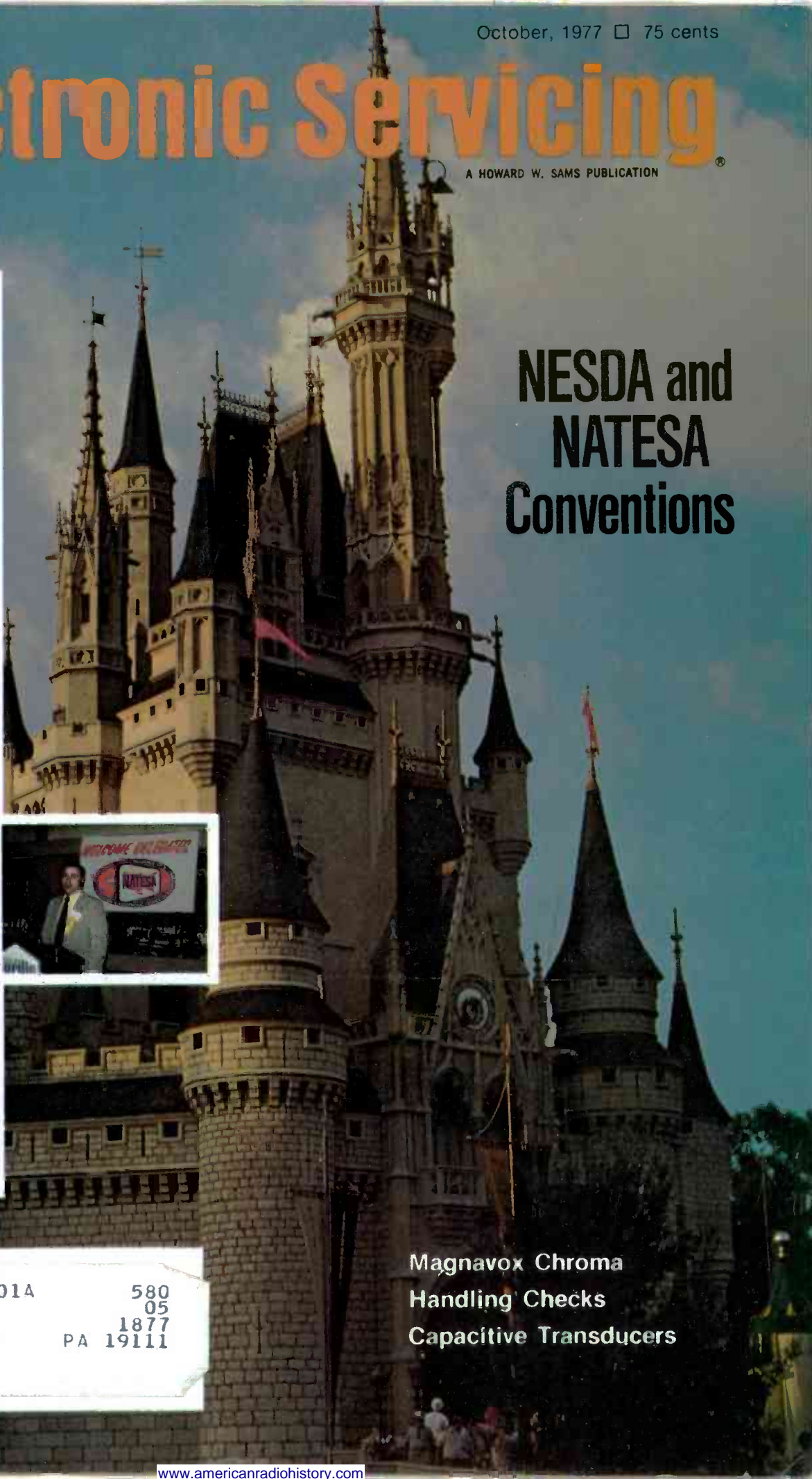
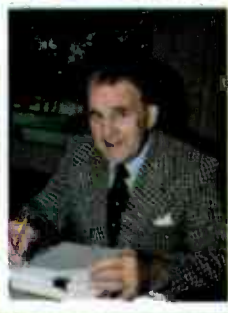


Electronic Servicing

A HOWARD W. SAMS PUBLICATION

NESDA and NATESA Conventions



SACS0129052PE01A 580
 S'ANUEL SACHS 05
 809 BERGEN ST 1877
 PHILADELPHIA PA 19111

Magnavox Chroma
 Handling Checks
 Capacitive Transducers

GET MORE FOR YOUR DUDS!

PTS OFFERS GREATER VALUES FOR DUD TV MODULES

PTS is into module rebuilding in a big way, and we'll buy all the dud modules you can lay your hands on. Check your shop. Whether you have one or 101, PTS will give you more for your dud TV modules.

COMPARE!

A FEW EXAMPLES OF DUD MODULES PTS PAYS TOP DOLLAR FOR:

MODULE	OEM DUD VALUE	PTS DUD VALUE
Quasar 65534A82-B-If	\$13.05	\$14.20
RCA MCK001A/141224	\$10.00	\$11.40
Zenith 150-162	\$10.48	\$12.20

If you have a large quantity of dud TV modules send us a list of brand* and module numbers and we'll advise you of the value. Contact the PTS Servicecenter nearest you for more information.

*Acceptable brands are Admiral, GE, Magnavox, Montgomery Ward, Philco, Quasar, RCA, Sears/Warwick, Sylvania and Zenith. Do not include ceramic encapsulated, broken or cannibalized modules. PTS reserves the right to reject any or all modules.

PTS ELECTRONICS, INC.

A Complete List Of All PTS Servicecenters Appears On The Opposite Page.

For More Details Circle (1) on Reply Card



PTS THE WORLD'S LARGEST TUNER REPAIR COMPANY

SERVICENTER LOCATIONS

MIDWEST

Home Office
BLOOMINGTON, IN 47401
 5233 S. Hwy. 37, P.O. 272
 812-824-9331
CLEVELAND, OH 44134
 5682 State Road
 216-845-4480
KANSAS CITY, KS 66106
 3119A Merriam Lane, P.O. 6149
 913-831-1222
MINNEAPOLIS, MN 55408
 815-W. Lake St., P.O. 8458
 612-824-2333
ST. LOUIS, MO 63130
 8456 Page Blvd., P.O. 24256
 314-428-1299
DETROIT, MI 48235
 13707 W. 8-Mile Rd.
 313-862-1783
GRAND RAPIDS, MI 49501
 1134 Walker Northwest
 P.O. 1435
 616-454-2754
CINCINNATI, OH 45216
 8172 Vine St., P.O. 15491
 513-821-2298
MILWAUKEE, WI 53218
 7211 Fond du Lac
 414-464-0789
COLUMBUS, OH 43227
 4085A E. Livingston
 614-237-3820
INDIANAPOLIS, IN 46202
 28 E. 14th St.
 317-631-1551
DAVENPORT, IA 52805
 2024 E. River Dr., P.O. 187
 319-323-3975
OMAHA, NE 68132
 509B Dodge Street
 402-556-1800
CHICAGO
 Bekeley, IL 60163
 1756 S. Tall Street
 312-449-2082

SOUTH

ATLANTA, GA 30311
 2180 Campbellton Road
 P.O. 42558
 404-753-0007
JACKSONVILLE, FL 32210
 1918 Blanding Blvd., P.O. 7923
 *04-389-9952
WASHINGTON, DC
 Silver Spring, MD 20910
 8860 Brookville Rd.
 301-565-0025
CHARLOTTE, NC 28225
 726 Seigle Ave., P.O. 5512
 704-332-8007
BIRMINGHAM, AL 35201
 210 N. 9th St., P.O. 1801
 205-323-2657
MEMPHIS, TN 38118
 3614 Lamar Ave., P.O. 18053
 901-365-1918
NORFOLK, VA 23504
 3118 E. Princess Anne Rd.
 804-625-2030
NEW ORLEANS
 Metairie, LA 70004
 3920A Airline Hwy., P.O. 303
 504-837-7569
TAMPA, FL 33690
 2703 S. Moccasin, P.O. 14301
 313-839-5521
NASHVILLE, TN 37214
 2426 A Lebanon Rd.
 615-885-0688

NORTHEAST

SPRINGFIELD, MA 01103
 191 Chestnut, P.O. 3189
 413-734-2737
PHILADELPHIA
 Upper Darby, PA 19082
 1742-44 State Rd., P.O. 207
 215-352-6609
PITTSBURGH, PA 15202
 257 Riverview Ave. W, P.O. 4130
 412-761-7648
E. PATERSON, NJ 07407
 158 Market St., P.O. 421
 201-791-6380
RUFALGO, NY 14212
 993 Sycamore St., P.O. 1241
 716-891-4935
BOSTON
 Arlington, MA 02174
 1167 Massachusetts Ave., P.O. 371
 617-648-7110
SYRACUSE, NY 13204
 418 Solar St., P.O. 207, Salina Sta.
 315-475-2330
BALTIMORE, MD 21218
 5505 Reisterstown Rd.
 301-358-1186

PACIFIC

SACRAMENTO, CA 95841
 4611 Auburn Blvd., P.O. 41354
 916-482-6220
SAN DIEGO, CA 92105
 5111 University Ave., P.O. 5794
 714-280-7070
LOS ANGELES, CA 90023
 4184 Pacific Way
 213-266-3728
PORTLAND, OR 97213
 5220 N.E. Sandy Blvd.
 P.O. 13096
 503-282-9636
SEATTLE, WA 98109
 432 Yale Ave. N, P.O. 9225
 206-623-2320

MOUNTAIN

DENVER
 Arvada, CO 80001
 4958 Allison St., P.O. 672
 303-423-7080
SALT LAKE CITY, UT 84106
 1233 Wilmington Ave.
 P.O. 6218
 801-484-1451
PHOENIX, AZ 85009
 2916 West McDowell Rd.
 602-278-1218

SOUTHWEST

LONGVIEW, TX 75601
 110 Mopac Rd., P.O. 7332
 214-753-4334
OKLAHOMA CITY, OK 73106
 3007 N. May, P.O. 60566
 405-947-2013
HOUSTON, TX 77207
 4326 Telephone Rd., P.O. 26616
 713-644-6793

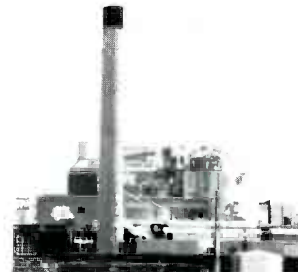
Electronic Servicing

CONTENTS

- 18 News From The Service Associations Conventions**—This report and pictures of the NESDA, IS CET, and NATESA conventions should help you understand the purposes and helpful actions of these fine organizations—*Carl Babcoke*.
- 24 Servicing Magnavox Modular Color TV, Part 5**—Many waveforms and precise voltages are given for the remaining video and chroma stages of the T995 chassis, including the matrixing—*Gill Grieshaber, CET*.
- 34 Tips For Cashing Checks**—Rubber checks can cause loss of time and money. Here are practical suggestions for minimizing check dangers—*Lipman G. Feld, B.S., J.D.*
- 38 The Basics Of Industrial Electronics, Part 4**—The capacitance of some transducers changes when the material or process being monitored becomes different—*J. A. "Sam" Wilson, CET*.
- 46 Reports From The Test Lab**—A versatile and dependable digital frequency counter is the Sencore FC45. The PR47 prescaler can multiply the top frequency of most counters by a factor of 10—*Carl Babcoke CET*.



page 18



page 38

About The Cover—Cinderella Castle of Disney World illustrates the fun-time activities of the NESDA convention in Orlando, Florida. From top to bottom are: Hank Aaron, the home-run king of baseball; Will Rogers Junior, who talked about his famous father; Dick Glass was without his NESDA badge, so "Texas Sheriff" William Brandon stopped him at the door; George Weiss is the President of NATESA; Mr. NATESA is Frank Moch, the Executive Director of NATESA.

DEPARTMENTS

- 6 Electronic Scanner
- 11 Sycmure
- 12 Troubleshooting Tips
- 14 Reader's Exchange
- 48 Product Report
- 49 Test Equipment
- 50 Antenna Systems
- 51 The Marketplace
- 52 Advertisers' Index

Second class postage paid at Shawnee Mission, Kansas and additional mailing offices. Published monthly at 9221 Quivira Road, Overland Park, Kansas 66212 by Intertec Publishing Corp., 9221 Quivira Road, Overland Park, Kansas 66212. Send Form 3579 to 9221 Quivira Road, P.O. Box 12901, Overland Park, Kansas 66212.

©Copyright, 1977, Howard W. Sams & Co., Inc. All rights reserved. Material may not be reproduced or photocopied in any form without written permission of publisher.



PTS ELECTRONICS, INC.

PRECISION TUNER SERVICE

For More Details Circle (3) on Reply Card

SUBBER®

MARK IV-CUVB

A TIMESAVING INSTRUMENT BY CASTLE



UHF-VHF TV tuner and i-f signal analyst
Incorporates these important features:

- Tunes all UHF & VHF Channels
- Electronic Fine Tuning
- Dual 40 MHZ IF Output Jacks
- Battery Condition Indicator

MARK IV-CUVB Net \$64.95
(BATTERY POWERED ONLY)



CASTLE ELECTRONICS

5233 Old South Highway 37 Bloomington, Indiana 47401

For More Details and Specifications Contact Your Nearest Distributor
In Canada: Len Finkler Ltd; Ontario

For More Details Circle (4) on Reply Card



Seeking Original Japanese Replacement Parts for CB Repair Use?

CB REPAIR PACKAGE \$80.00 value for only \$59.00

Now repair almost all CB's with this package of Japanese Transistors

2SK 19 FET	2 pcs	2SC 1306	4 pcs
2SD 235	4 pcs	2SC 1239	3 pcs
2SC 710	10 pcs	2SC 1307	4 pcs
2SC 1678	4 pcs	2SC 756	3 pcs

SPECIAL PACKAGE OF MOST COMMON DRIVERS & FINALS

This kit contains 6 each of:

2SC 1678	2SC 756
2SC 108	2SC 799
2SC 1226	2SC 1239
2SC 1306	2SC 1307

\$145.00 value for Just \$99.95

CHECK OUR NEW REDUCED PRICES!

Original Japanese Transistors, FET, IC, Diodes

TRANSISTORS	FET		IC	
2SB 415 .70	2SC 509 .90	2SC 776 2.65	2SC 1060 2.25	2SC 1675 .59
2SB 463 1.50	2SC 517 3.95	2SC 777 3.50	2SC 1061 1.40	2SC 1678 2.25
2SA 495 .70	2SC 535 .70	2SC 778 3.60	2SC 1096 1.00	2SC 1679 4.25
2SA 562 .59	2SC 536 .59	2SC 781 2.65	2SC 1166 .59	2SC 1684 .59
2SA 628 .59	2SC 562 2.15	2SC 784 .59	2SC 1173 .90	2SC 1728 2.00
2SA 634 .90	2SC 619 .59	2SC 785 .70	2SC 1175 .90	2SC 1760 2.00
2SA 640 .59	2SC 184 .59	2SC 789 1.00	2SC 1189 1.40	2SC 1816 4.25
2SA 643 .70	2SC 371 .59	2SC 793 2.90	2SC 1213 .70	2SC 1908 .59
2SA 683 .70	2SC 372 .59	2SC 799 3.60	2SC 1226 1.00	2SC 1909 4.40
2SA 719 .70	2SC 373 .59	2SC 802 3.60	2SC 1237 4.25	2SC 1957 1.20
2SA 720 .70	2SC 381 .59	2SC 815 .59	2SC 1239 3.50	2SC 1975 4.40
2SA 721 .70	2SC 387 .59	2SC 712 .59	2SC 828 .59	2SC 1306 4.40
2SA 733 .59	2SC 388 .59	2SC 717 .59	2SC 829 .59	2SD 77 1.00
2SB 54 .59	2SC 394 .59	2SC 732 .59	2SC 838 .59	2SD 142 2.00
2SB 75 .59	2SC 403 .59	2SC 737 .59	2SC 839 .59	2SD 180 2.50
2SB 77 .59	2SC 454 .59	2SC 738 .59	2SC 839 .59	2SD 187 .66
2SB 186 .59	2SC 458 .59	2SC 735 .59	2SC 900 .59	2SD 188 3.00
2SB 324 .70	2SC 461 .59	2SC 756 2.80	2SC 930 .59	2SD 227 .59
2SB 337 1.60	2SC 461 .59	2SC 763 .59	2SC 945 .59	2SD 234 1.00
2SB 367 1.50	2SC 481 1.60	2SC 773 .70	2SC 1014 1.20	2SD 235 1.00
2SB 368 2.15	2SC 482 1.50	2SC 774 1.60	2SC 1017 1.40	2SD 313 1.10
2SB 406 .70	2SC 495 1.00	2SC 775 1.95	2SC 1018 1.20	2SD 325 1.10
			2SC 1674 .59	2SD 360 1.20

PRICES MAY CHANGE WITHOUT NOTICE

COD ORDERS WELCOMED Less than \$500 no deposit required

IMMEDIATE DELIVERY WITHIN 48 HOURS ON ALL TRANSISTORS IN STOCK

Minimum order \$10.00. Ohio residents add 4% sales tax. Add \$1.00 postage and handling. Quantity discount prices.

ASK FOR OUR COMPLETE PRICE LIST

MANUFACTURER INQUIRIES WELCOMED

All Parts Guaranteed Against Factory Defects

FUJI-SVEA ENTERPRISE

Dept. ES
P.O. Box 40325
Cincinnati, OH 45240
(513) 874-0220
(513) 874-0223

For More Details Circle (5) on Reply Card

Electronic Servicing

Editorial, advertising and circulation correspondence should be addressed to: 9221 Quivira Road, P.O. Box 12901, Overland Park, Kansas 66212 (a suburb of Kansas City, Missouri). (913) 888-4664.

EDITORIAL

RONALD N. MERRELL, Director
CARL H. BABCOKE, Editor
MICHAEL SCHEIBACH, Associate Editor
DUDLEY ROSE, Art Director
CINDY NELSON, Editorial Assistant
MARY CHRISTOPH, Graphic Designer

EDITORIAL ADVISORY BOARD

LES NELSON, Chairman
Howard W. Sams & Co., Indianapolis
JOE A. GROVES, Technical Consultant
Howard W. Sams & Co., Indianapolis

CIRCULATION

GREG GARRISON, Director
EVELYN ROGERS, Manager



Member, American Business Press
Member, Audit Bureau of Circulations

ADMINISTRATION

GEORGE H. SEFEROVICH, President
MIKE KREITER, Publisher

ADVERTISING SALES

Overland Park, Kansas 66212
(a suburb of Kansas City, Missouri)
Phone: (913) 888-4664

PAT FOX, Production

Regional and Advertising Sales Offices
with Advertising Index

ELECTRONIC SERVICING (with which is combined PF Reporter) is published monthly by Intertec Publishing Corp., 9221 Quivira Road, Overland Park, KS 66212.

ELECTRONIC SERVICING is edited for technicians who repair home-entertainment electronic equipment (such as TV, radio, tape, stereo, and record player), and for industrial technicians who repair defective production-line merchandise, test equipment, or industrial controls in factories.

Subscription Prices: 1 year—\$6.00, 2 years—\$10.00, 3 years—\$13.00, in the U.S.A. and its possessions. All other foreign countries: 1 year—\$7.00, 2 years—\$12.00, 3 years—\$16.00. Single copy 75 cents; back copies \$1. Adjustment necessitated by subscription termination to single copy rate. Allow 4-6 weeks delivery for change of address. Allow 6-8 weeks for new subscriptions.



INTERTEC PUBLISHING CORP.
Subsidiary of HOWARD W. SAMS & CO., INC.

ELECTRONIC SERVICING

**From blisters to
boxes to bags.**

**Mallory's got the
winning team
for your solderless
terminal needs.**

Mallory solderless terminals are available now — packaged to suit your needs. These crimp-type terminals and connectors fit virtually all popular applications and come in a complete range of sizes from 26 through 4/0 AWG.

Buy the winning team for convenience and reliability. See your Mallory Distributor. Or contact Mallory Distributor Products Company, a division of P. R. Mallory & Co. Inc., Box 1284, Indianapolis, Indiana 46206. (317) 856-3731.



MALLORY

Capacitors • Controls • Fastening Devices • Resistors • Security Products • Semiconductors • Solderless Terminals • Sonalert® Signals • Switches

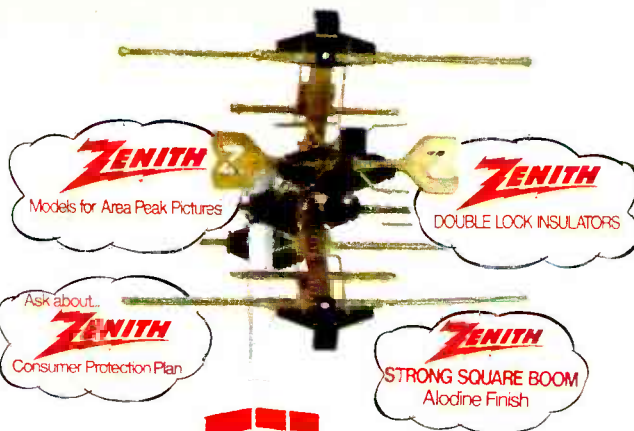
For More Details Circle (6) on Reply Card

www.americanradiohistory.com

**Only from
Zenith!**

**The first free-standing
floor display for both
indoor and outdoor
antennas!**

**Takes up less than
one square foot
of floor space!**



It's such an eye-catcher, such a profit center in its own right, we've dubbed it the "Power House."

Comes complete with a full-feature miniature of the new, improved Zenith Chromatenna™ II, with four cloud-like hang tags describing the Chromatenna II features, and our new antenna catalog for easy customer selection.

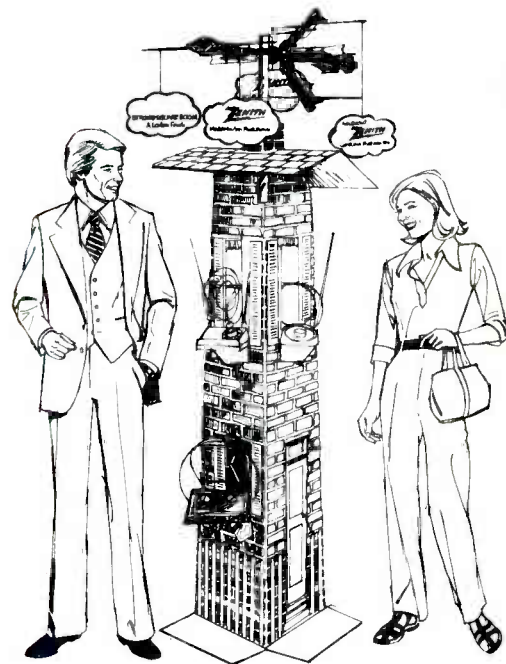
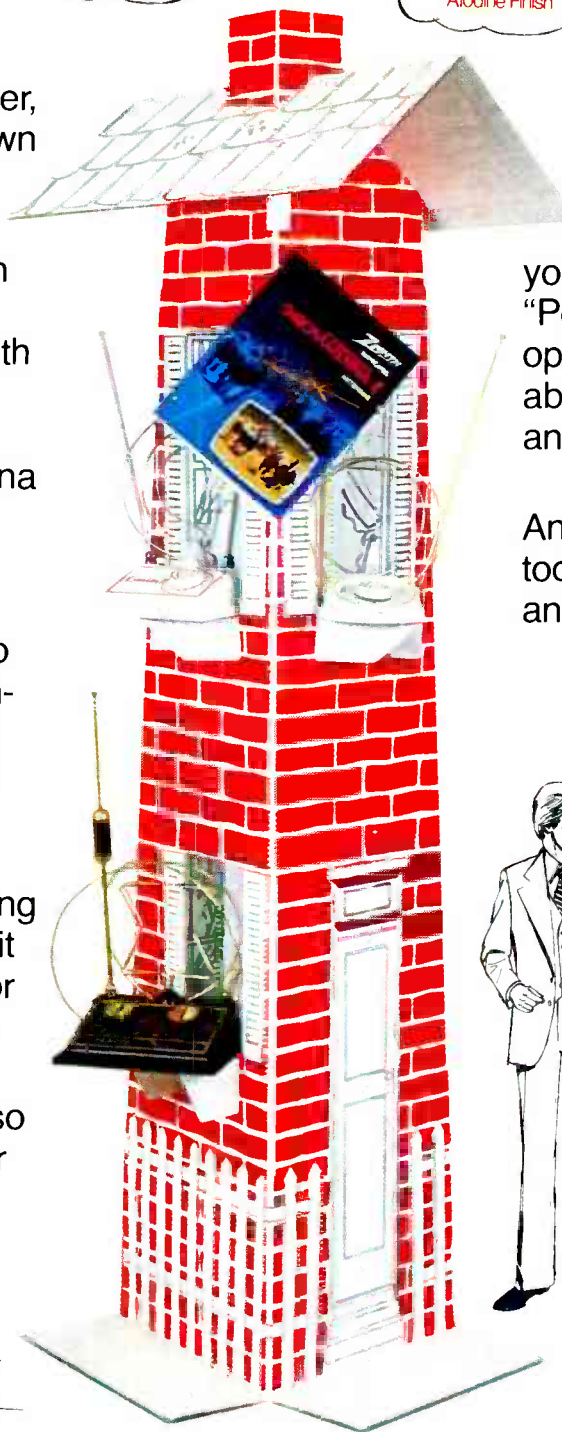
Windows pop open to display three indoor antennas in such a way they're locked in place to prevent theft even in high-traffic areas.

Stands an eye-catching 7½' tall so you can place it in a corner, along a wall, or even in a display window.

Complete assembly instructions are included so you can set up in a matter of minutes.

With just an order to your Zenith distributor for the "Power House," you can open the door to the profitable indoor and outdoor antenna business.

Order a "Power House" Antenna Display, 950-490, today before another antenna prospect goes by!



The quality goes in before the name goes on.®

Zenith Radio Corporation/Service, Parts & Accessories Division/11000 Seymour Avenue/Franklin Park, Illinois 60131

For More Details Circle (7) on Reply Card

electronicscanner

news of the industry

The National AM Stereophonic Radio Committee has completed tests on three proposed AM-stereophonic broadcast systems developed by Belar Electronics, Magnavox and Motorola. The committee now is preparing a report to be submitted to the Federal Communications Commission, which is reviewing information about AM stereo in order to determine a standard by June, 1978. Retailing Home Furnishings reports that AM-stereo products could be on the market within two years.

The California Energy Resources Conservation and Development Commission has voted to drop television from its energy efficiency and labeling program. Representatives of the television industry had warned the commission that proposed restrictive energy-saving standards for TVs could severely disrupt the industry and hurt the consumer. The energy proposals would have set wattage limits on color TV and monochrome TV sets based on screen size, and would have banned the use of any feature requiring power when the set is off, such as remote control and instant-on.

Peter F. McCloskey has been selected to be president of the Electronic Industries Association. McCloskey replaces V. J. Adduci, who left the presidency of EIA in June. McCloskey has been president of the Computer and Business Equipment Manufacturers Association since 1973.

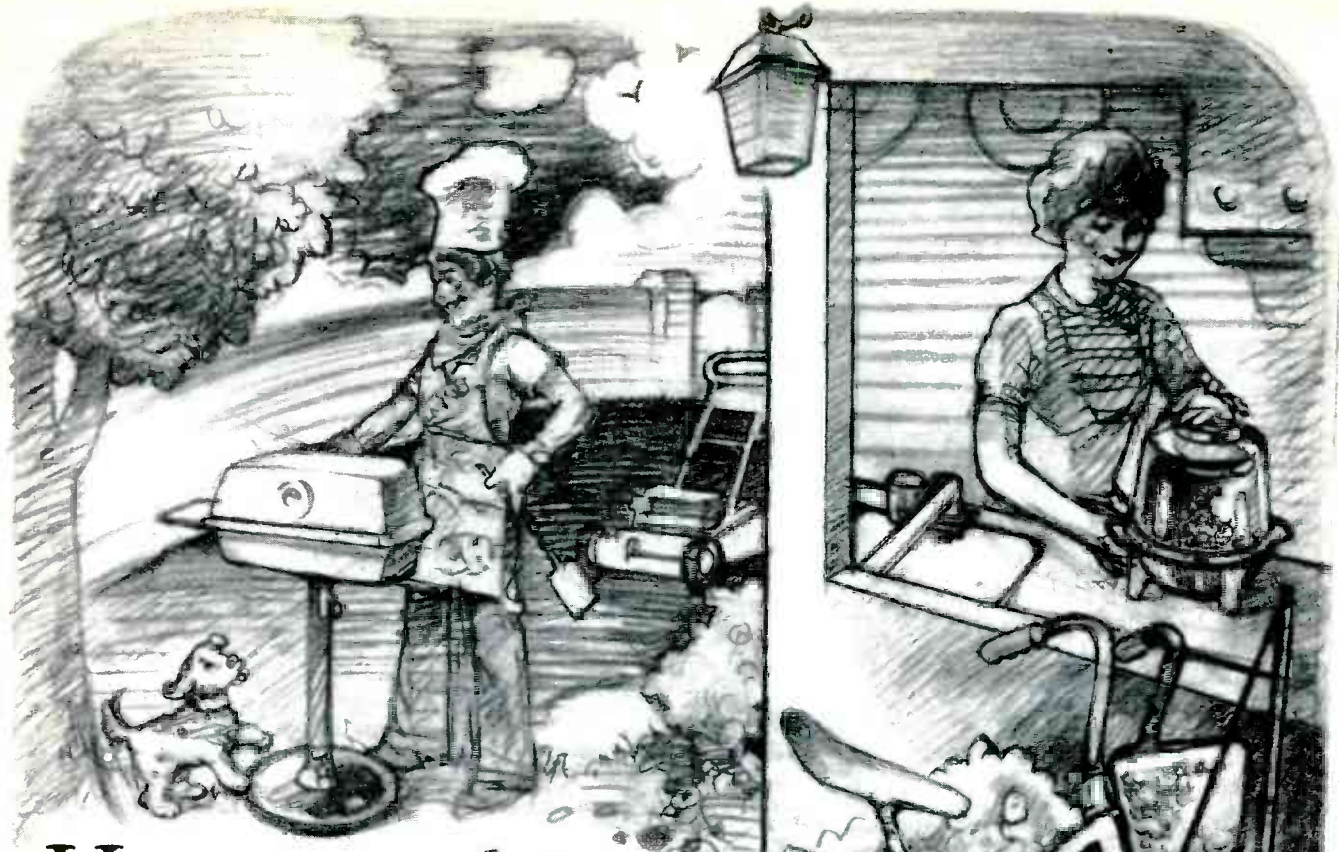
Citizens Band Radio Service licensees reached a total of 11,127,695 in the first seven months of 1977, according to the FCC. The new total marks an increase of 3,288,692 since the beginning of the year, when CB service expanded to 40 channels. At the end of December 1976, the total was 7,839,003.

Warranties and guarantees requiring consumers to mail in registration cards should be abolished, according to the Federal Trade Commission (FTC). The commission believes a consumer only should have to prove the product was under warranty when the malfunction occurred. The FTC also objects to the requirements that a consumer assume the cost of mailing or shipping defective products, mail or ship items weighing more than 36 pounds, remove built-in products, and return a defective product in its original container.

Bussman Manufacturing division of the McGraw-Edison Co. plans to house many of its operations in a new \$8.2 million manufacturing and office complex in Ellisville, Missouri, a suburb of St. Louis. Approximately 1,200 people will be employed at the new facility, located on a 42-acre tract, beginning in mid-February, 1978.

Hand-held 23-channel CB radios can be sold through August of 1978, the FCC has ruled. The previous deadline for the sale of the units was January 1, 1978. The ruling is in response to a petition by Radio Shack and Fanon Courier to extend the cut-off date for the hand-held units because of the difficulty in selling sets already in inventory. Hand-held radios are defined by the FCC as those with a built-in microphone, antenna, and power supply.

continued on page 8



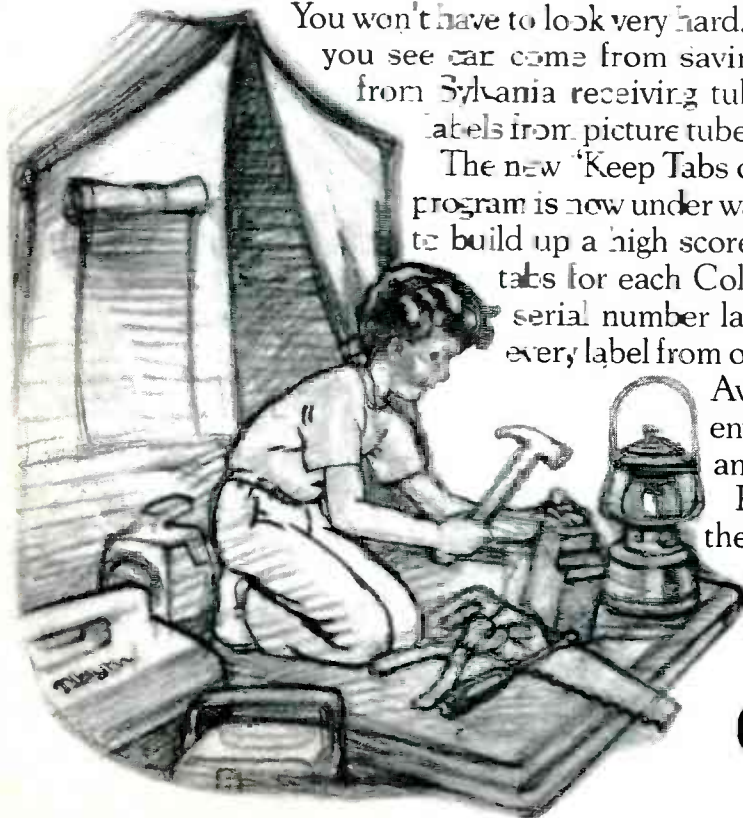
How many things can you find on this page that start with Sylvania tabs?

You won't have to look very hard. Almost everything you see can come from saving address tabs from Sylvania receiving tube cartons and labels from picture tubes.

The new "Keep Tabs on Sylvania" awards program is now under way, and this year it's ever easier to build up a high score. You get a bonus of 50 extra tabs for each Color Bright 85[°] picture-tube serial number label and 10 extra tabs for every label from other Sylvania color tubes. Pick up your

Award Catalog and special tab-saver envelope at your local Sylvania distributor and start collecting your tabs, now.

Put your tabs and award order form in the mail by Nov. 30, 1977 and you'll be able to find a lot of the things in the picture right in your own backyard.



GTE SYLVANIA



continued from page 6

A low production level has delayed Cybernet Electronics' proposed price reduction on its new 40-channel CB radio containing just five ICs. Electronic News reports that poor CB market conditions in the U.S. have forced Cybernet to alter its production and pricing schedule on the compact unit. According to a company spokesman, Cybernet Electronics has postponed plans to have all its models using the IC chassis by November.

California State Senator David Roberti recently received an award from the California State Electronics Association for his outstanding service to the small business community. Roberti is chairman of the Senate Select Committee on Small Business Enterprises and actively supports legislation to solve the problems of small business. He is also senate majority leader.

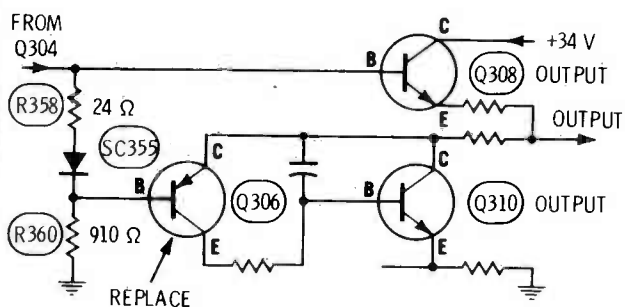
Zenith Radio Corporation has introduced its first two videocassette recorders. Model SJR9500P is a full-feature color-TV/videocassette-recorder console combination with a suggested retail price of \$2600. Model JR9000W is a deck unit, ready for attachment to the antenna terminals of any television receiver. The suggested retail price is \$1300. Zenith also will market a one-hour videotape cassette with a suggested retail price of \$12.45 and a two-hour videotape cassette with a suggested retail price of \$16.95. An optional video black and white camera kit has a suggested retail price of \$395. The company's distributors will introduce the units to dealers in special showings and open houses. Zenith's national service organization has established service training programs for independent service technicians.

A hand-held electronic device that alerts tactical combat troops before they can be detected by anti-personnel radar is being marketed by GTE Sylvania. The device (RWR-1000) also is designed to monitor and locate frontline anti-aircraft gun radars, fire-control and mortar-location radars, as well as isolate and identify high-priority radar signals in a clutter of signals and noise.

Quasar Electronics Company is reducing the price of videocassettes for their videotape recorder, "The Great Time Machine." The suggested retail price of the VC120, a two-hour cassette, is now \$24.95 (previously \$33.95). Similar reductions were announced for the 100-minute and 60-minute tapes.

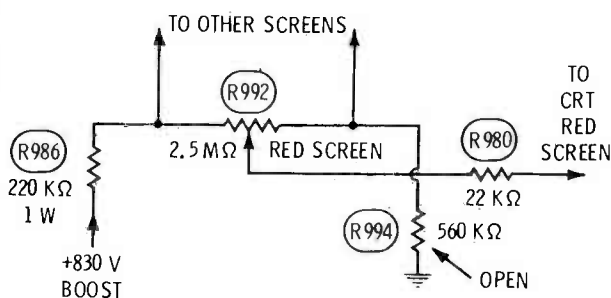
The Personal Communications Show [PC-78] will be held in conjunction with the 1978 Winter Electronics Show, following an agreement between the EIA Consumer Electronics Group and EIA Citizens Radio Section-Communications Division, sponsors of the two trade shows. The electronics show will be held in the Las Vegas Convention Center and Pavilion Exhibition Hall of the Las Vegas Hilton Hotel, January 5-8, 1978. (The PC-78 show had been scheduled for February 14-16, also in Las Vegas.)

Chassis—Sylvania E04
PHOTOFACT—1425-3



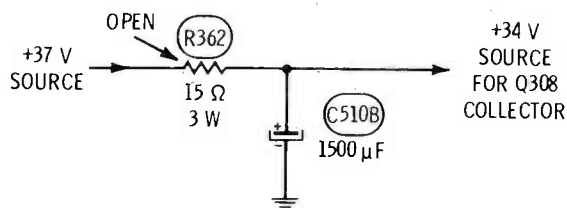
Symptom—Compression of lower third of the raster
Cure—As a test, replace Q306, the vertical driver transistor

Chassis—Sylvania E08
PHOTOFACT—1481-2



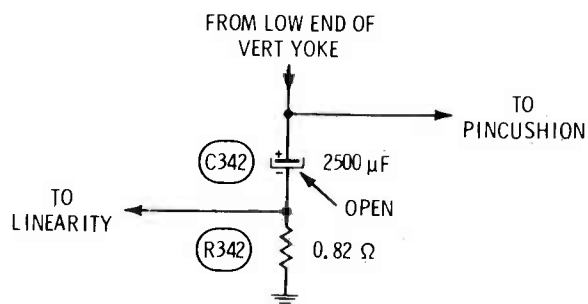
Symptom—Excessive brightness
Cure—Check R994, and replace it if open

Chassis—Sylvania E03/E04/E05
PHOTOFACT—1425-3



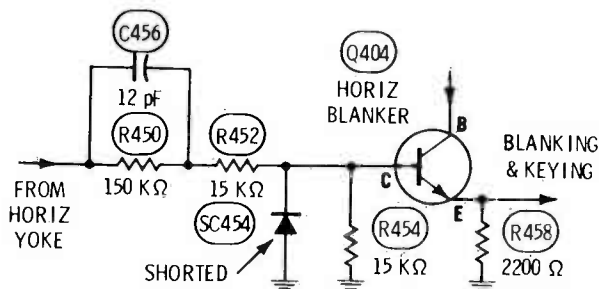
Symptom—No vertical deflection
Cure—If there's no voltage at Q308, check R362, and replace it if open

Chassis—Sylvania E08
PHOTOFACT—1481-2



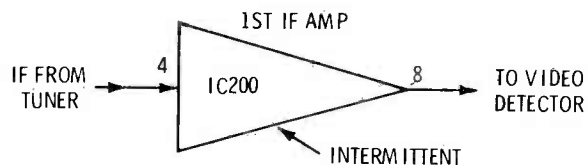
Symptom—No vertical deflection, but square waves are present at the input to the yoke
Cure—Check capacitor C342, and replace it if open

Chassis—Sylvania E08
PHOTOFACT—1481-2



Symptom—Video is smeared, horizontal locking might be affected
Cure—Check diode SC454, and replace it if shorted

Chassis—Sylvania E08
PHOTOFACT—1481-2



Symptom—Intermittently, has snow in the picture
Cure—Replace IC200, the IF amplifier IC

ideal, all-around iron

BY
Weller



FOR ELECTRONIC SOLDERING

Model WP-25. Popular 25-watt, pencil-type iron for general purpose work. Handy size: 7⁷/₈" long. Lightweight: 1³/₄ oz. Comfortable to hold. Perfect for crowded areas. Easily stored. Long-life, double-coated, 1/16" screwdriver tip quickly changed to other available styles and sizes. Rugged stainless steel barrel. Use with or without optional, mounted or free-standing bench stand PH-25.

Ask your local distributor or write...

**Weller-Xcelite
Electronics Division**



The Cooper Group

P. O. BOX 728,
APEX, NORTH CAROLINA 27502

For More Details Circle (8) on Reply Card

troubleshootingtips

Blown fuses and burned parts Admiral 4M10C (Photofact 1504-1)

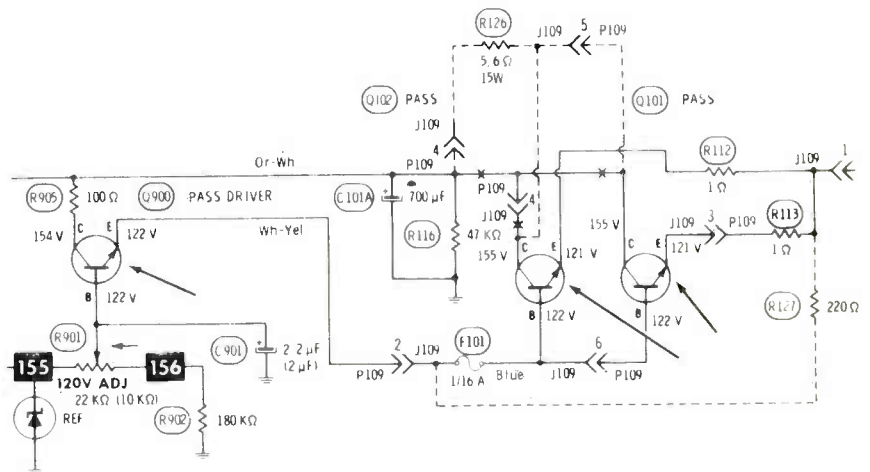
When the set first was brought to the shop, three fuses had been blown and paralleled with wire by a do-it-yourselfer. A visual inspection showed a cracked R907 thermistor, and burned R905 and R112.

Ohmmeter tests proved R12 was open, R905 was burned, also Q101, Q102, and Q900 were shorted.

obtained from +120-volt supply to ground. Such a low reading usually indicates a short. The audio output and horizontal output transistors were checked and found to be okay.

When I located the D101 damper diode (behind the horizontal output transistor and heat sink), it was split, so no test was necessary.

Installation of a new D101 brought back to normal picture with good sound.



All bad components were replaced, including the fuses. When the set was plugged in, F101 blew instantly. I checked Q101, Q102, and Q900, even though they were new, and found Q900 had 3 milliamperes of leakage. Another Q900 was installed.

Next, 1.5-ampere F900 blew (it protects the 120-volt source). An approximate 1,000 ohm reading was

Probably the damper diode was the original defect, but after so many parts had been ruined by the jumped fuses, it was difficult to be certain. Anyway, this repair reminded me to check all solid-state devices before I install them, even when they are new.

Richard J. Serrano
Madera, California

Low contrast Zenith 14B38Z B&W (Photofact 1156-3)

This model is susceptible to two common troubles which reduce the contrast. One is the tuner; we have sent in several to be rebuilt. Secondly, the grid of the AGC-keyer tube requires a negative voltage, which is obtained by filtering a sample of the DC grid voltage of the horizontal-output tube. When the output tube develops a slight gas or grid leakage, this voltage is reduced, causing excessive AGC action, and resulting in insufficient (and drifting) contrast. (Keep this in mind for future use, for it is a difficult defect to find.)

Unfortunately, this set was not to

be repaired that easily.

I connected a tuner substitutor to the IF cable, and the contrast was strong. Before removing the tuner for shipping to a tuner station, I made some simple tests. Removing most of the channel strips (to give room for the test probe), I tuned in a local station. Checking DC voltages, I found none at the mixer screen grid. This grid is fed from the mixer-plate supply through a 47K resistor, and is bypassed by a feedthrough capacitor. Neither the tube nor the feedthrough were shorted.

Suspecting some kind of regeneration, I bypassed the feedthrough with a .001 disc capacitor. The voltage rose to a normal value. I left



WORLD'S MOST PRACTICAL SOLDER HANDLING TOOLS

**SOLDERING +
DESOLDERING +
RESOLDERING =**
SOLDERAbility ELEMENTARY TO ELITE

- LONG
- MED
- SHORT



FEATURE FOR FEATURE - A LOT OF TOOL FOR THE MONEY!

ADJUSTABLE
VACUUM STROKE

US140

**UNIVERSAL
SOLDAPULL®**
DESOLDERING TOOL

Compact tool for convenient tool box storage. Precision molded plastic barrel and low-mass plunger creates rapid vacuum impulse with negligible recoil. Three position plunger adjusts loading span to fit large or small hands. Ample vacuum for most circuit board desoldering requirements.

contact your local **DISTRIBUTOR** inquiries invited
Covered by U.S. and Foreign Patents and Pending Applications

EDSYR®
1558 ARMINTA ST., VAN NUYS, CALIF. 91406
24 HR. PHONES: LOCAL (818) 709-2224, L.A. (213) 873-5115
CABLE: EDSYR/EX VAN TELE 85-1469

144 PAGE TRAINING MANUAL
NEW! OVER 1,000
ILLUSTRATIONS



For More Details Circle (10) on Reply Card

YOU GET TO CHOOSE THE WARRANTY TIMES WHEN YOUR INVOICES COME FROM TECH SPRAY

LIMITED WARRANTY: This warranty only covers those parts and tubes which we replaced. We do not warrant the parts in other portions of the set. **SPECIFIC WARRANTY PERIODS FOR PARTS AND TUBES INSTALLED AND FOR TECHNICAL SERVICES ARE:** DAYS

Future service on portions of the set other than those we repaired will be charged for at our regular rates.

This warranty gives you specific legal rights, and you may also have other rights in this state.

PICTURE TUBE	_____
PARTS & TUBES	_____
SERVICE CALL	_____
MAJ. SHOP RPR.	_____
MIN. SHOP RPR.	_____
MIN. SERVICE	_____

BLANK
UNTIL
IMPRINTED

We think you should be the one to determine the warranty times for the various service jobs you perform.

That's why we leave the warranty times blank. And we allow for different warranty periods for different service jobs.

It's ridiculous to warranty a service call for the same period as a major bench job. After all, when you replace a tube on a house call, you aren't paid to check under the chassis to see what caused the tube to fail.

And giving the choice of warranty times is just one of the reasons why the service invoices you get from Tech Spray are better for you and your shop.

See them at your Distributor's today.

**TECH
SPRAY** supplying the technician's daily needs... better

See our PRICING GUIDE, TELEPHONE PURCHASE ORDER LOG, CALL CONTROL CARD, and TRIPPLICATE PURCHASE ORDER.

For More Details Circle (11) on Reply Card

reader's exchange

For Sale: Five line-isolation transformers for servicing AC-DC chassis. Primary rating 120 V or 240 V (double wound) at 400 watts of continuous power. Perfect for high school electronics lab use. \$25 each prepaid (shipping included). Gerald Koske, 10204 Thayer Road, RR 1, Ringwood, Illinois 60072.

Needed: Hickok model 189 Tracemeter; also one 1B85 geiger-counter tube. ARO Electronic Service, 735 Mills Street, Kalamazoo, Michigan 49001.

Needed: Schematic and parts list for Western Auto model DC-4850 auto radio. Material no longer available from manufacturer or Sams. Charles Prater, Edna, Kentucky 41419.

Needed: Schematic and service manual for AKAI M-10 or M-9 stereo tape recorder (especially interested in alignment specs). Will buy, or copy and return. Michael Craig, 421 Fairmount NE, Warren, Ohio 44483.

For Sale: Heath scope model IO-102, factory wired and calibrated, good condition, with low-capacity probe, \$95. Also, Telematic VHF/UHF sub tuner, AC/battery operation, never used, \$55. Willis Ormes, 1420 Melrose Avenue, Fort Wayne, Indiana 46808.

Needed: Scope with wide bandwidth (10 MHz or better), something similar to B&K 1465. Must be in good condition with instruction manual. Send description and asking price. Harold Kinley, 212 Marble Road, Kingstree, South Carolina 29556.

Needed: B&K model 1077B TV Analyst; color-bar generator; and assembly manual for VOM kit supplied with RCA Institute's course. Roger E. Davis, RFD 1, Box 472, Mossup, Connecticut 06354.

Needed: Schematic for a Minerva Tropic Master AM and short-wave radio. Samson Newsome, 9312 Arlington Avenue, Manassas, Virginia 22110.

Needed: Schematic and information on antique Apco radio using 3-199s. John Uscinowski, RR1, Box 379, Greenwich, New York 12834.

Needed: Solid-state triggered scope, comparable to RCA WO-535A, B&K 1461, etc. Also, a late model CRT checker and rejuvenator. State price and condition. Keith L. Kincaid, 1530 E. Washington, Charleston, West Virginia 25311.

Needed: Operation manual and schematic for a Precision model 120 VTVM. Will buy, or copy and return. Joseph E. Kosydar, RD 1, Box 182C, Jermyn, Pennsylvania 18433.

For Sale: Rider's radio and TV manuals. Also, the following radio and TV tubes: 00A; 01A; G2S; 99; 199; 299; 120; all 6-volt and 7-volt tubes; 12-volts, 12A, 12FR8; 24; 26; 27; 30; and 35. Fifty or more surplus tubes for 75 cents each. All tubes are guaranteed to be satisfactory. G. C. Goodwin, Goodwin Radio Shop, Rankin, Illinois 60960.

continued on page 16

ELECTRONIC SERVICING

Here Today, Gone Tomorrow.



At General Electric we're treating every TV parts order like a rush order. Here's how it's paying off: Over 99% of the General Electric TV replacement parts ordered this year were in stock in our national computer-linked parts distribution system. And on the average better than 90% were ready for immediate shipment from the Regional Replacement Parts Centers.

This is why most parts are now shipped the same day an order's received or by the close of business the following day.

But ordering parts from us is more than fast. It's easier than ever before. In almost all areas, our toll-free ordering numbers connect you directly with GE Parts Centers. And you can charge your order to Master Charge, VISA (BankAmericard) or your approved GE Open Credit Account.

What's more, when you order several parts and one isn't immediately available, we don't leave you hanging. Instead, we ship what's in stock and include the expected shipping date for what isn't.

How did General Electric's parts distribution come so far so fast? One factor was the enlargement of stocks at many



GE Parts Centers. But the deciding factor was our determination to build a streamlined, efficient system that simplified the parts ordering process for both of us.

Now comes the easiest part of all. Clipping out and sending in the coupon below. When you do, we'll send you a list of our toll-free numbers and all the information you need to take the easy way out next time you order TV replacement parts from us. **It's our business to make your business easier.**

"I've got your number."

DUCHSM MEYER/GENERAL ELECTRIC COMPANY
TELEVISION BUSINESS DEPARTMENT
COLLEGE BOULEVARD/PORTSMOUTH, VA. 23705

Dear "Dutch":

Please send me the items checked below:

- Brochure covering GE toll-free ordering numbers.
- Listing of Parts Distributors.
- Master Charge and VISA (BankAmericard) information.
- GE Open Credit Account information.

Name _____

Service Company _____

Address _____

City _____ State _____ Zip _____

THIS IS GE PERFORMANCE TELEVISION

GENERAL  ELECTRIC

continued from page 14



Wherever fast, portable heat is the need

Heating shrink tubing is just one of many jobs the Master Flameless Heat Gun performs in electronic assembly. It's the perfect source of fast, portable heat for drying components, heat-checking circuitry, softening plastics and adhesives, melting solder, etc. Industrial quality for production line duty. Twelve models: 200°F to 1000°F, 120V or 230V, standard or UL listed. Special application attachments available.

For FREE complete line catalog from the originators of heavy duty heat guns, contact your electronic distributor or call or write:

MASTER
appliance corporation

In Canada, contact Martin Industrial Sales Ltd. 4445 Harvester Road, Burlington, Ontario

2420 — 18th Street,
RACINE, WIS. 53403
(414) 633-7791

For More Details Circle (12) on Reply Card

Low cost tool for design and trouble-shooting

Pocket Size
Slide-Switch
Resistance
Substitution Unit
still only **\$58**

- Over 11 million step range
- 1% accuracy resistors
- Unique in convenient size
- Rugged construction

Small enough to take anywhere in your pocket, this aluminum-housed unit delivers a very broad range of resistance steps. Excellent for both development and repair work.

Half-watt 1% tolerance resistors give an accurate range from 1 to 11,111,110 ohms, in one-ohm steps. Has three binding posts, one to ground case.

Available now from stock. Catalog No. 7092-236. Cash savings available, see coupon. Write, or call (804) 264-2858. Phipps & Bird, Inc.

- Please send _____ Units @ \$58 each. (Check enclosed less 5% cash discount)
- Send _____ Units @ \$58 each C.O.D. (Phipps & Bird will pay C.O.D. charges)

Name _____

Firm _____

Address _____

City, State _____ Zip _____

Ask your dealer, or contact:

PHIPPS & BIRD, INC.

Manufacturers of Scientific Instruments

P.O. Box 27324 • Richmond, Virginia 23261 • Phone: 804/264-2858

For More Details Circle (13) on Reply Card



Needed: Service information and schematic for a silver Marshall superheterodyne radio. Cannot find model number. Has a serial number of 50260. Radio has type 80 rectifier tube, three type 45 power amplifier tubes, three type 56 tubes and three 58 tubes in IFs. Will buy a copy of original. Ronald E. Blevins, 608 Rupert Lane, Grayson, Kentucky 41143.

For Sale: Eico model 460 scope, \$50. Al Potter, Potter's TV Shop, 2 Buttonwood Drive, Parlin, New Jersey 08859.

For Sale: Rider's radio manuals plus index. Will sell singly or as a set. Also, other antique-radio service data for sale. Lawrence Beitman, 1760 Balsam Road, Highland Park, Illinois 60035.

Needed: AM/FM Delco stereo custom-fit auto radio for 1969 Chevelle 307 auto. Good used or new. Paul Capito, 637 W. 21st Street, Erie, Pennsylvania 16502.

Needed: Schematic for Mitsubishi TV model 6P-126. Will buy, or copy and return. Gerwig's TV & Electronics, Route 1, Box 194, Round Hill, Virginia 22141.

For Sale: RCA WO91B scope; RCA WR69A sweep generator; and WR99A crystal-controlled marker generator. All used very little and in mint condition. Cables and manuals included. Make a reasonable offer. B. G. Brandt, 241 Retama Place, San Antonio, Texas 78209.

For Sale: Complete Bell & Howell radio and television training course, includes: 16 textbooks, all experiments, design console (AC/DC power supply and sine-square wave generator), digital multimeter, 5-inch triggered-sweep solid-state scope, and GR2000 Heathkit 25-inch color TV. All kits unassembled. Best offer over \$1100 plus freight. "A" TV Service, 1822 N. Pleasantburg Drive, Greenville, South Carolina 29609.

Needed: Rider's radio manuals 1 to 7. Will buy or trade 7-series tubes. Also, need WD11 and UX199 tubes. Troch's Television-Radio-Appliances, 290 Main Street, Spotswood, New Jersey 08884.

Needed: Service manual for Mercury model 1800 VOM. Will buy, or copy and return. David F. Koterba, RD 5, Box 255, Johnstown, Pennsylvania 15905.

Needed: Operators manual for a Wayne WT2A transistor tester. Will buy, or copy and return. Will pay for service. Thomas F. Burns, 9 Allegheny Terrace, Pittsburgh, Pennsylvania 15207.

For Sale or Trade: Triplet 801 VOM, \$175. Might trade for Hickok 6000B tube tester or Super Cricket. (The 801 is still in warranty and in mint condition because never used.) Kenneth Miller, 10027 Calvin Street, Pittsburgh, Pennsylvania 15235.

Needed: B&K 1077B TV analyzer, and B&K 467 CRT tester. State condition and price. Stephen Solomon, 1800 N. Cunningham, Lake Hamilton, Florida 33851.



The GE Bottoms Up Program will end November 30, 1977.

Time is running out.

Get busy before your chance for some pretty fabulous awards is gone.

Mail orders and flaps to:

General Electric Award HQ
3003 E. Kemper Road
Cincinnati, Ohio 45266

TUBE PRODUCTS DEPARTMENT
GENERAL ELECTRIC COMPANY
OWENSBORO, KENTUCKY 42301

GENERAL  ELECTRIC

Needed: Lafayette HE-20 series (A-B-C) tube-type CB transceiver. Want repairable unit and schematic. C. Pryson, 4909 Gettysburg Road, Knoxville, Tennessee 37921.

Needed: Service manual for a Sylvania model 131 scope. Will buy, or copy and return. Murray Goldstein, 8842 Grange Hill Road, Sauquoit, New York 13456.

For Sale: RCA test equipment and tubes, sweep generator, marker, adder, scope and VTVMs. Harold Bentley, 8012 W. Sunbury Ct., Milwaukee, Wisconsin 53219.

For Sale: Antique TV sets. 15-inch RCA CT100 in cabinet, \$150; RCA console projection set, \$150. Both in excellent condition. Other sets available. Howard Katz, 101 Hilltop Road, Silver Spring, Maryland 20910.

Needed: Power transformer (part #U-204-U) for Telefunken reel-to-reel tape deck, Magnetophon 204. Woodron Smith, P.O. Box 3173, Columbia, South Carolina 29203.

Needed: Ultra-sonic cleaner large enough for tuner work, and used UHF marker generator covering the 450 to 1000 MHz range. Also, TV tuners, used or factory rejects and factory over-runs. Cash paid. Earl Triplett, Box 165, Avant, Oklahoma 74001.

For Sale or Trade: Sencore model FT 155 FET tester, like new, \$65 postpaid. Also, Heathkit TV post-marker sweep generator, like new, with attenuator and probes, \$140 postpaid. Or trade for a recent model mutual-conductance tube tester. Mike Shepherd, 775 Park Glen Drive, Windsor, California 95492.

Needed: Schematic and operating maintenance manual for scope model OS-8A/U, manufactured by Hycon Manufacturing Co., Pasadena, California. Scope is enclosed in a case, type CY-912/U. Will buy, or copy and return, paying postage both ways. Dennis Baron, 129 Townsend Avenue, Staten Island, New York 10304.

For Sale: Precision sweep generator model E400; and Precision scope model ES 500 with leads and instruction books; both for \$125. Al Crispo, 159-30-90 Street, Howard Beach, New York 11414.

Needed: Heath SP5ZZO variable isolated AC supply. Also, Heath SG-28 color-bar pattern generator or equivalent. State condition and price. Caswell Davis, Jr., 601 Delmar, Apt. 2, San Antonio, Texas 78210.

For Sale: Rider's TV manuals volumes 1 through 23 plus a public address manual. No reasonable offer refused. J. Hart, 26 William, St. Glens Falls, New York 12801.

There is no charge for listing in Reader's Exchange, but we reserve the right to edit all copy. If you can help with a request, write direct to the reader, not to Electronic Servicing.

News from the Service Associations Conventions

By Carl Babcoke, Editor

All of the home-entertainment service associations are concerned with improving the conditions of our industry. They are having successes; therefore, we believe they are worthy of your support and ours. It is impossible to report these conventions completely, so we urge you to join one or more of them and attend next year's convention. Names and addresses of three organizations will be given at the end.

August was national-convention time for NATESA, NESDA, and ISCET. These conventions had better attendances, exhibited more harmony, and were operated more smoothly than any in the past.

Entertainment Giants

Traditionally, the electronic

manufacturers send their presidents, sales managers, or national service managers to the conventions as PR men and after-dinner speakers. This year something new was presented by nationally-known entertainment and sports figures.

RCA brought Will Rogers Junior to speak at both the NESDA and NATESA conventions about his famous father, Will Rogers. Of course, Will Rogers was the favorite humorist of a previous generation, who still is remembered and loved. He started as a rope-trick cowboy, became a star of the Ziegfield Follies, where he first began to tell topical jokes along with the rope tricks. From that he made several movies, and started his famous front-page short daily newspaper column. Will Rogers' humor was based on human foibles, and was not bitter or vindictive. He died in an Alaskan plane crash, along with famed pilot Wiley Post.

Hank Aaron, the baseball home-run king, recounted at both conventions his \$200-a-month start with the Indianapolis Clowns. The rest of his long career is history, peaking when he broke Babe Ruth's home-run record. After each prepared message, Hank answered baseball questions from the audience. In these personal appearances, Hank gave the impression of being a likable, interesting speaker. He is an asset to Magnavox, which has appointed him as the Magnavox good-will ambassador.

NESDA National Electronic-Service Convention

August 17 through 22, and the Sheraton Twin Towers in Orlando,

Florida were selected for the National Electronics Service Dealers Association (NESDA) for the simultaneous NESDA and ISCET conventions. Details of the ISCET meetings will be given later in this article.

NESDA greeters, under the di-



Will Rogers, Jr. spoke at both NESDA and NATESA conventions about remembrances of his father, the famous humorist.



Hank Aaron, the home-run king of baseball, talked about the highlights of his career, and answered questions from the audiences of both conventions.



Newly-elected officers of NESDA (from left to right) are: Hershel Lawhorn, treasurer; Kenneth Parese, secretary; Bob Villont, national vice president; and LeRoy Ragsdale, president.



Officers of ISCET elected at the Orlando convention (left to right) are: Charles Couch, Jr., chairman; Frank Grabiec, vice chairman; Jesse Leach, treasurer; and Carl Babcoke, secretary.

rection of David Garwacki, met many of the conventioners at the airport, giving lapel decals, small gifts, and transportation information. This service was the first such help at a convention, and it was appreciated.

Many of the meals were sponsored by the manufacturers (such as RCA, Admiral, Sony, Zenith, Panasonic, Sylvania, General Electric, Magnavox, and Sharp), who furnished after-meal speakers.

Activities on Wednesday were limited to a golf tourney and a poolside party. Thursday brought full activities, including many technical seminars (many by manufacturers of digital tuners and videotape recorders) which were attended by more than 120 technicians, and a 100-person all-day business-management school. At noon, RCA presented Will Rogers Junior, who reminisced about his famous father. RCA also provided transportation and admission to nearby Disney World.

One large surprise occurred during the NESDA nomination meeting on Friday. In the three-way contest for president, Everett Pershing (previous president) withdrew, and recommended support of John McPherson. However, LeRoy Ragsdale triumphed in the election. Other newly-elected officers are: Bob Villont, national vice president; Kenneth Parese, secretary; and Hershel Lawhorn, treasurer. Ten regional vice presidents also were installed.

The National Electronic Trade Show (this year called the "Magic Kingdom of Electronics" after the Disney World theme) was the largest ever, with 60 booths operated by various TV and test-equipment manufacturers. Also included were 18 booths for association projects and other similar exhibits.

Hank Aaron, who holds 18 baseball records, including the most home runs (755) in the major leagues, spoke at the Magnavox dinner.

On Saturday, the National Service Conference (under the chairmanship of Tom Thomas) studied the future of the home-entertainment electronic servicing businesses, and concluded that solid-state equipment is causing fewer per-set repairs, but that the cost of each repair is higher. Also, there will be fewer repairs in the field and more in the shops.

The license seminar and an Association workshop gave the conventioners much information on those two subjects.

J. A. "Sam" Wilson was unable to attend this convention or to record the training videotape, as was planned. Forest Belt substituted

with a demonstration of his new "Easi-Way" servicing technique.

Another innovation this year was the "NESC Daily Newsletter," edited by Forest Belt, Marti McPherson, Steve Bernard, and Arlene Tuttle. Teen reporters were Carla Glass and Judy Posey, while Jeff Tuttle delivered the papers under the inn doors early each morning. Forest was not paid for this valuable service, but placed a one-page ad in each issue. He now offers several kinds of workshops, seminars, training monographs, and self-trainer kits. (For information, write to Forest at: Forest H. Belt, Box 68120, Indianapolis, Indiana 46268.)

To show NESDA's appreciation of the "NESC Daily Newsletter," a special award plaque was presented to Forest Belt.

Special "Thanks" go to Nolan Boone, chairman of the trade show, Anita Parks for the local direction, and to Larry Steckler, Tom Thomas, Paul Dontje, and many others who helped tremendously with the arrangements.

Many "hospitality" suites operated after the convention meetings, including the annual Howard W. Sams cocktail party, hosted by Joe Groves, manager of the Photofact Division.

Total registration was nearly 900: a new NESDA record.

Dick Glass resigned

Probably the biggest news of the convention was the Sunday resignation of Dick Glass as executive vice president of NESDA. At first, the conventioners thought the resignation was precipitated by the election of LeRoy Ragsdale as president.

continued on page 20



"Man of the Year" award was made to M. L. Finneburgh, Sr., who often is called "The Champion of Independent Service." Past president Everett Pershing presented the huge trophy.



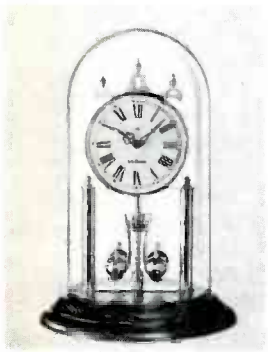
Typical of the activity at the National Electronics Trade Show in Orlando is this scene of the Howard W. Sams booth, with Joe Groves (manager of the Photofact Division) in attendance.



For the first time, *Electronic Servicing* had its own space at the NESDA Trade Show. Carl Babcoke, editor, and his wife Virginia (shown passing out free copies of *ES*) operated the booth.



Redi-Chec '77 Awards



Conventions

continued from page 19

However, Ragsdale made it clear that he was very willing to work and cooperate with Glass. (Ragsdale also was president for the 1975/1976 term, without any unusual conflicts with Glass who was EVP then.)

Afterwards, Glass stated that NEA (and later NESDA) has been plagued by political in-fighting between some state organizations and

the national. Since these leaders had not responded to his suggestions for organizational changes to minimize these frictions, Glass decided to leave, for the good of NESDA.

Glass was executive vice president of NEA for four years and NESDA for about four years, and he leaves NESDA when it is at the strongest, having 40 affiliate state groups, 2400 business members, good benefits for members, effective management-training programs, and certification of both service managers and technicians. Dick intends

to form a service-management and consultant firm.

NESDA changes

Ralph Tirrell III has agreed to assume the duties of executive vice president of NESDA for a 90-day interim period. Tirrell was director of the Arizona State Electronics Association for four years. (The NESDA office will remain in Indianapolis for this period.) Steve Bernard has agreed to become editor again of *Service Shop*, the NESDA monthly magazine. A full additional





Valuable free gifts with your purchases of RCA Entertainment Receiving Tubes!

Redi-Chec Award '77 certificates are available to you with your purchases of RCA receiving tubes from your local participating RCA Tube Distributor. Save these certificates. In required quantities, they are redeemable for an assortment of 221 exciting gifts from the RCA Redi-Chec Award '77 Prize Book.

See your participating RCA Tube Distributor for a copy of the Prize Book. Select the award you wish to earn. Buy

RCA receiving tubes and save the Redi-Chec Award '77 certificates you receive until you have the number required for the award of your choice. Fill out the award order form and mail with your Redi-Chec Award '77 certificates to:

RCA Redi-Chec Award '77 Hq.
P. O. Box 154, Dayton, Ohio 45401

Always specify RCA receiving tubes! Quality tubes and great awards go hand in hand at RCA!

Redi-Chec Awards '77

**DEALER
CERTIFICATE**

ISSUED BY: _____

Distributor Name _____

City _____ State _____

SERIAL NO. _____

Specimen

One Valuable Certificate

6240-8 4-7501-00

This certificate is redeemable by mail from RCA Redi-Chec Awards '77 Headquarters, P.O. Box 154, Dayton, Ohio 45401 in required quantities for merchandise as stated in the RCA Redi-Chec Awards '77 Prize Book available from participating RCA Tube Distributors. Valid for redemption until midnight of April 30, 1978. Good only in the U.S.A. This certificate void where prohibited, taxed or restricted. (Cash redemption value: 1.00 of 1¢). RCA Distributor and Special Products Division, Deptford, NJ 08035.

RCA | Distributor and Special Products | Deptford, N.J. 08096

RCA Receiving Tubes

executive council meeting is scheduled for October 14-16.

President Ragsdale has appointed chairmen for 24 committees, including several new ones. He is convinced that "working" committees are the vital lifeblood of a successful association.

Next year

In 1978, the NESDA convention will be held in the Inn at the Quay, Thunderbird Hotel, Portland, Oregon. Tucson, Arizona is to be the location for 1979.

ISCET Convention

The International Society of Certified Electronic Technicians (ISCET) also held its convention with NESDA at Orlando, Florida. NESDA began the CET program to increase the knowledge of technicians, and to give them reason to be proud of their profession. There are now more than 10,000 CETs. John Suwak, the ten-thousandth CET, attended the convention. ISCET members now number nearly 1500.

Last year, the nomination and *continued on page 22*

(Left to Right)

Dick Glass, former executive vice president of NESDA, is shown admiring the plaque he received.

Jules Steinberg, the executive vice president of NARDA, received a plaque and induction into the "Electronic Hall of Fame." Everett Pershing is congratulating him, while Mrs. Steinberg and Kurt Wertheim, the master of ceremonies, look on.

Forest Belt (left) received an award and loud applause for supplying the "NESC Daily Newsletter" for four days of the NESDA convention.

Past-president Pershing and President LeRoy Ragsdale shared a quiet moment at the NESDA awards banquet.

At the NATESA convention, Executive Director Frank Moch presented a plaque to Carl Babcoke (editor of *Electronic Servicing*) for his help during the past year, including a convention one-hour seminar about measurements.



Conventions

continued from page 21

voting by mail for IS CET officers was authorized for the first time. The intent was to allow every member, and not just those attending the convention, a chance to select the leaders. For those not mailing a ballot, voting was permitted at the nomination meeting. Some questions arose about the procedure, perhaps requiring small changes to correct the minor flaws.

Proposals were made for advanced grades of CETs, and the matter was referred to a committee. Promises were made of financial

help for shelving and equipment for the IS CET Technical Library and Librarian Henry Golden. The trial membership program has been successful, and it is to be continued, in more limited form.

Because of the resignation of Dick Glass, and the uncertainties about headquarters, the IS CET operation has been moved to Ames, Iowa under the jurisdiction of Ron Crow, the IS CET executive director.

During the past year, IS CET Serviceability Inspections were made to Admiral, Sony, Magnavox, and two RCA plants. Over the years, the scores have been rising steadily, probably because the manufacturers realize the benefits to them (as

well as to the technicians) of designs that make servicing easier.

NATESA National Convention

The Carson Inn in Nordic Hills near Chicago was chosen for the August 25-28, 1977 convention by the National Alliance Of Electronic Service Associations (NATESA).

Wednesday was registration day, with an optional tour of the Quasar plant in Chicago, and the golf journey. Thursday breakfast was sponsored by GTE Sylvania, and the host, J. W. Ritter, spoke about the new trends in color TVs. An official NATESA business session followed. At noon, Hank Aaron, the baseball superstar, spoke and answered



These are three of the national service managers attending the conventions. (Left) shows Ray Guichard of Magnavox (Mrs. Guichard is at the left); "Dutch" Myers of General



Electric (middle) was busy explaining a point to a conventioneer; and (right) "Bronc" Marohnic of Zenith is said to be preparing for retirement later this year.



Doris Hotzoll won the first prize in the NATESA attendance drawing, a Quasar "Great Time Machine" which was presented by Ed Gaiden. Virginia Babcoke, wife of Carl Babcoke, won the Magnavox color receiver with an Odyssey game built-in.



All of the NATESA officers were reelected. They are (left to right): Richard Ebare, treasurer; Leo Cloutier, secretary general; Earl Gove, Jr., who swore them in; Frank Moch (behind podium), executive director; George Weiss, president; and Paul Kelley, vice president.

questions, under the sponsorship of Magnavox. The afternoon sessions consisted of: warranty information by Paul Kelley and Robert Haskings; scope practices by James Farrell of B&K-Precision; Carl Babcoke (editor of *Electronic Servicing*) spoke on "Measuring the New Technology"; and Leo E. Cloutier gave a presentation of digital math.

Saturday started with another business meeting, followed by a CB seminar by a representative of Sencore. Joe Groves, manager of the Photofact Division of Howard Sams, spoke about the new directions of electronics. The RCA luncheon featured Will Rogers Junior, who told many fascinating stories of the life and career of his famous actor-and-humorist father. Later Jim Newbrough demonstrated the new RCA 2-hour or 4-hour videocassette tape recorder. Another NATESA business session completed the day, except for the banquet, featuring entertainment by Randy Brown (MC and comedian), the Farrell Sisters (twin accordions and vocals), and the orchestra of Rennie Collins.

Many awards were presented during the banquet. Zenith was awarded the coveted "Friend Of Service" plaque. *Electronic Servicing* and its editor, Carl Babcoke, both were placed in nomination, among others.

Two major attendance prizes were given during a drawing of the ticket stubs. The Quasar "Great Time Machine" was won by Doris Rotzoll, while Virginia Babcoke, the bride of Carl Babcoke, received a Magnavox 19" color receiver that had a built-in color Odyssey game.

NATESA traditionally has worked with various government bureaus for the good of the servicing industry, and has responded with vigor to the accusations of consumerists, in addition to providing many valuable services for its members. However, for years there has been a problem with the previous total autonomy (without control by the national) of the local and state affiliates. Even so, NATESA has grown somewhat in past years. For example, the attendance at this year's convention was 22% higher than the 1976 convention.

For the past year, NATESA has pondered a change to become an association, rather than an alliance. This step was approved at the convention, involving changes of bylaws and name (although the initials NATESA remain the same) **NATESA now can accept individual members, or local groups.** The local groups

would not be held responsible for the association dues. Another change is to add a new "associate" classification for members who are entitled to partial benefits.

NATESA now is "The National Association Of Television & Electronic Servicers of America." All of the previous officers were reelected. These are: George J. Weiss, president, Paul Kelly, vice president; Leo Cloutier, secretary-general; and Richard Ebare, treasurer. Frank Moch again was chosen to be the executive director of NATESA. □

Addresses of the Service Associations

NESDA
1715 Expo Lane
Indianapolis, Indiana 46224
Phone (317) 241-8160

ISCET
310½ Main Street
Ames, Iowa 50010
Phone (515) 294-5060

NATESA
5908 South Troy Street
Chicago, Illinois 60629
Phone (312) 476-6363

**TECH-WICK®
TOOL FOR FAST
PINPOINT DESOLDERING**

No burned fingers. No electrical shock.

AT LONG LAST... a hand-held desoldering tool that's safer, more accurate AND has superior absorption capacity. The unique patented design of the heat-resistant plastic dispenser makes TECH-WICK® TOOL a true tool—allowing steady pin-point positioning of the wick on the connection to be desoldered—without the hazard of burned fingers or electrical shock. TECH-WICK® is constructed of fine strands of pure copper treated with non-conductive, non-corrosive rosin flux. The stranded wick contains more voids to absorb the molten solder faster. Send for data sheet and name of your nearest distributor.

**MOHAWK
WHOLESALE & EQUIPMENT CO.**
Marketing Agent
P.O. BOX 4490, YUMA, AZ 85364
PHONE (602) 782-4313

No. S-16
Ten feet of #16 Ga. wick O.D. .064
Ideal for larger connections
\$2.75 ea.

No. R-20
Twenty feet of #20 Ga. wick O.D. .040
Ideal for small and mini connections
\$3.75 ea.

Stranded pure copper wick

For More Details Circle (14) on Reply Card

Servicing Magnavox



By Gill Grieshaber, CET

The Magnavox T995 chassis matrixes the video and -Y signals before they reach the picture tube. This is called pre-CRT matrixing. The chroma stages, plus the remainder of the video circuits, are described, including the matrixing in the red, blue, and green power amplifiers.

Troubleshooting the video and chroma sections of the Magnavox T995 (Photofact 1469-1) can be done in either of two general ways. If you have a full set of known-good modules, use the block diagram of Figure 1 to help you decide which module to substitute, based on the symptoms.

When you are using test equipment (either during calls or at the bench), locate the appropriate test point of the many on the "bottom" of the main chassis (which faces the rear while the chassis is in the normal upright position, as shown in Figure 2).

For shop service, lower the chassis back in the service position and make measurements at the ICs and other important points on the modules.

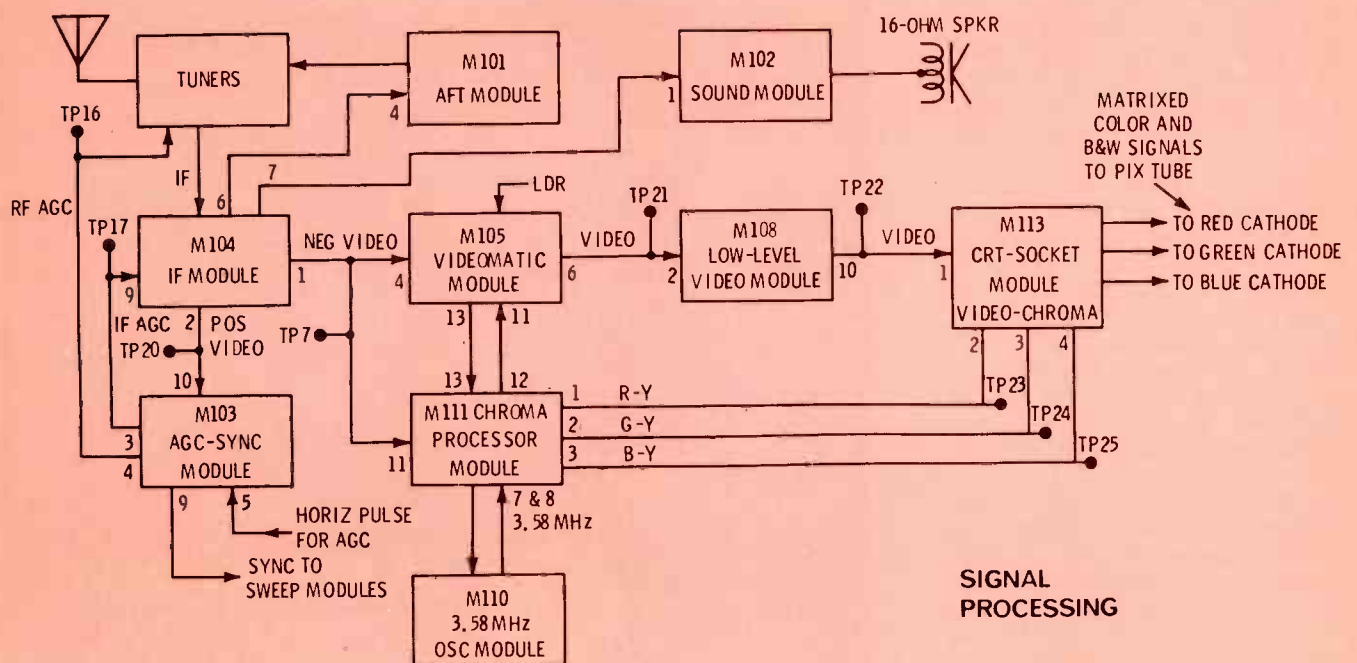


Figure 1 The block diagram shows the various signal paths of the Magnavox T995 chassis.

Modular Color TV, Part 5

The circuit descriptions and waveforms that follow should help you during times when you are using scope and meters for detailed and logical troubleshooting tests.

Chroma Modules

Because of the many interconnections between them, the schematics of chroma-processor module M111 and color-oscillator/APC module M110 are shown together in Figure 3.

In addition, the major components of M111 are located in the photograph of Figure 4, and those of M110 are identified in Figure 5.

Chroma IF stages

Chroma enters module M111 at pin #11 (see Figure 3), and goes through a bandpass filter (C1, C2,

L1, and L2) before it is applied to pin 2 of IC1.

Early-production modules specified R2 as a 22K-ohm variable control, which could change the tilt of the filter during alignment. Later modules substituted a fixed 4300-ohm resistor that replaced both R1 and R2. Evidently, this was not a critical adjustment, and safely could be eliminated without affecting the performance.

Gain of the first chroma IF amplifier inside IC1 is varied by the "burst" ACC circuit. (It is called that because the ACC is controlled by the amplitude of the burst. There is another ACC circuit on the Videomatic module that levels the gain according to the total chroma amplitude.)

Control of the "burst" ACC is

accomplished by the **difference** between the DC voltages at pins 1 and 14 of IC1, and it will be explained with the ACC circuitry of module M110.

Back to module M105

Chroma from the output of the first IF amplifier at pin 6 of IC1 is sent both to the burst circuit on M110 (via pin #6 on M111), and through voltage divider R3/R4 and M111 pin #12 to pin #11 of the Videomatic module M105 (refer to Figure 1).

On M105, the chroma amplitude is leveled by another ACC action, and also the amplitude is varied in step with the contrast changes, as explained last month. Following

continued on page 26



A

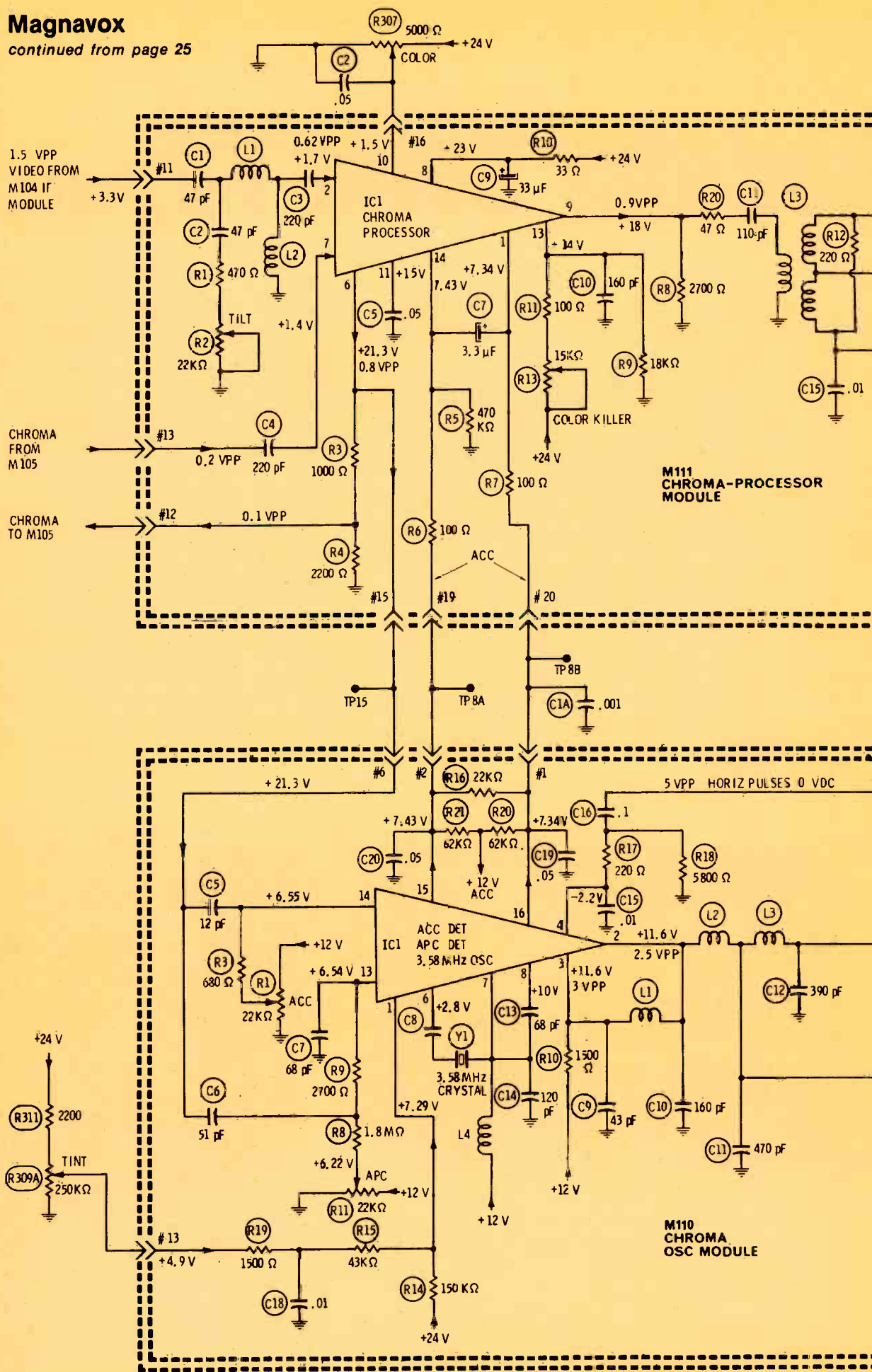
Figure 2 When the chassis is in the normal upright position, the bottom of the "mother" chassis is accessible (picture A). The back of the chassis board (B) has road-map wiring paths shown, plus the markings of many helpful testpoints.



B

Magnavox

continued from page 25



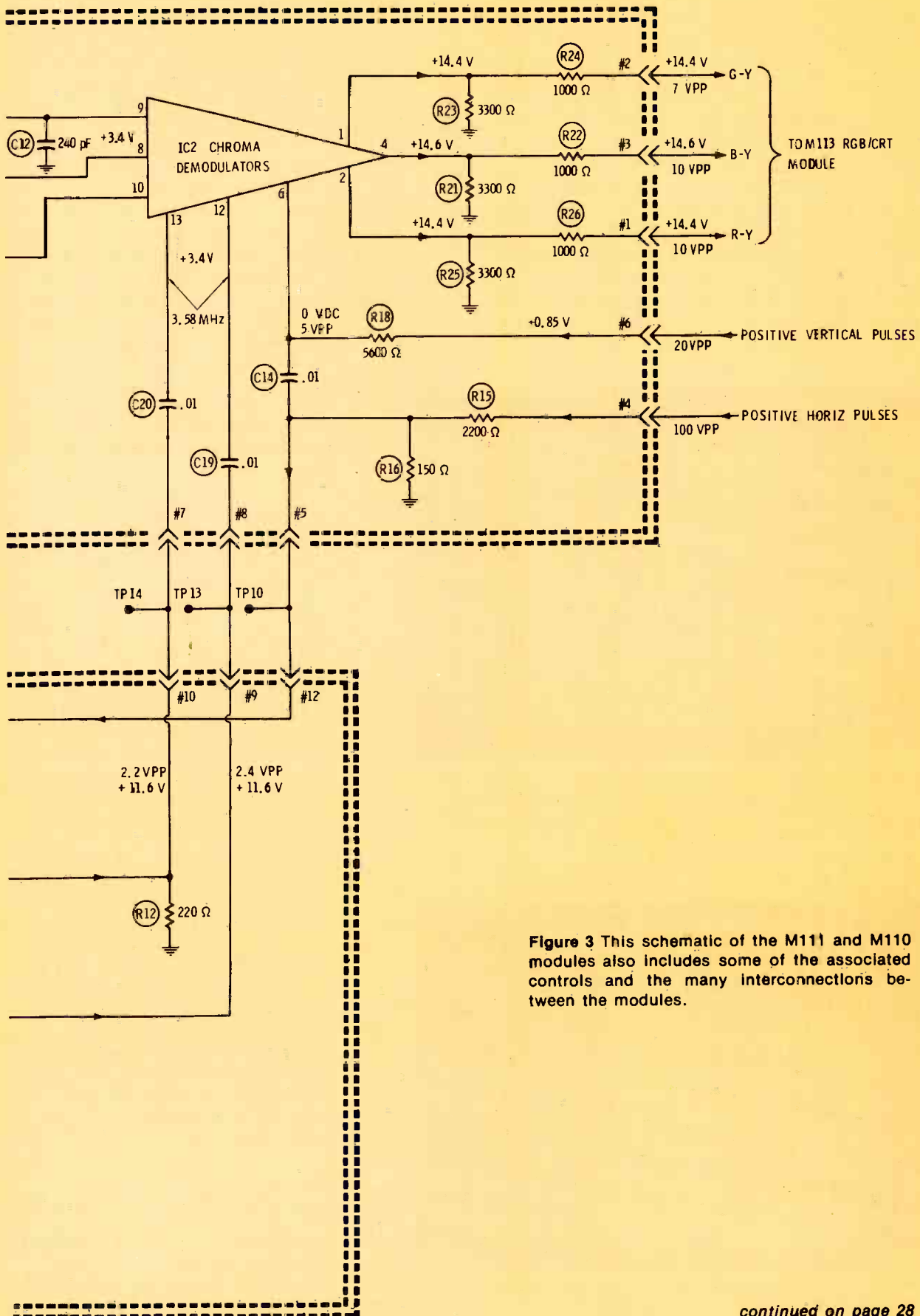


Figure 3 This schematic of the M111 and M110 modules also includes some of the associated controls and the many interconnections between the modules.

continued on page 28

this processing, the chroma-IF signal leaves M105 at pin #13 and returns to M111 at pin #13.

Return to M111

The chroma signal from M105 again enters M111 and is applied to pin 7 of IC1, which is the input of the fourth chroma amplifier. This stage of the IC is a differential amplifier, having two outputs. One output goes to the demodulators, leaving the IC at pin 9. The other output is at IC1 pin 11, but it is

used only in the gain variation, for that pin is bypassed by C5.

Gain of the fourth chroma amplifier is determined by the amount of DC voltage that comes from the front-panel color control. The DC voltage is applied to pin 10 of IC1.

Color Killer

The color-killer circuitry stops the conduction of the fourth chroma amplifier when there is no color burst. Most of the action goes on inside IC1, so we can give only a

general explanation.

Conduction and gain of the first chroma amplifier is controlled by the ACC circuit according to the amplitude of the burst. This varies the DC voltage at pin 13 of IC1, which changes also with adjustments of the killer control, R13. A sample of the pin 13 DC voltage controls the color-killer amplifier, which in turn controls the conduction of the fourth chroma amplifier. Therefore, a lack of burst eliminates all gain of the fourth chroma amplifier, preventing colored snow during B&W programs.

Early-production M111 modules included a variable color-killer control, but later versions replaced both R11 and R13 with a single, fixed 5600-ohm resistor, designated R13.

Four chroma amplifiers

Chroma amplifiers numbers one and four are on M111 module, and amplifiers two and three are on M105. You need this vital information when you trace the chroma signal through the various stages and modules.

From pin 9 of IC1, the chroma-IF signal proceeds through a band-pass transformer circuit (C11, L3, C12, and R12). Full signal is applied to pin 9 of IC2, and a smaller signal from a tap of L3 is fed to pin 8.

Demodulators

Three demodulators also are contained inside IC2. Two continuous 3.58-MHz carriers (having a phase difference of 120 degrees) enter IC2 at pins 12 and 13 (refer to Figure 3). The synchronous demodulators operate from the chroma IF signals and two carriers from the color oscillator. Outputs from the demodulators are G-Y, B-Y, and R-Y, which are sent on to the RGB/CRT module for matrixing with the -Y video signal.

Blanking

Vertical and horizontal blanking of the chroma IF signal is accomplished in IC2 of the M111 module. Samples of vertical and horizontal sweep are filtered and combined before they are applied to

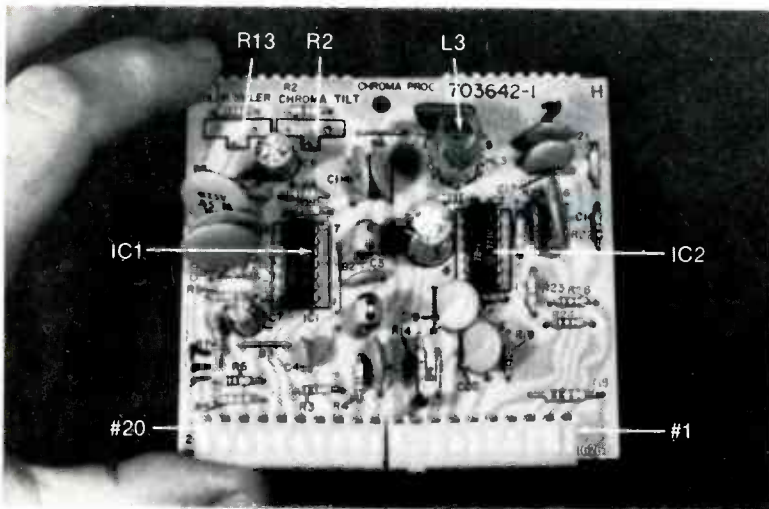


Figure 4 Arrows show the locations of most major components of the M111 chroma-processor module. Late-production versions—such as this one—have substituted fixed resistors for the color-killer and chroma-tilt variable controls.

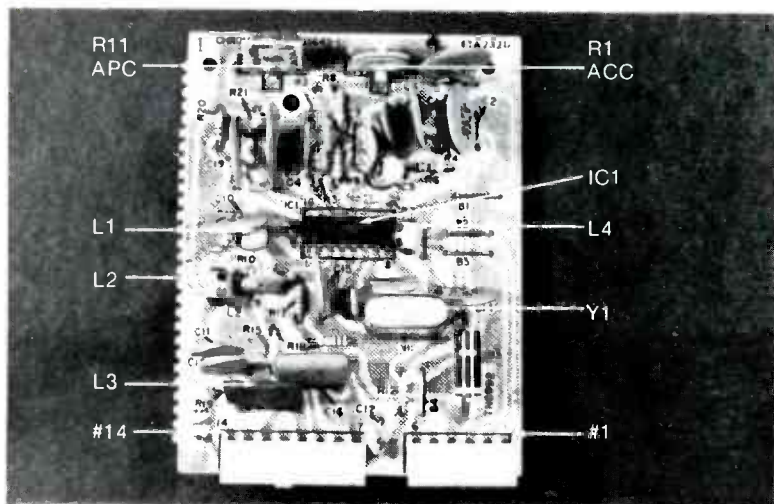


Figure 5 Major components of the M111 color-oscillator module are identified on the photograph.

Smaller makes sense.

pin 6 of IC2.

In addition, this combined signal enters the M110 module at #12, passes through C16, and finally reaches pin 4 of IC2. Horizontal blanking of the burst and the 3.58-MHz carriers is the purpose of the pulses.

Phase detectors

M110 module (picture in Figure 5, and schematic in Figure 3) has only one IC (IC1), and it functions as ACC detector, APC (color-locking) detector, tint control, and 3.58-MHz reference color oscillator.

One bit of clever engineering is shown by the RC circuits that feed burst into IC1. The chroma signal from M111 enters M110 at pin #16, and is split into two signals having different phase (remember the chroma signal has the burst, which is retained here while the remainder of the chroma is eliminated).

One branch is through a leading-phase high-pass filter (C5 and R3) to pin 14 of IC1; while C6, R9, and C7 comprise a low-pass lagging-phase network that brings the burst (and chroma) to pin 13. Between pin 14 and pin 13 there's a phase difference of 90 degrees, that's necessary for the ACC and APC phase detectors. In addition, each detector is supplied with some 3.58-MHz from the color oscillator. Pin 14 signal is for the in-phase ACC detector, and the signal at pin 13 is used for the quadrature-type Automatic-Phase Control (APC) detector. Horizontal pulses at pin 4 of IC1 allow only the burst to reach the detectors.

At IC1 pins 15 and 16 appear the two DC output voltages produced by the ACC detector. When there is no burst at pin 14, the ACC control (R1) should be adjusted to provide the same DC voltage at pins 15 and 16. As previously stated, the voltage difference between pins 1 and 14 of IC1 on the M111 module determines the gain of the first chroma stage in that IC. Both ACC systems together keep the chroma level very constant.

The APC detector supplies an error-control voltage to maintain

continued on page 30



In the tradition of mini-computers and mini-skirts, great small products usually evolve from larger packages.

The new 8020A digital multimeter carries on the Fluke tradition of precision bench-top instrumentation, with this handheld, 13-oz. DMM. Same quality and value, smaller package. And only \$169.*

Your 8020A goes on call with you in your pocket, briefcase, or tool kit. Wherever your job takes you and your 8020A, you can count on bench-instrument performance.

Small in size, but big in capability, with features like 2000-count resolution, transient protection to 6000V,

six resistance ranges to 20 M Ω . Plus, an exclusive conductance capability for leakage measurements to 10,000 M Ω !

And, traditional Fluke quality and accuracy are guaranteed for a full year. Parts and service available worldwide. And *that's* meaningful when it's from the recognized leader in DMMs.

Get your hands on one. Call (800) 426-0361, toll free. Give us your chargecard number for same-day shipment. Or, we'll tell you the location of the nearest Fluke office or distributor. (Where you can save by buying a ten-pack of 8020As for only \$1521.*)

*U.S. price only.

Fluke 8020A DMM for Field Service: \$169.

1807-7005

FLUKE[®]

For More Details Circle (15) on Reply Card

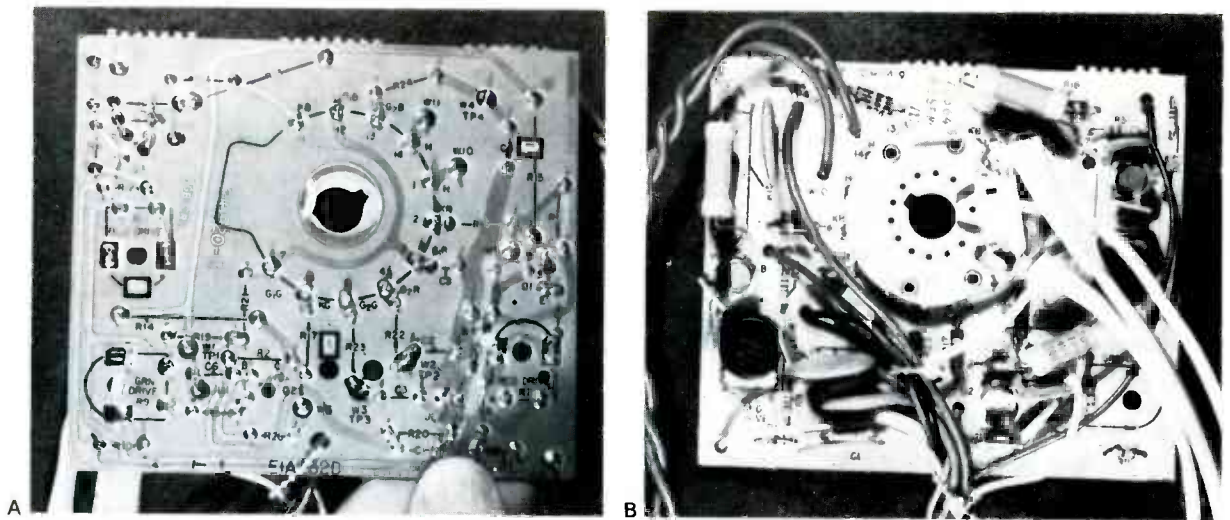


Figure 6 The base socket of the picture tube is fastened to the M113 module, and this "rear" view shows the road-mapping of wiring and components that are mounted on the "front" side (picture A). With

the socket removed and the module turned over, picture B reveals the three power transistors and other discrete components of the matrixing circuits.

Magnavox

continued from page 29

correct locking of the color oscillator, which also is inside the same IC1. Adjustment of the APC control (R11) is made to produce the correct 3.58-MHz frequency when there is no burst to provide locking.

The error-correction voltage can be measured at pins 11 and 12.

Color oscillator

Quartz crystal Y1, along with C8, C14, C15, and L4, determines the approximate frequency of the 3.58-MHz color oscillator.

Two 3.58-MHz output signals

come from the oscillator. They have different phase, and tint control is accomplished by a variation of the two signal amplitudes.

From pin 2 of IC1 comes the direct 3.58-MHz signal. A similar signal is obtained from pin 3; however, it travels through a phase-lagging network (C9, L1, and C10)

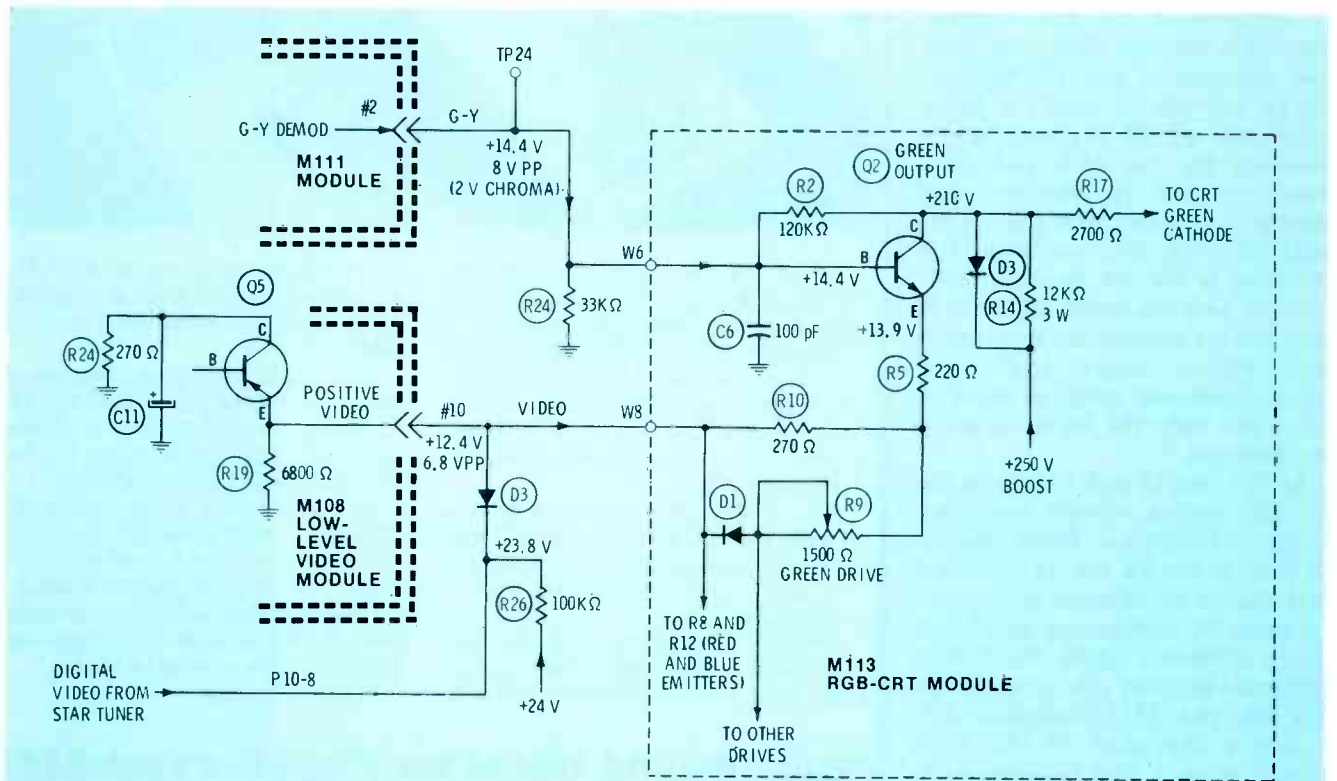


Figure 7 Matrixing of the G-Y and video signals to produce a green signal for the picture tube is diagrammed here. The blue and red stages are similar. Diode D3 is not used for blanking, as stated last month. Instead, it isolates the video of the digital

signal that comes from the STAR tuning system. This model uses the Videomatic tuner, not the STAR; therefore, the P10-8 connection is not wired to anything.

which delays the phase. The two signals join at the input of L2. Vectoral addition occurs, so that the output phase is between zero and 90 degrees, with the exact figure depending on the amplitudes of the two signals. And that brings us to the tint control.

An adjustable DC voltage is obtained from the front-panel tint control (R309A), and it is routed to pin 1 of IC1 through R19 and R15 (with C18, they form an AC filter). Also, a fixed amount of DC voltage is added by R14, from the +24-volt supply.

Now, the DC voltage at pin 1 determines how much signal amplitude will be obtained from pin 2 versus the amplitude from pin 3 (which has a phase change). If all the output signal is from pin 2, the phase is zero; if all is from pin 3 and the phase-shift network, the phase is 90 degrees. Variation of the tint DC voltage, therefore, can swing the phase almost that amount, giving more than enough tint change.

This resultant-phase signal is shifted an additional fixed amount by L2 and C11, and then it is fed to one of the demodulators in IC2 on the M111 module.

For the other demodulator, the signal travels through the L3, C12, and R12 phase-lagging network, which provides a phase change of about 120 degrees.

Matrixing the -Y and Y signals

As explained last month, the output of the low-level video module (M108) is the Y or video signal that is sent to the RGB/CRT module (located at the base of the picture tube) for matrixing with the three -Y chroma signals from the demodulators. (Both sides of the M113 RGB/CRT module are shown in Figure 6.)

The partial schematic of Figure 7 illustrates the matrixing method. An appropriate -Y signal is fed to the base of a color-output power transistor, while the video or Y signal is applied (through an amplitude control) to the emitter of the same transistor. Matrixing is accomplished inside the power transistor, and the amplified complete color signal at the collector is direct coupled to the corresponding cathode of the picture tube.

continued on page 32

Pay less, get more.



Lots more. In fact, the new 8020A digital multimeter has more features and capability than any other DMM at any price.

Once again, it pays to think small. Costing only \$169,* the 8020A is big on features and value.

You get unbelievable field versatility with the 8020A, and it's sized to slip easily into your pocket or service kit. Compact, with big features—like 0.25% dc accuracy and 26 ranges. Conductance ranges for measuring leakage to 10,000 MΩ, or transistor beta. Ten megohm input resistance, ac and dc. Battery powered, with a large liquid crystal display.

For reliability, we've shrunk the number of total parts to only 47, including the world's first custom LSI CMOS multimeter chip.

On-the-job reliability you can't be without. A full-year guarantee. World-wide parts and service. And more, including the traditional Fluke quality you depend on.

Call (800) 426-0361, toll free. Give us your chargecard number and we'll put an 8020A in your hand immediately. (Or a ten-pack of 8020As for only \$1521*.) Call now for the location of the closest Fluke office or distributor.

*U.S. price only.

Fluke 8020A DMM for Field Service: \$169.

1807-7006

FLUKE[®]

For More Details Circle (16) on Reply Card

Three identical color stages are furnished; one for red, one for green, and the other for blue.

Typical Waveforms

Typical chroma waveforms produced by a color-bar generator are featured in Figure 8, and appropriate video waveforms from a TV station are shown in Figure 9.

Correction

Last month, the correct waveform was shown at the output of module M108, but the wrong interpretation

was given. That waveform is found at pin #10 of M108, and the photograph is repeated in Figure 10. Refer to the M108 area of the schematic in Figure 7, and specifically to the wiring around diode D3. Now, D3 is NOT used for blanking (as stated previously) for no pulses come to the cathode from P10-8. This pin is used *only* with models that have the STAR digital tuner, and it brings in the digital video from the generators that show the channel number and correct time on the screen of the picture tube. A

negative-going signal at the cathode of D3 increases the brightness. Therefore, the channel number appears in white letters.

A positive voltage through R26 normally reverse biases D3, so it has no effect on the signal at the anode.

Of course, the original question remains: what causes the *negative going blanking pulses* that accompany the *positive-going video* at the output of M108 at #10? Answer: the peculiar pulses come from the horizontal blanking that's

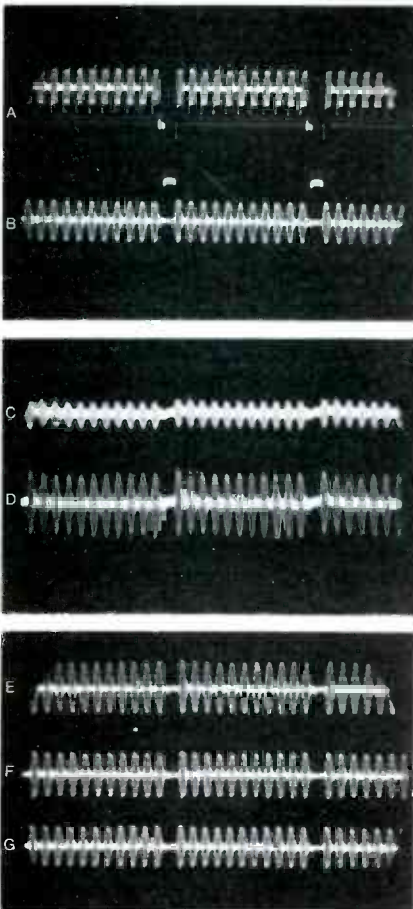
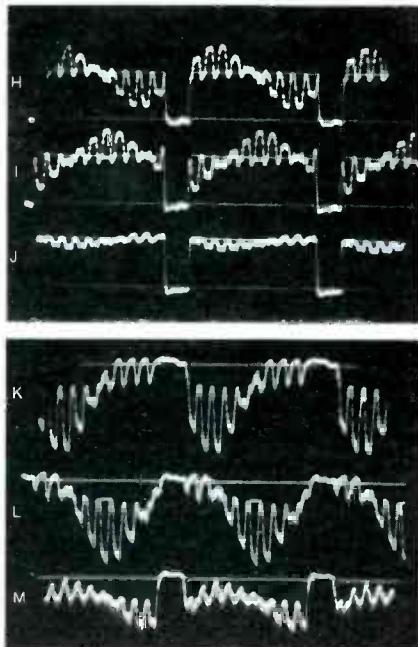


Figure 8A These are some of the waveforms on modules M111 and M113, when color bars are displayed on the TV screen. Trace A is the 1.5 VPP video waveform at the pin #11 input of M111 module, while trace B is the 0.62 VPP input chroma signal at pin 2 of IC1. Bandpass filtering has removed the horizontal sync/blanking pulses. Trace C shows the 0.09 VPP output signal of M111 pin #12 which goes to M105. After being processed and amplified, the 0.2 VPP signal



(trace D) coming back from M105 is fed to pin 13 of M111. Trace E is the 0.9 VPP output of IC1 at pin 9, which goes to bandpass transformer L3. At the pin 9 input of IC2 is found this 1.4 VPP chroma signal (trace F), while trace G is the 1.2 VPP signal that goes to pin 8 of IC2 from the tap of L3. Following demodulation inside IC2, these three -Y signals are produced: trace H, 10 VPP R-Y waveform at #1 of M111 module; trace I, 10 VPP B-Y signal at #3; and trace J, 7 VPP G-Y waveform at #2 of M111. The three -Y signals are sent to the M113 module for matrixing. Following matrixing, these three color signals go to the picture-tube cathodes: trace K, 120 VPP of red output at the red cathode; trace L, 120 VPP of blue output at the blue cathode; and trace M, 80 VPP of green output at the CRT green cathode.

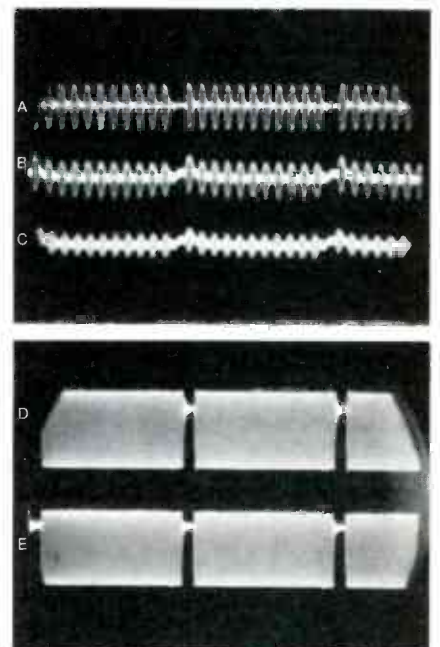


Figure 8B Here are the waveforms of module M110, which has two phase detectors and the 3.58-MHz oscillator. Trace A is the 0.8 VPP chroma signal coming to M110 pin #6 from the M111 module; trace B is the 0.11 VPP phase-shifted signal input to IC1 at pin 14; and trace C is the 0.07 VPP phase-delayed signal input to IC1 at pin 13. Trace D is the 3.58-MHz 2.4 VPP output carrier at TP13. It supplies one of the demodulators on M111, and has undergone horizontal blanking. Similarly, trace E is the 2.2 VPP 3.58-MHz output signal at TP14.

present in the -Y signals at the bases of the color amplifiers on M113. Blanking at the collector of a color-output transistor must be positive-going, and that requires a negative-going blanking at the base. The waveforms of Figures 8 and 9 prove the statement is correct.

Now, a negative-going base signal also will appear at an unbypassed emitter resistor. Follow the emitter circuit of Q2 in Figure 7. It goes through R5, R10 and R9/D1, and finally arrives at pin #10 of M108. The emitter returns to ground

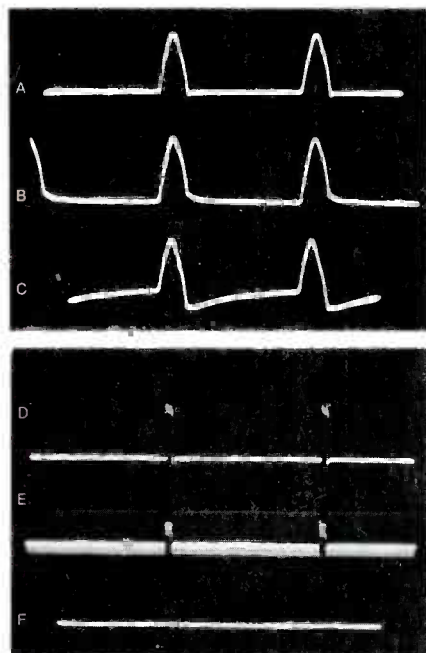


Figure 8 C Combined vertical and horizontal blanking is applied to the chroma signal in M111. Also, horizontal pulses go to M110 from the same circuit. Trace A reveals the 100 VPP horizontal pulses that enter M111 at pin #4; trace B shows the 5.1 VPP pulses at M111 pin #5. These are sent to M110; and trace C is the 5 VPP horizontal signal at pin 6 of IC2. These pulses produce chroma blanking. Trace D shows the 20 VPP vertical pulses at M111 pin #6; trace E is the mixture of horizontal and vertical signals at IC2 pin 6 (scope at vertical rate); and the line of trace F shows the zero amount of 60 Hz pulses at the output of M111 at pin #5. The signal there keys the burst separator (among other functions), and therefore 60 Hz is not desired.

through R19 and the E/C resistance of Q5 on M108. Therefore, the negative blanking pulses overpower the weaker positive-going ones in the video, showing a waveform that appears to have only negative-going blanking. Clear?

Troubleshooting T995 Chroma

Chroma signals are processed on four modules (M111, M110, M108, and M113). If you knew which module probably had the chroma defect, it would save much time, and eliminate much of the risk inherent in the shotgunning of modules (a module might have been damaged by an external defect—and the defect might ruin your replacement module).

Follow these preliminary tests for localizing chroma problems:

- Check operation of the customer-operated controls, the antenna connections and performance, and the service adjustments (for example, color killer, horizontal locking, and the 3.58-MHz oscillator);
- Study the symptoms, especially the appearance of color bars;
- If only one color is missing (but all three are present in the raster), the defect probably is in the M111 demodulator module or the M113 RGB module;
- Loss of all colors might originate in the M105, M111, or M110 module, but not the M113 module; and
- Out-of-lock color probably can be cured by replacement of the M110 module.

If you attempt to repair a module, check the ICs indirectly by measuring input and output signals, and analyzing the DC voltages at the IC pins. For example, when the input signal is normal, but there is no output, and the supply voltages are okay, but some of the IC pin voltages are wrong (and the wrong voltages are not caused by bad external components), then the IC probably is defective.

Next Month

The Magnavox T995 that we are analyzing has a Videomatic electronic tuner that is controlled by much digital circuitry. Next month, we'll begin the description of this interesting feature. □

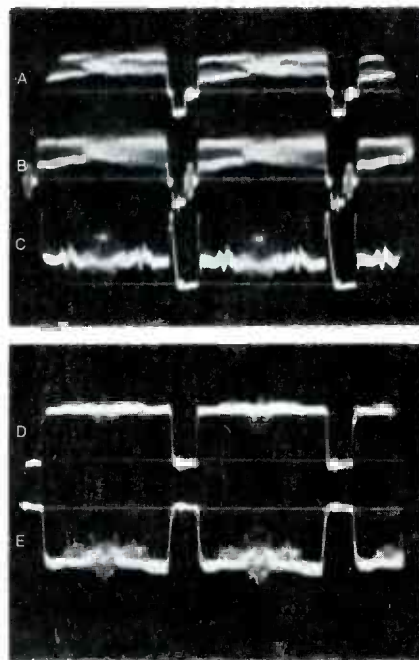


Figure 9 These are typical waveforms when the T995 Magnavox is operated from a TV-station signal source. Trace A is normal negative-going 1.7 VPP video at TP7; trace B shows the 3.5 VPP video (that has high-frequency boosting) at TP21; trace C has positive-going video and negative-going blanking, which is found at input W8 of module M113; trace D shows horizontal blanking plus the random color signal at the base of the red output, Q1 on M113; and trace E is a typical 140 VPP waveform at the collector of Q1, the red output (also, at the CRT red cathode).

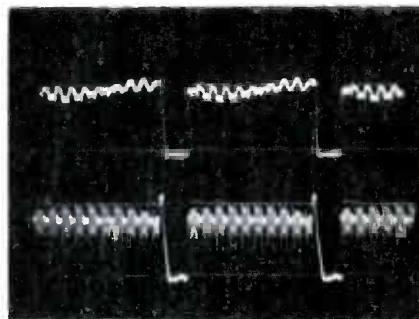


Figure 10 This dual-trace waveform reveals the G-Y signal at W6 on M113. The negative-going horizontal-blanking pulses appear also at the emitters of the color amplifiers (Q1, Q2, and Q3), where they overpower the normal positive-going video blanking. The result at the W8 video input of M113 is positive-going video with large negative-going blanking. In practice, the waveform at the bases of Q1, Q2, and Q3 appears with little change at each individual emitter.

Tips For Cashing Checks

By Lipman G. Feld,
B.S., J.D.

Here are reasons for and against accepting or cashing checks for your customers. If you do accept checks, these suggestions can save you many dollars.

Checks are so simple in appearance that it's hard to believe the amount and degree of trouble they can cause. Of course, we're referring to "bad" checks, which can cost you a loss of money, in addition to wasting much of your valuable time.

A Necessary Nuisance

Checks have become essential to our modern way of life. At busy check-out counters, I have noticed that nearly half of the customers offer checks in payment. Each store has a method of handling checks, including identification, lists of known offenders, or calling the office for confirmation. However, such procedures slow down the flow of customers, often triggering resentment (toward the store) in other buyers who are forced to wait. Even after all of these precautions, it's likely those merchants lose a large amount of money by accepting the checks.

Why do they take checks? Well, many customers do not carry cash

(indeed, some authorities advise against it, because of the risks of robbery), and they insist on paying with checks. If one store refuses their checks, they just go to a competitor who is not so selective. Yes, the fear of losing sales is the reason shops and stores continue to accept checks in payment, despite the losses and extra expenses.

No Obligation

Remember this: *you never are obligated to settle for a check instead of cash.* Checks from strangers have no value until their bank has paid you the money. Until that time, a check is merely a promise to pay.

Except for money orders or cashier's checks, which are paid for in advance, a check actually is a form of credit based on trust. Even when the check is genuine and is backed by money in the bank, you have to wait for several days for the check to clear before the cash legally is yours.

Sometimes a check is refused by

① JOHN AND MARY SMITHSON
9 EASY STREET
ANYTOWN, MISSOURI 64000

② 108

③ October 24, 1977

④ PAY TO THE ORDER OF No State Insurance Co.

⑤ \$ 39.47

⑥ Thirty-nine and 47/100 DOLLARS

⑦ **ISB** Insured State Bank
1000 Main Street
Anytown, Missouri 64000

MEMO _____

⑧ John Smithson

Figure 1

1. The name and address on a check are not to be considered as proof of identification. Always ask for additional IDs.
2. This number is for the customer's record. Watch for low numbers, however, because this indicates a new account.
3. Make sure the check has the correct day, month, and year. Don't accept checks post-dated or more than 30 days old.
4. This is the payee (you or your company). Make sure the name is correct.
5. This is the numerical amount of the check. Be sure there is no space preceding the first figure which could permit adding another digit.
6. The written amount should correspond to the numerical amount (5).
7. Look for the bank's name, branch, city, state, and zip code. Beware of out-of-town banks.
8. This is the authorized signature. It should correspond with the name in the upper left-hand corner of the check.

a bank because of insufficient funds. Even honest people often play the little game called "race the check to the bank." Although such checks eventually are made good, there are delays and sometimes extra charges.

Anyway you look at it, checks are bad news. Losses are inevitable. However, if you believe it's good for your business to accept checks in payment, then observe the following suggestions for handling checks.

The Form Of Checks

Typical checks have several important entries, such as the name and address of the bank, the date, the legal signature of the owner of the bank account, and the precise amount (given both in figures and spelled out). Figure 1 shows a sample.

Before accepting a check, look for:

Non-local bank. Use extra care in examining a check drawn on an out-of-town or non-local bank, including the best types of identifica-

tion. On the back of the check, list the customer's local and out-of-town address and phone number, including area code. Verify local phone numbers in your area code plus 555-1212, then giving the name of the city. After the operator answers, request the phone number for that certain name and address.

Date. Make sure the check has the correct day, month, and year. Don't accept any check that's not dated, if it's post-dated, or one that's more than 30 days old.

Bank. Look for the bank's name branch, city, state, and zip code.

Amount. The numerical amount *must* agree with the written amount.

Legibility. Don't accept a check that is not written legibly in *ink*.

Two-party checks. Don't accept two-party checks.

Payee. That's you or your company, so be certain it's made out to the exact name you want, and for the exact amount, without any change in cash.

Amount. Repeating: personal checks should be only for the exact

amount of the purchase, and the customer should not receive any change.

Company checks. Paychecks, or other company checks, are not above suspicion. Many blank checks are taken during burglaries and robberies, and the rest of the check is easy to falsify.

Erasures. Don't accept a check with erasures or written-over amounts.

Identification

Require double identification, before you cash checks. Of course, IDs can be lost or stolen, so ask for one that has a picture or description.

Here are good, recommended identifications:

- automobile-operators license, especially ones with a photo. If those of your state do not have a picture, ask for additional identification. Also, look at the date of birth, while you ask the person to tell you his birth date;

continued on page 36

"HOW THE CONSUMER INFORMATION CATALOG HELPED ME SOLVE THE MYSTERIES OF THE LEAKY FAUCET."



I'll never forget my first leaky faucet. It had me stumped. I meditated. I talked to it. It still leaked. Then I discovered the Consumer Information Catalog.

It is put out by the Federal Government and lists over two hundred of their booklets that you can send away for. It listed just the booklet I needed to fix my faucet. It also listed booklets on how to fix a car, dieting, how to buy a home and many others. And most were free.

So send for the free catalog which you will also find very helpful. Write: Consumer Information Center, Dept. A, Pueblo, Colorado 81009. Because the road of life is paved with leaky faucets.



THE CONSUMER INFORMATION CATALOG
A catalog of over 200 helpful publications.



General Services Administration • Consumer Information Center

Survival of the FITTINGEST




THORDARSON FITS

Thordarson replacements fit exactly. And they are designed and built better than the original. Thordarson gives you the industry's widest selection of replacement flame retardant flybacks and yokes. Accurate, constantly updated cross-reference data makes replacement selection fast and easy. These solid reasons, and more, are why Thordarson has survived when most others have failed.

The next time you need a flyback or yoke for any brand see your independent electronic parts distributor for a Thordarson replacement. You'll be dollars and hours ahead!



THORDARSON MEISSNER, INC.
Electronic Center
Mt. Carmel, Illinois 62863

Support your independent parts distributor... we do! NEDA  Associate Member

For More Details Circle (17) on Reply Card

Checks

continued from page 35



"On second thought, sir,
I see no reason why I can't work
on your set immediately."

- the car license number. Look at the car, and write the number on the back of the check (write it also on the invoice; the bank stamping on the back of checks often obscures extra writings);
- credit cards usually are safe, if they bear the signature of the person or a photo laminated to the card;
- government passes should have the department name and a serial number. Often they have a picture, too; and
- ID cards carried by members of the armed forces, police departments, and fire departments. Police cards should show the badge number, which you can copy, while the other cards should have a description, a signature, and a photo.

A few examples of improper identification include: business cards; social-security cards; organization cards; bank books; insurance cards; draft cards; hunting licenses; birth certificates; marriage licenses; library cards; unsigned credit cards; payroll stubs; work permits; temporary driver's license receipts; voter's registration cards; and passports.

Teach Your Employees

Instruct all of your employees about these precautions and proper identifications. Also, show them any bad checks which are returned to your store, explaining why each

check is worthless.

For example, one business within just a few days got back checks because: two were not endorsed; one was endorsed improperly; two were made out to the wrong business name; three had different written and numerical amounts; one had not been signed; two were dated incorrectly; two had no address; and one was post-dated.

More Precautions

Watch out for identification that's less than 30-days old. Also, be suspicious of a person who has *too much* identification. Compare the signature on the check with pre-written signatures (driver's license and credit cards), and verify the address. Examine IDs for tampering or erasures. *Remember, a person who will forge a check also can forge identification.*

Be cautious of checks presented outside of banking hours or on holidays. This applies particularly to persons who do not live in the immediate vicinity.

After examining the identifications, if you still have doubts, write down the height, weight, and a general description of the passer. If the case goes to court, a personal ID is necessary to get a conviction.

Don't be swayed by the commercial-appearing payroll check, for such checks are easy to steal or to counterfeit; don't accept any from people you don't know.

Before accepting a check, ask yourself, "Can I find the person if the check bounces?" If the answer is "No," ask for more information and identification, or refuse the check.

After The Bounce

After a check bounces, you should take immediate action. However, the type of action depends on the reason for the bounce.

If the check is stamped "no account," it's likely you have lost your money, for this usually is evidence of a deliberate fraud or swindle. Of course, in rare instances, a customer might issue a check by mistake on a wrong bank, or on a discontinued account. You quickly should determine which possibility is true. If the person is

known in the community, you should proceed with collection efforts.

Another warning is a check marked "closed account," which usually is a sign of deliberate fraud. Again, investigate a bit, for a person might have opened a new account, forgetting about the check that still was outstanding.

Whether the bounce was accidental or fraudulent determines your next step.

Criminal Offense

It is a criminal offense under bad-check laws to issue or pass a bad check. If you can locate the person who deliberately cheated you, it's best to obtain the advice of your lawyer, or turn all of the information over to the local prosecuting or district attorney for action. Otherwise, the person might file a counter-suit against you.

Incidentally, criminal charges against someone who gives you a check for a down payment usually can be prosecuted successfully, because you lost a property right. However, very few charges can be successful against someone for a bounced check paid for a later payment.

Diversion Of Attention

One reason for the success of stage magicians is that they direct your attention to an unimportant action or area, while they accomplish unobserved whatever they must do to make the trick work. This is a diversion of attention, and bad-check passers often use the same tactics.

Become suspicious of anyone who tries to distract you from a proper examination of their identification. Perhaps he might question you about something at a crucial moment, or tell some story of why he is in a big hurry. A con man needs to prevent you from checking him too closely, and he must get out in a hurry before you remember to verify some vital facts.

All of those warning signs were there, and were ignored in a case I'll tell you about next.

The Rock Concert

The owner of an electronic shop

was contacted to set up a public-address system for a rock festival. He knew that show-business functions often were unstable and not well-financed, so he talked to the bank where the rock promoter had an account.

"Is a check on the 'Horrible Chanters' good?" he asked at the bank. "It's all right to five figures," answered the banker, where the money for advance tickets had been deposited.

As the technician went about installing the elaborate sound system, Joe Chanter was very interested in the details. In fact, he seemed fascinated, and he talked and talked constantly until the job was finished and tested.

Then he handed the technical expert his personal check for the agreed amount, plus a couple of hundred dollars "for pocket money." The electronics man confidently accepted the check and gave the

change.

The concert was not a success. Many listeners became angry and violent, and took out their frustrations on the band stand and the equipment.

Not only was much of the sound equipment ruined, but the check bounced a few days later. The shop-owner victim stormed into the bank, demanding to know why the check had bounced. He received a fast and costly education.

First, Joe Chanter had no authority to sign checks for the promoter; only Moe Chanter was authorized. In the meantime, many of the listeners wanted their money back, and the "Horrible Chanters" bank account was tied up by creditors. Also, by now Joe Chanter could not be found.

One of the morals of this story is that the bank account of a company that's in a risky business can be substantial on one day, and be

depleted only a couple of days later. Another lesson is to be sure a check is signed by a person who is authorized to do so.

The worst mistake of the shop owner was in not insisting on a *certified* check for the exact amount of the invoice.

Comments

The old advice to "Stop, look, and listen!" certainly applies to cashing checks for customers.

Stop for a moment and ask yourself why this person is asking you, rather than a bank, to cash his check. *Look* at the identification and determine whether or not it is sufficient, under the circumstances. Then *listen* to the customer to determine if the request seems valid, or whether the person is trying too hard to distract or hurry you.

Don't accept the check until all of these factors ring true. □

Your new RCA QT Parts Inventory Program with annual drop-ship updating.



Here it is! Your new RCA QT (Quick Turnover) Parts Program that assures you an up-to-date inventory of the most used RCA exact replacement TV parts.

Simply contact your RCA Distributor and register as a QT Dealer. You will receive your package of 150 of the most-needed, fastest-moving parts.

Automatically, once a year, QT parts will be evaluated, and the program will be updated to include only the 150 fastest-moving parts. You return the parts that are dropped from the fastest-movers list to your RCA Distributor, and get *full credit*. At the same time, the new parts added to the QT list will be *shipped directly to you from RCA*. A quick, automated inventory control system designed for your convenience.

And, to keep your parts organized for fast servicing, ask your RCA Distributor about the QT Parts Rack. It's sturdy, but light enough to hang on a wall. Saves you time and space.

Call your RCA QT Parts Distributor for all the details, or write to RCA Distributor and Special Products Division, Deptford, N.J. 08096.

RCA QT Parts

For More Details Circle (18) on Reply Card

The Basics of Industrial Electronics, Part 4

By J. A. "Sam" Wilson, CET

A capacitance transducer undergoes a change of capacitance when the condition of the material or process being monitored becomes different. These capacitance changes can be accomplished in one of three general ways.

The factors that determine the capacitance of a capacitor are: the area of the plates; the distance between the plates; and the type of dielectric between the plates.

Temperature often affects the capacitance. But, in most applications, the temperature coefficient is listed as a disadvantage that must be overcome.

Any of these three factors can be made variable in transducers that change capacitance to indicate a different condition of the material being tested.

Varying The Distance

Condenser microphone

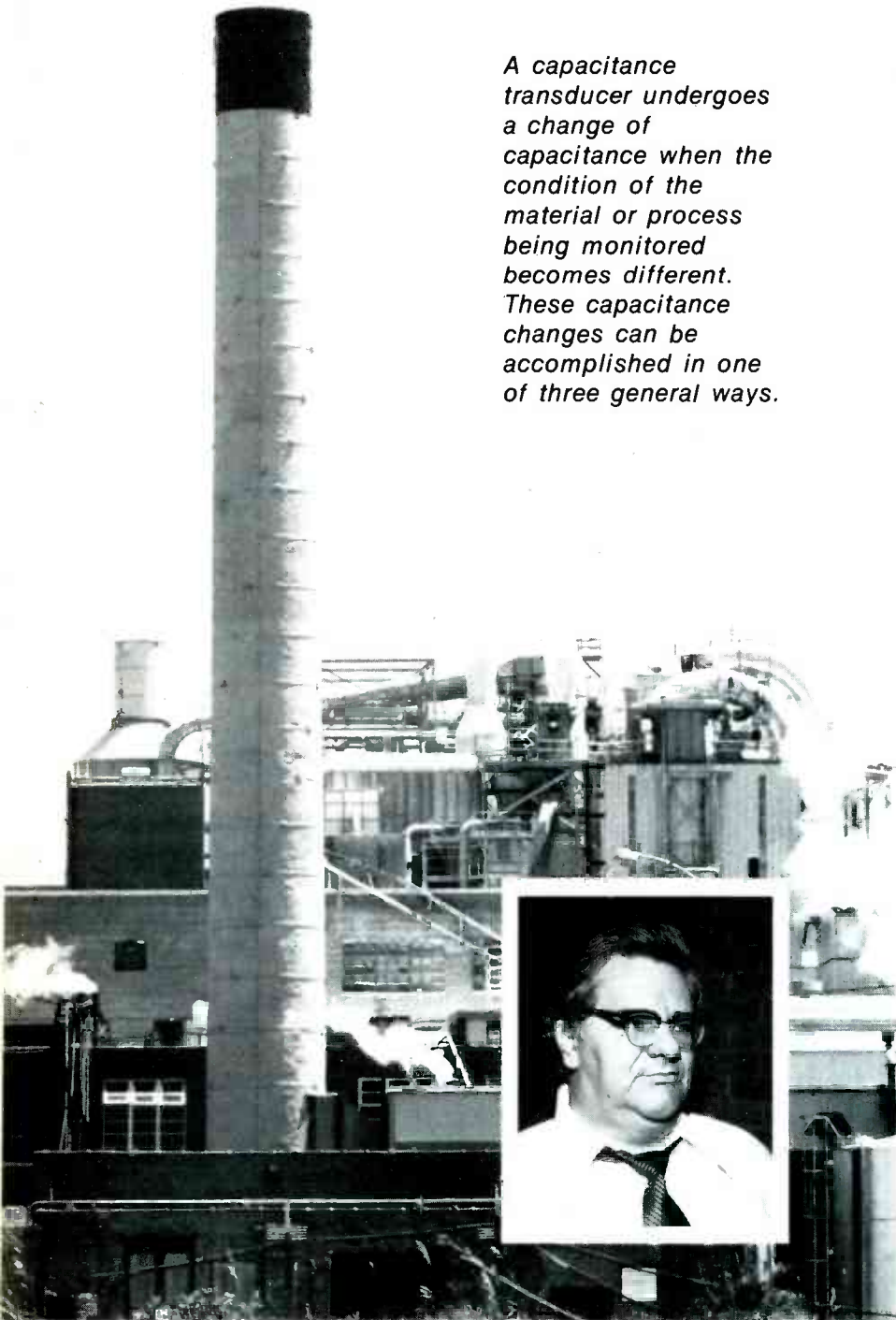
One example of a capacitive transducer that operates by varying the distance between the two plates is the "condenser" microphone. Of course, the word condenser in electronics has been replaced by capacitor. However, this type of microphone was developed in the 1920s, and the old name persists.

Operation of a condenser mike does not vary the applied voltage or the dielectric, but it changes the capacitance by changing the distance between the plates (see Figure 1).

The formula for the charge on a capacitor (called Q) is: $Q = C \times V$. Therefore, when the voltage is held constant, any change of capacitance results in a corresponding change of the charge. For example, an increase of capacitance increases the charge; or a decrease of capacitance decreases the charge.

One plate of the capacitor in a condenser microphone is rigid, while the other is a very-thin and flexible diaphragm that's clamped at the edges but free to vibrate at the center (Figure 1). Sound waves striking the diaphragm move it alternately closer or farther away from the back plate, changing the capacitance. The charge varies in step with the capacitance. Increased capacitance requires more current, while reduced capacitance has less current flow. When a load resistor (R1) is added in series with the charging current, the sound waves cause a varying voltage drop, which is the electronic equivalent of the sound waves.

In practice, the change of capaci-



tance is very small, and the output voltage is extremely low. To raise the level so it's equal to that of other types of mikes, a preamplifier usually is mounted near the capacitance unit. The diaphragm must be mounted very close to the back plate, to give the highest possible output signal, and when it is stretched tightly to raise the resonant point above the range of hearing, the frequency response can be much flatter than the response of dynamic or ceramic mikes. This is the value of a condenser mike, and the improved response is worth all of the extra components.

Vibration transducer

The same principle of movable plates is used with capacitive transducers that are designed to sense vibrations. One example is illustrated in Figure 2. It is built to endure strong pressures and is ruggedly constructed, in comparison to a condenser mike, which is very delicate.

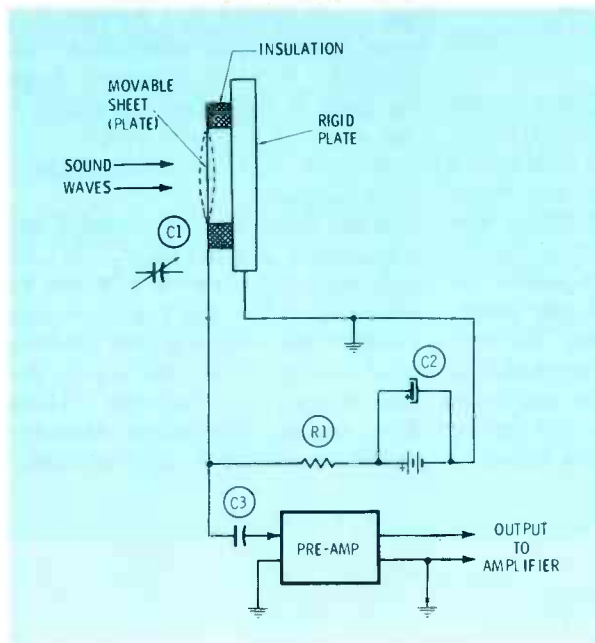


Figure 1 In a condenser microphone, sound waves move the flexible plate, varying the spacing of the plates, and producing a variable capacitance. The changing capacitance requires a varying charging current, which in turn causes a varying voltage drop across the load resistor, R1.

Thickness transducer

Figure 3 shows another type of transducer that varies the distance between the capacitive plates to detect deviations of thickness. The dielectric is the material being tested for thickness, and therefore

it must be a nonconductor such as rubber, linoleum, or other similar substance.

The capacitance is part of an oscillator circuit, whose frequency shifts with capacitance changes.

continued on page 40

When Accuracy Counts...



Count on Ungar Heat Guns

The compact Ungar Heat Gun provides the accuracy that you need to heat shrinkable tubing in confined areas, to test for thermal intermittents in components, to soften conformal coating for repair and to reflow individual solder connections. A flick of the three-position switch provides a quiet stream of 750°F hot air for heating or ambient air for cooling. Its light weight of only 13 ounces makes it a breeze to use or to carry from job to job, yet it has the capacity to shrink tubing up to 1/2" in diameter.

See the versatile Ungar Heat Gun at your local Authorized Ungar Distributor, or call or write us for more information.



Division of Eldon Industries, Inc.
P.O. Box 6005, Compton, Ca. 90220 — (213) 774-5950
In Canada, 50 Prince Andrews Place, Don Mills, Ontario.

For More Details Circle (19) on Reply Card



Industrial

continued from page 39

Frequency of the oscillator is adjusted with sample material of the desired thickness so it produces a minimum reading after the signal passes through a notch filter. Any change of thickness and its resulting change of frequency moves the signal up the sides of the notch, increasing the amplitude. The sensitivity is adjusted for the amplitude of signal produced by the maximum allowable deviation from the desired thickness, and the control action or

the alarm is activated for variations that exceed the tolerance. For example, the relay contacts might be used to stop the movement of the material until the problem was corrected. Or it could light a warning sign.

If the notch filter is replaced by a zero-center discriminator, the circuit then can indicate whether the material is too thick or too thin. Further, the output signal could be used to control the mechanism that determines the thickness. Therefore, any out-of-tolerance thickness would be corrected *automatically*.

Varying The Dielectric

The level of fluid in a tank can be sensed by a capacitive transducer, as shown in Figure 4. Of course, the liquid must be a non-conducting type, and it's desirable for it to have a high dielectric constant.

When the liquid level is low, the dielectric is air and the capacitance is low also. At higher levels, the liquid becomes the dielectric, increasing both the dielectric constant and the capacitance.

Two different indicators are illus-
continued on page 42

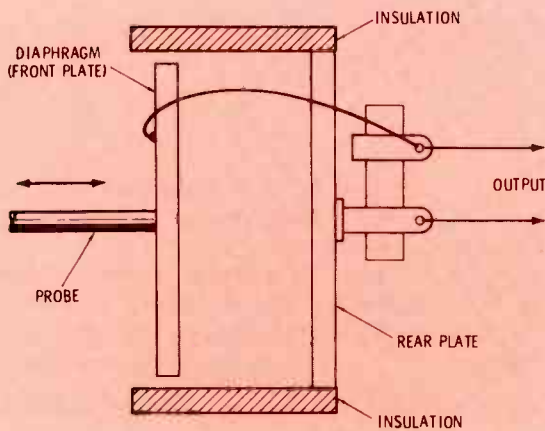


Figure 2 A capacitive vibration transducer is similar in principle to a condenser mike, but it is built much stronger to withstand the heavy blows.

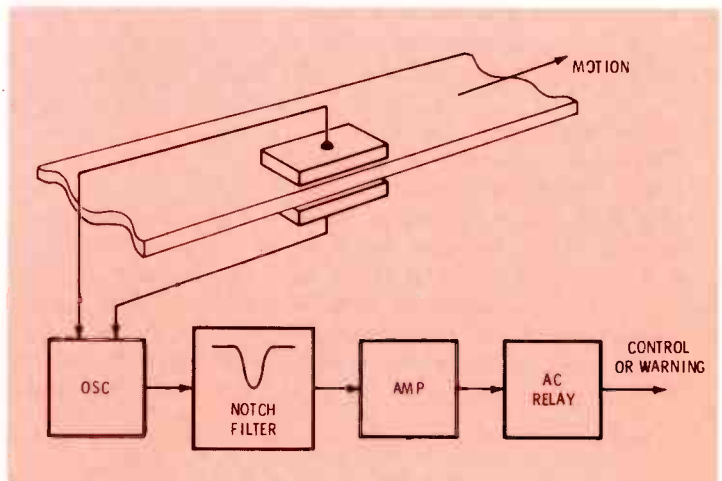


Figure 3 Two metal plates held against top and bottom of a moving piece of insulating material in a manufacturing plant change capacitance according to the thickness of the material. Thus, thickness variations change the oscillator frequency, and an unacceptable thickness moves the frequency out of the notch. This increased amplitude can trigger a relay or a warning device.

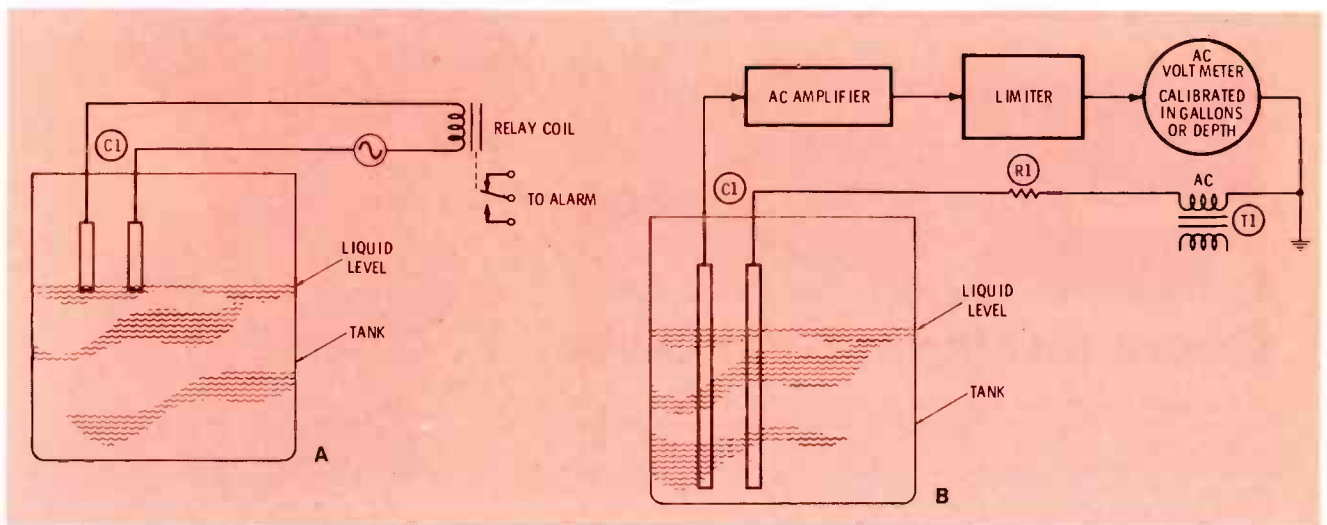


Figure 4 Here are two versions of a capacitive depth indicator. (A) When the liquid is between the plates that act as a capacitor, the capacitance is increased, and the stronger current trips the relay to sound an overflow warning. Lower liquid levels provide only air between the plates, and the weak current is not enough to trip or

hold-in the relay. (B) A more-sophisticated version uses longer capacitor plates, an amplifier for sensitivity, and a meter than can be calibrated in gallons or depth. More plate area with the non-conducting liquid between gives increased capacitance; thus passing more voltage to the meter, and giving a continuous reading of depth.

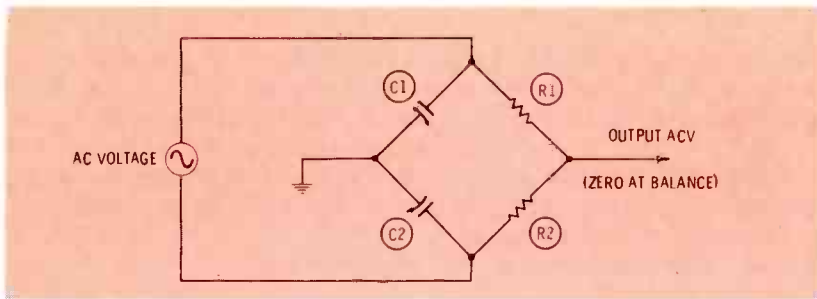


Figure 5 Capacitive bridges have a sharp null at the balance point. Output AC signals from the bridge can be amplified to provide good sensitivity. Bridges are very useful when the capacitance change is not large.

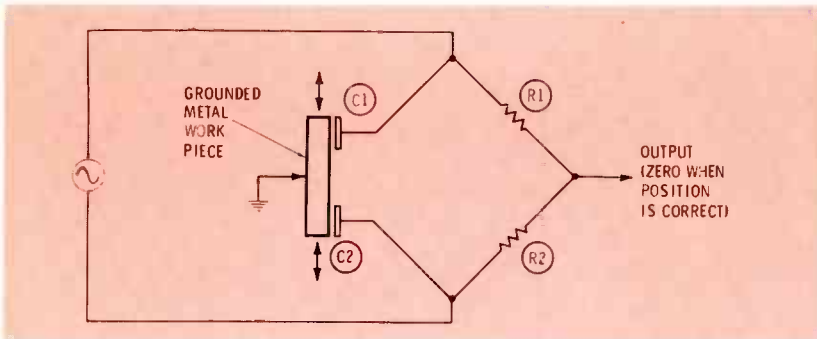


Figure 6 Here is one example of an AC-bridge circuit that's used in industrial electronics. When the production-line metal item is positioned exactly between the C1 and D2 plates, two equal capacitors are formed. This balances the bridge, and the AC output has almost zero amplitude. If the metal object is positioned wrongly, one capacitance will be larger, and the other smaller. Thus, the bridge is unbalanced, and the output rises sharply. If the output increases above a preset point, an auxiliary circuit can flash a warning sign or prevent the next automated step of the production machinery.

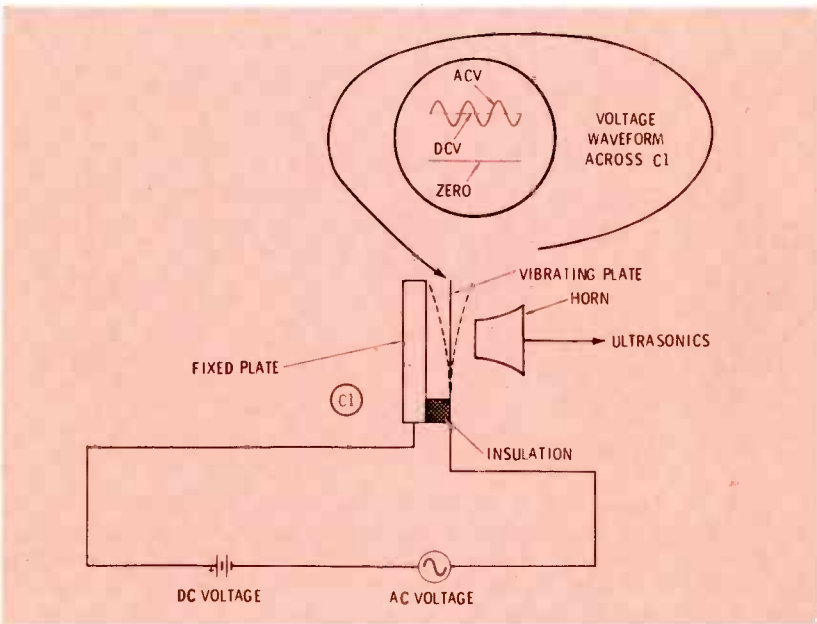


Figure 7 Electrostatic transducers closely resemble some capacitance types. In some ways, operation of this ultra-sonic generator is opposite to that of the condenser mike in Figure 1. Both have a DC polarizing voltage, but the mike accepts acoustic sound waves and produces an electrical audio signal, while the generator uses an AC electronic signal that's similar to audio (but higher in frequency) to produce super-sonic acoustic sound waves. Some models have a tuned horn to strengthen the signal level.

15MHz Triggered Sweep Dual Trace Scope Usable to 30 MHz



B&K-PRECISION MODEL 1472C \$740
INCLUDING PROBES

Normally rated at 15MHz (-3dB), it easily syncs and displays a 30MHz signal with sure triggering.

- Automatically selects chopped or alternate trace display
- Maintains calibration accuracy over 105-130VAC range.
- 11 sensitivity ranges, 10mV to 20V/cm.
- 19 sweep ranges, 0.5 μ SEC to 0.5SEC/cm.
- 24nSEC rise time.
- Front panel X-Y operation with matched phase-shift and sensitivity inputs.
- P31 blue phosphor
- Algebraic addition and subtraction

Available from your distributor.

B&K PRECISION
DYNASCAN
CORPORATION

6460 West Cortland Avenue
Chicago, Illinois 60635 • 312/889-9087
In Canada: Atlas Electronics, Ontario
Int'l. Sys. Empire Exp., 270 Newtown Rd., Plainview, LI, NY 11803

For More Details Circle (20) on Reply Card

Industrial

continued from page 40

trated. The first sensor is not very sensitive. Air is the dielectric at normal depths, and the current is not sufficient to close the relay. At the overflow point, the increased capacitance from the change of dielectric increases the current, closing the relay points. The second circuit indicates *any* depth by the amount of AC voltage that passes

through the capacitance. In fact, the meter can be calibrated in gallons or the depth in feet.

Capacitive Bridges

Capacitive transducers often produce a very small change of capacitance, and need amplification to make the change sufficient for a reliable reading. Or, an undesirable temperature coefficient might cause excessive drift. Both of these corrections can be made in an AC bridge circuit (Figure 5).

This bridge is balanced when $C1/C2$ equals $R1/R2$. In other words, when the ratio of the capacitances equals the ratio of the resistances. At the balance point, the output AC voltage is minimum.

Position sensor

One use for a capacitive bridge is shown in Figure 6. Two separate capacitances are formed by the plates and the grounded metal object. When the object is centered correctly, the two capacitances are

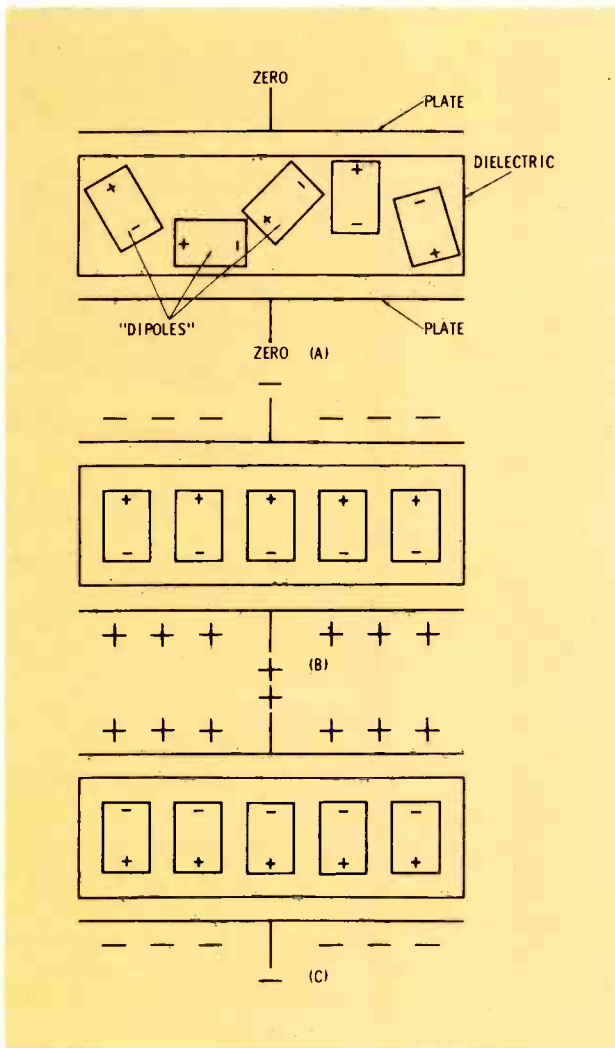


Figure 8 The action of capacitors when taking or discharging power is quite complex. This simplified explanation should help you understand the basic principle. Imagine that dielectric material is composed of many tiny "dipoles" (as shown in A) of random orientation. When a capacitor accepts a charge, the dipoles arrange themselves as drawn in B. Reversing the polarity of the charge (C) also reverses the dipoles. Heat from friction is produced during the movement of the dipoles, when an AC charge is applied to the capacitor. This is the reason for the dielectric-heating phenomena.

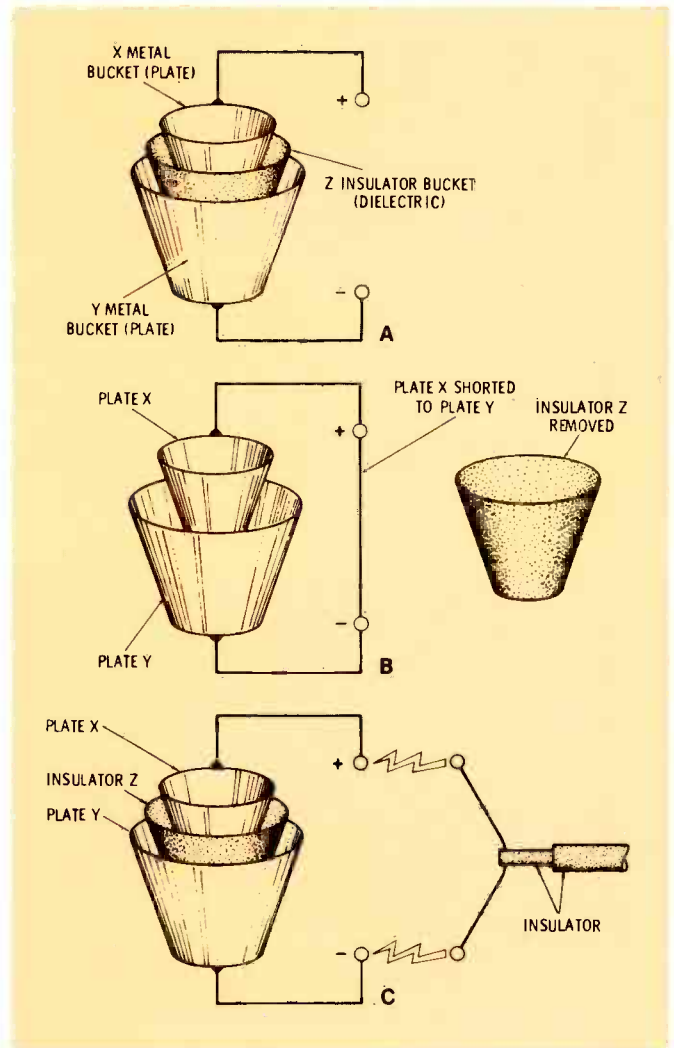


Figure 9 Here is an experiment you can perform to prove that the charge of a capacitor is held in the dielectric. Make a capacitor from two metal buckets and one of dielectric material, assembled one inside the other (A). Charge the capacitor to a high voltage. Then, using insulating sticks, remove the dielectric pail, and short together the two metal buckets (B). Such a short would remove or dissipate any charge held between these "plates." Assemble the components again, as shown in C, and carefully connect a shorting bar to the two metal buckets. Before or during the contact, you should see an arc, proving that the original charge was there, even after the disassembling and efforts to discharge.

equal, and the bridge is balanced (giving a minimum-amplitude output AC signal). If the object is not centered, the capacitances are not equal, the bridge is not balanced, and the output signal has a comparatively strong amplitude.

This output signal might be read on a meter marked with in-tolerance and out-of-tolerance areas. Or, the amplified output signal could activate a safety circuit that would not allow a subsequent step to occur unless the bridge was balanced.

The balanced-bridge transducer operates by varying the active area of the plates, according to the position of the object. Remember that only those areas facing each other contribute to the capacitance.

Electrostatic Transducers

Closely related to the capacitive types are the electrostatic transducers. One example is given in Figure 7. The ultrasonic generator (frequency above 20 KHz) has a fixed plate and a movable plate.

A DC voltage is connected between the plates, placing a negative voltage on one and a positive voltage at the other. Unlike charges attract, and like charges repel, so the voltage produces a small attraction between the plates.

An AC voltage source is wired in series with the DC voltage. When the positive peak of the signal is at the positive plate, the attraction between the plates is increased. Similarly, when the negative peak of the signal is at the positive plate, the attraction between the plates is decreased. Therefore, the movable plate vibrates in front of the rigid plate, producing a sound wave.

One use for an ultra-sonic generator is to agitate a liquid which shakes loose the dirt and grease from the inside of clocks or TV tuners. In addition, ultra-sonic devices also are used for measurements, and in intrusion burglar alarms.

Dielectric Heating

The principle of dielectric heating can be understood by reviewing some little-known facts about the behavior of the dielectrics in capacitors.

Actually, the energy of a capacitor is stored in the dielectric. A physical change occurs in the

dielectric when the capacitor is charged. Figure 8 shows a simplified version of what happens inside the dielectric material.

The dielectric can be imagined as being made of many tiny dipoles, each having a positive charge at one end and a negative charge at the other. In the uncharged state (Figure 8A), the dipoles are pointing in random directions.

When the capacitor is charged, the dipoles align with the electrostatic lines of flux, as shown in Figure 8B. If the polarity of the applied voltage is reversed, the dipoles also reverse direction (Figure 8C).

A high-frequency AC voltage across the capacitor causes the dipoles to reverse direction rapidly in step with the positive and negative peaks of the waveform. The reversal of the dipoles is opposed by friction, so heat is generated within the dielectric material.

Some frequencies of RF produce more heating effect than others do. Dielectric heating is used extensively in industry to heat plastics and other non-conducting materials.

Electrostatic Pail Mystery

The theory of dielectric behavior just described explains the results of the experiment in Figure 9.

Three buckets or pails are inserted one inside the other (Figure 9A). The outside pails are metal, and the middle one is made of dielectric material. Of course, you recognize this as a capacitor.

The capacitor is charged with a very high DC voltage (say 1 million volts). Then the capacitor is disassembled, using insulated sticks (Figure 9B), and the two metal plates are stacked together (which shorts them together). If the charge actually is stored in the plates, it now will be gone.

But when the pails are reassembled (Figure 9C) and a shorting bar touched to the two metal pails, a large arc can be seen.

The dipoles were held in their previous alignment by friction; therefore, the charge remained in the dielectric, and when the capacitor was reassembled, the charge still was there.

This experiment proves that the charge of a capacitor is stored in the dielectric. □

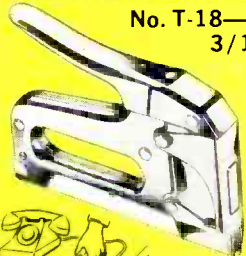
ARROW AUTOMATIC STAPLE GUNS

CUT WIRE & CABLE INSTALLATION COSTS

... without cutting into insulation!

SAFE! Grooved Guide positions wire for proper staple envelopment! Grooved Driving Blade stops staple at right depth of penetration to prevent cutting into wire or cable insulation!

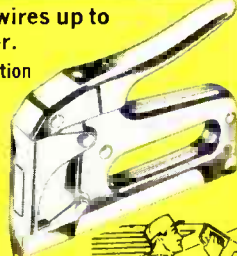
No. T-18—Fits wires up to 3/16" in diameter.



BELL, TELEPHONE, THERMOSTAT, INTERCOM, BURGLAR ALARM and other low voltage wiring.

Uses T-18 staples with 3/16" round crown in 3/8" and 7/16" leg lengths.

No. T-25—Fits wires up to 1/4" in diameter.

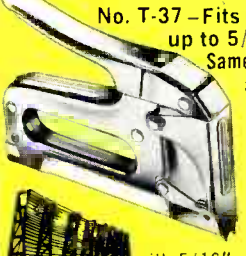


Same basic construction and fastens same wires as No. T-18.

Also used for RADIANT HEAT WIRE

Uses T-25 staples with 1/4" round crown in 9/32", 3/8", 7/16" and 9/16" leg lengths.

NEW! Intermediate No. T-37—Fits wires and cables up to 5/16" in diameter.

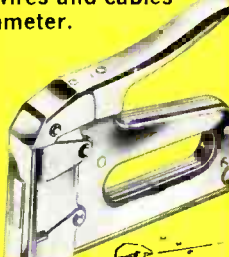


Same basic construction as Nos. T-18 & T-25.

Also used for CATV and DRIVE RINGS in stringing wires.

Uses T-37 staples with 5/16" round crown in 3/8", 1/2" and 9/16" leg lengths.

No. T-75—Fits wires and cables up to 1/2" in diameter.



RADIANT HEAT CABLE, UF CABLE, WIRE CONDUIT COPPER TUBING or any non-metallic sheathed cable.

Also used as DRIVE RINGS in stringing wires.

Uses T-75 staples with 1/2" flat crown in 9/16", 5/8" and 7/8" leg lengths.

ARROW FASTENER COMPANY, INC.
271 Mayhill Street, Saddle Brook, N. J. 07663

For More Details Circle (28) on Reply Card

Figure 1 The FC45 Sencore digital frequency counter has several unusual features, including high- and low-resistance inputs, and coverage from 20 Hz to 230 MHz in two ranges. No external adjustments are needed to obtain an accurate count.



Reports from the test lab

Each report about an item of electronic test equipment is based on examination and operation of the device in the ELECTRONIC SERVICING laboratory. Personal observations about the performance, and details of new and useful features are spotlighted, along with tips about using the equipment for best results.

By Carl Babcock

Sencore FC45 Frequency Counter

Model FC45 digital frequency counter from Sencore (Figure 1) has no external adjustments, but it does have seven pushbuttons and two input jacks, plus the on/off switch. These extra pushbuttons and jacks greatly increase the versatility of the instrument, permitting additional types of measurements.

FC45 Features

Here are some important features of the Sencore FC45 counter:

- The display has eight 0.5-inch red LED digits;
- Hz and MHz lights show the range that's in use;
- The decimal is placed automatically according to the pushbutton selected (although not mentioned in the instruction book, the internal circuit apparently selects the range giving best resolution);
- Both 1-megohm and 50-ohm inputs are provided;

- Either 0.1-second or 1-second update can be selected;
- Two ranges of frequency coverage are supplied;
- An external socket is provided for testing the fundamental frequency of crystals;
- The 50-ohm input has a 12-watt 50-ohm load, which can be used as the load for a CB transmitter;
- The counter can operate from either 120 VAC or 12 VDC;
- An oven maintains a constant temperature for the internal timing oscillator, to minimize calibration drift;
- Many accessories are available, including special probes; and
- The input circuits protect against moderate overloads, and a fuse protects the 50-ohm input from massive overloads

Frequency Ranges

Two ranges cover from 30 Hz to 30 MHz, and from 30 MHz to 230 MHz (see Figure 2 for the panel layout). Actually, the two ranges overlap, with the lower range useful to about 35 MHz, and the higher one operating down to about 10 MHz. Readings of the higher band are provided by a built-in 10-to-1 scaler.

The minimum amplitude of input voltage required for reliable counting varies with the frequency and type of input. Any input above 20 millivolts should give a reading, except at the extreme ends of the ranges where a stronger input is required. Refer to the charts in the

instruction manual for the exact levels needed.

Input Resistances

Pushbuttons select either a 50-ohm or a 1-megohm input resistance. The 50-ohm input has an internal 12-watt dummy load rated at 12 watts, and it can be used as the test load of a CB transmitter. The frequency can be checked at the same time, or the 50-ohm input can function only as a load, while you check the frequency of another circuit by using the 1-megohm input.

For most other measurements, the 1-megohm input probably is better. There is less undesirable loading of the circuit that's being tested.

However, a few square wave or pulse waveforms suffer ringing when they enter the 1-megohm input (because of the mismatch between cable and load). In such cases, the ringing will be counted as extra cycles, giving a wrong count. This can be prevented by using the 50-ohm input. Refer to the instruction manual for details.

Time Base

Frequency readings can be updated either every 1/10 second or once every second, depending on the resolution needed. Of course, all audio measurements should be made with the 1-second timebase.

The timebase also determines the accuracy of this (or any other) digital counter. The FC45 has a temperature-regulated oven for the crystal oscillator, to minimize the drift from changes of room temperature.

Specs call for a temperature stability from 0° to 40° Centigrade of only 1 part-per-million, following a 10-minute warmup. After 30 days of operation, the stability versus time should be about 2 PPM per year. Therefore, the total accuracy is \pm the time base accuracy, ± 1 count.



Figure 2 Three pushbuttons are for input selection, two more select the reading rate, and another two buttons select the range desired. At the lower left is the power jack for the prescaler, and the crystal jack is at the lower right. Two BNC connectors are provided for the inputs.

Accessories

A 39G112 direct/isolated (through 33 pF capacitor) probe is supplied with each FC45 counter. It is pictured in Figure 3. The "hot" lead is very handy for connecting to small wires (such as transistor leads), for it is spring loaded and completely insulated (except for the tiny hook).

Also, a fused, DC-supply cable with plug for a cigarette lighter is furnished.

Optional

Useful, but not supplied with the FC45, are the 39G80 low-capacitance 10-to-1 probe, the NE206 noise-minimizer probe (not sent for testing, but it apparently gives

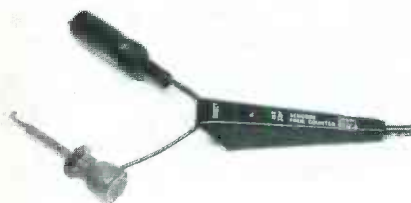


Figure 3 A sliding switch in the 39G112 probe selects direct input, or routes the input signal through a 33 pF capacitor.



Figure 4 The PL207 RF pickup is small so it can be slipped over coils. The offset handle permits easy location of the loop, even in crowded chassis. This is an excellent method of obtaining a sample signal for the counter, without loading the circuit that's under test, or exposing the counter to excessive voltages.



Figure 5 The small PR47 Sencore prescaler permits a counter having an upper limit of 60 MHz to count up to 600 MHz. It has a divide-by-10 circuit. The input is 50 ohms, and the signal should have a level between 300 millivolts and 3.5 volts.

different amounts of low-pass filtering to remove some types of noise from the input signal), a PL207 pickup loop for RF signals (Figure 4), and a PR47 prescaler. The prescaler can be operated from an FC45, or other types of counters.

PR47 10-to-1 Prescaler

The PR47 prescaler (Figure 5) is designed to be connected ahead of a digital frequency counter. It has a 10-to-1 divider circuit; therefore, the output frequency is 0.1 times the input frequency. The PR47 is rated for inputs up to 600 MHz, when used with a counter having a top frequency of 60 MHz.

Because there is no action except the divide-by-10 function, the accuracy depends on the counter. PR47 does not change the accuracy of the count.

External power of 7 to 10 volts DC is required for the prescaler. The FC45 has a 9-volt jack at the lower-left corner of the front panel for powering the PR47. However, the PR47 can be used with other counters by the addition of a PA202 AC adapter (not supplied).

Input resistance is 50 ohms, to minimize cable ringing. The input is protected up to 3.5 volts RMS at 600 MHz input, or 7 volts RMS at low frequencies. Output amplitude is 1 volt PP. The sensitivity varies with frequency, but should not require more than 325 millivolts of input for dependable operation.

A PL207 RF loop and a 39G116 power cable are supplied with each PR47.

Comments

The Sencore FC45 is one of the few counters I've tested that correctly counted an audio signal, with the generator connected to the high-impedance input of the counter. Also, the direct/isolated probe should allow operation with more circuits, and with far less chance of accidental shorts.

Another good idea is the RF loop. I obtained a reading of 3.579552 MHz by placing the loop over the reactance coil of an old color TV. In the same television, a reading of 15,734 Hz was shown when the loop was hung over the horizontal-efficiency coil.

All counters give wild and inaccurate readings under certain conditions. The Sencore instruction manual illustrates them and gives the solutions. I advise that you study the manual thoroughly.

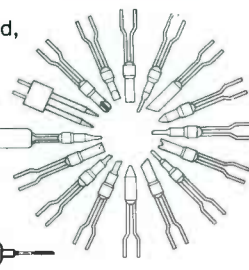
The Sencore model FC45 counter performed all tests perfectly, and should prove to be a reliable and versatile instrument. □

The quick charge iron with 16 different quick change tips.



ISO-TIP®
QUICK CHARGE
Cordless
Soldering Iron
completely
recharges in
3½-4 hours.
Low voltage,
battery powered,
ground free
isolated tip
design.

16 snap-in tips
to fit any job
plus a PC
Drill.



WAHL CLIPPER CORPORATION
ORIGINATORS OF PRACTICAL CORDLESS SOLDERING
• Sterling, Illinois 61081 • (815) 625-6525
"Manufacturing Excellence Since 1919"

For More Details Circle (25) on Reply Card

PUT YOUR FINGER ON THE TRUTH

It's the one and only flat-rate increment system that gives you the great feeling of pricing every job right. A system that treats both customer and shop owner fairly. Fast finger-tabs in both editions: **6x9 Hard Cover**, steel ring-bound - \$19.95 ea. post pd.

Or The Satellite Edition for pocket sized convenience - \$16.95 ea. post pd.

New
Computerized Parts Pricing manual lists over 3,500 most-used parts - \$75 initial set-up plus \$10 per copy.



tv & radio
tech's guide to pricing

P.O. Box 5234
Lincoln, NE 68505

Nebr. residents
add sales tax

sperry tech inc. (No. editions)

My check enclosed
 BankAmericard Exp. _____
 Master Charge Exp. _____
Name _____
Co. _____
Address _____
City _____
State _____ Zip _____

For More Details Circle (26) on Reply Card 47



NEW EICO 480 TRIGGERED SWEEP 10 MHz SCOPE

100% Solid State • Includes 10:1 Probe

More Professional scope performance for your money! DC to 10 MHz bandwidth, AC and DC coupling, 11 position calibrated attenuator, 10 mV/cm sensitivity, push-button operation. Outstanding features: Built-in TV Sync Separator; Digitally controlled trigger circuits; reference baseline display; calibrated 21 step sweep speed; Fully regulated power supply; Custom Bezel for standard camera mounting. **Assembled \$425.00**

FREE '78 EICO CATALOG

Check reader service card or send 75¢ for first class mail. See your local EICO Dealer or call (516) 681-9300, 9:00 a.m.-5:00 p.m. EST. Major credit cards accepted.

EICO—108 New South Rd.
Hicksville, N.Y. 11802



For More Details Circle (21) on Reply Card

Want to cut out a career as a two-way radio technician?

MTI offers the only training for professional FM two-way radio available. Qualified technicians are employed in government, industry, and public service. But training is your key.

You could cut out a career as a two-way radio technician by cutting out this coupon. We'll send you information on how you can learn more about this specialized field, at home.

Name _____
Address _____
City _____
State/Zip _____

KK8



formerly

**MOTOROLA TRAINING
INSTITUTE**

College Hill, Summerdale, Pennsylvania 17093

For More Details Circle (22) on Reply Card

Soldering Pistol

The Kager KL 3000 is a lightweight instrument suited to precision applications in the electrical and electronics fields.

The solder, incorporated in the pistol, is fed to the heated soldering tip by squeezing the trigger. The precise amount of solder required



for a particular joint may be selected by simply turning a knob. Cold soldering spots are minimized because the object being soldered or the copper lamination surrounding it is heated prior to the application of the solder.

The KL 3000 is available with power inputs of 20 to 60 watts. A large choice of solder tip designs also is available.

For More Details Circle (35) on Reply Card

Technical Manual

GTE Sylvania has published a technical manual describing more than 275 linear ICs and modules in its ECG replacement semiconductor line.

The fully-illustrated manual presents comprehensive technical data for devices used in consumer, commercial and industrial electronic equipment. It contains sections on electrical ratings and characteristics, mechanical specifications, application notes, performance information, and a selector guide.

For More Details Circle (36) on Reply Card

Anti-Static Desoldering Tool

Edsyn now offers a manual desoldering tool which protects sensitive FET and MOSFET semiconductor devices from failure by static electricity, while isolating the operator from a direct short.

The "Silverstat Soldapull" is a hand-held, spring-loaded vacuum device which incorporates an enclosed loading shaft, high-low vacuum adjustment, and fast bayonet-type disassembly for ease of maintenance. No conductive straps

are necessary when working with FET devices because of its conductive plastic tip and barrel housing which allow any static charge to drain off harmlessly through the hand to the ground. The usual precautions such as conductive work mats and grounded wrist or body straps might be required.

For More Details Circle (37) on Reply Card

Smoke Detector

The FI photoelectric smoke detector from Mountain West is said to detect early fire indications before flames and elevated temperatures can be detected by other devices.

The light-source lamp has a 2½-year life span, and an alarm sounds when replacement is needed. The FI has an 85-decibel alarm.

For More Details Circle (38) on Reply Card

CB Radio

The new RCA remote CB 40-channel transceiver, model 14T275, is a three-piece, two-way radio. The detachable, hand-held microphone has all operating controls built-in: on/off, volume, squelch, channel selector, digital channel readout, microphone, and separate speaker.



The main chassis, with 100% solid-state and phase-locked circuitry, can be mounted in concealed locations by using the optional 13-foot extension cable (14T819).

For More Details Circle (39) on Reply Card

These features supplied by the manufacturers are listed at no-charge to them as a service to our readers. If you want factory bulletins, circle the corresponding number on the Reply Card and mail it to us.

test equipment report

CB Meter

Mura has a full-function CB meter (model CBM) on the market. The meter measures SWR and relative field strength for checking and tuning the antenna; RF power output from the transceiver; and modulation level.



The CBM-40 has the following specifications: SWR scale—1:1 to 20:1; power scales—0 watts to 10 watts, 0 watts to 100 watts at $\pm 10\%$; modulation scale—0 to 100%; frequency range—3.5 MHz to 150 MHz; impedance—52 ohms.

The unit is provided with its own 9½-inch antenna for FS measurements, an instruction booklet, and a 3-month warranty.

For More Details Circle (40) on Reply Card

Portable FET VOM

Model WV-543A VoltOhmyst from VIZ is an all-purpose VOM using FETs. Some of the features include: automatic polarity of DC readings, with a separate meter to indicate the polarity; 10 megohms input impedance for all voltage ranges; a switch selects the polarity of test leads during ohms measurements, and a meter indicates the polarity; both high-power and low-power ohms functions are provided; the FETs and the tautband meter are protected: decibels from -50 to +56 can be measured using the AC ranges; and the VOM can be operated either from line power

or from eight "AA" cells (not supplied).



AC and DC voltage ranges are 0.15, 0.5, 1.5, 5, 15, 50, 150 and 500 with a separate jack for 1.5KV. Seven resistance ranges are provided, with a choice of high or low power. The AC and DC current ranges are the same as those for voltage, except the readings are in milliamperes.

For More Details Circle (41) on Reply Card

Dual-Trace Scope

Simpson Electric has introduced a new dual-trace scope for design, development and service of digital circuitry as well as general communications, audio and TV servicing.

The Model 452 has triggered sweep and 15-MHz bandwidth plus all solid-state and IC components (except CRT). Differential vertical amplifier stages give wide bandwidth (DC coupled, DC to 15 MHz; AC coupled, 2 Hz to 15 MHz) with rolloff through 27 MHz.

For More Details Circle (42) on Reply Card

Analog Power Meter

Elwin Electronics offers a new analog power meter designed for use in laboratories, service installations, factories, and for operator applications.

The Hooker APM-15 through-line watt and VSWR meter has negligible insertion loss which allows it to remain "on line" for continuous monitoring of either forward or reflected power.

For More Details Circle (45) on Reply Card

These features supplied by the manufacturers are listed at no-charge to them as a service to our readers. If you want factory bulletins, circle the corresponding number on the Reply Card and mail it to us.

IT'S NO PUZZLE
TO ORDER



OELRICH SERVICE FORMS

FOR TV RADIO & 2 WAY RADIO SERVICE LEGAL FORMS FOR CALIF. FLA. UTAH NOW AT YOUR PARTS JOBBER OR WRITE FOR CATALOG B64
OELRICH PUBLICATIONS
4040 N. NASHVILLE AVE. CHICAGO, ILLINOIS 60634

For More Details Circle (27) on Reply Card

October, 1977

Includes
Functional
Tilt Stand!

NEW EICO 270
3½ DIGIT DMM KIT
ONLY \$79.95

Introductory Offer—FREE AC ADAPTOR

The first and only lab accuracy portable DMM Kit featuring MOS/LSI IC economy and reliability. Measures DC/AC Volts, Kilohms, DC/AC milliamps in 21 ranges. Polarity indicators and overload protection are provided, and 0.5 inch LED displays give easiest-to-read digital readout to 1999. The 270 features a basic 0.5% DC accuracy, 10 Meg-ohm input impedance, low voltage drop in all current ranges and automatically-flashing overrange indicator. **Assembled \$109.95**

FREE '78 EICO CATALOG

Check reader service card or send 75¢ for first class mail. See your local EICO Dealer or call (516) 681-9300, 9:00 a.m.-5:00 p.m. EST. Major credit cards accepted.

EICO—108 New South Rd. **EICO**
Hicksville, N.Y. 11802

For More Details Circle (23) on Reply Card

APPLIANCE REPAIR BOOKS



Thirteen Handbooks written in easy-to-understand language by experts in the service field with illustrations and diagrams! Acclaimed by instructors and professionals alike! How to diagnose and repair air conditioners, refrigerators, washers, dryers, ranges, microwave ovens, dishwashers, vacuum cleaners, electrostatic air cleaners, RV gas appliances, hair dryers, motors, water heaters, coffeemakers, can openers, floor polishers, steam irons, food mixers, lawn care appliances, electric knives, electric and digital clocks and many others. Also fundamentals of solid state, setting up a shop, using test instruments and more. Only \$2.65 to \$4.90 ea.

SEND FOR FREE PRICE LIST

C & N, Dept. ES
5841 W. Montrose Avenue
Chicago, Illinois 60634

For More Details Circle (24) on Reply Card



endeco soldering & desoldering equipment

SOLDERING IRONS



Pencil style. Safety light. Two heats — 20w and 40w. 6 tips. Unbreakable handle. 2 and 3 wire neoprene cords.

DESOLDERING IRONS



Pencil style. Safety light. Some operate at 40w, idle at 20w. 8 tip sizes. 2 and 3 wire neoprene cords.



SOLDERING & DESOLDERING KITS

Everything needed to solder or desolder or both. All in a handy lifetime metal box with hasp.

See your distributor or write...

Enterprise Development Corp.

5127 E. 65th St. • Indianapolis IN 46220
PHONE (317) 251-1231

For More Details Circle (29) on Reply Card

SERVICE AIDS



Chemicals, Lubricants,
Cleaners, Coolers,
Adhesives & Solder
For All Service Situations
at
Great Savings

WRITE FOR FREE CATALOG



**Projector-Recorder
Belt Corp.**

414-473-2151

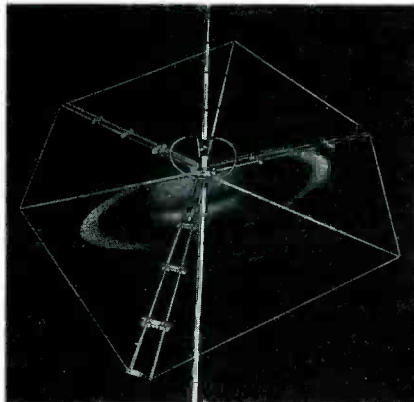
200 Clay St. - Whitewater, WI 53190

For More Details Circle (30) on Reply Card

antenna systems report

Dual-Polarity Antenna

Avanti has introduced a combination vertical and horizontal omnidirectional antenna. The "Saturn" antenna needs no rotor, yet picks up vertical mobiles, or horizontal and vertical beams.



The Saturn not only works on both polarities with high gain, but is said to be efficient for both transmit and receive. When sun spots cause a signal-level shift, the polarity often can be changed to pick up the desired channel more strongly.

For More Details Circle (43) on Reply Card

Ground Plane Antenna

An Antenna Incorporated quarter-wavelength ground-plane antenna for the 25-54 MHz frequency range is designed to provide lightning protection and static discharge.

The antenna is nine feet high and has three nine-foot radials to establish the ground-plane system. A cutting chart is included for tuning it to exact frequencies. All tubing and brackets are made of aircraft-type aluminum. The antenna accepts a PL-259-type connector for use with 50-ohm RG-8/U or RG-58/U coaxial cable. A pre-wired beta-match assembly for 50-ohm termination provides lightning protection and static discharge.

Included with the unit is a heavy-duty mounting bracket with weather-protected hardware to fit on a standard 1-5/8-inch mast or 1 1/4-inch plumbing pipe.

For More Details Circle (44) on Reply Card

These features supplied by the manufacturers are listed at no-charge to them as a service to our readers. If you want factory bulletins, circle the corresponding number on the Reply Card and mail it to us.

ORIGINAL JAPANESE PARTS

For Hi-Fi, Auto Sound, T.V.,
C.B. and More

Lower Price than a "REPLACEMENT"
Compare Our Prices and Service

I.C.'s	2SC839	50
AN214Q	2SC867	4 00
AN247P	2SC945	50
BA511A	2SC1013	1 10
M5115P	2SC1014	1 10
TA7205P	2SC1061	1 30
TA7204P	2SC1098	1 00
uPC554C	2SC1116	4 00
uPC575C2	2SC1172	6 25
	2SC1173	85
TRANSISTORS	2SC1211	60
2SA102	2SC1222	70
2SA473	2SC1226	85
2SA545	2SC1306	3 30
2SA564	2SC1674	75
2SA606	2SC1675	75
2SA634	2SC1675	75
2SA699	2SC1444	2 00
2SA720	2SC1358	7 00
2SA733	2SD213	3 25
2SA748	2SD227	50
2SB405	2SD234	1 00
2SB463	2SD261	60
2SB556	2SD361	95
2SC373	2SD426	4 80
2SC634A	2SD471	75
2SC710	2SD571	75
2SC711		
2SC828	8 Track Heads	2 95

The above is a partial list. Ask for a Complete Dealer Catalog. We ship all possible orders Within 24 HRS. Min. order \$10.00 We Pay Shipping on Prepaid Orders Over \$20.00. (We refund all unused money)

**ORA
ELECTRONICS**

P.O. Box 7548, ES. Van Nuys, CA 91409

For More Details Circle (31) on Reply Card

TUNER SUB \$19.95

Since all tuner subs that we know of are modified TV Tuners, we decided to market an excellent performing yet very low cost sub for the technician who has to get all he can for his money...a "Poor Boy's Sub" for only \$19.95.

This was not an easy task since cabinets, knobs and controls would push the price far above \$19.95...We searched for a tuner that needed no cabinet and no controls...one that the tech could scrounge the knobs from most any old TV...

It took over two years but we finally found it. The gain is excellent...Battery drain is very low (only 18 mils). It's self biasing so there is no R.F. gain control to fiddle with...It works equally well on tube or transistor sets...b/w or color...and is as easy to use as starting a fight with your wife (well, almost). All you need do is hook the set's IF cable to the "Poor Boy" and view the picture...That's it...no set up controls to confuse you.

We compared the "Poor Boy" with other subs costing over twice the price and found it to work just as well on all the comparison tests we made...and often a lot easier to use...Even though instructions aren't needed...you get those too.

The "Poor Boy" is small enough to easily hold in one hand...no wires or controls dangling around. It comes completely wired and tested including batteries and ready to use. Send a check for only \$19.95, and we even pay the shipping (how about that?) or we will ship COD.

Try it for 10 days...If not completely satisfied...return for full refund.

ALL ORDERS SHIPPED THE SAME DAY RECEIVED!!

TEXAS TUNER SERVICE

4210 N.E. 28TH STREET
FORT WORTH, TEXAS 76117
PHONE (817) 834-8201

For More Details Circle (32) on Reply Card

Advertising rates in the Classified Section are 35 cents per word, each insertion, and must be accompanied by cash to insure publication.

Each initial or abbreviation counts a full word.

Minimum classified charge \$3.00.

For ads on which replies are sent to us for forwarding (blind ads), there is an additional charge of \$3.00 per insertion to cover department number, processing of replies, and mailing costs.

Classified columns are not open to advertising of any products regularly produced by manufacturers unless used and no longer owned by the manufacturer or a distributor.

HELP WANTED

EXPERIENCED AUDIO TECH. Only qualified need apply. Send resume and references. Top wages to the right person. Contact: Manager, 307 E. Columbia Dr., Kennewick, WA 99336, (509) 582-8683. 10-77 11



CET — MD

Just a few letters
Spell the difference
That is professionalism

If you are a service technician,
Servicing:

- * TV
- * CB
- * Video
- * Antenna systems
- * Industrial electronics
- * Medical electronics

Don't be
"Just another repairman"
Be a **CERTIFIED**
ELECTRONICS TECHNICIAN

Write to ISCET for details
On how and where
To take the exam

ISCET - 1715 Expo Lane
Indianapolis, IN 46224
317-241-8172

FERRIS STATE COLLEGE ELECTRICAL & ELECTRONICS DEPARTMENT HEAD: Effective December, 1977, or as soon thereafter as possible. Closing date for receipt of applications is November 1, 1977. Department has twelve faculty and offers programs in Avionics, Electrical Power Technology, Industrial Electronics Technology, Radio and Television Service, Broadcast Electronics Technology. Minimum of Masters degree in closely related field. Industrial technical experience and evidence of managerial and leadership skills. Salary commensurate with qualifications. Send resume and credentials to: Associate Dean John C. Vander Molen, School of Technical & Applied Arts, Swan Building, Room 108, Ferris State College, Big Rapids, MI 49307. AN EQUAL OPPORTUNITY/AFFIRMATIVE ACTION EMPLOYER.

BUSINESS OPPORTUNITY

TV AND STEREO SALES AND SERVICE—Paint Store combination. Well established growing business in mountain town, low rent, heavy traffic location, figures available to qualified buyers. Valley Realty, Box 1051, Glenwood Springs, CO 81601, call collect (303) 945-8601. 9-77 2t

START ELECTRONIC FACTORY IN YOUR HOME. GET STARTED IN YOUR SPARE TIME. ONE MAN OPERATION. EXPECT BIG PROFITS. EXPERIENCE NOT NECESSARY. PRACTICALLY NO INVESTMENT. WRITE FOR FREE LITERATURE TELLING HOW. ELECTRONIC DEVELOPMENT LAB, DEPT. A, BOX 1535, PINELLAS PARK, FL 33565. 8-77-1t

SMITTYS TV SALES & SERVICE. Must retire. Two houses and shop. Low overhead. Established 18 years. Good reputation. \$50,000 yearly net income. \$25,000 inventory. Servicing most major motels in town, approximately 600 color sets. Will show figures to interested parties only. Call 1 (305) 267-9570 or write 509 Park Avenue, Titusville, Florida 32780. 10-77 3t

WANTED

WANTED: CB radio repair contract work. A&R Service, North Haven, Conn., 203-239-0155 (evenings). 9-77 3t

SITUATION WANTED

ELECTRONIC TECHNICIAN, 12 years, must relocate to southern climate. Dependable performance, good references. Ph: (515) 394-2560, Box 14, North Washington, Iowa 50601. 10-77 1t

EDUCATION-INSTRUCTION

REPAIR TV TUNERS—High Earnings; Complete Course Details, 12 Repair Tricks, Many Plans; Two Lessons, all for \$2. Refundable. Frank Bocek, Box 3236 Enterprise, Redding, Calif. 96001. 8-76-1t

REJUVENATE TV PICTURE TUBE without an expensive rejuvenator. Use power from T.V. set. Instructions \$5.00, Helen R. Collins, 3303 Garland Ave., Hopewell, Virginia 23860. 10-77 1t

FCC 1st-2nd-3rd questions and answers. "Explanations" compiled from technical schools, colleges and avionics companies. \$11.00. S. Mager, Box 26151, Los Angeles, California 90026. 10-77 1t

CONVERT ANY TRANSISTORIZED T.V. TUNER to a tuner substituter. Plans \$2.00. New accelerated Radio & T.V. course. RADIO TELEVISION TRAINING, Box 279, ES-107, Syracuse, N.Y. 13206. 10-77 12t

USED COURSES. We buy-sell electronics, other subjects. TVT Courses, Box 396, Griffith, Indiana 46319. 10-77 2t

EARN YOUR PROFESSIONAL BACHELOR DEGREE...

with 4 or more years of Electronic Business Management, Sales, or Servicing Experience. Let us tell you **Why You Need Your Professional Degree Now!** For **FREE** Information Write: © **EBERT PROFESSIONALS INSTITUTE** Box 1651 Dept. R Columbia, Missouri 65201.

CONGRATULATIONS!

If you find your name among those listed below, then, **We Congratulate You** for becoming an **Accredited Professional** by **Accrediting Standards** Established by the **EBERT PROFESSIONALS INSTITUTE.** Your **Professional Credit Hours** have been **Certified** and a **Professional Bachelor Degree** awarded by **EPI.**

Alex Williams, Jr, GA
Heriberto Paredes, ID
Ervin Morton, NC
Harold Moore, MI
Ronald Palmer, UT
Dennis Ferris, IA
Howard Miller, CA
John Cagle, SC
Eniola Dele-Michael, NY
Donald Gregory, MS
Alfred Reinhart, NJ
Russell Waddell, OR
Glenn Clarke, AL
Kenneth Dallas, OK
Thomas Garvin, GA
Emerson Lowery, WI
Robert Koch, AZ
Hugo Alexander, MD
Gene Vaughn, PA
John Snell, NV
Wayne Rollin, VT
Dean Hughes, MI
Garland Winn, IN

Paul Needham, OH
Gerald Piland, NY
Roy Jackson, CA
Kenneth Bentele, GA
Gordon Wright, IL
Chester Sims, CO
Wilbur Vestal, AL
Lloyd Tipton, KY
Thurman Reynolds, AR
David Cheever, ID
Edward Lewis, AZ
Darrel Riley, NV
Perry Franklin, CA
Carl Houpt, NY
Merle Jones, MI
John Hammontree, SD
Willard Main, KS
Gail Ryburn, WI
Neil Travis, NH
Diamond King, FL
Kenneth Fogle, MT
David Jones, AR
Melvin Young, NB

Frank Lucas, KY
Dean English, MO
Riley Walker, KS
Clarence Freeman, CA
Gerald Turner, ND
Robert Hollis, IN
Harold Douglas, NM
Bert Zahn, CA
Grover Imler, WI
Allan Lunsford, TX
Robert Stuart, TN
Denzil Burris, OH
Harry Shatto, DE
Ronald Lene, NM
Olan Walter, TX
Hailward Edwards, RI
Dale Uihorn, WV
Gerald Britt, IA
Raymond Collins, MS
Albert Gladson, SC
Bryan Hurst, WI
Charles Kurtz, OK
Clinton Leetch, KS

Who needs a **professional degree** anyway? **You Do....** and let us tell you why. Write to the above address for **FREE** Information.

© EPI 1977

FOR SALE

TUNERS-DEALERS ONLY—Sylvania SS 54-35054 -1, 54-29331-3, 54-29332-2, Zenith—175-1122 (3HA5-6EA8) \$4.95 ea. Magnavox SS - 340226-2, 340184-3, 340187-1, Quasar - 77G10249A30-A31-A36-A37-A38-A41, Varactor-77G10728A01 \$7.95 ea. UPS-COD, David Sims Enterprises, Inc. 665 E. Jerico Tpke., Huntington Sta., N.Y. 11746, 10-77 2t

HEWLETT PACKARD signal generator model 608A. Recently factory serviced \$225.00. Stuart Gray, 1600 West Ave., Beach Haven, N.J. 08008, (609) 492-0267. 10-77 1t

TV BUSINESS, only shop in town of 2000 with large rural area to serve. Zenith franchise. Located 70 miles south of Minneapolis, Minn. Write Dept. 514, Electronic Servicing, P.O. Box 12901, Overland Park, Kansas 66212. 10-77 1t

SAMS PHOTOFACTS 1176-1479 plus 60 earlier sets \$600; Tube Caddy with 300 tubes \$450. Assorted equipment, 405-357-3469, 2911 Bellvue Circle, DC7014-06, Lawton, OK 73501. 10-77 1t

YOU CAN GET DIRECTLY: from Japan any electronic part, even if only one piece. Write me your inquiry. I'll do my best to help you. My main lines are semiconductors, capacitors, resistors, switches, lamps or so. K. SOEDA, No. 5-9-503, Toshima 5-Chome, Kita-Ku, Tokyo 114, JAPAN. 10-77 3t

FOR SALE: Sprague Capacitor Tester TO-6. Never used. \$100.00. Phone 406-452-1073, William Schoenen, 811-11th-St. South, Gt. Falls, Montana 59405. 10-77 1t

B & K 1075 ANALYST, Eico flyback checker, Sprage Capacity checker, Sams manuals 1 to 500, Jackson TVG2 Marker-Sweep Generator and 5 inch wide band matching scope, 11 Riders manuals and 300 older type tubes, never used. All for \$400, or trade. Shipped Prepaid. Earl Triplett, Box 165, Avant, Okla. 74001. 10-77 1t

T.V. SALES AND SERVICE BUSINESS for sale in Colorado. Call after 6:00, 303-221-4981 or write Mr. Nodich, 411 E. Plum, Ft. Collins, CO 80521. 10-77 1t

SAMS PHOTOFACTS. Numbers 1-1075 with file cabinets. \$500. Buyer pays shipping. Arkansas Instruments, 2242 N. College, Fayetteville, AR 72701. 10-77 1t

POCKET DIGITAL TV COLOR/BAR GENERATOR, 16 patterns. Complete plans \$4.95. Kit/wired \$39.95 up. Workshop, Box 393E8, Bethpage, N.Y. 11714 4-77-6t

BUILD ELECTRONIC DEVICES in your home. Get started in your spare time. Big profits. Experience not necessary. Ask for free literature telling how. Electronic Development Lab, Box 1535, Pinellas Park, Fla. 33565. 4-77-1f

TV & RADIO TUBES 36c EA!! Free color catalog. Cornell, 4221 University, San Diego, California 92105. 8-76-tf

REPLACEMENT COLOR YOKES-DEALERS ONLY. Zenith 95-2501-2532-2638-2667-S-89633 etc. 16.95, Magnavox 361380-1 18.95, Sylvania, GE etc. 14.95 to 19.95. Request for price list on your letterhead. David Sims Enterprises, Inc., 665 Jericho Turnpike, Huntington Station, N.Y. 11746. 12-76-tf

TUNER SUB ONLY \$19.95, wired, tested, complete with batteries and ready to use on tube or transistor sets. This unit is without knobs or cabinet but very compact with no wires or controls dangling. Easy to use, simply hook set's coax to sub and view picture (instructions provided). Only \$19.95, we pay the shipping. This is not a gimmick. If not completely satisfied, return within 10 days for full refund. TEXAS TUNER SERVICE, 4210 N.E. 28th Street, Fort Worth, Texas 76117. Phone (817) 834-8201. 9-77 3t

SHOP OWNERS/SERVICE MANAGERS: No "off season" layoffs for your personnel. Lock in your customers "year-round" with a service and maintenance agreement. Details - \$5 and copy of your letterhead to: Peck's Plan, Box 64, Hillsdale, New York 12529. 10-77 3t

EICO SCOPE TR410 10 mghz w/probes, 10 months old \$350.00. Heathkit ID-101 electronic switch, 5 months old \$40.00. Heathkit VC-2 Voltage calibrator \$15.00. Senco tube tester \$15.00. RCA RF generator 170khz-50mhz 160.00. Mr. John A. Alvarez, P.O. Box 522, Jackson Hts., N.Y. 11372; Phone (212) 651-6730. 10-77 1t

advertisers' index

American Technology Corp. 13
 Arrow Fastener Co., Inc. 45
 B & K Precision, Dynascan Corp. 41
 Bussman Mfg. Div.,
 McGraw-Edison Co. Cover 3
 Castle Tuner Service 2
 Charous & Niebergall 49
 Ebert Professionals Institute 51
 Edsyn, Inc. 14
 EICO 48, 49
 Enterprise Development Corp. 50
 Ferris State College 51
 John Fluke Mfg. Co., Inc. 29, 31
 Fuji-Svea Enterprise 2
 General Electric Co.-TV Dealer 15
 General Electric Co., Tube Div. 17
 IS CET 51
 MTI, Inc. 48
 Mallory Distributor Products Co. 3
 Master Appliance Corp. 16
 Mohawk Wholesale & Equipment
 Co. 23
 NESDA 52
 Oelrich Publications 49
 Ora Electronics 50
 PTS Electronics, Inc. Cover 2-1
 Phipps & Bird, Inc. 16
 Projector-Recorder Belt Corp. 50
 RCA Distributor & Special
 Products 37, 20-21
 Howard W. Sams & Co., Inc. ... Cover 4
 Sperry Tech, Inc. 47
 GTE Sylvania ECG/Consumer
 Renewal 7
 Tech Spray 14
 Texas Tuner Service 50
 Thordarson Meissner, Inc. 35
 Ungar, Div. of Eldon
 Industries, Inc. 39
 Wahl Clipper Corp. 47
 Weller-Xcelite Electronics Div.,
 The Cooper Group 12
 Zenith Radio Corp. 4-5

REGIONAL ADVERTISING SALES OFFICES

- Indianapolis, Indiana 46280**
 ROY HENRY
 2469 E. 98th St.
 Phone: (317) 846-8066
- Greenlawn, New York 11740**
 CHUCK HORN
 P.O. Box 175
 Phone: (516) 757-7863
- Mountain View, California 94043**
 DENNIS TRIOLA
 2680 Bayshore Frontage Road, Room 102
 Phone: (415) 961-0378
- London, W.C. 2, England**
 JOHN ASHCRAFT & CO.
 12 Bear Street
 Leicester Square
 Phone: 930-0525
- Badhoevedorp, Holland**
 JOHN ASHCRAFT & CO.
 JOHN J. LUCASSEN, Mgr.
 Slotterweg 303
 Phone: 2968-6226
- Tokyo 105, Japan**
 INTERNATIONAL MEDIA
 REPRESENTATIVES LTD.
 2-29, Toranomom 1-chome, Minato-ku
 Phone: 502-0656



WE'RE GROWING!
 to better represent
YOU

the successful service
 business operator.

- *Over 2500 firms belong
- *39 State Affiliates
- *167 Local Associations

YOU CAN JOIN!

and learn how to make
 money and work less hours.

Write today for a
 membership application
 and more information.

1715 Expo Lane
 Indianapolis, Indiana 46224
 Phone (317) 241-8172

Help!

Anytime you have
 a question about
 your subscription to
 Electronic Servicing,
 please include a
 mailing label to in-
 sure prompt service
 on your inquiry.

**Change of
 Address**

If you're about to
 move, please let us
 know approximately
 four weeks before
 the move comes
 about. Simply affix
 your present label
 here, and carefully
 print the updated in-
 formation below.

Electronic Servicing
 P.O. Box 12901
 Overland Park, KS 66212

Please Help Us to Serve You Better

Name _____
 (Please Print)
 Employer _____
 Address _____
 City _____ State _____ Zip _____

**AFFIX
 LABEL
 HERE**

BUSS ELECTRONIC FUSES.

Nearly every type of fuse and fuse holder you need to protect electronic circuits and devices you can get from us, easy. For example, Buss® Semiconductor Fuses; 700 volts, with extremely low I²t and I_p let-thru values. TRON® Rectifier Fuses, ½ to 1,000 amps, up to 600 volts. Fusetron® dual-element time-delay fuses. Buss quick-acting glass tube fuses. Buss signal-indicating, alarm-activating fuses. TRON sub-miniature pigtail fuses. Buss sub-miniature GMW fuses. Buss telecommunications fuses. Buss military fuses. And Buss fuse holders and fuse blocks. Get your hands on exactly what you want. Write us now. Ask for Buss Bulletin SFB.

SUPPLIED THE ECONOMICAL WAY
THRU DISTRIBUTORS
BUSS® FUSES
THE QUALITY LINE

BUSSMANN MANUFACTURING
a McGraw-Edison Company Division
Earth City, Missouri 63045



**WE MAKE IT EASY
TO GET YOUR HANDS
ON WHAT YOU WANT.**



How to Hire an Expert For \$18.00 a Month

Make your tough repairs easy and your easy jobs a breeze! Save time and right now—save money. Join up with Photofact® through P.O.M. — Sams Photofact-of-the-Month Club.

With Photofact you have an expert advisor in your shop. The most reliable source for service data available anywhere. Loaded with detailed circuit information covering TV, radio, stereo and more. As a P.O.M. member you'll build your own Photofact library quickly and economically.

Join P.O.M. and save \$162 annually over regular Photofact prices. It's like getting 3 Photofact sets FREE every month. And each Photofact contains a multitude of product information in handy file folders. All yours for only \$18.00 a month.

Enroll in P.O.M. by sending us the coupon below. SEND NO MONEY. Your P.O.M. distributor will deliver your package of 7 Photofact sets to you each month. Each package contains data on about 100 models of equipment. Plus P.O.M. "Members Only" extras that help you build profits and stay abreast of technology changes. Hire an expert. Join P.O.M. today!

Send No Money — Send Coupon Only

Mail to: Howard W. Sams & Co., Inc.
4300 West 62nd Street
Indianapolis, IN 46206

Please enroll me as a new member of the P.O.M. Club. I agree to pay \$18.00 per month for my membership and understand my subscription will begin with the 7 current Photofact sets, plus the Photofact Index, which will be delivered by my Sams distributor.

NAME _____

BUSINESS NAME _____

ADDRESS _____

CITY _____ STATE _____ ZIP _____

My Sams Distributor is _____

I don't know my Sams distributor. Please send a list of Sams Distributors.

YOUR SIGNATURE _____

Howard W. Sams & Co., Inc. 4300 West 62nd Street/Indianapolis, IN 46206 TC934



Howard W. Sams & Co., Inc.

4300 West 62nd Street/Indianapolis, Indiana 46206