

LEN BURRIT MD 21061
LEVD - FERRDALE
EE - TIMORE - ANNAPOLIS
RICHARD JONES JR

January, 1975 □ 75 cents

Electronic Servicing

A HOWARD W. SAMS PUBLICATION

FAVORITE TV REPAIRS



Cassette problems
MATV amplifier specs
How not to repair a tuner

PTS ELECTRONICS

Precision Tuner Service



now available near you

<p>ALABAMA: PTS ELECTRONICS 524 32ND ST SOUTH BIRMINGHAM, ALA. 35222 TEL. 205. 323-2647</p>	<p>CALIFORNIA—NORTH: PTS ELECTRONICS 4611 AUBURN BLVD. SACRAMENTO, CALIF. 95841 TEL. 916. 482-6220</p>	<p>CALIFORNIA—SOUTH: PTS ELECTRONICS 5111 UNIVERSITY AVE. SAN DIEGO, CALIF. 92105 TEL. 714. 780-7070</p>	<p>COLORADO: PTS ELECTRONICS 4958 ALLISON ST. ARVADA, COLO. 80001 TEL. 303. 423-7080</p>	<p>FLORIDA—NORTH: PTS ELECTRONICS 12934 N W 7TH AVE MIAMI, FLA. 33158 TEL. 305. 685-9811</p>	<p>FLORIDA—SOUTH: PTS ELECTRONICS 1918 BLANDING BLVD. JACKSONVILLE, FLA. 32210 TEL. 904. 389-9952</p>	<p>HOME OFFICE—INDIANA: PTS ELECTRONICS 5233 S HWY. 37 BLOOMINGTON, IND. 47401 TEL. 812. 824-9331</p>	<p>KANSAS: PTS ELECTRONICS 3116 MERIAM AVE KANSAS CITY, KANSAS 66100 TEL. 913. 831-1222</p>
<p>TEXAS—EAST: PTS ELECTRONICS 4324-26 TELEPHONE RD HOUSTON, TEX. 77032 TEL. 713. 644-6793</p>	<p>..new pts products.. ..pts 115 dura-seven..stop..seven piece alignment tool kit..stop..glass- filled polymer plastic for longer life.. ..stop..up to 10 times the life of regular plastic tools..stop ..\$2.49.. ..see your distributor or any pts service center..stop.. ..pts elcx..not a franchise Co..</p>					<p>LOUISIANA: PTS ELECTRONICS 2914 WYCHWOOD DRIVE METAIRIE, LOUISIANA 70033 TEL. 504. 885-2349</p>	
<p>TEXAS—NORTH: PTS ELECTRONICS MOPAC LANE LONGVIEW, TEX. 75601 TEL. 214. 753-4334</p>						<p>MARYLAND: PTS ELECTRONICS 1105 SPRING ST SILVER SPRING, MD. 20910 TEL. 301. 565-0025</p>	
<p>TENNESSEE: PTS ELECTRONICS 3614 LAMAR AVE MEMPHIS, TENN. 38118 TEL. 901. 365-1918</p>						<p>MASSACHUSETTS: PTS ELECTRONICS 191 CHESTNUT ST SPRINGFIELD, MASS. 01103 TEL. 413. 734-2737</p>	
<p>PENNSYLVANIA—WEST: PTS ELECTRONICS 257 RIVERVIEW AVE W PITTSBURGH, PA. 15202 TEL. 412. 761-7648</p>						<p>MICHIGAN: PTS ELECTRONICS 13709 W EIGHT MILE RD DETROIT, MICH. 48235 TEL. 313. 862-1783</p>	
<p>PENNSYLVANIA—EAST: PTS ELECTRONICS 1921 S. 70TH ST PHILADELPHIA, PA. 19142 TEL. 215. 724-0999</p>						<p>MINNESOTA: PTS ELECTRONICS 815 W. LAKE ST MINNEAPOLIS, MINN. 55408 TEL. 612. 824-2333</p>	
<p>OREGON: PTS ELECTRONICS 5220 N E SANDY BLVD. PORTLAND, OREGON 97213 Tel. 503. 282-9636</p>						<p>OKLAHOMA: PTS ELECTRONICS 3307 N. MAY OKLAHOMA CITY, OKLA. 73106 TEL. 405. 947-2013</p>	<p>OHIO—SOUTH: US TUNER SERVICE 8180 VINE ST CINCINNATI, OHIO 45215 TEL. 513. 821-2298</p>

LET US TAKE CARE OF YOUR TUNER PROBLEMS...

PTS will repair any tuner - no matter how old or new - black & white or color - transistor or tubes - varactor or electronically tuned - detent UHF. 8 hour service is a must!

...THIS IS THE SERVICE WE OFFER:

1. Fastest Service—8 hour—in and out the same day. Overnight transit to one of our strategically located plants.
2. Best Quality—Your customers are satisfied and you are not bothered with returning tuners for rework.
3. PTS uses only ORIGINAL PARTS! No homemade or make-do, inferior merchandise (this is why we charge for major parts!). You get your tuner back in ORIGINAL EQUIPMENT condition.
4. PTS is recommended by more TV Manufacturers than any other tuner company.
5. PTS is overhauling more tuners than all other tuner services combined.



Fast **8** hr. Service!

We offer you finer, faster...

...Precision
Tuner Service



ELECTRONICS, INC....

...Number ONE and still trying harder!
(Not a Franchise Company)

1 YEAR GUARANTEE

VHF, UHF \$10.95
UV-COMBO 17.95
IF-SUBCHASSIS 12.50
Major parts and shipping
charged at cost.
(Dealer net!)

Over 4000 exact tuner replace-
ments available for \$14.95 up
(new or rebuilt).

For More Details Circle (1) on Reply Card

ONE TV Repair Shop in your locality . . . will soon stand out head and shoulders above every other competitor in town. It could be YOU.

Want to know HOW? Very simply:

by using a regular series of clever, inexpensive 'column' ads in your local newspaper! You doubt it? Well . . .

. . . A TV shop in Maryland had to hire more help within 3 weeks after starting their series!

. . . A dealer in Montreal has had people come in from all over Canada, from his ads.

. . . An enterprising repair man in Louisiana has acquired 4 other places in his area from the surge of business that his series brought.

. . . Two cousins in a New England community attribute 75% of their business to these ads.

You can see their secret . . . adapt their method . . . improve your business . . . gain an immediate edge on competition . . . and develop a friendly, permanent clientele . . . by judiciously using the same inexpensive idea!

Our new folio—which we'd like you to try out for six months—is called "How to Double Your Business with Unique 'Column' Ads."

It shows how others have done it . . . replete with case histories.

It shows how *you* can do it, too.

It shows how and when, where and why—the whole fascinating story of this cheapest means of advertising . . . with most effective RESULTS! Here are ads that will attract attention—stimulate curiosity . . . arouse interest, amuse readers and make YOU known and remembered for quality . . . service . . . integrity . . . dependability.

All at trivial cost!

Among the Advantages you will learn . . . how to create interest among prospects who never even knew you existed!

. . . how to influence people to switch over to your business or service!

. . . how to create excitement—even though your business seems dull and drab!

. . . how to get the most out of your promotional dollar (something most business men *never* learn!)

. . . how to get your *customers* to "work" for you!

. . . how to get fast action from a \$3 investment!

. . . how to keep interest sustained over an extended period!

. . . how to make people laugh . . . and agree with you . . . and seek to meet you personally!

. . . how to get maximum assistance without charge from the newspaper staff!

. . . how to develop continuing ideas!

And, above all —

A Special "TV REPAIR" PROMOTION SUPPLEMENT!

H. K. SIMON CO., INC.

1280 Saw Mill River Road
Yonkers, N.Y. 10710

"TV REPAIR" PROMOTION SUPPLEMENT —

shows you:

- . . . How to out-smart (instead of out-spend) the competition!
- . . . Why most ads *fail* . . .

The ONE BIG SECRET of successful TV Repair advertising.

- . . . The Greatest Compliment any ad can Pay You.
- . . . The mistake that is made by 98 out of 100 local advertisers.
- . . . 94 examples of enticing "come on in" copy (distilled from thousands).
- . . . 26 Merchandising Ideas that you can adapt, to stimulate business.
- . . . 37 Illustrations that enliven the ad, attract the eye.

Here are "Big Time" ideas at "small time" prices. Prepared by a \$25,000 copy group . . . but your cost is less than 40¢ per week!

You'll refer to this for years—every time you need copy to promote special occasions . . . or an idea for a layout . . . or an eye-catching border . . . or a good illustration!

You'll see how to establish your name as an outstanding source: as helpful . . . friendly . . . sincere . . . intelligent . . . courteous . . . dependable.

You'll see how to have people looking forward to your ads—wondering what you will say next!

You run very little risk, if you accept this opportunity—because we GUARANTEE that any one using these ideas six months or more who does NOT hear favorable comment—who does NOT think his own staff has been stimulated—who does NOT see direct results at lower cost—can simply say so, and we'll REFUND 100% of every penny you paid us!

We think this offer is unique We dare to make it only because we KNOW this will prove profitable to you.

Who in your community will benefit by this? Will YOU? Better advise us at once.

Write or wire us TODAY. Use the handy blank below.

Suppose YOU spent 3 weeks with an advertising agency . . .

. . . developing a year's program for your business that would make you well known—give you a competitive edge . . . bring customers to your door . . . stimulate your sales . . . save wasted efforts on unproductive promotion.

Personal service, of course, is expensive. The ad agency's fee would be about \$2,000, plus your traveling and maintenance expenses.

But we have completed just such an intensive 3-week conference . . . and you may have the results for a tiny fraction of that cost!

Let me ask: how is your present ad program going—now? Was it prepared well in advance, by a "pro"? Or do you promote your services, catch-as-catch-can, when you can spare a moment?

The difference between the two methods can mean a doubling of your annual gross.

Perhaps you've always thought, "I can't afford a high-priced ad man."

But surely, you COULD afford him if he cost you only 40¢ a week!

And if that 40¢ weekly expense brought you \$7,500 a year—you couldn't afford to be without him!

"True", you say, "If it is so good as all that."

We think it is. But we want YOU to be the judge.

Try the ideas for the next six months. Then—6 months from now—if you don't expect to get back at least \$1,995 for your \$19.95 investment (a return of 100 to 1—or better) simply send it back for full refund.

Could anything be fairer?

Since there's no obligation, why not accept? Promotion-wise, I doubt if you'll EVER get another opportunity to equal it. But . . .

Better act TODAY. This offer may be withdrawn when our supply of copies run out. So write or wire NOW!

H. K. Simon Co., Inc.
Dept. ES-45
1280 Saw Mill River Road
Yonkers, N.Y. 10710

Kindly send "HOW TO DOUBLE YOUR BUSINESS WITH UNIQUE 'COLUMN' ADS" along with your "TV REPAIR" PROMOTION SUPPLEMENT to:

NAME _____
ADDRESS _____
CITY, STATE _____
ZIP _____

We enclose our check for \$19.95.

It is understood that if we use your ideas for six months or more and are not fully satisfied, every cent will be refunded.

REFERENCES: Any publication in the U.S.A. • Rated by Dun & Bradstreet

For More Details Circle (4) on Reply Card

Electronic Servicing®

EDITORIAL
RONALD N. MERRELL, Director
CARL H. BABCOKE, Managing Editor
JOYCE PRUESSNER, Editorial Assistant
DUDLEY ROSE, Graphic Designer

ELECTRONIC SERVICING
1014 Wyandotte Street
Kansas City, Missouri 64105

TECHNICAL CONSULTANT
JOE A. GROVES

EDITORIAL ADVISORY BOARD
LES NELSON, Chairman
Howard W. Sams & Co., Indianapolis

CIRCULATION
EVELYN ROGERS, Manager

ADVERTISING SALES
Kansas City, Missouri 64105
Tele: 913/888-4664
E. P. LANGAN, Director
R. J. HANCOCK, Manager
JAKE STOCKWELL
DENNIS TRIOLA
CRIS BARNES, Production

REGIONAL ADVERTISING SALES OFFICES
Indianapolis, Indiana 46280
ROY HENRY
2469 E. 98th St.
Tele: 317/846-7026

New York, New York 10017
STAN OSBORN
Room 1227
60 E. 42nd St.
Tele. 212/687-7240

Mountain View, California 94043
MIKE KREITER
2680 Bayshore Frontage Road, Room 102
Tele: 415/961-0378

London W. C. 2, England
JOHN ASHCRAFT & CO.
12 Bear Street
Leicester Square
Tele: 930-0525

Amsterdam C. Holland
JOHN ASHCRAFT & CO.
W. J. M. Sanders, Mgr.
for Benelux & Germany
Herengracht 365
Tele: 020-240908

Tokyo, Japan
INTERNATIONAL MEDIA
REPRESENTATIVES LTD.
1, Shiba-Kotohiracho, Minatoku
Tele: 502-0656



ELECTRONIC SERVICING (with which is combined PF Reporter) is published monthly by Intertec Publishing Corp., 1014 Wyandotte Street, Kansas City, Missouri 64105.

Subscription Prices: 1 year — \$6.00, 2 years — \$10.00, 3 years — \$13.00, in the U.S.A. and its possessions.

All other foreign countries: 1 year — \$7.00, 2 years — \$12.00, 3 years — \$16.00. Single copy 75c; back copies \$1. Adjustment necessitated by subscription termination to single copy rate.



Robert E. Hentel, Publisher

Intertec Publishing Corp.
Subsidiary of Howard W. Sams & Co., Inc.

in this issue...

- 12 **My Favorite Repairs**—these repair jobs were remembered by the technician because his methods worked fine—*Ron Meyer, CET.*
- 18 **Reader's Chuckles**—One reader's humorous problems with antenna and tuner—*Mort Gordon.*
- 20 **Answers About MATV Amplifier Specs**—before you buy a MATV amplifier, you should understand the input/output specs—*James E. Kluge, Winegard Company.*
- 25 **Reports From The Test Lab**—the subject this month is an unusual universal remote control from Jerrold—*Carl Babcoke.*
- 28 **Workshop On Cassette Recorders, Part 3**—this session explains the mechanisms of typical pushbutton-type machines—*Dewey C. Couch, Forest H. Belt Associates.*
- 35 **Index of 1974 Articles**—The yearly index of articles, Troubleshooting Tips and Symcures —*Electronic Servicing Staff.*
- 38 **Our Current Puzzler**—have fun solving a Just-Across-Word puzzle based on electronic terms—*Edmund A. Braun.*

DEPARTMENTS

Electronic Scanner 4	Product Report 44
Symcure 8	Antenna Systems 46
Troubleshooting Tips 10	Audio Systems 47
Photofact 24	Letters to the Editor 51
Reader's Exchange 39	Book Review 52
Test Equipment 41	Catalogs and Literature 53
Service Associations 43	Advertiser's Index 54

ABOUT THE COVER

Joyce Pruessner, our Editorial Assistant, adjusts the Heath Model SO-4510 dual-trace scope. Both the scope waveforms and the blanked-out line on the RCA test jig illustrate the first of Ron Meyer's Favorite Repairs on page 12.

Second class postage paid at Shawnee Mission, Kansas and additional mailing offices. Published monthly at 9221 Quivira Road, Shawnee Mission, Kansas 66215 by Intertec Publishing Corp., 1014 Wyandotte St., Kansas City, Mo. 64105. Send Form 3579 to 9221 Quivira Road, Shawnee Mission, Ks. 66215.

© Copyright, 1975, Howard W. Sams & Co., Inc. All rights reserved. Material may not be reproduced or photocopied in any form without written permission of publisher.

Now make almost all your replacements with RCA's medium-priced Colorama A's

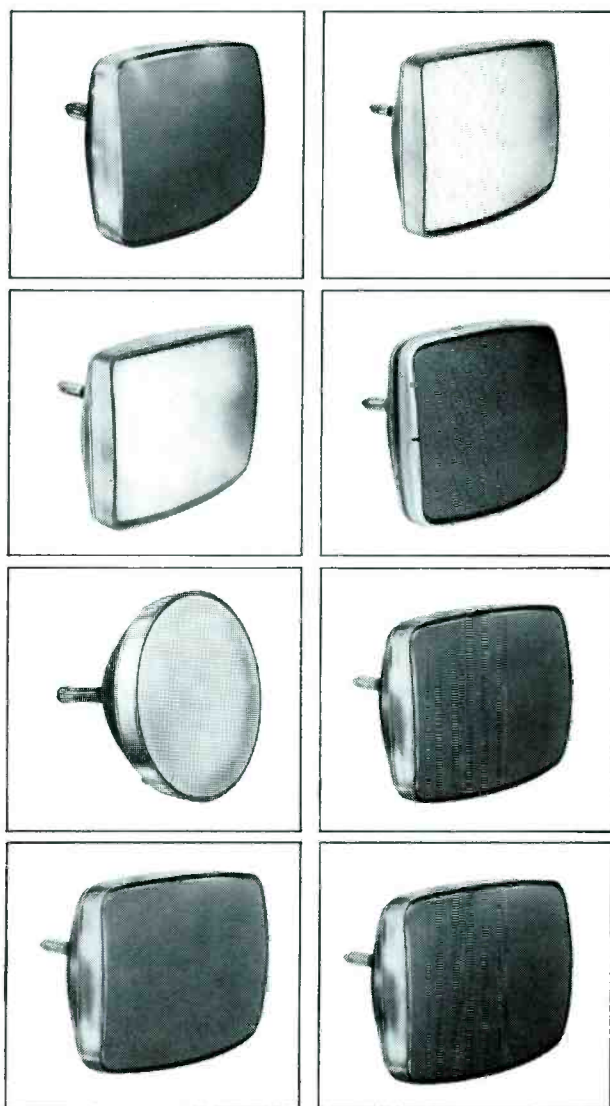
That's the kind of socket coverage you can count on from this popular new "middle line" of RCA replacement color picture tubes. With just eight Colorama A types, you can cover almost all of the replacement market with "Grade A" performance at a price your customers can afford.

Every tube in the RCA Colorama A line is totally remanufactured. That's why they all can carry RCA's 18-month inboarded warranty plus the option for an additional 12 months. Each has a completely new gun and a completely new screen made of the latest all-new rare-earth phosphors. In addition, every "V" type is made of advanced x-ray glass.

The RCA Colorama A line includes three Matrix types: CA-21VAKP22, CA-23VALP22 and CA-25VABP22. These advanced RCA Matrix tubes are as much as 100 percent brighter than any equivalent non-Matrix picture tube in RCA history.

So why not give your customers the "Grade A" choice. Choose Colorama A at your RCA Distributor today.

Remember, RCA is the world-wide leader in picture tubes, with over 65 million produced to date.



RCA

RCA/Electronic Components/Harrison, N.J. 07029

electronicscanner

news of the industry

The Consumer Electronics Group of the Electronic Industries Association (EIA) has launched a \$250,000 public service program for 1974-75. Included is a service technician development program, designed to insure continuing reliable service in the industry. The program consists of: career guidance via textbook, film, and a slide/cassette library; plus summer seminars and workshops for training vocational instructors. Radio public service announcements also will be used to attract potential technicians, provide consumer shopping tips, as well as tips to improve service and satisfaction.

Sony plans to unveil five audio components, including two vertical-FET amplifiers at the Consumer Electronics Show in New York. A 100-watt-per-channel power amplifier, and a 30-watt per channel integrated amplifier, will feature V-FETs in the output stages. The products reportedly offer the linear response and low distortion characteristic of vacuum tubes, according to **Home Furnishings Daily**.

Westinghouse has taken the first step toward a possible pocket-sized transistor TV with the development of a thin transistorized viewing screen. The screen is made of glass and is coated with layers of phosphor and microminiature thin-film transistor circuits, according to **Radio & Television Weekly**. Available by 1976, the "pocket TV" initially will be produced for industrial and military uses.

Newsday, a subsidiary of the Times Mirror Company, Los Angeles, plans to install 224 video-display terminals for use in its news and advertising department. Reporters will operate typewriter-like keyboards, with the news stories recorded on a video disc and displayed for observation or editing on the screen of an attached TV monitor. After editing, the disc is sent to the typesetting computer in the composing room. No typing paper or computer tape is used, reports the **Wall Street Journal**.

Dr. Ray Dolby of Dolby Laboratories has invented a noise-reduction device that changes the sound quality for use by FM radio stations. The Dolby encoder at the station boosts the high frequencies when the sound volume is low. Inside the FM receiver, the Dolby "B" circuit reverses the process by reducing the high frequencies during soft musical passages. Reduction of audible noise can be as much as 13 dB's, without any change of dynamic range. Seven FM stations now use the Dolby encoder for their broadcasts.

Teledyne plans to enter a new consumer electronics market—solid-state player-piano systems—and has scheduled deliveries for spring, 1975. The units are expected to retail between \$2,000-\$2,500, according to **Home Furnishings Daily**.

Sony will introduce a new 1/2-inch video-cassette recorder integrated with a 19-inch Trinitron color TV, reports **Home Furnishings Daily**. The system, SLX, features

(Continued on page 6)

TUNER SERVICE CORPORATION

SUBSTITUNER



INTRODUCING
AT JUST

\$39.95
U.S.A. ONLY

WITH CABLES

ONE YEAR
GUARANTEE



STILL ONLY

\$9.95
U.S.A. ONLY

ALL PARTS
INCLUDED

EXCEPT TUBES
AND TRANSISTORS

PROVIDES YOU WITH A COMPLETE SERVICE
FOR ALL YOUR TELEVISION TUNER REQUIREMENTS.

FEATURES

- A UHF Tuner with 70 channels which are detented and indicated just like VHF channels.
- A VHF Hi Gain Solid State Tuner.

Demonstrate the **SUBSTITUNER** to your customers and show improved reception with their TV sets.

You may place your order through any of the Centers listed below.

REPAIR

- VHF OR UHF ANY TYPE (U.S.A. ONLY) \$ 9.95
 UHF/VHF COMBINATION (U.S.A. ONLY) \$15.00
- IN THIS PRICE ALL PARTS ARE INCLUDED. Tubes, transistors, diodes, and nuvistors are charged extra. This price does not include mutilated tuners.
 - Fast, efficient service at our conveniently located Service Centers.
 - All tuners are ultrasonically cleaned, repaired, realigned, and air tested.

REPLACE

- UNIVERSAL REPLACEMENT TUNER \$12.95 (Canada \$15.95)
- This price buys you a complete new tuner built specifically by Sarkes Tarzian Inc. for this purpose.
 - All shafts have a maximum length of 10 1/2" which can be cut to 1 1/2".
 - Specify heater type parallel and series 450 mA. or 600 mA.

CUSTOMIZE

- Customized tuners are available at a cost of only \$15.95. With trade-in \$13.95. (Canada \$17.95 and \$15.95)
- Send in your original tuner for comparison purposes to Franchises listed below.



HEADQUARTERS	BLOOMINGTON, INDIANA 47401	537 South Walnut Street	Tel. 812-334-0411
ARIZONA	TUCSON, ARIZONA 85713	P.O. Box 4534, 1528 S. 6th St.	Tel. 602-791-9243
CALIFORNIA	NORTH HOLLYWOOD, CALIF. 91601	10654 Magnolia Boulevard	Tel. 213-789-2720
	BURLINGAME, CALIF. 94010	1324 Marsten Road	Tel. 415-347-5728
	MODESTO, CALIF. 95351	123 Phoenix Avenue	Tel. 209-527-8051
FLORIDA	TAMPA, FLORIDA 33606	1505 Cypress Street	Tel. 813-253-0324
	HIALEAH, FLORIDA 33013	906 East 25th Street	Tel. 305-836-7078
GEORGIA	ATLANTA, GEORGIA 30310	938 Gordon Street S.W.	Tel. 404-758-2232
ILLINOIS	CHAMPAIGN, ILLINOIS 61820	405 East University Street	Tel. 217-356-6400
	CHICAGO, ILLINOIS 60621	737 West 56th Street	Tel. 312-873-5556-7
	SKOKIE, ILLINOIS 60076	5110 West Brown Street	Tel. 312-675-0230
INDIANA	HAMMOND, INDIANA 46323	6833 Grand Avenue	Tel. 219-845-2676
	INDIANAPOLIS, INDIANA 46204	112 West St. Clair Street	Tel. 317-632-3493
KENTUCKY	LOUISVILLE, KENTUCKY 40208	2920 Taylor Boulevard	Tel. 502-634-3334
LOUISIANA	SHREVEPORT, LOUISIANA 71104	3025 Highland Avenue	Tel. 318-861-7745
MARYLAND	BALTIMORE, MARYLAND 21215	5505 Reisterstown Rd., Box 2645	Tel. 301-358-1186
MISSOURI	ST. LOUIS, MISSOURI 63132	10530 Page Avenue	Tel. 314-429-0633
NEVADA	LAS VEGAS, NEVADA 89102	1412 Western Avenue No.	Tel. 702-384-4235
NEW JERSEY	TRENTON, NEW JERSEY 08638	901 North Olden Avenue	Tel. 609-393-0999
	JERSEY CITY, NEW JERSEY 07307	547-49 Tonnelle Ave., Hwy. 1 & 9	Tel. 201-792-3730
OHIO	CINCINNATI, OHIO 45216	7450 Vine Street	Tel. 513-821-5080
	CLEVELAND, OHIO 44109	4525 Pearl Road	Tel. 216-741-2314
OREGON	PORTLAND, OREGON 97210	1732 N.W. 23th Avenue	Tel. 503-222-9059
TENNESSEE	GREENEVILLE, TENNESSEE 37743	1215 Snapps Ferry Road	Tel. 615-639-8451
	MEMPHIS, TENNESSEE 38111	3158 Barron Avenue	Tel. 901-458-2355
TEXAS	DALLAS, TEXAS 75218	11540 Garland Road	Tel. 214-327-8413
VIRGINIA	NORFOLK, VIRGINIA 23513	3295 Santos Street	Tel. 804-855-2518
CANADA	ST. LAURENT, QUEBEC H4N-2L7	305 D'Arcy Boulevard	Tel. 514-748-8803
	CALGARY, ALBERTA T2H-0L1	448 42nd Avenue S.E.	Tel. 403-243-0971
		P.O. Box 5823, Stn. "A"	

WATCH US
GROW

January, 1975

IF YOU WANT TO BRANCH OUT INTO THE TV TUNER REPAIR BUSINESS,
WRITE TO THE BLOOMINGTON HEADQUARTERS ABOUT A FRANCHISE.

For More Details Circle (5) on Reply Card
www.americanradiohistory.com

(Continued from page 4)

lower tape speeds, a simplified cassette-loading system, and resolution equal to Sony's 3/4-inch U-Matic machines used for the educational and commercial market. The system is priced between \$2,500-\$3,000.

RCA is demonstrating its video-disc system to Japanese home-electronics firms, according to an item in **Home Furnishings Daily**. Although the system is not yet complete, a spokesman said it will feature a total playing time of one hour.

WBTB-TV, the first TV station in the U.S. authorized by the FCC to broadcast subscription (pay) TV programming, recently conducted its first over-the-air test. A scrambled video signal was transmitted from West Orange, New Jersey and received/decoded in New York City. WBTB-TV is a station of the Blonder-Tongue Broadcasting Corporation.

RCA reportedly is considering a reduction of its one-year warranty on color TV sets to six months or 90 days. According to **Home Furnishings Daily**, RCA is seriously concerned with escalating costs of manufacturing color TV sets, but fears a loss of market share if it reduces its warranty while other manufacturers continue to maintain one-year warranties.

I/O Metrics is negotiating with an American TV manufacturer over the introduction of a home-video disc system, expected to retail for under \$300. The system uses a 10-watt light bulb and should be in production within 12 months, reports **Merchandising Week**. An hour-long disc should retail for \$5-\$7.

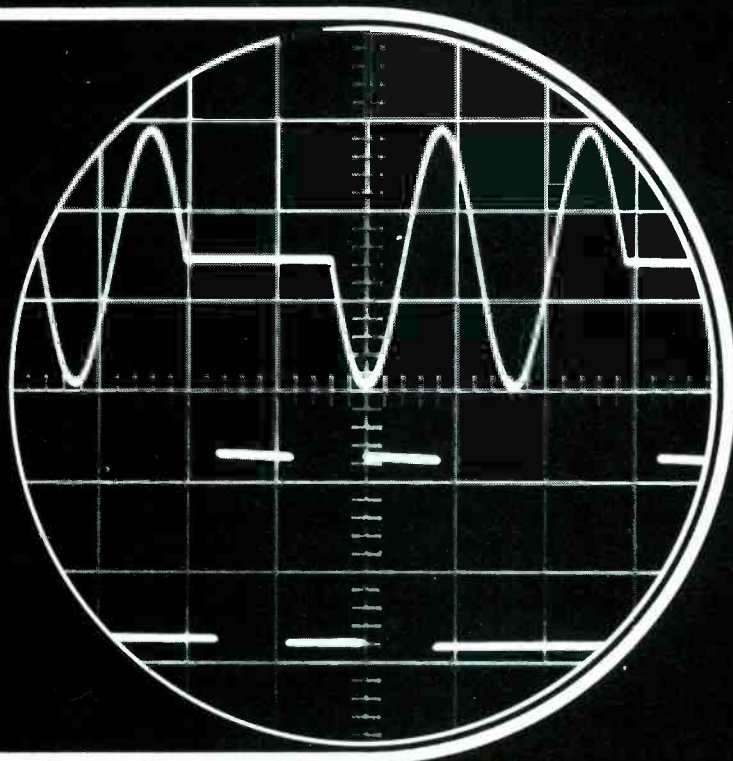
The FCC plans to relax its restrictions on pay-CATV systems, which should allow pay-cable operators greater flexibility in competition with other broadcasters for exclusive rights to popular movies and sporting events. Pay-CATV systems currently have about 90,000 subscribers compared with 10 million subscribers for regular CATV, reports the **Wall Street Journal**.

New York City's TV license law, passed April 1, has been revised by the Department of Consumer Affairs because of angry response from service organizations. The law requires shops, not technicians, to be licensed at an annual cost of \$100, and does not require shop managers nor owners to take tests of any kind. **Home Furnishings Daily** states that most dealers in New York believe the law will lower the number of unscrupulous businessmen in the industry, but disapprove of the law's accompanying regulations.

A new three-year contract has been ratified between the RCA Service Company and the International Brotherhood of Electrical Workers (IBEW). Approximately 2,800 striking members returned to work at the company's 179 service branches.

how 80%
of \$2,000
is only

\$580⁰⁰



Oscilloscopes for most production, inspection, QC and lab applications are not used to their full capability.

In fact their full capability in bandwidth may even need to be limited by an external bandpass filter for easier trace readability. In one electronics manufacturing facility a survey of 22 applications discovered 19 applications which were appropriately served by our least expensive \$179.95 oscilloscope with recurrent sweep and 2MHz bandwidth. A survey of your facility may reveal similar opportunities for saving. Our triggered sweep scopes with 10MHz bandwidth and 35 nanosecond rise time answer the needs of more than 80% of all applications. Sensitivity of 10mV/cm offered by both our single and dual trace triggered sweep scopes is similarly suitable for over 80% of all applications.

Why overspecify your oscilloscopes? It's not necessary if the intent is to be sure you get the repeatability, reliability, ruggedness and versatility that is characteristic of every B&K oscilloscope. Move your ultra-wide bandwidth scopes to other applications where you need them. You'll find the B&K scopes easier to use with their simplified, human-engineered panels and controls.

10 Day Free Trial

With more than 20 years successful experience in manufacturing fine test equipment at competitive prices, Dynascan has the confidence in its new B&K instruments to offer them on a 10 day free trial basis. Just properly identify yourself, your company and your application and we'll supply a new oscilloscope that will prove our claim to quality and value. Write on your letterhead for complete specifications and Free Trial.



Model 1470

CONDENSED SPECIFICATIONS

B&K Model 1470 Dual Trace Triggered Sweep Scope

DC to 10MHz at 10mV/cm. Two separate vertical amplifiers. 35 n sec rise time. Six dual pattern modes including chopped, alternate, add and Channel 2 inverted. Auto and triggered sweep 1 usec/cm to 0.1 sec/cm. 5X magnification.

\$580.00

B&K Model 1460 Triggered Sweep Scope

DC to 10MHz at 10mV/cm. 35 n sec rise time. 0.5 usec/cm to 0.5 sec/cm auto and triggered sweep. 5X magnification. 5V p-p 1 KHz calibration voltage.

\$450.00

B&K Model 1431 3" Triggered "Mini-Scope"

As above, but 1/2 the size.

\$399.00

B&K Model 1403 Portable 3" "Mini-Scope"

3" solid state scope only 5 1/4" x 7 3/8" x 1 1/4". DC to 2MHz bandwidth and 20mV/cm sensitivity. Recurrent sweep 10Hz to 100kHz. Weighs only 8 1/2 pounds.

\$189.00

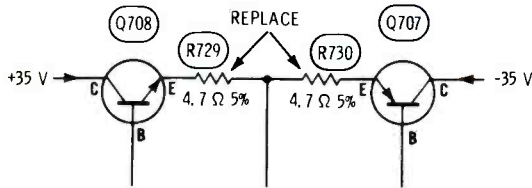


1801 W. Belle Plaine Ave. • Chicago, IL 60613 • Phone (312) 327-7270

Complete Line of Analog and Digital Multimeters, Oscilloscopes, Signal Generators, Semiconductor Testers, Power Supplies, Probes, Tube Testers and Substitution Boxes.

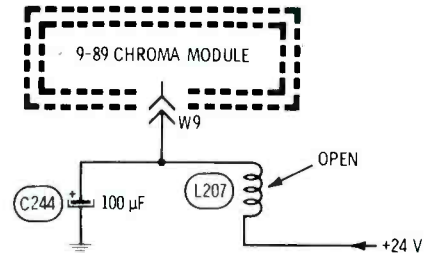
For More Details Circle (6) on Reply Card

Chassis—Zenith 17EC45 and 19EC45
PHOTOFACT—1377-3



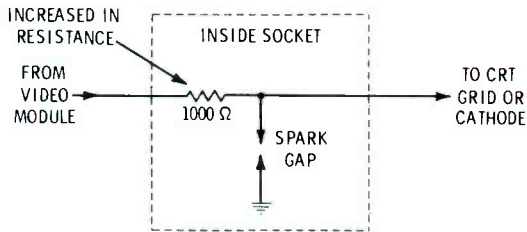
Symptom—No vertical; output transistors shorted
Cure—When replacing shorted vertical output transistors, also replace both emitter resistors (on the module)

Chassis—Zenith 17EC45 and 19EC45
PHOTOFACT—1377-3



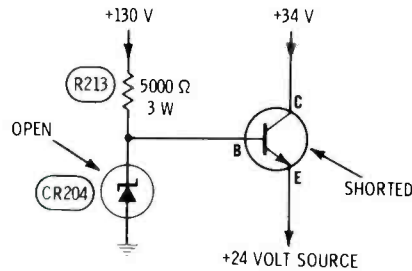
Symptom—No brightness; no raster
Cure—Replace L207 if there is no +24 volts at chroma module W9

Chassis—Zenith 17EC45 and 19EC45
PHOTOFACT—1377-3



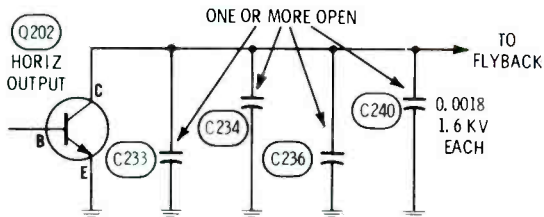
Symptom—Poor tracking of raster color, as though one gun of CRT is weak
Cure—Check all 1K resistors inside CRT socket for increased resistance

Chassis—Zenith 17EC45 and 19EC45
PHOTOFACT—1377-3



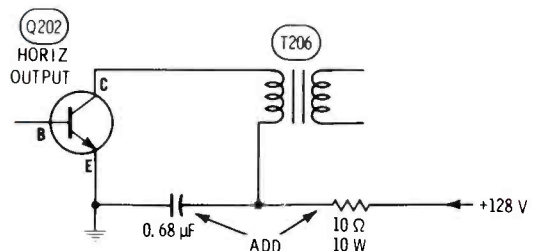
Symptom—120 Hz hum in picture, and failure of IC's or transistors
Cure—Check for excessive +24-volt supply, especially transistor and zener

Chassis—Zenith 17EC45 and 19EC45
PHOTOFACT—1377-3



Symptom—Excessive high voltage (normal 27KV for 17" and 29KV for 19")
Cure—Check for open .0018 capacitors; use only factory replacements; each open increases HV by 1.5 KV

Chassis—Zenith 17EC45 and 19EC45
PHOTOFACT—1377-3



Symptom—Slight bending of picture at high brightness
Cure—Add RC filter as shown to B+ supply for the flyback

Now you don't have to turn down jobs just because the sets were made in the Far East.

Your Sylvania Distributor has solved one of your biggest problems in semiconductor replacements for imported equipment.

Until now, unless your shop was around the corner from an import warehouse, you probably had a tough problem. Especially for those non-repairable modules.

But not anymore.

Sylvania's new ECG™ 1000 series gives you over 140 new integrated circuits and modules for imported sets right on your distributor's shelves.

And, thanks to our newest interchangeability guide (ECG 212E-4), those 140 parts add up to a lot more

when it comes to the number of types they'll replace.

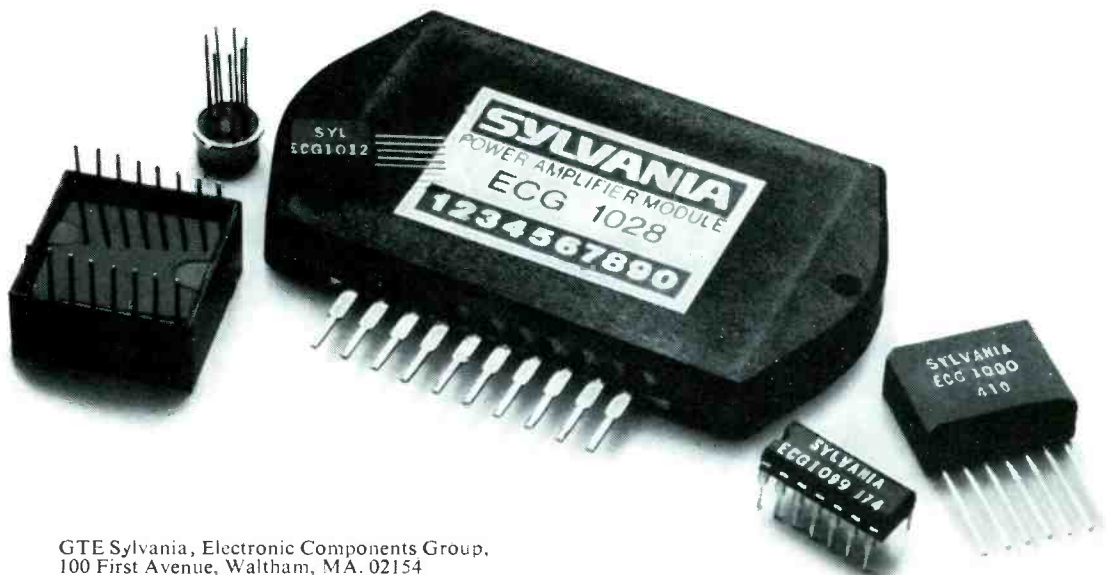
That means you don't have to watch a profitable repair job walk out the door just because getting the parts could make it unprofitable.

It also means that you've got one-stop shopping for all of your repair jobs, foreign or domestic.

Whether you need semiconductors, picture tubes or receiving tubes, you'll find them all at one electronic supermarket.

Your Sylvania Distributor.

GTE SYLVANIA



GTE Sylvania, Electronic Components Group,
100 First Avenue, Waltham, MA. 02154

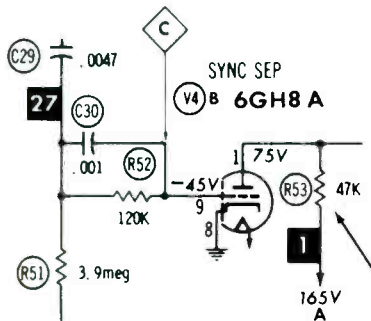
troubleshootingtips

Send in your helpful tips—we pay!

Loss of vertical sync RCA KCS155 b-w (Photofact 784-4)

When he brought the portable TV to the shop, the customer requested new antenna dipoles, and repair of the sound, which was dead. We gave him a firm-price estimate, but before the set was finished, two other problems almost made it a loss job.

While the dipoles were on order, we replaced a plate resistor of the sound IF amplifier tube, restoring good audio.



After two hours of cooking prior to return of the receiver to the

customer, the vertical linearity spread at the top of the picture, and then the vertical would roll. A new 15KY8 vertical tube stopped the change of linearity. However, the locking was not very strong, and there was little range to the hold control.

Then we noticed that when loss of locking occurred, the picture rolled **upward**. This indicated the oscillator was running below the proper frequency. Now, the normal oscillator frequency is supposed to be slightly too slow, then the sync fires it at the proper time. Therefore, it seemed the problem was lack of sync, not a defect in the vertical sweep circuit.

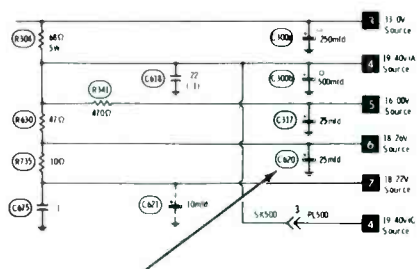
Armed with this information, we rapidly found that the plate resistor of the sync separator (V4B) had increased to about 120K, weakening the sync.

This time the TV passed the heat test with no problems.

T. Schilsky
Masonville, New Jersey

Left edge of raster was green Sylvania D18 color chassis (Photofact 1322-3)

The left two or three inches of raster showed a greenish hue on both b-w and color programs. I placed the "service/normal" switch in the service position and turned up one screen control at a time. The green horizontal line was about normal, but both red and blue lines were dark on the left.



Because filter capacitors sometimes cause such shading, I scoped

all of the power supply sources, and also the waveforms around the 12MD8 matrix amplifier.

A higher amplitude of horizontal ripple was found at the 18.26-volt source. C620, a 25-microfarad 25-volt filter, was tested and found to be open.

Albert Sarhad
San Rafael, California

Trapezoidal picture RCA color receiver

The symptom of trouble in an RCA color TV was a keystone or trapezoidal raster, having the height reduced on the left edge.

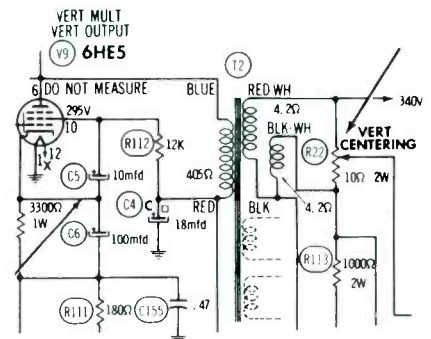
In b-w sets, this symptom always proved the deflection yoke was bad, but other defects in color receivers also can cause a trapezoid. Before changing the yoke, I gave the chassis a good "eyeball" test and found that the tip of a wire connected to

one terminal of the top-and-bottom pincushion control was touching the shell of the control. Clipping the end of the wire to clear the short repaired the trapezoidal raster.

Reg. Bartlett
Windsor, Ontario
Canada

Bounce at bottom of picture Zenith 23XC36 color chassis (Photofact 863-3)

After replacing the picture tube and several small tubes, I moved the receiver to the showroom for a few hours cooking before delivery.



Some of the other tech's claimed the set had a vertical jitter, or bounce, at the bottom of the picture. I didn't see it happen, but they were insistent, so I removed the chassis for operation on the test jig.

By some gentle shoving and prodding around the chassis, I discovered that the area around the high-voltage circuit was sensitive to movement. There seemed to be no connection, until I realized the vertical-centering pot was located just below.

Sure enough, a new centering control eliminated the bounce.

Gus Rubino
Paoli, Pennsylvania

Excessive brightness General Electric KE-II color chassis (Photofact 1177-3)

Originally, the complaint was that the picture had just died out. I checked and replaced the 6LB6 horizontal-output tube and the 3DH3 HV rectifier, but the HV did not come back, so I pulled the chassis for the shop.

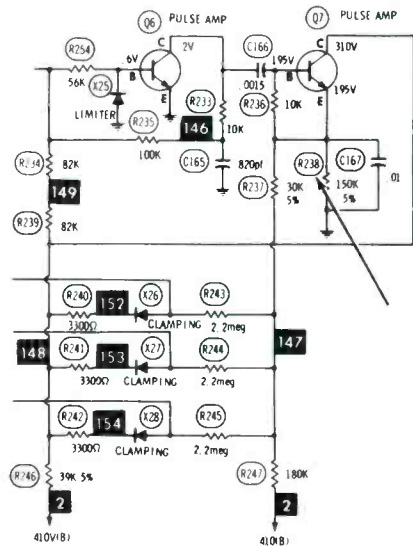
When the chassis was connected to my test jig, there was high voltage, but the brightness was

excessive and the picture would bloom out easily.

Problems of this kind are best located by measuring the DC voltages of all the control grids and cathodes of the picture tube to find out whether the trouble is coming to the grids (chroma circuit) or to the cathodes (video circuit). For a time, I was confused by checking the actual voltages against the schematic. Finally I realized the grid and cathode voltages had been accidentally interchanged.

The cathode voltages varied about as they should with adjustments of the brightness control, but the grids measured much too positive.

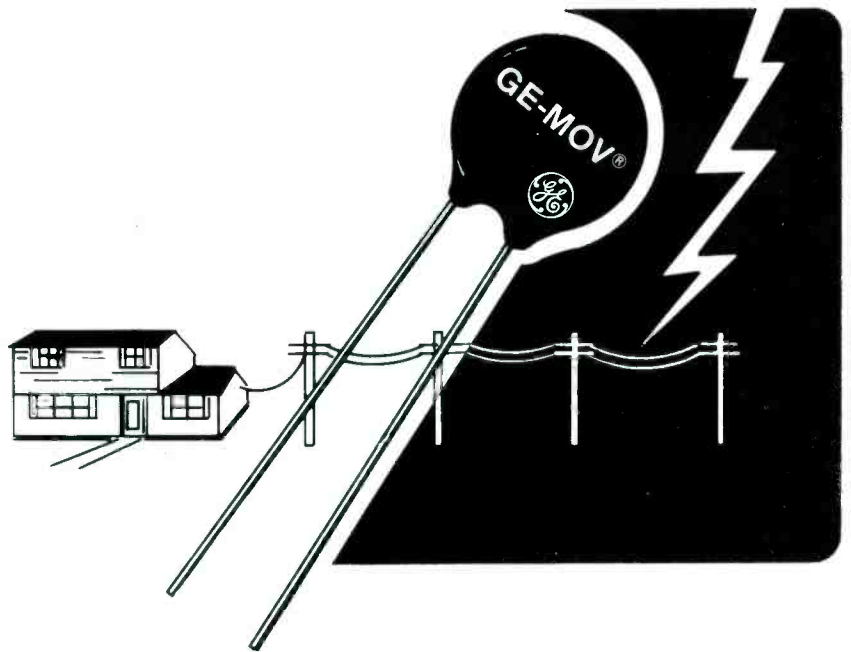
This model has a special keyed DC restorer to prevent zero-line drift from color pulses of different widths. Because all three grids were affected, the DC restorer circuit seemed the logical place to start.



In circuit, transistor Q7 checked okay. All terminals of the transistor checked in excess of +300 volts; obviously wrong. Next, I tested R237, R236, and R238. The first two were alright. Then the trouble gremlin seemed determined to give me one more false trail, because when I first touched probe to R238, it showed about the normal 150K. But the reading slowly climbed as the charge was bled from the filters; the resistor was open.

I replaced the resistor, and found with much relief, that the brightness now could be controlled normally.

John Van Der Wall
Hawthorne, New Jersey



NOW! Protect against Transient Voltage Damage to TV, Stereo and Home Appliances with GE-MOV[®] Metal Oxide Varistors.

TV Set manufacturers know that many component failures are caused by voltage transients: lightning, voltage spikes and power surges. Now you can do something about it . . . economically.

Insert easy to install GE-MOV metal oxide varistors in component circuits and prevent damage from transient voltage once and for all. The varistor absorbs the dangerous transient and dissipates it as heat. The cost is low. The installation fast and easy. It's like offering your customers an insurance package . . . and it's an opportunity to make a profit!

Our GE-MOV program is ready and waiting. For all the facts about this addition to General Electric's growing replacement semiconductor line, see your authorized distributor.



TUBE PRODUCTS DEPARTMENT
GENERAL ELECTRIC COMPANY
OWENSBORO, KENTUCKY 42301

GENERAL ELECTRIC

MY FAVORITE

By Ron Meyer, CET

Most technicians remember longest the repair jobs that either were embarrassing because of mistakes, or gave pleasure because everything worked out just right. This collection of case histories are of the latter type, in which the technician's methods worked without a hitch.

Green Stripe

Symptoms

The raster of the Sears TV with a 529.72574 chassis showed a green stripe down the left edge of the screen, and there was a hint of a Barkhausen line at the side of it. With the service/normal switch in the service position, the blue horizontal line could not be seen until the picture-tube bias was increased to maximum setting, and the blue screen control completely turned up. Also, some of the blue line near the left edge was missing.

Diagnosis

First, I checked purity of the raster (one color at a time), but it was okay. All guns of the picture tube tested the same emission on a CRT checker, the picture tube was not at fault.

Low brightness of the blue seemed to be the most promising symptom, so I checked the DC voltages at the picture tube control grids. Red and green were about normal (+180 volts), but the blue CRT grid measured only about +100 volts. Also, the plate of the B-Y amplifier measured the same voltage (see schematic in Figure 1).

That grid voltage showed the blue gun had excessive cut-off bias, and it isolated the trouble to the B-Y stage. There seemed a good chance the wrong bias was related to the missing left end of the horizontal line.

Scope waveforms showed reduced-amplitude blanking pulses at the plate of the B-Y tube (Figure 2), and also a rounding of the base line just to the right of the pulses. Any negative-going part of the grid waveform reduces the brightness, so this would account for the reduced blue brightness on the left.

Such a change of waveform strongly suggested a defect that changed the time constant (resistance times capacitance); therefore,

the plate voltage could not climb with the usual speed.

Resistances are easier to check in a hurry than capacitances are. I tested all the resistors in the B-Y stage and found R189 to be open completely.

In some stages, an open plate resistor would have reduced the plate voltage to zero. However, this B-Y amplifier has a feedback path through R187 to the plate of the "Z" demodulator, and it supplied enough voltage for partial operation.

Replacement of R189 restored normal brightness of the blue, and brought back the blue at the left edge, where it had been blanked out.

Comments

If the rounded corner of the baseline in Figure 2 had appeared at all three CRT grids, the left edge of the picture would have been missing. Although this might have appeared to be a loss of width, the gradual cut-off would have been proof it was not.

Other defective resistors and capacitors in circuits of this general kind also can cause either a tinted or a blanked edge at right or left. If all three colors are affected, the symptom appears to be a loss of picture at the edge. If the three colors are changed in different ways, the result is a tinted edge.

Poor Horizontal Locking

Symptoms

Horizontal locking of the Packard Bell Model MR623 was loose, and vertical lines were hooked near the top of the picture.

Diagnosis

These symptoms indicated a horizontal AFC (Figure 3) or a sync defect. Waveforms at the output of the sync separator showed normal negative-going horizontal pulses.

REPAIRS

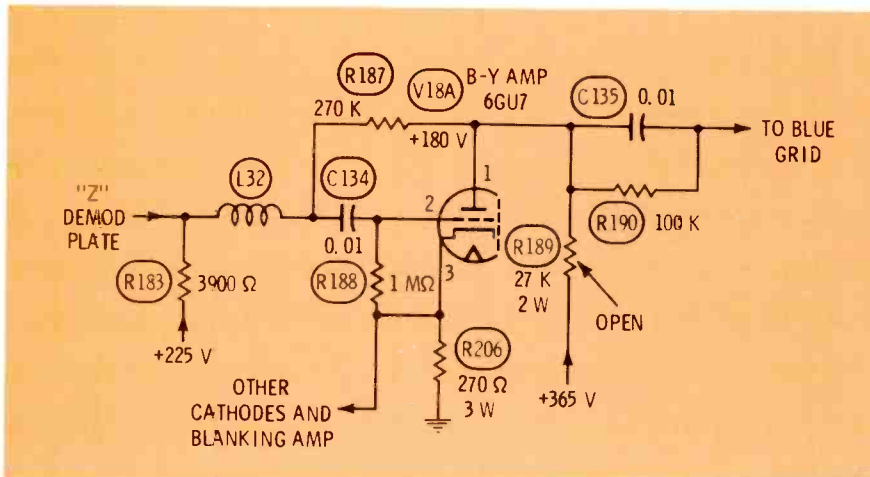


Fig. 1 An open resistor in this B-Y amplifier circuit caused loss of blue on the left and insufficient brightness of the blue field. The receiver was a Sears Silvertone with a 529.72574 chassis (Photofact 965-2).

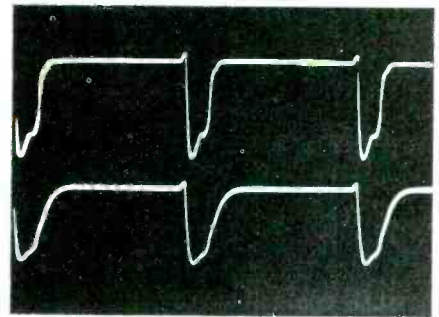


Fig. 2 Waveform at the top is correct for the red CRT grid, while the bottom blue-grid waveforms with rounded corners were produced by an open in R189 (Figure 1).

But at the anode of X3 (AFC diodes), were weak positive-going horizontal pulses instead of the normal strong sawteeth.

Pulses from the horizontal sweep circuit are supposed to be integrated into sawteeth by R57 and C64, and there was plenty of pulse amplitude at R57. Therefore, these two components were the chief suspects. R57 tested almost open; **installation of a new resistor tightened the horizontal locking and straightened the vertical lines of the picture.**

Comments

Trouble in the sync separator was not seriously suspected because the vertical locking was very normal. Defects in or before the sync

separator usually affect vertical locking more than horizontal.

Always remember that **both** sync and the sample of sweep waveform must reach the AFC diodes, else horizontal locking can't be effective.

No Color Locking

Symptoms

There was no color locking in this color TV using a 6JU8 tube for phase detection (Figure 4). Defeating the killer action by rotating the control made the color visible as stripes.

Diagnosis

It's best with color locking that has a double-diode phase detector followed by a reactance control tube to determine whether the lack



Fig. 5 Socket extenders feed the wiring on through from plug to socket, and provide a lug for each pin so readings can be taken in-circuit. Connect a test lead between each lug in turn to the corresponding point on the circuit board to check for opens.

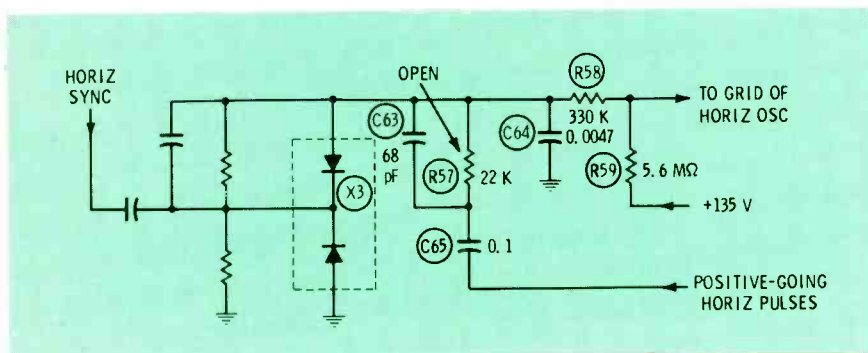


Fig. 3 Both strong horiz-sweep sawteeth at the anode of X3 and good clean sync pulses at the common cathodes are necessary for solid locking. An increased value of R57 degraded the horizontal locking in the Packard Bell Model MR623 (Photofact 972-1).

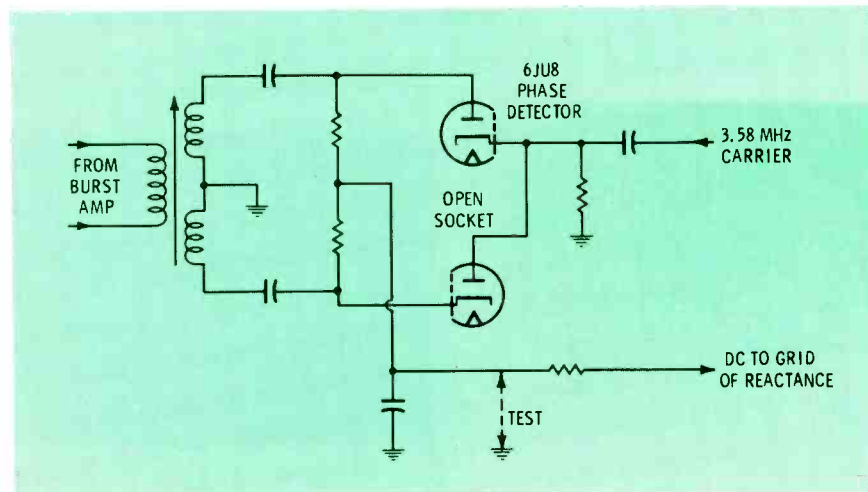


Fig. 4 Open circuits either at the socket pins or on the circuit board connecting to the sockets can be difficult to find. Ground the output DC signal from the phase detector and try to zero-beat the color oscillator. If this is successful, the defect is in the phase detector. Use a socket extender and clip leads to find opens in socket or wiring.

of locking is caused by an inability of the oscillator to tune to the correct frequency, or whether the phase detector is at fault.

Because the control voltage should be zero for perfect locking, the best test is to cause a zero control voltage by shorting it to ground, as shown in Figure 4. Then, try to bring the color into "zero beat" (color bars upright or one upright color picture which can be drifting slowly sideways) with the reactance coil, or whatever adjustment is provided. If zero beat is obtained, the problem is not in the oscillator or reactance stages. If there's no zero beat, look for a trouble in reactance or oscillator.

One precaution, don't ground the grid of the reactance directly. A small-value resistor always is located between control voltage and grid, and the ground should be made at the end of the resistor away from the grid. Many sets have a test point there. Incidentally, the value of this resistor is quite critical. If the resistance is too low, the color locking can be too loose. Or, if the value becomes too high, the changed reactance characteristics can kill the oscillator.

In this case, the oscillator could be brought into zero beat when the control voltage was grounded. Therefore, the defect was before the reactance stage.

Phase detectors of this kind must have a continuous 3.58 MHz carrier at the common cathode/anode, and 3.58 MHz burst at the other cathode and anode. The burst should have from 3 to 5 times the amplitude of the CW signal.

Scope tests using a low-capacitance probe showed approximately the correct amplitudes at the 6JU8 socket. The 6JU8 checked okay, and a new one did not help the locking.

Of course, there are DC voltage tests designed to find opens and shorts, but I have had several cases of open sockets causing such troubles. So, I decided to try a shortcut to test the socket.

My favorite test for an open socket is to use a socket-extender and a test lead. (Figure 5). The tube is plugged into the extender, which is inserted into the original socket. Then I connect the test lead in turn between each lug of the extender to the corresponding conductor on the circuit board. Normal operation, or any major change of performance, is a good indication an open circuit has been bridged. Of course, two socket connections might be open, so two or more might require jumpering to obtain complete operation.

Addition of the test lead adds stray capacitance to the circuit, and this must be taken into consideration with some circuits. Also, the open might be in pins spread too far apart or it might be a hairline crack between socket and circuit board.

This time, connection of the test lead from one extender lug to the circuit board snapped the color into lock. **Replacement of the socket brought back normal color locking.**

Poor Height And "Pulling"

Symptoms

The Zenith (b-w chassis 14M23) had insufficient height plus some video "pulling", although the raster was straight at both edges.

Diagnosis

My snap diagnosis was: bad filter capacitors. I bridged the filters, one at a time, but there was no improvement. Scope waveforms of the power supply showed normal ripple. The power supply seemed alright, so I switched to the symptom of insufficient height.

All components and DC voltages in the vertical sweep circuits checked fine, except at the cathode of the vertical-output tube. At that

point (Figure 6), instead of the usual upside-down parabolic waveform, a series of sawteeth were found.

With the scope still connected to the cathode, I paralleled the cathode capacitor (C2A), but could see no significant change either of the height or of the waveform.

Undoubtedly, you know that rounded sawteeth are normal for this cathode when the bypass capacitor is open. But, it wasn't open.

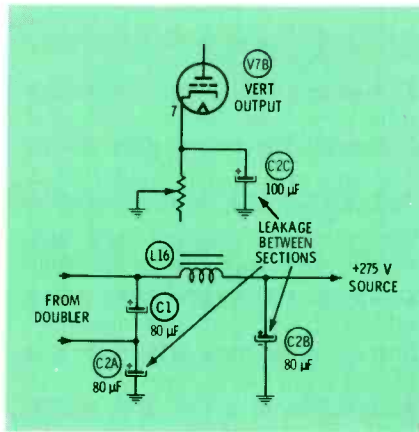
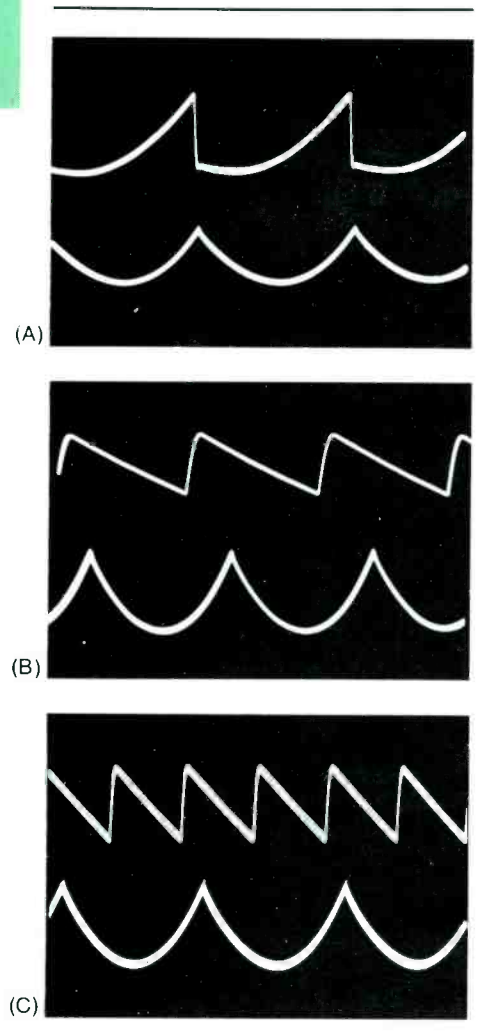


Fig. 6 A defective multiple filter capacitor can feed some of the sawteeth power supply ripple to the cathode of the vertical output tube. That's what happened in this b-w Zenith with 14M23 chassis (Photofact 739-4). A new capacitor unit cured the height and pulling problems.

Fig. 7 These are simulated waveforms for the circuit in Figure 6. (A) Trace at the top shows the distorted sawteeth obtained at the cathode of a vertical-output tube when the bypass capacitor was open. The parabolas of the bottom trace are the normal waveform. (B) At the top are 60-Hz sawteeth from a half-wave power supply, and the parabolas at the bottom are the correct cathode waveform. There is one sawtooth to every parabola; both are 60 Hz. (C) The 120-Hz ripple from a full-wave rectifier (top trace) has two sawteeth for each cathode parabola (bottom trace). Note: actual mixing of these waveforms produces a composite waveform which (during color broadcasts) would change constantly.

After other unproductive tests, I concluded that the filters **must** be at fault. I disconnected all wires from the three sections and substituted individual tubular filters. The height increased and the picture pulling was gone. **Installation of a new triple-section electrolytic permanently cured the symptoms.**

Editor's Note: Picture pulling without the height problem can be caused by an open filter, the one bypassing the B+ to the horizontal-output stage. If it's completely open, one side of the picture is darker than the other. In this case, we assume the power supply sawteeth were reaching the cathode of the vertical capacitors because they were physically in the same can. However, it's unlikely leakage between



sections was the cause, because such leakage would have burned up the linearity control in the cathode circuit. Chances are the defect was the equivalent of a resistance in series with the common negative lead of the three sections. The waveforms in Figure 7 are simulations of correct waveforms under the conditions stated.

Retrace Lines

Symptoms

Retrace lines appeared at the top of the raster of the Emerson with chassis 856A.

Diagnosis

Either a defective vertical output transformer or yoke was suspected, because it seemed likely the retrace lines would have covered the whole raster if the trouble was in the blanking circuit (Figure 8).

Scope measurements showed 50 volts p-p at the top of the yoke winding instead of the normal 100 volts. With the yoke disconnected, the amplitude rose to about 100 volts p-p, so a new yoke was ordered.

Installation of the new replacement yoke cured the retrace lines and also increased the height.

Comments

Although the analysis based on pulse amplitude worked fine this time, in later tests I found the amplitude to have no definite relationship to height or linearity.

Loss Of AGC

Symptoms

Picture on the Sears TV (chassis 456.61580) had excessive contrast, showed picture pulling, and the vertical rolled often; the usual symptoms of insufficient AGC causing overload.

Diagnosis

I connected a bias box to the IF AGC, and could adjust the voltage for normal operation. This was proof of AGC trouble.

DC voltage tests of the AGC keyer (Figure 9) proved to be nearly normal, although the suppressor was 10 volts less positive than specified. Pulse amplitude at the plate was correct, but there was no

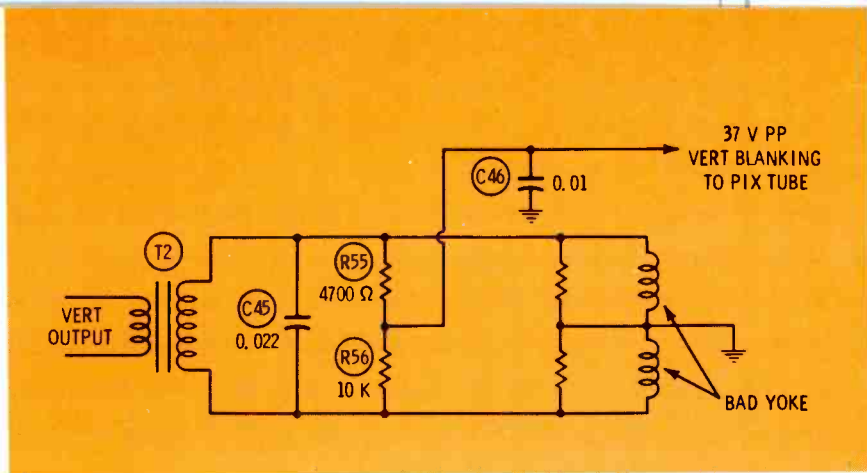


Fig. 8 Insufficient amplitude of vertical pulses in this Emerson (856A chassis, Photofact 866-2) caused retrace lines at the top of the picture, without reducing the height any large amount. A new yoke cured both problems.

rectified negative voltage.

R27 and R48 form a voltage divider to reduce the video AC and DC voltages that are applied to the suppressor grid. I suspected R48 of increasing in value, because neither resistor appeared burned, and such resistors often increase rather than decrease in resistance. That was a good guess, because R48 measured about 3 megohms after it was removed from the circuit.

Installation of a new R48 (560K) resistor eliminated the AGC overload.

Bad Purity And Focus

Symptoms

Purity was terrible (green patches around the edges of the red field), and the picture was badly out of focus. The TV receiver was a Motorola with a TS914Y chassis.

Diagnosis

The focus voltage was checked using a HV probe, and found to be about 7 KV; much too high. Temporarily, a resistor was added from focus control to chassis to reduce the focus voltage. Now the focus control could be adjusted for sharp scanning lines. Of course, the purity still remained poor.

After examining the schematic (Figure 10), I decided the degaussing circuit must be open. Such an open circuit could happen in the connectors, the manual degaussing switch, or the coil itself.

A fast ohmmeter test proved the degaussing switch was open, and **installation of a new switch permitted adjusting for good focus and purity.**

Comments

Here's a brief description of how this degaussing circuit works. Except during degaussing, the focus control returns to ground through R151 and the degaussing coil. To the focus action, this is the same as grounding the focus control, and a correct range of focus voltages can be obtained. Current through the degaussing coil is negligible, and has no degaussing effect. When degaussing is desired, the degaussing switch is moved to the "open" position for a short period of time. During this time, the focus voltage rises, because the focus control now returns to ground through the 22 megohm resistor and C103. The increased voltage across R151 charges C103 (2 microfarad), then when the switch contacts are closed, the charge of C103 is connected to the degaussing coil. C103 and the degaussing coil form an LC tuned circuit, and the shock of the DC voltage being applied to the coil starts the circuit into a damped wave-train oscillation.

Any damped wave train is a series of sine waves gradually diminishing in amplitude to zero. Of course, such a waveform is ideal for degaussing purposes. Now that the switch is closed, the focus voltage decreases to normal until the next degaussing. In the previous case, the open switch increased the focus voltage and made degaussing impossible.

Intermittent Color Locking

Symptoms

Intermittently, the color part of the picture would break up into

stripes (lose color lock) on the screen of the 18QT85 chassis Philco color set.

Diagnosis

As in repair #3, the source of the intermittent locking was isolated to the phase detector by grounding the control voltage DC output from the phase detector (Figure 11), and zero-beating the oscillator.

Scope measurements showed sufficient burst and 3.58 MHz carrier amplitudes at the detector diodes.

Capristor units (assemblies containing both capacitors and resistors) in the past have proved to be the source of many difficult-to-find problems. What's more, they are hard to test because often the leads are not all brought to the outside of the package.

In this case, two resistors and two capacitors were in PC3. The capristor was not available immediately, so I made up one from capacitors selected to be within 10%, and resistors matched to within 2%. **Installation of the home-brew capristor cured the intermittent color locking.**

Comments

In phase-detector circuits, such as this one, the precise values of the components are not particularly important. However, **the parts should be matched.** In other words, the 1 megohm resistors both could be only 910,000 ohms (or both 1,200,000 ohms) and yet work perfectly just so long as they are within 2% of each other.

A positive voltage is generated by rectification at the cathode of X17, and a negative voltage at the anode of X18. These voltages should be precisely equal in voltage, and the 1M resistors also should be exactly equal, so that at the correct frequency and phase the output DC voltage to the reactance stage measures zero.

Summary

All of these repairs have **one** similarity: no parts were replaced before all possible proof could be obtained from both instruments and logic. I believe such precision servicing is imperative, especially with solid-state circuits. □

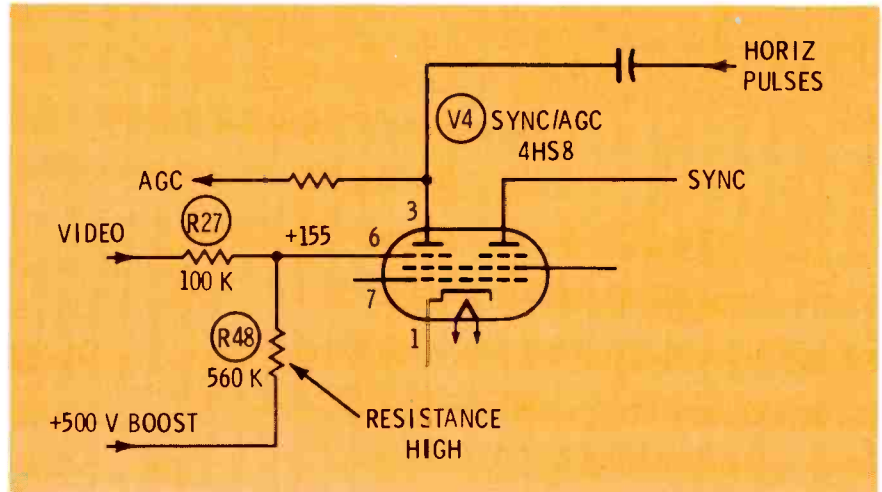


Fig. 9 Complete loss of AGC in a Sears Silvertone with chassis 456.61580 (Photofact 841-2) was produced by loss of sufficient positive voltage from the B-boost supply to the suppressor grid of the AGC keyer. Grid/cathode bias of any AGC keyer is very critical.

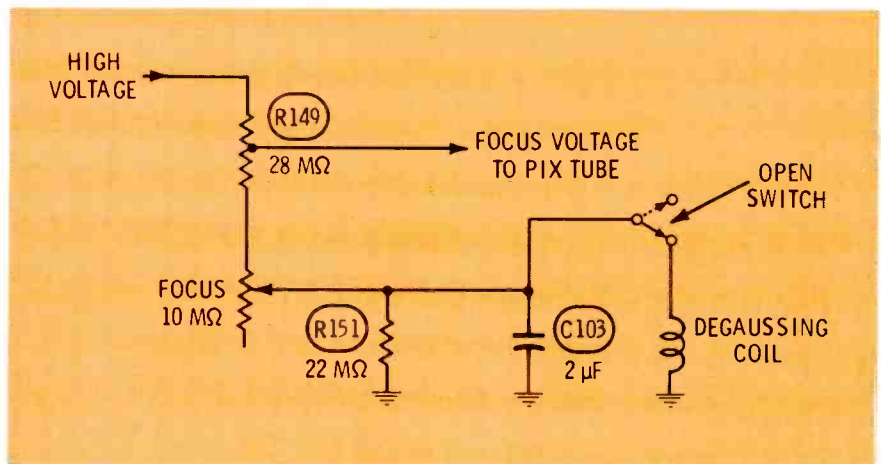


Fig. 10 An open manually-operated degaussing switch prevented operation of the degaussing (causing bad purity), and also increased the focus voltage too much, preventing normal focus. The receiver was a TS914 chassis Motorola, covered in Photofact 798-2.

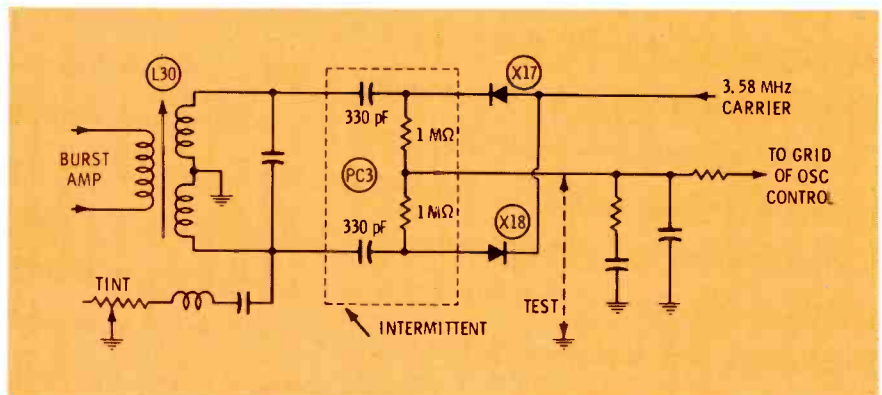


Fig. 11 Always suspect capristor units; many cause intermittent problems. PC3 in the Philco with a 18QT85 chassis (Photofact 954-2) produced intermittent color locking. If you can ground the DC output of the phase detector and zero-beat the color oscillator, the defect is in the phase detector or burst separator.

readerchuckles

Share with other readers one of your amusing incidents. Send a short write-up to the editor.

How NOT To Repair Tuners

By Mort Gordon

At breakfast on October 29th, 1974, I listened idly to a news commentary on the anniversary of the 1929 stock market crash as an eye-witness told how he had seen a broker climb out on the ledge of a Wall Street building and then jump. I little knew that before the end of this day, I would seriously contemplate emulating this long-departed broker by jumping from a two-story ladder.

At about 11:30 AM, I arrived at my customer's house to re-orient an existing antenna to minimize ghosting, which was especially troublesome on Channel 2. The dealer who had sold her the RCA black and white set had installed an excessively-large fringe type VHF-UHF antenna which had shifted following a recent storm. Furthermore, the construction of twin 24-story towers a half-mile away compounded the reception problem.

I set up the 32-foot ladders, lowered the antenna, tightened its "U" bolts, reworked the wiring, and set it in what I believed to be optimum orientation. I came down to check the set, and found all channels improved and working beautifully, except Channel 7 (WABC). At that position, I received an unbelievable combination of snow, some adjacent Channel 9, a little RF herringbone, and a windshield-wiper effect from some other channel. I turned to Channel 8, hoping that the tuning range would be broad enough to capture Channel 7; no luck! I went up the ladder, muttering unhappily about overly-large antennas with excessive gain that would blank out only one channel; returned the unit to its original position, scrambled back to the set, and lo and behold—still no Channel 7!

I unhooked the outside antenna connection from the rear of the set and connected two clip leads to simulate a rabbit-ears, but still the same symptom. I concluded that loss of Channel 7 was not an antenna problem, and so returned to my original project on the roof to finish that job. Cautiously, I left the ladder extended to the housetop until I could conclude this call.

Now, I returned to the set with my tools and caddy to work on this unusual tuner problem. I replaced the tuner tubes and then the IF tubes, but still no change in the symptom. I did a careful visual of the tuner and surrounding area and noticed a chemical residue on the tuner cover. Of course! Someone had used too much of our new space-age chemicals. Some of it must have dripped on a critical capacitor, and presto! Oscillation on Channel 7! I pulled the appropriate knobs, removed the three screws holding the tuner cluster, and then loosened the tuner cover enough to do an internal inspection. Sure enough, too much chemical gook was on the critical components and wafers due to an excessive and indiscriminate application from a pressurized can.

Using a good quality degreaser, I meticulously cleaned the tuner, lubricated the contacts, reassembled, and expectantly turned on the set. Still the same symptom!

At this point, some 45 minutes beyond the time I had programmed for the job, I decided to tell my slightly-hysterical customer that the tuner would have to be taken to the shop for examination and repair, at considerable additional cost. However, I recalled that the customer had elsewhere in her house a small portable TV, and therefore decided to check that set on the improbable chance that Channel 7 had gone off the air. I tried this set in its usual location, and much to my surprise and joy, there was no Channel 7! Excitedly I hooked the portable set to the antenna outlet that I was working on to demonstrate to my

customer that the "impossible" was indeed true; Channel 7 was off the air!

Gloomily, the customer insisted on exploring the action to be taken, and the cost, in the event that Channel 7 was on the air and the tuners in the two sets had to be repaired in the shop. The customer at this point, when presented with the bill for the antenna orientation, recalled that she didn't have enough cash on hand to pay for the job but instead would mail to me a check.

Prior to removing the ladder and loading it on the truck I considered whether, like the 1929 broker, I should jump off. But, I decided that the news media would not draw a parallel to 1929, and besides it was an hour past lunch time; better I should eat first.

Upon arrival at the shop I turned on the two sets and, sure enough, no Channel 7. I turned on a third set and went to wash while it warmed up. When I returned, Channel 7 was playing beautifully on that set and in the midst of a program. I turned on the first two sets again, and Channel 7 gave a normal display on all three units. I fought back my ulcers and sat down to lunch, turning on the radio as I did so. The news commentator announced that, due to an "electrical failure," Channel 7 had been off the air for two hours, and their switchboard had been swamped with 5,000 inquiries about the problem. I considered extending the ladder again for that long-delayed jump, but hunger overcame me.

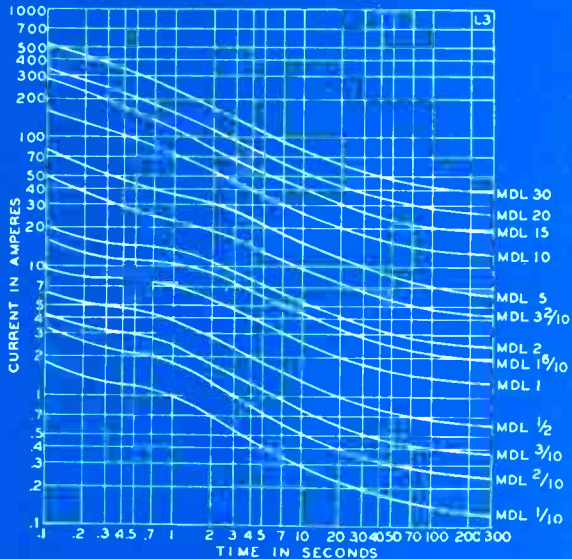
Since the customer's antenna appeared to have a range of approximately 150 miles, it was probably pulling a snowy signal from a channel 7 or 8 from some distant city which, together with spillover from Channel 9 and some pick-up from a local "Doctor Call Service," resulted in the odd display on Channel 7 tuner position while that channel was off the air.

Anybody want to buy a 32-foot ladder? □

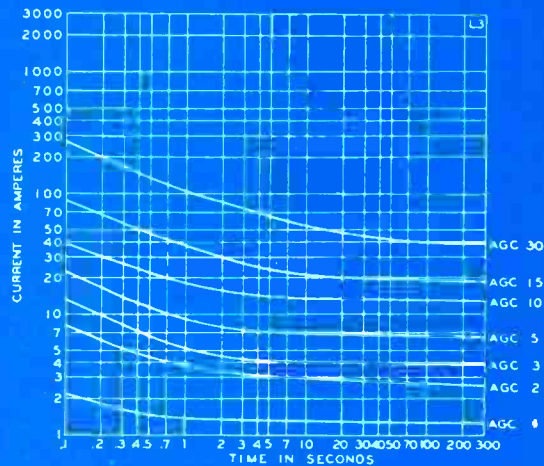
NEED A 1/4" x 1-1/4" TIME-DELAY FUSE OR QUICK-ACTING FUSE?

BUSS HAS IT!

Time-current characteristics of FUSETRON® dual-element time-delay fuses



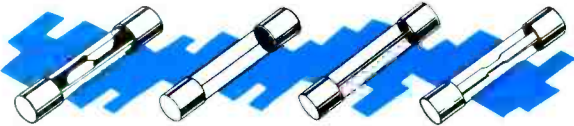
Time-current characteristics of BUSS® fast-acting fuses



FUSETRON® dual-element fuses

Time-delay characteristics avoid nuisance openings from starting currents or surges—yet, give full protection from short-circuits or dangerous overloads.

Voltage	Symbol	Amperes
250 or less	MDL	1/100, 1/32, 1/16, 1/10, 1/8, 15/100, 175/1000, 3/16, 2/10, 1/4, 3/10, 3/8, 4/10, 1/2, 6/10, 7/10, 3/4, 8/10 or 1
250 or less	MDX	1-1/4, 1-1/2, 1-6/10, 1-8/10 or 2
125 or less	MDL	1-2/10, 1-1/4, 1-1/2, 1-6/10, 2, 2-1/2, or 2-8/10
125 or less	MDX	3, 3-2/10, 4, 5, 6-1/4 or 7
32 or less	MDL	3, 3-2/10, 4, 5, 6-1/4, 8, 10, 15, 20, 25 or 30

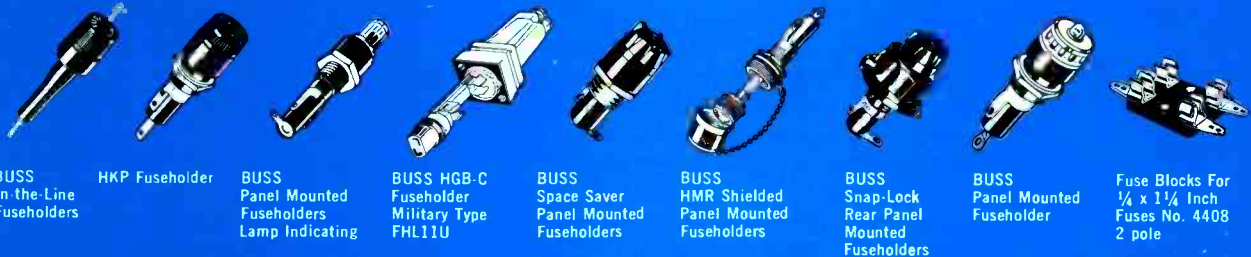


BUSS® fast-acting fuses

Fast-acting characteristics provide the instantaneous high speed opening necessary to protect sensitive instruments or delicate apparatus.

Voltage	Symbol	Amperes
250 or less	AGC	1/500, 1/200, 1/100, 1/32, 1/16, 1/10, 1/8, 15/100, 175/1000, 3/16, 2/10, 1/4, 3/10, 3/8, 45/100, 1/2, 6/10, 3/4, 1, 1-1/4, 1-1/2, 1-6/10, 2
250 or less	MGB	1/16 or 1/8 MBW & MBB fuses now called AGC.
250 or less	AGC	2-1/2, 3
250 or less	MTH	4, 5 or 6
For 250 volt fuses above 6 amperes—See ABC fuses.		
125 or less	GLH	7, 8 or 10
32 or less	AGC	4, 5, 6, 7, 7-1/2, 8, 10, 15, 20, 25 or 30

For a complete selection of BUSS fuses and fuseholders ask for bulletin SFB.



BUSS In-the-Line Fuseholders

HKP Fuseholder

BUSS Panel Mounted Fuseholders Lamp Indicating

BUSS HGB-C Fuseholder Military Type FHL11U

BUSS Space Saver Panel Mounted Fuseholders

BUSS HMR Shielded Panel Mounted Fuseholders

BUSS Snap-Lock Rear Panel Mounted Fuseholders

BUSS Panel Mounted Fuseholder

Fuse Blocks For 1/4 x 1 1/4 Inch Fuses No. 4408 2 pole



BUSSMANN MANUFACTURING
a McGraw-Edison Company Division
St. Louis, Missouri 63107



Answers about MATV amplifier specs

By James E. Kluge, Technical Editor, Winegard Company

The MATV amplifier specifications most difficult to interpret probably are the ones listing the input and output signal levels of broadband amplifiers. Each manufacturer seems to have a different way of saying the same thing. Although such specmanship is not designed to confuse, the result often is total misunderstanding on the technician's part of how to use these important ratings. A cure for the confusion can be found in the facts behind the specs.

Broadband Means Multi-channel

MATV broadband amplifiers are designed to provide nearly-equal gain for signals of many TV channels. Depending on the purpose, the bandpass probably would include coverage of VHF-low, FM, VHF-high, CATV, and UHF band (about 50 to 900 MHz, as shown in Table 1).

Broadband amplifiers for cable (CATV) usually have continuous coverage from 50 to 300 MHz. They do not include UHF, because in CATV systems, all UHF channels are converted to VHF before distribution.

UHF channels 70 through 83 have been allocated by the FCC for translator use only. Therefore, many newer broadband MATV amplifiers cover only the UHF channels of 14 through 69. To make these amplifiers compatible with CATV systems, the special CATV midband and superband VHF frequencies are included.

Maximum Number Of Channels

In the MATV industry, it's commonly agreed that broadband amplifiers seldom will be required to handle simultaneously more than 7 VHF and 5 UHF channels. This is in line with the FCC allocations of channels.

Why should we be concerned about how many channels an amplifier is required to handle?

The reason is simple. The more channels amplified, the smaller output amplitude **each** channel can have without distortion.

Amplitudes of all signals at the input **add** together to make up the total instantaneous voltage that the amplifier is required to amplify and deliver to the output. Every amplifier has a maximum signal-handling ability, and the quality of the various signals will be degraded if this limit is exceeded.

One result of excessive signal amplitudes is cross-modulation distortion which might cause the video of another channel to be seen superimposed on the desired picture. The exact symptoms vary according to the severity of the overload (Figures 1 and 2).

When single-channel amplifiers overload, the main symptoms are excessive contrast, or poor vertical and horizontal locking of the TV (Figures 3 and 4).

Maximum Output Signal

Output from a broadband amplifier is specified in one of two ways, either as a total voltage, or as a "per-channel" voltage for each of a specified number of channels. It's logical (and true) that the more channels you have, the lower each "per-channel" voltage must be to avoid exceeding the specified output level.

This maximum output voltage might be stated in volts, volts-per-channel, dBmV or dBmV-per-channel. In addition, the manufacturer might or might not specify the amount of amplifier distortion at the maximum output level, or how many channels should be applied simultaneously to the input. Without such important information, the rating of output level will be virtually meaningless, thus adding to the confusion.

Typically, an excellent specification for broadband amplifiers gives the output in dBmV-per-channel at 0.5% cross modulation for 7 channels of VHF and 5 channels of

UHF. Some new models amplify VHF and UHF bands separately, giving maximum output level with minimum distortion.

If you customarily work with dB's, remember that you can't multiply dBmV levels, but instead multiply the voltages. To do this, first convert the per-channel dBmV level to volts, multiply by the number of channels, and convert the voltage back to dBmV.

Take Advantage Of Maximum Output

What should you do if there are fewer than the maximum number of channels in your area? This might be a bonus. The amplifier could be driven to a much-higher per-channel voltage than specified. Refer to Chart 1 for the new ratings according to the number of channels.

In some MATV systems, the extra output capability made possible by fewer channels might allow you to select a smaller distribution amplifier, or perhaps to eliminate one or more line amplifiers, resulting in a substantial saving of costs.

Why "Per-Channel"?

The reason for specifying amplifier output on a "per-channel" basis rather than in total voltage is simple and practical. These levels are measured by tunable RF voltmeters called signal-level meters (sometimes wrongly called field-strength meters). By its very nature, signal-level meter measures the amplitude of each individual carrier in succession, not all channels at once.

In a properly designed and installed MATV system, all picture-carrier levels should be balanced to within 1 dB. Knowing how many channels there are and their individual voltage levels, you can calculate the amplifier input voltage by multiplying the two numbers. This product should not be allowed to exceed the amplifier input-per-channel spec times 7 VHF or 5

**Over-The-Air
TV Channels**

VHF Low Band
Channels 2 through 6
54 to 88 MHz

VHF High Band
Channels 7 through 13
174 to 216 MHz

UHF Band
Channels 14 through 69
470 to 806 MHz

UHF Translators
Channels 70 through 83
806 to 890 MHz

Cable-TV Channels

Subchannels

Channels A through E
17.75 to 47.75 MHz

Midband

Channels A through I
120 to 174 MHz

Superband

Channels J through S
216 to 276 MHz

FM Band

Channels 201 through 300
88 to 108 MHz

Table 1 Except for the cable subchannels, a broadband MATV amplifier should have flat response over these channels and frequencies.



Fig. 1 Excessive input signals to a broadband amplifier often result in a faint negative picture from another channel appearing with the desired picture. When the horizontal blanking and sync pulses move sideways, the effect is called "windshield wiper".



Fig. 2 A more-severe overload than that of Figure 1 might show an image of the other program. Notice the negative image of a woman's face just to the right of the man.



Fig. 3 Excessive input signal, that overloaded a single-channel amplifier, might cause clipping of the sync tips, thus fooling the AGC into increasing the contrast too much.



Fig. 4 Sync clipping in a single-channel amplifier might cause the vertical locking to flip.



Fig. 5 Under certain combinations of channels and signal strengths, a strong beat pattern, similar to sound bars in a color set, are produced.

UHF channels (or however the amplifier is rated).

A specification of minimum input but without a maximum, or one of a certain maximum input at some unstated reduced-gain setting, is of little use to anyone. Yet these partial specs sometimes appear.

Last Stage Limits Output

In all correctly-designed amplifiers, the output transistors limit the level that can be handled without overload; that is, the final stage should overload before any other.

Before knowing the maximum output level, you can determine the maximum input level by subtracting the amplifier gain. If the gain is not stated, there is no way of knowing the maximum permissible input level. When it is specified, the input plus the gain should equal the output level.

If the gain control attenuates the input signal before the first amplifier stage, the maximum permissible input level increases by the amount of the gain reduction. However, if the gain control follows the input stage, it's possible at reduced settings to overload the input stage before the output stage overloads.

The maximum output level is

fixed by the design of the output stage. Nothing the customer can do alters that. But maximum input level is affected by the gain-control setting.

Amplifier Distortion

Generally, MATV overload is defined as the level at which 0.5% compression, occurs. This amount of distortion is invisible to trained eyes looking at the picture, and is considered to be acceptable.

Any increase of level beyond this point rapidly increases the distortion, causing ghost images from other channels, windshield wiper, or unstable horizontal or vertical locking.

Minimum Input

Some manufacturers specify minimum input levels for their broadband amplifiers. This has nothing to do with overload, but is related to the signal-to-noise ratio. It tells how weak the input signal can be without causing excessive snow and noise.

Look at it this way: With no signal, the picture is **all** snow. As the signal is increased, it appears in the snow with the picture getting stronger and the snow less noticeable. At a certain level, the snow

disappears entirely. This is termed a grade-1, excellent picture by Television Allocation Study Organization (TASO) standards.

Minimum input signal level is defined as that required to produce a grade-1, excellent picture with no snow. According to TASO, this is a signal-to-noise ratio of 45 dB.

Dynamic Range

Additionally, a minimum-input spec defines the dynamic input range. It's the difference between maximum and minimum input. In other words, it marks the points of overload or snow.

Amplifiers should be operated as near maximum input level as possible to obtain the best signal-to-noise ratio at least cost, so the dynamic-range specification is not important in small systems. In large systems where many amplifiers are cascaded, the dynamic range of the system is compressed by each successive amplifier, making it advisable to use amplifiers capable of a wide dynamic range.

Single-Channel Amplifiers

Although single-channel amplifiers are narrow band, their specs are much the same as for broadband ones. Because there is only one channel to be amplified, cross-modulation distortion is not a consideration. Instead, the limitation is the amount of sync clipping or compression.

Adjusting The Levels

All this discussion about maximum and minimum levels, overload, etc., is fruitless unless you have the capability to measure and adjust these levels accurately. Such capability is possible only by use of a quality signal-level meter. Don't be tempted with a "bargain" that might not do the job. Carefully compare the specifications of accuracy, bandwidth, and input-voltage range before you buy.

Summary

If you don't understand the input or output level specifications of an MATV broadband amplifier you are buying, ask the distributor or the manufacturer to explain them. Much of the success of an MATV installation depends on the correct signals at the amplifier. □

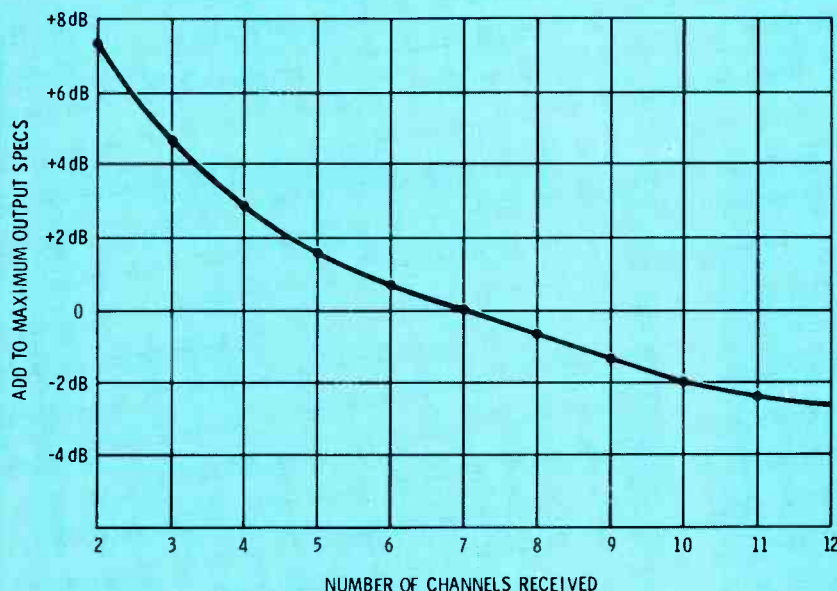
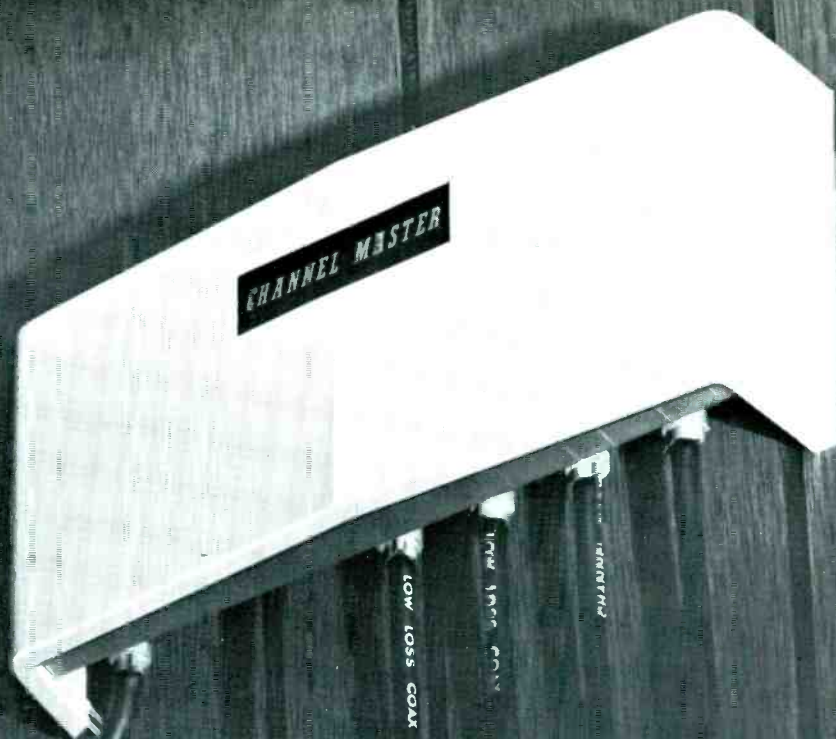


Chart 1 A broadband VHF amplifier, rated at a certain output signal with 7 channels, should have the output spec changed according to this chart. For example, for only three VHF channels, the output could be increased 4.8 dB, without exceeding the rated distortion.

Channel Master Announces **SPARTAN INDOOR Amplifiers**



The proven technology developed for Spartan antenna amplifiers, which gives you the most trouble free antenna amplifiers in the industry, is now applied to an all new series of indoor amplifiers.

Our Spartan indoor amplifier series' advanced electronic design provides:

- **High Gain** - more than enough gain to overcome distribution losses within the average home
- **Unconditionally Stable Operation** - to assure peak performance through voltage surges, brownouts and temperature extremes.
- **Superior Lightning Protection** - energy absorption circuits automatically protect against component failures.

Available in deluxe and standard models for every reception requirement. All Spartan indoor amplifiers feature power transformer regulated circuits to further guarantee stable operation and eliminate possible shock hazards.

Deluxe models have rejection filters to reject disturbing interference caused by other communication signals near the television frequencies and a switchable FM trap for complete control of strong local FM signals. Standard models have fixed FM attenuation to control FM beat commonly found on the television channels.

Spartan series indoor amplifiers are designed to the criteria of large commercial type MATV amplifiers and are covered by the extraordinary Channel Master four year dealer warranty.

Channel Master **SPARTAN SERIES**

DIVISION OF AVNET, INC., ELLENVILLE, N.Y. 12428



PHOTOFACT BULLETIN lists new PHOTOFACT coverage issued during the last month for new TV chassis.

BROADMOOR 20161453-1	RCA Chassis CTC53H, CTC53K1452-3 Chassis KCS192B/C1449-2
CORONADO TV6-1741A1448-1	SEARS 528.40721400 thru 528.407214071454-2
JC PENNEY 685-2849 (855-2010)1451-1 685-4906, 4906 (855-2374)1453-2	TELEDYNE 3C174WL1449-3
JCV 7320, 75201450-1	TRUETONE ADM3409A-47 (2DC3409)1454-3
K MART SKC1960, SKC2500, SKC25101454-1	WARDS AIRLINE GAI-11655A/B, GAI-13444A/B1455-3
PANASONIC TR-7291452-2	ZENITH Chassis 23FC45, 25FC451453-3

// New generation // Flat rate pricing...

...truly outdates old methods ... prices your work realistically!

Still using the old single flat rate charge for house calls or bench work regardless of repair time required? You may say it all averages out. But, how strongly do your customers feel about consumerism and TV exposés? You could be leaving yourself wide open for trouble...big trouble!

This is where **Tech's Guide to Pricing** comes in ... the "New Generation" of flat rate pricing ... the system that breaks down each repair step or adjustment encountered. Keeps a true and proper balance between cost and work performed in the eyes of the consumer.

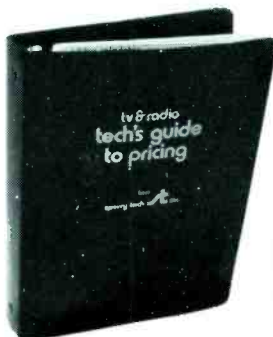
Tech's Guide is in a professional, hard-use cover. 6-ring steel binding. fast-tab design, 7 1/2 x 9 1/2 size fits in the tool box ... ready for immediate use. Calculator adjusts in seconds for any area in the U.S. ... it's the new industry standard. Relieves you of the stress and pressure of pricing responsibility! Simply fill out the coupon, include check or money order. All orders filled same day.



sperry tech inc.
P.O. Box 5234
Lincoln, NE. 68505

More information please.
 My check or money order enclosed.

NAME _____
COMPANY _____
ADDRESS _____
CITY _____ STATE _____ ZIP _____



\$18⁰⁰
per issue,
postpaid.

tv & radio
**tech's guide
to pricing**

(Nebr. residents add city and state sales tax)



Fig. 1 The Jerrold TRC-12 remote control easily can be installed on any television receiver. Converter and pushbutton remote units are connected by a 25-foot cable. (Courtesy of Jerrold)

Reports from the test lab

By Carl Babcock

Usually in this column, we report our findings about test equipment examined in the Electronic Servicing laboratory. This month the subject is an unusual remote channel selector by Jerrold. There are no motors, and the remote can be used with any model of TV, because the only connection is to the antenna terminals.

Perhaps you remember, a dozen years or so ago, when a few TV manufacturers tried to supply remote-control kits for after-the-sale installations in a few consoles of their own brands. Usually such installations were a pain, requiring extensive mechanical and electrical modifications to the receivers. And, often the labor costs were excessive, because the few kits sold did not permit technicians to become efficient in the installations. In short, the kit idea at that time was too complex to be practical. Now there is a new kind of remote, requiring only a simple installation.

Converters Are The Answer

The only type of after-the-sale remote-tuning system that can work well with all brands and models, both b-w and color, and without wiring changes inside the TV, is a frequency converter. Also, a push-button action is faster and more convenient to use than is a rotary motion of the selector. These two

features are the basis of the Jerrold Model TRC-12 remote control system.

Installation consists of minor changes to the antenna wiring, plus plugging in two power cables. No motors are used, no adjustments are required, and it's not necessary even to remove the back from the TV.

There are a few small limitations, to be discussed later, but also there are several benefits not obtainable with conventional systems.

Typical Installation

Two major units make up the Jerrold TRC-12 remote-control system: the converter containing the power supply and electronic circuits; and (at the other end of a small-diameter 25-foot cable) the remote control box with 12 channel buttons, an on/off switch, and a fine-tuning control (Figure 1).

Input and output signal circuits both have 75-ohm impedance, for cable using "F" connectors (Figure

2). If the present antenna system is a 75-ohm type, only a short length of cable and two "F" connectors are required. With 300-ohm systems, add two 300-to-75 ohm matching transformers with the 75-ohm side toward the converter.

Insert the power plug of the converter into a wall outlet, and plug the AC cable of the TV receiver into the outlet (500 watts, maximum) on the back of the converter (Figure 3). Inside the converter, a relay operated from the DC power supply (which eliminates relay AC buzz) in series with an AC switch in the remote, turns on or off the power to the TV receiver.

Of course, the AC switch on the receiver must be left on at all times, and there is a continuous drain of about 8 watts to power the remote. This defeats the instant-on feature of those sets that have it; however, instant-on has fallen into disfavor in this era of power shortages. Most new sets don't have instant-on.

Lugs on the converter unit permit

it to be fastened to the back of the TV receiver where it's out of sight. The converter runs cool, and the remote unit has no heat (or signal) at all.

The cable that's between the converter and the remote units can be run under a rug, or around the wall. I have a similar unit with my cable TV service, and I just carry

the remote to my chair for the evening, with the cable stretched across the floor, then return it to the top of the set when I'm through watching the programs.

That's all there is to the installation: connecting the antenna to the converter, and cable from converter to antenna terminals of the receiver; plugging in the power

cables; and moving the remote where desired.

The Remote Unit

Wiring on the inside of the remote unit hardly could be more simple (Figure 4). One circuit board contains the 12 pushbuttons, and the 12 pots that determine the DC voltage to tune the desired channels. At one side is the on/off rocker switch, and the fine-tuning pot is located at the other edge of the panel. I suppose you could touch-up the adjustment of the pots so no adjustment of the fine-tuning control would be necessary when you change channels. However, our test sample really didn't need any trimming; it was quite accurate.

No shock hazard is possible, either from the connecting cable or the remote-control box, for the voltages there never exceed 20 volts DC. No signal or AC power voltages go to the remote unit.

Converter Features

Figure 5 pictures the inside of the converter unit with the top removed. On the small board are the power supply and regulator components. The critical parts and solid-state components are inside the shielded compartment.

A fairly-sophisticated circuit is indicated by the block diagram of Figure 6. Certainly, it's too complicated for anyone to try to build at home.

DC voltage, determined by the remote channel switch and pot that's in use, controls a varactor diode in the variable-oscillator. The exact capacitance of the varactor diode depends on this control voltage. Thus tuning is possible at some distance without problems from the tuned circuit.

Oscillator and antenna signals are combined in the first mixer, the resulting IF signal is tuned and amplified before it and the fixed-oscillator signal are heterodyned in the second mixer. Output of the second mixer is a signal on channel 3 (or channel 2, if your area has a channel 3), which goes to the receiver. **The channel selector of the**

Fig. 2 Shielded "F" connectors are provided on the rear panel of the converter for the 75-ohm antenna wiring.



Fig. 3 An AC socket on the rear of the converter supplies switched power for the receiver.



Fig. 4 When the bottom plate of the remote unit is removed, the 12 pots can be seen along the top edge of the circuit board, with the rods of the pushbutton switches inside the metal bracket just below the center.

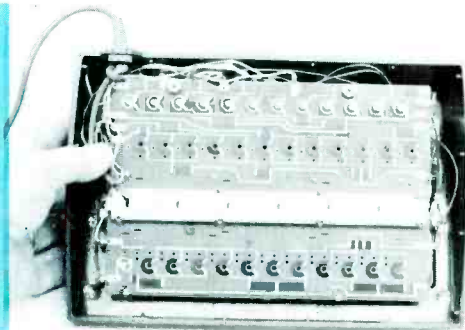
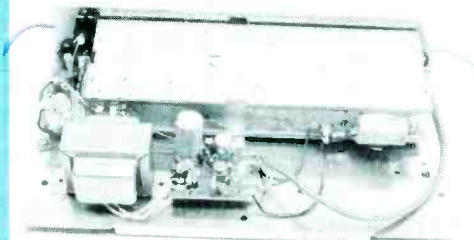


Fig. 5 The power transformer of the converter (top removed) is shown at the lower-left corner, with the DC relay just above it, and the board for the rectifiers and voltage regulation located to the right. Along the top of the picture is the shielded compartment housing the active circuitry.



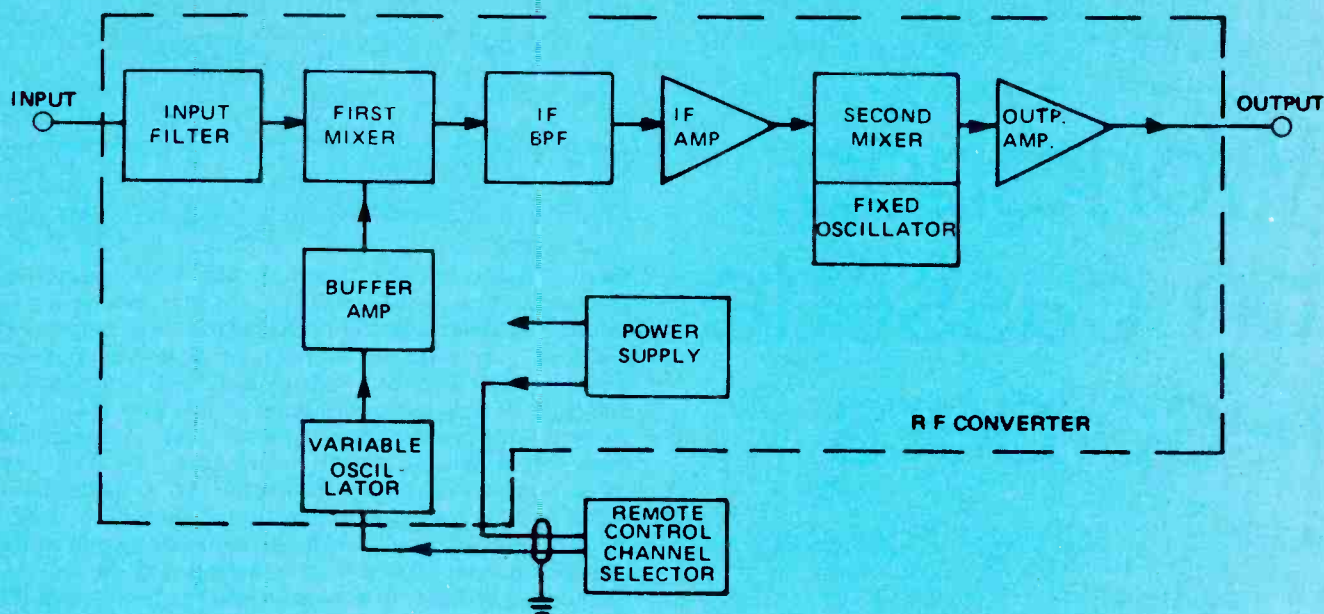


Fig. 6 Block diagram of the TRC-12 shows many more parts than just a mixer and oscillator. (Courtesy Of Jerrold)

receiver remains tuned to that channel at all times.

Eliminates Leading Ghosts

One possible problem with MATV systems is that direct pickup of station signals by the wiring of the TV receiver can produce ghosts located to the left of the desired picture. There is a small delay when signals go through any CATV or MATV system; therefore, the unwanted direct signals get there first (to the left).

A remote control of the converter type eliminates all direct pickup, because all channels are tuned-in by the receiver either on channel 2 or channel 3. This can produce an important improvement of signal quality, especially in apartments on the station side of the building.

Comments

Although no provision is made for UHF reception, there are two methods of obtaining it. One is to use a UHF/VHF splitter (such as the Jerrold FCO-375) to feed the UHF to the UHF receiver terminals and the VHF to the converter. Then, the UHF can be tuned by

rotation of the receiver channel selector to the UHF position. The deluxe way is to convert all active UHF channels to VHF (as is done in CATV systems) and supply them to the remote control converter along with the VHF signals from the antenna.

We have no instruments to check the exact specifications of products such as this remote control. Therefore, we tested the TRC-12 by actual usage under several kinds of typical conditions. From these tests, we arrived at several general impressions.

Color picture quality was the same with the converter as it was with the antenna signal connected direct to the receiver.

No noticeable snow was added, even when rabbit-ears were used for local reception. Before the test, the possibility of added snow had been a question, because of the experience I had with more snow on CATV than with my own antenna during tests of the Winegard Cablemate (Electronic Servicing, page 50, May, 1974).

Specifications call for a converter gain between 4.5 dB and 11 dB. It should be possible to operate two or three TV receivers from one remote

control, if desired. The extra gain might be an advantage with older sets which have only moderate RF gain.

Fine-tuning drift of both the converter and receiver appeared to be the same as the drift of the receiver alone. If the converter drifted it was not noticeable.

Other remote functions, such as volume control and brightness adjustment, are not handled by the Jerrold remote. However, under test conditions with several receivers, I did not find any need for those two controls.

Most uses for the remote control are obvious, such as in sick-rooms or hospitals, and in homes, schools and motels. But the two that impressed me most were with MATV to eliminate leading ghosts, and uses in receiver locations that make manual channel changing difficult, such as above a bar, or a cabinet in a restaurant.

The pushbuttons provided instant channel changes, and the button in use stayed down to give a visual indication of the channel selected.

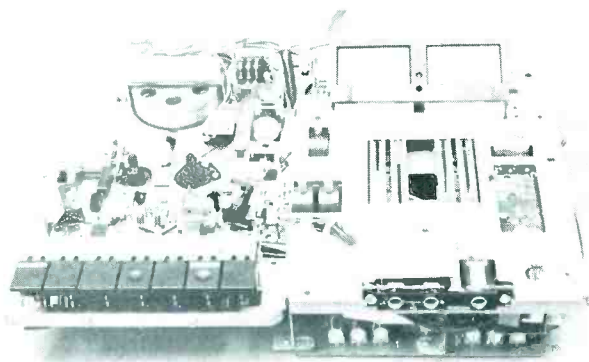
The Jerrold Model TRC-12 remote control performed very well on all the functions for which it was designed. □

Workshop on cassette recorders

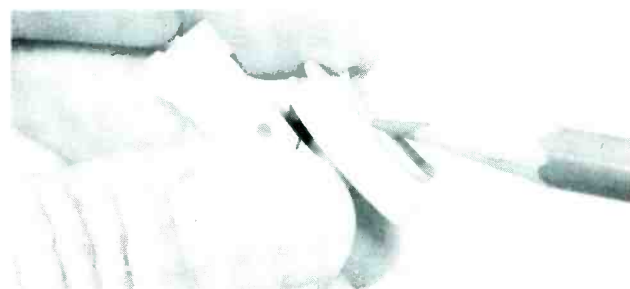
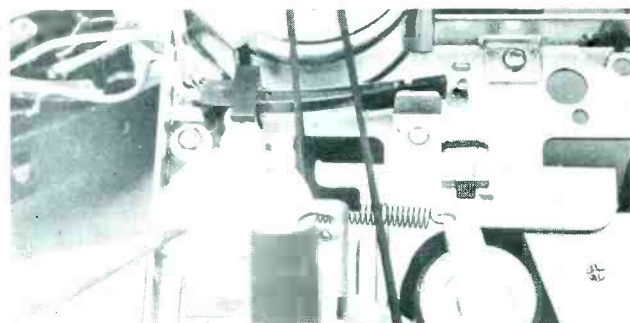
Part 3

By Dewey C. Couch, Forest H. Belt Associates

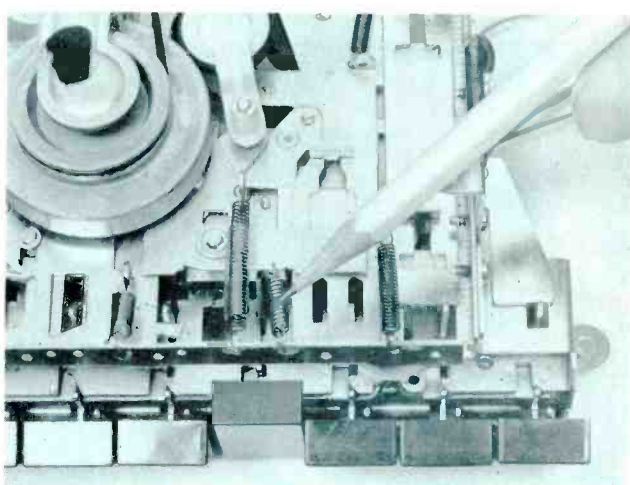
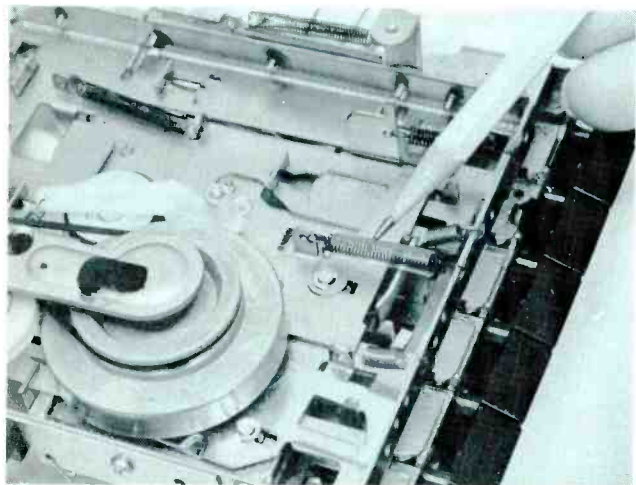
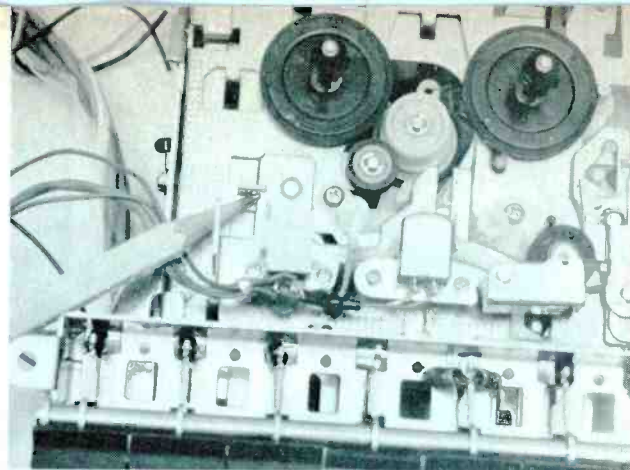
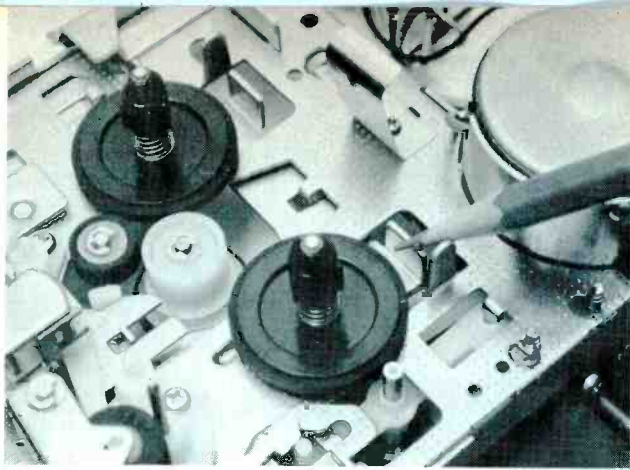
The first two sessions of this Cassette Workshop illustrated ways to clean and adjust cassette assemblies, and how to inspect and test typical mechanisms. For complete servicing, you need to understand three basic mechanisms: pushbutton switched; selector-cam switched; and slot-loading [Staar]. Part 3 takes you through the assemblies and operation of pushbutton machines. Features of several machines have been included so you can deal with many different brands and models.



Step 1. Every cassette machine has three tape-drive functions: Fast-Forward, Rewind, and Play. Recording is just an electronic variation of Play. To analyze faults in a machine, you must concentrate on which assemblies work in each function. Perhaps you can pinpoint the defective assembly without having to tear into the whole mechanism. Consider Play operation first. Pressing the Play button affects several assemblies: (1) a power switch closes, energizing the motor; (2) a brake plate slides back, releasing both supply and takeup spindles; (3) erase and play heads move into the cassette and press against the tape; (4) the pinch roller presses the tape to the rotating capstan, to draw tape past the heads; and (5) a drive idler presses against the forward (takeup) spindle, which winds up the tape as it leaves the capstan. If any one of these movements is wrong, correct it before you look for other troubles.

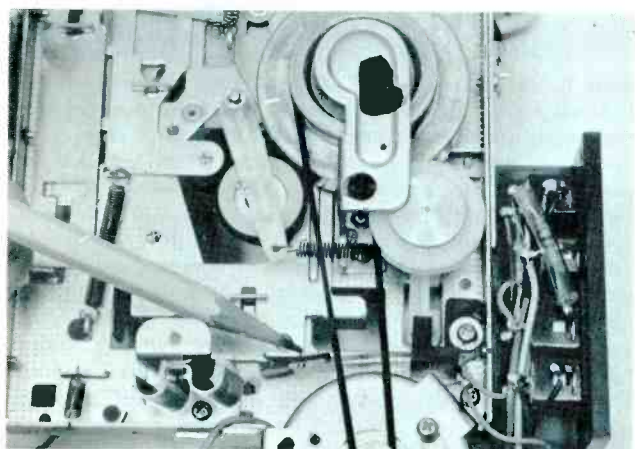


Step 2. A rubber belt from the motor pulley drives the fly-wheel. Usually, it also passes over and turns the takeup-clutch pulley assembly. This drive tries to turn the forward spindle slightly faster than the tape reaches it from the capstan. But a clutch system allows slippage, so the tugging doesn't stretch or break the tape. To assess takeup clutch operation, grasp and hold the turning spindle momentarily. Then turn it loose and see if it takes up the slack tape smoothly and without bouncing. If takeup seems erratic, the tension spring that holds the takeup pulley against the drive belt might be weak. Or, the felt clutch might be worn or matted. Try a new assembly (this one doesn't come apart). The cause of excessive takeup bounce probably is binding of the takeup-clutch pulley; again, a new one is the best cure.

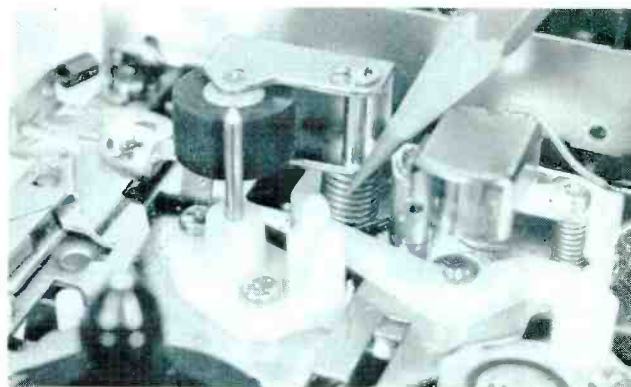


Step 3. Here's a brake plate that hangs **below** the base plate (they're usually on top). Two tabs protrude above the baseplate. A spring holds the plate so the tabs normally press against the spindles. Any one of three levers, pivoted by the button for either Play, Fast-Forward, or Rewind, forces the brake plate back to move the tabs away from the spindles. Braking can be checked best from Fast-Forward or Rewind, since the spindles turn faster than in Play. With the machine running in either fast-wind mode, punch the Stop button. If the spindles don't stop instantly, the brakes are not doing their job properly. The spring could be weak or slipped, or the plate might be binding on its mountings.

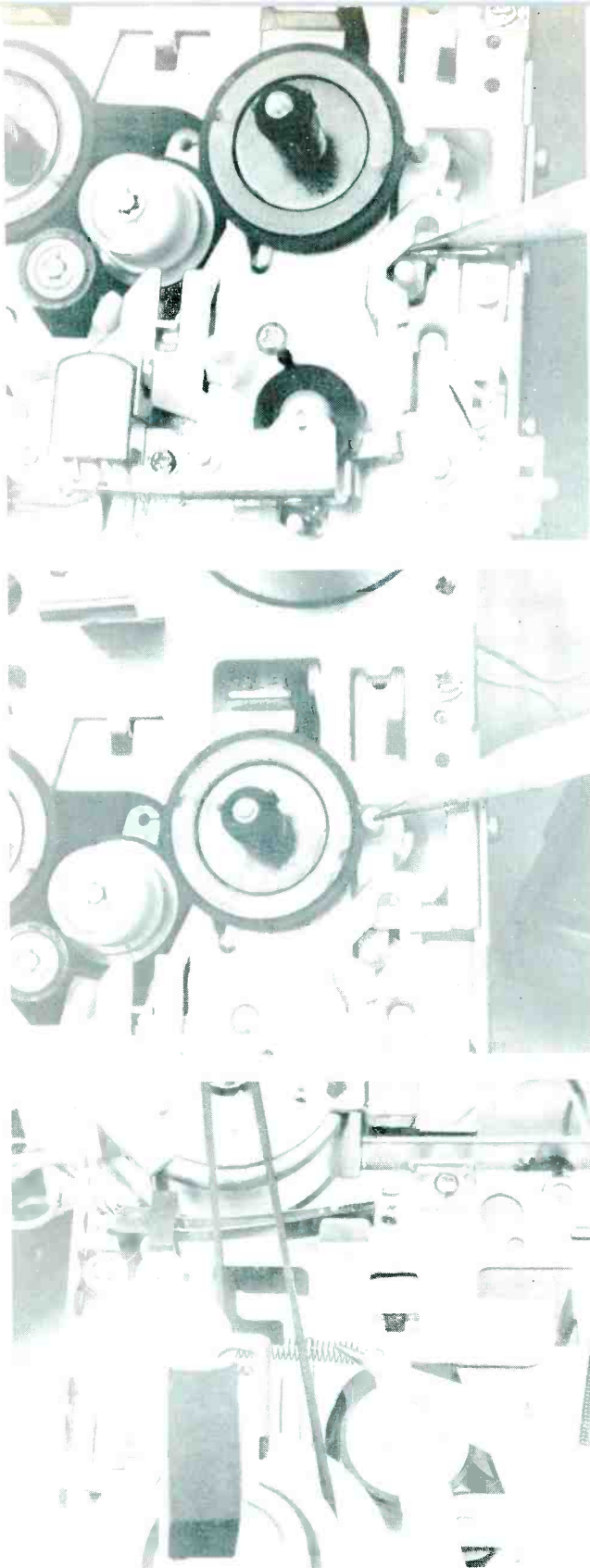
Step 5. The Play-button lever pushes the head plate, pressing the heads in against the tape. Suspect that the heads go too far into the cassette, if you find one of these symptoms: (1) tapes squeak; (2) tapes twist or break; (3) cassettes feed erratically; or (4) pressure pad and spring in cassettes repeatedly become damaged. Heads also wear out fast, but that takes a while to spot. On the other hand, the head plate might not move in far enough for good head-to-tape contact. Volume on playback is weak, and recording erase is poor. The fault could lie in a bent head plate or guides (or a bent Play slide, on some machines). The head-plate spring might be missing or unhooked.



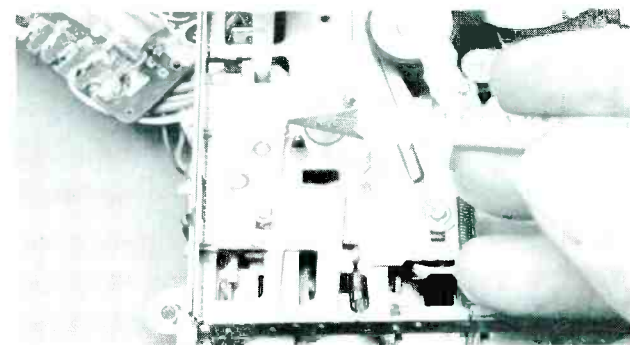
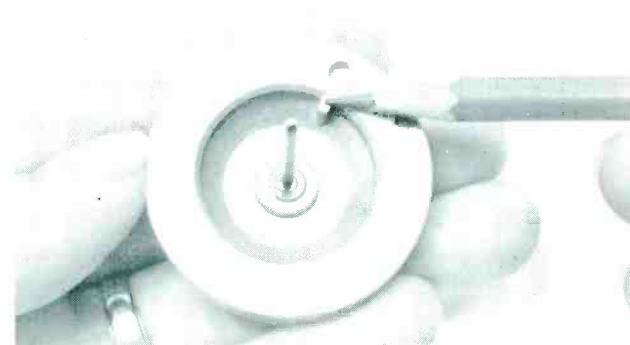
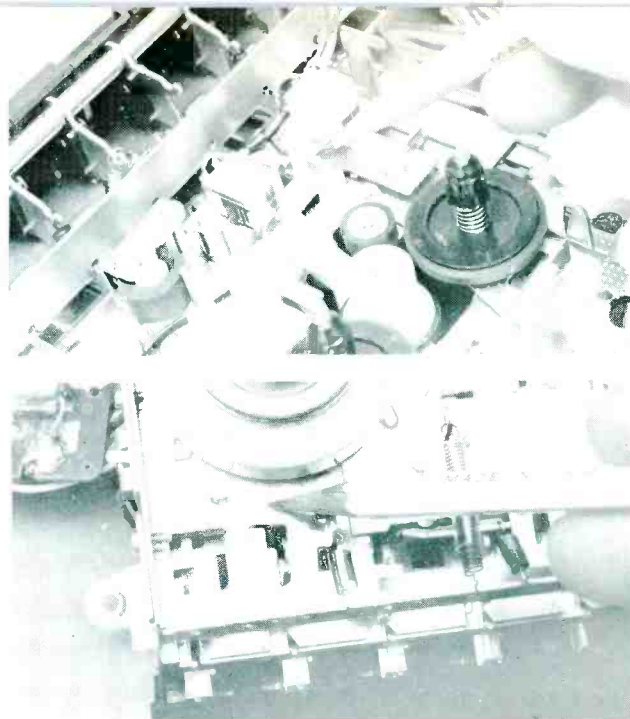
Step 4. On this machine, the brake plate also presses against the power switch when you select Play, Fast-Forward, or Rewind. If the plate doesn't move back far enough, the switch might not close; the motor won't start. Check the button-lever tabs for wear. Also, see that the switch leaves haven't been bent.



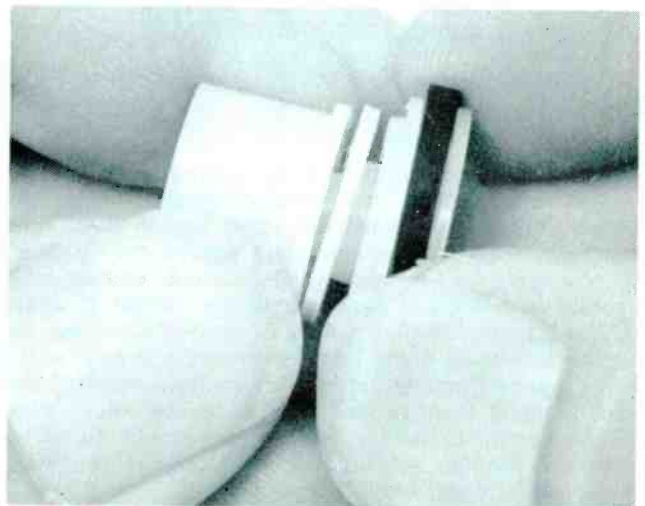
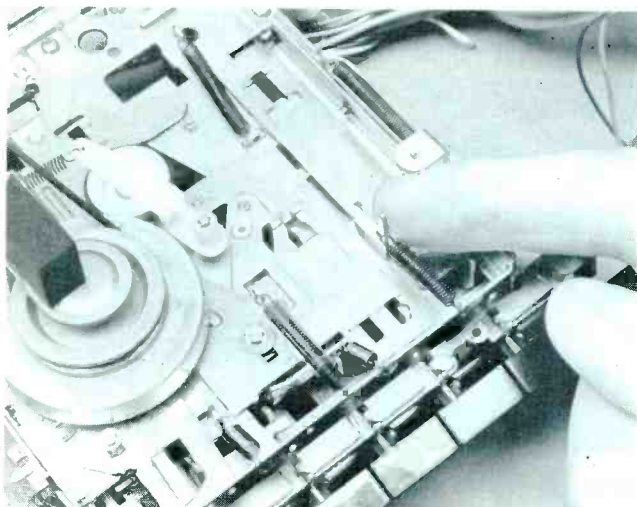
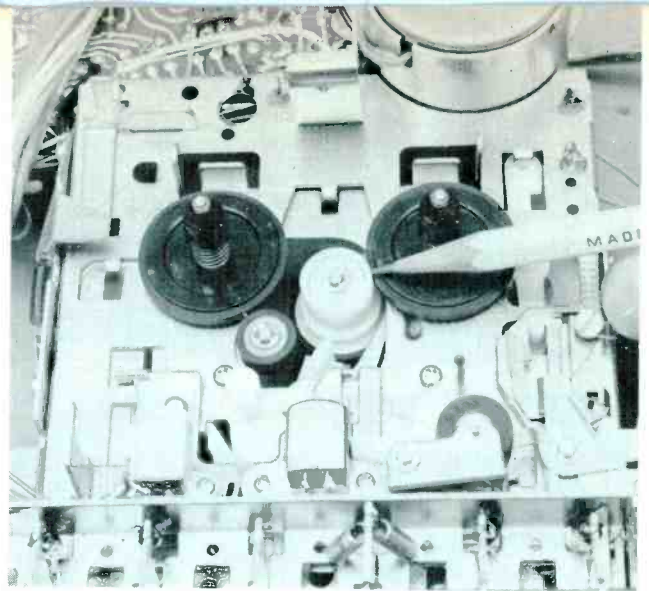
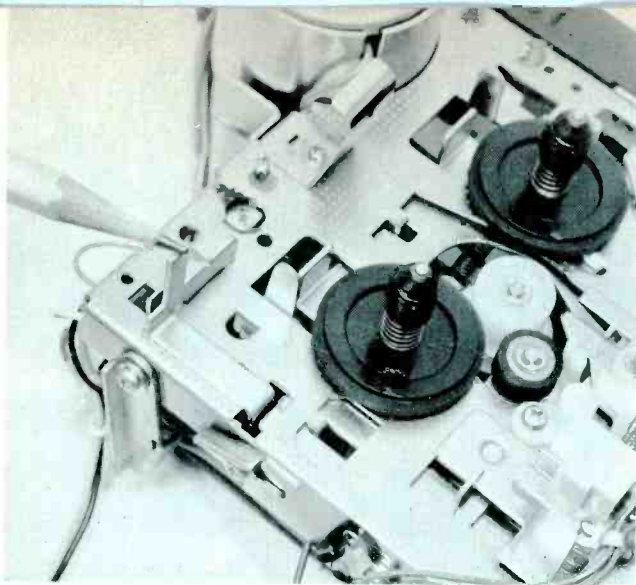
Step 6. The pinch roller, mounted on the movable plate with the heads, moves forward for Play and presses against the rotating capstan. A spring determines the pressure. With tension too light, the tape can pull through erratically, or not at all. If the roller presses too hard, the capstan digs into the rubber surface, soon ruining the roller. In either case, adjust the roller-tension spring (explained in Session 2).



Step 7. In playback operation, a cam surface that's part of the head plate allows a spring-loaded arm to pivot, pressing the takeup idler against the rubber rim of the forward spindle. On this machine, one spring applies idler tension for both takeup and fast-wind assemblies. In fact, it stretches between the two. If the takeup idler fails to press hard enough on the spindle, the tape might not wind up fast enough and can spill out of the cassette. The cure is a new spring. Don't try to cut and bend the old one. You'll never get idler pressure right that way.

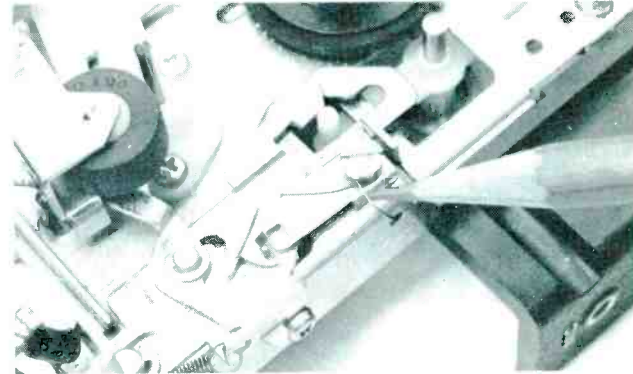
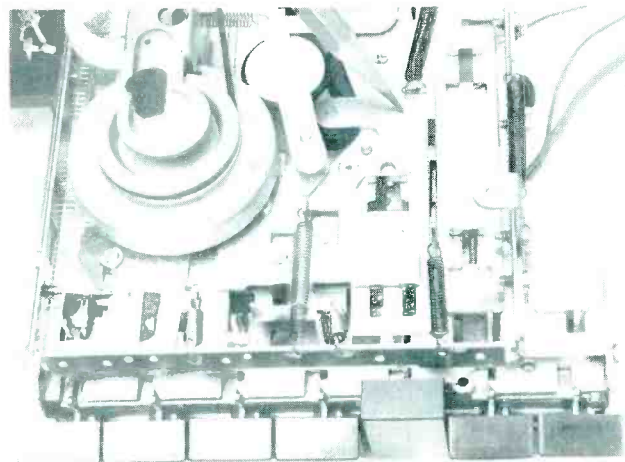
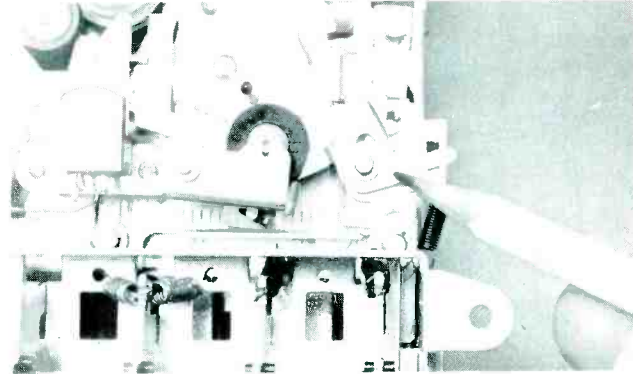
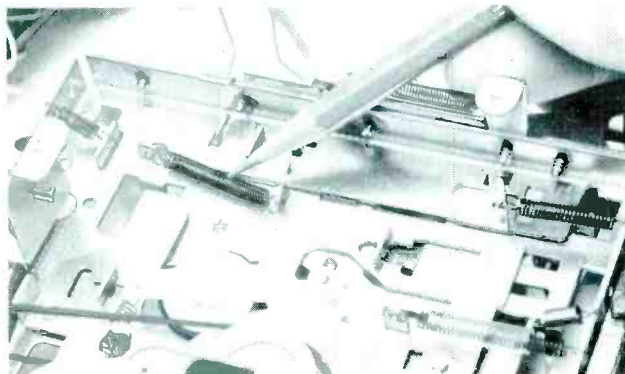
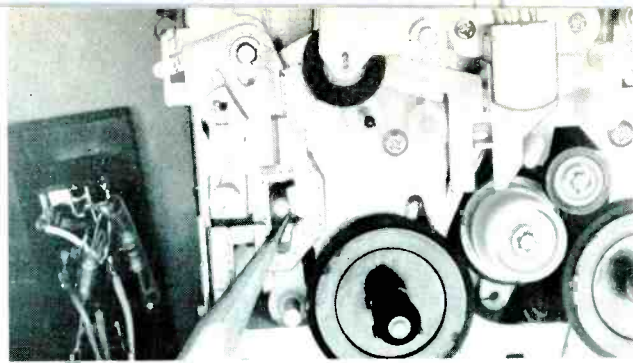
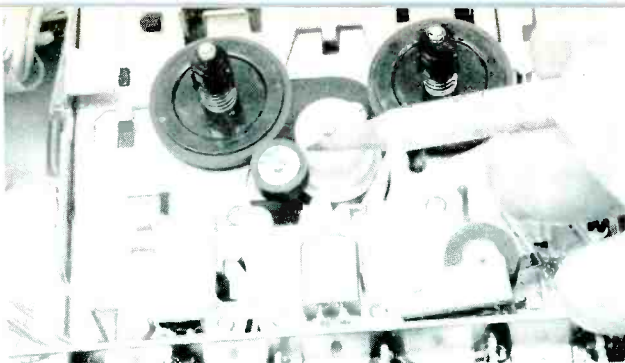


Step 8. An automatic-shutoff actuator also mounts on the head plate of some models. The tape, moving past the heads, presses against the actuator. The tape is not very taut, and bends inward slightly. When the tape has played out, the supply spindle stops rotating. Yet, the takeup spindle keeps pulling on the tape. This increased tension of the tape (how taut is determined by takeup-clutch slippage) pivots the actuator, moving a shutoff slide below the baseplate. A protrusion on the turning flywheel catches a tab on this shutoff slide, pulling the slide well forward. The other end of the slide catches and tugs on the Stop-button lever. The latch plate releases the depressed Play button, and the mechanism returns to Stop. To analyze automatic shutoff operation, momentarily push the actuator back toward the pushbuttons. If the machine doesn't shut off, hunt for binding in the actuator or shutoff slide. The slide might be bent or otherwise damaged. Remove the flywheel and check the tab on the shutoff slide; sometimes it gets bent or broken off.



Step 9. The anti-record feature prevents accidental erasing and recording of a prerecorded tape. An anti-record lever has to pivot (or slide) backward before you can push the Record button down. Blank cassettes push the anti-record lever when you put the cassette in. If tabs on the rear of the cassette have been punched out (prerecorded cassettes come with them out), a spring keeps the anti-record lever in the safety position, blocking the Record slide. Thus, you can't record the tape. If you can push the Record button down with no cassette on the machine, the anti-record lever is not doing what it's supposed to. Suspect its tension spring, or a bent or binding lever.

Step 10. The fast-wind drive wheel of this machine contains its own clutch assembly. A felt ring fits between a rubber-rimmed inner spindle and a long, cylindrical wheel. When you push the Fast-Forward button, a takeup/fast-wind spring holds the rubber-rimmed idler against the flywheel. The cylindrical idler presses against the forward spindle (which is above the baseplate) and turns it. If the takeup spindle turns erratically or too slowly, look for one of these possible faults: (1) tension spring weak or unhooked; (2) worn felt; (3) dirty or greasy surfaces on flywheel or clutch; or (4) binding slide on which the clutch assembly mounts. If the felt clutch is to blame, replace the whole assembly. You can't disassemble it.



Step 11. The fast-wind clutch assembly for fast-forward operation works also for Rewind. When you depress the Rewind button, the cylindrical wheel doesn't move, but the lower rubber-rim spindle stays against the flywheel. At the same time, a spring pulls a rubber-rimmed idler (above the baseplate) against both the cylindrical wheel and the supply (rewind) spindle. This turns the spindle rapidly backward. If you find fast-forward operation okay, but the supply spindle rotates erratically for Rewind, the pull-in spring could be weak or missing, the rewind slide might be stuck, or the rewind idler could be dirty, greasy, or binding. Any other defect would likely show up with Fast Forward, too.

Step 12. Pause controls work only during playback or recording. Pressing the Pause button on this machine moves a slide that pivots the takeup drive idler away from the forward spindle. At the same time, the slide pivots another small lever that pulls the pinch roller back from the capstan, releasing the tape. The heads and brake tabs usually stay in playing position. A spring and plate latch the Pause slide. When you press the Pause button again, the spring toggles the latch plate the other way, releasing the slide. The mechanism returns to playback or recording position. If the Pause button doesn't latch down, or doesn't pop back up when you push it the second time, the latch-plate spring is probably the culprit. A warped cam on the Pause slide might miss pulling the takeup idler away from the spindle. The pinch roller can't pull back properly if the pivot lever is bent.

Next Month

In Part 3 of the Cassette Workshop, you've learned how the assemblies of the pushbutton (piano-key) machine work. Details of the other two common types of cassette mechanisms will be presented next month in the final session. □

READER SERVICE CARD Electronic Servicing

Use the handy card below to obtain free catalogs and literature . . . and to subscribe or renew your subscription.

Read instructions carefully.

As a service to its readers, ELECTRONIC SERVICING makes the card below available for your convenience in obtaining current manufacturer's literature.

To use the card, simply:

- Circle the numbers corresponding to the numbers of the items about which you would like to receive additional information.
- Print your name and address and check your occupation.
- Include ZIP code—requests may not be filled without it.
- Tear out lower half of this insert and place in mailbox.

Note the deadline date—Requests received after this cannot be filled.

▼ Free catalogs & literature

Subscribe or renew your present subscription to the nation's favorite electronic servicing magazine . . . ELECTRONIC SERVICING (formerly PF REPORTER).

Now with expanded editorial coverage of the entire electronic servicing business, ELECTRONIC SERVICING is more valuable to you than ever! Monthly it brings you the latest solutions to service problems on home entertainment electronics, including concise, timely coverage of new testing methods, product reports and practical service procedures!

Start ELECTRONIC SERVICING coming by sending in this order form . . . TODAY!

▼ Subscription offer

JANUARY, 1975
OFFER EXPIRES APRIL 1, 1975

Please indicate number of items you have circled →

1 2 3 4 5 6 7 8 9 10 11 12 13 14 15 16 17 18
19 20 21 22 23 24 25 26 27 28 29 30 31 32 33 34 35 36
37 38 39 40 41 42 43 44 45 46 47 48 49 50 51 52 53 54
55 56 57 58 59 60 61 62 63 64 65 66 67 68 69 70 71 72
73 74 75 76 77 78 79 80 81 82 83 84 85 86 87 88 89 90
91 92 93 94 95 96 97 98 99 100 101 102 103 104 105 106 107 108
109 110 111 112 113 114 115 116 117 118 119 120 121 122 123 124 125 126
127 128 129 130 131 132 133 134 135 136 137 138 139 140 141 142 143 144
145 146 147 148 149 150 151 152 153 154 155 156 157 158 159 160 161 162
163 164 165 166 167 168 169 170 171 172 173 174 175 176

Print plainly or type below:

Name

Firm

Firm Address

City State Zip

Did you receive this issue through Distributor Subscription

Subscription Offer

Enter my subscription to ELECTRONIC SERVICING

3 Years \$13.00 2 Years \$10.00 1 Year \$6.00

Bill Me Remittance Enclosed Extend Present Subscription

IMPORTANT! Please check your business classification.

Type of Business

Position

Check One

Check One

- | | |
|---|--|
| A. <input type="checkbox"/> Independent Electronic Service Organization | H. <input type="checkbox"/> Owner, Manager |
| B. <input type="checkbox"/> Retailer with Electronic Service Department. | I. <input type="checkbox"/> Ser. Manager |
| C. <input type="checkbox"/> Independent or Self-Employed Service Technician | J. <input type="checkbox"/> Technician |
| D. <input type="checkbox"/> Electronics, Radio, TV Manufacturer | K. <input type="checkbox"/> Other |
| E. <input type="checkbox"/> Industrial Electronic Service | |
| F. <input type="checkbox"/> Wholesale, Jobber, Distributor | |
| G. <input type="checkbox"/> Other (Specify) | |

Be sure you have checked one box in each column above!

WRITING TO **Electronic Servicing?**

Help us prevent delay

If your comment or question is about . . .

YOUR SUBSCRIPTION

Changes of address or any questions about your subscription should be sent to the address at right. Please advise us of a change of address at least 4-6 weeks in advance of your move, if possible.



Evelyn Rogers, Circulation Manag
ELECTRONIC SERVICING
1014 Wyandotte St.
Kansas City, Mo. 64105

ANY OTHER SUBJECT

If you have a comment or question about an article, condition in the industry, a service tip or problem, need a part or schematic, or would like to pass along information about an industry oriented event, etc., write to:



Carl Babcoke, Managing Editor
ELECTRONIC SERVICING
1014 Wyandotte St.
Kansas City, Mo. 64105

PLACE
FIRST CLASS
POSTAGE
HERE

Electronic Servicing

P.O. Box 2512

Clinton, Iowa 52732

Index of 1974 articles

LIST OF TITLES

All Around Electronics (puzzle)	Dec. 52
Avoid Un-needed Picture Tubes	Oct. 28
Bad Day At Service Bench	Dec. 20
Cable Or TV?	May 52
Cures of Trapezoids	Jan. 26
Currently Puzzled? (puzzle)	Oct. 33
Delco AM/FM/Stereo Radios	Jun. 38
Digital Multimeters	Mar. 14
Electronics...Medicine's Helper	Feb. 14
Expanding Into CB Service	Nov. 26
Faster Repairs of "Dogs"	Feb. 28
Fun Around Ohm (puzzle)	Jul. 48
Get More Work From Your Employees	Dec. 18
Getting Started With Medical Equipment	Sep. 32
Golden Age Theme	Jan. 16
Have Time for an Injury?	Mar. 33
Home TV Reception From Satellites!	Jul. 12
Horizontal Sweep Revisited, Part 2	Jan. 20
How To Shop For Money	Jun. 14
I'd Rather "Switch" Than Fight	May 50
I'm Just A Shade-Tree Technician	Nov. 13
Index of 1973 Articles	Jan. 35
Interlaced Scanning...Fact or Myth?	Aug. 12
It Was Only A Tube!	May 32
Motorola AGC Problems, Part 1	Jul. 20
Motorola AGC Problems, Part 2	Sep. 16
Multiple Scopes For Classes	May 44
Nitty Gritty Of Installing Antennas	May 36
Other Side Of Warranty	Oct. 12
Practical Way Of Installing Antenna Towers	Apr. 14
Prevent Those Costly Callbacks	Feb. 44
Pricing And Selling MATV Systems	Jun. 45
Professional Practices for MATV Installations	Oct. 38
Profitable Intermittents	Oct. 46
Profitable MATV Repairs	Dec. 26
Rare Cases Of SCR-Sweep Defects	Oct. 14
Record Changer Workshop, Part 3	Jan. 40
Record Changer Workshop, Part 4	Feb. 46
Repairs For RCA Solid-State Vertical	Jun. 16
Repairs Of Marine Radios	Jul. 43
Safety...The Ignored Subject	Mar. 28
Servicing AGC in RCA Portables	Feb. 22
Servicing A Horizontal Module	Sep. 22
Servicing Calculators, Part 1	Mar. 42
Servicing Calculators, Part 2	Apr. 36
Servicing Video Tape Recorders, Part 1	Dec. 12
Servicing Zenith Color TV's	Jul. 36
Sixty-seven Years Of "Know-How"	Aug. 20
Symptoms From "Fail-Safe", Part 1	Mar. 36
Symptoms From "Fail-Safe", Part 2	Apr. 30
Tax Deduction For Your "Home" Office	Apr. 24
Tracking Down Regulator Problems	Nov. 30
Transistor Repairs...The Hard Way	Oct. 24
Transistor Replacement Chart	Apr. 35

TV Instructor Advises Beginners	Aug. 24
Type Of Business Best For You?	Jul. 18
Understanding New Zenith Remotes	May 16
Vertical Trouble Not A Vertical Trouble?	Apr. 28
Warranty Discussion Roundup	Sep. 12
Wife To Widow	Nov. 12
Workshop On Cassettes, Part 1	Nov. 20
Workshop On Cassettes, Part 2	Dec. 35
Workshop On Tape Recorders, Part 1	Jun. 24
Workshop On Tape Recorders, Part 2	Jul. 28
Workshop On Tape Recorders, Part 3	Aug. 36

ANTENNA, MATV, CATV

Cable Or TV?	May 52
Home TV Reception From Satellites!	Jul. 12
I'd Rather "Switch" Than Fight	May 50
Nitty Gritty Of Installing Antennas	May 36
Practical Way Of Installing Antenna Towers	Apr. 14
Pricing And Selling MATV Systems	Jun. 45
Professional Practices for MATV Installations	Oct. 38
Profitable MATV Repairs	Dec. 26

AUTO ELECTRONICS

Delco AM/FM/Stereo Radios	Jun. 38
---------------------------------	---------

BUSINESS AND WARRANTY

Get More Work From Your Employees	Dec. 18
Golden Age Theme	Jan. 16
How To Shop For Money	Jun. 14
Other Side Of Warranty	Oct. 12
Prevent Those Costly Callbacks	Feb. 44
Profitable Intermittents	Oct. 46
Sixty-seven Years Of "Know-How"	Aug. 20
Tax Deduction For Your "Home" Office	Apr. 24
Type Of Business Best For You?	Jul. 18
Warranty Discussion Roundup	Sep. 12

CB AND MARINE RADIO

Expanding Into CB Service	Nov. 26
Repairs Of Marine Radios	Jul. 43

COLOR TV

Avoid Un-needed Picture Tubes	Oct. 28
Bad Day At Service Bench	Dec. 20
Cable Or TV?	May 52
Cures of Trapezoids	Jan. 26
Faster Repairs of "Dogs"	Feb. 28
Horizontal Sweep Revisited, Part 2	Jan. 20
I'd Rather "Switch" Than Fight	May 50
I'm Just A Shade-Tree Technician	Nov. 13
Interlaced Scanning...Fact or Myth?	Aug. 12
It Was Only A Tube!	May 32
Motorola AGC Problems, Part 1	Jul. 20
Motorola AGC Problems, Part 2	Sep. 16
Rare Cases Of SCR-Sweep Defects	Oct. 14
Repairs For RCA Solid-State Vertical	Jun. 16

Servicing AGC in RCA Portables	Feb. 22
Servicing A Horizontal Module	Sep. 22
Servicing Zenith Color TV's	Jul. 36
Symptoms From "Fail-Safe", Part 1	Mar. 36
Symptoms From "Fail-Safe", Part 2	Apr. 30
Tracking Down Regulator Problems	Nov. 30
TV Instructor Advises Beginners	Aug. 24
Understanding New Zenith Remotes	May 16
Vertical Trouble Not A Vertical Trouble?	Apr. 28

DIGITAL LOGIC OR EQUIPMENT

Digital Multimeters	Mar. 14
Servicing Calculators, Part 1	Mar. 42
Servicing Calculators, Part 2	Apr. 36
Understanding New Zenith Remotes	May 16

HORIZONTAL AND HIGH VOLTAGE

Cures of Trapezoids	Jan. 26
Faster Repairs of "Dogs"	Feb. 28
Horizontal Sweep Revisited, Part 2	Jan. 20
I'm Just A Shade-Tree Technician	Nov. 13
Rare Cases Of SCR-Sweep Defects	Oct. 14
Servicing A Horizontal Module	Sep. 22
Servicing Zenith Color TV's	Jul. 36
Symptoms From "Fail-Safe", Part 1	Mar. 36
Tracking Down Regulator Problems	Nov. 30

MISCELLANEOUS

Electronics...Medicine's Helper	Feb. 14
Getting Started With Medical Equipment	Sep. 32
Have Time for an Injury?	Mar. 33
Safety...The Ignored Subject	Mar. 28
Index of 1973 Articles	Jan. 35
Multiple Scopes For Classes	May 44
Wife To Widow	Nov. 12

PUZZLES

All Around Electronics	Dec. 52
Currently Puzzled?	Oct. 33
Fun Around Ohm	Jul. 48

REPORTS FROM THE TEST LAB

B&K Dynascan Model 282 DMM	Sep. 28
B & K Dynascan Model E-310B audio generator	May 28
Data Technology Model 21 DMM	Oct. 34
Castle TV Master Subber Mark V	Jun. 36
Sencore Model TC28 tube and transistor tester	Dec. 42
Simpson Scope Model 455	Oct. 34
Tequipment D61 scope	Aug. 30
Wayne Model WT2A transistor tester	Nov. 40

SOLID STATE

Delco AM/FM/Stereo Radios	Jun. 38
Digital Multimeters	Mar. 14
Motorola AGC Problems, Part 2	Sep. 16
Multiple Scopes For Classes	May 44
Rare Cases Of SCR-Sweep Defects	Oct. 14
Repairs For RCA Solid-State Vertical	Jun. 16
Repairs Of Marine Radios	Jul. 43
Servicing A Horizontal Module	Sep. 22
Servicing AGC IN RCA Portables	Feb. 22
Servicing Calculators, Part 1	Mar. 42
Servicing Calculators, Part 2	Apr. 36
Servicing Zenith Color TV's	Jul. 36
Transistor Repairs...The Hard Way	Oct. 24
Transistor Replacement Chart	Apr. 35
Understanding New Zenith Remotes	May 16

TEST EQUIPMENT

Digital Multimeters	Mar. 14
Multiple Scopes For Classes	May 44

VERTICAL SWEEP

Bad Day At Service Bench	Dec. 20
It Was Only A Tube!	May 32
Repairs For RCA Solid-State Vertical	Jun. 16
Vertical Trouble Not A Vertical Trouble?	Apr. 28

WORKSHOPS

Record Changer Workshop, Part 3	Jan. 40
Record Changer Workshop, Part 4	Feb. 46
Workshop On Cassettes, Part 1	Nov. 20
Workshop On Cassettes, Part 2	Dec. 35
Workshop On Tape Recorders, Part 1	Jun. 24
Workshop On Tape Recorders, Part 2	Jul. 28
Workshop On Tape Recorders, Part 3	Aug. 36

SIGNATURE PATTERNS

General Electric JA Chassis	Mar. 46
Philco-Ford 3CR41 Chassis	Apr. 26
Magnavox T989 Chassis	Sep. 39
Magnavox T979 Chassis	Jan. 31
Sylvania EO3, EO4, EO5 Chassis	Feb. 34
Zenith 17EC45/19EC45 Chassis	Jun. 33

TROUBLESHOOTING TIPS

ADMIRAL

G13 weak horizontal locking	Sep. 10
G13 intermittent buzz in sound	Mar. 12
K16 brightness problem from HV regulation	Nov. 10

CURTIS MATHES

CMC24 intermittent focus and brightness	May 12
---	--------

EMERSON

120883 blooming picture	Jul. 11
-------------------------------	---------

GENERAL ELECTRIC

A-2 small picture	Mar. 12
C-1 vertical problem from HV regulator	Nov. 10
HC dark picture	Apr. 10

PACKARD BELL

CRQ312 small picture	Jul. 10
98C19 buzz in the sound	Jul. 11

PANASONIC

B-W no HV or horizontal tearing	Sep. 11
---------------------------------------	---------

PHILCO

19QT87 intermittent HV	Oct. 10
------------------------------	---------

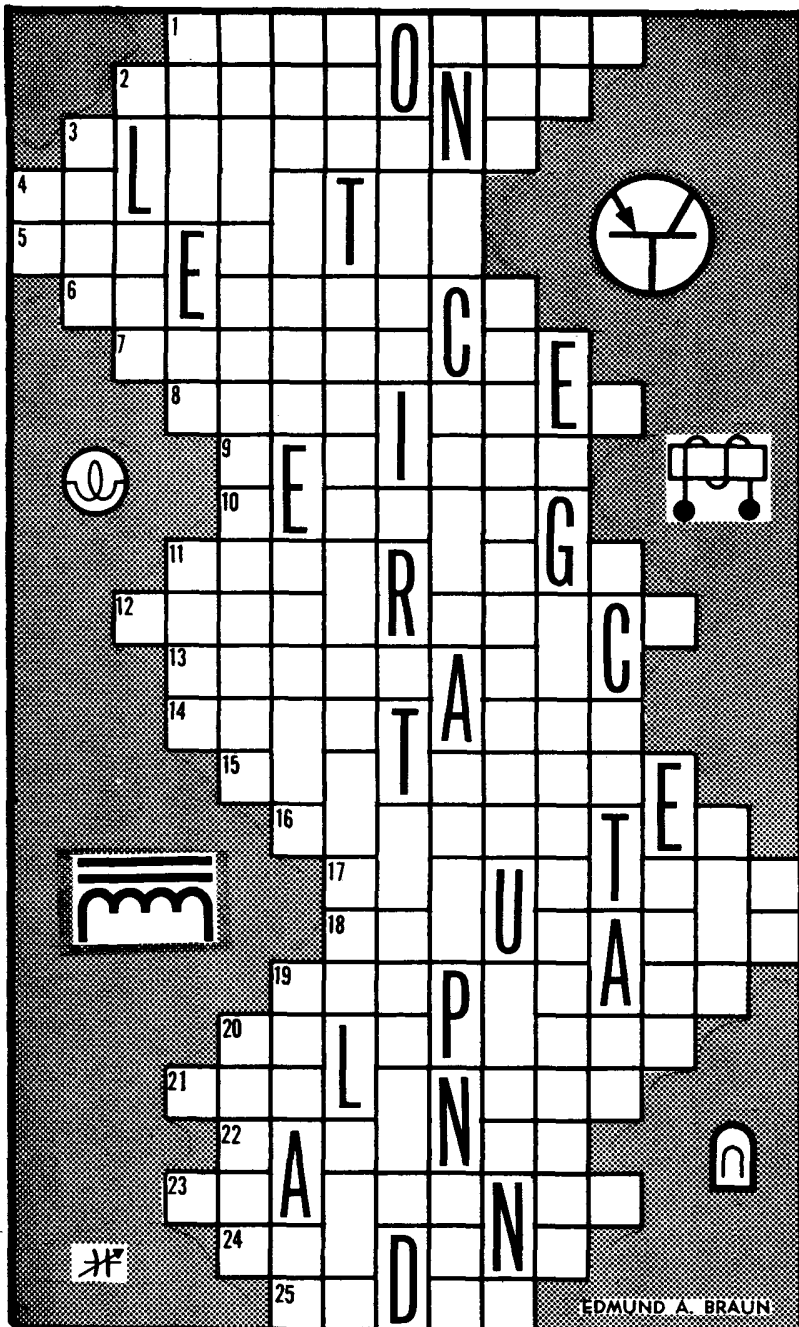
RCA

CTC12A cure for blooming	Feb. 11
CTC16 intermittent height	May 12
CTC31 no raster, open contrast control	Apr. 10
CTC31A no color, excessive brightness	Mar. 11
CTC48 no picture, no sound	Feb. 11
CTC50XP vertical non-linearity	Jan. 11
CTC51 no video	Feb. 10
CTC51 intermittent horizontal and locking	Aug. 10
CTC53 purple screen and noise in color	Jan. 9
CTC59 no color	Feb. 10
CTC62 slow warmup	Jan. 53

SEARS			
562.10481 overload and vertical lines	Nov.	11	
SHARP			
CY61PC snowy picture	Jan.	10	
SILVERTONE			
528.72660 low voltage, no sound or picture	Dec.	8	
SYLVANIA			
D14 intermittent color and locking	Aug.	10	
D16 low sensitivity	Apr.	9	
D18 insufficient height	Mar.	12	
EO1 intermittent raster	Jul.	10	
TELEDYNE PACKARD BELL			
98C9 no high voltage, then poor linearity	Apr.	9	
WARDS			
Airline GC112420E tripping circuit breaker	Aug.	10	
ZENITH			
4B25C19 no brightness	Oct.	10	
12B8C15 intermittent picture and sound	Nov.	10	
14L36 bend at the top of the picture	Feb.	10	
16Z8C50 insufficient height	Dec.	8	
20Y1C50 erratic height	May	10	
25CC50 rapid width changes	May	11	
25CC50 intermittent picture	Aug.	10	
25DC56 intermittent hum bars	Jan.	10	
25DC56 no sound, no raster	Apr.	10	
25DC57 intermittent brightness	Sep.	10	
ADMIRAL			
SYMCURE			
H10 vertical hold control at one end	Apr.	8	
K10 raster, but no picture; might be intermittent	Apr.	8	
K16 no control of brightness	Feb.	8	
K19 insufficient height at bottom, poor R-G convergence	Feb.	8	
CURTIS MATHES			
Compression at bottom of picture	Nov.	8	
C-51 HV Protect activates falsely with weak signal	Nov.	8	
C-51 reduced height	Nov.	8	
C-51 right half of lines missing in service position	Nov.	8	
CMC-51 horizontal output transistor fails periodically	Nov.	8	
CMC-51 snowy picture, reduced height, low brightness	Nov.	8	
GENERAL ELECTRIC			
KC no color, or intermittent color	Apr.	8	
GTE SYLVANIA			
No picture, or weak contrast	Jun.	8	
D16 horizontal hold control has no effect	Aug.	8	
D16 intermittent loss of green from raster	Aug.	8	
D16 no color, weak sensitivity	Aug.	8	
D16 no vertical or horizontal sync	Aug.	8	
D18 left edge of screen is green	Aug.	8	
D19 low brightness, poor color	Aug.	8	
MAGNAVOX			
T920 no high voltage, output plate red	Apr.	8	
T936 weak locking on some channels	Jan.	8	
T940 intermittent loss of color	Jun.	8	
T940 low brightness at turn on, or after operation	Jun.	8	
T958 failure of 5-amp fuse	Jan.	8	
MOTOROLA			
18TS929 movement of IF/audio panel changes brightness	Jun.	8	
TS915, TS919 arcing around focus plug on HV cage	Jun.	8	
TS915, TS919 intermittent focus, loss of brightness	Sep.	8	
TS929 no raster, HV okay	Jun.	8	
TS929, TS934 hum bars in picture	Sep.	8	
TS929, TS934 loud arcing	Sep.	8	
TS929, TS934 picture stretched at top	Sep.	8	
TS929, TS934 slight compression at top and bottom	Sep.	8	
TS929, TS934 vertical bar of noise on left side	Sep.	8	
PHILCO-FORD			
18QT85 raster, but no picture	Apr.	8	
RCA			
CTC39 high-frequency squeal	Mar.	8	
CTC40 repeated failures of SCR101	Dec.	10	
CTC46 low HV, horizontal foldover, no HV regulation	Mar.	8	
CTC46 no HV regulation, unstable horizontal locking	Mar.	8	
CTC46 no vertical sweep	Dec.	10	
CTC46 repeated failures of vertical output transistor	Mar.	8	
CTC48 circuit breaker open shortly after turn-on	Dec.	10	
CTC48 circuit breaker trips, excessive CRT screen voltage	Jul.	8	
CTC48 no raster, R5 burns	Jul.	8	
CTC48 video has "S" bend vertically	Mar.	8	
CTC49 high frequency squeal from horizontal sweep	Dec.	10	
CTC52 width in an "hourglass" shape	Mar.	8	
CTC52XAL no remote control operation	Jul.	8	
CTC54 channels continuously following channel selection	Jul.	8	
CTC58 narrow width	Dec.	10	
CTC58 narrow width and squeal	Dec.	10	
CTC68 (CTC52) erratic on-off, or power always on	Jul.	8	
KCS172, KCS183 raster ringing at left edge of picture	Jul.	8	
SYLVANIA			
D16 low brightness	Feb.	8	
D16 no color locking	Feb.	8	
D16 poor convergence of R-G vertical lines	Feb.	8	
D17 poor horizontal locking	Jan.	8	
D17 weak color	Jan.	8	
EO2 excessive high voltage	Jan.	8	
EO2 intermittent or no color	Jan.	8	
ZENITH			
17EC45, 19EC45 no AGC action, dark picture	May	8	
17EC45, 19EC45 no raster, HV okay	May	8	
17EC45, 19EC45 no raster, dark picture no set-up line	May	8	
17EC45, 19EC45 no vertical deflection	May	8	
17EC45, 19EC45 small picture	May	8	
17EC45, 19EC45 sound too high-pitched	May	8	
23XC36 poor color locking	Apr.	8	

OUR CURRENT PUZZLER

Now that you have a few minutes to spare, have fun solving this Just-Across-Word Puzzle based on electronics. Each word is connected to the word above and below by at least one or more letters but only one is usually shown as a clue. Each correct answer is worth 4 points; a perfect score is 100. It should be fairly simple to get a high rating except perhaps for someone who thinks "pawl" refers to Revere, or that "exciter" is a nicely shaped gal in a bikini! So sharpen your pencil and give it a try. by Edmund A. Braun.



1. Gradual destruction of metal by atmosphere, moisture, or other agents.
2. Small telephone receivers attached over the head, either single or in pairs.
3. Adjustment of a system's components for proper relationship.
4. Pertaining to a type of spring clip with long, metal, meshing jaws.
5. Rotating machine which converts mechanical energy into electrical energy.
6. Number of complete cycles per second of an alternating current.
7. A thousand reversals of AC per second.
8. Device which increases power and/or voltage or current.
9. Unit used to express loudness or volume of sound.
10. Consolidation of two metals by application of extreme heat.
11. A removable phonograph pickup.
12. Branch of science concerning vacuum tubes, photoelectric cells, etc.
13. Diagram showing circuits, parts, assemblies, etc.
14. Revolving platform used in recording and playing records.
15. Original model from which copies are made.
16. Device for changing electrical energy from one form to another as AC to DC etc.
17. Action of one conductor setting up a voltage in another without connection.
18. Device that alters amplitude or frequency of wave in accordance with speech or signal.
19. Thin, flexible sheet which vibrates when struck by sound waves.
20. This type circuit usually involves 3 alternating voltages.
21. Pertaining to the effect of absorption of radio waves normally reflected by the ionospheric layers.
22. Plastic, wood, or metal housing which protects electronic equipment.
23. Pertaining to the approximate speed of sound. (Speeds 600 to 900 MPH)
24. Transmitting, as the Morse code.
25. The horizontal dimension of a television or facsimile display.

When you finish, repeat FINISH, you'll find the solution on Page 50.

reader's exchange

Needed: Instruction book and schematic for a Hickok OS10, AF/RF oscillator. Will buy, or copy and return.

Harold Elwood
517 Melrose Avenue
South Plainfield, New Jersey 07080

Needed: Recording-and-playback head for a Webcor Model EP 2001-1C tape recorder.

R. C. Spence
2407 Brooklyn Avenue
Parkersburg, West Virginia 26101

Needed: Schematic for Musicall intercom system, Model 999.

Phillip D. Lund
220 Buena Vista
Claremont, California 91711

Needed: A power transformer for Magnavox CT-277, part number 300059-1.

Stan's TV
223 South Virginia Lee Road
Columbus, Ohio 43209

Needed: Operators Service Manual for Pyramid Model CRA-2 capacitor-resistance-analyzer.

B. W. Embree
27 Willow Avenue E.
Box 757
Souris, Manitoba ROK 2C0

Needed: Six 1L4 tubes.

Charles Anding
Box 87
Bolton, Mississippi 39041

Needed: Manual for Paco Model G-30 RF signal generator and TV/FM marker generator.

William F. Isokait
1318 Mimosa Lane
Silver Spring, Maryland 20904

Needed: Operating manual for Amphenol Model 880 Stereo Commander generator.

Philip Kennedy
5520 Fenmore Road
Indianapolis, Indiana 46208

(continued on next page)

For Sale: Antique Grunow radio Model 1151, Chassis 11A. Would like schematics and parts for old radios. Does anyone know of a club for antique-radio buffs?

W. B. Marlar
227 Griffin Road
Helena, Montana 59601

Needed: Operating manual and schematic for a 3-band Sparton AC radio model number 7BW46PA with type 7-46PA chassis. Will buy, or copy and return.

Joseph A. Owens
918 Gorsuch Avenue
Baltimore, Maryland 21218

Needed: A 25-inch color picture tube mask. Also need dial, cabinet, and parts for Hallicrafter S-47 broadcast receiver. Dial part number 22B193 and dial glass part 22B184 and frame preferred.

Don Setliff Radio
Route 1 Box 2902
Culloden, West Virginia 25510

Needed: A good used motor (1/50 HP, 1800 RPM, 3-wire) for Roberts tape recorder Model 1055.

M. R. Davis
2655 West Park Drive
Baltimore, Maryland 21207

Needed: Set of probes for Model CRO-2 Jackson scope.

James E. Boston
2505 Moorman
Cincinnati, Ohio 45206

Oneida has one of the most complete lines of **TUBE SOCKETS** in the world . . .

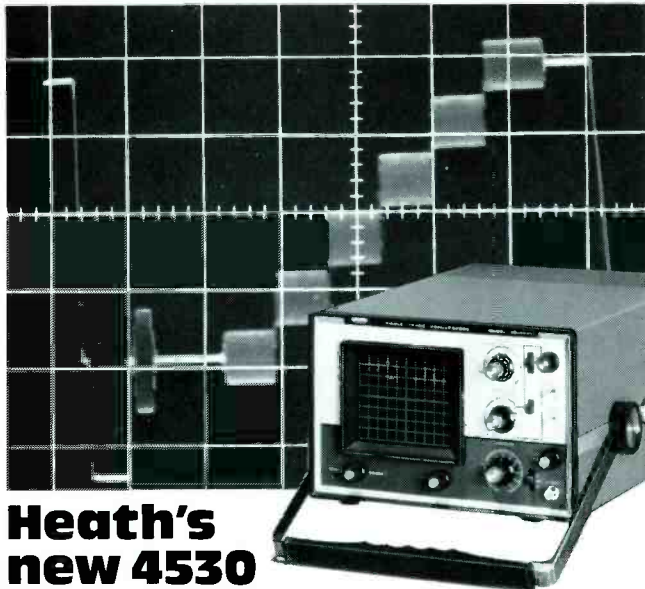
Hundreds to choose from — all major makes including full line of Zenith . . . General purpose, exact replacement, universal replacement, b/w and color assortments or individual pieces.

Send literature with details and name of nearest Distributor.

Name
Company
Address
City State Zip

Oneida ONEIDA ELECTRONIC MFG. INC.
Meadville, Pa. 16335

For More Details Circle (15) on Reply Card



Heath's new 4530

a professional TV service scope with a practical price

It's hard to find a better TV service scope value than the new Heathkit 4530. Features like TV coupling, DC-10 MHz bandwidth, wide-band triggering capability, sensitive 10 mV/cm vertical input and calibrated X-channel input make it a versatile, easy-to-use scope every service technician will appreciate.

Trigger circuits are digitally controlled, requiring only a level control and a slope switch. Various trigger signals can be selected: a sample of the vertical input signal, a sample of the line voltage or an externally applied trigger signal. In the TV trigger coupling mode, the 4530 can be easily triggered on the vertical or horizontal signal in a composite video signal such as the one shown above. Trigger bandwidths are *guaranteed* to 15 MHz, AC and DC coupled. A low-pass filter with 1 kHz cut-off is used in the TV coupling mode.

High or low frequency waveforms are no problem since the 4530's wide range of time bases can be switched from 200 ms/cm to 200 ns/cm. And any sweep can be expanded five times.

The 4530 is one of the few single trace scopes available with two input channels. For true X-Y operation, a calibrated X-input is provided with maximum sensitivity of 20 mV/cm.

The 4530 is easy to operate, easy to service and offers a lot of performance per dollar. The IO-4530 is available in easy-to-assemble kit form for only \$299.95*. Or order the factory assembled and calibrated SO-4530, just \$420.00*.



Send for your free Heath catalogs

The latest Heath/Schlumberger Assembled Instruments Catalog features a complete line of high performance, low cost instruments for service and design applications. Our '75 Heathkit Catalog describes the world's largest selection of electronic kits — including a full line of lab and service instruments. Send for your free copies today.

HEATH COMPANY
Dept. 25-1
Benton Harbor, Michigan 49022

HEATH
Schlumberger

- Please send the 1975 Heathkit Catalog.
 Please send the latest Heath/Schlumberger Assembled Instruments Catalog.

Name _____
Title _____
Company/Institution _____
Street _____
City _____ State _____ Zip _____

*MAIL ORDER PRICES; F.O.B. FACTORY.
PRICES & SPECIFICATIONS SUBJECT TO CHANGE WITHOUT NOTICE.

TE-316

(continued from previous page)

Needed: Service data/schematics for Model A-100 signal generator manufactured by Approved Electronic Instrument; also need Moss Electronic Genometer TV-50 signal generator.

David Huch
1915 "Y" Street
Omaha, Nebraska 68107

Needed: Schematic for Audio Tex pocket meter Model 30-240.

Louis Fabrizio
8750 57th Street North
Pinellas Park, Florida 33565

Needed: Names and addresses of firms selling rebuilding equipment for picture tubes.

Cristobal Ordonez
149 West 26th
Bayonne, New Jersey 07002

Magazines: Copies of PF Reporter and Electronic Servicing from May 1957 to December 1970; yours for the freight.

R. C. Spence
2407 Brooklyn Avenue
Parkersburg, West Virginia 26101

Needed: Operating manual and schematic for Paco oscilloscope Model S-55. Will pay expenses.

John M. Craddock
Box 151
Gibsonville, North Carolina 27249

For Sale: Antique tubes, Rider's radio manuals, and metal-cased capacitors (10 for \$5).

Goodwin Radio Shop
Rankin, Illinois 60960

Needed: UHF/VHF tuner for Delmonico-Nivico 9T-4 UHF TV set, Sams Photofact Folder 771-2. Tuner need not be in working condition or tubed; used one acceptable. Also, need UHF tuner (any condition) for 1950 model DuMont Teleset RA-109A (Sams Folder 7, set 110).

William M. Moran
109 Mill Street NE
Vienna, Virginia 22180

Needed: Power transformer number 2SB15086 for Model 61CA Motorola table radio. Also need schematic for a Zenith Transoceanic portable Model 151764.

Earl T. Scott
P.O. Box 171
Walnut Grove, California 95690

Needed: Schematic and service manual for Megatone Model CSR-800 combination auto 8-track AM/FM/MPX radio. Buy, or copy and return.

Homer E. McLucas
1346 Norton Street
Flint, Michigan 48507

(Continued on page 52)

test equipment report

These features supplied by the manufacturers are listed at no-charge to them as a service to our readers. If you want factory bulletins, circle the corresponding number on the Reply Card and mail it to us.

Digital Wattmeter

Model 4371 THRULINE directional high-power wattmeter is a digital insertion instrument for measuring forward or reflected CW power in coaxial transmission lines. It measures power flow under any load condition from 25 to 520 MHz and from 1 to 1000 watts in six ranges. Insertion VSWR in 50-ohm systems is 1.1, and accuracy is $\pm 5\%$ OFS. Model 4371 can be calibrated in the field to known RF power standards, eliminating weeks of transit for periodic certifications.



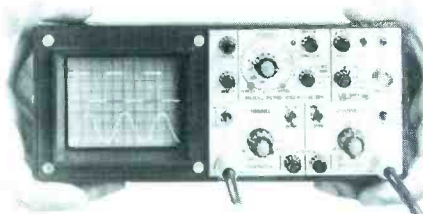
Model 4371 wattmeter from Bird Electronic Corp. sells for \$950.00.

For More Details Circle (50) on Reply Card

Dual-Trace Mini-Scope

Model PS940A mini-portable oscilloscope from **Vu-Data**, features computerized triggering. A TTL logic circuit reportedly eliminates the need for front panel adjustment to achieve a stable trace display. It is stated the DC trigger mode allows the technician to make vertical position adjustments without losing sync. The mini-scope weighs less than 10 pounds and operates from self-contained batteries. The model includes the following standard features: 20 MHz bandwidth, 10 mV/div sensitivity, a built-in delay line for use in viewing pulse-leading

edges, full dual-trace switching capability, algebraic waveform display,



low and high frequency-reject trigger modes. The price of the scope is \$1,095.

For More Details Circle (51) on Reply Card

Portable, Triggered Scope

Offering all the features normally found in higher-priced oscilloscopes, **Systems Electronics** has introduced Systems 57, a portable, wide-bandwidth, 3-inch triggered scope for \$275.00. The scope has a bandwidth of DC to 3 MHz at a high sensitivity of

20 millivolt-per-centimeter for the vertical deflection amplifier, plus horizontal sweep from $1 \mu/\text{Cm}$ to 0.5 S/Cm in 11 calibrated steps.

Plus or minus internal and external trigger modes are provided. The control panel features a metallic-brush anodized face that includes red and blue coded legends to identify the vertical and horizontal deflection controls.

Encased in an insulated protective aluminum cabinet, the lightweight (15 pounds) scope is equipped with a "comfort-grip" handle that adjusts to serve as a ready tilt-stand for improved readability at many viewing angles.

For More Details Circle (52) on Reply Card



The wattmeter measures CW, AM, FM, and SSB signals. Its digital readout is useful for production testing and continuous service applications, since the information is displayed with the decimal point in place. The readout requires no mental transposition or attention to full-scale switch position. No plug-in elements are needed; all variable measurement parameters are push-button selectable on the front panel.

FAST

COMPLETE SERVICE ON ALL MAKES OF TV TUNERS

Maximum Time In Shop 24 Hrs.

(Warranty: One Full Year) **(WE SHIP C.O.D.)
YOU PAY SHIPPING
\$9.95**



Black & White or Color

VHF or UHF

UV Combo's \$16.50

Price includes all labor and parts except Tubes, Diodes & Transistors. If combo tuner needs only one unit repaired, disassemble and ship only defective unit. Otherwise there will be a charge for a combo tuner. When sending tuners for repair, remove mounting brackets, knobs, indicator dials, remote fine tuning arrangements and remote control drive units.

WE UNCONDITIONALLY GUARANTEE All Tuners FOR ONE FULL YEAR



All tuners are serviced by EXPERTLY TRAINED TECHNICIANS with years of experience in this specialized field. All tuners are ALIGNED TO MANUFACTURER'S SPECIFICATION on crystal controlled equipment and air checked on monitor before shipping to assure that tuner is operating properly.

GEM CITY TUNER SERVICE

Box 6G Dabel Station
1621 Mardon Drive
Dayton, Ohio 45420

Solid-State RF Generator

B&K model 2050 RF signal generator from **Dynascan** is a solid-state, compact unit. The model provides three types of outputs: RF, 400-Hz modulated RF, and externally-modulated RF. Accuracy is 1.5 percent of dial setting. A combination high/low switch, plus continuously variable RF output control provides 20 dB of attenuation. Power supply is zener-regulated, and FETs are used in the RF and audio-oscillator stages for maximum linearity. The unit's applications include: AM receiver alignment, marker source for TV sweep align-

ment, RF amplifier gain test, signal tracing, and a signal source for production line and QC testing. The price of the generator is \$107.00.



For More Details Circle (53) on Reply Card

Small Digital Multimeter

A handheld digital multimeter that measures capacitance, along with AC volts, DC volts and resistance, has been introduced by **Data Technology Corporation**. Model 21 has four DC and four AC voltage ranges with 1mV resolution; four resistance ranges with 1 ohm resolution, and four capacitance ranges with 1pFd resolution. Readout is by a 3½ digit LED display.

Several features contribute to the portable operation. Power is from four NiCad batteries, which can be recharged overnight. The case is high-impact polycarbonate, and the components inside are tightly fastened down to withstand impacts and vibrations.

Model 21 is priced at \$269.00, complete with battery charger, test leads, and a belt-carrying case.

For More Details Circle (54) on Reply Card

Matcher/Reflected-Power Meters

Two matcher/reflected-power meters from **Gold Line Connector** eliminate the need for an SWR bridge. The GLC1087 is a 500-watt, 13-78 MHz unit, and the GLC1088 has a rating of 1000 watts and 144-220 MHz. By inserting the meter between the transmitter and antenna lead-in, and adjusting the tuning knobs to the lowest meter reading, reportedly an ideal match results and power loss is



minimized. The 1087 sells for \$28.95, and the 1088 sells for \$33.95.

For More Details Circle (55) on Reply Card

TeleMatic

MJ-195

MASTER TEST RIG FOR TUBE AND SOLID STATE SERVICING



- 30 KV CAPACITY
- METAL CABINET
- SPEAKER BUILT IN

- HIGH VOLTAGE METER
- STATIC CONVERGENCE
- FRONT PANEL CONNECTIONS

TeleMatic

2245 Pitkin Ave., Brooklyn, N.Y. 11207

FREE! Adaptor Quick Reference Chart

For More Details Circle (14) on Reply Card

Portable Oscilloscopes

Systems Electronics 3-inch scope, Model 37, and 5-inch scope, Model 27, feature quick-removing vinyl-finish cabinets, and a printed circuit layout for easy servicing. Both models are equipped with a "comfort-grip" handle that adjusts to three positions to serve as a ready tilt-stand.

Model 37 provides all the functional controls of a full-sized scope, yet weighs only 11 pounds. It has a 3-inch CRT, operates over a bandwidth from 5 Hz to 2.5 MHz, and is priced at \$165.00.

Model 27 features solid-state circuitry, a 5-inch CRT, bandwidth from DC to 2.5 MHz, weighs 15 pounds, and retails for \$280.00.

For More Details Circle (56) on Reply Card

CORRECTION

Price of the Wayne transistor tester mentioned on page 40 of the November, 1974 issue of *Electronic Servicing* was in error, because it was based on an earlier model. Price of the Wayne WT2A transistor tester is approximately \$150.00. □

SERVICE ASSOCIATIONS

NARDA Schools

National Appliance & Radio-TV Dealers Association (NARDA) has scheduled three 1975 Schools Of Service Management. The first will be held January 26-28 at the University of San Francisco, the second school is scheduled for Philadelphia February 9-11, and the third will operate February 23-25 at the University Of Notre Dame in Indiana. Registration fee is \$125 to NARDA members for the 3-day school; non-members pay \$185. NARDA is located at 318 West Randolph Street, Chicago, Illinois 60606.

ETA News

A newsletter from the North Carolina Electronic Technicians Association, Inc. tells of the formation of a new committee on Training And Education. Several of the local chapters have solid-state and CET training courses. There is a possibility of a one-day business-management school in cooperation with NARDA.

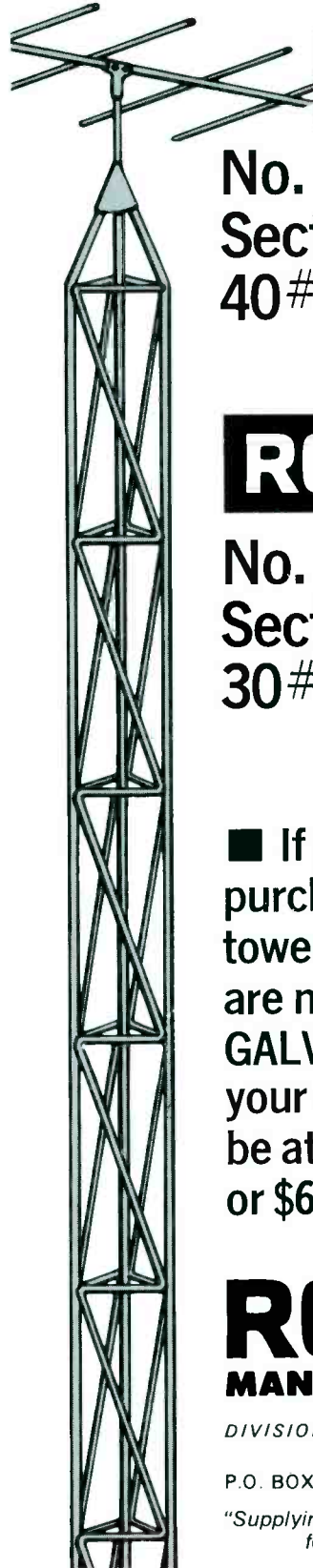
NATESA News

Two books are offered for sale by National Alliance of Television Electronic Service Associations (NATESA). "Television Service Contract Cookbook" gives answers about obtaining customers for prepaid service. "Practical Operations Manual For Independent Home-Electronics Service Business" was written by several successful servicers and gives suggestions for operating a profitable service business. Supplemental sheets for the loose-leaf book will be issued to keep it up to date. Either book can be purchased for \$15 from NATESA. The COPE program continues to expand. This seems to be a cooperative program involving most of the NATESA members in obtaining answers to modern servicing problems. Also, NATESA members can obtain the Master Charge plan for 2%, which is said to be quite a saving. Other plans about insurance, eye glasses, and auto/truck purchases are designed to save members money. NATESA headquarters is at 5908 South Troy, Chicago, Illinois 60629.

NESDA News

NESDA (National Electronic Service Dealers Association) announced during the convention in Hawaii these goals for 1975: an increase of 30% in membership; and the installation of data-processing equipment at the headquarters in Indianapolis. Other actions taken at the convention appear to reflect the problems of inflation and rising costs. Dues were increased to \$48 per year, the ISCET fee for the CET exams was raised to \$20 from the previous \$10, and a \$5 fee was established for new ISCET initiations. NESDA delegates at Hawaii voted to push for complaint arbitration on a national basis to help resolve any customer-relations problems faced by the industry. NESDA continues to schedule Business Management Schools, and to search for solutions to the urgent problems of warranty. NESDA is located at 1715 Expo Lane, Indianapolis, Indiana 46224. □

DID YOU KNOW HOT DIP GALVANIZING COSTS \$ 0.20 ^{per} pound ?



ROHN's

No. 25G Tower
Section weighs
40# x 20¢ = \$8.00

Mfg. Cost

ROHN's

No. 20G Tower
Section weighs
30# x 20¢ = \$6.00

Mfg. Cost

■ If you are purchasing towers which are not HOT DIP GALVANIZED your cost should be at least \$8.00 or \$6.00 less.

ROHN[®]

MANUFACTURING

DIVISION OF 

P.O. BOX 2000 / PEORIA, ILL. 61601

"Supplying tower needs worldwide for over 25 years."

productreport

for further information on any of the following items, circle the associated number on the reader service card.

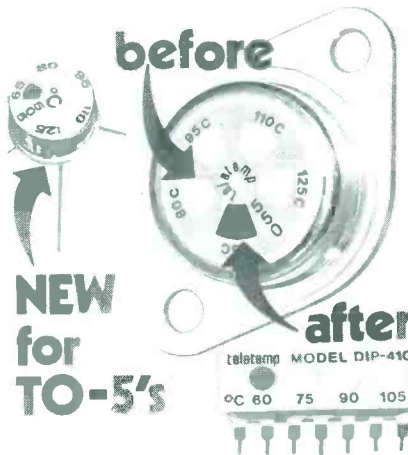
Electronic Projects Book

Thirteen easily-assembled electronic devices are featured in **Fascinating Electronic Projects**, No. FR-174, offered by **GC Electronics** for \$1.25. Included in the book are schematics and instructions for building an emergency lamp flasher, metal locator, rechargeable lantern, psychedelic lights, hobby lie detector, and others. Most are battery-operated, feature solid-state design, and can be constructed for less than \$10.00.

For More Details Circle (57) on Reply Card

Overheated Power Transistor Detector

An adhesive-backed temperature recorder capable of detecting overheated TO-5 power components has been introduced by **Telatemp**. Model 505 can be applied to the top of power transistors and other small component



packages. The unit contains five temperature increments, each calibrated at a specific value between +65°C and +125°C. These increments, or silver-colored windows, turn irreversibly black at their rated value with an accuracy of ± 1 percent. Useful in analyzing circuit and component performance, the recorders detect overheating in prototype designs during troubleshooting and testing.

For More Details Circle (58) on Reply Card

Pocket Electronic Calculator

The EL-807 from **Sharp**, features the calculator-on-substrate (COS) system and liquid-crystal display with eight extra-large numerals. In the COS system, all circuitry is integrated on a single glass plate. According to the manufacturer, COS reduces power consumption and makes possible a reduction in weight, bulk, and size. The product weighs less than eight ounces with batteries included.

The liquid-crystal display features numerals that reportedly are three times larger than most mini calculators. The unit operates up to 50 hours on two penlight batteries, and costs \$79.95.

For More Details Circle (59) on Reply Card

Tape-Player Parts Catalog

PTS Electronics offers a unique catalog, said to be the only one of its kind in the industry, that lists parts exclusively for tape players and recorders. An illustrated section helps identify the parts you need. Listings cover a full line of parts for almost all models and brands. Parts are stocked at PTS depots in Bloomington, Indiana; Springfield, Maine; and Longview, Texas.

The catalogs sell for \$2.00 each.

For More Details Circle (60) on Reply Card

Marking, Engraving Instrument

Electro Stylus Model Mark IX includes seven interchangeable points for marking metals, plastic, glass, film, etc. Precision made for delicate engraving and strong enough for marking shop tools, the model is



reportedly quiet and lightweight. Electro Stylus with a set of five standard steel points is \$19.95. Carbide point for metals is \$2.95, and a diamond point for glass cutting, \$7.95. An idea book and patterns are included.

For More Details Circle (61) on Reply Card

FM Digital Receiver

Four Nixie tubes read-out the frequency of the FM station tuned by the **Hervic Electronics Model HR-150** digital stereo receiver. RMS power output before clipping is 100 watts per channel; both tuning and signal-strength meters are provided; and the variable controls are the sliding type. There are separate bass, mid-range, and treble tone controls. The dial has continuous tuning, and fast dialing is possible because the readout is corrected 60 times per second.

Price of the solid-state Hervic Model HR-150 is \$849.95, and a walnut enclosure is available at \$44.95.

For More Details Circle (62) on Reply Card

Polaris

40 KV

DUAL RANGE

Probe

Current & Voltage Reading

For Today...
And Tomorrow!

MODEL 651 **\$29.95**

RANGE NO. 1: 40,000 VOLTS DC
RANGE NO. 2: 0-400 MA DC

Send literature and name of my distributor.

Polaris New York
2862 FULTON STREET
BROOKLYN, N.Y. 11207

Name _____

Address _____

City _____ State _____

Zip _____

For More Details Circle (16) on Reply Card

Motion-Sensor/Monitor

Motion in the picture from any video camera can be detected on the 9 inch screen of the SM-906 monitor introduced by **Javelin Electronics**. Six sensitized areas are furnished for detection, compared to one for many



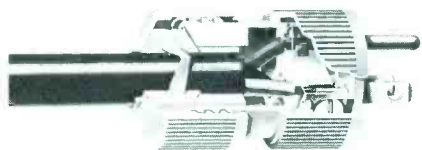
other motion sensors. No suction cups, dangling wires, or "black boxes" are necessary, and the monitor is connected into a security system the same as a conventional monitor.

A beeping signal from a built-in speaker and a flashing panel lamp indicate an alarm. In addition, there's wiring for one normally-open and one normally-closed relay contact, and an AC voltage. These all operate when the sensor is triggered.

For More Details Circle (63) on Reply Card

Gator Grip Cord

Dyna-Mate II plugs and connectors with Gator Grip cord clamp from



General Electric are designed for greater safety and fast wiring. The Gator Grip cord clamp works like a drill chuck, tightening its hold on any size electric cord with a hand twist of the PVC/ABS housing. For safety, no metal parts are exposed.

The nylon grip automatically centers the cord and holds it; but reportedly does not damage the cord, which can be released quickly by hand.

For More Details Circle (64) on Reply Card

Noisy TV Tuner Cure

An inexpensive kit designed to help solve the problem of noisy VHF turret-type TV tuners is now offered by **General Electric**. The kit includes ten foam pads and a bottle of cleaning/lubricating jelly. To use, remove the tuner cover and affix the foam pad on the inside of the cover where the pad will lightly wipe all tuner contacts when they are revolved. Apply a light coating of jelly, and replace the tuner cover.

For More Details Circle (65) on Reply Card

Wirewound Resistor Kit

The BW-20 1-watt molded wirewound resistor kit from **TRW Electronics Supply** offers a broad range of resistance values for replacement parts.

The TRW resistor's 1-watt rating in 1/2-watt size means the technician can replace 1-watt units and save space; or insert the resistor in 1/2-watt space with the advantages of a double safety factor plus wirewound stability.



The kit includes 20 pieces, one each of 20 values from .27 ohm to 10 ohms, with 5% tolerance and in standard EIA 10% values.

For More Details Circle (66) on Reply Card

(Continued on page 50)

**What would
you like
to read
in ES?
Send in
your ideas.**

BENCH PERFORMANCE IN YOUR POCKET



The Hickok Model 239 color bar generator has an exclusive MOS LSI chip which provides 9 Rock Stable patterns and low battery drain.

- Simplified operation with 2 matrix slide switches.
- Crystal controlled chroma and timing oscillators.
- RF adjustable Channels 2-4.
- Powered by 2 standard 9v batteries.

Plus our unique 2-year warranty.

The Hickok Pocket Model 239 or our deluxe bench Model 246 are values you have to see to appreciate. See them at your Hickok distributor or contact us for more information.

\$115⁰⁰

HICKOK

the value innovator

INSTRUMENTATION & CONTROLS DIVISION
THE HICKOK ELECTRICAL INSTRUMENT CO.
10514 Dupont Avenue • Cleveland, Ohio 44108
(216) 541-8060 • TWX: 810-421-8286

For More Details Circle (25) on Reply Card



The key component in this job is the professional ladder!

As a professional, your ladder gets rough and frequent use, so you need a product you can use confidently and comfortably. For your own safety, demand a professional ladder, with the ANSI Type I Heavy Duty rating: able to support your weight, plus 50 lbs. of tools and parts. Get it from your electronic parts distributor, who stocks Perma Power aluminum ladders, best for durability, strength, and safety.

Knowing the needs of electronic professionals, we've made this high quality professional ladder with the ruggedness and stability you require, yet light enough for one man handling.

A Perma Power ladder costs only a little more than the ladder you buy at the hardware store and replace every two or three years; but you'll probably never have to replace the Perma Power ladder. In fact, we unconditionally guarantee it for 12 full years!

Perma Power straight and extension ladders start from \$47.95 net. Ask your distributor, or write to Perma Power for free literature.



Perma Power

Chamberlain Manufacturing Corporation
Perma Power Division
845 Larch Avenue, Elmhurst, Illinois 60126
Telephone (312) 279-3600

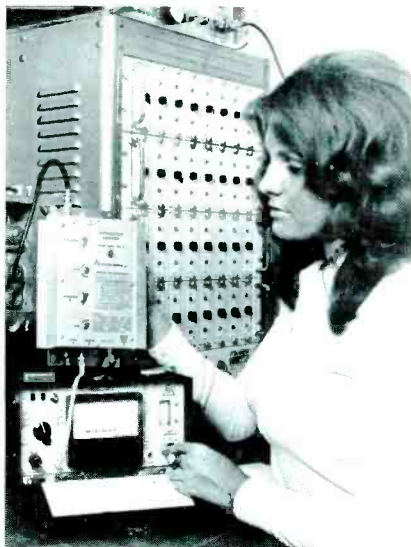
For More Details Circle (17) on Reply Card

antenna systems report

These features supplied by the manufacturers are listed at no-charge to them as a service to our readers. If you want factory bulletins, circle the corresponding number on the Reply Card and mail it to us.

MATV Distribution Amplifier

The **Delta-Benco-Cascade** Model DA-60 is a push-pull, high-output level, broadband (40-300 MHz) MATV amplifier. On a 12-channel system, the amplifier reportedly can be driven to an output of +60 dBmV without noticeable degradation of the picture quality.



Featuring a tilt control and a wide variation of gain, the DA-60 has a maximum gain of 45 dB, when the response is flat. Two switchable attenuators and a variable gain control can reduce the gain to 10 dB.

For More Details Circle (67) on Reply Card

UHF Mobile Antenna

Model ASP-830 from **The Antenna Specialists**, features more than 5 dB gain, and can handle 150 watts of RF power continuously, according to the manufacturer. The antenna maintains a VSWR of less than 1.5:1 over a wide bandwidth of at least 9 MHz, which is useful for repeater systems and broadband monitoring.

Precise phasing is said to be possible with a phasing coil assembly that is molded to a pair of 5/8-wave-length radiators.

For More Details Circle (68) on Reply Card

High Input/Output MATV Amplifier

ACA has added a high-input/high-output distribution amplifier to its MATV line. Model MSV 70 has a 3.0



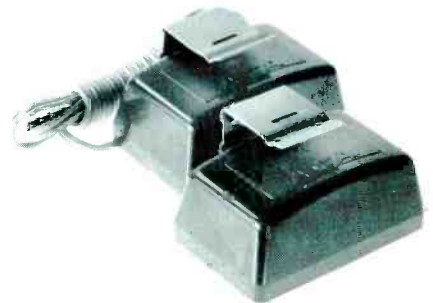
volt output with an input capability of 126,000 mV. The bandwidth covers 54 to 300 MHz, which includes CATV mid-bands and super-bands. Featured is a low noise figure of 4.1 dB, and variable gain control that allows considerably more input than the 126,000 rated input capability.

The price of the MSV 70 is less than \$125.00.

For More Details Circle (69) on Reply Card

Antenna Pre-amp

Model AA 37 antenna pre-amp from ACA has 300-ohm antenna input and 75-ohm output for use with MATV systems, or in areas with high noise



level. The model boosts the signal at the antenna where it is strongest and free from interference. Gain averages 16 dB.

For More Details Circle (70) on Reply Card

audio systems report

These features supplied by the manufacturers are listed at no-charge to them as a service to our readers. If you want factory bulletins, circle the corresponding number on the Reply Card and mail it to us.

Linear-Suspension Speaker

Model 25A from **Mitsubishi International** is a 3-way "linear"-suspension speaker system and reportedly offers well-balanced tonal quality in all frequency ranges. The speaker has a 14-inch woofer that is mold-shaped rather than pressed for added absorption and lower cone resonance. The woofer has a ported-cone cap that supposedly helps bass response and eliminates non-linear distortion. Duraluminum diaphragms are used in the 2-inch dome-radiator mid-range and 1-inch dome-radiator tweeter.



Specifications of the system include a frequency response from 30 Hz to 20,000 Hz, 60 watts maximum power, impedance of 8 ohms, and crossover frequencies from 700 Hz to 7,000 Hz.

For More Details Circle (71) on Reply Card

Condenser Stereo Headphones

TEL-111 stereo headphones from **Telephonics** have patented permanently-polarized electret diaphragms, which eliminate the bias supply normally required by electrostatic reproducers. Total harmonic distortion is less than 0.2% at 115 dB SPL, and the frequency response is said to be 18 to 24,000 Hz. An adapter is supplied for matching to amplifiers of 4- to 16-ohms impedance, enabling the phones to handle audio power up to 65 watts. Included is a plug-in phone jack and a phone/speaker selector switch. The TEL-111 weighs only 17 ounces, has foam-filled ear cups for comfort and better acoustic seal, and the headband is adjustable. The unit sells for \$87.50.

For More Details Circle (72) on Reply Card

Noise Reduction System

The **Burwen DNF 1201** Dynamic Noise Filter doesn't require pre-encoding of the sound source, and so can be used with sound produced by microphones, phono discs, or tapes. The bandwidth changes constantly, depending on the program material in use. The system can work with any two-channel stereo setup or matrix-encoded source. Because the filter is intended for home use, it is designed for simple operation and can be connected easily to any hi-fi system through record jacks on any receiver



or preamp. Reportedly the component is capable of obtaining noise reduction in excess of 14 dB. Retail price for the filter is \$299.95.

For More Details Circle (73) on Reply Card

Cassette Player/Recorder

Channel Master has engineered a cassette recorder for visual aid and educational uses. Model 6323 has a digital counter with reset button that permits the student to log specified points and locate them instantly for playback. A push-button pause control allows the student to proceed at his own pace. The unit has a built-in condenser microphone and a full complement of input and output jacks for remote control microphone, private earphone, and auxiliary input. An automatic shutoff protects the unit against excessive wear.

Except for slide-operated volume and tone controls, the recorder is



completely push-button operated and is priced at \$74.95.

For More Details Circle (74) on Reply Card

ACA

**Chroma
POWER**

TV and FM ANTENNAS
AND ELECTRONICS

MR. DEALER — Return this ad with your letterhead for a FREE DEALER BONUS COUPON, CATALOG and the name of your nearest ACA distributor.

Mail to: P.O. Box 865, Burlington, IA 52601
Phone: 319-753-1625

For More Details Circle (18) on Reply Card

Telephone Accessories

Telco Products has introduced a line of telephone accessories, including the ATR-100, a recording device which electronically tapes phone calls, automatically and legally. The ATR-100 begins operating when the phone is lifted and stops when it is hung up. The solid-state model may be used with most standard portable tape recorders, and does not interfere with normal telephone operation. ATR-100 attaches by plugging into a tape recorder and phone line, and retails for \$29.95.



For More Details Circle (75) on Reply Card

Stacking Bins

Bay Products steel stacking bins and boxes are available in a variety of sizes, types, and shapes for efficient storage. Styles include boxes with hopper ends for easy removal of contents; boxes with continuous rims, drop handles, and reinforced corners; types with rigid handles, hook holes on each end, skid legs, and riveted label holders. The boxes are manufactured of 16-gauge industrial steel.

For More Details Circle (76) on Reply Card

Directional Microphone

Model 589S Unidyne from **Shure** features a unidirectional pickup pattern, wind/breath filter, and internal shock mount. The unit has a cardioid pickup pattern that is symmetrical about the axis and uniform at all frequencies. Other features include dual impedance, smooth frequency response tailored to compensate for proximity effect, and a built-in on/off switch with lockplate. The model sells for \$51.00.

For More Details Circle (77) on Reply Card

Electronic Telephone Amplifier

Radio Shack has introduced the new DuoFone® Electronic Telephone Amplifier/mike and speaker enclosures.

The DuoFone amplifies calls to room-filling volume so that everyone present can join the conversation. An ultra-sensitive mike picks up your voice from anywhere in the room, and the solid-state amplifier lets you hear callers the same way you listen to a radio.

Outgoing calls are made normally, using your telephone. When the called party answers, press the Talk-Bar and hang up your phone. Volume may be adjusted as desired.

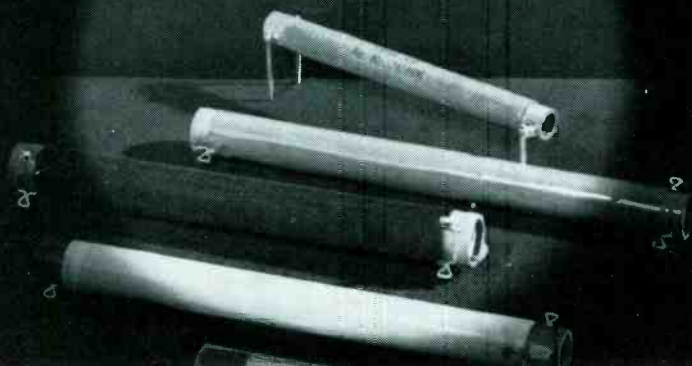


A "jack in a plug" makes installation easy with most phones. Insert this jack in your telephone wall outlet, then plug your phone into the piggyback jack. The DuoFone operates on three "D" cells.

The DuoFone is priced at \$29.95. (Might be subject to local telephone company tariffs.)

For More Details Circle (78) on Reply Card

Replacement Delay Lines for More Than 500 Color TV Models



Write for Cross Reference.

BELL INDUSTRIES / J. W. Miller Division

19070 REYES AVENUE ■ P. O. BOX 5825 ■ COMPTON, CALIFORNIA 90224

"Mount Anywhere" Mini Stereo Speakers

Utah Electronics announces the SA53 stereo speaker kit that can be securely mounted at any angle without drilling holes, by using special hook-and-pile fasteners included with each kit. Two high-fidelity speakers use heavy ceramic magnets for smooth, wide-range response, and are pre-connected to color-coded wire for



fast hook-up. Each kit includes complete instructions.

For More Details Circle (79) on Reply Card

For More Details Circle (19) on Reply Card

Trumpet Speakers

GC Electronics introduces two all-weather trumpet speakers for clear sound reproduction indoors or out-



doors. Available is a 5-inch horn type, No. S2-245, for paging or public address, and a 6-inch speaker, No. S2-246, for use as an extension speaker for radio or Hi-Fi. Both are 5-watt, 8-ohm speakers and come complete with adjustable mounting brackets.

For More Details Circle (80) on Reply Card

"Big Mag" Speakers

RCA has introduced its new "Big Mag" stereo speakers set with powerful sound reproduction from a large 10-ounce ceramic magnet.



"Big Mag" speakers, with foam-padded grills for safety, are especially suitable for use in cars, boats, recreational vehicles and trucks, or ceiling and wall installations around the home. Its frame measures just 6-1/4", making it suitable even in confined areas.

Technical specifications are as follows: 5-3/4" speaker, 6-1/4" frame, 6-1/2" grill; 8-ohms voice coil impedance at 80-11,000 Hz frequency response; 16 watts music maximum input.

Manufacturer's suggested list price is \$19.95 per pair.

For More Details Circle (81) on Reply Card

Bass Reflex Speaker System

A bass-reflex enclosure with a tuned port to increase the low-frequency response is featured in the Model 8 offered by the **Onkyo Sales Division** of Mitsubishi. The system has a woofer with an eight-inch "non-press" molded cone with ported cap, a heavy ferrite magnet, and a long-throw voice coil, which is matched to a two-inch cone tweeter speaker.

The two-way internal crossover network is constructed on a PC board, and is said to divide the



frequencies smoothly and without distortion.

Model 8 speaker system sells for \$89.95.

For More Details Circle (82) on Reply Card

"Voice-Control" Safety System Speakers

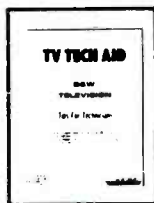
Providing sound distribution for large areas, Models AP-15TU and APF-15TU from **Atlas Sound**, reportedly comply with the latest safety standards governing water and corrosion resistance and electrical connections. Within temperature limits ranging from 150°F to -30°F, the speakers are said to operate without loss of signal.

For More Details Circle (83) on Reply Card

Music-On-Hold Telephone System

Neotec Speak-Eze 600 is an automatic telephone answering and music-on-hold system for multiple line usage. Model 600 can answer your phone, take calls from multiple lines and deliver music to any caller placed on hold.

For More Details Circle (84) on Reply Card



GET YOUR ALL NEW, BIG 1975 TV TECH AID COLOR TV BOOK

- Brand new, all-in-one book. Over 500 trouble shooting tech-tips.
- Covers all leading manufacturers, Admiral, Emerson, GE, Magnavox, Motorola, Panasonic, Philco, RCA, Silvertone, Sony, Sylvania and many others.
- Full schematic diagrams help you find symptoms, cause and cure of recurring troubles in all types of situations.
- Saves you time and money.

BACK ISSUES: GET 'EM WHILE THEY LAST!! SPECIAL REDUCED RATES

PLEASE SEND: 1970 Book Form \$3.00 1971 12 Issues \$3.00 1973 12 Issues \$3.00
 1971 B&W Book \$3.00 1972 12 Issues \$3.00 1974 12 Issues \$5.95
 1975 All New Color TV Book \$7.95

MAIL CHECK OR
MONEY ORDER TO:

TV TECH AID

P.O. Box 603
Kings Park, N.Y. 11754

ES-1

Name

Address

City

State..... Zip.....

For More Details Circle (20) on Reply Card

The GREATEST TV Schematic Bargain EVER Offered!

**Complete TV Schematics
for less than 5c each
COVERS ALL COLOR TV 1960-1968 AND
23 BRANDS B & W FROM 1965-1968**

Here are FABULOUS savings on nationally-known TV schematic and service data—on everything you need to fill your vital service data needs for TV model years 1965 through 1968 . . . plus COLOR TV from 1960 through 1968! It amounts to a low, low cost of less than \$9.00 per year for your TV service data . . . with 5 more years of Color TV coverage thrown in for good measure!

SERVICE DATA FOR 23 BRANDS

TV TECH/MATICS includes complete schematic diagrams and vital servicing data for every TV receiver produced by more than 20 leading American Manufacturers for 1965, 1966, 1967, and 1968. All diagrams and servicing details are completely authentic. Each year's coverage is permanently bound into two convenient-to-use volumes which open flat to 11" x 29½", ready to provide you with instant service data at your workbench. Some diagrams as large as 58" x 22"!

HERE'S WHAT YOU GET

You receive 8 BIG volumes in all. Included is a clearly detailed and annotated TV schematic diagram for each specific model. You also get complete replacement parts lists, alignment instructions, tube and component location diagrams, plus key waveforms and voltage readings . . . all the information you need to service over 90% of the TV receivers you'll encounter!

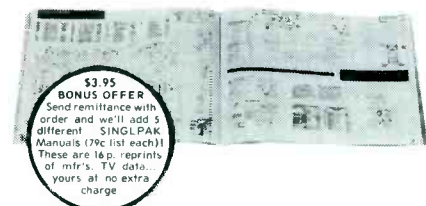
Each volume is organized alphabetically by manufacturer, then numerically by model number. In addition, a handy Chassis/Model Finder is bound into each volume. Regular list price for each year's coverage—2 BIG volumes—is \$19.90. All 8 volumes normally sell for \$79.60. Your price is ONLY \$35.95 . . . a savings of nearly \$45.00!

MONEY-BACK GUARANTEE

Order at our risk for FREE 10-day examination. Prove to yourself they are worth many times the price.

CONTENTS

The 8 BIG volumes (2 for each year) cover all black-and-white receivers for model years 1965 through 1968—PLUS Color TV coverage from 1960 through 1968—for these brands: Admiral, Airline, Andrea, Coronado, Curtis Mathes, Dumont, Electrohome, Emerson, Firestone, General Electric, Hoffman, Magnavox, Motorola, Muntz, Olympic, Packard-Bell, Philco, Philco-Ford, RCA Victor, Sears Silvertone, Setchell-Carlson, Sonora, Sylvania, Truetone, Westinghouse and Zenith.
Publisher's List Price each year \$19.90
Total \$79.60. Special price \$35.95 only while they last!



LARGE PAGES, 15x11", open flat to 29½x11". Provides complete schematic diagrams.

NO RISK COUPON—MAIL TODAY

TAB Books, Blue Ridge Summit, Pa. 17214

- I enclose \$35.95 Please send me your complete 8-Vol. Tech/Matics Schematic Offer postage prepaid...plus my 5 FREE SINGLPAK Manuals.
 Please invoice me for \$35.95 plus postage Same return privileges.

Name Phone.....
Company
Address
City..... State..... Zip.....
Foreign, add 10%. Pa. add 6% sales tax. ES-15

50 For More Details Circle (21) on Reply Card

productreport

(Continued from page 45)

Soldering Iron Tip-Cleaner

Instant cleaning of soldering iron tips is now possible with RE-TIP from GC Electronics. Reportedly, the pro-



duct (#9482) instantly and uniformly cleans tips up to ¼-inch in diameter, prevents contaminated solder joints, and prolongs tip life.

For More Details Circle (85) on Reply Card

TV Service Table

RCA's service table is handy for moving TV chassis around the shop. The easy-to-assemble roll-around utility table offers nearly four square feet of work surface. The top shelf is constructed of 20-gauge sheet metal. The convertible bottom shelf can be installed with a flat surface; or inverted, making a lip to prevent small parts and tools from falling.

For More Details Circle (86) on Reply Card

FREE ALARM CATALOG

Full line of professional burglar and fire alarm systems and supplies. 96 pages, 450 items. Off the shelf delivery, quantity prices.



mountain west alarm
4215 n. 16th st., phoenix, az. 85016

For More Details Circle (23) on Reply Card

FREE CATALOG

The 1974 Tucker Electronics Company General Catalog includes 160 pages of electronic test instruments, 16 lines of low cost distributor products and thousands of reconditioned instruments.

TUCKER

ELECTRONICS • COMPANY
P.O. Box 1050 • Garland, Texas 75040

For More Details Circle (24) on Reply Card

Multi-Purpose Cutting Tool

Three interchangeable blades are featured in the multi-purpose cutting tool from General Electric. The tool can cut light plywood, laminates, wire screening, aluminum, asbestos, galvanized metals, plastics and others.

For More Details Circle (87) on Reply Card

Tuner Foam Cleaner

PTS Electronics has developed PTS #108 Green Giant Tuner Foam for continuous cleaning, polishing and lubricating of tuner contacts. Safe for all plastics, the cleaner reportedly will not cause drift or detuning when sprayed on contacts only.

For More Details Circle (88) on Reply Card

(Continued from page 38)

Solution to: OUR CURRENT PUZZLER:

- | | |
|-----------------|---------------|
| 1. corrosion | 13. schematic |
| 2. earphones | 14. turntable |
| 3. alignment | 15. prototype |
| 4. alligator | 16. converter |
| 5. generator | 17. induction |
| 6. frequency | 18. modulator |
| 7. kilocycle | 19. diaphragm |
| 8. amplifier | 20. polyphase |
| 9. decibel | 21. Dellinger |
| 10. welding | 22. cabinet |
| 11. cartridge | 23. transonic |
| 12. electronics | 24. sending |
| | 25. width |

Start with 100 points and deduct 4 points for any part you may not have answered correctly.

Your rating:

- 60 - 64 Circuit incomplete.
68 - 72 Encountered high resistance.
76 - 84 Current flowing.
88 - 96 Excellent.

100 PERFECT! You're a real live wire!

ELECTRONIC SERVICING

letters to the editor

Dear Editor:

For years, many television manufacturers have envied RCA and Zenith because they outsold all others. Perhaps one of the main reasons for the large sales is that other companies didn't provide the same speed and convenience of obtaining repair parts. Any serviceman can go to the local Zenith or RCA distributor, obtain replacement parts, and repair the receiver the same day. With other makes, the delays for paperwork and shipping run from one to three weeks.

Now we have a new problem: modules. How many independent technicians can tie up so much money in inventory, not knowing how much he will be stuck for? Again, it's easy for technicians to drop by a local RCA or Zenith distributor and obtain the modules needed, without stocking dozens of them.

The theory that technicians should specialize on certain brands is a lot of bunk. With business the way it is, how many can do that?

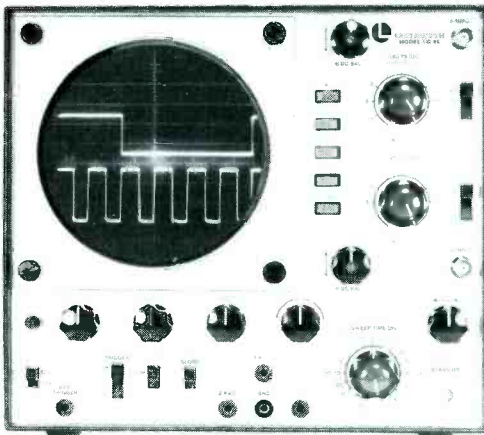
I predict that any TV manufacturers of modular sets that do not provide local distributors are doomed to failure. The public already is annoyed at the higher repair prices of the new sets. But to wait weeks for a module to be shipped will cause further irritation. Also, having a kit of modules is no cure-all. I can sell one module in the morning and again need another of the same kind in the afternoon.

I hope this letter will be printed, because the problem is serious and concerns both technicians and manufacturers.

Sincerely,
Max Goodstein
Flushing, New York



the new automatics . . .

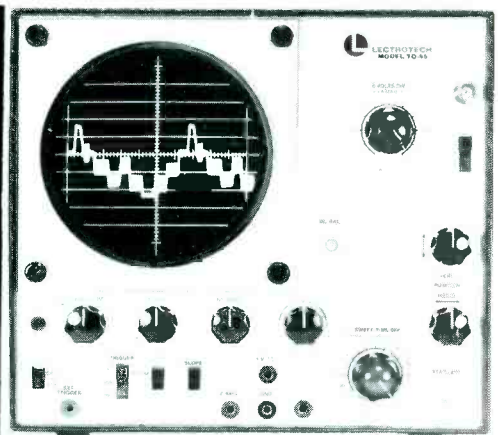


TO-60 dual-trace

TO-60 automatic dual-trace triggered sweep oscilloscope
Bandwidth: DC 15 MHz
10 mV sensitivity **\$489.50**

TO-55 automatic single-trace triggered sweep oscilloscope
Bandwidth: DC 10 MHz
10 mV sensitivity **\$379.50**

Made in U.S.A.



TO-55 single-trace

Two outstanding new five inch oscilloscopes with exceptional stability, featuring:

- Automatic Triggering • Automatic Astigmatism • Automatic Horizontal Sweep • Automatic TV Trigger Selection • All Switching 1-2-5 Sequence • Vertical Amplifier Sensitivity: .01 volts/div. • Horizontal Sweep Speed .2 Sec.-.5 μ Sec./div. • 5x Magnifier • All Solid State • TO-60 Dual Trace Capability: Channel "A", Channel "B", A-B Chopped, A-B Alternate, Sum of A & B.



See your distributor or write:

LECTROTECH, INC.

5810 N. Western Avenue, Chicago, Illinois 60659 (312) 769-6262

For More Details Circle (22) on Reply Card

bookreview

Tape Recorders—How They Work (Third Edition, Number 20989)

Author: Charles G. Westcott, Richard F. Dubbe
Publisher: Howard W. Sams & Co., Inc. 4300 West 62nd Street, Indianapolis, Indiana 46268

Size: 240 pages

Price: \$5.50 paperback

Beginning with a short history of magnetic recording, this book gives information concerning the motorboard-tape-transport mechanism, drive motors, volume indicators, bias oscillators, amplifiers, magnetic heads, recording tape, and the theory of magnetic recording. A chapter is also included on test equipment and testing procedures. Written in an easy-to-understand style, the text explains and illustrates the mechanical and electronic principles of modern tape recorders. Updated to include the latest in cassette and cartridge recorders as well as stereo and quadriphonic recording equipment, the text also includes photographs, charts and schematics.

Logical Color TV Troubleshooting—Including Quick-Reference Symptom Guide

(TAB book 690)

Author: Ben Gaddis

Publisher: TAB Books, Blue Ridge Summit, Pennsylvania 17214

Size: 240 pages, 151 illustrations

Price: \$8.95 hardbound, \$5.95 paperback

Repair know-how, TV theory and circuit troubleshooting are explained from a practical, common-sense point of view in this book. Beginning with a systems approach to color TV, Gaddis explains how information is conveyed between the receiving and transmitting subsystems, and gives a functional description of the color TV receiver and how to use it as a test instrument for troubleshooting. The need for such test instruments as dot-bar and sweep-marker generators, vectorscopes and oscilloscopes, CRT testers, color TV analyzers, flyback and capacitor checkers is discussed.

Once trouble has been isolated, the next step is finding the defective parts, which often requires a thorough knowledge of circuit theory. Coverage of circuit theory includes chapters on tuners and amplifiers, as well as resistance and voltage checks. □

readers'exchange

(Continued from page 40)

Needed: Schematic or operating manual for Melco Supreme battery-operated 6-volt radio manufactured by Amsco Products.

Lowell E. Bateman
1958 Parrish Road
Kawkawlin, Michigan 48631

Needed: Service data for Estey Organ Model 1307.

J. M. Sullivan
1313 George Washington Way
Richland, Washington 99352

Needed: Junk Symphonic Mini-TV Model TPS-5050 for parts.

Michael J. Kittl
17084 Canterbury Circle
Holly, Michigan 48442

Needed: Schematic for Philco radio Model 42-380, code 121.

C. L. Orbegoso
730 Duke Street
Northumberland, Pennsylvania 17857

For Sale: Rider's Radio Manuals Volumes 1 through 13, cloth bound. Best offer. Also, have some Philco tubes for older radios and early TV's.

Harold E. Jones
P.O. Box 112
Ithaca, New York 14850

Needed: Schematic for an Imperial Model Capri (Export chassis 664) AM/FM/Phono console. Looks like a Telefunken or Grundig, but can't match it.

C.A. Joseph
Pax-Tronics
Route 5
Great Mills, Maryland 20634

Needed: Manual and schematic for radio receiver, Model RCH, 1-CZC-46209, Navy Department, Bureau of Ships.

D.J. Ferguson
Clintondale Community Schools
35100 Little Mack
Mount Clemens, Michigan 48043

Needed: Power transformer for Eico Scope Model 470K.

Sam Lasky
33-06 106 Street
Corona, New York 11368 □

catalogs literature

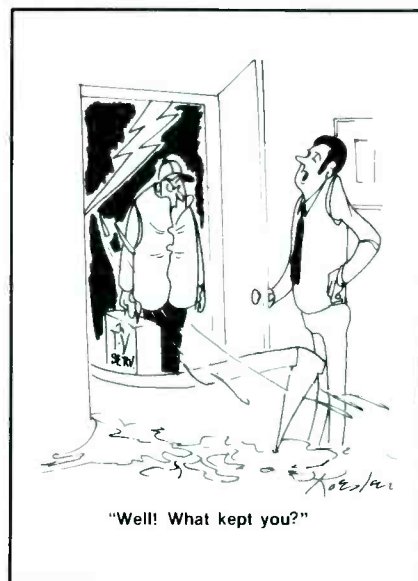
Circle appropriate
number on Reader
Service Card.

- 100. Littlefuse**—the line of "Littelite's" miniature lampholders is featured in a color catalog including detailed drawings complete with mounting dimensions, information tables, and a cross reference to military part numbers. An easy-to-use ordering table lists available options, special features, housing finishes, resistors, lens-cap styles, and colors.
- 101. Altec**—a 24-page color-illustrated brochure features the Altec line of hi-fi loudspeaker systems, including raw-frame speakers and utility systems.
- 102. Pageant/M. A. Miller Industries**—offers a 1974 catalog on Pageant-brand replacement needles. Illustrations and descriptions of more than 800 styles of needles in both sapphire and diamond types are included. The catalog makes it possible to locate a particular needle style by knowing either the cartridge number, phonograph model number, or the needle number of another manufacturer.
- 103. Triplett**—a 16-page catalog features Triplett's line of test equipment from multi-purpose VOM's, through laboratory and special features-testers, to G/P portables, temperature testers and accessories. The catalog, 60-T, contains a selection guide chart designed to help select a tester for specific requirements.
- 104. Mountain West Alarm Supply Company**—has announced an alarm equipment catalog, A-75. The 96-page catalog describes over 450 intrusion-and fire-alarm products. Equipment offered ranges from simple kits with instructions, to the latest ultrasonic, radar, and infrared intrusion detectors.
- 105. RCA Electronic Components**—has released a revised product guide describing picture tubes for the renewal market. The guide, PIX-300H, includes a directory which lists replacements for 975 industry types, plus over 85 foreign types. Basing diagrams, pictorial views illustrating safety feature constructions, and keys to tube sizes in the old, new, and foreign type designation systems are covered.
- 106. International Rectifier Corporation**—makes available the 1974 edition of the semiconductor cross-reference and transistor data book. The 70-page brochure lists over 44,500 parts and corresponding replacements. The parts are indexed in straight alpha-numeric sequence for easy location. Also included are transistor specifications, showing polarity, case style, maximum current, typical bandwidth and gain, and price information.
- 107. Eico Electronic Instrument Company**—has released a 6-page condensed catalog featuring its line of electronic test and measuring instruments. Over 100 electronic kits and factory-assembled instruments, including oscilloscopes, VTVM's, VOM's, generators, tube/transistor testers, and power supplies, are listed.
- 108. Fordham Radio Supply Company**—has made available a 48-page illustrated, discount mail-order catalog, designed as a quick-reference ordering guide. Included are tools, service and repair kits, tubes, test equipment, phono cartridges and needles, speakers and microphones, antennas, components and other servicing aids. All products are shown with their discounted prices.
- 109. Jensen Tools and Alloys**—offers a tool catalog with descriptions of over 2,500 items. The 112-page handbook includes sections covering tool kits, solder, technical data on tool selection, and tool "terms".
- 110. Bernard Franklin Company**—announces a rack catalog which

includes technical information for the bulk storage rack. The rack is intended for large items too big or bulky for standard shelving. Models include heights to 12 feet, depths to 4 feet, and beams to 10 feet.

111. Radio Shack—introduces a 1975 Electronics Catalog 250, which lists hundreds of specialized electronics items, parts and accessories, tools, tubes and transistors, wire and cable, home security products, intercoms, microphones, timers, batteries, and a library of books on electronics and related subjects. The 164-page catalog has 100 full-color pages and introduces many products.

112. Vaco—the Answer Book provides technical information and reproducible copy for distributors to prepare their own catalogs, or for conversion to micro-fiche for cost-and space-saving reference. All type is large and easy-to-read. □



MOVING?

Send your new address to:

Circulation Dept.
Electronic Servicing
1014 Wyandotte Street
Kansas City, Missouri
64105

The MARKETPLACE

This classified section is available to electronic technicians and owners or managers of service shops who have for sale surplus supplies and equipment or who are seeking employment or recruiting employees.

Advertising Rates
in the Classified
Section are:

- 25 cents per word
(minimum \$3.00)
- "Blind" ads \$2.00
additional
- All letters capitalized
35 cents per word

Each ad insertion must be accompanied by a check for the full cost of the ad.

Deadline for acceptance is 30 days prior to the date of the issue in which the ad is to be published.

This classified section is not open to the regular paid product advertising of manufacturers.

FOR SALE

INCREASE EARNINGS—YOU deserve more for your expert electronics know-how. Service Contract Cookbook, and, Practical Home Electronics Business Manual tell how. Either book, \$15.00. Both ordered at same time, \$25.00. Prepaid. NATESA SCOPE, 5908 S. Troy St., Chicago, Ill. 60629. 12-74-3T

TV & RADIO TUBES 36c EA!! Free color catalog. Cornell, 4221 University, San Diego, California 92105. 10-74-6T

NEW Canadian Magazine "Electronics Workshop". \$5.00 yearly. Sample \$1.00. Ethko, Box 741, Montreal "A" Canada. 10-74-12T

UNUSUAL SURPLUS AND PARTS Catalog. \$1. ETCO Electronics Dept. E.S., Box 741, Montreal "A" H3C 2V2. 12-74-12T

PRECISION E200 and E400 signal and sweep generators, includes cables. Best offer. Also many OBSOLETE TUBES. \$4.00 each shipped. List your needs. Elmwood TV, 136 Market Square, Newington, Conn. 06111. 1-75-2T

DYNCO-A-R-TRANSISTORS, REPAIR BOARDS & UNITS, SPEAKER SERVICE. SEND FOR PRICES AND DETAILS: BEAR ELECTRONICS, 177-E HILLCREST ROAD, MT. VERNON, N.Y. 10552. 1-75-3T

T.V. SERVICEMEN: 2.5A-1000V diodes; Hep-170, IR-170 4/\$1.00. Fantastic prices; test equipment, parts. 10 cents for list. F. & M. Electronic Dist. Box 236, DEPT. K Maspeth, N.Y. 11378. 1-75-4T

LAKESIDE PICTURE TUBE REBUILDER - complete with many extras, e.g. neck glass, basis, pump oil, practice stems, spark coil. \$1,500. FOB Oxon Hill, Md. 13207 Park Lane, Oxon Hill, Md. 20022. (301)292-2070 1-75-1T

FOR SALE (CONT'D)

BUILD - Color CRT and Circuit Quick check analyzer. Pinpoint Color and CRT problems fast with easy and inexpensive to build tester. Instructions \$1.00. Bills, 1063 N.E. 19th St., Ocala, Fla. 32670. 1-75-1T

EDUCATION-INSTRUCTION

REPAIR TV TUNERS—High Earnings; Complete Course Details, 12 Repair Tricks, Many Plans, Two Lessons, all for \$2. Refundable. Frank Bocek, Box 3236 Enterprise, Redding, Calif. 96001. 12-74-6T

HELP WANTED

ELECTRONIC TECHNICIAN WANTED Benefits are, retirement, loss of income, health and accident insurance, 5 day week, paid vacation. Send experience resume to Senatra TV, 113 4th Street West, Milan, Illinois 61264. 1-75-1T

advertisers' index

Antenna Corporation of America . . .	47
B & K Div., Dynascan Corp.	7
Bell Industries	48
Bussmann Mfg. Div., McGraw-Edison	19
Castle TV Tuner Service	Cover 4
Channel Master	23
Gem City Tuner	41
General Electric Company	11
Heath Company	40
Hickok Electrical Instrument Co.	45
Lectrotech, Inc.	51
Mountain West Alarm Supply Co.	51
Oneida Electronic Mfg., Inc.	39
Perma Power	46
Precision Tuner Service	Cover 2
RCA Electronic Components	3
Rohn Manufacturing	43
H. K. Simon Company, Inc.	1
Sperry Tech, Inc.	24
GTE Sylvania- Consumer Renewal	9
TV Tech Aid	49
Tab Books	50
Telematic	42, 44
Tucker Electronics Company	50
Tuner Service Corporation	5
Winegard Company	Cover 3

Before you write a 'Help Wanted' ad, read ours.

EMPLOYERS WANTED

Applications being accepted from industry, manufacturing, publishing, educational institutions, every business—large and small. Needed to employ disabled individuals skilled in many fields: accounting, secretarial, managerial, technical, sales, design, clerical, teaching, etc. All are highly trained, industrious and fully rehabilitated. We follow-up on every employee we place. Write: Director, State Department of Vocational Rehabilitation in your state. His office is in your state capital.

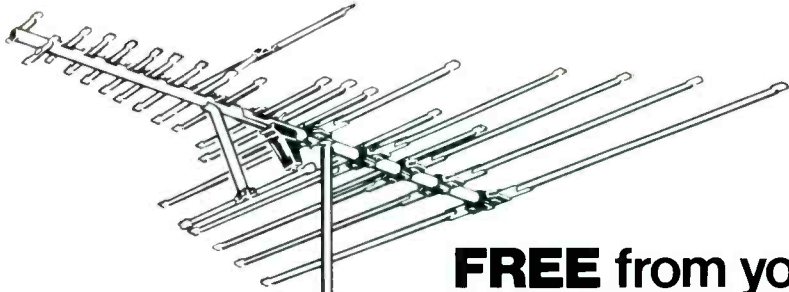
WRITE YOUR STATE
DIRECTOR OF VOCATIONAL
REHABILITATION.
HIS OFFICE IS IN YOUR
STATE CAPITAL.



The U.S. Department of Health,
Education, and Welfare.

A Public Service of This Magazine & The Advertising Council





FREE from your Winegard distributor:
New 'BIZ BOOMER UPPER KIT'
gives you 15 ways to put more
ring in your register...
more profit in your picture in '75.

Antenna sales slipping? Profits sliding? We can give you some timely, tested, proved effective help. A special Biz Boomer-Upper Kit with 15 sales-getter ideas and the materials you need to put 'em in action.

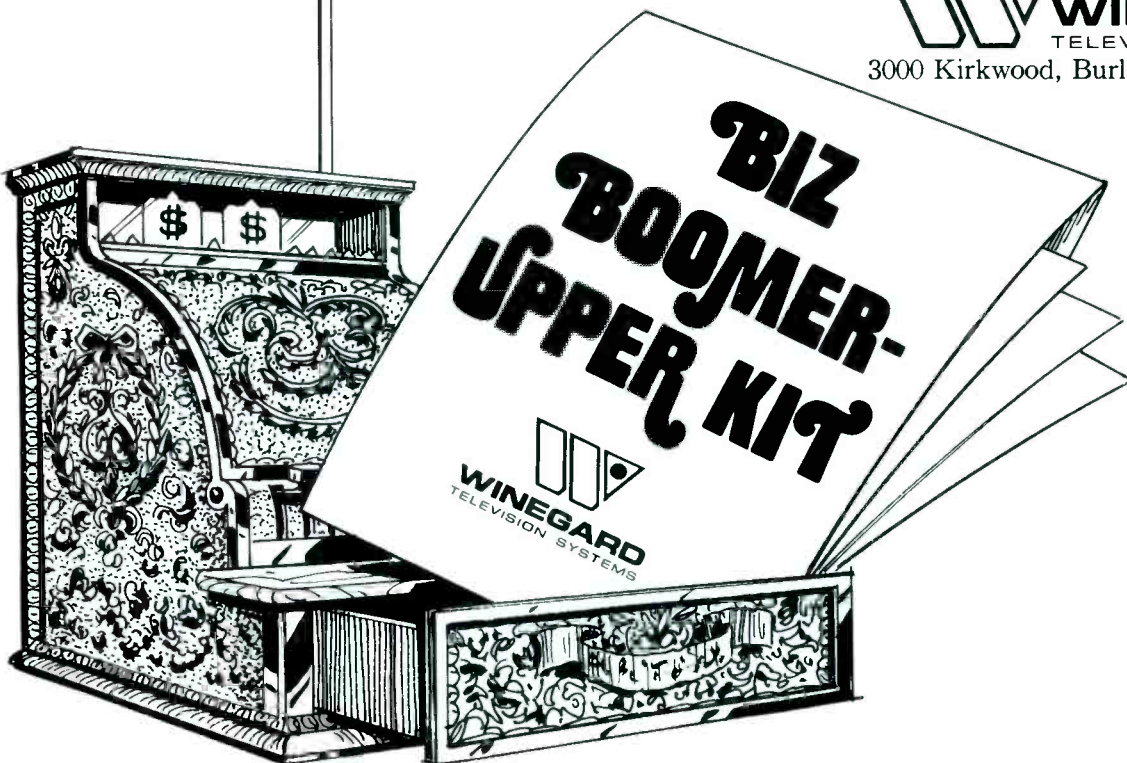
The kit's yours at no cost from your Winegard distributor. Designed so that *together* you can launch a planned program to sell replacements for all those tired old weather-beaten or damaged an-

tennas on homes in your area.

In today's competitive climate, this could be the extra promotion power you need to push profits up to—or ahead of last year's. Definitely, an offer you shouldn't refuse.

Not yet in the antenna business? There's plenty of potential going unsold right now. And your Winegard distributor can help you cash in. Why not contact him—today.

 **WINEGARD**
TELEVISION SYSTEMS
3000 Kirkwood, Burlington, Iowa 52601



SUBBER™

*TV Service Instruments for
signal circuit analyzing.*



When Castle introduced the TV Tuner SUBBER* analyzing instrument a couple of years ago it became the first practical way to easily test the VHF tuner, UHF tuner and i.f. amplifier system of any TV receiver. Being lightweight, self contained and battery powered the TV Tuner SUBBER* Mk. IV is the first such instrument which may be carried on service calls and used with ANY color or black and white TV receiver . . . at \$45.95 for the battery powered Mk. IV, or \$52.95 for the a.c. plus battery powered Mk. IV-B the instruments have been known to pay for themselves in **TIMESAVING** in the first two weeks of use!

Now we have introduced the Mk. V Master SUBBER*, an instrument which is absolutely unique . . . there is nothing else like it anywhere! It is completely portable and battery powered, practically foolproof in it's simplicity of operation when testing ALL the signal stages of any color or black and white TV receiver. The substitution signals available allow tests of the following stages: VHF tuner, UHF tuner, each video i.f. amplifier, video detectors, video amplifiers, 4.5 MHz sound i.f. amplifiers, sound limiter, sound detector and audio amplifier. It includes a signal level meter for testing the antenna signal. Inbuilt telescopic antenna makes the meter adaptable for true field strength measurements. Inbuilt monitor loudspeaker ensures foolproof substitution tests . . . every time!

At \$169.95 the Master SUBBER* instrument is the best bargain in an analyzer that has ever been available. It will save oodles of time in the hands of a professional troubleshooter . . . and help advance the novice to professional status.

All SUBBER* instruments come complete with batteries, connecting cables and comprehensive instruction manual. The Master SUBBER* comes complete with wall plug-in transformer for 120vac 60Hz operation.

As an added bonus, all SUBBER* instruments enable use of the high speed agc system analyzing procedure invented by Castle . . . the first practical method for analyzing agc system defects without confusion.

*A registered trademark of Castle TV Tuner Service, Inc.



These instruments boast the extra features of all Castle products — advanced technology — modern styling — and they work!

If you need to save some analyzing time . . . you need a SUBBER* instrument!

See your stocking distributor . . . or write for more details and complete specifications.

CASTLE TV TUNER SERVICE, INC.

5701 N. Western Ave., Chicago, Illinois 60645 Phone: (312) 561-6354

In Canada: Len Finkler Ltd., Ontario

For More Details Circle (3) on Reply Card