

RADIO DIAL

Volume I, No. 3

WEEK ENDING DECEMBER 10, 1931, COLUMBUS, OHIO

Price 5c

Rosa Ponselle Sings Sunday Twilight Hour



Rosa Ponselle, leading soprano of the Metropolitan Opera Company, sets the mood of her program for the General Electric Sunday Home Circle period Sunday (December 6) at 5:30 p. m. with Ethelbert Nevin's "The Rosary." WTAM and other WEA-F-NBC stations will broadcast the concert.

Miss Ponselle will also sing "Carry Me Back to Old Virginia," "Kiss Me Again," from "Mlle. Modiste," "Songs My Mother Taught Me," by Dvorak; "Goodbye," by Tosti, and "Ave Maria," by Bach-Gounod.

Gid Tanner's Skillet Lickers Play at WAIU

Gid Tanner and his Skillet Lickers, who are fiddling boys from Georgia, are playing on WAIU at 8 a. m. daily and at 5 p. m. daily. They will be in Columbus for about six weeks more.

The boys have sold hundreds of thousands of recordings of their music and recently went back to Georgia to make new records.

TOO FAST

NBC is trying to work out a way to put an announcer and portable radio transmitter on one of the bob sleds that will swish around the 25 turns of the glare-ice course in the 1932 Olympic Games at Lake Placid, N. Y. The sleds travel 65 or more miles.

Atlantic To Be Spanned For International War Debt Debate

Wile Will Cover Disarmament Meet for Radio

The Columbia Broadcasting System has announced the assignment of its political analyst, Frederic William Wile, of Washington, D. C., to broadcast from the General Conference on Disarmament to be held at Geneva, Switzerland, under the auspices of the League of Nations, beginning February 2.

Ohio Receives Compliments of Parade of States

Complimenting Ohio and its contributions to the national and cultural life of America, the General Motors "Parade of States" will dedicate its program to that state in the broadcast to be heard at 9:30 p. m. (Monday, December 7) from WTAM and other NBC-WEA-F network stations.

Phil Dewey, baritone, will be the guest artist in the Ohio program of this "state-parade" series. In continuity and in the tribute to the state, attention will be called to Ohio as the homeland of presidents and men of distinction in American history. As a gesture of respect to the Wright Brothers, "The Aeroplane," a tone poem by Whitthorne, will be played by Erno Rapee's orchestra which will introduce the program with "Paraphrase on Beautiful Ohio."

Mary Elizabeth Schwartz Writes December Plays

Mary Elizabeth Schwartz writes the radio adaptations of the plays the WEA-F Players will broadcast this month in their performances, at 8:30 Friday nights and 4:15 Thursday afternoons. Miss Schwartz is a 1930 graduate of Ohio State University,

Oxford and Harvard Will Argue World Question in Trans-Atlantic Broadcast

With the Atlantic ocean between them, debating teams from Harvard university and Oxford university will argue the question of war debt cancellation while the United States and England will listen to the broadcast on Saturday (December 5) at 6 p. m. on the WEA-F-NBC network including WTAM and other stations.

James W. Gerard, former ambassador to Germany, will preside at the NBC New York studios where the Harvard men will broadcast the affirmative side of the argument, Resolved: That in the interests of world prosperity, war debts should be cancelled.

The Oxford men, supporting the negative, will speak in London where the British Broadcasting Company will rebroadcast their remarks by short-wave to America as the NBC will do for the Harvard team. Each team will hear their opponents by radio.

The audiences in the United States and England will be asked to send in their votes, not on the merits of the question, but on the skill with which each side was handled.

Mr. Gerard calls the event a "milestone in the history of broadcasting."

"At a time when suspicion and narrow national views rule the world, it is a splendid thing to learn how close together science has bound the far corners of the earth," he said.

where she was particularly interested in dramatics. She writes original radio plays, adapts stories and plays for radio, and can dash off a poem on a moment's notice. She also wrote the "King" series the Players did some time ago.

Navy vs. Penn. Game Will Be Aired Saturday

When the Navy meets Pennsylvania University Saturday (December 5) in one of the few post-Thanksgiving football games Columbia and NBC network stations will broadcast the game, beginning at 1:45 p. m., with Graham McNamee and Ted Husling announcing.

WCAH will carry the Columbia account, with Husling at the microphone. WTAM will have the NBC version.

WCAH Has Radio Version of Verdi's "La Traviata"

An abridged version, prepared specially for radio presentation by Howard Barlow, conductor of the orchestra, of Verdi tragic opera, "La Traviata," will be presented over the Columbus network and WCAH at 10:30 p. m. Thursday (December 10) during the Grand Opera Miniatures, a program which is welcomed back to the airwaves after an absence of nearly a year.

Jean Paul King, NBC announcer, is now almost half-way through his first novel. (The first novel authored —not read.) "It may not be good," says Jean, "but at least it will be sensational."



Adele Astaire, Fred's sister and co-star in "The Band Wagon," will be guest star in the Nestle program on WLS and other NBC-WJZ stations at 8 p. m. Friday (December 4).

Russ Columbo to Sing Listerine Program for NBC

Russ Columbo, whom NBC always bills as "The Golden Voice of the West" or as the "Valentino of Song," has been selected by the Lambert Pharmaceutical Company (Listerine) to sing their new program, beginning Monday (December 7) at 5:45 p. m., and at the same time on Thursday and Friday on an NBC network, including WJZ and WENR. A similar program at 10 p. m., Tuesday, Wednesday and Saturday, will be heard through WCKY, WJZ, WGAR, WMAQ and WJR. Columbo will direct his own orchestra (so the story goes), will play the violin, and will sing.

"Bartered Bride" To Be Broadcast By Chicago Opera

An act of Smetana's humorous "Bartered Bride" will be broadcast from the Chicago Civic Opera stage at 9 p. m. Saturday (December 5) through Station WLS and other NBC outlets.

COMPLETE RADIO PROGRAMS BEGIN ON PAGE 3

Weekly RADIO DIAL "PROGRAM JOTTINGS" Professional Radio Daughter

Contents Copyrighted

Published every Friday by the Radio Dial Publishing Co.,
208 Beggs Bldg., Columbus, Ohio.

NATALIE GIDDINGS, Editor
Six Months for \$1.

E. E. HARRIS, Bus. Mgr.
Single Copies 5 cents

VOL. I WEEK ENDING DECEMBER 10, 1931 No. 3

A STRIKING TECHNICAL IMPROVEMENT

Save for the obvious item of increased transmitter power, most of the successive improvements in the technical department of broadcasting are likely to be taken pretty much for granted by the average listener. But one recent improvement is so striking that it is already the subject of widespread and enthusiastic interest among listeners who ordinarily care nothing about technicalities.

We are referring to the new electro-dynamic microphone used to broadcast the first two concerts by the Philadelphia Symphony Orchestra over the Columbia System and WCAH.

As might be gathered from its name, this new microphone (developed by the Western Electric Laboratories) employs the same basic principle on which the familiar dynamic loudspeaker operates. But what it does, rather than how it does it, is causing the wave of enthusiastic interest.

For one thing, it makes possible a considerable improvement in tonal fidelity. That was evident to any listener with an ear for quality, who heard the Stokowski concerts. The reason is a virtually uniform response over the whole band of audible frequencies from 20 to 10,000 cycles.

However, a still more important improvement is the wide volume range the new microphone can handle. Any musically-minded listener who heard the two Philadelphia programs cannot have failed to note that, instantly and gratefully.

With the condenser type microphone, standard equipment for the past several years, the volume level in the studio must be held within rather narrow limits. Fortissimos have to be throttled down and pianissimos built up, until the heart is pretty much ironed out of the music, particularly if it is the better sort. But this deadly flatness is eliminated with the dynamic microphone.

It has the extraordinary volume range of 40 decibels; or, in non-technical language, a power variation of 1 to 10,000. Sforzandi can be played as scored. Pianissimos come through as they should, and fortissimos have to be shaded only a trifle.

In short, this new dynamic microphone sounds like the nearest approach to hearing a concert in person which broadcasting technique has made thus far. It should be as much of a boon to harassed conductors as it is to the listeners who demand that certain something that makes programs live.

Probably it will be some little time before the new equipment comes into general use. But, judging by the first two trials, it cannot be too soon. For example, we are impatient to hear a Sousa broadcast so handled. With the dynamic microphone the result should be more of the stuff that makes Sousa Sousa in person, but somehow has been conspicuous for its absence via radio thus far.

Around the Dial

By THE DIAL TWISTER

They say Columbia has put up the bars against astrologists, numerologists, mind-readers and fortune-tellers of all kinds. But the ban doesn't seem to apply to predictions of scores by football coaches and other sports crystal-gazers.

And it turns out that Alice Joy, vocalist in the Prince Albert act is really Frances Holcomb. Why the change of name? Ask an easy one.

Rumor has it that a half dozen more stations just over the line in Mexico are going to go on the air before long. If they chisel in between the American channels like XER is doing, that's going to make some pretty back-fence static. And the story is that American money is building them.

Those programs by the National Oratorio Society (WTAM, Sunday at 10:11 p. m.) are worth a twist of anybody's dial. Reinald Werrenrath, who conducts them, says the purpose is "to show that good music isn't a bore." He proves it. This season the Society is presenting shorter works.

Vincent Lopez says he thinks the waltz is on its way back to popularity. Speed the day, say we.

Those Goodyear programs WTAM, Tuesday at 8:30 p. m. and Saturday at 9 p. m.) have started something by getting in a plain citizen to supply the words. At last somebody has tumbled to the fact that a lot of listeners are fed up with the stilted style most of the

professional announcers don before the mike. If they know their business, more of the program experts will be following suit soon.

And some people are blaming radio for the freakish fall weather we've been having. Poor old radio! Last year it was responsible for the drought, and before that too much rain. What's the next charge, your honor?

NBC reports that that educational program (WTAM, Saturday at 8:30 p. m.) drew over 10,000 requests for the listener's notebook in less than a week after the first broadcast. Figuring 1000 listeners per letter, as the broadcasters do, this means an audience of 10,000,000. Yet there are broadcasters who will tell you, oh, so positively, that listeners abhor anything educational.

Some of the football coaches think radio is partially responsible for this year's slump in gridiron attendance. As if anybody would rather hear a game broadcast than see it. It's nearer the truth to say that radio is football's best salesman. Maybe, too, the coaches might feel different about it if only their wins could be put on the air.

They say Columbia limits broadcast cussing to five naughty words per program: three d—mns and two h—lls, or vice versa. But nothing stronger. What's more, there can't be four references to condemnation and only one to the place said to be paved with good intentions. There has to be a three-to-two ratio.

Friday, December 4

8 p. m., WTAM (NBC). Chopin's "Minute Waltz" will be played by the Cities Service Orchestra, directed by Rosario Bourdon, and sung by Jessica Dragonette, soprano. A traditional minstrel song, "The Daring Young Man on a Flying Trapeze," will be sung by the Cities Service Cavaliers.

8 p. m., WLS (NBC). Adele Astaire, sprightly song and dance star of the present Broadway hit, "Band Wagon," will be guest artist with Nat Brusiloff's orchestra during the Nestle's Program. Never seen in stage productions without her brother, Fred, Adele will sing several popular songs, and jest with Allyn Joslyn, master of ceremonies.

8 p. m., WEO. Professor Thomas L. Kibler, Director of Commerce Extension at Ohio State, is giving listeners first-hand information on international economic problems as the result of six months in Austria, Germany, France, Switzerland, Holland, Belgium and England, studying trends in business. While in Germany he gave similar talks in a series of lectures at the University of Hamburg.

8:30 p. m., WEO. "The Sire de Maletroit's Door," by Robert Louis Stevenson, will be presented by the WEO Players.

9 p. m., WLW. The Maxwell House Cotton Queen Showboat has a sure 'nuff minstrel show aboard with Hink and Dink as end men. Hink and Dink also do a stunt with the Werk Bubble Blowers on WLW at 8:30 p. m. Tuesdays.

Saturday, December 5

8 p. m., WLW. A burlesque version of "Rip Van Winkle" will be broadcast on the Lavender network of the Irrational Broadcasting Company as part of the Crosley Follies. Henry Thies plays the program.

8:30 p. m., WLW. Digging back into the music files, the King Edward Cigar Band will play "On Moonlight Bay," "Hindustan," "Jada" and "Last Night on the Back Porch."

Sunday, December 6

11 a. m., WAIU. Rabbi Tarshish will broadcast another of his sermons which are bringing many out-of-Columbus to the WAIU wavelength every Sunday.

2 p. m., WAIU. The Elks' Lodge of Columbus will broadcast a memorial program.

5:30 p. m., WTAM (NBC). Rosa Ponselle of the Metropolitan will sing familiar songs in the General Electric Twilight program.

Monday, December 7

11:30 p. m., WLW. "Little Brown Bulls," "Moose Meat," and other dramatic ballads of the lumberjacks of the Northwest will be sung in the WLW Fanfare program dedicated to Seattle, Wash. Some of the ballads, germane to the woodcutting regions of the West, have been written down for the first time in preparation for the program. A vocal chorus will sing the "Bear" song, official rally tune of the Seattle Chamber of Commerce.

8:30 p. m., WLW. The Hollingsworth Hall slumber music will include selections from Romberg's "Blossom Time," Massenet's "Minuet," and Glazounow's "Pas Espagnole."

9 p. m., WEO. The Neighborly Players, under the direction of Gwendolyn Jenkins, will give her adaptation of "The Ruggles Family," by Kate Douglas Wiggin. Both are adaptations of "The Birds' Christmas Carol."

9 p. m., WEO. J. P. Schmidt, Supervisor of Ohio's Farmers' Institutes, will be master of ceremonies for the Farm Night program. Mr. Schmidt is partly responsible for the growth of the rural adult education plan of the state, which last year reached 770,000 ruralites in 732 communities.

Tuesday, December 8

6:30 p. m., WLW. Patrick Henry's speech, "The Call to Arms," the deciding factor in determining that this country should separate itself from European domination, will be discussed by Professor Arthur S. Postle in the first of a new series of University of Cincinnati talks.

Wednesday, December 9

2 p. m., WCAH (CBS). A dramatization based on "Russlan and Ludmilla" will be presented to school children by the American School of the Air. The basic story of "Russlan and Ludmilla," the inspiration of Glinka's opera, goes far back into the folk-lore of Russia, but it is generally known today as one of the best works of Alexander Pushkin, the famous Russian poet.

10 p. m., WCAH (CBS). Irene Bordoni, French musical comedy actress, will be guest artist on the Vitality Personalities program.

Thursday, December 10

9 p. m., WLW. Part of Schubert's "Unfinished Symphony" will be played by the WLW concert orchestra in the Great Composers' program which will be exclusively Schubert. Harriet Wellen, soprano, will be the soloist.

10 p. m., WKRC (CBS). Herman Hupf, who wrote "When Yuba Plays the Rumba on the Tuba," and "Sing Something Simple," will sing his newest song for the first time with the Hart, Shaffner & Marx Trum-peters. It is "Goopy Gear, He Plays Piano and He Plays by Ear." The radio audience's selection of best all-American football team will be announced.

10:30 p. m., WCAH (CBS). Grand Opera Miniatures will have a radio version of Verdi's "La Traivata."

Ross MacLean



Ross MacLean, young baritone from Canada who achieved success on Broadway overnight by stepping into Everett Marshall's role in the "Scandals" when the star was ill, will be heard on the radio for the first time when he appears as guest artist with Nat Brusiloff's orchestra on the Nestle Chocolate program Friday (December 11) at 8:00 p. m. over a WJZ - NBC network and WLS.

MacLean will sing three tunes from the "Scandals," as his contribution to the program. They are "That's Why Darkies Are Born," "The Thrill Is Gone," and "You Didn't Know the Music and I Didn't Know the Words."

Four Famous Speeches Will Be Reviewed on Air

"Famous American Speeches" is the title of a series of four talks to be given at WLW by Arthur S. Postle, Instructor in Speech at the University of Cincinnati, at 6:30 p. m. Tuesdays, beginning this week (December 8).

The schedule of his talks follows:
Dec. 8—Patrick Henry—"The Call to Arms."
Dec. 15—George Washington's Farewell Address.
Dec. 22—Henry Ward Beecher's Liverpool Address.
Dec. 29—Theodore Roosevelt—"The Man with the Muck-Rake."

In giving these talks, Mr. Postle will include parts of each of the four chosen speeches, together with the historic background, comments on the speech itself, and a statement of the immediate results accomplished.

Contract Bridge Playlet Will Be Repeated by NBC

Page boys, veteran actors, musicians, announcers, engineers and studio whatnots will participate in the repeat performance of "The Bridge Fiends" on the NBC-WFAF network Friday (December 4) at 7 p. m. The program consists chiefly of a 32-verse poem written by Dr. Sigmund Spaeth, music authority. Each verse is spoken by a different person. The only qualification for the 32 is that each must have attempted to master contract bridge, and therefore feel his role. The impromptu actors take their parts only for the fun of it or for revenge, and receive no pecuniary recompense. The skit was first given in October. WENR and WWJ probably will broadcast.

Nat Shilkret, NBC director and composer, has three brothers: Jack, Lou, and Fred. Each of the four is a pianist.

If We Had Our Own Radio Station

By JACK SNOW

ANNOUNCER:

Ladies and Gentlemen!

Here is the program of the Buxom Belt Company, manufacturers of Buxom Belts for Buxom Ladies, guaranteed to remove excess flesh and make you smooth and lithesome in no less than twenty years. Our old time orchestra, the Belt Busters, headed by Ben Buckle, opens the program with the theme melody "It's the Girdle."

PARDON MY Imperkinsence!
Being Some Perky Palaver From the Programs of **RAY PERKINS**

Hi there, Radio Dialers!



They had a premiere of the new opera called "Wozzeck" at the New York Metropolitan Opera House last week. The entire music world is all agog over it, even though it sounds like the name of a patent medicine.

I didn't go because opera gets in my hair as a rule, but Mr. Willy Nilly, our operative in charge of opera, attended. It was written in 1921 by Alan Berg, who is no relative of the Mrs. Berg who writes "The Rise of the Goldbergs." Ten years ago is practically yesterday when it comes to opera, so they just got round to producing it at the Met.

Mr. Nilly says that what "Wozzeck!" lacks is a few good belly-laughs.

Don't raise your eyebrow, that's an expression used in show business and isn't considered vulgar.

Perfectly nice people say it. Mr. Nilly's idea is that if they made the first act curtain stronger, put in some gags, a couple of good tap dancers here and there, a good theme song, and cut down a little on the murders it would make good popular entertainment.

It seems everybody gets murdered or commits suicide, just like in a Eugene O'Neill play.

Willy says you'd think it were put on by the Theatre Guild.

* * *

"Wozzeck" is pronounced "woz-zeck," as in the sentence: Who wozzeck girl I seen you with last night?

* * *

We did a ravishing moon song the other night called "Pagan Moon." By "we" I mean I and my piano, the one named Cuthbert—a stallion he is, the pride of the NBC stables.

* * *

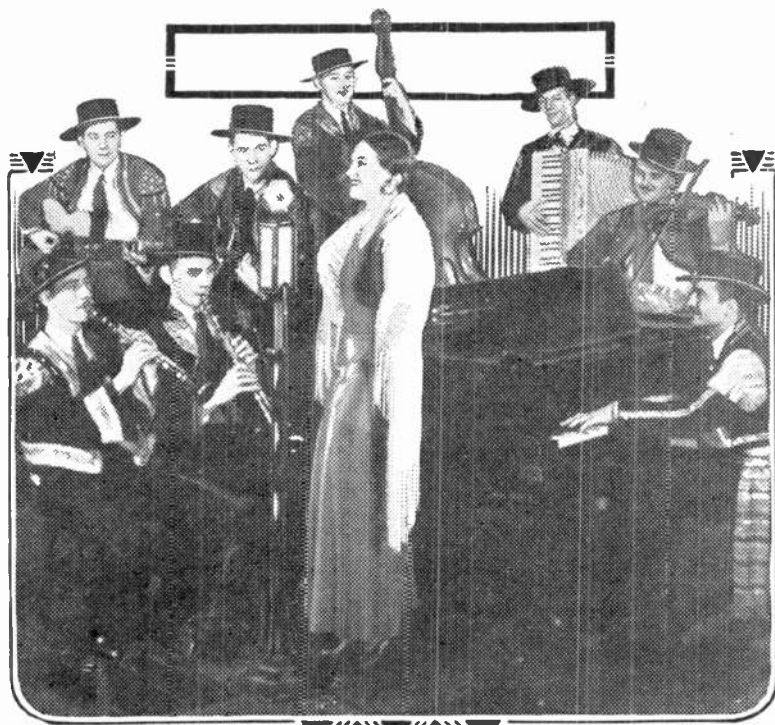
When television arrives we shall have tableaux to go with songs of this sort.

For "Pagan Moon," for example, we would have a big orange moon rise just over Cuthbert's right shoulder, half way between the floor and the ceiling.

* * *

We would have a bugle call off stage (not off key, just off stage); and six little girls about 19 years old (19 years apiece, making 114 years altogether) would flutter down on wires (private wires, not party lines as these are nice girls), dressed as Pagan Moon goddesses—all good flutterers in yellow

"Los Vaqueros de Ramona"



"Los Vaqueros de Ramona" is the official title of this picture, and although we're no great shakes at Spanish, we suspect that freely translated it means simply "Ramona and her Boy Friends." They appear at WLW at 5:15 p. m. on Monday and at 5:30 p. m. Wednesday. Ramona further demonstrates her versatility by singing some of her songs in Spanish, adding a linguistic ability to her talent for singing blues and playing the piano.

cheese cloth (the very best Swiss Cheese, full of holes to facilitate fluttering).

For a wow finish to the tableau I would enter driving a chariot, in the rumble seat of which would be the Goddess of Dawn, Aurora, which is up near Syracuse somewhere.

Aurora and I would pose as living statuary like a Vision, symbolic of something or other, I don't know what, but the audience would know.

I figure audiences can tell-a-vision when they see one.

* * *

A tableau like that would certainly be greeted with a roar of Borealis. The only question on our minds is whether the bugle should keep on blowing during the entire tableau.

Tableau or no tableau, that is the question.

Television is certainly going to open up a tremendous field. Whether it will stay open or not of course remains to be seen.

William Burke (Skeets) Miller, NBS's midget director of special broadcast events, was rushing out of his office on the way to Lakehurst in anticipation of the Akron's first voyage along the Atlantic seaboard.

"Well," remarked Frank Singiser, announcer, as he observed Miller's rush. "I guess that will make you an-Akronism."

Columbus Club Women Aid Ohio School of the Air



Columbus club women took radio education under their wing recently to the extent of contributing a check to the Ohio School of the Air to assist in its development.

The picture shows B. H. Darrow, director of the School which is broadcast by WLW from 2 to 3 p. m. every school day, receiving the check. Left to right, the picture includes Mrs. Roy C. Wolcott; Darrow; Roy Reichelderfer, his assistant; Mrs. J. H. Robinson, chairman of the Educational Department of the Ohio Federation of Women's Clubs; Mrs. D. H. Evans; Mrs. M. E. Johnston; Mrs. J. T. Kirk; Mrs. H. D. Rodee; and Mrs. A. H. Herbert.

Verna Is Red-Headed Blue Singer on CBS



Red of hair and blue of voice, this decorative young woman is the latest find in the Columbia network's studios in Chicago. She's a contralto, responds to the name of Verna Burke and is heard from WBBM over the Columbia network each Sunday at 6 p. m. during the Chicago Knights Program which WKRC sometimes broadcasts.

Radio Campaign Will Make Nation Tax Conscious

A radio campaign to make the nation tax conscious will be started by the American Taxpayers' League on Monday (December 7), on NBC stations, including WENR (860 kc.), at 6:15 p. m., when leaders in public life, including journalists, congressmen, governors and industrialists, will discuss every phase of the tax problem.

Ex-Senator James W. Wadsworth, Jr., of New York, chairman of the League's radio committee, will initiate the series Monday with a review of the organization's history, its purpose, and an outline of the radio series and its intent. He is also to talk on "Centralization."

COMPLETE PROGRAMS

To facilitate the finding of network programs with no Columbus outlet, stations more available than the key stations WJZ, WEAL (for NBC) and WABC (CBS) are listed in the network schedule.

This log of stations mentioned in these schedules will assist dialers in finding out-of-town programs:

- KDKA, Pittsburgh—980 kc.
- KMOX, St. Louis—1090 kc.
- WENR, Chicago—870 kc.
- WGN, Chicago—720 kc.
- WGY, Schenectady—790 kc.
- WHAS, Louisville—820 kc.
- WJR, Detroit—750 kc.
- WKRC, Cincinnati—550 kc.
- WLS, Chicago—870 kc.
- WLW, Cincinnati—700 kc.
- WSM, Nashville—650 kc.
- WTAM, Cleveland—1070 kc.

FRIDAY December 4

WAIU (640 kc.—468.5m.)

- 7:00 A. M.—Musical Clock
- 7:55—Program Review
- 8:00—Gid Tanner and his Skillet Lickers
- 8:30—Organ—Mary Jane Lusch
- 9:00—Bible Lovers' Meditation
- 9:30—Felix on the Keys
- 9:45—Fashion
- 9:48—Felix on the Keys
- 9:55—Live Stock Markets
- 10:00—Mrs. Davison—Child Health
- 10:05—Mrs. H. C. K. Muhlenberg; Mrs. R. C. Gribben
- 10:45—Little Harry
- 11:00—Musical
- 11:30—Bob & Paul, guitar and harmonica
- 11:55—Live Stock Markets
- Noon—Neighbors' Noon Hour
- 1:00 P. M.—Program Review
- 1:05—Helen Wagner, organist
- 1:30—Matinee Entertainers
- 2:00—Story Hour
- 2:30—H. H. Walker, pianist
- 2:45—Ralph Sapp
- 3:00—RKO Vaudeville
- 3:15—Walter Furniss, Songs of Yesteryear
- 3:30—Helen Carlisle, pianist
- 4:00—Magazine Survey—Gwen Williams
- 4:15—Santa Claus Story
- 4:30—Gene Gordon, organist
- 5:00—Gid Tanner and his Skillet Lickers
- 5:30—Stewart Sisters
- 5:45—Program Review
- 6:00—Rusty Parker's Orchestra
- 6:30—Cedric Lemont, astrologer
- 6:45—Scarlet Mask Band
- 7:15-7:30—Chevrolet Chronicles

WCAH (1430 kc.—209.7m.)

- 7:30 A. M.—Good Mornin'
- 8:00—Sleepwalkers' Club
- 8:15—Something for Everyone (CBS)
- 8:30—Hymn Time
- 8:45—Food for Thought
- 9:00—Commuters' Special (CBS)
- 9:15—Santa Claus Program—The Union Company
- 9:30—Tony's Scrap Book (CBS)
- 9:45—Sunshine Girl
- 10:00—Home Topics
- 10:15—Bond Bread Program (CBS)
- 10:45—Don and Betty (CBS)
- 11:00—Therionid Talk
- 11:10—Xmas Shoppers Program
- 11:30—Melody Parade (CBS)
- 11:45—Ben Alley (CBS)
- Noon—Dispatch Globe Trotter
- 12:15 P. M.—Don Bigelow's Orches. (CBS)
- 12:30—Rusty Parker's Orchestra
- 1:00—King's Jesters Program
- 1:15—Farm Community Network (CBS)
- 2:00—Columbia Artists Recital (CBS)
- 2:30—American School of the Air (CBS)
- 3:00—Eton Boys—Star Furniture Co. (CBS)
- 3:15—Talking Women
- 3:30—Arthur Jarrett's Orchestra (CBS)
- 3:45—Col. Educational Features (CBS)
- 4:00—Light Opera Gems (CBS)
- 4:30—Edna Thomas (CBS)
- 4:45—American Air Cadets
- 5:00—Union's Santa Claus
- 5:30—Uncle Ollie's Kremel Gang (CBS)
- 5:45—The Captivators (CBS)
- 6:00—Dave Abrams Orchestra (CBS)
- 6:15—Gilbert's Novelty Four
- 6:45—Bert Lown Orchestra (CBS)
- 7:00—Vi-Zoy Sunshine Girl
- 7:15—Cremo—Bing Crosby (CBS)
- 7:30—Baker Bar—Boswell Sisters (CBS)
- 7:45—Camel Quarter Hour (CBS)
- 8:00—The Columbians (CBS)
- 8:15—C. W. Brand Coffee—Little Harry
- 8:30—Cloth-Craft Radio Auditions
- 9:00—Corrine Schmidt, soprano
- 9:15—The Magic Carpet
- 9:30—Everybody's Play Time
- 9:45—Broad—Lincoln Supper Club
- 10:15—Bud Clark and His Hawaiians
- 10:30—The Four Clubmen (CBS)
- 10:45—Rusty Parker and His Orchestra
- 11:15—Street Singer (CBS)
- 11:30—Valley Dale Orchestra

FRIDAY, Dec. 4 WEO (570 kc.—526m.)

- 9:00 A. M.—Morning Melodies
- 9:30—New Things in Agricultural Science—Prof. E. F. Almy
- 9:45—Early Market News
- 9:55—World Book Man
- 10:00—Homemakers' Half Hour
- 10:30—Opening Live Stock Quotations
- 10:40—Ohio History—Friel Heimlich
- 12:30 P. M.—Live Stock
- 12:45—Fruit, Vegetable Markets
- 12:50—With Uncle Sam's Naturalists
- 1:00—Frew Mohr, Organist
- 1:30—A Chapter a Day—Dorothy Wilson
- 1:45—Science News
- 4:00—Market Reports
- 4:10—Studio Music
- 4:15—Poetic Harmonies—David Larrimer
- 4:30—Maxine Davies, Soprano
- 4:45—Y. M. C. A. Employment
- 7:00—French Lesson—Prof. Robert Fouré
- 7:30—Spanish Lesson—Prof. Santiago Gutierrez
- 8:00—International Economic Problems—Prof. T. L. Kibler
- 8:15—Elementary Accounting Course—Prof. W. E. Dickerson
- 8:30—WEO Players—"The Sire de Maletroit's Door" by Stevenson
- 9:00—Sun Dial Program
- 9:30—Frew Mohr, Organist
- 9:45—"Katinka"—Columbus Opera Club
- 10:00—Columbus Opera Club
- 10:30—Campus News—William Blair
- 10:45—Studio

WSEN (1210 k.c.—248m.)

- 8:00 A. M.—Smilin' Sam
- 8:30—Morning Program
- 9:00—Happy Half-hour
- 9:30—Musical Gems
- 10:00—WSEN Band Wagon
- 10:15—Melodies
- 10:30—Popular Selections
- 10:45—Organ Recital
- 11:15—Dance Moments
- 11:30—Luncheon Music
- Noon—Time Signal
- 12:01 P. M.—Wurlitzer Musicale
- 12:30—Eddie Lee
- 1:00—Citizens News Flashes
- 1:00—Cheerio
- 1:30—Furniture Factory Showroom
- 2:00—Music Box
- 2:30—"Baby's Birthday Party"
- 3:00—Fiesta
- 3:30—"With the Shut-Ins"
- 3:45—Louise Hammerstein, piano
- 4:00—Melodies
- 4:15—Madeleine Chevallard, blues
- 4:30—Student Musicale
- 5:00—John May, guitar and song
- 5:15—Stanley Watson, musical saw
- 5:30—Melodyland
- 6:00—Westerville Merchants
- 6:30—Dick Fidler's Neil House Orchestra
- 7:00—Olentangy Serenaders
- 7:30—Arabian Grill Orchestra
- 8:00—Studio
- 8:15—Knickerbocker Theatre
- 8:30—Cecil and Sally
- 8:45—Marie Wright, blues
- 9:00—Dick Fidler's Neil House Orchestra
- 9:30—Oscar Conrad Presentation
- 10:00—Abe Lyman Records
- 10:15—Steve, Skeeter and Chet
- 10:30—Radio Ramblers
- 11:00—"Livvie" Richardson's Arabian Grill Orchestra

WLW (428m.—700 kc.)

- 6:30 A. M.—International Fiddlers
- 7:00—Physical Exercises
- 7:15—Happiness Kids
- 7:30—Arthur Chandler, Jr., organ
- 7:45—Jolly Bill and Jane (NBC)
- 8:00—Morning Devotions
- 8:15—Georgian Wildcats
- 8:30—Bissel Pick-ups (NBC)
- 8:45—Physical Exercises
- 9:00—Rumford School of Cookery
- 9:15—Town Crier Economy Homes
- 9:30—Beautiful Thoughts (NBC)
- 9:45—Premium Man
- 10:00—Live Stock; Pollyanna Talk
- 10:15—A. & P. Orchestra
- 10:30—Colonel Goodbody (NBC)
- 10:45—Stokely Program
- 11:00—Music Appreciation (NBC)
- Noon—Tuxedo Fiddlers
- 12:15 P. M.—Pat Barnes (NBC)
- 12:30—River Reports
- 12:30—Piano Solos
- 12:45—Market Reports
- 12:50—Live Stock Reports
- 1:00—National Farm and Home (NBC)
- 1:31—Bernie Cummins' Orchestra
- 2:00—Ohio School of the Air
- 3:00—Mormon Tabernacle Choir (NBC)
- 3:15—Rochester Philharmonic Orchestra (NBC)
- 4:00—A. & P. Orchestra
- 4:30—Organ Matinee, Hershel Luecke
- 5:00—Words and Music
- 5:15—Los Vaqueros de Ramona
- 5:30—Southern Singers Quartet
- 5:45—Little Orphan Annie (NBC)
- 6:00—Old Man Sunshine
- 6:15—The Chatter
- 6:30—Mail Pouch Program
- 6:45—Lowell Thomas (NBC)
- 7:00—Amos 'n' Andy (NBC)
- 7:15—Boscul Program
- 7:30—Famous Beauties of History
- 7:45—Old Reliable Singers
- 8:15—Musical Bridges
- 8:30—Smith Brothers (NBC)
- 8:45—Sisters of the Skillet (NBC)
- 9:00—Maxwell House Cotton Queen
- 9:00—Armour Program (NBC)
- 10:00—Bernie Cummins Orchestra from Netherland Plaza

WLW **FRIDAY, Dec. 4**
 10:30—Variety: Seger Ellis and Band
 10:45—Bob Newhall Sports Slices
 11:00—Van Camp Night Caps
 11:30—Los Amigos
Midnight—Hotel Gibson Orchestra
 12:15—William Stoess Orchestra (NBC)

WTAM (1070 kc.—280.2m.)

6:31 A. M.—Sun Up—Farm Talk
 7:00—Physical Culture Class
 7:15—Morning Melodies, Weather
 7:45—Clegg Monroe, Baritone
 8:00—Gene and Glenn (NBC)
 8:15—Pie Plant Pete
 8:30—Cheerio (NBC)
 9:00—Opening Live Stock Markets
 9:05—Physical Culture Class
 9:15—Tom Waring's Troubadours (NBC)
 9:45—Our Daily Food (NBC)
 10:00—Mrs. Blake's Radio Column (NBC)
 10:15—Patty Jean's Chat
 10:30—Savory Kitchen Institute (NBC)
 10:45—Betty Crocker (NBC)
 11:00—Archer Gibson Ensemble
Noon—General Elec. Home Circle (NBC)
 12:15 P. M.—Sports Flashes — Weather—Fruit—Vegetables Markets
 12:30—Noonday Melodies
 1:00—Markets—Program Resume
 1:30—Americo Bono Orchestra
 2:00—Chester Zohn, Tenor
 2:15—WTAM Players
 2:30—Young Poets
 2:45—Tom Waring
 3:00—Women's Radio Review (NBC)
 4:00—Betty Moore Decorating Talk (NBC)
 4:15—Twilight Voices (NBC)
 4:30—Phil Spitalny's Tea Dansante (NBC)
 5:00—Jungle Man (NBC)
 5:15—Merry Marketeers
 5:45—Wizard of Oz
 6:00—Sports Review
 6:05—Waldorf-Astoria Orchestra (NBC)
 6:15—Henkel Vesperters
 6:45—The Stebbins Boys (NBC)
 7:01—Spang Bakers (Gene and Glenn)
 7:30—Prince Albert Quarter Hour (NBC)
 7:45—The Goldbergs (NBC)
 8:00—Cities Service Concert (NBC)
 9:00—Fisher's Friday Frolic
 9:30—Pond's Dance Program (NBC)
 10:00—Guggenheim Airship Research Program
 10:15—Artist Service (NBC)
 10:30—RKO Theater of the Air (NBC)
 11:00—Adventure at Your Elbow
 11:15—Sports Review; Musical Bulletin Board
 11:30—George William's Orchestra
Midnight—Midnight Melodies
 12:30—Americo Bono Orchestra

NETWORK PROGRAMS

not broadcast by WCAH (Columbia), WLW or WTAM (NBC).

6:00—Raising Junior (WJZ)
 —Waldorf-Astoria Hotel Orchestra (WEAF-WENR)
 6:15—Peter Van Steeden's Orchestra (WJZ)
 6:30—Sundial Bonnie Laddies (WJZ).
 —Ray Perkins, the Old Topper (WEAF)
 —John Kelvin (WABC)
 6:35—Three Mustachios (WEAF)
 7:15—Boscul Moments (WJZ)
 7:30—Phil Cook, the Quaker Man (WJZ—KDKA—WENR)
 7:45—Esso Program (WJZ—KDKA)
 8:00—Nestle's Program (WJZ—KDKA—WLS)
 8:15—Singing Sam, the Barbasol Man (WABC)
 8:30—Smith Brothers (WJZ—WLS)
 —March of Time (WABC-WOWO)
 9:00—Interwoven Pair (WJZ—KDKA)
 —The Clicquot Club (WEAF-WGY)
 —Radio Reproductions (WABC)
 9:15—Liberty Magazine Hour (WABC WOWO)
 9:45—Friendly Five Footnotes (WABC)
 10:00—Paul Whiteman's Paint Men (WJZ—KDKA—WENR)
 —Pillsbury Pageant (WABC)
 10:30—Clara, Lu and Em (WJZ-KDKA)
 10:45—Waves of Melody (WJZ-KDKA)
 —Tito Guizar (WABC)
 11:00—Slumber Music (WJZ)
 —Marion Harris, songs (WEAF)

NETWORK **Friday, Dec. 4**
 —Leon Belasco and his Orchestra (WABC)
 11:30—Jack Denny and his Orchestra (WJZ)
 —Enric Madriguera's Orchestra (WABC)
 11:45—Nocturne, with Ann Leaf (WABC)
Midnight—Russ Columbo (WJZ)
 —Ralph Kirbery, tenor (WEAF)
 —Ben Bernie and his Orchestra (WABC)
 12:30—Ship Inn Orchestra (WABC)
 1:00—Connie's Inn Orchestra (WABC)

SATURDAY
December 5

WAIU (640 kc.—468.5m.)
 7:00 A. M.—Musical Clock
 7:55—Program Review
 8:00—Gid Tanner and his Skillet Lickers
 8:30—Organ Melodies, Mary Jane Lusch
 9:00—Bible Lovies' Meditation
 9:30—Felix on the Keys
 9:55—Live Stock Markets
 10:00—Children's Hour
 10:15—Flying Playshop
 10:45—Little Harry
 11:00—Ada Nolan, soprano
 11:15—Charles Crise, pianist
 11:30—Paul and Bob
 11:55—Live Stock Markets
Noon—Neighbors' Noon Hour
 1:00 P. M.—Program Review
 1:05—Junior Artists' League
 2:00—Story Hour
 2:30—Musical
 3:00—People's Poetry, J. Howard Doyle
 3:15—Thelma Parrshall and her Uke
 3:30—Traveling 'Round the World
 3:45—Santa Claus Story
 4:00—Accordiane and Accordiette
 4:30—Ralph Lambert, organist
 5:00—Gid Tanner and his Skillet Lickers
 5:30—Stewart Sisters
 5:45—Program Review
 6:00—Rusty Parker's Orchestra
 6:30—Boy Scout Program
 6:45—Scarlet Mask Band
 7:00-7:45—Neighbors Family Party

WCAH (1430 kc.—209.7m.)
 7:30 A. M.—Good Music
 8:00—Sleepwalkers' Club
 8:15—Recordings
 8:30—Hymn Time
 8:45—Food for Thought
 9:00—Commuters' Special (CBS)
 9:30—Tony's Scrap Book (CBS)
 9:45—Maitre De Hotel
 10:00—Jewish Art Program (CBS)
 10:30—Deacon Leonard's Fiddlers
 11:00—Xmas Shoppers' Program
 11:15—New York Philharmonic Symphony
 11:45—The Mr. and Mrs.
Noon—Dispatch Globe Trotter
 12:15—Office Boy, Art Graham
 12:30—Rusty Parker's Orchestra
 1:00—Hotel Taft Orchestra (CBS)
 1:15—Football Souvenir Program (CBS)
 1:30—Penn-Navy Football Game (CBS)
 4:00—Ann Leaf, organ (CBS)
 4:30—Spanish Serenade (CBS)
 5:00—Eddie Duchin's Orchestra (CBS)
 5:30—Bert Lown's Orchestra (CBS)
 5:45—Tropic-Aire Sport News (CBS)
 6:00—Dave Abrams Orchestra (CBS)
 6:15—Gilbert's Novelty Four
 6:45—Mr. and Mrs. Happy Lawson
 7:00—Political Situation in Washington (CBS)
 7:15—Cremo—Bing Crosby (CBS)
 7:30—Reis and Dunn (CBS)
 7:45—Camel Quarter Hour (CBS)
 8:00—The Phils Brothers (CBS)
 8:15—Philco—Philadelphia Symphony Orchestra (CBS)
 10:00—National Radio Forum (CBS)
 10:15—Hank Simmons' Showboat (CBS)
 11:00—Valley Dale Orchestra
 11:30—Rusty Parker's Orchestra

WEAO (570 kc.—526m.)
 9:00 A. M.—Morning Melodies
 9:15—Children's Story Hour
 9:45—Early Market News
 9:55—World Book Man

Ray Perkins Has New Commercial Program on WLW



Ray Perkins, RADIO DIAL'S columnist, has a new program at 6:30 p. m. Tuesdays and Saturdays on an NBC network including WJZ, WLW, WMAQ and WHAM and probably additional stations. It is sponsored by the Andrew Jergen Company which has taken up its option on Perkins' air time so that he can not continue on the Three Bakers program on Sunday nights. His Libby program on Thursday and Friday mornings at 10 o'clock will continue on WJZ, WCKY, and other NBC stations. The new program will give Perkins' fans a better chance than before to hear his subtle type of punful radio entertaining, his original songs and his adroit contortions with his twin piano Clarence and Cuthbert.

WEAO SATURDAY, Dec. 5
 10:00—Farm Science Snapshots
 10:10—Camp Fire Girls' Quotations
 10:30—Opening Live Stock Quotations
 10:40—Ohio History—Friel Heimlich
 12:30 P. M.—Live Stock, Fruit and Vegetable Markets

WSEN (1210 k.c.—248m.)
 8:00 A. M.—Smilin' Sam
 8:30—Morning Program
 9:00—Recordings
 9:30—Musical Half-hour
 10:00—WSEN Band Wagon
 10:15—Happy Moments
 10:45—Organ Recital
 11:15—Hester Clement, pianist
 11:30—Melodies
Noon—Time Signal
 12:01 P. M.—Wurlitzer Musicale
 12:30—Eddie Lee
 1:00—Citizens News Flashes
 1:10—Cheerio
 1:30—Furniture Factory Showroom
 2:00—Music Box
 2:30—"Biby's Birthday Party"
 2:45—Melody Moments
 3:00—Fiesta
 3:30—Organogue
 4:00—Carrie Smith, reader
 4:15—Recordings

WSEN SATURDAY, Dec. 5
 4:25—Dublin Junior Entertainers
 4:45—Pearl Palace Trio
 5:00—Catharine Albright, reader
 5:15—State Music School Banjo Band
 5:45—Jerry Allerton, pianist
 6:00—Studio
 6:30—Neil House Orchestra
 7:00—The Hayshakers
 7:30—Arabian Grill Orchestra
 8:00—Studio
 8:15—Harry and Uncle Bill
 8:30—Cecil and Sally
 8:45—Clara Lavin, contralto
 9:00—Neil House Orchestra
 9:30—Betty Burgess, piano
 9:45—Studio
 10:00—Radio Ramblers
 10:30—Greystone Ballroom Orchestra
 11:00—Arabian Grill Orchestra

WLW (428m.—700 kc.)

6:30 A. M.—International Fiddlers
 7:00—Physical Exercises
 7:15—Happiness Kids
 7:30—Organ, Arthur Chandler, Jr.
 7:45—Jolly Bill and Jane (NBC)
 8:00—Morning Devotions
 8:15—Sunbirds (NBC)
 8:45—Physical Exercises
 9:00—Girls' Program
 9:10—Organ Interlude
 9:20—Book News
 9:30—Beautiful Thoughts (NBC)
 9:45—WLW Mail Bag
 10:00—Live Stock Reports
 10:10—Piano Solos
 10:15—A. & P. Orchestra
 10:30—Colonel Goodbody (NBC)
 10:45—Oklahoma Cowpunchers
 11:00—Moto-Ironing Time
 11:15—Elliot Brock, violin
 11:30—Live Stock Reports
 11:45—River; Weather; Time
Noon—Government Glimpses—Gilbert Bettman, Attorney General

12:15 P. M.—Pat Barnes (NBC)
 12:30—Hotel Gibson Orchestra
 12:45—National Farm and Home (NBC)
 1:31—Bernie Cummins Orchestra
 2:00—WLW Talent Bureau
 2:30—Organ, Arthur Chandler, Jr.
 3:00—Plantation Days
 3:30—Three Doctors (NBC)
 3:45—Sisters Three
 4:00—A. & P. Orchestra
 4:30—Sectatry Hawkins
 5:00—Crosley Buster's Hour
 5:30—Little Dealer Parade
 5:45—Little Orphan Annie (NBC)
 6:00—Old Man Sunshine
 6:15—The Chatter
 6:30—Ray Perkins
 6:45—Lowell Thomas (NBC)
 7:00—Amos 'n' Andy (NBC)
 7:15—Crosley Theater of the Air
 7:45—Hotel Gibson Orchestra
 8:00—Crosley Follies (to KQV, WIBO)
 8:30—Dance with Countess Dorsay (NBC)
 9:00—King Edward Cigar Band
 9:30—The First Nighter (NBC)
 10:00—Korn Parchie Program
 10:15—The Arzen Serenaders
 10:30—Variety: Three Musketeers
 10:46—Bob Newhall Sports Slices
 11:00—Van Camp Night Caps
 11:30—Doodledickers
Midnight—Josef Cherniavsky Orchestra
 12:30—Netherland Plaza Orchestra
 12:30—Bernie Cummins' Orchestra
 1:00—Hotel Gibson Orchestra

WTAM (1070 kc.—280.2m.)

6:31 A. M.—Sun Up
 7:00—Physical Culture Class
 7:15—Morning Melodies; Weather
 7:45—Clegg Monroe, Baritone
 8:00—Gene and Glenn (NBC)
 8:15—Pie Plant Pete
 8:30—Cheerio (NBC)
 9:00—Opening Live Stock Markets
 9:05—Physical Culture Class
 9:15—Tom Waring's Troubadours (NBC)
 9:45—Our Daily Food (NBC)
 10:00—Mrs. Blake's Radio Column (NBC)
 10:15—Raymond Mitchen, tenor
 10:30—Sonata Recital (NBC)
 11:00—Two Seats in a Balcony (NBC)
 11:30—Patty Jean's Chat
 11:45—Chester Zohn, Tenor
Noon—Black and Gold Room Orch. (NBC)
 12:15 P. M.—Sports Flash; Weather; Markets
 12:30—Kay Kyser's Orchestra
 1:00—Markets; Program Resume
 1:09—Organ Interlude
 1:30—Ted Black's Orchestra (NBC)
 1:45—Football Game, Navy vs. Pennsylvania (NBC)
 4:30—Phil Spitalny's Tea Dansante (NBC)
 5:00—Lady Next Door (NBC)
 5:15—Frances Bowdon (NBC)
 5:30—Contract Bridge (NBC)
 5:55—Suorts Review
 6:00—Oxford-Harvard Debate
 6:05—Waldorf-Astoria Orchestra (NBC)
 6:31—Viennese Ensemble
 7:00—Kay Kyser's Orchestra
 7:15—Football Scores
 7:30—Prince Albert Quarter Hour (NBC)
 7:45—The Goldbergs (NBC)
 8:00—Metropolitan Good Roads
 8:30—National Advisory Council on Radio Education (NBC)
 9:00—Goodyear Program (NBC)
 9:30—Club Valspar (NBC)
 10:00—Lucky Strike Dance Hour (NBC)
 11:00—Sports Review; Musical Bulletin Board
 11:15—WTAM Players
 11:30 to 2 A. M.—Gene and Glenn Song Shop

NETWORK SATURDAY, Dec. 5
NETWORK PROGRAMS

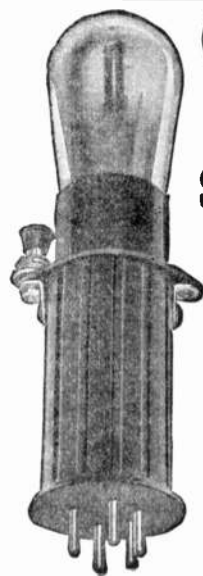
6:00—Raising Junior (WJZ)
 —Dave Abrams' Orchestra (WABC)
 6:15—Gruen Answer Man (WJZ)
 6:30—Breyer Leaf Boys (WJZ)
 —Don Bigelow's Orchestra (WABC)
 6:45—Connie Boswell (WABC)
 7:15—Tastyest Jesters (WJZ—KDKA)
 —Laws that Safeguard Society (WEAF)
 7:30—Benrus Program (WJZ)
 7:45—Hollywood Nights (WJZ-KDKA)
 8:00—Danger Fighters (WJZ—KDKA)
 —Civic Concerts Service Program (WEAF)
 9:00—Chicago Civic Opera (WJZ-WLS)
 10:00—Cuckoo (WJZ)
 10:30—Clara, Lu and Em (WJZ-KDKA)
 10:45—Twenty Fingers of WJZ (WJZ—KDKA)
 11:00—Slumber Music (WJZ)
 —Amos 'n' Andy (WENR)
 —Marion Harris, songs (WEAF—WGY)
 —Enric Madriguera's Orchestra (WABC)
 11:15—Jesse Crawford, Poet of the Organ (WEAF)
 —Jack Miller (WABC)
 11:30—Russ Columbo (WJZ—WENR)
 —Coon-Sanders' Orchestra (WEAF)
 —Leon Belasco's Orchestra (WABC)
 11:45—Lew White Organ Recital (WJZ)
 —Nocturne, with Ann Leaf (WABC)
Midnight—Mildred Bailey and the King's Jesters (WJZ)
 —Guy Lombardo Orchestra (WABC)
 —Ralph Kirbery, tenor (WEAF)
 12:15—Paul Whiteman and his Orchestra (WJZ)
 12:30—St. Moritz Orchestra (WABC)
 —Vincent Lopez Orchestra (WEAF)
 1:00—Noble Sissle Orchestra (WABC)
 1:30—Dave Abram's Barn Orchestra (WABC)

SUNDAY
December 6

WAIU (640 kc.—468.5m.)
 7:45 A. M.—Morning Melodies
 9:00—The Class Family
 9:30—Hymns—Hazel Reed
 10:00—Lecture—Judge Rutherford
 10:15—Alice Van Sickle
 10:30—Mary Jane Lusch, organ
 11:00—Rabbi Tarshish
Noon—Cantor Grodner
 12:15 P. M.—Catalena Quintette
 12:45—Sheridan Trio
 1:15—Harold Davidson
 1:30—Ohio Studio String Ensemble
 2:00—Elks' Memorial
 3:00—Cols. Gallery of Fine Arts
 4:00—Nazarene Hour
 5:00—P. T. L. Vespers
 5:25—Xmas Seal Talk
 5:30—Baldwin Hour
 6:00—Rusty Parker's Orchestra
 6:30—WAIU Players
 7:00-7:45—Watch Tower Hour

WCAH (1430 kc.—209.7m.)
 9:00 A. M.—Land o' Make Believe (CBS)
 10:00—Judge Rutherford Lecture
 10:15—Hymn Time
 10:30—Community Center Faculty Recital (CBS)
 11:00—Vi-Zoy Clever Kiddie Club
 11:55—Theronoid Talk
Noon—Watch Tower Program
 12:30 P. M.—International Broadcast (CBS)
 12:45—Cafe Budapest (CBS)
 1:00—Gilbert Memories
 1:30—Cathedral Hour (CBS)
 1:45—Robert E. Burns, tenor
 2:00—Whitaker's Friendship Hour
 2:30—The WCAH Forum
 3:00—Christian Science Lecture
 4:15—N. Y. Philharmonic Symphony
 5:00—Civic Theatre of the Air
 5:30—Watch Tower Program
 6:00—Hills Cab Boys
 6:30—Broad—Lincoln Supper Club—Trio
 7:00—The World's Business (CBS)
 7:15—Capital City—Saxophone Four
 7:30—Hartman Players Guild
 8:00—Bonnie Jean Martin, soprano
 8:15—Ester Cad-Kin with Concert Orchestra (CBS)
 8:30—Rusty Parker's Orchestra
 9:00—Roxy Theater Symphony (CBS)
 10:00—Elks Variety Program
 10:30—Ernest Hutcheson, Pianist, with Orchestra (CBS)
 11:00—The Gauchos (CBS)
 11:30—Ben Bernie Orchestra (CBS)

WSEN (1210 k.c.—248m.)
 10:45 A. M.—Bon Jour
 11:00—Musical Gems
Noon—Time Signal
 12:01 P. M.—Music Classics
 12:31—Children's Program
 2:00—Glenn L. Myers' Sacred Hour
 3:00—The Two Pioneers
 3:15—Jerry Allerton, pianist
 3:30—Father Flanagan's Boys' Home Program
 4:00—Grace M. E. Church Choir
 4:30—Radio Ramblers
 4:45—Such Sisters, duo
 5:00—Four Night Owls
 5:30—Vesper Service
 6:00—Robbins' Crooners Orchestra
 6:40—Studio
 7:00—Helen Quigley
 7:15—Mary Frances Ellis, soprano
 7:30—Neil House Ensemble

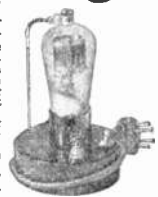


Get the Police Calls on your Radio

\$2.50 A RAHM "POLICER" INSTANTLY GIVES YOU 80-200 METER RECEPTION WITH ANY TUNED RADIO FREQUENCY RECEIVER.

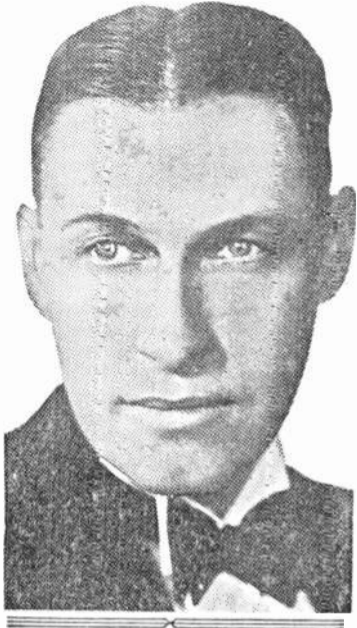
Simply plug it in. No wiring to change. No altering your receiver or spoiling it for 200-550 meter reception. The Rahm "Policer" connects and disconnects in a few seconds. Brings in police calls from 25 cities, and regular short wave reception from everywhere. The neatest, cleverest short wave system ever devised. A precision-built instrument in every sense of the word. Two models—one for T. R. F. receivers using type 224 (screen grid) detector—and one for sets using 227 detector. Only DeLuxe Model works in superhets. Specify type wanted. Only \$2.50 postpaid. Fully guaranteed. Order now.

DELUXE MODEL
Rahm "Policer" \$3.50
 Gives same marvelous results as the \$2.50 model, but offers the advantage of permanent installation. By simply snapping the switch in the base of the de luxe model, your T. R. F. set tunes between 80-200 meters or 200-550 meters. Plug it in at once; leave it there! Turn as you wish. Plus receiver having either 224 or 227 detector. Also works in most superhets in first detector stage. \$3.50 postpaid and fully guaranteed. Order now.



DEALERS—write at once for discount on quantity lots of this fast selling accessory.
RAHMC PRODUCTS, Dept. 13, Elmurst, Ill.

Brad Browne, Radio "Nit-Wit," Joins Bakers



Bradford Browne, banjo-strumming master of foolishness, succeeds Ray Perkins as master of ceremonies, or "Spare Baker," on the Fleischmann "Three Bakers" program Sunday (December 6) at 7:30 p. m. on WLW and the WJZ-NBC network.

The change is being made because the Jergen Company exercised an option on Ray's exclusive services for their new program at 6:30 Tuesday and Saturday nights on WLW and the WJZ-NBC network.

In Brad Browne, the "Three Bakers" have one of radio's most versatile performers, known most widely as producer and leading genius of the "Nit-Wits." He's a song-writer, script-writer on humorous subjects, announcer, banjo-player and singer, on occasion, of funny songs. Quite a record for one whose early education at Georgetown University, was in the solemn ways of the law.

The skit for Sunday is titled "The Three Bakers With Columbus," or "1492 Complete With Tubes."

WSEN SUNDAY, Dec. 6

- 8:00—Carol Ready, soprano
- 8:15—Bob Bush, tenor
- 8:30—Weather Report
- 8:31—Mary Krejci
- 8:45—Ruth Wilson, piano
- 9:00—Wayne Clark
- 9:30—Dance Selections
- 10:00—Mrs. Chambers' Variety
- 10:30—Steve, Skeeter and Chet
- 10:45—Dream Time

WLW (428m.—700 kc.)

- 9:00 A. M.—Church Forum
- 9:30—Children's Program (NBC)
- 10:00—Organ, Arthur Chandler, Jr.
- 10:25—River Report
- 10:30—Fiddlers Three (NBC)
- 10:45—Song for Today (NBC)
- 11:00—Russian Singers (NBC)
- 11:30—Morning Musicales (NBC)
- 12:30 P. M.—Plantation Days
- 12:45—Henry Thies Orchestra
- 1:15—Walter Damrosch Symphony (NBC)
- 2:15—Conservatory of Music Recital
- 2:30—Yeast Foamers (NBC)
- 3:00—Crosley Theater of the Air
- 3:30—Crosley Roamios
- 4:00—League of the Little Flower (WJR)
- 5:00—Shuron Musical Showman
- 5:30—Simonize Program (NBC)
- 6:00—Cincinnati Unemployment Concert
- 6:30—The Chatter
- 6:45—Vanity Fair Program (NBC)
- 7:00—Bernie Cummins' Orchestra
- 7:15—National Federation of Temple Brotherhood
- 7:30—The Three Bakers (NBC)
- 8:00—Enna Jettick Melodies (NBC)
- 8:15—Collier's Radio Hour (NBC)
- 9:15—Bayuk Stag Party (NBC)
- 9:45—Kaffee Hag Slumber Music (NBC)
- 10:15—Gold Medal Express (NBC)
- 10:45—Variety: Three Musketeers
- 11:00—Josef Cherniavsky Orchestra (NBC)
- 11:30—Moon River
- Midnight—Henry Thies' Orch. (NBC)
- 1:00—Bernie Cummins' Orchestra

SUNDAY, Dec. 6 WTAM (1070 kc.—280.2m.)

- 7:00 A. M.—Morning Processional
- 8:00—Melody Hour (NBC)
- 9:00—The Balladeers (NBC)
- 9:30—Mary Eaton, Violinist (NBC)
- 9:45—Walter Mills, Baritone (NBC)
- 10:00—Southland Sketches (NBC)
- 10:30—Troika Balls (NBC)
- 11:00—Neapolitan Days (NBC)
- 11:30—Major Bowes' Capitol Family Party (NBC)
- 12:30 P. M.—Emerald Isle (NBC)
- 12:30—Laskin-Lamb Varsity Squad
- 12:45—NBC Artist Service (NBC)
- 1:00—Isa Kremer, Diseuse (NBC)
- 1:30—Silver Flute (NBC)
- 1:45—Pop Concert (NBC)
- 2:15—Sunday Bright Spot (NBC)
- 2:30—Moonshine and Honeysuckle (NBC)
- 3:00—Wayne King's Orchestra (NBC)
- 3:30—Sunday Sextet
- 4:00—Florsheim Frolic (NBC)
- 4:30—The Wonder Program (NBC)
- 5:00—Cosmopolitans (NBC)
- 5:30—Gen. Electric Twilight Hour (NBC)
- 6:00—Organ Processional; Program Reume
- 6:30—Viennese Ensemble
- 7:01—Spang Bakers (Gene and Glenn)
- 7:30—Jodent Club of the Air (NBC)
- 8:00—Chase & Sanborn Orchestra, with Eddie Cantor (NBC)
- 9:00—Industrial Alcohol Program
- 9:15—American Album of Familiar Music (NBC)
- 9:45—The Beck Program (NBC)
- 10:15—National Oratorio Society (NBC)
- 10:45—Seth Parker's Neighbors (NBC)
- 11:15—Sports Review; Musical Bulletin Board
- 11:30—George William's Orchestra
- Midnight to 1 A. M.—Gene and Glenn, son shop

NETWORK PROGRAMS

- 6:00—Raising Junior (WJZ)
- Chicago Knights (WABC)
- 6:15—Veronica Wiggins (WJZ)
- 6:30—My Portrait of Famous Britons (WJZ)
- Howard Dandies (WABC)
- 7:00—Willys-Overland Orchestra (WJZ—KDKA)
- Through the Looking Glass (WEAF)
- 7:15—Dalhart Trio (WJZ—WLS)
- Jolly Time Revue (WEAF)
- 7:30—Luden's Novelty Orchestra (WABC)
- 8:00—Devils, Drugs and Doctors (WABC)
- 8:15—Music Along the Wires (WABC)
- 8:45—Angelo Patri, Your Child (WABC—WOWO)
- 9:00—"Our Government" (WEAF)
- 9:30—Romances of the Sea (WABC—WOWO)
- 10:00—Edna Wallace Hopper's Variety Show (WABC)
- 10:15—"Thrillers" (WJZ—KDKA)
- 10:45—Land of Wonder and Fear (WJZ—KDKA)
- 11:15—Ralph Kirbery, tenor (WEAF)
- 11:30—Three Doctors (WJZ—KDKA)
- Ben Bernie Orchestra (WABC)
- Jesse Crawford, organ (WEAF)
- 11:45—South Sea Islanders (WJZ—KDKA)
- Midnight—Larry Funk's Orchestra (WEAF—WGY)
- Eddie Duchin's Orchestra (WABC)
- 12:30—Nocturne, with Ann Leaf (WABC)

MONDAY December 7

WAIU (640 kc.—468.5m.)

- 7:00 A. M.—Musical Clock
- 7:55—Program Review
- 8:00—The Skillet Lickers
- 8:30—Organ Melodies, Mary Jane Lusch
- 9:00—Bible Lovers' Meditation
- 9:30—Felix on the Keys
- 9:45—Fashions
- 9:48—Felix on the Keys
- 9:55—Live Stock Markets
- 10:00—Mrs. Davison—Child Health
- 10:05—Virginia Yodeling Kid
- 10:30—The Old Sarge
- 10:45—Musicales
- 11:15—Patricia Rives
- 11:30—Martin Bros., old time tunes
- 11:55—Live Stock Markets
- Noon—Neighbors' Noon Hour
- 1:00 P. M.—Program Review
- 1:05—Gene Gordon, organ
- 1:30—Matinee Entertainers
- 2:00—Story Hour
- 2:30—Ira Schurz
- 2:45—Lester Thompson
- 3:00—RKO Vaudeville
- 3:15—Walter Furniss, Songs of Yesteryear
- 3:30—Harriet Fisher, soprano
- 4:00—Corporal Parr
- 4:30—Ralph Lambert, organist
- 5:00—The Skillet Lickers
- 5:30—Safety Drama C. of C.
- 5:45—Program Review
- 6:00—Rusty Parker's Orchestra
- 6:30—Cedric Lemont, astrologer
- 7:00—Stewart Sisters
- 7:15—Scarlet Mask Band

WCAH (1430 kc.—209.7m.)

- 7:30 A. M.—Goud Mornin'
- 7:45—Sleepwalkers' Club
- 8:15—Saion Musicales (CBS)
- 8:30—Hymn Time
- 8:45—Food for Thought

WCAH MONDAY, Dec. 7

- 9:00—Gypsy Music Makers (CBS)
- 9:30—Tony's Scrap Book (CBS)
- 9:45—The Ambassadors (CBS)
- 10:00—Home Topics
- 10:15—Sweet and Hot (CBS)
- 10:45—Farm Reporter from Washington
- 11:00—Xmas Shoppers' Program
- 11:15—Madison Singers (CBS)
- 11:30—Front Page Personalities (CBS)
- 11:45—Ben Alley, tenor (CBS)
- Noon—Dispatch Globe Trotter
- 12:15 P. M.—Don Bigelow's Orchestra (CBS)
- 12:30—Rusty Parker's Orchestra
- 1:00—Kenton Pharnical Program—Constance Parker Young (CBS)
- 1:15—Farm Community Network (CBS)
- 2:00—Singing Vagabond (CBS)
- 2:15—Ann Leaf, organ (CBS)
- 2:30—American School of the Air (CBS)
- 3:00—Four Eton Boys—Star Furniture Co. (CBS)
- 3:15—Columbia Salon Orchestra (CBS)
- 3:30—Will Osborne Orchestra (CBS)
- 3:30—Arthur Jarrett (CBS)
- 3:45—Sam Prager, pianist (CBS)
- 4:00—Bert Lown Orchestra (CBS)
- 4:20—Marquis of Lothian (CBS)
- 4:40—Col. Artist Recital (CBS)
- 5:00—Safety Club Santa Claus
- 5:30—Uncle Olie's Kre-Mel Gang (CBS)
- 5:45—Safety Kiddie Club
- 6:00—Hills Cab Program
- 6:15—Gilbert's Novelty Four
- 6:45—Reis and Dunn (CBS)
- 7:00—Vi-Zoy Sunshine Girl
- 7:15—Cremo Singer—Bing Crosby (CBS)
- 7:30—Baker Bar—Boswell Sisters (CBS)
- 7:45—Camel Quarter Hour (CBS)
- 8:00—Budd & Co. Columbians (CBS)
- 8:15—Studio—Charles Buchler, tenor
- 8:30—La Pallina—Kate Smith (CBS)
- 8:45—Pompeian Make-up Box (CBS)
- 9:00—Vapex—Mills Brothers (CBS)
- 9:15—Howard Barlow Symphony (CBS)
- 9:30—The Magic Carpet
- 9:45—Robert O'Day, tenor
- 10:00—Helen Wagner Trio
- 10:30—Toscha Seidel, violinist (CBS)
- 10:45—Rusty Parker's Orchestra
- 11:15—Street Singer (CBS)
- 11:30—Midnight Organ Melodies

WCAH (570 kc.—526m.)

- 9:00 A. M.—Morning Melodies
- 9:15—Spanish Lesson—Prof. Santiago Gutierrez
- 9:45—Early Market News
- 9:55—World Book Man
- 10:00—Homemakers' Half Hour
- 10:30—Opening Live Stock Market
- 10:40—Ohio History—Friel Heimlich
- 12:30 P. M.—Noon Live Stock Market
- 12:45—Columbus Fruit, Vegetable Prices
- 12:50—Economic Information for the Farmer—Paul R. Fankhouser
- 1:00—Frew Mohr, Organist
- 1:30—A Chapter a Day—Dorothy Wilson
- 1:45—Campus News—William Blair
- 4:00—Markets
- 4:10—Music
- 4:15—Public Speaking, Phi Delta Gamma
- 7:00—Farm Night Melody Makers

WCAH MONDAY, Dec. 7

- 7:05—Ohio's Pork Production Clubs—J. W. Wuichet
- 7:20—Co-operative Marketing Business—Prof. L. G. Foster
- 7:35—Testing for Garget Milk—O. V. Brumley
- 7:50—New Church Buildings for Old—E. S. Matheny
- 8:05—Play Opportunities in the Home—Mrs. Katherine F. Rohrbough
- 8:20—Have You Seen Your Dentist?—Dr. Paul Kitchin
- 8:35—Research in Beekeeping at Ohio State—W. E. Dunham
- 8:50—How to Force Khubarb and Chicory—A. W. Marion
- 9:00—"The Ruggles Family" (Kate Douglas Wiggin), an adaptation of "The Birds' Christmas Carol"—Neighborhood Players
- 9:30—Frew Mohr, organist

WSEN (1210 k.c.—248m.)

- 8:00 A. M.—Smilin' Sam
- 8:30—Morning Program
- 9:00—Happy Half-hour
- 9:30—Melodies
- 10:00—Weather; Jean and Jerry
- 10:15—WSEN Band Wagon
- 10:30—Musical Gems
- 10:45—Organ Recital
- 11:15—Les and Chuck
- 11:30—Wurlitzer Noonday Musicale
- Noon—Time Signal
- 12:01 P. M.—Luncheon Musicale
- 12:15—W. E. Lamneck Program
- 12:30—Eddie Lee
- 1:00—Citizens' News: Flashes
- 1:10—Cheerio
- 1:30—Furniture Factory Showroom
- 2:00—Recordings
- 2:30—"Baby's Birthday Party"
- 2:45—Popular Selections
- 3:00—Fiesta
- 3:30—With the Shut-ins
- 3:45—Knick-knacks
- 4:00—Musical Gems
- 4:15—Tea-time Melodies
- 4:40—P. T. A. Program
- 5:00—Ruth and Mary Anne, harmony team
- 5:15—Stanley Watson, musical saw
- 5:30—Music Box
- 6:00—Studio
- 6:30—Kenny Bowsher's Orchestra
- 7:00—Lawrence and Betty
- 7:15—Pianologue
- 7:30—Arabian Grill Orchestra
- 8:00—Studio
- 8:15—Knickerbocker Theater
- 8:30—Weather: Cecil and Sally
- 8:45—Dixie Playboy
- 9:00—Studio
- 9:30—Betty Burgess, piano
- 9:45—Abe Lyman Orchestra (recorded)
- 10:00—Time: Radio Ramblers
- 10:30—Four Three Linkers
- 1:00—"Livie" Richardson's Arabian Grill Orchestra

WCAH MONDAY, Dec. 7

- 6:30 A. M.—International Fiddlers
- 7:00—Physical Exercises
- 7:15—Happiness Kids
- 7:30—Organ, Arthur Chandler, Jr.
- 7:45—Jolly Bill and Jane (NBC)
- 8:00—Morning Devotions
- 8:15—Oklahoma Cowpunchers
- 8:30—Bissell Pick-ups (NBC)
- 8:45—Physical Exercises
- 9:00—Rumford School of Cookery
- 9:15—Musical Portraits
- 9:20—Child Care—Dr. Ada Arlitt
- 9:30—Beautiful Thoughts (NBC)
- 9:45—Radio Folks
- 10:00—Live Stock Reports; Piano
- 10:15—A. & P. Orchestra
- 10:30—Colonel Goodbody (NBC)
- 10:45—Ford Rush
- 11:00—Elliot Brock, violin recital
- 11:30—Rogers Musical Trio (NBC)
- 11:45—River; Weather; Time
- Noon—Happiness Kids
- 12:15 P. M.—Pat Barnes (NBC)
- 12:30—Hotel Gibson Orchestra
- 12:45—Markets; Live Stock Reports
- 1:00—National Farm and Home (NBC)
- 1:30—Bernie Cummins' Orchestra
- 2:00—Ohio School of the Air
- 3:00—Interviews by Alice Cory
- 3:15—Bradley Kincaid
- 3:30—Three Doctors (NBC)
- 3:45—Tick, Tack, Toe
- 4:00—A. & P. Orchestra
- 4:30—Organ Matinee
- 5:00—Chats with Peggy Winthrop (NBC)
- 5:15—Los Vaqueros de Ramona
- 5:45—Little Orphan Annie (NBC)
- 6:00—Old Man Sunshine and Santa Claus
- 6:15—The Chatter
- 6:30—Crosley Auto-Stokers
- 6:45—Lowell Thomas (NBC)
- 7:00—Amos 'n' Andy (NBC)
- 7:15—Sunsweet Melodies
- 7:30—Variety; Seger Ellis and Band
- 7:45—Seiberling Rubber Program
- 8:00—Smilin' Ed McConnell
- 8:30—Hollingsworth Hall
- 8:45—Vick's Chemical Program
- 9:00—Armco Band
- 9:30—Musical Dominos (NBC)
- 10:00—Korn Parchie Program
- 10:15—Bob Newhall Sports Slices
- 10:30—Real Folks (NBC)
- 11:00—Van Camp Night Caps
- 11:30—WLW Fanfares
- Midnight—Bernie Cummins Orchestra
- 12:30—Isham Jones Orchestra

WTAM (1070 kc.—280.2m.)

- 6:31 A. M.—Sun Up—Farm Talk
- 7:00—Physical Culture Class
- 7:15—Morning Melodies; Weather
- 7:45—Clegg Monroe, Baritone
- 8:00—Gene and Glenn (NBC)
- 8:15—Pie Plant Pete
- 8:30—Cheerio (NBC)

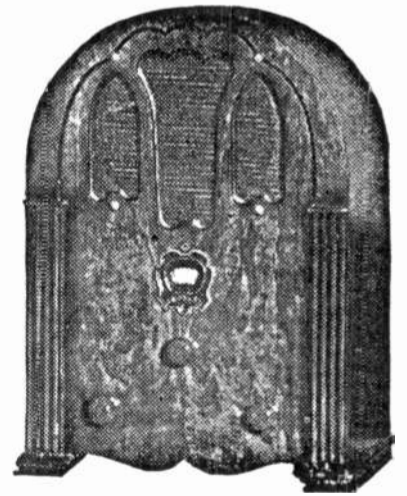
SUPERHETERODYNE Pentode Output--Variable Mu Full Size Dynamic Speaker

The Crosley

LITLFELLA

\$36³⁶

Complete with TUBES



Crosley sweeps aside all precedent in offering the sensational Crosley LITLFELLA, a compact table model, Pentode Output, Variable Mu, SUPERHETERODYNE with an illuminated dial and full size dynamic speaker, at a price less than that asked for other ordinary circuit receivers. Never before has it been possible to obtain a SUPERHETERODYNE at this remarkably low price. Think of it! A Crosley 5-tube SUPERHETERODYNE for \$36.36, complete with tubes! Compare the Crosley LITLFELLA feature by feature with other radio receivers sold at this price, then you will know Crosley offers you the greatest value per dollar in radio. Come in and hear the Crosley LITLFELLA today. You will marvel at its high sensitivity, razor-edge selectivity and superior tone.

CAPITAL SOUND EQUIPMENT

Crosley Distributors

32 SOUTH FOURTH STREET

COLUMBUS

OHIO



WTAM MONDAY, Dec. 7

9:00—Opening Live Stock Markets
 9:05—Physical Culture Class
 9:15—Tom Waring's Troubadours (NBC)
 9:45—Our Daily Food (NBC)
 10:00—Mrs. Blake's Radio Column (NBC)
 10:15—Dr. Copeland's Health Clinic (NBC)
 10:30—Morton Bellin, tenor
 10:45—Ballad Singers (NBC)
 11:00—Hawaiian Serenaders (NBC)
 11:30—Patty Jean's Chat
 11:45—Hugo Mariani's Marionettes (NBC)
Noon—Gen. Electric Home Circle (NBC)
 12:15 P. M.—Sports Flash; Weather; Markets
 12:30—Noonday Melodies
 1:00—Markets. Program Resume
 1:30—Jan Garber's Orchestra
 2:00—WTAM Players
 2:15—The Nomads (NBC)
 2:45—Sports Flash; Miriam Good Lohman
 3:00—Women's Radio Review (NBC)
 4:00—National Music League (NBC)
 4:30—Phil Spitalny's Tea Dansante (NBC)
 4:58—Sports Flash
 5:00—Lady Next Door (NBC)
 5:15—Frances Bowdon (NBC)
 5:30—Ed and Alice
 5:45—Wizard of Oz
 6:00—Sports Review
 6:05—Waldorf-Astoria Orchestra (NBC)
 6:30—C. W. Brand Welcomes, Jack Turner
 6:45—The Stebbins Boys (NBC)
 7:01—Spang Bakers (Gene and Glenn)
 7:15—Campbell Orchestra (NBC)
 7:30—Prince Albert Quarter Hour (NBC)
 7:45—The Goldbergs (NBC)
 8:00—Hoserot Airtite Coffee Artists
 8:30—Voice of Firestone (NBC)
 9:00—A. & P. Gypsies (NBC)
 9:30—General Motors Program (NBC)
 10:00—True Story Hour (NBC)
 10:45—Lottice Howell (NBC)
 11:00—Sports Review; Musical Bulletin Board
 11:15—Mr. X
 11:30—Isham Jones' Orchestra
Midnight—Midnight Melodies
 12:30—George Williams' Orchestra

WAIU TUESDAY, Dec. 8

9:55—Live Stock Markets
 10:00—June Wood
 10:15—Wilbur Rains
 10:30—Katherine Liggitt
 11:00—Mary McCann from Melodyland
 11:15—Frank Batterson, baritone
 11:30—Bob & Paul, guitar and harmonica
 11:55—Live Stock Markets
Noon—Neighbors' Noon Hour
 1:00 P. M.—Program Review
 1:05—Olive Pearl Kerlin, organ
 1:30—Matinee Entertainers
 2:00—Story Hour
 2:30—Four Jazz Kings
 2:45—Ardath Tudor, pianist
 3:00—People Poetry—J. Howard Doyle
 3:15—Pat and Pal
 4:00—Virginia Gustafson
 4:15—Obliging Frank
 4:30—Ralph Lambert, organ
 5:00—The Skillet Lickers
 5:30—Better Business Bureau—Harry Van Horn
 5:45—Program Review
 6:00—Rusty Parkers' Orchestra
 6:30—C. W. Brand Welcomes
 6:45—Don Miller, tenor; Nancy Webster, organ
 7:00—Hollywood Reporter
 7:15—Scarlet Mask Band

WCAH (1430 kc.—209.7m.)

7:30 A. M.—Good Mornin'
 8:00—Sleepwalkers' Club
 8:15—Popular Recordings
 8:30—Hymn Time
 8:45—Food for Thought
 9:00—Operatic Echoes (CBS)
 9:30—Tony's Scrap Book (CBS)
 9:45—Vi-Zoy Sunshine Girl
 10:00—Home Topics
 10:15—Izaak Walton League
 10:30—U. S. Navy Band (CBS)
 11:00—Xmas Shoppers' Program
 11:15—Farm Reporter from Washington
 11:30—Morning Minstrels (CBS)
 11:45—Ben Alley, tenor (CBS)
Noon—Dispatch Globe Trotter
 12:15 P. M.—Don Bigelow's Orches. (CBS)
 12:30—Rusty Parker's Orchestra
 1:00—King's Jesters Program
 1:15—Farm Community Network (CBS)
 2:00—Brain Duster
 2:15—Columbia Salon Orchestra (CBS)
 2:30—American School of the Air (CBS)
 3:00—Columbia Salon Orchestra—Star Furniture Co. (CBS)
 3:30—Anne Leaf, organ (CBS)
 4:00—Miriam Ray (CBS)
 4:15—Four Clubmen (CBS)
 4:30—Phil Fisher's Orchestra (CBS)
 4:45—American Air Cadets
 5:00—Safety Kiddie Club
 5:30—Norman Linke, pianist
 5:45—Bert Lown's Orchestra
 6:00—Hills Cab Program
 6:15—Gilbert Novelty Four
 6:45—Mr. and Mrs. Happy Lawson
 7:00—Vi-Zoy Sunshine Girl
 7:15—Cremo Singer—Bing Crosby (CBS)
 7:30—Studio Program
 7:45—Camel Quarter Hour (CBS)
 8:00—Col. Stoopnagle and Budd (CBS)
 8:30—La Palina—Kate Smith (CBS)
 8:45—Theronold All-Star Juvenile Act
 9:15—Harry Thrall and Hazel Ewing
 9:45—Doc Taylor's Minstrels
 10:15—Howard Barlow (CBS)
 10:30—Louis Panico's Orchestra (CBS)
 10:45—Rusty Parker's Orchestra
 11:00—Rusty Parker's Orchestra
 11:30—Bob Robertson, pianist
 11:45—George Olsen's Orchestra (CBS)

WEAO (570 kc.—526m.)

9:00 A. M.—Morning Melodies
 9:15—French Lesson—Prof. Robert Fouré
 9:45—Early Market News
 9:55—World Book Man
 10:00—Physical Education for Women
 10:15—Studio Music
 10:30—Opening Live Stock Market
 10:40—Ohio History—Friel Heimlich
 12:30 P. M.—Noon Live Stock Market
 12:45—Columbus Fruit, Vegetable Prices
 12:50—Uncle Sam at Your Service
 1:00—Frew Mohr, Organist

WEAO (570 kc.—526m.)

9:00 A. M.—Morning Melodies
 9:15—French Lesson—Prof. Robert Fouré
 9:45—Early Market News
 9:55—World Book Man
 10:00—Physical Education for Women
 10:15—Studio Music
 10:30—Opening Live Stock Market
 10:40—Ohio History—Friel Heimlich
 12:30 P. M.—Noon Live Stock Market
 12:45—Columbus Fruit, Vegetable Prices
 12:50—Uncle Sam at Your Service
 1:00—Frew Mohr, Organist



Robert Mason Cawley, Jr.
 "Master of ceremonies"

**IN THERONIDS
 All Star Juveniles**
 With Honey Holstein, Eddie Thompson and Howard Ingles.
 Every Tuesday, 8:45-9:15, WCAH

WEAO TUESDAY, Dec. 8

1:30—Chapter a Day—Dorothy Wilson
 1:45—Campus News—William Blair
 4:00—Markets
 4:10—Mountain Songs—Jeff Phillips
 4:15—Student Journeys—Everette Laybourne
 4:45—Book Talk—Virginia Gunn

WSEN (1210 k.c.—248m.)

8:00 A. M.—Smilin' Sam
 8:30—Morning Program
 9:00—Happy Half-hour
 9:30—Your Favorite Hymns
 10:00—Weather Report
 10:01—WSEN Band Wagon
 10:15—Dance Selections
 10:45—Organ Recital
 11:15—Laura Foster, soprano
 11:30—Hester Clement, pianist
 11:45—Dance Melodies
Noon—P. M. Signal
 12:01 P. M.—Wurlitzer Noonday Musicale
 12:30—Eddie Lee
 1:00—Citizens' News Flashes
 1:10—Cheerio
 1:30—Furniture Factory Showroom
 2:00—Recordings
 2:30—"Baby's Birthday Party"
 2:45—Fiesta
 3:00—Pearl Nagle, tenor
 3:15—Musical Moments
 3:30—"With the Shut-ins"
 3:45—Music Box
 4:00—Caroline Zollner, vocal
 4:15—Musical Milly
 4:30—Melodies
 4:45—Madeleine Chevallard, blues
 5:00—Music Treasures
 5:15—Dorothy Hitchcock, songs
 5:30—Hi-Lo-Jack Trio
 5:45—Theronoid Program
 6:00—Time; Bickel Trio
 6:30—Weather. Studio
 7:00—Edna Sowerby, soprano
 7:15—Gustave Spaeth, basso; Mary McAllister, piano
 7:30—Arabian Grill Orchestra
 8:00—Studio
 8:15—Little Gladys Little
 8:30—Cecil and Sally
 8:45—Brendie Haynie
 9:00—Studio
 9:30—Wurlitzer Variety
 10:00—Radio Ramblers
 10:30—Greystone Ballroom Orchestra
 11:00—"Livie" Richardson's Arabian Grill Orcestra

WLW (428m.—700 kc.)

6:30 A. M.—International Fiddlers
 7:00—Physical Exercises
 7:15—Happiness Kids
 7:30—Organ Prog., Arthur Chandler, Jr.
 7:45—Jolly Bill and Jane (NBC)
 8:00—Morning Devotions
 8:15—Oklahoma Cowpunchers
 8:30—Bissell Pick-ups (NBC)
 8:45—Physical Exercises
 9:15—Fashionette
 9:30—Beautiful Thoughts (NBC)
 9:45—Premium Man
 10:00—Live Stock Reports; Piano
 10:15—A. & P. Orchestra
 10:30—Colonel Goodbody (NBC)
 10:45—Davis Mystery Chef (NBC)
 11:00—Mrs. A. M. Goudiss (NBC)
 11:15—Ramona
 11:30—Through the Looking Glass (NBC)
 11:45—River; Weather; Time
 11:55—Time Signals
Noon—Tuxedo Entertainers
 12:15 P. M.—Pat Barnes (NBC)

WLW TUESDAY, Dec. 8

12:30—Hotel Gibson Orchestra
 12:45—Markets; Live Stock Reports
 1:00—National Farm and Home (NBC)
 1:30—Bernie Cummins' Orchestra
 2:00—Ohio School of the Air
 3:00—Crimelights
 3:30—Three Doctors (NBC)
 3:45—Varsity Quartet
 4:00—A. & P. Orchestra
 4:30—Organ Matinee
 5:00—Maltine Story Hour (NBC)
 5:30—Los Vaqueros del Ramona
 5:45—Little Orphan Annie (NBC)
 6:00—Old Man Sunshine and Santa Claus
 6:15—The Chatter
 6:30—U. C. Educational Series
 6:45—Lowell Thomas (NBC)
 7:00—Amos 'n' Andy (NBC)
 7:15—Gaytees Orch., Odette Myrtil (NBC)
 7:30—Famous Beauties of History
 7:45—Bernie Cummins' Orchestra
 8:00—Armstrong Quakers (NBC)
 8:15—Vincent Lopez and His Valvoliners
 8:30—Werk Bubble Blowers
 9:00—Maxwell House Musical Memories
 9:30—Great Personalities (NBC)
 10:00—Chevrolet Chronicles
 10:30—Variety: Seger Ellis and Band
 10:45—Bob Newhall Sports Slices
 11:00—Van Camp Program
 11:30—Los Amigos
Midnight—Bernie Cummins Orchestra
 12:30—Isham Jones Orchestra

WTAM (1070 kc.—280.2m.)

6:31 A. M.—Sun Up
 7:00—Physical Culture Class
 7:15—Morning Melodies; Weather
 7:45—Clegg Monroe, Baritone
 8:00—Gene and Glenn (NBC)
 8:15—Pie Plant Pete
 8:30—Cheerio (NBC)
 9:00—Opening Live Stock Markets
 9:05—Physical Culture Class
 9:15—Tom Waring's Troubadours (NBC)
 9:45—Our Daily Food (NBC)
 10:00—Mrs. Blake's Radio Column (NBC)
 10:15—Breen and DeRose (NBC)
 10:30—Morning Serenaders
 11:00—S. C. Johnson & Company (NBC)
 11:15—Radio Household Institute (NBC)
 11:30—Patty Jean's Chat
 11:45—Home in the Sky
Noon—Gen. Electric Home Circle (NBC)
 12:15 P. M.—Sports Flash; Weather; Markets
 1:00—Markets; Program Resume
 1:30—George Williams' Orchestra
 2:00—Kay Kaiser's Orchestra
 2:30—Russell Neff, Tenor
 2:45—"What Right Has a Woman to Her Own Name?" Ruth Hale (NBC)
 3:00—Women's Radio Review (NBC)

WTAM TUESDAY, Dec. 8

4:00—Magic of Speech—Vida Sutton (NBC)
 4:30—Phil Spitalny's Tea Dansante (NBC)
 4:58—Canfield Sports Flash
 5:00—Lady Next Door (NBC)
 5:15—Frances Bowdon (NBC)
 5:30—Rinso Talkie (NBC)
 5:45—Ed and Alice
 6:00—Sports Review
 6:05—Waldorf-Astoria Orchestra (NBC)
 6:30—C. W. Brand Welcomes—Jack Turner
 6:45—The Stebbins Boys (NBC)
 7:01—Spang Bakers (Gene and Glenn)
 7:30—Prince Albert Quarter Hour (NBC)
 7:45—The Goldbergs (NBC)
 8:00—Blackstone Plantation (NBC)
 8:30—Sousa's Goodyear Band (NBC)
 9:00—McKesson Musical Magazine (NBC)
 9:30—The Fuller Man (NBC)
 10:00—Lucky Strike Dance (NBC)
 11:00—Sports; Musical Bulletin Board
 11:15—WTAM Players
 11:30—Jack Denny's Orchestra (NBC)
Midnight—Midnight Melodies
 12:30—Isham Jones' Orchestra

NETWORK PROGRAMS

6:00—Raising Junior (WJZ)
 —National Security League (WABC)
 6:15—Rameses Program (WJZ)
 —Hotel Taft Orchestra (WABC)
 6:30—Savannah Liners Orchestra (WJZ)
 —Nick Lucas (WEAF)
 —Charlie and Oscar (WABC)
 7:00—Mid-Week Federation Hymn Sing (WEAF)
 —Myrt and Marge (WABC)
 7:30—Phil Cook—the Quaker Man (WJZ WEAF)
 —Kaltenborn Edits the News (WABC)
 7:45—Back of the News in Washington (WJZ)
 8:15—Sterling Products Program (WABC)
 8:30—Heel Huger Harmonies (WJZ-WLS)
 8:45—Sisters of the Skillet (WJZ)
 —Walter Winchell (WABC)
 9:00—Household Finance Program (WJZ-KDKA)
 —Ben Bernie's Blue Ribbon Orchestra (WABC)
 9:30—Romances of the Sea (WABC-WOWO)
 10:00—Russ Columbo and Orchestra (WJZ)
 —Modern Male Chorus (WABC)
 10:30—Clara, Lu and Em (WJZ-KDKA-WENR)
 10:45—Paris Night Life (WJZ-KDKA)
 11:00—Slumber Music (WJZ-WJR)
 —Marian Harris (WEAF)
 —Amos 'n' Andy (WENR)
 —Enric Madriguera's Orch. (WABC)
 11:15—Jesse Crawford, Poet of the Organ (WEAF)
 —Jack Miller (WABC)

★

**No wonder
 CHEVROLET
 MUSICAL CHRONICLES
 are so popular . . .
 Frank Black directs this program**



FRANK BLACK

—one of the most versatile stars of the radio world. To this famous orchestra conductor and composer belongs much of the credit for the splendid entertainment offered in the Chevrolet Musical Chronicles.

To real, dyed-in-the-wool radio fans Frank Black needs no introduction. His brilliant conducting, the many popular numbers that stand to his credit as a composer, and the new and happy effects he achieves in his musical arrangements have long marked him as one of radio's greatest stars.

But you may not know that Frank Black has been directing the Chevrolet Musical Chronicles for over a year. And directing is really too mild a term, for he takes an active part in practically every detail of this immensely popular broadcast.

He selects all musical numbers. He directs the orchestra, and originates many striking musical arrangements. And when the Chevrolet quartette sings he plays the piano accompaniment.

Programs planned and directed by so versatile a genius could be expected to be outstanding. And the latest version of the Chevrolet Musical Chronicles is outstanding, so much so that it numbers millions of members of the radio audience in its enthusiastic following. Listen in this week without fail. You can plan on hearing the finest entertainment broadcast today.

Hear this famous star over
 Station WAIU every Friday, 7:15 P. M.

BEN BERNIE

"The Old Maestro" and His Orchestra offer you
 A Full Half Hour of Mirth and Music on the
BLUE RIBBON MALI PROGRAM
TONIGHT at 9
 Eastern Time
WKRC
 and Columbia Stations

**TUESDAY
 December 8**

WAIU (640 kc.—468.5m.)

7:00 A. M.—Musical Clock
 7:55—Program Review
 8:00—The Skillet Lickers
 8:30—Organ Melodies, Mary Jane Lusch
 9:00—Bible Lovers' Meditation
 9:30—Felix on the Keys
 9:45—Fashion
 9:48—Felix on the Keys

NETWORK TUESDAY, Dec. 8
 11:30—Three Doctors (WJZ-WENR)
 —Leon Belasco's Orchestra (WABC)
 11:45—Dream Pictures (WJZ-WENR)
Midnight—Ralph Kirbery, baritone (WEAF)
 —Romanelli's Orchestra (WABC)
 12:15—Paul Whiteman and his Orchestra (WJZ)
 12:30—Asbury Park Casino Orchestra (WAEC)
 1:00—Hotel Bossert Orchestra (WABC)
 1:30—Roseland Ballroom Orchestra (WABC)

**WEDNESDAY
 December 9**

WAIU (640 kc.—468.5m.)
 7:00 A. M.—Musical Clock
 7:55—Program Review
 8:00—The Skillet Lickers
 8:30—Organ Melodies—Mary Jane Lusch
 9:00—Bible Lovers' Meditation
 9:30—Felix on the Keys
 9:45—Fashion
 9:48—Felix on the Keys
 9:55—Live Stock Markets
 10:00—Mrs. Davison—Child Health
 10:05—Musical
 10:30—The Old Sarge
 11:00—Book Review—Gwen Williams
 11:15—Sunshine Melodies
 11:30—Bob & Paul, guitar and harmonica
 11:55—Live Stock Markets
Noon—Neighbors' Noon Hour
 1:00 P. M.—Program Review
 1:05—Helen Wagner, organist
 1:30—Matinee Entertainers
 2:00—Story Hour
 2:30—Iris Schurz
 2:45—Bob and Jerry
 3:00—RKO Vaudeville
 3:15—Walter Furniss, Songs of Yesterday
 3:30—Three Preachers' Sons
 4:00—Betty Brunn, songs
 4:15—Russell McCoy and Nason Oldham
 4:30—Ralph Lambert, organist
 5:00—The Skillet Lickers
 5:30—Stewart Sisters
 5:45—Program Review
 5:00—Rusty Parker's Orchestra
 6:30—Cedric Lemont, astrologer
 6:45—Scarlet Mask Band
 7:15-7:45—The Old Stager and Philco Orchestra

WCAH (1430 kc.—209.7m.)
 7:30 A. M.—Good Mornin'
 7:45—Firemen's Program
 8:15—Salon Musicale (CBS)
 8:30—Hymn Time
 8:45—Food for Thought
 9:00—Melody Magic (CBS)
 9:30—Tony's Scrap Book (CBS)
 9:45—Vi-zoy Sunshine Girl
 10:00—Home Topics
 10:15—Dr. Royal S. Copeland (CBS)
 10:30—Melody Parade (CBS)
 10:45—Four Clubmen (CBS)
 11:00—Zmas Shoppers' Program
 11:15—Musical Alphabet (CBS)
 11:45—The Mr. and Mrs.
Noon—Dispatch Globe Trotter
 12:15 P. M.—Don Bigelow's Orches. (CBS)
 12:30—Rusty Parker's Orchestra
 1:00—Kenton Pharmaceutical Co.—Constance Parker Young
 1:15—Advertising Club Luncheon (CBS)
 2:00—Theronoid Talk
 2:15—Columbia Salon Orchestra (CBS)
 2:30—American School of the Air (CBS)
 3:00—Kathryn Parsons, Girl o' Yesterday—Star Furniture Co. (CBS)
 3:15—Four Eton Boys (CBS)
 3:30—Arthur Jarrett (CBS)
 3:45—Columbia Artist Recital (CBS)
 4:00—U. S. Navy Band Concert (CBS)
 4:45—American Air Cadets
 5:00—Union Santa Claus
 5:15—Uncle Olie's Kre-Mel Gang (CBS)
 5:30—Studio—Vi-Zoy Kiddie Program
 5:45—Jolly Juggler (NBC)
 6:00—Hills Cab Program
 6:15—Gilbert's Novelty Four
 6:45—Reis and Dunn (CBS)
 7:00—Evening Program Review
 7:15—Cremo Singer—Bing Crosby (CBS)
 7:30—Baker Bar—Boswell Sisters (CBS)
 7:45—Camel Quarter Hour (CBS)
 8:00—Budd & Co.—The Columbians (CBS)
 8:15—C. W. Brand Coffee—Little Harry
 8:30—La Palma—Kate Smith (CBS)
 8:45—Modern Male Chorus
 9:00—Watch Tower Program
 9:30—Florence Stevens, organist; Evelyn M. Huff, readers
 10:00—Vitality Personalities (CBS)
 10:15—The Magic Carpet
 10:30—Columbia Concerts Corp. (CBS)
 10:45—Rusty Parker's Orchestra
 11:15—Street Singer (CBS)
 11:30—Ora Shore, organist

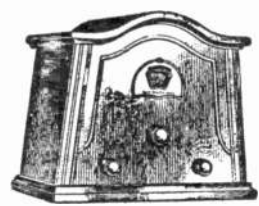
WEAO (570 kc.—526m.)
 9:00 A. M.—Morning Melodies
 9:15—Spanish Lesson—Prof. Santiago Gutierrez
 9:45—Early Market News
 9:55—World Book Man
 10:00—Homemakers' Half Hour
 10:30—Opening Live Stock Market

WEAO WEDNESDAY, Dec. 9
 10:40—Ohio History—Friel Heimlich
 12:30 P. M.—Nash Live Stock Market
 12:45—Columbus Fruit and Vegetable Prices
 12:50—Primer for Town Farmers
 1:00—Frew Mohr, Organist
 1:30—University Religious Council—Rev. Paul E. Bierstedt, St. Luke's Lutheran Church
 4:00—Markets
 4:10—Studio Music
 4:15—Story Hour—Florence Chubbuck
 7:00—French Les-on, Prof. Robert Fouré
 7:30—Spanish Lesson—Prof. Santiago Gutierrez
 8:00—Review of "Men of Earth" (Russell Lord) by Prof. Gordon Hayes
 8:20—Changes in the Cost of Living—Prof. Viva Boothe
 8:30—Early Recognition of Cancer—Dr. P. J. Reel
 8:45—Modern Developments in Short Wave Transmission—Prof. W. L. Everitt
 9:00—Morrey School of Music Program
 9:30—Frew Mohr, organist
 10:00—Campus News—William Blair
 10:15—Conservation Program, J. W. Stuber
 10:30—Fiddlers Green. Russell McCoy, Nason Oldham, Ann Charles

WSEN (1210 k.c.—248m.)
 8:00 A. M.—Smilin' Sam
 8:30—Morning Program
 9:00—Happy Half-hour
 9:30—Musical Moments
 10:00—Weather Report
 10:01—WSEN Band Wagon
 10:15—Melodies
 10:45—Organ Recital
 11:15—Les and Chuck
 11:30—Luncheon Music
Noon—Time Signal
 12:01 P. M.—Wurlitzer Musicale
 12:30—Weather Report
 12:31—Eddie Lee
 1:00—Citizens News Flashes
 1:10—Cheerio
 1:30—Furniture: Factory Showroom
 2:00—Music Box
 2:30—"Baby's Birthday Party"
 2:45—Popular Selections
 3:00—Fiesta
 3:30—"With the Shut-ins"
 3:45—Melodies
 4:00—West Virginia Mountain Boy
 4:15—Henrietta and Janice, violin and piano
 4:30—Melodyland
 4:45—Musical Milly
 5:00—Melodyland
 5:15—Stanley Watson, musical saw
 5:30—Melodies
 5:45—Friendly Fred
 6:00—Studio
 6:30—Dance Melodies
 7:00—Singing Mailman
 7:15—Laura and Earl, Hawaiian guitar
 7:30—Arabian Grill Orchestra
 8:00—Studio
 8:15—Knickerbocker Theater
 8:30—Weather Report
 8:31—Cecil and Sally
 8:45—Andrew Lang, tenor; Gene Gordon, pianist
 9:00—Pianologue
 9:15—Emily Fay Brown
 9:30—Radio Skylarks
 10:00—Radio Ramblers
 10:30—Weather Report; Studio
 11:00—"Livid" Richardson's Arabian Grill Orchestra

WLW (428m.—700 kc.)
 6:30 A. M.—International Fiddlers
 7:00—Physical Exercises
 7:15—Happiness Kids
 7:30—Organ Prog., Arthur Chandler, Jr.
 7:45—Jolly Bill and Jane (NBC)
 8:00—Morning Devotions
 8:15—Oklahoma Cowpunchers
 8:30—Bissell Pick-ups (NBC)
 8:45—Physical Exercises
 9:00—Musical Etching
 9:10—Mennen Program
 9:15—Theodora Le Fevre, graphologist
 9:30—Beautiful Thoughts (NBC)
 9:45—Art Talk
 10:00—Live Stock Reports; Piano
 10:15—A. & P. Orchestra
 10:30—Colonel Goodbody (NBC)

**STEWART
 WARNER
 SHORT WAVE CONVERTER**



Only
\$23.95

We repair and service 98 makes of radios. Call us.
 Service Calls 75c.
**RADIO ENGINEERING
 LABORATORIES**
 803 W. Broad, RAndolph 5722

Mario Chamlee



Mario Chamlee, one of the world's foremost lyric tenors and former Metropolitan Opera star, will be guest artist with Leo Reisman and his orchestra on the Pond's program Friday (December 11) at 9:30 p. m. over an NBC network including WENR and WGY. He will sing Italian folk songs and old favorites from opera.

WLW WEDNESDAY, Dec. 9
 10:45—Marley Personality Perfumes
 11:00—Charis Morning Musicale
 11:15—Talk on Mouth Hygiene
 11:25—Ramona
 11:45—River; Weather. Time
 11:55—Time Signals
Noon—Happiness Kids
 12:15 P. M.—Pat Barnes (NBC)
 12:30—Hotel Gibson Orchestra
 12:45—Markets; Live Stock Reports
 12:50—Live Stock Reports
 1:00—National Farm and Home (NBC)
 1:30—Netherland Plaza Orchestra
 2:00—Ohio School of the Air
 3:00—Plantation Days
 3:30—Three Doctors (NBC)
 3:45—Varsity Quartet
 4:00—A. & P. Orchestra
 4:30—Organ Matinee
 5:00—Chats with Peggy Wixthrop (NBC)
 5:15—Mouth Health (NBC)
 5:30—Los Vaqueros de Ramona
 5:45—Little Orphan Annie (NBC)
 6:00—Old Man Sunshine and Santa Claus
 6:15—The Chatter
 6:30—Dr. Glenn Adams' Dog Talk
 6:45—Lowell Thomas (NBC)
 7:00—Amos 'n' Andy (NBC)
 7:15—John Ruskin Dance Orchestra
 7:30—Bernie Cummins' Orchestra
 8:00—R. F. D. Hour
 8:15—Remington Rhythm Rounders
 8:30—Jack Frost Melody Moments (NBC)
 9:00—Adventures of Sherlock Holmes (NBC)
 9:30—Dutch Masters Minstrels (NBC)
 10:00—Korn Parchie Program
 10:15—Variety: Seger Ellis and Band
 10:30—Crosley Auto-Stokers
 10:45—Bob Newhall Sports Slices
 11:00—Van Camp Program
 11:30—Greystone Ballroom Orchestra
Midnight—Bernie Cummins Orchestra
 12:30—Isham Jones Orchestra

F. & H. CAPACITY AERIAL



Every Instrument Tested on Actual 1127 Mile Receptive
A LARGE NUMBER ARE IN USE BY GOVERNMENT, IN NAVY HOSPITAL.
 The F. & H. Capacity Aerial Eliminator has the capacity of the average 75-foot aerial, 50 feet high. It increases selectivity and full reception on both local and long distance stations is absolutely guaranteed. It eliminates the outdoor aerial along with its unsightly poles, guy wires, mutilation of woodwork, lightning hazards, etc. It does not connect to the light socket and requires no current for operation. Installed by anyone in a minute's time and is fully concealed within the set. Enables the radio to be moved into different rooms, or house as easily as a piece of furniture.
PREDICT THIS TYPE OF AERIAL WILL BE USED PRACTICALLY ENTIRELY IN THE FUTURE. 8,000 dealers handle our line. Dealer over 80 leading jobbers carry our line or order sample direct. Write for proposition.
 — Send coupon it protects you —

Name
 Address
 City State
 Send one F. & H. Capacity Aerial with privilege of returning after 3-day trial if not satisfactory or which enclosed find check M. O. or bar bill, or send C. O. D. Send Literature. Dealer's proposition.
F. & H. RADIO LABORATORIES
 FARGO, N. DAK., DEPT. 28
 World Radio History

WTAM (1070 kc.—280.2m.)
 6:31 A. M.—Sun Up—Farm Talk
 7:00—WTAM Physical Culture Class
 7:15—Sun Up—Weather
 7:45—Clegg Monroe, Baritone
 8:00—Gene and Glenna (NBC)
 8:15—Pie Plant Pete
 8:30—Cheerio (NBC)
 9:00—Opening Live Stock Markets
 9:05—Physical Culture Class
 9:15—Dr. Copeland's Health Clinic (NBC)
 9:30—Flying Fingers (NBC)
 9:45—Our Daily Food (NBC)
 10:00—Mrs. Blake's Radio Column (NBC)
 10:45—Jane Grant's Steero Prog. (NBC)
 10:30—Wildroot Institute (NBC)
 10:45—Betty Crocker (NBC)
 11:00—Keeping Up With Daughter (NBC)
 11:15—Radio Household Institute (NBC)
 11:30—S. C. Johnson Program (NBC)
 11:45—Patty Jean's Chat
 11:58—Time Signals
Noon—Gen. Electric Home Circle (NBC)
 12:15 P. M.—Sports; Weather; Markets
 12:30—Noonday Melodies
 1:00—Markets; Program Resume
 1:30—George William's Orchestra
 2:00—WTAM Players
 2:15—Golden Gems (NBC)
 2:45—Tom Waring, songs
 3:00—Women's Radio Review (NBC)
 4:00—Pop Concert (NBC)
 4:30—Harshaw Program
 4:45—Raymond Mitchem, tenor
 5:00—Lady Next Door (NBC)
 5:15—Frances Bowdon (NBC)
 5:30—Ed and Alice
 5:45—Wizard of Oz
 6:00—Sports Review
 6:05—Viennese Ensemble
 6:30—C. W. Brand Welcomer—Jack Turner
 6:45—The Stebbins Boys (NBC)
 7:01—Spang Bakers, Gene and Glenn
 7:15—Campbell Orchestra (NBC)
 7:30—Prince Albert Quarter Hour (NBC)
 7:45—The Goldbergs (NBC)
 8:00—Sohio
 8:30—Mobiloil Concert (NBC)
 9:00—Halsey Stuart Program (NBC)
 9:30—Palmolive Hour (NBC)
 10:30—Coca Cola Program (NBC)
 11:00—Nellie Revelle (NBC)
 11:15—Sports Review—Musical Bulletin Board: Americo Bono Orchestra
 11:45—Kay Kyser's Orchestra
 12:15 A. M.—Midnight Melodies
 12:30—Paul Whiteman's Orchestra (NBC)

WEDNESDAY, Dec. 9
 NETWORK Wednesday, Dec. 9
 7:30—Phil Cook—the Quaker Man (WJZ-KDKA)
 7:45—Esso Program (WJZ-KDKA)
 8:00—College Memories (WJZ-WJR)
 —Snoo and Peep (WEAF)
 8:15—Guy Robertson (WJZ)
 —Singin' Sam, the Barbasol Man (WABC)
 9:00—Gold Medal Fast Freight (WABC-WOWO)
 9:30—Eno Crime Club (WABC)
 10:00—Russ Columbo Orchestra (WJZ)
 10:15—Weed Tire Chain Program (WABC)
 10:30—Clara, Lu and Em (WJZ-KDKA)
 10:45—Hollywood Nights (WJZ-KDKA)
 11:00—Slumber Music (WJZ)
 —Amos 'n' Andy (WENR)
 —Leon Belasco's Orchestra (WABC)
 11:15—Jesse Crawford, Poet of the Organ (WEAF)
 11:30—Three Doctors (WJZ)
 —Vincent Lopez and his Orchestra (WEAF-WGY)
 —Noble Sissle and his Orchestra (WABC)
 11:45—Lew White Organ Recital (WJZ-WENR)
Midnight—Mildred Bailey and the King's Jesters (WJZ-KDKA-WENR)
 —Ralph Kirbery, tenor (WEAF)
 —Eddie Duchin's Orchestra (WABC)
 12:15—Coon-Sanders' Orchestra (WJZ)
 12:30—Larry Funk's Orchestra (WJZ-WENR)
 —Louis Panico's Orchestra (WABC)
 —Paul Whiteman Orchestra (WEAF)
 1:00—Dave Abrams' Orchestra (WABC)
 1:30—Roseland Ballroom Orchestra (WABC)

**THURSDAY
 December 10**

WAIU (640 kc.—468.5m.)
 7:00 A. M.—Musical Clock
 7:55—Program Review
 8:00—The Skillet Lickers
 8:30—Mary Jane Lusch, organ
 9:00—Bible Lovers' Meditation
 9:30—Felix on the Keys
 9:45—Fashion
 9:48—Felix on the Keys
 9:55—Live Stock Markets
 10:15—Wilbur Rains, pianist
 10:30—Paul and Bob
 10:45—Little Harry
 11:00—Federated Churches
 11:30—Martin Bros.
 11:55—Live Stock Markets
Noon—Neighbors' Noon Hour
 1:00 P. M.—Program Review
 1:05—Olive P. Kerlin at the organ
 1:30—Matinee Entertainers
 2:00—Story Hour
 2:30—Iris Schurz
 2:45—Lester Thompson
 3:00—People's Poetry
 3:15—Santa Calus Story
 3:45—Helen Stoker, soprano

**The
 Very
 Idea!**



Why not settle at least one of your Christmas gift problems—intelligently—here and now by giving RADIO DIAL? Could you think of anything more welcome to a radio fan than this weekly treat of radio programs, news and personalities? RADIO DIAL is growing daily through a tremendous surge of popular appeal.
 P. S.—If you are not getting copies regularly, surely you'll want to give yourself this gift of daily entertainment. Just use the coupon.

RADIO DIAL
 208 Beggs Bldg., Columbus, Ohio
 Send RADIO DIAL for six months (26 weeks) for \$1.00 to the following. Check, currency, money order is enclosed.
 Name
 Address
 City State
 Sent by
 (If a gift subscription, a card showing your name as the giver will be mailed.)

WAIU THURSDAY, Dec. 10
 4:00—Ralph Lambert, organ
 4:30—Tom Fulton
 4:45—Motion Picture Talk
 5:00—The Skillet Lickers
 5:30—Columbia Civic Concert
 5:45—Program Review
 6:00—Rusty Parker's Orchestra
 6:30—Little Harry
 6:45—Beauty Talk
 7:00—Hollywood Reporter
 7:15—Scarlet Mask Band

WCAH (1430 kc.—209.7m.)

7:30 A. M.—Good Mornin'
 7:45—Firemen's Program
 8:15—Recordings
 8:30—Hymn Time
 8:45—Food for Thought
 9:00—U. S. Navy Band (CBS)
 9:30—Tony's Scrap Book (CBS)
 9:45—The Ambassadors (CBS)
 10:00—Home Topics
 10:15—Radio Philosopher
 10:30—Madison Singers (CBS)
 10:45—Farm Reporter
 11:00—Xmas Shoppers' Program
Noon—Dispatch Globe Trotter
 12:15—Columbia Review (CBS)
 12:30—Rusty Parker's Orchestra
 1:00—King's Jesters Program
 1:15—Farm Community Net. (CBS)
 1:30—Speeches by Governors (CBS)
 2:00—Brain Duster
 2:15—Columbia Salon Orchestra (CBS)
 2:30—American School of the Air (CBS)
 3:00—La Forge Berumen Musicale—Star Furniture Co. (CBS)
 3:30—Miriam Ray (CBS)
 3:45—Vingean Arnold, pianist (CBS)
 4:00—U. S. Army Band (CBS)
 4:30—Hotel Taft Orchestra (CBS)
 5:00—Safety Kiddie Club
 5:30—Studio—Vi-Zoy Safety Kiddie Club
 5:45—Bert Lown's Orchestra
 6:00—Hills Cab—Hotel Bossert Orchestra (CBS)
 6:15—Gilbert Novelty Four
 6:45—Studio
 7:00—Vi-Zoy Sunshine Girl
 7:15—Cremo Singer—Bing Crosby (CBS)
 7:30—Groce Electric Office Boy
 7:45—Camel Quarter Hour (CBS)
 8:00—Budd's Company—The Mills Brothers (CBS)
 8:15—Tioline Singers—Pure Oil Co.
 8:30—La Palina—Kate Smith (CBS)
 8:45—The Magic Carpet
 9:00—Vapex—Mills Brothers (CBS)
 9:30—Olive Pearl Kerlin, organist
 10:00—String Ensemble
 10:15—Frank Russo, mandolin
 10:30—Grand Opera Miniature (CBS)
 10:45—Rusty Parker's Orchestra
 11:15—Jack Miller (CBS)
 11:30—Bob Robertson, pianist
 11:45—George Olsen's Orchestra (CBS)

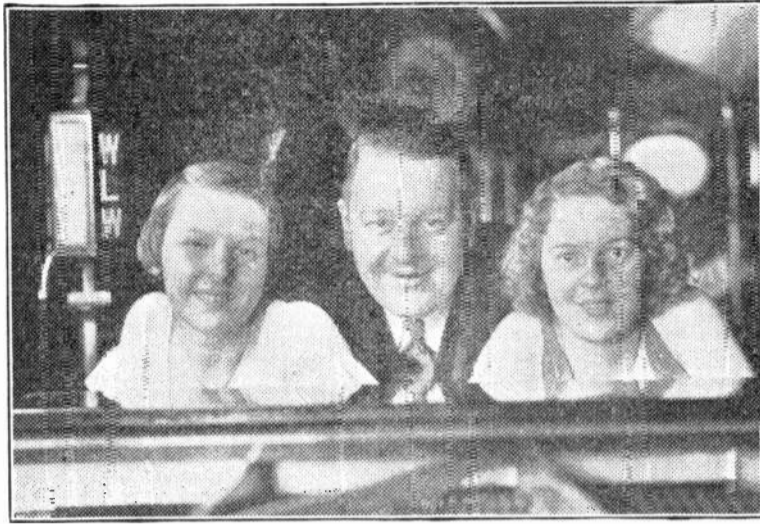
WEAO (570 kc.—526m.)

9:00 A. M.—Morning Melodies
 9:15—French Lesson—Prof. Robert Fouré
 9:45—Early Market News
 9:55—World Book Man
 10:00—Physical Education for Women
 10:15—Studio Music
 10:30—Opening Live Stock Market
 10:40—Ohio History—Friel Heimlich
 12:30 P. M.—Noon Live Stock Market
 12:45—Columbus Fruit and Vegetable Prices
 12:50—Conservation Prog.—J. W. Stuber
 1:00—Frew Mohr, Organist
 1:30—Chapter a Day—Dorothy Wilson
 1:45—Campus News—William Blair
 4:00—Markets
 4:10—Studio Music
 4:15—WEAO Players—"Sire de Mal-troit's Door" (Stevenson)
 4:45—Vera Daniell, Pianist

WSEN (1210 k.c.—248m.)

8:00 A. M.—Smilin' Sam
 8:30—Morning Program
 9:00—Happy Half-hour
 9:30—Your Favorite Hymns
 10:00—Jean and Jerry
 10:15—WSEN Band Wagon
 10:30—Dance Melodies
 10:45—Organ Recital
 11:15—Hester Clement, pianist
 11:30—Brunswick Half-hour
Noon—Time Signal
 12:01 P. M.—Wurlitzer Musicale
 12:30—Eddie Lee
 1:00—Citizens News Flashes
 1:10—Cheerio
 1:30—Furniture Factory Showroom
 2:00—Knick-knacks
 2:15—Recordings
 2:30—"Baby's Birthday Party"
 2:45—Popular Selections
 3:00—Kenny Bowsher's Orchestra
 3:45—Ruth and Edith, vocal and piano
 4:00—Recordings
 4:15—Bill and Sherman
 4:30—Music Box
 4:45—Musical Milly
 5:00—Pearl Palace Trio
 5:15—Betty and Sally, harmony team
 5:30—Melodyland
 5:45—Theronoid Program
 6:00—Kenny Bowsher's Orchestra
 6:30—Weather Report
 6:34—Neil House Orchestra
 7:00—Fun Makers' Orchestra
 7:30—Livie Richardson's Arabian Grill Orchestra
 8:00—Studio
 8:15—Seiberling Singers
 8:30—Weather Report
 8:31—Cecil and Sally
 8:45—Antonio Champa
 9:00—Neil House Orchestra
 9:30—Ned's String Band

Like Father Like Daughter



Like Father like Daughter is the rearranged axiom that prevails in the Horton family of WLW.

Although no one is willing to believe that Murray Horton is old enough to be the father of two almost-grown daughters, it really is true that two of the Horton Trio who sing with the Sunday afternoon Crosley Ramios programs are his daughters. At the left is Mary, at the right Harriet. Their trio-mate is Libby Beck who somehow was squeezed out of this family picture. Father Horton conducts the A. & P. orchestra at WLW morning and afternoon, and also directs several other programs. It was only natural that the two Horton girls should have begun to harmonize as soon as they learned that they could get farther by singing than by crying.

WSEN THURSDAY, Dec. 10
 10:00—Thelma, Ruth and Earl, variety trio
 10:30—Orchestra from Greystone Ballroom
 11:00—"Livie" Richardson's Arabian Grill Orchestra

WLW (428m.—700 kc.)

6:30 A. M.—International Fiddlers
 7:00—Physical Exercises
 7:15—Bradley Kincaid
 7:30—Organ Program, Arthur Chandler
 7:45—Jolly Bill and Jane (NBC)
 8:00—Morning Devotions
 8:15—Oklahoma Cowpunchers
 8:30—Bissell Pick-ups (NBC)
 8:45—Physical Exercises
 9:00—Health Talk, Dr. Carl Wilzbach
 9:15—Netherland Plaza Chef
 9:30—Beautiful Thoughts (NBC)
 9:45—Florence Frey Beauty Workshop
 10:00—Live Stock Reports; Piano
 10:15—A. & P. Orchestra
 10:30—Colonel Goodbody (NBC)
 10:45—Davis Mystery Chef (NBC)
 11:00—Ford Rush
 11:15—Mouth Hygiene
 11:25—WLW Stars
 11:45—River; Weather; Time
Noon—Happiness Kids
 12:15 P. M.—Pat Barnes (NBC)
 12:30—Hotel Gibson Orchestra
 12:45—Markets; Live Stock Reports
 1:00—National Farm and Home (NBC)
 1:30—Bernie Cummins' Orchestra
 2:00—Ohio School of the Air
 3:00—Varsity Quartet
 3:15—Ohio Federation of Women's Clubs
 3:30—Three Doctors
 3:45—Sisters Three
 4:00—A. & P. Orchestra
 4:30—Organ Matinee
 5:00—Brazilian Coffee (NBC)
 5:30—Edna Wallace Hopper
 5:45—Little Orphan Annie (NBC)
 6:00—Old Max Sunshine and Santa Claus
 6:15—The Chatter
 6:30—Radio News Revl of Hollywood
 6:45—Lowell Thomas (NBC)
 7:00—Amos 'n' Andy (NBC)
 7:15—Crosley Auto Stokers
 7:30—Bernie Cummins' Orchestra
 7:45—Shoe-ing the Blues Away
 8:00—Hotel Gibson Orchestra
 8:15—Rin-Tin-Tin Thriller (NBC)
 8:30—Hollingsworth Hall
 8:45—Sisters of the Skillet
 9:00—Great Composers
 9:30—Maxwell House Ensemble (NBC)
 10:00—A. & P. Dance Gypsies (NBC)
 10:30—Variety: Three Musketeers
 10:45—Bob Newhall Sports Slices
 11:00—Van Camp Program
 11:30—Crosley Theater of the Air
Midnight—Bernie Cummins Orchestra
 12:30—Isham Jones Orchestra

WTAM (1070 kc.—280.2m.)

6:31 A. M.—Sun Up
 7:00—Physical Culture Class
 7:15—Morning Melodies; Weather
 7:45—Clegg Monroe, Baitone
 8:00—Gene and Glenn (NBC)
 8:15—Pie Plant Pete
 8:30—Cheerio (NBC)
 9:00—Opening Live Stock Markets
 9:05—Physical Culture Class
 9:15—Tom Waring's Troubadours (NBC)
 9:45—Our Daily Food (NBC)
 10:00—Mrs. Blake's Radio Column (NBC)
 10:15—Jeanette Pearlstein, piano
 10:30—Morning Serenaders (NBC)
 11:00—Jeanette Pearlstein, Pianist

WTAM THURSDAY, Dec. 10
 12:15 P. M.—Sports Flash; Weather; Markets
 12:30—Noonday Melodies
 1:00—Markets; Program Resume
 1:30—Moods and Moods
 2:00—Hotel Pennsylvania Music (NBC)
 2:30—Sports Flash: Young Poets
 2:45—Talk — Honore Willis Morrow (NBC)
 3:00—Women's Radio Review (NBC)
 4:00—Salon Singers (NBC)
 4:50—Phil Spitalny's Tea Dansan e (NBC)
 5:00—"The Jungle Man," Carveta Well (NBC)
 5:15—Frances Bowdon (NBC)
 5:30—Rinso Talkie (NBC)
 5:45—Ed and Alice
 6:00—Sports Review
 6:05—Waldorf-Astoria Orchestra (NBC)
 6:30—C. W. Brand Welcomer — Jack Turner
 6:45—The Stebbins Boys (NBC)
 7:01—Spang Bakers, Gene and Glenn
 7:30—Prince Albert Quarter Hour (NBC)
 7:45—The Goldbergs (NBC)
 8:00—Fleischmann Hour (NBC)
 9:00—Arco Dramatic Musicale (NBC)
 9:30—Adventures of Sherlock Holmes (NBC)
 10:00—Lucky Strike Dance Hour (NBC)
 11:00—Sports Review — Musical Bulletin Board: 11:15—Mr. X
 11:30—Kay Kyser's Orchestra
Midnight—Midnight Melodies
 12:30—Emerson Gill's Orchestra

NETWORK PROGRAMS

6:00—Raising Junior (WJZ)
 6:15—The Gruen Answer Man (WJZ)
 —Peter van Steeden and his Orchestra (WENR)
 —Hotel Bossert Orchestra (WABC)
 6:30—Breyer Leaf Boys (WJZ)
 —The World Today (WEAF)
 7:00—Vermont Lumber Jacks (WEAF-WENR)
 —Myrt and Marge (WABC)
 7:15—Campell Orchestra (WEAF-WENR)
 7:30—Phil Cook—the Quaker Man (WJZ-KDKA-WENR)
 —Kaltenborn Edits the News (WABC)
 7:45—Famous Fallacies of Business (WJZ)
 8:15—Sterling Products Program
 8:30—Pickard Family (WJZ-KDKA)

NETWORK Thursday, Dec. 10
 8:45—Angelo Patri "Your Child" (WABC)
 9:00—Blackstone Plantation (WJZ-KDKA)
 9:30—Love Story Hour (WABC-WOWO)
 10:00—Hart, Schaffner and Marx Trumpeters (WABC-WOWO)
 10:30—Clara, Lu and Em (WJZ-KDKA)
 10:45—Paris Night Life (WJZ-KDKA)
 11:00—Slumber Music (WJZ)
 —Ralph Kirbery, songs (WEAF)
 —St. Moritz Orchestra (WABC)
 —Amos 'n' Andy (WENR)
 11:15—Coon-Sanders' Orchestra (WEAF)
 11:30—Jerse Crawford, Poet of the Organ (WEAF)
 —Leon Belasco's Orchestra (WABC)
 11:45—Lew White Organ Recital (WJZ-WENR)
 —Cab Calloway and his Orchestra (WEAF-WGY)
Midnight—Mildred Bailey and the King's Jesters (WJZ)
 —Ralph Kirbery, tenor (WEAF)
 —Guy Lombardo's Orchestra (WABC)
 12:15—Earl Hines and his Orchestra (WJZ)
 12:30—Larry Funk's Orchestra (WJZ-WENR)
 —Florence Richardson Melody Boys (WEAF-WENR)
 —Louis Panico Orchestra (WABC)
 1:00—Dave Abrams' Barn Orchestra (WABC)
 1:30—Roseland Ballroom Orchestra (WABC)

WANTED BOYS TO SELL RADIO DIAL

MAKE GOOD MONEY IN SPARE TIME

See Scott Krauss News Co. 360 N. Front St.

SPECIAL OFFER RADIO DIAL

4 weeks for 10c

RADIO DIAL—the official weekly publication of all radio programs. New programs—guest artists—friendly familiarities about your radio favorites. The Radio Dial will be bigger and better every week. Send in your subscription TODAY!

Delivered to your home

RADIO DIAL
208 Beggs Bldg.
Columbus, Ohio.

Gentlemen:

Send RADIO DIAL—4 weeks for 10c.

Enclosed find . . . 10c in cash.

. . . 10c in stamps.

Name

Address

City State

Mail this
← Coupon

enclose

10c