

VOLUME 15

NOVEMBER, 1927

NUMBER 11

PROCEEDINGS  
*of*  
The Institute of Radio  
Engineers



Published Monthly By

**THE INSTITUTE OF RADIO ENGINEERS**

Publication Office: 450-454 Ahnaip St., Menasha, Wis.

Editorial and Advertising Departments  
37 West 39th Street, New York, N.Y.

Subscription \$10.00 per Annum in the United States  
\$11.00 in all other Countries

General Information and Subscription Rates on Page 883.

---

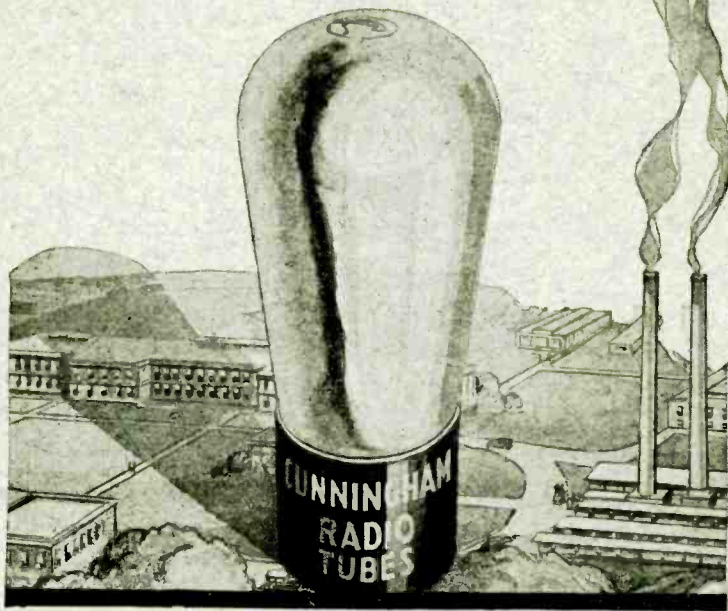
# Cunningham RADIO TUBES

are used by  
**Leading Radio Engineers**  
in their exacting  
**Laboratory Tests**

Cunningham Radio Tubes have that rugged strength that will endure through hour after hour of gruelling service. They also have the accuracy that transcends all normal scientific standards.

*Twenty different types—  
all in the Orange and Blue carton.*

**E. T. CUNNINGHAM, Inc.**  
New York      Chicago      San Francisco



When writing to advertisers mention of the Proceedings will be mutually helpful.



**Faradon**  
COUPLING CAPACITORS  
*for the*  
**Commonwealth  
Edison Co. -  
Chicago, Ill.**

There is a type of Faradon Capacitor for every electrostatic condenser need.

Faradon engineers will furnish data necessary in connection with any application.

**WIRELESS SPECIALTY APPARATUS COMPANY**  
JAMAICA PLAIN      *Est. 1907*      BOSTON, MASS., U. S. A.

---

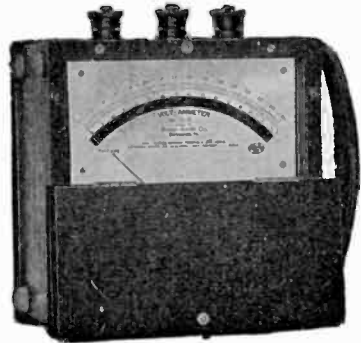
# Two New Bulletins



New Bulletin No. K-420 covers R-S Types TA (3½ in.) and FA (4 in.) small, panel type, alternating current ammeters, voltmeters and wattmeters in capacities from 100 milli-amperes to 200 amperes and from 10 volts to 300 volts. The Type TA is illustrated.

*Send for your copy*

New Bulletin No. K-210 covers R-S type GSD, portable, direct current ammeters, voltmeters and volt-ammeters in capacities from 5 milli-amperes to 750 amperes and from 10 milli-volts to 750 volts.



Galvanometers, shunts and multipliers are included also.

*Send for your copy*

*"Over thirty years' experience is back of Roller-Smith"*

## **ROLLER-SMITH COMPANY** Electrical Measuring and Protective Apparatus

MAIN OFFICE  
2134 Woolworth Bldg., New York



WORKS  
Bethlehem, Penn.

*Offices in principal cities in U. S. A. and Canada  
Representatives in Australia, Cuba and Japan*

---

When writing to advertisers mention of the Proceedings will be mutually helpful.

## AMERTRAN PUSH-PULL



With your socket power supply a stage of AmerTran Push-Pull, using the new 171-A tubes, can be operated at *no* increased cost over the single power tube. It brings the advantages of greater tone reality and added volume. Tube distortion and harmonics are suppressed—the hum caused by raw A. C. on the filaments of the power tube is eliminated.

For those wishing to utilize their present high voltage power packs we recommend the 210 combination of Push-Pull. Volume will be greater and only a slight change required in the plate supply.

AmerTran Push-Pull Input and Output transformers use high permeability alloy cores with multiple windings to give high inductive coupling and low capacity coupling. The Input transformer, has approximately the same primary impedance as the second state AmerTran DeLuxe. It is suitable for use ahead of any pair of standard power tubes.

The plate impedance of two tubes connected push-pull is double the impedance of a single tube. Since various types of power tubes have different values of plate impedance, this company provides output transformers to correspond with the power tubes and the speakers. The impedance ratios provide for the greatest transfer of energy from 60 to 100 cycles, because at these low frequencies more energy is required to drive the loud speaker mechanism.

AMERTRAN PUSH-PULL TRANSFORMERS are now available in these types:

Push-Pull Input Type 151—\$15 each.	Push-Pull Output Type 271 (Impedance ratio 2:1), for two UX-171 tubes connected Push-Pull—\$15 each.
Push-Pull Output Type 152 (Impedance ratio 4:1), for two UX-210's or similar power tubes—\$15 each.	

### AMERICAN TRANSFORMER CO.

178 Emmet Street Newark, N.J.

*"Transformer Builders for Over 26 Years"*





*A  
Quality  
Product*

*Pattern  
No. 133  
Radio Set  
Analyzer*

## *Your Service Problem is Solved*

RADIO ENGINEERS engaged in radio service work have the solution to their service problem in the Jewell Radio Set Analyzer. Jewell Set Analyzers are understandable and easy for a service man to operate, and are thoroughly reliable.

When it is considered that seven individual and complete tests are made on each stage, or forty-two tests in the ordinary analysis of a six-tube set, the remarkable nature of this testing instrument is appreciated and its popularity understood.

On the Jewell Pattern No. 133 Radio Set Analyzer, plainly marked, individual push button switches for each test are used in conjunction with a special plug which is inserted in turn in each socket of the radio set to give the complete characteristics of each stage. A, B and C voltages, plate current and grid bias are instantly obtained by pressing the proper button. It gives a good tube check, also, and a separate set of terminals provides for making circuit tests.

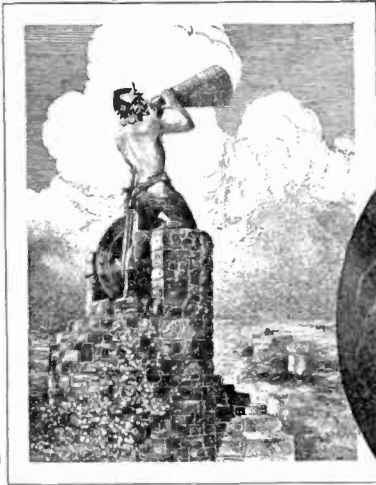
Write for descriptive circular No. 1124.

***Jewell Electrical Instrument Co.***

*1650 Walnut St. - Chicago*

*"27 Years Making Good Instruments"*

When writing to advertisers mention of the Proceedings will be mutually helpful.



When the Gauls transmitted important news, it was shouted from tower to tower through a megaphone. Within fifteen hours the news of the Roman massacre at Orleans was thus sent to Auvergne, 120 miles away.



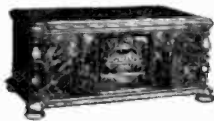
Doctor H. Grebe



*Natural Tone*—Perfection in radio reception is naturalness of tone. It must reach you as it left the studio—clear and life-like. It must be rich, deep, resonant—admitting no trace of "radio accent".

Nothing is so fatal to tone quality as an "unsympathetic" loud speaker. Reception suffers unless set and speaker work in perfect harmony.

Grebe has built a *Natural Speaker*. With



it your set will reproduce tone more clearly and faithfully, affording you purer tone quality.

But in combination with the Grebe Synchronphase Seven, it attains its highest capabilities.

The Grebe Natural Speaker is priced at \$35; the Grebe Synchronphase Seven at \$135. Send for Booklet I; then have a Grebe dealer prove, in your home, that you can "get it better with a Grebe".

# GREBE

TRADE MARK REG. U.S. PAT. OFF.

## SYNCHROPHASE

### RADIO

A. H. Grebe & Company, Inc., 109 W. 57th St., New York City

Factory: Richmond Hill, N. Y.

Western Branch: 443 S. San Pedro St., Los Angeles, Cal.

Makers of quality radio since 1909

When writing to advertisers mention of the Proceedings will be mutually helpful.

Radio - Is - **BETTER** - With - Dry - Battery - Power



made to run  
the *full* race!

*ANY* horse can make a good start . . . . . But it takes real stamina to *finish!* ¶So it is with batteries. *Staying* power is the quality to look for—unfailing power over a long period of service. Millions prefer Burgess *Chrome* Batteries for just this reason. They hold up . . . . . They *last.* ¶Next time, buy black and white striped Burgess *Chrome* Batteries. You are certain to get longer and better service for your money.

*Chrome* —the preserving element used in leather, metals, paints and other materials subject to wear, is also used in Burgess Batteries. It gives them unusual *staying* power. Burgess *Chrome* Batteries are patented.

*Ask Any Radio Engineer*

**BURGESS BATTERY COMPANY**

*General Sales Office: CHICAGO*

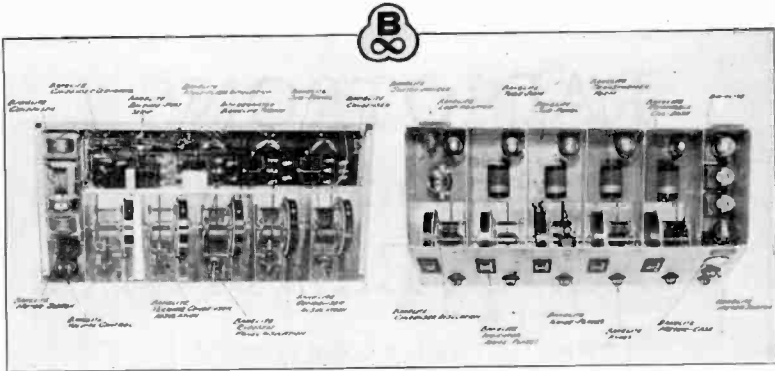
*Canadian Factories and Offices: Niagara Falls and Winnipeg*



**BURGESS BATTERIES**

When writing to advertisers mention of the Proceedings will be mutually helpful.





Two views of Transoceanic "Phantom" Receiver, showing the extensive use of Bakelite Materials. Made by Golden-Leutz, Inc., Long Island City, N. Y.

## Insulated throughout with Bakelite Materials ~ to assure superlative performance

IN THE Transoceanic "Phantom," Golden-Leutz, Inc., sought to produce a Broadcast Receiver that would exceed the expectations of the most expert radio enthusiast. One that would tune 35 meters to 3600 meters—that in receiving range, selectivity, electrical design, amplification and quality of reproduction would be unrivaled. It is significant that this powerful receiver is insulated throughout with Bakelite Materials—both Molded and Laminated.

The reasons given by the makers for the extensive use of Bakelite Materials in this set are: "Bakelite Materials possess the best insulation properties of any, particularly over a period of time. As they will not cold-flow the

assembled parts will remain in place permanently—there will be no loose contacts. They are mechanically strong and capable of supporting all necessary parts. They are unaffected by age, moisture or heat."

Since the earliest days of Radio, the Bakelite Corporation has kept pace with the development of Broadcast Receivers, and its engineers and research laboratories have cooperated with manufacturers in adapting Bakelite Materials to each exacting need. The wealth of knowledge acquired during these years of experience is offered to the radio industry through our Service Engineers located in important industrial centers.

Write for Booklet 33

### BAKELITE CORPORATION

247 Park Ave., New York, N.Y.  
BAKELITE CORP. OF CANADA, LTD.

Chicago Office: 635 W. 22nd St.  
163 Dufferin St., Toronto, Ont.

# BAKELITE

REGISTERED U. S. PAT. OFF.



THE MATERIAL OF A THOUSAND USES

\*The registered Trade Mark and Symbol shown above may be used only on products made from material manufactured by Bakelite Corporation. Quote the capital "B" in the trademark when the ability or substance of any material is advertised in the interest of the public. © 1933 Bakelite Corporation, U.S.A.

When writing to advertisers mention of the Proceedings will be mutually helpful.

# RADIOTRONS

## for modern

# A. C. OPERATION

### POWER AMPLIFIER RADIOTRON UX-171

*Filament—5 Volts—5 Amperes*

Plate Voltage . . . . .	90	135	180	Volts
Negative Grid Bias . . . . .	16½	27	40½	Volts
Plate Current . . . . .	10	16	20	Milliamperes
Plate Resistance (A.C.) . . . . .	2500	2200	2000	Ohms
Mutual Conductance . . . . .	1200	1360	1500	Micromhos
Voltage Amplification Factor . . . . .	3.0	3.0	3.0	
Max. Undistorted Output . . . . .	130	330	700	Milliwatts

### R. F. & A. F. AMPLIFIER RADIOTRON UX-226

*Filament (A. C.) 1.5 Volts—1.05 Amperes*

Plate Voltage . . . . .	90	135	180	Volts
Negative Grid Bias . . . . .	6	12	9	13½ Volts
Plate Current . . . . .	3.7	3	6	7.5 Milliamperes
Plate Resistance (A.C.) . . . . .	9400	10,000	7400	7000 Ohms
Mutual Conductance . . . . .	875	820	1100	1170 Micromhos
Voltage Amplification Factor . . . . .	8.2	8.2	8.2	
Max. Undistorted Output . . . . .	20	60	70	120 Milliwatts

### DETECTOR RADIOTRON UY-227

*Heater (A. C.) 2.5 Volts—1.75 Amperes*

Plate Voltage . . . . .		45	90	Volts
Grid Leak . . . . .		2-9	¼-1	Megohms
Plate Current . . . . .		2	7	Milliamperes
Plate Resistance (A.C.) . . . . .		10,000	8000	Ohms
Mutual Conductance . . . . .		800	1000	Micromhos
Voltage Amplification Factor . . . . .		8	8	

### FULL WAVE RECTIFIER RADIOTRON UX-280

A.C. Filament Voltage . . . . .		5.0	Volts
A.C. Filament Current . . . . .		2.0	Amperes
A.C. Plate Voltage (Max. per plate) . . . . .		300	Volts
D.C. Output Current (Maximum) . . . . .		125	Milliamperes
Effective D.C. Output Voltage of typical Rectifier . . . . .			
Circuit at full output current as applied to Filter . . . . .		260	Volts

### HALF WAVE RECTIFIER RADIOTRON UX-281

A.C. Filament Voltage . . . . .		7.5	Volts
A.C. Filament Current . . . . .		1.25	Amperes
A.C. Plate Voltage (Max. per plate) . . . . .		750	Volts
D.C. Output Current (Maximum) . . . . .		110	Milliamperes
Effective D.C. Output Voltage of typical Rectifier . . . . .			
Circuit at full output current as applied to Filter . . . . .		620	Volts

RADIO CORPORATION OF AMERICA

New York

Chicago

San Francisco

# RCA Radiotron

MADE BY THE MAKERS OF THE RADIOLA

When writing to advertisers mention of the Proceedings will be mutually helpful.





WARREN FETTER HUBLEY  
Late Treasurer, Institute of Radio Engineers, 1915-1927

PROCEEDINGS OF  
**The Institute of Radio Engineers**

Volume 15

November, 1927

Number 11

**CONTENTS**

	Page
Officers and Board of Direction	884
Committees	884
Institute Sections	886
Institute Activities	887
News of the Sections	888
Committee Work	891
Manfred von Ardenne, "On the Values and Effects of Stray Capacities in Resistance-Coupled Amplifiers."	895
R. C. Hitchcock, "Mounting Quartz Oscillator Crystals."	902
C. R. Englund, "The Short Wave Limit of Vacuum Tube Oscillators"	914
A. Meissner, "Directional Radiation with Horizontal Antennas."	928
E. A. Guillemin, "Making Normal Coordinates Coincide with the Meshes of an Electrical Network."	935
E. L. Chaffee, "Voltage Detection Coefficient."	946
C. Francis Jenkins, "Radio Vision"	958
R. R. Batcher, Book Review, "Radio Theory and Operating," by Mary Texanna Loomis	965
Greenleaf W. Pickard, Book Review, "Properties and Testing of Magnetic Materials," by Thomas Spooner	966
J. B. Brady, Digest of U. S. Radio Patents	967
Geographical Location of Members Elected October 5, 1927	968

**GENERAL INFORMATION**

The PROCEEDINGS of the Institute are published monthly and contain the papers and the discussions thereon as presented at meetings.

Payment of the annual dues by a member entitles him to one copy of each number of the PROCEEDINGS issued during the period of his membership.

Subscriptions to the PROCEEDINGS are received from non-members at the rate of \$1.00 per copy or \$10.00 per year. To foreign countries the rates are \$1.60 per copy or \$11.00 per year. A discount of 25 per cent is allowed to libraries and booksellers.

The right to reprint limited portions or abstracts of the articles, discussions, or editorial notes in the PROCEEDINGS is granted on the express conditions that specific reference shall be made to the source of such material. Diagrams and photographs in the PROCEEDINGS may not be reproduced without securing permission to do so from the Institute through the Secretary.

It is understood that the statements and opinions given in the PROCEEDINGS are the views of the individual members to whom they are credited, and are not binding on the membership of the Institute as a whole.

Entered as second class matter at the Post Office at Menasha, Wisconsin. Acceptance for mailing at special rate of postage provided for in Section 1103, Act of October 3, 1917, authorized October 7, 1918.

Copyright, 1927, by  
**THE INSTITUTE OF RADIO ENGINEERS, Inc.**  
Publication Office 450-454 Ahnaip Street, Menasha, Wis.  
Editorial and Advertising Departments, 37 West 39th St., New York, N. Y.

## OFFICERS AND BOARD OF DIRECTION, 1927

(Terms expire January 1, 1928, except as otherwise noted)

### *President*

RALPH BOWN

### *Vice-President*

FRANK CONRAD

### *Treasurer*

MELVILLE EASTHAM

### *Secretary and Editor*

ALFRED N. GOLDSMITH

### *Managers*

L. A. HAZELTINE

R. H. MANSON

L. E. WHITTEMORE  
(Serving until Jan. 1, 1929)

J. V. L. HOGAN

A. E. REOCH

R. H. MARRIOTT  
(Serving until Jan. 1, 1929)

R. A. HEISING  
(Serving until Jan. 1, 1930)

---

### *Junior Past Presidents*

J. H. DELLINGER

DONALD McNICOL

---

### *Assistant Secretary*

JOHN M. CLAYTON

### *Associate Editor*

GEORGE R. METCALFE

---

### *Committees of the Institute of Radio Engineers, 1927*

#### Committee on Meetings and Papers

R. H. MARRIOTT, *Chairman*

STUART BALLANTINE

R. R. BATCHER

CARL DREHER

W. G. H. FINCH

ERICH HAUSMANN

S. S. KIRBY

G. W. PICKARD

PAUL WEEKS

W. WILSON

L. M. HULL

F. H. KROGER

A. G. LEE

F. K. VREELAND

#### Committee on Revision of the Constitution

J. H. DELLINGER, *Chairman*

J. V. L. HOGAN

DONALD McNICOL

#### Committee on Publicity

W. G. H. FINCH, *Chairman*

DAVID CASEM

ORRIN E. DUNLAP

E. EHLERT

L. W. HATRY

E. H. HANSEN

LLOYD JACQUET

J. F. J. MAHER

#### Committee on Admissions

F. CONRAD, *Chairman*

ARTHUR BATCHELER

HARRY F. DART

C. P. EDWARDS

A. H. GREBE

L. A. HAZELTINE

R. A. HEISING



*Committees of the Institute—(Continued)*

J. G. UZMANN  
WILLIS K. WING  
R. F. YATES

Committee on Membership

HARRY F. DART, *Chairman*

M. C. BATSEL  
M. BERGER  
GEORGE BURGHARD  
E. M. DELORAINE  
DR. L. J. DUNN  
C. P. EDWARDS  
W. G. H. FINCH  
C. M. JANSKY, JR.  
ROBERT S. KRUSE  
WILLIAM J. LEE  
PENDLETON E. LEHDE  
C. L. RICHARDSON  
F. H. SCHNELL  
E. R. SHUTE  
G. S. TURNER  
E. H. ULRICH

Committee on Institute Sections

DAVID H. GAGE, *Chairman*

M. BERGER  
L. F. FULLER  
D. HEPBURN  
L. G. PACENT  
M. C. RYPINSKI  
E. R. SHUTE

Committee on Standardization

L. E. WHITTEMORE, *Chairman*

M. C. BATSEL  
EDWARD BENNETT  
E. L. CHAFFEE  
J. H. DELLINGER  
MELVILLE EASTHAM  
C. P. EDWARDS  
GENERAL FERRIE  
A. N. GOLDSMITH  
L. A. HAZELTINE  
J. V. L. HOGAN  
W. E. HOLLAND  
L. M. HULL  
F. A. KOLSTER  
MAJOR J. O. MAUBORGNE  
R. H. MANSON  
DONALD MCNICOL  
E. L. NELSON  
H. S. OSBORNE  
H. B. RICHMOND  
LT. COMDR. W. J. RUBLE  
E. H. SHAUGHNESSY  
H. M. TURNER  
C. A. WRIGHT  
HIDETSUGU YAGI  
J. ZENNECK

All Section Secretaries ex-officio

## INSTITUTE SECTIONS

### ATLANTA SECTION

*Chairman*  
Walter Van Nostrand

*Secretary-Treasurer*  
George Llewellyn, Room 524, Post Office  
Bldg., Atlanta, Ga.

### BOSTON SECTION

*Chairman*  
George W. Pierce

*Secretary-Treasurer*  
Melville Eastham, 30 State St.,  
Cambridge, Mass.

### BUFFALO—NIAGARA SECTION

*Chairman*  
L. C. F. Horle

*Secretary*  
C. J. Porter, 141 Milton Street,  
Buffalo, New York

### CANADIAN SECTION

*Chairman*  
A. M. Patience

*Secretary*  
C. C. Meredith, 110 Church St., Toronto, Ontario

### CHICAGO SECTION

*Chairman*  
G. M. Wilcox

*Secretary*  
H. E. Kranz, 4540 Armitage Ave., Chicago, Ill.

### CLEVELAND SECTION

*Chairman*  
John R. Martin

*Secretary-Treasurer*  
L. L. Dodds, 6528 Carnegie Ave.,  
Cleveland, Ohio

### CONNECTICUT VALLEY SECTION

*Chairman*  
W. G. Cady

*Secretary-Treasurer*  
K. S. Van Dyke, Scott Laboratory,  
Middletown, Conn.

### DETROIT SECTION

*Chairman*  
Thomas E. Clark

*Secretary-Treasurer*  
W. R. Hoffman, 615 West Lafayette Blvd.,  
Detroit, Mich.

### LOS ANGELES SECTION

*Chairman*  
L. Taufenbach

*Secretary*  
L. Elden Smith, 340 N. Painter Ave.,  
Whittier, Cal.

### PHILADELPHIA SECTION

*Chairman*  
J. C. Van Horn

*Secretary*  
John C. Mevius, 1533 Pine St.,  
Philadelphia, Pa.

### ROCHESTER, N.Y. SECTION

*Chairman*  
Harvey Klumb

*Secretary*  
F. W. Reynolds, 1060 University Ave.,  
Rochester, N. Y.

### SAN FRANCISCO SECTION

*Secretary-Treasurer*  
D. B. McGown, Custom House,  
San Francisco, Cal.

### SEATTLE SECTION

*Chairman*  
Tyng Libby

*Secretary-Treasurer*  
W. A. Kleist, 820 Dexter Horton Bldg.  
Seattle, Wash.

### WASHINGTON SECTION

*Chairman*  
A. Hoyt Taylor

*Secretary-Treasurer*  
F. P. Guthrie, 122 Conn. Ave., Washington, D.C.

## INSTITUTE ACTIVITIES

### OCTOBER MEETING OF THE BOARD OF DIRECTION

At the meeting of the Board of Direction of the Institute, held on October 5, 1927 in the Institute Offices, the following were present: Dr. Ralph Bown, President; Frank Conrad, Vice-President; Dr. A. N. Goldsmith, Secretary; L. A. Hazeltine, R. A. Heising, J. V. L. Hogan, R. H. Marriott and J. M. Clayton, Assistant Secretary.

Mr. Melville Eastham was elected Treasurer of the Institute to fill the unexpired term caused by the death of Mr. Warren F. Hubley.

Upon recommendation of the Committee on Admissions, the following applications for transfer or election to the higher grades of membership in the Institute were approved: Transfer to the grade of Fellow: M. C. Batsel and L. E. Whittemore; transfer to the grade of Member: Carlton D. Morris and Conway Taylor; election to the grade of Member: John F. Grinan, E. B. Moullin and G. McB. Salt.

One hundred and two Associate and ten Junior members were elected.

In the absence of nominations by petitions, the ballot for 1928 officers of the Institute will be as follows:

For President, Professor E. M. Bennett and Dr. A. N. Goldsmith.

For Vice-President, A. H. Grebe and L. E. Whittemore.

For Managers, Dr. W. G. Cady, Dr. J. H. Dellinger, W. G. H. Finch, and R. H. Manson.

### LIEBMAN MEMORIAL PRIZE

The Liebmann Memorial Prize for this year was awarded to Dr. A. Hoyt Taylor for his work in connection with the investigation of radio transmission phenomena. The award will be made at one of the sessions of the 1928 convention of the Institute early in January.

### 1928 YEAR BOOK

With the ballots for 1928 Officers of the Institute, which will be in the mail shortly after November 1st, there will be found a form to be used by all members in notifying the Institute of any changes of business or residential address for

inclusion in the 1928 Year Book. These forms should be executed and returned with the ballots. All members are urged to return both promptly in the envelope provided therefor.

The 1928 Year Book will contain a catalog of the membership of all grades, as of December 31, 1927. Changes in address or unpaid members cannot be included in the membership list if the Institute is not notified prior to that date.

#### MEMBERSHIP CARDS

At the October meeting of the Board of Direction it was decided that membership cards for *all* grades of membership shall be available next year. These cards will be issued only upon request.

#### Institute Meetings

##### NEW YORK MEETING

At the New York meeting of the Institute, held on October 5, 1927 in the Engineering Societies Building, 33 West 39th Street, New York City, a paper on "Method of Reducing The Effect of Atmospheric Disturbances" was presented by Major E. H. Armstrong.

In the discussion which followed the paper, the following took part: Dr. A. N. Goldsmith, Carl T. Englund, Roy Weagant, R. H. Marriott, D. K. Martin, A. H. K. Morse, A. E. Reoch, and others.

The attendance at this meeting was over six hundred.

A limited number of copies of the paper, in pamphlet form, are available to members of the Institute upon application to the Institute Offices.

##### ATLANTA SECTION

A meeting of the Atlanta Section of the Institute was held in the Atlanta Athletic Club on September 7, 1927. H. L. Wills, Vice-Chairman, presided. Mr. Oliver, of the Southern Bell Telephone Company, read the paper of Messrs. Diamond and Webb on "The Testing of Audio-Frequency Transformer-Coupled Amplifiers."

Following the paper and discussion, the motion picture "Silent Drama of Telephony" was shown.

The attendance at this meeting was twenty-five.

##### BUFFALO-NIAGARA SECTION

At the invitation of the local Section of the American Institute of Electrical Engineers, the Buffalo-Niagara Section

of the Institute of Radio Engineers attended an A.I.E.E. meeting on September 23, 1927 at which E. C. Markley of the General Electric Company delivered a paper on "Carrier Current Telephony." This paper was discussed by C. A. Boddie and others.

A meeting of the Buffalo-Niagara Section was held on October 12, 1927 in Townsend Hall, University of Buffalo. L. C. F. Horle was the presiding officer.

A paper by Francis H. Engel, of the Radio Corporation of America, on "Notes on A-C. Tubes" was presented by Mr. Engel. Messrs. Hector, Stone, Horle, Jones and others participated in the discussion which followed.

The attendance was fifty-five members.

The next meeting of the Section will be held on November 17, 1927 in the Science Hall, University of Buffalo, at which time Dr. Ralph Bown, President of the Institute, will present a paper on "Transatlantic Telephony."

#### CANADIAN SECTION

At the September 14th meeting of the Canadian Section, held in the Electrical Building of the University of Toronto, A. M. Patience presided.

C. I. Soucy, of the University of Toronto, presented the first of a series of "Junior Lectures" prepared for the benefit of the younger members of the Section. The first lecture was entitled "Inductance Coils." It is planned that at each meeting of the Section, for a period of about twenty minutes, one of these Junior Lectures will be given. The proposed subjects include Coils, Condensers, Application of Coils and Condensers, Tubes, Radio-Frequency Circuits, Audio-Frequency Circuits, Sensitivity and Selectivity, Loudspeakers, Batteries and Rectifiers, Installation and Service Problems and other subjects.

The paper of the evening, entitled "Rectox, The Oxide-copper Rectifier", was presented by A. L. Atherton. In the discussion which followed, the following took part: Messrs. C. I. Soucy, C. L. Richardson, D. Hepburn, J. Leslie, G. E. Pipe, C. A. Lowry, A. R. Starr and others.

#### CLEVELAND SECTION

On September 23, 1927 a meeting of the Cleveland Section, J. R. Martin presiding, was held in the Auditorium of the new School of Lighting, General Electric Company, Nela Park. Wm. T. L. Cogger, Manager of the Vacuum Tube Department

of the Nela Works, presented a paper on "The New Vacuum Tube (A-C)."

Seventy-five members of the Section attended the meeting.

On November 4, 1927, Dr. Ralph Bown, President of the Institute, will present a paper "Transatlantic Telephony" in the Case School of Applied Science, Cleveland.

#### PHILADELPHIA SECTION

The September meeting of the Philadelphia Section was held on the twenty-third of the month in the Bartol Laboratories. J. C. Van Horn presided.

A paper by Dr. Ralph Bown on "Transatlantic Radio Telephony" was presented by Dr. Bown.

Messrs. Miller, Arnold, Snyder and others took part in the discussion which followed.

The attendance was fifty-two members.

#### SAN FRANCISCO SECTION

The San Francisco Section is planning a renewal of its meetings beginning with a session in November, to continue throughout the winter and spring months.

At a luncheon in the Engineers' Club, San Francisco, on October 7, 1927 the affairs of the Section were discussed by Dr. L. F. Fuller (member of the Committee on Sections), D. B. McGown, B. H. Linden, A. Y. Yuel, and Past-President Donald McNicol.

The large growth of radio on the Pacific Coast now makes possible the presentation of a wide range of papers on radio and related subjects of interest to members of the Institute.

#### SEATTLE SECTION

On September 17, 1927 a meeting of the Seattle Section was held in the Telephone Building, 3rd and Seneca Streets, Seattle. Mr. T. M. Libby was Chairman.

Two papers were presented. The first, by J. R. Tolmie, was a discussion of the Preliminary Drafts of Reports of the Institute's Sub-committees on Vacuum Tubes, Receiving Sets and Electro-Acoustic Devices. The following participated in the discussion of these preliminary drafts: Messrs. Libby, Willson, Burleigh, and others.

The second paper, by Howard F. Mason, was entitled "Short Wave Transmitter Operation in the Arctic." Messrs. Libby, Burleigh, and Tolmie discussed this paper.



Twenty-eight members of the Section were present at the meeting.

### PROPOSED SECTIONS

Continued correspondence is being held with members of the Institute looking to the formation of Sections of the Institute in the following localities: Milwaukee, New Orleans, Pittsburgh, Denver, and Minneapolis.

It is anticipated that Sections will be formed in several of these cities before the first of next year.

### Committee Work

#### SUB-COMMITTEE OF THE STANDARDIZATION COMMITTEE

A meeting of the Sub-committee on Determination of Circuit Constants was held at Institute Headquarters on September 23, 1927. The following members of the Sub-committee were present: H. M. Turner, Chairman; C. T. Burke, G. C. Crom, and G. S. Southworth.

Miscellaneous questions pertaining to symbols and nomenclature which have been referred to the Committee were discussed and for the most part agreed upon. Certain of these matters are to be taken up with the American Institute of Electrical Engineers with the hope of securing uniformity of action.

The greater portion of the day was devoted to a consideration of a partially completed preliminary draft of a report. One of the major problems is that of obtaining convenient and reliable methods of measuring the inductance of iron-cored coils with and without superposed direct current. The Chairman has spent considerable time studying the various methods in general use and devising others and comparing them. Some of this material was submitted to the Committee members present at this meeting for their comments and suggestions. Other problems discussed included determining the characteristic curves of audio-transformers, measuring the capacity of large and small condensers, the distributed capacity of coils, and measuring the resistance of grid leaks.

#### COMMITTEE ON ADMISSIONS

At its meeting held on October 5, 1927, the following members of the Committee on Admissions were present: Vice-President, Frank Conrad, Chairman; Professor L. A. Hazeltine,

Dr. L. M. Hull, F. H. Kroger, and H. F. Dart. The Committee acted upon eleven applications for transfer or election to the higher grades of membership in the Institute.

#### COMMITTEE ON MEMBERSHIP

A meeting of the Committee on Membership was held in the Institute Headquarters on September 23, 1927. At this meeting H. F. Dart, Chairman, E. R. Shute, and J. M. Clayton were present.

The Committee has many plans before it looking to circularization and other activities which will result in an increase in the membership in the Institute.

---

## OBITUARY

With deepest regret The Institute of Radio Engineers announces the death of

### Warren Fetter Hubley

Mr. Hubley's interest in the development of The Institute of Radio Engineers goes back to the early days of the organization. He first became interested in the meetings of the Wireless Institute. When that parent organization combined with the Society of Wireless Telegraph Engineers to form The Institute of Radio Engineers in May, 1912, he continued to attend the meetings and was elected to associate membership November 4th, 1912. He was elected to the grade of Member February 8, 1926. In 1915 he was elected Treasurer and continued in that capacity, except for the year 1917, until his death.

Mr. Hubley, throughout his long and helpful association with The Institute of Radio Engineers, gave unsparingly of time and effort in the interest of the Institute. His unremitting attendance at meetings of the Board of Direction of the Institute rendered available his wise counsel and careful analysis of the problems of Institute management, to which he gave his undivided and thoughtful attention.

The Board of Direction as a group has lost a capable and conscientious associate, and as individuals they have lost a close friend.

Mr. Hubley was born May 9th, 1880. He died at 4 A.M. September 19th, 1927.

---



# ON THE VALUES AND THE EFFECTS OF STRAY CAPACITIES IN RESISTANCE-COUPLED AMPLIFIERS\*

BY

MANFRED VON ARDENNE AND WOLFGANG STOFF

(Berlin)

It is a well-known fact that among the stray capacities in a vacuum-tube amplifier the capacity between grid and plate of the tube is of primary importance, especially since this capacity is materially increased by the amplification of the tube. In Germany this effect first was explained by H. Barkhausen.† The corresponding equations, however, have very often not been properly applied. For example, the effective direct grid-plate capacity is given as  $(1+A_v)$  times larger than the statically measured  $C_{gp}$ .  $A_v$  is the actual voltage amplification of the tube arrangement in question. In this case the fact is overlooked that the phase-difference existent between  $\Delta E_g$  and  $\Delta E_p$  is generally not 180 deg., but some other considerably different angle. This fact, of course, is immaterial in respect to mere amplification, but it is of first importance in regard to the charge and actual amount of grid-plate capacity increase. The fact that the actual increase of  $C_{gp}$  is, according to the phase angles, smaller than  $(1+A_v)$  times, is naturally of the greatest influence on the judgment of amplifier-dimensions such as are given by the writer since the beginning of 1925, namely, resistance-coupled audio-amplifiers with tube-plate resistances and outer plate circuit resistances of the order of megohms. In the following, the general theory of stray capacities will first be developed with due consideration to the phase conditions mentioned above, and then the values and effects of stray capacities will be discussed for a three-stage amplifier of practical dimensions.

Fig. 1 shows the simplified circuit and Fig. 2 the corresponding symbolic diagram employed to explain the calculation of the effective stray capacities in a single-stage amplifier with optional plate load. Here the tube is considered to be an alternating current generator with the e.m.f.  $=\mu \cdot \Delta E_{go}$  and the internal resistance

\* Original Manuscript received by the Institute, July 6, 1927. Revised Manuscript received by the Institute, August 12, 1927.

† See also Manfred von Ardenne and Wolfgang Stoff: "Die Berechnung der Scheinkapazitäten bei Widerstandsverstärkern," Jahrbuch der drahtlosen Telegraphie und Telephonie, Vol. 30, No. 13.

$r_p$ , according to a well-known definition. Parallel to the plate-circuit impedance load  $Z_b$  are the plate-filament capacity  $C_{pf}$  and the grid-plate capacity  $C_{gp}$ , which is connected in series with the

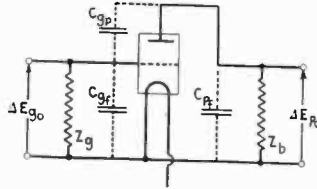


Figure 1

e.m.f.  $= \mu \cdot \Delta E_{g0}$ . The alternating grid-potential  $\Delta E_{g0}$  should be considered as given;  $\Delta E_{po}$  is the potential across  $Z_{b_{tot}}$ , which is the total plate-circuit impedance formed by  $Z_b$  and the parallel stray

capacities. The potential ratio  $\frac{\Delta E_{po}}{\Delta E_{g0}}$  is given by the following well-known equation:

$$\frac{\Delta E_{po}}{\Delta E_{g0}} = -\mu \cdot \frac{1}{1 + \frac{r_p}{Z_{b_{tot}}}} \tag{1}$$

Here  $\frac{1}{Z_{b_{tot}}}$  is equal to:  $\frac{1}{Z_b} + j\omega C_{pf} + j\omega C_{gp} \cdot \left(1 - \frac{\Delta E_{g0}}{\Delta E_{po}}\right)$  (2)

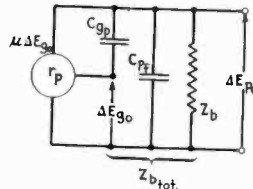


Figure 2

After a mathematical operation with these two equations the following results:

$$\frac{\Delta E_{po}}{\Delta E_{g0}} = -\mu \cdot \frac{1 - j\omega C_{gp} \cdot \frac{r_p}{\mu}}{1 + r_p \left( \frac{1}{Z_b} + j\omega C_{pf} + j\omega C_{gp} \right)}$$

Just as in the plate circuit the stray capacities must also be considered in the grid-circuit. Fig. 3 shows the corresponding symbolic diagram for the grid-circuit. Parallel to the grid circuit



impedance  $Z_g$  of optional type are the grid-filament capacity  $C_{gf}$  and the grid-plate capacity  $C_{gp}$ , which is in series with the e.m.f.  $=\Delta E_{po}$ . The total grid-circuit impedance  $Z_{g_{tot}}$  may then be calculated according to the following equation:

$$\frac{1}{Z_{g_{tot}}} = \frac{1}{Z_g} + j\omega C_{gf} + j\omega C_{gp} \left( 1 - \frac{\Delta E_{po}}{\Delta E_{go}} \right) \quad (3)$$

In order to make use of equation (3) properly the phase-angle  $\phi$  between  $\Delta I_{po}$  and  $\Delta E_{po}$  and  $\psi$  between  $\Delta I_{po}$  and  $\Delta E_{go}$  have to be introduced. The potential ratio  $\frac{\Delta E_{po}}{\Delta E_{go}}$  may then be divided into the real component  $\frac{\Delta E_{po}}{\Delta E_{go}} \cos(\phi - \psi)$  and the imaginary one  $j \frac{\Delta E_{po}}{\Delta E_{go}} \sin(\phi - \psi)$ :

Equation 3 then becomes the following:

$$\frac{1}{Z_{g_{tot}}} = \frac{1}{Z_g} - j\omega C_{gf} + j \frac{\Delta E_{po}}{\Delta E_{go}} \sin(\phi - \psi) + j\omega C_{gp} \left( 1 - \frac{\Delta E_{po}}{\Delta E_{go}} \cos(\phi - \psi) \right) \quad (3a)$$

In this formula the total effective stray capacity corresponds to:

$$C_{eff} = C_{gf} + C_{gp} \left( 1 - \frac{\Delta E_{po}}{\Delta E_{go}} \cos(\phi - \psi) \right) \quad (4)$$

For the effective stray capacity only the real component in the ratio  $\frac{\Delta E_{po}}{\Delta E_{go}}$  is of influence.

According to the type of plate circuit load three distinct cases can be distinguished for the reaction on the grid-circuit:

First,  $Z_b$  is a pure ohmic resistance,

Secondly, the inductive component in  $Z_b$  is dominant,

Thirdly,  $Z_b$  is mainly capacitive.

For a pure ohmic load on the plate circuit the maximum value of effective stray capacity results, since the first-mentioned formula is correct in this special case:

$$C_{eff_{tot}} = C_{gf} + C_{gp}(1 + A_v) \quad (4a)$$

The condition of a pure ohmic resistance load, however, is only met in practice for the lower frequencies (below about 500 cycles), especially in resistance-coupled amplifiers. Furthermore, it should be noted that even if a pure ohmic resistance is connected in the plate circuit, for radio frequencies the stray capacities already

existent according to equation (2) form a considerable capacitive load.

Generally the effective stray capacities should always be calculated according to equation (4); it then is of no consequence

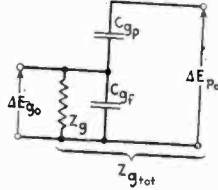


Figure 3

whether the plate circuit has a capacitive or inductive load. It is, however, of importance that, as formula (3a) shows, the imaginary component of the ratio  $\frac{\Delta E_{p_0}}{\Delta E_{g_0}}$  gives rise to a real component in the grid-circuit. This real component is negative in the case of an inductive plate circuit load, and can therefore produce self-oscillation of the amplifier. For a capacitive plate circuit load this component is positive and therefore damps the grid-circuit somewhat.

In dimensioning audio frequency amplifiers with resistance-capacity coupling, it is of primary importance to determine the frequency response toward the higher audio frequencies, where the capacitive load on the plate circuit is no longer negligible<sup>1</sup>. Correct results are then only obtained if the effective values of the stray capacities are calculated according to formula (4). Besides, the real component appearing in the grid-circuit must be taken into consideration as well, as was mentioned above. This real component has, since all the phase-angles in the formulas given are defined with respect to the direction of the grid-potential as a normal, no phase-angle difference from a pure ohmic resistance in the grid-circuit.

This real component thus effects a reduction of the total grid-circuit impedance  $Z_{g_{tot}}$  for the higher frequencies; in practice, it therefore is necessary to reckon with slightly smaller grid-leak values in order to take account of this effect. If both effects are taken into consideration: First, the reduction of the effective value

<sup>1</sup> A sufficiently uniform response of the amplifier to impulses of frequencies near the lower limit of audibility may easily be obtained by suitably dimensioning the grid-coupling capacities.

of the stray capacities because of the phase-difference, and, secondly, the reduction of the total grid-circuit impedance due to the real resistance component introduced into the grid circuit at higher frequencies, then the actual frequency response of the amplifier at the higher audio-frequencies turns out to be considerably more uniform than should be expected from formula (4a).

The practical appliance of the theoretical considerations given above can best be shown by means of an example. Fig. (4) shows the simplified circuit diagram of a three-stage resistance-capacity-coupled amplifier, as will be considered given for the calculations. The dimensions of the components correspond to measurements taken by the writer on an amplifier of this type.

$$\begin{aligned}
 R_{b1} &= R_{b2} = 3 \text{ megohms} \\
 R_{b3} &= r_{p3} \\
 R_{g2} &= R_{g3} = 8.5 \text{ megohms} \\
 \mu_1 &= \mu_2 = 31 \\
 \mu_3 &= 5 \\
 r_{p1} &= r_{p2} = 0.7 \text{ megohms.}
 \end{aligned}$$

In a normal circuit arrangement the direct inter-electrode tube capacities for German tubes were measured and found to be from

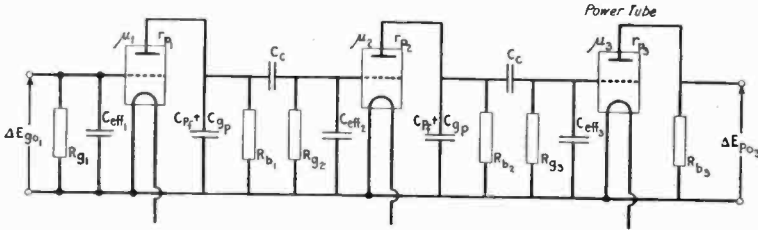


Figure 4

1 to 2 micro-microfarads. In the following a mean value of 1.44 micro-microfarads will be assumed for  $C_{gp}$ ,  $C_{gf}$ , and  $C_{pf}$ .

For the simplified assumption of a pure ohmic plate circuit resistance of the power-tube  $R_{b3} = r_{p3}$  the following equation exists:

$$\frac{\Delta E_{p03}}{\Delta E_{g03}} = -\frac{\mu}{2} = -2.5$$

The further calculations will be carried out at the frequency of 10,000 cycles which is near the upper limit of audibility.<sup>2</sup> At this frequency the following may be assumed:

$$\begin{aligned}
 Z_{b_{tot1}} &= Z_{b_{tot2}}; & Z_{b_{tot2}} &= Z_{g_{tot3}}; \\
 \Delta E_{p01} &= \Delta E_{g02}; & \Delta E_{p02} &= \Delta E_{g03}.
 \end{aligned}$$

<sup>2</sup> At this frequency, the capacitive load of course has the greatest influence.

According to formula (4a):  $C_{eff} = 1.44 + 1.44(1 + 2.5) = 6.5$  micro-microfarads. Accordingly, the total effective stray capacities are found to be  $C_{eff\ tot} = C_{pf} + C_{gp} + C_{eff} = 9.4$  micro-microfarads. If the

factor  $j\omega C_{gp} \frac{r_r}{\mu}$  is disregarded in comparison to (1), then formula

(1a) is changed into:

$$\frac{\Delta E_{po}}{\Delta E_{go}} = -\mu \frac{1}{1 + r_p \left( \frac{1}{R_b} + \frac{1}{R_g} + j\omega C_{eff\ tot} \right)}$$

After the correct values for the different constants are introduced:

$$\frac{\Delta E_{po2}}{\Delta E_{go2}} = -31 \frac{1}{1 + 0.32 + j0.41}$$

$$\frac{\Delta E_{po2}}{\Delta E_{go2}} \cos(\phi - \psi) = -21.6; \quad \frac{\Delta E_{po2}}{\Delta E_{go2}} \sin(\phi - \psi) = 6.8; \quad A_{v2} = 22.6.$$

The static amplification in this stage is  $A_v = 23.8$ ; the dynamic amplification therefore is practically equal to the static even at the high frequency of 10,000 cycles. The frequency response in this second stage therefore may be assumed to be uniform. After examining the curvature of the dynamic working characteristic it will be found that here too the amplitude-distortion is negligible, which is of primary importance in this stage because the amplitude is large.

For the first stage the following values must be assumed:

$$C_{eff\ tot} = 3 \times 1.44 + 1.44 \times (1 + 22.6) = 38.5 \text{ micro-microfarads}$$

$$\frac{1}{R_{g\ tot1}} = \left( \frac{1}{8.5} + 0.62 \right) 10^{-6} = 0.715 \times 10^{-6}$$

Just as above, the following values result:

$$\frac{\Delta E_{po1}}{\Delta E_{go1}} \cos(\phi - \psi) = -9.6; \quad \frac{\Delta E_{po1}}{\Delta E_{go1}} \sin(\phi - \psi) = 8.9; \quad A_{v1} = 13.1.$$

In spite of the fact that the phase-difference  $(\phi - \psi)$  is rather large in this stage (about 140 deg.), the only pure resistance-capacity coupled stage, the dynamic amplification for the frequency of 10,000 cycles does not drop even to one-half of the static amplification. The same of course applies to the three-stage amplifier as a whole:

$$A_{vst_{tot}} = 1420$$

$$A_{vdy^{n_{10000}}} = 730 = 0.51A_{vst_{tot}}$$

These voltage amplification factors given here are those determined by measurement of the input alternating grid potential and of the output alternating potential across the output resistance. The amplification factors calculated here practically exactly comply with measurements taken on a three-stage amplifier of the same dimensions. According to these measurements the dynamic amplification at the frequency of 10,000 cycles falls off to 0.516 times the maximum amplification. Therefore, the effective stray capacity values calculated here may be assumed to be practically equal to those actually present.

As the above calculations have shown, the actual amplification factors of such resistance-capacity-coupled amplifiers and all other amplifiers with appreciable reaction of the plate-circuit load on the preceding grid-circuit can only then be correctly calculated, *if the different stages are calculated proceeding backward, that is, beginning with the plate circuit of the last stage.* Wrong results are obtained, if founded on some assumptions one stage only is examined, and the result gained simply multiplied by the number of stages involved, as in the case of the frequency-response calculation of a three-stage amplifier with resistance coupling. As has been shown by the calculations carried out above, with resistance-capacity-coupled audio-frequency amplifiers the frequency response of the *first stage only* is of material importance. Three-stage resistance-coupled amplifiers of these dimensions with such high amplification factors, however, are seldom used as pure audio-frequency amplifiers. As a rule the grid of the first stage is directly connected to a tuned radio-frequency circuit, which is then coupled either to the antenna or to the output of a radio-frequency amplifier. By the influence of the considerable capacitive load on the plate-circuit of the first tube, a very sensitive "anode-bend" detection effect for radio frequency only is then introduced.<sup>3</sup> Two-stage amplifiers of this description, containing one voltage-amplification stage followed by a power-tube, have a practically complete uniform frequency-response, as is apparent from the calculations given above.

<sup>3</sup> Compare the first writer's publication "Über Anodengleichrichtung," Jahrbuch der drahtlosen Telegraphie und Telephonie, Zeitschrift für Hochfrequenztechnik, Berlin. Vol. 29. No. 3.

# MOUNTING QUARTZ OSCILLATOR CRYSTALS\*

By

R. C. HITCHCOCK

(Research Department, Westinghouse Electric and Manufacturing Company,  
East Pittsburgh, Pennsylvania)

Quartz oscillators are becoming more widely used to control the frequencies of radio stations. Under fairly constant temperature conditions, and with good regulation of filament current and plate voltage on the controlled tube, a quartz master oscillator may readily be kept to within 50 parts in a million of an assigned frequency.

There are several methods of cutting a piezo-electric plate from a quartz crystal. Fig. 1 shows a right prism of quartz with the optic axis perpendicular to the bases. The usual orientation<sup>1</sup> for a quartz piezo-electric plate is that of method 2, giving a thickness wavelength of 105 to 115 meters per millimeter. The crystals used

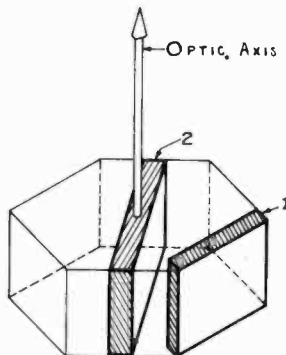


Figure 1—Methods of cutting piezo-electric plates.

for all the tests to be described in this article are cut according to method 1, having a thickness wavelength of 140 to 150 meters per millimeter. For a given wavelength, the crystal of method 1 is two-thirds as thick as a crystal of method 2. For some wavelengths, the thinner crystal of method 1 has definite advantages, due to the stronger electric field which is applied.

\* Original manuscript received by the Institute, June 21, 1927.

<sup>1</sup> A. Hund: Uses and Possibilities of Piezo-electric Oscillators. *Proc. I.R.E.* Aug. 1926, p. 448. A. Crossley: Piezo-electric Crystal-controlled Transmitters. *Proc. I.R.E.* Jan. 1927, p. 13.



Of the several factors which govern the action of a piezo-electric crystal when controlling a radio-frequency circuit, the mounting of the crystal is quite important. It will be assumed that the circuit is properly designed, that a good piece of piezo-electric material is available, and that the only variable to be considered is the mounting of the crystal. The main feature of a crystal-controlled master oscillator is its ability to regulate a radio frequency very closely. In addition, it is quite desirable to have the crystal-controlled circuit radiate as much power as possible, in order to reduce the number of radio-frequency power amplifiers.

In using crystal-controlled tubes radiating more than a few watts, several problems arose which did not occur when the power was only a fraction of a watt. The circuit of Fig. 2 is a typical crystal-controlled circuit in which the grid bias is supplied through a

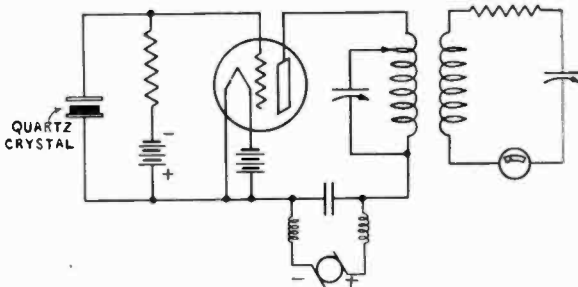


Figure 2—Piezo oscillator with power-absorbing circuit.

grid-leak, this being found to give better control of the radio frequency than when a choke coil was used. In addition to the crystal circuit, an absorbing circuit is used (see Fig. 2 at the right) to measure the amount of power radiated. Using this circuit the various mountings were tried and their effect on the output determined. The frequency characteristics were found by using a crystal-controlled receiving tube circuit coupled very loosely to the power crystal circuit which was being tested. The crystal which controlled the receiving tube circuit was ground to give a frequency several hundred cycles above or below the power crystal circuit, so that the audio beat could be heard by receivers which were inserted in the receiving tube plate circuit.

When the crystal-controlled circuit was arranged so that as much as 10 watts could be absorbed, it was found that the piezo-electric reaction of the crystal was so great as to cause sparking at the electrodes. The sparking caused electrode corrosion which soon interfered with the free action of the crystal, and also spoiled

the clear-cut character of the radio-frequency output. High power also caused the crystal to heat badly, often resulting in cracking, which of course stopped the oscillations.

In order to compare directly the various types of mountings the frequencies of the crystals were ground to less than 3 percent of one million cycles per second (300 meters wavelength). From a survey of mountings for crystals of this frequency, the possibilities at other frequencies can be considered.

All mountings for piezo-crystals consist of electrodes which are smooth and plane on the side next to the crystal. One of the simplest mountings is that of a flat metal plate on which the crystal rests, and an upper plate resting on top of the crystal, (see Fig. 3). This mounting as shown is one in which the upper plate rests on the crystal, the only pressure being its weight, while others use a spring to press the upper electrode more firmly on the

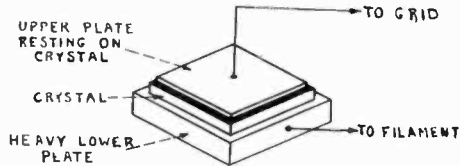


Figure 3

crystal. At high radio frequencies, perhaps above two million cycles per second (less than 150 meters wavelength) the simple type of mounting shown in Fig. 3 is fairly satisfactory.

For frequencies in the vicinity of one million cycles another type of mounting, in which the upper electrode is supported a definite distance away from the crystal, has certain advantages which the simpler mounting does not have. The disadvantages of the simpler holder for frequencies of the order of a million cycles per second are shown when a large amount of power is taken from the crystal-controlled circuit. An ordinary crystal-controlled UX-210 tube (7-1/2 watt rating) can radiate 5 to 7 watts at a million cycles with nearly any type of mounting. When using a UV-211 tube (rated at 50 watts) with 1,000 volts on the plate and absorbing 50 to 80 watts from the plate circuit, crystals were often broken when using the above simple method of upper electrode resting on the crystal. Using the spaced mounting, in an oil bath at constant temperature, which will be described later, tests of several hours were run successfully at outputs of 50 to 80 watts without breaking the crystal.

### SPACED UPPER ELECTRODE

When mounting the upper electrode a fixed distance away from the crystal, it is essential to have the electrodes parallel. If the electrodes were not parallel, the electric field would be unevenly distributed, tending to strain the crystal. Various mountings were constructed which provided a space above the crystal, yet which were simple in construction. One type, which proved useful for several sizes of crystals, is shown in Figs. 4 and 5. In this mounting an accurately turned hard rubber ring spaces the upper electrode a small distance away from the crystal, and when a different crystal

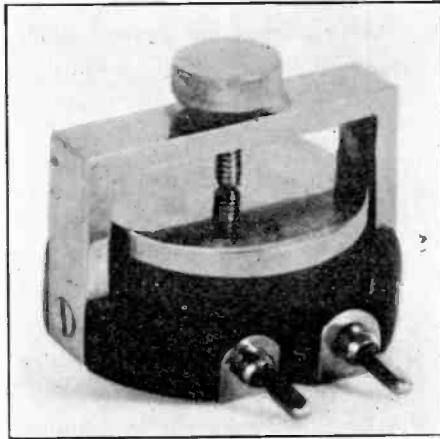


Figure 4

is to be used an appropriate ring is substituted in the holder. A definite spacing which could always be duplicated was afforded by keeping the ring and its crystal in the same envelop.

The crystal vibrations are not damped by the pressure of the upper plate in the spaced type of mounting; this accounts for the increased power which can be obtained. A further advantage of a spaced holder is that the intensity of the electrostatic field across the crystal is reduced, due to what is effectively a series condenser. This reduced field helps prevent breakage of the crystal due to dielectric failure of the quartz.

There is a certain phenomenon which occurs when using a spaced upper electrode which may give trouble if its characteristics are not known. The position of the upper electrode for maximum power and accurate frequency control is somewhat critical. If a

holder with an adjustable upper electrode is available, an interesting experiment can be performed. If the upper electrode is continuously moved away from the crystal, the radio frequency emitted by the crystal-controlled circuit is raised, but not at a uniform rate. There will be successive points where the frequency will "jump" a few hundred cycles, or occasionally as much as a few thousand cycles per second. If the power is measured at the same time that the frequency is being investigated, it will be found to be a minimum at the same points where the frequency jumps occurred. This test would make it seem that the use of a spaced upper electrode was undesirable, but there is a simple explanation and solution to this phenomenon. The crystal when vibrating strongly sets up compressional air waves, which when reflected back from the upper plate in certain definite positions exert a

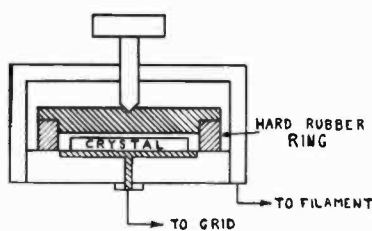


Figure 5

damping effect on the crystal. These are simply standing waves in air. For a first approximation it can be assumed that the speed of this air wave is the same as that of an ordinary sound wave in air. The air wavelength in millimeters would then be equal to the speed of sound in meters per second divided by the frequency in kilocycles per second. That is

$$\lambda_{mm} = \frac{331_{m/sec}}{F_{kc/sec}}$$

It was found that the assumption of the ordinary speed of sound in air did not give the correct distance of air wavelength for minimum power and frequency shift. In fact several experimental curves showed that the speed of the sound wave emanating from a vibrating crystal was nearly twice that of an ordinary sound wave. This makes the wavelength twice as long as when using the usual speed of sound in air, and a more correct formula is

$$\lambda_{mm} = \frac{662_{m/sec}}{F_{kc/sec}}$$

It should be noted that this equation is simply a further approximation, and that the speed of sound is really a function of the energy with which the crystal vibrates and varies with the amount of power radiated. The reason for the faster speed of propagation is to be found in the very energetic crystal vibration when radiating large amounts of power from the controlled circuit. It is well known that explosive waves travel faster than ordinary sound waves which have much smaller amplitudes.<sup>2</sup> A strongly vibrating quartz oscillator crystal can be regarded as a source of rapidly recurring explosive waves, therefore having a velocity greater than ordinary sound waves.

A simple experiment with a screw top holder serves to locate the correct position of the upper electrode for any piezo-electric

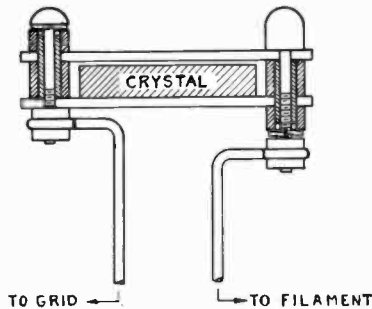


Figure 6—Piezo crystal mounting for low power.

crystal. An absorbing circuit is coupled to the crystal-controlled circuit, and as the upper electrode is raised, the first point of minimum power is noted. The best operating position of the upper electrode is to be found between the upper surface of the crystal and the first position of minimum power. For crystals vibrating at a million cycles per second the spacing of the upper electrode above the crystal can be from two-tenths to four-tenths of a millimeter, the smaller value being preferable.

In mounting electrode plates a fixed distance apart, a reliable spacer should be used. Also, due to the fact that the assembly for permanent use has to be mounted inside a glass bulb, it is seen that any material which contains gases would not be satisfactory. This excludes the use of molded materials such as micarta and bakelite. The heat which is applied to outgas the crystal electrodes is sufficient to rule out other materials which become plastic at

<sup>2</sup> The Detonation Wave from Solid Explosives: W. C. Holmes, *Jour. Fr. Inst.* Apr. 1927, p. 549.

fairly low temperatures, for instance, hard rubber. In the assembly which is shown in Figs. 6, 7, and 8, the spacers are made of fused quartz tubing. This material has a very low coefficient of expansion, contains no more gases than the glass of the bulb itself, and does not become plastic at ordinary temperatures. Sections of glass tubing can also be used for spacers, although their coefficient of expansion is much higher than for fused quartz. The feature of low expansion coefficient is not of such importance where the

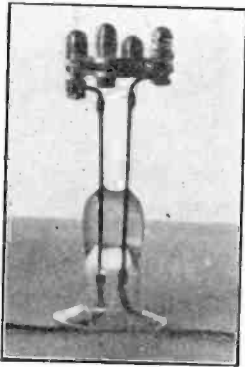


Figure 7

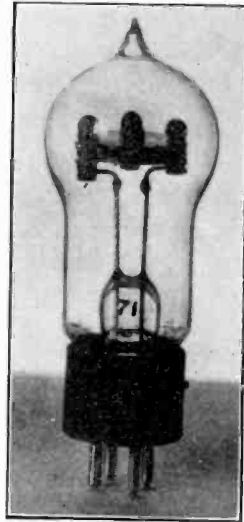


Figure 8

crystal mounting is immersed in a temperature-controlled bath. The oil bath will be described later in detail.

#### ELECTRODE MATERIAL

Having determined the best spacing of the upper electrode above the crystal, the next problem was to find the best material of which to make the electrode plates. When large amounts of power were absorbed from the crystal-controlled circuit, the periodic reaction of the crystal produced such large potential differences between the upper face of the crystal and the lower surface of the upper electrode, that sparks passed between them, as mentioned at the beginning of this article. These sparks are detrimental in two ways. In the first place they are strongly oxidizing sparks which rapidly corrode the electrode plates. Using

brass electrodes, it was found necessary to clean off the corrosion nearly every day when a crystal was in continuous operation. The other objectionable feature is that air is a fairly good insulator; the spark does not pass until the potential difference has become quite large, and as the spark leaves it creates a disturbance in the form of a transient vibration of the crystal, which is added to the emitted radio frequency. When a crystal plate is sparking, the rough pitch of the sound can be heard by listening near the crystal holder, and this pitch is the same as that which is added to the radio frequency, making it unsuitable for master oscillator control of radio stations. To reduce the effect of oxidizing the electrodes, metals which were somewhat resistant were adopted, such as

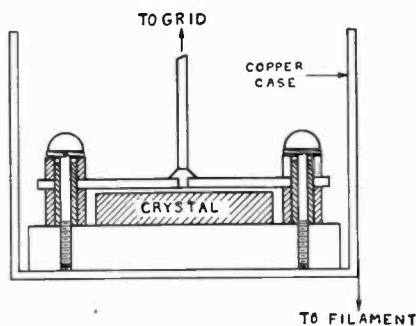


Figure 9—Piezo crystal mounting for high power.

monel metal, pure nickel, and stainless iron. Of these three, pure nickel is perhaps the easiest to machine and makes a very good crystal electrode.

There are two methods of procedure which can be used to prevent sparking. The original procedure was to reduce the plate voltage of the crystal-controlled tube. The output power was thereby reduced, and in turn the voltage feedback through the tube was diminished, which eliminated the sparking at the crystal. The disadvantage was obvious; the number of radio amplifier stages had to be increased to compensate for the decreased power in the crystal-controlled tube circuit.

#### GLOW DISCHARGE AT CRYSTAL

The second method is the one which is now being used successfully for control crystals at the radio station KDKA. This method substitutes a silent glow discharge for the rough spark. The glow discharge takes place at much lower potential differences than the spark, and accomplishes the desired result. A glow dis-

charge is best accomplished by using some gas which ionizes readily, which means that the crystal holder must be sealed, as in Fig. 8. The glow discharge is preferably carried by an inert gas, so that it will not attack the electrode plates when in its ionized state. Neon is an inert gas which permits glow discharges at very low potential differences, and a pressure of a few millimeters of neon has proved satisfactory for quartz oscillator plates.

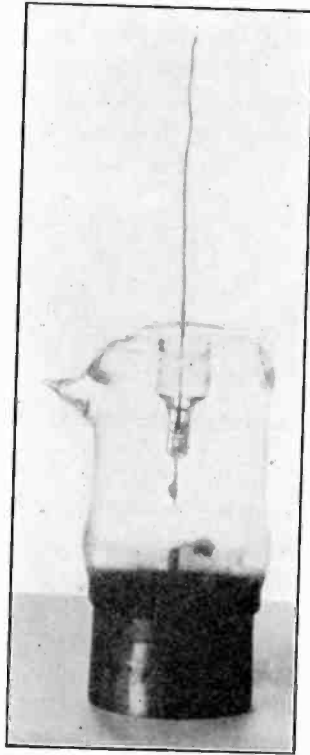


Figure 10

UX-210 tubes with 400 volts on the plate can radiate 5 to 7 watts of clear-cut radio-frequency output when using a crystal plate mounted in a neon-filled tube. Under the same conditions of clear radio output, the same crystal in air would only be able to supply one or two watts and the tube would have to be operated at a reduced plate voltage of 200 or 300 volts.

When piezo crystals mounted in neon are controlling power circuits, there can be seen a pink glow surrounding the crystal. If the plate circuit is tuned to a frequency much higher than that



of the crystal, a brilliant glow will fill the entire crystal tube. As the frequency of the plate circuit is lowered, the glow becomes more concentrated, until when the plate circuit is tuned to its best point (slightly higher than the crystal frequency) the crystal itself seems to be permeated with the pink glow, but there is very little glow in the rest of the tube.

The effect of varying temperature is a very important one for quartz plates. Depending on the method of cutting the quartz plate, the frequency-temperature coefficient is from 25 to 50 parts in a million per centigrade degree. For quartz plates oscillating in the thickness direction the latter figure should be used. For a constant radio frequency the temperature of the quartz plate should be kept as uniform as possible. Quartz crystals are not symmetrical; it is due to this fact that they are piezo-electric. This asymmetry is a disadvantage in that the crystal when heated expands unevenly in its thickness and length directions. It expands very nearly twice as fast in the thickness direction as it does in one of its longer dimensions. Any use of a crystal to control more than 10 watts causes so much dielectric displacement current to flow through the crystal that it heats up. If the crystal is operated continuously without cooling the heat finally causes such large stresses that the crystal cracks. Sometimes only a corner cracks and again the crack may occur through the middle of the crystal. If only the corner has been cracked, the crystal can be made to oscillate again by carefully grinding away all the portion that shows any cracks. If a large crystal cracks in the middle, it may be cut into smaller plates which are all right for radio oscillators. In other words, the failure seems to be a local one and the rest of the crystal is unaffected.

#### COOLING CRYSTALS FOR POWER WORK

A means of cooling the crystal is necessary when continuous operation at high powers is desired. The holder which is used to do this is shown in Figs. 9 and 10. This mounting retains the features of the glass bulb type, in that the upper electrode is spaced above the crystal, and an inert gas at low pressure is used for a glow discharge. By using direct metallic conduction from the lower electrode to the copper case, which is sealed to a glass superstructure, the cooling is easily effected by immersion in a tank of oil kept at the desired temperature. Fig. 11 shows the tank with the crystal unit immersed, and Fig. 12 gives the connections for the thermostat *T*, the heating element *R*, also the lamp *L* and condenser *C* which serve to protect the thermostat contacts on

breaking the circuit. For a 3-gallon oil tank,  $R$  was 85 ohms, and  $L$  was a 100-watt tungsten lamp. The working temperature of the crystal unit is chosen to be above that of the highest summer room temperature. The temperature chosen for a series of tests was 58 deg. C. A good bimetallic thermostat of the helical type

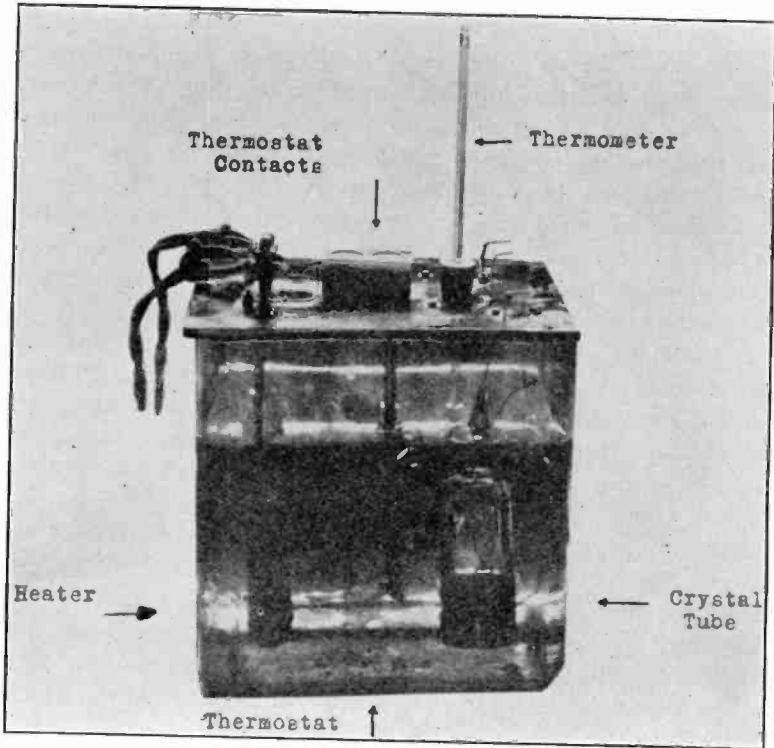


Figure 11

was found to regulate the temperature of this 3-gallon oil bath within two-tenths of a centigrade degree. This variation should keep a piezo-electric quartz crystal constant to better than 10 parts in a million. Frequency differences are difficult to measure to better than 20 cycles when using a million cycles per second, but it can be said definitely that the control is better than 20 parts in a million.

It should be noted that both the heater and the crystal are placed below the center of the oil bath. This is to insure adequate cooling of the crystal and to provide good circulation in the case of the heater. If the crystal heats up above the oil temperature,

the thermostat cuts off the major part of the current through the heater, and the coolness of the room serves to bring the oil temperature down. If the crystal does not heat up very much, the regular heater is turned on and off by the thermostat, in keeping the oil bath at the desired temperature.

Using a crystal unit in the oil bath mentioned, and feeding into the grid a UV-211 tube using the circuit of Fig. 2, and applying 1000 volts on the plate, a test of 8 hours was run while absorbing 50 watts in the auxiliary circuit. Longer tests would be illuminating and are in progress, but it is felt that if there were a flaw in this manner of operating a crystal, that it would show up

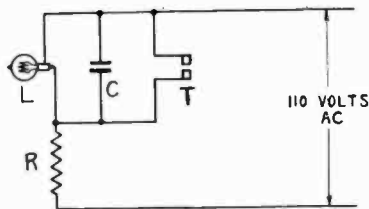


Figure 12—Thermostat and heater connections.

in a severe test of the kind just described. The temperature-controlled oil bath can also be used for crystals mounted as in Fig. 8 which are not used primarily for maximum power output.

For crystals of natural thickness frequencies of about one million cycles per second, a spaced electrode holder, mounted in an inert gas, and properly cooled, is recommended for power work. For crystals of higher frequencies, there may be some difficulty in making the spacing of the upper electrode as small as is necessary to avoid the resonant air wave. In this case, it might prove advisable to use a harmonic of a lower frequency having a large power output. For crystals of lower frequencies than a million per second there should be no trouble in using exactly similar mountings to those of Figs. 6 and 9, with a small distance between the crystal and upper electrode.

#### SUMMARY

Various types of mountings are described for quartz oscillator crystals having frequencies in the vicinity of one million cycles per second. For low power work a spaced upper electrode is recommended, mounted in a neon-filled tube. For radiating up to 50 watts from the crystal-controlled tube, a similar mounting placed in a copper-based tube is advised. This latter tube can be cooled by immersion in an oil bath. Accurate temperature control of the oil bath keeps the radio frequency within narrow limits.

# THE SHORT WAVE† LIMIT OF VACUUM TUBE OSCILLATORS\*

By

C. R. ENGLUND

(Bell Telephone Laboratories, Inc.)

The following paper contains the results obtained while investigating the practical short wavelength limit of the vacuum tube oscillator. While considerable work at short wavelengths has been published by various investigators, no conclusive data determining the practical short wave limit have come to the author's notice.

Short waves may be obtained from vacuum tubes in at least two quite distinct manners, the first being the orthodox oscillator

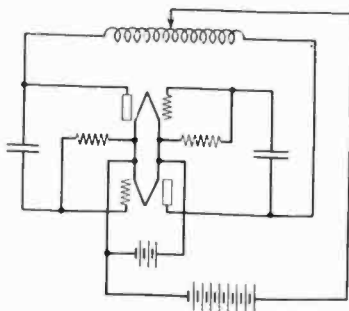


Figure 1

operation where a coupling between grid and plate circuits by regeneration builds up resonance oscillations of frequencies determined by these circuit constants, and the second (the Barkhausen type) being an oscillation within the tube itself in the electron atmosphere between grid and plate. The frequencies of the second type of oscillation are apparently determined by the time of transit of an electron between the tube electrodes and are thus dependent upon the electrode voltages. Little power has so far been obtained in the second manner. The work here reported refers to the first type or normal oscillator operation.

It was found that shorter waves could be obtained by means of a double tube symmetrical oscillator, than could be got by a single oscillator, due to the fact that the total length of conductor carry-

\* Original manuscript received by the Institute, July 24, 1927.

† In the present state of the short wave art, it is a distinct inconvenience to use "frequency" rather than "wavelength," since all the measurements are made in terms of lengths.

ing oscillating currents could be reduced, in the double tube connection, below what could be reached by means of a single tube. For wavelengths above five meters the tubes available in commercial use were found adequate, and except for the limitations imposed by the necessity for low resistance condensers and inductances of very small values, the oscillator technique differed little from that at considerably longer waves. Small inductances of low resistance at these wavelengths require considerable copper, but commercial tubing has been found adequate.<sup>1</sup> This paper therefore concerns only the range below five meters.

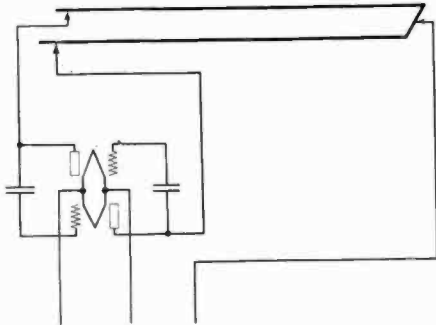


Figure 2

In a cursory consideration of experimental procedure it might seem that the connection of a vacuum tube to a "Lecher System" of parallel conductors offers greater possibilities of reaching shorter waves than does the use of lumped circuits. This has not been borne out by our experience. The first type of circuit tried was a symmetrical connection of standard 215-A tubes ( $N$  tubes) Fig. 1, connected to a quarter wave Lecher system as shown in Fig. 2. Results showed that the waves actually obtained were much longer than four times the length of the Lecher system. The following simple theory, while not exact, is adequate to explain the results.

The impedance of a Lecher wire system of length  $l$  and shorted at the far end, is given by the expression

$$S_o = \sqrt{\frac{Z}{D}} \tanh \sqrt{DZ} l$$

where  $Z = R + i\omega L$  is the complex series impedance per unit length and  $D = A + i\omega C$  the complex shunt admittance per unit length

<sup>1</sup> The ordinary 1/8 in. (0.318 cm.) commercial copper tubing was chiefly used here.

of the system. Since the tube reactances are capacities we may say that oscillations will occur when the Lecher wire impedance is an inductance and these oscillations will be approximately of the frequency given by  $\omega^2 L'K = 1$  where  $L'$  is the effective inductance of the Lecher wires and  $K$  the capacity of the tube electrodes in shunt on the Lecher wires. Or

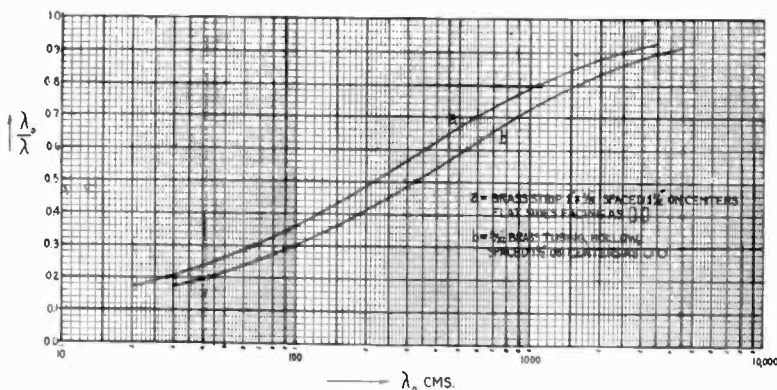


Figure 3

$$\text{imag. part of } \left[ \sqrt{\frac{R + i\omega L}{A + i\omega C}} \tanh \sqrt{(R + i\omega L)(A + i\omega C)l} + \frac{1}{i\omega K} \right] = 0$$

is the resonance condition. Neglecting  $R$  and  $A$ , since approximate values will suffice, we have the transcendental equation

$$\sqrt{\frac{L}{C}} \tan \omega \sqrt{LC} l = \frac{1}{\omega K} \text{ or if } \lambda \text{ be the true wavelength obtained}$$

$$\text{and } X = \frac{\pi}{2} \times \frac{\lambda_0}{\lambda} \text{ we have } X \tan X = \frac{C\lambda_0}{4K} \text{ which may be readily solved}$$

graphically. In order that  $\lambda = \lambda_0$ , we must have  $\frac{Cl}{K} = \infty$  or only at relatively long wavelengths does the ratio  $\frac{\lambda_0}{\lambda}$  (for given tubes) approach unity. If  $\frac{\lambda_0}{\lambda}$  be determined experimentally for a

given wavelength it can be calculated for other wavelengths and Fig. 3 gives two curves thus obtained for two Lecher systems, markedly different in shunt capacity. No essential distinction can

be drawn between such Lecher systems and a lumped inductance at the shorter wavelengths; it is only at longer wavelengths that space wave resonance can occur. Naturally the addition to the Lecher system of a length of additional wire equal to half a wavelength (or  $1/4$  wavelength if open circuited at the end) need not affect the wavelength generated and, conversely, by damping out the fundamental wave by means of appropriate shunts at the current antinodes harmonic oscillations should be produced. The additional energy loss is apparently pronounced, however, for

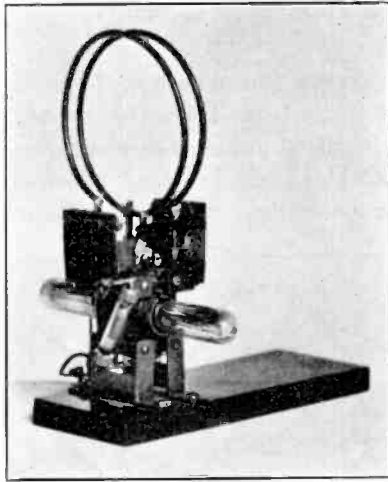


Figure 4—4.2-meter wavelength

while it has been possible to produce such harmonic waves, only the fundamental occurs without shunts. A little consideration will show that no harmonic wavelength is obtainable which is not more easily gotten as the fundamental of a shorter length of line. Accordingly, no further attempts to excite Lecher systems by means of *direct* connected oscillators were made and simple inductances were solely used for the remaining work.

Fig. 4 is a photograph of a balanced 215-A tube oscillator using the circuit of Fig. 1 and giving a wavelength of 4.2 meters. By reducing the size of the coil this wavelength was considerably reduced. The tube capacity was the only tuning capacity used. Realizing that too much metal was used in this oscillator it was rebuilt with very compact blocking condensers of tinfoil and parafined paper and a wavelength of 1.9 meters was reached.

In casting about for some scheme of connecting the tubes so as to reduce their effective capacity the circuit of Fig. 5 was devised and tested. It operated well, usually without a grid leak and could be pushed down to 1.67 meters with ordinary based

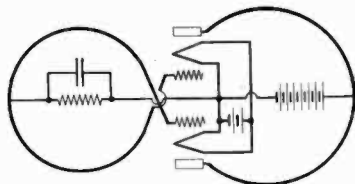


Figure 5

215-A tubes. Fig. 6 is a photograph of the actual oscillator. The two coils (each a single turn) had to be connected geometrically as shown; if their mutual inductance was reversed no oscillations occurred. The lead in wires in 215-A tubes are about as short as it is possible to make them, and when unbased tubes were used,

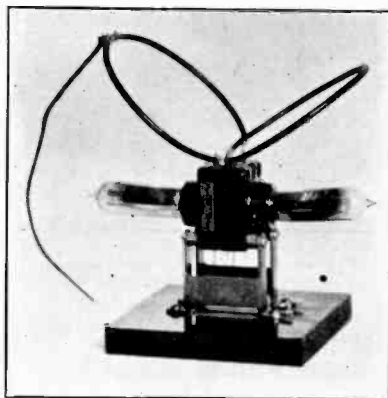


Figure 6—1.67 meters.  $E_b = 180$  volts.

as in Fig. 7, the wavelength was reduced only to 1.42 meters.

Since this represented the limit attainable with commercial 215-A tubes attempts were made to push down in wavelength by increasing plate voltage and filament current. A plate voltage increase is of no use alone if the filament does not have a corresponding emission of electrons, in fact a very active filament is the backbone of a short wave oscillator. The limit is reached when the plate overheats. No marked shortening in obtainable wavelength occurred by pushing the plate current per tube to 17



milliamperes momentarily ( $E_b$  app. 200 volts, normal  $I_b$  2 milliamps.) and had such shortening been obtained it would not have been of practical value.

It therefore appeared that the only prospect of further reduction in wavelength was in the construction of a special tube

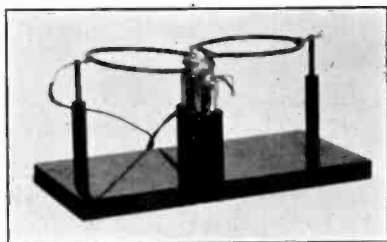
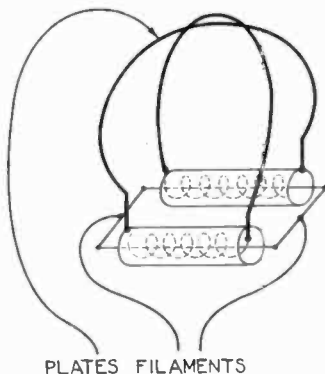


Figure 7—1.42 meters.  $E_b = 180$  volts.



PLATES FILAMENTS

Figure 8

and the assembly adopted was that shown schematically in Fig. 8. Five of these tubes were tested, the last one with doubled leads inside the tube and one-ampere filaments. With this a wavelength of 1.05 meters was finally reached, as a rather unstable

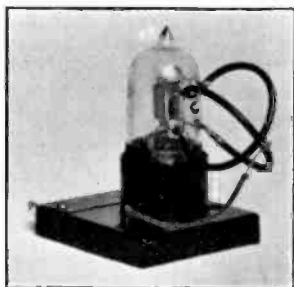


Figure 9—1.05 meters.  $E_b = 180$  volts.

oscillation, by pushing the tubes hard. Fig. 9 is from a photograph of the complete oscillator. At two meters the operation of these tubes was quite satisfactory and Fig. 10 shows such an oscillator arranged to vary the frequency by changing the length of the oscillating coils through sliding contactors. The circuit is the same, electrically, as that of Fig. 8.

As is evident from Fig. 9 the physical dimensions have been reduced to the point where it is necessary, for further progress, to put the resonant circuits inside the tube itself. The inter-electrode capacity of such a tube would have to be kept very small also, all further experiments having indicated that this is more important than low plate impedance. So far no limitations except those of

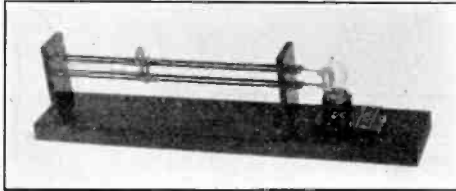


Figure 10—2 meters.

ordinary energy loss have been apparent. But to operate below one meter a tube must have the properties of a low loss condenser with terminal leads of very low inductance. Unnecessary inclusion of glass dielectric and the use of nickel electrodes are inadvisable and the tube geometry must be rigidly worked out. The construction of such a tube is necessarily a double assembly to keep the leads short, and the wavelength is not variable.

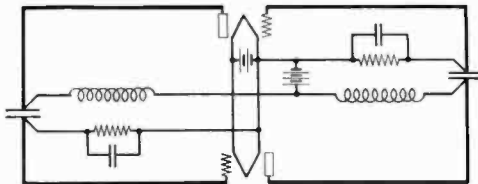


Figure 11

At the shortest wavelength obtained a grid leak stopped the oscillations, at longer wavelengths, say three meters, the oscillations were so vigorous that if a leak was used it had to be a low resistance one or the tube "blocked" at a rate varying from 4 to 10 kilocycles per second. The oscillating current during blocking was very rich in harmonics, and these could be demonstrated as of wavelengths well below one meter. If necessary, therefore, the use of harmonics will enable the production of small amounts of energy at wavelengths below one meter and it is possible that this will be technically useful sometime. It might appear that such harmonics could be amplified after selection but apparently the technique

which will produce amplifier tubes will give oscillator tubes, therefore the need for amplification brings the problem back to the oscillator itself. Possibly a square law detector pushed hard with an input from a short wave oscillator will make a useful source of shorter waves.

Another double-tube oscillator circuit which seems feasible is given in Fig. 11. It is complicated by requiring blocking condensers and for the shortest waves needs a different geometrical arrangement from that in Fig. 8. It was tried once and not giving any apparent improvement over the circuit of Fig. 8 was not used further.

The one-meter wave not being controllable, it is pertinent to determine what wavelength limit can be reached with reasonable



Figure 12—3.1 meters.  $E_b = 700$  volts.

power and some frequency control, with the present vacuum tube technique. With the double *215-A* tube a two-meter wave is available with frequency control, with a reservation to be referred to later. While the power thus available is small, it is sufficient for wavelength, capacity, and inductance measurements, a subject which will be deferred for the moment. Some rough tests on commercial tubes, operated at normal voltages are added in the table below.<sup>2</sup> These values are not necessarily the shortest attainable but represent wavelengths which can be obtained with reasonable ease.

Tube	Connection	Meters
230-D (60 mil. fil.)	push pull	2.0
205-D ("E" 5 watt)	single (200 volts $E_b$ )	3.2
221-D (1/4 amp. fil.)	push pull	3.3
211-D ("G" 5 watt)	push pull	3.5

No frequency control was left at these wavelengths. It therefore appeared possible to design a *5-watt* tube which should have some frequency control left at 3.5 meters and a photograph of such a tube is shown in Fig. 12. With the oscillating circuit shown

<sup>2</sup> A recent measurement has given Radio Corporation UX-852, single tube, 1,000 volts 2.6 meters.

attached, the wavelength is 3.1 meters, and by means of a small variable shunting capacity the wavelength can be controlled within a reasonable range. With such a tube (at 3.66 meters) it has been possible to transmit, without noticeable attenuation, three watts for a distance of 5.2 meters (the room would not allow a longer distance) over a brass pipe transmission line, and radiation experiments, using a simple vacuum tube voltmeter as receiver, have been made up to a distance of  $5\frac{1}{2}$  wavelengths. At a four-meter wavelength, reception up to distances of a mile has been possible with a double detection receiver.<sup>3</sup> It seems certain, therefore, that wavelengths down to 3.5 meters are readily available for engineering

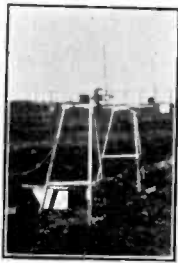


Figure 13



Figure 14

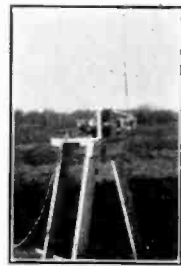


Figure 15

purposes. Figs. 13, 14, and 15 show transmitter, receiver, and transmitter reflector antenna systems operating at 3.66 meters. It is a curious fact, possibly worth mentioning, that the human body forms a very fair Hertzian resonator, and at 3.66 meters is so nearly in tune with the radiation that an operator becomes a mobile parasitic antenna seriously interfering with radiation experiments.

The results given above are somewhat at variance with the data published by a number of investigators<sup>4</sup> since only by the use of special tubes was it possible to shorten the wavelength below that reported for (apparently) ordinary tubes by these investigators. Especial care was therefore taken to make certain that the values here reported are fundamental wavelengths and not harmonics of a fundamental but unobserved oscillation. It is not difficult to assure certainty in this matter; it is merely necessary to have a resonant Lecher system which is longer than a full wavelength and which has a low attenuation. Brass tubes of

<sup>3</sup> I am indebted to Mr. H. C. Baumann of this laboratory for the construction of this receiver.

<sup>4</sup> See list of references attached.

0.8 cm. diameter spaced approximately 7 cm. give such a system and with this it should be difficult to mistake harmonic minima for the practical zeros of the fundamental. Various Lecher frames have been made and compared, both as open end and short circuit end frames. The check between  $\lambda/4$  and  $\lambda/2$  frames was always found good to 0.2 percent although it would seem that a short circuit end, when in the form of a plate, would be more nearly ideal than an ordinary open end. Figs. 16 and 17 show two short and adjustable  $\lambda/4$  frames used, one having a meter in it. The presence of the meter necessitates a small correction. The method of using these frames was found to be very simple. For the shorter

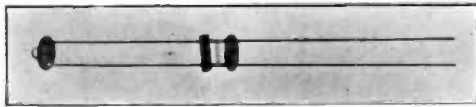


Figure 16—Range 1.2-3.2 meters.

wavelengths it was sufficient to place one end of the wave frame near the oscillator and adjust by observing the tube plate current. At space resonance the energy absorption from the tube circuit was so marked that it could not fail of observation and would stop the oscillation when increased. For longer waves where more power was available a meter in the Lecher frame could be used for the rough setting and for the fine setting a sensitive thermocouple and micro-ammeter connected to a coil of several turns of wire could be used as a loosely coupled exploring unit to indicate maxima and minima on the frame while its length was being varied. Almost equally sensitive is a vacuum tube voltmeter with tube mounted in the handle holding the wire coil. If the experiment is one involving radiation, a Lecher frame in proximity to a sharply tuned receiving antenna and detector gives very distinct and accurate wavelength settings.

The measurement of small inductances and capacities by means of Lecher frames has been mentioned. The theory, when great accuracy is not required, is simple. Thus, suppose a  $\frac{\lambda}{4}$  Lecher frame be cut off a distance  $X$  from the closed end, the length of open line  $\frac{\lambda}{4} - X$  being rejected. Obviously, this frame will be again in resonance to the wavelength  $\lambda$  if an impedance

equal to the effective impedance of the piece cut off is placed across the open end. The impedance of a short length of Lecher frame with open end is

$$S_{\infty} = \frac{\sqrt{\frac{Z}{D}}}{\tanh \sqrt{DZ} \left( \frac{\lambda}{4} - X \right)}$$

and if we neglect the resistance and conductance of the frame

$$S_{\infty} = \frac{\sqrt{\frac{L}{C}}}{i \tan \omega \sqrt{LC} \left( \frac{\lambda}{4} - X \right)}$$

or as long as  $\frac{X}{\lambda} < \frac{1}{4}$  the impedance is capacitive. Hence,

$$\frac{1}{i\omega K} = S_{\infty} = \frac{\sqrt{\frac{L}{C}}}{i \tan \omega \sqrt{LC} \left( \frac{\lambda}{4} - X \right)}$$

and

$$K = C \left( \frac{\lambda}{4} - X \right) \frac{\tan \omega \sqrt{LC} \left( \frac{\lambda}{4} - X \right)}{\omega \sqrt{LC} \left( \frac{\lambda}{4} - X \right)}$$

is the capacity necessary to reterminate the Lecher frame for space

resonance. For small values of  $\left( \frac{\lambda}{4} - X \right)$ ,

$$K = C \left( \frac{\lambda}{4} - X \right)$$

a very convenient expression. When  $X > \frac{\lambda}{4}$ , or the wave frame

has been lengthened instead of shortened,  $K$  becomes negative and the impedance which will effectively retune the wave frame to a  $\frac{\lambda}{4}$  length is an inductance. This is a particularly neat method of adjusting choke coils for short wave work, as was experimentally verified.

A reservation was mentioned in connection with the two-meter oscillation obtained with the apparatus of Fig. 10, with reference to the frequency control. The frequency was readily adjusted to the required value on an ordinary percentage basis, but when a heterodyne reception with two oscillators was attempted it failed. Two meters is the equivalent of 150,000,000 cycles and 1 k.c. is therefore only one part in 150,000 and a setting to this accuracy would be considered difficult under any circumstances. Here, with the tube elements themselves constituting the major part of the tuning capacities, the natural frequency variations were so pronounced that a heterodyne note did not exist; only a hiss could be heard as the oscillator frequencies passed through the

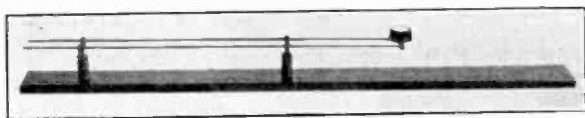


Figure 17—Range 3.4–6.2 meters.

region of synchronism. Later a beat was looked for at 3.6 meters, and this was successful. But the resulting note was extremely variable. Some of this variability was traced to the a-c. excitation of the power tube (full wave rectified alternating current on the plates and straight alternating current on the filaments) where the mechanical tractions set up inside the tube were apparently great enough to wobble the tube elements markedly. But also on battery excitation the frequency variation was considerable, and even when the coupling between the oscillators was sufficient to pull the frequency of one about, as the frequency of the other was varied, a clear note was difficult to obtain. Possibly, with great care, heterodyne reception will be feasible, but it will not be an engineering proposition without something like crystal control.

A list of short wave vacuum tube oscillator references, which it is hoped is complete, is attached.

#### SUMMARY

An investigation of the short wave limit of vacuum tube oscillators of the normal type, where regeneration builds up oscillations in a resonant circuit, has indicated that the physical limits for ordinary commercial tubes lie between 3.5 and 1.5 meters, depending on the type of tube used. By means of a small special tube a wavelength of 1.05 meters was reached. No frequency control

was left at this wavelength. With a small power tube not deviating greatly from ordinary vacuum construction it was possible to operate at 3.5 meters with adequate frequency control, and it is concluded that the 3.5-5 meter range is available for technical purposes. Apparatus for measuring wavelength is discussed together with its application to the measurement of capacity and inductance. A bibliography of short wave vacuum tube oscillator work is attached.

## BIBLIOGRAPHY

1. W. C. White, *General Electric Review* 19, 751; 1916.  
The Photron Oscillator for Extreme Frequencies.
2. Gutton et Touly, *C. R.* 168, 217; 1919.  
Oscillations Électriques non Amorties de Courte Longueur d'Onde.
3. Balth. Van der Pol, *Phil. Mag.* 38, 90; 1919.  
The Production and Measurement of Short, Continuous Electromagnetic Waves.
4. W. H. Eccles and F. W. Jordan, *Electrician* 83, 229; 1919.  
A Method of Using Two Triode Valves in Parallel for Generating Oscillations.
5. R. Whiddington, *Rad. Rev.* 1, 53; 1919.  
Ionic Oscillations in Three-Electrode Thermionic Valves.
6. H. Barkhausen and K. Kurz, *Phys. Zeit.* 21, 1; 1920.  
Die kürzesten, Mit Vakuumröhren herstellbaren Wellen.
7. G. C. Southworth, *Rad. Rev.* 1, 577; 1920.  
Electron Tube Generators of Alternating Currents of Ultra-Radio Frequencies.
8. G. C. Southworth, *Rad. Rev.* 2, 25; 1921.  
Electrical Measurements at Ultra-Radio Frequencies.
9. F. Holborn, *Zeit f. Phys.* 6, 328; 1921.  
Über Versuche Mit Kurzen Ungedämpften Elektrischen Wellen.
10. J. S. Townsend and J. H. Morrell, *Phil. Mag.* 42, 265; 1921.  
Electric Oscillations in Straight Wires and Solenoids.
11. E. W. B. Gill and J. H. Morrell, *Phil. Mag.* 44, 161; 1922.  
Short Electric Waves Obtained by Valves.
12. R. Whiddington, *Phil. Mag.* 44, 1064; 1922.  
Note on "Short Electric Waves Obtained by Valves" by Gill & Morrell.
13. A. Bailey, *Phys. Rev.* 20, 154; 1922.  
A Study of the Effect of Absorbed Gas on the High Frequency Resistance of Copper Wire.
14. C. Schafer und J. Merzkirch, *Zeit f. Phys.* 13, 166; 1923.  
Experimentelle Untersuchungen über die Beugung Ungedämpfter Elektrischer Wellen an Dielektrischen Zylindern und über die Eigenschwingungen Dielektrischer Zylinder.
15. F. W. Dunmore and F. H. Engel, *Sci. Paper No. 469 Bur. of Standards* Apr. 11, 1923.  
Directive Radio Transmission on a Wavelength of Ten Meters.
16. R. Mesny et P. David *C. R.* 177, 1106; 1923.  
Les Ondes tres Courtes en Radiotelegraphie.
17. A. Schiebe, *Ann.* 73, 54; 1924.  
Untersuchungen über die Erzeugung Sehr kleiner Wellen mit Glühkathodenröhren nach Barkhausen und Kurz.
18. G. Wuckel, *Ann.* 73, 427; 1924.  
Über eine neue Methode zur Messung von Drahtwiderständen bei sehr Schnellen Schwingungen.
19. M. Mesny *L'Onde, Elect.* 3, 25 et 99; 1924.  
Les Ondes tres Courtes.



20. M. Malgouzeou L'Onde, *Elect.* 3, 129; 1924.  
Pour Recevoir les Ondes tres Courtes.
21. F. W. Dunmore and F. H. Engel, *Radio News*, 1924.  
(Article on Short Wave Technique).
22. E. W. B. Gill and J. H. Morrell, *Phil. Mag.* 49, 369; 1925.  
Short Electric Waves Obtained by the Use of Secondary Emission.
23. C. Gutton et E. Pierret L'Onde, *Elect.* 4, 387; 1925.  
Sur les Harmoniques des Oscillateurs a Ondes tres Courtes.
24. A. Scheibe, *Jahr. d.D.T.u.T.* 27, 1; 1926.  
Parallelschaltung von Senderöhren zur Erzeugung intensiver Kurzer Wellen.
25. F. Kiebitz, *Jahr. d.D.T.u.T.* 27, 163; 1926.  
Ein Neuer Grundsatz für die Erzeugung von Schwingungen mit Elektronenröhren.
26. E. W. B. Gill and R. H. Donaldson, *Phil. Mag.* 2, 129; 1926.  
A New Method of Obtaining a Luminous Discharge in Gases at Very Low Pressures.
27. M. T. Greehova, *Zeit f. Phys.* 38, 621; 1926.  
Weitere Untersuchungen mit dem Zweiröhren und Vielröhren-generator Kurzer Elektrischer Wellen.
28. Lewi Tonk, *Phys. Rev.* 1927.  
Space Charge as a Cause of Negative Resistance in a Triode. (Presented at Washington meeting Amer. Phys. Soc.)
29. L. Bergmann, *Ann.* 82, 504; 1927.  
Messungen im Strahlungsfeld einer in Grund und Oberschwingungen erregten stabförmigen Antenne.

# DIRECTIONAL RADIATION WITH HORIZONTAL ANTENNAS\*

By

A. MEISSNER

In continuation of the investigation with horizontal antennas and reflectors<sup>1</sup> the attempt was made to concentrate the radiation energy by combining several antennas. If several horizontal

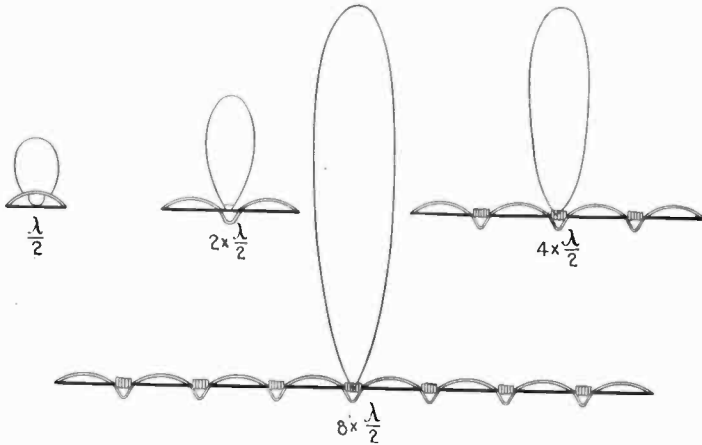


Figure 1—Concentration of radiation in the horizontal plane.

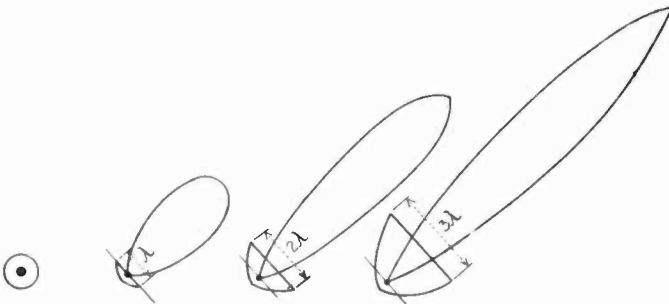


Figure 2—Concentration of radiation in the vertical plane.

antennas are so arranged as to oscillate together in the same phase, radiation patterns are obtained as shown in Fig. 1. The radiation angle as measured in the horizontal plane (angle determined by the

\* Original manuscript in German received by the Institute, July 16, 1927. Translated manuscript received by the Institute, August 22, 1927.

<sup>1</sup> Jahrbuch für drahtlosen Tel. & Tel., Vol. 28, 1926, page 78.

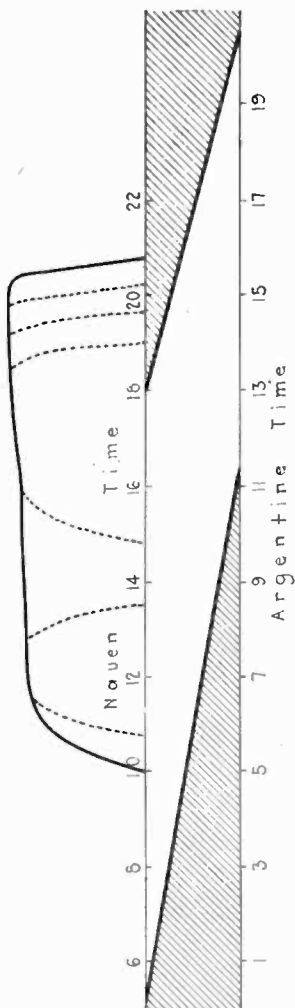


Figure 3—Communication periods with the Argentine on 11 meters.

half-amplitude of the radiation on both sides of the maximum) diminishes with increasing number of antennas in the ratio of 72 deg.:42 deg.:32 deg. to 14 deg. for 1, 2, 4, and 8 half-wave radiators respectively. The equal phasing of the radiation is obtained by the use of a non-radiating half-wave system<sup>2</sup> (non-radiating loops, coils or combination of coils and condensers) connected between two adjacent antennas. The concentration of the radiation in the vertical plane (Fig. 2) is obtained by an arrangement of a parabolic reflector about the horizontal antennas.

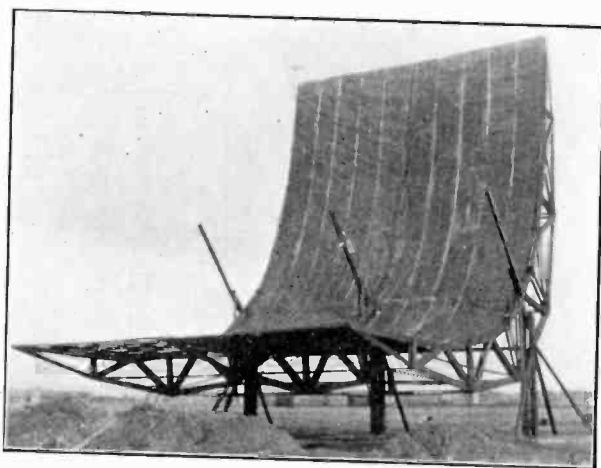


Figure 4

The concentration of the beam is sharper the greater the ratio of the width of the opening of the parabola to the wavelength.<sup>3</sup> The first reflector used was built of copper sheet and other reflector systems were compared with this "standard system." It was found that the metal-sheet surface could be entirely replaced by wire with equally good results; the individual wires of the wire reflector being one-half wavelength long.

With a beam concentrated in this way in both the horizontal and vertical planes, the determination of the optimum angle for the radiation from the transmitter was next attempted. In order to reduce the dimensions and the cost of the entire beam transmitting system as much as possible, the shortest possible wavelength was used at which reception over the distance 10,000 km. (South

<sup>2</sup> Franklin, British Patent.

<sup>3</sup> Tatarinoff, *Jahrbuch für drahtlosen Tel. & Tel.*, Vol. 28, 1926, page 117. It seemed more suitable to deviate somewhat from the parabola form.

America) could still be expected. According to computations and theories<sup>4</sup> no reception would in general be possible with 11 meters over greater distances, as according to theory the beam is bent away from the earth at such high frequencies. Contrary to theory, the investigation showed that not only did the wavelength of 11 meters work extraordinarily well over great distances, but that this wave when horizontally polarized by reflectors was for the most part even the best for daylight transmission with South America. This showed that the wavelength range for short wave communication could be extended considerably downward. In connection with reception in South America, several interesting

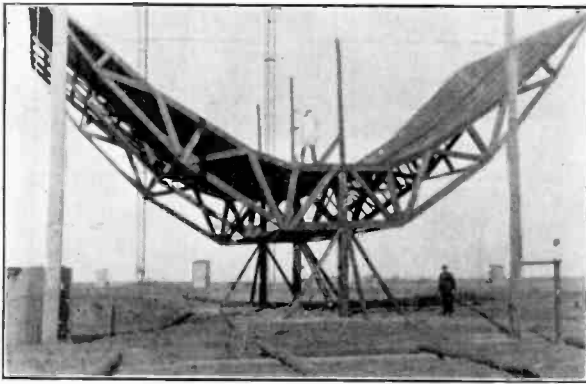


Figure 5

things were noted. The reception on the wavelength of 11 meters was also possible during the period in which a part of the intervening path lay in darkness. Fig. 3 shows the time of reception; underneath, the period of daylight for the month of April (above for Nauen and below for Rio de Janeiro). The reception began usually about 10 o'clock Central European Time. The period from 13 to 15 o'clock is often one of uncertainty. From then until 21 o'clock reception is very good. It was further characteristic of 11-meter transmission that on certain days reception failed completely. The following values of audibility ratios were obtained in comparing transmission from the 11-meter transmitter *AGK* antenna energy less than 1 kw. and the 15-meter transmitter *AGA*, antenna energy 8 kw. (beam radiator with vertical polarization;

<sup>4</sup> A. H. Taylor and E. O. Hulburt, *Phys. Rev.*, Vol. 27, 1926, page 189. Lassen, *Jahrbuch für Drahtlosen Tel. & Tel.*, Vol. 28, 1926, page 109.

8 parallel wires half a wavelength long and half a wavelength separation):

Date	Time	AGK (1 kw.) = 11 m.	:	AGK (8 kw.) = 15 m.
May 17, 1927	14-19 o'clock	1	:	2-6
	19-21 "	1	:	1
May 18, 1927	14-20:30"	5	:	1
May 19, 1927	14-19 "	6	:	1
	19-20:30"	2	:	1
May 5, 1927	none		:	normal

The transmitter *AGK* is, in other words, better than the transmitter *AGA* but at times fails completely. It appeared as if the

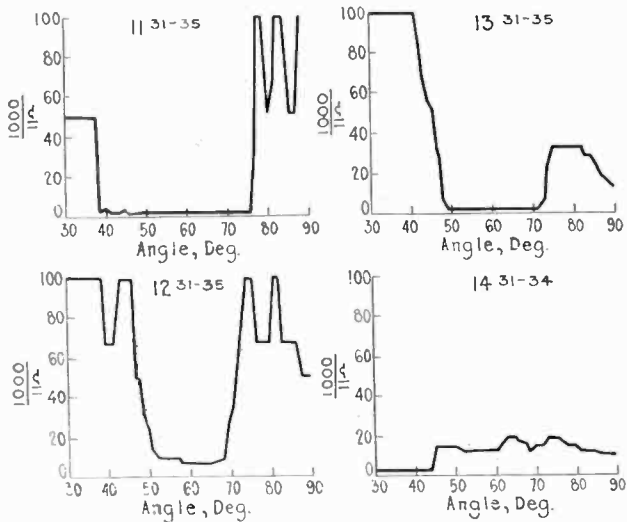


Figure 6—Signal strength for various reflector angles.

latter was somehow connected with a depression approaching the transmitter. Should this be the case, that the influence of the lower atmosphere (up to 20 km.) is of significance, a high reflector angle (80 deg.-second optimum as shown later) may bring the signal back in again on such days that the signal with low reflector angle goes out completely. The investigation so far had only been carried out with a radiation angle of the reflectors of 38 deg.

Reception on 11 meters shows comparatively less fading than on 15 meters. How much of this decrease in fading might be due to using 500-cycle plate supply on the 11-meter transmitter is not known. Fig. 4 shows the beam reflector system which was used. The antenna consists of two half-wave sections connected by a phase reversal coil. To this coil are connected the conductors

leading from the transmitter which is located 28 meters distant. The reflector is 11.5 meters long and 19 meters wide and rests on three supports 3.9 meters high. At the right in the figure are shown the two windlasses with which the reflector is turned. Two men, one on each windlass, can easily raise the reflector from 30 deg. to 90 deg. in four minutes. Fig. 5 shows the reflector in the 90 deg. position. (The transmitting arrangements were in charge of Mr. J. Pohl, while the reception observations were made by

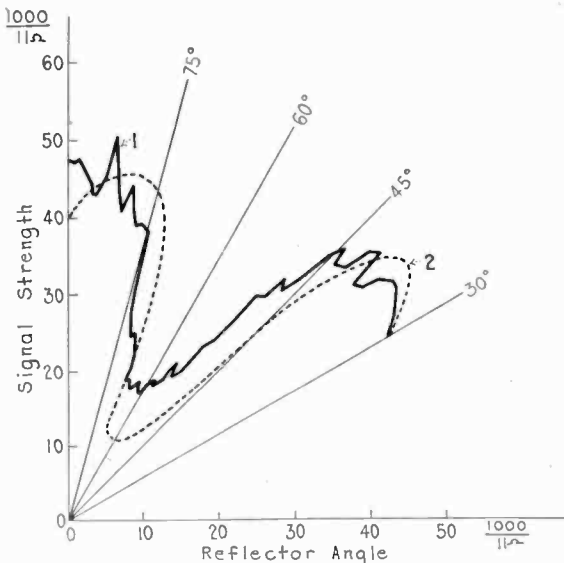


Figure 7—Signal strength for variation of reflector angle.

Mr. A. Ellerbrock in Rio de Janeiro and later in Buenos Aires). As the reflector turned, observations in Rio de Janeiro indicated a maximum with the reflector at an angle of about 38 deg. A second maximum, usually 10 percent less, was observed at about 80 deg. In between lay a deep minimum. Fig. 6 shows a few typical reception curves. The turning of the reflector took four minutes. While the first three curves show definite maxima, the last curve does not. This lack of definite maxima occurred in about 10 per cent of the observations. There was no difference between forenoon and afternoon. In Fig. 7 the mean value of the field intensity is plotted for the various angular settings. The investigation was carried on in such a way that at first measurements were made for several days and mean values obtained for each setting of the reflector (mean value Fig. 6, Curve 2). Later

measurements were made for several days in which the reflector was rotated between 30 deg. and 90 deg. during each four minutes. (Mean value for three days, Fig. 6, Curve 1). Frequent comparisons were made with a simple vertical antenna ( $3/4$  wavelength long). The vertical antenna was seldom heard and when it was heard, the intensity was only a fraction of that obtained from the reflector (approximately  $1/10$ ).

From these results one would assume that on all other wavelengths as well as on 11 meters, an optimum radiation angle exists for transmission in which space radiation plays a part. At present investigations are in progress to determine this angle for 20 meters.



# MAKING NORMAL COORDINATES COINCIDE WITH THE MESHES OF AN ELECTRICAL NETWORK\*

By

E. A. GUILLEMIN

(Massachusetts Institute of Technology, Cambridge, Massachusetts)

The theory of normal coordinates is perhaps best known and certainly most effectively interpreted physically in connection with a mechanical system of elastically-coupled mass points which carry out small oscillations about a point of equilibrium. Here a normal coordinate is such a direction in space upon which the projection of the oscillation of any point of the system contains only one of the natural frequencies of the system. There are as many such normal coordinates as there are normal frequencies; and since these directions are in general neither normal to each other nor coincide with the axes of the fundamental frame of reference, each has projections upon all coordinates of the reference system. Mathematically this is evidenced by the fact that the component oscillation of any mass-point of the system upon any reference coordinate contains in general all of the natural frequencies of the system. Furthermore, we can easily visualize a process of rotation of the reference coordinates which will bring at least one of them to coincide with a normal direction or normal coordinate. And when carried out mathematically, such a transformation will cause the normal frequency, belonging to the particular normal coordinate in question, to be confined entirely to the reference coordinate which has been brought into coincidence. The projected oscillations upon the remaining reference coordinates then lack this normal frequency, i.e., it has been eliminated from the rest of our reference coordinates.

In setting up the differential equations for the normal mode of oscillation of an electrical network, we find an exact mathematical analogy to those of a mechanical system having the same number of degrees of freedom. Hence, from a mathematical standpoint at least, there also exist in the electrical system certain normal coordinates. The physical interpretation of them is, however, somewhat more puzzling than in the case of the mechanical system, and it is the object of this paper to point out in as direct a way as possible what, in the electrical network, is the equivalent of the normal coordinate of a mechanical system; and how it is

\* Original manuscript received by the Institute July 26, 1927.

possible, by properly fixing the circuit constants, to bring about coincidence with certain meshes of the network, thereby confining the corresponding natural frequencies to these meshes and eliminating them from the rest.

We will begin with a brief review of the solution to the homogeneous system of equations describing the free oscillations of an electrical network. If we number the meshes of our system from 1 to  $n$ , and let  $\lambda_{ii}$ ,  $\rho_{ii}$ ,  $\sigma_{ii}$  represent the total inductance, resistance, and elastance respectively present in mesh  $i$ , and further let  $-\lambda_{ik}$ ,  $-\rho_{ik}$ ,  $-\sigma_{ik}$  represent the total inductance (here the algebraic sum of mutual and common self-inductance), resistance and elastance respectively common to meshes  $i$  and  $k$ , then obviously the countervoltage in mesh  $k$  due to current  $i_k$  in it is given by:

$$\lambda_{kk} \frac{di_k}{dt} + \rho_{kk} i_k + \sigma_{kk} \int i_k dt,$$

and the countervoltage induced into mesh  $k$  from mesh  $i$  will be given by:

$$\lambda_{ik} \frac{di_i}{dt} + \rho_{ik} i_i + \sigma_{ik} \int i_i dt.$$

In order to bring the analogy to the equivalent mechanical system still closer, we define:

$$x_k = \int i_k dt$$

as the corresponding "mesh charge," it being the equivalent of displacement in the mechanical sense just as electric current is the equivalent of velocity in the mechanical system. If we further use the abbreviation:

$$a_{ik} = \lambda_{ik} \frac{d^2}{dt^2} + \rho_{ik} \frac{d}{dt} + \sigma_{ik} \quad (1)$$

then the homogeneous system of simultaneous linear differential equations, which are an expression of Kirchoffs' e.m.f. law for the force-free network, become:

$$\left. \begin{aligned} a_{11}x_1 + a_{12}x_2 + \dots + a_{1n}x_n &= 0 \\ a_{21}x_1 + a_{22}x_2 + \dots + a_{2n}x_n &= 0 \\ a_{n1}x_1 + a_{n2}x_2 + \dots + a_{nn}x_n &= 0 \end{aligned} \right\} \quad (2)$$

We assume as solutions, the normal functions:

$$x_k = Y_k e^{pt} \quad (3)$$

Substitution into (2) gives the algebraic system of condition equations:

$$\left. \begin{aligned} b_{11}Y_1 + b_{12}Y_2 + \dots + b_{1n}Y_n &= 0 \\ b_{21}Y_1 + b_{22}Y_2 + \dots + b_{2n}Y_n &= 0 \\ b_{n1}Y_1 + b_{n2}Y_2 + \dots + b_{nn}Y_n &= 0 \end{aligned} \right\} \quad (4)$$

where:

$$b_{ik} = \lambda_{ik}p^2 + \rho_{ik}p + \sigma_{ik} \quad (5)$$

are now simple algebraic polynomials in  $p$ . If the conditions (4) can be satisfied in agreement with arbitrary initial conditions, then our assumed solution will be valid and useful. Obviously this eliminates the trivial solutions:

$$Y_1 = Y_2 = \dots = Y_n = 0.$$

Before going on with the solution in the usual manner, let us give the conditions (4) a more definite interpretation. In the first place it will be noted that the electrical equivalent to a physical dimension in the mechanical system is a mesh; and that the number of meshes in the electrical system is equivalent to the number of dimensions of the corresponding mechanical system. For the latter this number is limited to three in our actual space. In the electrical system, this number is physically unlimited—and fortunately mathematically also, the system (2) being written for an  $n$ -dimensional space. Now let us define the vector  $b_1$  with the components:

$$b_{11}, b_{12}, \dots, b_{1n}.$$

Similarly, the vector  $b_2$  with components:

$$b_{21}, b_{22}, \dots, b_{2n},$$

and so on down to a vector  $b_n$  with the components:

$$b_{n1}, b_{n2}, \dots, b_{nn},$$

the  $b_{ik}$ 's being those defined by (5). Then if we consider:

$$Y_1, Y_2, \dots, Y_n$$

of equations (4) as components of a vector  $Y$  in our  $n$ -dimensional space, the condition equations (4) may be put in the vector form:

$$\left. \begin{aligned} (b_1, Y) &= 0 \\ (b_2, Y) &= 0 \\ (b_n, Y) &= 0 \end{aligned} \right\} \quad (6)$$

where the round parentheses indicate scalar product. But if the scalar product of two vectors vanishes, it means that these are orthogonal to each other. Hence we see that the conditions (4), or their equivalent (6), demand that the vector  $Y$  be determined in such a way as to be *simultaneously orthogonal* to the given system of vectors  $b_1, b_2, \dots, b_n$ , assuming for the moment that the  $p$ 's are known. But the components of  $Y$  we know to be the transient mesh charge amplitudes corresponding to the natural angular velocity  $p$  which fixes the  $b_{ik}$ 's. Hence it is clear that the direction of our vector  $Y$  is the direction of the normal frequency. And we see at once that the condition equations (4) fix the directions of these normal coordinates.

We have so far said nothing about the possibility of fulfilling these condition equations. We shall give this a physical interpretation as well. Let us confine our argument for the moment to a three-dimensional problem so that the process of visualization becomes easier. Our coordinate axes are numbered 1, 2, 3 instead of being lettered  $x, y, z$  as is the usual case. Suppose then that the vectors  $b_i$  all have three components different from zero and are linearly independent. The conditions (4) or (6) require us to find such a direction in space as will be simultaneously orthogonal to all three of these vectors  $b_i$ . Obviously this is impossible, since all the available dimensions are consumed by the given system  $b_i$ . However, if the latter all lie in a plane, i.e., consume only two out of the available three dimensions, then the vector  $Y$  can be drawn normal to this plane to satisfy (4) or (6). And if the given system of vectors  $b_i$  all lie along the same direction, two independent solutions to (4) are possible. In general, if the given system of vectors  $b_i$  consume  $(n-m)$  of the  $n$  available dimensions, then there are  $m$  possible independent solutions to the system (4). The determinant of the system is then said to have the rank  $(n-m)$ . If we demand a unique solution to the system (4), and this is the case with our network problem, then the rank of the determinant

$$D(p) = \begin{vmatrix} b_{11} & \dots & b_{1n} \\ b_{21} & \dots & b_{2n} \\ \vdots & \ddots & \vdots \\ b_{n1} & \dots & b_{nn} \end{vmatrix} \quad (7)$$

should be  $(n-1)$ . This means that the determinant shall vanish, but that at least one of its first minors shall not vanish. The vanishing of the determinant:

$$D(p) = 0 \quad (8)$$

is the well-known determinantal equation which fixes the natural angular velocities  $p$ .

The problem of making a normal coordinate coincide with one of the meshes of the given network is now clear. If for a given root  $p = p_r$  of (8), an entire column in the determinant (7) vanishes, then obviously the normal coordinate will occupy the coordinate, i.e., mesh, thus vacated by the  $b_i$ 's. Incidentally, if we make a column in (7) vanish, the corresponding row vanishes also due to the relation:

$$b_{ik} = b_{ki}.$$

To make a column vanish for one of the roots of (8) it is necessary that:

$$b_{i2} = \alpha b_{i1}; \quad b_{i3} = \beta b_{i1}; \quad \dots \quad b_{in} = \gamma b_{i1} \quad (9)$$

where  $\alpha, \beta, \dots, \gamma$  are any proportionality factors, not necessarily integers. For, expanding (7) by minors we have for instance for the first row:

$$D(p) = b_{11}B_{11} + b_{12}B_{12} + \dots + b_{1n}B_{1n} \quad (10)$$

where the  $B_{ik}$  are the minors of  $b_{ik}$ . But by (9) we have for  $i = 1$ :

$$D(p) = b_{11} \{ B_{11} + \alpha B_{12} + \beta B_{13} + \dots + \gamma B_{1n} \}. \quad (11)$$

The determinantal equation is factorable, and one of the natural frequencies is given by:

$$b_{11} = 0. \quad (12)$$

It is this frequency which goes with the normal coordinate coinciding with mesh one in this case. Similarly we could have made any other mesh a normal coordinate. Mesh one in the above case will be the only one in which the frequency given by (12) can be present. The transient solutions for the other meshes will contain only  $(n-1)$  terms. Obviously we can use this process to eliminate objectionable natural frequencies as will be shown later.

In general, mesh  $k$  becomes a normal coordinate when:

$$b_{ik} = \alpha_{ik} b_{kk} \quad (13)$$

where the  $\alpha_{ik}$ 's are any proportionability constants. If (13) is satisfied for all the  $b_{ik}$ 's then all meshes become normal coordinates.

The determinantal equation for this case becomes:

$$D(p) = (b_{11} b_{22} \cdots b_{nn}) \begin{vmatrix} 1 & \cdots & \cdots & \alpha_{1n} \\ \alpha_{21} & 1 & \cdots & \alpha_{2n} \\ \alpha_{31} & \cdots & 1 & \cdots & \alpha_{3n} \\ \cdots & \cdots & \cdots & \cdots & \cdots \\ \alpha_{n1} & \cdots & \cdots & \cdots & 1 \end{vmatrix} = 0. \quad (14)$$

But:

$$b_{ii} = \frac{\alpha_{ik}}{\alpha_{ki}} b_{kk},$$

so that (14) is equivalent to

$$b_{ii} = 0. \quad (14a)$$

The entire network possesses only one natural frequency.

Suppose we have a primary mesh (mesh No. 1), coupled to  $(n-1)$  other meshes and fix the circuit constants so that:

$$b_{1k} = \alpha_{1k} b_{kk}. \quad (15)$$

The other meshes are assumed not coupled to each other so that

$$b_{ik} = 0 \text{ for } i \neq k \neq 1.$$

Then the determinantal equation becomes:

$$D(p) = \begin{vmatrix} b_{11} & \alpha_{12} b_{22} & \cdots & \alpha_{1n} b_{nn} \\ b_{21} & b_{22} & 0 & \cdots & 0 \\ \cdots & \cdots & \cdots & \cdots & \cdots \\ b_{n1} & 0 & \cdots & \cdots & b_{nn} \end{vmatrix} \\ = (b_{22} b_{33} \cdots b_{nn}) \begin{vmatrix} b_{11} & \alpha_{12} & \cdots & \alpha_{1n} \\ b_{21} & 1 & 0 & \cdots & 0 \\ \cdots & \cdots & \cdots & \cdots & \cdots \\ b_{n1} & 0 & \cdots & \cdots & 1 \end{vmatrix} = 0. \quad (16)$$

The roots are obtained from:

$$b_{22} = 0; b_{33} = 0; \cdots b_{nn} = 0; \quad (17)$$

and:

$$\begin{vmatrix} b_{11} & \alpha_{12} & \cdots & \alpha_{1n} \\ b_{21} & 1 & \cdots & 0 \\ \cdots & \cdots & \cdots & \cdots \\ b_{n1} & 0 & \cdots & 1 \end{vmatrix} = 0. \quad (18)$$

All meshes except mesh No. 1 are normal coordinates, and the frequencies given by (17) are confined to their respective meshes. Mesh No. 1 contains only the one frequency defined by (18), which

appears also in all the other meshes, since mesh No. 1 is the only one which is not a normal coordinate. If we made mesh No. 1 a normal coordinate also, the case would revert to the previous one, and all normal frequencies would coincide as given by (14a). In our present case, however, we have present in the network  $n$  different natural frequencies, but  $(n-1)$  of these are pigeon-holed in their respective normal meshes and cannot appear in the rest of the network in the form of free or transient oscillations. When the network is subjected to suddenly applied forces in all of the meshes, the transient current in mesh No. 1 will contain only one frequency, while those in the other meshes will contain this one and also their own normal frequency as given by (17).

An interesting point in connection with the transient solution can be brought out if we consider a network where only one of the meshes, say mesh No. 1, is made a normal coordinate. The pair of conjugate complex roots, which define the one frequency in this normal coordinate, are given by:

$$b_{11} = 0.$$

Let us indicate this root by  $p = p_1$ , and evaluate the corresponding transient current amplitude by Heaviside's formula. In the notation used in this paper, this formula becomes, for suddenly applied d-c. voltages:

$$i_{ik} = E \sum_p \frac{B_{ik}(p) \epsilon^{p,t}}{\left(\frac{dD}{dp}\right)_{p=p_1}} \quad (19)$$

where the summation is to extend over all the roots of:

$$D(p) = 0.$$

the subscripts  $ik$  on the current indicate that the latter belongs to mesh  $i$  with the voltage impressed in mesh  $k$  or vice versa. Suppose we assume the voltage impressed in mesh No. 1. Then the one term of (19) for  $p = p_1$  becomes:

$$(i_{11})_{p=p_1} = E \frac{B_{11}(p_1) \epsilon^{p_1,t}}{\left(\frac{dD}{dp}\right)_{p=p_1}} \quad (20)$$

But by the rule for differentiating determinants we have:

$$\left(\frac{dD}{dp}\right)_{p=p_1} = \left(\sum_1^n ik \frac{\partial D}{\partial b_{ik}} \frac{db_{ik}}{dp}\right)_{p=p_1} = \left(\sum_1^n ik B_{ik} (2\lambda_{ik} p + \rho_{ik})\right)_{p=p_1}$$

But since for  $p = p_1$  the first row and column of  $D(p)$  vanish, we see that:

$$B_{ik}(p_1) = 0 \text{ for } i = k \neq 1, \quad (21)$$

so that:

$$\left(\frac{dD}{dp}\right)_{p=p_1} = B_{11}(p_1) \cdot (2\lambda_{11}p + \rho_{11}),$$

and substituting into (20) we get:

$$(i_{11})_{p=p_1} = \frac{E\epsilon^{p_1 t}}{2\lambda_{11}p_1 + \rho_{11}} \quad (22)$$

which shows us that the amplitude of this normal oscillation, which is confined to mesh No. 1, depends only upon the constants of this mesh and not at all upon those of the rest of the network. That the frequency given by  $p = p_1$  is actually confined to mesh No. 1, is immediately evident from (21) and (19) and needs no further elaboration.

Suppose now that we impress our voltage in any of the other meshes, and proceed to calculate the transient current amplitude for  $p = p_1$  by formula (19). Here again, due to (21) we find that this amplitude vanishes, even for mesh No. 1. Hence we note the very interesting fact that, not only is the normal frequency  $p = p_1$  confined to the mesh which is its normal coordinate, but it will not come into action unless the actuating force is applied in that mesh. In the case where all meshes except one are normal coordinates, the transients in all meshes, due to a force applied in the non-normal mesh, contain only one term in spite of the fact that the whole network possesses  $n$  natural-frequencies. In other words, a normal frequency which coincides with a mesh can only be actuated by a force applied in that mesh, and does not respond to disturbances which occur in the other meshes. Obviously the complexity of transients in complicated networks may be reduced considerably by making use of this fact.

The point of chief interest which this analysis has in connection with steady state operation is the elimination or reduction of the number of resonance maxima when the network is subjected to sustained variable frequencies. In simple coupled radio circuits containing only two meshes, the double resonance peak in the secondary is an objectionable feature and gives rise to "broad" waves. By making the primary a normal coordinate, one of these



can be confined there, and the secondary will then contain only one resonance peak. Or by making both meshes normal coordinates, the network will contain only one frequency and hence only one resonance peak in primary or secondary. The second case would, however, be harder to maintain under variable conditions of secondary tuning and radiation;—but preference here is merely a matter of design.

In general, if a steady state e.m.f. of the form:

$$e(t) = Re \{ E \epsilon^{\mu t} \} \quad (23)$$

(where  $\mu$  may be real, imaginary, or complex, and  $Re$  denotes "real portion of") is impressed in mesh  $k$ , the resulting steady state charge in mesh  $i$  is given by:

$$x_{ik} = Re \left\{ \frac{EB_{ik}(\mu)\epsilon^{\mu t}}{D(\mu)} \right\}, \quad (24)$$

and hence the corresponding mesh current is given by:

$$i_{ik} = \dot{x}_{ik} = Re \left\{ \frac{E\mu B_{ik}(\mu)\epsilon^{\mu t}}{D(\mu)} \right\} \quad (25)$$

Again let mesh No. 1 become a normal coordinate, and let its normal frequency be represented by:

$$p_1 = -\delta \pm j\omega \quad (26)$$

Then for  $i = k = 1$ , and  $\mu = j\omega$  we see that:

$$\left[ \frac{B_{11}(\mu)}{D(\mu)} \right] \rightarrow \infty \text{ for } \rho_{ik} \rightarrow 0, \quad (27)$$

and hence it is apparent that mesh No. 1 resonates at this point. However, keeping the e.m.f. in mesh No. 1 and calculating the current in any other mesh we have:

$$i_{i1} = Re \left\{ \frac{E\mu B_{i1}(\mu)\epsilon^{\mu t}}{D(\mu)} \right\}. \quad (28)$$

But

$$\left[ \frac{B_{i1}(\mu)}{D(\mu)} \right]_{i \neq 1} \rightarrow \frac{0}{0} \text{ for } \rho_{ik} \rightarrow 0. \quad (29)$$

We can get at the behavior of this indeterminate form for large values of  $\mu$  by evaluating in the usual manner. For the denominator we have:

$$\left[ \sum_1^n ik \frac{\partial D}{\partial b_{ik}} \frac{db_{ik}}{d\rho_{ik}} \right]_{\rho_{ik}=0} = \sum_1^n ik B_{ik}^* \cdot \mu$$

where the \* indicates the limit for  $\rho_{ik}=0$ . But again:

$$B_{ik}^* = 0 \text{ for } i \neq k \neq 1,$$

so that the coefficient of the linear term in the Taylor expansion of the denominator becomes:

$$B_{11}^* \cdot \mu.$$

For the numerator we have:

$$\left[ \sum_1^n rs \frac{\partial B_{rs}}{\partial b_{rs}} \frac{db_{rs}}{d\rho_{rs}} \right]_{\rho_{rs}=0} = \sum_1^n {}'rs B_{\left\{ \begin{smallmatrix} i1 \\ rs \end{smallmatrix} \right\}} \cdot \mu \quad \dagger$$

where the prime on the sum indicates that the terms for  $r=i$  and  $s=1$  are to be omitted. But here we see that:

$$B_{\left\{ \begin{smallmatrix} i1 \\ rs \end{smallmatrix} \right\}}^* = 0 \text{ for } r \neq 1,$$

so that the corresponding Taylor coefficient becomes:

$$\sum_2^n s B_{\left\{ \begin{smallmatrix} i1 \\ 1s \end{smallmatrix} \right\}}^* \cdot \mu,$$

and our indeterminate (29) evaluates to:

$$\frac{\sum_2^n s B_{\left\{ \begin{smallmatrix} i1 \\ 1s \end{smallmatrix} \right\}}^*}{B_{11}^*} \quad (29a)$$

Here the denominator is two powers higher in  $\mu$  than the numerator, and hence the factor (29) varies as  $1/\mu^2$  for large  $\mu$ . Hence it is clear that all meshes except No. 1 do not resonate to the normal frequency  $p_1$ ; and that for large values of the latter, the steady state oscillations in all but mesh No. 1 are very much suppressed. Mesh No. 1 tends to confine its normal frequency even in the steady state.

† The minor  $B_{\left\{ \begin{smallmatrix} ik \\ rs \end{smallmatrix} \right\}}$  is obtained from  $D(\mu)$  by striking the rows  $i$  and  $r$  and the columns  $k$  and  $s$ , and prefixing the sign  $(-1)^{i+k+r+s}$ .

If now we put the source of e.m.f. in any other mesh except No. 1 and try to feed the normal frequency  $\mu = j\omega$  into it, we have:

$$i_{1i} = \text{Re} \left\{ \frac{E_{\mu} B_{1i}(\mu) e^{\mu t}}{D(\mu)} \right\}.$$

But due to the symmetry of  $D(\mu)$ , this is identical with (28), and hence we should arrive at (29a) again for the limit (29). In other words, it is just as hard to feed the resonance frequency into a normal mesh as it is to get it out of one. The normal mesh resonates to its own frequency only when the e.m.f. acts in it, and in that case tends to confine the oscillation there.

Obviously many other interesting combinations of normal and non-normal meshes may be gotten up and investigated both in the transient and steady states. The results of such investigations are often both interesting from the purely theoretical standpoint, as well as useful from the practical. It is the hope of the writer that the principles involved have been made sufficiently clear so that the reader may carry out his own extensions of the idea by himself.

#### SUMMARY

The theory of normal coordinates in oscillatory systems is briefly reviewed, and their significance in connection with the electrical network pointed out. The relation which must hold between the circuit constants in order that normal coordinates may be made to coincide with certain meshes is derived. The effect of having made a certain mesh a normal coordinate of the system is then shown for the transient state, first, to confine the corresponding normal frequency to that mesh; secondly, to cause its amplitude to be independent of the other circuit constants; and, thirdly, to cause that normal frequency to remain inactive unless the actuating e.m.f. is impressed in that mesh. The effect so far as the steady state is concerned, is to confine resonance with the normal frequency in question to the normal mesh, and in general to present a means for eliminating or localizing resonance peaks in more complicated networks.

## VOLTAGE DETECTION COEFFICIENT\*

By

E. L. CHAFFEE

(Cruft Laboratory, Harvard University)

In a previous paper<sup>1</sup> it was shown that the current of modulation frequency which flows in the plate circuit of a triode detector is given by the expression

$$\Delta^2 I_{pl} = (\text{Det. } I)_l \sqrt{2m} (\underline{\Delta E_{oh}})^2 \quad (1)$$

In the above equation and those that follow the  $\Delta$  sign indicates small but finite values. Bold-face type indicates complex quantities. The subscript  $p$  refers to the plate of the triode, and the subscripts  $l$  and  $h$  refer to low or modulation and high or radio frequencies, respectively.  $m$  is the degree of modulation and  $\underline{\Delta E_{oh}}$  is the maximum value (indicated by the underscore) of the unmodulated radio voltage impressed in the grid circuit of the triode detector. The notation used here and in the previous paper is fully described in a paper entitled "Vacuum Tube Nomenclature" published in these Proceedings by the author.<sup>2</sup>

The complex factor  $(\text{Det. } I)_l$  is defined as the total current detection coefficient, but reference to the previous paper shows that the value of  $(\text{Det. } I)_l$  depends not only upon the tube characteristics, but also upon the impedance of the particular plate load used during the measurement of  $(\text{Det. } I)_l$ . It is then not easy to determine the detection coefficient if the tube is used with some other plate impedance. If, however, the plate current  $\Delta^2 I_{pl}$  be multiplied by the total plate circuit impedance a voltage is obtained which is a fictitious voltage but which, although non-existent, may be used for the calculation of the plate current of modulation frequency when the particular plate load is known. It was suggested in the previous paper<sup>1</sup> that a voltage detection coefficient may be defined according to the relation

$$\widehat{\Delta^2 E}_l = (\text{Det. } E)_l \sqrt{2m} (\underline{\Delta E_{oh}})^2 \quad (2)$$

which is more fundamental and a better quantity in terms of which to express the detection obtained with a particular triode.

\* Original manuscript received by the Institute July 9, 1927.

Paper presented before the American Section, International Union of Scientific Radio-Telegraphy, April 21, 1927.

<sup>1</sup> A Theoretical and Experimental Investigation of Detection for Small Signals by E. L. Chaffee and G. H. Browning, I.R.E. Feb. 1927, Vol. 15, No. 2.

<sup>2</sup> Vacuum Tube Nomenclature by E. L. Chaffee, I.R.E. March, 1927, Vol. 15, No. 3.

It is convenient to think of  $(Det. E)_1$  as the fictitious voltage introduced into the plate circuit by a 70.7 o/o modulated signal of one-volt maximum amplitude if the detection followed the same law for so large a signal. It is probably better to consider one ten-thousandth of  $(Det. E)_1$  as the equivalent audio voltage in the plate circuit due to a 70.7 o/o modulated signal of .01-volt maximum amplitude.

In the paper referred to above a method is given for measuring  $\Delta^2 I_{p1}$  from which, knowing  $m$  and  $(\Delta E_{oh})$ , the value of  $(Det. I)_1$  can be calculated. The purpose of the present paper is to present a method of directly measuring  $\Delta^2 E_i$  from which  $(Det. E)_1$  can be calculated. Some experimental results are here presented to show the application of the method.

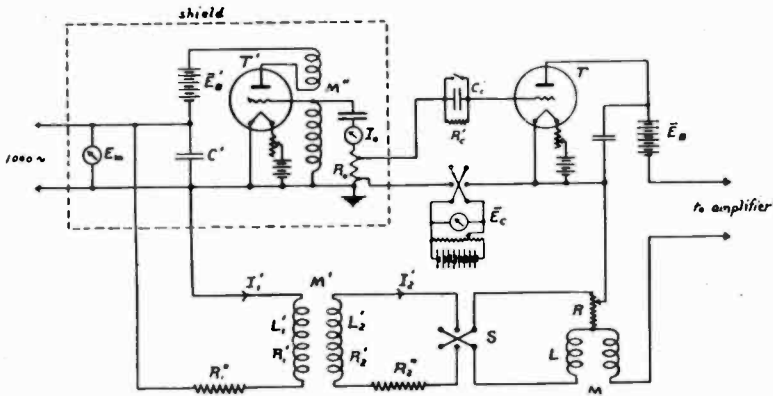


Figure 1

The diagram of connections for measuring the fictitious voltage  $\Delta^2 E_i$  is shown in Fig. 1. Tube  $T$  is the triode under test.  $T'$  is a small radio-frequency oscillator, the output of which is modulated by an external source of power at 1,000 cycles. The oscillator is preferably enclosed in a shield shown by the dotted rectangle surrounding  $T'$  and its circuits. The oscillator has the oscillatory circuit connected to its grid. The plate circuit of the oscillator is regenerative coupled to the oscillatory circuit through the mutual inductance  $M''$ . The plate voltage of the oscillator is pulsating and is obtained by adding to the steady voltage  $\bar{E}_B'$ , the modulating 1,000-cycle voltage  $E_m$ . The condenser  $C'$  serves only as a by-pass around the source  $E_m$  for the high-frequency currents in the plate circuit. The modulated oscillatory current passes through a small four-terminal resistance  $R_o$ , consisting of a short piece of

fine resistance wire on which are soldered the potential taps. The voltage drop across the two potential terminals is introduced into the grid circuit of the tube  $T$ . Also in the grid circuit are the potential-changing means to provide polarizing potential  $\bar{E}_c$ , and the grid condenser and resistance  $C_c'$  and  $R_c'$ . The latter may be short-circuited when only plate-circuit rectification is considered.

Rectification taking place in tube  $T$ , in effect, introduces in the plate circuit a 1,000-cycle voltage  $\Delta^2 E_1$ . This voltage is opposed by an equal and opposite known voltage introduced into the plate circuit, balance being determined by silence in telephones connected to a two-stage amplifier. The known opposing voltage is obtained by passing through a variable resistance  $R$  and the coil  $L$  of the variable mutual inductance  $M$  a 1,000-cycle current derived from the modulating source  $E_m$ . An air-core, closely-coupled transformer, having mutual inductance  $M'$ , is introduced and the circuit constants so adjusted that  $I_2'$  is in phase with  $E_m$ . To make possible any phase of the balancing voltage the current  $I_2'$  can be reversed by switch  $S$ , and  $M$  can be reversed by rotation of the secondary coil of  $M$ .

The condition under which the current  $I_2'$  is in phase with the modulating voltage  $E_m$  is simply stated below. Consider first, apart from the particular circuits of Fig. 1, a primary circuit which has a resistance  $R_1$  and inductance  $L_1$  coupled by a mutual inductance  $M$  to a secondary circuit having resistance  $R_2$  and inductance  $L_2$ . Then the complex expression for the secondary current when an e.m.f. of  $E_1$  volts is impressed in the primary circuit is

$$I_2 = \frac{jM\omega E_1}{(R_1 + jL_1\omega)(R_2 + jL_2\omega) + M^2\omega^2} \quad (3)$$

$$= \frac{jM\omega E_1}{(R_1R_2 - L_1L_2\omega^2 + M^2\omega^2) + j(R_1L_2\omega + R_2L_1\omega)}$$

If the first bracket of the denominator is made equal to zero then the secondary current is in phase with the e.m.f.  $E_1$  and given by the expression,

$$I_2 = \frac{E_1 M}{R_1 L_2 + R_2 L_1} \quad (4)$$

Placing the first bracket of the denominator of (3) equal to zero gives as the condition necessary for no phase difference between  $E_1$  and  $I_2$ —

$$R_1 R_2 = L_1 L_2 \omega^2 - M^2 \omega^2 \quad \text{or} \quad (5)$$

$$\eta_1 \eta_2 = 1 - \tau^2$$

where  $\eta_1 = \frac{R_1}{L_1\omega}$ ,  $\eta_2 = \frac{R_2}{L_2\omega}$  and  $\tau = \frac{M}{\sqrt{L_1L_2}}$ .

Applying the above theory to the present case as given by the diagram of Fig. 1, the condition to be fulfilled in order that the current  $I_2'$  be in phase with  $E_m$  is, by equation (5)

$$(R_1' + R_1'')(R_2' + R_2'' + R) = L_1'(I_2' + L)\omega^2 - M'^2\omega^2 \quad (6)$$

The value of the secondary current  $I_2'$  is then obtained by applying equation (4) to the present case.

$$I_2' = \frac{M'E_m}{(R_1' + R_1'')(I_2' + L) + (R_2' + R_2'' + R)L_1'} \quad (7)$$

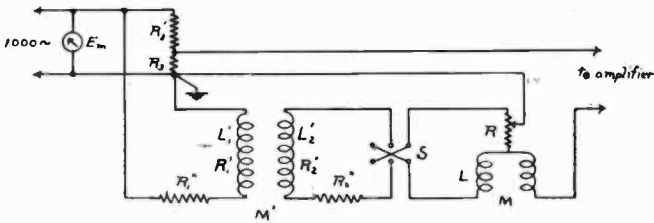


Figure 2

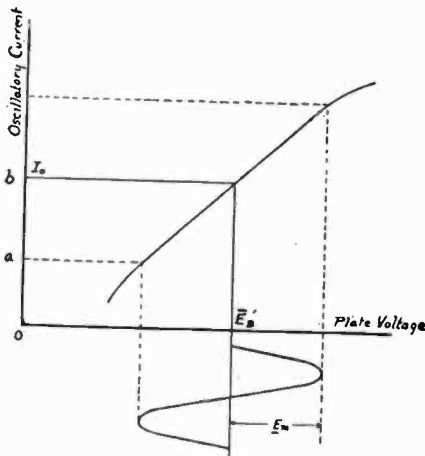
Although the proper values of the resistances of the circuit can be determined by calculation, usually it is easier to determine their proper values by experiment as follows: Referring to Fig. 2, two resistances,  $R_3$  and  $R_3'$ , are connected in series across  $E_m$  and the junction between the two resistances is connected to the terminal of the amplifier which in Fig. 1 is shown connected to the plate battery  $E_B$ .  $R_3$  may conveniently be one-thousandth of  $R_3'$ . Then  $R_2''$  and  $R_1''$  can be so adjusted that with  $M$  equal to zero, balance is obtained with some value of  $R$ . The value of  $R$  gives the number of ohms which introduces into the plate circuit

a voltage equal to  $\frac{E_m R_3}{R_3 + R_2'}$ . It is usually desirable to make  $R_2''$

about 10,000 ohms so that the variation of  $R$  in normal operation causes only a small percentage variation in the total secondary resistance.  $R$  is shown in the diagram as a potentiometer on the high-dial end. In the experiments to be described  $R$  was a three-dial box having dials of tenths, units and tens of ohms. As just stated, the connections were changed so that all of the 10-ohm coils were in the secondary circuit, the switch arm being represented

by the arrow in the diagram. The total maximum change of resistance due to varying the two lower dials was then only 11 ohms.

Before measurements of detection coefficient can be made the oscillator  $T'$  must be adjusted to give sinusoidal modulation. The oscillator is tested by short-circuiting the alternating voltage  $E_m$  and reading  $I_o$  for various values of  $\bar{E}_B'$ . The value of coupling  $M''$  and the grid polarizing potential of the oscillator should be so chosen that the plot of  $I_o$  against  $\bar{E}_B'$  is straight over a considerable range of  $\bar{E}_B'$ , as shown in Fig. 3. A value of  $\bar{E}_B'$  is then chosen corresponding to a point about midway on the straight portion of



Figure\_3

the plot. The peak value of  $E_m$  or  $\bar{E}_m$  is then chosen to vary the plate voltage over the straight line portion of the plot. The degree

of modulation  $m$  is then given by the ratio  $\frac{\bar{ab}}{\bar{ob}}$  where  $\bar{ob}$ , as

indicated in Fig. 3, is equal to  $I_o$ , the r.m.s. value of the unmodulated radio current, and  $\bar{oa}$  is the minimum value of the r.m.s. radio current as it is modulated. It is assumed that the amplitude of the radio-frequency current changes as its plate voltage is varied at 1,000-cycles according to the plot of Fig. 3 which was obtained by a slow variation of plate voltage.

The value of  $(\Delta E_{oh})$  to be used in equation (2) is obviously

$$\Delta E_{oh} = \sqrt{2} I_o R_o \tag{8}$$



where  $I_o$  is the value of the radio current when there is no modulation. When the modulating e.m.f.  $E_m$  is superposed upon the steady plate-battery voltage  $\bar{E}_B'$ , the radio frequency current will in-

crease to  $I_o \sqrt{1 + \frac{m^2}{2}}$ .

Some tests were made upon two tubes of the same size and make, except one has an amplification factor of 8.5 and the other a  $\mu$  of 20. The low-amplification-factor tube corresponds to the type 201-A Radiotron.

The constants of the circuits during the tests described in this communication are given below:

$\bar{E}_B' = 45$ volts	$M' = 1.36$ h.
$E_m = 10$ volts at 1000 cycles	$L_1' = 0.841$ h.
$m = 0.51$	$L_2' = 3.63$ h.
$I_o = 74.7$ milliamperes	$R_1' = 576$ ohms
$R_o = 0.504$ ohms	$R_2' = 1490$ ohms
$(\Delta E_{oh}) = 0.0533$ volts	$R_1'' = 3310$ ohms
	$R_2'' = 10000$ ohms

When calibrating the transformer by the method of Fig. 3 it was found that 87.5 ohms in  $R$  balanced  $\frac{5}{1005} \times E_m$ . Then

$$\begin{aligned} \widehat{\Delta^2 E} &= \frac{5}{1005 \times 87.5} \cdot \sqrt{R^2 + M^2 \omega^2} \\ &= 0.000568 \sqrt{R^2 + M^2 \omega^2} \end{aligned} \quad (9)$$

$$\begin{aligned} \text{and } Det. E &= \frac{0.000568}{\sqrt{2} \times 0.51 \times 0.0533^2} \cdot \sqrt{R^2 + M^2 \omega^2} \\ &= 0.278 \sqrt{R^2 + M^2 \omega^2} \end{aligned}$$

The curves of Figs. 4 and 5 which exhibit observed points give the values of  $(Det. E)$  for plate-circuit rectification plotted against the grid polarizing potentials. The three curves of Fig. 4 are for the tube possessing an amplification factor of 8.5 and the two curves of Fig. 5 give the results for the high- $\mu$  tube. The values of  $(Det. E)$  increase as the plate current, plotted against grid volts, approaches zero due to the increasing resistance of the tube. The curves end when the current has become so small that balance is indefinite.

Not all of the audio voltage given by  $(Det. E)$  is available as

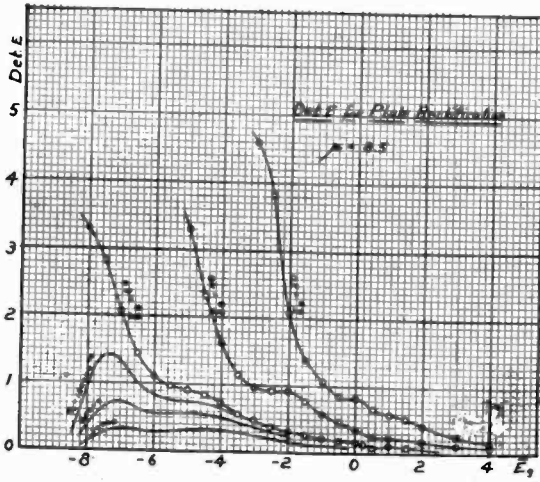


Figure 4

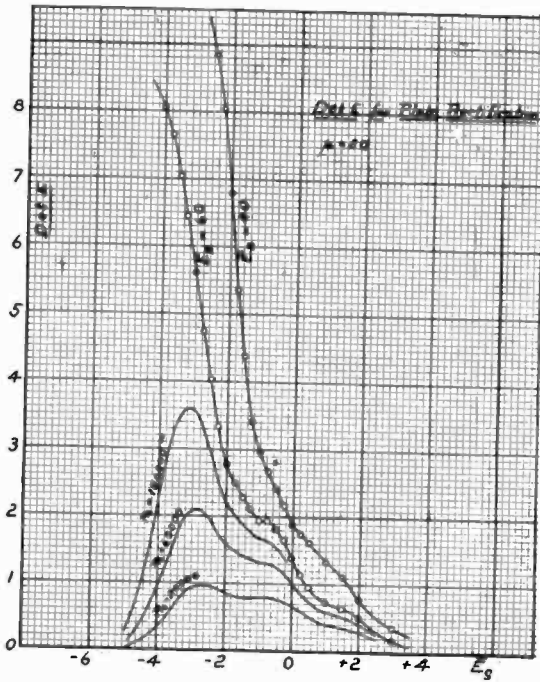


Figure 5

output voltage to act upon the next amplifier tube. The available fraction of (*Det. E*) is obtained by multiplying by the ratio

$$\frac{\sqrt{R_b^2 + X_b^2}}{\sqrt{(r_p + R_b)^2 + X_b^2}},$$

where  $R_b$  and  $X_b$  are the resistance and reactance of the load in the plate circuit of the detector. It is apparent then that, given the curves of (*Det. E*) and of  $r_p$  for a tube, the output voltage can be obtained for any plate load. If the

plate load has no reactance then the ratio becomes  $\frac{R_b}{r_p + R_b}$ . The

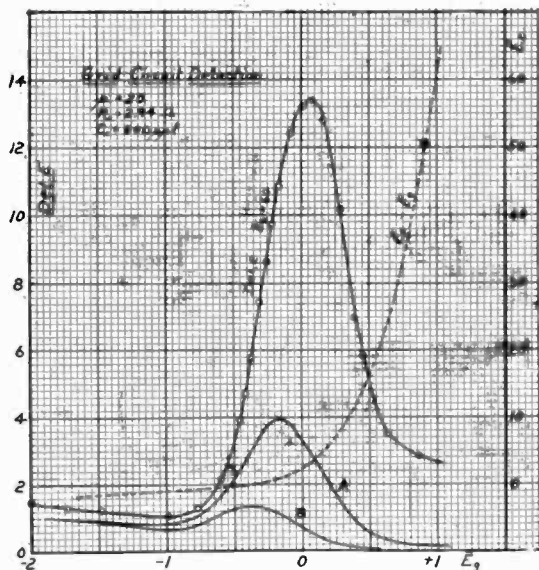


Figure 6

three full-line curves of Figs. 4 and 5 were obtained by multiplying the curve of (*Det. E*) for 60 volts by the above fraction for three values of  $R_b$  given on the curves. It is worthy of note that the values of  $k_p$  for the two tubes at the grid voltage which gives maximum detection are not very different. The value of  $k_p$  at  $-7$  volts for the low- $\mu$  tube is  $8.2 \times 10^{-6}$  mhos. and for the high- $\mu$  tube at  $-3$  volts is  $9.9 \times 10^{-6}$  mhos. Examination of the curves shows that the high- $\mu$  tube is the better detector when used to give plate-circuit rectification but in either case it is desirable to use a plate load of high impedance.

The curves of Figs. 6 and 7 which show the observed points give the values of  $(Det. E)$  for grid-circuit rectification, when the grid resistance is about 3 megohms and the grid condenser 200 micro-microfarads. Curves of Fig. 6 are for the low- $\mu$  tube and those of Fig. 7 are for the high- $\mu$  tube, both for a plate potential of 60 volts. The curves are plotted against *actual* grid volts, but since the grid takes current when the grid voltage is positive there is a

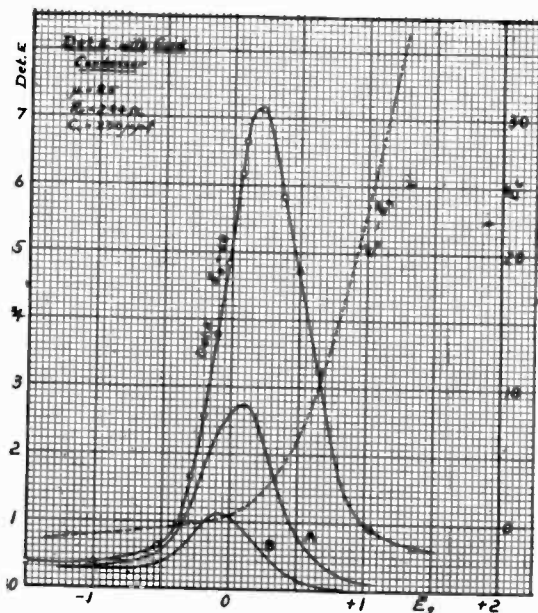


Figure 7

large voltage drop through the external grid resistance necessitating sometimes a very large applied polarizing potential  $\bar{E}_c$  to obtain even a slightly positive value of  $\bar{E}_g$ . The dotted curves of Figs. 6 and 7 give the relations between  $\bar{E}_g$  and  $\bar{E}_c$ .

In the case of grid-circuit rectification there are two effects which operate to cause the actual available voltage output to be less than that given by  $(Det. E)$ . In the first place only a certain fraction of the fictitious voltage acting in the plate circuit is available as output voltage as explained in the case of plate-circuit

rectification. The ratio  $\frac{\sqrt{R_b^2 + X_b^2}}{\sqrt{(r_p + R_b)^2 + X_b^2}}$  reduced to apply to a pure resistance plate load for the two cases shown in Figs. 6

and 7, are plotted in Fig. 8. The full-line curves are for the low- $\mu$  tube; the dotted curves apply to the high- $\mu$  tube.

The second cause operating to reduce the output voltage in the case of grid-circuit rectification is the damping of the input oscillatory circuit due to the conduction between grid and filament. Let  $\Delta E_{oh}$  be the radio voltage across the oscillatory circuit when there is no grid conduction as in plate-circuit rectification, and let

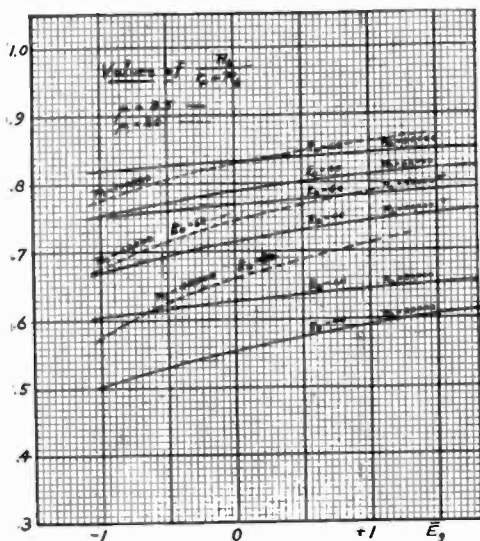


Figure 8

$\Delta E_{oh}'$  be the radio voltage across the same circuit when the grid conductance is different from zero and equal to  $k_g$ . The second reducing factor is then  $\left(\frac{\Delta E_{oh}'}{\Delta E_{oh}}\right)^2$ . The ratio is squared because detection varies as the square of the radio amplitude. It can be easily shown that this ratio has, to a sufficient accuracy, the value given in (10) below.

$$\left(\frac{\Delta E_{oh}'}{\Delta E_{oh}}\right)^2 = \left(\frac{\eta}{\eta + L\omega k_g}\right)^2 = \left(\frac{1}{1 + \frac{L^2\omega^2}{R} \cdot k_g}\right)^2 \quad (10)$$

where  $\eta$  is the ratio  $\frac{R}{L\omega}$  for the oscillatory circuit. The ratio  $\frac{L^2\omega^2}{R}$  is the equivalent resistance of the oscillatory circuit at resonance.

Referring again to Figs. 6 and 7, the full-line curves marked *A* were obtained from the detection-coefficient curves by multiplying by the product of the factor from equation (10) and the factor taken from Fig. 8 for the value of plate-load resistance  $R_b$  equal to five times the plate resistance  $r_p$  of the tube at zero grid volts. The values of  $R_b$  in the two cases are, respectively, 60,000 ohms and 100,000 ohms. For the two *A*-curves the value of  $\frac{L^2\omega^2}{R}$  was taken as 100,000 ohms. The two curves marked *B* in Figs. 6 and 7 are similar to the *A*-curves except that the value of  $\frac{L^2\omega^2}{R}$  was chosen to be 360,000 ohms. This value is a reasonable value because it corresponds to an  $\eta$  of 0.005, a value of  $L$  of 286 microhenrys, and a wavelength of 300 meters.

The enormous reduction in detection due to the factor of equation (10) is apparent. No account is taken of the effect of regeneration if it exists either solely because of the capacity between grid and plate of the tube, or if regeneration is purposely provided. Of course the effect of regeneration is to increase the voltage across the oscillatory circuit due to an e.m.f. induced in the coil, but such regeneration is probably more effective in increasing the signal strength with plate-circuit rectification than with grid-circuit rectification, for in the latter case, although regeneration decreases  $\eta$ , the factor of equation (10) is at the same time reduced. However, it is well known that since regeneration in both types of detection can bring the system to the point of oscillating, the signal strength then should be approximately the same in both cases. This is borne out by experimental observation.

The presence of the grid conduction acting across the oscillatory circuit very much broadens the resonance curve to the sacrifice of selectivity. The difference in selectivity in the two cases with no regeneration is very apparent in actual practice. In fact, taking into account all of the considerations, it seems to the author that grid-circuit rectification has little to justify its use either from the point of view of sensitivity or from the stand-point of quality.

Finally, it may be worth noting that the method of measurement outlined in the paper can easily be applied to the measurement of the voltages across a plate-load resistance or reactance, or across the secondary of a plate-circuit transformer, and in order to include the effects of damping of the oscillatory circuit by the

grid conductance and to include the effects of natural or purposed regeneration, the radio voltage could conveniently be introduced in series with the inductance of an oscillatory circuit connected in the grid circuit of the detector. These changes might seem more satisfactory because the tube would be used as in practice. Such measurements are not here given because they are less definitive of the tube itself, but depend upon the particular impedances used.

#### SUMMARY

The advantages of the use of voltage detection coefficient as a means of expressing the sensitivity of a detector and for the comparison of detectors are discussed. An experimental method is given for the measurement of the fictitious equivalent audio voltage which, if acting in the plate circuit of a detector, would give the demodulated audio plate current. Some experimental results are given for both plate-circuit detection and grid-circuit detection. The experimental results show that a high- $\mu$  tube is usually more sensitive as a detector than a low- $\mu$  tube.

## RADIO VISION\*

BY

C. FRANCIS JENKINS

(Jenkins Laboratories, Washington, D. C.)

In speaking to you this evening on the subject of the electrical transmission of pictorial representations, may I say that in our laboratory we have found it convenient and informative to use the words radiogram, radiophone, and radio vision when we speak of radio-carried service; and to say telegram, telephone, or television when we speak of wire-carried service.

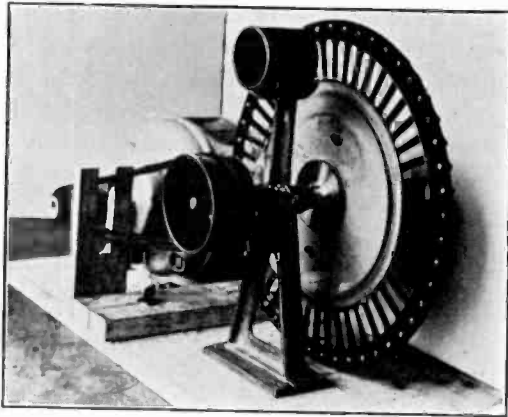


Figure 1—Laboratory receiver for radio vision. The black box contains a neon gas lamp; the slotted lens-disc sweeps the light-image spot across the screen in lines while the overlapping prism-disk distributes the lines from top to bottom of the screen.

The art of electrical picture-transmission is very old, relatively, for more than fifty years ago successful demonstrations were made in sending pictures by wire.

And there have been many workers, too, but the attainment of each was given but passing notice until the stamp of approval was put thereon by the great laboratories of the Bell Telephone Company, when, in April last, they made their spectacular demonstration between Washington and New York. This demonstration gave a great impetus to the development of electrical transmission of all kinds of pictorial representation.

\* Original manuscript received by the Institute, July 6, 1927.  
Presented before the Philadelphia Section of the Institute of Radio Engineers, June 24, 1927.



In general there have been but two types of mechanisms employed, the cylinder and the flat surface. The cylinder has been used most often in the transmission of still pictures.

But obviously a flat receiving surface is the only possible type for radio vision and television, for the eye must seem to see the whole picture all the time, and that can only be done on a flat screen.

However, whatever type of machine is used, the only method employed to the present time consists in a linear analysis of the picture, scene, or object, and the instantaneous synthesis of each line on a distantly located receiving surface.

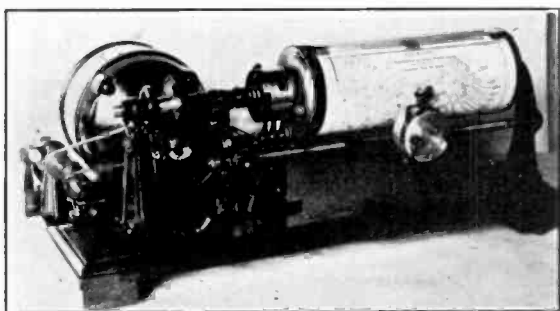


Figure 2—The weather map ship's receiver. The pen-box is moved across the base-map on the rotating cylinder by the screw, while the incoming radio signals touch the ink pen to the paper to build up the weather map.

The lights and darks of each successive line are changed into electrical current of corresponding strengths, which, carried to distant receivers, is there changed back into like light intensities and assembled on a suitable surface, for example, a sheet of paper, a photo film, or a flat picture screen.

It is quite evident that if this synthesis in the received picture is to result in an exact likeness to the transmitted subject, perfect synchronism of all receiving mechanisms with that of the transmitting mechanism must exist.

To attain synchronism, the synchronous motor is the simplest, but it is limited in application.

Other synchronizing methods have consisted of clock-controlled motors, where elapsed time is the standard against which all the motors were regulated.

Tuning forks for controlling the motors have been extensively employed, but this is but a modification, for it is only a smaller and more frequent division of time than the clock method.

Because pendulum clocks and most tuning forks soon stop when installed aboard a rolling ship in a rough sea, an oscillator, resembling the escapement of a ship's chronometer, has been developed, and has been found quite a successful motor controller.

A simple method of synchronizing consists in maintaining the speed of the motor constant with a governor, together with means for automatically setting the receiving cylinder at zero on the beginning of each revolution of the transmitter cylinder.

We employed this method in the "three-cornered experiment" recently conducted by the U. S. Navy, the Weather Bureau, and the writer's laboratory.

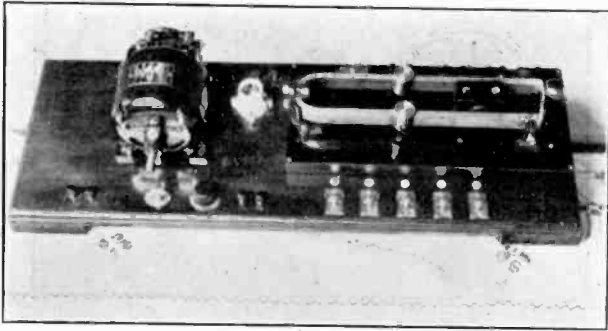


Figure 3—Fork-controlled motor unit. The vibration of the free ends of the fork arms cuts out armature resistance to keep the motor up to a definite speed. The fork continues to vibrate by reason of the current pulses in the electro-magnet between the fork arms.

Each morning the Weather Bureau made up a weather map, gave it to us, and we put it on our transmitter in the Navy building, which was connected by wire to the radio broadcast transmitters at Arlington, Virginia.

Weather map receivers were set up at certain land stations, and also on board the *U. S. S. Trenton*, and the *U. S. S. Kittery*. The latter made experimental cruises between Naval Operating Base at Hampton Roads and Caribbean Sea ports.

This territory was chosen for its well-known static disturbances, coincident with hurricane-forming zones. And it was found that weather maps could be recorded on the receivers with certainty even when weather information could not be received by code. The Florida hurricane of September provided a severe test of the system, demonstrating its worth and dependability.

While these "side-uses" are doubtless valuable, my premier ambition was radio vision, and so we do these other things only in "breathing spells" between attacks on the main problem.

Our first public demonstration of radio vision occurred on June 13, 1925, when we showed in the laboratory in Washington, in the presence of Navy Secretary Wilbur, Admirals Taylor and Robinson, and many others, what was happening at the time at the Naval Air Station at Anacostia, some miles distant. It was the first radio vision demonstration ever made, I believe, and quite an historical event to many of us.

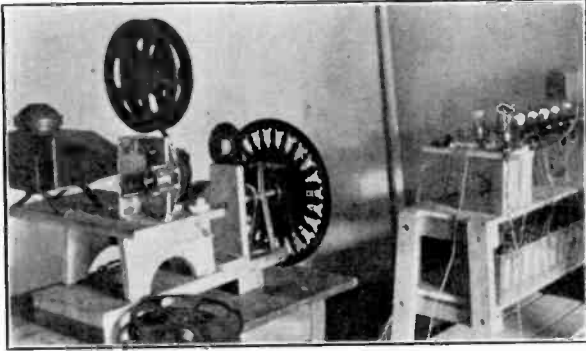


Figure 4—The simple mechanism by which motion pictures are transmitted. The rotation of the slotted lens-disk sweeps the image of each picture "frame" on the film across the light-sensitive cell in the box shown at the extreme right above the tubes.

The possibilities of radio vision for home entertainment, and of television in business, have been told so repeatedly in the public press that I hardly need restate here the promises of views of distant inaugural ceremonies, flower festivals, and baby parades. Being technical men I rather think you are more interested in details of methods and mechanisms.

As you know, the general scheme is to analyze the object or scene by a rotating scanning disk which in the transmitter permits the light reflected from the subject to fall on a light-sensitive cell, which, just as in still pictures, changes these light values into like current values; and which at the receiver permits light from a given source to be seen, directly or by reflection from a screen.

Such a scanning disk was shown in a patent as early as 1884. It consisted of a disk with one-fiftieth of an inch ( $1/50$  in.) holes therein, arranged in a spiral.

The holes were an inch apart in the spiral, and the ends of the spiral had an inch offset; therefore, the contemplated picture was an inch square made up of fifty lines.

The light intensity, as in a pin-hole camera, is limited to the amount which can pass through this minute aperture, that is,  $1/50$  of  $1/50$ , or only  $1/2,500$  part of the whole light.

To overcome this limitation it was proposed by a Frenchman that an arc lamp of high-intensity be focused on these minute apertures, after passing which the spot of light is swept across the subject by the rapid rotation of the scanning disk. I hardly think

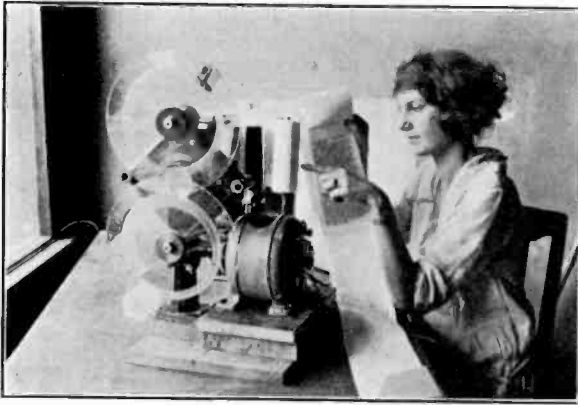


Figure 5—Strip device by which news copy, or like matter, can be transmitted by radio or by wire automatically as a continuous process. The overlapping prismatic rings in rotation sweep each typewritten line across a light-sensitive cell as the message moves longitudinally.

he expected to radio-transmit a baseball game by sweeping there-over a point of light from an arc lamp.

We, in the laboratory, think that limiting the light by passing it through these apertures is not the best plan; the available light is too limited. So, to get a greater value of the light, we usually make the openings in the scanning disk 1-1/2 inches in diameter and put lenses over the openings; and get the required tiny light-spot by focusing the light-source as a tiny flying spot on the receiving screen, to build up the moving picture.

While we have made a variety of mechanisms, this has been a fundamental principle in all of them.

Television would doubtless have been attained as early as the telephone if a suitable light-sensitive cell had been available for the transmitter, and an adequate light-source for the receiver.

Such tools are available today, and marked progress has been made in recent months toward a radio vision receiver acceptable to the public, and with the many hands and minds now engaged on the problem, I confidently believe its completion is the work of but a few months more.

In the transmitter we need more sensitive light-cells, or perhaps I should say, light-cells giving greater current output, a current output which will more dependably start the first tube of an amplifier.

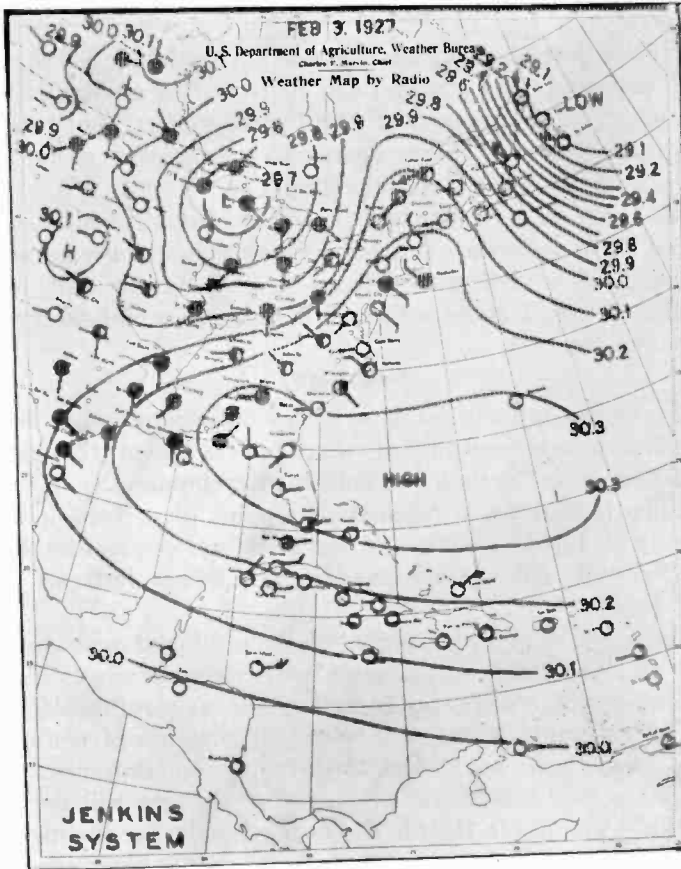


Figure 6—One of the weather maps as received aboard the *U. S. S. Kittery*. The base map is printed in brown and the isobars and other weather information received by radio is received thereon in red ink.

With light reflected from outdoor objects, the potassium cell gives but a very small current, only a few microamperes.

The present day potassium cells do not give current output proportional to the light intensity, but rather to the cell-surface covered by the light.

Resistance cells act too slowly for the required speed of light-reaction, which is of the order of 250,000 per second.

Our problem in the receiver is a light-source more intense than the neon lamp, but having approximately its high-speed light-change.

The other possibility is a steady light source and a light-valve between the source and the screen for modulating the light to build up the picture.

For this purpose many have proposed a bisulphide cell through which polarized light is passed and controlled by a potential (the Kerr effect) or a current field (the Faraday effect), but this cell requires such a large energy change to produce any useful light change as to put it out of consideration.

Of course, we have our own proposed solutions, which I shall tell you about if they are successful. Radio vision for home entertainment will revive radio interest as nothing else will, for it combines the reach of the radio and the fascination of the story told in pantomime.

#### SUMMARY

To see by radio what is actually happening at a distant place is now an accomplished scientific attainment, though the mechanism is not yet a merchandising development.

When it shall have reached that point of perfection, then one may sit in one's home and see inaugural ceremonies, baseball, football, polo games, mardi gras, flower festivals, and baby parades.

Radio vision is also experimentally combined with audible radio, and when these instruments are made generally available, then radio pictures and music and speech at the fireside, sent from distant world points, will be the daily source of news; the daily instructional class, and the evening entertainment; and equally the long day of the sick and the shut-ins will be more endurable, and life in the far places less lonely, for the flight of radio is not hindered by rain or storm, or snow blockades.

The electrical transmission of still pictures of photographs, sketches, maps, and the like, is now an every day affair, applicable to newspaper illustration and other usefulness.

But for the research worker it has lost its interest for him, it is too easy. To increase the speed of picture presentation ten thousand times, as required in radio movies, makes it a sporting proposition, and really worth while.

The apparatus employed in transmitting pen-and-ink sketches, photographs, and movies by radio are all simple in construction, though modified to best suit each particular use.

## BOOK REVIEWS

**Radio Theory and Operating**, by MARY TEXANNA LOOMIS. LOOMIS PUBLISHING Co., THIRD EDITION, 886 Pages with approximately 700 illustrations, flexible covers. Price \$3.50.

In the main this is a textbook for courses training students for commercial operating (although it might prove of value as a reference book for those engaged in other radio lines) and is written by the President of the Loomis Radio College.

A short historical section gives details of the experiments of Dr. Mahlon Loomis, of Washington, D. C., in 1865 et seq., who devised what is claimed to be a practical wireless telegraph system and to whom later a patent was granted. While definite proof and details of the system are unavailable, still many of the ideas indicated in the diagrams and notes reproduced anticipated modern practice and it would seem that Dr. Loomis should occupy a more important place in radio history than has been heretofore accorded him.

In common with many other textbooks it is used to best advantage in connection with lectures, since many of the terms used in the first few chapters are not adequately explained until later. Many cases will be noted where the use of definitions apparently from dictionaries do not disclose the exact distinctions usually accorded the terms.

A large number of inaccurate statements decrease the value of the book as a reference work. These are mainly confined to the first two hundred pages. These include such statements as: "A henry is defined as the energy which is induced by the cutting of one hundred million lines of force per second."

"A coil of high resistance wire passes all of the current in the circuit but consumes a portion of it in heat."

"The back e.m.f. due to inductance in a circuit is called reactance."

"These (referring to an illustration of a logarithmic condenser) are known as 'Straight Line' condensers, because when a graph is made of the capacity or of wavelengths in meters in a circuit in which they are used the 'curve' will be a straight line."

It is unusual that so many of these items should have survived to the third edition.

On the other hand, the major portion of the book is devoted to detailed description of apparatus circuits and procedure in broad-

cast transmitting, commercial operating, amateur operating and receiving fields. Very little mathematical theory is included, but a number of useful tables are to be found.

The book is excellent guide for studying for a commercial operating examination. Pertinent questions and problems appear in each section, and a complete index of 27 pages completes the book.

R. R. BATCHER

**Properties and Testing of Magnetic Materials**, BY THOMAS SPOONER, McGRAW-HILL, 1927. FIRST EDITION, 385 Pages. Price \$5.00.

The author of this book has admirably succeeded in gathering and arranging in useful form the more important properties of commercial ferromagnetic materials, and modern methods of testing and inspection. The book is singularly free of the accumulated "deadwood" of the early years of magnetic investigation, and although intended primarily for the use of the engineer it will also find a useful place in the library of the research worker.

GREENLEAF W. PICKARD



# DIGESTS OF UNITED STATES PATENTS RELATING TO RADIO TELEGRAPHY AND TELEPHONY

*Issued September 20, to October 11, 1927*

By

**JOHN B. BRADY**

(Patent Lawyer, Duray Building, Washington, D. C.)

- 1,642,688—FIXED CONDENSER—ALFRED MOSS, of New York, N. Y., Filed July 14, 1925, issued September 20, 1927. Assigned to Electrad, Inc.
- 1,642,861—ELECTRIC RELAY—L. B. TURNER, of Cambridge, England. Filed Feb. 13, 1919, issued Sept. 20, 1927. Assigned to Westinghouse Electric & Manufacturing Co.
- 1,643,015—RADIO RECEIVING CIRCUITS—E. W. HOUSE, of Birmingham, Alabama. Filed August 27, 1925, issued Sept. 20, 1927.
- 1,643,323—DIRECTIVE ANTENNA ARRAY—JOHN STONE STONE of San Diego, Calif. Filed Jan. 4, 1921, issued Sept. 27, 1927. Assigned to American Telephone and Telegraph Co.
- 1,643,781—RADIO SENDING SYSTEM—DONALD G. LITTLE of Wilkinsburg, Pa., Filed Jan. 8, 1924, issued Sept. 27, 1927. Assigned to Westinghouse Electric & Mfg. Co.
- 1,643,782—DEVICE FOR ALTERING THE WAVE LENGTH—SIEGMUND LOEWE, Berlin, Germany. Filed Sept. 2, 1921, issued Sept. 27, 1927. Assigned to Westinghouse Electric & Mfg. Co.
- 1,644,242—CONDENSER—H. P. DONLE, Meriden, Conn. Filed Sept. 22, 1923, issued Oct. 4, 1927. Assigned to The Connecticut Telephone & Electric Co., Inc.
- 1,644,266—ANTENNA CONSTRUCTION—FREEMAN ORNE, Dubuque, Iowa. Filed Dec. 21, 1925, issued Oct. 4, 1927.
- 1,644,601—VACUUM DISCHARGE TUBE—A. P. HANS-GERD NICKEL, Charlottenburg, and JOHANNES J. SPANNIER, Berlin, Germany. Filed Feb. 24, 1927, issued Oct. 4, 1927.
- 1,644,744—ELECTRON TUBE—H. M. PINGEN, of Toledo, Ohio. Filed March 21, 1922, issued Oct. 11, 1927.
- 1,644,796—AMPLIFYING AND DETECTING TUBE—H. P. STUART, of Seattle, Washington. Filed March 27, 1926, issued Oct. 11, 1927.
- 1,644,906—FRAME AERIAL AND THE LIKE—P. W. WILLANS, of Pattishall, Towcester, England. Filed April 5, 1926, issued Oct. 11, 1927.
- 1,645,280—PHOTOELECTRIC CELL—T. R. GOLDSBOROUGH, of Wilkinsburg and OTTO H. ESCHHOLZ, of Pittsburgh, Pa. Filed Sept. 28, 1926, issued Oct. 11, 1927. Assigned to Westinghouse Electric & Mfg. Co.
- 1,645,291—POLYPHASE PLATE CIRCUIT EXCITATION SYSTEM—A. NYMAN, Swissvale, and FRANK CONRAD, of Pittsburgh, Pa. Filed August 18, 1921, issued Oct. 11, 1927. Assigned to Westinghouse Electric & Mfg. Co.
- 1,641,749—VARIABLE CONDENSER—JACOB M. ENDERS, Schenectady, N. Y. Filed Sept. 22, 1923, issued Sept. 6, 1927. Assigned to General Electric Company.
- 1,645,462—INSULATED SUPPORTS FOR INDUCTANCE COILS—LOUIS STEINBERGER of Brooklyn, N. Y., and GUY HILL, of Washington, D. C. Filed Dec. 11, 1922, issued Oct. 11, 1927. Assigned to Wired Radio, Inc.
- 1,645,231—ELECTROMAGNETIC SOUND REPRODUCERS—FREDERICK DIETRICH of N. Y. and WILLIAM H. GERNS of East Orange, N. J. Filed March 5, 1926, issued Oct. 11, 1927. Assigned to Brandes Laboratories, Inc.

## GEOGRAPHICAL LOCATION OF MEMBERS ELECTED OCTOBER 5, 1927

### Transferred to the Fellow grade

Connecticut,	Middletown	Cady, W. G.
New York,	New York City	Grebe, A. H.
	New York City	Whittemore, L. E.
Pennsylvania,	Wilkinsburg	Batsel, M. C.

### Transferred to the Member grade

Michigan,	Wyandotte	Morris, Carlton D.
New Zealand,	Auckland	Taylor, Conway

### Elected to the Member grade

New York,	New York City	Grinan, John F.
England,	Cambridge	Moullin, E. B.
New Zealand,	Auckland	Salt, G. McB.

### Elected to the Associate grade

Arkansas,	Little Rock, 316 Louisiana St.	Williams, Joe
California,	Artesia, 438 N. Main St.	Corcoran, Edward M.
	Berkeley, 2529 Channing Way	Morgan, Howard K.
	Los Angeles, 817 So. Parkview St.	Kornftved, George W.
	Los Angeles, 207 So. Broadway	Nickels, Eugene E.
	Oakland, 2417 25th Avenue	Evans, George S.
	Santa Barbara, 22 E. Valerie St.	Means, Paul S.
	Santa Barbara, 1200 Anacapa St.	Sawyer, Gordon E.
	San Diego, USS S-44, c/o Postmaster	Wilcox, Nathan
	San Francisco, 30 Corona St.	Morris, John F.
Connecticut,	Bridgeport, 838 Park Avenue	Gould, Leslie
	Hartford, 29 Hartland St.	Kiley, Edward C.
	S. Norwalk, 91 N. Main St.	Nason, Charles H.
Dist. Columbia,	Washington, Navy Department	Cooper, Orville T.
	Washington, 1628 Riggs Place, N. W.	Kriz, Joseph
	Washington, 226-8th Street, S. E.	Page, Robert M.
Florida,	Jacksonville, 2144 Rosselle St.	Wintler, E. M.
Illinois,	Chicago, 950 Edgecomb Place	Allen, Justus
	Chicago, 6353 Yale Avenue	Beazley, Chas., Jr.
	Chicago, 510 Deming Place	Walter, V. W.
Indiana,	Fort Wayne, 314 Arcadia Ct.	Schryver, Henry A.
	Indianapolis, 1510 N. New Jersey St.	Ashlock, H. D.
Iowa	Newport, 1834 Mollary St. West	Reschetriz, Hans.
Kentucky,	New Orleans, 520 East Second St.	Kolo, R. E.
Louisiana,	New Orleans, 1525 Eighth St.	Teunisson, John F.
Massachusetts,	Boston, 316 Huntington Avenue	Gray, Alfred R.
	N. Cambridge, 4 Andover Hall, Harvard	Myers, G. B.
	N. Cambridge, 16 Allen Street	Gayne, Clifton
	Newtonville, 258 Linwood Avenue	Stark, Eldon E.
Michigan,	Flint, 1032 1/2 Ann Arbor St.	Forbey, Wm. D.
Minnesota,	Elysian	Jarstad, E. O.
	Fribault	Carney, Philip G.
	Waseca	Johnson, Edgar F.
Missouri,	St. Louis, 4531 Emerson St.	Zehr, Nicholas J.
New Jersey,	Boonton, Radio Frequency Labs.	Haas, John G.
	Bound Brook, Station WJZ	Hagmann, Niklaus
	Bound Brook, Station WJZ	Lindstrom, A. J.
	Cliffwood, c/o Bell Telephone Labs.	Lowry, L. R.
	Elizabeth, 215 Inslee Place	Walsh, Lincoln
	Fort Monmouth, 51st Signal Battalion	Zimmerman, Julius
	Newark, 137 Fourth St.	Schiffenhaus, D. H.
	Vineland, 429 Elmer St.	Himes, Walter L.
New York,	Albany, 350 Second Ave.	Pozefsky, Leonard
	Brooklyn, 704 New Jersey Ave.	Ostrove, Wm.
	Brooklyn, 773 Willoughby Ave.	Kaplan, H. H.
	Buffalo, 1285 Jefferson Ave.	Barker, C. R.
	Buffalo, 95 Densmore Street	Baumann, N. C.
	Buffalo, 356 N. Ogden Street	Goetz, Otto
	Buffalo, 18 Carmel Road	Hayslett, L. E.
	Buffalo, 215 Mulberry St.	Knowlton, E. W.
	Buffalo, 233 Sanders Road	Lawrence, A. P.
	Buffalo, 274 Delaware Ave.	March, Philip
	Buffalo, 25 Gelston St.	Miller, John G.
	Buffalo, 236 Barton St.	Miller, Theodore
	Buffalo, 42 Chatham Avenue	Schelling, R. F.
	Buffalo, 474 Carlton Street	Strauss, John B.

	Buffalo, 38 Auchinvole Ave. . . . .	Voll, Harry
	Buffalo, 179 Royal Ave. . . . .	Watson, J. A.
	Hollis, L. I., 184-03 90th Ave. . . . .	Caputo, N. J.
	Jamaica, L. I., 8 George Street . . . . .	McCord, Orison
	Maspette, L. I., 2573 Mymaud Place . . . . .	Bennett, Jack
	New York City, 1416 Nelson Ave. . . . .	Alderman, L. T.
	New York City, 531 West 37th St. . . . .	Berry, James
	New York City, Van Cortland Park So. . . . .	Bunting, T. R.
	New York City, 241 West 108th St. . . . .	Horowitz, Saul
	New York City, 600 West 144th St. . . . .	Leach, H. B.
	New York City, 80 Cortland St. . . . .	Schechter, Jack
	New York City, 144 West 72d St. . . . .	Van Blaricom, M.
	North Tonowanda, 84 Allen St. . . . .	Schurr, Wm.
	Port Washington, L. I., 69 Summit Road. . . . .	Hafner, G. M.
	Riverhead, L. I., Box 1191 . . . . .	Keary, H. F.
	Schenectady, General Electric Co. . . . .	Coombs, C. F.
	Schenectady, General Electric Co. . . . .	Hargrave, W. A.
	Schenectady, 209 Seward Place . . . . .	Tittle, H. C.
	Woodside, 3740 65th St. . . . .	Bell, L. J.
	Yonkers, 579 Van Cortlandt and Park Ave. . . . .	Craig, A. G.
Ohio,	Alliance, 158 W. Cambridge St. . . . .	Dinger, H. E.
	Cincinnati, 234 West Fourth St. . . . .	Dixon, C. C.
Pennsylvania,	Bellevue, 233 South Starr Ave. . . . .	Donbar, C. F.
	Cresson, 301 Columbus Ave. . . . .	Meckley, R. C.
	Edgewood, 100 W. Hutchinson Ave. . . . .	Haak, Arthur
	Lester, 3d Ave. and Pontiac St. . . . .	Causse, R. D.
	Philadelphia, 1312 Arch St. . . . .	Stouidt, J. D.
	Philadelphia, 511 W. King St. . . . .	Trump, Wm. H.
	Pittsburgh, 1114 Gladys Ave. . . . .	Clark, C. M.
	Waynesburg. . . . .	Kappes, A. J.
	Wilkinsburg, 1117 Wallace Ave. . . . .	Greis, W. K.
Texas,	Wilkinsburg, 193 Meade St. . . . .	Henderson, Roy
	Dallas, 1610 Commerce Street . . . . .	Sternberg, F. B.
	Galveston, 1917 22nd Street . . . . .	Hughes, K. E.
	San Antonio, 206 Laurel Heights Place . . . . .	McShane, J. B.
Utah,	Murray, Box No. 48, R. D. No. 4 . . . . .	Smith, Edwin
Virginia,	Petersburg, 617 Union Ave. . . . .	Carr, R. J.
Washington,	Seattle, USS Jason, c/o Postmaster . . . . .	Hurwitz, S. B.
Australia,	Melbourne, 44 Elizabeth St. . . . .	Grace, A.
	Victoria, 6 Esplanade Ave. Brighton Beach . . . . .	Melluish, C. A.
Canada,	Toronto, 217 Bowood Ave. . . . .	Hill, A. L.
	Ontario, 9 Gloucester St. . . . .	Mc Aleaney, H.
	Ontario, 805 Davenport Road . . . . .	Parsons, J. B.
England,	Nr. Rugby, Cawston . . . . .	Williams, Frank
	Middlesex, Northolt, Uscbridge . . . . .	Jamieson, J. R.
Japan,	Tokyo, Nippon Broadcasting Bldg. . . . .	Ueno, Shuzo

**Elected to Junior grade**

California,	Artesia, 438 N. Main St. . . . .	Corcoran, George
Connecticut,	Bridgeport, Sylvan Ave. . . . .	Ivanko, J. G.
Idaho,	Sandpoint, 422 Antone Street . . . . .	Johnson, O. E.
Massachusetts,	East Pepperell, R. F. D. No. 1 . . . . .	Hills, E. K.
New York,	Buffalo, 145 High Street . . . . .	Hoffman, Joseph
	Buffalo, 523 Massachusetts Ave. . . . .	Hyman, Irving
	New York City, 600 W. 187th St. . . . .	Kambourian, Haig
	Rochester, 356 Seneca Parkway . . . . .	De Witt, Wm. H.
	Rochester, 148 Colonial Road . . . . .	Nelson, Edward



---

# Fixed *and* Variable Resistance

## —In One!

THAT, briefly tells the story of the Clarostat—a different type of resistor. It provides the *dependability* of fixed resistance with the *convenience* of variable resistance. It covers an enormous resistance range—0-5 megohms in the case of the Universal Range Standard Clarostat—in several turns of the knob, and with a micrometric adjustment. It remains fixed at any value, just so long as it is not touched. Yet it is instantly ready for adjustment to meet altered operating conditions.



*Volume Control Type for Use in Radio Receiving Circuits*

The Clarostat is standard in most radio power units. The Clarostat Volume Control is becoming increasingly popular in radio receivers. The Heavy-Duty Clarostat is being used more and more in the control of line voltage for radio power units. The Power Clarostat is meeting the heaviest demands of A.B.C. radio power units and the largest power amplifiers. There is a Clarostat of proper range and rating for every radio purpose.



*Power Type for use in A-B-C Radio Power Units and Power Amplifiers.*

*However, as with all standards, the Clarostat is being imitated in general appearance, but hardly in performance. Make sure you specify Clarostats. And then see that you get genuine Clarostats—with name stamped on each.*

*Write us for data on all types and ranges of Clarostats, and place your resistance problems up to us.*

AMERICAN MECHANICAL LABORATORIES, INC.



*Specialists in Variable Resistors*

285-87 North Sixth St., BROOKLYN, N. Y.

# —CLAROSTAT—

When writing to advertisers mention of the Proceedings will be mutually helpful.

# COSTS

---

◆ CUTTING MANUFACTURING COSTS ◆

---

# COSTS



## COSTS

Frozen assets. Many a business has sickened of this dread malady, frequently the penalty of over-expansion. Here's one way to forestall this serious trouble. Instead of tying up precious working capital in new plants and machinery, increase production by bringing your problems to Scovill. Scovill is geared with great factories, skilled workmen, modern laboratories and master metallurgists to develop and fabricate in quantity, parts and finished products of metal. Scovill can, in effect, be your factory. Trained service organizations are maintained in the country's important manufacturing areas. You may find it extremely profitable to call the nearest Scovill office.

---

## A SCOVILL SERVICE

---

### THESE ARE SCOVILL PRODUCTS

*Made to Order:* Condensers—Variable and Variable Vernier and parts for same, Metal Stampings, Screw Machine Products, Switches, Decorated Metal Radio Panels, Parts from Brass, Steel and Aluminum. *Carried in Stock:* Butts and Hinges, Continuous Hinges, Machine Screws. *Brass Mill Products:* Sheet, rod, wire, tubing.

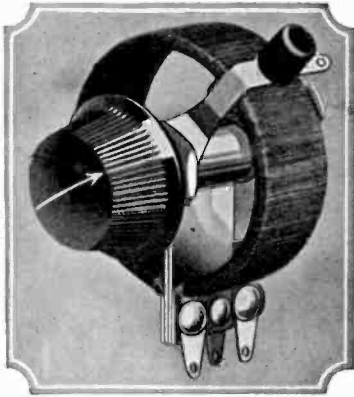
SCOVILL MANUFACTURING COMPANY  
Waterbury Connecticut

New York, Boston, Chicago, Providence, Philadelphia, Cleveland,  
San Francisco, Los Angeles, Atlanta, Cincinnati, Detroit

*Member, Copper and Brass Research Association*



When writing to advertisers mention of the Proceedings will be mutually helpful.



*Greater Efficiency  
and Economy*

*in*

**“B” Eliminator  
Resistances**

**T**HE new Centralab 4th Terminal Potentiometers have two variable contact arms on each unit. Two of these units in series will provide complete voltage regulation for any “B” power supply without additional fixed resistors or variables. One additional unit will provide two “C” bias taps when desired. The economy is apparent in that there are fewer units to buy, and less assembly time to mount them on the panel.

Centralab 4th Terminal Potentiometers are wire wound on a frame of metal and asbestos. They will safely dissipate in excess of 30 watts without break down. This high current carrying capacity makes possible a low total resistance across the “B” supply, giving much better voltage regulation than the high resistances normally used, and sufficient current load on open circuit to substantially lessen the danger of condenser break down.

Fourth Terminal Potentiometers are wire wound in resistance values up to 6000 ohms. The diameter is 2", depth  $\frac{3}{4}$ ". They are recommended as the best and most economical of available “B” power voltage controls.

Where smaller units must be used because of small panel space, there are other Centralab wire wound potentiometers with diameters of  $1\frac{5}{8}$ " and  $1\frac{3}{8}$ " respectively that can be furnished in resistances up to 20,000 ohms, and variable high resistances up to 500,000 ohms.

*Complete information and circuit data  
will be gladly mailed to those interested.*

**Central Radio Laboratories**

16 Keefe Avenue, Milwaukee, Wisconsin

---

---

**Centralab**

---

---

When writing to advertisers mention of the Proceedings will be mutually helpful.



# U N I F O R M

No matter whether you buy a TOBE Condenser in California or New York — whether you buy it this year or next year — the quality will be the same. *All* TOBE Condensers are made of materials selected for their serviceable and *lasting* qualities, by methods perfected over years of experience. *All* TOBE Condensers are made to stand up and work continuously at their rated voltages — *and* do. The trademark (TOBE) takes all the doubt out of condenser performance. For sale wherever good Radio is Sold.



***Tobe Deutschmann Co.***

*Cambridge :: Mass.*

Write us for pamphlet O-11

When writing to advertisers mention of the Proceedings will be mutually helpful.



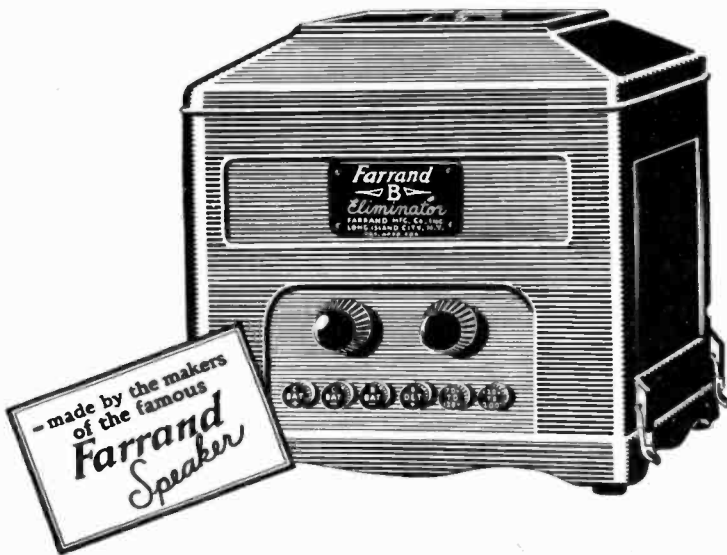
# *Farrand*

---

# B

---

## ELIMINATOR



## KNOWN QUALITY

When writing to advertisers mention of the Proceedings will be mutually helpful.

# PROFESSIONAL ENGINEERING DIRECTORY

For Consultants in Radio and Allied Engineering Fields

**The J. G. White  
Engineering Corporation**  
Engineers—Constructors  
*Builders of New York Radio  
Central*

Industrial, Steam Power, and Gas  
Plants, Steam and Electric Rail-  
roads, Transmission Systems.

43 Exchange Place New York

**Q R V  
RADIO SERVICE, Inc.**

JOHN S. DUNHAM  
J. F. B. MEACHAM

*Devoted to Servicing Broadcast  
Receivers Exclusively*

1400 BROADWAY, NEW YORK  
WISCONSIN 9780

**Free Radio Employment Service**  
Employers in any line of the  
Radio industry (or in allied in-  
dustries) should call on our Free  
Radio Employment Service when  
additional employees are needed.  
Thoroughly trained, experienced men  
supplied anywhere in the U. S. or Can-  
ada on 48 hours notice. No charge for  
service. Send post card today for our  
free monthly bulletin.

Address National Radio Institute  
Dept. I.R.E., Washington, D. C.

**POSITION VACANT—Radio  
Engineer** required by large  
Manufacturer of Broadcast Re-  
ceivers located in Toronto dis-  
trict. Give full particulars of  
education, experience and salary  
expected. Apply Box 234, I.R.E.

**Electrical Testing  
Laboratories**

Electrical, Photometrical,  
Chemical and Mechanical  
Laboratories

**RADIO DEPARTMENT**  
80th St., and East End Ave.  
New York, N. Y.

**J. E. JENKINS and S. E. ADAIR**  
Engineers

**Broadcasting Equipment  
General Radio Telephone  
Engineering**

1500 N. DEARBORN PARKWAY  
CHICAGO, ILLINOIS

**Radio Fundamental Co.**  
Hearst Square  
Chicago

Specializing in radio and allied prob-  
lems—both mathematical and practical.  
Analysis. Criticisms. Economical pro-  
duction. Expert designing. Radio  
power supply. Small and large tube de-  
sign. Also plant construction. Photo  
electric problems. Set design. Trans-  
lations. Patent problems. Cost sys-  
tems, etc. Write us in confidence.

John Minton I. G. Maloff

**JOHN MINTON, Ph.D.**  
Consulting Engineer

for  
Developing — Designing —  
Manufacturing

of  
Radio Receivers, Amplifiers, Transform-  
ers, Rectifiers, Sound Recording and  
Reproducing Apparatus.

Radio and Electro-Acoustical  
Laboratory  
8 Church St. White Plains, N. Y.

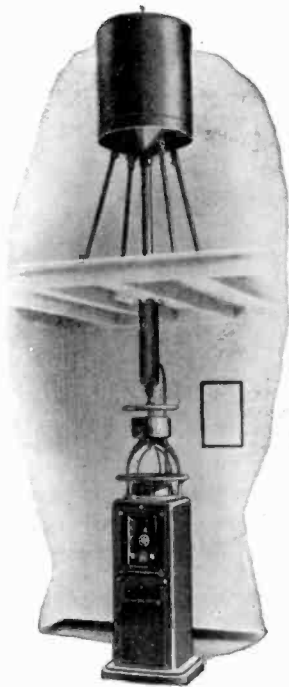
When writing to advertisers mention of the Proceedings will be mutually helpful.

---

---

# The new Kolster Radio Compass provides

Greater Safety—  
Visual Bearings—  
Simple, Positive Operation



From its aluminum pedestal to the new enclosed loop, the new Kolster Radio Compass [Type AM-4490] embodies every improvement radio science has to offer. The insulated cylindrical housing of the loop affords complete protection against wind, ice, snow, and spray. A tiny lamp flashes the signals of nearby stations. While for long-distance bearings, a Kolster eight-tube receiver with a new circuit especially designed for radio compass work provides the maximum of selectivity and sensitiveness.

No knowledge of radio is necessary to operate the Kolster Radio Compass. It is built for the navigator. The positive unidirectional indicator gives instantaneous readings without guesswork or computation. A new and improved Kolster automatic compensator corrects all natural errors, and makes *direct* readings absolutely accurate.

*Kolster Radio is also setting new standards of performance in broadcast receiving sets*

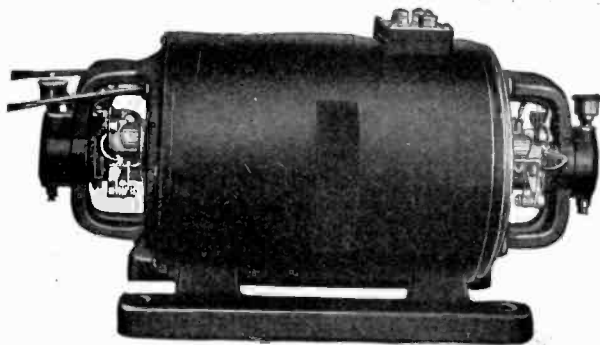
**FEDERAL-BRANDES, INC.**  
200 Mt. Pleasant Avenue  
Newark, N. J.

---

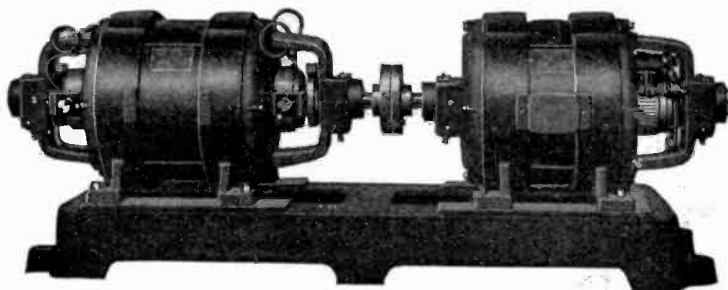
---

When writing to advertisers mention of the Proceedings will be mutually helpful.

*Always specify—*  
"ESCO" Maximum miles per watt  
Power supplies for Transmission.



"ESCO" has developed a line of over 100 standard 2-bearing Motor-generators for plate or filament. These include D.C., A.C., single phase and polyphase motors.



"ESCO" two and three unit sets have become the accepted standards for transmission. The "ESCO" line consists of over 200 combinations. These are covered by Bulletin 237C.

Our engineers are always willing to cooperate in the development of special sets.

"ESCO" is the pioneer in designing, developing and producing Generators, Motor-Generators, Dynamotors and Rotary Converters for all Radio purposes.

*How can "ESCO" Serve You?*

**ELECTRIC SPECIALTY COMPANY**

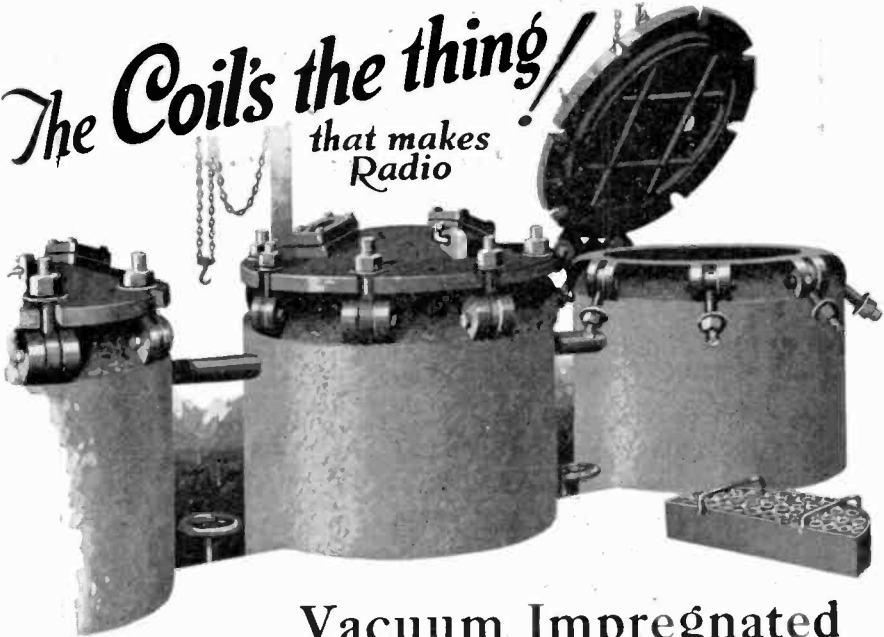
TRADE "ESCO" MARK

300 South Street

Stamford, Conn.

When writing to advertisers mention of the Proceedings will be mutually helpful.

*The Coils the thing!*  
that makes  
Radio



## Vacuum Impregnated To Keep Out Moisture

Moisture is the enemy of every fine coil or winding and Dudlo coils are not only shipped "bone dry," but unusual precautions are taken to see that they stay absolutely dry.

Dudlo coils are kiln-dried to drive out any moisture and then placed in huge vacuum tanks to exhaust all air from the inter-spaces. The waxes and compounds then applied under heavy pressure thoroughly penetrate the windings and prevent, for all time, the absorption of moisture.

The manufacture of Dudlo coils advances by the use of special methods and equipment made possible only by immense production—the largest in the world. The result is a uniformity and dependability of product that causes leading manufacturers to depend exclusively on Dudlo for their coil requirements.



# DUDLO

DUDLO MANUFACTURING CORPORATION, FORT WAYNE, INDIANA  
 56 Earl Street Newark, N. J.    160 North La Salle Street Chicago, Ill.    4153 Bingham Ave. St. Louis, Mo.    274 Brannan St. San Francisco, California

When writing to advertisers mention of the Proceedings will be mutually helpful.

XVII

# *Absolute Insulation*

## **\*PYREX Radio Insulators**

---

WITH \*PYREX Radio Insulators safeguarding it, the full amount of precious radio energy, even from the most distant stations, will be delivered from the antenna to the detector tube without loss. None will leak away and thus impair reception.

\*PYREX Radio Insulators do not leak. They give perfect insulation. Tests have shown that the special glass from which these insulators are made, has the lowest power loss of any known material suitable for antenna insulators, with the exception of pure fused quartz.

Nor can water, smoke or acid fumes corrode their hard smooth and impermeable surface. Moisture cannot penetrate it. Dust and soot do not accumulate upon it.

Wherever the vital importance of perfect insulation is demanded, \*PYREX Radio Insulators are used. By the United States Navy, Coast Guard, Lighthouses and air mail, by the largest broadcasting stations in the United States, they are specified by name.

### **ELECTRICAL PROPERTIES**

Phase Angle Difference,  $0.16^\circ$  (30,000 cycles). Di-electric Constant, 4.48 (30,000 cycles). Volume Resistivity, greater than  $10^{14}$  ohm-c.c. Surface Resistivity, 34% Humidity,  $10^{14}$  ohms. Surface Resistivity, 84% Humidity,  $14 \times 10^8$  ohms.

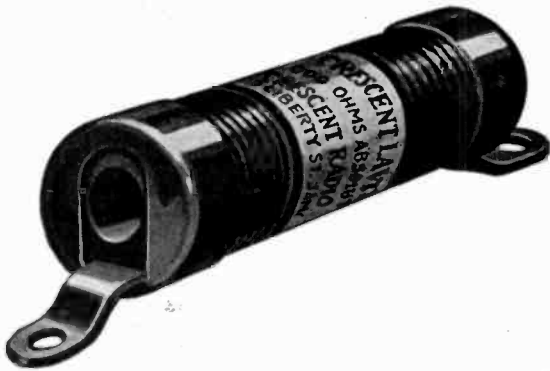
---

## **CORNING GLASS WORKS**

*Industrial Div. Dept. R*

**CORNING, NEW YORK**

\* Trade-mark Reg. U. S. Pat. Off.



**H**ERE is a resistance you can use in a transmitter or receiver on voltages up to 2000. Noninductive and low H.F. capacity.

Absolutely moisture proof, will not change with voltage applied. Each unit will dissipate 10 watts for a short period or 4 watts continuously. When the limited surface is taken into account this is a marvelous performance.

Obtainable in any resistance from 3000 ohms to ten megohms.

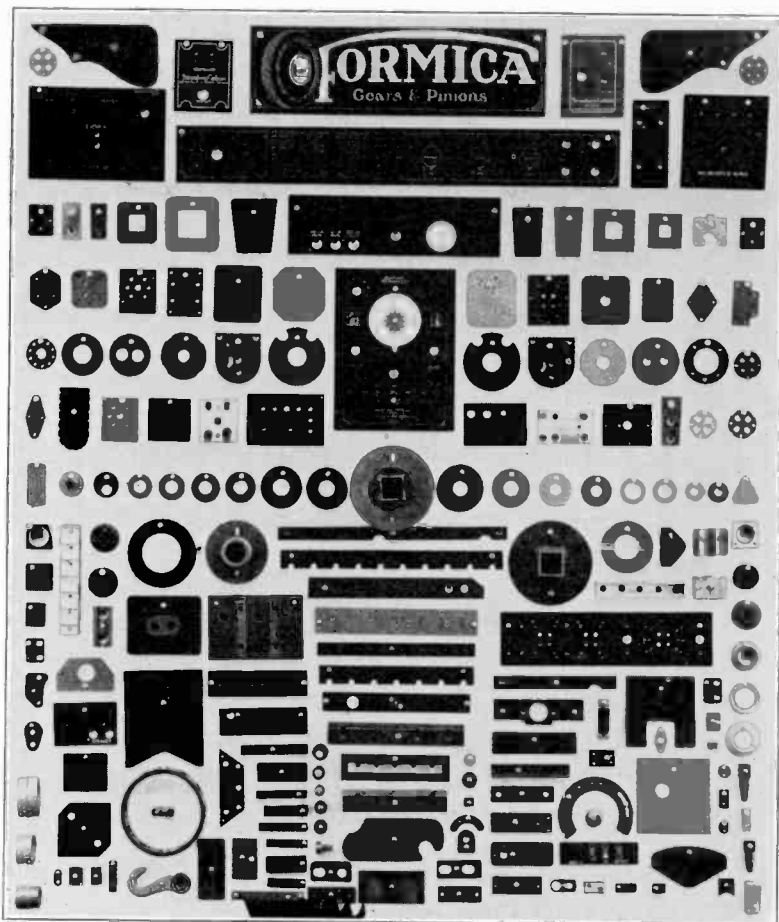
*Write for catalogue*

## Cresradio Corporation

166-32 Jamaica Ave., Jamaica, N. Y.

**CRESCENT  
LAYITE  
RESISTANCES**

When writing to advertisers mention of the Proceedings will be mutually helpful.



## *Formica Parts for Many Purposes*

Formica is provided for all sorts of radio electrical and mechanical purposes in a great variety of shapes and sizes—punched, drilled and machined in a variety of ways. It combines excellent quality as an insulator for high or low frequency work, with mechanical strength, immunity to moisture, absorption and chemical inertness.

**THE FORMICA INSULATION COMPANY**

4646 Spring Grove Avenue, Cincinnati, Ohio

Hear the  
**FORMICA**  
Orchestra Tuesday 9  
to 10 over  
WLW

**FORMICA**  
Made from Anhydrous Bakelite Resins  
**SHEETS TUBES RODS**

Formica has a  
Complete Service  
on Insulating Ma-  
terial for Radio  
Manufacturers

When writing to advertisers mention of the Proceedings will be mutually helpful.

XX



# RADIO RESISTORS

*that do not deteriorate*

## Bradleyunit-A

PERFECT FIXED RESISTOR



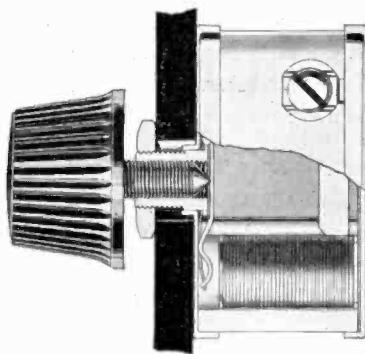
A solid-molded fixed resistor baked under high pressure and accurately calibrated. Unaffected by temperature, moisture or atmospheric changes. Does not age or change in resistance. Can be soldered without affecting accuracy of unit.

## Bradleyunit-B

PERFECT FIXED RESISTOR



Bradleyunit-B is similar to Bradleyunit-A, but is made especially for manufacturers. It is available in an extremely wide range of accurately calibrated resistance values.



## Bradleyohm-E

PERFECT VARIABLE RESISTOR

Used extensively by leading B-eliminator manufacturers for plate voltage control. Provides an extremely wide range of resistance values. Variation occurs only through adjustment. Made in several ranges and capacities.

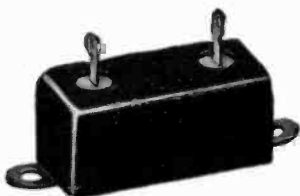
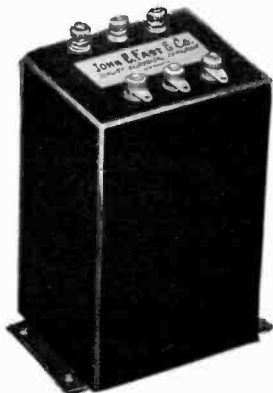
*Write for data and prices*

**Allen-Bradley Co., 282 Greenfield Avenue, Milwaukee, Wisconsin**

# Allen-Bradley

## PERFECT RADIO RESISTORS

When writing to advertisers mention of the Proceedings will be mutually helpful.



## Service to Manufacturers

MILLIONS of Fast condensers are in daily use in radio sets made by leading set manufacturers. They offer conclusive proof as to their extraordinarily high insulation resistance and excellent electrical characteristics. Special one-piece die-press steel housing seals and protects them permanently from climatic conditions or abuse. Built for endurance, long life and reliability.

Manufacturers looking for a dependable source of supply will find here one of the largest organizations of its kind in the world. Specialization keeps our costs low and quality high.

*Send us your specifications.* We make everything in the condenser line.

# JOHN E. FAST & CO.

Established 1919

3982 BARRY AVE., Dept. I.R.E., CHICAGO, ILL.

When writing to advertisers mention of the Proceedings will be mutually helpful.  
XXII



## *Binders for Your Proceedings*



Haven't you often wished for a practical and good-looking binder for your PROCEEDINGS? The binder pictured above is both.

Made of handsome Spanish Grain Fabrikoid—in blue and gold—it is constructed to hold a complete volume (12 issues). No matter where the pages are opened they lie flat and wire straps permit easy transfers if not used as a permanent binder. Space is provided on the back for marking of volume number or your name.

**PRICE \$1.50 EACH** -  
*or \$2.00 each with name stamped in gold*



### **PINS and WATCH CHARMS**

Both 14K gold and enam-  
eled in white, maroon,  
blue or gold



Pin has safety catch and is  
finished on one side.

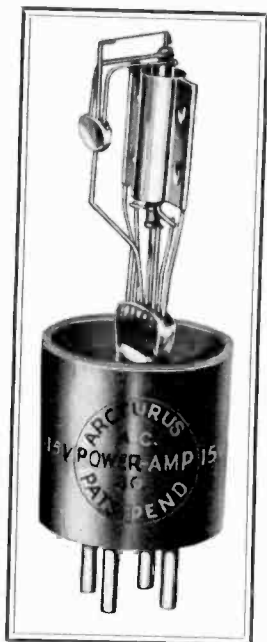
Watch charm has swivel  
suspension ring and is fin-  
ished on both sides.

Price, \$3.00 each, any grade

Price \$5.00 each, any grade

*To obtain Binders, Pins or Watch Charms address the  
Institute office and enclose cash or check with order.*

When writing to advertisers mention of the Proceedings will be mutually helpful.



# Announcing

## ARCTURUS

## A-C TUBES

DETECTOR-AMPLIFIER-POWER

*Now to the convenience and economy of A-C operation is added un-failing quality reception with the reliable Arcturus A-C Tubes.*

All Arcturus tubes are of the heater type, employing a negative temperature co-efficient heater that eliminates disastrous current surges. Unique features make possible un-failing reception of unusual tone quality throughout a life well in excess of 1000 hours.

All leads, heater and elements, are brought down to a standard four prong base. Therefore your present circuit, — *with but a few simple changes in wiring,*—can be adapted for light socket operation with Arcturus A-C Tubes.

*We have prepared engineering and servicing data on these tubes which we shall be pleased to send on request.*

ARCTURUS RADIO COMPANY  
255 Sherman Avenue, Newark, N. J.

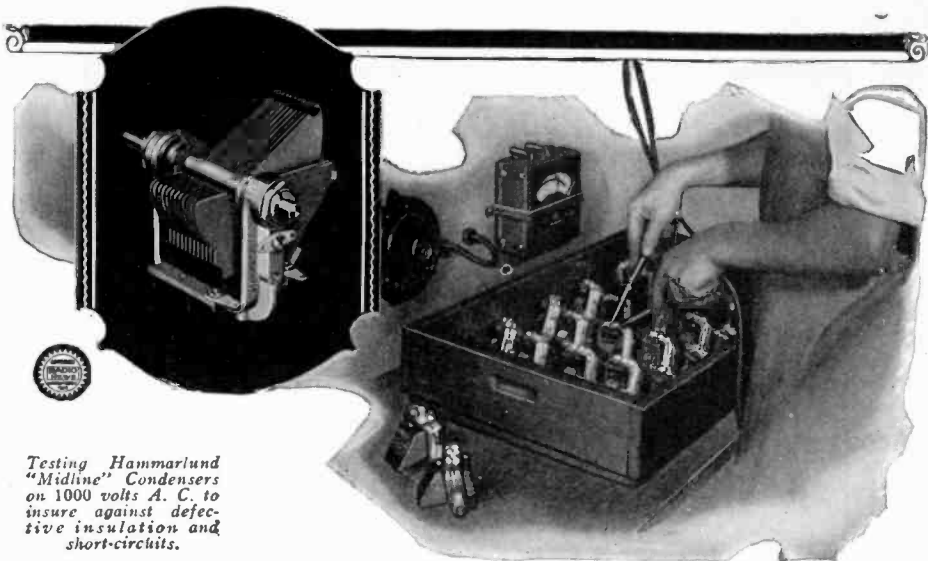
---

When writing to advertisers mention of the Proceedings will be mutually helpful.

## *Alphabetical Index to Advertisements*

<b>A</b>	
Allen-Bradley Co.....	XXI
American Mechanical Laboratories, Inc.....	IX
American Transformer Co.....	III
Arcturus Radio Company.....	XXIV
<b>B</b>	
Bakelite Corporation.....	VII
Burgess Battery Co.....	VI
<b>C</b>	
Central Radio Laboratories.....	XI
Cresradio Corporation.....	XIX
Corning Glass Works.....	XVIII
Cunningham, E. T., Inc.....	Inside Front Cover
<b>D</b>	
Dudlo Manufacturing Corporation.....	XVII
<b>E</b>	
Electric Specialty Co.....	XVI
<b>F</b>	
Farrand Mfg. Co., Inc.....	XIII
Fast, John E. & Co.....	XXII
Federal-Brandes, Inc.....	XV
Formica Insulation Co.....	XX
<b>G</b>	
General Radio Co.....	Back Cover
Grebe, A. H. and Co., Inc.....	V
<b>H</b>	
Hammarlund Manufacturing Co.....	XXVI
<b>I</b>	
I. R. E.....	XXIII
<b>J</b>	
Jewell Electrical Instrument Co.....	IV
<b>P</b>	
Professional Engineering Directory.....	XIV
<b>R</b>	
Radio Corporation of America.....	VIII
Roller-Smith Co.....	II
<b>S</b>	
Scovill Manufacturing Co.....	X
<b>T</b>	
Thordarson.....	Inside Back Cover
Tobe-Deutschmann Co.....	XII
<b>W</b>	
Ward-Leonard Electric Co.....	XXII
Weston Electrical Instrument Corporation.....	X
Wireless Specialty Apparatus Co.....	I

*When writing the advertisers please mention The Proceedings of  
The Institute of Radio Engineers.*



Testing Hammarlund  
"Midline" Condensers  
on 1000 volts A. C. to  
insure against defect-  
ive insulation and  
short-circuits.

## Hammarlund Precision Means Your Protection

**T**HE word "Precision" as applied to Hammarlund Condensers, Coils, Chokes and Shields means precisely what it says.

It means soundness of design, accuracy of manufacture, fineness of finish and scientific testing. Precision has given Hammarlund Products undisputed leadership in their respective fields.

From the very first, Hammarlund has stood for quality and Hammarlund has never deviated from that principle.

But you pay no premium for Hammarlund reputation. Hammarlund Products are standard-priced. You can pay far more and get far less than Hammarlund Products give you.

*Write for the Hammarlund descriptive folder before planning your new receiver.*

HAMMARLUND MANUFACTURING COMPANY  
424-438 W. 33rd Street, New York

*More than a score of radio designers officially specify Hammarlund Precision Products for their latest circuits.*

For Better Radio  
**Hammarlund**  
PRECISION  
PRODUCTS

*Dealer inquiries invited concerning several new and appealing Hammarlund developments having a wide sales demand.*



When writing to advertisers mention of the Proceedings will be mutually helpful.



## Manufacturers of Receiving Sets and Power Units

You will not have to sell the transformers in your apparatus if those transformers are THORDARSON.

For years your customers have been sold on Thordarson Supremacy.

Our adequate manufacturing organization — coupled with the nation's best engineering skill — assures you of securing transformers of a quality not surpassed by *any*.

*Our delivery promises are kept  
Our prices are always right*

# THORDARSON RADIO

*Supreme in Musical Performance*

## TRANSFORMERS

**THORDARSON ELECTRIC MANUFACTURING CO.**

*Transformer specialists since 1895*

**WORLD'S OLDEST AND LARGEST EXCLUSIVE TRANSFORMER MAKERS**

**Chicago, U.S.A.**

3579

When writing to advertisers mention of the Proceedings will be mutually helpful.



# Portable R. F. Oscillator

*with range of 15 to 30,000 meters*



TYPE 384 R. F. OSCILLATOR

The Type 384 oscillator has a wide range of utility in the radio laboratory. It may be used as a source in high frequency measurements of coils and condensers, or for checking radio receivers. It is particularly useful for checking over-all receiver characteristics when combined with the General Radio Type 413 Beat-Frequency Oscillator. By using the Type 384 R. F. Oscillator and Type 413 Beat Frequency Oscillator radio frequency and audio frequency tests may be made simultaneously.

The Type 384 R. F. oscillator covers the range from 15 to 30,000 meters by means of nine plug-in coils.

A single UX-199 tube is used which permits an entirely self-contained instrument. A plate milliammeter is provided to indicate oscillation.

Type 384 R. F. Oscillator, without Coils.....\$80.00

Type 384-D Figure 8 Coil (200-600 meters).....\$ 4.00

Prices on coils covering other ranges on request.

Type 413 B. F. Oscillator.....\$210.00

Licensed under Patent No. 1113149 for experimental laboratory use only where no commercial features are involved.

*Write for Bulletin 6150-1*

General Radio Co., Cambridge, Mass.

# GENERAL RADIO

## LABORATORY EQUIPMENT