

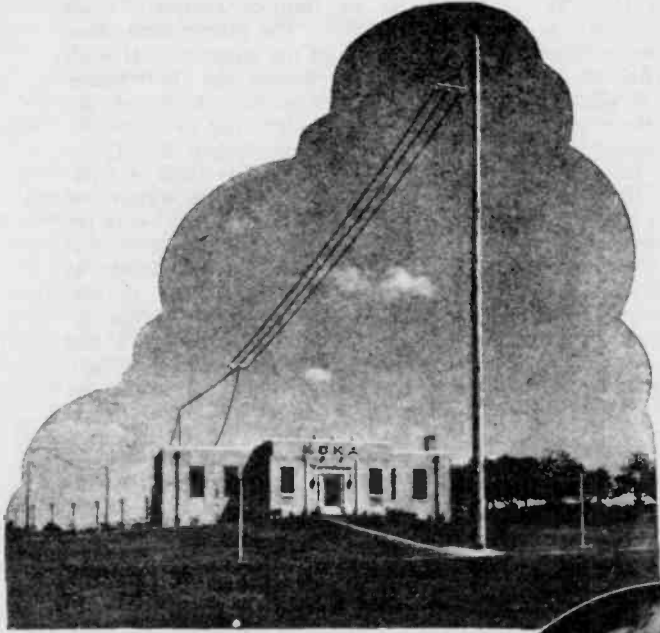
THE HORN SPEAKER

THE NEWSPAPER FOR THE HOBBYIST OF VINTAGE ELECTRONICS AND SOUND

By Albert Pfaltz

RADIO NEWS FOR APRIL, 1931

KDKA



Above is an outside view of the new KDKA transmitters at Saxonburg, Pa. Dr. Frank Conrad—at right—a pioneer broadcaster and assistant chief engineer of the Westinghouse company, who has just been awarded the Edison medal for his contribution to radio broadcasting and short-wave radio transmission



IN the amazing manner of what may some day be known as the "radio decade," our erstwhile pioneer and infant commercial broadcaster, KDKA, has achieved the ripe old age of ten and acquired a 500 horsepower voice. It seems hard to realize that 400,000 watts of power have grown from the feeble, hesitant, 100-watt transmitter that undertook the task of sending news to a few eager listeners on that momentous evening of the Harding presidential election. Since that occasion, November 2, 1920, the station has not missed a single day of broadcasting.

Those gifted with an historic mind or a penchant for first causes may perhaps rejoice that the late war had something to do with the fact that we now listen to Phil Cook, Amos 'n' Andy, or the Philharmonic Symphony. It had—and for the simple reason that the Westinghouse Electric and Manufacturing Company did considerable work in radio during the World War, first for Great Britain and later for the United States. At the end of the conflict, H. P. Davis, vice president, who had been directing war activities of the company, found a large staff of men and considerable equipment on hand. Mr. Davis decided to make use of this personnel and equipment.

Experimental stations 2WE and 2WM were set up, one at the East Pittsburgh plant and the other at the Wilkinsburg home of Dr. Frank Conrad, Asst. Chief Engineer of the Company. Step followed step until it became possible for Dr. Conrad to broadcast entertainment programs from his home each Saturday night. These became so popular with the radio amateurs that one of the Pittsburgh department stores advertised receiving sets that would bring in the Conrad programs.

Seeing this advertisement convinced Mr. Davis that the proper field of radio was unlimited, that it could be a medium of mass communication as well as a means of secret and confidential messages. So plans were made to broadcast regular programs from the Westinghouse plant, instead of from the Conrad home, and to begin this service with the returns of the national election, November 2, 1920.

The company's first broadcasting was from a rough "box" affair on the roof of one of the taller buildings of the plant.

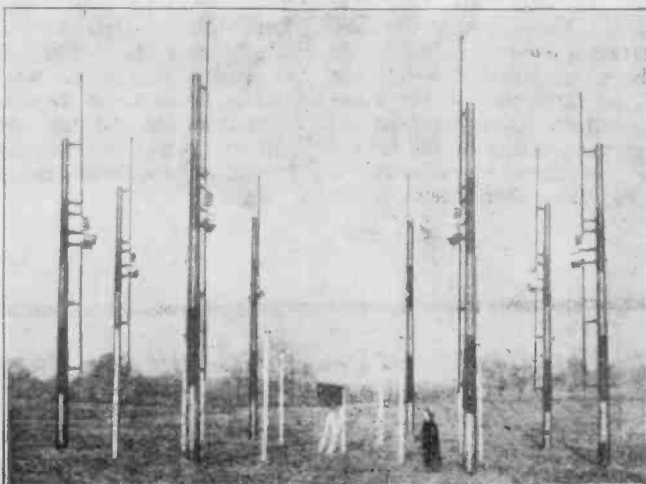
At the right is shown the short-wave antenna system at the Saxonburg site. Through station W8XK programs are regularly sent to listeners in foreign countries

Much of the interesting history of the development of broadcast and entertainment technique by station KDKA is now well known. Thousands of radio listeners, of course, remember that the early program material was drawn largely from phonograph records. They also remember that the KDKA Little Symphony Orchestra was an outstanding feature in those early years of broadcasting. Some may not know that in order to accomplish good sound reproduction it was realized that rooms for that purpose would have to be specially designed and that in the case of the first of the summer broadcasts, it was decided to erect a tent which was used for some months as a broadcast studio. Everything went along satisfactorily during the summer and early fall until one night a high wind blew the tent away. And so the first studio of KDKA passed out and into history. The studio was then moved indoors and the tent "pitched" on the top floor of one of the buildings.

Shortly after that the subject of a specially-constructed studio was again revived and designs were prepared. The elements of the present-day studio in which the ceilings, floors and walls are built of materials, sound absorbing in character, are to be found in the early efforts of KDKA.

Church services, sport events, public addresses, concerts, opera, conventions and scores of other broadcasts followed as new pick-up stations were established, and the wave of popularity that greeted radio during 1921 was greater than anything known in the industrial and commercial world.

In brief, within the last decade radio has progressed from



A W-220 tube is 72 inches in height, has a diameter of 8 inches and weighs 60 pounds. It has a capacity of 200 kilowatts and is water-cooled



At the left is the power stage equipment of the Saxonburg transmitter and from this panel energy goes directly to the huge spray type antenna designed by Dr. Frank Conrad. Two of the new tubes are shown set up in their tube trucks. The large plates at the right and the coil at the top handle the enormous radio frequency energy generated at this point. They compose the tank condenser of this transmitter and are made of aluminum

programs of records to recorded programs, from studio niches, wherein a potted palm tree rubbed elbows with a grand piano, to the "cathedral" studio at N. B. C., from entertainment of sorts to some sort of advertising with good entertainment, from strictly local broadcasting to Little America and return. More than this. Television is no longer lurking around the corner. One might almost say it is larking around the corner. The Radio City in New York is soon to become an actuality. The first step will involve the razing of three whole midtown city blocks. Such is progress.

One of the most important innovations is the new tube with a capacity of 200 kilowatts. This tube is not merely an enlarged edition of a smaller tube, but is thoroughly engineered as a tube of larger size and of a distinctly novel design. The mere building of a larger tube following the style of the smaller type would not produce the results desired. The quality of output and the life of such a tube would not be up to the desired standard.

The new tube, called the AW-220, is 72 inches in height, has a diameter of eight inches and weighs 60 pounds. Two of the new tubes are incorporated in the transmitter.

In its design engineers found one of their greatest problems to be that of cooling the grid. This difficulty has been solved by I. E. Mourmoutseff, company research engineer, who has produced a water cooled tube of great mechanical strength and sturdiness embodying a double end construction.

A modern water softening system has been installed for use in connection with the cooling system for these gigantic vacuum tubes. There is a practical reason for this installation because these giant tubes are expensive and unless properly protected their useful life period is limited. Therefore, anything that can be done to increase their life constitutes a saving in costly replacements.

According to E. B. Landon, chief operator of the transmitting station, the water must be tested frequently to protect the tubes and the cooling system. Ordinary city water cannot be used because it contains lime and other minerals which form harmful scale in the coils.

At the KDKA station this ultra-soft water is pumped to an outdoor cooling pool before going to the cooling coils and the tubes. Hot water coming from the station circulatory system enters the pool through a fountain-like spray. After cooling in the pool, it is pumped through the same circuit again.

An idea of the capacity of the cooling problem may be obtained from the statement that approximately five tons of cooling water must be passed through the water jacket of the tube each hour it is in operation. This water cools the tube in the same manner as water in an automobile cools the motor. One hour's operation of the tube would heat enough water to supply the domestic requirements of the average home for several weeks.

While of course these AW-200 tubes will only be used to generate high frequency power for radio stations, an appreciation of the power capacity of one of these tubes can perhaps best be gained by a comparison with familiar household devices. For example, a similar amount of power of the kind distributed commercially would operate simultaneously four hundred toasters or flat irons. This would also be the equivalent of power required to light one thousand average homes of five to six rooms or the energy to operate two modern street cars.

The antenna system of the new KDKA radio transmitting station, conceived by Dr. Conrad, is designed to make the local signal strength less than it would be for the conventional type of antenna, and to make the distant signal strength greater than for the conventional antenna. This is desirable from the standpoint of both listener and broadcaster; it makes the signal less objectionably loud to local listeners, and yet gives better reception to distant listeners; and it allows the broadcaster to use the radiated energy to better advantage in reaching distant points, since less energy is absorbed by objects in the local area.

The Antenna System

Sixty-two rigid tests were made to find a location which would be adaptable to favorable broadcasting before Saxon-



KDKA's famous symphony orchestra, which is nationally known for its regular broadcasts

burg was definitely selected. These tests were made to determine the proper altitude with no interference from metal construction, free from trees so as to prevent undue interference and ample area for erection of the necessary structures and antennas.

The site at the new transmitter occupies 130 acres. The long-wave antenna over which KDKA broadcasts consists of a circular arrangement of poles surrounding about eight acres. The poles are 100 feet above the ground and painted, according to law, yellow and black. Aerial hazard beacons also have been erected to serve as a warning to aviators.

A much smaller space is required for the short-wave transmitter of W8XK. It is through the short-wave station that programs are sent great distances for reception in far away lands.

The functioning of this antenna is based on the fact that local reception is due to radiation horizontally outward from the antenna that is, the ground wave; whereas distant reception depends considerably on radiation initially at an angle of elevation, due to the wave front descending as it moves outward from the antenna, and to reflections from the Heaviside layer. The descent of the wave front as it travels outward is due to the fact that the waves travel slower at the surfaces of the earth than in the upper atmosphere; and the reflections from the Heaviside layer are caused by the ionized condition of the layer which makes it conducting, i.e., like a short-circuit on the

end of a transmission line, except that the lines of force are not guided by wires, and hence follow the ordinary law of equal angle of incidence and reflection. There is really no line of demarcation between the ground wave and the upward radiation, conveniently called the sky wave. The part of the wave which reaches the receiving antenna by moving out horizontally from the antenna or by the descent of the wave front, is what is usually meant by the ground wave, and the part which reaches the receiving antenna by reflection downward from the ionized layer, the sky wave. Since the ground wave is attenuated with comparative rapidity, the distant signals are carried largely by the sky wave, and if the ratio of horizontal radiation to sky-wave radiation can be decreased, the desired ratio of local or distant signal strength should be attained.

This decreased ratio of ground to sky-wave radiation is obtained in the new

tions. In contrast to this the new KDKA antenna has eight wood poles about 100 feet high, spaced on a circuit more than 700 feet in diameter and having a vertical down lead at each of the poles, the cage top being suspended between adjacent poles to form a complete circle around the poles. The proper time phase of the currents in the eight vertical leads is obtained by running the transmission line to the center of the system and running individual feeder lines to each pole.

Since the factors governing radio transmission are so many and variable that satisfactory formulas, applicable winter and summer, have not been developed even for the simplest antenna, it cannot be expected that reception will be exactly as calculated. It is possible that in certain localities absorption and minor reflections will entirely over-balance the effect produced by the antenna design. Also while transmission by means of the sky-wave works well at night, it is usually not satisfactory in the daytime. Therefore, for daytime transmission it would be preferable to get the opposite of the effect described above, and to broadcast to a more limited area by means of the ground wave. The opposite effect, suppression of sky-wave and reinforcement of ground wave, can be produced by making currents in opposite poles at 180° out of phase, so that adjacent poles are 45° out of phase. The difference in phase can be obtained by making the feeder lines of different lengths or by artificial lines. Thus, when conditions are not favorable for transmission by reflections of the sky-wave, it is possible to change over by simply changing the feeder line connections, to an antenna arrangement suitable for ground-wave transmission.

KDKA antenna by using an arrangement and spacing of vertical antennas fed with currents in time phase, such that interference between waves from the various antennas reduces the horizontal field strength in comparison to the field strength at an angle of elevation. The interference of the arrangement of vertical antennas will make the horizontal radiation much less than for a single antenna with the same total current; and will make radiation at an upward angle decreasingly less as the angle is increased, so that at high angles the radiation is only slightly less than for a single pole. This great decrease in horizontal radiation will decrease the radiation resistance of the antenna system, and so will cause the current to increase until the total power radiated is the same. This will make the upward radiation greater, and the horizontal radiation less than for a single antenna with the same power radiation.

In its physical arrangement the new KDKA antenna differs considerably from usual transmitting antennas. The usual antenna has 2 or more fabricated steel towers several hundred feet high, with a concentrated flat top suspended between them, and a single vertical down lead usually near the center. To cut down absorption losses, the steel towers are usually detuned and kept as far as possible from the flat top and down lead, and are sometimes insulated from the ground or even broken into insulated sec-

EXCELLO RADIO



MIDGET

Quadruple Screen Grid
with Tone Control

An ideal set that will meet the most exacting conditions and has every modern feature to insure fine performance.

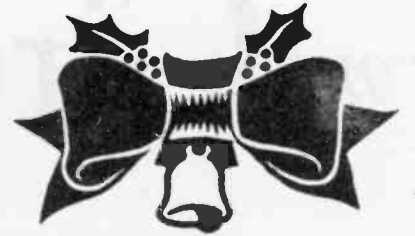
1981

POSTAL IDENTIFICATION STATE-
MENT The Horn Speaker (USPS
956120) is published monthly,
except July and August by Jim
Cranshaw, N5PSL, 9820 Silver

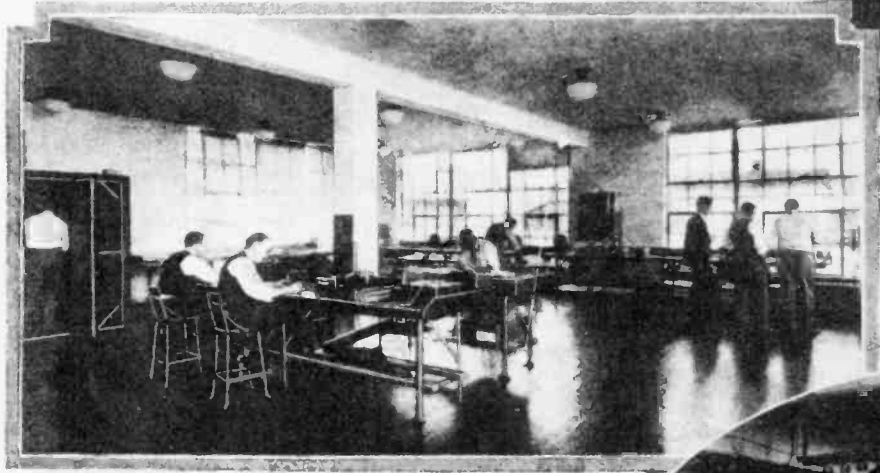
Meadow Drive, Dallas, Texas
75217. Subscription rates are
\$8.50 per year, \$15.00 for two
years. Second class postage
paid at Dallas, Texas. POST-

MASTER: SEND ADDRESS CHANGES TO
MAIL ADDRESS: THE HORN SPEAKER,
P. O. BOX 53012, DALLAS, TX
75253-0012.
(ISSN 2537-1430)

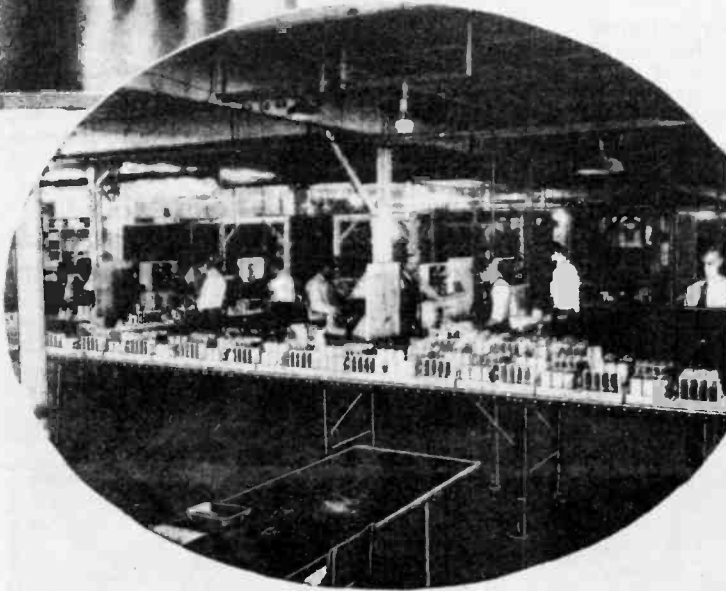
William J. Frisbie, for four years
Factory Superintendent with Silver-
Marshall, Inc. The present plant was
laid out to his specifications



Mailbox



Above, part of the research laboratory at the factory, where the all-famous S.-M. circuits are developed. From here they go downstairs to the factory laboratory, where working models are designed. From the production lines, which are pictured at the right, the completed receivers go over a conveyor system through the test booths, where the tuning condensers are aligned and the receivers are tested for sensitivity



Dear Jim -

Glad to see my letter on the Edison battery oil in print. (The paper quality is great as is.) Recently found a bottle of the Edison battery oil FULL, with a cap like used on beer or sodas, in Vermont while on vacation. Oil looks heavy, but perhaps is condensed.

Can anyone in H. S. land tell me anything about my recently acquired "GLOBE NAVIGATOR RADIO"? It's a 12" globe pivoted on 2 posts on a wooden base which also mounts the pilot lite and on-off volume control. A cable connects to the five tube AC-DC radio in the globe which uses 12A8, 12K7, 12Q7, 35L6 and 35Z5. Rotating the globe tunes the stations. Can't find manufacturer and/or schematic and info. Model is TSG 4A. One of a kind and well on its way to being completely restored.

My pride and joy is a Sparton Bluebird Blue Vaseline glass mirrored radio. Very art deco with 3 chrome strips across the 15" diameter mirror. Dial in center with chrome knobs and speaker behind dial. Model is 566. Any others out there? What value should I place on it for insurance purposes? Thanks for any help.

Stan Lopes
1201-74 Monument Blvd.
Concord, CA 94520
(415) 825-6865

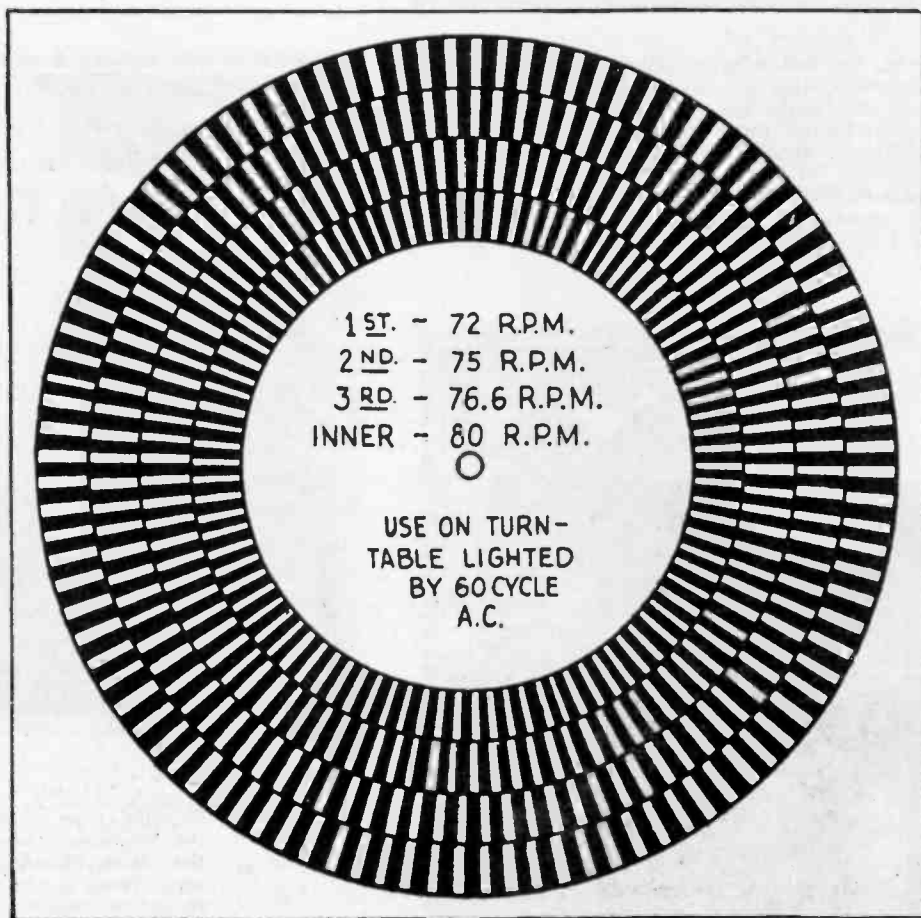


Fig. 2

A quadruple stroboscope suitable for home recording. If the speed of the turntable is, for instance, 76.6 R.P.M., then the two outer scales will seem to rotate in one direction and the inner scale in the other.

CLASSIFIED

AD RATE: 10 cents per word
20¢ per word for nonsubscribers
Photo ads: \$5.00 extra
DEADLINE: 20th of the preceding month
List ads - 35 cents per line
AD SPACE:
Full page.....\$65.00
Half page.....\$35.00
Quarter page...\$20.00
Multiple runs....20% discount

Five Minutes of Radio for a Nickel

Radio News for April, 1926

By JOSEPH RILEY

ONE of the favorite pastimes of the American people is dropping coins in a slot. There are the familiar weighing machines in every railroad station, which for the sum of one cent will indicate your correct weight. There are machines scattered all over the country that dispense chewing gum, candy and other eatables for the same amount. If your boots need shining, there is no need to wait for the shoe-shine artist; go to the nearest shine machine and place your shoes in its care. Not to be behind the trend of the times, the radio slot machine has made its appearance. If you forget to bring your pocket portable receiver with you, and there is a program on the air that you are particularly anxious to hear, just walk into a store that has one of these radio receiver slot machines, drop a nickel in the slot, set the two dials of the set—and your station will be heard from the loud speaker in the top of the machine.

HOW IT OPERATES

This slot machine made its appearance recently in Philadelphia and consists of a five-tube radio frequency receiver, having one stage tuned R.F., one stage of fixed R.F., detector and two stages of audio frequency amplification. There is also a timing mechanism which limits the reception to five minutes. On the side of the machine next to the slot in which the nickels are deposited, is a table showing the times when stations are broadcasting and also the necessary dial settings of the receiver.

The small knob below the slot is turned after the nickel is deposited. This starts the motor which operates the timing mechanism. After four minutes of music a red electric lamp lights in the front of the cabinet, warning the listener that if he wishes to continue the reception beyond the period of another minute another nickel must be dropped in the slot. This must be repeated every five minutes. The opening of the loud speaker horn is behind the grill work above the dials of the receiver, and the timing mechanism is under it.

Before long, it is possible these machines

will be as common a sight as the many different types of vending machines that are familiar to everybody today and then the

American boy and girl will have another slogan. "Papa, gimme a nickel I wanta bear some radio music!"



When a nickel is dropped in the slot, your favorite radio station can be tuned-in by the two dials on the front of the cabinet.

© Wide World Photos.

Ads

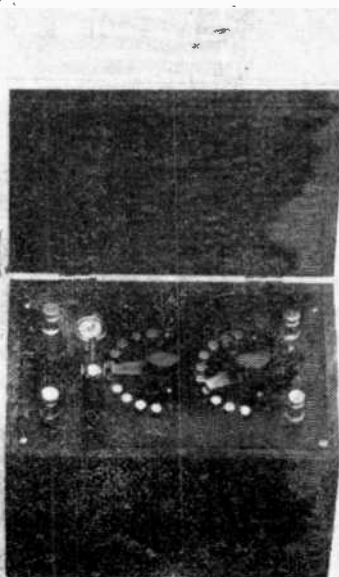
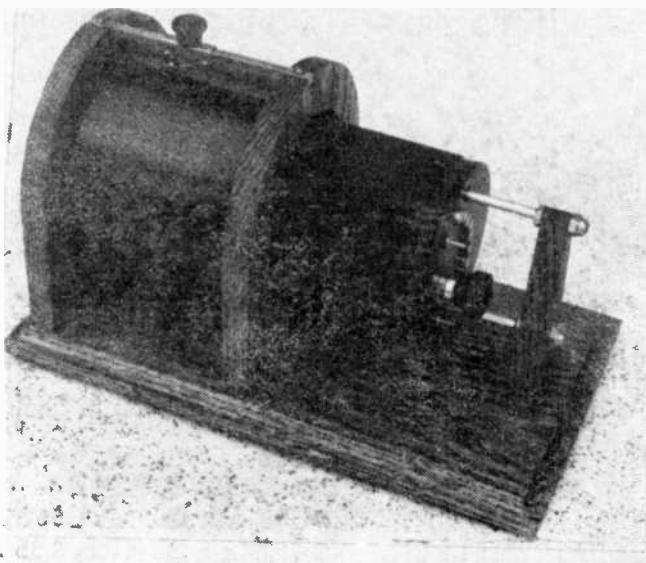
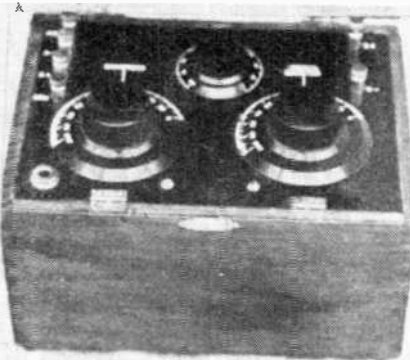
REPRO CRYSTAL SETS, LOOSE COUPLERS, ONE TUBE REGENS OF THE EARLY 20s. SASE FOR PHOTOS AND DETAILS. BOB, W6ME, 4178 CHASIN STREET, OCEANSIDE, CA, 92056.

SELLING RADIO COLLECTION. Send S.A.S.F. for list of radio magazines and books. D. Harrison, 714 N. Hague Avenue, Columbus, OH 43204. Phone (614) 279-4619. NO - collect calls please.

USED TUBES, NEW AND USED RADIO AND TV PARTS, SEND S.A.S.F. FOR LISTS. ELMER NELSON, 11 S. CHURCH STREET, PRINCETON, IL 61356.

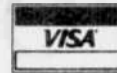
DX CRYSTAL, ONE TUBE sets, kits, plans, handbooks, coils, supplies. Obsolete tube quotations. Catalog \$1.00; none free. Laboratories, 1477-H, Garden Grove, CA 92642.

TUBES FOR EARLY ELECTRIC RADIOS. SASE FOR FREE PRICE LIST. SAM FAUST, CHANGewater, NJ 07831



PUETT ELECTRONICS

P.O. BOX 28572 DALLAS TX 75228



Christmas



WE ARE OVERSTOCKED ON THE FOLLOWING BOOKS. YOU MAY PURCHASE THE FOLLOWING AT DRASTIC REDUCTIONS IF YOUR ORDER IS RECEIVED BY 31 DECEMBER 1983:

CATALOG NO.	TITLE	REGULAR PRICE	SALE PRICE
SG	SILVER GHOSTS	\$10.95	\$3.95
CRCH	THE CLASSIC RADIO COLLECTORS HANDBOOK	\$8.95	\$4.95
AAR	THE APPRAISAL OF ANTIQUE RADIOS	\$7.95	\$3.95
E2	THE ENCYCLOPEDIA OF ANTIQUE RADIO VOLUME 2 (V2 only)	\$9.95	\$2.95
R1 & R2	THE ANTIQUE RADIO RESTORATION HANDBOOK (VOLUME 1 OR 2)	\$4.95	\$2.95 EA.



THESE BOOKS MAKE EXCELLENT CHRISTMAS GIFTS. ORDER AN EXTRA COPY TODAY!

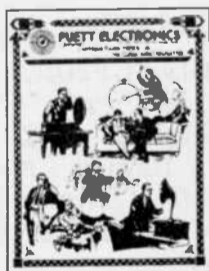


OLD TIME RADIO SHOWS

OUR OLD TIME RADIO PROGRAM CASSETTES ARE REGULARLY \$4.50 EACH.

YOU MAY PURCHASE O.T.R. CASSETTES AT \$3.00 EACH IF YOUR ORDER IS RECEIVED BY 31 DECEMBER 1983!!!

SPECIAL OFFER - 4 CASSETTES - INCLUDING AMOS N' ANDY, FIBBER MCGEE & MOLLY, CHARLIE MCCARTHY, SUSPENSE, INNER SANCTUM, THE SHADOW, I LOVE A MYSTERY, AND THE LONE RANGER (\$2.50 PER CASSETTE) -- \$10.00 PPD!!!



ANTIQUE RADIO TOPICS @ THE CLASSIC RADIO NEWSLETTER

BEGIN OR RENEW YOUR SUBSCRIPTION AT A \$3.00 SAVING!!! ONLY \$12.00 IF YOUR ORDER IS RECEIVED BY 31 DECEMBER 1983!!!!

ALL SUBSCRIBERS PURCHASE FROM PUETT ELECTRONICS AT A 15% DISCOUNT. THE SUBSCRIPTION ALSO INCLUDES SIX OTHER SPECIAL ITEMS (SEE CATALOG FOR DETAILS). YOU GET OUR NEW DIRECTORY OF ANTIQUE RADIO SERVICES FREE - A \$4.95 VALUE!!!!

GET THIS
WORLD'S GREATEST RADIO CATALOG

1984 CATALOG NO. 22

\$2.00 POSTPAID

CATALOG NO. 21 IS NOT OBSOLETE. ALL PRICES THEREIN REMAIN THE SAME!!!

OUR NEW CATALOG NO. 22 CONSISTS OF 40 PAGES AND INCLUDES EVERYTHING WE OFFER. YOU RECEIVE TWO PUETT ELECTRONICS "BUCKS" WORTH \$2.00 WITH YOUR NEW 1984 CATALOG. ORDER YOUR COPY TODAY!!!!!!!



Nothing hurts like being forgotten

Visit a Hospitalized Vet

During the Week of

Feb. 14

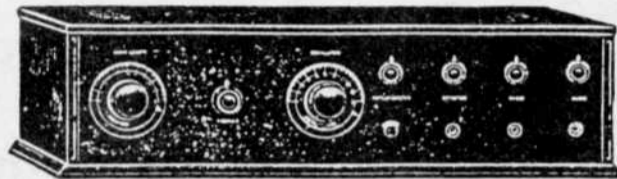


contact your Veterans Administration Hospital

A Public Service of this Publication and the Veterans Administration

THE OLDE TYME RADIO COMPANY

2445 LYTTONSVILLE ROAD SILVER SPRING MD 20910



NEED HARD TO FIND OLDE TYME RADIO PARTS SUCH AS:

- | | |
|-----------------------------|----------------------------|
| *Vintage Tubes | *Headphones |
| *AK Style Battery Cable | *Headphone & Speaker Cords |
| *OLDE Tyme Hookup Wire | *Ant., RF, Osc, & IF Coils |
| *Brown Silk Type Power Cord | *Speaker Grill Cloth |
| *Audio Transformers | *Pilot Lamps |
| *Power Transformers | *Xtal Set Parts |

AND MUCH, MUCH MORE. ALSO, AS A CONVENIENCE TO YOU, WE CAN EVEN PROVIDE COPIES OF THOSE EVER POPULAR BOOKS "VINTAGE RADIO" & "FLICK OF THE SWITCH" IN SOFT COVERS. SCHEMATICS OF MANY VINTAGE RADIO AND TV SETS ARE ALSO AVAILABLE. FOR FREE FLYER SEND SASE TO OLDE TYME RADIO COMPANY, 2445 LYTTONSVILLE ROAD, SILVER SPRING, MD 20910.

WISH TO REACH US BY PHONE? THE NUMBER IS 301-585-8776. PLEASE CALL BETWEEN 7:00 and 11:00 PM LOCAL TIME ANY DAY OF THE WEEK.

 HOMEBREWERS- 1/8" GLOSSY BLACK BAKELITE PANELS ANY SIZE. TWO 20 CENT STAMPS FOR SAMPLE. BOB. W6ME, 4178 CHASIN STREET. OCEANSIDE, CA 92056. PS NEED TUNING CONDENSERS FOR NATIONAL SW-5.

 CATHEDRAL: 1. PHILCO 20; mint condition, plays good \$90.00 -- 2. GLORITONE 26; mint condition, plays extremely good \$90.00 -- 3. PHILCO 60; excellent original condition \$65.00 -- 4. PHILCO 84; excellent, plays weak \$65.00 -- 5. PHILCO 81 Jr.; poor condition, plays good \$35.00 -- 6. PHILCO 50; mint condition, plays good \$80.00 -- 7. PHILCO 51; mint condition, plays good \$80.00 -- 8. RCA 86; 1931, excellent condition, re-finished, plays good \$60.00 -- 9. GENERAL ELECTRIC E-61; excellent condition, plays weak \$50.00 -- 10. SILVERTONE 1660 U; 1932, mint condition, plays good \$75.00 -- 11. PHILCO 90 REPLICA; excellent \$25.00 *****
 ELECTRIC SETS ::: 12. ZENITH

6-S-27; nice end table, mint condition, plays excellent, \$75.00 -- 13. ZENITH 6-S-128; similar #12, very good condition, plays excellent \$55.00 -- 14. ZENITH 6J230; nice striped veneer, black dial, excellent condition, plays excellent \$50.00 -- 15. ZENITH 50-50; good condition, plays weak \$35.00 -- 16. ZENITH TRANSOCEANIC; 8 tubes, excellent condition, with book \$30.00 -- 17. ATWATER KENT 40; excellent condition, plays \$48.00 -- *18. STROMBERG-CARLSON 601; treasure chest style, mint condition, 1926, complete with external loop (mint), power supply, 01A tubes, voltmeter, plays excellent \$180.00 -- 19. RCA T-7-5; fair-good condition, plays excellent \$20.00 -- 20. PHILCO 37-630; excellent condition, speaker missing \$15.00 -- 21. AIRCASTLE 14-196; mint condition, new eye tube, large lack dial, beautiful \$48.00 -- 22.5. RADIOLA 17; excellent condition, w/100A speaker, working \$85.00 ***** BATTERY SETS :::::

22. CROSLY TRIDYN REGULAR; mint condition, with tubes \$85.00 -- 23. RADIOLA TIIA; mint condition, no tubes \$120.00 -- 24. RADIOLA 20; excellent condition, with tubes, plays \$125.00 -- 25. AMBAS-SADOR; early 3 tube regenerative, marble colored panel, excellent, \$45.00 -- 26. CROSLY XJ; excellent condition, no tubes \$90.00 -- 27. ATWATER KENT 33; very good, no tubes, \$55.00 -- 28. MICHIGAN NRC-1; 1 tube regenerative, mint condition, \$250.00 ***** SPEAKERS, all work ::::: 29. PEER-LESS; excellent \$30.00 -- 30. RCA GLOBE 100; excellent \$25.00 -- 31. CROSLY F; excellent \$28.00 -- 32. TEMPLE; excellent \$25.00 -- 33. RCA UZ-1325; horn, excellent \$75.00 -- 34. ATLAS horn; excellent \$75.00 -- 35. MUZETTE horn; excellent \$70.00 ===== List changes daily. Phone (412) 656-0338. Or write: Jerry Finamore, 501 Miller Avenue, New Castle, Pennsylvania 16101 *****
 AK speaker model L \$100, AK



**Radiofest
'84
The National Conference
of
The Antique Radio Club Of America
June 21-22-23, 1984
at
The Holiday Inn - Elgin, IL.**

345 River Rd.

Featuring...

A Grand Tour of Dr. Ralph Muchow's
Fantastic Radio Museum

For Motel Reservations - Contact:

The Holiday Inn - 312-695-5000

For Convention information - Call or write:

Joe Willis

P.O. Box 14732

Chicago, IL. 60614

312-871-3928

model 35 \$100, Philco Jr., works, cabinet scratched up \$45, Philco 39-70 \$45, Nazi Volksempfänger, crack on side \$100, Croyden - Australian radio \$60, shipping extra on above. Super Zenith model VIII \$100 - will deliver in Southwest. Various radio fan magazines from 1930s and 40s, \$10 each. 2 original Abbott and Costello radio scripts, 1 Fred Allen \$35 each H. Pike, 314 Enrico, Sierra Vista, AZ 85635

FOR SALE AK'S 21, 49, 559 RADIOLA'S 24, 28. OTHER SETS, PARTS, TUBES. 1920 Z-NITH. (CHICAGO RADIO LABS) FOR TRADE. RAYMOND THOMPSON, 7422 CHERRY TREE DRIVE, FULTON, MARYLAND 20759

FIRESIDE WIRELESS SPECIAL LIST
--- Fireside has recently acquired a private collection. The condition of most of these sets is almost unbelievable. Some of the sets look as though

they have never been sold, but stashed away since the 1920's. Therefore, pay special attention to the condition listing of each piece: MINT- Chassis like brand new. Cabinet probably the same (a few cabinets may have a few scratches or something, but nothing couldn't be made perfect very easily). EXCELLENT- Probably would have called these mint or near mint if the other pieces were not so perfect. VERY GOOD- Very nice piece. Easily restored or made excellent. GOOD- Average condition. Restorable without too problem. FAIR- Needs some work, but nothing is missing. *Prices do not include shipping. LT- means less tubes, WT- means with tubes. Make money order or cashiers check to Gary Hill. *Items over \$100 are satisfaction guaranteed for 10 days. If not satisfied return within 10 days for full refund minus all shipping charges. *Calling to reserve sets ahead of time

is encouraged: Fireside Wireless, 1507 Ridge Avenue, New Castle, PA 16101 (412) 654-9335
----- 1. Paragon RD5 Mint LT/\$300 WT/\$340 -- 2. RB5 Exc. LT/\$200 WT/\$240 -- 3. Crosley Trirdyn 3R3 3 tube set. Exc to Mint LT/\$100 WT/\$115 -- 4. Freshman Masterpiece Exc. LT/\$75 WT/\$100 5. AK 20 (Big box) Chassis and cabinet Mint (Front panel has some scratches but still nice) LT/\$95 WT/\$120 6. Paige 6 6 tube set. Mint LT/\$85 WT/\$115 7. Crosley RFL 60 Mint 5 tube set with fancy decorated panel. LT/\$90 WT/\$115 8. Freed Eismann FE 15 5 tube set. Mint LT/\$125 WT/\$150 9. Freed Eismann NR7 6 tube set. Exc. LT/\$95 WT/\$125 10. Freed Eismann NR-45 Large set with door on front. Exc. LT/\$125 WT/\$150 11. Radiola 26 Mint LT/\$200 WT/\$250 12. A.C. Dayton XL5 5 tube set. Mint LT/\$125 WT/\$150 13. Silvertone Neutrodyne 5 tube set. Mint (Even has instruction book.) LT/\$95

WT\$120 14. Clarion 5 tube set. Mint LT/\$85 WT\$110 15. Radiola 20 Exc. LT/\$115 16. Crystal Set Very nice. Probably home made. Don't know much about this piece. Comes with head phones, crystals and detector mounted in wooden box with other components (coils). Looks very early. Exc. \$75 17. Signal 5 tube set. Exc. to Mint. LT/\$65 WT/\$90 18. Grebe CK5 1 tube set. Mint. \$300 19. Majestic Treasure Chest. Cute AC novelty set. Cabinet is a treasure set, speaker is in lid. \$150 20. Radiola RS (I think) 1 tube (w/ll brass base) Mint- LT/\$130 WT/\$180 (tube is new) 21. AK 21Cc Similar to AK 30C but takes 199's Mint. (Like brand new. Not even a scratch or bit of dust.) LT\$165 WT/\$200 22. Crosley 51 2 tube set. Good to very Good. LT/\$75 23. Western Electric 7A amp. Exc. Lt/\$70 24. Clarion Flat Top Small AC Tombstone. Very Good. WT/\$40 25. Philco 50-1400 TV 1940's set. Mint with original book and schematics but not working. WT/\$50 26. Enjay Flat Top Bat. Op. set in Good to Very Good condition. WT/\$25 27. Philco 90 Cathedral Very good and working. \$200 28. German AC set. 1940's or early 50's. Exc. and working. \$29-29. Radiola 17 Early AC set. Very good to Exc. and working. Comes with RCA 100B speaker. Speaker is in fair condition (needs grille cloth on one side) WT/\$80 30. Floor cabinet with built in 110V speaker for #29 above in Mint condition. \$45 (or take #29 & 30 for \$105) 31. AK 40 with Peerless speaker (square) Fair WT/\$45 32. Silvertone tombstone Bat. Op. set. Good condition. WT/\$30 33. RCA R5 Cathedral. Cabinet Mint. Chassis untried (no cord). WT/\$75 34 Freshman Masterpiece 5 tube set. (This is slant front cabinet and is different from the model listed earlier in list.) Cabinet and chassis exc. Front panel needs paint job. LT/\$50 WT/\$75 35. All-American Monawk 5 tube set. Mint. LT/\$80 WT/\$105 36. Gloritone Cathedral Exc. and working WT/\$80 37. Thompson Horn Very Good to Exc. but not working. \$40 38. Trimm Horn Small horn in Mint condition. Works \$65 39. Magnavox M1 Horn Mint condition. (Just like new) \$80 40. Nathaniel Baldwin Horn Good to Very Good \$50 41. Bosch Cathedral Speaker Mint+ \$60 42. Peerless Cathedral Speaker Mint \$55 43. AK Model E3 speaker

Exc. to Mint \$40 44. Harold Model B Horn Very Good \$40 45. Orchestron Delux Horn All wood and georgeous. Mint Extremely fancy. \$160 46. Brunswick Cathedral Speaker Good to Very Good \$30 47. 100B Speaker Fair \$12 48. Philco 39-6015 Flat Top Bat. Op. set. Good WT/\$20 49. Simpson Volt Meter 50. Western Electric Antique Volt and Ohm meter. Mint \$75 51. Homemade B-Battery Elim. Works \$15 52. Early Quack Medical Device Looks like crystal set. Has coil mounted in wooden box. Probably 1920's vintage. Has strange pamphlet describing gold finding device. \$35 53. Antique Tooting Machine and all accessories. This is a real nice piece of equipment. Looks like 1920's vintage. \$150 54. Freed Eisemann NR5 Mint LT/\$175 WT/\$200 -- TUBES -- 01A's Used \$5 -- New. with Brass Base \$12 199's \$10 -- Others. Write for quote. *Color photos of any set are available for \$1.00 and a stamped self addressed envelope. To stay on mailing list, send long S.A.S.E. as soon as possible. --- Fireside Wireless, 1507 Ridge Avenue, New Castle, PA 16101 (412) 654-9335 *****
 ANTIQUE RADIOS, TUBES AND CYLINDER RECORDS. SASE TO ARTHUR HARRISON, 1021 FALCON DRIVE, COLUMBIA, MISSOURI 65201 *****
 FOR SALE, RADIOS, FEDERAL TABLE, B20 - Kennedy, console, 20B. - Kolster, K6 cone speaker (beautiful) Musicaire, table, 811T- 1 1/2 V Batt. Zenith, portable, H503Y-, Whse- table H104A, - , Air King table 20C1. All in good working cond. 40 good used, old type radio tubes, all tested. If interested send for list. Herb DeGarmo, 203 3rd St., Early, IA 50535. *****
 SILVER MARSHALL LABORATORY SUPER using 01A's and 22's. exc., working with tubes \$150 -- RCA T4-8A midget cathedral, works \$65 -- Browning Drake kit with 3 stage Daven amp., cab. rough \$50 -- AK 20 big box GD \$50 -- Aero S.W. kit with nice plug in coils in original box \$35 -- RCA 140 giant tombstone 3 band set with extra RF amp. for S.W., works \$85 -- Homebrew with Amrad var. plus Fed. cond. \$30 -- Philco III, chassis, speaker works, tubes \$25 -- Kolster SP- unit using PP250's, has tubes, not tested \$25 -- Correct Philco decals available. (617) 655-2056 6-9 p.m.

EST, Richard C. Foster, 12 Shawmut Avenue, Cochituate, MA 01778. Shipping extra.

 ATTENTION HAM RADIO OPERATORS, Hammarlund HQ-170AC, exc. condition, works perfect. Also included, like new Telex headset. \$90.00 Ron Burtzos, 915 Crane Drive, DeKalb, IL 60115.

 FOR SALE - RADIO AND WIRELESS MAGAZINES, CATALOGS AND SERVICING LITERATURE. 1915-1930'S "WIRELESS AGE", "QST", "RADIO NEWS" MANY MORE. SEND LONG S.A.S.E. FOR LIST. VINNY SHEA, 6 ROCKY RIDGE, EASTON, CT 06612.

 RADIO COLLECTORS COLLECTION OF RADIOS, SPEAKERS, PARTS, CHASSIS, TUBES, RIDERS, HOWARD SAMS, RCA PLUS MORE, SERVICE DATA, TEST EQPT. A LARGE QUANTITY OF ITEMS ALL TYPES ATTIC, BASEMENT, GARAGE, LOADED BUYER TO PICK UP, NO SHIPPING. KRANTZ, 100 OSAGE AVENUE, SOMERDALE, NJ 08083 (609) 783-0400.

 POWER SUPPLY FOR POWERING 1920'S RADIOS. AVAILABLE ASSEMBLED OR IN KIT FORM. INFO-SEND S.A.S.E., GARY B. SCHNEIDER, 9951 SUNRISE BLVD., #R-9, NORTH ROYALTON, OH 44133

 FOR SALE- CATHEDRAL, BATTERY and A.C. radios. Send SASE with two stamps. J. Albert Warren, Box 279, Waverly, PA 18471

WANTED

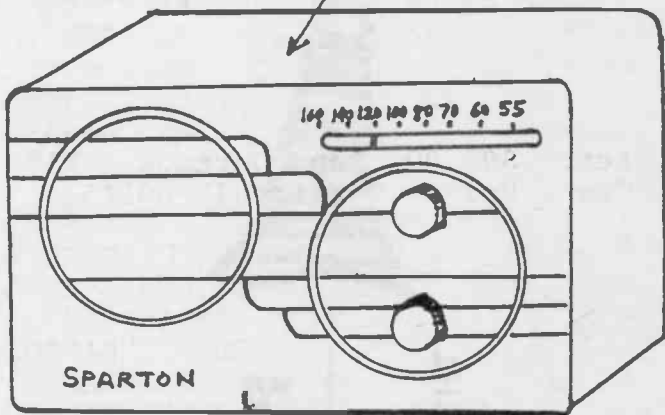
 RADIO TUBE ECH81 OR 6AJ8. WILL BUY OR TRADE. COULD USE TECH. SPECS. OF 6AJ8. GEORGE BLASUS, P. O. BOX 223, 4950 SHERMAN DRIVE, BEMIDJI, MN 56601

WANTED: WESTERN ELECTRIC audio products, Marantz and McIntosh tube audio equipment, surplus tubes and anything related. Contact Charles Dripps, 4331 Maxson Road, El Monte, CA 91732 (213) 444-7079

WANTED: WESTERN ELECTRIC, CUNNINGHAM TUBES, AMPS, SPEAKERS, McINTOSH, MARANTZ AMPLIFIERS. (713) 728-4343. CORB, 11122 ATWELL, HOUSTON, TX 77096.

HALLICRAFTERS SPEAKER PM-23 USED WITH SK-28A. COXE, 1360-G NO. MANZANITA, ORANGE, CA, 92667.

YELLOW PLASTIC CASE



BLUE (GLASS-LIKE) FRONT -

CHROME DESIGN

21
WANTED - SPARTON MODEL 500
TABLE RADIO. ABOUT 6 X 8 X 5.
KRIS GIMMY, 1441 NOTTINGHAM,
AIKEN, SC 29801

WANTED: 21 INCH OAK OR MAHOG-
ANY MUSIC MASTER BELL. CONDIT-
ION NOT IMPORTANT. CHARLIE
STEWART, 900 GRANDVIEW AVENUE,
RENO, NV 89503

WANTED: ATWATER KENT CONDENSERS
variable, detector and ampli-
fier tube panel and filament
control and switch panel. Wil-
liam L. Compton, 11 Harbor
Woods Drive, Clearwater, FL
33519.

WANTED: EARLY BATTERY RADIO
PARTS, ALSO JUNKER PANELS/
BASEBOARDS FOR STRIPPING. BRO-
KEN PANELS OK, BUT DO NOT WANT
ANY CABINETS. SEND LIST AND
PRICES TO: BOB, W6ME, 4178
CHASIN STREET, OCEANSIDE, CA
92056

WANTED: ONE LATE 1920's style
0-2000 and 0-12 ohms 2 watt
wire wound potentiometer. Shaft
1/4" x 1". All makes of KINO
lamps and scanning discs. Would
welcome vintage TV collectors
interests in any construction
projects. D'Arcy Brownrigg,
Chelsea, Quebec, JOX 1N0,
Canada.

HALLICRAFTERS --- SERIOUS COL-
LECTOR needs Hallicrafter and
other Ham equipment manufact-
ured before 1940 for restorat-
ion and eventual museum exhib-
it. Need Hallicrafters, Nat-
ional, Hammarlund, Patterson,
RCA, RME, Grebe, etc. Condition
not important. Also need QST
magazines Volumes I and II and
old tubes. All letters answer-
ed. Write Dave Medley, 6621
Duffield Drive, Dallas, Texas
75248, WA5YA.

WANTED: 1 TUBE SETS, CRYSTAL
SETS, GREBE CR EQUIPMENT. RAY
GARNER, ROUTE 1, BOX 320, BIC
SANDY, TN 38221.

AK19, AK 21, AK24, AK35A,
AK30A, AK33, AK48, AK49, AK50,
AK55, CABINET ONLY FOR FADA
175A, CROSLEY 51A AMP, CROSLEY
50 AND 52, RADIOLA III AMP ON-
LY, AND RADIOLA 108 SPEAKER.
BRIAN RHODES, 2413 GRIER AVE-
NUE, LINDEN, NJ 07036 (201)
925-2665,

WANTED: ANTENNA COILS (2) FOR
1935 RCA MODEL 262. DESPERATE,
PLEASE WRITE OR CALL COLLECT,
DON HUGHES, 8584 ROGUE RIVER,
FOUNTAIN VALLEY, CA 92708 (714)
968-3884.

WANTED: WORKING CHASSIS FOR RCA
MODEL 120 RADIO. MIKE FARRELL,
1725 McDONALD DRIVE, HURON, SD
57350.

CROSLEY VI MAIN DIAL REOSTAT
and knob ant. coil or complete
set. also Kennedy 521 amplif-
ier. Bob Taylor, 4450 Halls
Mill Road, Mobile, AL 36609.

WANT: SE1071 AUDION CONTROL
BOX/ DETECTOR PANEL OR SIMILAR
UNIT. WESTERN ELECTRIC 1-A AV-
IATORS HELMET AND PHONES. ANY
WWI RADIO DUPLICATES YOU HAVE.

WILL TRADE OR BUY. PARTIAL
TRADE LIST: BATTERY- FEDERAL
110, GREBE CR-9, KENNEDY XV,
GREBE SYNCHROPHASE, RADIOLA RS
AND AC, REMLER SUPERHET, WEST-
INGHOUSE RC, RADIOLA 20, RAD-
IOLA VIII, CLAPP EASTHAM R-4,
WESCOT REGEN/ 2-STAGE AMP,
RADIOLA III, STEINITE 1-TUBER,
CROSLEY 51. COMM.- COLLINS
75A-1, HALLICRAFTERS SUPER
SKYRIDER PLUS SPEAKER. CATHE-
DRAL- MAJESTIC 20, RCA R-7, RCA
143, PHILCO 16B, CROSLEY 7H9,
CLARION AC-60, ERLA? (EARLY).
MISC. - WESTERN ELETRIC 8-A
AIRCRAFT RECEIVER. 1936 PHILCO
AUTO RADIO, GE A-70 TOMBSTONE,
AIRLINE MOVIE DIAL RADIO, WES-
TON 1929 RADIO TEST SET, 1932
GEM-RAD BFO. MORE TRADES FOR
CHOICE ITEMS. RICH GROSHONC,
6604 KENT DRIVE, CEDAR RAPIDS,
IA 52402.

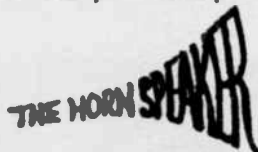
WANTED: RIDERS VOLUMES 22 AND
23, OLDER STYLE KNIGHT "OCEAN
HOPPER" WITH OCTAL TUBES OR
COPY OF KIT INSTRUCTIONS. JOE
WATSON, 3300 ARROWHEAD CIRCLE,
ROUND ROCK, TEXAS 78664

WANTED: CABINET FOR KENNEDY XV
CHASSIS. FOR SALE: OLD RADOS
AND TEST INSTRUMENTS. SEND LONG
SASE FOR PIX PRICE LIST. JOHN
MARTIN, 817 COCK AVE, BIL-
LINGS, MT 59101 (406) 252-4287

classified ad

Please print and punctuate. Clip and Mail

Box 53012, Dallas, Texas 75253



Classification _____

A grid of horizontal lines for entering classification and other details.

10 cents per word

Number of words Number of issues..... Amount Enclosed

Important: Box number ads require name and address of advertiser for our confidential files.

THE HORN SPEAKER

PHOTO AD

SELLS
THE EASY INEXPENSIVE WAY

ATTACH PHOTO HERE

the cost is \$5.00
(Black & white photograph preferred)

\$5.00

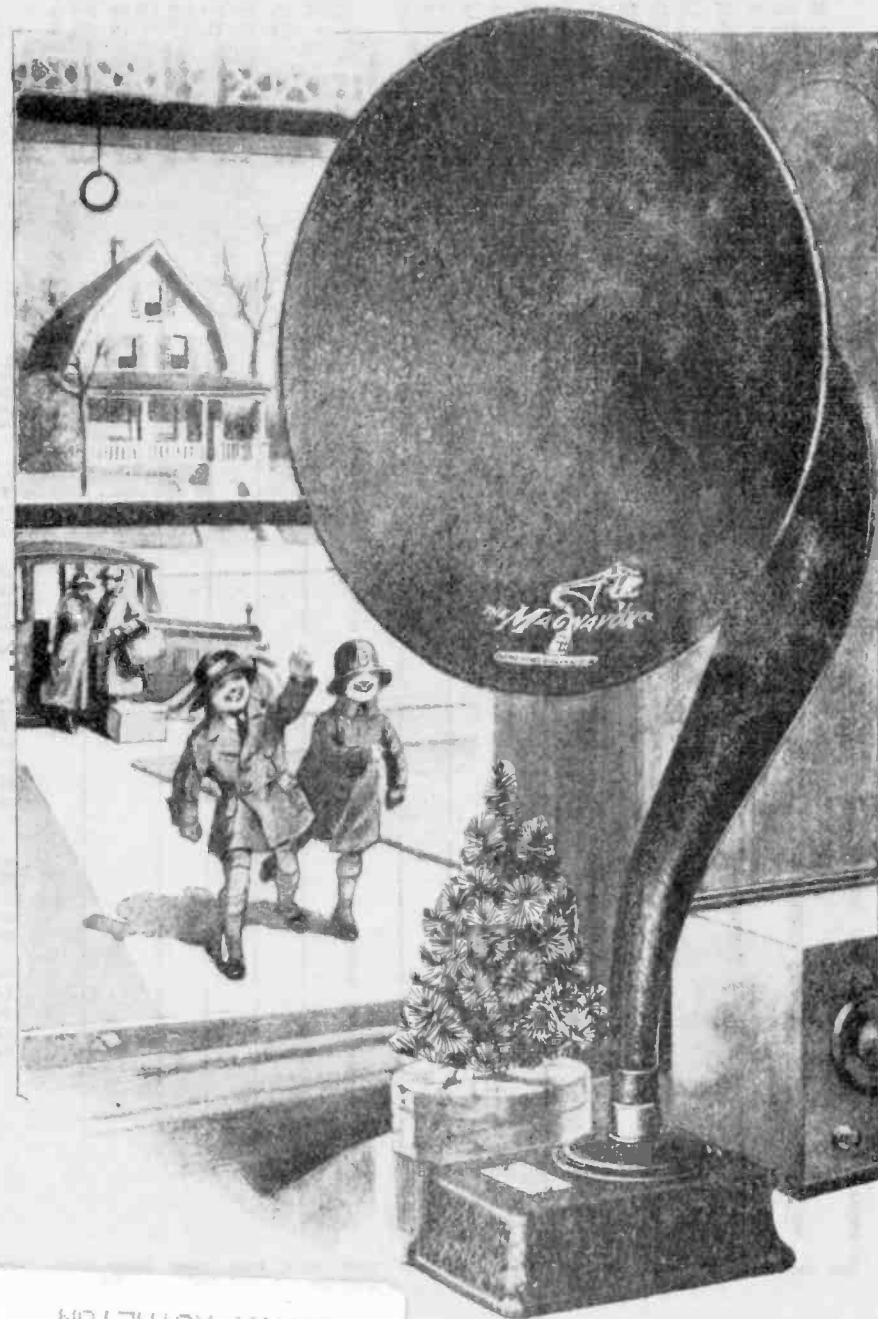
Box 53012, Dallas, Texas 75253

Classified ad only 10 cents per
word. Photo ad \$5.00 extra.

DECEMBER

THE HORN SPEAKER

1983



MR. GARY B. SCHNEIDER
9951 SUNRISE BLVD #R-9
NORTH ROYALTON OH 44133
**51283
73