

Radio Foto Log

15¢

PUBLISHED BY NATIONAL UNION RADIO CORPORATION
57 STATE STREET NEWARK, NEW JERSEY



MARTHA TILTON
Vocal Star of Benny Goodman's Swing Band



TELEVISION
IN THE HOME



PROFESSOR QUIZ



CHARLIE McCARTHY
AND ANDREA LEEDS

You can
play any night
if your
**RADIO'S
RIGHT!**

CBS

NATIONAL UNION RADIO TUBES
MUTUAL
FOR BEST RECEPTION

NATIONAL UNION RADIO TUBES
NBC
FOR BEST RECEPTION

**NEWS
COMEDY
DRAMA**

**SYMPHONY
DANCE BANDS
OPERA**



NATIONAL UNION

RADIO TUBES AND CONDENSERS

Ask us about **NEW SETS**
or Call us for

EXPERT RADIO SERVICE



Radio Fata Log

PUBLISHED BY NATIONAL UNION RADIO CORPORATION
57 STATE STREET NEWARK, NEW JERSEY

Manufacturers of National Union Radio Tubes and Parts

EDITED BY SAMUEL KAUFMAN

The Listener Always Wins

PROGRAM executives of leading radio stations and advertising agencies are ever on the alert for new ideas that will win mass audiences. The competition to win and hold listeners to air features is always keen. Keen rivalry is demonstrated between sponsors of similar wares as well as between advertisers who maintain simultaneous broadcasting schedules.

Radio editors of newspapers and magazines have often indicated that their readers disliked two stellar hours on the air at the same time inasmuch as they were forced to forego one in favor of the other and it was difficult to make a choice.

However, sponsors haven't got much choice in the matter of time. True, there are twenty-four hours to the day but most big advertisers desire the evening hours between 7 and 10 o'clock when they believe they can reach the biggest possible audiences.

Rather than the listener *losing* one good program by listening to another excellent feature on the air at the same time, he should remember that the high standard of the broadcast to which he's listening is maintained by the scheduling of a high-calibre hour on the other station or network. He's not losing anything. Rather, he's given a wider choice of program fare and the odds of giving him a program he'll enjoy are considerably in his favor.

From season to season, the main classifications of radio programs retain large followings they have earned through the years. Dance bands, comedy, drama, news, variety, classical music and other headings are never replaced. But new ideas as well as new stars do constantly pop into the radio schedules and some of them reach the high-salary and high-popularity brackets in very short time.

Audience-participation shows have been gaining larger and larger followings since they came into being on a big scale a couple of seasons back. Amateur hours, under this heading, were the opening guns in the campaign to recruit Mr. Next Door Neighbor for microphone appearances. Now the lead in audience participation has been taken by the many quiz, spelling bee and "what do you know?" features that stud program schedules.

But the heavy draw of new ideas—even the smash hits—doesn't dig into the popularity of such perennial headliners as Jack Benny, Rudy Vallee, Bing Crosby and the many other topnotch stars who helped make broadcasting the leading entertainment medium it now is.

The intriguing thing about radio listening,

is that it always brings surprises and thrills in new offerings as well as reliably presenting the best of the old-established stars. And listeners, through experience, know that forthcoming features are "sure things" in the way of good, wholesome entertainment.



Jack Benny Comes to Town

KNOWLEDGE IS FUN

YOU may never have thought so when you went to school. But since radio quiz programs came into popularity, it's been fun indeed to participate in the "what do you know?" games. Sidewalk interviews, studio spelling and question bees, word games and even musical-guessing programs have soared the heights of radio fame, many of these features ranking among the most popular (according to surveys) on the air. One reason why the listener gets an added kick out of the quizz features is that he has the chance of participating in the mike game himself. He can test his own wits against the microphone contestants. But he must remember that he has two advantages. He can look the answer up in dictionaries, atlases and other reference books, and there is no chance of mike-fright.



"True or False?" asks Dr. Harry Hagen after he reads a statement. No, the placard-toting men are not pickets. It's customary on quiz programs to have the contestants wear their names on cards over their chests so that the master-of-ceremonies can address them.



Left to right: Max Eastman, author, humorist and raconteur, who heads the CBS Word Game; Professor Quiz (Craig Earl) paying off a winner with silver dollars, and Paul Wing, master of the NBC Spelling Bee.



Three topnotch cross-examiners: (left to right): "Uncle Jim" McWilliams of Question Bee fame; Kay Kyser, the orchestra leader who directs the musical quizz show known as the Kollege of Musical Knowledge, and Franklin P. Adams ("F. P. A.") of NBC's "Information Please."

VOX POP



THIS program, conducted by Parks Johnson and Wallace Butterworth, was one of the first of the quiz programs and claims to be the first network show of its type. The show differs from the other question-and-answer periods in that it is broadcast from public and semi-public spots and never from a studio. It used to go on the air from street corners until traffic congestion caused it to be moved into hotel lobbies, railroad terminals and the like. Passers-by, unrehearsed, are recruited from the crowd that gathers around the mike and the result is an amusing, informative quiz program which is greatly enhanced by the spontaneous humor arising from Johnson's and Butterworth's banter with their guests. Turn over to the next page and see how you would score if you happened to be selected for the Vox Pop broadcast. Parks Johnson selected the questions (and parenthetical answers) especially for readers of Radio Foto Log.

Here they are: Vox Poppers Parks Johnson and Wallace Butterworth.



Left: They're never too young to know the answer! Here's a five-year-old doing his stuff! Right: The English vicar who married the Duke and Duchess of Windsor—Rev. Robert Anderson Jardine—and a Chinese nurse meet for a session of Q's and A's with Johnson.



Even a cigar store Indian pops up at the Vox Pop mike, but we doubt whether he was interviewed. Right: Harry M. Nanos—noted for his likeness to the late Will Rogers—takes to the air with Parks and Wally.

WHAT DO YOU KNOW?

You've often had the answer while listening at home much quicker than the fellow at the mike. Here's a specimen mike quiz prepared by Parks Johnson. Try it with your family and friends and figure how you would have fared if you faced the Vox Pop mike.

QUESTIONS

1. A monkey climbing a greased pole 30 feet high goes up 3 feet in 10 seconds. He slips back 2 feet in 5 seconds. How long will it take him to reach the top?
2. Quickly: 11 is 1/6th of 3 times what number?
3. Is the half of a hundred the same as 100 divided by 1/2?
4. If you stand on your head, face to the East, in which direction is your right shoulder pointed?
5. Would it be the same if you were standing on your feet, facing East?
6. If you drive 60 miles at 20 m.p.h. going, and return at 30 m.p.h., what is your "AVERAGE" speed for the 120 miles?
7. Two candles, one will burn 4 hours and the other will burn five hours. Both are lighted simultaneously. Both are extinguished when what remains of one is exactly four times as long as what remains of the other. How long had the candles been burning?
8. If I work the first day for \$100, the second day for \$50, the third day for \$25, and so on . . . how many days will I work before I have earned \$200?
9. You have an engagement for 12 noon. Your friend phones that he must "Advance" the engagement a half hour. At what time will you meet him?
10. In 15 seconds tell me how to change a twenty-dollar bill into dollars and half-dollars so that I will have ONE MORE half-dollar than I will dollars.
11. If "This and That" plus one-half of "This and That" equals 11, how much is "This and That"?
12. If a person is consistently inconsistent, would you say that person is consistent or inconsistent?
13. If a coat is turned inside out, would the right arm still go into what was the right sleeve?
14. Would you think a "Hugger-mugger" is a loving sort of a person?
15. Which is farthest West: Detroit, Michigan—Pensacola, Florida, or Indianapolis, Indiana?
16. Honestly, DO you know how many of your own teeth you now have in your mouth?
17. A bicycle rider travels a mile in three minutes WITH the wind; he returns over the same course in four minutes AGAINST the wind. How fast could he make the mile if there were NO wind?
18. Which is the longer, a cigarette or a stick of chewing gum?
19. Is the Sahara desert flat, rolling or mountainous?
20. What abbreviations for State names make complete words?
21. I start work Monday morning at \$1 per day. You start work Tuesday morning at \$2 per day. How many days will you work before you will have earned TWICE as much as I?
22. How many times per day does the ordinary watch tick?
23. In the line: "Little Miss Muffet sat on a TUFFET" . . . what is a "tuffet"?
24. Quickly . . . count from 10 to 1, backwards.
25. How many STATES in the United States?
26. Do the words "In God we Trust" appear on all current U. S. Coins?
27. On every package of ordinary pins there appears the initials: "S. C.", "M. C." or "B. C.". What do these mean?
28. If a chicken has a gizzard what has an "Izzard"?
29. If the laundry goes out Monday morning and is returned Thursday noon, what is the minimum number of shirts a man must have in order to wear a clean shirt each morning?
30. Assume it takes 30 seconds to toast one side of a slice of bread. Now, in an old-style two-slice toaster, what's the shortest time it will take to toast THREE slices of bread on BOTH sides?

31. If Tom, Dick and Harry agree to lunch together, each bearing his own share of the cost, what about this situation. Tom brings 6 eggs; Dick brings 3 eggs; Harry brought NO eggs, but tossed 15c on the table. HOW should the 15c be divided?
32. Take an ordinary sheet of letter paper, business size. Tear it in two, and stack the halves on top of each other. Do this fifty times. How high will the stack be after the fiftieth tear and stacking?
33. A barrel has three spigots. They empty the barrel in 15, 30 and 45 minutes, respectively. If ALL are opened at the same time, how long will it take to empty the barrel?

TRICKS TRIED AGAINST DESIGNATED TIME LIMITS:

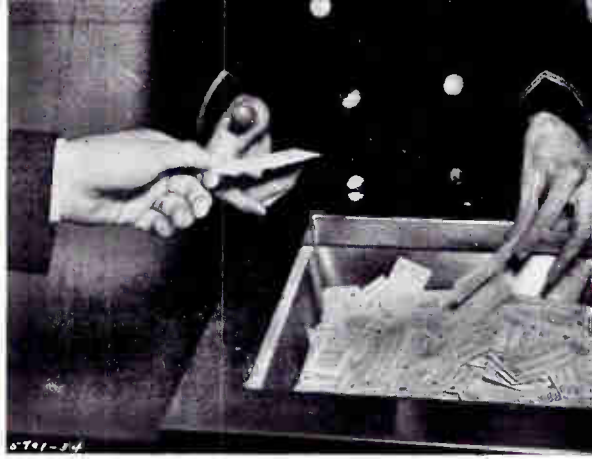
Say Alphabet backward in 30 seconds.
Spell one's full name backward in 15 seconds.
Say months of year backward in 10 seconds.

33. 8-2/11ths minutes, though many without thinking will answer from 15 to 30 minutes!
32. (OVER) 22 million miles high! 6 eggs!
31. (TOM) gets the 15c, as Harry ate 3 of Tom's 6 eggs!
30. 1 and No. 2. Then toast final side of No. 1, and one side of No. 3! Finally toast remaining sides of Nos. 2 and 3.
29. Minimum of eleven shirts. No. 1 and No. 2. Then toast final side of No. 1, and one side of No. 3! Finally toast remaining sides of Nos. 2 and 3.
28. an old Scotch-English term meaning "Pin".
27. Small, medium or Big CORNKIN. Cornkin being piece, or the Indian Head one-cent coin.
26. NO, they do not appear on either agreement Pennsylvania and Virginia.
25. "Technical", forty-four States and four Commonwealths", viz: Kentucky, Massachusetts, Pennsylvania and Virginia.
24. Ah, ah . . . it should be 1, 2, 3, etc.!
23. An old English measure, the equivalent of half-receptacle. She probably sat on the inverted husband!
22. 432,000 times per 24-hour day.
21. Never. Orci Of Kent Wash.
20. Ark; Ill; Ida; Lat; Met; Mass; Miss; Neb; Unabridged.
19. 10,000 feet above sea level—see Webster's.
18. The stick of chewing gum, the Sahara desert contains mountains up to 10,000 feet above sea level—see Webster's.
17. You forgot the wind HELPED him only 3 of the 7 minutes, while it HINDERED him four of the seven!
16. Estimated not one in a thousand knows. Pennsylvania, Florida, farthest West.
15. "conclusion", a middle". At any rate, NO privacy or secrecy about hugging or mugging these days!
14. Hugger-Mugger, according to Webster is: "private, or in privacy, or in secrecy." (Or, also, "conclusion", a middle". At any rate, NO privacy or secrecy about hugging or mugging these days!
13. No.
12. (1).
11. 7-1/3, 3/2 equals 11 1/3 equals 1/3 of 11, or 3-2/3; 2/2, or "This and That" then equals 2 x 3-2/3, or 7-1/3.
10. Fourteen halves, and 13 dollars.
9. Webster says "Advance" to make earlier, as an event or date", so you would meet at 11:50—though personally, I would not show up until 12:30!
8. Never.
7. 3 hours and 45 min.
6. NOT 25, but 24 miles per hour.
5. North.
4. No.
3. No.
2. (22).
1. 6 minutes and 55 seconds. He uses 28 upward strokes or 240 seconds; 27 back slips or 135 seconds, total 415 seconds, or 6:55.

ANSWERS (No fair peek!)

Mr. Next Door Neighbor Takes the Air

THE quiz programs mentioned on the preceding pages are but one of several popular forms of audience-participation shows. There are amateur hours, public forums and comedy and variety hours in which the listener is heard from by voice, applause and laughter. Audience-participation shows have gained tremendous popularity probably because listeners like to hear from Mr. Next Door Neighbor as well as from professional broadcasters.



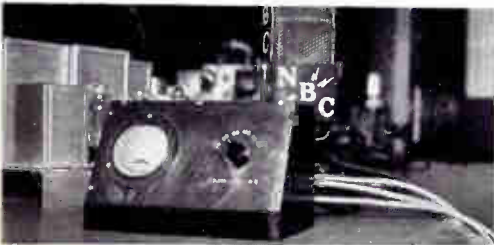
Tickets to broadcasts are in great demand



"America's Town Meeting of the Air" has been cited as the best example of freedom of the air. Here, the listener can debate with the celebrities on the platform on topics of the day. George V. Denny, Jr., is shown at the left giving the floor to a questioner who (above) is seen taking it.



Jerry Belcher (left) takes his mike right into homes of listeners. Center: Lyman Bryson (at head of table) invites "typical citizens" to dinner for the extemporaneous "People's Platform" feature of CBS. The mikes are hidden under napkins to keep the guests immune of mike-fright. Right: Major Bowes and his amateurs hold their grip on popularity. Here he is with a fellow playing two musical saws.



The applause and laughter of a typical studio audience such as the one portrayed on the right are measured by the "appliance meter" shown above.





George Burns and Gracie Allen, one of the highest-paid comedy teams in the land.

KING COMEDY STILL REIGNS

FROM the very beginning of radio entertainment, comedy has never been displaced as a smash hit classification on stations' schedules. Listeners like to laugh and the broadcasters and sponsors spare no expense in obtaining the world's best funsters. Many of the comedy stars have held their popularity through the years but declare it's a tough assignment to get new material for every broadcast.



"Feud for Thought" might be the caption of the photo at the left showing Jack Benny and Fred Allen meeting. Above: "The Bee or not The Bee—that is the question" Jack seems to wonder as he raises his bow.



Left: Bob Burns, who skyrocketed to comedy stardom and who many believe comes closest to filling the philosopher-comedy role of the late Will Rogers. Above: Two of the old reliables, Al Jolson and Joe Penner. In center oval: Oliver Wakefield, the English comedian who scored favorably in his American broadcasts.



Top: Two popular comedy pairs—Marion and Jim Jordan (Fibber McGee and Molly) and (right) Stoopnagle and Budd. The latter pair, whose real names are F. Chase Taylor and Wilbur Budd Hulick, have popped up solo in recent seasons but singly or doubly, they're great fun!



Parkyakarkas (Harry Einstein), The Mad Russian (Bert Gordon) and the man who introduced both to big-time broadcasts—Eddie Cantor.



Left: Pick and Pat (Pick Malone and Pat Padgett) talk things over with their production man—Frank MacMahon.



Above: Teddy Bergman and Jack Haley who add merriment to the airwaves. Right: The Stroud Twins. Clarence brings the mike to brother Claude. The twins have scored sensationally with Charlie McCarthy.





Left: Kaltenmeyer's Kindergarten has a recess. Left to right, Professor August Kaltenmeyer (Bruce Kamman), Izzy Finkelstein (Johnny Wolf), Percy Van Schuyler (Merrill Fugit), Cornelius Callahan (Billy White) and Yohnny Yohnson (Thor Ericson). Above: Sam Hearn, better known as Schleppeyman whose "Hullo, Stranzer" remark is a famous tag-line.



The movies are the source of considerable comedy material. Andy Devine and Charles Butterworth (above) are popular mike performers. Left: "Tim and Irene"—Tim Ryan and Irene Noblette, do a comedy-ventriloquist routine for the camera.



Bob Hope used the air as a short cut to screen stardom after many years on the stage. He's shown at the left with his comely nemesis, Honeychile. He's known to change his mike partners from season to season, so it's not always the same Honeychile you hear. Above: Billy House, star of "The Laugh Liner" and Cal Tenny, a youngster who, like Bob Burns, has been nominated as a successor to the late Will Rogers.

KID STARS AND KID PROGRAMS

A LARGE share of each day's program schedule is devoted to features of especial appeal to youngsters. Sponsors feel that if they reach the children with good programs they are building sales for the future. Network standards for children's programs are very high and each new feature must pass a board of experts on child welfare and psychology.



Young Deanna Durbin who followed her radio success with film triumphs has earned a grown-up as well as juvenile following.



Walter Tetley, veteran child dramatic performer, who now shares time between radio and talkie mikes. Hollywood scouts signed him after his spectacular supporting roles with leading air stars. Right: Madge Tucker, director of NBC's children's features and discoverer of many talented youngsters.



Irene Wicker, radio's famous "Singing Lady". Below: Uncle Don (Donald Carney), popular children's program story-teller, singer, pianist and master-of-ceremonies.



"Jolly Bill" Steinke, conductor of a novel junior news program, and Hendrick Willem Van Loon, author and artist, who is as popular with child listeners as with grown-ups, a knack few writers or broadcasters can achieve.



A LITTLE BIT OF EVERYTHING

IT'S a standard gag around the studios that whenever a sponsor has a lot of money to spend on an airshow, he auditions all types of programs and finally winds up with a band, a comedian, a vocal star, a dramatic sketch and a master-of-ceremonies, or, in other words, a variety show. It's not always a sure-fire formula but there are many exceptional hit combinations under the heading of "Variety."



Don Ameche, popular singer, actor and master-of-ceremonies of the Chase & Sanborn Hour.



Leaders of three top-notch variety shows. Left to right: Rudy Vallée, Kate Smith and Bing Crosby, all of whom are versatile entertainers as well as program directors.



It's "Good News" to many when the program of that name hits the air. Four of its headliners are shown above: Left to right: Frank Morgan, the hesitant conversationalist of the films; Hanley Stafford, the exasperated daddy of Baby Snooks; Meredith Willson, musical director, and Robert Taylor, the movie star serving as master-of-ceremonies. Right: Ben Bernie, graduated from bandsman to program "m.c." is shown with Sophie Tucker.

DON'T BE YOURSELF!

A FEW radio entertainers have proved that it pays to follow that slogan. In recent seasons, persons who could do exceptional stunts with their voices won lucrative long-time contracts. Ventriloquism, mimicry and other vocal oddities, all of which were once thought unsuitable for the air, are now acknowledged smash-hit formulas.



That impish but lovable Charlie McCarthy and his master (?), Edgar Bergen, try out a script. Below: Bergen shows that even a ventriloquist's dummy demands a wardrobe suited to his status.



Fanny Brice, veteran of the musical comedy and vaudeville stages, in her Baby Snooks characterization—a radio sensation.



Left: Walt Disney, creator of Mickey Mouse, Donald Duck and numerous other imaginary cartoon characters who magically come to life on air programs. Center: Arthur Boran, a first-rate radio mimic who can impersonate the air's "great." Right: Tommy Riggs whose vocal creation of Betty Lou brought him nation-wide fame.

STATIONING STATIONS OF THE UNITED STATES

Call Letters	Location	Frequency (K C.)	Power (Watts)
KABC	San Antonio, Tex.	1420	100-250
KABR	Aberdeen, S. Dak.	1420	100
KADA	Ada, Okla.	1200	100
KALB	Alexandria, La.	1210	100
KALE	Portland, Ore.	1300	1000
KAND	Corsicana, Tex.	1310	100
KANS	Wichita, Kans.	1210	100
KARK	Little Rock, Ark.	890	500-1000
KARM	Fresno, Calif.	1310	100
KASA	Elk City, Okla.	1210	100
KAST	Astoria, Ore.	1370	100
KATE	Albert Lea, Minn.	1420	250
KAWM	Gallup, N. Mex.	1500	100
KBIX	Muskogee, Okla.	1500	100
KBKR	Baker, Ore. (C.P.)	1500	100
KBND	Bend, Ore. (C.P.)	1310	100-250
KBPS	Portland, Ore.	1420	100
KBST	Big Spring, Tex.	1500	100
KBTM	Jonesboro, Ark.	1200	100
KCKM	Kansas City, Kans.	1310	100
KCMC	Texarkana, Tex.	1420	100-250
KCMO	Kansas City, Mo.	1370	100
KCRC	Enid, Okla.	1360	250
KCRJ	Jerome, Ariz.	1310	100-250
KDAL	Duluth, Minn.	1500	100
KDB	Santa Barbara, Calif	1500	100-250
KDFN	Casper, Wyo.	1440	500
KDKA	Pittsburgh, Pa.	980	50000
KDLR	Devils Lake, N. Dak.	1210	100
KDNC	Lewis & Clark, Mont.(C.P.)	1200	100-250
KDNT	Denton, Tex.	1420	100
KDON	Monterey, Calif.	1210	100
KDTH	Dubuque, Iowa (C.P.)	1340	500
KDYL	Salt Lake City, Utah	1200	1000
KECA	Los Angeles, Calif.	1420	1000-5000
KEEN	Seattle, Wash.	1370	100
KEHE	Los Angeles, Calif.	780	1000-5000
KELA	Centralla, Wash.	1440	500
KELD	N. of Eldorado, Ark	1370	100
KELO	Sioux Falls, S. Dak.	1200	100
KERN	Bakersfield, Calif.	1370	100
KEUB	Price, Utah	1420	100
KEX	Portland, Ore.	1180	5000
KFAB	Lincoln, Nebr.	770	10000
KFAC	Los Angeles, Calif	1300	1000
KFAC	St. Cloud, Minn.	1420	100
KFAR	Fairbanks, Alaska (C.P.)	810	1000
KFBB	Great Falls, Mont.	1280	1000-5000
KFB1	Abilene, Kans.	1050	5000
KFBK	Sacramento, Calif	1490	5000
KFDM	Bearport, Tex.	560	500-1000
KFDY	Brookings, S. Dak.	780	1000
KFE0	Denver, Col.	820	500
KFE0	St. Joseph, Mo.	680	2500
KFG0	Boone, Iowa	1370	100
KFH	Wichita, Kans.	1300	1000-5000
KFI	Los Angeles, Calif.	640	50000
KFIO	Spokane, Wash.	1120	100
KFIZ	Fond du Lac, Wisc.	1420	100
KFJB	Marshalltown, Iowa	1200	100-250
KFJI	Klamath Falls, Ore.	1210	100
KFJM	Grand Forks, N. Dak.	1410	500-1000
KFJR	Portland, Ore.	1300	500
KFJZ	Fort Worth, Tex.	1370	100-250
KFKA	Greeley, Colo.	880	500-1000
KFKU	Larrence, Kans.	1220	1000-5000
KFNF	Shenandoah, Iowa	890	500-1000
KFOR	Lincoln, Nebr.	1210	100-250
KFOX	Long Beach, Calif.	1250	1000
KFPL	Dublin, Tex.	1310	100-250
KFPW	Ft. Smith, Ark.	1210	100
KFPY	Spokane, Wash.	890	1000-5000
KFO0	Anchorage Alaska	780	250
KFR0	San Francisco, Calif.	810	1000-5000
KFR0	Longview, Tex.	1370	250
KFRU	Columbia, Mo.	830	500-1000
KFS0	San Diego, Calif.	600	1000
KFSG	Los Angeles, Calif.	1120	500-2500
KFU0	Clayton, Mo.	550	500-1000
KFV0	Los Angeles, Calif.	1000	1000
KFVS	Cape Girardeau, Mo.	1210	100-250
KFWB	Hollywood, Calif.	950	1000-5000
KFXD	Hampa, Idaho	1200	100-250
KFXJ	Gran Junction, Colo.	1200	100-250
KFXM	San Bernardino, Calif.	1210	100
KFU0	Clayton, Mo.	550	500
KFY0	Lubbock, Tex.	1310	100-250
KFYR	Bismarck, N. Dak.	550	1000-5000
KGA	Spokane, Wash.	1470	5000
KGAR	Tucson, Ariz.	1370	100-250
KGB	San Diego, Calif.	1330	1000
KGBU	Ketchikan, Alaska	900	500
KGBX	Springfield, Mo.	1230	500
KCCA	Decorah, Iowa	1270	100
KCCI	Coeur d'Alene Idaho(CP)	1200	100
KCCU	Mandan, N. Dak.	1240	250
KCCX	Wolf Point, Mont.	1450	1000
KGDE	Fergus Falls, Minn.	1200	100-250
KGDM	Stockton, Calif.	1100	1000
KGDY	Huron, S. Dak.	1340	250

NOTE: C. P. after station location, indicates construction permit has been issued.

Call Letters	Location	Frequency (K C.)	Power (Watts)
KGEK	Sterling, Colo.	1200	100
KGER	Long Beach, Calif	1380	1000
KGEZ	Kalispell, Mont.	1310	100
KGFF	Shawnee, Okla.	1420	100-250
KGFJ	Brownville, Tex.	1500	100-250
KGFL	Los Angeles, Calif.	1200	100
KGFL	Roswell, N. Mex.	1370	100
KGFM	Kearney, Nebr.	1310	100
KGFX	Pierre, S. Dak.	630	200
KGGC	San Francisco, Calif.	1420	100
KGGF	Coffeyville, Kans.	1010	1000
KGGM	Albuquerque, N. Mex.	1230	1000
KGHF	Pueblo, Colo.	1330	500
KGHI	Little Rock, Ark.	1200	100-250
KGHL	Billings, Mont.	780	1000-5000
KGIR	Butte, Mont.	1340	1000-2500
KGIW	Alamosa, Colo.	1420	100
KGKB	Tyler, Tex.	1500	100-250
KGKL	San Angelo, Tex.	1370	100-250
KGKO	Scotts Falls, Tex.	970	250-1000
KGKY	Wichita, Kans.	1500	100-250
KGL0	Mason City, Iowa	1210	100-250
KGLU	Safford, Ariz. (C.P.)	1420	100-250
KGMB	Honolulu, Hawaii	1320	1000
KGME	Amarillo, Tex.	1410	1000-2500
KGNF	North Platte, Nebr.	1430	1000
KGNO	Dodge City, Kans.	1340	250
KGO	San Francisco, Calif.	790	7500
KGU	Honolulu, Hawaii	710	2500
KGV1	Greenville, Tex.(C.P.)	1200	100
KGVO	Missoula, Mont.	1280	1000
KGW	Portland, Ore.	620	1000-5000
KGY	Olympia, Wash.	1210	100
KHB	Hilo, Hawaii	1400	250
KHBK	Okmulgee, Okla.	1210	100
KHJ	Los Angeles, Calif.	900	1000-5000
KHO	Spokane, Wash.	580	1000-5000
KHO	Chicago, Calif.	1280	250
KHUB	Watsonville, Calif.	1310	250
KICA	Clarks, N. Mex.	1370	100
KID	Idaho Falls, Idaho	1320	500-1000
KIDO	Boise, Idaho	1350	1000-2500
KIDW	Lamar, Colo.	1420	100
KIEM	Eureka, Calif.	1450	500-1000
KIEY	Glendale, Calif	850	250
KINY	Juneau, Alaska	1310	100
KIRO	Seattle, Wash.	850	250
KIT	Yakima, Wash.	1250	250-500
KITE	Kansas City, Mo.	1530	1000
KIUL	Garden City, Kans.	1210	100
KIUN	Pecos, Tex.	1420	100
KIUP	Durango, Colo.	370	100
KJBS	San Francisco, Calif.	1070	500
KJR	Seattle, Wash.	970	5000
KJRH	Carlsbad, N. Mex.	1210	100
KLBN	La Grande, Ore. (C.P.)	1420	100-250
KLC	Blytheville, Ark.	1290	100
KLD	Ogden, Utah	1400	500
KLP	Minot, N. Dak.	1240	250
KLRA	Little Rock, Ark.	1390	1000-5000
KLS	Oakland, Calif.	1280	250
KLUF	Galveston, Tex.	1370	100
KLX	Oakland, Calif.	880	1000
KLZ	Denver, Colo.	560	1000-5000
KMA	Shenandoah, Iowa	930	1000-5000
KMAC	Los Angeles, Tex.	1370	100-250
KMBC	Kansas City, Mo.	950	1000-5000
KMED	Madras, Ore.	1410	250
KML	Fresno, Calif.	580	1000
KMLB	Monroe, La.	1200	100-250
KMM	Clay Center, Nebr.	740	1000
KMO	Tacoma, Wash.	1330	1000
KMOX	St. Louis, Mo.	1090	50000
KMPC	Beverly Hills, Calif.	710	500
KMTR	Los Angeles, Calif.	570	1000
KNEL	Brady, Tex.	1500	250
KNET	Paestling, Tex.	1370	100
KNOW	Austin, Tex.	1050	50000
KNX	Los Angeles, Calif.	1050	50000
KOA	Denver, Colo.	630	50000
KOAC	Conway, Ore.	550	1000
KOAM	Pittsburg, Kans.	790	1000
KOB	Albuquerque, N. Mex.	1160	10000
KOBA	Rapid City, S. Dak.	1370	100-250
KOBN	Kilgore, Tex.	1210	100-250
KOCY	Oklahoma City, Okla.	1310	100-250
KOH	Ren0, Nev.	1380	500
KOIL	Omaha, Neb.	1260	1000-3000
KOIN	Portland, Ore.	940	1000-5000
KOKO	La Junta, Colo.	1370	100
KOL	Seattle, Wash.	1270	1000-5000
KOMA	Oklahoma City, Okla.	1480	5000
KOMO	Seattle, Wash.	920	1000-5000
KONO	San Antonio, Tex.	1370	100
KOOS	Marshfield, Ore.	1200	100-250
KORE	Eugene, Ore.	1420	100
KOTN	Pine Bluff, Ark.	1500	100
KOVC	Valley City, N. Dak.	1500	100-250
KOY	Phoenix, Ariz.	1390	1000
KPAB	Laredo, Tex. (C.P.)	1500	100-250

Call Letters Location Frequency Power (K.C.) (Watts)

KPAC	Port Arthur, Tex.	1260	500
KPBM	Poplar Bluffs, Mo. (C.P.)	1310	100
KPDN	Pampa, Tex.	1310	100
KPFA	Helena, Mont.	1210	100-250
KPLC	Lake Charles, La.	1500	100-250
KPLT	Paris, Tex.	1500	250
KPMC	Bakersfield, Calif.	1650	1000
KPO	San Francisco, Calif.	680	50000
KPOF	Denver, Colo.	880	1000
KPPC	Pasadena, Calif.	1210	100
KPO	Wenatchee, Wash.	1500	100-250
KPRC	Houston, Tex.	920	1000-5000
KOV	Pittsburgh, Pa.	1380	500
KOW	San Jose, Calif.	1010	1000
KRBA	Lufkin, Tex.	1310	100
KRBC	Abilene, Tex.	1420	100-250
KRBM	Bozeman, Mont. (C.P.)	1420	100-250
KRE	Berkeley, Calif.	1370	100-250
KRGV	Weslaco, Tex.	1260	1000
KRIC	Beaumont, Tex. (C.P.)	1420	100-250
KRIS	Corpus Christi, Tex.	1330	500
KRKD	Los Angeles, Calif.	1120	500-2500
KRKO	Everett, Wash.	1370	50000
KRLC	Lewiston, Idaho	1390	250
KRLD	Dallas, Tex.	1040	10000
KRLH	Midland, Tex.	1420	100
KRMC	Jamestown, N. Dak.	1370	100-250
KRMD	Shreveport, La.	1310	100-250
KRNR	Roseburg, Ore.	1500	100-250
KRNT	Des Moines, Iowa	1320	1000-5000
KROC	Rochester, Minn.	1310	100-250
KROD	El Paso, Tex. (C.P.)	1500	100
KROW	Oakland, Calif.	930	1000
KROY	Sacramento, Calif.	1210	100
KPOA	Santa Fe, N. Mex.	1310	100
KRRV	Sherman, Tex.	1310	250
KRSC	Seattle, Wash.	1120	250
KSAC	Manhattan, Kans.	980	500-1000
KSAL	Salina, Kans.	1500	100-250
KSAM	Huntsville, Tex. (C.P.)	1500	100
KSCJ	Sioux City, Iowa	1330	1000-5000
KSD	St. Louis, Mo.	550	1000-5000
KSEI	Pocatello, Idaho	900	250-1000
KSFO	San Francisco, Calif.	560	1000-5000
KSL	Salt Lake City, Utah	1130	50000
KSLM	Salem, Ore.	1370	100
KSO	Des Moines, Iowa	1430	500-2500
KS00	Sioux Falls, S. Dak.	1110	2500
KSRO	Santa Rosa, Calif.	1310	250
KSTP	St. Paul, Minn.	1460	10000-25000
KSUB	Cedar City, Utah	1310	100
KSUN	Lowell, Ariz.	1200	100-250
KTAR	Phoenix, Ariz.	620	1000
KTAT	Fort Worth, Tex.	1240	1000
KTBC	Austin, Tex. (C.P.)	1120	1000
KTBS	Shreveport, La.	1450	1000
KTEM	Temple, Tex.	1370	250
KTFI	Twin Falls, Idaho	1240	1000
KTHS	Hot Springs Natl. Pk. Ark.	1040	10000
KTKC	Visalia, Calif.	1190	250
KTMS	Santa Barbara, Cal.	1220	500
KTKO	Oklahoma City, Okla.	1370	100
KTRB	Houesto, Calif.	740	250
KTRH	Houston, Tex.	1290	1000-5000
KTRI	Sioux City, Iowa (C.P.)	1420	100-250
KTSA	San Antonio, Tex.	650	1000-5000
KTSM	El Paso, Tex.	1310	100-250
KTUL	Tulsa, Okla.	1400	500-1000
KTW	Seattle, Wash.	1220	1000
KUJ	Walla Walla, Wash.	1370	100
KUMA	Yuma, Ariz.	1420	100
KUOA	Siloam Springs, Ark.	1280	5000
KUSD	Vermillion, S. Dak.	890	500
KUTA	Salt Lake City, Utah (CP)	1500	100
KVCV	S. of Redding, Calif.	1200	100
KVEC	San Luis Obispo, Calif.	1200	250
KVGB	Great Bend, Kans.	1370	100
KVI	Tacoma, Wash.	570	1000-5000
KVNU	Logan, Utah (C.P.)	1200	100
KVOA	Tucson, Ariz.	920	1000
KVOD	Denver, Colo.	920	500
KVOE	Santa Ana, Calif	1500	100
KVOL	Lafayette, La	1310	100
KV00	Tulsa, Okla.	1140	25000
KVOR	Colorado Springs, Colo	1270	1000
KVOS	Bellingham, Wash.	1200	100
KVOX	Mohead, Minn. (C.P.)	1310	100-250
KVRS	Rock Springs, Wyo. (C.P.)	1370	100-250
KVSO	Ardmore, Okla.	1210	100-250
KWRG	Hutchinson, Kans.	1420	100
KWEW	Hobbs, N. Mex. (C.P.)	1500	100
KWG	Stockton, Calif.	1200	100
KWJB	Globe, Ariz. (C.P.)	1210	100-250
KWJJ	Portland, Ore.	1060	500
KWK	St. Louis, Mo.	1350	1000-5000
KWKH	Shreveport, La.	850	10000
KWLC	Decorah, Iowa	1270	100
KWLK	Longview, Wash.	780	250
KWNO	Winona, Minn.	1200	250
KWOC	Poplar Bluff, Mo.	1310	100

NOTE: C. P. after station location, indicates construction permit has been issued.

Call Letters Location Frequency Power (K.C.) (Watts)

KWOS	Jefferson City, Mo.	1310	100
KWSC	Pullman, Wash.	1220	1000-5000
KWTN	Watertown, S. Dak.	1210	100
KWTO	Springfield, Mo.	560	5000
KWYO	Sheridan, Wyo.	1370	100-250
KXA	Seattle, Wash.	760	250-500
KXL	Portland, Ore.	1420	100-250
KXO	El Centro, Calif.	1600	100
KXOK	St. Louis, Mo. (C.P.)	1250	1000
KXRO	Aberdeen, Wash.	1370	100-250
KXYZ	Houston, Tex.	1440	1000
KYA	San Francisco, Calif.	1230	1000-5000
KYCA	Prescott, Ariz. (C.P.)	1500	100-250
KYOS	Merced, Calif.	1040	250
KYSM	Mankato, Minn. (C.P.)	1500	100-250
KYW	Philadelphia, Pa.	1020	10000
WAAB	Boston, Mass.	1410	500-1000
WAFF	Chicago, Ill.	920	1000
WAAT	Jersey City, N. J.	940	500
WABW	Omaha, Nebr.	680	500
WABC			
WB00	New York, N. Y	880	50000
WAB	Bangor, Me.	1200	100-250
WABY	Albany, N. Y.	1370	100-250
WACO	Waco, Tex.	1420	100
WADC	Tallmadge, Ohio	1320	1000-5000
WAGA	Athens, Ga.	1450	500-1000
WAGF	Dothan, Ala.	1370	250
WAGM	Presque Isle, Me.	1420	100
WAIM	Anderson, S. C.	1200	100
WAIR	Winston-Salem, N. C.	1260	250
WALA	Mobile, Ala.	1380	500-1000
WALR	Zanesville, Ohio.	1210	100
WAML	Laurel, Miss.	1310	100-250
WAPI	Birmingham, Ala.	1140	5000
WAP0	Chattanooga, Tenn.	1420	100-250
WARD	Brooklyn, N. Y.	1400	500
WASH	Grand Rapids, Mich.	1270	500
WATL	Atlanta, Ga.	1370	100-250
WATR	Waterbury, Conn.	1190	100
WAYE	Louisville, Ky.	940	1000
WAYZ	Zarephath, N. J	1350	500-1000
WAYX	Waycross, Ga.	1200	100-250
WAZL	Hazleton, Pa.	1420	100
WBAA	West Lafayette, Ind.	890	500-1000
WBAL	Baltimore, Md.	1080	10000
WBAP	Fort Worth, Tex.	800	50000
WBAX	Wilkes-Barre, Pa.	1210	100
WBBC	Brooklyn, N. Y.	1400	500
WBRL	Richmond, Va.	1210	100
WB3M	Chicago, Ill.	770	50000
WBRR	Brooklyn, N. Y.	1300	1000
WBZB	Ponca City, Okla.	1200	100-250
WB04	Bay City, Mich.	1410	500-1000
WBEN	Buffalo, N. Y.	900	1000-5000
WBEO	Marquette, Mich	1310	100
WBFP	Huntsville, Ala.	1200	100
WBIG	Greensboro, N.C.	1440	1000
WB1I	New York, N. Y.	1100	5000
WB1K	Clarksburg, W. Va.	1370	100
WB1Y	Lima, Ohio	1210	100
WBNO	New Orleans, La.	1200	100
WBNS	Columbus, Ohio.	1430	500-1000
WB3N	New York, N. Y.	1350	1000
WB3Y	Buffalo, N. Y.	1370	100-250
WABC	(See WABC-WB00)		
WB0W	Terre Haute, Ind.	1310	100-250
WB3R	Red Bank, N. J.	1210	100
WB3C	Birmingham, Ala.	930	1000-5000
WB3E	Wilkes-Barre, Pa.	1310	100
WB3K	Pittsfield, Mass.	1310	100-250
WB3Y	Waterbury, Conn.	1530	1000
WB3T	Charlotte, N. C.	1080	50000
WB3M	Danville, Va.	1370	100-250
WB3B	Boston, Mass.	980	50000
WB3A	Boston, Mass.	990	5000
WB3D	Camden, N. Y.	1250	500
WB3E	Pittsburgh, Pa.	1250	1000-5000
WB3L	Northfield, Minn.	1250	1000-2500
WB3M	Camden, N. J.	1280	500
WB3O	Baltimore, Md.	600	500-1000
WB3P	Asbury Park, N. J.	1280	500
WB3Q	Rapid City, S. Dak.	1200	100
WB3R	Philadelphia, Pa.	1170	50000
WB3X	Burlington, Vt.	1200	100-250
WB3Z	Carthage, Ill.	1070	100
WB3A	Allentown, Pa.	1440	500
WB3B	Chicago, Ill.	1080	5000-
WB3M	Baltimore, Md.	1370	100-250
WB3S	Springfield, Ill.	1420	100-250
WB3O	Minneapolis, Minn.	810	50000
WB3L	Chicago, Ill.	970	5000
WB3H	Charleston, W. Va.	580	500-1000
WB3V	Charlottesville, Va.	1420	100-250
WB3Y	Covington, Ky.	1490	1000
WB3E	Cleveland, Ohio.	610	500
WB3O	Janesville, Wisc.	1200	100-250
WB3L	Joilet, Ill.	1310	100
WB3M	Ashtland, Ky.	1310	100-250
WB3W	Brooklyn, N. Y.	1500	100-250

Call Letters	Location	Frequency (K.C.)	Power (Watts)	Call Letters	Location	Frequency (K.C.)	Power (Watts)
WMAL	Washington, D.C.	630	250-500	WSAR	Fall River, Mass.	1450	1000
WMAQ	Chicago, Ill.	670	50000	WSAU	Wausau, Wisc.	1370	100
WMAS	Springfield, Mass.	1420	100-250	WSAY	Savannah, Ga.	1310	100
WMAZ	Macon, Ga.	1180	1000	WSAY	Rochester, N.Y.	1210	100
WMBC	Detroit, Mich.	1420	100-250	WSAZ	Huntington, W.Va.	1190	1000
WMBC	Peoria, Ill.	1440	1000-5000	WSB	Atlanta, Ga.	740	50000
WMBF-WIO	(See W100-WMBF)			WSBC	Chicago, Ill.	1210	100-250
WMBG	Richmond, Va.	1350	500	WSBT	South Bend, Ind.	1360	500
WMBH	Joplin, Mo.	1320	100-250	WSFA	Montgomery, Ala.	1410	500-1000
WMBI	Chicago, Ill.	1060	5000	WSGN	Birmingham, Ala.	1310	100-250
WMBQ	Auburn, N.Y.	1310	100	WSIX	Nashville, Tenn.	1210	100-250
WMBR	Jacksonville, Fla.	1370	100-250	WSJS	Winston-Salem, N.C.	1310	100
WMBSS	Uniontown, Pa.	1420	250	WSLI	Jackson, Miss. (C.P.)	1420	100-250
WMC	Memphis, Tenn.	780	1000-5000	WSM	Nashville, Tenn.	650	50000
WMCA	New York, N.Y.	570	1000	WSMB	New Orleans, La.	1320	1000
WMEX	Boston, Mass.	1500	100-250	WSMK	Dayton, Ohio	1380	200
WMFD	Wilmington, N.C.	1370	100	WSNJ	Bridgeton, N.J.	1210	100
WMFF	Plattsburg, N.Y.	1310	100-250	WSOC	Charlotte, N.C.	1210	100-250
WMFG	Hibbing, Minn.	1210	100-250	WSPA	Spartanburg, S.C.	920	1000
WMFJ	Daytona Beach, Fla.	1420	100	WSPD	Toledo, Ohio	1340	1000-5000
WMFO	Decatur, Ala.	1370	100	WSPR	Springfield, Mass.	1140	500
WMFR	High Point, N.C.	1200	100	WSTP	Salisbury, N.C. (C.P.)	1500	100-250
WMIN	St. Paul, Minn.	890	500-1000	WSUI	Iowa City, Iowa	880	500-1000
WMJN	Farmont, W. Va.	1200	100-250	WSUN	St. Petersburg, Fla.	620	1000-5000
WMKC	Lapeer, Mich.	1430	500-1000	WSVA	Harrisonburg, Va.	550	500
WMKS	Memphis, Tenn.	1420	100	WSVS	Buffalo, N.Y.	1370	50
WMSD	Shelbyville, Ala.	1420	100	WSYB	Rutland, Vt.	1500	100
WMT	Cedar Rapids, Iowa	600	1000-5000	WSYR	Syracuse, N.Y.	570	1000
WNAC	Boston, Mass.	1230	1000-5000	WTAD	Quincy, Ill.	900	1000
WNAD	Norman, Okla.	1010	1000	WTAG	Worcester, Mass.	580	1000
WNAA	Yankton, S. Dak.	570	1000-5000	WTAL	Tallahassee, Fla.	1310	100-250
WNBC	New Britain, Conn.	1380	250	WTAM	Cleveland, Ohio	1070	50000
WNBH	Binghamton, N.Y.	1500	100-250	WTAN	Green Bay, Wisc.	1330	1000
WNBK	New Bedford, Mass.	1310	100-250	WTAC	Norfolk, Va.	780	1000
WNBZ	Springfield, Vt.	1260	1000	WTAR	College Station, Tex.	1120	500
WNEE	Saranac Lake, N.Y.	1290	100	WTAX	Springfield, Ill.	1210	100
WNEU	San Juan, Puerto Rico	1290	1000-2500	WTBO	Cumberland, Md.	800	250
WNEW	New York, N.Y.	1250	1000-2500	WTEN	Philadelphia, Pa.	1250	1000-5000
WNLC	New London, Conn.	1500	100	WTHT	Hartford, Conn.	1310	100
WNMX	Knoxville, Tenn.	1010	1000-5000	WTIC	Hartford, Conn.	1060	50000
WNYC	New York, N.Y.	810	1000	WTJS	Jackson, Tenn.	1310	100-250
WOAI	San Antonio, Tex.	1190	50000	WTMJ	Milwaukee, Wisc.	620	1000-5000
WOCB	Davenport, Iowa	1370	100-250	WTMV	E. St. Louis, Ill.	1500	100-250
WOI	Ames, Iowa	1210	100-250	WTNJ	Trenton, N.J.	1280	500
WOKO	Albany, N.Y.	640	5000	WTOC	Savannah, Ga.	1260	1000
WOL	Washington, D.C.	1430	500-1000	WTOH	Toledo, Ohio	1200	100
WOLS	Florence, S.C.	1310	100	WTRC	Elkhart, Ind.	1310	100-250
WOMI	Owensboro, Ky.	1200	100	WVFW	Brooklyn, N.Y.	1400	500
WOMT	Manitowoc, Wisc.	1500	100-250	WWAE	Hammond, Ind.	1200	100
WOOD	Grand Rapids, Mich.	1210	100	WWJ	Detroit, Mich.	920	1000-5000
WOPI	Bristol, Tenn.	1270	500	WWL	New Orleans, La.	850	10000
WOR	Newark, N.J.	1500	100	WWNC	Asheville, N.C.	570	1000
WORC	Worcester, Mass.	710	50000	WWRL	Woodsie, N.Y.	1500	100-250
WORK	York, Pa.	1280	500	WWSS	Pittsburgh, Pa.	1500	100-250
WORL	Boston, Mass.	1320	1000	WWVA	Wheeling, W.Va.	1160	5000
WOSU	Columbus, Ohio	920	500	WXYZ	Detroit, Mich.	1240	1000
WOV	New York, N.Y.	570	750-1000				
WOV	Omaha, Nebr.	1130	1000				
WOV	Omaha, Nebr.	590	1000-5000				
WOV	Omaha, Nebr.	1160	10000				
WOFAD	Paducah, Ky.	1420	100-250				
WOFAR	Parkersburg, W. Va.	1420	100				
WOFAX	Thomasville, Ga.	1210	100				
WOFAY	Portsmouth, Ohio	1370	100				
WOFEN	Philadelphia, Pa.	920	250-500				
WOFI	Atlantic City, N.J.	1100	5000				
WOFJ	Sharon, Pa. (C.P.)	780	250				
WOFK	Mayaguez, Puerto Rico	1370	100-250				
WOFM	Providence, R.I.	630	500-1000				
WOFN	Ponce, Puerto Rico	1420	100-250				
WOFQ	Raleigh, N.C.	680	5000				
WOFR	Miami, Fla.	560	1000				
WOFG	Scranton, Pa.	880	500-1000				
WOFH	Vicksburg, Miss.	1360	1000				
WOFI	St. Albans, Vt.	1390	1000				
WOFJ	New York, N.Y.	1550	1000				
WOFK	Williamsport, Pa.	1370	100-250				
WOFL	Raleigh, N.C. (C.P.)	1210	100-250				
WOFM	Reading, Pa.	1310	100				
WOFN	Philadelphia, Pa.	920	250-500				
WOFQ	Columbus, Ga.	1200	100-250				
WOFR	Washington, D.C.	950	500-1000				
WOFG	Augusta, Me.	1370	100				
WOFH	Augusta, Ga.	1500	100-250				
WOFI	Memphis, Tenn.	600	1000-5000				
WOFJ	Lawrence, Kans.	1220	1000-5000				
WOFK	Rome, Ga.	1500	100-250				
WOFL	Racine, Wisc.	1370	100-250				
WOFM	Richmond, Va.	880	500				
WOFN	Rockford, Ill.	1410	500-1000				
WOFQ	Knoxville, Tenn.	1310	100-250				
WOFR	Dallas, Tex.	1280	500				
WOFG	Richmond, Va.	1500	100				
WOFH	Gainesville, Fla.	830	5000				
WOFI	Richmond, Va.	1110	5000				
WOFJ	Cincinnati, Ohio	1330	1000-5000				
WOFK	Grove City, Pa.	1310	100				
WOFL	Salisbury, Md.	1200	250				
WOFM	Allentown, Pa.	1440	500				
WSAR	Fall River, Mass.	1450	1000				
WSAU	Wausau, Wisc.	1370	100				
WSAY	Savannah, Ga.	1310	100				
WSAY	Rochester, N.Y.	1210	100				
WSAZ	Huntington, W.Va.	1190	1000				
WSB	Atlanta, Ga.	740	50000				
WSBC	Chicago, Ill.	1210	100-250				
WSBT	South Bend, Ind.	1360	500				
WSFA	Montgomery, Ala.	1410	500-1000				
WSGN	Birmingham, Ala.	1310	100-250				
WSIX	Nashville, Tenn.	1210	100-250				
WSJS	Winston-Salem, N.C.	1310	100				
WSLI	Jackson, Miss. (C.P.)	1420	100-250				
WSM	Nashville, Tenn.	650	50000				
WSMB	New Orleans, La.	1320	1000				
WSMK	Dayton, Ohio	1380	200				
WSNJ	Bridgeton, N.J.	1210	100				
WSOC	Charlotte, N.C.	1210	100-250				
WSPA	Spartanburg, S.C.	920	1000				
WSPD	Toledo, Ohio	1340	1000-5000				
WSPR	Springfield, Mass.	1140	500				
WSTP	Salisbury, N.C. (C.P.)	1500	100-250				
WSUI	Iowa City, Iowa	880	500-1000				
WSUN	St. Petersburg, Fla.	620	1000-5000				
WSVA	Harrisonburg, Va.	550	500				
WSVS	Buffalo, N.Y.	1370	50				
WSYB	Rutland, Vt.	1500	100				
WSYR	Syracuse, N.Y.	570	1000				
WTAD	Quincy, Ill.	900	1000				
WTAG	Worcester, Mass.	580	1000				
WTAL	Tallahassee, Fla.	1310	100-250				
WTAM	Cleveland, Ohio	1070	50000				
WTAN	Green Bay, Wisc.	1330	1000				
WTAC	Norfolk, Va.	780	1000				
WTAR	College Station, Tex.	1120	500				
WTAX	Springfield, Ill.	1210	100				
WTBO	Cumberland, Md.	800	250				
WTEN	Philadelphia, Pa.	1250	1000-5000				
WTHT	Hartford, Conn.	1310	100				
WTIC	Hartford, Conn.	1060	50000				
WTJS	Jackson, Tenn.	1310	100-250				
WTMJ	Milwaukee, Wisc.	620	1000-5000				
WTMV	E. St. Louis, Ill.	1500	100-250				
WTNJ	Trenton, N.J.	1280	500				
WTOC	Savannah, Ga.	1260	1000				
WTOH	Toledo, Ohio	1200	100				
WTRC	Elkhart, Ind.	1310	100-250				
WVFW	Brooklyn, N.Y.	1400	500				
WWAE	Hammond, Ind.	1200	100				
WWJ	Detroit, Mich.	920	1000-5000				
WWL	New Orleans, La.	850	10000				
WWNC	Asheville, N.C.	570	1000				
WWRL	Woodsie, N.Y.	1500	100-250				
WWSS	Pittsburgh, Pa.	1500	100-250				
WWVA	Wheeling, W.Va.	1160	5000				
WXYZ	Detroit, Mich.	1240	1000				

NOTE: C. P. after station location, indicates construction permit has been issued.

CANADIAN BROADCAST STATIONS			
CBF	Montreal, Que.	910	50000
CBT	Toronto, Ont.	840	50000
CBW	LaFayette, Que.	1050	500
CBO	Harthorne, Ont.	980	1000
CBR	Lulu Island, B.C.	1100	5000
CBF	Calgary, Alta.	980	1000
CFB	Ft. Erie, Man.	1370	100
CFCE	Montreal, Que.	900	500
CFCH	North Bay, Ont.	820	100
CFCH	Strathmore, Alta.	1020	10000
CFCH	Chatham, Ont.	830	100
CFCT	Esquimaux District, B.C.	1450	500
CFCH	Montreal, Que.	6000	75
CFCH	Charlottetown, P.E.I.	850	1000
CFGP	Grande Prairie, Alta.	1200	100
CFJC	North Kamloops, B.C.	880	1000
CFLE	Prescott, Ont.	930	100
CFMB	Fredericton, N.B.	550	500-1000
CFPL	London, Ont.	730	100
CFPR	Prince Rupert, B.C.	960	50
CFRS	Saskatoon, Sask.	840	1000
CFRS	King, Ont.	850	10000
CFRC	Kingston, Ont.	1510	100
CFRN	Edmonton, Alta.	980	100
CFRQ	King, Ont.	6070	1000
CFRP	Strathmore, Alta.	6030	100
CHAB	Moose Jaw, Sask.	1200	100-250
CHCK	Charlottetown, P.E.I.	1310	50
CHCS	Summerside, P.E.I.	1450	50
CHLM	Three Rivers, P.Q.	1420	100
CHLP	Montreal, Que.	1120	100
CHLT	Sherbrooke, Que.	1210	100
CHM	Saltfleet, Ont.	1010	100
CHNC	New Carlisle, Que.	960	1000
CHNS	Bedford, N.S.	930	1000
CHNR	Bedford, N.S.	6130	500
CHRC	Quebec, P.Q.	860	1000
CHSJ	St. John, N.B.	1120	100
CHWK	Chilliwack, B.C.	780	100
CJAT	Trail, B.C.	910	1000
CJBR	Sacre-Coeur, P.Q.	1790	1000
CJCA	Belmont View, Alta.	730	1000
CJCB	Sydney, N.S.	1240	1000
CJCI	Calgary, Alta.	100	100
CJCS	Stratford, Ont.	1210	50
CJCU	Aktavik, N.W.T.	1210	50
CJCV	Sydney, N.S.	6010	1000
CJG	Yorkton, Sask.	1300	100
CJIC	Sault Ste. Marie, Ont.	1500	100
CJKL	Kirkland Lake, Ont.	1310	100
CJLS	Yarmouth, N.S.	1310	100
CJOC	Lethbridge, Alta.	950	100
CJOR	Sea Island, B.C.	800	800
CJRC	Middlechurch, Man.	630	1000

THE CURTAIN RISES

BROADCASTING is now an acknowledged branch of drama and the leading names of the stage and screen are attracted by its many opportunities as well as the fat salaries that go with appearance on a sponsored show. Radio drama is divided in two classes: Original and adapted plays are in one branch, and serial and sketch programs are in the second. As far as air audiences go, such names as Amos 'n' Andy and Myrt and Marge, made popular on the air, are just as much an attraction as the marquee names radio recruits from the footlights and kleiglits.



Edward G. Robinson and Claire Trevor, co-stars of the popular CBS serial "Big Town" are in the ranks of "regular" air performers, differing from most other big movie names who just appear on guest spots.



James Cagney and Noel Coward are caught by the studio candid cameraman. Circle: Irene Rich, who, in several seasons on the air, scored as favorably with listeners as she did with theatre and movie audiences.



Left to Right: Cecil B. De Mille, the movie director who added microphone triumphs to his megaphone hits as producer of the CBS "Radio Theatre" programs; Wallace Beery, an occasional guest star, and Jean Hersholt, portrayal of "Dr. Christian" in the radio series of that name.



The theatre's "royal family" is in constant air demand. Left to right: Lionel, Ethel and John Barrymore.



How a radio play takes the air is demonstrated by these four views from NBC's "Spy at Large" series. Upper left: The first script reading. Lines are ironed out and the cast learns story. Upper right: Director Joseph Bell gives some pointers to actresses Consuelo Lembke, Eileen Burns and Elena Karan. Lower left: The dress rehearsal with Miss Burns, Eric Dressler and Miss Lembke going through their paces. Lower right: On the air! Miss Lembke is shown reading the opening lines.



Two popular series of long standing are pictured above. Left: Four members of the cast of "One's Man's Family" which has been a radio hit since 1932. Photo shows Minetta Ellen (Fanny Barbour) with Bernice Berwin (Hazel) at left; Kathleen Wilson (Claudia) at right, and Winifred Wolfe (Teddy) below. Right: The popular team of Lum and Abner in make-up. Chet Lauck plays Lum and Norris Goff portrays Abner.



Amos 'n' Andy are shown with the only woman—and only third person—in their cast, Madaline Lee. The pair, Charles Correll (Amos) and Freeman Gosden (Andy) enact all the other characters themselves. Right: Myrt and Marge. (Myrtle Vail and Donna Damerel).



ON WITH THE DANCE!

WHETHER personal preferences go to "swing" or "sweet" music, dance music is a "must" on most listeners' tuning schedules. There are scores of headlining bands and space permits only some of the representative ones to be pictured on these two pages. Most dance bands attempt to establish an individual style to be distinctive and the demand for special arrangements of popular tunes keeps the arrangers working day and night. Many bands have stellar vocalists and instrumental soloists to enhance their offerings.



Fred Waring, head of the Pennsylvanians, a pioneer radio band. Choral offerings are his dish. Right: They don't usually call him the "king of jazz" any more but there's no doubt that he's still its master — Paul Whiteman.



Phil Spitalny and his All-Girl Orchestra, a radio act that's in great demand for stage appearances. Right: Raymond Paige. Below, left: Guy Lombardo (seated) and his versatile brothers, Leibert, Carmen and Victor. Below, right: B. A. Rolfe, radio old-timer who's still a radio big-timer.





Vincent Lopez, Peter Van Steeden and Robert Armbruster, three ace baton-wavers.



The Dorsey Brothers used to jointly conduct their own orchestra under that name but now they have separate aggregations—both highly successful. Jimmy Dorsey is at the left and Brother Tommy at the right.



Al Goodman, George Olsen and Joe Rines, all stellar bandmen.



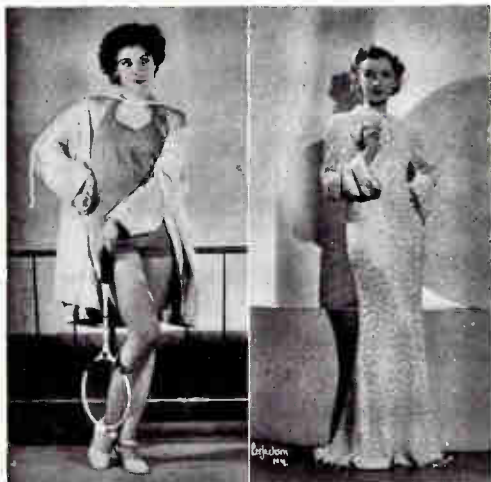
Left to Right: Horace Heidt, conductor of the Brigadiers, Gene Krupa, the drummer, who left Benny Goodman to head his own band, and Richard Himber, a consistent broadcaster.

BEAUTY AND THE MIKE

RADIO vies with the stage and screen in the beauty of its female stars. In the long run, radio even goes the other entertainment mediums one better; the microphone drafts the "best-lookers" as well as the best talent from the stage and cinema. And the high standard of mike beauty has brought about many screen offers for the broadcasting damsels. With television in the offing, you will soon enjoy hearing as well as seeing these decorative persons.



Elaine Bassett, an NBC dramatic performer. Left: Betty Lou Gerson, NBC actress and Alice Frost, heard on both CBS and NBC in leading dramatic roles.



Left to right: Olga Andre, NBC songstress frequently featured on shortwave programs because of her ability as a linguist; Virginia Verrill, vocalist presented on both networks and the Lane Sisters—Priscilla and Rosemary, whose air work brought about a Hollywood cinema career. Below, left to right: Wendy Barrie, who reversed the Lane Sisters formula by coming to the air from the screen; Maxine, vocalist with Phil Spitalny's All-Girl Orchestra, and Bess Johnson who plays a featured role in the CBS series "Hilltop House."





Dorothy Lamour, singing co-star of the NBC Chase & Sanborn Hour, whose picture on magazine covers is said to have nearly established a quantity record for radio artists, Ruth Warrick (right), CBS actress, shows the photographer her idea of keeping cool during a broadcast.



Betty Caine and Helen Walpole, NBC actresses, who are undoubtedly adept on figures of speech.



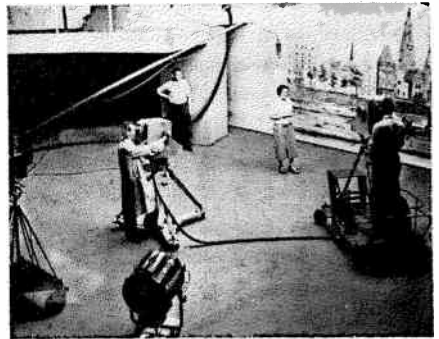
Gale Page, NBC singer and actress, who also used the mike as a short-cut to Hollywood fame. Right: Templeton Fox, NBC actress.



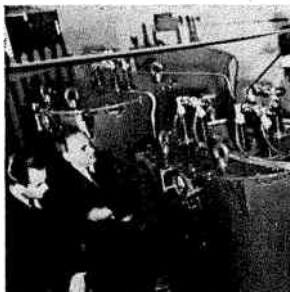
The mirror-lid of this television receiver reflects a picture measuring 12 by 14 inches off a vertically-mounted cathode-ray tube. This set was introduced to the Berlin market and is similar in many respects to models developed in American laboratories.

THERE ARE ADDED THRILLS IN SIGHT

AND sight, of course, means television. The great progress in the video art here and abroad indicates that regular television programs should be available in many parts of the country at an early date. It is certain that the new art will win wide acceptance on a mass scale and that many of the current crop of radio stars will be drafted for the television camera along with stars of the stage and screen.



No, this is not a Hollywood movie set. It is a typical European television studio. Left: This photograph reveals the excellent detail of a projection television image on a theatre-size screen ten feet high and twelve feet wide.



Preparations are under way for the introduction of public-participating television in many American cities. Gilbert Seldes and Peter C. Goldmark, respectively television program director and television engineer of the Columbia Broadcasting System, are seen at the left at the scanning panel of the network's New York video station. In the center photo they are inspecting one of ten giant transformers for the new Chrysler Building sight-and-sound station. A Columbia television studio setting of many years ago is shown at the right. The image was virtually confined to "head and shoulders" in those days. Today, however, the television camera can pick up wide-angle scenes in the manner of a movie camera.

TELEVISION BROADCAST STATIONS

LICENSEE AND LOCATION	CALL LETTERS	FREQUENCY (kc) OR GROUP*	POWER		EMISSION
			VISUAL	AURAL	
Columbia Broadcasting System, Inc., New York, N. Y.	W2XAX	B, C	50w C. P. 7500w	7500w	A4 A3
Don Lee Broadcasting System, Los Angeles, Calif.	W6XAO	B, C	150w C. P. 1kw	150w	A3, A4
Farnsworth Television Incorporated of Pa., Springfield, Pa.	W3XPF	B, C	4kw	1kw	A3, A4 (C. P. only)
First National Television, Inc., Kansas City, Mo.	W9XAL	B, C	300w	150w	A3, A4
General Television Corporation, Boston, Mass.	W1XC	B, C	500w		A4
The Journal Company, Milwaukee, Wisconsin.	W9XD	B, C	500w		A4
Kansas State College of Agriculture & Applied Science, Manhattan, Kansas.	W9XAK	A	125w	125w	A3, A4 & Special
National Broadcasting Co., Inc., New York, N. Y.	W2XBS	B, C	12kw	15kw	A3, A4
National Broadcasting Co., Inc., Portable (Camden, N. J. & New York, N. Y.)	W2XBT	D(92,000 & 175000-180000)	400w	100w	A1, A2, A3, A4 & Special (C. P. only)
Phileo Radio & Television Corp., Philadelphia, Pa.	W3XE	B, C	10kw	10kw	A3, A4
Phileo Radio & Television Corp., Philadelphia, Pa.	W3XP	D(204000-210000)	15w		A4 & Special (C. P. only)
Purdue University, West Lafayette, Ind.	W9XC	A	1500w		A4
Radio Pictures, Inc., Long Island City, N. Y.	W2XDR	B, C	1kw	500w	A3, A4
RCA Manufacturing Co., Inc., Portable (Bldg. No. 8 of Camden Plant)	W3XAD	D(124000 to 130000)	500w	500w	A3, A4
RCA Manufacturing Co., Inc., Camden, N. J.	W3XEP	B, C	30kw	30kw	A3, A4
RCA Manufacturing Co., Inc., Portable-Mobile	W10XX	B, C	50w	50w	A3, A4
The Sparks-Withington Company, Jackson, Michigan.	W8XAN	B, C	100w	100w	A3, A4
University of Iowa, Iowa City, Iowa.	W9XK	A	100w		A4
University of Iowa, Iowa City, Iowa.	W9XUI	B, C	100w		A4
Dr. George W. Young, Minneapolis, Minnesota	W9XAT	B, C	500w		A4

*FREQUENCY GROUPS

Group A	Group B	Group C	Group D
2000 to 2100 kc	42,000 to 56,000 kc	60,000 to 86,000 kc	Any 6,000 kc frequency band above 110,000 kc excluding 400,000 to 401,000 kc.

THE SERIOUS SIDE OF RADIO MUSIC

IN this age of swing music and such dances as the Big Apple, Lambeth Walk and Yam, radio renditions are by no means confined to jitterbugs' tastes. The serious side of music is not neglected. The best symphony concerts, operas and instrumental and vocal solo bits are offered on radio schedules. Sponsors and networks spare no expense to obtain the best names in the music world.



Lily Pons, the world-famed coloratura, and her noted conductor-husband, Andre Kostelanetz.



There's beauty on the classical programs, too, as these views of Gladys Swarthout and Grace Moore adequately prove.



Arturo Toscanini, acclaimed by many experts as the greatest symphonic conductor of all time. As chief conductor of the NBC Symphony Orchestra, he has contributed greatly towards the advance of broadcast entertainment. An NBC photographer, took these candid shots of Toscanini in action.



Three popular singers of classics—Lawrence Tibbett, Margaret Speaks and Walter Cassell.



Judging by the smiles of these three stars, serious music has its bright side. Left to right: Howard Barlow, CBS conductor; Vivian Della Chiesa, NBC lyric soprano, and Erno Rapee, NBC conductor.



Mario Cozzi, NBC baritone. Left: Pierre French, conductor, who scored favorably with American listeners. Right: Frank Black, NBC conductor.



WORLD-WIDE SHORT-LONG WAVE STATION LIST

Kc. Meters Call	Location	Kw.	Service, etc.	Kc. Meters Call	Location	Kw.	Service, etc.
400,000 0.75 W1XEG	Storrs, Conn.	0.5	Experimental	14,650 19.21 JVF	Nasahi, Japan	20.0	Phone to KWU; occ. bc.
400,500 4.96 W8XKA	Pittsburgh, Pa.	0.13	Experimental	15,505 19.33 CULAS	Havana, Cuba	40.0	Tests, irr.
400,800 5.41 W3XKA	Pittsburgh, Pa.	0.15	Exp.; relays KDEA	15,490 19.37 KEM	Belinas, Calif.	40.0	Phone
41,000 2.12 W2XK	New York, N. Y.	0.1	Experimental	15,475 19.39 KKL	Belinas, Calif.	40.0	Phone
31,800 9.50 W1XKA	Chicopee Falls, Mass.	0.5	Experimental	15,450 19.42 IUG	Addis Ababa, Ethiopia	20.0	Phone
31,800 9.49 W3XKA	Philadelphia, Pa.	0.5	Exp.; relays KYW	15,420 19.45 XEDM	Dixah, Calif.	20.0	Phone to Hawaii, Manila
31,800 9.48 W8XAL	Rochester, N. Y.	0.1	Exp.; relays WHAM	15,370 19.52 HASS	Sokolshabar, Hungary	20.0	Broadcast
31,800 9.40 W8XWJ	Detroit, Mich.	0.1	Exp.; relays WWJ	15,360 19.53 DZG	Zeesen, Germany	20.0	Phone
31,800 9.40 W9XPD	St. Louis, Mo.	0.1	Exp.; relays KSD	15,335 19.54 KWU	Dixah, Calif.	20.0	Phone
26,100 11.49 GSK	Daventry, England	20.0	Broadcast	15,340 19.56 DZM	Zeesen, Germany	20.0	Phone
21,440 13.83 WKKK	Pittsburgh, Pa.	40.0	Exp.; relays KDEA	15,320 19.57 W2XAD	Saksachetty, N. Y.	20.0	Phone
21,320 13.62 GSP	Daventry, England	15.0	Broadcast	15,290 19.58 OLRAB	Podabrady, Czechoslovakia	25.0	Broadcast
21,250 13.94 JZM	Wayne, N. J.	0.1	Exp.; relays WABC	15,210 19.66 GSP	Daventry, England	20.0	Broadcast
21,478 13.97 GSH	Nasahi, Japan	20.0	Broadcast	15,200 19.63 DJQ	Zeesen, Germany	5.0	Phone
21,465 13.98 W1XAL	Daventry, England	5.8	Broadcast	15,200 19.63 LRU	Buenos Aires, Argentina	5.0	Phone
21,460 13.99 OLR6A	Podabrady, Czechoslovakia	25.0	Broadcast	15,230 19.65 W2XE	Wayne, N. J.	15.0	Phone
21,430 14.01 WKK	Lawrenceville, N. J.	20.0	Phone	15,200 19.66 GSH	Daventry, England	15.0	Phone
21,100 14.18 LSL4	Hurlingham, Argentina	60.0	day	15,230 19.67 W1XAL	Boston, Mass.	12.0	Broadcast
21,140 14.19 KBI	Manila, P. I.	10.0	Phone	15,240 19.68 TP2A	Fontaine, France	25.0	Broadcast
21,080 14.22 PBA	Marapies, Brazil	10.0	Phone; broadcast	15,230 19.70 OLR6A	Podabrady, Czechoslovakia	25.0	Broadcast
21,040 14.25 W1XK	Lawrenceville, N. J.	20.0	Phone; broadcast	15,210 19.71 FCJ	Musem, Holland	20.0	Experimental
21,020 14.25 KWN	Dixon, Calif.	20.0	Phone	15,210 19.72 W1XK	Pittsburgh, Pa.	40.0	Phone
21,000 14.27 LSL6	Hurlingham, Argentina	60.0	Phone	15,200 19.74 DZM	Zeesen, Germany	4.5-5.0	Broadcast
20,910 14.35 PSB	Marapies, Brazil	10.0	Phone	15,190 19.78 ZBW4	Hongkong, China	2.0	Broadcast
20,860 14.37 EBY	Madrid, Spain	7.5	Phone to Buenos Aires	15,180 19.79 GSO	Daventry, England	15.0	Broadcast
20,820 14.41 RRS	Bolinas, Calif.	40.0	Phone	15,180 19.79 JZM	Nasahi, Japan	20.0	Broadcast
20,780 14.43 K2M	Bolinas, Calif.	40.0	Phone	15,180 19.79 OLR6C	Podabrady, Czechoslovakia	25.0	Broadcast
20,740 14.50 DWG	Nauas, Germany	10.0	Phone	15,150 19.80 YDC	Bandoeng, Java	20.0	Broadcast
20,640 14.67 OPL	Leopoldville, Belgian Congo	9.0	Phone to OBG; mornings	15,140 19.81 GSF	Daventry, England	18.0	Broadcast
20,620 14.69 DPZ	Nasen, Germany	9.0	Phone to South America	15,120 19.84 EVJ	Valencia City	20.0	Broadcast
19,890 15.92 KAK	Manila, P. I.	20.0	Phone to England	15,110 19.85 PHJ	Zeesen, Germany	10.0	Broadcast
19,890 15.14 W1XN	Lawrenceville, N. J.	20.0	Phone to England	15,070 19.81 FBD	Marapies, Brazil	12.0	Phone
19,720 15.21 EAQ	Madrid, Spain	10.0	Phone to Latin America	15,065 19.83 WNC	Hilsum, Florida	0.4	Phone
19,700 15.22 DPJ	Nauas, Germany	10.0	Phone	15,040 19.85 RKT	Moosoo, U.S.E.R.	20.0	Phone to WQQ; mornings
19,660 15.26 SUY	Absnabi, Egypt	9.0	Phone	15,000 20.0 WVV	Beltsville, Md.	1.0	Phone
19,460 15.31 LSPF	Monte Carlo, Argentina	20.0	Phone	14,985 YSL	San Salvador, El Salvador	40.0	Phone; Mexican stations
19,440 15.32 IRW	Rome, Italy	9.0	Phone to South America	14,980 20.02 KAY	Manila, P. I.	40.0	Phone to Dixon
19,440 15.42 DFM	Nauas, Germany	10.0	Phone	14,970 20.04 LSA	Sofia, Bulgaria	20.0	Broadcast
19,360 15.51 PMA	Bandoeng, Java, D. E. I.	40.0	Phone; sometimes bc.	14,930 20.05 YRI	San Salvador, El Salvador	20.0	Phone
19,260 15.58 FPU	Sepetiba, Brazil	12.0	Phone	14,935 20.09 PSE	Marapies, Brazil	10.0	Phone; broadcast
19,250 15.61 WKF	Lawrenceville, N. J.	20.0	Phone	14,910 20.12 JVC	Nasahi, Japan	10.0	Phone to Formosa; broadcast
19,200 15.62 ORG	Ruysselode, Belgium	8.0	Phone	14,620 20.42 PSF	Marapies, Brazil	10.0	Phone; broadcast
19,140 15.68 LSL4	Hurlingham, Argentina	60.0	Phone to Madrid, Berlin	14,600 20.55 JVIH	Nasahi, Japan	20.0	Phone; broadcast
18,650 15.75 JVC	Nasahi, Japan	20.0	Phone; sometimes bc.	14,590 20.56 WMN	Lawrenceville, N. J.	20.0	Phone
18,020 15.77 H8PJ	Bangkok, Siam	20.0	Broadcast	14,535 20.64 HBJ	Pruggins, Switzerland	20.0	Phone
18,910 15.86 JVA	Nasahi, Japan	20.0	Phone to Europe; occ. bc.	14,504 20.65 LSN1	Hurlingham, Argentina	60.0	Phone to New York; mornings
18,890 15.88 ZSS	Kilipevele, S. Africa	5.0	Phone to Rugby	14,500 20.69 LSM2	Hurlingham, Argentina	60.0	Phone to Madrid, Berlin
18,860 15.91 W1X4	Rocky Point, N. Y.	40.0	Phone	14,480 20.72 YMA	Managua, Nicaragua	20.0	Phone to WNC
18,860 15.92 PLE	Bandoeng, Java, D. E. I.	40.0	Phone to Dixon and Nasahi	14,440 20.78 DZH	Rugby, England	15.0	Phone
18,870 16.06 OCI	Lima, Peru	15.0	Phone	13,980 21.46 VPD2	Suva, Fiji Islands	20.0	Experimental
18,820 16.11 GAU	Rugby, England	15.0	Phone to WMI, VVWY	13,820 21.70 SUZ	Abu Zabal, Cairo, Egypt	20.0	Phone
18,800 16.13 PDM	Kootwijk, Holland	40.0	Phone	13,810 21.76 RUCB	Cairo, Egypt	8.0	Phone; broadcast
18,465 16.18 KCM	Kootwijk, Holland	40.0	Phone	13,811 21.78 SUE1	Abu Zabal, Egypt	8.0	Phone
18,460 16.23 HBR	Pruggins, Switzerland	20.0	Phone	13,760 21.80 TYE2	Pentose, France	12.0	Phone to U. S. A.
18,405 16.30 PCK	Kootwijk, Holland	40.0	Phone to Bandoeng	13,600 21.91 KKEZ	Bolinas, Calif.	40.0	Phone to Japan, Java
18,340 16.36 WLA	Lawrenceville, N. J.	20.0	Phone to CAS	13,485 22.96 8PW	Warsaw, Poland	20.0	Broadcast
18,210 16.38 FYS	Saigon, French Indo-China	15.0	Phone to France	13,440 22.97 JVC	Kumakura, Choo, Japan	15.0	Experimental; bc.
18,270 16.42 IUD	Addis Ababa, Ethiopia	10.0	Phone	13,385 23.06 GVB	Rugby, England	15.0	Phone
18,190 16.48 JVB	Nasahi, Japan	10.0	Phone to Java; P. I.; bc.	13,460 22.72 J11	Nasahi, Japan	10.0	Phone to Manchukuo; also bc.
18,165 16.51 PPZ	Sepetiba, Brazil	20.0	Phone	13,337 22.47 YVQ	Maracay, Venezuela	20.0	Phone
18,135 16.55 PMC	Bandoeng, Java	40.0	Phone; sometimes bc.	13,280 22.78	British Ships	20.0	Phone
18,060 16.58 TFE	Pentose, France	12.0	Phone to U. S. A.	13,264 23.58 CGA3	Drummondville, Canada	15.0	Phone to ships
18,040 16.63 KQR	Bolinas, Calif.	40.0	Phone	13,268 23.66 KBJ	Manila, P. I.	40.0	Phone
18,020 16.65 KQJ	Bolinas, Calif.	40.0	Transpacific phone	13,218 22.71 PNSK	S.S. Normandie	1.5	Phone
17,980 16.69 KQZ	Bolinas, Calif.	40.0	Phone	13,160 22.93 CWH	Cerita, Uruguay	1.5	Phone
17,940 16.72 W1XJ	Rocky Point, N. Y.	40.0	Phone	13,090 22.99	Nasahi, Japan	10.0	Phone to ships
17,820 16.74 WQF	Rocky Point, N. Y.	40.0	Phone	13,020 23.04 JZE	Coltahn, Italy	32.0	Phone
17,790 16.86 GSG	Daventry, England	15.0	Broadcast	13,085 23.28 PNR	San Francisco	10.0	Time signals: 4:55-5:00 p.m. E. S. T.
17,785 16.87 JZL	Nasahi, Japan	40.0	Broadcast	12,830 23.36 CNG	Rabat, Morocco	12.0	Phone to France
17,780 16.87 W3XK	Pittsburgh, Pa.	40.0	Broadcast; relays KDEA	12,680 23.38 YNE	Porto Cabelos, Nicaragua	0.1	Phone
17,780 16.87 W3XAL	Brunsd Brook, N. J.	15.0	Broadcast; relays WJE	12,630 23.76 NAA	Ashington, Va.	10.0	Time signals: 9:55-10:00 a. m. E. S. T.
17,780 16.87 W9XAA	Chicago, Illinois	0.8	Experimental	12,290 24.41 GBU	Rugby, England	15.0	Phone
17,778 16.88 PHJ	Hilsum, Holland	23.8	Broadcast	12,250 24.49 TYB	Pentose, France	15.0	Phone to JVH, ships
17,740 16.89 W2XE	Wayne, N. J.	4.4	Exp.; relays WABC	12,235 24.62 TPT	Reykjavik, Iceland	20.0	Broadcast
17,760 16.89 DJE	Zeesen, Germany	5.50	Broadcast	12,190 24.68 TYA	Fontaine, France	15.0	Phone
17,755 16.90 ZBW5	Hongkong, China	2.0	Broadcast	12,150 24.99 GBS	Zeesen, Germany	15.0	Phone to U. S. A.
17,750 16.90 IAC	Coltahn, Italy	14.0	Phone; early mornings	12,130 24.73 DZE	Pentose, France	15.0	Phone
17,740 16.91 HSP	Bangkok, Siam	20.0	Phone to JVG	12,060 24.88 PDY	Kootwijk, Holland	60.0	Phone
17,640 17.00	British Ships	20.0	Phone	12,020 24.96 VTY	VK3ME	20.0	Tests with Drummondville
17,520 17.12 DFB	Nauas, Germany	10.0	Phone to YVR	12,000 25.00 RV58	Melbourne, Australia	20.0	Tests with Drummondville
17,480 17.18 WYV2	Kirkse, India	20.0	Phone to Rugby	11,955 25.09 IUC	Moosoo, U.S.S.R.	3.5	Phone
17,310 17.33 W3XK	Brunsd Brook, N. J.	20.0	Experimental	11,960 25.11 KKQ	Addis Ababa, Ethiopia	3.5	Phone
17,245 17.37 DRY1	Norddeich, Germany	0.0	Phone	11,900 25.21 YXW1	Bolinas, Calif.	40.0	Phone
17,180 17.51 HASS	Sokolshabar, Hungary	20.0	Broadcast	11,900 25.21 CTIG0	Mexico, D. F., Mexico	20.0	Broadcast
16,820 17.84 NAA	Arlington, Virginia	10.0	Time signals: 9:55-10:00 a. m. E. S. T.	11,900 25.21 OLRAD	Parde, Portugal	0.33	Broadcast
16,645 18.00	German Ships	20.0	Phone	11,895 25.22 HPI3	Podabrady, Czechoslovakia	25.0	Broadcast
16,305 18.40 PCL	Kootwijk, Holland	40.0	Phone to Bandoeng	11,895 25.22 XCR	Aquiduan, Panama	0.05	Broadcast
16,270 18.44 WLK	Lawrenceville, N. J.	20.0	Phone to Rugby	11,890 25.25 XEXA	Mexico, D. F., Mexico	0.1	Broadcast
16,240 18.47 KTO	Manila, P. I.	40.0	Phone to Dixon	11,890 25.25 TPA3	Pentose, France	20.0	Broadcast
16,210 18.51 IRY	Rome, Italy	40.0	Phone to KWO	11,880 25.25 W9XF	Chicago, Illinois	20.0	Phone
16,030 18.71 KKP	Kabuku, Hawaii	40.0	Phone	11,875 25.26 OLR6C	Podabrady, Czechoslovakia	25.0	Phone
15,985 18.77 KOH	Kabuku, Hawaii	40.0	Phone	11,860 26.29 YDB	Pittsburgh, Pa.	40.0	Phone; relays KDEA
15,950 18.81 PLC	Bandoeng, Java	20.0	Phone; afternoons	11,860 25.30 GSE	Daventry, England	20.0	Broadcast
15,880 18.88 FTK	St. Anne, France	0.5	Phone to Saigon	11,835 25.31 DJP	Zeesen, Germany	5-30	Broadcast
15,885 18.91 CED	La Granja, Chile	0.5	Phone				
15,860 18.90 JVD	Nasahi, Japan	20.0	Phone to Shanghai				
15,810 18.97 LSL3	Hurlingham, Argentina	60.0	Phone to London, Rio; mornings				
15,750 19.05 JIA	Tyurki, Formosa	10.0	Phone to Nasahi				
15,680 19.13 JVE	Kanoshi, Manchukuo	20.0	Phone to Nasahi				
15,660 19.16 JVE	Nasahi, Japan	10.0	Phone to PLE, P. I.; occ. bc.				

Kc. Meters Call	Location	Kw.	Service, etc.	Kc. Meters Call	Location	Kw.	Service, etc.
6,350 47.24 YNJ5	Waspoak, Nicaragua	0.1	Phone	6,025 49.79 HJ1ABJ	Santa Marta, Colombia	0.025	Broadcast
6,350 47.24 YNJ7	Waspoak, Nicaragua	0.1	Phone	6,020 49.83 DJC	Zeezen, Germany	5-50	Broadcast
6,357 47.20 HRP1	San Pedro Sula, Honduras	0.075	Broadcast	6,020 49.83 XEUUV	Veracruz, Ver., Mexico	Broadcast
6,349 47.32 YNE	Puerto Cabezas, Nicaragua	0.1	Phone	6,018 49.88 XEVI	Mexico, D. F., Mexico	0.25	Broadcast
6,340 47.32 HXK	Trujillo, D. R.	Broadcast	6,015 49.90 HJ1ABH	Bogota, Colombia	1.2	Broadcast
6,330 47.39 JZG	Nasaki, Japan	10.0	Phone to ships	6,010 49.92 YP3MR	Georgetown, British Guiana	0.25	Amateur; bc.
6,310 47.54 HJZ	Trujillo, D. R.	0.02	Broadcast	6,010 49.92 COCO	Havana, Cuba	0.25	Broadcast
6,300 47.62 YV4RD	Maracay, Venezuela	0.1	Broadcast	6,010 49.92 OLR2A	Podebrady, Czechoslovakia	25.0	Broadcast
6,280 47.77 HIG U	Trujillo, D. R.	0.1	Phone	6,008 49.98 HJ1ABG	Montreal, Quebec	1.075	Bc. relays CPFCF
6,280 47.77 COHB	Sancti Spiritus, Cuba	0.15	Broadcast	6,005 49.96 YEDDN	Montreal, Quebec	4.0	Broadcast
6,270 47.84 YV5RP	Caracas, Venezuela	Broadcast	6,003 49.97 XEHT	Mexico, D. F., Mexico	0.1	Bc. relays XEB
6,260 47.92 OAX4G	Lima, Peru	Broadcast	6,000 50.00 HJ1ABG	Quibdo, Colombia	1.0	Broadcast
6,250 48.00 YV3HJ	Mexico, D. F., Mexico	0.75	Broadcast	6,000 50.00 YOI	Bucharest, Roumania	0.075	Broadcast
6,243 48.05 HIN	Trujillo, D. R.	Broadcast	6,000 50.00 RV59	Moscow, U.S.S.R.	20.0	Broadcast
6,235 48.11 HRD	La Ceiba, Honduras	0.25	Broadcast	6,000 50.00 TGWA	Guatemala City, Guatemala	0.2	Broadcast
6,225 48.19 YV1RO	Valera, Venezuela	0.2	Broadcast	6,000 50.00 PIQA	Tanarary, Madagascar	Broadcast
6,208 48.35 YV1RH	Coro, Venezuela	0.2	Broadcast	5,990 50.17 HJZ	Trujillo, D. R.	10.0	Broadcast
6,200 48.39 XEKS	Mexico, D. F., Mexico	Broadcast	5,985 50.28 HJN	Veitikon, U.S.S.R.	Broadcast
6,200 48.39 COJK	Santiago, Cuba	2	Bc.; relays CMKE	5,985 50.04 RPT	Tashkent, U.S.S.R.	1.0	Phone
6,198 48.08 H18Q	Ciudad, Trujillo	0.025	Broadcast	5,990 50.08 HJZABD	Bucaramanga, Colombia	0.1	Broadcast
6,190 48.47 H11A	Santiago de los Caballeros	D. R.	0.05	5,990 50.08 HJZ	Colon, Panama	Broadcast
6,164 48.67 OAX1B	Chicalayo, Peru	0.3	Bc.; relays OAKIA	5,940 50.50 TG2X	Guatemala City, Guatemala	0.2	Police; bc.
6,150 48.70 CJRO	Winnipeg, Man., Canada	Bc.; relays CJRO	5,928 50.64 HJZ	Port-au-Prince, Haiti	0.1	Bc. relays HEZT
6,150 48.78 FT4AJ	Tunis, Tunisia	Experimental	5,917 50.71 VV2RH	Valencia, Venezuela	Broadcast
6,156 48.78 YV1RH	Caracas, Venezuela	1.0	Broadcast	5,917 50.71 VV2RH	Maracay, Venezuela	Broadcast
6,150 48.78 CB6A	Santiago, Chile	0.15	Broadcast	5,890 50.84 YV3RA	Barquisimeto, Venezuela	0.25	Broadcast
6,150 48.78 H15N	Santiago de los Caballeros, D. R.	0.1	Broadcast	5,882 51.00 ZEA	Salisbury, So. Rhodesia	0.325	Broadcast
6,150 48.78 HJ4ABU	Pereira, Colombia	0.1	Broadcast	5,880 51.02 HJA	Addis Ababa, Ethiopia	Phone
6,150 48.78 YBCL	Winnipeg, Man., Canada	Broadcast	5,875 51.06 H1RN	Tucucigalpa, Honduras	0.4	Broadcast
6,140 48.80 ZEB	Batavia, So. Rhodesia	0.325	Broadcast	5,885 51.15 HJ1J	San Pedro de Macoris, D. R.	0.4	Broadcast
6,140 48.86 W8XK	Pittsburgh, Pa.	40.0	Bc.; relays KDEA	5,850 51.28 YV1RB	Maracaibo, Venezuela	0.3	Broadcast
6,137 48.88 CR7AA	Lourenzo Marques, Mosambique	0.33	Broadcast	5,845 51.32 KHO	Kabuku, Hawaii	40.0	Phone
6,133 48.81 XEXA	Mexico, D. F., Mexico	Broadcast	5,830 51.46 TDD	Shinkio, Manchukuo	Phone to Tokyo
6,133 48.82 CT1GO	Parade, Portugal	0.35	Broadcast	5,830 51.46 CWD	Montevideo, Uruguay	1.5 Phone
6,130 48.94 COCD	Havana, Cuba	0.3	Bc.; relays CMGD	5,830 51.46 TIGPH	San Jose, Costa Rica	1.0	Broadcast
6,130 48.94 LKJ1	Jeloy, Norway	1.0	Broadcast	5,800 51.72 YV3RC	Caracas, Venezuela	1.0	Broadcast
6,130 48.94 YF3BG	Georgetown, British Guiana	0.15	Broadcast	5,800 51.72 KZJF	Manila, P. I.	10.0	Phone to Manchukuo; also bc.
6,128 48.98 OAX7A	Cusco, Peru	Broadcast	5,790 51.81 YUJ	Nasaki, Japan	Phone to Manchukuo; also bc.
6,128 48.98 CX4A	Montevideo, Uruguay	Broadcast	5,790 51.80 OAXAD	Lima, Peru	30.0	Broadcast
6,122 49.01 HJ3ABX	Isotota, Colombia	Broadcast	5,780 51.80 HJ1ABD	Medellin, Colombia	Broadcast
6,122 49.01 OAX4P	Itzacayo, Peru	Broadcast	5,758 52.10 YNOP	Managua, Nicaragua	Broadcast
6,122 49.01 OAX8A	Arequipa, Peru	Broadcast	5,735 52.31 HC1PM	Quito, Ecuador	0.3
6,120 49.02 YD4S	Bandoeng, Java, D. E. I.	4.5	Broadcast	5,730 52.36 JYV	Nasaki, Japan	10.0	Phone to Formosa; bc.
6,120 49.02 XEFPW	Mexico, D. F., Mexico	Broadcast	5,715 52.51 TOS	San Cristobal, Venezuela	0.2	Broadcast
6,120 49.02 XEFT	Veracruz, Veracruz, Mexico	0.12	Broadcast	5,710 52.54 YV2RA	San Cristobal, Venezuela	Broadcast
6,120 49.02 HP3Z	Panama City, Panama	0.2	Broadcast	5,705 52.59 CDF	Rosland, B. C., Canada	Phone; bc.
6,120 49.02 WXPY	Kyoto, N. J.	10.0	Bc.; relays WADO	5,670 52.91 FAU	Norddeich, Germany	Phone
6,117 49.04 XEUDZ	Mexico, D. F.	Broadcast	5,555 54.00 YNE	Suerto Cabezas, Nicaragua	0.1	Phone
6,115 49.06 XEUCU	Guadalajara, Mexico	Broadcast	5,500 54.83 HJ1AH	San Ramon, Costa Rica	0.4	Phone
6,115 49.06 HJ1ABB	Barranquilla, Colombia	1.0	Broadcast	5,498 54.04 R01	Fuertecito, U.S.S.R.	15.0	Phone
6,115 49.06 OLR3C	Podebrady, Czechoslovakia	25.0	Broadcast	5,435 55.19 LSH	Monte Grande, Argentina	Phone
6,110 49.10 G5L	Deventry, England	0.0	Broadcast	5,415 55.40 PMY	Bandoeng, Java, D. E. I.	0.45	Phone; bc.
6,110 49.10 VEPHX	Halifax, N. S., Canada	0.2	Bc.; relays CBNS	5,170 58.03 H1RZ	La Ceiba, Honduras	0.1	Phone
6,109 49.10 VUC	Calcutta, India	0.5	Broadcast	5,140 58.37 HRY	Bandoeng, Java, D. E. I.	0.6	Broadcast
6,108 49.11 HJ1ABB	Manizales, Colombia	20.0	Bc.; relays WHZ	5,110 58.71 K1KB	Bolinas, Calif.	40.0	Phone
6,100 49.18 W9XAL	Bound Brook, N. J.	5.0	Bc.; relays WENR	5,105 58.76 XEC	Bolinas, Calif.	40.0	Phone
6,100 49.18 W9XF	Chicago, Illinois	2.5	Broadcast	5,025 58.70 ZFA	Hamilton, Bermuda	1.5	Phone
6,100 49.20 YTC	Belgrade, Yugoslavia	2.5	Broadcast	5,000 59.00 W9WV	Beltville, Md.	1.0	Frequency Standard; Tues., Wed., Fri.; noon, 1 p.m. E. S. T.
6,098 49.20 ZTJ	Johannesburg, S. Africa	5.0	Broadcast	5,000 60.00 RUD	Pretoria, S. Africa	Experimental
6,087 49.20 HJ4ABE	Medellin, Colombia	9.1	Broadcast	4,975 60.20 GBC	Rugby, England	Phone to ships
6,090 49.26 ZBWZ	Hong-Kong, China	2.0	Bc.; relays ZBW	4,826 62.24 GDW	Rugby, England	15.0	Phone to U.S.
6,090 49.26 HJ4ABC	Ibague, Colombia	Broadcast	4,795 62.56 V95BK	Vancouver, B. C.	0.25	Broadcast
6,090 49.26 CRXC	Toronto, Ont., Canada	0.5	Broadcast	4,783 63.11 W0Y	Lawrenceville, N. J.	20.0	Phone
6,088 49.30 HJ5ABD	4,783 63.11 W0Y	Ocean Gate, N. J.	20.0	Phone
6,083 49.32 V97LO	Nairobi, Kenya, Africa	1.25	Broadcast	4,658 65.11 W00	Wapam, Nicaragua	0.1	Phone
6,080 49.34 ZHJ	Penang, Straits Settlements	0.05	Broadcast	4,610 65.08 YNJ7	Waspoak, Nicaragua	0.1	Phone
6,080 49.34 CP5	La Paz, Bolivia	20.0	Bc.; relays WCFL	4,610 65.08 YNE	Waspoak, Nicaragua	0.1	Phone
6,080 49.34 W9XAA	Chicago, Illinois	Experimental	4,610 65.08 YNE	Puerto Cabezas, Nicaragua	0.1	Phone
6,079 49.35 DJM	Zeezen, Germany	0.2	Broadcast	4,610 65.08 YNE	Boon, Nicaragua	0.1	Phone
6,073 49.38 H18P	Colon, Panama	Broadcast	4,605 65.16 H1RW
6,075 49.38 YV1RD	Maracaibo, Venezuela	Broadcast	4,605 65.16 H1RW
6,073 49.37 CQJ	Macao, Asia	0.5	Broadcast	4,605 65.16 H1RW
6,070 48.42 YB9CS	Vancouver, B. C., Canada	0.01	Broadcast	4,600 65.22 HC2ET	La Ceiba, Honduras	0.1	Phone
6,070 49.42 CFXK	Toronto, Ontario	1.0	Broadcast	4,465 65.29 CFA2	Guayaquil, Ecuador	0.4	Broadcast
6,070 49.42 HJ3ABF	Bogota, Colombia	0.1	Broadcast	4,465 65.29 CFA2	Drummondville, P. Q.	15.0	Phone
6,067 49.45 VPB	Colombo, Ceylon	Broadcast	4,355 68.89 IAC	Katano, Italy	56.0	Phone
6,065 49.46 XEXR	Mexico, D. F., Mexico	Broadcast	4,273 70.21 RV15	Chibarovsk, U.S.S.R.	20.0	Broadcast
6,060 49.50 OXY	Skatmebek, Denmark	10.0	Bc.; relays WLV	4,067 73.05 HC1B	Quito, Ecuador	0.5	Broadcast
6,060 49.50 W9XAL	Cincinnati, Ohio	10.0	Bc.; relays WCAU	4,100 73.17 LK1J	Jeloy, Norway	1.0	Experimental
6,060 49.50 W3XAU	Philadelphia, Pa.	10.0	Bc.; relays WCAU	4,097 73.23 WND	Hialeah, Fla.	0.4	Phone
6,050 49.59 HJ3ABD	Bogota, Colombia	1.0	Broadcast	4,002 74.77 CT2AJ	San Miguel, Azores	0.5	Amateur; bc.
6,050 49.59 XEAP	Mexico, D. F., Mexico	Broadcast	4,000 75.00 CT3AQ	Funchal, Madeira	Broadcast; exp.
6,045 49.65 XE1TW	Mexico, D. F., Mexico	Broadcast	3,175 94.48 YNJ5	Wapam, Nicaragua	0.1	Phone
6,042 49.65 HJ1ABG	Barranquilla, Colombia	0.15	Broadcast	3,175 94.48 YNJ5	Wapam, Nicaragua	0.1	Phone
6,040 49.67 W4XB	Miami Beach, Fla.	2.5	Bc.; relays WIOD	3,175 94.48 YNE	Boon, Nicaragua	0.1	Phone
6,040 49.67 H19B	Santiago de los Caballeros, D. R.	0.1	Broadcast	3,175 94.48 YNE	Boon, Nicaragua	0.1	Phone
6,040 49.67 W1XAL	Boston, Mass.	5.0	Broadcast	3,800 78.85 ZP11	Puerto Cabezas, Nicaragua	0.1	Phone
6,040 49.67 YDA	Tandjongpriok, Java, D. E. I.	10.0	Broadcast	3,710 79.86 H19B	Aguacion, Paraguay	Broadcast
6,033 49.72 HJ4ABP	Medellin, Colombia	Broadcast	3,525 85.11 H19AQ	Basle, Switzerland	Broadcast
6,030 49.76 OLR2B	Podebrady, Czechoslovakia	25.0	Broadcast	3,376 83.83 HJ3A3	Lausanne, Switzerland	Broadcast
6,030 49.76 H15B	Panama, Panama	0.1	Broadcast	3,330 92.38 YD2V	Barranquilla, Colombia	Phone
6,030 49.76 W9CA	Calgary, Alberta, Canada	0.1	Bc.; relays CPFN	3,040 98.68 YDA	Banderjansur, Borneo, D. E. I.	30.0	Broadcast
6,030 49.76 XEBQ	Masatlan, Mexico	Broadcast	3,040 98.68 YDA	Tandjongpriok, Java, D. E. I.	10.0	Broadcast



Fine quality radio tone depends on fine quality radio tubes and parts Insist on

NATIONAL UNION TUBES and PARTS
to get the most out of your set.



Ted Husing recruits a mowing machine to carry himself, portable relay transmitter and engineers around the lengthy fairway of a golf club while he presents a word picture of the event.

BROADCASTING THE NEWS

WITH greater speed than newspapers can be published and distributed, radio supplies the public with news flashes throughout the day. In addition to news bulletins, there are stellar commentators who interpret the events of the day editorially. News re-enactment programs are also popular; actors and actresses with expert mimicking ability bring to life the stories of the headlines.



A section of the busy news department of NBC where wired material from press associations is prepared for the air. Right: A scene from the "March of Time," a pioneer news re-enactment feature.



Walter Winchell, the Broadway columnist, Lowell Thomas and Edwin C. Hill, three long-established air commentators.



It's always news when the President and the First Lady takes to the airways. The President is shown at the left in a typical railroad platform broadcast. Mrs. Roosevelt is apparently setting a record for broadcasts by Presidents' wives.

SAY IT WITH A SONG

THAT'S what sponsors believe and they do that very thing! Only they're smart enough to have talented men and women do it for them. On these pages are representative vocalists who are responsible for the tunes you hum to yourself after a night of radio listening. This branch of radio, particularly, offers big opportunities to newcomers.

The Revelers, a pioneer air quartet that's still going strong.



"Autograph please!" is the request and Lucille Manners and Lanny Ross are seen obliging.



Del Casino and Loretta Clemens, whose voices are known from coast to coast.



And Harriet Hilliard and Don Ross, two more top-notch mike vocalists. Left: Recognize her! It's Martha Tilton, the girl on the cover. She's featured with Benny Goodman's Orchestra.



Songstresses Dorothy Arnold and Sylvia Froos, who have "an eye" as well as "ear" appeal.



Left to right: Claire Sherman, Jack Baker and Joan Edwards, popular network songsters. And below, left to right, are Lucy Monroe, Jane Froman and Ethel Shutta, whose voices have wide followings.



Right: A scene such as this can only occur in a dream or in a Hollywood musical talkie. In this case it's the latter. And in the foreground is Kenny Baker, the young singer who "made the grade" cinematically as well as microphonically.



YE OLDE FAMILY ALBUM

HERE are some photos from the family albums of your air favorites. Can you identify them from these photos taken when they were young? See how good your guess is before you look at the captions on the lower right.



1. He's popular as a dance conductor, singer and variety show director. He looks the same today (outside of the haircut!)



2. She's known as "The Nitwit of the Networks." She looks innocent enough here but she turned into radio's leading exponent of daffy humor.



3. These two lads used burnt cork and a Harlem dialect to gain fame.



4. This girl's name comes to mind whenever you hear "Shine on, Harvest Moon." The young man at the right scored his greatest mike success with the aid of a gong. He's pictured here as a young yachtsman making a formal (see the hat!) call on neighboring boats.

OF COURSE YOU KNEW!

1. Rudy Vallee.
2. Gracie Allen.
3. Freeman Gosden (Amos) and Charles Correll (Andy).
4. Ruth Etting and Major Bowes.

Don't
Monkey
with your
RADIO



Call us for
RADIO
SERVICE
ALL WORK
Guaranteed



The recommended
NATIONAL UNION

RADIO TUBES
CONDENSERS

CALL US FOR RADIO REPAIRS

Guaranteed Work on All Makes



IF your radio hums, buzzes, crackles, fades or stops playing altogether, call us!

We have scientific instruments which quickly locate radio troubles and show us exactly what must be done to cure them.

We are experts with a broad training in the science of radio repairs and are equipped to cope with problems on all makes of sets.

We use quality parts in all of our work and guarantee every job fully.

Our charges are reasonable and our service is fast.

Call us for radio repairs at any time and be assured of full satisfaction.

GREENS RADIO SERVICE

3414 12th STREET, N. E.

DEcatur 4236