

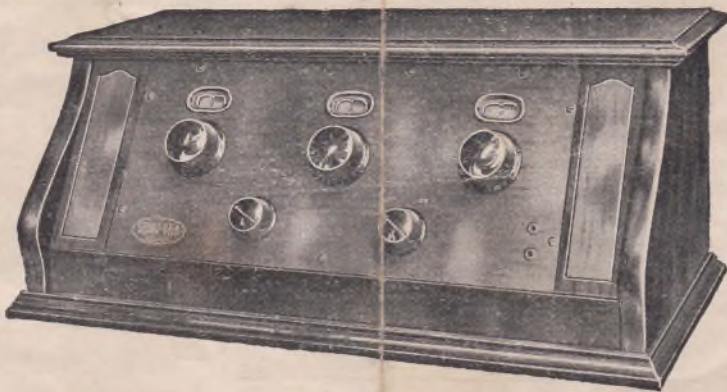
CHELSEA

Instructions For Chelsea Super-Five Receiver

If the general instructions given below are followed most excellent results may be obtained with the Chelsea Super-Five receiver.

ANTENNA:

For best long distance reception the antenna should be as long as possible, up to one hundred and fifty feet. Copper wire erected at as great a height and in as open a space as possible. It should be well insulated at all points and equipped with a lightning arrester at the point of entrance. All connections should be soldered. More than one wire is undesirable, maximum height is much more important. If severe local interference is encountered a shorter wire will give much greater selectivity, but a longer antenna is most efficient for distant reception.



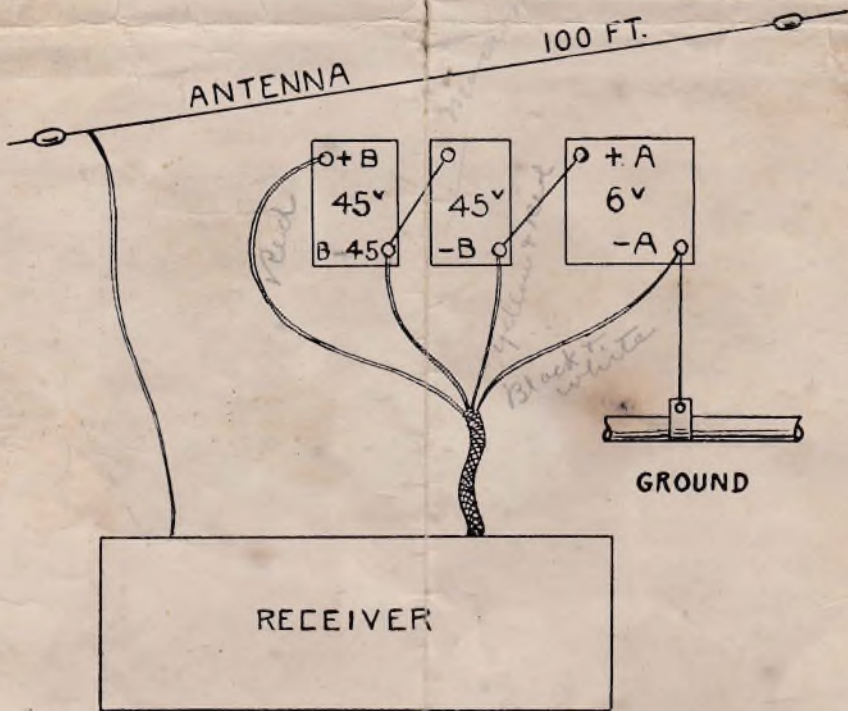
INSTALLATION:

The batteries may be placed close to the radio or may be placed in the basement. A remote location does not interfere with best efficiency. Ordinary lamp cord should be used for inside wiring with ground connection preferably made to the water pipe, altho

radiators are frequently used. The storage battery is known as the "A" battery and the dry cell blocks as the "B" battery. A terminal of the storage battery is generally marked red or plus for the positive terminal and the terminals of the "B" batteries are likewise designated. The loud speaker cord having the colored marker should be inserted in the upper speaker terminal.

ACCESSORIES:

Only the best of these should be used, as much of the success of the receiver depends upon these parts. The "A" battery should be approximately one hundred ampere hour, six volts, and the "B" battery should consist of two forty five volt, heavy duty type only. Smaller size batteries are not economical. Any good type of "B" battery eliminator may be used with complete success. Only the best vacuum tubes should be used for without good tubes the excellence of the rest of the radio is without avail. Five type 201A tubes may be used but for best results the detector tube, which is the middle one, should be type 200 A. If a little more power is desired on distant stations type 112 tube may be used in the first socket on the left. This constitutes the best combination. Any good type of speaker may be used.



OPERATION:

If connected as described, turn the switch to the "on" position and turn the rheostat in a clock wise direction and the radio is ready for tuning. The three dials operate approximately in unison, that is if one dial is set at 42, all dials should be set at 42. If a station has been located a slight readjustment will result in improvement. The rheostat may also be adjusted for best tone and volume. A station once located may be easily relocated by returning to the original dial settings. A schedule of the various stations may be thus prepared for future use. By turning the switch to the "off" position, all batteries are disconnected.

GENERAL:

Dry cell tubes or accessories other than described above may be used, but resulting reception will not be as good.

The direction in which the antenna points is not important. Strong distant stations sometimes grow weaker or "fade," a phenomena for which there is no local remedy.

The storage battery should be charged every two weeks at least. The B batteries will last about six months.

The location of the antennas is of much importance. Those which are erected on a hill or elevated ground function a great deal better than those erected at the base of a hill.

Distance cannot be guaranteed, as it depends upon so many factors beyond the design and control of the receiver. However, distances of 1000 to 2000 miles should be readily accomplished in the evening during the cold weather months.

Reception is much better at night than in daylight and in winter than in summer.

The Chelsea Super-Five will respond equally over all wave lengths. It is non-regenerative and incapable of disturbing your neighbor. An ideal broadcast receiver, and will equal if not surpass the performance of any other radio.

CHELSEA RADIO COMPANY, CHELSEA, MASS.

Chelsea material is absolutely guaranteed