



# DX NEWS

*the magazine of the  
National Radio Club*

— SINCE 1933 —

VOL. 44; NO. 6

22 NOVEMBER 1976

Once again, we must open with something which should be familiar to all members, namely that you now must submit 25¢ if we must make an address change without prior notice from you. The alternative, as always, is to notify us of your address changes in advance. If you have a note on the cover of this bulletin, please remit the amount indicated, or your membership will have to be prorated to make up for it. The USPS is trying to break us on this — not only do we have to pay 25¢ for each correction, but most of our local Post Offices delay notifying us long enough that we end up getting two or three notification and paying 50 or 75¢. If this money is not collectable, we can only prorate dues or cease to request Postal address correction, meaning if you don't send us your address change, you may not get the bulletin at all. It's in your own interest — please cooperate.

And, while we're on the subject, RENEWALS go to BOX 118, POQUONOCK CT 06064 and ADDRESS CHANGES come to BOX 127, BOONTON, NJ 07005. ALSO, despite what it says on the REPRINTS order forms, those orders go to BOX 401, GALES FERRY, CT 06335.

DOMESTIC LOG ORDERS ARE BEING HELD AT THE PUBLICATIONS CENTER (some 60 of them) UNTIL WE CAN SHIP THE LOGS TO A CONVENIENT DISTRIBUTION POINT, OR GET THEM DISTRIBUTED ELSEWHERE. By the time you receive your next bulletin, we hope to have this worked out. We were going under the assumption (from supposedly reliable info) that the UPS strike would end in Oct., but now it seems that UPS may never see the light of day again, a la REA, so..... By the way, that's part of why your bulletins have been coming later of late — extra volume into the USPS due to the strike. As we get closer to Christmas, expect it to get worse — MUCH worse.

## ON THE INSIDE.....

- \* A Novel Approach to Building Your Own ECB Loop - ~~Mike~~ Maloney (copyright claimed)
- \* A Large Aperture Ferrite Core Loop Antenna for Long and Medium Wave Reception -
- \* Clippings - Various Jim Hagan (typed by Foxworth)

## NEW MEMBERS

- Russel Minthorn, 816 S. Wisteria Dr., Melbourne, FL 32901 (re-joins)
- \* David L. Bush (WA2RYC), 18 Nutley Ave., Nutley, NJ 07110

## RENEWALS

R. Purdy, D. Gleason, I. Eaves, M. King, J. Yates, S. Shaw, A. Hobson, R. Vitti, J. Hathaway, J. Brauner, M. Lewis, T. Sayan, B. Dangerfield, C. Dabelstein.

Mrs. Marty Brauner advises that Joe ( a former DDxD editor ) has been in the hospital again of late. He should be home by now, and we all wish him luck for a speedy recovery.

Tom Sandstrom advises that there is a Hamarlund EQ-150 for sale for \$130 at "Ham" Ruarger Inc., 68 W. York St., Willow Grove, PA 19090 (215)-659-5900. The 150 is a good rig, recommended by RJE, TRS, Foxy and other happy users.....

The NRC HAM OPS LIST is in production, so get any updated info on your call and operations in to HQ ASAP. If you are a ham and haven't advised us of your call, etc., please do. The lists will be available for an SEME after 12/5/76.....

**THE WORLD'S OLDEST AND LARGEST ALL MEDIUM-WAVE DX CLUB**

## C. P. C. TEST SCHEDULE

MONDAY	NOV. 22	- 0300-0400	* KMBL-1450	* Junction, TX	1000/2500	IRCA
	Mon. 22 or	TU 23	-0200-0230	* WBOB-1360	* Galax, VA	1000 <sup>00</sup>
FRIDAY	26	- 0300-0330	* WYNN- 540	* Florence, SC	2500 <sup>00</sup>	NRC
SATURDAY	27	- 0000-0200	* WHITE-1320	* Griffin, GA	5000 <sup>00</sup>	NRC
MONDAY	29	- 0200-0300	* KVVW-1280	* Pearsall, TX	5000	IRCA
SUNDAY	DEC. 05	- 0115-0130	* KJAM-1390	* Madison, S	5000 <sup>00</sup>	NRC
MONDAY	06	- 0100-0200	* WONT-1400	* Pleasantville, NJ	1000/2500	NWRC
		- 0200-0400	* WTAW-1150	* College Sta., TX	1000 <sup>00</sup>	IRCA
		- 0300-0330	* WNAT-1450	* Natchez, MS	1000/2500	NRC
		- 0200-	* KBGN- 910	* Caldwell, ID	1000	IRCA
MONDAY	13	- 0030-0230	* WIQT-1000	* Horseheads, NY	1000 <sup>00</sup>	IRCA
		- 0500-0600	* KBEC-1390	* Waxahachie, TX	5000	IRCA
MONDAY	20	- 0000-0200	* WPCR-1340	* Hanover, NH	1000/2500	NRC
		- 0330-0400	* WECC- 940	* Wartburg, TN	1000 <sup>00</sup>	NRC
MONDAY	27	- 0230-0300	* WNNO- 990	* Wisconsin Dells, WI	5000	NWRC
		- 0300-0330	* KOKO-1450	* Warrensburg, MO	1000/2500	NRC
MONDAY	JAN. 10	- 0230-0330	* WGLB-1560	* Port Washington, WI	2500	NWRC
MONDAY	31	- 0330-0400	* KAJO-1270	* Grant's Pass, OR	5000 <sup>00</sup>	IRCA
1st MM of month		- 0030-0045	* WBNY-1450	* Newberry, MI	1000/2500	NRC
2nd TH of month		- 0100-0130	* WTKN-1390	* Meridian, MS	5000 <sup>00</sup>	NRC
Next to last FM		- 0205-	* KARS- 860	* Belen, NM	2500	NRC

## DETAILS:

- WOND - Voice & code IDs, rr oldies. Prepaid calls to (609)-653-1400. V/s: CE, Box 352, 08232. Arr: Tom Sundstrom.
- WTAW - March & polka mx. No v/s, Box 3008, College Sta., TX 77801. Arr: Artie Bigley.
- WNAT - Music & tones. No v/s, Dr. 768, 39120. Arr: Dave Lewis.
- KBGN - No pgm. details. No v/s. Zip 83605. Arr: Karl Raymond.
- KJAM - Music & voice IDs. No v/s. Box 549, 57042. Add. to CE. Arr: Kelly Andrews.
- KMBL - Big band mx, code IDs. No v/s. Box 206, 76849. Arr: Artie Bigley.
- WBOB - No pgm. details. V/s: Ed Boyer, CE.(24333). Arr: Dave Schmidt.
- WYNN - No pgm. details. V/s: James N. Maurer, P/GM; Box 1586, 29501. Arr: Dabelstein.
- WHITE - PoP TEST. No further details. V/s: Charles E. Gaskins, CE, Box 971, 30223. Arr: Mike O'Shea.
- KVVW - Big band mx, TT, Code IDs. Address listed is Box 3098, 79604. (Log lists Box 938, but we'll assume 3098 is correct). No v/s. Arr: Bigley.
- WNEY - Info from Dave Lewis
- WTKN - Info from Jerry Starr
- KARS - Info from Kelly Andrews

## international dx digest

editor: Alan Merriman

P.O. Box 6

Fairfax, VA. 22030

Phone 703-354-2135 Before 2200 ELT \* All Times Are GMT \* Deadlines Are Friday \*

Greetings. Another big column so we'll get right to it. Another DXer has tried LW DXing from the West Coast - Jim Young. Below is what he heard . . .

- 155 -USSR Khabarovsk. M/F in RR, vy strong at 1033 on 11/9.  
 182 -USSR Petropavlovsk (presumed) at 1030 w/talking by M voice on 11/9.  
 191 -USSR Blagoveschensk, here u/"SFI" beacon at 1028 w/drama and mx on 11/9.  
 209 -USSR Several Siberian stns listed - which one? Cl mx px at 1027 on 11/9.  
 218 -USSR Khabarovsk (presumed) w/M/F voices, not //4610 on 11/9.  
 245 -USSR Vladivostok, talking by M voice, march mx, //5015 on 11/9.

Jim used a 200' dipole at 7500' elevation and an SPR-4 for these loggings . . . .

- 529 -ALGERIA Ain Beida strong o/u beacon QRM w/chanting 0515 11/5, again even stronger w/m/f alternating in AA, 0108, 11/8. (Falconer) \* Fair w/AA chanting o/fast SAH, 2230, 11/4. (Connolly) // (Connolly)
- 535 -GRENADA St. George's poor/fair w/f ancr, then interspersed mx, 0113, 11/6.  
 539 -HUNGARY (Tentative) Assumed 2304 11/9 end of talk in non-AA language, into seal-operatic vocal, weak/fair. Occ QRM fr Libya. (Hutton)
- LIBYA (Tentative) Assumed 11/7 at 0418 w/hits and pieces of AA mx. (Hutton)
- LEIB TA Someone here w/strong carrier hitting 940, 0505, 11/5. (Falconer)
- 545 -DOMINICA H. Jumbo ex w/LA-influenced mx and disco, occ FF talk, 0120, 11/6. (Connolly) \* Strong w/reggae, disco stuff, Jumbo HIDE, 0215, 11/5. (Falconer) W/sx 89 sig 10/21 in FF at 1003, just missed s/on anst. Fair 10/25 1001.
- 548 -ALGERIA Oran overpowering CPMB w/404h/89 sig, AA chanting at 208 // (Seaver) modulation level, 2231, 11/4. (Connolly) \* On 10/26 fr 0024-0045 w/s/f chanting and a f ancr. Strong sig. (Gustafson)
- USSR Vladivostok 11/6 at 1427 w/cl mx, atop 550 domestic 01436; 11/8 w/open mx 1428 //575, fair audio and strong het on 550, in/out all AM. (Kaskey)
- 555.3 -CHINA La Possibly TIRNJ off freq agn weak w/SS talk, 0520, 11/5. (Falconer)
- 565 -NORTH KOREA No sign of listed R. Pyongyang outlet on this freq 10/25. KLAG had OC most of AM. (Seaver)
- 566 -IRELAND Talasore s/on 0730 11/8, OC on 0720. IS on chise-like inst. (Hutton)
- 575 -USSR Khabarovsk 11/6 thru splatter at 1353 weakly; 11/8 peaked at 1425 //948. In/out all AM mostly because of 570/580 QRM. (Kaskey) \* Nayak pgs hrd 10/25 across 1000, Nayak chises (4 sets) and 6 pipe. KLAG on OC. (Seaver)
- 584 -SPAIN Madrid fair w/open-air-style SS w vocal, then SS talk, then f vocal; o/SAH, possibly the Tunisian noted by GPS and others, 0530-0534 11/6. (Con) \* Weak sig w/s in SS 2350 11/5. (Falconer) \* Strong w/SS talk but being chewed up pretty badly by unid stn u/w/fast SAH. Tunisia possible. (Eckman)
- USSR Svyobodny, w/audio 11/4 at 1436; 11/5 breaking thru at 1436, //547, w/ "Peace & Progress" pgs. 11/7 at 1447 same pgs. (Kaskey) \* FS chises (same as first pgs H3 chises) on 10/25 at 1000, then into OC pgs. Note that WTH lists stn w/"E. Peace & Progress" pgs in OC at 1100-1130 and 1430-1500. P&P IS in 6 notes on 2 clarinets. (Seaver)
- 615 -CHINA Heilongjiang vy loud and clear at 1247 11/8 w/YL singing in CC w/string-ed orchestra accompaniment. (Reynolds)
- 625 -NORTH KOREA Haeju 11/6 w/good sig 1352 w/f talking. Vy strong sig 1425 m/f talking. Weakly thru splatter 11/8 at 1423. (Kaskey) \* Loud w/mx at 1140 on 11/8 then f talking in KK. (Reynolds)
- 635 -NORTH KOREA Chongin breaking thru domestics w/talk-talk at 1441 11/4. (Kaskey) \* Hrd poorly u/KFI carrier hum at 1153. Would have been good sig without the KFI powerhouse so close. (Reynolds)
- 638 -SPAIN La Coruña fair/good w/f/m in SS, 2334, 11/4. (Connolly)
- 645 -CHINA Beijing (?) hrd at 1146 11/8 rather weakly. Wiped out by KFI carrier on at 1149. (Reynolds)
- 647 -ENGLAND Daventry good w/EE political talk, 0510, 11/5. Good o/u WSM alop, m/f in EE w/interesting talk abt folk-rock groups, part of song played at 0528 11/6. ID at 0530, followed by pop pgs. (Connolly)
- USSR Inan noted w/fair/good sig all week (11/2-8). FS s/off 1430 followed by 75 seconds of dead air and P&P w/on w/6 note IS played on clarinets as described in WTH. Repeat IS 3 times then man interjects a few words (Cont)

647 -USSR (Cont) IS once more, man talks briefly and IS one more time. Then into P&P pgs. Hrd and recorded 11/4-5-6; best RR sig this week probably due to less US splatter on 647. Believe P&P pgs in CG. (Kaskey) \* Iman FES w/m/f in KK alternately. Good sig at 1145 on 11/8. (Reynolds)

655 -EL SALVADOR YSS R. Nacional hrd at 0217 on 11/7. Have hrd this one before, but they were playing a song I like, by some f vocalist. Fair sig. (Barnes)

-NORTH KOREA Pyongyang strong sig 11/2-8 week until 1500 f/out. (Kaskey) \* Going strongly as early as 0950 w/m in KK. Later at 1250 vy loud w/a singing beautiful KK mx. This on 11/8. (Reynolds)

665 -PORTUGAL Lisbon strong w/MoR mx and f PP ancr, 0525, 11/5. (Falconer) \* On 10/11 sent them a report. They had US pop mx fm 0108-0130. This stn is one of the best European sigs noted here. (Gustafson)

-USSR Komsomolok FES w/vy strong carrier but weak audio at 1155 11/8. Too weak to ID language man was speaking. (Reynolds)

674 -UNID TA Here w/fair/good carrier but no audio discernable at 2148 11/5. Maybe the Lopik stn here now? (Eckman) Would suspect the Frenchie at this time.

683 -SPAIN/UNID Sevilla strong w/talk in SS //to the other RNE stns. Being ripped up by SAH at times likely fm Belgrade but still no positive ID fm them. This around 2147 11/5. (Eckman)

692 -ENGLAND Moorside Edge likely the one in EE at good level 2201 11/5 piercing thru the TVI. (Eckman)

695 -UFO Probably FDR Korean outlet w/carrier only 10/25 at 1100. XETRA off this AM. (Seaver) UFO is "Unidentified Foreign Oriental". (ED)

700 -JAPAN Synchros noted 11/7&8 as late as 1450 but still too weak to get definite stn ID at 1500 s/off. (Kaskey)

710 -UNID EE Mexican noted here w/MOR/CJRN w/"whoop-whoop-whoop" IS similar to Uno-660 and Mil-1000 at 0415 on 11/9. (Murphy)

712 5-SOUTH KOREA HLEA 11/6 strong sig 1421 w/f talking. 11/8 @1419 w/strong sig, also blasting in at 1444. Strong het on 710. Audio is vy sporadic, up/down like a Yo-Yo. (Kaskey) \* Ex on 715 at 1022-28 on 10/25, also 1057-59. KMPC s/on at 1059 wiped it out. In KK w/KBS pgs (drama, talk, etc). On 11/8 noted on 712 about 1045. Nura Nagure, was this your 715 logging? Note that this has been hrd w/3 pips and chime and 3 pips and chime. Wonder why? (Seaver)

719 -PORTUGAL Norte I fair w/het on WGN w/a giving mx in FF 0103 11/8. Has been one of the best regular DAs this season. (Falconer) \* Local like sig 2146-2300 plus w/pop mx, PP talk on 11/5. Mainly separable fm 720 along. (Eckman) \* Good on car rx in Belmont w/PP mx, talk, 2140, 11/4. Excellent, way better than WGN-720; PP talk by f, 2336, 11/4. (Connolly)

725 -TUNISIA Sfar o/s OC w/AA mx, 0520, 11/5. (Connolly)

735 -NORTH KOREA Elacack w/s/f talk 11/6 at 1245, fair sig thru splatter. (Kaskey)

-ECUADOR Quito, R. Melodia, HGBG1, fair w/what sounded like Polka mx, Melodia at 0530 11/5. (Falconer)

-NORTH KOREA R. Pyongyang w/time pips at 1200 11/8 then m in KK. (Reynolds)

737 -SPAIN Barcelona good w/semi-cl lush orchestral mx, 0030, 11/6. (Connolly) \* Fair w/cl mx 0020 11/6, 740 splash. (Falconer)

-SPAIN/UNID Barcelona quite good at 2145 11/5 w/m in SS but being badly chewed up by unid stn w/perhaps a 3 hr SAH (estimated). I'd like to believe this was Aviv but couldn't ID lang. Barcelona was alone by 2300. (Eckman)

746 -HOLLAND Lopik xlnr w/lively jazz 2202-2300 s/off 11/7; played as much as 45 mins on non-stop mx; at 2300 had 12 chimes, then s/off anmt, then NA; vy steady, clear sig. (DeLorenzo) \* (?) Stn here w/late mx at 2218 11/5. Anmt in unid lang at 2220. Apparently still in past 2300 which is supposedly their s/off. (Eckman)

750 -UPPER VOLGA/HOLLAND (Tentative) Ouagadougou presumed w/man in FF o/slow SAH (0.2 hr) probably from Lopik, 2337, 11/4. (Connolly)

755 -JAPAN JOBB Sapporo 11/8 1010 w/mx in EE by strong accented JJ m. S6. (Lobel)

-MOROCCO Rabat strong w/cl mx rite thru TVI 2245 11/5 and agn on 11/6 at arnd same time. (Eckman) \* Weak w/cl mx, PP talks, surfaced 0025 11/6. (Falconer) \* Powerful w/cl mx, 2352, 11/5. (Connolly)

768 3-SPAIN putting out a strong carrier, no audio, but freq gave it away, 0040, 11/6. (Falconer) \* Good/xlnr w/AA talk, perhaps a sermon before a congregation, 2350, 11/5. (Connolly)

773 -COSTA RICA San Jose, R. Uno TIV strong w/cptspomax, R. Uno IDs. Strong het fa somebody about 300 hrs on low side, 1244? 0040, 11/5. (Falconer)

782 -PORTUGAL Miramar CSB9 strong w/MoR mx, PP DJ, splash fm WBBM, 0035 11/6.

-PORTUGAL/EAST GERMANY (?) Miramar strong w/pop mx at 2248 11/5 // (Falconer) mixing w/unid stn w/semi-cl type mx. At 2300 unid on top of Portugal but no ID from them as remained playing mx thru the period. (Eckman) \* Miramar good w/PP talk well atop 2nd stn w/mx (Burg probable), 2339, 11/4. (Connolly)

-USSR Spassk Dalniy audio finally on 11/8 w/loud KCRL. 1440 w/opera mx and m tenor. Was not //575/548. Really kicking KCRL at 1450 w/extra strong het and opera mx. Het every day against KCRL but extremely strong 11/8. (Kaskey)

791 -UNID Strong het on WEAN, France possible, 2340, 11/4. (Connolly)

810 -COLOMBIA Bogota 11/8 audible u/a strong KGO w/usual pgs. First time hrd w/KGO on. HJCY had rock mx. (Lobel)

-USSR Vladivostok FES fair w/man and f talking. Sounded like RR at 1207 on 11/8. (Reynolds) \* Fair 11/8 1158-1205, piano mx and f in RR, no IS, 6 pips (1/2 sec long each, 5.5 sec sequence, all same pitch; -----), then m/f in RR. This is listed as City pgs in WRTH. On the hour, a 2nd set of 6 pips was hrd (5 low, 6th high, 1 sec long each, 11 sec sequence: - - - - -) - probably PRC outlet. (Seaver)

817 -UNID OC Looping TA 10 db weaker than 818, 0420, 11/6. (Connolly)

818 -ANDORRA Well on top of what appeared to be Rabat w/FF pop mx 2205 11/5. Traces of AA under. (Eckman)

-MOROCCO Rabat A tentatively the weak one here w/AA walling 0030 11/6. (Falconer)

-MOROCCO/ANDORRA Rabat dominant w/AA vocal, strong at 2150; Sud Radio rising o/briefly in FF, 2155, 11/4. Rabat knocking the walls down w/tremendous sig, f AA chants, S9 plus 0032, 11/6. (Connolly)

-MOROCCO/EGYPT Rabat in like a local w/AA chants and violin mx, 2nd AA, probably Egypt under, 2255, 11/4. (Connolly)

820 -NORTH KOREA Najin 11/7 at 1232, //876. Fair/good sig w/some QRN. F talking, as usual. Another TF below. (Kaskey)

825 -COSTA RICA San Jose TIOS fair w/automated ID by woman, then slow mx, badly junked by potent 827 AA mess, 0450, 11/6. (Connolly)

827 -LIBYA Sebha probable w/Big Ben-type chimes, then AA talk, not //818 (so not likely Morocco), 0500, 11/6. Unid stn popped on w/heavy OC at 0504. (Con)

-MOROCCO Definitely the Moroccan w/a powerful sig, totally dominant, w/AA chanting //818, 0535, 11/5. (Connolly)

-UNID TAS A weak one noted w/AA chants. If Morocco is off this is likely Libya. 0040 11/6. On 11/8 at 0115 someone was here w/cl mx vy weak. (Fal)

-UNIDS At least 2, maybe 3 stns here at 2154 11/5. One on top was in AA - rprobably Libya. Others are anyone's guess - maybe Spain and Morocco (if still on). (Eckman)

830 -JAPAN JOBB Osaka 11/8 1020 in JJ, followed by EE lesson on cooking. In null of WCCO. (Lobel)

-UNID SS U/JOBB 11/7 1225-1230, probably XENMS. (Kaskey)

834 -BELIZE Belize City strong w/several local spots into a "Community Calendar" type of pgs w/several coming events mentioned, 0045, 11/6. (Falconer)

836 -FRANCE/SPAIN (?) Nancy believed to be the one on top w/pgm not in FF which seemed //863-Paris. Something under as well making language ID difficult on either. This at 2155 11/5. (Eckman)

835 -CHINA Nanchang strong 11/5 at 1415 and 11/8 at 1413. F in CC. (Kaskey) \*Vy loud at 1211 on 11/8 w/f talking CC. Much better than Belize on 834. Revolutionary singing at 1250 w/xlnr strength. (Reynolds)

840 -JAPAN Niigata JOGK. 11/6 (---) NHK pips at 1400 on tape. 11/8 w/exceptionally strong sig @1430 w/pgm of American Western songs. Mixing all AM w/USSR and HLKY. (Kaskey) \* Fair w/NHK1 pgs 10/19 across 1200, NHK 3 pips and chime. (Seaver)

-USSR Spassk Dalniy, hrd well 10/8 at 1200 w/Mayak chimes and 6 pips o/HLKY and JOGK. This is listed in WRTH as 1st pgs and local pgs; this is the only error in WRTH before listings I've found. (Seaver)

844 -SPAIN MURCIA HRE strong w/MoR mx, 2350, 11/7. (Falconer)

850 -UNID ASIAN Hrd at 1259 11/8 w/1 pip at 1300. Could not ID lang because of much stateside QRN. M/f were talking. (Reynolds)

870 -JAPAN JOBB 11/8 1305. S strong suspect mixing w/another oriental, possibly North Korea-872. Too much QRN to get anything useful. (Lobel)

-UNID Hrd on 11/7 at 0106 w/some kind of LA mx and a odd sounding noise made by an electronic inst between selections. Much QRN fm WWL. (Barnes)

Due to several complaints, male/female will be indicated by m/f in the future.

- 872 -SPAIN/GERMANY (?) Zaragoza on top w/SS type mx at 2158 11/5. Fast SAH bot-hering sig. Possibilities include the AFN outlet but no audio noted. (Eckman)  
-UNID TA Strong carrier here w/bits of talk by f in unid lang surfacing 0050 11/8. Too much WWL. (Falconer)
- 876V -NORTH KOREA Wonsan, 11/6 w/pips ( \_ \_ \_ - ) at 1400. 11/8 booming in w/martial mx fm 1400-1410 etc. (Kaskey)
- 880 -BRAZIL R. Inconfidencia, PF mx, anmts, talking //6000. 1st Brazilian here for me, on 10/22. (Young)  
-CUBA CMAF Havana 11/8 0830 w/soft mx and f ancr. ID as 0900 "R. Enciclopedia Nacional La Habana". Good sig w/KRVN off and a faint WCBS. (Lobel)  
-CHINA Foochow. Intermixes w/JOPK and HLKI every AM. Noted w/pips at 1400 on 11/5 ( \_ \_ \_ \_ - ). (Kaskey)  
-JAPAN Shizuoka. W/China and HLKI 11/5. NHK pips at 1500 ( - - - - ). Not clear enuf for specific ID. 11/8 noted at 1503 w/Music Box s/off thru several others. (Kaskey) (Murphy)  
-UNIDS 2 fighting it out here in WCBS null. Assume Progresso was the high one putting bad bet on channel, the other maybe Guatemala? This at 0400 11/9.  
-UNIDS Was taping this freq 11/8 at 1400 and had at least 3 stns there, none all that clearly. However, pips came thru loud and clear, and altho replayed numerous times, this is what I have: ( . — ) ?? Have hrd 2&1, 3&1, 4&1 and 5&1 but first time I've hrd one quick low note followed by a long high note. As General Halftrack often says, "now what?" (Kaskey)
- 881 -WALRS Washford et al, apparently here in EE w/strong sig though badly bothered by WCBS slop at 2331 11/6. (Eckman)
- 890 -JAPAN JOKH Sendai mixing 11/8 w/EEB and who knows all AM but mostly w/poorly received sigs. Music box s/off theme in pretty good at 1503. (Kaskey) \* 11/8 1315 in JJ. Mention of Sendai and NHK. (Lobel)
- 900 -SOUTH KOREA HLKV Seoul on top of QRM at 1310 11/8 w/bits of KK and cl mx. Not strong enuf for report. Maybe next time. (Reynolds)
- 908 -ENGLAND London strong w/talk apparently in EE at 2158 11/5. Dldn't stay for positive ID. (Eckman) \* Synchronized BBC outlets fair w/EE talk, 2247, 11/4.
- 926 -BELGIUM Wavre-Overijse good w/DD talk, then song in EE, then soft mx followed by mx in DD, 0525, 11/5. (Connelly, last 2)
- 935 -MOROCCO Agadir poor/fair w/m AA chant, 2248, 11/4. Good w/a-capella AA chant, 0510, 11/6. (Connelly)
- 944 -FRANCE Toulouse strong w/m/f in FF, also at times in AA, 0512, 11/6. (Con)
- 950 -MEXICO XEYJ Nueva Rosita, Coah. 11/8 1040. Many "Ehkees-Eh-Ye-Hota" IDs and mention of Nueva Rosita. XEGM off. Played Yankee Doodle theme on a flute like inst. Almost mistook it for a VOA stn. (Lobel)
- 955 -BURMA (Tentative) Little bits of audio at 1315. Native mx and weird lang. Loop bearing OK for Rangoon. Not hrd here since 9/23/67. Semi-local XEGM makes it rough. (Reynolds)
- 962 -UNID Talk, flute mx, not sure if AA, fair 2250 11/4. 2 carriers, no audio, SAH about 4 hrs, 0520 11/6. (Connelly)
- 980 -MEXICO (Tentative) XELC suspected here, hrd on 11/7 at 0111 w/fair sig and some QRM. Ad for clothes store delivered by fast-talking w/anacr. Also several mentions of Michoacan, which leads me to suspect XELC, which is located in La Piedad in that province. Also some mx played which sounds like a polka. (Barnes) (Hutton)
- 989 -SPAIN RNR Madrid here 11/7 at 0004 w/nice sig - no problem getting audio.
- 995 -UNID Likely HCW2, R. Suceso, Guayaquil, Ecuador; SS talk by man, fair, 0515 on 11/6. (Connelly)
- 998 -UNID Carrier noted nightly arnd 0030 when the WRTH lists everyone off. Just too weak for audio. (Hutton)
- 1007 -COLOMBIA HNDP Neiva 11/8 0940 w/soft mx. Mention of Neiva at 0944. (Lobel)
- 1016 -TURKEY Istanbul dominant w/chanting, fair o/SAH (W. Germany), 2251 11/4. (Con)
- 1020 -VENEZUELA YVRS R. Margarita good thru KDKA OC 0552 11/8 w/ID & SS vocal.
- 1034 -IDEN Wk weak 0514 11/7 w/Portugal off, //845. (Hutton) (DeLorenzo)
- PORTUGAL Porto Alto CSB2 in strong w/Top 40 mx in nitely. Seems to be a good indicator for low-band TAs. Always strong, has it increased power? Good 2330 11/7. (Falconer)
- 1040 -CHINA Shanghai 11/8 0600. Actual freq was 4160; the 4th harmonic. Sounded even stronger than it was on 1040. Mentioned Shanghai a few times. Used e/w longwire for this reception. (Lobel)
- 1043 -MOROCCO Sebba-Aloum fair 11/8 at 0708 w/pgm they could put on the AA net - they sound the same to me. (Hutton)

- 1061 -PORTUGAL Norte good w/cl piano mx, 0023, 11/6. (Connelly)
- 1079 -SPAIN Here 11/8 at 0625 and later w/poor sig, audio up and clear every min or two. (Hutton)
- 1081 -UNID Probably SA noted here past week or so, noted w/particularly strong sig 11/2 w/mx and mucho fanfare in between, 0245-0300 s/off w/NA. (Falconer)
- 1100 -ANTIGUA St John's fair at times in WWWE null w/rock mx and EE DJ between cuts w/thick Caribbean accent 0010 11/3. (Falconer)
- 1106 -EGYPT (tentative) Assumed 0017 11/8 w/super strong man in AA followed by Koran readings til 0035 when faded back down. Audible briefly w/no filter. The tremendous strength makes me wonder if it was Batra though. (Hutton)
- 1115 -SOUTH KOREA (??) Unid Asian hrd here at 1247 11/8. Man talking low, then piano mx. Loop bearing and pgm fit S. Korea but only 1 kw stns listed in WRTH. (Reynolds)
- 1124 -SPAIN EAJ15 in and out w/fair sig 0025 11/5. (Hutton)  
-UNID Taped someone 0500 11/4 w/an unfamiliar IS, into talk but fading badly. Sounds like it might be an "organola" per Listed Bulgaria. (Hutton) What the hell does an organola sound like? (ED)
- 1125 -CHINA Nanchang w/musical pgm and f in CC. Not vy loud at 1245 11/8. (Reynolds)
- 1180 -UNID Hrd u/VOA at 0141 on 11/8. This stn has a format similar to R. Reloj of Cuba (SS dialogue delivered between ticks of a clock, w/tones on the minute) but WRTH lists no Cuban on this freq. Any ideas? (Barnes) This is a Cuban-see past issues of IDXD. (ED)
- 1187 -INTERNATIONAL WATERS R. Caroline good on peaks, 0458-0502, 11/5. Rock, followed by time pips, jingle, DD talk followed by more mx. (Connelly) If in DD this would be R. Mi Amigo. (ED)
- 1190 -MEXICO XEWK in well in Cordillera null and o/KLIF w/LV de America Latina pgm //XEW-900, 0530 11/8. (Murphy)
- 1196 -UNID Hrd what I think was Portalegre, Portugal in almost definite PP 0700 11/8 but Morocco's Berbere net is in SS then; weak PP and SS sound similar to me. (Hutton)
- 1205 -SIERRA LEONE Freetown, here w/IS, anthem, ID, some EE and African mx, //3316. First hrd 10/21, but vy strong 11/1. (Young)
- 1214 -ALBANIA Good w/talk, possibly AA, 0455, 11/5. (Connelly)
- 1268 -GREAT BRITAIN BBC atop Albania w/EE talk by man, 0557, 11/6. (Connelly)
- 1268 -WEST GERMANY Neumunster strongly hetting 1270 jumble, GG singing noted w/fair overall copy, 0021, 11/6. Good w/bouncy style Musak, 0556, 11/6. (Con)
- 1277 -FRANCE Strausgourg weak w/m/f in FF, 0555, 11/6. (Connelly)
- 1286 -CZECHOSLOVAKIA Prague-Pelick poor w/cl mx in bad CJMS-1280 slop, 0018, 11/6. (Connelly) \* Strong w/cl mx //6055 at 2338 11/5. Apparently w/Interprogram at this time. (Eckman)
- 1313 -SPAIN Taped w/fair to poor sig 0625 11/5. (Hutton)
- 1349 -MAURITANIA On 10/25 received good w/f singing and beating od drums fm 2315-2355. This stn is received good even when the Europeans on the high freqs are not coming in too good. (Gustafson)
- 1378 -FRANCE Lille level w/St. Pierre-1375 at 2115 11/5 in foreign language. St. Pierre in FF at the time. (Eckman) \* Good w/man/woman in FF, interspersed mx, 0452, 11/5. (Connelly)
- USSR Vladivostok FES in JJ at 1130 on 11/8. Good strength. (Reynolds)
- 1394 -ALBANIA Tirana noted w/xlnt sig at 2051 11/5 in unid lang. Earliest f/in for TAs at this location so far this season. (Eckman)
- 1395 -ECUADOR HCW4 La Voz de Esmeralda in fairly well at 1130 on 11/8. Verified several years ago. This MM was not a vy good Latin time here. (Reynolds)
- 1403 -GUINEA Conakry good sig on 10/27 fm 0318-0411 - orchestra mx w/drums vy prominent and m singing. Sent him a report but don't expect too much as I have sent reports to him twice before without answers. (Gustafson)
- UNID Man in FF, 0450, 11/5. (Connelly)
- 1425 -GREENLAND (Tentative) Thule, AFRTS 11/8 1126-1134 up to S6, US pops, TC at 1130 for 30 mins past 7, (fits GMT-4), then time tone, at 1134 a US Savings Bond PSA (Take Stock in America). (Seaver)
- 1439 -LUXEMBOURG Marnach fair w/disco mx, then pop, 0010, 11/6, good peaks but deep fades. Apparent GG vocal, fair/good, 0447, 11/5. (Connelly) \* Vy good w/rock mx, EE ancr at 2305 11/5. Not noted later in the evening. (Eckman) \*
- 1466 -MONACO Monte Carlo w/blockbuster sig, 0005, 11/8 w/talk in what sounded like GG by f. Sounded like a rel pgm. (Falconer) \* Vy good at 2051 11/5 w/typical rel pgm. Noted fade in on 11/6 at 2040 but no audio til past 2100. (Eckman)

- 1520 -COLOMBIA HJLQ R. Minuto way atop w/ID then lively mx 0610 11/8, WKEW off.
- 1525 -CHINA Urumchi was quite good at 0000 11/6 w/East is Red IS and/(DeLorenzo) RR ID "Govorit Pekin". Noted to past 0030 w/RR [redacted] and some CC mx at 0025. First definite logging for me this season and first time hrd in quiet rather than disturbed geomagnetic cx for me. (Eckman)
- 1529 -VATICAN STATE Vatican City was likely the one here putting the strong het on WCKY 0000 11/8. (Falconer) \* Potent w/lite mx 2213 11/5 easily seperable fm 1530 slop. (Eckman)
- 1546 -ENGLAND Somewhere, good w/lite mx; anmt in EE at 2248 11/6; still no positive ID however. (Eckman)
- 1552.4 -UNID Maybe Turks Is. the one here several nites lately. Has varied fm 1551 to 1553 w/weak sig mostly just a het. Song "Misty Blue" surfaced 0035 11/3. SW// on 4788 not hrd. (Falconer) SW is reported off the air. (ED)
- 1555 -CAYMAN ISLANDS R. Cayman in well w/rxl pems 0310-0338 s/off 11/9. Mentioned FM on 105.3. s/off s/GSTQ. (Murphy) \* Hrd 11/7 and 8. On 11/7 S8 OC noted at 1134. At 1154 calypso mx, man w/"Radio Cayman, The voice of the Cayman Islands ... 1555 khz ...", then "Yellow Bird" (presume its the IS). On 11/8 noted OC at 1045, tuned at 1057 to catch "Yellow Bird" organ IS. Listed as 1100 s/on. (Seaver) \* Xlnt many evenings w/het against Nice-1554 until they s/off at 2300. Have noted BBC WS nx on the hour. Has a chime or bell IS on the hour w/ID "This is Radio Cayman, the voice of the Cayman Is." Noted on past 0300 on 11/6 but off by 0500 so maybe s/off is at 0400 as WRTH notes. (Eckman) \* Fair w/cl mx pgm, then ID, then old inst. Monitored 2358 11/5 to 0002 11/6. (Connelly) \* First noted 0030-0105 11/3 w/strong sig, 80 db at times, some WQR splash. ID at 0030 by IL as R. Cayman. Plays mainly US rock mx, some reggae mx. Man was hrd w/talk on US election at 0050. Have made several checks here recently s/no luck so must have only been on a couple of days. (Falconer) \* Strong sig on 10/31 fm 0303-0406 most of the [redacted] was a symphonic orchestra playing. Had mx fm 0303-0315 by a man w/a decidedly British accent. (Gustafson) \* Tentative logging 10/31 at 2300 exlnt level w/relay of BBC WS nx. Unfortunately sig clobbered 2306 w/local noise source which has been bothering me lately, and which lasted all evening. (Calkin)
- PHILIPPINES DYLA Cebu City w/xlnt sigs on 11/8 1057-1125. Some fades but generally quite good. Have good tape. ID in EE on the hour - clear "DYLA" by man. 1057 played "Yellow Bird" on organ. ID at 1100, 1104 hymn. At 1116 a large choir (possibly Mormon) singing hymn and at 1121 a woman singing hymn. Then sig faded down. Already reported this on 10/11 reception, but this time have more details so will send another report. They use Cebuano lang w/stn ID in EE. All the above hymns were recorded in EE. First Philippine reception here since VOA-1140 several years ago. Randy Seaver, this is your stn here and it is Malaysia on 885. (Reynolds) \* Sure would like to hear that tape - I'd be willing to bet this was Radio Cayman. See above. (ED)
- UNID LA This is the one w/the weak carrier noted almost every nite while checking for Cayman. Had mx and SS ancr. 10/30 at 0215. Seems to me there used to be an HJ here, what about now. (Falconer) As far as I know, only LA here is the Ecuadorian. HJLP was logged and verified here in 1969, but they haven't been reported for a long time and RFS says La Voz del Guabo is the one here. (ED)
- 1570 -SOUTH KOREA Cheju Is. HJLA. 11/7 o/u XERF 1256-1315 t/out. Sig in easy enough but apparently don't use pips across the hour. (Kaskey)
- 1578 -PORTUGAL Porto CSB5 fair w/T. Rex style rock, then man/woman in PP, slop fm ultrawide superpest CKLM, 0540, 11/6. (Connelly)
- 1586 -RUSSIA Khabarovsk FS w/m/f speaking RR at 1230 11/8. Certainly must be more than 5 kw listed in WRTH. Sig fairly good. (Reynolds)
- WEST GERMANY Langenberg good w/jazzy inst, 0542, 11/6. Munich on 1602 was also in at the time, primarily just het on local WUNR. (Connelly)
- A bunch of veries . . . . .
- 545 -DOMINICA R, Jumbo, v/l and stickers in FF from Patrick Meyer, Director [redacted] General in 6 weeks for 2 IRC's. (Calkin, Ontario)
- 595 -DOMINICA Dominica B/Cing Corp, full data friendly letter from George Buck- [redacted] in 1 month for 2 IRC's. (Calkin, Ontario)
- 635 -ECUADOR HCHA2 Quevedo, vy friendly stn sent pennant verie signed by Humberto Alvarado P., also a letter fm his secretary requesting US stamps, sent. Stn hrd well when [redacted] in on 645. (Gustafson)

- 746 -UPPER VOLTA Ouagadougou from reception a year ago. Took 5 months to hear fm this one. V/f w/sked and freqs, no signer. (Gustafson)
- 820 -SOUTH KOREA HLCN Kwangju sent beautiful green/gold cloth banner 6 1/2 x 10 1/2 plus vy definite confirmation of 10/11 reception. Verie received 11/2 air mail. V/s Mr. Eun-Sub Lee, Chief Engineer. (Reynolds)
- 989 -ENGLAND Beacon Radio, card in 2 1/2 months for mint stamp. V/s B. Warburton.
- 998 -ENGLAND Radio Trent, Nottingham, friendly letter fm C. L. Theobald, Promotions Manager, 6 weeks for mint stamps. (Calkin, England, last 2)
- 1016 -TURKEY Istanbul, v/q w/all details in 1 month for EE report and tape. No signer, Large attractive card, showing bridge across Bosphorus. Ctry #90 here and a long time coming! (ED)
- 1133 -CANARY ISLANDS R. Popular de Tenerife, v/l in 2 weeks for SS report, tape and IRC's. Signer illegible. (ED)
- 1165 -ANTIGUA Caribbean Radio Lighthouse, form letter w/full data in 1 month air fm Curtis L. Waite, CE for 3 IRC's. Gives sked as 1000-1300 and 1600-0200 GMT daily. (Calkin, Ontario)
- 1169 -ENGLAND Radio Orwell, Ipswich, v/l from Richard Allison, CE in 2 weeks together w/stn info. (Calkin, England)
- ENGLAND Radio Victory, Portsmouth, full data v/q, info sheet and window sticker; 2 weeks for mint stamps. (Calkin, England)
- 1340 -NORTHERN IRELAND BBC R. Ulster, Lisnagarvy, card in 1 1/2 weeks for mint stamps.
- 1349 -YUGOSLAVIA Studio B, Beograd, card in 2 months for 2 IRCs. (Calkin, Eng, 2)
- 1358 -ENGLAND (Pirate) London Music Radio, v/l in 2 weeks fm v/s Debbie Jones, listing power as 20 watts ERP. Also bumper stickers. (Calkin, England)
- 1430 -ENGLAND Thames Radio, stn sticker and info sheet in 2 1/2 months, but no verie. Have sent f/up. (Calkin, England)
- 1457 -ENGLAND BBC Radio London, v/f fm John Langdon, EIC. (Calkin, England)

That's it. The reporters for this issue . . . . .

Clifford BARNES - Bellaire, Texas ES-9500, 110' longwire w/tuner

Gregg CALKIN - Ottawa, Ontario and England SPR-4

Mark CONNELLY - Arlington, Mass. R390A, car radio, SM-2, whip

Marc DELORENZO - Centerville, Mass. HQ-100, SM-2

Richard ECKMAN - Philadelphia, Pennsylvania HQ-180A, Sanserino loop

Jeff FALCONER - Clinton, Ontario 51J-4, SM-2, 85' longwire

Hilding GUSTAFSON - Rockford, Illinois

Chuck HUTTON - Decatur, Georgia R388/URR, Sanserino loop

Don KASKEY - San Francisco, California HQ-140X, SM-2

Albert LOBEL - San Diego, California DX150A, Sanserino loop

Wayne MURPHY - Louisville, Kentucky R390A/URR, 4' loop, SM-1

Don REYNOLDS - Glendora, California HQ-180A, Sanserino loop

Randy SEAVER - Chula Vista, California HQ-180A, Sanserino loop

James YOUNG - Wrightwood, California HQ-180A, 260' inverted V, BCB preselector

That's it. I've finally gotten back on the air - call here is K4GLU - with a new Drake T-4XC/beam. Active CW only, mostly on 20 for the time being chasing DX but can work all bands 160-10. CW only - if anyone is interested in a sked. 73 DX !!

THE BRITISH BROADCASTING CORPORATION  
Broadcasting House, Ormeau Avenue, Belfast, BT2 8HQ  
TELEPHONE & TELEGRAMS: BELFAST 44400

Date as Postmark

Thank you for your message and we are glad to confirm that the station you heard was BBC RADIO ULSTER broadcasting on 1340 kHz. The transmitter is situated at Lisnagarvy, on the outskirts of the market town of Lisburn, some 9 miles south-west of Belfast.

# DOMESTIC X DIGEST



editor.. Wes Boyd  
2699 W. Liberty St. Ext.  
Girard, Ohio 44420

## changes

620 WVMT VT This went AN about 10/20, so far is a "trial operation"(WTF)  
690 WELD WV S/off annc't. sez is 500wt, & FM on 97.3Mhz..change! (JF)  
790 CKSO ON MM SP 0059-0600, quick s/off & GSQ (DS)  
WFUN FL Seems NSP, and is "79 NEWS" (BW)  
930 WFMD MD Noted w/ MOR 0230+ (10/25) so suspect is now ANing (DS)  
1100 WWWE OH This ON all MM 11/8, much JAZZ, no anncr, maybe ET!!(JS)  
1450 WWGO PA S/ogf is 2352, then into ISSB..strange time (JS)  
WMAJ PA W/ s/off 0205 to ISSB( had been ANing)MM, now seems off(PRM)  
\*1020 KGBS CA Still using this call on 11/8 MM show (HWB)  
r c's  
3rd. THU: WHII MS per list (MjR)  
4th. MM:: KOZA TX--WMIS MS--KLEO-KS----(all MjR)  
4th. SAT: WABD 1370 w/ 1K TT 0140-0150 (JF) WPTN 1550 TN w/ TT (JF)  
1st. TUE: WARI 1480 w/ dt..Off 0154 (SF)  
1st. SAT: WDDY 1420 per list (SF) WSWV 1570 per list, ID start & end(JS)  
2nd. MM:: WVAK 1560 per list, ID at end (BULL) KNBI 1530 Seems definate on  
move to 2nd. MM now..3 months in a row w/ TT (HWB) (also hrd by SF)

FAMOUS  
WFIL56

## TENT: (or changes?)

1st. MM:: WCNX 1150 ET w/ TT & mx 0015-0030, maybe f/c is 15 min early(RA)  
WNBY 1450 ET w/ 1K TT noted 0030, f/c maybe 30 min. early (Dr Tom)

## NEWSIES::

4th. MM:: KWEY OK twixt 0102-0105 (MjR)  
1st. SAT: WTLO 1480 w/ TT..0415-0430, per verie(JF)

## NOT HRD:

4th. SAT: KBRS 1340--KIML 1270 (JF)  
2nd. TUE: WRAA 1330--WHLD 1270 (HWB)

## TEST RESULTS:::

WPHB 1260 HRD. BY:: Dr. Tom--JS--HWB--DS--RA  
WNVA 1350 Hrd. BY:: SF  
WEEN 1460 NOT HRD:: SF--JS--HWB  
WATZ 1450 Hrd. BY:: Dr. Tom  
WVWG 1450 Hrd. by: SF TENT: PRM Not Hrd: HWB--JS  
sunset & evening

600 CFCH ON 11/5 Rare here, atop 1720-24+ w/ SX, ads, then MOR mx (DS)  
980 WPHG VA 11/7 Hrd. 1658-1711, ending Ac nx, local ads, ID for "TRI--  
CITIES REAL ROCK", then RR oldie, was o/ WRC (DS)  
\*1330 WFTO MS 11/7 S/off 1745 w/ ISSB, sez pwr is 2500 watts (SF) (JS)  
1580 KLPK OK 11/7 Loud w/ C&W/Gospel 1810-1828 s/off w/ ISSB, winter pest/  
+ KPIK CO 11/7 W/ Ac nx 1854 after C&W, at 1900 local wx, AM-FM ID into  
more C&W, still on 1915+, should be off about 1845!(Starr) Typical  
time change "goof", so interested in setting clocks back to LST on  
10/31, they forgot next day was new month & new s/off--HWB  
WLIJ TN 10/31 Poor, but audible 1850-1900, much QRN & CBJ QRM & 1570  
CKLM slop.. Masic, local dept. store ad, s/off 1900, no SSB(RA)  
1590 WJSO TN 10/31 Surfaced 1755-1759 w/ "SUPER J S O", to RR, then gone to  
WQIQ/WQQW stuff (RA)

## midnight to sunrise

540 CBK SA 11/8 Nx-Wx-0200, s/off w/ both anthems..my 1st. SA (BULL)  
570 WNNC NC 11/8 ET 0031-0059+ w/ TT, much OC, ID, after 0100 to RR mx,  
some C&W mx, much OC (Bull)  
590 WCAB NC 11/4 Fair in WOW null 0643 w/ C&W mx (SF) Me Boithday!--HWB  
710 WQKI SC 11/5 Fair 0637 w/ livestock report & C&W mx (SF)  
950 KOA CO 11/8 Super loud 0212 w/ s/off, prayer & ISSB(JS) 11/8 Fair  
thru WRDH OC w/ relig, ID, Plug KOA TV-4, more relig. 0100(MD)  
CKVL PQ 11/8 Loud 0230 w/ ad in FF for "Connie Francis" record offer  
(JS) Gee..I didn't know she was French!--HWB  
WVJC WI 11/8 Another loud ET w/ OC--C&W hymns 0200-0230+(JS)  
WEAT FL 11/1 Weak but clear 0100-0109 w/ nx,detailed s/off & SSB (RA)  
WRAP VA 11/8 Super weak 0225, male DJ & soul mx, JX ID 0228 (HWB)



940 WMIX IL 11/8 FIRST TIME 0222, female DJ & MOR,much WPEN slop(DS)  
970 WDAY ND 11/1 Fair w/ MOR @ 0300 in mess of CKCH/WWSW (Dr. Tom)  
1140 WAWK IN 11/5 Good in WRVA null w/ RR mx 0656 (SF)  
1240 WIST NC 11/1 Atop w/ RR oldies 0035-0045+, winter pest here(DS)  
WWCO CT 11/1 ET, way atop, 0226-0231+ w/ RR, ID @ 0230 sez 1Kw(RA)  
1280 CJJD ON 11/8 W/ RR 0059-0110+,short nx-sx, like CHAM is only hrd here  
couple times a year(DS) I should be so lucky!--HWB  
1350 WHWH NJ 10/28 Mixing w/ WSLR/WKLX 0325-0337, w/ JEBKO stuff, hrd. here  
often,but poorly (RA) Thats more than I can say!--HWB  
\*1360 WSAI OH 11/8 Promo 0147, then RR, o/ WDRC..that was off MMs (DS) This  
guy & WIXZ both seem NSP anymore ---HWB  
1370 WFEA NH 11/1 Noted OFF this AM, normally NSP w/ RR (DS)  
1400 WSAM MI 11/8 Atop freq. 0300 w/ ID into NBC nx (JS)  
1450 WWSC NY 11/8 This & WOL equal 0012-0038,WWSC RR & WOL YL talk(PRM)  
1460 WPDQ FL 11/8 Loud, atop 0030 w/ JAZZ ROCK (MD)  
1530 WTTI GA 11/8 ET w/ mx, "Can't Help This Feeling" by BLUE SWEDE,at 1st  
that was 2 station, one w/ the "chanting", wasn't drinking!(Bull)  
1550 KRGO UT 10/28 First time hrd. 0117-0120 w/ C&W mx, then TC as 11:19 on  
"KRGO", to more C&W.. Was after CBE s/off, no WOKJ, kinda weak with  
deep fades, gone by 0130..is only 500wt??(RA) Yep,but it sure is a  
"LOUD" 500 watts!--HWB  
1560 WBKC OH 11/1 ET 0100,loud (Dr. Tom)(is dumping right at you--HWB)  
11/1 ET 0115-0120+ w/ RR, IDs, & JX..LOUD(DS)  
1570 WPGM PA 11/1 Fair in mess of 0601 s/ons..after WQTW, several ments.  
of WPGM & WPGM FM Stereo (PRM)  
WTOW MD 11/1 Fair, 0602 s/on w/ full ID, then lost to 2 other s/ons.  
one was UNID, other WYTI VA..Order of s/ons seems WQTW-WPGM-WTOW-  
UNID-WYTI (PRM)  
1600 KATZ MO 11/1 In the clear, but just audible 0205-0208, thru WWRL &  
WUNR OB's..was ending UPI nx, ID to Soul MX (RA)

## REPORTERS::

MJR	Mike Ramirez	San Antonio, TX	HA600 & short wire
RA	Ray Arruda	Gnu Bedford, MA	SX122 SM
BULL	Tom Bull	Washington, DC	HQ180 SM
SF	Stephen Francis	Alcoa, TN	TRF
JF	Jeff Falconer	Clinton, ON	Collins 51J-4 SM LW
PRM	Paul Mount	Teaneck, NJ	TRF
DS	Davie Schmidtksi	New Kastle, DE	HQ180 SM
Dr. Tom	Tom Williamson	Guelph, ON	HQ180 SM/ DX150 LW
MD	Marc DeLorenzo	Centerville, MA	HQ100 SM
JS	Jerry Starr	Ohio home for Rednecks	HQ180 Loop
HWB	"dummy editor"	Girard, Oh	HQ180 Loop

NOTE: Starr got a letter from KYME 740 in reference to the DX test. Seems  
the xmtr. blew up 3-4 days before the test & they were running about 300 wt  
or so for several days, including the test. They will be putting in a new  
xmtr soon, and will notify us of dates/times of ETs, etc. Considering the  
power during the test it's doubtful any of us in the east heard it, none of  
Starr's "tones or partial IDs" were correct, so thusly mine were also wrong!  
When new rig is installed we should all have a much better chance to bag  
KYME, and a new "test" is coming!! NOW IF "The EX--HAMBURG KID" could get  
a test from the 740 stations in Colorado...HINT, HINT, HINT!!!---HWB

The space below is provided for writing dirty words while waiting on that  
UNID Eter to give an ID...

A Nevel Approach to Building

Your Own BCB Loop

Mike Maloney

Having built a number of loops ranging from a 2' spiral to a 6' box, I have come up with several ideas and improvements to make a box loop easier, stronger and more practical to build, set up and operate, and transport to a remote location.

The construction details to be described are more general in nature than detailed. This was done on purpose to allow the builder to add or delete what parts he wants, as well as, giving him a choice as to the size of the loop. The problem of a mounting base, mast, supporting dowel, or whatever, has been completely eliminated by supporting the loop from the ceiling by means of a hook and swivel located in a convenient location (allowing for wall/crossarm clearance) above the receiver. This type hook and swivel is the kind used for hanging potted plants and should be readily available at a variety or hardware store where such is sold. The swivel is hooked thru a small eye screw located in the top end of the vertical crossarm. (With a little thought one could fashion a fork style arm to allow the loop to be tilted as desired.) The loop is then rotated for best position just as a floor or table mounted type would be. So much for the mounting.

The crossarms were cut at a lumber yard from a length of 2x4 Redwood (straight and free from knots) into two lengths - 1 1/2" square and long enough to allow a couple of inches past the dowel peg hole centers (3 inches is allowed past the terminating peg for the capacitor mounting plate). Thus for a 36"

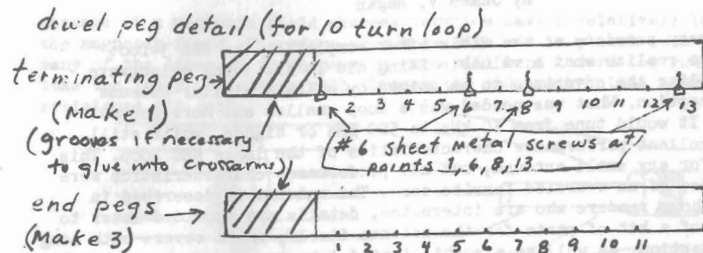
loop the horizontal and vertical crossarms are 54 1/4" and 55 1/4" respectively. The crossarms were notched out in the center with a hacksaw and chisel (the hard way) to allow them to be glued and fitted together flush and square in two straight pieces. You might get the lumber yard to do this for you with a Radial Arm Saw. Four - 3/4" holes are drilled at the spacings given in the table for the size loop desired. Ideally, these holes would best be made with a drill press and wood "paddle" bit. If you don't have access to a drill press, it is strongly recommended that several practice holes be made in a scrap piece of 2x4 and a dowel peg inserted and checked for square. Concentrate on drilling the holes straight and have somebody "eyeball" the drillbit from a distance at right angles to square up the holes with the crossarms. The dowel pegs should fit snug and remain straight even with heavy #12 wire. If slop is encountered, however, cut grooves with a hack saw on the edge of the dowels, add glue, and insert into crossarm. Also, I might add, be sure to place a piece of scrap wood under the crossarms when drilling the holes to prevent the wood from chipping when the drill bit exits the back side. The dowel pegs are 8" long leaving 6 1/2" sticking out past the crossarm. The dowels can be notched at 1/2" intervals if desired to maintain uniform spacing, ~~if desired~~ although I did not do this. For a 10 turn loop, thirteen - 1/2" marks or notches are made on the terminating dowel peg (11 if link is not used). Start the first mark as near as possible to the crossarm to still permit the #6 screw. (about 1/8") The other 3 dowel pegs have eleven 1/2" marks each (10 if link is not used) with the 1st mark spaced 3/8" from the crossarm frame. Four small pilot holes are drilled in the terminating dowel peg at points 1, 6, 8, 13 as indicated in the drawings and

small #6 sheet metal screws are used at these points to terminate the loop and link ends. Winding the loop is fairly easy. The frame is laid flat on a table or better yet, clamped in a vise. The wire is secured on the first screw and the wire wrapped around the pegs tightly until the turns are completed. A small "C" clamp <sup>or spring</sup> may come in handy to hold a turn tight while another is being made. If the link is employed, points 6 and 8 are skipped on the terminating dowel and point 6 on the other dowels. The coax link is wound around these points in the same direction. See diagram for detail of shielded coax link.

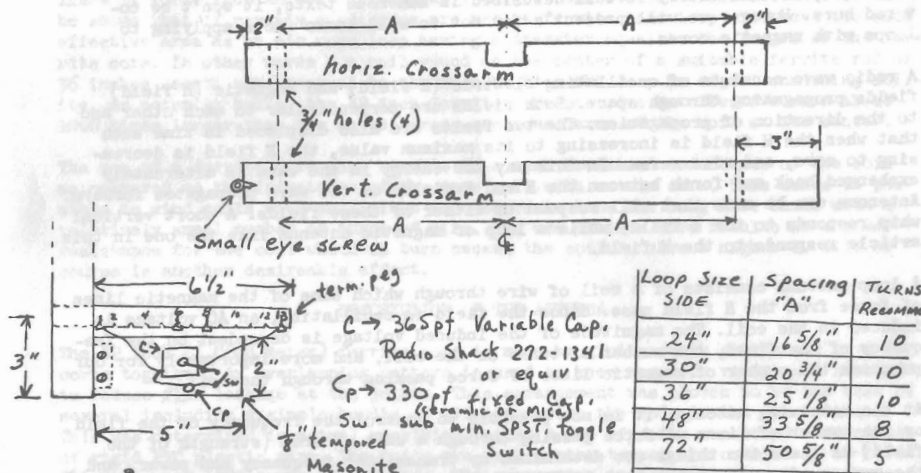
After the loop and link have been wound, the capacitor tuner plate is attached as shown with screws into a small block of wood glued to the crossarm below the terminating dowel peg. The fixed capacitor (C<sub>p</sub>) and switch are to permit the loop to tune the low end of the band (particularly the smaller loops).

An interesting feature of this loop design was realized as it was being wound. Rubber bumpers can be attached to the back side of the crossarm ends and the loop layed flat and strapped atop a car for transporting the loop to a remote location free of local noise without fear of damage to the loop ends or car roof.

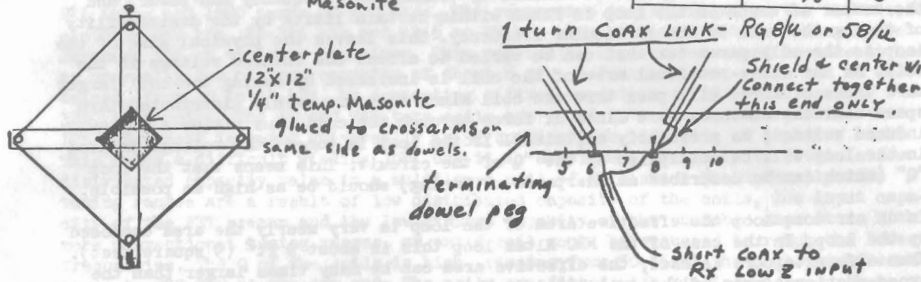
It is hoped that the loop described will increase your dx'ing pleasure and I would be interested in hearing any constructive ideas or comments from members who consider making a loop of this type.



all pegs made from 3/4" dia. hardwood - 8" long,  
1/2" space between marks



Loop Size SIDE	Spacing "A"	TURNS RECOMM
24"	16 5/8"	10
30"	20 3/4"	10
36"	25 1/8"	10
48"	33 5/8"	8
72"	50 5/8"	5



Copyright Claimed



A LARGE APERTURE FERRITE CORE LOOP ANTENNA  
FOR LONG AND MEDIUM WAVE RECEPTION  
by James V. Hagan

It didn't require many sessions at the dials after completing the NRC 3-foot altazimuthal loop to realize what a valuable DXing aid it is. Being a longwave DXer, I could visualize the advantage to be gained by using a similar antenna for longwave DX reception. What was needed was a loop smaller and more portable than the NRC loop. It would tune from 10 kHz to 500 kHz or higher, while still maintaining the excellent performance characteristics of the large NRC loop. This is a "tall order" for any small antenna, but all performance characteristics were obtained with the use of an oversize ferrite core. The antenna is described in this article. For those readers who are interested, details are provided later to enable procurement of a kit of parts for the antenna itself, which covers both long and medium wave reception, as well as a sophisticated long wave converter to enable operation with a high-frequency receiver.

SOME THEORETICAL BACKGROUND

Since loop antenna theory is well described in numerous texts, it won't be covered here. However we will present a few not so well known facts applying to loops with magnetic cores.

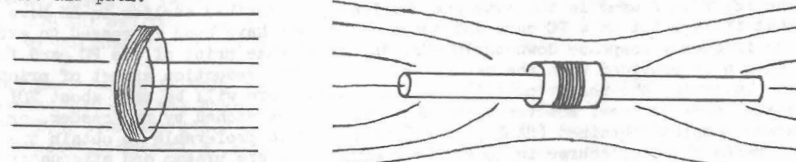
A radio wave consists of oscillating electric (E field) and magnetic (H field) fields propagating through space. Both fields are perpendicular to each other and to the direction of propagation. The two fields are also displaced in time such that when the H field is increasing to its maximum value, the E field is decreasing to zero, and vice versa. In this way the energy in the wave is alternately exchanged back and forth between the E and H fields as the wave propagates forward. Antennas can be made that will respond to either of these fields. A short vertical whip responds to the E field, while a loop or magnetic antenna like the one in this article responds to the H field.

A loop antenna consists of a coil of wire through which some of the magnetic lines of force from the H field pass. Since the field is oscillating, an AC voltage is induced in the coil. The magnitude of the induced voltage is dependent on the frequency of the field, the number of turns on the coil, and more importantly for our purposes the number of magnetic lines of force passing through the coil.

At the receiving antenna, it is not possible to control the frequency of the field or the number of lines of force passing through a unit of area (strength of the field) as these two things are determined by transmitter frequency and power, and the number of turns on the loop is fixed within certain limits by the desirability of tuning the coil to the particular frequency. This leaves the physical size of the loop as the only parameter that can be varied to affect the induced voltage in the coil. As the cross-sectional area of the coil is increased by making the coil larger more lines of force will pass thru the coil since they are evenly distributed thru space near the antenna. More lines of force through the coil thus yields a higher induced voltage, as previously explained. If the loop is tuned, the voltage induced in the loop will be multiplied by the "Q" of the circuit. This means that the loop "Q" (which can be described as sharpness of tuning) should be as high as possible.

In an air core loop the effective area of the loop is very nearly the area enclosed by the loop. In the case of the NRC Altaz loop this is about 9 ft<sup>2</sup> (9 square feet). When a ferrite core is used, the effective area can be many times larger than the cross-sectional area of the coil wound on the core. This can be explained as follows. The magnetic lines of force behave somewhat like an electric current, following the path of least resistance. Air or space offers a relatively high resistance to the

passage of a magnetic field whereas ferrites have a relatively low resistance to the magnetic field. Therefore when a ferrite rod is placed in a magnetic field, many of the lines of force near the rod will bend toward the rod and enter it to take the lower resistance path through the rod, rather than remain in the higher resistance air path.



Lines of force; vicinity of air loop.      Lines of force; vicinity of ferrite.

By referring to the above diagram it is easy to see how the ferrite core "attracts" lines of force from an area considerably larger than its own cross section. It can be shown that if certain conditions are met, a ferrite core loop will have the same effective area as an air core loop having a diameter equal to the length of the ferrite core. In other words - a coil wound on the center of a suitable ferrite rod of 36 inches length can be equal to the much bulkier NRC loop in signal snatching ability. As actually built, the 42 inch ferrite core provides an effective area about 1000 times larger than the actual cross-sectional area of the coil at its center.

The use of a ferrite core also results in a much increased inductance of the coil as compared to the inductance of the same coil with an air core. This makes it possible to wind coils with sufficient inductance to tune the long wave bands with a relatively small number of turns of wire. The use of less wire results in a lower resistance for the coil which in turn causes the coil to have a higher Q. This of course is another desirable effect.

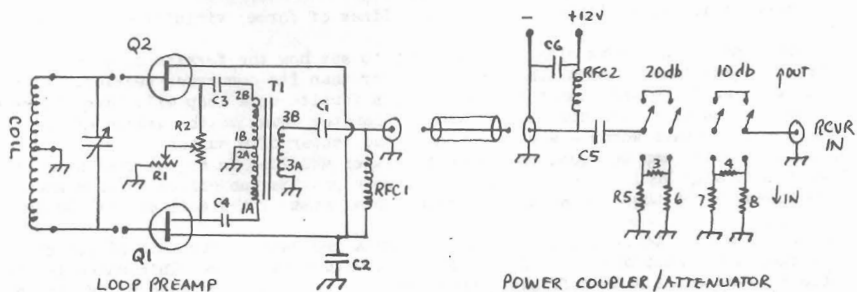
DESCRIPTION OF THE ANTENNA

The 42 inch (1.0668 meter) ferrite core is made by gluing seven smaller 12" x 0.6" cores together. An overlapping pattern is used to keep magnetic resistance low and to reduce flux leakage at the joints. This arrangement was proven to be the best of several including a simple bundle of all seven with the ends in the same plane. This was determined in actual receiving tests. A set of coils are wound on sections of rigid PVC plastic pipe. The coils are each center-tapped and consist of 40 turns, 246 turns and 1280 turns of #30 wire. The respective tuning ranges of the three coils are 350-1950 kHz, 64-365 kHz and 13.6 to 75 kHz when resonated with an inexpensive Japanese 365 pf variable capacitor. This particular capacitor is used because it has an unusually low minimum capacity of about 8 pf. A fourth tuning range can be obtained, from 10 to 14 kHz, by connecting a fixed capacitor of 330 pf across the 1280 turn coil. The 40 and 246 turn coils are wound in a single layer, while the 1280 turn coil is wound universally in 32 quarter-inch wide pi's of 40 turns each. This makes a difficult winding job, but it is absolutely necessary to obtain a low distributed capacity value in a multilayer coil of this size. The unusually wide tuning ranges are a result of low distributed capacity of the coils, low input capacity of the FET preamp and the low minimum capacity of the variable capacitor. With more conventional tuning ranges, an extra coil would be required to reach the lowest frequencies. The Q of the coils is high, ranging from 50-75 at the high end of each range to 250-360 at the low end. The coils are fitted with binding posts so that they can be slipped over the core and connected to the FET preamp when changing the tuning range.

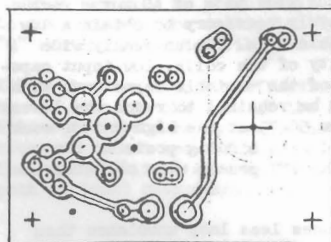
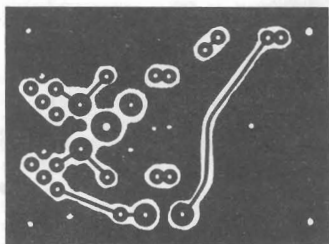
The small physical size of the tuning capacitor produces less loop unbalance than the usually used type capacitor with its large metal frame connected to one side of the loop. Still, a small amount of capacity must be added to the other side by means

of a "gimmick" capacitor (very small value) in order to get perfect loop balance. The housing for the core is made by sawing a 43" length of  $2\frac{1}{2}$ " diameter PVC pipe in half along its length. One side is hinged while the other is fitted with latches so that the housing can be opened to allow removal of the core while changing coils. Provision is made for rotation of the housing in both azimuth and elevation so that the best possible null may be found regardless of wavefront tilt.

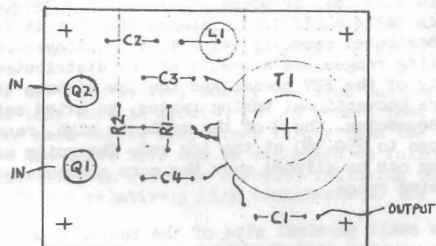
The FET preamp used is the same one, basically, described earlier in DX News except that it is built on a PC card and component values have been increased to extend the frequency response down to 10 kHz. An actual size print of the PC card foil pattern is provided with the manuscript. Due to the reduction effect of printing the bulletin, the resulting illustration you see here will be only about 70% of scale, more or less. However a suitable card may be etched by the reader, or a true scale template obtained (SASE please!) or it may be preferable to obtain the kit of parts which of course includes the board. Below are preamp and attenuator schematics.



- Parts List**
- |   |                         |
|---|-------------------------|
| 1 ea. 2 uf 16v.   | 2 ea. feedthrough       |
| 2 ea. 1 uf 3v.  | 1 connector             |
| 1 ea. 1 uf 16v.   | 1 minibox, 2 x 2.75     |
| 1 ea. 22mhy RFC   | x 1-5/8                 |
| 1 ea. 1K ohm pot  | 4 spacers, 1/4 inch     |
| 1 ea. 2500 ohm pot  | 4 screws, 6-32 x 1/2"   |
| 2 ea. 2N4416 trans'r.   | 5 hex nuts 6-32         |
| 2 ea. sockets for above   | 20 feet #30 magnet wire |
| 1 PC board  | 1 screw 6-32 x 1 inch   |
| 1 toroid Amidon T-106-3   | 1 popsicle stick        |
| (attenuator parts, see previous DX News article as detailed in reference section) |                         |



board foil



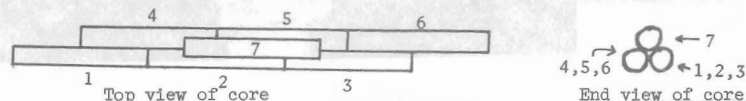
parts layout

Results when using this antenna have been everything I had hoped for. Nulls of at least 70 db are possible with signals received by groundwave. My 1240 khz local WMMB can be nulled well enough to permit reception of other stations on 1240 even in the daytime. On longwave, local 400 watt beacon "SQT"-257 (Satellite, FL.) can be nulled down into the noise level, allowing daytime reception of distant "AEN"-256 in Allenhurst, GA. The use of nulling techniques has provided good sunset reception of MSF in England (60 kHz) over WVVB in Colorado, also on 60 khz; a previously impossible feat. QRM-free reception of the longwave Trans-Atlantic such as Azilal, Morocco on 209 kHz and Tebessa, Algeria on 251 kHz are also available for the first time ever, by nulling beacons in the Bahamas on the same frequencies.

Weak signal performance is very good, although not quite equal to the NRC loop. However, Hawaiian KORI-650 was heard here in the fall of 1975. Other stations heard were Moscow-173, and many other TA's on both MW and LW. On the very lowest frequencies, all presently operating Omega stations - Norway, Trinidad, Hawaii, North Dakota, Japan and Argentina have been heard. Super-powered Navy teletype station NAA operating on 17.8 kHz in northern Maine produces an incredible signal of 20,000 uV at the input of the FET preamp. At the other end of the spectrum, many very low power 160 meter amateur signals from all parts of the country have been copied around the 1800-1820 kHz range.

## CONSTRUCTION

Begin by gluing six ferrite rods together such that each overlaps another by 6 inches to form a single unit of rod 42 inches long. It is easiest to lay the six cores and glue the flat interfaces and ends between the rods. Eastman 910 adhesive is highly recommended for this but it may not be available to everyone. (The factory is in Kingsport, TN.-ed.) Any good epoxy glue can be used in place of Eastman 910. When the glue has set completely go over all joints with a generous supply of epoxy glue. It is best to let the glue set on one side, then turn the cores over and do the other side. Glue a seventh core over the center of the rod formed by the six cores at the time the second side is glued. Again let the glue set, then apply a generous supply of glue along the entire seam formed between the seventh core and the other six. It is important to glue in this manner so that the rod will withstand the repeated handling when coils are changed. Refer to the diagram below.



Slip a 15 inch length of 1 inch heat shrinkable plastic tubing over each end of the rod up to the seventh core. Carefully shrink the tubing over the kitchen stove. Tightly spiral-wrap the cores with black plastic electrical tape in the center for the entire length of the seventh core. A 42" length of some very large size heat shrink tubing would be a better cover for the rod than the one just described, but this is difficult to locate. If any heat shrink tubing is not available, the whole rod could be wrapped with electrical tape. Do not omit the tubing or wrap as it helps strengthen and protect the assembly. Although the finished rod is strong, use extreme care when handling it because ferrite is a ceramic material and is subject to breakage, just as china and glass are.

Next cue three sections of  $1\frac{1}{4}$ " ABS sink tailpiece, one each of 2-7/8, 4-1/2 and 8-7/8 inches length. Do not confuse this with 1-1/4 inch ABS pipe. It is similar but the diameter is different. Sink tailpiece is the pipe that makes the connection from the sink drain to the trap. This is available in 12 inch lengths from Montgomery Ward stores, and probably most other plumbing stores as well. Two lengths are needed.

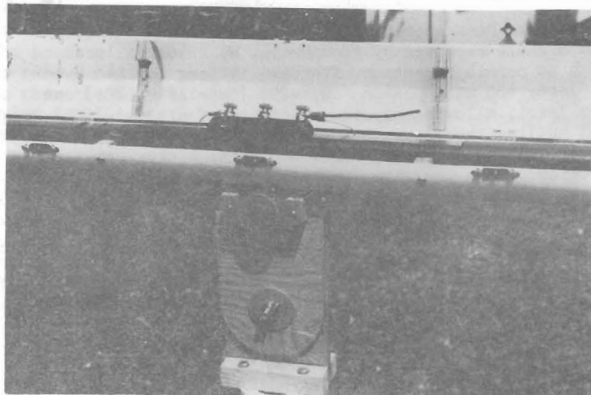


Fig. 1. Center of loop, top unhinged. Note balance wire on right hand binding post. Tuning knob is directly below coil. Wing nut for elevation adjust is visible below tuning knob. Detail of core support is visible to left. 350-1950 khz coil shown in place.

Fig. 2. View as Fig. 1. except from other side. Preamp (cover in place) visible in center. Top is locked in place, protecting core and coil. Note feedthroughs (coil to FET gates) on top of the preamp.

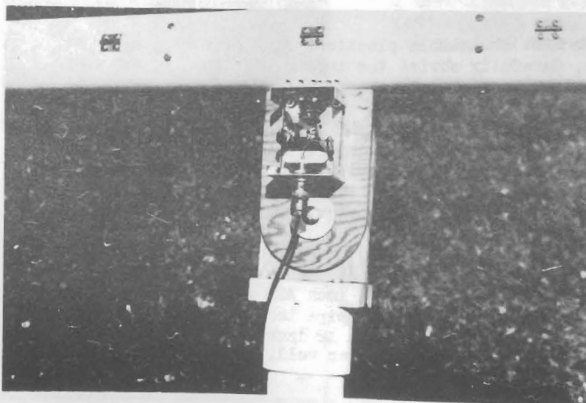
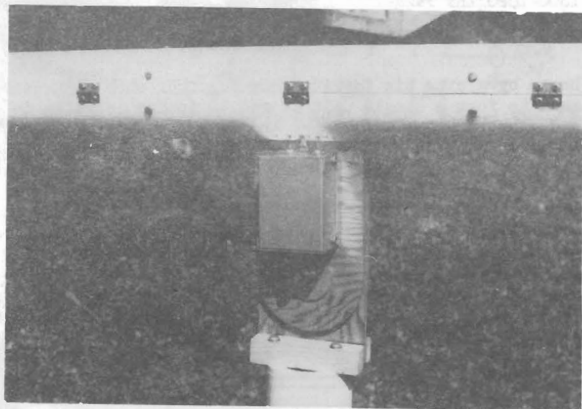


Fig. 3. View as Fig. 2. Preamp cover removed. FETs are the 2 white dots at extreme top inside preamp; toroid at bottom. Coax lead (signal and power) to attenuator box is in place, a BNC connector used. (Black area at bottom is shadow of loop).

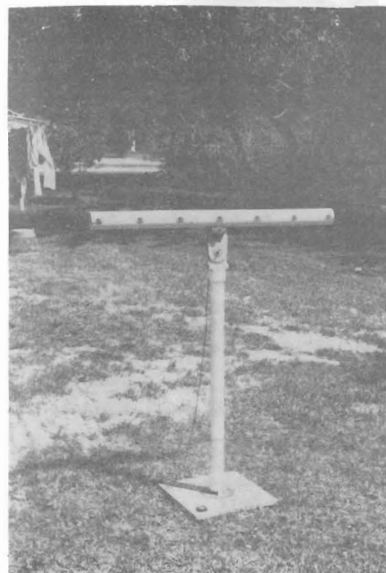


Fig. 4. Complete loop assy.

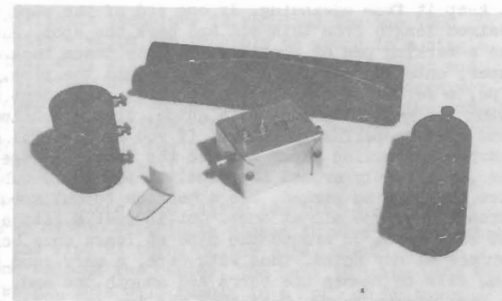


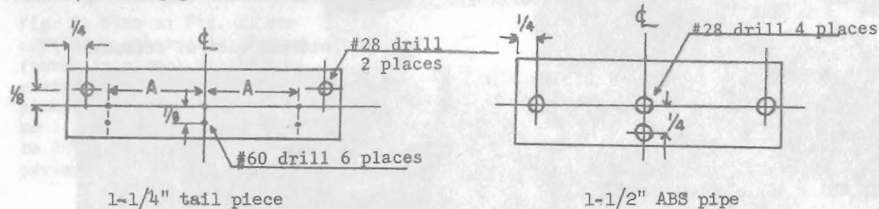
Fig. 5. Attenuator (0-10-20db) and power coupler in center; 3 coils; pointer for setting circle.

Fig. 6. Internal view of attenuator.



Fig. 7. Base, PVC plug, 360° setting circle; compass at right.

Also cut identical pieces of 1-1/2" ABS drain pipe. PVC pipe could be used here if the thin wall kind is available. Do not use Schedule 40 PVC as its inside diameter will be too small. Be sure to cut the pipe ends square. It may be possible to do this with a mitre box but the following method works well. Wrap a sheet of notebook paper around the pipe. Carefully square it up and tape it to itself in 2 or 3 places to keep it from unwinding. If one end of the pipe is already square, measure the desired length from this end and mark the spot. Slide the paper over to this mark. Use a marking pen or pencil to lightly trace back and forth over the edge of the paper, onto the pipe, all the way around the pipe. When the paper is slid off the pipe, a series of closely spaced lines, very neat and even at one end will remain. Using the even line ends as a guide, draw a continuous line around the pipe. This line will be perfectly square. If you are careful enough, it may be possible to use heavy construction paper and use the paper's edge itself as a straight edge to guide the pen directly around the pipe. Or perhaps a tubing cutter large enough is available. Once the pipe is marked, use a hacksaw to cut around the pipe. Do not attempt to cut through the pipe all at once. Cut in just a little, then rotate the pipe a bit and cut some more. Go around the pipe at least once before cutting through to the interior surface at any point. Thus with care, a very good squared end can be made. Use a fine file to remove the burrs and smooth the end. Drill the pipe sections according to the diagram below. Note that the two end holes in the 1-1/4" tail piece must match the two end holes in the 1-1/2" ABS pipe when the tail piece is fitted inside the 1-1/2" ABS pipe of the same length.



(For pipe length of 2-7/8", Dimension "A" is 3/8 inch. For pipe length of 4-1/2", Dimension "A" is 1-13/16 inch and for 8-7/8 length, "A" is 4 inches.)

Start winding the coils beginning with the 2-7/8" length of 1-1/4" tail piece. Thread about 6 inches of #28 magnet wire from a spool through one of the #60-drilled end holes, then back through the other hole as shown.



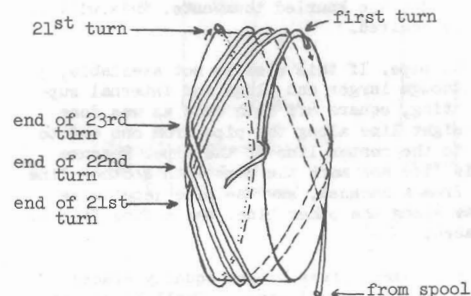
Winding is accomplished by applying tension to the spool and turning the pipe, rather than wrapping the wire around the pipe.

Tuck the six inch free end into the end of the pipe to get it out of the way and wind 20 turns of wire from the spool onto the pipe. The spool can be supported on a dowel rod or piece of metal rod, the other end of which can be clamped in a vise. Tension must be maintained on the wire to insure a good wind. Cut the wire about 6 inches longer than the 20th turn and thread this through the #60-drilled center holes as before. Thread another 6 inches of wire from the spool through the center holes so that the free end comes out the same hole as the free end of the 20th turn. Continue winding another 20 turns on the pipe by turning the pipe in the same direction as before. This is important to insure that all of the turns are wound in the same direction. At the end of the second 20-turn wrap, again cut the wire 6 inches too long and thread this through the remaining end holes and pull tight. Use chemical dip compounds or if not available, fine sandpaper to remove the enamel insulation from the free ends of the wire. Twist the center leads together and solder.

You should now have a tight and even 3/4" long winding of 40 turns, center-tapped. This will be the 350 to 1950 kHz coil. Set this aside. Now, the 4-1/2" length of 1-1/4" tail piece is similarly wound with #28 magnet wire except that the total number of turns will be 246, and the center tap is made after the first 123 turns.

A different and unfortunately more difficult technique is required for the 1280 turn coil. Unlike the previous two coils - which can probably be wound in a single sitting of 15 to 20 minutes each - this coil will require 4 to 8 hours' labor and should not be attempted in a single sitting, or else you may reinvent a modern version of the Chinese Water Torture. Keep some Scotch tape nearby to secure the end of the winding between sittings or during interruptions. A modified form of the Universal winding is used. It is not easy to wind and may require a few short practice runs before beginning the winding of the coil itself.

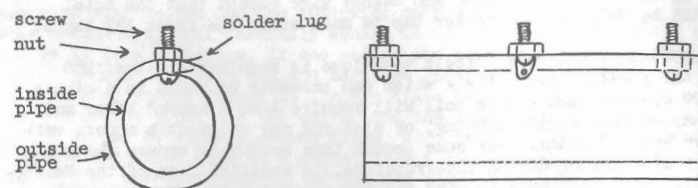
Begin by marking the 8-7/8" length of tailpiece into thirty two 1/4" sections; 16 either side of center. Thread 6 inches of #30 wire (note change in wire # from other coils) through the #60 center holes and wind 21 turns on the pipe. The 21st turn should end on the first 1/4" mark one side of the center. The next 19 turns will be universally wound on top of the first 21. This will result in a "pi" of 40 turns with a width of 1/4 inch. To make the universal winding, refer to the drawing below.



Universal Wind showing 1/4 of first, and 3/4 of last solenoid turns; and 2 1/2 turns of Universal winding.

The drawing shows part of the first turn and 3/4 of the 21st turn. The turns between the first and 21st are omitted for clarity. Notice that the universal turns 22, 23 and up to 40 cross the width of the pi and return, once each turn, zigzagging from edge to edge. It will be easier to visualize this if a universally wound coil such as a multi pi RF choke or a TV flyback transformer is inspected. Be sure you understand the universal winding concept before proceeding. When the first whole pi is complete, apply a small amount of coil dope (cement) or Duco glue over the turns at 3 equally spaced places around the pi. When the glue has set, the second pi will be wound, exactly like the first but in the second 1/4" section from the center. Continue winding pis, moving away from the center of the pipe, until you have wound 16 pis and have reached one end of the coil. Cut the wire only after the 16th pi is complete, and secure it by threading it through the end holes. At this point there will be 640 turns on the coil. Now, starting again at the center but working towards the other end of the form, wind the 2nd sixteen pis. When these are done, sandpaper and solder the ends of the wire, joining center leads for the center-tap, as was done on the previous two coils. Each coil is fitted inside the section of 1-1/2" ABS pipe of corresponding length. Use 6-32 x 3/4" round head brass hardware and #6 solder lugs as shown in the drawing. Note that the end solder lugs are installed inside the 1-1/2" ABS pipe, while the center lug is installed on the outside. Also note that the center screw is only 5/8" long, does not go through both pipes, and has only an external nut. (see drawing on next page.)

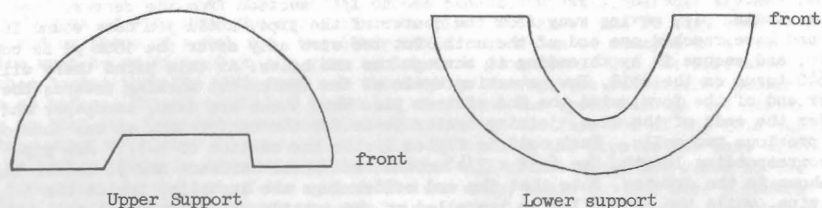
24



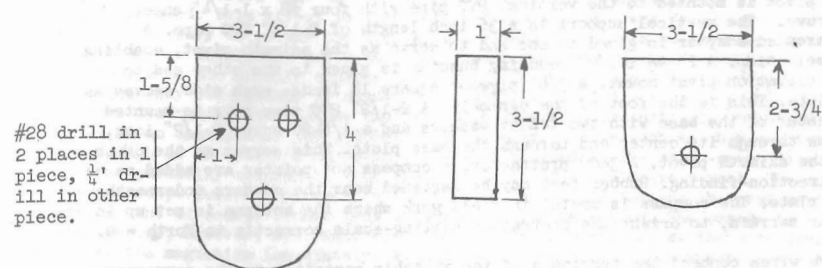
Solder the coil center and end leads to their respective solder lugs. Clip off the excess wire. The end leads will now be completely inside the assembly and the center lead will pass through the remaining #28 hole to reach the external center solder lug. The protruding #6 machine screws are fitted with #6 knurled thumbnuts. The coils are now complete. To make the range extender for the low frequency coil, solder a length of bare hookup wire to both leads of a 330 pf silver mica capacitor. Cut these leads just long enough to reach the end terminals of the large coil when the capacitor is positioned near to the center terminal. Put sleeving over both leads and solder a spade lug to each free end, so as to slip under the knurled thumbnuts. This will be attached only when coverage below 14 kHz is desired.

Cut a 43-1/2" length of 2-1/2" thinwall PVC pipe. If this size is not available, 3" PVC of any wall thickness can be used, although larger end plugs and internal supports will have to be fabricated. When cutting, square off both ends as was done with the coil forms. Carefully mark a straight line along the pipe from one end to the other. Be sure this line is parallel to the center line of the pipe. Measure exactly half way around the pipe from this line and mark the pipe with another line from end to end. Using the blade removed from a hacksaw, saw the pipe lengthwise along one line. Turn the pipe over and saw along the other line. Use a fine file to remove the burrs and smooth the cut surfaces.

The two halves are hinged together with seven small brass hinges equally spaced along the pipe beginning 1-1/8" from the ends. Use #4 x 1/4" screws. Small brass latches are fastened to the other side of the pipe opposite each hinge. Circular end plugs are cut from 1/2" plywood. The plugs are made the same size as the inside diameter of the pipe for tight fit. Place the plugs just inside each end of the pipe. Secure each plug to the section of pipe that you designate as the bottom half with three #6 x 1/2" sheet metal screws. Now, upper and lower supports are required for the ferrite core itself. These are also cut from 1/2" plywood. Two of each are required. A pattern is shown below, approximately 70% of full size. (view from side).



The supports are fastened inside the housing pipe with #6 x 1/2" sheet metal screws. Locate them 5 inches from the center of the tube, the upper and lower supports going respectively into the top and bottom sections of the housing. Use 3 screws in each support. Next, make the elevation yoke. Cut the following parts from 1/4" plywood. (see next page)



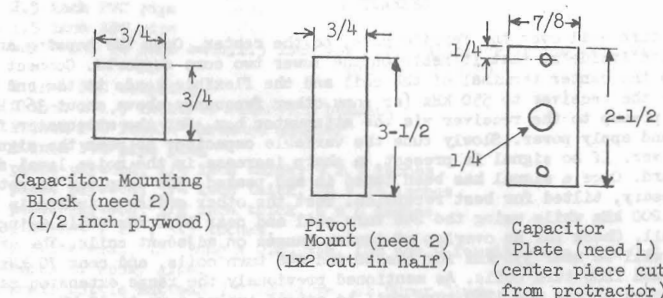
#28 drill in 2 places in 1 piece, 1/4" drill in other piece.

Yoke Side (need 2)

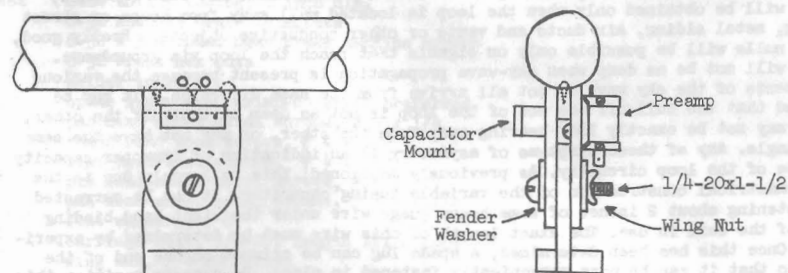
Spacer (need 1)

Yoke Pivot (need 1)

Above Material: 1/4 inch plywood

Capacitor Mounting Block (need 2)  
(1/2 inch plywood)Pivot Mount (need 2)  
(1x2 cut in half)Capacitor Plate (need 1)  
(center piece cut from protractor)

Assemble the parts as shown in the photographs and following diagram. The housing is fastened to the yoke spacer with three #6 x 1" sheet metal screws. All other parts are glued together, except for the capacitor mounting plate which is mounted with two #4 x 1/2" sheet metal screws. The FET preamp is mounted to the elevation yoke with two #6 x 1/2 inch sheet metal screws. Refer to the diagrams below.



The yoke pivot is mounted to the vertical PVC pipe with four #8 x 1-1/4" sheet metal screws. The vertical support is a 36 inch length of 2-1/2" PVC pipe. A female threaded adapter is glued to one end to serve as the azimuth pivot, enabling bearing selection. A 2" to 1-1/2" reducing bushing is glued to the other end to take the elevation pivot mount. A 3/4" plywood square 18 inches each side serves as a base plate. This is the foot of the assembly. A 2-1/2" PVC pipe plug is mounted in the center of the base with two fender washers and a 1/4-20 screw 2-1/2" long, which runs through its center and through the base plate. This serves as the other half of the azimuth pivot. A 360° protractor, a compass and pointer are added as an aid to direction-finding. Rubber feet may be fastened near the corners underneath the base plate. The compass is useful in field work where the antenna is set up in unfamiliar terrain, to orient the protractor setting-scale correctly to North = 0.

Short bare wires connect the terminals of the variable capacitor to the corresponding terminals of the preamp on the opposite side of the elevation yoke. These wires should be as short as possible. Route them through 1/4" holes in the housing. A flexible lead 4 inches long is soldered to each of these leads inside the housing. Another bare wire 2-1/2 inches long is soldered to the ground lug of the preamp. This enters the housing through a 1/4 inch hole. Solder lugs to the free ends of these wires.

#### OPERATION

Slip the 40-turn coil over the ferrite core, to the center. Open the housing and place the core inside so that it rests on the lower two core supports. Connect the bare wire to the center terminal of the coil and the flexible leads to the end terminals. Tune the receiver to 550 kHz (or some other frequency above about 360 kHz). Connect the preamp to the receiver via the attenuator box. Set the attenuator for 10 db loss and apply power. Slowly tune the variable capacitor to peak the signal in the receiver. If no signal is present, a sharp increase in the noise level should still be heard. Once a signal has been tuned in and peaked, the loop can be rotated and if necessary, tilted for best reception. Test the other coils by tuning in a signal near 200 kHz while using the 246 turn coil and near 17.8 kHz while using the 1280 turn coil. Check for an overlap of tuning ranges on adjacent coils. The cross-over points will be near 350 kHz for the 40 and 246 turn coils, and near 70 kHz for the 246 and 1280 turn coils. As mentioned previously the range extension capacitor is connected across the 1280 turn coil to extend tuning down to 10 kHz.

To null a station, rotate the loop for minimum signal. Loosen the wing nut slightly and tilt the loop a few degrees. Rotate the loop slightly to see if the null is improved. Try this with various amounts of elevation until the best null is obtained. This point is very critical. A degree or so off in either direction (azimuth or elevation) will make a large difference in depth of the null. Even the proximity of the operator to the loop housing will disturb a deep null. The best (deepest) nulls will be obtained only when the loop is located well away from house or street wiring, metal siding, air ducts and vents or other conductive objects. Really good, sharp nulls will be possible only on signals that reach the loop via groundwave. Nulls will not be as deep when sky-wave propagation is present because the various components of the sky wave do not all arrive from the same direction. It may be noticed that the null off one end of the loop is not as deep as that off the other, or it may not be exactly 180° bearing away from the other, or may not have the same tilt angle. Any of these symptoms of asymmetry is an indication of improper capacity balance of the loop circuitry. As previously mentioned, this is largely due to the non-symmetrical construction of the variable tuning capacitor. It can be corrected by fastening about 2 inches of some heavy gauge wire under the right hand binding post of the coil in use. The exact length of this wire must be determined by experiment. Once this has been determined, a spade lug can be crimped on one end of the wire so that it can be more conveniently fastened in place. Be sure to position this wire the same way each time the coil is changed.

It will also be noticed that the tuning of the loop will vary slightly as the antenna is rotated. This effect is much more obvious on the lower frequencies, and makes it necessary to retune the loop slightly when it is rotated through a large angle. I do not completely understand the reason for this and have never observed the effect with the usually shorter and lower Q ferrite loops. Ferrite materials are notoriously susceptible to magnetic saturation. The inductance of a coil, and therefore its tuning will not be the same on a saturated or partially saturated core as on an unsaturated core. I believe that a large core such as this one intercepts enough of the earth's magnetic field when aligned in the north-south direction to become partially saturated, even though this field is relatively weak. The core would intercept less of the earth's field as it is rotated towards the east-west position, and of course become less saturated at the same time. The change is not instantaneous, however, and requires a few seconds to complete, as the core does not lose its magnetism immediately. At any rate, this retuning phenomena seems to be a small price to pay for a relatively large aperture directional antenna that provides the frequency coverage that this one provides.

#### MATERIALS LIST

Quantity	Item
3.5 feet	2 inch PVC pipe
4 feet	2.5 inch PVC pipe
16 inches	1.5 inch ABS pipe
2	sections, 12 inch each; 1.5 inch ABS sink tailpiece (Montgomery Ward p/n 81-1 20810)
1	2 inch PVC coupling
1	2 inch x 1.5 inch PVC reduction bushing
1	2 inch PVC female threaded adapter
1	2 inch PVC pipe plug
1	piece plywood, 1/4 inch thick, 9 x 7 inches
1	piece plywood, 3/4 inch thick, 16 x 16 inches
1	piece plywood, 1/2 inch thick, 6 x 6 inches.
1	piece of 1"x2", 3.5 inches.
7	Ferrite rods, 12" long x 0.6" dia. (OR use 9 ferrite rods, 9 x 0.7 inch)
several	tubes of epoxy glue.
1	small bottle Eastman 910 adhesive, or Super-Glue.
1	miniature 365 pf variable capacitor (Radio Shack 272-1341)
1	silver mica capacitor, dipped, 330 pf
550 ft.	magnet wire, # 30
120 ft.	magnet wire, # 28
15 inches	standard hookup wire
15 inches	solid bare wire, # 22
1	roll plastic electrical tape
3 feet	heat shrink tubing, 1 inch dia.
9	6-32 knurled brass thumbnuts
9	6-32 x 3/4 round head brass machine screws
15	6-32 brass hex nuts
9	solder lugs, # 6
6	spade lugs, # 6, crimp-on style preferred
28	pan head sheet metal screws, # 4 x 1/4
2	round head wood screws, # 4 x 1/2
3	flat head wood screws, # 4 x 1/2
20	pan head sheet metal screws, # 6 x 1/2
4	pan head sheet metal screws, # 8 x 1-1/4
4	flat washers, # 8
1	carriage bolt, 1/4-20, length 1-1/2 inch
1	wing nut, 1/4-20 thread
1	round head machine screw, 1/4-20, length 2-1/2 inches.
1	hex nut, 1/4-20 thread.

(continued)

- 4 Fender washers, 1-1/2" diameter, 1/4" center hole  
 1 protractor, 360° or other device to act as setting scale.  
 1 pocket compass ("girl scout" type)  
 7 Brass hinges, 3/4" x 5/8" (Brainerd Mfg. Co. 5075 XC -or- Montgomery  
 Ward 84-9 962-001)  
 7 Brass Latch, 3/4" x 1-1/4" (Stanley CD 5345 US3 -or- Brainerd 865 XC)  
 - Roll of solder  
 - Preamp assembly. Attenuator assembly; power source with cabling.

## REFERENCES

- Watt, A.D.; "VLF Radio Engineering" pages 413-429, Pergamon Press (1967)  
 Hagan, J.V.; "An FET Loop Amplifier with Coaxial Output", DX News 42 No. 15, p.31-34 (3 February 1975)  
 Nelson, G.P.; "FET Altazimuth Loop Antenna", NRC Antenna Reference Manual, 2-17 (1974) (original text appeared in DX News in 1969)

\* \* \*

The above article by Jim Hagan was transcribed by Bob Foxworth. As of this writing, Jim has been rounding up parts and materials preparatory to offering both the loop antenna, and the companion long wave converter (to be described in a forthcoming issue of DX News very soon) in kit form. Tentative pricing information indicates that the antenna will sell for \$75 and the LW converter will sell for \$55, with a discount if both items are purchased at one time. A definite schedule will appear very soon in DX News.

A word about the LW converter. It uses a rejection circuit to keep out strong MW broadcast signals and utilizes a double-balanced mixer to eliminate problems with local oscillator feedthrough, as is commonly experienced with the majority of currently available designs. It can be set to up-convert to any frequency in the HF range, though a frequency of 3, 3.5 or 4 MHz would be optimum in the majority of cases.

I experienced the operation of the antenna and converter first-hand when Jim stopped at my house for an afternoon in September 1976. We tried out the system in portable mode in my front yard. I can personally testify that the performance of the system was very, very satisfying and I intend to obtain both a loop and converter as soon as practicable. I can very strongly recommend the loop, and the converter as well (for the LW DX enthusiast) as being the best available on the market anywhere today.

-Bob Foxworth

Inquiries and prospective orders should be sent to the author of the article, James V. Hagan, 896 Port Malabar Blvd., Palm Bay, Florida 32905 Please include a Self-Addressed Stamped Envelope with all correspondence to ensure a timely reply.

\* \* \*

## musings of the members

editor: Ernest R. Cooper

5 Anthony St.

Provincetown, MA. 02657

The opinions expressed in this column are those of the individual members, and do not necessarily reflect those of the editors, the publishers, or the National Radio Club.

ELLIOT R. STRAUS - 1410 Bond Street - Asbury Park, NJ - 07712  
 201-775-5293, On Mon. 11/1 I logged & reported three new stations on 1000 in 17 minutes as they took turns signing off - WKYB Heming, SC @ 5:12pm, WKBQ, Garner, NC @ 5:14 & WKDE, Alta, Va. @ 5:16. Next day newies WTGR-1520 Myrtle Beach SC & WPED-810 Crozet, VA w/5pm s/off. Recent veries include: WADS-690 for fifth f/up, WBKC-1560 from a MM test, WPLW-1590, WIGK-1400, TWR-1466, WUST-1120, CBI-1140, WFAX-1220 among others to make current totals 1,228/465, 42/40, 9/8, 64/25. I heard Relej Nacional station on 1180 SM 10/31 w/WHAM off @ 1:35am. I sent out 22 reports in September & 18 in October & will try to maintain at least that level for the rest of the season. I finally verified WARM-590 after about 13 years, up in W. Orange, NJ where I grew up my friend & I must have sent the CE 20-30 reports in the space of four years, we sent postage money & prepaid cards needing only an initial but never a response! Finally I sent a letter to the DJ whose program was on while I was taking details & I received three veries from the CE within a week! That also worked w/WADS who never veried for me, just sent the letter to the DJ. It might be a good idea for others with this problem. PS- The card WARM sent in an envelope had 2¢ postage imprinted on it, so they had those cards sitting around since the late 50's. I better get off to work now - I hope to see some of you at ERC's.

BOB HLIVAK - 1468 South Carpenter Road, #345 - Brunswick, OH - 44212  
 Hey, this is really spooky. As I write this I get the feeling that somewhere out there (wherever it is) there are 700 or so odd (hi) souls who are paying attention. But I guess I'll never know 'cause you never Muse. I'm not good at public confessions but I must say DX here just hasn't been. Too lazy, I guess. No, HWB, your loaner isn't going to waste. Believe it or not it has spurred the long vacant tinkerer within & I has been buildin'. Projects here go oh so slow, but when I'm done I hope to have one dandy loop. I finally got all the parts. Let me say that Allied is honest - you won't lose your money, but I sure lost a lot of time with their poor service. Hey, would it be against Club policy or good manners to mention companies who have out and out stolen my bucks in future Muses? (COULD be libelous, I think! -ERC) I missed the Convention due to the fact that my job had me up on the N slope of Alaska. Be forewarned that any visitor to my humble abode will have to put up with infinite tall tales of the North. My favorite photo of the trip is yours truly standing next to signpost in Barrow, AK, with WHOT sticker on vehicle. Fust IS everywhere. Phone is local call from Cleveland area: 216-225-7617. I live about two blocks from I-71 & sr303. Maybe now I'll feel guilty and DX'.

RICH FRCHO - 1208 Hulett - Eastlake, OH - 44094

This past week of DX has given me a new state & a new country, so I can't complain! 10/29- R. Jumbo-545 @ 8:50pm good w/FF mx, ID & NX @ 9; I finally got an ID on this. UnID-810 @ 9:32pm w/SS stuff, mention of "pueblo Colombia", I suspect HJCY, mostly o/WGY. 11/1- UnID-790 @ 2:46am poor u/WTAR w/TTs, much CKLW gunk. I suspect much-needed KGHL w/r/c. Re-plays of tape reveal nothing. This one has eluded me many times because I can't null bigmouth CKLW without nulling KGHL too. But if ya lose some, oa also win some: KLAD-960 excellent mostly atop w/TEST @ 3:05-3:18, w/much march mx & frequent IDs, fantastic signal for 5 kw, Oregon #1. WENE-1430 finally heard @ 5:35pm w/rr, ID @ 5:43. WSAV-630 new @ 6:50 atop w/pop MoR, political announcements, ID @ 6:51. WSLI-

30  
(Frho) -930 new @ 7:14 o/u w/ID & MoR. 4VEC-1035 good @ 7:20 mixing w/  
unID het on 1036 (TA?), EE announcer w/gospel mx, "Touch of Light" pro-  
gram. IS & ID @ 7:29, s/off @ 7:30, Haiti #1. Thatzait. (1036 is not  
a TA channel, Rich - 1034 is the closest - ERC)

MICHAEL HOGAN - 9224 Cottage Grove Avenue - Highland, IN - 46322  
DX has finally reached a productive stage for the sea-  
son, with some of the dial-twisting paying off in the form of new logg-  
ings. Four new stations have been heard in the last six days (10/27-  
11/1). CX so far have seemed pretty unusual. For example a few MMs  
ago things have started very AU & then have done complete turn-arounds  
with stations from the N dominating the airwaves. There also have been  
some quite unusual SRS CX where some stations should have theoretically  
faded out but were still being heard two hours past local SRS. There  
also have been an unusual amount of Western openings. All in all, I  
never know what I'll be hearing next whenever I turn on the rig. (Ah,  
Michael - that's the definition of DX - D for Distance, and X for the  
missing quantity! -ERC) As to say, CX at this DX shack are very unpre-  
dictable. Total heard is up to 588, & hoping to reach 600 by the end  
of this month. DX time is still limited to about one hour per week -  
it's been that way for the last four years. 73 & good DXing to all.

BRUCE BOOMER - 108 Norma Avenue - Nutter Fort, WV - 26301  
DX has been getting off to a slow start for me this Fall.  
SW has taken more of a hold on me this season & now that I am working  
for the first time in my life, MM sessions are a bit harder to be up for  
For the past few months I have been working as a management trainee for  
a large American retailer, which has paved the way for the addition of  
an HQ-180. It performs great & brought in Turkey-1016 the first night  
the RX arrived for a new country. Since then I've added Portugal, Mor-  
occo, & Spain to the logbook & new BBC receptions on 647 & 1088, but I  
have yet to stumble upon some TA nights as good as some of those last  
season. As for domestic DX, I have very little to report. 10/10 - An  
unID on 930 @ 10:12pm w/a sports program //-CBM & CBO. It was weak and  
soon lost. Does anyone know what this could have been? (Sounds like the  
new Espanola, Ont. station -ERC) I'd like to think it was an LPRT but  
that is probably unlikely. MM 10/25 - CHTN-1190 was in pretty good @ 3am  
for PEI #1. I couldn't get them last year. Also I looked hard for the  
KYME-740 TEST & heard some traces of CW @ 3:17-3:20 but nothing solid en-  
ough to copy. The highlight of the season was hearing R. Cayman-1555.  
I sent a tentative report for some signals heard on 10/23-24 but then a  
definite ID was heard 10/31 @ 8pm. They use a four-tone IS like R. An-  
guilla. Lately I've taken an interest in ham radio again & I'm taking a  
general ticket course run by a local ham club. I'll finish up now with  
local news- WBOY-1400 is now WBBN (That stands for "Big Bands & News.")73

WAYNE HEINEN - 2603 Paseo Road - Colorado Springs, CO - 80907  
Let's start off on a positive note. It's election night  
& I'm staying away from both the RX & the TV! 10/27 - CJWW-1370 1:53-2:05  
am. I reported longtime neglected KSTP-1500, 2:32-2:55am. 10/30 - KIXZ-  
940 w/rr @ 2:06, KRNT-1350 in KKAM null 2:50-3:05am, KRXV-1540 for call  
change 3:28-3:36. Finally Bagged Dep't.: KEX-1190 w/MoR 3:44-3:57am w/  
KAYQ/KLIF. CJIC-1050 w/CHUM/XEG, 4:01am. MM 11/1 - KXIV-1400 ET/TT 2:51  
& on. New KEQA-1390 w/T-40 2:41-2:50am. KLO-1430 w/rr 1:41. KYXI-1520  
now NIS & all-news 3:04am, KOOK-970 3:13 while looking for KVEG. WRR-  
1310 w/NIS @ 3:33. KELI-1430 w/WIRE 4:24am, CFUN-1410 w/T-40 4:36. KSEI  
-930 w/WXY 5:04am. Lastly, a few CW IDs & one voice ID from KFLA-1310  
TEST. Most above were reported, too. I hope that more "verie freqs" will  
start sending in v/s. I guess we're a dwindling number. Latest veries  
include v/q- KFAB-1110, CKWX-1130. v/l- CKJS-810, KCMC-740, KSTR-620.  
v/f- KFDI-1070. That wraps up another week at the dials from sunny Colo-  
rado. We'll see you all in LINCOLN!

MUSINGS IS PICKING UP, THANKS TO SOME OF YOU GOOD GUYS. NOW, SOME MORE  
GOOD GUYS COULD MAKE IT EVEN BETTER! ARE YOU A GOOD GUY? LET'S SEE!

31  
NEIL ZANK - 2445 "E" Street - Apt. 6 - LINCOLN, NE - 68510  
I guess that if we don't have any more interested members  
than we have Musers then maybe we should also go on a "Fast" with the  
1977 NRC LINCOLN Convention. DX up & down the dial here follows: MM  
10/11- CHWO-1250 Oakville, Ont. ANING w/R&B; CBNM-740 Marystown, @ s/on  
@ 10 minutes' programming. 10/16- KUAD-1170 Windsor, CO, at their s/on  
- fair level. 10/17- KOAL-1230, Trice, UT on car radio w/f/c. 10/18-  
CHSM-1250 Steinbach, Man. @ good level w/c/mx & "R. Southern Manitoba"  
ID. KEUL-900, Wichita, good w/c/w into s/off. 10/22- KFML-1390 Denver,  
good 2-2:15 on announced PoP. I noted KTCH-1590 Waynem NE on again as  
other morns this week w/rr for ETs 1-2am time slot. 10/25- KICK-1340,  
Springfield, MO on announced r/c-TT 2:05-2:15, CKJD-1250 Sarnia, Ont. @  
2:20-2:40 w/rr & announced engineering tests. 10/26- KWNO-1230 Winona,  
MN noted 2:30-3 w/MoR & IDs. 10/27- KLT1-1560 Macon, MO loud on ET 2:10-  
2:15 end. 10/29- CJNB-1050 No. Battleford, Sask. fair w/rr 2:10-2:30am.  
10/30- WKKQ-1060 Hibbing, MN, good w/c/w into s/off 7:20-7:30pm. 11/1-  
KFQZ-1260 Boone, IA on ET loud w/organ mx & phonetic IDs; WPHB-1260  
Phillipsburg, PA quite good at start of TEST, KFLA-1310 Scott City, KN  
weak w/lots of rapid code IDs & little gospel mx - no voice IDs made it  
here. Till next time, 73s.

TED FLEISCHAKER - 3023 Tremont Drive - Louisville, KY - 40205  
After a cliffhanger election with late returns, an MM  
DX session which netted seven new stations, including the Klamath Falls  
TEST, it is safe to say I am whipped out, but still finding time for  
some DX. Glad to hear all the kind words & comments on the Convention  
here - I just hope all are as enthusiastic and set for LINCOLN in '77 as  
it sounds like they are already beginning to plan for the bigger & bet-  
ter get-together. I've been busy here as we made a trip to North Caroli-  
na recently, stopping to see DXers Bruce Winkelman in Greensboro, & also  
Glenn Hauser in Knoxville. I also met Ron Schiller of Dallas at Bruce's  
as he was in Greensboro area (as we were) for the High Point Southern  
Furniture Market. At any rate, we had a nice get-together at Bruce's  
lovely new home by the fireplace. I also did some DX there & found  
(drool) WDEL roaring in. I also want to thank Glenn Hauser for his kind  
hospitality as I GOT TO SEE WUOT (FK) at the U. of Tennessee on a VID  
(very important DXer) tour & got to hear some of the super reception  
Glenn gets, not to mention (note, ERC) joining Glenn at a Knoxville Chin-  
ese restaurant for dinner. Newest loggings here since the trip put me  
over 525 heard in 41 states. Some goodies included: KBMR-1130 at SSS  
10/27 for much wanted ND; KRVN-880, Lexington, NE to top of WCBM @ 7:52  
10/27; & KMJ-580 Fresno, way under, but audible about 3am 11/1. Also  
lots of other nice loggings, including the Phillipsburg TEST, which al-  
most didn't get through WNDE-1260, Indianapolis, from my location. I  
got a late entry in the most delayed verie contest - WWSW-970 veried last  
week for reception last 12/8 & I didn't even send a f/up! That's about  
all here - I will try to Muse more often hereafter; so let's see it from  
all you other folks out there in Radioland!

HANK WILKINSON Jr. - 5028 Maiden Lane - Santa Rosa, CA - 95405  
I had to miss DXing on morning of 10/11 due to seve-  
re local buzzing noise that covered all frequencies. It continued for  
40 minutes so I gave up & went to bed. According to letters & reports I  
missed a "super" DX period. DX on 10/18: HLKA on 706/7k @ 5:01am; HLDA-  
1570 at good volume from 5:44-5:51. 10/21- Far East service Russian on  
647 w/semi-cl selections starting @ 7:18am. 10/24- Thailand on 715k  
logged from 8:03-8:33am. Taiwan-660 logged 6:21-7:37am. 10/25- Thailand  
on 715 logged again, 7:02-7:35. Sabah-1475 playing US type mx @ 6:10am.  
No sign of DYLA-1555 on 10/18-21-24-25. I heard him for a few minutes  
only @ 7:31 & 7:43 on 10/29. 10/30- Russians on 575 & 584 were both very  
strong starting @ 6:46am. Japs & Koreans were poor that AM. 10/31- TP  
reception practically nil on this date. 11/1- Asian DX CX better. I  
caught HLKC-640, South Korea, from 6:33 to 7am when KFI s/on. I noted  
HLKA hasn't been heard on 706/7k for many AMs now. 11/2- JOOR-1210 atop.  
KGIN @ 7:28, better at 8:36. Naha, Okinawa w/EE lessons @ 7:36. DYLA  
still unheard, maybe he changed frequency? I'm enjoying this DX season  
so far - how about you? 28 lines - enough! (Less here, hi - ERC)



CALVIN AUGUSTINE - 3422 Brookside - Rapid City, SD - 57701

It has now been one full year that I have been DXing, so I guess it's time to try another Musing. First of all, I wonder if any of you were lucky enough to be by the dials on the evening of 6/14. We had a minor flood here in the Black Hills, which wasn't so neat for us, but we did offer a couple of good chances to add SD to your logs. KOTA-1580 in Rapid City was on under emergency authorization with their full 5,000w & their daytime non-directional pattern. Also KBHB-810, a Sturgis daytimer, was on that night with full power. Both stations continued operating under emergency conditions until early the next morning. For those of you hardy enough to withstand the static, there was a prime chance to add a couple of goodies to your logs. We have added an SM-2 to our shack here, & it sure beats the old LW. I finally got a chance to really put the thing to work on 10/27. I added KECK-1530, LINCOLN, NE, daytimer & KRYT-1530, Colorado Springs, daytimer, to my logs. As dusk set in, we picked up WCKJ-1550, Jackson, MS w/c/w @ 8:40pm for state #34. KUAT-1550 Tucson, with Southwest's only non-commercial station @ 8:50pm EDT till s/off @ 9 for AZ #3; XEVOZ-1590 Mexico City @ 9:05; WDAF-610, Kansas City, @ 11 w/ABC NX & "Big Line"; KKYX-680, San Antonio, @ 11:35 w/c/w; WPTF-680 Raleigh, NC @ 11:45 for state #45. Did anyone else notice that CX were kind of wild that night? It seemed like the whole South was open all night, and a lot of the normal stations we get from the North every night weren't coming in at all. I guess I've rattled on long enough, so 73s & good DXing.

JEFF ROBERTS - 945 East Moore - Decatur, IL - 62521

Those TAs have been making it into the Midwest regularly in October. 647 had a monstrous carrier @ 2:20am 10/28, but no audio surfaced. Portugal on 665 is very often heard - good audio 12:30am 10/15, 2:10am, 10/25, & 12:45am on 10/28. RNE-683 Sevilla Spain heard @ 11pm 9/1 w/pips on the hour. RNE-737 Barcelona was in briefly w/SS talk 2:38 am, 10/25. Other Iberians were also good at this time. Dakar-764, Senegal, is almost a regular from 2-3am. Usually their carrier or a TT seems to come on about 1:55am. I have to point the loop somewhat S of their actual location to null WJR. RNE-854, Murcia, really stunned me w/super strong mx, ID @ 2:20am 10/25, KOA off. Murcia has been heard several times w/both EE & SS rr, Elton John, etc. On 1016 I found a super-strong TT here @ 9:55pm 10/27 looping toward Europe. At 10, mx & apparent s/on w/woman talking in what sounded like German, but I'm not positive. I suspect Mainz, Germany since 1586 was in w/GG talk about the same time, but I'm not sure since Turkey is so widely reported at this spot. Does anyone know what time Mainz signs on? Lisbon-1034 real good w/talk in PP through the WBZ s/loop @ 8:22pm, 10/13. England-1214 has produced good carriers & some light mx @ 2:35am 10/28 but no definite log. Lille-1376 was good w/audio 2:02am 10/28. Also on 10/13, w/woman talking in (FF?) @ 12:45am. 1394 produced some very weak audio 1:09am on 10/14, but nothing conclusive. Monte Carlo-1466 heard many times w/excellent signals, s/on very good @ 12:45am 10/14. Everyone in the Midwest should try for Monte Carlo, & Nice-1554 France also heard often, good w/FF talk @ 1:18am 10/14, also good @ 12:58am 10/28. WDR-1586, Langenberg, actually not heard as much as expected w/CX so good. Still, good audio @ 9:30pm 10/27 & 10/26 @ 1:55am. Next report will cover domestic DX. 73s.

MIKE BISCHOFF - 420 Longfellow Avenue - Deerfield, IL - 60015

It's time to see if I still remember how to write these things, hi. I guess by now everybody knows about Larry Lujack jumping over to WLS, & Fred Winston to the PM drive-time shift on WMAQ. NIS is disbanding 1/1/77, so save those WERE-WRR-WANR QSLs, they'll be worth something. Latest news from my place of employment is that it's my former place of employment. WVVX has undergone a format change (to MoR), & with it, the GM "cleaned house", so it's back to bagging at the A&P, hi. The entire station is one big nightmare now; don't expect any QSLs out of them, or a DX TEST, either. The station is on shaky grounds re license renewal as well, for violations like signing off 38 minutes late on 10/14, & various other things too numerous to list in 30 lines. Anyway, back to DX. (Remember DX? Column's about DX). Totals now stand at 355

(Bischoff) heard, 190 varies, 35 out of 43 states varied. The ol' SM-2 is finally paying off w/good stuff the last few weeks. Heard as of late: WAAAY-1550 w/report on fire, KNX-1070 (program obvious), WTRA f/c on 10/15, WTUV on same net, they varied for ME #1, on much-needed 1490 yet! CJGX-940 on SRS, KIRO-710 on weird opening 10/5, KMA-960 on 10/27 w/DX promo, KXXL-1440, WCNW-1560 on SRS 10/31, & f/cs from WHBG, WWBZ, WTTM, all on 11/5. The DX appears to be there this season, so let's take advantage of every poor helpless station that comes ourway! Just six or so more weeks till Christmas, depending on when the postal people get this to ERC, so why not give DX NEWS this year? I've already done it twice, so you should be hearing from Elliot Pollock and Geoffrey L. Parrish very soon in these hallowed pages. Especially watch out for GLP - I think we created a monster when EP & I got him started in DX this year. (This should be his first issue if it's 11/15, so I know he'll love seeing his name in print). 73s & good DX from your news and trivial information service.

RON SCHILLER - 7657 La Bolsa Drive - Dallas, TX - 75248

Ten varies in this past week: V/ls from KQCV-800, KLUF-1420, KGTV-1530, KNCB-1600, KCLE-1120, KHYM-1060 & KBBB-1600. V/q from WBE-710 & KFEQ-680 & my PP/c from KGYN-1210. In addition, KBBB, KHYM, KCLE, & KLUF sent CMs; KGTV & KHYM sent bumper stickers. Best of all KCLE's GM invited me down for lunch next time I'm in Cleburne; that's a first here! Recent heard: 10/29, semi-local KRZO o/KLOU-1580 8:19-8:27 am, unn LWED s/on @ 8:28. KSWA-1330 8:49-8:54 with local NX & calendar; KHYM-1060 8:58-9:02, they're all religion, I believe. 10/30, I logged oft-heard KGBX-1260 w/rr & political ads 7:20-7:25; KOKE-1370 briefly a-top w/two local spots @ 7:30 midst KVYL & others, KFRQ too. KSWC-1380 o/KBWD 8:48-9am. 10/30, KM00-1510 copied in the afternoon over another, KSTV? w/c/w. KWT0-560 topping KLVI @ 9:40pm. KALB-580 9:50-10 w/LSU FE they didn't answer in 1954 from NJ's another try! 10/31, KFMJ-1050 7:49-8 w/gospel, XEG seemingly off. 11/1, KRLD, who obliterates 1070-1090 here, off briefly & log taken on XEPRS-1090 selling records 2:48-2:51, then KRLD (or krud, if you prefer) back on, seemingly ETing. I was happy to log Oregon #4 in KLAD-960 on their TEST, through murderous WERC & fellow rocker KAYK "Radio K-96" Provo, latter new too, 3:01-3:16. I caught two IDs on KLAD, then logged KAYK. 11/3, hets all over the band in the evening, including TAs 665 & 1602, but when I heard one on 1555 I thought to myself "it must be Cayman!" Sure enough, new R. Cayman, Georgetown, Grand Cayman, BWI, with good to excellent signals 9:25-10:06 non-stop records & BBC NX, country #94 heard (combined locations). UnID were the hets on 645, 723, & 944, I presume the HR on the last mentioned. 11/4- KEND-1590 @ 7:17pm w/WUN/KYOK et al. Unn KOGT topping 1600 @ 7:30. No luck on the KVEG TEST 11/3, all KEJ, WFLA, & I think, KAKC. 73.

JOHN OLDFIELD - 325 East 14th Street - North Vancouver, BC - V7L 2N7

The Great Canadian Radio Chicken hatched a few new eggs of interest. CHNM-FM "innipeg feeds an AN6 twin thing to CJRL-1220 CKDR-900 CFOB-800 all in Ontario (twins on AN show ONLY). The new CBC-750 egg will relay little CBG Gender, NF. CKNS-930 Espanola may go AN twinned w/CJNR/CKNR/CJIC/CJWA. The French connection is on & should get out nicely. CFNS-860/CFRG-690 (from one studio at CBC Regina) are FF CBC O&O. Watch for CKSW-570 (ex-1400) & CFVR-850 (ex-1240) soon. CFVR no longer twins CHWK. Brandon gets a new one on 1570 but two twins were deferred. CFRW-1470 gets 1290. CJDV-910 gets twin #2 on 1400 in Stettler. CJYR-970 gets three 50w mini-twins. I hope newer members in this area don't ignore these minis because of low power as LWs are used & the 1480/1490 minis in BC get out 500 miles E & S quite regularly. The CRTC denied Edmonton-1070, Vernon-730 & 1050. I don't know about Penticton 900/1490 Oliver CPs. The CBC dropped BBC NX after 30 years. The CBC is using FM for most new LPRTs (seven 11-CBU, five CBR, four CBK, four CBQ). CJVA-810 is NOT on due to no \$\$\$ & they want a new frequency too. CHLC-580 gets a 620 twin, CHNC 610/1450, CKLD moves to 1330 for its new 1230 twin; an 850 twin at Corner Brook denied. Fredericton gets 10/lkw on 1400! DX: 10/6 SRS nothing new. Asians plug the dial (820-900). China-835 is local-like, 877a, 770 & 830 about the same. KTKN-930 & KINY-800 are easy

(Oldfield) here & aren't really Alaskans like KFQD which is easy too. KTKN at times through "local" KBFW-930 @ SSS, & KINY through "local" CJJJ-800 (also CKOK/CHAB/SEROK/PJB). KIKI-830 is regular until my local NHK arrives. XEGM-950 at times crashes through KJR. 11/1, I noted SS on 830 @ 8pm, SS-880, Conga o/KGBS @ 4:15am 11/2 & JOBB-830 @ 2:05 (earliest ever) strong & steady. TWO on 844 3:10am, one Asian weak. I hope to get some DX time this winter, Thanks, NJPC'.

JOHN SOMMER - 1022 Catalina - Fort Wayne, IN - 46825

I haven't DXed much (more precisely, at all) this Summer but I've found CX to be very exciting even though I only have time for MMs. I was disappointed in not hearing WATZ-1450 on the TEST; local WLYV is NSP & the only station heard while they were on the air was WFTR VA on r/c, therefore I expected WATZ. Other r/cs on 1450 haven't been heard either. During Election Night the Cuban on 780 was the worst (or best for DXers) I have ever heard & WCAW-680 WV now is a semi-local. I have changed my views about "super-power" for example CKLW-800 can't be listened to at night, compliments of our "friends" at TWR. WBBM-780 is the only all-NX station within listening distance & is having problems due to the good CX which have escalated Cuba from a het to a 50/50 audio mix. During May I vagabonded through Central America but it was impossible to do any listening. I saw buildings of La Voz del Pueblo which is the the TICA Bus Terminal in Panama, R. de P., YSU, YSR, YSU-TV, YSR-TV & YSKL-TV in El Salvador (the latter three had some of the best looking buildings in the country. YSU-AM & all the TV stations have their antennas on top of Colcan Salvador, which is 1800m (1200m above the valley) a very cheap way to build a high antenna. Although there were 24 antennas (probably including AM, FM, TV, telephone, etc.) on V. Salvador & about ten on its neighbour. In Guatemala R. Nuevo Mundo's studio building looked pretty bad due to the January earthquake. Stations like R. Monumental Antigua, & R. Triunfadora are stuck in mountain valleys & undoubtedly can't be heard in the next. At Flores, Guatemala 810 says R. Nacional on its nameplate, not R. Tikal. R. Sideral in Costa Rica on 1340 has one of the few modern-looking buildings, & although it is listed as San Ramon, it is a few km. N of San Jose. In Belize most want another station but don't want to pay for it & the government hasn't offered. I don't think it is fair to expect any of these to verify, most operate from mud-brick buildings w/little hope of doing more than breaking even. It is irrelevant to them if they're heard someplace far away. Generally I don't think most understand the value of QSLs, there is none to them!

PAT HARTLAGE - 9200 Wendell Way - Jeffersontown, KY - 40299

11/6. To start another season, a re-intro. I'm 31, in my fifth year as an NRCer (two of which were in the early 60's), married, two children. I use an HQ-180 w/a 3/4' loop, & 50' LW. I have heard approximately 890 with about 175 verified. I have been rather inactive since the Convention. New for me: WIXK-1590 WI 10/21 @ 7:30 s/off, folo shortly by KQWB-1550 ND heard till 7:45 s/off. Later same evening, I nulled WAKR to add WISZ-1590 MD @ 8. WNIC-1310 MI was added @ 8am 10/23, previously logged as WKMH. WVOV-1000 AL was a surprise 10/25 @ 10:15am. I had thought I was listening to WCFL. After making several adjustments to my loop wiring, I can now null WCKY very well at times. Two unIDs & KMAM-1530 MO were strong w/WCKY 10/29 evening. MM 11/1 brought my first Oregon station - thanks, CPers! March mx from KLAD-960 cut through WERC at times very well. Fades were pretty long & I didn't hear them after 3:25am. Earlier I also heard the WPHB-1260-PA TEST: WNDE provided stiff competition throughout. 11/4 @ 11:30pm I noted a station in SS on 1525a. I would guess this was the Costa Rican. The LADS enjoyed hosting the Convention. If anyone wants a copy of our Convention program send an SASE. I'm planning on LINCOLN next year. I hope to muse a little more often. 73.

AS THEY SAY IN HAVANA, CUBA, "CMW." "CONTINUE MUSING WEEKLY." AND TO THOSE WHO SEEM TO HAVE SOMETHING AGAINST MUSING, PLEASE MUSE AND TELL US WHAT IT IS! THE DX IS THERE IF YOU ARE, BOYS AND GIRLS, SO LET'S HEAR FROM YOU FOR THESE PAGES OFTEN. PLEASE BE KIND ENOUGH TO DOUBLE SPACE.

PAUL MOUNT - 471 Emerson Avenue - Teaneck, NJ - 07666

Aloha! While you may be shivering in your shack, I'm still musing about the Summer, hi. Starting from 7/28 DX totals, WRDI-1580 NJ heard w/s/on 5:58, only second time heard here. MM 8/2- WJW-850 heard w/s/off 12:06, ISSB, WCNC Elizabeth City, NC on r/c, thanks list, 12:20-12:26, when a long explanatory announcement was made. A short v/l received from them. UPI NX @ 12:29 then WAXC Rochester-1460 s/off, said 50 Chestnut Parkway, & on @ 6. WDEL-1150 s/off 12:37, still the only DE heard here. CKOC/CJRC fighting on 1150, so what else is new, hi. WWC0-1240 Waterbury, CT testing @ 1. WGLI-1290 Bablon, L.I. testing. I read in Billboard that they have a DJ named Paul Richards, how dare he! Billboard, of course, is Mr. Fader's unID "BB." WGLI met CJBK 1:08 & I left WTRX-1330 "lint testing w/rr o/a rocker. Next was one of the ultimate thrills for me as a DXer, hearing WHOT from home. They had just about non-stop rr 1:19-1:53 when WHOY NX w/a woman came on. The station was weak @ 2. Now came a time when all these airchecks I've made & received came in handy. Jerry Starr's (so says George Greene) voice saying "WHOT Campbell, with MU-sic & Big Al Knight" was a little more discernable in the mess, with the same stress on the first syllable of "music." I got a nice long letter from Mr. Starr as a verie. 8/3- A biek & DXing trip. I wanted to try DXing on the other side of a mountain, away from NYC & Philly stuff. I rode to Nyack Beach State Park, on the far side of Bear Mountain, and 10' from the Hudson River. It was a hot sunny day. My location was roughly opposite the river from Sing Sing State Prison, or 17.2 miles & 71° N of E from my home. There was a difference to be heard, although I received several stations from PA that I thought would be too weak or blocked. Anyway, here's a recap: Finally an ID to the weakie on 550 that's not WHN/WNRL, WHLM Bloomsburg at noon. I was hoping for my telephone station WGNG. (?? -ERC) If just the station mentioned, then it's same as Teaneck, or expected. (Continued next week - ERC).

ERIC FADER - 23-35 Bell Boulevard - Bayside, NY - 11360

Hi all. My magic calendar tells me it's time once again to Muse. Is ERC still on strike? EVERYBODY MUSE, OK? I haven't missed one since March. SSS 11/5- WSVA-550 suspected the one w/Mor, strong @ 4:22pm w/mentions of VA. WTAR-790 also in like gangbusters 4:30. CJFP-1400 pinning meter pre-power-cut 4:48. Now, three newies: 1. WRAK-1400 PA w/ID, into Johnny Cash mx, 4:48. 2. WNCR-1440, ex-WAAB logged for call change w/lk TA het providing the necessary QRM, hi. WNCR IDed as such @ 5:30 & back into male female NX, alternating a la Cuban tickers! Newie #3- surprise! I had never heard R. Jumbo-545 due to not DXing, so I was glad to find them in the clear w/FF, 5:30. Many mentions of "Jumbo" & a great signal 100% readable. Noisy carrier sounds a lot like R. Paradise-1265, but had a better signal here than Paradise ever did. Much stronger than WHLM/WGNG, no 550 slop. They had R. Jumbo jingles 5:38 & 5:43 w/female voices. Interesting thing, also, was the bits of mx (bagpipes, some drums - orchestral mx sounding like the theme of the A1 Net, just before they say "A verve of ABC NEWS,") between paragraphs, I guess, of what the male announcer was saying. Another distinctive thing about this station is the "Jumbo..ma-ma-mama" tape repeated several times - sounds like a little girl about two years old saying that. Oh yes - they gave a 7:45 TV @ 6:44, hi. I listened to Jumbo 5:30-6:45 or so. Later on, CX became less Auroral & overall excellent. 8:54, CFOX-1470 atop there w/mx mix. 10:10, newie CHR-1290 on top w/EE rr & FF Mor, FF talk twixt selections, in the clear w/good signal. WSAY-1370 @ 11 - rare o/WFEA w/progressive rr. AT-40 adds - 10/31- KEEL-710 LA, WXLX-1060 GA, WQOK-1440 SC, WSAI-1360 OH (re-add, they had been deleted) Outa space, so 73s.

KEN CHATTERTON - RFD #2 - Mannsville, NY - 13661

Hello from cold & snow-covered Northern NY. DX is off to a good start here w/27 newies added since Labor Day. My thanks to the LADS for a great Convention. This was my first but it sure won't be my last. Best recent DX catches have been on 11/3 @ 4:45pm, WBZ-1570 weak o/WFLR/CFOR w/s/off about two minutes after other 1570 daytimers & IDing as Fredonia-Dunkirk. Seven IDs in 17 minutes should make them an

(Chatterton) easy catch if they are in at all. Also 11/4, WTOW-1570 in good at s/off w/CHLO in for a log after WTOW was gone for four minutes, then they vanished - maybe pattern switch. Recent veries, v/1 CJWA-1240 via CJIC, CFOX-1470, & WQQW-1590 for a report almost two years old. Come on now, if I can Muse so can 24 others. Let's get going & make Ernie Muse again. 73. (Lookin' Good! -ERC)

KEN ONYSCHUK - 16771 Shea Avenue - Hazel Crest, IL - 60429

Hello again. I caught diarrhea late Monday night, so I spent Tuesday home w/a little DX ng at night. WKRC-550 OH w/Captain & Tennile mx 10:55-11pm in KSD null. I'm still trying to get out of the Midwest on 550. WAAX-570 AL w/c/w @ 11:18 atop w/"Wax Radio" IDs. They're a pretty dominant Alabamian here nights, w/only lkw. WSGN-610 AL w/TC @ 11:34, then solid mx. WLAP-630 KY w/ID @ 11:39 in KXOK null, then local ad; KNBR-680 CA surfacing from mess @ 11:45-11:55 w/Gold St. Port NBA game, good, then faded. They're not common here. Unus clear (?? -ERC), no CKVM-que. w/FF fem vocal @ 11:56. No sign of WOR. They faded a bit @ 12:02. 10/30-ON 970, unID FF-rr @ 2:08-2:10AM, then male announcer w/ talk. CBJ-1580 in solid @ 2:40 w/FF-rr. WKBW-1520 NY unus clear alone @ 2:41 w/rr, later at 2:51 w/UIP NX w/KOMA in back, good. 1530, unID TT in WCKY bkgd, fr. wk (?? -ERC) 2:50-3am. WPTN-1540 NY w/rr atop @ 2:43, TX ID @ 2:45, alone, no sign of KXEL, where'd they go? Sun. 10/31, CST, WKZO-590 w/MoR 5:45-6:02, pattern/power change @ 6pm, but still audible for a while. WTVN-610 OH still in after local 6:15 s/offs. I thought I would lose them, but no. About 6:25 on 1550, WSAO surfaced briefly, but another announcer came in w/NX, Jackson Miss. mentions, WX, but no IDs, I assume WOKJ till 6:30 on. What time does KRGO s/off in November? I'd like to hear 'em. (They're NSP -ERC) CBE makes it tough. I was tootired to hear the 11/1 TESTS. A couple of hours taking my two boys out trick-or-treating plus a bonfire wore me out by 11pm. My three-year-old went 13 blocks before wearing out, but a lot of fun - 200 pieces of goodies, hi. I've got plenty of toothpaste handy. My daughter will be 3, Monday next week, in good shape with occasional chest congestion due to cool WX. I will be DXing more as more bulletins increase my interest. My new Lloyds in, doing a good job - model 7841-B. Int. Ant. C'mon. Midwest DXers, what's going on domestically? I'd love to read about it. 73. (Your abbreviations throw me, Ken -ERC)

GORDON FENDERSON JR. - Smithwheel Road - Old Orchard Beach, ME - 04064

Hi, everyone! To start this Musing, WLOB-1310 is now MoR (was T-40 for 16 years of so), & is on the CBS network. I visited them last month, and saw that their playlist is about 50 current MoR singles, and about 1,500 oldies. Latest NRcer to visit OOB was Akron, OH's George Greene, 10/9-10. Twas a nice weekend, too. More on the Jerry Williams story - the ex-WBZ-1030 talkmaster is on WTIC-1080 Hartford 7pm-midnight Mon-Sat. His number on-the-air is 203-52200200. Meanwhile, CBZ's Guy Mainella has his talk show extended two hours (to 6-10pm M-F), & is now "general discussion" instead of sports only. At 10, Ken Beatrice takes over with his "Calling All Sports" till midnight. WBZ's tele-talk number is 617-254-5678. DX-wise, I have not picked up CFDR-680 Dartmouth yet - I get only WRKO & some trace if CFTR. This makes WEAN-790 Providence a pest at night on that channel. That's all that I can think of from here, so 73s & best DX, etc.!

STEPHEN FRANCIS - 1620 Lodge Street - Alcoa, TN - 37701

ET noted 4:15-4:30am 10/27 on 1560 playing EZL instrumentals & sounding like Stan Morss' "one watt down a well" - IDed @ 4:33 was deciphered as WBBK, Brockport, NY, after several tape playbacks. It was their annual PoP per verie & most welcome since I managed to forget about their TEST back in the Spring of '75; 1560 #40 heard. MM 11/1-1560-TEST made it poor/fair w/Grand March from "Aida" @ 3:01, voice ID 3:03, but deteriorated rapidly thereafter, although WERC/CKWS were almost totally nulled. A Boston Pops-style arrangement of "Home on the Range" was noted around 3:20 but seemed too strong to be KLAD, certainly not WERC or CKWS & Bermuda doesn't seem to be making it to the U.S. much

(Francis) any more, although it fits their format. MM 11/8- WMVG-1450 TEST heard with one code ID at 12:37; no sign of WEEN-1460 u/unnullible WBNS. 3WE-1100 noted ANING for this week's addition to the "Goodbye Frequency" list. Correction: In the 11/1 DDKD, only the first ERGO-1550 report is mine - I believe the second should be credited to JS. 73s.

CAL CRAIG - 181 Oakhurst Drive - Munroe Falls, OH - 44262

After almost two years of membership, and two years of being one of the silent majority, I present my first Muse. This is really the result of two things: Ernie's plea for More Musing Members, and Eric Fader's wondering who I am. So, I am --- 29, married, a sporadic DXer since 1965, commercial artist, and the guy who designed the new cover. I hope you like it - I enjoyed doing it and would like to thank RJE for the honor. If I can be of similar service to anyone, please write. If you look carefully you will find that this Muse is void of DX, much to my dismay. Although DXing is high on my list of fun-type things I have very little time to spend at the dials: MMs are a rare bird here - I had only two last season, but I promised myself more this year. Anyway, current totals are 235/162, almost all on an SW-4A. So that's about it for now - I hope to report results seen of (hopefully) interesting DX sessions. Also, I've seen a few passing comments about members collecting beer cans. Write me if any want to swap. 73s. (Welcome, Cal, to Musings! Please stay with us now that you're one of us! -ERC)

ERNEST R. COOPER - 5 Anthony Street - Provincetown, MA - 02657

No veries received this week, so it's still 4,006. DX this week was not exactly overwhelming, either, but here we go. 11/3- (The morning after) - Just about every fulltime station was on with ER, but WOWW-1380 was Tting @ 1:07 & on, unn. UNID Tter, loud, on 690 @ 2:04. 11/5- My HQ-180-C #2 was completely overhauled by NRcer Steve Bohac, and I met him over in Needham today and picked it up, and also the tuning apparatus of the altazimuth 4' loop he built for me. Now, everything is hooked up, plugged in, and perking first-rate! The first newbie on this arrangement was WGNL-1010, u/WINS (which pounds in here all day/night) at 4:10-4:30pm s/off, w/HS FB. Unn WTBQ topping 1110 @ 4:47pm, but first time heard here - they were weak all day back in Brooklyn. SM 11/7- H1, LADS - WHAS-840 was silent today, & semi WCSH-970 (NIS) was ANING. Unn KRMG topped 740 @ 2:15. R. Tup1-1040 was on top here @ 2:24. A Tter on 1220 looping N/S @ 3:01, unID. MM 11/8- WTTI-1530 at it again @ 3:05 as I got started, having missed hearing the alarm clock & I "just awoke." I don't know if I had WEEN-1460-TEST or not, for w/WPDQ nulled as best I could, I was getting mostly WBNS, but an SSB @ 4:02 might have been they leaving the air, plus a few other tentative items. WPDQ "was never lovelier", hi. An MoR on 1560 @ 4:09, unID & weak. At 4:27, an anthem noted on 660, & a Caribbean-accented EE s/on @ 4:28, but soon wiped out by the opening carrier of WNBC. 11/9- Who carries Herbie on 1290 now? They have a pretty good signal here. Local WVLC-1170 is signing off this month at 4:10pm, for some odd reason - last year they went off @ 4:30 in November! Did Leap Year do something to the 15th's sunset time? C U N 7.

#### M O T H B A L L M E M O R I E S

A Poem by the late NRcer CARROLL SETH in the 3/30/57 issue of DX NEWS.  
"FOOTNOTES TO HISTORY" (Chapter XXXIII)

A hundred years or so ago	No special programs marred their rest
Hardly anyone we know	And dreams were of the very best,
Had a favorite TV show,	Untroubled by the overdue
Or listened to the radio.	Reports to stations in the blue.
The atmosphere was very clear	No wonder they were not neurotic
Throughout the whole ionosphere.	Nor knew the very word "psychotic".
Things were really rather peachy	No tranquilizing pills occurred
Before the birth of Don Ameche.	Until the broadcast band was heard.
The people talked or walked or read	I say to you in closing, friend
And after supper went to bed.	We are today a sorry blend
If band conditions were superb	Of troubles when we're pleasure bent
Your ancestors slept undisturbed.	In tuning in the firmament!
	(sent in with several others by "a member".)

VERIE SIGNERS

550	K O A C	B J	Ballard, CE	A	1240	Z N S 2	S J	Hepburn, CE	E
	K FrY R		u/u	A		K T A M	D D	Acree, SM	D
560	K LqZ	G M	Westerburg, Stue A			K O C A	R	Martin, GM	D
	K L V I	S	Gomey, CE	C	1260	K PqO W	D	DeVore, OpM	A
580	K A N A	J	Boley	A	1270	K A J O	M G	Pangburn, E	A
590	K U G N	T	Hicks, CE	A	1290	K AmP Y	C H	Herring Jr., P, CE A	
	K HqQ		u/u	A		K G V O	T	McGinley, CE	A
610	W D A F	J	Schmidt, CE	C		W M L S	L	Perryman, PD	C
620	K Smt R	R	Collins, ExecVP	B	1320	K H I T	C S	Tyler, P, GM	A
630	W L A P	L	Owens, TD	C		K XqR O	D	Rozmyn, CE	A
640	W HrL O	L D	Sharp, CE	C		K A T R	J	Warr, SM	A
	W OqI	D D	Forsling, SM	A	1340	K R O C	R W	Cross, CE	A
690	K G G F	R	McBride, PD	C		K Y L T	C	Nicklay, OM	A
730	W L O R	R	Harris, CE	C	1350	W G A D	R	Burton, PD	C
	W J M W	F	Schrimsher	C		K RmL C	S A	MacKelvie, PD, NxDA	
	W F M C	R F	Montgomery	C		K D O V	R	Baughman, PD	A
	W LmI L		Joanna Greenway, TrM	C	1360	K MqO	C	Fraingwall, CE	A
	K WmO A	S	Larson, CE	A		W W W B		Marion B. Grant, P	C
740	W B A W	S	Cloan, Nx D	C	1370	W R G	J M	Waller, CE	C
	K CmM C	H	Cecil, M	BC		K G E N		Fran Reyes, TrfM	A
800	K PmD R	R W	Ball, VP, GM	A		K RmE L	E	Puchalski, OpM	A
920	W G S T	M C	Thurlow, CE	C		K SmU M	R	Laird, GM	A
	KrK LmS	W	Spitzer, GM, CE	A	1380	K OfT A		u/u	A
930	K EmW Q	S	Roberts, E	A	1390	W MmC T	P	Gobble, GM	C
	W G N T	C	Kessell, CE	C	1400	W T R R	W	Rock, OpnsPtnr	C
940	W I D G	D M	Angelo, GM	C		W B M A	J	Campolasso, D	C
	K VmS H	J	Schultz, E	A	1420	W K S R	G M	Martin, MngPtnr	C
950	K Xmj K	K D	Adamson, CE	C	1440	W M V B	M	McBride, CE	C
960	K R O F	P	Spurlock, CE	C		K X X R	R	Stiffler, CE	A
	K LmD A	A	Crandall, PD	A	1450	K UmP Y	S	Orchard, PD	A
	K AqB L	H E	Webster, PD	A		K B K W	W	Hardy, CE	A
970	W WfS W	P R	Chimes, D TechOpA			K B P S	W E	Bates, VE	A
	W D A Y	L	Lee, CE	A	1470	W E A G	T	Teffeteller, CE	C
	K R E M	J	Feldhausen, TSuA			K EqL A	W	Tilton, CE	A
980	K DrS Z	H	Daniels	A	1480	K V A N	D	McNamee, PubAfraS	A
	K MrB Z	E J	Langrath, ESu	A		K S E E	L R	Watts, PD	A
1010	W M E V		Stella Maloney, P, GM	C		W I S M	C	Cain, CE	C
1050	K C T A	N	Messer	C	1490	K S Y C	M W	Hawke	A
	KrB LmE		Anita Busek, OpM	A		K R T R		Barbara Bartlett	A
	W H N	R H	Walton, CE	A		K D B M	B	Oliphant, M	A
1060	W M A P	M H	Baucum, PD	C		K E N E	D R	Nelson, O	A
1070	K FfD I	C	Koch, CE	B	1500	W D E E	C B	Roberts, ESu	G
	KqNmX	R	Hammond, D TechOp	A	1520	K O M A	R	Klotz, CE	A
1080	K R L D	R	Neace, CE	C	1540	KqZ AmM	J	Stevens, CE	A
1090	W CmM G	M	Rowland, PD	C		W Npr E	P	Chester, PD	C
1110	W S L V		Kathy Hovis, S	C		W J J T		Beth Callahan, TrfM	C
	KqF AmX	R L	Roberts, CE	A		W K Y K	R E	Sink, VP	C
	K FqA B	J A	Bruna, CE	B	1550	W C V L	L	Hawk, CE	C
1130	CqK WmX	T	Peacock, PM	B		K K J O	R M	Heard, CE	AC
	W MrG A	D	Dickenson, CE	C		W YpN X	L N	Polk	E
	W P U B	R H	Miller, CE	C	1560	W FpS P	A W	George, P	A
1140	W I X C	Sue	Brooks, Trfc	C	1570	W O N A		u/u	C
1170	WpC OmV	P	Witt, CE	C		W G H C	C S	Lee Jr., SM, E	C
	W S N E	P	Woodham, CE	C		W SmS A	R B	Brittain, DJ	C
1150	K W K Y	L	Newman, CE	C		K O L S	C	Newkirk, GM	C
	W S N W	H J	Hosea, CE	C		W CmR L		Annette King, S	C
1230	K S P O	R	Wheeler, P	A		W G L X		Linda McMillen	C
	K W Y Z	T	Levis, CE	A	1590	WmE TqT		Juanita E. Raab, ASM	A
	K Y J C	M	Moran	A					
1240	K CmC R	D	Miller, CE	A					
	KrT HmE	J A	Ostby, P, GM	A					
	K Q E N	J M	Macke	A					
	K G Y	D	Jones, M	A					

C R E D I T S

A - J. Trochimczyk C - K. Andrews  
 B - W. Heinen D - R. Schiller  
 E - E. Cooper

NBC NEWS AND INFORMATION SERVICE (NIS)

620	WLEZ	Bangor ME	1340	KDEN	Denver CO
630	KOH	Reno NV		WRIT	Milwaukee WI
710	KURV	Edinburg, TX		WSTV	Steubenville OH
790	*KSPD	Boise ID		WBRE	Wilkes-Barre PA
	WEAN	Providence RI	1350	WKLX	Norfolk VA
910	WRNL	Richmond VA	1380	KTSM	El Paso TX
930	WSOC	Charlotte NC		KUDL	Kansas City MO
940	WINZ	Miami FL	1400	WABY	Albany NY
950	*WHPN	Poughkeepsie NY		KMBI	Las Vegas NV
970	WCSH	Portland ME		KAAP	Ventura CA
980	WRC	Washington DC	1410	WFCP	Hartford CT
1040	KHVV	Honolulu HI		KQV	Pittsburgh PA
1130	WCAR	Detroit MI		KWBB	Wichita KS
1150	KNWZ	Albuquerque NM	1450	WILM	Wilmington DE
1220	*WQSA	Sarasota FL	1460	*KHOW	Salem OR
1230	KSPQ	Spokane WA	1480	*WMAX	Grand Rapids MI
	KGEE	Bakersfield CA		*KJOE	Shreveport LA
1240	KRDO	Colorado Sprgs CO	1490	KING	Lincoln NE
	WBIR	Knoxville TN		WNUS	Springfield MA
	WIBU	Madison WI	1500	*WURL	Winston-Salem NC
1260	WBUD	Trenton NJ		KYXI	Portland OR
1270	*KGUY	Palm Springs CA	1520	KHNK	Cheyenne WY
1280	*WEXI	Jacksonville FL	1530	KFEK	Sacramento CA
	WWTC	Minneapolis-St. Paul MN	1540	KRXV	Ft. Worth TX
	KWMS	Salt Lake City UT	1590	*WNTS	Indianapolis IN
1300	WRBC	Jackson MS	1600	WPOM	W. Palm Beach FL
1310	WRR	Dallas TX			

\*--Daytime-only operation

Source: Time 11/15/76

NIS List Submitted by Bruce Winkelman. As per notice in Clipping Corner last issue, NIS plans to cease operations in the Spring.

Saturday, Nov. 13, 1976 Philadelphia Inquirer

Offbeat: And now some norts spews

It's not every day that a radio deejay introduces the news by saying, of the broadcasters "I don't know if we can trust putting them on... They're a little wacko." But that's what happened before the 7:50 a.m. newscast yesterday on WIBG when deejay Bob McLain introduced Mary Margaret Myers and Richard Hunt to do the news.

He was right. They were wacko. In fact, they were so wacko that both of them ended up in the hospital later in the morning to be treated with oxygen and anti-spasmodic medication to clear up their lungs.

Apparently the broadcasters were stricken by fumes, perhaps from some substance in new rugs that had been placed in the studio the day before. Both Hunt and Ms. Myers became so giddy they could barely complete their scheduled broadcast. In fact, Mary Margaret passed out and had to be taken to Montgomery Hospital for treatment. Hunt drove himself to the hospital later.

The studio was being aired out yesterday and both broadcasters are back to normal. Apparently the only real damage from the incident was to WIBG general manager Burt Sherwood's car radio. He slammed his briefcase into it when he heard his two newscasters convulsing with laughter while he was driving to work.

CLIPPING CORNER

Submitted by Tom Sundstrom