



DX News

OLDEST
MEDIUM WAVE
DX CLUB
Established 1933

34 issues per year
\$13.25 Annual
\$10.00 First Class
\$7.50 Third Class

OFFICIAL PUBLICATION OF THE
NATIONAL RADIO CLUB
P. O. BOX 99
CAMBRIDGE, MASS. 02139

VOLUME 37

SEPTEMBER 27, 1969

No. 2

IN THIS ISSUE...

- *Latest LPRT List
- *More on Loop Kits!
- *Additional FET Altazimuth Loop Plans

FET ALTAZIMUTH LOOP ANTENNA

"The frame is very easy to build. In fact, I built mine in 10 hours of work, with parts left around the house... It came out real strong and sturdy... Your plans were very easy to understand..." (Teenage NRC member)

"I don't know what I'd expected, but I certainly never expected such local 10000 microvolt signals as KABC and WPC to drop down into the noise. Nevertheless, they did. I still can't quite accept hearing a Holiday Inn broadcast (about even with garbled audio from KABC) on 790 with local KABC on the air. Incredible!" (Don Kenney, Calif.)

Response to the offer of loop kits has been very heavy and we are going ahead with this project as quickly as possible. We will contact those who have indicated to us that they wish kits directly; information will also appear in DX News. We hope to be mailing within a couple of weeks but the exact time will depend on how soon we can get hold of sufficient quantities of parts such as tuning capacitors, etc.

FET's!

For those who are going ahead without waiting for kits, the NRC will now supply the 2N416 FET's at the lowest available price. We will supply regular pairs of these FET's for only \$2.00 apiece. Especially selected matched pairs for the ultimate in performance and ease in crossneutralization are available for \$5.00 a pair. We can provide these units at such low prices because of quantity buying; they are currently listed in the latest Allied catalog at \$3.75 apiece in small quantities. We expect the first big batch in about a week and will mail immediately.

NRC CHECKS INFLATION

We had hoped to include the following announcement along with the "State of the NRC Report" but we must hold the latter back again for lack of space. As anyone who's gone shopping lately will readily testify, prices for all goods and services are rising very rapidly at the moment. Our printer recently informed us that he would

be forced to raise our printing costs by about 15% when our contract came up for renewal this winter in order to cover the effects of inflation. Since we are actually breaking just about even overall under the present contract and dues structure, it seemed as if a flat 15% dues hike would be inevitable this winter so that we could continue to hold even.

After extensive planning and calculation by the NPC and a series of planning sessions with the Printer, we have come up with a number of measures that will not only permit us to negate this printing cost hike, hold dues fixed for another year (barring postage hikes, of course), but actually provide 10% more space per year in DX NEWS!

Under our original contract, we could run an average of 74 pages in 34 issues, or 816 pages per year maximum. During the last Volume we were often cramped for space (we actually ran 768 pages last Volume) on heavy weeks and had to hold back material that even today hasn't made it into print. Even worse, we are now at a record-high membership level and are adding new members at an unprecedented rate. In coming months, as DX picks up and Communications Handbook hits the stands, we expect to add new members at an even faster rate. So we're caught between a need to supply more space on one hand and rising costs on the other.

We've beaten the problem as follows. Beginning next issue, DX News will be shaped a bit differently: it will be a bit narrower and the page size will be decreased. BUT there will be more pages - 40 instead of 32 - and the total number of words (or, equivalently, the total area or weight per issue) we'll be able to run will be the same as the present 32 page bulletin. The increase in page count will exactly balance the smaller pages. The photographic reduction will remain unchanged - the type will be the same same size as before. There will be fewer words on a page and naturally the editors will be using smaller-sized layout sheets. The new format will use standard sized paper stock and thus cut printing costs.

As mentioned at the Convention, by cutting back to 32 issues per year instead of the old 34 count we can save enough on printing and postage costs so that we can run full size each issue. This means we can now run 40 pages x 32 issues or 1280 pages per year (new size pages). Taking into account the smaller size of the new page, this will be equivalent to 32 issues the size of this one per year, or 1024 pages the size we have been running up until now. Remember that under the old arrangement we could only run 816 pages per year. Thus by eliminating two issues per year we can actually run about 25% more material per year; this will give us the "growing room" that we need now and will need even more in the future. One issue will be skipped at Christmas (mails and editorial tasks are traditionally hopeless then) and one in the Spring. We've spread the remaining 32 issues out evenly so that there won't be any big gaps anywhere.

In addition there'll be one more new twist. The printer has agreed to purchase one page in DX News each issue to advertise the new line of NRC stationery (improved variety), report forms, DX Information slips, SWL cards, and any other printed supplies that the membership might need. In addition to supplying the NRC with the equivalent of several hundred dollars in revenue, the NRC will now be able to supply printed supplies without investing large amounts of cash in the initial printing investment. Under this happy agreement everyone wins - members get printed supplies, the Printer gets business, and the NRC gets revenue and will not have to invest in paper supplies.

The disadvantages: two less bulletins and smaller page size. Advantages: no dues hike from increased printing costs, more material per year, and the end of the printing supply problem. NPC worked on this problem for a long time and we're all very happy that it turned out as well as it did!

GPN

SPECIALS

Mon. Oct. 6	K B M Y	1240	Billings, Montana	1,000/250	3:00 - 4:00	IRCA
6	K I D O	630	Boise, Idaho	5,000	3:00 - 4:00	IRCA
6	K O M W	680	Omak, Washington	1,000	3:01 - 4:00	IRCA
6	K B G N	910	Caldwell, Idaho	1,000	4:00 - 5:00	IRCA/TEST
Mon. Oct. 13	W E R T	1220	Van Wert, Ohio	250	2:00 - 2:30	NRC/IRCA
13	W V A B	1550	Virginia Beach, Virginia	5,000	2:00 - 2:30	IRCA/TEST
13	K M E R	950	Kemmerer, Wyoming	5,000	3:00 - 4:00	IRCA/TEST
Sun. Oct. 19	W D O N	1540	Wheaton, Maryland	1,000	12:01 - 1:00	IRCA/TEST
Mon. Oct. 27	W G S M	740	Huntington, New York	5,000/1,000	2:30 - 3:00	NRC/TEST
27	W C I R	1070	Beckley, West Virginia	10,000	3:00 - 5:00	IRCA/TEST

NOTES:

- KEMY-1240 - Music and tones. Reports to Mr. John P. Sweeney, CE, KEMY, Box 20,316 - Billings, Montana, 59102. (Percy Kesteven)
- KOMW-680 - They have just installed a new XR, a BTA-123 RCA. Toys, IDs, & music. Mr. Jerry Robinson - Box 151 - Omak, Washington, 98841. (Randy Miltier)
- KIDO-630 - They'll test with day pattern, with major lobes at 24°, 170° & 270°. Mr. D. K. Cederstrom CE, KIDO, 1109 Main, 5th fl., Owyhee Plaza, Box 8,087 - Boise, Idaho - 83707.
- KBGN-910 - Reports to Mr. Lee Schafer, E, KBGN, 3303 East Chicago St., Caldwell, Idaho - 83605. (Last two by Percy R. Kesteven; Edmonton, Alta.)
- WERT-1220 - March music, tones, and lots of IDs are the probably modulation for this test broadcast. They'll be on 1:00-3:30 a.m., E.D.T., which is 2-2:30 EST. Roy Tanner, CE, WERT, Box 487, Van Wert, Ohio, 45891. (Dan Myers)
- WVAB-1550 - Reports to Mr. Dexter Phibbs, CE, WVAB, 3108 Pacific Ave., Virginia Beach, Virginia, 23451. (Jim Hall, of Louisville, Ky.) (Kesteven)
- KMER-950 - Reports to Mr. Bruce R. Hyman, CE, KMER, Box 432, Kemmerer, Wyo. 83101.

MR. HENRY PAULISEN, Engineer in Charge, F.C.C., 641 Washington Street, New York, NY, 10014, asks your Editor to ask if NRCers who are Hams would be interested in becoming a part of a TV Interference Committee. It has to do with interference to neighborhood TV sets by hams, and what to do if and when they don't succeed with preventative measures installed by the ham in question. Or something, lol.

THIS ISSUE'S MUSINGS SECTION.

We have been allotted 15 pages for Musings for this issue. Ten pages had been cut for the 9/13 DX NEWS, which we stupidly sent to Watertown, N.Y. instead of Watertown, Mass., so we had only five pages to go. We used the DX-test ones, and the earliest ones, and held over the others for the 10/11 issue, which they will read. Sorry about that, gang - please forgive me.

Nothing has been received for several weeks from Cooper-Front, so we have no Changes in Station Data to give you - until something arrives from them.

RALPH JOHANNIS

Ralphie will be sorely missed - not only by the Buffalo-area DXers whom he befriended, but by every NRC member. Ralphie was always trying to get "info", as he called it, from every station he wrote to. And, he ALWAYS shared that info with the NRC via DX NEWS. Ralphie was quite opinionated, and would periodically get mad at me, and others, but he never stayed mad. He had his own formidable store of words and typing, and in person, was one of the most personable and funniest I've ever met. He was a riot of laughs at get-togethers, and no one who ever had the pleasure of meeting him in person will never forget him. He was, truly, a "big" Ralphie. I liked to wait until the last minute to get his Musings typed. I'd go to have the absolute latest info. Sometimes this would result in his info being late, and then he'd be irritated, first at me, then at the printer. Ralphie always had the NRC at heart, and I'm sure, that up there, he'll miss us as much as we will miss him and his always-interesting Musings. And from you, Ralph.

September 27, 1969

G. HARLEY DeLEURERE - Box 233 - Elk Garden, West Virginia - 26717

DXing certainly has been slow this Summer. In fact, I've only tried to hear something new for just a couple hours. It seems like other things take a lot more of my time; therefore I have little left for DXing. Some recent veries include R. Liban-836, Beyrouth, Lebanon; KTUF-1580, Tempe, Ariz., for TEST; WGAL-490 Lancaster, Pa. 17603; 4XB47-656, Tel Aviv, Israel; WXPB-550, Pawtucket, R.I. who says they don't get very many DX reports; WIDE-1400, Biddeford, Me. 04005; WIKE-1490, Newport, Vt. 05855 which says mine was the furthest report he has received. The previous record for WIKE was from Maryland.; WEEEX-1230, Easton, Pa. 18042; WMOU-1230 Berlin, N.H. 03570; CHEF-1450 Granby, Que.; & WRHU-1450 Thurmont, Md. 21788 (says I was the furthest listener West of Thurmont to hear them. Where does their signal go?) (It made it into Brooklyn once, Harley, all 100 watts -ERC) Also on a recent verie from CHRS-1090 the address given is C. P. 1090, Cite-de-Jacques-Cartier. Is CHRS in Cite-de-Jacques-Cartier, or St. Jean? "Broadcasting" indicates the former, but the NRC Log and the NARTVSG say that it's St. Jean. With the letter from WTHU I need only four more on-the-air stations in Md. to complete that state. I've heard them & reported, but so far I've had no luck. Does anyone have any info re v/s etc. from WQMR-1050, Silver Spring; WIMD-900 Laurel; WTHU-1520 Brunswick; & WUOK-1270, Cumberland? Also, what's the latest on WXIN-950, Cabin John? Thank you & 73s. (Harley, what's "NARTVSG"? -ERC)

MARTIN BILMENTHAL - 10 Cutler Street - Worcester, Massachusetts - 01604

It's been a few moons since I was last in these pages. Needless to say DX has been almost non-existent the past few months. I haven't done any regular listening since late May. The last new catch came on 6/9 @ 1:18am when somehow I logged KOPX-1060 on an ET through the QRN. CX have been typically Summer-like and even when the HNL are low everything is weak. On 8/11 however there was a sign of things to come, when between 12:30 & 1:30am I came up with KNX-1070, KBL-1160 @ 8-9 plus, & what must have been KHHI-1550 @ 1:20 when I heard weak opera mx. On 8/18 I was up hoping to find some Southern stations on late for the hurricane but local thunderstorms blotted out everything. I did find KIRL-1460 on w/one of their weekly "commercial ETs", an unID tester w/c/w on 1090 from at least 1:15 to 1:30am plus, no IDs. WPNX-1460 testing & quite loud @ 1:45am. I've been concentrating on trying to get this past season's holdouts to verify with varying degrees of success. I've also come up w/something new in Project Summercall. I've taken a few of my most-wanted stations that so far have refused to answer & I've been calling them up. So far this has resulted in a nice v/1 from WGOG-1000 & a promise of one from WQTL-870. KRIO & a couple of others also will eventually be called. I've been calling after 7pm EDT, when the rates are lower & I place the call person-to-person to the CE. Usually by this time he's gone home for the day by then & one of the announcers will answer. If I want to talk to him it costs only at station-to-station rates. The WGOG call cost me only 70¢. So far this scheme seems to be working, so if anyone has a few bucks to blow I recommend trying it, at least with one station. Hopefully some DX to report next time. Other veries: KTUF-TEST, WGRP KOPX ORTP-1554 WGOG KPEK WNAK WPGA WKDO. 73s.

JAY MURLEY - 1733 Candlestick - Newport Beach, California - 92660

Three Cal. stations still use a "T" antenna to my knowledge; KFOX KPCC & KIEV, w/the latter to go vertical as soon as aircraft and zoning hangups are solved, I understand. All efforts at DXing deep SAs all Summer have been fruitless. Rather than spend weekend in ST. LOUIS at Convention, I will be moving five blocks without the help of a van, but with many cases of beer for helpers. I can use more of the latter o/Labor Day. The phone remains 714-548-2914, new address above.

September 27, 1969

CHUCK HUTTON - 1521 Fama Drive - Atlanta, Georgia - 30329

DX good here, low noise level and technical modifications of the AJ-53 providing 12 new ones in a week. 8/2- WEZJ-1440 Ky. ET @ 3:04, WSAZ-930, W.Va. @ 1:30 w/NX & easy listening; WIRL-1290 Ill. w/Job Hunter @ 1:57, Blood, Sweat and Tears next. WYXI-1390 Tenn. f/c @ 11:15pm (8/1), KORC-1390 Okla. w/ Cardinals BB & s/off @ 12:40. KOTN-1490 Ark. ID lam & soul record. WMFJ-1450 Fla. w/HI, WOWL-1240 Ala. w/ID @ 2:01. Back to 7/31 now - WKIM-980 N.C. testing w/announcement "Testing, 1-2-3-4-5" over & over. WRC-980 w/good mx, WJBO-1150 La. s/off mentioning FM location of studios, etc. WDEL-1150 s/off @ 12:05 w/SSB, new state. WOC-1420 Ia. lam s/off mentioning FM, temperature, Bob --- for staff & management, TTer on 1130 w/tremendous signal almost nightly, WMGA? WEIF-990 Centre, Ala. Tting 7/31 also, weak u/WNOX. KPCL-1470 La. s/off @ 2am. No DX tonight as I need sleep - two fractured ribs, four wisdom teeth out, 102° temperature, and staph infection in throat. (But outside of that, Chuck, how do you feel, hi -ERC) WC DXers, please send formats of locals to me. 73s. (All members are asked to send Chuck the formats of your local stations -ERC)

LEE SIDDONS - 657 Gaines Way - Winter Park, Florida - 32789

Newcomer here! I've been an MW DXer on a spare time basis, so it's not new for me, but I'm now a member of this exclusive Club! I have a VJ-67 log of N.A. Radio/TV stations, quite helpful! Florida appears to be a difficult place to DX from as well as for you to receive those "hard-to-get" directional stations from up North. But I do quite well, even during Summer. My DX report is three-fold from various periods in past year. While visiting Tampa, Fla. in May, between 2 & 3:30am, 5/1, I heard WKY-930, Okla.; WDOE-1310, Chattanooga; one I've been looking for & finally did find, KOA-850, Denver, where my father was PD in 1950s of KOA-TV. KMBC-980, Kansas City, WKWF-1600, Key West. Then back home, 5/2: WJBO-1150, Baton Rouge; WAPI--1070, Birmingham, KRLD-1080, Dallas, KWGH-1130 Ia. More recently, 6/21 (here): WJAX-930 Jacksonville w/a Delta-88 spot, 9pm, NX, CBS. WSB-750, Ga. Atlanta Braves spot, Nightbeat @ 9:35pm, MoR. WKIS-740 here, uses directional I believe, so no QRM w/WSB? On 680, WPTF, Raleigh, sports-MoR 9:44pm. Next door, WTIX-690, Ia. played rr w/SS QRM, frim South. Also on 690, "Big Ape" WAPE, Jacksonville, 50,000/10,000 fades out around 8:30pm. WQAM-560 Miami; ID @ 10pm, rr, "The Big 56", good signal. 600, a weak WPDQ Jacksonville. WABC-770 barely readable because of SS. Of course, PJB-800, Bonaire, N.W.I. 10:30pm, "Back to the Bible" ending, "Trans-World Radio." 500,000w? Wow! I am also an FM DX enthusiast. FM can be fun as well as surprising, especially in Summer, but MW DXing is best. That's all for now - next report in August-Sept. Patience is best policy for any DXing. Thank you, NRC! (Welcome to the NRC, Lee! And many happy DXing hours! -ERC)

RICHARD E. WOOD - U. of Hawaii - Dep't of European Language - Honolulu, Hawaii 96822

Veries: KTYM-1460 Cal., first from Hawaii & evidently farthest on RS; CKX-1150 Man., first from Hawaii, for a new province, #5 verified; KFOX-1280 Cal.; KHOB-1390 N.M., which says "It is rewarding to learn that we occasionally reach more than just the jack rabbits in the desert." CKVN-1410 B.C.; KEWI-1440 Kan KDDA-1560 Ark., most distant report, previous best was Canada, for a new state, #32 from the mainland (I now need only Tenn. among states heard); KILJ-930 Cal.; KJJO-1550 Mo, which said, "I am quite amazed at our reception report. At the time we were directional to the NW, so the signal you heard had skipped all the way across the North Pole & down to Hawaii. Yours is by far the longest report that we have ever received." The night pattern is certainly highly directional, but I don't think it would have to cross the Pole to reach Hawaii. Comments, anyone? Also KVEC-920 Cal.; most distant report in recent years & possibly in the 32 years of KVEC's operation; KPOP-1110 Cal., most distant ever; WMEK-1510 Mass., my second NE; KALG-1230 N.M. for a new graveyard state; KRKO-1380 Wash.; KHEM-1140 Ida.; KCAN-1550 Tex., KMYC-1410 Cal.; & one of my most wanted, WPAI-1560 Fla. Reports are out to: KRAM-1340 Nev.; KOMY-1340 Cal.; KROB-1450 Cal. which was a real surprise to me, as I had seen no mention of an impending call & power change; WLAC-1510 Tenn.; KUAT-1550 Ariz. noted on test; KARR-1450 Mont.; KPHB-860 Cal.; KYCB-1440 Cal.; WLOU-1350

September 27, 1969

Ky., only my second daytimer E of the Mississippi & N of Fla.; KAIV-1400 Ariz.; KSLM-1390 Ore.; KOH-630 Nev.; KAIR-1490 Ariz.; WJBO-1150 La.; KLVI-560 Tex.; KSIG-1450 La.; my second La. on 1450; KVOU-1400 Texas.

ALEX BOWAB - OI Div. - U.S.S. Forrestal - F.P.O. - New York - 09501

I'm finding it more interesting to compare what I hear from Different locations than to see how many loggings I can amass from one location (to each his own). I'm currently en route to Guantanamo, & though I'm somewhat inhibited by interference from the array of powerful radar & communications gear aboard this glorified canoe, the listening from out in the Gulf Stream has proven to be of interest. Notes from a listening session in Northern Bahamas, 200 miles due E of Miami: Coastal stations in from as far N as Jax - WAPE WQIK WBIX. Miami area stations in OK w/varying strengths including graveyards - the one exception being 1550 which surely protects ZNS-1. ZNS-2 noted on 1240 w/fair signal at 100 miles subdued good mx format. Only the strongest 88 were heard. I tuned in again early AM in Southern Bahamas. I won't attempt enumeration of SS & hets - I listen to them through the ease of Spiro (If you've heard one, you've heard them all). WTOP WPTF WLCY WDAE WBAP WCOA WLEE were good, in addition to these: ZNS-1540 noted poorly in outlying islands - apparently the result of combined skip and ground signals. They ran a poor third in side-by-side comparison w/WLAC/WCKY. Loudest AN US signal was WSRF-1590. A pre-sunrise on 550 w/WGGA dominant, this close to Cuba. I lived in Gainesville in 1967, & the Cubans used to meet them head-on at the city limits nights. As the edge of darkness moved W, RJR appeared - still no Cuban. Jamaica also heard on 580 620 750 (lattermost was 'louder-most') & 700 720 770 u/Cubans, 560 lost u/WQAM. RJR & GBC both have a very contemporary sound - unlike the BBC-ish Bahamians. WGMA-1320 WWOK-1360 day signals still good at 380 miles - apparently DA to favor the fish. Smaller Miami outlets looking out to the SS/het combo. Cap Haitien-1035 extremely good at 300 miles - seems their EE religious pitch is intended for territory beyond Haiti. Next time I'll report on what's heard on the SE tip of Cuba. Visit Jamaica next month. I hope to visit RJR & JBC.

BILL ALISAUSKAS Jr. - 7 Avenue B - Haledon, New Jersey - 07508

Hi Gang! Just a few brief lines to let you know I'm still alive. No new DX on AM except for new WTDQ (?) - 1110 in Warwick, N.Y. which is now on. They came in fairly here & are bothered a little by WNAR. S/off time is currently 8pm, & programming is mx like WPAT etc. till 7pm, & there is an R&B program till 8pm s/off. (Ed. note: This was August, & EDT -ERC) They are on Oakland Avenue in Warwick and are 250D. All other additions are FM & no new veries. That's about it for now, so I'll go back to my corner till next time. 73s.

STAN MORSS - Route 3 - Bradford, Massachusetts - 01830

DX has been nil since 4/1 except a rainy day report to WUNR. Veries from WUNR WBTN WABK WBERG WLIX HJAC. Tries on 1170 & 1050 show no signs of WVLC or WSCV on RS yet. I made tapes of most catches the past season & quite a few holdouts yet - w/f/ups sent to some - at least I've got them on tape even if no verie is forthcoming. WBTN verie leaves one unverified Vermont - WFAD, & WUNR verie leaves one unverified (on the air) Mass., WMRC, as usual. V/Q & V/L from Koln-1360 Deutschlandfunk for 1/6 report. I note WJRZ has been sold to a big corporation owner, so no doubt a change in call & format

LEE SIDONS - 657 Gaines Way - Winter Park, Florida - 32789

First Musings for me: I've been DXing since 1965 in Atlanta, Ga. Jerry Conrad welcomed me & I visited his radio shack, wow! All I've got is a ten transistor portable three-band (AM-FM-SW) RX w/minor adjustments at time. I've logged nearly 100 stations in 19 states, D.C. & three countries, but no veries as yet. I'm digging the graveyard more & more lately. 8/11- WWBA-680 Fla. w/MoR mx @ 7,46pm "Continuous Mx on Wonderful Bay Radio." WSB-750 Ga. @ 8, WMEG-920 Fla. w/rr, Radio 92 ID. WORD-910 Pa. w/NX @ 8:05, R&B. (WORD is in Spartanburg, S.C., Lee -ERC) WIVK-850 Tenn. w/c/w.

September 27, 1969

WHDH-850 Mass. Boston BB (0) vs. Chicago (4) w/QSB, @ 8:37. Ad on Bob Adams' money problems @ 9. WJJD-1160 Ill. w/c/w, WOWO-1190 w/rr & ID "Group W" @ 9:30. WDAE-1250 Fla. w/WX @ 9:33. WRDW-1490 Ga. w/R&B @ 9:38. WBBM-780 Ill. CBS NX @ 10:05. WJR-760 Mich. w/BB Tigers (1) vs. Angels (2), @ 10; ID spot on Buick. 8/16- WTIW-690 w/rr @ 10:15. R. Belize w/MoR @ 10:45. PJB-800 "Word of Life" & "Mx & Youth" @ 10:55. WOR-710 WX: Camille 25.4 N; 87.3 W, w/NX @ 11:10; PSA on National Wildlife. WCOA-1370 Fla. w/MoR @ 1:14am & w/WX @ 2 on Camille, 26.2 N, 87.5 W w/murricane watch in effect. WALG-1590 Ga. w/rr @ 1:34. WUNI-1410 Ala. w/c/w; also u/WDOV, mention of Del. U. WSMB-1350 La. w/WX & DJ Chris Brad. MM 8/25- WCOG-1320 N.C. @ 1:45 w/ET/M till 2am, & w/IDs during rr. WABB-1480 Ala. w/rr & SID @ 1:25; QRM from WVOJ-1480 Fla. w/c/w. (WVOJ is 1320, not -ERC) ZNS-1-1540 Bahamas w/MoR, ad on Bahamas Optical Services @ 9:30pm. WCAU-1210 Pa. Night Talk @ 12:05. WOAI-1200 Tex. @ 12:55 w/MoR, NX till lam. That's it for now. By the way I heard local WORJ-1270 broadcast an ET/M 8/20 from 1-1:25 am. Good DXing to all for the season ahead! Peace, & Get Together! (Welcome to the NRC Fold, Lee! We hope to hear from you often, & say hello to my good friend Jerry! -ERC)

FRED OSTERMAN * 436 North Forest Road - Williamsville, New York - 14221

This being my first Musing perhaps I should introduce myself. I'm 17 - I've been DXing CCB for three years, & I found out about NRC from Ken Lyon & Ralph Johans. RX is an HQ-129-X, antenna, longwire. I've been in IRCA for a while. I will correspond w/anyone. Getting down to DX - two new states: KFJM on f/c 8/8 3:04am, v/g in one week for first N.D. KWYO on r/c 8/18 @ 3:03, poor u/QV, v/l in five days. An El Salvadorian has been doing a good job up here on 1155a w/excellent IDs of the location but no station ID heard - is this YSCF up 5 kc/s.? (Yes - ERC) The TAs were coming in very good the first week of August, but not so good this week (R. One-1214 & Bordeaux-I-1205). I went to ANARC Convention - I didn't see too many NRCers up there. I'm sorry I couldn't make ST. LOUIS - maybe next year. Good DX to U-All. (Welcome to you too, Fred, & we also hope you'll double-space us many a fine Musing -ERC)

RONALD J. CHRISTEN - 30 Lucille Drive - Cheektowaga, New York - 14225

Since this is my first Musing, I'll give a brief intro. I'm 17 years old, and a student at the State University of N.Y. at Buffalo, planning to major in Electrical Engineering. The rig here is an HQ-180, coupled to a 25' inverted L (anything longer overloads the 180 badly). Statistics now stand at 604/115, 40/37 states, 7/6 provinces, and 21/9 countries. My best veries are: KDDA-1560 CPN-1060 KAAV-1090 WMEJ-1450 WMEG-920 KNUJ-860 WNAX-570 SR8-725 KBHD-810. I'm one of the guys who heard KECK-1530 last January, and like everyone else, still no verie. An interesting catch here this AM (9/1) "Radio Jolly Roger" in Cincinnati, 1580k. They gave their number, and asked to call collect, which I did. They were trying to raise the NRC Convention, and finally did. Besides being heard in Cheektowaga, and St. Leo, they were heard in Columbus, Worcester, (M. Blumenthal) and Va. They were heard here from 1:23-3:30 - I listened so long hoping to hear them announce my name, hi, but wouldn't you know - when they did, the recorder wasn't running. Other DX 9/1- WPLB-1380 w/TT @ 12:06, KWK-1380 @ 12:08, WZKY-1580 w/TT @ 12:36, WEEEX-1230 test @ 1:27, CBI-1140 test @ 3:45, and CBH-860 @ 4:04. Reports out for the month of August to: *WDLR *WNAX *WRFD WAMO *WRKO *WELI *WCAZ KGLC-test *KNX *WSPW *WATE WOAI *KOTH WBEJ WXYZ WLET *KBHH WCOU *WNIA WPAC WAHT WAPE *WSAO WCIK & KGLC again, this time on RB. (* before call indicates verified). Well, that's about it from here, so till next issue, 73s & good DX! (Welcome also to you, Ronald, and we hope you'll also be a Musings regular! -ERC)

RICHARD E. WOOD - 1509-A Mokulua Drive - Kailua, Hawaii - 96734

What greater bliss than to return to Hawaii after a highly successful NRC Convention, with a new SP-800 in which the airlines did not charge overweight, to find that a local NSPer has dropped ANing, to be greeted by 15 nice new veries, and to hear two new stations within 15 minutes of switching on? The new catches are KEGL-1430 Cal. & KONI-1480 Utah, my first U. outside Salt Lake. The former NSPer is KORL-650, now signing off at 6am, & freeing not only 680 but, thanks to the mixing product w/KKUA-690,

September 27, 1969

730 and to some extent 610, which should make Guam easier. Best verie is a world's first from KOB0-1450 Cal., which says no other reports had been received from anywhere at the time of my report; also KUBA-1600, KBBQ-1500, KYOS-1480, KPIS-1150, KCEY-1390 Cal., the last four first from Hawaii; KSIM-1390 Ore.; WLAC-1510 Tenn. for State #35 verified; KGBT-1530, first from Hawaii; KVOU-1400, also first, & another first, in KLVI-560, all Tex.; KIMN-950 another first, Col.; KXXL-1450 Mont. for r/c; KARR-1400 Mont., when on RS w/250w., most distant report; KOH0 630 Nev., first from Hawaii; KUAT-1550 Ariz. for tests; CJOC-1220 Alta. & another first. As those of you who saw my KENI verie at St. Louis will know, stations - for some reason - seem to like to send me humorous or satirical veries, perhaps because some of my reports are in similar vein. Latest addition is KSIM, which wrote, in part, "However, your estimation of 2.8 miles per watt is somewhat inaccurate. In explanation, we employ a Gatesway transmitter, which, with my own special modifications of pushy pull-pull side-saddle modulation insertion, and drip-dry grid leak bias, results in much more efficiency than you would expect. In fact, I find we're able to gorgo the usual even-controlled crystal and just plug into a normal 220V outlet. Also, our transmitter is located in the abandoned hulk of the USS Codfish, some 200 ft. below the surface of Pearl Harbor; utilizing as our antenna the omni-directional corona discharge of certain large-bodied fishes. In light of the above, I can't help but wonder why you would desire a confirmation of reception certificate, but find it attached herewith anyhow."

JAY MURLEY - 1733 Candlestick - Newport Beach, California

Sorry to miss the Convention, but I was rather tied up on a do-it-yourself move. Who hires a moving van for a five-block change of address? Who can afford to, with another youngster expected in October? The loop was one of the first things out of the old house - and one of the last into the new. As it spent a good deal of time in the new front yard over Convention weekend, it attracted some publicity for the hobby. Speaking of loops, GPN's new plans look fantastic. I hope some sort of kit for the tuning capacitor assembly materializes. Or at least the FET amplifier! That way I can subcontract the rest of the construction to my wife again, hi! Now to DXing: Summer CX seem to be ending (but the WX remains normally ideal). Most of 9/2-3 was spent chasing Honduras-Guatemala hurricane reporters, though Foxy's WCBS was strongest EC at S-7, & WBZ close behind, making solid reading of AN TGUX-1030 difficult 3-3:40am. TGJ apparently not on 1-4am. Most interesting was Bwize-834v w/normal relief messages interspersed with pleadings for national unity, etc. Mostly EE, some SS, some native Indian March mx predominated, for those who want to check tentatives, w/signal varying from S-3-6, between 11:30pm-3am. I alerted new member Gerald Behotequay to this rare ANer. I suspect half of the other Musings may be full of Belize as well, however. I hope to see "How to Listen to the World" eventually, hi! Dr did all the copies get waterlogged by that strange Eastern institution called humidity? Again, we all owe the Admiral a vote of thanks re the new loop. Hasta la vista.

BRUCE REYNOLDS - Route 2 - Warrensburg, Missouri - 64093

Labor Day Weekend 1969 is one I won't forget! I had a great time at the Convention and it was great to meet so many fine guys in person after four years of reading their reports in DX NEWS. I have always felt that NRC is the best DX club going, and everything that happened at the convention re-inforced that opinion. The NRC seems to be in great shape, and the progress made during the past year is quite a tribute to the Boston Guys. I would like to acknowledge a nice letter of greeting sent to the NRC Convention from IRCA-Chicago. Unfortunately, it arrived at my home after I had departed for St. LOUIS. I found four veries waiting for me when I returned home, so I guess we should have conventions more often! DX: 8/18- WBCa-1110 @ 12:30am, WMOX-1010 @ 1:15, WBG3-1560 @ 1:47, and WHNY-1250 @ 2:31am, all on for hurricane coverage. 8/22- KISD-1230 @ 6:09am, and KBOK-1310 @ 7:01am. 8/26- KBAB-1490 @ 6:56am * KBIX-1490 @ 7:50am. Veries: v/1- KWRT WGEM KSEK WMOX WBCA KFAY WHNY & KDMO. 73s and best of DX.

SEPTEMBER 27, 1969

BILL ALISAUSKAS Jr. - 7 Avenue B - Haledon, New Jersey - 07508

I have just been informed by Joe Fela of the death of Ralph Johanns. Needless to say, I am very stunned & shocked by this, as were many others, no doubt. Although I never had the pleasure of meeting him personally, I know I will miss him and his Musings, which always had those little bits of info in them. The only personal contact I recall having with him was while I was in Service when he sent a Christmas card three years ago & requested a reply sent him from the ship, so he could add the postmark to his collection. Ironically enough, I was in Buffalo 8/31 & tried to get in touch with him by phone & was told he had no phone on record, but it was probably too late already. In closing, let me say that the Club has lost a good member, one who cannot be replaced. My condolences to his family & friends. DX: 8/26- I added WKOL-1570 s/off 8pm. 73.

BRUCE REYNOLDS - Route 2 - Warrensburg, Missouri - 64093

Hi. By the time you read this I'll be going through Basic Training at Lackland AFB, so this was a very short DX season for me! DX: 8/18- WBCA-1110, WMOX-1010, WBG3-1560 & WHNY-1250 all noted AN for the hurricane. 8/22- KISD-1230 @ 6:09am w/rr & KBOK-1310 @ 7:01am. 8/26- KBAB-1490 @ 6:56am & KBIC-1490 @ 7:50am. 9/9- WMOX-1450 through looped local KOKO @ 11:15pm. 9/10- KAYS-1400 s/off @ 12:07am & KRVN-880 on EP/OC @ 10:45am (IDs every 15 minutes). 9/12- CJKL-560 Ont. @ 4:57am s/on "O Canada", KHOG-1440 7:26-7:30pm s/off. 9/13- KWAK-1240 @ 11:50pm w/FB. Veries: v/1- KWRT WGEM KSEK WMOX WBCA WHNY KFAY KDMO KBOK KLEX KDRO WJPF. 10/1 is the target date for KDMO's daytime power increase to 1kw. WJPF is apparently AN-7 again. Totals from Route 2: 1,503/772, states 46/45, provinces 8/8 & countries, 34/24. My first verie came in 12/64 & I had 360 stations logged at the time. I had a great time at the Convention, meeting many new friends & renewing old acquaintances. DX CX were much better Labor Day weekend than the past two MMs. I tried to DX on both 9/8 & 9/15, but nothing heard worth reporting. Well, I hope to have my new address in the next issue so I can keep in touch w/my NRC friends. Until then, 73s & best of DX! (The very best to you in the Air Force, Bruce! Let's hear from you! -ERC)

JEFF KADET - Box 732, Easton Hall - U. of Maryland - College Park, Md. - 20742

All correspondents please note above address for weekday delivery. I will be home on weekends but otherwise prefer mail to the above address. I have a great location for DXing, seven floors up, but unfortunately the room is facing SE & I like domestic DXing, hi. I hope to get some wire on the other side soon. Two corrections to my last Musing. Ham total is 276 countries worked & verified, not 27, BCB verified total from Bethesda is (or was) 685 domestics, not 68. I'm still spending most of my time TV DXing but have heard WWIN KUAT & KKJO Specials. 73.

ERNEST R. COOPER - 438 EAST 21 Street - Brooklyn, New York - 11226

Veries: v/q- WIBS-705 & WPHB-1260; v/1- WHRF-1570 & second from WFBQ-1110; v/PP- WPTO-1520. I certainly enjoyed the ST. LOUIS Convention. It was well planned and well attended and well enjoyed by everybody present, and the boys who did the groundwork deserve a rousing, standing ovation! I couldn't help notice that out of the 54-or-so members in the Meeting Room, only about ten or so smoked, & of them, only about half smoked cigarettes! Ralphie would have been very proud of you, as I was. It became my sad duty to announce at the conclusion of Gordie's fascinating discussion of Aurora CX, the passing of our beloved Ralph Johanns. We got the info by phone from Martha Brauner, member Joe Brauner's wife. He died of cancer she told us, at age 70. I'm truly sorry about missing with Musings last issue - for the first time in the 24 years I've been Musings Editor, I sent my stuff to the wrong address, putting down "Watertown, N.Y." instead of "Watertown, Mass." but w/the correct Watertown Mass. ZIP number, so perhaps the P.O. isn't telling us the whole story when they say the Zip number is the most important part of the address. DX: 9/4- WHRF-1570 6:15-6:27pm "Wharf Radio" in/out w/others on the channel w/WBUX apparently off; this one is tough here as they protect local WQXR-1560. 9/5- Bootlegger noted on 1580 IDin as WIRM, The Young Band of the Young City, & sounding much like WCBS-FM; FCC notified on this, also WIRM, Jackson, Mich. & WQXR-1560, interested parties. 9/12- WSOQ-1220 at 6:07-6:15 s/off, mostly on top, at last, for a report. C U N 14.

INTERNATIONAL DX Digest

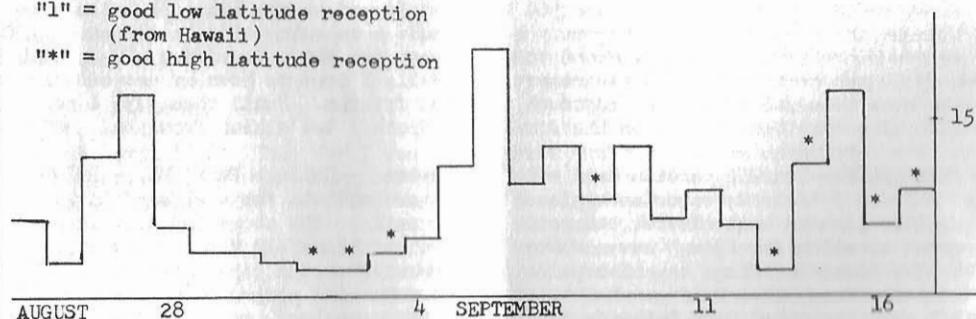


Propagation & Features:
Gordon Nelson, 19 Irma Ave.
Watertown, Mass. 02172

DX conditions here in the Northeast have been very good during the last few weeks; very strong signals from Transatlantic stations and West Africans. TA's are fading in about 90 minutes before local sunset and many medium-power range stations are audible nightly. There was a moderate auroral disturbance on 9/15; stations that were loud and clear on 9/14 were weak on 9/15 but returned on 9/16. This is one of the best examples of a quick and minor auroral/geomagnetic disturbance. A call from Jerry Conrad on 9/17 tipped us off to what appeared to him to be a severe auroral disturbance that night; he experienced almost total loss of reception of stations to his north. TA's were still audible here however and geomagnetic activity and auroral disturbance remained very low that night. We think that Jerry was experiencing sporadic-E blanketing that night which appeared at relatively low latitudes; more on this next week. Did anyone else notice anything out of the ordinary that night?

Geomagnetic/auroral activity remained quite low during this period except for a slight flurry of activity beginning 1017 EST on 9/15. Both Page Taylor and the Editor noticed a sharp drop in TA signal strengths on that night.

"a" = auroral-type cx
"l" = good low latitude reception
(from Hawaii)
"*" = good high latitude reception



Reportedly in operation

**ICELAND. Mike Bugaj, recently returned from duty in Iceland, reports that AFRS was to put a new station into operation on 8/15/69 on 1234 kHz; like the station at Thule AF Base on 1210, this one will only operate on special occasions such as sporting events, etc. Well worth watching for!!

ENGLAND. A recent letter from Ken Brownless in England brings more information on the special station at the University of York at Heslington - which is 3 miles from his home. The station is legal, licensed by the G.P.O. as a test case; several other such stations are also operating at universities in other locations. GPO says the station must restrict its radiation to the "University precincts"; Ken can't hear the one on 998 that's only 3 miles away. Seems to be the English equivalent of our carrier-current operations; don't spend too much time on 998...

IDX Monitor Reports

Members' Loggings:
Bob Foxworth, GPO Box 2111
New York, N.Y. 10001

- Telephone Tip No.: 212-582-0844. All Times in DX News are Eastern Standard. 9-27-69
- 590 Cuba. CMW dominating freq. 2330 9/1 and 9/2, took a chance and rptd via QTH shown in WRTVH. L V de Cuba pgms. (John Hathaway, Ill.) (Welcome, John-Ed.)
- 600 Cuba. Outlet here usually very loud day and night at Guantanamo bay, but was weak off and on in early Sept. and completely u/HJHJ some nites. (Bowab, at sea)
- 602 France. Lyon hrd at s/on 2330 9/12, only s-4 signal, news directly following s/on ancmt., not often hrd here. (Page Taylor, New Jersey)
- 638 Spain. RNE, Sevilla very high and clear 1906 9/18 w/typical Spanish popular records, local WRKO-680 totally eliminated w/altazimuthal loop. (Nelson, Mass.)
- 640 Cuba. CMQ dominating freq 0130-0230 9/2; decided to try a report via Apto Postal 6017 as ancd during pgm; maybe this will come thru. (Hathaway, Ill.)
- 701 Andorra/Morocco. Radio Andorra and Sebaa-Aiou are just about even most nights from 1800 on; mixture of AA and Iberian pop pgmg up very high 1832-1900 on 9/18 and weak traces of a third carrier in there too from time to time, believe it was just Prague, though. Both Andorra and the Moroccan currently are going off at 1900. (Nelson, Mass.)
- 719 Portugal/Tunisia. Porto I extremely strong 1909 on 9/13 w/ID. Sfax was on top 1824 on 9/18 but replaced by Porto 1830; latter then dominated channel. (Nelson)
- 719.43 Cuba. This drifter is currently here, down 570 Hz from nominal 720. Creates a terrible het nights against 720 and it takes triple mechanical filters to separate the TA's on 719 from this pest. (Nelson, Mass.) (as is the next item.)
- 737 Spain. RNE Barcelona generally the best low-band AN TA these days w/local-like quality and lots of good modern rock records most nights; was outstanding 9/18.
- 755 Portugal. Lisboa II so high that it was overriding the local TV sweep buzz at 1818 9/18, were playing Ray Charles music. (Nelson, Mass.)
- 773 Spain. RNE San Sebastian good w/Beatles record 1803 on 9/18, could see a SAH from the Egyptian on scope but could pull no audio at all. (Nelson, Mass.)
- 780 Brit. V.I./Barbados/P.Rico. ZBVI, Road Town, EVI noted w/soul mx and religious pgmg on an irregular sked, IDs as "Big Zed" and has 10 kW. When they're silent during daytime, I can hear AFCN at Ramey AFB, P.R. weak but readable and // to the 1050 outlet. After 2100 I've been hearing Barbados mixed w/WBEM. Both R. Barbados and ZBVI carry BBC news from London (via SW relay). Not bad, hearing 3 EE stns, none in the U.S., on one freq, hl. (Bowab, at sea off coast of P.Rico)
- 782 Portugal/East Germany/Syria. CSB9 is once again this year the earliest of the TA's TA's to become audible here in the afternoon, noted as early as 1710 on 9/18. A good mixture of Burg, East Germany and CSB9 noted 1857 on 9/13 w/about equal signals that date. Snatches of audio from the Syrian noted jumbled w/Burg and CSB9 around 1820 9/18 but no really solid copy yet this season. (Nelson, Mass.)
- ** 799.54 unID TA. Very interesting case here, het from this one fades in before local sunset (LSS) but isn't very strong even at peak quality and really tough to split off from PJB and CKLW especially as the evening wears on. Have hrd traces of musical audio and a man talking but no positive language ID yet. DF is for Iberia or North Africa and s/off is about 2007 nightly. Seems to be a TA down from 800 (which is a TA channel) and I strongly suspect it's EAJ7, Madrid, 20 kW, on basis of DF and sked. Will keep after it. (Nelson, Mass.)
- 818 Andorra. Radio Des Valles just like a local w/ID in FF 1833 9/14, US pop mx and not the slightest trace of the Egyptian. Is generally much better than Radio Andorra-701; being atop Mont Blanc does seem to help them get out! (Nelson, Ma)
- 830 Haiti/Costa Rica. While at Gitmo, some nights I've noted FF here evenings w/religious pgms and EE lessons at 1900, so must be 4VEC. Ohter times, I've hrd an SS w/ads in EE for a steak house in San Jose. A Costa Rican here? Both are off by 2300 as WCCO is hrd in the clear then. (Bowab, USN) (Costa Rican should be on 825, but don't think they have any EE ads, even though. Who can help?)
- 834 Brit. Honduras. Belize at 0055 9/3, on w/martial mx for hurricane watch advisory and frequent IDs in EE, had advisories from time to time. (Hathaway, Ill.)

- 908 East Germany. Deutsche Freiheitssender, Burg quite strong from 2255-2300 w/theme from "Ode to Joy" being their interval signal, mixed w/ID as "Deutsche Freiheitssender, neun hundert vier" and this was hrd 9/4. Why do they announce 904 when signal is on 908? (Bill Feidt, Md.) (Welcome, Bill, several years ago they were on 904 kHz and moved to 908, I assume, to comply with the European standard freq assignments-Ed.)
- 910 Venezuela. Radio Aeropuerto strong here nights, rambling newscast and TC's every minute. YVRQ in Maiquetía. (Bowab, USN, Caribbean)
- 917 Spain/Morocco. EAJ2 noted on top w/SS ID 1853 on 9/14, Tetuan, Morocco is the one producing the buzz on the low side of the channel - they're on 916.93 and were noted signing off at 1859:10 on 9/14, and were unusually good for a 5 kW station. (Nelson, Mass.)
- 930 Montserrat. Radio Antilles strong but w/Cuban QRM till 2300 evenings; is in FF till 2000, then the EE house party w/US mx. On Sundays, they have instead an EE preacher at 2000. They go into SS at 2100. (Bowab, Guantánamo Bay)
- 935 Morocco. Station logged 2110 on 9/8 in AA w/chanting and middle-East style mx - is Agadir now AN? Too much slop from WPAT-930 for a definitive rpt. (If not AN, then possibly a religious festival?-Ed.) Agadir squeaked thru WBen slop 0102-0111 8/31, very weak w/man chanting. I must be the last DXer to log it; somehow never logged before, Cou. #54. (Rugg, Quebec)
- 940 Mexico. XEQ, Mexico City in quite well 0030 w/"XEQ" IDs. (Rugg, Que.)
- 970 Virgin Is. WSTX s/off is at 2300 w/hymn "A Closer Walk." (Bowab)
- 1016 Germany. Mainz logged here w/pop and easy-listening mx 2025 7/24 excellent signals s-9 plus 10 db, unn. here. (Taylor, N.J.)
- ** 1050 Puerto Rico. AFRS - AFCN (Armed Forces Caribbean Network) outlet hrd regularly o/ and u/WHN nights and stronger than their // signal on 780 from Ramey AFB. Very poor fidelity-sounds like xmtr was tuned and assembled non-professionally. (Bowab, off coast of P.R.) (This is a scoop, Alex, this outlet used to be on 1200 nominally, 1197 actually, until WBMJ-1190 chased them off that freq. They were hrd on 1040 a couple of times last winter but no one was aware that they had since moved to 1050. The old setup on 1197 involved more than one xmtr, on the same freq (one of them was at the NAS at Roosevelt Roads, another at Fort Brooke) and I believe they were 50 watts each. The poor fidelity might be due to hearing multiple audios from these xmtrs, assuming that they are all still on the air, and all were shifted to 1050. Then, too, they might just be poor quality rigs. Try to find out for us (1) their schedule, and (2) whether any sign of them being slightly off-freq, enough to make them audible here. Tnx -Ed.)
- 1097 Spain or Canary Is. SS speaker hrd here several evenings at LSS, 1900-1935 w/pop mx, some RR (rock mx, not Russian, srl) but no ID as WKYC in too early, last hrd on 9/4. (Taylor, N.Jersey)
- 1115 Italy. Probably Bari hrd here w/"Notturmo d'Italia" in // w/Rome-845 at 2140 on 9/12; both freqs were strong. (Taylor, N.J.)
- 1125 Costa Rica. US mx here 0035 9/4 but couldn't ID due to terrific rain static and all I could get was word "nacional" and "Radio Capital" but believe it was the C.R. here; will check again. (Hathaway, Ill.)
- 1133 Yugoslavia. Stn hrd w/sign-on at 2230 then mx in language during good TA opening 9/12; Albania and Poland were strong. Too close to WNEW to get a good logging thru their splash. Will list as tentative reception. (Taylor, NJ)
- 1180 Dominican Rep. Hrd u/VoA nights. (Bowab) MIBE, RADIO MIL 10KW SANTO DOMINGO
- 1200 Cuba. The Reloj stn here, and one on 1260 were hrd weakly daytime at Gitmo with RS. These were the only stns hrd with RS Sunday 9/7 as every other stn. audible carried a special pgm mourning Ho Chi Minh all day long and into the night. The pgm was cl mx interspersed w/vignettes of Uncle Ho. (Bowab)
- 1205 Colombia. Unknown Colombian hrd w/s/off and NA 2358 on 7/29; anthem was definitely Colombian, who dis? (Taylor, N.Jersey)
- 1205 Sierra Leone. Freetown was last hrd 9/4 during a good TA opening with their 0100 s/on, continuous IS 0055-0100. Does anyone have them verified?

- 1205 (cont'd.) I have an unanswered report out to Sierra Leone since December 1968. (Taylor, N.J.)
- 1250 Jammer. Distinct traces of a jammer, a búzz or hum, noted u/Khabarovsk which was carrying Radio Moscow's Chiese Service. 9/6 at 1015. Looped appx the same as Khabarovsk. (Wood, Hawaii) (Thoughts of Chairman Mao???)
- 1295 St. Maarten. PJD-2 all EE religious, has s/off 2305 and easily monitored from Puerto Rico. One of the few missionary stns I've hrd with local advertising. (Bowab, at sea off P.R. coast)
- ** 1340 Guantánamo Bay. I recently reported AFRS here was not AN; this was based on "bum info from anncr" so the previous info still stands...the station IS AN with show "East of Midnight" featuring MoR mx. The former WGBY calls are obsolete and are not used. (Bowab, Gitmo as it's fondly known..)
- 1340 Virgin Is. WSTA St. Thomas is 250 U-1 and RS is 0700-0015. (Bowab)
- 1373 Colombia. HJEA, LV del Cauca, Popayan hrd 9/8 during SA opening w/LA mx, frequent slogan IDs and s-7 signal 2030-2040. Best HJ yet. (Taylor, NJ)
- ** 1410 Trucial Oman. BBC Relay, Masirah Island hrd 0945 9/6 in BBC Hindi Svce., into Urdu svce at 1015. Effortless reception of Country 55, s-9 most of the time and 95% readable audio. Excellent audio quality, no audible trace of an off-the-air relay but time signals etc. showed that it must've in fact been a relay. This island not a separate country, counts as a part of the sultanate of Trucial Oman (Southeast coast of the Arabian Peninsula.) (Wood, Hawaii) (Bad news for NA DXers, EBU msmts for August gave mean freq as 1410.0012 kHz, much too close to 1410 (!) to split off even with 3 mechanical filters, hi. And, being a BBC xmtr, don't waste any time waiting for them to drift off the channel. Wonder why they didn't put it on 1412, which would be the "even" channel in that part of the world? -Ed.)
- 1502 Poland. Warsaw FS easy here at LSS on 7/24, 9/2, 9/14 etc. with alternate male and female ancrcs, polka mx, Chopin piano IS at 2000. (Taylor, NJ)
- ** 1505 Anguilla. Radio Anguilla positively IDed 0545-0800 RS, gospel mx, BBC mx from London and MoR mx, no advertising hrd. The ID said 1510 kHz, however, was easily separated on my Sony portable from local WRAI-1520 but difficult to isolate from much-weaker WMNT-1500. No mention of power, but much weaker than PJD-2 on Sint Maarten, which is near Anguilla. I broke down and sent a report, my first in 7 years. Stn noted off the air during midday hours 9/18 but finally s/on at 1600 w/theme mx by the TJB. (Tijuana Brass-Ed.) Announced "commencement of evening broadcast" till 2000 and read their pgm sked which consisted of BBC-London news feeds and music - MoR, calypso and soul. Announcer sounds very inexperienced. Still no advertising hrd. (Bowab, from 2 reports, his of 9/14 off the PR coast and of 9/18 off St. Thomas, V.I. - hope I didn't break security)
- 1575 unID. SS noted here during SA opening 9/8, 2230 w/good signal. IS hrd at 2230 played on organ, ascending arpeggio: do-mi-sol-do. Who? (Taylor, NJ)
- 1580 Mexico/unID LA. XEDM noted good at times around 0030 on 9/8, a second SS at the same time but no ID, who? (Nelson, Mass) (possibly a HJ here-Ed.)
- Special Round-Up of Info on Puerto Rican Stations -----
tnx Alex Bowab
- 580 WKAQ, San Juan, RS runs past 1 am local time (0000) and presume AN. (I believe they are an-Ed.) Easily IDed because they average more than one jingle between each record. Many top-40 style gimmicks with frantic deejays. Few US tunes however, all of local origin, mainly.
- 740 WIAC puts on OC at 0445, s/on is at 0500 along w/Radio Maracaibo, when hrd on 9/14, WIAC was the 2nd one to s/on at 0500.
- 760 WORA Mayagüez has s/off at 2300 in EE; like many other P.R. stations, they pronounce their call as a word: "Wora".
- 810 WKVM has RS in SS but w/many US records. S/on is at 0400 weekdays, 0500 Sundays in EE and s/off 2258 or 2300 w/SSB.
- 870 WHOA puts OC on at 0450 daily but RS occurs at odd times: 0510-2310. Does not use anthem. Sked is all-EE w/US MoR mx.
- 940 WIPR San Juan s/on 0530 9/18 w/SSB and P.R. anthem, then farm pgm.

- 1070 WMIA s/on SM 9/14 at 0510 in very broken EE, then into SS.
- 1190 WBMJ San Juan now on RS w/very professional Top 40 sound, all in EE. ID is "a Bob Hope Station" on the hour. Is AN with the Jack Schwartz show. They weren't audible daytimes west of the island; off the north coast they were strong days and mixed w/WOWO nights. (Has a null toward WOWO-Ed)
- 1390 WISA Isabela can be recognized by their distinctive reverb sound. They are the only stn on the island, besides WBMJ, using echo.
- 1520 WRAI slogan is Radio Aeropuerto Internacional; hrd an ad for Eastern Airlines, stn must be near San Juan Intl Airport?

--Tnx to Alex for this info.

VERIFICATION SECTION

- 610 Mexico. XEGS, Radio 610, Guasave, Sin. sent v/1, José Luis Aguilar Becerra, Locutor the signer. (Richard Wood, Honolulu Hawaii)
- 1020 Tonga. Letter and QSL card from ZCO, signed by Merv. Holmes-Libbis, Supervising Technician, Tonga Broadcasting Commission, P.O. Box 36, Nuku'Alofa. Most unusual stamps on the envelope, like three footprints, one 4 shilling like a banana and 2 10 shilling shaped like sports figures. (Norm Maguire, Honolulu Hawaii)

What a coincidence that our 2 reports of veries should both come from different DXers, both on Hawaii. Richard Wood is actually in Kailua, however and has a new location about a mile from the old one. Those of us at the Convention who saw his new SP-600 will be glad to know that it arrived safely and is working well. Norm is returning to N.M. the end of this month and has been trying to get a log on KUAM-610 (too much KQMB interference so far) altho ham radio (KH6FQB) has been good out there. He's had the same problems your Ed. has had to put up with, namely, too much city between the DX and the DXer.

73 Bob

CORRECTIONS TO PLANS:

- 1. The plate on the lower right hand corner of page (D) is "I"; the plate between "D" and "F" on page (E) should be "J". Lettering broke up during printing.
- 2. On page (C) , the letter next to "L" is a lower-case "j".
- 3. On page (E) , plate "J" is also 5 1/2" x 3"; the pair of holes in the center of plate "H" on same page are 1/2" from the edge of the plate.
- 4. The Range extender capacitor "M" is the blob shown connecting the toggle switch and the tuning capacitor frame in the upper left hand drawing on page (F) .
- 5. There are no notches on the plates to keep the wire in place; the spreaders, once woven through the windings and twisted, tighten up the wires so much that no notches are needed.

PARTS AVAILABILITY:

- 1. There is no single supplier which carries all of these parts; some must come from Lafayette and some from Newark. The Lafayette items are all shown in the newest edition of the Lafayette Industrial catalog; catalogs from both suppliers will be sent by them upon request.
- 2. If 2N4416A FET's cannot be easily obtained, the more common 2N4416 can be substituted without too much effect, although the former is more desirable. For best results with the FET amplifier, use a pair matched on the basis of transconductance.
- 3. The Q-spoiling potentiometer, "N", is primarily for use with the FET amplifier; it will have relatively little effect on the performance of the unamplified loop except at its most extreme setting.
- 4. The tuning range switch, "L", may be SPST, SPDT, etc.; it is only used to switch "M" into the circuit; if multisection switches are used the extra sections just remain unconnected.
- 5. Longer feed-line than the 36" material specified is also available from Lafayette if needed; Lafayette item 11 T 7408 is identical except is 54" long. Automobile radio repair shops often have extenders as long as 72" in stock; check locally.

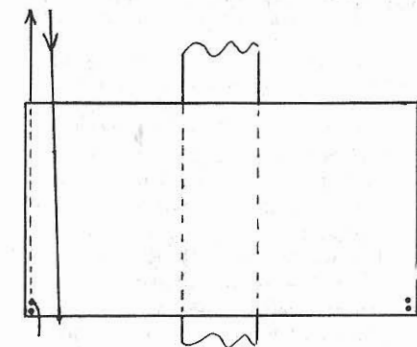
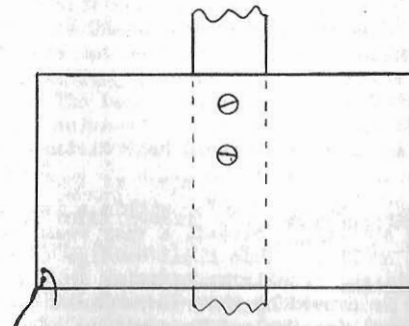
ASSEMBLY SEQUENCE:

- 1. Fasten one center plate "F" to arm B2 with wood screws as shown on page (G) .
- 2. Lay the 4 crossarms (with the slanted ends properly oriented as shown on page (C)) and "sandwich" them between the 2 center plates with bolts as shown on page (G) . Make certain the arms are at right angles to one another before tightening the whole arm assembly.
- 3. Fasten the 3 arm plates ("D") to the arms with wood screws; mount the terminal arm plate ("E") on the long arm as shown on page (F) .
- 4. Mount the tuning capacitor mounting plate on A1.
- 5. Fasten the tuning capacitor ("K"), Q-gain pot ("N") and range extender cap switch ("L") on the mounting plate as shown on page (G) .
- 6. Wind the tank coil with the proper number of turns (see page (N)).
- 7. Wind the link coil and mount the terminal block plate if FET's are not used.

(n)

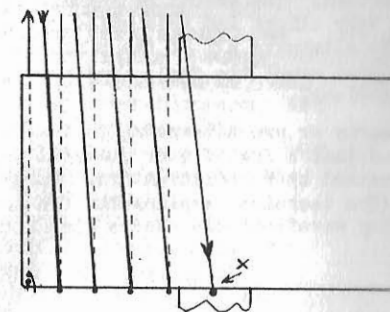
8. Connect the two free ends of the tank coil protruding from the edges of plate "E" to the tuning capacitor lugs. Make certain you connect one wire to the lug on the capacitor mounting screw (see page (G)) and the other wire to the lug protruding from the bakelite insulator on the top of the capacitor. Miswiring this tuning capacitor is the most likely mistake you'll make so be careful!
9. Now wire in the range extending capacitor and switch and Q-gain control as shown on page (F). Keep wiring as short as possible.
10. If FET amplifier is not used, connect the two ends of the link coil to the terminal block as shown in the upper right hand corner of page (F). Scrape the insulation off the center of the link-coil next to where it passes through the wooden arm and solder a short lead to the bare spot; connect this lead to the terminal block as shown on (F). When you scrape the insulation off, be careful not to nick the wire.
11. If the FET is to be used, mount the completed amplifier on the loop at this time. Run the shortest possible leads from the ends of the tank coil to the two input terminals of the amplifier as shown on page (K); bare the center of the tank coil and connect the center tap to the amplifier as shown.
12. Now connect arm E1 to the stub protruding from one side of the center plate ("B2"); also bolt B3 to E1. Now bolt the entire assembly to the mounting shaft.
13. Lay arm "B3" against the mounting shaft and bolt on the tilt lock plate ("I"). The wingnuts ("CC") will then tighten the lock plate against A3 and will allow the operator to freeze the loop at any desired tilt angle.
14. Adjust the spacing of the turns where they pass over each end plate so that the distance between adjacent turns is even. It is important that the loop winding be as symmetrical as possible relative to the center tap if the FET amplifier is used.
15. Now "weave" the spreaders in and out of the windings; two spreaders on each side. When all of the spreaders have been threaded into the windings, twist them 90° one at a time. After all 8 have been twisted, the windings should be under relatively great tension. This eliminates detuning due to vibration of the wire and reduces the distributed capacity of the winding by increasing the average distance between adjacent turns.

(o)

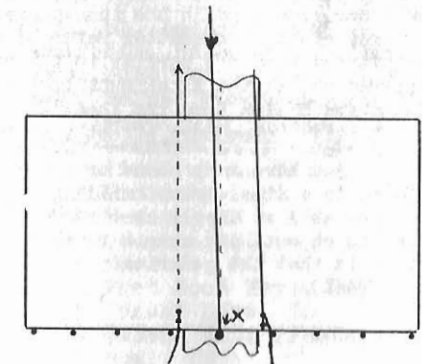


Begin winding tank coil by weaving end of wire through the pair of holes on end of plate for strain relief. See bottom left-hand corner of page G for detail.

One complete turn has been wound around the loop.



After 5 complete turns have been added, the wire passes through the hole drilled through arm A1; winding then continues as before until a total of 10 turns have been made. Pass end of winding through the pair of holes on right side of plate to anchor. Strip insulation away at point "x" for center tap. Spacing between adjacent turns should be made exactly one-half inch!



If the FET's are not used, wind an 8 turn tank instead; pass through hole in A1 after 4 turns have been added. The link coil consists of 2 turns as shown above; the ends are anchored through the holes near the center of the plate. Note that the middle of the link coil also passes through the center hole as well as the tank coil! Spacing between adjacent turns is 5/8" for the tank coil if 8-turn tank is used. Make the link center-tap at point "x".

Because the FET Altazimuth loop antenna permits the nulling-out of powerful local signals to a much greater degree than any previous loop design, a number of novel effects may be noted when you attempt to null out a nearby station.

You may find that the signal from your local will drop from say S9 + 80 db to S4; in the daytime you may hear nothing but noise with your local nulled out. In this case you will have reduced the local signal so greatly that you are just hearing the background noise level - exactly as if the station had actually signed off the air. In this case the null depth is said to be greater than the signal-to-noise ratio for your location and the station in question. At night you should hear distant DX stations on the channel.

If you've got an extremely powerful local - say a 50 kw'er within a few miles - you may not be able to totally eliminate the station. Instead, a very weak and highly distorted bit of signal will resist complete nulling. This final vestige of the local station is the signal actually being backscattered from irregularities in the ionosphere directly overhead; the distortion is caused by the random phase cancellation of this scattered signal. This very weak signal (equivalent in power to only a fraction of a watt in most cases) cannot be totally eliminated by any antenna.

If you have another powerful local station in the neighborhood and its frequency is within a few hundred kHz of the station you're trying to eliminate, you may encounter a strange phenomenon that was rarely observed before the invention of this antenna - the "Luxembourg Effect". An example will help to illustrate this effect. When the author nulls his superlocal WRKO on 680 kHz (0.4 volts per meter of signal) during the daylight hours, the signal from local WCAS (740 kHz) is heard very faintly in the background mixed in with the highly distorted skywave backscatter from overhead. This is not a typical spurious response (e.g., not an image or sum-and-difference mixing in local phone lines, etc.) but is actual crossmodulation produced in the ionosphere directly overhead. In the example just cited, the programming of WCAS is actually being transferred to WRKO's signal by slightly nonlinear processes in the ionosphere; this transferred signal is then picked up by means of the backscatter returned from overhead. The amount of signal actually transferred from one carrier to the other is very slight and this effect is never observed unless the Altazimuth loop is used to eliminate all of the direct and groundwave pickup from the local station; in that event the small fraction of watt of effective Luxembourg effect then becomes obvious.

If you have many phone or power lines nearby or are attempting to use this antenna in a steel-frame building you may find that a few of your powerful locals will not null as deeply as others. This is caused by reradiation from nearby metallic objects and cannot be eliminated. (The technical explanation for this effect is that the polarization of the incoming wavefront has become significantly elliptical).

Gordon P. Nelson
Box 99
Cambridge, Mass.
02138

DOMESTIC DX Digest

Randall Kane
132 Beacon St. Box 72
Boston, Ma. 02116

LATEST LPRT LIST

This list is reprinted from the NNRC bulletin thanks to Page Taylor.

* = 20 watt LPRT; f = CBC French network. Otherwise, 40 watts English.

- 540 CBXQ Ucluelet, BC (860) CBXJ Jasper, Alta
- CBAC Barrington, NS *CBRT Ashcroft, BC
- CBLI Deep River, Ont *CBUH Chase, BC
- CBEN Mindemoya, Ont *CBRR Cranbrook, BC
- fCBLU Smooth Rock Falls, Ont *CBRD Field, BC
- *CBLJ Wawa, Ont *CBRJ Grand Forks, BC
- fCBFF Chibougamau, Que *CBUE Kaslo, BC
- CBMM Senneterre, Que CBUQ Lake Windemere, BC
- 560 CBDE Dawson City, YT CBUL Lillooet, BC
- CBDD Elsa, YT *CBXM McBride, BC
- 570 CBDN Schefferville, Que CBUP Merritt, BC
- CBML Val d'Or, Que CBRP Princeton, BC
- 580fCBAH Meteghan, NS *CBRA Revelstoke, BC
- 590fCBFK Murdochville, Que CBUC Salmon Arm, BC
- 600 CBNI Cow Head, Nfld CBUJ Slocan City, BC
- fCBAS Quinan, NS *CBRL Williams Lake, BC
- CBLV Bancroft, Ont CBDU Lynn Lake, Man
- 610 CBQA Churchill Falls, Nfld CBKB St. Lazare, Man
- 630 CBRZ Bralorne, BC CBXF Ste. Rose du Lac, Man
- CBRW Port Hardy, BC CBDI Fort Smith, NWT
- CBRG Prince George, BC CBDU Haines Junction, YT- Mile-
- 690 CBDS Pukatawagan, Man post 1016 Alaska Hwy
- CBDO Fort Simpson, NWT 880 CBDH Uranium City, Sask
- CBES Ignace, Ont CBDV Pine Point, NWT
- CBDM Beaver Creek, NWT 900*CBRK Kimberley, BC
- 710fCBFO Senneterre, Que CBUM Nakusp, BC
- 730 CBRF Fernie, BC *CBUB Osoyoos, BC
- *CBUA Oliver, BC CBUO Procter, BC
- *CBIG Geraldton, Ont 920 CBQE Fort Good Hope, NWT
- 740*CBRM Creston, BC 940 CBXR Fraser Lake, BC
- CBRO Greenwood, BC CBXU Hudson Hope (Portage Mtn
- CBUK Kitimak, BC Dam), BC
- CBUI New Denver, BC CBDL Destruction Bay, YT
- CBRN North Bend, BC CBDK Teslin, YT
- CBRQ Quesnel, BC (kwuh-NELL) 970 CBDX Swift River, YT
- CBUN Salmo, BC 990 CBUS 100 Mile House, BC
- CBRS Smithers, BC fCBAE Digby, NS
- CBAW St. George, NB fCBAK Kedgwick, NB
- CBDZ Churchill Falls, Nfld CBAD Plaster Rock, NB
- CBNJ Port Saunders, Nfld CBAO St. Stephen, NB
- CBNB St. Fintans, Nfld fCBAA Wedgeport, NS
- CBNF Woody Point, Nfld CBDW Norman Wells, NWT
- 790 CBND Flower's Cove, Nfld CBEI Bonfield, Ont
- 860 CBXB Banff, Alta fCBEM Espanola, Ont
- CBXL Blairmore, Alta fCBFB Megantic, Que

fCBFI Mont Brun, Que
 CBMB Port-Cartier, Que
 CBQF Carmacks, YT
 CBDY Clinton Creek, YT
 CBDB Watson Lake, YT- Milepost 635
 1010fCBEJ Blind River, Ont
 GBLD Dryden, Ont
 CBEB Manitouwadge, Ont
 CBEA Red Lake, Ont
 CBLR Red Rock, Ont
 CBEH Terrace Bay, Ont
 CBLW White River, Ont
 1070 CBUU Clinton, BC
 CBUV Fort St. James, BC
 CBXV Portage Mtn, BC
 1080*CBUD Castlegar, BC
 CBRI Christina Lake, BC
 *GBRE Lytton, BC
 1090 CBNG Gloverstown, Nfld
 CBLC Chapleau, Ont
 CBEC Elliot Lake, Ont
 CBOK Kapuskasing, Ont
 CBLK Kirkland Lake, Ont
 CBLM Marathon, Ont
 1110fCBLX Hearst, Ont
 1140 CBAN Andover, NB
 CBAP Shelburne, NS
 fCBFA Chapais, Que
 CBMI Baie Comeau, Que
 fCBFJ Gagnon, Que
 CBME La Tuque, Que
 fCBFR Matagami, Que
 fCBFD St. Fabien de Panet, Que
 1150 CBXA Mica Dam, BC
 CBXS Midway, BC
 1170 CBRB Burns Lake, BC
 CBUZ Chetwynd, BC
 CBUW Fort St. John, BC
 CBRH New Hazelton, BC
 CBUX Port Alice, BC
 CBRC Terrace, BC
 CBRV Vanderhoof, BC
 1190 CBNC Stephenville, Nfld
 CBAR Ganso, NS
 CBMC Sept-Iles, Que
 1200 CFFB Frobisher Bay, NWT
 (CP: 250w)
 1230fCBAL St. Quentin, NB
 CBAZ Sheet Harbor, NS
 fCBAJ Yarmouth, NS
 CBQC Fort Providence, NWT
 CBOD Maynooth, Ont
 CBMH Gaspe, Que
 CBMN Malartic, Que
 CBDC Mayo, YT
 1240 CBDA Fort Nelson, BC- Milepost 300 Alaska Hwy
 CBXE Golden, BC
 CBXK Pemberton, BC

(1240)CBDP Labrador City, Nfld
 CBAV Sable River, NS
 CBLE Bearmore, Ont
 CBEZ Britt, Ont
 CBLP Espanola, Ont
 GBL0 Mattawa, Ont
 CBLN Nakina, Ont
 fCBFP Parent, Ont
 fCBEK Petawawa, Ont
 CBLS Sioux Lookout, Ont
 1320fCBAI Minto, NB
 1340 CBKD Edson, Alta
 CBRV Alert Bay, BC
 CBDG Cassiar, BC
 CBUR Houston (HOW-stun), BC
 CBUY Lac La Hache, BC
 CBXO Ocean Falls, BC
 CBNH Searstown, Nfld
 CBEQ Barry's Bay, Ont
 fCBEU Chapleau, Ont
 CBLH Hornepayne, Ont
 CBEY Moosenee, Ont
 CBLE Schreiber, Ont
 fCBFH Grande Vallee, Que
 1350 CBAB Grand Falls, Nfld
 CBRU Squamish, BC
 CBXP Tahsis, BC
 1370 CBNE Port-aux-Basques, Nfld
 CBAU Larry's River, NS
 1380fCBFG Gaspé, Quebec
 1400 CBWG Gilliam, Man
 CBDQ Wabush, Nfld
 CBEW Frasedale, Ont
 CBLV Haliburton, Ont
 CBLZ Hearst, Ont
 *CBLI Longlac, Ont
 CBMJ Murdochville, Que
 CBED Spanish, Ont
 fCBEE Sturgeon Falls, Ont
 CBMG Gagnon, Que
 1440fCBEG Elliot Lake, Ont
 1450 CBXC Colema, Alta
 CBKE Fort Chipewyan, Alta
 CBXI Hinton, Alta
 CBKF Waterways, Alta
 CBXH Cooper Creek, BC
 CBLF Foleyet, Ont
 CBLQ Latchford, Ont
 CBMA Noranda, Que
 1490 CBXN Natal, BC
 CBAM Edmunston, NB
 CBDJ Hay River, NWT
 CBLA Atikokan, Ont
 1510 CBEL Vermillion Bay, Ont
 1530fCBAQ Rogersville, NB
 1550fCBAG Weymouth, NS
 CBFE Riviere-au-Renard, Que

+ 460 WNBC-NY S/off 2330 past 2 MMs. (Frank Waldron, Matawan, NJ) SP still every MM at 0030 per Log, not yet NSP. (Page Taylor)
 740 KRMG-Okla w/good signal 0032 8/26. (George Kelley, Belmont, Mass)
 + 910 GHRL-Que S/off hrd 0100 8/31, is FF. (Waldron, NJ)
 * 920 CKCY-Ont AN MM 9/1- again? (Waldron)
 940 CJGX-Sask Strong w/RR 0045-0059 followed by religious message & nx at 0100 8/31. (Marc DeLorenzo, Boston, Mass) Good to hear from you, Marc! Fair to strong w/wx at 0130 8/26, RR. (Big George)
 1010 KXEN-Mo 8/26 at 0307 ending 50kw HTs. (Dave Fischer, Lincoln, Neb)
 + CBR-Alta S/off 8/26 at 0304. (Fish)
 1090 WGO-C NC 7/29 TT 0245-0300. (Page Taylor, Butler, NJ)
 1110 CBLX-Ont Hearst logged for rpt 9/14 0000-0004 w/FF nx; abrupt s/off after "Ici Radio Canada" ID, no anthems. WBT off w/XR trouble, leaving CBLX/KFAB alone. (Taylor, NJ)
 1240 WSNY-NY W/good signal & RR at 0015, 8/26. (Kelley, Mass)
 +1370 WFEA-NH Off nightly at 0000. (Walt Rogers, Nashua, NH)
 1400 WALE-Mass 7/14 ET 0100-0115, TT. (pt)
 *1440 KIL0-ND R/c is 3rd Sun from 0115 per letter from GE, unlisted. (pt)
 *1450 WTSA-Vt Hrd AN 8/30-9/1 w/special oldie RR thing bombing in at times, not hrd 9/3 or since. (Waldron, NJ)
 1460 WPNX-Ala Fair to strong w/much fading 0027 9/1, C&W. (George)
 *1470 KWVY-Iowa Per verie, r/c-TT is 0100-0130 3rd Fri, EST all year long; hrd 8/15 w/good sigs. (Waldron, NJ)
 +1480 WIOS-Mich V/1 says my TT 0039-0046 8/3 was a f/c; they say they have no plans to get to 1410, but will apply for 5000/1000 full-time on 1480. (Waldron, NJ)
 WADR-NY 8/31 ET/mx 0045-0100. (Taylor, NJ)
 * WISM-Wis Hrd on RS 0357 MM 9/1 w/RR u/WLEE, well past listed s/off; then WHOM s/on. (Waldron, NJ)
 1490 WFLB-NC w/CHYM at 0126 9/1, first here. How does CHYM get away w/ running so much power? (Chris Lucas, Fairfield, Conn)
 Sheer deviousness. (Lub)
 WOLF-NY ET w/ID at 0015 8/25. (Lucas, Conn)
 X1450 WENZ-Va 9/8 0233-0237 w/R&B, on top. (Geoff Fox, Saugus, Mass)
 1530 KFBK-Gal Fair w/BB scores & mx 0207 9/1. (Marc)
 1550 WSER-Md ET-OC/TT very weak 0048-0104+ 9/14; requested rpts & promised QSL. (DeLorenzo, Mass)
 S5 on DX 9/4 0149 w/TT & ID dedicated to IRCA/NRC. (Marc)
 KKJO-Mo DX in well w/TT 0110+ 9/4 but topped by unusually potent KKHI. (Starr, Ohio)
 WMAD-Wis ET-OC/TT 0015-0026+ 8/31, fair level. (Marc)
 1560 KLTI-Mo 8/31 TT 0100-0115. (pt)
 1580 WPAC-NY ET-mx 2342 8/17, annod 10kw-Dir & 5kw-ND. What happened to the 250w-ND CP? (Waldron) All things come in time, my son. (Lub)

sunrise and daytime

380 KRVN-Neb Is ETingnow days. (Starr, Ohio)
 + 990 WNTY-Conn Noted 9/6 @ 1450 w/MoR, don't know when RS began. (Lucas)
 **1164 WHES-NY? MoR/RR pirate, annod 1180. Hrd 8/21 1330-1450 s/off, 1730-1830 s/off & 8/25 @ 1200; seems to be in or near NYC per nx items & annod SR/SS times, but no location announced. (Chris Lucas, Conn)
 +1410 WKBH-Wis S/on 8/25 0500, then nx/wx. (Fish, Neb)

990 unID LPRT(s) FF net nx 8/31 at 2200 way on top; many listed, probably Lac Megantic. (Taylor, NJ)
 1520 WTBE-NY S/off 1800 through July and August. (Lucas) Neat-o! (sk)

schedules and other info

- 540 CBEF-Ont Per Wayne Plunkett, stn will not be on for a long time. (Starr, Ohio)
- 570 WVMI-Miss Off 8/17-18 due to hurricane damage. (Edmunds, NJ)
- + 580 WTAG-Mass Is AN, off MM at approx 2300. (Waldron, NJ)
- 690 WTIK-La On w/AXR (5 kw) & antennae 8/17-18 due to hurricane. (RJE)
- + 790 KONA-Hawaii New owners granted CP to restore service, 1000 U1. (RJE)
- + 810 WSJG-Miss Granted increase in nite power to 500w. (Edmunds)
- + 910 KGLG-Okla Per verie is AN C&W, said mine is "most distant report yet" (yes, Richard ~~sk~~), hrd 8/15. (Waldron, NJ)
- 940 WNAL-Ohio Recent (8/28) letter from stn says they haven't begun work yet. (Starr, Ohio)
- + 970 KHFI-Texas granted KTAP. (Starr)
- + 990 WBTE-NC Is on w/1000 D1. (Edmunds)
- +1000 WREM-Ky Call for Jenkins CP. (RJE)
- * CP-Ohio Heath 43055, 250 D1, Box 2061. (RJE)
- + CP-Va Tappahanock 22560, 500 D1, 318 Prince St (RJE)
- +1080 CP-WVa Hurricane 25526, 5000 D3, Box 208. (Edmunds)
- +1110 WTBQ-NY Addr for new stn, now on, is 7 Oakland Ave., Warwick 10990. (Starr, Ohio)
- WELX-Ohio Hrd going to Convention, C&W and has the worst audio quality I've hrd plus a bad 60 cps hum. Unusual for a new stn. Evidently near RS, is advertising for anners in Broadcasting. Addr is Box 484, Cornwall-on-Hudson 12520; will be MoR. (Starr, Ohio)
- 1170 WWLE-NY
- +1230 KHND-Mont CP to U1. (Edmunds)
- + KADA-Okla CP to 1000/250 U1. (RJE)
- + WNVY-Va Net: CBS. (Russ)
- +1240 KVRK-Ark CP for 1000/250 U1. (Edmunds)
- + KWAK-Ark CP for 1000/250 U1. (Edmunds)
- WGCM-Miss Off 8/17-18 due to hurricane; using longwire until tower re-erected. (Edmunds, NJ)
- *1250 WTMA-SC ANing 0230 8/31, RR. (Waldron, NJ)
- +1270 CP-Miss Monticello 39654, 1000 D1. (Edmunds)
- +1300 WLOT-Wis Is on. (Edmunds, NJ)
- +1310 WORC-Mass Is AN, off MM at 0000. (Waldron, NJ)
- WDXI-Tenn My item in 8/23 DDXD should be WYXI-1390 tip in same issue.
- +1330 WHAZ-NY Is D1, not SH; runs normal daylight hours, 0600 a/on w/500 w PSA in winter. (Lucas, Conn)
- +1340 WNHC-Conn 0430-0100 (0130 Sun or Mon, whichever you prefer). (Waldron)
- WIRY-NY CP for U3. (Edmunds) Not listed as U3, Russ. (sk)
- +1370 KAWW-Ark CP to 1000 D1. (Edmunds, NJ)
- +1390 WJRM-NC CP to 1000 D1. (Edmunds, NJ)
- +1400 KREO-Cal CP for 1000/250 U1. (RJE)
- +1430 WVAM-Pa AN MM 8/18, "obviously" NSP. (Waldron)
- +1440 KCOY-Cal Granted KUHL. (Edmunds, NJ)
- +1450 WMAS-Mass Now AN w//Mx after Hours", hrd 0130 9/3. (Waldron)
- +1490 KGUZ-Ariz Is on. (Edmunds, NJ)
- * WLOX-Miss Off 8/17-18 due to hurricane; returned 8/19 w/50w AXR pending new XR & tower. (Edmunds)
- +1570 CKLM-Que Is now NSP per Frank LaBelle of Montreal & IRCA, via devious sources. He spoke to Hughes LaPointe of CKLM Technical Dept.
- +1590 WOSL-NC CP to 1000 D1. (Edmunds)

1234567,

all good children

go to

heaven.

73, randy

September 27, 1969

ALEX BOWAB - OI Div - U.S.S. Forrester - F.P.O. New York - 09501

From Guantanamo Naval Base, on S.E. tip of Cuba: Strong local Cubanos on 600 680 880 950 1090 1130 1290 - presumed to be in Guantanamo city of other nearby burgs in Oriente province. 1290 IDs as CMKS, Guantanamo, when they have EE NX @ 6 nightly. A lone signal from the mainland is here days, WGBS-710 at 470 miles - at night they and less than a dozen other voices from Stateside appear - WINZ WRDW WLCY WHP WTOP WKBW WCKY WSRF for instance; only WGBS and WCKY are of listenable strength. After some of the locals pipe down after midnight WLS WQAM and very few others sneak in - but there are still far too many Carribean outlets w/ undisciplined frequency controlling devices to get much US radio here/ AFRS-1340 here on the base operates 6am - midnight w/variety - they were told to cease using WGBY as calls. All the Jamaican frequencies are readable here day & night. Both RJR (Boss Radio) and JBC (The Big J) make extensive use of female DJs - and both devote considerable portions of their sked to Soul R&B w/DJs who sound highly reminiscent of WWRL WVON, et al. Except for the slight British accent & hard liquor ads you'd think they were US stations. Foregoing related for those who want to know what to listen for. Our itinerary will take us to Puerto Rico next - not Jamaica as originally planned. Lastly, a daytime dial scan reveals PJB-800 still solid after travelling 650 miles - that's what a half megawatt'll do for you. And, Cap Haitien-1035 noted silent most of the waking hours; probably an irregular sked.

PAUL KIROY - 2113 Fort Davis Street S.E. - Washington, D. C. - 20020

I certainly hope that the NRC Convention will be the most successful ever held. I wish I could have been there but time did not permit it o/Labor Day. I will be going to Mobile & New Orleans later this month and hope to check DX activities down there. Nothing spectacular heard. One veri: WKAQ-580 P.R. sent v/1 & decals for taped report. DX: R. Titania-825 heard many times during July around midnight EST. 8/3- HJAI-1040 @ 1:50-3am for taped report. WAAB-1440 Mass. 3:37am w/an exceptionally good signal. WSWA-800 Va. s/on 6am, WCPG-760 N.C. s/on 6. 8/22 produced a rare appearance of KGO-810 Cal. @ 1:48am w/WGY off. 9/1- UnID Col. on 1025 @ 1;10am to 1:30, probably HJER. Weak SS on 1015 @ 1:25am, probably YSC. According to a BBC broadcast I heard on 8/15, private broadcasting will get a boost, but it will be limited to the VHF (at least, at this time). An increase in listeners' license fees is also expected. Is it in the cards that private medium wave broadcasting may soon emerge or that the licensing of listeners may be abolished? One can always hope.

FRED NORDQUIST - 302 Sandra Lane - North Syracuse, N.Y. 13212

Hi. Now into my sixth DX season w/NRC which probably won't be as active as the previous years. I hope to be more active on MMs, however. Present totals logged are: Total 393, USA, 301; Canada 56; Mexico 9; Cuba 10, S.A. 4; TA 3; others - 10. State w/most logged - MY w/89. RX: SX-110 w/56' loop utilizing a crude tilting technique. Also a 100' longwire strung N/S recently installed. Recent DX: 8/17- WHLL-1600 W.Va. w/NX 6:30pm, CHIN-1540 Ont. u/WPAW null w/FFC 6:45. WISL-1480 Pa. rr 7:36. 8/19- WOLF-1490 N.Y. noted off again Tuesday am. 8/25- WCEM-680 Md. w/tele-talk 9:17pm. Notes of interest: PJB-800 is planning to directionalize N/S - they are making pattern studies now; this will completely kill CKLW's signal here, I bet. WFBL-1390 is on the Buffalo Bills' FB net. WPAW-1540 plans to switch to Ae network on 9/1. One v/1 back from WJAB-1440 after four months due to CE change. That's it for now, I hope all had a swingin' time in ST. LOUIS. 73.

ANDREW F. RUGG - 16 Lake Breeze Avenue - Pointe Claire, Quebec

Greetings! I have reactivated this DX Den and hope to be quite successful this season. The BCB has sounded good lately. Warner, watch my smoke! On 7/20 I logged two new stations: CHIN-1540 @ 7:46-7:58pm. & WDR-1586 8:15-8:38pm. On 8/4 I was in Nfld. For the first time on my own initiative, I visited a radio station: WOCM-590. On 8/8 I was in St. Pierre & Miquelon, where I easily pulled in RNE 683-773 & PJB-800 on a portable. The next new logging was on 8/31 when Agadir-935 broke through WBen from 1:02-1:11am (my 54th country). For some reason, I was

September 27, 1969

never able to log it before. Who would be the station u/CJGX-940 @ 1:15? The last newie was 9/1 @ 1:07-1:22 when CHER-950 came in. Agadir was even stronger on 935 at this time. New veries are HIJP-1020 & WDR-1586. The Quebec government just commenced construction of a gigantic overpass which is practically in our front yard. I hope it doesn't worsen reception. I have to write the C.A. exams in early October but after that I should be very active. 73.

MORRIS SORENSEN - Box 93 - Emsdale, Ontario

My report in the July DX NEWS in which I mentioned quitting International Nickel to get a Summer job closer to home proved rather ironic as shortly after sending it I received an offer of a six-week job in B.C. & I accepted it. DX logged prior to leaving included: 6/17- CBEE-1400 the Sturgeon Falls, Ont. LPRT in for a log o/CKCB, 3:29pm. 6/23- WJL-1440 N.Y. another surprise day-time catch o/CKPM, 11:29am; WEHH-1590 N.Y. 6:59pm, WCDL-1440 Pa. s/off 7:43pm. While I was in B.C. I was stationed in 100 Mile House which is about 300 miles NE of Vancouver but my work took me as far afield as Prince George & the lumbering community of Upper Fraser which is 55 miles E of Prince George. Several factors including my job, the lack of a decent RX & various Summer activities which I found more enjoyable kept me from doing any serious DXing in B.C. What little info I did pick up re changes in station data etc. will be sent to Randy Kane. I enjoyed the West very much & am seriously considering moving out there after I graduate (if I graduate, hi). I have been rather slow in getting back into the DX groove since returning to Ont. w/only two new loggings. MM 8/11, KIMN-950 Col 12:35am, state #41 as KOA doesn't exist here, & 8/25- WPHM-1380 (ex-WTTH) logged for call change @ 9:59pm. QSLs received: WJL-1440 (marked QSL #1 so I guess they have just changed their verie policy), WOC-1420 CHUC-1450 WENE-1430 CBEE-1400 WYSL-1400 WING-1410 WEHH-1590 WCDL-1440 & WBY-1590. I made it to the ANARC Convention in Toronto. We had lots of fun despite the small turnout & I was pleased to meet several NRCers, including Sam Simmons, Andy Rugg, Gray Scrimgeour, Jim Warner, and of course Wayne Plunkett whom I had not seen for several years. Is the call of the new Castlegar B.C. on 1230 CKQR as listed on P. 5 of July DX NEWS or CHQR as listed on P. 30? (CKQR is correct, Morris - first was listed CHQR & then corrected to CKQR -ERC) I met a girl from Castlegar this Summer so I will have to ask her in my next letter to her, hi. I wish I could be with you in ST. LOUIS this weekend but I barely had enough bread to make it to Toronto, hi. However, I plan a big DX session here MM 9/1 to officially start the new season. I would like to thank Don Bridson, Russ Edmunds & John Tweedie for helping me w/American stamps. 73.

ALAN MERRIMAN - Box 6 - Fairfax, Virginia - 22030

I just got home from the Convention a couple of days ago, where a great time was had by all. Walt & Bruce & everyone else who was in on organizing the Convention did a great job & I would like to say WELL DONE to everyone concerned. Some DXing was done during the Summer so here is what was heard. First veries have come in from WISD WCAR CKPT WCPM WBMJ WMOB WDLR KUAT WYNX WPTX WBVM WCCR WCVR WCAL WADE WCOY WXIN & KIRL. New DX: 7/11, brand new WCCP-1560 w/ET/mx @ 12:09am. WMOB-840 w/ET @ 1. 7/12- WCCR-1580 r/c-TT 12:20-12:30. 7/15- WPTX-1450 w/r/c 11:48-12. 7/25- KUAT-1550 w/ET @ 2:05, heard w/both 25 & 5kw. 8/4- WCVR-1320 w/test @ 11:15, this for RLA. Long-wanted WDLR-1550 w/ET @ 1:25. 8/6- WCOY-1580 ET @ 11:58. 8/8- WADE-1210 w/ET @ 12:45. 8/18- Finally, KIRL-1460 w/one of their many ETs @ 12:45. 9/4- KKJO-1550 in on their DX @ 1:09, not needed here but the first time I have heard them in quite a while. First new logging of the new season was WBZE-1470 w/ET/TT @ 1:36. That's it from here. 73 and good DX to all.

CLIFF RENO - 75 Parish Road - New Canaan, Connecticut - 06840

Hi gang! DX since last Muse has been great. My regular RX is still broken, but I have been using a Bulova Model 380 in the meantime. I am definitely going to get the old Hallicrafters 5R10A fixed this week. Its sort of a hassle trying to dig in the back of the Bulova to place the antenna. Anyway, down to DX: 7/17- WIBC-1070 finally logged w/rr o/u CBA @ 7:10pm, WFLI-1070 w/rr & ID @ 6:55pm,

September 27, 1969

CJSS-1220 u/WGAR w/rr, time & ID @ 8:41pm. 8/3- WBEN atop frequency w/phone contest, ID & rr 11:09pm. MM 8/4- CKWS-960 w/light rr @ 12, CJRC-1150 w/FF rr, commercials & phone requests 12:44am. 8/7- CJRP-1060 in FF, listed as CJLR, but re v/1, now this call, heard w/FF rr & ID jingle. NOTE: According to Jim Renfrew, they have changed calls again, is this so? 8/8- WMTR-1250 w/NX @ noon. 8/25- CFRA-580 w/NX @ 9pm. Umm CJEM-570 atop channel w/FF MoR. First heard 1/8/69. Probably my best Canadian, report sent on 1/9 but nothing yet. F/up sent & fingers crossed. Veries: v/q- WIBC-1070 WFLI-1070 TGN-725 CKWS-960. v/1- CJRP-1060. Woodstock was great! How was Tanglewood, ERC, hi? (It really sucks, Cliff! -ERC) Well folks, all for now. I swap WPE SWL cards. Landline here is 203-966-4903, never home Fri & Sat. nights. You CAN call MMs! 73 & Peace! PS: On the WGSN TEST, they will QSL 100%, but they request you include return postage in your report for the v/q. Dig life, it ain't all that bad.

WILLIAM B. FEIDT - 9931 Glenn Dale Road #303 - Lanham, Maryland - 20801

Many thanks to Walt Breville & Dave Carlson for doing a truly superb job in hosting the ST. LOUIS Convention. I really enjoyed the activities & meeting many of the CXers about whom I had only read previously. To DX: 8/20- WGAI-560 above jumble momentarily @ 9:53pm w/ID. RAI-845 Rome in quite well @ 10pm & on. 8/22- RAI-845 @ 10:30pm. VOA-1196 Munich @ 10:40pm w/program in unID language, heavily jammed. Tirana-1214 @ 10:45pm in Arabic, up to S-7 at times, but had rough going from WGAR. OC-1295 w/strong S-7 signal was no doubt BBC European service getting ready to open. WDR-1586 Langenburg @ 11:15pm w/its usually fine signal. 8/24 & 8/26 RAI-845 noted at very good level throughout the evening. 9/2- CJCB-1270 Sydney, N.S. very strong w/MoR, but heavy traffic on this spot @ 3:35am. CBI-1140 Sydney about even w/WRVA @ 3:45. I had this one from Paris, but needed at this location. CJGX-940 Yorkton, Sask. all alone @ 3:54am w/mx & TCs for Sask. & Man. CBD-1110 St. John, N.B. @ 3:58 w/o Canada & GSQ in battle with Dolly of Charlotte. CBH-860 Halifax @ 4:10am u/CJBC OC w/regional NX, WX & sports. WGHQ-920 Kingston, N.Y. @ 5am s/on - would this be PSA of 262w? (Sure should be, Bill! -ERC) WCHN-970 Norwich, N.Y. @ 5:03 w/s/on announcement. WCFW-1550 New Castle, Ind. @ 5:15am w/clear ID for AM & FM. XERF-1570 @ 5:30am somehow rose above mess on this frequency for a few minutes w/RS-SS, umm, hi. In evening I heard a het against 1580 @ 7:20 pm; so I put my crystal filter in gear & split off CSB5-1578 Porto w/a real fine signal & a new one here, only my second Portugal. RAI-845 @ 7:50pm. 9/3- WKBA, Vinton, Va. @ 6:30pm s/off. I also had a station on this frequency that sounded like WFMG or some such, who? WKVA-920 Lewiston, Pa. @ 6:45pm RS w/mx. CSB5-1578 in well again for a while around 7pm. I hope to be able to build the FET HI-Q loop sometime before the season gets too much older - this should improve reception around here about 250 times. 73. I enjoyed talking to folks who understand the plight of the BCB DXer, hi. I hope to make some of Dave Roys' gatherings!

JOHN H. SHANNON - 478 East High Street - Kittanning, Pennsylvania - 16201

Greetings, gang. Since my last Musing, I have installed the mechanical filter from HQ in my homebrew RX & gotten a vast improvement in selectivity. The RX is gradually getting from the breadboard stage to the finished product. It will be ready for the DX season this Winter. I only have a few more things to do to it now. In testing it out during the past couple of weeks. I find it is going to be the finest BCB RX I have ever used. I think now I will get started on the altazimuth loop in the latest DX NEWS. My old loop is starting to show its age now, hi. Not too many new stations here lately, but a few: 7/29- HJER-1025 lam s/off w/NA, 8/14- WNAR-1110 Pa. 6:45pm (at last), WMNS-1360 11:46pm r/c. 8/15- WLET-1420 Ga. 12:37am r/c u/WHK, WSIP-1490 Ky. 12:46am. During my RX testing, I noted several very strong LA signals almost nightly w/exceptional signals from umm R. Belize, umm YSS, umm 4VEF, & several others. 9/4-5 eve-morn was quite good for TAs, the first opening here since March, although I probably missed a lot due to inactivity while building the RX. Heard were old friends BBC-1214 Bordeaux-1205, possibly Rome-845 w/heavy static, some strains of mx on 764 which I believe was Dakar. Some veries of late are: v/q- WHP KQV CFRA WPHB WCPA WKVA. v/1- WISR WPTV WBBF WCVI. v/1-CM- CHOK WKOK. v/r- WBBF. Very 73 till next time.

September 27, 1969

RICH EDDIE - 152 West Rose - Webster Groves, Missouri - 63119

Hi fellow members - I hope all had a good Summer DX-wise & otherwise. I enjoyed meeting all of you who came to the NRC Convention in ST. LOUIS & hope to meet more of you at future Conventions. Special welcome to a local new member MIKE DANIELS & all other new members in the Club. A brief re-intro for all new members & for those who have forgotten - I'll be 22 by the end of the month & currently taking a correspondence course in Electronics. Rigs here are two Zenith radios, model 660A five tube w/coverage from 150k to 30mg. in five tuning bands, & a nine transistor Royal 1000 Trans-Oceanic which hopefully will be repaired before too long. My antennas are a 40' longwire & a three-foot loop plus a Realistic Model 7A7 tape recorder. I plan to add the new loop as soon as possible. I have a third class FCC license w/broadcast endorsement. So much for the re-intro. Totals as of 9/4 are overall 709/324, states 41/38, provinces 5/5 & countries 13/7. The only recent DX has been on Wed. 9/3 AM w/R. Belize 834 or 835 heard from 11:19pm to 12:40am EST for Country #13 & WSUI-910 Iowa City ending air check @ lam. Next time I hope to have more DX to report but that will do it for this time. So good DX in the new season, which is either here now or will be soon. 73s. (Rec'd 9/8's mail, Rich -ERC)

DICK TRUAX - 3472 Dixiana Drive - Lexington, Kentucky - 40502

Greetings from Kentucky for the big anniversary issue - perhaps a re-intro is in order. Age is 27 & I have been DXing for 11 years. Since moving to Ky. 2/1/69 I began my log anew & at present I have 790 loggings since that date. Equipment is HQ-150 & NRC Loop. Odds & ends since last Muse: Semi-local WEKY-1340 is now NSP for a possible new MM catch for many. Outlaw "WLUV"-1610 from Cincinnati now is on nightly w/s/on @ 7:30pm EDT per announcement @ 8pm 8/18, I guess the FCC is really asleep on this one! MM 8/18 saw WJDX-620, WBGS-1560 WSJC-810 WMOB-840 WMOX-1010, WNSL-1260 WABO-990 WHNY-1250 & WHOD-1290 on for Hurricane Camille tragedy. The NRC Convention was great - finally being able to associate names with faces & meeting top DXers. Now it's Sept. & I have hopes of breaking 1,000 before this season is too old & I begin my second year in Ky. in Feb. A few of last month's loggings: MM 8/18-WEPN-1600 Pa. f/c w/ID @ 1:58am, s/off @ 1:59. 8/24- WLKM-1510 Mich. s/off o/WLAC @ 7:44pm. MM 8/25- WCLD-1490 Miss. s/off @ 12:05am, KPUR-1440 Tex. ETing w/mucho IDs @ 12:20am for over ten minutes, till past tuneout. Looking forward to new season!

CESAR OBJIO - Calle Benigno F. Rojas 46, 3er. Piso, Apt. 5 - Santo Domingo, D. R.

Hi, DXers - this is my new address. Here I am again after this honeymoon trip through Jamaica, Miami and Haiti. I had a very good talk w/Mike Silvera & Bill Brubaker whom my wife & I met in Kingston in the hotel we were staying at, & later on board the S/S Starward, a beautiful cruise ship. We only had for listening Bill's transistor radio in which I could hear R. Mil-1180 w/a very good & strong signal around 6pm, also Onda Musical-1150 & R. Comercial-1010, both of these weaker, all in Santo Domingo, as well as some Colombian & Venezuelan stations. In Miami I could not see all the friends I wanted to see, only Brubaker who was so kind to me during all our stay there, as well as his relatives, whom we visited twice & spent w/them a very good time. I hope I can meet them again. Only once I could speak to Sheldon Miller by telephone, nobody else. We visited WFUN-790 & Channel 10, Miami color TV station, very interesting as I have never been inside of a color TV station accompanied by Bill. In a trip to Key West I could not hear any Cuban station as I did not have any RX with me. I could see VOA towers on the way in Marathon Key. This trip lasted one whole day & I liked it very much. From Miami I mailed Dominica slides to Gordon Nelson to the Convention Hotel in ST. LOUIS, I hope he received them & were presented to everybody. FEET Althazimut Loop seems to be too complicated but it must be great to have one. Lafayette store in Miami did not have anything of the radio items I was looking for, as I was so much interested in one Crystal Calibrator I saw in their catalog. Now I'll have to order it by mail. Next Sunday I will have all my equipment installed at my new address and DXing will be on the way in this new place. I hope to have good catches here. See you, friends, somewhere else. 73s. (Congrats again, Cesar! -ERC)

SEPTEMBER 27, 1969

DAVE CARLSON - 1214 Henninger Hall - Macomb, Illinois - 61455

I guess I'll start off the season with a Musing. Thanks to everyone who came to the NRC Convention in ST. LOUIS (Cardinal country) over the Labor Day weekend. I hope everyone had a good time as I know I did. Over 50 members were there from all directions. Bruce Reynolds should have a complete Convention report in this issue. I pay my last respects to the Green-Eyed Elephant, the NFL, Roy, & the Iowa SWDXC! Anyway, I'll try to make New York or Passaic or wherever the Convention is being held next year, & I hope to hear Javetski give a lecture on NYC DX, hi. I'm now starting my four year tenure at Western Illinois University in Macomb - which is about 90 miles NW of Springfield. By the way, I found the most popular indoor sport in college is NOT Bowling! 73s for now & keep hopping. (Of course not, Dave - everybody knows it's Table Tennis -ERC)

ROY H. MILLAR - Box 851 - Everett, Washington - 98201

No new loggings since my last report, but a few veries, i.e.: HJFF-1210 KMBL-1450 KSOL-1450 CBXC-1450. The 1450 veries bring total graveyard veries past the 300 mark, w/1450 leading the way now w/55 veries. Biggest news on my Alaska trip was KYAK-650 announcing as "Soon 24 hours with 25,000 watts"; may protect WSM, so we will have to wait and see just how good this signal makes it "outside". AFRN-850 Anchorage announces also as "R. Alaska" but isn't a very potent signal, even in that area. 73.

RICHARD RICHMAN - 14 East Cheshire Place - Staten Island, New York - 10301

The highlight of the Summer was a trip to Hawaii. While there, I visited several Honolulu stations: KORL KZOO KIKI KGMB (radio & TV) & KHVH radio & TV. All demonstrated true Hawaiian hospitality, as did Norm Maguire. I had a most pleasant visit at his apartment, on the evening I arrived. We talked DX, & radio in general. A car radio DX attempt near Diamond Head, yielded KMVI, on Maui. I attended the "Concert by the Sea" radio program, which is heard Sunday nights on KAIM. I also saw the KCCN Tree House, & the exterior of KPOI. In spite of plenty of tries I couldn't get anything except Oahu stations on the table model in my room in Waikiki. More on radio in Hawaii in my next Musing. I stopped in Las Vegas on my way home, but the 113° heat discouraged me from visiting the stations. Back home, CX have improved considerably, since the beginning of the last week in August. Some specifics: 8/25- CJIC-1050 Ont. u/CHUM @ 12:05am w/CBC NX/WX. WCBG-1590 heard w/NBC NX @ 7:03pm on 8/25. Pa. total inched up again on 8/30 when WICK-1400 was logged w/Mutual Sports @ 6:34pm. On of my favorite spots, 1550, was good to me again: 8/30- WVAB Va. w/s/off @ 7 w/Ebb Tide. My second Me. lgging came in the form of WCSH-970 w/s/off @ 12:23 on 8/31. Province #6 was caught a little later, CBW-990 Man. w/CBC NX well o/WIBG @ lam. Another favorite channel, 620, was again profitable for me: WHEN NY w/s/off @ 11:01 on 8/31. A big surprise hezrrd on 1560: WCIC, Gordon, Ga. trsting 11:17-11:23pm 8/31. Who is SS-1500 w/talk & mx 9/1 from 12:25-1am? Anybody know who it is w/"The World Tomorrow" on 1150 from 12:30-1am MMs? Only other MM catch was WDAD-1450 Pa. w/NX & s/off, 11:55-12 8/31. 9/1 brought WBIG-1470 N.C. w/s/off @ 11:57pm. SSS delivered WRCH-910 Conn. w/mx, sports, ads, etc. 9/2, 6-6:14pm. Was that an SS I heard after CEM s/off one night? Two neck & neck races have been going on for some time now/my loggings, one between N.Y. & Pa., the other between CBS & NBC. Currently it stands, NY-44, Pa. 45; CBS-38, NBC-38. Place your bets. Veries: v/q- WTRY WKAT & WHP on a f/up. v/1- WCHE WTEL (t ped 3/31, but had midAug. postmark). I'm crossing my fingers, but it seems my favorite station WNBC didn't go NSP. They now s/off ½ hour earlier than previously. ...

ON THE STATION'S STATIONERY - W N A L - 940

"Dear Mr. Starr:

"Radio Station WNAL of Nelsonville, Ohio is not on the air. We (Valley Broadcasting Inc.) hold a construction permit for WNAL (940 kcs) daytime only but the project has not yet been launched." Sincerely yours, (signed) G. Kemner Bush, Publisher, The Athens Messenger. (We had shown them in "Hrard Since Last Issue." The info came from a FORMER NRC member, so strike WNAL- they're not yet built. Thanks to Jerry Starr for forwarding their letter.

FISH - Lincoln, Nebraska

Welcome another ECB Season! Welcome all newcomers! All tune up your pens for NRC reports in all sections! ERC, order some elbow grease, couple of cases of typewriter ribbons, & tune up dem fingers! GPN's new loop is worth every effort; it's computer optimized & I suggest it strongly! To you newcomers, GPN is extremely active in technical development as well as DXing, his works merit your careful consideration! ST. LOO was enjoyable & 'twas indeed a pleasure meeting many of the troops! Too, I enjoyed very pleasant visit of Richard Wood & Alan Merriman here in Neb.! Now some tidbits, all times A.M.: KFNF-920 now silent! KCJB-910 ND 9/3 @ 1:20 KDHL-920 Minn. 1 s/off vocal SSB, KEIP-920 Tex. @ 1:05 a regular but not always good copy, KXLY-920 Wash. @ 1:10 a regular here after 1 almost nightly so if you need Wash. here's an easy catch. KIMR-920 Col. @ 7:30 now regular, CJCA-930 A Ita. @ 1:30 NX I&C o/WKY. KXEN-1010 St. Loo 8/26 @ 3:07 ending 50kw. test; CBR-1010 3:04 s/off-GSQ, WBEL-1380 Ill. 8/25 @ 5:30 s/on-SSB, WMSL-1400 Ga. @ 4:58 s/on-SSB, then NX, WLAQ-1410 Ga. @ 4:55 I&C, seems Fall is their path into Neb. KRVN-880 running day ETs @ 10kw non-directional, RS late Fall or early Winter perhaps. Jerry Statr's WHOT I&C on Truax' car radio in St. L. MM 9/1! IDXD reports from here soon.

DAN MYERS - Box 311 - Toledo, Ohio - 43601 (on KXEN-1010 stationery!)

I'm saddened to learn of Ralphie's passing DXing has lost a good friend, & I'm sure we'll miss him. Great to meet everybody at Convention. I guess I forgot to say good-bye to everybody. We really had a time getting the eight of us out of that room (without somebody owing somebody money; came to \$8.75 each for the three nights). I'm going to try & set up a lot of CPC Tests. I started working on one the day I got back from ST. LOUIS. How does WTOD-1560 sound? Anybody in this area (approximately) willing to build me a loop that works? Speaking of anybody in this area. anytime any DXers are passing thisaway, be sure to stop or call. If you don't have a place to stay overnight, you're always welcome here. Of course, I can't handle a whole convention-load, hi, but I can put up several people. WOHO-1470 is now AN-6 off MM 12-5; WITO-1520 NSP; WSPD-1370 NSP (naturally), & WCWA-1230 AN-6 MM SP 12-5:30am. That's about it for now.

DON EGGERT - 1925 East Bowman Street - South Bend, Indiana - 46613

I certainly had a great time in ST. LOUIS, & by meeting all the NRCers I did, it's easy to see what makes this Club #1. Some DX managed here before returning to school: 8/23- WADO-690 a regular here in daytime since coming on the air. (Here too Don, but on 1280 in NYC -ERC) 8/24- WQUA-1230 @ 11:29pm. 8/25- WMAD-1550 8pm s/off. 9/3- KLWW-1450 @ 11pm. 9/4- KWHN-1320 @ 11:59 s/off. 9/5- KPZ-1450 a much-wanted one since they are one of the few Ks E of the Miss. @ midnight s/off, WJBC-1230 @ 12:05 in the mess, KNOX-1310 @ 1:28 on late w/ Twins BB, one of my better catches, & only Mont. #2 in KGCK-1480 @ 1:37 also Twins BB, & KBIX-1490 in briefly @ 1:57. 9/6- WMIN-1400 briefly @ 12:03am & newie WEBR-1550 @ 12:54 ET/mx (River Falls Wis.) Are they on RS yet? (Calls have to be wrong, Don, WEBR is 970 in Buffalo -970) -ERC And an unID 10kwer & an ET/mx from WSHN-1550 all at the same time. WBLU-1480 w/ET/mx off/on. 9/8- Nothing new due to HNL, only WKBA-1550 w/one of their frequent ETs most of the AM. Veries: v/f- WRYT-TEST & v/q XEIRA. Total logged now 1,276, states 47/45, but I'm hoping for a verie from KGCK to raise total states verified to 46. As they say in Hartford, "WPOP- We're Planning On Paramus" in '70. DX.

JOHN D. HATHAWAY - 1912 Rebecca Drive - Champaign, Illinois - 61820

Nice to see so many NRCers at the Convention. 9/1- WHBQ-560 ET/OC 12:31-12:50am for #581 here & sent first report of season although it was brief. WQAM-560 TT 1:37-2:01 & IDs. 9/2- WSGN-610 1:10am. CKWS-960 4 s/on, sent report. 9/3- KIMM-950 1:55am. 9/4- WCAU-1210 11pm, WGAR-1220, reported both. 9/5- WEMP/WTAE-250 12:05am, WXYZ-1270 12:10, WILS-1320 12:15, WHOT-1330 12:30, WSR-1350, WING-1410 1. 9/7- WIAR-790 2am sent report, WINS-1010 3:15, CJIC-1050 3:33, WHN-1050 @ 3:48, would you believe - this is the first time I've heard them in five years at this locale? WBBC-1070 4, WDIA-1070 4:15, WKLO-1080 4:30, KXEL-1540 5:27-5:49, sent report. 9/8- I couldn't pull in WCVR-1320 TEST due to WVOJ & others. Recent veries WQAM-560 & WAVE-970, WLAC-1510. Best 73 & DX.

CHRIS LUCAS - 89 Round Hill Road - Fairfield, Connecticut - 06430

It's been quite some time since I reported, first due to schoolwork, and more lately due to FM DXing. Loggings of late: 6/16- WQWW-1380 Naugatuck, Conn. now here, u/WBNX, logged @ 1:55pm. MM 7/13- WGMF-1500 Watkins Glen, N.Y. @ 11:04pm w/ET, WJBK-1500 on top @ 11:43 after WGMF left the air, Mich. #26. I noted WTHE-1520 s/off 5pm all Summer, so I made another desperate attempt for WSIT-1520. Most nights it was all WKBW/WCHE, even at 5pm. Finally, I IDed WSIT @ 6:30pm on 8/22. This was evidently skip as their groundwave doesn't make it here at all. 8/25- WTBQ-1110 Warwick, N.Y. @ 2:30pm o/WNAR/WHIM/WHII latter w/loop. WABK-1280 Augusta, Me. @ 6:31pm o/u WEIM/WADO. This is Me. #26. Also WNCX-1070, Greenville, N.C. in mess for ID @ 6:59pm. 8/29- WNRV-990 on top @ 6:56pm, surprised not heard previously. 8/31- Long sought-for WKAJ-900 Saratoga Springs @ 6:490m, but not enough for report. 9/1- WFLB-1490 @ 1:26am for N.C. #41. A pirate IDing as WHES-1180 was noted on two occasions as 1164 kc/s, 8/21 & 8/25, no location announced, and reverb made readability difficult. See DDXD. Total now 1,238. Recent veries: v/r- WGMF/v/1- WTBQ. v/q- WJBK. Sorry I couldn't be at the Convention, but I hope everyone had a great time. I hope to be at next year's. I begin graduate study at Cornell U next week so DX will be cut short again. One more logging kust made, WNYU-990 Southington, Conn. 8/6 @ 2:50pm w/MoR, uses Mutual NX on the hour, good signal here for 500w, well o/WIBQ w/my direx-longwire. 73.

RICK MARR - 6912 West Park Drive - Hyattsville, Maryland - 20783

Believe it or not, in these hot sticky Summer days I've actually pulled in a new station. As I was scanning the ECB 9/5 AM I noticed a signal equal to WINA-1070, Va. It turned out to be WKOK-1070 Sunbury, Pa. airing the community bulletin board @ 10:29am. For some reason I obviously missed this one on my first journey up the ECB during day. Total number logged from here is now 77 from six states & D.C., daytime only. I recently toured the VOA which has HQ in Washington, in the Dep't of HE&W at 330 Independence Ave. SW. The VOA, as most of you know, is the international broadcasting service to build world understanding of the U.S. & its policies around the world. Also visited lately was WBEJ-1240 the MBS & ABC affiliate in Hagerstown, Md. Seen in recent weeks have been the following DXers: Bob Jacoby & Dick Brazier, of Pomona, Cal.; Paul Lots of Buffalo; Dave Schmidt of Chester, Pa. (yes, he's still alive), Bob Binau of Williamsport, Md., & Jeff Kadet of nearby Bethesda. Locally, all Washington Redskins, U. of Md., & Notre Dame FB games this season will be aired on WMAL-630 while all Navy FB contests can be heard over WRC-980. WEEL-1310, Fairfax, Va. & WIMD-900, Laurel, Md. have dropped ABC Contemporary NX. I hope all had a safe & interesting trip to-from ST. LOUIS. Unfortunately, I could not make it due to my job at NBC/WRC & lack-a-loot. Maybe next year. School has begun again at U. of Md. This semester, as always, I'll be doing air work on the campus radio station WMUC-650, & my activities w/the Radio & TV Workshop at college will also keep me very busy, but I do hope to do some DXing as well. See you soon.

JOHN W. HOOGERHELDIE - 3 Marquette Drive - Marquette, Michigan - 49855

No DX since last May because of building a brand new home in Marquette. But it is now completed so DXing can now resume. Almost cried, having to miss the ST. LOUIS Convention but we had just returned from a month's vacation in Europe so had to spend the long weekend working on the home. I hope you all had a marvelous Convention. Those FET Loop plans & what it will do look fantastic, but how do you wind it? I can't locate anywhere how many turns to put on the loop & then is it wired to the RX & tuning condenser as in regular loops? Hey you Canadians - starting at Mackinac City Mich. all the way to Alpena I pick up a very very powerful CBL-740 relay as early as 2pm on 540k. Once I get to the upper peninsula I lose it. Seems most powerful opposite Rogers City. I can't locate any CBL relays that should fit on 540 since all seem closer to the upper peninsula than Rogers City. Any ideas? Also who's FF on 550 heard early afternoons? Is Sudbury an FF?

FRANK WALDRON - 65 Lakeridge Drive - Matawan, New Jersey - 07747

Hi. 7/22- WBSC-1550 ET/OC/TT very strong, ten promos reeled off @ 12:58. 7/25- KUAT-1550 fair to strong at times on IRCA TEST 2:05-2:25, OC/mx/TT

September 27, 1969

7/27- WCMS--1050 r/c relaying c/w FM outlet until 11:13 end. Oops, I forgot WAYB-1490 s/off-America @ 11:06. 8/3 PM, into MM 8/4- CHEF-1450 IDed as my unID FFC on that channel @ 11:24 w/mx, NX, then s/off-NA @ 11:58. They never answered my tentative so I tried again, this time in FF. X WEXL-1340 a good surprise atop w/c/w @ 2:25, normally dominant WOOK not apparant. Bits of WLFH-1230 s/on @ 4 through mess. 8/5-- WIOS01480 f/c-TT @ 12:39, many code IDs w/"W-I-0-S" repeated. 8/8- WETH-1400 r/c-DT barely IDable through QRM @ 2:27, must use only 250w. for the r/c. 8/10- CHUC-1450 w/NX @ 11:10 till s/off 11:17pm. MM 8/11- CJOC-1220 noted again atop @ 2 w/ID & NX, s/off-GSQ @ 2:06. This has got to be the best bet for Alberta in these parts. PM, WMNB-1230 mx, NX, then s/off 11:56pm, no SSB. 8/14- WMNS-1360 r/c o/u WDRC, both s/off @ 12. 8/15- What a fantastic AM! It all started w/WKMF-1470 atop w/c/w @ 12:08 (must've changed its pattern, never a sign of them before). Then WLET-1420 r/c through WHK/WBSM @ 12:38, followed by KWVY-1470 f/c-TT @ 1:05 on a tip w/good signal. And then, WKCU-1350 r/c-DT somehow clearly audible @ 1:47, gradually inundated by WCVU/WSLR. Tuning the dial for the final time I was making a routine check of 910 when suddenly someone shouted "On KGLC - Miami." I was amazed to copy KGLC o/u WSBA/WRCR 2:32-3 & on w/rr, apparently highly directional this way. Verie says they're now AN & have switched to c/w. MM 8/18- WKSK-1600 r/c u/QRM @ 12:05. WBPZ-1230 s/on 4:01. 8/29- WWGO-1450 atop w/NX & c/w @ 4:0. WCIK-1560 ET/mx/OC @ 11:43. 8/30- WISA-1450 atop well at times @ 1:45 w/special AN-rr. Veries: v/q- CBV WOKO WDAK WEXL WJMA 3AM2 KGLC. v/1- CJRP-1060 (ex-CJLR) WCSH KGMO WAYB KUAT WCMS WMNS CHUC WMRC KWVY WBPZ WIOS & CBMM-540 from CBM. v/pp- WHSL. v/r- CKIM. Totals are now 945/596 44/43 9/9 & 25/20. 73.

PEPE TAYLOR - 8 Endicott Road - Arlington, Massachusetts - 02174

Labour Day weekend gave me an opportunity to hit the dials a bit in search of some elusive maritime stations (and others). WBEW-930 was way o/WPAT 8/31 @ 4:14-4:33am for a report. On 9/1, local WRKO-680 was off, excepting for a few OCs & ear-shattering "let's turn the thing on cold w/a lkw. TT & see how many DXers' hearing we can impair." So between these, CJON Nfld. was logged 2:30-3:09am w/their AN show //-CJOX/CJON (neither of which was readable). If you have CVN, this is your next best bet on a MM. I missed the Summerside PEI-1240 DX of a year or two ago, & CFCY (#) HAD EVADED ME, SO I was pleased to hear an AST NXcast & record show between 5-5:24am; it sounded CBC-ish, & the AST eliminated CJET (WPRO off MM). However, a local announcer came on about 5:24½ & said "This is CFCY, operating w/10,000 watts, now resuming our broadcasting; we will have the NX & WX in five minutes." The v/1 explained they carry network 5-5:25, "break for five minutes, & resume local programs until 12 midnight." WPRO was on by 5:30 so that took care of that. The CJON v/c indicated 5kw, & CFCY's letter did not infer AN operation so you might correct your NRC Logs. Meanwhile, Bart Cronin has left WJIB & returned to his native Northwest. I know we can look forward to some excellent reports. 73.

ALLEN L. NISSEN - 336 Hillcrest Avenue - Westwood, New Jersey - 07675

Hi all! No, I'm not dead - in fact, I'm beginning my 11th year in the better-than-ever NRC. I got out of Uncle Sam's Army 7/17 and am now back in the P.O. - as a window clerk in the Palisade Station, Fort Lee, N.J. I owe a lot of people mail & it will be forthcoming. Thanks to all who wrote to me while I was in Viet-Nam - that mail sure helped. Condolences to Ralph Johanns' family. Also count me in, Russ Edmunds, for the planning of the 1970 Convention - I may be able to help. By the way, Westwood is five miles N of Hackensack and two miles NE of Paramus. Unlisted phone number here is 201-664-7251. 73. (Welcome home, Allen!)

KEN LYON - 9415 Goodrich - Clarence Center, New York - 14032

I'm sure all of the members are as saddened as I am about the recent passing of Ralph Johanns who was a veteran DXer & was dedicated to the hobby. I'll always remember him & the weekly jam sessions at his house. I only hope that some day I can measure up to the goals that he reached. Please note NEW ADDRESS above. I have started dial twisting again at new location & have also been married since 6/14. DX to date includes: 8/26- WNTN-1550 TEST was heard like a local here w/clear channel & no trouble at all. 8/27- CFRA-580 heard briefly w/ID/NX/WX @ 7pm; WMBS-

-590 in well w/Pirate BB @ 7:42pm u/CKEY. 8/29- KFAB-1110 was in well u/WBT nulled @ 7:57pm until sudden disappearance at 8:30 when they switched to DA, WHIM-550 heard @ 9:50pm w/Phillies BB when WGR was nulled, first station heard on 550 since WGR AN. 9/2- CJRP-1060 heard well @ 7:29pm w/KYW nulled, but all FF & hard to copy. 9/4- KKJO-1550 heard on TEST @ 1:09am w/TT which was quite weak due to DA, but ID was strong @ 1:50. WQXR was testing w/OC. 9/8- WCVR-1320 w/TEST o/u WJAS & s/off @ midnight when WJAS did. I could not hear 8/18 TEST' I doubt they were on. Recent veries are WHIM KFAB WAHT WOTR & WREL. 73s.

BOB SHAW - 10 Williams Drive - Delaware, Ohio - 43015

I've been sitting here for five minutes trying to think of a snappy lead-in. And I can't, so I won't. CKLC-1380 11:05pm s/off 8/31. 9/1- WCIK-1560 ET/TT midnight. FF-1375 about that time, assumed St. Pierre & Miquelon, CKVL-850 topping WJW 12:44. WGET-1320 w/NX 1:58. 9/7- WWOL-1120 ET/TT/OC 11:36pm. Then @ 11:43 I had what sounded like a WCVR-TEST ID w/TT, although they weren't supposed to be on that hour - but they were not heard at listed time. (That 12:01-1 time turned out to be EDT, Bob - reported to me w/no designation, so I assumed it was EST, the rule here - ERC). CJRP-1060 for call change 12:15 9/8. Also that AM, CKOY-1310 was off & I caught WEEL-1310 around 1:30 way u/WIFE or WISE. This was a station that was among the most friendly that Greene, Roczko & I visited on our trip to BOSTON-68. 9/11- KKJO-1150 on till 1:30 w/Royals' BB from the WC w/no sign of WAAY, just WOKJ/KKHI. 9/12- WEEEX-1230 rr 1:30. 9/13- WCCR-1580 r/c for call change. WHYP-1530 (whip!) o/u WCKY w/c/w 4:30pm, WHOK-1320 finally, very poor u/WIIS/WJAS 5:31pm. Then WHHO-1320 for call change. 9/15- A wiped-out MM. WTMB-1460 ET/TT L&C 12:18. WBOW-1230 3:10am s/on-SSB. This might mean they are SP MM contrary to NRC Log. WERE was off around 12-3am, only WMAK & unID weakie (KOL?) there. But there was a phone show there that s/off 12q56 w/SSB, KCON, or WIBR? Is CHAM the 1270 0 Canada s/off @ 3:05 MM? That's from June. I did not DX in NY this Summer; however I was able to meet Dave Allaway, Port Washington NRCer & also had a phone chat w/Bernie Duffy. However, I was, in the end, unable to get together w/the Staten Island group. I went to Albany NY on a couple of weekends & noticed some interesting things about WPTR-1540's signal. KKEL clobbers them until you are seven miles S of the city on the Thruway, and only then do you pass their XR? And their night signal is inaudible downtown, except at intersections, while WTRY has no problem w/the not-too-tall buildings. Returning to college here 9/17; see you around Thanksgiving. (Good luck! -ERC)

JOHN W. HOOGERHEIDE - 3 Marquette Drive - Marquette, Michigan - 49055

First DX session since May turned out to be a dandy w/nine new loggings on 9/15. I got up for WKEK-TEST but no go & only WIRE/CKFH were noted. WIRE had c/w so I hope this didn't confust anyone. WHK-1420 was silent & WBSM was all alone for a good Mass. log. WISM-1480 also was off @ 2 & several others there, but only WDAS positively IDed. WPNX-1460 w/c/w on RS for new log. This channel was clear last Spring. 940 had WINZ on very weakly w/hurricand info @ 3:30, all along & a tough log. WPTF-680 was off & WCBM/WAPA fighting @ 3:30 w/good IDs & two new logs. Let's hope WPTF stays off AN forevermore. 950 had two ANs, I believe one was WPEW but I couldn't be sure, unnn, however. 910 had WRNL s/on 4am w/SSB AS DID WMNI-920. Best of all was a whopping WLBX-950 s/on 3:56. Usually WWJ is on by then but wiyh Mich. lagging one hour, WLBX should be easy all over Mid-West. Final17, Greenville Pa.-940 caught w/c/w @ 6 on tape. A real good MM of DX, lads - I'm up to 994 so next report should pass 1,000! I'm working on GPN-FET loop - wait till that's ready!

"AN" SITUATION

OFF- 660 W N B C MMs 1:00-5:30 approx. ON- K G L C c/w, SPU, on MMs (910)

W P E N 950 NSP

HEARD SINCE LAST ISSUE (NRC) - W N T Y 990 Southington, Connecticut

NEXT ISSUE IN TWO WEEKS; THEN IT'S BACK TO THE WEEKLY FORMAT ONCE AGAIN. DEADLINE FOR THE OCTOBER 11 ISSUE IN BROOKLYN WILL BE MONDAY, OCTOBER 6. REMEMBER, 30-LINE LIMIT FOR MUSINGS, AND KEEP THEM NEWSY, AND STICK TO THE SUBJECT OF DX. USE OUR REGULAR ABBREVIATIONS AND STICK TO E.S.T. THROUGHOUT. ALSO REMEMBER, NO VERIE-SIGNERS' NAMES IN MUSINGS! SEND THEM WITH YOUR MUSING ON A SEPERATE SHEET OF PAPER!