

MAY - JUNE  
1942

# THE GLOBE CIRCLER

COMPLETE GUIDE-BOOK FOR SHORT-WAVE LISTENERS



NBC's FAR EASTERN LISTENING POST IN NORTH HOLLYWOOD, CALIF.

## INTERNATIONAL DX'ERS ALLIANCE

TGWA OLR3A ZBW3 OAX4T HH3W VK2ME IRF VLR VUD2 PMN PCJ RAN  
 CS2WA RAN XEFT  
 TPB12 LRA  
 LRX PSH  
 YEYU ZHP OZF  
 TPB13 JZI EAQ  
 HJ1ABP GSB PSH  
 COCQ XEDQ W2XAF  
 ZRK TPB12 DJA  
 VLR KZRM VUD2 W3XAU VK2ME GSC LRX RAN CS2WA HJ1ABP CXAR HH3W JFO YEYU PCJ

PUBLISHED MONTHLY



# The GLOBE CIRCLER

CHARLES A. MORRISON  
EDITORINTERNATIONAL DX'ERS ALLIANCE  
NORMAL, ILL. U. S. A.

MAY-JUNE 1942

NUMBER 104

**EDITORIAL**

On April 13, your editor was forced to undergo an accute appendectomy, from which I am now recovering nicely, however this unexpected illness made it necessary to hold up publication of the May Globe Circler for about two weeks. This issue will be known as the MAY-JUNE issue. A JULY issue (ordinarily omitted), will be mailed on approximately June 15. The AUGUST issue will be mailed on regular schedule about August 1.

Summer is here. An ordinary summer in appearance but very unlike other summers otherwise for we are in an all-out war in which each man, woman and child must do their part. YOU are shortwave reception experts. The information you can turn in is now very valuable to many defense agencies. We urge your continued support of the IDA Shortwave Information Service by spending whatever "Spare" time you can at your dials and then sending us regular reports.

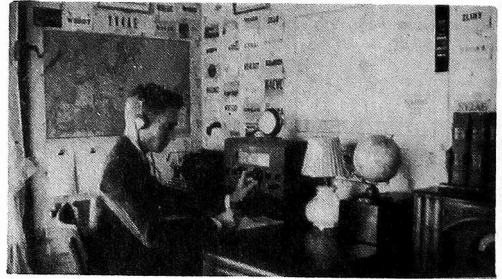
It is necessary to mention that club revenues normally reach a low ebb during the summer while our expenses remain almost constant. Support the defense service YOUR organization is trying to give by paying your renewal promptly (whether you are dx'ing at present or not); by telling others about IDA; by dropping us a small free-will contribution when- and if- it is possible for you to do so.

**MORE MONITORS FOR NETWORK**

IDA has added four more Regional Monitors to its network: Thos. Van Auken, Alpine, Texas; Tom Becker, Fenton, Michigan; Miss Margot Andrade, Greencastle, Indiana; R.D. Juett, Madison, Ind. This Regional Monitoring Network is doing a very fine job of "cruising" the dials in search of important shortwave facts. We are deeply indebted to these unselfish men and women who are giving generously of their limited spare time in order that vital shortwave statistics may be available to those who need them.

**INTERNATIONAL DX'ERS ALLIANCE CLUB****NOTES NEW MEMBERS**

Frank Coryell, Cleveland Heights, Ohio..  
Henry Bennett, Collingswood, N.J.....Oren  
L. Denhart, Champaign, Ill...Chas. F. Wassen-  
burg, Van Wert, Ohio,..P. Cherkassky, Boston,



BILLY WARREN LYERLY, REGIONAL  
MONITOR, FORT WORTH, TEXAS.

Mass...J.G. Richardson, Yakima, Wash....  
J.W. Clarkson, Rich Hill, Missouri.....  
Thos. B. Grandin, Falls, Church, Virginia.  
...Thos. Van Auken, Alpine, Texas.

**RENEWALS**

A.R. Tuffs (England)...Reg. Tibbetts,  
(W6ITH)...Edw. Debaecke...Albert Bond.  
...John H. Hoak...Ashley Walcott.....  
Ed Goss (ex-IDA Director)...J.E. Sou-  
viney... Bernard Hiss ... Hal Newell  
(WGRC)...Ted Seaton...Aug. Balbi (IDA-  
Vice. Pres)...E. Somner...C.F. Jaeger...  
Sgt. Guy Bigbee...R.B. Callahan...Robt.  
Base...Chas. Mouzis...John DeMyer (ex  
IDA Director)...Capt. Tyndale-Lea M.C.  
...H.F. Brown...(CONTRIBUTIONS): Capt.  
Tyndale-Lea M.C.; A.B. McKeen; John De-  
Myer; Robt. Base; Albert Bond; Reg.  
Tibbetts.

**CHAPTER ACTIVITIES**

For information concerning dates an meeting places for IDA chapters contact the representatives given:

ACC (Detroit area)- W. P. Mathers,  
6607 Vinewood, Detroit ...**BEER CITY**  
(area of Milwaukee)- Kay Williams,  
6824 W. Stevenson St., Milwaukee.....  
SO. CALIF (Los Angeles area)- Aug. Bal-  
bi, 1090 W. Kensington Road, Los Angeles,  
Calif...**WINDY CITY CHAPTER AND WORLD**  
**WIDE DIAL CLUB** (Chicago)- Chas. Tre-  
zise, 7638 Lafayette, Chicago- Chapter  
has 2 meetings each month. One a so-  
cial get-together; the other a bowl-  
ing session at some leading alley.

**PERSONAL NOTES**

Ray Botkin is now a Government Ra-  
dio Inspector at the Zenith Factory,  
in Chicago, Illinois...Hal Newell, has

een transferred from WCAU, Philadelphia, to Louisville, Ky., to take over sports broadcasting in that city... Our very best wishes go to former IDA New York state Mgr., Ed Goss, and to his newly acquired bride. The newlyweds are living at Jackson Heights, LI... Steve Mann, Dartmouth Univ., says he will be in Cuba for 6 weeks this summer studying at the University of Havana... Many of you will remember former head of the CDXR, Chas. Esterman. He would like to hear from all his friends. Write to (Canadian) No. 62125, Cpl. Hesterman, Charles H., 405 Squadron, R.C.A.F., England... Ray Simpson of Concord West, N.S.W., Australia, has been accepted in the Royal Australian Air Force, and has begun a 5 weeks officers training course... Robert E. Base, 105 Alto Road, Windsor Hills, Baltimore, Md., would like to SWAP VOICES- "If you have phonograph recorder give a brief description of your city on a 6" disc; mail to Mr. Base, and receive his in re-

turn... We were glad to hear from former IDA Vice-Pres. John DeMyer of Lansing, Mich., that although not well he is much better than a year ago. In his spare time he putters around his garden or goes fishing... Leon Hutchinson of Milford, NH, is also improving in health after a long illness... Our deepest and most sincere sympathies go to Ed Somner of Los Angeles, in the recent loss of his mother... Roy Myers of Los Angeles, is getting married, and joining the Signal Corps in July... Can anyone send John Zaladonis, 510 Alexander Ave., Linden, N.J. a diagram and coil data for a Peak preselector model P11?... Our best wishes for a rapid recovery go to Capt. Horace L. Hall of Springfield, L.I., N.Y., who has been in the hospital for 10 weeks with a heart ailment... Harry Honda of Los Angeles, now at Camp Berkeley, Texas, has been promoted to Corporal... Dick Coales of Southsea, England, is now a full-fledged Radio Mechanic in the Royal Army Ordnance Corps.

ont. from Page 8) - ...XGOY (varies 9.625 to 9.647) now broadcasts 7:35-9:55, 10-11:25am to E. Asia & N.A.; News in English at 8:30, 10, 11am (\*\*Ong, Balbi, Henry, Tibbetts, Baxter, Pichler-W, Van Auken-C, Soplop, Ayvazian, Hart-E)... XGRS (11.68), Shanghai, now heard 3:45am-Noon; English news at 7:30, 8, 10:15am (\*Balbi, Baxter-W, Hart, Becker, Newell, Voisich, Skyten-E)... XMHA (11.86), Shanghai, on air again and being heard approx. 5-11am; English news 9, 10am; also heard with English news at 8; letters from Aussie prisoners of war at 8:15pm (\*Baxter, Balbi-W)

**INDO-CHINA** Saigon (11.775) comes on air now at 5:15am (Baxter-W)

**INDIA** NEW: "Voice of Free India"- anti-British, pro-Nazi, under-cover station, site unknown, broadcasts daily 11am-12 noon on 11.47 & 9.40; 9:30-11:30 pm on 9.40; English news at 11pm (\*\*Allen, Payette, E, Allen, Baxter-W, Becker-E)... 41-Meter band stations being heard mornings as follows: VUB2 (7.24), 7:30-9:45am; VUC2 (7.21), 7:30-10am; VUD2 (7.29) 7:30-9:30am; VUM2 (7.27), 8-10am. All these stations join with VUD3 (9.59) and VUD4 (11.93) for the English news at 8:30am (\*Becker, Skyten, Hart, Ferguson, Roberts-E, Van Auken-C, Baxter-W)

**APAN** J-- (11.74) is being heard irreg. 2-4:30, 4:45-8:55am (Balbi, Baxter-W)... The 2:30-4am program to Hawaii has been discontinued (Balbi)... JWV3 (11.725) and JZL (17.785), operate approx 3:30-4:30am (Field, Baxter-W)... An all Japanese program is broadcast daily 4:45-8:55am over JLG (7.285), J-- (9.677), JWV3 (11.725), JWV4 (15.235) (\*\*Allen, Skyten, Gozen-E, Van Auken-C, Balbi, Baxter-W)... English programs are broadcast 4:45-7:30am over JZI (9.535), JZJ (11.8), JZK (15.16); 8-11am over JZK (15.16), JVZ2 (11.825), JZJ (11.8); English news at 5, 8, 9:30, 10:30am (\*\*Hart, Payette-E, Van Auken, Juett-C, Balbi, Baxter, Field, Tibbetts-W). JZI (9.535), JZJ (11.80), operate 11am-2:30pm (Baxter, Allen-W)... Tokyo broadcasts to E.NA, 6:55-11pm; to W.NA, 11:30pm-2:30am over JZK (15.16), JZJ (11.80) (Gozen, Soplop, Becker, Payette, Hart, Wilson, Ferguson, Skyten, Mouzis, -E, Balbi, Picard, Field, Pichler-W)... Unidentified Jap on 5.80, heard mornings irreg. (Baxter-W).

**LACAO** Postal service with Macao has been suspended (Hart-E)

**ANCHUKUO** Commercial call prefix becomes HL instead of TD (Legge)... Hsinking programs are now heard: 1:30-3am to NA over MTCY (11.775), HLA2 (10.065); 8-11am, on 5.71; 9-11am on 9.545; 9-10am on 7.33; English news at 1:30, 2:30, 9, 10:30am. (\*\*Legge-E, Lyerly-C, Balbi, Baxter, Krumlinde, Pichler, Field, Allen-W)

**ZL** Rebroadcasts to U.S. networks are made over one of the following: ZLT2 (7.39), ZLT3 (8.90), ZLT4 (10.98-11.00), ZLT5 (12.295) (Skyten, Allen, Hart-E)\*\*

**APUA** VIG (7.30), Port Moresby, broadcasts Mondays 7-7:30am; relays BBC news in English at 7; Aussie news in English at 7:15am (\*\*Van Auken-C)

**I.I.** Jap-controlled KZRH (11.89, 9.64, 6.145), now operates 4-9, 9:15-10am; English news at 8, 9:30am. Last transmission is now dedicated to Corregidor,

**AHITI** FOBA (now on 6.98), Papeete, is now heard Wed/Sat 12:01-1am; Signs off with native Tahitian melody (\*\*Baxter, Balbi, Krumlinde-W)

**TAIWAN** JIE3 (9.695), JIB (10.53), heard 10-10:50am; English news at 10:30am

...JIE3 also heard approx. 8-9am (Baxter-Balbi-W)\*\*

# SHORT WAVE NOTES

EDITOR-IN-CHIEF--CHARLES A. MORRISON

ASSOCIATE EDITORS: Robt. Skyten, J. Wilson, August Balbi, Roger Legge, Ray Simpson, Mrs. A. B. Allen, W. W. Lyerly, James Hart, Murray Soplop.

PRESS DEADLINES: for JULY GLOBE CIRCLER, June 1, for JULY STOP PRESS SHEET, June 13, for AUGUST GLOBE CIRCLER, July 15; for AUGUST STOP PRESS SHEET, July 30. JULY issues will be mailed June 15, AUGUST issue about August 1.

**SHORTWAVE NOTES FOR THE GLOBE CIRCLER:** During the present emergency short wave information has become doubly important. We need plenty of notes. Please submit your items as follows- when possible: Use one side page only.....Double space all lines...Group items by continents...Be sure to state time used. We are particularly interested in items pertaining to: NEW stations; changes in frequency, or schedule; times for newscasts in English, or other languages; times of peak reception for the weaker stations or those of timely war interest; identifying signals; any detailed authentic information concerning station schedules; addresses, power etc. It is important that any important items reach me by fastest mail... **FOUR STAR (\*\*\*\*)** items denote exceptional merit...Each **FIVE STAR (\*\*\*\*\*)** ITEM pays its contributor \$2.00 in war stamps...In crediting items the general geographical location of that member- if in North America- is shown as: E-Eastern; C-Central; W-Western. If foreign, the country or an abbreviation of that country is given.

## CBS OPENS LATIN AMERICAN NETWORK MAY 19

The following shortwave stations are affiliated with the CBS Latin Network.	XEQQ 9680 2 kw Mexico City, Mexico
CP5 6200 1 kw La Paz, Bolivia	HP5A 11700 500 w Panama City, Panama
CB1180 11975 1 kw Santiago, Chile	OAX6D 9500 350 w Arequipa, Peru
HJAG 4905 1 kw Barranquilla, Colombia	OAX4R 15150 10 kw Lima, Peru
HJED 4823 750 w Cali, Colombia	OAX4T 9562 12 kw Lima, Peru
HJFB 6105 750 w Manizales, Colombia	OAX4Z 6082 14 kw Lima, Peru
TIPG 9620 2 kw San Jose, Costa Rica	CXA8 9640 7 1/2 kw Colonia, Uruguay
COCY 11740 1kw Havana, Cuba	CXA14 11625 1 kw Colonia, Uruguay
COHI 6450 1 kw Santa Clara, Cuba	YV5RU 4860 5 kw Caracas, Venezuela
HI1Z 6316 500 w Ciudad Trujillo, D.R.	YV6RU 4790 1 kw Caracas, Venezuela
HC2AK 9310 1 kw Guayaquil, Ecuador	YV1RV 4750 250 w Maracaibo, Venezuela
HCQRX 5970 250 w Quito, Ecuador	YV4RP 3460 1 kw Valencia, Venezuela
YSPA 10400 300 w San Salvador, Salvador	WCBX ---- 50 kw Brentwood, N.Y. (21.57, 21.52, 17.83, 15.27, 11.83, 9.65, 6.17, 6.12)
YSPB 6575 300 w San Salvador, Salvador	WCDA ---- 10 kw Brentwood, N.Y. (21.57, 21.52, 17.83, 15.27, 11.93, 9.65, 6.17, 6.12)
TGWA 9685 10 kw Guatemala, Guatemala	WCRC ---- 50 kw Brentwood, N.Y. (21.57, 21.52, 17.83, 15.27, 11.83, 9.65, 6.17, 6.12, 6.06)
TGWB 6460 1 kw Guatemala, Guatemala	
HE3W 10130 500 w Port-au-Prince, Haiti	
HRN 5875 4 kw Tegucigalpa, Honduras	

## SHORTWAVE NOTES

### NORTH AND CENTRAL AMERICA

(Eastern War Time)

\* **ANTIGUA** Veri letter from H.M. Donald, Publicity Officer, Publicity Dept., Radio Antigua, Antigua, states Radio Antigua (7.063), operates weekdays 6-8:15pm, in French; Sundays 4:00-4:30pm, in English, 4:30-4:45pm, in French (\*\*Hart-E)

**CANADA** CBFY's crystal trouble which caused frequency to shift to 11.745 from time to time has been remedied & station is on 11.705 regularly now (\*Hankins, Legge, Wilson-E, Roberts, Schrock, Lyerly-C, Balbi, Allen, Picard, Baxter-W).... CFCX (6.005) now operating 8am-11:15; Sun. 9am-11:15pm (Schrock-C)... CJCX (3.01) Sydney, N.S., has "The Dawn News Patrol" daily 6:30-6:45am (\*Hankins-E)

**COSTA RICA** TI4NRH is broadcasting experimentally on 9.740 or 9.715 daily from 8:00 to 9:00am, in English; requests airmail reports (\*Lyerly, Juett-C, Becker-E)

**CUBA** COBC has shifted to 9.375 (Allen-E, Lyerly-C, Baxter-W)... COBZ (9.025) "Radio Salas", P. O. Box 866, Havana, requests reports (Moser, Becker-E)... COCH (9.435), now broadcasting English news at 6:45pm (Gozen-E)... COCQ still heard on 9.505, parallel with 8.83, near mid. (Baxter-E, Schrock-C)... COK (11.616), broadcasts "America Speaks" (English) at 3:30pm; announcements (English) at 9:45pm.

**CURACAO** Curacao Shortwave Station, under direction of Director of Government Radio & Telegraph Administration, Curacao, D.W.I., has a new 3 kw transmitter, which it tested for almost a month on 9.105, back to 5.936 on April 1; then to 7.25 on April 13, where at time of writing PJCI is still being heard nightly to

approx. 10:15pm. Irregular announcements in English request reports(\*\* Beyer-C, Borchardt, Lyerly-C, Ferguson, Allen, Payette-E, Balbi, Picard-W)

D.R. Harmonic of HILN again being heard nights on 12.49 (Lyerly, Wedewer -C)...HILX has moved to 5.34 (Legge-E)...HI3U (6.015), "Estacion Perifonica"; "La Voz del Comercio", Santiago, 100w, verified promptly with card and beautiful letterhead in Spanish (Batson-E)...HI3X (11.88), broadcasts in parallel with HILX nightly from approx. 7 to 10pm (\*\*Allen, Legge, Skyten, Soplop-E, Lyerly-c)

EL SALVADOR YSPB has shifted to 6.15 where it is heard nightly to lam(\*Legge-E, Wedewer-C, Baxter-W)...HUB has shifted to 4.78 mcs. (Legge-E)

GUATEMALA TGWC now heard on 7.26 nightly in parallel with TGWA-B (Legge-E)... TG2 is now being heard on approximately 6.22 mcs.

HAWAII KIO (11.68), heard after 12 noon working west coast; KHE (17.95), heard working KRCA at 12:30 p.m. ETW (Allen-W)

MEXICO XEFT (9.543), "El Primero Puerto de Mexico", is located at Ave. Independencia No.28, Vera Cruz...XEJG (4.82), Guadalajara, relays XEJB, 11pm-12 mid. (Legge-E, Roberts-C)...XETA (9.55) not heard recently (Legge-E)...XETT (9.555), 500 watts, operated by Angel H. Ferreiro, Estudios y Oficinas Uruguay Num. 37, Apartado Postal 7451, Mexico D.F., relays XEQK (1350), 24 hours daily; verifies promptly by letter (\*\*Lyerly-C, Legge, Hankins-E, Baxter-W)...XEUW (6.023), broadcasts nightly to 2am (Schrock-E)...

NEWFOUNDLAND VONG (9.48), on the air again, has English news at 6am (\*Hart-E).... VONH (5.97), has English news at 5:30pm; BBC English news relay at 9pm Newell-E)

NICARAGUA YN2FT (7.49), Granada, operates nightly 9-11:30pm (Kopp-C)

PANAMA HP5A (11.70) opens mornings now at 9:15am; opens evenings at 9:10 pm; has English news at 10:50-11pm (Lyerly-C, Hankins-E)...HP5G (11.78), now operates approx. 9:15-10am, 12:30-3, 6-11pm; English news at 9:30am, 9:45, 10:15pm; has Lutheran Hour in English Sun. at 12 noon (\*\*Allen, Gozen, Becker-E, Moser, CAM, Schrock-C, Krumlinde-W)...HP5K (6.005), Colon, operates 8am-2, 6pm-12 mid; News in English at 10:15 and 11:15pm; verifies promptly (\*\*Becker-E, Wedewer, Schroc-C)

U.S.A. PRESS WIRELESS STATIONS (PHONE)

Los Angeles, California	KJE 15850	Hicksville, N.Y.	WRK 15910
KGT3 6920	KCI3 11840	KJE2 19470	WEE 6920 WJQ 10010 WRM 18560
KGT6 7625	KCI6 15910	KJE3 19850	WBS 7555 WHL 10750 WDM 19470
KGT6 8810	KCI8 7830	KJE4 23450	WDQ 7625 WPJ 11640 WBE 19850
KGT7 10010	KCI9 22780	KJE6 7355	WCX 7850 WPK 13840 WRP 20800
KGT8 13840	KJN8 18560	KJE8 9390	WJP 8810 WCB 15580 WBH 22780
KGT9 15580	KJN9 20800	KJE9 10750	WCL 9390 WCW 15850 WBK 23450

\*\*Victory News, Allen-E, Picard, Balbi, Cook-W)

RCA COMMERCIAL STATIONS AT BOLINAS, CALIFORNIA

KRR 2776	KEF 6710	KEE 7715	KLR 10090	KKQ-KRCA 11950	KEM-KRCA 15490
KEH 4550	KEN 6845	KEJ 9010	KER 19390	KKZ 13690	KWE 15430 KUN 17170
KEG 5110	KEL 6860	KET 9480	KEZ 10400	KLL 13720	KKR 15460 KQZ 17980
KEC 5265	KEB 6890	KEI-KRCA 9490	KES 10410	KKW 13780	KKL 15475 KQG 18000
					(Victory News) KQR 18040

KGEI (7.25), KET (9.48) & KEL (6.86), broadcast in parallel 12:15am-12 noon; KET also relays KGEI evenings irreg. (\*Pichler, Allen, Balbi, Field, Pichard-W, Lyerly, Van Auken-C, Hankins, Ferguson, Batson, Wilson, Allen, Gozen, Newell-E)...WBOS now operates 9am-1:45 on 15.21; 2-4:40, 4:55-1:10am on 11.87 (NBC, Hankins-E)....The CBS Latin American Network (Cadena de las Americas) of 76 stations went on full scale operations May 19 (CBS)...WGEA-WGEO request permission to add 7.00 mcs, and 11.347 (WGEA). WGEA (15.33), broadcasts a special program to our forces over seas daily 9-10am. (WGEA)...See list for new WLWO sked...See list for revised skeds for WRCA-WNBI & WRUW-WRUL...WRUL has discontinued verifications for the time being. State their staff is too small; budget insufficient (Hankins-E).

SOUTH AMERICA

ARGENTINA LRA5 (17.83), "Radio del Estado", Buenos Aires, Still broadcasts in English, Fridays 5-5:30pm (\*Skyten-E)...LRX (9.66), broadcasts 6:30-7, 8:30am-11:10 pm (\*Krumlinde-W, Van Auken-C, Hankins-E)...LSY4 (20.7), heard calling JVA, Tokyo, at 6:30pm (Legge-E)

BRAZIL A new 50 kw transmitter has been ordered by the government from RCA (Balbi)...PPH (11.93) & PPQ (11.67) are often heard with network pickups (Lyerly-C)...Reports for PSH should be sent to P.O.Box 709, Dept. of Press & Propaganda, Rio de Janeiro (Becker-E)...PSH (10.22)/PSL (7.935), heard Sun. 9:15-9:45pm with Spanish program (Allen-E)...PRC5 (4.865), Radio Clube do Para, Rua Jurunas 479, Belem, Para, has been using a new 2 kw transmitter since March 25, and would like reports on it; verifies by airmail, signs-off at 9:05pm (\*\*Legge-E)

CHILE CB970 (9.73) now opens at 7:15pm (Lyerly-C)...NEW: CB1170, Santiago, is now heard 8-10pm (\*\*Lyerly-C, Hart-E)...Chilean on 11.74 is CB1174, "Radio Hu-

cke, "Casilla 6009, Santiago; verifies with Spanish letter (Batson-E, Lyerly-C).  
COLOMBIA HJAG, Barranquilla, now on 4.97, but inclined to wander (Legge-E).....  
HJCD not heard on 4.845 recently (Legge-E)...HJCX (6.018), opens at 8am with the  
 "Indian Love Call" (Simpson-Austr.)...  
DUTCH GUIANA PZX5 (15.40) and PZX3 (5.946), Paramaribo, now broadcast Mon. through  
 Fri. 7:40-9:40pm; Sat. 5:40-8:40pm; Sat. 9:10-11:40am. A report sent to PZX5 by  
 W2IXY, Dorothy Hall, was returned by the U. S. Censor because it contained  
 "shortwave communications" (\*\*Hall, Ferguson, Soplop, Legge, Allen, Skyten, Wilson-E,  
 CAM, Beyer, Kopp, Schrock-E, Baxter, Filed, Balbi-W)  
ECUADOR HCJB (12.455), Quito, heard weeknights to 11pm; Sun. to 12 mid. Program  
 features include: English news at 9am and 7pm; Friendship Bridge at 10pm; Sun-  
 days program opens at 7:45am; English Fellowship Hour at 11am; Bible Broadcasts  
 at 6:30pm; Evening Vespers at 7:15; Revival Hour at 10:30pm and Back Home Hour  
 at 11:30pm (\*\*Krumlinde, Pichler, Picard-W, Beyer-C, Hankins-E)  
 X PERU OAX4K (on 9.715), Lima, heard to mid. to 12:30am (Baxter, Allen-W, Legge  
 -E)...OAX5C (9.54), Ica, usually heard to 1am (Simpson-Austr.)...  
URUGUAY CXA8 (9.64), heard mornings near 6am (Baxter-W)...CXA19 (11.705), heard  
 coming on air at 7am; sign-off nights at 11pm (Baxter-W, Lyerly-C)  
VENEZUELA Frequency changes: YV3RN to 6.12 (from 4.82); YV5RM to 6.15 (from  
 4.89); YV5RN to 5.20 (from 4.92); YV5RU to 6.07 (from 4.86) (\*\*Mann, Gozen, Legge,  
 Batson, Allen-E, Kopp-C, Balbi, Baxter, Picard-W)...YV3RF (3.49), YV3RX (3.41), and  
 YV5RV (3.50), have not been heard recently (Legge-E)

#### AFRICA

ALGERIA TPZ (12.12), heard 7:15-7:55am; French news at 7:45am with woman an-  
 nouncer (Newell-E)...TPZ verified with photo card. Report sent 5/9/41, veri' re  
 ceived 3/23/42 (\*Batson-E)  
 X BEL. CONGO For a couple of weeks "Radio Congo Belge" tested on 17.78 mcs, after-  
 noons 2:30-4:30pm where it was heard with excellent signal strength. It has now  
 returned to its usual frequency of 11.73 where it is heard afternoons to 3:45pm  
 in parallel with OPM (10.22) and OQ2AA (15.175). OQ2AA can often be heard with  
 good signal strength after TGWA (15.17) signs-off at 3pm (\*\*Wilson, Allen, Legge,  
 Ferguson, Ayvazian, E, Payette-E)  
 X EGYPT SUV (10.055) is almost always used for Cairo relays to American net-  
 works; From time to time SUX (7.865) is used (\*Hart, Becker-E)  
 X FR. MOROCCO CNR (12.83), "Radio Maroc", Rabat, is being heard weakly 8-9am, in  
 French, evidently replacing CNR (8.035) (\*\*Skyten-E)...CNR (8.035), heard signing  
 off at 7pm with an announcement in French only, and the "Marseillaise" (\*\*Soplop)  
 X MADAGASCAR Radio Tananarive (9.696 & 6.063), heard 11:45am-12:30pm; News in  
 French to 12:00 noon, then music till fade-out; not sure of sign-off time (HB-W)  
MIDDLE CONGO FZI (11.97) is now heard afternoons to 5:30pm, the last fifteen  
 minutes being a Spanish news bulletin (\*Allen-E, Picard-W)...FZI (11.97), heard  
 mornings 9:30-10am (Baxter-W)  
MOZAMBIQUE CR7AA (6.035) logged at 1:30am under terrific qrm from DXP & CFVP  
 (Schrock-C). CR7AA (6.035 & 8.137), heard coming on at 1pm; musical program with  
 a woman doing most of the announcing (\*Baxter-W)...CR7BE believed to be operat-  
 ing 6-8 on 9.645, in Portuguese; 3 time pips at 6:30am (Van Auken-Texas). CR7BE  
 gives English news at 4pm; verifies with a green & purple card opened by South  
 African censor. "Oopgemaak" stamped on censor's seal (\*Hart-E, Wedewer-C)  
 X SO. AFRICA Several South African stations were well heard during April & early  
 May. The frequencies & times of best reception follow: ZRH (6.007), Johannes-  
 burg, ZRK (6.097), Capetown, ZNB (5.89), Bechuanaland, all well heard 12:45-2:45am.  
 Also heard irreg. 11 or 11:30am to fade-out at about 1:30pm (\*Balbi, Baxter-W,  
 Van Auken-C)...ZRD (6.147), Durban, heard weakly 12 noon to fade-out at about 1pm  
 (\*Baxter-W)...ZRG (9.523), Johannesburg, is being heard weekdays 10-11:30am; al-  
 so heard irreg. 4:30-9am; announcements are in English. Time pips on the hour.  
 (\*Baxter, Balbi-W, Van Auken-C)...ZRL (9.606), Johannesburg, heard irreg. opening  
 with weak signals at 4:15am (\*Van Auken-C)  
 X SPAN. MOROCCO EA9AA (7.09), Melilla, relays EAJ21 to 6pm; also heard irreg. 7-7:30  
 pm in Spanish (\*Legge, Payette-E)

#### EUROPE

X AZORES Ponta Delgada, now on approx. 7.33, now broadcasts 3-4pm (\*Allen-E)  
 X BOHEMIA An as yet unidentified station heard evenings on 12.05, is believed  
 to be a Prague station (\*Soplop-E)...A Czechoslovakian station on 10.05, is be-  
 ing heard 2:30-3pm (Allen-E)  
ENGLAND On Fridays, May 22 & May 29, at 8:45pm, London Stations GSC & GSD will  
 broadcast special reception test programs entitled "Lend Us Your Ears". BBC en-  
 gineers wish to obtain as complete a picture of reception conditions in the US  
 as possible. IDA members are urged to cooperate on these tests. Send your re-

ports to the B.B.C North American Office, 630 Fifth Avenue, New York City.....  
Changes in transmission timings: Pacific Transmission now 1-4:15am; Eastern  
 Transmission now 6:45-11:15am (\*Balbi-W,Wilson-E)...GSF (15.14), operates in the  
 North American Service, 5:15-6:15pm (\*Wilson-E)...London's Service to So.America  
 is now broadcast: 6:30-10:45pm over GRV (12.04); 7-10:45pm over GRX (9.69) and  
 GSB (9.51)(\*Wilson,Soplop-E,Wedewer,Lyerly-C,Baxter,Picard-W)...NEW: GRD (15.45)  
 is being heard in the Pacific transmission 1-4:15pm (\*\*Baxter-W)...GRF (15.39)  
 operates: 6:45-11:15,11:30am-12:30,1:15-2:15pm to NA, 2:30-2:45, 3:15-5pm to NA.  
 (Wilson,Ferguson,Gozen,Soplop-E,Kopp,Schrock,Juett-C, Balbi,Baxter,Allen,Picard  
 -W)...NEW: GRF (12.095),heard to 11:45am in French,12-12:15pm in German (Baxter)  
 ...GRF also heard 1-1:15,2:45-3,3:15-3:40pm (Legge,Allen-E)...GRG (11.68),broad-  
 casts 2:30-3:30,3:30-5pm to NA (Wilson-E)...GRW (6.145), is heard approximately,  
 12:30-2:30am, afternoons to 5:30pm and 10-11:15pm (Gozen,Allen-E, Juett-C,Balbi,  
 Baxter-W)...GRY (9.60) broadcasts the N.A. program to W.Africa,5:15-6:45pm (RG).  
**FINLAND** NEW: Suomen Vapaus Radio (Finnish Freedom Station),is heard 7:30-7:48  
 am on 11.59; man announcer; strong signals but c.w. qrm & poor quality.Also sup-  
 posed to broadcast: 3:05-3:20pm on 6.125 (\*\*Skyten-E)...OFE (11.785) and OFD  
 (9.495) now operate approx. 10:55am-7:05pm and 12:15-1:30am with home service.  
 Broadcasts to N.A. are made 2:05-2:30,over OIE (15.19),OFE (11.785),OFD (9.495);  
 8:10-9pm over OFE (11.785),OFD (9.495) and 11:05-11:45pm over OFE (11.785)...The  
 news in English is given at 12:45,2:10,6:15,8:20,11:10pm (\*\*Skyten,Allen,Newell,  
 Roberts,Hankins,Hart,Soplop,Becker,Wilson,Ferguson-E, Wedewer,Heflin,-C,Balbi-W)  
**FRANCE** "Radio Unconnu" (9.75),is also broadcasting 6:30-6:50am (Becker,Legge  
 -E)...Anti-Vichy station heard on 6.155 at 12:50am (Allen-W)...The **NEW VICHY**

**SCHEDULE effective April 11, follows:**

12:45-1:30am	15.24	To Indo China	2:00-2:45pm	15.24	To Madagascar
1:45-2:30am	9.52	To No. & Equa. Afr.	3:00-3:45pm	11.845	To No. Africa
2:45-3:30am	9.52	To Occidental Afr.	4:00-4:45pm	11.845	to NORTH AMERICA
3:45-4:30am	11.845	To Eastern Medit.	5:00-5:45pm	11.845	to North Africa.
7:30-8:15am	17.85	To NORTH AMERICA	6:00-6:45pm	11.845	To North Africa.
8:30-9:15am	17.85	to North Africa.	7:00-7:45pm	9.52	To NORTH AMERICA
9:30-10:30am	15.24	To Indo China	8:00-8:45pm	9.52	To Indo China
10:45-11:30am	17.85	To North Africa	9:00-11:00pm	9.52	To South America.
11:45-12:45pm	15.24	To Madagascar	11:15-12:30am	9.52	To NORTH AMERICA
1:00-1:45pm	15.24	To South America			

**GERMANY** Berlin broadcasts to NA: 7-9:45am over DJB (15.20) and DXW (11.84),  
 7-9:30am over DJE (17.76); 5:50-8:30pm over DJB (15.20), 8:30pm-2am over DXP  
 (6.03); 5:50pm-12 mid. over DXL7 (11.885),DJD (11.77),DXC2 (11.74),DZD (10.545),  
 DXL24 (9.62); 5:50pm-2am over DXJ (7.24)(\*Wilson,Soplop,E,Kopp-C,Balbi,Picard-W)  
 ...Berlin broadcasts to SA: 5:50-8,9:30pm-12:15am over DJA (9.56); 5:50-12:15am  
 over DXZ (9.57), DJE (17.76) has replaced DZH (14.46), in program for S.A., 11am  
 12 noon (\*Wilson,Soplop,Gozen-E, Lyerly-C, Picard-W)...DXT (15.23), again broad-  
 casts English news with DJL at 7:30 & 8:30am (Wilson-E)...News in Japanese is  
 broadcast at 7:30am over DJP (11.855) and DJW (9.65)(\*Balbi-W)...An unidentified  
 station on 15.13- probably a Paris xmtr.- is being heard at 10:45,11-11:15am and  
 at 3:30pm (\*Hankins,Allen,Wilson,Gozen-E)...News in English from Berlin may be  
 heard during the day: at 12:30am over DZD (10.54), 7:30 & 8:30am over DJL (15.11)  
 & DXT (15.23), 9:30am over DJL (15.11); 11:30am over DJB (15.2); 12:30pm over  
 DJB & DXJ (7.24); 1:30,2:30,3:30pm over DXZ (9.57),DXJ (7.24),DXM (7.27); 4:30pm  
 over DZD (10.54), DXJ, DXM (\*Wilson-E). . . NEW: Station DEBUNK (7.3), location  
 supposed to be in U.S. but actually in Germany, broadcasts rank propaganda in  
 English nightly 8:30-9pm; opens and closes with piano melody consisting of a few  
 notes from the "Star Spangled Banner" (\*\*Skyten,Legge,Mason,Becker-E, Wedewer,  
 Mouzis,CAM-C)...The "German Revolutionary Station" (9.645) is now heard 3-3:15,  
 5-5:15,7-7:15,9-9:15,11-11:15pm,1-1:15am; signal is ticking of clock (\*\*Gozen-E,  
 Balbi-W)..."Gustave Siegfried Eint" (9.545), is also being heard at 8:52, 9:52,  
 10:52pm etc. (\*Gozen-E)

**HUNGARY** HAT4 (9.125),Budapest,now broadcasts to Latin America 7-9pm(Becker-E)  
**HOLLAND** PCV (18.065),Kootwijk,still being heard weakly 7:30-11:45am, with PCJ  
 (15.22)(\*Skyten-E)...PCJ (15.22),is now broadcasting the regular Berlin program  
 to S.A.,4-5:45,5:50pm-12:15am,with DJQ, replacing PCJ on 9.59(\*Skyten,Allen,Wil-  
 son,Gozen,Soplop-E,Balbi-W)

**IRELAND** "Radio Eirrean" (17.84),gives program resume at 1:40pm; English news  
 at 1:45pm (\*Payette,Hall-E, Wedewer-C)

**ITALY** "Radio Italia"- anti-Fascist (11.915),now heard 11:30-11:50am,5-5:20,  
 7-7:25,9-9:25pm,1-1:30am (\*\*Roberts,Allen,Soplop-E,Stark-C,Baxter,Balbi-W).....  
**URO--** (9.575),used for relays to the Argentine at 6pm (\*\*Hart-E)...IQY (11.70) &  
**IRF** (9.815),heard 3:50-4:30pm (\*Skyten-E,Legge-E)...2RO6 (15.30),broadcasts news

in English at 1:30, 3, 5pm (Hankins, E, Andrade-C, Field-W)...Rome broadcasts to SA: 7-9:30pm over 2R018 (9.76), 2R0-- (10.33), 2R06 (15.3)...Rome broadcasts to W.NA: 12:30-1:30am over 2R03 (9.63), 2R04 (11.81), 2R06 (15.3); English news at 1am (\*Wilson, Ferguson, Hankins-E, Balbi, Krumlinde-W)...Rome broadcasts to Far East: over 2R0-- (11.95), 1:30-2:30am (\*\*Balbi-W)

X JUGOSLAVIA YUC (9.505) also heard 12-12:20am; announced as the German Shortwave Sender (\*Balbi-W)...Unidentified station on 11.785, daily 3-3:30, gives news in Serb; mentions "Jugoslavia" (\*\*Soplop, Allen, Skyten, Legge-E)

MONACO The Principality of Monaco has been issued a permit for the establishment of a shortwave station at Monte Carlo (\*\*Johnson-W)

NORWAY NEW: Norske Frihits Station (Norwegian Freedom station), heard on 10.07, approx. 11am-2:40pm with strong signals, all-Norwegian program (\*\*Skyten-E)

PORTUGAL Shortwave Emissora Nacional at Lisbon, broadcasts 12 noon-4:30pm over CSW6 (11.04); 4:40-6:50, 7-9pm over CSW7 (9.735) (\*Allen, Becker-E, Kopp-C, Baxter-W)

X SLOVAKIA Radio Bratislava is back on the air and broadcasting Mon/Wed/Fri/Sat, at 7pm to North America on 9.503; opens with English talk (\*\*Hart-E)

SPAIN Radio Spain (9.86), Madrid- probably old EAQ, now broadcasts weekdays 2-3pm (English 2:15-2:30), and 8-9pm to N. A. English period 8-8:15pm; woman announcer; Spanish period 8:15-9pm; man announcer; signs-off with national anthem (\*\*Ferguson, Becker, Voisich, Soplop, Skyten, Roberts, Allen, Legge-E, CAM, Borchardt-C)

SWEDEN Swedish home programs are broadcast: over SBT (15.155), weekdays Noon 6pm, Sun. 10am-6pm; over SBP (11.705), Sun. 4am-5:15pm, Mon/Tues/Fri 2-5:15; Wed & Sat. 9-10pm; SBP (11.705) & SBU (9.535) broadcast daily 5:20-5:35pm (Skyten, Ayvazian, Becker, Allen)

SWITZERLAND HER4 (9.538) and HER5 (11.865) broadcast nightly ex. Sat, 6:45-8:10pm to S.A. and 8:45-10:10pm to N.A.; News in English is read by Max Swinker at 10, and 11pm (\*\*Allen, Ferguson, Gozen, Soplop, Soplop, Wilson-E, Wedewer-C, Balbi-W)

U.S.S.R. (Europe & Asia) KHABAROVSK: 5.89 heard daily approx 11:45pm-11am or later; 5.94 heard approx. 4am-1pm; 6.05 heard approx. 2-4am; 6.09 comes on air at 2am (Allen, Roberts-E, Balbi, Baxter, Allen-W)...KUIBYSHEV: 10.04 heard weakly 11:30pm-1am in addition to regular skeds (Skyten-E)...MOSCOW: 6.98 heard 5pm or earlier to 10pm or later (Skyten-E); 7.77 heard at 1:15, and 6:30-10pm or later (7-7:40pm to NA); news in English at 6:50pm; RV96 (9.52) heard 12-2am and 1-7pm irreg. (Allen, Skyten-E, Balbi-W); .. 11.72 heard 10-11pm irreg (Balbi-W); 12.06 heard 6:45-7:30am weakly (Allen-E); ..NEW: 12.18 heard 11:50am-12:40pm weakly (Allen-E); RV96 (15.18) heard 12-1:30, 7:40-9:40am, 12:30-12:45pm irreg. with all Russian programs (\*Soplop, Allen-E, Juett-C, Balbi-W)...MOSCOW-KOMSOMOLSK 9.567 is now heard 5:40-8:15am, 9:15-9:30am, 4-7, 11:15-11:40, 11:45pm-12:30am; English news at 7:15, 8:00, 9:15am, 11:15pm; 6.115 is also on now 5:40-8:15am; The 5:40-8:15 am broadcast is carried on 15.23 & 11.885 irreg.. Network relays are carried at 8am, 6:45 and 7:15pm irreg. on 15.23; occasionally 11.885 (\*\*Wilson, Gozen, Skyten, Allen, Hart, Ferguson-E, Borchardt, Juett-C, Krumlinde-W)...SVERDLOVSK: 9.86 is heard 11:30pm-12:30am & 1-4pm irreg; 12.235 heard 8:20-8:30 (Eng), 10-11:30am, 11pm-2:30am irreg. (\*Allen, Skyten-E, Balbi-W)

VATICAN CITY HVJ (15.12), is broadcasting Sundays 8:30-8:50pm in Spanish. (E\*)

#### ASIA AND OCEANIA

AUSTRALIA Voices of our U.S. soldiers "Calling Home" may be heard daily at 12:40am over VLG6 (15.23); 7:40am over VLG2 (9.54); 11:15am over VLG2 & VLQ2 (11.87) (Allen-E, Andrade-C, Balbi-W)\*\*)...Australia broadcasts to NA as follows: 12:25-1:10am to W.NA over VLG6 (15.23); 7:25-8:10am to E. NA over VLG2 (9.54); 11-11:45am to W.NA over VLG2 & VLQ2 (11.87) (\*\*Payette, Ferguson-E, Balbi, Picard, Field-W)...VLS (9.84), arranges morning contacts with U.S. networks (\*Legge, Ferguson, Waite, Skyten, Gozen, Wilson-E, Acton-C)...Tests to E.NA, have been made recently, 5:25-6pm on VLG3 (11.71), 6:25-7pm on VLG6 (15.23) irreg. (Newell-Ferguson, Allen, Hankins, Bailey-E, Balbi-W)...VLG6 (15.23), broadcasts French program 1:55-2:45am; to S.W. Pacific, 5:30-6:30am (Wilson-E, Balbi, Baxter-W)...VLQ (9.615), broadcasts French program 4:20-5:25am (Van Auken-C, Baxter-W)...VLQ2 (11.87), to A.I.F., 12 noon-12:15pm (Balbi-W)...VLR (9.58), broadcasts 3:45-9:30am...VLW3 (11.83), heard 2-6:45, 7-9am, VLW4 (9.665), heard 9:15-11am; English news at 8 & 10:30am (Hart-E, Lyerly, Juett, Van Auken-C, Balbi, Baxter-W)

CHINA FFZ (12.06), Shanghai, gives English news at 8am (Soplop-E)...XGAP, Peiping, is now broadcasting on both 6.105 and 10.26, 6:30-11:50am (\*Allen, Gozen, Skyten, Becker-E, Juett-C, Balbi, Baxter, Allen-W)...XGOA (9.72), heard one evening 7:04-7:52pm (Ferguson-E)...XGOK (11.65), Canton, still heard 5-9:30am; English news at 8am (Hart, Skyten, Becker, Roberts, Voisich-E, Baxter, Field, Balbi-W)...XGOX (varies 15.18 to 15.19), heard irreg. from as early as 6 to as late as 10pm with oriental program & relays to U.S. networks (\*Allen, Ferguson, Hart, Skyten, Soplop)



# SHORT-WAVE BROADCASTING STATIONS

SYMBOLS: N—NEW stations; F—Frequency changes; S—Change in sked; J—Stations persisting in hopping about; V—Varying in frequency; \*—See shortwave notes . . . . IMPORTANT English news periods are indicated in list as NEWS.

METERS	MEGS.	CALL	STATION	LOCATION	TIME	EASTERN WAR
<b>13 METER BAND</b>						
13.86S	21.84	GRZ	London, England		7:15-8, 8:15-9am	
13.92S	21.55	GST	London, England		9:45-11:15am to S.A.	
13.97S	21.47	GSH	London, England		6:45-11:15am to Africa	
15.31S	19.59	2R017	Rome, Italy		7:30-9:30, 11:30am-12:45pm.	/am
16.61n	18.06S	PCV	Kootwijk, Holland		7:30-11:45am...News 7:45, 8:45, 10:30, 11:30	
<b>16 METER BAND</b>						
16.63	18.04	KQR-KGEI	Bolinas, Calif.		6:45pm-12 mid.	
16.64S	18.03	GRQ	London, England		6:45-9, 9:30-11:15, 11:30-11:45am, 12-12:15p	
16.77S	17.89	GRP	London, England		6:45-11:15, 11:30am-12:30pm to C.A.	
16.81S	17.85		Vichy, France		7:30-8:15am to NA, 8:30-9:15, 10:45-11:30am	
16.81S	17.845	DJH	Berlin, Germany		3:45-11am	
16.82S	17.84		Athlone, Ireland		8-9:30am, 1:30-2:15pm...News- 1:45pm.	*
16.83	17.83	WCRC	New York City, N.Y.		6am-3:30pm	
16.83	17.83	WCDA	New York City, N.Y.		3:30-4:45, 4:50-7:30pm	
16.83n	17.83	LRA5	Buenos Aires, Argentina		Fridays 5-5:30pm	/9:15a
16.84	17.82	2R08	Rome, Italy		7-7:25, 8:30-9, 9:15-9:40am, 1-2:30pm ..News	
16.84S	17.81	GSV	London, England		6:45am-2:15pm	
16.85	17.80	OIH	Lahti, Finland		7am to 1:30pm or later	/12:30-1245
16.86S	17.79	GSG	London, England		6:30-7:30, 7:45-8, 9:30-11, 11:15-11:30am,	
16.87n	17.785	JZL	Tokyo, Japan		3:30-4:30am approx.	*
16.87S	17.78	WNBI	New York City, N.Y.		9am-2, 4:55-5:45pm to Latin America.	
16.88S	17.77	2R07	Rome, Italy		8:30-9, 10-11, 11:30am-12:45pm.	
16.89S	17.76	DJE	Berlin, Germany		2:30-7, 7:15-9:30am to NA, 11am-12 noon.	
16.90S	17.75	WRUL	Boston, Mass.		9am-12:30pm ex.Sun; Sun.10am-12 noon.	
<b>19 METER BAND</b>						
19.42N	15.45	GRD	London, England		1-4:15am to N.Z. /pm; Su.9:10-11:40am. *	
19.48S	15.40	PZX5	Paramaribo, Dutch Guiana		7:40-9:40pm ex.Sa/Su; Sa.5:40-840	
19.51S	15.39	GRE	London, England		3-4:15, 6:45-11:15, 11:30am-12:30pm to NA, 12:45-1, 1:15-2:15pm to NA, 2:30-2:45, 3:15-5pm to NA...News 4, 7, 9am, 12, 2, 4:45pm.	
19.53	15.36	DZG	Berlin, Germany		1-3:15am, 12:30-2pm.	
19.54S	15.35	WRUW	Boston, Mass.		1:15-4:45 ex.Sa/Su; Sa. 1:30-6:15pm.	
19.56S	15.34	DJR	Berlin, Germany		1am-12 noon to Central Asia.	
19.57	15.33	WGEA	Schenectady, N.Y.		9am-6:30pm	
19.57	15.33	KGEI	San Francisco, Calif.		7pm-12 mid.	
19.58n	15.32	DXU	Berlin, Germany		7-9:30am.	
19.60	15.31	GSP	London, England		6:30-7:30, 7:45-8, 8:15-8:30am, 12:45-2:15pm	
19.61S	15.30	2R06	Rome, Italy		2:15-2:30, 3-3:30, 3:40-4:20, 6:30-7:15, 7:30-10:30am, 1-2:30pm to NA, 1:40-6:50, 7-9:30pm, 12:30-1:30am to W.N.A...News- 1:30, 3, 5p	
19.62	15.29	VUD2	Delhi, India		2:30-4:45am, 10pm-12:30am...News- 10:30pm.	
19.62	15.29	LRU	Buenos Aires, Argentina		7:15-8:15am./pm-12:15am...News-10	
19.63S	15.28	DJQ	Berlin, Germany		1-3:30, 7am-12 noon, 3:30-3:45, 4-5:45, 5:50	
19.64	15.27	WCBX	New York City, N.Y.		6am-3:47, 4-11pm	
19.66S	15.26	GSI	London, England		2:45-5pm.	
19.67S	15.25	WLWO	Cincinnati, Ohio		10am-5:15, 6:30-7:45pm.	
19.67	15.247	CR7BD	Lourenco Marques, Mozambique		1-5:20pm; Sun.11am-3pm.	
19.69n	15.235	JVW4	Tokyo, Japan		4:45-8:55am. * /9:40pm*	
19.70S	15.23		Moscow-Komsomolsk, USSR		5:40-8:15am, 5:15-5:40, 7-7:40, 9:15-	
19.70	15.23	2R014	Rome, Italy		1:30-2:40, 6:15-6:25, 7-10:30, 11:30am-1pm.	
19.70n	15.23	DXT	Berlin, Germany		7-9:45am...News- 7:30, 8:30am.	
19.70S	15.23	VLG6	Melbourne, Australia		12:25-1:10am to W.N.A.1:55-2:45, 3:45-4:45, 5:30-6:30am, 6:25-7pm irreg, 9pm-mid.	
19.71S	15.22	PCJ	Huizen, Holland		7:30-11:45am, 4-5:45, 5:50pm-12:15am...News-	
19.72S	15.21	WBOS	Boston, Mass.		5:30-5:45, 7-9:45am to NA, 11:30am-12, 12:30-1, 5:50-8:30pm to NA...News- 7:30, 9:30,	
19.75	15.195	TAQ	Ankara, Turkey		6:30-8am /11:30am, 12:30pm, 6, 7, 8pm.	
19.75S	15.19	OIE	Lahti, Finland		10:55am-7:05pm...News- 12:45, 2:15pm.	
19.75V	15.19	XGOX	Chungking, China		approx. 6-10pm. *	

19.76S	15.18	GSO	London, England	2:30-2:45pm.
19.76n	15.18	RV96	Moscow, U.S.S.R.	12 mid.-1:30, 7:40-9:40am, 12:30-12:45pm ir.
19.77	15.175	OQ2AA	Leopoldville, Bel. Congo	6:55-8am, 2:45-3:45pm.
19.78	15.17	TGWA	Guatemala, Guatemala	1:45-3p, to NA; Sun. 1:45-6:15pm.
19.78	15.165	PRE9	Fortaleza, Ceara, Brazil	9:10am-12 noon. / NA... News- 7, 1130p
19.79S	15.16	JZK	Tokyo, Japan	4:45-7:30, 8-11am, 6:55-11, 11:30pm-2:30am to
19.81S	15.15	WRCA	New York City, N.Y.	9am-3:15, 4:55-5:30pm / -6:15pm to S.A.
19.82S	15.14	GSF	London, England	1-4:15, 6:45-11:15, 11:30am-3:30, 4:35-5, 5:15
19.83N	15.13	DXL6	Paris, France	Relays Berlin program intermittently *
19.83S	15.13	WRUW	Boston, Mass.	9am-12:30pm ex. Sun.
2000 19.84	15.12		Athlone, Ireland	2:30-5pm.
19.84	15.12	HVJ	Vatican City	10:30am-1pm or later; Sun. 8:30-8:50pm
19.85	15.11	DJL	Berlin, Germany	1-3:15, 7:30-7:45, 8:30-3:45, 9:30-9:45, 11:40am-5:30pm... News- 7:30, 8:30, 9:30am.
19.86	15.10	EPB	Tehran, Iran	4:30-6am (Fri. 4-7am)
19.92	15.06	ZRO21	Rome, Italy	10-10:30, 11:30am-1pm (Arabic)

20.07	14.935	PSE	Rio de Janeiro, Brazil	Thurs. 4-4:30pm (Italian)
20.11S	14.92		Sverdlovsk, U.S.S.R.	8:20-8:30am (English)
20.75	14.46	DZH	Berlin, Germany	11am-Noon, 3:30-4:15, 5:50pm-12:15am
20.83	14.40		Kuibyshev, U.S.S.R.	8:50-9:15am (English)
21.77	13.78	KKW-KGEI	Bolinas, Calif.	6:45pm-12 mid.
23.38n	12.83	CNR	Rabat, Morocco	8-9am (French) / 7-11pm. *
24.09S	12.455	HCJB	Quito, Ecuador	7:45-9:30am, 12:30-3:30 (Sun. 9:30am-5:30),
24.52S	12.235	TFJ	Reykjavik, Iceland	Thurs. 7:17pm.
24.54S	12.225		Sverdlovsk, U.S.S.R.	8:20-8:30, 10-11:30am, 11pm-12:30am ir.
24.61N	12.18		U.S.S.R.	11:50am-12:40pm *
24.73	12.13	DZE	Berlin, Germany	7-10, 11am-1:45, 4-5:45, 5:50pm-12:15am.
24.75S	12.12	TPZ	Alger, Algeria	7:15-8am, 2:30-4:15, 5-7pm... French news 4,
24.80N	12.095	GRF	London, England	11:30-11:45am, 12-12:15, 1-1:15, / 5:30pm.
24.88S	12.06	FFZ	Shanghai, China	2:45-3, 3:15-3:30pm
24.88	12.06	RNE	Moscow, U.S.S.R.	12-2, 4:30-10am... News- 8am.
24.92S	12.04	GRV	London, England	8:20-8:30am (English)
				2:40-5:30, 8:15-9:15, 9:45-11, 11:15am-12:30
				12:45-3, 6:30-10:45pm.

## 25 METER BAND

25.00	12.00		Brazzaville, Middle Congo	2-9:50am, 2-3, 4:30-6pm.
25.04S	11.98	XIRS	Shanghai, China	7-9:30am... News- 7:15am.
1000 25.04S	11.975	CB1180	Santiago, Chile	7:30-10am, 6:15pm-12 mid.
25.05S	11.97	FZI	Brazzaville, Middle Congo	2:2-2:20, 9:30-10am, 3:45-4, 4-5:30, 11pm-12 mid. to NA... News- 3:45, 11:45pm.
25.08	11.96	CB1190	Santiago, Chile	9-10:30pm / 12:30-1:30am to W.NA, 130-230am
25.10S	11.95	ZRO--	Rome, Italy	10:30am-12:15, 1-8:15, 8:30pm-12 mid. to NA,
25.18S	11.915		Anti-Fascist	9-9:30, 11-11:30, 3-3:30, 5-5:30, 7-7:30, 9-930
25.21	11.90	TIJMP	San Jose, Costa Rica	8-9:30am, nightly to lam/ pm, 1-1:30am.
25.21S	11.90	XGOY	Chungking, China	Present schedule unknown.
25.23S	11.89	WNBI	New York City, N.Y.	2:15-4:40, 6-7:45pm.
25.24	11.885		Paris (Mondiale), France	2-5:10pm.
25.24	11.885	DXL7	Paris, France	5:50pm-12 mid. to NA... News, 7, 8, 9, 10, 11pm.
25.24S	11.885		Komsomolsk, Moscow, USSR	5:40-8:15am, 5:15-5:40, 7-7:40, 9:15-9:40, 11:15-11:40pm... News-8am
25.25S	11.88	H13X	Trujillo City, D.R.	Mon. 6:10-9:30pm; Tu. 6:10-10:30pm; Wd. & Fri. 6:10-9:10pm; Th. 6:10-9pm; Sa. 6:10-8:15 / pm
2000 25.25	11.88	VLR3	Melbourne, Australia	9pm-3:15am.
1000 25.25	11.88	VIG5	Melbourne, Australia	5-7am.
1000 25.27S	11.87	VLQ2	Sydney, Australia	6:40-7:15, 11-11:45am to W.NA... News-11a
25.27S	11.87	WBOS	Boston, Mass.	4:57pm-1:10am. / 11pm.
25.28S	11.865	HER5	Berne, Switzerland	7:45-9:10, 9:45-11:15pm to NA... News- 10,
25.29n	11.86	KMHA	Shanghai, China	5-11am, 8-8:30pm... News- 9, 10am, 8pm. *
25.29	11.86	GSE	London, England	4am-11:45am, 12 noon-4pm... News- 4am.
25.30S	11.855	DJP	Berlin, Germany	1-3:15, 7am-4:20, 5:50pm-12:15am.
25.33S	11.845		Vichy, France	3:45-4:30am, 3-3:45, 4-4:45, 5-5:45, 6-6:45pm
25.35	11.84	DXW	Warsaw, Poland	7-9:45am to NA... News- 7:30, 8:30, 9:30am.
25.35	11.84	DHE4A	Prague, Bohemia	4:30-6:45, 6:55-9:15pm. / 8:30am, 10:30pm.
25.36	11.83	VUD4	Delhi, India	2:30-4:45, 7:30-9am, 10pm-12 mid... News-
2000 25.36S	11.83	VLW3	Perth, W. Australia	2-6:45, 7-9am.
5000 25.36	11.83	WCRC	New York City, N.Y.	3:47-11pm.
1000 25.37	11.825	CXA14	Colonia, Uruguay	4:30-10:05pm

25.37S	11.825	JVZ2	Tokyo, Japan	4:50pm-2, 8-11am...News- 8am, 10:30am.
25.38S	11.82	GSN	London, England	7-11:45am, 1-2:15, 2:30-4:20pm.
25.38	11.82	XEBR	Hermosillo, Mexico	9am-lam.
25.39	11.815	JVZ	Tokyo, Japan	5am-12 noon, 11pm-1:30am irreg.
25.40	11.81	2R04	Rome, Italy	2:15-2:30, 3:20-4:20, 6:30-7:25, 10:30am-12:15, 12:30-8:15, 8:30pm-12 mid. to NA, 12:30-1:30am to W.NA...News- 8:30, 10:30pm
25.42	11.80	DJZ	Berlin, Germany	7am-12 noon.
25.42S	11.80	JZJ	Tokyo, Japan	4:45-7:30, 8-11, 11am-2:30, 6:55-11pm to ENA; 11:30pm-2:30am to W.NA...News- 7, 11:30pm.
25.45	11.79	WRUL	Boston, Mass.	1:15-6:30pm; Sat. 1:30-6:15pm; Sun. 10am-Nn.
25.46S	11.785	OFE	Lahti, Finland	10:55am-7:05, 8:10-9, 11:05-11:45pm, 12:15-1:30am...News- 12:45, 2:10, 6:15, 8:10, 11:10
25.46N	11.785		Jugoslav undercover station	3-3:30pm (Serb) /9:45, 10:15p*
24.47S	11.78	HP5G	Panama City, Panama	9:15-10am, 12:30-3, 6-11pm...News- 930am
25.48	11.775	MTCY	Hsinking, Manchukuo	1:30-3am to NA...News- 1:30, 2:30am. *
25.48S	11.775		Saigon, Fr. Indo China	5:15-10:30, 11:30am-12 noon, 1-1:30, 7:45-8:20pm...News- 6:15, 7:30, 11:45am.
25.49	11.77	DJD	Berlin, Germany	1-3:15, 7-11:30, 11:40am-5:30, 5:50pm-12 mid. to NA...News- 7, 8, 9, 10, 11pm.
25.50	11.765	PYD8	Sao Paulo, Brazil	5:30-10:45pm.
25.51S	11.76	DKR	Warsaw, Poland	1:30-3:15, 11:40am-5:30pm to Africa.
2000 25.51	11.76	VLR8	Melbourne, Australia	3:30-7:15pm
25.51	11.76	2R015	Rome, Italy	1:30-2:40, 6:15-9:30, 11:30am-2:30, 3:20-7pm
25.53S	11.75	GSD	London, England	1-4:15, 9:45-11:15, 11:30am-5, 5:15-11:45pm (5:15-8:45pm to NA)...News- 5:45, 6:45, 8, 9pm, 12:30am.
25.55C	11.74	CB1174	Santiago, Chile	8-9am, 7:30pm-12:30am. 9pm, 12:30am.
25.55n	11.74	J--	Tokyo, Japan	2-4:30, 4:45-8:55am. /10, 11p*
1000 25.55	11.74	COCY	Havana, Cuba	7:30am- 2:15am. /mid. to NA...News- 7, 8, 9,
25.55S	11.74	DXC2	Berlin, Germany	1:30-3:15, 4:30-12 noon, 12:30-5, 5:50pm-12
25.58S	11.73	WRUW	Boston, Mass.	6:30-11pm ex. Sa/Su; Sat. 6:15-11pm.
25.58n	11.73		Leopoldville, Bel. Congo	2:55-3:45pm with OPM *
25.59S	11.725	JVW3	Tokyo, Japan	3:30-4:30, 4:45-8:55am, 4:50pm-2am. *
5000 25.60	11.721	ZPA2	Asuncion, Paraguay	Relays ZP10 6-8:40pm.
25.60N	11.72		Leopoldville, Bel. Congo	2:30-4:30pm *
25.60	11.715	HSP5	Bangkok, Thailand	7-11am, 7:45-8:30pm...News- 8:30am.
25.62	11.71	YSM	Salvador, El Salvador	2-3, 8-10:30pm
25.62S	11.71	WLWO	Cincinnati, Ohio	8pm-12 mid.
10000 25.62S	11.71	VI3	Melbourne, Australia	5:25-6pm to E.NA irreg. *
25.63S	11.705	CXAL19	Montevideo, Uruguay	7-8am, 7:30-11pm. /-5:35p
25.63S	11.705	SBP	Motala, Sweden	2-5:15, 5:20-5:35pm; 9-10pm to NA; Sun. 4am
7300 25.63J	11.705	CBFY	Montreal, Canada	7:30am-12 mid...News- 7:30, 8, 9am.
500 25.64S	11.70	HP5A	Panama City, Panama	9:15-11:40am, 9:10pm-lam; Sun. 9am-lam...
25.64n	11.70	IQY	Rome, Italy	3:50-4:30pm. /News- 10:30pm.
25.64N	11.70	CB1170	Santiago, Chile	8-10pm
25.68S	11.68	GRG	London, England	3:30-5pm /10:15am, 745p
25.68S	11.68	XGRS	Shanghai, China	3:45am-12 noon, 6:45-9pm...News- 7:30, 8:00
25.75n	11.65	XGOK	Canton, China	5-9:30am...News- 8am. *
25.82	11.616	VCOK	Havana, Cuba	1pm-lam; Sun. 1-7pm...News- 1, 3:30, 7, 10pm.
25.88N	11.59		Finland Freedom Station	7:30-7:45am. *
26.16N	11.47		Voice of Free India	11am-Noon, 9:30-11:30pm. *
27.17S	11.04	CSW6	Lisbon, Portugal	12 noon-4:30pm
27.29	10.953	CR6RB	Benguela, Angola	3:20-4:30pm; Sun. 12 noon-1pm.
28.30	10.60	ZIK2	Belize, Br. Honduras	Tues/Thurs/Sat 2:30-3, 9:30-9:50pm.
28.45S	10.543	DZD	Berlin, Germany	2:30-3:15, 4:30-5, 5:50pm-12 mid. to NA, 1230-lam...News- 2:30, 4:30, 6, 7, 8, 9, 10, 11pm, 10-10:50am...News- 10:30am. /12:30am.
28.49n	10.53	JIB	Taihoku, Taiwan	10-10:50am...News- 10:30am. /12:30am.
300 28.85	10.40	YSFA	San Salvador, El Salvador	9:10-10am, 7:30pm-12:30am.
29.04	10.33	2R0--	Rome, Italy	7-9:30pm to S.A.
29.15	10.29	DZC	Berlin, Germany	4-5:45, 5:50pm-12:15am to S.A.
29.24N	10.26	XGAP	Peiping, China	6:30-11:50am. Sun. 9:15-9:40pm
29.35S	10.22	PSH	Rio de Janeiro, Brazil	7-8pm ex. Sun; Mon/Wed/Sat 9-9:30pm; *
29.44N	10.19	J--	Tokyo, Japan	4:45-8:55am. *
29.59	10.14	OPM	Leopoldville, Bel. Congo	2:55-3:45pm.
500 29.62	10.13	HH3W	Port-au-Prince, Haiti	1-4:45, 7:30-11:30pm; Sun. 1-5, 7-1130p
29.79	10.07		Norway Freedom Station	11am-2:40pm.
29.81n	10.065	HLA2	Hsinking, Manchukuo	1:30-3am to NA...News- 1:30, 2:30am. *

29.84	10.055	SUV	Cairo, Egypt	Relays Cairo programs to American networks
29.88S	10.04		Kuibyshev, U.S.S.R.	11:30pm-3:30, 7-10:50am...News- 1,8:50,
30.43S	9.86		Madrid, Spain	2-3, 8-9pm to NA...News- 2:15, 8pm. /9:30am
30.43n	9.86		Sverdlovsk, U.S.S.R.	11:30pm-12:30am, 1-4pm irreg. *
30.49S	9.84	CR7BE	Lourenco Marques, Mozambique	3-5pm or later; Su. 11am-5pm.
30.49	9.84	VLS	Sydney, Australia	Relays programs to American networks *
30.51	9.833	COCM	Havana, Cuba	9am-1am; Sun. 9am-12 mid. /9, 10:45, 12:30am.
30.54	9.825	GRH	London, England	5:15pm-12:15am to C.A...News- 5:45, 6:45, 8,
30.57n	9.815	IRF	Rome, Italy	3:50-4:30pm *
30.67	9.73	HNF	Baghdad, Iraq	10am-3pm.
30.74	9.76	ZRO18	Rome, Italy	12:30-2:30, 7-9:30pm to S.A.
30.75	9.755	ZRO	Durban, So. Africa	4:30-8, 10am-5pm; Sun. 4:50am-5pm.
30.77S	9.75		Radio Unconnu	2-2:15, 6:30-6:55am, 3:30-3:50pm
30.80F	9.74	TI4NRH	Heredia, C.R.	8-9am irreg; Tu/Th/Sa 12:01-1am
30.82S	9.735	CSW7	Lisbon, Portugal	4:40-6:50, 7-9pm to NA.
30.82S	9.73	CB970	Valparaiso, Chile	7:30-9am, 7:15pm-12:30am.
30.86S	9.72	XGOA	Chungking, China	7am-12 noon, 3-5pm...News 8:30, 10, 11am.
30.88S	9.715	OAX4K	Lima, Peru	8pm-12 mid.
30.92	9.705		Fort-de-France, Martinique	12:30-1:40, 6:35-9pm. /2-9:30pm
30.93S	9.70	WRUW	Boston, Mass.	1:15-11pm ex. Sa/Sun; Sa. 1:30- 11pm; Sun.
30.95n	9.695	JIE3	Taihoku, Taiwan	8-9, 10-10:50am...News- 10:30am. *
30.96	9.69	GRX	London, England	2:15am-2:45, 3-4:15, 5-6pm, 7-10:45pm.
30.96	9.688	LRA1	Buenos Aires, Argentina	11:30am-2, 3:30-4:30, 5-10pm.
1400.6 2000	30.98	TGWA	Guatemala, Guatemala	11pm-12:45am ex. Su; Su. 7pm-12:45am.
30.99	9.68	XEQQ	Mexico D.F., Mexico	9am-1:45am.
30.99	9.68	EQC	Teheran, Iran	11am-1pm (Th. 9:30am-1, Fri. 10am-1pm)
31.01	9.675	DJX	Berlin, Germany	1-3:15, 11:40am-5:30pm...News- 12:15pm

## 31 METER BAND

31.02S	9.67	WRCA	New York City, N.Y.	3:30-4:40, 5:45pm-5am.
31.04F	9.665	VLW4	Perth, W. Australia	9:15-11am to Far East.
31.06S	9.66	LRX	Buenos Aires, Argentina	6:30-7, 8:30am-11:10pm.
31.06	9.66	HVJ	Vatican City,	Sun/Thurs 9:30-9:50pm to NA, in English
31.06	9.66	XGRI	Shanghai, China	7-11am...News- 8:10, 10:10am.
31.06	9.658	HIBM	Port-au-Prince, Haiti	8-9:45am, 1-4, 4:30-9:45pm.
31.08	9.655	HJCT	Bogota, Colombia	11am-3, 6:15pm-12:40am.
31.09S	9.65	DJW	Berlin, Germany	1:15-3:30, 7am-12 noon, 5:50pm-12:15am.
31.11	9.645	LLH	Oslo, Norway	6:40-8am, 1:30-6, 10-11pm to N.A. /1-1:15am.
31.11S	9.645		German Revolutionary	3-3:15, 5-5:15, 7-7:15, 9-9:15, 11-11:15pm
31.12S	9.64	KZRH	Manila, Philippines	4-10am...News- 8, 9:30am.
7500	31.12S	CXAB	Colonia, Uruguay	6-8am, 3-5, 7-11pm (Sun. to 2am)
31.13S	9.635	XGOY	Chungking, China	7:35-9:55, 10-11:25am to NA...News- 8:30, 10
31.14S	9.63	ZRO4	Rome, Italy	3-3:30am, 1-2:30, 3:20-8:15, 8:30pm-12 mid. to NA, 12:30-1:30am to W.NA...News- 8:30,
31.17	9.625		Addis Abeba, Ethiopia	10:15-11:35am. 10:30pm, 1:00am
31.19	9.62	CXA6	Montevideo, Uruguay	4:30-10:15pm
31.19	9.62	DXL24	Paris, France	5:50pm-12 mid. to NA...News- 7, 8, 9, 10, 11pm.
2000	31.19	TIPG	San Jose, C.R.	8:15am-12:30am.
10000	31.21S	VLQ	Sydney, Australia	4:20-5:25am.
31.22	9.61	KEYU	Mexico D.F., Mexico	12 mid.-1:15am.
31.22	9.61	DXB	Berlin, Germany	12:15-4:15pm /10-11:15am
31.23S	9.606	ZRL	Capetown, So. Africa	4:15-10, 10-11:15am; Sun. 2:10-2:45, 4:30-9
31.23	9.606	HP5J	Panama City, Panama	8am-2:30, 7:30-11:30pm; Sun. 9am-11pm.
31.25	9.60	CB960	Santiago, Chile	7pm-12 mid.
31.25S	9.60	GRY	London, England	1-2:45am, 2:30-5pm.
2000	31.27	9.595	Athlone, Ireland	5:10-6pm...News- 5:10pm /3:30am, 10:30p
31.28	9.59	VUD3	Delhi, India	2:30-4:30, 7:30am-12:30, 10pm-12 mid...News-
10000	31.32	9.58	Melbourne, Australia	2:55-3:25am.
10000	31.32	9.58	Sydney, Australia	12 noon-12:15pm to A.I.F.
2000	31.32S	9.58	Melbourne, Australia	3:45-9:30am...News- 9:15am.
31.32S	9.58	GSC	London, England	1-2:20am, 1-3, 3:15-4:45, 5:15pm-12:45am to NA...News- 5:45, 6:45, 8, 9, 10:45pm, 12:30am.
31.35S	9.57	DXZ	Berlin, Germany	1:30-4, 5:50pm-12:15am to SA...News- 1:30, 2:30-3:30pm. /11:45pm-12:30am
31.37	9.566		Komsomolsk-Moscow, USSR	5:40-8:15, 9:15-9:30am, 11:15-11:40,
31.37	9.565	J--	Tokyo, Japan	Present schedule is unknown.
31.38	9.56	DJA	Berlin, Germany	5:50-8, 9:30pm-12:15am to S.A.
500	31.39	9.557	Mexico D.F., Mexico	24 hours daily
31.40	9.55	VUB2	Bombay, India	3-4:55am

31.41	9.55	WGEA	Schenectady, N.Y.	7pm-1am	
31.43S	9.54S	MTCY	Hsinking, Manchukuo	9-11am, 5-6pm...News-	9, 10:30am.
31.43	9.54S	RV--	Khbarovsk, U.S.S.R.	1:30-10:30am,	4-7pm irreg.
31.44	9.54S	XEFT	Vera Cruz, Mexico	10am-2:15am.	/9:52, 10:52, 11:52pm.
31.44S	9.54S		German Freedom Station	2:52, 3:52, 4:52, 5:52, 6:52, 7:52, 8:52,	
31.45S	9.54	OAX5C	Ica, Peru	8pm-1am. /11:45am to W.NA)	...News-7:30, 11am
0002 31.45S	9.54	VIG2	Melbourne, Australia	4:30-11:45am (7:25-8:10am to E.NA;	11-
31.46S	9:538	HR4	Berne, Switzerland	7:45-9:10, 9:45-11:15pm to NA...	News- 10pm
31.47S	9.535	JZ1	Tokyo, Japan	4:45-7:30, 11am-2:30, 2:55-6:30pm...	News- 5,
31.47	9.535	SBU	Motala, Sweden	5:20-5:35, 9-10pm to NA.	/8, 10:30am..
31.48	9.53	WGEO	Schenectady, N.Y.	5-11:45pm-1am.	
31.50	9.525	JZHA	Hongkong, Hongkong	8-10am...News-	9:15am.
31.50S	9.525	DXY	Warsaw, Poland (Berlin)	9am intermittently to 7pm.	
31.50n	9.523	ZRG	Johannesburg, So. Africa	4:30-9, 10-11:30am.	*
31.50S	9.52		Vichy, France	1:45-2:30, 2:45-3:30am, 7-7:45pm to NA, 8-8:45, 9-11, 11:15pm-12:30am to NA.	
31.50n	9.52	RV96	Moscow, U.S.S.R.	12-2am, 1-7pm irreg.	*
31.55S	9.51	GSB	London, England	1-4:15, 9:30-11:15, 11:30am-2:15, 3-5, 7-1045p	
31.57	9.505	JLG2	Tokyo, Japan	11:30am-2:30pm...News-	11:30am, 2pm.
31.57S	9.505	YUC	Belgrade, Yugoslavia	12-12:20am, 4-4:30, 6-8pm.	
31.57F	9.503		Bratislava, Slovakia	Mon/Wed/Fri/Sat to N.A.	7-8pm. *
31.58	9.50	XEWW	Mexico D.F., Mexico	9am-2:45am.	
31.60S	9.494	OPD	Lahti, Finland	10:55am-7:05 (2:05-2:30 to NA), 8:10-9pm to	
31.65	9.48	KP38	La Paz, Bolivia	6:30-11pm / NA...News 12:45, 2:15, 6:15, 8:20p	
31.65N	9.48	KET	Bolinas, Calif.	Relays KGEI 12:15am to 12 noon.	
31.69	9.47	CR6RA	Luanda, Angola	3:30-5pm.	
31.70	9.465	TAP	Ankara, Turkey	10am-5pm; 6:50-7:30pm irreg...News-	3:15pm
31.75S	9.45	GRU	London, England	1-1:45am, 1-2:15, 2:30-3:30, 4-4:20pm.	
31.80	9.435	COCH	Havana, Cuba	7am-1:15am; Sun. 8am-1:15am...News-	6:45pm
31.88	9.41	FGA	Dakar, Senegal	3:15-4:30 or 5pm.	
31.91N	9.40		Voice of Free India	9:30-11:30pm...News-	11pm. *

32.00F	9.375	COBC	Havana, Cuba	9am-1:15am; Sun. 8am-11:30pm.	*
32.12	9.34	OAX4J	Lima, Peru	9-10am, 1-4, 7pm-2am.	
1000 32.22	9.31	HC2AK	Guayaquil, Ecuador	7pm-12 mid.	
32.28	9.295	HI2G	Trujillo City, D.R.	8:10-9:40, 12:40-3:10, 6:10-10:40pm	
32.36	9.27	COCK	Havana, Cuba	8:45am-1am.	
32.43V	9.25		Bucharest, Roumania	3-6:05pm...News-	4:50pm
32.64	9.19	HC2ET	Guayaquil, Ecuador	8:30am-1:30am; Sun. 9:30-11:30pm.	
32.88	9.125	HAT4	Budapest, Hungary	7-9, 9-11pm to NA...News-	9:20, 10:25pm.
33.24	9.025	COBZ	Havana, Cuba	8:45am-1am; Sun. 8:45am-12 mid.	
33.48	8.96	COBQ	Havana, Cuba	Relays CMBQ to 12 mid.	
33.48	8.96	TPZ2	Alger, Algeria	3-4, 8-10am, 2:30-4:15, 5-7pm.	
33.98J	8.83	COCQ	Havana, Cuba	6am-2:15am. (Also on 9.515 irreg.)	
34.48	8.70	COCO	Havana, Cuba	5:30am-1:30am.	
34.62	8.665	COJK	Camaguey, Cuba	12:30-1:30, 4:30-7, 9-9:30pm.	
34.95	8.585	YNRS	Managua, Nicaragua	9-10am or later, 7:40pm-12 mid.	
35.44	8.465	XPSA	Kweiyang, China	6:30am-12 noon, 4-6pm...News-	10, 11am.
37.27	8.05		Kuibyshev, U.S.S.R.	11am-6:30pm...News-	4pm /4, 5:30pm.
37.36S	8.035	CNR	Rabat, Morocco	3:15-3:45, 8-9am, 1:30-7pm...French news-	
37.37	8.035	FXE	Beyrouth, Syria	1-4:30, 5-7:30, 9am-4pm	
37.50	8.00	FLA6	Douala, Cameroons	6:45-7am, 2:15-2:30pm	
37.81	7.935	PSL	Rio de Janeiro, Brazil	7-8pm; Sun. 9:15-9:40pm	*
38.00	7.894	YSD	San Salvador, El Salvador	8pm-12 mid. with HUB	
38.15	7.865	SUX	Cairo, Egypt	1:30-5pm	
38.20	7.854	HC2JSB	Guayaquil, Ecuador	9-11pm	
39.16	7.66	YNDG	Leon, Nicaragua	9:30pm-12 mid. ex. Sun.	
39.40	7.615	YNLAT	Granada, Nicaragua	9-11:15pm	
40.05S	7.49	YN2FT	Granada, Nicaragua	9-11:30pm	
40.30	7.446	EG8AH	Pointe-a-Pitre, Guadeloupe	7-9pm	

## 41 METER BAND

40.93F	7.33		Ponta Delgada, Azores	3-4pm.	
40.93N	7.32		Hsinking, Manchukuo	9-10am.	*
40.98S	7.32	GRJ	London, England	12:30-2:20am, 3:15-4pm.	
41.10N	7.30	VIG	Port Moresby, Papua	Mondays 7-7:30am (Eng)	* /10:30pm*
41.15S	7.29	VUD2	Delhi, India	7:30-9:30am, 10pm-12:30am...News-	8:30am..
41.15S	7.29	DJI	Berlin, Germany	1:15-2:30am, 5:30-5:45, 5:50pm-12:15am to CA	
41.27S	7.27	DXM	Berlin, Germany	1-8pm...News-	1:30, 2:30, 3:30, 4:30pm.

41.32	7.26	EA--	Spain	Daily to 7pm
41.32S	7.26	TGWC	Guatemala, Guatemala	8:30pm-1am with TGWB
41.38	7.25	KGEI	San Francisco, Calif.	12:25am to 12 noon
3000 41.38F	7.25	PJCI	Willemsted, Curacao	8-10:15pm
41.38S	7.25	VLQ9	Sydney, Australia	4:25-5:25am.
41.44	7.24	VUB2	Bombay, India	3-4:45, 7-9:45am, 10pm-12 mid.
41.44	7.24	DXJ	Berlin, Germany	12:30-4, 5:50pm-2am to NA... News- 12:30, 1:30, 2:30, 3:30, 5, 7, 8, 9, 10, 11pm, 12, 1am.
41.49S	7.23	GSW	London, England	11:40pm-5:45, 7am-4, 4:30-7pm to Europe
41.55	7.22	2R011	Rome, Italy	1:30-3, 11:30am-7pm
41.61	7.21	VUC2	Calcutta, India	3-5:30, 7:30-11:15am, 10-11:30pm, 1:30-2:40a
41.64	7.205		Kuibyshev, U.S.S.R.	2-5pm... News- 4pm.
41.64	7.205	EA--	Madrid, Spain	4-7pm
41.67N	7.20		Station Debunk	8:30-9pm (English)
41.96	7.15	GRT	London, England	4-4:15am, 3-7pm.
42.00	7.143	EAJ9	Malaga, Spain	4-6:30pm
42.05	7.135		Kuibyshev, U.S.S.R.	12:15-1am.
42.08	7.13	EAJ22	Oviedo, Spain	3-6pm
42.11	7.125	GRM	London, England	11:30am-12:15pm
42.28	7.095	EA--	Spain	Heard to 6:30pm
42.31	7.09	EA9AA	Melilla, Spanish Morocco	Heard to 6pm
42.37	7.08	Y15KG	Baghdad, Iraq	10am-3pm
42.40	7.075		Athens, Greece	5:15-6pm approx.
42.46S	7.07		Serb Freedom Station	3:15-3:30, 4-4:15, 4:30-4:45pm.
42.46S	7.07	GRS	London, England	1-4:15am
42.47S	7.063		Antigua, B.W.I.	6-6:20pm ex. Sun; Sun. 4-4:45pm.
42.65	7.037	EA--	Valencia, Spain	3-7pm
42.74	7.03	EA--	Madrid, Spain	4:30-5:20pm

42.98F	6.98	FO8AA	Papeete, Tahiti	Wed/Sat 12:01-1am
42.98N	6.98		U.S.S.R.	5-10pm approx. irreg.
43.23	6.94		Kuibyshev, U.S.S.R.	1-4, 4:30-lam approx. irreg.
43.54	6.89	KEB-KGEI	Bolinas, Calif.	12:15am-12 noon irreg., or KEL
43.67S	6.87	YNOW	Managua, Nicaragua	8pm-12:30am or later.
43.73	6.86	KEL-KGEI	Bolinas, Calif.	12:15am-12 noon irreg., or KEB
43.92	6.83	RFL	U.S.S.R.	8-11:30am, 5pm on irreg. approx.
44.28	6.775	HHH	San Pedro, D.R.	8-9:30pm; Sun. 6:20-7:40pm
44.38	6.76	YNRS	Managua, Nicaragua	9-10am, 7:40pm-12 mid.
44.81	6.696	TIEP	San Jose, C.R.	8-9am, 8pm-1am.

## 49 METER BAND

45.05	6.66		Brazil	6-7pm
45.22	6.635	HC2RL	Guayaquil, Ecuador	Sun. 6:45-7:45, Tu. 10:15pm-12:15am.
45.25	6.63	HIT	Trujillo City, D.R.	1:10-2:40, 5:40-9:40pm
45.37	6.54	YNLGG	Managua, Nicaragua	2-3:30, 9-11pm ex. Sun.
46.15	6.50	HIL	Trujillo City, D.R.	1:30-3, 7-10:30pm ex. Sun.
1000 46.22J	6.49	TGWB	Guatemala, Guatemala	9-10, 1:45-4:45, 8:30pm-1am; Sun. 11:30am-6:15, 8:30pm-1am.
46.26	6.485	HILL	Santiago de los Caballeros, D.R.	6:30-8:30pm ex. Sun.
1000 46.48	6.455	COHI	Santa Clara, Cuba	7:42am-1:15am
46.58	6.44	HILS	Santiago, D.R.	6:40-9:10pm ex. Sun.
46.84	6.405	TGQA	Quezaltenango, Guatemala	9-11:30pm; Sat. 9pm-2am; Su. 8pm-4am.
46.95	6.39	HI9B	Santiago, D.R.	6:40-8:40pm
47.10J	6.37	COCQ	Havana, Cuba	7:30am-2am.
47.20	6.357	HRP1	San Pedro Sula, Honduras	7-8:30am, 7-11:30pm
47.32	6.342	OAX4G	Lima, Peru	7pm-1:30am (Sat. to 2am)
47.32F	6.34	H11X	Trujillo City, D.R.	Mon. 6:10-9:30pm; Tu. 6:10-10:30pm; Wed. & Fri. 6:10-9:10pm; Th. 6:10-9pm; Sa. 6:10-8:10pm
47.39	6.33	COCW	Havana, Cuba	8:55am-1:15am.
47.47	6.32	SUP2	Cairo, Egypt	12:10-1pm
500 47.50	6.316	H11Z	Trujillo City, D.R.	12:40-1:40, 6:10-11:10pm
47.68	6.29	OAX1A	Chiclayo, Peru	8:30pm-12:30am.
47.77	6.28	HI1G	Trujillo City, D.R.	8:10-9:40am, 12:40-3:10, 4:40-10:40pm
47.85	6.27	YSR	San Salvador, El Salvador	8pm-12 mid.
48.04	6.245	HI1N	Trujillo City, D.R.	7:40-8:40am, 12:40-2:40, 8:10-11:20pm.
48.08	6.24	HRD	La Ceiba, Honduras	9-11:30pm; Sun. 5-7pm
48.35	6.205	OAX3A	Huancayo, Peru	9pm-12 mid. approx.
48.39F	6.20	YV5RN	Caracas, Venezuela	5pm-12:30am.
1000 48.39	6.20	CP5	La Paz, Bolivia	7:15-9am, 7:30pm-12mid; Su. 4-9pm.
48.43	6.196	TG2	Guatemala, Guatemala	8:30-11am, 7pm-12 mid.; Sat. 7pm-4am.

48.43S	6.195	GRN	London, England	11:40pm-5:45, 12 noon-2, 3-8:15pm (Europe)
48.47	6.19	H11A	Santiago, D.R.	4:40-6:40, 7:40-10:40pm
48.47	6.19	XECC	Puebla, Mexico	Heard evenings
48.47	6.19	JLT	Tokyo, Japan	2:55-6:30pm... News- 3, 6pm.
48.47	6.19	HVJ	Vatican City	2-3:45pm approx. irreg.
48.48	6.188		Saigon, Dr. Indo. China	8-10:30am
48.51	6.185	TIRCC	San Jose, C.R.	Tu/Th/Sat 7-8pm; Sun. 9-10pm
48.54	6.18	XEXA	Mexico D.F. Mexico	9:30am-12 noon, 3:30-5, 8:30pm-1:30am.
48.58	6.175	H19T	Puerto Plata, D.R.	Daily to 7:40pm; Sat. to 11pm or later.
000	48.62	6.17	WCDA	New York City, N.Y. 7:47-11pm.
48.62	6.17	CR7BE	Lourenco Marques, Mozambique	1-3pm, or later.
48.66	6.165	HER3	Berne, Switzerland	1:40-2:30, 7-8:45am, 2-5:30pm
48.66	6.165	TILS	San Jose, C.R.	8-10:30am, 1-3:30, 7-11pm (to 3am Sun)
48.70	6.16	HJCD	Bogota, Colombia	11am-1, 5pm-12 mid.
50	48.70	6.16	CBRX	Vancouver, B.C., Canada Relays CBR 10:30am-4am... News- Noon.
48.74	6.155	EOB	Teheran, Iran	1-4pm... English talk at 3pm.
48.74	6.155	CS2WD	Lisbon, Portugal	4-7pm.
48.74	6.155		Anti-Vichy Station	5:10-5:20, 12:45-12:55am.
48.78	6.15	HI3C	La Romana, D.R.	Heard 8:20-9am, 5:55-7:10pm.
48.78F	6.15	YSPB	San Salvador, El Salvador	Heard Nightly to lam.
48.78S	6.15	YV5RM	Caracas, Venezuela	12 noon-3, 5-11pm; Sun. 10:30am-2, 5-11pm
48.78	6.15	TIRH	San Jose, C.R.	Heard to 12:35am / 2:45, 6:30am-5:00pm. *
48.81	6.147	ZRD	Durban, So. Africa	12:45-2:45, 4:30-8, 10am-5pm; Sun. 2:10-
48.82	6.145	HJDE	Medellin, Colombia	10:30am-11:30pm
48.82n	6.145	GRW	London, England	12:30-2:30am, afternoons to 5:30, 10-11:15p
48.84S	6.145	KZRF	Philippines	4-10am... News- 8, 9:30am.
48.90	6.135	EK8AA	Noumea, New Caledonia	3:30-4:30, 9-10am; Sun. 1:40-2:35am.
00	48.93	6.132	CHNX	Halifax, N.S., Canada 8am-12:15am; Sat. 9am-12 mid; Sun. 1pm-12:15am... News- 7am, 3:30, 5:30, 11pm. 9:15am-12 noon... News- 11:50am.
48.94	6.13	VUD2	Delhi, India	9:15am-12 noon... News- 11:50am.
48.98	6.125	MTCY	Hsinking, Manchukuo	3-11:30am, 6:30-7pm.
48.98	6.125	CXA4	Montevideo, Uruguay	7pm-12 mid.
49.00	6.122	HP5H	Panama City, Panama	7pm-12 mid.
49.02	6.120	OFH	Helsinki, Finland	2-3:30, 8:30-9:30, 11am-6:15pm
49.02F	6.120	YV3RN	Barquisimeto, Venezuela	12:30-2:30, 6:30-10:30pm *
49.02	6.119	XEUZ	Mexico D.F., Mexico	10am-2, 8pm-3am.
49.08	6.115	H16H	Trujillo City, D.R.	10:40am-9:40pm.
49.08S	6.115		Komsomolsk, U.S.S.R.	5:40-8:15, 9:15-9:45, 10:15-10:45am, 5:15-5:40, 7-7:40, 9:15-9:40, 11:15-11:40pm.
49.10	6.11	CP2	La Paz, Bolivia	5pm-1am.
49.10S	6.11	GSL	London, England	10pm-12:45am to N.A... News- 10:45pm, 12:30a
49.14	6.105	PRE9	Fortaleza, Ceara, Brazil	4:30-11pm
50	49.14	6.105	HJFB	Manizales, Colombia 6:30-11pm ex. Sun.
49.14S	6.105	XGAP	Peiping, China	6:30-11:50am...
49.21	6.097	HJFK	Pereira, Colombia	8-9am, 7:05-11:30pm (to 3:30am Sun. ir.)
49.21n	6.097	ZRK	Capetown, So. Africa	12:45-2:45am; after 11am irreg. *
49.21	6.095	PYD7	Sao Paulo, Brazil	5:40-10:45pm
00	49.25	6.090	ZNS2	Nassau, Bahamas 9-9:15am, 2-2:30, 7-10pm (Sun. to 11:20pm)
00	49.25S	6.09	CBFW	Montreal, Canada 7:30am-12 mid... News- 11pm.
49.25	6.09	XEBF	Jalapa, Mexico	Heard evenings irreg.
00	49.33	6.082	OAX4Z	Lima, Peru 8pm-12 mid. or later.
49.34	6.08	GRR	London, England	1:30-1:45, 7:20-7:35pm.
49.34n	6.08	WLWO	Cincinnati, Ohio	12:45-2:30am.
49.34	6.08	CKFX	Vancouver, B.C., Canada	10:30am-4am. / 8:15pm
49.34	6.08	ZFY	Georgetown, British Guiana	6:45-8:45, 10:45am-12:45, 3:15-
49.38	6.075	HJCF	Bogota, Colombia	8pm-12 mid.
00	49.42	6.07	VCFRX	Toronto, Canada 7am-1:30am; Sun. 11am-12 mid... News- 8am, / 4pm.
49.42F	6.07	YV5RU	Caracas, Venezuela	6-10:30pm (Sun. to 11:30pm) *
49.42	6.07	TIWS	Puntarenas, C.R.	8:30-11pm; Sun. 3-9pm.
49.42	6.07	CR8AA	Macao, Macao	6-10am (Probably off air)
49.46	6.065	SBO	Motala, Sweden	5:20-5:35pm... English- 5:20pm.
49.48S	6.063		Tananarive, Madagascar	11:45am-12:30pm approx. irreg. *
49.50	6.06	VQZLO	Nairobi, Kenya	6:45-7:15am, 12:30-3:30 ex. Sa/Sun; Tues/Th 9:30-10:30am; Sa. 6:45-7:30am, 12:30-3:30
49.50	6.06		Bangkok, Thailand	7-11am. / pm; Sun. 12-3pm.
49.55	6.054	HJFA	Pereira, Colombia	10am-1, 7:30-11:20pm
49.59S	6.05	GSA	London, England	11:40pm- 8:15pm (European Service)
49.59n	6.05	RV--	Khabarovsk, U.S.S.R.	2-4am approx. *

41.32	7.26	EA--	Spain	Daily to 7pm	
41.32S	7.26	TGWC	Guatemala, Guatemala	8:30pm-1am with TGWB	
41.38	7.25	KGEI	San Francisco, Calif.	12:25am to 12 noon	
3000 41.38F	7.25	PJCF	Willemsted, Curacao	8-10:15pm	*
41.38S	7.25	VIQ9	Sydney, Australia	4:25-5:25am.	
41.44	7.24	VUB2	Bombay, India	3-4:45, 7-9:45am, 10pm-12 mid.	
41.44	7.24	DXJ	Berlin, Germany	12:30-4, 5:50pm-2am to NA... News- 12:30, 1:30, 2:30, 3:30, 5, 7, 8, 9, 10, 11pm, 12, 1am.	
41.49S	7.23	GSW	London, England	11:40pm-5:45, 7am-4, 4:30-7pm to Europe	
41.55	7.22	2R011	Rome, Italy	1:30-3, 11:30am-7pm	
41.61	7.21	VUC2	Calcutta, India	3-5:30, 7:30-11:15am, 10-11:30pm, 1:30-2:40a	
41.64	7.205		Kuibyshev, U.S.S.R.	2-5pm... News- 4pm.	
41.64	7.205	EA--	Madrid, Spain	4-7pm	
41.67N	7.20		Station Debunk	8:30-9pm (English)	
41.96	7.15	GRT	London, England	4-4:15am, 3-7pm.	*
42.00	7.143	EAJ9	Malaga, Spain	4-6:30pm	
42.05	7.135		Kuibyshev, U.S.S.R.	12:15-1am.	
42.08	7.13	EAJ22	Oviedo, Spain	3-6pm	
42.11	7.125	GRM	London, England	11:30am-12:15pm	
42.28	7.095	EA--	Spain	Heard to 6:30pm	
42.31	7.09	EA9AA	Melilla, Spanish Morocco	Heard to 6pm	
42.37	7.08	Y15KG	Baghdad, Iraq	10am-3pm	
42.40	7.075		Athens, Greece	5:15-6pm approx.	
42.46S	7.07		Serb Freedom Station	3:15-3:30, 4-4:15, 4:30-4:45pm.	
42.46S	7.07	GRS	London, England	1-4:15am	
42.47S	7.063		Antigua, B.W.I.	6-6:20pm ex. Sun; Sun. 4-4:45pm.	*
42.65	7.037	EA--	Valencia, Spain	3-7pm	
42.74	7.03	EA--	Madrid, Spain	4:30-5:20pm	
<hr/>					
42.98F	6.98	FOBAA	Papeete, Tahiti	Wed/Sat 12:01-1am	*
42.98N	6.98		U.S.S.R.	5-10pm approx. irreg.	*
43.23	6.94		Kuibyshev, U.S.S.R.	1-4, 4:30-1am approx. irreg.	
43.54	6.89	KEB-KGEI	Bolinas, Calif.	12:15am-12 noon irreg., or KEL	
43.67S	6.87	YNOW	Managua, Nicaragua	8pm-12:30am or later.	
43.73	6.86	KEL-KGEI	Bolinas, Calif.	12:15am-12 noon irreg., or KEB	
43.92	6.83	RFL	U.S.S.R.	8-11:30am, 5pm on irreg. approx.	
44.28	6.775	HIH	San Pedro, D.R.	8-9:30pm; Sun. 6:20-7:40pm	
44.38	6.76	YNRS	Managua, Nicaragua	9-10am, 7:40pm-12 mid.	
44.81	6.696	TIEP	San Jose, C.R.	8-9am, 8pm-1am.	
<hr/>					
<b>49 METER BAND</b>					
45.05	6.66		Brazil	6-7pm	
45.22	6.635	HC2RL	Guayaquil, Ecuador	Sun. 6:45-7:45, Tu. 10:15pm-12:15am.	
45.25	6.63	HIT	Trujillo City, D.R.	1:10-2:40, 5:40-9:40pm	
45.87	6.54	YNLGG	Managua, Nicaragua	2-3:30, 9-11pm ex. Sun.	
46.15	6.50	HIL	Trujillo City, D.R.	1:30-3, 7-10:30pm ex. Sun.	
1600 46.22J	6.49	TGWB	Guatemala, Guatemala	9-10, 1:45-4:45, 8:30pm-1am; Sun. 11:30am-6:15, 8:30pm-1am.	
46.26	6.485	HILL	Santiago de los Caballeros, D.R.	6:30-8:30pm ex. Sun.	
1000 46.48	6.455	COHI	Santa Clara, Cuba	7:42am-1:15am	
46.58	6.44	HILS	Santiago, D.R.	6:40-9:10pm ex. Sun.	
46.84	6.405	TGQA	Quezaltenango, Guatemala	9-11:30pm; Sat. 9pm-2am; Su. 8pm-4am.	
46.95	6.39	HI9B	Santiago, D.R.	6:40-8:40pm	
47.10J	6.37	COCQ	Havana, Cuba	7:30am-2am.	
47.20	6.357	HRP1	San Pedro Sula, Honduras	7-8:30am, 7-11:30pm	
47.32	6.342	OAX4G	Lima, Peru	7pm-1:30am (Sat. to 2am)	
47.32F	6.34	HILX	Trujillo City, D.R.	Mon. 6:10-9:30pm; Tu. 6:10-10:30pm; Wed. & Fri. 6:10-9:10pm; Th. 6:10-9pm; Sa. 6:10-8:10pm	
47.39	6.33	COCW	Havana, Cuba	8:55am-1:15am.	/pm
47.47	6.32	SUP2	Cairo, Egypt	12:10-1pm	
500 47.50	6.316	HILZ	Trujillo City, D.R.	12:40-1:40, 6:10-11:10pm	
47.68	6.29	OAX1A	Chiclayo, Peru	8:30pm-12:30am.	
47.77	6.28	HIIG	Trujillo City, D.R.	8:10-9:40am, 12:40-3:10, 4:40-10:40pm	
47.85	6.27	YSR	San Salvador, El Salvador	8pm-12 mid.	
48.04	6.245	HI1N	Trujillo City, D.R.	7:40-8:40am, 12:40-2:40, 8:10-11:20pm.	
48.08	6.24	HRD	La Ceiba, Honduras	9-11:30pm; Sun. 5-7pm	
48.35	6.205	OAX3A	Huancayo, Peru	9pm-12 mid. approx.	
48.39F	6.20	YV5RN	Caracas, Venezuela	5pm-12:30am.	
1000 48.39	6.20	CP5	La Paz, Bolivia	7:15-9am, 7:30pm-12 mid; Su. 4-9pm.	
48.43	6.196	TG2	Guatemala, Guatemala	8:30-11am, 7pm-12 mid.; Sat. 7pm-4am.	



48.43S	6.195	GRN	London, England	11:40pm-5:45, 12 noon-2, 3-8:15pm (Europe)	
48.47	6.19	H11A	Santiago, D.R.	4:40-6:40, 7:40-10:40pm	
48.47	6.19	XECC	Puebla, Mexico	Heard evenings	
48.47	6.19	JLT	Tokyo, Japan	2:55-6:30pm... News- 3, 6pm.	
48.47	6.19	HVJ	Vatican City	2-3:45pm approx. irreg.	
48.48	6.188		Saigon, Dr. Indo. China	8-10:30am	
48.51	6.185	TIRCC	San Jose, C.R.	Tu/Th/Sat 7-8pm; Sun. 9-10pm	
48.54	6.18	XEXA	Mexico D.F. Mexico	9:30am-12 noon, 3:30-5, 8:30pm-1:30am.	
48.58	6.175	HI9T	Puerto Plata, D.R.	Daily to 7:40pm; Sat. to 11pm or later.	
020	48.62	6.17	WCDA	New York City, N.Y. 7:47-11pm.	
48.62	6.17	CR7BE	Lourenco Marques, Mozambique	1-3pm, or later.	
48.66	6.165	HER3	Berne, Switzerland	1:40-2:30, 7-8:45am, 2-5:30pm	
48.66	6.165	TILS	San Jose, C.R.	8-10:30am, 1-3:30, 7-11pm (to 3am Sun)	
48.70	6.16	HJCD	Bogota, Colombia	11am-1, 5pm-12 mid.	
50	48.70	6.16	CBRX	Vancouver, B.C., Canada	Relays CBR 10:30am-4am... News- Noon.
48.74	6.155	EOB	Teheran, Iran	1-4pm... English talk at 3pm.	
48.74	6.155	CS2WD	Lisbon, Portugal	4-7pm.	
48.74	6.155		Anti-Vichy Station	5:10-5:20, 12:45-12:55am.	
48.78	6.15	HI3C	La Romana, D.R.	Heard 8:20-9am, 5:55-7:10pm.	
48.78F	6.15	YSPB	San Salvador, El Salvador	Nightly to lam.	
48.78S	6.15	YV5RM	Caracas, Venezuela	12 noon-3, 5-11pm; Sun. 10:30am-2, 5-11pm	
48.78	6.15	TIRH	San Jose, C.R.	Heard to 12:35am / 2:45, 6:30am-5:00pm. *	
48.81	6.147	ZRD	Durban, So. Africa	12:45-2:45, 4:30-8, 10am-5pm; Sun. 2:10-	
48.82	6.145	HJDE	Medellin, Colombia	10:30am-11:30pm	
48.82n	6.145	GRW	London, England	12:30-2:30am, afternoons to 5:30, 10-11:15p	
48.84S	6.145	KZRF	Philippines	4-10am... News- 8, 9:30am.	
48.90	6.135	EK8AA	Noumea, New Caledonia	3:30-4:30, 9-10am; Sun. 1:40-2:35am.	
06	48.93	6.132	CHNX	Halifax, N.S., Canada	8am-12:15am; Sat. 9am-12 mid; Sun. 1pm-12:15am... News- 7am, 3:30, 5:30, 11pm. 9:15am-12 noon... News- 11:50am.
48.94	6.13	VUD2	Delhi, India	9:15am-12 noon... News- 11:50am.	
48.98	6.125	MTCY	Hsinking, Manchukuo	3-11:30am, 6:30-7pm.	
48.98	6.125	CXA4	Montevideo, Uruguay	7pm-12 mid.	
49.00	6.122	HP5H	Panama City, Panama	7pm-12 mid.	
49.02	6.120	OFH	Helsinki, Finland	2-3:30, 8:30-9:30, 11am-6:15pm	
49.02F	6.120	YV3RN	Barquisimeto, Venezuela	12:30-2:30, 6:30-10:30pm *	
49.02	6.119	XEUZ	Mexico D.F., Mexico	10am-2, 8pm-3am.	
49.08	6.115	HI6H	Trujillo City, D.R.	10:40am-9:40pm.	
49.08S	6.115		Komsomolsk, U.S.S.R.	5:40-8:15, 9:15-9:45, 10:15-10:45am, 5:15-5:40, 7-7:40, 9:15-9:40, 11:15-11:40pm.	
49.10	6.11	CP2	La Paz, Bolivia	5pm-1am.	
49.10S	6.11	GSL	London, England	10pm-12:45am to N.A... News- 10:45pm, 12:30a	
49.14	6.105	PRE9	Fortaleza, Ceara, Brazil	4:30-11pm	
50	49.14	6.105	HJFB	Manizales, Colombia	6:30-11pm ex. Sun.
49.14S	6.105	XGAP	Peiping, China	6:30-11:50am...	
49.21	6.097	HJFK	Pereira, Colombia	8-9am, 7:05-11:30pm (to 3:30am Sun. ir.)	
49.21n	6.097	ZRK	Capetown, So. Africa	12:45-2:45am; after 11am irreg. *	
49.21	6.095	PYD7	Sao Paulo, Brazil	5:40-10:45pm	
00	49.25	6.090	ZNS2	Nassau, Bahamas	9-9:15am, 2-2:30, 7-10pm (Sun. to 11:20pm)
00	49.25S	6.09	CBFW	Montreal, Canada	7:30am-12 mid... News- 11pm.
49.25	6.09	XEBF	Jalapa, Mexico	Heard evenings irreg.	
00	49.33	6.082	OAX4Z	Lima, Peru	8pm-12 mid. or later.
49.34	6.08	GRR	London, England	1:30-1:45, 7:20-7:35pm.	
49.34n	6.08	WLWO	Cincinnati, Ohio	12:45-2:30am.	
49.34	6.08	CKFX	Vancouver, B.C., Canada	10:30am-4am. / 8:15pm	
49.34	6.08	ZFY	Georgetown, British Guiana	6:45-8:45, 10:45am-12:45, 3:15-	
49.38	6.075	HJCF	Bogota, Colombia	8pm-12 mid.	
00	49.42	6.07	VCFRX	Toronto, Canada	7am-1:30am; Sun. 11am-12 mid... News- 8am, / 4pm. *
49.42F	6.07	YV5RU	Caracas, Venezuela	6-10:30pm (Sun. to 11:30pm)	
49.42	6.07	TIWS	Puntarenas, C.R.	8:30-11pm; Sun. 3-9pm.	
49.42	6.07	CR8AA	Macao, Macao	6-10am (Probably off air)	
49.46	6.065	SBO	Motala, Sweden	5:20-5:35pm... English- 5:20pm.	
49.48S	6.063		Tananarive, Madagascar	11:45am-12:30pm approx. irreg. *	
49.50	6.06	VQ7LO	Nairobi, Kenya	6:45-7:15am, 12:30-3:30 ex. Sa/Sun; Tues/Th 9:30-10:30am; Sa. 6:45-7:30am, 12:30-3:30 / pm; Sun. 12-3pm.	
49.50	6.06		Bangkok, Thailand	7-11am.	
49.55	6.054	HJFA	Pereira, Colombia	10am-1, 7:30-11:20pm	
49.59S	6.05	GSA	London, England	11:40pm- 8:15pm (European Service)	
49.59n	6.05	RV--	Khabarovsk, U.S.S.R.	2-4am approx. *	

49.59	6.05	OAXGA	Arequipa, Peru	7pm-12 mid.	
49.59	6.05	HP5F	Colon, Panama	8-10pm	
49.66	6.04	XETW	Tampico, Mexico	8pm-2am /2-9:30pm	
49.66S	6.04	WRUS	Boston, Mass.	1:15-11pm ex. Sa/Sun; Sa. 1:30-11pm; Sun.	
49.73S	6.03S	CR7AA	Lourenco Marques, Mozambique	1-2, 5:30-8am, 1-5:15pm; Sun.	
49.73	6.03	HP5B	Panama City, Panama	11:30am-3, 7-11pm. /5:30-8, 11am-3pm	
49.73S	6.03	DXP	Berlin, Germany	8:30pm-2am to N.A...News- 9, 10, 11pm, 12, 1a	
49.73	6.03	CFVP	Calgary, Alta, Canada	11am-3am.	
49.73	6.03	MTCY	Hsinking, Manchukuo	3-10am.	
49.75	6.03	XEKW	Morelia, Mexico	9am-2, 6pm-12:40am.	
250	49.78	6.026	HL1J	San Pedro, D.R.	12:40-2:40, 7:10-9:40pm, or later.
49.80S	6.023	XEUW	Vera Cruz, Mexico	8am-2am	
49.83S	6.02	DJC	Berlin, Germany	1:30-3:15am, 11:40am-5:30pm to Africa	
49.83	6.018	HJCX	Bogota, Colombia	8-9, 11:30am-3, 6:30pm-12:40am.	
100	49.88	6.015	HT3U	Santiago, D.R.	8:10-9:55am, 12:40-2:40, 5:40-6:40pm
49.92S	6.01	CJCX	Sydney, N.S., Canada	6:30am-2:30, 9pm-12 mid...News- 7, 8am.	
49.92	6.01	PRAS	Recife, Pernambuco, Brazil	4-10pm	
49.95	6.007	ZRH	Johannesburg, So. Africa	11am-5pm, 12:45-2:45am. *	
49.96S	6.005	CFXC	Montreal, Canada	9am-11:15pm; Sun. 9am-11:15pm.	
49.96S	6.005	HP5K	Colon, Panama	8am-2, 6pm-12 mid...News- 10:15, 11:15pm. *	
49.96	6.005	CXA2	Montevideo, Uruguay	9pm-2am.	
49.98	6.002	ZOY	Accra, Gold Coast	11am-4pm	
1000	50.00	6.00	VXBT	Mexico D.F., Mexico	11am-1:30am...News- 8:45pm, 1:20am.

50.13	5.985		Cairo, Egypt	3:30-4:30pm...News- 4pm.	
50.21	5.975	OAX4P	Huancayo, Peru	10pm-12 mid.	
250	50.23	5.972	HCQRX	Quito, Ecuador	7:45-9am; Evenings to 11:45pm /5:30, 9:00p
50.25	5.97	VONH	St. John's, Newfoundland	8:30am-2:30, 4:30-10:30pm...News-	
50.45	5.947	HR2S	Port-au-Prince, Haiti	7:30-11pm /Sun. 9:10-11:40 a.m.	
100	50.46S	5.946	PZK3	Paramaribo, Dutch Guiana	7:40-9:40pm ex. Sa/Su; Sa. 5:40-8:40,
50.51	5.94	OAX2A	Trujillo, Peru	9pm-12 mid.	
50.51n	5.94	RV--	Khabarovsk, U.S.S.R.	4am-1pm approx. *	
50.90S	5.89	ZNB	Mafeking, Bechuanaland	12:45-2:45, 7:30-8:10am, 11am-5pm.	
50.90m	5.89	RV--	Khabarovsk, U.S.S.R.	11:45pm-1am or later irreg. *	
4000	51.07S	5.875	HRN	Tegucigalpa, Honduras	7pm-12:30am (Sun. to 10:45pm)
52.17	5.75	YNTAT	Leon, Nicaragua	8-11:20pm	
52.40	5.725	HC1PM	Quito, Ecuador	9-11pm ex. Sun.	
52.45	5.71	MTCY	Hsinking, Manchukuo	8-11am irreg.	

**60 METER BAND**

1000	60.36F	4.97	HJAG	Barranquilla, Colombia	12 noon-12 mid.; Sun. 12 noon-9pm.
60.48	4.96	VUD2	Delhi, India	7:30-9:30am...News- 8:30am.	
60.67	4.945	HJCV	Bogota, Colombia	7:30-9am, 8:30pm-12 mid.	
60.85	4.93	HJAP	Cartagena, Colombia	10am-2:30, 8-11:15pm ex. Sun.	
60.98	4.82	VUM2	Madras, India	6:30am-1pm	
61.29	4.895	HJCH	Bogota, Colombia	12:30-3, 7pm-12 mid.	
61.42	4.385	HJDP	Medellin, Colombia	9am-2, 7pm-12 mid.	
61.48	4.88	VUB2	Bombay, India	10am-1:15pm...News- 12 noon	
61.54	4.875	HJFH	Armenia, Colombia	9am-12 noon, 7-11:30pm	
2000	61.67	4.865	PRC5	Belem, Para, Brazil	6-9:05pm *
61.67	4.865	HJFX	Cali, Colombia	7-11:45pm.	
61.78	4.855	HJCA	Bogota, Colombia	Relays HJCU evenings to 11pm or mid.	
61.98	4.84	VUC2	Calcutta, India	11:30am-1pm.	
61.98	4.84	YVLRZ	Valera, Venezuela	12:30-2, 6:45-9:45pm.	
62.04	4.835	HJAE	Cartagena, Colombia	8am-7, 8-11:30pm.	
62.11	4.83	YV2RN	San Cristobal, Venezuela	12:30-1:30, 7-10:30pm ex. Sun.	
250	62.16	4.823	HJED	Cali, Colombia	8-11:30pm
200	62.24	4.82	XEJG	Guadalajara, Mexico	Relays XEJB 11pm-12 mid.
62.31	4.815	HJBB	Cucuta, Colombia	Signs-off at 12 mid.	
62.33	4.81	YV1RL	Maracaibo, Venezuela	12 noon-2, 5:30-11:30pm	
62.44	4.805	HJDU	Medellin, Colombia	7-9:30pm irreg.	
62.50	4.80	YV1RX	Maracaibo, Venezuela	to 11:30pm	
62.57	4.795	HJDX	Medellin, Colombia	6-11:35pm	
1000	62.63	4.79	YV6RU	Cuidad Bolivar, Venezuela	6:30-10:30pm
62.70	4.785	HJAB	Barranquilla, Colombia	6-11:30pm.	
62.76F	4.78	HUB	San Salvador, El Salvador	2-3, 9:30-12 mid. with YSD	
62.83	4.775	HJGB	Bucaramanga, Colombia	7-11pm	
62.89	4.77	YV1RY	Coro, Venezuela	7:30-11pm ex. Sun.	
63.03	4.76	YV4RO	Valencia, Venezuela	11am-2, 5-10pm.	

(Clip Out) SUBSCRIPTION BLANK (Clip Out)

**INTERNATIONAL DX'ERS ALLIANCE  
NORMAL, ILL.**

Herewith attached you will find \$1.50 for one year's dues in the International Dx'ers Alliance, including subscription to the GLOBE CIRCLER.

NAME \_\_\_\_\_ ADDRESS \_\_\_\_\_  
CITY and STATE \_\_\_\_\_ COUNTRY \_\_\_\_\_