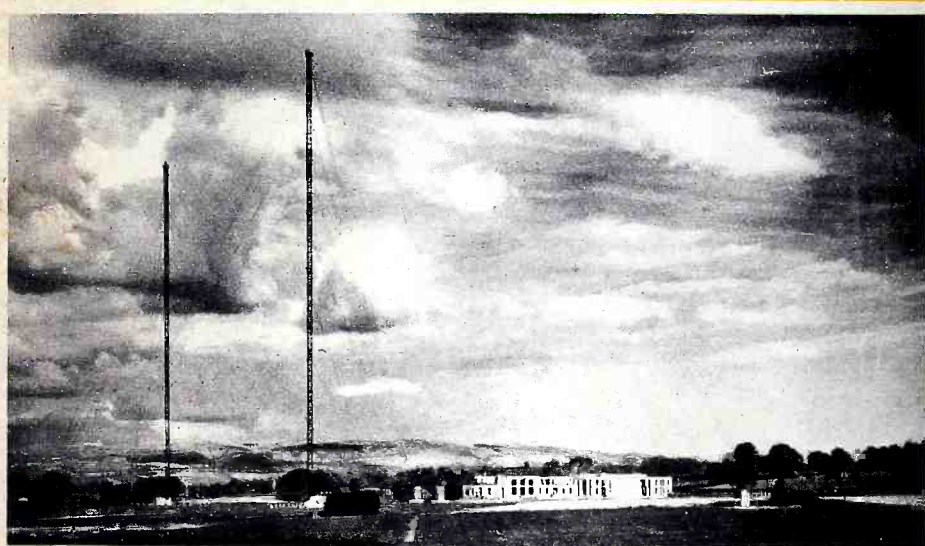


# THE GLOBE CIRCLER

DECEMBER, 1938



THE BBC TRANSMITTING STATION AT WASHFORD CROSS,  
SOMERSET, ENGLAND

## *In this issue*

A MERRY CHRISTMAS TO ALL

Revised Frequencies for Cuban Stations—International Friendship Broad-  
casts—Short-Wave Notes from 66 Countries—VIC-VAC Short-Wave  
Honor Rolls—Broadcast Band Dx Notes—Short-Wave List

*ten cents*

INTERNATIONAL DX'ERS ALLIANCE

## SHORT WAVE NOTES

Editor-in-Chief C. A. Morrison; Frequency-Checking Bureau; R. B. Oxrieder, J. Larsen; Ama-Touring Editors, Roger Legge, Roy Waite.

### INTERNATIONAL FRIENDSHIP PROGRAMS:

See complete list on page 13.

**AMA-TOURING:** The first issue of this publication under the editorship of Roger Legge and Roy Waite will be out shortly. Anyone at all interested in reception on the Amateur Bands should be a subscriber to Ama-Touring. About this publication one of the leading amateurs on the West coast recently said--"it is the best source of information available for amateur 'phone' stations and I do mean better and more complete than the DX columns of QST and RADIO."



DX DEN OF W.H. STARK, WAUWATOSA, WIS.

### THE I. D. A. IOO CLUB

John DeMyer, Lansing, Michigan	133	Ralph Gozen, Yonkers, New York	107
John W. May, Wilkinsburg, Penna.	120	Roy Myers, Los Angeles, Calif	110
H. S. Bradley, Hamilton, New York	115	P. Alberto, New York City, N.Y.	104
Roger Legge, Binghamton, New York	113	Norman Kriebel, Ambler, Penna.	104
David Thomas, Proctorville, Ohio	113	Howard Eck, East Lansing, Mich.	102
G. Rockwell, Halifax, N.S., Canada	111	Guy Bigbee, Fort Benning, Georgia	100

The DSW Degree has been conferred upon John D. Gallivan (Canal Zone)

DEADLINE for JANUARY GLOBE CIRCLER, Dec. 16; For JANUARY STOP PRESS SHEET Dec. 29; for JANUARY AMA-TOURING, Dec. 22 (For Ama-Touring send your news items to Roger Legge, 20 Beethoven, St., Binghamton, New York)

MAKE OUT YOUR S.W. REPORT AS FOLLOWS: double-space lines; use one side of page only; group items by continents, and state time used. Items in order of importance are NEW stations; exact frequencies, or changes; exact schedules, or addresses; identifying signals and unusual receptions. RUSH important items by fastest mail. FOUR STAR items denote exceptional merit. EACH FIVE STAR (\*\*\*\*\*) item pays contributor \$1.00.

### == NORTH AND CENTRAL AMERICA ==

EST)

ALASKA KAQF, Unalaska, KAEW, Umnak, and KAJJ, Atka, all on 5207.5kc, are being heard occasionally near 1:15am EST (\*\*Walcott-Calif)

CANADA CFCX (6.005) verifies promptly with attractive cd (Shaffar).. CGA4 (9.33), Drummondville, heard calling and working London at 6pm (Amers)..

CHNX (6.13), Halifax, works 7am-10:15pm and Sundays 12:15-10pm (Roberts, Tuff)

COSTA RICA TILS (5.9), "Radio Parati" uses organ solo "Donkey Serenade" as an interval theme (Amers).

CUBA Manuel Alvarez will soon open a station at Santa Clara; and another station is to be opened at Holguin. This station is believed to be testing on 6.195 (\*Rubio).. COBX now on 9.2; COBZ now 9.02 to 9.025mc (\*Larsen).. COCA (9.1), verifies promptly with a new red and blue card picturing its aerial towers (\*Wells, Larsen, Shaffar, Pichler).. COCM (9.8), often on air until 2am, verifies with a nice red, white and blue card showing scenes in Cuba (Shaffar, Morey, Larsen).. COCO (back on 6.01), will receive power increase to 5kW (\*Smith, Larsen, Radio Guia, Shaffar, Schubert).. COCW (6.324), verifies promptly with a red and white cd (\*Amers).. COHB, Sancti Spiritus, is off the air pending an increase in power (Rubio).. COJK, Camaguey, now on 6.688mc (\*Larsen, Amers).. CMA5 (11.56, and 15.53), heard near mid. (Shaffar, L)

CURACAO PJCL (9.09), heard weakly Sundays near 10pm (Caribbean LP)

D.R. HIG (9.285), heard irregularly to 10:15pm (Tuff, Larsen).. HII (6.775), "La Voz de Higuamo," San Pedro signs-off at 8:30pm with English announcement and the Dominican National anthem (Graham, Amers).. HIN, HILX and HIZ sometimes work in a network after 7:40pm (Amers).. HI5G (6.66), now at Isabel la Catolica (Altos), Trujillo City, relays HI6Y (Legge).. HI5N (6.15),

Moca City, is off the air, but operating as amateur HI9U, on 20 and 40M bands (\*\*Legge)...HI9T (6.12), San Cristobal, formerly HI6H (6.6) of Trujillo City, is operating near 3 and 6pm (\*\*Legge)...NEW: HI9C (9.1), "Voz de Trujillo, "Trujillo City, is on the air (\*\*Caribbean LP)

EL SALVADOR YSP (near 10.36), "La Voz de Cuscatlan, "Fernando Albayeros Sosa, prop, San Salvador, relays YSP (780), daily 1-3, and 6:30-11pm; verifies in three weeks with a light blue card (\*\*RBO, Roberts)

GUADELOUPE NEW: FG8AA (7.05 to 7.2), announcing as "Ici Pointe a Pitre, a la Guadeloupe au Antille Francaise," operates approx. 6-7pm. Announcements are all in French. Modulation good but some CW QRM (\*\*Caribbean LP, Lebouef)

GUATEMALA Correct addresses for unlisted amateurs follow: TG9BA, Walter C. Bay, Chaley Krolj, Guatemala City; TG5JG, John Tuiller, P.O. Box 12, Guatemala City (send reports under cover) (\*Stark, A-T)...TGB (5.732), is operated by Aviation Nacional, Country of the Aurara, Guatemala City; TGF (14.48), phones WNC daytime (Cleveland Radio Club)...Revised sked for TGWB (6.498) is week days 7:45-9am, 12:45-3:45, 7:30pm-12:15am; Sundays 10:30am-5:15, 7pm-mid (TGW)...Sked for TG2 (6.19), "Radio Morse, "Guatemala City, is weekdays 7:30 to 9am (Sundays to 11am), Mon/Fri 6-11pm, Sat 6pm-1am, Sun. 3-8pm (Cleveland Radio Club)...Sked for TGOA (6.4), Quezaltenanto, is Mon/Fri 9-11pm, Sat 10pm-1am, and Sun. 1-3pm. (Cleveland Radio Club)...Sked for TG2X (5.945), Guatemala, is Mon/Thurs 9-11:30pm, Sat. 10pm-mid, Sun. 2-5am (Cleveland Radio Club)...TGS (5.713), operates Wed/Thurs/Sat 7-10pm irreg. (Cleveland Radio Club)...TG25A -portable at the Presidential House, 100w, and TG25E (5.79), operate irreg.... TG3 (2.34), operates Sundays 1-3am (\*Sekach, RBO)

HAWAII HH3W (9.645), operates daily 1-3 and 7-9pm (Amers, Larsen, Balbi)

HAWAII Programs from Hawaii originating over KGU or KGMB, are being relayed by KQH (14.92) and KKH (7.52), Fri. 12:15-12:30am, Sat. 9-9:30pm and Sundays 12-12:30am. KQH verifies (\*Gallagher, Gardner, Shaffar, Bass, UDXC)

JAMAICA VRR4, Stony Hill, works WNC, Hialeah, intermittently from 3 am to 1pm; verifies (\*DeMent) - (Balbi, Larsen, Tuff, Eders, CL)

MARTINIQUE FZF6 (9.7), Fort-de-France, has been boosted in power to 1600w.

MEXICO X4BGI (14.3), Federal Irrigation Commission, El Palmito, Durango heard testing on Nov. 9; reports appreciated (\*Wells)...XEBR (11.826), Hermosillo, back on the air, is now operating daily 9-11am and 9-10:30pm, or later (\*Balbi, Eders)...XETA (approx. 6.08), Monterrey, is being heard irregularly evenings to 10:30pm (\*Amers)...XEUW (6.023), "El Eco de Sotavente des de Veracruz," verifies promptly with picture postcard showing view of out side of studio bldg. (\*Amers)

NICARAGUA NEW: YNRE, "Radio Nicaraguente," Managua, seems to be operating with two channels in parallel, namely 8.58 and 6.74 (\*RBO, Larsen)...YN3DG (7.12), Leon, heard at 7pm (\*Caribbean LP)...YNLGG now on 6.46 (RBO)

PANAMA HP5J now on 9.59mc signs-off weekdays at 10pm (\*Larsen, Smith)

PUERTO RICO A new RCA commercial, WCT (2.598), 400w, has been licensed at San Juan (FCC)

ST. KITTS Wednesday night program sponsored by the Bookers Drug Stores of Demerara is now being heard over ZIZ (6.384), from 7 to 7:30pm (\*\*ZIZ)

U.S.A. W1XAL tests on 21.46mc mornings. Regular sked is: on 15.25mc, weekdays ex. Sat 2-3:30, or 4pm; on 15.13mc, Sun 10am-1pm; on 11.79mc, Mon/Wed/Fri 4:55-6:30pm, Tues/Thurs 4:40-6:30, Sat 1:45-6pm, Sun 3-6:30pm; on 11.73, weekdays ex. Sat 9:15-11:30pm, and on 6.04, 7-8:30, or 9pm ex. Sat (Vyle).....

W2XAD (9.55), now operating 7:15-10pm...Following new frequencies have been granted to W2XE: 6.17, 9.65, 17.83 and 21.57. New sked follows: on 21.57, week days ex. Sat/Sun 7:30-10am, and Sat/Sun 8am-1pm; on 15.27, weekdays ex. Sat/Sun 1-3pm and Sat/Sun 1:30-2:30pm; on 11.83, weekdays ex. Sat/Sun 3:30-6pm, and on Sat/Sun 3-6pm; on 9.65, daily 6:30-11pm and on 6.17, nightly 11:30pm-12:30am (W2XE)...New freq. of 15.27mc granted to W3XAU (FCC)...Boundbrook xmtr. of NBC on 6.1mc is now using call W3XL (NBC)...Following new frequencies have been granted to W8XAL: 21.65, 17.76, 15.27, 11.87 and 9.59. Power is to be increased to 50kW (FCC)..... TELEVISION: Domestic television sets will be on the market within six months (RCA)...WTMJ, the Milwaukee Journal station, has requested a permit to erect a television station...The new Zenith television xmtr. will be in operation soon in Chicago on an experimental basis (Com. McDonald)... UHF: NEW: W9XA (26.45), Commercial Radio Equipment Co. of Kansas City, Mo., relays KITE, has S.W. Mail bag daily noon-12:15pm. Will send 4 page booklet giving dope on W9XA and other UHF stations for return

4  
 postage (\*Larsen)...W8XNU (25.95), relays WSAI of Cincinnati, daily 7am-11am. Power 1kW (Taglauer, NNRC)...W2XJI (26.3), New York City, N.Y. relaying Mutual network programs was heard on Nov. 10 after 8:30pm (Reamy-N.Y.).  
COMMERCIAL: WXA (9.74), Seattle, advises they do not verify. WKE (12.25), Anchorage, Alaska, does verify (Amers)...KMY (19.04), and KWS (21.05), Dixon, both work JVA (18.91) after 6pm (Amers)...W2XAA (8.655/12.8625) of the Bell Telephone Lab, 463 West St, N.Y. (xmtr. at Chicago, Ill), is testing days (Amers, Taglauer)... Dick Stoddart, C/o the Hughes Aircraft Co., 7000 Romaine St, Hollywood, Calif., has verified our reception of KHRH on the "Round the World Flight" plane (\*\*Amers-Calif)

**== SOUTH AMERICA ==**

BRAZIL PPU (19.26) and PUS (19.96), heard sending program to N.Y. on 10/30, from 7:18 to 7:26pm (Amers) -at 4:45 pm (Caribbean LP)  
BR. GUIANA VP3BG (6.13), broadcasts messages from jungle outposts Sundays  
CHILE NEW: CB970 (9.73), "Radio Populare, La Voz de Chile," Valparaiso operates nightly from 6:30 to 11:30pm, or Midnight. Interval signal is the chorus of "Anchors Aweigh." (\*\*Shaffar, Smith, Larsen, Gallagher, RBO, Roberts) ...CB1185 (11.85), is only being heard Saturdays 6-11pm (\*Larsen)...CD1190 has moved to 11.9mc; heard irreg. at 5:30pm (\*Schubert, Tuff)

COLOMBIA There have been numerous changes in calls and frequencies of stations. Data given is subject to corrections but has been carefully compiled from several authentic sources-Ed: HJLABB (4.78 to 4.79), Barranquilla, signs-off at 10:30pm with organ selection...HJLABE (4.83), Cartagena, signs-off at 10:45pm with Ted Lewis Goodnight song and national anthem....HJLABG, Barranquilla, now on 6.05...HJLABZ believed to be call of station logged on 4.86...HJ2BAC, formerly HJ2ABC (4.81), Cucuta, signs-off at 10pm.....HJ2BAJ, formerly HJ2ABJ, now on 4.86mc...HJ3CAB, formerly HJ3ABD (4.84), relays broadcast station HJ3CAD to 11:30pm...HJ3CAF, formerly HJ3ABF (4.85), Bogota, signs-off at 11pm, or midnight, with "Three O'Clock in the Morning" played on church bells followed by a musical selection. Interval signal is 6 chimes...HJ3CAH, formerly HJ3ABH (4.895), relays HJ3CAI, Bogota to 11:15pm...HJ3CAX, formerly HJ3ABX (6.015), relays HJ3CAZ, Bogota, to 11:15pm; signs-off at 11:15pm with "Indian Love Call"...HJ4ABP (4.88), Medellin...HJ5ABD (4.82), Cali, signs-off at 11pm with Goodnight Melody...HJ6ABB, Manizales, has shifted to 6.103...HJ6FBC, or HJ6FAC (4.79), formerly HJ6ABC, signs-off at 10:30pm.....HJ6ABH (4.87), Armenia, using bugle call and chimes for interval signal signs-off at 10:40pm...HJ6ABU now on 5.88...HJ7GAB, formerly HJ7ABD (4.775), Bucaramanga, signs off at 10:45 or 11pm...HJ7ABB, Bucaramanga, on 4.76...NEW: HJ7EAH (4.89), Bucaramanga, heard to 10:30pm (Roberts, Smith, Legge, Larsen, RBO, Eders, Morey, Gallagher, Caribbean LP, Tuff)... Stations now about like this-Ed.  
HJ6ABB 6.103    HJ3CAH 4.895    HJ2BAJ 4.860    HJLABE 4.830    HJLABB 4.785  
LABG 6.050    7EAH 4.890    LABZ 4.860    5ABD 4.820    7GAB 4.775  
3CAX 6.015    4ABP 4.880    3CAF 4.850    2BAC 4.810    7ABB 4.760  
6ABU 5.880    6ABH 4.870    3CAB 4.840    6FAC 4.790

ECUADOR HCJB, Quito, will soon increase power to 5kW (\*Stark)... Friendship Hour now heard nightly ex. Mondays at 10pm over HCJB (12.46) and HCLJB (14.42) (Stark)...HCLPM (5.73), El Palomar, back on air Monday nights (\*\*RBO) ... Guayaquil station on 4.56, may be HC2ET, or HC2FG (\*RBO) - (Amers)

PERU OAX1A (6.334), Chiclayo, signs-off at 11pm with Goodnight Song  
VENEZUELA YV1RH (6.365), will increase power to 1kW (CLP)...YV1RI (6.21) coro, signs off with "Tres. Colores Marcha": interval signal 5 marimba notes. (CLP)...YV2RA, San Cristobal, now heard on 5.75 (Larsen)...NEW: YV4RQ (5.02), Puerto Cabello, is broadcasting with power of 2kW (NRC)... Address for YV5RF (6.375), relaying YV5RE (1100) is P.O. Box 1192, Caracas (\*Kamman)

**== EUROPE ==**

BELGIUM ORK (10.33), Ruyssedele, is now broadcasting 1:30-3pm (Chris- tie.  
BULGARIA LZA is positively not operating on 14.97 as listed. An official letter states the station has not been on 14.97 since January (Clein)  
DENMARK The Danish S.W. station is also licensed to operate on 17.75.  
FINLAND OFO (15.19), Lahti, is not in use at the present time (\*Clein)  
FRANCE A French station on 9.52 was heard on Nov. 11, 2-3pm and later, probably TPB13, but did not have the same program as TPB11 (9.55) (Larsen)... Most of the French phones now use a three-tone whistle before beginning a sked. A peculiar background hum also helps to identify them (\*Amers)...TPB7 (11.835) has been sending test programs to Canada at 12:15-2am (Balbi)....



TPB11 (9.55) broadcasts the news in English at 4pm (Roberts)

GERMANY S.W. coils are being forcibly removed from all-wave sets in Vienna (RPS)...A DSD (14.7) was heard calling Tokio at 3:30am (Shaffar)... The new 50kW transmitter at Vienna is on the air and broadcasting as follows: over DJX (9.675), daily 10:40-4:25pm to Africa, and over DJZ (11,801), daily 7:15 to 10:50pm (\*\*Smith, Herz, Balbi, Larsen, Schubert, Christie, Amers)... PROGRAMS: Special broadcast dedicated to Illinois, Dec 8, 9:45pm, and a special broadcast dedicated to the Western states Dec. 19, 9:30pm, both over DJB, DJD and DJZ (Zeesen)

GT. BRITAIN News in French, German and Italian, is being broadcast weekdays at 2pm, and on Sundays at 1pm, over GSE (11.86) and GSA (6.05)... See S.W. list for latest revised program schedules of Daventry stations. (HC)

HOLLAND PCJ is being heard irregularly on a freq. of approx. 21.48mc.

HUNGARY HAT4 (9.12) is now broadcasting nightly 7-8pm (\*\*Hutchinson)

IRELAND The new 2kW xmtr. at Moydrum, near Athlone, is completed and as soon as frequencies have been assigned it, initial tests will commence.

ITALY The new imperial S.W. Center at Prato Smeraldo, near Rome, was officially inaugurated on Oct. 31. Two 100kW xmtrs. will operate on 49, 31 and 25 meter wave-bands, while two 50kW xmtrs. will operate on the 19, 16 and 13 meter bands. A vast aerial system including eight separate beams is in use. So far transmissions have been made on 15.3, 11.81, and 9.635mc only, but other frequencies will be put into use soon. 2RO4 (11.81) is now in operation daily 4:40 to 12:05pm, and 2RO3 (9.635), daily 12:05-9pm. 2RO5 (15.3) is on daily 11:15am - 12:15pm and 2-4pm. IQY (11.68) is on daily 6-9pm. 2RO6 (17.82) is heard 6-7:30am and 10-11:15am (\*\*Loyd, Smith, NNRC, Schubert, Shaffar, Larsen, Amers, Christie, RBO, Balbi, Morey)... IRF (9.83) heard calling SUV, Cairo at 3:35pm (Shaffar)... IOA (14.73) tests with N.Y. frequently near 10

LITHUANIA The new 60kW S.W. xmtr. will be testing in the near future (NRC)... A Cuban dx'er reports hearing a station in Memel at 10:10pm on a frequency of 5.95mc (\*Radio Guia)

MALTA The following phone amateurs are operating in Malta: ZB1R (14.03-14.3), 80w; ZB1L (14.14); ZB1J (14.032), and ZB1E (NNRC)

NORWAY The new "Norsk Rikskringkasting" S.W. station was inaugurated on Oct. 30. It is broadcasting for Norwegians abroad on 9.53mc nightly 8-9 and 10-11pm (\*\*RPS)... LKC (9.535), logged on Sunday from 2:36 to 2:56am with very loud signals. Probably the new transmitter testing (\*\*Eders)

POLAND New 50kW S.W. xmtrs. are to be installed near Warsaw soon (morey)... SP19 and SP25 cards will be sent out as soon as they are printed-

PORTUGAL CSW2 (11.04) now broadcasting daily 9:30am-noon and 2 to (WS) 5:30pm (\*Amers, Larsen, Balbi, Taglauer)

SPAIN RR6, Radio Raquete, Vitoria, heard on 11.98mc (\*RBO)

SWEDEN Revised sked for SBP (11.705) is weekdays 1-4:15, and Sun 1:15-4:15pm, and Wednesdays and Saturdays 8-9pm (Granberg)

SWITZERLAND Radio Club Schaffhausen, Schaffhausen, broadcasts Mondays at 4 pm on 20, 40 and 80M bands, and on Sundays at 2pm on 40M band. Address is Radio HB9L, Schaffhausen, (\*\*Reinhard)... Revised sked for Radio Nations follows: Sundays, 10:45-11:30am to India, over HBJ (14.535); 1:45-2:30pm to Africa and Europe, over HBO (11.4) and HBQ (6.675); 2:30-2:45pm to Europe, over HBQ; 7-7:45pm to N.A. over HBL (9.345) and 8-8:45pm to S.A. over HBL; Mondays 3:30-3:45am over HBO (11.4) and 4-4:15am over HBJ to Australia and New Zealand, and 6:50-8:15pm to N.A. over HBL and HBP (7.797) (\*\*Eders, Tuff, RG)

U.S.S.R. RAN (9.6) now broadcasts in French nightly 9:15-10:15pm (\*Larsen); verifies with QSL picturing the 4 Arctic explorers and a copy of "Sovietland," a Russian picture magazine (Wells)... RV9G, Moscow, formerly on 15.18, has shifted to 15.27 (\*Christie)... Soviet xmtr. on 9.52mc broadcasts in Chinese 9-10am and in parallel with RV96 10am-4pm, and sometimes after 6 pm in parallel with RAN (\*\*Orlaw, Christie)... A new frequency for Moscow, namely 7.57mc, is now being used irreg. in the evenings (Campbell)

VATICAN CITY Revised sked for "Radio Vaticano" follows: on 15.12mc, Tuesdays 10:30-10:45am and Sun 1-1:30pm; on 9.55 or 9.66mc, Sundays 5-5:30am in French; on 6.03 or 6.19mc, Mon/Tues/Wed/Fri/Sat 2-2:30pm, Mon/Tues/Thurs/Fri 2:30-3pm and Wed/Sat 3-3:30pm (\*\*Radiocorriere)

== AFRICA ==

ANGOLA CR6AA, Lobito, now operates simultaneously on 7.174 and 7.614mc Wed/Sat 2:45-4:30pm; irreg. on 9.666mc near mid. (\*\*Clein)... CR6RS (14.269)

Lobito, 40w, operates one hour daily on an experimental basis...CR6RC (11.79), Luanda, 50w, owned by the Radio Club of Angola, was opened early in 1938, operates 4 to 6 hours daily; may receive power increase to 5000 watts (\*\*Com.Bul.)

BECHUANALAND ZNB verified promptly, sending back my IRC (\*DeMyer)

EGYPT SUV (10.055) contacts GBB2 daily near 2:57-3am (\*\*Stark)

ETHIOPIA Station on 15.3, mentioning Addis Abeba frequently, might be ZRO5, is being heard 9am-noon irreg. and Sun. 11am-noon (\*\*Clein, Balbi)...ETA (18.27), Addis Abeba, heard 4-5am (\*Radio Guia)

SO. AFRICA ZRD (9.72), Durban, is now being heard on West Coast with excellent signals daily 9-11:30am (\*\*Amers, Clein, Balbi, E.R.)...The power of ZRK will soon be raised to 25kW (NNRC)

TANGIER New station being installed near Tangiers may, it is thought, use the present transmitter of amateur station CNIAF.

TRIPOLITANIA IQN (9.46), Zanzur Oasis, power 5kW, is on the air. Sked is unknown, but was heard near 4:30pm (\*\*Tune In, CAM)

### = ASIA AND OCEANIA =

AUSTRALIA VLR, Melbourne, operates on new freq. of 11.88mc (call VLR3), weekdays Mid-2am; Sun. Mid-3am. Shifts to 9.58mc at 3:15am. Also has been licensed to operate on 6.14mc (\*\*NRC, Shaffar, Balbi, Walcott)

CHINA Broadcast station XMHA (600kC), will soon inaugurate a S.W. relay (ADXC)...Xmtr. on 6.82mc, believed to be XGOX, Nanking, again on the air, being heard 6-6:30am (\*\*Orlaw)...NEW: XGSA (7), is operating daily 6:30-7:30pm, 1-2 and 8-10:10am. Announcement in English every quarter hour is "This is XGSA, the Kweiyang Broadcasting Station, Kweichow Prov., China, operating on 43 meters." News in English at 9am. Both men and women announcers (\*\*\*\*Walcott)...XGX (9.09) is off the air since the fall of Hankow (\*\*Walcott)...A station announcing as "The Voice of China," call letters believed to be XTJ, is now being heard on approximately 11.38mc, 8-8:35am irreg. (\*\*Trezise)...NEW: XUD (9.56), "Peking Central Broadcasting Station," Peking, relays XGAP, daily 4-9am (\*\*Walcott, Saito, Yoshimura)...NEW: XOZ (15.51), and XOY (9.37), Chengtu-broadcast the news in English, for Europe, and U.S. respectively, daily from 9:45-10:30am (\*\*\*\*E. Radio)

D. NEW GUINEA PK6XX (6.52), Hollandia, contacts 5 watt portable xmtrs. in interior, on same frequency, daily near 2:30am (\*\*ADXC)

F. INDO-CHINA Radio Hanoi (11.91), heard weakly 3:45-4:15am (\*\*Orlaw)

INDIA Revised sked for Delhi: VUD3 (15.16), 9:30-11:30pm (\*\*Balbi, Shaffar). VUD2 (9.59/4.995), broadcasts English program of birth day greetings Thurs 7-7:30am (\*\*Eders)...All India Radio requests IDA members to furnish more detailed reports if veri's are expected - Ed.

JAPAN JVL (11.66) is relaying the Overseas Hours irreg...See List for revised sked of Overseas Hours.

MACAO Xmtr. on 6.08mc, heard about once a month (last heard Oct 24, 9:20-10:10am) using call starting with CR9, may be CQN (\*\*Amers)

N.Z. ZZB (6.96-3.48), Wellington, is operating nightly mid-7am - power 200w; gives station identification at 3am (\*\*Breen)

P.I. NEW: KZIB (9.503), Manila, on daily 7-9:05am, is heard best 7-7:40am (\*\*Orlaw, Balbi)...KAX (19.98), calls either KWU (15.35), or JVA (18.91), daily at 6pm (\*\*Amers)

SIAM Bangkok (6.11), operates Wednesdays 7-10am (\*\*Tune In)

S.S. ZHP (9.69), has again replaced ZHO (Orlaw, RBO, Gallagher) Address is J.S. Dumeresque, Gen. Mgr., The British Malaya Broadcasting Corp., Ltd, Broadcasting House, Thomson Road, Singapore (\*\*Amers)

TURKEY TAP (9.465), Direction General des P.T. & T., Ankara, 20kW - went on air Oct. 23, was officially inaugurated Oct. 30, and is now broadcasting daily 11:30am-4, or 5pm. Announcements in English at 2:45, 4 and 5pm states "This is Ankara Calling." Identification is also made in German, French and Turkish... TAQ (15.195), is operating daily 9:30-11am; and 5:30-7am irreg. (\*\*Balbi, Clein, Guilbert, E. Radio, NRC, Reinhard, Larsen, Christie, Smith, Legge, DeMyer, Schrock, CAM)

U.S.S.R. RV15 of Khabarovsk, formerly on 4.27mc, is now operating on 6.045mc, where it may be heard with excellent signals relaying broadcast stations RV69 or RV54, from approximately 2 to 11am. RV69 on 6.8mc has closed down owing to CW QRM (\*\*Orlaw, Balbi, Clein, Walcott)

# SHORT-WAVE BROADCASTING STATIONS

SYMBOLS: N-NEW stations; F-Frequency change; S- Change in sked; B- Frequency calibrations according to Oxrieder-IDA Frequency Bureau; J- stations persisting in hopping about; V- varying in frequency; Y- does not verify; X- does not verify direct; U- frequency in doubt; \* See short-wave notes.

DIAL METERS	MEGS	CALL	STATION	TIME	-----EASTERN STANDARD.
13.91N	21.57	W2XF	New York City, N.Y.	7:30-10am;	Sat/Sun 8am-1pm.
13.92	21.54	W8XK	Pittsburg, Penna.	6:45-9am.	
13.93SY	21.53	GSJ	Daventry, England	5:45-8:50,	9-10:30am.
13.96	21.50	W2XAD	Schenectady, N.Y.	8am-noon	directed to S.A.
13.97Y	21.47	GSH	Daventry, England	5:45-8:50,	9am-noon.
13.99	21.45	DJS	Zeesen, Germany	12:05-11am	to Asia.
15.77	19.02	HSGPJ	Bangkok, Siam	Mondays 8-10am See 15.23mc.	
16.84N	17.82	2RO6	Rome, Italy	6-7:30,	10-11:15am.
16.85	17.81	TPB3	Essarts, France	9:30-11am.	
16.86Y	17.79	GSG	Daventry, England	5:45-8:50,	9am-noon, 12:20-4pm.
16.87	17.78	W3XL	Boundbrook, N.J.	9am-5pm	to Europe, 5-11pm to SA
16.88	17.77	PHI2	Huizen, Holland	Sun, 6:25-9:40am/M/W/F/S.	7:25-8:25am; Tues/Thurs 7:25-8:40am
16.89S	17.76	DJE	Zeesen, Germany	12:05-11am.	
17.36S	17.28	FZE8	Djibouti, F.Somaliland	Jan.5/Feb.2	8-8:30am.
19.34N	15.51	XOZ	Chengtu, W.China	9:45-10:30am	to Europe. *
19.52	15.37	HAS3	Budapest, Hungary	Sundays	9-10am.
19.56	15.34	DJR	Zeesen, Germany	8-9am,	4:50-10:50pm to C.A.
19.57S	15.33	W2XAD	Schenectady, N.Y.	12:15-6pm.	
19.60YS	15.31	GSP	Daventry, England	1:45-4pm.	to Canada.
19.61S	15.30	2RO5	Rome, Italy	11:15am-12:15,	2-4pm.
19.62	15.29	LRU	Buenos Aires, Argentina	7-9am.	
19.63S	15.28	DJQ	Zeesen, Germany	12:05-11am,	4:50-10:50pm
19.64	15.27	HT3X	Trujillo City, D.R.	Tues/Fri 8:10-10:10pm	& Sun AM
19.64S	15.27	W2XE	New York City, N.Y.	1-3pm;	Sat/Sun 1:30-2:30pm. *
19.64FS	15.27	RV96	Moscow, U.S.S.R.	9am-4pm;	6-9pm irreg. *
19.66YS	15.26	GSI	Daventry, England	3-5:15am,	12:20-1:30pm.
19.67S	15.25	WLXAL	Boston, Mass.	2-3:30,	or 4pm except Sat.& Sun
19.68	15.243	TPA2	Pontoise, France	6-11am.	
19.70	15.23	OLR5A	Prague, Czechoslovakia	M/T/W/T/F 7:10-10:55pm;	Sa/Su 5-5:15pm; Sun 5:55-8:55pm; Tues-Mondays 8-10am. (4:40-5:10p
19.70	15.23	HS6PJ	Bangkok, Siam	Mondays	8-10am. (4:40-5:10p
19.71	15.22	PCJ2	Huizen, Holland	6:15-6:45pm;	Tu 2-2:30am; Wed# 9:30-11:30am; Sat 7:15-7:45pm.
19.72	15.21	W8XK	Pittsburgh, Penna.	9am-1pm.	(11:10am-12:25
19.74	15.20	DJB	Zeesen, Germany	12:05-11am,	4:50-10:50pm; Sun-
19.74S	15.195	TAQ	Ankara, Turkey	9:30-11am;	5:30-7am irreg. *
19.76Y	15.18	GSO	Daventry, England	3-5:15,	9-11am, 4:15-6, 6:20-8:30
19.78	15.17	TGWA	Guatemala, Guatemala	12:15-1:45pm;	Sun 12:45-5:15pm.
19.78	15.165	OZH	Skamlebak, Denmark	Sundays	8am-1:30pm.
19.79S	15.16	VUD3	Delhi, India	9:30-11:30pm.	
19.80	15.155	SM5SX	Stockholm, Sweden	11am-5pm;	Sundays 9am-5pm.
19.80	15.15	YDC	Bandoeng, Java	4:30-10:30am;	6-7:30pm ex.Sat, 10:30pm-2am; Sat 7:30pm-2am.
19.82Y	15.14	GSF	Daventry, England	3-5:15,	5:45-8:50, 9am-noon.
19.83	15.13	TPB6	Essarts, France	7-9:15pm.	
19.83	15.13	WLXAL	Boston, Mass.	Sundays	10am-1pm.
19.84	15.12	SP19	Warsaw, Poland	6-9pm.	*(am#
19.84S	15.12	HVJ	Vatican City, Italy	Sun 1-1:30pm;	Tues. 10:30-10:45
19.85	15.11	DJL	Zeesen, Germany	12:05-2, 8-9,	10:35-4:25pm.
19.89	15.08	RKI	Moscow, U.S.S.R.	3-4,	7-9:15pm; Sun 6:30am etc.
20.11S	14.92	KQH	Kahuku, Hawaii	Fri 12:15-12:30am;	Sat 9-9:30pm
20.55	14.60	JVH	Nazaki, Japan	10-11pm	& irreg(Su 12-12:30am,
20.64S	14.535	HBJ	Geneva, Switzerland	Sun 10:45-11:30am;	Mon 4-4:15am
20.78	14.44		Malaga, Spain	5:40-8:40pm	& Later.
20.79S	14.43	HCLJB	Quito, Ecuador	10-10:30pm	except Mondays *
21.43	13.997	EA9AH	Tetuan, Span.Morocco	4-8,	9-9:30pm; to 11pm irreg.*
22.00	13.635	SPW	Warsaw, Poland	6-9pm.	

13M

16M

19M

24.03	12.486	HIN	Trujillo City, D.R.	7:10-10:10pm.
24.08	12.46	HC2JB	Quito, Ecuador	8-10:30pm ex. Mondays.
24.53	12.235	TFJ	Reykjavik, Iceland	Sundays 1:30-2:30pm.
25.00	12.000	RNE	Moscow, U.S.S.R.	8:30-9:15, 10:15-11pm, 3-6pm; Sun 6-7, 10-11am; Wed 6:30-7:30am.
25.02	11.99	CB1180	Santiago, Chile	7-11pm.
25.06	11.97	HI2X	Trujillo City, D.R.	Tues/Fri 8:10-10:10pm.
25.15	11.928	TI2XD	San Jose, Costa Rica	10am-noon, 4-10pm.
25.19FS	11.91		Hanoi, F. Indo-China	Daily 3:45-4:15, 7-9:30am.
25.21F	11.90	CD1190	Valdivia, Chile	10am-1pm, and 7-10pm.
25.21	11.90	XEWI	Mexico D.F., Mexico	7:30pm-mid; Sun 12:30-2pm.
25.21	11.90	HP5I	Aguadulce, Panama	7:30-9:30pm.
25.23	11.885	TPA3	Pontoise, France	2-5; 11:15am-6, 7-9:15pm.
25.23S	11.885	TPB7	Essarts, France	9:30-Midnight; 12:15-2am irreg*
25.25N	11.88	VLR3	Melbourne, Australia	12-2am; Sundays 12M-3am. *
25.27	11.87	W8XK	Pittsburgh, Penna.	1-11pm.
25.28	11.865		Bern, Switzerland	Testing 8-9pm for N.A. irreg.
25.30YS	11.86	GSE	Daventry, England	3-5:15, 5:45-noon, 2-2:30pm; Sun-
25.32S	11.85	CB1185	Santiago, Chile	Sat. 6-11pm & irreg*(1-1:30pm*
25.34	11.84	OLR4A	Prague, Czechoslovakia	M/T/W/T/F 7:50-10:55pm; Daily 1:55-4:30pm; Sunday 5:55-8:55pm
25.36S	11.83	W2XE	Wayne, New Jersey	3:30-6pm; Sat/Sun 3-6pm. *
25.37S	11.826	XEBR	Hermosillo, Mexico	9-11am, 9-10:30pm, or later *
25.40S	11.81	2R04	Rome, Italy	4:40am-12:05pm. *
25.42N	11.801	DJZ	VIENNA, GERMANY	7:15-10:50pm. *
25.42	11.80	COGF	Matanzas, Cuba	6pm-midnight.
25.42S	11.80	JZJ	Tokio, Japan	12:30-1:30, 7-7:30, 8-9:30am, 2:30-4, 4:30-5:30, 8-8:30pm. (25M)
25.45S	11.79	WLXAL	Boston, Mass.	4:40-6:30pm; Sat 1:45-6pm; Su 3-
25.45N	11.79	CR6RC	LUANDA, ANGOLA	4 to 6 hours daily *(6:30pm.
25.47	11.78	HP5G	Panama City, Panama	8-11pm.
25.47	11.78	OFE	Lahti, Finland	1:05-3, 5-6:30, 10am-12:30pm ir.
25.49	11.77	DJD	Zeesen, Germany	10:35am-4:25, 4:50-10:50pm.
25.50	11.76	XETA	Monterrey, Mexico	Noon-3:30pm. (-8:30, 9:20-11:20p
25.53YS	11.75	GSD	Daventry, England	3-5:15, 10:45am-nn, 12:30-6, 6:20
25.55	11.74	SP25	Warsaw, Poland	6-9pm.
25.55	11.74	COCX	Havana, Cuba	8am-lam.
25.58S	11.73	WLXAL	Boston, Mass.	9:15-11:30pm ex. Sat/Sun.
25.60	11.72	CJRX	Winnipeg, Canada	Saturdays only irreg.
25.60S	11.718	CR7BH	Laurenc, Mozambique	12-1, 4:30-6:30, 9-11am, noon-4pm --Sun 5 <sup>am</sup> 7, 10am-2pm.
25.61	11.713	TPA4	Pontoise, France	7-9:15, 9:30-12 mid. to N. A.
25.62	11.71	YSM	San Salvador, El Salvador	1-2:30pm.
25.62	11.71		Saigon, F. Indo-China	7:30-9:15am. (- 8-9pm. *
25.63S	11.705	SBP	Motala, Sweden	1-4:15pm; Sun 1:15-4:15pm; Wed/S
25.64	11.70	HP5A	Panama City, Panama	10am-1pm, 5-10pm; Sun 6-10pm.
25.64	11.70	CB1170	Santiago, Chile	10am-2pm, 3:30-11pm.
25.74S	11.67	IQY	Rome, Italy	12:10-9pm intermittently.
26.01	11.535	SPD	Warsaw, Poland	6-9pm.
26.32S	11.402	HBO	Geneva, Switzerland	Sun 1:45-2:30pm; Mon 3:30-3:45a
26.36FS	11.38	XTJ	Hankow, China	8-8:35am. *
27.17S	11.04	CSW2	Lisbon, Portugal	9:30am-noon, 2-5:30pm. (am ExSa
27.27	11.00	PLP	Bandoeng, Java	4:30-10:30am, 6-7:30, 10:30pm-2
27.40	10.95		Tananarive, Madagascar	12:30-12:45, 10-11am; 2:30-4
28.14	10.66	JVN	Tokio, Japan	1:50-7:40am. (am Ex.Sun.
28.30	10.60	ZIK2	Belize, Br. Honduras	Tu/Th/Sat 1:30-2, 8:30-9pm.
28.48	10.535	JIB	Taihoku, Taiwan	Relays JFAK 9:05-9:55am.
28.96VS	10.36	YSP	San Salvador, El Salvador	1-3, 6:30-11pm. *
29.04S	10.33	ORK	Ruyselede, Belgium	1:30-3pm to Belgian Congo.
29.15	10.29	TIEMT	San Jose, Costa Rica	4:30-8pm. (ex. Sat; Sat 7:30pm-2a
29.24	10.26	PMN	Bandoeng, Java	4:30-10:30am, 6-7, 10:30pm-2a
29.35	10.22	PSH	Rio de Janeiro, Brazil	6-7pm; Mondays 8-8:30pm.
29.70J	10.10		Deutsche Freiheits	Sender 4-5pm.
30.30J	9.99	COBC	Havana, Cuba	6:55am-lam.
30.24	9.92	JDY	Darien, Kwantung	7-8am, or later.



30.455	9.855	EAQ	Madrid, Spain	3:45-4:05am, 4:45-5:05, 7:30-8,
30.52S	9.83	IRF	Rome, Italy	12:40-9pm intermit(8:30-9:10pm
30.61J	9.80	COCM	Havana, Cuba	8am-12:30am; irreg. to 2am. *
30.74	9.76		Saigon, F.Indo-China	7:30-9:15am.
30.82J	9.735	CSW7	Lisbon, Portugal	Noon-2, 6-9pm for N.A.
30.83NF	9.73	CB970	Valparaiso, Chile	6:30-11:30pm, or midnight. *
30.86N	9.72	ZRD	DURBAN, SO.AFRICA	9-11:30am. *
30.90J	9.71	COCQ	Havana, Cuba	6:55-1am.
30.93J	9.70		Fort-de-France, Martinique	6-8:10, or 9:30pm. *
30.96F	9.69	ZHP	Singapore, S.S.	4:40-9:40am; Wed 12:40-1:40am;
				Sa 12:25-1:40pm; Su 10:40pm-110
30.96	9.69	LRA	Buenos Aires, Argen.	Mon to Th. 6-9pm; Fri 4-9pm.
				Sat/Sun 7-9pm.
30.98S	9.685	TGWA	Guatemala, Guatemala	10-11:30pm ex. Sun; Sun 7-10:45p
31.01N	9.675	DJX	VIENNA, GERMANY	10:40am-4:25pm to Africa *
31.02F	9.67	TI4NRH	Heredia, Costa Rica	Tu/Th/Sat 9-10pm; Sun 7-8am.
31.02	9.67		Italian station	Relays 2R03 7:30-9pm.
31.02	9.67	W3XAL	Boundbrook, N.J.	5pm-1am.
31.06S	9.66	LRX	Buenos Aires, Argen.	9:30am-10pm; Sat. to mid.
31.09J	9.65	CS2WA	Lisbon, Portugal	Tues/Thurs/Sat 4-7pm.
31.09N	9.65	W2XE	New York City, N.Y.	6:30-11pm. *
31.11	9.645	HH3W	Port-au-Prince, Haiti	1-3, 7-9pm. (am
31.12S	9.64	CXA3	Colonia, Uruguay	Relays LR3 7am-9pm; Sat to 2:15
31.13	9.636	JFO	Taihoku, Taiwan	4-10:30am.
31.14S	9.635	2R03	Rome, Italy	12:05-9pm. *(pm, Sun 4:30-9pm. *
31.20	9.618	HJ1ABP	Cartagena, Colombia	Weekdays 9am-1:30pm, 4:30-10:15
31.22	9.61	ZRK	Klipheuvell, S.Africa	11:45pm-12:45am ex. Sa; 3:30-720
31.25	9.602	KEYU	Mexico D.F., Mexico	3:40-4:30, 8-12pm (9-11:45am. *
31.25S	9.60	RAN	Moscow, U.S.S.R.	6-7, 7-9:10, 9:15-10:15pm. *
31.28F	9.59	HP5J	Panama City, Panama	Noon-1:30pm, 6:30-10:30pm.
31.28	9.59	PCJ	Huizen, Holland	Sun 3:20-4:30, 7:15-9:30pm; Tues
				1:45-3:40, 7-9; Wed 7:15-8:30pm,
31.28	9.59	VK6ME	Perth, W. Australia	Weekdays 6-8am (Fri. 7-9pm.
31.28S	9.59	VK2ME	Sydney, Australia	Sundays 1-3, 5-11am.
31.28	9.59	W3XAU	Philadelphia, Penna.	M/Th/Sa 1pm-1am; Tu F/Su mid-1
				am; Wed 10pm-1am.
31.28	9.59	VUD2	Delhi, India	8:30-10:30pm; 6:30am-12:30pm.
31.32S	9.58	GSC	Daventry, England	4:15-6, 6:20-8:30, 9:20-11:20pm.
31.32	9.58	VLR	Melbourne, Australia	Weekdays 3:15-8:30am or later.
31.35	9.57	WLXK	Springfield, Mass.	6am-1am.
31.35	9.57	KZRM	Manila, Philippines	Weekdays 4:30-6pm; Mon. to Fri 5
				-9pm; Sat 5-10am; Sun 4-10am.
31.38C	9.56	XUD	Peking, China	Relays XGAP 4-9am. *
31.38	9.562	OAX4T	Lima, Peru	7-8, 11:30am-1:30pm, 4-6:15pm.
31.38	9.56-	DJA	Zeesen, Germany	12:05-11am, 6-10:50pm.
31.41	9.55	YDB	Soerabaja, Java	4:30-10:30am; 6-7:30, 10:30pm-2
				am ex. Sat; Sat 7:30pm-2am.
31.41S	9.55	VUB2	Bombay, India	8:30-10:30pm, 1-3:30am.
31.41	9.55	or 9.66	or HVJ, Vatican City,	SSundays 5-5:30am. *
31.41	9.55	TPB11	Essarts France	2-5am, 11:15am-6pm
31.41	9.55	OLR3A	Prague, Czechoslovakia	Mondays 4:40-5:10pm.
31.41S	9.55	W2XAD	Schenectady, N.Y.	7:15-10pm to S.A.
31.41X	9.55	XEFT	Veracruz, Mexico	7:30pm-midnight.
31.45	9.54	DJN	Zeesen, Germany	4:50-10:50pm to S.A.
31.46	9.538	VPD2	Suva, Fiji's	5:30-7am ex. Sundays.
31.47	9.535		Bern, Switzerland	1-2, 6:45-7:45, 8-9pm.
31.48	9.53	W2XAF	Schenectady, N.Y.	4pm-midnight.
31.48S	9.53	VUC2	Calcutta, India	2:06-4:06am. (2:30-10:30am. *
31.49S	9.526	LKC	Jeloy, Norway	4:30-10:30am, 8-9, 10-11pm; Sun-
31.50	9.526	ZBW3	Hong Kong, Hong Kong	4-11am; Sun 3-9:30am etc.
31.50X	9.526	XEDQ	Guadalajara, Mexico	Noon-4:30, 8-11:30pm.
31.50	9.523	ZRH	Roberts Heights, S.Africa	11:45pm-12:45, 5-7:30am,
31.51	9.52	OZF	Skamlebak, Denmark	8-9:30, 9:30-11pm (Sun 4-5am
31.51N	9.52		MOSCOW, U.S.S.R.	9am-4pm; 6-9pm irreg. (11:20pm*
31.55Y	9.51	GSB	Daventry, England	1:30-4, 4:15-6, 6:20, 8:30, 9:20-

31M

31.55V	9.51	HS8PJ	Bangkok, Siam	Thurs. 8-10am.	(ex.Sun.)
31.55	9.51	FIQA	Tananarive, Madagascar	12:30-12:45, 10-11am, 2:30-4am	
31.57	9.503	XEWW	Mexico D.F., Mexico	9am-12:30am.	
31.57N	9.503	KZIB	MANILA, P.I.	7-9:05am.	*
31.58	9.501	PRF5	Rio de Janeiro, Brazil	4:45-5:55pm	ex.Sundays.
31.58	9.50	OFD	Lahti, Finland	12:15-5pm.	
31.58	9.50	VK3ME	Melbourne, Australia	4-7am	except Sundays.
31.61V	9.49	OAX5C	Ica, Peru	8-11:30pm.	
31.62V	9.488	EAR	Madrid, Spain	3:40-4, 7:30-8, 8:40-9pm.	
31.70S	9.465	TAP	Ankara, Turkey	11:30am-4, or 5pm,	*
31.77	9.445	HCODA	Guayaquil, Ecuador	8:15-10:15pm	ex.Sundays.
31.79	9.436	COCH	Havana, Cuba	8am-11pm; Sun 8am-10pm.	
32.02N	9.37	XOY	CHENGTU, W.CHINA	9:45-10:30am	for N.A. *
32.07V	9.354	HCL1ETC	Quito, Ecuador	8-11pm	Saturdays. (-8:15pm.)
32.11S	9.345	HBL	Geneva, Switzerland	Sun 7-7:45, 8-8:45pm; Mon 6:50-	
32.12	9.34	OAX4J	Lima, Peru	Noon-3, and 5pm-midnight.	
32.29	9.29		Shanghai, China	8-9:05am.	(4:40pm.)
32.31FX	9.285	HIG	Trujillo City, D.R.	6:40-8:40, 11:40am-2:10, 3:40-	
32.40U	9.26	ZP8	Asuncion, Paraguay	6:30-8pm.	
32.61F	9.20	COBX	Havana, Cuba	Relays CMBX 8am-11:30pm.	*
32.66V	9.185	HCL1GQ	Quito, Ecuador	Mon/Wed/Sat 9-11pm.	
32.74J	9.165	HC2CW	Guayaquil, Ecuador	7-11:30pm; Sun 3:30-6pm.	
32.89S	9.12	HAT4	Budapest, Hungary	7-8pm.	*
32.97N	9.10	HI9C	TRUJILLO CITY, D.R.	Operating in evenings.	*
32.97V	9.10	COCA	Havana, Cuba	Noon-12:15am, or later.(etc.)	*
32.00F	9.09	PJC2	Curacao, D.W.I.	6:36-8:36pm; Su 10:36am-12:36pm	
33.28V	9.015	COBZ	Havana, Cuba	7:45am-1:15am.	
33.48	8.96	COJK	Santiago, Cuba	5-6, 9:30-10:30pm. (or 10pm.)	
34.53F	8.688	COJK	Camaguey, Cuba	11:30am-12:30pm, 3:30-6, 8-9pm,-	
34.67V	8.652	HJ4ABU	Medellin, Colombia	Weekdays 7-10pm.	
34.97	8.58		Managua, Nicaragua	12:45-2:15, 6:45-10:15pm. (pm-2a	
37.08	8.09	YDX	Medan, Sumatra	Weekdays 10:30pm-2am; Sun 7:30	
38.00	7.894	YSD	San Salvador, El Salvador	7-10:30pm.	
38.12	7.87	HCL1RB	Quito, Ecuador	8:30-11:30pm.	
38.20	7.854	HC2JSB	Guayaquil, Ecuador	11am-2pm, 4-11pm.	
38.48S	7.797	HBP	Geneva, Switzerland	Monday 6:50-8:15pm.	*
39.39N	7.614	CR6AA	Lobito, Angola	Wed/Sat 2:45-4:30pm.	*
39.63N	7.57		Moscow, U.S.S.R.	Heard evenings irreg.	*
39.89N	7.52	KKH	Kahuku, Hawaii	Fa 12:15-12:30am, Sa 9-9:30pm,-	
39.95	7.51	JVP	Tokio, Japan	8-9:30am. (Su 12-12:30am.)	
40.05F	7.49	EAJ43	Tenerife, Canarias	1:15-3:30, 4-6, 6:45-7:45, 8-9pm.	
40.27	7.45	TI2RS	San Jose, Costa Rica	7-11pm.	
40.49	7.41	YDA	Batavia, Java	10:30pm-2am; Sat 7:30pm-2am.	
40.65	7.38	XECR	Mexico D.F., Mexico	Sundays 6-8pm.	
41.01S	7.31	VIG	Port Moresby, Papua	Dec 17/Jan 7 3-5am.	
41.55	7.22		Malaga, Spain	9-10am, 4-5:30pm etc.	
41.67	7.20		Baghdad, Iraq	8:30am-3pm.	
41.80	7.177	CR6AA	Lobito, Angola	Wed/Sat 2:45-4:30pm.	*
42.25	7.10	FO8AA	Papeete, Tahiti	Tues/Fri 11pm-12:30am.	
42.55VN	7.05	FG8AA	POINT A PITRE, GUADELOUPE	6-7pm; 9-10:30pm irreg.	*
42.80N	7.00	XGSA	KWEIYANG, CHINA	1-2, 8-10:10am, 6:30-7:30pm.	*
43.10S	6.96	ZZB	Wellington, N.Z.	Mid.-7am.	*
43.99N	6.82	XGOX	Nanking, China	Reported on air 6-6:30am.	*
44.12F	6.80	PZH	Paramaribo, D.Guiana	Mon/Wed/Fri 5:41-8:41pm.	
44.28VS	6.775	HIH	San Pedro, D.R.	7:40-8:40pm; Sun 5:20-6:40pm	*
44.36V	6.763	HI7P	Trujillo City, D.R.	7:10-8:40pm; Sun 9:40-10:40pm.	
44.51V	6.74	YNRF	Managua, Nicaragua	6:45-10:15, or 11pm.	*
44.51	6.74	HCL1TQ	Quito, Ecuador	Sundays 5-7pm.	
44.60	6.727	PMH	Bandoeng, Java	4:30-11am; Sun 8:30pm-1:30am.	
44.84F	6.69	TIEP	San Jose, C.R.	7-11pm.	
44.95N	6.676	HBQ	Geneva, Switzerland	Sun 1:45-2:30, 2:30-2:45pm.	*
44.98	6.67	HI9B	Santiago, D.R.	6:40-7:40pm.	
45.05	6.66	HI5G	Trujillo City, D.R.	To 5:55pm	ex. Sundays.
45.22B	6.635	HC2RL	Guayaquil, Ecuador	Sun 5:30-7:30pm; Tu 9-11pm.	
45.25X	6.63	HIT	Trujillo City, D.R.	12:10-1:40pm, 4:40-8:40pm.	

45.29B	6.625	PRADO	Riobamba, Ecuador	Thursdays 9-11pm.
45.39V	6.61	YNLG	Managua, Nicaragua	1:30-2:30, 6-10:15pm.
45.70	6.565	HI5P	Puerto Plata, D.R.	5:40-7:40, 9:40-11:40pm.
45.80	6.55	TIRCC	San Jose, C.R.	Tu/Th/Sa 6-7pm; Sun 8-10pm.
45.84X	6.545	YV6RB	Bolivar, Venezuela	6:30-9:30pm ex.Sundays.
46.01V	6.52	YV4RB	Valencia, Venezuela	11am-1:30pm, 5-9:30pm.
46.15	6.50	HIL	Trujillo City, D.R.	12:30-2, 6-8, or 9pm ex.Sun.
46.15	6.50	YV1RN	Maracaibo, Venezuela	Who knows sked ?
46.16S	6.498	TGWB	Guatemala, Guatemala	7:45-9am, 12:45-3:45, 7:30pm - 12:45pm; Su 10:30am-midnight. *
46.26	6.485	HILL	Santiago, d.l.c., DR.	Weekdays 5:30-9:30pm.
46.41	6.465	YV3RD	Barquisimeto, Venez.	11:30am-1:30, 5:30-9:30pm.
46.44J	6.46	YNLGG	Managua, Nicaragua	1-2:20, 8-10pm ex.Sundays. *
46.44	6.455	HI4V	S.F.de Macoris, D.R.	5:10-7:40pm; to 10pm irreg.
46.66	6.43	HILL	Santiago, d.l.c., DR.	5:40-7:10pm ex.Sundays.
46.77	6.416	YV6RC	Bolivar, Venezuela	10:30am-1:30pm, 4:30-9:30pm.
46.80	6.41	TIPG	San Jose, C.R.	7-9:30am, 12-2, 4-11:30pm.
46.88	6.40	YV5RH	Caracas, Venezuela	5-9:30pm ex.Sundays.
46.88JS	6.40	TGQA	Quezaltenango, Guatemala	Mon/Fri 9-11pm, Sat 10pm-1am; Sun 1-3pm. *
46.99S	6.384	ZIZ	Basseterre, St.Kitts	4-4:45pm; Wed 7-7:30pm. *
47.02	6.38	YV5RF	Caracas, Venezuela	11am-1pm, 5:30-9:30pm ex.Sunday
47.06J	6.375	TIWS	Puntarenas, C.R.	5-7, 7:30-10; Sun 5-6pm.
47.14	6.365	YV1RH	Maracaibo, Venezuela	10:30am-1:30, 4:30-10:30pm.
47.20S	6.357	HRP1	San Pedro Sula, Honduras	6-7:30am, 2-4pm ex.Sundays.
47.32	6.34	HILX	Trujillo City, D.R.	Tues/Fri 8:10-10:10pm.
47.36	6.334	OAX1A	Chiclayo, Peru	8-11pm.
47.43	6.324	COCW	Havana, Cuba	6:55-1am; Sun 9:55am-10pm.
47.51	6.315	HIZ	Trujillo City, D.R.	5:10-7:40pm ex.Sundays,
47.62	6.30	YV4RD	Maracay, Venezuela	6-11pm except Sundays.
47.66	6.295	OAX4G	Lima, Peru	7pm-midnight. (9:40
47.74	6.285	HIG	Trujillo City, D.R.	6:40-8:40, 11:40am-2:10, 3:40-
47.85	6.27	YV5RP	Caracas, Venezuela	4:30-9:30pm or later.
47.96	6.255	YV5RJ	Caracas, Venezuela	5:30-8pm.
48.05XV	6.243	HIN	Trujillo City, D.R.	5:25-10:10pm or later.
48.08	6.24	ZGE	Kuala Lumpur, F.M.S.	Sun/Tues/Fri 6:40-8:40am.
48.11	6.235	HRD	La Ceiba, Honduras	8-11pm; Sun 4-6pm.
48.15	6.23	YV1RG	Valera, Venezuela	11:30am-1pm, 5:45-8:45pm.
48.31	6.21		Saigon, F.Indo-China	7:30-9:15am & irreg.
48.31F	6.21	YV1RI	Coro, Venezuela	6:30-9:30pm ex.Sundays.
48.43	6.195	HI2D	Trujillo City, D.R.	5:10-7:10pm.
48.45S	6.193	TG2	Guatemala, Guatemala	7:30-9am; Mon/Fri 6-11pm; Sat 6pm-1am; Sun 3-8pm. *
48.47N	6.19	or 6.03, HVJ,	Vatican City,	M/T/W/F/Sa 2-2:30pm, M/T/T/F/- 2:30-3pm, Wed/Sat 3-3:30pm. *
48.47V	6.19	HILA	Santiago, D.R.	10:40am-1:40, 6:40-9:40pm.
48.60	6.172	XEXA	Mexico D.F., Mexico	8:30-10:30am, 2:40-4:30, 7pm-mid *
48.62N	6.17	W2XE	New York City, N.Y.	11:30pm-12:30am.
48.70	6.16	YV5RD	Caracas, Venezuela	3:30-10pm; Sun 8am-10:30pm.
48.78	6.15	VPB	Colombo, Ceylon	7-11am, or later.
48.78	6.15	ZP14	Villarica, Paraguay	4-6pm.
48.78V	6.147	CJRO	Winnipeg, Canada	Saturdays only irregular.
48.82S	6.145	HJ4ABE	Medellin, Colombia	9:30am-1pm, 5-10:30pm.
48.86	6.14	W8XK	Pittsburgh, Penna.	11pm-1am.
48.86	6.14		Leopoldville, Belgian Congo,	Sundays 5:35-7am.
48.88	6.137	CR7AA	Laurencio Marques, Moz.	12-1, 4:30-6:30, 9-11am, noon-4pm, Sun 5-7, 10am-2pm.
48.93S	6.132	CHNX	Halifax, N.S., Canada	7am-10:15pm; Sundays 12:15-10p
48.94	6.13	VP3BG	Georgetown, B.Guiana	9-10am, 2:15-6:30pm; Sun 5:30
48.94	6.13	LKJ	Jeloy, Norway	10:30am-5pm. (11:30am, 3-5pm.
48.94	6.13	COCJ	Havana, Cuba	10am-11pm; Sun 10am-9pm.
48.98V	6.125	CXA4	Montevideo, Uruguay	8am-noon, 2-10pm.
49.00	6.122	FK8AA	Noumea, New Caledonia	Tues/Sat 2:30-3:30am (3-4am?)
49.00V	6.122	HP5H	Panama City, Panama	6-10pm; to mid. irreg.
49.02CF	6.12	HI9T	San Cristobal, D.R.	Operating near 3 and 6pm. *

49M

49.02	6.12		Helsinki, Finland	12 mid-5pm.
49.04B	6.117	XEUZ	Mexico D.F., Mexico	9am-1pm, 7pm-2am.
49.10	6.11		Bangkok, Siam	Wednesdays 7-10am.
49.10	6.11	GSL	Daventry, England	6:20-8:30, 9:20-11:20pm.
49.13	6.108	HJ6ABB	Manizales, Colombia	5:30-10pm ex. Sun; Sat to 11pm.
49.18	6.10	W9XF	Chicago, Illinois	1-2am.
49.18V	6.10	YUA	Belgrade, Yugoslavia	1-3, 6:30-8:30am, Noon-6:30pm.
49.20	6.097	ZRK	Klipheuvell, So. Africa	11:45am-4pm; Sun noon-3:20pm.
49.20	6.087	ZRJ	Johannesburg, So. Africa	11:45pm-11:30am.
49.30XJ	6.085	XECU	Guadalajara, Mexico	Evenings irreg. (8:15-9:15am.
49.32	6.083	VQ7LO	Nairobi, Kenya	5:30-6, 11:15am-2:15pm; Tues/Th-
49.33	6.081	YVLRD	Maracaibo, Venezuela	5-10, or 11pm.
49.34N	6.080	XETA	Monterrey, Mexico	Evenings to 10:30pm irreg.
49.37	6.077	OAX4Z	Lima, Peru	7pm-1:30am ex. Sundays.
49.40	6.072	DJY	Vienna, Germany	9am-5pm; Sat to 5:30pm. (ex. Sun
49.42	6.07		Tananarive, Madagascar	12:30-12:45, 10-11am; 2:30-4am
49.42	6.07	CFRX	Toronto, Canada	7:30am-mid; Sun 10am-11pm.
49.46	6.065	SBO	Motala, Sweden	4:15-5pm.
49.50	6.06	W3XAU	Philadelphia, Penna.	Tues/Fri/Sun 1pm-mid; Wed 1-10p
49.50	6.06	W8XAL	Cincinnati, Ohio	6:45-8pm; 11pm-2am; Su 8am-8pm.
49.53	6.057	ZHJ	Penang, S.S.	6:40-8:40am ex. Sundays.
49.56	6.053	HJ6ABA	Pereira, Colombia	9am-noon, 6:30-10pm.
49.59S	6.05	GSA	Daventry, England	12:20-6pm.
49.59F	6.05	HJ1ABG	Barranquilla, Colom.	11am-11pm; Sun 11am-8pm.
49.63N	6.045	RVL5	KHABAROVSK, U.S.S.R.	2-11am.
49.63	6.045	XETW	Tampico, Mexico	7-11pm.
49.67S	6.04	WLXAL	Boston, Mass.	7-8:30, or 9pm ex. Saturdays.
49.67	6.04	W4XB	Miami, Florida	1-3, 9pm-mid; Sun 4-6, 9pm-mid.
49.67	6.04	YDA	Tandjong Prick, Java	4:30-10:30am & irreg.
49.73B	6.033	HP5B	Panama City, Panama	10:30am-2, 6-10pm.
49.75	6.03	VE9CA	Calgary, Alta., Canada	10am-2am.
49.75	6.03	HVJ	Vatican City, Italy	See 6.19mc.
49.75	6.03	RV59	Moscow, U.S.S.R.	506, and 10-11pm irreg.
49.81	6.023	XEUW	Veracruz, Mexico	10pm-1am.
49.83	6.02	DJC	Zeesen, Germany	11:30am-4:25pm to Africa.
49.86V	6.017	HI3U	Santiago, D.R.	4:40-9:40pm ex. Sundays.
49.88X	6.015	PRA8	Pernambuco, Brazil	4-9pm.
49.88FX	6.015	HJ3CAX	Bogota, Colombia	5:30-11:15pm; Sun 6-11pm.
49.92	6.01	OLR2A	Prague, Czechoslovakia	Wed/Thurs 4:40-5:10pm.
49.92	6.01	CJCX	Sydney, Nova Scotia	7am-1:30, 4-8:30pm. (week.
49.92	6.01	9MI	S.S. Kanimbla	7-7:30am two or three times a-
49.92FV	6.01	COCO	Havana, Cuba	7:55am-midnight.
49.94	6.007	XYO	Rangoon, Burma	Heard 9-9:40am irreg. (10am-445
49.94	6.007	ZRH	Roberts Heights, S. Afri.	11:45pm-12:45am, 5-7:30am, -
49.94	6.007	ZRJ	Klipheuvell, So. Africa	3:30-4pm.
49.95V	6.005	CFCX	Montreal, Canada	7:45am-1am; Sun 9am-11:15pm.
49.95V	6.005	HP5K	Colon, Panama	7-9am, 12-1, 6-11pm.
49.99	6.002	CXA2	Montevideo, Uruguay	7:30-10:30pm.
50.00	6.00	XEBT	Mexico D.F., Mexico	10am-1:45am.
50.20	5.977	CS2WD	Lisbon, Portugal	2:30-5:30pm; Sun/Thurs 6-7am.
50.21	5.975	OAX4P	Huancayo, Peru	9-11pm. (9:30pm
50.22F	5.973	YV5RC	Caracas, Venezuela	4-10pm; Sun 8:30-11:30am; 3:30
50.38	5.955	HH2S	Port-au-Prince, Haiti	7-10:15pm ex. Sundays. (Su 2-5a
50.47FS	5.945	TG2X	Guatemala, Guatemala	Mon/Thur 9-11:30pm; Sa 10pm-mid
50.55	5.935	YV1RL	Maracaibo, Venezuela	11am-1pm, 4:30-10:30pm.
50.68	5.92	YV4RH	Valencia, Venezuela	5-9:30pm.
50.85	5.90	TILS	San Jose, C.R.	Noon-2:30pm, and 6-11pm.
50.85	5.90	ZNB	Mafeking, Bechuanaland	1-2:30pm; 6-7am ex. Sundays.
50.85V	5.90	YV3RA	Barquisimeto, Venez.	5:30-9:30pm ex. Sundays.
51.02	5.88	HJ6ABU	Pereira, Colombia.	6:30-10pm.
51.07	5.875	HRN	Tegucigalpa, Honduras	6:30-10:30pm.
51.24	5.855	H1LJ	San Pedro, D.R.	11:40am-1:40pm, 6:10-8:40pm.
51.32	5.845	YV1RB	Maracaibo, Venezuela	10:45-12:40pm, 4:30-10:30pm.
51.41	5.835	YV5RR	Caracas, Venezuela	6:30:30, 10:30am-1:30, 3:30-10p
51.51V	5.825	TIGPH	San Jose, C.R.	Noon-2pm, 7-11pm ex. Sun



# = I. D. A. INTERNATIONAL FRIENDSHIP PROGRAMS =

DEC. 4,	SUNDAY, 3-4am EST,	JP Bucaramanga, Colombia	IDA 9630kc	HJ7ABD
4,	SUNDAY, 3-4am EST,	HT Cleveland, Ohio	IDA 1390	WHK
4,	SUNDAY, 4-5am EST,	ST. Pierre, Miquelon	NRC 609	FQN
NOTE: A fee of 10¢ must be enclosed for a veri' from FQN.				
DEC. 9,	FRI. or DEC. 10, SAT, 2-4am,	San Jose, Costa Rica	11928	TI2XD.
ADDRESS: P.O.Box 1729, San Jose, C.R. . . Owner is			800	TI2XD
John G. Daly.			JL 950	TIRH
DEC. 10,	SATURDAY, 2:30-3:30am EST,	Moncton, New Brunswick	NRC 1370	CKCW
DEC. 11,	SUNDAY, 3:30-4:30am EST,	Calgary, Alta., Canada	NRC 690	CJ2J
DEC. 12,	MONDAY, 2am on- EST,	Flin Flon, Man., Canada	NRC 1370	CFAR
12,	MONDAY, 3-4am EST,	Hull, Que., Canada	NRC 1210	CKCH
DEC. 17,	SATURDAY, 10:30-11:30pm EST,	Panama City, Panama	IDA 9590	HP5J
NOTE: HP5J's famous English commentator Geo. Williams has arranged a unique program of unusual interest. Don't miss it.				
DEC. 18,	SUNDAY, 1-2am EST,	HT Madrid, Spain	IDA 1095	EAJ7
18,	SUNDAY, 4-5am EST,	HT Iowa City, Iowa.	IDA 880	WSUI
JAN. 1,	SUNDAY, 12:01-1am EST,	HT Monterrey, N.L., Mexico	IDA 690	XET
1,	SUNDAY, 7-9pm EST,	HT Moscow, U.S.S.R.	IDA 12000	RNE
JAN. 2,	MONDAY, 3-4am EST,	HT Pinar del Rio, Cuba	IDA 1240	CMAB
JAN. 8,	SUNDAY, 1-1:30am EST,	HT Cleveland, Ohio	IDA 1070	WTAM
NOTE: This is a feature broadcast including all-star local talent, and a talk by IDA Programs Director Herb Tucker. An even better program than last year's is promised. Reports on WTAM's new vertical antenna are solicited from all dx'ers.				
JAN. 8,	SUNDAY, 1-2am EST,	HT Strasbourg, France	IDA 859	
8,	SUNDAY, (time undecided)	HT Zeesen, Germany	IDA 6020	DJC
JAN. 15,	SUNDAY, 2-3am EST,	Quebec, Canada	NRC 580	CHRC
15,	SUNDAY, 4-5am EST,	HT Calgary, Alta., Canada	IDA 930	CFAC
NOTE: Special announcements, and messages in Spatari.				
15,	SUNDAY, 9-10pm EST,	HC Lima, Peru	IDA 9330	OAX4J
JAN. 21,	SAT. and JAN. 22, SUN, 3-4am,	Guatemala, Guatemala	IDA 1310	TG1
NOTE: Special announcements, and messages in Spatari. 6190 TG2				
JAN. 22,	SUNDAY, 2-3am or 3-4am EST,	Sao Paulo, Brazil	NRC 96C	PRF3
JAN. 29,	SUNDAY, 1-2am EST,	HT Cleveland, Ohio	IDA 1450	WCAR
MAR. 20,	MONDAY, 12:01-1am EST,	LA San Salvador, El Salvador.	IDA 7894	YSD
			IDA 640	YSS
1st and 3rd Sundays of each month, 2-4am EST, Baton Rouge NRC 1120 WJBO				
NOTE: "Radio Voice of the NRC" with dx tips & specials.				
Tuesdays, 5:30-6pm EST, (IDA Tips) Schenectady, N.Y.			15330/9530	W2XAD/F
Tues. 8pm/Fri. Midnight EST, (NNRC) New York City, N.Y.			NNRC 26300	W2XJI
Wednesdays, 10:30-11pm EST, (IDA) Detroit, Michigan			IDA 41000	W8XWJ
NOTE: Programs arranged by: LA, Louis Ambrosius; JP, J. Pichler; HT, H. Tucker; JL, Joe Lippincott; HC, Herb Campbell; NRC, National Radio Club;				

## = OFFICIAL REVISED LIST OF CUBAN BROADCASTING STATIONS =

550 CMBD Havana	100w	880 CMW Havana	100w	1140 CMBC Havana	100w
590 CMCY Marianao	15kW	910 CMOA Havana	"	1150 CMKG Santiago de C.	"
630 CMCD Regla	15kW	910 CMKD Santiago de C.	1160	CMHJ Cienfuegos	"
660 CMCR Havana	100w	930 CMJF Camaguey	100w	1170 CMBS Havana	"
680 CMHW Santa Clara	"	940 CMBZ Havana	"	1190 CMKX Santiago de C.	"
690 CMBG Havana	"	950 CMKL Bayamo	"	1200 CMCo Havana	"
710 CMKS Cuantanamo	"	970 CMCK Havana	5kW	1210 CMHK Cruces	"
720 CMK Havana	"	1010 CMQ Havana	"	1230 CMCB Havana	"
740 CMJX Camaguey	"	1050 CMCP Havana	100w	1230 CMJE Camaguey	"
750 CMBL Havana	"	1060 CMHI Clara	"	1240 CMAB Pinar del Rio	"
770 CMKW Santiago de C.	1070	CMJW Camaguey	"	1240 CMHB Sancti Spiritus	"
780 CMCU Havana	100w	1080 CMBX Havana	"	1250 CMKC Santiago de C.	"
790 CMGH Matanzas	"	1080 CMKM Manzanillo (de	1260	CMX Havana	"
810 CMCF Guanabacoa	5kW	1090 CMHA Sagua la Gran-	1260	CMJO Ciego de Avila	"
850 CCMC Havana	100w	1110 CMCJ Havana	"	1270 CMHD Caibarien	"
860 CMJA Camaguey	"	1120 CMGF Matanzas	"	1280 CMKO Holguin	"
870 CMHO Sagua la Grande	1130	CMJI Ciego de Avila (Cont. on Page 15).			

International

Published Monthly Excepting July



BLOOMINGTON, ILLINOIS, U. S. A.

Rx'ers Alliance

CHARLES A. MORRISON  
EDITOR

Volume 6

December, 1938

Number 11

## EDITORIAL

**EXTRA! EXTRA!! CHRISTMAS SPECIAL-- FOR 30 DAYS ONLY-- NEW IDA ENROLLMENTS \$1.00 (4/-) WITH GLOBE CIRCLER; \$1.50 (5/-) WITH GLOBE CIRCLER AND AMA-TOURING.** Enrollee must be endorsed or introduced by an active member to secure this extra-special limited offer.

As a next step in improving the Globe Circler we would like to add four more pages, thus making it possible to include ultra high frequency and 62M band stations in our S.W. list; to add a SWL card exchange; more news about interesting foreign amateurs; diagrams of dx aerials; more BCB dx tips; more Listening Post photos and personal notes about members; more feature stories etc. We can give this to you without extra charge, if we get sufficient new enrollments. If EACH member would help, we could accomplish this very desirable end.

## ==NEW MEMBERS==

D.H. Stone, Brooklyn, N.Y. ... D. Beman, State College, Penn. ... J. Wells, Phenix, Ala. ... H. Magowan, Merchantsville, N.J. ... Len Carling, Maywood, Ill. ... L.R. McCague, Fort Wayne, Ind. ... Wm. Miller, Bronx, N.Y. ... R. Cooper, Palmyra, N.J. ... C. Lieberman, Bronx, N.Y. ... E.A. Knoff, Canton, Ohio. ... I. Witty, Lynn, Mass. ... F.H. Koble, Garfield, N.J. ... R.D. Grandas, Cartagena, COLOMBIA. ... S. Rudd, Toronto, Ont., CANADA. ... H. V. Gribble, Minneapolis, Minn. ... E. Barker, Portland, Maine. ... M.D. Foster, Winston Salem, N.C. ... K.I. Kibling, W2HXQ, and C.A. Kibling, W2EOA, Rye, N.Y.

## ==I. D. A. EXCHANGE CORNER==

Ivan Witty, 18 Park St., Lynn, Mass. (swap SWL cards 100%) ... C. Drain, 617 Camden St., Parkersburg, W.Va. (swap snap-shots and views) ... Jack Wells, 1000 Fourteenth St., Phenix, Ala. (swap SWL cards; especially overseas cards) ... Caribbean Radio Listening Post, General Delivery, San Juan, Puerto Rico (swap foreign SWL cards, photos, or stamps)

## == CHAPTERS ==

ACC (Detroit): MEETINGS HELD 3rd Tuesday of month, 8pm EST, at the News Bldg; next, Dec. 20. ... W8XWJ "Chatter Box" program of Nov. 23, featured talk by Mr. McFtridge, Interference expert



"Making Aerial Tests": Regina Chapt. Members (left to right) --Mrs. Baird, L. Kohl, J. Dickenson Mrs. E. Morphy, and Wm. Ansell.

of the Police Dept.; program of Nov. 30. featured talk by E. Lee of FCC, on the new ham regulations.

BETA (New York City): MEETINGS ARE HELD on alternate Saturday nights at home of Ed. Goss, 812 Prospect Place, Brooklyn; next, Dec. 10. All dx'ers and members in vicinity are cordially invited to these popular meetings.

CALGARY FOOTHILLS (Calgary): Oct. 24 meeting held at home of W. Wood. All officers were re-elected for coming season. New membership contest to run to April 30, was instituted.

WINDY CITY (Chicago): MEETINGS HELD 2nd Wednesday of month, 8pm CST, at Central YMCA; next, Dec. 14. Home meetings featuring social activities and receiver try-outs held frequently.

SO. CAL (Los Angeles): Nov. 29, meeting at YMCA went off nicely. E. J. Naife of Sears Roebuck & Co. (Los Angeles Branch), W6EGW, kindly demonstrated one of the new Model 3, Silver-tone Precision Communication Receivers. We are indebted for this co operation. It was moved to limit-chapt. membership to 20. All members jointed NAPRI individually.

## BROADCAST BAND DX

(Cont. from page 13)	
1290 CMCG Havana	100w.
1290 CMJK Camaguey	"
1320 CMBQ Havana	5kW
1350 CMCA Havana	100w
1360 CMJH Ciego de Avila	
1370 CMGE Cardenas	100w
1380 CMCW Havana	"
1390 CMJC Camaguey	"
1400 CMKR Santiago de C.	
1410 CMCQ Havana	100w
1420 CMJP Moron	"
1430 CMKZ Palma Soriano	
1440 CMBY Havana	"
1450 CMFM Cienfuegos	"
1460 CMKF Holguin	"
1470 CMCX Guanabacoa	"
1480 CMHX Cienfuegos	"
1490 CMKQ Santiago de C.	
1500 CMOX Havana	"
1530 CMC Havana	"
1560 CMBF Havana	5kW
1580 CM9RT Guines (New)	
1600 CMBH Guanabacoa	5kW

Note: This list revised to Nov. 1, through courtesy of E. Hidalgo of Cienfuegos, Cuba.

KHBC (1400) still heard with good sigs after 3am EST. KGMB (1320) heard but weak. LR3 (950) heard after 2:09am on Oct. 30. CMBF heard well on 1560kc, Nov. 4, at midnight and since. XEP (1160), "Voz de Panamericana," Juarez, is on air until 3am weekdays, much later Sundays; verifies by card. IDA program over PRG2 heard well on Nov. 12, until fade out at 4:30am EST (Shaffar-Iowa)... CMBF (1560) comes in good; CM9RT (1580) weakly. TGW (1520) comes in fair (Britt-Iowa)... PRG2 was received QSA5, R8 to 9, on Nov. 12. It was riding over some domestic station like a steam roller. The same evening WHAM was so loud I had to disconnect both aerial and ground from set to receive them. Condx. were truly wonderful (Campbell-Penn)... When too much propaganda is being belched forth by the US short-wave stations I can always find a station on the BCB to give fair reception. Sometimes WJZ is received R8-9. Others heard are WABC, WEAJ and WGN (Whitney-B. Guiana)... The following TPs were heard on Oct. 23 and 24, many of them with speaker volume. Aussies were best on 23; Zedders on the 24: 2YA (570), 2NR (700), 3YA (720), 2BL (740), 3LO (770) 4YA (790), 3GI (830), 2GB (870), 2CA (1050), 2ZB (1130), 2NC (1230), 2KO (1410), 3CV (1470), and many others. Same evenings following TAs were heard: Rome (713), Spain (731), Scotland (767), Toulouse (776), Toulouse (913), Long-wave reception is very

regular. Reykjavik (208) heard daily as early as 5pm EST; often R8-9. Hilversum is next best. Paris (182) is also quite good. Others are heard irregularly. Following SAs have been best: LR5 (830), LR6 (870), LS2 (1190), PRE8 (980), OAX4A (854), CX28 (1090), HJ3ABD (1104), YV1RK (1250) and YV5RS (1317) (J. Lip-pincott-Mass.)... All in all looks like BCB reception is picking up..... Ed.

## RETURN POSTAGE BUREAU

Mint stamps from the following new countries (stamps from 50 countries now in stock) to be used in prepaying postage on QSL or SWL cards are now available from the Return Postage Bureau, 85 Francisco Ave., Rutherford, N.J.: 5¢ each--Venezuela; 6¢ each--Trinidad and Grenada.

## JOIN THE WORLD WIDE HOBBY CLUB

A club for the hobby-fans of the world... Publishes a monthly magazine called HOBBYMAG, which contains dope on hobbies of all kinds, also QRA's of SWL card exchangers, photo swappers & other collectors. Dues are 15¢ per month; 60¢ for 6 months or \$1.00 per year (foreign 75¢ or \$1.25). Send for a sample copy now & further information from IDA member Larry Lundberg, 1020 Lowry Ave. North, Minneapolis, Minnesota, U.S.A.

## WE, THE MEMBERS SPEAK

Back issues of ALL radio magazines for 1933-38 at 5¢ each plus postage; stamps accepted. First come-first served (J. Satterthwaite, 544 Colonial Court, Toledo, Ohio). . . The new RCA

#1851 tube (\$2.50 net), when used to replace the ordinary 1st RF tube is reported by several members to have boosted signals from 25 to 75%. . . Very attractive form QSL cards with place for station call and signature are now available from printer John P. Miller, 6 Willow Ave., Ambler, Pa. at \$1.25 for 180 cards. These will bring answers from such hard to get stations as ZLT. Send for sample. . . . IDA CLUB PINS: Displaying IDA emblem and I.D.A. in gold letters, are available in either clasp-pin or screw-on type, from Ed. Goss, 812 Prospect Place, Brooklyn, N.Y. for 75¢ each; with extra gold letter representing your local chapt. attached at \$1.00 each....

Due to heavy space pressure we are forced to omit our regular feature, "Broadcast Station News" from this issue only. Will appear as usual in Jan.

## THE DRIVE AGAINST MAN-MADE QRM

NOW is the time to write to your Senator and Congressmen urging support of the National bill to outlaw electrical interference which will be introduced into congress shortly.



# VIC-VAC SHORT-WAVE HONOR ROLLS

**VAC: VERIFIED—DISTRICT 1:** 11-L. Underwood, 9-W. Ansell, 6-H. Orlaw, 4-Wm. King, N. Ebling, J. Christie, J. Maguire, 2-Mrs. Baird, J. Hodges. **ALL CONTINENTS** King, N. Ebling, J. Christie, J. Maguire, 2-Mrs. Baird, J. Hodges. I-W. Wood, S. Barnetson, G. Young, G. Cheeseman. **DISTRICT 2:** 59-R. MYERS, 23-W Britting, 16-G. Gallagher, J. Moore, 14-H. Allen, 12-Amers, 8-H. Clein, 6-Aug. Balbi, 5-M. Fisher. **DISTRICT 4:** 20-F. MURPHY, 15-G. Beyer, 11-T. Grey, 8-K. Schram, B. Bostad, 6-L. Herz, B. Hetzel, 5-R. DeMent, A. Deterly, Eders, 4-E. Bristow, D. Traister, 3-E. Frost, W. Stark, 2-S. Graham, H. Gustafson, M. Meade, A. Paul, R. Swenson, 1-E. Danielson, W. Daugherty, J. Delaney, R. Dissing, R. Kramer, P. Loyd, L. Lundberg, Mrs. Rogers, R. Schaffar, E. Shenk. **DISTRICT 5:** 20-G. BIGBEE, 15-Dr. Kash, 5-G. Magee, 4-H. Weatherly. **DISTRICT 6:** 79-H. BRADLEY, 70-J. DE MYER, 68-J. MAY, 62-R. GOZEN, 51-R. LEGGE, 48-N. KRIEBEL, 35-D. THOMAS, 28-I. GOODEVE, D. HALL, 26-L. CAVILEER, 25, P. ALBERTO, H. ECK, 22-R. WAITE, 19-P. RODRIGUEZ, 17-M. Buitekant, 16-J. Barre, W. Palmer, 14-M. Cassina, 13-C. Hartzell, E. Nicolassy, 12-R. Oxrieder, E. Powers, M. Soplop, 11-H. Kentzell, 10-J. Buitekant, W. Herzog, J. Siringer, C. Weber, 9-E. Goss, T. Serafin, 8-M. Bass, E. Hatch, L. Windisch, 7-M. Bruscio, L. Miller, M. Reamy, J. Satterthwaite, C. Zanardi, 6-F. Heller, R. Schoel, 5-G. Graham, R. Powell, J. Steele, I. Van Zandt, D. Wright, 4-C. Dawson, J. Hager, B. Partridge, L. Salizar, A. Steinmetz, 3-A. Bartholomew, J. Boehm, B. Horne, H. Lueth, E. Reinhard, R. Verbrugge. **DISTRICT 7:** 23-G. ROCKWELL, 16-R. Messer, 13-D. Styles, 11-J. Kneeland, 9-F. Baines, 8-J. Lippincott, 7-L. Hutchinson, 6-F. Alfred, J. Graham, 5-L. Groves, 4-J. Pratt, A. Willis, 3-J. Everett, 2-H. Ward, A. Long, R. Collins, 1-G. Cote, W. Buchanan, R. Ritchie. **GT. BRITAIN:** 16-R. Pybus, 6-R. Coales, 5-J. Shaw, 1-G. Haylock. **MALTA:** 9-V. Trapani, 2-M. Bonici, 1-J. Mercieca, J. Preciosi. **ST. MARTIN:** 3-C. Peterson. **N.Z.:** 7-A. Breen, 3-B. Connor. **CANAL ZONE:** 4-J. Gallivan. **JAPAN:** 9-S. Yoshimura **P.R.:** 5-E. Butcher.

**VIC: TOTAL NUM. DISTRICT 1:** 76-W. Ansell, 65-L. Underwood, 54-H. Orlaw, 51-W. King, 48-J. Maguire, 42-N. Ebling, J. Christie, 35-W. Wood, 32-Mrs. Baird, 27-S. Barnetson, 26-F. Newton, 21-J. Hodges, 20-R. Thompson, 19-G. Young, 17-G. Cheeseman, 15-J. Dickenson, J. Frederick, 14-W. White. **DISTRICT 2:** 110-R. MYERS, 78-W. BRITTING, 72-G. Gallagher, J. Moore, 65-H. Allen, H. Clein, 63-Amers, 43-A. Balbi, 29-M. Fisher, **DISTRICT 4:** 84-F. MURPHY, 72-G. Beyer, 70-T. Grey, R. Irwin, 68-K. Schram, 63-R. Irwin, B. Hetzel, 61-B. Bostad, E. Frost, 58-H. Schrock, 55-B. Hetzel, L. Herz, 49-M. Meade, 46-R. De Ment, 44-W. Clarke, 42-D. Traister, C. Trezise, 40-A. Deterly, R. Swenson, 36-E. Schenk, 35-F. Anzalone, 34-P. Loyd, C. Will, 33-R. Dissing, 31-J. Delaney, 30-S. Graham, A. Paul, 29-L. Eikamp, 28-R. Kramer, 26-L. Lundberg, 25-Mrs. Rogers, 23-R. Schaffar, 20-S. Cashio, 19-H. Gustafson, 17-E. Danielsen, 15-A. Kiesewetter. **DISTRICT 5:** 100-G. BIGBEE, 69-G. Magee, 68-Dr. Kash, 51-H. Weatherly, 33-W. Byrn, 27-H. Gunn, 24-M. Mosler, 17-G. Hinson, 9-A. Pleyte. **DISTRICT 6:** 133-J. DEMYER, 120-J. MAY, 115-H. BRADLEY, 113-R. LEGGE, D. THOMAS, 107-R. GOZEN, 104-P. ALBERTO, N. KRIEBEL, 102-H. ECK, 99-R. WAITE, 93-L. CAVILEER, 91-J. BARRE, 90-C. WEBER, 89-E. ROBERTS, M. BUIEKANT, I. GOODEVE, 84-E. POWERS, 81-W. PALMER, P. RODRIGUEZ, 79-E. GOSS, 78-E. HATCH, 77-D. HALL, J. SIRINGER, H. KENTZEL, 76-M. SOPLOP, 75-J. SATTERTHWAITE, 74-T. Serafin, 71-C. Hartzell, R. Oxrieder, 70-E. Nicolassy, 68-W. Herzog, 67-M. Bass, J. Buitekant, 66-M. Cassina, 64-E. Reinhard, 63-B. Fiederowicz, 62-L. Salazar, 59-L. Windisch, J. Steele, 58-R. Powell, 55-B. Partridge, R. Schoel, 54-R. Newcomer, I. Van Zandt, 53-B. Horne, 52-C. Zanardi, 51-M. Bruscio, J. Gardner, 50-G. Graham, E. Wokaty, D. Wright, 49-M. Reamy, 46-A. Steinmetz, 44-C. Dawson, J. Hager, E. Payette, 43-A. Rhoads, 42-J. Boehm, M. Vanderhagge, 40-H. Lueth, R. Verbrugge, 37-J. Tate, 36-J. Brauner, 33-J. Johnson, 31-A. Bartholomew, 28-L. Ambrosius, C. Glick, 25-J. Evanovsky, W. Sammis, 24-W. Matthews, J. Voisich, 23-C. Seth, 21-H. Graeme, M. Kennedy, 19-H. Magowan, E. Prendergast, 16-G. Cook, 13-E. Kline, 8-W. Shoemaker. **DISTRICT 7:** 107-G. ROCKWELL, 76-R. MESSER, 71-D. Styles, 67-J. Kneeland, 58-F. Baines, 57-L. Hutchinson, 55-J. Lippincott, F. Alfred, 49-J. Graham, 47-L. Groves, 46-J. Pratt, 44-J. Everett, 40-H. Ward, 39-A. Long, 37-R. Collins, 31-A. Willis, 29-G. Cote, 28-W. Buchanan, 26-F. Harvey, 23-R. Ritchie, 21-J. Kernan, 8-D. Witthun, 6-K. Morey, 4-T. Hogg. **GT. BRITAIN:** 84-R. PYBUS, 78-R. COALES, 48-J. Shaw, 27-G. Haylock (Send reports to R. Pybus, 4 Highfield Rd, Manchester 21, England). **MALTA:** 46-V. Trapani, 26-J. Mercieca, 17-Preciosi, 14-A. Muscat, 13-M. Bonici, 11-A. Crockford, A. Gilbert, 9-J. Rossingnaud, **JAPAN:** 75-S. YOSHIMURA. **CANAL ZONE:** 57-J. Gallivan. **P.R.:** 70-E. Butcher. **N.Z.:** 63-A. Breen, 53-B. Connor. **NOTE:** Next VIC VAC HONOR ROLL IN MARCH G.C. Send revisions to directors before February 5