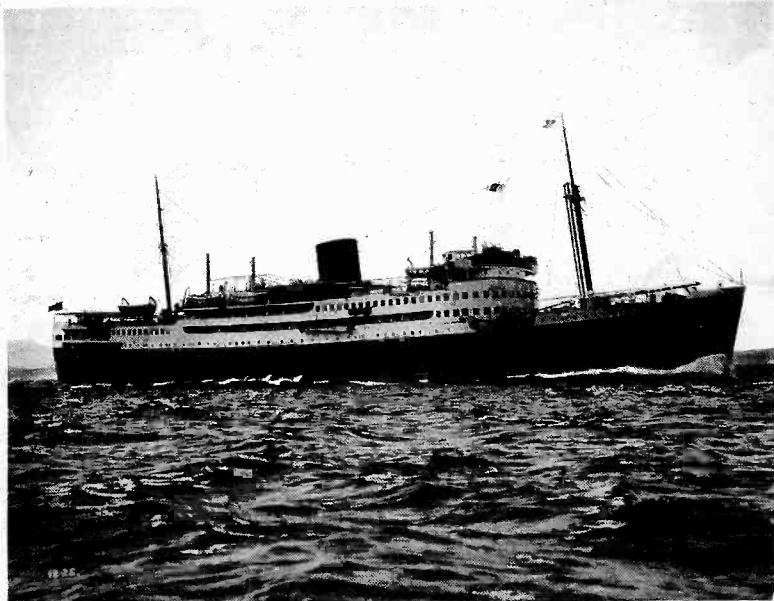


THE GLOBE CIRCLER

AUGUST — 1937



LUXURIOUS AUSTRALIAN LINER, THE S.S. KANIMBLA,
FLOATING HOME OF SHORT-WAVE STATION 9MI.

ONE
DIME

INTERNATIONAL DX'ERS ALLIANCE

IDA "PROGRAMS OF THE MONTH"

COLUMBIA BROADCASTING SYSTEM

DX'ING "DOWN AND UNDER"

SHORT-WAVE NOTES AND LIST

49.79	6.025	HJLABJ	Santa Marta, Colom.	5:30-10:30pm ex. Sunday.
49.83	6.02	XEUW	Veracruz, Mexico	10pm-1am.
49.83	6.02	DJC	Zeesen, Germany	11:35am-4:30pm.
N49.85	6.018	ZHI	Singapore, S.S.	Mon/Thurs 6:40-8:10am. *
V49.86	6.017	HJ3U	Santiago, D.R.	4:40-9:40pm ex. Sundays.
49.91	6.012	HJ3ABH	Bogota, Colombia	4 to 11pm, Sun 4-9pm.
49.92	6.01	COCO	Havana, Cuba.	7:55am-10pm or later.
N49.92	6.01	OLR2A	Prague, Czechoslov.	Mon/Thur 10 to 11pm irr. *
S49.92	6.01	9MI	S.S. Kanimbla	6:35-7:30am irreg. *
49.92	6.01	FIU	Tananarive, Madagascar	10-11am.
49.95	6.005	CFCX	Montreal, Canada	7:45am-1am; Sun 9am-11:15pm
V49.95	6.005	HP5K	Panama City, Panama	7-8am, 8-10:30 or 11pm.
49.97	6.003	XEBT	Mexico D.F.	10am to 1:45am. (Su 7:45am-10am)
J49.98	6.002	VP3MR	Georgetown, B. Guiana	10:15-11:45am, 4:45-7:30pm
N50.00	6.00	CXA2	Montevideo, Uruguay	Testing 4 to 10pm. *
50.00	6.00	RV59	Moscow, U.S.S.R.	
V50.08	5.99	HJ2ABD	Bucaramanga, Colom.	6 to 10pm.
V50.21	5.975	HJ4ABD	Medellin, Colombia	8 to 11pm irreg.
V50.38	5.955	HJN	Bogota, Colombia.	11am-2pm, 8:30-10:30pm ex S
50.51	5.94	TG2X	Guatemala City, Guat.	M/Wed/Sat 9 to 10:30pm.
N50.53	5.937	YV1RL	Maracaibo, Venezuela	11am-1pm, and 4:30-9:30pm
V50.64	5.925	HH2S	Port-au-Prince, Haiti	7-10, or 11pm ex. Sundays.
50.71	5.917	YV4RH	Valencia, Venezuela	5pm-midnight ex. Sundays.
S50.81	5.905	TLLS	San Jose, C.R.	7 to 10pm ex. Sundays.
50.85	5.90	ZNB	Mafeking, Bechuanaland.	2-3am and 1-2pm & irreg
V50.86	5.899	YV3RA	Barquisimeto, Venez	5:30-9:30pm ex. Sundays.
51.07	5.875	HRN	Tegucigalpa, Honduras	6 to 9:30pm.
51.24	5.855	HJ1J	San Pedro, D.R.	11:40a-1:40p, 6:10-8:40pm.
51.28	5.85	YV1RB	Maracaibo, Venez.	10:45-12:40pm, 4:30-9:30pm.
B51.55	5.82	TIGPH	San Jose, C.R.	N'n-2pm, 7-11pm ex. Sunday
S51.72	5.80	YV5RC	Caracas, Venezuela	4-10:30pm; Sun 1:30-10pm. *
51.90	5.78	OAX4D	Lima, Peru	Wed/Sat 9-11:30pm.
S52.10	5.758	YNOP	Managua, Nicaragua	8:30 to 10:30pm ex. Sundays
52.30	5.735	HCLPM	Quito, Ecuador	Tues 9-11pm & irreg.
52.45	5.72	YV2RA	San Cristobal, Ven.	5:30-9:30pm ex. Sundays.

FEATHERWEIGHT

Based on Heinie Johnson's Invention

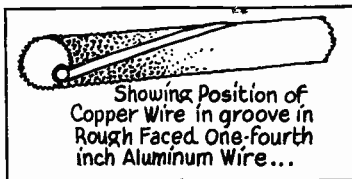
THE ONLY

AERIAL EVER

SOLD ON A TEN-

DAY MONEY BACK

GUARANTEE.



FLATLY

GUARANTEED

TO BE THE

BEST MONEY

CAN BUY.

DOUBLE-DOUBLET KITS... \$11.00 (anywhere in N.A.)
\$12.50 (foreign)

SINGLE AERIAL KITS... \$5.00 (anywhere in N.A.)
\$6.00 (foreign)

EACH SALE CARRIES 10-DAY TRIAL GUARANTEE.

--You have never really enjoyed your radio until you use one--
..WRITE FOR DETAILS..

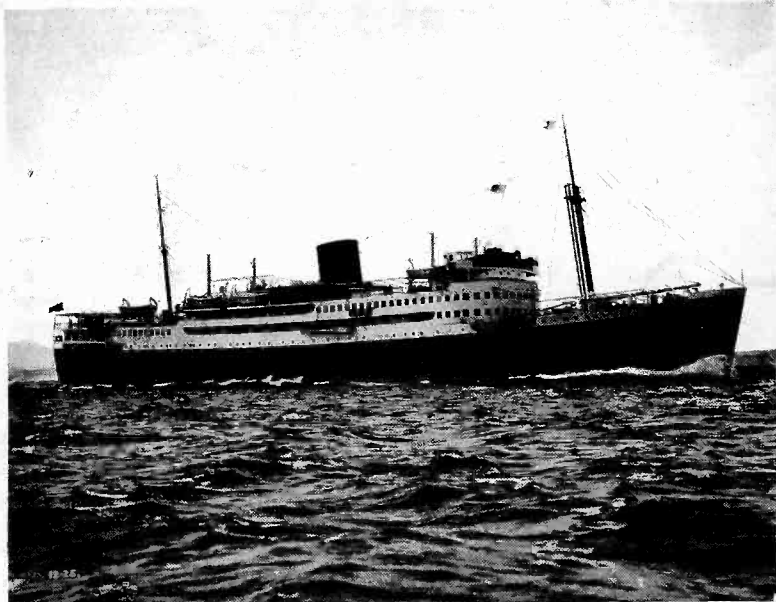
FEATHERWEIGHT D-X ANTENNA CO.

HEINIE JOHNSON, MGR.

1006 S. Barker St. " " Bloomington, Illinois, U. S. A.

THE GLOBE CIRCLER

AUGUST — 1937



LUXURIOUS AUSTRALIAN LINER, THE S.S. KANIMBLA,
FLOATING HOME OF SHORT-WAVE STATION 9MI.

ONE
DIME

INTERNATIONAL DX'ERS ALLIANCE

IDA "PROGRAMS OF THE MONTH"

COLUMBIA BROADCASTING SYSTEM

DX'ING "DOWN AND UNDER"

SHORT-WAVE NOTES AND LIST

ARGENTINA LU2, "Radio Bahia Blanca" (800kC), Bahia Blanca, which took the air recently, is owned by the owners of LRI, Buenos Aires.

AUSTRALIA NEW: 2CR (550kC), Cummoock, NSW, 10kW, commenced broadcasting on April 29. It is being received with strong signals; 7QT (900), Queenstown, Tasmania, 100w, opened on June 1; 4SB, Kingaroy, 2kW, should be on the air soon; 4RM (1450kC), Roma, 100w, was scheduled to take the air in June; 5SE (1340kC), Mount Gambier, S.A., 100w, to share time with 4WK and to relay 5AD, is under construction; 6PM (1390), 100w, owned by Broadcasters Ltd., St. George's House, St. George's Terrace, Perth, and located at Fremantle, W.A., came on the air April 22; 6GN (1370), Geraldton, W.A., 500w, now under construction, should be on air by October; 7HT (1020), 300w, owned by Metropolitan Broadcasters Pty. Ltd., 14 Elizabeth St., Hobart, Tasmania, is on the air. CHANGES: 3SH to 1330kC; 5MU to 1450kC; 4WK to 140kC; 3AR now on 630kC; 3YB now on 1210kC; 2RG (1470), Griffith, to increase to 100w power; 5AD, 5DN and 5KA, all of Adelaide, have increased to 500w power each. (Niven, W.A.W.N., McCormick, Wignall, Breen, Cameron, Preece, Currie, Tune In, CDXR).

CANADA CBC is constructing a 50kW transmitter at Vercheres, near Montreal and a 50kW transmitter at Hornby, near Toronto. These new stations will be placed in operation by October 1.; VAS (621), Glace Bay, NS, broadcasts weather reports, daily at 12 noon to 12:15pm EST.

CHINA NEW STATIONS: XLJA (1430), Nanchang; XGOV (800kC), Changsha, 10kW, and XGOU (1350), Kiangsu Prov., 100w. CHANGES: XOCL (1500) Tsinan, increased to 200w power; XGOY, Kunming now on 776kC; XGOF (934) Tsinan, now on 800kC; XGOC (1130), Nanchang, now has 5kW power; XOKD, formerly XGOM, Tientsin, now on 730kC, with 150w (Tune In).

MEXICO XEAQ (1090), Rosarito, 1kW, and XBEC (730), Agua Caliente, 5kW, have been deleted; XEAC (980), Tijuana, now has 5kW power; XELO, (1110kC), 50kW, formerly in Piedras Negras, Coahuila, has moved to Tijuana, Lower Calif. A new 150kW station is under construction in Rosarito, Lower California (URDXC).

N. Z. 2ZB (1120), 1kW, Wellington, went on the air April 22. It is N. Z.'s 2nd commercial station and uses 2YA's old aerial towers; 2YD (990), Wellington, using 2YC's old 200w xmtr, came on the air April 25; 2YC, using 2YA's old 5kW transmitter, is now on the air on 840kC.

PERU OAXLA (854), "Estacion Radio Nacional del Peru," studios on Avenue Petit Thouars, and transmitter at San Miguel, operates daily from 7 to 11:30pm. The chief engineer is IDA member George Vargas E.

TURKEY A 120kW long-wave transmitter to be installed at Etemesut, 15 miles from the new Broadcasting House at Ankara, is now under construction by the Marconi Co. The xmtr. will operate on 1630 meters.

U.S.A. NEW: Greenville, Texas, 1200kC, 100w day; KHBG, Okmulgee, Oklahoma, 1210kC, 100w, day; Owensboro, Kentucky, 1500kC, 100w; KLBM, La Grande, Oregon, 1420kC, 100w/250w; Centralia, Washington, 1200kC, 250-watts day; Salisbury, Maryland, 1200kC, 250 watts day; Fresno, Calif., 1310kC, 100w; Lawrence, Massachusetts, 680kC, 1kW day; Pittsfield, Massachusetts, 1310kC, 100w/250w; St. Cloud, Minnesota, 1420kC, 100w; Toledo, Ohio, 1200kC, 100w, day; Dubugue, Iowa, 1340kC, 500w day; Sioux City, Ia., 1420kC, 100/250w; Austin, Texas, 1120kC, 1kW; Lufkin, Texas, 1310kC, 100w daytime. CHANGES: WAAB, Boston, Mass., 1410kC, to 1kW; WMBD, Peoria, Ill., 1440kC, to 1kW night/5kW day; KRIS, Corpus Christi, Texas, to 500 watts; KGBU, Ketchikan, Alaska, decrease day power to 1kW; KSEI, Pocatello, Idaho (900), to 1kW day; WAPO, Chattanooga, Tenn., 1420kC, to 100w night, 250w day; WJAR, Providence, R.I., 890kC, to 1kW night; 5kW day; KOCA, Kilgore, Texas, to 250w day; WJRD, Tuscaloosa, Ala., to 250w day; KOVC, Valley City, N.D., to 250w day; WQAN, Scranton, Penna., to 1kW; WRAX, Philadelphia Penna., to 1kW; WKBB, Dubuque, Iowa, move transmitter to Julian Township, Ill., and install new antenna; WMBI (1080), "The Radio Voice or the Moody Bible Institute," 153 Institute Place, Chicago, Ill., have installed a new vertical radiator and are anxious for reports. A "Mid Night Hour" is broadcast each Saturday morning from 1 to 2am EST (Ambrosius)

DOCTOR OF SHORT WAVES DEGREES
DSW DEGREES have been recently conferred upon the following members:
Wilbur Britting, Los Angeles, Calif

Irving Cohen, New York City, N.Y.
George Magee, Birmingham, Alabama.
Louis G. Chavez, Los Angeles, Calif
E. E. Nicolassy, Brooklyn, New York.

"DX'ING DOWN AND UNDER"

"DX is very slack here just now. Conditions have been very erratic during the past two months. The Australians take possession of the dial from just before dark until midnight. Then the 'Easterners are heard' with China best; Japan fair and the Siamese and Indians good on clear nights. The best heard of the Chinese are: XGOA, LUHQ, XHHG, XMHA, XMHD, FFZ, XQHC, XHUX and XMH. Recent loggings include: JOLG, JOAK -1, JFAK, JOSK, JOXK, JODG, JFBK, Poznan Rome, Kuldiga, Juan-les-Pins, Trondelag, Brussells 1, Milan 1, Radio Cite XQHC and XEAW". (G. Currie, N. Z.)

"The IDA program from LBC was well heard here. The new ZB in Wellington, puts an R signal in here. Conditions are erratic however, as some nights LBC has complete charge of this channel.. A Dunedin dx'er has received a veri' from RW52, Tchite, USSR, which broadcasts on 556kC, with 20kW. This is the mystery station reported by many near 7am EST last November and December.. 2CR and 6WA, the new 10kW

Aussies are being well heard here"
(Alan I. Breen, Dunedin, N. Z.)

"Latest loggings are VUD, VUC, 2QR 7QT, 3WV, 6GF and an unidentified Jap on 790kC. Another JO thought to be JOQK was heard on 860kC. KZRM is beginning to come in now. 3AR was heard on, and announcing its frequency as 620kC, although the PMG's Dept. says it is on 630kC now. 7ZL also seems to be roving about".
(Ernie Niven, Dunedin, N. Z.)

LATEST BROADCAST VERI'S REPORTED:
H. Gustafson, Rockford, Ill: PRE, TG1 KHBC, Rennes, Belfast, PRF and HIX.
J. DeMyer, Lansing, Mich: Copenhagen.
Edward Goss, Prooklyn, NY: PRE, PR9 R.H. Tomlinson, Port Chester, NY: LKD.
G.W. Currie, Tefshu, N. Z.: Miskolc, Moscow, KRRV, KRSC (first in NZ), KUMA (2nd in NZ), KJBS and JOVK.
A.J. Paul, Austin, Texas: JOIK, JOHK, KGU.

"A New Brazilian, believed to be PRC, is being heard on 1360kC. For the most part static and a high noise level prevails" -E. Peters, NS

ANNOUNCING IDA'S "PROGRAMS OF THE WEEK"

(Director) Herbert Tucker, 57 Kenilworth Drive, Akron, Ohio.

WE PRESENT! a sparkling new idea in North American dx programs- THE IDA "PROGRAM OF THE WEEK." Some thing new and different in dx programs that will prompt you to turn your dials weekly to the IDA "PROGRAM OF THE WEEK."

We plan to produce 20 or 25 carefully chosen, carefully arranged, four-star feature dx revues, each one varied and interesting, each one carefully worked out by our Program Director, cooperating with the various stations' program directors, and enlisting the aid of local dx'ers whenever possible.

Tell other dx'ers about these red letter broadcasts, and tune in yourself to each PROGRAM OF THE WEEK, regardless of whether you are a BCB or SW dx'er.

A \$10.00 CASH PRIZE will go to the dx'er who verifies the greatest number of the "PROGRAM OF THE WEEK" programs.

We want dx'ers in each vicinity where a PROGRAM OF THE WEEK is to be put on, to write in to Herbert Tucker, offering your services in helping to plan the local program.

Following are the initial "Programs of the Week" to be scheduled

IDA "PROGRAMS OF THE WEEK"

- No 1. SUN., NOV. 21, 3-4a.m. EST, KVOR, 1270kC, 1000 watts.
COLORADO SPRINGS, COLORADO.
No 7. SUN., DEC. 12, 2:45-4:30am EST CKWX, 1010kC, 100 watts.
VANCOUVER, B.C., CANADA.
No 8. Sometime during the week of December 10, 3-4am EST. WJJD, 1130kC, 20,000 watts.
CHICAGO, ILLINOIS.

NOTE: PRES. OF IDA MAY SPEAK

- No 9. SUN., DEC. 26, 3-4am EST. WTAM, 1070kC, 50,000 watts.
CLEVELAND, OHIO.

NOTE: Herebert Tucker will participate in person.

DX TIPS PERIODS

- | | | | |
|--|---------------|-----------------------|---------|
| WEEKLY MONDAY 9:15-9:30 pm | 690 BC | CALGARY, Canada. | CJCJ |
| WEEKLY TUESDAY 5:35-6pm | 9530/15330 SW | SCHENECTADY, New York | W2XAF/D |
| WEEKLY WEDNESDAY 12:35-12:45am | 1390 BC | PHOENIX, Arizona | KOY |
| WEEKLY THURSDAY 2:30-2:45am | 1320 BC | HONOLULU, Hawaii | *KGMB |
| *A sponsored period called "Your Radio Man," conceived and conducted by IDA Official Rep., Leo A. J. deRoo. IDA tips and talks on radio eqp. | | | |
| WEEKLY SATURDAY 12:01-12:30am | 6140 SW | FITTSBURGH, Penna. | W9XX |

Subscription price \$1.25 per year anywhere.

International

Published Monthly Excepting July



Exers Alliance

CHARLES A. MORRISON
EDITOR

VOLUME 5

BLOOMINGTON, ILLINOIS, U. S. A.

NO. 7



JEWEL OF MEDITERRANEAN CHAPTER

To the left we picture the members of our famous Maltese IDA Chapter as follows: top row: (left to right) A. Muscat J. Rossignaud, J. Azzopardi-Preziosi, G. Azzopardi, J. E. Mangion, J. Zerafa. lower row: E. Mangion, Hon. Treasurer; J. Mercieca Hon. Malta Rep.; V. A. Trapani, Chapt. Chairman; A. C. Crockford, Chapt. Secretary; C. Agius Gili bert. In the inset: J. Mifsud Bonici. Two of the above, namely, Messrs. J. Zerafa and J. M. Rossignaud, are recent enrollees in the Chapter.

LONDON EPSILON CHAPTER

To the right we picture some of the members of our active and enthusiastic London Chapt, as follows -- top row (left to right) D. Hooper, H. Campbell (GRMK), H. M. Blaber, (2BMH), (2AAK); bottom row, (2BFL) - R. Simms, G. Haylock, E. Knowles. Other active chapter members not shown include: Ralph Johnson, R. Kiley, A. G. Ward, W. Caulfield, J. Knight.

Epsilon, despite the summer season, has been very active, having added four new members recently.

A Field Day was held on Sun, July 11. The stations were GRMKP in SW London and GRBPB near Colchester. Stations were on 7mc band, both CW and phone, from 6am to noon EST.

AUTO CITY (DETROIT) CHAPTER

ACC Chapt. is deeply indebted to the "Detroit News", and particularly to A. B. Allen, S. W. Editor of the newspaper, for the cooperation and support that has been extended by the aforementioned. The Detroit News has made its Conference Rooms available for ACC meetings, which will be held the 3rd Tuesday of each month. A chapter election will be held on July 20, and plans will be made for a local dx bulletin, and for the mid-west IDA Convention, which the chapt. is sponsoring for the near future. ACC is laying plans for an extensive campaign.



GOLDEN GATE (SAN FRANCISCO) CHAPT.

The following chapt. officers have been elected: Pres. G. C. Gallagher; Vice-Pres. J. Stone; Sec-Treas - A. Walcott; Business Mgr. J. Moore; G. C. Sholin, is IDA Gen. Mgr. for N. Calif. By-Laws have been drawn up and accepted by GG Chapt. DX Committees, each one responsible for reporting on reception for some particular continent, have been organized. Meetings will be held the 2nd Fri. of each month at 8pm EST, at 55 Lapidge St. Very enjoyable Chapt. visits have been made to ham stations W6ITH and W6EQA recently.

REGINA JUBILEE CHAPT.

Very enjoyable meetings have been held recently - principally devoted to social activities. A program from CKCK is under discussion - July 22, meeting to be at L. Kohl's

NEW I.D.A. MEMBERS

J. Zerafe, Hamrun, MALTA.
 J. M. Rossignaud, Sliema, MALTA.
 W. T. Choppen, Timaru, NEW ZEALAND.
 Leonard Sawyer, Woodstock, N. H.
 F. W. Gaul, Freeland, Michigan.
 Inz. P. Piorko, Lodz, POLAND.
 Louis Everett Thoreson, Ponoka, Alta
 CANADA.
 Bernard J. A. Dani, Chicago, Illinois.
 Jeanette L. Bell, Springdale, Conn.
 Richard D. Powell, Camden, New Jersey.
 Alan I. Breen, Dunedin, NEW ZEALAND.
 W. S. Jackson, Memphis, Tennessee.
 Chas. H. Magee, Los Angeles, Calif.
 Ronald L. Gleisher, East Croydon, Sur
 rey, ENGLAND.
 John A. Hay, Brighton, England.
 Ralph W. Johnson, London SW2, ENGLAND
 Douglas R. Hooper, London SW16, ENG.
 Frank Brown, Superior, Wisconsin.
 Eddy Prendergast, Long Beach, L. I.,
 New York.
 Fred Baines, Sydney Mines, NS, CANADA
 Leslie Himing, Christchurch, N. Z.
 Bill Sparks, San Francisco, Calif.
 Eric Titt, Verdun, P. A., CANADA.
 James H. Bachelder, Columbus, Ohio.

APPOINTMENTS

OFFICIAL REP. FOR POLAND: Inz. P.
 Piorko, Sienkiewicza 9, Lodz.

GEN. MGR. FOR NORTHERN CALIFORNIA:
 G. C. Sholin, 55 Lepidge St., San
 Francisco. (also Asst. Director)

FOREIGN AFFAIRS DEPARTMENT:
 Prof. W. K. Jones, Oxford, Ohio.

CORRESPONDENCE AND STAMP EXCHANGE
Miss Laura Preece, 61 Lipson Street
Port Adelaide, S. Australia, wishes
 to exchange stamps with members.
C. G. Jones, 1 Dudley Rd, Copnor, Ports
mouth, England; exchange SWL cards,
 photos or correspond with members
C. E. Clark, 164 N. Robinson St, Phila-
delphia, Penna; exchange SWL cards.
M. Gaillard, 3 Avenue d'Antoine,
Châtellerault (Vienne), France; ex-
 change stamps with members in So.
 Africa or Asia.

Carl and Anne Eder, Willmar, Minn;
 exchange SWL cards with members
 in foreign countries; QSL 100% and
 also swap dx corner photos.

Fred Baines, P. O. Box 25, Sydney-
Mines, Nova Scotia, Canada; exchange
 listening post photos with anyone

ASST. IDA PROGRAM DIRECTOR

WANTED: An IDA member to serve as
 Assistant IDA Program Director, to
 take over task of working out de-
 tails for interesting broadcasts
 with station program directors
 after programs have been scheduled
 by members of the IDA F. A. D.

LEADERS IN DX CONTESTS

BC	L. Giddings, Hawaii	7837
	L. A. J. De Roo, Hawaii	6174
	Miss M. Newton, Sask., Canada	1750
	P. Sampson, Sask., Canada	252
	J. Dickenson, Sask., Canada	154
SW	W. Woods, Alta., Canada	560
	B. Koss, Texas.	168
	W. Ansell, Sask., Canada	330
	R. Thompson, Sask., Canada	302
	S. Earnetson, Alta., Canada	251
	R. MacLean, Alta., Canada	154

NOTE: Winners will be announced as
 soon as results are received from
 James Dickenson, of Regina.

WANTED

Enthusiastic and energetic mem-
 ber for position of IDA Advertis-
 ing Manager to handle arrangements
 for, and placing of all advertising
 in the Globe Circler. Expenses and
 regular Agency commission. Apply
 in writing to IDA President.

1936-7 DISTRICT CONTEST WINNERS.

District 6 E.-Central U.S.A.	125
District 2 Pacific area	53
District 7 E. Canada-N.E. US	46
District 4 Mid-west U.S.A.	34
District 1 N.W. US-W. Canada	31
District 12 England	19
District 5 Dixie States	11
District 21 Malta	10
District 57 France	0
District 28 Australia	8
District 27 New Zealand	5

PERSONAL NOTES

Our sympathies to Director John
DeMyer, of Lansing, Michigan, whose
 son recently sustained a badly
 fractured arm. Congratulations to
D. McCarthy, of Melbourne, Australia,
 for his success in recently win-
 ning the 1937 Australian DX club
 Competition stated by that club. .
 Congratulations to Warren Stark, of
 Wauwatosa, Wisconsin, who has been
 engaged as the Short-Wave Editor
 of the Wisconsin News. . . . The new
 QRA of IDA French and Colonial Rep
 resentative, Ch. Bullbert, is 35, Rue
 Jean-Mermoz, Deauville (Calvados),
 France. . . . The new QRA of Leslie
Wilson, IDA Official Rep. for N. Z.
 is c/o Poverty Bay Club, Gisborne.

IDA OFFICIAL CHAPTER CHARTERS

There are still a few IDA Chap-
 ters that have not ordered their
 official chapter charters as yet.
 Each chapter, in order to be on an
 official status must have an IDA
 charter certificate. These beauti-
 fully engraved three-color diplo-
 mas should be ordered from W. An-
 sell, 168 Wascana St. N. Regina, Sask.

6TH DIST. VAC

HONOR ROLL.

(Verified All

Continents)

H.S. Bradley	5 ⁸
John DeMyer	4 ⁶
Chas. Miller	27
F.A. Portmann	27
D. Henderson	24
Roy Waite	1 ⁸
Roger Legge	17
Howard Eck	15
Irv. Goodeve	14
N. Kriebel	13
Ralph Gozen	11
Hubert Fey	10
Irving Cohen	9
C. Irizarry	9
Edward Goss	8
Edwin Hatch	8
R.C. Kash	7
R.B. Oxrieder	7
Myron Reamy	7
David Thomas	7
Harry Kentzel	6
P. Rodriguez	6
C.M. Bolton	5
E. Nicolassy	5
R.H. Tomlinson	5
C.J. Dawson	4
John Deibe	4
Thad. Grabek	4

6TH DIST. VIC

HONOR ROLL.

(Verified Indi-

vidual Countries)

John DeMyer	105
H.S. Bradley	101
Chas. Miller	87
Howard Eck	86
Roger Legge	80
Roy Waite	73
Ralph Gozen	72
D. Henderson	72
Dr. R.C. Kash	69
P. Alberto	69
Irving Goodeve	68
Norman Kriebel	66
Irving Cohen	65
Harry Kentzel	63
C. Irizarry	60
R.B. Oxridier	56
C.M. Bolton	52
E. Nicolassy	49
Myron Reamy	48
Ellis Bird	35
R. Verbrugge	31
James Shock	29
James Steele	23
John Barre	3
L. Cavileer	3
Art. Johnson	3
Chas. Zanardi	3

G. E. ANNOUNCES NEW RADIO OUTLET

A convenient and attractive outlet for doublet antennas, which eliminates unsightly wiring connections has been announced by the General Electric Co. The outlet affords a compact means of separable attachment for ground, serial (two-wire) and power leads for the radio set. Lead-in wires are there by eliminated and replaced by neat short lengths of cord.

BLUE NETWORK OF NBC TO EXPAND

On August 1, the NBC-Blue network will add 10 Southern affiliates, as follows: WAGA, Atlanta, Ga.; WSGN, Birmingham, Ala.; WNBR, Memphis, Tenn.; WROL, Knoxville, Tenn.; WJBO, Baton Rouge, La.; WDSU, New Orleans, La.; KFDM, Beaumont, Texas; KXYZ, Houston, Texas; KRIS, Corpus Christi, Texas, and KRGV, Weslaco, Texas. Since Jan. 1, 1937, NBC has added 30 new stations to its Blue network, in addition to the 77 stations, which previously constituted this net.

CBS BUILDS HOLLYWOOD RADIO CENTER

The luxurious and ultra-modern new Hollywood broadcasting center for the CBS, which is now under construction and which will be completed by December, includes photoelectric signal devices, built-in sound effects, invisible control room windows, inverted studio wells and many other novel features.

NOTE: This is only a partial list on VIC. Let's all get together and make this VIC interesting. Just drop me a postal card stating how many countries you have verified. (J. DeMyer, 545 Baker St., Lansing).

THE COLUMBIA BROADCASTING SYSTEM

Station	City	Meters	Kilo.	Station	City	Meters	Kilo.	Station	City	Meters	Kilo.
WABC	New York City	348.6	860	WHP	Harrisburg, Pa.	209.7	1430	KOIN	Portland, Ore.	319.0	840
**WXE	N. Y. (Short Wave)	See Below		WDRC	Hartford, Conn.	225.4	1330	WPRO	Providence, R. I.	475.9	830
WADC	Akron, Ohio	227.1	1320	KGMB	Honolulu, Hwai.	227.1	1320	KOH	Richmond, Va.	217.3	1360
WOKO	Albany, N. Y.	209.7	1430	KTRH	Houston, Tex.	475.9	1290	WRTA	Richmond, Va.	270.1	1110
WAIM	Anderson, S. C.	249.9	1200	WFBM	Indianapolis, Ind.	243.8	1230	WDBJ	Roanoke, Va.	322.4	830
WGST	Atlanta, Ga.	336.9	890	WMBR	Jacksonville, Fla.	218.8	1370	WHCC	Rochester, N. Y.	209.7	1430
WPG	Atlantic Cy., N. J.	272.6	1100	KMBC	Kansas City, Mo.	315.6	950	KMOX	St. Louis, Mo.	275.1	1090
KNOX	Austin, Texas	199.9	1500	WNOX	Knoxville, Tenn.	297.0	1010	KSL	S. L. City, Utah	265.3	1130
WCAO	Baltimore, Md.	493.6	600	KFAB	Lincoln, Neb.	389.4	770	KTSA	San Antonio, Tex	545.1	550
WLBZ	Bangor, Me.	483.6	620	KLRA	Little Rock, Ark.	215.7	1390	ESFO	S. Francisco, Calif.	535.5	560
WBRC	Birmingham, Ala.	322.4	930	WKBH	La Crosse, Wis.	217.3	1380	WTOC	Savannah, Ga.	236.0	1260
WNBF	Binghamtn, N.Y.	199.9	1500	KXNX	Los Angeles, Cal.	285.5	1050	WGBJ	Scranton, Pa.	340.7	860
WEET	Boston, Mass.	508.2	590	WHAS	Louisville, Ky.	365.8	820	KOL	Seattle, Wash.	236.1	1270
WGR	Buffalo, N. Y.	545.1	550	WMAZ	Macon, Ga.	254.1	1180	KWEH	Shreveport, La.	272.6	1100
WKBW	Buffalo, N. Y.	202.6	1480	KGLO	Mason City, Ia.	247.8	1210	KSCJ	Sioux City, Ia.	225.4	1330
WCHS	Chilton, W. Va.	516.9	580	WREC	Memphis, Tenn.	499.7	600	WSBT	South Bend, Ind.	243.8	1360
WBT	Charlotte, N. C.	277.6	1080	WCOG	Meridian, Miss.	340.7	830	KFPY	Spokane, Wash.	336.9	830
WDOD	Chattanooga, Tenn.	232.4	1280	WQAM	Miami, Fla.	535.4	560	WMAS	Springfield, Mass.	211.1	1420
WBBM	Chicago, Ill.	389.4	770	WALA	Mobile, Ala.	217.3	1380	WFLI	Syracuse, N. Y.	220.4	1360
WKRC	Cincinnati, Ohio	545.1	550	WISN	Milwaukee, Wis.	267.7	1120	KVI	Tacoma, Wash.	526.0	570
WHK	Cleveland, Ohio	215.7	1390	WCCO	Minnea-St. Paul	370.2	810	WDAE	Tampa, Fla.	245.8	1220
KYOR	Colo. Spgs., Colo	206.1	1270	WFGA	Montgomery, Ala	212.8	1410	IBWB	Topeka, Kan.	516.9	580
WBNS	Columbus, Ohio	239.7	1430	CKAC	Montreal, Que.	410.7	730	CFRB	Toronto, Can.	434.8	690
KILD	Dallas, Tex.	263.3	1040	KGVO	Missoula, Mont.	236.	1250	KTUL	Tulsa, Okla.	214.2	1400
WOC	Dayton, Iowa	218.8	1370	WLAC	Nashville, Tenn.	204.9	1470	WIBX	Utica, N. Y.	249.9	1200
WHIO	Dayton, Ohio	238.0	1280	WWL	New Orleans, La.	352.7	850	WACO	Waco, Texas	211.1	1480
WIR	Detroit, Mich.	399.8	750	KOMA	Okla. City, Okla.	202.6	1480	WISV	Washington, D.C.	205.4	1480
KRNT	Des Moines, Ia.	221.7	1320	WDBO	Oklahoma, Fla.	516.9	580	WINO	W. Plm Bch, Fla.	249.9	1200
KLZ	Denver, Colo.	535.4	560	WPAP	Prkabh, W. Va.	211.1	1420	WVVA	Wheeling, W. Va.	258.5	1160
WKBW	Desuque, Iowa	199.9	1500	WCOA	Pensacola, Fla.	233.7	1340	KFH	Wichita, Kan.	230.8	1300
WDNC	Durham, N. C.	218.8	1370	WMBD	Peoria, Ill.	206.2	1440	WSJS	Wsm. Salem, N. C.	228.9	1310
WESG	Elma-Ithaca, N.Y.	352.7	850	WCAU	Philadelphia, Pa.	256.3	1170	KGKO	Wichita Fla, Tex.	526.0	570
WMMN	Fairmont, W. Va.	336.9	890	W3KAU	Philadelphia	(See Below)		WORC	Worcester, Mass.	234.2	1280
WTAQ	Green Bay, Wis.	225.4	1330	KOY	Phoenix, Ariz.	215.7	1390	WNAX	Yankton, S. D.	526.0	570
WBIG	Greenboro, N. C.	208.2	1440	WJAS	Pittsburgh, Pa.	232.4	1280	WKBN	Youngstown, O.	526.0	570
KFBZ	Great Falls, Mont	234.2	1280								

**See Below

*Basic Stations

Short-Wave News

Editor: C. Morrison; Amateur Editor
Ralph Gozen; Frequency Checking Bur-
esu, R.B. Oxrieder (RBO)

DSW DEGREES have recently been con-
ferred upon: Messrs. W. Britting, Irv-
ing Cohen, George Magee, L.G. Chavez,
and E.E. Nicolassy.

To receive AUGUST AMA-TOURING, send
at least one item for it, and stamp,
to Ralph Gozen, 666- 39th St, Brooklyn
N.Y., before August 3rd.

C. W. WESTCOTT, M.D. BELGIAN CONGO TONDO (REBU)

OO5AA

Radio 5 MW L. Gladto Confer (RBO) Mar 3 1937 - at 22.00G.M.T. on 1/4 MC 77

Xmitr. 75 watts
Pair 210's final
Beam Antenna

RSE QSL-CMC
INX for
no attention
Belle

73.33 Dec
RME-69
Antenna
Pole Specialist
-loc



GREATLY PRIZED VERI[®]
RECEIVED BY R. C. MESSER

Deadline for Sept. G. C. Aug. 17; for stop press sheet - Aug. 30.
IT IS IMPERATIVE that all SW reports: use one side of page only; lines
be double spaced; items be grouped by continents and time used be sta-
ted. Items in order of importance are: NEW stations; exact frequencies
or freq. changes; exact schedules and addresses; identifying signals;
commercial sked tips and unusual receptions. RUSH important items by
fastest mail. FOUR STAR (****) items denote SCOOP or exceptional merit

EST. NORTH AND CENTRAL AMERICA EST.

ALASKA New commercial SW phone circuit between Seattle (WVD) and
Juneau, Alaska, now in use. WXA heard on 11.55 and 9.9mc. WVD believed
to be on 11.93mc. Circuit best heard 11pm to 2am (**Walcott, Ambrosius)

CANADA Sked of CFCX (6.005), Montreal is: 8am-11:15pm, and Sundays
9am-11:15pm (Magnuson-R.I.)

CUBA COCQ-9.75, Havana, broadcasts an English "Church of the Air"
Sundays from 11:30pm to mid (Ambrosius-Ky); COQXX (15.55), operated by
Frank Jones of Tuinucu, heard testing irreg. (RBO-Penna); COJK (8.66h),
"Radio Zenith," 1kW, formerly COJK of Camaguey, inaugurated on May 17,
relays CMJK daily 11:30am-12:30pm and 7-10pm (*George, RBO, Sholin, Mag-
nuson, Stark, Moore)... NEW STATIONS: COGF (claims 11.8 but actually
on 11.79mc), power 1kW, inaugurated May 25, relays CMGF daily 6 to 11
pm. Signs off with organ selection "My Cheri." Final announcement in
English and solicits reports, which are promptly verified. Address:
Bernabe R. De La Torre, Gral. Betancourt 51, Matanzas (**Magnuson, Ansell
Eders, RBO, Kentzel, Brewer, Sholin, Gallagher, Ambrosius, Balbi, Messer, Moore
Graham, Sawyer); New one with call believed to be COCW, apparently re-
laying CMW and CMHX heard on 6.324mc (**RBO); COBC, Boston-California,
inaugurated on May 30, relays CMBC, from about 8pm to 12:30am. Has been
heard on several frequencies between 9.282 and 9.395mc, but usually is
in vicinity of 9.365mc. Address: Maximo Gomez No 139, Havana (**Balbi,
Ambrosius, RBO, Eders); COBZ, Boston-New Zealand, "Radio Selas," Havana
-first heard July 2, relays CMBZ from 7pm to 1am; to 1:30am Sunday
morning when English program is given, reports read and travel notes
announced. Souvenirs promised to those reporting reception. Announce-
ments in Spanish every half hour preceded by chimes. Frequency is 9.19
mc and address P.O. Box 866, Havana (**Ambrosius, Stark, RBO, Byrd)

D.R. H1LX-6.3h and H12X-11.97, come on air Tues. and Fri. at
7:40pm (*Sawyer); HIN-6.2h3 and 12.486 comes on air at 5:10pm (Sawyer)

HAITI Address of HH3W (9.6h5), 100w, is Societe Haitienne De
Radiodiffusion, Port-au-Prince. Operates 1-2pm and 7-8:45pm (Magnuson)

MARTINIQUE Letter from Radio Fort-de-France, dated April 19, states
freq. is 9.45mc, and schedule daily 11am-noon and 5-6pm (Waite-NY)

MEXICO The address of XEBR (11.826); 500w, is Hidalgo 23, Apartado
6A, Hermosillo (CSWRC-Brewer); Address of XETM is Apartado 7h, Villa-
hermosa, Tabasco. Not heard at present (*RBO); XEWV or B, Guadalejara,
may be heard irregularly, bouncing around between 11.33 and 11.41mc
(*RBO); "La Voz de la America Latina," 10kW S.W. relay of XEW, Mexico,
D. F., first heard on May 23, operates daily as follows: over XEWU on
15.16mc from 9am to 6pm and over XEWW on 9.052mc from 6pm to midnight,
or 1am. Four chime notes in a descending scale precede Spanish announce-
ments, which sometimes only mention XEW. Address is P.O. Box 2516.

U.S.A. GENERAL ELECTRIC STATIONS W2XAF/W2XAD GRANTED PERMISSION TO INCREASE POWER TO LOCKW AND TO INSTALL DIRECTIONAL ARRAY FOR BEAM TRANSMISSIONS TO S.A. AND EUROPE. W2XAD-15.33, is now operating daily from 10am to 8pm (**Darlington)... Mormon Church, of Salt Lake City, Utah, has applied for permit to erect 50kW S. W. xmtr. to operate on 15.25 and 21.46mc... G.E. will erect W2XOY, a \$20,000 ultra-high frequency xmtr. for experimental purposes, atop the State Office Building at Albany, NY (*Darlington); W2XBS, new apex station of NBC at Chicago, will operate on 31.6, 35.6, 38.6 or 41mc, with power of 50w. . . General Foods Corp. has filed an option with NBC for sponsorship of the first commercial television show. . . The KDKA DX CLUB may now be heard on Fridays at 11:30pm... W2XE is now broadcasting daily to EUROPE on 21.52mc, from 6:30-9am; on 15.27mc, from 2-4:30pm and 5:30-6pm; on Sundays, on 21.52mc, from 7-9am and on 15.27, from 12-3pm. to SOUTH AMERICA daily on 21.52mc from 9-9:30am, on 15.27mc, 4:30-5pm and on 11.83mc, from 6pm-11pm; on Sundays on 15.27mc, 4pm-5pm and 11.83mc, 6pm-11pm. . . W2XE will collaborate with the Daventry xmtrs. in a series of important tests (CBS). . . W2XAL (6.06), broadcasts a Spanish "Salute to Their Friends to the South" on Tuesdays, 10:30-11pm; Press Radio news, in Spanish, over W3XAL (17.7^R), weekdays at 6pm; News of Inter-American Cultural Activities in Spanish, over W3XAL (17.7^R), on Sundays at 12:30 pm. . . EXPEDITIONS: Bowdoin Kent Expedition for the Arctic will keep contact with outside world over VELIN (Criswell); UPOL (Union Folus), is call of 20-meter amateur xmtr. of the Soviet scientific expedition under direction of Prof. Schmidt, now established at North Pole, where an airbase is being established (SWS); NBC xmtr., aboard Schooner General A.W. Greely, which is now transporting MacGregor Expedition to Fort Conger, Ellesmere Island, near North Pole, will originate one program each month for relay in US by NBC network; W10XDA (14.24^R-12.862), is 150w, xmtr. aboard "Schooner Morrisey" now enroute to W. Greenland, and usually heard contacting home xmtr. W20J at Kingston, NY, between 7:30 and 9pm -Reports should be sent to Cliff Foss of W20J, Kingston, NY, and they will be answered when expedition returns in fall (**Ambrosius-Ky)

CENTRAL AMERICA . . C.R. TI2H, San Jose, a new station on 5.813mc, is being heard from approx. 7 to 11pm (**RBO); TI2PG on 20 meters, heard testing out new xmtr. preparatory to placing it in service on 25-meter band or other bands as may be required (**RBO) PANAMA HP5H, "The Voice of the People," owned by M. Lombardo Vega, has been heard on 6.05, and drifting near 6.122 to 6.127mc, but not heard recently (**RBO); HP5A-11.7, heard with special trans, July 14, 11:17pm (Eders)

SOUTH AMERICA

ARGENTINA Sked of "Radio El Mundo" is: daily over LRU (15.28), from 7-9am; over LRX (9.66), from 9:30am-11:30pm (LR1)

BOLIVIA CP1-9.895, Sucre, heard on June 8, at 8:30pm (*Gallagher)

BR. GUIANA VP3MR, Georgetown, operating near 6.064mc now (**RBO)

COLOMBIA HJ1ABP-9.61^R, Cartagena, kW, has 2 gongs given 3 times between announcements and is also identified by a trumpet flere. QRA is P.O. Box 37 (*Maguire, Magnuson); HJ3ABD, Bogota, now operating on 4.835mc (*Walcott); HJ1ABP-6.033, Medellin, operating from 8am to 11pm is now identified as "Emisora Cleridad", instead of "Emisora Philco" (Magnuson)

CURACAO PJCL (5.947), "Radio Curom", operates weekdays 6:36-8:36pm, and Sundays 10:36am-12:36pm; also testing on 9.47mc, Tuesdays 5-6pm irreg. will dedicate special broadcast to ISWC on Aug. 27, 7:36-8:36pm. Reports should be sent to Johan P. Curiel, Mundo Nebo 143, Curacao, D.W.I.. Xmtr. is owned by Curacaosche Radio Vereeniging Eredestraat (GDXC)

ECUADOR NEW- HC1EC (8.6), Quito, heard testing near 10:30pm (CSWRC) . . . HC04, formerly 9.44, Guayaquil, moved to 9.2^R on June 6, then to 9.37 mc, on June 9, where it has been since (*Gallagher); Sked of HC2JSB on 7.851mc, is daily 9am-2pm and 4-11pm; director is Juan S. Rehr (Magnuson)

PARAGUAY Amateur ZP2AC (14.02), America-Colombia, heard working EA9AH at 7pm (P. Alberto-NYC*)

PERU OAX1A, Chiclayo, 200w, now on 6.335mc (**RBO, Rivera); OAX1G, Lima, now on 6.295mc (**RBO); OAX1J, "Sintonice Radio Internacional," located in edificio Minería 6 piso, Lima (Casilla No. 1166), issues a very attractive QSL card. Broadcast opera on Saturdays at 10pm (*Gallagher) . . . OAX1L, "Radio Golcochea," 200w, Lima, operates on 6.425mc (*Sintonia); OAX1P-5.975, Huancayo, heard from approx. 9-11pm (**RBO); NEW- OAX1M, near 10.345mc. "Radio Record, La Voz de Huacho," relays OAX1C (14.70kc). Address

is Senores Cortes & Cia, Huacho (**Rivers); OAX14T- 5.56mc, 10kW, operates from 11:30am to 1:30pm and OAX14Z-6.0²¹, 15kW, Radio Nacional, Lima, operates 7-11:30pm. Address George Vargas Escalante (IDA member), Av. Petit Thouars, Lima (**Gallagher, Vargas); OAX6A-6.122, Arequipa, operates daily 9-11pm. Address Is Casilla Correo 293 (**CSWRC)

VENEZUELA YV2RA, formerly on 5.755, Cristobal, is now believed to be on 5.775mc (**RBO); YV3RA, Barquisimeto, has shifted to 5.87mc (**RBO); Caracas station on 6.255mc, now being announced as YV5RJ, instead of YV5RI it is believed (**RBO); YV6RC, "Radio Bolivar", in Bolivar, announces frequency as 6.42mc, but is usually on 6.416mc (**RBO)

EUROPE

BULGARIA LZA, Sofia, reported to be operating near 14.915mc (NRC)
CZECHO-SLOVAKIA Present schedule: OLR5A (15.23), daily 2-2:15pm and Mon/Thurs 9-10pm irreg; on OLR4A (11.84), daily 2:30-4:30pm, and Mon/Thurs 7-9:10pm. Morning sked temporarily discontinued (OLR4A)*

FRANCE Radio Coloniale's new xmtr. soon to be put into use will gradually be increased in power output until maximum of 50kW is reached (RMA); TYA2-9.03⁸, Paris, gives press items for N. Africa, daily at 1:45-2:30am (NNRC); TPA3-11.8⁸⁵, Pontoise, now operating from 1-3am (Balbi); FLJ-9.23mc, operated by army heard irregularly (**Reinhard)

GERMANY DZG, and not DJT, as previously reported, is on 15.36 (RBO); DJR-15.34, now broadcasts to C.A. daily 4:50-10:45pm (Maguire); Program of YUA, Belgrade, Yugoslavia, to Slavic Emigrants, is relayed 1^{1/2}h and 3^{1/2}h of each month to S.A. over DZC-10.29, and to N.A. over DJO-11.795, or DJP-11.85. DZH and DZC may be heard near 5:45 or 7:45pm Irr (Sawyer)

ITALY Radio Sao Paolo, Rome, operates on the following frequencies: IBC 17.62, IBT 16.27, IBS 14.48, IBD 12.005, IBE 9.36 and IBF 9.07mc. IBT often contacts IUG near 6 to 8am; IAC, Coltano Radio, Pisa, sometimes operates simultaneously on 17.699 and 17.75 (**NRC); Those interested in Italian lessons course, should send their names and address to Italian Lessons Dept., E.I.A.R., 5 Via Montello, Rome, and advance copies of the texts will be mailed free of charge (EIAR); Lisa Sergio, popular woman announcer, previously with 2RQ, Rome, is now in the U.S.A. studying American radio and acting as guest announcer of the NBC (NBC)

POLAND SPW-13.635, Warsaw, is testing Sundays noon-1:30pm, and judging from signal strength, must be using new beam antenna (**NRC)

SPAIN Former EAQ2-9.488mc, now announcing as EAR, "La voz de Libertad" (RBO); EAQ-9.86, Madrid, now operating 4-6:30pm or later (Sawyer); Amateur "Radio Rachete," in Santander (14.06), gives insurgent accounts of Spanish war in German and English from 6:30-8:30pm (**Graham); Mystery station, believed to be a Communist broadcaster being heard in early evenings near 12.1mc (**Stark, CAM)

SWEDEN Three new SW xmtrs. (10 to 20kW) are to be built in the vicinities of Lulea, Karlskrona and Halsingborg, respectively (**RMA)

SWITZERLAND Officials of HBO/HBJ write a powerful new Swiss National S.W. station will be constructed sometime during 1938 (**Haeggi)

U.S.S.R. Radio Centre Moscow is now broadcasting daily program to North America, from 7 to 9:15pm, over RAN-9.6 and RKI-15.08 (**RBO, Loyd, Campbell, Balbi, Reinhard, Waite, Messer, Bell, Ambrosius, Sawyer, CAM)

YUGOSLAVIA Belgrade station on 6.1mc, formerly called YTC is now known as YUA. See Germany note for special transmissions (**Reamy)

AFRICA

ALGERIA TPZ-12.12, often tests at night with badly worn records of "Ramona" and "Paree." (**Sholin)

ANGOLA CR6AA, Lobito, can use frequencies of either 9.66 or 7.177 (mc)
BECHUANA-LAND ZNB-5.9, Mafeking, 250 watts, operates daily from 1 to 2:30, or 3pm. Leader of Calif. has verified (Burdett, Wasserzug*)

BELGIAN CONGO OPL-20.04, contacts Belgium from 4:30 to 11:30am intermittently. OPM-10.14, 8:30-9am or 2-3:30pm (**Walcott, Sholin)

... Amateur QQ5AA (14.0²-14.15), usually heard 4 to 6pm is now QSL'ing with the interesting card shown at beginning of S.W. notes (**Messer)

EGYPT Recent IDA special from SULSG was well received.

ERITREA IDU-13.38, Asmara, heard phoning at 1:30am. The Asmara station supposedly on 14.38mc, does not exist. This is IBS at Sao Paolo, Rome, Italy (actually on 14.48mc). (**Gallagher, Sholin)

ETHIOPIA IUG-15.43, Addis Ababa, heard near 8:15am, is now verifying on card plainly marked IUG or else on old IUD cards overprinted with IUG (**Walcott, Waite, Brewer)

F. SOMALI- PZE-17.2R, Djibouti, calls Paris on CW daily at 9:30am and on phone at the same time, once a week or so (**Walcott)
MADAGASCAR Radio Tananarive reported on 9.54mc, from 8:15 to 10:15am (African Radio Announcer); French station believed to be Radio Tananarive, heard on 9.4mc, from 7:30 to 9am on Pacific coast (**Sholin-Calif)
MOZAMBIQUE CR7BH-11.71R, 250w, Lourenco Marques, in addition to regular sked, broadcasts special program starting at 11am on Sundays, sponsored by G. E. Co., with all inquiries to be sent to P. O. Box 1100, in Johannesburg. CR7BH's P. O. Box No. is 504, Lourenco Marques (**Merton)
SOUTH AFRICA Overseas Communications Ltd., is operating a new commercial telephony xmt. on 8.9mc, with 5kw power, at Pretoria (Wasserzug)
SP. MOROCCO Radio Guardia Civil, Tetuan, now on 6.125mc (RBO); LACAH-14, Tetuan, plays records and broadcasts rebel war news, from approximately 9 to 9:30pm (**Balbi, Walcott, Messer, Demyer, Sholin)

ASIA AND AUSTRALASIA

AFGHANISTAN NEW: YAD, YAM, YAN and YAT to operate on 4.15mc, 500w, and YAK to operate on 9.65 and 12.64, with higher power, will all be on the air soon. YAA is already in use (All-Wave Radio)

AUSTRALIA Veri gives power of VK6ME-9.59, as 5kw (**Walcott, Lders) VK3LR-9.5R, comes on air daily at 1am, or earlier (**Gallagher); VK9SC-5.96, Fort Hedland, heard early in June, calling Melbourne, from 2:30 to 2:40am (**Gallagher); Two new National S. W. stations will be erected in Australia: one in Victoria and one in Western Australia (W.A.W.N.)

BORNEO NEW: YCP (9.12), Balikpapan, usually on code may be heard once in a while phoning PLO on phone from 5:30 to 6:30am (**Walcott)

BURMA XZ is the new prefix for Burma. . . The "Government Radio Station," Mingaladon, Rangoon, is making experimental tests as follows: on 6.007mc from 9:10 to 9:40am and on 6.007 or 6.156 at 7:10pm. W. J. Byrne is the Engineer-in-Charge (**W.A.W.N., Walcott, Sholin)

CEYLON VPB, Colombo, now on approx. 6.115mc, operates daily from 7 to 9:30am or later (**Sholin, Gallagher, Walcott)

CHINA XGOK, Nanking, on 6.275mc at present; has women announcer (**Walcott, Gallagher, Miss Jacke); XTB, Shanghai, shifted to 11.19mc... strongest commercial phones at present are: XTV-9.195 or 9.51R, Canton, and XTU-12.07, Canton, heard from 6 to 9, and 3 to 4am, respectively; XTH-9.36, Swatow, has replaced XTS-11.47, and is usually heard between 3 and 10am (**Walcott, Sholin, Gallagher)

F. M. S. ZGE, Kuala Lumpur, is roving about being reported almost any place between 6.13 and 6.25mc. Last heard on 6.10mc (Moore, Walcott) ... NEW: ZGB-Kuala Lumpur, frequently heard on 13.64mc, phoning PLO, Bandoeng, between 7:30 and 9:30am (**Walcott-Calif) ZOB reported on 11.21mc by Australian listener (W.A.W.N.)

F. INDO- CHINA "Philco Radio" in English and "Station Boy-Lendry" 17 and 5.0mc, although the announced frequencies are 11.71 and 6.01mc (**Walcott, Moore)... The mystery French xmt. on 7.415mc and heard daily from 6 to 9:30am, is located in Hanoi. Native programs are given from 6 to 7:30am and French programs thereafter (**Perdeman-Java, CDXh)

HAWAII KQH-14.9, Kahuku, is being used to relay some of the programs to U.S. at present (**Gallagher); KQH and KKF were used in calling the ill-fated Earhart plane on July 5 and 6 (Gallagher*)

HONG KONG ZBW is using 15.19mc frequency irregularly (**Cavileer)

INDIA WVY-17.4R, Poona, heard irregularly 2:30-9am (Walcott)... "Akash Vani" at Mysore, in the Deccan, is reported on 6.05 and 6.11. The mysterious Indian station on 6.025mc reported by Sholin, of Calif., as operating on Mon/Wed/Fri from 2:04 to 2:34am and on Tues/Thurs/Sat from 2:34 to 9:15am or later, is also believed to be "Akash Vani" (**RMA, Herdeman-Java, Sholin)

IRAQ NEW Amateur YI2BA (14.1-14.135-14.175), Belgium-Amsterdam, operated by Messrs. Mellon and Norman, c/o Fort Directorate, Basra ya, Mirgil ya, is being heard at 8am, 4-5pm and 2-10pm (**Ama-Touring)

JAPAN See station list for new overseas schedules effective on July 1, as broadcast over JZK and JZJ... JZL-17.7R5, has been testing in reg. near 3 to 3:30am (**Sholin, Walcott); JVB-12.19, heard testing with Europe frequently near 6am (NRC)... Commercial stations: JKJ-7.64, Yoshino, Kagoshima and JCH-2.155, Mawashi, Okinawa, Ryukyu Islands, now being heard near 7am; unidentified phones heard irreg. from 1:15 to 2am on 2.17, 2.9 and 0.74mc (**Moore, Walcott, Sholin)

..Cont. on Page 15

SHORT-WAVE BROADCASTING STATIONS

SYMBOLS: N- NEW station; F- frequency change; S- change in sked; C- change in call; U- frequency in doubt; F- frequency calibrations by Oxrieder-IDA Frequency Bureau; J-stations persisting in hopping about; V- varying in frequency; * see short-wave notes; new stations in caps.

DIAL METERS	MEGS	CALL	STATION	TIME	E.S.T.
13.93	21.54	W8XK	Pittsburgh, Penna.	Weekdays 4:45-7am	
13.93	21.53	GSJ	Daventry, England	5:45-8:55, 9:15am-noon	
13.94	21.52	W2XE	Wayne, New Jersey	6:30-9:30; Sun 7-9am	(13M)
13.97	21.47	GSH	Daventry, England	5:45-8:55, 9:15am-noon	
15.77	19.02	HS8PJ	Bangkok, Siam	Mondays 8-10am	
16.86	17.79	GSJ	Daventry, England	Mid-2:15, 5:45-8:55, 9:15-noon	
16.87	17.785	JZL	TOKIO, JAPAN	Testing. (12:20-6, 9-11pm.	
16.87	17.78	W3XAL	Boundbrook, N.J.	6:30am to 8:30pm.	(16M)
16.88	17.77	PHI	Huizen, Holland	M/T/Th/F 8-9:30am; Sun 7-10	
16.89	17.76	DJE	Zeesen, Germany	12:05-5:15, 5:15-11am	(9pm)
18.72	16.03	KKP	Kahuku, Hawaii	Tu/W 1:15am; Sa. or Su. 9:30	
19.45	15.42	XEBM	Mazatlan, Mexico	9-10am, 1-3 and 8-9pm & irr.	
19.52	15.37	HAS3	Budapest, Hungary	Sundays 9-10am.	
19.56	15.34	DJR	Zeesen, Germany	8-9am, 4:50-10:45pm to CA.	
19.57	15.33	W2XAD	Schenectady, N.Y.	10am-3pm.	*
19.60	15.31	GSP	Daventry, England	6:20-8:30pm to No. America	
19.62	15.29	LRU	Buenos Aires, Arg.	7-9am. (4:50-10:45pm.	*
19.63	15.28	DJQ	Zeesen, Germany	12:05-5:15, 8:15-11am, 6-8am	
19.64	15.27	H2XE	Wayne, New Jersey	2-5pm; Sundays noon-5pm.	
19.64	15.27	H13X	Trujillo City, D.R.	Sun 7:40-10:40am; Dly noon	
19.66	15.26	GSI	Daventry, England	12:15-4 and 9-11pm.	(19M)
19.67	15.25	W1XAL	Boston, Mass.	Daytime irregular.	
19.68	15.24	TPA2	Pontoise, France	5-10:05am. (pm irregular.	
19.71	15.23	OLR5A	Prague, Czechoslov.	2-2:15pm; Mon/Thur 9:10-10	
19.71	15.22	PCJ	Huizen, Holland	Tues 4:30-6am; Wed 8-11am.	
19.72	15.21	W8XK	Pittsburgh, Penna.	7am-5pm. (10:45pm to N.A.	
19.74	15.20	DJB	Zeesen, Germany	12:05-5:15, 5:55-11am; 4:50-	
19.76	15.18	GSO	Daventry, England	Mid-2:15am, 4-6, 6:20-8:30pm	
19.79	15.16	XEWU	MEXICO CITY, MEXICO	9am-6pm. * (5:30pm*	
19.79	15.16	JZK	Nazaki, Japan	12:30-1:30, 8-9am, 3-4, 4:30-	
19.80	15.15	YDC	Bandoeng, Java	5:30-11am; 6-7:30pm.	
19.82	15.14	GSF	Daventry, England	4-6 and 6:20-8:30pm to NA.	
19.84	15.12	HVJ	Vatican City, Italy	10:30-10:45am ex. Sundays	
19.85	15.11	DJL	Zeesen, Germany	12-2am, 8-9, 11:35am-4:30pm.	
19.88	15.08	RKI	MOSCOW, U.S.S.R.	7-9:15pm.	*
20.11	14.92	LZA	Sofia, Bulgaria	Su 12:30-8, 10am-4:30pm; M/ W/F/S 5-7am; Tu/Th 1-3pm.	
20.55	14.60	JVH	Nazaki, Japan	Relays JOAK evenings & irr	
20.64	14.535	HBJ	Geneva, Switzerland	Sats 6:45 to 8, or 8:30pm.*	
20.75	14.46	DZH	Zeesen, Germany	5-9pm intermittently for S.A. (Sundays 12:30-1:30pm Mon/Wed/Fri 12:30-1:30pm &	
22.00	13.635	SPW	Warsaw, Poland	5:10 to 10:10pm or later *	
24.03	12.486	HIN	Trujillo City, D.R.	11am-1pm, 8-11pm.	
24.39	12.30	CB615	Santiago, Chile	Sundays 1:40-2:30pm.	
24.52	12.235	TFJ	Reykjavik, Iceland	4-6pm irreg.	
24.81	12.092	RNE	Moscow, U.S.S.R.	Sun 6-7, 10-11am, 4-5pm; Wed 6-7am, M/W/F 4-5; 10-11:30pm	
24.88	12.06	RNE	Moscow, U.S.S.R.	Tues/Fri 7:40-10:10pm. M/W/F 3-4pm, Tu/Th 7:30 to 8:45pm, T/Th/F 10pm-mid. &	
25.06	11.97	HT2X	Trujillo City, D.R.	1-3?, 3-4, 10:15am-5pm. *	
25.21	11.90	XEWI	Mexico D.F.	11am-4:20pm. (9:15pm. 2:30-4:30pm; Mon/Thur 7- 5:30-11pm; Sun. 6-11pm. *	
25.21	11.90	HP5I	Aguadulce, Panama	Sun 8am-midnight.	
25.24	11.885	TPA3	Pontoise, France	11:15pm-12:03am. (25)	
25.27	11.87	W8XK	Pittsburgh, Penna.	8 to 10:15am irreg.	
25.32	11.85	DJP	Zeesen, Germany	Tanarive, Madagascar 10-11am and 1:30-2:30pm	
25.34	11.84	OLR4A	Prague, Czechoslov.		
25.36	11.83	W2XE	Wayne, New Jersey		
25.36	11.83	W9XAA	Chicago, Illinois		
25.37	11.826	XEBR	Hermosillo, Mexico		
25.38	11.82	RFM	Khabarovsk, U.S.S.R		
25.40	11.81		Tanarive, Madagascar		

WIXAL

25.40	11.81	2R04	Rome, Italy	6:43am-7:30pm on M/W/F, and to 7:45pm on T/Th/S; to 5:30pm on Sundays.
0	11.805	ORX		
25.42	11.80	OAX5A	Ica, Peru	2-4 and 7-11:30pm.
S25.42	11.80	ZJZ	Nazaki, Japan	3-4, 4:30-5:30pm and 8-9am
25.45	11.79	COGF	MATANZAS, CUBA	6-11pm.
25.47	11.778	OER2	Vienna, Austria	M to F 10a-5pm; Sa to 5:30p
25.49	11.77	DJD	Zeesen, Germany	11:35-4:30, 4:50-10:45pm.
S25.53	11.75	GSD	Daventry, England	Mid-2:15am, 12:20-4, 6:20 to 8:30, 9-11pm.
25.60	11.72	CJRX	Winnipeg, Canada	6-midnight, Sun 3-9:30pm.
25.60	11.718	CR7BH	Laurence Marques, Moz.	11:45pm-12:30, 4:30-6:30 -9:30-11am, 12:30-4pm. *
25.61	11.714	TPA4	Pontoise, France	5:15-7 and 9pm-midnight.
25.63	11.705	SBG	Motala, Sweden	11am-1:30pm.
25.64	11.70	HP5A	Panama City, Panama	Heard at 11:15pm recently.
F25.64	11.70		Saigon, F. Indo-China	4:30, or 5:30 to 9:30am. *
25.68	11.68	KIO	Kahuku, Hawaii	Tues/Wed 1:15-1:30am & irr
25.71	11.67	PPQ	Rio de Janeiro, Braz	Tu/Th/Sat 7:45-8:45pm.
V26.11	11.49	COCX	Havana, Cuba	8am-1am; Sun 8am-Nn, 6-9pm.
S26.32	11.402	HBO	Geneva, Switzerland	Sats. 6:45 to 8, or 8:30pm*
J26.48	11.33	XEWV?	Guadalajara, Mexico	Heard irreg. in evenings *
27.17	11.04	CSW	Lisbon, Portugal	Noon to 7pm to Africa
27.27	11.90	PLP	Bandoeng, Java	5-11am, 6-7:30pm.
28.14	10.66	JVN	Nazaki, Japan	3:50-7:40am & irreg. (9:15p
28.93	10.37	EAJ43	Tenerife, Canarias	2-4, 5:45-7, 7:20-7:55, 8-
28.93	10.35	LEX	Buenos Aires, Argen.	Mon/Fri 5-5:45pm for N.A.
N29.00	10.345	OAX4M	HUACHO, PERU	
29.04	10.33	ORK	Ruysselsde, Belgium	12:30 to 2pm.
29.15	10.29	DZC	Zeesen, Germany	Relays Zeesen irreg. *
29.24	10.26	PLM	Bandoeng, Java	5:30-11am, 6-7:30pm.
F29.61	10.133	CQN	Macao, Macao	Mon/Fri 7 to 8:30am. *
30.18	9.94	CSW	Lisbon, Portugal	7-8pm to N.A.
30.32	9.895	CPI	Sucre, Bolivia	8-10pm irreg. *
V30.43	9.86	EAQ	Madrid, Spain	4-6:30pm or later.
S30.78	9.746	COCQ	Havana, Cuba	Relays CMQ 6:50am to 1am.
V31.05	9.663	TILNRH	Heredia, C.R.	9-10 and 11:30pm-12 irreg.
V31.05	9.662	YNLF	Managua, Nicaragua	2-3 and 8-11pm.
31.06	9.66	CR6AA	Lobito, Angola	Wed/Sat 3:45-5:30pm. (*
N31.06	9.66	YDA	Tandjongpriok, Java	Every other AM from 5-11am
S31.06	9.66	LRX	Buenos Aires, Arg.	9:30am-11:30pm. *
J31.09	9.65	CTLAA	Lisbon, Portugal	Tu/Th/Sat 3-6pm.
B31.11	9.645	HH3V	Port-au-Prince, Haiti	1-2, 7-8:45pm. (pm
31.20	9.618	HJLABP	Cartagena, Colombia	7-9, 11am-1:30pm, 5-10:30-
B31.23	9.607	HP5J	Panama City, Panama	Noon-1:30pm, 6:30-10:30pm.
31.24	9.604	XEYU	Mexico D.F.	Heard in evenings irreg.
31.25	9.60	RAN	Moscow, U.S.S.R.	6-7; 7 to 9:15pm for N.A.
31.25	9.60	CB960	Santiago, Chile	10:30am-noon, 6-8:30pm.
31.27	9.595	EBL	Geneva, Switzerland	Sats. 5:30-6pm. (Wed 7-10pm
31.28	9.59	PCJ	Huizen, Holland	Sun 2-3, 7-8pm; Tu 1:30-3pm-
31.28	9.59	VK6ME	Perth, W. Australia	Weekdays 6-8am. (-12:30pm.
S31.28	9.59	VK2ME	Sydney, Australia	Sun mid-2, 4:30-8:30, 10:30a
S31.28	9.59	W3XAU	Philadelphia, Penna	11am-7pm; Wed/Sun 11am-6pm. (31M)
31.32	9.58	GSC	Daventry, England	
S31.32	9.58	VK3LR	Melbourne, Austr.	1-8:30am; 8:45-9:45am. *
31.35	9.57	WLKK	Springfield, Mass.	6am-mid; Sun 7am-midnight.
N31.35	9.57		MANILA, PHILIPPINES	4:30-9am; Sat to 10am. *
31.38	9.56	DJA	Zeesen, Germany	12:05-5:15am, 4:50-10:45pm.
31.38	9.56	OAX4T	Lima, Peru	11:30am-1:30pm. *
F31.41	9.55	YDB	Soerabaja, Java.	5:30-11am. *
31.45	9.54	VPD2	Suva, Fiji's	5:30-7am except Sundays.
31.45	9.54	DJN	Zeesen, Germany	12:05-5:15, 5:55-11am, 4:50-10:45pm.
31.48	9.53	W2XAF	Schenectady, N.Y.	4pm-midnight. *
31.48	9.52	LKJ1	Jeloy, Norway	5-8am. (9:15pm-Su 1:30 etc.
31.50	9.525	ZB33	Hong Kong, Hong Kong	11:30pm-1:30, 4-10am; Sat-
31.48	9.52	J31481	Armenia, Colombia	6-10pm and early AM.
31.48	9.52		Tananarive, Madagascar	10-11am, 1:30-2:30pm. *

S31.55	9.51	GSB	Daventry, England	Mid-2:15am, 12:20-6, 9-11pm.
31.55	9.51	HJU	Buenaventura, Colom	Mon/Wed/Fri 8-11; Su 6-8pm.
N31.58	9.502	XEWW	MEXICO, D.F.	6pm to midnight, or lam. *
31.58	9.50	HJLABE	Cartagena, Colombia	5-10:30pm ex. Sundays.
31.58	9.50	PRF5	Rio de Janeiro, Brz	4:45-5:45pm ex. Sundays.
B31.58	9.50	VK3ME	Melbourne, Austral.	4-7am except Sundays.
B31.61	9.493	XEFT	Veracruz, Mexico	7:30pm to midnight, or latr
31.61	9.49	OXY	Skamlebaek, Denmark	Heard 9pm to midnight irr.
B31.62	9.488	EAR	Madrid, Spain	3-4, 7:30-9:30pm irreg.
B31.73	9.453	TGW	Guatemala, Guatemala	8-10, 11pm-mid, to 5am Sun.
J31.73	9.45	XEDQ	Guadalajara, Mexico	Noon-4:30pm, 8-11:30pm.
S31.81	9.43	COCH	Havana, Cuba	7:30am-mid, Sun 8-9am, 11:30 am-1:30pm, 6-9pm
N31.87	9.415	PLV?	Bandoeng, Java	5:30-9am intermittently. *
F32.02	9.37	HCODA	Guayaquil, Ecuador	8:15 to 10:15pm ex. Sun. *
JN32.04	9.365	COBC	HAVANA, CUBA	8pm-12:30am. *
32.05	9.36		Fort de France, Marti	nique 5:15-6:15; 8-9pm ir
J32.15	9.33	OAXLJ	Lima, Peru	Noon-3 and 5pm to lam. *
32.26	9.30	YNGU	Managua, Nicaragua	1-2:55, and 5:30-8pm. (9.03*
JN32.64	9.19	COBZ	HAVANA, CUBA	7pm-lam; Sun to 1:30am-see
V32.27	9.125	HAT4	Budapest, Hungary	Sun/Wed 7-8pm; Sat 6-7pm
JN33.22	9.03	COBZ	HAVANA, CUBA	Heard on assigned freq irr
33.53	8.948	HGJB	Quito, Ecuador	7-10pm except Sundays.
34.11	8.795	HKV	Bogota, Colombia	Mon/Thurs 7-7:30pm.
S34.66	8.664	COJK	Camaguey, Cuba	11:30am-12:30pm, 7-10pm *
N34.88	8.60	HC1EC	Quito, Ecuador	Heard testing near 10:30pm
34.88	8.60	YNPR	Managua, Nicaragua	8 to 10:30pm.
35.27	8.505	YNLG	Managua, Nicaragua	1:30-2:30, 6-10pm.
J36.01	8.33	HC2CW	Guayaquil, Ecuador	7-11pm; Sun 3-5pm.
B38.20	7.854	HC2JSB	Guayaquil, Ecuador	9am-2pm, 4-11pm. *
38.47	7.797	HBP	Geneva, Switzerland	Sats. 5:30-6pm.
B39.68	7.56	YNLF	Managua, Nicaragua	6:45-9:45pm.
J39.74	7.55	TI8WS	Puntarenas, C.R.	5-7, 8:30-10pm; Sun 5-6pm.
N40.30	7.445		HANOI, F.INDO-CHINA	6-9:30am. *
40.55	7.38	XEGR	Mexico D.F.	Sundays 6-8pm.
J41.00	7.315	YNLAT	Granada, Nicaragua	8-10pm irregularly.
41.10	7.30	HB9BG	Lucerne, Switzerland	Fridays 4-5pm.
41.15	7.29	PSU1	Barcelona, Spain.	3:50 and 6:30pm.
41.32	7.26	ED2GT	Bilbao, Spain	Relays EAJ8 at 2:30pm
V41.55	7.22	ECN1	Barcelona, Spain	Noon-1, 4-5pm; Sun 5-7pm.
41.67	7.20		San Sebastian, Spain	Evenings to 9:30pm.
41.67	7.20	YNAM	Managua, Nicaragua	8-11pm.
42.25	7.10	F08AA	Papeete, Tahiti	Tues/Fri 11pm to midnight
J42.80	7.00	EA9AH	Tetuan, Sp. Morocco	4:30-7pm irreg.
S43.04	6.97	HCETC	Quito, Ecuador	Mon/Sat 8 to 9pm. *
43.10	6.96	VK8SC	Port Hedland, Austr	Sun 4:30-5:30am & irreg. *
43.48	6.90	HI2D	Trujillo City, D.R.	5-7pm irreg.
43.60	6.88	TI2RS	San Jose, C.R.	10-11:30pm.
F43.64	6.875	XGOX	Nanking, China.	5:30 to 9:40am. *
V44.20	6.788	PZH	Paramaribo, D. Guiana	Mon/Wed/Fri 5:40-9:40pm.
V44.23	6.782	HI7P	Trujillo City, D.R.	7:10-8:40pm; Sun 9:40-10:40a
V44.28	6.775	HIH	San Pedro, D.R.	7:40-9:10pm; Sun 5:30-6:30p
44.51	6.74	HCLTQ	Quito, Ecuador	Sundays 5-7pm.
44.58	6.73	HI3C	La Romana, D.R.	6:10-7:40pm; irreg to 11pm
44.60	6.727	PMH	Bandoeng, Java	5:30-11am.
V44.86	6.687	TI1EP	San Jose, C.R.	7-10:30pm; Sat. to midnight
B45.22	6.635	HC2RL	Guayaquil, Ecuador	Sun 5:30-7:30pm; Tu 9-11pm.
45.25	6.63	HIT	Trujillo City, D.R.	12:10-1:40pm; 5:40-8:40pm.
B45.29	6.625	PRADO	Riobamba, Ecuador	Thursdays 9-11pm. (49)
45.60	6.578	HCVT	Ambato, Ecuador	7-10pm; to 11pm on Friday.
45.76	6.555	HI4D	Trujillo City, D.R.	5:10-8:10pm ex. Sundays.
45.80	6.55	TIRCC	San Jose, C.R.	Tu/Th/S 6-7pm; Su/Th 9-10pm
45.84	6.545	YV6RB	Bolivar, Venezuela	6:30-9:30pm ex. Sundays.
J45.87	6.54	YN1GG	Managua, Nicaragua	1-2:30, 8-10pm ex. Sunday.
V46.01	6.52	YN4RB	Valencia, Venezuela	10:30am-1:30pm, 5:30-9:30pm
46.15	6.50	TIOW	Port Limon, C.R.	10-11:30am, Sundays 2-3pm.
46.15	6.50	HIL	Trujillo City, D.R.	5:40-7:40pm ex. Sundays.
F46.26	6.485		Tetuan, Sp. Morocco	7 to 8pm.

46.31	6.479	HI8A	Trujillo City, D.R.	5:40-7:40pm ex. Sundays.
46.33	6.477	HI4V	S.F. de Macoris, DR	5:10-6:40pm ex. Sundays.
46.70	6.425	OAX4L	Lima, Peru.	*
46.73	6.42	HI1S	Santiago, D.R.	6:10-8:10pm ex. Sundays.
46.77	6.416	YV6RC	Bolivar, Venezuela.	*
46.80	6.41	TIPG	San Jose, C.R.	6-11:30pm.
46.88	6.40	YV5RH	El Valle, Venezuela	5-9:30pm ex. Sundays.
47.02	6.38	YV5RF	Caracas, Venezuela	11am-1pm, 5:30-9:30pm ex Su
47.14	6.365	YV1RH	Maracaibo, Venezuela	8:30-11pm.
47.20	6.357	HRP1	San Pedro Sula, Hon.	7:45-10pm ex. Sundays.
47.32	6.34	HI1X	Trujillo City, D.R.	12:10-1:10pm; Su 7:40-10:40 am; Tu/Fri 7:40-10:10pm. *
47.36	6.335	OAX1A	Chiclayo, Peru	8-11pm. *
47.43	6.324	COCW	Havana, Cuba.	Heard in evenings irreg. *
47.54	6.31	HIZ	Trujillo City, D.R.	5:10-7:40pm ex. Sundays.
47.54	6.31	TG2	Guatemala City, Guatemala	heard late evenings.
47.62	6.30	YV4RL	Maracay, Venezuela	6-10pm except Sundays
47.66	6.295	OAX4G	Lima, Peru	7-11pm.
47.76	6.282	COHB	Sancti Spiritus, Cuba	4-6, 9-11pm ex. Sundays.
47.77	6.28	HIG	Trujillo City, D.R.	8:10-9:40pm; T/F 6:40-8:10p
47.85	6.27	YV5RP	Caracas, Venezuela	6:30 to 9:30pm, or later.
47.96	6.255	YV5RJ	Caracas, Venezuela	5:30-8pm ex. Sundays.
48.05	6.243	HIN	Trujillo City, D.R.	5:10-10:10pm, or later. *
48.11	6.235	HRD	La Ceiba, Honduras	7:30-10:30pm ex. Sunday
48.19	6.225	YV1RG	Valera, Venezuela	11:30am-1pm, 6-9pm.
48.35	6.205	YV1RI	Coro, Venezuela	6:30-9:30pm ex. Sundays.
48.39	6.20	XEXS	Mexico D.F.	10pm-midnight irreg.
48.39	6.20	COKG	Santiago, Cuba	8-9am, 11am-2pm, 5-9pm.
48.47	6.19	ZGE	Kuala Lumpur, FMS.	Sun/Tues/Fri 6:40-8:40am *
48.47	6.19	HI1A	Santiago, D.R.	10:40am-1:40pm, 6:40-9:40p
48.60	6.172	XEXA	Mexico D.F.	7-11pm.
48.66	6.165		Bizerte, Tunis	3-5pm irreg.
48.70	6.16	CP12	Cochabamba, Bolivia	Noon-12:30pm, 8:30-10:30pm.
48.73	6.156	YV5RD	Caracas, Venezuela	3:30-10pm.
48.78	6.15	HI5N	Moca City, D.R.	6-7am, Noon-2pm, 6-9:30pm.
48.78	6.15	CJRO	Winnipeg, Canada	6am-mid; Sun 3-9:30pm.
48.81	6.147	ZEB	Bulawayo, S. Rhodesia	Mon 11am-Nn, Tu/T 1:15-3:15 pm, Sun 3-4:30am, F 10-10:45a
48.82	6.145	HJ4ABU	Pereira, Colombia	9am-noon, 6:30-10pm.
48.86	6.14	W8XK	Pittsburgh, Penna.	8-11pm.
48.88	6.137	CR7AA	Laurenc Marques, Moz.	11:45-12:30am, 4:30-6:30 am, 9:30-11am, 12:30-4pm.
48.93	6.132	VE9HX	Halifax, N.S.	6:30, 11, 1, 4 and 5-11pm.
48.93	6.132	VP3BG	Georgetown, B. Guiana	Has anyone heard lately?
48.94	6.13	LKJ1	Jeloy, Norway	11am-5pm. (pm
48.94	6.13	COCJ	Havana, Cuba	9am-1am; Sun 10am-4pm, 8-10
48.98	6.125	CXA4	Montevideo, Uruguay	8am-Noon, 2-10pm.
48.98	6.125	XEPW	Mexico D.F.	8am-mid; irreg to 2am.
49.01	6.122	HJ3ABX	Bogota, Colombia	10:30am-2:30, 5:30-11:30pm.
49.01	6.122	HP5H	Panama City, Panama	Heard irreg. *
49.01	6.122	OAX6A	Arequipa, Peru.	8-11pm. *
49.04	6.117	XEUZ	Mexico D.F.	9am-1pm, 7pm-3am.
49.06	6.115	VPB	Colombo, Ceylon	7-9:30am. *
49.11	6.109	VUC	Calcutta, India	2:06-3:06am; Sun 12:36am &-
49.11	6.108	HJ4ABB	Manizales, Colombia	5:30-10pm ex. Sun; Sat to 11
49.18	6.10	W3XAL	Boundbrook, N.J.	8:30-10pm ex. Sat; Sa 8:30-
49.18	6.10	W9XF	Chicago, Illinois	10pm-1am ex. Sat. (12pm
49.18	6.10	YUA	Belgrade, Yugoslavia	1-3, 6:15-8:15am, Nn-5:15pm
49.20	6.097	HJ4ABE	Medellin, Colombia	7:30-10:30pm. *
49.20	6.097	ZTJ	Johannesburg, S. Afr	11:45pm-1am, 3:15-7:30am &-
49.26	6.09	CRCX	Bowmanville, Canada	6:45am-4pm; Sat 10-11pm.
49.26	6.09	HJ4ABC	Ibague, Colombia	8-10pm ex. Sunday
49.30	6.085		MYSORE, INDIA	M/W/F 8:04-8:34am; Tu/Th/Sa 8:34-9:14am or later. *
49.30	6.085	HJ5ABD	Calli, Colombia	7-11pm ex. Sunday (2:30pm &
49.32	6.083	VQ7LO	Nairobi, Kenya	M to F 5:40-6:10, 11:25am-
49.34	6.081	OAX4Z	Lima, Peru	7-11:30pm ex. Sundays. *
49.34	6.08	W9XAA	Chicago, Illinois	6:30am-midnight ex. Sundays

JAVA **YDA**, Tandjongpriok, seems to be alternating with programs on 3.06 and 9.65mc, while **YDB**, Soerabaja, apparently has shifted to 9.55 mc; an unidentified one on 9.39mc is heard irreg. A station on 9.415mc (maybe **PLV**) is relaying the NIROM intermittently each morning from 5:30-9am; **YB-?**, Palembang, Sumatra on 7.87mc, phones **PLQ-10.68**, Bandoeng, frequently between 5:30 and 9am and Pam (**RBO, Walcott, Gallagher)... Veri's reports on the IDA-NIROM broadcast of last Jan. 2, have been held up pending arrival of new QSL cards but will be answered soon (Herdeman)

MACAO **CQN** has shifted again, this time to 10.133mc (**GSWRC)

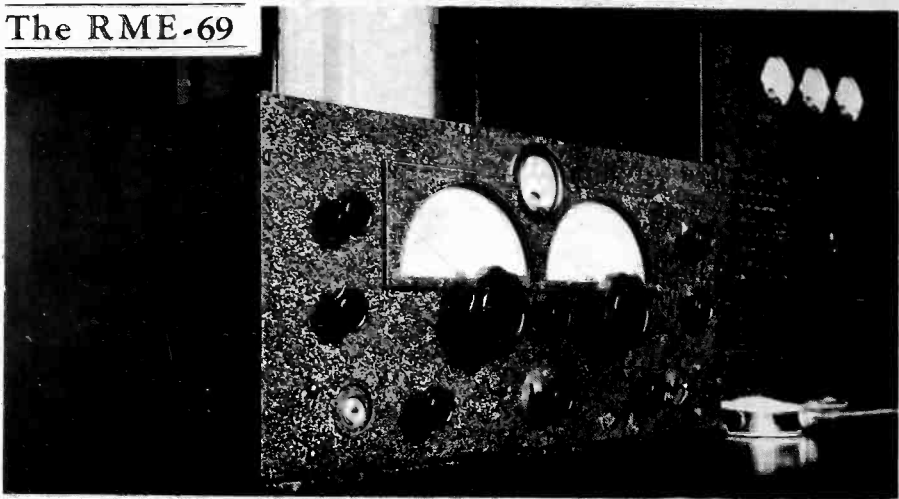
PHILIPPINES "Radio Manila," owned by Erlanger & Galinger, of Manila, tested with its new xmtr. on 11.84mc, about middle of June, then went off the air, to reappear on July 1, officially inaugurating the new xmtr. on a frequency of 9.57mc, where it is audible daily from approx. 4:30 to 9am and on Saturdays to 10am; interval signal is a metronome. It relays **KZRM** (**Sholin, Moore, Walcott, Cornfield-Hong Kong, Gallagher Clark, Balbi)

SHIPS **9MI**, the S.S. Kanimbla, is broadcasting from 6:55-7:30am, on Sundays, and irreg. on Wednesdays or Thursdays (**DeMent, Sholin) (AW

SIAM **H88PJ** operates now on 19.02, and on Mondays only 8-10am.-
S.S. **ZHJ** (now on 6.055), Penang, operates weekdays 3:40-5:40am.

49.38	6.075	HP5F	Colon, Panama	7-10:30pm.
U49.38	6.075	XECU	Guadalajara, Mexico	8-11pm.
B49.38	6.075	YV1RD	Maracaibo, Venezuela	5-10pm. (Sun 11am-5pm.
S49.42	6.07	CFRX	Toronto, Canada	6:30am-5pm; Sat 11pm-mid;-
49.43	6.69	HJ3ABF	Bogota, Colombia	7pm-mid., except Sundays
49.46	6.065	SBG	Motala, Sweden	1:30-5pm.
F49.47	6.064	VP3MR	Georgetown, B. Guiana	4:45-7:30pm.
49.50	6.06	OXY	Skamlebaek, Denmark	1-6:30pm; Sun 11am-7pm, 9-
49.50	6.06	W3XAU	Philadelphia, Penna.	7-10pm.
49.50	6.06	W8XAL	Cincinnati, Ohio	5-7, 10pm-1am; Sun 7am-7pm.
F49.55	6.055	ZHJ	Penang, S.S.	3:40-5:40am.
V49.65	6.042	HJ1ABG	Barranquilla, Colom	6:30-11pm ex. Sundays.
49.67	6.04	W1XAL	Boston, Mass.	
B49.72	6.033	HJ4ABP	Medellin, Colombia	8-11pm ex. Sundays.
49.75	6.03	HP5B	Panama City, Panama	8-10:45pm.
49.75	6.03	VE9CA	Calgary, Alta, Canada	10am-2am.
49.79	6.025	HJ1ABJ	Santa Marta, Colom.	5:30-10:30pm ex. Sundays.
B49.83	6.02	XEUW	Veracruz, Mexico	10pm-1am.
49.83	6.02	DJC	Zeesen, Germany	11:35am-4:30pm.
V49.86	6.017	H13U	Santiago, D.R.	4:40-9:40pm ex. Sundays.
49.91	6.012	HJ3ABH	Bogota, Colombia	4-11pm; Sun 4-9pm.
49.92	6.01	COCO	Havana, Cuba.	7:55am-10pm, or later.
S49.92	6.01	9MI	S.S. Kanimbla	Sun, Wed/Thur 6:55-7:30am *
49.92	6.01	FTU	Tananarive, Madagascar	10-11am, 1:30-2:30pm.
N49.94	6.007		RANGOON, BURMA	9:10-9:40am; 7:10pm. *
S49.95	6.005	CFCX	Montreal, Canada	8am-11:15pm; Sun 9am-11:15p
V49.95	6.005	HP5K	Panama City, Panama	7-8am, 8-10:30, or 11pm.
F50.00	6.00	XBET	Mexico D.F.	10am-1:45am.
50.00	6.00	CXA2	Montevideo, Uruguay	4-10pm; Sun to 9pm.
V50.08	5.99	HJ2ABD	Bucaramanga, Colom.	6-10pm.
F50.21	5.975	OAX4P	Huancayo, Peru	9-11pm. *
V50.21	5.975	HJ4ABD	Medellin, Colombia	8-11pm. (Sun
V50.38	5.955	HJN	Bogota, Colombia	11am-2pm, 8:30-10:30pm ex.
S50.45	5.947	PJCI	Curacao, D.W.I.	6:36-8:36pm; Sun 10:36am-
50.51	5.94	TG2X	Guatemala, Guat.	M/W/Sa 9-10:30pm (12:36pm*
50.53	5.937	YV1RL	Maracaibo, Venez.	11am-1pm, 4:30-9:30pm.
V50.64	5.925	HH2S	Port-au-Prince, Haiti	7-10, or 11pm ex. Sundays
50.71	5.917	YV4RH	Valencia, Venezuela	5-9:30pm ex. Sundays.
F50.81	5.905	TILS	San Jose, C.R.	Noon-2:30pm, and 6-11pm.
S50.85	5.90	ZNB	Mafeking, Bechuanaland	2-3am and 1-2:30 or 3pm
50.98	5.885	HI9B	Santiago, D.R.	6:40-8:40pm.
51.07	5.875	HRN	Tegucigalpa, Honduras	6-9:30pm.
F51.11	5.87	YV3RA	Barquisimeto, Venez	5:30-9:30pm ex. Sundays.
51.24	5.855	HI1J	San Pedro, D.R.	11:40a-1:40p, 6:10-8:40pm.
51.28	5.85	YV1RB	Maracaibo, Venez.	10:45-12:40pm, 4:30-9:30pm.
B51.55	5.82	TIGPH	San Jose, C.R.	N'n-2pm, 7-11pm ex. Sundays
N51.61	5.813	TI2H	SAN JOSE, C.R.	7-11pm. *

The RME-69



REASONS RME RECEIVERS SATISFY

The BREAK-IN FEATURE

GIVING AUTOMATIC CONTROL

The TUNING RANGE

WHICH HAS PRACTICAL VALUES

The BAND SPREAD

AS A DISTINCT FEATURE

The SUPPRESSOR

TO MINIMIZE BOTHERSOME INTERFERENCE

The CONTROLS

GIVING FINGER-TIP HAIRLINE TUNING

The RESONATOR

FOR PEAK RECEPTION AT ALL TIMES

The METER

INDICATING CARRIER LEVELS

The FILTER

USING A NEW QUARTZ CRYSTAL

**SINGLE
SIGNAL
SUPER**

The
RME 69

Bulletin 69 for information
on receivers

INTERNATIONAL DX 'ERS ALLIANCE

BLOOMINGTON, ILLINOIS, U. S. A.