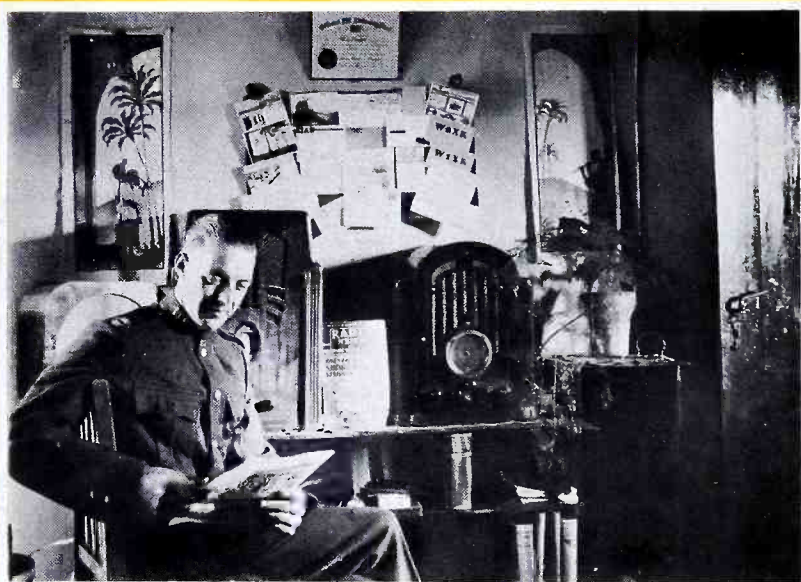


THE GLOBE CIRCLER

FEBRUARY 1936



The "Old World" Listening Post of, IDA Representative,
W. E. Frost, at JERUSALEM, PALESTINE.

ONE
DIME

INTERNATIONAL DX'ERS ALLIANCE

CUBAN STATION LIST.

RUSSIAN STATION LIST.

THE WORLD LISTENS IN.

DE-LUXE SHORT WAVE LIST

BROADCAST BAND WORLD DX CHART.

BROADCAST BAND STATION NEWS
E.S.T. EUROPE

Austria. Dornbirn, 1294kC, increased to 5kW. New Linz 20kW Xmtr, 1294kC, to be inaugurated in January.

Belgium. Brussels I, 620kC, and Brussels II, 932kC, now start at 1:37am, and close down at 7pm daily. News bulletins at 2:25am.

Czecho-slovakia. Several new stations are planned by the Govt., including a 100kW station to replace the present Prague II, 1204kC, 5kW
Estonia. Tallin, 731kC, 20kW, to be increased to 50kW. Old Tallin 20kW transmitter to go to Tartu, 517kC, to replace present 500 watt Xmtr.

France. Radio Lyons, 1393kC, new 25kW Xmtr. now in use. M. Anglade is the Station Director... Toulouse Pyrenees PTT, 776kC, often test their 120kW Xmtr after 6pm... Bordeaux-Lafayette PTT, 1077kC, 30kW, opens daily at 1:50am. Will have 60kW Xmtr in 1937... Bordeaux-Sud-Ouest, 25kW now on 968kC... Strasbourg, 859kC, is one of best heard Europeans with its new 100kW Xmtr. Opens daily at 1:45am... Beziers, 1393kC, have increased power and are now known as "Radio-Midi" ... A new PTT station of 120kW will be completed in 1937 near Limoges.

Germany. Reichssender Saarbrucken in the Saar, 1249kC, 17kW, took the air Dec. 23rd... Gleitwitz, upper Silesia, 1231kC, 5kW, also opened Dec. 23rd... Stuttgart, 574kC, 100kW, still operating on 2kW up to 10am while new Anti-fading serial is being constructed.

Malta. Malta W/T, a naval code station on 1303kC, is relaying the BBC evening news bulletin, with a translation of same in Maltese.

Norway. Trondelag, 629kC, now 20kW. Fredrikstad, 776kC, and Porsgrund, 850kC, each 1kW now. Aalesund, 850kC, will have 10kW Xmtr in near future. Tromso, 253kC, new 10kW Xmtr testing. Bodo, 686kC, to have new 10kW Xmtr. by May. Oslo, 260kC, will open new 100kW Xmtr soon. A new 20kW Xmtr for Flekkeroy will be ready in February, a new 10kW Xmtr. for Randaberg in April, and a new 20kW Xmtr for Bergen by May.

Switzer-land. Sottens (Radio Suisse Romand), 677kC, now broadcasting with 100kW. Comes on Air with chimes at 3:55am Sundays.

ASIA

India. Delhi, 882kC, 20kW, inaugurated on January 1st. (air.

Iraq. A new State Broadcasting station is reported to be on the

Japan. The new 150kW JOAK Xmtrs. have been progressing rapidly and may be brought into operation early in the year 1936.

AFRICA

Algeria. To have powerful new 100kW Xmtr. to replace present one on 941kC before end of 1936.

AUSTRALASIA

Australia. 4QN, North Regional, Clevedon, Qsld, 600kC, 10kW, and 2NR, Northern Rivers Regional, Lawrence, NSW, 700kC, 7kW, both rumored on the air... 4BU, Bundaberg, Qsld, 1480kC, 100 watts, opened Dec. 16th... 3MB, Birchip, Vic 1470kC, 100 watts, opened Oct. 20th, 1935... A new station has been authorized for Charleville, Qsld... 3MA, Mildura, Vict, 900kC, increased to 100 wts power... 3WR, Shepparton, Vict, 1260kC, decreased to 500 watts power... 4AK, Oakey, Qsld, 1220kC, increased to 2kW power... 6IX, Perth, 300 watts, now on 1240kC... 2BH, Broken Hill, NSW, 100 watts, from 1350 to 1330kC.

New Zeal- and. 2YA's new 60kW Xmtr. probably won't be on air until 1937. 1ZJ, Auckland, 1310kC, 65 watts on the air again..

SOUTH AMERICA

Chile. All CE-calls changed to CB... CB-90, on 1380kC, has a power of 10kW, and is owned by "El Mercurio", leading Santiago newspaper. Address reports to Sr. L. E. Brain, Radio Estacion El Mercurio, Santiago, Chile.

CENTRAL AMERICA

Costa Rica-TIGP, 625kW, 1000 watts, "La Voz de la Victor", is owned by Mr. Perry Girton, of Apartado 224, San Jose, Costa Rica. Schedule 6-11:30 pm daily. English programs Wednesdays and Saturdays 8-9pm.

NORTH AMERICA

Alaska. KINY, 1310kC, 100 watts, owned by Edwin A. Kraft, of Juneau, is on the air daily until 9pm.

Cuba. CMCD, Havana, 250 watts is now on 950kC... CMK, Havana, is

5
R
M



5RM, Renmark, South Australia, 850kC, 1kW.

now broadcasting on approximately 730kc with 1000 watts of power. 3

Canada. CJGX, Yorkton, Sask, 630kc, now using power of 1000 watts
Mexico. XEAQ, 1090kc, is new station owned by Rosarito Country Club, of Rosarito, Baja California, Mexico... XERA, Villa Acuna, Coah, 840kc, 300kW plans increase to 1000kW (1,000,000 watts) in the near future.

Puerto-Rico. WNEL, San Juan, 1290kc, to use 2½kW day, and 1kW night shortly
Rico. WPRP, 1420kc, 100 watts, owned by Julio M. Conesa, of Ponce, should be testing shortly.

U.S.A. New station for Springfield, Mass, will work on 1140kc with ½kW... New station for Hartford, Conn., will operate on 1200kc with 100 watts... New station for Muskogee, Okla., will operate on 1500kc, 100 w... WGST, Atlanta, Georgia, 890kc, will soon have 1kW power... WDRC, Hartford, Conn, 1330kc, have been authorized to increase power to 5kW.

WORLD WIDE BROADCAST CALENDAR

TIME	E.S.T.	KC/S	KW	LOCATION	CLUB	CALL
Feb.10	Mon. 1-2am	625	1	Santiago, Chile	T IDA	CB62
Address: Cia Radio Chilena CB-62, C/o International Machinery Co., Casilla # 107-D, Santiago, Chile.						
Feb.12	*Wed. 2-3am	830	25	Buenos Aires, Argen.	R IDA	LR5
Feb.15	Sat. 2:30-4am	1050	2	Montevideo, Uruguay.	R IDA	CX26
Feb.18	*Tues. 2-3am	1190	39	Buenos Aires, Argen.-R	IDA	LS2
Feb.22	*Sat. 2-3am	830	25	Buenos Aires, Argen.-R	IDA	LR5
Feb.23	Sun. 2-3am	1040	10	La Paz, Bolivia.	NNRC	CP1
Feb.29	*Sat. 2-3am	1190	39	Buenos Aires, Argen.	R IDA	LS2
Feb.29	Sat. 1-3am	1380kc	5	Havana, Cuba.	IDA	CMBX
Mar.28	Sat. 5-6am	820	.15	Hobart, Tasmania.	A IDA	7HO
Address: Mr. R. Brundle, 106 Cascade Rd, S. Hobart, Tasmania.						

NOTE: *Highly tentative. Not definitely confirmed.

NOTE: Feb.22,23,24 MYSTERY DX sponsored by RADEX. Some 60 stations will transmit for an hour on one of these mornings. A magnificent prize will be awarded the dx'er identifying and reporting on most programs.

DX TIPS PERIODS						
Weekly	Tues.	6:35-6:45pm	9530	SW	Schenectady, N.Y.	D Tips W2XAF
Weekly	Thur.	11-11:15pm	1010	½	Regina, Sask, Canada.	W Tips CKCK
Weekly	Fri.	2-2:15am	1300	1	Los Angeles, Calif.	EJ Tips KFAC
Weekly	Fri.	8-8:15pm	1530	1	Kansas City, Mo.	Tips W9XBY
Weekly	Sat.	12-12:30am	980	50	Pittsburgh, Pa.	S Tips KDKA
Weekly	Sun.	12:30-12:45am	640	50	Los Angeles, Calif.	FA Tips KFI
Weekly	Sun.	12:45-1am	1470	5	Nashville, Tenn.	H Tips WLAC
Weekly	Sun.	1-1:15am	900	1	Jacksonville, Fla.	JA Tips WJAX
FAD MEMBERS: T-Tomlinson, R.E. Roberts, K-A. Kinghorn, A. Wm. Ansell.						
IDA DX COM-MENTATORS: S-J. Stokes, FA-F. Andrews, H-Cappie Hadley, JA-Armantrout						
D-E. Darlington, W-L. Westmoreland, EJ-Wm. Ellis-H. Jones.						

SPECIAL TESTS FROM FOREIGN STATIONS

Offering an unequalled chance for logging, -the following Foreign stations have been conducting weekly Thursday morning tests for observation purposes by the U. S. Bureau of Standards (This may portend an International re-allocation of Broadcast Band frequencies-Ed).

1:00-3:00am E.S.T.	KC/S	KW
Athlone, I. F.S.	565	60
London Regional, England.	877	50
Poste Parisien, France.	959	100
2:00-3:30am E.S.T.	KC/S	KW
LS10, Buenos Aires, Argen.	590	5
LR5, Buenos Aires, Argen.	830	25
LR6, Buenos Aires, Argen.	870	39
LR4, Buenos Aires, Argen.	990	20
LR1, Buenos Aires, Argen.	1070	50
LS2, Buenos Aires, Argen.	1190	30

TRICKY LATIN CATCHES

TIGP,	San Jose, C.R.	625	1000w
YV6RV,	Valencia, Venez.	670	300w
RDN,	San Salvador, E.S.	680	500w
OAX1A,	Lima, Peru.	750	1500w
HIX,	Trujillo City, DR.	800	700w
TIEP,	San Jose, C.R.	850	500w
HHK,	Port au Prince, Haiti.	920	1000w
TIGH,	San Jose, C.R.	1000	500w
HJ3ABH,	Barranquilla, Colombia.	1005	2000w
HC2ET,	Guayaquil, Ecuad.	1153	300w
YV7RMO,	Marsaibo, Venez.	1153	500w
TGW,	Guatemala, Guat.	1217?	10kW
HRN,	Tegucigalpa, Hon.	1270	100w
YV8RB,	Barquisimeto, Venezuela.	1273	
HJ1ABA	Barranquilla, Colombia.	1330	150w
TGX,	Guatemala, Guat.	1400	250w
HP50	Colon, Panama.	1440	25w

Data courtesy members DeMyer, Eck Peters, Swenson, Brauner, Hall, Grant,

"The Globe Circler"

Subscription price \$1.25 per year anywhere.

International



DX'ers Alliance

Published Monthly Excepting July

CHARLES A. MORRISON
EDITOR

VOLUME 4

BLOOMINGTON, ILLINOIS, U. S. A.

NO. 2

I. D. A. CHAPTERS

ALPHA (Toledo), running smoothly with a number of new membership prospects. Dec. 14th meeting held at home of Sidney Steele. Local dues, and plans for a local tip sheet were agreed upon. Jan. 4th meeting at home of Ray Lewis, with a good attendance. Reception fair. LR3 and KGU are best bets at present.

BETA (N.Y.C.). Dec. 28th meeting held at home of Ed. Goss, 812 Prospect Place, Brooklyn, with a good attendance. It was decided to hold meetings every three weeks at this same address, because of its central location. Principal discussion concerned plans for increasing the Chapt. membership. Next meeting was set for Jan. 18th.

DELTA (Mich). Jan. meeting held 9th at home of John DeMyer, with nine present, including some prospects for memberships, guests of Mr. Alf Debicki. DX conditions were discussed, and Mr. DeMyer displayed a fine group of new veri's. Next meeting was set for home of Miss M. Caniff.

REGINA JUBILEE (Regina) climbs towards high ranking Chapt. position, with present enrollment of thirty active members. At meeting of Jan. 5th, re-election of officers approved Wm. Ansell as Chairman, and L. Westmoreland as Sec. An Executive committee, composed of Messrs. Dickenson, Hodges, Johnson, Ansell and Westmoreland was appointed. Local dues of 25¢ per month were agreed upon. It was decided that something must be done to save the Chapter Honor in the S.W. Contest with Calgary Foothills, as Regina seems to be lagging sadly behind.

RADIO GLOBE TROTTERS (Los Angeles) although one of the younger Chapters, already has enrolled 19 members. Chapter meetings are held in the Studios of KFAC, prior to the regular weekly Broadcast period, sponsored by Director Wm. Ellis and Harry Jones.

GLOBE RADIO DX'ERS (Australia), proceed with plans for a large Australian IDA. Gen. Rep. A. Preece, 61

Lipsom St., Adelaide, announces six months membership campaign with prizes. Rep's will be appointed for Victoria and Tasmania. All Australian IDA correspondence should be at Australian IDA-HQ by the 2nd, and last Tuesday of each month. Official logs of IDA members will be kept by Mr. Preece, and IDA Letterheads and Badges will also be available. Publicity will soon be started in each state by Mr. Preece

NOTE: (Chapter Sec's. must have Chapter reports in by 17th-Ed).

DELUXE SIX HOUR SCOOP TIP SERVICE
The IDA may soon inaugurate something new in DX history, providing sufficient support is afforded.

DX SCOOP' ITEMS are often received here which would be of great value to enthusiastic dx'ers, Radio Columnists, DX period announcers, and publishers, providing such information could be instantly released and sent to those individuals by the fastest possible air-mail service (Foreign service would include U.S. Airmail, plus first outgoing boat).

Such a service would be a heavy expense, as it would necessitate setting up special handling machinery, stenographic help in editing and addressing, and air-mail postage expenses. Such a service would take precedence over any other task, at any time.

We would be willing to undertake such a service, guaranteeing to get the data in the mail within six hours of its receipt, providing we could be assured of a sufficient number of people willing to pay a substantial fee for such a personalized Six Hour DX Service.

Write at once if interested-Ed.)

CUBAN CHAIN

A network, composed of CMQ, Havana, 840kC; CMBN, Havana, 880kC; CMBD, Havana, 1170kC; CMBC, 940kC, and COCO, Havana Short Wave Station, on 6010kC, are said to be broadcasting each night, between the hours of 6-8pm E.S.T. Calls are announced every 15 minutes, it is reported.

NEW I. D. A. MEMBERS

John A. Bink, Brooklyn, New York.
 J. E. Dahlen, Los Angeles, California.
 Harold Sulter, Chesapeake, Ohio.
 L. R. Underwood, Estacada, Oregon.
 H. R. Gordon, Regina, Sask, Canada.
 G. W. Ferguson, Moose Jaw, Sask, Canada
 T. E. Mullane, Halifax, Nova Scotia.
 Philip R. Nichols, E. Hartford, Conn.
 George Holder, Bloomington, Illinois
 Sr. Jose Rodriguez Rivas, Cojutepeque, EL SALVADOR, Central America.
 Arthur Hayler, San Diego, California
 T. A. Pridgeon, Halifax, Nova Scotia.
 Charles Whymark, Calgary, Alta, Can.
 R. O. Morrison, Estacada, Oregon.
 Martin F. Garvey, Brooklyn, New York.
 George Ebbecke, Philadelphia, Pa.
 Ch. Guilbert, Desauville, Calvados, FRANCE.

Mrs. E. Barlow, Regina, Sask, Canada.
 Harvey Clark, Regina, Sask, Canada.
 A. C. West, Regina, Sask, Canada.
 M. M. MacLean, Ottawa, Ontario, Canada.
 David C. Kennett, Coronado, Calif.
 H. R. Williams, Los Angeles, Calif.
 Andre Berlatier, Hollywood, Calif.
 Sr. Amado Cespedes Marin, San Jose, COSTA RICA, Central America.
 W. E. Frost, Jerusalem, PALESTINE.
 William D. Barrows, Providence, R. I.
 William Patton, Old Westbury, N. Y.
 William Greer, Regina, Sask, Canada.
 James H. French, Chicago, Illinois.
 Arthur B. Rogers, Regina, Sask, Canada

DIST. MEMBERSHIP CONTEST STANDINGS

Dist-1 (North West US-Canada)	49
Dist-2 (Pacific Coast)	38
Dist-6 (East Central States)	30
Dist-7 (North East US & Canada)	20
Dist-4 (W. Central States)	13
Dist-3 (Rocky Mt. Area)	7
Dist-5 (Dixie States)	8
Dist-97 (Australia)	5

We urge all members to buy or order the FEBRUARY RADEX, which is dedicated to the I. D. A.

BEST VERI'S REPORTED RECENTLY
 3TR, Sale, Vict., Aust. 500 watts.
 7LA, Launceston, Tasmania. 300 watts.
 Lloyd Westmoreland, Regina, Canada.
 4IP, Ipswich, Qsld, Aust. 50 watts.
 Warren Reichardt, Reading, Mass.
 CMBX, Havana, Cuba. 150 watts.
 CMCY, Havana, Cuba. 1000 watts.
 CMQ, Havana, Cuba. 500 watts.
 W.K. Walton, Sennen S.O., England.
 VUO, Rangoon, India, 750kC, 25 watts.
 David Thomas, Proctorville, Ohio.
 LSL, Buenos Aires, Argentina. 6kW.
 Robt. Ludwig, Toledo, Ohio.
 PRB9, Rio de Janeiro. 5000 watts.
 Ray Lewis, Toledo, Ohio.
 2GN, Goulburn, Aust. 100 watts.
 Herb Diedrich, Moline, Illinois.
 Marseilles PTT, France. 60kW.
 Hilding Gustafson, Rockford, Ill.
 Radio Cote D'Azur, France. 900 watts
 Walter Birch, East Lynn, Mass.

I. D. A. DEGREE CANDIDATES
TA DEGREE (Trans-Atlantic Degree)
 Philip Nichols, Hartford, Conn.
SA DEGREE (South American Degree)
 Howard Eck, Lansing, Michigan.
 John DeMyer, Lansing, Michigan.
 Ray Lewis, Toledo, Ohio.

LONG WAVE 4 STAR BEST BETS
 Droitwich, England, 200kC, 6-7pm EST
 Radio Paris, France, 182kC, 6-7:15pm
 Radio Luxembourg, 230kC, Sun 6-7pm

RABAT IDA PROGRAMS HUGE SUCCESS
 Many members report the IDA Programs from Rabat, Morocco, Africa on Dec. 18th and Jan. 8th. Signals were quite strong with some reporting interference from KFSD. Although the music was mostly native, a lady announcer announced in English and French.

Other IDA Specials reported fair to good, were those from Hamburg, Turin, Lille, Marseilles and Strasbourg. Exceedingly poor conditions made the other specials inaudible.

"SPECIAL I. D. A. GLOBES" made by the World's Best Known Globe Manufacturer. Globes 12" in diameter, Circumference of 37". Overall height 17". Over 5000 place names shown, with principal Short Wave Stations in red. Recent Geographical changes and new spellings shown. Colors are bright and permanent. Hour Time Dial shows time anywhere at a glance. Free Hand Book of data included. Send Money Order, Check, or Cash (in registered letter) to address below, and be sure to INCLUDE POSTAGE. Shipping weight is seven pounds.

This Big
**WORLD
 GLOBE**
 for only

***2.95**
 F. O. B. Indianapolis,
 Indiana



INTERNATIONAL DX 'ERS ALLIANCE

BLOOMINGTON, ILLINOIS. U. S. A.

WITH OUR MEMBERS

(Correspondence Corner)

Albert G. Cutts, B.Sc., 75 Broomhall St., Sheffield 3, England, has French, Belgian, Dutch, Italian and Swiss stamps from 1852 onwards, to swap for Pictorials, etc, of any country. What offer for German Customs 400 marks dated Nov. 20, 1885?

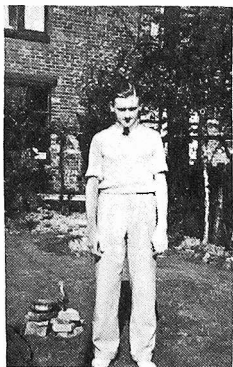
Wm. Rank, Box 41, Route 1, Frostburg, Maryland, wishes to contact an IDA member wanting to sell a Short Wave Set at a not too large cost.



DX DEN OF
MIKE MICKELSON,
MINNEAPOLIS

It is our sad duty to state that Murray Black, of Canon City, Colorado, has reported the recent and untimely demise of IDA State Mgr, Mr. Henri Mershon of Pueblo, Colorado. This is a great blow to us, and we wish to extend our heartfelt sympathy to the family of Mr. Mershon at this time.

Eugene Darlington, W2XAF, has kindly sent us a fine collection of foreign International Reply Coupons to be used for an award in some IDA Contest... In recognition of his contribution to Radio Transmission we are pleased to award an Honorary Life Membership in the IDA to Sr. Amando Cespedes Marin, of Heredia, Costa Rica... The future of the 2nd Dist. Circlette, rests with the members, if you want it continued, contact Wm. Ellis, 1750 S. Longwood, Los Angeles, Calif... I suggest a "Calls Heard" Column for each Continent as soon as we get a larger GC (Moss-England)... IITG good on IDA Special. Reports out to LRL, LRL4, LS2, ILBA, 4YA, Torun HJLABA, Copenhagen, Paris PTT, Moravska Ostrava, Brussels 2, Lyons la Doua, HIX, etc. (Walker-N.J.)... Marseilles verified on IDA Special. Fecamp, P.P., Bordeaux, Munich and Cologne being heard. Recent veri's, 3GI, 2GZ, 4BH 2KO and 2UE (Gustafson-Ill)... LRL verified in six weeks, and returned my IRC (Stansfield-England)... Best BCB veri's received this season are 3GI, 3YA, HJ3ABH, and reports out to PRF4, 2P9 and PRB9 (Base-Md)... Have just purchased a 1936 S.M. "Skymaster", and find it remarkably good on the S.W.'s. McMurdo Silver R9 plus Antenna not satisfactory here (Black Colo)... I have reports out to KSL, KNX and KPO, received between 10:30pm and 12:30am JST. Veri's received from 7NT, and Lille PTT. Best heard Europeans are: Kiev, Breslau, Bratislava, Bari, Konigsberg, Madona, Kosice, and Nice (Saito-Japan)... Had a great time at the International Radio Party in Havana, Cuba. Divided my time between Broadcast Stations, Blonds and Banquets (Wallace-Fla)... BCB comes thru strong here, but we have in cessant static. We have constant reception of more powerful S.W. Xmtrs. (Frost-Palestine)... Best TA reception yet on Dec. 23, 24, 25 and 26th. On 24th, logged 49 TA's between 12-3am EST. On 25th, nine new Swedish Xmtrs heard, with seven of only 200 watts. Have now heard 118 TA's, and hope for 100 veri's. (E. Roberts-Mass)... Congratulations to Alonzo Williams, R.I. State Mgr., for his excellent IDA Column running in the "Providence News Tribune" (IDA)... FOR SALE: Scott 12 DeLuxe, with Pwr. Pack, Speaker & Baldwin Phones, in A-I condition, for best offer over \$50.00 cash (Warren Reichardt, 5 Grant St., Reading, Massachusetts).



Colin Wright,
Manchester, England.



BATAVIA, JAVA, D.E.I.
Residence of Member J.J. Kolibonso.



JOE STOKES.
KDKA DX CLUB.

BROADCAST BAND WORLD DX CHART

FREQ	CALL	PST	GST	EST	GMT	JAPAN	FREQ	CALL	PST	GST	EST	GMT	JAPAN
74	Stuttgart			1-2			1017	PRB9		D-21	D-22	1-3	
90	JOAK	1-4:30					1020	2KY	2-4	4-6	5-7		
01	Rabat			---			1030	CMCY	D-19	D-21	D-22	1-3	
33	Prague I			2		4-6	1031	Konigsberg			2-3		4-6
40	KFI				3-5	15-17	1040	WTIC				1-5	
40	5CK	2-5	4-5	5-6			1040	Rennes		1-2	2-3:30		
48	Lyons La Doua			2-2:30			1050	KNX				3-6	24-1
50	LYA	1-5	4-5	5-6			1050	CX26		D-20	D-21	1-2	
58	Cologne			1-2			1059	Bari			2-3		4-6
60	XGOA	4-5	5-7	6-7			1070	LRL	D-19	D-21	D-22	1-3	
70	LS4	D-18	D-20	D-21			1077	Bordeaux		1-2	2-3:30		
70	2CO	2-5	4-5	4-6			1080	WBT				1-5	
80	KPO				3-6	24-1	1085	JOBK	1-4:30				
81	HJN			---			1100	WPG			1-5:30		
95	Paris PTT			2-3			1104	Madona			1-2		4-6
10	WOR				1-5		1110	2UW	2-4	4-6	5-7		
10	7NT	1-4	4-6	5-7			1113	Fecamp		1-2	2-4		
10	JOJK	1-4:30					1113	Moravska Ostrava					
13	ILRO			2-3			1120	LBC	2-4	4-5	5-6		
20	3YA	1-3	4-5	5-6			1130	KSL				2-6	22-23
30	5CL	1-4	4-6	5-7			1140	Turin			2-2:30		
40	Munich		24-2	1-2:30			1140	KVOO				1-2	
40	2BL	1-4	4-6	5-7			1158	Kosice					4-6
49	Marseilles			---			1170	LTO	2-4	4-6	5-7		
50	JOBK	1-4:30					1170	WCAU				1-6	
50	KGU	22-1					1175	JOCK	1-4:30				
60	WJZ				1-6		1176	Copenhagen			1-3		
70	JOHK	24-4:30					1180	KEX					15-17
76	Toulouse-Muret			---			1185	Nice-Corse			17-18		4-6
85	Leipzig			1-2:30			1190	2CH	2-4	4-6	5-7		
90	KGO				3-5		1190	LS2		D-20	D-21	1-2	
90	LYA	1-3	4-5	5-6			1195	Frankfurt		24-2	24-3		
90	JOJK	24-4:30					1213	Lille			2-3		
95	Lwow			1-3			1217	TGW		---	---		
00	4QG	1-4	4-6	5-7			1222	Trieste			2-3		
00	HIX			17-18			1230	WNAC					1-6
04	West Regional			D-19			1230	2NC	2-4	4-6	5-7		
10	JOCK	1-4:30am					1231	Gliwicz			2-3		
14	Milan		2-2:30				1240	CJOB					1-4
30	3GI	2-4	4-6	5-7			1240	WKAQ					24-
30	LR5		D-20	D-22	1-2		1249	Juan les Pins			---		
30	KOA				2-5		1267	Nurnberg			1-2		
30	JOJK	23-4:30					1280	PRG3		D-20	D-21	1-2	
41	Berlin			---			1290	WNEL					1-4
50	CX16		D-20	D-21			1300	WIOD					1-5
50	JOFK	1-4:30					1320	KGMB	22-24	---	1-2 $\frac{1}{2}$		
59	Strasbourg			2-2:30			1360	WFBL					1-6
60	WABC				1-6		1393	Radio Lyons			16-17		
70	JOAK	24-4:30					1410	WAAB					1-4
70	LR6		D-20	D-21	24-2		1470	KGA					15-17
77	London Regional		D-7										
04	Hamburg			1-2		4-6							
23	PRFl		D-21	D-22	1-3								
32	Brussels II			1-3									
41	Algiers			2-3									
50	Breslau			2-3		4-6							
50	LR3			D-22	1-3								
59	P. P.		1-2	2-3:30									
60	YVIRC		D-6	D-7	1-3								
70	KJR				3-5	16-17							
86	Torun			1-2									
86	Genoa			2-3									
90	LR4		D-21	D-22	1-3								
90	2GZ	2-4	4-6	5-7									
1010	CX24		D-21	D-22	1-3								

NOTE: This table shows at a glance what foreign BCB Stations are being best received at present in your time Zone. Numbers indicate best approximate tuning period, and are not to be taken as exact station Schedules. The 24-Hour clock is used. Thus 1pm becomes 13-2pm, be comes 14, and so on. D- stands for Dusk, or Sunset your local time. Tuning hours are given in that time indicated at the top of the Column. We will appreciate any comments on this new idea- Ed.

THE WORLD LISTENS IN

AKIFUSA
SAITO
IDA
REP.
IN
JAPAN

Akifusa is the chief Engineer at transmitting Station JOGK in Jumamoto, Japan.

EUROPE HEARD WELL IN MASSACHUSETTS
-Warren Reichardt-

The only way to hear the European stations is to get up about 12:30-lam EST. The only nights I don't get up are when the stations are coming through poor in the afternoons. TA reception seems to be the best here the first quarter, and the last quarter of the moon. All stations below 1100kc seem to come in better on an antenna less than 100 ft. long. The Radio News Antenna Trap-tuner is a big help in cutting out interference. Up to date, I have 125 foreign BCB veri's (not including N.A., or C.A.) and have 52 reports out. South Americans are poor here, and not a Jap heard this season. Aussie reception only fair. 4IP, 50 watts, in Ipswich, Australia heard Oct. 11, and 14th, best TP veri this season. As European best bets Mr. Reichardt includes Stuttgart, 574, best bet 1-2am... Brussels I, 620, Regular 1:15-2:15am, but QRM from KFRC... Lyons la Doua, 648, best bet 4:30-5:30pm, or 2-2:30am... Cologne, 658, best bet 1-2am... Munich, 740, 1-2:30am, best bet of Germans.. Strasbourg, 859, 2-2:30am, good but some QRM from Mexican... Toulouse, 913, good before 5pm only... Brussels II, 932, 1-3am, very good.. Poste Parisien, 959, 3:30-6pm, or 2:15-3:30 am, excellent... Algiers, 941, good from 2:10-2:30am... Torun, 986, testing 1-1:45am best Polish station.. Rennés, 1040, 1:30-3:30am, one of the best French stations... Bordeaux, 1077, 3:30-5pm, 1:45-3:30am, very good... Moravska Ostrava 12:30-1:30 am, best bet of Czechs... Normandie, 1113, 1:45-4pm, very good... Copenhagen, 1176, 5-7pm, 1-1:40am, 2-2:45am, best until 2am... Nice PTT, 1185, 4:30-6pm, good bet... Frankfurt, 1195 5-8pm, 12-3am, very good bet... Klagenfurt, 1-2am, 4:30-5pm, very good volume... Radio Lyons 4-5pm, good.

SAN FRANCISCO CROSSES PACIFIC
-George C. Sholin-

BCB stations heard here are 1YA, 3YA, KGU, KGMB, 4QG, LRL, JOAK1-2, JOBK, JOCK-1, JOFK-GK-HK-1K-PK-XK. A veri' from CMQ, 500 watts, says they have changed to 880kc. The power is to be increased to 5kW soon. Their sked is 7am-1am EST. My two-tube set has gone into retirement. On it I have heard over fifty countries with nearly all verified on the SW'S. The new receiver is a Philco 116B.

Some common Japanese words are: To broadcast (honson suru). The broadcasting station (honson Kyoku The broadcasting Corp (honson Kyon kai). The Central b.c.St. (Chunou honson Kyoku). Good Morning (Ohayou Gozai Masu). Good Day (Kon Nichi Wa) Good Evening (Kon ban wa). Good Night (Oyasumi Nasai wase). Good Bye (Sayonara).

I have reported to KNX and KPO this month. KNX heard 11:30-12:30 am J.S.T. KPO heard 12-12:30am. I am unable to hear KSL at present.

European reception is very bad. The following veri's were received this month: 7NT, Lille PTT, Prague, KSL, KZRM, Nice PTT and Breslau.

7NT sent a letter from the chief Engineer with the veri', from which I got important technical data.

SANTIAGO DE CHILE REPORTS

-Prof. Luis Hernandez-

American stations with no interesting programs have been heard in regular conditions this year. Europe has been heard on several waves, and has wonderful and artistic programs better than your powerful W2XAF.

My antenna is very short, under a corrugated iron roof, 5 meters long and it catches noises.

A good Scott All-Wave costs here perhaps more than \$10,000 Chilean pesos.

On account of the conference of South American Broadcasters in Buenos Aires, all Chilean stations have changed Call letters, and wave length. The best station in Chile is CB-76, on 765kc, with 10kW.

-In Buenos Aires there is the new 50kW LRL, Radio El Mundo. From Brazil, I hear Sao Paulo, Radio Farouilla, on 600kc, with 25,000 watts.

OFFICIAL SOVIET BCB STATIONS

NOTE: List courtesy of Soviet All-Union Radio Committee, and Ernest G Gaunt, IDA British FAD Director.

KC	CALL	LOCATION	KW
174	RW1	Moscow Komitern	500
187	RW14	Irkoutsk	20
208	RW10	Minsk-Kolodistchi	35
217	RW76	Novosibirsk	100
227	*	Jakoutsk	10
232	RW4	Kharkov	10
238	RW8	Bakou	10
245	RW53	Leningrad-Kolpino	100
256	RW11	Raschkent	25
271	RCZ	Moscow	100
283	RW7		35
310	RW60	Alma-Ata	10
333	RW66	Krasnoiarisk	1
340	RW3	Saratov	20
340	*RW85	Igarka	2
350	RW63	Verkhneoudinsk	10
355	RW12	Rostov s/Don	20
364	RW24	Smolensk	2
375	RW5	Sverdlovsk	40
380	RW21	Erivan	10
390	RW27	Makhatch-Kala	3
401	RW49	Moscow-Stchelkovo	100
413	RW25	Voronej	10
421	RW47	Stalinabad	2
436	RW37	Oufa	10
450	RW83	Qlrot-Toura	1
461	RW45	Orenbourg	1
472	RW44	Omsk	1
522	RW34	Stalingrad	10
556	RW52	Tehita	20
565	RW42	Gorkii	10
577	*	Tcheliabinsk	10
586	RW36	Arkhangelsk	10
598	RW35	Astrakhan	10
608	*	Frunze	2½
610	*RW79	Mourmansk	10
610	*RW18	Piatigorsk	1
617	*	Oust-Abakensk	2½
625	RW31	Ivanovo	10
635	RW28	Vladivostok	.8
640	RW56	Penza	1
648	RW29	Petrozavodsk	10
662	RW38	Alexandrovsk-Sakhaline	2
676	RW23	Groznyi	1
686	RW17	Kazan	1
686	RW46	Karaganda	1
704	*	Elista	2½
713	RW16	Samara	10
722	RW9	Kiev (100kW?)	35
734	RW65	Saransk	1
749	RW64	Ordjonikidze	10
767	RW78	Ljovsk	3
776	RW26	Stalino	10
794	RW51	Naltchik	1
832	RW39	Moskva-Noginsk imenie Stalina	100
859	RW73	Simferopol	10
888	RW61	Jochkar-Ola	1
913	RW30	Dnepropetrovsk	10
937	RW55	Engels	1
959	RW40	Gomel	1
968	RW13	Odessa	10
968	RW67	Oukhta	2

1013	RW36	Tchernigov	5
1040	RW70	Leningrad	10
1050	RW33	Krasnodar	1
1068	RW57	Tiraspol	4
1095	RW75	Vinnitza	10
1185	RW20	Kharkov	10

NOTE * means in construction.

Every member of the I.D.A. joins in the feeling of universal grief at the passing of that beloved Monarch, 'His Gracious Majesty, King George V', of Great Britain. King George was not only a great ruler of a great empire but a good and noble man, and we all mourn for his loss to the world. With sincere sympathy—Pres

REVISED CUBAN FREQUENCIES

Note: This list appeared in that excellent little NNRC bulletin of January 20th, 1936.

CALL KC	WATTS	CALL KC	WATTS
CMW -600	1000	CMCO-1200	250
CMBY-640	150	CMHI-1210	150
CMCQ-680	250	CMJE 1220	50
CMK -730	250	CMCB-1230	250
CMCX-750	150	CMHB 1240	250
CMHX 760	500	CMHD-1250	250
CMBS-770	150	CMCG-1255	250
CMJK 780	250	CMKC 1270	150
CMGH 790	1	CMCU-1280	150
CMHW 810	100	CMOX-1320	250
CMCF-815	250	CMHK 1330	250
CMBN-850	150	CMJL 1340	100
CMQ -880	500	CMCA-1350	250
CMX -920	650	CMJH 1360	100
CMCD-950	250	CMGE 1370	50
CMBC-970	500	CMBX-1380	500
CMBZ-1000	250	CMJO 1390	50
CMJA 1010	300	CMKR 1400	100
CMCY-1030	1000	CMGC 1400	100
CMKD 1050	250	CMGR-1410	150
CMHA 1070	50	CMJP 1430	100
CMCJ-1100	350	CMOA-1440	150
CMGF 1120	100	CMKF 1460	50
CMKM 1120	200	CMOK-1470	150
CMJI 1130	50	CMCN-1500	150
CMBG-1140	200	CMCX-1500	150
CMJF 1150	200	CMFM-1712	
CMHJ 1160	100		
CMBD-1170	150		
CMJO 1180	50		

NOTE- In Havana.

Cappie Hadley notifies us that WLAC, Nashville, Tenn., 1470kc, 5000w, will put on the first DX Program ever staged from that station on February 22nd, from 4-5am E. S. T. The program will be dedicated to the NNRC.

A worthy campaign to eliminate 24-hour blocking of certain channels has been instigated by A. Foerster, of Indianapolis, Indiana. The IDA has appointed Mr. Edward Goss, of Brooklyn, as our committeeman.

Short-Wave News

S.W. reports must be in by the 17th of each month. Write on one side of page only. Double space lines. Divide items by Continents, and always state time used. Important items are New stations; Frequency or Schedule changes; commercial schedule tips; addresses, identifying signals, and unusual receptions. Number of Stars denote relative importance of items with a four star as highest rating.



Harry Lange, IDA Rep. in Moscow Labor Palace, housing RNE to right

E. S. T. NORTH AMERICA-CENTRAL AMERICA Megacycles

Alaska. K7VF, Wrangell, 300w, HF end US 75m band heard Sun. 5:30am ** WXE, Anchorage, 5.995, KBAI, Ketchikan, 2.3, KMYA, Juneau, 2.3, and KILY, Excursion Inlet, 2.99mc, all being heard in evenings (*Underwood-Oregon).

Canada. VE9CA, Calgary, 6.03, is operating daily from 9am-12m (Smith) CFU, Rossland, B.C., 5.705, play records, and read News bulletin for Yukon and far North at 8:30pm daily (*Morrison).

C.R. TI8WS, "Ecos del Pacifico", Puntarenas, 120w, reported broadcasting evenings between 7.52 and 7.55.

Cuba. CMA3, Cuban Trans-Atlantic Tel. Corp, Havana, 15.505. Testing irregularly with WCG around 7pm (Sweetland-Roberts-Messer) * New-CMB2, Havana, 5.78, tests with Riverhead in evenings (Roberts-Messer-Miller).. CO9GC, P. O. Box 137, Santiago, on 6.15, announce "Santiago de Cuba" every 15 minutes. Have strong harmonic on 12.3 (Ansell-Messer).. CO9JQ, Camaguey, back on 8.665 with improved signals and modulation (Roberts-Shanks).

D.R. Name Santo Domingo City, changed to "Trujillo City" (*Messer-Dilg).. HIH, San Pedro, 6.81, on air early mornings (Roberts)* HIX, Trujillo City, 5.98, new sked-4:40-5:40pm ex. Sun. Tues/Fri 8:10-10:10pm. Sun 7:40-10:40am (Smith-Picere) * HI1J, Calle Anacoano Moscoso 3, P. O. Box 204, San Pedro de Macoris, 7.29-now broadcasting 12:10-2:40, 6:10-8:10pm (W.R.) * H11S, "La Voz de la Hispaniola", Puerto Plata, 6.42, 45 watts- on N'n-2pm, 6-8pm daily. English talks Tues/Fri at 7pm (Slough-Shanks-L. Miller-Thomas) ** New-HI3C, La Romana, 6.9-on N'n-2pm, 5-9pm (Roberts).. HI1D "La Voz de Quisqueya", Trujillo City, 6.55, or 6.56? (Shanks-Ansell).. HI1V "La Voz de Marina", Trujillo City, reported on new freq. of 6.49, broadcasting till 7:40pm (Shanks) ** New-HI5N, Trujillo City, 6.15, 100 watts, on 6-7am, N'n-2pm, 7-9:30pm (Roberts) ** New-HI9B, Trujillo City, 6.05, heard at 8:35pm, announcing in English and Spanish (Roberts).

Guatemala. TGS, 'Casa Presidencial', Guatemala City, 5.74, (Official Freq. 5.713) 200w, on Wed/Thur/Sun 6-9. VFB QSL card (Picere).

Greenland. NX2Z, Hophstetter Rundingen (Foreland), 14.01, 1450 watts, first phone in Greenland. Power supplied by tractor. 76° North. Puts through FB signal 2-4pm usually (***) DeMyer-Morrison-Messer-Ballard & Haiti. HH2R, Port-au-Prince, Box 103, heard testing on 9.545 at 12pm (CDXR) * HH2S, Port-au-Prince, 5.91-relays HH2T from 6:30-9pm irreg. HH2S has chimes before announcements in English and French (Shanks-Roberts-CSWRC) ** HH3W, Port-au-Prince, New Station on approx. 9.615. Chimes before English, French and Spanish announcements. On daily 2-3pm, and 7 to 8:20pm. Station is just higher in frequency than HP5J (Dilg-Morrison)

Hawaii. Amateur K6LJN, Honolulu, 14.15, putting thru FB signal around 9-10pm, and Sunday Noon to around 10pm (Goodeve-Moore-Roberts).

Hon-duras. HRN, Tegucigalpa, 5.975, sked is 6-7:30, 8-9:30pm, and also 3-5pm on Sunday. On Feb. 15th, will move to 5.91, or 5.86 (Dilg-L.M.) * HRW, Tegucigalpa, 11.04, (11.1-Radio Fellowship), tests around 6:15-6:45 pm with HRV, Tela, 6.35. Owned by Tropical Fruit Importers (R.F.-CSWRC)

Mexico. Amateur prefix changed from X to XE- (Sholin).. XBJQ, Mexico DF 11, uses metronome, and works Hems irreg (Sholin-L. Miller-Smith) * XECR, Mexico DF, new sked is 6-8:15pm Sundays (Calgary Chapt-Sweetland-Slough) ** New-XEME, Merida, Yuc, approx 8.1, relays XEFC, on 10:30am-11:10pm. Use chimes and siren before announcements (Dilg-Shanks-Roberts) * XEUW, "El Eco de Sotavento Desde Veracruz", Av. Independencia 98, Veracruz, is operating on 6.055 at present (Sholin-Shanks-Roberts) * XEVI, 5.97, address is "Estacion Radio Difusora XEVI Cultural, P. O. Box 2874, Mexico DF. (Shanks).. XEXA, Secretary of Public Education, Mexico DF, 6.185, sign off

about 11:15pm (Smith-WR) * XFAZ, Veracruz, phone 6.53, heard calling XDC 7-8pm (Roberts).

Nicar- YNE, Puerto Cabezas, 12.68, address P.O.Box 830, New Orleans, La. heard testing at 8:20am, and 5:15-5:30pm (Messer-Thomss-E.R.)
Panama HP5E, Colon, 6.08, sked 7:45-10pm, Sunday 4-6pm (Butcher) .. Much disputed frequency of HP5J, Panama seems to be 9.065 (Morrison).
U.S.A. WEP, Rocky Point, N.Y., 10.62, will soon have 200kW Xmtr. .. W2XBJ, RCA, Rocky Point, N.Y., 9.46, heard testing with South America at 6-6:30pm (Moore) .. W3XL, Boundbrook, N.Y., 6.425, testing irregularly at 2-3am (Calgary Chapt) .. W8XK, Pittsburg, and W1XK, Springfield, Mass. have discontinued acknowledging S.W. letters or reports (A selfish move we say-IDA) * W6KG, Los Angeles, California, relaying KGFJ on 35.6 daily (McGlashan) * W2XE, Wayne, N.J. heard with FB signal on 21.52, 10-11am sked (IDA).

SOUTH AMERICA

Argen- New-LRU, Buenos Aires, 15.29, S.W. relay of LRI "Radio El Mundo" first heard testing at 11pm (Bills-Goodeve) Early evening test heard Jan. 16th, 7-8pm. Tremendous signal. Perfect tone quality. Was testing for U.S. Bureau of Standards (** Morrison-Koschmidder).

Brazil. PSH, Rio de Janeiro, 10.2, works CEC and N.Y. 6-7pm (Smith).
British VP3BG, J.L.Kerr, 1, Wellington St, Georgetown, 7.22, heard near 6pm
Guiana (CSWRC) * VP3MR, Georgetown, 7.08, 50 w, will shortly have 300w, and operate on the 25 and 49 meter bands (CSWRC).

Chile National prefix now CB- .. New-CB960, Santiago, 9.605, on daily 10-12pm. First heard Jan. 5th. (** Chavez-Smith-Hernandez) Address of CB960 is Casilla 1342 (Chavez) ** New-CB615, Santiago, on 6.155 (Hernandez -Chile) * CEC, Santiago, 10.67, 4kW, may soon shift to 9.545 (NRC).

Colom- HJN, Bogota, now on 5.97 (Bigbee) * HJP, Bogota, 7.46, heard at 12 pm, Jan. 9th (Slough) * HJQ, Bogota, 7.4, heard working Quito 11:20 pm, Jan. 9th (Gordon) ** New-HJU, Buenaventura, "La Voz de Pacifico", owned by National Railways of Colombia. Studios in National Railway Station. Heard first Jan. 9th. (Freq. is 9.065mc.) Assigned freq. is 9.05mc. On 8-11 pm irregularly and heard testing with W2XAF. Signal R9 plus. (Purkey-Butcher-Slough-Sholin-Shanks-Bills-Messer-Smith-Morrison-X. DX-Calgary Chapt-Underwood-F. Andrews) * HJLABB, Baranquilla, have new kW Xmtr. .. Being heard around 7am (Darlington-Dilg-Messer-Smith) * HJLABC, "La Voz del Choco", Intendencia de Choco, Director of Public Education, Quibdo Choco, 5.966, 100 watts, on 5-6pm, Sunday 3-5pm (Roberts-CSWRC) * HJLABJ, Barranquilla, 6.042, on 6-10:30pm (Burdett) * HJLABH, Cienaga, 6.3 heard 7-8pm (Ansell) HJLABH now on 7mc experimental only (Burdett) * HJLABG, Santa Marta, 6.005, heard Sundays 7am (Sholin) * There are apparently 2 HJLABB's now. HJLABB, in Manizales on 6.135mc, and a new HJLABB on 6.11 announcing as "Radio Monte Carlo", location uncertain (Roberts-Shanks) .. HJLABG, Medellin, 7.1, heard working COARR at 11:50pm (J. Miller) * HJ5ABC, "La Voz de Colombia", Calle 12, No 235, Cali, Valle, on 7-10pm, and also in mornings at 6am (Burdett-Brauner).

Ecuador. HC2AT, 8.4, has been sold, but a new station is to be built by the American Trading Co. of Guayaquil (CSWRC) * HC2CW, Guayaquil, now on 8.43mc. Three gong Signal (NNRC-Slough) * HC2JSB, Guayaquil, being heard again on 7.83mc, from about 10-11:30pm (Messer-Roberts-X-DX) .. lard

Peru. OCI, Lima, 18.67, heard calling PPU, Rio, 19.27, at 7:03am (Bal-Venez-
The following new stations are believed to be operating: YV7-uela. RMO, Maracaibo, 5.81, 4:35-9:35pm; YV11RMO, Maracaibo, 6.128, 6:50 to 9:50pm; YV1RV, Valencia, 6.33, 5:30-9:30pm; YV9RC, El Valle, reported, testing on 6.4 (** CSWRC) .. YV12RM, Maracay, 6.3, often works W2HYP, N.Y., and other Hams after regular evening broadcast period (Ansell-Ficere).

EUROPE

Denmark. A powerful new Danish Govt. S.W. Station is planned (Manning).
England. Third Xmtr GSB 6-8:45am, GSL 4-5:45pm, and GSB 6-8pm now being used in addition to regular Xmtrs. (*X. DX-Dilg-Gordon) * New BBC Xmtrs have been on order two months, and building is already partly constructed (Stansfield) * Three new BBC frequencies which may be testing soon are GSN 11.82, GSO 15.18, and GSP 15.13 (DeHaven).

France. Work is up to schedule, and the new Paris Short Wave stations are supposed to be testing very shortly (*Stansfield) .. TYB, Paris, 12.25 heard announcing as "Radio Coloniale", at 6:50am (Messer) .. Pontoise's 11.88mc freq. has been heard lately from 6:15-9pm (X. DX) .. Paris, 9.59mc, heard testing with OCI, Lima, Peru, 10.97, Jan. 4, 11:30am-N'n (Slough) ** FTK, St. Assise, France, 15.88, is telephoning PZR3, Saigon, F. Indo China,

16.214, daily at 6:45-7:20am (Bullard-J. Miller-DeMyer).

Germany. NEW GERMAN XMTRS, and their approximate schedules are: DJI (DZA) 9.675mc, 5-7pm; DJJ (DZB) 10.045, 2-4pm; DJK, 12.035, Sun 8:30pm; DJL, 15.11, 4-6am; DJM, 6.079, 3-5; DJO, 11.795, 5-7am; DJP, 11.855, 2-4am; DJR, 15.34, 5-7am; DJS, 12.13, 7-9pm; DJT, 15.36, 11pm-1am; DZH, 14.46, N'n -2pm (** Dilg-Calgary Chapt-Slough-Sholin-X. DX-Ficere-CSWRC) * DIQ on 10.29mc, has been relaying DJC irregularly early evenings (Bills-Cox) --DGK, Nauen, 6.68, heard calling Panama Jan. 16, 5:42pm (Roberts) * DFB, Nauen, 17.52, calls Rio de Janeiro about 8:30am. DFB calls YVR, Maracay, 18.296, at about 9:20am (Morrison-Roberts) * Listen for Serman Short Wave Amateur Hour on DJC, Tuesdays at 6pm (RRG).

Iceland. TFJ, Reykjavik, 12.235, have only been on irregularly Sundays 1:40-2pm recently (Dilg-Slough-X. DX) * GBC, Rugby, 12.78, heard contacting TFK, Reykjavik, 9.05, at 5-5:30am (Slough).

Italy. IAC, Coltano, 6.65, heard testing at 4am (J. Miller) ..IAC, Coltano, 8.515, heard calling Tripoli at 3:15am, 4am, and 12:15pm (Slough-J. Miller) * 2RO, 6.085, testing frequently between 5:15-5:45pm (Dilg-X. DX) ..2RO, 11.81, "Eastern Hour", Tues/Thur/Sat, 9-10:30am is in English (XDX)

Norway. LKJL, Jeloy, Norway, expects to have a new 25kW Xmtr in the near future (RMA)..Frequency of LKJL reported as 9.51 (Dilg) and 9.57 (W.R.) What is the correct frequency for LKJL ?? (IDA) LKJL heard well 5-8am.

Poland. SPW, Warsaw, 13.635, testing irregularly Wed/Thur, 11:30am-12:30pm (J. Miller-Ballard-X. DX) * SPW, 20kW, is now constructing beam antennas for regular program service to the North America (CSWRC).

Sweden. Swedish Mystery stations heard on 11.93, at 8:45am, and on 11.67mc, 5:20-6pm (CSWRC)..Swedish Ham, SM5WK, 14.25, heard (CDXR).

USSR. Powerful new S. W. Station being constructed in Igerka in the far North. It will contact Moscow, Yakuti, and the Taimyr Peninsula (H. Lange) * RAU, Tashkent, 15.104, telephones RKK, Moscow, 12.27, often after Midnight (Ansell) * RIO, Baku, 10.16, phones RIR, 10.08, or RNE after Midnight (Ansell-Roberts-Slough) * RIR, Tiflis, 10.08, often telephones RNE between 8-9:30am (Slough-Morrison) * RKI, Moscow, 15.04, phones RNE almost daily 8-9am (Dilg). RKI phones RIM, Tashkent, 15.25, irregularly, between 8:15-9am (Roberts).

ASIA-AUSTRALASIA

Afghanistan. The construction of a 3rd S.W. station is contemplated. Austra- VLK, Sydney, 10.53, phones regularly at 2am (Calgary Chapt) VLK, 11a. heard at 4:20am (Messer) * VK3LR, 9.58, broadcasts news daily at 4:15am. VK3LR heard after 10am irregularly with Cricket games (Calgary Chapt-Smith) * VK3ZX, 33 Saturn St., Caulfield, S.E. 8; 7.3mc, broadcasting Sun 1:30-3am, and Wed 2-3am (Hall).

Borneo. YDV2, Bandjermasin, 3.33mc, 20 watts, owned by Eureka Agenturen, is on Saturday 11:09am (**This station verified by G. Burdett-Rhodesia)

China. ZBW, Hong Kong, still operating on 8.75mc, until 10am (G. Sholin) ..CQN, Macao, believed to have been heard on 6.02mc, again, Monday and Friday, 3-4am (E. Purkey).

F. Indo- FZR3, Saigon, 16.214, is phoning FTK, Paris, 15.88, between 6:45-7:20am. Calls "Allo, allo, ici Saigon, allo Parea" (**J. Miller).

India. VWY, 17.48, Kirkee, phones GAU, Rugby, 18.62, at 8am (* J. Miller).

Japan. New Jap on about 5.1-carries network relays irreg. 4-7am (Walker) * JVN, 10.66, apparently has taken the place of JVT, 6.75, on the 1:50-7:40am JBC relay (Walcott-Smith) * JIB, Taiwan, 10.535, sometimes carries the morning JBC relay (Smith) * JVF, 15.62, telephones KWU, Dixon 15.355, daily at 3:45-4pm (Moore) * JVM, 10.74, phones KEE, Bolinas, 7.715 at 1:10am (Moore-Morrison) * JVP, 7.51, phones KWX, Dixon, 7.61, at 12:45-1am irregularly * JVQ, 10.375, phones JZE (TDE) 10.065, at 3:30am * JVV, 5.73, phones JIC, Taiwan, 5.89 at 7:30am (Slough) * JVU, 5.79, phones JZC (TDD) 5.83, often, between 6-7am (J. Miller) * New Manchukuo lists gives JZE, 10.065 as TDE, and JZC, 5.83, as TDD.

Java. YDA, Batavia, is testing irregularly on 6.04mc, 5:30-10am instead of 3.04 (Walker-Hardeman) * YDB, Sourabaya, relays YDA on 9.64, at present from 5:30-10am, Sat. to 11:30am (Smith-Dilg-Slough-J. Miller-Hardeman) * PLP, Bandoeng, 11mc, relays YDA Sundays 5:30-10am beamed on Celebes, Hawaii, and California (Hardeman-J. Miller-Ballard-Slough-Goodeve) * PMN, Bandoeng, 10.26, relays YDA, daily 5:30-10am, beamed on Sumatra, Holland, etc. (Hardeman) ** PMY, Bandoeng Radio Club, 5.17, on 4:30-10:30am, and 5:30-7:30pm. Best 6-7am in US (J. Miller-Ballard-Hardeman).

SHORT-WAVE BROADCASTING STATIONS

DIAL	METERS	MEGS.	CALL	STATION	TIME	E.S.T.
8.42	35.60	W6XKG	Los Angeles, Calif.	Relays KGFJ continuously.		
8.42	35.60	W2XDV	New York City, N.Y.	Relays WABC 5-10pm. Ultra		
9.48	31.60	W9XPD	St. Louis, Missouri.	Relays KSD irregularly.		
13.45	22.90	GBU	Rugby, England.	Works N.Y.		
13.92	21.54	W8YK	Pittsburg, Penna.	7-9am.		
13.93	21.53	GSJ	Daventry, England.	6-8:45am irregularly.		13
13.94	21.52	W2XE	Wayne, New Jersey.	10-11am.		
14.00	21.41	WKK	Lawrenceville, N.J.	Works PSA Noon.		
14.23	21.07	PSA	Rio de Janeiro, Brz.	Works WKK Noon.		
14.97	20.04	OPL	Leopoldville, Congo.	4:30-6:30am, Sun 9:45am-		
15.02	19.98	KAX	Manila, Phillipines.	Works Bolinas nights irr.		
15.51	19.35	PMA	Bandoeng, Java.	7-8am, and irr.		
15.57	19.27	PPU	Rio de Janeiro, Brz.	Works Paris.		
15.87	18.89	ZSS	Capetown, S. Africa.	Works London 7-9am irreg.		
15.93	18.82	PLE	Bandoeng, Java.	Works JVE 7:30pm & irreg.		
16.06	18.67	OCI	Lima, Peru.	Calls PPU 7am irreg.		
16.10	18.62	GAU	Rugby, England.	Works VWY at 8am.		
16.23	18.48	HBH	Geneva, Switzerland.	Experimental.		
16.25	18.44	HJY	Bogota, Colombia.	Works CEC, LSR, OCI days.		
16.34	18.34	WLA	Lawrenceville, N.J.	Works GAS mornings.		
16.38	18.31	FZS3	Saigon, F. Indo-China	Phones Paris 9:30am irreg		
16.38	18.304	GAS	Rugby, England.	Works WLA mornings.		
16.39	18.296	YVR	Maracay, Venezuela.	Works DFB about 9:20am.		
16.42	18.27	ETA	Addis Ababa, Ethiopia.	Very irregular.		
16.49	18.18	CGA	Drummondville, Que.	Works Rugby mornings.		
16.56	18.115	LSY3	Monte Grande, Argen.	Phones Rocky Point irreg.		
16.86	17.79	GSG	Daventry, England.	6-8:45am.		
16.87	17.78	W3XAL	Boundbrook, N.J.	9am-5pm.		
16.89	17.76	W2XE	Wayne, New Jersey.	Relays WABC irreg.		16
16.89	17.76	DJE	Zeesen, Germany.	8-11:30am.		
16.91	17.74	HSP	Bangkok, Siam.	Works JVG around 4:30am.		
17.11	17.52	DFB	Nauen, Germany.	Works YVR 9:20am etc.		
17.15	17.48	VWY	Kirkee, India.	Works GAU around 8am.		
17.51	17.12	WOO	Ocean Gate, N.J.	Works ships.		
18.48	16.27	WLK	Lawrenceville, N.J.	Works Rugby days.		
18.49	16.24	KTO	Manila, Phillipines.	JVB 6:30-7pm, KWU 7:30-8pm		
18.51	16.20	FZR3	Saigon, F. Indo China	Works FTK 6:45-7:20am.		
18.61	16.12	TRY	Rome, Italy.	Calls Asmara mornings irr		
18.71	16.03	KKP	Kahuku, Hawaii.	Phones KWO 1:30-7pm.		
18.89	15.88	FTK	St. Assise, France.	Works FZR3 6:45-7:20am.		
19.16	15.66	JVE	Nazaki, Japan.	Phones PLE 7:30-8pm.		
19.21	15.62	JVF	Nazaki, Japan.	Phones KRU 3:45, 7:30pm et		
19.35	15.505	CMA3	Havana, Cuba.	Tests around 7pm irreg.		
19.45	15.42	KWO	Dixon, California.	Works KKP, and Manila.		
19.52	15.37	HAS3	Budapest, Hungary.	Sunday 9-10am.		
19.53	15.355	KWU	Dixon, California.	Phones KKP, KTO, etc.		
19.55	15.34	DJR	Zeesen, Germany.	1:30-3:30am.		
19.57	15.33	W2XAD	Schenectady, N.Y.	2-3pm, Sun 10:30-4pm		
19.61	15.295	FYA	New Radio Coloniale			
19.62	15.29	LRU	Buenos Aires, Argen.	Testing 7-8pm irreg.		
19.63	15.28	DJQ	Zeesen, Germany.	12:30-2:15am to East Asia		
19.64	15.27	W2XE	Wayne, New Jersey.	11am-6pm. Relays WABC.		
19.66	15.26	GSI	Daventry, England.	12:15-2:15pm.		
19.67	15.25	W1XAL	Boston, Mass.	On irregularly.		19
19.67	15.25	RIM	Tashkent, USSR.	Works RKI 8:15-9am irreg.		
19.68	15.24		Pontoise, France.	6:55-11am. (8:30-11:30am)		
19.71	15.22	PCJ	Eindhoven, Holland.	Tues 3-6am, 7-11am Wed, Sun		
19.72	15.21	W8XK	Pittsburgh, Penna.	9am-7pm relays NBC (Blue)		
19.74	15.20	DJB	Zeesen, Germany.	3:45-10:30am, 10:30-11:30a		
19.76	15.18	GSO	Daventry, England.	Experimental.		
19.82	15.14	GSF	Daventry, England.	6-8:45am, 9-10:30am.		
19.82	15.13	GSP	Daventry, England.	Experimental.		
19.84	15.12	HVJ	Vatican City, Italy.	10:30-10:45am, Sat 10am.		
19.85	15.11	DJL	Zeesen, Germany.	4-6am. irreg.		

19.85	15.104	RAU	Tashkent, USSR.	Works RKK after 12pm irr.
19.92	15.06	WNC	Hialeah, Florida.	Works C.A. and S.A. daily
19.95	15.04	RKI	Moscow, U.S.S.R.	Works RNE/RIM 8-9am irreg
19.95	15.04	WQG	Rocky Point, N.Y.	Experimental.
20.03	14.98	KAY	Manila, Philippines.	Works DFB around 7am etc.
20.08	14.93	HJB	Bogota, Colombia.	Works WNC.
20.12	14.91	JVG	Nazaki, Japan.	Works JIA, and HSP.
20.27	14.80	WQV	Rocky Point, N.Y.	Experimental.
20.35	14.74	IRG	Massaua, Eritrea.	Works JVH 5-7am irreg.
20.45	14.665	DFD	Nauen, Germany.	Phones JVH 2am irreg.
20.50	14.63	IQA	Rome, Italy.	Works JVH 6-7am.
20.48	14.653	GBL	Rugby, England.	Phone.
20.55	14.60	JVH	Nazaki, Japan.	Works Europe 2-8am irreg.
20.64	14.535	HBJ	Geneva, Switzerland.	Experimental to U.S.A.
20.69	14.50	TIU/HPF	Central/America	all work WNC.
20.71	14.485	HRL5	La Lima, Honduras.	Phones WNC.
20.72	14.48	HSJ	Bangkok, Siam.	Works JVG around 4:30am.
20.75	14.46	DZH	Zeesen, Germany.	Noon-2pm irreg.
20.78	14.44	GBW	Rugby, England.	Works Lawrenceville days
20.82	14.41	DIP	Zeesen, Germany.	Experimental.
20.83	14.40	HB9B	Berne, Switzerland.	Experimental to U.S.A.
20.91	14.35		Noumea, New Caledonia	Saturdays 5-6pm.
20.91	14.35	ZS6AF	Pretoria, So. Africa.	2-4pm irreg.
21.15	14.208	ZS1B	Cape, South Africa.	1-3pm.
21.13	14.20	K7VH	Juneau, Alaska.	Usually heard about 9pm.
21.13	14.198	KALAN	Manila, Philippines.	Heard early mornings.
21.20	14.15	K6LJB	Honolulu, Hawaii.	9-10pm, Sunday 12N to 10pm
21.28	14.10	ZS4J	Bloemfontein, S.Afr.	2-4pm irreg. 20m
21.31	14.08	VQ4CRO	Nairobi, Kenya, Afr.	2-3:30pm irreg. Hams
21.31	14.08	ZS6AM	Johannesburg, S.Afr.	2-4pm irreg.
21.37	14.044	ZELJR	Salisbury, S. Rhodesia	3-4pm irreg.
21.40	14.02	ZU6P	Johannesburg, S.Afr.	Around 3pm.
21.40	14.02	SULCH	Cairo, Egypt.	3-5pm in near future.
21.41	14.01	NX2Z	Hophsteter, Greenland	1-4pm irreg.
21.41	14.01	E88AF	Tenerife, Canary IIs	Heard 3-4pm irreg.
21.57	13.90	WQP	Rocky Point, N.Y.	Experimental.
21.71	13.81	SUZ	Cairo, Egypt.	Works GBB 9:30-10am, 11-Nn
21.81	13.745	CGA2	Drummondville, Que	Phone. (irregularly.)
22.00	13.636	SPW	Warsaw, Poland.	Wed/Thur 11:30am-12:30pm-
22.08	13.585	GBB	Rugby, England.	Works SUZ, and CGA2 days.
22.37	13.41	WCT	San Juan, Puerto R.	Works WNC.
22.42	13.38	IDU	Asmara, Eritrea, Afr.	Phones IRY/IQA. News 9-10a
22.48	13.35	YVQ	Maracay, Venezuela.	Works WNC etc.
22.58	13.285	CGA3	Drummondville, Que.	Works ships and Rugby.
22.94	13.075	VPD	Suva, Fiji's.	12:30-1:30am.
23.36	12.84	WOO	Ocean Gate, N.J.	Works ships days.
23.39	12.83	CNR	Rabat, Morocco.	Sunday 7:30-9:20am irreg.
23.45	12.80	IAC	Coltano, Italy.	Works Italian ships days.
23.47	12.78	GBC	Rugby, England.	Works ships days.
23.66	12.68	YNE	Puerto Cabezas, Nicaragua	heard 8:20am, & 5:15p
24.20	12.396	CT1G0	Parede, Portugal.	Sun 10-11:30am, T/Th/F 1pm
24.21	12.40	DAF	Norden, Germany.	Works ships days.
24.45	12.27	RKK	Moscow, U.S.S.R.	Heard after 12M irreg.
24.48	12.25	TYB	Paris, France.	Tues/Thur/Sat 7-8am irreg
24.49	12.24	GBU	Rugby, England.	Phone.
24.52	12.235	TFJ	Reykjavik, Iceland.	Sun 1:40-2pm. GBC 6am & 9a
24.73	12.13	DJS	Zeesen, Germany.	7-9pm irreg.
24.91	12.035	DJK	Zeesen, Germany.	Sundays around 8:30pm.
24.92	12.03	HBO	Geneva, Switzerland.	Experimental.
25.00	12.00	RNE	Moscow, U.S.S.R.	Sun 7-8am, and irreg.
25.09	11.955	ETB	Addis Ababa, Ethiopia	Wed 4:50-5:15pm irreg.
25.08	11.95	KKQ	Bolinas, California	Evenings irreg. (irreg.
25.23	11.88		Pontoise, France.	4-5am, 11:15-6pm, Later-
25.27	11.87	W8XX	Pittsburg, Penna.	5-9pm.
25.29	11.86	GSE	Daventry, England.	9am-Noon.
25.31	11.85	DJP	Berlin, Germany.	2-4am. irreg.
25.33	11.845	FYA	New Radio Coloniale	
25.36	11.83	W2XE	Wayne, New Jersey.	Relays WABC 6-10pm. 25

25.38	11.82	GSN	Daventry, England.	Experimental. (1pm.	25
25.40	11.81	ZRO	Rome, Italy.	8:15-9, 9:15-11, 11:30am-	
25.42	11.80	CO9WR	Sancti Spiritus, Cuba	Irregular late afternoon	
25.42	11.80	HJ4ABA	Medellin, Colombia.	6:30-10:30pm except Sun.	
25.43	11.79	DJO	Zeesen, Germany.	5-7am irreg.	
25.43	11.79	WLXAL	Boston, Mass.	5:30-6pm Ex. Sat, Sun.	
25.51	11.77	DJD	Zeesen, Germany.	Noon-4:30pm for Africa.	
25.53	11.75	GSD	Daventry, England.	12:15-4pm. Mornings irr.	
25.57	11.73	PHI	Huizen, Holland.	8:30-11:30am Ex. Tues/Wed	
25.60	11.72	CJRX	Winnipeg, Canada.	7-12pm, 5-4pm-1am, Sun 5pm-	
25.63	11.71		Pontoise, France.	6:15-9pm, 11pm-1am.	
25.68	11.68	KIO	Kahuku, Hawaii.	Works KKQ, and GMBJ.	
25.87	11.595	VRR4	Stoney Hill, Jamaica	Works WNC.	
26.00	11.54	XGR	Shanghai, China.	Phones irregular.	
26.11	11.495	VIZ3	Fiskville, Australia	Works CGA4 Tues 7-8am.	
26.80	11.187	XAM	Merida, Yuca, Mexico.	Works XDC 5-7pm irreg.	
26.91	11.15	CTV	Lisbon, Portugal.	Testing irreg.	
27.17	11.04	HRW	La Faba, Honduras..	Works HRY/YNA 6:15-6:45pm	
27.27	11.00	XBJQ	Mexico DF, Mexico.	Tests afternoons irreg.	
27.27	11.00	PLP	Bandoeng, Java.	Sun 5:30-10am relays YDA	
27.30	10.99	ZLT	Wellington, N.Z.	Music Sun 1-2am,	
27.50	10.91	KTR	Manila, Phillipines	Works KVV at 10am irreg.	
27.68	10.84	KWV	Dixon, California.	Works KTR at 10am irreg.	
27.86	10.77	GBP	Rugby, England.	Works VLK 12-2am & later	
27.93	10.74	JVM	Nazaki, Japan.	M/T 4-5pm irr. Works KEE.	
28.09	10.675	WNB	Lawrenceville, N.J.	Works Bermuda.	
28.12	10.67	CEC	Santiago, Chile.	7-8pm, Thur/Sun 8:30-9pm.	
28.14	10.66	JVN	Nazaki, Japan.	12-1am, Mon/Thur 4-5pm. 5:20-11pm, 1:50-7:40am.	
28.25	10.62	WEF	Rocky Point, N.Y.	Will have new 200kW Xmtr.	
28.28	10.61	WEA	Rocky Point, N.Y.	Experimental.	
28.47	10.53	JIB	Taihoku, Taiwan.	1:50-7:40am irreg.	
28.50	10.52	VLK	Sydney, Australia.	Works GBP 12-2am.	
28.76	10.43	YBG	Medan, Sumatra.	Works Java 4:30am, 8:30p	
28.90	10.38	WCG	Rocky Point, N.Y.	Experimental.	
28.91	10.375	JVO	Nazaki, Japan.	Works JZB at 3:30am.	
28.98	10.35	LSX	Buenos Aires, Argen.	Mon 6pm, Tues 8-8:15pm etc	
29.01	10.335	ZFD	Hamilton, Bermuda.	Works WNB afternoons.	
29.04	10.33	ORK	Ruyselede, Belgium.	2:30-4pm to Belgian Congo	
29.15	10.29	DIQ	Nauen, Germany.	Experimental. (1lam.	
29.24	10.26	PMN	Bandoeng, Java.	5:30-10am daily (Sat to-	
29.34	10.20	PSH	Rio de Janeiro.	Works B.A. and CEC, 6-7pm.	
29.50	10.17	RIO	Bakou, U.S.S.R.	Works RNE/RIR 12-2am dly.	
29.59	10.143	OPM	Leopoldville, Congo.	2-2:35am, and 3:30-4:15pm	
29.74	10.08	RIR	Tiflis, USSR.	RIO 12-2am, Works RNE 8-9a	
29.80	10.065	JZB	(TDE) Kanjoshi, Manchukuo	Works JVO at 3:30am.	
29.84	10.055	SUV	Cairo, Egypt.	GAA 3:30pm, DGU 4:30-5pm &	
29.87	10.042	DJJ	(DZB) Zeesen, Germany.	2-4pm experimental.	
30.00	10.00	WWV	Beltsville, Maryland	Wed 2:30-3:30pm.	
30.01	9.99	KAZ	Manila, Phillipines.	Works Dixon 10-10:45am.	
30.32	9.89	LSN3	Buenos Aires, Argen.-	Works New York.	
30.40	9.87	WON	Lawrenceville, N.J.	Works GCW afternoons.	
30.43	9.86	EAQ	Madrid, Spain.	5:15-9:30pm. Sat N'n-2pm.	
30.50	9.83	IRM	Rome, Italy.	Works U.S.A. irreg.	
30.59	9.80	GCW	Rugby, England.	Works WON afternoons.	
30.75	9.76	VLJ	(VK2ME) Sydney, Austr.	ZLT 12-2am, Java 4-8am.	
31.01	9.675	DJI	(DZA) Zeesen, Germany.	Tests 5-7pm daily.	
31.10	9.64	YDB	Sourabaya, Java.	5:30-10am, Sat to 11:30am.	
31.10	9.64	CT1AA	Lisbon, Portugal.	Tues/Thur 5-7pm.	
31.13	9.635	ZRO	Rome, Italy.	2:30-5pm, 6-6:15pm, M/Wd/F 6-9pm, Tues/Thur 5:15-5:30	
31.19	9.62	DGU	Nauen, Germany.	Works SUV, and USA irreg.	
31.20	9.615	HH3W	Port-au-Prince, Haiti	2-3, 7-8:20pm approx.	
31.22	9.61	HP5J	Panama City, Panama.	7-10:30pm.	
31.23	9.605	CB-960	Santiago, Chile	10-12pm daily.	
31.27	9.595	HLB	Geneva, Switzerland.	Sat 5:30-6:15pm, Mon 3:15a	
31.28	9.59	VK2ME	Sydney, Australia.	1-3, 5-9, 9-11am Sunday.	31
31.28	9.59	W3XAU	Philadelphia, Penna.	Relays CBS Noon-8pm.	

31.30	9.585	FYA	New Radio Coloniale	Should be testing soon.
31.31	9.58	LRX	Buenos Aires,Argen.	
31.32	9.58	GSC	Daventry,England.	4-5:45,6-8,10-11pm daily.
31.32	9.58	VK3LR	Melbourne,Australia	3:30-7:30am except Sunday
31.35	9.57	WLXK	Springfield,Mass.	6:30am-1am,Sun 8am-1am.
31.36	9.565	VUB	Bombay,India.	Su 12:30-1:30P/T/S 11:30a
31.38	9.56	DJA	Zeesen,Germany.	12:30-2:15am,8-11:30am, 4:55-9:15pm. (10.67mc.
31.43	9.545	CEC	Santiago,Chile.	May be here soon (See-
31.43	9.545	HH2R	Port-au-Prince,Haiti	testing around midnight.
31.45	9.54	DJN	Zeesen,Germany.	3:45-7:15am,4:55-10:30pm.
31.48	9.53	W2XAF	Schenectady,N.Y.	4-12pm,Sa 1-12pm,S 4:15pm
31.48	9.53	LKJ1	Jeloy,Norway.	5-8am,11am-6pm.
31.51	9.52	OXY	Skamlebak,Denmark.	4:30-6am.(5:45,6-8pm.
31.55	9.51	GSB	Daventry,England.	3-5am,10:30am-N'n,12:15-
31.58	9.50	PRF5	Rio de Janeiro,Brz.	4:45-5:45pm Ex.Sunday.
31.61	9.49	VK3ME	Melbourne,Australia	4-7am except Sunday.
31.65	9.48	CQN	Macao,China.	Mon/Fri 3-5am heard here.
31.68	9.47	WET	Rocky Point,N.Y.	Experimental.(10-11am.
31.80	9.428	COCH	Havana,Cuba.	10am-N'n,4-6,9-10pm,Sun-
31.84	9.415	PLV	Bandoeng,Java.	Tues/Thur 10-10:30am irr.
31.92	9.40	XDC	Mexico D.F.,Mexico.	Works XAM 5-7pm irreg.
32.13	9.332	CGA4	Drummondville,Que.	Works GCB 4-6pm etc.
32.26	9.30	YNGU	Managua,Nicaragua.	12:45-2:15pm,6:15-7:15pm
32.33	9.28	GGB	Rugby,England.	Works CGA4 4-6pm & SUV.
32.70	9.17	WNA	Lawrenceville,N.J.	Works London.
32.70	9.168	YVR	Maracay,Venezuela.	Relays YV2RC Sat 8-9pm ir
32.88	9.125	HAT4	Budapest,Hungary.	Sunday 6-7pm.
33.11	9.06	HJU	Buenaventura,Colom.	Tues/Thur/Sat 8-11pm
33.15	9.05	TFK	Reykjavik,Iceland.	GBC 5-5:30am,
33.26	9.02	GCS	Rugby,England.	Phones U.S. in evenings.
33.30	9.01	KEJ	Bolinas,California.	Tues 12:20-1am with KKH.
33.41	8.98	VWY	Kirkee,India.	Works England mornings.
33.50	8.95	WEL	Rocky Point,N.Y.	Experimental.
33.71	8.90	WVD	Seattle,Washington	Calls WXE,WXH 10pm-1am.
34.19	8.77	PNI	Macassar,Celebes.	Works Bandoeng 4-5am.
34.26	8.75	ZEW	Hong Kong,China.	4-10am.
34.44	8.71	KBB	Manila,Phillipines	4-8am irreg.
34.66	8.665	CO9JQ	Camaguey,Cuba.	8-9pm & irreg.
34.88	8.60	YNVA	Managua,Nicaragua.	8-11pm irreg.
34.92	8.59	HCJB	Quito,Ecuador.	7-9:30pm except Monday.
35.59	8.43	HC2CW	Guayaquil,Ecuador.	8-11pm.
36.65	8.185	PSK	Rio de Janeiro,Brz.	Phone & irreg.Programs.
36.95	8.12	KTP	Manila,Phillipines.	Works Dixon 9:30-10:30am
37.04	8.10	XENE	Merida,Yuca,Mexico.	Relays XEFC 10:30a-11:30
37.24	8.05	WXA	Juneau,Alaska.	Works WVD near 12pm.
37.33	8.04	CNR	Rabat,Morocco.	Works Paris irreg.
38.29	7.83	HC2JSB	Guayaquil,Ecuador.	10-11:30pm irreg.
38.07	7.877	SUX	Cairo,Egypt.	Works London 5-6:30pm.
38.47	7.797	HBP	Geneva,Switzerland.	Sat 5:30-6:15pm & irreg.
38.86	7.715	KEE	Bolinas,California.	Phones KKH evenings.
39.28	7.63	ZHJ	Penang,F.M.S.	7-9am Except Sunday.
39.37	7.62	ETD	Addis Ababa,Ethiopia	tests 5-5:30pm irreg.
39.40	7.61	KWX	Dixon,California.	Phone.
39.70	7.56	EA8AB	Tenerife,Canarias.	Mon/Wed/Fri 3:30-4:30pm.
39.87	7.52	KKH	Kahuku,Hawaii.	Tues 12:30-1am,10-12pm ir
39.92	7.51	JVP	Nazaki,Japan.	Mon/Th 4-5pm,KWX 12:45am.
40.16	7.465	HJP	Bogota,Colombia.	Works WNC nights.
40.54	7.40	HJ3ABD	Bogota,Colombia.	7-11pm except Sunday.
40.54	7.40	WEM	Rocky Point,N.Y.	Works Rugby, & Honolulu.
40.65	7.38	XECR	Mexico D.F.,Mexico.	Sunday 6-8:15pm.
41.10	7.30	VK3ZX	Caulfield,Australia	Sun 1:30-3am,Wed 2-3am.
41.15	7.29	H11J	San P de Macoris,DR	12:10-2:40pm,6:10-8:10pm.
41.21	7.28	HJ1ABD	Cartagena,Colombia.	7:30-9:30pm except Sun.
41.55	7.22	VP3BG	Georgetown,B.Guiana	Heard near 6pm.
41.80	7.18	CR6AA	Lobito,Angola,Afr.	Wed/Sat 2:45-4:45pm.
42.08	7.14	PZH	Paramaribo,D.Guiana	Until 5pm on Mondays.
42.13	7.12		Papeete,Tahiti.	Tues/Fri 11-12pm.

42.25	7.10	HKE	Bogota, Colombia	Tues/Sat 8-9pm.
42.25	7.10	HJ4ABG	Medellin, Colombia.	Heard at 11:50pm.
42.40	7.08	VP3MR	Georgetown, B. Guiana	Mon/Wd/Th/Sat 6:45-7:45pm
42.41	7.074	HJ1ABK	Barranquilla, Colom	Sundays 3-6pm.
42.74	7.02	VP5MK	Kingston, Jamaica.	Saturday 5-5:30pm.
43.23	6.935	WEB	Rocky Point, N.Y.	Works Paris.
43.48	6.90	HI3C	La Romana, D.R.	N'n-2pm, 5-9pm.
44.03	6.81	HIH	San Pedro, D.R.	6:30-12pm, Sun 3-4:30am,
44.12	6.80	HCETC	Quito, Ecuador.	8:30-10:30pm Ex. Sunday.
44.44	6.75	JVT	Nazaki, Japan.	1:50-7:40am irregular.
44.57	6.725	WQO	Rocky Point, N.Y.	Experimental.
44.71	6.71	TIEP	San Jose, D.R.	7-12pm except Sunday. 49
44.96	6.672	YVQ	Maracay, Venezuela.	Sat 8-9pm irregular. (15pm
45.00	6.66	HC2RL	Guayaquil, Ecuador.	Sun 5:45-7:45p, Tu 9:20-11-
45.00	6.66	WXH	Ketchikan, Alaska.	Works Seattle.
45.09	6.65	IAC	Coltano, Italy.	Works ships.
45.31	6.62	PRADO	Riobamba, Ecuador.	Thursday 9:20-11:40pm.
45.80	6.55	TIRCC	San Jose, C.R.	6-7pm, Sun/Thur 6-10pm.
45.80	6.55	HI4D	Trujillo City, D.R.	4:40-7:40pm except Sunday.
45.94	6.53	XFA2	Veracruz, Mexico.	Calls XDC 7-8pm irreg.
46.01	6.52	YV6RV	Valencia, Venezuela	5:30-9:30pm.
46.08	6.51	HIL	Trujillo City, D.R.	5:30-7:40pm daily.
46.23	6.49	HJ5ABD	Calí, Colombia.	7-10pm except Sunday. (so.
46.30	6.48	TI8WS	Puntarenas, C.R.	6-7, 8-9pm (Rptd on 7.52 al
46.51	6.451	HJ4ABC	Ibague, Colombia.	8-10pm except Sunday.
46.51	6.45	HI4V	Trujillo City, D.R.	5:15-6:30pm irreg. (8am dly
46.60	6.44	HJ1ABB	Barranquilla, Colom.	6-10pm, Sat to 12pm, Before-
46.70	6.425	W9XBS	Chicago, Illinois.	NBC Experimental irreg.
46.70	6.425	VE9AS	Fredericton, N.B.	Thur 10:30pm-1:30am.
46.69	6.425	W3XL	Boundbrook, N.J.	Cue station for N.B.C.
46.73	6.42	HI1S	Puerto Plato, D.R.	N'N-2pm, and 6-8pm. (English
46.80	6.41	TIPG	San Jose, C.R.	6-11:30pm, Wed/Sat 9-10pm-
46.88	6.40	YV9RC	El Valle, Venezuela.	Reported testing.
46.95	6.39	HI3U	Santiago d.L.C., DR	6:30-7:30pm and later irr
47.02	6.38	YV4RC	Caracas, Venezuela.	11am-1:30pm, 5-10pm Ex. Sun.
47.17	6.36	TIFA	San Jose, C.R.	7-9pm irregular.
47.20	6.357	HRF1	San Pedro Sula, Hon	7-9pm except Sunday.
47.24	6.35	HRY	Tela, Honduras.	Testing 6:15-6:45pm irr.
47.39	6.33	YV13RV	Valencia, Venezuela.	5:30-9:30pm shortly.
47.50	6.31	HIZ	Trujillo City, D.R.	5-7:30pm.
47.62	6.30	YV12RM	Maracay, Venezuela.	8-10:30pm.
48.15	6.23	OAX4G	Lima, Peru.	7-11pm, and later irreg.
48.23	6.22	HJ2ABA	Tunja, Colombia.	8-10pm.
48.40	6.198	CT1G0	Parede, Portugal.	7:20-8:30pm, Sun 11:30am-1p
48.50	6.19	HI1A	Trujillo City, D.R.	6:40-9:40pm Ex. Sun, 6:45am-
48.51	6.185	XEXA	Mexico D.F.	Relays XFX 6-11:15pm.
48.62	6.17	HJ3ABF	Bogota, Colombia.	7-11pm except Sunday.
48.74	6.155	CB615	Santiago, Chile.	New Chilean testing.
48.78	6.15	YV3RC	Caracas, Venezuela.	4:30-10pm.
48.78	6.15	HI5N	Trujillo City, D.R.	6-7am, N'n-2pm, 7-9:30pm.
48.78	6.15	CSL	Lisbon, Portugal.	7:14am-12:24pm.
48.78	6.15	C09GC	Santiago, Cuba.	8-9am, 11am-2pm, 5-11pm.
48.82	6.145	FYA	New Radio Colonial	Watch for tests.
48.82	6.145	HJ5ABC	Calí, Colombia.	7-11am, and at 6am. (10:30pm
48.83	6.144	CJRO	Winnipeg, Canada.	7-12pm, Sat 4pm-1am, Sun 5-
48.86	6.140	W8XK	Pittsburg, Penna.	9pm-1am daily. Relays NBC.
48.89	6.137	CR7AA	Laurenc, Mozambique	12:45-3pm, Sunday 8-10:30a
48.90	6.135	HJ4ABB	Manizales, Colombia.	8-10pm irreg.
48.94	6.13	ZGE	Kuala Lumpur, FMS.	Sun/Tues/Fri 6:40-8:40am.
48.94	6.13	COGD	Havana, Cuba.	6-12pm.
48.94	6.13	TGX	Guatemala, Guat.	6-12pm irreg.
48.93	6.128	YV11RMO	Maracaibo, Venezuela	5:50-8:50pm shortly.
49.02	6.12	ZEB	Bulawayo, S. Rhodesia	Tu 1:15-3:15, F 10-10:45a
49.02	6.12	W2XE	Wayne, New Jersey.	10-11pm daily.
49.02	6.12	XEFT	Veracruz, Mexico.	11am-4pm, 7-12pm daily.
49.05	6.117	HJ1ABE	Cartagena, Colombia	7:30-9pm, Mon 11:10-12:10pm
49.10	6.11	GSL	Daventry, England.	2:30-5:45pm, 10-11pm.
49.10	6.11	HJ4ABB	Radio MonteCarlo, Colombia	(Details vague)

49.10	6.11	VUC	Calcutta, India.	2:06-3:06am, 8-11:30am irr.
49.18	6.10	W3XAL	Boundbrook, N.J.	Mon/Wed/Sat 6pm-12:45am.
49.18	6.10	W9XF	Chicago, Illinois.	Sun/Tu/Th/Fri 9pm-2am etc.
49.20	6.097	ZTJ	Johannesburg, S.Afr	11:45-12:30am, 3:30-7am etc
49.26	6.09		Colombo, Ceylon.	Heard at 11:25am.
49.26	6.09	CRCX	Bowmanville, Ont.	5:30-11:30pm, Sun 3-11:30pm
49.27	6.085	ZRO	Rome, Italy.	Tests 5:15-5:45pm irreg.
49.31	6.081	VQ7LO	Nairobi, Kenya, Afr.	5:45-6:15am Ex. Sat/Sun etc
49.34	6.08	HP5F	Colon, Panama.	6-9:30pm, Sunday to 11pm.
49.34	6.08	CP5	La Paz, Bolivia.	8-9:30pm.
49.34	6.08	W9XAA	Chicago, Illinois.	11am-9pm.
49.35	6.079	DJM	Zeesen, Germany.	Testing 3-5pm irreg.
49.42	6.07	OER2	Vienna, Austria.	9am-5pm, Sat 9am-6pm.
49.42	6.07	VE9CS	Vancouver, B.C. (2w)	6-7:30pm, Sun 1:45pm-1am.
49.46	6.065	HJ4ABH	Manizales, Colombia	6-7:45pm.
49.50	6.06	OXY	Skamlebaek, Denmark	1-6:30pm, Sun 11am-7pm.
49.50	6.06	W3XAU	Philadelphia, Penna	8-11pm daily. (8pm, 11pm-130
49.50	6.06	W8XAL	Cincinnati, Ohio.	6:30-8am, 11pm-2am, Sun 8am-
49.50	6.06	HJ4ABL	Manizales, Colombia	7-10pm.
49.55	6.055	XEUW	Veracruz, Mexico.	7-12pm, Sun 2-3, 4-5am.
49.59	6.05	GSA	Daventry, England.	6-8pm daily. (1:15am)
49.59	6.05	HI9B	Trujillo City, D.R.	11am-9pm irr. Sun 12:15-
49.65	6.04	W4XB	Miami, Florida.	N'n-2, 5:30-12pm, Sat 2-6am.
49.65	6.04	HJ1ABG	Barranquilla, Colom	6:30-10pm except Sunday.
49.65	6.04	W1XAL	Boston, Mass.	Tu/Th 7:15-9:15pm, Sat 3-4p
49.65	6.04	YDA	Batavia, Java.	5:30-10am (to 11:30am Sat)
				Testing irregularly.
49.71	6.035	PRA8	Pernambuco, Brazil.	Heard best 4-4:45pm.
49.75	6.03	HP5B	Panama City, Panama	7-10:30pm.
49.75	6.03	VE9CA	Calgary, Alta, Can.	9am-12pm.
49.83	6.02	DJC	Zeesen, Germany.	N'n-4:25, 4:55-10:45pm.
49.88	6.015	HJ3ABH	Bogota, Colombia.	4-11pm, Sun 4-9pm. (pm-12:45
49.92	6.01	COCO	Havana, Cuba.	9:30am-1pm, 4-7pm, Sa 11:30-
49.92	6.01	FIU	Tananarive, Madagascar	10-10:45am daily. (10:40p
49.90	6.01	ZHI	Singapore, F.M.S.	Mon/Wed/Thur 6-8:30am, Sat-
49.95	6.005	VE9DN	Drummondville, Que.	Sat 11-12pm.
49.95	6.005	HJ1ABJ	Santa Marta, Colom.	6-10pm, Sundays at 7am.
50.00	6.00	XEBT	Mexico D.F.	10am-1:15am. (45am, 11am-N'n
50.00	6.00	ZEC	Salisbury, S. Rhodesia	Tu 1:15-3:15pm, Fr 10-10-
50.00	6.00	TGWA	Guatemala, Guatemala	Relays TGW early Sundays.
50.00	6.00	RV59	Moscow, U.S.S.R.	2-6pm etc.
50.04	5.995	WXE	Anchorage, Alaska.	Calls WVD 10pm-1am irreg.
50.17	5.98	HJ2ABD	Bucaramanga, Colom.	7:30-9:30pm irreg. (10:10pm
50.17	5.98-	HIX	Trujillo City, D.R.	4:40-5:40pm, Tu/Fr 8:10-
50.18	5.975	HJ2ABC	Cucuta, Colombia.	6:30-9pm except Sunday.
50.25	5.97	XEVI	Mexico D.F.	8-12pm.
50.26	5.969	HVJ	Vatican City, Italy	2-2:15pm, Sunday 5-5:15am.
50.29	5.966	HJ1ABC	Quibdo, Colombia.	5-6pm, Sunday 3-5pm.
50.42	5.95	HJN	Bogota, Colombia.	8:30-10:30pm except Sunday
50.51-	5.94	TG2X	Guatemala, Guatemal	4-6, 9-10:30 or 11pm.
50.59	5.93	HJ4ABE	Medellin, Colombia.	7-11pm.
50.68	5.91	HH2S	Port-au-Prince, Haiti	7:30-9:30pm. (5.87mc.
50.68	5.91	HRN	Tegucigalpa, Honduras	here after Feb 15th-see
50.93	5.89	JIC	Taihoku, Taiwan.	Works Tokyo around 7:30am.
50.93	5.89	HCK	Quito, Ecuador.	8-10, or 11pm irreg.
51.02	5.88	YV8RB	Barquisimeto, Venez	5:30-9:30pm. (pm English.
51.07	5.87	HRN	Tegucigalpa, Hondur	6:30-8, 8:30-10pm, Sun 9-10
51.15	5.865	H11J	San Pedro, D.R.	12:10-2:40, 6:10-8:10pm.
51.28	5.85	YV5RMO	Maracaibo, Venez.	5:15-10pm except Sunday.
51.28	5.85	WOB	Lawrenceville, N.J.	Phones evenings irreg.
51.30	5.845	KRO	Kahuku, Hawaii.	Phones evenings irreg.
51.37	5.84	TIGA	Cartago, C.R.	7-10pm irregular.
51.46	5.83	JZC (TDD)	Kanjoshi, Manchukuo	Works JVU 6-7am.
51.52	5.823	TIGPH	San Jose, C.R.	7-10pm except Sundays.
51.64	5.81	YV7RMO	Maracaibo, Venez.	3:35-8:35pm.
51.72	5.80	YV2RC	Caracas, Venezuela.	5-9:30pm.
51.72	5.80	KZGF	Manila, Philippines	Relays KZRM 3-5am irreg.
51.81	5.79	JVU	Nazaki, Japan	Works JZC between 6-7am.

51.90	5.78	OAX4D	Lima, Peru.	Wed/Sat 9-11:30pm,
51.90	5.78	GMB2	Havana, Cuba.	Works Rooky Point night.
51.99	5.77	HJ4ABD	Medellin, Colombia.	8-11pm except Sunday.
52.26	5.74	TGS	Guatemala, Guatemala	6-9pm Wed/Thur/Sunday.
52.32	5.73	JVV	Nazaki, Japan.	Works JIC at 7:30am irreg
52.45	5.72	YV1ORSC	San Cristobal, Venez	5:30-12pm except Sundays
52.59	5.705	CFU	Rossland, B.C.	News Bulletin at 8:30pm.
54.30	5.525	TI5HH	San Ramon, C.R.	3:30-5, 8-9:30pm.
57.00	5.26	YDU3	Medan, Sumatra.	
58.03	5.17	PMY	Bandoeng, Java.	4:30-10:30am, 5:30-7:30pm.
58.82	5.10		Japanese Mystery Station	reported by many.
59.67	5.025	ZFA	St. Georges, Bermuda	Works WOB nights.
59.96	5.00	WWV	Beltsville, Md.	Wed 2:30-3:30pm.
60.27	4.975	GBC	Rugby, England.	Works ships nights.
62.20	4.82	GDW	Rugby, England.	Works New York nights.
62.66	4.785	CZA	Drummondville, Que	Works Rugby, and ships.
63.08	4.753	WOO	Ocean Gate, N.J.	Works ships nights.
63.66	4.71	YDU2	Medan, Sumatra.	6:30-9:30am irreg.
65.22	4.60	HC2ET	Guayaquil, Ecuador.	9:30-10:45pm Wed/Sat.
66.44	4.512	ZFS	Nassau, Bahamas.	Works WND Hialeah.
67.94	4.413		Ships-British, French, and German	work nights.
70.65	4.25	RV15	Khobarovsk, U.S.S.R	1-9am.
73.16	4.098	WTD	Hialeah, Florida.	Works ZFS nights.
74.96	4.00	CT2AJ	Ponta Delgada, Azores	Wed/Sat 5-7pm.
98.70	3.04	YDA	Batavia, Java.	5:30-10am (Sat to 11:30am)

(Short Wave Notes Continued)

Malaya. I think ZHJ, Penang, is still broadcasting on 6.08mc (Walker)
N.Z. ZLT, Wellington, 10.99, heard working VLJ, Sydney, 9.76, at 4:30-5
am (* J. Miller). ZLT heard working VLK, Sydney, 10.53, at 3:25am (*Roberts)
*** ZLT announce they phone 12m-2am daily, and broadcast MUSIC from 1-2
am Sundays. They announce frequently (Calgary Chapter).

P.I. KAY, Manila, 14.98, works DFB, 17.52, around 7am (* J. Miller) *KAY
heard phoning Shanghai, at 10:28pm (Moore) * KTP, Manila, 8.18, phones
Dixon daily at 10am (Smith) * KTR, Manila, 10.91, phones KWV, Dixon, 10.84,
irregularly at 10am (NNRC) ** New-KBB, Manila, owned by Philippines Long
Distance Telephone Co., P.O. Box 444, call San Francisco, and S.S. GMBJ on
8.71mc, between 4-8am (Walker) * KZGF, Manila, about 5.8, phones and re-
lays KZRM 3-5am daily (Walker-CDXR) * Amateur KALAN, Frank Speir, 719
Dakota St., Manila, 14.198, 80 watts, being heard early mornings (Walker)
Tahiti. Radio Oceanie, Peapeete, 7.12, reported as being heard Tues/Fri,
11-12pm (* DeHaven). Also reported heard on 10.11, Wed/Sat 12m-1am (R.F)

AFRICA

Belgian. OPM, Leopoldville, 10.14, being heard 2-2:35am, and 3:30-4:15pm.
Congo. Heard announcing in English in afternoon (Westmoreland-Slough
-Roberts-J. Miller-Morrison).

Canary IIs. EARAF, Tenerife, abt 14.01, being heard 3-4pm (Miller-Messer)
Egypt. SULCH, Amateur, Egyptian State Broadcasting, Radio House, Sharia
Elwi, Cairo, 14.02, will soon be on air again from 3-5pm (* J. Miller) *
SUX, Cairo, 7.877, works London frequently 5-6:30pm (J. Miller-Ballard) *
SUZ, Cairo, 13.81, works GBB, Rugby, England, 13.585, between 9:30-10am, and
11-12noon (J. Miller-Goodeve-Ballard). * Miller

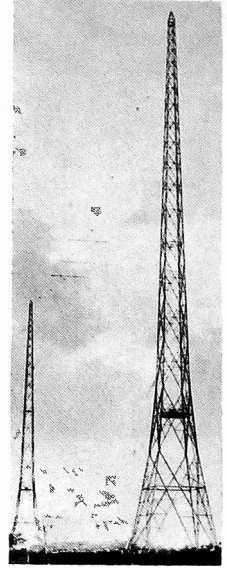
Kenya. VQ4CRO, Nairobi Amateur, 14.08, still coming thru 2-3:30pm (J.-
Madagas Radio Betsileo, FBR2, has been inaugurated (Mercieca) * FIU, and
car. not FIQA is proper call for Radio Madagascar, at Tananarive.
FIU operates from 10-10:45am daily. Sign off with "Marseilles". Official
frequency is 5.692mc, but they are often heard between 5.9 and 6.01mc.
Mozam- CR7AA, Lourenco Marques, 6.137, is now broadcasting regularly
bique. from 12:45-3pm, and on Sundays from 8-10:30am. Announcement is
made in English at 8am Sunday (** African Radio Announcer).

S. Rhodesia. ZEC, Salisbury, 6mc, and ZEB, Bulawayo, 6.12, broadcast Tuesday,
1:15-3:15pm, and Friday 10-10:45am, and 11am to Noon (A.R.A.) * ZELJR, of
Salisbury, 14.044 still being heard frequently 3-4pm (**Ballard-Miller)
South Best African Hams at present are: ZU6P, Johannesburg, 14.02mc,
Africa heard at 3pm. ZSLB, R.D.G.A. Richardson, Newlands, Cape, 14.208mc,
on almost daily 1-3pm, and on 7.104, 11pm-1am. ZSLJ, Sgt. R.C. Brown, Bloem-
fontein, 14.1mc, and ZS6AF, W.H. Lister, 139 Johnstn St., Sunnyside, Pretor-
ia, 14.350. Best tuning Hours 2-4pm (** J. Miller-CDXR).

Popular DX Announcer Endorses PR-16

Harry O. Jones, one of the popular DX News Announcers on KFAC's Thursday night 11pm PST. DX Period in writing about his new PR-16 says.

"The noise level of the 16 is far less than any other receiver I have heard, and it has selectivity plus. I cannot understand its beautiful tone, with such selectivity as this receiver offers. Perhaps you would be interested in knowing that I have been able to send for the following veri's in the three weeks I have had the receiver- PMA.PLE.ETA.W3XAL.W2XE JVF.HAS3.W2XAD.DJQ..GSI.W1XAL.FYA.PCJ.DJB.GSF. 2RO.HVJ.JVH..VPD.GSE.HJ4ABA.DJD.GSD..PHI.CJRX. VRR4.VIZ3.JVN.CEC..ORK.PMN.OPM.EAQ..ST1AA, HBL. HP5J.2ME.3ME.3LR.YDA.GSC.DJA.DJN.LKJ1.HAT4.ZHJ CO9JQ.TIEP.HG2RL.PRADO.TIRCC.HJ4ABC.HJ1ABB.ZBW HRY.HIZ.YV3RC.GSL.VE9CS.HP5B.ZHI.HIX..YV1ORSC. and RV15. Incidentally we use the PR16 as a means of checking our tips which we use in the weekly period over KFAC".



A DX SET FOR DXERS

360° Band Spread---Beat Oscillator--Crystal Filter-Patterson Camera Type Dial-8 to 550 meters-Five Bands-Plug for head phone reception--R Meter--Two Stage Pre selector---Fractional Micro volt sensitivity---Extreme selectivity-100% shielding-12" Dynamic Speaker---Full Range Reproduction---Exceptional reception on 9 and 10 meter bands.

SIX MONTHS GUARANTEE.

PR-16

SPECIAL DISCOUNT FOR IDA MEMBERS. FOR FULL DETAILS WRITE TO THE ADDRESS BELOW.

The DX Radio Sales Co.---Distributors
Cable Address "DEEX" WYoming 0429 P. O. BOX 291
BEVERLY HILLS, CALIFORNIA, U.S.A.