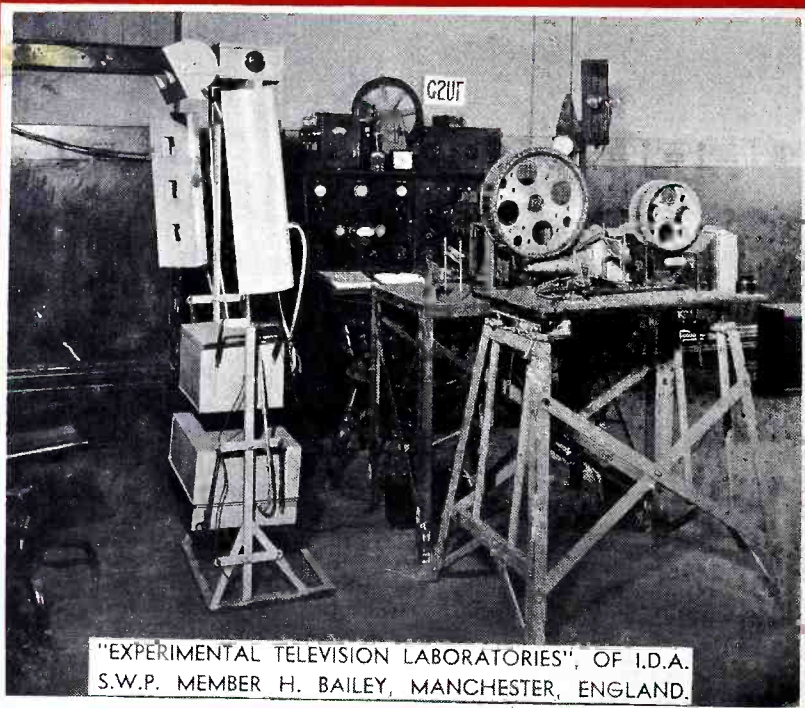


# THE GLOBE CIRCLER

NOVEMBER 1935



"EXPERIMENTAL TELEVISION LABORATORIES", OF I.D.A.  
S.W.P. MEMBER H. BAILEY, MANCHESTER, ENGLAND.

ONE  
DIME

## INTERNATIONAL DX'ERS ALLIANCE

DX BROADCAST CALENDAR

NEW JAPANESE BROADCAST LIST

BEST BETS ON THE LONG WAVES

RANDOLPH TROPHY CONTEST WINNERS

COMPLETE DE LUXE SHORT WAVE LIST

SCHEDULE OF BUENOS AIRES BROADCAST STATIONS

## WORLD-WIDE DX BROADCAST CALENDAR

TIME	E.S.T.	KC/S	KW	LOCATION	CLUB	CALL
Nov. 4	Mon. 3-3:30am	1113	10	Fecamp, France	RT IDA	RN
IBC Program Dept. 11 Hallam St., London, England.						
Nov. 17	Sun. 1-2am	583	15	Riga, Latvia	RT IDA	YLZ
	1-2am	1104	50	Madona, Latvia	RT IDA	
	1-2am	1258	10	Kuldiga, Latvia	RT IDA	
Nov. 19	Tues. 1:30-2:30am	749	100	Marseilles, France	RT IDA	
Radio Marseilles PTT, Marseilles, France.						
Nov. 19	Tues. 3-4am	1230	10	La Paz, Bolivia	RT IDA	CPX
Radio Nacional CPX, Casilla Correo 596, La Paz, Bolivia.						
Nov. 26	Tues. 1-3am	922	32	Brno, Czechoslovakia	T IDA	OKB
Special Music, Czech artists, English, Esperanto announcements; Radio Journal, OKB, Kounicova #44, Brno, Czecho.						
Nov. 29	Fri. 1:15-1:45am	986	10	Genoa, Italy	RT IDA	ILGE
Special Program not on the E.I.A.R. Network. Address: E.I.A.R., via Arsenale 21, Torino, Italy.						
Dec. 1	Sun. 2-3am	1040	10	La Paz, Bolivia	RT IDA &	CP4
Period from 2-2:15am dedicated to IDA, CP4, Compania Radio Boliviana, Casilla 637, La Paz, Bolivia.						
Dec. 2	Mon. 1-2am	832	100	Moscow, U.S.S.R.	JD IDA	RW39
R. Siglin, All Union Radio Committee, Moscow, Petrovka 12.						
Dec. 8	Sun. 2-3am	1250	.15	Havana, Cuba	AK IDA	CMKC
Dec. 17	Tues. 1-2:30am	1095	10	Madrid, Spain	ER IDA	EAJ7
Dec. 17	Tues. 1:30-2:30am	601	25	Rabat, Morocco	RT IDA	CNR
Dec. 20	Fri. 1:30-2:30am	895	10	Helsinki, Finland	RT IDA	
Dec. 22	Sun. 1-2am	1250	.15	Havana, Cuba	AK IDA	CMKC
Dec. 22	Sun. 1:30-2:30am	859	35	Strasbourg, France	RT IDA	
Radio Strasbourg PTT, Strasbourg #63, Strasbourg, France.						
Dec. 24	Tues. 1:15-1:45am	1140	7	Turin, Italy	RT IDA	ITTO
E.I.A.R., via Arsenale 21, Torino, Italy.						
Dec. 28	Sat. 1-2:30am	795	7 1/2	Barcelona, Spain	ER IDA	EAJ1
FAD MEMBERS: (RT) R. Tomlinson (JD) J. DeMyer (ER) E. Roberts (AK) Kinghorn						

### RANDOLPH IDA DX CONTEST WINNERS

J.L. Sullivan (New Zealand)	1	8841	-	Randolph DX Contest Grant Trophy.
Charles Hesterman (Sask.)	2	7259	-	Second Place Grand Trophy.
W.K. Walton (England)	3	5445		DISTRICT AWARDS
Warren Reichardt (Mass.)	4	5270	*	Awards to Dist. leaders based upon
Leo A.J. De Roo (Hawaii.)	5	5177	*	total number of entrants by Dists
Irwin Beitman (Ohio)	6	3794		(Dist. entrants in parenthesis.)
R.T. Coales (England)	7	3140	*	W.K. Walton (20) Sun Gold Trophy
R. Stansfield (England)	8	2780	*	R. Hunt (8) Sun Gold Trophy
A.C. Lyell (S. Africa)	9	2775	*	I. Beitman (7) World Globe- RADEX
Howard Eck (Mich)	10	2711	*	C. Hesterman (4)
Randolph Hunt (Calif)	11	2202		Ray Swenson (2) Phone Adapter-RADEX
Ray Swenson (Illinois)	12	2093		John Shanks (4) Radio News Sub-R.N.
R.H. Tomlinson (N.Y.)	13	2015	*	Those marked with an asterisk are
Fred Crowder (England)		2015	*	to be given their choice of a One
John Shanks (Tenn.)	14	1368		year subscription to either Radex
Herb Diedrich (Illinois)	15	1365		Radio News, or any N.A. Radio Club.
G. Haylock (England)	16	1350		Write to Randolph Hunt, Encinitas,
F. Farr (England)	17	1266		California, stating your choice.
R.F. Thompson (England)	18	1145		-----
E.L. Peters (Nova Scotia)	19	1100		N. Robinson, Eng. 375-H. Campbell, Eng
Edw. Goss (N.Y.)	20	930		315-Joel Armantout, Ga. 290-S. Walm-
A.G. Ward (England)	21	900		sley, Cal. 264-B. Eberlein, Cal. 264-
K.S. Oliver (England)	22	860		M. Bladon, Sask. 259-T. Goodwin, Eng.
Robt. Hough (New York)	23	820		200-A.G. Heathcote, Eng. 165-L. Chav-
R. Schofield (Montana)	24	791		vez, Cal. 132-Roy Meyers, Cal. 132-Wm
A.G. Cutts (England)	25	660		Ellis, Cal. 126-L.A. Scott, Eng. 110-
A.L. Hynes (Newfoundland)	26	620		E. Purkey, Cal. 72-J. Himelwright, Ore
L. Westmoreland (Sask.)	27	574		66-G. Bigbee, Ga. 60-A. Baker, Eng. 55-
J.R. Maloney (N.C.)	28	555		R. Craft, Eng. 55-J. Wheeler, Eng. 50-
Dr. H. Jacobs (N.Y.)		555		C. Wright, Eng. 50-J. Tricklebank, Eng
Warren Winkley (Calif)	29	498		50. (We wish to cordially thank
Alan Walker (N.J.)	30	475		each entrant for his support-Ed.)

## WITH OUR MEMBERS

### -CORRESPONDENCE CORNER-

The following wish to write to fellow members: W. Lay, 16 Devonport St, Hyde Park, London, W. 2, England, wishes to write to I.D.A. stamp collectors.

John Barlow, 2803 Woolsey St, Berkeley, California wishes to correspond with foreign members, and stamp collectors.

R. F. Thompson, 84 Langler Rd, Farlesden, London, N.W 10, England, wishes to write to IDA BCB members.

J. Spalding, 2710 Alford Ave, Louisville, Ky, wishes to hear from members, and stamp collectors, in any British Colony or possession.

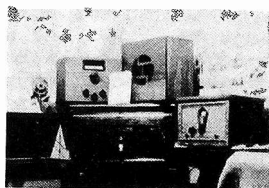


"AROUND THE WORLD"  
FRANK ANDREWS OF KFI

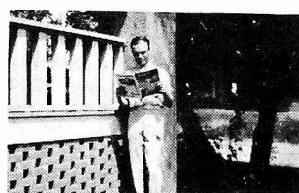
Good signals, but bad static from Australia. 200 much better on 670, than they were on 560. 1YA and 3YA are good, and 2YA fair (H. Eck)...Recent veri' from XGOW, Hankow, China, 1010KC, 3kW. Following European stations have been heard: Kuldiga, Lille, Frankfurt, Konigsberg, Breslau, Madona, Radio Toulouse, Hamburg, Milan, Prague and Budapest (A. Saito-Japan)... Highly prized veri's here from 3HA and 2UW (Hoxie-Maine)... Since January, 240 reports have been sent to VK2ME-3ME-3LR, and 220 veri's received. Hope for 365 by Xmas (Amlie-Pa.)... Aussies coming in excellently. 7ZL, 2FC, 3AR, 5CK, 5CL, 7NT, 3LO, 4QG, 2GB and 4RK are best (Long-Mo)... More than 300 stations audible here. American's very weak. So American's plentiful. I have more than 200 reports out in the S. African S.W. Contest (Burdett-N. Rhodesia)... Veri' from HSP1, Bangkok, Siam, (857KC), for report of June received. I am receiving this station daily except Tues/Fri (Lowe-Cal.)... The finest day ever experienced for S.W. reception was Sun., Oct. 6th (Maguire-Alta)... Best veri's lately LS2, XHHE, VUB. (Sullivan-N.Z.)... TP's are fine. Sept. 27th, I had 24, and 1 Jap. 200 was best. TA's poor now after being fine for a couple of weeks. Pecamp and Frankfurt fair. SA's fine-LR3, LR5 and LS2 nightly. LR2, LR4, LS8, LR6 and LR8 heard several nights. CX26 and PRF4 heard (Tomlinson-N.Y.)... I would like to enter JONK, Nagano, Japan (500W), and VK3CB (30W), as best catches for N.Z. (E. Nevin-N.Z.)... Three veri's recently received are KZRM, KFDM and KTFI. KZRM is seldom received in Europe (Bohm-Sweden)... 7NT, 3YA, and an unknown Aussie on about frequency of WHAS are the only new DX. 1YA is by far the best, and 3YA/7NT good at times. 2BL only heard once. 200 heard with fair volume (Hostetler-Ohio)... In the IDA Contest I received veri's from Australia, Japan, Germany, France, Italy, Sweden, Czechoslovakia, Hungary, Argentina, Poland, Spain, Hawaii, Denmark, Portugal, IFS, Latvia, Holland, England, Morocco, N.Z., Bolivia, Venezuela and Guatemala (Reichardt-Mass)... Static and poor reception general. Nothing coming in but Cubans. I counted 25 from 5-9pm EST the other nite (Shanks-Tenn)... J.H.A. Hardeman-Lieutenant of Royal Engineers-Tjimahi-JAVA, wishes to correspond with all DX'ers in the Dutch West Indies, South America, and South Africa, about the local state of broadcasting, and about Short-wave reception from Java, and Holland stations. PHI, GSG and GSG are coming like locals. W3XAL is an R6 signal now and then, on 16 meters. YV2RC-HJLABB good.



Listening Post of,  
Jack Herbert Hyde.



Reception Nook of  
R. Lawton, England



'Bill Schumacher'  
Ellis, Kansas

Price, \$1 a year by subscription in the United States.

International

Published Monthly Excepting July



Dx'ers Alliance

CHARLES A. MORRISON  
EDITOR

VOLUME III

BLOOMINGTON, ILLINOIS, U. S. A.

NO. 10

## EDITORIAL

This Special Edition of the Globe Circler is made possible by the co-operation of THE MIDWEST RADIO CORP. Whether or not, Midwest inserts further Ads, will be up to you. Remember the IDA reputation for co-operation and courtesy, and give this new member of our family a rousing welcome. You can't go wrong in buying this popular Radio receiver! If you can't purchase right at present, YOU CAN, at least show your support by writing in to Midwest for literature and show it to a friend.

We have had many requests for at least One Complete Short Wave List showing all ordinary Commercials, as well as every S.W. Station that can be received at present. We present, what we believe is the most useful, and up-to-date list yet published, with over 375 stations listed. Keep This List for future reference.

We would like more members to get behind our Three for One membership Campaign. A few members are more than doing their share, but we must have a united effort to reach our objective. We are putting our entire time into building up the IDA, without any financial return. Surely, we can ask that Each member help us, at least, to the extent of introducing three new members into our ranks before next year. We have promised to give you a larger and more complete book as soon as our membership justifies it. WE SOLICIT YOUR CO-OPERATION- Pres.

## I. D. A. CHAPTER NEWS

KALAMAZOO, MICHIGAN, Chapter of IDA has been officially organized. Director, J. DeMyer, and H. Eck, State Mgr., from Lansing, were present to assist in the ceremonies. All local members, with the exception of one, were present. Mr. Irving Goodeve local DX celebrity, was elected as Chapter Chairman, and the balance of the evening was consumed in inspecting Veri's, and talking DX. It is whispered that Kalamazoo is out to give Lansing Delta a real race.

LOS ANGELES CHAPTER of IDA held a very successful DX Tuning Party on Sept. 21st, with about 25 Dx'ers present. Six late model receivers were on hand, including a Patterson PR-16, PR-10, Two Atwater Kents, an RCA, G.E. and a Hallicrafter. The receivers were through the courtesy of members, Walter McMenamy, E. J. Bower and Earl DeHaven. The race is on! L.A. Chapt. is out to make their Chapter IDA's largest and best.

REGINA JUBILEE held a meeting on Oct. 6th, at the home of J.C. Hodges, with a large attendance. Wm. Ansell Dist. Director, told of his recent trip to Saskatoon and of plans for a Chapt. there, and for one in Edmonton, Alta. Further moves in the War against QRM were outlined. The subject of S.W. Contest prizes was discussed. It was moved to challenge Foothills Chapt. to a combined membership, and DX Contest to start on Nov. 1st. Jubilee state they will not be content with beating Foothills, but are out to swamp all other IDA Chpts. (Look out L.A. -Ed)

CALGARY FOOTHILLS met on Sept. 23 and a suitable Report Form for the Chapt. was the chief topic of conversation. Calgary Amateur Radio Club has invited Calgary IDA Chapt to attend its meetings and dinners - Mr. A. Cook, Pres. of the local AMT., was invited to attend the next Chapt. meeting and give a talk. The S.W. Contest is progressing nicely, and all members have reports in the mails. Calgary Chapter has accepted the challenge of Regina Jubilee Chapt. to a Contest.

LANSING DELTA Chapt. will hold its first meeting Oct. 15, at the home of Mr. Howard Eck.

MANCHESTER ZETA Chapt. met Aug. 26 at the home of Mr. R. Lawton. Members Pybus and Wright announced a spirited USA Ham Contest between them. Reception was carried out at the meeting on a Philco A.W. Model 98. Several U. S. Hams, and VP6YB were heard. The next meeting was set for Oct. 7th, at the home of Mr. R. Pybus.

FURTHER CHAPTERS are in formation for Boston, Vancouver, Birmingham, ham, Saskatoon, Malta, etc.

APPOINTMENTS

ASSISTANT DISTRICT DIRECTOR.

Dixie Dist.No.5 - G.T.Magee,2809,  
S.13th Ave,Birmingham,Alabama.

STATE MANAGERS

Mass. -Alden Bowser,Brockton.  
Vermont-R.Green, N.Benington.  
R.I. -A.Williams, Providence.

ASST. PROVINCIAL MANAGERS.

B.C. -Harley Slough,Vancouver.  
Alberta-E.H.Manning,Edmonton.

PUBLICITY.

Alberta-J.Maguire,Calgary.

NEW I. D. A. MEMBERS

Sr. Francisco Fossa Anderson,  
Caracas, VENEZUELA.  
John J. Crozier, White Plains, N.Y.  
J.F. Ficere, Long Beach, California.  
Fred Cox, Victoria, B.C., CANADA.  
L.F. Ruiz, Los Angeles, California.  
Miss Charlotte Dooley, Calgary, CAN  
Stephen Ogg, Calgary, Alta, CANADA.  
Jess Shaw, Kenmore, New York.  
Clarence Burnham, Gloucester, Mass.  
Murray Black, Canon City, Colorado.  
Thomas L. Sego, Augusta, Georgia.  
Don Keller, Portland, Oregon.  
Jack Herbert Hyde, Elmwood, Conn.  
Wilbur Britting, Los Angeles, Calif.  
Clarence J. Miller, Hueneme, Calif.  
Van O. Blair, Portland, Oregon.  
D. Gordon, Edmonton, Alta, CANADA.  
Leland A. Hersem, Edmonton, Alta, CAN.  
E.C. Deibert, Endiang, Alta, CANADA.  
Roy Freeman, Moncton, New Brunswick,  
CANADA.  
R.E. Donnelly, Moncton, New Brunswick  
CANADA.  
T.H. Kickson, Moncton, New Brunswick,  
CANADA.  
Ronald Gatenby, Disley, Sask, CANADA.  
Mervyn T. Whalen, Saskatoon, Sask, CAN  
Leonard Clarke, Regina, Sask, CANADA.  
Robt. E. Hoffman, Toledo, Ohio.  
Harold B. Cessna, Jr, Bedford, Pa.  
J.C. Livingstone, Red Hill, Natal,  
SOUTH AFRICA.  
W.B. Smith, Regina, Sask, CANADA.  
D.F. Krentzer, Clarksburg, W. Virginia  
Ray N. Putnam, Fargo, North Dakota.  
Miss E. Rose, Regina, Sask, CANADA.  
Paul Dillingham, Luseland, Sask, CAN.  
Jas. E. Robbins, Westboro, Mass.  
Frank Waters, Chicago, Illinois.  
Kenneth McKinley, Vancouver, B.C. CAN  
Thos. A. Lonergan, Dorchester, Mass.

SPECIAL DEGREES

TA DEGREE (Trans-Atlantic)

Clarence Burnham, Gloucester, Mass.  
Harold B. Cessna, Jr, Bedford, Pa.

TP DEGREE (Trans-Pacific)

Harold B. Cessna, Jr, Bedford, Pa.  
Joel Armentrout, Fitzgerald, Ga.

NOTE: Upon receipt of the usual  
50% fee, we will be pleased to con-  
fer the degrees on these members.

BEST BETS ON THE LONG WAVES

EST	(Raymond M. Bell)	EST.
KC	KW AM PM	
160	Kootwijk, Holland (100kW.)	10:40-6:10 (to 6:40pm Tu/Sa)
166	Lahti, Finland	40 1:05 -3:15 (to 5:00pm Sat.)
174	Moscow, U.S.S.R.	500-9:40pm-6pm
182	Paris, France	80 1:45 -7:15 (to 8pm Fri) (Sun 2:00 -7:15)
191	Deutschlandsend-er, Germany.	60 12:00-6:00
200	Droitwich, Eng.	150 5:15 -7:00 (Sun 7:30 -5:35)
208	Reykjavik, Ice-land.	16 6:00 -7:00 (Sat/Sun to 8:00)
216	Motala, Sweden.	150 1:20 -5:00 (Sun 3:00 -5:00)

NOTE: Best Bets underlined.

DISTRICT DOINGS

Dist.1. (Pacific North West) has set a goal of 100 members for District by Jan.1st. Dist.No.1, challenges Dist.7 to a membership contest.

Dist.2. (California Area) has set a goal of 150 new members for the season, and in turn challenges Dist No.1 to a membership contest. Bill Ellis says, "We hope to give Bill Ansell some real competition".

Dist.5. (Dixie District) is sponsoring a membership drive, with prizes to the members turning in the most signed applications for new memberships. Also, are publishing a dandy little District bulletin called "The Dixie DX Flash". Have made arrangements for a Tips period over WBRC, and will carry news in Southern Radio News.

Dist.6. (Eastern States) John DeMyer, 545 Baker St, Lansing, Mich, the Director, states that only one request has been made for a District bulletin this season, and unless more enthusiasm is shown, NO bulletin will be published. If interested in this bulletin, write to John at once.

Dist.7. (N.E. Canada and New England States) are working on a big membership drive, and promises to have several local Chapters swinging into action before long. Are editing a very fine new District bulletin, type-set throughout, and containing 8 to 12 pages of real DX News. The price of these bulletins will be 5¢ each. Write to E. L. Peters, Westport, Nova Scotia, Canada at once and reserve your copy.

IDA member, Jack Rice, Pres. of the International Radio Club, informs their annual party will be in Havana, Cuba, on December 9th, 10th, 11th

# JAPANESE BROADCAST STATIONS

(Corrected to September 25, 1935)

-Akifusa Saito-

CALL	KC/S	KW	LOCATION
MTCY	560	100	Shinkyo, Manchuko
JFCK*	580	1	Taichu, Taiwan
JOAK2	590	10	Tokyo, Japan
J2JE-	590	50	Tokyo, Japan
JODK2	610	10	Keijo, Chosen
JOTK	625	.5	Matsue, Japan
JODG	635	.5	Hamamatsu, Japan
JOUK	645	.3	Akita, Japan
JQAK	650	1	Dairen, Manchukuo
JOCG	655	.3	Asahiga, Japan
JFAK	670	10	Taihoku, Taiwan
MTFY	674	3	Harbin, Manchukuo
JOVK	680	.5	Kakodate, Japan
JOLK	680	.5	Fukuoka, Japan
JOKK	700	.5	Okayama, Japan
JOJK	710	3	Kanazawa, Japan
JFBK	720	1	Tainan, Taiwan
JORK	720	.5	Kochi, Japan
JOSK	735	1	Kokura, Japan
JOBK1	750	10	Osaka, Japan
JOHK	770	10	Sendai, Japan
JOPK	780	.5	Shizuoka, Japan
JOGK	790	10	Kumamoto, Japan
JOCK1	810	10	Nagoya, Japan
JOIK	830	10	Sapporo, Japan
JOFK	850	10	Hiroshima, Japan
JOAK1	870	10	Tokyo, Japan
MTBY	890	1	Hoten, Manchukuo
JODK1	900	10	Keijo, Chosen
JOQK	920	.5	Niigata, Japan
JOAG	930	.5	Nagasaki, Japan
JONK	940	.5	Nagano, Japan
JOOK	960	.3	Kyoto, Japan
JOBG	970	.5	Maebashi, Japan
JOXK	980	.5	Tokushima, Japan

JOFG	990	.3	Fukui, Japan
JABK*	1030	.15	Fuzan, Chosen
JOHG*	1050	.5	Kagoshima, Japan
JOIG*	1060	.5	Toyama, Japan
JOBK2	1085	10	Osaka, Japan
JOCK2	1175	10	Nagoya, Japan

\* New Stations now on the air.  
- Experimental station of the  
Tokyo Electric Co., tests irregularly from 6 to 10am P.S.T.

## BUENOS AIRES SCHEDULES

-Raymond M. Bell-

Time is Eastern Standard Time.

CALL	KC/S	AM-PM	ADDRESS
LS10	590	8-11	Callao 864,
LS3	630	11-10	Callao 1526,
LS4	670	8-10:30d	Belgrano 1841,
LS1	710	10-10:30d	
LR10	790	9-11	Belgrano 1841,
LR5	830	7-10:30d	Maipu 462,
LR6	870	8-10 sb	Florida 347,
LR2	910	9-10 s	Bolivar 1356,
LR3	950	7-11 s	Belgrano 1841,
LR4	990	8-10:30d	Callao 1526,
LR9	1030	9-10:30	Santa Fe 174,
LR1	1070	Testing.	
LS5	1110	8-10	Callao 1526,
LR8	1150	10-10:30c	Cangallo 860,
LS2	1190	11-10:30d	Bolivar 1356,
LS8	1230	7-10 s	Florida 8,
LS9	1270	9-10	Pozos 439,
LS6	1350	8-10	

Code: b-to lam on Saturday; c-to 12pm on Sunday; d-May continue to 12pm; s-Closes down several minutes after the hour.

FQN, St. Pierre, Miquelon, 609kc, 250w,  
DX for GCDXRC Nov 16, 11pm-lam 17th

## D I S T R I C T H O N O R R O L L S

<b>DISTRICT -6-</b>	Mich, Ind, Ohio, Ky, Va, W. Va, Pa, N.Y., Del, Md, N.J.
David Thomas	21X Ohio VQ7LO, Moscow, FPTT, NRH, EAJ5, ZTJ, LOV, Santo Paulo, CX20, PRAK, Huizen, KZRC, FN. G6BM, Strausbourg, 2BD, LYX, Droitwich, ZBW, F8GC, Warsaw.
Ray Lewis	8X Ohio LVL, TIC, 5DN, EAJ41, Palermo, JOAK2, JOBK2, JODK2.
Howard Eck	6X Mich Innsbruck, Stettin, Freiberg, Ausberg, Nurnberg, 3KZ.
C. Wyborski	6X Pa. CE90, HJ3ABD, CX14, OKK, TIRC, TIRCA.
Carl Lord	3X Ohio NN, SN, Suisse Romande.
R. Tomlinson	2X N.Y. HAL2, Vienna. T. Colegrove 2X D.C. 2ZW, 4YA.
John DeMyer	2X Mich JOPK, JQAK. Robt. Hough 1X N.Y. OAX.
Ed. Goss	1X N.Y. LRL J. W. Brauner Loses JOIK to Beitman.
<b>DISTRICT -42-</b>	Gt. Britain, and Europe.
W.K. Walton	14X Eng-VOGY, WADC, KPRC, WTAR, WHAZ, WLXBS, LS9, WFIL, KXL, KQV, land WHEC, CMGF, WBNS, WHOM.
John S. Bohm	13X Swe-WCFP, TFW, KWG, KFXM, WTJS, KGIR, KFLV, WBCM, KXL, WMAS. den WJDX, WJBW, Algiers. Cutts.)
F.R. Crowder	7X Eng. WDAF, WMBG, WSJS, WREN, KSO, KVOR, KLZ (Lost KGW to-
R. Stansfield	6X Eng. CKNC, CFCY, CRCW, WEAN, WMC, KFSD.
K. Judd	6X Eng. NAA, KMPC, 2UE, 5CL, KERN, KGU.
A.G. Cutts	5X Eng. KOMA, KFNF, KOL, WMT, WTCN.
R. Ellis	4X Scot WKRC, WFBM, WSPD, KJR, (Lost WGAR to Stansfield).
N. Robinson	3X Eng. CX12, KGA, WERC. R. T. Coales 3X Eng. CKLW, WBBR, CPX.
R. Mumford	3X IFS. CKCW, WAAM, WICC.
R. Pybus	1X Eng. WJJD. P. Tremaine 1X Eng. WMAL.
R.F. Thompson	1X Eng. WPTF. A.G. Ward 1X Eng. CKPC.
A.G. Heathcote	1X Eng. LVL. J.O'Donnell 1X IFS. KHQ.



AROUND THE WORLD WITH THE BROADCASTERS

(NEW)

EUROPE	<u>France</u>	Paris PTT, 695kC, 120kW, on air with regular schedule. Paris Cite (Formerly Paris LL), 1077kC, 2kW, now on air. Radio PTT, Nice-La Brague, 1249kC, 60kW, testing. (15th.) Toulouse-Muret PTT, 776kC, 100kW, officially opened Oct-Marseilles PTT, 749kC, 120kW, testing.
	<u>Estonia</u>	Tallinn, 731kC, to have a new 40/60kW transmitter. Tartu, 517kC, to have a new 40/60kW transmitter.
	<u>Italy</u>	Bari II, 1357kC, now using 2kW power. Bologna, 50kW, to open Oct. 28th. Frequency unknown. Rome, 713kC, will have new 120kW Xmtr. by end of 1936. Warsaw, 224kC, to be increased in power to 200kW/s.
	<u>Poland</u>	
	<u>Mallorca</u>	may have a station built by the Radio Luxembourg Syndicate for sponsored programs to N. Africa, Spain, etc.
	<u>Portugal</u>	Lisbon, 629kC, to have 100kW transmitter by next year. Oporto will have a station on 1031kC to relay Lisbon. to erect a 150kW station near Angola.
	<u>Turkey</u>	Reichenbach (Silesia), 1231kC, 5kW, under construction
	<u>Germany</u>	Salonica, 1285kC, 1250 w, on irregularly from 8-8:30pm.
	<u>Greece</u>	
	<u>Czechoslovakia</u>	, to have station on Mount Jeschken, near Liberec.
	<u>Bulgaria</u>	Vakarel, near Sofia to have 100kW station shortly.
	<u>Finland</u>	Oulu, 431kC, has new 10kW Xmtr. Vaasa to have 10kW Xmtr Lahti, 166kC, will test new 150/220kW transmitter soon.
ASIA	<u>India</u>	Peshawar, 1500kC, 2kW, rumored to be in operation. Hyderabad will have a 3/5kW station in near future. Aurangabad, Hyderabad, will have 500 watt Xmtr shortly.
	<u>Palestine</u>	Jerusalem, 668kC, 20kW, to be on the air shortly.
S. A.	<u>Argentina</u>	Buenos Aires, "El Mundo", 1070kC, 50kW testing. LRL Rosario, 1260kC, LT12; LV8, Cordoba, 1130kC under const.
AUSTRA-	<u>Australia</u>	Maryborough, 1060kC, 50 watts on the air. LMB
LASIA		Armidale (N.S.W.) 1080kC, to be erected. 2AD
		Narrabi (N.S.W.) 1170kC, to be erected 2NZ
		Gympie (Qsld.) 1430kC, 50w under construction. 4GY
		Inverell (N.S.W.) 980kC, to be erected. 2LV
		Bundaberg (Qsld.) 1480kC, 100w under construction. 4BU
		Melbourne (Vict.) 1420kC, 600w now on the air. 3XY
		Ipswich (Qsld.) 1440kC, 100w now on the air. 4IP
	<u>N. Z.</u>	Dunedin, 790kC, new 1-kW Xmtr to test in November 4YA
N. A.	<u>U. S. A.</u>	WHBB, Selma, Ala, 1500kC, 100w; Buffalo, N.W., 1370kC, 250w; KNEI, Brady, Tex, 1500kC, 100w; Roseburg, Ore, 1500kC, 100w. Hilo to have new station on 1420kC, with 100w. KHBC
	<u>Hawaii</u>	
	<u>Mexico</u>	XEMZ, Tijuana, L. C., 1210kC, 250w; Mexico DF, 1100kC XEL
	<u>Cuba</u>	CMKD, Santiago, 1050kC, 250w; CMKR, Santiago, 1400kC, 200w. CMHX, Cienfuegos, 760kC, 150w; CMBN, Havana, 880kC, 150w.
		(C H A N G E S)
AUSTRA-	<u>Australia</u>	New Power ratings furnished by the N. Z. DX R. A.:-
LASIA		2FC, 610kC, 3kW; 2CO, 670kC, 1kW; 7HO, 820kC, 100w; 2YC, 840kC, 200w; 1YX, 880kC, 150w; 3UZ, 930kC, 650w; 2UE, 950kC, 3kW; 2ZF, 960kC, 250w; 4AY, 980kC, 100w; 4GR, 1000kC, 500w; 1ZB, 1090kC, 100w; 2UW, 1110kC, 1kW; 6ML, 1130kC, 500w; 2WG, 1150kC, 200w; 4YO, 1140kC, 150w; 6KG, 1210kC, 85w; 3TR, 1240kC, 500w; 2ZO, 1400kC, 100w; 3ZM, 1470kC, 60w; 2AY, 1480kC, 100w; 3AK, 1500kC, 200w. New Frequencies furnished by the N. Z. DX R. A.:- 6BY, 50w, 1170kC; 2BH, 100w, 1330kC; 2MO, 50w, 1360kC.
AFRICA	<u>So. Africa</u>	Grahamstown, 560kC, 10kW changes call from ZTG to ZUG
S. A.	<u>Argentina</u>	Mendoza, 760kC, 200w, changes call from LTH to LV6 Parana, 1260kC, 250 watts, deleted LT11
N. A.	<u>U. S. A.</u>	WIND, Gary (Ind), 560kC, 1 to 2kW; Des Moines, Iowa, KSO 1430kC, 1/2 to 1kW; WCFL, Chicago (Ill) 970kC, 1 to 5kW. KSTP, St. Paul (Minn), 1460kC, 10 to 25kW; WJR, Detroit, (Mich), 750kC, 10 to 50kW; KFBK, Sacramento (Calif) 1490 kC, - from 100 to 5000 watts.
	<u>Mexico</u>	XEAW, Reynosa (Tams) 960kC, 10 to 50kW; XED, Guadalajara (Jal.) 1155kC, 50 to 2500 watts.
	<u>Cuba</u>	Havana, 600kC, from 100 to 1000 watts. CMW

# On Short Waves

EST

SPECIAL S.W. FEATURES

EST

Wed, Nov. 6, 6:15-7:30am, Daventry, GSG, 17.79mc  
6:15-7:30am, Daventry, GSF, 15.14mc

Royal Wedding of H.R.H. the Duke of Gloucester,  
and Lady Alice Montagu-Douglas-Scott.

Weekly Tuesday 6:35-7:00am 9530kc, W2XAF. tady.  
"Mail Bag", followed by "Backstage in Schenec-

George C. Sholin, 55 Lapidge St, San Francisco, California, suggests the use of the 24-hour clock in our Notes and S. W. List. (What do you think of this suggestion?). Mr. Sholin is also in favor of S. W. Stations using Esperanto in making announcements, as well as their own language. Esperanto is a very simple 'international language' that can be learned in a few hours time. Members can obtain a pamphlet containing the whole grammar, and a simple vocabulary of Esperanto by writing Mr. Sholin, and sending 5¢ to cover postage charges, etc.

You can help to make our S.W. Dept. increasingly valuable by sending us a monthly Short Wave Report. This should arrive not later than the 17th of the month. Write on one side of the page only, double space, and please divide your items into Continents. New Stations, Changes in frequency, location or schedule are important, as are unusual receptions, and tips. Any suggestions for improving this dept. are always very welcome.

Sergeant H.J. Dent, of Bombay, India, becomes eligible this month for a D.S.W. (Doctor of Short Waves) Degree.

E.S.T.

NORTH AMERICA

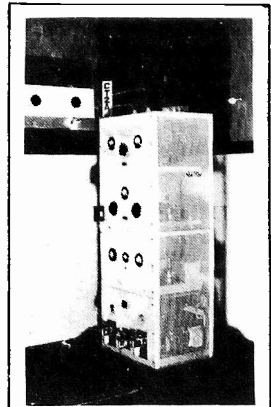
E.S.T.

U.S.A. W10XFH, Stratosphere Balloon Kxtr (13.05), heard testing almost daily during Oct. noon-1pm, and rebroadcasting W3XAL. W10XL, Ground Station, Rapid City, S.A. (6.35), testing nightly with W3XL (6.425), 9:15-9:30pm. (Twomey-Miller-Morrison) .. W1XAL, Boston, Mass. to increase power from 5 to 10kW .. W2XAF, New Sked 4-12pm, Daily. Sunday 4:15-12pm. W2XAF has an attractive and novel new QSL card .. W2XAF contacts LSX, 10.35mc, Mondays and Thurs 6pm; and VK2ME, 9.59mc, often Saturdays at 6am .. W9XBY Kansas City (1530kc), gives S.W. Tips daily Ex. Sun. at 7:45pm (Schumacher) .. Valuable in calibrating S. W. receivers, are the frequency transmissions of WWV, Washington, D.C. Wed. Noon-1pm (15mc) 1:15-2:15pm (10mc) 2:30-3:30pm (5mc) .. New Sked for W2XE; 11am-6pm (15.27) 6-8pm (11.83) 8-11pm (6.12) (Clough) .. WEA, Rocky Point, N.Y. (10.61) heard broadcasting program to DIQ, Berlin, Sun. Oct. 6, 6-6:35pm (Twomey-Morrison) .. Lawrenceville, N.J. Stations, WKF, 19.22mc, WME, 14.47mc, WOF, 9.75mc, have added Paris as a primary Communication point .. WOR, Newark, N.J. has decided to abandon construction of their proposed S.W. relay W2XHI it is reported .. W8XKA is the call of W8XK's new 5 meter Kxtr. Relays KDKA-W8XK on 55.5 mc (Sholin) .. W2XE is adding two new waves, 17.76 and 21.52mc (Stokes) .. WQQ, Rocky Point, N.Y. (6.725), heard calling S. S. Normandie at 8:50pm (Butcher) .. KBAZ, KBAY, W6EAN, Milford, Utah, and the Fairchild Aerial Survey have been providing many thrills on their trip down the Colorado River (Mrs. Eberts) .. Transatlantic telephone transmitters are at Lawrenceville, N.J., South American calls handled from Hialeah, Florida, and Trans-Pacific calls made from Dixon, Calif; RCA experimental stations for relaying international programs are located at Rocky Point, N.Y. and Bolinas, Calif. The principal USA receiving station is at Riverhead, L.I.

Mexico. New Station, XBJQ, National Bank of Mexico, P.O. Box 2825, Mexico, D.F. (11mc) relays XEW nightly, until 12:45am. Announcements are made in English and Spanish, usually preceded by the striking of gongs. Signal strength is tremendous (Clough-Butcher-Bills-Sholin-Moore-Twomey-Messer-Maguire-McGee-Morrison) .. X1G, famous Amateur station of Dr. Hard, Mexico, D.F. operates on 14128kc (Sholin) .. New station XEFT, Vera Cruz (6.12), 7-10pm reported by Robert Rossi (CSWRC).

Alaska. WVD, Alaskan Telegraph Co., Seattle, Wash. (8.9), heard calling WXY, Nome (2.604), and WXE, Anchorage (5.995), near 11pm (Moore).

Canada. Station reported in Victoria, B.C. on (5.83) is a harmonic of



50 Watt Transmitter  
"CT2AJ"  
Ponta Delgada, Azores



CFCT on 1450kc (Blair-Maguire) .. CJKO (6.15), and CJRX, Winnipeg (11.72 carry the Canadian Radio Commission programs. CRGX (6.09) may carry the programs regularly soon.

Hawaii. KIQ, Kahuku (11.68) heard sending out Hawaiian program Sept 25, 5-5:30pm (Twomey) heard testing with KKQ, Bolinas, Calif. (11.95) Oct. 15 1:10-1:18am (Bills) .. KKH, Kahuku, Hawaii (7.52), relays Hawaiian program to the CBS, Mondays 11:45pm to lam. Preceding the broadcast, KKH tests with KEJ, Bolinas (9.01), and KKQ (Moore) .. KGU's Short Wave relay will work on 11.85 and 15.23mc (Stokes).

West Indies. New Station for San Juan, Puerto Rico (13.355), to work WNC, Hialeah, Fla., pt. to pt .. COH (9.43), Havana, Cuba, is now COCH. COCH heard 8-11pm (Moore) .. COCD, Havana, Cuba (6.13), signs off with Ted Lewis Goodnight melody, anywhere from 12:05 to 12:35am (Miller) .. COCO Havana (6.01), stays on the air Sunday mornings to 12:15am (Maguire) .. CO9JQ, Camaguey (8.2), heard Oct. 11, 8-9:20pm (Clough) .. COBYB, famous amateur at Guantanamo Bay, Cuba, sends a fine QSL card to S.W.L.'s. Send U.S.A. stamps for return postage (Sholin). Dominican Republic. HILL, owned by Fausti Donastorg, Apartado 204, San Pedro, de Macoris, Dominican Republic, broadcasts on (5.865) nightly with English announcements. On Sat, they broadcast an hour of music dedicated to Radio Clubs, from 8:40 to 9:40pm (Miller) .. HIH, "La Vox del Higuamo", San Pedro de Macoris, (6.81), broadcasts from 10am to Noon, and 7-9pm daily. Sun. 3-4am (Haverlin).

#### CENTRAL AMERICA

Costa Rica. TIPG, "La Voz de la Victor", San Jose (6.41), on daily--noon to 2pm, and 6-11pm, sometimes later. Has lady announcer (Clough--Maguire-Miller) .. TI6OW, Limon, owned by Otto Wimmer, broadcasts with 50 watts on (6.8) irregularly.

Guatemala. TGX, heard on approx 5.77mc, Oct. 11, 6:30-8:15pm (CSWRC) .. TGIX, experimental station, Guatemala City (9.45) has antenna beamed on Chicago, heard 1pm (Schumacher) .. TG2X, "La Voz de Policia Nacional", on (5.96), also reported on (5.94).

Honduras. HRN (N as in Navy), "Voice of Honduras", Tegucigalpa, on (5.875), relays HRN on 1460kc with 400 watts power daily from about 7:30 to 10pm, or later. Sign off with Ted Lewis Goodnight melody. Music appreciation hour for English listeners Sunday nights 10-11:30pm (McGee-Miller-Twomey-Messer-Morrison-Butcher-Sholin).

Nicaragua. YNOP, "Estacion Radiodifusora Bayer, YNOP", Managua, owned by IDA Rep. Ernest H. Andreas, (3.48), broadcasts nightly 8:15-10:15pm. Has power of 1kW .. YNLF, "La Voz de Nicaragua", Managua, owned by Sr. Moises le France, broadcasts on 6mc, with 250w, 6:45-8:45pm daily (Andreas) E.H. Andreas will be glad to answer any questions about Nicaragua, or its stations. Send US postage stamps. IRC's are no good in Nicaragua.

Panama. New station being built at Bocas del Toro, with call HP53, to operate on a frequency of (9.565) (R.C.V.) .. Amateur station HPLA, owned by R.D. Prescott, Box 32, Panama City, operates on 14.3-Sholin.

#### SOUTH AMERICA

Argentina. "Radio El Mundo", Compania Internacional de Radio, Buenos Aires, took the air Sun, Oct. 13. LSN3, operates on (9.89), and relays the 50kW broadcast station LRL. Signed off at 11pm (Morrison) .. LSX (10.35) heard testing with HBL, 6:30pm, Sept. 4 (Lawton) .. LSG, Monte Grande, 19.9mc heard operating (Stokes).

Bolivia. CP7, La Paz (15.3), works irregularly in evenings .. CP9 Oruro (6mc), 200w, has lately been adapted for broadcasting (Armantrout)

Brazil. Marconi will open new PRG6, Cruzeiro, San Paulo. Will operate on 15mc with 25kW (Stokes) .. PSK, Rio de Janeiro (8.18), reported to be on Monday/Tues, 9:15-11:15pm .. IRC's are no longer valid in Brazil according to P.O. (Butcher).

Colombia. HJN, Bogota (6.07), is on Saturdays at 11pm (Stokes) .. HJ2ABD, Radio Bucaramanga, Calle 2A, 1205, Bucaramanga, Colombia, testing on (5.9) (Stokes). HJ2ABD supposed to be on (8.57) .. HJ3ABH, Bogota, is on (6.012) now (Miller) .. HJ4ABC, Pereira, on new frequency of (6.08) .. HJ4ABD, Medellin, Colombia, a NEW station working on 6.06mc from 8-11pm nightly (CSWRC) .. HJ4ABE, Medellin, Colombia (5.93), 6-10:30 or 11pm. Very interesting talks in English about Colombia, at 10:15 or 10:30pm. Special "Theatre of the Air" Program Sunday 9-10pm (Miller-Moore-Sholin) .. HJ4ABJ, "Ecos del Tolina, Ibague (6.46) on 8:30-10:30pm. Heard HJ4ABJ on their IDA Special on about 6.47 (Brauner) .. HJ5ABC, "La Voz de Colombia", Cali (6.15), on 8-11pm (W. R. -Butcher) .. HJ5ABE, Cia. Radio-difus-

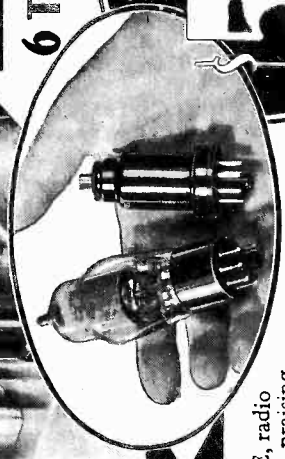
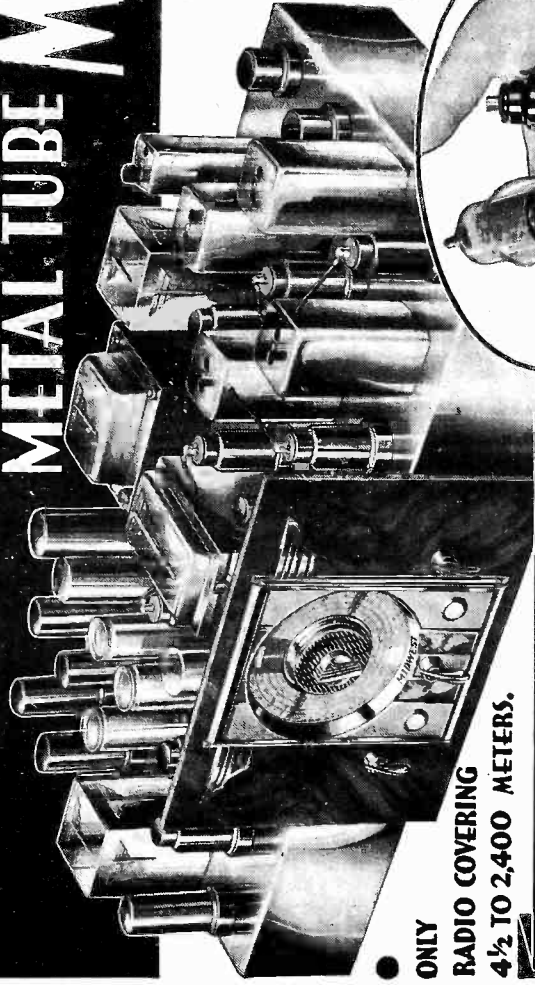
SAVE UP TO 50% BY BUYING YOUR RADIO Direct from MIDWEST LABORATORIES

*Glorious Tone Realism.. World-Wide Entertainment Guaranteed!*  
with New 1936 SUPER Deluxe

# METAL TUBE MIDWEST

# 18 TUBE RADIOS

6 TUNING RANGES



● ONLY  
RADIO COVERING  
4½ TO 2,400 METERS.

**30 Days FREE Trial!**

WORLD'S GREATEST  
RADIO VALUE

**59**  
50  
With New  
GIANT  
THEATRE-  
SONIC  
(LESS TUBES) SPEAKER

EVERYWHERE, radio enthusiasts are praising this amazingly beautiful, bigger, better, more powerful, super selective, 18-tube 6-tuning range radio. They say it is a tremendous improvement over Midwest's 16-tube set, so popular last season.



Now, Push Button Silent Tuning is offered for first time! Simply pushing Silencer Button hushes set between stations . . . suppresses noises. Pressing Station Finder Button automatically indicates proper dial position for bringing in extremely weak stations.

**Acousti-Tone V-Spread Design**  
(Patent Pending)

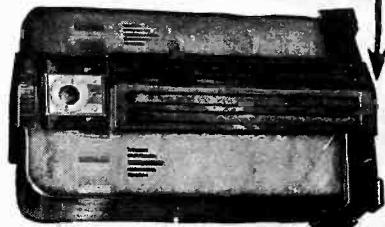
Establishes new radio style overnight! The V-Front Dispersing Vanes were developed by Midwest engineers as a result of a study of directional effect of the Midwest Full Scope High Fidelity Speaker. These Vanes spread the beautiful lacwork of the "highs" throughout the entire room in a scientific manner, directing the High Fidelity waves uniformly to the ear. Send for new FREE 40-page catalog. It pictures the complete line of beautiful 1936 Acousti-Tone V-Spread consoles . . . and chassis . . . in four colors.

**FULL SCOPE HIGH FIDELITY**

**Brilliant Concert Tone**

Now, get complete range of audible frequencies from 30 to 16,000 cycles, being transmitted by our new High Fidelity Broadcasting stations—W1XBS, W9XBY, W2XR and W6XAL. Glorious new Acousti-Tone is achieved life-like, crystal clear "concert" realism.

**V-FRONT**



among representative Ohio, Kentucky and Indiana radio retailers.) Before you buy any radio, write for FREE 40-page 1936 catalog. Never before so much radio for so little money. Why pay more? You are triple-protected with: One Year Guarantee, Foreign Reception Guarantee and Money-Back Guarantee!

This super Midwest will out-perform \$200 to \$300 sets on a point-for-point comparison. That is why nationally known orchestra leaders like Fred Waring, George Olsen, Jack Denny, Ted Fio Rito, and others use Midwest sets to study types of harmony and rhythmic beats followed by leading American and Foreign orchestras.

**80 ADVANCED 1936 FEATURES**

Scores of marvelous features, many exclusive, explain Midwest super performance and thrilling world-wide all-wave reception. . . enable Midwest to bring in weak distant foreign stations, with full loud speaker volume, on channels adjacent to locals. Only Midwest offers so many features. . . only Midwest tunes as low as 4 1/2 meters. . . only Midwest gives the sensational new Push-Button Tuning feature, etc. See pages 12 to 21 in FREE catalog for description of the 80 features. Read about advantages of 6 Tuning ranges. . . offered for first time: E, A, L, M, H and U. They make this Super De Luxe 18-tube set the equivalent of six different radios. . . offer tuning ranges not obtainable in other radios at any price!

**DEAL DIRECT WITH LABORATORIES**  
No middlemen's profits to pay — you buy at wholesale price direct from laboratories. . . saving 30% to 50%. Increasing costs are sure to result in higher radio prices soon. Buy before the big advance. . . NOW. . . while you can take advantage of Midwest's sensational values. You can order your Midwest 1936 Full Scope High Fidelity Acousti-Tone radio from the 40-page catalog with as much certainty of satisfaction as if you were to come yourself to our great radio laboratories. You save 30% to 50%. . . you get 30 days FREE trial. . . as little as \$5.00 puts a Midwest radio in your home. Satisfaction guaranteed or money back. Write today, for FREE catalog.



Thrill to new explorations in sections of radio spectrum that are strangers to you. Every type of broadcast from North and South America, Europe, Asia, Africa and Australia is now yours. Send today for money-saving facts.

**GEORGE OLSEN PRAISES LIFE-LIKE TONE REALISM**

Long Island, N. Y.—After comparing many different makes, I finally decided upon Midwest. It out-performs other radios costing almost twice as much. The crystal-clear tone is so life-like that it sounds as though I am standing in the studios, actually hearing artists performing.



**TODAY'S FINEST RADIO SAYS TED FIO RITO**

My new Midwest is finest radio I have had pleasure of hearing. Bass-Treble control is marvelous. . . enables one to hear every instrument in orchestra.



**METAL TUBES**

This Midwest is engineered from the ground up to see either the new METAL tubes or glass-metal counterpart tubes. Octal sockets and newest circuits permit use of either type. . . just as you desire.

**MAIL COUPON TODAY!**  
**FREE 30-DAY TRIAL OFFER AND 40-PAGE FOUR-COLOR FREE CATALOG**

**MIDWEST RADIO CORP.**  
Dept. 163-E, Cincinnati, Ohio

Without obligation on my part, send me your new FREE catalog, complete details of your FREE 30-day trial offer, and name of nearest Midwest Radio Laboratory. I will return this card to you at once.

Name \_\_\_\_\_  
Address \_\_\_\_\_  
Town \_\_\_\_\_ State \_\_\_\_\_

User-Agents Make Easy Check Here for details

**MIDWEST RADIO CORP.**  
DEPT. 163-E CINCINNATI, OHIO U.S.A.  
Established 1920 Cable Address MIRACO All Codes

Check here, if interested in a Midwest All-Wave Battery Radio

ora Colombiana, S. A. formerly on 14.1mc now on 1500kc, only (CSWRC) .. HJ5ABG, P.O.Box 200, Cali, Colombia, will be on air with new transmitter on 7.15 and 14.2mc, shortly .. From now on all Colombian Short Wave stations must have a power of at least 500 watts, or confine their transmissions to the broadcast band.

Ecuador. HCJB, Quito, "Voice of the Andes", has moved to 8.47mc, and is broadcasting from 7-10pm Ex. Monday (Stokes-Messer) .. HC2CW, Guayaquil, "Ondas del Pacifico" (8.63), being heard daily 8-12:20am (CSWRC) .. HCK, Quito, Ecuador, reported broadcasting again on 5.88 and 5.9mc, irreg.

Paraguay. Paraguay's two S.W. stations are: ZP1Q, Asuncion, 8.22mc, 15 watts, on from 11-11:45am and 7:30-9:30pm. ZP1L, Asuncion, 7.897, 10 w, 9-11am, and 5:30 to 9:30pm (Armantrout-S. Radio News).

Peru. OAX4G, Lima, owned by Roberto Grellaud & Cia, S en C., Avenida Abancay, 915-923, Lima (6.23), is broadcasting daily 9-11pm, and to 12pm Sat. night. OAX4D, Lima (5.78), on daily 9-11pm, till 11:30pm Saturday and Wednesday nights. (Balbi).

Venezuela. YV2RC, "Broadcasting Caracas", Caracas, has shifted to a far more satisfactory frequency of 5.8mc (Twomey-Maguire-Miller-Sholin Anzola, Director of station) .. YV4RC, Caracas (6.375) is an experimental station with no regular schedule (DeHaven) .. YV5RMO, Maracaibo (5.85), heard as early as 7:40pm, and as late as 11pm (Miller) .. YV8RV, "La Voz de Lara, Barquisimeto (5.85), being heard (Stokes) .. YV9RC, Caracas, "Ondas Populares" (6.4), is broadcasting regularly (Stokes) .. YVQ, Maracay (6.67), relays YV1RC Saturdays, 8-8:30pm. YVR (9.15), sometimes transmits the programs of YV1RC, also (DeHaven) YVR (18.3), heard at noon calling Germany (Schumacher) .. YV1ORSC, San Cristobal, 5.72mc, changing its call to YV1ORC (Stokes-DeHaven).

#### EUROPE

Belgium. ORK, Ruyssedele (10.33), have increased their power, and are now broadcasting to 4pm, instead of 3pm, daily (Maguire).

England. The following corrected schedules are now effective: No. 1, GSB-GSD, 2:15-4:15am; No. 3, 9-10:30am, GSF-GSG, 10:30-Noon, GSF-GSE (GSF-GSI and GSD being used at this hour, irregularly); No. 4, 12:15-2:15pm GSB, GSD, GSI, 2:15-2:30pm, GSB, GSD, 2:30-4pm, GSB, GSD, =, 4:15-5:45pm GSB, GSC. No. 5, 6-8pm, GSA-GSC.

France. New Radio Coloniale will use 100kW for frequencies lower than 10mc, and 50kW for frequencies above 10mc. There will be four transmitters, and six directional serials. Was supposed to take the air Oct. 15th, but hasn't been heard as yet (Ed) .. TYA, Paris (12.215), heard calling S. S. Normandie, 5:35am (Miller) .. FYC2, Paris (9.84), occasional works JVN (10.66), near midnight (Stokes).

Germany. DFD, Nauen, 14.665mc, often works JVH, 14.6mc at 2am (Walker) .. DJB, 15.2mc, 3:45-7:15am to South Asia, 8-10:30am to East Asia, 10:30am-11:30am to North America. After Noon, Sundays, and irreg. DJQ, 15.28mc, 12:30-2:15am to East Asia. (German Short-Wave Program Schedule) .. DFB, Nauen, 17.51mc, heard calling Bangkok, at 5:30am (Miller). Heard testing at 6pm (Schumacher).

Holland. PHI, Huizen, Holland, now on winter frequency of 11.73mc; on 8:30-11:10am, daily, except Tues, Wed. (Sholin).

Hungary. HAS3, 15.37mc, on 9-10am Sundays. HAT4, 9.125mc, on 6-7pm, Sundays. Both schedules are being received very fine in U. S. at present (Armantrout-Morrison-Sholin).

Iceland. Tune for Iceland on TFL, 13.96mc, TRK, 9.06mc, TFI, 5.05mc and TFJ, 12.21mc .. TFJ phones FYA, Paris, and GBC, Rugby, 12.78, almost every morning (Lawton) TRK heard Oct. 15th, 2:30-2:43am (Bills). Also being heard on an unlisted frequency of 7.4mc, irregularly from 1-1am ... TFJ, heard working GBS, Rugby, 12.25mc, and sending program to the U.S. Oct. 13th, 12:07 to 1:05pm (Clough-Miller-Morrison).

Italy. IGA, Rome, 14.73mc, works JVH, Tokyo, 14.6mc, usually between 5-6am (Miller) ... IGA also works SUZ, Cairo (Lawton) ... IGA, often sends music tests around 3:30pm for Buenos Aires (Laul) .. IRW, Rome, 19.52mc, called New York, Oct. 13, 1:25pm (Miller) .. Latest Rome schedules are: 2RO, 11.81mc, 8:15-9am to Mediterranean, Noon-1pm, 1:45-2:30pm, 2:30-5:15pm relays 1RO program. 2RO, 9.635mc, Mon/Wed/Fri, 6-7:30pm to U.S., Mon/Wed/Fri 7:30-9pm to South America. 2RO, 6.98mc, tests with ICK, Tripoli on (10.24, 9.46, and 5.82mc) (Stokes-Sholin-Miller-Moore).

Poland. New Station, SPW, at Babice, near Warsaw, heard testing 11:30 am-12:30pm, Oct. 13, 14, 15th, on (13.63). Power is 10kW. Address reports

to Minister of Postes, and Telegraph, Mazowiecka, No.5, Warsaw (CSWRG)  
Sweden. A station in Motala heard working on 6.06mc (Stokes).  
U.S.S.R. RIO, Baku, heard calling Moscow almost nightly between 11  
and 12pm on 10.17mc (Bills). Think this is a harmonic of RIO, 5.0<sup>25</sup>5mc (Ed  
Azores. CT2AJ, Ponta Delgada, S. Miguel, broadcasts Wed/Sat from 5-7  
pm on 4mc, with a power of 50 watts (Deodato E. Soares-Bigbee).

#### ASIA

China. ZBW, Hong Kong (8.75), coming in well between 7-10am (Sholin  
.. XGL, Shanghai, heard Oct. 12, 7:15am on 11.497mc working VLZ, Sydney  
Australia, 16.33mc (Morrison).

India. VUC, Calcutta, 6.11mc, sked is Mon. 8:05-9:05am, Wed. 10:35am-  
1:35pm, Friday, 8:35-11:35am. (India Radio Amateur's News).

Iraq. Baghdad, 6.135mc, power 250 watts broadcasts about three  
times a year the important festivals. Was on Sept. 8, noon-2:30pm Normally  
this station broadcasts commercially on C. W. only (Kouyoumdjian-Iraq)

Japan. "Odeni narimashita; Onanashi. kudasai" means "The connect-  
ion is made; kindly converse. "moshimoski", means "hello" (Buffalo News)  
.. JIC, Chureki, Taiwan, 5.89mc, heard phoning JVV, Nazaki, 5.73mc, near 9:30  
am (Sholin) .. What is the mysterious station working under Nagoya, JNJ  
13.94mc, gives VVV ... or ..... tocs of TDC? in code? (Gaillard) ...

JVF, Nazaki, 15.62, heard working KWU and KKZ, Oct. 11, 10:58-11:17pm (Bills  
.. JVF, works KWU nightly now at 7:30pm; and JVE, Nazaki, 15.66, works PLE,  
Bandoeng, Java, 18.82mc, at the same time (Koschmidder) .. JVH, Nazaki, 14.6  
mc broadcasts Gymnastics from JOAK daily at 5:20-5:40pm (Sholin) .. JVH,  
works GHL, Rugby, 14.653mc, each morning using commercial phone circuit

(Lawton) .. The Kokusai-Denwa Kaisha, Ltd, of Tokyo, Japan, are very anxious  
for detailed reports on their transmissions over JVH, 14.6mc, Mon/Thur  
4-5pm. East Coast U. S. reports and South American reports are wanted  
particularly, as a regular schedule will soon be made at this time. JVN,  
10.66mc, will probably be used during the winter (Laul-Windsch-Reamy)

.. JVM, Nazaki, 10.74, testing irregularly with voice, and scrambler be-  
tween 11:30pm and 3am EST. (Bills) .. JVN, Nazaki, Japan (10.66), with a  
much stronger signal, has replaced JVH on the daily "Overseas Broadcast  
from 12-1am (Sholin-Moore-Bills). JVN, also heard with Oriental program  
from 1:30-2am, Oct. 15th (Bills) .. JVT, Nazaki, 6.75mc, now relays the

JOAK program from 4-7:40am, instead of JVM. JVN, 10.66, occasionally  
broadcasts this schedule simultaneously with JVT (Sholin-Butcher).

Malaya. New Station, ZGR, at Alor Star, Kedah, F.M.S. works on about  
6.12mc (Dent-India) .. "Lets call it a day", is the opening and closing  
melody of ZGE, Kuala Lumpur, F.M.S., 6.13mc, Sun, Tues, Fri, 6:40-8:40am.

Philippines. KAZ, Manila, 9.99mc, heard from 10-10:45am (Stokes) .. KAZ  
Manila, 8.12mc, heard calling Bolinas at 3:47pm, Sept. 29th. (McGee).

Siberia. ROU, Omsk, 14.79, testing with RV15 between 6-9pm (Sholin) ..  
RV15, Khabarovsk, 4.25mc, will now verify correct reports (Thomas).

#### AUSTRALASIA

Australian-New stations, VH22 and VH23, 4.3mc, stations owned by God  
frey Bros, Cunnamulla, Qsld. They test around 2am, and from 3:30-4am (Wal-  
ker) .. VIZ3, Fiskville, Vict, works on exactly 11.495mc (Lawton-DeHaven)

.. VK2ME, Sydney, Australia (9.59), is now announcing in French, German,  
and English. Sked. for November is Sunday 1-3am, 4:30-8:30am, and 9-11am.  
.. VK3ME, Melbourne, Australia (9.51), on Oct. 21st, started to broadcast  
daily, except Sunday from 5-7am. (Amlie) .. New radio telephone equip-  
ment is being installed in Hobart, King and Flinders Island. Two new  
stations are also on order for the Fiji's.

Fiji's. VPD, Suva (13.075), on irregularly now from 12:30-1:30am. In  
January, 1936, VPD's programs will be extended, and put on a more prac-  
tical and appropriate basis. VPD is weak in the USA at present. Heard  
fine on Oct. 15th. (Sholin-Bills).

D.E.I. PLV, Bandoeng, Java (9.415), relays the native music of YDE2,  
Solo, Java (4.81), in a special program for North America on Tues/Thurs  
10-10:30am. English announcements are made every 15 minutes. This pro-  
gram is also relayed by PLE, Bandoeng, Java, 18.82, and PMA, Bandoeng, Java  
19.35, occasionally (Petch-Stokes-Moore-W.R.-Morrison) .. PLP, Bandoeng,  
11mc, and PMN, Bandoeng, 10.26mc, on Saturdays, 2:30-8:30pm, Sundays, 5:30-10  
am. They relay YDA (3.04). PLP will be on daily shortly (Sholin-Bills-  
Stokes-Hardeman, D.E.I.) .. YDA, Batavia, 3.04mc, on daily 5:30-10am, and  
Saturdays to 11:30am.

AFRICA SHORT WAVE NOTES ON PAGE 19...

# SHORT-WAVE BROADCASTING STATIONS

DIAL	METERS	MFGS	CALL	STATION	TIME	E.S.T.
13.93	21.54		W8XK	Pittsburgh, Penna	8-10am	
13.93	21.53		GSJ	Daventry, England.	Experimental.	
13.94	21.52		W2XE	Wayne, New Jersey.		13
13.96	21.49			Paris, France.	New Radio Coloniale Xmtr.	
13.97	21.47		GSH	Daventry, England.	Experimental.	
14.97	20.04		OPL	Leopoldville, Congo.	4:30-6:30, 9:30-11am & etc.	
15.08	19.90		LSG	Monte Grande, Argen.	Phones mornings.	
15.14	19.82		WKN	Lawrenceville, N.J.	Phones GAU & Paris.	
15.40	19.50		LSQ	Buenos Aires, Argen	Experimental.	
15.50	19.35		FTM	St. Assise, France.	Phones LSG etc.	
15.51	19.35		PMA	Bandoeng, Java.	Tu/Th 10-10:30am & irreg.	
15.80	18.97		GAQ	Rugby, England.	Works ZSS at 3am.	
15.87	18.89		ZSS	Capetown, S. Africa.	Works GAQ. (7:30pm.	
15.93	18.82		PLE	Bandoeng, Java.	Tu/Th 10-10:30am-Works JVE	
16.06	18.67		OCI	Lima, Peru.	Works CEC, LSR, HJY, WNC etc.	
16.23	18.48		HBH	Geneva, Switzerland.	Experimental.	
16.25	18.44		HJY	Bogota, Colombia.	Works CEC, LSR, OCI days.	
16.38	18.31		FZS3	Saigon, F. Indo-China	Phones Paris 9:30am & irr.	
16.39	18.30		VVR	Maracay, Venezuela.	Works Germany mornings.	
16.42	18.27		ETC	Addis Ababa, Ethiopia		
16.47	18.22		KUS	Manila, Phillipines.	Phone.	
16.86	17.79		GSG	Daventry, England.	6-8:45am, 9-10:15am.	
16.87	17.78		W3XAL	Boundbrook, N.J.	9-11am, 3-4pm.	16
16.88	17.77			Paris, France.	New Radio Coloniale Xmtr.	
16.89	17.76		W2XE	Wayne, N.J.		
16.89	17.76		DJE	Zeesen, Germany.	8-11:30am to So. America.	
16.91	17.74		HSP	Bangkok, Siam.	Works JVG around 4:30am.	
17.10	17.53		VWY	Kirkee, India.	Phones Rugby 2-8am.	
17.11	17.52		DFB	Nauen, Germany.	Phones S. America mornings.	
17.37	17.26		DAF	Norden, Germany.	Works ships.	
17.51	17.12		WOO	Ocean Gate, N.J.	Works ships.	
18.48	16.27		WLK	Lawrenceville, N.J.	Phones Rugby days.	
18.47	16.24		KTO	Manila, Phillipines.	Works JVB Tokio 6:30-7pm.	
18.50	16.21		FZR3	Saigon, F. Indo-China	Works Paris irregularly.	
18.71	16.03		KKP	Kahuku, Hawaii.	Phones KWU 1-7pm & GMBJ.	
18.89	15.88		FTK	St. Assise, France.	Works FZR3 mornings	
19.16	15.66		JVE	Nazaki, Japan.	Works PLE 7:30pm etc.	
19.21	15.62		JVF	Nazaki, Japan.	Works KWU 7:30pm etc.	
19.45	15.42		KWO	Dixon, California.	Phones Kahuku, Hawaii.	
19.52	15.37		HAS3	Budapest, Hungary.	Sunday 9-10am.	
19.53	15.35		KWU	Dixon, California.	Works JVF, KKP, PLV etc.	
19.57	15.33		W2XAD	Schenectady, N.Y.	2-3pm, Sunday 10:30am-4pm	
19.61	15.30		CP7	La Paz, Bolivia.	Works evenings irreg.	
19.61	15.295			Paris, France.	New Radio Coloniale Xmtr.	
19.63	15.28		DJQ	Zeesen, Germany.	12:30-2:15am.	
19.64	15.27		W2XE	Wayne, New Jersey.	11am-6pm.	
19.66	15.26		GSI	Daventry, England.	12:15-2:15pm.	19
19.67	15.25		W1XAL	Boston, Mass.	9:50am-12:30pm.	
19.68	15.24			Pontoise, France.	7-11am.	
19.71	15.22		PCJ	Eindhoven, Holland.	8:30-11:10am, Tues 3-6am.	
19.72	15.21		W8XK	Pittsburgh, Penna.	9am-7pm. (11:30am, Later Sun	
19.74	15.20		DJB	Zeesen, Germany.	3:45-7:15, 8-10:30am, 10:30-	
19.82	15.14		GSF	Daventry, England.	6-8:45, 9am-Noon.	
19.84	15.12		HVJ	Vatican City, Italy.	10:30-10:45am Ex. Sunday.	
19.88	15.09		RKI	Moscow, U.S.S.R.	Mornings irregularly.	
19.92	15.06		WNC	Hialeah, Florida	Works C.A. & S.A. phones.	
19.95	15.04		WQG	Rocky Point, N.Y.	Experimental.	
20.00	15.00		WWV	Washington, D.C.	Wed Noon-lpm.	
20.00	15.00		PRG6	Sao Paulo, Brazil.	On the air shortly.	
20.03	14.98		KAY	Manila, P. I.	Works U.S. in evenings.	
20.08	14.93		HJB	Bogota, Colombia.	Works WNC.	
20.12	14.91		JVG	Nazaki, Japan.	Works JTA, JIB, JIC.	
20.28	14.79		ROU	Omsk, U.S.S.R.	Works Khabarovsk 6-9pm irr	
20.35	14.74		IRG	Massaua, Eritrea.	Works JVH 5-7am irreg.	

20.37	14.732	IQA	Rome, Italy	Works JVH 5-6am irreg
20.45	14.665	DFD	Nauen, Germany.	Works JVH 2am irreg.
20.48	14.653	GBL	Rugby, England.	Works JVH mornings.
20.55	14.60	JVH	Nazaki, Japan.	Mon/Th 4-5pm; Europe 3-7am.
20.64	14.535	HBJ	Geneva, Switzerland	Experimental
20.69	14.50-	TIU	Cartago, C.R.	Works WNC.
20.69	14.50	HPF	Panama, Panama.	Works WNC.
20.69	14.50	TGF	Guatemala City, Guatemala	Works WNC.
20.72	14.48	HSJ	Bangkok, Siam.	Works JVG around 4:30am.
20.72	14.48	YNA	Managua, Nicaragua.	Works WNC.
20.72	14.48	HRM	Tegucigalpa, Honduras	Works WNC.
20.78	14.44	GBW	Rugby, England.	Phones U.S.A. daytime.
20.82	14.41	DIP	Zeeseu, Germany.	Experimental irreg.
20.83	14.40	HB9B	Bern, Switzerland.	Experimental
21.25	14.10	SULCH	Heliopolis, Egypt.	Amateur heard irreg.
21.48	13.965	TFL	Reykjavik, Iceland.	Phones irreg.
21.57	13.90	WQP	Rocky Point, N.Y.	Experimental. (30pm daily.
21.71	13.82	SUZ	Cairo, Egypt.	Works GBB near noon, or 12:
21.81	13.745	CGA2	Drummondville, Que	Phone.
22.00	13.635	SPW	Warsaw, Poland.	Testing 11:30am-12:30pm.
22.08	13.585	GBB	Rugby, England.	Works SUZ, and CGA2.
22.39	13.39	WMA	Lawrenceville, N.J.	Works London.
22.48	13.35	YVQ	Maracay, Venezuela.	Works WNC etc.
22.58	13.28	CGA3	Drummondville, Que.	Works ships and England.
22.94	13.08	VPD	Suva, Fiji's.	12:35-1:35am. Works VLK 12p
22.99	13.05	WLOXFH	Stratosphere Xmtr.	Tests noon-1pm.
23.08	13.00	TIRCC	San Jose, C.R.	Evenings irreg.
23.36	12.84	WOO	Ocean Gate, N.J.	Works ships day.
23.39	12.83	CNR	Rabat, Morocco.	Sunday 7:30-9am & Phones.
23.45	12.80	IAC	Coltano, Italy.	Works ships mornings.
23.47	12.78	GBC	Rugby, England.	Works ships. (1:15pm.
24.20	12.396	CTLGO	Parade, Portugal.	Sun 9-10:30am, T/Th/F noon-
24.21	12.40	DAF	Norden, Germany.	Works ships daytime. (Paris
24.52	12.235	TFJ	Reykjavik, Iceland	Works GBC 6am & irr. Also-
24.75	12.12?	ETB	Addis Ababa, Ethiopia	tests 5-5:15pm (Taaffe)
25.00	12.00	RNE	Moscow, U.S.S.R.	2-6pm, Sun 6-7, 10-11a, Wed 6
25.02	11.99	FZS2	Saigon, F. Indo-China	Works Paris mornings.
25.05	11.98?	ETB	Addis Ababa, Ethiopia	heard 5-5:30pm (CSWRC)
25.08	11.95	KKQ	Bolinas, California	Relays NBC 8-10:30pm irreg
25.23	11.88		Pontoise, France.	11:50am-6pm.
25.27	11.87	W8XK	Pittsburgh, Penna.	5-9pm.
25.29	11.86	GSE	Daventry, England.	10:30am-noon.
25.33	11.845		Paris, France.	New Radio Coloniale Xmtr.
25.36	11.83	W2XE	Wayne, New Jersey.	6-8pm.
25.40	11.81	2RO	Rome, Italy.	8:15-9, N'n-1, 1:45-5:15pm.
25.42	11.80	C09WR	Sancti Spiritus, Cuba	7-12pm irreg.
25.43	11.795	DJO	Zeeseu, Germany.	Testing 5-7am.
25.45	11.79	W1XAL	Boston, Mass.	4-6:30pm.
25.51	11.77	DJD	Zeeseu, Germany.	Noon-4:30pm for Africa.
25.57	11.73	PHI	Huizen, Holland.	8:30-10:10am Ex. Tu-Wed.
25.60	11.72	CJRX	Winnipeg, Canada.	6-11pm, S 3-12pm, Su 4-10:30
25.63	11.71		Pontoise, France.	7-10:10, 11pm-1am.
25.65	11.70	HJ4ABA	Medellin, Colombia.	6:30-10:30pm.
25.68	11.68	KIO	Kahuku, Hawaii.	Works KKQ, and GMBJ.
26.09	11.497	XGL	Shanghai, China.	Heard 7:15am working VLZ.
26.11	11.495	V1Z3	Fiskville, Austral.	Works CGA4. (Relays XEW.
27.27	11.00	XBJQ	Mexico, D.F.	Evenings irr to 12:45am-
27.27	11.00	PLP	Bandoeng, Java.	Sa 2:30-8:30pm, Sun 5:30-10
				am (May soon be on daily)
27.30	10.99	ZLT	Wellington, N.Z.	Works VLJ 12pm irregularly
27.68	10.84	KWV	Dixon, California.	Phones Hawaii daytime.
27.86	10.77	GBP	Rugby, England.	Works VLK 12-2am & Later.
27.93	10.74	JVM	Tokyo, Japan.	11:30pm-3am irreg.
28.12	10.67	CEC	Santiago, Chile.	7-8pm, Thur/Sun 8:30-9pm.
28.14	10.66	JVN	Nazaki, Japan.	12-1am, (4-7:40am irreg)
28.28	10.61	WEA	Rocky Point, N.Y.	Experimental with Europe.
28.48	10.54	JIB	Taihoku, Taiwan.	Works JVL 3am, and 9am.
28.50	10.53	VLK	Sydney, Australia.	Works GBP 12-2am, VPD 12am.



28.76	10.43	YBG	Medan, Sumatra	Works Java 4:30am & 8:30pm
28.85	10.40	KEZ	Bolinas, Calif.	Phone irreg.
28.90	10.38	WCG	Rocky Point, N.Y.	Experimental irreg.
28.92	10.375	JVO	Nazaki, Japan.	Works JZB mornings.
28.98	10.35	LSX	Buenos Aires, Arg.	Tests evenings near 6pm &-
29.03	10.335	ZFD	Hamilton, Bermuda.	Phones afternoon & 12-2am.
29.04	10.33	ORK	Ruyssede, Belgium	2:30-4pm.
29.15	10.29	DIQ	Nauen, Germany.	Contacts Rocky Point irreg
29.24	10.26	PMN	Bandoeng, Java.	Sa 2:30-8:30pm, Su 5:30-10a
29.30	10.24	ICK	Tripoli, Tripolitania	Tests with ICA at 4:30pm
29.50	10.17	RIO	Bakou, U.S.S.R.	Calls Moscow 11-12pm irreg
29.59	10.140	OPM	Leopoldville, Congo	1:30-2:30am, Sat 3-4:30pm &
29.81	10.065	JZB	Kanjoshi, Manchukuo	Works JVO in mornings.
29.84	10.055	SUV	Abou Zabal, Egypt.	GAA 3:30pm, and DGU 4:30-5p
29.84	10.055	ZFB	Hamilton, Bermuda.	Phones N.Y. days.
29.98	10.00	WWV	Washington, D.C.	Freq tests Wed. 2:30-3:30pm
30.01	9.99	KAZ	Manila, Phillipines	Tests with Dixon 10-10:45a
30.32	9.89	LSN3	Buenos Aires, Arg.	Relays LRL evenings irreg.
30.40	9.87	WON	Lawrenceville, N.J.	Works Rugby evenings.
30.43	9.86	EAQ	Madrid, Spain.	5:15-9:30pm; Sat 1-3pm.
30.50	9.83	IRM	Rome, Italy.	Phones SUV afternoons.
30.59	9.80	GCW	Rugby, England.	Phones N.Y. evenings.
30.75	9.76	VLJ-VLK	Sydney, Australia.	ZLT at 12pm, Java 4-8am.
30.75	9.75	WOF	Lawrenceville, N.J.	Phone Rugby, -Paris evening
31.13	9.635	ZRO	Rome, Italy.	Mon/Wed/Fri 6-9pm, Sa 7:45p
31.19	9.62	CT1AA	Lisbon, Portugal.	Tues/Thur/Sat 4:30-7pm.
31.19	9.62	DGU	Nauen, Germany.	Phones SUV during day.
31.27	9.595	HBL	Geneva, Switzerland	Sat 5:30-6:15pm, Mon 3:15am
31.28	9.59	HP5J	Panama City, Panama	7:30-10pm.
31.28	9.59	VK2ME	Sydney, Australia.	Sun 1-3, 4:30-8:30, 9-11am.
31.28	9.59	W3XAU	Philadelphia, Penna	11am-7pm.
31.30	9.585		Paris, France.	New Radio Coloniale Xmtr.
31.32	9.58	GSC	Daventry, England.	4:15-5:45pm, 6-8, 10-11pm.
31.32	9.58	VK3LR	Melbourne, Austral.	3:15-7:30am Ex. Sunday. 31
31.35	9.57	LKJ1	Jeloy, Norway.	11am-6pm.
31.35	9.57	W1XK	Springfield, Mass.	6am-12pm. (Sat 11:30am-1230
31.36	9.565	VUB	Bombay, India.	Sun 8:30-10:30am; Wed/Thurs
31.38	9.56	DJA	Zeesen, Germany.	12:30-2:15am, 8-11:30am, 5-9:15pm.
31.38	9.56	HP53	Bocas del Toro, Panama.	(-45pm.
31.45	9.54	DJN	Zeesen, Germany.	12:30-2:15-8-11:30am, 5-10:
31.48	9.53	W2XAF	Schenectady, N.Y.	4-12pm; Sunday 4:15-12pm.
31.54	9.518	VK3ME	Melbourne, Austral.	5-7am Except Sunday.
31.55	9.51	GSB	Daventry, England.	2:15-4:15am; 12:15-4pm, 4:15 -5:45pm; 6-8pm.
31.58	9.50	PRF5	Rio de Janeiro, Brz	4:45-5:45 Ex. Sunday.
31.68	9.47	WET	Rocky Point, N.Y.	Experimental.
31.70	9.46	ICK	Tripoli, Tripolitania	works IAC 5-7am, 4:30pm &
31.73	9.45	TG1X	Guatemala, Guatemala.	
31.73	9.45	WES	Rocky Point, N.Y.	Experimental.
31.80	9.428	COCH	Havana, Cuba.	11am-N'n, 5-6, 8-9pm.
31.90	9.415	PLV	Bandoeng, Java.	Tues/Thur 10-10:30am & irr
32.05	9.36		Tunis, Tunisia.	Heard testing near 6pm.
32.15	9.332	CGA4	Drummondville, Que.	Phones GCB daytime & SUV.
32.33	9.28	GCB	Rugby, England.	Phones CGA4 & SUV daytime.
32.72	9.17	WNA	Lawrenceville, N.J.	Phones London daytime.
32.78	9.15	YVR	Maracay, Venezuela.	Sat 8-8:30pm irreg & etc.
32.88	9.125	HAT4	Budapest, Hungary.	Sunday 6-7pm.
33.15	9.05	TFK	Reykjavik, Iceland.	Phones Gt. Britain daily.
33.26	9.02	GCS	Rugby, England.	Phones U.S. nights.
33.30	9.10	KEJ	Bolinas, California	Tests with KKH, Kahuku.
33.59	8.98	VWY	Kirkee, India.	Phones Eng. early mornings.
33.71	8.90	WVD	Seattle, Wash.	Calls WXY, WXE near 11pm.
34.09	8.80	HKV	Bogota, Colombia.	Tues/Thur/Sat 8-10pm.
34.19	8.77	PNI	Macassar, Celebes.	Phones Bandoeng 4-5am etc.
34.29	8.75	ZBW	Hong Kong, China.	Mon/Th 3-6:30am; 5:30-11am.
34.76	8.63	HC2CW	Guayaquil, Ecuador.	8pm-12:20am irreg.
35.42	8.47	HCJB	Quito, Ecuador.	8:30-11:30pm Ex. Monday.

35.72	8.40	HC2AT	Guayaquil, Ecuador.	8-10pm.
36.50	8.22	ZP10	Asuncion, Paraguay.	7:30-9:30pm.
36.59	8.20	CO9JQ	Camaguey, Cuba.	6-8pm and later irreg.
36.59	8.20	FNSK	S.S. Normandie.	Transmits programs irreg.
36.65	8.185	PSK	Rio de Janeiro.	Phone & Programs irreg.
36.95	8.12	KAZ	Manila, Philippines.	Works Bolinas afternoons.
37.33	8.04	CNR	Rabat, Morocco, Afr.	Sunday 3-6:30pm.
37.93	7.91	HCETC	Quito, Ecuador.	Wed/Sat evenings.
37.97	7.90	ZP11	Asuncion, Paraguay.	5:30-9:30pm.
38.31	7.83	HC2JSB	Guayaquil, Ecuador.	7:20-11:20pm Ex. Sunday.
38.46	7.80	HBP	Geneva, Switzerland.	Sat 5:30-6:15pm & irreg.
38.86	7.72	KEE	Bolinas, California.	Phones evenings irreg.
39.28	7.63	ZHJ	Penang, F.M.S.	7-9am Ex. Sunday.
39.37	7.62	ETA	Addis Ababa, Ethiopia	tests 5pm irreg.
39.42	7.61	KWX	Dixon, California.	Phones Kahuku nights.
39.70	7.56	EABAB	Tenerife, Canarias	Mon/Wed/Fri 3:30-4:30pm.
39.87	7.52	KKH	Kahuku, Hawaii.	Works Dixon evenings.
40.16	7.47	JVQ	Nazaki, Japan.	Works P.I., Java etc.
40.54	7.40	HJ3ABD	Bogota, Colombia.	7-11pm Ex. Sunday.
40.54	7.40	WEM	Rocky Point, N.Y.	Works London.
40.60	7.39	ZLT	Wellington, N.Z.	Phones Sydney.
40.65	7.38	XECR	Mexico, D.F.	Sunday 6-7pm.
40.98	7.32	5WB	Adelaide, S. Aust.	Sat 11:30pm-Sun 12:30am.
41.21	7.28	HJ1ABD	Cartagena, Colombia.	7:30-9:30pm Ex. Sunday.
41.80	7.18	CR6AA	Lobito, Angola, Afr.	Wed/Sat 2:45-4:45pm.
41.96	7.15	HJ5ABG	Calí, Colombia.	On the air shortly.
42.08	7.14	VP3BG	Georgetown, B. Guiana	Experimental irregular.
42.16	7.12	HB9B	Basle, Switzerland.	Mon/Thur/Fri 3-5pm.
42.25	7.10	HKE	Bogota, Colombia.	Tues/Sat 8-9pm.
42.40	7.08	VP3MK	Georgetown, B. Guiana	Mon/Wed/Sat 6:45-7:45pm &
42.74	7.02	VP5MK	Kingston, Jamaica.	Saturday 5-5:30pm.
42.83	7.00	VK3ZX	Caulfield, Australia	Sundays 12:30-2am etc.
43.23	6.935	WEB	Rocky Point, N.Y.	Works Paris.
44.03	6.81	HIH	San Pedro, D.R.	6:30-12pm irr; Sun 3-4:30am
44.12	6.80	TI60W	Puerto Limon, C.R.	Evenings irreg.
44.44	6.75	JVT	Nazaki, Japan.	1:50-2:20, 4-7:40am.
44.57	6.725	WQO	Rocky Point, N.Y.	Experimental.
44.71	6.71	TIEP	San Jose, Costa Rica	7-12pm Ex. Sunday.
44.96	6.672	YVQ	Maracay, Venezuela.	Sat 8-9pm & Irreg. (11:15pm
45.00	6.66	HC2RL	Guayaquil, Ecuador.	Su 5:45-7:45pm; Tu 9:20-
45.31	6.62	PRADO	El Riobamba, Ecuador	9:20-11:40pm Thursday.
45.54	6.59	HI4D	Santo Domingo, R.D.	4:40-7:40pm Ex. Sunday.
45.80	6.55	TIRCC	San Jose, Costa Rica	6-7pm, Sat/Sun 6-11pm.
46.01	6.52	YV6RV	Valencia, Venezuela.	4:40-9:30pm.
46.23	6.49	HJ5ABD	Calí, Colombia.	7-10pm Ex. Sunday.
46.44	6.46	HJ4ABJ	Ibague, Colombia.	7-10pm.
46.60	6.44	HJ1ABB	Barranquilla, Colom.	6-10pm Ex. Sun; Sat to 12pm.
46.70	6.425	VE9AS	Fredericton, N.B.	Thurs 10:30pm-1:30am & irr
46.69	6.425	W3XL	Boundbrook, N.J.	NBC Cue station on irreg.
46.80	6.41	TIPG	San Jose, Costa Rica	5:30-11pm, & irreg.
46.88	6.40	HIZ	Santo Domingo, D.R.	irreg until about 10pm.
46.88	6.40	YV9RC	Caracas, Venezuela.	(Sked.
47.06	6.37	YV4RC	Caracas, Venezuela.	Experimental no regular-
47.24	6.35	W10XL	Rapid City, S.D.	Works W3XL 9:15-9:30pm ir
47.39	6.33	JZG	Nazaki, Japan.	4-7:40am in winter irreg.
48.15	6.23	OAX4G	Lima, Peru.	9-11pm; 9-12pm on Sat.
48.23	6.22	HJ2ABA	Tunja, Colombia.	8-10pm.
48.40	6.20	CT1GO	Paredo, Portugal.	6:20-7:30pm; Sun 10:30am-Nn
48.50	6.19	H11A	Santo Domingo, D.R.	6:40-9:40pm Ex. Sunday.
48.62	6.17	HJ3ABF	Bogota, Colombia.	7-11:30pm Ex. Sunday.
48.70	6.16?		Colombo, Ceylon.	
48.78	6.15	YV3RC	Caracas, Venezuela.	4:30-10pm.
48.78	6.15	CSL	Lisbon, Portugal.	6-7:30am, 1-5pm.
48.78	6.15	CO9GC	Santiago, Cuba.	3:40-4:30pm, 10-11pm & irr
48.81	6.147	ZEB	Bulawayo, S. Rhodesia	Tu 2-3pm, Fri 10:30-11:30am
48.82	6.145	HJ5ABC	Calí, Colombia.	8-11pm.
48.83	6.144	CJRO	Winnipeg, Canada.	6-11pm, Sa 3-12pm, Su 4-9:30
48.86	6.140	W8XX	Pittsburg, Penna.	9pm-1am.

# PR-16'S ARE BEING DELIVERED

Have You Ordered Yours?

## Tune-in the World!



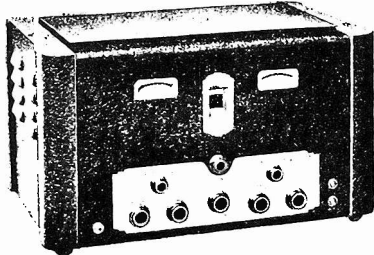
A DX SET FOR DX'ERS!  
360° Band spread, Beat  
Oscillator, Crystal Filter,  
Patterson Camera Type Dial,  
8 to 550 meters, Five bands,  
Plug for head phone reception,  
R Meter, Two stage Pre-Selector,  
Fractional Microvolt Sensitiv-  
ity, Extreme selectivity, 100%  
shielding, 12" Dynamic Speak-  
er, Full range Reproduction,  
SIX MONTHS GUARANTEE!

**THE TALK OF THE AIR!**

"—heads-up! The PR-16 is on the way!"

# PR-16

**Patterson**  
ALL-WAVE  
SUPER-HETERODYNE



BILL ELLIS, popular I.D.A. Director of the Pacific Coast area, 813 S. Detroit St, Los Angeles, California says. "The PR-16 is really a marvelous job. It is the finest thing I have ever seen. I can readily say the most beautiful in looks and tone yet. It has a power than can not be compared with, and is still quiet between stations--for a DX set. THIS IS REALLY A SET!"

SPECIAL DISCOUNT FOR IDA MEMBERS.  
WRITE FOR FULL PARTICULARS TO THE  
ADDRESS BELOW.

**The DX Radio Sales Co.---Distributors**  
Cable Address "DEEX" WYoming 0429 P. O. BOX 291  
BEVERLY HILLS, CALIFORNIA, U.S.A.