



PHILCO *News*

APRIL 1953



PLEASE SEND ARTICLES, PHOTOGRAPHS AND DRAWINGS FOR THE NEWS TO EXTENSION 418

PRODUCT PERFORMANCE

Why Philco is famous for quality the world over is told in the 61st Annual Report of the Company.

"To guard and enhance the reputation for superior quality in all Philco products," the Report states, "a separate department devotes itself entirely and systematically to product performance.

"Its activities embrace three main areas: first, the evaluation of Philco designs in terms of competitive performance; second, the appraisal of uniformity achieved in manufacture; third, the examination of dependability as recorded by service experience.

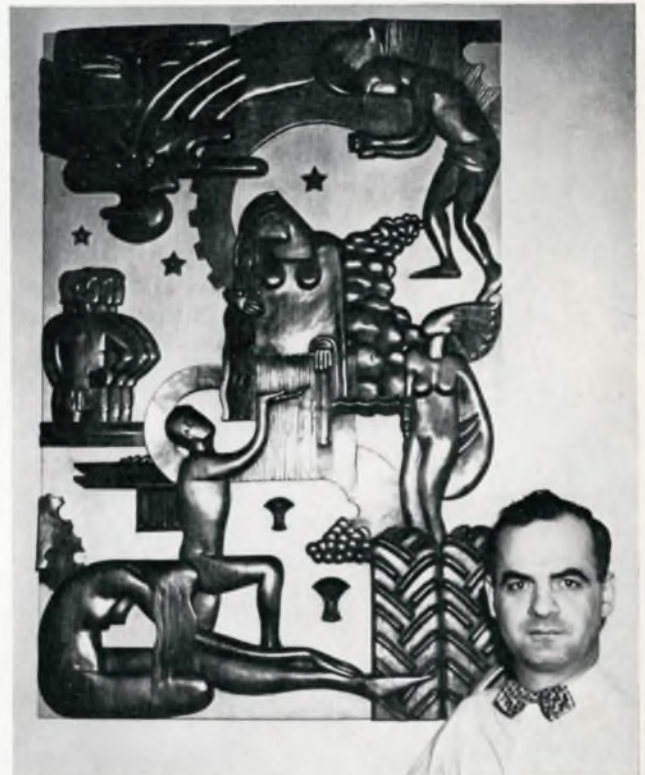
"These activities involve close co-ordination with the engineering, design and manufacturing divisions of Philco as well as extensive field testing and close contact with distributor service experience in all parts of the country. Likewise, a continuous system of inspection checks the quality of the product as it is being shipped to the field.

"All these searching procedures are in addition to the normal quality control methods followed throughout the course of production. As a result, the Philco reputation for quality stands today at an all-time high and is a powerful factor in the universal public acceptance for Philco products."

A LUCKY NUMBER won a special deluxe '53 model automobile for Peg Hageter, Dept. 40-738. Miss Hageter visited the show-rooms of an automobile agency to see the latest models. A new car was being given away in a free drawing. Miss Hageter placed her name on a card . . . and good luck did the rest.



COURSON COMPLETES MURAL



IBER C. COURSON and a 32 x 45-inch mural he has carved from 1 1/8-inch black walnut. This walnut is mounted on solid maple plywood. "Aspirations of Man" is the title of the mural, which it took the artist nine months to design and carve.

Wood carving is a hobby with Iber C. Courson, of Refrigeration Engineering at Plant 6. For the past 15 years he has been carving murals, figurines, lamp bases, letter holders, boxes of various sizes in low relief, trays and statuary. Not only does Courson carve, but he designs all pieces to be carved. He uses only hand tools since these permit better control, and he uses hard woods because they require less finishing and have beautiful grains. At present, Courson is making a full size, clay sculpture of his son's head. Later, he will carve this in wild cherry. "Carving in wood is a means of aesthetic expression that affords an outlet for my inner desires which are the result of five years of studying design in college," Courson states. Originally from Ohio, Courson has been living with his wife and son in Glenside since joining the Philco organization.



IN GERMANY, Emil J. Sedik (left), a Philco TechRep, receives a certificate of achievement from Major General James M. Gavin, Commander of the Headquarters VII Corps, Signal Section, U. S. Army. Sedik is working with the Army to promote greater efficiency in communications wherever signal problems have occurred in the VII Corps units.

BLOODMOBILE VISIT SET FOR MAY

A total of 299 pints of blood was contributed by Philco employees from Plants 50, 28A, 28, 17, 18 and 12 when the Red Cross Bloodmobile visited the Dobbins School Gymnasium earlier this month in connection with the Philco blood program. Donations from these employees insure that every employee and his family will be guaranteed blood in time of emergency.

Plants in the C and Tioga Streets area will be visited by the Bloodmobile May 18, 19, 20, 21 and 22, inclusive. The goal set is for 150 pints daily. The Philco quota for the year is 300 pints of blood.

CASH PRIZE OFFERED FOR LETTER

A prize of \$25 is being offered by the PHILCO NEWS to the employee who writes the best suggestion on how to make the magazine more interesting to its more than 18,000 readers.

A photograph of the winner and his prize letter will be published in the June issue.

The contest closes May 30.

Your letter may suggest new features, any new approach—anything at all that, in your opinion, would make the NEWS more interesting and readable.

Put your name, home address, department and clock number at Philco at the top of your suggestion letter. Mail your letter, in an interdepartmental envelope if you like, to Mark Lutz, Ext. 418.



“DON'T BE A LITTER BUG”
CLEAN UP - PAINT UP - FIX UP

Beginning in ... MAY a Year Round Campaign
CHAMBER OF COMMERCE OF GREATER PHILADELPHIA

MAYOR JOSEPH S. CLARK, JR. C. P. JARDEN - MRS. WALTER A. CRAIG
Honorary Chairman Co-Chairman



SIXTY YEARS OF PROGRESS at Philco is illustrated by the photographs shown above for television audiences and participants in the Junior Achievement program. The photograph on the left shows the parent building of the present Corporation, located on Emerald Street, while the second photograph shows the newest of the Company plants for the manufacture of Philco television receivers. Onlookers are, left to right: Paul Riblett, Harry L. Riley, the three teen-agers from JA, and Al Schimpf. The adults are advisors for the JA group, sponsored by Philco.

LEARNING BY DOING

During the past year, Philco has been co-operating with other Philadelphia industries in sponsoring a group of teen-agers in the Junior Achievement program designed to teach high school students business methods by actually running a business.

The group sponsored by the Company called itself Jiffy Production Company, with headquarters at the JA Center at Frankford and Wakeling. A miniature company was formed, stock sold, and a token amount of capital raised to start a business. The student business men and women elected company officers, bought raw materials and tools, kept books, made sales, paid wages, rent and dividends. In short, they ran a big business on a small scale.

This learn-by-doing program on running a business had as its advisors from Philco, Al Schimpf, Harry L. Riley and Paul Riblett. The latter has been elected to the board of directors of the Junior Achievement program of Philadelphia for a four-year term and appointed chairman of the special events committee.

The Junior Achievement group sponsored by Philco was featured in a 15-minute program over Station WFIL-TV on March 8. William Balderston, President of Philco, opened the program.

Philco parents interested in having their children participate in the Junior Achievement program in 1953-54 may secure information on JA by calling Ext. 418.

Applicants must be at least 15 years of age and have passing grades in high school studies.

Travel distance to and from homes to Philco means little to Company employees.

An examination of employee addresses shows that while the majority live within short commuting distance of the Philadelphia plants by trolley, bus, subway and elevated, there are a surprising large number of workers who live many, many miles away which calls for long trips by private car or by train. A few live only a few steps—literally—away from the Philco plants.

The majority of Company employees live in various sections of the city and environs, but both New Jersey and Delaware contribute commuters to the Philco plants. With the opening of Levittown, a group of Philco-ites moved there, but many an employee has, for years, been travelling considerable distance . . . and arriving on time in spite of bad weather and other uncertainties of travel.

Among the addresses of those commuting are Norristown, Richboro, Pottstown, Quakertown, Phoenixville, Souderton, Feasterville, Doylestown, Morrisville in this state; Pitman, Atco, Bordentown and Mt. Holly, in New Jersey; and Claymont and Wilmington, in Delaware.



IT TAKES TWO automobile lifts and a half-hour street car ride to get Hilda Kosh to and from her daily job as a Radarette at Philco. Hilda lives on a farm near Atco, N. J. She gets a "hop" early each morning to within a half-an-hour trolley ride to Plant 2. Then, in the afternoon, she rides home with a second driver because her early morning driver has already left.

SOME PHILCO EMPLOYEES TRAVEL LONG DISTANCES DAILY, OTHERS LIVE AROUND THE CORNER



Ed Franzen

Ed Franzen, of the Range Model Shop, lives near Perkiomenville, at the western boundary of Montgomery County, and has been driving 36 miles to work and 36 miles home every day since joining Philco two and a half years ago. Asked if he did not find the drive tiring, Ed pointed out that it takes him only about an hour and a quarter, and that many people living and working in the city and using public transportation spend the same amount of time en route.



WHEN CHARLES McKENDRY, Payroll Information, steps from his front door he can look down the street and see Plant 3. From 316 Thayer Street to Plant 2 is a matter of only minutes.

"It is nowhere near as tiring," he said, "as fighting the subway rush or standing on the corner waiting for a crowded bus or trolley. As long as I have a car in good condition and comfortable to drive, I can relax and enjoy myself. And when I get there, it's really worth while."

Ed is enthusiastic about his 163-year-old Pennsylvania Dutch farm house, where he has lived for the past eight years, and, although he was born and grew up in the city, would not consider moving back. Asked about the difficulty of driving in the winter, he replied: "The plows are out on the highways before they are on the city streets. My own drive I clean off with a garden tractor and bulldozer blade quicker, and much more enjoyably, than you can shovel your sidewalk. And, with snow treads on the car, I seldom have any difficulty getting through. Those who think of the country as being inaccessible in the winter are thirty years behind the times."

THIRTY-SIX MILES daily to and from Philco is traveled by Jack Haggerty (examining a map for a short route home). Jack, his brother, James Haggerty, and Pete Reese, all of the Photographic Department, share rides to and from work. They all live near Swarthmore, 18 miles from their jobs at Plant 28.

KEEPING PHILCO IN WORKING ORDER

PLANT ENGINEERING DEPARTMENT SEES TO IT THAT THE WHEELS TURN



ED WILEY ADJUSTS a balanced monorail drive for the heat run conveyor which is so important in insuring Philco quality.

The Plant Engineering Department does everything from repairing office furniture to designing and installing the latest structures and equipment for our production operations.

There are three units—the Construction, Maintenance and Power House Departments—under the supervision of the Plant Engineering Department, which is headed by Herbert N. Johnston. Charles (Chuck) Marron has charge of the Construction group; Clifton Stump the Maintenance; and Alex Isyak the Power House.

There are 240 persons in the Construction Department. Upon them rests the responsibility of providing facilities and equipment for all Philco plants, except Plant 50, in the Philadelphia area. In addition to local operations, engineering and construction assistance is available and has been extended many times to Philco plants elsewhere.

Currently, with so many changes being made in the physical set-up of the plants, interest in the Plant Engineering Department centers around the work of the Construction group. This unit, when presented with a layout, whether for an office, laboratory, or production area, immediately discusses the various design problems. The proper approach once decided upon, the department proceeds with drawings, if time

permits. Sometimes it is necessary, however, for designs to be made in the field in conjunction with construction personnel.

In addition to the obvious duties of the department, such as the installation of partitions, test booths, conveyors, trucks, etc., much planning and work is involved in the hidden facilities, such as the complex power systems, gas, water and drainage layouts. Here again, care must be exercised in order that installations made today may be easily expanded to meet the requirements of tomorrow.

As with those who design and construct our many consumer products, the Plant Engineering Department cannot be satisfied with the performance of their products but must strive to produce better quality for a lower cost.

The Plant Engineering Department, in line with its myriad duties, requires the skill of many types of workers—draftsmen, machine repairmen, millwrights, electricians, woodworkers, steamfitters, and many others who maintain the general facilities of the plants and machines.

Safety is highly important in these hazardous activities. Safety Director Frank Humphries is the man who plans safety into all of the construction projects in the Philadelphia area.

AUGUST ERFURT and Thomas O'Hare adjust ► a timing device on a conveyor belt, thus insuring the smooth flow of quality products to the Shipping Department.



FOREMAN ALEX ISYAK and Engineer Don Piening make sure that there is adequate heat, hot water, steam and compressed air for operations in Plant 10.



PARTITIONS FOR NEW OFFICES to be located on the first floor of Plant 2 are installed by Richard Arwood, Harry Wagner, Louis Curran, Charles Owens and Louis Hebson.



◀ BUILDING A CONVEYOR, one of the many duties of the Construction group of the Plant Engineering Department, is the job of Robert Pfeiffer, John Buffington and John Livingston.



IT LOOKS LIKE a happy birthday for Rose Tomlinson at a party in her honor given on the third floor of Plant 3.



A BUFFET LUNCHEON is served at a birthday party for Anita Crook (foreground) of Dept. 43-506.



▲ BIRTHDAYS ARE SHARED by Mary Asehenback and Dot Fee at a party in Plant 14 Cafeteria. Both girls are members of Dept. 14-504.

ROSE JACKSON is the recipient of a large cake and many gifts ► from friends at a shower in the Television Assembly Section of Dept. 41-502 at Croydon.



IN AND AROUND



BEST WISHES for the future are extended to Sylvia Rosenfeld by friends in the Riveting Section of Dept. 43-506 at shower in Plant 3.



FOUR MEMBERS of the Blueprint Room on the fourth floor of Plant 2 share birthday honors in March. They are Charley McMann, Ceil Brooks, Nell Gozak, Ernie Hallam.



▲ NEWLYWEDS Dolores Stanton and Paul Bright, following their marriage at St. Mark's Church, Bristol. Dolores is a cashier for the Slater System Cafeteria at the Croydon Plant, while the groom is connected with the Farmers' National Bank at Croydon.

PHILCO



◀ BEST WISHES for the future are extended by the office girls on the second floor of Plant 2 to Peggy Hoffman (with corsage), Dept. 531, at a shower in the Conference Room.



PLANT 6 EMPLOYEES honor Ed Brenner, Dept. 42-532, who retires from duty at Philco after twenty-seven years of service. A clock and a radio were presented to Ed by his fellow-workers.



A TRAILER PROVED to be the solution of the housing problem for TechRep John L. Longan and his bride, Jeanne Jordan Longan, former personnel receptionist at TechRep Division Headquarters here. The couple were married in December on the groom's birthday. They bought a 40-foot New Moon trailer home which they are living in at Riverhead, Long Island.



LOU MERCURI, of the Industrial Engineering Department at Craydon, is a widely known guitarist. While in the Armed Services he played in the Fort Dix band which broadcast every Sunday over WOR Mutual in the program "This Is Fort Dix." Jack Leonard, ex-Tommy Dorsey vocalist, was on the program. Immediately after his discharge from the Army in 1946, Lou resumed his musical activities in New York City, doing free lance playing, arranging and recording with studio groups. In the interim, he played with Claude Thornhill, Enoch Light, Billy Butterfield, Raymond Scott and others. Lou is married and the father of four children. He continues to play professionally in his hours away from Philco.

EMPLOYEES ON PENSION TO RECEIVE NEWS

Since the inauguration of the Philco Pension Plan in January of 1950, approximately forty Philco employees have retired and are now on pensions. The PHILCO NEWS would welcome news from these former employees and, in turn, the editors feel that news of the Company and its employees is of interest to those who have retired. Therefore, the NEWS is keeping the names of retired employees on its active mailing list, and a copy will be mailed each month to those on pension.

PHILCO GI VACATIONS IN JAPAN

Pfc. James A. Otto, Dept. 14-513, recently spent a five-day vacation from Korea on a rest and recuperation leave in Japan. He stayed at Nara, one of Japan's most famous resort cities, where the Army has set up an extensive recreational center for combat soldiers enjoying a respite from battle.

Otto is a mechanic in Battery B of the 555th Field Artillery Battalion, a part of the 5th Regimental Combat Team in Korea. Since arriving in the Far East, he has been awarded the UN Service Ribbon and the Korean Service Ribbon with two campaign stars.

Otto, a graduate of Northeast High School, is the son of Mr. and Mrs. James P. Otto, 2544 North Lee Street.



THREE BRIDES-TO-BE ARE HONORED by their co-workers at a shower given by girls in the TechRep Division Headquarters' office. Guests of honor (holding bride dolls) are, left to right: Eileen Riale, Lynn Murray and Marion Barone.

STORK VISITS THE ED FINKS

Congratulations are going to Ed Fink, an engineer in the microwave group at Plant 28, who has become the father of a baby girl, Randy Ann Fink. The mother, Martha Fink, was formerly in the Drafting Department at Plants 28A and 12.

CONGRATULATIONS UPON becoming the father of a boy are extended Rufus Ewert, Jr., by his supervisor, John Nowakowski (left), at a shower given in Dept. 43-503. The proud father was presented with a gift certificate and cake for his son. ▶



GIRLS FROM VARIOUS OFFICE departments of Plant 2 unite in giving a shower for Millie O'Farrell of the Mail Room staff. ▼

FRIENDS IN THE RIVET SECTION of Dept. 43-506 present gifts to Mary Lean (with doll) at a shower on the third floor of Plant 3. ▼





IT'S A FACT

- CARELESSNESS CAUSES MOST ACCIDENTS.
- 4 OUT OF 5 ACCIDENTS OCCUR OFF THE JOB.
- MOST ACCIDENTS CAN BE AVOIDED.



PVT. WILLIAM H. GANTHER, JR., formerly of Plant 20 at Croydon, is now stationed at Fort George G. Meade, Md.

★ ★ ★

No race can prosper until it learns that there is as much dignity in tilling a field as in writing a poem.—Booker T. Washington.

★ ★ ★

The guy on top is the one who never gave opportunity a chance to knock—he went out to meet it.—P. L. Andarr.

PHILCO CORPORATION
TIOGA AND C STREETS
PHILADELPHIA 34, PA.



J F SMYTH
6354 ALGARD ST 9791
PHILA PA 35

Postmaster: RETURN POSTAGE GUARANTEED—If forwarded to a new address notify sender on Form 3547. Postage for notice guaranteed.