

Lafayette

SCORES AGAIN

Once again Lafayette presents a Spring Parade of special values. Radio receivers, combinations, phono players, parts and cameras and photographic supplies—all priced to help you **SAVE**. Quantities in most cases, however, are extremely limited. It will pay you to fill your requirements **NOW**, while stocks are available.



1941
Permanent Winner

LOOKS LIKE A CAMERA
SOUNDS LIKE A BIG SET

\$9.95
COMPLETE WITH BATTERIES

Lafayette "MINI-RADIO" PORTABLE

Make this unique 1941 Lafayette "Personal" radio your constant companion. It's especially designed for Americans on the move, for it's "at home" anywhere—at the beach, at ball games, at the summer resort, in canoes or on boat trips—and anywhere else you might go. The entire assembly, housed in a compact "personal" case that looks like a camera and weighs only 3½ pounds with batteries, comprises the very latest type superhet receiver utilizing a 1A7GT, 1N5GT, 1H5GT and a 3Q5GT. An efficient built-in loop aerial eliminates the need for any outside connections—just push the switch and tune. All domestic broadcasts are received, from 540 to 1500 kc. Controls include "on-off" switch, calibrated tuning control and volume control. A powerful automatic volume control circuit minimizes fading. Case is covered in attractive, durable "Hyde Tex" (simulated leather). Size: 4¼x5¼x9". Batteries used: two 1½ volt flashlight cells and one 67½ volt "B".

MODEL EB-164—Lafayette "Mini-Radio" complete with batteries and tubes. Shpg. wt. 9 lbs.

YOUR COST COMPLETE..... **\$9.95**

K20199—Extra Kit of Batteries..... **\$1.75**



Lafayette 6 TUBE A. C. - D. C. SUPERHET

A world of entertainment is yours when you own model EB-113—and the price is far below what you would ordinarily have to pay for so fine a table model superhet. Our stocks, however, are extremely limited—so get your order in **NOW** and **SAVE!** Here's what this fine receiver features:

ANTENNAIRE: a built-in loop antenna that eliminates the need for any outside aerial or ground connections.

"BEAM POWER" output stage to insure high powered, distortionless reception. Tubes used are: 6A7 converter; 6D6 i.f. amp.; 76 diode detector, a.v.c.; 75 driver; 25L6G "beam power" output; 25Z5 rectifier and an L49B ballast tube.

EXTENDED RANGE covers from 1720 to 538 kilocycles; includes popular police calls.

MATCHED SPEAKER, full electro-dynamic type, reproduces all tones naturally and

clearly; covers the entire audible range. Other circuit features include: a vernier drive Slide-Rule dial calibrated in both kilocycles and meters and well illuminated; powerful automatic volume control circuit to minimize fading and to prevent inter-station "blasting"; double tuned i.f. coils; power output of 2.2 watts; operation from any 110 volt electric outlet, either A.C. or D.C.

WALNUT CABINET; rubbed and polished striped walnut with rare zebra wood inlays. Beautifully styled to go well with practically any room of furniture.

MODEL EB-113: Lafayette 6-Tube A.C.-D.C. Superhet complete with tubes in cabinet. Built-in Antennaire. Size: 14½" wide, 8" high, 8¼" deep. Shpg. wt. 12 lbs. List \$22.95.

YOUR COST COMPLETE..... **\$10.95**



Lafayette 5 TUBE A. C. - D. C. SUPER

Neat styling, excellent tone quality and **EXTRA VALUE**—that's the story of this popular type 1941 Lafayette superheterodyne. It brings you all the wealth of entertainment afforded on the standard American broadcast range—with volume and clarity of tone that will delight you. Just look over the extra-value features outlined—then take advantage of the unusually low price we are now quoting. Here's what you get:

MAGIC ANTENNAIRE: Lafayette's famous built-in loop aerial that eliminates the need for any outside connections other than for electric power. Just turn "on" and tune.

BEAM POWER OUTPUT provides clear, distortion-free reception with **2 watts** of power. The tube complement includes a 12SA7GT, 12K7GT, 12SQ7GT, 50L6GT "beam" output and 35Z5GT rectifier. Tuning range from 535 to 1720 kc (includes some police calls and high fidelity stations).

FULL-TONE PM SPEAKER, incorporating a powerful magnet, provides fine quality of tonal reproduction.

FULL-VISION DIAL is calibrated in both kilocycles and meters. Double edged pointer covers the scales. Dial is illuminated. Other features include: automatic volume control circuit to minimize fading; operation on either a.c. or d.c. (110 volts); gleaming plastic case that's durable and washable (choice of walnut or ivory). The ideal auxiliary radio.

MODEL JS-166: Lafayette 5-Tube A.C.-D.C. super complete with tubes in **Walnut** plastic case 9¼" x 6" x 6". For 110 volts a.c. or d.c. Shpg. wt. 10 lbs.

YOUR COST EACH..... **\$6.98**

MODEL JS-167: Same as above, but in Ivory plastic case. **YOUR COST EACH**..... **\$7.98**

LAFAYETTE RADIO

NEW YORK
100 SIXTH AVE.

CHICAGO
901 W. JACKSON BLVD.

ATLANTA
265 PEACHTREE ST.

BOSTON
110 FEDERAL ST.

NEWARK
24 CENTRAL AVE.

BRONX
542 E. FORDHAM RD.

JAMAICA, L. I. - - 90-08 166th ST.

FLYER C-23

Entire contents copyrighted 1941 by Lafayette Radio Corporation. Printed, published and distributed by L.R.C., New York, N. Y., U. S. A.

Step out with these Double Values!



6-TUBE STANDARD SUPERHET

6-TUBE DELUXE SUPERHET

Twice as much for your money with these new Lafayettes! Greater power. More features. Higher quality. Lower cost. In short—double value! It pays to look to Lafayette first.

Outstanding among this year's auto radios is this new Lafayette Model B-110. With such unusual features as "flat" AVC and "permeability tuned" inductances it is years ahead in design and performance. It is compact and equipped with a universal type of remote control so that it can be custom-fitted to your car by means of "customized" control plates that match the design of your dashboard exactly. These and the following features definitely mark this the year's best buy.

LICENSED SUPERHETERODYNE CIRCUIT—employs the following tubes: 6SK7 RF amplifier, 6SA7 1st detector oscillator, 6SK7 IF amplifier, 6SQ7 2nd detector—AVC, 6K6GT output amplifier and a 6X5GT power rectifier. Tuning range: 540 to 1600 kc.

PERMEABILITY CIRCUITS—instead of the usual variable condenser tuning a three circuit permeability system is used. This assures greatly improved signal to noise ratio and stability.

FLAT AVC—is a special application of automatic volume control which results in perfect AVC action.

MOBILE DYNAMIC SPEAKER—the 6" electro-dynamic speaker is arranged to be mounted behind the instrument panel in those cars equipped with a suitable panel grille or may be used in a separate housing and mounted in the most convenient location on the fire wall. A kit of accessories including the speaker housing can be supplied (see below right).

COMPACT SIZE—the set (without the speaker) is housed in a compact rounded corner cabinet measuring only 9" x 8" x 7".

POWER OUTPUT—is 5.0 watts maximum and 3.0 watts undistorted. Current consumption is 8.2 amperes at 6.6 volts (no signal).

OTHER FEATURES—include a non-synchronous plug-in vibrator, four tuned IF circuits, improved noise-filtering circuit, etc.

MODEL B-110—Lafayette 6-Tube Standard Superhet Car Radio complete with tubes, distributor suppressor, generator condenser, speaker. Shpg. wt. 20 lbs.

YOUR COST SPECIAL \$19.95

"Customized" Control Plate to match your car 95c
(Specify make, model, and year of car)

Setting a new high in performance and value! This new Lafayette DeLuxe Model B-111 is unquestionably one of the finest auto radio receivers ever developed. With the amazingly high undistorted power output of 8 watts it is one of the most powerful available. Just compare the following features with any other set.

TUBE COMPLEMENT—includes 6SK7 RF amplifier, 6SA7 1st detector-oscillator, 6SK7 IF amplifier, 6SQ7 2nd detector—AVC, 6K6GT driver and a 6N7G dual output audio amplifier. Note that no rectifier is included in this tube lineup. A self-rectifying (synchronous) vibrator eliminates the need for this tube thus keeping the current consumption low—8.2 amperes at 6.6 volts.

PERMEABILITY CIRCUITS—instead of the usual capacity (condensers) tuning a three circuit permeability system is used. This assures greatly improved signal to noise ratio and stability.

FLAT AUTOMATIC VOLUME CONTROL—this is a special application of automatic volume control whereby the action obtained is so perfect that all stations of approximately equal modulation, whether distant or local, are reproduced with equal volume provided only they are above normal noise levels.

MOBILE DYNAMIC SPEAKER—the special 6" oversize electro dynamic speaker is arranged to be mounted behind the instrument panel in those cars equipped with a suitable panel grille or may be mounted in a separate housing (see listing at left) on the fire wall. The receiver is equipped with a 40' speaker cable.

MINIMUM INTERFERENCE PICKUP—an improved circuit assures the elimination of practically all interference. Normally spark suppressors are entirely unnecessary, the only suppression items required to eliminate antenna pickup being the distributor suppressor and generator by-pass condenser, which are supplied with the receiver. Dimensions of the case are: 9" x 8" x 7".

MODEL B-111—Lafayette 6-Tube De Luxe Superhet with tubes, distributor suppressor, generator condenser and speaker. Shpg. wt. 20 lbs.

YOUR COST SPECIAL \$25.95


"Customized" Control Plate to match your car 95c
(Specify make, model and year of your car when ordering)

Lafayette CUSTOM CAR RADIOS

SPEAKER HOUSING AND MOUNTING KIT

If your car does not have a grille installed on the dashboard, or if you desire to mount the speaker elsewhere in the car you will require this kit which includes a specially designed matching housing for the speaker and all necessary hardware for mounting.

YOUR COST \$1.50





Lafayette

7-Tube 6-Volt 3-Band Superhet

*Power Line Performance — Battery Operation

One of the best selling battery receivers we have ever offered. In order to make room for new models that we contemplate manufacturing this summer, we are offering our remaining stock at a discount of over 33 1/2% from our former low selling price! Naturally the quantity is limited—so order now! Designed especially for the rural dweller, this receiver provides excellent reception over a wide tuning range. It is powered from a SINGLE 6-volt storage battery that can be kept charged economically by means of a wind-driven charger (write for information). At the low price quoted, you'll find that model CC-1 is a good investment.

THREE BANDS cover from 13.3 to 51.8 meters for foreign short-wave stations; 48 to 136 meters for intermediate short-waves and amateur calls; 174 to 552 meters (543-1720 kc) for standard domestic stations. A full-view slide-rule dial, fully calibrated, simplifies station adjustments.

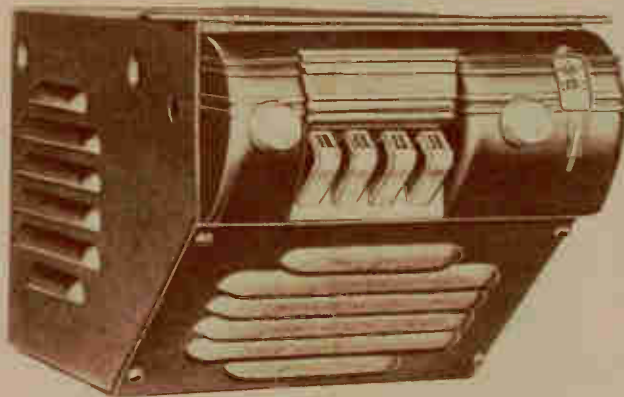
TUNING "EYE" permits accurate VISUAL station adjustments; it's easy to operate.

SUPERHET CIRCUIT uses 6K7 r.f. amp., 6K8 osc.-mixer, 6S7G i.f. amp., 6T7G det., a.v.c. and first audio, 6L5G driver, 6Z7G output and 6N5 "eye" tube.

Other features: high efficiency 6" PM speaker; automatic volume control full-range **TONE CONTROL**; beautiful Walnut veneer table model cabinet.

MODEL CC-1—Lafayette 7-Tube 3-Band Superhet for 6-Volt storage battery operation. With tubes. Size: 20 3/4" wide, 10 1/2" high, 8 1/4" deep. Shpg. wt. 26 lbs. Code GMNOF. Was \$29.95.

NOW ONLY (Less Storage Battery) \$19.95 With Tubes



Lafayette 5-Tube Single Unit Push-Button Auto Radio

A triple plus value! A powerful 5-tube superheterodyne auto radio—plus single-unit construction for easy installation—plus push-button tuning for eye-on-the-road operation—plus a smashing reduction in price for easy-on-the-pocketbook buying! Where else could you get so much value for so little money? It takes Lafayette's tremendous buying power to make possible money-saving values like this! Check the following features:—

DELIGHTFUL TONE QUALITY—a scientifically designed audio system plus a carefully matched dynamic speaker results in tone quality that is fully the equal of many home type radio receivers.

PUSH-BUTTON TUNING—maximum driving safety requires you to keep your eye on the road at all times and to keep your hands on the steering wheel. This is easy with the Lafayette Model FE-32 because of the four convenient push buttons. You can set these buttons for any station you choose quickly and easily. Thereafter four buttons provide a choice of four stations that you can tune-in instantly and accurately at the touch of a finger. In addition, of course, there is also a standard type of dial with the scale conveniently located on the front panel in full view.

SUPERHETERODYNE CIRCUIT—more than ample volume and excellent selectivity. The circuit employs 5 tubes including: 6SA7 converter, 6SK7 i.f. amplifier, 6SQ7 detector, A.V.C. (automatic volume control) and 1st audio, 6K6G power output amplifier and a 6X5G power rectifier. The tuning range covers the complete broadcast band from 530 kc to 1550 kc.

EASY TO INSTALL—You need drill only two holes in the dashboard and attach the mounting strap in the rear to mount the set securely. Then a simple ammeter connection and another to the aerial complete the installation. Condensers and a distributor suppressor are supplied.

MODEL FE-32—complete with all tubes, accessories and instructions. Size: 5 7/8" high, 6" wide, 12" deep. Shpg. wt. 15 lbs. **\$14.95**
Code HAKIM List \$25.00. YOUR COST SPECIAL

NOTE: IN ADDITION TO THE CAR RADIOS LISTED WE CAN FURNISH CUSTOM MODELS TO MATCH 1941 CARS. WRITE, MENTIONING MAKE OF CAR YOU OWN AND YEAR FOR COMPLETE DETAILS



Lafayette

5-Tube 2-Way Push-Button Superhet

*Operates From 6V. Storage Battery or 110V. AC

Looking for a radio you can use in your camp or bungalow as well as your home? Then here's the job for you and of a tremendous saving! We have cut the price of this one to the bone! But we must warn you that we have only a very limited quantity on hand at this price and it is first come—first served!

Actually **TWO** receivers in one! Model FE-35 operates perfectly from any commercial 110 volt a.c. line or from a single 6-volt storage battery. Reception, with either type of power, is clear, crisp, and has ample volume—and you get the added convenience of automatic station selection too. It's an ideal set for those living in rural districts, where the "high line" has not as yet been installed.

AUTOMATIC SIX STATION TUNING: Six buttons on the front panel permit instant selection of any one of your six favorite stations. Buttons can be set in a few minutes, and settings can be changed at will. There's a manual tuning knob, too, for getting all the other domestic stations. Tuning range is from 535 to 1735 kilocycles.

DUAL DUTY TUBES used in the superhet circuit account for the fine tone quality and power. Tubes used: 6D8G mod.-osc., 6K7 i.f. amplifier, 6T7G second detector, a.v.c. and first audio, 6G6G output and 6Z7G rectifier. Operation is from any 6-volt storage battery which can be charged from a "Wincharger" (write for information) or from 110 volts a.c. Housed in a handsome Walnut veneer cabinet with illuminated slide-rule dial.

MODEL FE-35—Lafayette 5-Tube Superhet for 6-volt storage battery or 110 volt a.c. operation. With tubes. Size: 17" wide, 9 1/2" high, 8 1/2" deep. Shpg. wt. 20 lbs. Code HEDGE. Was \$22.95.

NOW ONLY (less storage battery) \$16.95 With Tubes

Here's the way to go to-day

Lafayette 7 TUBE 3-IN-1 SUPER

Let this fine new Lafayette portable accompany you on all your travels. It will provide you with superb radio reception—equipment to the better model table radios for the home—and you need never worry about "current" problems. The set is designed to operate from its own self-contained batteries (for outdoor excursions of any kind) or from any 110 volt outlet—either alternating or direct current. The entire assembly is housed in a beautifully styled portable case with LOCKING TYPE deep front—no carry it around like any other piece of small luggage. And the price is less than you'd ordinarily be asked to pay—as shown by these features:

R. F. AMPLIFIER stage to insure extra selectivity and sensitivity to the extra-power circuit that employs seven instead of the usual five or six tubes. Tubes used: 1N5 R.F. amplifier; 1A7 oscillator-converter; two 1N3's as I.F. amplifiers; 1H5 diode detector, a.v.c. and audio amplifier; 3Q5 power output stage; 3Z5 rectifier (for electric operation).

EXTENDED RANGE brings you all the domestic stations from 520 to 1620 kilocycles (includes high fidelity stations and some police calls).

EFFICIENT PM SPEAKER with swirled 5-ounce magnet insures fine-tune quality over the entire reproductive frequency range.

LOW DRAIN, due to the use of special type low drain tubes; insure longer battery life. Batteries required: 2-45-volt "B" 1-4-volt "A" and 3-4 1/2-volt "A". Switch on front panel changes from battery to electric operation.

DELUXE CASE is provided with handle, drop front and lock and key. Outside covering of durable "Beaver" fabric (like leatherette). Size: 14 1/2" long, 6 1/2" deep, 11" high; Shpg. wt. 18 lbs. (with batteries).

MODEL C-160-BR: All Brown.
MODEL C-160-BW: Brown and White.
MODEL C-160-BL: Blue and White.
YOUR COST EACH, With Batteries **\$19.95**
K20195—Extra kit of batteries. Shpg. wt. 7 lbs. **\$2.75**



Lafayette 7 TUBE 3-IN-1 3 BAND SUPER

Amazingly versatile, this deluxe 1944 Lafayette portable brings you reception in THREE bands instead of the usual one—and the quality of reception obtained is far above the average because it uses SEVEN multi-function tubes instead of the usual five or six. Take one with you wherever you go—get fine reception using the built-in batteries or plug into any 110 volt electric line, either A.C. or D.C.

INCLUDES POPULAR 60 METER BAND: In addition to tuning in all the domestic broadcast stations, you can tune police calls, amateur stations, Ship-to-Shore signals, two-way Aviation signals, foreign short wave stations and many other interesting services. The THREE tuning bands are 16.2 to 51 meters (for foreign short-wave); 47 to 133 meters (for amateur aviation and ship-to-shore, police calls, etc.); 174 to 556 meters (for domestic broadcast programs).

MAGIC "ANTENNAIRE" Special loop antenna built into the set eliminates the need for external aerial and ground connections. Terminals for external aerial are included, however, for use where desired.

HEADPHONE JACK permits listening by an individual without disturbing others. When phones are plugged in, speaker is automatically cut off.

MULTI-FUNCTION TUBES, low drain type, afford excellent quality. Tubes used: 1A7GT converter; two 1N3GT's i.f. amplifiers; 1H5GT det., a.v.c., and audio; 3Q5GT and 50L6GT "beam power" output; 3Z5GT rectifier (for electric). Matched 5" PM speaker is in "pig tail" fabric and has drop front, lock and key, 11 1/4" x 11 1/4" x 7 1/2" deep.

MODEL C-125: Complete with tubes and batteries. Ready to operate. Shpg. wt. 20 lbs.
 List \$45.00. **\$26.95**
YOUR COST, With Batteries
K20163—Extra kit of batteries (2-45-volt "B" and 2-4 1/2-volt "A"). Shpg. wt. 7 lbs. **\$2.75**



Lafayette "AVIATOR" 3-IN-1 2 BAND SUPER

A deluxe portable especially designed for use by aviators, pilots and all those interested in the reception of aircraft signals and weather reports. It provides safety and peace of mind at a price well within the means of any pilot. Compact and easily portable, it can be used in any ship—previously owned or rented. Its performance and construction characteristics are exceptionally good, as shown by the features outlined here:

THREE-WAY OPERATION: the receiver operates from self-contained dry batteries, or from any 110-120 volt commercial line, either A.C. or D.C.

MULTI-FUNCTION TUBES, six in all, furnish 8-tube performance. Circuit uses: two 1H50's, 1A7GT, 1H5GT, 3Q5GT and a 5Z7GT rectifier (for electric operation).

R. F. AMPLIFIER stage, on each band, insures fine selectivity and selectivity. A three-gang condenser, found only in fine sets, is utilized.

SPECIAL TUNING RANGE: In addition to tuning the entire domestic broadcast band from 530 to 1620 kc, you can bring in aircraft beacon signals and weather reports on the 140 to 410 kc band (232 to 213 meters). A special **SEPARATION FILTER** enables the separation of the beacon signals from the weather reports at the flip of a switch.

DIRECTIONAL "ANTENNAIRE", a built-in matched loop, eliminates the need for any external antenna or ground connections.

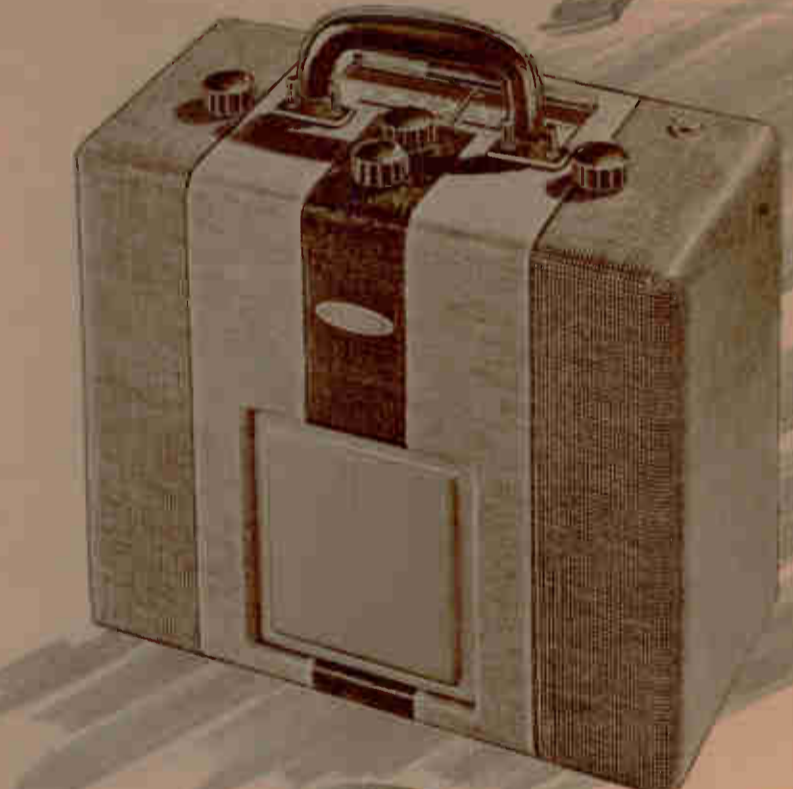
HEADPHONE JACK is provided for headphone reception. Necessary for use in an open cockpit plane or where noise level is high. Insertion of headphone plug automatically cuts off the set speaker.

SLIDE-RULE DIAL, with each band individually calibrated, is easily legible.

THERMAL RELAY built into the circuit to conserve battery current (batteries required are two 45-volt "A" and two 4 1/2-volt "B").

Other features include: powerful automatic volume control circuit to minimize fading; convenient knob padding so that tuning is simple even when gloves are worn; ruggedly built chassis and components. The compact case measures only 11" x 13" x 7" deep, and is covered with durable fabricoid. Sturdy carrying handle is provided.

MODEL E-193: Lafayette "Aviator" Portable complete with tubes and batteries, less headphones. Shpg. wt. 24 lbs.
YOUR COST COMPLETE **\$29.50**
K20194—Extra kit of batteries. Wt. 7 lbs. **\$2.75**



Lafayette 3-IN-1 "PERSONAL"

This deluxe little Lafayette Personal radio, slinky as a snail's hand-foot, makes a delightful pal. As beautiful as the finest piece of luggage you ever saw—and it performs just like its "big brothers". Take one with you on your vacation trip, no matter where you go. You can get fine performance from the built-in battery power supply, or you can plug it into the nearest electric outlet, either A.C. or D.C. It's economical to operate and it's very easy to own at the low price quoted.

Five tubes are used in the lens-free superheterodyne circuit: 1H5 converter; 1T4 i.f. amplifier; 3Z5 detector, a.v.c., and first audio amplifier; 35A power stage and 3Z5 rectifier (for electric operation). All these tubes are special low drain types to insure long battery life. A matched permanent magnet dynamic speaker provides accurately sound tone quality. Tuning range covers the domestic broadcast band from 540 to 1650 kc. Design features include built-in "Antennaire" loop antenna to eliminate all outside connections; battery switch that automatically shuts off current when door is closed; vernier drive for volume control; automatic volume control. The portable case is covered with durable simulated leather. Size: 9" high, 6" wide and 3 1/2" deep. Shpg. wt. 7 lbs.

MODEL JS-115BR: Brown and Ivory.
MODEL JS-115BR: All Brown.
With Batteries (1-6 1/2 volt "A" and 3 flashlight cells) **\$15.95**
List \$27.50. YOUR COST COMPLETE WITH GENUINE COWHIDE CASE: Like above, but with genuine top grain cowhide case with genuine "cut tan" finish. Custom made. List \$32.50.
MODEL JS-115L: YOUR COST, With Batteries **\$17.95**

FOR BATTERY OPERATION ONLY
 Like above models, but operates on built-in batteries only. Uses four tubes (1R5, 1T4, 154, 155). Sim. and leather case. Size: 8" high, 4 1/2" wide, 4 1/4" deep. Uses 1-6 1/2-volt "B" and 3 flashlight cells. All other features like models above. Shpg. wt. 7 lbs.
MODEL JS-114BR: Brown and Ivory. **\$13.75**
MODEL JS-114BR: All Brown. **\$15.75**
List \$27.50. YOUR COST, With Batteries: Like above, but with genuine top grain cowhide case with genuine "cut tan" finish. List \$25.00.
MODEL JS-114L: YOUR COST, With Batteries



Lafayette 5 TUBE 3-IN-1 PORTABLE

Let this fine superb portable accompany you wherever you go. It will provide you with great quality entertainment at all times, and because of the self-contained batteries and built-in "Antennaire" there are no connections to make. When built-in batteries are merely plug in the line cord (concealed in the case when not in use) into any 110 volt outlet, A.C. or D.C. The handsomely styled, compact case, available in several popular colors, has excellent type fronts and are finished complete with lock and key.

LOW DRAIN TUBES used in the sensitive superhet circuit insure long battery life. Tubes used are: 1A7GT converter; 1H5GT i.f. amp.; 1H5GT detector, a.v.c., and first audio; 3Q5GT "BEAM POWER" output; 3Z5GT rectifier (for electric). The tuning range covers the American broadcast band from 540 to 1650 kc.

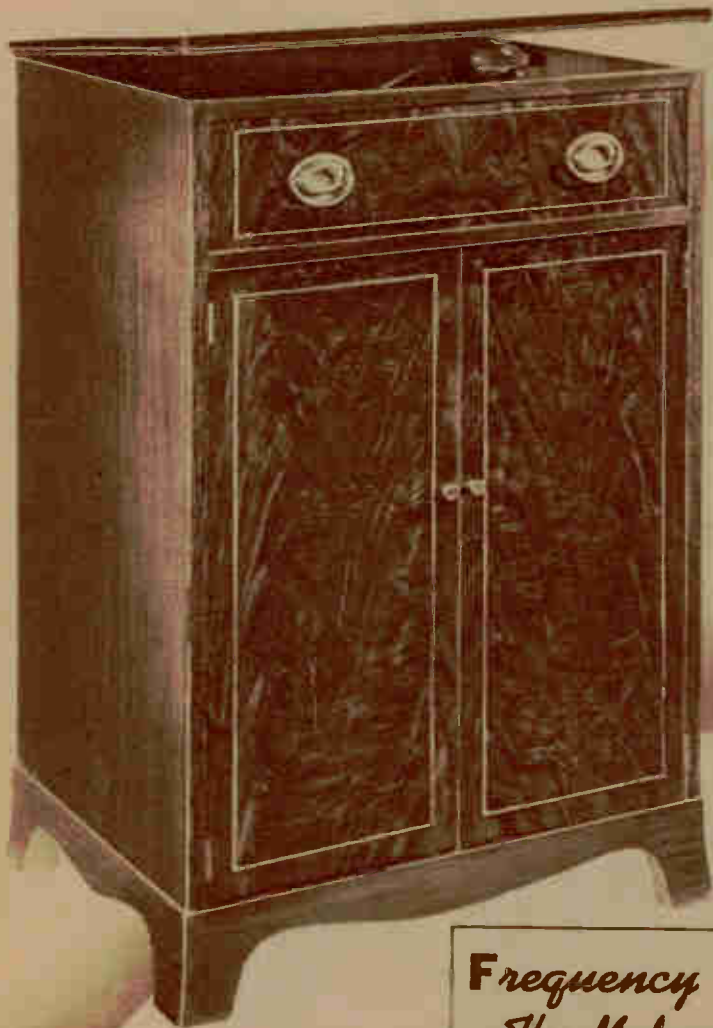
MATCHED PM SPEAKER reproduces voice and music with great fidelity. Batteries required: two 4 1/2 volt "A" and two 45-volt "B". Switch on panel permits instant change-over from batteries to electric current.

"ANTENNAIRE": built-in loop antenna makes outside aerial or ground unnecessary. Dimensions: 13 1/2" x 11" x 3 1/2" deep. Shpg. wt. 19 lbs.

MODEL C-121-BW: Blue and White.
MODEL C-121-BL: Blue and White.
MODEL C-121-BR: Solid Brown.
YOUR COST EACH, With Batteries **\$15.95**
K20194—Extra kit of batteries. Wt. 7 lbs. **\$2.75**



SETTING THE STYLE



Frequency Modulation
The Modern Miracle
Radio Development —
Staticless — Noise-free
Amazing Reproduction
Send For Our Helpful, Explanatory
FM Brochure

Lafayette 6-TUBE 2-BAND PHONO-RADIO

If you've been waiting for a really De Luxe table model phono radio combination at true economy prices this new Lafayette Model JS43 is for you. In all our years of turning out fine combinations of unbelievable low prices we've hardly ever matched this combination for excellence of reproduction, beauty of cabinet and amazingly low price. But quality has not been slighted. You'll find all the many fine features so necessary for really fine radio and phono-graph reproduction. Just check this list and compare: **BUILT-IN ANTENNAIRE**, Exclusive Lafayette loop permitting you to operate this unit anywhere without using an aerial or ground for broadcasts. Antenna terminals provided for S.W. reception. **TWO TUNING BANDS** covering domestic broadcasts from 540 to 1700 kc (556 to 176 meters) which includes all the new allocations. Foreign S.W. stations are heard from 4.8 to 16 mc (62.5 to 18.7 meters). Large, easy-to-read dial makes for pleasurable tuning, easy logging. **BEAM POWER OUTPUT** provides both excellent tone and ample volume on both radio and phono. Tube complement includes: 6SA7GT 1st det.-osc., 6SK7GT i.f.; 6J5GT 2nd det. AVC; 6SQ7GT 1st a.f.; 6V6GT beam-power output; 80 rectifier. **VARIABLE TONE CONTROL** provides the acoustics most pleasing to you.

OVERSIZE FIDELITY SPEAKER capable of handling full audio output with excellent frequency response and tonal quality. **TANGENT ARM CRYSTAL PICKUP** of the latest type supplies the most from your records, minimizes needle scratch, extends record life. **CONSTANT SPEED MOTOR**, self starting, highly dependable with 10 inch flaked turntable. For 10-inch and 12-inch records, played with lid of cabinet completely closed. **ATTRACTIVE GRAIN WALNUT CABINET** that will grace any room it is placed in. Two toned with contrasting graining and custom satin-finish. Size: 12" high, 18" wide and 13 1/2" deep. **MODEL JS-43**—Lafayette 6-tube, 2-band AC Phono-Radio combination in table model walnut cabinet, complete with tubes. For operation on 110 volts, 60 cycles A.C. only. List Price \$45.00. Shpg. wt. 28 lbs. **YOUR COST** **\$27.50**
 For 220 volt operation add.....\$3.00
9-TUBE A.C.-D.C. MODEL
MODEL JS-43-DC—Similar to above, but for operation on 110 volts AC or DC, complete with tubes. List Price \$62.50. **YOUR COST**..... **\$37.50**

Lafayette FM-AM PHONO-RADIO

Here's a high quality phono-radio combination that is bound to receive an overwhelming welcome because of its excellent features. Its handsome appearance, its superb performance and its truly "can't-be-beaten" Lafayette low price. It is a well known fact that there can be no compromise with quality in Frequency Modulation receivers—which makes this ensemble more remarkable because it not only features a fine FM receiver, but a FOUR BAND A.M. receiver and a fine quality automatic record changer in a beautiful furniture piece at this amazing price. It is truly one of the greatest Lafayette values ever offered. Here are some of its feature highlights:

R.F. STAGE ON ALL BANDS, a feature found only in quality receivers. Assures greater sensitivity and selectivity on all stations.

FIVE COMPLETE TUNING RANGES including: 1) F.M. band from 41.5 to 50.5 megacycles; 2) Standard A.M. or broadcast band from 540 to 1650 kc and three short-wave spread bands covering: 3) 31 meter band from 9.42 to 9.8 mc; 4) 25 meter band from 11.38-12.1 mc and 5) 19 meter band from 14.44 to 16.1 mc. These bands have wide spread tuning for greater selectivity and dialing ease.

MAGIC ANTENNAIRE, Lafayette's exclusive loop eliminates need for antenna on A.M. broadcast band. For fine F.M. and short wave reception terminals for a good antenna are provided.

14 HIGH GAIN TUBES include: 6AB7 i.f.; 6SA7 converter; 3-6SK7 i.f. amplifiers; 6SJ7 F.M. limiter; 6H6 F.M. detector; 6SQ7 2nd det., AVC, 1st a.f.; 6SQ7 tone control amp.; 6J5GT phase inverter; 2-6V6GT push-pull "beam-power" output; 6V5 tuning "eye" and a 5U4G rectifier tube.

10 WATTS UNDISTORTED OUTPUT assures excellent fidelity of tone on FM, AM and phono.

SEPARATE BASS AND TREBLE CONTROLS provide any desired degree of acoustic control you wish—a "must" for fine reproduction. Gives you any desired degree of bass with or less of treble and vice versa. Not to be mistaken for ordinary tone controls.

AUTOMATIC RECORD CHANGER will provide you with almost an hour of undisturbed musical "luxury listening." Gentle action mechanism will play ten 12-inch records or twelve 10-inch records automatically.

LATEST TYPE CRYSTAL PICK-UP in tangent tone arm for maximum frequency response, increased record life, minimum scratch.

12-INCH DYNAMIC SPEAKER fully capable of handling entire audio output with all the volume and fidelity desired.

HANDSOME MAHOGANY CONSOLE fittingly houses this superb instrument. Tone chamber matched to both the amplifier and speaker for finest results. Overall measurements: 37" high, 24 1/2" wide, 18" deep. Beautiful hand rubbed satin finish.

MODEL FE-198—Lafayette FM-AM Phono-Radio Combination, with Automatic Record Changer in Mahogany Console as described above, complete with all tubes. For operation on 110 volts, 60 cycles a.c. Shpg. wt. 125 lbs. List Price \$225.00. **YOUR COST**..... **\$128.50**

MODEL FE-199—Same as above, but with special dual speaker system consisting of one 12" woofer and one 6" tweeter speaker in place of the single speaker. List Price \$240.00. **YOUR COST**..... **\$138.50**



Lafayette 5-TUBE AC PHONO-RADIO

It may seem unbelievable that a good quality phono-radio combination can be produced to sell for this low price, but Lafayette has been offering "buys" of this nature for so long that the dollar-wise radio public looks upon them as the usual thing for us. And well they may, for once again we scoop the low-price phono-radio combination with this unusual table model. It is ideal for a den, dormitory, child's room, small apartment and any other place where space is at a premium, yet quality cannot be overlooked. Check these features:

MAGIC ANTENNAIRE, Lafayette's exclusive built-in loop which eliminates the necessity for any aerial or ground and permits placement anywhere near a 110-volt outlet, A.C. only.

HIGH GAIN TUBES provide performance equal in many ways to that of a seven tube receiver. Tube complement: 1-12SQ7GT, 1-12SK7GT, 1-12SA7GT, 1-50L6GT "Beam-Power" output tube and 1-35Z5GT rectifier tube. Plenty of power and exceptional quality is assured.

TANGENT ARM CRYSTAL PICKUP of the latest type will reproduce your favorite records with excellent fidelity.

CONSTANT SPEED MOTOR, 78 r.p.m., of the self-starting type, is rubber cushioned, a quality feature rare at this price. Plays 10" and 12" records with lid closed.

COMPLETE BROADCAST COVERAGE from 550 to 1700 kc (545 to 176 meters) includes all the new allocated frequencies.

AUTOMATIC VOLUME CONTROL minimizes fading on weak or distant stations.

DYNAMIC SPEAKER amply handles all the volume you want for good reproduction.

GRAINED WALNUT CABINET measures 15" wide, 10 1/4" high, 11 1/4" deep. Needle cup in motor board, pick-up arm rest.

MODEL EB-163—Lafayette 5-tube High Gain AC Radio-Phono combination in table model Walnut cabinet, complete with tubes. For operation on 110 volts 60 cycles A.C. only. Shpg. wt. 20 lbs. List Price \$25.00. **YOUR COST**..... **\$14.95**



Lafayette F-M RECEIVER & CONVERTER

For the many owners of fine broadcast receivers who would like to enjoy the advantages of Frequency Modulation reception Lafayette now offers this fine little F-M Receiver and Converter. No bigger than the ordinary table model midset set it nevertheless is both a complete receiver housing its own amplifier and speaker AND a converter for using the audio section and speaker of your present set. Change-over is made by a simple toggle switch on the back of the FM unit. It hardly pays to deprive yourself of the undoubted superiority of FM transmission when you can pick up this fine unit at so low a price.

SUPERIOR F.M. CIRCUIT incorporating the latest refinements in F.M. utilizes seven tubes, including: 6SA7 converter; 6SK7 1st i.f.; 6SK7 2nd i.f.; 6B8 limiter, freq. detector; 2-25L6GT push-pull "beam power" output and 25Z6GT rectifier. Operates on 110 volts A.C. or D.C.

FIDELITY SPEAKER for use when unit is used as straight F.M. receiver. Switch cuts out this speaker when set is used in conjunction with your audio.

COVERS 42 TO 50 MEGACYCLES including the entire F.M. band. Tuning as simple as any broadcast set.

STATIC FREE HIGH FIDELITY RECEPTION, assured because of the inherent qualities of Frequency Modulation. Will amaze you. Your program came through unscathed through the noisy broadcast stations.

CHARMING WALNUT CABINET only 5 inches high, 14 inches wide and 6 1/2 inches deep. Beautifully finished to form a welcome addition to your present set.

MODEL FE-158—Lafayette 7-tube A.C. D.C. Frequency Modulation Receiver and Converter, complete with all tubes. List Price \$50.00. Shpg. wt. 12 lbs. **YOUR COST**..... **\$29.50**

PHONO-RADIO COMBINATIONS



Lafayette TABLE MODEL SUPER WITH RCA AUTOMATIC RECORD CHANGER

Sets a new high in versatility and value! That's what you'll say when you find that this fine **Automatic** combination is being offered at a price you'd expect to pay for a good table model radio alone! You'll enjoy the fine quality of radio reception it provides—and you'll be thrilled by the luxury afforded by the gentle action RCA record changer that permits you to build your own programs of recorded music. With radio and automatic record changer are housed in a beautifully styled walnut cabinet that's just the thing for the small apartment. Here's what you get:

- MAGIC "ANTENNAIRE"** built in loop aerial to eliminate outside connections; terminals for external antenna included.
- EXTENDED RANGE** from 540 to 1730 kc; brings you all domestic broadcast stations.
- MULTI-FUNCTION TUBES** give you extra sensitivity and selectivity with more than ample volume. Circuit uses a 12SA7, 12SK7, 12SD7, SOLAET "BEAM POWER" tube and a 35Z5GT rectifier.
- RCA AUTOMATIC CHANGER** plays seven 12" or eight 10" records automatically, in sequence. You can enjoy over a half-hour of recorded entertainment without interruption. Changer has "gentle action".
- CRYSTAL PICK-UP**, latest lightweight type, provides wide range response.
- WALNUT CABINET**: Styled to go well with practically any room or furniture. Size: 14 1/2" x 18 1/2" x 4 1/2" deep.
- MODEL E-114**: Complete with tubes. For 110 volts, 60 cycles ac. Ship. wt. 14 lbs. **YOUR COST \$32.45**

Lafayette 8 TUBE A. C. 2 BAND DeLuxe AUTOMATIC COMBINATION Complete With Semi-Permanent Needle!

Your entertainment ambitions are fulfilled when you select this deluxe compact console model to provide with complete radio and record programs. And you'll find that the cost of this program makes you say "Yes!" for the table-top model which is being specially priced for the spring season. Designed so that the entire automatic record changer is contained in a sliding compartment, this sophisticated performer gives a "top spot" in your home.

- DUAL "ANTENNAIRE"**: A special "High Q" loop with tuned primary is used for broadcast band reception and a self-contained compensated type antenna for reception in the short-wave band. **NO OUTSIDE CONNECTIONS ARE REQUIRED!**
- GET EUROPE DIRECT**: In addition to being the entire domestic broadcast band from 540 to 1730 kc, you can bring in European short-wave stations on the 7.5 to 32.2 meter band.
- MODERN CONTROL PANEL**: A 65' illuminated slide-rule dial and four control knobs—volume, channel selector, band change and auto-on-off.
- VARIABLE TONE CONTROL**: Will range from soft, mellow tones to clear, crisp tones. As control is turned to maximum, tone reproduction is accentuated without appreciably affecting the light.

- BEAM POWER OUTPUT** gives high powered, clear reception. Tube uses new 12SA7, 12SK7, 12SD7 and SOLAET "BEAM POWER" 35Z5GT rectifier.
- VISUAL TUNING** is provided by the color tuning eye which indicates a simple 12" **CONCERT SPEAKER** of latest design furnishes wide range frequency response. All voice and music faithfully reproduced.
- AUTOMATIC CHANGER** plays seven 10" or ten 12" records automatically, in sequence.
- "LIFE-TIME" NEEDLE** is supplied for the fine crystal pick-up. This needle is good for several thousand plays without change. Response is incomparably fine.
- DELUXE WALNUT CONSOLE**: Constructed with fine walnut veneer. Has attractive light top strip and sliding panel. Automatic change compartment on right housing slides becomes an integral part of the speaker grille. Overall size: 27 1/2" high, 24 1/2" wide, 14" deep.
- MODEL E-113**: Complete with all tubes and with semi-permanent needle for the pick-up. For 110 volts, 60 cycles ac. Ship. wt. 34 lbs. **YOUR COST \$54.95 EACH**



Lafayette 4 IN ONE PORTABLE "Radiocorder"

The most complete entertainment instrument ever devised! Here, in one compact portable case, are **FOUR GREAT INSTRUMENTS!** It comprises a fine superhet radio receiver; a high quality record player; an improved home recording mechanism; a good Public Address system. Now you can make permanent records of the voices of your family and friends—and play them back whenever you desire. Or you can make speeches—amplified so that large gatherings can hear you—through the audio system of the radio. Never before has Lafayette been able to offer so much in one instrument at such a low cost! It features:

- 7-TUBE SUPERHET** of superb quality, tuning the broadcast band from 530 to 1700 kc (including high fidelity stations and police calls).
- MAGIC "ANTENNAIRE"**, a built-in loop aerial, eliminates the need for outside antenna or ground wires (terminals for external aerial).
- VARIABLE TONE CONTROL** that operates so radio and phono arms, permitting tone quality that you find most enjoyable.
- FIDELITY RECORD PLAYER**, incorporating a fine self-starting motor and a modern magnetic arm Crystal Pick-Up. It plays all standard 10" or 12" commercial records.
- FINE HOME RECORDER** permits cutting blanks up to 10" diameter. It's amazingly simple to record any broadcast program, singing, talking, etc.—and you can play the recordings back immediately.
- CRYSTAL CUTTER** cuts blanks "outside-in" so that they can be played on any record player. It provides wide-range response and has jewel lead for correct depth of cut.
- CRYSTAL MICROPHONE** of the latest type is supplied, with long cable and connector.
- PUBLIC ADDRESS UNIT** utilizes the audio section of the receiver and the crystal mike.
- CHANGEOVER SWITCH**, on front panel, is plainly marked for all adaptations.
- MULTI-PURPOSE TUBES**: 12SA7, 12SK7, 12SD7, 35Z5GT, 6X4GT, 6X5 "vac" and 6X5GT rectifier.
- FREE ACCESSORIES**: We supply six 6" recording discs, two steel recording needles and a stock-peg of playback needles.
- MODEL S-162**: Complete with tubes, microphone and FREE accessories. Is leatherette covered portable case 12" x 7 1/2" x 4 1/4" deep. For 110 volts, 60 cycles ac. Ship. wt. 4 lbs. **YOUR COST COMPLETE \$47.50**

Lafayette DeLuxe 5 TUBE COMBINATION

For those whose home furnishings reflect the gracious charm of the eighteenth century, Lafayette heartily recommends this delightful period style compact phono radio. Designed and built by master furniture craftsmen, this model is bound to meet with your instant approval. And the quality of radio and recorded reproduction afforded is fully equal to the beauty of the cabinet. Take advantage now of the "table-top" price while waiting. A review of its features will convince you.

- MAGIC "ANTENNAIRE"**: built-in matched long-wavelength makes it unnecessary to connect any external aerial or ground wire. Terminals for outside aerials are included, however, for use when desired.
- AIRPLANE DIAL**, fully illuminated, is specially calibrated in kilocycles (only a few 40 numbers).

- POWERFUL SUPERHET** uses five multi-purpose tubes to provide seven-tube performance. Tube complement: 12SA7, 12SK7, 12SD7, SOLAET "BEAM POWER" tube for push-pull output and 35Z5GT rectifier. A matched 5" PR speaker provides loud tone.
- SELF STARTING MOTOR**, constant speed type, has a 10" cone speaker. All standard 10" and 12" records can be played with the lid closed.
- CRYSTAL PICKUP**, latest type lightweight stagger arm type, furnishes faithful reproduction over the entire audible range.
- MODEL E-135**: Complete with all tubes in deluxe walnut cabinet 15 1/2" x 15 1/2" x 12 1/2" deep. For 110-120 volts, 60 cycles ac. Ship. wt. 20 lbs. **YOUR COST EACH \$19.95**



NEW Echophone COMMERCIAL RECEIVERS



ECHOPHONE COMMERCIAL MODEL EC-2

This is truly one of the most amazing values ever offered in a communications receiver. Offering preselection on all bands, calibrated bandspread and automatic noise limiter in addition to a host of other valuable features, it is the answer to many a ham and SWL's prayer at this price. Just check these features.

TUNED RF STAGE on all bands.

110 VOLT AC OR DC OPERATION.

AUTOMATIC NOISE LIMITER operated by the mere flip of a switch.

EIGHT TUBES (including ballast) are: 6SD7GT r.f.; 6K8 converter; 6SK7 i.f.; 6SC7 a.f. and 8FO 25L6GT power output; 6H6 1st det. and automatic noise limiter tube; 25Z6GT rectifier and a K35 ballast tube.

THREE BAND COVERAGE includes: 545 to 2100 kc on Band 1; 2.1 to 8.1 mc on Band 2, and 7.9 to 30.5 mc on Band 3.

CALIBRATED BAND SPREAD SCALE on 80, 40, 20 and 10 meter ham bands.

PM DYNAMIC SPEAKER mounted in top of cabinet.

ELECTRICAL BAND SPREAD available on all frequencies in the tuning range.

CONTROLS include: Main tuning band spread tuning; AF gain control; Band Switch; AVC BFO on-off switch; ANL on-off switch; Receive Standby switch; Speaker phone switch. In addition, phone tip-jacks are provided for an ear phone as well as double type antenna posts.

SEPARATE BFO OSCILLATOR for CW reception and for assistance in locating weak foreign SW. Frequency coverage includes the entire broadcast band and extends through the 10 meter band. Short-wave broadcast bands, ham bands, marine and aviation bands are all indicated on main tuning scale. In black crackle finish steel cabinet 15 1/2" long, 8 1/2" high, 9 3/4" deep. With chrome center band. Shpg. wt. 16 lbs.

K21335—Echophone Commercial EC-2 complete with tubes and built-in speaker.

YOUR COST \$29.95



ECHOPHONE COMMERCIAL EC-3

Never before has a value as outstanding as this been offered in the communications field at any time like this amazing low price. Think of it as a deluxe communications receiver with crystal filter circuit, automatic noise limiter, preselection on all bands, 2 stage AF amplifier, separate speaker and many more features—FOR LESS THAN \$50.00! Look over these fine features.

TUNED R.F. STAGE on all bands.

CRYSTAL FILTER CIRCUIT; four position for variable selectivity. Crystal phasing condensers employ variable capacitance to eliminate objectionable heterodynes and give smooth signal CW reception. Broad crystal selection allows phase reception with ability to tune out interfering heterodynes.

FOUR POSITION SELECTIVITY SWITCH; sharp crystal broad crystal, sharp IF and broad IF.

SEPARATE BFO OSCILLATOR for CW reception with variable pitch control.

OPERATES ON 110 VOLTS A.C. OR D.C.

NINE TUBES (including ballast) are: 6SD7GT 1st r.f.; 6K8 converter; 6SK7 1st i.f.; 6SK7 2nd i.f.; 6H6 2nd det. and automatic noise limiter; 6SC7 1st a.f. and BFO; 25L6GT beam-power output; 25Z6GT rectifier and K29D ballast.

THREE BAND COVERAGE; overlapping covers on Band 1—545 to 2100 kc; Band 2—2.1 to 8.1 mc; Band 3—7.9 to 30.5 mc.

CALIBRATED BAND SPREAD on 4 ham bands.

SEPARATE EXTERNAL SPEAKER IN MATCHING CABINET. MONITOR CIRCUIT for listening to your own CW transmission. Complete controls include: Main Tuning; Band Spread Tuning; RF Gain; AF Gain; Crystal Phasing; BFO Pitch Control; Bandswitch; Selectivity Control; AVC BFO on-off switch; ANL on-off switch; Speaker-Phone Switch; Monitor-Receive-Standby Switch.

K21334—Echophone Commercial EC-3, complete with tubes and speaker in separate cabinet. Shpg. wt. 34 lbs.

YOUR COST \$49.95



Economy All-Electric Complete Record Player

Here is a really complete home record player that has its own high efficiency amplifier and PM dynamic speaker all built into a compact yet highly practical table model cabinet that will not look out of place anywhere. Has a powerful amplifier using a 50L6 "beam-power" output tube for an undistorted power output of two watts. 35Z5 rectifier, operates on 110 volts a.c. 60 cycles only. Heavy duty self-starting constant speed induction motor. Latest type offset head crystal pick-up. Combines real performance with eye appeal in its beautifully grained walnut cabinet measuring 12 3/8" x 11 3/8" x 4 1/2" high. Motor board has needle well, on-off switch and volume control. Shpg. wt. 8 lbs.

K22385—YOUR COST \$10.44



"Mystery" Wireless Player With One Ounce Pickup

An exceptional value in the latest type of mystery "Wireless" record player, this unit features an improved ONE OUNCE crystal pickup for greater record life, less handling scratch and higher fidelity. Plays through your radio with an interconnection wire. Merely plug into any 110 volt 60 cycle a.c. outlet and hear your records reproduced beautifully through your radio. Features include: dependable constant speed drive motor with 9" floored turntable plays all 10" and 12" records. Automatic record start for extra added convenience. A microphone jack for use with a toy microphone permits you to "broadcast" through your radio—loads of fun. Volume control and on-off switch mounted on motor board as is the needle well. In streamlined walnut cabinet: 13 1/2" x 12 1/2" x 4 1/2" high. Shpg. wt. 10 lbs.

K22383—YOUR COST \$10.66



Luxe All-Electric Complete Record Player

For the small apartment dweller, the office worker or the student who needs a compact, efficient, low maintenance volume that will handle you, 10" and 12" records and twelve inch records with no cover. Features a heavy duty constant speed induction motor (7 1/2" r.p.m.) with shock absorber turntable. Has a high efficiency three tube amplifier utilizing a 12SQ7, a 50L6GT beam-power output tube and a 35Z5GT rectifier. Operates on 110 volts 60 cycles a.c. only. Overly sensitive speaker handles full output faithfully. Handsome wood cabinet speaker grille. Front panel has on-off volume switch and needle pilot light. Two position bass treble switch permits control in all your own taste. Latest type tangent arm Aztek crystal pick-up provides excellent response. Two toned walnut case measures 15" x 11" x 4 1/2". Shpg. wt. 19 lbs.

K22384—YOUR COST \$14.95



COMPLETE PORTABLE RECORDER

Here's value that IS value! For the price of one instrument you get 1) A fine home recorder; 2) A fine record player; 3) A fine low-power public address system. Features include:

HIGH GAIN AMPLIFIER; will provide 4 watts undistorted output. Accessory controls atop motor panel for gain and variable tone.

CUTTING HEAD; quality crystal type with factory adjusted needle angle and pressure for cutting record disc up to 10" diameter.

CRYSTAL PLAY-BACK PICKUP; wide range type with tangent arm. For 10" and 12" records.

FOOLPROOF DRIVE MECHANISM—can't go wrong.

HEAVY DUTY MOTOR; constant speed, for 110 volts 60 cycles a.c. only. Weighted turntable no "wows". 78 r.p.m.

6" PM SPEAKER for fine tonal quality over audio range for all playback.

CRYSTAL MIKE; on desk stand with 12' cable. Housed in attractive leatherette covered portable case: 18" x 16" x 9" high. With sturdy carrying handle. Shpg. wt. 35 lbs.

K22382—Portable Recorder, as described with tubes and 12" record discs and steel recording needle. **YOUR COST SPECIAL \$32.25**



"SUPER-VALUE" CHANGER 1-Oz. Pickup - Lifetime Needle

The changer buy of the year! One of our great values this Super-Value automatic record changer brings you the latest type low-pressure (1 ounce) tangent tone arm with improved crystal pick-up and a life-time needle good for many thousand plays without change—and all for only \$15.75! Automatically plays up to fourteen 10-inch records or ten 12-inch records at one loading. Selector blades handle your precious records gently. The new tone arm and needle assure excellent frequency response and greatly increased record life. Powerful constant speed motor, precision machined throughout. Finished in attractive brown wrinkle. Size: 14" x 14" x 3" deep. For 110 volts 60 cycles a.c. Shpg. wt. 24 lbs.

K22391—YOUR COST \$15.75



RUSSELL Recording Unit

An excellent home recording mechanism for installation in your present radio, etc. Sturdy construction and ease of operation assure excellent results. High quality magnetic cutting head adjustable for depth of cut, arm height and needle angle. Cuts 110 lines to the inch outside in. The powerful self-starting induction motor (7 1/2" r.p.m.) has positive speed and torque control driving the cutting head. Heavy weighted turntable. Latest type crystal pick-up, excellent for all records, acetate and shellac. Will play back up to 12" commercial records records up to 10" discs. Cutting head will operate on 3 watts from any 6.3 volt vacuum tube circuit. 13" x 12 1/2" x 2 1/2" high. Outer board 4 1/2" deep. For operation on 110 volts 60 cycles a.c. Shpg. wt. 15 lbs.

K22386—YOUR COST \$16.76



GARRARD One Ounce Pick-Up With Permanent Sapphire Stylus

The highest quality of Garrard, world famed for producing the finest hi-fi record playing equipment, is entirely worthy of the fine name it carries. A low-pressure of only one ounce at the needle point enables you to get the life for your precious records and provides greater enjoyment for you. The triple action of the permanent sapphire needle and the sapphire stylus, without the normal contact of changing needles, provides maximum volume and the remarkable wide range of 15 to 15000 cycles. The arm has the new "Holloway" bearing mechanism and a 1/4" oil seal. Beautifully shaped for optimum tracking. Counter balanced to insure correct needle pressure. Complete mounting instructions included. Includes cable, record, shpg. wt. 3 lbs.

K13405—YOUR COST \$9.70



Automatic Changer in Walnut Case

An ideal for luxe unit to convert your present radio into a modern phone-radio combination. Compact enough to be placed atop your radio cabinet if need be, handsome enough to stand by itself in any home, this new economy priced unit is an exceptionally good buy. Check these splendid features:

G. I. CHANGER plays ten 12" or twelve 10" records automatically, providing 45 minutes of undisturbed listening pleasure. Any record can be rejected at will. Last record repeats until motor is turned off.

CRYSTAL PICKUP, lightweight for needle life and fidelity. **CONSTANT SPEED MOTOR** (78 r.p.m.) powerful, dependable, for 110 volts 60 cycles a.c.

BEAUTIFUL WALNUT CABINET with hinged top lid that closes over 12" records. Contrasting light striping. Size: 16 1/2" x 15 1/2" x 8 1/8" high. With full instructions. Shpg. wt. 24 lbs.

K22375—YOUR COST \$19.66

This Summer you'll want STATICLESS RADIO

Meissner Latest! Compact 17-Tube Table Model AM-FM Receiver

- Receives Both Ordinary (AM) and Frequency Modulated (FM) Broadcasts
- 3-Bands: Broadcast (540-1660kc)—Short Wave (5.9-18.8mc)—FM (42-50mc).
- FM Band Incorporates A Specially Designed Interstation Noise Suppressor
- Carefully Engineered High Fidelity Eight-Inch PM Speaker
- Flat Audio Response: FM 30 to 15,000 cycles—AM 30 to 6,500 cycles
- RF Amplification On All Bands—Employs Three Gang Tuning Condenser
- Wide Band IF Transformers On AM For Maximum Fidelity



Undoubtedly the finest AM-FM receiver ever developed by Meissner, one of the pioneers in the design of Frequency Modulated receivers. Within a compact handsome table model cabinet, measuring only 12 1/4" high by 22 3/4" wide and 11" deep, is housed a perfectly engineered 17-tube radio incorporating all of the latest features.

17-TUBE DUAL SUPERHETERODYNE CIRCUIT—employs the following tube lineup: 6AC7-FM RF amplifier, 6SA7-FM Mixer-Oscillator, 3-6SK7 FM IF Amplifiers, 6SAC7-Limiter, 6H6-Discriminator, 6SK7-AM RF Amplifier, 6K8-AM Mixer-Oscillator, 6SK7-AM IF Amplifier, 6H5-AM Detector, 6SQ7-1st Audio Amplifier, 6F6G Power Amplifier, 6AD7G-Power Amplifier—Phase Inverter, 6SC7-FM Interstation-Silencer, 5U5G-Rectifier and a 6E5-Tuning Eye. **AUTOMATIC VOLUME CONTROL** on all bands to minimize fading.

THREE BANDS — Broadcast Band 540 to 1660kc. International Short Wave 5.9 to 18.8mc and FM Band 42 to 50 mc.

HIGH FIDELITY SPEAKER—8" diameter with extra heavy 2 1/2 oz. magnet.

OTHER FEATURES—include push pull audio 6 1/2 watts power output FM interstation silencer, wide band IF's on AM, 3 gang condenser, flat audio response (FM—30 to 15,000 AM—30 to 6,500 cycles), continuously variable tone control excellent signal to noise ratio cathode ray tuning eye, etc.

WALNUT CABINET—two-toned hand rubbed finish. Attractive modern design. Overall dimensions: 12 1/4" high, 22 3/4" wide and 11" deep. Matching plastic control knobs.

MEISSNER FM-AM RECEIVER. 17 tubes in table model cabinet. Complete with tubes and instructions Shpg. wt. 40 lbs. **\$69.50**
K21070—EACH



Meissner Frequency Modulation Converter For the Modern "Staticless" Reception

Now's your opportunity to modernize your present radio by adding this efficient Frequency Modulation Converter—get the new staticless reception that everyone is talking about. This adapter can easily be connected to your standard home radio by any serviceman—you can do it yourself if your set has phonograph or television terminals.

8-TUBE CIRCUIT: the FM converter employs 8 tubes in the well engineered superhet circuit. 12SK7 R.F. amplifier; 12SA7 converter; two 12SK7 I.F. amplifiers; 12SJ7 limiter; 7A6 detector; 6A85 tuning eye; 35Z5GT rectifier. The tuning eye permits accurate visual station setting. Only two knobs to govern all FM operations.

Other features include glass, edge illuminated dial; 3-gang ceramic condenser; molded bakelite R.F. coil forms; doublet or ordinary antenna connections; **A.C. operation.** The entire assembly is contained in a compact cabinet built of fine walnut veneers. It can be placed on top of your present radio or on any handy table. Overall dimensions are: 12 3/8" wide, 7" high, 6 5/8" deep. Full instructions are included with each unit. Shpg. wt. 12 lbs.

K21064—Meissner Frequency Modulation Converter complete with tubes in cabinet. For operation on 110 volts a.c. 60 cycles only.
LIST \$39.95
YOUR COST EACH \$23.49



Lafayette 2-BAND 5-TUBE AC-DC SUPER

A grand buy! Good to look at—performs wonderfully well—yet is exceptionally low in price. A great deal of radio for very little money. It is not a mid-get—either in appearance or performance. It stands full 7 3/4" high, 11" long and 6 1/4" deep. The beautifully proportioned molded plastic cabinet is cream-ivory in color with brocade speaker grille and illuminated full vision dial in complementary dull gold. Just the radio for your din. bedroom or living room. Moves an impressive gift that is sure to be appreciated.

FIVE TUBE SUPERHETERODYNE CIRCUIT—employs the following tubes: 1-6K8GT converter, 1-6K7GT F amplifier, 1-6SQ7GT detector—1st audio amplifier, 1-25L6GT "beam power" amplifier and a 25Z5G power rectifier.

MAGIC ANTENNA-AIRE—Lafayette's improved type of built-in loop antenna eliminates the need for an external antenna on the broadcast band. A standard type of outdoor antenna should be used for best reception on the short wave band. A lead for connecting such an antenna is provided. No ground connection is required.

FIVE-INCH PM DYNAMIC SPEAKER—this speaker is accurately matched to the output of the audio system assuring excellent tone quality at all volume settings.

TWO-BAND OPERATION—provides for reception of both the regular domestic broadcast band from 550 to 1500 kc (200 to 550 meters) and the international short wave band from 6.5 to 22 mc. (13 to 49 meters). The important short wave channels are clearly identified on the tuning dial, with the name of each country opposite its own particular channels.

BEAM POWER AMPLIFIER—a super efficient method of amplification assures the maximum power output with minimum current consumption. Distinctly a large set feature.

AUTOMATIC VOLUME CONTROL—is incorporated to keep the output volume at a constant level and to minimize fading and eliminate blinking.

VOLTAGE CONTROL—a plug-in ballast tube controls the voltage applied to the tubes and eliminates the usual "hot power" card.

SIMPLE OPERATION—only three knobs control all functions of the set. The first is the volume control and power switch. The second is the band selector and the third the tuning knob.

MODEL AB-138—Lafayette 2 Band 5-Tube AC-DC Superhet complete with tubes and instructions. For 110 volts DC or 60 cycles AC operation. Shpg. wt. 11 lbs.
YOUR COST SPECIAL \$11.75

Majestic Clock-Radio

Just a few feet of the outstanding Majestic Clock-Radio. It is certainly the best of its class. Made by one of the leading radio manufacturers it incorporates a really complete Majestic clock that keeps perfect time always and an efficient Superheterodyne radio. Housed in a very attractive plastic case with a clock face. It is only when the set is turned on and the clock face is lit up that the tuning dial of the radio is visible. The set includes 12SA7GT converter and 6SK7GT detector. The tube lineup includes 12SA7GT converter and 6SK7GT detector. The tube lineup includes 12SA7GT converter and 6SK7GT detector. The tube lineup includes 12SA7GT converter and 6SK7GT detector.

MODEL TS—Made in 2-Tube. Complete with Plastic Clock and Superheterodyne Radio. Complete with tubes. Ivory color plastic case. For operation on 110 volt AC only. Shpg. wt. 12 lbs. **YOUR COST SPECIAL \$9.75**

RIBBON VALUES



Lafayette 3-Band AC-DC Super

Amazing beyond words! And surprisingly low in price. The Lafayette 3-Band AC-DC Super has a reputation for quality and a host of new features. Small enough to be placed almost anywhere, it is powerful enough to bring in stations from near and far. Among its many features are: "Magic Antenna-Aire" for clearer and more powerful domestic broadcasts; "Antenna-Aire" for short wave bands; "beam power" output amplifier for reception of local stations; 4-Tube Superhet circuit for positive control of tone quality; 2-25Z5GT rectifier, variable tone control for positive control of tone response; 3 tuning bands—540 to 1660 kc (555 to 175 meters) for domestic and international short wave; 225 to 70 mc (133 to 43 meters) for international short wave; 6.5 to 22 mc (13 to 49 meters) for international short wave; a handsome ivory plastic dynamic speaker, a carrying case, 225 to 70 mc (133 to 43 meters) for international short wave; a handsome ivory plastic dynamic speaker, a carrying case, 225 to 70 mc (133 to 43 meters) for international short wave; a handsome ivory plastic dynamic speaker, a carrying case, 225 to 70 mc (133 to 43 meters) for international short wave.

MODEL JS-181—Lafayette 3-Band Superhet. Walnut Plastic Cabinet. Complete with tubes and instructions. Shpg. wt. 15 lbs. **YOUR COST SPECIAL \$15.75**

BLUE-

A winning line-up of Bargains

★★★★
Special



Quality Magnetic Pickup

No greater buy in a quality magnetic pickup has ever been offered! A brand new 10,000 ohm high impedance magnetic pickup for new unit or replacement use. Streamlined in the modern manner. The sturdy metal tone arm is finished in attractive stately bronze. Entire arm lifts easily on a swivel for easy replacement of needles. For 10" and 12" records. Complete with mounting nut; standard wire leads. Shpg. wt. 2 lbs.
K13432—**\$1.49**
YOUR COST, SPECIAL EACH

De Luxe Magnetic Pick-up With Offset Head

For Use With Any Radio

Here's a new fidelity type magnetic pickup that can be attached to any radio. The modern longer arm, minimum tracking error, results in increased record life and greater fidelity. Tone arm constructed of new developments alloys for improved efficiency. Entire arm mounted on swivel, raised for easy needle insertion. Single note mounting type; free lateral motion. For both 10-inch and 12-inch records. Tone arm is 9 inches long. Made by Webster. Shpg. wt. 3 lbs.
K13428—**\$1.69**
SALE PRICE, SPECIAL

25 Tubular By-Pass Condenser Kit

All standard capacity and working voltages. Assorted capacities from .00025 to .1 mfd. Shpg. wt. 2 lbs.
K3360—SALE PRICE SPECIAL **\$55^c**

10 Popular Dry Electrolytics

Ten dry electrolytic units. Included are carbon, tubular and aluminum cap types, etc. Single and multiple section electrolytics in each kit. Bypass and filter types. Shpg. wt. 3 lbs.
K3868—SALE PRICE SPECIAL **\$88^c**

100 1/2 Watt Carbon Resistor Kit

100 assorted 1/2 watt RMA coated carbon resistors of good quality. Each kit contains 100 resistors in about 10 useful values. Shpg. wt. 2 lbs.
K3849—SALE PRICE SPECIAL **\$59^c**

1000 Ft. Wire Kit

Contains coils of Hook-up Push-back, Lead-in, etc., wire with rubber, waxed and lacquered.

500 Ft. Wire Kit

Same as above, but coils total 500 feet. Shpg. wt. 7 lbs.
K16383—SALE PRICE SPECIAL **\$98^c**

Bakelite Knob Kit

10 assorted spring type push on molded knobs for midget set use. A phenomenal buy in a ready use item. Shpg. wt. 2 lbs.
K9607—Kit of 10 Knobs **\$9^c**

Auto Control Knob Kit

10 assorted molded plastic knobs for auto radio controls. Types for the most popular sets. Shpg. wt. 1 lb.
K9608—Kit of 10 knobs **\$25^c**

Wet Electrolytics

For as little as **7^c ea.**

NOTE: Rising market conditions make an offer like this one impossible to repeat. Our quantities are limited. Order NOW. Popular sized wet electrolytics in inverted and upright mounts. Inverted type supplied with pinnut; upright type less clamp. Shpg. wt. 1 lb.

Upright Type (A)				Inverted Type (B)					
No.	Mfd.	Vltg.	Size	Each	No.	Mfd.	Vltg.	Size	Each
K932	8	300	1 1/4 x 3/4"	11c	K891	8	250	1 x 3/4"	11c
K905	12	150	1 1/4 x 3/4"	12c	K795	8	450	1 x 3/4"	12c
K933	18	300	1 1/4 x 3/4"	7c	K917	16	450	1 x 3/4"	13c
K935	25	150	1 x 3/4"	11c	K710	16	320	1 1/2 x 3/4"	9c
K934	30	300	1 1/4 x 3/4"	13c	K796	20	175	1 x 3/4"	11c
K729	40	150	1 1/4 x 3/4"	9c	K920	24	450	1 x 3/4"	14c

Tubular Electrolytics At Bargain Prices

8 Mfd.—550 V. Peak				20 Mfd.—250 Volts			
The Utility	8 mfd.	550 volts	Peak tubular cardboard elec. type	20 mfd.	25 volts wkg. elec. type	1 1/2 x 3/4"	1 1/2 x 3/4"
K802—EACH	10c			K803—EACH	7c		
10 For	95c			10 For	65c		

Prong Base Midgets

Over 80% off on these popular prong base midget electrolytics used in practically every late model set. Mounting ears bend back under chassis.

Paper Tubulars At All-Time Lows

These buys will probably be the last of their kind. Order NOW! All voltages working.

K684—10 mfd./400 V. 10 mfd./350 V. 10 mfd./25 V. 2 1/2 x 1 1/2"	10c
K685—20 mfd./350 V. 10 mfd./350 V. 5 mfd./350 V. 15 mfd./25 V. 2 1/2 x 1 1/2"	22c
EITHER TYPE, EACH 22^c	

Oldsmobile 1937-1938 Aerial Kit

Absolutely the lowest price ever offered for this aerial. This genuine DELCO aerial kit is made especially for use with 1937 and 1938 model Oldsmobile. It converts the running board of these models into highly efficient aerials completely hidden out of sight. Easy to install. Our price is just a fraction of list. Quantity limited. With instructions. Shpg. wt. 3 lbs.
K16252—SALE PRICE **\$39^c**

Volume Control Complete with Switch

Here's an opportunity for servicemen, radio set builders, hams, etc. A good quality 250,000 ohm linear type volume control complete with 110 volt AC switch at less than half what you'd expect to pay for the switch itself. 1/4" shaft, 3/8" in length. Mounts in 3/8" hole (not supplied). Not in stock. Order NOW!
K8114—YOUR COST SPECIAL **12^c**
5 For **53c**

6 1/2-Inch 2 Band Slide Rule Dial

Here's a really amazing buy in a full size 6 1/2 inch slide rule dial for two band sets. Covers 550 to 1700 kc for the broadcast band and 2.2 to 7 mega cycles for the short wave band. Takes 1/4 inch shaft, counter clockwise condensers. Has hand some antique gold scratches with unbreakable window. Shpg. wt. 2 lbs.
K9905—YOUR COST SPECIAL **59^c**

RIDER'S MANUAL VOL. XII—Ready April 25th

The book every profit wise serviceman has been awaiting. Will be published April 25th. 1652 pages of every late set on the market. Orders will be filled in order of their receipt. Be wise. Send yours NOW!
K19784—Shipped Postpaid. YOUR COST **\$9.80**

RIDER'S Newest Book Vacuum-Tube Voltmeter

Covers thoroughly the theory and practice of the vacuum tube voltmeter—how it is used under different conditions, where it is useful and what to look for you. Concise, in the most modern manner. Shipped Postpaid.
K19785—YOUR COST **\$1.47**

Giant Tubing (Spaghetti)

Excellent for insulating condensers, resistors, etc. Half inch in diameter. It is formed of black synthetic tubing 30 inches in length. 1000 volts insulation making it ideal for all receivers and amplifiers. Quantity limited.
K15969—Per Length **7^c**
YOUR COST **8^c**
5 Lengths For **32c**

Twin Bayonet Pilot Sockets

A serviceman's necessity. This new type twin bayonet pilot light dual socket is used on many modern sets having large orials. The sockets are of molard construction and can be spaced up to 3 inches apart. 191 leads.
K6412—YOUR COST **8^c**
10 For **69c**

Xmitting Cond. Oil-Filled Oil Treated

(A) Oil treated, oil filled unit. 3.1 mfd., 400 V. sections. 1 3/4 x 7/8 x 1/2".
K800—(10 for 75c) **9^c**
SPECIAL, EACH

(B) Oil treated .05 mfd. 400 V. 1 1/4 x 1 1/2 diam. less clamp.
K801—10 for 33c. **4^c**
SPECIAL, EACH

K936—Clamp for K801. **2 1/2c**

Fully Shielded Vol. Control With Switch

Here's a fully shielded volume control with an off switch that's a rare buy. 250,000 ohm linear taper. It can be used in many new and old sets. Has 1/4" shaft, 3/8" long. Quantity limited—fill your needs NOW.
K8186—EACH **16^c**

Cutler-Hammer S.P.S.T. Toggle Switch

A new design, fast action single pole single throw toggle switch by Cutler-Hammer. For appliances, sets, etc. Rated 3 amps., 125 volts A.C. 3/8" bushing. Solder lugs. Underwriter's Lab Approved.
K12837—SPECIAL EACH **10^c**
10 For **93c**

C-H Rotary S.P.S.T. Switch

Genuine value in a Cutler-Hammer Bakelite enclosed rotary S.P.S.T. switch. Rated at 3 amps., 125 volts. Uses regular volume control knob (not supplied). Has 1 3/8" shaft, 3/8" bushing. C-H switches are Underwriter's Lab approved.
K12838—SPECIAL EACH **8^c**
10 For **75c**

Audio Xformer Ratio 3:1

An exceptionally low price for a full size quality audio transformer. Can be used in most any set or amplifier. Unshielded strip mounting. Ratio 3:1. Size 2 1/4 x 1 1/2. Mounting centers 2 3/8" apart. Long colored leads. Shpg. wt. 2 lbs.
K2337—SPECIAL **29^c**

Audio or Plate Choke

High impedance choke for use as audio choke, filter in 100% bias supply, etc. D.C. resistance 3200 ohms; inductance 80 henrys (zero current) at 4 ma. Size 3 1/2 x 2 1/2. Shpg. wt. 3 lbs. Quantities limited.
K1415—YOUR COST SPECIAL **9^c**

Wiring Diagram Manual

Check full of wiring diagrams of over 80% of the sets you service day in and day out in this one big handy manual. Important hint-giving trouble shooting circuits to make your servicing job easier and more profitable. Make faster better repairs. Circuits date from 1926 to date in a well printed easy to understand handbook compiled by M. N. Beilman, radio teacher and author. Contains 427 diagrams and illustrations. Shipped Postpaid.
K19710—SPECIAL **\$1.95**

Ford-Majestic "B" Power Supply

Genuine Majestic built for Ford model 40-18805 receiver. Contains transformer, vibrator filter condensers and buffer condensers. Uses 2-6E7, 1-6A7S, 1-6C7, 1-6Y5 and 1-42. 6 prong plug connects in chassis. Buffer condensers in metal container mounted on side of casing. Rubber cushioned. Shpg. wt. 8 lbs.
K15691—YOUR COST **\$2.95**
SPECIAL

Auto "B" Eliminator Majestic Model 66

Offered at an amazingly low cost! This exceptionally popular unit will find a ready welcome. An exact duplicate of Majestic Model 66. Contains transformer, vibrator, filter condenser and an 84 rectifier. Complete in heavy metal container with sponge rubber cover. Shpg. wt. 8 lbs.
K14232—Complete unit, with tubes. YOUR COST **\$2.95**
SPECIAL

Non-Synchronous Vibrator 4-Prong Universal Type

For general purpose use fitting a very large number of popular auto radio sets, this standard four-prong base non-synchronous vibrator is offered as an outstanding value. Our quantity is extremely limited and at this price orders will be filled only as long as they last. Size: 3 1/8" high, 1 1/2" diam.
K1086—YOUR COST **69^c**
SPECIAL

Molded Mica Condensers

High quality mica dielectric condensers that can take 200,000 volts. Precision finished. Color bands not official RMA.
K1035—00015 mfd. (A) **10c**
K1007—00025 mfd. (A) Orange. **10c**
K1008—00030 mfd. (A) Blue. **10c**
K1036—00075 mfd. (A) White. **10c**
K1038—00015 mfd. (A) Any Above Type, EACH **2^c**
25 (Any Assortment) For **39c**

Grille Cloth Tacker

A quick, handy tacker that is exceptionally convenient for tacking on grille cloth, attaching light wire or spallies, labels, etc. In addition it is used as a tacker in car home stapling machine for stapling papers, receipts, checks, etc. Precision built, durable, handsome bronze finish. 100 staples furnished.
K15280—YOUR COST SPECIAL **59^c**
K15281—Box of 1000 Staples **25c**

BALLAST TUBES

All clean fresh stock of well known make. Popular glass and metal type ballasts. Lowest prices ever. Quantity extremely limited.

Stock No.	Type	Stock No.	Type
K7027	M55h	K7025	M49HG
K7028	03G	K7026	115.53"
K7032	K42C	K7023	L49B

ANY ABOVE TUBE, YOUR COST, SPECIAL **6^c ea.**
10 (Any Assortment) For **55c**

Meissner I.F. Xformer Replacement Manual

A highly usable little book of essential data on I.F. transformers to assist every serviceman in making replacements in a satisfactory, profitable manner. Covers all sets on the market. Includes separate chapter on installation and alignment. 254 pp. 7 1/4 x 4 1/4. Wt. 1 lb.
K19781—YOUR COST **25^c**

Ohm's Law Calculator

A simple, handy mathematical calculator for the serviceman, experimenter, engineer and student. One slide setting solves every Ohm's Law problem. Scales on both sides. Shpg. wt. 8 oz. Size 4 1/4 x 9.
K19711—EACH **10^c**

Fibre Tube Coil Forms

Finest quality fibre tubing, especially well suited for winding all types of coils for all types of receivers, "ham" units, etc. Stock up while our supply lasts.
K10230—2 1/2" high, 1 1/4" diameter. **1^c ea.**
K10238—3 1/2" high, 7/8" diameter. **1^c ea.**
SPECIAL

HANDY Midget Pliers

A handy, little pair of switch for hams, experimenters, servicemen, etc. It is a single-gang switch that is actually a 4-pole triple throw. PLUS an additional 2-pole triple throw. Phosphor bronze contacts. Shaft 1 1/8", 1/2" diam. Mounts in 3/8" hole. A swell buy but quantity limited.
K21749—EACH **4^c**

Single Gang Switch

An amazingly useful switch for hams, experimenters, servicemen, etc. It is a single-gang switch that is actually a 4-pole triple throw. PLUS an additional 2-pole triple throw. Phosphor bronze contacts. Shaft 1 1/8", 1/2" diam. Mounts in 3/8" hole. A swell buy but quantity limited.
K21749—EACH **4^c**

10,000 Ohm Bleeder

An excellent bleeder resistor that every set builder, serviceman, etc., will find extremely useful. A remarkable buy. In molded bakelite case 4" long with mounting centers 4 1/2" apart. Rated at 20 watts. Has solder lugs for easy connection.
K4995—SPECIAL **6^c ea.**
10 For **49c**

Wire Bundles

Every serviceman and set builder will welcome this handy, money saving wire bundle. Every size available in lengths from 250 to 1000 feet. Made for wire bundles for home use. All standard. Push back and hook up. No soldering. Quantities extremely limited.

K16049—1 lb. bundle	14^c
K16048—2 lb. bundle	27^c
K16047—3 lb. bundle	39c
K16046—5 lb. bundle	63c

NEW LOW PRICE! Heavy Gauge Lead-In

Extra heavy-duty No. 14 gauge lead-in wire. High four round center strands of extra high carbon steel for greater tensile strength. Will withstand pull of 250,000 lbs. per square inch. 3 round strands of soft wire cover. Overall diameter 1/4". Quantities extremely limited.

K16330—100-ft. coil	24^c
PER COIL	
K16331—250-ft. coil	55c
K16332—500-ft. coil	\$1.00

RCA Receiving Tubes Characteristics Chart

An indispensable book listing characteristics and socket positions of every vacuum tube produced by RCA. Includes 89 illustrations. Shipped Postpaid.
K19984—YOUR COST **10^c**

Oil Impregnated Cond. 1000 Volts—2 Mfd.

Here's the greatest buy in a heavy duty condenser in years. 1000 volts, 2 mfd. oil impregnated metal case condenser with porcelain terminals for only 79c! Size: 5" high, 2" deep, 3 1/4" wide. Terminals 1 1/4" high. Mounting centers 3 13/16" apart. Quantity limited. Hams, servicemen, etc., get your order in now while our limited supply lasts.
K983—Shpg. wt. 2 lbs. YOUR COST **79^c**
SPECIAL

Colored Plastic Auto Radio Knobs

We've never seen a more attractive set of knobs—at a more attractive price. Available in three striking colors—pearl gray, brown or black. Dress up your equipment, replace those missing knobs—and servicemen, take our tip and lay in a stock at this price. For standard 1/4" shaft 3/8" diam. 1" high.
K9668—Pearl Gray **2^c**
K9669—Brown **2^c**
K9670—Black **2^c**
ANY ABOVE, EACH **2^c**
25 (Any Ass't) For **40c**

Two-Gang Pulley Variable Condenser

Offered at a remarkably low price this fine quality two-gang pulley drive variable condenser is ideal for the short-wave set builder, for midget set replacement, etc. Both sections have trimmers: first section maximum capacity 415 mmfd.; second section maximum capacity 220 mmfd. 1 1/2" diameter pulley for remote tuning dial 1 1/2" x 1 1/2" deep. Shpg. wt. 2 lbs.
K9695—YOUR COST **19^c**
SPECIAL, EACH

RCA

ELECTRONIC CONTROLS



**FOR PROTECTION
FOR SAFETY
FOR CONVENIENCE**

The value sensation of the year! Lafayette leads again with the most startling offer ever made on brand new RCA Electronic Controls! Now you can buy the identical control that originally sold at \$21.00 for only \$12.50, and the one which sold at \$22.00 for only \$9.95! You save \$8.50 on one and \$12.05 on the other! Proof again that Lafayette consistently gives you more—much more—for far less money. It pays to buy your needs from Lafayette. QUANTITY LIMITED? Unfortunately, yes! So get your order in soon—today . . . and avoid disappointment.



\$9.95

Capacity-Operated ELECTRONIC CONTROL

This control works instantly, day or night at the mere approach of a person's body or similarly sized object. No light whatsoever is used. For this reason it is adaptable to many applications such as burglar proofing, door opening, live sock counting, window lighting, etc. In the case of window lighting, for example, it is employed to turn on the lights whenever a person approaches the window or show case. This is an effective anti-theft device and also saves current since the window is only lit for a short period of a time. Another valuable application is the protection of children or valuables from theft. Due to its unique operating principle, protection is easily obtained from all directions simultaneously.

The RCA Capacity-Operated Electronic Control is designed for operation from any 105-125 volts 50-60 cycles AC power line. Current consumption is 30 watts. Load capacity is 105-125 volts 50-60 cycles at 1 amp. (maximum). Tube complement includes: 6SQ7, 6F8G, 1R150, 3C, and a 6X5. Overall dimensions are: 12x4-1/16x6-3/4" high. The unit is completely housed in an attractive and sturdy metal case easily mounted by means of ordinary wood screws or machine screws. The unit is supplied complete with tubes and full instructions. Auxiliary equipment such as alarm systems, etc., are not supplied since each installation will require different accessories. The control provides only momentary contact (10 or 20 seconds depending upon adjustment) and if continuous contact is required some means of keeping the alarm circuit operating continuously must be provided. A simple means would be a manual reset relay or similar device. If in doubt as to the material required, we will be glad to make recommendations if you will write us. Shpg. wt. 7 3/4 lbs.

K17193—RCA No. 41903 Electronic Control. **\$9.95**
YOUR COST SPECIAL



Photo-Electric ELECTRONIC CONTROL

This is the very popular type of control operating on the beam-of-light principle. The interruption of a beam of light sets the control in operation. This type of control is widely used for counting, door opening, burglar proofing and as a safety device in connection with machinery of various types. It is used in restaurants to open the doors between kitchen and dining room, in homes to open garage doors automatically, in the doorways of commercial establishments to count customers, etc. Installation is extremely simple. The RCA Light-Operated Electronic Control is designed for operation from any 105-125 volts 50-60 cycles AC power line. Current consumption is 22 watts. Load capacity is 105-125 volts 50-60 cycles AC at 1 ampere. Tube complement includes: 925, 6SF5, 6SQ7 and 6L6. Overall dimensions: 12x4-1/16x6-3/4" high. The unit is completely housed in an attractive metal case which is easily mounted to the wall or other support by means of small wood or machine screws. The unit is supplied complete with tubes but less light source (minimum 2 foot candles—an ordinary 15 watt lamp at 3 feet) and accessories. Accessories such as alarm bells, etc., are not supplied since this type of equipment will be determined by the application. The control provides momentary contact with automatic reset. If continuous contact is required the use of a manually or electrically reset relay is recommended. If in doubt as to the auxiliary equipment required for your particular application write us and we will be glad to assist you in the selection of the proper equipment. Note that slow variations in light intensity do not set off the control since automatic compensation for variations of this kind is incorporated in the unit. Shpg. wt. 6 1/2 lbs.

K17194—RCA Photo-electric Electronic Control. **\$12.50**
YOUR COST SPECIAL



\$12.50



FLUORESCENT FIXTURES

FLUORESCENT BED & UTILITY LAMP

Creates a soft restful light that is ideal for use as a bed-lamp but may also be used as a general utility light that can be clamped anywhere. It employs a standard 18" 15 watt T8 fluorescent lamp bulb—either white or daylight. The fixture is finished in beautiful lustrous ivory and has a high efficiency white enameled reflector. It is designed for operation from any 110 volt 60 cycles AC power line. Shipping weight 4 lbs.

K25582—Less bulb. Lots of 3, each \$2.37. **\$2.56**
YOUR COST SPECIAL, SINGLY

FLUORESCENT SWIVEL ADAPTOR

Exceptionally attractive in appearance. May be used anywhere—screws into the lamp socket on your regular fixture just like an ordinary bulb. One piece steel with a rich metallic brown finish. Employs a single standard 18" 15 watt fluorescent lamp bulb. Operates from any 110 volt 60 cycles AC power line. Ideal for use in homes over sinks, benches, ping pong tables, etc. Shipping weight 4 lbs.

K25583—Less bulb. Lots of 3, each \$2.37. **\$2.56**
YOUR COST SPECIAL, SINGLY

FLUORESCENT KITCHEN UNIT

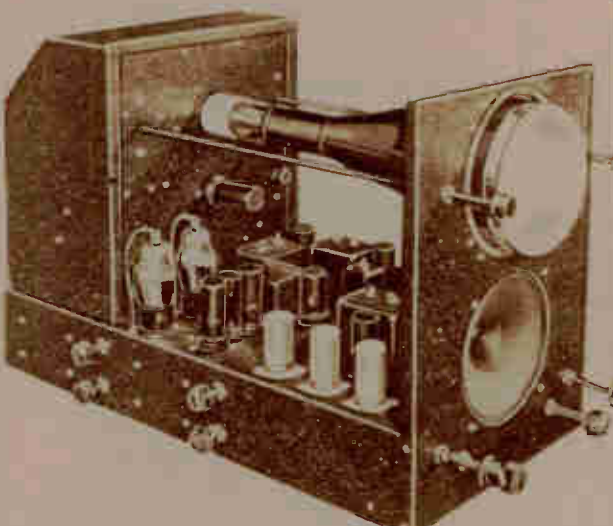
Fits any standard fixture employing a 4" or 6" diameter dome holder. Installed in a moment. Ideal for use in kitchens, halls, etc. Lustrous washable baked-on white enamel finish with chrome trim. Employs three 24" 20 watt fluorescent lamp bulbs. Designed for operation from 110 volts 60 cycles AC. Shpg. wt. 9 lbs.

K25584—Less bulbs. Lots of 3, each \$6.23. **\$6.72**
YOUR COST SPECIAL, SINGLY
K25581—Similar to above but two-lamp. **\$4.35**
Less bulbs. YOUR COST SPECIAL

G.E. MAZDA FLUORESCENT LAMPS

Original and still the best make of fluorescent lamps. White lamps provide a quality of light approximately that of the incandescent lamp. Daylight lamps that of ordinary day-light. Average life better than 2500 hours.

DAY LIGHT	GE. Stock #	Dimen. L x D	Watts	YOUR COST	Lots of	EACH
K25534 T-5	9x3/4"	6	\$1.00	5	\$0.80	
K25497 T-8	18x1"	15	.85	6	.68	
K25536 T-12	24x1 1/2"	20	1.10	5	.88	
K25538 T-6	36x1"	30	1.10	5	.88	
K25540 T-12	48x1 1/2"	40	1.60	4	1.28	
K25532 T-7	60x2 1/8"	100	3.50	2	2.80	
WHITE GE.	Dimen. L x D	Watts	YOUR COST	Lots of	EACH	
K25533 T-5	9x3/4"	6	\$1.00	5	\$0.80	
K25496 T-8	18x1"	15	.85	6	.68	
K25535 T-12	24x1 1/2"	20	1.10	5	.88	
K25537 T-6	36x1"	30	1.10	5	.88	
K25539 T-12	48x1 1/2"	40	1.60	4	1.28	
K25531 T-17	60x2 1/8"	100	3.50	2	2.80	



Over 60% Discount Meissner Television Receiver Kits

Just a lucky purchase of a very small quantity of these excellent kits enables us to offer them at this ridiculously low price! This is your opportunity to build up an exceptionally fine, highly efficient, television receiver, for your own use or for resale, at a very small expenditure. The kit is complete (except for tubes) ready to wire and install in your own cabinet. It will receive the standard 441 or 507 line signals. The RF assembly is factory pre-tuned and alignment is extremely simple. The tube line up includes: 1-6J5, 5-6AC7 (1852), 1-6AB7 (1853), 1-6SQ7, 1-6V6G, 1-6H6, 2-6N7, 2-6F8G, 1-5V4G, 1-879, and 1-1802-P4. Even though variable controls are provided for ease in adjustment actual operation of the receiver is extremely simple since almost all of the controls are set once and left there. Wiring is very easy and instructions furnished go into great detail. Shipping weight 50 lbs. LESS TUBES. **\$29.25**
K22492—List Value \$73.75.
YOUR COST SPECIAL

NEW Lafayette 1941 SOUND CATALOG

SEND FOR YOUR COPY

JUST OFF THE PRESS! Exclusively PA! The biggest and most complete Public Address Equipment Catalog ever published! Chock full of news and information about the most modern line of equipment on the market! Lists—

- AMPLIFIERS
- INTER-COMMUNICATORS
- SPECIAL SCHOOL SYSTEMS
- FACTORY AND OFFICE CALL SYSTEMS
- MICROPHONES
- P.A. AND HIGH-FIDELITY SPEAKERS
- INDOOR AND OUTDOOR BAFFLES
- PHONO PICKUPS
- PHONO MOTORS
- RECORD CHANGERS
- PORTABLE CASES
- WIRE AND CABLES
- CABLE CONNECTORS
- AND HUNDREDS OF OTHER ITEMS.

YOUR BIG FREE COPY IS WAITING FOR YOU! Paste the coupon at the right on a penny postal—fill in your name and address and mail today!



Lafayette Radio
100 Sixth Ave.,
New York, N. Y.

Please send me my FREE copy of the new 1941 Lafayette P.A. Catalog No. 84(F).

NAME _____
ADDRESS _____
CITY _____ STATE _____
(You can paste this coupon on a penny postal card.)

AUTO RADIO AERIALS



Top Cowl Antenna

Completely disappearing type; for use on 1940-41 Chrysler, DeSoto, Dodge, Plymouth, Nash, Zephyr. Also all 1940 Hudson, Pontiac, Cadillac, LaSalle, Olds, Studebaker Champion. 3-Section, 2 1/2" closed; 66" extended. **\$3.39**
K20443—YOUR COST.

New 1941 DeLuxe Heavy Duty Auto Radio Aerials

NOW A TYPE FOR EVERY CAR!

The most outstanding auto aerial line for the 1941 season. JFD now offers a specially designed aerial for every different make and type of car. Made of triple chrome plated Admiralty brass, this new line is rustproof, durable, noiseless and extremely attractive. 55% increase in signal capacity and mechanical strength because of the use of tubing 25% greater in diameter and 50% heavier than the average auto antenna on the market today. Low-loss heavy duty shielded lead-in (3 or 4-ft. as required) with each unit. Will fit any set; no other adapter required. Clear instructions furnished, easy to follow. Average shipping weight of JFD antennas 3 lbs.



Side Cowl Antenna

For use on 1940-1941 Chevrolet, Packard, Ford, Hudson, Nash, Buick, Cadillac, Mercury, Studebaker, Zephyr, etc. All 3 sections. K20440—24" to 66" **\$1.97**
K20441—28" to 84" **\$2.15**
K20442—32" to 99" **\$2.33**
YOUR COST.



Semi-Disappearing Type

For use on 1941 Chevrolet, Buick, Olds, Cadillac, Chrysler, DeSoto, Dodge, Hudson, Nash, Plymouth, etc. 3-section: 24" to 66". K20439—YOUR COST. **\$2.94**



Fender Antenna

For use on Chevrolet, Buick, Oldsmobile, Cadillac, Pontiac and other "torpedo" shaped cars. 3-section. K20435—24" to 66". **\$1.97**
YOUR COST. **\$2.15**
K20437—32" to 99". **\$2.33**
YOUR COST.



Side Cowl Antenna

For use on all cars having a straight side cowl, with the exception of the 1941 Chevrolet. All have three sections. K20428—24" to 66". **\$1.75**
YOUR COST. **\$1.97**
K20429—28" to 84". **\$1.97**
YOUR COST. **\$2.15**
K20430—32" to 99". **\$2.15**
YOUR COST.



Fender Antenna

Disappearing type, for use on all General Motors 1941 makes and models. Three section; extends only 2 1/4" when closed; 66" open. K20427—YOUR COST. **\$3.39**



Under Hood Antenna

For use on many cars where side hood bracket is required. Three section: 24" to 66". K20438—YOUR COST. **\$1.93**



Top Underhood Antenna

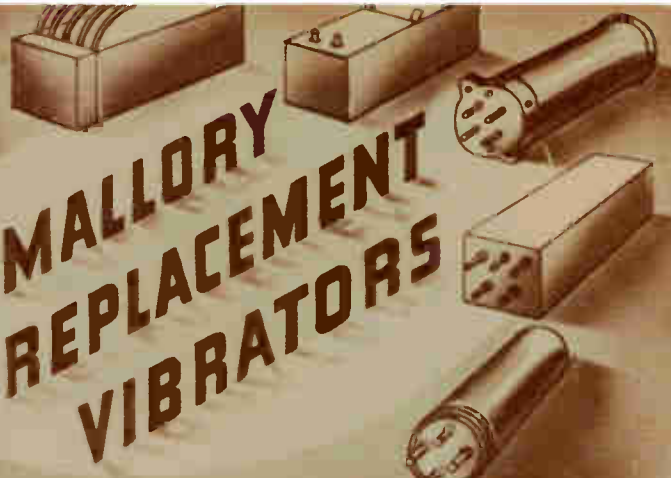
Designed for all 1940-1941 Chrysler, DeSoto, Dodge, Plymouth, etc. Three section: 24" to 66". K20434—YOUR COST. **\$1.93**



Hinge Bracket Antenna

For use on all cars having extended hinges. Three section: 24" closed, 66" extended. K20426—YOUR COST. **\$1.93**

10% DISCOUNT IN LOTS OF 6



MALLORY REPLACEMENT VIBRATORS

10% ADDITIONAL DISCOUNT

will be allowed from the prices shown below on all purchases of 6 or more Mallory Vibrators. Orders may be in any assortment. Order six—and save!

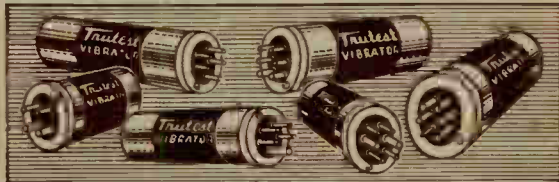
No.	Type	List	Each	No.	Type	List	Each	No.	Type	List	Each
K6104	205	\$6.50	\$3.82	K6126	270B	\$5.95	\$3.50	K7290	728A	\$4.95	\$2.91
K6106	210	7.50	4.41	K6127	271	5.95	3.50	K6107	742	4.95	2.91
K6112	220B	4.00	2.35	K6130	273C	5.50	3.23	K7289	743	4.95	2.91
K6113	221	3.95	2.32	K6167	273D	5.50	3.23	K7291	744	3.95	2.32
K6114	222	5.50	3.23	K6132	2778	5.95	3.50	K6063	825	4.50	2.65
K6165	224	7.00	4.12	K7284	285XS	7.00	4.12	K6108	826	3.95	2.32
K6116	230	7.50	4.41	K6133	286S	5.50	3.23	K6065	F826	4.75	2.79
K6119	235	5.95	3.50	K6135	292	3.45	2.03	K6109	G826	3.95	2.32
K6096	245	4.95	2.91	K6136	294	2.95	1.73	K7292	839	3.45	2.03
K7277	245A	4.95	2.91	K6087	294SW	2.95	1.73	K6083	850	2.95	1.73
K6088	245C	4.95	2.91	K6137	296	2.95	1.73	K6084	852	2.95	1.73
K7279	245SW	4.95	2.91	K6070	299	3.95	2.31	K6085	853	2.95	1.73
K6280	W245A	4.95	2.91	K6138	302S	6.50	3.82	K6086	854	2.95	1.73
K6097	246	4.95	2.91	K6122	500P	2.50	1.47	K6076	860	2.95	1.73
K7281	246A	4.95	2.91	K6170	501P	2.50	1.47	K7293	863	2.95	1.73
K7283	W246	4.95	2.91	K6093	505P	2.50	1.47	K6110	866	2.95	1.73
K6169	247	4.95	2.91	K7285	506P	3.95	2.31	K7294	868	2.95	1.73
K6098	248	4.95	2.91	K6071	507P	2.50	1.47	K7295	869	2.95	1.73
K6171	249	4.95	2.91	K7286	508P	2.50	1.47	K7296	901M	2.50	1.47
K6120	G249	5.95	3.50	K7287	509P	2.50	1.47	K6069	902M	2.50	1.47
K6123	253	3.95	2.32	K6072	510P	3.00	1.76	K6077	908M	2.50	1.47
K6124	253T	3.95	2.32	K6073	514	4.95	2.91	K6078	951P	5.25	3.09
K6125	253Y	2.95	1.73	K6074	716	4.95	2.91	K6079	952W	4.95	2.91
K7282	264	4.95	2.91	K7288	722A	4.95	2.91	K6080	953W	4.95	2.91
				K6062	725	5.50	3.23	K6081	954	4.95	2.91

FREE! Latest 1941 Edition Mallory Vibrator Guide.

With every purchase of a Mallory Vibrator we will send you a copy of the newest handy Mallory Vibrator Guide. Packed with valuable information, service hints and kinks—every service man should have one. Ask for your copy (No. K19993) when you order—you'll be glad you did.

For Model	Use	For Model	Use	For Model	Use	
L7, X6, X641, X741, Z4, Z5, 6P, 6PU, 7J, 69, 77, 78, 88, 770, 8A, 6D, 7A, 66, 660	Admiral	FT6, FT9, N-FND, F1440, F1442, F1540, 6M390 (Zenith), F1640, F1740, F1840	Ford	All Models To 1936 and 816, 817, 818, 819, 1937, 1938 Models, 821P, 821PV, HT11X, T10, 920, 921, 922, C1708, AR1, AR2, AR3, AR5, AR6, AR7, AR8, AR9, 932, 933, C1808, C1809, F1840, P1835, S1825, S1826, AR10, AR40, AR45, AR50, AR55, AR75, 38-35, 38-40, FA50, FA61, FA80, N51, D50, D51, D52, GA62, JAG4	Philco	500P, 501P, 505P, 506P, 507P, 508P
5, 6, 7, 17, 17A, 18, 22A, 27, 28, 29, 32, 33, 37, 9A, 19, 510, 520, 610, 620, 710, 720, 810, 820, 821, 10A, 15 (2nd), 16, 20A, 20B, 25 (2nd), 30A, B	Arvin	B40, B52, C41, C61, FB52, FB53, FB56, FB57, FB72, FB73, FB76, FB77, D72, M58, M60, N60, FA60, FA61, FA80, N51, D50, D51, D52, GA62, JAG4	Galvin—See Motorola	544245-6, 544268, 544290-1, 544297, 544298, 983506-7, 980455, 980459, 983597, 983599-70, 983617, 7232553, 983626, 983627, 983705, 983667, 983680, 983775, 983679, 983776	500P, 501P, 505P, 506P, 507P, 508P	
408A, 415A, B, 489A, B, 504A, 611A, 804, 823A, 505A, 566, 567A, 661, 666A, B, 667, 677, 580 (Rev.) 670, 680, 880A	Belmont	5AB, 614, 618, 4NB, 7NB, 410, 411, 711	General Electric	544245-6, 544268, 544290-1, 544297, 544298, 983506-7, 980455, 980459, 983597, 983599-70, 983617, 7232553, 983626, 983627, 983705, 983667, 983680, 983775, 983679, 983776	273C, 273C, 222, 852, 852, 249, 249, 863, 868, 742	
45A, 45C, 140, 140A, 150 (2nd), 180, 139, 149, 524A, 536, 634A, 636, 637, 738, 737, 738, 838	Bosch	AM20, A54, A60, B62, JA1, M94, D37, B92, J50, M44, L30, 68	Hudson-Terraplane	CV8, 6BK6, 6BT6, 8BK6, 5M1, 6M, 6M2, 8M3, 8M4, 67M1, 67M2, 67M3, 8M, 8M1, 8M2, 9M1, 9M2, 84BT6, 94BT6, 94BT61, 58BT6, M101, M104, M108, M34, M105, M116, M123	294, 245, 294, 245, 294, 245, 285XS, 253	
544245, 544246, 1291344, 1291345, 980507, 980508, 980509, 980525, 980526, 980529, 980455, 980459, 980566, 980567, 1304873, 1304874, 980534, 980535, 980620, 1308221, 1314523, 980650	Buick	6R, 6S, 5X, 6KB, 1425470, 1425471, 39 Master	Karadio	R143, R160, R178, R179, R188, R131, R133, R191D, R192D, R1318, R319	273C, 273D, 222, 514, 514, 716	
600153, 600249, 600565, 600566, 601038, 601176-7, 601525, 601574, 601662, 601814, 985100, 985200, 985253, 985255, 985283, 985284, 985286, 985424, 985426, 985252, 985254, 985256, 985300, 985301, 985536, 985537, 985538, 985694, 985697, 985695, 985696	Cadillac	6R, 6S, 5X, 6KB, 1425470, 1425471, 39 Master	Lafayette	4405A, 4418, 4419, 4421, 4428A, 4430, 4433, 4434, 566, 666, 1869, 1949, 4405, 4407, 4428	248, 210, 868	
600153, 600249, 600565, 600566, 601038, 601176-7, 601525, 601574, 601662, 601814, 985100, 985200, 985253, 985255, 985283, 985284, 985286, 985424, 985426, 985252, 985254, 985256, 985300, 985301, 985536, 985537, 985538, 985694, 985697, 985695, 985696	Chevrolet	6R, 6S, 5X, 6KB, 1425470, 1425471, 39 Master	LaSalle	4405A, 4418, 4419, 4421, 4428A, 4430, 4433, 4434, 566, 666, 1869, 1949, 4405, 4407, 4428	294, 294, 248, 285XS, 253	
600153, 600249, 600565, 600566, 601038, 601176-7, 601525, 601574, 601662, 601814, 985100, 985200, 985253, 985255, 985283, 985284, 985286, 985424, 985426, 985252, 985254, 985256, 985300, 985301, 985536, 985537, 985538, 985694, 985697, 985695, 985696	Crosley	6R, 6S, 5X, 6KB, 1425470, 1425471, 39 Master	L'Atro	4405A, 4418, 4419, 4421, 4428A, 4430, 4433, 4434, 566, 666, 1869, 1949, 4405, 4407, 4428	248, 210, 868	
600153, 600249, 600565, 600566, 601038, 601176-7, 601525, 601574, 601662, 601814, 985100, 985200, 985253, 985255, 985283, 985284, 985286, 985424, 985426, 985252, 985254, 985256, 985300, 985301, 985536, 985537, 985538, 985694, 985697, 985695, 985696	Delco	6R, 6S, 5X, 6KB, 1425470, 1425471, 39 Master	Majestic	4405A, 4418, 4419, 4421, 4428A, 4430, 4433, 4434, 566, 666, 1869, 1949, 4405, 4407, 4428	273C, 294, 868, 868, 245A	
600153, 600249, 600565, 600566, 601038, 601176-7, 601525, 601574, 601662, 601814, 985100, 985200, 985253, 985255, 985283, 985284, 985286, 985424, 985426, 985252, 985254, 985256, 985300, 985301, 985536, 985537, 985538, 985694, 985697, 985695, 985696	DeSoto	6R, 6S, 5X, 6KB, 1425470, 1425471, 39 Master	Mallory Vibrapacks	4405A, 4418, 4419, 4421, 4428A, 4430, 4433, 4434, 566, 666, 1869, 1949, 4405, 4407, 4428	294, 294, 248, 285XS, 253	
600153, 600249, 600565, 600566, 601038, 601176-7, 601525, 601574, 601662, 601814, 985100, 985200, 985253, 985255, 985283, 985284, 985286, 985424, 985426, 985252, 985254, 985256, 985300, 985301, 985536, 985537, 985538, 985694, 985697, 985695, 985696	Dodge	6R, 6S, 5X, 6KB, 1425470, 1425471, 39 Master	Mission Bell	4405A, 4418, 4419, 4421, 4428A, 4430, 4433, 4434, 566, 666, 1869, 1949, 4405, 4407, 4428	294, 294, 248, 285XS, 253	
600153, 600249, 600565, 600566, 601038, 601176-7, 601525, 601574, 601662, 601814, 985100, 985200, 985253, 985255, 985283, 985284, 985286, 985424, 985426, 985252, 985254, 985256, 985300, 985301, 985536, 985537, 985538, 985694, 985697, 985695, 985696	Emerson	6R, 6S, 5X, 6KB, 1425470, 1425471, 39 Master	Montgomery-Ward	4405A, 4418, 4419, 4421, 4428A, 4430, 4433, 4434, 566, 666, 1869, 1949, 4405, 4407, 4428	294, 294, 248, 285XS, 253	
600153, 600249, 600565, 600566, 601038, 601176-7, 601525, 601574, 601662, 601814, 985100, 985200, 985253, 985255, 985283, 985284, 985286, 985424, 985426, 985252, 985254, 985256, 985300, 985301, 985536, 985537, 985538, 985694, 985697, 985695, 985696	Fada	6R, 6S, 5X, 6KB, 1425470, 1425471, 39 Master	Motorola	4405A, 4418, 4419, 4421, 4428A, 4430, 4433, 4434, 566, 666, 1869, 1949, 4405, 4407, 4428	294, 294, 248, 285XS, 253	
600153, 600249, 600565, 600566, 601038, 601176-7, 601525, 601574, 601662, 601814, 985100, 985200, 985253, 985255, 985283, 985284, 985286, 985424, 985426, 985252, 985254, 985256, 985300, 985301, 985536, 985537, 985538, 985694, 985697, 985695, 985696	Firestone	6R, 6S, 5X, 6KB, 1425470, 1425471, 39 Master	Oldsmobile	4405A, 4418, 4419, 4421, 4428A, 4430, 4433, 4434, 566, 666, 1869, 1949, 4405, 4407, 4428	294, 294, 248, 285XS, 253	
600153, 600249, 600565, 600566, 601038, 601176-7, 601525, 601574, 601662, 601814, 985100, 985200, 985253, 985255, 985283, 985284, 985286, 985424, 985426, 985252, 985254, 985256, 985300, 985301, 985536, 985537, 985538, 985694, 985697, 985695, 985696	Ford	6R, 6S, 5X, 6KB, 1425470, 1425471, 39 Master	Packard			

Truest VIBRATORS



NON-SYNCHRONOUS VIBRATORS

<p>A 4-prong base non-synchronous vibrator that fits a tremendous number of sets. Size: 1 1/2" diam.; 3 1/2" high. K14635—EACH..... 89c Lots of 6, Each..... 86c</p>	<p>4-prong non-synchronous unit for Philco No. 38-5036, all models up to 1936 except model 816. 2" diam.; 3 1/2" high. K14632—EACH..... 89c Lots of 6, Each..... 86c</p>
<p>4-prong, 2" by 3 1/2" high. Exact replacement for Philco #41-3170. For 1936-7-8 sets, except model 816. K14636</p>	<p>4-prong, 1 1/2" by 4 1/2" high. Exact replacement for Philco #41-3186. Fits Philco auto radio model 816, etc. K6026</p>
<p>4-prong, 1 1/2" by 3 1/2" high. Special pin arrangement. Exact replacement for Delco and General Motors sets. K6027</p>	<p>6-prong, 1 1/2" by 3 1/2" high. Standard 6-prong unit for Firestone, Stewart-Warner, Zenith, etc. auto radios. K6029</p>
<p>4-prong, 1 1/2" by 3 1/2" high. Exact replacement for Standard 6-prong unit for Arvin, Ford, Zenith, Bosch and other makes of auto radios. K6030</p>	<p>5-prong, 2" by 4 1/2" high. With condensers. For Delco, General Motors, Crosley and Colonial. K6032</p>
<p>5-prong, 1 1/2" by 3 1/2" high. For most household sets (Admiral, Simplex, Western Auto, etc.). Without condensers. K6031</p>	<p>5-prong, 1 1/2" by 3 1/2" high. For most household sets (Admiral, Simplex, Western Auto, etc.). Without condensers. K6034</p>
<p>5-prong, 2" by 3 1/2" high. Without condensers. For Delco and General Motors auto radio receivers. K6035</p>	<p>6-prong reversible, 1 1/2" by 3 1/2" high. For General Electric, R.C.A., Delco, Montgomery-Ward, etc. K6036</p>
<p>6-prong, 1 1/2" by 3 1/2" high. Without condensers. For Crosley, Silver-tone, Zenith, Philco, etc. Farm and auto. K6037</p>	<p>6-prong, 1 1/2" by 3 1/2" high. Without condensers. For Crosley, Silver-tone, Zenith, Philco, etc. Farm and auto. K6037</p>

Non-Synchronous Vibrators Above (Except K14635, K14632) YOUR COST SPECIAL (Lots of 6, Each 90c) 92c.

SYNCHRONOUS VIBRATORS

<p>5-prong, 2" by 4 1/2" high. With condensers. For Delco, General Motors, Crosley and Colonial. K6032</p>	<p>5-prong, 1 1/2" by 3 1/2" high. For most household sets (Admiral, Simplex, Western Auto, etc.). Without condensers. K6031</p>
<p>5-prong, 2" by 3 1/2" high. Without condensers. For Delco and General Motors auto radio receivers. K6035</p>	<p>6-prong reversible, 1 1/2" by 3 1/2" high. For General Electric, R.C.A., Delco, Montgomery-Ward, etc. K6036</p>

Synchronous Vibrators Above YOUR COST SPECIAL (Lots of 6, Each \$1.75) ... \$1.95.

Truest Auto Radio Suppressors

<p>Standard Spark Plug K5233</p>	<p>Special for Ford V8 K5246</p>	<p>Compact Spark Plug K5278</p>	<p>Compact S.P. for Ford V8 K5247</p>	<p>Cable Type for Buick K5253</p>	<p>Elbow Cable Type K5285</p>	<p>Standard Distributor Distributor Type for Ford 1936 and earlier K5279</p>	<p>Distributor Type for Ford 1937-38-39-40 K5293</p>	<p>Elbow Type for 1938 Plymouth K5256</p>
---	---	--	--	--	--	---	---	--

High quality suppressors housed in black and m.c.d cases. All popular types shown.

Wire Wound Units (G)
Most efficient type. Do not impair motor efficiency. Low d.c. resistance; high inductance. Acts as r.f. choke. Extra rugged.
K5296—Spark Plug Type} 27c Each
K5297—Distributor Type} 27c Each
10 (Any Assortment) For..... \$2.40

Master Distributor Unit
Hermetically sealed; impervious to moisture and heat. Eliminates need for other suppressors. D.C. resistance, 10,000 ohms.
K5284—(5 for \$1.25) 27c
YOUR COST EACH..... 27c

Generator Condensers

Standard auto radio condensers designed to eliminate generator noise. Fully shielded. Long lead. Completely dirt and oil proof.

Stock No.	Mfd.	Each	10 For
K14220	.25	12c	\$1.10
K14215	.5	18c	1.70
K14216	1.0	20c	1.80

K14198—Similar to above, but Dual; has two .5 mfd sections and two leads.
YOUR COST..... 34c

Vibrator Condensers

Oil impregnated. Rated at 1600 volts. Small square metal cans are 1 1/16 x 3/8 x 1/4". Size of K3246 is 7/8 x 9/32 x 5/16"

Stock No.	Mfd.	Stock No.	Mfd.
K3240*	.007	K3241*	.01
K3242	.02	K3243	.007
K3244	.01	K3245	.02
K3246*	.007		

ANY TYPE ABOVE, YOUR COST EACH..... 19c
In Lots of 10 (Any Assortment)..... \$1.71
*Indicates two leads; others have one.

FORD V8 Condensers

Tailor made for Ford V8's. K14219—Type A. For V8's up to 1936. K14199—Type B. For 1937 to 1940 models. Either Type, 10 for \$1.59.
YOUR COST EACH..... 17c

Noise Filter

Cuts out all ignition interference; no need for spark plug suppressors with this filter installed in antenna lead of set. Shielded lead and instructions supplied.
K14202—(Shpg. wt. 2 lbs.) EACH..... \$1.05

MOTOROLA 65 and 70 Condenser

High voltage condenser. Consists of two .0008 mfd 1000 volt units in a single housing. Four leads. Sprague make.
K14207—YOUR COST EACH..... 26c
5 For..... \$1.17

Dome Light Filter

Completely eliminates the noise in dome light wiring. Has condenser—choke combination.
K14208—(10 for \$1.95) 24c
YOUR COST EACH..... 24c

"A" Line R.F. Filter

For eliminating interference coming through the "A" supply. This is tested by disconnecting antenna and noting whether interference persists. Fully shielded.
K14205—YOUR COST..... 73c

Wheel Static Eliminator

Eliminates front wheel noise, usually an unsuspected nuisance. Easy to install in each hub cap. All rust proof.
K5294—(10 for 37c) 5c
YOUR COST EACH..... 5c

Copper Shielding

This is as fine quality copper shielding as is available. Used in radios, amplifiers, test circuits, etc., for shielding of interference creating circuits. Available both in bare and tinned form for a wide variety of uses.

BARE		TINNED	
Stack No.	Per Ft.	Stack No.	Per Ft.
K16234	1 1/2c	K16237	2c
K16235	2c	K16238	2 1/2c
K16236	2 1/2c	K16239	3c

Shielded 7 MM. Wire

Lacquered braided wire with a heavy rubber wall and outer covering of tinned copper shielding. Wt. 7 lbs. per 100 ft.
K16211—Per Foot..... 5c
K16213—100 Ft. Spool..... \$4.50

7 MM. Ignition Wire

Standard 7 mm. black lacquered braided wire. Moisture proof. Wt. 7 lbs. 100 ft.
K20851—Per Foot..... 3 1/2c
K20852—100 Feet..... \$3.00



STAR Panel Plate Kits

Panel plate kits comprise the dial plate, dial scale (calibrated in kilocycles) and set of matched knobs only. All Star panel plates are die-cast or stamped from heavy metal and are beautifully finished to match the luxuriousness of the modern automobile.



No.	Car Model and Year	No.	Car Model and Year	No.	Car Model and Year
K8221	Buick 1936 (All)	K9320	Ford Standard 1939	K9377	Plymouth DeL. 1936
K9353	Buick, 40, 60, 1937	K9309	Ford DeLuxe 1939	K9874	Plymouth Stand. 1937
K9354	Buick 80, 90, 1937	K8206	Ford Standard 1940	K9388	Plymouth DeL. 1937
K9363	Buick 1938 (All)	K8207	Ford DeLuxe 1940	K9396	Plymouth DeL. 1938
K9315	Buick 1939 (All)	K8231	Ford 1941	K9324	Plymouth Stand. 1939
K8200	Buick 1940 (All)	K9876	Hudson 1936	K9325	Plymouth DeL. 1939
K8225	Buick 1941	K9877	Hudson 1937	K8214	Plymouth Stand. 1940
K9343	Cadillac-Lasalle '36, '37	K9369	Hudson 1938	K8215	Plymouth DeL. 1940
K9381	Cadillac-Lasalle 1938	K9310	Hudson 122, 1939	K8237	Plymouth 1941 (P11) Standard & DeLuxe
K9311	Cadillac-Lasalle 1939	K9328	Hud. DeL. 112-118, 1939	K8238	Plymouth Spec. DeL. 1941 (P12)
K8201	Cadillac-Lasalle 1940	K8208	Hudson 1940	K9343	Pontiac 1935, 1936
K8226	Cadillac-Lasalle 1941	K8232	Hudson 1941	K9389	Pontiac 1937
K9343	Chevrolet 1935-1936	K9330	Hud.-Terraplane 1937	K9397	Pontiac 1938
K9356	Chevrolet 1937	K9384	Lafayette (Nash) 1937	K9326	Pontiac 1939
K9364	Chevrolet 1938	K9373	Lincoln Zephyr 1936	K8216	Pontiac 1940
K9316	Chevrolet 1939	K9878	Lincoln Zephyr 1937	K8239	Pontiac 1941
K8202	Chevrolet 1940 (All)	K9392	Lincoln Zephyr 1938	K9390	Stud. Dict. late 1937
K8227	Chevrolet 1941	K9321	Lincoln Zephyr 1939	K9391	Stud. Pres. late 1937
K9344	Chrysler Airstream 6, '36	K8210	Lincoln Zephyr 1940	K9398	Studebaker 1938
K9357	Chrysler Royal 1937	K8233	Lincoln Zephyr 1941	K9893	Stud. Champion 1939
K9365	Chrysler 1938	K9312	Mercury (Ford) 1939	K9327	Stud. Commander 1939
K9317	Chrysler 1939	K9884	Mercury (Ford) 1940	K9308	Stud. President 1939
K8203	Chrysler 1940	K8231	Mercury (Ford) 1941	K9894	Stud. Champion 1940
K8228	Chrysler 1941	K9384	Nash Lafayette 1937	K9895	Stud. Commander and President 1940
K9347	De Soto De Luxe 1936	K9393	Nash Lafayette 1938	K8240	Studebaker 1941
K9359	DeSoto 1937	K9322	Nash Lafayette 1939	K9380	Terraplane 1936
K9366	DeSoto 1938	K8211	Nash-Lafayette 1940	K9330	Terraplane 1937
K9318	DeSoto 1939	K8234	Nash 1941	K9399	Terraplane 1938
K8204	DeSoto 1940	K9375	Oldsmobile 1936	K9331	Willys '37, '38, '39, '40
K8229	DeSoto 1941	K9385	Oldsmobile 1937	K9383	Universal Under Dash Mounting Kit
K9348	Dodge 1936	K9323	Oldsmobile 1939		
K9360	Dodge 1937	K8212	Oldsmobile 1940		
K9367	Dodge 1938	K8235	Oldsmobile 1941		
K9319	Dodge 1939	K9376	Packard 120, 1936		
K8205	Dodge 1940	K9386	Packard 120, 1937		
K8230	Dodge 1941	K9387	Packard 115, 1937		
K9352	Ford 1936 (All models—Standard & DeLuxe)	K9395	Packard 6 & 8, 1938		
K9361	Ford Standard 1937	K9313	Packard (All) 1939		
K9362	Ford DeLuxe 1937	K8213	Packard 1940 (All)		
K9368	Ford 1938 (All Models)	K8236	Packard 1941		
		K9873	Plymouth Stand. 1936		

STAR Remote Control

- Fits All Cars
- For Any Gear Ratio
- No Cord or Cable

Fits all cars and all radios. No drilling or filing of any kind necessary. May be used with battery or counter-clockwise condensers. Has direct drive; no cord, no cable. Adjustable to any gear ratio; 6 interchangeable gears supplied for 6, 8, 10, 12, 16 and 20 to 1 ratios. In addition to gears all end fittings, lock nuts, pilot light socket, etc., are furnished. Order plate from listing of Star Panel Plates above. Illustration shows the control assembly and plate kit mounted. Shpg. wt. 2 lbs.
K9339—Mechanism Only, YOUR COST..... \$2.06

Tone Controls

T-1: 3-stage variation. Assembled in place of volume control shaft.
K9334—EACH..... \$1.18
ST-1: As above, with "on-off" switch insulated leads, fuse retainer and pilot light socket.
K9336—YOUR COST..... \$1.76
T-2: Same as T-1, but variable (100,000 ohms)
K9335—YOUR COST..... \$1.18
ST-2: As above, with switch, leads, etc.
K9337—YOUR COST..... \$1.76

"On-Off" Power Switch

Switch with long leads, fuse retainer, pilot light lead, socket.
K9332—59c

2-Stage (Local-DX) Sensitivity Switch

S.P.S.T. switch. Assembled in place of plate on the tuning unit. Solder lugs S2.
K9333—EACH..... 29c

Serviceman's Special Auto Suppressors

High quality units in Bakelite cases. Brass fitting. LOW prices.
K5272—Univ. Spark Plug 7c each
K5292—Distributor 6c each
In Lots of 25

Wire Wound Suppressors

Moisture proof, sealed, heat resisting insulation. Fits all makes of spark plugs and cars. Low D.C. resistance, yet high resistance to ignition noises. Amazingly low-priced. Limited quantities on all types.
K5301—Spark Plug 20c
K5302—Distributor \$1.78
K5303—Slip-on Type* 20c
ANY ABOVE, EACH..... 20c
10 For..... \$1.78
*Fits older cars.

J. F. D. AUTO RADIO CABLE FITTINGS

Stock No.	Type	Each
K8414	K8312	0
K8415	K8313	1
K8421	K8319	7
K8416	K8314	2
K8418	K8316	4
K8422	K8320	8
K8411	K8323	11
K8417	K8315	3
K8419	K8317	5
K8420	K8318	6
K8423	K8321	9
K8424	K8322	10
K8329	K8330	12

Match your old fittings with illustrations above: order by Stock Number.
.150" .130" Type Each
K8414 K8312 0
K8415 K8313 1
K8421 K8319 7
K8416 K8314 2
K8418 K8316 4
K8422 K8320 8
K8411 K8323 11
K8417 K8315 3
K8419 K8317 5
K8420 K8318 6
K8423 K8321 9
K8424 K8322 10
K8329 K8330 12

Special Fittings

Machined from brass. Order by stock number checked against type number under illustration.
For .130" cables.
No. Type No. Type
K8084 P10 K8089 P15
K8085 P11 K8090 P16
K8086 P12 K8091 P17
K8087 P13 K8092 P18
K8088 P14
ANY TYPE, EACH..... 29c

Gear Fittings

For .150" cables.
G1 G2 G3 P9 P4
No. Type Each
K8425 G1 24c
K8426 G2 24c
K8427 G3 24c
K8428 P9 35c
K8331 P4 35c

Cable and Housing

Finest quality cable for auto radio remote controls. Cable ends swaged—cannot unravel. Write for special prices on long lengths. Wt. 1 lb. per foot.
Cable Only
.130" .150" Length Each
No. No. Length Each
K8299 K2433 18" 24c
K8300 K8434 24" 29c
K8301 K8302 30" 36c
K8303 K8435 36" 42c
Cable and Steel Housing
K8304 K8437 18" 37c
K8305 K8438 24" 50c
K8306 K8307 30" 62c
K8308 K8439 36" 73c

We can supply cables complete with any two fittings shown, at an additional 50c. Order by stock numbers.
Special Cable for Majestic, Clarion, Atwater Kent and Arvin Set.
9-foot Bowden cable with 8-foot sheath. Exact duplicate.
K16078—YOUR COST..... \$1.35

Special Fittings

Order by stock number from illustrations above. All are for .150" cables except M0130 which is for .130" cable. Type C5 is special casing chuck for Motorola; types M0130 and M0150 bell ends for Motorola cables.
Stock No. Type Your Cost Each
K8294 P5 15c
K8295 P6 15c
K8296 CB2-L 15c
K8297 CB2-S 15c
K8298 CB1 15c
K8282 C5 9c
K8283 MO(.130") 29c
K8284 MO(.150") 29c

Fuse Retainer

Two piece connector of heavy metal with fibre inside insulation, 2 1/2" long. Powerful spring contact.
K12372—EACH..... 5c
12 For..... 50c

"Jumbo" Fuse Retainer

2 1/2" long by 1/2" diameter. Replacement for Philco and Motorola. With bushings, springs, etc.
K8349—YOUR COST EACH..... 10c
10 For..... 89c

LITTELFUSE Auto Fuses

Lower resistance than standard fuses. 1 1/4 x 1/4".
K12320—5 amps. 3c ea.
K12321—10 amps. 3c ea.
K12322—15 amps. 3c ea.
K12323—20 amps. 3c ea.

Antenna Connector

Two-piece metal container, fibre inside insulation.
K16714—YOUR COST..... 4c

for Over 56% Off List!

BARGAIN HUNTERS

A Super Value!

FAMOUS-MAKE Double-Condenser ENLARGERS
\$12.95 each

Nationally advertised at \$29.95 this Model No. 1941 enlarger is a truly sensational value at Lafayette's special Spring Sale price of \$12.95! This famous-make enlarger incorporates such unusual de luxe features as a built-in all-steel light-tight drawer for paper up to 11" x 14" in size. A full gross of double weight paper this size can be accommodated. A pair of optically correct 4 1/2" condenser lenses in conjunction with a light equalizer assures perfect over-all illumination. The enlarging lens is a sharp 3 1/2" f:6.3 anastigmat especially corrected for use in an enlarger. Accurate focusing assured by slow-motion, spiral device designed to maintain lens alignment. A combined easel and easily adjusted masking frame makes for straight print margins. The lamp-house is scientifically designed for cool operation. The sturdy upright post is calibrated to indicate enlargement ratios and simplifies exposure calculation. All negatives up to 2 1/4" x 3 1/4" in size can be accommodated. Equivalent areas of larger negatives can also be enlarged. In short, it is a de luxe unit—a smash value at Lafayette's low Spring Sale price!

Because of the drastic price cut we are not permitted to state the manufacturer's name but it does appear on each unit shipped. It comes to you packed in its original factory cartan complete with instructions. Frankly we have only a limited supply at this Spring Sale price and we are not just using "sales talk" when we urge you to get your order in early. It must of necessity be a case of first come—first served. Act now!

PH2541—Shpg. wt. 25 lbs. SPECIAL SPRING SALE PRICE **\$12.95**

Cut to \$1.29
\$2.29 Complete

LAFAYETTE ADJUSTABLE ROLL FILM TANK
LAFAYETTE ROLL FILM DEVELOPING KIT

Actually there is no reason why we should cut the price on this tank. It is an outstanding value at its regular price—a mighty fine tank in every respect. But, we feel that this is an excellent opportunity to get you to try a Lafayette product so that you can see for yourself what we mean when we say they are "tops in quality." After you find out how good this product is we hope that, like many others, you'll become a Lafayette booster too. So during this Spring Sale only we are forgetting about our profit!

Alli-baxelite. Fully adjustable from 35mm to No. 116 size. Unaffected by chemicals, stain proof and non-warping. Absolutely light-tight. Supplied with bakelite agitator rod. Shpg. wt. 2 lbs. PH9267—**\$1.29**

SPECIAL SALE PRICE. PH9271—Extra Real only. Use the second white first film is washing. Also for replacement purposes. Shpg. wt. 1 lb. EACH 79c PH8694—Lafayette Glass Tank Thermometer. Range from 45° to 90° Fahrenheit. Fits all tanks. Shpg. wt. 4 oz. EACH .79c

You can save still more by buying the complete kit. Using the Lafayette adjustable roll film developing tank, described at the left, as the nucleus, this kit contains everything you need to successfully develop any roll film from the small 35mm size right up to the large No. 116 or 616 size. Included in the kit in addition to the tank and agitator, are the following items: a can of Lafayette Minigrain Developer—this is a super-fine grain developer excellent for all types of film. The can contains enough chemicals to make up a full quart of liquid developer. A can of Lafayette Acid-Hypo sufficient to make up a half-gallon of fixing bath for either paper or film. Two sure-grip non-rusting film clips for use in hanging up your film to dry are also included. And last, but not least, is a complete manual titled "Darkroom Handbook" which covers in detail all types of developing and printing processes: lenses, theory, etc. Shpg. wt. 5 lbs. PH2609—**\$2.29**

ONLY \$2.49
Verified \$7.50 Value

LAFAYETTE ALL-METAL EASEL

A breath taking bargain if there ever was one! But we had to forego our profit in order to bring it down to this price. Nevertheless we were determined to make this Spring Sale a smashing success and we know it can only be done by giving you such outstanding values! We want those of you with whom we have not as yet had the pleasure of doing business to try a Lafayette product and Lafayette service just once. After that we know that you'll become a steady customer.

This Lafayette all-metal easel has many outstanding features. The entire frame is in one piece stamped out of a single sheet of solid metal. It will always lie flat and produce sharply edged borders. The two-inch wide masking bands are held in position by powerful spring tension clamps that assure perfect alignment and absolutely square margins. Full length etched metal scales for the two masking bands are calibrated in 1/16ths of an inch. All sizes of prints up to a full 11" x 14" size can be accommodated. Narrow "maton style" 1/8" borders are provided at the top and along one side thus assuring maximum use of paper area.

The base of the easel is made entirely of metal and is heavy enough to remain in position wherever it is placed. It is made up of two pieces so that the upper surface is raised from the lower resulting in greater efficiency and sturdiness. The entire easel is finished in oven baked black photo enamel which will not chip or crack. Fittings are heavily chromium plated providing excellent protection against rust and adding considerably to the attractiveness of the easel. Overall dimensions are: 20" long, 17" wide, 11 1/2" high.

So much for a description of the easel itself and now just a word about this sale. Of necessity we must limit the quantity available at this price and as soon as the sale is over, the quantity is sold then the former price must again go into effect. You will agree with us that we are justified therefore in urging you to get your order in as promptly as you can to avoid disappointment. It is going to be a case of first come—first served. PH9308—Lafayette Easel. Shpg. wt. 12 lbs. YOUR COST SPECIAL **\$2.49**

E-Z ON APRON
List \$1.00
Special 49c

Plio-Film Cover
Special 49c

Yes, we must admit we felt pretty hard for this one—personally we mean. Every morning before we go to work it has been the same story—brush, brush, brush in order to remove that white powder which collects on our vest and trousers wherever the developer and hypo splattered the night before. The Missus has been trying to get us to use an apron but they were such sissy things. Now this new E-Z ON Apron comes along and boy it's a real man's apron! No strings—just slip it around your waist and it stays there held by a gentle spring hidden inside the apron. Its male-looking too, no fancy trimming. The material is rubberized and locks like that used in expensive raincoats. Lightweight but won't leak. Can be washed the manufacturer says. PH9939—SPECIAL **49c**

Dust is the subject of many an amateur's nightmare! Those microscopic specks that you can hardly see on the negative turn up as big white spots on the enlarged print. You can prevent this by covering your enlarger with a dustless, dust-proof cover. One of the best we know of is this Plio-Film cover. Plio-Film is absolutely dust proof, stain resistant and moisture proof. It is non-inflammable and 100% transparent. This cover is extra seamed and fitted with a silk draw-cord and a hanging loop. Volume purchasing enables us to offer this cover at a tremendous discount. Sells regularly for \$1.00, now available for only 49c—exactly 51% off the list price. 30 1/2" long, 23" wide. Shpg. wt. 8 oz. PH9918—SPECIAL **49c**

CARRY YOUR DARKROOM WITH YOU
Lafayette Port-O-Lab
Only \$8.89
List Value \$11.60

What a boon to the amateur who doesn't have all the room he needs for his dark room equipment and must store things away after each session! It is also an ideal outfit for the vacationist and traveler. A glance at the list of contents at the right will prove that this kit contains everything necessary for developing and printing. And, as usual, Lafayette offers the whole outfit at a great reduction in price. The entire kit is neatly packed in a sturdy, canvas covered, wood reinforced carrying case finished in airplane luggage style. It is equipped with two spring locks and key. Dimensions overall: 18 1/2" long, 11" high, 3" deep. Shpg. wt. 18 lbs. PH2612—Lafayette Port-O-Lab De Luxe Darkroom Outfit. YOUR COST **\$8.89**

The Lafayette Port-O-Lab Outfit includes the following items. Note the completeness of the kit and the notably high quality.

1 Lafayette Tank	\$1.85
3 4x6" Horn Rubber Trays	.75
1 All-metal Print Frame	.60
1 8 oz. Glass Graduate	.25
1 Catinol Stirring Rod	.20
1 Tank Thermometer	.50
2 Sure Grip Film Clips	.20
2 Stainless Steel Tongs	.50
2 10x14" Ferrotype Plates	.40
1 4" Squeeze Roller	.30
1 4 oz. Bottle of Polish	.30
2 32 oz. Bottles	.50
1 Qt. Size Minigrain Dev	.60
24 3 1/4x5 1/2" Convira Paper	.25
6 Lafayette MQ Tubes Dev	.25
1 Lafayette 1/2 Gal. Fixer	.25
1 Practo Safelight	1.65
1 Carrying Case	2.00
1 Instruction Manual	.25
Total List Value	\$11.60

REAL BUYS!
48c
19c
\$3.98

DU PONT SPONGES
 These cellulose sponges have an excellent reputation because of their softness and absorption abilities. Use them for drying negatives, prints, etc. Also fine for general household use. PH8763—No. 4 Shpg. wt. 4 oz. EACH **19c**
 PH8784—No. 6 Shpg. wt. 6 oz. EACH **37c**

LAFAYETTE BLOTTER BOOK
 A regular 65c value for only 48c! A swell chance to get that extra book you have often wanted at a real saving. Book will take prints up to 9"x12" in size. 18 pages provide for 18 prints this size or the equivalent in smaller sizes. Additional waxed paper pages cover the face of the print. Neat plastic binding allows pages to open flat. Shpg. wt. 2 lbs. PH8691—**48c**
 SPECIAL **48c**

A sensational value in a quality printer. A metal construction assures absolute rigidity and sturdiness. Will accommodate negatives from 35mm to 4 1/2". Positive paper alignment is assured by metal guides and accurate 3/16" margins. Masking bands are adjustable and easily accessible. Sponge rubber coating and double hinged platen assure uniform pressure over the entire negative area. Hinged top for easy cleaning and bulb replacement. An outstanding feature of this printer is the method of exposure control employed. This method permits keeping the bulb lit at all times thus enabling its use as a safelight. An appropriate color filter is mounted in one side of the printer for this purpose. Shpg. wt. 6 lbs. PH8666—SPECIAL **\$3.98**

15c each
4" x 6" TRAYS
NEW LOW PRICES!

HARD RUBBER TRAYS
 Lowest price ever! These hard rubber trays are noted for the fact that they are non-porous, non-corrosive and chip-proof. They are easy to clean and can be used interchangeably for developing, fixing and washing. They have reinforced rims and bottoms and ribs inside the bottom so that it is easy to get under the print with your fingers or tongs. Sloping sides are a further aid to easy print and negative manipulation. Wt. 1 lb. PH8235—4" x 6" Tray **15c**
 SPECIAL EACH 3 for **39c** 6 for **69c**

STIRRING ROD MODEL (A)
 A fine value in a combination stirring rod and an accurate thermometer. Range from 20 to 180 degrees F. Flattened end for crushing chemicals to aid in dissolving them. Shpg. wt. 8 oz. PH8698—SPECIAL EACH **39c**

OPEN TANK & TRAY MODEL (B)
 The glass tube in this model is protected by a curved stainless steel back which also carries the calibration marks. These calibrations are etched into the metal itself. Range 30 to 120 degrees F. Shpg. wt. 8 oz. PH8697—SPECIAL EACH **29c**

Always A Good Buy!
Lafayette DARKROOM OUTFITS

ECONOMY OUTFIT
 A very reasonably priced outfit for both developing and printing that is especially designed for those desiring to start with just the necessary essentials. Each item has been carefully selected and is of excellent quality. The outfit is complete enough to enable you to do good work right at the start without resorting to any makeshift methods. It provides an excellent foundation for the beginner to which other items may be added as his skill increases in order to do more advanced work. It is an excellent gift for the youngster or grownup just beginning to get interested in photography.

Quan.	Item.	List
3	4x6" Hard Rubber Trays	60c
1	3 1/4x5 1/2" Print Frame	40c
1	Thermometer	30c
1	Ruby Bulb	25c
4	Tubes Developer	20c
1	4 oz. Graduate	20c
20	2 1/2x4 1/4" Contact Paper	20c
1	1/2 lb. Box Acid Fixer	15c
1	Glass Stirring Rod	5c
1	"Darkroom Handbook"	25c
Total List Value	\$2.60	
Neatly Boxed, Shpg. wt. 5 lbs.		
PH2606—YOUR COST \$1.69	COMPLETE	

Enlarging Paper Bargains!
(SECONDS)
As Low As 16c per dz.
(for 5x7" SW)

GLOSSY & SEMI-MATTE ENLARGING PAPER
 Here is your opportunity to stock up on enlarging paper at a tremendous saving! Both single weight and double weight in 5x7" and 8x10" sizes. Fresh Stock, Seconds—slightly imperfect. Speed—approximately slower than Cykora and Kodabromide. Shpg. wts. 5"x7" SW—6 oz.; 8"x10" DW—8 oz.; 8"x10" SW—8 oz.; 8"x10" DW—10 oz. White only. 2 sheets to a package.

Surface	Grade	5 x 7	8" x 10"	DOUBLE WEIGHT
Glossy	Soft	PH7456	PH7462	PH7468
Glossy	Medium	PH7457	PH7463	PH7469
Glossy	Hard	PH7458	PH7464	PH7470
Semi-Matt	Soft	PH7459	PH7465	PH7471
Semi-Matt	Medium	PH7460	PH7466	PH7472
Semi-Matt	Hard	PH7461	PH7467	PH7473
Per Pkg. of 12		16c	29c	21c
Two Pkgs. for		30c	56c	40c

Up to 33 1/3% Off!
Super Values!
3c
8 1/2c each
(lots of 2)

LAFAYETTE TRIMMING BOARDS
 An exceptional opportunity to buy top quality trimming boards at unusually low prices! Tough tempered steel blades have an adjustable spring tension device so that blades are self-sharpening. Study re-inforced tables are marked out in 1/4" squares. Rule has 1/16" calibrations. Shpg. wts. 6"-5 lbs.; 10"-7 lbs.; 12"-8 lbs.; 15"-16 lbs. PH8405—6" size YOUR COST EACH **\$1.49**
 PH8406—8" size YOUR COST EACH **\$2.29**
 PH8407—12" size YOUR COST EACH **\$2.89**
 PH8408—15" size YOUR COST EACH **\$5.89**

WOOD CLIPS
 For films or prints. Non-scratching. Powerful wire spring. Flat spring hook. Wt. 1 1/2 oz. PH8677—EACH **3c**
 12 for **29c** 24 for **53c**

REXO FILM CLIPS
 Cannot rust. Wide jaws hold film securely. Prongs fit into recessed holes. Shpg. wt. 4 oz. PH8680—EACH **45c**
 6 for **2.49**

STAINLESS STEEL TONGS
 Absolutely acid, chemical and rust proof. Exceptionally light in weight. Easily handled and grip securely. Shpg. wt. 6 oz. PH8685—YOUR COST EACH **9c**
 Per Pair **17c**

STANDARD OUTFIT
 Priced only a little higher than our Economy outfit the Standard Printing and Developing Outfit provides a much wider range of working facilities than does the former. It includes a larger graduate as well as "sure grip" film clips and a larger quantity of essential chemicals. The contact printing paper is larger, too, enabling you to print larger size negatives or to cut it up into a larger number of smaller size prints. Another feature is the inclusion of two stainless steel print tongs and a "Darkroom Handbook."

Quan.	Item.	List
1	3 1/4x5 1/2" Print Frame	75c
1	Special Thermometer	75c
3	4x6" Hard Rubber Trays	60c
1	1-lb. Acid Fixer	20c
5	Tubes Developer	25c
1	Ruby Bulb	25c
20	3 1/4x5 1/2" Contact Paper	25c
1	8 oz. Glass Graduate	30c
1	Glass Stirring Rod	5c
2	"Sure Grip" Clips	20c
2	Stainless Steel Print Tongs	50c
1	Beginners "Darkroom Handbook"	25c
Total List Value	\$4.40	
PH2607—Shpg. wt. 8 1/2 lbs.		
COMPLETE KIT	\$2.49	
YOUR COST		

De Luxe DARKROOM KIT
 Our De Luxe Darkroom Outfit shown above—complete—highest quality.

1	3 1/4x5 1/2" Metal Print Frame		1	8 oz. Graduate	
1	Troy Thermometer		1	Glass Stirring Rod	
2	Stainless Steel Print Tongs		1	4 oz. bottle Ferrotype Polish (non-inflammable)	
3	5x7" Porcelain Enamel Tray		20	3 1/4x5 1/2" Contact Paper	
1	De Luxe Safelight with two safelight filters		1	1/2 gal. size Acid Fixer	
2	Ferrotype Plates		2	"Sure Grip" Clips	
4	Ruby Bulbs		1	Beginners "Darkroom Handbook"	
6	Tubes H. G. Developer				
PH2614—Shpg. wt. 10 lbs.			Total List Price Value—\$7.30	YOUR COST	\$4.89

LAFAYETTE GLOSS-RITE KIT
 Kit includes everything necessary to produce perfectly ferryped glossy prints. Two 10 x 4" enamel ferrotype plates; an all-metal frame 4" rubber print roller; 4 oz. bottle Lafayette Ferrotype Polish; complete instructions. The kit is easy to use, and a splendid value. The polish is non-inflammable. Shpg. wt. 4 lbs. PH2613—SPECIAL **77c**

Lafayette Ferrotype Polish
 Guaranteed to be the finest ferrotype and chromium polish. Non-inflammable. PH8678—8 oz. bottle **39c**
 PH8682—4 oz. bottle **24c**
 Shpg. wt. 8 oz.—2 lbs. 4 oz.—1 lb.

FERRATYPE PLATES
 All are extra heavy except PH8501 which is lightweight. Shpg. wt. 2 lbs. each except PH8501—1 lb. and PH8504 which is 3 lbs.

Black Enamelled Plates

No.	Size	EACH	3 For
PH8501	10x14	15c	\$0.41
PH8500	10x14	24c	.63
PH8502	12x17	39c	1.11
PH8503	14x20	49c	1.35
PH8504	18x24	79c	2.19

Chromium Finished Plates
 Very high polish—able to be plated.

No.	Size	EACH	3 For
PH8514	10x14	\$0.99	\$1.39
PH8515	14x20	1.09	3.09
PH8516	18x24	1.98	5.69

Lafayette Radio Corporation

formerly WHOLESALE RADIO SERVICE CO., Inc.

Mail Your Orders to Warehouses at:

NEW YORK, N. Y.
100 Sixth Ave. Phone: WAlker 5-8883

CHICAGO, ILL.
901 W. Jackson Blvd. Phone: HAYmarket 0422

ATLANTA, GA.
265 Peachtree St. Phone: WALnut 5140

Local Sales and Display Rooms at:

NEWARK, N. J.
24 Central Ave. Phone: MArket 2-1661

BRONX, N. Y.
542 E. Fordham Road Phone: RAYmond 9-8813

JAMAICA, L. I.
90-08 166th St. (Merrick Rd.) Phone: REpublic 9-4242

BOSTON, MASS.
110 Federal St. Phone: HUBbard 0474

HOW TO ORDER

Use our convenient order blank (additional blanks sent on request). Please write in ink, legibly, and not more than ONE item to a line. Make sure you write the exact stock number and that the price is the one quoted for the item you want. Specify how we shall make shipment by checking the preferred square "Parcel Post", "Express", etc. We shall follow your instructions, but will change them wherever we are sure that such a change is to your better interest. Please keep all correspondence or remarks relative to your order on a separate sheet of paper. Make sure you include sufficient postage; all overpayments promptly refunded (if overpayment is under 10c, we will credit your account).

NOTE: In many instances, especially in the tabulated lists of merchandise, it is impossible to show shipping weights. In practically all cases, it is a simple matter to estimate the weight of each article. Please be sure to include sufficient postage. We will credit you with any overpayments.

DOMESTIC ORDERS

We buy for cash and sell for cash; this explains our low price policy. We do not carry credit accounts, and we pass on to our customers all savings affected by the elimination of costly book-keeping. We will ship C.O.D. if desired, providing a deposit of at least 20% accompanies your order. C.O.D. parcels may be shipped ONLY to places in the 48 states of the U.S. and to U.S. territories. On small orders, remittance in full saves you extra collection costs.

FOREIGN ORDERS

On all foreign orders we require payment in the United States by irrevocable and confirmed letter of credit against documents, or 50% deposit with order, balance sight draft against B/L. All quotations are F.O.B. our warehouse, with slight additional charge for export packing. Orders up to \$25.00 payable in full, in advance, including postage. All remittances payable in U.S. funds.

2% TRANSPORTATION ALLOWANCE

On mail orders of \$25.00 or more, we allow you to deduct 2% from the total as transportation allowance, with the following exceptions: All Lafayette and National Co. products; all items sold under Fair Trade regulations, all items marked "shipped Postpaid"

RETURNING MERCHANDISE

If you find it necessary to return any merchandise for adjustments, please write in advance stating the following: reason for return—when and where purchased—number of sales slip (if purchased over the counter). If your shipment is received damaged, obtain a report from the postmaster or express agent and mail it to us. Use a separate sheet of paper for all adjustment matter; do not add remarks to a new order for parts. Do not include money in the package you return. When returning merchandise, pack carefully, insure, and write your name and address on all packages and letters before returning to us.

FINAL PRICES

Prices shown in this catalog are net, and except where marked POSTPAID, do not include postage. All discounts have been deducted, including 2% discounts for cash. Prices are subject to change without notice; we give customers the benefit of all reductions taking place after the catalog is published.

POSTPAID ITEMS

Items marked "Shipped Postpaid" do not require postage. Please note that Postpaid items refer only to shipments made within the 48 states of the U.S. only (does not include U.S. possessions).

SENDING MONEY

The safest and best way to send money is by: American Express; Post Office or Telegraph Money Order; bank drafts; firm checks; stamps. Do not send cash. If absolutely necessary to remit cash, send by registered mail only. Do not hesitate to include sufficient postage; over-payments are promptly refunded.

PARCEL POST RATES FOR ALL ZONES

Parcels up to 8 ounces may be shipped anywhere in the United States for 6c. Parcel post shipments to any zone must not exceed 70 pounds. The limit of size on all parcel post packages is 100 inches in length and girth combined, at

widest point. Example: a package 35 in. long, 10 in. wide and 5 in. high measures 65 in. in length and girth combined (length 35 in. plus twice 10 in. width, plus twice 5 in. height, equals 65 in.).

Weight In Pounds	ZONES							
	First Up to 50 Mi.	Second 50 to 150 Mi.	Third 150 to 300 Mi.	Fourth 300 to 600 Mi.	Fifth 600 to 1000 Mi.	Sixth 1000 to 1400 Mi.	Seventh 1400 to 1800 Mi.	Eighth Over 1800 Mi.
1	\$.08	\$.08	\$.09	\$0.10	\$0.11	\$0.12	\$0.14	\$0.15
2	.10	.10	.11	.14	.17	.19	.23	.26
3	.11	.11	.13	.17	.22	.26	.32	.37
4	.12	.12	.15	.21	.27	.33	.41	.48
5	.13	.13	.17	.24	.33	.40	.50	.59
6	.14	.14	.19	.28	.38	.47	.59	.70
7	.15	.15	.21	.31	.43	.54	.68	.81
8	.16	.16	.23	.35	.49	.61	.77	.92
9	.17	.17	.25	.38	.54	.68	.86	1.03
10	.18	.18	.27	.42	.59	.75	.95	1.14
11	.19	.19	.29	.45	.64	.82	1.04	1.25
12	.21	.21	.31	.49	.70	.89	1.13	1.36
13	.22	.22	.33	.52	.75	.96	1.22	1.47
14	.23	.23	.35	.56	.80	1.03	1.31	1.58
15	.24	.24	.37	.59	.86	1.10	1.40	1.69
16	.25	.25	.39	.63	.91	1.17	1.49	1.80
17	.26	.26	.41	.66	.96	1.24	1.58	1.91
18	.27	.27	.43	.70	1.02	1.31	1.67	2.02
19	.28	.28	.45	.73	1.07	1.38	1.76	2.13
20	.29	.29	.47	.77	1.12	1.45	1.85	2.24
For Each Added lb. Add	1¢	1¢	2¢	3½¢	5¢	7¢	9¢	11¢

EXPRESS CHARGES

Express charges are also determined by the weight of the shipment and distance of the consignee from shipper. The following chart enables you to estimate charges.

signee from shipper. The following chart enables you to estimate charges.

Maximum Distance in miles	50 Mi.	150 Mi.	300 Mi.	500 Mi.	750 Mi.	1000 Mi.	1500 Mi.	2000 Mi.
cost up to 5 lb.	\$0.25	\$0.25	\$0.25	\$0.30	\$0.35	\$0.45	\$0.50	\$0.72
" " 10 lbs.	.30	.30	.31	.40	.50	.65	.70	1.34
" " 15 lbs.	.30	.34	.41	.51	.67	.73	1.00	1.96
" " 20 lbs.	.30	.42	.51	.64	.85	.94	1.30	2.57
" " 25 lbs.	.35	.50	.61	.78	1.04	1.15	1.60	3.19
" " 35 lbs.	.45	.66	.82	1.05	1.41	1.57	2.20	4.42
" " 45 lbs.	.55	.82	1.02	1.34	1.79	1.99	2.80	5.66
" " 55 lbs.	.65	.98	1.23	1.59	2.16	2.40	3.40	6.89
" " 75 lbs.	.85	1.30	1.63	2.13	2.91	3.24	4.60	9.36
" " 95 lbs.	.99	1.60	2.04	2.67	3.66	4.08	5.80	11.83
For Ea. 100 lbs.	.99	1.60	2.04	2.70	3.74	4.18	6.00	12.34

INSURANCE

Parcel post insurance rates are: 5¢ for parcels up to \$5.00; 10¢ for parcels from \$5.00 to \$25.00; 15¢ for parcels from \$25.00 to \$50.00; 25¢ for parcels from \$50 to \$100.00. After \$100.00 the charge for each additional \$50.00 is 5¢ extra. All parcels that we ship are insured.

Express insurance rates are: for shipments under \$50.00, no extra insurance charge; for shipments valued from \$51.00 to \$150.00 charge is 10¢. For each additional \$100.00 value or portion thereof, charge is 10¢.

EXPRESS & FREIGHT SHIPMENTS

Express and freight shipments are sent transportation charges collect. If your station has no agent, please send sufficient money to cover transportation. Charges are the same either way. All over-payments are promptly refunded.

C. O. D. SHIPMENTS

Transportation charges on C.O.D. parcels are slightly higher than those sent prepaid. C.O.D. charges in addition to the regular postage costs outlined above are as follows (including insurance): When value of parcel is up to \$5.00 the extra charge is 12¢; \$5.00 to \$25.00 the extra charge is 17¢; \$25.00 to \$50.00 the extra charge is 22¢; \$50.00 to \$100.00 the extra charge is 32¢; \$100.00 to \$150.00 the extra charge is 40¢; \$150.00 to \$200.00 the extra charge is 45¢. For each \$50.00 value above \$200.00 the charge is 5¢ more (including insurance). The Post Office also charges an extra small money order fee on each C.O.D. parcel. Save these fees by remitting in full.

NOTE: Equipment built or ordered especially to meet customers requirements not subject to exchange, credit or refund. All orders for special merchandise must be accompanied by a deposit.

Lafayette Radio Corporation

100 SIXTH AVENUE NEW YORK, N. Y.

RETURN POSTAGE GUARANTEED

Sec. 562, P. L. & R.

U. S. POSTAGE

PAID

New York, N. Y.

Permit No. 8486

SCORING AGAIN!



MILTON H. ILLI
95 CLOVERDALE AVE.
BUFFALO N. Y.

29 WRS 73

POSTMASTER:—If addressee has removed and new address is known, notify sender on **FORM 3547** postage for which is guaranteed.

Содержание
№ 1

СОВЕТСКИЙ РАДИО



ИЗДАНИЕ
1945

Содержание
№ 1

ПРИ
ПРИ
ПРИ