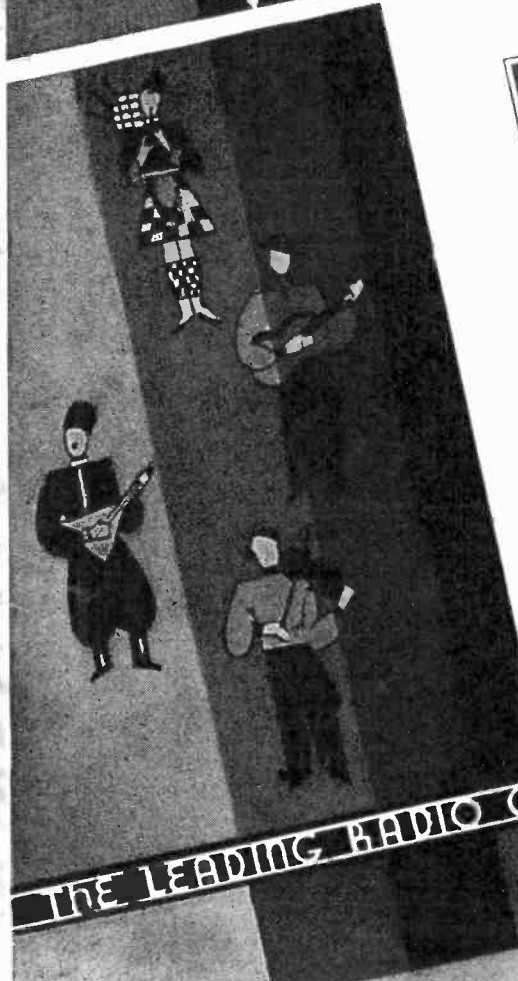


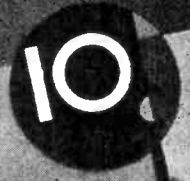
FOR WEEK OF
December
10th to 16th

BROADCAST WEEKLY



DONNA DAMERAL
Better known to the radio audience as "Marjorie Minter" of the "Myrt & Marge" skit, heard five nights a week over the Columbia-Don Lee Broadcasting System.

THE LEADING RADIO GUIDE OF THE PACIFIC COAST



Pullman Rates Reduced $\frac{1}{3}$

and

Rail Fares for 2^c A MILE and less

WHAT HAPPENED DEC. 1

1. Pullman rates reduced to all points in the United States.
2. Southern Pacific "2¢ a mile" Tourist fares continued with a few changes.
3. One way Coach and Tourist fares to the East reduced.
4. Standard "All-year" round-trips to the East greatly reduced.
5. Standard one way fares cut one-sixth, everywhere in the West.

—**—

SPECIAL CHRISTMAS ROUNDTRIPS EAST

Leave December 9, also December 14 to January 1, inclusive. Return limit January 15. For example, \$88.75 from most California points to Chicago and back, good in all types of accommodations.

Southern Pacific

BAL TABARIN

invites you to dance to those Gerun tempos you hear on the air.

TOM GERUN'S BAND

now home at "The Bal" after World's Fair triumphs. And the band's only the half of it. One Broadway floor show after another! Frank Martinelli menus.

Dinner \$1.50

Saturdays \$2

NO COVER CHARGE

Columbus at Chestnut / San Francisco

TWENTY MINUTES IN PARIS

A lilting, gay transplantation
of far-off Patee

on

KQW

(1010 kilocycles)

EVERY SATURDAY

7:05 p. m.

SONGS—STORIES—MUSIC
Entirely in French

Conducted by

JEAN BERGEVIN

Contributing Artists

MME. FERNE BATTEL, *Soprano*
LEO BATTEL, *Violinist*
ROSE MANNING, *Pianist*

RADIO IS A MOST APPRECIATED GIFT

Make your Christmas selection at

BROADCAST WEEKLY'S own RADIO STORE

36 POWELL STREET

HEADQUARTERS

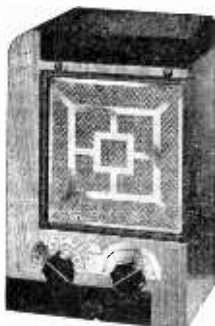
for the

Majestic

SMART SET



Model 59—\$44.50



Model 49—\$28.50

STYLE-BUILT
RADIOS

The modern Christmas gift
that keeps on giving
throughout the
year

—**—

Models pictured here give
6, 8 and 9-tube reception by
use of Duo-Valve Spray
Shield Tubes.

—**—

TAKE ADVANTAGE
OF OUR
SPECIAL CHRISTMAS
TERMS AND
LIBERAL TRADE-IN
ALLOWANCE



Model 44—\$28.50



The Century
Model 463—\$47.50



The Master
Model 461—\$47.50

FOR EXPERT
RADIO SERVICE

Phone our Service
Department

DOUGLAS 5272



Model 194—\$24.50

ETHER GLEANINGS

By J. CLARENCE MYERS

THANKS, folks. Thanks! Wish we could get Bing Crosby to sing for us our appreciation to you for your s-p-l-e-n-d-i-d response to our limerick contest announced in last week's issue. Were we surprised!

It's going to be easy money to the winner. One simoleon iron man, eagle, buck—or, in the King's English—one dollar, just for writing one line. That's the award Ether Gleanings is making each week this month for the best line tagged on to the bottom of our weekly radio limerick. The winner for last week's limerick will be announced in the next issue, as will the runners-up.

Our congratulations, too. We didn't know there were so many fine limerick artists out there in the radio audience. We assumed a lot when we started this here contest. We've grown a handful of new gray hairs trying to decide the winner, so many were good. But to those who didn't click with the first one—try again, we say. Below is Limerick Number 2. Dig right in, gang; you'll get many times more than a dollar's worth of fun out of it, even if you don't win the buck.

Number 2

Meredith Willson's fine crop of hair
Seldom does fall beneath a barber chair.
He wears it long
So he can belong

There it is. Write the last line for it and mail it right now to Ether Gleanings, Broadcast Weekly, 36 Powell Street, San Francisco. Member, one buck to the writer of the best line.

What a clamor to see that Shell Show at Don Lee's KFRC in San Francisco! The sponsor has issued complimentary tickets to all who request them, and thus far there is a waiting list of several thousand, with the space in the studio being booked up until next April.

Rita Lane, the NBC songstress, sang in several of the operas produced by the San Francisco Opera Association during the season just closed. She sang under the name of Myrtle McLaughlin.

Acme Beer's "swelligant" program, "Stars of the West," has moved bag and baggage to a Wednesday night spot on the NBC chain. It may be dialed from 9 to 9:30 o'clock.

"Stars of the West" limelights Meredith

Willson and his orchestra; Tommy Harris, Helen Musselman, and the Acme Male Quartet.

Folgers Coffee have cancelled their NBC programs, which means that Lee S. Roberts' final program for them will be broadcast on the evening of December 20 over KGO. His final morning program was December 8.

One feature we regretted seeing go off the air was those "Do You Believe in Ghosts?" yarns so excellently written and staged by Harold Burdick for S & W on the NBC. Understand Burdick is working on something new for S & W, and they may renew his radio contract by the first of the year.

Most of the KFRC staff had to eat their Thanksgiving turkey dinner on the run, including Manager Harrison Holliday. For Thursday is Blue Monday Jamboree day now, and that means long hours of rehearsal before the program goes on the air at night. Such is the life of a microphone star.

A glutton for work is John Eugene Hasty, radio playwright and production manager of MacGregor and Sollie's recording laboratories in San Francisco. Hasty is now producing eighteen programs for transcriptions to be used on radio stations throughout the country, as well as writing six different programs weekly. One of his most popular hits is "Eb and Zeb," which has been running now for several years. Al Pearce and William H. Wright are the principals.

Senator Fishface of the NBC convulsed 'em when he appeared in person at the Warfield Theater in San Francisco last week.

The Langendorf people drop their feature, Langendorf Pictorial, conducted by Rush Hughes, on December 29. It has been an event of KGO for many months, and was widely followed. Hughes' personality at the mike will be missed. Here's hopin' he cinches another sponsor by New Year's.

Emil Polak, vocal counsel and orchestra conductor at the NBC, is back at work, following a week's illness.

The manufacturers of the Pontiac automobile have purchased time on the CBS chain for a twice weekly program beginning December 16. It will be released over KFRC

here from 9:15 to 9:30 p. m., Wednesdays and Saturdays. The nature of the broadcasts have not been announced.

* * *

New material on the Big Ten program, a KPO event Thursdays at 9:30 p. m., includes the Clef Dwellers, vocal trio; Nanette La Salle and Tommy Harris. Meredith Willson's orchestra remains too.

* * *

Camel cigarettes started its new program over CBS November 28. KFRC is local outlet.

* * *

No-Doz is sponsoring a nightly dramatized news program on KTAB which lime-lights Harold Peary.

* * *

Aunt Sammy, KQW's household expert, whose informative chats are winged out every morning except Sunday at 10 o'clock, is Eva P. Hart in real life, production manager of the San Jose broadcaster.

* * *

KYA announces that it is releasing three new NBC programs which are:

Father Finn's Choral Group—Mondays at 5:45 p. m.

Muriel Pollock and Vee Lawnhurst, piano team, Fridays at 3:45 o'clock and Echoes of Erin, Thursdays at 2:45 p. m.

* * *

Etta Moten, NBC's dusky torch singer, who is a recent addition to the artist staff, had a featured vocal part in the "Gold Diggers of 1933" and other RKO sound films.

* * *

Esther Coombs, who won a national audition contest for amateur singers several years ago, ex-NBC, is now vocalizing before KFRC's mikes.

* * *

Captain Argus (Gustave Severin) has changed the time of his KYA chats to 8:30 p. m. It was formerly 9:30 p. m.

* * *

Those three of a kind Pickens Sisters, Georgia sweethearts, departed from San Francisco recently, with regret. They enjoyed a very successful run at the Warfield Theater, movie palace, and also the participation on a half-dozen or so programs at the NBC San Francisco studios. They are headed East, but looking forward to their return here.

Walter Krausgrill is back on the air. He was one of the first to broadcast way back when the transmission of music over the air was a novelty and we listened with earphones on our head through a little crystal set. He's directing the Hotel Whitcomb orchestra, which is broadcasting Saturday nights over KYA from 9:15 to 10 o'clock.

* * *

One of the results of Program Manager Frost's scouting trip to Southern California is being heard on the NBC lanes now—The Clef Dwellers, vocal group. They worked ten weeks with Ted Lewis and his band, put in considerable time singing on the M-G-M lot in Hollywood, and have made numerous transcriptions for radio broadcasts. You can dial 'em Fridays from 7:05 to 7:15 p. m. on KPO and on various other programs. The personnel of the group: Earl Frederick, baritone, manager; Wayne Frederick, second tenor; Victor LaBat, first tenor; and Gene Close, arranger and accompanist.

**Heroes of
the Old Trails**



Live once more in
**"WINNING
the WEST"**

Tune in Stations

KFI	Los Angeles
KGO	San Francisco-Oakland
KGW	Portland
KOMO	Seattle

EVERY TUESDAY, 9:30 P. M.
SPONSORED BY
OCCIDENTAL LIFE INSURANCE CO.

Published weekly by the Broadcast Weekly Publishing Company, 36 Powell Street, San Francisco, Calif.
Telephone DOUGLAS 5272

Vol. XII, No. 50

A. J. URBAIN, Editor and Publisher

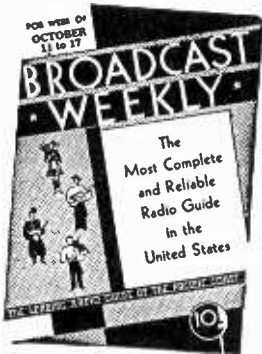
December 9, 1933

Yearly subscription: \$2 in the United States. Entered as second class matter, March 25, 1923,
at the Post Office, San Francisco, Calif., under Act of March 3, 1879.

Copyright, 1933, by Broadcast Weekly Publishing Company.

New, Renewal or Extension

BROADCAST WEEKLY



Regularly 10c per copy

SPECIAL—
1 FULL YEAR

52
Issues
for—

\$ **1** 00

If you act **AT ONCE**

KNOW what is on the air and avoid missing enjoyable programs. Complete schedules for entire Pacific Coast in **BROADCAST WEEKLY**. Also Artists' photographs, biographies, comments, radio news and open letter department. Oldest and largest publication of its kind in the world. Complete radio enjoyment impossible without it. Keep posted. Get acquainted with the Stars. Select your programs. Air your opinions. **KNOW** what's going on. Subscribe to **BROADCAST WEEKLY** now and save \$4.20. Special offer good for a short time **ONLY**. Act **AT ONCE**. Tell your friends.

**YOU SAVE
\$4.20
by Subscribing
NOW**

MAIL THIS COUPON

**BROADCAST WEEKLY PUBLISHING COMPANY,
36 Powell Street, San Francisco, Calif.**

Gentlemen: Enclosed herewith \$1 (Bill, P. O. Money Order or Check), for which send me **BROADCAST WEEKLY** for one year (52 issues). It is understood dollar is payment in full.

NAME.....

NUMBER.....STREET.....

CITY.....STATE.....

New Renewal Extension



WARREN LUCE
KFRC



TIM and IRENE
(Tim Ryan and Irene Noblette)
NBC



EDDIE MARBLE
KOL

★ Stars of the Radio ★



CAROL LOFNER
KOA



AGATHA TURLEY
NBC

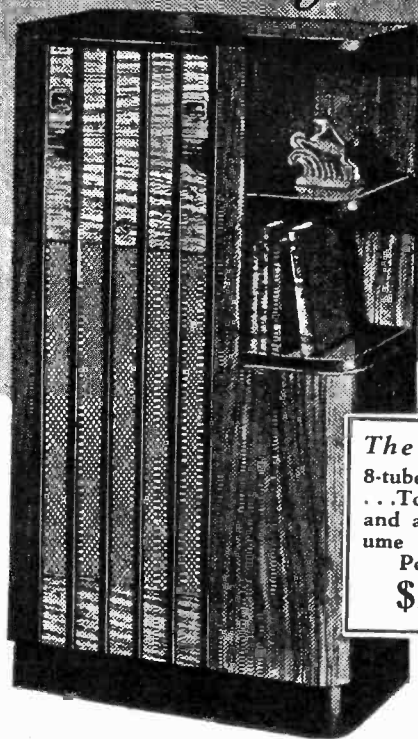


NORMAN BROKESHIRE
CBS



Majestic

The "Smart Set" of Radio



The RIVIERA
8-tube performance
...Tone control
and automatic volume control. Gets
Police Calls.
\$109.50

Many have called this new Majestic the most beautiful—and the *smartest*—radio design ever created. Very modern, but not extreme. Very colorful, with its contrasting wood tones—rosewood, walnut, natural, and ebony—but a most restful, satisfying piece of furniture to live with.

THOMPSON & HOLMES, LTD.

Wholesale Distributors

171 Bluxome Street

San Francisco

Radio's Royal Quartet!



THE KING'S MEN

A finished mastery of the trends and blends in harmony qualify "The King's Men" as members of radio's royalty. Jon Dodson, Ken Darby, Buddy Lynn, and "Rod" Robinson are the henchmen who bring these organ-like harmonies to dialers each Tuesday and Friday evening at 7:15 o'clock, over . . .

KYA

1230 kilocycles

MICROPHONE GOSSIP



• • • Members of KHJ's staff have been falling right and left under the darts of Dan Cupid. The mischievous little fat fellow has felled the following people in his furious onslaught, the diminutive Sylvia Picker who up and married Grant Garrett, Eddie Cantor's gag man; Frank Gill, Jr., who promised "forever and ever" to beauteous Verna Hillie of the Paramount Studio; Bertha Gerstaner who nodded acquiescence to "Red" Wild.

So much for those already hinged by marital ties. The w.k. gossiping birdie whispers that Bill Doemling is headed lickety-split for luncheon dates with lovely Mary Kornman, film actress who recently returned from New York. Bill Goodwin, whose soft voice is heard over "Catherine the Great," is "that way" about Paula Winslow, big-eyed beauty of, the "Catherine" cast. Clarence Hamilton, new addition to KHJ's announcing brethren, strains at the microphone because a fair-haired young lady awaits his every syllable in Sacramento.

• • • Paul Martin, NBC star whose unique style of playing the guitar lends a touch of magic to the harmonies heard on his Wednesday and Friday evening programs over KPO, is the proud father of a brand new daughter, born Thursday, November 23, and named Joan immediately. Her older sister, Gloria, is waiting anxiously for Joan and her mother to come home.

• • • K N X, Hollywood's 25,000 watt station, continues to shatter long-distance reception records. Recently three phonograph records were made in England from a direct broadcast heard over

KNX. These records were sent to KNX and listened to by the entire staff. Now comes a letter from John S. Bohm, Gronland 105, Malung, Sweden, telling of his reception of KNX from 4:49 a. m. until 5:53 a. m., the morning of November 3. The corresponding time on the Pacific slope would be nine hours earlier, or from 7:49 p. m. 'til 8:53 p. m., the evening of November 2.

Enclosed with Bohm's letter was a "Coupon-Response International" for 40 Ore (approximately 12 cents), which takes the place of a postage stamp.

Kenneth G. Ormiston, chief engineer for KNX, traced the plot of the Great Circle, showing the way in which the KNX signal reached Sweden. The signal travelled over the widest possible portion of North America, from Los Angeles to Labrador in a straight line, from thence over the North Atlantic into Sweden.

• • • That "Vive Noeh!" which Carl Ravazza of Tom Coakley's orchestra sang not long ago during the orchestra's nightly broadcast from the Palace Hotel Rose Bowl room, is an old Italian drinking song, which has never been recorded on paper. Carl's grandmother taught it to him along with a number of other folk songs which have been handed down from one generation to another.

According to the song, "Noeh" (as spelled in Italian) was not only the hero of the Deluge, but the inventor of wine and the first real "wet."

• • • "We're just waiting for a free week-end that's all that's holding up our marriage now!" So says Mabel Todd in the latest bulletin regard-

ing the romance between Mabel Todd and Morey Amsterdam.

• • • Howard Barlow had a rare experience the other night when he heard the "March of Time" on the air for the first time in his life, although he has just begun his fourth season as the program's musical director. Reason: his doctor ordered a rest. Result: Barlow attended the rehearsal; instructed his concert master, Victor Bey, on how to wield the baton as "Time Marched On," and then marched home to catch it on the receiving end.

• • • If Don Bestor, band leader, had followed his earliest musical bent he would have been a pipe organ player instead of an orchestra director. At the age of nine he was adept enough at the keyboard to win the praise of his music teacher. But at 16 he ran away from home to become orchestra director for a traveling musical show.

• • • Several firms are dickering with Tony Romano, Al Pearce singer and guitarist, to make recordings for them.

Tony, who is eighteen years old, is both the oldest and youngest member of Al's Gang. Oldest in point of continuous associations with Al and youngest in point of years.

Tony's ambition is to be the best guitar player in the world.

• • • Rush Hughes, NBC's Pictorial reporter heard weekday afternoons at three o'clock, has an album filled with pictures of listeners, who frequently send autographed likenesses of themselves with a request for a photograph of the news-reporting star. They range through all conceivable types of men, women, and

children—pretty girls in bathing suits, little boys who inscribe snapshots "To my pal Rush" and elderly folk.

One of the youngest fans whose picture is included is a tiny girl of three, photographed beside her big St. Bernard; one of the most interesting is a 72-year-old listener who lives on a California ranch far from city comforts. She stands beside a big spinning wheel of elementary type upon which she is busily engaged.

"Just to show you some folks know how to meet the depression," her letter says, gallantly.

A thousand requests for Hughes' photograph arrived in one mail from Southern California.

• • • Rene Hemery, who conducts the KFVB concert orchestra, owns a small sailing brig. His off hours at KFVB are spent roaming the Isthmus between Wilmington and Catalina. Which accounts for his mighty ruddy complexion.

• • • The Rubinoff-Cantor air feud is on with redoubled vigor. Teddy Bergman, expert dialectician, played the part of Rubinoff on Eddie's first program of the season.

• • • Al Jolson's retirement from the screen, which he announced November 19 in Hollywood, will not affect his radio broadcasting, which will be resumed early in January on the Kraft program, with Paul Whiteman and Deems Taylor. On the matter of picture work, Al said his current film production would be his last.

Signing of Paul Whiteman and Deems Taylor to contracts covering 1934, insures the continuance of the program as originally set up, with Jolson, Whiteman, and Taylor contributing variously to the entertainment.

Disinclined, after a busy career, to pursue the strenuous

routine of the movie studios, Jolson feels that radio offers the proper outlet for his talents.

• • • Joe Penner, after receiving a number of letters from dialers wanting to know why he says "You nasty mind," rises to remark that the line is "You nasty man," and he is curious to know why the misunderstanding occurs.

• • • Edward J. Kay, prominent in music and film activities, joins the musical staff of KHJ, Los Angeles, as assistant to Raymond Paige, musical director. Long identified with silent and talking pictures, Mr. Kay comes to the Don Lee station with an impressive musical record, having acted as musical director for British Gaumont in England, during which time he directed scores for "Rome Express" and "After the Ball" in addition to thirty-six other pictures.

Kay, who replaces Gino Severi, now director for the Hoff Brau in San Francisco, will direct "Three Old Favorites" and "Forest Lawn" programs in addition to his duties as Paige's assistant.

Musical circles recall Kay's work as director for Pat Rooney for five years, musical director for Esther Ralston and Leatrice Joy, and others of the silent films. His most recent work in pictures, "Rainbow Over Broadway," will have an early release.

• • • Norman Nielsen, master of ceremonies for the "Happy Go Lucky" hour and "Peck's Bad Boy" of radio, celebrated his birthday Friday, November 17, at festivities he will remember for a long time. All of the "Happy Go Lucky" comics ganged up on the genial Norman and despite an over-sized suit padded with pillows, they remembered him with congratulatory pats he will not soon forget.

• • • The Frank Gill-Verna Hillie nuptials, Saturday, November 18, were almost disrupted when Bill Doemling, Gill's air associate and best man, had a memory lapse and went into their apology routine. It took the combined efforts of the wedding attendants to divert the comics from going into their regular "Merrymakers" routine.

• • • The wages of sin are just ice cream and cake to members of the NBC Stringwood Ensemble!

Almost the greatest sin a radio artist can commit is to be late to rehearsal, but Charles Hart, conductor of the Ensemble, has discovered how to make it pay, by fixing a rate of fines for varying degrees of unpunctuality by the Stringwoodians. The penalties go something like this:

One to five minutes late—ten cents.

Five to fifteen minutes late—twenty-five cents a minute over five.

Fifteen to thirty minutes late—two weeks' notice.

So far, none of the Stringwoodians has reached the five dollar mark, but even so, the dollars mount up, and once a month the whole organization enjoys a party at the expense of the late members.

• • • Nanette La Salle, NBC blues singer, has a manicure twice a week—you would too, if you owed as much to your patties as Nanette does. For many months they paid her room rent and singing lessons, for she was one of the most sought-after models for hand-closeups in Hollywood, and her fingers "doubled" for those of a number of stars whose own digits weren't so long and delicately shaped.

• • • Fred Waring's smooth theme melody, "Sleep," has had quite a metamorphosis. It began as a hymn, was converted into negro ragtime, and finally orchestrated in its more

famous form by Waring himself. Fred first heard a negro band blaring it back in 1919 at Penn State College, and was struck by its melody. He discovered that originally it was a hymn entitled "Visions of Sleep," written thirty years ago by Adam Giebel, a blind organist of Philadelphia. Giebel, who penned more than 1500 hymns and piano compositions, gave the original "Sleep" copy to Waring, who orchestrated the number and built it up to a popular hit in 1924. Since then, it has been the Pennsylvanians' identifying tune on radio, stage and screen. Giebel's original now hangs in a frame in Waring's office.

• • • Like those old brain-teasers about a man being his own brother-in-law, we have been trying to discover Lulu (Big Show) McConnell's exact relationship to herself, but will have to give it up. Anyway, it seems that when Lulu clowns on the Columbia net-

work she mimics herself, performing in character as Mrs. Grant Simpson, who, in private life, is Lulu McConnell. She does so in tribute to her late actor-husband, Grant Simpson. In addition, he is portrayed in the skits by one of his old actor friends, and all others heard in her cyclonic comedy scenes are old acquaintances. Each performs under his private-life name.

• • • An instrument rarity, a perfect copy of the harpsichord used by Johann Sebastian Bach in composing one of his most famous works, has been acquired by Frank Black, NBC music director. It is considered one of the finest harpsichords in the world and is the only one of its kind in this country.

The instrument was made twenty years ago by Paul de Wit for the University of Vienna. During the war it was sold to a Viennese musician who in turn recently transferred it to the NBC music

director. It is an exact copy of the instrument used by the famous harpsichordist, Goldberg, for whom Bach wrote one of his chief masterpieces, the Goldberg Variations.

Physically, this forerunner of the pianoforte looks like a narrow, elongated grand piano, except that it has three keyboards, on each side of which are several stops similar to those on an old-fashioned organ. These give different tone effects and take the place of pedals. The color scheme of the keys is the opposite of that used today, five "black" keys in each octave being white, and the "white" keys, black. The strings are plucked by a quill when the keys are struck.

• • • Hale, Derry and Hanna, the Three Cheers, just completed some work in the Columbia Picture "Let's Fall in Love," with Edmund Lowe and Miriam Hopkins. They sang the theme song which titles the picture.

HOTEL PLAZA

Ray Maxwell, Manager

POST STREET at STOCKTON

SAN FRANCISCO

CENTRALLY located in the heart of business and amusement activities . . . facing beautiful Union Square . . . your stay at San Francisco will be more enjoyable at the Hotel Plaza.

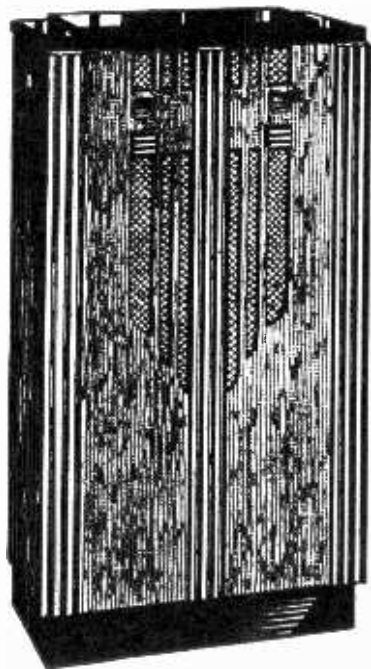
Here a spirit of real hospitality awaits you . . . the best of service . . . rooms in which you will feel at home . . . comfortable beds that invite restful sleep . . . and food to tempt your appetite served in the dining room at popular prices.

*Private dining rooms for group luncheons
and conventions*

RATES NOW BEGIN AT—
\$2 SINGLE WITH BATH
\$3 DOUBLE WITH BATH



The "Smart Set" of Radio



Majestic

THE RITZ — \$87.50

A beautiful console radio — the very last word in *beauty, style and smartness*. Piano finish, modernistic cabinet with center panel and sides of striped walnut and pilasters of dark walnut.

A superheterodyne receiver using the latest "DUO-VALVE" tubes — each of which does the work of two ordinary tubes.

A MAJESTIC radio in every sense of the word.

THOMPSON & HOLMES, LTD.

Wholesale Distributors

171 Bluxome Street

San Francisco



SILHOUETTES



TWO girls with nimble fingers blend their talent in "A Pair of Pianos," and comprise the only feminine twosome heard regularly from NBC's San Francisco studios.

Gertrude Lyne and Grace Frankel are the names of this unique team whose pianistic ability harmonizes so perfectly, but who, in person, form a complete contrast in appearance, tastes and temperament.

"That's why we get along so well," explains Gertrude Lyne.

She's the taller of the duo, a slim girl with tawny hair and hazel eyes, who makes the arrangements for the Pair of Pianos' programs, and directs their other activities. Grace Frankel is a few years younger and several inches shorter, dark-haired and dark-eyed.

"Forgotten Melody," the theme song which she and Gertrude use on their own programs, was written by the latter. It is only one of a number of songs which Gertrude has composed.

She was born in Leadville, Colorado, and began playing piano when she was so small a cushion had to be placed on the piano bench so she could reach the keys. She attended the New England Conservatory of Music, and was graduated with high honors in or-

gan and piano. She was just twenty-one years old when she became an organist on the Paramount Theater circuit, playing in the theaters of every large city until she and Grace Frankel met and formed their present team.

Grace was born in San Francisco and educated here. She was just eight years old when she took her first piano lesson and at sixteen she first began playing professionally,



GERTRUDE LYNE and GRACE FRANKEL

in motion picture theaters. For several years she was with the West Coast Theaters in Los Angeles, where she played in various theaters.

Then a well-known music publishing firm in San Francisco annexed her services. It was at the period when the music business was at the height of its prosperous era,

and the diminutive pianist recalls the long days she spent at the keyboard in her company's rehearsal room. Vaudeville stars wanted new songs, and frequently got them within a few short hours after the words and music had been fitted together. They usually tried to include them in their acts the same night, and it was Grace's job to teach these songsters the new melodies.

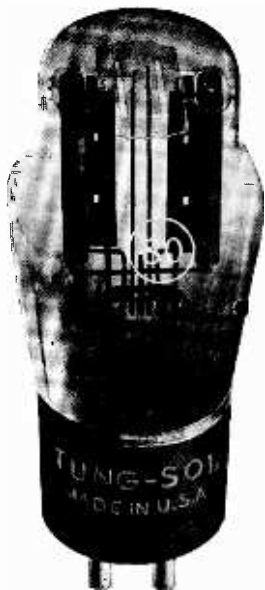
First the music, then the words, was the sequence and Grace would sit at the piano for as long as four and five hours at a stretch, munching sandwiches between bars.

"And I thought that was strenuous," she says. "Why I lost eight pounds the first week Gertrude and I began rehearsing together!"

The two pianists rehearse now for several hours every day, whether they are to be on the air or not. Every number they play is especially arranged by Gertrude and timed to the last note. The girls have a firm friendship, but spend little time together outside their working hours — they feel that in this manner they keep their working comradeship unspoiled by too much intimacy, don't talk each other out, and keep their keyboard twosome fresh and spontaneous in sound. Grace's favorite sport is horseback riding. Gertrude plays golf for recreation and contract bridge for mental exercise.



KENNETH NILES, KHJ announcer, producer and master of ceremonies, became associated with radio while a student at the University of Washington. The coonskin coat period was intermingled with Glee Club affairs, fraternities, dramatics and saxophones. He won a scholarship to the Goodman Memorial Theatre in Chicago; played in various Duffy productions; studied dancing; appeared as Juvenile in a touring "Rain" company; has held various positions as stage director. Age, twenty-six. Height, 5 feet 11; weight, 140; dark. Married.



TUNG-SOL'S reputation as a precision manufacturer was established long before radio was born.

Look at the light bulbs in your automobile. They are probably Tung-Sols, because most of the cars in America have for years been initially equipped with Tung-Sol bulbs.

Can you think of any product on which precision methods of manufacture are more important or rigid standards of quality more vital than the light bulbs on which the safety of millions of motorists depends?

And if the leading automobile engineers in the world's greatest automobile owning nation have for years found Tung-Sol bulbs so outstandingly superior that they have specified them repeatedly, isn't that a tribute to Tung-Sol's standing as a manufacturer of precision built products?

To build good radio tubes demands precisely the same type of manufacturing operation as to build good automobile bulbs. And when it comes to that kind of experience, Tung-Sol stands alone!

Look for the dealer in your community who sells Tung-Sol radio tubes. The fact that he has the Tung-Sol franchise is in itself a sign of dependability and evidence of his desire to give you reliable merchandise and service.

They call it the

LONG-LIFE TUBE

...and absolute precision in every single manufacturing operation maintains that Tung-Sol reputation!

You can't see what makes Tung-Sol a longer lasting tube, and even the readings on the dealer's testing apparatus tell only part of the story. . . But it's the years of experience in precision production, the use of processes and the adherence to inspection standards which in many respects are unique in the tube industry, that show up after months of perfect performance in your set. . . And after all, flawless performance is the important thing you buy when you buy *any* tube, because the finest receiver in the world is only as good as the tubes in it. . . Try Tung-Sols in your radio next time you need tubes and convince yourself that they actually do give better service *longer*.

TUNG-SOL RADIO TUBES, Inc.

NEWARK, N. J.

Distributed by

KAEMPER-BARRETT, LTD.

1118 Mission Street

San Francisco

ORDER BY MAIL

from

BROADCAST WEEKLY'S own RADIO STORE

Just mark the tubes that you want. We will thoroughly check and match them, and mail them to you, postage paid. Sent c. o. d. if desired.

Type	List Prices	Type	List Prices
TS-1	Half-Wave Mercury Vapor Rectifier.....\$1.50	TS-120	Power Amplifier..... 3.00
TS-2A3	Power Amplifier Triode..... 4.00	TS-171-A	Power Amplifier..... .75
TS-2A5	Power Amplifier Pentode..... 1.60	TS-183	Power Amplifier..... 2.05
TS-2A7	Pentagrid Converter..... 2.20	TSV-199	Amplifier and Detector..... 2.25
TS-2B7	Duplex-Diode Pentode..... 2.00	TSX-199	Amplifier and Detector..... 1.50
TS-5Z3	Full-Wave Rectifier..... 1.50	TS-200-A	Super-Sensitive Detector..... 4.00
TS-6A7	Pentagrid Converter..... 2.20	TS-201-A	Amplifier and Detector..... .60
TS-6B7	Duplex-Diode Pentode..... 2.00	TS-210	Amplifier and Oscillator..... 5.00
TS-25Z5	Voltage Double Rectifier..... 2.00	TS-222	Screen Grid Amplifier..... 2.00
TS-34	Power Control R. F. Pentode..... 2.15	TS-224	AC Screen Grid Detector & Amplifier 1.20
TS-41	Power Pentode..... 1.60	TS-226	AC Amplifier..... .65
TS-42	Power Pentode..... 1.60	TS-227	AC Amplifier and Detector..... .70
TS-43	DC Power Pentode..... 2.50	TS-250	Amplifier Detector..... 1.30
TS-44	Super-Control R-F Amplifier Pentode 1.55	TS-231	Power Amplifier..... 1.30
TS-46	Amplifier..... 1.55	TS-232	Screen Grid Amplifier..... 1.90
TS-48	Power Amplifier Tetrode..... 3.00	TS-233	Pentode..... 2.10
TS-49	Dual Grid Power Amplifier..... 1.70	TS-235	Super Control Screen Grid R. F. Amplifier Variable Mu..... 1.30
TS-55	Duplex-Diode Triode..... 1.60	TS-236	Screen Grid R. F. Amplifier..... 1.50
TS-56	Amplifier and Detector..... 1.20	TS-237	Detector and Amplifier..... 1.20
TS-57	Triple Grid Detector and Amplifier... 1.65	TS-238	Power Amplifier Pentode..... 1.45
TS-58	Triple Grid Super-Control Amplifier... 1.65	TS-239	Super Control R. F. Pentode..... 1.50
TS-59	Triple Grid Power Amplifier..... 2.00	TS-240	Voltage Amplifier with Resistance... 2.00
TS-75	Duplex-Diode Triode..... 1.60	TS-245	Power Amplifier..... .75
TS-77	Triple Detector Amplifier..... 1.80	TS-247	Power Amplifier Pentode..... 1.30
TS-78	Triple-Grid Super-Control Amplifier... 1.80	TS-250	Power Amplifier..... 4.00
TS-79	Class B Amplifier..... 2.60	TS-257	Power Amplifier Pentode (DC Filament)..... 2.50
TS-82	Full Wave Mercury Vapor Rectifier... 1.20	TS-280	Full Wave Rectifier..... .70
TS-83	Full Wave Mercury Vapor Rectifier... 1.55	TS-281	Half Wave Rectifier..... 3.50
TS-84 or TS-6Z4	Full-Wave Rectifier..... 1.75	TS-485 or 484	Detector Amplifier..... 1.80
TS-85	Duplex-Diode Triode..... 1.60		
TS-89	Triple-Grid Power Amplifier..... 1.80		
TS-112-A	Amplifier and Detector..... 1.30		

BROADCAST WEEKLY RADIO STORE,
36 Powell Street, San Francisco, California.

Gentlemen: I enclose herewith \$ for which send me the tubes marked. (If you want tubes sent c. o. d., mark here)

Name

Address

City..... State

SUNDAY Programs • • • • • December 10, 1933

379.5 Mtrs. NBC-KGO Sutter 1920
790 Kcys. 7500 Watts
 National Broadcast. Co., San Francisco

8 A.M.—Chronicle Comics
 8:30—Arion Trio
 9:30—Organ Concert
 10—Stringwood Ensemble
 10:30—National Youth Conference
 11—Gene Arnold's Commodores
 11:30—Grenadier Guards' Band
 12 noon—Lady Esther Serenade
 12:30—Yeast Foamers
 1—True Engineering Adventures
 1:15—Wildroot Program
 1:30—Hoover Sentinels Concert
 2—National Vespers
 2:30—Grand Hotel: drama
 3—Catholic Hour
 3:30—The Novellers
 3:45—Engineering Thrills: drama
 4—The Real Silk Show
 4:30—Joe Penner, comedian
 5—Eddie Cantor and Rubinoff
 6—Manhattan Merry-Go-Round
 6:30—American Album of Familiar Music
 7—Chevrolet Program: Jack Benny
 7:30—To be announced
 8:15—The Jergens Program
 8:30—Death Valley Days: drama
 9—To be announced
 9:15—Readers' Guide: J. H. Jackson
 9:30—Tom Gerun's Orchestra
 10—Richfield News Flashes
 10:15—Paul Carson, Organist
 11 to 12 mid.—Tom Coakley's Orch.

440.9 Meters KPO Sutter 1920
680 Kcys. 50,000 Watts
 National Broadcast. Co., San Francisco

8 A.M.—Hall and Gruen, piano duo
 8:15—Major Bowes' Family
 9:15—Gordon String Quartet
 9:30—Radio City Concert
 10:30—Cecilians, vocalists
 11—Bible Stories
 12 noon—Music Garden
 1—Melodians, dance orchestra
 1:45—To be announced
 4:30—Sax-o-Tunes
 5—John and Ned, harmony duo
 5:15—Music of Today and Yesterday
 5:45—H. M. Hyde, talks on science
 6—Gunnar Johansen, pianist
 6:30—Silhouettes: orchestra, vocal
 7—Quartet Time
 7:15—Personal Closeups, interview by Gypsy
 7:30—Rainbow Harmonies
 8—Rudy Seiger's Orchestra
 8:30—Minneapolis Symphony Orch.
 9:30—Univ. of Calif. Program
 10—Gene Quaw's Orchestra
 10:30—On Wings of Music
 11 to 12 mid.—Midnight Melodies

322.4 Meters KROW Glenc. 6774
930 Kcys. 1000 Watts
 Educa. Broad. Corp., Oakland, Calif.

8 A.M. to 12:30—Various programs
 12:30 P.M.—Johnny Bozie, accordion
 12:45—Gwendolyn Van Emon, vocalist
 1—William Hamlyn, vocalist
 1:30—Bible Questions and Answers
 2—University of the Air
 2:30—Soccer—Football
 4:30—Warren Stenson, vocalist
 4:45—Alice and Cathryn, vocalists
 5—Oakland Council of Churches
 5:30—Juliet Powers, vocalist
 5:45—The Chatterbox
 6—Sally Snow, Hillnely
 6:15—Watch Tower Program
 6:30—Musical Miniatures

7—Music and Speaker
 7:30—Sunday Concert
 8—Walk-a-thon
 8:15—Olga Cook, vocalist
 8:30—Cumberland Hillbillies
 9—Watch Tower Japanese
 9:30—International Serenaders
 10—Dance Music
 10:45 to 11 P.M.—Walkathon

243.8 Meters KYA Prospect 3456
1230 Kcys. 1000 Watts
 Pac. Broadcast. Corp., San Francisco

8:15 A.M.—Christ. Science Reading
 8:30—Sabbath Reveries
 9—"Fellowship of the Air"
 9:15—Funny Paper Man
 9:45—Tango Time
 10—Pianoforte Etudes
 10:15—Village Boys
 10:30—Three Four Melodies
 10:45—Musical Strings
 11—Old St. Mary's Church Services
 12 noon—Pipe Organ Concert
 12:30—Paraders: 1, Waltz Idylls
 2—Light Opera Concert
 2:30—Seventh Church of Christ Sc.
 3:30—Chamber Group
 4—Community Forum
 4:30—Symphony Concert
 5:30—Violin Masters
 6—Sacred Hour
 7—Memory Music
 7:30—Opera (Recordings)
 9:30—"Beauty That Endures"
 9:45—Hotel Montclair Orchestra
 10 to 11 P.M.—Concert Melodies

535.4 Meters KTAB Garfield 4700
560 Kcys. 1000 Watts
 Assoc. Broadcasters, Oakland, Calif.

8:30 A.M. to 1—Various Programs
 1 P.M.—Church of Latter Day Saints
 1:30—Dillon Players
 2—Calif. State Cham. of Commerce
 2:15—Si and Elmer
 2:30—Musical Moods: Ensemble
 3:30—Book Review; Studio
 4:30—Concert Recital
 5—Organ Concert
 6—Echoes of Portugal
 7—Prof. Geo. Kruger, pianist
 7:15—Amateur Sports News
 7:30—Church Services
 9:15—Rod Hendrickson
 9:30—Chapel of the Chimes Organ
 9:45—Studio Program
 10—X Bar B Boys
 10:30 to 11 P.M.—Hal Girvin's Orchestra

340.7 Meters KLX Lake. 6000
880 Kcys. 1000 Watts
 Tribune Pub. Co., Oakland, Calif.

12 noon—Records
 12:30—Jeannette Stock, soprano;
 Merlyn Morse, tenor; Anita and
 Orsco, novelty guitar, duo
 1:30—Records: Brahms Trio
 3:30—Manila String Orchestra
 4—Recordings
 5—Covered Wagon Jubilee
 5:30—Famous Campers
 5:45—Old Man Soliloquy
 6—Mixed Quartet
 6:30—Hotel Oakland trio
 7:30—Dot Kay and Nancy Hersey
 7:45—Leaders in Sports
 8—John Lewis Quintet
 9—Nevada Nite Herders
 9:30—William Don
 9:45—Sheila Sand and Joe Sanchez
 10—Freddie Skinner
 10:30 to 11 P.M.—Dance Program

491.5 Meters KFRC Prospect 0100
610 Kcys. 1000 Watts
 Don Lee Broadcast. System, S. F., Cal.

8 A.M.—Examiner Comics
 8:30—Tabernacle Choir and Organ
 9:30—CBS, Madison Ensemble
 10—Home Sweet Home Concert
 11—CBS, Broadway Melodies
 11:30—The Georgians
 12 noon—CBS, Philharmonic Orch.
 2—Melodies Organist
 2:15—Salon Moderne
 2:45—Helen Nagin, pianist
 3—Rabbi Magnin
 3:15—Organ; violinist
 3:30—To be announced
 3:45—CBS, Current Events
 4—CBS, Ace Bigode's Orchestra
 4:30—CBS, Willard Robison
 4:45—Cystex Newspaper Adventures
 5—CBS, An Evening in Paris
 5:30—Uncle Louie's Pet Shop
 5:45—Mac. Cowboy songs
 6—CBS, Seven Star Revue
 7—CBS, Angelo Patri
 7:30—"The Merry-makers"
 8:30—CBS, Black Rhapsody
 9—76 All-Star Revue
 9:30—CBS, Ace Bigode's Orchestra
 10—Darrell Donnell; News
 10:10—Dance Music
 11:30 to 12 midnight—Organ Concert

468.5 Meters KFI Richm'd 6111
640 Kcys. 50,000 Watts
 Earle C. Anthony, Inc., Los Angeles

9 A.M.—Church Quarter Hour
 10:30—NBC, Nat'l Youth Conference
 11—NBC, Arnold's Commodores
 11:30—Marimba Band (Elec. T.)
 11:45—The Triodors
 12 noon—NBC, Wayne King's Orch.
 12:30—NBC, Jan Garber's Orch.
 1—NBC, True Railroad Stories
 1:15—NBC, Wildroot Institute
 1:30—NBC, Hoover Sentinels
 2—The Sunday Players
 2:30—NBC, Grand Hotel
 3—U. of S. C. Music Program
 3:30—The Philosopher's Corner
 3:45—NBC, Engineering Thrills
 4—NBC, The Real Silk Show
 4:30—NBC, Joe Penner
 5—NBC, Chase and Sanborn Prog.
 6—NBC, Merry-Go-Round
 6:30—NBC, Amer Album of Music
 7—NBC, Chevrolet Program
 7:30—NBC program
 7:45—"Makers of History"
 8:15—NBC, Jergens Program
 8:30—NBC, Death Valley Days
 9—To be announced
 9:15—NBC, Readers' Guide
 9:30—Zip's Mirth Parade
 9:45—B. A. Rolfe's Orchestra
 10—NBC, Richfield Reporter
 10:15 to 10:45 P.M.—Richelieu,
 Cardinal or King

280.2 Meters KJBS Ord. 4148-49
1070 Kcys. 100 Watts
 J. Brunton & Sons, San Francisco

8 A.M. to 4:45—Records; News
 4:45 P.M.—Silent period
 12:01 to 6 A.M.—Owl program

296.6 Meters KQW Ballard 777
1010 Kcys. 500 Watts
 Pac. Agric. Foundation, Ltd., San Jose

10:15 A.M.—Sunday School Lesson,
 First Baptist Church
 11—First Baptist Church Services
 12:30 P.M.—Silent period
 7:30 to 9 P.M.—Church Services

483.6 Meters KGW Atwater 2121
620 Kcys. 1000 Watts

Morning Oregonian, Portland, Ore.
8 A.M. to 12—Various Programs
12 noon—Wayne King's Orchestra
12:30—NBC, Yeast Foamers
1—NBC, True Railroad Stories
1:15—NBC, Wildroot Program
1:30—NBC, Hoover Sentinels
2—Musical Program
2:25—Oregon State Board of Optometry
2:30—NBC, Grand Hotel
3—NBC, Catholic Hour
3:30—Nick's Flower Home
3:45—NBC, Engineering Thrills
4—NBC-KGO Programs to 9:15
9:15—G. A. Paine program
9:30—Homicide Squad
10—NBC, Richfield News Flashes
10:15—NBC, Bridge to Dreamland
11 to 12 mid.—NBC, Bal Tabarin Orchestra

309.1 Meters KJR Seneca 1515
970 Kcys. 5000 Watts

Northwest Broad. System, Seattle, Wn.
8 A.M. to 1—Various Programs
1—Hymn Tunes
1:45—Male Quartet
2—NBC, National Vespers
2:30—Cornish School
3—NBC, Catholic Hour
3:30—Songs of the Sea
3:45—Olympic Male Chorus
4—University on the Air
5—Emanuel Tabernacle
5:30—Viennese Vagabonds
6—Angelus Hour; Dinner Dances
7:30—Peter Meremblum's Quartet
8—First Church of Christ, Scientist
9—Major and Minor Moods
9:15—NBC Reader's Guide
9:30—NBC Congress Hotel Orch.
10—Emil Hanson
10:15—NBC Bridge to Dreamland
11 P.M.—Silent

526 Meters KVI Broadway 4211
570 Kcys. 1000 Watts

Puget Sound Broadcast Co., Tacoma
8 A.M. to 12—Various Programs
12 noon—CBS, N. Y. Phil. Orch
2—Dick Aurandt, Organist
2:15—Ballad Concert
2:30—Judge Rutherford
2:45—Helen Nagin, pianist
3—A Visit with Betty
3:30—To be announced
3:45—CBS, H. V. Kaltenborn
4—Adele Nelson
4:05—CBS, Programs to 7:30
7:30—Smiling Ed Marble
7:45—Ronald Graham and Dick Aurandt
8—Beauty That Endures
8:15—Haywire Mac
8:30—Black Rhapsody
9—76 All-Star Revue
9:30—Modern Beer Garden
10:30—Dance Music
11:30 to 12 mid.—Organ Concert

225.4 Meters KGB Franklin 6151
1330 Kcys. 1000 Watts

Don Lee Broadcast. System, S. D., Cal.
8 A.M. to 5—Various Programs
5 P.M.—CBS, An Evening in Paris
5:30—Men Love Darkness
6—CBS, 7 Star Revue
7—CBS, Angelo Patri
7:30—Merrymakers
8:30—Musical program
9—76 All-Star Revue
9:30—CBS, Ace Bigode Orchestra
10—World-wide News
10:10 to 1 A.M.—Dance Music

236.1 Meters KOL Main 2312
1270 Kcys. 1000 Watts

Seattle Broadcast. Co., Seattle, Wash.
8 A.M. to 5—Various Programs
5 P.M.—CBS, An Evening in Paris
5:30—Smiling Eddie Marble
5:45—'Fan-O-Gram'
6—CBS, "Seven Star Revue"
7—"Your Child," Angelo Patri
7:30—String Quartette
7:45—The Buccaneers
8—"Strange Adventures"
8:15—Haywire Mac
8:30—Black Rhapsody
9—"76 All Star Revue"
9:30—"Pilsener Beer Garden"
10:30—Dance Music
11:30 to 12 mid.—Organ Concert

285.5 Meters KNX Hemp. 4101
1050 Kcys. 25,000 Watts

Western Broadcast Co., Los Angeles
6:45 A.M. to 5—Various Programs
5 P.M.—Organ recital
5:30—Dr. John Matthews
6:30—Curtis Abell
7—Julie Kellar, harp
7:15—Mayfair Concert Orchestra
7:30—Musical Program
8—Presbyterian Church
9—News; Judge Rutherford
9:30 to 10:30 P.M.—Calmon Luboviski, violinist

499.7 Mtrs. KFSD Franklin 6353
600 Kcys. 1000 Watts

Airfan Radio Corp., Ltd., San Diego
8 A.M. to 2:30 P.M.—Various progs
12 noon—Gus the Funny Man
12:30—NBC Yeast Foamers
1—Program Resume; Studio Prog.
2—NBC, National Vespers
2:30—Popular Program
3—Old Time program
3:30—NBC, Soloist
3:45—True Engineering Stories
4—Concert; Hawaiians
6:30—Dr. Straus' Sketchbook
7—NBC Chevrolet Program
7:30—Mollie Thompson, organist
7:45—To be announced
8:15—NBC, Jergens Program
8:30—Voice, Violin and Piano
9—To be announced
9:15—NBC, Reader's Guide
9:30—University of California
10—NBC, Richfield News Flashes
10:15—NBC, Bridge to Dreamland
11 to 12 mid.—Tom Gerun's Orch.

265 Meters KSL Wasatch 3901
1130 Kcys. 50,000 Watts

Radio Serv. Corp. of Utah, Salt Lake
7 A.M. to 6—Various Programs
6 P.M.—CBS, Seven Star Revue
7—CBS, Angelo Patri, "Your Child"
7:30—Ford V-8 Merrymakers
8:30—Cathedral Madeleine
9—Mormon Tabernacle Organ
10 to 11 P.M.—Dance Music

333.1 Meters KHJ Vandike 7111
900 Kcys. 1000 Watts

Don Lee Broadcast. System, L.A., Cal.
8 A.M. to 12—Various Programs
12 noon—CBS, N. Y. Philharmonic Orchestra
2—Programs from KFRC
3—Rabbi Magnin
3:15—Professor Lindsley
3:30—CBS, Smiling Ed McConnell
3:45—CBS, H. V. Kaltenborn
4—Cystex program
4:15—CBS, Ace Bigode's Orch.
4:30—To be announced
4:45—Quartet
5—CBS, Evening in Paris
5:30—CBS Program
6—CBS, Seven Star Revue
7—CBS, Your Child
7:30—Ford V-8 Merrymakers
8:30—CBS, Black Rhapsody
9—76 All-Star Revue
9:30—Ace Bigode's Orchestra
10—News Items
10:10—To be announced
11—Gus Arnheim's Orchestra
11:30—Organ Recital
12 to 1 A.M.—Recordings

325.9 Meters KOMO Elliott 5890
920 Kcys. 1000 Watts

Fisher's Blend Station, Inc., Seattle
8 A.M. to 12—Various Programs
12 noon—NBC, Wayne King's Orch.
1—NBC, Engineering Adventures
1:15—NBC, Wildroot Institute
1:30—Orchestra and Chorus
2—Old Songs of the Church
2:30—NBC, Grand Hotel
3—Betty
3:30—Olympic Male Chorus
3:45—NBC, Engineering Thrills
4—Real Silk Hosiery Corp.
4:30—NBC, Joe Penner
5—NBC, Chase and Sanborn Prog.
6—NBC, Merry-Go-Round
6:30—NBC, Amer. Album of Music
7—NBC, Jack Benny
7:30—To be announced
8:15—NBC, Jergens Program
8:30—NBC, Death Valley Days
9—To be announced
9:15—Pioneers
9:45—Crazy Water Crystals
10—NBC, Richfield News Flashes
10:15—Sonatas, Frank Leon
10:30 to 11 P.M.—Greater Wash-
ton Hour

508.2 Meters KHQ Main 5383
590 Kcys. 1000 Watts

Louis Wasmer, Inc., Spokane, Wash.
9 A.M. to 1—Various programs
1 P.M.—NBC, True Railroad Stories
1:15—NBC, Wildroot Program
1:30—NBC, Hoover Concert
2—N. W. on Parade
2:30—NBC, Grand Hotel
3:15—N. W. Stories
3:30—NBC, Willie Bird
3:45—NBC, Engineering Thrills
4—NBC, Vincent Lopez Orchestra
4:30—NBC, Joe Penner
5—NBC, Eddie Cantor
6—NBC, Merry-Go-Round
6:30—NBC, American Album
7—NBC, Chevrolet Program
7:30—To be announced
7:45—Crazy Wells Water Co
8—Beauty That Endures
8:15—NBC, Jergens Program
8:30—NBC, Death Valley Days
9—Crooners
9:15—NBC, Readers Guide
9:30—Wash. Water Power Co.
10—NBC, Richfield News
10:15 to 12 mid.—NBC-KGO Prog.

Subscribe Now!

Only \$1 a year

MONDAY Programs

December 11, 1933

379.5 Mtrs. **NBC-KGO** Sutter 1920
790 Kcys. 7500 Watts
National Broadcast. Co., San Francisco
7 A.M.—Breen and de Rose
7:15—Organ Concert
7:30—Financial Service
7:45—Exercise and Applesauce
8—U. S. Navy Band
9—Johnny Toffoli, accordionist
9:15—Home Economics Talk
9:30—Arion Trio
10—Organ Concert
10:30—Magazine of the Air
11:30—Widow and Angel
11:45—The Syncopators: orchestra
12 noon—Financial Flashes
12:15—Western Farm & Home Hour
1—Betty and Bob
1:15—Contract Bridge
1:30—Oxydol's Own Ma Perkins
1:45—Mary's Friendly Garden
2—Al Pearce and Gang
3—Langendorf Pictorial
3:15—Xavier Cugat's Orchestra
3:30—Art and Music
3:45—Horse sense Philosophy
4—The Well-Dressed Woman
4:15—Little Colleen, Agatha Turley
4:30—Arion Trio
4:45—Engineering Thrills
5—Stories of Human Behavior
5:15—Two Men and a Maid
5:30—Billy Batchelor
5:45—Little Orphan Annie
6—Eileen Piggott, vocalist
6:15—Chester Rowell
6:30—Just Around the Corner
7—Carnation Contented Hour
7:30—Demi-Tasse Revue
8—Amos 'n' Andy
8:15—Dr. Painless Parker presents
"The Philistine"
8:30—Voice of Firestone
9—Sealed Power Side Show
9:30—Benny Meroff's Orchestra
10—Richfield News Flashes
10:15—Anson Weeks' Orchestra
11 to 12 midnight—Organ Concert

440.9 Meters **KPO** Sutter 1920
680 Kcys. 50,000 Watts
National Broadcast. Co., San Francisco
7:30 A.M.—Morning Parade
8—Organ Concert
8:15—Log o' the Day Crosscuts
9:15—Julia Hayes, beauty talk
9:35—Johnnie O'Brien, harmonica
9:45—News; Arion Trio
10:15—Songs by the Kitchen Sink
10:30—Dr. Wynn's Health Talks
10:35—Soloist
10:45—Orlando's Concert Ensemble
11—Musical Originalities
11:15—Calif. Fed. of Women's Clubs
11:45—Agricultural Bulletins
12 noon—Radio Guild; 1, News
1:15—Ann Warner's Chats
1:45—John and Ned, harmony duo
2—Ward & Muzzy, piano duo
2:15—Babes in Hollywood
2:30—Mobile Moaners, negro quartet
2:45—The Big Top
3—Dr. Copeland's Health Talks
3:05—Xavier Cugat's Orchestra
3:15—Mud Caves, dramatic skit
3:30—Irene Beasley, blues singer
3:45—Univ. of Calif. Program
4—Dance Masters
4:15—Bisque program
4:20—Bismarck Bavarian Ensemble
4:30—Melody Mixers, orchestra
5—Cambrian Male Choir
5:15—Arion Trio
5:40—Westclox Sketches, drama
5:45—News; Organ Concert

6:30—Safety First
6:45—Detectives Black and Blue
7—Southern Harmony Four
7:15—Tarzan of the Apes
7:30—Realm of Terpsichore
8—Edna Fischer, pianist
8:15—Red Davis, dramatic sketch
8:30—Marshall's Mavericks
9—NBC Drama Hour
9:30—Waltz Time
10—Pacific Serenades
10:30—Piano Pictures
11—Ambassador Hotel Orchestra
11:30 to 12 mid.—Arion Trio

491.5 Meters **KFRC** Prospect 0100
610 Kcys. 1000 Watts
Don Lee Broadcast. System, S. F., Cal.
7 A.M.—Records; Stocks
7:30—Early Morning Exercises
8—Popular Selections
8:15—CBS, Morning Moods
8:30—Popular Selections
8:45—CBS, Rhythm Kings
9—CBS, Voice of Experience
9:15—CBS, Gypsy Nina
9:30—General Mills
9:35—CBS, Concert Miniatures
10—CBS, George Hall's Orchestra
10:30—Better Business Bureau
10:45—Prudence Penny
11—CBS, Just Plain Bill
11:15—Romance of Helen Trent
11:30—CBS, School of the Air
12 noon—Noonday Concert
12:55—Vidacrin Laboratories Talk
1—CBS, Clarence Wheeler's Orch.
1:30—N. Y. Stock Quotations
1:35—CBS, Symphony Orchestra
2—Happy Go Lucky Hour
3—Feminine Fancies
3:30—Sweet Music
3:45—CBS, Enoch Light's Orchestra
4—Hodge Podge Lodge
4:30—Vidacrin Laboratories
4:35—CBS, Kasper Sisters
4:45—Lost and Found Items
4:50—Records; 4:55, Town Topics
5—Rhythm Kings
5:15—H-Bar-O Rangers
5:30—CBS, Bing Crosby
6—CBS, Philadelphia Orchestra
6:15—CBS, Alexander Woolcott
6:30—CBS, The Big Show
7—CBS, Wayne King's Orchestra
7:30—Columbia News Service
7:45—Myrt and Marge
8—The Shell Show
9—CBS Orchestras
10—News Editor of the Air
10:10—Dance Orchestra
11:30 to 12 mid.—Organ Recital

322.4 Meters **KROW** Glenc. 6774
930 Kcys. 1000 Watts
Educa. Broad. Corp., Oakland, Calif.
7 A.M. to 5:30—Various Programs
5:30 P.M.—Eat Your Way to Health
6—Dell Perry, pianist
6:15—Walk-a-thon; 6:30, Organ
7—"Solomon & Sullivan"
7:15—Sports Review
7:30—Italian Program
8—Headlines—News
8:15—Jack Morgan, Accordion
8:30—Latin-American Program
9:30—Musical Program
10 to 12 mid.—Dance Music

280.2 Meters **KJBS** Ord. 4148-49
1070 Kcys. 100 Watts
J. Brunton & Sons, San Francisco
6 A.M. to 4:45—Records; News
4:45 P.M.—Silent period
12:01 to 6 A.M.—Owl Program

243.8 Meters **KYA** Prospect 3456
1230 Kcys. 1000 Watts
Pac. Broadcast. Corp., San Francisco
7:30 A.M. to 12—Various programs
12 noon—Scriptures
12:03—Harmonica; 12:30, Organ
1—Mid-day Concert
1:15—NBC, Rhythmic Serenade
2—NBC, Words and Music
2—Parent Teachers' Association
2:15—Modern Maestros
2:45—Organ; 3:45, Tango Time
4—Music Masters
5—Sunset Revue
5:30—Father, Fins Choral Music
5:45—Campbell Digest
6—Paraders; 6:15, Waltz Idylls
6:45—Eb and Zeb
7—Bob Allen, Piano Stylist
7:15—Choir Interlude
7:45—Musical Whims
8—Eugene Mancini, Virginia Miller
8:30—Symphonic Band
8:45—Talk; Victor Herbert Music
9—News Flashes
9:15—"National Defense"
9:30—Captain Argus
10—Organ Serenade
11 to 12 Mid.—Concert Melodies

535.4 Meters **KTAB** Garfield 4700
560 Kcys. 1000 Watts
Assoc. Broadcasters, Oakland, Calif.
7 A.M. to 1—Various Programs
1 P.M.—Radio Frolic
1:30—Over the Teacups
2—News; 2:15, Town Crier
3—Studio program
3:30—Beauty Talk; Studio Program
4—The Old Rajah
4:30—The Old Bachelor
5—Organ Concert
5:15—Si and Elmer
5:30—Health Talk; 6, Smile Club
6:30—Columbia News Page
6:45—Sport Page; Dot Kay, vocalist
7:15—Italian News Broadcast
7:30—Organ Concert
7:45—Minstrel Show
8:15—Garden of Memory
8:30—Studio program
8:45—Cecil and Sally (Elec. Trans.)
9—Souvenirs
9:30—Jerry Wilford, poetry, music
9:45—News Flashes
10—Thunderbolt Lodge
10:30 to 12 mid.—Records

340.7 Meters **KLX** Lake. 6000
880 Kcys. 1000 Watts
Tribune Pub. Co., Oakland, Calif.
8 A.M. to 12—Records; Stocks; Talks
12 noon—Bill Duncan's Band
1—Jean's Highlights
2—Recordings; News
2:40—S. F. Stocks
2:45—Opportunity Hour
3:30—News Flashes; Records
4:15—Brother Bob's Club
4:45—McCoy Health School
5—Covered Wagon Jubilee
5:30—Helen Parmelee, pianist
5:45—Lovable Liars
6—Betty Babbish Band; News
7:30—Beauty That Endures
7:45—Club News Parade
8—Donald Neal, baritone; Helen
Parmelee, pianist
8:25—Better Business Talk
8:30—Faucit Theatre of the Air
9—Nevada Nite Herders
9:30—Bungling Bunglers
9:45—Romaine Sisters
10—Fred Skinner
10:30 to 11 P.M.—Dance program

468.5 Meters KFI Richm'd 6111
640 Kcys. 50,000 Watts
Earle C. Anthony, Inc., Los Angeles
6:45 A.M. to 5—Various Programs
5 P.M.—Health Talk
5:15—NBC, Two Men and a Maid
5:30—NBC, Billy Bachelor
5:45—NBC, Little Orphan Annie
6—Sinclair Minstrels
6:30—"Golden Melodies"
7—NBC-KGO Programs to 8:30
8:30—NBC, Voice of Firestone
9—NBC, Sealed Power Side Show
9:30—Zip's Mirth Parade
9:45—To be announced
10—NBC, Richfield Reporter
10:15—Dance Orchestras
11:30 to 12 mid.—Arion Trio

508.2 Meters KHQ Main 5383
590 Kcys. 1000 Watts
Louis Wasmer, Inc., Spokane, Wash.
7 A.M. to 1—Various programs
1 P.M.—NBC, Betty and Bob
1:15—Studio program
2—NBC, Al Pearce and Gang
3—NBC, Waldorf-Astoria Orchestra
3:15—Club Bulletin
3:30—Business and Pleasure
4—NBC-KGO Programs
4:30—Parade of Happy Feet
4:45—Studio Programs
5:15—NBC, Two Men and a Maid
5:30—NBC, Billy Bachelor
5:45—Orphan Annie
6—NBC, Eileen Piggott
6:15—Theatrical Review
6:30—Four Horsemen
6:45—Frank Funkhouser
7—NBC-KGO Programs to 8:15
8:15—Sports Review
8:30—NBC, Voice of Firestone
9—NBC, Sealed Power Sideshow
9:30—To be announced
9:45—Frank and Archie
10—NBC, Richfield News
10:15—NBC, Anson Weeks' Orch.
10:30—Radio Specials
11 to 12 mid.—NBC Programs

526 Meters KVI Broadway 4211
570 Kcys. 1000 Watts
Puget Sound Broadcast. Co., Tacoma
6 A.M. to 5:30—Various Programs
5:30 P.M.—CBS, Bing Crosby
6—Philadelphia Symphony Orchestra
6:15—Smilin' Ed Marble
6:30—The Big Show
7—CBS, Wayne King and Orchestra
7:30—Mr. Mellor
7:45—Myrt and Marge
8—Shell Show
9—CBS, Leon Belasco's Orchestra
9:30—CBS, Abe Lyman's Orchestra
10—Dance Music
11:30 to 12 mid.—Organ Recital

236.1 Meters KOL Main 2312
1270 Kcys. 1000 Watts
Seattle Broadcast. Co., Seattle, Wash.
6:45 A.M. to 5—Various Programs
5 P.M.—"Fan-O-Gram"
5:15—H-Bar-O Rangers
5:30—CBS, Bing Crosby
6—CBS, Phila. Symph. Orch.
6:15—Smiling Eddie Marble
6:30—CBS, Big Show
7—CBS, Wayne King's Orchestra
7:30—Radio Speaker Stevenson
7:45—CBS, Myrt and Marge
8—The Shell Show
9—Detectives Black and Blue
9:15—Supertitions
9:30—Globe Trotter; Talk
10—Dance Music
11:30 to 12 mid.—Organ Recital

285.5 Meters KNX Hemp. 4101
1050 Kcys. 25,000 Watts
Western Broadcast Co., Los Angeles
6:45 A.M. to 5—Various Programs
5 P.M.—Storytown Express
5:15—College Daze and Knights
5:30—Musical Transcription
5:45—Tom Wallace and Cardinal Quartet
6—News; Singing Guardsmen
6:30—Concert
6:45—Bill Mack and Jimmy
7—Watanabe & Archie
7:15—Black and Blue
7:30—Red Davis Adventures
7:45—Smilin' Ed McConnell
8—Calmon Luboviski, violinist
9—News Flashes
9:15—Frenge Players
9:45—Musical Transcription
10 to 11 P.M.—Dance Orchestra

333.1 Meters KHJ VAndike 7111
900 Kcys. 1000 Watts
Don Lee Broadcast. System, L.A., Cal.
7 A.M. to 5—Various Programs
5 P.M.—Western Clock
5:05—Ruth Royale
5:15—H-Bar-O Rangers
5:30—CBS, Bing Crosby
6—CBS, Philadelphia Symphony Or.
6:15—CBS, Alexander Woolcott
6:30—CBS, The Big Show
7—CBS, Wayne King's Orchestra
7:30—Industrial Home Owners of So. California
7:45—CBS, Myrt and Marge
8—Shell Show
9—Leon Belasco's Orchestra
9:30—Abe Lyman's Orchestra
10—News Items
10:10—The Bowery
10:30—Jack Ross' "Dude Ranch"
11:30—The "Bowery"
12 to 1 A.M.—Recordings

499.7 Mtrs. KFSB Franklin 6353
600 Kcys. 1000 Watts
Airfan Radio Corp., Ltd., San Diego
7:30 A.M. to 6:30—Various Progs.
6:30 P.M.—NBC, Just Around the Corner
7—Studio program
7:30—NBC, Demi-Tasse Revue
8—Feature program
8:15—NBC, The Philistine
8:30—NBC, Voice of Firestone
9—To be announced
9:30—NBC, Terrace Gardens Orch.
10—Richfield News Flashes
10:15—NBC, Anson Weeks' Orch.
11—NBC, Ambassador Hotel Orch.
11:30 to 12 midnight—Arion Trio

296.6 Meters KQW Ballard 777
1010 Kcys. 500 Watts
Pac. Agric. Foundation, Ltd., San Jose
7 A.M. to 6—Various Programs
6 P.M.—Musical Impressions
6:15—Franco's Program
6:30—Fed. State Market Reports
6:45—Farmers Exchange
7—U. S. Weather Forecast
7:03—Radio News and Forum
7:30—Minute Man
7:45—Band Concert
8—Monarch Melodists
8:30—Golden Memories
9—Accordion Capers
9:30 to 10 P.M.—Mauna Keans

325.9 Meters KOMO Elliott 5890
920 Kcys. 1000 Watts
Fisher's Blend Station, Inc., Seattle
7 A.M. to 1—Various Programs
1 P.M.—NBC, Betty and Bob
1:15—Rhythmic Serenade
1:30—Vindobonians; Grant Merrill
2—NBC, Al Pearce and his Gang
3—Proctor's; Betty
3:15—Talking Fiddle
3:30—Red Shadow, Playboys
3:45—Trumpet Sobers
4—NBC-KGO Programs to 4:30
4:30—Pastel Harmony
5—NBC-KGO Programs to 6
6—30 Minutes of Music
6:30—General Harmonizers
6:45—Crazy Crystals Program
7—NBC-KGO Programs to 8:15
8:15—Happiness program
8:30—NBC, Voice of Firestone
9—NBC, Sealed Power Side Show
9:30—The Big Ten
10—NBC, Richfield News Flashes
10:15—Melody Mixers
10:30—Lyric Melodies
11—Jules Buffano Orchestra
11:30 to 12 mid.—NBC, Arion Trio

309.1 Meters KJR Seneca 1515
970 Kcys. 5000 Watts
Northwest Broad. System, Seattle, Wn.
7:30 A.M. to 1—Various Programs
1 P.M.—Cowboy Joe
1:15—Rhythmic Serenade
1:30—NBC, Mary's Friendly Garden
2—Salon Hour: Recordings
3—NBC Programs to 4
4—Viennese Vagabonds
4:30—NBC, Arion Trio
4:45—NBC, Piano Fals
5—Records; Dinner Dansant
6—NBC, Eileen Piggott
6:15—NBC, Chester Rowell
6:30—Washington H. S. Reporter
6:45—Dinner Dansant
7:15—Tarzan
7:30—Sohl and Auckland
7:45—Dollars and Cents
8—Blue Streaks
8:15—Olympic Male Chorus
8:30—Muted Strings
8:45—Watanabe and Archie
9—Mystic Asia, Solberg
9:30—Dance Orchestra
10:30—Musical Favorites
11 to 12 mid.—Dance Music

483.6 Meters KGW Atwater 2121
620 Kcys. 1000 Watts
Morning Oregonian, Portland, Ore.
7 A.M. to 12—Various Programs
12 noon—F. A. Cook News
12:15—NBC, Farm and Home Hour
1—General Mills
1:15—NBC, Rhythmic Serenade
1:30—Parker Dental Clinic
1:45—Orchestra; Relief Needs
2—NBC, Al Pearce and Gang
3—Krazy Limericks
3:05—NBC, Waldorf-Astoria Orch.
3:15—As If By Magic
3:20—Friendly Chat
4:15—NBC-KGO Programs to 5
5—Musical program
5:15—Collins & Erwin
5:30—NBC, Billy Bachelor
5:45—NBC, Little Orphan Annie
6—NBC Program
6:15—Crazy Crystals
6:30—Memory Singer
6:35—NBC, Just Around the Corner
6:45—Traffic Talk
7—NBC-KGO Programs to 8:15
8:15—Beauty That Endures
8:30—NBC-KGO Programs to 10:15
10:15—Cole McElroy's Orchestra
10:45 to 12 mid.—NBC Programs

SEE PAGE 6

TUESDAY Programs

December 12, 1933

379.5 Mtrs. **NBC-KGO** Sutter 1920
790 Kcys. 7500 Watts
National Broadcast. Co., San Francisco

- 7 A.M.—Edward MacHugh, the Gospel Singer
- 7:15—Organ Concert
- 7:30—Financial Service
- 7:45—Exercise and Applesauce
- 8:15—Morin Sisters
- 8:30—Marine Band Shut-In Hour
- 9:30—Martha Meade Society
- 9:45—Edna Fischer, pianist
- 10—Organ Concert
- 10:30—Woman's Magazine of the Air
- 11:30—Widow and Angel
- 11:45—Neil Sisters
- 12 noon—Financial Flashes
- 12:05—Blue Room Echoes
- 12:15—Western Farm & Home Hour
- 1—Betty and Bob
- 1:15—To be announced
- 1:45—Betty Marlowe, talk
- 2—Al Pearce and His Gang
- 3—Langendorf Pictorial
- 3:15—Mme Frances Alda, soprano
- 3:30—Organ Concert
- 3:45—Cheerio Musical Moaiscs
- 4—The Family Cook Book
- 4:15—Music Room
- 4:45—Eva Gruninger, contralto
- 5—Back Stage Chatter
- 5:15—Vincent Lopez' Orchestra
- 5:30—Billy Batchelor
- 5:45—Little Orphan Annie
- 6—Piano Pals
- 6:15—Historical Sketches of San Francisco
- 6:30—Ed Wynn and the Texaco Fire Chief Band
- 7—Cruise of the Seth Parker
- 7:30—Madame Sylvia & Movie Stars
- 7:45—Jerry Sears' Orchestra
- 8—Amos 'n' Andy
- 8:15—Memory Lane
- 8:45—Horlick's Adventures in Health
- 9—Ben Bernie's Orchestra
- 9:30—Winning the West: drama
- 10—Richfield News Flashes
- 10:15—Anson Weeks' Orchestra
- 11—Tom Coakley's Orchestra
- 11:30 to 12 midnight—Organ Concert

440.9 Meters **KPO** Sutter 1920
680 Kcys. 50,000 Watts
National Broadcast. Co., San Francisco

- 7:30 A.M.—Morning Parade
- 7:45—Your Child
- 8—Four Southern Singers
- 8:15—Log o' the Day Crosscuts
- 9:15—Julia Hayes, beauty talk
- 9:35—Johnny O'Brien, harmonica
- 9:45—News
- 10—New Kitchen Secrets
- 10:15—When the Gang Gathers
- 10:30—Dr. Wynne's Health Talks
- 10:35—Merrie Men, male quartet
- 10:45—Smackout, Marion and Jim Jordan, comedy and songs
- 11—Musical Originalities
- 11:30—Argentine Trio
- 12 noon—Agricultural Bulletins
- 12 noon—Midday Musical
- 12:45—Comedy Stars of Hollywood
- 1—News: 1:15, Ann Warner Chats
- 1:45—John and Ned
- 2—Harry Owens' Orchestra
- 2:15—Daytime Talks
- 2:30—Adventures of Dr. Doolittle
- 2:45—Fashion Flashes
- 3—Dr. Copeland's Health Talks
- 3:05—Mme. Frances Alda
- 3:15—Mud Caves, dramatic skit
- 3:30—Mid-Week Fed. Hymn Sing
- 3:45—Univ. of Calif. Program
- 4—The Sizzlers, male trio

- 4:10—Bisquick Program
- 4:15—You and Your Government
- 4:45—Stringwood Ensemble
- 5:15—News; 5:30, Souvenirs
- 6—Melody Mixers
- 6:30—Flori Gough Shorr and Lev Shorr, cellist and pianist
- 7—Doric Quartet
- 7:30—Boris Kramarenko's Orchestra
- 7:45—Calif. St. Cham. of Commerce
- 8—Nathan Abas, violinist
- 8:15—Thru the Hollywood Looking Glass
- 8:30—The Orchestra
- 9—Magnolia Minstrels
- 9:30—Harry Sosnick's Orchestra
- 10—Stringwood Ensemble
- 10:30—Rhythm Aces
- 11—Ambassador Hotel Orchestra
- 11:30 to 12 mid.—Tom Gerun's Or.

243.8 Meters **KYA** Prospect 3456
1230 Kcys. 1000 Watts

- Pac. Broadcast. Corp., San Francisco
- 7:30 A.M. to 12—Various programs
- 12 noon—Scriptures
- 12:03—Mid-day Concert
- 12:30—Organ Recital
- 1—Modern Maestros
- 1:45—NBC, Brown Palace Orch.
- 2—Opera Phantoms
- 2:30—Verse: Mrs. M. C. Sloss
- 2:45—NBC, The Big Top
- 3—Organ Matinee
- 4—Artist Celebrities
- 4:15—Symphony Highlights
- 4:55—Talk, National Tuberculosis Association
- 5—Sunset Revue
- 5:45—NBC, Clef Dwellers
- 5:50—Cambell Digest
- 6—"Mail Early" Talk
- 6:05—Paraders
- 6:15—Waltz Idylls
- 6:45—Symphonic Jazz
- 7:15—Royal Quartet, King's Men
- 7:30—Floyd Bennett Aviation Forum
- 8—Sydney Dixon, Virginia Miller
- 8:15—NBC, Poet Prince
- 8:30—Paradise Restaurant Orchestra
- 8:45—Bob Allen, Piano Stylist
- 9—News; 9:15, Rhythm Princes
- 9:30—The Cub Reporters
- 9:45—Symphonic Band; 10, Organ
- 11 to 12 Mid—Concert Memories

535.4 Meters **KTAB** Garfield 4700
560 Kcys. 1000 Watts

- Assoc. Broadcasters, Oakland, Calif.
- 7 A.M. to 1—Various Programs
- 1 P.M.—Radio Frolic
- 1:30—Over the Teacups
- 2—News: 2:15, Town Crier
- 3—Bar B Boys: Siesta
- 4—The Old Rajah
- 4:30—The Old Bachelor
- 4:45—Studio; Organ
- 5:15—SI and Elmer
- 5:30—Health Talk; 6, Smile Club
- 6:30—Columbia News Page
- 6:45—Ernie Smith's Sport Page
- 7—Dot Kay, vocalist
- 7:15—Italian News Broadcast
- 7:30—Organ and soloist
- 7:45—Voice of Democracy
- 8—Studio program
- 8:15—Gertrude Ahearn and Lee Baker
- 8:30—Sweet's Ballroom
- 8:45—Cecil and Sally (Elec. Trans.)
- 9—Souvenirs
- 9:30—Doc Herrold, the Mirror
- 9:45—News; Dance Music
- 10:30—Studio Program
- 11 to 12 mid.—Records

491.5 Meters **KFRC** Prospect 0100
610 Kcys. 1000 Watts

- Don Lee Broadcast. System, S. F., Cal.
- 7 A.M.—Recordings; Stocks
- 7:30—Early Morning Exercises
- 8—Recordings
- 8:30—CBS, Tony Wons, Philosopher
- 8:45—CBS, Carlile and London
- 9—CBS, Voice of Experience
- 9:15—CBS, Connie Gates, songs
- 9:30—Ruth Adams, Cooking School
- 9:45—CBS, Geo. Scherban's Orch.
- 10—Little French Princess
- 10:15—Frances Lee Barton
- 10:30—CBS, Easy Aces
- 10:45—Prudence Penny
- 11—Just Plain Bill
- 11:15—Romance of Helen Trent
- 11:30—CBS, School of the Air
- 12 noon—Noonday Concert
- 12:55—Talk, Vidacrin Laboratories
- 1—Women's Institute of the Air
- 1:15—CBS, U. S. Navy Band
- 1:30—N. Y. Stock Quotations
- 1:35—Medical Society Health Talk
- 1:45—CBS, Enoch Light's Orchestra
- 2—Happy Go Lucky Hour
- 3—Feminine Fancies
- 3:30—Sweet Music; Beauty Talk
- 4—Popular Selections
- 4:15—CBS, Texas Rangers
- 4:30—Vidacrin Laboratories Talk
- 4:35—Popular Selections
- 4:45—Lost and Found Items
- 4:50—Records; 4:55, Town Topics
- 5—Melodies Organistique
- 5:15—Children's Radio Theatre
- 5:30—Bobs, Sports Authority
- 5:45—Uncle Louie's Pet Shop
- 6—CBS, Philadelphia Orchestra
- 6:15—CBS, Poet's Gold
- 6:30—California Melodies
- 7—CBS, Camel Program
- 7:30—Globe Headlines
- 7:45—CBS, Myrt and Marge
- 8—CBS, Deep River
- 8:15—CBS, Elmer Everett Yess
- 8:30—Mellow'd Melodies
- 8:45—CBS, Voice of Experience
- 9—Dance Orchestra
- 9:30—Hodge Podge Lodge
- 10—News Editor of the Air
- 10:10 to 12 midnight—Dance Music

340.7 Meters **KLX** Lake. 6000
880 Kcys. 1000 Watts

- Tribune Pub. Co., Oakland, Calif.
- 8 A.M. to 12—Records; Stocks; News
- 12 noon—Bill Duncan's Band
- 1—Jean's Hi-Lights
- 2—Recordings; News
- 2:40—Closing S. F. Stocks
- 2:45—Recordings
- 3:15—Carmen Rushing, pianist
- 3:30—News Flashes; Records
- 4:15—Brother Bob's Club
- 4:45—Health School of the Air
- 5—Covered Wagon Jubilee
- 5:30—Helen Parmelee, pianist
- 6—Hotel Oakland Trio; News
- 7:30—Los Tres Caballeros
- 7:45—Football Reviews
- 8—John Lewis Quintet
- 9—Old Gospel Hymns
- 9:30—Bungling Bunglers
- 9:45—Italian NRA Talk
- 10—Freddie Skinner
- 10:30 to 11 P.M.—Dance Program

280.2 Meters **KJBS** Ord. 4148-49
1070 Kcys. 100 Watts

- J. Brunton & Sons, San Francisco
- 6 A.M. to 4:45—Records; News
- 4:45 P.M.—Silent period
- 12:01 to 6 A.M.—Owl Program

508.2 Meters KHQ Main 5383
590 Kcys. 1000 Watts
Louis Wasmer, Inc., Spokane, Wash.

7 A.M. to 1—Various Programs
1 P.M.—NBC, Betty and Bob
1:15—Studio programs
2—NBC, Al Pearce and Gang
3—Studio programs
4—NBC-KGO Programs to 5
5—Tull and Gibbs Express
5:15—NBC-KGO Programs to 6
6—N. W. on Parade
6:30—NBC, Texaco Firechief
7—Lives at Stake
7:30—NBC, Madame Sylvia
7:45—Bob and Barbara
8—NBC, Amos 'n' Andy
8:15—NBC, Memory Lane
8:45—NBC, Adventures in Health
9—NBC, Ben Bernie Orchestra
9:30—Words and Music
9:45—Frank and Archie
10—NBC, Richfield News
10:15—NBC, Anson Weeks Orch.
10:30—Radio Specials
11 to 12 mid.—Dance Music

526 Meters KVI Broadway 4211
570 Kcys. 1000 Watts
Puget Sound Broadcast. Co., Tacoma

6 A.M. to 6—Various Programs
6 P.M.—Philadelphia Symphony Or.
6:15—Poet's Gold
6:30—CBS, California Melodies
7—CBS, Camel program
7:30—Dr. Mellor
7:45—Myrt and Marge
8—South Americans
8:15—Elmer Everett Yess
8:30—Mellow'd Melodies
8:45—Voice of Experience
9—Scandinavian Hour
9:30—Hodge Podge Lodge
10—Dance Music
11:30 to 12 midnight—Organ Recital

325.9 Meters KOMO Elliott 5890
920 Kcys. 1000 Watts
Fisher's Blend Station, Inc., Seattle

7 A.M. to 1—Various Programs
1 P.M.—NBC, Betty and Bob
1:15—Vindobanians; Smoke Rings
1:55—Stanco, Electric Trans.
2—NBC, Al Pearce and Gang
3—Proctor's: Betty
3:15—Cowboy Joe
3:30—Petite Symphonists
3:45—Glen and Ruby
4—Musical Program
4:30—Pastel Harmonies
5—King County Talk
5:05—Saxophone Melodies
5:15—Male Quartet
5:30—NBC, Billy Batchelor
5:45—NBC, Little Orphan Annie
6—Happiness Program
6:30—NBC-KGO Programs to 7:45
7:45—Beauty That Endures
8—NBC-KGO Programs to 10:15
10:15—The King's Men
10:30 to 12 mid.—Dance Music

322.4 Meters KROW Glenc. 6774
930 Kcys. 1000 Watts
Educa. Broad. Corp., Oakland, Calif.

7 A.M. to 5:30—Various Programs
5:30 P.M.—Eat your way to Health
6—Dell Perry, pianist
6:15—Walk-a-thon
6:30—Organ Echoes
7—Studio program; sports
7:30—The 'Ne'er Do Well'
8—Headlines—News
8:15—Watch Tower Program
8:30—Desert Roamers
9—Basketball Game
10:30 to 12 mid.—Dance Music

335.1 Meters KHJ VAndike 7111
900 Kcys. 1000 Watts
Don Lee Broadcast. System, L. A., Cal.

7 A.M. to 5—Various Programs
5 P.M.—Children's Radio Theatre
5:15—CBS, Organilities
5:30—Charlie Lung and Gang
5:45—The Columbians
6—CBS, Philadelphia Orchestra
6:15—CBS, Poet's Gold
6:30—CBS, California Melodies
7—CBS, Camel Program
7:30—Globe Headlines
7:45—CBS, Myrt and Marge
8—CBS, Nino Martini
8:15—CBS, Elmer Everett Yess
8:30—S. & W. Mellow'd Melodies
8:45—CBS, Voice of Experience
9—Vincent Lopez Orchestra
9:30—Hodge Podge Lodge
10—News Items
10:10—Dance Music
12 to 1 A.M.—Recordings

285.5 Meters KNX Hemp. 4101
1050 Kcys. 25,000 Watts
Western Broadcast Co., Los Angeles

6:15 A.M. to 5—Various Programs
5 P.M.—Storytown Express
5:15—Mary Kirk, organ
5:30—Bouquet of Memories
5:45—Health Talk; News
6:15—Spanish Ensemble
6:30—King Cowboy
6:45—Chandu the Magician
7—Watanabe & Archie
7:15—Singing Guardsmen
7:30—Elvia Allman and Band
7:45—Lawrence King and Orchestra
8—Lite Concert
8:15—Realty Board Program
8:45—Drury Lane in Reveries
9—Electrical Transcription
9:30—Gems from Lite Opera
10 to 11 P.M.—Dance Music

225.4 Meters KGB Franklin 6151
1330 Kcys. 1000 Watts
Don Lee Broadcast. System, S. D., Cal.

7 A.M. to 5—Various Programs
5 P.M.—Town Topics
5:05—Chamber of Commerce
5:15—Sheriff's Office
5:30—Charlie Lung's Gang
5:45—Ib and Zeb
6—CBS, Chesterfield
6:15—CBS, Poet's Gold
6:30—CBS, California Melodies
7—CBS Program
7:30—Globe Headlines
7:45—CBS, Myrt and Marge
8—Tarzan
8:15—CBS, Elmer E. Yess
8:30—Recordings
8:45—CBS, Voice of Experience
9—Dance Orchestra
9:30—Hodge Podge Lodge
10—World-wide News
10:10—Dance Music
11:30—Organ Recital
12 to 1 A.M.—Recordings

296.6 Meters KQW Ballard 777
1010 Kcys. 500 Watts
Pac. Agric. Foundation, Ltd., San Jose

7 A.M. to 6—Various Programs
6 P.M.—Dinner Music
6:15—Franco's Program
6:30—Fed State Market Reports
6:45—Farmers Exchange
7—U. S. Weather Forecast
7:03—Radio News and Forum
7:30—Minute Man
7:45—Band Concert
8 to 10 P.M.—You Never Can Tell

468.5 Meters KFI Richm'd 6111
640 Kcys. 50,000 Watts
Earle C. Anthony, Inc., Los Angeles

6:45 A.M. to 5—Various programs
5 P.M.—NBC, Stringwood Ensemble
5:15—NBC, Congress Hotel Orch.
5:30—NBC, Billy Batchelor
5:45—NBC, Little Orphan Annie
6—E. A. Rolfe Orchestra
6:15—Singing Service Men
6:30—NBC-KGO Programs to 7:45
7:45—Frank Luther's Adierikans
8—NBC-KGO Programs to 10:30
11—Ted Fio-Rito's Orchestra
11:30 to 12 mid.—Bal Tabarin Or.

483.6 Meters KGW Atwater 2121
620 Kcys. 1000 Watts
Morning Oregonian, Portland, Ore.

7 A.M. to 12—Various Programs
12 noon—F. A. Cook News
12:15—NBC-KGO Programs to 1:30
1:30—Parker Dental Clinic
1:45—NBC, Friendly Garden
2—NBC, Al Pearce and Gang
3—News Reporter; 3:05, Orchestra
3:15—As if by Magic
3:20—Friendly Chat
4:15—NBC-KGO Programs to 6
6—Crazy Crystals
6:15—Seven-Up, Mixograms
6:20—Melody Mixers
6:25—Snowshoe program
6:30—NBC-KGO Programs to 7:45
7:45—Studio programs
8 to 12 mid.—NBC Programs

309.1 Meters KJR Seneca 1515
970 Kcys. 5000 Watts
Northwest Broad. System, Seattle, Wn.

7:30 A.M. to 1—Various Programs
1 P.M.—Cowboy Joe
1:15—NBC Programs to 2
2—Recorded Program
3—NBC Programs to 4
4—Steamboat Bill
4:15—NBC Programs to 5:30
5:30—Dinner Dansant
6—NBC, Arion Trio
6:30—Washington H. S. Reporter
6:45—Brief Notes, recorded
7—Melodie Moods
7:30—General Harmonizers
7:45—Dollars and Cents
8—Orpheus Ensemble
8:30—Dr. Williams' Drug Store
8:45—Watanabe and Archie
9—Crazy Water Program
9:15—Recorded program
9:30—Shriners Band
10 to 12 mid.—Dance Music

236.1 Meters KOL Main 2312
1270 Kcys. 1000 Watts
Seattle Broadcast. Co., Seattle, Wash.

6:45 A.M. to 5—Various Programs
5 P.M.—'Fan-O-Gram'
5:15—CBS, H-Bar-O Rangers
5:30—Studio program
5:45—CBS, The Columbians
6—CBS, Phila. Symph. Orch.
6:15—Sports Revue
6:30—Smiling Eddie Marble
6:45—'It's Time to Sing Sweet
Adeline Again'
7—CBS, Camel Program
7:30—Radio Speaker Stevenson
7:45—CBS, Myrt and Marge
8—Hollywood Newshawk
8:15—CBS, Plymouth Motors Prog.
8:30—S. & W. Mellow'd Melodies
8:45—CBS, Voice of Experience
9—CBS, Vincent Lopez Orchestra
9:15—Globe Trotter
9:30—Boxing Bouts
10:30 to 12 mid.—Dance Music

WEDNESDAY Programs

December 13, 1933

379.5 Mtrs. **NBC-KGO** Sutter 1920
790 Kcys. 7500 Watts
National Broadcast. Co., San Francisco

7 A.M.—Tony Cabooch
7:15—Organ Concert
7:30—Financial Service
7:45—Exercise and Applause
8:15—Sam Moore, guitarist
8:30—United States Army Band
9—Accordiana—Johnny Toffoli
9:15—Home Economics Talk
9:30—Sarah Kreindler, violinist
9:45—Jean Abbey, shop news
10—Argentine Trio
10:15—Books for Children
10:30—Magazine of the Air
11:30—Magic Moments
11:45—Words and Music
12:10 P. M.—Financial Flashes
12:15—Western Farm & Home Hour
1—Betty and Bob; 1:15, Pop Concert
1:30—Oxydell's Own Ma Perkins
1:45—Mary's Friendly Garden
2—Al Pearce and His Gang
3—Langendorf Pictorial
3:15—Xavier Cugat's Orchestra
3:30—Organ Concert; Soloist
4—Society Sidelights
4:15—Arion Trio
4:45—Children's Corner
5—Stringwood Ensemble
5:30—Billy Batchelor
5:45—Little Orphan Annie
6—Ipana Troubadours
6:30—John McCormack, tenor
7—Corn Cob Pipe Club
7:30—National Radio Forum
8—Amos 'n' Andy
8:15—To be announced
8:30—One Man's Family
9—Stars of the West
9:30—Charles Hart
10—Richfield News Flashes
10:15—Anson Weeks' Orchestra
11—Tom Coakley's Orchestra
11:30 to 12 Mid.—Organ Concert

440.9 Meters **KPO** Sutter 1920
680 Kcys. 50,000 Watts
National Broadcast. Co., San Francisco

7:30 A.M.—Three Scamps, vocalists
7:45—Organ Concert
8—Four Southern Singers
8:15—Log o' the Day Crosscuts
9:15—Julia Hayes, beauty talk
9:35—Johnny O'Brien, harmonica
9:45—News
10—Elmore Vincent, tenor
10:15—Songs by the Kitchen Sink
10:30—Dr. Wynne's Health Talks
10:35—Merrie Men, male quartet
10:45—Smackout, Marion and Jim Jordan, songs and comedy
11—Bisquick program
11:05—Musical Originalities
11:30—Widow and Angel
11:45—Agricultural Bulletins
12 noon—Midday Musicales
1—News; 1:15, Ann Warner's Chats
1:45—John and Ned, harmony duo
2—California Ramblers
2:30—Mobile Moaners
2:45—The Big Top
3—Dr. Copeland's Health Talks
3:05—Xavier Cugat's Orchestra
3:15—Mud Caves, dramatic skit
3:30—George R. Holmes
3:45—Univ. of Calif. Program
4—Dance Masters, orchestra
4:15—Oriental Orchestra
4:30—The Clef Dwellers
4:45—Arion Trio
5—Facing the Music
5:15—Song Personalities; 5:45, News
6—Tone Portraits

6:30—Paul Martin, banjolist
6:45—Detectives Black and Blue
7—Etta Moten, blues singer
7:15—Tarzan of the Apes
7:30—Irving Kennedy, tenor
7:45—Agriculture Today
8—Nathar Abas, violinist
8:15—Red Davis, dramatic sketch
8:30—Californians on Parade
9—Cab Calloway's Orchestra
9:15—Book Parade
9:30—Harry Sosnick Orchestra
10—Marshall's Mavericks
10:30—Seven Seas, orchestra
11—Ambassador Hotel Orchestra
11:30 to 12 mid.—Tom Gerun's Orch.

491.5 Meters **KFRC** Prospect 0100
610 Kcys. 1000 Watts
Don Lee Broadcast. System, S. F., Cal.

7 A.M.—Recordings; Stocks
7:30—Early Morning Exercises
8—Popular Selections
8:15—CBS, Four Showmen
8:30—CBS, Tony Wons, Philosopher
8:45—Dancing Echoes
9—Voice of Experience
9:15—CBS, Gypsy Nina
9:25—Goodwill Industries, talk
9:30—Betty Crocker
9:45—CBS, Raginsky Ensemble
10—CBS, The Little French Princess
10:15—CBS, The Playboys
10:30—CBS, Easy Aces
10:45—Prudence Penny
11—CBS, Just Plain Bill
11:15—CBS, Helen Trent's Romance
11:30—CBS, Amer. School of the Air
12 noon—Noonday Concert
12:55—Vidacrin Laboratories
1—Musical Album
1:30—N. Y. Stock Quotations
1:35—CBS, Educational Feature
1:45—CBS, Merry-makers
2—Happy Go Lucky Hour
3—Feminine Fancies
3:30—Sweet Music
3:45—CBS, George Hall's Orchestra
4—Hodge Podge Lodge
4:30—Vidacrin Laboratories
4:35—CBS, Those McCarty Girls
4:45—Lost and Found Items
4:50—Records; 4:55, Town Topics
5—To be announced
5:15—H-Bar-O Rangers
5:30—CBS, A. Spaulding, violinist
6—CBS, Philadelphia Orchestra
6:15—CBS, Alexander Woolcott
6:30—Burns & Allen; Lombardo
7—Waring's Pennsylvanians
7:30—Globe Headlines
7:45—CBS, Myrt and Marge
8—CBS, Presenting Mark Warnow
8:15—Jean Ellington, vocalist
8:30—CBS, Edwin C. Hill
8:45—The Buccaneers
9—Orchestra
9:30—To be announced
10—News Editor of the Air
10:10 to 12 midnight—Dance Music

322.4 Meters **KROW** Glenc. 6774
930 Kcys. 1000 Watts
Edca. Broad. Corp., Oakland, Calif.

7 A.M. to 5:30—Various Programs
5:30 P.M.—Eat your way to Health
6—Dell Perry, pianist
6:15—Walk-a-thon; 6:30, Organ
7—Annette Thompson, vocalist
7:15—Sports Review
7:30—Italian Program
8—Headlines—News
8:15—Nellie Aising, soprano
8:30—Artists on Parade
10 to 12 mid.—Dance Music

243.2 Meters **KYA** Prospect 3456
1230 Kcys. 1000 Watts
Pac. Broadcast. Corp., San Francisco

7:30 A.M. to 12—Various programs
12 noon—Scriptures; 12:03, Concert
12:30—Organ Recital
1—Tango Time
1:30—Jack and Loretta Clemens
1:45—NBC, Lady Next Door
2—Quartette
2:15—Helen Barker, Art Lecture
2:30—Community Chest
2:45—Organ Matinee
3:45—Mountain Boys
4:15—Better Business Talk
4:30—Symphony Highlights
4:55—Talk; 5, Sunset Revue
5:45—Campbell Dentist; 6, Paraders
6:15—Waltz Idylls
6:45—Eb and Zeb
7—Bob Allen, Piano Stylist
7:15—Rhythm Princes
7:30—Broadway Reflections
8—Souvenirs of Italy
9—News Flashes
9:15—John Wolohan's Orchestra
10—Organ Serenade
11 to 12 Mid.—Concert Memories

340.7 Meters **KLX** Lake. 6000
880 Kcys. 1000 Watts
Tribune Pub. Co., Oakland, Calif.

8 A.M. to 12—Records; Stocks; Talks
12 noon—Bill Duncan's Band
1—"Timely Garden Tips"
1:15—Jean's Hi-Lights
2—Recordings; News
2:35—Better Business Talk
2:40—Stocks; Records
3:15—Nancy Ann Hersey, pianist
3:30—News Flashes; Records
4:15—Brother Bob's Club
4:45—Health School of the Air
5—Covered Wagon Jubilee
5:30—Famous Campers
5:45—Lovable Liars
6—Hotel Oakland Trio; 7 News
6:30—Manila String Orchestra
8—Miniature Revue
9—Nevada Nite Herders
9:30—Bungling Bunglers
9:45—Helen Parmelee, pianist
10—Freddie Skinner
10:30 to 11 P.M.—Dance Program

535.4 Meters **KTAB** Garfield 4700
560 Kcys. 1000 Watts
Assoc. Broadcasters, Oakland, Calif.

7 A.M. to 1—Various Programs
1 P.M.—Radio Frolic
1:30—Over the Teacups
2—News; 2:15, Town Crier
3—X Bar B Boys
3:30—Beauty Talk; 3:45, Studio
4—The Old Rajah
4:30—The Old Bachelor
4:45—Studio program
5—Dr. Brinkley
5:15—Si and Elmer
5:30—Health Talk; Smile Club
6:30—Columbia News Page
6:45—Ernie Smith's Sport Page
7—Dot Kay
7:15—Italian News Broadcast
7:30—Organ Concert
7:45—Family Album
8—Fairy Tales
8:30—Paramount on Parade
8:45—Cecil and Sally (Elec. Trans.)
9—Souvenirs
9:30—Jerry Wilford, Poetry, Music
9:45—News Flashes
10—X Bar B Boys
10:30 to 12 mid.—Records

468.5 Meters KFI Richm'd 6111
640 Kcys. 50,000 Watts
Earle C. Anthony, Inc., Los Angeles
6:45 A.M. to 5—Various programs
5 P.M.—Health Talk
5:15—Julie Kellar, harpist
5:30—NBC, Billy Batchelor
5:45—NBC, Little Orphan Annie
6—NBC-KGO Programs to 7:30
7:30—Orchestra with Virginia Flohri soprano
8—NBC, Amos 'n' Andy
8:15—To be announced
8:30—NBC, One Man's Family
9—NBC, Stars of the West
9:30—Eno Crime Clues
10—NBC, Richfield Reporter
10:15 to 12 mid.—Dance Music

333.1 Meters KHJ VAndike 7111
900 Kcys. 1000 Watts
Don Lee Broadcast. System, L. A., Cal.
7 A.M. to 6—Various Programs
6 P.M.—CBS, Philadelphia Orch.
6:15—CBS, Alexander Woolcott
6:30—CBS, Guy Lombardo's Orch.
7—CBS, Waring's Pennsylvanians
7:30—Globe Headlines
7:45—CBS, Myrt and Marge
8—"Calling All Cars"
8:30—CBS, Edwin C. Hill
8:45—Home Owners of California
9—To be announced
9:15—A & F—"Three Old Favorites"
9:45—To be announced
10—News Items; Organ
10:30—Dance Music
12 to 1 A.M.—Recordings

285.5 Meters KNX Hemp. 4101
1050 Kcys. 25,000 Watts
Western Broadcast Co., Los Angeles
6:45 A.M. to 5—Various Programs
5 P.M.—Storytown Express
5:15—College Daze & Knights
5:30—Special Lite Concert
5:45—Universal Song Service; News
6:15—Spanish Program
6:30—King Cowboy
6:45—Bill, Mack and Jimmy
7—Frank and Archie
7:15—Black and Blue
7:30—Adventures of Red Davis
7:45—Musical Program
8—Grand Opera; News
9:15—KNXponents of Rhythm
9:30—Tonto Basin Boys
10 to 11 P.M.—Dance Orchestra

225.4 Meters KGB Franklin 6151
1330 Kcys. 1000 Watts
Don Lee Broadcast. System, S. D., Cal.
7 A.M. to 5:30 P.M.—Various prog.
5:30—CBS, Albert Spaulding
6—CBS, Philadelphia Orchestra
6:15—CBS, Alexander Woolcott
6:30—Burns & Allen, Guy Lombardo
7—Fred Waring's Pennsylvanians
7:30—Globe Headlines
7:45—CBS, Myrt and Marge
8—CBS program
8:30—CBS, Edwin C. Hill
8:45—Buccaneers
9—Dance Orchestra
9:30—To be announced
10—World-wide News
10:10—Dance Music
11:30—Organ Concert
12 to 1 A.M.—Recordings

280.2 Meters KJBS Ord. 4148-49
1070 Kcys. 100 Watts
J. Brunton & Sons, San Francisco
6 A.M. to 4:45—Records; News
4:45 P.M.—Silent period
12:01 to 6 A.M.—Owl Program

236.1 Meters KOL Main 2312
1270 Kcys. 1000 Watts
Seattle Broadcast. Co., Seattle, Wash.
6:45 A.M. to 5—Various Programs
5 P.M.—"Fan-O-Gram"
5:15—H-Bar-O Rangers
5:30—CBS, Centaur Program
6—CBS, Chesterfield Program
6:15—Smiling Eddie Marble
6:30—CBS, White Owl Program
7—CBS, Old Gold Program
7:30—Rado Speaker Stevenson
7:45—CBS, Myrt and Marge
8—CBS, Presenting Mark Warnow
8:15—Frank Funkhauser Talk
8:30—CBS, Edwin C. Hill
8:45—The Buccaneers
9—Detectives Black and Blue
9:15—Hollywood Looking Glass
9:30—Globe Trotter
9:45—Charles A. Reynolds
10 to 12 mid.—Dance Music

526 Meters KVI Broadway 4211
570 Kcys. 1000 Watts
Puget Sound Broadcast. Co., Tacoma
6 A.M. to 6—Various Programs
6 P.M.—Philadelphia Symphony
6:15—Smilin' Ed Marble
6:30—Burns, Allen and Lombardo
7—Waring's Pennsylvanians
7:30—Dr. Mellor
7:45—Myrt and Marge
8—CBS, Presenting Mark Warnow
8:15—Doc Williams
8:30—Edwin C. Hill
8:45—The Buccaneers
9—Griff Williams' Orchestra
9:15—South Americans
9:30—School Program
10—Dance Music
11—The Wanderers
11:30 to 12 mid.—Tavern Orchestra

325.9 Meters KOMO Elliott 5890
920 Kcys. 1000 Watts
Fisher's Blend Station, Inc., Seattle
7 A.M. to 1—Various Programs
1 P.M.—NBC, Betty and Bob
1:15—Musical Favorites, Damski
1:45—Easy Chair
2—NBC, Al Pearce and His Gang
3—Proctor's; Betty
3:15—Trumpet Sobs; Red Shadow
3:45—Manhattan Echoes
4—NBC-KGO Programs to 5
5—Pastel Harmony
5:30—NBC, Billy Batchelor
5:45—NBC, Little Orphan Annie
6—Ipana Troubadours
6:30—NBC, John McCormack
7—NBC, Corn Cob Pipe Club
7:30—Happiness Program
7:45—Crazy Wells Quartet
8—NBC-KGO Programs to 9
9—NBC, Stars of the West
9:30—Musical Mannequins
10—NBC, Richfield News Flashes
10:15—General Harmonizers
10:30 to 12 mid.—Dance Music

296.6 Meters KQW Ballard 777
1010 Kcys. 500 Watts
Pac. Agric. Foundation, Ltd., San Jose
7 A.M. to 6—Various Programs
6 P.M.—Musical Impressions
6:15—Franco's Program
6:45—Fed. State Market Reports
6:45—Farmers Exchange
7—U. S. Weather Forecast
7:03—Radio News and Forum
7:30—Monarch Melodists
8—American Legion War Camp
8:15—Herbert Miller, basso
8:30—Half-Hour of Melodies
9—A. Caro Miller and Vibraharp
9:30 to 10 P.M.—Orchestra

309.1 Meters KJR Seneca 1515
970 Kcys. 5000 Watts
Northwest Broad. System, Seattle, Wn.
7:30 A.M. to 1—Various Programs
1 P.M.—Cowboy Joe
1:15—Pop Concert
1:30—Mary's Friendly Garden
2—Salon Hour, recorded
3—NBC Programs to 4
4—Steamboat Bill
4:15—Hiram R. Gale, talk
4:30—Dancing with Don Redmond
5—NBC, Stringwood Ensemble
5:30—Recorded program
6—Woodwind Ensemble
6:30—Washington H. S. Reporter
6:45—Dinner Dansant
7:15—Tarzan (E. T.)
7:30—Muted Strings
7:45—Dollars and Cents
8—Manhattan Echoes
8:15—Olympic Male Chorus
8:30—Shades of Yesterday
8:45—Watanabe and Archie
9—Song Recital
9:15—Chamber of Commerce Talk
9:30—NBC, Waltz Time
10 to 12 mid.—Dance Music

483.6 Meters KGW Atwater 2121
620 Kcys. 1000 Watts
Morning Oregonian, Portland, Ore.
7 A.M. to 12—Various Programs
12 noon—F. A. Cook News
12:15—NBC, Farm and Home Hour
1—NBC, Bob and Betty
1:15—NBC, Pop Concert
1:30—Parker Dental Clinic
1:45—Eddie King
2—Al Pearce and Gang
3—Krazy Limericks
3:05—Waldorf-Astoria Orchestra
3:15—As If By Magic
3:20—Friendly Chat
4:15—NBC-KGO programs to 5
5—Gems of Thot
5:05—Stringwood Ensemble
5:10—Brookfield Memory Singer
5:15—Piano Surprises
5:30—NBC-KGO Programs to 7:30
7:30—Covered Wagon Days
8—NBC-KGO Programs to 9:30
9:30—Francis Ingram
9:45—Feenamint Program
10—NBC, Richfield News Flashes
10:15 to 12 mid.—Dance Music

508.2 Meters KHQ Main 5383
590 Kcys. 1000 Watts
Louis Wasmer, Inc., Spokane, Wash.
7 A.M. to 1—Various programs
1 P.M.—NBC, Betty and Bob
1:15—Studio program
2—NBC, Al Pearce and Gang
3—NBC, Waldorf-Astoria Orchestra
3:15—Club Bulletin
3:30—Business and Pleasure
4—NBC Program
4:15—Oriental Orchestra
4:30—Balalaika Ensemble
4:45—Studio programs
5:15—Stringwood Ensemble
5:30—NBC, Billy Batchelor
5:45—NBC, Orphan Annie
6—NBC, Ipana Troubadours
6:30—NBC, John McCormack
7—NBC, Corn Cob Pipe Club
7:30—Book of Memories
8—NBC, Amos 'n' Andy
8:15—To be announced
8:30—NBC, One Man's Family
9—To be announced
9:45—Frank and Archie
10—NBC, Richfield News
10:15—NBC, Anson Weeks' Orch.
10:30—Radio Specials
11 to 12 mid.—Dance music

THURSDAY Programs • • • December 14, 1933

379.5 Mtrs. **NBC-KGO** Sutter 1920
790 Kcys. 7500 Watts

National Broadcast. Co., San Francisco
7 A.M.—Edward MacHugh, Gospel
Singer
7:15—Organ Concert
7:30—Financial Service
7:45—Exercise and Applause
8—Del Monte Ship of Joy
8:30—United States Navy Band
9—Elmore Vincent, tenor
9:15—Ward and Muzzy, pianists
9:30—Martha Meade Society
9:45—Sax Appeal
10—Magazine of the Air
11—Standard School Broadcast
11:45—Pioneers: Male quartet
12 noon—Financial Flashes
12:05—Words and Music
12:15—Farm and Home Hour
1—Betty and Bob
1:15—To be announced
1:30—Oxydol's Own Ma Perkins
1:45—Betty Marlowe, talk
2—Al Pearce and His Gang
3—Langendorf Pictorial
3:15—Xavier Cugat's Orchestra
3:30—John B. Kennedy
3:45—The Sizzlers, male trio
4—Family Cook Book
4:15—Arion Trio
4:45—Engineering Thrills
5—Rudy Vallee's Orchestra
6—Capt. Henry's Show Boat
7—Paul Whiteman's Orchestra
8—Amos 'n' Andy
8:15—Standard Symphony Hour
9:15—To be announced
9:30—Dancing in the Twin Cities
10—Richfield News Flashes
10:15—Anson Weeks' Orchestra
11—Tom Coakley's Orchestra
11:30 to 12 mid.—Organ Concert

440.9 Meters **KPO** Sutter 1920
880 Kcys. 50,000 Watts

National Broadcast. Co., San Francisco
7:30 a.m.—Morning Parade
7:45—Organ Concert
8:15—Log o' the Day Crosscuts
9:15—Julia Hayes, beauty talk
9:35—Johnny O'Brien, harmonica
9:45—News
10—New Kitchen Secrets
10:15—Strange Interview
10:30—Dr. Wynne's Health Talks
10:35—Rex Battle Concert Ensemble
11—Standard School Broadcast
11:45—Agricultural Bulletin
12 noon—Melody Mixers
12:40—Bisquick program
12:45—Comedy Stars of Hollywood
1—News; 1:15, Ann Warner's Chats
1:45—John and Ned, harmony duo
2—Federation of Women's Clubs
2:15—Babes in Hollywood
2:30—Adventures of Dr. Doolittle
2:45—Fashion Flashes
3—Dr. Copeland's Health Talk
3:05—Xavier Cugat's Orchestra
3:15—Mud Caves, dramatic skit
3:30—Canzonetta, Arion Trio
3:45—Univ. of Calif. Program
4—Twenty Fingers of Harmony
4:15—Dance Masters Orchestra
4:30—Concert Footlights
5—Bisquick program
5:05—Arion Trio
5:15—Behind the Footlights
5:30—Organ Concert
5:40—Westelox Sketch, drama
5:45—News; Arion Trio
6:30—Federal Business Talk
6:45—Melody Mixers
7:15—Review of Activities of the

San Francisco Municipal Govern.
7:30—Powderpuff Revue
8—Josef Hornik's Concert Orchestra
8:30—Eno Crime Clues
9—Pennsylvania Hotel Orchestra
9:30—Music Box
10—Voice of Pan
10:30—Organ Concert
11—Ambassador Hotel Orchestra
11:30 to 12 mid.—Tom Gerun's Or.

243.8 Meters **KYA** Prospect 3456
1230 Kcys. 1000 Watts

Pac. Broadcast. Corp., San Francisco
7:30 A.M. to 12—Various programs
12 noon—Scriptures
12:03—Tango Time; 12:30, Organ
1—Mid-day Concert
1:45—NBC, Winnie the Pooh
2—International Troubadors
2:15—Hawaiian Melodies
2:45—NBC, The Big Top
3—Organ Matinee
4—Musical Strings
4:15—Old Songs
4:30—Music Masters
5—Sunset Revue
5:45—Campbell Digest
6—Associated Glee Clubs
6:15—Waltz Idylls; Rhythm Princes
7—Bob Allen, Piano Stylist
7:15—Sportsman's Corner
7:30—Paraders; Sports Review
8—John Wolohan's Orchestra
9—News Flashes; 9:15, Quartette
9:30—Dance Rhythms
10—Organ Serenade
11 to 12 Mid.—Concert Memories

535.4 Meters **KTAB** Garfield 4700
560 Kcys. 1000 Watts

Assoc. Broadcasters, Oakland, Calif.
7 A.M. to 1—Various Programs
1 P.M.—Radio Frolic
1:30—Over the Teacups
2—News; 2:15, Town Crier
3—X Bar B Boys
3:30—Studio program
4—The Old Raiah
4:30—The Old Bachelor
4:45—Handwriting Analysis
5—Organ Concert
5:15—Si and Elmer
5:30—Health Talk; 6, Smile Club
6:30—Columbia News Page
6:45—Ernie Smith's Sport Page
7—Dot Kay
7:15—Italian News Broadcast
7:30—KTAB Capers
8:30—Hal Girvin's Band
8:45—Cecil and Sally (Elec. Trans.)
9—Souvenirs
9:30—Lee Baker, Songs
9:45—News Flashes
10—Kelli-Widner Orchestra
10:30—Organ Concert
11 to 12 mid.—Records

296.6 Meters **KQW** Ballard 777
1010 Kcys. 500 Watts

Pac. Agric. Foundation, Ltd., San Jose
7 A.M. to 6—Various Programs
6 P.M.—Musical Impressions
6:15—Franco's Program
6:30—Fed. State Market Reports
6:45—Farmers Exchange
7—U. S. Weather Forecast
7:03—Radio News and Forum
7:30—Dr. C. B. Sylvester
8—Old Church Choir Songs
9—Gene Mancini, tenor
9:15—Mabel Adams, vocalist
9:30—Musical Readings
9:45 to 10 P.M.—Studio programs

491.5 Meters **KFRC** Prospect 0100
610 Kcys. 1000 Watts

Don Lee Broadcast. System, S. F., Cal.
7 A.M.—Records; Stocks
7:30—Early Morning Exercises
8—Popular Selections
8:15—CBS, Sunny Side Up
8:30—Popular Selections
8:45—CBS, Academy of Medicine
8:55—Talk, Vidacrin Laboratories
9—Voice of Experience
9:15—CBS, Connie Gates, songs
9:30—Ruth Adams, Cooking School
9:45—George Scherban's Orchestra
10—Little French Princess
10:15—Frances Lee Barton
10:30—CBS, Easy Aces
10:45—Prudence Penny
11—CBS, Just Plain Bill
11:15—Romance of Helen Trent
11:30—CBS, Amer. School of the Air
12 noon—Noonday Concert
12:55—Vidacrin Talk
1—Women's Institute of the Air
1:15—Curtis Institute of Music
1:30—N. Y. Stocks
1:35—CBS, Amer. Legion Speaker
1:45—CBS, Artist Recital
2—Happy Go Lucky Hour
3—Feminine Fancies
3:30—Sweet Music
3:45—CBS, Memory Lane
4—Popular Selections
4:15—CBS, Texas Rangers
4:30—Talk, Vidacrin
4:35—CBS, Texas Rangers
4:45—Lost and Found Items
4:50—Records; Town Topics
5—Children's Radio Theatre
5:15—CBS, Organalities
5:30—Charlie Lung and his Gang
5:45—Uncle Louie's Pet Shop
6—CBS, Philadelphia Symphony
6:15—CBS, Andre Kostelanetz Pre-
sents
6:45—CBS, The Mystery Guild
7—CBS, Camel Program
7:30—Globe Headlines
7:45—CBS, Myrt and Marge
8—CBS, Harlem Serenade
8:15—CBS, Elmer Everet Yess
8:30—CBS, Singin' Sam
8:45—76 All Star Revue
9:15—Blue Monday Jamboree
10—News Editor of the Air
10:10—General Mills, talk
10:15 to 12 midnight—Dance Music

340.7 Meters **KLX** Lake. 6000
880 Kcys. 1000 Watts

Tribune Pub. Co., Oakland, Calif.
8 A.M. to 12—Records; Stocks; News
12 noon—Bill Duncan's Band
1—Jean's Hi-Lights
2—Mildred Miller, bridge talk
2:15—Records; News; Stocks
3:15—Carmen Rushing, pianist
3:30—News Flashes; Records
4:15—Brother Bob's Club; News
4:45—Health School of the Air
5—Covered Wagon Jubilee
5:30—High School News
6—Hotel Oakland Trio
7—News Items
7:30—Los Tres Caballeros
7:45—Sports Hi-Lights
8—Mabel French
8:15—M. Jay Goodman, tenor
8:30—Jack Manley, violinist
8:45—Eleanor Nielson, soprano
9—Nevada Nite Herders
9:30—Bungling Bunglers
9:45—Helen Parmelee, pianist
10—Freddie Skinner
10:30 to 11 P.M.—Dance Program

333.1 Meters KHJ VAndike 7111
900 Kcys. 1000 Watts
Don Lee Broadcast. System, L. A., Cal.

7 A.M. to 5—Various Programs
6 P.M.—Dick Aurandt, Organist
6:15—H-Bar-O Rangers
5:45—To be announced
6—CBS, Philadelphia Orchestra
6:15—CBS programs to 7:30
7:30—Globe Headlines
7:45—CBS, Myrt and Marge
8—CBS, Harlem Serenade
8:15—CBS, Elmer Everett Yess
8:30—CBS, Barbasol Program
8:45—Union Oil Program
9:15—Blue Monday Jamboree
10—News Items
10:10—Dance Orchestras
12 to 1 A.M.—Recordings

225.4 Meters KGB Franklin 6151
1330 Kcys. 1000 Watts
Don Lee Broadcast. System, S. D., Cal.

7 A.M. to 5 P.M.—Various programs
5 P.M.—Town Topics
5:05—Chamber of Commerce
5:15—Recordings; Safety Talk
5:30—Charlie Lung's Gang
5:45—Eb and Zeb
6—CBS, Philadelphia Symphony
6:15—CBS, Andre Kostelanetz
6:45—CBS, Colum Dram. Guild
7—CBS, Camel Program
7:30—Globe Headlines
7:45—Myrt and Marge
8—Tarzan
8:15—CBS, Elmer E. Yess
8:30—CBS, Singin' Sam
8:45—76 All Star Revue
9:15—Blue Monday Jamboree
10—World-wide News
10:10—Melodies Organistique
10:30—Dance Orchestra
11:30—Organ Recital
12 to 1 A.M.—Recordings

468.5 Meters KFI Richm'd 6111
640 Kcys. 50,000 Watts

Earle C. Anthony, Inc., Los Angeles
6:45 A.M. to 5—Various programs
5 P.M.—NBC, Rudy Vallee Orch.
6—NBC, Capt. Henry's Showboat
7—NBC, Paul Whiteman's Orchestra
8—NBC, Amos 'n' Andy
8:15—NBC, Standard Symphony Hr.
9:15—To be announced
9:30—Eno Crime Clues
10—NBC, Richfield Reporter
10:15—Comedy Stars of Hollywood
10:30 to 12 mid.—Dance Music

499.7 Mtrs. KFSD Franklin 6353
600 Kcys. 1000 Watts
Airfan Radio Corp., Ltd., San Diego

7:30 A.M. to 1—Various Programs
1 P.M.—Stock Reports
1:15—NBC, Political Discussions
1:45—Studio program
2:30—NBC, Al Pearce and Gang
3—Studio program
3:15—NBC, Waldorf-Astoria
3:30—NBC, John E. Kennedy
3:45—NBC, Univ. of California
4—NBC, Twenty Fingers of Harmony; Orchestra
4:30—NBC, Concert Footlites
5—Studio; 5:55, The Last Word
6—NBC, Capt. Henry's Showboat
7—Stevensville Folks
7:15—Popular program
7:30—YMCA Harmonica Band
8—Chamber of Commerce Program
8:15—Angelita
8:30—Voice, Violin and Piano
9—To be announced
10—NBC, Richfield News Flashes
10:15 to 12 mid.—Dance Music

285.5 Meters KNX Hemp. 4101
1050 Kcys. 25,000 Watts
Western Broadcast Co., Los Angeles

6:45 A.M. to 5—Various Programs
5 P.M.—Storytown Express
5:15—Mary Kirk and Organ
5:30—Bouquet of Memories
5:45—Health Talk; News
6:15—Mayfair Hotel Ensemble
6:30—King Cowboy
6:45—Chandu the Magician
7—Frank and Archie
7:15—Singing Guardsmen
7:30—Elvia Allman
7:45—Lawrence King
8—Varieties
8:15—Stuart Buchanan, skit
8:45—Drury Lane, News
9:15—Cap. Dan'l Treasures
9:45—Orchestra
10 to 11 P.M.—Paris Inn Orchestra

508.2 Meters KHQ Main 5383
590 Kcys. 1000 Watts
Louis Wasmer, Inc., Spokane, Wash.

7 A.M. to 1—Various Programs
1 P.M.—NBC, Betty and Bob
1:15—Studio program
2—NBC-KGO Program to 3:15
3:15—Club Bulletin
3:30—Business and Pleasure
4—NBC-KGO Programs to 4:45
4:45—Full & Gibbs
5—NBC-KGO Programs to 9:15
9:15—National Grocery
9:30—NBC-KGO Programs to 10:30
10:30—Radio Specials
11 to 12 mid.—Dance Music

526 Meters KVI Broadway 4211
570 Kcys. 1000 Watts
Puget Sound Broadcast. Co., Tacoma

6 A.M. to 6—Various Programs
6 P.M.—Philadelphia Symphony
6:15—CBS programs
7—CBS, Camel program
7:30—Dr. Mellor
7:45—Myrt and Marge
8—South Americans
8:15—Elmer Everett Yess
8:30—Singin' Sam
8:45—76 All Star Revue
9:15—Blue Monday Jamboree
10 to 12 mid.—Dance Music

322.4 Meters KROW Glenc. 6774
930 Kcys. 1000 Watts
Educa. Broad. Corp., Oakland, Calif.

7 A.M. to 5:30—Various Programs
5:30 P.M.—Eat your way to Health
6—Dell Perry, pianist
6:15—Walk-a-thon
6:30—Organ Echoes
7—Tom King, Crime News
7:15—Sports; The Musicale
8—Headlines—News
8:15—Ice Hockey
9:30—Cumberland Hillbillies
10 to 12 mid.—Dance Music

265 Meters KSL Wasatch 3901
1130 Kcys. 50,000 Watts
Radio Serv. Corp. of Utah, Salt Lake

6 A.M. to 6:45 P.M.—Various prog.
6:45 P.M.—Elec. transcriptions
7—CBS, Camel Program
7:30—Crazy Crystals Program
7:45—CBS, Myrt and Marge
8—Famous Furniture Stories
8:15—CBS, Programs to 8:30
8:30—CBS, Singin' Sam
8:45—CBS, Orchestra
9—Romance of Mary and John
9:15—Blue Monday Jamboree
10—Dick Aurandt, Organist
10:30 to 11 P.M.—Dance Music

325.9 Meters KOMO Elliott 5890
920 Kcys. 1000 Watts
Fisher's Blend Station, Inc., Seattle

7 A.M. to 1—Various Programs
1 P.M.—NBC, Betty and Bob
1:15—Vindobonians
1:45—Modern Melodies
2—NBC, Al Pearce and Gang
3—Proctor's; Betty
3:15—Melodies and Memories
3:45—Songs New and Old
4—20 Fingers of Harmony
4:15—Dance Masters
4:30—Pastel Harmony
4:45—Engineering Thrills
5—NBC-KGO Programs to 9:30
9:30—Crazy Wells program
9:45—Male Quartet
10—NBC, Richfield News Flashes
10:15 to 12 mid.—Dance Music

483.6 Meters KGW Atwater 2121
620 Kcys. 1000 Watts
Morning Oregonian, Portland, Ore.

7 A.M. to 12—Various Programs
12 noon—F. A. Cook News
12:15—NBC, Farm and Home
1—NBC, Bob and Betty
1:15—Mark Daniels, baritone
1:30—Parker Dental Clinic
1:45—Mary's Friendly Garden
2—NBC, Al Pearce and his Gang
3—Radio Reports
3:05—Waldorf-Astoria Orchestra
3:15—As If By Magic
3:20—Friendly Chat
4 to 12 mid.—NBC-KGO Programs

309.1 Meters KJR Seneca 1515
970 Kcys. 5000 Watts
Northwest Broad. System, Seattle, Wn.

7:30 A.M. to 1—Various Programs
1 P.M.—Cowboy Joe
1:15—Melodies and Memories
1:45—Songs New and Old
2—Vindobonians
2:30—Recorded program
3—NBC Programs to 4
4—Steamboat Bill
4:15—Preschool Asso. Interviews
4:30—Melodic Moods
5—Recorded Programs
6—Viennese Vagabonds
6:30—Washington H. S. Reporter
6:45—Dinner Dansant
7:15—Around the Town
7:30—General Harmonizers
7:45—Dollars and Cents
8—Mische Guterson's Orchestra
8:30—Singing Stars
8:45—Watanabe and Archie
9—Merrie Maniacs; Big Ten
10 to 12 mid.—Dance Music

236.1 Meters KOL Main 2312
1270 Kcys. 1000 Watts
Seattle Broadcast. Co., Seattle, Wash.

6:45 A.M. to 5—Various Programs
5 P.M.—"Fan-O-Gram"
5:15—Radio Theatre of the Air
5:30—Studio program
6—CBS, Philadelphia Symphony
6:15—Sports Review
6:30—CBS, Andre Kostelanetz
6:45—Smiling Eddie Marble
7—CBS, Camel Program
7:30—Radio Speaker Stevenson
7:45—CBS, Myrt and Marge
8—Hollywood Newshawk
8:15—CBS, Plymouth Program
8:30—CBS, Singin' Sam
8:45—"76 All-Star Revue"
9:15—Globe Trotter
9:30—Hockey Game
10:30—American Weekly
10:45 to 12 mid.—Dance Music

FRIDAY Programs • • • • • December 15, 1933

379.5 Mtrs. NBC-KGO Sutter 1920
790 Kcys. 7500 Watts
National Broadcast. Co., San Francisco

- 7 A.M.—Tony Cabooch
- 7:15—Organic Financial Service
- 7:45—Exercise and Applesauce
- 8—To be announced
- 8:15—Log of the Day Crosscuts
- 9:15—Home Economics Talk
- 9:30—Arion Trio
- 10—Sixth Coast Artillery Band
- 10:30—Magazine of the Air
- 11:30—The Rhythm Rascals
- 11:45—Friday Steeplechase
- 12:10 p.m.—Financial Flashes
- 12:15—Farm and Home Hour
- 1—Betty and Bob
- 1:15—Rhythmic Serenade
- 1:30—Oxydol's Own Ma Perkins
- 1:45—Modern Columbus
- 2—Al Pearce and His Gang
- 3—Langendorf Pictorial
- 3:15—Xavier Cugat's Orchestra
- 3:30—Tin Pan Allies
- 4—The Well Dressed Woman
- 4:15—Arion Trio
- 4:30—Studio Chatter
- 5—Balladettes, soloist and Orch.
- 5:30—Billy Batchelor
- 5:45—Little Orphan Annie
- 6—Let's Listen to Harris
- 6:30—Armour Program: Phil Baker
- 7—The First Nighter
- 7:30—Tim and Irene
- 7:45—The Headline Hunter
- 8—Amos 'n' Andy
- 8:15—Gilmore Circus
- 9:15—To be announced
- 9:45—Harry Sosnick Orchestra
- 10—Richfield News Flashes
- 10:15—Anson Weeks' Orchestra
- 11—Tom Coakley's Orchestra
- 11:30 to 12 mid.—Organ Concert

440.9 Meters KPO Sutter 1920
890 Kcys. 50,000 Watts
National Broadcast. Co., San Francisco

- 7:30 A.M.—The Story Singer
- 7:45—Organ Concert
- 8—Music Appreciation Hour
- 9—Johnnie Toffoli, accordionist
- 9:15—Julia Hayes, beauty talk
- 9:35—Organ Concert
- 9:45—News
- 10—Alvino Rey, guitarist
- 10:15—Christmas Gifts from Kitchen
- 10:30—Dr. Wynne's Health Talks
- 10:35—Melody Mixers
- 11—Magic of Speech
- 11:30—Paul Carson, organist
- 11:45—Agricultural Bulletin
- 12 noon—State Dept. of Agriculture
- 12:15—Stringwood Ensemble
- 12:45—Commonwith Club Luncheon
- 1:30—Ann Warner's Chats
- 2—Norman Cloutier's Orchestra
- 2:30—News; 2:45, The Big Top
- 3—Dr. Copeland's Health Talks
- 3:05—Xavier Cugat's Orchestra
- 3:15—Mud Caves; dramatic serial
- 3:30—Three X Sisters, vocal trio
- 3:45—Univ. of California Program
- 4—Dance Masters
- 4:30—Bisquick Program
- 4:35—Arion Trio
- 4:45—For Girls and Boys Only
- 5:15—Souvenirs; organ, guitar, tenor
- 5:45—News; 6, Evening Prelude
- 6:30—Paul Martin, banjoist, and Katherine Julye, harpist
- 6:45—Detectives Black and Blue
- 7—The Clef Dwellers
- 7:15—Tarzan of the Apes
- 7:30—Sports Revue
- 7:45—Bisquick program

- 7:50—Charles Hart, instrumentalists
- 8:15—Red Davis; dramatic sketch
- 8:30—Eno Crime Clues
- 9—Ralph Kirbery, vocalist
- 9:05—Ted Weems' Orchestra
- 9:15—Waltz Time
- 9:45—Concert Miniature
- 10—Football Rally
- 10:30—Out of the East
- 11—Ambassador Hotel Orchestra
- 11:30 to 12 Mid.—Tom Gerun Orch.

243.8 Meters KYA Prospect 3456
1230 Kcys. 1000 Watts
Pac. Broadcast. Corp., San Francisco

- 7:30 A.M. to 12—Various programs
- 12 Noon—Scriptures
- 12:03—Hawaiians; Organ Recital
- 1—Afternoon Concert
- 2—International Troubadors
- 2:30—Mobile Moaners
- 2:45—Organ Matinee
- 3:45—Pollock and Lawnhurst
- 4—Artist Celebrities
- 4:15—Symphony Highlights
- 5—Sunset Revue
- 5:45—Cambell Digest
- 6—Robert Saxe, soloist
- 6:15—Waltz Idylls
- 6:45—Eb and Zeb
- 7—Bob Allen, Piano Stylist
- 7:15—Royal Quartet, King's Men
- 7:30—Musical Whims
- 8—John Wolohan's Orchestra
- 9—News; 9:15, Symphonic Jazz
- 9:30—Milly and Billy
- 9:45—Edgewater Hotel Orchestra
- 10—Organ Serenade
- 11 to 12 Mid.—Concert Memories

340.7 Meters KLX Lake. 6000
890 Kcys. 1000 Watts
Tribune Pub. Co., Oakland, Calif.

- 8 A.M. to 12—Records; Stocks; Music; News
- 12 noon—Bill Duncan's Band
- 1—Jean's Hi-Lights
- 2—Recordings; News
- 2:35—Better Business Talk
- 2:40—S. F. Closing Stocks; Records
- 3:15—Carmen Rushing, pianist
- 3:30—News Flashes; Records
- 4:15—Brother Bob's Club; News
- 4:45—McCoy Health School
- 5—Covered Wagon
- 5:30—News; Famous Campers
- 5:45—Lovable Liars
- 6—Hotel Oakland Trio; News
- 7:30—Meryln Morse, tenor
- 7:45—Helen Parmelee, pianist
- 8—KLX Hi-Jinks
- 10—Fred Skinner
- 10:30 to 11 P.M.—Dance Program

225.4 Meters KGB Franklin 6151
1330 Kcys. 1000 Watts
Don Lee Broadcast. System, S. D., Cal.

- 7 A.M. to 5—Various Programs
- 5 P.M.—Town Topics; Records
- 5:30—CBS, March of Time
- 6—Philadelphia Symphony Orch.
- 6:15—CBS, Threads of Happiness
- 6:30—All American Football Show
- 7—Swift Revue
- 7:30—Globe Headlines
- 7:45—CBS, Myrt and Marge
- 8—CBS, Gladys Rice and Orchestra
- 8:15—Recordings
- 8:30—CBS, Edwin C Hill
- 8:45—CBS, Dance Music
- 9:30—"Catherine the Great"
- 10—World-wide News
- 10:10—Dance Orchestra
- 11:30—Organ Concert
- 12 to 1 A.M.—Recordings

491.5 Meters KFRC Prospect 0100
610 Kcys. 1000 Watts
Don Lee Broadcast. System, S. F., Cal.

- 7 A.M.—Records; Stocks
- 7:30—Early Morning Exercises
- 8—Popular Selections
- 8:30—CBS, Tony Wons, Philosopher
- 8:45—CBS, Dancing Echoes
- 9—CBS, Voice of Experience
- 9:15—CBS, Gypsy Nina
- 9:30—Betty Crocker
- 9:45—CBS, George Hall's Orchestra
- 10—The Little French Princess
- 10:15—CBS, The Playboys
- 10:25—Vidacrin, Talk
- 10:30—CBS, Easy Aces
- 10:45—Prudence Penny
- 11—CBS, Just Plain Bill
- 11:15—Romance of Helen Trent
- 11:30—Philadelphia Orchestra
- 12 noon—Noonday Concert
- 12:55—Vivaderin, talk
- 1—Discovery Hour
- 1:30—Closing N. Y. Stocks
- 1:35—CBS, U. S. Army Band
- 2—Happy Go Lucky Hour
- 3—Feminine Fancies
- 3:30—Sweet Music
- 3:45—CBS, Memory Lane
- 4—Hodge Podge Lodge
- 4:30—Vidacrin, Talk
- 4:35—N. Y. Stocks
- 4:40—Popular Selections
- 4:45—Lost and Found Items
- 4:50—General Mills, talk
- 4:55—Town Topics; 5, Records
- 5:15—H-Bar-O Rangers
- 5:30—CBS, March of Time
- 6—Philadelphia Orchestra
- 6:15—Threads of Happiness
- 6:30—All American Football Show
- 7—CBS, Swift Revue
- 7:30—Globe Headlines
- 7:45—CBS, Myrt and Marge
- 8—CBS, Gladys Rice and Orchestra
- 8:15—S & W Mellow'd Melodies
- 8:30—CBS, Edwin C Hill
- 8:45—CBS, Isham Jones' Orchestra
- 9—Dance Music
- 9:30—Catherine the Great (tentative)
- 10—News Editor of the Air
- 10:10—Talk, General Mills
- 10:15—Dance Music
- 11:30 to 12 mid.—To be announced

535.4 Meters KTAB Garfield 4700
560 Kcys. 1000 Watts
Assoc. Broadcasters, Oakland, Calif.

- 7 A.M. to 1—Various Programs
- 1 P.M.—Radio Frolic
- 1:30—Over the Teacups
- 2—News; 2:15, Town Crier
- 3—X Bar B Boys
- 3:30—Beauty Talk; 3:45, Studio
- 4—The Old Rajah
- 4:30—Studio program
- 5—Dr. Brinkley
- 5:15—Studio Program
- 5:30—Health Talk
- 6—Smile Club
- 6:30—Columbia News Page
- 6:45—Ernie Smith's Sport Page
- 7—Dot Kay, vocalist
- 7:15—Italian News Broadcast
- 7:30—Organ Concert
- 7:45—London Fantasy
- 8:15—American Weekly Drama
- 8:30—Fishing Fool
- 8:45—Cecil and Sally (Elec. Trans.)
- 9—Souvenirs
- 9:30—Jerry Wilford, Poetry, Music
- 9:45—News Flashes
- 10—X Bar B Boys
- 10:30—Don Steele, tenor; organ
- 11 to 12 mid.—Studio program

468.5 Meters KFI Richm'd 6111
640 Kcys. 50,000 Watts
Earle C. Anthony, Inc., Los Angeles
6:45 A.M. to 5—Various programs
5 P.M.—Jimmie West Coast
5:15—NBC, Balladettes
5:30—NBC-KGO Programs to 7:30
7:30—Melodies Operatic
7:45—Frank Luther's Adlerikans
8—NBC, Amos 'n' Andy
8:15—NBC, Gilmore Circus
9:15—NBC program
10—NBC, Richfield Reporter
10:15 to 12 mid.—Dance Music

285.5 Meters KNX Hemp. 4101
1050 Kcys. 25,000 Watts
Western Broadcast Co., Los Angeles
6:45 A.M. to 5—Various Programs
5 P.M.—Storytown Express
5:15—College Daze and Knights
5:30—Touring Topics
5:45—Quartet; News
6:15—Mayfair Concert Ensemble
6:30—King Cowboy
6:45—Bill, Mac and Jimmy
7—Frank and Archie
7:15—Black and Blue
7:30—Red Davis Adventures
7:45—Lawrence King, tenor
8—Optimistic Donut Revue
9—News; Music
9:30—Dance Band
9:45—Fights, Legion Stadium
10:45 to 11 P.M.—Dance Band

333.1 Meters KHJ VAndike 7111
900 Kcys. 1000 Watts
Don Lee Broadcast System, L. A., Cal.
7 A.M. to 5—Various Programs
5 P.M.—Western Clock
5:05—To be announced
5:15—H-Bar-O Rangers
5:30—CBS, "March of Time"
6—CBS, Philadelphia Orchestra
6:15—CBS, "Threads of Happiness"
6:30—CBS, All American Show
7—CBS, Olsen and Johnson
7:30—Globe Headlines
7:45—CBS, Myrt and Marge
8—Home Owners of So. California
8:15—S & W Mellow'd Melodies
8:30—CBS, Edwin C. Hill
8:45—CBS, Isham Jones' Orchestra
9—Tapestries of Life
9:30—Catherine the Great (tentative)
10 to 12 mid.—Dance Music

453.6 Meters KGW Atwater 2121
620 Kcys. 1000 Watts
Morning Oregonian, Portland, Ore.
7 A.M. to 12—Various Programs
12 noon—F. A. Cook News Flashes
12:15—NBC, Farm and Home Hour
12:45—O. M. Plummer
1—General Mills program
1:15—NBC, Rhythmic Serenade
1:30—Parker Dental Clinic
1:45—Mark Daniels, baritone
2—NBC, Al Pearce and his Gang
3—Krazy Limericks
3:05—Waldorf-Astoria Orchestra
3:15—As If by Magic
3:20—Friendly Chat
4:15—NBC-KGO Programs to 5:10
5—Gems of Thot
5:05—NBC, Balladettes
5:10—Adele's Cafe
5:15—Collins & Erwin
5:30—NBC-KGO Programs to 7:30
7:30—Montag Fireside Hour
8—NBC-KGO Programs to 9:45
9:45—Portland Cleaning Works
9:55—Orchestra; 10, News
10:15—Memory Singer
10:20 to 12 mid.—Dance Music

309.1 Meters KJR Saneca 1515
970 Kcys. 5000 Watts
Northwest Broad. System, Seattle, Wn.
7:30 A.M. to 1—Various Programs
1 P.M.—Chamber of Commerce
1:30—Modern Columbus
2—Recorded Program
3—NBC program
4—Cowboy Joe
4:15—Recorded program
4:45—Winnifred Auckland, vocalist
5—NBC, Balladettes
5:30—Recorded Program
6—Melodies of Yesterday
6:30—Washington H. S. Reporter
6:45—Manhattan Echoes
7—Song Recital
7:45—Dollars and Cents
8—Recorded Program
8:15—Olympic Male Chorus
8:30—The South Americans
8:45—Frank Watanabe
9—Happiness Program
9:30—Latin-American Nights
10—Jules Buffano's Orchestra
10:30 to 12 mid.—Dance Music

322.4 Meters KROW Glenc. 6774
930 Kcys. 1000 Watts
Educa. Broad. Corp., Oakland, Calif.
7 A.M. to 6—Various Programs
6 P.M.—Recordings
6:15—Dell Perry, pianist
6:30—Organ Echoes
7—"Solomon and Sullivan," skit
7:15—Sports Review
7:30—"The 'Ne'er Do Well'"
8—Headlines—News
8:15—Watch Tower Program
8:30—Radio Playmakers
9—Wrestling Matches
10:30 to 12 mid.—Dance Music

280.2 Meters KJBS Ord. 4148-49
1070 Kcys. 100 Watts
J. Brunton & Sons, San Francisco
6 A.M. to 4:45—Records; News
4:45 P.M.—Silent period
12:01 to 6 A.M.—Owl Program

296.6 Meters KQW Ballard 777
1010 Kcys. 500 Watts
Pac. Agric. Foundation, Ltd., San Jose
7 A.M. to 6—Various Programs
6 P.M.—Musical Impressions
6:15—Franco's Program
6:30—State Market Reports
6:45—Farmers Exchange
7—U. S. Weather Forecast
7:03—Radio News and Forum
7:30—Chamber of Commerce
7:45—Band Concert
8—San Jose Accordion Club
8:30—Orchestra; Fireside Program
9:30—Mauna Keans
10—Examiner Drama

499.7 Mtrs. KFSB Franklin 6353
600 Kcys. 1000 Watts
Airfan Radio Corp., Ltd., San Diego
7:30 A.M. to 5—Various Programs
5 P.M.—Better Business Bureau
5:05—NBC, Balladettes
5:30—Studio program
6—Safety Talk
6:05—Concert
6:45—High School Program
7—NBC, First Nighter
7:30—NBC, Soloist
7:45—NBC, Floyd Gibbons
8—Fairway Facts
8:15—L'Heure Exquise
9:15—To be announced
9:45—Confidence Man
10—Richfield News Flashes
10:15 to 12 mid.—Dance Music

236.1 Meters KOL Main 2312
1270 Kcys. 1000 Watts
Seattle Broadcast. Co., Seattle, Wash.
6:45 A.M. to 5:15—Various Progs.
5:15 P.M.—H-Bar-O Rangers
5:30—CBS, March of Time
6—CBS, Phila. Symphony Orch.
6:15—CBS, Threads of Happiness
6:30—To be announced
7—CBS, Swift Revue
7:30—Radio Speaker Stevenson
7:45—CBS, Myrt and Marge
8—Front Page Headlines
8:15—S & W Mellow'd Melodies
8:30—CBS, Edwin C. Hill
8:45—CBS, Isham Jones' Orchestra
9—Detectives Black and Blue
9:15—Fun Fest; Globe Trotter
9:45—Smiling Eddie Marble
10 to 12 mid.—Dance Music

526 Meters KVI Broadway 4211
570 Kcys. 1000 Watts
Puget Sound Broadcast. Co., Tacoma
6 A.M. to 6—Various Programs
6 P.M.—Philadelphia Symphony
6:15—Threads of Happiness
6:30—All-American Football Show
7—Olsen and Johnson
7:30—Dr. Mellor
7:45—Myrt and Marge
8—Gladys Rice and Orchestra
8:15—Mellow'd Melodies
8:30—Edwin C. Hill
8:45—CBS, Isham Jones' Orchestra
9—Elk's Stocking Fillers
11 to 12 mid.—Dance Music

508.2 Meters KHQ Main 5383
590 Kcys. 1000 Watts
Louis Wasmer, Inc., Spokane, Wash.
7 A.M. to 2 P.M.—Various programs
2—NBC, Al Pearce and Gang
3—Studio program
4—A. & K. Markets
4:15—NBC Program
4:30—Parade of Happy Feet
4:45—Studio programs
5:15—NBC, Balladettes
5:30—NBC-KGO Programs to 7:30
7:30—Bob and Barbara
7:45—Theatrical Review
8—NBC, Amos 'n' Andy
8:15—Sports Review
8:30—To be announced
9:45—Frank and Archie
10—NBC, Richfield News
10:15—NBC, Anson Weeks' Orch.
10:30—Radio Specials
11 to 12 mid.—Dance Music

325.9 Meters KOMO Elliott 5890
920 Kcys. 1000 Watts
Fisher's Blend Station, Inc., Seattle
7 A.M. to 1—Various Programs
1 P.M.—NBC, Betty and Bob
1:15—NBC, Rhythmic Serenade
1:30—Cowboy Joe
1:45—Easy Chair, Grant Merrill
2—NBC, Al Pearce and his Gang
3—Proctor's Betty
3:25—Capt. Sanisio; Red Shadow
3:45—NBC-KGO Programs to 5
5—NBC, Balladettes
5:15—Male Quartet
5:30—NBC, Billy Batchelor
5:45—NBC, Little Orphan Annie
6—NBC-KGO Programs to 7:30
7:30—Montag Fireside Hour
8—NBC, Amos 'n' Andy
8:15—NBC, Gilmore Circus
9:15—To be announced
9:45—Happiness Program
10—NBC, Richfield News Flashes
10:15—The King's Men
10:30 to 12 mid.—Dance Music

SATURDAY Programs · · · December 16, 1933

379.5 Mtrs. NBC-KGO Sutter 1920
790 Kcys. 7500 Watts
National Broadcast. Co., San Francisco
7 A.M.—Edward MacHugh, Gospel
Singer
7:15—Morning Parade
7:30—Financial Service
7:45—Exercise and Applesauce
8:15—The Vass Family: vocalists
8:30—Stopak and Honti
9—Down Lovers Lane
9:30—Amer. Farm Bureau
10:30—Magazine of the Air
11:30—Concert Echoes
12 noon—Financial Flashes
12:05—Edna Fischer, pianist
12:15—Western Agriculture
1—Dance Masters
1:30—Melody Mixers
2—To be announced
4:45—Engineering Thrills
5—Economics in the New Deal
5:30—Billy Batchelor
5:45—Little Orphan Annie
6—Jack Pearl, the Baron
6:30—Football Scores
6:35—Jamboree, variety show
7—Saturday Night Dancing Party
8—Caswell Concert
8:15—Happy Tunes
8:30—Hollywood on the Air
9—Nathan Abas, violinist
9:30—Anson Weeks' Orchestra
10—Club Villa Orchestra
10:30—Serenata: orchestra
11—Tom Coakley's Orchestra
11:30 to 12 midnight—Slumber Hour

243.8 Meters KYA Prospect 3456
1230 Kcys. 1000 Watts
Pac. Broadcast. Corp., San Francisco
7:30 A.M. to 12—Various programs
12 Noon—Scriptures
12:03—The Blenders
12:30—Organ Recital
1—Afternoon Concert
1:30—Hawaiian Entertainers
2—Rhythmic Ripples
2:45—Organ Matinee
3:45—Artist Celebrities
4—Symphony Highlights
4:55—Talk
5—Sunset Revue
5:45—Campbell Digest
6—Paraders; 6:15, Waltz Idylls
6:45—Rhythm Princes
7—G. Donald Gray, Virginia Miller
7:30—Broadway Reflections
8—John Wolohan's Orchestra
9—Harmony Girls
9:15—Hotel Whitcomb Orchestra
10—Organ Serenade
11 to 12 Mid.—Concert Memories

440.9 Meters KPO Sutter 1920
680 Kcys. 50,000 Watts
National Broadcast. Co., San Francisco
7:30 A.M.—Morning Parade
8—Four Southern Singers
8:15—Log of the Day Crosscuts
9:15—Sax-o-Tunes, Mickey Gillette
9:45—News; 10, Organ Concert
10:30—Merrie Men, male quartet
10:45—Smackout: comedy & songs
11—Musical Originalities
11:30—Arion Trio
11:45—Agricultural Bulletin
12 noon—Words and Music
12:30—Wealth of Harmony
12:45—Comedy Stars of Hollywood
1—News
1:15—John and Ned
1:30—Concert Favorites
2—Ward & Muzzy, pianists

2:15—Babes in Hollywood
2:30—Three Scamps, vocal trio
2:45—The Big Top
3—Xavier Cugat's Orchestra
3:30—Phil Spitalny's Orchestra
3:45—Meyer Davis' Orchestra
4:15—Religion in the News
4:30—Trio Romantique
4:45—Stringwood Ensemble; News
5:30—Sous Les Ponts de Paris
6—Musical Echoes
6:30—Education at Crossroads
6:45—Souvenirs of Song
7:15—Boris Kramarenko's Orchestra
7:30—Tom Gerun's Orchestra
8—The Music Counter
8:30—Piano Pals
9—Carefree Carnival
10—Charles Hart, instrumentalists
10:30—Blue Moonlight
11—Ambassador Hotel Orchestra
11:30 to 12 Mid.—Organ Concert

535.4 Meters KTAB Garfield 4700
560 Kcys. 1000 Watts
Assoc. Broadcasters, Oakland, Calif.
7 A.M. to 1—Various Programs
1 P.M.—Concert—Ensemble
1:30—Studio program
2—Ye Old Town Crier
3—Madelon Sevier, violinist
3:30—Studio Program
4—Young Peoples Program
4:30—The Old Bachelor
4:45—Handwriting Analysis
5—Post Enquirer Funnies
5:15—Si and Elmer
5:30—Travelogue; 6, Organ Recital
6:30—Columbia News Page
6:45—Ernie Smith's Sport Page
7—Dot Kay
7:15—Italian News Broadcast
7:30—Julie Foster and Elbert La
Chelle
7:45—Studio Program
8—Home Favorites
8:30—Song Composers
8:45—Studio; 9, Souvenirs
9:30—Lee Baker, songs
9:45—News Flashes
10—Kelli-Widner Orchestra
10:30—Studio program
11—Hal Girvin's Band
11:30 to 12 mid.—Records

340.7 Meters KLX Lake. 6000
880 Kcys. 1000 Watts
Tribune Pub. Co., Oakland, Calif.
8 A.M. to 12—Records; Stocks; Mu-
sic; News
12 noon—Bill Duncan's Band
1—Jean's Hi-Lights
2—Recordings; News
2:45—Jean Ardath, pianist
3—Recordings; News
4:15—Brother Bob's Club
4:45—Recordings
5—Covered Wagon Jubilee
5:30—Helen Parmelee, pianist
6—Hotel Oakland Trio
7—News; 7:30, Tropical Serenaders
8—Musical Soiree
9—Faucit Theater of the Air
9:30—Soprano and Tenor Soloists
10—Bob Kinney's Band
11 to 12 mid.—Dance Program

280.2 Meters KJBS Ord. 4148-49
1070 Kcys. 100 Watts
J. Brunton & Sons, San Francisco
6 A.M. to 4:45—Records; News
4:45 P.M.—Silent period
12:01 to 6 A.M.—Owl Program

491.5 Meters KFRC Prospect 0100
610 Kcys. 1000 Watts
Don Lee Broadcast. System, S. F., Cal.
7 A.M.—Records; Stocks
7:30—Early Morning Exercises
8—CBS, N. Y. Philharmonic Chil-
dren's and Young People's Concert
9—Junior Artist Program
10—Mickey Mouse, child drama
10:30—CBS, Harold Knight's Orch.
10:45—Prudence Penny
11—CBS, Artist Recital
11:30—CBS, Dancing Echoes
12 noon—Noonday Concert
12:55—Vldacrin, talk
1—CBS, Saturday Syncopators
1:30—N. Y. Stock Quotations
1:35—CBS, Mischa Raginsky En-
semble
2—CBS, Eddie Duchin & Orchestra
2:30—Recordings
2:45—CBS, Spanish Serenade
3—CBS, Meet the Artist
3:15—CBS, Mildred Bailey
3:30—Popular Selections
3:45—CBS, Geo. Scherban's Orch.
4—CBS, Frederic William Wile
4:15—CBS, Lyle Smith's Orchestra
4:30—Lost and Found Items
4:35—Town Topics
4:40—Church Announcements
4:45—CBS, Elder Michaux
5—Dance Music
5:15—CBS, Fray and Braggiotti
5:30—CBS program
6—CBS, Philadelphia Orchestra
6:15—CBS program
6:30—To be announced
7—CBS, Byrd Antarctic Expedition
7:30—CBS, Col. News Service
7:45—CBS, Leaders in Action
8—George Jessel
8:15—CBS, Eimer Everett Yess
8:30—CBS, Glen Gray's Orchestra
9—CBS, Abe Lyman's Orchestra
9:30—Musical Program
10—News Editor of the Air
10:10—Dance Orchestra
11—Gus Arnheim's Orchestra
11:30 to 12 mid.—The Bowery

322.4 Meters KROW Glenc. 6774
930 Kcys. 1000 Watts
Educa. Broad. Corp., Oakland, Calif.
7 A.M. to 5:30—Various Programs
5:30 P.M.—Eat Your Way to Health
6:15—Dell Perry, pianist
6:15—Walk-a-thon
6:30—Organ Echoes
7—Sally Snow, Hillnelly
7:15—Sports Review
7:30—The "Ne'er Do Well"
8—Headlines—News
8:15—Current Reactions
8:30—Royal Hawaiians
9—Italian Program
10 to 12 mid.—Dance Music

296.6 Meters KQW Ballard 777
1010 Kcys. 500 Watts
Pac. Agric. Foundation, Ltd., San Jose
7 A.M. to 6—Various Programs
6 P.M.—Musical Impressions
6:15—Franco's Program
6:30—Band Music
6:45—Farmers Exchange
7—U. S. Weather Forecast
7:03—Radio News and Forum
7:05—Twenty-five Minutes in Paris
7:30—Soul of Portugal
8—Music Lovers' Half-Hour
8:30—Spanish Melodies
8:45—Italian Program
10—Hotel St. Claire Orchestra

285.5 Meters KNX Hemp. 4101
1050 Kcys. 25,000 Watts
Western Broadcast Co., Los Angeles
6:45 A.M. to 2—Various Programs
2 P.M.—To be announced
5—Musical Transcription
5:15—Dr. John Matthews
5:45—Bouquet of Memories
6—News; Lite Concert
6:30—King Cowboy
6:45—Chandu the Magician
7—Frank and Archie
7:15—Phil Musgrave, 'cellist
7:30—Elvia Allman and Band
7:45—Lawrence King and Band
8—Jack Carter's Varieties
9—News Service
9:15—Musical Transcription
9:30—Viennese Nights
10 to 11 P.M.—Dance Bands

468.5 Meters KFI Richm'd 6111
640 Kcys. 50,000 Watts
Earle C. Anthony, Inc., Los Angeles
6:45 A.M. to 1:30—Various progs.
1:30 P.M.—NBC, Melody Mixers
2:15—To be announced
4:45—NBC, A. C. Gilbert Program
5—Rev. Charles E. Fuller
5:30—NBC, Billy Batchelor
5:45—NBC, Little Orphan Annie
6—NBC, Baron Munchausen
6:30—Clarence Muse, baritone
6:45—Frank Luther's Adlerikans
7—NBC, Saturday Night Dancing Party
8—NBC, Caswell Coffee Concert
8:15—Seven Seas
8:30—Hollywood Looking Glass
8:45—Paul Roberts, songs
9—L. A. Philharmonic Orchestra
10—NBC, Club Villa Orchestra
10:30 to 12 mid.—Dance Music

309.1 Meters KJR Seneca 1515
970 Kcys. 5000 Watts
Northwest Broad. System, Seattle, Wn.
7:30 A.M. to 1—Various Programs
1 P.M.—Dance Masters
1:30—Children's Matinee
2—Headliners, recorded
2:30—"Over the Skyrays," talk
2:45—Winnifred Auckland
3—Shuffling Feet; records
4—Melodic Moods
4:30—Dream Melodies
5—New Deal Economics
5:30—Recorded program
6—Dinner Dansant
6:30—Washington H. S. Reporter
6:45—NBC Jamboree
7—Song Recital
7:15—Rocky Mountaineers
7:45—Creole Rhythm
8—Mischa Gutterson's Orchestra
8:30—Songs We Love
8:45—Watanabe and Archie
9—NBC, Carefree Carnival Hour
10—Jules Buffano's Orchestra
10:30—Blue Moonlight
11:30 to 12 mid.—NBC, Slumber Hr

499.7 Mtrs. KFSD Franklin 6353
600 Kcys. 1000 Watts
Airfan Radio Corp., Ltd., San Diego
7:30 A.M. to 12—Various Programs
12 noon—NBC, Edna Fischer
12:15—NBC, Farm and Home
1—NBC, Organ
1:15—NBC, John and Ned
1:30—NBC, Melody Mixers
2:15—To be announced
5—New Deal Economics
5:30—Studio program
6—NBC, Lucky Strike Program
6:30—NBC, The Jamboree
7—Orphans Adrift

7:15—Feature; 8, American Weekly
8:15—NBC, Happy Tunes
8:30—Hollywood on the Air
9—NBC, Carefree Carnival
10—NBC, Club Villa Orchestra
10:30—NBC, Blue Moonlight
11—NBC, Lippman's Orchestra
11:30 to 12 mid.—NBC, Slumber Hour

508.2 Meters KHQ Main 5383
590 Kcys. 1000 Watts
Louis Wasmer, Inc., Spokane, Wash.
7 A.M. to 1—Various programs
1 P.M.—NBC, Dance Masters
1:15—Studio Programs
1:45—Melody Mixers
2—To be announced
3:15—Studio program
5—Economics in the New Deal
5:15—To be announced
5:30—NBC, Billy Batchelor
5:45—NBC, Orphan Annie
6—NBC, Baron Munchausen
6:30—Mantle Lamp Company
7—Crazy Wells Water Company
7:15—American Weekly
7:30—Gilt Top Minstrels
8—NBC, Caswell Coffee Company
8:15—NBC, Happy Tunes
8:45—To be announced
9—NBC, Carefree Carnival
9:45—Frank and Archie
10—Davenport Hotel Orchestra
10:30—Radio Specials
11 to 12 mid.—Dance Music

526 Meters KVI Broadway 4211
570 Kcys. 1000 Watts
Puget Sound Broadcast. Co., Tacoma
6 A.M. to 6—Various Programs
6 P.M.—Philadelphia Symphony
6:15—Stoopnagle and Budd
6:30—To be announced
7—Byrd Expedition Broadcast
7:30—Dr. Mellor
7:45—Leaders in Action
8:15—Elmer Everett Yess
8:30 to 12 mid.—Dance Music

333.1 Meters KHJ Vandike 7111
900 Kcys. 1000 Watts
Don Lee Broadcast. System, L. A., Cal.
7 A.M. to 4 P.M.—Various programs
4—CBS, Frederick William Wile
4:15—Dorothy Miller & Norm Sherr
4:30—CBS, Clyde Lucas' Orchestra
5—Recordings
5:15—Fray and Braggiotti
5:30—CBS, George Jessel
6—CBS, Philadelphia Orchestra
6:15—CBS, Pontiac Program
6:30—To be announced
7—General Foods Program
7:30—CBS, Leaders in Action
7:45—CBS, Hon. Elder Michaux
8:15—CBS, Elmer Everett Yess
8:30—CBS, Glen Gray's Orchestra
9—CBS, Abe Lyman's Orchestra
9:30—To be announced
10—News Items
10:30—Dance Music
12 to 1 A.M.—Recordings

265 Meters KSL Wasatch 3901
1130 Kcys. 50,000 Watts
Radio Serv. Corp. of Utah, Salt Lake
6 A.M. to 6—Various Programs
6 P.M.—CBS, Philadelphia Orch.
6:15—CBS, Modern Male Chorus
6:30—Peter Spraynozzie
7—CBS, Byrd Antarctic Expedition
7:30—CBS, Columbia News Service
7:45—Crazy Water Crystals
8—Saturday Night Party
8:15—CBS Programs
9 to 11 P.M.—Dance Music

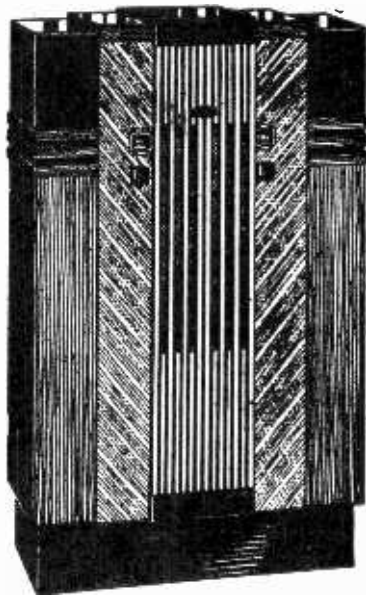
483.6 Meters KGW Arwater 2121
620 Kcys. 1000 Watts
Morning Oregonian, Portland, Ore.
7 A.M. to 12—Various Programs
12 noon—Oregonian of the Air
12:15—Star Furniture Co.
1:15—NBC, Dance Masters
1:30—Parker Dental Clinic
1:45—To be announced
5—Radio Reporter; Orchestra
5:10—Adele's Cafe
5:15—Collins & Erwin
5:30—NBC-KGO Programs to 6:30
6:30—Studio Programs
7—NBC-KGO Programs to 8:30
8:30—Fisher's Blend Half Hour
9—Shanghai Days
9:30—Book Chat; Studio Program
10—NBC, Club Villa Orchestra
10:30—NBC, Blue Moonlight
11 to 12 mid.—Dance Music

325.9 Meters KOMO Elliott 5890
920 Kcys. 1000 Watts
Fisher's Blend Station, Inc., Seattle
7 A.M. to 1—Various Programs
1 P.M.—Clef Dwellers
1:30—NBC, Melody Mixers
2—To be announced
4:45—Engineering Thrills
5—Pastel Harmony
5:30—NBC, Billy Batchelor
5:45—NBC, Little Orphan Annie
6—NBC, Baron Munchausen
6:30—Blue Streaks, Brashen
6:45—General Harmonizers
7—NBC, Dancing Party
8—NBC, Caswell Coffee Concert
8:15—Studio program
8:30—Fisher's Blend Half Hour
9—30 Minutes of Music
9:30—W. Clock, Nocturne Russel
10—NBC, Club Villa Orchestra
10:30—Vic Meyers' Orchestra
11—Jules Buffano Orchestra
11:30 to 12 mid.—Slumber Hour

236.1 Meters KOL Main 2312
1270 Kcys. 1000 Watts
Seattle Broadcast. Co., Seattle, Wash.
6:45 A.M. to 1:45—Various Progs.
1:45—To be announced
4:15—CBS program
4:30—CBS, Clyde Lucas' Orchestra
5—Fan-O-Gram
5:15—CBS Programs to 6:30
6:30—Don Lee Feature
6:45—"It's Time to Sing Sweet Adeline Again"
7—"Byrd Antarctic Expedition"
7:30—Radio Speaker Stevenson
8—CBS program
8:15—CBS, Plymouth Motors prog.
8:30—CBS, Glen Gray Orchestra
9—Globe Trotter
9:15—CBS Orchestras
9:45—Democratic Educ. Feature
10 to 12 mid.—Dance Music

225.4 Meters KGB Franklin 6151
1330 Kcys. 1000 Watts
Don Lee Broadcast. System, S. D., Cal.
7 A.M. to 6:15—Various programs
6:15 P.M.—CBS, Modern Chorus
6:30—Recordings
7—CBS, Byrd Expedition
7:30—To be announced
7:45—CBS, Leaders in Action
8—Tarzan
8:15—CBS programs
8:30—CBS, Abe Lyman's Orchestra
9:30—CBS, Ted Fio-Rito's Orch.
10—World-wide News
10:10—Dance Music
11:30—Organ Recital
12 to 1 A.M.—Recordings

The "Smart Set" of Radio



Majestic

THE LIDO - \$103.50

Here is a radio that "belongs" in modern settings, or will add a welcome touch of originality to more usual environments. A new and refreshing note in design that gets away from the deadly-dull monotony of the ordinary radio. Five different tones of woods are employed—from natural to ebony.

Houses the famous Majestic superheterodyne chassis with the new "DUO-VALVE" tubes. These tubes are also *self-shielded*—molten metal fused directly on the glass effectively shutting out interference.

THOMPSON & HOLMES, LTD.

Wholesale Distributors

171 Bluxome Street

San Francisco