

FOR WEEK OF  
**JULY**  
16th to 22nd

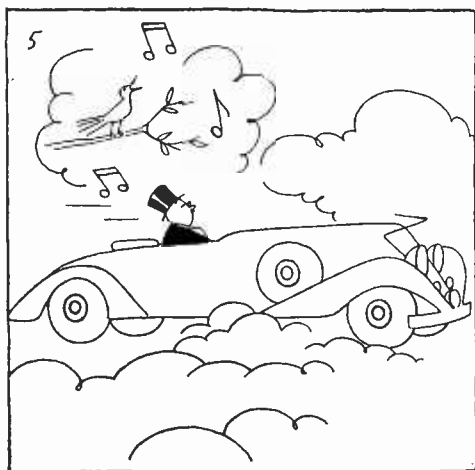
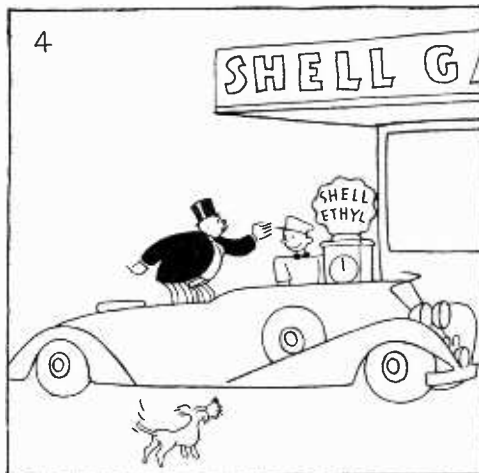
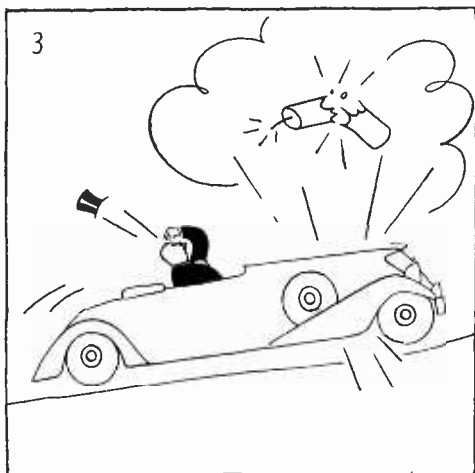
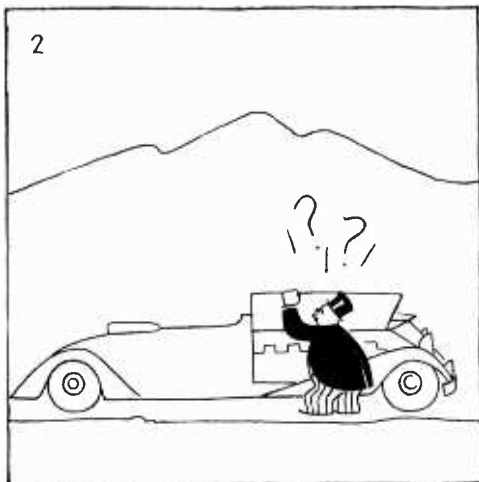
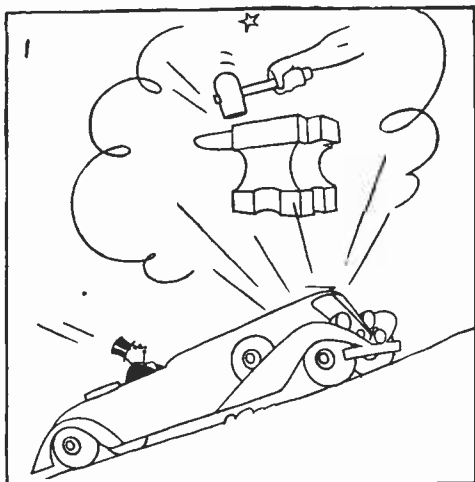
# BROADCAST WEEKLY



**PAUL CARSON, Organist**  
"Builder of 'the Bridge to Dream-land'" broadcast Sunday nights over the NBC-RGO network stations.

THE AMERICAN RADIO GUIDE OF THE PACIFIC COAST





Fun...that's what driving becomes once more! It's a new kind of a thrill to feel the extra power Shell Ethyl gives your motor. The instantaneous starts. The quiet smoothness. From three vital energies . . . plus Ethyl. There's never been a gasoline like it!

# BROADCAST WEEKLY

LOS ANGELES  
R. J. Birch Co.  
846 S. Broadway  
Los Angeles

NEW YORK  
Edwin F. Ripley  
118 East 28th Street  
New York City

*The Leading Radio Guide of the Pacific Coast*

Vol. XII, No. 29

A. J. URBAIN, *Editor and Publisher*  
726 Pacific Building, San Francisco, Calif.

July 15, 1933

## LEST WE FORGET

THE long-hoped-for "business recovery" is imminent. The indications are positive and numerous. Authorities are unanimously agreed. To perpetuate this victory we need now give attention to the "recovery" of some of those other equally valuable though somewhat more intangible assets seemingly lost, "frozen," or forgotten in the frantic fight for physical existence. Rampant individualism manifested in selfish disregard for fellow human beings and evasion of social duties and obligations is the first step toward social demoralization and decay. No code of governmental aid or business procedure, however brilliant or practical, is capable of sustaining a prosperity which is not simultaneously accompanied by a revival of conscience and of courtesy. And to the "recovery" of these, radio must contribute the immediate and unstinted aid of its full power.

Already it is doing much to that end. Religious services, sublime music, inspiring lectures, and other forms of character-building, spirit-sustaining programs are being regularly broadcast to millions of homes which would otherwise want for such inspiration and uplift. The functions and activities of church and school are being augmented and extended to the remotest corners of the country in the most gigantic and accessible system of education and inspiration ever conceived by man.

Not the least important of radio's potential achievements as a social influence is its value in combating the trend toward blase sophistication, in reviving and re-popularizing courtesy in speech and conduct and the other old-fashioned basic virtues.

Whether thirty million American children shall develop into devil-may-care, wise-cracking, jazz-mad clowns, or worse, depends entirely on the example set for them. As the twig is bent the tree is inclined. Home en-

vironment is the crucial factor in a child's growth and development. And upon Radio, one of the outstanding influences in modern home life, devolves the responsibility of preserving and enhancing the wholesomeness of this atmosphere. Hero worship is an inherent part of child psychology. Whatever of good or bad the child accumulates in his growth may be traced directly or indirectly to that one factor. Let radio writers and artists never forget that fact in a single word that is written or uttered.

Although too many sponsors and stations are still willing to contaminate the home with bawdy buffoonery and suggestive wisecracks, broadcasting as a whole has greatly improved in this respect. The manifest courtesy of announcers is commendable and worthy of emulation by children and adults alike. Speaking for the audience as well as himself and the station or sponsor, it is a proper act of politeness and appreciation that the announcer should thank the artist after the rendition of a number, regardless of the fact that both are paid employees. Recompense for service in no way and to no degree is a substitute for the amenities that should characterize relations of a civilized people. Courtesy is not artificial or insipid. It is intensely practical. It is not the mark of weakness but of strength. It is the courtly gesture and kindly word that soften the harsh realities of life and add charm and beauty to human relations.

In worrying about prosperity and physical well-being let us not forget this and the other every-day virtues without which, even though prosperity were possible, peace and happiness and contentment would vanish from the earth. In writing radio stations, artists, or sponsors suggest that they bear in mind not merely the entertainment value of broadcast material, but its cultural influence in modern *home* environment.

Free!



this Valuable Guide to Lovelier

WESTERN GARDENS

With Your Subscription to

SUNSET MAGAZINE \$1<sup>00</sup>

..... 2 WHOLE YEARS FOR ONLY .....

NEWS STAND COST

\$2.40

YOU SAVE \$1.40

HERE'S just the information you need to have a beautiful Western garden! With step-by-step directions and everyday words the SUNSET Garden Book tells you HOW, WHAT, WHEN and WHERE to plant to have the all-year garden of your dreams. Best of all is the 30-page Western Planting Calendar in this book (first of its kind), which tells you exactly when to plant seeds and set out plants to produce the blossoms and colors you want each month of the year. Over 45,000 Western flower lovers now use this valuable guide to lovelier gardens.

SUNSET is the West's own Home, Garden and Outdoor magazine—packed each month with inspiring, money-saving articles on Western gardening, Western cooking, home building and decorating, and Western outdoor life and travel!

Two whole years (24 issues) for only \$1—that is SUNSET Magazine's regular rate. And with your subscription you may have, ABSOLUTELY FREE, a copy of the SUNSET Garden Book. Your FREE copy will come to you by return mail. Just drop this coupon in the mail TODAY!

SUNSET Magazine,  
1045 Sansome Street, San Francisco, Calif.

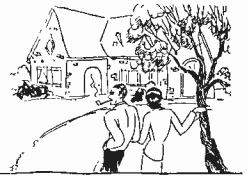
BW-3

Yes, send me SUNSET Magazine for 2 years (24 issues). I enclose \$1. Now I am to receive, by return mail, my FREE copy of the SUNSET Garden Book.

NAME .....

ADDRESS .....

P. O. .... STATE .....



HE: "Our place sure needs flowers and shrubs to make it homier." SHE: "But where would we learn how to plan and care for our garden? We wouldn't know where to begin."



SHE: "What a discovery! SUNSET magazine and the FREE Garden Book tell us just what we want to know!"



HE: "Gee, we're saving money with these SUNSET plans! They're ideal for us Westerners." SHE: "And we've learned how to have a real all-year flower garden, too."



HE: "It's no trick at all to make a fine garden with SUNSET and the Garden Book telling you HOW, WHAT, WHERE and WHEN to plant!"



SHE: "Isn't it heavenly? It's a real home now!" HE: "And to think that SUNSET and the FREE Garden Book made all this possible. Why, we've had hundreds of dollars worth of fun and information for that little \$1 subscription cost!"

# SILHOUETTES

IN AN old-fashioned parlor in Council Bluffs, Iowa, across an old-fashioned square piano, two youths stared at each other—not too kindly.

"Mr. Tollinger, Mr. Wolfe," said the very pretty girl who sat on the piano bench.

"How do you do?" said Ned Tollinger, as if he hoped the worst.

"Pleased to meet you," said John Wolfe, looking the reverse.

And a great friendship was born. Neither lad—one wasn't yet twenty—could foresee the results of that evening on which they both called on the same girl. The object of their joint admiration, having dutifully opened both identical boxes of candy her swains had brought, sought some means to lighten the atmosphere.

"How about some music?" she asked, and swung around to the piano keys.

Planted one on each side of her, John and Ned sang—at first trying to drown each other out, and then, finally, as they unwilling discovered a queer blending of their voices—in harmony.

"And we've been doing it ever since," says Ned, senior member, by all of three years, of one of the most popular duos on the air. Their friendship, a Damon-Pythias affair, has lasted through all the vicissitudes and trying times that come to any team, over a decade in which they have seen radio grow from a plaything to one of the most important mediums in the entertainment world.

In the early days of their acquaintance, if you had told young Mr. Wolfe and Mr. Tollinger that some day they

would be stars in that world, they would have laughed. Neither had ever taken a singing lesson and although John played the guitar, music was altogether a recreational affair, and it was not until the same girl who had introduced them, suggested it, that they even thought of singing at their local radio station. The station manager was willing—all station managers were in those days—so John and



JOHN AND NED

Ned stood up and harmonized manfully before an old-time microphone for five minutes one evening. The thirty fan letters that arrived the next day amazed them, but they recovered sufficiently to take the letters to the Monomotor Oil Company and ask for a job as its singing representatives.

For the next four years John and Ned radio-barnstormed all over the country. They sang over stations in every large city in the United States, giving a quarter-hour of entertainment, mingled

with clever sales-talk for the Monomotor Company.

Twice the duo made personal appearances at San Francisco stations—and liked the city so well that when their Monomotor contract was concluded they trekked all the way from New York to California. They have been with the NBC's San Francisco staff since 1929, and the cheery, friendly message their singing voices bring listeners is echoed in the varied letters which come to them in every mail.

Shortly after they joined the NBC staff, the boys introduced a new member into their partnership, Little Mary, that shrill-voiced six-year-old youngster who sees all and tells all about her family affairs.

Little Mary is so real to listeners that she gets as much fan mail as each of the other members of the duo and many hearers have seriously taken John and Ned to task—"for letting that little girl tell those things about her family, and teasing her all the time."

In appearance, John and Ned look so much like brothers that they are frequently supposed to be so. Both are dark-haired and dark-eyed; both smile in the same pleasant, friendly manner, but their characters are sufficiently unlike to make them an excellent balance for each other. Ned is the quieter of the two, and a bit more reserved. He is the official worrier for the team; John is happy-go-lucky; Ned likes to play golf because it keeps him in trim; John prefers fishing—"because it's more comfortable." He's the bachelor of the team—Ned married the girl who introduced them.

# The OPEN CIRCUIT



*This department is open to all. Send in your letters. Anonymous letters will not be published. Give full name and address.*

## When You Play the Organ

Words by Iola McReynolds  
Music by Luther A. Clark

When you play the organ, the deepest tones roll

Like a wave on the breast of the sea,  
And upon its crest I am lulled to rest,  
And the cares of life go free,  
You take me up to the mountain top,  
Right up to the stars in their flight,  
Then in perfect rhythm we drift back to the haven,  
And the peace of home's firelight.

### Chorus

When you play the organ you give my soul wings,  
And all the earth with harmony rings;  
Even the stars together sing,  
And heaven itself seems near,  
And although your face I may not ever see,  
For from Radioland comes your melody:  
In all the world there is just you and me,  
When you play the organ, my dear.

On billows of melody we sail away  
To the land of sweet dreams that come true,  
Where the moonlight gleams on the silv'ry streams,  
As I stroll alone with you,  
Together we find tomorrow's trail  
That leads up a steep rainbow hill,  
To the glowing sky—where our dream castles lie,  
Then your magic music is still.

Copyright MCMXXXIII by W. A. Quincke, Los Angeles, Calif. International copyright secured. All rights reserved, including public performance for profit. Printed in U. S. A.

## Dobbie Not Lost

FOR some time I have meant to write and ask you if Jerry Wilford, "The Old Vagabond of the Air" who used to broadcast from KFRC from 12 to 1 a. m., is broadcasting on any other station. (Editor's note: We have no record of him at the present time.) I am sure many people must have been grieved, as I was, when he left. And now have we lost Captain Dobbie entirely? I notice he is not listed this week. The

"Powers That Be" made a mistake to let him go east. (Editor's note: He broadcasts over KGO Wednesdays at 6:30 p. m.)

I always have a thrill when I read a letter in the "Open Circuit" referring to Paul Carson's "Bridge to Dreamland," for this is my best loved program, the one I never miss. One can feel Mr. Carson's love of music in his playing. He couldn't play so beautifully if he didn't love it. I always have a warm, friendly feeling toward others, and particularly "Iola," who wrote in about this program and love it as I do.

"One Man's Family" is grand! The actors and actresses all seem particularly well cast. Paul appeals to me especially. He is such a thoroughly understanding soul.

It would take too long and too much space to go on listing things I enjoy, so this seems the place to stop, with a final word of appreciation for our great little magazine. May it live long and prosper! Sincerely yours,

*Dorothy De F., Wenatchee, Wash.*

## Now on NBC



**Dr. PAINLESS  
PARKER**

*Dentist*

Presents **"THE PHILISTINE"**

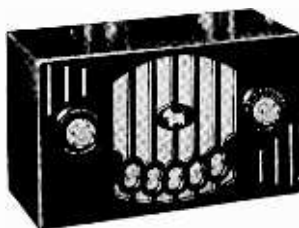
Topics of all times... vitally  
interesting and informative  
... every Tuesday night  
at 8:15 p. m.

Stations **KGO, KFI, KFSD**



Hoot mon—it's a brae wee r-radio  
 as pr-retty as a bit o' heather  
 and as chummy as a puppy!

The New  
**REMLER  
 SCOTTIE**



**M**ADE by Remler—Builders of the World's first superheterodyne—the smart new Scottie is a miniature five-tube superheterodyne de luxe with performance as heart-warming as a wee drop of Scotch.

The completely enclosed cabinet—designed by an artist and made of mirror-finished bakelite with contrasting trim in ivory—adds the final touch of distinction.

Features include: AC-DC operation, which means that you can plug it in anywhere; dynamic speaker; translucent dial illumination; and new multiple prong type tubes. Its diminutive size, 10 $\frac{1}{8}$ " x 6 $\frac{1}{4}$ " x 4 $\frac{7}{8}$ ", makes the eight pound Scottie an ideal travelling companion. Scotch price, too! Complete with tubes . . . .

Suede-finished zipper carrying case at a slight additional cost

**\$27.90**

Remler Company, Ltd.

2101 Bryant Street

San Francisco

REMLER THE RADIO FIRM AS OLD AS RADIO



To sustain interest in Radio  
throughout the summer . .

# BROADCAST WEEKLY

*offers*

A regular \$3 full  
year's subscription  
now special at . . .

New, Renewal or Extension

\$

00

Interest in radio must be sustained the year around, if good programs are to continue. Believing *Broadcast Weekly* stimulates this interest, we are offering, for a short time only, a regular \$3 full year's subscription for \$1. You save \$2 by subscribing *now*, and the offer is also open to your friends. Tell them, and act yourself.

●  
SHORT  
TIME  
OFFER

Don't wait!

MAIL  
THE COUPON  
NOW

✓ ✓ Subscribe for  
your friends, too.

**THIS COUPON SAVES YOU \$2 IF MAILED NOW**

BROADCAST WEEKLY PUBLISHING CO.,  
Pacific Building, San Francisco, California.

*Gentlemen:*

I enclose herewith One Dollar, for which send me *Broadcast Weekly* for one full year. It is understood this pays for a full year's subscription.

Name .....

Address .....

NEW

RENEWAL

EXTENSION



# ETHER GLEANINGS

By J. CLARENCE MYERS

**S**UDS—the 3.2 per cent variety—begin trickling out over the ether highways hereabouts when the first of the big western breweries takes to the air to ballyhoo its foamy wares on July 17.

A half-hour concert of exceptionally high calibre will be broadcast over the Pacific Coast network of the NBC on that date and every Monday thereafter from 8:30 to 9 p. m. The program will originate at the San Francisco studios of the chain, and will be let loose here over KGO.

Meredith Willson and a fifteen-piece concert orchestra; the Doric Male Quartet, ace NBC songsters; Mary Wood, soprano; and Irving Kennedy, tenor, are the shining musical stars on the microphone presentation.

With Acme leading the way, it is likely that it won't be long now before several of the other large brew masters will be hitting the ether roads to advertise their products.

The radio has been anticipating big advertising business from the beer manufacturers ever since the government bars were let down on the sale of alcoholic suds in this country. But the return of the brew was so swift that it caught most of the breweries off guard and they didn't have enough on hand to supply the demand, so advertising was unnecessary. To stimulate further sale would have been folly, for they didn't have the beer to sell. But now that they are beginning to catch their breath there will probably be some action. And radio means to get its share of advertising from the brewers while they are still panting.

For the same reason is radio looking forward to the repeal of the Eighteenth Amendment. It will mean more advertising revenue and ultimately to the listening audience—bigger and better broadcast programs.

\* \* \*

Fredric Bittke, radio songster, who had a wide following while associated with the KFRC staff up until about a year ago, has been singing again over that Don Lec outlet in San Francisco. For the past few months Bittke has been singing over a Southern California radio station.

\* \* \*

Rumor has it that the NBC personnel is going to get back the ten per cent salary cut which was put into effect some months back. Anyhow, the boys and girls in the Pacific division are anticipating it, and most of them have it spent already.

\* \* \*

The Rhythm Rascals, vocal aces, left Gus Arnheim's Hotel St. Francis orchestra and

have been signed by the NBC. If you're interested, you can dial 'em twice a week—Wednesdays at 5:30 to 5:45 p. m., and Saturday at 12 noon.

\* \* \*

As we told in these columns in a previous issue, the San Francisco *Examiner* and other bay district Hearst papers yanked the KYA broadcasting schedules out of their columns because that station sold *Shopping News*, a competitive medium, sponsorship of a news broadcast nightly. An eye for an eye says the station, and dropped the *Examiner* comics broadcasts on Sundays, substituting those of the *Chronicle*, competing San Francisco morning paper.

\* \* \*

Boris Kramerenko and his Balalaika orchestra are additions to the NBC staff and are playing over KPO on Fridays at 6:30 p. m.

\* \* \*

Virginia Miller, KYA's staff pianist, has been given a scholarship at Mills College for the summer months and will study there under Egon Petri, Berlin master.

\* \* \*

Manager Harrison Holliday of KFRC announces several new accounts on his station within the last few days. Among them is the Plymouth Motor Car program from 10:10 to 10:15 p. m. nightly (electrical transcription); a program sponsored by the Health Products Corporation on Tuesdays and Fridays (electrical transcription); and the Frigidaire program over the CBS chain on Wednesdays and Fridays from 6:30 to 6:45 p. m.

\* \* \*

Estelle Loveland, NBC hostess, whom in all probability you will meet if you go up to the NBC studios to watch the "mike" stars do their stuff, is preparing to leave for an extended trip around the world on August 8.

\* \* \*

This fellow Tim Ryan has been going places on the NBC. He started at the network a couple of weeks ago on the "Care-free Carnival" program and together with his partner, Irene Noblette, clicked in such grand style that the program chiefs have given him a program of his own, called: Tim Ryan's Night Club. It's broadcast from 10 to 10:30 p. m., Wednesdays, over KPO. Miss Noblette is an important adjunct to the affair, as is Walter Beban's orchestra.

\* \* \*

Walter Krausgrill, who batoned one of the first bands to broadcast over a radio in San Francisco way back when—is playing toe-

ticking tunes over KYA now. His band is substituting for John Wolohan's orchestra at the El Patio dance pavilion, from where KYA broadcasts nightly.

\* \* \*

Fred J. Hart, president of the Pacific Agricultural Foundation, which owns KQW in San Jose, has been presenting his evening Farm News and Radio Forum program over that station six times a week at 7 o'clock for the past eight years, which, in our belief, is some sort of a record.

\* \* \*

Taylor Holmes has succeeded Ed Wynn on that Fire Chief program of Texaco's for the summer months. Wynn is scheduled to make some flickers in Hollywood.

\* \* \*

The sponsors of the American Album of Familiar Music and Richfield Reporter have renewed their radio contracts with the NBC.

\* \* \*

Gus Arnheim and his orchestra, which is alternating with Anson Weeks on these M. J. B. Demi-Tasse Revues, which are

NBC'd Mondays at 7:30 p.m. still holds the record of having appeared for a longer period on the coffee company's program than any other band. Arnheim and his horn tooters were the second aggregation to appear on the M. J. B. broadcasts while they were playing at the Coconut Grove in Los Angeles a few years ago. They appeared for nine months. Ted Fio-Rito's group appeared on the program for seven months.

\* \* \*

Senator Frankenstein Fishface, whom you've been chucking and guffawing at these past couple of weeks on the NBC's Carefree Carnival, is in real life Elmore Vincent, who held forth on KJR on Seattle for some time and gained quite a reputation in the same hilarious character on the Mardi Gras program.

\* \* \*

Gene Sullivan strolled into the KYA studios t'other day with buttons popping right and left off his vest. He had a fish story to tell and he told it, not before the nuke this time, but to the gang. He caught the limit of striped bass.

**CASA DEL REY**

ANSWER THE LURE  
OF MOUNTAINS, SEA AND SUNSHINE

**SURF**, plunge and sun bathing - stream and deep sea fishing - golf, tennis, polo - delightful dinner and ballroom dances - restful Spanish garden - complete kiddies' playground.

Come where sunshine, salt-tanged breeze and cloudless sky, rushing streams and foaming breakers promise carefree days of fun and zest. Then, to make your outing complete, delicious meals and soothing slumber at home-like CASA DEL REY.

Rates as low as \$2.00 per day or \$10.00 per week European Plan, and \$4.50 per day or \$23.00 per week American Plan. Beautifully appointed housekeeping apartments with complete hotel service \$20.00 per week and up.

Open the year 'round. Write for Descriptive Folder.

MANAGEMENT TROYER BROTHERS

AT THE BEACH

**SANTA CRUZ CALIF.**

# ONE SNIFF AND THEY'RE STIFF



I'm at the end of my wits! Every moth in the neighborhood seems to think I'm running a free boarding house.



A tribe of mosquitoes is holding a flying circus in my kitchen, and the ants are using my cupboard for a warehouse.



And flies don't seem to realize that I have screens on all the doors and windows to keep them from coming in. What to do?



One Sniff and they're Stiff! Associated Fly Spray gets rid of the pests. It is stainless, odorless, more effective—costs less.

Buy Associated Fly Spray from your neighborhood grocer or Smiling Associated Dealer.



# STARS OF THE RADIO



**BETTY MARINO**  
NBC—Violinist



**BARBARA MAUREL**  
CBS—Vocalist



**MURRAY and HARRIS**  
KFRC—Harmony Duo



**Jessica Dragonette**  
NBC—Vocalist



**LEAH McMAHON**  
KFSD—Staff Artist



# The San Francisco CHRONICLE OF THE AIR

## Station KGO—Daily

### Daily Broadcasts Featuring Through the Week:

CHESTER H. ROWELL, Editor  
of The Chronicle. "Behind the  
News."

HARRY B. SMITH, Editor of  
The Chronicle Sporting Green  
—Sports Topics.

JOSEPH HENRY JACKSON,  
The Chronicle's Literary Edi-  
tor—"The Reader's Guide."

NINON, The Chronicle's Fash-  
ion Editor, "The Well-Dressed  
Woman."

JANE FRIENDLY, The Chron-  
icle's Home Economics Edi-  
tor—"The Family Cook Book."

PAUL C. SMITH, The Chron-  
icle's Financial Editor—Finan-  
cial Chats.

ED R. HUGHES—Sports Com-  
ments.

DINK TEMPLETON and  
BRICK MORSE—Sports In-  
terviews and Forecasts.

PRESCOTT SULLIVAN—  
Sports Comments.

AUNT DOLLY—Child Psychol-  
ogy.

ALICE MORGAN ROEDEL—  
Contract Bridge.

LADY TEAZLE—Society's  
Doings.

GEORGE WARREN—Drama  
Criticisms.

KATHERINE HILL—Stage and  
Screen.

ALEXANDER FRIED—Musical  
Topics.

"SCOTTY" MORTLAND—Col-  
umnist and Philosopher.

JACK DENSHAM—Tales of the  
Sea.

LILLIAN B. CONNELLY—Club  
News.

EARL C. BEHRENS—Political  
Comments.

LEON J. PINKSON—Auto-  
motive Notes.

A new series of features takes to the air—a series of varied interests and personalities. The editors and feature writers of the San Francisco Chronicle will speak to you on their own subjects, each bringing to you his own personality, comments and "inside" information. These daily radio broadcast programs from our own studio in the Chronicle Building over KGO, the most popular station in Northern California.

SAN FRANCISCO CHRONICLE  
Mission Street at Fifth

*Circulation Department:*

Please deliver THE SAN FRANCISCO CHRON-  
ICLE (daily and Sunday) to me at the following address  
for \$1.15 per month:

Name .....

Address .....

Telephone .....

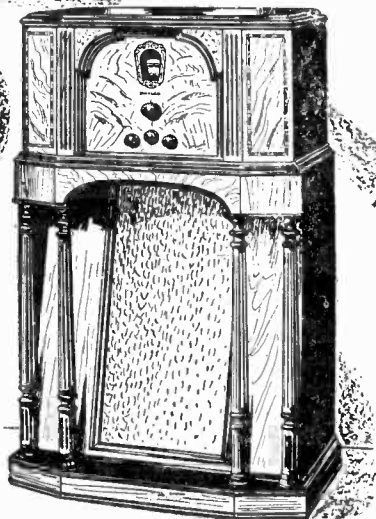
Signature .....

**FIRST  
TIME!**

A Genuine

**PHILCO**  
"X" Model

for **\$68.50** COMPLETE  
only Federal Tax Paid



Think of it! Now—a brand new 1934 PHILCO (Model 19X) with the famous Inclined Sounding Board at a price no higher than you would pay for an ordinary radio. Supreme tone quality—extra power—exquisite cabinet.

**Built-in, Balanced-Unit Quality  
Plus Every Worth-While Feature**

A Musical Instrument of Quality, every part perfectly balanced. Among its many big features are Shadow Tuning, PHILCO Bass Compensating Tone Control Full Floating Chassis. Automatic Volume Control. Station Recording Dial and PHILCO High-Efficiency Tubes. Receives police and airplane calls in addition to regular broadcasts! Don't fail to see and hear it!

**MANY OTHER NEW 1934 PHILCOS—\$15.75 UP!**

**EASY PAYMENTS**

**Extra-Liberal Trade-In Allowances**

**SEE YOUR NEAREST PHILCO DEALER**

# MICROPHONE GOSSIP



• • • The Maxwell House Show Boat, heard over an NBC-WEAF network each Thursday night, has what is probably the largest cast of any regular radio feature. There are sixty-seven members. The entire group dashed in a parade of taxicabs from the NBC studio to a Broadway theatre after last week's broadcast to be the theater guests of Lanny Ross, tenor of the hour, who was making a personal appearance over the footlights. Then the entire crowd dashed back to the studios for the repeat broadcast to the NBC Pacific Coast network.

• • • Cynthia, 225-pound torch singer, who recently made her radio debut over NBC networks from San Francisco, went to the University of Southern California and studied psychology there before she started her professional career—which may be one reason this big girl with the infectious smile and the come-hither eyes knows what folks like to hear on the radio.

Cynthia is the daughter of a well-known Los Angeles physician who wanted her to become a psychiatrist instead of a radio star—so she has never used her last name professionally. She has lived in Southern California most of her life, and was featured in several motion pictures including "College Humor," with Bing Crosby, before she joined NBC's San Francisco staff.

Her unusual voice, with its low register which goes lower than most baritones, is the result of a tonsil operation. When she had her tonsils she also had a beautiful soprano voice, and studied music—the classic variety—for nine years. Cynthia's pet recreations are

bicycling, roller-skating, and eating; her favorite companion, her German police dog puppy whose name is Hitler. Her pet aversion is diets; she's never tried one, but knows she wouldn't like it.

• • • When the KGB staff have a meeting it is quite a collegiate gathering, for almost everyone on the staff is a college man: Lincoln Dellar, manager, is from the University of California, Berkeley; Advertising Manager Stewart, from Columbia University; Bob Bowman, program director, from Dayton University; James Dillon, from University of Southern California; and Arthur Linkletter, publicity manager, from San Diego State College. This makes it a 100 per cent "brain trust."

• • • Listeners expect a great deal of the radio stations that serve their territory, as attested by some of the phone calls received at KYA recently. There was the man who phoned to ask that a record he liked to hear be sent out to his house; a lady who was going out for the afternoon and wanted her favorite program to be broadcast at four o'clock instead of two on the day she phoned; a lady who called at 10 o'clock at night to ask if the station could furnish her with a recipe for tamale pie; and another who wanted to know where to find the death notices in her local paper.

• • • The Freeman Lang Sound Studios down in Hollywood are producing a new series of electrical transcriptions which will be released this month with Don Wilson, KFI-KECA's chief announcer, in the rôle of drum major for the Mirth Parade. While defi-

nite list of releasing stations is not yet available, West Coast listeners will probably be able to get a choice of stations for dialing to the new fun and mirth radio carousel. Most of the talent is already familiar to radio eavesdroppers on such frolics as the Hi-Jinks, Merrymakers and others. These include Tizzie Lish, Bob Burns, Joe Twirp, Browne and Lavelle, Florence Gill, Aunt Addie, Three Cheers, Eddy Adams, Eureka, Andy Andrews, Sylvia Picker and others.

Freeman's Lang's sound studios also release transcriptions which distribute western talent in all parts of the globe. Their most popular dance group series is furnished by the orchestras which play currently at the famous Ambassador Hotel's Cocoanut Grove in Los Angeles.

• • • Ted Roy, NBC tenor who is heard with the Knickerbocker quartet, lives in a hay loft.

Seeking an apartment where he could practice at odd hours without getting neighborly complaints, Ted and his wife discovered an old hay loft, which they leased for four years at five dollars a month. Then they proceeded to remodel it, and the result is a studio apartment—still at the five-dollar rental—which has other NBC artists envious. Thoroughly cleaned, painted and decorated in quaint fashion, the studio presents a charming picture—and beats the depression to a frazzle.

• • • Arthur Yarborough, noted portrait photographer and brother of Barton Yarborough, NBC actor, recalls the days when it was dangerous to display a photograph of Bernice Berwin, NBC dramatic star, in his studio. Once

when Bernice was a student at the University of California, Yarborough put several pictures of her in the window of his Berkeley establishment, and a group of youthful admirers of Bernice broke the glass and stole the pictures to adorn the wall of their fraternity house.

• • • Howard Claney, possessor of one of the NBC's best known voices, admits he was scared stiff when he made his debut as an announcer over station WJZ in 1927. He had won an announcer's job by reading from a scene from "Peter Ibbetson," a play in which he had starred on Broadway.

"The late Gerald Stopp heard the audition," says Claney, "and he said he thought the station could take a chance on me. My first program was a drama—an O. Henry story. In rehearsal, I looked at the microphone and felt a little contempt for it. "But when the time for the broadcast arrived, I began to shake like a leaf and I thought I would never get through the brief announcement. Ever since I have always had a profound respect for the "mike" and to this day I never feel entirely at ease until the program is well under way."

• • • Elizabeth Love, romantic young Southern actress heard as Betty Graham in Columbia's "Roses and Drums" series, probably has played opposite more famous leading men than any ingenue in the theatre. Since the start of the historical radio drama, Miss Love has appeared with more than fifty male stars of all generations on the stage. They include Walter Connolly, William Faversham, De Wolf Hopper, Conway Tearle, Bert Lytell and Guy Bates Post, the latter currently depicting the rôle of General Grant. Miss Love is a pretty product of Lakeland, Fla.,

who made her air debut last year in a radio play on Columbia's Philadelphia station, WCAU. She has wavy brown hair and brown eyes, stands five feet two and weighs 102 pounds.

• • • Phil Harris, versatile young Californian, who has been the sensation of the West Coast in movie and radio entertainment and who has been hailed by competent observers as the next "matinee idol" of the air, is heading a new program over an NBC coast to coast net work sponsored by the Northam Warren Corporation. Harris will lead his orchestra, be his own master of ceremonies and sing in his agreeable bass baritone. In duets and dialogue with him will be Leah Ray, also of movie popularity, who has been his partner in a record-breaking 18-months' engagement at the Coconut Grove, Hollywood. Phil has made a movie short entitled "So this is Harris" and a longer picture, "Melody Cruise," with Charles Ruggles. The young maestro has concluded his engagements on the Coast and is headed for Chicago. He is scheduled to go into the Ben Bernie spot at the College Inn in August. He is also recording for Columbia.

• • • Now that radio comedians have exhausted the field of invention, Bert Lahr, the social beast of those Sunday night coffee programs, has turned to the gentle art of nature-faking, his latest discovery being a bird called the flipturkle. The flipturkle is a bird that resembles an oyster and flies upsidedown to keep the sun out of his eyes.

• • • A very novel program on KGB is the children's program, "Fantasia," which is sponsored by Holz-wasser's Department Store. "Fantasia," the land of happy hours, has been built by the sponsor, and takes in the eighth floor of their store

building. It is open to the public, and the characters in the story appear on Saturday mornings and put on an hour of entertainment for the kiddies. This program is proving so popular that it is necessary to give two or three shows to accommodate the crowds attending the performances.

• • • Joseph Henry Jackson, NBC book reviewer heard Sunday nights on the Reader's Guide program, married a girl whose paternal grandmother came around the Horn with her pioneer husband, raised a large family and who lived to meet her grandson-in-law while he was still a prospective suitor. Not until after the old lady's death did Jackson hear her comment upon him:

"Look's like a nice enough man—but he wouldn't be much good at the end of a pick and shovel!"

• • • The amazing tales of crime detection being related on "Standard on Parade" each Sunday evening by Captain Don Wilkie are all the more astounding when it is remembered that the subject matter is unadorned facts taken from the files of the United States Secret Service. Capt. Wilkie, during his years as an operative in the service, was active in every section of the country, and at different times was assigned to special duty for both Scotland Yard and the Prefect of Paris police. His personal fact crime library is known to law-enforcement officials as one of the most comprehensive in America.

• • • With spring comes aching muscles as a number of KYA employees will testify. Now that the rainy season is over, several members of the staff have been exhibiting a great thirst for exercise. Lynn Church, announcer, and Karol Chylinski, of the Slavic program, have enrolled in gym classes and



spend their spare time about the studio discussing comparative lameness. Harry Bechtel is reducing again—with exercise and much groaning. Herb Lewis, in the technical department, reports bicycling as his media for exercises.

• • • At last a song's been written about bridge. It's comic, and entitled, "So It's Bridge Again Tonight." The Men About Town, noted radio trio, recently introduced it on the B. A. Rolfe program.

• • • Reminiscent of those old spine-chiller yarns of how the ancient grandfather's clock which hadn't run for years, came suddenly to life to toll the hour of death for the head of the famous household, is the following much more modern "haunt" story sworn to by Bob Bence, KFRC announcer of Professor Bob fame in the early morning exercise period.

Bence claims the incident to be the first genuine case of dirty work by the spirits in the field of radio. At the conclusion of the 8:15 a. m. program Bence, as local announcer, is scheduled to come in with the KFRC station identification. His cue is supposed to be the network's announcer's line, "Set Your Alarm Clock at 8:15." But the net work man slipped a bit on the cue and while Bence anxiously watched the studio chronometer to have his announcement on time, both hands suddenly dropped off at 8:15:50, leaving Mr. Bence very deeply shocked and surprised. So if the station identification was a bit shaky, that is the reason.

• • • One of the best friends and most severe critics of Richard Gordon, the Sherlock Holmes of the air over NBC networks, is the Gordon postman, who after listening to

Sherlock the night before, leaves his comment penciled on the back of envelopes he delivers to Gordon. One he scribbled in caustic vein he signed Spencer Dean, and the other day after Gordon had played the part of a physician on an NBC program, he found an envelope the next morning with this sentiment, "You're some doctor. Hope you never have to call yourself in to cut off a finger or two!"

• • • Eddie Peabody, internationally famous banjo star who is heard on Wednesday nights over an NBC-KGO network, writes his own continuity for his broadcasts—usually in a borrowed office in NBC's San Francisco studios, where he "plays" a typewriter much as he does musical instruments, leaping at the machine and away from it again in characteristic Peabody style.

*"In the Heart of California's Redwood Empire"*

# HOTEL VANCE

EUREKA, CALIFORNIA

10 HOURS FROM SAN FRANCISCO

From San Francisco it is a comfortable one-day drive to Eureka. The Vance is a convenient first-night stop-over.

**DINING ROOM**  
Club Breakfasts 30c to 50c  
Lunch and Dinner 50c

**Famous Redwood Log Cabin Beer Garden**

The most unique beer garden in Northern California will enchant you—popular prices will please you.

Daily Luncheon SANDWICHES  
11 to 1:30—35c AT ALL HOURS

ATTRACTIVE TOURIST RATES

ROOMS DETACHED BATH \$1.50  
SHOWER \$2.00 TUB \$2.50

FREE GARAGE



HOME OF RADIO KIEM



# SUNDAY Programs

July 16, 1933

**379.5 Mtrs. NBC-KGO** Sutter 1920  
790 Kcys. 7500 Watts  
National Broadcast. Co., San Francisco  
8 A.M.—Chronicle Comics  
8:30—Arion Trio  
9:15—Palmer House Ensemble  
9:30—Sabbath Reveries  
10—Gene Arnold and Commodores  
10:15—International Radio Forum  
10:30—Yeast Foamers  
11—Lady Esther Serenade  
11:30—Radio Pulpit  
12—Fiddlers Three and vocal trio  
12:15—Wildroot Program  
12:30—Organ Recital  
1—The World of Religion  
1:30—Eva Jessye Choir  
2—Pastels: Orchestra and vocal  
2:30—Tunes of the Times  
3—Nathan Abas, violinist  
3:30—Wisdom of the Ages: Drama  
4—Chase and Sanborn Program  
5—Manhattan Merry-Go-Round  
5:30—American Album of Music  
6—Col. Louis McHenry Howe  
6:15—Impressions of Italy  
6:45—Sunday at Seth Parker's  
7:15—Donald Novis, tenor  
7:30—Orchestral Gems  
8—Standard on Parade  
9—Reader's Guide, Joseph Jackson  
9:30—Chas. Hart Instrumentalists  
10—Richfield News Flashes  
10:15—Paul Carson, organist  
11 to 12 mid.—Kay Kyser's Orch.

**243.8 Meters KYA** Prospect 3456  
1230 Kcys. 1000 Watts  
Pac. Broadcast. Corp., San Francisco  
8:15 A.M.—Christian Science prog.  
8:30—"Uncle Harry" Comics  
9—Sabbath Reveries  
10—Ruth Rogers  
10:15—Town Hall Harmonies  
10:30—Singing Strings  
11—Old St. Mary's Church Services  
12 noon—Organ; Paraders  
1:30—Waltz Idylls; Opera at 2:00  
3:30—Records; Serenaders  
4:30—Symphony Series  
5:30—Violin Masters  
6—Choir Hour  
6:30—Evening Lullaby  
7—Political Talk  
7:15—Memory Music; 7:30, Opera  
9:30—El Patio Orchestra  
10:30 to 11 P.M.—Concert Memories

**280.2 Meters KJBS** Ord. 4148-49  
1070 Kcys. 100 Watts  
J. Brunton & Sons, San Francisco  
8 A.M. to 7:30—Records; News;  
Music  
7:30 P.M.—Silent period  
12:01 to 6 A.M.—Owl Program

**535.4 Meters KTAB** Garfield 4700  
560 Kcys. 1000 Watts  
Assoc. Broadcasters, Oakland, Calif.  
8:30 A.M. to 1—Various programs  
1 P.M.—Church of Latter Day Saints  
1:30—Golden Memories  
2—Iverson String Quartet  
2:45—Little Journeys  
3—Old Music Masters  
3:30—Isle of Dreams  
4—Studio; Organ  
4—Echoes of Portugal  
7—George Kruger, pianist  
7:15—Amateur Sports News  
7:30—Church Services  
9:15—Rod Hendrickson; Organ  
9:45—Studio program  
10—Jess Stafford's Orchestra  
10:30 to 11:15 P.M.—Records; Walk-  
athon

**440.9 Meters KPO** Sutter 1920  
680 Kcys. 50,000 Watts  
National Broadcast. Co., San Francisco  
8 A.M.—Major Bowes' Family  
8:15—Radio City Concert  
9:15—Concert Ensemble  
9:30—Melody Mixers; Orchestra  
10:30—Cecilians: Vocal and instr.  
11—Bible Stories  
12 noon—Music Garden  
1—Melody Train  
2—Catholic Hour  
2:30—Pollikoff Novelty Orchestra  
3—Harmonica Rascals  
3:15—World Economic Conference  
3:30—San Francisco Municipal Organ  
4—Community Forum  
4:30—Song Shots  
5—Louis Ford, violinist  
5:15—Coquettes; Vocal trio  
5:30—Evening Concert: Orchestra  
direction Emil Polak  
6—Melodians: Orchestra direction  
Walter Beban  
6:30—Irving Kennedy, tenor  
7:15—Personal Close-ups: Barry  
Hopkins, actor, interviewed by  
Gypsy  
7:30—Gunnar Johansen, pianist  
8—Dance Nocturne  
8:30—Leo Reisman and his Congress  
Hotel Orchestra  
9—Rudy Seiger and his Fairmont  
Hotel Orchestra  
9:30—University of California prog.  
10—Gene Quaw's Orchestra  
10:30—On Wings of Music  
11 to 12 mid.—Chas. Runyan, organ

**340.7 Meters KLX** Lake. 6000  
880 Kcys. 1000 Watts  
Tribune Pub. Co., Oakland, Calif.  
12 noon—Records  
12:30—John Lewis quintet  
1:30—Recordings  
2:30—Merriell Bond, baritone; Muriel  
Scherruble, soprano; Anita and  
Romando, novelty guitar duo;  
Jean Ardath, pianist  
3:30—Records; violn ensemble  
5—Covered Wagon Jubilee  
5:30—"Old Man Soliloquy"  
5:45—Dot Kay & Nancy Ann Hersey  
6:30—Hotel Oakland Trio  
7:30—Neighboring Songs and Poems  
7:45—William Don, comedian  
8—Manila Stringed Orchestra  
8:30—Florence Hertzog, contralto;  
Henri Sheffer, basso, and Helen  
Parmelee, pianist.  
9:15—Studio program  
9:30—Wallele Trio  
10 to 11 P.M.—Dance program

**322.4 Meters KROW** Glen. 6774  
930 Kcys. 1000 Watts  
Educa. Broad. Corp., Oakland, Calif.  
8 A.M. to 12—Various programs  
12 noon—"Muse and Music"  
12:30—Organ; Sebastopol Trio  
1:30—Bible Questions and Answers  
2—Marie George, soprano  
2:30—Novelty Review; Requests  
4—Hour with the Masters  
5—Mills Brothers' Records  
5:15—Recorded program  
5:30—American Veterans' program  
6—Watch Tower program  
6:30—Jewish Classical Hour  
7:30—Dixieland Melodies  
8—Radio Playmakers  
8:30—Sunday Evening Melodies  
9—Italian Watch Tower  
9:30—Hawaiian Melodies  
10 to 11 P.M.—Request program

**491.5 Meters KFRC** Prospect 0100  
610 Kcys. 1000 Watts  
Don Lee Broadcast. System, S. F., Cal.  
8 A.M.—Examiner Comics  
8:30—CBS, New World Symphony  
9—CBS, Fred Feibel, organist  
9:30—CBS, Compinsky Trio  
10—Home Sweet Home Concert  
11—Jean Ellington & Dick Aurandt  
11:15—CBS, Symphonic Hour  
12 noon—CBS, Cathedral Hour  
1—CBS, Poet's Gold  
1:15—CBS, Vera Van and Orchestra  
1:30—Fred Lane's Book Review  
1:45—Claude Sweeten's Concert.  
2—CBS, Ballad Hour  
2:30—CBS, Chicago Knights  
3—CBS, The Gauchos  
3:30—CBS, H. V. Kaltenborn  
3:45—CBS, Gertrude Niesen  
4—CBS, Chicago Variety Program  
4:30—Philadelphia Summer Concerts  
6:15—CBS, John Henry  
6:30—CBS, Rhythm Rhapsody  
7—CBS, Guy Lombardo's Canadians  
7:30—CBS, Jerry Freeman's Orch.  
8—Salon Moderne  
8:30—CBS, Ted Lewis' Orchestra  
9—The Merrymakers  
10—Examiner News Items  
10:10—Gus Arnheim's Orchestra  
11 to 12 midnight—Midnight Moods

**296.6 Meters KQW** Ballard 777  
1010 Kcys. 500 Watts  
Pac. Agric. Foundation, Ltd., San Jose  
10:15—Sunday School Lesson  
11—First Baptist Church Services;  
Silent at 12:30  
7:30 to 9 P.M.—Church Services

**333.1 Meters KHJ** VAndike 7111  
900 Kcys. 1000 Watts  
Don Lee Broadcast. System, L. A., Cal.  
8 A.M. to 12—Various programs  
12 noon—CBS, Cathedral Hour  
1—CBS, Poet's Gold  
1:15—CBS, Vera Van and Orch.  
1:30—Fred Lane's Book Review  
1:45—Little Concert  
2—CBS, Ballad Hour  
2:30—Adventure, Mystery, Romance  
2:45—CBS, Chicago Knights  
3—CBS, The Gauchos  
3:30—CBS, H. V. Kaltenborn  
3:45—CBS, Gertrude Niesen  
4—CBS, Columbia Variety Program  
4:30—Philadelphia Summer Concert  
6:15—CBS, John Henry  
6:30—CBS, Rhythm Rhapsody  
7—CBS, Guy Lombardo's Orchestra  
7:30—CBS, Jerry Freeman's Orch.  
8—Salon Moderne  
8:15—S. & W. Mellow'd Melodies  
8:30—CBS, Ted Lewis' Orchestra  
9—The Merrymakers  
10—News Items  
10:10—Gus Arnheim's Orchestra  
11 to 12 mid.—Claude Reimer,  
Organist

**285.5 Meters KNX** Hemp. 4101  
1050 Kcys. 25,000 Watts  
Western Broadcast Co., Los Angeles  
6:45 A.M. to 5—Various programs  
5 P.M.—Ethel Hubler; Organ  
5:30—First Radio Church  
6:30—Dr. Curtis Abel  
7—"Complaint Department"  
7:15—Range Riders  
8—First Presbyterian Church  
9—Newspaper Service  
9:15—Judge Rutherford  
9:30 to 10:30 P.M.—Calmon Lubovis-  
ki, violinist

**468.5 Meters KFI** Richm'd 6111  
640 Kcys. 50,000 Watts  
Earle C. Anthony, Inc., Los Angeles  
9 A.M. to 12:15—Various programs  
12:15 P.M.—NBC, Wildroot Program  
12:30—Dr. Casselberry  
12:45—Barbara Jamieson, pianist  
1—Classic Hour, String Trio  
1:30—Eva Jessye Choir  
2—Wesley Tourtelotte, Organist  
2:30—Univ. of S. Calif. Music Prog.  
3—NBC, Harmonica Rascals  
3:15—World Economic Conference  
3:30—Symphonic Band Concert  
4—NBC, Chase and Sanborn prog.  
5—NBC, Merry-Go-Round  
5:30—NBC, Amer. Album of Music  
6—NBC, Col. Louis M. Howe  
6:15—NBC, Impressions of Italy  
6:45—Ranse Valentine and cast  
7:15—NBC, Donald Novis, tenor  
7:30—Organ and Violinist  
8—NBC, Standard on Parade  
9—The Galettes of '33  
10—NBC, Richfield Reporter  
10:15 to 11 P.M.—NBC, Bridge to Dreamland

**499.7 Mtrs. KFSD** Franklin 6353  
600 Kcys. 1000 Watts  
Airfan Radio Corp., Ltd., San Diego  
7:45 A.M. to 12—Various programs  
12 noon—NBC, Fiddlers Three  
12:15—Studio program  
12:30—NBC, Organ Recital  
1—NBC, World of Religion  
1:30—NBC, Eva Jessye Choir  
2—Old Time program  
2:30—NBC, Pollihoff Orchestra  
3—NBC, Harmonica Rascals  
3:15—NBC, William Hard  
3:30—NBC, Wisdom of the Ages  
4—Concert  
5—Morales Entertainers  
5:30—Twilight Hour  
6:15—Impressions of Italy  
6:45—NBC, Seth Parker  
7:15—Bonham's program  
7:30—NBC, Orchestral Gems  
8—NBC, Standard on Parade  
9—NBC, Reader's Guide  
9:30—Univ. of Calif. Programs  
10—NBC, Richfield News Flashes  
10:15—NBC, Bridge to Dreamland  
11 to 12 mid.—NBC, Bal Tabarin Or.

**483.6 Meters KGW** Atwater 2121  
620 Kcys. 1000 Watts  
Morning Oregonian, Portland, Ore.  
8 A.M. to 12—Various Programs  
12 noon—NBC-KGO Programs to 2  
2—Catholic Hour  
2:30—Pollihoff Novelty Orchestra  
3—NBC-KGO programs to 8  
8—NBC, Standard on Parade  
9—G. A. Paine, violinist  
9:05—Golden Sonnets  
9:30—NBC, Hart Instrumentalists  
9:55—Musical Comedy Miniatures  
10 to 12 mid.—NBC-KGO programs

**225.4 Meters KGB** Franklin 6151  
1330 Kcys. 1000 Watts  
Don Lee Broadcast. System, S. D., Cal.  
8 A.M. to 4:30—Various programs  
4:30—Philadelphia Summer Concert  
6:15—CBS, John Henry  
6:30—CBS, Frigidaire program  
6:45—CBS, Columbia Revue  
7—CBS, Guy Lombardo's Orchestra  
7:30—CBS, Jerry Freeman's Orch.  
8—Salon Moderne  
8:30—CBS, Ted Lewis' Orchestra  
9—KHJ Merrymakers  
10—World-Wide News  
10:10—Arnheim's Dance Orchestra  
11:30 to 1 A.M.—Organ; Records

**508.2 Meters KHQ** Main 5383  
590 Kcys. 1000 Watts  
Louis Wasmer, Inc., Spokane, Wash.  
(Spokane Daylight Saving Time)  
9 A.M. to 1—Various programs  
1 P.M.—U. S. Forest Service  
1:15—NBC, Wildroot Program  
1:30—NBC, Organ Recital  
2—Northwest on Parade  
2:30—NBC, Eva Jessye Choir  
3—NBC, Catholic Hour  
3:30—NBC, Pollihoff Orchestra  
4—NBC, Harmonica Rascals  
4:15—To be announced  
5—NBC, Chase and Sanborn Hour  
6—NBC, Merry-Go-Round  
6:30—NBC, Bayer's Amer. Album  
7—NBC, Col. Louis Howe  
7:15—NBC, Impressions of Italy  
7:45—NBC, Sunday at Seth Parker's  
8:15—NBC, Donald Novis, tenor  
8:30—Electrical Transcription  
9—NBC, Standard on Parade  
10—NBC, Reader's Guide  
10:30—Musical Program  
11—NBC, Richfield News Flashes  
11:15—NBC, Bridge to Dreamland  
12 to 1 A.M.—NBC, Bal Tabarin

**526 Meters KVI** Broadway 4211  
570 Kcys. 1000 Watts  
Puget Sound Broadcast. Co., Tacoma  
(Tacoma Daylight Saving Time)  
8 A.M. to 12—Various programs  
12 noon—CBS, Symphonic Hour  
1—CBS, The Cathedral Hour  
2—CBS, Poet's Gold  
2:15—Vera Van and Orchestra  
2:30—Judge Rutherford  
2:45—Studio program  
3—CBS, Ballad Hour  
3:30—CBS, Chicago Knights  
4—CBS, The Gauchos  
4:30—CBS, H. V. Kaltenborn  
4:45—CBS, Gertrude Neisen  
5—CBS, Chicago Variety Program  
5:30—Philadelphia Summer Concerts  
7:15—CBS, John Henry  
7:30—CBS, Rhythm Rhapsody  
8—CBS, Lombardo Orchestra  
8:15—Betty's Front Porch  
8:45—CBS, Jerry Freeman's Orch.  
9—CBS, Isham Jones' Orchestra  
9:30—CBS, Ted Lewis' Orchestra  
10—The Merrymakers  
11 to 12 mid.—CBS, Arnheim's Orch.

**325.9 Meters KOMO** Elliott 5890  
920 Kcys. 1000 Watts  
Fisher's Blend Station, Inc., Seattle  
(Seattle Daylight Saving Time)  
9 A.M. to 12—Various programs  
12 noon—NBC, Lady Esther prog.  
12:30—NBC, Radio Pulpit  
1—Sonata Recital  
1:15—NBC, Wildroot Program  
1:30—Old Songs of the Church  
2—Lyric Melodies  
2:15—Airs and Arias  
2:30—Musical program  
3—Banjoland  
3:15—Sohl and Lundberg  
3:30—NBC, Pollihoff Orchestra  
4—NBC, Harmonica Rascals  
4:15—To be announced  
5—NBC, Chase and Sanborn Prog.  
6—NBC, Merry-Go-Round  
6:30—NBC, Amer. Album of Music  
7—NBC, Col. Louis Howe  
7:15—Impressions of Italy  
7:45—NBC, Sunday at Seth Parker's  
8:15—For all the Family  
8:45—Baldy's Homespun Melodies  
9—NBC, Standard On Parade  
10—Crazy Wells Serenaders  
10:15—Greater Washington Hour  
10:45—Lee Sisters  
11—NBC, News Flashes  
11:15—Harp Concert  
11:30 to 12 midnight—Viennese Vag-abonds

**309.1 Meters KJR** Seneca 1515  
970 Kcys. 5000 Watts  
Northwest Broad. System, Seattle, Wn  
(Seattle Daylight Saving Time)  
9 A.M. to 1—Various programs  
1—NBC, Fiddlers Three  
1:15—Singing Stars  
1:30—NBC-KGO programs  
2:30—Cornish School  
3—KPO programs  
4—Skyscrapers, Recorded  
4:30—Negro Melodies  
4:45—Harp Concert, Hubert Graf  
5—The Vindobonians  
5:30—Frank Kane, pianist  
6—Angelus Hour; Works of Strauss  
7:30—String Quartet  
8—The Drawing Room  
8:15—NBC, Donald Novis  
8:30—NBC, Orchestral Gems  
9—Lyric Melodies; Silver Strings  
10:30—NBC, Charles Hart  
11—Banjoland  
11:15 to 12 mid.—NBC, Bridge to Dreamland

**236.1 Meters KOL** Main 2312  
1270 Kcys. 1000 Watts  
Seattle Broadcast. Co., Seattle, Wash.  
(Seattle Daylight Saving Time)  
8 A.M. to 1—Various programs  
1 P.M.—CBS, Cathedral Hour  
2—CBS, Poets Gold  
2:15—CBS, Vera Van  
2:30—Book Review  
2:45—Claud Remier, organist  
3—CBS, Eddie Duchin's Orchestra  
3:30—CBS, Chicago Knights  
4—CBS, The Gauchos  
4:30—CBS, H. V. Kaltenborn  
4:45—CBS, Gertrude Neisen  
5—CBS, Chicago Variety Program  
5:30—CBS, Summer Concerts  
7:15—CBS, John Henry  
7:30—CBS, Rhythm Rhapsody  
8—CBS, Lombardo's Orchestra  
8:30—CBS, Jerry Freeman's Orch.  
9—CBS, Salon Moderne  
9:30—CBS, Ted Lewis' Orchestra  
10—The Merrymakers  
11 to 12 mid.—Dance Music

Program listings are correct when published by *Broadcast Weekly*, but sale of time by stations and networks and national emergencies often cause deviations which the stations cannot foresee.

# MONDAY Programs

July 17, 1933

**379.5 Mtrs. NBC-KGO** Sutter 1920  
790 Kcys. 7500 Watts

National Broadcast. Co., San Francisco  
7 A.M.—Hour of Memories  
8—Johnny Marvin, tenor  
8:15—Lee S. Roberts  
8:30—The Merrie Men Quartet  
8:45—Rhythmic Serenade  
9—Vic and Sade; Skit  
9:15—Buckaroos: Ted Maxwell and Charles Marshall  
9:30—Organ Concert  
10—Sax-o-Tunes  
10:30—Magazine of the Air  
11:30—Financial Flashes  
11:35—Words and Music  
11:45—To be announced  
12 noon—Sarah Kreindler, violinist  
12:15—Farm and Home Hour  
1—Casino Orchestra  
1:30—Society Sidights  
1:45—Organ Concert  
2—Al Pearce and his Gang  
3—News, Rush Hughes  
3:15—The Rollickers: Quartet  
3:30—St. Regis Orchestra  
3:45—The Well-Dressed Woman  
4—Stringwood Ensemble  
4:30—Mickey Gillette, saxophone  
4:45—King's Jesters: Male quartet  
5—Stories of Human Behavior  
5:15—John and Ned, harmony duo  
5:30—Goldman Band  
6—The Hour Glass: vocal and orch.  
7—Amos 'n' Andy  
7:15—Chester H. Rowell  
7:30—M.J.B. Demi-Tasse Revue  
8—Hollywood on the Air  
8:30—Stars of the West  
9—Charles Hart: Instrumentalists  
9:30—Don Irwin Orchestra  
10—Richfield News Flashes  
10:15—Melody Mixers: Orchestra  
11—Organ Concert  
11:30 to 12 mid.—Arlon Trio

**491.5 Meters KFRC** Prospect 0100  
610 Kcys. 1000 Watts

Don Lee Broadcast. System, S. F., Cal.  
7 A.M.—Seal Rocks Broadcast  
7:25—Stocks; Exercises at 7:30  
8—CBS, George Hall's Orchestra  
8:30—CBS, Concert Miniatures  
9—CBS, Jack Griffin's Orchestra  
9:15—Movie Star Name Contest  
9:20—CBS, Jack Griffin's Orchestra  
9:30—CBS, George Scherban's Orch.  
10—Round Towners  
10:15—CBS, Caroline Gray  
10:30—Better Business Bureau  
10:45—CBS, The Captivators  
11—Ann Leaf, Organist  
11:15—Prudence Penny  
11:30—CBS, New World Salon Orch.  
12 noon—Sherman Clay Concert  
1—CBS, True Animal Stories  
1:15—CBS, Syracuse Spotlight  
1:30—Stocks; Records; Talk  
2—Happy Go Lucky Hour  
3—Feminine Fancies  
4—CBS, The Village Choir  
4:15—Hodge Podge Lodge  
4:45—Lost and Found Items  
4:50—Examiner Movie Contest  
4:55—Town Topics  
5—CBS, Wayfaring Men  
5:15—"Street Singer" and Lula  
5:30—Thompson and Jenks  
5:45—CBS, Tito Guizar and Orch.  
6—CBS, In the Gloaming  
6:30—CBS, Phil Regan, tenor  
6:45—CBS, Edwin C. Hill  
7—CBS, Columbia Symphony  
7:15—Connie Moffatt  
7:30—CBS, Casa Loma Orchestra  
7:45—Fun Frolic

8—Blue Monday Jamboree  
10—News Editor of the Air  
10:10—Plymouth Motor Car Co.  
10:15—Tangee Cosmetic Company  
10:20—Movie Star Name Contest  
10:25—The Islanders  
11:15—Thompson & Kings of Rhythm  
11:30—Announcers' Revel  
12 to 1 A.M.—Request Hour

**340.7 Meters KLX** Lake. 6000  
880 Kcys. 1000 Watts

Tribune Pub. Co., Oakland, Calif.  
8 A.M.—Records; Stocks, 8:15  
8:30—Covered Wagon Jubilee  
9—Recorded program  
10:15—Stocks; News Flashes  
10:30—International Kitchen  
11—Sunshine Twins; News  
11:30—Novelty Guitar Duo  
11:45—Madelon and Nancy  
12 noon—Jack Delaney's Band  
1—Jean's Hi-Lights  
2—Recordings; News Flashes  
2:40—Opportunity Hour  
3:30—News Flashes; Health School  
4—Records; News Flashes  
4:30—Brother Bob's Club  
5—Covered Wagon Jubilee  
5:30—News; Lovable Liars  
5:45—Helen Parmelee, pianist  
6—Betty Babbish Band  
7—News; Clark Sisters  
7:45—Helen Parmelee, pianist  
8—Wallele Trio  
8:25—Better Business talk  
8:30—Faucit Theatre Players  
9—Nevada Night Herders  
9:30—Bungling Bunglers  
9:45—Helen Parmelee, pianist  
10—Fred Skinner  
10:15 to 11 P.M.—Dance Program

**243.8 Meters KYA** Prospect 3456  
1230 Kcys. 1000 Watts

Pac. Broadcast. Corp., San Francisco  
7:30 A.M. to 12—Music and Talks  
12 noon—Scriptures  
12:03—Singing Strings  
12:30—Organ Recital, Elmer Vincent  
1—Afternoon Concert  
2—Modern Maestros; Serenaders  
3—Organ; Music Masters  
5—Recorded program  
5:45—Campbell Digest  
6—"Liza and Linda"  
6:15—Supper Serenade  
6:30—Waltz Idylls  
6:45—Cecil and Sally  
7—Paraders; Hawaiians  
8—Hill Billies  
8:15—Sydney Dixon & Donald Gray  
8:45—Tango Time; News  
9:15—Junior Chamber of Commerce  
9:30—Musical Novelties; Organ  
11 to 12 mid.—Concert Memories

**322.4 Meters KROW** Glenc. 6774  
930 Kcys. 1000 Watts

Educa. Broad. Corp., Oakland, Calif.  
7 A.M. to 5—Various programs  
5 P.M.—Brother Walter  
5:30—Castro Valley program  
5:45—Jack Morgan, accordion  
6—Oklahoma "Doc" Shahan  
6:30—Organ Echoes; Records  
7—Gladys Kaull, pianist  
7:15—Studio program  
7:30—Italian program  
8—Topics of the Day  
8:15—Harmony Girls  
8:30—"Tubby" Addington  
8:45—Nellie Aising  
9—Casual Hour  
10 to 12 mid.—Request program

**440.9 Meters KPO** Sutter 1920  
680 Kcys. 50,000 Watts

National Broadcast. Co., San Francisco  
7:30 A.M.—Organ Concert  
7:45—Financial Service; Organ  
8:15—Log o' the Day Crosscuts  
9:15—Palmer House Ensemble  
9:30—Johnnie O'Brien, harmonica  
9:45—News Items  
10—Tom Mitchell, baritone  
10:15—Winston Petty, cellist  
10:30—Outstanding Speakers  
10:45—Sisters of the Skillset  
11—Outstanding Speakers  
11:15—Words and Music  
11:30—League of Western Writers  
11:45—Agricultural Bulletins  
12 noon—Radio Guild: Drama  
1—News; 1:15, Ann Warner  
1:45—Melodic Wanderings  
2—Viennese Ensemble  
2:30—Drake's Drums; Drama  
3—Slow River; Eva Taylor, crooner;  
Southernaires, male quartet  
3:15—Ramblers: Orchestra  
3:45—University of California prog.  
4—Oahu Serenaders  
4:30—World Economic Conference  
4:45—Arlon Trio  
5:15—Pair of Pianos; 5:45 News  
6—Rhythm Vendors  
6:30—Safety First: Traffic talk  
6:45—Detectives Black and Blue  
7—Edna Fischer, pianist  
7:15—Tarzan of the Apes  
7:30—Chas. Hart Instrumentalists  
8—Powderpuff Revue  
8:30—To be announced  
9—Ted Weems Orchestra  
9:30—NBC Drama Hour  
10—Pacific Serenaders  
11—Abe Lyman's Orchestra  
11:30 to 12 mid.—Organ Concert

**535.4 Meters KTAB** Garfield 4700  
560 Kcys. 1000 Watts

Assoc. Broadcasters, Oakland, Calif.  
6:30 A.M. to 1—Various programs  
1 P.M.—Radio Frolics  
1:30—Over the Teacups  
2—Ye Olde Towne Crier  
3—Paul Kellar; Records  
4—"Keep Smilin' Revue"  
4:30—Explorations; News  
5—Smile Club; Health Talk  
6—Auto Question Box  
6:15—Empire Minstrels; News  
6:45—Sport Page of the Air  
7—Bargain Page  
7:15—Cuban Cabaret  
7:30—Crazy Quilt  
7:45—Romance of the Turf  
8—Minstrel Show  
8:30—Miles of Melody  
9—Reporter; Souvenirs  
9:45—Paul Kellar, pianist  
10—Dance Records  
11—Blue Blowers; Records  
12 to 1 A.M.—Nite Owls

**285.5 Meters KNX** Hemp. 4101  
1050 Kcys. 25,000 Watts

Western Broadcast Co., Los Angeles  
6:45 A.M. to 6:15—Various prog.  
6:15—Range Riders  
6:30—Lawrence King, tenor  
6:45—Grown' Up  
7—Frank Watanabe  
7:15—Black and Blue  
7:30—Fifty Famous Landmarks  
7:45—Count of Monte Cristo  
8—Calmon Luboviski, violinist  
9—News; Organ Recital  
9:20—Happy Chappies  
9:30—Opera in Miniature  
9:45 to 11 P.M.—Orchestra, Vocalist

**508.2 Meters KHQ** Main 5383  
 590 Kcys. 1000 Watts  
 Louis Wasmer, Inc., Spokane, Wash.  
 (Spokane Daylight Saving Time)

- 7 A.M. to 1—Various programs
- 1 P.M.—Sylvia Grey
- 1:15—NBC, Farm and Home Hour
- 2—Spokane Fur Co.
- 2:15—Kelvinator program
- 2:30—NBC, Schirmer & Schmitt
- 2:45—Club Bulletin
- 3—NBC, Al Pearce and Gang
- 4—The Bill Board
- 4:30—NBC, St. Regis Orchestra
- 4:45—Studio Programs
- 5:15—Sax Appeal
- 5:45—King's Jesters
- 6—Mindways Stories
- 6:15—NBC, John & Ned, harm'y duo
- 6:30—Goldman Band
- 6:45—Voice of Texas
- 7—To be announced
- 7:15—Hour Glass
- 7:30—To be announced
- 8—NBC, Amos 'n' Andy
- 8:15—NBC, Ethel Waters, vocalist
- 8:30—NBC, Demi-Tasse Revue
- 9—Black and Blue
- 9:15—Frank Funkhouser
- 9:30—Richard Cole Orchestra
- 10—Radio Specialties
- 10:30—NBC, Drama Hour
- 11—NBC, Richfield News Flashes
- 11:15 to 1 A.M.—Dance Music

**333.1 Meters KHJ** VAndike 7111  
 900 Kcys. 1000 Watts  
 Don Lee Broadcast System, L. A., Cal.

- 7 A.M. to 5—Various programs
- 5 P.M.—CBS, Modern Male Chorus
- 5:10—Town Topics; Records
- 5:15—CBS, "The Street Singer"
- 5:30—Kay Thompson
- 5:45—CBS, Tito Guizar and Orch.
- 6—CBS, In the Gloaming
- 6:30—CBS programs
- 7—Inglewood Park Association
- 7:30—Bato Dog Catchers
- 7:45—Fun Frolic
- 8—Blue Monday Jamboree
- 10—News; Plymouth Progress
- 10:15—Orchestra; Islanders
- 11:15—Kay Thompson and Kings of Rhythm
- 11:30—Announcers' Revel
- 12 to 1 A.M.—Claude Reimer, Organist

**225.4 Meters KGB** Franklin 6151  
 1330 Kcys. 1000 Watts  
 Don Lee Broadcast System, S. D., Cal.

- 7 A.M. to 5—Various programs
- 5 P.M.—CBS, Wayfaring Men
- 5:15—CBS, Street Singer
- 5:30—Thompson & Jenks
- 5:45—CBS, Tito Guizar
- 6—CBS, In the Gloaming
- 6:15—Chamber of Commerce
- 6:30—CBS program
- 6:45—U. S. Service Experiences
- 7:15—CBS, Theo Karle
- 7:30—Tarzan (E. T.)
- 7:45—Fun Frolic
- 8—Blue Monday Jamboree
- 10—News; Orchestra
- 10:10—Cafe de Paris Orchestra
- 10:45—Islanders
- 11:15—Thompson & Jenks
- 11:30—Announcers' Revel
- 12 to 1 A.M.—Recordings

**280.2 Meters KJBS** Ord. 4148-49  
 1070 Kcys. 100 Watts  
 J. Brunton & Sons, San Francisco

- 6 A.M.—Alarm Klock Klub
- 8—Records; News; Music
- 7:30 P.M.—Silent Period
- 12:01 to 6 A.M.—Owl Program

**468.5 Meters KFI** Richm'd 6111  
 640 Kcys. 50,000 Watts

- Earle C. Anthony, Inc., Los Angeles
- 6:30 A.M. to 5—Various programs
  - 5 P.M.—Baron Keyes' Air Castle
  - 5:15—NBC-KGO Programs to 6
  - 6—Raine Bennett, Poet of the Air
  - 6:15—Orchestra
  - 6:45—Keller, Sargent and Ross
  - 7—NBC, Amos 'n' Andy
  - 7:15—Orchestra
  - 7:30—NBC, Demi-Tasse Revue
  - 8—Orchestra
  - 8:30—NBC, Palmer House Orchestra
  - 8:45—To be announced
  - 9—NBC, Charles Hart
  - 9:30—Orchestra
  - 10—NBC, Richfield Reporter
  - 10:15—NBC-KGO program
  - 11—Abe Lyman's Orchestra
  - 11:30 to 12—Arion Trio

**296.6 Meters KQW** Ballard 777  
 1010 Kcys. 500 Watts  
 Pac. Agric. Foundation, Ltd., San Jose

- 7 A.M. to 6—Music; Talks; Stocks
- 6 P.M.—Dinner Music
- 6:15—Franco's program
- 6:30—Fed. State Market Reports
- 7—Weather Forecast
- 7:03—Radio News and Forum
- 7:30—Minute Man; Quartette
- 8—Sacred & Golden Memories
- 9—Accordion Capers
- 9:30 to 10 P.M.—Mauna Keans

**309.1 Meters KJR** Seneca 1515  
 970 Kcys. 5000 Watts  
 Northwest Broad. System, Seattle, Wn.  
 (Seattle Daylight Saving Time)

- 8:30 A.M. to 1—Various programs
- 1—Musical program
- 1:15—Master Works of the Piano
- 1:30—Recorded program
- 2:30—NBC, Schirmer and Schmitt
- 2:45—NBC, Organ concert
- 3—Recorded Programs
- 4—Sohl and Lundberg
- 4:15—Concert Ensemble
- 4:45—Sweet and Lovely
- 5—Steamboat Bill
- 5:15—Pastel Harmonies
- 5:45—NBC-KGO programs to 7
- 7—Chamber of Commerce talk
- 7:15—Tarzan (E. T.)
- 7:30—News Edition of the Air
- 7:45—Northwest Mines Reporter
- 8—Moment Musicale, Jan Russell
- 8:15—NBC, Ethel Waters
- 8:30—Modern Concert Ensemble
- 9—NBC, Hollywood on the Air
- 9:15—Frank Funkhouser
- 9:30—NBC, Palmer House Orch.
- 9:45—Banjoland
- 10—NBC, Charles Hart
- 10:30—NBC, Drama Hour
- 11—Concert in Miniature
- 11:15 to 12 mid.—Dance Orchestra

**236.1 Meters KOL** Main 2312  
 1270 Kcys. 1000 Watts

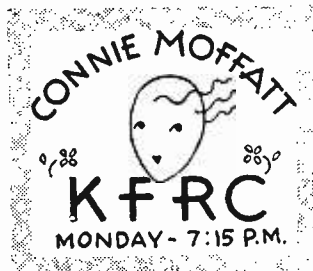
- Seattle Broadcast Co., Seattle, Wash.  
 (Seattle Daylight Saving Time)
- 6:45 A.M. to 1—Various programs
  - 1—CBS, Billy White's Orchestra
  - 1:30—Julie Day
  - 1:45—CBS, Col. Artists Recital
  - 2—CBS, "True Animal Stories"
  - 2:15—CBS, Syracuse Spotlight
  - 2:30—CBS, Between the Bookends
  - 2:45—CBS, Grub Street speaks
  - 3—Happy Go Lucky Hour
  - 4—Feminine Fancies
  - 5—Studio program
  - 5:15—Hodge Podge Lodge
  - 5:45—CBS, Howard Ely, organist
  - 6—Cecil and Sally
  - 6:15—Ivan Stumars, organist
  - 6:30—Ken Stuart's Sports Review
  - 7—CBS feature
  - 7:15—Radio Speaker Stevenson
  - 7:30—Black and Blue
  - 7:45—Chandu the Magician
  - 8—CBS, Howard Barlow's Orchestra
  - 9—CBS, Casa Loma Orchestra
  - 9—Globe Trotter
  - 9:15—Blue Monday Jamboree
  - 11 to 12 mid.—Adams Dance Band

**483.6 Meters KGW** Atwater 2121  
 620 Kcys. 1000 Watts

- Morning Oregonian, Portland, Ore.
- 7 A.M. to 12—Various programs
  - 12 noon—Oregonian of the Air
  - 12:15—NBC-KGO Programs to 1:30
  - 1:30—Dental Clinic of the Air
  - 1:45—NBC-KGO Programs to 3
  - 3—Crazy Crystals
  - 3:15—Allyn's program
  - 3:20—Friendly Chat
  - 4—NBC-KGO programs to 5:30
  - 5:30—Fairview Farms
  - 5:45—Piano Surprises
  - 6—Ervin Traffic Talk
  - 6:15—NBC-KGO programs to 8
  - 8—Covered Wagon Days
  - 8:15—NBC, Ethel Waters
  - 8:30—Dance Orchestra
  - 8:40—Musical Comedy Miniatures
  - 8:45—To be announced
  - 9—Four Shades of Rhythm
  - 9:30—Plymouth program
  - 9:35 to 12 mid.—NBC-KGO progs.

**325.9 Meters KOMO** Elliott 5890  
 920 Kcys. 1000 Watts  
 Fisher's Blend Station, Inc., Seattle  
 (Seattle Daylight Saving Time)

- 7:55 A.M. to 1—Various programs
- 1 P.M.—Tea Time Tales
- 1:15—NBC, West. Farm and Home
- 2—NBC, Casino Orchestra
- 2:30—Easy Chair; Red Shadow
- 3—NBC, Al Pearce and Gang
- 4—NBC, Slow River
- 4:15—The Observer and Vocalist
- 4:45—Stringwood Ensemble
- 5:15—NBC, Sax Appeal
- 5:30—To be announced
- 5:45—Stringing Along
- 6—Dinner Dansant
- 6:30—Viennese Vagabonds
- 7—NBC, The Hour Glass
- 7:30—Fifteen Carefree Minutes
- 7:45—Dollars and Cents
- 8—NBC, Amos 'n' Andy
- 8:15—Financial News Reporter
- 8:30—NBC, Demi-Tasse Revue
- 9—Ann Olander and Chet Cathers
- 9:15—Thirty Minutes of Music
- 9:45—To be announced
- 10—Four Shades of Rhythm
- 10:30—Big Opportunity Contest
- 10:45—Concert in Miniature
- 11—NBC, Richfield News Flashes
- 11:15 to 12 mid.—Club New Yorker



# TUESDAY Programs

July 18, 1933

379.5 Mtrs. **NBC-KGO** Sutter 1920  
790 Kcys. 7500 Watts  
National Broadcast. Co., San Francisco

7 A.M.—Organ Concert  
7:30—U. S. Army Band  
8—Johnny Marvin, tenor  
8:15—Pollock & Lawnhurst, pianists  
8:30—Rex Battell, Concert Ensemble  
9—Vic and Sade; Skit  
9:15—Buckaroos  
9:30—Martha Meade Society  
9:45—Tom Mitchell, baritone  
10—Arion Trio  
10:30—Magazine of the Air  
11:30—Financial Flashes  
11:35—Argentine Trio  
11:45—Meredith Willson's Orchestra  
12:15—Farm and Home Hour  
1—Casino Orchestra  
1:30—Contract Bridge  
1:45—John and Ned: vocal duo  
2—Al Pearce and his Gang  
3—News, Rush Hughes  
3:15—Rhythm Vendors  
3:45—Aldo Ricci Phantom Strings  
4—The Family Cook Book  
4:15—Vincent Lopez' Orchestra  
4:30—Little Collen, vocalist  
4:45—Back Stage Chatter  
5—Balladettes  
5:30—The Fire Chief's Uncle  
6—Lives at Stake: Drama  
6:30—National Radio Forum  
7—Amos 'n' Andy  
7:15—Memory Lane  
7:45—Horlick's Adventures in Health  
8—Cotton Club Orchestra  
8:15—The Philistine: Dr. Maker  
8:30—Ben Bernie's Orchestra  
9—Ted Weems Orchestra  
9:30—Buddy Rogers' Orchestra  
10—Richfield News Flashes  
10:15—Anson Weeks' Orchestra  
11—Organ Concert  
11:30 to 12 mid.—Kay Kyser's Orch.

491.5 Meters **KFRG** Prospect 0100  
610 Kcys. 1000 Watts  
Don Lee Broadcast. System, S. F. Cal.

7 A.M.—Seal Rocks Broadcast  
7:25—Stocks; Exercises at 7:30  
8—CBS, U. S. Marine Band  
8:15—Mary Sear's Garden party  
8:30—CBS, Concert Miniatures  
8:55—National Oil Products Co.  
9—The Little French Princess  
9:15—Movie Star Name Contest  
9:20—CBS, Harold Knight's Orch.  
9:30—CBS, George Scherban's Orch.  
10—CBS, Ann Leaf, Organist  
10:30—CBS, Voice of Experience  
10:45—CBS, New World Symphony  
11—Prudence Penny  
11:15—Frances Lee Barton  
11:30—Billy White, tenor, and Orch.  
12 noon—Sherman Clay Concert  
1—CBS, Memories Garden  
1:15—CBS, Fred Berren's Orch.  
1:30—Stocks; Recordings  
1:45—Belle and Martha  
2—Happy Go Lucky Hour  
3—Feminine Fancies  
4—CBS, Mary Eastman  
4:15—Health Talk  
4:30—Children's Radio Theatre  
4:45—Lost and Found Items  
4:50—Movie Star Name Contest  
4:55—Town Topics  
5—CBS, Modern Male Chorus  
5:15—Frank Westphal' Orchestra  
5:30—CBS, Nino Martini  
5:45—Health Products Corporation  
6—CBS, California Melodies  
6:45—Light Opera Gems  
7:15—Vagabonds of the Hills  
7:45—Fun Frolic

8—Globe Headlines  
8:15—CBS, Glen Gray's Orch.  
8:30—Ozzie Nelson's Orchestra  
9—Gus Arnheim Orchestra  
9:30—Hodge Podge Lodge  
10—News Editor of the Air  
10:10—Dance Orchestra  
10:15—Tangee Cosmetic Company  
10:20—Movie Star Name Contest  
10:25—Dance Orchestra  
10:45—Golden Sands  
11:15—The Georgians; I'Zingari  
12 to 1 A.M.—Midnight Request Hr.

535.4 Meters **KTAB** Garfield 4700  
560 Kcys. 1000 Watts  
Assoc. Broadcasters, Oakland, Calif.

6:30 A.M. to 1—News; music; talks  
1 P.M.—Radio Frolics  
1:30—Over the Teacups  
2—Ye Olde Towne Crier  
3—Matinee, Paul Kellar; Records.  
4—'Keep Smilin' Revue'  
4:30—Explorations; News  
5—Smile Club; Health Talk  
6—John Collins, baritone  
6:15—Empire Minstrels; News  
6:45—Sport Page of the Air  
7—Bargain Page  
7:15—Isle of Dreams  
7:45—Voice of Democracy; Studio  
9—Reporter; Souvenirs  
9:45—Paul Keller, pianist  
10—Jess Stafford's Band  
10:30—Dance Records  
11:30—Blue Blowers  
12 to 1 A.M.—Nite Owls

340.7 Meters **KLX** Lake. 6000  
880 Kcys. 1000 Watts  
Tribune Pub. Co., Oakland, Calif.

8 A.M.—Records; Stocks; 8:15  
8:30—Covered Wagon Jubilee  
9—Records; Stocks; News  
10:30—International Kitchen  
11—Sunshine Twins; News  
11:30—Novelty Guitar Duo  
11:45—Fred Skinner  
12 noon—Jack Delaney's Band  
1—Jean's Hi-lights  
2—News; Stocks  
2:45—Verna Anderson, pianist  
3—Records; News Flashes  
3:45—Health School  
4—'Timely Garden Tips'  
4:15—Records; News  
4:30—Brother Bob's Club  
5—Covered Wagon Jubilee  
5:30—Helen Parmelee, pianist  
6—Hotel Oakland Trio  
7—News Items; Aroo's Trio  
7:45—Helen Parmelee, pianist  
8—John Lewis Quintet  
9—Old Gospel Hymns  
9:30—Bungling Bunglers  
9:45—Nevada Night Herders  
10:15 to 11 P.M.—Dance Program

322.4 Meters **KROW** Glenc. 6774  
930 Kcys. 1000 Watts  
Educa. Broad. Corp., Oakland, Calif.

7 A.M. to 5—Various programs  
5 P.M.—Brother Walter  
5:30—Castro Valley program  
5:45—Jack Morgan, accordion  
6—Oklahoma "Doc" Shahan  
6:30—Organ Echoes; Records  
7—Gladys Kaull, pianist; Studio  
7:30—Bill Roth, songs  
7:45—Sally Snow  
8—Topics of the Day  
8:15—Watch Tower  
8:30—Studio program  
9—Motorcycle Races  
10 to 12 midnight—Dance Music

440.9 Meters **KPO** Sutter 1920  
680 Kcys. 50,000 Watts  
National Broadcast. Co., San Francisco

7:30 A.M.—Organ; Financial Service  
8:15—Log o' the Day Crosscuts  
9:15—Palmer House Ensemble  
9:30—Johnny O'Brien, harmonica  
9:45—News  
10—New Kitchen Secrets  
10:15—Songs by the Kitchen Sink  
10:30—Synchopators: Dance music  
10:45—Sisters of the Skillet  
11—Manhattan Beach Brass Band  
11:30—Organ Concert  
12 noon—Midday Musicale; News  
1:15—Ann Warner's Chats  
1:45—Nursery Rhymes: Milton Cross  
and Lewis James, tenor  
2—Viennese Ensemble  
2:30—Federation Hymn Sing  
2:45—James Melton, tenor  
3—The Sizzlers: Male trio  
3:15—National Advisory Council on  
Radio in Education  
3:45—University of California  
4—Stringwood Ensemble  
4:30—Book Parade: Book reviews  
4:45—Arnold & Amber Adventures  
5—Arion Trio; 5:45, News  
6—Mickey Gillette, saxophonist  
6:15—Music Box  
6:45—Irving Kennedy, tenor  
7—Edna Fischer, pianist  
7:15—Jack Denny's Orchestra  
7:30—Master Singers  
7:45—California State Chamber of  
Commerce program  
8—Aesop's Fables  
8:30—Enno Crime Clues  
9—Carefree Carnival  
10—Melody Mixers  
11—Abe Lyman's Orchestra  
11:30 to 12 mid.—Organ Concert

296.6 Meters **KQW** Ballard 777  
1010 Kcys. 500 Watts  
Pac. Agric. Foundation, Ltd., San Jose

7 A.M.—Records; Silent at 8  
9 A.M. to 6—Music; Stocks; Talks  
6 P.M.—Dinner Music  
6:15—Franco's program  
6:30—State Market Reports  
6:45—Farmers' Exchange  
7—Weather Reports  
7:03—Radio News and Forum  
7:30—Minute Man; Concert  
8 to 10 P.M.—You Never Can Tell

243.8 Meters **KYA** Prospect 3456  
1230 Kcys. 1000 Watts  
Pac. Broadcast. Corp., San Francisco

7:30 A.M. to 12—Music and talks  
12 noon—Scriptures  
12:03—Mid-Day Concert  
12:45—Aviation Club  
1:15—Footlight Features  
1:45—Symphonic Band; Serenaders  
2:30—Singing Strings  
3—Organ Matinee; Records  
5:45—Campbell Digest  
6—Serenade  
6:15—Social Service News  
6:30—Waltz Idylls  
6:45—Cecil and Sally  
7—Hawaiian Melodies  
7:15—Strange Adventures  
7:30—Mountain Echoes  
7:45—Bob Allen, pianist  
8—Sydney Dixon and Donald Gray  
8:30—Tango Time  
9—News Flashes  
9:15—Musical Whims  
9:30—The Cub Reporters  
9:45—Quartette; Organ  
11 to 12 mid.—Concert Memories

**333.1 Meters KHJ Vandike 7111**  
**900 Kcys. 1000 Watts**  
**Don Lee Broadcast. System, L. A., Cal.**  
 7 A.M. to 5—Various programs  
 5 P.M.—CBS, Wayfaring Man  
 5:15—Town Topics  
 5:20—CBS Orchestra  
 5:30—CBS, Nino Martini  
 6—CBS, California Melodies  
 6:45—CBS, Light Opera Gems  
 7:15—Chandu, the Magician  
 7:30—Rockne Band  
 7:45—Four Star Fun Frolic  
 8—"Globe Headlines"  
 8:15—CBS, Casa Loma Orchestra  
 8:30—Cafe de Paree  
 8:45—CBS, Ozzie Nelson's Orch.  
 9—Gus Arnheim's Orchestra  
 9:30—Hodge Podge Lodge  
 10—News Items; Orchestra  
 10:45—Golden Sands  
 11:15—Georgians; I Zingari  
 12 to 1 A.M.—Claude Reimer, Organist

**468.5 Meters KFI Richm'd 6111**  
**640 Kcys. 50,000 Watts**  
**Earle C. Anthony, Inc., Los Angeles**  
 6:30 A.M. to 5—Various programs  
 5 P.M.—Baron Keyes' Air Castle  
 5:15—Calvin Hendricks, baritone  
 5:30—NBC-KGO Programs  
 6:30—Pierce Brothers Quartet  
 6:45—Orch. and Robt. Hurd, tenor  
 7—NBC-KGO Programs to 8  
 8—Orchestra  
 8:15—NBC, The Philistine  
 8:30—NBC, Ben Bernie's Orchestra  
 9—"Tapestries of Life"  
 9:30—Eno Crime Clues  
 10—NBC, Richfield Reporter  
 10:15—NBC, Mark Hopkins Orch.  
 11—NBC, Abe Lyman's Orchestra  
 11:30 to 12 mid.—Dance Music

**285.5 Meters KNX Hemp. 4101**  
**1050 Kcys. 25,000 Watts**  
**Western Broadcast Co., Los Angeles**  
 6:45 A.M. to 6—Various programs  
 6 P.M.—Newspaper of the Air  
 6:15—King Cowboy  
 6:30—Lawrence King and Orchestra  
 6:45—Growin' Up  
 7—Frank Watanabe  
 7:15—Dance Orchestra  
 7:45—Count of Monte Cristo  
 8—Happy Chappies  
 8:15—Los Angeles Realty Board  
 8:45—Drury Lane, tenor  
 9—News Service  
 9:15—Miles of Melody  
 9:45—Musical program  
 10 to 11 P.M.—Dance Orchestra

**225.4 Meters KGB Franklin 6151**  
**1330 Kcys. 1000 Watts**  
**Don Lee Broadcast. System, S. D., Cal.**  
 7 A.M. to 5—Various programs  
 5 P.M.—CBS, Wayfaring Men  
 5:15—CBS Orchestra  
 5:30—CBS, Nino Martini, tenor  
 6—CBS, California Melodies  
 6:45—CBS, Light Opera Gems  
 7—Chandu (E. T.)  
 7:15—Fantasia  
 7:30—CBS, Isham Jones' Orchestra  
 7:45—Four Star Fun Frolic  
 8—Globe Headlines  
 8:15—Chamber of Commerce  
 8:30—Eb and Zeb  
 8:45—CBS, Dance Orchestra  
 9—Gus Arnheim's Orch.  
 9:30—Hodge Podge Lodge  
 10—News; Dance Orchestra  
 10:45—CDLBS, Golden Sands  
 11:15—Georgians; I Zingari  
 12 to 1 A.M.—Recordings

**483.6 Meters KGW Atwater 2121**  
**620 Kcys. 1000 Watts**  
**Morning Oregonian, Portland, Ore.**  
 7 A.M. to 12—Various programs  
 12 noon—Oregonian of the Air  
 12:15—Star Furniture program  
 1—NBC, Tom Gerun's Orchestra  
 1:31—Dental Clinic of the Air  
 1:45—NBC-KGO Programs to 3  
 3—Crazy Crystals program  
 3:15—Allyn's prog.; Friendly Chat  
 4—NBC-KGO Programs to 4:45  
 4:45—Mahdi, the Magician  
 5—NBC-KGO Programs to 6:30  
 6:30—Concert Trio  
 6:55—Portland Cleaning Works  
 7—NBC-KGO Programs to 8  
 8—Montag Fireside Hour  
 8:30—Ben Bernie Orchestra  
 9—Musical Mannequins  
 9:30—Homicide Squad  
 10 to 12 mid.—News; Orchestra

**280.2 Meters KJBS Ord. 4148-49**  
**1070 Kcys. 100 Watts**  
**J. Brunton & Sons, San Francisco**  
 6 A.M.—Alarm Klock Klub  
 8—Records; News; Music  
 7:30 P.M.—Silent Period  
 12:01 to 6 A.M.—Owl Program

**526 Meters KVI Broadway 4211**  
**750 Kcys. 1000 Watts**  
**Puget Sound Broadcast. Co., Tacoma**  
**(Tacoma Daylight Saving Time)**  
 6 A.M. to 5—Various programs  
 5 P.M.—CBS, Mary Eastman  
 5:30—Children's Radio Theatre  
 5:45—Musical Creditor  
 6—CBS, Wayfaring Men  
 6:15—Goodrich Transcription  
 6:20—CBS, Frank Westphal's Orch.  
 6:30—CBS, Nino Martini  
 7—CBS, California Melodies  
 7:30—Dr. Mellor  
 7:45—Systematic Bible Study  
 8:15—CBS, Little Jack Little  
 8:30—CBS, Isham Jones' Orchestra  
 9—CBS, Casa Loma Orchestra  
 9:30—Baseball Game  
 11:30—Cafe De Paris Orchestra  
 11:45 to 12 mid.—Golden Sands

**236.1 Meters KOL Main 2312**  
**1270 Kcys. 1000 Watts**  
**Seattle Broadcast. Co., Seattle, Wash.**  
**(Seattle Daylight Saving Time)**  
 6:45 A.M. to 1—Various programs  
 1 P.M.—CBS, U. S. Navy Band  
 1:30—Julie Day  
 1:45—CBS, Memories Garden  
 2:15—CBS, Fred Berren's Orch.  
 2:30—CBS, Between the Bookends  
 2:45—Belle and Martha  
 3—Happy Go Lucky Hour  
 4—Economic Conference  
 4:15—Feminine Fancies  
 5—CBS, Mary Eastman  
 5:15—Walter M. Schelp, trio  
 5:30—Studio program  
 5:45—CBS, Novelty Rhythms  
 6—Cecil and Sally  
 6:15—CBS, Frank Westphal's Orch.  
 6:30—Stuart's Sports Review  
 6:45—Charles A. Reynolds  
 7—Hill and Dale  
 7:15—Radio Speaker Stevenson  
 7:30—California Melodies  
 7:45—Chandu the Magician  
 8—CBS, Light Opera Gems  
 8:15—CBS, Little Jack Little  
 8:30—CBS, Isham Jones' Orchestra  
 9—Globe Trotter; Orchestra  
 9:15—CBS, Casa Loma Orchestra  
 9:30—Boxing Bouts  
 11 to 12 mid.—Dance Music

**309.1 Meters KJR Seneca 1515**  
**970 Kcys. 5000 Watts**  
**Northwest Broad. System, Seattle, Wn.**  
**(Seattle Daylight Saving Time)**  
 8:30 A.M. to 1:15—Various programs  
 1:15—Master Works of the Piano  
 1:30—Concert in Miniature  
 2—NBC-KGO programs to 3  
 3—Recorded Programs  
 4—Shades of Yesterday  
 4:15—NBC, Nat'l Advisory Council  
 4:45—NBC, Little Colleen  
 5—The Vindabonians  
 5:30—Emil Hanson  
 5:45—NBC, Balladettes  
 6:30—Pastel Harmonies  
 7—Concert Ensemble, Henri Damski  
 7:30—NBC, National Radio Forum  
 8—Times News Edition  
 8:15—Harp Concert, Hubert Graf  
 8:30—Gypsy Trails  
 9—NBC, Cotton Club Orchestra  
 9:30—Melodic Moods  
 10—NBC Programs  
 11—Banjoland  
 11:15 to 12 mid.—NBC, Mark Hopkins Orchestra

**325.9 Meters KOMO Elliott 5890**  
**920 Kcys. 1000 Watts**  
**Fisher's Blend Station, Inc., Seattle**  
**(Seattle Daylight Saving Time)**  
 7:55 A.M. to 1—Various programs  
 1 P.M.—Tea Time Talks  
 1:15—NBC, Farm and Home Hour  
 2—Melody Musketees  
 2:30—Tyroleans  
 3—NBC, Al Pearce and Gang  
 4—NBC, Jack and Loretta Clemens  
 4:15—The Observer  
 4:30—Lyric Melodies  
 5—NBC, Congress Hotel Orchestra  
 5:30—To be announced  
 5:45—Piano Student' Album  
 6—Dinner Dantsant  
 6:30—NBC-KGO program  
 7:30—Vacation Land Review  
 8—NBC, Amos 'n' Andy  
 8:15—NBC, Memory Lane  
 8:45—NBC, Adventures in Health  
 9—Montag Fireside Hour  
 9:30—Ben Bernie's Orchestra  
 10—Musical Mannequins  
 10:30—Concert in Miniature  
 11—NBC, Richfield News Flashes  
 11:15 to 12—Club New Yorker

**508.2 Meters KHQ Main 5383**  
**590 Kcys. 1000 Watts**  
**Louis Wasmer, Inc., Spokane, Wash.**  
**(Spokane Daylight Saving Time)**  
 7 A.M. to 1—Various programs  
 1 P.M.—Sylvia Grey  
 1:15—NBC, Farm and Home Hour  
 2—Studio programs  
 2:30—NBC, Schimer & Schmitt  
 2:45—Club Bulletin  
 3—NBC, Al Pearce and Gang  
 4—The Bill Board  
 4:30—Sid McNutt, pianist  
 4:45—NBC, Phantom Strings  
 5—Tull and Gibbs Express  
 5:15—Moronies Beach Orchestra  
 5:30—Studio program  
 5:45—NBC, Balladettes  
 6:30—NBC-KGO Program  
 7—NBC, Lives at Stake  
 7:30—National Radio Forum  
 8—NBC, Amos 'n' Andy  
 8:15—NBC, Memory Lane  
 8:45—NBC, Adventures in Health  
 9—Northwest on Parade  
 9:30—NBC, Ben Bernie Orchestra  
 10—Radio Specials  
 10:30—Musical program  
 11—NBC, Richfield News Flashes  
 11:15 to 1 A.M.—Dance Music

# WEDNESDAY Programs

July 19, 1933

379.5 Mtrs. **NBC-KGO** Sutter 1920  
790 Kcys. 7500 Watts  
National Broadcast. Co., San Francisco

7 A.M.—Organ Concert  
7:30—Rhythm Ramblers  
8—Soloist  
8:15—Lee S. Roberts, Memory Box  
8:30—Merrie Men: Male quartet  
8:45—Rhythmic Serenade  
9—Vic and Sade: Skit  
9:15—Buckaroos: Songs, dialogue  
9:30—Organ Concert  
9:45—Jean Abbey, shop news  
10—Sarah Kreindler, violinist  
10:15—Books for Children  
10:30—Magazine of the Air  
11:30—Financial Flashes  
11:35—Sax-o-Tunes  
12 noon—Southern Symphonies  
12:15—Farm and Home Hour  
1—Casino Orchestra  
1:30—Winnie the Pooh  
1:45—John and Ned: Harmony duo  
2—Al Pearce and his Gang  
3—News Talk, Rush Hughes  
3:15—Short Revue  
3:30—Moods: Orchestra Music  
3:45—Art and Music; 4—Ramblers  
4:30—Stephen Foster, Life & Songs  
5—Goldman Band  
5:30—Myron Niesley, tenor  
5:45—Argentine Trio  
6—Corn Cob Pipe Club  
6:30—Dobbie's Ship of Joy  
7—Amos 'n' Andy  
7:15—Chester H. Rowell  
7:30—Eddie Peabody, entertainer  
8—Hotel Roosevelt Orchestra  
8:30—Mark Fischer's Orchestra  
9—One Man's Family: Drama  
9:30—Don Irwin Orchestra  
10—Richfield News Flashes  
10:15—Anson Weeks' Orchestra  
11—Organ Concert  
11:30 to 12 mid.—Jim Taft's Orch.

440.9 Meters **KPO** Sutter 1920  
680 Kcys. 50,000 Watts  
National Broadcast. Co., San Francisco

7:30 A.M.—Organ; Financial Service  
8:15—Log o' the Day Crosscuts  
9:15—Palmer House Ensemble  
9:30—Johnny O'Brien, harmonica  
9:45—News Items  
10—Tom Mitchell, baritone  
10:15—Fashion Flashes  
10:30—Syncoptors  
10:45—Sisters of the Skillet  
11—Grand Trio: Instrumental  
11:15—Words and Music  
11:30—Happy Days in Dixie  
11:45—Agricultural Bulletins  
12 noon—Midday Musicales  
1—News Items  
1:15—Ann Warner's Chats  
1:45—Melodic Wanderings  
2—Viennese Ensemble  
2:30—Back of the News  
2:45—John Pierce, tenor  
3—Jack and Loretta Clemens  
3:15—Rhythm Vendors  
3:45—University of California prog.  
4—Charles Hart; Instrumentalists  
4:30—Facing the Music  
4:45—Kenneth Spencer, basso  
5—Tea Dansant  
5:30—Rhythm Rascals; 5:45, News  
6—Melody Mixers: Orchestra  
6:45—Detectives Black and Blue  
7—Edna Fischer, pianist  
7:15—Tarzan of the Apes  
7:30—Seven Seas  
8—Californians on Parade  
8:30—Eno Crime Clues  
9—Kay Kyser's Orchestra  
9:30—Waltz Time

10—Tim Ryan's Night Club  
10:30—Pair of Pianos  
11—Abe Lyman's Orchestra  
11:30 to 12 mid.—Organ Concert

491.5 Meters **KFRC** Prospect 0100  
610 Kcys. 1000 Watts  
Don Lee Broadcast. System, S. F., Cal.

7 A.M.—Seal Rocks Broadcast  
7:25—Stocks; Exercises 7:30  
8—CBS, Vincent Traver's Orch.  
8:15—Mary Sears' Garden Party  
8:30—CBS, Concert Miniatures  
9—CBS, Little French Princess  
9:15—Movie Star Name Contest  
9:20—CBS, George Hall's Orchestra  
9:30—Betty Crocker  
9:45—CBS, Geo. Scherban's Orch.  
10—CBS, Ann Leaf, Organist  
10:30—CBS, Four Norsemen  
10:45—CBS, The Captivators  
11—Mary Lewis Haines, talk  
11:10—Goodwill Industries, speaker  
11:15—Prudence Penny  
11:30—CBS, Orchestra and Vocalist  
11:45—CBS, Luis Russell's Orch.  
12 noon—Sherman Clay Concert  
1—CBS, Dancing by the Sea  
1:30—Stocks; Records  
1:45—Belle and Martha  
2—Happy Go Lucky Hour  
3—Feminine Fancies  
4—Hodge Podge Lodge  
4:30—Dick Aurandt, organist  
4:45—Lost and Found Items  
4:55—Movie Star Name Contest  
5:50—Town Topics; Records  
5:15—"Street Singer and Lula"  
5:30—Bobs, Sports Authority  
5:45—Organ and Vocalist  
6—CBS, Warnings Pennsylvanians  
6:30—Frigidaire program  
6:45—CBS, Edwin C. Hill  
7—CBS, Columbia Symphony  
7:30—CBS, Charlie Davis' Orchestra  
7:45—Fun Frolic; 8—Globe Headlines  
8:15—CBS, Ted Lewis' Orchestra  
8:30—Lombardo; "Burns & Allen"  
9—Gus Arnheim's Orchestra  
9:30—Catherine the Great  
10—News Editor of the Air  
10:10—Plymouth Motor program  
10:15—Tangee Cosmetic Company  
10:20—Movie Star Name Contest  
10:25—Studio program  
10:30—Isle of Golden Dreams  
11—Johnny Robinson's Orchestra  
11:30—McElroy's Orchestra  
12 to 1 A.M.—Request Hour

280.2 Meters **KJBS** Ord. 4148-49  
1070 Kcys. 100 Watts  
J. Brunton & Sons, San Francisco

6 A.M.—Alarm Klock Klub  
8—Records; News; Music  
7:30 P.M.—Silent Period  
12:01 to 6 A.M.—Owl Program

296.6 Meters **KQW** Ballard 777  
1010 Kcys. 500 Watts  
Pac. Agric. Foundation, Ltd., San Jose

7 A.M.—Records; Silent at 8  
9 to 6—Music; Stocks; Talks  
6 P.M.—Music; Franco's program  
6:30—Fed. State Market Reports  
6:45—Farmer's Exchange  
7—U. S. Weather Forecast  
7:03—Radio News and Forum  
7:30—Chamber of Commerce  
7:45—Dairyman's Message  
8—American Legion War Camp  
8:15—Mabel Adams, vocalist  
8:30—Music Lovers program  
9—A. Caro Miller  
9:30 to 10 P.M.—Monarch Melodies

243.8 Meters **KYA** Prospect 3456  
1230 Kcys. 1000 Watts  
Pac. Broadcast. Corp., San Francisco

7:30 A.M. to 12—Music and Talks  
12 noon—Scriptures  
12:03—Concert; Organ Recital  
12:30—Organ; Royal Serenades  
1:30—Modern Maestros; Quartette  
2:30—Com. Chest Question Box  
2:45—Mountain Echoes  
3:15—Elmer Vincent, organist  
4:15—Better Business Bureau  
4:30—Symphony Highlights  
5—"Safety First"—Talk  
5:15—Records; Campbell Digest  
6—"Liza and Linda"  
6:15—Waltz Idylls  
6:45—Cecil and Sally  
7—Slavic Concert; Tango Time  
8—"Souvenirs of Italy"  
9—News Flashes  
9:15—El Patio Orchestra  
10 to 12 mid.—Organ; Records

340.7 Meters **KLX** Lake. 6000  
800 Kcys. 1000 Watts  
Tribune Pub. Co., Oakland, Calif.

8 A.M.—Records; Stocks  
8:30—Covered Wagon Jubilee  
9—Records; Stocks; News  
10:30—International Kitchen  
11—Sunshine Twins; News  
11:30—Novelty Guitar Duo  
11:45—Clark Sisters  
12 noon—Jack Delaney's Band  
1—"Timely Garden Tips"  
1:15—Jean's Hi-Lights  
2—Recordings; News  
2:35—Better Business Talk  
2:40—Closing San Francisco Stocks  
2:45—Verna Anderson, pianist  
3—Records; News; Pianist  
3:45—McCoy Health School  
4—Records; News  
4:30—Brother Bob's Club  
5—Covered Wagon Jubilee  
5:30—The Lovable Liars  
5:45—Helen Parmelee, pianist  
6—Hotel Oakland Trio; News  
7:30—Jack Manley, violinist  
7:45—J. Llewellyn Wintle, baritone  
8—Clark Sisters; Cora Scott; Melody Maids; Wes Summerford and Banjo Girls  
9—Manila Stringed Orchestra  
9:30—Hungling Bunglers  
9:45—Helen Parmelee, pianist  
10—Fred Skinner  
10:15 to 11 P.M.—Dance program

333.1 Meters **KHJ** VAndike 7111  
900 Kcys. 1000 Watts  
Don Lee Broadcast. System, L. A., Cal.

7 A.M. to 5—Various Programs  
5—Nora Schiller and Tiny Newland  
5:10—Town Topics  
5:15—CBS, The Street Singer  
5:30—Kay Thompson  
5:45—Dick Aurandt, organist  
6—CBS, Waring's Pennsylvanians  
6:30—CBS program  
6:45—CBS, Edwin C. Hill  
7—CBS Orchestra  
7:15—Chandu, the Magician  
7:30—CBS, Orchestra  
7:45—Fun Frolic  
8—"Globe Headlines"  
8:15—S. & W. "Mellow'd Melodies"  
8:30—Lombardo, Burns & Allen  
9—Gus Arnheim's Orchestra  
9:30—Catherine the Great  
10—News; Plymouth Progress  
10:15—Orville Knapp's Orchestra  
10:30—Isle of Golden Dreams  
11—Johnny Robinson's Orchestra  
12 to 1 A.M.—Organ recital



**535.4 Meters KTAB** Garfield 4700  
560 Kcys. 1000 Watts  
Assoc. Broadcasters, Oakland, Calif.  
6:30 A.M. to 1—News; music; talks  
1 P.M.—Radio Frolic  
1:30—Over the Teacups  
2—Ye Olde Towne Crier  
3—Matinee; Records  
4—“Keep Smillin’ Revue”  
4:30—Siesta; News  
5—Smile Club; Health Talk  
6—Automobile Question Box  
6:15—Empire Minstrels; News  
6:45—Sport Page of the Air  
7—Bargain Page; Cuban Cabaret  
7:30—Crazy Quilt  
7:45—Romance of the Turf  
8—Masquerade; Miles of Melody  
9—Reporter; Souvenirs  
9:45—Paul Kellar, pianist  
10—Dance Records  
11:30—Blue Blowers  
12 to 1 A.M.—Nite Owls

**322.4 Meters KROW** Glenc. 6774  
930 Kcys. 1000 Watts  
Educa. Broad. Corp., Oakland, Calif.  
7 A.M. to 6—Various programs  
6 P.M.—“Doc” Shahan’s Ramblers  
6:30—Jewish Classical Hour  
7:30—Italian program  
8—Topics of the Day  
8:15—Pyramid Club  
8:30—KROW Frolic  
9:30—Organ Echoes  
10 to 12 mid.—Request program

**285.5 Meters KNX** Hemp. 4101  
1050 Kcys. 25,000 Watts  
Western Broadcast Co., Los Angeles  
6:45 A.M. to 6—Various programs  
6 P.M.—Newspaper of the Air  
6:15—Range Riders  
6:30—Lawrence King and Orchestra  
6:45—Grown’ Up  
7—Frank Watanabe  
7:15—Black and Blue  
7:30—Musical program  
7:45—Count of Monte Cristo  
8—Grocer’s Basket of Fun  
9—News; Happy Chappies  
9:30 to 11 P.M.—Musical program

**508.2 Meters KHQ** Main 5383  
590 Kcys. 1000 Watts  
Louis Wasmer, Inc., Spokane, Wash.  
(Spokane Daylight Saving Time)  
7 A.M. to 1—Various programs  
2:45—Club Bulletin  
1 P.M.—Sylvia Grey  
1:15—NBC, Farm and Home Hour  
2—Studio programs  
2:45 P.M.—Club Bulletin  
3—NBC, Al Pearce and Gang  
4—The Bill Board  
4:30—Dandies of Yesterday  
5—Tull and Gibbs Express  
5:15—To be announced  
5:30—NBC, Stephen Foster Songs  
5:45—To the Sweethearts  
6—NBC, Mandoliers  
6:15—NBC, World Econ. Conference  
6:30—NBC, Myron Niesley, tenor  
6:45—Voice of Texas  
7—NBC, Corn Cob Pipe Club  
7:30—NBC, Ship of Joy  
8—NBC, Amos ‘n’ Andy  
8:15—NBC, Ethel Waters, vocalist  
8:30—NBC, Eddie Peabody  
9—Black and Blue  
9:15—College Inn Orchestra  
9:30—NBC, Edgewater Beach Orch.  
9:45—Radio Specials  
10—NBC, One Man’s Family  
10:30—Terrace Garden Orchestra  
11—NBC, Richfield News Flashes  
11:15 to 1 A.M.—Dance Music

**236.1 Meters KOL** Main 2312  
1270 Kcys. 1000 Watts  
Seattle Broadcast. Co., Seattle, Wash.  
(Seattle Daylight Saving Time)  
6:45 A.M. to 1:15—Various progs.  
1:15—CBS, Columbia Artist Recital  
1:30—Julie Day  
1:45—CBS, Round Towners  
2—CBS, Dancing by the Sea  
2:30—Between the Bookends  
2:45—Belle and Martha  
3—Happy Go Lucky Hour  
4—Feminine Fancies  
5—Studio program  
5:15—Hodge Podge Lodge  
5:45—CBS, Howard Ely, Organ  
6—Cecil and Sally  
6:15—CBS, Street Singer and Lula  
6:30—Sports Review  
6:45—Radio Speaker Stvenson  
7—CBS, Old Gold Program  
7:30—CBS, Frigidaire program  
7:45—Chandu the Magician  
8—CBS, Howard Barlow’s Orchestra  
8:30—CBS, Freddie Martin’s Orch.  
8:45—Ralph Horr; Globe Trotter  
9:15—CBS, Ted Lewis’ Orchestra  
9:30—CBS, Guy Lombardo’s Orch.  
10—Dance Music  
10:30—Joe Adams, Dance Band  
11:30—Isle of Golden Dreams  
12 to 1 A.M.—Johnny Robinson’s  
Dance Band

**483.6 Meters KGW** Atwater 2121  
620 Kcys. 1000 Watts  
Morning Oregonian, Portland, Ore.  
7 A.M. to 12—Various programs  
12 noon—Oregonian of the Air  
12:15—Star Furniture Company  
1:15—NBC, Casino Orchestra  
1:30—Dental Clinic of the Air  
1:45—NBC-KGO Programs to 3:15  
3:15—Ailyn’s Prog.; Friendly Chat  
4—NBC-KGO programs to 5:30  
5:30—Fairview Farms  
5:35—NBC, Myron Niesley  
5:45—Piano Surprises  
6—Corncob Pipe Club  
6:30—Sam Gordon, the Kibitzer  
6:45—NBC, Ship of Joy  
7—NBC-KGO Programs to 8  
8—Baldy’s Homespun Melodies  
8:15—NBC-KGO programs to 9:30  
9:30—Studio program  
9:40—Terrace Gardens Orchestra  
10—News; Orchestras  
11:15 to 12 mid.—Taft’s Orchestra

**499.7 Mtrs. KFSD** Franklin 6353  
600 Kcys. 1000 Watts  
Airfan Radio Corp., Ltd., San Diego  
7:30 A.M. to 6—Various programs  
6 P.M.—Postal Talk; News  
6:15—Sheriff Ed F. Cooper  
6:30—NBC, Ship of Joy  
7—Studio program  
7:15—Poet Prince  
7:30—Y.M.C.A. Harmonica Band  
8—NBC programs  
9—L’Heure Exquise  
9:30—NBC-KGO programs to 11  
11—Ambassador Hotel Orchestra  
11:30 to 12 mid.—Dance Music

**526 Meters KVI** Broadway 4211  
570 Kcys. 1000 Watts  
Puget Sound Broadcast. Co., Tacoma  
(Tacoma Daylight Saving Time)  
6 A.M. to 8 P.M.—Various programs  
8—CBS, Columbia Symphony  
8:15—CBS, Little Jack Little  
8:30—CBS, Tom Gerun’s Orchestra  
9—CBS, Ted Lewis’ Orchestra  
9:30—Guy Lombardo’s Orchestra  
10—Baseball Game  
11:30 to 12—Isle of Golden Dreams

**468.5 Meters KFI** Richm’d 6111  
640 Kcys. 50,000 Watts  
Earle C. Anthony, Inc., Los Angeles  
6:30 A.M. to 5—Various programs  
5 P.M.—“Baron Keyes’ Air Castle  
5:15—NBC, World Econ. Conference  
5:30—Julie Kellar, harpist  
5:45—NBC-KGO programs to 6:30  
6:30—Hollywood Bowl school prog.  
6:45—NBC-KGO programs to 7:15  
7:15—Orchestra  
7:30—NBC, Eddie Peabody  
8—Orchestra and Soloist  
8:30—NBC-KGO programs  
9—NBC, One Man’s Family  
9:30—Eno Crime Clues  
10 to 12 mid.—News; Dance Orch.

**325.9 Meters KOMO** Elliott 5890  
920 Kcys. 1000 Watts  
Fisher’s Blend Station, Inc., Seattle  
(Seattle Daylight Saving Time)  
7:55 A.M. to 1—Various programs  
1 P.M.—Tea Time Talks  
1:15—NBC, Farm and Home Hour  
2—Casino Orchestra  
2:15—Violin Concert  
2:30—Easy Chair; Red Shadow  
3—NBC, Al Pearce and Gang  
4—NBC, Jack and Loretta Clemens  
4:15—The Observer  
4:30—Concert in Miniature  
4:45—To be announced  
5:30—NBC, Stephen Foster  
5:45—Emil Hanson  
6—Dinner Dantsant  
6:30—Vacation Land Revue  
7—NBC, Corn Cob Pipe Club  
7:30—Fifteen Carefree Minutes  
7:45—Dollars and Cents  
8—NBC-KGO programs to 9  
9—Baldy’s Homespun Melodies  
9:15—Light Opera Melodies  
9:45—NBC-KGO Programs to 10:30  
10:30—Big Opportunity Contest  
10:45—The Tyroleans  
11—NBC, Richfield News Flashes  
11:15 to 12 mid.—Club New Yorker

**309.1 Meters KJR** Seneca 1515  
970 Kcys. 5000 Watts  
Northwest Broad. System, Seattle, Wn.  
(Seattle Daylight Saving Time)  
8:30 A.M. to 1—Various programs  
1:30—Sherman, Clay Hour  
1 P.M.—Southern Symphonies  
1:15—Master Works of the Piano  
1:30—The Salon Hour  
2:30—NBC, Winnie the Pooh  
2:45—NBC, John and Ned  
3—Recorded Programs  
4—Sohl and Lundberg  
4:15—Short Revue  
4:30—NBC-KGO programs to 5  
5—Steamboat Bill  
5:15—Festel Harmonies  
5:45—NBC, Musical program  
6—To be announced  
6:30—NBC, Myron Niesley  
6:45—NBC, Argentine Trio  
7—Around the Town  
7:15—Tarzan  
7:30—Times News Edition  
7:45—Northwest Mines Reporter  
8—Shades of Yesterday  
8:15—NBC, Ethel Waters, vocalist  
8:30—Tyroleans  
9—Vocalist and Orchestra  
9:15—Sohl and Lundberg, vocal  
9:30—Edgewater Beach Orchestra  
9:45—Wandering Minstrel  
10—Dream Melodies  
10:30—Terrace Garden Orch.  
11—Viennese Vagabonds  
11:15 to 12 mid.—NBC, Mark Hop-  
kins Orchestra

# THURSDAY Programs

July 20, 1933

379.5 Mtrs. **NBC-KGO** Sutter 1920  
790 Kcys. 7500 Watts  
National Broadcast. Co., San Francisco

7 A.M.—Singing Strings  
7:15—London Terrace Orchestra  
7:30—United States Navy Band  
8—Gene Arnold, Commodores  
8:15—Originalities  
8:30—Concert Ensemble  
9—Vic and Sade; Skit  
9:15—The Buckaroos  
9:30—Martha Meade Society  
9:45—Johnny Toffoli, accordionist  
10—Magazine of the Air  
11—Arion Trio  
11:30—Financial Flashes  
11:35—Organ Concert  
12:15—Farm and Home Hour  
1—Casino Orchestra  
1:30—Trio Romantique  
1:45—John and Ned: Harmony duo  
2—Al Pearce and his Gang  
3—Rush Hughes, news  
3:15—Concert Footlights  
3:30—The Well Dressed Woman  
3:45—Tune Detective  
4—Fleischmann Hour  
5—Children's Corner  
5:15—Dance Journal  
5:30—Memory's Melody  
6—To be announced  
7—Amos 'n' Andy  
7:15—Newell Chase, pianist  
7:30—Death Valley Days  
8—Standard Symphony Hour  
9—Captain Henry's Show Boat  
10—Richfield News Flashes  
10:15—Anson Weeks' Orchestra  
11—Organ Concert  
11:30 to 12 mid.—Kay Kyser's Orch.

535.4 Meters **KTAB** Garfield 4700  
560 Kcys. 1000 Watts  
Assoc. Broadcasters, Oakland, Calif.

6:30 A.M. to 1—Various programs  
1 P.M.—Radio Frolics  
1:30—Over the Teacups  
2—Ye Olde Town Crier  
3—Matinee; Records  
4—“Keep ‘Smilin’ Revue”  
4:30—Explorations; News  
5—Smile Club; Health Talk  
6—Leonardo Chiarlo, tenor  
6:15—Empire Minstrels; News  
6:45—Sport Page of the Air  
7—Bargain Page  
7:15—Chinese Fantaste  
7:30—Empire Minstrels  
7:45—Iron Horse, mystery drama  
8—Eight o'Clock Show  
9—Reporter; Souvenirs  
9:45—Paul Keller, pianist  
10—Dance Records  
11—Jess Stafford's Orchestra  
11:30—Blue Blowers  
12 to 1 A.M.—Nite Owls

296.6 Meters **KQW** Ballard 777  
1010 Kcys. 500 Watts  
Pac. Agric. Foundation, Ltd., San Jose

7 A.M.—Records; Silent at 8  
9 to 6—Music; Stocks; Talks  
6 P.M.—Dinner Music  
6:15—Franco's program  
6:30—State Market Reports  
6:45—Farmers' Exchange  
7—U. S. Weather Forecast  
7:30—Radio News and Forum  
7:35—Minute Men  
7:45—Kenneth Adcock, tenor  
8—Old Church Choir Songs  
9—Gene Mancini, tenor  
9:15—Pezzolo Sisters  
9:30—Musical Readings  
9:45 to 10 P.M.—Studio program

440.9 Meters **KPO** Sutter 1920  
680 Kcys. 50,000 Watts  
National Broadcast. Co., San Francisco

7:30 A.M.—Organ; Financial Service  
8:15—Log o' the Day Crosscuts  
9:15—Ralph Ginsberg's Ensemble  
9:30—Johnny O'Brien, harmonica  
9:45—News Items  
10—New Kitchen Secrets  
10:15—Songs by the Klitchen Sink  
10:30—The Pioneers: Male Quartet  
10:45—Sisters of the Skillet  
11—Echoes of Erin  
11:15—Words and Music  
11:45—Agricultural Bulletin  
12 noon—Thursday Special  
12:15—Melody Mixers; News at 1  
1:15—Ann Warner's Chats  
1:45—Genia Fonariova, soprano  
2—Viennese Ensemble  
2:30—John B. Kennedy  
2:35—Essex House Ensemble  
3—The Sizzlers: Male trio  
3:15—Rhythm Vendors  
3:45—University of California prog.  
4—California Dons; Arion Trio  
5:15—Behind the Footlights  
5:30—Tom Mitchell, baritone  
5:45—News Items; Tone Portraits  
6:30—Federal Business Talk  
6:45—Irving Kennedy, tenor  
7—Edna Fischer, pianist  
7:15—Review of Activities of San Francisco Municipal Government  
7:30—United States Army Band  
8—Don Bestor's Orchestra  
8:30—Dancing in Twin Cities  
9—Doric Quartet  
9:30—The Orchestra  
10—Rhythm Aces  
10:30—Voice of Pan; Flute & piano  
11—Abe Lyman's Orchestra  
11:30 to 12 mid.—Organ Concert

243.8 Meters **KYA** Prospect 3456  
1230 Kcys. 1000 Watts  
Pac. Broadcast. Corp., San Francisco

7:30 A.M. to 12—Music and Talks  
12 noon—Scriptures; Organ  
12:03—Tango Time  
12:15—Organ Recital, Elmer Vincent  
1—Mid-day Concert  
2—International Troubadors  
2:15—Hawaiian Melodies  
2:45—Singing Strings  
3—NBC, “The Sizzlers”  
3:15—Organ Matinee  
4:15—Florence Mendoza, Old Songs  
4:30—Records; Campbell Digest  
6—Serenade; Waltz Idylls  
6:45—Cecil and Sally  
7—Harmony Highlights  
7:15—“Sportsman's Corner”  
7:30—Modern Maestros; Sports  
8—El Patio Orchestra  
9—News; Musical Whims  
9:30—The Cub Reporters  
9:45 to 12 mid.—News; Organ; Rec.

322.4 Meters **KROW** Glenc. 6774  
930 Kcys. 1000 Watts  
Educa. Broad. Corp., Oakland, Calif.

7 A.M. to 6—Various programs  
6 P.M.—“Doc” Shahan's Ramblers  
6:30—Organ Echoes; Records  
7—Gladys Kaull, pianist  
7:15—Studio program  
7:30—Paul Benson; Blue J's  
8—Topics of the Day  
8:15—Watch Tower program  
8:30—Jack Morgan, accordion  
8:45—Studio program  
9—Pemm Players  
9:30—Concert Melodies  
10 to 12 mid.—Request program

491.5 Meters **KFRC** Prospect 0100  
610 Kcys. 1000 Watts  
Don Lee Broadcast. System, S. F., Cal.

7 A.M.—Recorded programs  
7:25—Stocks; Exercises at 7:30  
8—CBS, Frank La Marr's Orchestra  
8:15—Mary Sears' Garden Club  
8:30—CBS, Concert Miniatures  
9—Little French Princess  
9:15—Movie Star Name Contest  
9:20—CBS, Harold Knight's Orch.  
9:30—CBS, Geo. Scherban's Orch.  
10—CBS, Ann Leaf, Organist  
10:30—CBS, The Merry-makers  
11—Prudence Penny  
11:15—Frances Lee Barton  
11:30—CBS, Billy White, tenor & Or.  
12 noon—Sherman Clay Concert  
1—Discovery Hour  
1:30—Stocks; Records  
1:45—Belle and Martha  
2—Happy Go Lucky Hour  
3—Feminine Fancies  
4—CBS, Windy City program  
4:45—Lost and Found Items  
4:50—Movie Star Name Contest  
4:55—Town Topics  
5—CBS, Wayfaring Men  
5:15—Presenting Mark Warnow  
5:45—Dick Aurandt, organist  
6—CBS, John Henry  
6:15—CBS, Evan Evans  
6:45—CBS, Orchestra and Vocalist  
7:15—Vagabonds of the Hills  
7:45—Fur Frolic  
8—Globe Headlines  
8:15—CBS, Glen Gray's Orchestra  
8:30—“Sports Parade”  
9—Gus Arnheim Orchestra  
9:30—The Buccaneers  
9:45—Olga Steeb, pianist  
10—News, Darrell Donnell  
10:15—Tangee Cosmetic Company  
10:20—Orchestra; Berceuse  
11:15—The Georgians  
11:30—The Islanders  
12 to 1 A.M.—Midnight Request Hr.

280.2 Meters **KJBS** Ord. 4148-49  
1070 Kcys. 100 Watts  
J. Brunton & Sons, San Francisco

6 A.M.—Alarm Klock Klub  
8—Records; Talks; Music  
7:30 P.M.—Silent Period  
12:01 to 6 A.M.—Owl Program

340.7 Meters **KLX** Lake. 6000  
880 Kcys. 1000 Watts  
Tribune Pub. Co., Oakland, Calif.

8 A.M.—Records; Stocks  
8:30—Covered Wagon Jubilee  
9—Records; Clinic  
10:15—Stocks; Financial Info.  
10:30—International Kitchen  
11—Sunshine Twins; News  
11:30—Curtain Calls, Wood Soanes  
11:45—Fred Skinner  
12 noon—Jack Delaney's Band  
1—Jean's Hi-Lights  
2—Recordings; Stocks; News  
2:45—Records; News Flashes  
3:45—Health School; Records  
4:30—Brother Bob's Club  
5—Covered Wagon Jubilee  
5:30—Heald's Business College  
5:45—Helen Parmelee, pianist  
6—Hotel Oakland Trio; News  
7:30—Arco's Novelty Trio  
7:45—Sports Hi-Lights  
8—Dot Kay; Herb Kennedy; Three Echoes and Nancy Ann Hersey  
8:30—Studio program  
8:45—Franklin Roberts, baritone  
9—Nevada Night Herders  
9:45—Helen Parmelee, pianist  
10 to 11 P.M.—Dance program

**508.2 Meters KHQ** Main 5383  
 590 Kcys. 1000 Watts  
 Louis Wasmer, Inc., Spokane, Wash.

(Spokane Daylight Saving Time)

- 7 A.M. to 1:15—Various programs
- 1:15—NBC, Farm and Home Hour
- 2—Studio programs
- 2:30—NBC, Trio Romantique
- 2:45—Club Bulletin
- 3—NBC, Al Pearce and Gang
- 4—The Bill Board
- 4:30—NBC, Concert Footlights
- 4:45—Tull and Gibbs Express
- 5—NBC, Rudy Vallee Orch.
- 6—NBC, Dance Journal
- 6:30—NBC, Memory's Melody
- 6:45—Crazy Wells
- 7—NBC-KFO Programs to 11:15
- 11:15—Radio Specials
- 11:30 to 1 A.M.—Dance Music

**526 Meters KVI** Broadway 4211  
 570 Kcys. 1000 Watts  
 Puget Sound Broadcast. Co., Tacoma

(Tacoma Daylight Saving Time)

- 6 A.M. to 5—Various programs
- 5 P.M.—CBS, Windy City Revue
- 5:30—Children's Radio Theatre
- 5:45—Musical Crediteer
- 6—CBS, Wayfaring Men
- 6:15—CBS, Fray & Braggiotti
- 6:30—CBS, Mark Warnow
- 7—Jimmy McDowell's Orchestra
- 7:15—CBS, John Henry
- 7:30—Dr. Mellor
- 7:45—CBS, Symphony Orchestra
- 8:15—CBS, Little Jack Little
- 8:30—Studio program
- 9—CBS, Casa Loma Orchestra
- 9:30—Baseball Game
- 11:30 to 12 mid.—Orchestra

**333.1 Meters KHJ** VAndike 7111  
 900 Kcys. 1000 Watts  
 Don Lee Broadcast. System, L. A., Cal.

- 7 A.M. to 5—Various programs
- 5 P.M.—Fire Department talks
- 5:15—Town Topics
- 5:30—To be announced
- 6—Pasadena Community Players
- 6:15—CBS, Windy City Revue
- 6:45—CBS, Maude Rooney
- 7:15—Chandu, the Magician
- 7:30—CBS, Guy Lombardo's Orch.
- 7:45—Four Star Fun Frolic
- 8—"Globe Headlines"
- 8:15—"Laff Clinic"
- 9—Dance Orchestra
- 9:30—The Buccaneers
- 9:45—Olga Steeb, pianist
- 10—News; Orchestra; Berceuse
- 11:15—To be announced
- 12 to 1 A.M.—Organ recital

**225.4 Meters KGB** Franklin 6151  
 1330 Kcys. 1000 Watts  
 Don Lee Broadcast. System, S. D., Cal.

- 7 A.M. to 5—Various programs
- 5 P.M.—Safety Talk; Town Topics
- 5:15—CBS, Mark Warnow
- 6—CBS, John Henry
- 6:15—CBS, Windy City Revue
- 6:45—CBS, Columbia Symphony Or.
- 7—Chandu, the Magician
- 7:15—Basketeters
- 7:45—Fun Frolic
- 8—"Globe Headlines"
- 8:15—Chamber of Commerce
- 8:30—Eb and Zeb
- 8:45—CBS, Dance Band
- 9—Gus Arnheim's Orchestra
- 9:30—Buccaneers; Olga Steeb
- 10—News; Berceuse; Orchestra
- 11:15—Georgians; Islanders
- 12 to 1 A.M.—Recordings

**483.6 Meters KGW** Atwater 2121  
 620 Kcys. 1000 Watts  
 Morning Oregonian, Portland, Ore.

- 7 A.M. to 12—Various programs
- 12 noon—Oregonian of the Air
- 12:15—NBC-KGO Programs to 1:30
- 1:30—Dental Clinic of the Air
- 1:45—NBC-KGO Programs to 3
- 3—Crazy Crystals program
- 3:15—Allyn's Prog.; Friendly Chat
- 4—NBC-KGO programs
- 5:45—Collins & Erwin
- 6—NBC-KGO programs to 10:15
- 10:15—McCool's Fishing Guide
- 10:30—Anson Week's Orchestra
- 11—Abe Lyman's Orchestra
- 11:30 to 12 mid.—Liberty organ

**463.5 Meters KFI** Richm'd 6111  
 640 Kcys. 50,000 Watts  
 Earle C. Anthony, Inc., Los Angeles

- 6:30 A.M. to 5—Various programs
- 5 P.M.—Baron Keyes' Air Castle
- 5:15—Calif. Teachers' Assoc. Prog.
- 5:30—NBC, Memory's Melody
- 5:45—Calvin Hendricks, baritone
- 6—To be announced
- 7—NBC, Amos 'n' Andy
- 7:15—Orchestra
- 7:30—NBC, Death Valley Days
- 8—NBC, Standard Symphony Hour
- 9—NBC, Capt. Henry's Showboat
- 10—NBC, Richfield Reporter
- 10:15—NBC, Anson Weeks' Orch.
- 11—NBC, Abe Lyman's Orchestra
- 11:30 to 12 mid.—Dance Music

**499.7 Mtrs. KFSD** Franklin 6353  
 600 Kcys. 1000 Watts  
 Airfan Radio Corp., Ltd., San Diego

- 7:30 A.M. to 6—Various programs
- 6 P.M.—To be announced
- 7:15—NBC, Newell Chase, pianist
- 7:30—To be announced
- 9—NBC, Maxwell House Showboat
- 10—NBC, Richfield News Flashes
- 10:15—NBC, Hotel Mark Hopkins Or.
- 11 to 12 mid.—Dance Music

**285.5 Meters KNX** Hemp. 4101  
 1050 Kcys. 25,000 Watts  
 Western Broadcast Co., Los Angeles

- 6:45 A.M. to 6—Various programs
- 6 P.M.—Newspaper of the Air
- 6:15—King Cowboy
- 6:30—Orchestra and vocalist
- 6:45—Growin' Up
- 7—Frank Watanabe
- 7:15—Light Opera
- 7:45—Count of Monte Cristo
- 8—Midweek Parade
- 8:45—Drury Lane, tenor
- 9—Newspaper of the Air
- 9:15—Miles of Melody
- 9:45—Musical program
- 10 to 11 P.M.—Dance Music

**325.9 Meters KOMO** Elliott 5890  
 920 Kcys. 1000 Watts  
 Fisher's Blend Station, Inc., Seattle

(Seattle Daylight Saving Time)

- 7:55 A.M. to 1—Various programs
- 1 P.M.—Tea Time Tales
- 1:15—NBC, Farm and Home Hour
- 2—Musical Madcaps
- 2:30—Modern Concert Ensemble
- 3—NBC, Al Pearce and Gang
- 4—To be announced
- 4:15—The Observer
- 4:30—Melody Musкатeers
- 5—NBC, Fleischmann Sunshine Hour
- 6—Dinner Dansant
- 6:30—Venetian Ensemble
- 7—NBC, To be announced
- 8—NBC, Amos 'n' Andy
- 8:15—Financial News Reporter
- 8:30—NBC, Death Valley Days
- 9—NBC, Standard Symphony Hour
- 10—NBC, Capt. Henry's Showboat
- 11—NBC, Richfield News Flashes
- 11:15 to 12 mid.—Club New Yorker

**309.1 Meters KJR** Seneca 1515  
 970 Kcys. 5000 Watts  
 Northwest Broad. System, Seattle, Wn.


(Seattle Daylight Saving Time)

- 8:30 A.M. to 1—Various programs
- 1—Musical programs
- 1:15—Masterworks of the Piano
- 1:30—Musical Madcaps
- 2—NBC-KGO programs
- 3—Recorded Programs
- 4—Sohl and Lundberg, vocal
- 4:15—NBC-KGO programs
- 5—Pastel Harmonies
- 5:30—Concert in Miniature
- 6—NBC-KGO program
- 7—Gems from Light Operas
- 7:30—Times News Edition
- 7:45—Moment Musicale
- 8—Sohl and Lundberg, songs
- 8:15—Newell Chase, pianist
- 8:30—Orpheus Ensemble
- 9—The Tyroleans
- 9:30—Rhythm Aces
- 10—Woodwind Ensemble
- 11—Harp Solos, Hubert Graf
- 11:15 to 12 mid.—NBC, Mark Hopkins Orchestra

**236.1 Meters KOL** Main 2312  
 1270 Kcys. 1000 Watts  
 Seattle Broadcast. Co., Seattle, Wash.

(Seattle Daylight Saving Time)

- 6:45 A.M. to 1—Various programs
- 1 P.M.—CBS, U. S. Army Band
- 1:30—Julie Day
- 1:45—CBS, American Legion
- 2—CBS, Geo. Hall's Orchestra
- 2:30—CBS, Between the Bookends
- 2:45—Belle and Martha
- 3—Happy Go Lucky Hour
- 4—CBS, Economic Conference
- 4:15—Feminine Fancies
- 5—CBS, Windy City Revue
- 5:15—Walter Schelp, trio
- 5:30—Studio program
- 5:45—CBS, Vera Van
- 6—Cecil and Sally
- 6:15—CBS, Fray and Braggiotti
- 6:30—Stuart's Sports Review
- 6:45—Studio program
- 7—CBS, John Henry
- 7:15—Radio Speaker Stevenson
- 7:30—CBS, Evan Evara's Orchestra
- 7:45—Chandu the Magician
- 8—Maud Rooney and Orchestra
- 8:15—Vagabonds of the Hills
- 8:45—CBS Orchestra
- 9—Globe Trotter
- 9:15—CBS, Casa Loma Orchestra
- 9:30—CBS, Ozzie Nelson's Orchestra
- 10—American Weekly
- 10:15 P.M.—Don Lee programs

  
 Program listings are correct when published by *Broadcast Weekly*, but sale of time by stations and networks and national emergencies often cause deviations which the stations cannot foresee.

# FRIDAY Programs

July 21, 1933

**379.5 Mtrs. NBC-KGO Sutter 1920**  
**790 Kcs. 7500 Watts**  
**National Broadcast. Co., San Francisco**  
**7 A.M.—United States Marine Band**  
 8—Fiddlers Three  
 8:15—Lee S. Roberts, Memory Box  
 8:30—Merric Men; Male quartet  
 8:45—Rhythmic Serenade  
 9—Vic and Sade; Skit  
 9:15—The Buckaroos  
 9:30—Organ; Arion Trio  
 10:30—Magazine of the Air  
 11:30—Borden program  
 11:45—Financial Flashes  
 11:50—Five Cards  
 12:15—Farm and Home Hour  
 1—Manhattan Beach Band  
 1:30—Winnie the Pooh  
 1:45—John and Ned; Harmony Duo  
 2—Al Pearce and his Gang  
 3—Rush Hughes, news  
 3:15—Four Horsemen; Male quartet  
 3:30—Joseph Littau's Orchestra  
 4—Family Cook Book  
 4:15—Music Room; Orchestra  
 4:45—Southern Harmony Four  
 5—Let's Listen to Harris  
 5:30—Armour Jester; Phil Baker  
 6—The First Nighter; Drama  
 6:30—World Economic Conference  
 6:45—Hill Billy Heart Throbs  
 7—Amos 'n' Andy  
 7:15—Chester H. Rowell  
 7:30—Best Foods Musical Grocery  
 8—Sports Headliners  
 8:15—Gilmore Circus  
 9:15—Ted Weems Orchestra  
 9:30—Terrace Garden Orchestra  
 10—Richfield News Flashes  
 10:15—Anson Weeks' Orchestra  
 11—Organ Concert  
 11:30 to 12 mid.—Kay Kyser's Orch.

**491.5 Meters KFRC Prospect 0100**  
**610 Kcs. 1000 Watts**  
**Don Lee Broadcast. System, S. F., Cal.**  
**7 A.M.—Recorded program**  
 7:25—Stocks; Exercises at 7:30  
 8—CBS, Harold Knight's Orchestra  
 8:15—Mary Sears' Garden Party  
 8:30—CBS, Concert Miniatures  
 9—CBS, Little French Princess  
 9:15—Movie Star Name Contest  
 9:20—CBS, La Marr's Orchestra  
 9:30—Betty Crocker  
 9:45—Smiling Ed McConnell  
 10—CBS, Fred Berden's Orchestra  
 10:30—CBS, Madison Singers  
 10:45—CBS, Colum. Educ. Features  
 11—Prudence Penny  
 11:15—CBS, Alex Semmler, pianist  
 11:30—CBS, Harrisburg Program  
 12 noon—Noonday Concert  
 1—CBS, "True Animal Stories"  
 1:15—CBS, John Kelvin, tenor  
 1:30—Stocks; Recordings  
 1:45—Belle and Martha  
 2—Happy Go Lucky Hour  
 3—Feminine Fancies  
 4—Hodge Podge Lodge  
 4:30—Records; Lost & Found Items  
 4:50—Records; Town Topics  
 5—Organ and Vocalist  
 5:15—CBS, The Street Singer  
 5:30—In the Gloaming  
 5:45—Health Products Corporation  
 6—CBS, Lennie Hayton's Orchestra  
 6:30—CBS, Frigidaire program  
 6:45—CBS, Edwin C. Hill  
 7—CBS, Freddie Rich's Orchestra  
 7:30—CBS, Isham Jones' Orchestra  
 7:45—Four Star Fun Frolic  
 8—Globe Headlines  
 8:15—CBS, Freddie Martin's Orch.  
 8:30—CBS, Leon Belasco's Orch.  
 9—Gus Arnheim's Orchestra

9:30—Conquerors of the Air  
 10—Darrell Donnell, News  
 10:10—Dance Orchestra  
 10:15—Tangee Cosmetic Company  
 10:20—Dance Orchestra  
 10:45—The Georgians  
 11—Raymond Paige's Orchestra  
 12 to 1 A.M.—Request Hour

**243.8 Meters KYA Prospect 3456**  
**1230 Kcs. 1000 Watts**  
**Pac. Broadcast. Corp., San Francisco**  
 7:30 A.M. to 12—Music and Talks  
 12 noon—Scriptures  
 12:03—Concert; Hawaiians  
 1:30—Modern Maestros  
 1:45—Melodic Wandering  
 2—International Troubadors  
 2:30—Gould and Shefter, pianists  
 2:45—Violin Masters  
 3—Organ Matinee; Records  
 6—"Liza and Linda"; Waltz Idylls  
 6:45—Cecil and Sally; 7, Tango Time  
 7:15—Romance of Music  
 7:30—Musical Novelties  
 8—El Patio Orchestra  
 9—News; Captain Argus  
 9:45—Bob Allen, Pianist  
 10 to 12 mid.—Organ; Records

**340.7 Meters KLX Lake. 6000**  
**880 Kcs. 1000 Watts**  
**Tribune Pub. Co., Oakland, Calif.**  
 8 A.M.—Records; Stocks  
 8:30—Covered Wagon Jubilee  
 9—Recorded program  
 10:15—Stocks; Financial Info.  
 10:30—International Kitchen  
 11—Sunshine Twins; News  
 11:30—Novelty Guitar Duo  
 11:45—Madelon and Nancy  
 12 noon—Jack Delaney's Band  
 1—Jean's High-Lights; Records  
 2:35—Better Business Talk  
 2:40—Closing San Francisco Stocks  
 2:45—Verna Anderson, pianist  
 3—Records; News Flashes  
 3:45—Health School; Records; News  
 4:30—Brother Bob's Club  
 5—Covered Wagon Jubilee  
 5:30—News; Lovable Liars  
 5:45—Helen Parmelee, pianist  
 6—Hotel Oakland Trio; News  
 7:30—Dr. Ross Pet Clinic  
 7:45—Helen Parmelee, pianist  
 8—Hi-Jinks program  
 10—Fred Skinner  
 10:15 to 11 P.M.—Dance program

**535.4 Meters KTAB Garfield 4700**  
**560 Kcs. 1000 Watts**  
**Assoc. Broadcasters, Oakland, Calif.**  
 6:30 A.M. to 1—Various programs  
 1 P.M.—Radio Frolics  
 1:30—Over the Teacups  
 2—Ye Olde Towne Crier  
 3—Matinee; Records  
 4—"Keep Smilin' Revue"  
 4:30—Walkathon; News  
 5—Smile Club; Health Talk  
 6—Auto Question Box  
 6:15—"Fish'n' Fool; News  
 6:45—Sports Page of the Air  
 7—Bargain Page; Cuban Cabaret  
 7:30—Sydney Rosenbloom, pianist  
 7:45—Romance of the Turf  
 8—Waltz Land  
 8:15—American Weekly Drama  
 8:30—Miles of Melody  
 9—Reporter; Souvenirs  
 9:45—Paul Kellar, pianist  
 10—Dance Records  
 11—Jess Stafford's Band  
 11:30—Blue Blowers  
 12 to 1 A.M.—Nite Owls

**440.9 Meters KPO Sutter 1920**  
**680 Kcs. 50,000 Watts**  
**National Broadcast. Co., San Francisco**  
 7:30 A.M.—Organ; Financial Service  
 8:15—Log o' the Day Crosscuts  
 9:15—Ralph Ginsberg's Ensemble  
 9:30—Alvino Rey, guitarist  
 9:45—News; Tom Mitchell, baritone  
 10:15—Fashion Flashes  
 10:30—Canzonetta; Arion Trio  
 11—Sonata Rectal  
 11:15—Famous Loves  
 11:30—Organ Concert  
 11:45—Agricultural Bulleitein  
 12 noon—Midday Musicale  
 12:45—Commonwealth Club Lunch  
 1:30—Ann Warner's Chats  
 2—Viennese Ensemble  
 2:30—News; 2:45, Just Relax  
 3—Harmonica Rascals  
 3:15—Stringwood Ensemble  
 3:45—University of California prog.  
 4—Pair of Pianos; 4:30—Arion Trio  
 5:15—For Girls and Boys Only  
 5:45—News; Musical Echoes  
 6:30—Boris Kramarenko's Orchestra  
 6:45—Detectives Black and Blue  
 7—Edna Fischer, pianist  
 7:15—Parzan of the Pipes  
 7:30—Josef Hornik; Viennese prog.  
 8—Mills Musical Playboys  
 8:15—Sports Revue  
 8:30—Harold Stern's Orchestra  
 9—Singable Songs; Orch., vocalist  
 9:30—Story Teller  
 10—Out of the East  
 10:30—Symphonettes  
 11—Abe Lyman's Orchestra  
 11:30 to 12 mid.—Organ Concert

**322.4 Meters KROW Glenc. 6774**  
**930 Kcs. 1000 Watts**  
**Educa. Broad. Corp., Oakland, Calif.**  
 7 A.M. to 6—Various programs  
 6 P.M.—"Doc" Shahan's Ramblers  
 6:30—Organ Echoes; Records  
 7—Gladys Kaull, pianist  
 7:15—Studio program; Records  
 7:30—Roy Edwards, tenor  
 7:45—Records; Topics of the Day  
 8:15—Annette Thompson  
 8:30—Pianologue; Studio program  
 9—Chuck and Harmonica  
 9:15—Bill Roth, songs  
 9:30—Montana Cowaddles  
 10 to 12 mid.—Request program

**280.2 Meters KJBS Ord. 4148-49**  
**1070 Kcs. 100 Watts**  
**J. Brunton & Sons, San Francisco**  
 6 A.M.—Alarm Clock Club  
 8 to 7:30—Records; News; Music  
 7:30 P.M.—Silent Period  
 12:01 to 6 A.M.—Owl Program

**468.5 Meters KFI Richm'd 6111**  
**640 Kcs. 50,000 Watts**  
**Earle C. Anthony, Inc., Los Angeles**  
 6:30 A.M. to 5—Various programs  
 5—NBC, Phil Harris Orchestra  
 5:30—NBC, Armour Hour  
 6—NBC, The First Nighter  
 6:30—NBC, World Conference  
 6:45—NBC, Hill Billy Heart Throbs  
 7—NBC, Amos 'n' Andy  
 7:15—String Orchestra  
 7:30—NBC, Best Foods Program  
 8—String Orchestra  
 8:15—NBC, Gilmore Circus  
 9:15—Dramatic Sketch  
 9:30—String Orchestra; Soloist  
 10—NBC, Richfield Reporter  
 10:15—NBC, Anson Weeks' Orch.  
 11—NBC, Abe Lyman's Orchestra  
 11:30 to 12 mid.—Bal Tabarin Orch.

- 236.1 Meters KOL** Main 2312  
1270 Kcys. 1000 Watts  
Seattle Broadcast. Co., Seattle, Wash.  
(Seattle Daylight Saving Time)
- 6:45 A.M. to 1—Various programs  
1 P.M.—CBS, Grab Bag  
1:30—Julie Day  
1:45—CBS, U. S. Army Band  
2—CBS, "True Animal Stories"  
2:15—CBS, John Kelvin, tenor  
2:30—CBS, Between the Bookends  
2:45—Belle and Martha  
3—Thru the Looking Glass  
3:15—Happy Go Lucky Hour  
4—Feminine Fancies  
5—Hodge Podge Lodge  
5:30—CBS, Barx  
6—Cecil and Sally  
6:15—CBS, Street Singer  
6:30—Sports Review  
6:45—Radio Speaker Stevenson  
7—CBS, Chesterfield Program  
7:30—Black and Blue  
7:45—Chandu the Magician  
8—CBS, Freddie Rich's Orchestra  
8:30—CBS, Isham Jones' Orchestra  
9—Globe Trotter  
9:15—CBS Programs  
10 to 12 midnight—Dance Music
- 526 Meters KVI** Broadway 4211  
570 Kcys. 1000 Watts  
Puget Sound Broadcast. Co., Tacoma  
(Tacoma Daylight Saving Time)
- 6 A.M. to 5—Various programs  
5 P.M.—Hodge Podge Lodge  
5:30—CBS program  
6—Investment Talk  
6:15—Street Singer  
6:30—Andre Kostelanetz presents  
7—CBS, Lennie Hayton's Orchestra  
7:30—CBS, Frigidaire program  
7:45—Dr. Mellor  
8—CBS, Freddie Rich's Columbians  
8:15—CBS, Little Jack Little  
8:30—CBS, Isham Jones' Orchestra  
9—Scandinavian Hour  
9:30—Baseball Game  
11:30 to 12 mid.—Orchestra
- 483.6 Meters KGW** Atwater 2121  
620 Kcys. 1000 Watts  
Morning Oregonian, Portland, Ore.
- 7 A.M. to 12—Various programs  
12 noon—Oregonian of the Air  
12:15—Farm and Home Hour  
12:45—O. M. Plummer  
1—NBC-KGO Programs to 1:30  
1:30—Dental Clinic of the Air  
1:45—NBC-KGO Programs to 3:15  
3:15—Allyn's Prog.; Friendly Chat  
4—NBC-KGO programs to 4:30  
4:30—To be announced  
4:40—Fairview Farms  
4:45—Mahdi the Magician  
5—NBC-KGO Programs to 8  
8—Texas Cowboy  
8:15—NBC-KGO programs to 9:30  
9:30—The Story Teller  
10 to 12—News; Orchestras
- 296.6 Meters KQW** Ballard 777  
1010 Kcys. 500 Watts  
Pac. Agric. Foundation, Ltd., San Jose
- 7 A.M.—Records; Silent at 8  
9 to 6—Music; Stocks; Talks  
6 P.M.—Dinner Music  
6:15—Franco's program  
6:30—State Market reports  
6:45—Farmers' Exchange  
7—U. S. Weather Forecast  
7:03—Radio News and Forum  
7:30—Minute Man; Concert  
8—San Jose Accordion Club  
8:30—Paramount Quartette  
9—Fireside Program  
9:30 to 10 P.M.—Mauna Keans
- 309.1 Meters KJR** Seneca 1515  
970 Kcys. 5000 Watts  
Northwest Broad. System, Seattle, Wn.  
(Seattle Daylight Saving Time)
- 8:30 A.M. to 1—Various programs  
1—Chamber of Commerce Luncheon  
1:30—The Salon Hour  
2:30—NBC-KGO programs  
3—Recorded program  
4—Sohl and Lundberg, vocal  
4:15—NBC, Four Horsemen  
5—Steamboat Bill  
5:15—Tunes for Tots  
5:30—Guitarmony  
5:45—NBC, Southern Harmony Four  
6—Dinner Dansant  
6:30—Venetian Ensemble  
7—Moment Musicale  
7:15—Tarzan; News  
7:45—Northwest Mines Reporter  
8—Banjoland  
8:15—NBC, Frances Paperte  
8:30—Bunker Hill Billies  
9—Musical program  
9:15—Harp Concert, Graf  
9:30—The Viennese Vagabonds  
10—Concert in Miniature  
10:30—NBC, Story Teller  
11—Dreamland  
11:15 to 12 mid.—NBC, Mark Hopkins Orchestra
- 285.5 Meters KNX** Hemp. 4101  
1050 Kcys. 25,000 Watts  
Western Broadcast Co., Los Angeles
- 6:45 A.M. to 6—Various programs  
6 P.M.—Newspaper of the Air  
6:15—Range Riders  
6:30—Concert and Lawrence King  
8:45—Growin' Up  
7—Frank Watanabe  
7:15—Black and Blue  
7:30—The Hawk  
7:45—Count of Monte Cristo  
8—Optimistic Revue  
9—News; Studio program  
9:30—Musical program  
9:45—Hollywood Legion Fights  
10:45 to 11 P.M.—Dance Orchestra
- 225.4 Meters KGB** Franklin 6151  
330 Kcys. 1000 Watts  
Don Lee Broadcast. System, S. D., Cal.
- 7 A.M. to 5:15—Various programs  
5:15 P.M.—CBS, Street Singer  
5:30—CBS, In the Gloaming  
5:45—Recordings  
6—CBS, Chesterfield  
6:30—CBS, Frigidaire program  
6:45—CBS, Edwin C. Hill  
7—Chandu, the Magician  
7:15—Fantasia; Tarzan at 7:30  
7:45—To be announced  
8—Globe Headlines  
8:15—CBS Orchestra  
8:30—Eb and Zeb  
8:45—CBS, Orchestra  
9—Gus Arnheim's Orchestra  
9:30—Conquerors of the Sky  
10—World-Wide News  
10:10—Dance Orchestra; Music  
10:45—Georgians  
11—Raymond Paige's Orchestra  
12 to 1 A.M.—Recordings
- 499.7 Mtrs. KFSD** Franklin 6353  
600 Kcys. 1000 Watts  
Airfan Radio Corp., Ltd., San Diego
- 7:30 A.M. to 6—Various programs  
6 P.M.—Manuel Dehesa  
6:30—NBC, World Conference  
6:45—NBC, Hill Billy Heart Throbs  
7—Studio program  
7:15—NBC-KGO Program to 8:15  
8:15—Fairway Facts  
8:30—Viratelle Quartette  
9:30—NBC, Story Teller  
10 to 12 mid.—News; Music
- 508.2 Meters KHQ** Main 5383  
590 Kcys. 1000 Watts  
Louis Wasmer, Inc., Spokane, Wash.  
(Spokane Daylight Saving Time)
- 7 A.M. to 1—Various programs  
1 P.M.—Sylvia Grey  
1:15—NBC, Farm and Home Hour  
2—To be announced  
2:30—NBC, Winnie the Pooh  
2:45—Club Bulletin  
3—NBC, Al Pearce and Gang  
4—The Bill Board  
4:30—To be announced  
5—Tull and Gibbs Express  
5:30—To be announced  
5:45—NBC-KGO Programs  
6:15—Voice of Texas  
6:30—NBC, Armour: Phil Baker  
7—NBC, The First Nighter  
7:30—To be announced  
8—NBC, Amos 'n' Andy  
8:15—Frances Paperte, soprano  
8:30—NBC, Best Foods Program  
9—Black and Blue  
9:15—Bohemian Club  
9:45—To be announced  
10—Radio Specialties  
10:30—NBC, Story Teller  
11—NBC, Richfield News Flashes  
11:15 to 1 A.M.—Dance Music
- 333.1 Meters KHJ** VAndike 7111  
900 Kcys. 1000 Watts  
Don Lee Broadcast. System, L. A., Cal.
- 7 A.M. to 5—Various programs  
5 P.M.—Town Topics  
5:15—CBS, "The Street Singer"  
5:30—CBS, In the Gloaming  
6:30—CBS, Chesterfield  
6:30—NBC, Frigidaire program  
6:45—CBS, Edwin C. Hill  
7—CBS, Freddie Rich's Columbians  
bians  
7:15—Chandu, the Magician  
7:30—Rockne Military Band  
7:45—Four Star Fun Frolic  
8—Globe Headlines  
8:15—To be announced  
8:30—"Tapestries of Life"  
9—Gus Arnheim's Orchestra  
9:30—Conquerors of the Sky  
10—News; Orchestra  
10:45—The Georgians  
11—Ray Paige's Symphony Orch.  
12 to 1 A.M.—Organ Concert
- 325.9 Meters KOMO** Elliott 5890  
920 Kcys. 1000 Watts  
Fisher's Blend Station, Inc., Seattle  
(Seattle Daylight Saving Time)
- 7:55 A.M. to 1—Various programs  
1—Tea Time Tales  
1:15—NBC, Farm and Home Hour  
2—Soloist; Three Scamps  
3—NBC, Easy Chair; Red Shadow  
3—NBC, Al Pearce and Gang  
4—NBC, Harmonica Rascals  
4:15—The Observer  
4:30—Metropolitans  
5—NBC, Eileen Piggott  
5:15—Music Room  
5:30—To be announced  
5:45—Banjoland  
6—Phil Harris' Orchestra  
6:30—NBC, The Armour Hour  
7—NBC, The First Nighter  
7:30—Fifteen Carefree Minutes  
7:45—Dollars and Cents  
8—NBC, Amos 'n' Andy  
8:15—Moment Musicale  
8:30—NBC, Best Foods Program  
9—Ann Olander and Chet Cathers  
9:15—NBC, Gilmore Circus  
10:15—NBC-KGO program  
10:30—Big Opportunity Contest  
10:45—Lee Sisters  
11—NBC, Richfield News Flashes  
11:15 to 12 mid.—Club New Yorker

# SATURDAY Programs

July 22, 1933

379.5 Mtrs. **NBC-KGO** Sutter 1920  
790 Kcys. 7500 Watts  
National Broadcast. Co., San Francisco

- 7 A.M.—Morning Parade
- 7:15—Organ Concert
- 7:30—Down Lovers' Lane
- 8—Johnny Marvin, tenor
- 8:15—American Legion National Trade Revival Campaign
- 8:30—Synopsators: Dance orchestra
- 9—Vic and Sade; Skit
- 9:15—Ralph Ginsberg's Ensemble
- 9:30—Farmers' Union program
- 10:30—Magazine of the Air
- 11:30—Financial Flashes
- 11:35—Marshall's Mavericks
- 12 noon—Rhythm Rascals
- 12:15—Western Agriculture
- 1—Casino Orchestra
- 1:30—Organ Concert
- 1:45—John and Ned: Harmony Duo
- 2—Viennese Ensemble
- 2:30—Drake's Drums: Drama
- 3—American Taxpayers' League
- 3:15—Annie, Judy and Zeke
- 3:30—Jack and Loretta Clemens
- 3:45—John Pierce, tenor
- 4—Jack Denny Orchestra
- 4:30—Edna Fischer, pianist
- 4:45—Stringwood Ensemble
- 5:15—Harry Stanton, basso
- 5:30—Organ Concert
- 6—Saturday Night Dancing Party
- 7—Piano Flueurs
- 7:15—Amer. Legion Mt. Hood Climb
- 7:45—The Witching Hour
- 8—Caswell Concert
- 8:15—Hollywood Bowl Symphony Concert
- 10—Kay Kyser's Orchestra
- 10:30—Serenata: Orchestra
- 11—Organ Concert
- 11:15 to 12 mid.—Jim Taft's Orch.

296.6 Meters **KQW** Ballard 777  
1010 Kcys. 500 Watts  
Pac. Agric. Foundation, Ltd., San Jose

- 7 A.M.—Records; Silent at 8
- 9 to 6—Music; Talks; Stocks
- 6 P.M.—Dinner Music
- 6:15—Franco's program
- 6:30—Band Music
- 6:45—Farmers' Exchange
- 7—Weather Forecast
- 7:05—Radio News and Forum
- 7:15—Fifteen Minutes in Paris
- 7:30—Soul of Portugal
- 8—Studio program
- 8:45 to 10 P.M.—Italian Program

243.8 Meters **KYA** Prospect 3456  
1230 Kcys. 1000 Watts  
Pac. Broadcast. Corp., San Francisco

- 7:30 A.M. to 12—Music and Talks
- 12 noon—Scriptures
- 12:05—Harmony Highlights
- 1—Afternoon Concert
- 2—Rhythmic Ripples
- 2:30—Song Vogues
- 3—Lyric Trio; Songs
- 3:45—Tom and Molly
- 4—Symphony Series
- 5—Sunset Revue; Hawaiians
- 5:45—Campbell Digest
- 6—Supper Serenade
- 6:15—Waltz Idylls
- 6:45—Cecil and Sally
- 7—Paraders
- 7:30—Sydney Dixon & Donald Gray
- 8—El Patio Orchestra
- 9—News Flashes; Pianist
- 9:30—The Cub Reporters
- 9:45—Tango Time
- 10 to 12 mid.—Organ; Records

440.9 Meters **KPO** Sutter 1920  
680 Kcys. 50,000 Watts  
National Broadcast. Co., San Francisco

- 7:30 A.M.—Organ; Financial Service
- 8:15—Log of the Day Crosscuts
- 9:15—Arion Trio; 9:45, News
- 10—Tom Mitchell, baritone
- 10:15—Johnnie Toffoli, accordionist
- 10:30—Concert Echoes
- 11—Words and Music
- 11:30—Wealth of Harmony
- 11:45—Agricultural Bulletins
- 12 noon—Dance Masters
- 12:30—Concert Favorites
- 1—News; Organ Concert
- 1:30—Gotham Gaities
- 2—Melody Mixers: orch. and vocalist
- 3—Arion Trio
- 4—News; Organ Concert
- 4:30—N. Y. Philharmonic Orchestra
- 6—Charles Hart Orchestra
- 6:30—Education at the Crossroads
- 6:45—Irving Kennedy, tenor
- 7—Rudy Vallee and his Hotel Pennsylvania Orchestra
- 7:30—Rhythm Vendors
- 8—Mark Fisher's Orchestra
- 9—Pacific Serenaders
- 9:30—Anson Weeks' Orchestra
- 10—Jack Walton's Orchestra
- 10:30—Blue Moonlight: Organ
- 11—Abe Lyman's Orchestra
- 11:30 to 12 midnight—Organ Concert

340.7 Meters **KLX** Lake. 6000  
880 Kcys. 1000 Watts  
Tribune Pub. Co., Oakland, Calif.

- 8 A.M.—Records; Stocks
- 8:30—Covered Wagon Jubilee
- 9—Records; Clinic
- 10:15—Stocks; Financial Inf.; News
- 10:30—International Kitchen
- 11—Sunshine Twins; News
- 11:30—Novelty Guitar Duo
- 11:45—Fred Skinner
- 12 noon—Closing Stocks
- 12:05—Jack Delaney's Band
- 1—Jean's Hi-Lights
- 2—Classical Recordings; News
- 2:45—Jean Ardash, pianist; records
- 3:30—The Three Echoes
- 4—Records; News Flashes
- 4:30—Brother Bob's Club
- 5—Covered Wagon Jubilee
- 5:30—Helen Parmelee, pianist
- 6—Hotel Oakland Trio; News
- 7:30—Arco's Novelty Trio
- 8—Musical Solree
- 9—Faucit Theatre of the Air
- 9:30—Wallele Trio
- 10—Buddy Lyman's Orchestra
- 11 to 12 mid.—Dance program

322.4 Meters **KROW** Glenc. 6774  
930 Kcys. 1000 Watts  
Educa. Broad. Corp., Oakland, Calif.

- 7 A.M. to 6—Various programs
- 6 P.M.—"Doc" Shahan's Ramblers
- 6:30—Organ Echoes; Records
- 7—Gladys Kaull, pianist
- 7:15—Program; Poet's Gold
- 7:45—Bobbie Lee, songs
- 8—"Topics of the Day"
- 8:15—Latin-Amer. Program
- 9:15—Italian program
- 10:15 to 12 midnight—Dance Music

280.2 Meters **KJBS** Ord. 4148-49  
1070 Kcys. 100 Watts  
J. Brunton & Sons, San Francisco

- 6 A.M.—Alarm Klock Klub
- 8 to 7:30—Records; News; Music
- 7:30 P.M.—Silent Period
- 12:01 to 6 A.M.—Owl program

491.5 Meters **KFRC** Prospect 0100  
610 Kcys. 1000 Watts  
Don Lee Broadcast. System, S. F., Cal.

- 7 A.M.—Recorded program
- 7:25—Stocks; Exercises 7:30
- 8—CBS, Vincent Travers' Orchestra
- 8:30—CBS, Frank La Marr's Orch.
- 8:45—S. P. Convention & Tour. Bureau
- 9—CBS, Dancing by the Sea
- 9:15—Movie Star Name Contest
- 9:20—CBS, Dancing by the Sea
- 9:30—CBS, Madison Ensemble
- 10—Junior Artists program
- 10:55—Church Announcements
- 11—CBS, Italian Idyll
- 11:15—Prudence Penny
- 11:30—CBS, Mark Warnow's Orch.
- 12 noon—Noonday Concert
- 1—CBS, Harold Knight's Orchestra
- 1:30—Stock Exc. Quotations
- 1:45—CBS, Tito Guizar
- 2—CBS, Arrowhead Inn Orchestra
- 2:30—Popular Selections
- 2:45—CBS, Buddy Wagner's Orch.
- 3—CBS, Eton Boys
- 3:15—CBS, Gypsy Nina
- 3:30—CBS, Glen Gray's Orchestra
- 3:45—Lost and Found Items
- 3:50—Movie Star Name Contest
- 3:55—Town Topics
- 4—Gus Arnheim's Orchestra
- 4:30—CBS, Philadelphia Summer Concerts from Robin Hood Dell in Fairmount Park, Philadelphia
- 5:15—Dr. J. C. Campbell
- 5:30—CBS, Saturday Revue
- 5:45—CBS, Ann Leaf, organist
- 6:15—CBS, Isham Jones' Orchestra
- 6:45—CBS, Gertrude Niesen
- 7—CBS, Jerry Freeman's Orchestra
- 7:30—CBS, Charlie Davis' Orch.
- 8—CBS, Don Bestor's Orchestra
- 8:30—Gus Arnheim's Orchestra
- 9—So. Calif. Symphony Concert
- 10—News Editor of the Air
- 10:10—Dance Music
- 12 to 1 A.M.—Request Hour

535.4 Meters **KTAB** Garfield 4700  
560 Kcys. 1000 Watts  
Assoc. Broadcasters, Oakland, Calif.

- 6:30 A.M. to 1—Various programs
- 1 P.M.—The Homesteaders
- 2—Ye Olde Towne Crier
- 3—Matinee, P. Kellar; 3:30—Records
- 4—Chili Peppers; Slestia
- 4:45—Post-Enquirer Funnies
- 5—Young Peoples Program
- 5:30—Travelogues; Concert
- 6—John Collins, baritone
- 6:15—Empire Minstrels; News
- 6:45—Sport Page of the Air
- 7—Bargain Page
- 7:15—Dark Town Strutters' Ball
- 8—Home Favorites
- 8:30—Jess Stafford's Band
- 9—Reporter; Souvenirs
- 9:45—Paul Kellar, pianist
- 10—Dance Records
- 11—Jess Stafford's Orchestra
- 11:30—Blue Blowers
- 12 to 1 A.M.—Nite Owls

499.7 Mtrs. **KFSD** Franklin 6353  
600 Kcys. 1000 Watts  
Airfan Radio Corp., Ltd., San Diego

- 7:30 A.M. to 6:30—Various programs
- 6:30 P.M.—Manuel Dehesa
- 7—NBC-KGO program
- 7:30—NBC, Witching Hour
- 8—American Weekly
- 8:15—NBC-KGO Programs to 10
- 10—Johnny Crofton's Orchestra
- 10:30—NBC, Blue Moonlight
- 11—Ambassador Hotel Orchestra
- 11:30 to 12 mid.—Jimmy Taft's Or.

**333.1 Meters KHJ** VAndike 7111  
900 Kcys. 1000 Watts  
Don Lee Broadcast. System, L. A., Cal.  
7 A.M. to 4:30—Various programs  
4:30—CBS, Philadelphia Summer  
Concerts  
5:15—Town Topics  
5:20—CBS, Saturday Revue  
5:45—CBS, Ann Leaf, organist  
6:15—CBS, Isham Jones' Orch.  
6:45—CBS, Gertrude Niesen  
7—CBS, Jerry Freeman's Orchestra  
7:15—Chandu, the Magician  
7:30—CBS, Chas. Davis' Orchestra  
8—Orville Knapp's Orchestra  
8:15—CBS, Don Bestor's Orchestra  
8:30—Gus Arnheim's Orchestra  
9—Symphony Concert  
10—News; Dance Orchestra  
12 to 1 A.M.—Organ Concert

**285.5 Meters KNX** Hemp. 4101  
1050 Kcys. 25,000 Watts  
Western Broadcast Co., Los Angeles  
6:45 A.M. to 6—Various programs  
6 P.M.—Newspaper Service  
6:15—King Cowboy  
6:30—Orchestra and vocalist  
6:45—Phil Musgrave, cellist  
7—Frank Watanabe  
7:15—Musical program  
7:45—Kellar, harpist  
8—KNX Varieties  
9—News Service  
9:15—Miles of Melody  
9:45 to 11 P.M.—Musical program

**483.6 Meters KGW** Atwater 2121  
620 Kcys. 1000 Watts  
Morning Oregonian, Portland, Ore.  
7 A.M. to 12—Various programs  
12 noon—Oregonian of the Air  
12:15—Star Furniture Co.  
1:15—Hotel Sherman Orchestra  
1:30—Dental Clinic of the Air  
1:45—NBC-KGO Programs to 3:15  
3:15—Allyn's Prog.; Friendly Chat  
4—NBC-KGO programs to 7  
7—Let Us Boast a Bit  
7:15—NBC-KGO Programs to 10  
10—Orchestra; Organ  
11—Abe Lyman's Orchestra  
11:30 to 12 mid.—Jim Taft's Orch.

**309.1 Meters KJR** Seneca 1515  
970 Kcys. 5000 Watts  
Northwest Broad. System, Seattle, Wn.  
(Seattle Daylight Saving Time)  
8:30 A.M. to 1—Various programs  
1 P.M.—NBC, Synco-Thots  
1:15—Songs of the British Isles  
1:30—Metropolitans  
2—NBC-KGO programs to 3  
3—Recorded; Talk  
4—Sohl and Lundberg  
4:15—NBC-KGO Programs to 5:30  
5:30—Claude Sauer's Scrapbook  
6—Dinner Dansant  
7—Concert Ensemble  
7:30—Times News Edition  
7:45—Banjoland; Melody Musketeers  
8:30—Latin American Nights  
9—Concert in Miniature  
9:30—To be announced  
9:45—Harp Concert  
10—Melodic Moods  
11—Bal Tabarin Orchestra  
11:30 to 12 mid.—NBC, Blue Moonlight

**236.1 Meters KOL** Main 2312  
1270 Kcys. 1000 Watts  
Seattle Broadcast. Co., Seattle, Wash.  
(Seattle Daylight Saving Time)  
6:45 A.M. to 1:30—Various programs  
1:30 P.M.—Julie Day  
1:45—CBS, The Ambassadors  
2—CBS, Harold Knight's Orchestra  
2:30—CBS, Between the Bookends  
2:45—CBS, Tito Guizar  
3—CBS, Irving Conn's Orchestra  
3:30—Studio programs  
3:45—CBS, Buddy Wagner's Orch.  
4—CBS, Eton Boys  
4:15—CBS, Gypsy Nina  
4:30—CBS, Casa Loma Orchestra  
5—CBS, Evan Evans and Orchestra  
5:15—Gus Arnheim's Orchestra  
5:30—CBS, Summer Concerts  
6:15—CBS, Ann Leaf & Chas. Carille  
6:45—Democratic Educ. Feature  
7—CBS, Saturday Revue  
7:15—Radio Speaker Stevenson  
7:45—CBS, Gertrude Niesen  
8—CBS, Jerry Freeman's Orchestra  
8:30—Charlie Davis Orchestra  
9—Globe Trotter  
9:15—CBS, Barney Rapp's Orchestra  
9:30—CBS, Gus Arnheim's Orchestra  
10—South. Calif. Symphony  
11 to 1 A.M.—Dance Music


**526 Meters KVI** Broadway 4211  
570 Kcys. 1000 Watts  
Puget Sound Broadcast. Co., Tacoma  
(Tacoma Daylight Saving Time)  
6 A.M. to 5—Various programs  
5 P.M.—CBS, Evan Evans  
5:15—CBS, Leon Belasco's Orch.  
5:30—Studio program  
5:45—Musical Crediteer  
6—CBS, Summer Concert  
6:15—CBS, Ann Leaf & Chas. Carille  
6:45—CBS, Saturday Revue  
7:15—Mary March  
7:30—Dr. Mellor  
7:45—CBS, Gertrude Niesen  
8—CBS Orchestra  
9:30—Baseball Game  
11 to 12 mid.—Gus Arnheim's Orch.

**508.2 Meters KHQ** Main 5383  
590 Kcys. 1000 Watts  
Louis Wasmer, Inc., Spokane, Wash.  
(Spokane Daylight Saving Time)  
7 A.M. to 1—Various programs  
1 P.M.—Sylvia Grey  
1:15—NBC, Western Agriculture  
2—Studio programs  
2:30—NBC, Organ Concert  
2:45—Club Bulletin  
3—NBC, Viennese Ensemble  
3:30—Drake's Drums  
4—The Bill Board  
4:30—NBC, Jack & Loretta Clemens  
4:45—Musical program  
5—Tull and Gibbs Express  
5:15—NBC-KGO programs  
6—To be announced  
7—American Weekly  
8—NBC, Piano Pictures  
8:45—NBC, Witching Hour  
9—NBC, Caswell Concert  
9:15—NBC-KGO Programs  
10—Radio Specialties  
10:30—Dance Music  
11 30—NBC, Blue Moonlight  
12 to 1a.m.—NBC-KGO, Dance Music


**468.5 Meters KFI** Richm'd 6111  
640 Kcys. 50,000 Watts  
Earle C. Anthony, Inc., Los Angeles  
6:30 A.M. to 5—Various programs  
5 P.M.—NBC-KGO Programs to 10  
10—Bal Tabarin Orchestra  
10:30—Blue Moonlight  
11—NBC, Abe Lyman Orchestra  
11:30 to 12 mid.—Jimmy Taft's Orch.

**225.4 Meters KGB** Franklin 6151  
1330 Kcys. 1000 Watts  
Don Lee Broadcast. System, S. D., Cal.  
7 A.M. to 4:30—Various programs  
4:30—Philadelphia Summer Concert  
5:15—Town Topics  
5:30—CBS programs  
7—Chandu, the Magician  
7:15—CBS, Jerry Freeman's Orch.  
7:30—CBS Orchestras  
9—Symphony Concert  
10—World-Wide News  
10:10—Dance Orchestras  
12 to 1 A.M.—Recordings

**325.9 Meters KOMO** Elliott 5890  
920 Kcys. 1000 Watts  
Fisher's Blend Station, Inc., Seattle  
(Seattle Daylight Saving Time)  
7:55 A.M. to 1—Various programs  
1 P.M.—Cecile Barbezat  
1:15—NBC, Western Agriculture  
2—The Tyroleans  
2:30—Children's Matinee  
3—NBC, Viennese Ensemble  
3:30—NBC, Drake's Drums; Drama  
4—NBC, Amer. Taxpayers League  
4:15—Observer; Concert Ensemble  
5—Pastel Harmonies  
5:30—To be announced  
5:45—NBC, Stringwood Ensemble  
6—NBC, N. Y. Philharmonic Orch.  
7—Dancing Party  
8—NBC, Piano Pictures  
8:30—NBC, Witching Hour  
9—NBC, Caswell Coffee Concert  
9:15—NBC-KGO Programs to 11  
11 to 12 mid.—Orchestra



Program listings are correct when published by *Broadcast Weekly*, but sale of time by stations and networks and national emergencies often cause deviations which the stations cannot foresee.



Published weekly by the Broadcast Weekly Publishing Company, 726 Pacific Building, San Francisco, Calif.  
Telephone DOUGLAS 5273

Yearly subscription: \$1.00 in the United States. Entered as second class matter, March 25, 1923,  
at the Post Office, San Francisco, California, under Act of March 3, 1879.

Copyright, 1933, by Broadcast Weekly Publishing Company.

# S. P. TRIES OUT NEW FARES FOR

# 2¢ A MILE

ONE WAY



ROUNDTRIP

## WHAT THIS MEANS TO YOU

It means you can travel by train to almost anywhere in the West for about 2c a mile—one way as well as roundtrip—*any day*.

These new fares, plus our new "Meals Select," bring the cost of rail travel to an all-time low. "Meals Select" are complete luncheons and dinners for 80c to \$1.25 and breakfasts for 50c to 90c, now being served on all S. P. dining cars.

## IN EFFECT EVERY DAY!

	TOURIST		FIRST CLASS
	One Way	Roundtrip	Roundtrip
<i>Between San Francisco and</i>			
LOS ANGELES . . . . .	\$ 9.50	\$14.00	\$18.75
PORTLAND . . . . .	12.00	20.00	29.70
SAN DIEGO . . . . .	12.85	19.00	25.75
	One Way Tourist	Roundtrip 1st Class	One Way Tourist
BAKERSFIELD .....	\$ 6.10	\$12.05	\$15.90
CHICO .....	3.40	6.75	9.65
EL PASO .....	21.50	51.05	4.70
FRESNO .....	3.90	7.75	1.80
MARYSVILLE .....	2.50	4.95	2.30
MARTINEZ .....	.70	1.40	12.00
MODESTO .....	2.10	4.10	1.60
MERCED .....	2.80	5.55	7.40
MONTEREY .....	2.50	4.90	1.70
PHOENIX .....			3.40
RENO .....			
REDDING .....			
SACRAMENTO .....			
SALINAS .....			
SALT LAKE CITY .....			
SANTA CRUZ .....			
SANTA BARBARA .....			
STOCKTON .....			

*Similar fares between all S. P. stations. All roundtrips good for 21 days. Tourist fares are good in coaches and Chair cars—also in Tourist Sleepers (plus small berth charge). First Class fares are good in all types of accommodations.*