

FOR WEEK OF  
**JUNE**  
11th to 17th

# BROADCAST WEEKLY



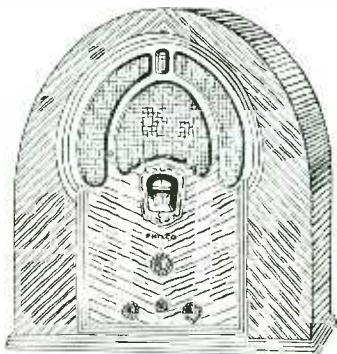
**EMIL POLAK**  
Orchestral director and vocal supervisor of NBC  
in San Francisco



THE LEADING RADIO GUIDE OF THE PACIFIC COAST



# New PHILCOS on Sale!



*Latest 1933 Model*

9-Tube PHILCO  
with Police and  
Airplane Range

**\$50.00**  
complete  
installed

Yours on EASY TERMS

*Never before* have you been able to buy the latest  
PHILCO with all these improvements at  
such a remarkable low price.

1. Brand new—latest model.
2. Balanced, selective superheterodyne.
3. 9-Tubes for distance.
4. 4 Pentode tubes for tone.
5. Extra-large Electro-Dynamic speaker.
6. Unsurpassed PHILCO tone.
7. Amazing Shadow Tuning.
8. Extra-large, full-size chassis.
9. Short-wave—1500 to 3200 Kilocycles.
10. Gets police, airplane and amateur stations.
11. Plus many other exclusive PHILCO features!

**PHILCO RADIO & TELEVISION CORP.**

218 Fremont Street

San Francisco, Calif.

# BROADCAST WEEKLY

LOS ANGELES  
R. J. Birch Co.  
846 S. Broadway  
Los Angeles

NEW YORK  
Edwin F. Ripley  
118 East 28th Street  
New York City

*The Leading Radio Guide of the Pacific Coast*

Vol. XII, No. 24

A. J. URBAIN, *Editor and Publisher*  
726 Pacific Building, San Francisco, Calif.

June 10, 1933

## Plan to Attend the Exposition

ON May 27, there began one of the most important happenings of current world history . . . the *Century of Progress Exposition* and World's Fair in the city of Chicago. BROADCAST WEEKLY steps momentarily out of rôle to comment on the timely significance of this picturesque pageant, and to urge its attendance.

Here, thanks to the initiative of America, the genius of the world is exhibiting the achievements of a century in the most gigantic and impressive spectacle of modern times. Here the miracles of industry and agriculture, the feats of science, and the attainments of art, whatever the whole world has to offer for augmenting human happiness and uplifting mortal existence, may be surveyed simultaneously. A liberal education in a few hours; the never-to-be-forgotten thrill of new sights, sounds, and sensations; the practical value of an intimate acquaintanceship with modern trends, facilities and developments.

Have you read the scientist's dream of conditions on earth fifty years from now? The *Century of Progress Exposition* translates many of these modernistic visions into actual realities . . . new types of architecture, transportation, lighting, and air conditioning; amazing new inventions; marvelous new methods and merchandise; subtle

new forces. Nowhere in the civilized world is there a home whose comfort and happiness is not concerned with these developments, an individual whose success is not interwoven with them, or a business whose prosperity is not directly or indirectly dependent upon them. Hence their viewing is not merely a pleasurable experience or a splendid excuse for an enjoyable vacation, but defensive strategy of the greatest value and importance. Progress marches ceaselessly onward, and he who lags behind leads a lonesome, difficult life, indeed. The *Century of Progress Exposition* affords a short-cut to catch up with the caravan.

Not since the San Francisco Exposition of 1915 has there been such an event in America, and perhaps not during the life of the present generation will there be another. Make the most of this opportunity. Let no obstacles or contrary considerations deter you. Where there is a will there is a way. Chicago is not far. Railroads are offering special low round trip rates. The cost is lower than it may ever again be for the same amount of travel, education and enjoyment. Arrange now to go. Cast troubles, worries, and inhibitions aside. And come back with new inspiration, new courage, new vision, equipped for a happier, more successful, more useful life.

# The OPEN CIRCUIT

*This department is open to all. Send in your letters. Anonymous letters will not be published. Give full name and address.*

## *Enjoys Talks and Dramas*

I AM in entire accord with you in your views on the five-minute programs. In my opinion it would be suicidal to radio. At least I would not bother any longer with it and I completely ignore any such programs as they appear now and then. I enjoy educational talks and radio dramas most.

Sincerely yours,

E. O., Vallejo.

## *Patronizes Sponsors*

FOR some time I have wanted to write BROADCAST WEEKLY how glad I am you are back on the newsstands. I never fail to secure my copy, for I can manage to "spare a dime," but a larger amount always seemed to be needed for more necessary things.

My radio is entertaining me all day, and it's so nice to be able to select by program from BROADCAST WEEKLY and not have to wade around hunting for one to suit—and it was a lifesaver when times changed.

I'd like to echo Iola McR.'s (Chico) letter every word. My Sunday is utterly ruined if it doesn't close with "Bridge to Dreamland."

In my humble opinion nobody plays the organ as Mr. Carson does, or "rambles over the keys" of the piano as Mr. Roberts and the Folger Coffee program through the week is one of my most eagerly awaited programs.

I'd like to say right here that I've kept house for twenty-five years and used my first pound of Folger coffee at Mr. Roberts' suggestion and entirely agree with him.

Through "One Man's Family" I've begun to use Wesson Oil more, though I've used Snowdrift for thirteen years. These advertisers who put on worthwhile programs *do* profit by it, for I know quite a few who have begun to use the goods so advertised. We'd all just about drown in Ovaltine to keep Orphan Annie on the air.

I *never* listen to a five-minute program. Five minutes of fast, furious superlatives aren't a bit interesting.

Referring to "One Man's Family" again, here's my vote of thanks to Mr. Morse, for *every one* of his characters and the ones who play them. Each one is *splendidly* taken. They are all so natural and real, each situation so splendidly handled. I just loved the way Mother Barbour accused Father Barbour of *yanking* the button off his night shirt.

Stay on the newsstands, BROADCAST WEEKLY. You are a very necessary adjunct to the radio. Most sincerely,

Martha H., Sacramento.

## *Better Bible Plays*

I WONDER why the NBC Bible plays are *so* poorly cast, taking them on the whole, week after week. These are the most poorly cast of all the NBC offerings, and the weakness is the more glaring because listeners are familiar with Biblical characters and can pretty well picture these famous figures as they sit to hear re-enacted the stories they read and re-read over the years, or have heard discussed in hundreds of sermons in all the many houses of worship.

Thus there is no reason in the world for the atrocious casting given these Bible plays over KPO. The play yesterday was no exception. The role of Moses was not even approximated by Anthony Smythe. Moses was a strong, masterful figure; not a ministerial type, whining and pleading his way. Smythe played him in the latter vein, a characterization entirely out of focus. The man to have played the role was Barry Hopkins, already known as having played the character in several previous Bible plays and ideally suited vocally to the demands of the role. He was in the cast in a minor part, all the while the major figure was being wrongly projected.

The man who played the "Doubter" didn't project the character, either. He was unconvincing, also, and the production thus lacked the balance necessary to hold interest.

It would seem a simple thing to cast these plays with more care. Why just "slap" them on the air? Aren't they worthy of better handling? Or is the hour so early that the NBC officials think that just a bunch of "yokels" are listening? In the latter case, I suppose, the NBC men feel that whatever goes on is good enough for 11 a. m. Sunday.

Last, but not least, the crowd effects were, as usual, very bad. Listeners feel that a good crowd effect is not possible with five or six people. There is no balance and there is no variety of sound, the same voices taking both sides of an argument. Pretty poor stuff, all around, I'd say.

Yours for better Bible Plays.

E. E., San Francisco.





Announces

**NEW**

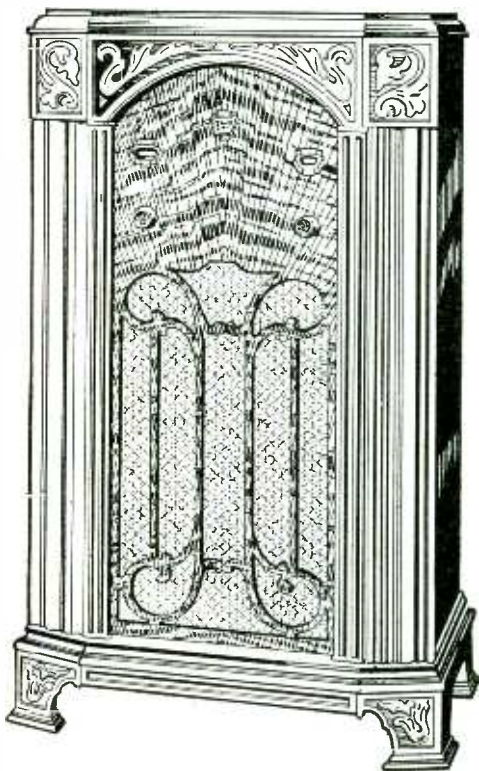
Models

**NEW**

Values

**NEW**

Enjoyment



**D**ON'T wait until prices go up. **NOW** is the time to buy a new radio, and here are brand new ZENITH Models that give you important new improvements a year in advance at present low prices. See and hear these beautiful new melodious instruments such as ZENITH alone can build, radios that set new high standards of performance and value giving. Buy one for *your* home **NOW**. Take advantage of the amazingly *low prices* and *easy terms*. Look up the ZENITH Dealer in your vicinity or write us for his name. See ZENITH *first . . .* for unequaled value and supreme enjoyment.

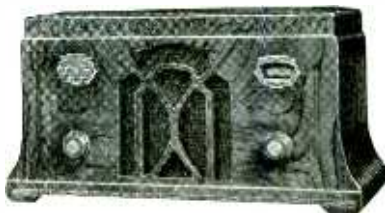
*New COMPACT PORTABLE MODELS* with 6 tubes and *Automatic Volume Control* at \$26.00 to \$37.95.

*New CONSOLES:* 6-tube, \$39.95; 8-tube, \$59.95; 9-tube, with double speaker, \$69.95; prices include tubes.

H. R. CURTISS CO., *Distributors* ·  
895 O'Farrell St., San Francisco, Calif.

ABOVE: Beautiful new ZENITH Console, Model 750, with 6 tubes and Shadow-graph tuning.  
Complete..... **\$39.95**

BELOW: Model 705, compact new 6-tube ZENITH Miniature with Automatic Volume Control, and other big-ZENITH features, complete **\$28.95**



# ETHER GLEANINGS

By J. CLARENCE MYERS

A SECRET ambition of Hugh Barrett Dobbs—Capt'n Dobbsie to you and you—has been realized. He is appearing regularly on a coast to coast radio broadcast over the NBC wireup.

Dobbsie, you will recall, went to New York recently to take a vacation and as he put it "just look around." He left after his contract with the Shell Oil Company ran out, after broadcasting continuously over the Pacific Coast for more than five years.

We long have classed Dobbsie as one of those super-salesmen you rarely meet. In our estimation he could sell a Philadelphia lawyer the Golden Gate. He sold thousands of dollars' worth of products for the company he worked for on the radio and as long as he appears before a microphone he'll continue to do it. And that's the reason his late sponsor signed him up for a yearly salary that overshadowed that paid the president of the United States.

Although Dobbsie's present programs are not sponsored at this writing, we'll wager it won't be long before they are. He's calling his broadcast program the "Ship of Joy," is continuing the "wishing well" gag and is being heard Monday nights from 6:30 to 7 Pacific Coast time over KGO net.

On his initial program June 5, he was scheduled to have with him Carrie Jacobs Bond, the composer; James Melton, the NBC tenor, and other notables.

\* \* \*

After a lay-off for a few months, Chesterfield is back on the air via the CBS. Lou Holtz is the new master of ceremonies.

\* \* \*

The comical Burns and Allen, best of their type on the air in this dialer's estimation, are back on Columbia with Guy Lombardo's orchestra. You can dial 'em on the CBS-Don Lee chain stations from 8:30 to 9 p. m. on Wednesdays. General Cigar Company is paying the bill.

\* \* \*

Caltanna Christoph, who left KFRC for the NBC, is no longer associated at the latter broadcasting establishment.

\* \* \*

Standard Oil auditioned many elaborate programs over the NBC for weeks and wound up by buying announcements to go with time signals three times nightly.

\* \* \*

Laugh this off. KTAB turns up its nose at all beer or other intoxicating beverage advertising, yet it advertises Alkaseltzer, which is supposed to be taken the morning

after that strenuous night before. The account is sponsoring three half hour programs a week—Mondays, Wednesdays and Fridays, from 8:30 to 9 p. m., and features organ, a quartet and feminine trio.

\* \* \*

C. Ellsworth Wylie, sales manager of the Don Lee chain, wises us up that among the newer customers on the chain are the following: Union Oil Company sponsoring the Hollywood Bowl Concerts; General Food Sales Company sponsoring "Belle and Martha"; Sears Roebuck Company sponsoring "Mary Sears' Neighbors' Club"; S. & W. Coffee presenting Norman Nielsen and Hazel Warner on KHJ only; California Scientific Laboratories sponsoring musical programs; Acme Paint Company presenting transcriptions over KFRC and KHJ.

\* \* \*

Saturday night has become international night on KQW, San Jose, with the inauguration recently of a French program, featuring songs, music and chatter, native to that country. The new program, which is already attracting the attention of many among the 100,000 French speaking residents of Northern California, is conducted by Mlle. Jean Bergevin, who came here a few years ago from Paris. It is broadcast every Saturday from 7:15 to 7:30 o'clock. Owing to the popularity that it has already achieved, it is probable that the broadcast will be extended soon to a half hour, according to Fred J. Hart, station manager. Other foreign programs broadcast by KQW on Saturday night include the Italian hour and a Portuguese program.

\* \* \*

The other day Midge Williams, the young negress singer who has been vocalizing now and then on KFRC, brought her three young brothers to the studio and they went through some harmony that caused the program department to engage 'em right on the spot. The pickaninnies, the youngest of whom is eight years, will be heard frequently on the Don Lee outlet here.

\* \* \*

KTAB has abandoned the rebroadcasting of KNX programs during the summer months, due to unfavorable reception conditions, Bob Roberts, station boss, informed your reporter this week. The rebroadcasts will probably be resumed in the fall, he said.

\* \* \*

Karol Chylinski, who conducts the Slavic programs on KYA, is busy organizing a singing chorus and symphony orchestra for

the presentation of Mendelssohn's oratorio, "St. Paul" at the Memorial Opera House in September. G. Donald Gray, baritone and staff artist at KYA will sing one of the lead rôles.

Mabel Adams, staff contralto at KQW, San Jose, has just launched a new weekly program on that station, monickered "Favorites Old and New," which is winged out on Wednesday nights from 8:15 to 8:30 o'clock.

Lloyd E. Yoder, NBC press relations chief and secretary of the Pacific Coast Football Association, sailed from San Francisco on the H. F. Alexander Saturday to attend the coast football conference at Seattle. While in the Northwest he will pay official visits to the NBC affiliated stations in that section of the country. It was Yoder's first ocean voyage and his friends, recalling a very eventful fishing trip to the Farallones off the Golden Gate some time ago, were speculating as to his sea-worthiness.

Many members of the NBC artists staff are spending their week-ends at John Wolf's Rod and Gun Club at Lower Lake in Lake County. Wolf is the John of "John and Ned"—veteran air team.

The original Beverly Hillbillies are back on the air, with a new name, over KFRC Thursday night, 7:30 to 8. Arnold Maguire is m.c.-ing and is known on the program as Mr. Mack.

Several members of the KYA staff have gone in for daily dozen exercises. Harry Bechtel, who tips the scales at—well—considerably over 200, is taking strenuous calisthenics daily; Lynn Church has joined a gym class and Herb Lewis is bike riding.

Ed Murphy, publicity planter for KTAB, KROW and KJBS, became papa for the fourth time the other day—a nine-pound boy. The score is three boys and one girl now. Mother and the tot are doing nicely. The Murphy offspring may be quartet-ing it before a microphone one of these days. We say they're ready right now.

M. J. B. has renewed its contract with the NBC for another fifty-two weeks.

One of the newest feminine vocal trios to hit the ether lanes via KFRC, is the one name California Sweethearts. The personnel: Peggy Stanley, Nina Hinds and Charlotte Hammill.

Mahlon Merrick, newly appointed program chief for the Don Lee chain, was a recent

visitor in San Francisco. Your reporter bumped into him at an advertising agency t'other day. He looked swell. Says he's very happy in his new radio berth.

Eugene Eubanks, late of KFRC, who has been doing some transcription work in Los Angeles, was in town the other day, stalking around his old haunts.

That rich Russian basso voice that you've been hearing over KYA recently belongs to Jacob Davidoff, who is making Wednesday night appearances before that station's microphone at 7:00 o'clock. He came here recently from Harbin, China. Davidoff was born in America, but was taken to Russia when an infant, where he lived until the revolutionists routed his family out.

And speaking of renewals here are a few others: The Armour Hour and Phil Baker's contract have been renewed through September on NBC, the Hudson program with B. A. Rolfe's orchestra renewed; Wheatena announced it will be back in the fall with its script act: "Wheatenville"; and Walter Winchell returns with the Jergens Company sponsoring him, to the NBC fold on September 3. The final Real Silk program with Jane Froman will be NBC'd June 18.



## Dr. PAINLESS PARKER

Dentist

Presents "THE PHILISTINE"

Topics of all times . . . vitally  
interesting and informative  
. . . every Monday and Wed-  
nesday, 4:00 p. m. to 4:15  
p. m. over the California  
Columbia Don-Lee network.



**HAPPY CHAPPIES**  
KNX—Staff Artists



**BARBARA JO ALLEN**  
NBC—Dramatic Artist



**HELEN LOWE**  
KFWI—Vocalist

★ Stars of the Radio ★



**DONALD WILSON**  
KFI—Announcer



**TED BERGMAN**  
NBC—Character Man



**DOAKES & DOAKES**  
KFRC—Comedians







Ask your Smiling Associated Dealer for your *free* copy of the new, complete, up-to-the-minute highway map / / /



**CYCOL**  
MOTOR OILS & GREASES



# BROADCAST WEEKLY

*offers a*

## Full Year's Subscription

for only \$ **1.00**

Either new or renewal.

**H**ERE is your opportunity to save \$2. Don't miss it. Subscribe for your friends at the same time. One full year's subscription (new, renewal, or extension) for \$1, for a limited time only. All together now . . . let's make it UNANIMOUS. Let's see how many thrifty, loyal friends BROADCAST WEEKLY really has.

BROADCAST WEEKLY PUBLISHING CO.,  
Pacific Building, San Francisco, California.

*Gentlemen:*

I enclose herewith One Dollar, for which send me BROADCAST WEEKLY for one full year. It is understood this pays for a full year's subscription.

NAME.....

ADDRESS.....

NEW

RENEWAL

EXTENSION



# QUESTIONS AND ANSWERS

By GYPSY

- (Q.) Who is the "Melody Boy" on station KROW?
- (A.) *Walter R. McCoy, formerly known as "Brother Walter."*
- (Q.) What are the names of the All-American Girls heard on KNX?
- (A.) *Kay Wood, Jackie Shannon and Patsy Steiner.*
- (Q.) Are Burns and Allen back on the air, and if so, when may they be heard?
- (A.) *Yes. Hear them on CBS with Guy Lombardo on Wednesday night.*
- (Q.) What are the pet aversions of Frank Munn, Jack Pearl, Richard Gordon and "Cheerio"?
- (A.) *Bridge, a dressing-room whistler, catching trains and inquisitive people.*
- (Q.) What university did Harry von Zell attend?
- (A.) *University of California.*
- (Q.) What was Kenneth Roberts' profession before he became an announcer?
- (A.) *He was an actor specializing in "villain" rôles.*
- (Q.) What college did Bernardine Flynn attend?
- (A.) *The University of Wisconsin.*
- (Q.) Is Ben Bernie married, and has he any children?
- (A.) *Yes. He has a son aged fourteen.*
- (Q.) When was Barton Yarborough interviewed on Personal Closeups?
- (A.) *April 27, 1932.*
- (Q.) Is Jennings Pierce related to Al and Cal Pearce?
- (A.) *No.*
- (Q.) When and where was Ben Klassen born?
- (A.) *February 17, 1901, in Lincoln, Nebraska.*

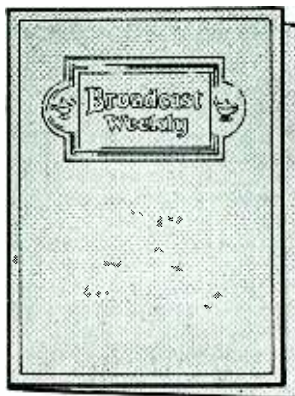
- (Q.) What is Vinton La Ferrera's hobby?
- (A.) *Raising Pekingese dogs.*
- (Q.) What well known radio actor was for many years identified with the London stage?
- (A.) *Leigh Lovel (Doctor Watson of the Sherlock Holmes series).*
- (Q.) What was Betty Marino's earliest ambition?
- (A.) *To become a harpist and rank as high in the profession as her Neapolitan father.*
- (Q.) How many stage plays has Ted Maxwell written?
- (A.) *Fifty-two.*
- (Q.) When did Tom Mitchell make his radio debut?
- (A.) *In 1923 after eight successive years on Keith-Orpheum and several seasons in musical comedy.*
- (Q.) Is Helen Musselman blonde or brunette?
- (A.) *Blonde.*
- (Q.) Where was Robert Olsen born?
- (A.) *In San Francisco, next door to Governor James Rolph's home.*
- (Q.) Where did Emil Polak receive his education?
- (A.) *At the National Conservatory in New York and the capitals of Europe.*
- (Q.) When did George Rand begin his theatrical career?
- (A.) *At the age of fifteen in Oakland, Calif., under the direction of McKee Rankin.*
- (Q.) What popular radio personality and columnist of the Pacific Coast once practiced law in Illinois?
- (A.) *Samuel Gayley Mortland ("Scotty").*

This Beautiful  
Leatherette  
Cover

for only

**50** cents

WHILE THEY  
LAST



This attractive leatherette cover provides a dandy holder for your *Broadcast Weekly* copy. A rich, red color with gold embossed letters.

**Mail Coupon Now!**

**BROADCAST WEEKLY,**  
726 Pacific Building,  
San Francisco, Calif.

Gentlemen: Here's 50 cents for which send me the beautiful leatherette cover.

Name.....

Address.....

City.....

State.....

# MICROPHONE GOSSIP



• • • Police Chief William J. Quinn of San Francisco, whose talks over NBC have made him one of radio's most popular figures, was one of the celebrities asked to draw a picture of himself for the recent exhibit of self-portraits at San Francisco's Beaux Arts Galerie. The Chief complied with a picture which seemed to answer all the requirements, but he hardly expected it to be so attractive as it turned out. Along with the other efforts of musical, literary, business and professional celebrities—every career except painting or drawing was represented—the Chief's portrait of himself went up for auction, and was sold for the resounding sum of \$3.50 to Mrs. Genevieve Barron, California socialite. Proceeds of the auction went to charity. Mrs. Barron's chauffeur carried the portrait to her car, then went back for further orders—and when he returned, the car was bare. Some audacious thief, art-lover or radio fan had stolen the Chief's portrait of himself, and although the dragnet was taken out, polished up and thrown far and wide, the miscreants have not yet been found.

• • • Walter McCoy, "Big Brother Walter" to KROW listeners, appears with his juvenile entertainers every afternoon, except Saturdays and Sundays, at 5:15. He is a well known radio personality.

• • • Bert Lahr, on the Sunday evening Rubinoff programs, played ten years with a dialect resembling Jack Pearl's, whose part he once took in a stage production. In recent years Bert has dropped the dialect entirely.

• • • Under the auspices of the Northern California Re-

frigeration Bureau, KJBS has begun a series of household talks each Wednesday and Friday afternoon, 3:30 to 3:45, by Laretta La Marr. The talks are directed toward the relief of the much bewildered housewife.

• • • Johnny Marvin, the lonesome singer of the air, has been left, in a listener's will, twelve cows, three horses, a pair of saddles and a police dog—all of which were shipped to the Marvin ranch in Butler, Okla., except the police dog, which was brought to New York.

• • • Lawrence King, "the nightingale tenor," currently being heard over KNX, Hollywood, and a musician as modern as radio itself, has the charming, old-fashioned grace to place the credit for his success at the feet of his mother. King received his early vocal training from his mother, who during the '90's scored a succession of hits in concert and opera. For six years King studied with the late Joseph Dupuy, famous teacher of Lawrence Tibbett. Music critics are marveling at the KNX tenor's extraordinary voice, which ranges from low G to D above C above high C!

• • • Eva Olivotti, star of stage and microphone, is featured nightly from 11 until midnight over KMTR with Manny Harmon's orchestra from the Ship Cafe in Venice. She confines her particular forte—selections from musical comedies and comic opera productions. Good intermissions in a good dance hour.

• • • Can you imagine Jack Pearl closing a gold mine? Well, he does—for two hours a week. The Evening Star

mine at Cottage Grove, Ore., is a gold mine running 24 hours a day, but on Thursday nights, all operations are suspended while 250 workmen listen to Baron Munchausen on the Magic Carpet, and they draw pay while they listen, according to Thomas Horn, assistant mining superintendent. They're snowbound there, the nearest town is 20 miles by skis and Der Barren is their only fun.

• • • Are the Boswell sisters drawing cards? Well, three steamship companies, learning the girls plan to go to London, have offered them suites on shipboard for less than the average man pays for a month's rent.

• • • KROW's Friendship Club, a program which is presented daily, consists of select bits of homey philosophy and poems. The station invites listeners to mail in their favorite poems and they will be read over the air during this period.

• • • Ted Bergman, who plays the part of the bol-bol-bolshe-Red, the burg-burg-burg racketeer, the gallant fireman or what have you on NBC's Musical Grocery Store, is the Lon Chaney of the kilocycles.

Since 1928 Ted has played 1012 different radio characters ranging from gangsters to romantic lovers. He works in twenty-two different dialects including Scandinavian, so he feels right at home in any crowd. He has played as many as six parts in one broadcast, using different dialects for each part.

Once, when he was playing a radio scene with only one other actor in the cast, the other fellow fainted dead away, leaving Ted soloing be-



fore the mike. Ted immediately picked up the other fellow's lines and finished out the scene playing both parts. Nobody outside the studio ever knew the difference.

• • • A young man who has lifted more CBS stars to the studios than any other person sailed in April to his old home in Erin for his first vacation in seven years. He is Danny Cahill, genial elevator operator at Columbia's New York studios, who has smoked the cigars of Franklin D. Roosevelt and Alfred E. Smith, swapped Irish stories with Cardinal Hayes, traded playful punches with Dempsey and Sharkey, and exchanged pictures with the Boswell Sisters. When he gets home to Fermoy, County Cork, perhaps nobody will ask him for his autograph, but under his arm will be the signatures of enough American celebrities to show just how Danny has fared in America. He hasn't missed one yet!

• • • Cliff Soubier, NBC character actor, was once shot on the stage. Lacking blank cartridges, the stage revolver with which he was supposed to have been shot was loaded with actual cartridges that had the lead removed. Cliff stopped with his leg the tiny wad under the lead that holds in the powder.

• • • One of the most unique gifts he ever received from a listener is a water color which Charles Runyan, NBC organist, treasures. It is a symbolic composition in which running brooks, city scenes, nymphs, children, and other figures are merged in a pastel effect above an excellent portrait of the organist at the keyboard.

• • • Donald Novis, tenor, comes by his music naturally. His mother was Charlotte Lorris, a well known concert pianist of Pasadena, California. His father, the late Fred-

erick Novis, was a church soloist and concert singer.

The NBC singer's brother, Edward, has studied voice abroad and his sister Mary, is also a singer. The only unmusical member of the family is Don's brother Harold, 28, now a physical education instructor in California.

• • • If we should take Harold Smithson, Commercial Manager of KFWI, as an example of just how many suits the well-dressed men in England have—well, we would no doubt get dizzy in trying to keep track of all of them. Smithson spent a number of years across the pond and tho' he has been back here for quite a long time, he can almost produce a different suit daily. He does it so nonchalantly, too, just as though they were neckties or handkerchiefs. Those Englishmen and the American inhabitants must be kept busy with the clothes problem in dear old London. Smithson, by the way, hails from Kentucky, Sir.

• • • Ed Ludes, NBC sound effects engineer, was playing in pictures when he was only seven years old, and the juvenile star of the St. Louis Motion Picture Company.

• • • Sigmund Spaeth can't help being a tune detective. His father, Adolph Spaeth, was a German Lutheran minister and composer of hymn tunes. His mother, Harriett Reynolds Kräuth, was editor of the Church Book, and also was musically gifted. Spaeth's sister, Carola, is a fine pianist and his brother, J. Duncan Spaeth, a professor of English at Princeton University, has musical and dramatic talents. Spaeth, heard regularly over NBC networks from New York, is also a sports authority. He has been radio commentator at intersectional football games, he announced the Walker-Greb fight, and he has described the international

tennis matches at Forest Hills, L. I.

• • • Carveth Wells, NBC explorer, who has peeked into many of the strange corners of the world, is a staunch advocate of air travel. Since the author-lecturer began his current series over NBC networks he has flown more than 11,000 miles throughout the West.

Wells has ridden upon burros in western America, in rickshas in China, in canoes in Africa, behind reindeer in Lapland, upon canal boats in Sweden and has employed a dozen other odd conveyances in all parts of the earth.

• • • Cliff Hall, straight man for Jack Pearl, the Baron Munchausen, is being considered for a job as an announcer for Ed Wynn's new broadcasting company.

• • • Ted Maxwell, of the NBC National Players, once played a brawny blacksmith on the stage with the aid of six shirts and three vests to expand his boyish physique—of those days—to the required chest measurement.

• • • Howard Eastwood is the new KROW staff pianist and accompanist. Eastwood has done considerable orchestra work, and for a time was with Hermie King and Walt Roesner at the Fox Theatre in San Francisco.

• • • Helen Hoover, soprano, has been added to KMTR's staff. Until recently she has been affiliated with NBC in San Francisco, and with various stations in Washington and Oregon.

• • • Eddie Peabody, NBC Banjo Boy, met his wife for the first time in an ice cream parlor in a Southern California town, where she and her mother, driving through, stopped for a soda. Eddie happened to sit at their table. Drawn by something unex-

plainable, he says, he and the older woman began to talk, and discovered they were related to each other. She presented him to her daughter, and a few weeks later Eddie and Eddie—Mrs. Peabody's name is Edna—were married.

• • • Raine Bennett, "Poet of the Air" who has turned the charm of his magic voice to describing the beauty spots and historical landmarks of Southern California on a series over KNX, is currently involved in the preparation of a volume of prose and poetry for publication. The book, as yet untitled, will go to the printers' at an early date. Bennett now is not unknown to literary students. One volume of his verse, reflecting the influence of the California to which he is so devoted, has enjoyed wide circulation.

• • • Every Wednesday evening KFSD presents a harmonica band under the direction of Arthur H. Groves. Twenty men in this band. Selections range from old time to concert.

• • • They're calling Fran Frey, the bandsman-vocalist, the laughing Prima Donna of the NBC after his recent Friday night stunt with Jack Benny on the Chevrolet program.

Frey did the hyena-laughing rôle at the close of Benny's Dr. Jekyll and Mr. Hyde thriller, but did no singing.

• • • Your announcer has a wide variety of wardrobe preferences: Consider these NBC adjective heavers—HOWARD CLANEY prefers gray and dark blue suits.

GEORGE HICKS, whose specialty is special events broadcasting, prefers brown and gray suits, particularly tweeds, green ties and clothes that "look comfortable and warm!" . . . KELVIN KEECH, one of radio's handsomest men, prefers dark clothes, double-breasted serges and gray-striped trousers with a dark coat . . . JOHN S. YOUNG is perhaps radio's best dressed announcer. He has thirty suits, tailor made, including a complete riding habit and five suits of full dress clothes. It is Young's boast that he is prepared to leave for any part of the world at fifteen-minutes notice . . . All of NBC's announcers will admit one general similarity in the choice of clothes. If they had their way they wouldn't wear a tuxedo!

**CASA DEL REY**

ANSWER THE LURE  
OF MOUNTAINS, SEA AND SUNSHINE

**S**URF, plunge and sun bathing · stream and deep sea fishing · golf, tennis, polo · delightful dinner and ballroom dances · restful Spanish garden · complete kiddies' playground.

•

Come where sunshine, salt-tanged breeze and cloudless sky, rushing streams and foaming breakers promise carefree days of fun and zest. Then, to make your outing complete, delicious meals and soothing slumber at home-like CASA DEL REY.

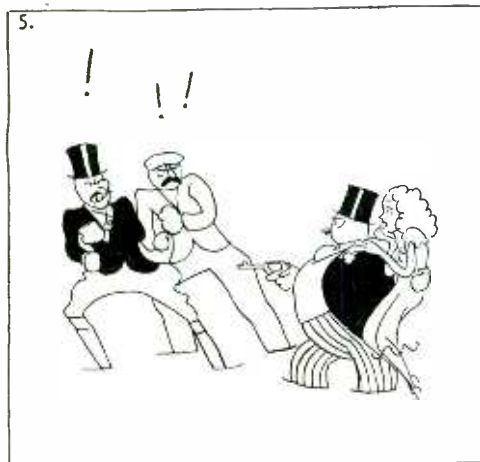
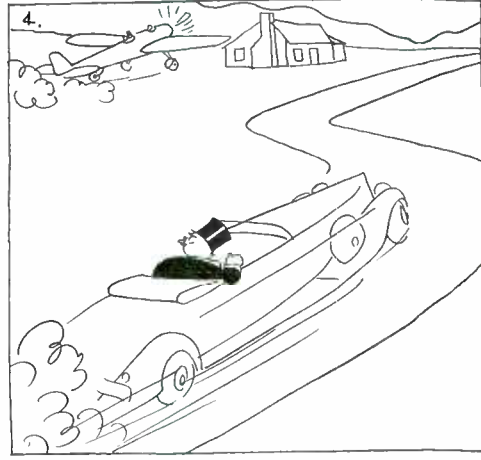
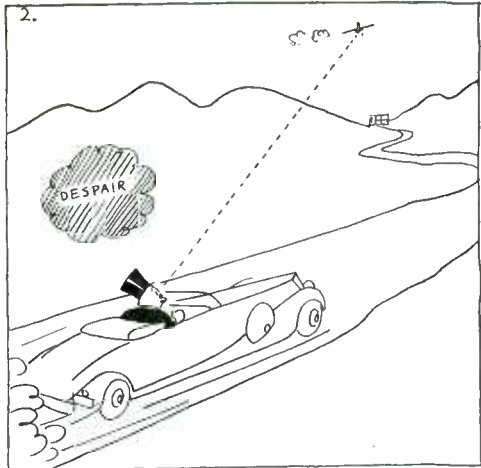
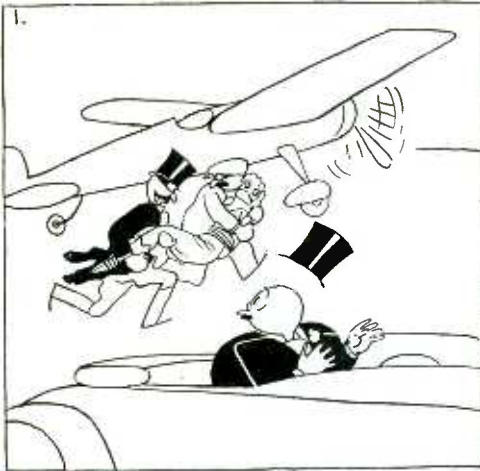
•

Rates as low as \$2.00 per day or \$10.00 per week European Plan, and \$4.50 per day or \$25.00 per week American Plan. Beautifully appointed housekeeping apartments with complete hotel service \$20.00 per week and up.

Open the year round Write for Descriptive Folder.

MANAGEMENT TROYER BROTHERS

AT THE BEACH  
**SANTA CRUZ CALIF.**



**Fun...that's what driving becomes once more! It's a new kind of a thrill to feel the extra power Shell Ethyl gives your motor. The instantaneous starts. The quiet smoothness. From three vital energies . . . plus Ethyl. There's never been a gasoline like it!**

# THE PARADE GOES

INTO THE FOURTH YEAR OF  
OUTSTANDING RADIO PROGRAMS  
WHICH HAVE BROUGHT YOU



GEORGE OLSEN  
GUS ARNHEIM  
JIMMY GRIER  
PHIL HARRIS  
TED FIO-RITO  
BING CROSBY  
DONALD NOVIS  
JOHN P. MEDBURY  
PETER B. KYNE

*AND NOW*

*Anson W.*

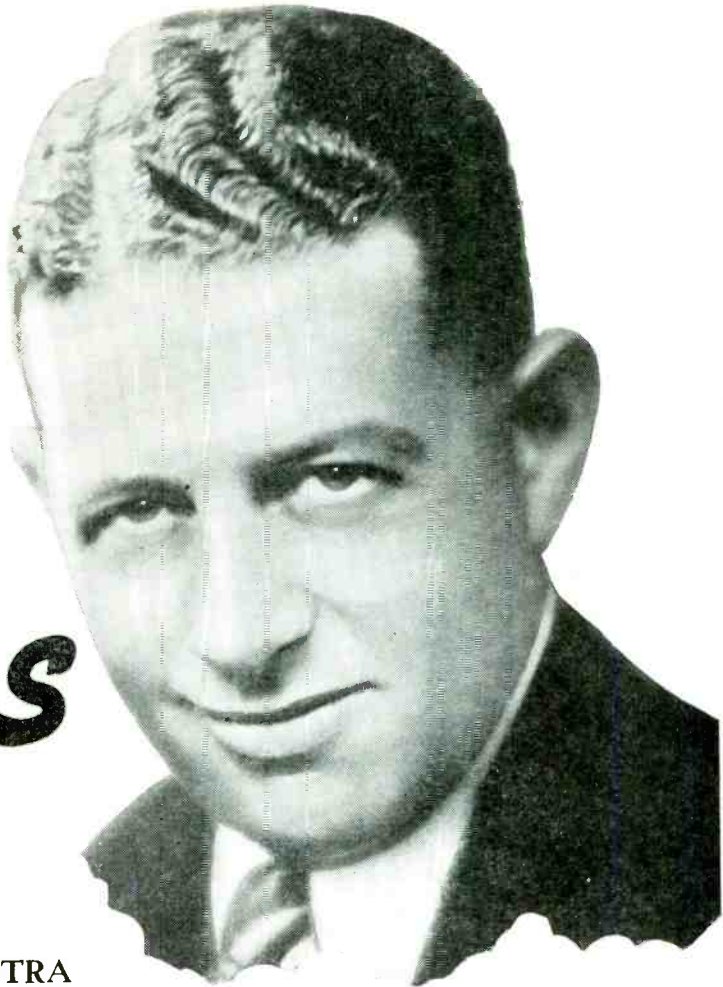
AND HIS HOTEL MARK H

ALSO AN ADDED FEATURE "T

# M·J·B "DEMI-TASSE



ON



Weeks

OPKINS ORCHESTRA

OPIC TERRORS"

REVUE"

*America's only*



MONDAYS

7:30 P. M.

NBC STATIONS

*"Safety-Sealed" Coffee*

# SUNDAY Programs

June 11, 1933

**379.5 Mtrs. NBC-KGO** Sutter 1920  
790 Kcys. 7500 Watts  
National Broadcast. Co., San Francisco  
8 A.M.—Major Bowes' Capitol Family;  
Vocalists and Orchestra  
8:15—Radio City Concert  
9:15—Palmer Concert Ensemble  
9:30—Sabbath Reveries  
10—Summer Idyll  
10:15—International Radio Forum  
10:30—Northwestern Chronicle  
11—Lady Esther Serenade  
11:30—Radio Pulpit  
12 noon—Fiddlers Three  
12:15—Wildroot: Pianist and vocal.  
12:30—Samovar Serenade  
1—World of Religion  
1:30—Pages of Romance: Drama  
2—Cecilians: Vocalists  
2:30—Tunes of the Times: Orchestra  
3—Greek Theater Symphonic Band  
3:30—Great Moments in History  
4—Chase and Sanborn program  
5—Manhattan Merry-Go-Round  
5:30—American Album of Music  
6—RCA-Victor Program  
6:15—Vincent Lopez Orchestra and  
Jane Froman, contralto  
6:45—Sunday at Seth Parker's  
7:15—Donald Novis, tenor  
7:30—Orchestral Gems  
8—Chas. Hart, instrumentalists  
8:30—Congress Hotel  
9—Reader's Guide, Joseph Jackson  
9:30—Voice of Pan  
10—Richfield News Flashes  
10:15—Paul Carson, Organist  
11 to 12 mid.—Bal Tabarin Orch.

**243.8 Meters KYA** Prospect 3456  
1230 Kcys. 1000 Watts  
Pac. Broadcast Corp., San Francisco  
8:15 A.M.—Christian Science Prog.  
8:30—"Uncle Harry" Comics  
9—Sabbath Reveries; Melodies  
10:15—Town Hall Harmonies  
10:30—Singing Strings  
11—Old St. Mary's Church Services  
12 noon—Organ; Paraders  
1—Modern Maestros  
1:30—Waltz Idylls; Opera at 2  
4—Royal Serenaders  
4:30—Symphony Series  
5:30—Violin Masters  
6—Church Choir Series  
6:30—Light Opera Concert  
8—John Wolohan's Orchestra  
9—Memory Music  
9:15—Evening Lullaby  
10 to 11 P.M.—Concert Memories

**340.7 Meters KLX** Lake. 6000  
880 Kcys. 1000 Watts  
Tribune Pub. Co., Oakland, Calif.  
12 noon—Records  
12:30—John Wharry Lewis' quintet  
1:30—Recordings  
2:30—Alice Lucas, contralto; Merrill  
Bond, baritone; Arco and Anita,  
novelty guitar duo; Jean Ardath,  
pianist  
3:30—Records; violin ensemble  
5—Covered Wagon Jubilee  
5:30—Old Man Solloquy  
5:45—Studio program  
6—Mixed Quartet  
6:30—Hotel Oakland Trio  
7:30—Dot Kay, contralto  
7:45—William Don, comedian  
8—Manila Stringed Orchestra  
8:30—Helen Parmelee, pianist  
8:45—Neighborly Songs and Poems  
9—Studio program  
9:30—Wailele Trio  
10 to 11 P.M.—Dance program

**440.9 Mtrs. KPO** Sutter 1920  
680 Kcys. 50,000 Watts  
National Broadcast Co., San Francisco  
8 A.M.—Comics read by Scotty  
8:30—Arlon Trio; piano, violin, cello  
9:30—Melody Mixers  
10:30—Song Thots: orch. & vocal  
11—Bible Stories  
12 noon—Lucile Kirtley, soprano;  
woodwind ensemble direction Willard  
Flashman.  
12:30—Melody Train, orchestra di-  
rection Josef Hornik  
1:30—Olympians, quartet  
2—Catholic Hour  
2:30—Our American Schools  
3—Minnevitich Harmonica Rascals  
3:15—Morin Sisters  
3:30—Stringwood Ensemble  
4—Community Forum  
4:30—Nathan Abas, Violinist  
5—Rendezvous, vocal trio  
5:30—Evening Concert  
6—Melodians: Orch. and vocal  
6:30—Irving Kennedy, tenor  
7:15—Personal Close-ups, Clarence  
Hayes, tenor, interviewed by  
Gypsy  
7:30—Gunnar Johansen, pianist  
8—Dance Nocturne  
8:30—Rudy Selger's Orchestra  
9—Rainbow Harmonies, vocalist and  
orchestra  
9:30—University of California  
10—Gene Quaw Orchestra  
10:30—On Wings of Music  
11 to 12 midnight—Midnight Melodies

**296.6 Meters KQW** Ballard 777  
1010 Kcys. 500 Watts  
Pac. Agric. Foundation, Ltd., San Jose  
10:15 A.M.—Sunday School Lesson  
11 to 12:30—First Baptist Church  
services; Silent at 12:30  
7:30 to 9 P.M.—Evening Church Ser-  
vice

**491.5 Meters KFRC** Prospect 0100  
610 Kcys. 1000 Watts  
Don Lee Broadcast. System, S. F., Cal.  
8 A.M.—Examiner Comic Section  
8:30—CBS, Emery Deutsch's Orch.  
9—Organ; Song Contest  
9:30—CBS, Compinsky Trio  
10—Home Sweet Home Concert  
11—Jean Ellington & Dick Aurdant  
11:15—CBS, Symphony Hour  
12 noon—CBS, Cathedral Hour  
1—CBS, Poet's Gold  
1:15—CBS, Bright Interlude  
1:30—Little Concert  
1:45—Fred Lane's Book Review  
2—CBS, Ballad Hour  
2:30—To be announced  
2:45—Rabbi Magnin  
3—CBS, Chicago Knights  
3:30—CBS program  
3:45—CBS, Fray and Braggiotti  
4—CBS program  
4:30—CBS, Chicago Variety Show  
5—CBS program  
5:30—CBS, Andre Kostelanetz  
6—CBS, John Henry  
6:15—CBS, The Columbia Revue  
6:45—CBS, Quiet Harmonies  
7—CBS, Eddie Duchin's Orchestra  
7:30—CBS, Jerry Friedman's Orch.  
8—Salon Moderne  
8:30—CBS, Orchestra  
9—The Merry-makers  
10—Organ; Song Contest  
10:10—News by Darrell Donnell  
10:20—Gus Arnheim's Orchestra  
11:30 to 12 mid.—Midnight Moods

**535.4 Meters KTAB** Garfield 4700  
560 Kcys. 1000 Watts  
Assoc. Broadcasters, Oakland, Calif.  
8:30 A.M.—Hour of Prayer  
9—Records; Watchtower Program  
10—Baptist Church Bible Class  
11—Church Services; Organ  
12:45—Calvary Meditations  
1—Church of the Latter Day Saints  
1:30—Records; Golden Memories  
2—March Players  
2:30—Isle of Dreams  
3—String Quartet; Records  
4:35—Little Journeys; Records  
5—Organ Recital  
6—Portuguese program  
7—George Kruger, pianist  
7:15—Amateur Sports News  
7:30—Church Services  
9:15—Rod Hendrickson  
9:30—Chapel of the Chimes Organ  
9:45—Rambles in Rhyme  
10—Jess Stafford's Orchestra  
11 to 11:15 P.M.—Emeryville Walk-  
athon

**322.4 Meters KROW** Glenc. 6774  
930 Kcys. 1000 Watts  
Educa. Broad. Corp., Oakland, Calif.  
8 A.M.—Sunday Classics; Program  
9—Health Talk; recordings  
10—Music and Lecture  
10:30—Studio program  
12 noon—Farm Hands  
12:30—Rainbow String Ensemble  
1—Studio program  
1:30—Bible Questions & Answers  
2—Dixie Sextet  
2:15—Marie George; 2:30 silent  
6—Music and Lecture  
6:30—Dixie Land Melodies  
6:45—"This and That"  
7—A. O. Arseneau, speaker  
7:15—Radio Playmakers  
7:52—Silent period  
9—Watch Tower program  
9:40—Wally Yewdall, pianist  
10 to 11 P.M.—Studio program

**322.4 Meters KFWI** Franklin 0200  
930 Kcys. 500 Watts  
Radio Entertainments, San Francisco  
2:30 P.M.—George Kruger, pianist  
2:45—Mississippi Roustabouts  
3—Chesley Mills Trio  
3:30—Rod Niles, Trio  
3:45—Andy and Al, the Banjo Boys  
4—Musical Masterpieces  
5—Sunday Sunshine; silent at 6  
7:50 to 9 P.M.—Services from First  
Church of Christ, Scientist

**280.2 Meter: KJBS** Ord. 4148-49  
1070 Kcys. 100 Watts  
J. Brunton & Sons, San Francisco  
8 A.M. to 7:30—Records; News; Mu-  
sic; silent at 7:30 P.M.  
12:01 to 6 A.M.—Owl program

**319 Meters KOIN** Atwater 3333  
940 Kcys. 1000 Watts  
The Journal, Portland, Oregon  
9 A.M. to 6—Various programs  
6 P.M.—CBS, John Henry  
6:15—Quiet Harmonies  
6:30—CBS, Columbia Revue  
7—CBS, Eddie Duchin's Orchestra  
7:15—CBS, Eddie Duchin's Orch.  
7:30—Jerry Friedman's Orchestra  
8—Journal Column of the air  
8:30—CBS, Ben Pollack's Orchestra  
9—KHJ Merry-makers  
10 to 12—Dance Music

**325.9 Meters KOMO** Elliott 5890  
920 Kcys. 1000 Watts  
Fisher's Blend Station, Inc., Seattle  
(Seattle Daylight Saving Time)

9 A.M. to 5—Various programs  
5—NBC, Chase & Sanborn program  
6—NBC, Manhattan Merry-Go-Round  
6:30—NBC, Amer. Album of Music  
7—NBC, RCA Victor  
7:15—NBC, Real Silk program  
7:45—NBC, Sunday at Seth Parker's  
8:15—For All the Family  
8:30—Cecil and Sally (E. T.)  
9—Baldy's Homespun Melodies  
9:15—Univ. of Wash. talk  
9:30—NBC, Congress Hotel Orch.  
9:45—Helms and Harkins  
10—Greater Washington Hour  
11—NBC, Richfield News Flashes  
11:15—Paul Tutmore  
11:30 to 12 mid.—A Night in Venice

**483.6 Meters KGW** Atwater 2121  
620 Kcys. 1000 Watts  
Morning Oregonian, Portland, Ore.

8 A.M. to 12—Various Programs  
12 noon—NBC, Fiddlers Three  
12:15—NBC, Wildroot Institute  
12:30—NBC, Samovar Serenade  
1 P.M.—NBC, World of Religion  
1:30—NBC, Pages of Romance  
2—NBC, Catholic Hour  
2:30—NBC, Our American Schools  
3—NBC, Greek Theatre Concert  
3:30—NBC, Moments in History  
4—NBC, Chase & Sanborn  
5—NBC, Merry-Go-Round  
5:30—Album of Familiar Music  
6—NBC, RCA Victor program  
6:15—NBC, Real Silk Program  
6:45—NBC, Sunday at Seth Parkers  
7:15—NBC, Donald Novis, tenor  
7:30—Orchestral Gems  
8—Baldy's Homespun Melodies  
8:15—Portland Cleaning Works  
8:20—Studio program  
8:45—NBC, Congress Hotel Orch.  
9—Book Chat; KEX program  
9:30—NBC, Voice of Pan  
10—NBC, Richfield News Flashes  
10:15—NBC, Bridge to Dreamland  
11 to 12 mid.—NBC, Bal Tabarin

**508.2 Meters KHQ** Main 5383  
590 Kcys. 1000 Watts  
Louis Wasmer, Inc., Spokane, Wash.  
(Spokane Daylight Saving Time)

9 A.M.—Post-Intelligencer Comics  
9:30—NBC, Radio City Concert  
10—Judge Rutherford  
10:15—Old Painter Products  
10:30—NBC, Dance Nocturne  
11—To be announced  
11:15—NBC, Intern. Radio Forum  
11:30—NBC, Northwest Chronicle  
12 noon—NBC, Wayne King's Orch.  
12:30—NBC, Radio Pulpit  
1—U. S. Forest Service  
1:15—NBC, Wildroot Institute  
1:30—NBC, Samovar Serenade  
2—NBC, World of Religion  
2:30—NBC, Pages of Romance  
3—NBC, Catholic Hour  
3:30—NBC, American Schools  
4—Northwest on Parade  
4:30—NBC, Moments in History  
5—NBC, Chase & Sanborn  
6—NBC, Merry-Go-Round  
6:30—NBC, American Album  
7—NBC, RCA-Victor Program  
7:15—NBC, Real Silk, Vincent Lopez  
7:45—NBC, Sunday at Seth Parker's  
8:15—To be announced  
8:30—'Rainbow Crooners'  
8:45—Voice of Texas  
9—NBC, Charles Hart Ensemble

9:30—NBC, Congress Hotel Orch.  
10—NBC, Reader's Guide  
10:30—NBC, Voice of Pan  
11—NBC, Richfield News Flashes  
11:15—NBC, Bridge to Dreamland  
12 to 1 A.M.—NBC, Bal Tabarin Or.

**468.5 Meters KFI** Richm'd 6111  
640 Kcys. 50,000 Watts

**Earle C. Anthony, Inc., Los Angeles**  
9 A.M. to 11:30—Various Programs  
11:30 A.M.—NBC, Radio Pulpit  
12 noon—Ann Mason, harpist, and  
Helen Muehnic, violinist  
12:15—NBC, Wildroot Institute  
12:30—Dr. Casselberry  
12:45—Barbara Jamieson, pianist  
1—Classic Hour, string trio  
1:30—NBC, Pages of Romance  
2—Wesley Tourtellotte, Organist  
2:30—Univ. of So. Calif. College of  
Music  
3—Greek Theatre Band Concert  
3:30—NBC, Moments of History  
4—NBC, Chase & Sanborn program  
5—NBC, Merry-Go-Round  
5:30—NBC, Amer. Album of Music  
6—Raine Bennett, Poet's Corner  
6:15—NBC, Real Silk program  
6:45—Wesley Tourtellotte, organist  
7:15—NBC, Donald Novis, tenor  
7:30—'The Gaieties of '33'  
8:30—NBC, Congress Hotel Orch.  
9—NBC, Reader's Guide  
9:30—Eno Crime Clues  
10—NBC, Richfield News Reporter  
10:15—Orchestra and Soloist  
10:30 to 11 P.M.—Organ

**333.1 Meters KHJ** VAndike 7111  
900 Kcys. 1000 Watts

**Don Lee Broadcast System, L. A., Cal.**  
8 A.M. to 10 P.M.—Various progs.  
10—'Home Sweet Home' Concert  
11—CBS, Symphonic Hour  
12 noon—CBS, Cathedral Hour  
1—CBS, Poet's Gold  
1:15—CBS, Bright Interlude  
1:30—Prof. Lindsley  
1:45—To be announced  
2—CBS, Ballad Hour  
2:30—'Musical Comedy Shorts'  
2:45—Rabbi Magnin  
3—CBS, Chicago Knights  
3:30—CBS, Current Events  
3:45—CBS, Fray and Braggiotti  
4—CBS, The Gauchos  
4:30—CBS, Chicago Variety Show  
5—CBS, Columbia Dramatic Guild  
5:30—CBS, Andre Kostelanetz  
6—CBS, John Henry  
6:15—Columbia Revue  
6:45—CBS, Quiet Harmonies  
7—CBS, Eddie Duchin's Orchestra  
7:15—CBS, 'Your Child'  
7:30—CBS, Jerry Friedman's Orch.  
8—Salon Moderne  
8:15—S. & W. 'Mellow'd Melodies'  
8:30—CBS, Orchestras  
9—Merrymakers; News Items  
10:10—Dance Music  
11:30 to 12 mid.—Organ recital

**499.7 Meters KFSD** Franklin 6353  
600 Kcys. 1000 Watts

**Airfan Radio Corp., Ltd., San Diego**  
7:45 A.M. to 6—Various programs  
6—To be announced  
6:15—Serenaders  
6:45—NBC, Seth Parker  
7:15—Organ; Orchestral Gems  
8—NBC, Chas. Hart Ensemble  
8:30—NBC, Congress Hotel Orch.  
9—NBC, Readers' Guide  
9:30—NBC, University of California  
10—NBC, News Flashes  
10:15—NBC, Bridge to Dreamland  
11 to 12 mid.—Dance Music

**285.5 Meters KNX** Hemp. 4101  
1050 Kcys. 25,000 Watts

**Western Broadcast. Co., Los Angeles**  
6:45 A.M.—Bill Sharples and Gang  
9—Bob Shuler; Organ  
9:45—Talk; Records; Organ  
10:50—Christian Science Church  
12:10 P.M.—Story of India  
12:30—Louise Johnson, Interpreter  
of Cosmic Law  
1—Recordings  
2—Concert, Westlake Park  
4—Organ; Dr. King; talk  
4:30—Bob Shuler  
5—Miss Ethel Hubler, talk  
5:15—Guardsmen  
5:30—Dr. John Matthews  
6:30—Dr. Abel, Humanist Society  
7—Capt. Don Wilkie  
7:15—Calmon Luboviski, violinist  
8—First Presbyterian Church  
9—News Service  
9:15—Judge Rutherford  
9:30—Arizona Wranglers  
10—Worldwide Christian Currier's

**225.4 Meters KGB** FRank. 6151  
1330 Kcys. 1000 Watts

**Don Lee, Inc., San Diego, California**  
8 A.M. to 6—Various programs  
6 P.M.—CBS, John Henry  
6:15—CBS, Columbia Revue  
6:45—CBS, Quiet Harmonies  
7—CBS, Eddie Duchin's Orchestra  
7:15—CBS, Angelo Patri  
7:30—CBS, Friedman's Orch.  
8—Salon Moderne  
8:30—CBS, Ben Pollack's Orchestra  
8:45—CBS, Johnny Hamp's Orch.  
9—Merrymakers  
10—World-Wide News  
10:10—Hotel St. Francis Orch.  
11:30—Midnight Moods  
12 to 1 A.M.—Recordings

**236.1 Meters KOL** Main 2312  
1270 Kcys. 1000 Watts  
Seattle Broadcast. Co., Seattle, Wash.  
(Seattle Daylight Saving Time)

8 A.M.—P. I. Comic Section  
8:30—Studio program  
9—CBS, Tabernacle Choir  
9:30—CBS, Emery Deutsch's Orch.  
9:45—Cecil Solly  
10—CBS, Fred Feibel, organist  
10:30—CBS, Compinsky Trio  
11—To be announced  
11:30—CBS, Manhattan Moods  
11:45—Democratic Educa. Feature  
12—Francisco del Campo Hour  
12:15—CBS, Symphonic Hour  
1—CBS, Cathedral Hour  
2—CBS, Poets Gold  
2:15—CBS, Bright Interlude  
2:30—Professor Lindsley  
2:45—William Felix Knight  
3—CBS, Ballad Hour  
3:30—Claud Remier, organist  
3:45—Rabbi Magnin  
4—CBS, Chicago Knights  
4:30—CBS, Current Events  
4:45—CBS, Fray and Braggiotti  
5—CBS, The Gauchos  
5:30—CBS, Chicago Variety program  
6—CBS, Columbia Dramatic Guild  
6:30—CBS, Andre Kostelanetz  
7—CBS, John Henry  
7:15—CBS, Columbia Revue  
7:45—CBS, Quiet Harmonies  
8—CBS, Eddie Duchin's Orchestra  
8:15—CBS, 'Your Child'  
8:30—CBS, Jerry Friedman's Orch.  
9—CBS, Guy Lombardo's Orchestra  
9:30—CBS, Ben Pollack's Orchestra  
9:45—CBS, Johnny Hamp's Orch.  
10—The Merrymakers  
11 to 12 mid.—Dance Orchestra

# MONDAY Programs

June 12, 1933

**379.5 Mtrs. NBC-KGO Sutter 1920**  
**790 Kcys. 7500 Watts**  
**National Broadcast Co., San Francisco**  
 7 A.M.—Hour of Memories  
 8—Lee S. Roberts' Memory Box  
 8:15—Jack, Patsy, Sambo & Mandy  
 8:30—Arion Trio  
 9—Edna Fischer, pianist  
 9:15—Buckaroos, Chas. Marshall & Ted Maxwell

9:30—Organ Concert  
 10—Sax-o-Tunes  
 10:30—Woman's Air Magazine  
 11:30—Monday Matinee  
 11:45—Happy Jack Turner  
 12 noon—Bluettes; Vocal trio  
 12:15—Western Farm and Home Hr.  
 1—Edward Davies, baritone  
 1:15—Austin Strong, playwright  
 1:15—Songs at Twilight  
 1:30—Schirmer & Schmitt, pianists  
 1:45—John and Ned, harmony duo  
 2—Al Pearce and his Gang  
 3—News talk by Rush Hughes  
 3:15—Concert Ensemble  
 3:45—Melody Mixers  
 4:15—Canzonetta; Arion Trio  
 4:30—Little Orphan Annie  
 4:45—Song Fellows; Quartet  
 5—Stories of Human Behavior  
 5:15—Sarah Kreindler, violinist  
 5:30—Annie, Judy and Zeke  
 5:45—Ortiz, Tinado, tenor  
 6—The Hour Glass  
 6:30—Dobbsie's "Ship of Joy"  
 7—Amos 'n' Andy  
 7:15—Everett Marshall, baritone; with Al Mitchell's Orchestra  
 7:30—M.J.B. Demi-Tasse Revue  
 8—Hollywood on the Air  
 8:30—Richard Cole's Dance Orch.  
 8:45—Ferde Grofe's Orchestra  
 9—Charles Hart; Instrumentalists  
 9:30—The Doric Quartet  
 10—Richfield News Flashes  
 10:15—Anson Weeks' Orchestra  
 11—Abe Lyman's Orchestra  
 11:30 to 12 mid.—Organ Concert

**440.9 Mtrs. KPO Sutter 1920**  
**680 Kcys. 50,000 Watts**  
**National Broadcast Co., San Francisco**  
 7:30 A.M.—Organ Concert  
 8—Financial Service  
 8:15—Catherine Field, soprano  
 8:30—The Merrie Men, male quartet  
 8:45—Harold Stokes' Orchestra  
 9—Words and Music, Harvey Hays  
 9:15—Palmer House Ensemble  
 9:30—Alvino Rey, guitarist  
 9:45—News Service  
 10—Tom Mitchell, baritone  
 10:15—Harvey Peterson, violinist  
 10:30—Outstanding Speakers  
 10:45—Sisters of the Skillet  
 11—Outstanding Speakers  
 11:15—Monday Matinee  
 11:30—League of Western Writers  
 12 noon—Radio Guild; News  
 1:15—Ann Warner's Chats  
 1:45—Musical Moments, orchestra  
 2—Waldorf-Astoria Orchestra  
 2:30—Essex House Ensemble  
 2:45—Langford Leibert program  
 3—Slow River—Eva Taylor, crooner; Southernaires, male quartet  
 3:15—Rhythm Vendors  
 3:45—Univ. of Calif.  
 4—Oahu Srenaders  
 4:30—Olga, Countess Albani, soprano  
 4:45—Arion Trio  
 5:15—Ramblers, orchestra; news  
 6—Orchestra and Vocalists  
 6:30—Safety First, Traffic Talk  
 6:45—Detectives Black and Blue  
 7—Organ Recital

7:15—Tarzan of the Apes  
 7:30—Stringwood Ensemble  
 8—NBC Drama Hour  
 8:30—Talent Parade, variety prog.  
 9:30—Pair of Pianos, Grace Frankel, Gertrude Lyne  
 10—Marshall Mavericks  
 10:30—Pacific Srenaders  
 11:30 to 12 mid.—Rhythm Vendors

**340.7 Meters KLX Lake. 6000**  
**880 Kcys. 1000 Watts**  
**Tribune Pub. Co., Oakland, Calif.**  
 8 A.M.—Records; Stocks  
 8:30—Covered Wagon Jubilee  
 9—Records; Clinic of the Air  
 10:15—Stocks; News Flashes  
 10:30—International Kitchen  
 11—Sunshine Twins; News Flashes  
 11:30—Arco and Anita, guitarists  
 11:45—Madelon Sivyver and Nancy Hersey, piano and violin  
 12 noon—Jack Delaneys band  
 1—Jean's Hi-Lights; News Flashes  
 2—Records; News; Stocks  
 2:45—Opportunity Hour; News  
 3:45—Health School; Records  
 4:30—Brother Bob's Club  
 5—Covered Wagon Jubilee  
 5:30—Lovable Liars  
 5:45—Helen Parmelee, pianist  
 6—Betty Babbish band  
 7—News Items; Clark Sisters  
 7:45—Fred and Morris, comedians  
 8—Nevada Night Herders  
 8:25—Business Bureau talk  
 9—Caucit Theatre Players  
 9:30—California Colleens Orchestra  
 9:30—Bungling Bunglers  
 9:45—Wallele Trio; Fred Skinner  
 10:15 to 11:30 P.M.—Dance program

**322.4 Meters KFWI Franklin 0200**  
**930 Kcys. 500 Watts**  
**Radio Entertainments, San Francisco**  
 7 A.M.—Early Bird; silent at 8  
 9—Blues Chasers; Dr. Corley  
 10—White House and Bellevue Prog.  
 10:30—Talk; Topics and Music  
 11—Helen Gordon Barker  
 11:15—Melodies; Melody Girl  
 11:45—Musical Portraits  
 12 noon—The Range Riders  
 12:30—Dance Music; silent at 1  
 6—Dance Music; Salon Memories  
 7—Christian Science program  
 7:15—Lobby Tales; Silent at 7:30  
 8:30—Mildred Epstein, vocalist  
 8:45—G. Willitts, Story of Progress  
 9—Concert Pianist  
 9:15—Bias Players, drama hour  
 9:45—C. Martin Friburg, tenor  
 10—Master Melodies  
 11—Salon Serenade; Dance Music  
 12—Paris at Midnight  
 12:30 A.M. to 1—Hi-Dee-Ho!

**322.4 Meters KROW Glenc. 6774**  
**930 Kcys. 1000 Watts**  
**Educa. Broad. Corp., Oakland, Calif.**  
 8 A.M.—News; Hill Billies  
 8:45—Prosperity program; silent at 9  
 1 P.M.—Latin-American program  
 2—Student Melodies  
 2:15—Old Timers; Carnival  
 3:30—Hitsorial Hi-Lights  
 3:45—Charming Melodies  
 4—"Doc" Shahan and Ramblers  
 4:30—Quartette; Pianologue  
 5—Three Islanders  
 5:15—Bix Brother Walter  
 5:45—Studio program; 6, silent  
 7:30—Italian program  
 8—Topics of the Day  
 8:15 to 8:30 P.M.—Watch Tower

**491.5 Meters KFRC Prospect 0100**  
**610 Kcys. 1000 Watts**  
**Don Lee Broadcast System, S. F., Cal.**  
 7 A.M.—Records; Barnyard Melodies  
 7:25—Stocks; Exercises  
 8—CBS, Buddy Harrod's Orchestra  
 8:30—CBS, Concert Miniatures  
 9—Billy Hays' Orch.; Song Contest  
 9:30—Through the Looking Glass  
 9:45—CBS, Geo. Scherban's Orch.  
 10—CBS, Nat'l Student Federation  
 10:15—CBS, Caroline Gray  
 10:45—CBS, Better Business Bureau  
 10:45—CBS, Ann Lear, organist  
 11:15—Prudence Penny  
 11:30—CBS, Columbia Salon Orch.  
 11:45—CBS, Electronic Piano  
 12 noon—Noonday Concert  
 1—Edna Wallace Hopper  
 1:30—Stocks; Records; Beauty talks  
 2—Happy Go Lucky Hour  
 3—Femline Fancies  
 4—"The Philistine"  
 4:15—Hodge Podge Lodge  
 4:45—Lost and Found  
 4:55—Town Topics  
 5—Sunshine Discoverers' Club  
 5:15—CBS, Nonspi Program  
 5:30—CBS, Evening in Paris  
 6—CBS, Deep River Jubilee  
 6:15—CBS, Swiss Yodelers  
 6:30—CBS, Edw. C. Hill  
 6:45—CBS, Howard Barlow Orch.  
 7:15—Connie Moffatt  
 7:30—CBS, Ted Lewis' Orchestra  
 8—Blue Monday Jamboree  
 10—Organ; Song Contest  
 10:10—News, Darrell Donnell  
 10:20—The Islanders  
 10:30—Dance Orchestra  
 12 to 1 A.M.—Request Hour

**296.6 Meters KQW Ballard 777**  
**1010 Kcys. 500 Watts**  
**Pac. Agric. Foundation, Ltd., San Jose**  
 7 A.M. to 3—Music; Talks; Reports  
 3—Stock Market Reports  
 4:30 P.M.—Various programs  
 6—Scott Held's Orchestra  
 6:15—Franco's program  
 6:30—Market Reports; Weather  
 7:03—Radio News and Forum  
 7:30—Minute Man; Band Concert  
 8—Sacred and Golden Memories  
 9—Accordion Capers  
 9:30 to 10 P.M.—Mauna Keans

**243.8 Meters KYA Prospect 3456**  
**1230 Kcys. 1000 Watts**  
**Pac. Broadcast Corp., San Francisco**  
 7:30 A.M.—Dawn Salute  
 7:45—Christian Science Program  
 8—Emporium Breakfast Hour  
 9—Melody Moods  
 10—Marian Day's Matinee  
 10:30—Records; Question Box  
 11:30—Rhymsters; Scriptures  
 12:03—Singing Strings; Organ  
 1—Afternoon Concert  
 2—P. T. A. Lecture  
 2:15—Royal Serenaders  
 3—Glen Goff, organist  
 4—Music Masters  
 5—Harmony Highlights  
 5:15—Records; Campbell Digest  
 6—Serenade; Waltz Idylls  
 6:45—Cecil and Sally  
 7—Paraders; "Ne'er Do Well"  
 7:45—Hawaiians  
 8—Sydney Dixon & G. Donald Gray  
 8:30—Tango Time  
 9—Modern Maestros  
 9:15—Junior Chamber of Commerce  
 9:30—Novelties; News; Organ  
 11-12 mid.—Concert Memories



**535.4 Meters KTAB** Garfield 4700  
560 Kcys. 1000 Watts  
Assoc. Broadcasters, Oakland, Calif.  
6:30 A.M.—Morning Watch; News  
7:45—Crazy Serenaders  
8—Rod Hendrickson, "Early Riser"  
8:30—Radio Shopper's Digest  
9—Hour of Prayer  
9:30—Dr. J. D. Thompson  
10—Household Hour; Records  
10:35—Health Talk; News  
11—Electrical Transcription  
12 noon—Noon Concert  
1—Radio Frolic  
1:30—Health Talk  
1:45—Over the Teacups  
2—Ye Old Towne Crier  
3—Organ Recital  
3:30—George Kreuger, pianist  
3:45—Studio program  
4—"Keep Smiling" Revue  
4:30—Crazy Quilt  
4:45—Oakland Post-Enquirer  
5—Uncle Rod's Smile Club  
5:30—Health talk; Question Box  
6:15—Emeryville Walkathon; News  
6:45—Ernie Smith, Sports  
7—Financial Advisor  
7:15—Cuban Cabaret; Toreadors  
7:45—Romance of the Turf  
8—Moonlight Melodies  
8:15—Detective Service Tales  
8:30—Miles of Melody  
9—Talking Reporter  
9:15—Souvenirs  
9:45—Rambles in Rhyme  
10—Orchestra; Walkathon  
12 to 1 A.M.—Night Owls

**280.2 Meters KJBS** Ord. 4148-49  
1070 Kcys. 100 Watts  
J. Brunton & Sons, San Francisco  
6 A.M.—Alarm Klock Klub  
8 to 7:30—Records; Talks; Music  
7:30 P. M.—Silent period  
12:01 to 6 A.M.—Owl program

**468.5 Meters KFI** Richm'd 6111  
640 Kcys. 50,000 Watts  
Earle C. Anthony, Inc., Los Angeles  
6:45 A.M. to 5—Various programs  
5 P.M.—Baron Keyes' Air Castle  
5:15—NBC, Sarah Kreindler  
5:30—NBC, Annie, Judy and Zeke  
5:45—NBC, Ortiz Tirado, tenor  
6—Betty Lou and Vonnie  
6:15—Orchestra with Chas. Wellman  
6:45—Keller, Sargent and Ross  
7—NBC, Amos 'n' Andy  
7:15—NBC, Everett Marshall, baritone with Mitchell's Orch.  
7:30—NBC, Demi-tasse Revue  
8—L. A. City School Music Dept.  
8:45—NBC, Ferde Grofe's Orchestra  
9—"Makers of History"  
9:30—Etude Ethiopians  
10—NBC, Richfield News Reporter  
10:15—Orchestra and Soloists  
10:30—Ambassador Hotel Orchestra  
11:30—NBC, Organ Concert

**319 Meters KOIN** Atwater 3333  
940 Kcys. 1000 Watts  
The Journal, Portland, Oregon  
6:30 A.M. to 6—Various program  
6—CBS, Deep River Jubilee  
6:15—CBS, Swiss Yodelers  
6:30—CBS, Edwin C. Hill  
6:45—CBS, Symphony Orchestra  
7:15—CBS, William O'Neal  
7:30—Black and Blue  
7:45—Studio Feature  
8—DLBS, Blue Monday Jamboree  
10—Leather Pushers  
10:15—Sport Flashes  
10:30 to 12 mid.—Dance Music

**483.6 Meters KGW** Atwater 2121  
620 Kcys. 1000 Watts  
Morning Oregonian, Portland, Ore.  
7 A.M. to 5—Various Programs  
5 P.M.—Piano Surprises  
5:15—NBC, Sarah Kreindler  
5:30—NBC, Annie, Judy & Zeke  
5:45—Ortiz Tirado  
6—Capt. Ervin Traffic Talk  
6:15—NBC, The Hour Glass  
6:30—NBC, Ship of Joy  
7—NBC, Amos 'n' Andy  
7:15—NBC, Al Mitchell's Orchestra  
7:30—NBC, MJB Demi Tasse Revue  
8—Covered Wagon Days  
8:30—NBC, Palmer House Orchestra  
8:40—Comedy Miniatures  
8:45—NBC, Ferde Grofe Orchestra  
9—Four Shades of Rhythm  
9:30—NBC, Doric Quartet  
10—NBC, Richfield News Flashes  
10:15—NBC, Dance Orchestra  
11:30 to 12 mid.—Organ Concert

**325.9 Meters KOMO** Elliott 5890  
920 Kcys. 1000 Watts  
Fisher's Blend Station, Inc., Seattle  
(Seattle Daylight Saving Time)  
7:55 A.M. to 5—Various programs  
5—NBC, Concert Serenaders  
5:15—Helms and Harkins  
5:30—NBC, Little Orphan Annie  
5:45—Cecil and Sally (E. T.)  
6—Today and Yesterday  
6:30—Song Idylls  
6:15—Quarter Hour of Health  
7—NBC, The Hour Glass  
8—NBC, Amos 'n' Andy  
8:15—Al Mitchell' Orchestra  
8:30—NBC, Demi-Tasse Revue  
9—Elmore Vincent, Grant Merrill and Thomas Freebairn-Smith  
9:15—Light Opera Melodies  
9:45—NBC, Ferde Grofe Orchestra  
10—Four Shades of Rhythm  
10:30—Big Opportunity Contest  
10:45—Paul Tutmore  
11—NBC, Richfield News Flashes  
11:15—Old Favorites  
11:30 to 12 midnight—Gondoliers

**333.1 Meters KHJ** VAndike 7111  
900 Kcys. 1000 Watts  
Don Lee Broadcast. System, L. A., Cal.  
7 A.M. to 5:15—Various programs  
5:15—Town Topics  
5:30—CBS, Evening in Paris  
6—CBS, Deep River Jubilee  
6:15—CBS, Swiss Yodelers  
6:30—CBS, Edwin C. Hill  
6:45—CBS, Colum. Symphony Orch.  
7:15—CBS, William O'Neal  
7:30—Balto Dog Catchers  
7:45—Orville Knapp's Orchestra  
8—Blue Monday Jamboree  
10—News Items; The Islanders  
10:30—To be announced  
11—Dance Orchestra  
12 to 1 A.M.—Organ recital

**225.4 Meters KGB** FRank. 6151  
1330 Kcys. 1000 Watts  
Don Lee, Inc., San Diego, California  
7 A.M. to 6—Various programs  
6—CBS, Deep River Jubilee  
6:15—CBS, Swiss Yodelers  
6:30—CBS, Edwin C. Hill  
6:45—CBS, Sheriff Cooper  
7—CBS, Columbia Symphony Orch.  
7:15—CBS, William O'Neal  
7:30—Tarzan  
7:45—CBS, Dance Orchestra  
8—Blue Monday Jamboree  
10—World-Wide News  
10:10—Islanders; Dance Music  
12 to 1 A.M.—Recordings

**236.1 Meters KOL** Main 2312  
1270 Kcys. 1000 Watts  
Seattle Broadcast. Co., Seattle, Wash.  
(Seattle Daylight Saving Time)  
6:45 A.M. to 12—Various Programs  
12 noon—CBS, Anr Leaf, organist  
12:15—CBS, Columbia Salon Orch.  
12:45—CBS, Messner Elec. Piano  
1—CBS, Frank Westphal's Orch.  
1:30—Julie Day  
1:45—CBS, Columbia Artists Recital  
2—CBS, True Animal Stories  
2:15—CBS, Ethel Hayden & A. Lang  
2:30—CBS, Between the Book Ends  
2:45—CBS, Tito Guizar  
3—Happy Go Lucky Hour  
4—Feminine Fancies  
5—Studio program  
5:15—Hodge Podge Lodge  
5:45—CBS, Rhythm Rhapsody  
6:15—CBS, Nonspi program  
6:30—CBS, An Evening in Paris  
7—CBS, Deep River Jubilee  
7:15—Radio Speaker Stevenson  
7:30—Black and Blue  
7:45—Chandu, the Magician  
8—Eb and Zeb  
8:15—Ken Stuart's program  
8:30—CBS, Ted Lewis' Orchestra  
9—Globe Trotter  
9:15—Blue Monday Jamboree  
11 to 12 midnight—Dance Music

**285.5 Meters KNX** Hemp. 4101  
1050 Kcys. 25,000 Watts  
Western Broadcast. Co., Los Angeles  
6:45 A.M. to 5:45—Various progs.  
5:45—Rhythm Boys; News  
6:15—Arizona Wranglers  
6:30—Orchestra and Lawrence King  
6:45—Growth' Up  
7—Frank Watanabe and Archie  
7:15—Black and Blue  
7:30—Auto Club program  
7:45—Count of Monte Cristo  
8—Dance Orchestra  
8:15—L. A. Realty Board  
8:45—Drury Lane, vocalist  
9—News Service  
9:15—Rance Valentine  
9:30—Ray West's Orchestra  
10 to 11 P.M.—Dance Orchestra

**508.2 Meters KHQ** Main 5383  
590 Kcys. 1000 Watts  
Louis Wasmser, Inc., Spokane, Wash.  
(Spokane Daylight Saving Time)  
7 A.M. to 1:15—Various programs  
1:15 P.M.—NBC, Farm and Home  
2—Studio programs  
3—NBC, Al Pearce and his Gang  
4—KHQ News  
4:30—NBC, Concert Ensemble  
4:45—Happy Feet  
5—Tull and Gibbs  
5:15—NBC, Arior, Trio  
5:30—NBC, Little Orphan Annie  
5:45—NBC, Song Fellows  
6—Voice of Texas  
6:15—To be announced  
6:30—NBC, Annie, Judy and Zeke  
6:45—NBC, Ortiz Tirado  
7—Three Little Maids  
7:15—NBC, Hour Glass  
7:30—NBC, Dobbsie's Ship of Joy  
8—Amos 'n' Andy  
8:15—NBC, Everett Marshall  
8:30—NBC, Demi-Tasse Revue  
9—Black and Blue  
9:15—Frank Funkhouser  
9:30—NBC, Richard Cole's Orch.  
10—NBC, Chas. Hart's Ensemble  
10:30—NBC, Doric Quartet  
11—NBC, Richfield News Flashes  
11:15 to 1 A.M.—NBC, Dance Music

# TUESDAY Programs

June 13, 1933

379.5 Mtrs. **NBC-KGO** Sutter 1920  
790 Kcys. 7500 Watts  
National Broadcast. Co., San Francisco  
7 A.M.—Organ Concert  
7:30—United States Army Band  
8—"Vic & Sade," domestic comedy  
8:15—Jack, Patsy, Sambo & Mandy  
8:30—To be announced  
9—Edna Fischer, pianist  
9:15—Buckaroos; songs and dialogue  
9:30—Martha Meade Society  
9:45—Rhythm Vendors  
10:30—Woman's Air Magazine  
11:30—Argentine Trio  
11:45—Meredith Willson's Orchestra  
12:15—West, Farm and Home Hour  
1—Melodic Thoughts; Orch. and vocal  
1:30—Schirmer & Schmitt, pianists  
1:45—John and Ned, vocal duo  
2—Al Pearce and his gang  
3—News Talk by Rush Hughes  
3:15—Arion Trio, piano, violin, cello  
3:45—Irish Songs and Stories  
4—Congress Hotel Orchestra  
4:30—Little Orphan Annie  
4:45—Balladettes; Orch. & vocalists  
5:30—Ed Wynn for Texaco  
6—Lives at Stake; Dramatization  
6:30—National Radio Forum  
7—Amos 'n' Andy  
7:15—Memory Lane; Drama  
7:45—Adventures in Health  
8—Duke Ellington's Orchestra  
8:30—Ben Bernie's Orchestra  
9—Waltz Time  
9:30—The Story Teller; Drama  
10—Richfield News Flashes  
10:15—Anson Weeks' Orchestra  
11—Abe Lyman's Orchestra  
11:30 to 12 mid.—Organ Concert

322.4 Meters **KFWI** Franklin 0200  
930 Kcys. 500 Watts  
Radio Entertainments, San Francisco  
7 A.M.—Early Bird; silent at 8  
9—Blues Chasers  
10—White House & Bellevue prog.  
10:30—Beauty Talk; Topics; Music  
11—Concert Melodies  
11:30—Indoor Sports  
11:45—Musical Portraits  
12 noon—The Range Riders  
12:30—Dance Music; 1 P. M., silent  
6—Downey Sisters; Dance Music  
6:45—Salon Memories  
7—Christian Science program  
7:15—Bellevue Trio; silent at 7:30  
11—Joe Wright's Orchestra  
11:30—Salon Serenade  
12—Paris at Midnight  
12:30 A. M. to 1—Hi-Dee-Ho!

322.4 Meters **KROW** Glenc. 6774  
930 Kcys. 1000 Watts  
Educa. Broad. Corp., Oakland, Calif.  
8 A.M.—News; Hill Billies  
8:45—Prosperity program  
9—Silent period  
1 P. M.—Latin American program  
2—Student Melodies  
2:15—Old Timers; Carnival  
3:30—Historical Hi-Lights  
3:45—Charming Melodies  
4—"Doc" Shahan's Ramblers  
4:30—Quartette; Pianologue  
5—Three Islanders  
5:15—Big Brother Walter  
5:45—Studio program; Silent at 6  
7:30—Sequoian Quartette  
7:45—Studio program  
8—Topics of the Day  
8:15—"Echoes of Yesterday"  
8:30—KROW Frolic  
10—Night Hawks  
10:30 to 11 P. M.—X-Bar-B Boys

440.9 Mtrs. **KPO** Sutter 1920  
680 Kcys. 50,000 Watts  
National Broadcast Co., San Francisco  
7:30 A.M.—Organ Concert  
8—Financial Service  
8:15—Pollock & Lawnhurst, pianists  
8:15—Rochester Mechanics Institute  
Exercises  
9—Words and Music  
9:15—Palmer House Ensemble  
9:30—Johnny O'Brien, harmonica  
9:45—News Service  
10—Tom Mitchell, baritone  
10:15—Songs by the Kitchen Sink  
10:30—New Kitchen Secrets  
10:45—Sisters of the Skillet  
11—Vocal Art Quartet  
11:30—Organ recital  
12 noon—Artists Service program  
12:30—Midday Musicales; News  
1:15—Ann Warner's Chats  
1:45—Nursery Rhymes; Milton Cross  
and Lewis James, tenor  
2—Mme. Frances Alda, soprano  
2:30—Mid-week Fed. Hymn Sing  
2:45—James Melton, tenor  
3—Jack and Loretta Clemens  
3:15—Radio in Education  
3:45—University of California  
4—Stringwood Ensemble  
4:30—Book Parade; book reviews  
4:45—Arnold and Amber Adventures  
5—Scotty's Talkathon  
5:15—Arion Trio  
6—Rhythm Vendors  
6:30—Social Planning  
6:45—Irving Kennedy, tenor  
7—Charles Runyan, pianist  
7:15—Jack Denny's Orchestra  
7:30—Master Singers  
7:45—Calif. State Chamber of Com.  
8—Chiffon Jazz  
8:30—Eno Crime Clues  
9—Music Box; Orchestra  
9:30—Bal Tabarin Orchestra  
10—Powder Puff Revue  
11:30—Charles Hart, instrumentalists  
11—Charles Runyan, organist  
11:30 to 12 mid.—Melody Mixers

296.6 Meters **KQW** Ballard 777  
1010 Kcys. 500 Watts  
Pac. Agric. Foundation, Ltd., San Jose  
7 A.M. to 3—Records; Talks; News  
3—Stock Market Reports  
4:30 P. M.—Various programs  
6—Dinner Music  
6:15—Franco's program  
6:30—Mkt. Reports; Farm Exch.  
7:03—Radio News and Forum  
7:30—Minute News; Band Concert  
8 to 10 P. M.—You Never Can Tell

535.4 Meters **KTAB** Garfield 4700  
560 Kcys. 1000 Watts  
Assoc. Broadcasters, Oakland, Calif.  
6:45 A. M.—Music; News; Talks  
12 noon—Records and Concert  
1—Radio Frolic  
1:30—Over the Teacups  
2—Ye Olde Towne Crier  
3—Organ; Health Talk  
4—"Keep Smiling" Revue  
4:30—Better Homes; News  
5—Uncle Rod's Club  
5:30—Dr. J. D. Thompson  
6—Concert; Walkathon; News  
6:45—Sport Page of the Air  
7—Studio program; June Bugs  
7:45—Voice of Democracy  
8—June Bride's Hour  
9—Reporter; Souvenirs  
9:45—Rambles in Rhyme  
10—Records; Dance Band  
12 to 1 A. M.—Night Owls

491.5 Meters **KFRC** Prospect 0100  
610 Kcys. 1000 Watts  
Don Lee Broadcast. System, S. F., Cal.  
7 A.M.—Records; Barnyard Melodies  
7:25—N. Y. Stocks; Exercises  
8—CBS, Buddy Harrod's Orch.  
8:15—Mary Sear's Garden Club  
8:30—CBS, Concert Miniatures  
8:55—National Oil products  
9—CBS, The Little French Princess  
9:15—Examiner Contest  
9:20—CBS, Harold Knight's Orch.  
9:30—CBS, Madison Ensemble  
10—CBS, Ann Leaf, Organist  
10:30—CBS, Voice of Experience  
10:45—CBS, Columbia Salon Orch.  
11—Prudence Penny  
11:15—Frances Lee Barton  
11:30—CBS, Frank Westphal's Or.  
12 noon—Sherman Clay Concert  
12:15—Tiny Newland and Trio  
12:30—Sherman Clay Concert  
1—CBS, Gypsy Music Makers  
1:15—CBS, Fred Berren's Orchestra  
1:30—CBS; Records  
1:45—"Belle and Martha"  
2—Happy Go Lucky Hour  
3—Feminine Fancies  
4—CBS, Mary Eastman  
4:15—Medical Society Health Talk  
4:30—Children's Radio Theatre  
4:45—Lost and Found  
4:50—Examiner Contest; Topics  
5—CBS, Wayfaring Men  
5:15—CBS, Fray and Braggiotti  
5:30—CBS, Nino Martini  
6—California Melodies  
6:30—CBS, Edwin C. Hill  
6:45—CBS, Colum. Symphony Orch.  
7:15—CBS, Charles Carlisle  
7:30—To be announced  
8—Globe Headlines  
8:15—CBS, Glen Gray's Orchestra  
8:30—CBS, Leon Belasco's Orchestra  
9—Gus Arnheim's Orchestra  
9:30—Hodge Podge Lodge  
10—Organ Interlude  
10:20—Golden Sands  
11—Dance Orchestra  
12 to 1 A. M.—Request hour

280.2 Meters **KJBS** Ord. 4148-49  
1070 Kcys. 100 Watts  
J. Brunton & Sons, San Francisco  
6 A. M.—Alarm Klock Klub  
6 to 7:30—Records; Talks; Music  
7:30 P. M.—Silent period  
12:01 to 6 A. M.—Owl program

340.7 Meters **KLX** Lake. 6000  
880 Kcys. 1000 Watts  
Tribune Pub. Co., Oakland, Calif.  
8 A. M.—Records; stocks  
8:30—Covered Wagon Jubilee  
9—Records; Stocks; News  
10:30—International Kitchen  
11—Sunshine Twins; News Flashes  
11:30—Guitar Duo; Fred Skinner  
12 noon—Jack Delaney's band  
1—Jean's Hi-Lights  
2—Recordings; News; Stocks  
2:45—Verna Anderson, pianist  
3—Records; News; Health School  
4—Garden Tips; Records  
4:30—Brother Bob's Club  
5—Covered Wagon Jubilee  
5:30—Helen Farnelee, pianist  
6—Hotel Oakland Trio  
7—News Items; Banjo Girls  
7:45—Fred & Morris, comedians  
8—John Wharry Lewis Quintet  
9—Old Gospel hymns  
9:30—Bungling Bunglers  
9:45—Nevada Night Herders  
10:15-11 P. M.—Dance Program

**243.8 Meters KYA** Prospect 3456  
1230 Kcys. 1000 Watts  
Pac. Broadcast Corp., San Francisco

7:30 A.M.—Dawn Salute  
7:45—Christian Science Program  
8—Emporium Breakfast Hour  
9—Melody Moods; Novelities  
10:30—NBC, Syncopators  
10:45—Recorded program  
12 noon—Scriptures; Concert  
12:45—Aviation Club  
1:15—Footlight Features  
1:45—Symphonic Band; Serenaders  
2:30—Verse: Mrs. M. C. Sloss  
2:45—Singing Strings; Organ  
4—Recorded programs  
5:45—Campbell Digest; Serenade  
6:15—Social Service News  
6:30—Waltz Idylls  
6:45—Cecil and Sally  
7—Hawaiian Melodies  
7:30—Mountain Echoes  
7:45—Bob Allen, Pianist  
8—Holman Dramatic Players  
8:30—Sydney Dixon and G. Donald Gray  
9—Tango Time  
9:30—The Cub Reporters  
9:45—News Flashes; Organ  
11-12 mid.—Concert Memories

**319 Meters KOIN** Atwater 3333  
940 Kcys. 1000 Watts  
The Journal, Portland, Oregon

6:30 A.M. to 5:30—Various programs  
5:30—CBS feature  
6—CBS, California Melodies  
6:30—CBS, Edwin C. Hill  
6:45—CBS, Symphony Orchestra  
7:15—CBS, Threads of Happiness  
7:30—CBS Orchestra  
7:45—Tarzan of the Apes  
8—Studio program  
8:30—Leon Belasco's Orchestra  
9—Gus Arnheim's Orchestra  
9:30—Hodge Podge Lodge  
10—Golden Sands  
10:30 to 12 midnight—Dance Music

**468.5 Meters KFI** Richm'd 6111  
640 Kcys. 50,000 Watts  
Earle C. Anthony, Inc., Los Angeles

6:45 A.M. to 5—Various programs  
5 P.M.—Baron Keyes' Air Castle  
5:15—NBC, Balladettes  
5:30—NBC, Ed Wynn for Texaco  
6—NBC, Lives at Stake  
6:30—Pierce Brothers Quartet  
6:45—Orch. and Robert Hurd, tenor  
7—NBC, Amos 'n' Andy  
7:15—NBC, Memory Lane  
7:45—NBC, Adventures in Health  
8:30—NBC, Ben Bernie's Orchestra  
9—"Tapestries of Life"  
9:30—Eno Crime Clues  
10—NBC, Richfield News Reporter  
10:15—Orchestra and Soloist  
10:30 to 12 midnight—Dance Music

**499.7 Meters KFSD** Franklin 6353  
600 Kcys. 1000 Watts  
Airfan Radio Corp., Ltd., San Diego

7:30 A.M. to 6—Various programs  
6 P.M.—Serenaders  
6:30—NBC, Nat'l Radio Forum  
7—Bernice Briggs  
7:15—NBC, Memory Lane  
7:45—Rafael Villagrana  
8—NBC, Cotton Club Orchestra  
8:30—Chamber of Commerce prog.  
8:45—Studio program  
9—NBC, Waltz Time  
9:30—NBC, Story Teller  
10—NBC, Richfield News Flashes  
10:15 to 12 mid.—Dance Music

**483.6 Meters KGW** Atwater 2121  
620 Kcys. 1000 Watts  
Morning Oregonian, Portland, Ore.

7 A.M. to 5—Various programs  
5 P.M.—NBC, Balladettes  
5:30—NBC, Ed Wynn  
6—NBC, Lives at Stake  
6:30—Concert Trio  
6:55—Portland Cleaning Works  
7—NBC, Amos 'n' Andy  
7:15—NBC, Memory Lane  
7:45—NBC, Adventures in Health  
8—Montag Fireside Hour  
8:30—NBC, Ben Bernie Orchestra  
9—Musical Mannequins  
9:30—Homicide Squad  
10—NBC, Richfield News Flashes  
10:15 to 12 mid.—Dance music

**333.1 Meters KHJ** VAndike 7111  
900 Kcys. 1000 Watts  
Don Lee Broadcast System, L. A., Cal.

7 A.M. to 5—Various programs  
5 P.M.—CBS, Wayfaring Men  
5:15—Town Topics  
5:20—To be announced  
5:30—CBS, Nino Martini  
6—CBS, California Melodies  
6:30—CBS, Edwin C. Hill  
6:45—CBS, Colum. Symphony Orch.  
7:15—CBS, Threads of Happiness  
7:30—Chandu, the Magician  
7:45—To be announced  
8—"Globe Headlines"  
8:15—CBS, Glen Gray's Orchestra  
8:30—Orville Knapp's Orchestra  
8:45—CBS, Leon Belasco's Orch.  
9—Gus Arnheim's Orchestra  
9:30—College Concerts  
10—News Items; Golden Sands  
10:30—To be announced  
11—Dance Music  
12 to 1 A.M.—Organ recital

**285.5 Meters KNX** Hemp. 4101  
1050 Kcys. 25,000 Watts  
Western Broadcast Co., Los Angeles

6:45 A.M. to 5:15—Various programs  
5:15—Arizona Wranglers  
5:30—Organ; Musical Program  
6—News; King Cowboy  
6:30—Lawrence King and Orchestra  
6:45—Growin' Up  
7—Frank Watanabe and Archie  
7:15—Miles of Melody  
7:45—Count of Monte Cristo  
8—Bob Shuler  
8:15—To be announced  
8:45—Drury Lane; News  
9:15—To be announced  
9:30—Ray West's Orchestra  
10 to 11—Dance orchestra

**225.4 Meters KGB** Frank. 6151  
1330 Kcys. 1000 Watts  
Don Lee, Inc., San Diego, California

7 A.M. to 6—Various programs  
6—CBS, California Melodies  
6:30—CBS, Edwin C. Hill  
6:45—CBS, Colum. Symphony Orch.  
7—Chandu the Magician  
7:15—To be announced  
7:30—CBS, Guy Lombardo's Orch.  
7:45—Fantasia; Headlines at 8  
8:15—Chamber of Commerce  
8:30—Eb and Zeb  
8:45—CBS, Leon Belasco's Orch.  
9—Arnheim Orchestra  
9:30—Hodge Podge Lodge  
10—World-Wide News  
10:10—Golden Sands; Orchestra  
12 to 1 A.M.—Recordings

**508.2 Meters KHQ** Main 5383  
950 Kcys. 1000 Watts  
Louis Wasmer, Inc., Spokane, Wash.

(Spokane Daylight Saving Time)  
7 A.M. to 12:30—Various programs  
12:30—NBC program  
12:45—NBC, Meredith Willson Orch.  
1—Sylvia Grey  
1:15—NBC, Farm and Home Hour  
2—Studio program  
3—NBC, Al Pearce and his Gang  
4—KHQ News  
4:30—NBC, Arion Trio  
5—Tull and Gibbs  
5:15—NBC, Congress Hotel Orch.  
5:30—NBC, Little Orphan Annie  
5:45—NBC, Balladettes  
6:15—To be announced  
6:30—NBC, Ed Wynn for Texaco  
7—NBC, Lives at Stake  
7:30—NBC, National Radio Forum  
8—Amos 'n' Andy  
8:15—NBC, Memory Lane  
8:45—NBC, Adventures in Health  
9—Northwest On Parade  
9:30—NBC, Ben Bernie's Orchestra  
10—NBC, Waltz Time  
10:30—NBC, The Story Teller  
11—NBC, News Flashes  
11:15 to 1 A.M.—NBC, Dance Music

**325.9 Meters KOMO** Elliott 5890  
920 Kcys. 1000 Watts  
Fisher's Blend Station, Inc., Seattle

(Seattle Daylight Saving Time)  
7:55 A.M. to 5:15—Various programs  
5:15—Helms and Harkins  
5:30—NBC, Little Orphan Annie  
5:45—Crazy Wells Serenaders  
6—Blue Serenaders  
6:30—Ed Wynn, Texaco Fire Chief  
7—NBC, Lives at Stake  
7:30—Vacation Land Review  
8—NBC, Amos 'n' Andy  
8:15—NBC, Memory Lane  
8:45—NBC, Adventures in Health  
9—Montag Fireside Hour  
9:30—Ben Bernie's Orchestra  
10—Musical Mannequins  
10:30—Hawaiian Melodies  
11—NBC, Richfield News Flashes  
11:15—Old Favorites  
11:30 to 12 midnight—Tyroleans

**236.1 Meters KOL** Main 2312  
1270 Kcys. 1000 Watts  
Seattle Broadcast Co., Seattle, Wash.

(Seattle Daylight Saving Time)  
9:45 A.M. to 1—Various programs  
1 P.M.—CBS, U. S. Navy Band  
1:30—Julie Day  
1:45—CBS, The Melodeers  
2—CBS, "Meet the Artist"  
2:15—CBS, Fred Berren's Orch.  
2:30—CBS, Between the Book Ends  
2:45—Belle and Martha  
3—Happy Go Lucky Hour  
4—Feminine Fancies  
5—CBS, Mary Eastman  
5:15—Walter Schelp Trio  
5:30—Studio program  
5:45—CBS, Songsmiths  
6—CBS, Wayfaring Men  
6:15—Sports Review  
6:30—CBS, Nino Martini  
6:45—Charles A. Reynolds  
7—CBS, California Melodies  
7:15—Radio Speaker Stevenson  
7:30—CBS, Edwin C. Hill  
7:45—Chandu the Magician  
8—CBS, Howard Barlow's Orchestra  
8:15—CBS, Charles Carlile  
8:30—CBS, Orchestra  
9—The Globe Trotter; Music  
9:30—Boxing Bout  
11 to 12 mid.—Dance Music

See Page 10



# WEDNESDAY Programs

June 14, 1933

379.5 Mtrs. **NBC-KGO** Sutter 1920  
790 Kcys. 7500 Watts

National Broadcast. Co., San Francisco  
7 A.M.—Organ Concert  
7:30—Rhythm Ramblers  
8—Lee S. Roberts' Memory Box  
8:15—Jack, Patsy, Sambo & Mandy  
8:30—To be announced  
9—Edna Fischer, pianist  
9:15—The Buckaroos  
9:30—Organ Concert  
9:45—Jean Abbey, Shop News  
10—Sarah Kreindler, violinist  
10:15—Books for Children  
10:30—Woman's Air Magazine  
11:30—Sax-o-Tunes  
12 noon—Southern Symphonies  
12:15—West. Farm and Home Hour  
1—Al Bernard, the Minstrel Man  
1:15—Trio Romantique  
1:30—Winnie the Pooh  
1:45—John and Ned, harmony duo  
2—Al Pearce and his Gang  
3—Langendorf Pictorial  
3:15—Dinner Concert  
3:30—Dandies of Yesterday  
3:45—Carl Kalash, violinist  
4—Pair of Pianos; Frankel & Lyne  
4:30—Little Orphan Annie  
4:45—Rialto Echoes; Dance orch.  
5:30—Myron Niesley, tenor  
5:45—Sax Appeal  
6—Corn Cob Pipe Club  
6:30—Charles Hart, instrumentalists  
7—Amos 'n' Andy  
7:15—Everett Marshall, baritone  
7:30—Eddie Peabody, entertainer  
8—Ralph Kirby, vocalist  
8:05—Frank Libuse's Orchestra  
8:30—Edgewater Beach Orchestra  
8:45—Ferde Grofe's Orchestra  
9—One Man's Family; Drama  
9:30—Concert in Rhythm  
10—Richfield News Flashes  
10:15—Anson Weeks' Orchestra  
11—Abe Lyman's Orchestra  
11:30 to 12 mid.—Organ Concert

440.9 Mtrs. **KPO** Sutter 1920  
680 Kcys. 50,000 Watts

National Broadcast Co., San Francisco  
7:30 A.M.—Organ Concert  
8—Financial Service  
8:15—Catherine Field, soprano  
8:30—Merrie Men, male quartet  
8:45—Rhythmic Serenade  
9—Words and Music  
9:15—Palmer House Ensemble  
9:30—Johnny O'Brien, harmonica  
9:45—News Service  
10—Tom Mitchell, baritone  
10:15—Fashion Flashes  
10:30—Syncopators; Orchestra  
10:45—Sisters of the Skillet  
11—Grand Trio, Instrumentalists  
11:30—Happy Days in Dixie  
12 noon—Midday Musicals; News  
1:15—Ann Warner, household talks  
1:45—Musical Moments  
2—Waldorf-Astoria Orchestra  
2:30—Back of the News  
2:45—Soloist; Melody Mixers  
3:45—Univ. of Calif. program  
4—Dance Moods  
4:30—Mary Steele, contralto  
4:45—Kenneth Spencer, basso  
5—U. S. Marine Band  
5:30—Synco Thots; News  
6—Sunset Serenaders  
6:45—Detectives Black and Blue  
7—Organ Concert  
7:15—Tarzan of the Apes  
7:30—Palmer House Ensemble  
8—Calliformians on Parade  
8:30—Eno Crime Clues

9—Rhythm Vendors  
9:30—Bal Tabarin Orchestra  
10—Emil Polak's Orchestra  
10:30—Meredith Willson Orchestra  
11—Organ Recital  
11:30 to 12 mid.—Jim Taft's Orch.

491.5 Meters **KFRC** Prospect 0100  
610 Kcys. 1000 Watts

Don Lee Broadcast. System, S. F., Cal.  
7 A.M.—Records; Barnyard Melodies  
7:25—Stocks; Exercises  
8—To be announced  
8:15—Mary Sears' Garden Club  
8:30—To be announced  
9—CBS, Little French Princess  
9:15—Ye Old Song Contest  
9:20—CBS, George Hall's Orchestra  
9:30—Betty Crocker  
9:45—CBS, George Scherban's Orch.  
10—CBS, Ann Leaf, Organist  
10:30—CBS, Colum. Artists Recital  
10:45—CBS, Mark Warnow's Orch.  
11—Goodwill Industries  
11:05—Mary Haines, household hints  
11:15—Prudence Penny  
11:30—CBS, Vocalist and Orchestra  
11:45—CBS, Claude Hopkins' Orch.  
12 noon—Sherman Clay Concert  
12:15—Tiny Newland and Trio  
12:30—Sherman Clay Concert  
1—Edna Wallace Hopper  
1:05—CBS, Fred Berren's Orch.  
1:30—N. Y. Stocks; Records  
1:45—"Belle and Martha"  
2—Happy Go Lucky Hour  
3—Feminine Fancies  
4—"The Phillistine"  
4:15—Hodge Podge Lodge  
4:45—Lost and Found  
4:50—Song Contest; Town Topics  
5—"Sunshine Discovers' Club"  
5:15—CBS, Nonspi Company  
5:30—Bobs, Sports Authority  
5:45—Consuella Gonzales and Dick  
Aurandt, vocalist with organ  
6—CBS, Old Gold program  
6:30—CBS, Edwin C. Hill  
6:45—CBS, Light Opera Gems  
7:15—CBS, Little Jack Little  
7:30—CBS, Freddie Martin's Orch.  
8—Globe Headlines  
8:15—CBS, Eddie Duchin's Orch.  
8:30—CBS, Lombardo, Burns, Allen  
9—Gus Arnheim's Orchestra  
9:30—Catherine, the Great  
10—Organ; Song Contest  
10:10—Darrell Donnell, News  
10:20—Archie Loveland's Band  
10:30—Isle of Golden Dreams  
11—Johnny Robinson's Orch.  
12 to 1 A.M.—Request hour

468.5 Meters **KFI** Richm'd 6111  
640 Kcys. 50,000 Watts

Earle C. Anthony, Inc., Los Angeles  
6:45 A.M. to 5—Various programs  
5 P.M.—Baron Keyes' Air Castle  
5:15—NBC, U. S. Marine Band  
5:30—NBC, Myron Niesley, tenor  
5:45—NBC, Sax Appeal  
6—NBC, Corn Cob Pipe Club  
6:30—NBC, Charles Hart  
7—NBC, Amos 'n' Andy  
7:15—NBC, Mitchell's Orchestra  
7:30—NBC, Eddie Peabody  
8—Orchestra and Soloist  
8:30—To be announced  
8:45—NBC, Ferde Grofe's Orch.  
9—NBC, One Man's Family  
9:30—Eno Crime Clues  
10—NBC, Richfield News Reporter  
10:15—Orchestra and Soloist  
10:30—Ambassador Hotel Orchestra  
11:30 to 12 mid.—Dance Orchestra

243.8 Meters **KYA** Prospect 3456  
1230 Kcys. 1000 Watts

Pac. Broadcast Corp., San Francisco  
7:30 A.M.—Dawn Salute  
7:45—Christian Science Program  
8—Emporium Breakfast Hour  
9—Melody Moods  
10—Marian Day's Matinee  
10:30—Records; Question Box  
11:30—Rhythmsters  
12 noon—Scriptures; Concert  
12:03—Mid-day Concert  
12:30—Glen Goff, Organist  
1—Royal Serenaders  
1:30—Modern Maestros  
2:15—Quartet; Question Box  
2:45—Mountain Echoes  
3—Jack and Loretta Clemens  
3:15—Glen Goff, organist  
4:15—Better Business Bureau  
4:30—Symphony Highlights  
5—"Safety First," Talk  
5:15—Sunset Revue  
5:45—Campbell Digest  
6—Paraders; Waltz Idylls  
6:45—Cecil and Sally  
7—Slavic Concert  
7:30—"The Ne'er Do Well"  
7:45—Tango Time  
8—"Souvenirs of Italy"  
9—John Wolohan's Orchestra  
9:45—News Flashes; Organ  
11-12 Mid.—Concert Memories

535.4 Meters **KTAB** Garfield 4700  
560 Kcys. 1000 Watts

Assoc. Broadcasters, Oakland, Calif.  
6:45 A.M.—Music; News  
8—Rod Hendrickson, "Early Riser"  
8:30—Radio Shoppers' Digest  
9—Morning Prayer Hour  
9:30—Dr. J. D. Thompson  
10—Household hour; Records  
10:30—Records; Dr. Corley  
10:55—News; Records; Talk  
11:30—Buckhorn Boys  
12 noon—Concert; Records  
1—Radio Frolic; Health Talk  
1:45—Over the Teacups  
2—Ye Old Towne Crier  
3—Organ Concert  
3:30—George Krueger, pianist  
4—"Keep Smiling" Revue  
4:30—Siesta; News Service  
5—Uncle Rod's Club  
5:30—Dr. J. D. Thompson  
6—Automobile Question Box  
6:15—Emeryville Walkathon  
6:30—News Reporter; Sport Page  
7—Financial Advisor  
7:15—Cuban Cabaret; Toreadors  
7:45—Romance of the Turf  
8—March Players  
8:30—Miles of Melody  
9—Reporter; Souvenirs  
9:45—Rambles in Rhyme  
10—Dance Band; Walkathon  
12 to 1 A.M.—Night Owls

285.5 Meters **KNX** Hemp. 4101  
1050 Kcys. 25,000 Watts

Western Broadcast. Co., Los Angeles  
6:45 A.M. to 6—Various programs  
6—News Service  
6:15—Arizona Wranglers  
6:30—Political Talk  
6:45—Growin' Up  
7—Frank Watanabe and Archie  
7:15—Black and Blue  
7:30—Fifty Famous Land Marks  
7:45—Count of Monte Cristo  
8—Studio program; News  
9:15—Rance Valentine  
9:30—Ray West's Orchestra  
10 to 11 P.M.—Dance Music



**340.7 Meters KLX Lake. 6000**  
**880 Kcys. 1000 Watts**  
 Tribune Pub. Co., Oakland, Calif.

- 8 A.M.—Records; Stocks
- 8:30—Covered Wagon Jubilee
- 9—Records; Stocks; News
- 10:30—International Kitchen
- 11—Sunshine Twins; News Flashes
- 11:30—Novelty Guitar Duo
- 11:45—Clark Sisters
- 12 noon—Jack Delanevs band
- 1—"Timely Garden Tips"
- 1:15—Jean's Hi-Lights; Records
- 2:35—Better Business talk; Stocks
- 2:45—Verna Anderson, pianist
- 3—Records; News Flashes
- 3:32—Nancy Ann Hersey, pianist
- 3:45—Health School; Records; News
- 4:30—Brother Bob's Club
- 5—Covered Wagon Jubilee
- 5:30—News; The Lovable Liars
- 5:45—Helen Parmelee, pianist
- 6—Hotel Oakland Tric; News
- 7:30—Jack Manley, violinist; Helen Crawford, accompanist
- 7:45—Fred and Morris, comedians
- 8—Nevada Night Herders
- 8:30—Dot Kay, contralto, Herb Kennedy, tenor; and the Three Echoes
- 9—Manila Stringed Orchestra
- 9:30—Bungling Bunglers
- 9:45—Helen Parmelee, pianist
- 10—Fred Skinner
- 10:15 to 11 P.M.—Dance program

**296.6 Meters KQW Ballard 777**  
**1010 Kcys. 500 Watts**  
 Pac. Agric. Foundation, Ltd., San Jose

- 7 A.M. to 3—Records; Talks; Music
- 3—Stock Market Reports
- 4:30 P.M.—Various programs
- 6—Dinner Music
- 6:15—Franco's program
- 6:30—Market Reports
- 6:45—Farmers' Exchange; Weather
- 7:03 P.M.—News and Forum
- 7:30—State Chamber of Commerce
- 7:45—Message from Your Dairyman
- 8—Amer. Legion War Camp
- 8:15—Gene Mancini, tenor
- 8:30—Music Lovers' program
- 9—A Caro Miller
- 9:30 to 10 P.M.—Monarch Melodies

**322.4 Meters KROW Glenc. 6774**  
**930 Kcys. 1000 Watts**  
 Educa. Broad. Corp., Oakland, Calif.

- 8 A.M.—News; Hill Billies
- 8:45—Prosperity program; 9, silent
- 1 P.M.—Latin-American program
- 2—Student Melodies
- 2:15—Old Timers; Carnival
- 3:30—Historical Hi-Lights
- 3:45—Charming Melodies
- 4—"Doc" Shahan and Rambles
- 4:30—Quartette; Pianologue
- 5—Three Islanders
- 5:15—Big Brother Walter
- 5:45—Studio program; 6, silent
- 7:30—Italian program
- 8—Topics of the Day
- 8:15 to 8:30 P.M.—Watch Tower

**322.4 Meters KFWI Franklin 0200**  
**930 Kcys. 500 Watts**  
 Radio Entertainments, San Francisco

- 7 A.M.—Early Bird; silent at 8
- 9—Blues Chasers; Dr. Corley
- 10—White House & Bellevue prog.
- 10:30—Beauty Talk; Topics; Music
- 11—Concert Melodies
- 11:15—Maria Vogel, contralto
- 11:30—Baldwin Melody Girl
- 11:45—Musical Novelties
- 12 noon—The Range Riders

- 12:30—Dance Music; silent at 1
- 6—Dance Music
- 6:30—Salon Memories
- 7—Christian Science program
- 7:15—Bellevue Trio; silent at 7:30
- 8:30—Virginia Mifka, pianist
- 8:45—John D. Barry
- 9—Domestic Relations program
- 9:30—Open Forum
- 9:45—Chesley Mills Trio
- 10—Master Melodies
- 11—Joe Wright's Orchestra
- 11:30—Salon Serenade
- 12—Paris at Midnight
- 12:30 A.M. to 1—Hi-Dee-Ho!

**333.1 Meters KHJ VAndike 7111**  
**900 Kcys. 1000 Watts**  
 Don Lee Broadcast. System, L. A., Cal.

- 7 A.M. to 6—Various Programs
- 6 P.M.—CBS, Old Gold
- 6:30—CBS, Edwin C. Hill
- 6:45—CBS, Light Opera Gems
- 7:15—CBS, Little Jack Little
- 7:30—Chandu, the Magician
- 7:45—Orville Knapp's Orchestra
- 8—"Globe Headlines"
- 8:15—S. & W. "Mellow'd Melodies"
- 8:30—Guy Lombardo's Orch. with Burns and Allen
- 9—Gus Arnheim Orchestra
- 9:30—Catherine, the Great
- 10—News Items
- 10:15—Dance Orchestra
- 10:30—Isle of Golden Dreams
- 11—Dance Orchestra
- 12 to 1 A.M.—Organ Recital

**319 Meters KOIN Atwater 3333**  
**940 Kcys. 1000 Watts**  
 The Journal, Portland, Oregon

- 6:30 A.M. to 5—Various programs
- 5—Sports Authority
- 5:15—CBS, Nonspi Program
- 6—CBS, Old Gold program
- 6:30—CBS, Edwin C Hill
- 6:45—CBS, Light Opera Gems
- 7:15—CBS, Little Jack Little
- 7:30—Black and Blue
- 7:45—Studio program
- 8—CBS, Eddie Duchin's Orchestra
- 8:30—CBS, Ozzie Nelson's Orchestra
- 9—Gus Arnheim's Orchestra
- 9:30—"The Wanderer"
- 10—Johnny Robinson's Orchestra
- 10:30—"Isle of Golden Dreams"
- 11 to 12 mid.—Dance Music

**508.2 Meters KHQ Main 5383**  
**590 Kcys. 1000 Watts**  
 Louis Wasmer, Inc., Spokane, Wash.

- (Spokane Daylight Saving Time)
- 7 A.M. to 1—Various Programs
- 1 P.M.—Sylvia Grey
- 1:15—NBC, Farm and Home Hour
- 1:45 P.M.—Studio programs
- 3—NBC, Al Pearce and his Gang
- 4—KHQ News
- 4:30—NBC program
- 5—Tull and Gibbs
- 5:15—NBC, A Pair of Pianos
- 5:30—NBC, Orphan Annie
- 5:45—To the Sweethearts
- 6—Voice of Texas
- 6:15—U. S. Marine Band
- 6:30—NBC, Myron Niesley, tenor
- 7—NBC, Corn Cob Pipe Club
- 7:30—to be announced
- 8—NBC, Amos 'n' Andy
- 8:15—NBC, Everett Marshall
- 8:30—NBC, Eddie Peabody, banjoist
- 9—Detectives Black and Blue
- 9:15—to be announced
- 10—NBC, One Man's Family
- 10:30—Concert in Rhythm
- 11—NBC, News Flashes
- 11:15 to 1 A.M.—NBC, Dance Music

**325.9 Meters KOMO Elliott 5890**  
**920 Kcys. 1000 Watts**  
 Fisher's Blend Station, Inc., Seattle

- (Seattle Daylight Saving Time)
- 7 A.M. to 5—Various programs
- 5 P.M.—NBC, Pair of Pianos
- 5:15—Helms and Harkins
- 5:30—NBC, Little Orphan Annie
- 5:45—Crazy Wells Serenaders
- 6—Blue Serenaders
- 6:30—NBC, Myron Niesley
- 6:45—Sax Appeal
- 7—NBC, Corn Cob Pipe Club
- 7:30—Orchestra
- 7:45—Merril and Vincent
- 8—NBC, Amos 'n' Andy
- 8:15—Al Mitchell's Orchestra
- 8:30—NBC, Eddie Peabody
- 9—Baldy's Homespun Melodies
- 9:15—Light Opera Melodies
- 9:45—NBC, Ferde Grofe's Orch.
- 10—NBC, One Man's Family
- 10:30—Big Opportunity Contest
- 10:45—Tyroleans
- 11—NBC, Richfield News Flashes
- 11:15—Paul Tutmore
- 11:30 to 12 midnight—Gondoliers

**236.1 Meters KOL Main 2312**  
**1270 Kcys. 1000 Watts**  
 Seattle Broadcast. Co., Seattle, Wash.

- (Seattle Daylight Saving Time)
- 6:45 A.M. to 12—Various Programs
- 12 noon—CBS, Rhythm Kings
- 12:15—Belle Forbes Cutter Orchestra
- 1:15—CBS, Claud Hopkins' Orch.
- 1:30—CBS, Round Towners
- 1:30—Julie Day
- 1:45—CBS, "Going to Press"
- 2—CBS, Fred Berren's Orchestra
- 2:30—Between the Book Ends
- 2:45—Belle and Martha
- 3—Happy Go Lucky Hour
- 4—Feminine Fancies
- 5—Studio program
- 5:15—Hodge Podge Lodge
- 5:45—CBS, Royal Midwesterners
- 6:15—CBS, Nonspi program
- 6:30—Organ and Vocalist
- 6:45—Radio Speaker Stevenson
- 7—CBS, Old Gold program
- 7:30—Black and Blue
- 7:45—Chandu the Magician
- 8—Eb and Zeb
- 8:15—Ken Stuart's program
- 8:30—Ralph Horr
- 8:45—CBS, Freddie Martin's Orch.
- 9—Globe Trotter
- 9:15—CBS, Eddie Duchin's Orch.
- 9:30—CBS, White Owl
- 10 to 12 midnight—Dance Music

**483.6 Meters KGW Atwater 2121**  
**620 Kcys. 1000 Watts**  
 Morning Oregonian, Portland, Ore.

- 7 A.M. to 5—Various programs
- 5 P.M.—Piano Surprises
- 5:15—NBC, Rialto Echoes
- 5:30—NBC, Myron Niesley, tenor
- 5:45—NBC, Sax Appeal
- 6—Corncob Pipe Club
- 6:30—Sam Gordon, "Kibitzer"
- 6:45—Texas Cowboy
- 7—NBC, Amos 'n' Andy
- 7:15—NBC, E. Marshall, baritone
- 7:30—NBC, Eddie Peabody, banjo
- 8—Baldy's Homespun Melodies
- 8:15—NBC, Orchestras
- 8:45—NBC, Ferde Grofe Orch.
- 9—NBC, One Man's Family
- 9:30—Portland Cleaning Works
- 9:35—NBC, Concert in Rhythm
- 9:45—G. A. Paine, violinist
- 10—NBC, Richfield News Flashes
- 10:15—NBC, Anson Weeks' Orch.
- 11—NBC, Abe Lyman's Orchestra
- 11:30 to 12 mid.—Jim Taft's Orch.

# THURSDAY Programs

June 15, 1933

**379.5 Mtrs. NBC-KGO** Sutter 1920  
790 Kcys. 7500 Watts  
National Broadcast. Co., San Francisco

7 A.M.—Singing Strings  
7:30—U. S. Navy Band  
8—"Vic & Sade," Comedy Skit  
8:15—Jack, Patsy, Sambo & Mandy  
8:30—To be announced  
9—Edna Fischer, pianist  
9:15—The Buckaroos  
9:30—Martha Meade Society  
9:45—Johnny Toffoli, accordionist  
10—Woman's Magazine of the Air  
11—Arion Trio  
11:45—Organ Concert  
12:15—Western Farm and Home  
1—Green Brothers Novelties  
1:30—Trio Romantique  
1:45—John and Ned, harmony duo  
2—Al Pearce and His Gang  
3—Rush Hughes, News talk  
3:15—Olga, Countess Albani, soprano  
3:30—Concert Footlights  
3:45—Talk by Merle Thorpe  
4—Fleischmann Hour  
5—Dance Journal  
5:30—Memory's Melody  
6—Lucky Strike Dance Hour  
7—Amos 'n' Andy  
7:15—Sam Robbins' Orchestra  
7:30—Death Valley Days  
8—Standard Symphony Hour  
9—Captain Henry's Showboat  
10—Richfield News Flashes  
10:15—Anson Weeks Orchestra  
11—Abe Lyman's Orchestra  
11:30 to 12 mid.—Organ Concert

**491.5 Meters KFRC** Prospect 0100  
610 Kcys. 1000 Watts  
Don Lee Broadcast. System, S. F., Cal.

7 A.M.—Records; Barnyard Melodies  
7:25—Stocks; Exercises  
8—CBS, Buddy Harrod's Orchestra  
8:15—Mary Sears' Garden Club  
8:30—CBS, Concert Miniatures  
9—CBS, Little French Princess  
9:15—Ye Olde Song Contest  
9:20—CBS, Harold Knight's Orch.  
9:30—CBS, Geo. Scherban's Orch.  
10—Ann Leaf, Organist  
10:30—CBS, The Merrymakers  
11—Prudence Penny  
11:15—Frances Lee Barton  
11:30—CBS, Frank Westphal's Or.  
12 noon—Sherman Clay Concert  
12:15—Tiny Newland & Trio  
12:30—Sherman Clay Concert  
1—Discovery Hour; Farm News  
1:45—"Belle and Martha"  
2—Happy Go Lucky Hour  
3—Feminine Fancies  
4—CBS, Evan Evans, Do Re Mi  
4:30—Children's Radio Theatre  
4:45—Lost and Found Items  
4:50—Song Contest; Town Topics  
5—CBS, Wayfaring Men  
5:15—CBS, Fray and Braggiotti  
5:30—CBS, Col. Stoopnagle & Budd  
6—CBS, John Henry  
6:15—CBS, Windy City Revue  
6:45—CBS, Colum. Symphony Orch.  
7:15—CBS, Phil Reegan  
7:30—Vagabonds of the Hills  
8—Globe Headlines  
8:15—CBS, Glen Gray's Orchestra  
8:30—Sports Parade  
9—Gus Arnheim's Orchestra  
9:30—The Buccaneers  
9:45—The Personality Trio  
10—Organ; Song Contest; News  
10:20—Berceuse  
10:30—Raymond Paige's Orchestra  
11—Dance Orchestra  
12 to 1 A.M.—Request Hour

**440.9 Mtrs. KPO** Sutter 1920  
680 Kcys. 50,000 Watts  
National Broadcast. Co., San Francisco

7:30 A.M.—Organ Concert  
8—Financial Service  
8:15—On Wings of Song  
8:30—Marion and Jim Jordan  
9—Words and Music  
9:15—Palmer House Ensemble  
9:30—Johnny O'Brien, harmonica  
9:45—News Service  
10—Tom Mitchell, baritone  
10:15—Songs by the Kitchen Sink  
10:30—New Kitchen Secrets  
10:45—Sisters of the Skillet  
11—Echoes of Erin  
11:30—Radio Troubadors  
11:45—Happy Jack Turner  
12 noon—Thursday Special  
1—News Items  
1:15—Ann Warner's Chats  
1:45—Genia Fonarova, soprano  
2—Waldorf-Astoria Orchestra  
2:30—John B. Kennedy  
2:35—Essex House Ensemble  
3—Rhythm Vendors  
3:45—Univ. of Calif. Program  
4—California Dons' Orchestra  
4:30—Arion Trio  
5:15—Behind the Footlights  
5:30—Eileen Piggott, soprano  
5:45—News; Tone Portraits  
6:30—Federal Business Talk  
6:45—Irving Kennedy, Tenor  
7—Organ Concert  
7:15—S. F. Municipal Government  
7:30—U. S. Army Band  
8—Don Bestor Orchestra  
8:30—Dancing in Twin Cities  
9—Crosscuts o' the Day  
9:30—Bal Tabarin Orchestra  
10—The Orchestra  
10:30—Rhythm Aces  
11—Organ Music  
11:30 to 12 mid.—To be announced

**296.6 Meters KQW** Ballard 777  
1010 Kcys. 500 Watts  
Pac. Agric. Foundation, Ltd., San Jose

7 A.M. to 3—Talks; Music  
3—Stock Market Reports  
4:30 P.M.—Various programs  
6—Dinner Music  
6:15—Franco's program  
6:30—Market Reports  
6:45—Farmers' Exchange; Weather  
7:30—Radio News and Forum  
7:30—"Topics of the Day"  
8—Old Church Choir  
9—Songs You Love to Sing  
9:15—Pezzolo Sisters  
9:30—Musical Readings  
9:45 to 10 P.M.—Studio program

**322.4 Meters KFWD** Franklin 0200  
930 Kcys. 500 Watts  
Radio Entertainments, San Francisco

7 A.M.—Early Bird; silent at 8  
9—Blues Chasers  
10—White House & Bellevue prog.  
10:30—Beauty Talk; Topics; Music  
11—Concert Melodies  
11:30—Indoor Sports  
11:45—Musical Portraits  
12 noon—The Range Riders  
12:30—Dance Music; silent at 1  
6—Downey Sisters; Dance Time  
6:45—Salon Memories  
7—Christian Science program  
7:15—Bellevue Trio  
7:30—Silent period  
11—Joe Wright's Orchestra  
11:30—Salond Serenade  
12—Paris at Midnight  
12:30 A.M. to 1—Hi-Dee-Ho!

**535.4 Meters KTAB** Garfield 4700  
560 Kcys. 1000 Watts  
Assoc. Broadcasters, Oakland, Calif.

6:45 A.M.—Concert; News; Records  
7:45—Serenaders; Doc Herrold  
8:30—Radio Shoppers' Digest  
9—Morning Prayer Hour  
9:30—Dr. J. D. Thompson  
10—Household Hour; Records  
10:35—Dr. B. L. Corley; News  
11—Elec. Transc.; Beauty Talk  
11:30—Buckhorn Boys  
11:45—Elec. Transc.; Records  
1—Radio Frolic  
1:30—Over the Teacups  
2—Ye Olde Towne Crier  
3—Organ Concert  
3:30—George Kreuger, pianist  
3:45—Studio Airs  
4—"Keep Smiling" Revue  
4:30—Better Homes; News  
5—Uncle Rod's Club  
5:30—Dr. J. Douglas Thompson  
6—Dinner Concert  
6:15—Walkathon; News  
6:45—Sport Page of the Air  
7—June Bugs  
8—KTAB 8 o'Clock Show  
9—Reporter; Souvenirs  
9:45—Rambles in Rhyme  
10—Records; Dance Music  
12 to 1 A.M.—Night Owls

**340.7 Meters KLX** Lake. 6000  
880 Kcys. 1000 Watts  
Tribune Pub. Co., Oakland, Calif.

8 A.M.—Records; Stocks  
8:30—Covered Wagon Jubilee  
9—Records; Clinic of the Air  
10:15—Financial Information  
10:30—International Kitchen  
11—Sunshine Twins; News  
11:30—Curtain Calls  
11:45—Fred Skinner, What Have You  
12 noon—Jack Delaney's band  
1—Jean's Hi-Lights  
2—Recordings; News; Stocks  
3:45—McCoy Health School  
4—Records; News Flashes  
4:30—Brother Bob's Club  
5—Covered Wagon Jubilee; News  
5:30—Head's College program  
6—Hotel Oakland Trio  
7—News items; Clark Sisters  
7:45—Sports Hi-Lights  
8—Iversen's String Quartet  
8:30—Studio program  
9:30—Bungling Bunglers  
9:45—Helen Parmelee, pianist  
10 to 11 P.M.—Dance program

**322.4 Meters KROW** Glenc. 6774  
930 Kcys. 1000 Watts  
Educa. Broad. Corp., Oakland, Calif.

8 A.M.—News; Hill Billies  
8:45—Prosperity program; 9, silent  
1 P.M.—Latin-American program  
2—Student Melodies  
2:15—Old Timers; Carnival  
3:30—Historical Hi-Lites; Melodies  
4—"Doc" Shahan and Rammers  
4:30—Quartette; Pianologue  
5—Three Islanders  
5:15—Brother Walter; Studio prog.  
6—Silent period  
7:30—Howard Eastwood, pianist  
7:45—Tom King, detective stories  
8—Topics of the Day  
8:15—Poet's Gold  
8:30—Crystal Boys  
9—Pemm Repertory Players  
9:30—Chamber of Commerce speaker  
10—Night Hawks  
10:30 to 11 P.M.—X-Bar-B Boys

**243.8 Meters KYA** Prospect 3456  
1230 Kcys. 1000 Watts  
Pac. Broadcast Corp., San Francisco

- 7:30 A.M.—Dawn Salute
- 7:45—Christian Science Program
- 8—Emporium Breakfast Club
- 9—Melody Moods
- 10—Marian Day's Matinee
- 10:30—NBC, The Pioneers
- 10:45—Records; Scripts
- 12:03—Town Hall Harmonies
- 12:15—Glen Goff, organist
- 1—Shrine Club Luncheon
- 1:30—Mid-day Concert
- 2—International Troubadours
- 2:15—Hawaiian Melodies
- 2:45—Singing Strings
- 3—NBC, Regimentalists
- 3:15—Organ Matinee
- 4:15—Florence Mendoza, Old Songs
- 4:30—Music Masters
- 5—Sunset Revue; Campbell Digest
- 6—Serenade; Waltz Idylls
- 6:45—Cecil and Sally
- 7—Bob Allen, pianist
- 7:15—"Sportsman's Corner"
- 7:30—Musical Novelties
- 8—John Wolohan's Orchestra
- 8:30—Sports Review
- 9—Modern Maestros
- 9:15—Tango Time
- 9:30—The Cub Reporters
- 9:45—News Flashes; Organ
- 11-12 mid.—Concert Memories

**280.2 Meters KJBS** Ord. 4148-49  
1070 Kcys. 100 Watts  
J. Brunton & Sons, San Francisco

- 6 A.M.—Alarm Klock Klub
- 8 to 2—Records; Talks; Music
- 2—Blindcraft Ensemble
- 2:30—Records; News; Music
- 7:30 P.M.—Silent period
- 12:01 to 6 A.M.—Owl Program

**333.1 Meters KHJ** VAndike 7111  
900 Kcys. 1000 Watts  
Don Lee Broadcast. System, L. A., Cal.

- 7 A.M. to 5—Various programs
- 5—Fire Department Talks
- 5:15—Town Topics; Studio program
- 5:30—CBS, Col. Stoopnagle & Budd
- 6—Pasadena Community Players
- 6:15—CBS, Windy City Revue
- 6:45—CBS, Symphony Orchestra
- 7—Inglewood Park Concert
- 7:30—"Chandu, the Magician"
- 7:45—CBS, Ted Lewis' Orchestra
- 8—Globe Headlines
- 8:15—Laff Clinic
- 9—Orville Knapp's Orchestra
- 9:15—Gus Arnheim's Orchestra
- 9:30—The Buccaneers
- 9:45—Olga Steeb
- 10—News; Berceuse
- 11—Dance Music
- 12 to 1 A.M.—Organ recital

**285.5 Meters KNX** Hemp. 4101  
1050 Kcys. 25,000 Watts  
Western Broadcast. Co., Los Angeles

- 6:45 A.M. to 5—Various programs
- 5 P.M.—Records; Arizona Wranglers
- 5:30—Organ recital
- 5:45—Studio program; News
- 6:15—King Cowboy
- 6:30—Lawrence King and Orchestra
- 6:45—Growin' Up
- 7—Frank Watanabe and Archie
- 7:15—Miles of Melody
- 7:45—Count of Monte Cristo
- 8—Bob Shuler
- 8:30—Light and Power Company
- 8:45—Drury Lane, tenor
- 9—News; Organ Recital
- 9:20—Happy Chappies
- 9:30 to 11 P.M.—Dance Orchestra

**468.5 Meters KFI** Richm'd 6111  
640 Kcys. 50,000 Watts

- Earle C. Anthony, Inc., Los Angeles
- 6:45 A.M. to 12:15—Various prog.
  - 12:15—NBC, Farm and Home Hour
  - 1—News Release
  - 1:30—Ann Warner Chats
  - 1:45—"Through the Looking-Glass"
  - 2—NBC, Al Pearce and Gang
  - 3—NBC, Langendorf Pictorial
  - 3:15—Orchestra, Robt. Hurd, tenor
  - 3:45—Bess Meals Menu Service
  - 4—NBC, Fleischmann Sunshine Hr.
  - 5—Baron Keyes' Air Castle
  - 5:15—Calif. Teachers' Assn. prog.
  - 5:30—NBC, Memory's Melody
  - 6—NBC, Lucky Strike Dance Hour
  - 7—NBC, Amos 'n' Andy
  - 7:15—Orchestra
  - 7:30—NBC, Death Valley Days
  - 8—NBC, Standard Symphony Hour
  - 9—NBC, Captain Henry's Showboat
  - 10—NBC, Richfield News Reporter
  - 10:15—Orchestra and Soloist
  - 10:30—Ambassador Hotel Orchestra
  - 11:30 to 12 mid.—NBC, Jim Taft Or.

**225.4 Meters KGB** FRank. 6151  
1330 Kcys. 1000 Watts

- Don Lee, Inc., San Diego, California
- 7 A.M. to 6—Various programs
  - 6—CBS, John Henry
  - 6:15—CBS, Windy City Revue
  - 6:45—CBS, Columbia Symphony Or.
  - 7—Chandu the Magician
  - 7:15—CBS, Phil Regan, tenor
  - 7:30—CBS, Ted Lewis' Orchestra
  - 8—Globe Headlines
  - 8:15—Chamber of Commerce
  - 8:30—Eb and Zeb
  - 8:45—CBS, Hamp's Orchestra
  - 9:15—Gus Arnheim Orchestra
  - 9:30—Buccaneers
  - 9:45—Philharmonic String Quartet
  - 10—World-Wide News; Berceuse
  - 10:30—Dance Orchestra
  - 12 to 1 A.M.—Recordings

**483.6 Meters KGW** Atwater 2121  
620 Kcys. 1000 Watts  
Morning Oregonian, Portland, Ore.

- 7 A.M. to 5—Various Programs
- 5 P.M.—NBC, Dance Journal
- 5:30—NBC, Memory's Melody
- 6—NBC, Lucky Strike Hour
- 7—NBC, Amos 'n' Andy
- 7:15—NBC, Sam Robbins' Orchestra
- 7:30—NBC, Death Valley Days
- 8—NBC, Standard Symphony Hour
- 9—NBC, Captain Henry's Showboat
- 10—NBC, Richfield News Flashes
- 10:15—McCool's Fishing Guide
- 10:30 to 12 mid.—Dance Music

**319 Meters KOIN** Atwater 3333  
940 Kcys. 1000 Watts

- The Journal, Portland, Oregon
- 6:30 A.M. to 6—Various programs
  - 6 P.M.—CBS, John Henry
  - 6:15—CBS, Windy City Revue
  - 6:45—CBS, Symphony Orchestra
  - 7:15—CBS, Phil Regan, tenor
  - 7:30—CBS, Ted Lewis' Orchestra
  - 7:45—Tarzan of the Apes
  - 8—CBS, Dance Music
  - 9—Fifth Avenue Four
  - 9:15—CBS, Gus Arnheim's Orch.
  - 9:30—Dorothy Dix Dramatization
  - 10—Berceuse; Orchestra
  - 11—Rose City Beavers
  - 11:30 to 12—Dance Music

**325.9 Meters KOMO** Elliott 5890  
920 Kcys. 1000 Watts

- Fisher's Blend Station, Inc., Seattle  
(Seattle Daylight Saving Time)
- 7:55 A.M. to 5—Various programs
  - 5—NBC, Fleischmann Sunshine Hr.
  - 6—Venetian Ensemble
  - 7—NBC, Lucky Strike Dance Hour
  - 8—NBC, Amos 'n' Andy
  - 8:15—Cecil and Sally (E. T.)
  - 8:30—NBC, Death Valley Days
  - 9—NBC, Standard Symphony Hour
  - 10—NBC, Capt. Henry's Show Boat
  - 11—NBC, Richfield News Flashes
  - 11:15—Hawaiian Melodies
  - 11:30 to 12 midnight—Tyroleans

**508.2 Meters KHQ** Main 5383  
590 Kcys. 1000 Watts

Louis Wasmer, Inc., Spokane, Wash.  
(Spokane Daylight Saving Time)

- 7 A.M. to 2—Various programs
- 2 P.M.—Studio programs
- 3—NBC, Al Pearce and Gang
- 4—KHQ News
- 4:30—NBC, Concert Footlights
- 4:45—Tull and Gibbs
- 5—NBC, Fleischmann Hour
- 6—NBC, Dance Journal
- 6:30—NBC Memory's Melody
- 7—NBC, Lucky Strike Hour
- 8—NBC, Amos 'n' Andy
- 8:15—Sam Robbins' Orchestra
- 8:30—NBC, Death Valley Days
- 9—NBC, Standard Symphony Hour
- 10—NBC, Maxwell House Showboat
- 11—NBC, Richfield News Flashes
- 11:15 to 1 A.M.—NBC, Dance Music

**499.7 Meters KFSD** Franklin 6353  
600 Kcys. 1000 Watts

Airfan Radio Corp., Ltd., San Diego

- 7:30 A.M. to 6—Various programs
- 6 P.M.—NBC, Lucky Strike Hour
- 7—Perry Scope
- 7:15—NBC, Sam Robbins Orch.
- 7:30—Chamber of Commerce prog.
- 7:45—Samborloff Hour
- 8:30—Aztec Half Hour
- 9—NBC, Maxwell House Showboat
- 10—NBC, News Flashes
- 10:15 to 12 mid.—Dance Music

**236.1 Meters KOL** Main 2312  
1270 Kcys. 1000 Watts

Seattle Broadcast. Co., Seattle, Wash.  
(Seattle Daylight Saving Time)

- 6:45 A.M. to 12—Various Programs
- 12 noon—CBS, LaFong Musicale
- 12:30—CBS, Frank Westphal's Orch.
- 1—CBS, U. S. Army Band
- 1:30—Julie Day
- 1:45—CBS, American Legion Revival
- 2—Discovery Hour
- 2:30—CBS, Between the Book Ends
- 2:45—Belle and Martha
- 3—Happy Go Lucky Hour
- 4—Feminine Fancies
- 5—CBS, Ewan Evans and Orchestra
- 5:15—Walt Schelp, Trio
- 5:30—Studio program
- 5:45—CBS, Songsmiths
- 6—CBS, Wayfaring Men
- 6:15—Sports Review
- 6:30—CBS, Col. Stoopnagle & Budd
- 7—CBS, John Henry
- 7:15—Radio Speaker Stevenson
- 7:30—CBS, Windy City Revue
- 7:45—Chandu the Magician
- 8—Columbia Symphony Orchestra
- 8:15—CBS, Phil Regan
- 8:30—CBS, Ted Lewis' Orchestra
- 9—Globe Trotter
- 9:15—CBS, Orchestra
- 10—American Weekly
- 10:15 to 12 mid.—Dance Music

See Page 10



# FRIDAY Programs

June 16, 1933

**379.5 Mtrs. NBC-KGO** Sutter 1920  
790 Kcys. 7500 Watts  
National Broadcast. Co., San Francisco  
7 A.M.—U. S. Marine Band  
8—Lee S. Roberts' Memory Box  
8:15—Jack and Patay  
8:30—To be announced  
9—Edna Fischer, pianist  
9:15—The Buckaroos  
9:30—Organ Concert; Arion Trio  
10:30—Woman's Air Magazine  
11:30—Borden Program  
11:45—Five Cards: Vocal trio; guitar; piano  
12:15—Western Farm and Home  
1—Arlene Jackson, soloist  
1:15—Four Sharps: Quartet  
1:30—Winnie the Pooh  
1:45—John and Ned  
2—Al Pearce and His Gang  
3—Rush Hughes, news talk  
3:15—Music Is My Hobby  
3:30—Rhythm Vendors  
4—Music Room: Orchestra direction Josef Hornik  
4:30—Little Orphan Annie  
4:45—Southern Harmony Four  
5—Echoes of the Palisades  
5:30—Phil Baker, the Armour Jester  
6—Chevrolet Program: Jack Benny,  
6:30—The First Nighter  
7—Amos 'n' Andy  
7:15—Gruen and Hall, pianists  
7:30—Best Foods Musical Grocery  
8—Gwynn Jones, tenor  
8:15—Gilmore Circus  
9:15—Charles Hart Instrumentalists  
9:45—Paul Carson, organist  
10—Richfield News Flashes  
10:15—Anson Weeks' Orchestra  
11—Abe Lyman's Orchestra  
11:30 to 12 mid.—Organ Concert

**243.8 Meters KYA** Prospect 3456  
1230 Kcys. 1000 Watts  
Pac. Broadcast Corp., San Francisco  
7:30 A.M.—Dawn Salute  
7:45—Christian Science Program  
8—Emporium Breakfast Club  
9—Melody Moods  
10—Marian Day's Morning Matinee  
10:30—Records; Rhymsters  
11:15—Blotch's Question Box  
11:30—Album Leaves; Radio Council  
12 noon—Scriptures; Concert  
1—Hawaiians; Rhymsters  
1:45—NBC Musical Moments  
2—International Troubadors  
2:30—NBC Piano Duo  
2:45—Violin Masters  
3—Glen Goff, Organist  
4—Artist Celebrities  
4:30—Mountain Echoes  
5—Sunset Revue; Campbell Digest  
6—Paraders; Waltz Idylls  
6:45—Cecil and Sally  
7—Sydney Dixon & Donald Gray  
7:30—"The Ne'er Do Well"  
7:45—Musical Novelties  
8—John Wolohan's Orchestra  
9—Captain Argus  
9:30—Bob Allen, pianist  
9:45—News Flashes; Organ  
11-12 mid.—Concert Memories

**322.4 Meters KFWI** Franklin 0200  
930 Kcys. 500 Watts  
Radio Entertainments, San Francisco  
7 A.M.—Early Bird; silent at 8  
9—Blues Chasers  
9:45—Dr. Corley program  
10—White House & Bellevue prog.  
10:30—Beauty Talk; Topics; Music  
11—Concert Melodies

11:15—Edith Giles, talk  
11:30—Baldwin Melody Girl  
11:45—Musical Portraits  
12 noon—The Range Riders  
12:30—Dance Music; silent at 1  
6—Dance Music; Salon Memories  
7—Christian Science program  
7:15—Bellevue Trio; silent at 7:30  
8:30—Julie Foster, Dream Girl  
8:45—Studio Feature  
9—Jewish Classical Hour  
10—Master Melodies  
11—Joe Wright's Orchestra  
11:30—Salon Serenade  
12—Paris at Midnight  
12:30 to 1 A.M.—Hi-Dee-Ho!

**322.4 Meters KROW** Glenc. 6774  
930 Kcys. 1000 Watts  
Educa. Broad. Corp., Oakland, Calif.  
8 A.M.—News; Hill Billies  
8:45—Prosperity program; silent at 9  
1 P.M.—Latin American program  
2—Studio; Old Timers; Carnival  
3:30—Historical Hi-Lites  
3:45—Melodies; "Doc" Shahan  
4:30—Quartette; Pianologue  
5—The Islanders  
5:15—Brother Walter; 6 Silent  
5:45—Studio program; silent at 6  
7:30—Howard Eastwood, pianist  
7:45—American Weekly transe.  
8—Topics of the Day  
8:15 to 8:30 P.M.—Nellie Alsing, so-  
prano

**491.5 Meters KFRC** Prospect 0100  
610 Kcys. 1000 Watts  
Don Lee Broadcast. System, S. F., Cal.  
7 A.M.—Records; Barnyard Melodies  
7:25—Stocks; Exercises  
8—CBS, Billy Hays' Orchestra  
8:15—Mary Sears' Garden Party  
8:30—CBS, Concert Miniatures  
8:55—National Oil Products  
9—CBS, Little French Princess  
9:15—Ye Olde Song Contest  
9:20—CBS, Enzo Aita  
9:30—Betty Crocker  
9:45—Smiling Ed McConnell  
10—CBS, Fred Berren's Orchestra  
10:30—CBS, Round Towners  
10:45—CBS, Col. Educa. Feature  
11—Prudence Penny  
11:15—CBS, Alex Semmler, pianist  
11:30—CBS, Harrisburg variety prog  
12 noon—Noonday Concert  
1—Edna Wallace Hopper; records  
1:15—CBS, John Kelvin, tenor  
1:30—N. Y. Stocks; Records  
1:45—Belle and Martha  
2—Happy Go Lucky Hour  
3—Feminine Fancies  
4—Hodge Podge Lodge  
4:30—Records; Lost & Found Items  
4:50—Ye Olde Song Contest  
4:55—Town Topics; Recordings  
5:15—CBS, Nonspi Program  
5:30—CBS, Edwin C. Hill  
6—CBS, Chesterfield  
6:30—CBS, Little Jack Little  
6:45—CBS, Fred. Rich's Columbians  
7:15—Connie Moffatt  
7:30—CBS, Jerry Friedman's Orch.  
7:45—Hotel St. Francis Orchestra  
8—Globe Headlines  
8:15—CBS, George Hall's Orchestra  
8:30—CBS, Don Bestor's Orchestra  
9—St. Francis Hotel Orchestra  
9:30—Conquerors of the Sky  
10—Organ; Song Contest; News  
10:20—The Islanders  
10:30—Lyrical Moods  
11—Dance Orchestra  
12 to 1 A.M.—Request hour

**440.9 Mtrs. KPO** Sutter 1920  
680 Kcys. 50,000 Watts  
National Broadcast Co., San Francisco  
7:30 A.M.—Organ Concert  
8—Financial Service  
8:15—John Fogarty, tenor  
8:30—Merric Men, male quartet  
8:45—Rhythmic Serenade  
9—Words and Music  
9:15—Palmer House Ensemble  
9:30—Mickey Gillette, saxophonist  
9:45—News Service  
10—Tom Mitchell, baritone  
10:15—Fashion Flashes  
10:30—Canzonetta; Arion Trio  
11—Sonata Recital  
11:15—Famous Loves; Dramatic  
11:30—Pair of Pianos  
12 noon—Mid-day Musical  
12:45—Commonwealth Club luncheon  
1:30—Ann Warner's Chats  
2—Waldorf-Astoria Orchestra  
2:30—News Service  
2:45—Just Relax; Comedy sketch  
3—Harmonica Rascals  
3:15—Melody Mixers  
3:30—Drifting and Dreaming  
3:45—University of California  
4—Through the Looking Glass  
4:15—Arion Trio  
5—Scotty's Talkathon  
5:15—Rhythm Vendors; News  
6—Musical Echoes; Synco-Thots  
6:45—Detectives Black and Blue  
7—Organ Concert  
7:15—Tarzan of the Apes  
7:30—Stringwood Ensemble  
8—Duke Ellington's Orchestra  
8:15—Sports Revue  
8:30—Harold Stern's Orchestra  
9—Killed in Action, drama  
9:30—Bal Tabarin Orchestra  
10—Doric Quartet  
10:30—Joseph Hornik's Orchestra  
11—Charles Runyan, organist  
11:30 to 12 mid.—To be announced

**535.4 Meters KTAB** Garfield 4700  
560 Kcys. 1000 Watts  
Assoc. Broadcasters, Oakland, Calif.  
6:45 A.M.—Concert; News  
7:15—Star Melodies; Reporter  
7:45—Serenaders; Doc Herrold  
8:30—Radio Shoppers' Digest  
9—Morning Prayer Hour  
9:30—Health Talk; Household Hour  
10:30—Records; Dr. Corley; News  
10:55—Electrical Transcription  
11:30—Buckhorn Boys  
12 noon—Records; Radio Frolic  
1:30—Health Talk  
1:45—Over the Teacups  
2—Ye Olde Town Crier  
3—Organ Concert  
3:30—George Kreuger, pianist  
3:45—Studio Concert  
4—"Keep Smiling" Revue  
4:30—News Service  
5—Uncle Rod's Smile Club  
5:30—Health Talk  
6—Automobile Question Box  
6:15—Fishing Fool; News  
6:45—Sport Page of the Air  
7—Financial Advisor  
7:15—Cuban Cabaret; Toreadors  
7:45—Romance of the Turf  
8—Chinese Fantasy  
8:15—American Weekly Drama  
8:30—Miles of Melody  
9—News; Souvenirs  
9:45—Rambles in Rhyme  
10—Dance Music  
11—Emeryville Walkathon  
11:15—Jess Stafford's Orchestra  
12 to 1 A.M.—Night Owls



**340.7 Meters** **KLX** Lake. 6000  
880 Kcys. 1000 Watts  
Tribune Pub. Co., Oakland, Calif.

8 A.M.—Records; Stocks  
8:30—Covered Wagon Jubilee  
9—Records; Clinic of the Air  
10:15—Stocks, Financial Info.  
10:30—International Kitchen  
11—Sunshine Twins; News  
11:30—Novelty Guitar Duo  
11:45—Madelon Slyver and Nancy Hersey, piano and violin  
12 noon—Jack Delaney's band  
1—Jean's Hi-Lights; Records  
2:35—Better Business Talks  
2:40—Closing San Francisco Stocks  
2:45—Verna Anderson, pianist  
3—Records; Health School; News  
4:30—Brother Bob's Club  
5—Covered Wagon Jubilee  
5:30—Lovable Liars  
5:45—Helen Parmelee, pianist  
6—Hotel Oakland Trio; News  
7:30—Dr. Ross Pet Clinic  
7:45—Fred and Morris, comedians  
8—KLX Hi-Jinks program.  
10—Fred Skinner  
10:15 to 11 P.M.—Dance program

**296.6 Meters** **KQW** Ballard 777  
1010 Kcys. 500 Watts  
Pac. Agric. Foundation, Ltd., San Jose

7 A.M. to 3—Records; Talks  
3 P.M.—Stock Market Reports  
4:30—Various programs  
6:15—Franco's program  
6:30—State Market Reports  
6:45—Farmers' Exchange; Weather  
7:03—Radio News and Forum  
7:30—Minute Man; Band Concert  
8—San Jose Accordion Club  
8:30—Paramount Quartette  
9—Mexican Quintette  
9:30 to 10 P.M.—Mauna Keans

**468.5 Meters** **KFI** Richm'd 6111  
640 Kcys. 50,000 Watts  
Earle C. Anthony, Inc., Los Angeles

6:45 A.M. to 5—Various programs  
5—Baron Keyes' Air Castle  
5:15—String Trio  
5:30—NBC, Armour Hour  
6—NBC, Chevrolet program  
6:30—NBC, The First Nighter  
7—NBC, Amos 'n' Andy  
7:15—String Orchestra  
7:30—NBC, Best Foods program  
8—String Orchestra  
8:15—NBC, Gilmore Circus  
9:15—String Orchestra  
9:30—Charles Hart Instrumentalists  
9:45—NBC, Paul Carson  
10—NBC, Richfield News Reporter  
10:15—Orchestra and Soloist  
10:30—Ambassador Hotel Orchestra  
11:30 to 12 mid.—NBC program

**285.5 Meters** **KNX** Hemp. 4101  
1050 Kcys. 25,000 Watts  
Western Broadcast. Co., Los Angeles

6:30 A.M.—Various programs  
5 P.M.—Arizona Wranglers  
5:15—All American Girls  
5:30—Organ Recital  
5:45—Life of Villa  
6—News; Political Talk  
6:45—Growin' Up  
7—Frank Watanabe and Archie  
7:15—Black and Blue  
7:30—Auto Club program  
7:45—Count of Monte Cristo  
8—Optimistic Do-Nuts"  
9—News Items; Music  
9:30—Bob Shuler, political talk  
9:45—Hollywood Legion Fights  
10:45 to 11 P.M.—Paris Inn Orch.

**483.6 Meters** **KGW** Atwater 2121  
620 Kcys. 1000 Watts  
Morning Oregonian, Portland, Ore.

7 A.M. to 5—Various programs  
5—NBC, Echoes of the Palisades  
5:15—Piano Surprises  
5:30—NBC, Armour Hour  
6—NBC, Chevrolet program  
6:30—NBC, First Nighter  
7—NBC, Amos 'n' Andy  
7:15—NBC, Gruen & Hall, pianists  
7:30—Best Foods Program  
8—Texas Cowboys  
8:15—NBC, Gilmore Circus  
9:15—NBC, Charles Hart  
9:45—NBC, Paul Carson  
10—NBC, Richfield News Flashes  
10:15 to 12 mid.—Dance Music

**325.9 Meters** **KOMO** Elliott 5890  
920 Kcys. 1000 Watts  
Fisher's Blend Station, Inc., Seattle

(Seattle Daylight Saving Time)  
7:55 A.M. to 5—Various programs  
5 P.M.—NBC, Music Room  
5:30—NBC, Little Orphan Annie  
5:15—Helms and Harkins  
5:45—Cecil and Sally (E. T.)  
6—Vacation Land Revue  
6:30—NBC, The Armour Hour  
7—NBC, Chevrolet program  
7:30—NBC, The First Nighter  
8—NBC, Amos 'n' Andy  
8:15—Masterwork at Piano  
8:30—NBC, Best Foods Musical Store  
9—Elmore, Grant and Thomas  
9:15—NBC, Gilmore Circus  
10:15—Dollars and Cents  
10:30—Big Opportunity Contest  
10:45—Fisher Flouring Mills prog.  
11—NBC, Richfield News Flashes  
11:15—Then and Now  
11:30 to 12 mid.—Hawaiian Melodies

**280.2 Meters** **KJBS** Ord. 4148-49  
1070 Kcys. 100 Watts  
J. Brunton & Sons, San Francisco

6 A.M.—Alarm Klock Klub  
8—Records; Talks; Music  
7:30 P.M.—Silent period  
12:01 to 6 A.M.—Owl program

**319 Meters** **KOIN** Atwater 3333  
940 Kcys. 1000 Watts  
The Journal, Portland, Oregon

6:30 A.M. to 5—Various programs  
5—Dick Aurandt, Organist  
5:15—CBS, Nonspi Program  
5:30—CBS, Edwin C. Hill  
6—CBS, Chesterfield; Grace Moore  
6:30—CBS, Little Jack Little  
7—CBS, Freddie Rich's Columbians  
7:15—CBS, Do Re Mi  
7:30—Black and Blue  
7:45—Fishing Bulletin  
8—CBS Orchestras  
9:30—CBS, Conquerors of the Air  
10—Islanders; Lyrical Moods  
11 to 12 midnight—Dance Music

**499.7 Meters** **KFSD** Franklin 6353  
600 Kcys. 1000 Watts  
Airfan Radio Corp., Ltd., San Diego

7:30 A.M. to 6—Various programs  
6 P.M.—Chevrolet program  
6:30—News Parade  
6:45—Emma Lindsay Squire  
7—Serenaders  
7:15—NBC, Gruen and Hall  
7:30—NBC, Best Foods Program  
8—NBC, Gwynfi Jones  
8:15—Voice, Violin and Piano  
9—Johnny Crofton's Orchestra  
9:30—NBC, Stringwood Ensemble  
9:45—NBC, Paul Carson, Organist  
10—NBC, News Flashes  
10:15 to 12 mid.—Dance Music

**508.2 Meters** **KHQ** Main 5383  
590 Kcys. 1000 Watts  
Louis Wasmer, Inc., Spokane, Wash.

(Spokane Daylight Saving Time)  
7 A.M. to 12:30—Various programs  
12:30—NBC, Care of the Baby  
1—Sylvia Grey  
1:15—NBC, Farm and Home Hour  
2—Studio programs  
2:45—NBC, John and Ned  
3—NBC, Al Pearce and Gang  
4—KHQ News  
4:30—NBC, Rhythm Vendors  
4:45—Happy Feet  
5—Tull and Gibbs  
5:15—NBC, Music Room  
5:30—NBC, Orphan Annie  
5:45—NBC, Southern Harmony Four  
6:15—Voice of Texas  
6:30—NBC, Armour Hour  
7—NBC, Chevrolet program  
7:30—NBC, The First Nighter  
8—NBC, Amos 'n' Andy  
8:15—NBC, Gruen and Hall, pianists  
8:30—NBC, Best Foods program  
9—Black and Blue  
9:15—Bohemian Club  
9:45—To be announced  
10:15—NBC, Stringwood Ensemble  
10:45—NBC, Paul Carson, organist  
11—NBC, Richfield News Flashes  
11:15 to 1 A.M.—NBC, Dance Music

**333.1 Meters** **KHJ** VAndike 7111  
900 Kcys. 1000 Watts  
Don Lee Broadcast. System, L. A., Cal.

7 A.M. to 5:30 P.M.—Various Prog.  
5:30—CBS, "The Inside Story"  
6—CBS, Chesterfield Program  
6:30—CBS, Little Jack Little  
6:45—CBS, Freddie Rich Orchestra  
7:15—CBS, Do Re Mi  
7:30—Chandu, the Magician  
7:45—Orville Knapp's Orchestra  
8—Globe Headlines  
8:15—S. & W. "Mellow'd Melodies"  
8:30—"Tapestries of Life"  
9—Gus Arnheim's Orch.  
9:30—CBS, Conquerors of the Air  
10—News Items; The Islanders  
10:30—Lyric Moods  
11—Dance Music  
12 to 1 A.M.—Organ recital

**236.1 Meters** **KOL** Main 2312  
1270 Kcys. 1000 Watts  
Seattle Broadcast. Co., Seattle, Wash.

(Seattle Daylight Saving Time)  
6:45 A.M. to 12—Various programs  
12 noon—CBS, Col. Salon Orch  
12:15—CBS, Alex Semmler, pianist  
12:30—CBS, Harrisburg variety prog.  
1—CBS, Grab Bag  
1:30—Julie Day  
1:45—CBS, U. S. Army Band  
2—CBS, True Animal Stories  
2:15—CBS, John Kelvin, tenor  
2:30—CBS, Between the Book Ends  
2:45—Belle and Martha  
3—Through the Looking Glass  
3:15—Happy Go Lucky Hour  
4—Feminine Fancies  
5—Hodge Podge Lodge  
5:30—CBS, Foreign Legion  
6—L. E. Hill, financial expert  
6:15—Sports Review  
6:30—CBS, "The Inside Story"  
7—CBS, Chesterfield program  
7:30—Black and Blue  
7:45—Chandu the Magician  
8—Eb and Zeb  
8:15—Ken Stuart's program  
8:30—CBS, Jerry Friedman's Orch.  
8:45—Charles A. Reynolds  
9—Globe Trotter  
9:15 to 12 mid.—Dance Music

# SATURDAY Programs

June 17, 1933

379.5 Mtrs. **NBC-KGO** Sutter 1920  
790 Kcys. 7500 Watts

National Broadcast Co., San Francisco

7 A.M.—Morning Parade; Organ  
7:30—Down Lovers' Lane  
8—"Vic & Sade," Skit  
8:15—Jack. Patsy, Sambo & Mandy  
8:30—To be announced  
9—Organ Concert  
9:30—Amer. Farm Bureau Feder.  
10:30—Woman's Air Magazine  
11:30—Marshall's Mavericks  
12 noon—Winston Petty, 'cellist  
12:15—Western Agriculture  
1—Maurice Sherman's Orchestra  
1:30—Jack and Loretta Clemens  
1:45—John and Ned, harmony duo  
2—Waldorf-Astoria Orchestra  
2:30—The Week-enders  
3—American Taxpayers' League  
3:15—Benno Rabinof  
3:30—Upstaters: male quartet  
3:45—Edna Fischer, pianist  
4—Jack Denny' Orchestra  
4:30—Little Orphan Annie  
4:45—Arion Trio  
5:15—Harry Stanton, basso  
5:30—Organ Concert  
6—Saturday Night Dancing Party  
7—Johnny Johnson's Orchestra  
7:30—The Witching Hour  
8—Caswell Concert  
8:15—Louis Ford, violinist  
8:30—Bal Tabarin Orchestra  
9—Pacific Serenaders  
10—Symphonettes  
10:30—Blue Moonlight  
11—Abe Lyman's Orchestra  
11:30 to 12 mid.—Organ Concert

280.2 Meters **KJBS** Ord. 4148-49  
1070 Kcys. 100 Watts

J. Brunton & Sons, San Francisco

6 A.M.—Alarm Klock Klub  
8 to 7:30—Records; News; Music  
7:30 P.M.—Silent period  
12:01 to 6 A.M.—Owl program

440.9 Mtrs. **KPO** Sutter 1920  
680 Kcys. 50,000 Watts

National Broadcast Co., San Francisco

7:30 A.M.—Organ Concert  
8—Financial Service  
8:15—National Trade Revival  
8:30—Syncopators: Dance orchestra  
9—Words and Music  
9:15—Palmer House Ensemble  
9:30—Synco-Thots, piano duo  
9:45—News Service  
10—Tom Mitchell, baritone  
10:15—Johnnie Toffoli, accordion  
10:30—Concert Echoes  
11—Radio Troubadors  
11:30—Wealth of Harmony  
12 noon—Morin Sisters  
12:15—Dance Masters  
12:30—Chautauqua Opera Associa'n  
1—News, Stringwood Ensemble  
1:45—Five Mesner Brothers' Orch.  
2—Ramblers' Orch. & Vocal  
3—Arion Trio; Organ; News  
4:30—The Economic World Today  
5—Gilbert & Sullivan Gems  
6—Piano Pictures  
6:30—Education at the Crossroads  
6:45—Irving Kennedy, tenor  
7—Charles Hart, instrumentalists  
7:30—Medicine Show  
8—Edgewater Beach Hotel Orch.  
8:30—To be announced  
9—Music Doctor  
9:30—Anson Weeks' Orchestra  
10—Jack Walton's Orchestra  
10:30—Serenata; Organ Recital  
11:30 to 12 mid.—Jim Taft's Music

243.8 Meters **KYA** Prospect 3456  
1230 Kcys. 1000 Watts

Pac. Broadcast Corp., San Francisco

7:30 A.M.—Dawn Salute  
7:45—Christian Science Program  
8—Emporium Breakfast Club  
9—Melody Moods  
10—Records; School News  
11:35—Rhymsters; Scriptures  
12:05—Harmony Highlights  
1—Concert; Rhythmic Ripples  
2:30—Song Vogue  
3—Glen Goff, organist  
4—Symphony Series  
5—Sunset Revue; Hawaiians  
5:45—Campbell Digest  
6—Serenade; Waltz Idylls  
6:45—Cecil and Sally  
7—Paraders; Footlight Features  
7:45—Bob Allen, pianist  
8—John Wolohan's Orchestra  
9—Musical Novelties  
9:30—The Cub Reporters  
9:45—Tango Time; Organ  
11-12 mid.—Concert Memories

340.7 Meters **KLX** Lake. 6000  
880 Kcys. 1000 Watts

Tribune Pub. Co., Oakland, Calif.

8 A.M.—Records; Stocks  
8:30—Covered Wagon Jubilee  
9—Records; Clinic of the Air  
10:15—Stocks; News Flashes  
10:30—International Kitchen  
11—Sunshine Twins; News Flashes  
11:30—Novelty guitar duo  
11:45—Fred Skinner  
12 noon—Closing Stocks  
12:05—Jack Delaney's Band  
1—Jean's Hi-Lights; Records  
2—Recordings; News Flashes  
2:45—John Ardath, pianist; Records  
3:15—Cora Scott and Lilah Clark  
3:30—News Flashes; Records  
3:45—Records; News Flashes  
4:30—Brother Bob's Club  
5—Covered Wagon Jubilee; News  
5:30—Banjo Girls  
5:45—Song Stories, Clark Sisters  
6—Hotel Oakland Trio  
7—News Items; Ardito Trio  
8—Musical Soiree  
9—Faucit Theater of the Air  
9:30—Wallele Trio  
10 to 12 midnight—Dance program

535.4 Meters **KTAB** Garfield 4700  
560 Kcys. 1000 Watts

Assoc. Broadcasters, Oakland, Calif.

6:45 A.M.—Concert; News; Records  
7:45—Serenaders; Doc Herrold  
8:30—Records; Prayer Hour  
9:30—Talk; Household Hour  
10:30—Records; Dr. Corley  
11:30—Buckhorn Boys  
11:45—Elec. Transc.; Records  
1—Homesteaders Quartet  
2—Ye Olde Towne Crier  
3—Organ Quartet  
3:30—George Kreuger, pianist  
3:45—Studio program; Chili Peppers  
4:30—Better Homes  
4:45—Funnies, Uncle Putt  
5—Young Peoples' program  
5:30—Health Talk; Walkathon  
6:15—Dinner Concert; News  
6:45—Sport Page of the Air  
7—June Bugs  
8—Home Melodies; Organ  
8:30—Jess Stafford's Band  
9—Reporter; Souvenirs  
9:45—Rambles in Rhyme  
10—Dance Music; Walkathon  
12 to 1 A.M.—Night Owls

491.5 Meters **KFRC** Prospect 0100  
610 Kcys. 1000 Watts

Don Lee Broadcast. System, S. F., Cal.

7 A.M.—Records; Barnyard Melodies  
7:25—Stocks; Exercises  
8—CBS, Vincent Traver's Orchestra  
8:15—CBS, Harold Knight's Orch.  
8:30—CBS, Frank La Marr Orch.  
9—CBS, George Hall's Orchestra  
9:15—Ye Olde Song Contest  
9:20—CBS, George Hall's Orchestra  
9:30—CBS, Madison Ensemble  
10—Jr. Artists Program  
10:55—Church Announcements  
11—CBS, Italian Idyll  
11:15—Prudence Penny  
11:30—CBS, Hal Thompson's Orch.  
12 noon—Noonday Concert  
1—CBS, Eddie Duchin's Orchestra  
1:30—Stock Quotations; Records  
1:45—CBS, Tito Guizar  
2—CBS, Amer. Grub Street Speaks  
2:15—CBS, Art Coogan's Orchestra  
2:30—Recordings  
2:45—CBS, Buddy Wagner's Orch.  
3—CBS, Frederic William Wile  
3:15—CBS, Gypsy Nina; Recordings  
3:45—CBS, Melody Headlines  
4:15—Gus Arnheim's Orch.  
4:45—Lost and Found  
4:50—Song Contest; Town Topics  
5—CBS, Tony Wons  
5:15—CBS, Boswell Sisters & Orch.  
5:45—CBS, Saturday Frivolities  
6:15—CBS, Columbia Public Affairs  
6:45—CBS, Gertrude Niesen  
7—CBS, Freddie Martin's Orch.  
7:30—CBS, Ben Pollack's Orchestra  
8—CBS, Glenn Gray's Orchestra  
8:30—Gus Arnheim's Orchestra  
9—Southern California Symphony  
10—Dance Orchestra  
12 to 1 A.M.—Request hour

322.4 Meters **KFWI** Franklin 0200  
930 Kcys. 500 Watts

Radio Entertainments, San Francisco

7 A.M.—Early Bird; silent at 8  
9—Blues Chasers  
10—White House & Bellevue prog.  
10:30—Beauty Talk; Topics; Music  
11—Concert Melodies  
11:30—Rhumba Tunes  
11:45—Musical Novelties  
12 noon—The Range Riders  
1—Silent period  
6—Dance Music  
6:45—John Manning, pianist  
7—Christian Science program  
7:15—Bellevue prog.; silent at 7:30  
11—Joe Wright's Orchestra  
12—Paris at Midnight  
12:30 to 1 A.M.—Hi-Dee-Ho!

322.4 Meters **KROW** Glenc. 6774  
930 Kcys. 1000 Watts

Educa. Broad. Corp., Oakland, Calif.

8 A.M.—News; Hill Billies  
8:45—Prosperity program; silent at 9  
1 P.M.—Latin American program  
2—Student Melodies  
2:15—Old Timers; Carnival  
3:30—Historical Hi-Lights  
3:45—Charming Melodies  
4—"Doc" Shahan and Ramblers  
4:30—Quartette; Pianologue  
5—Three Islanders  
5:15—Cy Hiram's Country Store  
5:45—Studio program; silent at 6  
7:30—The Crystal Boys  
8—Topics of the Day  
8:15—Latin American program  
9:15—Italian program  
10:15 to 10:30 P.M.—X-Bar-B Boys

**508.2 Meters KHQ** Main 5383  
590 Kcys. 1000 Watts  
Louis Wasmer, Inc., Spokane, Wash.

(Spokane Daylight Saving Time)  
7 A.M. to 11:30—Various programs  
11:30—NBC, Woman's Magazine  
12:30—Marching Along  
12:45—Woman's Club Bulletin  
1—Sylvia Grey  
1:15—NBC, Western Agriculture  
2—To be announced  
2:45—NBC, John and Ned  
3—NBC, Waldorf-Astoria Orchestra  
3:30—NBC, Week-Enders  
4—KHQ News  
4:30—NBC, The Upstaters  
4:45—NBC, Edna Fischer, pianist  
5—Tull and Gibbs Express  
5:15—NBC, Jack Denny's Orchestra  
5:30—NBC, Little Orphan Annie  
5:45—NBC, Arion Trio  
6:15—To be announced  
7:45—NBC, Irving Kennedy, tenor  
8—NBC, Johnny Johnson's Orchestra  
8:30—NBC, Witching Hour  
9—NBC, Caswell Concert  
9:15—NBC, Gypsiana; Orchestra  
10—NBC, Pacific Serenades  
11:30—NBC, Blue Moonlight  
12 to 1 A.M.—NBC, Dance Music

**296.6 Meters KQW** Ballard 777  
1010 Kcys. 500 Watts  
Pac. Agric. Foundation, Ltd., San Jose

7 A.M. to 3—Records; Talks; Report  
3—Stock Market Reports  
4:30 P.M.—Various programs  
6—Dinner Concert  
6:15—Francis's program  
6:30—Band Music  
6:45—Farmers' Exchange; Weather  
7:03—Soul of Portugal  
7:30—French program  
7:45—Band Concert  
8:45 to 10 P.M.—Italian program

**225.4 Meters KGB** FRank. 6151  
1330 Kcys. 1000 Watts  
Don Lee, Inc., San Diego, California

7 A.M. to 8—Various Programs  
5—CBS, Tony Wons  
5:15—CBS, Boswell Sisters; Orch.  
5:45—CBS, Saturday Frivolities  
6:15—CBS, Public Affairs Institute  
6:45—CBS, Gertrude Niesen  
7—Chandu the Magician  
7:15—CBS, Freddie Martin's orch.  
7:30—CBS, Ben Pollack's Orchestra  
8 P.M.—CBS, Dance Music  
9—Symphony Concert  
9:15—Symphony Concert  
10—World-Wide News  
10:10—Dance Orchestra  
12 to 1 A.M.—Recordings

**499.7 Meters KFSD** Franklin 6353  
600 Kcys. 1000 Watts  
Airfan Radio Corp., Ltd., San Diego

7:30 A.M. to 6—Various programs  
6:15—Ray de O'Fan  
6:30—Serenades  
7—NBC, Hotel Penn Orchestra  
7:30—NBC, Witching Hour  
8—American Weekly  
8:15—NBC, Gypsiana  
8:30—Orchestral Music  
9—NBC, Pacific Serenades  
10 to 12 mid.—Dance Music

**468.5 Meters KFI** Richm'd 6111  
640 Kcys. 50,000 Watts  
Earle C. Anthony, Inc., Los Angeles

6:30 A.M. to 2—Various Programs  
2—NBC, Ramblers  
2:30—Wesley Tourtellotte, organist  
3:30—NBC, Upstaters  
3:45—Tea Dance  
4:30—NBC, Little Orphan Annie  
4:45—News Release  
5—Univ. of So. Calif. program  
5:15—To be announced  
6—NBC, B. A. Rolfe's Orchestra  
7—NBC, Johnny Johnson's Orch.  
7:30—NBC, Witching Hour  
8—NBC, Caswell Coffee Concert  
8:15—L. A. Philharmonic Orchestra  
9—NBC, Pacific Serenades  
10—NBC, Symphonettes  
10:30—Ambassador Hotel Orchestra  
11:30 to 12 mid.—Dance Orchestra

**285.5 Meters KNX** Hemp. 4101  
1050 Kcys. 25,000 Watts  
Western Broadcast. Co., Los Angeles

6:45 A.M. to 5—Various program  
5 P.M.—Organ Recital  
5:15—Dr. John Matthews  
5:45—Musical Program; News  
6:15—King Cowboy  
6:30—Concert Orchestra  
6:45—Capt. Don Wilkie  
7—Frank Watanabe and Archie  
7:15—Miles of Melody  
7:45—Bob Shuler  
8—KNX Varieties; News  
9:15—Municipal Light Company  
9:30—Dance Orchestra  
10 to 11 P.M.—New Paris Inn

**319 Meters KOIN** Atwater 3333  
940 Kcys. 1000 Watts  
The Journal, Portland, Oregon

6:30 A.M. to 6—Various Programs  
6—CBS, Saturday Frivolities  
6:15—CBS, Columbia's Public Affairs  
6:45—CBS, Gertrude Niesen, blues  
7—Studio program  
7:15—CBS, Freddie Martin's Orch.  
7:30—Ben Pollack's Orchestra  
7:45—Tarzan of the Apes  
8—CBS, Glen Gray's Orchestra  
8:30—Gus Arnheim Orchestra  
9—McElroy's Orchestra  
9:30—Symphony Concert  
10 to 12—Dance Music

**483.6 Meters KGW** Atwater 2121  
620 Kcys. 1000 Watts  
Morning Oregonian, Portland, Ore.

7 A.M. to 5—Various Programs  
5 P.M.—Piano Surprises  
6—NBC, Piano Pictures  
6:15—Let Us Boast a Bit  
6:30—NBC, Education at the Crossroads  
6:45—U. S. 7th Infantry Band  
7:15—NBC, Johnny Johnson's Orch.  
7:30—NBC, Witching Hour  
8—NBC, Caswell Coffee Concert  
8:15—NBC, Gypsiana  
8:30—Fisher's Blend half hour  
9—NBC, Pacific Serenades  
10—NBC, Symphonettes  
10:30—Blue Moonlight  
11—NBC, Abe Lyman's Orchestra  
11:30 to 12 mid.—Jim Tait's Orch.

**325.9 Meters KOMO** Elliott 5890  
920 Kcys. 1000 Watts  
Fisher's Blend Station, Inc., Seattle  
(Seattle Daylight Saving Time)

7:55 A.M. to 5—Various programs  
5 P.M.—Blue Serenades  
5:30—NBC, Little Orphan Annie  
5:45—NBC, Arion Trio  
6:15—Harmony Duo  
6:30—Old Favorites  
7—Musical Comedies  
8—NBC, Johnny Johnson's Orch.  
8:30—NBC, Witching Hour  
9—NBC, Caswell Coffee Concert  
9:15—NBC, Gypsiana  
9:30—Fisher's Blend Half Hour  
10—NBC, Pacific Serenades  
11—NBC, Symphonettes  
11:30 to 12 midnight—Tyroleans

**333.1 Meters KHJ** Vandike 7111  
900 Kcys. 1000 Watts  
Don Lee Broadcast. System, L. A., Cal.

7 A.M. to 5—Various programs  
5 P.M. CBS, Tony Wons  
5:15—Town Topics; Studio program  
5:30—CBS, The Boswell Sisters  
5:45—CBS, Saturday Frivolities  
6:15—CBS, Columbia Public Affairs  
6:45—CBS, Gertrude Niesen  
7—CBS, Freddie Martin Orchestra  
7:30—Chandu, the Magician  
7:45—Orville Knapp's Orchestra  
8—CBS, Glen Gray's Orchestra  
8:30—Gus Arnheim's Orchestra  
9—Scottish Rite Symphony  
10—News Items  
10:10—Dance Orchestra  
12 to 1 A.M.—Organ recital

**236.1 Meters KOL** Main 2312  
1270 Kcys. 1000 Watts  
Seattle Broadcast. Co., Seattle, Wash.  
(Seattle Daylight Saving Time)

6:45 A.M. to 12—Various Programs  
12 noon—CBS, Italian Idyll  
12:30—CBS, Hal Thompson's Orch.  
1—CBS, Columbia Salon Orchestra  
1:15—CBS, Saturday Syncopators  
1:30—Julie Day  
1:45—CBS, The Ambassadors  
2—CBS, Eddie Duchin's Orchestra  
2:30—CBS, Between the Book Ends  
2:45—CBS, Tito Guizar  
3—CBS, Amer. Graft Street Squares  
3:15—CBS, Paul Tremaine's Orch.  
3:30—Studio program  
3:45—CBS, Buddy Wagner's Orch.  
4—CBS, Polypical Situation  
4:15—CBS, Gypsy Nina  
4:30—Orchestral Music  
4:45—CBS, Melody Headlines  
5:15—Gus Arnheim's Orchestra  
5:45—CBS, Leon Belasco's Orch.  
6—CBS, Tony Wons  
6:15—Sports Review  
6:30—CBS, Boswell Sisters  
6:45—Democratic Etuc Features  
7—CBS, Saturday Frivolities  
7:15—Radio Speaker Stevenson  
7:45—CBS, Gertrude Niesen  
8—CBS, Freddie Martin's Orchestra  
8:30—CBS, Ben Pollack's Orchestra  
9—Globe Trotter; Dance Music  
10—Senator and the Deacon  
10:15—So. California Symphony  
11 to 12:30 A.M.—Dance Music

Published weekly by the Broadcast Weekly Publishing Company, 726 Pacific Building, San Francisco, Calif. Telephone DOuglas 5273

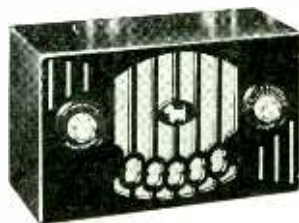
Yearly subscription: \$3.00 in the United States. Entered as second class matter, March 25, 1923, at the Post Office, San Francisco, California, under Act of March 3, 1879.

Copyright, 1933, by Broadcast Weekly Publishing Company.



Hoot mon—it's a brae wee r-radio  
as pr-retty as a bit o' heather  
and as chummy as a puppy!

The New  
**REMLER  
SCOTTIE**



**M**ADE by Remler—Builders of the World's first superheterodyne—the smart new Scottie is a miniature five-tube superheterodyne de luxe with performance as heart-warming as a wee drop of Scotch.

The completely enclosed cabinet—designed by an artist and made of mirror-finished bakelite with contrasting trim in ivory—adds the final touch of distinction.

Features include: AC-DC operation, which means that you can plug it in anywhere; dynamic speaker; translucent dial illumination; and new multiple prong type tubes. Its diminutive size, 10 $\frac{1}{8}$ " x 6 $\frac{1}{4}$ " x 4 $\frac{7}{8}$ ", makes the eight pound Scottie an ideal travelling companion. Scotch price, too! Complete with tubes . . . .

Suede-finished zipper carrying case at a slight additional cost

**\$27.90**

Remler Company, Ltd.  
2101 Bryant Street San Francisco

REMLER THE RADIO FIRM AS OLD AS RADIO

