

FOR WEEK OF
M A Y
1st to 7th

BROADCAST WEEKLY



PETE BARLOW

To the KFRC and DLBS audience he is better known as "Axel Axelson," featured on the Blue Monday Jamboree

THE LEADING RADIO GUIDE OF THE PACIFIC COAST



Special

THE NEXT **52** ISSUES OF
**BROADCAST
WEEKLY**

FOR ONLY **\$2.00**

or

THE NEXT 26 ISSUES

FOR ONLY **\$1.00**

THIS OFFER GOOD IN UNITED STATES ONLY

SUBSCRIBE NOW

BROADCAST WEEKLY PUB. CO.,
726 Pacific Building, San Francisco, Calif.

Gentlemen: Here's my \$_____ for which send me *Broadcast Weekly*
for _____ weeks.

Name _____

Address _____

City _____ State _____

New Renewal Extension

Send remittance direct to *Broadcast Weekly*, Pacific Bldg., San Francisco.

THE JAMES H. BARRY COMPANY, SAN FRANCISCO

BROADCAST WEEKLY

CHICAGO
Harold Poe Swartwood
29 South La Salle Street
Chicago

NEW YORK
Edwin F. Ripley
118 East 28th Street
New York City

The Leading Radio Guide of the Pacific Coast

Vol. XI, No. 18

A. J. URBAIN, *Editor and Publisher*
726 Pacific Building, San Francisco, Calif.

April 30, 1932

NEW RADIO WAR WEAPON

RADIO may be an important element in what is, if claims are true, the most deadly weapon of warfare ever invented, for the acquisition of which by the Government negotiations are now being conducted by Leeter P. Barlow of Stamford, Connecticut, inventor of the depth bomb and other bombing devices used in the World War.

Details of the invention are being closely guarded, and efforts are being made to secure the appointment of a secret commission to pass upon the weapon, which its inventor claims could destroy cities more than 1000 miles away. Possession of a weapon of this nature would give the United States the command of world military affairs through which, it is claimed, disarmament could be made an actuality.

Because of the distance over which it is claimed the device could operate, there is a well defined belief among military observers that radio plays an important part in the new arm. Even though the invention may consist of a projectile which can be sent through the air for long distances under its own power, after the fashion in which a torpedo travels in water, it is declared that some radio device would be important in its guiding to offset the effect of winds of different velocities and directions which it might encounter.

It is no secret that the leading nations of the world are devoting considerable study to the use of radio in warfare for other than communication purposes. A radio weapon which could operate at long distances would be of inestimable advantage to a warring nation. The World War and the period since have demonstrated conclusively that man-to-man conflict is too expensive in life and money and that the effects of such wars last for generations.

Weapons which would give a nation command of the world have been "developed" in the past, the only difficulty being that they did not live up to their claims under test.

In the case of Mr. Barlow's invention, however, if acquired by the United States, the weapon would be so closely guarded that no information regarding its make-up or operation would reach foreign nations until it was brought into play in the event of war.

It is recognized by scientists, both military and civil, that radio has potentialities which as yet are almost unknown. Whether these have been brought into operation in the weapon now being offered the Government is, of course, under the circumstances of secrecy with which it is surrounded, mere speculation, but purchase of the invention by the Government would immediately cause a tremendous burst of activity abroad to develop weapons with which to meet the threat of annihilation thus offered.

Published weekly by the Broadcast Weekly Publishing Company, 726 Pacific Building, San Francisco, Calif.
Telephone Douglas 5273
Yearly subscription: \$3.00 in the United States, \$5.50 in Canada. Entered as second class matter, March 25, 1923,
at the Post Office, San Francisco, California, under Act of March 3, 1879.
Copyright, 1932, by Broadcast Weekly Publishing Company

PERSONAL PICKUPS

BY GYPSY



Mrs. S. A. L., Oakland. Willard Daniels (KROW) is a quiet chap, modest and rather shy, whom few understand or thoroughly appreciate. He was born in **Russell, Kansas.**

Twenty-three years ago, attended schools in Chicago and Missouri, began making his own way at an early age and has been around the world twice, hiked from coast to coast twice, roughed it generally and, as he puts it, learned to grow bigger and better blisters yearly. About two and a half years ago he decided to study voice, settled in San Francisco and just recently became interested in radio. He is 5 feet 8 inches tall, weighs 155 pounds, has blond hair and blue eyes that see things most people miss.

Mrs. T. R., Portland.—Bernice Berwin (NBC) received so many requests for the little poem you and others of her listeners enjoyed on her Personal Closeups appearance that she has had copies of it printed and will gladly send you one. The poem is entitled "Trusting and Resting." Write her in care of the National Broadcasting Company, San Francisco.

Jo Jo, Biggs.—Carol Lofner (Lofner-Harris, NBC) is 5 feet 10½ inches in height, weighs approximately 160 pounds, has dark brown eyes and hair, a slight mustache and a truly wonderful smile. (When he smiles—he's just a wee bit stingy with it.) He is about twenty-nine years old, of English descent, a former University of Indiana student, and is married. Hal Schaefer is twenty-four years of age, was born in Salt Lake City, is of Swiss origin and has been identified with radio four or five years. He is about six feet tall, weighs 160 pounds, has dark eyes and hair and is married to a charming little dancer. Phil Harris' wife participates in the Jamboree broadcasts at KFRC and is known to radio audiences as Mascot Ralston and Christine Paddy.

Sally, Sacramento.—John Kelvin still appears over CBS, but his programs are not coming to the Pacific Coast at present. Lily Laguna (KLX) has been doing her Mexican peasant girl character for over three years. Marie De Veaux, formerly known as the "Little French Girl" at KPO, is now heard from KFRC. A picture of her appeared in the April 10 to 16 issue of Broadcast Weekly.

Mrs. B. O., Los Angeles.—Harold Isbell (KNX) has an aversion to fat girls, is fond of Chinese dishes, gets a thrill out of deep sea fishing, a bigger thrill out of luxurious motor cars (provided they belong to him) and enjoys a little boxing match once in a while. He hails from Aurora, Illinois, is thirty-two years old, married and has a curly-haired, blue-eyed three-and-a-half-year-old son who, as Hal's friends put it, is a "chip off the old block." "Sonny" dotes on pretty ladies, if that means anything. Mr. Isbell has been broadcasting for nine years, is a cellist, an announcer, a baritone and an actor, and has appeared on stations all over the United States. He is 6 feet 1 inch in altitude, weighs 210 pounds, has blue eyes, hair a shade or two darker than his son's, and owns a most devastating smile which is never idle.

G. S., Portland.—Dr. Lawrence Cross (NBC) commutes from Berkeley each morning save Sunday and Monday, and by the time he goes on the air at 8:15, has scanned the pages of four dailies, worked on a magazine article or two, prepared his program for the day and answered a dozen or so fan letters. He makes a point of being in his study not later than 5 o'clock each morning. His Monday program is conducted by his brother Robert, also a Doctor of Divinity. "Death Valley Days" is written by Miss Ruth Cornwall, a petite brunette and Vassar graduate. She has never lived on the desert, but comes west every year or so to gather material and "atmosphere" and on a recent visit was the guest of Death Valley "Scotty." Like yourself and many others, I had always supposed the "Death Valley Days" were written by some great-big-out-door-man and when I met Miss Cornwall last fall I mentioned this. She told an amusing story about her experiences

in selling the story. The prospective sponsors, it seems, were afraid it would be "too girly-girly," but after hearing it their only fear was that it might be too "hard-boiled."

Mrs. H. A. S., San Francisco. Lucille Wall is a Chicago girl who intended making music her life's work and studied with all the enthusiasm of her healthy young soul until one day, when she happened to hear Paderewski play. His mastery so crushed her faith in her own endeavors that she turned to the drama for expression. For many seasons she was identified with Broadway successes and later, when the Collier's Hour came into being, she had an opportunity to play lead in these Sunday afternoon broadcasts. In appearance she reminds me of a tall version of Joan Crawford, and those who know her well proclaim her the most charming personality in the profession.

Janet, Los Angeles.—Cliff Arquette (KNX) is 5 feet 8 inches in height, weighs 145 pounds, has blue eyes, blond hair, is twenty-four years of age and single. His birthplace is Toledo, Ohio, his ancestry, French and Irish, and his vocation in pre-radio days had to do with commercial drawing. He never permits anyone to see his continuity before he goes on the air, dislikes white cats, insists upon wearing his hat in the studio and hates to shave. Among his preferences are black cats, swimming, tennis, the color blue and reading material of humorous vein.

Ruth, Palo Alto.—Francis Michener will be nineteen years old on the 24th of May, was born in Chesterhill, Ohio, is of American-born parents whose antecedents were German and Irish, and makes his home in your own Palo Alto. He has discontinued broadcasting over KTAB but is frequently heard during George Davis' programs at Station KPO. Francis is a most likable chap, courteous and considerate, sincere and studious, with a penchant for collecting oddities and browsing about in quaint book shoppes. He is over six feet tall, weighs 200 pounds, has blue eyes, blond hair and a broad, good-natured countenance. His favorite color is blue, his game is bridge, his composer Debussy, and his author is George Brandes.

FOR READERS OF BROADCAST WEEKLY

for only
\$6.85
complete

The New
**ASSOCIATED
FLORMASHEEN**



RADIO
ASSOCIATED
SPOTLIGHT
SAT. NIGHTS
8:30
10:00
NBC STATIONS

TRIPLE-ACTION! Cleans; waxes; polishes — as you stand erect in operating it. You use the original cans of Associated Dry Cleaner and Associated Liquid Wax and eliminate troublesome pouring into a special container.

See the Associated Flormasheen demonstrated at leading Furniture, Hardware and Department stores in the Pacific West.

MAIL COUPON *for interesting booklet:*

Household Department, BW-5-1-2,
ASSOCIATED OIL COMPANY, 79 New Montgomery Street, San Francisco.

Without obligation, I will be glad to receive the free booklet "Facts on Floors," by John Graham, your floor expert, and also full details about the Associated Flormasheen.

Name

Address

My Furniture, Hardware, or Department Store Dealer's name is

MICROPHONE GOSSIP



• • • At the initial rehearsal of the Standard Symphony Orchestra under Alfred Hertz, famous conductor who is directing a series of concerts in NBC's Standard Symphony Hour, it took several minutes to get the musicians organized and under way. The reason was Hertz himself, for when the familiar, bearded figure appeared on the platform, the entire orchestra of sixty-two men broke forth in enthusiastic and long-sustained applause: It was a touching tribute to their veteran leader, whom radio has brought out of his retirement, and Hertz himself was delighted with the reception.

• • • It wasn't from fright, but—
Vance Graham, "Professor" in charge of the International Stagecoachers' broadcasts twice a week over KOA, Denver, jumped out of his shoes during a recent program.

He did it so that the drummer could broadcast a tap dance. Drum sticks usually are tapped on a drum edge to simulate the dance, but the drummer found that shoes produce a more realistic effect. He had rehearsed the act, but forgot the shoes. So Vance, who was wearing a tuxedo, hurriedly removed his shoes, handed them to the drummer, and stood in his stocking feet trying to hush the giggles of the studio visitors.

• • • Winnie Parker of the KFI organization is a composer as well as blues singer, for she provided the musical score for a musical show held at U. S. C. a short while ago.

• • • What's in a name may not mean much to most of us, but imagine Bill Hatch's embarrassment one evening not long ago when, as he was playing for Little Joe Warner (KNX), Joe suddenly read from "His Jolly Journal": "Will Hatch is an egg inspector." Bill swears he never inspected an egg in his life! Joe was just reading about some of the peculiar positions held by people whose names suited their occupations.

• • • Refa Miller, pretty little NBC songstress, was one of the first Mack Sennett bathing beauties. Just out of school and thrilled by the hope of becoming a movie star, she ran down beaches in flickering films,

dressed in what was considered a daring bathing costume then.

"I was terribly embarrassed," she confesses. "We wore long black stockings, but the skirts of our bathing suits came above our knees, and when my family saw the first picture in which I appeared they indignantly called me home."

• • • Walter Bunker, Jr., nonchalance itself before the microphone in his capacity of chief announcer at KFRC, San Francisco, wilted before the same mike when he debuted recently as a singer. His knees shook and his voice quavered; it was a good old-fashioned case of "mike fright," as he afterwards admitted. Bunker has been studying voice for the past year under one of San Francisco's best singing masters and hopes some day to make his singing voice as famous as his announcing.

• • • George Nickson, KYA staff tenor, earned his first money from singing by winning a \$5 prize in an "amateur night" contest at a tent show in Petaluma.

**The PARK WILSHIRE
HOTEL APARTMENTS**

Most desirably situated on Wilshire Boulevard, adjoining beautiful Westlake Park—15 minutes from the city center. By bus directly in front of the building and by three car lines within one block.

Apartments from \$75 a Month
Also Daily and Weekly Rates

3426 Wilshire Blvd., at Westlake Park

Modern, Homelike and
Supremely Comfortable



LOS ANGELES

SILHOUETTES

THELMA BROWN is one of the most popular members of the KFRC staff. An interview with Thelma is a whole series of surprises. First you learn that she is the daughter of one of the nation's prominent Baptist ministers, the Rev. L. B. Brown, now directing religious training at the Chicago Negro Institute Christian Center.

The next surprise is to learn that this quiet, attractive negro girl is a graduate of the University of California. Well liked on the campus, she was one of the most active students in her class, taking part in practically all choral, drama and oratorical activities at the school. She won scores of oratory contests and conducted the college's choral. Her social work at the University of California was so outstanding that she was awarded honorary membership in the Pacific Institute of International Relations, the honor being conferred upon her by Robert Gordon Sproul, President of the college.

Her first radio experience was gained over the Don Lee station, KHJ, at Los Angeles. She then came to San Francisco where she was starred on a weekly NBC program of negro folk songs and lore, which she produced herself. Fifteen months ago she made her bow to KFRC audiences and has since gained a tremendous following among listeners who like the "blues" numbers as well as those who love the old negro spirituals. She sings both with an equal ease and expression on many



THELMA BROWN

KFRC and Don Lee network productions.

Baseball and dancing are her greatest pleasures. She dislikes bridge and hates coffee, which she never drinks. On her more serious and material side of life Thelma has a burning ambition to write a



EVERETT GLASS

negro opera to preserve for the world the basic rhythm of the negro music, which she says is rapidly being lost.

HAVE you happened to notice a man talking to himself or going through all sorts of queer sounds, such as "mooin" like a cow or some imaginary creature, while "walking abroad" or boarding a street-car? If you have seen him in the bay area, you have more than likely noted the person we are talking of, Everett Glass, director of the Eight O'Clock Players, broadcasting dramas Sunday evenings over KLV.

Don't think that places said director as an "idiot"—he is merely trying effects for anything and everything he may meet with while directing. Though he has played the part of a fool and the like, he is far from being one himself, having won a medal for his literary endeavors when a "kid" and later distinguishing himself by graduating from "Cal" Coolidge's Alma Mater, though most emphatically not in the same class. Everett Glass dates more recently from Amherst than our former President, which may lead you to believe he is an Easterner—a New Englander, in fact.

In 1917 he went "through the mill" of being an actor in the Greenwich Village Theatre in New York City, but California has claimed him so much in the last ten years that he is a regular "Californian." He has directed and taken part in theatricals on both sides of the bay.

The OPEN CIRCUIT



This department is open to all. Send in your letters. Anonymous letters will not be published. Give full name and address.

Richard Le Grande Fans

ON the cover page of BROADCAST WEEKLY April 17 to 23, you advise us that Richard Le Grande is on station KYA. I have looked through seven days' program but do not find him mentioned. Please advise through the Open Circuit when he can be heard. We always enjoyed him when he was broadcasting over NBC and would like to hear him once more.

Mrs. W. S. N., Sacramento, Cal., April 13

(Editor's Note: Richard Le Grande is on the announcing staff at KYA and portrays the part of Ole in the "On With the Show" program.)

Hazel Back on Jamboree

I WISH to congratulate you on your little book, it is an absolute necessity in our home. I do enjoy "Personal Pickups" very much; also the silhouettes and pictures of one's favorites.

May I be permitted to say how glad I am to have our own Hazel Warner back on the Jamboree again. One could easily judge the type of person she is by listening to her sweet voice. When Hazel sings, as only she can, troubles soon disappear. I sincerely hope she continues on Jamboree, as well as her other programs, for years and years to come.

Mrs. N. J. V., Ceres, Cal., April 13

Preferences of Shut-in

I ENJOY using BROADCAST WEEKLY very much. Since using it I get the programs best suited to my own notions. I enjoy the better class of music and singing with a little of the programs of lighter nature. I especially enjoy The Wranglers, Cecil and Sally, Frank and Archie, Beverly Hillbillies and the Stebbins Boys. A little dance music is alright but I use my program and steer

away from most of Lucky Strike. A woman has as much right to smoke Luckies as a man has, but why brag about it? Smoking is only a nasty habit.

Radio is a wonderful thing. I have enjoyed some wonderful music since we bought our radio. I am a partial shut-in, so the radio helps get closer to the outside world.

I use the program every evening and get such lovely music, violin, piano, band and orchestra, all in all the BROADCAST is a very handy little guide.

Mrs. R. W. R., Naches, Wash., April 7

Want "Stebbins Boys" on Later

CAN'T we have the "Stebbins Boys" changed back from the afternoon to the night again? We who work never get a chance to listen to them any more.

G. E. Mc., Spokane, Wash., April 12

**HOTEL
NORMANDIE**

provides the maximum of comfort at reasonable cost. Located just outside the congested district of Los Angeles, yet close to the best shops, theaters and churches, the NORMANDIE offers every advantage you desire in your selection of a temporary or permanent home.

Rates
Room with Bath, single, \$12.00 per day
Room with Bath, double, \$24.00 per day
Monthly Rates on Application

The cuisine, excellent service and reasonable rates in the COFFEE SHOP AND CAFE combine to make your stay a pleasure one
(George L. Concession)



**CORNER SIXTH & NORMANDIE
LOS ANGELES**

LOS ANGELES

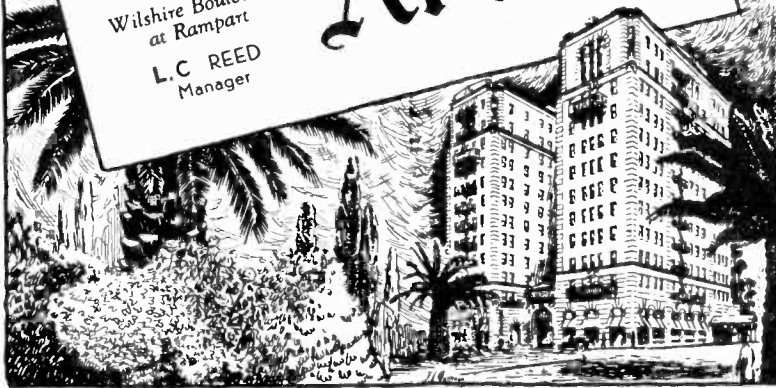
SITUATED in the midst of the famous Wilshire district, overlooking beautiful Westlake and Lafayette Parks, the Arcady offers every comfort and home convenience to the traveler.

Room and Bath from \$3.50 Daily
Apartments from \$90.00 Monthly

Dine in the Beautiful Pompeiian Room

Wilshire Boulevard
at Rampart
L. C. REED
Manager

The Arcady



SUNDAY Programs

May 1, 1932

491.5 Meters **KFRC** Prospect 0100
610 Kcys. 1000 Watts
Don Lee, Inc., San Francisco, Calif.
8 A.M.—Good Morning Organ Concert
8:30—Mac, Comics
9—"Home Sweet Home Concert"
11—CBS, Symphonic Hour
12 noon—CBS, Cathedral Hour
1 P.M.—CBS, Pastorate
1:30—CBS, Chicago Knights
1:45—Song Stories, Clark Sisters
2—CBS, The Lost Legion
2:30—CBS, Ace Begode's Orchestra
3—CBS, The World's a Business
3:15—CBS, Alex Haas' Orchestra
3:45—CBS, Between the Bookends
4—CBS, Ernest Hutcheson, Pianist
4:30—Lavender and Old Lace
4:45—CBS, "Your Child"
5—CBS, Ever-ready Radio Gaieties
5:30—Doakes and Doakes
6—CBS, Edna Hopper Variety Show
6:30—CBS, Ziegfeld Radio Show
7—Hancock Oil Co. program
7:15—CBS, Greyhound Traveler
7:30—CBS, Pennzoll Parade
8—"Musical Forget Me Not's"
8:15—Dramatic Reading by Eugene
Eubanks
8:30—CBS, California Melodies
9—Parisian Night Life
9:15—Variety program
10—Concert with Juanita Tennyson
and Charles Bulotti
11 to 12 midnight—Midnight Moods

243.8 Meters **KYA** Prospect 3456
1230 Kcys. 1000 Watts
Pac. Broadcast. Corp., San Francisco
8:45 A.M.—Musical Voguesters
9—Popular Melodies
9:15—Watchtower program
9:30—Dance Melodies
9:45—Funny Cartoons
10:45—Hawaiian Echoes
11—Church Services, Old St. Mary's
12 noon—Salon Melodies
12:30—Musical Contrasts
1—Dance Melodies
1:15—Program to be announced
1:30—Manual Melodies
2—Broadway Echoes
2:30—Operatic Airs
4—Sunday 4 o'Clock Forum
4:30—At the Symphony
5:30—Artist Celebrities
5:45—Rabbi Elliott M. Burstein
6—Revue
6:30—News Bulletin
6:45—NBC, Orchestra Reward prog.
7:30—Concert Memories
8—American Legion program
9—News Bulletin
9:15—Classic Hour
10 to 11 P.M.—Salon Melodies

322.4 Meters **KFWI** Franklin 0200
930 Kcys. 500 Watts
Radio Entertainments, San Francisco
2:30 P.M.—Studio feature
2:45—Emanuel Rosenthal, baritone
3—Organ Music
3:30—The Family Album
4—Musical Masterpieces
5—Variety
5:15—Anna Nettelman, soprano
5:30—Dance music
6—Silent period
7:50 to 9 P.M.—Service from Fifth
Church of Christ, Scientist



JACKIE ADAIR
KJBS—VOCALIST

340.7 Meters **KLX** Lake. 6000
880 Kcys. 500 Watts
Tribune Pub. Co., Oakland, Calif.
12 noon—Records
12:30—John Wharry Lewis' quintet
1:30—Classical recordings
2:30—Jean Ardath, Pianist; Clyde
Diddle, Bass; Delphine Murphy,
Contralto; Jack Manley, Violinist
3:30—Records
4:30—Venetian violin ensemble
5—Records
5:30—Gus Arnheim transcription
6—Mixed Quartet
6:30—KLX Trio
7:30—The Three Cocoanuts
8—The Eight o'Clock Players, under
the direction of Everett Glass,
present "Beaux Stratagem"
9—Lathan Foundation Program
9:30—Helen Parmelee, pianist
9:45—Marge Vogel and Jean Ardath
10 to 11 P.M.—Dance Program

322.4 Meters **KROW** Glenc. 6774
930 Kcys. 1000 Watts
Educa. Broad. Corp., Oakland, Calif.
8 A.M.—Recordings
8:30—Father Flanagan Boys' Home
9—Recordings
9:15—Jack Murray, pianist
9:30—The Rhythmites
10—Watchtower program
10:45—Peppy Songs, Ray Lowe
11—The Star-oilans
12 noon—Orchestra
12:30—King, Queen, Jack and Jill
1—Watchtower program
2—Studio Program
2:15—Neil Callahan, "Pianologues"
2:30—Off Air
6—Watchtower program
7—Arkansas Traveler
7:30—Sleepy Valley program
7:50—Off the Air
9—Spanish Watch Tower Program
10 to 11 P.M.—Recordings

440.9 Mtrs. **NBC-KPO** GA. 8300
680 Kcys. 5000 Watts
National Broadcast. Co., San Francisco
Service to KJR, KEX, KGA,
KECA, KTAR, KSL, KFSD
8 A.M.—Organ Concert, Paul Car-
son: KPO, KGA, KJR, KEX
8:30—Yvonne d'Arle, Concert and
Grand Opera Soprano: KPO, KGA,
KJR, KEX
8:45—Control of Crime by Law:
KPO, KGA, KJR, KEX, KFSD,
KGIR
9—Symphony Orchestra, direction
Erno Rapee; Talk on Music Week
by C. M. Tremaine: KPO, KGA,
KJR, KEX, KFSD, KSL
10—Aeolian Trio: KPO; KGA on
10:30; KJR on 10:15, off 10:45;
KEX
11—Bible Stories: "Cain and Abel,"
Biblical Drama by Wm. Ford
Manley; Paul Carson, Organist:
KPO, KGA, KJR, KEX
12 noon—Salon Orchestra; Eva De
Vol, Soprano; Orchestra direction
Cy Trobbe: KPO, KGA, KJR,
(KEX on 12:30)
1—Day Dreams, Lucile Kirtley, so-
prano; Easton Kent, Tenor: KPO,
KGA, KJR, KEX
1:30—Vagabonds, Gail Taylor, so-
prano; orchestra, direction Mah-
lon Merrick: KPO, KGA, KEX
2—Catholic Hour: KPO, KGA, KJR,
KEX, KTAR, KGIR
2:30—Our American Schools: KPO,
KGA, KJR, KEX, KTAR, KECA,
KFSD
3—Cecilians: KPO, KGA, KJR, KEX
3:30—Rhythmic Triplets, piano and
vocal trio: KPO, KGA, KJR, KEX
4—Community Forum: KPO
4:30—Gunnar Johansen, Pianist:
KPO, KGA, KJR, KEX
5—Songs that Never Grow Old: KPO
5—Nathan Abas Violin Recital:
KPO on 5:15, KGA, KJR, KEX
5:30—Campus Comedians: KPO,
KGA, KJR, KEX
5:45—Impressions of Amer. Waste-
lands, Milton Wood, narrator; or-
chestra direction Cy Trobbe: KPO,
KGA, KJR, KEX
6:45—Musical Merry-Go-Round; Co-
quettes, vocal trio; orchestra di-
rection Mahlon Merrick: KPO
7:15—NBC Palace Hotel Grand Con-
cert Orchestra: KPO, KGA, KJR
(KTAR off 7:45)
8—Wonders of the Sky; talk on
astronomy by Henry M. Hyde:
KPO, KGA, KJR, KEX
8:15—Henry Thompson, Tenor: KPO,
KGA, KEX
8:30—Rudy Selger and his Fair-
mont Hotel Orchestra: KPO, KGA;
KEX on 8:45
9—Abas String Quartet Chamber
Music Hour, Henri Deering, Pi-
anist, Guest Artist: KPO, KGA,
KJR, KEX
10—Songland, Refa Miller, soprano;
Ben Klassen, Tenor: KPO, KGA,
KJR, KEX, KOA
10:30—Around the Network: KPO,
KGA, KJR, KEX, KFSD, KSL,
KOA, KGIR
11 to 12 midnight—Midnight Mel-
odies, George Nyklícek, organist:
KPO, KGA, KJR, KEX

379.5 Mtrs. **NBC-KGO** Sutter 1920 790 Kcys. National Broadcast. Co., San Francisco Service to KHQ, KOMO, KGW, KFI, KOA, KSL, KTAR, KECA, KFSD

8 A.M.—Major Bowes' Capitol Family: KGO, KOMO, KGW
8:30—Arion Trio: Joyce Barthelson, pianist and director; Josephine Holub, violinist; Margaret Avery, cellist; Irving Kennedy, tenor: KGO, KOMO

9:30—Piano Pictures: Aileen Fealy and Phyllida Ashley: KGO, KGW
10—Pop Concert, orchestra direction Walter Logan: KGO, KOMO, KFI, KTAR

10:30—Yeast Foamers: Orchestra direction Herbie Kay; Browning Mummery, tenor: KGO, KHQ, KGW, KFI, KFSD, KTAR, KSL, KGIR, KGHL

11—Friendly Hour: KGO, KHQ, KGW, KFSD, KTAR, KSL, KGIR
11:30—National Sunday Forum: KGO, KHQ, KGW, KFSD, KTAR, KSL, KGIR

12 noon—Ident Program with Jane Froman, contralto and orchestra: KGO, KHQ, KGW, KFI, KFSD, KTAR, KGIR, KGHL

12:30—Sheaffer Lifetime Revue: KGO, KHQ, KOMO, KGW, KFI, KFSD, KTAR, KGIR, KGHL
1—Sabath Reveries: Dr. Charles L. Goodell, Speaker; Music direction George Shackley: KGO, KHQ, KGW, KFSD, KGIR; KOMO off 1:15

1:30—GE Circle, guest artist: KGO, KHQ, KOMO, KGW, KFI, KFSD, KTAR, KSL
2—Sunday Concert, orchestra direction Rex Dunn: Harry Stanton, Basso: KGO, KOMO, KGW

3—Sing a New Song, Mabel Jackson, soprano; Walter Preston, tenor: KGO, KOMO, KGW, KFI, KFSD
3:15—Rexall Radio Party, orchestra direction Andy Sannella; Ed and Jerry, dialogue and songs: KGO, KHQ, KOMO, KGW, KFI, KSL, KFSD, KTAR, KGIR, KGHL

3:30—The Three Bakers: KGO, KHQ, KOMO, KGW, KFI, KFSD, KTAR, KSL
4—Chase and Sanborn Program: Harry Richman, Master of Ceremonies; Rubinoff's Orchestra: KGO, KHQ, KOMO, KGW, KFI, KFSD, KTAR, KSL, KOA

5—Enna Jettick Melodies: KGO, KHQ, KOMO, KGW, KFI, KFSD, KTAR, KSL, KGIR, KGHL
5:15—The American Album of Familiar Music, Frank Munn, tenor; Mary McCoy, soprano; Veronica Wiggins, contralto; Ohman and Arden, piano duo; male quartet; orchestra direction Gustave Haenschen: KGO, KHQ, KOMO, KFI, KGW, KFSD, KTAR, KSL

5:45—Voice of Pan, Anthony Linden, flute; Emily Linden, piano: KGO, KOMO, KGW, KFI, KOA
6—What Would You Do?: KGO
6:06—Musings, John Brewster, poetry reading; incidental music: KGO, KGW, KFI

6:15—NBC Orchestral Awards Program, Announcement of Winners by Deems Taylor; Orchestra direction Walter Damrosch: KGO, KHQ, KOMO, KGW, KFSD, KTAR, KSL, KGIR, KGHL; KYA on 6:45

7:30—Sunday at Seth Parker's: KGO, KHQ, KGW, KFI, KTAR, KSL, KGIR, KGHL
8—William Stoess' Orchestra: KGO; KOMO, KGW on 8:15

8:30—Carnation Contented Hour: Male Quartet; Orchestra direction Emil Polak: KGO, KHQ, KOMO, KGW, KFI, KFSD, KGU Jackson, Book Reviews: KGO, KGW, KTAR, KOA

9—Reader's Guide: Joseph Henry Jackson, book reviews: KGO
9:30—On Wings of Music: Annabelle Jones, contralto; orchestra direction Rex Dunn: KGO, KGW, KFI
10—Richfield News Flashes: KGO, KHQ, KOMO, KGW, KFI, KFSD

10:15—Paul Carson, organist—'Builder of the Bridge to Dreamland': KGO, KGW, KFI
11 P.M.—Jimmy Joy and his Bal Tabarin Orchestra: KGO

535.4 Meters **KTAB** Garfield 4700 560 Kcys. 1000 Watts Assoc. Broadcasters, Oakland, Calif.
8:30 A.M.—Recordings
9—Call of the Open Road
9:45—Watchtower Program
10—Baptist Church Bible Class
11—10th Ave. Baptist Church
12:30 P.M.—Chapel of Chimes Organ

1—Church of the Latter Day Saints
1:30—Popular recordings
2—Top o' the Dial Music Room
2:30—Masterpieces of Melody
3:30—Theatre of the Air
4—Program for Industrial Home of Adult Blind
4:30—Popular Records
5—Chapel of the Chimes
6—Popular recordings
7—Gus Arnheim's Orchestra
7:30—Church Services from 10th Ave. Baptist Church
9:30—Records
10 to 11 P.M.—Beverly Hill Billies

499.7 Meters **KFSD** Franklin 6353 600 Kcys. 1000 Watts Airfan Radio Corp., Ltd., San Diego
8 A.M. to 6:15—Various Programs
6:15—NBC, Orchestral Award
7:30—Program to be announced
8—Organ Program
8:30—NBC, Carnation Contented Hr
9:15—NBC, Venetian Strings
10—NBC, Richfield News Flashes
10:15—T. Morley Harvey, Pianist
10:30—NBC, Around the Network
11 to 12 midnight—Dance Music

508.2 Meters **KHQ** Main 5383 590 Kcys. 1000 Watts Louis Wasmer, Inc., Spokane, Wash.
9 A.M. to 6:15—Various Programs
6:15 P.M.—NBC, Orchestral Awards
7:30—NBC, Seth Parker
8—Jocur Beauty Aids
8:30—NBC, Carnation Milk Co.
9:30—Studio Program
10—NBC, Richfield News Flashes
10:15 to 11 P.M.—KHQ Ensemble

394.5 Meters **KVI** Broadway 4211 760 Kcys. 1000 Watts Puget Sound Broadcast. Co., Tacoma
8 A.M. to 6—Various Programs
6 P.M.—CBS, Edna Wallace Hopper
7:30—CBS, Ziegfeld Radio Show
8—To be announced
7:15—CBS, Greyhound Traveler
7:30—CBS, Pennzoll Parade
7:45—Silent
9—To be announced
10—Master Concert
11 to 12 midnight—Midnight Moods

CECIT and SAVINNY



IN PERSON 6:45 p.m. Daily

K P O
KECA
K J R
K G A
KFSD

468.5 Meters **KFI** Richmond 6111
640 Kcys. 50,000 Watts
Earle C. Anthony, Inc., Los Angeles
9 A.M. to 6—Various Programs
6 P.M.—NBC Musings
6:15—Orchestra
7:30—NBC, Seth Parker
8—Packard Concert Orchestra
8:30—NBC, Carnation Contented Hr
9:15—Orchestra
9:30—NBC, Wings of Music
10—NBC, Richfield News Flashes
10:15 to 11 P.M.—NBC, Paul Car-
son, organist

239.9 Meters **KFOX** Phone: 67281
1250 Kcys. 1000 Watts
Nichols & Warinner, Long Beach, Cal.
5 A.M. to 6 P.M.—Various programs
6—The Three Boys
6:15—Honolulu Playboys
6:30—KFOX School Kids
6:45—"King of the Vampires"
7—Foster Rucker, baritone; Buda
Orth, accompanist
7:30—The Boy Detective
7:45—Howard's Radio Birds
8—First Church of Christ, Scientist
9—After Church Hour
10—Cally Holden's Orchestra
11—Rebroadcast from KHJ
12 to 5 A.M.—Recordings

333.1 Meters **KHJ** VAndike 7111
900 Kcys. 1000 Watts
Don Lee, Inc., Los Angeles, Calif.
8 A.M. to 6—Various Programs
6 P.M.—CBS, Edna Wallace Hopper
6:30—CBS, Ziegfeld Radio Show
7—CBS, The Gauchos
7:15—CBS, Greyhound Bus Travelog
7:30—CBS, Pennzoll Parade
8—Edison Reveries
8:30—CBS, California Melodies
9—To be announced
9:15—Musical Cameo
9:30—To be announced
10—World-wide News
10:10—Master Concert
11 to 12 midnight—Roy Ringwald,
Organist

285.5 Meters **KNX** Hemp. 4101
1050 Kcys. 5000 Watts
L. A. Evening Express, Los Angeles
7 A.M. to 6—Various Program
6 P.M.—News
6:15—Swami Dhirananda
6:30—Hollywood Humanist's Society
7—Ethel Duncan, "Good Samaritan
of the Air"
7:45—Transcription
8—Hollywood Presbyterian Church
9—"A Night in Paris"
9:15 to 10:15 P.M.—Calmon Lubo-
viski, violinist and Claire Mello-
nino, pianist

526 Meters **KMTR** Holly. 3026
570 Kcys. 500 Watts
KMTR Radio Corp., Hollywood, Cal.
6:30 A.M. to 6—Various Programs
6 P.M.—Twilight Melodist
6:30—Paradise Isle
7—Fishing News
7:15—Studio Program
7:30—Justin Johnson's Salon Group
8—Ted Dahl's Orchestra
8:15—Jeanne Dunn, Blues Singer
8:30—James Newill and Vocalist
9—Old Favorites
9:15—Maria Caselotti, Soprano
9:30—Lives of Composers Series
10—Electrical Transcriptions
10:30—Selected records
11—Louis Armstrong's Orchestra
12 to 12:30 A.M.—Selected records

204 Meters **KGA** Main 3434
1470 Kcys. 5000 Watts
NW. Broad. System, Spokane, Wash.
8 A.M. to 6:45—Various Programs
6:45 P.M.—NBC, Musical Merry-Go-
Round
7:15—NBC, Palace Hotel Concert
Orchestra
8—NBC, Wonders of the Sky
8:15—NBC, Henry Thompson, tenor
8:30—NBC, Rudy Seiger's Orch.
9—NBC, Nathan Abas String Quar-
tet
10—NBC, Songland
10:30—Around the Network
11 to 12 midnight—NBC, Midnight
Melodies

309.1 Meters **KJR** Seneca 1515
970 Kcys. 5000 Watts
Northwest Broad. System, Seattle, Wn.
8 A.M. to 6:45—Various Programs
6:45 P.M.—NBC, Musical Merry-Go-
Round
7:15—NBC, Palace Hotel Concert
Orchestra
8—First Church of Christ Scientist
9—NBC, Abas String Quartet
10—NBC, Songland
10:30—Around the Network
11 to 12 midnight—NBC, Midnight
Melodies

254.1 Meters **KEX** Atwater 3111
1180 Kcys. 5000 Watts
Western Broad. Co., Portland, Ore.
8 A.M. to 6:45—Various Programs
6:45 P.M.—NBC, John and Ned
7:15—NBC, Palace Hotel Concert
Orchestra
7:30—Silent Period
8—NBC, Wonders of the Sky
8:15—NBC, Henry Thompson, tenor
8:30—City Club Program
8:45—NBC, Rudy Seiger's Orchestra
9—NBC, Abas String Quartet
10—NBC, Songland
10:30—Around the Network
11 to 12 midnight—NBC, Midnight
Melodies

325.9 Meters **KOMO** Elliott 5890
920 Kcys. 1000 Watts
Fisher's Blend Station, Inc., Seattle
8 A.M. to 6—Various Programs
6 P.M.—NBC, Musings
6:15—NBC, Orchestral Awards Pro-
gram
7:30—NBC, Sunday at Seth Parker's
8—Baldy Homespun Melodies
8:15—NBC, William Stoess' Orch.
8:30—NBC, Carnation Contented Hr.
9:15—Seiberling Singers
9:30—NBC, Wings of Music
10—NBC, Richfield News Flashes
10:15 to 11 P.M.—U. of W. Educa-
tional Hour

236.1 Meters **KOL** Elliott 4466
1270 Kcys. 1000 Watts
Seattle Broadcast Co., Seattle, Wash.
8 A.M. to 6—Various Programs
6 P.M.—CBS, Edna Wallace Hopper
6:30—CBS, Ziegfeld Radio Show
7—CBS, The Gauchos
7:15—CBS, Greyhound Traveler
7:30—CBS, Pennzoll Parade
8—Waves of Melody
8:15—Don Lee Feature
8:30—CBS, California Melodies
9—"A Night in Paris"
9:15—Studio Program
9:30—Don Lee Feature
10—KFRC Master Concert
11 to 12 midnight—Midnight Moods

WHY KTAB?

For the organization demanding coverage from the Oregon line to San Luis Obispo and into Reno, no better outlet can be found than Station KTAB.

With one thousand watts of power, "At the top of the dial," KTAB forcefully carries your message into every large city, town and hamlet in the semi-circle extending from the top of the State into Nevada and as far south as San Luis Obispo.

KTAB's dial location makes possible undistorted reception on hot valley days.

A rate card and complete information will be sent to prospective advertisers or their agencies upon request.

Complete offices are maintained in metropolitan San Francisco and Oakland.

San Francisco office
PICKWICK HOTEL
5th and Mission Sts.
Phone GARfield 4700

Oakland office
1404 FRANKLIN ST.
Cor. 14th and Franklin
Phone HOLLiday 5070

MONDAY Programs

May 2, 1932

243.8 Meters **KYA** Prospect 3456
 1230 Kcys. 1000 Watts
 Pac. Broadcast. Corp., San Francisco
 7:30 A.M.—Rhythm Masters
 8—Metropolitan Hour
 9—Manual Melodies
 9:30—Modern Melodies
 10—Sunshine Hour
 11—Popular Hits
 11:15—Manhattan Moods
 11:30—Prudence Penny
 11:45—Song and Dance Kings
 12 noon—Broadway Echoes
 12:30—'Your Helpful Friend'
 12:45—Glen Goff, Organist
 1:45—Calif. Parent Teachers Assoc.
 2—Famous Songs and Singers
 2:30—Glen Goff, Organist
 3—Hawaiian Echoes
 3:15—Novelty Bits
 3:30—Great Masters of Music
 4—Salon Music
 4:15—E. B. Bronson; Psychiatrist
 4:30—On Parade
 5—Metropolitan Hour
 6—Revue
 6:30—Dance Music
 6:45—Henry Starr, Hot Spot of Radio
 7—Hap and Jack
 7:15—"The Harmonettes"
 7:30—Virginia Spencer; Piano
 7:45—News Bulletin
 8—On with the Show
 9—Billy Small Ensemble with The Troubadours
 9:30—Bob Allen and George Bowers
 9:45—Billy Small, Fiddlin' Around
 10—News Bulletin
 10:15—Radio Sandman Hour
 11 to 12 midnight—Concert Memories

535.4 Meters **KTAB** Garfield 4700
 560 Kcys. 1000 Watts
 Assoc. Broadcasters, Oakland, Calif.
 7 A.M.—Popular records
 7:05—Morning Reporter
 7:30—Allay-oo! with Bob Roberts
 8—Radio Shopping News
 8:30—Jack Hall and Clem Kennedy
 9—Morning Prayer Hour
 9:30—Dr. J. Douglas Thompson
 10—Household Hour, Alma La Marr
 10:30—News Service
 10:35—Dr. B. L. Corley
 10:55—Records
 11—Store Scenes
 11:30—Records
 12 noon—Dream Interpretations
 12:15—Dr. R. M. McLain
 12:30—News Service
 12:35—Studio Program
 1:30—Over the Teacups
 2—Popular Records
 2:30—Masterpieces of Melody
 3:30—Recordings
 4:30—Jack Hall and Clem Kennedy
 5—Uncle Rod's Children's program
 5:30—Dr. J. Douglas Thompson
 6—Popular records
 6:15—Crazy Cowboys
 6:30—Ernie Smith, Sport Page
 6:45—Reporter
 7—Popular music
 7:15—Rabbi Weinstein
 7:30—News Service
 7:45—The Mirror
 8—Water-Witch Orchestra
 8:15—This is Romance
 8:30—Organ recital by Elbert La Chelle
 9—Beverly Hill Billies
 10—Moment Musicale
 11 to 1 A.M.—Nite Owls



ROY HEDGE
 ("CLARENCE")
 CBS—6:45 P.M.

491.5 Meters **KFRC** Prospect 0100
 610 Kcys. 1000 Watts
 Don Lee, Inc., San Francisco, Calif.
 7 A.M.—Seal Rocks Broadcast
 7:15—Dobbssie and Wee Willie
 7:25—New York stock quotations
 7:30—Dobbssie Quarter Hour
 7:45—CBS, Old Gold program
 8—Shell Happytime
 8:30—Hallelujah hour
 9:30—Bristol Meyers program
 9:45—Ann Welcome
 10—The Almanac
 11—CBS, Columbia Salon Orchestra
 11:30—CBS, Sam Prager, Pianist
 11:45—CBS, Four Eton Boys
 12 noon—Noonday Concert
 1—The Hoofers
 1:15—Pancho and his Orchestra
 1:30—N. Y. Stock Quotations
 1:35—The Globe Trotter
 1:45—Beauty Talk
 2—Happy Go Lucky Hour
 3—Feminine Fancies
 4—CBS, Organalties
 4:15—CBS, Tweed Hogan's Orch.
 4:30—Better Business Bureau
 4:45—The Globe Trotter
 4:55—Town Topics
 5—Skippy
 5:30—Dog Chats
 5:45—"Idyllo," Walter Kelsey, Eleanor Allen and Juanita Tennyson
 6—CBS, Guy Lombardo's Orchestra
 6:30—CBS, Music that Satisfies
 6:45—CBS, Myrt and Marge
 7—CBS, Howard Barlow and Columbia Symphony Orchestra
 7:15—Independent Petroleum Association program
 7:30—CBS, Camel Quarter Hour
 7:45—CBS, Noble Sissie's Orchestra
 8—Blue Monday Jamboree
 10—Anson Weeks' Orchestra
 11—CBS, Henry Halstead's Orch.
 12 to 1 A.M.—Vagabond of the Air

340.7 Meters **KLX** Lake. 6000
 880 Kcys. 500 Watts
 Tribune Pub. Co., Oakland, Calif.
 7 A.M.—Morning exercises and entertainment; N. Y. Stocks
 8—Records
 8—Modern Homes Period
 9:30—Clinic of the Air
 10:15—San Francisco stocks; financial information, weather
 10:30—Records
 10:45—Aratone program
 11—Sunshine Twins
 12 noon—Jack Delaney's Band
 1—Jean's Hi-Lights
 2—Classical Recordings
 2:35—Closing stocks
 2:45—Opportunity hour
 3:45—Records
 4:30—Brother Bob's Club
 5—Helen Parmelee, pianist
 5:15—The Three Cooanuts, and the King Sisters' Harmony Trio
 6—Blue Watters' Dance Orchestra
 7—News Items
 7:30—Helen Parmelee, Pianist
 7:45—Fred and Morris, comedians
 8—Ethel Rhinard and Cora Scott
 8:15—Better Business Talk
 8:30—Faucit Theatre of the Air
 9—The Wanderer
 9:15—Helen Parmelee, pianist
 9:45—"Wes" Summerford and Jean Ardash
 10 to 11 P.M.—Dance program

322.4 Meters **KROW** Glenc. 6774
 930 Kcys. 1000 Watts
 Educa. Broad. Corp., Oakland, Calif.
 8 A.M.—X-Bar "B," Boys
 8:45—Fifteen Minutes at Home
 9—Off Air
 1—Weather Forecast
 1:05—Latin-American program
 2—Recordings
 2:45—C. Martin Friburg, tenor
 3—Paul's Hawaiians
 3:30—The KROW-olians
 4:15—Don Germano and Orchestra
 5—Italian program
 5:30—Wade Forrester
 5:45—Organ Moods, Vivian Moore
 6—Off Air
 7:30—KROW Reporter
 7:45—The Harmony Boys
 8—Curtain Wood and Apple Bottom
 8:15 to 8:30 P.M.—The Twilight Serenader

296.6 Meters **KQW** Columbia 777
 1010 Kcys. 500 Watts
 Pac. Agr. Foundation, Ltd., San Jose
 12 noon—Variety Program
 12:30—Weather and Market Reports
 1—Leah Bernhardt Kimball
 1:30—Friendly hour, Lena Leland
 2:30—Dr. Lawrence
 3—Studio program
 4:30—Story Time, Lena May Leland
 5—Vespers, Roger Darling
 5:30—The Romancers
 5:45—Liberty Bell Quarter hour
 6—The Knickerbockers
 6:15—Franco's program
 6:30—Market reports
 6:45—Radio News and Forum
 7:15—News 'n Music
 7:30—Calif. Dept. of Agric.
 7:45—Postal information
 7:50—Musical Tid-bits
 8—Sacred Memories
 8:30—Early Californians
 9 to 10 P.M.—Fireside program

379.5 Mtrs. **NBC-KGO** Sutter 1920
7900 Kcys. 7500 Watts
National Broadcast. Co., San Francisco

Service to **KHQ, KOMO, KGW,
KFI, KOA, KSL, KTAR;
KECA, KFSD**

7 A.M.—Organ Concert: KGO
7:30—Hinds Romance Exchange:
KGO, KHQ, KOMO, KGW, KFI,
KSL
7:45—Van and Don, the Two Pro-
fessors: KGO, KHQ, KOMO, KFI,
KGW, KFSD, KTAR, KSL, KOA
8—GE Circle, Oscar of the Wal-
dorf, guest; Grace Ellis, hostess:
KGO, KHQ, KOMO, KGW, KFI,
KFSD, KTAR, KGIR, KGHL
8:15—Brighten-Up Half-Hour: KGO,
KHQ, KOMO, KGW, KFI, KTAR
8:45—To be announced: KGO
9:15—Beautiful Thoughts: KGO,
KHQ, KGW, KFI, KTAR
9:30—Buckaroos, Charles Marshall
and Ted Maxwell: KGO
9:45—Rembrandt Trio: KGO (KFI
on 10); (KGW on 10:15)
10:30—Woman's Magazine of the
Air: KGO, KHQ, KOMO, KGW,
KFI (KFSD off 10:50, on 11:10)
(KTAR, KSL, KOA on 11:10)
11:30—The League of Western
Writers: KGO
12 noon—Organ Concert, Chas. Run-
yon: KGO
12:15—Western Farm and Home Hr.
KGO, KHQ, KOMO, KGW, KFI,
KFSD, (KTAR on 12:45), KSL,
KGIR, KGHL
1—Stringwood Ensemble: KGO,
KOMO; (KGW on 1:30)
1:45—Songsters: KGO
2—Waldorf-Astoria Sert Room Or-
chestra: KGO, KGW, KFI, KSL
2:15—Traveling Thru Europe: KGO,
KFI
2:30—Cotton Pickers, Tommy Mon-
roe, John O'Brien, Harold Peary,
Southern Harmony Four: KGO,
KFI
3—Regimentals: KGO
3:15—Sonata Recital: Piano and
Violinist: KGO
3:30—Swift Program, The Stebbins
Boys: KGO, KHQ, KOMO, KFI,
KGW, KSL
3:45—News Service: KGO
4—Fine Art String Quartet: KGO,
KFI
4:30—Death Valley Days, dramatic
sketch: KGO, KHQ, KOMO,
KGW, KFI, KFSD, KTAR, KSL
5—Hill Billies, Charles Marshall,
John O'Brien, Ace Wright, Chas.
Craver, John Toffoli: KGO, KFI,
KOA
5:30—Parade of the States, orchi-
estra direction Erno Rapee; cho-
rus of mixed voices: Howard
Claney, mixer; Graham Mc-
Namee, announcer: KGO, KHQ,
KOMO, KGW, KFI, KSL
6—National Radio Forum, Oliver
Owen Kuhn, Master of Cere-
monies: KGO, KOMO, KGW, KFI,
KGIR
6:30—Demi-Tasse Revue: John P.
Medbury, Master of Ceremonies;
Ambassador Hotel Orchestra, di-
rection Jimmie Grier; Donald
Novis, Tenor; Dick Webster,
Baritone; Ambassador Trio, Voc-
alists; Jeanne Shock, Pianist:
KGO, KHQ, KOMO, KGW, KFI,
KFSD, KTAR, KSL, KOA, KGIR,
KGHL
7—Amos 'n' Andy: KGO, KHQ,
KOMO, KGW, KFI, KFSD, KSL

7:15—Billy Jones and Ernie Hare:
KGO, KHQ, KOMO, KGW, KFI,
KFSD, KTAR, KSL (time subject
to change)
7:30—Voice of Firestone: Lawrence
Tibbett, Baritone: KGO, KHQ,
KOMO, KGW, KFI, KFSD,
KTAR, KSL, KGIR, KGHL, KGU
8—Adventures of Sherlock Holmes:
Dramatic Sketch: KGO, KHQ,
KOMO, KGW, KFI, KFSD,
KTAR, KSL
8:30—Hancock Oil Program: KGO,
KFI, KFSD
8:45—Dixie Memories: Sam Moore,
Carolyn Moore, Dixie Marsh:
Songs and Dialogue: KGO, KFI
9—Croatian Tambouritza Ensemble:
KGO
9:15—Political talk: KGO, KFI
9:30—Rendezvous: The Coquettes;
Alvino Rey, Banjoist: KGO, KFI
9:45—Garner for President: KGO,
KFI
10—Richfield News Flashes: KGO,
KHQ, KOMO, KGW, KFI, KFSD
10:15—Eva Gruningar, Contralto:
KGO
10:30—Olympians: David Bell, Gil-
bert Chick, Tenors; Joseph Tissier,
Baritone; Henry Schmetz, Bass;
Mynard Jones, Pianist and Direc-
tor: KGO
11—Phil Harris Hotel St. Francis
Dance Orchestra: KGO
12 to 12:30 A.M.—Organ Concert,
Dollo Sargent: KGO

440.9 Mtrs. **NBC-KPO** Gar. 8300
680 Kcys. 5000 Watts
National Broadcast. Co., San Francisco
Service to **KJR, KEX, KGA,
KECA, KTAR, KSL, KFSD**

7:30 A.M.—Sunrise Serenaders: Or-
chestra direction Jess Norman:
KPO
8—Financial Service: KPO, KGA,
KJR, KEX
8:15—Crosscuts from the Log o' the
Day, Robert Cross; Southern Har-
mony Four; Ace Wright, Violin-
ist: KPO, KGA, KJR, KEX
(KTAR off 8:45)
9:15—Stringwood Ensemble, direc-
tion Charles Hart: KPO, KGA,
KEX, KJR
9:30—Helpful Hints to Housewives,
Julia Hayes: KPO
9:45—University of California at
Your Service: KPO
9:45—Organ Concert, George Nykll-
cek: (KPO on at 10, off at 10:15),
KGA, KJR, KEX
10:15—Cultural Conversation: KPO,
KGA, KJR, KEX
10:30—Snapshots: Rita Lane, Sop-
rano; Orchestra direction Cy
Trobbe: KPO
11—Modern Moods: Orchestra direc-
tion Cy Trobbe: KPO
11:30—United States Marine Band,
Captain Taylor Branson directing:
KEX; KPO off 11:45; KGA, KJR
on 11:45
11:45—Organ Concert, George Nykll-
cek: KPO
11:50—South San Francisco Stock-
yards Report: KPO
11:57—Time Signals: KPO
12 noon—Rhythmic Triplets: KPO,
KGA, KJR, KEX
12:30—Windjammers: Saxophone
Quartet direction Jess Norman:
KPO, KGA, KJR, KEX
1—Helen Barker Art Talk: KPO,
KGA, KEX
1:15—Harry Owens and his Orches-
tra: KPO, KOA

1:45—Sparklers: Agatha Turley, Sop-
rano; Orchestra direction Jess
Norman: KPO, KGA, (KJR on 2),
KEX
2:15—Ted Roy, the Singing Black-
smith: KPO, KGA, KJR, KEX
2:30—Fiddlers Three: KPO, KGA,
KJR, KEX
2:45—June Pursell, Ballads: KPO,
KGA, KJR, KEX
3—Who Cares?: Variety Program:
KPO, KGA, (KJR on 3:05), KEX,
(KGIR on 3:30)
4—John and Ned: KPO, KGA, KJR,
KEX
4:15—Federal Business Talk: KPO,
KGA, KJR, KEX
4:30—California State Chamber of
Commerce Program: KPO
4:30—Phil Harris Hotel St. Francis
Dance Orchestra: (KPO on
4:45, off 5:15), (KGA off 5, on
5:15), KJR, KEX
5:15—A Couple of Mouthfuls by
Scotty: KPO
5:30—The Date Book with Stuart
Byron: KPO
5:45—Little Orphan Annie: KPO,
KGA, KJR, KEX, KECA
6—Rhythm Vendors: Orchestra di-
rection Jess Norman: (KPO off
6:15, on 6:30), (KGA off 6:30),
(KJR off 6:15, on 6:30), KEX
6:15—Chief of Police Quinn: KPO
6:45—Cecil and Sally: KPO, KGA,
KJR, KECA
7—Argentine Trio: KPO, KGA, KJR
7:15—Alice Gentry, Soprano: KJR
orchestra direction Cy Trobbe:
KPO, KGA, (KJR off 7:45)
8—Road Show: KPO off at 9; KJR,
KGA, KEX
9—University of California Pro-
gram: KPO
9:30—Earl Burtnett's Orchestra:
KPO, KGA, KJR, (KEX off
9:45), KECA, KOA
10—The Witch of Endor: Mystery
Serial by Carlton E. Morse, Third
Episode: KPO, KGA, KJR, KEX,
KOA
10:30—Around the Network: KPO,
KGA, KJR, KEX, KFSD, KSL,
KOA, KGIR
11—Stringwood Ensemble: KPO,
KGA, KEX
11:30 to 12 midnight—Organ Concert,
Paul Carson: KPO, KGA, KEX

322.4 Meters **KFWI** Franklin 0200
930 Kcys. 500 Watts
Radio Entertainments, San Francisco
7 A.M.—KFWI-opener program
8—Silent period
9—Morning Melodies
10—White House program
10:15—Bellevue Hotel program
10:30—Health talk, Dr. Linebarger
11—Timely Topics
11:15—Concert Music
11:30—Dr. Campbell's program
11:45—Popular Selections
12:30—Town Crier
12:45—News Flashes
1—Silent
6—Dinner Dance Music
7—Bob Robb's Sportsheet
7:15—Hoku Hawaiians
7:30—Silent period
8:30—Grace King and Loretta Van
Dyl, harmony duo
8:45—John D. Barry, World Events
9—Jack Coakley's Orchestra
9:30—Ella Stankevich, Young Rus-
sian Concert Pianist
10—Frank Baken, baritone
10:15—Miniature Concert
10:30—Dance Music
11—Master Melodies
12 to 1 A.M.—Dedication Hour

394.5 Meters KVI Broadway 4211
760 Kcys. 1000 Watts
Puget Sound Broadcast. Co., Tacoma
6:30 A.M. to 6—Various Programs
6 P.M.—Dellin Serviteers
6:30—CBS, Music That Satisfies
6:45—CBS, "Myrt and Marge"
7—CBS, Howard Barlow and Orch.
7:15—Don Lee Studio
7:30—CBS, Camel Quarter Hour
7:45—Silent period
9—Blue Monday Jamboree
10—Anson Weeks' Orchestra
11 to 12 midnight—Henry Halstead
Orchestra

236.1 Meters KOL Elliott 4466
1270 Kcys. 1000 Watts
Seattle Broadcast Co., Seattle, Wash.
6:45 A.M. to 6—Various Programs
6 P.M.—CBS, Guy Lombardo's Orch.
6:30—CBS, Music that Satisfies
6:45—CBS, Myrt and Marge
7—CBS, Howard Barlow
7:30—CBS, Camel Quarter Hour
7:45—CBS, Noble Sissie's Orchestra
8—CBS, Isham Jones and his Orch.
8:15—Valvoliners
8:30—CBS, Enric Madriguera's Orch.
9—Blue Monday Jamboree
10—Anson Weeks' Orchestra
11 to 12 midnight—Henry Halstead's
Orchestra

254.1 Meters KEX Atwater 3111
1180 Kcys. 5000 Watts
Western Broad. Co., Portland, Ore.
6:45 A.M. to 6—Various Programs
6 P.M.—NBC, Rhythm Vendors
6:45—Studio program
7—NBC, Argentine Trio
7:15—To be announced
7:30—Silent Period
8—NBC, Road Show
9:30—NBC, Earl Burnett's Orch.
9:45—Oregonian Interviews
10—NBC, Witch of Endor
10:30—Around the Network
11—Stringwood Ensemble
11:30—Organ Concert
12 to 1 A.M.—Allen Daniels

204 Meters KGA Main 3434
1470 Kcys. 5000 Watts
NW. Broad. System, Spokane, Wash.
6 A.M. to 6 P.M.—Various Programs
6 P.M.—NBC, Rhythm Vendors
6:45—NBC, Cecil and Sally
7—NBC, Argentine Trio
7:15—Alice Gentle and Salon Orch.
8—NBC, Road Show
9:30—NBC, Earl Burnett's Orch.
10—NBC, Witch of Endor
10:30—Around the Network
11—Stringwood Ensemble
11:30 P.M.—Organ Concert

508.2 Meters KHQ Main 5383
590 Kcys. 1000 Watts
Louis Wasmer, Inc., Spokane, Wash.
6:45 A.M. to 6—Various programs
6 P.M.—Kinman Business University
6:30—NBC, MJB Demi-Tasse Revue
7—NBC, Amos 'n' Andy
7:15—Chandu, the Magician
7:30—NBC, Firestone Program
8—NBC, Adventures of Sherlock
Holmes
8:30—Program to be announced
8:45—Babson Business Barometer
9—Program to be announced
10—NBC, Richfield News Flashes
10:45—Timely Topics
11—Fran Morton's Orchestra
12 to 12:30 A.M.—Desert Caravan

325.9 Meters KOMO Elliott 5890
920 Kcys. 1000 Watts
Fisher's Blend Station, Inc., Seattle
6:55 A.M. to 6—Various Programs
6 P.M.—NBC, National Radio Forum
6:30—NBC, MJB Demi-Tasse Revue
7—NBC, Amos 'n' Andy
7:15—NBC, Jones & Hare
7:30—NBC, Voice of Firestone
8—NBC, Adventures of Sherlock
Holmes
8:30—Studio Program
8:45—Spratt's Dog Story
9—Program to be announced
9:15—Gold Shield Little Symphony
10—NBC, Richfield News Flashes
10:15—Globe Trotter
10:30—NBC, Olympian Quartet
11—NBC, Hotel St. Francis Dance
Orchestra
12 to 12:30 A.M.—Organ Recital

309.1 Meters KJR Seneca 1515
970 Kcys. 5000 Watts
Northwest Broad. System, Seattle, Wn.
7 A.M. to 6 P.M.—Various Programs
6 P.M.—NBC, Rhythm Vendors
6:15—Anson Weeks, (E. T.)
6:45—Cecil and Sally
7—NBC, Argentine Trio
7:15—NBC, Alice Gentle & Salon Or.
8—NBC, Road Show
9:30—Earl Burnett's Orchestra
10—NBC, Witch of Endor
10:30—Around the Network
11—Earl Gerdon Roof Garden Orch.

285.5 Meters KNX Hemp. 4101
1050 Kcys. 5000 Watts
L. A. Evening Express, Los Angeles
6:30 A.M. to 6—Various Programs
6 P.M.—News
6:15—Anson Weeks' Orchestra
6:30—Challenge Grenadiers
6:45—Vivian Duncan and Lew Cody
7—Frank Watanabe & Hon. Archie
7:15—Rajput
7:30—KNX Ensemble
7:45—Centerville Sketches
8—Realty Board Californians
8:30—The Georgia Fifield Players
9—News
9:15—KNX Ensemble
9:30—Ethel Duncan "Good Samari-
tan"
10—Jack Taylor's Orchestra
11—The Paris Inn
12 to 1 A.M.—Ray Howell

468.5 Meters KFI Richmond 6111
640 Kcys. 50,000 Watts
Earle C. Anthony, Inc., Los Angeles
6:30 A.M. to 6—Various programs
6 P.M.—NBC, Nat'l Radio Forum
6:30—NBC, MJB Demi-Tasse Revue
7—NBC, Amos 'n' Andy
7:15—NBC, Jones & Hare
7:30—NBC, Voice of Firestone
8—NBC, Adventures of Sherlock
Holmes
8:30—Hancock Oil Program
8:45—NBC, Dixie Memories
9—Program to be announced
9:15—NBC, Political Talk
9:30—Studio Program
9:45—NBC, Garner for President
10—NBC, Richfield News Flashes
10:15 to 12 midnight—Jimmie Grier's
Orchestra

333.1 Meters KHJ VAndike 7111
900 Kcys. 1000 Watts
Don Lee, Inc., Los Angeles, Calif.
7 A.M. to 6—Various Programs
6 P.M.—CBS, Guy Lombardo's Orch.
6:30—CBS, Music that Satisfies
6:45—CBS, "Myrt and Marge"
7—CBS, Howard Barlow's Orchestra
7:15—Hutton's Concert Ensemble
7:30—CBS, Camel Quarter Hour
7:45—CBS, Noble Sissie's Orchestra
8—Blue Monday Jamboree
10—World-wide News
10:10—Anson Weeks' Orchestra
11—Roosevelt Dance Orchestra
12 to 1 A.M.—Roy Ringwald, Organ

499.7 Meters KFSB Franklin 6353
600 Kcys. 1000 Watts
Airfan Radio Corp., Ltd., San Diego
7:30 A.M. to 6—Various programs
6 P.M.—Cramer's Quartet and John
Wells
6:30—NBC, Demi-Tasse Revue
7—NBC, Amos 'n' Andy
7:15—NBC, Jones & Hare
7:30—NBC, Voice of Firestone
8—NBC, Adventures of Sherlock
Holmes
8:30—NBC, Hancock Oil Program
8:45—Studio program
9:30—NBC, Rendezvous
10—NBC, Richfield News Flashes
10:15—Studio Program
10:30—NBC, Around the Network
11 to 12 midnight—Dance Music

239.9 Meters KFOX Phone: 67281
1250 Kcys. 1000 Watts
Nichols & Wariner, Long Beach, Cal.
5 A.M. to 6 P.M.—Various programs
6—Sassy Little and her Pals
6:15—Blue Ribbon Group
6:30—The Three Vagabonds
6:45—Three Girls
7—KFOX School Kids
8—Christian Science Lecture
9—Organ Reveries, Vera Graham
9:30—Majestic Ballroom Orchestra
10:15—Anson Weeks' Orchestra
11—Henry Halstead Orchestra
12 to 5 A.M.—Recordings

220.4 Meters KGER Phone: 682-94
1360 Kcys. 1000 Watts
Cons. Broadcast. Co., Long Beach
6 A.M. to 6 P.M.—Various Programs
6—Em and Clem
6:15—Twilight Fantasy
6:45—Cheerful Earful
7—Buttercream Ragamuffins
7:15—Evening Diversions
7:30—Varieties
8—Rango
8:30—Wélma Souvagoel, Pianist
9—Evening Moods
10—Helene Smith, Pianist
10:15—Frank Jocelyn, Organist
11 P.M.—Tom Moore's Orchestra

526 Meters KMTR Holly. 3026
570 Kcys. 500 Watts
KMTR Radio Corp., Hollywood, Cal.
6:30 A.M. to 6—Various Programs
6 P.M.—Twilight Melodist
6:30—Paradise Isle
7—Chamber of Commerce program
7:15—The Hired Man
7:30—Tax Reduction Club
7:45—Harry Geise and Happy Guys
8—Studio Program
8:30—Louis Armstrong's Orchestra
9—Political Talk
9:15—James Newell, Tenor; Justin
Johnson's Group
9:30—Harold Curtis, organist
10—Selected Records
11—Louis Armstrong's Orchestra
12 to 12:30 A.M.—Records

SUBSCRIBE NOW



POLICE CALLS



THE ORIENT



SHIPS AT SEA



EUR

Radio's Big Thrills

in addition to regular stations with

New JACKSON-BELL

Model 25 single dial
combination long and
short-wave Receiver

THE world-wide drama of human events is broadcast on *short wave*. Not merely fiction, but *real adventures and tragedies* in every part of the world . . . hold-ups, disasters at sea, foreign intrigue, etc. With this new JACKSON-BELL you not merely hear them *reported* but are a *participant* as these thrilling events actually occur. Your regular stations, too, of course, and all on the *same dial*. Really two sets for the price of this one marvelous 8 tube superheterodyne—\$59.95 complete, on easy terms. Ask your dealer to demonstrate. But be *sure* it is NEW Model 28, SINGLE dial JACKSON-BELL *combination*. Value, performance, and versatility unequalled in the entire radio field TODAY.

H. R. CURTISS CO., *Distributors*
895 O'Farrell St., San Francisco

\$59.95

Complete with 8 Cunningham Tubes

Same JACKSON-BELL as above
but in beautiful new console
cabinet—

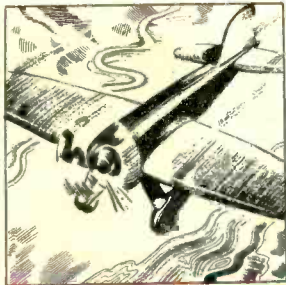
\$74.50

AT DEALERS
EVERYWHERE

Also New Model 25 JACKSON BELL . . . \$29.95 complete with tubes

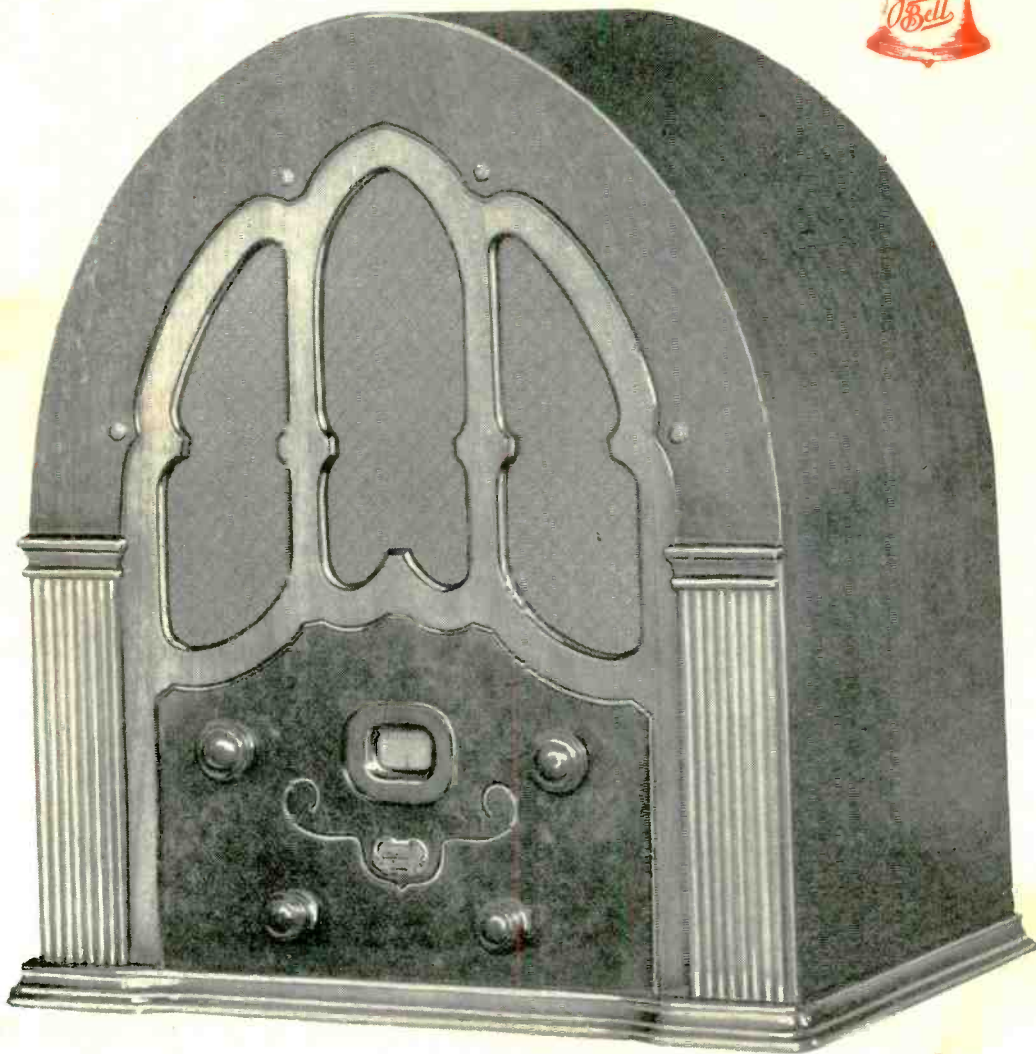


OPE



AIRPLANES

EASY TERMS



5

ove,
2

TUESDAY Programs

May 3, 1932

491.5 Meters **KFRC** Prospect 0100
610 Kcys. 1000 Watts
Don Lee, Inc., San Francisco, Calif.

7 A.M.—Seal Rocks Broadcast
7:15—Dobbie and Wee Willie
7:25—N. Y. Stock Quotations
7:30—Dobbie Quarter Hour
7:45—CBS, Old Gold program
8—Shell Happytime
8:30—Hallelujah hour
9:30—Mary and Jim
9:45—Question and Answer Box
10—The Almanac
11—Good Will Industries
11:05—CBS, Ann Leaf, Organist
11:15—Best Foods program
11:30—CBS, Musical Americana
12 noon—Noonday Concert
1—The Hoofers
1:15—Rita Murray Financial Talk
1:30—N. Y. Stock Quotations
1:35—The Globe Trotter
1:45—Organ Concert
2—Happy Go Lucky Hour
3—Feminine Fancies
4—Song Stories, Clark Sisters
4:15—Your Garden
4:30—Medical Talk
4:45—The Globe Trotter
4:55—Town Topics
5—Skippy
5:15—Song Recital
5:30—Nehi program
5:45—Adventures of Black and Blue
6—CBS, Symphony of Color
6:15—Anson Weeks' Orchestra
6:30—CBS, Music that Satisfies
6:45—CBS, Myrt and Marge
7—CBS, Joe Palooka
7:15—CBS, Howard Barlow's Orch.
7:30—CBS, Camel Quarter Hour
7:45—After Dinner Concert
8—CBS, Harold Stern's Orchestra
8:15—Chandu the Magician
8:30—Skyscrapers
8:45—CBS, Coon-Sanders Orchestra
9—Hollywood Nights
9:15—Variety program
9:30—CBS, Ben Bernie's Orchestra
10—Tillie the Toller
10:15—Gene Quaw's Orchestra
11—Henry Halstead's Orchestra
12 to 1 A.M.—Vagabond of the Air

296.6 Meters **KQW** Columbia 777
1010 Kcys. 500 Watts
Pac. Agric. Foundation, Ltd., San Jose
7 A.M.—The Breakfast hour
9—Morning Melodies
9:30—Helpful hour
10:45—Rainbow Trouper
11—Leah Bernhardt Kimball
11:30—Cliff, Mac and Norm
12 noon—Variety Program
12:30—Weather and Market Reports
1—Leah Bernhardt Kimball
1:30—Friendly hour, Lena Leland
2:30—Dr. Lawrence
3—Studio program
4:30—Story Time
5—Watch Tower
5:30—Evening Echoes
5:45—Liberty Bell Quarter Hour
6—The Knickerbockers
6:15—Franco's program
6:30—Market reports
6:45—Radio News and Forum
7:15—Rural Power Representative
7:30—Calif. Dept. Agriculture
7:45—The Caterpillar Crew
8 to 10 P.M.—You Never Can Tell, Challenge program



BERT CARLSON
KYA—STAFF ARTIST

243.8 Meters **KYA** Prospect 3456
1230 Kcys. 1000 Watts
Pac. Broadcast. Corp., San Francisco

7:30 A.M.—Rhythm Masters
8—Metropolitan Hour
9—Manual Melodies
9:15—Chet and Jerry
9:30—Modern Melodies
10—Sunshine Hour
11—Salon Melodies
11:15—Manhattan Moods
11:30—Prudence Penny
11:45—Song and Dance Kings
12 noon—Old Chestnuts
12:15—Marjorie Lee: Melody Girl
12:30—"Your Helpful Friend"
12:45—Tuesday Noon Club
1:15—Concert Memories
1:30—Musical Contrasts
2—Aunt Jemima's Songs
2:15—Dance Music
2:30—Verses: Mrs. M. C. Sloss
2:45—Hawaiian Echoes
3—Glen Goff, Organist
4—NBC, Radio in Education
4:30—Famous Songs and Singers
5—Metropolitan Hour
6—Revue
6:30—Drama Review
6:45—Henry Starr, Vocalist
7—Hap and Jack: Song Writers
7:15—"The Happy Men"
7:30—George Nickson: Recital
7:45—News Bulletin
8—On with the Show
9—Through the Golden Gate with Captain January
9:15—G. Donald Gray, Song Recital
9:30—Milly & Billy, Cub Reporters
9:45—Adele Burlan, Songs
10—News Bulletin
10:15—Radio Sandman Hour
11 to 12 midnight—Concert Memories

535.4 Meters **KTAB** Garfield 4700
560 Kcys. 1000 Watts
Assoc. Broadcasters, Oakland, Calif.

7 A.M.—Popular records
7:05—Morning Reporter
7:30—Allay-oo! with Bob Roberts
8—Radio Shopping News
8:30—Jack Hall and Clem Kennedy
9—Morning Prayer Hour
9:30—Dr. J. Douglas Thompson
10—Household Hour, Alma La Marr
10:30—News Service
10:35—Dr. E. L. Corley
10:55—Records
11—Store Scenes
11:30—Records
12 noon—U. S. Agricultural reports
12:15—Dr. R. M. McLain
12:30—News Service
12:35—Studio Program
1:05—Popular Records
1:30—Over the Teacups
2—Magazine Review
2:15—Popular records
2:30—Masterpieces of Melody
3—Dance Orchestra
4—Tommy Tucker
4:30—Jack Hall and Clem Kennedy
5—Glenhall Taylor, Pianist
5:15—Hot Tips and Hot Tunes
5:30—Dr. J. Douglas Thompson
6—Popular recordings
6:15—Fashion Flashes
6:30—Ernie Smith, Sport Page
6:45—Reporter
7—Dance Music
7:15—Organ Recital by Elbert La-Chelle
7:30—News Service
7:45—Italian program
8—Golden Memories
8:30—St. Mary's College, Brother Leo, Chancellor of St. Mary's
9—Beverly Hill Billies
10—Moment Musicals
11 to 1 A.M.—Nite Owls

340.7 Meters **KLX** Lake. 6000
880 Kcys. 500 Watts
Tribune Pub. Co., Oakland, Calif.

7 A.M.—Morning exercises and entertainment; N. Y. stocks
8—Records
9—Modern Homes period
9:30—Records
10:15—Stocks; financial information and weather
10:30—Records
11—Sunshine Twins
12 noon—Jack Delaney's Band
1—Jean's Hi-Lights
2—Classical recordings
2:35—Closing stocks
2:45—Ethel Rhinard, pianist
3—Records
3:45—Piano Rambles
4—Records
4:30—Brother Bob's Club
5—Helen Parmelee, pianist
5:30—The Three Cocoanuts
6—Dave Saylor's Orchestra
7—News Items
7:30—William Don, Comedian
7:45—Fred and Morris, Comedians
8—Ethel Rhinard and Cora Scott and the Three Cocoanuts
8:30—The Gay Caballeros
9—Gospel Hymns Program
9:30—Frank Reyes' California dance band
10 to 11 P.M.—Dance program

440.9 Mtrs. **NBC-KPO** Gar. 8300
680 Kcys. 5000 Watts
National Broadcast. Co., San Francisco

- Service to **KJR, KEX, KGA, KECA, KTAR, KSL, KFSD**
- 7:30 A.M.—Sunrise Serenaders: Orchestra direction Jess Norman: KPO
- 8—Financial Service: KPO, KGA, KJR
- 8:15—Crosscuts from the Log o' the Day, Dr. Laurence L. Cross: KPO, KGA, KJR, KEX, (KTAR off 9)
- 9:15—Stringwood Ensemble, direction Charles Hart: KPO
- 9:30—Organ Concert: (KPO off 9:45), KGA, (KJR on 9:45), KEX
- 9:45—University of California at Your Service: KPO
- 10—The Blueettes: Girls' Vocal Trio: KPO, KGA, (KJR off 10:15), KEX
- 10:30—Snapshots: Marie Leon, Soprano; Orchestra direction Cy Trobbe: KPO
- 11—Modern Moods: KPO
- 11:30—Rhythmic Triplets: KPO off 11:45; KGA, KJR; KEX on 11:45
- 11:45—Organ Concert: KPO
- 11:50—So. S. F. Stockyard Report: KPO
- 11:57—Time Signals: KPO
- 12 noon—Aeolian Trio: Instrumental Trio direction Cy Trobbe: KPO, KGA, KJR, KEX
- 12:45—Lady Next Door: KPO, KGA, KJR, KEX
- 1—Charles Gilbert Spross: KPO, KGA, KEX
- 1:15—Swanee Serenaders: KPO
- 1:30—Garden of Memories: KPO, KGA, KJR; KEX on 1:45
- 2—Western Interscholastic Broadcasts: KPO, KGA, KJR, KEX, KECA, KFSD, KTAR, KSL, KOA, KGIR, KGHL
- 2:30—Music Garden: Annabelle Jones, Contralto; Concert Orchestra direction Rex Dunn: KPO, KGA, KJR, KEX
- 3—Who Cares?: Variety Program: KPO, KGA, (KJR on 3:05), KEX
- 4—National Advisory Council on Radio in Education: KPO, KYA, KGA, KJR, KEX, KFSD, KTAR, KSL
- 4:30—Talk by Mrs. Luther Burbank: KPO, KJR, KEX, KGA
- 4:45—Popular Concert Hour: KPO, KJR, KEX; KGA on 5
- 5:15—A Couple of Mouthfuls by Scotty: KPO
- 5:30—Popular Concert: KPO
- 5:45—Little Orphan Annie: KPO, KGA, KJR, KEX, KECA
- 6—Musical Capers: Variety Program: KPO, KGA, KJR, KEX
- 6:45—Cecil and Sally: KPO, KGA, KJR, KECA, KFSD
- 7—Musketeers: Male Trio: Mervill Yetter, Harrison Cotes, Robert Williams: KPO, KGA, KJR
- 7:15—To be announced: KPO
- 7:45—Coquettes, Vocal Trio: KPO
- 8—Ralph Kirby, the Dream Singer: KPO, KGA, KJR, KEX
- 8:05—Buddy Rogers and his California Cavaliers: KPO, KGA, KJR, KEX
- 8:30—The Dinglebenders: Comedy Serial, with Kolb and Dill: KPO, KJR, KEX, KECA
- 8:45—Mona Low, Blues Singer: KPO, KGA, KEX, KOA

- 9—The Story Teller: KPO, KGA, KJR, KEX, KGHL, KTAR; KGIR, KOA
- 9:30—Earl Burnett and his Orchestra: KPO, KGA, KJR, KEX, KECA
- 10—Waltz Time: Betty Kelly, Soprano; Orchestra direction Rex Dunn: KPO, KGA, KJR, KEX, KOA
- 10:30—Around the Network: KPO, KGA, KJR, KEX, KFSD, KSL, KOA, KGIR
- 11—Jimmy Joy and his Bal Tabarin Orchestra: KPO, KGA, KEX
- 11:30 to 12 midnight—Witching Hour: Organ Concert, Paul Carson, Organist: KPO, KGA, KEX

379.5 Mtrs. **NBC-KGO** Sutter 1920
790 Kcys. 7500 Watts
National Broadcast. Co., San Francisco
Service to **KHQ, KOMO, KGW, KFI, KOA, KSL, KTAR, KECA, KFSD**

- 7 A.M.—Organ Concert: KGO
- 7:30—U. S. Marine Band: KGO
- 7:45—Van and Don: KGO, KHQ, KOMO, KGW, KFI, KFSD, KTAR, KSL, KOA
- 8—GE Circle: KGO, KHQ, KOMO, KGW, KFI, KFSD, KTAR
- 8:15—Miracles of Magnolia: KGO, KGW
- 8:30—Soloist: KGO, KGW
- 8:45—O' Cedar Melody Men: KGO, KHQ, KOMO, KGW, KFI, KSL
- 9—Harold Stokes' Orchestra: KGO
- 9:15—Beautiful Thoughts: KGO, KHQ, KGW, KFI, KTAR
- 9:30—Buckaroos: Ted Maxwell, Charles Marshall: KGO, KFI
- 9:45—Entertainers: Clarence Hayes, Tenor: KGO, KFI
- 10—Color Harmony Program: KGO, KHQ, KOMO, KGW, KFI
- 10:30—Woman's Magazine of the Air: KGO, KHQ, KOMO, KGW, KFI, KFSD, (KTAR, KSL, KOA on 11:10)
- 11:30—Organ Concert: KGO
- 11:45—Mormon Tabernacle Choir and Organ: KGO, KFSD, KSL
- 12:15—Western Farm and Home Hour: KGO, KOMO, KGW, KFI, KFSD, (KTAR on 12:45), (KSL off 12:45)
- 1—Stringwood Ensemble: KGO
- 2—Bluebird Melodies: KGO
- 2:30—Ray Perkins, the Old Topper: KGO, KHQ, KOMO, KGW, KFI, KSL
- 2:45—Back of the News in Washington: KGO
- 3—Mid-Week Federation Hymn Sing: KGO
- 3:15—Melody Trail: KGO, KFSD
- 3:30—Swift Program: The Stebbins Boys: KGO, KHQ, KOMO, KGW, KFI, KSL
- 3:45—News Service: KGO
- 4—Piano Capers: KGO, KGW, KFI
- 4:30—Little Miracle: KGO, KGW
- 4:45—Romancers: Jack Deane, Tenor: KGO
- 5—Coffee Matinee: Berna Frchette, Soprano; Marimba Band direction Joseph Hornik: KGO, KHQ, KOMO, KGW
- 5:30—Ed Wynn and the Texaco Fire Chief Band: KGO, KHQ, KOMO, KGW, KFI, KFSD, KTAR, KSL, KGIR, KGHL
- 6—Lucky Strike Dance Hour: KGO, KHQ, KOMO, KGW, KFI, KFSD, KTAR, KSL
- 7—Amos 'n' Andy: KGO, KHQ, KOMO, KGW, KFI, KFSD, KSL

- 7:15—Memory Lane: Rural Drama by H. C. Connette, featuring Billy Page, Eileen Piggott, Ted Maxwell: KGO, KHQ, KOMO, KGW, KFI, KFSD, KTAR
- 7:45—To be announced: KGO
- 8—Sperry Smiles: KGO, KHQ, KOMO, KGW, KFI, KFSD, KTAR, KSL, KOA
- 8:15—Pleasure Bound: Orchestra direction Mahlon Merrick: KGO
- 8:30—Billy Jones and Ernie Hare: KGO, KHQ, KOMO, KGW, KFI, KFSD, KTAR, KSL
- 8:45—Dixie Memories: KGO
- 9—Musical Highlights: KGO
- 10—Richfield News Flashes: KGO, KHQ, KOMO, KGW, KFI, KFSD
- 10:15—Cheer Leaders: KGO
- 10:30—The Medicine Show: KGO, KOMO
- 11—Phil Harris Hotel St. Francis Dance Orchestra: KGO
- 12 to 12:30 A.M.—NBC Organ Concert: KGO

322.4 Meters **KROW** Glenc. 6774
930 Kcys. 1000 Watts
Educa. Broad. Corp., Oakland, Calif.

8 A.M.—X-Bar "B" Boys

8:45—Marion Day

9—Off Air

1 P. M.—Weather Forecast

1:05—Latin-American program

2—Recordings

2:30—Si Hiram

3—Myrtle Segal, soprano

3:15—Studio program

3:30—Phantoms of the Air

4—The Rhythmites

4:15—Rumford School of Cookery

4:30—"Rovers in Romance"

4:45—Recordings

5:30—Wade Forrester

5:45—Organ Moods, Vivian Moore

6—Off Air

7:30—KROW Reporter

7:45—The Harmony Boys

8—Lecture by Judge Rutherford

8:15—Arrillaga Conservatory of Music

8:30—The Burlesquers

9:30—South American Quartet

10 to 11 P.M.—Fleur De Les Dance Orchestra

280.2 Meters **KJBS** Ord. 4148-49
1070 Kcys. 100 Watts
J. Brunton & Sons, San Francisco

6 A.M.—KJBS Alarm Klok Klub

8—Variety Records

8:45—Carleton Coveny

9—Recordings

9:45—Kevin Ahearn, Tenor, and Lea Vergano, Piano

10—Reporter of the Air

10:05—Popular Selections

10:30—Records

11:15—Health Talk

11:30—Robinson's Light Opera Hr.

11:45—Concert Music

12 noon—Variety Recordings

1—Stock Report and Records

1:45—Marjorie Lee, Pianist

2—Business Bureau Talk

2:15—Popular Records

2:45—Speak-Easy Time

3—Reporter of the Air

3:30—George Taylor's Bridge Hour

4—Records

4:15—Pat Buckman, Tenor

4:30—Records

5—Carleton Coveny

5:15—Records

5:30—Auburn Fuller Program

6—Musical Contrasts

6:30 to 7:15 P.M.—Records

12:01 to 6 A.M.—KJBS Owl Program

- 333.1 Meters KHJ** VAndike 7111
900 Kcys. 1000 Watts
Don Lee, Inc., Los Angeles, Calif.
7 A.M. to 5:45—Various Programs
5:45 P.M.—"Black and Blue"
6—CBS, Symphony of Color
6:15—CBS, Modern Male Chorus
6:30—CBS, Music that Satisfies
6:45—CBS, "Myrt and Marge"
7—CBS, Joe Palooka
7:15—CBS, Howard Barlow's Orch.
7:30—CBS, Morton Downey and the Camel Orchestra
7:45—After Dinner Concert
8—Skyscrapers
8:15—Chandu, the Magician
8:30—Historical Southern California
9—To be announced
9:15—Resinol "Hollywood Nights"
9:30—CBS, Ben Bernie's Orchestra
10—World-wide News
10:10—Gene Quaw's Orchestra
11—Roosevelt Hotel Dance Orch.
12 to 1 A.M.—Midnight Moods
- 468.5 Meters KFI** Richmond 6111
640 Kcys. 50,000 Watts
Earle C. Anthony, Inc., Los Angeles
6:30 A.M. to 6—Various programs
6 P.M.—NBC, Lucky Strike Program
7—NBC, Amos 'n' Andy
7:15—NBC, Memory Lane
7:45—Orchestra
8—NBC, Sperry Smiles
8:30—NBC, Billy Jones & Ernie Hare
8:45—NBC, Dixie Memories
9—Studio Program
9:15—NBC, Political Program
9:30—Orchestra
10—NBC, Richfield News Flashes
10:15 to 12 midnight—Jimmie Grier's Orchestra
- 499.7 Meters KFSD** Franklin 6353
600 Kcys. 1000 Watts
Airfan Radio Corp., Ltd., San Diego
7:30 A.M. to 6—Various programs
6 P.M.—NBC, Lucky Strike Program
7—NBC, Amos 'n' Andy
7:15—NBC, Memory Lane
7:45—Studio Program
8—NBC, Sperry Smiles
8:30—NBC, Billy Jones & Ernie Hare
8:45—Chamber of Commerce Program
9:15—Valvoliners
9:30—Feature Program
10—NBC, Richfield News Flashes
10:30—NBC, Around the Network
11 to 12 midnight—Dance Music
- 220.4 Meters KGER** Phone: 682-94
1360 Kcys. 1000 Watts
Cons. Broadcast. Co., Long Beach
6 A.M. to 6 P.M.—Various Programs
6—Em and Clem
6:15—Twilight Fantasy
6:45—Cheerful Earful
7—Buttercream Ragamuffins
7:15—Kaa'i's Hawaiians
7:30—Long Beach Band
8—Memory Lane
8:30—Rango
9—Evening Moods
10—Helene Smith, Pianist
10:15—Frank Jocelyn, Organist
10:30—Vagabond Dreams
11 to 12 midnight—Tom Moore's Orch
- 526 Meters KMTR** Holly, 3026
570 Kcys. 500 Watts
KMTR Radio Corp., Hollywood, Cal.
6:30 A.M. to 6—Various Programs
6 P.M.—Twilight Melodist
6:30—Paradise Isle
7—Judge Gates
7:05—Metropolitan Water Board
7:15—Ted Dahl's Orchestra
- 7:30—Tax reduction club
7:45—Ted Dahl's Orchestra with James Newill, Tenor
8—Dr. George Liebling, pianist
8:30—Baseball: S. F. vs. Hollywood
10:30—Selected Records
11—Louis Armstrong Orchestra
12 to 12:30 A.M.—Selected records
- 285.5 Meters KNX** Hemp. 4101
1050 Kcys. 5000 Watts
L. A. Evening Express, Los Angeles
6:30 A.M. to 6—Various programs
6 P.M.—News
6:15—Vigilante Druggists
6:30—Challenge Grenadiers
6:45—Vivian Duncan and Lew Cody
7—Frank Watanabe & Hon. Archie
7:15—Rev. R. P. Shuler
7:45—Program to be announced
7:45—"Just Willie"
8—Carefree hour
8:15—Calmon Lubovski, violinist and Claire Mellonino, pianist
9—News
9:15—KNX Ensemble
10—Starke's Bohemian Cafe
11—Paris Inn
12 to 1 A.M.—Ray Howell
- 325.9 Meters KOMO** Elliott 5890
920 Kcys. 1000 Watts
Fisher's Blend Station, Inc., Seattle
6:55 A.M. to 6—Various Programs
6 P.M.—NBC, Lucky Strike Hour
7—NBC, Amos 'n' Andy
7:15—NBC, Memory Lane
7:45—Dr. Strasska Program
8—NBC, Sperry Smiles
8:15—Male Quartet
8:30—NBC, Billy Jones & Ernie Hare
8:45—Male Quartet
9—Program to be announced
9:15—Fisher's Blend Hour
10—NBC, Richfield News Flashes
10:15—Globe Trotter
10:30—NBC, Medicine Show
11—NBC, Hotel St. Francis Dance Orchestra
12 to 12:30 A.M.—Organ Recital
- 508.2 Meters KHQ** Main 5383
590 Kcys. 1000 Watts
Louis Wasmer, Inc., Spokane, Wash.
6:45 A.M. to 6—Various programs
6 P.M.—NBC, Lucky Strike Hour
7—NBC, Amos 'n' Andy
7:15—NBC, Memory Lane
7:45—"Just Willie"
8—Sperry Smiles
8:15—"Chandu, the Magician"
8:30—NBC, Billy Jones & Ernie Hare
8:45—Musical Program
9—Program to be announced
9:15—Quaker State
10—NBC, Richfield News Flashes
10:45—Timely Topics
11—Fran Morton's Orchestra
12 to 12:30 A.M.—Desert Caravan
- 309.1 Meters KJR** Seneca 1515
970 Kcys. 5000 Watts
Northwest Broad. System, Seattle, Wn.
7 A.M. to 6 P.M.—Various Programs
6 P.M.—NBC, Musical Capers
6:45—NBC, Cecil and Sally
7—NBC, Musketeers
7:15—Program to be announced
7:30—NBC, Jack Denny's Orchestra
7:45—NBC, Coquettes
8—NBC, Ralph Kirbery
8:05—NBC, Hotel Pennsylvania Or.
8:30—NBC, The Dinglebenders
8:45—Evening Sunshine
9—NBC, Story Teller
9:30—NBC, Earl Burnett's Orch.
10—NBC, Waltz Time
10:30—NBC, Around the Network
11—Earl Gerton Roof Garden Orch.
- 254.1 Meters KEX** Atwater 3111
1180 Kcys. 5000 Watts
Western Broad. Co., Portland, Ore.
6:45 A.M. to 6—Various Programs
6 P.M.—Musical Capers
6:45—Studio Program
7—NBC, Musketeers
7:15—To be announced
7:30—Silent Period
8—NBC, Ralph Kirbery
8:05—NBC, Hotel Pennsylvania Or.
8:30—NBC, The Dinglebenders
8:45—NBC, Mona Low
9—NBC, Story Teller
9:30—NBC, Earl Burnett's Orch.
9:45—Oregonian at Home
10—NBC, Waltz Time
10:30—NBC, Around the Network
11—Jimmy Joy and his Bal Tabarin Orchestra
11:30—Witching Hour, Organ
12 to 1 A.M.—Allen Daniels
- 204 Meters KGA** Main 3434
1470 Kcys. 5000 Watts
NW. Broad. System, Spokane, Wash.
6 A.M. to 6:45—Various Programs
6:45 P.M.—NBC, Cecil and Sally
7—NBC, Musketeers
7:15—Program to be announced
7:30—NBC, Jack Denny's Orchestra
7:45—NBC, Coquettes
8—NBC, Ralph Kirbery
8:05—NBC, Hotel Pennsylvania Or.
8:45—NBC, Mona Low
9—NBC, Story Teller
9:30—NBC, Earl Burnett's Orch.
10—NBC, Waltz Time
10:30—NBC, Around the Network
11—Jimmy Joy and his Bal Tabarin Orchestra
11:30 to 12 midnight—Witching Hour, Organ
- 236.1 Meters KOL** Elliott 4466
1270 Kcys. 1000 Watts
Seattle Broadcast Co., Seattle, Wash.
6:45 A.M. to 6—Various Programs
6 P.M.—CBS, Symphony of Color
6:15—To be announced
6:30—CBS, Music that Satisfies
6:45—CBS, Myrt and Marge
7—CBS, Joe Palooka
7:30—CBS, Camel Quarter Hour
7:45—General Paint Program
8—CBS, St. Moritz Orchestra
8:15—Chandu the Magician
8:30—CBS, Coon-Sanders Orch.
9—CBS, Gus Arnheim's Orchestra
9:15—CBS, Resinol's "Hollywood Night" program
9:30—Radio Bugs Frolic
11 to 12 midnight—Henry Halstead's Orchestra
- 239.9 Meters KFOX** Phone: 67281
1250 Kcys. 1000 Watts
Nichols & Warinner, Long Beach, Cal.
5 A.M. to 6 P.M.—Various programs
6—Sassy Little and her Pals
6:15—Blue Ribbon Group
6:30—KFOX School Kids
6:45—"Rajput"
7—Don Frenco, "The Buccaneer"
7:15—Studio program
7:30—"The Boy Detective"
7:45—Three Vagabonds
8—Melody Garden
8:15—Chandu, the Magician
8:30—Majestic Ballroom Orchestra
8:45—"Signalers"
9:15—Vera Graham, organist
9:45—Majestic Ballroom Orchestra
10:15—Anson Weeks' Orchestra
11—Henry Halstead's Orchestra
12 to 5 A.M.—Recordings

WEDNESDAY Programs

May 4, 1932

491.5 Meters **KFRC** Prospect 0100
610 Kcys. 1000 Watts

- Don Lee, Inc., San Francisco, Calif.
7:15—Seal Rocks Broadcast
7:15—Dobbie and Wee Willie
7:25—N. Y. Stock Quotations
7:30—Dobbie Quarter Hour
7:45—CBS, Old Gold program
8—Shell Happytime
8:30—Hallelujah hour
9:15—Home Hints
9:30—Betty Crocker
9:45—CBS, Armand Vecsey Orch.
10—The Almanac
11—CBS, Columbia Salon Orch.
11:15—CBS, Charis Musical Revue
11:30—CBS, Arthur Jarrett
11:45—CBS, Four Eton Boys
12 noon—Noonday Concert
1—The Hoofers
1:15—CBS, Bill Schudd's "Going to Press"
1:30—N. Y. Stock Quotations
1:35—The Globe Trotter
1:45—CBS, George Hall's Orchestra
2—Happy Go Lucky Hour
3—Feminine Fancies
4—Sleepers Quarter Hour, featuring Ronald Graham
4:15—Numerology
4:30—Song Stories, Clark Sisters
4:45—The Globe Trotter
4:55—Town Topics
5—Skippy
5:15—CBS, Columbians
5:30—CBS, Plantation Grill Orch.
5:45—Black and Blue
6—CBS, Music that Satisfies
6:15—CBS, Bert Lown's Orch.
6:30—CBS, Society's Playboy Hour
6:45—CBS, Myrt and Marge
7—CBS, Howard Barlow's Orchestra
7:15—Serenade
7:30—CBS, Camel Quarter Hour
7:45—Heroes of the Olympics
8:15—Chandu, the Magician
8:30—KFRC Orchestra
8:45—CBS, Art Krueger's Orch.
9—To the Ladies
9:15—Foreign Lands Concert
9:30—Isle of Golden Dreams
10—Anson Weeks' Orchestra
11—Cole McElroy's Orchestra
11:30—Henry Halstead's Orchestra
12 to 1 A.M.—Vagabond of the Air



AMOS 'n' ANDY
NBC-KGO—7 P.M.

340.7 Meters **KLX** Lake. 6000
880 Kcys. 500 Watts

- Tribune Pub. Co., Oakland, Calif.
7 A.M.—Morning exercises and entertainment; N. Y. stocks
8—Recorded Program
9—Modern Homes period
9:30—Records; Business talk
10:15—Stocks; financial information; car loading reports; weather
10:45—Aratone program
11—Sunshine Twins
12 noon—Jack Delaney's Band
1—Jean's Hi-Lights
2:35—Closing S. F. Stocks
2:45—Ethel Rhinard, pianist
3—Records
3:45—Piano Rambles
4—Records
4:30—Brother Bob's Club
5—Helen Parmelee, pianist
5:30—The Three Cocoanuts
6—Dave Saylor's Orchestra
7—News Items
7:30—King Sisters' Harmony Trio
7:45—Fred and Morris, comedians
8—Hour of Melody
9—Prof. Earl G. Linsley
9:15—Blue Watters and his Orch.
10 to 11 P.M.—Dance program

322.4 Meters **KFWI** Franklin 0200
930 Kcys. 500 Watts

- Radio Entertainments, San Francisco
7 A.M.—KFWI-opener program
8—Silent period
9—Cal King's Country Store
9:15—Morning Melodies
10—White House program
10:15—Bellevue Hotel Program
10:30—Health talk, Dr. Linebarger
11—Timely Topics
11:30—Learn Italian, Prof. Achille
11:45—Popular vocal selections
12 noon—Dance Music
12:30—Town Crier
12:45—News Flashes
1—Silent Period
6—Dinner Dance Music
7—Concert Selections
7:15—Hoku Hawaiian Trio
7:30—Silent period
8:30—Louise Gilbert, pianist
8:45—John D. Barry, World Events
9—Jack Coakley's Orchestra
9:30—Strauss Waltzes
9:45—Dan Eckley and Roger Segure
10—Musical Gems
10:30—Dance Music
11—Master Melodies
12 to 1 A.M.—Dedication Hour

322.4 Meters **KROW** Glenc. 6774
930 Kcys. 1000 Watts

- Educa. Broad. Corp., Oakland, Calif.
8 A.M.—X-Bar "B" Boys
8:45—Fifteen Minutes at Home
1 P.M.—Weather Forecast
1:05—Latin-American program
2—Recordings
2:30—Watch Tower program
2:45—Odds and Ends
3—Paul's Hawaiians
3:30—The KROW-lians
4:15—Don Germano with Orchestra
5—Italian program
5:30—Wade Forrester
5:45—Organ Moods, Vivian Moore
6—Off Air
7:30—KROW Reporter
7:45—George J. Hatfield
8 to 8:30 P.M.—Latin-American program

243.8 Meters **KYA** Prospect 3456
1230 Kcys. 1000 Watts

- Pac. Broadcast. Corp., San Francisco
7:30 A.M.—Rhythm Masters
8—Metropolitan Hour
9—Manual Melodies
9:30—Modern Melodies
10—Sunshine Hour
11—Popular Hits
11:15—Manhattan Moods
11:30—Prudence Penny
11:45—Song and Dance Kings
12 noon—Broadway Echoes
12:30—"Your Helpful Friend"
12:45—Glen Goff, Organist
1:45—Musical Contrasts
2—Aunt Jemima's Songs
2:15—Concert Memories
2:30—Community Question Box
2:45—Hawaiian Echoes
3—Close Harmony
3:15—Babette
3:30—Concert Waltzes
3:45—Better Business Bureau Talk
4—Salon Music
4:15—Artist Celebrities
4:30—On Parade
5—Metropolitan Hour
6—Revue
6:30—Dance Music
6:45—Henry Starr, Hot Spot of Radio
7—Hap and Jack, Rapid Fire Song
Writers
7:15—The Harmonettes
7:30—Virginia Spencer: Piano Soliloquy
7:45—News Bulletin
8—On With the Show
9—Billy Small Ensemble
9:30—Bob Allen and George Bowers
9:45—"The Personality Girl"
10—News Bulletin
10:15—Radio Sandman Hour
11 to 12 midnight—Concert Memorials

280.2 Meters **KJBS** Ord. 4148-49
1070 Kcys. 100 Watts

- J. Brunton & Sons, San Francisco
6 A.M.—KJBS Alarm Klok Klub
8—Popular Records
9—Records
9:30—Old Favorites
9:45—Andy Anderson
10—Reporter of the Air
10:05—Variety Recordings
11:30—Charles' Miniature Vaudeville
11:45—Concert Music
12 noon—Popular Songs
12:30—Band Concert
12:45—Stock Report and Records
1:45—Popular Records
2:15—Popular Musical Favorites
2:45—Speak-Easy Time
3—Reporter of the Air
3:30—George Taylor's Bridge Hour
4—Records
4:15—Aloha Hawaiian Trio
4:30—Variety Records
6—Assoc. Food Stores Program
6:30 to 7:15 P.M.—Records
12:01—Jo Mendel's Pep Band
1 to 6 A.M.—KJBS Owl Program

- 379.5 Mtrs. NBC-KGO Sutter 1920**
790 Kcys. 7500 Watts
National Broadcast. Co., San Francisco
Service to KHQ, KOMO, KGW,
KFI, KOA, KSL, KTAR,
KECA, KFSD
- 7 A.M.—Organ Concert, Paul Carson: KGO
7:30—Hinds Romance Exchange: KGO, KHQ, KOMO, KGW, KFI, KSL
7:45—Van and Don, the Two Professors: KGO, KHQ, KOMO, KGW, KFI, KFSD, KTAR, KSL, KOA
8—GE Circle: KGO, KHQ, KOMO, KGW, KFI, KFSD, KTAR, KSL
8:15—Brighten-Up Half-Hour: KGO, KHQ, KOMO, KGW, KFI
8:45—Hal Kemp's Orchestra: KGO, KGW
9—Harold Stokes' Orchestra: KGO, KSL, KGHL; KTAR on 12:45
9:15—Beautiful Thoughts: KGO, KHQ, KGW, KFI, KTAR
9:30—The Buckaroos: Ted Maxwell, Charles Marshall: KGO
9:45—Parlor Pieces: Eva Garcia, Pianist: KGO
10—Keeping Up With Daughter: KGO, KHQ, KOMO, KGW, KFI, KFSD, KTAR, KSL
10:15—Entertainers: KGO, KOMO, KGW
10:30—Woman's Magazine of the Air: KGO, KHQ, KOMO, KGW, KFI, KGHL
11:30—Organ Recital: KGO, (KFI off 11:45)
12:15—Western Farm and Home Hour: KGO, KHQ, KOMO, KGW, KFI, KFSD, (KTAR on 12:45), KSL
1—Stringwood Ensemble: KGO
1:30—Wayne King and his Orchestra: KGO, KHQ, KOMO, KGW, KFI, KSL
1:45—Argentine Trio: KGO
2—Vagabonds' Orchestra direction Mahlon Merrick: KGO
3—D'Avrey of Paris, Tenor: KGO
3:15—Intermezzo: KGO, KFI, KFSD
3:30—Swift Program: The Stebbins Boys: KGO, KHQ, KOMO, KGW, KFI, KSL
3:45—News Service: KGO
4—American Taxpayers League Program: KGO
4:15—Willys-Overland Silver Streaks: KGO, KHQ, KOMO, KGW, KFI, KFSD, KTAR, KGIR, KGHL, KSL
4:30—Garden of Melodies: KGO
5—Novelettes: KGO
5:30—Mobil Oil Concert: KGO, KHQ, KOMO, KGW, KFI, KTAR, KSL
6—Coca-Cola Program: Interview with Grantland Rice; James Melton, Tenor; All-String Orchestra direction Gustave Haenschen: KGO, KHQ, KOMO, KGW, KFI, KFSD, KTAR, KSL, KGU
6:30—NBC Artists Service Musicale: KGO
7—Amos 'n' Andy: KGO, KHQ, KOMO, KGW, KFI, KFSD, KSL
7:15—Billy Jones and Ernie Hare: KGO, KHQ, KOMO, KGW, KFI, KFSD, KTAR, KSL
7:30—Team Mates: KGO, KHQ, KOMO, KGW, KFI, KFSD, KTAR, KSL, KOA
8—NBC Drama Hour: KGO, KFI
8:30—Program to be announced.
8:45—Dixie Memories: KGO
9—Out of the East: KGO
- 9:15—Goodyear Program: Grace Moore, Soprano; the Revelers Quartet: KGO, KHQ, KOMO, KGW, KFI, KFSD, KTAR, KGIR, KGHL, KSL
9:45—Mary Wood, Soprano: KGO
10—Richfield News Flashes: KGO, KHQ, KOMO, KGW, KFI, KFSD
10:15—National Concert Orchestra: KGO
11—Phil Harris Hotel St. Francis Dance Orchestra: KGO, KHQ
12 to 12:30 A.M.—Organ Concert, Dollo Sargent: KGO
- 440.9 Mtrs. NBC-KPO GAR. 8300**
680 Kcys. 5000 Watts
National Broadcast. Co., San Francisco
Service to KJR, KEX, KGA,
KECA, KTAR, KSL, KFSD
- 7:30 A.M.—Sunrise Serenaders: KPO
8—Financial Service: KPO, KGA, KJR, KEX
8:15—Crosscuts from the Log o' the Day: KPO, KGA, KJR, KEX, (KTAR off 8:45)
9:15—Stringwood Ensemble: (KPO off 9:30), KGA, (KJR on 9:45), KEX
9:30—Helpful Hints to Housewives: KPO
9:45—University of California at Your Service: KPO
10—Harmony Twins: Paul Lingle and Ray Jahngien, Pianists; Marjorie Young, Blues Singer: KPO, KGA, KJR, KEX
10:30—Snapshots: Rita Lane, Soprano; Orchestra direction Jess Norman: KPO
11—Radio Troubadours: Harold Stokes' Dance Orchestra: KPO
11:15—Outstanding Speakers: KPO
11:30—Hello, Marie; Comedy Skit: KPO
11:45—Organ Concert: KPO
11:50—Stockyards Report: KPO
11:57—Time Signals: KPO
12 noon—Midweek Musicale: KPO, KGA, KJR, KEX
12:15—Tom and Dudd, Vocal Duo: KPO, KGA, KJR, KEX
12:30—In a French Cafe: KPO, KGA, KJR, KEX
1—Jingle Joe: Joe Parsons, Basso: KPO, KGA, KEX
1:15—Swanee Serenaders: KPO
1:30—Songs of the Masters: Margaret O'Dea, Contralto; George Nyklkcek, Organist: KPO
1:45—Schrimer and Schmitt, Piano Duo: KPO, KGA, KJR, KEX
2—Discovery Hour, direction George Davis: KPO
2—Waldorf-Astoria Orchestra: KGA, KJR, KEX, KSL
2:45—Merle Thorpe, Talk: KGA, KJR, KEX, KFSD, KTAR
3—California Federation of Women's Club Convention: KPO, KECA, KFSD
4—John and Ned, Vocal and Instrumental Duo: KPO, KGA, KJR, KEX
4:15—Sunset Serenaders: KPO, KGA, KEX, KJR
5:15—A Couple of Mouthfuls by Scotty: KPO
5:30—The Date Book with Stuart Strong: KPO
5:45—Little Orphan Annie: KPO, KGA, KJR, KEX, KECA
6—Masters of Music: Allan Wilson, Tenor; Orchestra direction Cy Trobe: KPO, KGA, KJR, KEX
6:45—Cecil and Sally: KPO, KGA, KJR, KECA
- 7—Coquettes, Vocal Trio: KPO
7:15—Vincent Lopez and his Orchestra: KPO, KGA, KJR, KEX
7:30—Silver Strains: KPO, KGA, KJR
8—Personal Closeups: Monroe Upton, Producer, Continuity Writer and Actor, interviewed by Gypsy: KPO, KGA, KJR, KEX
8:15—Marching Through, with the Guardsman, Male Quartet; Salon Orchestra direction Cy Trobe: KPO
9—Doric Quartet: KPO, KGA, KJR, KEX
9:30—Earl Burnett's Orchestra: KPO, KGA, KJR, KECA
10—The Harmonoffs: KPO, KGA, KJR, KEX, KOA
10:30—Around the Network: KPO, KGA, KJR, KEX, KFSD, KSL, KOA, KGIR
11—Jimmy Joy and his Bal Tabarin Orchestra: KPO, KGA, KEX
11:30 to 12 midnight—Witching Hour: Organ Concert, Paul Carson, Organist: KPO, KGA, KEX
- 535.4 Meters KTAB Garfield 4700**
560 Kcys. 1000 Watts
Assoc. Broadcasters, Oakland, Calif.
- 7 A.M.—Popular records
7:05—Morning Reporter
7:30—Allay-oo! with Bob Roberts
8—Radio Shopping News
8:30—Jack Hall and Clem Kennedy
9—Morning Prayer Hour
9:30—Dr. J. Douglas Thompson
10—Household Hour, Alma La Marr
10:30—News Service
10:35—Dr. E. L. Corley
10:55—Records
11—Store Scenes
11:30—Records
11:45—Radio Shopping News
12 noon—Dream Interpretations
12:15—Dr. R. M. McLain
12:30—News Service
12:35—Studio Program
1:05—Popular records
1:30—Over the Teacups
2—Popular records
2:30—Masterpieces of Melody
3:30—Popular records
4:30—Jack Hall and Clem Kennedy
5—Glenhall Taylor, pianist
5:15—Hot Tips and Hot Tunes
5:30—Dr. J. Douglas Thompson
6—Popular records
6:15—Fashion Flashes
6:30—Ernie Smith, Sport Page
6:45—Reporter
7—Popular Music
7:15—Magazine Review
7:30—News Service
7:45—Italian program
8—Studio program
8:15—Novelty piano program
8:30—Chill Peppers, novelty instrumentalists
9—Beverly Hill Billies
10—Moment Musicale
11 to 1 A.M.—Nite Owls
- 526 Meters KMTR Holly. 3026**
570 Kcys. 500 Watts
KMTR Radio Corp., Hollywood, Cal.
- 6:30 A.M. to 6—Various Programs
6 P.M.—Twilight Melodist
6:30—Paradise Isle
7—All Year Club
7:15—"Speed" (Full Orchestra)
7:30—Jeanne Dunn, Blues Singer
7:45—Soothing Melodist
8—Ted Dahl's Orchestra
8:30—Baseball: S. F. vs. Hollywood
10:30—Recorded Program
11—Louis Armstrong's Orchestra
12 to 12:30 A.M.—Selected Records

394.5 Meters KVI Broadway 4211
760 Kcys. 1000 Watts
Puget Sound Broadcast. Co., Tacoma
6:30 A.M. to 6—Various Programs
6 P.M.—CBS, Music that Satisfies
6:15—King's Entertainers
6:30—CBS, Society Brand Program
6:45—CBS, Myrt and Marge
7—Kent Music Week program
7:30—CBS, Camel Quarter Hour
7:45—Silent period
9—To be announced
10—Modernistic Hi-Jinks
11 to 12 midnight—McElroy's Greater Oregonians

236.1 Meters KOL Elliott 4466
1270 Kcys. 1000 Watts
Seattle Broadcast Co., Seattle, Wash.
6:45 A.M. to 6—Various Programs
6 P.M.—CBS, Music that Satisfies
6:15—CBS, Swiss Yodelers
6:30—CBS, Society Playboy Hour
6:45—CBS, Myrt and Marge
7—CBS Program
7:30—CBS, Camel Quarter Hour
7:45—CBS, Don Redman's Orchestra
8—CBS, Eddie Duchin's Orchestra
8:15—"Chandu the Magician"
8:30—CBS, Art Kreuger's Orchestra
8:45—CBS, Frostilla program
9—The Unguentine Entertainers
9:15—El Sidelo program
9:30—Ring Battles of Old
10—Bouquet of Melody
10:30—U. of W. Mocking Birds
11 to 12 midnight—McElroy's Greater Oregonians

309.1 Meters KJR Seneca 1515
970 Kcys. 5000 Watts
Northwest Broad. System, Seattle, Wn.
7 A.M. to 6 P.M.—Various Programs
6 P.M.—NBC, Masters of Music
6:45—NBC, Cecil and Sally
7—NBC, Coquettes
7:15—Vincent Lopez and his Orch.
7:30—NBC, Silver Strains
7:45—Dollars and Sense
8—NBC, Personal Close-ups
8:15—NBC, Marching Thru
9—NBC, Doric Quartet
9:30—NBC, Earl Burnett's Orch.
10—NBC, Harmonoffs
10:30—Around the Network
11—Earl Gerdon Roof Garden Orch.

254.1 Meters KEX Atwater 3111
1180 Kcys. 5000 Watts
Western Broad. Co., Portland, Ore.
6:45 A.M. to 6—Various programs
6 P.M.—NBC, Masters of Music
6:45—Studio Program
7—NBC, Coquettes
7:15—Vincent Lopez and his Orch.
7:30—Silent Period
8—NBC, Personal Close-ups
8:15—NBC, Marching Thru
9—NBC, Doric Quartet
9:30—NBC, Earl Burnett's Orch.
9:45—Oregonian Interviews
10—NBC, Harmonoffs
10:30—Around the Network
11—Archie Loveland's Orchestra
11:30—Witching Hour, Organ
12 to 1 A.M.—Allen Daniels

204 Meters KGA Main 3434
1470 Kcys. 5000 Watts
NW. Broad. System, Spokane, Wash.
6 A.M. to 6 P.M.—Various Programs
6 P.M.—NBC, Masters of Music
6:45—NBC, Cecil and Sally
7—NBC, Coquettes
7:15—Vincent Lopez and his Orch.
7:30—NBC, Silver Strains
8—NBC, Personal Close-Ups

8:15—NBC, Marching Thru
9—NBC, Doric Quartet
9:30—NBC, Earl Burnett's Orch.
10—NBC, Harmonoffs
10:30—Around the Network
11—Jimmy Joy and his Bal Tabarin
Orchestra
11:39 to 12 midnight—Witching Hour,
Organ

508.2 Meters KHQ Main 5383
590 Kcys. 1000 Watts
Louis Wasmer, Inc., Spokane, Wash.
6:45 A.M. to 6—Various programs
6 P.M.—NBC, Coca-Cola Program
7—NBC, Amos 'n' Andy
7:15—NBC Program
7:30—NBC, Team Mates
8—Studio program
8:15—Chandu, the Magician
8:30—NBC Program
8:45—Babson Business Barometer
9—Program to be announced
9:15—NBC, Goodyear program
9:45—"Jewels of the Music Master"
10—NBC, Richfield News Flashes
10:15—Book of Memories
10:45—Timely Topics
11—Fran Morton's Orchestra
12 to 12:30 A.M.—Desert Caravan

325.9 Meters KOMO Elliott 5890
920 Kcys. 1000 Watts
Fisher's Blend Station, Inc., Seattle
6:55 A.M. to 6—Various Programs
6 P.M.—NBC, Coca-Cola Program
6:30—NBC Artists Service Musicale
7—NBC, Amos 'n' Andy
7:15—NBC Program
7:30—NBC, Team Mates
8—Quaker State Carefree Hour
8:15—Vocal Recital
8:30—NBC, Program
8:45—Baldy Homespun Melodies
9—Program to be announced
9:15—NBC, Goodyear Program
9:45—Greater Washington Hour
10—NBC, Richfield News Flashes
10:15—Globe Trotter
10:30—NBC, National Concert Orch.
11—NBC, Hotel St. Francis Dance
Orchestra
12 to 12:30 A.M.—Organ Recital

499.7 Meters KFSB Franklin 6353
600 Kcys. 1000 Watts
Airfan Radio Corp., Ltd., San Diego
7:30 A.M. to 6—Various programs
6 P.M.—NBC, Coca-Cola Program
6:30—Renton Company
6:45—NBC, Cecil and Sally
7—NBC, Amos 'n' Andy
7:15—NBC, Jones & Hare
7:30—NBC, Team Mates
8—Studio Program
8:45—Feature Program
9:15—NBC, Goodyear program
9:45—Studio program
10—NBC, Richfield News Flashes
10:30—NBC, Around the Network
11 to 12 midnight—Dance Music

220.4 Meters KGER Phone: 682-94
1360 Kcys. 1000 Watts
Cons. Broadcast. Co., Long Beach
6 A.M. to 6 P.M.—Various Programs
6—Em and Clem
6:15—Sacred hour
6:45—Cheerful Earful
7—Buttercream Ragamuffins
7:15—Kaai's Hawaiians
7:30—Long Beach Band
8—Hashers Review
8:30—Rango
9—Evening Moods
10—Helene Smith, Pianist
10:15—Frank Jocelyn, Organist
11 to 12 midnight—Tom Moore's Orch

285.5 Meters KNX Hemp. 4101
1050 Kcys. 5000 Watts
L. A. Evening Express, Los Angeles
6:30 A.M. to 6—Various programs
6 P.M.—News
6:15—The Hour of the Angelus
6:30—Challenge Grenadiers
6:45—Vivian Duncan and Lew Cody
7—Frank Watanabe & Hon. Archie
7:15—Rajput
7:30—KNX Ensemble
7:45—Jeannie and Joan
8—Drury Lane, tenor, and Sere-
naders
8:30—Arizona Wranglers
9—News
9:15—Crazy Crystals
9:30—"Good Samaritan of the Air"
10—Starke's Bohemian Cafe
11—Paris Inn
12 to 1 A.M.—Ray Howell

333.1 Meters KHJ VAndike 7111
900 Kcys. 1000 Watts
Don Lee, Inc., Los Angeles, Calif.
7 A.M. to 5:45—Various Programs
5:45 P.M.—"Black and Blue"
6—CBS, Music that Satisfies
6:15—Hutton's Concert Ensemble
6:30—CBS, Society Brand Clothes
6:45—CBS, "Myrt and Marge"
7—CBS, Howard Barlow's Orchestra
7:15—To be announced
7:30—CBS, Camel Quarter Hour
7:45—"Heroes of the Olympics"
8:15—Chandu, the Magician
8:30—CBS, Art Kreuger's Orchestra
8:45—To be announced
9—To the Ladies
9:15—To be announced
9:30—Isle of Golden Dreams
10—World-wide News
10:10—Anson Weeks' Orchestra
11—Roosevelt Dance Orchestra
12 to 1 A.M.—Midnight Moods

468.5 Meters KFI Richmond 6111
640 Kcys. 50,000 Watts
Earle C. Anthony, Inc., Los Angeles
6:30 A.M. to 6—Various programs
6 P.M.—NBC, Coca-Cola Program
6:30—Orchestra
6:45—Verne Gray, tenor, and string
quartet
7—NBC, Amos 'n' Andy
7:15—NBC Program
7:30—NBC, Team Mates
8—NBC, Drama Hour
8:30—NBC, Program
8:45—Dixie Memories
9—Studio Program
9:15—NBC, Goodyear Program
9:45—Orchestra
10—NBC, Richfield News Flashes
10:15 to 12 midnight—Jimmie Grier's
Hotel Ambassador Orchestra

239.9 Meters KFOX Phone: 67281
1250 Kcys. 1000 Watts
Nichols & Warinner, Long Beach, Cal.
5 A.M. to 6 P.M.—Various programs
6 P.M.—Sassy Little and her Pals
6:15—Blue Ribbon Group
6:30—KFOX School Kids
6:45—The Three Girls
7—Dr. Williams
7:15—Studio program
7:30—The Boy Detective
7:45—The Three Vagabonds
8—Melody Garden
8:15—"Chandu"
8:30—Pacific Coast Club Rhythm
Makers
9—"To the Ladies"
9:15—Majestic Ballroom Orchestra
9:30—Cally Holden's Orchestra
10:25—Anson Weeks' Orchestra
11—Henry Halstead's Orchestra
12 to 5 A.M.—Recordings

THURSDAY Programs

May 5, 1932

491.5 Meters **KFRC** Prospect 0100
610 Kcys. 1000 Watts
Don Lee, Inc., San Francisco, Calif.

7 A.M.—Seal Rocks Broadcast
7:25—N. Y. Stock Quotations
7:30—Dobbie's Quarter Hour
7:45—CBS, Old Gold program
8—Shell Happytime
8:30—Hallelujah Hour
9:30—Mary and Jim
9:45—Question and Answer Box
10—The Almanac
11—CBS, La Forge Berumen Musicale
11:30—CBS, Rhythm Kings
12 noon—Noonday Concert
1—Farm News Broadcast
1:15—CBS, U. S. Army Band
1:30—N. Y. Stock Quotations
1:35—The Globe Trotter
1:45—Barbara Gould Beauty Talk
2—Happy Go Lucky Hour
3—Feminine Fancies
4—Don Lee Overture
4:25—The Globe Trotter
4:30—Fred Lane's Book Review
4:45—CBS, "Your Child"
5—Skippy
5:15—Sunset Melodies, Robert Olsen and Eleanor Allen
5:30—Nehi All Star Radio Show
5:45—Black and Blue
6—Bobs, Sports Authority
6:15—Anson Weeks' Orchestra
6:30—CBS, Music that Satisfies
6:45—CBS, Myrt and Marge
7—CBS, Joe Palooka
7:15—"Synco-Thots," Edna Fischer and Newell Chase
7:30—CBS, Camel Quarter Hour
7:45—CBS, Noble Sissle Orchestra
8—CBS, Charles Boulanger's Orch.
8:15—Chandu, the Magician
8:30—CBS, Ben Polack's Orchestra
9—Congressional Medal Drama
9:30—Today and Yesterday
10—Anson Weeks' Orchestra
11—CBS, Henry Halstead's Orch.
12 to 1 A.M.—Vagabond of the Air

340.7 Meters **KLX** Lake. 6000
880 Kcys. 500 Watts
Tribune Pub. Co., Oakland, Calif.

7 A.M.—Morning exercises and entertainment; N. Y. stocks
8—Recorded Program
9—Modern Homes Period
9:30—Clinic of the Air
10:15—San Francisco stocks; financial information; weather
10:30—Records
11—Sunshine Twins
12 noon—Jack Delaney and his Band
1—Jean's Hi-Lights
2—Classical recordings
2:35—Closing San Francisco stocks
2:45—Baseball: Oaks vs. Sacramento
4:30—Brother Bob's Club
5—Helen Parmelee, Pianist
5:30—Gus Arnheim's Transcription
6—Dave Saylor's Hotel Oakland Dance Orchestra
7—News Items
7:30—"Golf Sidelights," Professional interviewed by Doug. Montell
7:45—"Where to Go Out of Doors"
8—Helen Parmelee, pianist
8:15—Touring and Road Information
8:30—Egan Trio
9—Studio Program
9:30—The Bookworm
10 to 11 P.M.—Dance Program



EUGENE EUBANKS
KFRC—ASST. PROD. MANAGER

535.4 Meters **KTAB** Garfield 4700
560 Kcys. 1000 Watts

Assoc. Broadcasters, Oakland, Calif.
7 A.M.—Popular records
7:05—Morning Reporter
7:30—Allay-ooop! with Bob Roberts
8—Radio Shopping News
8:30—Jack Hall and Clem Kennedy
9—Morning Prayer Hour
9:30—Dr. J. Douglas Thompson
10—Household Hour
10:30—News Service
10:35—Dr. B. L. Corley
10:55—Recorded program
11—Store Scenes
11:30—Radio Shopping News
12 noon—U. S. Agricultural reports
12:15—Dr. R. M. McLain
12:30—News service
12:35—Studio Program
1:05—Records
1:30—Over the Teacups
2—Popular Records
2:30—Masterpieces of Melody
3:30—Popular records
4:30—Jack Hall and Clem Kennedy
5—Taylor Made Tempos with Glenn-hall Taylor, pianist
5:15—Hot Tips and Hot Tunes
5:30—Dr. J. Douglas Thompson
6—Popular records
6:15—Fashion Flashes
6:30—Ernie Smith, Sport Page
6:45—Reporter
7—Song recital by Barney Woolpert
7:15—Ernie Smith's Magazine Review
7:30—News Service
7:45—Dance Music
8—Water Witch Orchestra
8:15—Poets' Den
8:30—Ghost Story, The Ruined Abbey
8:45—Better Business Bureau
9—Beverly Hill Billies
10—Moment Musicale
11 to 1 A.M.—Nite Owls

322.4 Meters **KROW** Glenc. 6774
930 Kcys. 1000 Watts

Educa. Broad. Corp., Oakland, Calif.
8 A.M.—X-Bar "B" Boys
8:45—Fifteen Minutes at Home
9—Off Air
1—Weather Forecast
1:05—Latin-American program
2—Recordings
2:30—Myrtle Segal, soprano
2:45—Evelyn Stuart, Violinist
3—Recordings
3:30—The Phantoms of the Air
4—The Rhythmites
4:15—Instrumental Quartet
4:30—Organ Moods, Vivian Moore
4:45—Recordings
5:15—Knoxway School of Music
5:30—Wade Forrester
5:45—Organ Moods, Vivian Moore
6—Off Air
7:30—KROW Reporter
7:45—Italian program
8:15—Watch Tower program
8:30—Robert's String Orchestra
8:45—Curtainwood & Apple Bottom
9—Lyric Trio with Willard Daniel, tenor
9:30—Pemm Repetory Players
10—Echoes of Paradise
10:15 to 11 P.M.—Dance Music

322.4 Meters **KFWI** Franklin 0200
930 Kcys. 500 Watts

Radio Entertainments, San Francisco
7 A.M.—KFWI-opener program
8—Silent period
9—Cal King's Country Store
9:15—Morning Melodies
10—White House program
10:15—Bellevue Hotel program
10:30—Health talk, Dr. Linebarger
11—Timely Topics
11:15—Concert Music
11:30—Open Forum, Miss Cecilia Hardman
11:45—Vocal Selections
12 noon—Dance Music
12:30—Town Crier
12:45—News Flashes
1—Silent period
2—Dinner Dance Music
6:45—Dr. Campbell's Rhythm Melodists
7—Virginia Mifka, pianist
7:15—Bellevue Program
7:30—Silent period
11—Master Melodies
12 to 1 A.M.—Dedication hour

280.2 Meters **KJBS** Ord. 4148-49
1070 Kcys. 100 Watts

J. Brunton & Sons, San Francisco
12 noon—Popular Vocal Selections
12:30—Variety Recordings
1—Stock Reports and Records
1:15—Financial Common Sense
1:45—Marjorie Lee, Pianist
2—Blindcraft Ensemble
2:45—Speak-Easy Time
3—Reporter of the Air
3:30—George Taylor's Hour
4—Recordings
4:15—Pat Buckman, Tenor
4:30—Popular Records
5—Carleton Coveny
5:15—Records
5:30—Auburn Fuller Program
6—Recordings
6:15—Philo Varieties
6:30 to 7:15 P.M.—Records
12:01 to 6 A.M.—KJBS Owl Program

379.5 Mtrs. **NBC-KGO** Sutter 1920
790 Kcys. 7500 Watts

National Broadcast. Co., San Francisco
Service to **KHQ, KOMO, KGW,**
KFI, KOA, KSL, KTAR,
KECA, KFSD

- 7 A.M.—Organ Concert: KGO
- 7:30—Hinds Romance Exchange:
KGO, KHQ, KOMO, KGW, KFI
- 7:45—Van and Don: KGO, KHQ,
KOMO, KGW, KFI, KFSD,
KTAR, KSL, KOA
- 8—GE Circle: KGO, KHQ, KOMO,
KGW, KFI, KFSD, KTAR, KSL
- 8:15—Miracles of Magnolia: KGO,
KGW
- 8:30—Soloist: KGO, KGW
- 8:45—O' Cedar Melody Men: KGO,
KHQ, KOMO, KGW, KFI, KSL
- 9—Harold Stokes' Orchestra: KGO
- 9:15—Beautiful Thoughts: KGO,
KHQ, KGW, KFI, KTAR
- 9:30—The Buckaroos: Ted Maxwell,
Charles Marshall: KGO
- 9:45—Stringwood Ensemble: KGO
- 10—Woman's Magazine of the Air:
KGO, KHQ, KOMO, KGW, KFI,
KFSD, KTAR, (KSL, KOA on
10:40)
- 11—Standard School Broadcast:
KGO, KHQ, KOMO, KGW, KFI,
KFSD
- 11:45—Shakespearean Plays: KGO,
KOMO, KECA, KFSD
- 12 noon—Organ Concert: KGO
- 12:15—Western Farm and Home
Hour: KGO, KHQ, KOMO, KGW,
KFI, KFSD
- 1—To be announced: KGO
- 1:30—Stringwood Ensemble: KGO;
KGW off 1:46; KFI on 2
- 2:30—Balladettes: Irving Kennedy,
Tenor: KGO, KFI
- 3—Thru the Opera Glass: KGO,
KFSD
- 3:30—Swift Program: The Stebbins
Boys: KGO, KHQ, KOMO, KGW,
KFI, KSL
- 3:45—News Service: KGO
- 4—Fleischmann Hour: Rudy Vallee
and his Orchestra: KGO, KHQ,
KOMO, KGW, KFI, KTAR, KSL
- 5—Program to be Announced: KGO
- 5:30—Thompkins Corners: Rural
Drama: KGO, KHQ, KOMO,
KGW, KFI, KFSD, KTAR, KSL
- 6—Lucky Strike Dance Hour, with
Walter Winchell: KGO, KHQ,
KOMO, KGW, KFI, KFSD,
KTAR, KSL
- 7—Amos 'n' Andy: KGO, KHQ,
KOMO, KGW, KFI, KFSD, KSL
- 7:15—Caswell Concert: KGO, KHQ,
KOMO, KGW, KFI, KFSD
- 7:30—The Big Six of the Air: KGO,
KHQ, KGW, KFI, KFSD, KTAR,
KSL, KGIR, KGHK
- 8—Sperry Smiles: Nathan Stew-
art, Baritone; Lee S. Roberts, Pi-
anist: KGO, KHQ, KOMO, KGW,
KFI, KFSD, KTAR, KSL, KOA
- 8:15—Standard Symphony Hour:
Orchestra direction Alfred Hertz:
KGO, KHQ, KOMO, KGW, KFI
- 9:15—Billy Jones and Ernie Hare:
KGO, KHQ, KOMO, KGW, KFI,
KFSD, KTAR, KSL
- 9:30—The Nomads: Lucile Kirtley,
Soprano; String and Woodwind
Ensemble, direction Joseph Hor-
nik: KGO; KGW on 10:15
- 10—Richfield News Flashes: KGO,
KHQ, KOMO, KGW, KFI, KFSD

- 10:15—Dixie Memories: Sam More,
Carolyn Moore, Dixie Marsh;
Songs and Dialogue: KGO
- 10:30—Footlight Fantasies: KGO,
KGW
- 11—Phil Harris Hotel St. Francis
Dance Orchestra: KGO, (KGW
off 11:15)
- 12 to 12:30 A.M.—Organ Concert,
Dollo Sargent: KGO

440.9 Mtrs. **NBC-KPO** Gar. 8300
680 Kcys. 5000 Watts

National Broadcast. Co., San Francisco
Service to **KJR, KEX, KGA,**
KECA, KTAR, KSL, KFSD

- 7:30 A.M.—Sunrise Serenaders: KPO
- 8—Financial Service: KPO, KGA,
KJR, KEX
- 8:15—Crosscuts from the Log o' the
Day: KPO, KGA, KJR, KEX
- 9:15—Stringwood Ensemble: KPO,
KGA, KEX
- 9:30—Windjammers: Saxophone
Quartet, direction Jess Norman:
KPO, KGA, KJR, KEX
- 9:45—University of California at
Your Service: KPO
- 10—The Chatterer: Bits of Philoso-
phy: KPO, KGA, KJR, KEX
- 10:30—Snapshots: Rita Lane, Sop-
rano; Orchestra direction Jess
Norman: KPO
- 11—Standard School Broadcast:
KPO
- 11:45—Organ Concert: KPO
- 11:50—Stockyards Report: KPO
- 12 noon—Fiddlers Three: Instru-
mental Trio; Dorothy Lewis, Con-
tralto: KPO, KGA, KJR, KEX
- 12:30—Meet the Girl Friends: Blu-
ettes, Vocal Trio; Tom and Dudd,
Vocal Duo: KPO, KGA, KJR,
KEX
- 1—Shrine Luncheon: KPO
- 1:30—Ted Roy, the Singing Black-
smith: KPO
- 1:45—Swanee Serenaders: KPO,
KGA, KJR, KEX
- 2—Western Intercollegiate Broad-
casts: KPO, KGA, KJR, KEX,
KECA, KFSD, KTAR, KSL, KOA
- 2:30—The World Today: KPO
- 2:45—June Pursell, Ballads: KPO
- 3—Who Cares?: Variety Program:
KPO, KGA, (KJR on 3:05), KEX
- 4—John and Ned, Vocal and Instru-
mental Duo: KPO, KGA, KJR,
KEX
- 4:15—Cultural Conversation: KPO,
KGA, KJR, KEX
- 4:30—Twilight Tunes: Eileen Pig-
gett, Soprano: KPO, KGA, KJR,
KEX
- 5—One-Man Show: Charles Craver,
Entertainer: KPO, KJR, KEX
- 5:15—A Couple of Mouthfuls by
Scotty: KPO
- 5:30—Date Book with Stuart
Strong: KPO
- 5:45—Little Orphan Annie: KPO,
KGA, KJR, KEX, KECA
- 6—Masters of Music: KPO, KGA,
KJR, KEX
- 6:45—Cecil and Sally: KPO, KGA,
KJR, KECA
- 7—Joseph Henry Jackson Book Re-
view: KPO, KGA, KJR
- 7:15—To be announced: KPO
- 7:30—The Opera Hour: Alice Gentle,
Soprano: KPO, KGA, KJR
- 8—Johnnie Hamp's Orchestra: KPO,
KGA, KJR, KEX
- 8:30—The Dinglebenders: Comedy
Serial with Kolb and Dill: KPO,
KJR, KEX, KECA, KFSD
- 8:45—Mona Low, Blues Singer: KPO,
KGA, KJR, KEX, KOA

- 9—Nathan Abas, Violinist: KPO,
KGA, KJR, KEX, KOA, KGHK
- 9:30—Earl Burnett's Orch.: KPO,
KGA, KJR, KEX off 9:45), KECA,
KOA
- 10—Great Moments of History:
KPO, KGA, KEX, KJR, KOA
- 10:30—Around the Network: KPO,
KGA, KJR, KEX, KFSD, KSL,
KOA, KGIR
- 11—Stringwood Ensemble: KPO,
KGA, KEX
- 11:30 to 12 midnight—Witching Hour:
Paul Carson, Organist: KPO,
KGA, KEX

243.8 Meters **KYA** Prospect 3456
1230 Kcys. 1000 Watts

- Pac. Broadcast. Corp., San Francisco
- 7:30 A.M.—Rhythm Masters
- 8—Metropolitan Hour
- 9—Manual Melodies
- 9:15—Chet & Jerry
- 9:30—Modern Melodies
- 10—Sunshine Hour
- 11—Salon Melodies
- 11:15—Manhattan Moods
- 11:30—Prudence Penny
- 11:45—Song and Dance Kings
- 12 noon—Broadway Echoes
- 12:30—Glen Goff, Organist
- 1—Concert Memories
- 1:30—"Your Helpful Friend"
- 1:45—Musical Contrasts
- 2—Aunt Jimima's Songs
- 2:15—Glen Goff, Organist
- 2:45—Masters of the Violin
- 3—Novelty Bits
- 3:15—Walter Markham program
- 3:30—Memories of Great Masters of
Music
- 4—Artist Celebrities
- 4:30—Famous Songs and Singers
- 5—Metropolitan Hour
- 6—Revue
- 6:30—"Just Willie"
- 6:45—Henry Starr, Hot Spot of Radio
- 7—Hap and Jack
- 7:15—Sportsman Corner, Gene Sulli-
van
- 7:30—Small's Concert Trio
- 7:45—News Bulletin
- 8—On with the Show
- 8:30—Sports Review
- 9—Billy Small Ensemble
- 9:30—Milly and Billy, Cub Reporters
- 9:45—George Nickson, Song Recital
- 10—News Bulletin
- 10:15—Radio Sandman Hour
- 11 to 12 midnight—Concert Memori-
les

296.6 Meters **KQW** Columbia 777
1010 Kcys. 500 Watts

- Pac. Agric. Foundation, Ltd., San Jose
- 10:45—Rainbow Trouper
- 11—Leah Kimball's Program
- 11:30—Cliff, Mae and Norm
- 12 noon—Variety Program
- 12:30—Weather and Market Reports
- 1—Leah Kimball's program
- 1:30—The Friendly hour
- 2:30—Dr. Lawrence
- 3—Studio program
- 4:30—Story Time
- 5—Vespers, Dr. C. B. Sylvester
- 5:30—Evening Echoes
- 5:45—Liberty Bell Quarter hour
- 6—The Knickerbockers
- 6:15—Franco's program
- 6:30—State Market reports
- 6:45—News Dispatches
- 7—U. S. Weather reports
- 7:15—International Parade
- 7:30—California Dept. of Agric.
- 7:45—The Caterpillar Crew
- 8—Songs of the Old Church Choir
- 9—Panic
- 9:15 to 10 P.M.—Five Pretzels Lit-
tle German Band

508.2 Meters KHQ Main 5383
590 Kcys. 1000 Watts
Louis Wasmser, Inc., Spokane, Wash.
6:45 A.M. to 6—Various programs
6 P.M.—NBC, Lucky Strike Hour
7—Amos 'n' Andy
7:15—NBC, Caswell Concert
7:30—Chandu, the Magician
8—NBC, Sperry Smiles
8:15—NBC, Standard Symphony Hr.
9:15—NBC, Billy Jones & Ernie Hare
9:30—Studio Program
9:45—"Paint Time"
10—NBC, Richfield News Flashes
10:45—Timely Topics
11—Fran Morton's Orchestra
12 to 12:30 A.M.—Desert Caravan

325.9 Meters KOMO Elliott 5890
920 Kcys. 1000 Watts
Fisher's Blend Station, Inc., Seattle
6:55 A.M. to 6—Various Programs
6 P.M.—NBC, Lucky Strike Hour
7—NBC, Amos 'n' Andy
7:15—NBC, Caswell Concert
7:30—NBC, Big Six of the Air
8—NBC, Sperry Smiles
8:15—NBC, Standard Symphony Hr.
9:15—NBC, Billy Jones & Ernie Hare
9:30—Studio Program
9:45—Male Quartet
10—NBC, Richfield News Flashes
10:15—NBC, The Nomads
10:30—Globe Trotter
10:45—Vocal Ensemble
11—Olympic Hotel Varsity Vagabonds
12 to 12:30 A.M.—Organ Recital

394.5 Meters KVI Broadway 4211
760 Kcys. 1000 Watts
Puget Sound Broadcast. Co., Tacoma
6:30 A.M. to 6—Various Programs
6 P.M.—Hutton's Concert Ensemble
6:30—CBS, Music that Satisfies
6:45—CBS, "Myrt and Marge"
7—CBS, Joe Palooka
7:15—CBS, Howard Barlow and Orchestra
7:30—CBS, Camel Quarter Hour
7:45—Silent period
9—To be announced
10—Anson Weeks' Orchestra
11 to 12 midnight—Henry Halstead Orchestra

236.1 Meters KOL Elliott 4466
1270 Kcys. 1000 Watts
Seattle Broadcast Co., Seattle, Wash.
6:45 A.M. to 6—Various Programs
6 P.M.—Ken Stuart's Sports Review
6:30—CBS, Music that Satisfies
6:45—CBS, Myrt and Marge
7—CBS, Joe Palooka
7:15—Program to be announced
7:30—CBS, Camel Quarter Hour
7:45—CBS, Bing Crosby
8—CBS, Guy Lombardo
8:15—"Chandu the Magician"
8:30—CBS, Ben Pollock's Orch.
9—CBS Feature
9:30—CBS, "Today and Yesterday"
11 to 12 midnight—Henry Halstead's Orchestra

204 Meters KGA Main 3434
1470 Kcys. 5000 Watts
NW, Broad. System, Spokane, Wash.
6 A.M. to 6 P.M.—Various Programs
6 P.M.—NBC, Masters of Music
6:45—NBC, Cecll and Sally
7—NBC, Joseph Henry Jackson
7:15—To be announced
7:30—NBC, Opera Hour
8—NBC, Hotel New Yorker Orch.
8:30—To be announced
8:45—NBC, Mona Low
9—NBC, Nathan Abas Popular Program

9:30—NBC, Earl Burnnett's Orch.
10—NBC, Great Moments in History
10:30—Around the Network
11—Stringwood Ensemble
11:30 to 12 midnight—NBC, Witching Hour, Organ

309.1 Meters KJR Seneca 1515
970 Kcys. 5000 Watts
Northwest Broad. System, Seattle, Wn.
7 A.M. to 6 P.M.—Various Programs
6 P.M.—NBC, Masters of Music
6:45—NBC, Cecll and Sally
7—NBC, Joseph Henry Jackson
7:15—To be announced
7:30—NBC, Opera Hour
8—NBC, Hotel New Yorker Orch.
8:30—NBC, The Dinglebenders
8:45—NBC, Mona Low
9—NBC, Nathan Abas Popular Program
9:30—NBC, Earl Burnnett's Orch.
10—NBC, Great Moments in History
10:30—Around the Network
11 to 12 midnight—Earl Gerdon's Orchestra

254.1 Meters KEX Atwater 3111
1180 Kcys. 5000 Watts
Western Broad. Co., Portland, Ore.
6:45 A.M. to 6—Various programs
6 P.M.—Masters of Music
6:45—Studio Program
7—NBC, Joseph Henry Jackson
7:15—To be announced
7:30—Silent Period
8—NBC, Hotel New Yorker Orch.
8:30—NBC, The Dinglebenders
8:45—NBC, Mona Low
9—NBC, Nathan Abas Popular Program
9:30—NBC, Earl Burnnett's Orch.
9:45—Oregonian at Home
10—NBC, Great Moments in History
10:30—Around the Network
11—Stringwood Ensemble
11:30—NBC, Witching Hour, Organ
12 to 1 A.M.—Allen Daniels

333.1 Meters KHJ Vandike 7111
900 Kcys. 1000 Watts
Don Lee, Inc., Los Angeles, Calif.
7 A.M. to 5:45—Various Programs
5:45 P.M.—"Black and Blue"
6—Hutton's Concert Ensemble
6:30—CBS, Music that Satisfies
6:45—CBS, "Myrt and Marge"
7—CBS, Joe Palooka
7:15—CBS, Palm Beach program
7:30—CBS, Morton Downey and Or.
7:45—Inglewood Park Concert
8:15—Chandu, the Magician
8:30—CBS, Ben Pollack Orchestra
9—Congressional Medal Drama
9:30—"Today and Yesterday"
10—World-wide News
10:10—Anson Weeks' Orchestra
11—Roosevelt Dance Orchestra
12 to 1 A.M.—Roy Ringwald, Organ

239.9 Meters KFOX Phone: 67281
1250 Kcys. 1000 Watts
Nichols & Warinner, Long Beach, Cal.
5 A.M. to 6 P.M.—Various programs
6—Sassy Little and her Pals
6:15—Blue Ribbon Group
6:30—KFOX School Kids
6:45—"Rajput"
7—Cheerio Boys
7:30—The Boy Detective
7:45—The Three Vagabonds
8—The Melody Garden
8:15—Chandu
8:30—SRO Revue
9—Majestic Ballroom Orch.
9:30—Cally Holden's Orchestra
10:15—Anson Weeks' Orchestra
11—Henry Halstead's Orchestra
12 to 5 A.M.—Recordings

468.5 Meters KFI Richmond 6111
640 Kcys. 50,000 Watts
Earle C. Anthony, Inc., Los Angeles
6:30 A.M. to 6—Various programs
6 P.M.—NBC, Lucky Strike Program
7—NBC, Amos 'n' Andy
7:15—NBC, Caswell Concert
8—NBC, Sperry Smiles
8:15—NBC, Standard Symphony Hr.
9:15—NBC, Billy Jones & Ernie Hare
9:30—Studio Program
9:45—Orchestra
10—NBC, Richfield News Flashes
10:15 to 12 midnight—Jimmie Grier's Hotel Ambassador Orchestra

499.7 Meters KFSD Franklin 6353
600 Kcys. 1000 Watts
Airtan Radio Corp., Ltd., San Diego
7:30 A.M. to 6—Various programs
6 P.M.—NBC, Lucky Strike Program
7—NBC, Amos 'n' Andy
7:15—Feature Program
8—NBC, Sperry Smiles
8:15—Studio program
8:30—NBC, Dinglebenders
8:45—Voice, Violin and Piano
9:15—NBC, Billy Jones and Ernie Hare
9:30—Studio Program
10—NBC, Richfield News Flashes
10:30—NBC, Around the Network
11 to 12 midnight—Dance Music

285.5 Meters KNX Hemp. 4101
1050 Kcys. 5000 Watts
L. A. Evening Express, Los Angeles
6:30 A.M. to 6—Various programs
6 P.M.—News
6:15—Vigilante Druggists
6:30—Challenge Grenadiers
6:45—Vivian Duncan and Lew Cody
7—Frank Watanabe & Hon. Archie
7:15—Bob Shuler
7:45—Vincent Lopez Valvoliners
8—Musical Memories
8:30—Violin Choir
9—News
9:15—KNX Ensemble
9:30—Arizona Wranglers
10—Starke's Bohemian Cafe
11—Paris Inn
12 to 1 A.M.—Ray Howell

220.4 Meters KGER Phone: 682-94
1360 Kcys. 1000 Watts
Cons. Broadcast. Co., Long Beach
6 A.M. to 6 P.M.—Various Programs
6—Em and Clem
6:15—Twilight Fantasy
6:45—Cheerful Earful
7—Buttercream Ragamuffins
7:15—Kaal's Hawaiians
7:30—Long Beach Band
8—Placentia Cavalry Church
9—Evening Moods
10—Helene Smith, Piano
10:15—Frank Jocelyn, Organist
10:30—Vagabond Dreams
11 to 12 midnight—Tom Moore's Orch

526 Meters KMTR Holly. 3026
570 Kcys. 500 Watts
KMTR Radio Corp., Hollywood, Cal.
6:30 A.M. to 6—Various Programs
6 P.M.—Sterling Young's Youngsters
6:30—Paradise Isle
7—Harold Rhoades and Bill Smalley, two pianos
7:15—Sunset Melodies
7:30—Taxi Reduction Club
7:45—Ted Dahl's Orchestra
8:15—Justin Johnson's Salon Group
8:30—Baseball: S. F. vs. Hollywood
10:30—Selected Records
11—Louis Armstrong Orchestra
12 to 12:30 A.M.—Selected records

FRIDAY Programs

May 6, 1932

491.5 Meters **KFRC** Prospect 0100
610 Kcys. 1000 Watts
Don Lee, Inc., San Francisco, Calif.
7 A.M.—Seal Rocks Broadcast
7:15—Dobbsie and Wee Willie
7:25—N. Y. Stock Quotations
7:30—Dobbsie's Quarter Hour
7:45—CBS, Old Gold program
8—Shell Happytime
8:30—Hallelujah Hour
9:30—"Betty Crocker"
9:45—Sally Stokely
10—The Almanac
11—The Lane Reporter
11:15—Best Foods Cooking School
11:30—CBS, Arthur Jarrett
11:45—CBS, Educational Features
12 noon—Noonday Concert
1—CBS, George Hall's Orchestra
1:15—Rita Murray Financial Talk
1:30—N. Y. Stock Quotations
1:35—The Globe Trotter
1:45—CBS, Piano Pictures
2—Happy Go Lucky Hour
3—Feminine Fancies
4—Ronald Graham, Vocalist
4:15—Numerology
4:30—Song Stories, Clark Sisters
4:45—The Globe Trotter
4:55—Town Topics
5—Skippy
5:15—Steamboat Bill
5:30—CBS, Lovely Lady
5:45—Black and Blue
6—CBS, Beau Bachelors
6:15—Seiberling Singers
6:30—CBS, Music that Satisfies
6:45—CBS, Myrt and Marge
7—CBS, Howard Barlow's Orchestra
7:15—Pat Frayne's Sports Talk
7:30—CBS, Camel Quarter Hour
7:45—CBS, Don Redman's Orchestra
8—Le Petite Cafe
8:15—Chandu, the Magician
8:30—CBS, Paul Specht's Orchestra
8:45—KFRC Feature program
9—To the Ladies
9:15—Studio Program
9:30—Eastman Kodak Program
10—Quaker State Oil program
10:15—Anson Weeks' Orchestra
11—Henry Halstead's Orchestra
12 to 1 A.M.—Vagabond of the Air

280.2 Meters **KJBS** Ord. 4148-49
1070 Kcys. 100 Watts
J. Brunton & Sons, San Francisco
8 A.M.—KJBS Alarm Klok Klub
8—Recorded Program
9:30—Old Favorites
9:45—Records
10—Reporter of the Air
10:05—Popular Record Program
11:30—Charles' Miniature Vaudeville
11:45—Concert Music
12 noon—Popular Vocal Selections
12:30—Band Concert
12:45—Variety Recordings
1—Stock Report; Musical Program
2—Business Bureau Talk
2:15—Recordings
2:30—Lucille Gordon Players
2:45—Speak-Easy Time
3—Reporter of the Air
3:30—George Taylor's Bridge Hour
4—Records
4:15—Aloha Hawaiian Trio
4:30—Assoc. Food Stores' Program
5—Records
6—Musical Contrasts
6:30 to 7:15 P.M.—Records
12:01—Jo Mendel's Pep Band
1 to 6 A.M.—KJBS Owl Program



BLANCHE CROSSMAN
KFI—CONTRALTO

243.8 Meters **KYA** Prospect 3456
1230 Kcys. 1000 Watts
Pac. Broadcast. Corp., San Francisco
7:30 A.M.—Rhythm Masters
8—Metropolitan Hour
9—Manual Melodies
9:30—Modern Melodies
9:50—Ethel Whitmore Talk
10—Sunshine Hour
11—Popular Hits
11:15—Manhattan Moods
11:30—Prudence Penny
11:45—Song and Dance Kings
12 noon—Broadway Echoes
12:30—Glen Goff, Organist
1—Concert Memories
1:30—"Your Helpful Friend"
1:45—Musical Contrasts
2—Famous Songs and Singers
2:30—Novelty Bits
3—Hawaiian Echoes
3:15—Masters of the Violin
3:30—Glen Goff, Organist
4—Salon Music
4:15—Artist Celebrities
4:30—On Parade
5—Metropolitan Hour
6—Revue
6:30—Dance Music
6:45—Henry Starr, Hot Spot of Radio
7—Hap and Jack
7:15—"The Harmonettes"
7:30—Sydney Dixon: Song Recital
7:45—News Bulletin
8—On with the Show
9—Gustav Severin, Talk on "War Spies"
9:30—Bob Allen and George Bowers
9:45—Virginia Spencer: Piano Soliloquy
10—News Bulletin
10:15—Radio Sandman Hour
11 to 12 midnight—Concert Mem-
ories

340.7 Meters **KLX** Lake. 6000
880 Kcys. 500 Watts
Tribune Pub. Co., Oakland, Calif.
7—Exercises and Entertainment;
N. Y. Stocks
8—Records
9—Modern Homes period
9:30—Records
10:15—San Francisco stocks; finan-
cial information; weather
10:30—Records
10:45—Aratone program
11—Sunshine Twins
12 noon—Jack Delaney and his band
1—Jean's Hi-Lights
2—Classical recordings
2:35—Closing San Francisco stocks
2:45—Ethel Rhinard, pianist
3—Records
3:45—Piano Rambles
4—Records
4:30—Brother Bob's Club
5—Helen Parmelee, Pianist
5:30—Gus Arnheim transcription
6—Dave Saylor's Hotel Oakland
Dance Orchestra
7—News Items
7:30—Helen Parmelee, Pianist
7:45—Fred and Morris, Comedians
8—KLX Hi-Jinks
10 to 11 P.M.—Dance program

322.4 Meters **KFWI** Franklin 0200
930 Kcys. 500 Watts
Radio Entertainments, San Francisco
9:30 A.M.—Morning Melodies
10—White House program
10:15—Bellevue Hotel program
10:30—Health talk, Dr. Linebarger
11—Timely Topics
11:15—Concert Selections
11:30—Learn Italian, Prof. Achille
11:45—Vocal Selections
12 noon—Dance Music
12:30—Town Crier
12:45—News Flashes
1—Silent period
6—Dinner Dance Music
6:45—Bellevue program
7—Rosenthal program
7:30—Silent Period
8:30—Ella Bostick and Laura
Wheeler, Harmony Duo
8:45—John D. Barry, World Events
9—Jack Coakley's Orchestra
9:30—Mildred Epsteen, soprano
10—Studio feature
11—Master Melodies
12 to 1 A.M.—Dedication hour

322.4 Meters **KROW** Glenc. 6774
930 Kcys. 1000 Watts
Educa. Broad. Corp., Oakland, Calif.
8 A.M.—X-Bar "B" Boys
8:45—Fifteen Minutes at Home
9—Off Air
1—Weather Forecast
1:05—Latin-American program
2—Recordings
2:30—News Items
2:45—Recordings
3—Paul's Hawaiians
3:30—The KROW-ians
4:15—Rumford School of Cookery
4:30—Don Germano with Orchestra
5—Italian program
5:30—Wade Forrester
5:45—Organ Moods, Vivian Moore
6—Off Air
7:30—KROW Reporter
7:45—The Harmony Boys
8 to 8:30 P. M.—The Star-olians

440.9 Mtrs. **NBC-KPO** GaR. 8300
680 Kcys. 5000 Watts
National Broadcast. Co., San Francisco
Service to KJR, KEX, KGA,
KECA, KTAR, KSL, KFSD
7:30 A.M.—Sunrise Serenaders: KPO
8—Financial Service: KPO, KGA,
KJR, KEX
8:15—Crosscuts from the Log o' the
Day: KPO, KGA, KJR, KEX
9:15—Stringwood Ensemble: KPO,
KGA, KEX
9:30—Helpful Hints to Housewives:
KPO
9:45—University of California at
Your Service: KPO
9:45—Organ Concert: (KPO on 10),
KGA, (KJR off 10:15), KEX
10:30—Snapshots: Rita Lane, So-
prano: KPO
11—Modern Moods: KPO
11:30—Sagamore Hotel Orch.: KPO
off 11:45; KGA, KJR; KEX on
11:45
11:45—Organ Concert: KPO
11:50—Stockyards Report: KPO
11:57—Time Signals: KPO
12 noon—Rhythmic Serenade: Harry
Kogen's Dance Orchestra: KPO,
KGA, KJR, KEX
12:15—To be announced: KPO
12:45—Commonwealth Club Lunch-
eons: KPO
1:15—Swanee Serenaders: KPO,
KTAR
1:30—Old Pappy: Negro Impersona-
tions, Songs, Clifford Soubier:
KPO
1:45—Songsters: KPO, KGA, KEX
2—Waldorf-Astoria Sert Room Or-
chestra: KPO, KGA, KJR, KEX,
KSL
2:15—The Jester: KPO, KGA, KJR,
KEX
2:30—Larry Funk and his Orches-
tra: KPO, KGA, KJR, KEX
3—Who Cares?: Variety Program:
KPO, KGA, (KJR on 3:05), KEX
4—John and Ned: KPO, KGA, KJR,
KEX
4:15—Victor Linfoot, Baritone: KPO,
KGA, KJR, KEX
4:30—Twilight Tunes: KPO, KJR,
KGA, KEX
5—One-Man Show: Charles Craver,
Entertainer: KPO, KJR, KEX
5:15—A Couple of Mouthfuls by
Scotty: KPO
5:30—Date Book with Stuart Strong:
KPO
5:45—Little Orphan Annie: KPO,
KGA, KJR, KEX, KECA
6—Rhythm Vendors: KPO, KEX;
KGA on 6:15; KJR off 6:15, on
6:30
6:45—Cecil and Sally: KPO, KGA,
KJR, KECA
7—Salt Water Program: Sea Chan-
teys, Male Quartet direction
Henry L. Perry: KPO, KGA, KJR,
KEX
7:15—To be announced: KPO
7:30—Vincent Lopez and his Orches-
tra: KPO, KGA; KJR off 7:45
8—Ralph Kirbyer, the Dream Sing-
er: KPO, KGA, KJR, KEX
8:05—Johnnie Hamp's Orchestra:
KPO, KGA, KJR, KEX
8:30—Heart of the News: "The
Chestnut Fire," Drama: KPO,
KGA, KJR; KEX off 8:45
9—The Scrapbook: Henry Thomp-
son, Tenor: KPO, KGA, KJR,
KOA; KEX on 9:15
10—Earl Burnett's Orchestra: KPO,
KGA, KJR, KEX, KOA
10:30—Around the Network: KPO,
KGA, KJR, KEX, KFSD, KSL,
KOA, KGIR

11—Jimmie Joy and his Bal Tabarin
Orchestra: KPO, KGA, KEX
11:30 to 12 midnight—Witching Hour:
Paul Carson, Organist: KPO,
KGA, KEX

379.5 Mtrs. **NBC-KGO** Sutter 1920
790 Kcys. 7500 Watts
National Broadcast. Co., San Francisco
Service to KHQ, KOMO, KGW,
KFI, KOA, KSL, KTAR,
KECA, KFSD

7 A.M.—Organ Concert, Charles
Runyan: KGO; KGW on 7:30
7:30—Marionettes: KGO
7:45—Van and Don: KGO, KHQ,
KOMO, KGW, KFI, KFSD,
KTAR, KSL, KOA
8—GE Circle: Grace Ellis, Hostess:
KGO, KHQ, KOMO, KGW, KFI,
KFSD, KTAR, KGIR, KGHL
8:15—Brighten-Up Half-Hour: KGO,
KHQ, KOMO, KGW, KFI
8:45—Hal Kemp and his Orchestra:
KGO, KGW
9—Harold Stokes' Orchestra: KGO
9:15—Beautiful Thoughts: KGO,
KHQ, KGW, KFI, KTAR
9:30—The Buckaroos: Ted Maxwell,
Charles Marshall: KGO, KFI
9:45—Rembrandt Trio: KGO
10:30—Woman's Magazine of the
Air: KGO, KHQ, KOMO, KGW,
KFI, KFSD, KTAR, KSL, KOA
11:30—Organ Concert, Paul Carson:
KGO, KFI off 11:45
12:15—Western Farm and Home
Hour: KGO, KHQ, KOMO, KGW,
KFI, KFSD, (KTAR on 12:45)
1—Metropolitans: Orchestra direc-
tion Joseph Hornik: KGO; KGW
on 1:30
1:45—Stringwood Ensemble: KGO
2:15—Vagabonds: KGO, KFI
3—Dream Pictures: KGO, KFI,
KFSD
3:30—Swift Program: The Stebbins
Boys: KGO, KHQ, KOMO, KGW,
KFI, KSL
3:45—News Service: KGO
4—National Concert Orchestra: KGO,
KGW, KFI
5—Friendship Town: Small Town
Sketch: KGO, KHQ, KOMO,
KGW, KFI, KFSD, KTAR, KSL
5:30—Armour Program: Roy Shield's
Orchestra: Edna Kellogg, Soprano;
Fireside Singers, Male Quartet:
KGO, KHQ, KOMO, KGW, KFI
6—Paul Whiteman's Pontiac Chief-
tains: KGO, KHQ, KOMO, KGW,
KFI, KFSD, KTAR, KSL, KGIR,
KGHL
6:30—National Oratorio Society:
KGO, KOMO, KGW, KFI, KFSD,
KTAR, KSL
7—Amos 'n' Andy: KGO, KHQ,
KOMO, KGW, KFI, KFSD, KSL
7:15—Billy Jones and Ernie Hare:
KGO, KHQ, KOMO, KGW, KFI,
KFSD, KTAR, KSL
7:30—Demi-Tasse Revue: KGO,
KHQ, KOMO, KGW, KFI
8—Voice of 76: Rhythm Orchestra:
Harry Beauchert, Baritone: KGO,
KHQ, KOMO, KGW, KFI, KFSD,
KTAR
8:30—Billy Jones and Ernie Hare:
KGO, KHQ, KOMO, KGW, KFI,
KFSD, KTAR, KSL
8:45—Dixie Memories: Sam Moore,
Carolyn Moore, Dixie Marsh;
Songs and Dialogue: KGO, KFI
9—Rhythmic Shad:ows: KGO
9:30—One Man's Family: Serial
Drama by Carlton E. Morse; Episo-
de Two, with Bernice Berwin,
Henry Shumer, Barbara Lee,

Kathleen Wilson, Barton Yarbor-
ough, Michael Raffetto and Billy
Page: KGO
10—Richfield News Flashes: KGO,
KHQ, KOMO, KGW, KFI, KFSD
10:15—Barbara Blanchard, Soprano:
KGO, KGW, KFSD
10:30—Across the Music Counter:
KGO, KGW, KFSD
11—Phil Harris Hotel St. Francis
Dance Orchestra: KGO
12 to 12:30 A.M.—Organ Concert,
Dollo Sargent: KGO

535.4 Meters **KTAB** Garfield 4700
560 Kcys. 1000 Watts
Assoc. Broadcasters, Oakland, Calif.

7 A.M.—Popular records
7:05—Morning Reporter
7:30—Allay-ooop! with Bob Roberts
8—Radio Shopping News
8:30—Jack Hall and Clem Kennedy
9—Morning Prayer Hour
9:30—Dr. J. Douglas Thompson
10—Household hour
10:30—News Service
10:35—Dr. B. L. Corley
10:55—Records
11—Store Scenes
11:30—Popular records
12 noon—Dream Interpretations
12:15—Dr. R. M. McLain
12:30—News Service
12:35—Studio Program
1:05—Recorded program
1:30—Over the Teacups
2—Popular records
2:30—Masterpieces of Melody
3:30—Popular records
4—Tommy Tucker and his Gang
4:30—Jack Hall and Clem Kennedy
5—Glenhall Taylor, pianist
5:15—Hot Tips and Hot Tunes
5:30—Dr. J. Douglas Thompson
6—Popular records
6:10—"The Fishin' Fool"
6:25—Recreation talk
6:30—Ernie Smith, Sport Page
6:45—Reporter
7—Gus Arnheim, electrical news.
7:30—News service
7:45—Italian program
8—Dance music
8:15—Night Baseball
10—Beverly Hill Billies
11 to 1 A.M.—Nite Owls

296.6 Meters **KQW** Columbia 777
1010 Kcys. 500 Watts
Pac. Agric. Foundation, Ltd., San Jose

7 A.M.—Breakfast hour
9—Morning Melodies
9:30—Helpful hour
10:30—Recordings
10:45—Rainbow Trouper
11—Leah Kimball's Program
11:30—Cliff, Mac and Norm
12 noon—Variety program
12:30—Weather and Market Reports
1—Leah Kimball's program
1:30—Friendly hour, Lena Leland
2:30—Dr. Lawrence
3—Studio program
3:30—Story Time
5—Vespers, Rev. W. L. Bone
5:30—Evening Echoes
5:45—Liberty Bell Quarter Hour
6—The Knickerbockers
6:15—Franco's program
6:30—Market reports
6:45—Radio News and Forum
7—Weather reports and forecasts
7:15—Bellcoliers
7:30—Calif. Dept. of Agric.
7:45—Musical Tid-bits
8—San Jose Accordion Club
8:30—Studio Program
9—The Cosmopolitans
9:30 to 10 P.M.—Studio program

325.9 Meters KOMO Elliott 5890
920 Kcys. 1000 Watts
Fisher's Blend Station, Inc., Seattle
6:55 A.M. to 6—Various Programs
6 P.M.—Paul Whiteman's Orchestra
6:30—NBC, National Oratorio Society
7—NBC, Amos 'n' Andy
7:15—NBC, Billy Jones & Ernie Hare
7:30—NBC, MJB Demi-Tasse Revue
8—NBC, Voice of 76
8:45—Vocal Ensemble
9—Studio Program
9:15—Mozart Hour
10—NBC, Richfield News Flashes
10:15—Globe Trotter
10:30—Male Quartet
10:40—Fox Theatre Frollic
11:10—Olympic Hotel Dance Orch.
12 to 12:30 A.M.—Organ Recital

508.2 Meters KHQ Main 5383
590 Kcys. 1000 Watts
Louis Wasmer, Inc., Spokane, Wash.
6:45 A.M. to 6—Various programs
6 P.M.—NBC, Paul Whiteman's Or.
6:30—Musical Program
7—NBC, Amos 'n' Andy
7:15—NBC, Billy Jones & Ernie Hare
7:30—NBC, MJB Demi-Tasse Revue
8—NBC, Voice of 76
8:45—Babson Business Barometer
9—Studio Program
9:15—"Jewels of the Music Master"
10—NBC, Richfield News Flashes
10:45—Timely Topics
11—Fran Morton's Orchestra
12 to 12:30 A.M.—Desert Caravan

236.1 Meters KOL Elliott 4466
1270 Kcys. 1000 Watts
Seattle Broadcast Co., Seattle, Wash.
6:45 A.M. to 6—Various Programs
6 P.M.—CBS, Beau Bachelors
6:15—CBS, Memory Mist
6:30—CBS, Music that Satisfies
6:45—CBS, Myrt and Marge
7—CBS, Howard Barlow
7:15—To be announced
7:30—CBS, Camel Quarter Hour
7:45—CBS, Don Redman's Orchestra
8—CBS, Isham Jones and Orch.
8:15—"Chandu the Magician"
8:30—CBS, Paul Specht's Orchestra
9—CBS Feature
9:30—CBS, Eastman Kodak prog.
10—Wrestling
11 to 12 midnight—Henry Halstead
Orchestra

309.1 Meters KJR Seneca 1515
970 Kcys. 5000 Watts
Northwest Broad. System, Seattle, Wn.
7 A.M. to 6 P.M.—Various Programs
6 P.M.—NBC, Rhythm Vendors
6:15—Anson Weeks (E. T.)
6:30—Rhythm Vendors
6:45—NBC, Cecil and Sally
7—NBC, Salt Water Program
7:15—NBC, To be announced
7:30—Vincent Lopez Orchestra
7:45—Dollars and Sense
8—NBC, Hotel New Yorker Orch.
8:30—NBC, Heart of the News
9—NBC, Scrapbook
10—NBC, Earl Burnett's Orch.
10:30—Around the Network
11—Earl Gerdon Roof Garden Orch.

204 Meters KGA Main 3434
1470 Kcys. 5000 Watts
NW. Broad. System, Spokane, Wash.
6 A.M. to 6 P.M.—Various Programs
6 P.M.—NBC, Rhythm Vendors
6:45—NBC, Cecil and Sally
7—NBC, Salt Water Program
7:15—NBC, To be announced
7:30—Vincent Lopez Orchestra
8—NBC, Hotel New Yorker Orch.

8:30—NBC, Heart of the News
9—NBC, Scrapbook
10—NBC, Earl Burnett's Orchestra
10:30—Around the Network
11—Jimmie Joy and his Bal Tabarin
Orchestra
11:30 to 12 midnight—NBC, Witching
Hour, Organ

285.5 Meters KNX Hemp. 4101
1050 Kcys. 5000 Watts
L. A. Evening Express, Los Angeles
6:30 A.M. to 6—Various programs
6:15—The Hour of the Angelus
6:30—Challenge Grenadiers
6:45—Vivian Duncan and Ley Cody
7—Frank Watanabe & Hon. Archie
7:15—Rajput
7:30—Centerville Sketches
7:45—Jeannie and Joan
8—Royal Order of Optimistic Donuts
9—News
9:15—KNX Ensemble
9:30—Lal Chand Mehra
9:45—Main Event, Hollywood Le-
gion Stadium
10:45—The Arizona Wranglers
11—The Paris Inn
12 to 1 A.M.—Ray Howell

239.9 Meters KFOX Phone: 67281
1250 Kcys. 1000 Watts
Nichols & Warinner, Long Beach, Cal.
5 A.M. to 6 P.M.—Various programs
6—Sassy Little and her Pals
6:15—Blue Ribbon Group
6:30—KFOX School Kids
6:45—The Three Girls
7—Cheerio Boys
7:15—Studio program
7:30—The Boy Detective
7:45—Three Vagabonds
8—Melody Garden
8:15—"Chandu"
8:30—"Harmonious Suggestions"
9—"To the Ladies"
9:15—Majestic Ballroom Orchestra
9:30—Cally Holden's Orchestra
10:15—Anson Weeks' Orchestra
11—Henry Halstead's Orchestra
12 to 5 A.M.—Recordings

254.1 Meters KEX Atwater 3111
1180 Kcys. 5000 Watts
Western Broad. Co., Portland, Ore.
6:45 A.M. to 6—Various Programs
6 P.M.—NBC, Rhythm Vendors
6:45—Studio Program
7—NBC, Salt Water Program
7:15—NBC, To be announced
7:30—Silent Period
8—NBC, Hotel New Yorker Orch.
8:30—NBC, Heart of the News
8:45—Sport Talk
9—NBC, Scrapbook
9:45—Oregonian at Home
10—NBC, Earl Burnett's Orch.
10:30—Around the Network
11—Jimmie Joy and his Bal Tabarin
Orchestra
11:30—NBC, Witching Hour
12 to 1 A.M.—Allen Daniels

394.5 Meters KVI Broadway 4211
760 Kcys. 1000 Watts
Puget Sound Broadcast Co., Tacoma
6:30 A.M. to 6—Various Programs
6 P.M.—Dellin Serviteers
6:30—CBS, Music that Satisfies
6:45—CBS, "Myrt and Marge"
7—To be announced
7:30—CBS, Camel Quarter Hour
7:45—Silent period
9—To be announced
9:30—CBS, Eastman Kodak prog.
10—Scandinavian hour
11 to 12 midnight—Henry Halstead
Orchestra

333.1 Meters KHJ Vandike 7111
900 Kcys. 1000 Watts
Don Lee, Inc., Los Angeles, Calif.
7 A.M. to 5:45—Various Programs
5:45 P.M.—"Black and Blue"
6—Beau Bachelors
6:15—Mona Content, Pianist
6:30—CBS, Music that Satisfies
6:45—CBS, "Myrt and Marge"
7—CBS, Howard Barlow's Orchestra
7:15—To be announced
7:30—CBS, Morton Downey and Or.
7:45—CBS, Don Redman's Orch.
8—CBS, Isham Jones' Orchestra
8:15—Chandu, the Magician
8:30—Historical Southern California
9—"To the Ladies"
9:15—To be announced
9:30—CBS, Eastman Kodak Hour
10—World-wide News
10:10—Anson Weeks' Orchestra
11—Rosevelt Dance Orchestra
12 to 1 A.M.—Roy Ringwald, Organ

468.5 Meters KFI Richmond 6111
640 Kcys. 50,000 Watts
Earle C. Anthony, Inc., Los Angeles
6:30 A.M. to 6—Various programs
6 P.M.—NBC, Paul Whiteman's Or.
6:30—Orchestra
7—NBC, Amos 'n' Andy
7:15—NBC, Billy Jones & Ernie Hare
7:30—NBC, MJB Demi-Tasse Revue
8—NBC, Voice of 76
8:45—NBC, Dixie Memories
9—Orchestra
10—NBC, Richfield News Flashes
10:15 to 12 midnight—Jimmie
Grier's Hotel Ambassador Orch.

499.7 Meters KFSD Franklin 6353
600 Kcys. 1000 Watts
Airfan Radio Corp., Ltd., San Diego
7:30 A.M. to 6:30—Various Programs
6:30—NBC, National Oratorio
6:45—NBC, Cecil and Sally
7—NBC, Amos 'n' Andy
7:15—NBC, Feature Program
8—NBC, Voice of 76
8:30—Studio program
10—NBC, Richfield News Flashes
10:15—Barbara Blanchard, soprano
10:30—NBC, Around the Network
11 to 12 midnight—Dance Music

220.4 Meters KGER Phone: 682-94
1360 Kcys. 1000 Watts
Cons. Broadcast Co., Long Beach
6 A.M. to 6 P.M.—Various Programs
6—Em and Clem
6:15—Sacred hour
6:45—Cheerful Earful
7—Buttercream Ragamuffins
7:15—Evening Diversions
7:30—Long Beach Band
8—KGER Dramatic Players
8:30—Rango
9—Evening Moods
10—DX'er's Tips
10:30—Frank Jocelyn, organist
11 to 12 midnight—Tom Moore's Orch

526 Meters KMTR Holly. 3026
570 Kcys. 500 Watts
KMTR Radio Corp., Hollywood, Cal.
6:30 A.M. to 6—Various Programs
6 P.M.—Sterling Young's Youngsters
6:30—Paradise Isle
7—Herald Sports
7:15—Sunset Melodies
7:30—Ted Dahl's Orchestra
8—Montaville Flowers, Speaker
8:15—Ann Grey, Vocalist, and Don
Warner, Pianist
8:30—Baseball: S. F. vs. Hollywood
10:30—Selected Records
11—Louis Armstrong's Orchestra
12 to 12:30 A.M.—Selected Records

SATURDAY Programs

May 7, 1932

243.8 Meters **KYA** Prospect 3456
1230 Kcys. 1000 Watts
Pac. Broadcast. Corp., San Francisco.

7:30 A.M.—Rhythm Masters
8—Metropolitan Hour
9—Manual Melodies
9:15—Chat and Jerry
9:30—Modern Melodies
10—Sunshine Hour
11—Salon Melodies
11:15—Manhattan Moods
11:30—Prudence Penny
11:45—Song and Dance Kings
12 noon—Old Chestnuts
12:15—Church Bulletin of the Air
12:30—Popular Songsters
1—Musical Contrasts
1:30—"Your Helpful Friend"
1:45—Novelty Bits
2—Glen Goff, Organist
3—Broadway Echoes
3:30—Concert Memories
4—Artist Celebrities
4:30—High School program, conducted by Lester Malloy
5—Metropolitan Hour
6—Revue
6:30—News Digest
6:45—Henry Starr, Hot Spot of Radio
7—Hap and Jack: Song Writers
7:15—Fritzi Rehbach: Piano Recital
7:30—Sydney Dixon, Song Recital
7:45—News Bulletin
8—On with the Show
9—Dramatic
9:30—Milly and Billy, Cub Reporters
9:45—Virginia Spencer, Soliloquy
10—News Bulletin
10:15—Radio Sandman Hour
11 to 12 midnight—Concert Memories

535.4 Meters **KTAB** Garfield 4700
560 Kcys. 1000 Watts
Assoc. Broadcasters, Oakland, Calif.

7 A.M.—Popular records
7:05—Morning Reporter
7:30—Ally-ooop! with Bob Roberts
8—Radio Shopping News
8:30—Popular recordings
9—Morning Prayer Hour
9:30—Dr. J. Douglas Thompson
10—Household Hour
10:30—Dr. E. B. Corley
10:55—Recorded program
11—Store Scenes
11:30—Radio Shopping News
12 noon—U. S. Agricultural Reports
12:15—Dr. R. M. McLain
12:30—Studio Program
1—Recorded program
1:30—Over the Teacups
2—Popular records
2:30—Masterpieces of Melody
3:30—Popular records
4:30—Popular records
5—Glenhall Taylor, pianist
5:15—Hot Tips and Hot Tunes
5:30—Dr. J. Douglas Thompson
6—Popular records
6:30—Ernie Smith, Sport Page
6:45—Reporter
7—Dance Music
7:30—Oakland Post Enquirer Funnies
7:45—Dance Music
8—Oakland Civic Chorus Music
8:30—Sierra Trio, direction of Neil Schettler
10—Moment 'Musicale
11 to 1 A.M.—Nite Owls



ARMAND GIRARD
NBC-KGO—8:30 P.M.

340.7 Meters **KLX** Lake. 6000
880 Kcys. 500 Watts

Tribune Pub. Co., Oakland, Calif.
7—Exercises; Entertainment; Stocks
8—Records
9—Modern Homes Period
9:30—Clinic of the Air
10:15—San Francisco stocks; financial information; weather
10:30—Better Business Bureau talk
11—Sunshine Twins
12 noon—Closing S. F. Stocks
12:05—Jack Delaney's Band
1—Jean's Hi-Lights
2—Classical recordings
2:45—Ethel Rhinard, pianist
3—Records
4:30—Brother Bob's Club
5—Helen Parmelee, pianist
5:30—The Three Cooconuts
6—Dave Saylor's Hotel Oakland Dance Orchestra
7—News Items
7:30—Helen Parmelee, Pianist
7:45—Sports Hi-Lights of the Air
8—Musical Soiree: John Wharry Lewis, Violinist; Evelyn Phelan, Accompanist; Muriel Scherrulle, Soprano; L. G. French, Baritone; Helen Wegman Parmelee, Pianist
9—Faucit Theatre of the Air
10—Dave Saylor's Orchestra
11 to 12 midnight—Dance program

468.5 Meters **KFI** Richmond 6111
640 Kcys. 50,000 Watts

Earle C. Anthony, Inc., Los Angeles
6:30 A.M. to 6—Various programs
6 P.M.—NBC, Lucky Strike Program
7—NBC, Amos 'n' Andy
7:15—NBC, Bank of America Program
7:45—NBC, Rhythmadors
8—String Orchestra
8:30—NBC, Associated Spotlight
10 to 12 midnight—Jimmie Grier's Hotel Ambassador Orchestra

379.5 Mtrs. **NBC-KGO** Sutter 1920
790 Kcys. 7500 Watts

National Broadcast. Co., San Francisco
Service to KHQ, KOMO, KGW,
KFI, KOA, KSL, KTAR,
KECA, KFSD

7 A.M.—Organ Concert, Paul Carson: KGO; KGW, KFI on 7:30
7:45—Van and Don: KGO, KHQ, KOMO, KGW, KFI, KFSD, KTAR, KSL
8—Black and Gold Room Orchestra: KGO, KGW, KFI
8:15—Miracles of Magnolia: KGO, KFI, KGW
8:30—Soloist: KGO, KFI, KGW
9—Harold Stokes' Orchestra: KGO, KFI
9:15—Beautiful Thoughts: KGO, KHQ, KGW, KFI, KTAR
9:30—National Farm and Home Hour: KGO, KHQ, KOMO, KGW, KFI, KFSD, (KTAR on 10), KSL
10:30—Woman's Magazine of the Air: KGO, KHQ, KOMO, KGW, KFI, (KFSD, KTAR 10:50 to 11:10)
11:30—Organ Recital, Paul Carson: KGO, (KFI, KFSD off 12)
12:15 P.M.—Cosmopolitans: Orchestra direction Edward J. Fitzpatrick: KGO, KFI, KGW
1—Stringwood Ensemble: Everett Foster, Baritone: KGO, KFI; KGW on 1:30
2—The Olympians: KGO, KFI
2:30—Nomads: Lucile Kirtley, Soprano: KGO, KFI
3—On Parade: KGO, (KFI off 3:15)
3:30—Piano Capers: Oscar Young and Dell Perry: KGO
3:45—News Service: KGO
4—Danger Fighters: Dramatic Sketch: KGO, KHQ, KOMO, KGW, KFI, KFSD, KTAR, KSL
4:30—National Advisory Council on Radio in Education: KGO, KOMO, KGW, KFI, KFSD, KSL, KGIR, KGHL
5—"K-7": Secret Service Spy Story: KGO, KGW, KOMO, KTAR, KGIR, KGHL, KSL
5:30—The First Nighter: "The Southern Bell," Drama: KGO, KHQ, KOMO, KGW, KFI, KFSD, KTAR, KSL
6—Lucky Strike Dance Hour, with Walter Winchell: KGO, KHQ, KOMO, KGW, KFI, KFSD, KTAR, KSL, KGU
7—Amos 'n' Andy: KGO, KHQ, KOMO, KGW, KFI, KFSD, KSL
7:15—Bank of America Back to Good Times Program: KGO, KFI
7:45—Alvino Rey's Rhythmadors: KGO
8—Los Gallitos: The Argentine Trio: KGO, KGW, KGHL
8:30—Associated Spotlight Revue: Cecil Underwood, Master of Ceremonies; Orchestra direction Walter Beban: KGO, KHQ, KOMO, KGW, KFI
10—Piano Pictures: Aileen Fealy and Phyllida Ashley, Piano Duo: KGO
10:30—Musical Echoes: Mary Wood, Soprano: KGO
11—Phil Harris Hotel St. Francis Dance Orchestra: KGO, KOMO
12 to 12:30 A.M.—Organ Recital: KGO, (KFI off 12:15)

440.9 Mtrs. **NBC-KPO** GAR. 8300
680 Kcys. 5000 Watts
National Broadcast. Co., San Francisco
Service to KJR, KEX, KGA,
KECA, KTAR, KSL, KFSD

7:30 A.M.—Sunrise Serenaders: KPO
8—Financial Service: KPO, KGA,
KJR, KEX
8:15—Crosscuts from the Log o'
the Day: KPO, KGA, KJR, KEX,
(KTAR off 8:45)
9:15—Superba Toreadors: KPO
9:45—University of California at
Your Service: KPO
10—Familiar Songs: KPO, KGA,
KJR, KEX
10:30—Snapshots: Rita Lane, So-
prano: KPO
11—Radio Troubadours: KPO, KGA,
KJR, KEX, KTAR
11:30—Hello, Marie: Comedy Skit:
KPO, KGA, KJR, KEX
11:45—Ted Roy, the Singing Black-
smith: KPO
11:50—Stockyards Report: KPO
11:57—Time Signals: KPO
12 noon—Rhythmic Serenade: KPO,
KGA, KJR, KEX, KFSD
12:30—Saturday Matinee: KPO,
KGA, KJR, KEX, KFSD
1—Musical Moments: KPO, KGA,
KJR, KEX
1:15—Swanee Serenaders: KPO,
KGA, KJR, KEX, KFSD
1:45—Laudt Trio and White: KPO,
KGA, KEX
2—Waldorf Astoria Sert Room Orch.:
KPO, KGA, KJR, KEX, KFSD
2:15—Heart Songs: KPO, KGA,
KJR, KEX, KFSD
2:25—Talk by John B. Kennedy:
KPO, KGA, KJR
2:30—Three Mustachios: KPO, KGA,
KJR, KEX
2:45—Kentucky Derby: Description
by Clem McCarthy and Graham
McNamee: KPO, KGA, KJR,
KEX, KECA, KFSD, KTAR, KSL,
KGIR, KGHL
3:30—Sonata Recital: KPO, KGA,
KJR, KEX
3:45—To be announced: KPO
4—Hotel St. Francis Salon Orches-
tra: KPO, KGA, KJR; KEX off
4:15, on 4:45
5—One-Man Show: KPO, KJR, KEX
5:15—Couple of Mouthfuls by Scotty:
KPO
5:30—Date Book with Stuart Strong:
KPO
5:45—Little Orphan Annie: KPO,
KGA, KJR, KEX, KECA
6—Rhythm Vendors: KPO, KGA,
KJR, KEX
6:45—Cecil and Sally: KPO, KGA,
KJR, KECA
7—Cheer Leaders: KPO, KGA, KJR
7:15—Jesse Crawford, Organ: KPO,
KGA, KJR, KEX, KECA, KTAR
7:30—Piano Moods: KPO, KGA,
KJR
7:45—Ted Cook Orchestra: KPO,
KGA, KJR, KTAR
8—Ralph Kirbery, the Dream Sing-
er: KPO, KGA, KJR, KEX
8:05—Johnnie Hamp and his Or-
chestra: KPO, KGA, KJR, KEX
8:30—The Dinglebenders: KPO,
KJR, KEX, KECA, KFSD
8:45—Manhattan Serenaders: KPO,
KGA, KJR, KEX, KTAR, KOA
9:30—Three Queens and a Pair of
Kings: KPO, KJR, KTAR, KOA
10—Earl Burnett's Orchestra: KPO,
KGA, KJR, KEX, KECA
10:30—Around the Network: KPO,
KGA, KJR, KEX, KFSD, KSL,
KOA, KGIR

11—NBC South Americans: KPO,
KGA, KEX
11:30 to 12 midnight—Organ Concert,
Dollo Sargent: KPO, KGA, KEX

491.5 Meters **KFRC** Prospect 0100
610 Kcys. 1000 Watts
Don Lee, Inc., San Francisco, Calif.
7 A.M.—Seal Rocks Broadcast
7:15—Dobbie and Wee Willie
7:25—N. Y. Stock Quotations
7:30—Dobbie Quarter Hour
8—Shell Happytime
8:30—Hallelujah Hour
9:30—Mary and Jim
9:45—CBS, Armand Vecsey's Orch.
10—Junior Artists program
10:50—Sperry Flour Co. program
10:55—Church Announcements
11—CBS, Four Clubmen
11:30—CBS, Rhythm Kings
12 noon—Noonday Concert
1—CBS, Eddie Duchin's Orchestra
1:30—N. Y. Stock Quotations
1:35—CBS, George Hall's Orchestra
1:45—CBS, Connie Boswell
2—CBS, Snook Friedman's Orch.
2:15—CBS, Boys' Week program
2:30—CBS, Jack Miller and Orch.
2:45—CBS, Leon Belasco's Orch.
3—CBS, Political Situation
3:15—CBS, William Hall's Orch.
3:30—Popular Program
3:45—CBS, Leon Belasco's Orch.
4—CBS, Laboratory Experiment Se-
ries
4:15—Mark Hopkins Orchestra
4:55—Town Topics
5—Skippy
5:15—Mark Hopkins Orchestra
5:30—CBS, Isham Jones Orchestra
5:45—Black and Blue
6—CBS, Music that Satisfies
6:15—Anson Weeks' Orchestra
6:30—CBS, Public Affairs Institute
6:45—CBS, The Street Singer
7—CBS, Don Redman's Orchestra
7:30—CBS, Camel Quarter Hour
7:45—CBS, Eric Madriguera's Orch.
8—CBS, Guy Lombardo's Orchestra
8:15—Chandu, the Magician
8:30—CBS, Ben Pollack's Orchestra
8:45—Adventures of Bart and Mike
9—Merrymakers
9:45—Studio Program
10—Anson Weeks' Orchestra
11—Henry Halstead's Orchestra
12 to 1 A.M.—Vagabond of the Air

333.1 Meters **KHJ** VAndike 7111
900 Kcys. 1000 Watts
Don Lee, Inc., Los Angeles, Calif.
7 A.M. to 5:45—Various Programs
5:45 P.M.—"Black and Blue"
6—CBS, Music that Satisfies
6:15—CBS, Columbia Public Affairs
6:45—CBS, Street Singer
7—CBS, Don Redman's Orchestra
7:30—CBS, Morton Downey and Or.
7:45—CBS, Eric Madriguera's Orch.
8—CBS, Guy Lombardo's Orchestra
8:15—Chandu, the Magician
8:30—CBS, Harold Stern's Orchestra
9—The Merrymakers
10—World-wide News
10:10—Gene Quaw and his Orch.
11—Roosevelt Dance Orchestra
12 to 1 A.M.—Roy Ringwald, Organ

499.7 Meters **KFSD** Franklin 6353
600 Kcys. 1000 Watts
Airfan Radio Corp., Ltd., San Diego
7:30 A.M. to 6—Various Programs
6 P.M.—NBC, Lucky Strike Program
7—NBC, Amos 'n' Andy
7:15—Saturday Night Revue
8:30—NBC, Dinglebenders
8:45—Studio Program
10:30—NBC, Around the Network
11 to 12 midnight—Dance Music

508.2 Meters **KHQ** Main 5383
590 Kcys. 1000 Watts
Louis Wasmer, Inc., Spokane, Wash.
6:45 A.M. to 6—Various Programs
6 P.M.—NBC, Lucky Strike Hour
7—NBC, Amos 'n' Andy
7:15—Louis Philippe Program
7:30—Chandu
8—Peerless Trio
8:30—NBC, Associated Spotlight
10—To be announced
11—Fran Morton's Orchestra
12 to 12:30 A.M.—Desert Caravan

325.9 Meters **KOMO** Elliott 5890
920 Kcys. 1000 Watts
Fisher's Blend Station, Inc., Seattle
6:55 A.M. to 6—Various Programs
6 P.M.—NBC, Lucky Strike Hour
7—NBC, Amos 'n' Andy
7:15—Santiseptic Program
7:30—Concert Orchestra & Vocalists
8—Dr. Strasska Program
8:15—Male Quartet
8:30—NBC, Associated Spotlight
10—NBC, Piano Pictures
10:30—NBC, Musical Echoes
10:45—Globe Trotter
11—NBC, Dance Orchestra
12 to 12:30 A.M.—Organ Recital

236.1 Meters **KOL** Elliott 4466
1270 Kcys. 1000 Watts
Seattle Broadcast Co., Seattle, Wash.
6:45 A.M. to 6—Various Programs
6 P.M.—CBS, Music that Satisfies
6:15—CBS, Public Affairs Institute
6:45—CBS, Street Singer
7—CBS, Don Redman's Orchestra
7:15—Program to be announced
7:30—CBS, Camel Quarter Hour
7:45—CBS, Eric Madriguera's Orch.
8—CBS, Guy Lombardo's Orchestra
8:15—"Chandu the Magician"
8:30—CBS, St. Moritz Orchestra
9—Don Lee Feature
10—Arizona Joe
10:15—Anson Weeks' Orchestra
11 to 12 midnight—Henry Halstead
Orchestra

309.1 Meters **KJR** Seneca 1515
970 Kcys. 5000 Watts
Northwest Broad. System, Seattle, Wn.
7 A.M. to 6 P.M.—Various Programs
6 P.M.—NBC, Rhythm Vendors
6:45—Cecil and Sally
7—NBC, Cheer Leaders
7:15—To be announced
7:30—Piano Moods
7:45—Ted Cook's Orchestra
8—NBC, Johnnie Hamp's Orchestra
8:30—NBC, The Dinglebenders
8:45—NBC, Manhattan Serenaders
9:30—NBC, Three Queens and a
Pair of Kings
10—NBC, Earl Burnett's Orchestra
10:30—NBC, Around the Network
11—Earl Gerdon Roof Garden Orch.

254.1 Meters **KEX** Atwater 3111
1180 Kcys. 5000 Watts
Western Broad. Co., Portland, Ore.
6:45 A.M. to 6—Various Programs
6 P.M.—NBC, Rhythm Vendors
7—NBC, Cheer Leaders
7:15—To be announced
7:30—Silent Period
8—NBC, Johnnie Hamp's Orchestra
8:30—NBC, The Dinglebenders
8:45—NBC, Manhattan Serenaders
9—Oregonian at Home
9:15—NBC, Manhattan Serenaders
9:30—Apostolic Faith Service
10—NBC, Earl Burnett's Orchestra
10:30—NBC, Around the Network
11—NBC, South Americans
11:30—Witching Hour
12 to 1 A.M.—Allen Daniels

**Buy an extra
ticket to millions
of dollars worth
of extra enter-
tainment for \$39⁵⁰**

Symphonies, the country's finest dance orchestras, sports events, comedy teams, news of the minute—millions of dollars worth of entertainment are flooding the air lanes.

But tastes differ. Father and mother like mysteries. Son and daughter are crazy about Winchell. Satisfy everyone. Buy a Remler "10." It is the family's extra ticket to millions of dollars' worth of extra entertainment.

Remler "10" is a six tube super-heterodyne. It is distinguished for its sharp tuning, its volume and its outstanding tone quality. Complete with tubes . . . \$39.50

. . . And remember: Your dealer will give you terms.

REMLER COMPANY, Ltd.
2101 Bryant Street San Francisco

Remler "10"



Made by the radio firm as old as radio
