

ATWATER KENT RADIO

TENTATIVE

CIRCUIT DIAGRAMS

FOR

MODELS 217,427,667 (7-tube A.C. receiver)

MODELS 310 and 510 (10-tube A.C. receiver)

MODELS 387 and 427Q (7-tube battery set)

TABULATED DATA FOR NEW MODELS

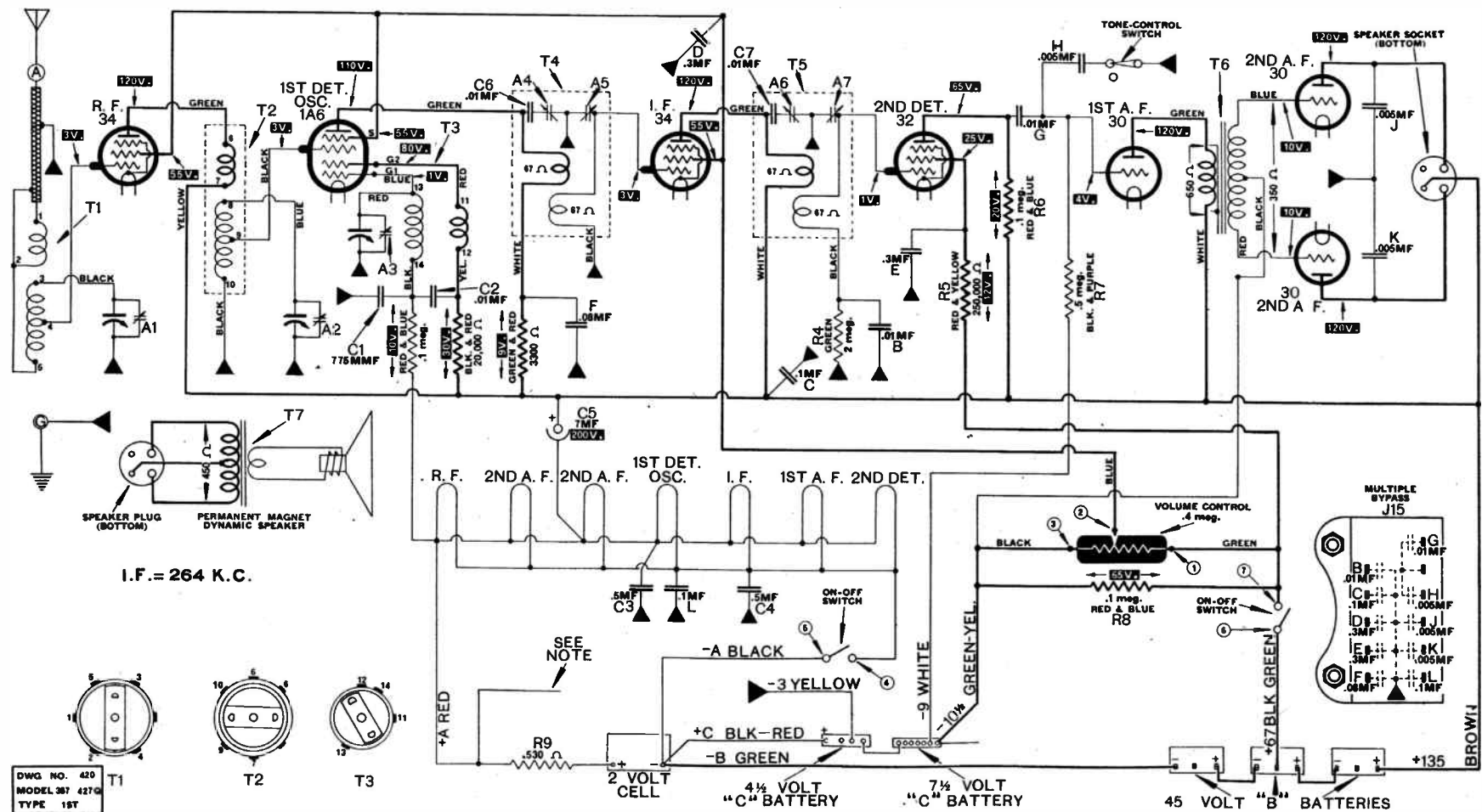
All models listed below have tone control, and all models with exception of 387 and 427Q have automatic volume control.

MODEL NUMBER	POWER SUPPLY	PART NO. COMPLETE	PART NO. SPEAKER	WATTAGE	SHADOW TUNING	SILENCING ADJUSTMENT	FREQUENCY RANGE	INTERMEDIATE FREQUENCY	TUBES									
									R. F.	1ST DET.	OSCILLATOR	I. F.	2ND DET.	CONTROL	1ST A. F.	2ND A. F.	3RD A. F.	RECTIFIER
217	110V, 60C	35500	36300	70	NO	NO	540-3200	264	58	58	56	58	55	2A5	80		
217D	110V, D.C.	36900	37500	45	NO	NO	540-3200	264	78	78	37	78	75	43 (2)		
275	110V*	36200	50	NO	NO	540-1750*	264	6A7	44	75	43	25Z5			
310	110V, 60C	35900	36500	120	YES	YES	540-3200	130	58	58	56	58	56	56	56	2A5 (2)	80
387	Battery	35200	31700	**	NO	NO	550-1500	264	34	1A6	34	32	30	30 (2)	
427	110V, 60C	35600	33400	70	NO	NO	540-3200	264	58	58	56	58	55	2A5	80		
427D	110V, D.C.	37000	37600	45	NO	NO	540-3200	264	78	78	37	78	75	43 (2)		
427Q	Battery	35800	36400	**	NO	NO	550-1500	264	34	1A6	34	32	30	30 (2)	
510	110V, 60C	36000	36500	120	YES	YES	540-3200	130	58	58	56	58	56	56	56	2A5 (2)	80
667	110V, 60C	36100	33400	70	NO	NO	540-3200	264	58	58	56	58	55	2A5	80		
667D	110V, D.C.	37100	37600	45	NO	NO	540-3200	264	78	78	37	78	75	43 (2)		
711	110V, 60C	36600	36700	150	YES	YES	540-23MC	472½	58	58	58	58 (2)	55	56 (2)	2A3 (2)	5Z3		

*Model 275 may be used on 110 Volts, 25-60 cycles, or 110 Volts, D. C. It has a police switch to tune in the 2500-kilocycle police band.

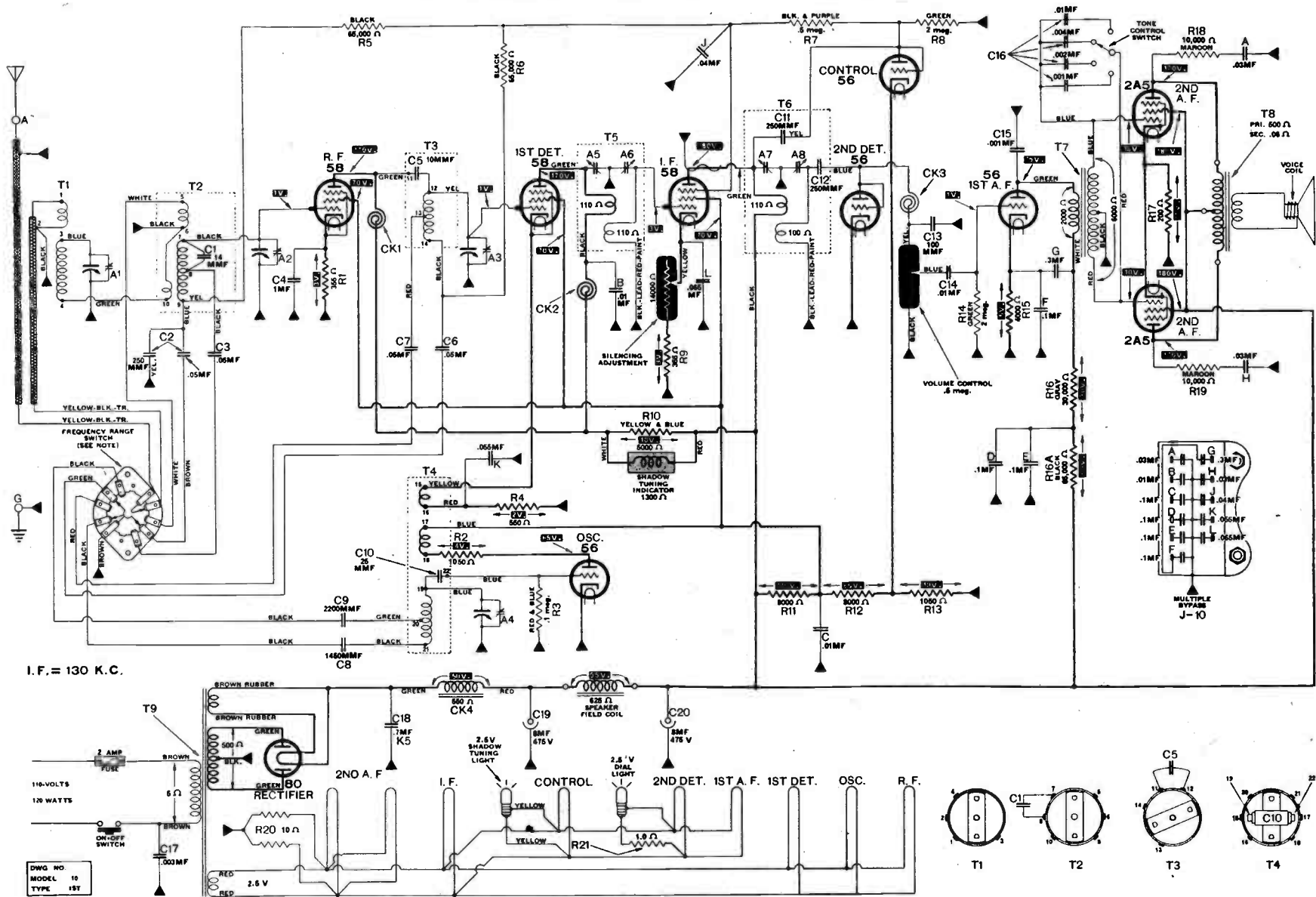
**The "B" battery consumption of Model 387 and 427Q is from 20 to 27 milliamperes depending on signal strength and volume level. (25 milliamperes is average.)

DIAGRAM OF MODELS 387 AND 427Q



Total "B" voltage at time measurements were made equaled 120-volts. Tube voltages are taken from -F of each tube, using the 250-volt scale of a 1000-ohm-per-volt meter. Resistor R9 is used with 2-volt air cell, but is not used with 2-volt storage cell.

DIAGRAM OF MODELS 310 AND 510



Above voltage measurements were made with 250-volt scale of a 1000-ohm-per-volt meter and a line supply of 110-volts. All measurements are made from cathode of each tube. The frequency-range switch is shown from the rear in the broadcast position.