



### INSIDE

A Sad Day In Lansing,  
Flint As McCrae  
Suddenly Passes

Here's A Puzzler For You:  
Morgan Replaced At  
Cumulus/Indy

Radio-Rama Features  
Adventures Of Rooster, Foxx  
And A Guy Named Doc

You May Know A  
Radio Hall Of Famer And  
Not Even Realize It

Register For R&R Con-  
vention Today And Receive  
19-Piece Cutlery Set

*Grapes will explode if you  
cook them in a microwave*

*Real news needed!*

[rcurtis@radioandrecords.com](mailto:rcurtis@radioandrecords.com)  
323-954-3444

## Citadel's WITL, WFBE Mourn Loss Of McCrae

Jay J. McCrae, who programmed two Citadel stations — WITL/Lansing and WFBE/Flint, Mich. — died suddenly yesterday while traveling to the Citadel managers meeting in Arizona. According to WITL GM Rob Striker, the 49-year-old McCrae was stricken while at the Grand Rapids airport, apparently suffering a massive heart attack. Striker, who had already arrived in Phoenix, immediately boarded a plane back to Flint. McCrae spent a total of 14 years at WITL over two different stints. In between, he worked in Texas. McCrae recently took on the responsibility of both WITL and WFBE. His wife of 20 years, Jordan Lee, also works at WITL in a dual role as an on-air personality and in the promotions department. Striker told **R&R** this afternoon there will be a viewing Wednesday (Sept. 12) and services the following day (Sept. 13). Anyone wishing to send flowers can send them to the Chapel in the Pines, 101 West Jolly Road, Lansing, MI 48910; and the chapel can be reached at 517-882-9091. Additionally, Striker said the station will be conducting a special "Toys for Tots" this Saturday (Sept. 15) to honor McCrae's pet charity. Toys will be accepted from 9 a.m.-2 p.m. and saved for distribution until the holiday season. Anyone wishing to contribute a toy to honor McCrae can send them to WITL, 3420 Pinetree Rd, Lansing, MI 48911. **R&R** sends its deepest sympathies to the staffs of WITL and WFBE, as well as the family and friends of McCrae.

## Head Scratcher Of The Year Points Leader: Morgan O-U-T At WFMS

Plenty of people are still shaking their heads over this one: Last Thursday (Sept. 6), Charlie Morgan was suddenly replaced as market manager for Cumulus/Indianapolis by Chris Wheat, who will return to the market from Entercom/Norfolk. Morgan, who was born and raised in Indianapolis, had a long and successful career at WFMS, starting as an air personality in 1985. He first did afternoons, then mornings and eventually became the PD. When Susquehanna, who then owned WFMS, launched "The Bear" to flank itself, Morgan became OM for both. He was later named GM and rose to market manager in 2000, oversee-

© 2007 Radio & Records. All Rights Reserved. No part of this material may be reproduced in any form or incorporated in any information retrieval system without written permission of the Publisher.

# ASHTON SHEPHERD

## "Takin' Off This Pain"

Going for Adds Sept 17

The Story Is Real.  
The Girl is Real.  
The Music is Real.

MCA  
NASHVILLE



# GARTH BROOKS

MORE THAN A MEMORY

#1 Is Only The Beginning

**THE COUNTDOWN TO ALBUM LAUNCH BEGINS!**  
ALBUM PREMIERE ON-AIR AND ONLINE OPPORTUNITIES COMING SOON



FROM GARTH BROOKS: THE ULTIMATE HITS 3-DISC SET  
IN STORES 11.06.07

garthbrooks.com  
bigmachinerecords.com  
myspace.com/bigmachinerecords

PEARL RECORDS, INC.  
© © 2007 PEARL RECORDS, INC.



ing WFMS, adult hits WJJK and news/talk WFFT. When R&R spoke to Morgan this morning, he was still evaluating his options and said, "There are times in this business that people find themselves separated from great organizations. While I'm disappointed to suddenly be in this situation, I respect the prerogative of the company, and their decision.... At the same time, I remain optimistic about what lies ahead and look forward to that process." For anyone wishing to reach Morgan, here is his contact information:

charliemorgan2@mac.com or 317-679-9478.

### 90% Of This Is Déjà Vu All Over Again

Same company, same job ... just the city is different for Tex Meyer, who will move a bit further to the south for his new gig as market manager for Clear Channel/Greensboro, where he'll oversee country WTQR, AC WMAG, rock WVBZ, Spanish oldies WGBT and urban AC WMKS. Meyer leaves a similar position at the company's Roanoke, Va. cluster. Commenting on his move, Meyer said, "Having met the majority of the Clear Channel employees in our Greensboro cluster, I am anxious to work with them on a daily basis." Meyer will be reporting to CC regional VP Morgan Bohannon, who, along with Clear Channel/Raleigh VP/market manager Dick Harlow, had been overseeing the Greensboro stations. Prior to Roanoke, Meyer also held GM positions in Pittsburgh, Tampa, Nashville and Norfolk. Back in Roanoke, director of sales Dave Carwile takes over as market manager.

### As A Matter Of Fact, Yes, Size Matters

It does when you're talking about PPM, that's for sure, so Arbitron will institute a "PPM Sample Target Guarantee," effective Oct. 1, according to CEO Arbitron CEO Steve Morris. In a letter to clients, Morris said the company's performance in both Houston and Philadelphia have "fallen short" and went on to outline a plan for a deduction in clients' monthly bills if Arbitron falls below a minimum threshold of its 6+ metro sample size target for the panel. "Recognizing that research

## This Week At Callout America

**Brooks & Dunn** move into the No. 1 slot this week with "Proud of the House We Built." Men rank the song at No. 1 overall and at No. 3 passion. Females are at No. 3 and No. 4 passion. Both 25-34 and 35-44 listeners rank it at No. 3, listeners 45-54 are at No. 1.

**Reba & Kelly Clarkson** are at No. 2 with "Because of You," which ranks as the No. 1 passion song. Females are at No. 2, men are at No. 3, while core 35-44s are the strength at No. 1 in the demo.

**Toby Keith** is at No. 3 this week with "Love Me If You Can," which ranks as the No. 2 passion song. Males are the strength at No. 2 and No. 1 passion. Females rank the song as the No. 2 passion song, and, overall, younger 25-34 listeners rank this song at No. 1 in the demo.

**Whiskey Falls** are getting strong listener reaction, posting the strongest growth of the week, as "Last Train Running" moves to No. 12 in this week's sample, up nine places from last week's No. 21, and ranks as the No. 14 passion song, up from No. 20 last week. Men are at No. 7, females are at No. 15.

**LeAnn Rimes** is performing well in front of the radio spin chart with listeners as "Nothin' Better to Do" climbs to the No. 15 slot, up from No. 17 last week and No. 23 two weeks ago. Younger 25-34 and core 35-44 listeners rank the song at No. 13. Listeners 25-44 are at No. 14. Core females are at No. 12, and core males are at No. 13.

like this is both art and science, we are unlikely to be perfect each month," Morris went on to say. "However, we should establish reasonable parameters and then be 'on the line' to deliver." Morris reiterated that despite the recent shortfall in total in-tab, "the audience data is statistically reliable, and audience trends from month to month are

© 2007 Radio & Records. All Rights Reserved. No part of this material may be reproduced in any form or incorporated in any information retrieval system without written permission of the Publisher.

From the Writer of the Garth Mega-Hit!

# LEE BRICE "Happy Endings"

On Your Desk Monday 9/17

Available for Immediate Download on PlayMPE.

Going for Adds October 1st!

CURB  
MUSIC  
curb.com

stable and credible." PPM measurement for New York is set to begin Sept. 20; in January, pre-currency starts in Los Angeles, Riverside and Chicago.

### Radio-Rama Featured Lots of Goodbye Time

In Florida, it was goodbye to the wide world of sports, as Magic Broadcasting's WPCF-AM (ESPN Radio 1290)/Panama City, Fla. made the flip to country on Friday (Sept. 7) ... Sticking with Florida g-byes for a moment, ADX Communications' WYCT (Cat Country) and WNRP-AM (Classic Country)/Pensacola said ta-ta to PD Ric Larson. Morning dude Brent Lane is holding down the fort for the time being ... After four years as the morning personality at Clear Channel's WKSF (99.9 Kiss Country)/Asheville, Ky., Drew Montgomery has left the building. Entering the building stage right just today: Eddie Foxx, who left Citadel's WKDF/Nashville in July. Montgomery spent 16 years at Citadel sister WGKX (Kix 106)/Memphis prior to his time at WKSF. Montgomery is instantly available at 828-651-8867 or [morningmouth@gmail.com](mailto:morningmouth@gmail.com) ... No more Tulsa time for Ric Hampton, as the PD for Journal's KVOO/Tulsa leaves the station, and possibly even radio, for other opportunities. You can reach out to Hampton at [RDH2@hotmail.com](mailto:RDH2@hotmail.com). Dave Austin will be handling interim PD chores until a permanent replacement is named ... At South Central's WLFW/Evansville, Ind., they're looking for a new evening personality who will rule the roost. Austin Henry, a.k.a. "Rooster," exited the coop last week after one year on the job. Prior to his time at WLFW, Rooster was at the Clear Channel/Wichita cluster and has done other formats besides country. He can be found by clucking [rooster1096@hotmail.com](mailto:rooster1096@hotmail.com).

### Enough Goodbyes; Finally, A Hello And Good Morning

This may be just what the doctor ordered: After Cox Radio's WWKA (K92)/Orlando decided a new prescription ... er, *direction* was needed for mornings, lo and behold, Doc Holliday came calling. This news comes six months after Holliday abruptly resigned from Clear Channel's crosstown top 40 WXXL (XL106.7), where he practiced the fine art of wakeups for 17 years. Holliday started today

### DATES & DEADLINES

**Sept. 14-15:** Darryl Worley's Tennessee River Run, featuring Worley, Charlie Daniels, Trick Pony and Jason Michael Carroll; Pickwick Landing State Park Resort, Hardin County, Tenn.

**Sept. 18:** Fourth Annual Leadership Music Dale Franklin Award: Sheryl Crow, Gary Morris, host Vince Gill and others provide musical salutes to Frances W. Preston; Schermerhorn Symphony Center, Nashville. For details, contact Leadership Music at [lm@leadershipmusic.org](mailto:lm@leadershipmusic.org).

**Sept. 30:** Dierks Bentley's "Miles & Music For Kids" motorcycle ride to benefit Vanderbilt Children's Hospital; Nashville. For more info, go to [www.dierks.com/milesandmusic](http://www.dierks.com/milesandmusic).

(Sept. 10) and replaces Ellis Feaster and co-host Melissa Moore, who both recently exited.

### The Secret To Their Successful Promotion

Faith Hill once sang, "The secret of life, is, there ain't no secret." While we hate to argue with Faith, the promotion done by Hall Communications' WCTK/Providence says otherwise. It was called "The Secret Star Jam." The station put up tickets to a show before announcing who would perform. Undaunted and ever-trusting, 2,000 fans bought tickets anyway and were rewarded when Clint Black, Clay Walker and Mark Wills came out on stage to play the VMA Arts and Cultural Center.

This next promotion was a real kick-up in the Northwest. Entercom's KKWF/Seattle morning personality Fitz challenged female listeners to kick a field goal at Quest Field, home of the Seahawks. All participants were automatically dubbed "Fitz's chicks" and competed for a chance to win tickets to the Seahawks home opener on Sunday (Sept. 9).

### A Loss And A Gain All In One Story

Convenient, eh? Kris Lamb gained a new, awesome position for Lyric Street records, taking over as manager, West Coast promotion. Lamb rises from

© 2007 Radio & Records. All Rights Reserved. No part of this material may be reproduced in any form or incorporated in any information retrieval system without written permission of the Publisher.

**Sugarland "STAY"**

**The Single**

On your desk this week!

Available today on Play MPE

**The Video**

Click here to see it now!

Or call your Mercury rep. for a copy

The song and the video everyone is talking about...

Mercury

the ranks of promotions coordinator and will be based out of his hometown, Phoenix. Prior to his start in the music biz, Lamb worked for CBS Radio's KMLE (Camel Country)/Phoenix in its promotions department. Lyric Street VP of national promotions Kevin Herring describes Lamb as "a rising star in our business." Lamb replaces Chris Loss, who will leave the label in October to pursue other opportunities ... which many people are surmising will ultimately have something to do with Jon Loba ... who many people assume will be doing something with Big Machine ... which isn't saying anything, so can you see how this stuff can make you nuts? At any rate, when contacted by **R&R**, Loss said of his time at Lyric Street, "Thanks to Randy Goodman, Kevin Herring, Renee Leymon and Dale Turner for giving me a shot five years ago and for making this the best professional experience of my adult life." In a bit of irony, Loss also segued to the music biz from KMLE, where he was the APD/MD until joining LS.

**They're All Hall-Worthy**

No question about this group, it's stellar. The Nashville Songwriters Hall of Fame (NaSHOF) has announced inductees for this year: In the songwriters category, Bob DiPiero and Mac McAnally. Because of a tie in the voting, there are two inductees in the songwriter/artist category: Flatt & Scruggs and Hank Williams Jr. Additionally, gospel legend Dottie Rambo will be honored with a special induction in recognition of her career achievements. All five honorees will join the hall in a ceremony on Oct. 14 at the Renaissance Nashville Hotel.

**What The Hall? Here's Another Hall Item**

Since we're on the subject of Hall of Fames, surely you know someone in country radio who's worthy? Keep in mind, their career in *country* had to have started at least 25 years ago, so we're not talking about that promising weekender you just hired. CRB is still seeking submissions for the DJ and Country Radio Hall of Fame, but the deadline is

| BILLBOARD BOXSCORE  |            |             |
|---|------------|-------------|
| ARTIST<br>VENUE/CITY/DATES  | ATTENDANCE | GROSS       |
| <b>Rascal Flatts, Jason Aldean</b><br>Harvey's Outdoor Amphitheater Lake Tahoe, Nev. Aug. 3-4 | 13,062     | \$1,313,212 |
| <b>Rascal Flatts, Jason Aldean</b><br>Columbus Crew Stadium Columbus, Ohio Aug. 12            | 22,035     | \$1,297,455 |
| <b>Rascal Flatts, Jason Aldean</b><br>Indiana State Fair Indianapolis Aug. 10                 | 16,954     | \$976,560   |
| <b>Kenny Chesney, Sugarland, Pat Green</b><br>PNC Bank Arts Center Holmdel, N.J. July 26      | 16,996     | \$898,061   |
| <b>Kenny Chesney, Sugarland, Pat Green</b><br>Toyota Pavilion Scranton, Pa. July 20           | 16,214     | \$841,254   |

Billboard Boxscore tracks recent country concert grosses and attendance figures. Copyright 2007, Nielsen Business Media. More concert grosses available at [www.billboard.biz](http://www.billboard.biz).

**SHOWPREP 101**

- Sept. 11:** National Tricky Handshake Day.
- Sept. 12, 1996:** A thief in Surrey, B.C. hijacked a beer truck loaded with 5,700 cases of beer. The driver was released unharmed outside Vancouver.
- Sept. 13, 1989:** A national study came out that revealed that on an average day in the U.S., 169 women and 56 men got nose jobs.
- Sept. 14:** Hug a Crabby Stranger Day.
- Quotable:** "A lie gets halfway around the world before the truth has a chance to get its pants on." —*Sir Winston Churchill*

© 2007 Radio & Records. All Rights Reserved. No part of this material may be reproduced in any form or incorporated in any information retrieval system without written permission of the Publisher.



# "Last Train Running"

CD In-Stores 9/25!

**AMAZING Callout America scores!**

**Overall Total Positive Rankings**  
3 week trend #27 – #21 - #12

|            |           |
|------------|-----------|
| #12 25-54  | #10 25-34 |
| #12 35-44  | #15 45-54 |
| #12 25 -44 |           |

**Overall Passion Rankers**  
3 week trend #29 - #20 - #14

|           |           |
|-----------|-----------|
| #14 25-54 | #18 25-34 |
| #9 35-44  | #19 44-54 |
| #12 25-44 |           |

**Female Total Positive**  
3 week trend #29 - #23 - #15

Time To Convert!





Sept. 14, which is *gasp!* [insert dramatic music stinger here] *this* Friday, Sept. 14! To submit a name, log on to [www.crb.org/hof/radionomination.shtml](http://www.crb.org/hof/radionomination.shtml). Technically, you can nominate yourself, but the idea is to recognize others who not only meet the minimum 25 years requirement, but these guidelines as well: contribution to the growth and development of country radio, community involvement and longevity and contribution to the preservation and enhancement of country music as an art form.

### The Writing Is Good, The Timing Is Really Good

This has been an unforgettable couple of weeks for songwriter Billy Montana, one of three co-writers for "More Than a Memory," which made history by debuting at No. 1 on the R&R chart one week ago. Now comes word that Montana is re-upping with Curb Music Publishing and Moraine Music Group, in a long-term songwriter agreement. Damn good timing for Montana, who is no rookie when it comes to penning hit songs, by the way. He also wrote "Bring on the Rain" for Jo Dee Messina and "Suds in the Bucket" for Sara Evans. His co-writers for "Memory" are Lee Brice and Kyle Jacobs.

### R&R Convention Is Killer, The Rates Aren't

We just checked, and guess what? The R&R Convention, happening Sept. 26-28 in Charlotte, is pretty damn affordable. Through Sept. 21, full registration is \$495. After that, you can register on-site for \$595. After that, well, then you're pretty much screwed, because it'll be over. All the more reason to act now, eh? R&R Convention HQ is the Hilton Charlotte Center City in Charlotte, and, even though it's already sold out because some of you actually paid attention and incredibly believed us when we said it was worth attending ... there are still rooms available at the Embassy Suites Charlotte. Call 704-527-8400, and be sure to ask for the Radio and Records rate of \$169.

— R.J. Curtis/Country Editor 323-954-3444  
Email: [rcurtis@radioandrecords.com](mailto:rcurtis@radioandrecords.com)

### Rascal Flatts, Garth Brooks & The Law Of Gravity

**Rascal Flatts** makes its fastest trip to No. 1 to date with "Take Me There" (Lyric Street), the lead single from the trio's forthcoming "Still Feels Good" album. The new song rises 3-1 in its tenth chart week, topping the 14 weeks it took "What Hurts the Most" to peak in April 2006. The new album is slated for release Sept. 25. The new track is the eighth Rascal Flatts song to dominate the Nielsen BDS-driven country list. Four of those previous chart-toppers spent more than one week at No. 1, led by five weeks with "Bless the Broken Road" in February-March 2005.

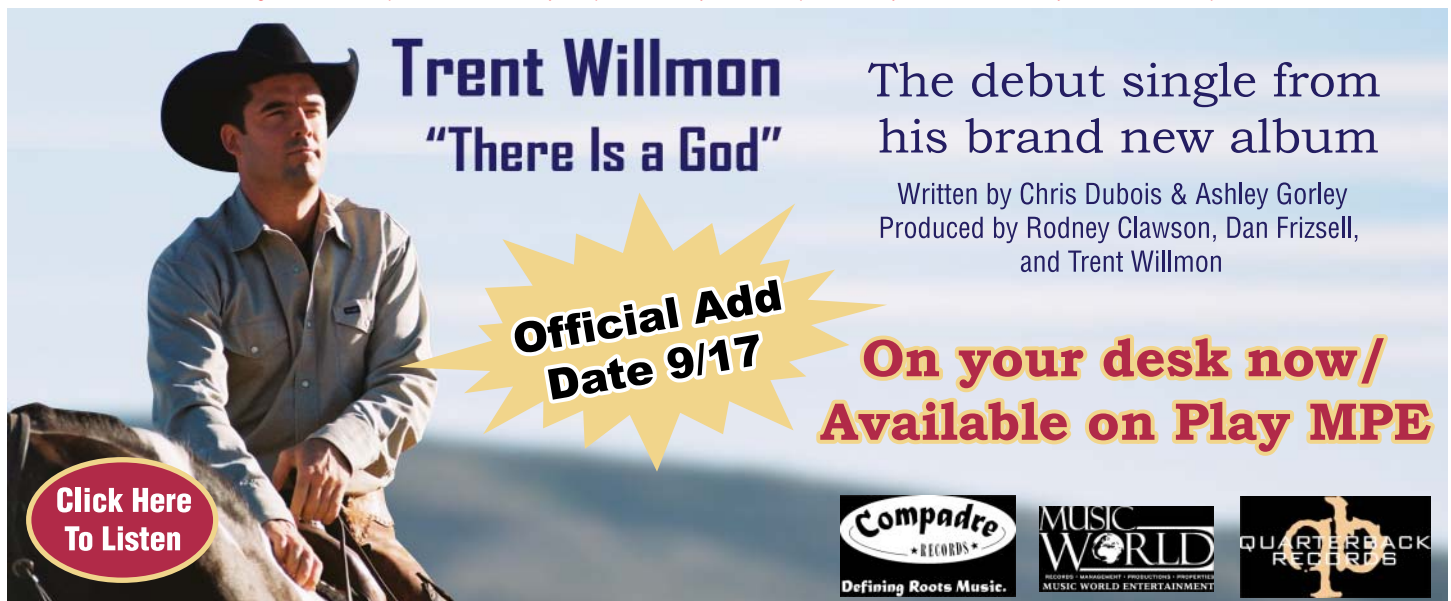
As expected after bowing atop the chart last issue, **Garth Brooks'** "More Than a Memory" (Pearl/Big Machine) falls 1-8, marking the most precipitous decline for any chart-topper since May 1996 when **Shania Twain's** "You Win My Love" tumbled 1-10. Considering his fast start, the Brooks track might behave more like a normal single once local programmers determine airplay rotations based on callout research and audience demand.

At a No. 1 celebration last Friday at Nashville's Country Music Hall of Fame and Museum, Brooks quipped that the entire thing was orchestrated specifically to get producer **Allen Reynolds** to show up at a No. 1 party. Applause erupted as Reynolds approached the podium. Perhaps if "Memory" defies the odds and returns to No. 1, Reynolds may get a second chance to make a first appearance.

Meanwhile, the cork-popping continues at Big Machine as **Taylor Swift** collects double-Most Added roses with "Our Song." The third single from Swift's self-titled debut album, "Song," nets 33 adds on the R&R Country panel. It draws 28 new adds from the R&R Country Indicator stable.

— **Wade Jessen/Director of Charts & Operations, Nashville**  
615-321-4291 Email: [wjessen@radioandrecords.com](mailto:wjessen@radioandrecords.com)

©2007 Radio & Records. All Rights Reserved. No part of this material may be reproduced in any form or incorporated in any information retrieval system without written permission of the Publisher.



**Trent Willmon**  
"There Is a God"

The debut single from his brand new album

Written by Chris Dubois & Ashley Gorley  
Produced by Rodney Clawson, Dan Frizzell, and Trent Willmon

**Official Add Date 9/17**

**On your desk now/  
Available on Play MPE**

Click Here To Listen

Compadre RECORDS  
Defining Roots Music.

MUSIC WORLD  
MUSIC WORLD ENTERTAINMENT

QUARTERBACK RECORDS

## MUSICNOTES

**Keith Urban** confirmed today (Sept. 10) that an upcoming greatest hits collection is on the way, and it'll be out just in time for the holiday shopping season. The street date will be Nov. 20 for the as-yet-untitled album; Urban has definitely accumulated a body of work in the last five years.

Congratulations to **Joe Nichols**, who married longtime sweetheart Heather Singleton on Sunday (Sept. 9) in Savannah, Ga.

**Taylor Swift** was recently ranked No. 1 in AOL Music's annual list of top 10 hottest women in country music. Rounding out the top five are **Martina McBride**, **Carrie Underwood**, **Faith Hill** and Sugarland's **Jennifer Nettles**. That was part of the good news for Swift; she just topped the 24 million mark for music streams on her MySpace page too.

The first artist signed by Robbins Music Nashville is **Rockie Lynn**, who will deliver a new single to radio, "I Can't Believe It's Me," this fall.

### VIDEO ADDS

#### CMT

**KENNY "BABYFACE" EDMONDS & T. YEARWOOD** Change The World  
**JOSH TURNER** Firecracker  
**RASCAL FLATTS** Take Me There

#### CMT PURE COUNTRY

**CLINT BLACK** The Strong One  
**HAL KETCHUM** In Front Of The Alamo  
**JOSH TURNER** Firecracker  
**KENNY "BABYFACE" EDMONDS & T. YEARWOOD** Change The World  
**SHOOTER JENNINGS** Walk Of Life

#### GAC

**CLINT BLACK** The Strong One  
**HAL KETCHUM** In Front Of The Alamo  
**THE EAGLES** How Long



promosquad  
**HitPredictor**

#### SONGS WITH HIT POTENTIAL

|  | CHART RANK |
|--|------------|
| <b>RASCAL FLATTS</b> <i>Take Me There</i> (Lyric Street) (86.8)                            | 1          |
| <b>TOBY KEITH</b> <i>Love Me If You Can</i> (Show Dog Nashville) (83.4)                    | 3          |
| <b>BROOKS &amp; DUNN</b> <i>Proud Of The House We Built</i> (Asylum-Curb) (82.7)           | 4          |
| <b>BRAD PAISLEY</b> <i>Online</i> (Asylum-Curb) (89.5)                                     | 6          |
| <b>TIM MCGRAW</b> <i>If You're Reading This</i> (Curb) (94.8)                              | 9          |
| <b>KENNY CHESNEY</b> <i>Don't Blink</i> (BNA) (85.6)                                       | 10         |
| <b>SUGARLAND</b> <i>Everyday America</i> (Mercury) (78.9)                                  | 11         |
| <b>CARRIE UNDERWOOD</b> <i>So Small</i> (Asylum-Curb) (83.0)                               | 12         |
| <b>DIERKS BENTLEY</b> <i>Free And Easy (Down The Road I Go)</i> (Capitol Nashville) (94.1) | 14         |
| <b>JASON MICHAEL CARROLL</b> <i>Livin' Our Love Song</i> (Arista Nashville) (88.6)         | 15         |
| <b>GEORGE STRAIT</b> <i>How 'Bout Them Cowgirls</i> (MCA Nashville) (88.4)                 | 16         |
| <b>CLAY WALKER</b> <i>Fall</i> (Asylum-Curb) (90.3)  | 17         |
| <b>JOSH TURNER</b> <i>Firecracker</i> (MCA Nashville) (88.6)                               | 18         |
| <b>MIRANDA LAMBERT</b> <i>Famous In A Small Town</i> (Columbia) (75.7)                     | 19         |
| <b>JACK INGRAM</b> <i>Measure Of A Man</i> (Big Machine) (78.2)                            | 20         |
| <b>SARA EVANS</b> <i>As If</i> (RCA) (89.7)  | 21         |
| <b>TRENT TOMLINSON</b> <i>Just Might Have Her Radio On</i> (Lyric Street) (75.9)           | 22         |
| <b>JOE NICHOLS</b> <i>Another Side Of You</i> (Universal South) (94.5)                     | 23         |
| <b>MONTGOMERY GENTRY</b> <i>What Do Ya Think About That</i> (Columbia) (89.7)              | 24         |
| <b>LEANN RIMES</b> <i>Nothin' Better To Do</i> (Asylum-Curb) (78.1)                        | 25         |
| <b>KEITH URBAN</b> <i>Everybody</i> (Capitol Nashville) (82.2)                             | 26         |
| <b>GARY ALLAN</b> <i>Watching Airplanes</i> (MCA Nashville) (80.5)                         | 31         |
| <b>BLAKE SHELTON</b> <i>The More I Drink</i> (Warner Bros.) (81.3)                         | 32         |
| <b>BILLY CURRINGTON</b> <i>Tangled Up</i> (Mercury) (91.8)                                 | 33         |
| <b>JASON ALDEAN</b> <i>Laughed Until We Cried</i> (Broken Bow) (88.5)                      | 35         |
| <b>CHRIS CAGLE</b> <i>What Kinda Gone</i> (Capitol Nashville) (88.3)                       | 37         |
| <b>TRACE ADKINS</b> <i>I Got My Game On</i> (Capitol Nashville) (84.4)                     | 38         |
| <b>EMERSON DRIVE</b> <i>You Still Own Me</i> (Midas) (86.6)                                | 39         |
| <b>DANIELLE PECK</b> <i>Bad For Me</i> (Big Machine) (78.3)                                | 51         |

Copyright 2007, Think Fast, LLC. For more information and testing methodology, please visit [HitPredictor.com](http://HitPredictor.com) or [Promosquad.com](http://Promosquad.com).

©2007 Radio & Records. All Rights Reserved. No part of this material may be reproduced in any form or incorporated in any information retrieval system without written permission of the Publisher.

**Mark Chesnutt**  
*Rollin' With The Flow*

**NEW ADDS THIS WEEK:  
 KFKF, KDRK & KUAD  
 MOVE TO POWER AT KPLX  
 THIS IS A HIT**

**ALREADY PLAYING ON  
 KILT, KPLX, KKNG, KSOP, KFTX, WFRG,  
 WXTA, WRSF, WTRS, WQRB, WTCM, WTHI, KRRV,  
 KTCS, KZKX, KAGG, KEAN, KGKL, and KJCS**

**CLICK HERE TO LISTEN**





**LUKE BRYAN** "All My Friends Say"

#7 bullet | +443 spins +2,725,700 aud.

**DIERKS BENTLEY** "Free And Easy (Down The Road I Go)"

#14 bullet | +144 spins +1,401,200 aud.

**KEITH URBAN** "Everybody"

#28 to #26 bullet | +477 spins +3,058,800 aud.

**CHRIS CAGLE** "What Kinda Gone"

#40 to #37 bullet | +155 spins +995,500 aud.

**TRACE ADKINS** "I Got My Game On"

#41 to #38 bullet | +189 spins +726,700 aud.

**ERIC CHURCH** "Sinners Like Me"

Already spinning at KCCY, KDRK, KEYY, KSD, KSKS, KSOP, KUBL, KUZZ, WCTQ, WFBE, WGKX, WKDF, WKXC, WKLB, WSSL, WYPY - 16 stations committed first week!

**LADY ANTEBELLUM**

the brand new single, "LOVE DON'T LIVE HERE"  
on your desk this week



**THANK YOU COUNTRY RADIO!**



| LW             | TW | ARTIST Title Label(s)   | Tot. Aud.<br>(00) | +/- Aud.<br>(00) | Total<br>Plays | +/-<br>Plays | Wks<br>On | Sta On/<br>Adds TW |
|----------------|----|---|-------------------|------------------|----------------|--------------|-----------|--------------------|
| 3              | 1  | RASCAL FLATTS Take Me There (Lyric Street)                    | 345090            | +24495           | 4734           | +221         | 10        | 130/0              |
| 2              | 2  | RODNEY ATKINS These Are My People (Curb)                      | 317740            | -13239           | 4200           | -393         | 27        | 130/0              |
| 6              | 3  | TOBY KEITH Love Me If You Can (Show Dog Nashville)            | 314382            | +42971           | 4430           | +574         | 14        | 130/0              |
| 5              | 4  | BROOKS & DUNN Proud Of The House We Built (Arista Nashville)  | 312483            | +19717           | 4365           | +91          | 15        | 130/0              |
| 4              | 5  | REBA MCENTIRE W/K. CLARKSON Because Of You (MCA Nashville)    | 309348            | -3254            | 4435           | -121         | 17        | 129/0              |
| 9              | 6  | BRAD PAISLEY Online (Arista Nashville)                        | 293060            | +39506           | 4142           | +530         | 12        | 130/0              |
| 7              | 7  | LUKE BRYAN All My Friends Say (Capitol Nashville)             | 285369            | +27257           | 4006           | +443         | 33        | 130/0              |
| 1              | 8  | GARTH BROOKS More Than A Memory (Pearl/Big Machine)           | 270394            | -92997           | 3580           | -769         | 2         | 125/0              |
| 11             | 9  | TIM MCGRAW If You're Reading This (Curb)                      | 260740            | +33549           | 3662           | +300         | 17        | 124/1              |
| 14             | 10 | KENNY CHESNEY Don't Blink (BNA)                               | 246408            | +69597           | 3268           | +924         | 3         | 128/6              |
| 10             | 11 | SUGARLAND Everyday America (Mercury)                          | 243988            | +11294           | 3410           | +17          | 17        | 130/0              |
| 13             | 12 | CARRIE UNDERWOOD So Small (Arista/Arista Nashville)           | 241417            | +25302           | 3352           | +161         | 6         | 129/0              |
| 8              | 13 | KENNY CHESNEY Never Wanted Nothing More (BNA)                 | 238409            | -15521           | 3019           | -504         | 15        | 130/0              |
| 12             | 14 | DIERKS BENTLEY Free And Easy ... (Capitol Nashville)          | 235868            | +14012           | 3263           | +144         | 16        | 130/1              |
| 15             | 15 | JASON MICHAEL CARROLL Livin' Our Love Song (Arista Nashville) | 183412            | +27681           | 2811           | +259         | 28        | 130/1              |
| 17             | 16 | GEORGE STRAIT How 'Bout Them Cowgirls (MCA Nashville)         | 160766            | +30439           | 2532           | +487         | 5         | 124/6              |
| 16             | 17 | CLAY WALKER Fall (Asylum-Curb)                                | 155596            | +18702           | 2459           | +181         | 25        | 120/3              |
| 19             | 18 | JOSH TURNER Firecracker (MCA Nashville)                       | 143032            | +23427           | 2209           | +182         | 11        | 120/4              |
| 21             | 19 | MIRANDA LAMBERT Famous In A Small Town (Columbia)             | 131613            | +24024           | 2041           | +227         | 25        | 117/3              |
| 20             | 20 | JACK INGRAM Measure Of A Man (Big Machine)                    | 128026            | +14699           | 2039           | +145         | 22        | 122/0              |
| 22             | 21 | SARA EVANS As If (RCA)  | 118699            | +13195           | 1837           | +176         | 14        | 116/5              |
| 23             | 22 | TRENT TOMLINSON Just Might Have Her Radio On (Lyric Street)   | 109114            | +13200           | 1905           | +136         | 25        | 116/1              |
| 24             | 23 | JOE NICHOLS Another Side Of You (Universal South)             | 100752            | +7947            | 1705           | +112         | 19        | 109/3              |
| 25             | 24 | MONTGOMERY GENTRY What Do Ya Think About That (Columbia)      | 96034             | +14790           | 1540           | +173         | 8         | 105/6              |
| 26             | 25 | LEANN RIMES Nothin' Better To Do (Asylum-Curb)                | 84980             | +15246           | 1331           | +141         | 15        | 91/6               |
| 28             | 26 | KEITH URBAN Everybody (Capitol Nashville)                     | 84548             | +30588           | 1324           | +477         | 3         | 97/24              |
| 27             | 27 | TRISHA YEARWOOD Heaven, Heartache And ... (Big Machine)       | 74827             | +13681           | 1252           | +232         | 8         | 96/3               |
| <b>Breaker</b> | 28 | EAGLES How Long (ERC/Lost Highway/Mercury)                    | 68448             | +18360           | 927            | +294         | 4         | 64/16              |
| 30             | 29 | TRAVIS TRITT You Never Take Me Dancing (Category 5)           | 60842             | +13821           | 939            | +190         | 19        | 67/1               |
| 31             | 30 | PAT GREEN Way Back Texas (BNA)                                | 56278             | +9706            | 880            | +81          | 16        | 80/4               |

© 2007 Radio & Records



"SOMETHING ABOUT A WOMAN"  
**JAKE OWEN**

LISTENERS  
IN OVER 35 MARKETS  
LOVE IT ALREADY.

**ADD IT NOW!!**

CATCH JAKE OWEN ON THE UPCOMING CMT TOUR THIS FALL!



*Sara Evans*  
*As if*

**21** R&R/BB  
**20** CA/MB

CONVERT  
NOW!!!

Debut single from her upcoming *Greatest Hits...* in stores Oct 9th.

RCA RECORDS LABEL  
SONY BMG MUSIC  
© 2007 BMG Music

| LW             | TW        | ARTIST Title Label(s)  | Tot. Aud. (00) | +/- Aud. (00) | Total Plays | +/- Plays | Wks On | Sta On/ Adds TW |
|----------------|-----------|--|----------------|---------------|-------------|-----------|--------|-----------------|
| 32             | <b>31</b> | GARY ALLAN Watching Airplanes (MCA Nashville)                    | 53834          | +9738         | 880         | +147      | 8      | 74/7            |
| 33             | <b>32</b> | BLAKE SHELTON The More I Drink (Warner Bros./WRN)                | 48768          | +6134         | 895         | +46       | 12     | 66/4            |
| 34             | <b>33</b> | BILLY CURRINGTON Tangled Up (Mercury)                            | 43842          | +2884         | 773         | +34       | 12     | 65/1            |
| 35             | <b>34</b> | WHISKEY FALLS Last Train Running (Midas/New Revolution)          | 41153          | +8691         | 798         | +20       | 18     | 69/1            |
| 39             | <b>35</b> | JASON ALDEAN Laughed Until We Cried (Broken Bow)                 | 33890          | +11184        | 605         | +157      | 5      | 60/9            |
| 42             | <b>36</b> | TAYLOR SWIFT Our Song (Big Machine)                              | 32865          | +11959        | 438         | +170      | 4      | 54/33           |
| 40             | <b>37</b> | CHRIS CAGLE What Kinda Gone (Capitol Nashville)                  | 32375          | +9955         | 636         | +155      | 8      | 57/6            |
| <b>Breaker</b> | <b>38</b> | TRACE ADKINS I Got My Game On (Capitol Nashville)                | 29033          | +7267         | 584         | +189      | 5      | 50/6            |
| 43             | <b>39</b> | EMERSON DRIVE You Still Own Me (Montage/Midas/New Revolution)    | 25879          | +6011         | 460         | +80       | 8      | 48/5            |
| 38             | 40        | STEVE HOLY Men Buy The Drinks (Girls Call The Shots) (Curb)      | 21324          | -1425         | 506         | -66       | 16     | 55/1            |
| 44             | <b>41</b> | BIG & RICH Between Raising Hell And Amazing Grace ...            | 19635          | +2069         | 298         | +35       | 5      | 33/4            |
| 52             | <b>42</b> | CHUCK WICKS Stealing Cinderella (RCA)                            | 19413          | +11483        | 291         | +167      | 3      | 38/21           |
| 36             | 43        | KEITH ANDERSON Sunday Morning In America (Arista Nashville)      | 16518          | -8668         | 256         | -229      | 18     | 48/0            |
| 37             | 44        | PHIL VASSAR This Is My Life (Universal South)                    | 15373          | -7775         | 343         | -170      | 16     | 56/0            |
| 46             | <b>45</b> | JENNIFER HANSON Joyride (Universal South)                        | 14629          | +534          | 256         | +7        | 7      | 30/0            |
| 45             | 46        | CLINT BLACK The Strong One (Equity)                              | 13426          | -734          | 249         | +26       | 12     | 33/1            |
| <b>Debut</b>   | <b>47</b> | KENNY CHESNEY W/GEORGE STRAIT Shiftwork (BNA)                    | 13365          | +13365        | 128         | +128      | 1      | 1/1             |
| 53             | <b>48</b> | LITTLE BIG TOWN I'm With The Band (Equity)                       | 10754          | +3210         | 198         | +49       | 3      | 27/7            |
| 47             | 49        | MARK CHESNUTT Rollin' With The Flow (Lofton Creek)               | 10504          | -747          | 125         | -5        | 4      | 12/2            |
| 51             | <b>50</b> | FLYNNVILLE TRAIN Nowhere Than Somewhere (Show Dog Nashville)     | 10055          | +1751         | 256         | +21       | 10     | 37/0            |
| 50             | <b>51</b> | DANIELLE PECK Bad For Me (Big Machine)                           | 10030          | +170          | 283         | -8        | 11     | 41/1            |
| 49             | 52        | CROSSIN DIXON Guitar Slinger (Broken Bow)                        | 9504           | -691          | 218         | -27       | 12     | 33/0            |
| 56             | <b>53</b> | BILLY RAY CYRUS Ready, Set, Don't Go (Walt Disney/CD5)           | 8985           | +2290         | 152         | +3        | 7      | 16/4            |
| <b>Debut</b>   | <b>54</b> | BUCKY COVINGTON It's Good To Be Us (Lyric Street)                | 8535           | +4175         | 132         | +59       | 1      | 25/17           |
| 55             | <b>55</b> | ELI YOUNG BAND When It Rains (Carnival)                          | 8524           | +1520         | 50          | +13       | 3      | 1/0             |
| 54             | <b>56</b> | JAKE OWEN Something About A Woman (RCA)                          | 8400           | +1293         | 221         | +15       | 2      | 30/2            |
| 48             | 57        | SARAH JOHNS The One In The Middle (BNA)                          | 7179           | -4044         | 160         | -47       | 19     | 26/0            |
| 60             | <b>58</b> | RISSI PALMER Country Girl (1720)                                 | 6847           | +1743         | 145         | +15       | 4      | 19/1            |
| 58             | <b>59</b> | VAN ZANT Goes Down Easy (Columbia)                               | 6631           | +811          | 160         | +43       | 3      | 19/3            |
| -              | <b>60</b> | BON JOVI FEAT. L. RIMES Till We Ain't ... (Mercury/Island/IDJMG) | 6567           | +3399         | 61          | +29       | 2      | 3/0             |

© 2007 Radio & Records

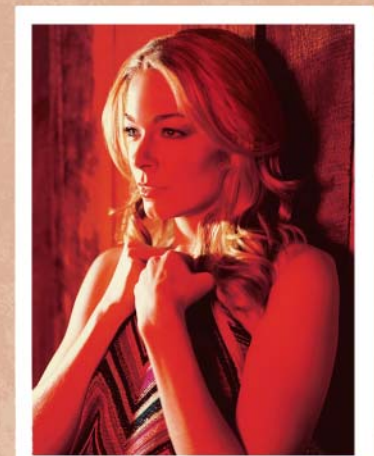
# Kickin' In!

## "Nothin' Better To Do"

### LeAnn Rimes

12 Adds This Week, Including:

WYCD, WDSY, KAJA, WTQR,  
 WSIX, WSM, WCOL, KSSN, WRBT, WCOS, WCTQ  
 RR: 26 to 25 +1.5 mil CA/MB: 28 to 25



The Album "Family" In Stores 10/9.

BIG SONG...BIG IMPACT!

# CHUCK WICKS

“Stealing Cinderella”

Debut week (42) R&R // // // Debut week #43 MB

52 Reporting stations ON 1<sup>st</sup> week!

Thanks to these GREAT stations...

WUSN-WQYK-WKSF-KUZZ-KSKS-WKHX-WUBE-WUSY-WGGY-WYRK-WNKT  
WKL B-WGNA-WRBT-KH KI-KYGO-WSIX-KEEY-KATM-KMLE-KUPL-WTOR  
WGH-WQDR-WPUR-WFBE-WSOC-KSD-KJUG-KRTY-WPAW-WPCV-WKDF  
WGNE-WCTK-KFRG-KUSS-WGKX-WSM-WBCT-WXCY-KRYS-WUBL-WCTQ  
WWGR-KPLX-KWJJ-WIVK-WGTY-WBUL-KSOP-WCTO

Find out what these stations already know. Chuck Wicks'  
“Stealing Cinderella” is a HIT! ADD IT NOW!

\*\*Be sure to catch Chuck Wicks on the debut of NASHVILLE..Friday 9pm est on FOX TV.\*\*



**COUNTRY**

**MOST ADDED**

| ARTIST Title Label(s)                                     | Adds |
|---|------|
| TAYLOR SWIFT Our Song (Big Machine)                       | 33   |
| KEITH URBAN Everybody (Capitol Nashville)                 | 24   |
| CHUCK WICKS Stealing Cinderella (RCA)                     | 21   |
| BUCKY COVINGTON It's Good To Be Us (Lyric Street)         | 17   |
| EAGLES How Long (ERC/Lost Highway/Mercury)                | 16   |
| ERIC CHURCH Sinners Like Me (Capitol Nashville)           | 11   |
| JASON ALDEAN Laughed Until We Cried (Broken Bow)          | 9    |
| KELLIE PICKLER Things That Never Cross A Man's Mind (BNA) | 8    |
| GARY ALLAN Watching Airplanes (MCA Nashville)             | 7    |
| LITTLE BIG TOWN I'm With The Band (Equity)                | 7    |

**MOST INCREASED AUDIENCE**

| ARTIST Title Label(s)   | Total Aud. Increase |
|---|---------------------|
| KENNY CHESNEY Don't Blink (BNA)                               | +69597              |
| TOBY KEITH Love Me If You Can (Show Dog Nashville)            | +42971              |
| BRAD PAISLEY Online (Arista Nashville)                        | +39506              |
| TIM MCGRAW If You're Reading This (Curb)                      | +33549              |
| KEITH URBAN Everybody (Capitol Nashville)                     | +30588              |
| GEORGE STRAIT How 'Bout Them Cowgirls (MCA Nashville)         | +30439              |
| JASON MICHAEL CARROLL Livin' Our Love Song (Arista Nashville) | +27681              |
| LUKE BRYAN All My Friends Say (Capitol Nashville)             | +27257              |
| CARRIE UNDERWOOD So Small (Arista/Arista Nashville)           | +25302              |
| RASCAL FLATTS Take Me There (Lyric Street)                    | +24495              |

**MOST INCREASED PLAYS**

| ARTIST Title Label(s)   | Total Play Increase |
|---|---------------------|
| KENNY CHESNEY Don't Blink (BNA)                               | +924                |
| TOBY KEITH Love Me If You Can (Show Dog Nashville)            | +574                |
| BRAD PAISLEY Online (Arista Nashville)                        | +530                |
| GEORGE STRAIT How 'Bout Them Cowgirls (MCA Nashville)         | +487                |
| KEITH URBAN Everybody (Capitol Nashville)                     | +477                |
| LUKE BRYAN All My Friends Say (Capitol Nashville)             | +443                |
| TIM MCGRAW If You're Reading This (Curb)                      | +300                |
| EAGLES How Long (ERC/Lost Highway/Mercury)                    | +294                |
| JASON MICHAEL CARROLL Livin' Our Love Song (Arista Nashville) | +259                |
| TRISHA YEARWOOD Heaven, Heartache And ... (Big Machine)       | +232                |

**COUNTRY INDICATOR**

**MOST ADDED**

| ARTIST Title Label(s)                               | Adds |
|---|------|
| TAYLOR SWIFT Our Song (Big Machine)                 | 28   |
| KEITH URBAN Everybody (Capitol Nashville)           | 12   |
| ERIC CHURCH Sinners Like Me (Capitol Nashville)     | 12   |
| EAGLES How Long (ERC/Lost Highway/Mercury)          | 11   |
| BUCKY COVINGTON It's Good To Be Us (Lyric Street)   | 10   |
| CRAIG MORGAN International Harvester (Broken Bow)   | 10   |
| SUGARLAND Stay (Mercury)                            | 8    |
| GARTH BROOKS More Than A Memory (Pearl/Big Machine) | 7    |
| GARY ALLAN Watching Airplanes (MCA Nashville)       | 6    |
| LITTLE BIG TOWN I'm With The Band (Equity)          | 6    |

**MOST INCREASED AUDIENCE**

| ARTIST Title Label(s)   | Total Aud. Increase |
|---|---------------------|
| KENNY CHESNEY Don't Blink (BNA)                               | +13295              |
| KEITH URBAN Everybody (Capitol Nashville)                     | +11188              |
| GARTH BROOKS More Than A Memory (Pearl/Big Machine)           | +11159              |
| TAYLOR SWIFT Our Song (Big Machine)                           | +7605               |
| JASON MICHAEL CARROLL Livin' Our Love Song (Arista Nashville) | +5290               |
| GEORGE STRAIT How 'Bout Them Cowgirls (MCA Nashville)         | +4872               |
| EAGLES How Long (ERC/Lost Highway/Mercury)                    | +4692               |
| LUKE BRYAN All My Friends Say (Capitol Nashville)             | +4649               |
| JOSH TURNER Firecracker (MCA Nashville)                       | +4487               |
| SARA EVANS As If (RCA)  | +4278               |

**MOST INCREASED PLAYS**

| ARTIST Title Label(s)   | Total Play Increase |
|---|---------------------|
| KENNY CHESNEY Don't Blink (BNA)                               | +585                |
| KEITH URBAN Everybody (Capitol Nashville)                     | +543                |
| GARTH BROOKS More Than A Memory (Pearl/Big Machine)           | +463                |
| TAYLOR SWIFT Our Song (Big Machine)                           | +344                |
| GEORGE STRAIT How 'Bout Them Cowgirls (MCA Nashville)         | +313                |
| EAGLES How Long (ERC/Lost Highway/Mercury)                    | +270                |
| TOBY KEITH Love Me If You Can (Show Dog Nashville)            | +231                |
| LUKE BRYAN All My Friends Say (Capitol Nashville)             | +222                |
| CLAY WALKER Fall (Asylum-Curb)                                | +214                |
| JASON MICHAEL CARROLL Livin' Our Love Song (Arista Nashville) | +204                |

**TOBY KEITH**  
**"LOVE ME IF YOU CAN"**

**HEAVY NOW!**

R&R **6** - **3** (+574x/+4,297,100)

#2 audience increase!!

MB 6-5\* (+423x/+1322 pts.)

#3 point increase!!

**Only 13 weeks YOUNG, and Top 5 Callout everywhere you look!**

**MB Callout: #5 A35-44 #5 F35-44**

**Callout America: #1 P25-44 #3 P25-54 #4 F25-44**

**...plus Top 5 research in:**

Houston, Atlanta, Boston, San Diego, Portland, Sacramento, Cincinnati, Kansas City, Salt Lake City, Milwaukee, Providence, Indianapolis, Norfolk, Raleigh, Nashville, Buffalo, Rochester, Omaha, Akron, Wilmington, Charleston, Madison, Colorado Springs, Wichita,...& more!



**"NOWHERE THAN SOMEWHERE"**

R&R **50**

+175,100 aud.

**MB #48\***

**CMT ADD TO MEDIUM!**

Already on in: WYCD, WUBL, WKLB, KKWF, KMLE, KNIX, KSON, KSD, KWJJ, WDSY, KBEQ, KSOP, KUBL, KCYE, KRTY, WMIL, WFMS, WKDF, WTQR, WIRK, KKNG, KTEX, WBEE, WBCT, WGGY, WIVK, ...& more!!

**Debut album in stores TODAY!**

**COUNTRY NEW & ACTIVE**

**KENNY CHESNEY FEAT. JOE WALSH** Wild Ride (BNA)  
Total Audience: 6433, Total Stations: 0, Adds: 0

**KENNY CHESNEY** Just Not Today (BNA)  
Total Audience: 5029, Total Stations: 0, Adds: 0

**HEARTLAND** Once A Woman Gets A Hold Of Your Heart (Country Thunder)  
Total Audience: 4996, Total Stations: 13, Adds: 1

**ALISON KRAUSS** Simple Love (Rounder)  
Total Audience: 4950, Total Stations: 6, Adds: 1

**KENNY CHESNEY** Dancin' For The Groceries (BNA)  
Total Audience: 4731, Total Stations: 0, Adds: 0

**KELLIE PICKLER** Things That Never Cross A Man's Mind (BNA)  
Total Audience: 4346, Total Stations: 11, Adds: 8

**COUNTRY INDICATOR NEW & ACTIVE**

**EMERSON DRIVE** You Still Own Me (Montage/Midas/New Revolution)  
Total Plays: 496, Total Stations: 39, Adds: 4

**DANIELLE PECK** Bad For Me (Big Machine)  
Total Plays: 366, Total Stations: 27, Adds: 1

**MARK CHESNUTT** Rollin' With The Flow (Lofton Creek)  
Total Plays: 365, Total Stations: 24, Adds: 1

**FLYNNVILLE TRAIN** Nowhere Than Somewhere (Show Dog Nashville)  
Total Plays: 323, Total Stations: 26, Adds: 1

**BIG & RICH** Between Raising Hell And Amazing Grace (Warner Bros./WRN)  
Total Plays: 313, Total Stations: 21, Adds: 1

**BUCKY COVINGTON** It's Good To Be Us (Lyric Street)  
Total Plays: 308, Total Stations: 23, Adds: 10

**STEVE HOLY** Men Buy The Drinks (Girls Call The Shots) (Curb)  
Total Plays: 288, Total Stations: 19, Adds: 1

**LITTLE BIG TOWN** I'm With The Band (Equity)  
Total Plays: 238, Total Stations: 21, Adds: 6

**ERIC CHURCH** Sinners Like Me (Capitol Nashville)  
Total Plays: 186, Total Stations: 17, Adds: 12

**TRACY LAWRENCE** Til I Was A Daddy Too (Rocky Comfort/CO5)  
Total Plays: 176, Total Stations: 16, Adds: 0

**R&R Going For Adds**

9/17  
**ASHTON SHEPHERD** Takin' Off This Pain (MCA Nashville)  
**CRAIG MORGAN** International Harvester (Broken Bow)  
**LAURA BRYNA** Make A Wish (Equity)  
**SUGARLAND** Stay (Mercury)  
**TRENT WILLMON** There Is A God (Compadre/Music World/Quarterback)

9/24  
**JYPSI** Love Is A Drug (Arista Nashville)  
**RODNEY ATKINS** Cleaning This Gun (Come On In Boy) (Curb)

10/1  
**GRETCHEN WILSON** You Don't Have To Go Home (Columbia)  
**LADY ANTEBELLUM** Love Don't Live Here (Capitol Nashville)  
**LEE BRICE** Happy Endings (Asylum-Curb)

**TOP 10 RECURRENTS**

| ARTIST Title Label(s)   | Total Aud. (00) |
|---|-----------------|
| <b>TRACY LAWRENCE</b> Find Out Who Your Friends Are (Rocky Comfort/CO5) | 162087          |
| <b>BILLY CURRINGTON</b> Good Directions (Mercury)                       | 159962          |
| <b>BIG &amp; RICH</b> Lost In This Moment (Warner Bros./WRN)            | 141559          |
| <b>MONTGOMERY GENTRY</b> Lucky Man (Columbia)                           | 139522          |
| <b>TAYLOR SWIFT</b> Teardrops On My Guitar (Big Machine)                | 130191          |
| <b>EMERSON DRIVE</b> Moments (Midas/New Revolution)                     | 120485          |
| <b>CRAIG MORGAN</b> Tough (Broken Bow)                                  | 116378          |
| <b>GEORGE STRAIT</b> Wrapped (MCA Nashville)                            | 112403          |
| <b>KEITH URBAN</b> I Told You So (Capitol Nashville)                    | 108882          |
| <b>RODNEY ATKINS</b> Watching You (Curb)                                | 105132          |



130 Country reporters. Songs ranked by total audience for the airplay week of 9/3-9/9. Bullets appear on songs gaining audience or remaining flat from previous week. A song will also receive a bullet if its percentage loss in audience does not exceed the percentage of monitored station downtime for the format. Country titles that decline in audience but increase in detections will also receive a bullet if the total audience erosion for the week does not exceed 3%. If two songs are tied in total audience, the song with the larger increase in audience is placed first. Descending, non-bulleted titles below No. 10 in either audience or detections are moved to recurrent after 20 weeks. Most Added is the total number of new adds officially reported to R&R by each reporting station or by automatic add thresholds for stations not allowed to report adds. Songs unreported as adds do not count toward overall total stations playing a song. Most Increased Audience lists the songs with the greatest week-to-week increases in total audience. Audience totals on the chart are derived, in part, using certain Arbitron Inc. copyrighted Persons 12+ audience estimates, under license (© 2007, Arbitron Inc.) © 2007 Radio & Records.

**RR/BB 36 / MB 36\***

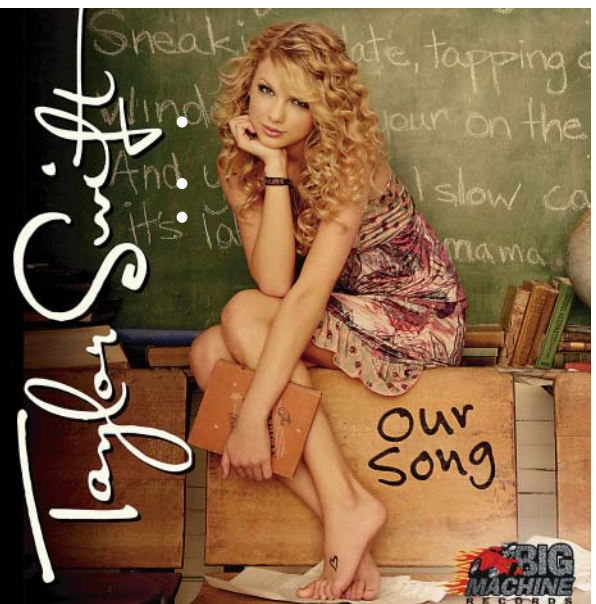
**#1 MOST ADDED SONG OF THE WEEK!!!**

**From the #1-selling country album in America**

**Thanks To The First-Week Believers:**

WKHX, WUSN, KYGO, KEYY, WYCD, KPLX, KILT, WKLB, KKNG, WGKX, KASE, KBOI, KCCY, KHEY, WGNE, WBCT, WKKT, WMIL, WSIX, WTQR, WUSY, WPCV, WPAW, WQYK, WWQM, KFRG, WIL, KSD, WKKO, KRTY, WGNA, WPUR, WYRK, WRNS, KMDL, WUSJ, WWGR, WYPY, KBEQ, WFBE, WNCY, KIIM, WOGI, WQMX, KRST, KUBL, KUZZ, WBEE, WCTK, WCTO, WGGY, WGH, KHKI, KJJY, KWLI, KATM, KKWF, WUBE, KSKS, KSOP, KRMD, WKCQ, KJUG, WBUL, KATC, KDRK, KHAY, KHGE, KBRJ, KBUL, KKJG, KKNJ, KXDD, KHKX, WDEZ, WOGT, WRSF, WXFL, WYCT, KGKL, KSUX, KTCS, KZKX, WBFM, WCTY, WFFN, WIBW, WTCM, WTHI, WFRG, WHKX, WOVK, WPOR, WXTA, KRAZ, KRWQ, KAGG, KTYS, WEGX, WHWK, WJLS, WRWD, WTCR, WGTR, WKCN, WBWN, WFYR, WKDQ, WQRB, WTNR, KRRV, WTVY, KOUT, KLLL, KSNI, KSUX, WGSQ, WMDH, WYCT, KBCY, KUAD, WLWI, WQCB, WXXQ, KEGA, WTNR, Music Choice Today's Country, Dial-Global Hot Country, Jones CD Country, XM Highway 16, Sirius New Country, Bob Moody/Regent, AOL Radio

**TOP 40 ON IMPACT DATE!!!**



September 10, 2007

| LW | TW | ARTIST Title Label(s)  | Total Plays | +/- Plays | Tot. Aud. (00) | +/- (00) | Wks On | Total Stations |
|----|----|--|-------------|-----------|----------------|----------|--------|----------------|
| 1  | 1  | RASCAL FLATTS Take Me There ( <i>Lyric Street</i> )                    | 3672        | +36       | 77918          | -21      | 10     | 94/0           |
| 3  | 2  | BROOKS & DUNN Proud Of The House We Built ( <i>Arista Nashville</i> )  | 3537        | +82       | 74510          | +2375    | 14     | 90/0           |
| 5  | 3  | TOBY KEITH Love Me If You Can ( <i>Show Dog Nashville</i> )            | 3500        | +231      | 74067          | +4138    | 13     | 93/0           |
| 6  | 4  | BRAD PAISLEY Online ( <i>Arista Nashville</i> )                        | 3329        | +163      | 71221          | +3602    | 10     | 91/0           |
| 7  | 5  | LUKE BRYAN All My Friends Say ( <i>Capitol Nashville</i> )             | 3298        | +222      | 68652          | +4649    | 24     | 91/0           |
| 2  | 6  | REBA MCENTIRE W/K. CLARKSON Because Of You ( <i>MCA Nashville</i> )    | 3253        | -237      | 68517          | -5673    | 16     | 86/0           |
| 11 | 7  | DIERKS BENTLEY Free And Easy ... ( <i>Capitol Nashville</i> )          | 2847        | +146      | 60756          | +3630    | 15     | 93/0           |
| 4  | 8  | RODNEY ATKINS These Are My People ( <i>Curb</i> )                      | 2814        | -539      | 57584          | -11872   | 25     | 82/0           |
| 9  | 9  | TIM MCGRAW If You're Reading This ( <i>Curb</i> )                      | 2803        | +47       | 59020          | +996     | 14     | 84/0           |
| 10 | 10 | CARRIE UNDERWOOD So Small ( <i>Arista/Arista Nashville</i> )           | 2790        | +53       | 60956          | +1710    | 6      | 89/0           |
| 13 | 11 | GARTH BROOKS More Than A Memory ( <i>Pearl/Big Machine</i> )           | 2760        | +463      | 55877          | +11159   | 2      | 87/7           |
| 8  | 12 | SUGARLAND Everyday America ( <i>Mercury</i> )                          | 2561        | -356      | 54281          | -8332    | 16     | 86/0           |
| 16 | 13 | KENNY CHESNEY Don't Blink ( <i>BNA</i> )                               | 2527        | +585      | 56674          | +13295   | 3      | 87/4           |
| 14 | 14 | JASON MICHAEL CARROLL Livin' Our Love Song ( <i>Arista Nashville</i> ) | 2366        | +204      | 51069          | +5290    | 22     | 86/1           |
| 17 | 15 | GEORGE STRAIT How 'Bout Them Cowgirls ( <i>MCA Nashville</i> )         | 2218        | +313      | 44004          | +4872    | 5      | 87/4           |
| 15 | 16 | JOSH TURNER Firecracker ( <i>MCA Nashville</i> )                       | 2145        | +171      | 45887          | +4487    | 9      | 86/0           |
| 19 | 17 | CLAY WALKER Fall ( <i>Asylum-Curb</i> )                                | 2060        | +214      | 40815          | +3929    | 20     | 81/2           |
| 18 | 18 | JACK INGRAM Measure Of A Man ( <i>Big Machine</i> )                    | 1953        | +93       | 41195          | +2092    | 18     | 86/0           |
| 12 | 19 | KENNY CHESNEY Never Wanted Nothing More ( <i>BNA</i> )                 | 1820        | -507      | 39519          | -7752    | 14     | 67/0           |
| 21 | 20 | JOE NICHOLS Another Side Of You ( <i>Universal South</i> )             | 1751        | +79       | 36112          | +1953    | 16     | 81/0           |

© 2007 Radio &amp; Records

## Wonder who this Woman is?

# Sherry Lynn "Scarecrow Dance"

Going For Adds!

Showcasing at 12th and Porter 9/26 6 PM

[www.sherrylynnmusic.com](http://www.sherrylynnmusic.com)  
[www.makescarecrowdance.com](http://www.makescarecrowdance.com)  
[www.myspace.com/sherrylynnmusic](http://www.myspace.com/sherrylynnmusic)

September 10, 2007

| LW           | TW        | ARTIST Title Label(s)  | Total Plays | +/- Plays | Tot. Aud. (00) | +/- (00) | Wks On | Total Stations |
|--------------|-----------|--|-------------|-----------|----------------|----------|--------|----------------|
| 20           | <b>21</b> | TRENT TOMLINSON Just Might Have Her Radio On ( <i>Lyric Street</i> ) | 1706        | +5        | 35750          | +487     | 21     | 81/1           |
| 22           | <b>22</b> | SARA EVANS As If ( <i>RCA</i> )                                      | 1684        | +115      | 37579          | +4278    | 11     | 83/1           |
| 23           | <b>23</b> | MIRANDA LAMBERT Famous In A Small Town ( <i>Columbia</i> )           | 1664        | +152      | 37048          | +3578    | 17     | 78/3           |
| 24           | <b>24</b> | MONTGOMERY GENTRY What Do Ya Think About That ( <i>Columbia</i> )    | 1645        | +165      | 34298          | +3314    | 7      | 83/4           |
| 32           | <b>25</b> | KEITH URBAN Everybody ( <i>Capitol Nashville</i> )                   | 1456        | +543      | 32363          | +11188   | 3      | 73/12          |
| 28           | <b>26</b> | TRISHA YEARWOOD Heaven, Heartache And ... ( <i>Big Machine</i> )     | 1300        | +190      | 27877          | +3943    | 6      | 77/5           |
| 27           | 27        | LEANN RIMES Nothin' Better To Do ( <i>Asylum-Curb</i> )              | 1190        | -8        | 24888          | -581     | 12     | 66/2           |
| 30           | <b>28</b> | TRAVIS TRITT You Never Take Me Dancing ( <i>Category 5</i> )         | 990         | +39       | 19972          | +336     | 12     | 51/0           |
| 25           | 29        | MARTINA MCBRIDE How I Feel ( <i>RCA</i> )                            | 984         | -475      | 20534          | -9069    | 19     | 52/0           |
| 31           | <b>30</b> | BILLY CURRINGTON Tangled Up ( <i>Mercury</i> )                       | 942         | +2        | 19948          | +1137    | 8      | 65/1           |
| 35           | <b>31</b> | GARY ALLAN Watching Airplanes ( <i>MCA Nashville</i> )               | 861         | +108      | 20664          | +2635    | 7      | 56/6           |
| 33           | <b>32</b> | BLAKE SHELTON The More I Drink ( <i>Warner Bros./WRN</i> )           | 845         | +75       | 16866          | +1792    | 11     | 57/3           |
| 38           | <b>33</b> | EAGLES How Long ( <i>ERC/Lost Highway/Mercury</i> )                  | 815         | +270      | 16595          | +4692    | 2      | 58/11          |
| 34           | 34        | PAT GREEN Way Back Texas ( <i>BNA</i> )                              | 738         | -25       | 15179          | -345     | 7      | 50/1           |
| 36           | <b>35</b> | WHISKEY FALLS Last Train Running ( <i>Midas/New Revolution</i> )     | 698         | +20       | 14327          | +802     | 8      | 47/1           |
| 37           | <b>36</b> | CHRIS CAGLE What Kinda Gone ( <i>Capitol Nashville</i> )             | 654         | +77       | 13777          | +1876    | 5      | 45/5           |
| 26           | 37        | TIM MCGRAW W/FAITH HILL I Need You ( <i>Curb</i> )                   | 632         | -697      | 12201          | -13859   | 20     | 47/0           |
| <b>Debut</b> | <b>38</b> | TAYLOR SWIFT Our Song ( <i>Big Machine</i> )                         | 625         | +344      | 13488          | +7605    | 1      | 52/28          |
| 40           | <b>39</b> | TRACE ADKINS I Got My Game On ( <i>Capitol Nashville</i> )           | 615         | +128      | 11826          | +1857    | 3      | 41/5           |
| 39           | <b>40</b> | JASON ALDEAN Laughed Until We Cried ( <i>Broken Bow</i> )            | 578         | +80       | 12076          | +2070    | 3      | 48/4           |

© 2007 Radio &amp; Records

# clear. consistent. quality.

All hooks are not created equal. Some are too short, some are too long, and some are just wrong. You invest big dollars in research - why risk testing with bad hooks? Hooks Unlimited's clear, consistent, quality never leaves you guessing about your listeners' music tastes. Contact Michael Pelaia for your next project.

September 10, 2007

| ARTIST Title (Label)   | PASSION | TOTAL POSITIVE | INDEX | NEUTRAL | FAMILIARITY | DISLIKE | STRONGLY DISLIKE |
|--|---------|----------------|-------|---------|-------------|---------|------------------|
| <b>BROOKS &amp; DUNN</b> Proud Of The House We Built (Arista Nashville)      | 28.5%   | 75.0%          | 3.94  | 16.0%   | 99.5%       | 7.3%    | 1.3%             |
| <b>REBA MCENTIRE W/KELLY CLARKSON</b> Because Of You (MCA Nashville)         | 41.0%   | 74.0%          | 3.98  | 12.5%   | 99.8%       | 9.0%    | 4.3%             |
| <b>TOBY KEITH</b> Love Me If You Can (Show Dog Nashville)                    | 33.0%   | 70.8%          | 3.91  | 16.8%   | 99.3%       | 10.0%   | 1.8%             |
| <b>JASON MICHAEL CARROLL</b> Livin' Our Love Song (Arista Nashville)         | 19.0%   | 70.3%          | 3.78  | 19.8%   | 99.8%       | 8.3%    | 1.5%             |
| <b>TIM MCGRAW</b> If You're Reading This (Curb)                              | 25.8%   | 68.8%          | 3.86  | 18.5%   | 96.8%       | 7.8%    | 1.8%             |
| <b>BRAD PAISLEY</b> Online (Arista Nashville)                                | 21.8%   | 67.8%          | 3.76  | 17.3%   | 97.3%       | 9.3%    | 3.0%             |
| <b>CARRIE UNDERWOOD</b> So Small (Arista/Arista Nashville)                   | 21.5%   | 67.0%          | 3.77  | 19.0%   | 97.5%       | 10.0%   | 1.5%             |
| <b>LUKE BRYAN</b> All My Friends Say (Capitol Nashville)                     | 26.3%   | 65.0%          | 3.74  | 19.3%   | 98.5%       | 10.3%   | 4.0%             |
| <b>RASCAL FLATTS</b> Take Me There (Lyric Street)                            | 23.3%   | 63.8%          | 3.69  | 21.0%   | 98.8%       | 9.5%    | 4.5%             |
| <b>RODNEY ATKINS</b> These Are My People (Curb)                              | 21.5%   | 63.5%          | 3.72  | 25.5%   | 99.0%       | 6.8%    | 3.3%             |
| <b>DIERKS BENTLEY</b> Free And Easy (Down The Road I Go) (Capitol Nashville) | 18.5%   | 62.5%          | 3.67  | 24.8%   | 99.3%       | 9.8%    | 2.3%             |
| <b>WHISKEY FALLS</b> Last Train Running (Midas/New Revolution)               | 17.3%   | 61.0%          | 3.63  | 23.0%   | 97.8%       | 11.3%   | 2.5%             |
| <b>CLAY WALKER</b> Fall (Asylum-Curb)  | 13.0%   | 60.0%          | 3.65  | 23.5%   | 94.3%       | 9.5%    | 1.3%             |
| <b>LEANN RIMES</b> Nothin' Better To Do (Asylum-Curb)                        | 11.8%   | 59.8%          | 3.55  | 23.0%   | 97.0%       | 10.5%   | 3.8%             |
| <b>SUGARLAND</b> Everyday America (Mercury)                                  | 24.3%   | 59.5%          | 3.62  | 21.5%   | 99.3%       | 14.0%   | 4.3%             |
| <b>JOE NICHOLS</b> Another Side Of You (Universal South)                     | 18.3%   | 57.8%          | 3.61  | 24.3%   | 95.5%       | 9.3%    | 4.3%             |
| <b>EMERSON DRIVE</b> You Still Own Me (Montage/Midas/New Revolution)         | 11.8%   | 56.8%          | 3.55  | 24.3%   | 94.8%       | 11.5%   | 2.3%             |
| <b>MONTGOMERY GENTRY</b> What Do Ya Think About That (Columbia)              | 12.5%   | 54.8%          | 3.49  | 22.8%   | 95.8%       | 15.8%   | 2.5%             |
| <b>JACK INGRAM</b> Measure Of A Man (Big Machine)                            | 11.3%   | 54.3%          | 3.52  | 30.3%   | 96.5%       | 8.8%    | 3.3%             |
| <b>MIRANDA LAMBERT</b> Famous In A Small Town (Columbia)                     | 13.0%   | 53.0%          | 3.48  | 25.3%   | 95.0%       | 13.5%   | 3.3%             |
| <b>GEORGE STRAIT</b> How 'Bout Them Cowgirls (MCA Nashville)                 | 13.5%   | 51.8%          | 3.53  | 26.0%   | 91.5%       | 10.8%   | 3.0%             |
| <b>JOSH TURNER</b> Firecracker (MCA Nashville)                               | 12.5%   | 50.8%          | 3.38  | 19.3%   | 91.3%       | 13.5%   | 7.8%             |
| <b>TRENT TOMLINSON</b> Just Might Have Her Radio On (Lyric Street)           | 16.5%   | 49.8%          | 3.51  | 30.0%   | 95.0%       | 12.8%   | 2.5%             |
| <b>SARA EVANS</b> As If (RCA)  | 10.3%   | 49.0%          | 3.41  | 31.0%   | 96.0%       | 11.8%   | 4.3%             |
| <b>TRISHA YEARWOOD</b> Heaven, Heartache And ... (Big Machine)               | 8.0%    | 49.0%          | 3.39  | 29.0%   | 94.5%       | 13.3%   | 3.3%             |
| <b>GARY ALLAN</b> Watching Airplanes (MCA Nashville)                         | 10.3%   | 49.0%          | 3.42  | 30.0%   | 95.0%       | 12.3%   | 3.8%             |
| <b>BILLY CURRINGTON</b> Tangled Up (Mercury)                                 | 12.0%   | 48.5%          | 3.44  | 35.0%   | 97.8%       | 11.3%   | 3.0%             |
| <b>MARTINA MCBRIDE</b> How I Feel (RCA)                                      | 10.0%   | 47.0%          | 3.35  | 27.3%   | 95.3%       | 18.0%   | 3.0%             |
| <b>TRAVIS TRITT</b> You Never Take Me Dancing (Category 5)                   | 10.5%   | 47.0%          | 3.33  | 25.8%   | 94.3%       | 16.5%   | 5.0%             |
| <b>BLAKE SHELTON</b> The More I Drink (Warner Bros./WRN)                     | 14.0%   | 42.5%          | 3.25  | 25.0%   | 93.0%       | 17.5%   | 8.0%             |
| <b>KEITH ANDERSON</b> Sunday Morning In America (Arista Nashville)           | 7.3%    | 39.0%          | 3.21  | 33.5%   | 94.3%       | 17.0%   | 4.8%             |
| <b>EAGLES</b> How Long (ERC/Lost Highway/Mercury)                            | 5.0%    | 38.0%          | 3.27  | 30.5%   | 85.0%       | 13.0%   | 3.5%             |
| <b>PHIL VASSAR</b> This Is My Life (Universal South)                         | 8.5%    | 36.8%          | 3.25  | 39.5%   | 94.0%       | 14.0%   | 3.8%             |
| <b>PAT GREEN</b> Way Back Texas (BNA)  | 7.5%    | 35.0%          | 3.16  | 30.5%   | 89.5%       | 19.8%   | 4.3%             |
| <b>GARTH BROOKS</b> More Than A Memory (Pearl/Big Machine)                   | 12.5%   | 33.5%          | 3.16  | 25.5%   | 85.5%       | 21.0%   | 5.5%             |

Total sample size is 400 persons weekly with a margin of error of plus or minus 5%. Scoring is done each week using live interviewers conducting an interview with each respondent. Scores are: 5) I like it a lot, in fact it's one of my favorites; 4) I like it; 3) It's OK, just so-so; 2) I don't like it; 1) I strongly dislike it. The index score is an average of all 1-to-5 scores. The total positive score is an aggregate of the 4 and 5 scores. To be included in the weekly callout, songs must have entered the top 40 positions on R&R's Country airplay chart. The sample is composed of 400 25-54-year-olds who identify country as their favorite music and who listen daily to competitive Country radio in the sample markets. The sample is 50% male/female and evenly distributed in the 25-34, 35-44, and 45-54 demos. The sample is balanced by region and markets within that region. Bullseye Callout is conducted in these regions and markets. **SOUTH:** Charleston SC; Charlotte; Baton Rouge; Nashville; Atlanta. **MIDWEST:** Flint, MI; Indianapolis; Madison; Omaha; Cincinnati. **EAST:** Harrisburg; Rochester, NY; Springfield, MA; Providence; Washington, DC. **WEST:** Modesto, CA; Salt Lake City; Colorado Springs, CO; Portland, OR; Houston. © 2007 Radio & Records © 2007 Bullseye Marketing Research Inc..

© 2007 Radio & Records All Rights Reserved No part of this material may be reproduced in any form or incorporated in any information retrieval system without written permission of the Publisher.

# THE INDUSTRY'S #1 NEWS SITE!

**FORMAT NEWS**  
17 Formats Covered

**R&R HEADLINES**  
Updated: March 20  
Industry At A Glance

**SEARCH R&R NEWS**  
GO  
News Search  
Search By Key Phrase/Word



[www.radioandrecords.com](http://www.radioandrecords.com)

ACCURATE • TRUSTWORTHY • COMPREHENSIVE