



## INSIDE

This Will Make You Say 'WOW' And 'Boise' In One Sentence



That Snapping Sound You Hear In Rochester Is A Real Buzz Kill



The No Name Morning Show, Starring Mark And Chris In Corpus!



Taylor Swift Awarded Key To The City, Unlocks School Gates



McLemore Joins DiVincenzo And Is Looking More Italian Every Day

*All polar bears are left-handed.  
Real news needed!*

[rcurtis@radioandrecords.com](mailto:rcurtis@radioandrecords.com)  
323-954-3444

## It's Officially 'WOW' Time In Boise

Rather than simply look for an "oh WOW" moment, Peak Broadcasting is building an entire radio station around the concept with the relaunch of KTMV/Boise, Idaho, formerly "My Country," as "The New WOW Country 104.3." The rebranding started today, with recently installed PD/President in charge of WOW **Rick Stewart** telling **R&R** the station will be built around great personalities and imaging, striving to be "a great radio station that plays country music." The musical calling card for "WOW Country" will be 104-in-a-row. Stewart also announced his on-air lineup, which includes Panama Jack doing mornings. Described as an Elvis impersonator and lounge singer with a repertoire of over 50 character voices, Panama Jack will be teamed with Amber Lee, a transplant from Joplin, Mo. Things look to get a little wild in middays with a guy called "Tarzan Dan" swinging into the market from Tucson; Stewart says you can expect a lot of jungle-like ape-man references with imaging for Tarzan. The station will segue from rope swinging to rabble rousing in afternoons with "The Outlaw" Don Jarrett, who comes back home to Boise from Salt Lake City. Jarrett vows to "break all the radio rules" in afternoons; Stewart told **R&R** that means moments of unpredictability with both musical and non-musical elements. Hilarity will undoubtedly ensue every weeknight from 7 p.m.-midnight, as "The Bird Man" swoops down upon Boise, wreaking fun and entertainment. And, in an interesting twist, the radio station has hired a lady known simply as Wendy, a.k.a. "the official WOW country song tag girl," whose entire job description entails giving listeners the title and artist information of every song played. The station is not yet streaming its on-air signal; Stewart says that should be coming in "a couple months." Peak purchased KTMV in March from Clear Channel and hopes to get it into a more competitive position; in fall 2006, the station fell to 1.4 with persons 12+, down from 5.2 in fall '05. Citadel operates two country stations in Boise as well, KIZN and KQFC.

© 2007 Radio & Records. All Rights Reserved. No part of this material may be reproduced in any form or incorporated in any information retrieval system without written permission of the Publisher.

One Huge Hit Two Mega Superstars

— **"Because of You"** —

Reba duet with Kelly Clarkson

# 1 Most Added after only 4 days of Airplay

Already Over 50 Stations On Board a Week Early

MCA NASHVILLE

One of the Most Talked about Moments of the ACM Awards Show.



**NOW charting**  
**Kristina Cornell**  
“Little Red Balloon”



**NOW adding**  
**Carmen Rasmusen**  
“Nothin’ Like The Summer”

**NOW playing**  
**Shawn King and Willie Nelson**

“I Give”



**NOW arriving**  
**Cook and Glenn**  
“Shining Star”



**Congratulations**  
**Bob Kingsley**  
**on your ACM win!**

[www.loftoncreekrecords.com](http://www.loftoncreekrecords.com)





### Snap Goes Country In Rochester; Crackle & Pop Unavailable For Comment

In upstate New York Friday, Clear Channel decided to flip rhythmic AC WSNP (Snap 107.3)/Rochester, taking it country and christening the new station "Country 107.3." In a statement, **Karen Karey**, VP/GM of Country 107.3, said, "We're pleased to provide a brand new country music experience in Rochester." That experience includes hardly any commercials, as Karey went on to explain the new station will guarantee "no more than two minutes of commercials per hour, 24 hours per day." Right now, the station in being programmed by **Dave LeFrois**, and **R&R** hears there's no plan in the near future for a live airstaff, due to the music-intensive presentation. This puts "Country 107.3" in direct competition with Entercom's WBEE/Rochester, which celebrates its 20th anniversary in 2007. In what nowadays seems like an unusual occurrence, no live jocks were harmed or fired in the making of the new radio station. The only casualty was the syndicated morning show "Wake Up With Whoopi." All other staffers from Snap 107.3 were, according to a station spokesman, "repurposed." Country 107.3 is up and streaming on the web at [www.mycountryfm.com](http://www.mycountryfm.com).

### Back To Boise For A Moment

The rebranding of Peak Broadcasting's KTMV (WOW Country 104.3)/Boise comes in the midst of a growing legal brouhaha in Boise between Citadel Broadcasting and Peak. As **R&R** reported last week, Citadel is accusing Peak of stealing confidential information and initiating "a scheme to raid the ranks of Citadel Broadcasting employees (and, thereby, cripple Citadel Broadcasting in a host of markets) by recruiting and luring away key employees and managers." That not only sounds like fightin' words, it has an element of legal mumbo-jumbo to it as well, because it's in federal court in the form of a lawsuit. Citadel owns six stations in Boise, including previously mentioned country sisters KIZN and KQFC. As a result of

### This Week At Callout America

**Sugarland's** "Settlin'" repeats as the No. 1 song; the track is also at No. 1 with both male and female listeners, as well as core 35-44 listeners.

The No. 1 passion song for the week is **Billy Currington's** "Good Directions," which also ranks at No. 2 overall, up from No. 5. Male listeners rank this song at No. 2; in demo, the strength is with younger 25-34s at No. 1 and core 35-44s at No. 2.

**Jake Owen** is new to the top 10 this week with "Startin' With Me" at No. 8, up strong from No. 16, moving eight places in tough territory. Men rank the song at No. 7, women at No. 10. Core 35-44 listeners are the strength at No. 6, with core females at No. 8 and core males at No. 5. Females 25-44 rank the song at No. 7, men in that demo at No. 6.

**Carolina Rain** show growth, moving inside the top 20 at No. 18, up from No. 22 with "Isn't She." This song shows balanced appeal ranking at No. 17 with males and No. 16 with females. Younger 25-34s rank the song at No. 16, core 35-44s at No. 18.

**Taylor Swift** has the growth song of the week with "TeardropsoOn My Guitar" ranking at No. 19, up strong from No. 27 last week and No. 29 two weeks back. Females rank the song at No. 17, up from No. 27, while men are at No. 20, up from No. 30 two weeks ago.

**Rodney Atkins** moves into the top 20 at No. 20 with "These Are My People," up from No. 26. Men rank the song at No. 21, females at No. 20.

a purchase from Clear Channel in March, Peak also owns six Boise radio stations, among them, country sisters KFXD and KTMV. According to *The Idaho Statesman*, Citadel says in its suit that Peak CEO Todd Lawley, a former Citadel regional VP who left the company last November along with four other former Citadel employees, are the impetus for the allegations. This gets even better ... or worse, depending on

© 2007 Radio & Records. All Rights Reserved. No part of this material may be reproduced in any form or incorporated in any information retrieval system without written permission of the Publisher.

# This Record is HUGE!

Mediabase:

#1 Most Increased Spins  
#2 Most Increased Points

RR:

#2 Greatest Gainer

Tim McGraw  
with Faith Hill

I Need You



RR: 21 to 17 +3.2 mil. aud. AC/MB: 28 to 22 +447

your point of view. One of the four defendants in this mess is **Rick Sutherlin**, who many of us know better as the aforementioned Rick Stewart. The Statesman says that Sutherlin was hired Feb. 26 to be the new program manager of Citadel's crosstown KQFC. Sutherlin's first day was to be on March 19, but his manager, Michaels Owens, now the former Citadel/Boise cluster GM, allowed him to start a week earlier. Citadel claims Sutherland had access to the station's information, including its playlists, marketing plans and strategic goals. Additionally, Citadel claims that Sutherlin didn't return to work March 19, alleging that during the week of March 12, he secretly traveled to Fresno to meet with Lawley. No trial date has been set, but Citadel is looking for compensatory damages in an amount to be decided at a jury trial. The company is also seeking an award of any profits Peak may have received as a result of the company's use of Citadel information. Citadel also wants a permanent injunction against Peak and its employees from using any information obtained from Citadel.

### This Week's Ambien Award Winner

Meet **Scott Kennedy**, the busiest man in the state of Ohio, who was recently named OM for the Cumulus/Youngstown cluster. Heck, there's only *eight* stations there, including country WQXK! Oh yeah ... Kennedy will retain PD stripes for classic rock WYFM in addition to being the morning dude. If that weren't enough punishment, he will continue to assist market manager Brian Schimmel with other stuff like staffing and personnel.

### The Bo-Man Comes Howling Back To Denver

And, back to country radio. **Bo Reynolds** did two stints with KZLA/Los Angeles as the afternoon and morning guy. In between, he had a long history with Entercom's hot AC KALC/Denver where he did mornings with Greg Thunder, then afternoons with Slacker. During the past dozen years or so, Reynolds has also hosted a nationally syndicated Saturday night country show. Now he's back in the format day-to-day at CBS Radio's KWLI/Denver as the new midday personality.

**May 15:** 42nd annual Academy of Country Music Awards, Las Vegas. Details at [www.acmcountry.com](http://www.acmcountry.com).

**June 4:** 40th annual IFCO Fun Fest, Nashville. Details at [www.ifco.org](http://www.ifco.org).

**June 7-10:** CMA Music Festival, Nashville, Details at [www.cmaworld.com](http://www.cmaworld.com).

**June 9:** Leadership Music and SOLID Yard Sale, Nashville. Details at [www.leadershipmusic.org](http://www.leadershipmusic.org).

Reynolds started May 16.

You love programming, country music and the Florida sunshine. Good, because they're still looking for a PD at Renda's **WWGR (The Gator)/Fort Myers**. Joel Raab is consulting and probably doing a ton of day-to-day, which he's brilliant at, but who's got the time? Send material to Joel at [joelraab@aol.com](mailto:joelraab@aol.com).

Is Oklahoma more your style? There's a big fat opening at Cox Radio's KWEN/Tulsa due to the departure of APD/afternoon driver **Ray Webb**, who's leaving May 25 for Austin. Get your A-game stuff to KWEN PD Karla Cantrell, and you better have chops, because you'll be helping with music, marketing, recruiting and coaching weekend talent, using Selector and Cool Edit Pro and doing station imaging. You'll also need to be a top-rated drive-time jock, leap tall buildings in a single bound and be faster than a speeding bullet. Send your stuff Human Resource Department, Cox Radio/Tulsa, 7136 South Yale, Suite 500, Tulsa, OK 74136; fax: 918-492-6495; e-mail [tulsajobs@coxradio.com](mailto:tulsajobs@coxradio.com).

Clear Channel's **KRYS/Corpus Christi, Texas** started its "hometown handshake" tour today, and, for the next six weeks, the no-name morning show (which, oddly, is hosted by two people who actually do have names — Mark and Chris — but only first ones) will broadcast from a different

© 2007 Radio & Records. All Rights Reserved. No part of this material may be reproduced in any form or incorporated in any information retrieval system without written permission of the Publisher.

**Hop On Board ---This Train's Movin'**

**WHISKEY FALLS**

**"Last Train Running"**

KBEQ	KRTY	WDAF	WTQR	WSIX	WKDF
WSOC	WUSY	WWYZ	WKKT	WCKT	WKXC
WIVK	KKWF	KCCY	WGTY	KSKS	WGNE
WITL	WBCT	WNCY	KBQI	WIRK	WGGY
KATC	WKCQ	WQHK	KDRK	WOKQ	WNKT
WWNU	KJUG	KUBL	KIZN	WFBE	KATM
WWQM	KHKI	WFRE	WOVK	WQRB	KIXQ
WEGX	WTCM	KRRV			







Gulf area town on Mondays, Wednesdays and Fridays. The goal is to shake every hand in South Texas while giving away concert tickets, CDs and setting a new world record for usage of Purell Hand Sanitizer ... **Valeri Ferrari**, who was formerly the PD at Lotus Broadcasting country KUUB/Reno, Nev., joins Wilks' crosstown classic rocker KURK (92.9 The Bandit) for middays and will probably end up with APD stripes ... **Paul B. Walker**, OM/PD at Hellinger Broadcasting news/talk WABV/Abbeville-Greenwood, S.C., has officially gone country as the new midday jock at Colonial Radio Group's WLMI/Kane, Pa.

### We Get Letters About Cool Promotions

**Dave Daniels**, PD of Westcoast's KJUG/Tulare, Calif., wrote R&R to brag about a promotion the station put together with Taylor [sigh!] Swift called "The Cool School Country Concert." The school raising the most money for St. Jude won a concert with Big Machine recording artist Swift. According to Daniels, "Our local winner was Woodlake High School, which raised \$2,800 and was awarded an acoustic show from Taylor Swift. At the performance, Taylor was awarded the key to the city, and a proclamation was issued making it Taylor Swift Day in Woodlake. Immediately, Taylor proclaimed school was dismissed for the day; the principal of the school stepped in and said that was part of the deal. Taylor performed for 25 minutes and then signed autographs for the class that raised the most and took pictures with the leadership group."

Speaking of St. Jude promotions, congratulations to Clear Channel's **KCCY (Y96.9)/Colorado Springs** for raising \$105,000 in its first-ever St. Jude Radiothon on May 17-18.

### We Now Take This Opportunity To Say 'Enzo DiVicenzo!'

That's Italian! **Haley McLemore** isn't, but we're not quibbling. Now that she'll be working with Enzo,

## BILLBOARD BOXSCORE

ARTIST VENUE/CITY/DATES	ATTENDANCE	GROSS
<b>Kenny Chesney, Sugarland, Pat Green</b> Van Andel Arena Grand Rapids, Mich. May 10-11	<b>24,056</b>	<b>\$1,644,037</b>
<b>Keith Urban</b> Entertainment Centre Brisbane, Australia May 11-12	<b>15,998</b>	<b>\$1,439,269</b>
<b>George Strait</b> Mohegan Sun Arena Uncasville, Conn. April 26-27	<b>17,995</b>	<b>\$1,170,350</b>
<b>Kenny Chesney, Sugarland, Pat Green</b> Xcel Energy Center St. Paul, Minn. May 13	<b>15,668</b>	<b>\$1,038,080</b>
<b>Rascal Flatts, Jason Aldean</b> Tacoma Dome Tacoma, Wash. March 4	<b>16,073</b>	<b>\$1,023,150</b>

Billboard Boxscore tracks recent country concert grosses and attendance figures. Copyright 2007, VNU Business Media. More concert grosses available at [www.billboard.biz](http://www.billboard.biz).

## SHOWPREP 101

**May 22, 1931:** The first canned rattlesnake meat was sold in Arcadia, Fla.

**May 23:** National Climb a Tree Day.

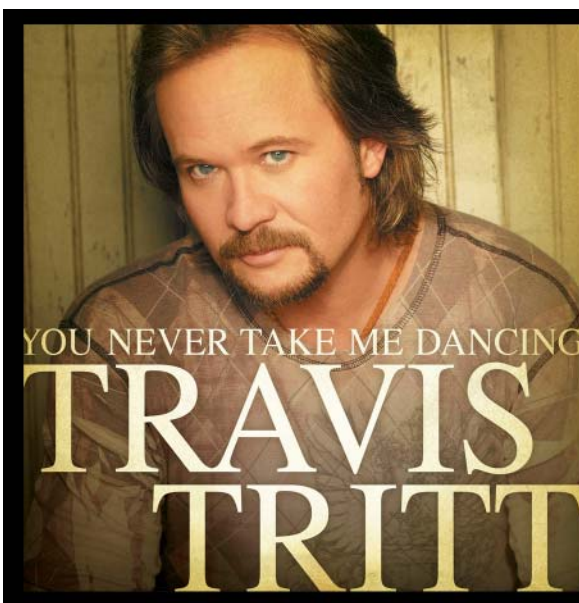
**May 24, 1974:** After nine seasons, the last "Dean Martin Show" was seen on NBC-TV.

**May 25, 1977:** The original "Star Wars" film opened in 32 theaters on this date.

**Quotable:** "There is only one thing about which I am certain, and that is that there is very little about which one can be certain."

—*W. Somerset Maugham*

© 2007 Radio & Records. All Rights Reserved. No part of this material may be reproduced in any form or incorporated in any information retrieval system without written permission of the Publisher.



## "YOU NEVER TAKE ME DANCING"

THANKS FOR SHOWING UP TO "THE DANCE"

WXTU, WMZQ, WYCD, WDSY, WGAR, KSOP, WGH, WWYZ, WBEE, KSKS, WGGY, KIXZ, WPUR, WKDF, WIVK, WOVK, WWFG, WQRB, WTHI, KVOX, KEAN, KJCS, KSNI, WHKX, WJLS, WKMI, WTRS, KRRV, KTCS and XM.

Category 5  
RECORDS

R&R: 51

QUANTUM  
MANAGEMENT

we'll officially consider her "Italian-adjacent," as she joins DiVincenzo's 377 Management to work with Asylum-Curb artist Lee Brice, who is co-managed by The Irv Woolsey Company. McLemore starts June 15 after putting in a nice run with Mercury Nashville as Southeast regional. She originally started with Mercury as promotions coordinator in 1999, eventually becoming a regional in the Midwest, Southwest and then Southeast.

### Her First Assignment: Oversee Ginormous Event

We wonder if the first memo to the CMA's brand new manager of media relations, **Stefanie Hurst**, went something like this: "Welcome to The Country Music Association, Stefanie. We're excited you've joined us, and we know your prior experience as director of development and communications for Angels Flight of Georgia has adequately prepared you for your first project here at CMA. In just two weeks, thousands and thousands and thousands of poorly attired star-struck country fans, overzealous publicists, demanding sponsors and label executives with overly high expectations will descend upon a humidity drenched Music City for our largest event of the year. You'll be responsible for media relations during this extravaganza. Address any questions to your direct supervisor, Scott Stem, CMA director of media relations. Please be sure to take advantage of the free coffee and tea service in our beautifully appointed break room. Thanks so much and once again, welcome!"

### Finally....

This stuff never happens to us, but thank God it happens to people we know and like. At last week's ACM festivities, consider the good luck of **Jim Dorman**, promotion rep for Thunder Country Records Nashville. After checking into Harrah's Sunday night, Dorman did what any red-blooded

American male does in his first 30 minutes in Vegas: He headed straight to the casino and beelined it toward the \$25 slots. On just his third try, Dorman hit a \$25,000 jackpot.

— **R.J. Curtis/Country Editor** 323-954-3444  
Email: [rcurtis@radioandrecords.com](mailto:rcurtis@radioandrecords.com)

### On The Charts: McGraw and Hill Open With ACM Show Juice

Tim McGraw's military-themed "If You're Reading This" (CBS-TV Audio) takes the Hot Shot Debut on the R&R Country chart at No. 35 after an emotional performance on the May 15 Academy of Country Music Awards. Sources at Curb tell **R&R** that no studio version of the song exists at this point, and the label has no immediate plans to service a single to radio. For now, the label is focusing on McGraw's duet with Faith Hill, titled "I Need You," which achieves Airpower status (top 20 in spins and audience for the first time, with increases in both). McGraw's "Reading" makes 3.3 million audience impressions (with spins detected at 50 monitored stations), while the duet rises 21-17 with 14.9 million impressions at 126 stations.

Meanwhile, Hill's "Lost" (Warner Bros./WRN), which she premiered on the ACM telecast, starts at No. 48 with spins at 45 monitored signals.

On the R&R Country Indicator list, Brad Paisley wins a duel with Emerson Drive as "Ticks" (Arista Nashville) reigns with 3,584 plays (3-1). Emerson Drive put up a good fight, though: "Moments" finishes with 3,567 plays (4-2) and outpaces Paisley's increase by 24 plays.

Reba McEntire's duet with Kelly Clarkson, titled "Because of You" (MCA Nashville), claims double Most Added honors with 26 reports on the R&R Country panel and 25 on the R&R Country Indicator panel.

— **Wade Jessen/Director of Charts & Operations, Nashville**  
615-321-4291 Email: [wjessen@radioandrecords.com](mailto:wjessen@radioandrecords.com)

©2007 Radio & Records. All Rights Reserved. No part of this material may be reproduced in any form or incorporated in any information retrieval system without written permission of the Publisher.

**TRACY BYRD**  
"BETTER PLACES THAN THIS"

**NEW ADDS THIS WEEK:  
KFD/St. Louis &  
WCOL/Columbus**

BLIND MULE RECORDS CO5

**Tracy Lawrence**  
"Find Out Who Your Friends Are"

**6 R&R and MB**

**#3 on Today's Building Chart**

**Top 5 National Research since January!**

RCR CO5



**MUSICNOTES**

If we asked you whether **Mel Tillis** was a member of the Grand Ole Opry, wouldn't you have automatically said yes? Same here! We never knew Mel wasn't, until we heard he'll be inducted June 9 by his daughter Pam, who is already a member. Mel Tillis has been a member of the Nashville Songwriters International Hall of Fame since 1976.

Look for **Gary Allan** on Oprah this Thursday, May 24. He was originally scheduled to appear a couple weeks ago but got bumped. Allan will discuss depression and its warning signs, something he is very knowledgeable about, given the tragic suicide of his wife in 2006.

At a news conference in Nashville today (May 21), **Collin Raye**, with managers Ken Kragen and Pat Melfi, discussed plans to donate proceeds from Raye's new single "A Soldiers Prayer" to The Wounded Warriors Project. A six-song package will be released featuring Raye's biggest hits, including "That's My Story," on Raye's newly formed label, Starpointe Records. The Wounded Warrior Project assists men and women of the United States armed forces who have been severely in-

**VIDEO ADDS**

**CMT**

**CARMEN RASSMUSSEN** Nothin' Like The Summer

**LEANN RIMES** Nothin' Better To Do

**CMT PURE COUNTRY**

**LEE BRICE** She Ain't Right

**PORTER WAGONER f/MARY STUART AND HIS**

**FABULOUS SUPERLATIVES** Committed To Parkview

**GAC**

**SUGARLAND** Everyday America

**LEE BRICE** She Ain't Right

**LEANN RIMES** Nothin' Better To Do



**promosquad**  
**HitPredictor**

**SONGS WITH HIT POTENTIAL**

	CHART RANK
<b>BILLY CURRINGTON</b> Good Directions (Mercury) (90.7)	1
<b>EMERSON DRIVE</b> Moments (Midas) (81.8)	2
<b>TOBY KEITH</b> High Maintenance Woman (Show Dog Nashville) (78.7)	3
<b>BRAD PAISLEY</b> Ticks (Arista Nashville) (85.1)	4
<b>ALAN JACKSON</b> A Woman's Love (Arista Nashville) (88.4)	5
<b>TRACY LAWRENCE</b> Find Out Who Your... (Rocky Comfort) (88.4)	6
<b>GEORGE STRAIT</b> Wrapped (MCA Nashville) (89.3)	9
<b>MONTGOMERY GENTRY</b> Lucky Man (Columbia) (94.7)	10
<b>BLAKE SHELTON</b> Don't Make Me (Warner Bros.) (87.7)	13
<b>JAKE OWEN</b> Startin' With Me (RCA) (88.2)	14
<b>TIM MCGRAW WITH FAITH HILL</b> I Need You (Curb) (95.4)	17
<b>BUCKY COVINGTON</b> A Different World (Lyric Street) (76.7)	18
<b>RODNEY ATKINS</b> These Are My People (CURB) (75.0)	19
<b>KELLIE PICKLER</b> I Wonder (BNA) (84.8)	20
<b>CRAIG MORGAN</b> Tough (Broken Bow) (88.3)	21
<b>JASON MICHAEL CARROLL</b> Livin' Our ... (Arista Nashville) (88.6)	28
<b>TERRI CLARK</b> Dirty Girl (BNA) (79.9)	30
<b>TRACE ADKINS</b> I Wanna Feel Something (Capitol Nashville) (85.2)	31
<b>CLAY WALKER</b> Fall (Asylum-Curb) (90.3)	32
<b>JACK INGRAM</b> Measure Of A Man (Big Machine) (78.2)	34
<b>MIRANDA LAMBERT</b> Famous In A Small Town (Columbia) (75.7)	36
<b>DUSTY DRAKE</b> Say Yes (Big Machine) (84.0)	37
<b>TRENT TOMLINSON</b> Just Might Have Her ... (Lyric Street) (75.9)	38
<b>GRETCHEN WILSON</b> One Of The Boys (Columbia) (76.6)	39
<b>CARRIE UNDERWOOD</b> I'll Stand By You (Fremantle)/19 (84.9)	43
<b>HALFWAY TO HAZARD</b> Daisy (Mercury) (84.4)	44
<b>VINCE GILL WITH S. CROW</b> What You ... (MCA Nashville) (90.1)	47
<b>CHRIS YOUNG</b> You're Gonna Love Me (RCA) (82.2)	49

Copyright 2007, Think Fast, LLC. For more information and testing methodology, please visit [HitPredictor.com](http://HitPredictor.com) or [Promosquad.com](http://Promosquad.com).

©2007 Radio & Records. All Rights Reserved. No part of this material may be reproduced in any form or incorporated in any information retrieval system without written permission of the Publisher.

**Country Radio's  
Number One  
Countdown**

**More Listeners.  
More Stations.  
Great Ratings.**

**Ad Sales**  
Susan Love  
212.302.1100

**Affiliate Sales**  
Shawn Studer  
817.599.4099 x2238

**JONES MEDIA AMERICA**

**KCCS PRODUCTIONS**

**BOB KINGSLEY'S COUNTRY TOP 40**

LW	TW	ARTIST Title Label(s)	Tot. Aud. (00)	+/- Aud. (00)	Total Plays	+/- Plays	Wks On	Sta On/ Adds TW
1	1	BILLY CURRINGTON Good Directions (Mercury)	363720	+4693	5089	-52	33	127/0
3	2	EMERSON DRIVE Moments (Midas/New Revolution)	330762	+17105	4647	+237	23	127/0
4	3	TOBY KEITH High Maintenance Woman (Show Dog Nashville)	305730	+7573	4342	+93	16	127/0
6	4	BRAD PAISLEY Ticks (Arista Nashville)	298682	+7578	4206	+146	12	127/0
7	5	ALAN JACKSON A Woman's Love (Arista Nashville)	293093	+9959	4305	+165	22	127/0
8	6	TRACY LAWRENCE Find Out Who Your ... (Rocky Comfort/CO5)	292810	+15733	4068	+226	38	126/1
2	7	SUGARLAND Settlin' (Mercury)	254539	-61431	3877	-700	21	126/0
5	8	RASCAL FLATTS Stand (Lyric Street)	253235	-39433	3729	-555	20	126/0
11	9	GEORGE STRAIT Wrapped (MCA Nashville)	248751	+20277	3622	+272	11	126/0
10	10	MONTGOMERY GENTRY Lucky Man (Columbia)	246642	+5055	3434	+135	17	127/0
14	11	KEITH URBAN I Told You So (Capitol Nashville)	204682	+35771	2821	+371	6	126/1
12	12	BIG & RICH Lost In This Moment (Warner Bros./WRN)	204236	+23910	2883	+270	15	127/2
13	13	BLAKE SHELTON Don't Make Me (Warner Bros./WRN)	188159	+7834	2883	+50	30	127/0
15	14	JAKE OWEN Startin' With Me (RCA)	175068	+11182	2725	+176	33	127/0
16	15	JASON ALDEAN Johnny Cash (Broken Bow)	173341	+16719	2610	+143	16	126/2
18	16	TAYLOR SWIFT Teardrops On My Guitar (Big Machine)	156937	+14824	2462	+100	15	125/0
21	17	TIM MCGRAW WITH FAITH HILL I Need You (Curb)	149232	+32310	2226	+460	8	119/9
19	18	BUCKY COVINGTON A Different World (Lyric Street)	145757	+5124	2373	+188	19	121/3
20	19	RODNEY ATKINS These Are My People (Curb)	135407	+11970	2265	+286	11	125/5
22	20	KELLIE PICKLER I Wonder (BNA)	117972	+2994	1818	+82	16	113/2
23	21	CRAIG MORGAN Tough (Broken Bow)	111706	+7987	1860	+212	12	116/9
24	22	ERIC CHURCH Guys Like Me (Capitol Nashville)	104762	+4789	1807	+127	18	111/5
25	23	LITTLE BIG TOWN A Little More You (Equity)	86354	+12257	1549	+228	14	101/7
26	24	LUKE BRYAN All My Friends Say (Capitol Nashville)	68099	+1053	1073	+67	17	77/3
28	25	COLE DEGGS & THE LONESOME I Got More (Columbia)	62916	+6405	1185	+80	18	93/1
29	26	SARAH BUXTON That Kind Of Day (Lyric Street)	61264	+6135	969	+66	16	82/3
27	27	CAROLINA RAIN Isn't She (Equity)	60559	-3171	1005	-20	22	75/1
30	28	JASON MICHAEL CARROLL Livin' Our Love Song (Arista Nashville)	58484	+5185	1098	+94	12	95/4
<b>Breaker</b>	29	MARTINA MCBRIDE How I Feel (RCA)	49269	+13836	749	+236	5	71/16
31	30	TERRI CLARK Dirty Girl (BNA)	47590	-170	819	+49	11	72/3

© 2007 Radio & Records



**“SUNDAY MORNING IN AMERICA”**  
THE 1ST SINGLE FROM THE HIGHLY ANTICIPATED FOLLOW UP TO  
**KEITH ANDERSON'S** GOLD DEBUT ALBUM!

**51 STATIONS ON.**  
★ **10 NEW THIS WEEK. MOST ADDED.** ★

WUSN KEYE KSCS KKBQ KYGO KKWF KSD KBEQ WOGI WSM WKDF  
WQYK WBCT WIL KIZN KNIX KSOP KUBL KSKS KUZZ KATM KTOM  
WDAF KDRK KIXZ WBEE WXBQ WSOC WGKX WNKT WQHK  
WGTK WIVK WMIL WYPY WKCQ WGTY WNCY WNU  
WPCV WCKT WOGK WCTQ...

©2007 BMG MUSIC  
ARISTA  
NASHVILLE  
SONY BMG  
NASHVILLE



LW	TW	ARTIST Title Label(s)	Tot. Aud. (00)	+/- Aud. (00)	Total Plays	+/- Plays	Wks On	Sta On/ Adds TW
32	31	TRACE ADKINS I Wanna Feel Something (Capitol Nashville)	43770	+5819	756	+146	8	59/7
33	32	CLAY WALKER Fall (Asylum-Curb)	41893	+4845	780	+54	9	63/5
34	33	WRECKERS Tennessee (Maverick/Warner Bros./WRN)	37808	+1903	678	+56	12	58/5
<b>Breaker</b>	34	JACK INGRAM Measure Of A Man (Big Machine)	37311	+8695	654	+139	6	60/9
<b>Debut</b>	35	TIM MCGRAW If You're Reading This (Curb)	33678	+33678	214	+214	1	9/9
38	36	MIRANDA LAMBERT Famous In A Small Town (Columbia)	32995	+4777	582	-13	9	51/3
36	37	DUSTY DRAKE Say Yes (Big Machine)	32247	+1495	618	-25	17	57/0
39	38	TRENT TOMLINSON Just Might Have Her Radio On (Lyric Street)	31166	+3981	705	+89	9	70/4
<b>Breaker</b>	39	GRETCHEN WILSON One Of The Boys (Columbia)	28785	+9858	373	+113	4	36/11
40	40	LEE BRICE She Ain't Right (Asylum-Curb)	28553	+4026	678	+44	11	67/4
44	41	JOE NICHOLS Another Side Of You (Universal South)	25587	+8997	402	+93	3	42/6
<b>Debut</b>	42	REBA MCENTIRE W/K. CLARKSON Because Of You (MCA Nashville)	21942	+21942	234	+234	1	27/26
42	43	CARRIE UNDERWOOD I'll Stand By You (Fremantle/19)	20440	+1941	202	+42	4	8/2
43	44	HALFWAY TO HAZARD Daisy (Mercury)	18040	-146	374	+14	8	48/6
<b>Debut</b>	45	SUGARLAND Everyday America (Mercury)	17238	+15761	168	+147	1	25/18
55	46	KEITH ANDERSON Sunday Morning In America (Arista Nashville)	14846	+7157	323	+87	2	43/10
46	47	VINCE GILL W/S. CROW What You Give Away (MCA Nashville)	13538	-147	303	+6	7	44/1
<b>Debut</b>	48	FAITH HILL Lost (Warner Bros./WRN)	11881	+11881	123	+123	1	14/14
51	49	CHRIS YOUNG You're Gonna Love Me (RCA)	11775	+2552	264	+6	8	31/0
49	50	LITTLE TEXAS Missing Years (Montage)	10493	+73	204	+5	10	28/0
52	51	TRAVIS TRITT You Never Take Me Dancing (Category 5)	10199	+1093	81	-1	3	12/6
53	52	VAN ZANT That Scares Me (Columbia)	9546	+471	256	+1	5	32/1
47	53	CATHERINE BRITT What I Did Last Night (RCA)	9224	-4129	180	-128	18	25/0
50	54	JAMIE O'NEAL God Don't Make Mistakes (Capitol Nashville)	8911	-805	205	+10	8	24/1
48	55	FLYNNVILLE TRAIN Last Good Time (Show Dog Nashville)	8901	-1917	247	-10	10	38/0
54	56	SARAH JOHNS The One In The Middle (BNA)	8623	-138	173	+41	3	17/5
57	57	WHISKEY FALLS Last Train Running (Midas/New Revolution)	8475	+1780	301	+87	2	36/8
58	58	DONOVAN CHAPMAN All I Need (Category 5)	7895	+1489	153	+5	7	17/0
<b>Debut</b>	59	MARK WILLS Days Of Thunder (Equity)	6714	+1573	68	+13	1	8/6
56	60	DARRYL WORLEY Living In The Here And Now (903)	6637	-109	100	-22	6	10/0

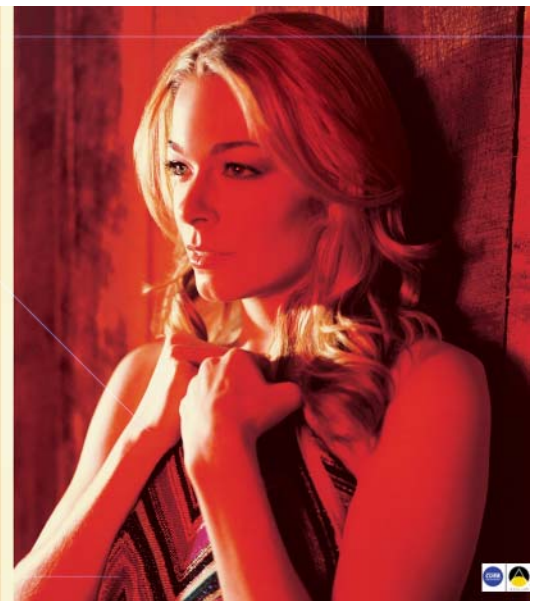
© 2007 Radio & Records

# The *Spark* to Heat Up your Summer.

From Her Brand New Album.... "Family"  
The Brand New Single....

## "Nothin' Better To Do" LeAnn Rimes

Impacting Tuesday May 29th! On Your Desk Now!



**COUNTRY**

**MOST ADDED**

ARTIST Title Label(s)	Adds
REBA MCENTIRE W/K. CLARKSON Because Of You (MCA Nashville)	26
SUGARLAND Everyday America (Mercury)	18
MARTINA MCBRIDE How I Feel (RCA)	16
STEVE HOLY Men Buy The Drinks (Girls Call The Shots) (Curb)	16
FAITH HILL Lost (Warner Bros./WRN)	14
GRETCHEN WILSON One Of The Boys (Columbia)	11
KEITH ANDERSON Sunday Morning In America (Arista Nashville)	10
TIM MCGRAW W/FAITH HILL I Need You (Curb)	9
CRAIG MORGAN Tough (Broken Bow)	9
JACK INGRAM Measure Of A Man (Big Machine)	9
TIM MCGRAW If You're Reading This (Curb)	9

**MOST INCREASED AUDIENCE**

ARTIST Title Label(s)	Total Aud. Increase
KEITH URBAN I Told You So (Capitol Nashville)	+35771
TIM MCGRAW If You're Reading This (Curb)	+33678
TIM MCGRAW WITH FAITH HILL I Need You (Curb)	+32310
BIG & RICH Lost In This Moment (Warner Bros./WRN)	+23910
REBA MCENTIRE W/K. CLARKSON Because Of You (MCA Nashville)	+21942
GEORGE STRAIT Wrapped (MCA Nashville)	+20277
EMERSON DRIVE Moments (Midas/New Revolution)	+17105
JASON ALDEAN Johnny Cash (Broken Bow)	+16719
SUGARLAND Everyday America (Mercury)	+15761
TRACY LAWRENCE Find Out Who Your ... (Rocky Comfort/CO5)	+15733

**MOST INCREASED PLAYS**

ARTIST Title Label(s)	Total Play Increase
TIM MCGRAW WITH FAITH HILL I Need You (Curb)	+460
KEITH URBAN I Told You So (Capitol Nashville)	+371
RODNEY ATKINS These Are My People (Curb)	+286
GEORGE STRAIT Wrapped (MCA Nashville)	+272
BIG & RICH Lost In This Moment (Warner Bros./WRN)	+270
EMERSON DRIVE Moments (Midas/New Revolution)	+237
MARTINA MCBRIDE How I Feel (RCA)	+236
REBA MCENTIRE W/K. CLARKSON Because Of You (MCA Nashville)	+234
LITTLE BIG TOWN A Little More You (Equity)	+228
TRACY LAWRENCE Find Out Who Your ... (Rocky Comfort/CO5)	+226

**COUNTRY INDICATOR**

**MOST ADDED**

ARTIST Title Label(s)	Adds
REBA MCENTIRE W/K. CLARKSON Because Of You (MCA Nashville)	25
SUGARLAND Everyday America (Mercury)	20
FAITH HILL Lost (Warner Bros./WRN)	16
DIERKS BENTLEY Free And Easy (Down The Road I Go) (Capitol Nashville)	13
MARTINA MCBRIDE How I Feel (RCA)	12
GRETCHEN WILSON One Of The Boys (Columbia)	12
TRAVIS TRITT You Never Take Me Dancing (Category 5)	8
WHISKEY FALLS Last Train Running (Midas/New Revolution)	7
JACK INGRAM Measure Of A Man (Big Machine)	6
JOE NICHOLS Another Side Of You (Universal South)	6
CARRIE UNDERWOOD I'll Stand By You (Fremantle/19)	6

**MOST INCREASED AUDIENCE**

ARTIST Title Label(s)	Total Aud. Increase
KEITH URBAN I Told You So (Capitol Nashville)	+7469
TRACY LAWRENCE Find Out Who Your ... (Rocky Comfort/CO5)	+5825
TIM MCGRAW WITH FAITH HILL I Need You (Curb)	+5512
MARTINA MCBRIDE How I Feel (RCA)	+5328
REBA MCENTIRE W/K. CLARKSON Because Of You (MCA Nashville)	+5318
MONTGOMERY GENTRY Lucky Man (Columbia)	+5294
LITTLE BIG TOWN A Little More You (Equity)	+4792
SUGARLAND Everyday America (Mercury)	+4333
BLAKE SHELTON Don't Make Me (Warner Bros./WRN)	+3834
CARRIE UNDERWOOD I'll Stand By You (Fremantle/19)	+3758

**MOST INCREASED PLAYS**

ARTIST Title Label(s)	Total Play Increase
KEITH URBAN I Told You So (Capitol Nashville)	+284
MONTGOMERY GENTRY Lucky Man (Columbia)	+266
MARTINA MCBRIDE How I Feel (RCA)	+254
TRACY LAWRENCE Find Out Who Your ... (Rocky Comfort/CO5)	+237
SUGARLAND Everyday America (Mercury)	+236
REBA MCENTIRE W/K. CLARKSON Because Of You (MCA Nashville)	+231
TIM MCGRAW WITH FAITH HILL I Need You (Curb)	+218
LITTLE BIG TOWN A Little More You (Equity)	+211
BUCKY COVINGTON A Different World (Lyric Street)	+187
GRETCHEN WILSON One Of The Boys (Columbia)	+175

**TOBY KEITH "HIGH MAINTENANCE WOMAN"**

Only 16 weeks YOUNG...  
 3 weeks from street...  
 4 weeks from the Big Dog Daddy tour kick-off...

**It's time for Heavies! CONVERT NOW!**

**R&R 3 CA/MB #3\***

**Top 5 both charts 5 weeks running!**

**Callout America:**

**#4 Adults 35-44**

**#7 Females 35-44**

**#3 Males 35-44**

Testing Heavy in: Minneapolis, Houston, Miami, St. Louis, Boston, Providence, Oklahoma City, Birmingham, Salt Lake City, Bakersfield, Harrisburg, Omaha, Allentown, Wichita... and more!!

Toby salutes our troops with 72 performances during his 5th USO tour... and we salute Toby!

**Have a safe and happy Memorial Day Weekend!**



[www.ShowDogNashville.com](http://www.ShowDogNashville.com)



**COUNTRY NEW & ACTIVE**

- PHIL VASSAR** This Is My Life (*Universal South*)  
Total Audience: 6506, Total Stations: 11, Adds: 7
- LANCE MILLER** She Really Loves Me (*Warner Bros./WRN*)  
Total Audience: 5984, Total Stations: 13, Adds: 1
- KENNY CHESNEY** Flip-Flop Summer (*BNA*)  
Total Audience: 4481, Total Stations: 1, Adds: 0
- RASCAL FLATTS** Backwards (*Lyric Street*)  
Total Audience: 4223, Total Stations: 2, Adds: 0
- RASCAL FLATTS** He Ain't The Leavin' Kind (*Lyric Street*)  
Total Audience: 4193, Total Stations: 1, Adds: 1
- LEANN RIMES** Nothin' Better To Do (*Asylum-Curb*)  
Total Audience: 3661, Total Stations: 2, Adds: 0

**COUNTRY INDICATOR NEW & ACTIVE**

- GRETCHEN WILSON** One Of The Boys (*Columbia*)  
Total Plays: 523, Total Stations: 37, Adds: 12
- JOE NICHOLS** Another Side Of You (*Universal South*)  
Total Plays: 510, Total Stations: 39, Adds: 6
- SUGARLAND** Everyday America (*Mercury*)  
Total Plays: 351, Total Stations: 32, Adds: 20
- HALFWAY TO HAZARD** Daisy (*Mercury*)  
Total Plays: 337, Total Stations: 24, Adds: 0
- JAMIE O'NEAL** God Don't Make Mistakes (*Capitol Nashville*)  
Total Plays: 315, Total Stations: 24, Adds: 0
- WHISKEY FALLS** Last Train Running (*Midas/New Revolution*)  
Total Plays: 278, Total Stations: 25, Adds: 7
- CARRIE UNDERWOOD** I'll Stand By You (*Fremantle/19*)  
Total Plays: 236, Total Stations: 13, Adds: 6
- REBA MCENTIRE W/KELLY CLARKSON** Because Of You (*MCA Nashville*)  
Total Plays: 231, Total Stations: 25, Adds: 25
- DONOVAN CHAPMAN** All I Need (*Category 5*)  
Total Plays: 225, Total Stations: 19, Adds: 1
- LANCE MILLER** She Really Loves Me (*Warner Bros./WRN*)  
Total Plays: 201, Total Stations: 16, Adds: 2

**R&R Going For Adds®**

- 5/29  
**CON HUNLEY** The Keys (*IMMI*)
- LEANN RIMES** Nothin' Better To Do (*Asylum-Curb*)
- MARK WILLS** Days Of Thunder (*Equity*)
- REBA MCENTIRE W/KELLY CLARKSON** Because Of You (*MCA Nashville*)
  
- 6/4  
**AMY DALLEY** Let's Try Goodbye (*Curb*)
- DIERKS BENTLEY** Free And Easy (Down The Road I Go) (*Capitol Nashville*)
  
- 6/11  
**KATIE ARMIGER** 17 In Abilene (*Cold River/Quarterback*)

**TOP 10 RECURRENTS**

ARTIST Title Label(s)	Total Aud. (00)
<b>CARRIE UNDERWOOD</b> Wasted ( <i>Arista/Arista Nashville</i> )	228454
<b>RODNEY ATKINS</b> Watching You ( <i>Curb</i> )	163365
<b>KENNY CHESNEY</b> Beer In Mexico ( <i>BNA</i> )	160353
<b>TIM MCGRAW</b> Last Dollar (Fly Away) ( <i>Curb</i> )	133840
<b>CARRIE UNDERWOOD</b> Before He Cheats ( <i>Arista/Arista Nashville</i> )	129122
<b>TRACE ADKINS</b> Ladies Love Country Boys ( <i>Capitol Nashville</i> )	125749
<b>BRAD PAISLEY</b> She's Everything ( <i>Arista Nashville</i> )	116998
<b>DIERKS BENTLEY</b> Long Trip Alone ( <i>Capitol Nashville</i> )	105263
<b>RODNEY ATKINS</b> If You're Going Through Hell ... ( <i>Curb</i> )	98628
<b>MARTINA MCBRIDE</b> Anyway ( <i>RCA</i> )	96928



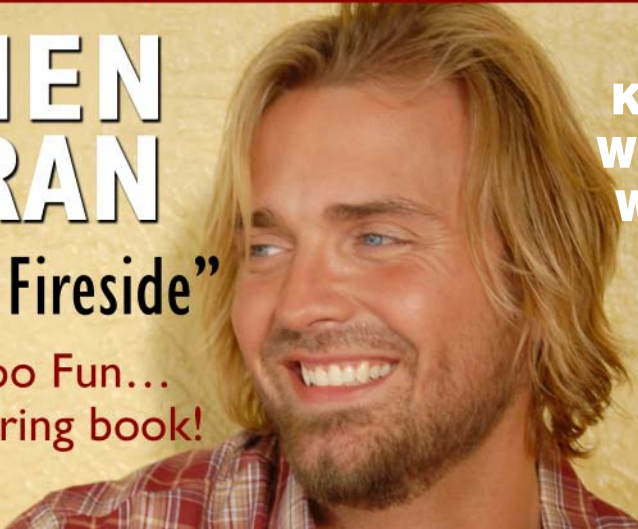
127 Country reporters. Songs ranked by total audience for the airplay week of 5/14-5/20. Bullets appear on songs gaining audience or remaining flat from previous week. A song will also receive a bullet if its percentage loss in audience does not exceed the percentage of monitored station downtime for the format. Country titles that decline in audience but increase in detections will also receive a bullet if the total audience erosion for the week does not exceed 3%. If two songs are tied in total audience, the song with the larger increase in audience is placed first. Descending, non-bulleted titles below No. 10 in either audience or detections are moved to recurrent after 20 weeks. Most Added is the total number of new adds officially reported to R&R by each reporting station or by automatic add thresholds for stations not allowed to report adds. Songs unreported as adds do not count toward overall total stations playing a song. Most Increased Audience lists the songs with the greatest week-to-week increases in total audience. Audience totals on the chart are derived, in part, using certain Arbitron Inc. copyrighted Persons 12+ audience estimates, under license (© 2007, Arbitron Inc.) © 2007 Radio & Records.

**TESTING TESTING TESTING TESTING TESTING**

**STEPHEN COCHRAN**

**"Friday Night Fireside"**

2:51 of Up-Tempo Fun...  
perfect for the spring book!



**Having Fun At:**

- KUBL, WKDF, WFBE,**
- WHKX, KOUL, KKJG,**
- WXFL, WRSF, WYCT,**
- KRRV, KVOX, XM,**
- SIRIUS, WTHI,**
- WTCM, KTOM,**
- WOVK & WGGY**



LW	TW	ARTIST Title Label(s)	Total Plays	+/- Plays	Tot. Aud. (00)	+/- (00)	Wks On	Total Stations
3	1	<b>BRAD PAISLEY</b> Ticks (Arista Nashville)	3584	+83	80660	+2891	11	91/0
4	2	<b>EMERSON DRIVE</b> Moments (Midas/New Revolution)	3567	+107	77065	+2963	20	91/0
2	3	<b>BILLY CURRINGTON</b> Good Directions (Mercury)	3491	-55	73242	-741	27	89/0
6	4	<b>TRACY LAWRENCE</b> Find Out Who Your ... (Rocky Comfort/CO5)	3431	+237	74451	+5825	18	89/0
1	5	<b>TOBY KEITH</b> High Maintenance Woman (Show Dog Nashville)	3384	-170	73144	-3340	16	90/0
5	6	<b>ALAN JACKSON</b> A Woman's Love (Arista Nashville)	3212	-74	69924	-1806	20	87/0
9	7	<b>MONTGOMERY GENTRY</b> Lucky Man (Columbia)	3088	+266	67868	+5294	15	90/0
10	8	<b>GEORGE STRAIT</b> Wrapped (MCA Nashville)	2894	+129	63095	+2694	11	89/0
11	9	<b>BIG &amp; RICH</b> Lost In This Moment (Warner Bros./WRN)	2614	+134	58786	+3519	13	90/0
12	10	<b>BLAKE SHELTON</b> Don't Make Me (Warner Bros./WRN)	2584	+105	60924	+3834	25	90/0
14	11	<b>KEITH URBAN</b> I Told You So (Capitol Nashville)	2394	+284	52580	+7469	5	89/1
15	12	<b>JASON ALDEAN</b> Johnny Cash (Broken Bow)	2236	+141	48159	+3606	14	89/1
16	13	<b>BUCKY COVINGTON</b> A Different World (Lyric Street)	2228	+187	45713	+3216	16	88/3
13	14	<b>TAYLOR SWIFT</b> Teardrops On My Guitar (Big Machine)	2218	+32	47780	+1071	13	89/0
7	15	<b>SUGARLAND</b> Settlin' (Mercury)	2183	-892	43395	-21540	20	70/0
8	16	<b>RASCAL FLATTS</b> Stand (Lyric Street)	2159	-756	43056	-17072	18	69/0
18	17	<b>RODNEY ATKINS</b> These Are My People (Curb)	2045	+106	43976	+1213	9	86/0
20	18	<b>TIM MCGRAW WITH FAITH HILL</b> I Need You (Curb)	2026	+218	42380	+5512	4	88/4
19	19	<b>JAKE OWEN</b> Startin' With Me (RCA)	1985	+55	42053	+2045	21	80/1
21	20	<b>CRAIG MORGAN</b> Tough (Broken Bow)	1768	+71	37797	+1230	9	87/1

© 2007 Radio & Records



## Decals Go Everywhere

Is your marketing effort mobile? It should be. **Print decals today.**








**Call us today!**

(800) 331-4438 [www.cgilink.com](http://www.cgilink.com)

\* When you see this symbol, you know you're buying quality printing DIRECT from the manufacturer.



May 21, 2007

LW	TW	ARTIST Title Label(s)	Total Plays	+/- Plays	Tot. Aud. (00)	+/- (00)	Wks On	Total Stations
22	<b>21</b>	ERIC CHURCH Guys Like Me (Capitol Nashville)	1766	+93	38870	+3626	16	80/4
23	<b>22</b>	KELLIE PICKLER I Wonder (BNA)	1576	+79	32942	+1702	10	76/0
24	<b>23</b>	LITTLE BIG TOWN A Little More You (Equity)	1474	+211	31214	+4792	11	71/2
17	24	CARRIE UNDERWOOD Wasted (Arista/Arista Nashville)	1407	-554	27678	-11090	20	62/0
27	<b>25</b>	TRACE ADKINS I Wanna Feel Something (Capitol Nashville)	1078	+159	21420	+3545	6	67/5
26	<b>26</b>	LUKE BRYAN All My Friends Say (Capitol Nashville)	1066	+133	21153	+2162	8	63/5
25	<b>27</b>	SARAH BUXTON That Kind Of Day (Lyric Street)	995	+8	20972	+242	12	58/1
37	<b>28</b>	MARTINA MCBRIDE How I Feel (RCA)	966	+254	20392	+5328	3	63/12
29	<b>29</b>	COLE DEGGS & THE LONESOME I Got More (Columbia)	893	+50	18540	+1061	16	52/1
33	<b>30</b>	CLAY WALKER Fall (Asylum-Curb)	838	+54	16966	+1257	4	61/4
34	<b>31</b>	TERRI CLARK Dirty Girl (BNA)	822	+60	18425	+1571	7	53/1
32	<b>32</b>	TRENT TOMLINSON Just Might Have Her Radio On (Lyric Street)	817	+22	16655	+617	5	57/2
39	<b>33</b>	JACK INGRAM Measure Of A Man (Big Machine)	778	+90	16229	+1714	2	55/6
31	34	DUSTY DRAKE Say Yes (Big Machine)	776	-27	16945	+141	14	53/2
28	35	KENNY CHESNEY Beer In Mexico (BNA)	766	-141	17370	-3043	20	46/0
36	<b>36</b>	WRECKERS Tennessee (Maverick/Warner Bros./WRN)	762	+41	14421	+1239	8	52/1
38	<b>37</b>	JASON MICHAEL CARROLL Livin' Our Love Song (Arista Nashville)746	746	+41	15832	+1125	6	52/0
35	38	CAROLINA RAIN Isn't She (Equity)	743	-10	13931	-176	7	42/1
30	39	TIM MCGRAW Last Dollar (Fly Away) (Curb)	642	-187	14508	-5146	20	42/0
	<b>Debut</b>	<b>40</b> MIRANDA LAMBERT Famous In A Small Town (Columbia)	544	+37	13350	+1587	1	39/4

© 2007 Radio &amp; Records

# Powergold®

The Leaders in Advanced Music Scheduling Software for Windows 98/ME/NT/2000/XP

"Powergold offers us limitless options with scheduling criteria and has integrated with all our other systems seamlessly. The reliability, customer service, and support that the folks at Powergold have provided us have been exactly what any customer could ask for."

Dan Turner, Vice President  
Programming Services



Call us and we'll make it **EASY** for you to switch.

Sales: 1-800-870-0033 • Support: 501-821-1123

Download a free trial version at [www.powergold.com](http://www.powergold.com)  
info@powergold.com



May 21, 2007

Table with 8 columns: ARTIST Title (Label), PASSION, TOTAL POSITIVE, INDEX, NEUTRAL, FAMILIARITY, DISLIKE, STRONGLY DISLIKE. Lists artists like SUGARLAND, BILLY CURRINGTON, MONTGOMERY GENTRY, etc.

Total sample size is 400 persons weekly with a margin of error of plus or minus 5%. Scoring is done each week using live interviewers conducting an interview with each respondent. Scores are: 5) I like it a lot, in fact it's one of my favorites; 4) I like it; 3) It's OK, just so-so; 2) I don't like it; 1) I strongly dislike it.

© 2007 Radio & Records All Rights Reserved No part of this material may be reproduced in any form or incorporated in any information retrieval system without written permission of the Publisher.

THE INDUSTRY'S #1 NEWS SITE!

Format News: 13 Formats Covered

R&R HEADLINE Updated: March 20 Industry At A Glance

SEARCH R&R NEWS GO News Search: Search By Key Phrase/Word