

From the Lips of Tony Soprano in the Season Premier, to Your Ears: **47-44** Already on: WQYK, KSON, WUBE, KZLA, KNIX, WIVK... & 23 more!



## KPLX, WKLB, WWYZ Lead Charge For St. Jude

This week's roundup of Country Cares efforts totals well over \$3 million, with several new records being set. Here's a look at the latest fund drives, or rides, as the case may be:

- KPLX/Dallas concluded its Hunt for a Cure effort last week to the tune of \$1,012,004 benefiting St. Jude Children's Research Hospital, with more than \$250,000 raised in the final two hours alone. Online donations exceeded \$65,000, a new St. Jude record.
- WKLB/Boston's 11th annual Country Cares for St. Jude Kids radiothon raised \$951,761 last week, a 39% increase over last year's \$682,000.
- WWYZ/Hartford collected a record \$926,089 for St. Jude Children's Research Hospital during its 14th annual Quest for the Cure radiothon last week. **Danielle Peck, Jason Aldean, Trent Tomlinson and Scotty Emerick** performed at the Concert 4 Kids guitar pull that opens the annual fund drive.
- WBYT/South Bend, IN recently staged its Country Cares for St. Jude Kids radiothon, bringing in \$197,486.
- WACO/Waco, TX held its St. Jude Radiothon last week, raising \$163,485 during the two-day event.
- WKSJ/Mobile, AL held its first Saddle Up for St. Jude trail ride over the weekend, drawing approximately \$10,000 for St. Jude Children's Research Hospital. **Steve Holy** will participate in the station's upcoming rodeo, also benefiting St. Jude.

## Berry To Columbia SW

CO5/Nashville West Coast regional **David "Bubba" Berry** is moving to Columbia as Southwest Regional, effective March 17. Prior to joining CO5 with the opening of its Nashville division in September of last year, Berry worked at RCA/Nashville Equity Music Group, Atlantic/Nashville, Giant-Reprise/Nashville and Giant/Nashville, in addition to KSCS/Dallas, where he was Promotions Director. Berry, who will remain in Dallas, replaces the exiting **Mark Janese**, a 15-year Sony veteran, who can be reached at 214-763-7816 or [musicho@aol.com](mailto:musicho@aol.com). Meanwhile, CO5's **David Newmark** is on the hunt for a new West Coast rep. Reach him at 615-469-1756 or [factor@co5music.com](mailto:factor@co5music.com).

## Raleigh To Focus As Consultant

**Bob Raleigh** has resigned as Programmer/Consultant with Jones Radio Networks to focus on his consulting firm, Raleigh Media Group. Raleigh joined JRN in February of last year, serving as PD for the syndicated *Lia Show* and *Bill Cody Classic Country Weekend* and overseeing Jones' Pure Country, Mainstream Country Expanded and Classic Hits formats. Prior to his stint at JRN, Raleigh was PD at Cumulus' WDEN/Macon, GA following six years as the company's Corporate Format Dir./Country.

## Five Country Crystal Award Nominees

Five Country stations are among the 50 finalists for the NAB's 2006 Crystal Radio Awards, which recognize stations for outstanding year-round commitment

If you experienced transmission problems ... please call our Circulation Department at 310-788-1625.

© 2006 Radio & Records. All Rights Reserved. No part of this material may be reproduced in any form or incorporated in any information retrieval system without written permission of the Publisher.

**RYAN SHUPE & THE RUBBERBAND**

# BANJO BOY

ON YOUR DESK NOW

ADD DATE  
3/20

CATCH THE NEW VIDEO ON CMT AND GAC

[www.capitolnashville.com](http://www.capitolnashville.com)  
[www.shupe.net](http://www.shupe.net)

On your desk now...  
**Impacting Radio**  
**March 20<sup>th</sup>**



**POVERTY NECK  
 HILLBILLIES**

**"The Hillbilly Way"**

David Berry-Promo Exec. (West)  
 3560 Alma Rd #1414  
 Richardson, TX 75080  
 972.234.5271 (office)  
 214.695.9777 (cell)  
 bubba@co5music.com

Darlene Starr-Promo Exec. (Midwest/TX)  
 2301 Sparrow Drive  
 Manchaca, TX 78652  
 512.291.0009 (office)  
 214.906.8514 (cell)  
 darlene@co5music.com

David Newmark-Promo Exec. (National/NE)  
 320 Old Hickory Blvd.#2507  
 Nashville, TN 37221  
 615.469.1756 (office)  
 214.734.7200 (cell)  
 factor@co5music.com

Trudie Richardson-Promo Exec. (SE)  
 123 Green Tree Drive  
 Newnan, GA 30265  
 770.253.1784 (office)  
 770.843.2858 (cell)  
 trudie@co5music.com

*"Poverty Neck Hillbillies generate passion wherever they go. They sell tons of CDs and merchandise, put on a great live show, and make records that test well with country listeners!" – Frank Bell, VP Programming, WOGL Froggy-Pittsburgh*

*"Rarely has a band come along and fed my appetite more like the PNH. The music is solid and real, and the live performance leaves patrons fighting to get to the front of the stage. From a live show to a good listen... this group is solid."  
 – Dave Steele, Program Director, WQXK K105-Youngstown, OH*

*"The Poverty Neck Hillbillies are a great addition to the country format. I can't wait to see one of their live shows. They have a very fresh sound, unlike anything else in country music."  
 "Big Mike" Music Director, WTVY-Dothan, AL*



1305 W. 80th St, Cleveland, OH 44102 | 216.631.2970  
 Pam Campoletti 216.631.3070 | fax: 216.631.2975  
 Ed Mascolo 615.369.0326



to community service. They are WQMX/Akron; KVET/Austin; KUZZ/Bakersfield; WIVK/Knoxville; and WTUZ/Urichsville, OH. Winners will be announced on April 25 during NAB2006 in Las Vegas.

### Lewis Helms CC/New Orleans

Clear Channel RVP **Dick Lewis** has relocated his base of operations from Baton Rouge to New Orleans, replacing **Muriel Funches** as CC/New Orleans Market Manager. Lewis now oversees the seven-station cluster, which includes Country WNOE. He will continue to oversee operations in CC's Biloxi, MS and Baton Rouge, Alexandria and Shreveport, LA markets.

### Rhattigan Taps Browning In Texas

**Susan Browning** has been named GM at Rhattigan Broadcasting's Plainview, TX stations, including Country KKYN. Most recently, Browning supervised the sales and retail operations at Cox's Plainview, TX cluster. She begins her new duties April 1, replacing Sam Stevens, who exits.

### CC's Hughes Moves South To WSIX

WKCY/Harrisonburg, VA PD/afternoon jock **Dennis Hughes** has been hired for middays at Clear Channel sister WSIX/Nashville. Hughes, who will work on-air as "Newman," will also serve as CC VP/Country Programming **Clay Hunnicutt**'s assistant. He fills the air slot most recently voicetracked by **Billy Greenwood**, who now serves as PD at KSD/St. Louis.

Hughes spent the last three years with WKCY, and he started his new gig in Nashville yesterday. WKCY OM **Steve Knupp** is on the hunt for his next PD. Send T&Rs to WKCY PD Search, Clear Channel Radio, 207 University Blvd., Harrisonburg, VA 22801.

### Helton To Katapult

**Brad Helton** has joined Katapult Records as Manager/Regional Promotions and will be working the Northeast. Most recently, Helton served as Northeast Regional for Equity Music Group. He can be reached at 615-400-3269.

### This Week At Callout America

Our weekly analysis of Country callout research is brought to you by Bullseye President John Hart. Here's a look at some of the biggest stories Hart looks at in next week's issue.

"Josh Turner's 'Your Man' remains the No. 1 song overall for the week and repeats as the No. 1 Passion song. Brad Paisley moves into the No. 3 slot from No. 4, with 'When I Get Where I'm Going.' Montgomery Gentry are new to the top five, with 'She Don't Tell Me To' ranking No. 4, up from No. 6. Keith Urban is kicking in, with 'Tonight I Wanna Cry' at No. 7 overall, up from No. 10. Toby Keith moves strong inside the top 10 to rank No. 8 overall, up from No. 15. Gary Allan's 'Life Ain't Always Beautiful' is the No. 17 song overall, up from No. 21 last week and No. 23 two weeks back. Leann Rimes' 'Something's Gotta Give' ranks No. 18 overall, up strong from No. 24 last week."

### Radio News

**Personalities:** **Jay Butler** has been named host of *Jay Butler's Saturday Night Request Show* on WCMC/Raleigh.

**Format:** Univision's Classic Country KKRQ/Albuquerque flipped to Spanish Oldies (Recuerdos) at 5pm local time Sunday.

**Promotions:** **Christa LeeVan** has joined WBYT/South Bend, IN as Promotions Director, replacing **Cinda White**, who is moving on to become statewide coordinator for St. Jude Children's Research Hospital.

### Set Your Own Agenda

CRB is looking for applicants for the CRS-38 Agenda Committee. Download the application form at [www.crb.org](http://www.crb.org). Direct your questions to Agenda Chair and KFKF/Kansas City Promotion Director **Renee Fonner** at [reneef@kfkf.com](mailto:reneef@kfkf.com). The deadline is April 1.

*If you experienced transmission problems ... please call our Circulation Department at 310-788-1625.*

© 2006 Radio & Records. All Rights Reserved. No part of this material may be reproduced in any form or incorporated in any information retrieval system without written permission of the Publisher.

# How About A Good, Swift Kick In The Ass?

"It Was an Absolutely Finger Lickin'  
Grits and Chicken  
Country Music Love Song"

**BOMSHEL**

**Just Got Bombed**  
WAMZ KBEQ WKKT WXBQ WBCT WIVK  
KSXS WIRK KTOM WRNS WCKT KSOP  
KUBL WQBE KFTX KATM KIXZ

**4th Most Added**



**CURB**  
RECORDS  
[curb.com](http://curb.com)

## Colorado Broadcasters Honor KKCS

KKCS/Colorado Springs was the big major-market winner at this weekend's Colorado Broadcasters Association Awards of Excellence event. Named 2005 Major-Market Radio Station of the Year, KKCS also won in the Best On-Air Contest, Best Sales Event/Remote Broadcast and Best Radio Sales Promotion categories.

The *Mark, Sam and Craig* morning show won in the Best Morning Show and Best Station Entertainment Personality fields. And the station earned a second-place showing in the Best Community Service Campaign slot for its work on behalf of St. Jude Children's Research Hospital. Kudos to PD **Cody Carlson** and the whole KKCS team.

## Craig Morgan Holds 'Em Captive

It's said the hallmark of an entertainer is the ability to hold an audience in the palm of their hand — to truly captivate. Last night at the first show in WGNE/Jacksonville's spring concert series, **Craig Morgan** took things to a whole new level. Two fights broke as a handful of the 12,000 fans at the venue had too much to drink.

As PD **Jeff Davis** tells it, Morgan stopped his set when the first fight broke out, telling the offenders, "Hey, I didn't come to Jacksonville for you all to fight." The next altercation, however, broke out in front of the stage near two small girls who were sitting in the front row. Seeing the potential for injury at a family-friendly show, Morgan stepped up with one foot on the stage and one on the barricade.

"He grabbed this big old boy by the back of his neck," Davis says. "Words were exchanged. Something to the effect of, 'You don't want me to come off this stage.'" Security rushed in at that point and the two brawlers were escorted from the building and are now under a two-year restraining order from the venue.

## Record News

**Penny Lazo** has joined Big Machine as National Dir./Sales & Marketing. Most recently, Lazo served as Universal

Music & Video Distribution's Divisional Country Marketing Manager, based in Dallas.

## Music News

Kudos to Arista and the RCA Label Group on tallying 107,000 first-week sales for **Alan Jackson's** *Precious Memories*.

Open Wide/Columbia/Sony BMG will release **The Dixie Chicks' Taking the Long Way** on May 23. The 14-track album was produced by **Rick Rubin**, with the Chicks receiving writing credit on all cuts.

Midas/Nashville has officially signed **Michelle René**, winner of the 24th annual Colgate Country Showdown recently held in Nashville. The recording contract was part of Rene's grand prize, which also included \$100,000. Her first single, "Kick It up a Notch," is expected in May.

RCA will release *Grand Ole Opry at Carnegie Hall*, a live concert DVD of the Nov. 14, 2005 Opry show in New York, on April 11.

Big Machine is releasing a digital-only version of **Danielle Peck's** self-titled debut album today. The album hits stores on June 6.

The RIAA has issued gold certification for **Little Big Town's** *The Road to Here*.

## Industry News

The CMA and NYC Big Events have been honored by the Promotion Marketing Association with two Reggie Awards for the "Country Takes NYC" marketing campaign for last year's CMA Awards. The campaign received a Silver Reggie Award for Local, Target, Regional Consumer Promotion — Under \$1 Million and a Bronze for Event Marketing.

Jody Williams Music Catalog Manager **Driver Williams** has been promoted to Creative Director. Also, the company has moved to 24 Music Square West, Nashville, TN 37203, with the

*If you experienced transmission problems ... please call our Circulation Department at 310-788-1625.*

© 2006 Radio & Records. All Rights Reserved. No part of this material may be reproduced in any form or incorporated in any information retrieval system without written permission of the Publisher.

**Performed last week on Regis & Kelly!**

**GRETCHEN WILSON**  
**"POLITICALLY UNCORRECT"**

**Most Added 5 Weeks In A Row!**

**R&R: 34 - 29 +137 spins, +387 points**

**BB: 32\* - 29\* +193 spins, +1.19 mil. in audience**

**New: KRTY, WROO, KUPL, WWYZ, WYGY,  
 WBBS, WKSJ, WDXB, WEZL, WBUL**

**Listeners are responding! Top 10 requests at Jones US Country  
 and CD Country 4 weeks in a row! Instant phones at WESC!**

**This song absolutely connects with every core value that made this format and this Country great!**



Sony Music  
NASHVILLE

EPIC

mailing address P.O. Box 128047, Nashville, TN 37212. Phones remain the same.

### Life Notes

Congrats to WKHX/Atlanta afternoon personality **Cadillac Jack** and his wife, ABC/Atlanta Account Executive **Donna Choate**, on Friday's birth of daughter **Charlotte Anne**.

Congrats to **SheDaisy's Kelsi Osborn**, who is expecting twins.

### Chronicle

Our condolences to CBS Radio VP/Country and KILT/Houston OM **Jeff Garrison** and family on Friday's passing of his father, **Bob Garrison**. Services were held this morning in South Carolina.

### The Week's News In Review

Here are some of the major stories that have appeared recently in **R&R Country Daily**. Subscribe to **RRC**D by visiting our website, [www.radioandrecords.com](http://www.radioandrecords.com), and clicking "About Us" and "How to Subscribe."

**RRC**D, **March 7**: Promotion vet **Bryan Switzer** is hired as Dir./Affiliate Relations for ABC Radio Networks' *American Country Countdown*, hosted by **Kix Brooks**.

**Phil Redo** joins Greater Media/Boston as Market Manager, with oversight responsibilities for five stations, including Country WKLB. He starts in early April.

KXKS/Shreveport, LA evening air talent **Chris Evans** is named PD. Evans, who has been with the station since its 2001 launch, fills the vacancy left by **Ragen King**.

**Cody Sage**, former afternoon personality at recently silenced KRPO/Santa Rosa, CA, can be reached at 707-235-5794 or [codysageq105@hotmail.com](mailto:codysageq105@hotmail.com).

**RRC**D, **March 8**: The New York Attorney General's office filed suit against Entercom, alleging the radio company traded airplay for trips, gifts, promotional items and other consideration. An Entercom spokesperson responded to the complaint by saying, "We have

cooperated fully with the Attorney General's office, and we are confident that the issues will be fully and fairly resolved by the court."

A significant portion of the allegations center on Entercom's Country WBEE/Rochester, NY — specifically, e-mails between Universal South promotion staffers indicate the label's purchase of a \$2,500 laptop computer for WBEE in return for adds or airplay on behalf of "Joe [Nichols] and McHayes."

Another e-mail, also ostensibly between Universal South staffers, dated 2003, identifies "worst culprits" by noting consideration of \$2,700 to WGGY/Wilkes Barre for "Joe, McHayes" and "Pat," as well as a \$1,500 entry to WCTO/Allentown for McHayes and "Joe conversion."

Elsewhere in the exhibit is a document containing an entry for \$975 to CHR/Pop WKSE/Buffalo from RCA/Nashville for "car winner KISS shirts" on behalf of Martina McBride on Nov. 9, 2004. Island Def Jam is referenced in another document recording a sum of \$750 to WKSE on behalf of Shania Twain on Dec. 11, 2002. Calls for comment made to Universal South, RCA Label Group and Universal Music Group were not returned.

The 28-page complaint and 67 pages of exhibits can be accessed at [www.oag.state.ny.us/press/2006/mar/mar08a\\_06.html](http://www.oag.state.ny.us/press/2006/mar/mar08a_06.html).

**Brad Paisley** leads nominees for the 41st annual ACM Awards, with six. Visit [www.acmcountry.com](http://www.acmcountry.com) for the full list, including off-camera award nominees in several radio categories.

**RRC**D, **March 9**: **Kenny Chesney** is taking his live show to stadiums this summer, beginning July 16 at Boston's Gillette Field. **Dierks Bentley**, **Gretchen Wilson**, **Big & Rich** and **Carrie Underwood** are also on the bill. In addition, Chesney is planning eight more stadium shows,

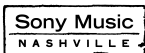
*If you experienced transmission problems ... please call our Circulation Department at 310-788-1625.*

© 2006 Radio & Records. All Rights Reserved. No part of this material may be reproduced in any form or incorporated in any information retrieval system without written permission of the Publisher.

We're writing this from somewhere in the Middle East on a USO Tour of some bases seeing our brave soldiers fighting the War On Terror when we got the news about our latest Top 5 "SHE DON'T TELL ME TO" so all we can say is THANK YOU COUNTRY RADIO! Appreciate ya'll & God Bless - we'll be home & on the road to see ya'll soon!

- Much Love, Eddie & T-Roy!

**MONTGOMERY GENTRY**





including Nashville, Seattle, Detroit, Tampa, Dallas, Chicago, Columbus and Los Angeles.

**RRCD, March 10:** WWGR/Ft. Myers morning air personality **"Gator Greg" Michaels** is leaving the station to form his own production company. PD **Mark Phillips** is moving from middays to join co-host **Valleri St. John** in mornings, with evening jock **Scott Fish** sliding down to Phillips' old shift. As for the evening slot, Phillips has part-timers covering, but is open to suggestions. Send T&Rs to him at [markphillips1019@aol.com](mailto:markphillips1019@aol.com).

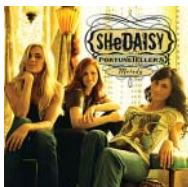
Capitol/Nashville Administrative Coordinator **Brad Clark** is promoted to Sales Operations Manager. Clark will report to VP/Sales **Bill Kennedy**, assisting him with retail and digital account support and sales report distribution.

The RIAA has issued digital gold certification for **Joe Nichols'** "Tequila Makes Her Clothes Fall Off," signifying 100,000 paid downloads.

**CD GALLERY**

Here are the releases new in stores today:

**SheDaisy Fortuneteller's Melody** (Lyric Street)



The trio's fourth release was produced by John Shanks (Sheryl Crow, Bon Jovi, Kelly Clarkson). Kristyn Osborn co-wrote 11 of the album's 12 songs, including two co-writes with Crow. Titles include "23 Days," "God Bless the American Housewife," "Burn Down the House" and "She Gets What She Deserves."

**Dates & Deadlines**

**April 10:** 2006 CMT Music Awards. Details at [www.cmt.com](http://www.cmt.com).

**March 28-April 1:** 14th annual Tin Pan South Songwriters Festival, Nashville. Details at [www.tinpansouth.com](http://www.tinpansouth.com).

**May 22:** CRB Las Vegas. Details at [www.crb.org](http://www.crb.org).

**May 23:** 41st annual ACM Awards, Las Vegas. Details at [www.acmcountry.com](http://www.acmcountry.com).

**June 8-11:** CMA Music Festival, Nashville. Details at [www.cmafest.com](http://www.cmafest.com).

**Sept 20-22:** R&R Convention, Dallas. Details at [www.radioandrecords.com](http://www.radioandrecords.com).

**John Rich Underneath the Same Moon** (BNA/Legacy)



The previously unreleased solo album from John Rich's short-lived tenure at BNA contains the original version of "I Pray for You," which is also on the current Big & Rich album. Five Rich co-writes with Big Kenny are featured, including titles "Old Blue Mountain," "I Love You Like That" and "Someday."

— **Lon Helton/Country Editor** (615) 244-8822  
Email: [lhelton@radioandrecords.com](mailto:lhelton@radioandrecords.com)

— **Chuck Aly/R&R Asst. Country Editor** 615-244-8822  
Email: [caly@radioandrecords.com](mailto:caly@radioandrecords.com)

*If you experienced transmission problems ... please call our Circulation Department at 310-788-1625.*

© 2006 Radio & Records. All Rights Reserved. No part of this material may be reproduced in any form or incorporated in any information retrieval system without written permission of the Publisher.

**Top 15! Thank You VERY MUCH Country Radio! - JVZ + DVZ!**



**"NOBODY GONNA TELL ME WHAT TO DO"**

**The Columbia Hit**

**R&R: 15**

**25+ spinners:**

- WBEE 33 WCAT 26 WDSY 30 WIOV 25 WOGI 56 WQMX 30 WSLC 30
- WGNE 28 WIRK 32 WKCN 28 WKXC 35 WQBE 30 WRNS 26 WROO 25
- WXBQ 30 KCCY 27 KKCS 26 KXKT 31 KYGO 25 WUSJ 29 WYPY 26
- KBKO 28 KFRG 25 KIIM 37 KJUG 36 KNIX 32 KRTY 36 KTOM 31
- KUPL 26 KUZZ 30 KZLA 28 WFBE 30 WGKX 26 WITL 28 WKDF 25
- WLXX 28 WMIL 25 WMUS 25 WNCY 25 WYGY 28!

**From The So-Close-To-Gold-We-Can-Taste-It  
Columbia Debut CD GET RIGHT WITH THE MAN**



## MUSIC NOTES

↪ **Rascal Flatts** are featured on three consecutive *Country Weekly* covers, beginning with the current issue, dated March 27. The band's **Gary LeVox** is the subject of a profile in the first issue, with **Jay DeMarcus** featured April 10 and **Joe Don Rooney** the focus for April 24.

↪ George Dickel Tennessee Whisky is sponsoring **Darryl Worley's** tour through 2007. The Darryl & Dickel tour has its roots in Worley's performance at the distillery's reopening two years ago. More than 80 dates are expected.

↪ Category 5's national billboard campaign for **Travis Tritt**, which kicked off in Nashville during CRS, will roll through markets including Atlanta, New York, Los Angeles and Dallas through summer.

↪ **Tim McGraw** is stepping in for **Sheryl Crow** to headline the 18th annual Bob Costas Benefit for SSM Cardinal Glennon Children's Medical Center show in St. Louis on April 1. Crow recently cancelled her spring tour following surgery for breast cancer.

↪ **Toby Keith** has created Operation: New Recruit on his website to enlist fans in spreading the word about the April 11 release of *White Trash With Money*. Prizes, including VIP flyaways to a tour stop, are awarded to fans who drum up the most new recruits. Details at [www.tobykeith.com](http://www.tobykeith.com).

## VIDEO ADDS

### CMT

**CARRIE UNDERWOOD** Don't Forget To Remember  
**DIERKS BENTLEY** Settle For A Slowdown  
**GARY ALLAN** Life Ain't Always Beautiful (Live)  
**TRENT WILLMON** On Again Tonight

### GREAT AMERICAN COUNTRY

**REBA MCENTIRE** Love Needs A Holiday  
**ASHLEY MONROE** Satisfied  
**TRENT WILLMON** On Again Tonight

## RANDOM FAX®

### Tuesday, 3/14

**BIRTHDAYS:** Michael Martin Murphy, Jerry Jeff Walker, Sam Cerami ([samcerami@msn.com](mailto:samcerami@msn.com))

**On TV:** USA: *Big & Rich*, *Wynonna*, *Cowboy Troy*, *Nashville Star*.

### Wednesday, 3/15

**BIRTHDAYS:** **Teddi Bonadies** ([teddi.bonadies@sonybm.com](mailto:teddi.bonadies@sonybm.com)), **Mike Dungan** ([mike.dungan@emicap.com](mailto:mike.dungan@emicap.com)), **Carl Smith**, **Mike Wilson** ([mike.wilson@sonybm.com](mailto:mike.wilson@sonybm.com)), **Rondal Richardson** ([rondal@wynonna.com](mailto:rondal@wynonna.com)), **Shar'n Clark**, ([shakem8@bellsouth.net](mailto:shakem8@bellsouth.net))

### Thursday, 3/16

**BIRTHDAYS:** Allison Smith

**On TV:** MSNBC: *Cowboy Troy*, *Imus in the Morning*.

### Friday, 3/17

**BIRTHDAYS:** Paul Overstreet

**On TV:** CBS: *Big & Rich*, *The Late Late Show With Craig Ferguson*; NBC: *Big & Rich*, *Today*.

### Saturday, 3/18

**BIRTHDAYS:** Charley Pride, John Huie, Lisa Austin

**On TV:** GAC: *Lorrie Morgan* (host), *Carrie Underwood*, *Lee Ann Womack*, *Danielle Peck*, *Grand Ole Opry Live!*

### Sunday, 3/19

**BIRTHDAYS:** Bob Kingsley, Nathan Cruise

Monday, 3/20

**BIRTHDAYS:** "Ranger" Doug Green, Jerry Reed, Rob Dalton, Ben Kline ([ben.kline@umusic.com](mailto:ben.kline@umusic.com))

**On TV:** CBS: *Big & Rich*, *The Late Late Show With Craig Ferguson*.

*If you experienced transmission problems ... please call our Circulation Department at 310-788-1625.*

© 2006 Radio & Records. All Rights Reserved. No part of this material may be reproduced in any form or incorporated in any information retrieval system without written permission of the Publisher.

**Emerson Drive**

*"A Good Man"*

**Airplay Now!**

**One of this week's MOST ADDED!**  
 Already On: KATM, KBKO, KBQI, KDRK, KIXZ, KQFC, KSKS, KSOP, KTOM, KUBL, WGAR, WGNE, WOKQ, WQM, WWGR, WWQM.

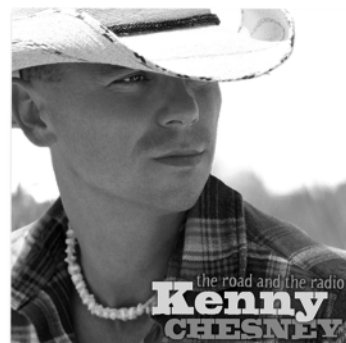
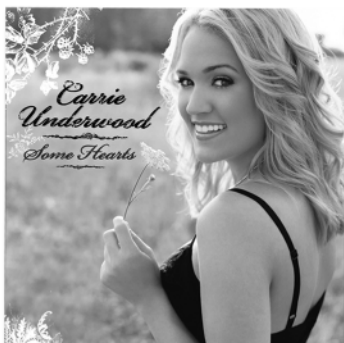
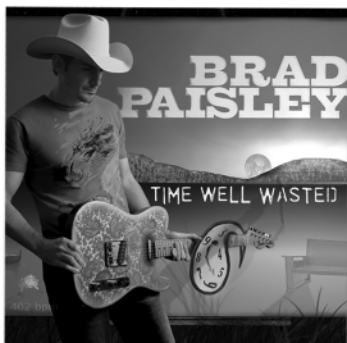
MIDAS RECORDS

| LW | TW        | ARTIST Title Label(s)   | Total Points | +/- Points | Total Plays | +/- Plays | Tot. Aud. (00) | +/- Aud. (00) | Wks On | Total Station |
|----|-----------|---|--------------|------------|-------------|-----------|----------------|---------------|--------|---------------|
| 2  | <b>1</b>  | <b>KENNY CHESNEY</b> Living In Fast Forward (BNA)                     | 13278        | 277        | 4604        | +132      | 408062         | 8497          | 15     | 120/0         |
| 3  | <b>2</b>  | <b>RASCAL FLATTS</b> What Hurts The Most (Lyric Street)               | 12869        | 342        | 4408        | +114      | 394613         | 8412          | 10     | 120/0         |
| 1  | 3         | <b>JOSH TURNER</b> Your Man (MCA)                                     | 12795        | -659       | 4498        | -208      | 388211         | -20181        | 32     | 119/0         |
| 4  | <b>4</b>  | <b>KEITH URBAN</b> Tonight I Wanna Cry (Capitol)                      | 12759        | 344        | 4396        | +125      | 389454         | 8314          | 15     | 119/0         |
| 6  | <b>5</b>  | <b>MONTGOMERY GENTRY</b> She Don't Tell Me To (Columbia)              | 11032        | 319        | 3914        | +124      | 329603         | 9290          | 19     | 119/0         |
| 8  | <b>6</b>  | <b>TOBY KEITH</b> Get Drunk And ... (Show Dog Nashville/Universal)    | 10115        | 975        | 3417        | +281      | 290303         | 18552         | 11     | 119/0         |
| 7  | <b>7</b>  | <b>BLAKE SHELTON</b> Nobody But Me (Warner Bros.)                     | 10045        | 711        | 3550        | +203      | 308188         | 23981         | 27     | 120/0         |
| 10 | <b>8</b>  | <b>BON JOVI W/J. NETTLES</b> Who Says You Can't ... (Island/IDJMG)    | 10006        | 1284       | 3305        | +424      | 310432         | 41068         | 14     | 116/1         |
| 9  | <b>9</b>  | <b>SARA EVANS</b> Cheatin' (RCA)                                      | 9336         | 542        | 3302        | +183      | 284696         | 19564         | 18     | 119/0         |
| 11 | <b>10</b> | <b>BROOKS &amp; DUNN</b> Believe (Arista)                             | 9075         | 403        | 3229        | +119      | 275151         | 15533         | 19     | 119/0         |
| 15 | <b>11</b> | <b>JACK INGRAM</b> Wherever You Are (Big Machine)                     | 7001         | 621        | 2317        | +211      | 196943         | 23527         | 17     | 120/1         |
| 13 | 12        | <b>JAMEY JOHNSON</b> The Dollar (BNA)                                 | 6899         | -410       | 2433        | -113      | 192756         | -12252        | 26     | 116/0         |
| 17 | <b>13</b> | <b>JASON ALDEAN</b> Why (BBR)   | 6491         | 507        | 2327        | +168      | 175309         | 18183         | 15     | 115/0         |
| 18 | <b>14</b> | <b>TRENT TOMLINSON</b> Drunker Than Me (Lyric Street)                 | 6339         | 664        | 2261        | +256      | 148495         | 15277         | 19     | 114/1         |
| 16 | <b>15</b> | <b>VAN ZANT</b> Nobody Gonna Tell Me What To Do (Columbia)            | 6297         | 26         | 2218        | +44       | 168139         | 778           | 23     | 114/0         |
| 19 | <b>16</b> | <b>LEANN RIMES</b> Something's Gotta Give (Asylum/Curb)               | 5871         | 521        | 2151        | +191      | 158155         | 14830         | 11     | 117/2         |
| 20 | <b>17</b> | <b>DIERKS BENTLEY</b> Settle For A Slowdown (Capitol)                 | 5699         | 362        | 2020        | +174      | 157487         | 10676         | 9      | 114/5         |
| 24 | <b>18</b> | <b>FAITH HILL</b> The Lucky One (Warner Bros.)                        | 5546         | 1615       | 1884        | +573      | 161028         | 41224         | 5      | 116/6         |
| 21 | <b>19</b> | <b>JOE NICHOLS</b> Size Matters (Someday) (Universal South)           | 5031         | 421        | 1852        | +171      | 134478         | 10612         | 8      | 111/0         |
| 23 | <b>20</b> | <b>SHEDAISY</b> I'm Taking The Wheel (Lyric Street)                   | 4562         | 619        | 1626        | +213      | 104202         | 12210         | 15     | 109/2         |
| 27 | <b>21</b> | <b>GEORGE STRAIT</b> Seashores Of Old Mexico (MCA)                    | 4253         | 1048       | 1577        | +379      | 117739         | 23063         | 5      | 113/8         |
| 25 | <b>22</b> | <b>KEITH ANDERSON</b> Every Time I Hear Your Name (Arista)            | 4152         | 281        | 1476        | +101      | 112561         | 6992          | 10     | 111/4         |
| 22 | 23        | <b>T. YEARWOOD &amp; G. BROOKS</b> Love Will ... (Pearl/Lyric Street) | 3907         | -252       | 1430        | -95       | 98867          | -3412         | 8      | 109/0         |
| 26 | <b>24</b> | <b>CRAIG MORGAN</b> I Got You (BBR)                                   | 3440         | 207        | 1340        | +65       | 91862          | 5745          | 13     | 100/1         |
| 28 | <b>25</b> | <b>PHIL VASSAR</b> Last Day Of My Life (Arista)                       | 3327         | 473        | 1164        | +152      | 91844          | 15640         | 6      | 104/5         |

© 2006 Radio &amp; Records

# THANK YOU RADIO!

RCA LABEL GROUP DOMINATES COUNTRY RADIO THIS YEAR  
 by holding the #1 position - 9 out of 11 weeks



© 2006 BMG Music.

REAL SUPPORT. REAL AIRPLAY. REAL HITS.





March 14, 2006

POWERED BY MEDIABASE

| LW             | TW | ARTIST Title Label(s)   | Total Points | +/- Points | Total Plays | +/- Plays | Tot. Aud. (00) | +/- Aud. (00) | Wks On | Total Station |
|----------------|----|---|--------------|------------|-------------|-----------|----------------|---------------|--------|---------------|
| <b>Breaker</b> | 26 | TIM MCGRAW When The Stars Go Blue (Curb)                            | 3151         | 1964       | 1012        | +621      | 97528          | 52955         | 2      | 89/34         |
|                | 29 | 27 ROCKIE LYNNE Lipstick (Universal South)                          | 2733         | 302        | 991         | +99       | 65987          | 4966          | 19     | 85/0          |
|                | 30 | 28 JO DEE MESSINA Not Going Down (Curb)                             | 2418         | 4          | 915         | +1        | 62321          | 761           | 11     | 85/0          |
|                | 34 | 29 GRETCHEN WILSON Politically Uncorrect (Epic)                     | 2261         | 387        | 837         | +137      | 59039          | 11336         | 5      | 90/9          |
| <b>Breaker</b> | 30 | KENNY ROGERS I Can't Unlove You (Capitol)                           | 2218         | 195        | 787         | +78       | 53548          | 8346          | 10     | 72/2          |
|                | 32 | 31 GARY ALLAN Life Ain't Always Beautiful (MCA)                     | 2173         | 240        | 825         | +58       | 56295          | 7005          | 8      | 79/3          |
|                | 35 | 32 RODNEY ATKINS If You're Going Through Hell ... (Curb)            | 2140         | 273        | 856         | +93       | 53936          | 8746          | 9      | 63/1          |
|                | 33 | 33 JAMIE O'NEAL I Love My Life (Capitol)                            | 2069         | 158        | 714         | +28       | 55288          | 5131          | 13     | 67/1          |
|                | 36 | 34 BIG & RICH Never Mind Me (Warner Bros.)                          | 1653         | -20        | 538         | -32       | 40890          | 382           | 6      | 57/4          |
|                | 38 | 35 ERIC CHURCH How 'Bout You (Capitol)                              | 1472         | 200        | 513         | +103      | 37613          | 5171          | 4      | 58/11         |
|                | 37 | 36 LITTLE BIG TOWN Bring It On Home (Equity)                        | 1427         | 144        | 527         | +54       | 34885          | 7092          | 6      | 67/3          |
|                | 40 | 37 TRENT WILLMON On Again Tonight (Columbia)                        | 1161         | 104        | 427         | +34       | 25980          | 2184          | 4      | 44/2          |
|                | 48 | 38 BILLY CURRINGTON Why, Why, Why (Mercury)                         | 1002         | 414        | 441         | +166      | 26153          | 10990         | 2      | 58/3          |
|                | 41 | 39 JAKE OWEN Yee Haw (RCA)  | 847          | 195        | 331         | +98       | 20530          | 8726          | 2      | 49/14         |
| <b>Debut</b>   | 40 | 40 JOSH GRACIN Favorite State Of Mind (Lyric Street)                | 726          | 203        | 328         | +103      | 16165          | 3029          | 1      | 50/11         |
|                | 44 | 41 CHRIS CAGLE Wal-Mart Parking Lot (Capitol)                       | 708          | 66         | 285         | +13       | 19052          | 5919          | 2      | 29/2          |
| <b>Debut</b>   | 42 | 42 MEGAN MULLINS Ain't What It Used To Be (BBR)                     | 706          | 202        | 266         | +88       | 17136          | 6178          | 1      | 42/9          |
|                | 49 | 43 STEVE HOLY Brand New Girlfriend (Curb)                           | 686          | 137        | 279         | +33       | 14873          | 2666          | 5      | 30/1          |
|                | 47 | 44 NEAL MCCOY The Last Of A Dying Breed (903)                       | 680          | 46         | 211         | +9        | 18256          | 1289          | 3      | 29/1          |
|                | 42 | 45 HANK WILLIAMS, JR. That's How They Do It In Dixie (Curb/Asylum)  | 678          | 26         | 282         | +35       | 14989          | 3114          | 2      | 30/3          |
|                | 43 | 46 BLAINE LARSEN I Don't Know What She Said (Giantslayer/BNA)       | 674          | 25         | 286         | +49       | 13194          | -1046         | 2      | 43/1          |
| <b>Debut</b>   | 47 | 47 CARRIE UNDERWOOD Don't Forget To Remember Me (Arista)            | 609          | 229        | 131         | +42       | 20493          | 7042          | 1      | 6/0           |
|                | 46 | 48 JOHN CORBETT Good To Go (Fun Bone)                               | 584          | -51        | 224         | -6        | 11776          | -2369         | 3      | 28/0          |
|                | 45 | 49 HAL KETCHUM Just This Side Of Heaven (Hal-Lelujah) (Curb/Asylum) | 574          | -66        | 234         | -18       | 12566          | -1325         | 4      | 31/0          |
| <b>Debut</b>   | 50 | SUGARLAND Down In Mississippi (Up To No Good) (Mercury)             | 497          | 326        | 139         | +79       | 17229          | 12408         | 1      | 30/19         |

© 2006 Radio & Records

# How Do YOU Do It??????

RR: 45

## Hank Williams Jr.

BB 49

With Big & Rich, Gretchen Wilson & Van Zant

### "That's How They Do It In Dixie"

Already Doin' It: WYCD, WQYK, WSIX, WKDF, KNCI, WIRK, WXBQ, WWGR, WESC, WBCT, KDRK, WUSY, WKKT, KXKT, KTOM, WQHK, WKCN, KFTX

## LeAnn Rimes "Something's Gotta Give" ...is on FIRE!



© 2006 Radio & Records

**COUNTRY**

**MOST ADDED**

| ARTIST Title Label(s)   | Adds |
|---|------|
| BRAD PAISLEY The World (Arista)                               | 36   |
| TIM MCGRAW When The Stars Go Blue (Curb)                      | 34   |
| SUGARLAND Down In Mississippi (Up To No Good) (Mercury)       | 19   |
| BOMSHEL It Was An Absolutely Finger Lickin', Grits ... (Curb) | 16   |
| JAKE OWEN Yee Haw (RCA)                                       | 14   |
| EMERSON DRIVE A Good Man (Midas)                              | 13   |
| ERIC CHURCH How 'Bout You (Capitol)                           | 11   |
| JOSH GRACIN Favorite State Of Mind (Lyric Street)             | 11   |
| RAY SCOTT Gone Either Way (Warner Bros.)                      | 10   |

**MOST INCREASED POINTS**

| ARTIST Title Label(s)                                       | Total Pt. Increase |
|---|--------------------|
| TIM MCGRAW When The Stars Go Blue (Curb)                    | +1964              |
| FAITH HILL The Lucky One (Warner Bros.)                     | +1615              |
| BON JOVI W/J.R. NETTLES Who Says You ... (Island/IDJMG)     | +1284              |
| GEORGE STRAIT Seashores Of Old Mexico (MCA)                 | +1048              |
| TOBY KEITH Get Drunk And ... (Show Dog Nashville/Universal) | +975               |
| BLAKE SHELTON Nobody But Me (Warner Bros.)                  | +711               |
| TRENT TOMLINSON Drunker Than Me (Lyric Street)              | +664               |
| JACK INGRAM Wherever You Are (Big Machine)                  | +621               |
| SHEDAISY I'm Taking The Wheel (Lyric Street)                | +619               |
| SARA EVANS Cheatin' (RCA)                                   | +542               |

**MOST INCREASED PLAYS**

| ARTIST Title Label(s)                                       | Total Play Increase |
|---|---------------------|
| TIM MCGRAW When The Stars Go Blue (Curb)                    | +621                |
| FAITH HILL The Lucky One (Warner Bros.)                     | +573                |
| BON JOVI W/J. NETTLES Who Says You ... (Island/IDJMG)       | +424                |
| GEORGE STRAIT Seashores Of Old Mexico (MCA)                 | +379                |
| TOBY KEITH Get Drunk And ... (Show Dog Nashville/Universal) | +281                |
| TRENT TOMLINSON Drunker Than Me (Lyric Street)              | +256                |
| SHEDAISY I'm Taking The Wheel (Lyric Street)                | +213                |
| JACK INGRAM Wherever You Are (Big Machine)                  | +211                |
| BLAKE SHELTON Nobody But Me (Warner Bros.)                  | +203                |
| LEANN RIMES Something's Gotta Give (Asylum/Curb)            | +191                |

**COUNTRY INDICATOR**

**MOST ADDED**

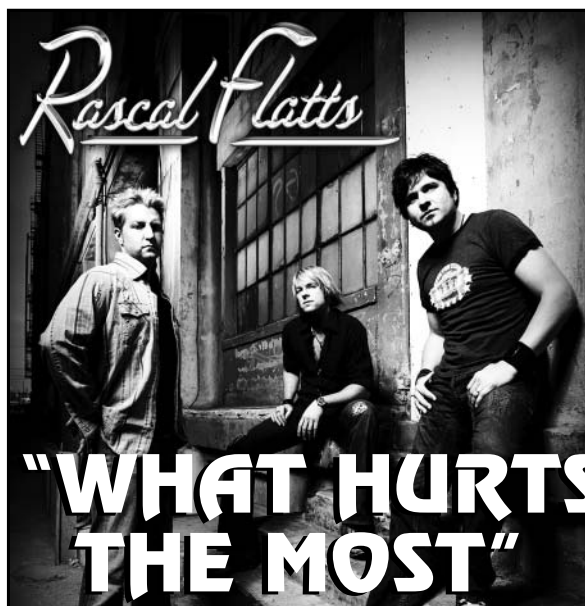
| ARTIST Title Label(s)   | Adds |
|---|------|
| TIM MCGRAW When The Stars Go Blue (Curb)                        | 31   |
| SUGARLAND Down In Mississippi (Up To No Good) (Mercury)         | 11   |
| BOMSHEL It Was An Absolutely Finger Lickin', Grits ... (Curb)   | 11   |
| BRAD PAISLEY The World (Arista)                                 | 10   |
| BILLY CURRINGTON Why, Why, Why (Mercury)                        | 8    |
| JAKE OWEN Yee Haw (RCA)   | 7    |
| ASHLEY MONROE Satisfied (Columbia)                              | 7    |
| PHIL VASSAR Last Day Of My Life (Arista)                        | 6    |
| HANK WILLIAMS, JR. That's How They Do It In Dixie (Curb/Asylum) | 6    |
| RAY SCOTT Gone Either Way (Warner Bros.)                        | 6    |

**MOST INCREASED POINTS**

| ARTIST Title Label(s)                                       | Total Pt. Increase |
|---|--------------------|
| TIM MCGRAW When The Stars Go Blue (Curb)                    | +493               |
| FAITH HILL The Lucky One (Warner Bros.)                     | +398               |
| BLAKE SHELTON Nobody But Me (Warner Bros.)                  | +281               |
| GEORGE STRAIT Seashores Of Old Mexico (MCA)                 | +242               |
| BON JOVI W/J. NETTLES Who Says You... (Island/IDJMG)        | +221               |
| LEANN RIMES Something's Gotta Give (Asylum/Curb)            | +219               |
| GRETCHEN WILSON Politically Uncorrect (Epic)                | +192               |
| TOBY KEITH Get Drunk And ... (Show Dog Nashville/Universal) | +184               |
| JACK INGRAM Wherever You Are (Big Machine)                  | +184               |
| GARY ALLAN Life Ain't Always Beautiful (MCA)                | +171               |

**MOST INCREASED PLAYS**

| ARTIST Title Label(s)                                 | Total Play Increase |
|---|---------------------|
| TIM MCGRAW When The Stars Go Blue (Curb)              | +436                |
| FAITH HILL The Lucky One (Warner Bros.)               | +278                |
| BLAKE SHELTON Nobody But Me (Warner Bros.)            | +232                |
| GEORGE STRAIT Seashores Of Old Mexico (MCA)           | +202                |
| LEANN RIMES Something's Gotta Give (Asylum/Curb)      | +177                |
| BON JOVI W/J. NETTLES Who Says You ... (Island/IDJMG) | +168                |
| JACK INGRAM Wherever You Are (Big Machine)            | +165                |
| JASON ALDEAN Why (BBR)                                | +153                |
| GRETCHEN WILSON Politically Uncorrect (Epic)          | +151                |
| MONTGOMERY GENTRY She Don't Tell Me To (Columbia)     | +150                |



**POWER CALLOUT FOR POWER ROTATIONS**

**Congrats Flatts on  
4 ACM Nominations  
Including  
Entertainer of the Year!**

**The New Album  
ME AND MY GANG  
in-stores April 4.**

**COUNTRY INDICATOR NEW & ACTIVE**

**BRAD PAISLEY** *The World (Arista)*  
 Total Points: 121, Total Stations: 13, Adds: 10  
**BOMSHEL** *It Was An Absolutely Finger Lickin' Grits ... (Curb)*  
 Total Points: 114, Total Stations: 15, Adds: 11  
**DOUG STONE** *Time (Lofton Creek)*  
 Total Points: 109, Total Stations: 12, Adds: 0  
**ASHLEY MONROE** *Satisfied (Columbia)*  
 Total Points: 95, Total Stations: 10, Adds: 7  
**STEVE HOLY** *Brand New Girlfriend (Curb)*  
 Total Points: 94, Total Stations: 9, Adds: 1  
**HOT APPLE PIE** *Easy Does It (MCA)*  
 Total Points: 89, Total Stations: 8, Adds: 1  
**TIM MURPHY** *Wild Wild West (Big 7)*  
 Total Points: 80, Total Stations: 10, Adds: 0  
**MEGAN MULLINS** *Ain't What It Used To Be (BBR)*  
 Total Points: 73, Total Stations: 7, Adds: 3  
**LELAND MARTIN & CHALEE TENNISON** *Same Ol' Song ... (Magnet)*  
 Total Points: 70, Total Stations: 9, Adds: 0  
**SHANNON BROWN** *Pearls (Warner Bros.)*  
 Total Points: 63, Total Stations: 10, Adds: 1

**COUNTRY NEW & ACTIVE**  
**CLINT BLACK** *Drinkin' Songs & Other Logic (Equity)*  
 Total Points: 453, Total Stations: 28, Adds: 1  
**LOST TRAILERS** *Chicken Fried (BNA)*  
 Total Points: 439, Total Stations: 24, Adds: 7  
**HOT APPLE PIE** *Easy Does It (MCA)*  
 Total Points: 346, Total Stations: 28, Adds: 4  
**EMERSON DRIVE** *A Good Man (Midas)*  
 Total Points: 344, Total Stations: 14, Adds: 13  
**ASHLEY MONROE** *Satisfied (Columbia)*  
 Total Points: 329, Total Stations: 18, Adds: 5  
**DANIELLE PECK** *Findin' A Good Man (Big Machine)*  
 Total Points: 326, Total Stations: 31, Adds: 6  
**COWBOY CRUSH** *Hillbilly Nation (Asylum/Curb)*  
 Total Points: 299, Total Stations: 16, Adds: 0  
**SHANNON BROWN** *Pearls (Warner Bros.)*  
 Total Points: 245, Total Stations: 19, Adds: 2  
**SCOTTY EMERICK** *What's Up With That (Show Dog Nashville)*  
 Total Points: 172, Total Stations: 16, Adds: 2  
**BRAD PAISLEY** *The World (Arista)*  
 Total Points: 163, Total Stations: 37, Adds: 36

**R&R Going For Adds**

3/20  
**DIAMOND RIO** *God Only Cries (Arista)*  
**POVERTYNECK HILLBILLIES** *The Hillbilly Way (Rust)*  
**RYAN SHUPE & THE RUBBERBAND** *Banjo Boy (Capitol)*  
**WILKINSONS** *Six Pack (Creative)*

3/27  
**DANIEL SMITH** *I'm Going Home (Parlor)*  
**JULIE ROBERTS** *Men & Mascara (Mercury)*  
**PINMONKEY** *That Train Don't Run (Back Porch/Narada Productions/EMI)*

4/3  
**CARRIE UNDERWOOD** *Don't Forget To Remember Me (Arista)*  
**CROSS CANADIAN RAGWEED** *This Time Around (Universal South)*  
**MEMARIE** *The Hole In Willie's Guitar (Cupit)*

**MOST PLAYED RECURRENTS**

| ARTIST Title Label(s)   | Total Points |
|---|--------------|
| <b>BRAD PAISLEY f/DOLLY PARTON</b> <i>When I Get Where I'm Going (Arista)</i> | 10853        |
| <b>CARRIE UNDERWOOD</b> <i>Jesus, Take The Wheel (Arista)</i>                 | 9875         |
| <b>BILLY CURRINGTON</b> <i>Must Be Doin' Somethin' Right (Mercury)</i>        | 7088         |
| <b>GEORGE STRAIT</b> <i>She Let Herself Go (MCA)</i>                          | 5550         |
| <b>TRACE ADKINS</b> <i>Honky Tonk Badonkadonk (Capitol)</i>                   | 5489         |
| <b>SUGARLAND</b> <i>Just Might (Make Me Believe) (Mercury)</i>                | 4990         |
| <b>MIRANDA LAMBERT</b> <i>Kerosene (Epic)</i>                                 | 4915         |
| <b>FAITH HILL w/TIM MCGRAW</b> <i>Like We Never ... (Warner Bros./Curb)</i>   | 4345         |
| <b>LITTLE BIG TOWN</b> <i>Boondocks (Equity)</i>                              | 4338         |
| <b>KEITH URBAN</b> <i>Better Life (Capitol)</i>                               | 4275         |

**POWERED BY MEDIABASE** 120 Country reporters. Songs ranked by total points for the airplay week of 3/5-3/11. Bullets appear on songs gaining points and/or plays or remaining flat from previous week. If two songs are tied in total points, the song with the larger increase in points is placed first. Songs below No. 1 and down in points and plays for three consecutive weeks are moved to recurrent. Most Added is the total number of new adds officially reported to R&R by each reporting station. Songs unreported as adds do not count toward overall total stations playing a song. Most Increased Points lists the songs with the greatest week-to-week increases in total points. Station Weight = AQH Persons + (Market rank X 10) divided by 4180. Total Audience equals Average Quarter Hour Persons times number of plays (times 100). Each daypart on each station is assigned an AQH number. Average Quarter Hour Persons used herein with permission from Arbitron Inc. (© 2006, Arbitron Inc.) © 2006 Radio & Records.

**Craig Morgan & Jason Aldean BOTH Nominated ACM TOP NEW MALE VOCALIST!!**

**JASON ALDEAN "WHY"**  
**GREAT Rate the Music callout #3**  
 #3 Females #6 Males #8 Overall!!!  
**R&R: 13 +168**  
**BB 15\* +232**  
 Over 1.7 Million NEW R&R Audience Impressions...AND Nearly 2 Million NEW BB Audience Impressions!!!

**HUGE DEBUT at #42 R&R!**  
**Megan Mullins**  
*"Ain't What It Used To Be"*  
**11 NEW Monitored Adds!**  
 "I can't imagine how hard it must have been to pick ONE single! I loved everything I heard Megan sing!"  
 ~ Mike Kennedy, PD/KBEQ  
 "I'm really likin' this song on the air...It sounds great."  
 ~ Bill Hagy, PD/WXBQ  
 Phones & Great Tests at: **KMPS, KYGO, KFDI, WBEE, WRNS, WSIX, KFTX**

**ANOTHER RESEARCH MONSTER!**  
**CRAIG MORGAN**  
*"I Got You"*  
**Mediabase Callout:**  
**#4 Females All Ages**  
**#2 Adults 35-44**  
**#7 Adults All Ages**  
**R&R: 24 +65 BB 28\* +64**  
 Once again...Craig DELIVERS!

March 14, 2006

| LW | TW | ARTIST Title Label(s)  | Total Points | +/- Points | Total Plays | +/- Plays | Tot. Aud. (00) | +/- Aud. (00) | Wks On | Total Station |
|----|----|--|--------------|------------|-------------|-----------|----------------|---------------|--------|---------------|
| 2  | 1  | KEITH URBAN Tonight I Wanna Cry (Capitol)                    | 4005         | 124        | 3324        | +91       | 92997          | 4927          | 15     | 87/0          |
| 3  | 2  | KENNY CHESNEY Living In Fast Forward (BNA)                   | 3975         | 163        | 3292        | +125      | 93334          | 4181          | 11     | 88/1          |
| 4  | 3  | RASCAL FLATTS What Hurts The Most (Lyric Street)             | 3812         | 132        | 3166        | +111      | 88041          | 2838          | 10     | 87/0          |
| 1  | 4  | JOSH TURNER Your Man (MCA)                                   | 3780         | -139       | 3095        | -120      | 87921          | -2232         | 32     | 82/0          |
| 5  | 5  | MONTGOMERY GENTRY She Don't Tell Me To (Columbia)            | 3668         | 150        | 3014        | +150      | 84603          | 2657          | 20     | 87/0          |
| 7  | 6  | BLAKE SHELTON Nobody But Me (Warner Bros.)                   | 3466         | 281        | 2903        | +232      | 80771          | 7130          | 28     | 88/1          |
| 9  | 7  | TOBY KEITH Get Drunk And ... (Show Dog Nashville/Universal)  | 3191         | 184        | 2670        | +125      | 72342          | 3159          | 11     | 87/0          |
| 8  | 8  | SARA EVANS Cheatin' (RCA)                                    | 3190         | 155        | 2691        | +132      | 74376          | 4400          | 19     | 87/0          |
| 10 | 9  | BROOKS & DUNN Believe (Arista)                               | 3096         | 107        | 2598        | +94       | 72673          | 3412          | 22     | 87/0          |
| 11 | 10 | BON JOVI W/J. NETTLES Who Says You Can't ... (Island/IDJMG)  | 2945         | 221        | 2461        | +168      | 68208          | 4858          | 13     | 78/0          |
| 6  | 11 | BRAD PAISLEY f/D. PARTON When I Get Where I'm Going (Arista) | 2707         | -728       | 2164        | -599      | 63923          | -17028        | 23     | 76/0          |
| 12 | 12 | JAMEY JOHNSON The Dollar (BNA)                               | 2422         | 106        | 2002        | +80       | 55762          | 2749          | 25     | 78/1          |
| 13 | 13 | JASON ALDEAN Why (BBR)                                       | 2312         | 166        | 1912        | +153      | 53970          | 3711          | 15     | 84/1          |
| 15 | 14 | JACK INGRAM Wherever You Are (Big Machine)                   | 2307         | 184        | 1955        | +165      | 52327          | 3850          | 17     | 83/2          |
| 16 | 15 | DIERKS BENTLEY Settle For A Slowdown (Capitol)               | 2114         | 141        | 1837        | +120      | 48392          | 3786          | 9      | 83/1          |
| 14 | 16 | VAN ZANT Nobody Gonna Tell Me What To Do (Columbia)          | 2114         | -14        | 1726        | +10       | 49665          | -689          | 24     | 77/0          |
| 19 | 17 | LEANN RIMES Something's Gotta Give (Asylum/Curb)             | 2066         | 219        | 1715        | +177      | 47625          | 4816          | 11     | 81/3          |
| 18 | 18 | TRENT TOMLINSON Drunker Than Me (Lyric Street)               | 2019         | 110        | 1671        | +56       | 44927          | 2528          | 19     | 83/1          |
| 20 | 19 | JOE NICHOLS Size Matters (Someday) (Universal South)         | 1833         | 139        | 1576        | +124      | 42212          | 4366          | 8      | 83/5          |
| 17 | 20 | T. YEARWOOD & G. BROOKS Love Will... (Pearl/Lyric Street)    | 1769         | -152       | 1516        | -131      | 38425          | -4442         | 8      | 83/1          |
| 24 | 21 | FAITH HILL The Lucky One (Warner Bros.)                      | 1712         | 398        | 1448        | +278      | 38850          | 9576          | 5      | 78/5          |
| 21 | 22 | GEORGE STRAIT Seashores Of Old Mexico (MCA)                  | 1707         | 242        | 1518        | +202      | 37928          | 5037          | 6      | 80/4          |
| 22 | 23 | SHEDAISY I'm Taking The Wheel (Lyric Street)                 | 1576         | 118        | 1305        | +99       | 34212          | 1952          | 16     | 69/1          |
| 23 | 24 | KEITH ANDERSON Every Time I Hear Your Name (Arista)          | 1487         | 154        | 1226        | +149      | 33947          | 2605          | 10     | 72/3          |
| 25 | 25 | CRAIG MORGAN I Got You (BBR)                                 | 1418         | 121        | 1177        | +96       | 32402          | 2744          | 14     | 72/1          |

© 2006 Radio &amp; Records

# JACE EVERETT

His new Epic Hit  
**"Nowhere in the Neighborhood"**

**7 early stations: KSKS, WGGY, WITL, KUBL, KIXZ, KATM and WNKT.**

"Any time you can say 'been there, done that' you know it's going to really connect with the listeners." - Darlene Dixon, MD, WLWI

"Don't miss the boat this time. This is another great effort from Jace." - Don Brake, MD, WCAT

"This song gets better and better with each listen."



Real life, put to music by a real artist...Jace Everett. Add this today! CD in stores NOW!



March 14, 2006

| LW           | TW        | ARTIST Title Label(s)  | Total Points | +/- Points | Total Plays | +/- Plays | Tot. Aud. (00) | +/- Aud. (00) | Wks On | Total Station |
|--------------|-----------|--|--------------|------------|-------------|-----------|----------------|---------------|--------|---------------|
| 26           | <b>26</b> | PHIL VASSAR Last Day Of My Life (Arista)                         | 1104         | 125        | 920         | +117      | 23073          | 2590          | 7      | 66/6          |
| 29           | <b>27</b> | GARY ALLAN Life Ain't Always Beautiful (MCA)                     | 1064         | 171        | 862         | +129      | 24969          | 5170          | 9      | 62/1          |
| 30           | <b>28</b> | GRETCHEN WILSON Politically Uncorrect (Epic)                     | 1050         | 192        | 916         | +151      | 22170          | 3755          | 5      | 65/2          |
| 28           | <b>29</b> | JAMIE O'NEAL I Love My Life (Capitol)                            | 943          | 13         | 792         | +4        | 20706          | 461           | 14     | 51/1          |
| 27           | 30        | JO DEE MESSINA Not Going Down (Curb)                             | 923          | -19        | 741         | -21       | 20985          | -241          | 13     | 50/0          |
| 39           | <b>31</b> | TIM MCGRAW When The Stars Go Blue (Curb)                         | 817          | 493        | 744         | +436      | 17003          | 10434         | 2      | 57/31         |
| 33           | <b>32</b> | KENNY ROGERS I Can't Unlove You (Capitol)                        | 815          | 85         | 676         | +79       | 16880          | 1805          | 11     | 51/2          |
| 31           | <b>33</b> | RODNEY ATKINS If You're Going Through Hell ... (Curb)            | 803          | 32         | 682         | +32       | 16993          | 745           | 9      | 51/0          |
| 32           | <b>34</b> | BIG & RICH Never Mind Me (Warner Bros.)                          | 748          | 12         | 611         | +11       | 15349          | 430           | 7      | 48/1          |
| 35           | <b>35</b> | LITTLE BIG TOWN Bring It On Home (Equity)                        | 660          | 96         | 548         | +87       | 13760          | 2274          | 7      | 45/3          |
| 34           | <b>36</b> | NEAL MCCOY The Last Of A Dying Breed (903)                       | 603          | 15         | 500         | +14       | 13110          | -13           | 9      | 46/2          |
| 36           | <b>37</b> | BILLY CURRINGTON Why, Why, Why (Mercury)                         | 571          | 116        | 477         | +112      | 12731          | 1801          | 3      | 49/8          |
| 38           | <b>38</b> | ERIC CHURCH How 'Bout You (Capitol)                              | 444          | 79         | 363         | +60       | 9474           | 1283          | 3      | 35/3          |
| 37           | <b>39</b> | CHRIS CAGLE Wal-Mart Parking Lot (Capitol)                       | 418          | 13         | 324         | +5        | 10214          | 758           | 5      | 32/3          |
| 41           | <b>40</b> | HANK WILLIAMS, JR. That's How They Do It In Dixie (Curb/Asylum)  | 298          | 40         | 242         | +23       | 6010           | 1118          | 3      | 26/6          |
| 43           | <b>41</b> | JOSH GRACIN Favorite State Of Mind (Lyric Street)                | 297          | 93         | 224         | +53       | 5903           | 1044          | 3      | 28/4          |
| 42           | <b>42</b> | TRENT WILLMON On Again Tonight (Columbia)                        | 221          | 7          | 182         | +14       | 4442           | 632           | 4      | 22/4          |
| 48           | <b>43</b> | DANIELLE PECK Findin' A Good Man (Big Machine)                   | 215          | 68         | 158         | +56       | 4740           | 1865          | 2      | 20/4          |
| <b>Debut</b> | <b>44</b> | SUGARLAND Down In Mississippi (Up To No Good) (Mercury)          | 209          | 139        | 182         | +116      | 4846           | 3360          | 1      | 23/11         |
| 46           | <b>45</b> | BLAINE LARSEN I Don't Know What She Said (Giantslayer/BNA)       | 200          | 37         | 171         | +32       | 3969           | 705           | 3      | 19/3          |
| 40           | 46        | MARTINA MCBRIDE W/D. PARTON I Still Miss Someone (RCA)           | 189          | -77        | 132         | -71       | 3298           | -1379         | 7      | 11/0          |
| 49           | <b>47</b> | JAKE OWEN Yee Haw (RCA)  | 188          | 61         | 148         | +54       | 3734           | 1207          | 2      | 15/7          |
| 45           | 48        | HAL KETCHUM Just This Side Of Heaven (Hal-Lelujah) (Curb/Asylum) | 174          | -22        | 137         | -18       | 3297           | -409          | 6      | 14/0          |
| 47           | <b>49</b> | TERRI CLARK Damn Right (Mercury)                                 | 167          | 16         | 124         | +1        | 3457           | -18           | 2      | 12/1          |
| 50           | <b>50</b> | JOHN CORBETT Good To Go (Fun Bone)                               | 152          | 25         | 132         | +20       | 3223           | 540           | 3      | 13/1          |

© 2006 Radio &amp; Records

Source: Arbitron, Su 05-Fa 05, Metro, AQH Share; Subject to limitations printed therein.

# BIG TIME Ratings

Whitney Allen's humor and high energy is delivering big Saturday Night ratings for big Country stations.

It's no wonder she's RMA's 2005 'Country Radio Personality of the Year!'

**BIG New Station Adds**

|                      |                       |
|----------------------|-----------------------|
| WCLT<br>Columbus, OH | KXKC<br>Lafayette, LA |
| KTOM<br>Monterey, CA | WAAC<br>Valdosta, GA  |

**WUBE Cincinnati**

P25-54 #10 to #1 ----- Up 115%

**WGAR Cleveland**

P25-54 #8 to #2 ----- Up 29%

## THE BIG TIME Saturday Night

 Get in touch for your BIG TIME demo  
 Big@XRadioNetworks.com or  
 212.419.2926


**XRadio**  
An Excelsior Radio Company



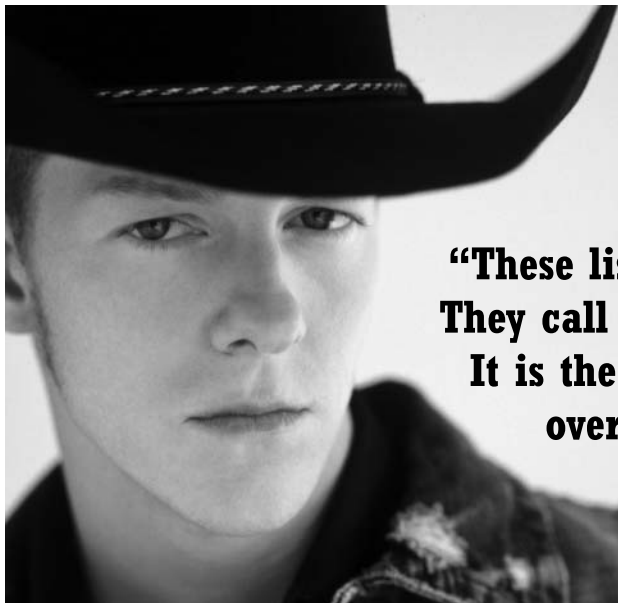


| Artist Title (Label)  | TW   | LW   | Fam. | Burn | P 25-54 | W 25-54 | M 25-54 |
|---|------|------|------|------|---------|---------|---------|
| JOSH TURNER Your Man (MCA)  | 4.23 | 4.29 | 97%  | 17%  | 4.24    | 4.36    | 4.10    |
| BRAD PAISLEY f/DOLLY PARTON When I Get Where I'm Going (Arista)       | 4.20 | 4.17 | 97%  | 24%  | 4.21    | 4.31    | 4.08    |
| SUGARLAND Just Might (Make Me Believe) (Mercury)                      | 4.10 | 4.18 | 98%  | 30%  | 4.07    | 4.13    | 3.98    |
| BLAKE SHELTON Nobody But Me (Warner Bros.)                            | 4.09 | 4.16 | 96%  | 20%  | 4.06    | 4.26    | 3.83    |
| BON JOVI w/JENNIFER NETTLES Who Says You Can't Go Home (Island/IDJMG) | 4.09 | 4.12 | 96%  | 21%  | 4.01    | 4.07    | 3.94    |
| KEITH URBAN Tonight I Wanna Cry (Capitol)                             | 4.08 | 4.06 | 97%  | 22%  | 4.05    | 4.23    | 3.82    |
| CARRIE UNDERWOOD Jesus, Take The Wheel (Arista)                       | 4.06 | 4.09 | 99%  | 39%  | 4.00    | 4.06    | 3.92    |
| JASON ALDEAN Why (BBR)  | 4.06 | 4.16 | 78%  | 11%  | 3.99    | 4.12    | 3.84    |
| MONTGOMERY GENTRY She Don't Tell Me To (Columbia)                     | 4.04 | 4.04 | 98%  | 23%  | 3.99    | 4.01    | 3.96    |
| GEORGE STRAIT Seashores Of Old Mexico (MCA)                           | 4.04 | -    | 57%  | 7%   | 4.06    | 4.07    | 4.05    |
| SARA EVANS Cheatin' (RCA)   | 4.03 | 4.15 | 98%  | 25%  | 4.00    | 4.02    | 3.96    |
| BROOKS & DUNN Believe (Arista)  | 4.03 | 4.02 | 98%  | 29%  | 4.08    | 4.19    | 3.96    |
| JACK INGRAM Wherever You Are (Big Machine)                            | 4.01 | 3.87 | 87%  | 12%  | 3.96    | 4.10    | 3.81    |
| JOE NICHOLS Size Matters (Someday) (Universal South)                  | 3.97 | 3.94 | 70%  | 7%   | 3.90    | 3.92    | 3.89    |
| RASCAL FLATTS What Hurts The Most (Lyric Street)                      | 3.96 | 4.14 | 95%  | 21%  | 3.89    | 4.10    | 3.63    |
| DIERKS BENTLEY Settle For A Slowdown (Capitol)                        | 3.92 | 3.93 | 66%  | 10%  | 3.89    | 4.05    | 3.74    |
| KENNY CHESNEY Living In Fast Forward (BNA)                            | 3.91 | 3.94 | 96%  | 28%  | 3.88    | 3.95    | 3.80    |
| KEITH ANDERSON Every Time I Hear Your Name (Arista)                   | 3.90 | 3.85 | 66%  | 10%  | 3.85    | 4.03    | 3.65    |
| MIRANDA LAMBERT Kerosene (Epic)                                       | 3.89 | 3.84 | 97%  | 34%  | 3.76    | 3.90    | 3.58    |
| JAMEY JOHNSON The Dollar (BNA)  | 3.86 | 3.77 | 89%  | 25%  | 3.90    | 3.88    | 3.92    |
| CRAIG MORGAN I Got You (BBR)  | 3.86 | 3.90 | 70%  | 10%  | 3.84    | 3.97    | 3.70    |
| LEANN RIMES Something's Gotta Give (Asylum/Curb)                      | 3.85 | 3.81 | 83%  | 14%  | 3.76    | 3.80    | 3.70    |
| TIM MCGRAW My Old Friend (Curb)                                       | 3.82 | 3.89 | 96%  | 32%  | 3.84    | 3.92    | 3.75    |
| TRENT TOMLINSON Drunker Than Me (Lyric Street)                        | 3.75 | 3.70 | 85%  | 19%  | 3.74    | 3.83    | 3.63    |
| VAN ZANT Nobody Gonna Tell Me What To Do (Columbia)                   | 3.74 | 3.81 | 91%  | 28%  | 3.71    | 3.67    | 3.76    |
| TOBY KEITH Get Drunk And Be Somebody (Show Dog Nashville/Universal)   | 3.72 | 3.88 | 93%  | 23%  | 3.70    | 3.71    | 3.69    |
| SHEDAISY I'm Taking The Wheel (Lyric Street)                          | 3.65 | 3.58 | 73%  | 15%  | 3.56    | 3.60    | 3.53    |
| FAITH HILL The Lucky One (Warner Bros.)                               | 3.65 | -    | 63%  | 12%  | 3.58    | 3.67    | 3.45    |
| ROCKIE LYNNE Lipstick (Universal South)                               | 3.65 | 3.57 | 60%  | 12%  | 3.63    | 3.63    | 3.63    |

Total sample size is 321 respondents. Total average favorability estimates are based on a scale of 1-5. (1=dislike very much, 5 = like very much). Total familiarity represents the percentage of respondents who recognized the song. Total burn represents the number of respondents who said they are tired of hearing the song. Songs must have 40% familiarity to appear on survey. Sample composition is based on persons 12+. Persons are screened via the Internet. Once passed, they can take the music test based on the format/music preference. RateTheMusic.com results are not meant to replace callout research. The results are intended to show opinions of participants on the the Internet only. RateTheMusic is a registered trademark of RateTheMusic.com. The RTM system, is available for local radio stations by calling 818-377-5300. RateTheMusic.com data is provided by Mediabase Research, a division of Premiere Radio Networks.

If you experienced transmission problems ... please call our Circulation Department at 310-788-1625.

© 2006 Radio & Records. All Rights Reserved. No part of this material may be reproduced in any form or incorporated in any information retrieval system without written permission of the Publisher.



# CRAIG HAND

## "Direct Connect"

**"These listeners in Dothan are eating this song up! They call in and request the 'Beep-Beep' song. It is the #1 most requested song at our station... over Kenny, Alan, Tim, George...anyone."**

**- Amie Pollard, WTVY / Dothan, AL**

