

## John Fullam Resigns From Infinity

Fullam, who joined Infinity in August 2002 as President/COO, has officially exited the company, Viacom spokesman Dana McClintock tells **R&R**. Official word of Fullam's departure came yesterday morning, although many Infinity staffers learned of Fullam's decision via an internal staff memo distributed Friday, McClintock says. Fullam's departure follows comments made April 22 by Viacom President/COO Mel Karmazin, who said the company would do whatever it takes to turn around Infinity's performance. "Any things that need to be done to get us back there will be done," Karmazin said in regard to improving radio revenue at Viacom — the "single biggest issue" Karmazin said he is currently dealing with. For more details, visit [www.radioandrecords.com](http://www.radioandrecords.com).

## Emmis Promotes Maki, Federman

**Val Maki**, SVP/Market Manager for Emmis' KPWR & KZLA/Los Angeles, adds responsibilities for the now-Emmis-managed KEYI, KGSR, KLBJ-AM & FM, KROX & KXMG/Austin. Maki, who joined Emmis in 1984, was VP/GSM of WKQX/Chicago before becoming VP/GM of Emmis/L.A. in June 1998.

In related news, Emmis/L.A. Director/Sales **Jeff Federman** is elevated to VP/Director of Sales. In his new role, he'll help oversee the day-to-day responsibilities for KPWR & KZLA now that Maki will be shuttling back and forth to Austin.

## Chicks Tour Begins This Week; All Eyes On Greenville

Country PDs will be watching what happens in Greenville, SC very closely this week, as the **Dixie Chicks'** tour gets underway on Thursday. In a story appearing in **R&R's** May 2 issue, PDs say they don't

believe that recent interviews given by the act with **Diane Sawyer** (on ABC-TV last week) and **Bob Kingsley** swayed public opinion. WQYK & WYUU/Tampa OM **Mike Culotta** says, "Wherever you were on the issue, you stayed the same. They didn't fill the hole in, but they didn't dig it any deeper."

WESC & WSSL/Greenville, SC OM **Bruce Logan**, who gets to be a first-hand witness at the first stop of the Chicks' Top of the World tour Thursday, tells **R&R** that he's continued to play Dixie Chicks music (although to a lesser degree) and that "Travelin' Soldier" has continued to test in his top 10 since the controversy began. Logan's biggest frustration is that it took the Chicks this long to say anything on the issue. He says, "The audience has no way to get to The Dixie Chicks other than not buying their CD or concert tickets. But they know how to get to me and my jocks. I've been called un-American and a traitor. There hasn't seemed to be much acknowledgement from Dixie Chicks' management that this has all happened, much less appreciation of all the wasted manhours of OMs and PDs across the country."

While time put in dealing with this issue has been a frustration for many PDs, they're still going to take more time before deciding what to do about the upcoming shows. WKDF/Nashville PD **Dave Kelly** says, "We have not taken a stance to not play The Dixie Chicks. It is one of the coolest groups we've got. I want to play them. But every time we play them, we get a huge backlash. I'm still in wait and see mode."

Only one PD **R&R** talked to claimed he already knew exactly how he was going to handle the act in the future, as well as the group's concert in his city. KKBQ/Houston PD **Michael Cruise** maintains that he

*If you experienced transmission problems ... please call our Circulation Department at 310/788-1625.*

© 2003 Radio & Records, Inc. All Rights Reserved. No part of this material may be reproduced in any form or incorporated in any information retrieval system without written permission of the Publisher.



# W

# WYNONNA

Is

## "What The World Needs"

# GOING FOR ADDS 5/5



Good Times, Great Oldies

Her Asylum/Curb debut single from her forthcoming summer release.

Welcome Back Wy,  
It's been way too long.

EARLY ADDS:

KPLX, KMPS, KEYE, WYCD,  
WIVK, KSOP, WITL

doesn't want to participate in any way because "I don't think having presents [status] at a Dixie Chicks show is anything to brag about now. With all the research I'm seeing and with ongoing callout and web polling, I don't think they are a core act anymore. I think they have turned in their core act card."

Others, however, do not agree. Logan says, "Anybody who would say that is way premature. The wound is still too fresh."

### Curtis, Swedberg Stay With the Chicks

KZLA/Los Angeles PD **R.J. Curtis** says he conducted an auditorium music test in late March — at the height of the Chicks' controversy — and says that the act's music is "more familiar than last year, and more popular." He adds that the e-mails and calls he's received are "pretty balanced." He adds, "It all feels pretty good. We never stopped playing their music, although we did stop playing some titles and backed off to appropriate levels on others. Now we're back to playing almost everything. The real negative e-mails and faxes stopped the day the war started."

As for the ladies' ABC-TV interview, Curtis said, "I don't think the tears were forced; nothing seemed to be contrived. They came across as real. Their comments were intelligent. While Natalie kind of orbited the actual idea of an out-and-out apology, she did say she used the wrong word and showed bad judgment. I'm not sure what more people want from them. Sooner or later stations [trashing them] are going to have to play them. What then?"

Clear Channel/Minneapolis OM **Gregg Swedberg** noted, "After the special, nothing really changed. The people who were angry about the Chicks are still angry about the Chicks, although it's not as passionate as it once was. The fact that they were as defiant on TV and in *Entertainment Weekly* as they were will probably mean that they won't gain any ground for a long time. But to say that they are done or to refuse to play anything might be a little short-sighted. We received plenty of positive and negative calls on the

issue, and we maintained that all we were about was playing records people wanted to hear.

"I'm ready to try another single from the Chicks, and then we'll see what the listeners say. It's important to keep the act on the air, and then allow the listeners to decide how often they want to hear them. For stations without callout, I wonder how they really know if their listeners are ready. You certainly can't base it on phone calls to a PD's office or to a studio."

### Cumulus To Consider Chicks Tomorrow

Cumulus' Country stations, which are under a company edict not to play The Dixie Chicks' music, will discuss in a conference call tomorrow whether or not its boycott should be lifted. Cumulus Exec. VP **John Dickey** initiated the companywide "No Chicks" policy shortly after a press release was put out explaining Maines' comments. Dickey stated then that their music would not be readded until the apology was made in person. Asked if last Thursday night's ABC-TV interview was sufficient enough explanation to lift the ban, Dickey told **R&R**, "We are taking the temperature in each of our markets. I will be making a decision this week. It looks favorable based on what I've seen."

### Fraunfelter Joins Allentown Cat

WLAN/Lancaster, PA Sales Manager **John Fraunfelter** has left the CHR/Pop station to become GM at nearby WCTO (Cat Country 99.9)/Allentown. He succeeds **John Hutchinson**, who exited two months ago. Also at WCTO, **Todd Nixon** is the new night talent/imaging director. He had been working for Infinity's Houston cluster as a programming assistant and a parttimer at KILT.

### Cooper In, Wolf Up In Columbus

Former KDKB/Phoenix PD/morning personality **Dave Cooper** has been named OM for Infinity/Columbus, OH, which includes Country WHOK, Rock WLVQ and Active Rock WAZU. He succeeds **Charley Lake**, who in March was named PD of Infinity's Oldies WJMK/Chicago. Concurrently, WHOK Asst. PD/MD/afternoon

If you experienced transmission problems ... please call our Circulation Department at 310/788-1625.

© 2003 Radio & Records, Inc. All Rights Reserved No part of this material may be reproduced in any form or incorporated in any information retrieval system without written permission of the Publisher.

**Tim McGraw**  
**She's My Kind**  
**Of Rain**

**Top 5 Overall**  
**and Top 5**  
**Passion Females**  
**at Bullseye**  
**Huge Local Callout**

R&R **2** +337 BB **2** + 334

**Jo Dee Messina**  
**Was That My Life**

**#15 Passion**  
**with Females**  
**Overall at Bullseye**  
**#15 with Core Males**  
**at MediaBase**  
**Callout**

R&R **19** - **17** +109

BB **22** - **21** +91

**CURB**  
www.curb.com

**Amy Dalley**  
**Love's Got** (It Is  
**An Attitude** What  
It Is)

**Big Spinners**  
**KMLE WUBE KFRG**  
**WKLB WXBQ KBEQ**  
**WKDF KSKS KSOP KATM**  
**WGKX WGH WYNK**  
**WWGR WCAT WPCV**

R&R **34\***-**30\*** BB **36\***-**34\***

driver **George Wolf** succeeds Lake as PD of the Country outlet.

**Landrum Lands WSM-AM PD Post**

**Brian Landrum**, OM of Southern Broadcasting's Rome, GA cluster since July 2002, has been named PD of WSM-AM/Nashville. Landrum commented on his new job by saying, "[This] is a lifelong dream come true. Our efforts here will be to focus on the imaging, presentation and delivery of WSM-AM, and our personalities and station will be more active than ever in the Nashville community. Fans and listeners know WSM-AM is where country music all started, and we will ensure our audience enjoys great music and programming that enhances the station's legacy."

**Albright & O'Malley: "Don't Paint Yourself Into A Corner"**

Country consultants **Jaye Albright** and **Michael O'Malley** sent a strongly worded memo to clients on April 25 that urged them to handle the Dixie Chicks situation carefully with its audience. "This is not a recommendation to play Chicks music in heavy rotation. But it is our feeling that you should avoid painting yourself into a corner. Present a balanced discussion. Ask listeners if the interview changed their opinion. Don't offer ultimatums such as, 'You tell us if we should ban the Chicks or not,' because those opposed to anything will almost always dominate such polls and may not represent what the majority of your listeners are feeling."

The memo goes on to urge a new perspective on polling the audience: "As you react to last week's personal and political statements as well as that nude cover shot in *Entertainment Weekly* — and it's obvious how a significant part of our current 40-plus audience is going to feel about that as well as their politics — Albright & O'Malley thought it might be helpful to remind you to first assess how the audience may be feeling about their music as well." The full text is now available at [www.mcvaymedia.com](http://www.mcvaymedia.com).

**McVay To AC: "Play the Chicks"**

Speaking of McVay Media, the [Mcvaymedia.com](http://Mcvaymedia.com) website also features these comments by leading consultant **Mike McVay**:

"Unlike Country radio, not every AC station dropped The Dixie Chicks. Following the appearance of the crossover act on *Prime Time*, stations should highlight 'Landslide.' The song, made famous the first time by Fleetwood Mac, has tested strongly from the start. If you did drop [it], return the song to your airwaves as a power recurrent.

"Natalie, the one who made 'that comment,' cried, said she'd made a mistake and did everything but say she was sorry. The three looked to me as if they knew that they'd made a mistake and that they wished they could 'take back' their words. When it's all said and done, when have we in Pop and AC cared about the political comments of the artists we play?"

"We target women at AC radio. What woman, after seeing Natalie cry, didn't feel sorry for the mistake she made? What about the threats all three of the women have received on themselves and their families? Isn't the song a hit? AC is a song-driven format. We've never been hung up on avoiding bad songs by core artists. If the song is great, we at AC play it. Stations play 'Born In The USA' by Bruce Springsteen as if it were a patriotic song instead of being the antiwar protest song that it is. *Why?* It's a great piece of music. So is 'Landslide.'

"Don't make a big deal about playing the song, or if you had dropped it, about readding it. Just do it. Unlike what country PDs may do, we at AC and Pop are a forgiving group. Maybe we're mercenaries. All I know is, when we have a big song, we'll play it for 52 weeks. Some songs *never* leave our airwaves. 'Landslide' is one of those songs.

"Attention Dixie Chicks: If they don't want you at Country radio, we'll take you at AC."

**If you experienced transmission problems ... please call our Circulation Department at 310/788-1625.**

© 2003 Radio & Records, Inc. All Rights Reserved No part of this material may be reproduced in any form or incorporated in any information retrieval system without written permission of the Publisher.



# MONTGOMERY GENTRY

**R&R 13**  
**Billboard 17\***

## "SPEED"

**MediaBase**  
**National Callout**  
**#4 adults total positive**  
**#3 adults net positive**

## JRN, WIL Face Discrimination Complaint

A man who claims he was denied a chance to make a request to the Jones Radio Networks' syndicated *Lia* show has filed a complaint against Jones and the station the man heard the program on, WIL/St. Louis. **Robert Tart** filed a complaint with the Missouri Human Rights Commission after he was allegedly told by a show producer, "We don't do the stuttering thing." WIL promptly dropped *Lia* from the lineup — a move station management says was already being planned for June. PD **Greg Mozingo** says the station moved up the timeline to "make sure that all of our listeners are treated with respect and dignity." Mozingo is now looking for a new night jock.

Jones Radio Networks' VP/GM **Jim LaMarca** says, "We apologized to Mr. Tart before this became public and we apologize again today. In fact, we would like to have him on the *Lia* show as soon as possible to make his request and even speak to the issue of discrimination he has faced in his life." There's been no word that Tart has accepted this offer. He has, however, visited with the morning show at WIL's rival, KSD.

## Gill Receives PGA Service Award

**Vince Gill** has received The PGA of America's highest honor, the 2003 PGA Distinguished Service Award. For those of you who are unfamiliar with the award, it's an enormous honor in the world of golf. Gill will be honored at a ceremony August 13 in Rochester, NY, in conjunction with the PGA Championship. He was named for his display of leadership and humanitarian qualities, including integrity, sportsmanship and enthusiasm for the game of golf. Past recipients include former Presidents George Bush and Gerald Ford, Bob Hope, and golfers Gene Sarazen, Byron Nelson, Jack Nicklaus, Arnold Palmer and Patty Berg.

## Radio News

**Station Sales:** **John Walton**, owner of Classic Country-Country combo KKCS-AM & FM/Colorado Springs, is selling the properties and preparing to retire after

45 years in radio. The FM has been sold to Marathon Media, with closing expected in September. A buyer is still being sought for the AM property.

**Management:** Former WIL/St. Louis PD **Russ Schell** is the new GM for CHR/Pop KLZR/Topeka, KS and its sister station, News/Talk KLWN-AM/Lawrence, KS. He can be reached at 785-843-1320, ext. 202.

## Street Talk

It's literally Street Talk this time around, as we send congrats to all of those who ran in last weekend's Music City Marathon — including Dreamworks Co-National Director/Promotion **Jimmy Harnen**, who set a personal best in the Half Marathon of 1:43:11 and placed as No. 401 out of more than 7,500 runners. Congrats also go out to R&R AE **Linda Johnson**, who (attention, Jimmy) ran the *full marathon* in four hours and 57 minutes.

Speaking of the young Mr. Harnen, a song he wrote that is being sung by an 11-year old girl from Massachusetts was getting some big time airplay in Music City last week. The song, "Can You Hear Me When I Talk To You," was penned by Harnen after his father's death several years ago. Harnen, who is working with the girl, Ashley Gearing, brought her to Nashville last week to visit industry executives. She does not have a deal yet, but after taking her and the music to WSIX/Nashville, the song got on the air and became the station's most-requested cut.

## Industry News

Dreamcatcher Entertainment promotes Director/Media & Artist Relations **Claire Cook** to VP/Media & Artist Relations. Cook joined the company in 1998.

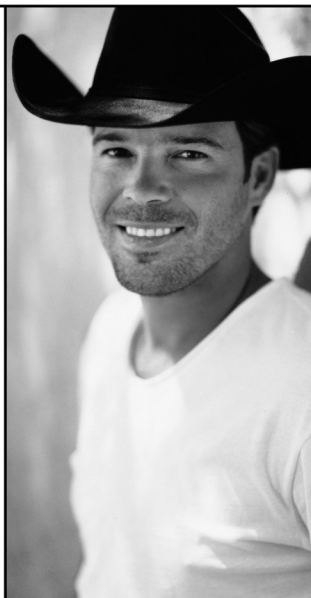
Sony/ATV Tree signs a second-generation songwriter to their roster. **Amanda Williams**, who co-wrote the Garth Brooks/George Jones song "Beer Run," is the daughter of Sony ATV Tree writer **Kim Williams**, whose credits include Brooks' "Papa Loved Mama" and "Ain't Goin' Down ('Til The Sun Comes Up)." He also co-wrote Randy Travis' current single, "Three Wooden Crosses."

*If you experienced transmission problems ... please call our Circulation Department at 310/788-1625.*

© 2003 Radio & Records, Inc. All Rights Reserved No part of this material may be reproduced in any form or incorporated in any information retrieval system without written permission of the Publisher.

**#1 MOST ADDED RECORD  
ON IMPACT DATE!  
OVER 64 1ST WEEK  
STATIONS!**

**CLAY  
walker**  
"a few questions"



**THANKS  
COUNTRY  
RADIO  
FOR  
RECOGNIZING  
A HIT!**



**Stationality**

KSON/San Diego Imaging Director/afternoon driver **Kimo Jensen** is tasting a little bit of fame these days. Jensen was asked to reedit "I'm Already There" for Lonestar's greatest hits project. The band wanted to include messages from the troops' families. Jensen says he used calls from local military wives and family members to remix the song, and it caused him to "weep openly." The new version, about 30 seconds longer than the original, has already been shipped to radio.

And you thought that car dealership remote went on too long! KFWR/Ft. Worth, TX morning host **Steve Harmon** is in talks with the Guinness Book of World Records to be listed as having the longest radio remote. Harmon has been doing his morning show live from different locations every morning since December. That's 95 back-to-back remotes for Harmon. Now taking a week off, Harmon will be back in the studio starting May 5.

**Chronicle**

There must be somethin' in the water — or perhaps it's the Lone Star longnecks. Congrats to KASE/Austin Asst. PD/MD **Bob Pickett**, who says he reported his biggest add ever this week. Ryan Pickett was born April 25 in Austin, and the "recent release" weighs in at 8 pounds, 2 ounces. Bob also reports the add date couldn't have come soon enough for his wife Sara.

Congratulations also in order for KSCS/Dallas mddayer **Melinda "Mel" Dickerson** on the birth of her first child. John Wade Dickerson Jr. was born April 21.

**Media Titan Edward Gaylord Dies**

**Edward Gaylord**, founder of Gaylord Entertainment, died Sunday night from complications from cancer. He was 83. Gaylord's production company turned out syndicated programs like *Hee Haw* and *The Glen Campbell Show* in the late 1970s. He bought the Opryland complex, including the Grand Ole Opry, The Opryland Hotel and the General Jackson showboat, in 1983. The company said in a statement, "His distinguished leadership developed Gaylord Entertainment into a leader in country lifestyle programming through TNN, CMT and The Grand Ole Opry, and now in hospitality through Gaylord hotels. Mr. Gaylord's belief in our company was evident by the generous investment of time, commitment and capital that he delivered over the last 20 years." In memory of his leadership, the company flag is flying at half-mast through Wednesday.

Gaylord also served as editor and publisher of *The Oklahoman* newspaper since 1974, and he reported to work every day until a week before his death. Services will be held tomorrow in Oklahoma City.

**Famous Songwriter Felice Bryant Dies**

Renowned songwriter **Felice Bryant** died last night at her Nashville-area home after a battle with cancer. She was 77. Bryant and her husband **Boudleaux Bryant** teamed to pen some of the best-known country and pop songs, including "Wake Up Little Susie" and "Bye Bye Love" for **The Everly Brothers**, "Country Boy" for **Little Jimmy Dickens** and "Rocky Top," which was adopted as the Tennessee state song in 1982.

— Lon Helton/R&R Country Editor (615) 244-8822  
Email: [lhelton@radioandrecords.com](mailto:lhelton@radioandrecords.com)

— Angela King/R&R Asst. Country Editor (615) 244-8822  
Email: [aking@radioandrecords.com](mailto:aking@radioandrecords.com)

**VIDEO ADDS**

**GREAT AMERICAN COUNTRY**

**SHANIA TWAIN** Forever And For Always  
**CHALEE TENNISON** Easy Lovin' You  
**TERRI CLARK** Three Mississippi  
**TRACE ADKINS** Then They Do

**CMT**

**SHANIA TWAIN** Forever And For Always  
**TRACE ADKINS** Then They Do

*If you experienced transmission problems ... please call our Circulation Department at 310/788-1625.*

© 2003 Radio & Records, Inc. All Rights Reserved No part of this material may be reproduced in any form or incorporated in any information retrieval system without written permission of the Publisher.



**RUSHLOW** SM

*"I CAN'T BE YOUR FRIEND"*

**2nd WEEK MOST ADDED**

THIS WEEK INCLUDES:

- KFRG**
- WXTU**
- WGAR**
- KNCI**
- KWJJ**
- WXBQ**
- WNKT**
- WITL**
- KKCS**
- WYPY**

**MUSIC NOTES**

According to the mother of former Prisoner of War Pfc. Patrick Miller, her son spent time in captivity singing a **Toby Keith** song. Mary Pickering told ABC-TV's *Good Morning America* that her son sang the song, which features the lyrics, "we're going to put a boot up their ass," at the top of his lungs.

After taking Spring Break off, **Tim McGraw's** concert tour resumed in New Orleans, where he also staged his

third "bread and water" show. Those after-concert shows are held in smaller venues and the proceeds go to charity. McGraw and the band played mostly 1970s cover songs during the show at Tipitina's Uptown, where they played until almost 4am.

**Sara Evans**, presently recovering from this week's removal of a blister from her vocal cords, is on voice rest. Evans still plans to host the Sizzlin' Country Concert in Las Vegas next month, but she is no longer expected to sing.

**RANDOM FAX®**

**Tuesday, 4/29**

**BIRTHDAYS:** Duane Allen, James Bonamy, Stephanie Bentley-Proutt, Richard Raines, Wayne Seacrest, Rosie Fitchpatrick  
**On TV:** GAC: **Billy Dean** (host), *GAC Classic*; **Chris Cagle** on *CRL*; **Aaron Tippin** *Stars and Stripes Special* ... CMT: "Cowboy" on *Cowboy Cool Theater*; **Cledus T. Judd** on *Most Wanted Live*; **Cledus T. Judd** on *Inside Fame*; *Military Messages*.

**Wednesday, 4/30**

**BIRTHDAYS:** Willie Nelson, Robert Reynolds, Tyler Wilkinson, Dana Burwell, Suzie Cox, Lane Wilson, Frank Wing, Chuck Rhodes  
**On TV:** NBC: **Rosanne Cash** on *The Caroline Rhea Show* ... Syndicated programming: **Brad Paisley** on *Jeopardy* ... CMT: **Blake Shelton** on *CMT Got Me In With The Band*; **Willie Nelson** on *CMT Got Me In With The Band*; **Willie Nelson** on *Inside Fame*; **Rascal Flatts**, **Jo Dee Messina**, **Brad Paisley** on *Ultimate Country Home*; **Toby and Willie:** Making the Video — "Whiskey For My Men (Beer For My Horses)"; *Military Messages*.

**Thursday, 5/1**

**BIRTHDAYS:** Helen Darling, Ilene Berns, Carrie Higdon, Barry Jeffrey, Louis Newman, Tanya Welch  
**On TV:** GAC: **Darryl Worley**, artist of the month; **Lee Greenwood**, Classic Artist of the month; **Marcel** on *CRL* ... CMT: **Tim McGraw** on *The Best Of Showcase*; **Tim McGraw** on *Controversy* — "Indian Outlaw"; **Tim McGraw** on *MWL Stacked*; *Top Twenty Countdown*; *Military Messages*

**Friday, 5/2**

**BIRTHDAYS:** Ty Herndon, Larry Gatlin, Buzz Ledford, Tammy Ragusa  
**On TV:** GAC: "Nashville Stars" visit *CRL* ... CMT: **Willie Nelson** and **Sheryl Crow** on *CMT Crossroads*; **Rascal Flatts:** "Melt On The Beach"; *Military Messages*

**Saturday, 5/3**

**BIRTHDAYS:** Brad Martin, Jerry Salley, Shane Minor, Rick Orozco, Jon Mitchell, Nancy Mitchell  
**On TV:** PBS: **Shawn Colvin**, **Alison Krauss**, **Lyle Lovett**, **Bruce Hornsby** on *Austin City Limits* ... CMT: *City Slickers* on *Cowboy Cool Theater*; *City Slickers II: The Legend of Curly's Gold* on *Cowboy Cool Theater*; **Lonestar** on *The Great Eight*; **Montgomery Gentry** on *Inside Fame*; **Jo Dee Messina**, **Brad Paisley**, **Jessica Andrews** on *Ultimate Country Home*; *Military Messages*; **Lonestar**, **Mark Wills**, **Rhonda Vincent** on *Grand Ole Opry Live*

**Sunday, 5/4**

**BIRTHDAYS:** Randy Travis, Robert Ellis Orrall, Tim Dubois, George Collier, Susan Eaddy, Sara Young  
**On TV:** CMT: **Jo Dee Messina**, **Brad Paisley**, **Jessica Andrews** on *Ultimate Country Home*; **Rascal Flatts:** "Melt On The Beach"

**Monday, 5/5**

**BIRTHDAYS:** the late **Tammy Wynette**, **Tim McGraw**, **Sammy Allred**, **Doug Baker**, **Mike Severson**  
**On TV:** CMT: **Brad Paisley** (episode premiere) on *CMT Got Me In With The Band*; **Jo Dee Messina**, **Brad Paisley**, **Jessica Andrews** on *Ultimate Country Home*; *Military Messages*.

*If you experienced transmission problems ... please call our Circulation Department at 310/788-1625.*

© 2002 Radio & Records, Inc. All Rights Reserved No part of this material may be reproduced in any form or incorporated in any information retrieval system without written permission of the Publisher.

**SAMMY KERSHAW**

**"I WANT MY MONEY BACK"**

**BULLSEYE CALLOUT AMERICA**

#13 25-54      #14 25-34      #12 35-44      #14 45-54  
 #12 25-44      #9 Males      #19 Females 25-54

**LOCAL CALLOUT**

220 Spins @ KUZZ/Bakersfield = #8 Overall

**MEDIABASE CALLOUT**

#15 Men 25-34      #20 Men All Ages      #27 Women All Ages  
 #Women 25-34      #Women 35-44

*Stay with us,  
 It's working for RADIO!*

**New Add:  
 WUSN/Chicago**



## And Then There Were Three, On *Nashville Star*

The winner of a Sony Music/Nashville recording contract has already been chosen by the public. But which of the last three remaining contestants on *Nashville Star* will be grabbing that prize? The answer won't be revealed until Saturday during a special grand finale program that will feature all 12 of the show's initial contestants. The final episode will also feature the final three contestants — Miranda Lambert, Buddy Jewell and John Arthur Martinez — singing duets with country stars Trace Adkins, Jo Dee Messina and Clint Black. Black is producing the winner's album.

With so much riding on the outcome of the public's vote, are things getting a little stressful in the house *Nashville Star* contestants are presently sharing on Music Row? Apparently not. Martinez claims it's been easier to live in the house as the show has gone on. "I've actually been more relaxed over the past three or four weeks than I had been during the previous weeks," he says. "I feel like I've had ample opportunity to share with the industry what I do. I feel like people have taken notice and that is exciting for me."

The atmosphere in the house isn't exactly high-tension either, Martinez claims: "Buddy and myself and Miranda, we tend to be pretty low key, probably the most low key of the 12 contestants." With the laid-back atmosphere in the house now, Martinez is freer to let creative juices flow. When it was more crowded, he would set the early morning hours aside for that. "I'm a singer-songwriter and I place a lot of weight on the songwriter part. I need that time alone; I need that creative time. I was getting that even when there were 12 of us. I get up at 6am because I have to get the girls to school. My clock is still set like that. So I had every morning to myself before people started moving."

That isn't to say Martinez doesn't miss that level of activity. He says, "I do miss the camaraderie that

came with having everyone there. Jamey [Garner] was one of my closest friends. Travis [Howard] is a guy that kind of grows on you. Travis is one that people liked a lot more than they initially expected themselves to. You didn't know how to take him at first."

With the many experiences this show has brought, Martinez says a few moments will continue to stand out in his mind: "The coolest thing was coming home to Marble Falls, TX and seeing how people reacted to me coming home. I know I'm the same human being, but people's perception of me has changed. Hometown folks are just so excited. They've put me on this elevated platform."

Obviously, that level of attention brings new challenges. Martinez says, "You want folks to treat you the same, but you don't want to do anything to blunt their excitement." And he makes sure he's careful not to do or say anything out of turn. "I already had a strong motivation in regard to that. I didn't want to say or do anything to embarrass the people I love. It's been amplified now because I also have to be responsible to my fans as well."

Those fans, from every state as well as countries like South Africa, Mexico and Canada, have sent Martinez e-mail notes of support. "The most amazing thing is how people say, 'I'm praying for you.' I woke up last week, and in my dream there were people praying over me in a church pew. People's prayers are definitely affecting me in a positive way."

If he doesn't win on Saturday, Martinez says he's confident that there are those in the industry who can see he has something to offer country music. "I've already begun some discussions with people in management and booking," he says. "Then it will be up to Sony if they want to exercise their option to sign me. They have 90 days from the completion of the show. If for some reason they decide not to, I'll be okay."

— Angela King/R&R Asst. Country Editor (615) 244-8822  
Email: [aking@radioandrecords.com](mailto:aking@radioandrecords.com)

If you experienced transmission problems ... please call our Circulation Department at 310/788-1625.

© 2002 Radio & Records, Inc. All Rights Reserved No part of this material may be reproduced in any form or incorporated in any information retrieval system without written permission of the Publisher.



# \* Tune In \* THE FINAL EPISODE

## Saturday 10PM/9c

Good luck Buddy, John Arthur and Miranda!

[nashvillestar.usanetwork.com](http://nashvillestar.usanetwork.com)



### Winter Arbitrons Roll

Winter 2003 Arbitron results continue to be released daily. If you like to watch 'em as they come in, keep an eye on [www.radioandrecords.com](http://www.radioandrecords.com). Go to the site and click on "Ratings." As always, each week's R&R Country Hot Fax will feature Country shares and 12+ ranks from around the nation. An "\*" indicates a tie in ranking, a "^" indicates co-owned stations within a marketplace, and a "+" indicates a Country Gold format.

| Station/City             | Fa '02 Share | Wi '03 Share | Fa '02 12+ Rank | Wi '03 12+ Rank | Station/City             | Fa '02 Share | Wi '03 Share | Fa '02 12+ Rank | Wi '03 12+ Rank |
|--------------------------|--------------|--------------|-----------------|-----------------|--------------------------|--------------|--------------|-----------------|-----------------|
| WQMX/Akron               | 5.6          | 6.6          | 3               | 1*              | WKIS/Miami               | 3.0          | 2.8          | 13*             | 16*             |
| WCTO/Allentown           | 10.1         | 13.4         | 2               | 1               | WMIL/Milwaukee           | 5.7          | 7.3          | 3*              | 2               |
| WKHX/Atlanta^            | 4.3          | 4.3          | 6*              | 4*              | KEYY/Minneapolis         | 5.8          | 8.3          | 5*              | 2               |
| WYAY/Atlanta^            | 2.4          | 3.4          | 18              | 10*             | KTOM/Monterey            | 3.5          | 3.0          | 9               | 10              |
| WPOC/Baltimore           | 9.0          | 10.1         | 1               | 1               | WNOE/New Orleans         | 5.4          | 7.1          | 5*              | 4               |
| WKLB/Boston              | 3.1          | 3.2          | 11*             | 11              | KXKT/Omaha               | 8.5          | 7.6          | 1               | 3               |
| WYRK/Buffalo             | 8.3          | 9.5          | 2               | 2               | WXTU/Philadelphia        | 3.8          | 3.5          | 10              | 9*              |
| WUBE/Cincinnati          | 5.6          | 4.7          | 5               | 7*              | KNIX/Phoenix             | 4.7          | 5.9          | 5*              | 1               |
| WYGY/Cincinnati          | 3.2          | 3.3          | 12              | 11              | KMLE/Phoenix             | 3.1          | 4.2          | 15              | 7*              |
| WCOL/Columbus, OH        | 7.0          | 6.3          | 4               | 5               | WDSY/Pittsburgh          | 7.6          | 7.1          | 3               | 3               |
| WHOK/Columbus, OH        | 2.2          | 2.9          | 13*             | 11              | WOGG/Pittsburgh^         | 1.6          | 1.1          | 17*             | 20*             |
| WCLT/Columbus, OH        | 2.3          | 1.7          | 12              | 17*             | WOGI/Pittsburgh^         | 1.6          | 1.4          | 17*             | 17              |
| KPLX/Dallas              | 6.1          | 5.5          | 2               | 2               | WOGF/Pittsburgh^         | —            | 0.5          | —               | 22*             |
| KSCS/Dallas              | 3.7          | 4.3          | 6               | 5               | WOGH/Pittsburgh^         | 0.5          | 0.4          | 23*             | 25*             |
| WHKO/Dayton              | 9.9          | 11.0         | 1               | 1               | WCTK/Providence          | 5.7          | 4.8          | 5               | 8               |
| WKSX/Dayton              | 1.7          | 1.8          | 15*             | 15*             | KFRG/Riverside           | 6.9          | 8.6          | 2               | 1               |
| WBZI-AM/Dayton           | 1.0          | 1.2          | 20*             | 18*             | KTDD/Riverside           | 0.8          | 1.0          | 30              | 26              |
| WPFB/Dayton              | 1.0          | 1.2          | 20*             | 18*             | KZLA/Los Angeles         | 1.1          | 0.7          | 26*             | 29*             |
| KYGO/Denver              | 6.2          | 6.9          | 2               | 2               | (Riverside Arbitron)     |              |              |                 |                 |
| WYCD/Detroit             | 3.8          | 4.1          | 10              | 9*              | KSON/San Diego           | 3.2          | 4.3          | 12*             | 7*              |
| WFLS/Fredericksburg, VA  | 13.4         | 17.5         | 1               | 1               | XHCR/San Diego           | 1.4          | 1.4          | 23              | 23*             |
| WWYZ/Hartford            | 7.4          | 4.9          | 4               | 7*              | KRTY/San Jose            | 1.0          | 1.0          | 26*             | 27*             |
| WPKX/Springfield, MA     | 1.1          | 0.6          | 16*             | 21*             | (San Francisco Arbitron) |              |              |                 |                 |
| (Hartford Arbitron)      |              |              |                 |                 | KRTY/San Jose            | 3.4          | 2.6          | 9               | 14              |
| KHCM/Honolulu            | 0.6          | 1.0          | 24              | 24              | KUBL/Salt Lake City      | 6.2          | 5.2          | 3               | 3               |
| KILT-FM/Houston          | 3.5          | 4.2          | 8               | 6               | KKAT/Salt Lake City      | 2.4^         | 3.2          | 16              | 11              |
| KKBQ/Houston^            | 2.6          | 3.5          | 14*             | 9               | KSOP/Salt Lake City      | 3.1          | 3.0          | 15              | 13              |
| KTHT/Houston+^1          | debut        | 2.5          | —               | 17*             | KWLW-AM/Salt Lake City+^ | 1.4          | 1.5          | 23*             | 24              |
| WFMS/Indianapolis        | 12.9         | 10.5         | 1               | 1               | KMPS/Seattle             | 6.8          | 5.5          | 2               | 3               |
| WDAF/Kansas City         | 6.2          | 7.1          | 3               | 2               | WPKX/Springfield, MA     | 5.0          | 6.7          | 7               | 5*              |
| KFKF/Kansas City         | 5.3          | 5.0          | 5               | 4               | WQYK/Tampa^              | 6.4          | 7.2          | 3               | 2               |
| KBEQ/Kansas City         | 3.9          | 4.2          | 11              | 8               | WYUU/Tampa^              | 1.4          | 1.9          | 19              | 18*             |
| KWNR/Las Vegas           | 7.9          | 7.8          | 1               | 1               | KIIM/Tucson              | 5.8          | 7.6          | 5               | 2               |
| WAMZ/Louisville^         | 13.2         | 13.2         | 1               | 2               | KOYT/Tucson              | 3.3          | 2.7          | 11              | 13              |
| WIBL & WYBL/Louisville+^ | 1.5          | 1.5          | 16*             | 16*             | WMZQ/Washington          | 2.3          | 3.0          | 15*             | 13              |
| WAVG/Louisville          | 0.9          | 1.2          | 21*             | 19              |                          |              |              |                 |                 |

<sup>1</sup> - Was CHR/Rhythmic until January 2003.

If you experienced transmission problems ... please call our Circulation Department at 310/788-1625.

© 2002 Radio & Records, Inc. All Rights Reserved No part of this material may be reproduced in any form or incorporated in any information retrieval system without written permission of the Publisher.

WIL WKLX WLZR WMZQ WPGC WRUF WRVA WSNE WTPI WWDB WWWM CHOM KNIX WCSX WGST WHCN WTPA KTFM KBOS WSSL KSFO

## The Remote Booth™

### THE Portable Display with Proven Remote Power!

- Fast, Easy Set-Up & Take-Down
- Increase Remote Visibility
- Quick-Change Graphics
- Great Sponsorship Opportunity

**Inventory Reduction Sale Save \$750**

**BROADCAST PRODUCTS INCORPORATED**

6528 Constitution Street  
Fort Wayne, IN 46804 • USA  
(260) 459-1286

**1-800-433-8460**

WISH KKLT CIMX KLTU WDV E KZLA WZTR KWJJ KWNZ

WIL WKLX WLZR WMZQ WPGC WRUF WRVA WSNE WTPI WWDB WWWM CHOM KNIX WCSX WGST WHCN WTPA KTFM KBOS WSSL KSFO



| LW | TW | ARTIST Title Label(s)  | Total Points | +/- Points | Total Plays | +/- Plays | Wks on Chart | Total Sta/Add |
|----|----|--|--------------|------------|-------------|-----------|--------------|---------------|
| 1  | 1  | <b>DARRYL WORLEY</b> Have You Forgotten ( <i>DreamWorks</i> )                  | 17613        | -831       | 6072        | -330      | 10           | 148/0         |
| 3  | 2  | <b>TIM MCGRAW</b> She's My Kind Of Rain ( <i>Curb</i> )                        | 16173        | +1158      | 5700        | +337      | 17           | 148/0         |
| 2  | 3  | <b>KENNY CHESNEY</b> Big Star ( <i>BNA</i> )                                   | 15563        | -1116      | 5489        | -359      | 17           | 148/0         |
| 7  | 4  | <b>DIAMOND RIO</b> I Believe ( <i>Arista</i> )                                 | 13167        | +603       | 4717        | +250      | 21           | 145/0         |
| 5  | 5  | <b>KEITH URBAN</b> Raining On Sunday ( <i>Capitol</i> )                        | 13003        | +168       | 4814        | +60       | 20           | 147/0         |
| 8  | 6  | <b>CHRIS CAGLE</b> What A Beautiful Day ( <i>Capitol</i> )                     | 12919        | +1131      | 4637        | +522      | 23           | 148/3         |
| 9  | 7  | <b>RANDY TRAVIS</b> Three Wooden Crosses ( <i>Word/Curb/Warner Christian</i> ) | 12145        | +557       | 4336        | +293      | 20           | 142/0         |
| 10 | 8  | <b>RASCAL FLATTS</b> Love You Out Loud ( <i>Lyric Street</i> )                 | 10913        | +501       | 3872        | +194      | 15           | 146/0         |
| 11 | 9  | <b>LONESTAR</b> My Front Porch Looking In ( <i>BNA</i> )                       | 10019        | +930       | 3496        | +294      | 9            | 145/3         |
| 15 | 10 | <b>TOBY KEITH</b> Beer For My Horses ( <i>DreamWorks</i> )                     | 9040         | +1867      | 3200        | +622      | 18           | 145/10        |
| 12 | 11 | <b>JIMMY WAYNE</b> Stay Gone ( <i>DreamWorks</i> )                             | 8901         | +251       | 3082        | +139      | 12           | 145/0         |
| 13 | 12 | <b>JEFF BATES</b> The Love Song ( <i>RCA</i> )                                 | 8176         | +276       | 3033        | +117      | 17           | 145/0         |
| 14 | 13 | <b>MONTGOMERY GENTRY</b> Speed ( <i>Columbia</i> )                             | 7595         | +255       | 2907        | +112      | 17           | 144/2         |
| 18 | 14 | <b>CRAIG MORGAN</b> Almost Home ( <i>Broken Bow</i> )                          | 7351         | +1030      | 2922        | +348      | 26           | 128/1         |
| 16 | 15 | <b>JESSICA ANDREWS</b> There's More To Me Than You ( <i>DreamWorks</i> )       | 7304         | +214       | 2711        | +83       | 17           | 137/2         |
| 17 | 16 | <b>TRACY BYRD</b> The Truth About Men ( <i>RCA</i> )                           | 7145         | +725       | 2549        | +262      | 8            | 132/5         |
| 19 | 17 | <b>JO DEE MESSINA</b> Was That My Life ( <i>Curb</i> )                         | 6367         | +303       | 2400        | +109      | 16           | 139/0         |
| 20 | 18 | <b>KID ROCK W/SHERYL CROW</b> Picture ( <i>Lava/Atlantic</i> )                 | 6014         | +213       | 2188        | +77       | 28           | 94/3          |
| 24 | 19 | <b>GEORGE STRAIT</b> Tell Me Something Bad About... ( <i>MCA</i> )             | 5549         | +1179      | 1981        | +445      | 5            | 133/6         |
| 23 | 20 | <b>BRIAN MCCOMAS</b> 99.9% Sure (Never...) ( <i>Lyric Street</i> )             | 5162         | +541       | 1822        | +249      | 9            | 124/7         |
| 25 | 21 | <b>BRAD PAISLEY</b> Celebrity ( <i>Arista</i> )                                | 4907         | +840       | 1702        | +267      | 7            | 119/10        |
| 21 | 22 | <b>GARTH BROOKS</b> Why Ain't I Running ( <i>Capitol</i> )                     | 4734         | +18        | 1784        | +21       | 10           | 118/1         |
| 22 | 23 | <b>TRAVIS TRITT</b> Country Ain't Country ( <i>Columbia</i> )                  | 4644         | +8         | 1841        | +40       | 15           | 129/2         |
| 26 | 24 | <b>SHANIA TWAIN</b> Forever And For Always ( <i>Mercury</i> )                  | 4526         | +725       | 1473        | +285      | 4            | 114/13        |
| 28 | 25 | <b>SARA EVANS</b> Backseat Of A Greyhound Bus ( <i>RCA</i> )                   | 4065         | +380       | 1471        | +147      | 9            | 123/5         |

(c) 2003 Radio &amp; Records, Inc.



"i'm just a girl"

# deana carter

This is your perfect uptempo spring/summer song!

impact date: 5/5

| LW             | TW        | ARTIST Title Label(s)  | Total Points | +/- Points | Total Plays | +/- Plays | Wks on Chart | Total Sta/Add |
|----------------|-----------|--|--------------|------------|-------------|-----------|--------------|---------------|
| 33             | <b>26</b> | <b>BROOKS &amp; DUNN</b> Red Dirt Road (Arista)                  | 3927         | +1249      | 1355        | +534      | 3            | 119/20        |
| 30             | <b>27</b> | <b>TRACE ADKINS</b> Then They Do (Capitol)                       | 3709         | +341       | 1438        | +182      | 8            | 116/5         |
| <b>Breaker</b> | 28        | <b>WARREN BROTHERS</b> Hey, Mr. President (BNA)                  | 3259         | -384       | 1248        | -81       | 6            | 89/4          |
| 31             | <b>29</b> | <b>DUSTY DRAKE</b> One Last Time (Warner Bros.)                  | 2921         | +21        | 1116        | +48       | 8            | 85/6          |
| 34             | <b>30</b> | <b>AMY DALLEY</b> Love's Got An Attitude (It...) (Curb)          | 2908         | +333       | 1146        | +150      | 9            | 102/2         |
| 32             | 31        | <b>SAMMY KERSHAW</b> I Want My Money Back (Audium)               | 2703         | -17        | 1147        | -29       | 13           | 96/1          |
| 35             | <b>32</b> | <b>MARK WILLS</b> When You Think Of Me (Mercury)                 | 2065         | +125       | 830         | +31       | 10           | 85/2          |
| 36             | <b>33</b> | <b>VINCE GILL</b> Someday (MCA)                                  | 1903         | +207       | 767         | +110      | 6            | 85/5          |
| 37             | <b>34</b> | <b>TERRI CLARK</b> Three Mississippi (Mercury)                   | 1760         | +211       | 704         | +79       | 7            | 79/7          |
| 45             | <b>35</b> | <b>BLAKE SHELTON</b> Heavy Liftin' (Warner Bros.)                | 1451         | +595       | 603         | +213      | 2            | 62/5          |
| 40             | <b>36</b> | <b>DIERKS BENTLEY</b> What Was I Thinkin' (Capitol)              | 1444         | +372       | 500         | +145      | 3            | 63/9          |
| 38             | <b>37</b> | <b>EMERSON DRIVE</b> Only God (DreamWorks)                       | 1331         | +149       | 531         | +50       | 5            | 77/6          |
| 42             | 38        | <b>LEANN RIMES</b> Suddenly (Asylum/Curb)                        | 1000         | -39        | 430         | -18       | 6            | 51/1          |
| 47             | <b>39</b> | <b>CLAY WALKER</b> A Few Questions (RCA)                         | 979          | +162       | 299         | +29       | 2            | 63/42         |
| 43             | <b>40</b> | <b>JENNIFER HANSON</b> This Far Gone (Capitol)                   | 974          | +84        | 373         | +27       | 2            | 58/3          |
| 48             | <b>41</b> | <b>AARON LINES</b> Love Changes Everything (RCA)                 | 939          | +141       | 387         | +57       | 3            | 55/4          |
| 49             | <b>42</b> | <b>MCHAYES</b> It Doesn't Mean I Don't... (Universal South)      | 855          | +102       | 328         | +32       | 3            | 52/3          |
| 46             | <b>43</b> | <b>TRICK PONY</b> A Boy Like You (H2E/WB)                        | 833          | -5         | 350         | +14       | 3            | 52/5          |
| <b>Debut</b>   | <b>44</b> | <b>FAITH HILL</b> You're Still Here (Warner Bros.)               | 795          | +557       | 235         | +168      | 1            | 45/37         |
| <b>Debut</b>   | <b>45</b> | <b>WYNONNA</b> What The World Needs (Asylum/Curb)                | 786          | +786       | 188         | +188      | 1            | 7/7           |
| 50             | <b>46</b> | <b>BRAD MARTIN</b> One Of Those Days (Monument/Epic)             | 745          | +159       | 358         | +62       | 2            | 51/1          |
| <b>Debut</b>   | <b>47</b> | <b>JOE NICHOLS</b> She Only Smokes When She... (Universal South) | 714          | +337       | 235         | +141      | 1            | 45/15         |
| <b>Debut</b>   | <b>48</b> | <b>RHETT AKINS</b> In Your Love (Audium)                         | 706          | +277       | 157         | +104      | 1            | 4/0           |
| <b>Debut</b>   | <b>49</b> | <b>JACK INGRAM</b> A Little Bit (Lucky Dog/Columbia)             | 551          | +178       | 118         | +79       | 1            | 1/0           |
| <b>Debut</b>   | <b>50</b> | <b>BILLY CURRINGTON</b> Walk A Little Straighter (Mercury)       | 549          | +82        | 210         | +49       | 1            | 38/10         |

(c) 2003 Radio &amp; Records, Inc.

**SPIN Increases!!!**
**SALES Increases!!!**
**CHART Moves!!!**

# Craig Morgan "Almost Home"

**R&R 14 +348 spins!**
**BB 18\* +246 spins!**
**6,481 units sold last week**
**(48% increase over the last 3 weeks!)**


(c) 2003 Radio & Records, Inc.

**NEW & ACTIVE**

**RUSHLOW** I Can't Be Your Friend (*Lyric Street*)  
Total Plays: 203, Total Stations: 42, Adds: 10

**CLINT DANIELS** The Letter (Almost Home) (*Monument/Epic*)  
Total Plays: 129, Total Stations: 28, Adds: 11

**RACHEL PROCTOR** Days Like This (*BNA*)  
Total Plays: 110, Total Stations: 35, Adds: 27

**CHARLIE ROBISON** Walter (*Columbia*)  
Total Plays: 101, Total Stations: 20, Adds: 2

**KENNY ROGERS** I'm Missing You (*Dreamcatcher*)  
Total Plays: 96, Total Stations: 13, Adds: 2

*Songs ranked by total plays*

**MOST INCREASED POINTS**

| ARTIST Title Label(s)  | Total Pt. Increase |
|--|--------------------|
| <b>TOBY KEITH</b> Beer For My Horses ( <i>DreamWorks</i> )         | +1867              |
| <b>BROOKS &amp; DUNN</b> Red Dirt Road ( <i>Arista</i> )           | +1249              |
| <b>GEORGE STRAIT</b> Tell Me Something Bad About... ( <i>MCA</i> ) | +1179              |
| <b>TIM MCGRAW</b> She's My Kind Of Rain ( <i>Curb</i> )            | +1158              |
| <b>CHRIS CAGLE</b> What A Beautiful Day ( <i>Capitol</i> )         | +1131              |
| <b>CRAIG MORGAN</b> Almost Home ( <i>Broken Bow</i> )              | +1030              |
| <b>LONESTAR</b> My Front Porch Looking In ( <i>BNA</i> )           | +930               |
| <b>BRAD PAISLEY</b> Celebrity ( <i>Arista</i> )                    | +840               |
| <b>WYNONNA</b> What The World Needs ( <i>Asylum/Curb</i> )         | +786               |
| <b>SHANIA TWAIN</b> Forever And For Always ( <i>Mercury</i> )      | +725               |

**MOST ADDED**

| ARTIST Title Label(s)   | Adds |
|---|------|
| <b>CLAY WALKER</b> A Few Questions ( <i>RCA</i> )                         | 42   |
| <b>FAITH HILL</b> You're Still Here ( <i>Warner Bros.</i> )               | 37   |
| <b>RACHEL PROCTOR</b> Days Like This ( <i>BNA</i> )                       | 27   |
| <b>BROOKS &amp; DUNN</b> Red Dirt Road ( <i>Arista</i> )                  | 20   |
| <b>JOE NICHOLS</b> She Only Smokes When She... ( <i>Universal South</i> ) | 15   |
| <b>SHANIA TWAIN</b> Forever And For Always ( <i>Mercury</i> )             | 13   |
| <b>CLINT DANIELS</b> The Letter (Almost Home) ( <i>Monument/Epic</i> )    | 11   |
| <b>TOBY KEITH</b> Beer For My Horses ( <i>DreamWorks</i> )                | 10   |
| <b>BRAD PAISLEY</b> Celebrity ( <i>Arista</i> )                           | 10   |
| <b>RUSHLOW</b> I Can't Be Your Friend ( <i>Lyric Street</i> )             | 10   |
| <b>BILLY CURRINGTON</b> Walk A Little Straighter ( <i>Mercury</i> )       | 10   |
| <b>DIERKS BENTLEY</b> What Was I Thinkin' ( <i>Capitol</i> )              | 9    |

**MOST INCREASED PLAYS**

| ARTIST Title Label(s)  | Total Play Increase |
|--|---------------------|
| <b>TOBY KEITH</b> Beer For My Horses ( <i>DreamWorks</i> )                 | +622                |
| <b>BROOKS &amp; DUNN</b> Red Dirt Road ( <i>Arista</i> )                   | +534                |
| <b>CHRIS CAGLE</b> What A Beautiful Day ( <i>Capitol</i> )                 | +522                |
| <b>GEORGE STRAIT</b> Tell Me Something Bad About... ( <i>MCA</i> )         | +445                |
| <b>CRAIG MORGAN</b> Almost Home ( <i>Broken Bow</i> )                      | +348                |
| <b>TIM MCGRAW</b> She's My Kind Of Rain ( <i>Curb</i> )                    | +337                |
| <b>LONESTAR</b> My Front Porch Looking In ( <i>BNA</i> )                   | +294                |
| <b>RANDY TRAVIS</b> Three Wooden ... ( <i>Word/Curb/Warner Christian</i> ) | +293                |
| <b>SHANIA TWAIN</b> Forever And For Always ( <i>Mercury</i> )              | +285                |
| <b>BRAD PAISLEY</b> Celebrity ( <i>Arista</i> )                            | +267                |

**>>> BNA "BREAKER" news: 4 new adds this week! <<<**

The war is "over", so the President of the United States can sit back, put his feet on the desk and call it a day, right? What about Syria, China, N. Korea, SARS, the U.S. economy, rebuilding Iraq, repairing worldwide alliances within the UN & NATO, Feingold, and the Phillipines — just to name a few???

**"Hey Mr. President" The Warren Brothers**

*This IS NOT A WAR SONG, it is a socially conscious song about the toughest job on the planet!*

(c) 2003 Radio & Records, Inc.

**MOST PLAYED RECURRENTS**

| ARTIST Title Label(s)                                  | Total Plays |
|--|-------------|
| MARTINA MCBRIDE Concrete Angel (RCA)                   | 4189        |
| ALAN JACKSON That'd Be Alright (Arista)                | 4010        |
| JOE NICHOLS Brokenheartsville (Universal South)        | 3571        |
| MARK WILLS 19 Somethin' (Mercury)                      | 2918        |
| GARY ALLAN Man To Man (MCA)                            | 2271        |
| RASCAL FLATTS These Days (Lyric Street)                | 2089        |
| KEITH URBAN Somebody Like You (Capitol)                | 2071        |
| TOBY KEITH Who's Your Daddy? (DreamWorks)              | 1790        |
| DIAMOND RIO Beautiful Mess (Arista)                    | 1787        |
| TERRI CLARK I Just Wanna Be Mad (Mercury)              | 1766        |
| EMERSON DRIVE Fall Into Me (DreamWorks)                | 1732        |
| GEORGE STRAIT She'll Leave You With A Smile (MCA)      | 1672        |
| BLAKE SHELTON The Baby (Warner Bros.)                  | 1544        |
| KENNY CHESNEY The Good Stuff (BNA)                     | 1430        |
| TOBY KEITH Courtesy Of The Red, White... (DreamWorks)  | 1361        |
| TRACY BYRD Ten Rounds With Jose Cuervo (RCA)           | 1204        |
| JOE NICHOLS The Impossible (Universal South)           | 1112        |
| STEVE AZAR I Don't Have To Be (Till...) (Mercury)      | 985         |
| AARON TIPPIN Where Stars And Stripes... (Lyric Street) | 980         |
| AARON LINES You Can't Hide Beautiful (RCA)             | 944         |

**GOING FOR ADDS**

|      |  |
|------|--|
| 5/5  | BEST OF FRIENDS I'm A Mom (Spring Hill)              |
|      | DEANA CARTER I'm Just A Girl (Arista)                |
|      | LISA MARIE PRESLEY Lights Out (Capitol)              |
|      | OAK RIDGE BOYS The Absence Of Love (Spring Hill)     |
|      | SHANE SELLERS Back To Riding Rainbows (Lofton Creek) |
|      | WYNONNA What The World Needs (Asylum/Curb)           |
| 5/12 | JAMIE O'NEAL Every Little Thing (Mercury)            |
| 5/19 | JESSICA ANDREWS Good Time (DreamWorks)               |
|      | JOSH TURNER Long Black Train (MCA)                   |
|      | PAT GREEN Wave On Wave (Republic/Universal South)    |



148 Country reporters. Monitored airplay data supplied by Mediabase Research, a division of Premiere Radio Networks. Songs ranked by total points for the airplay week of 4/20/03-4/26/03. Bullets appear on songs gaining in points or remaining flat from previous week. If two songs are tied in total points, the song with the larger increase in points is placed first. Songs below No. 1 and down in plays and points for three consecutive weeks are moved to recurrent. Most Added is the total number of new adds officially reported to R&R by each reporting station. Songs unreported as adds do not count toward overall total stations playing a song. Most Increased Points lists the songs with the greatest week-to-week increases in total points. Breaker status is awarded to songs reported by 60% of the panel for the first time. Station Weight = AQH Persons + (Market rank X 10) divided by 4180. Gross Impressions equals Average Quarter Hour Persons times number of plays (times 100). Average Quarter Hour Persons used herein with permission from the Arbitron Company (copyright 2003, The Arbitron Company). (C) 2003, R&R, Inc.

# RHETT AKINS

## "In Your Love"

"In Your Love" is the ultimate Springtime love song... sounds like the "Amazed" of 2003! Strong reaction from our Wolf audience!  
 -Cody Alan, 99.5 The Wolf!

**37 spins/Week • #1 Most Requested.**

**R&R: 48 Billboard: 57\***

This song *works!* Emotion, passion, no matter what you call it, this song makes it happen.....

-Shadow Stevens, WWKA/Orlando

**Also spinning at WPCV, KQFC, WITL**

**Thanks to After Midnite for helping us chart... stay tuned for more developing stories**



April 29, 2003

| LW | TW | ARTIST Title Label(s)   | Total Points | +/- Points | Total Plays | +/- Plays | Wks on Chart | Total Sta/Add |
|----|----|---|--------------|------------|-------------|-----------|--------------|---------------|
| 2  | 1  | <b>TIM MCGRAW</b> She's My Kind Of Rain (Curb)                        | 3559         | +96        | 2805        | +70       | 16           | 75/0          |
| 1  | 2  | <b>KENNY CHESNEY</b> Big Star (BNA)                                   | 3481         | -57        | 2738        | -48       | 18           | 74/0          |
| 3  | 3  | <b>KEITH URBAN</b> Raining On Sunday (Capitol)                        | 3333         | +61        | 2655        | +63       | 23           | 74/0          |
| 5  | 4  | <b>DIAMOND RIO</b> I Believe (Arista)                                 | 3287         | +158       | 2590        | +113      | 25           | 72/0          |
| 6  | 5  | <b>RANDY TRAVIS</b> Three Wooden Crosses (Word/Curb/Warner Christian) | 3207         | +119       | 2516        | +109      | 22           | 73/0          |
| 8  | 6  | <b>CHRIS CAGLE</b> What A Beautiful Day (Capitol)                     | 3054         | +168       | 2456        | +125      | 24           | 74/0          |
| 4  | 7  | <b>DARRYL WORLEY</b> Have You Forgotten (DreamWorks)                  | 2946         | -308       | 2298        | -265      | 10           | 72/1          |
| 10 | 8  | <b>RASCAL FLATTS</b> Love You Out Loud (Lyric Street)                 | 2855         | +101       | 2301        | +100      | 16           | 75/0          |
| 11 | 9  | <b>LONESTAR</b> My Front Porch Looking In (BNA)                       | 2576         | +137       | 2051        | +115      | 10           | 74/0          |
| 13 | 10 | <b>TOBY KEITH</b> Beer For My Horses (DreamWorks)                     | 2552         | +361       | 2019        | +284      | 6            | 75/0          |
| 14 | 11 | <b>JIMMY WAYNE</b> Stay Gone (DreamWorks)                             | 2375         | +236       | 1890        | +154      | 13           | 75/1          |
| 12 | 12 | <b>JEFF BATES</b> The Love Song (RCA)                                 | 2307         | +60        | 1847        | +20       | 17           | 74/1          |
| 15 | 13 | <b>JESSICA ANDREWS</b> There's More To Me Than You (DreamWorks)       | 2206         | +81        | 1769        | +74       | 20           | 72/0          |
| 17 | 14 | <b>TRACY BYRD</b> The Truth About Men (RCA)                           | 2092         | +240       | 1692        | +176      | 9            | 74/2          |
| 16 | 15 | <b>MONTGOMERY GENTRY</b> Speed (Columbia)                             | 2091         | +40        | 1645        | +21       | 18           | 70/0          |
| 20 | 16 | <b>GEORGE STRAIT</b> Tell Me Something Bad About... (MCA)             | 1886         | +270       | 1483        | +218      | 5            | 74/2          |
| 18 | 17 | <b>JO DEE MESSINA</b> Was That My Life (Curb)                         | 1870         | +85        | 1487        | +57       | 17           | 71/2          |
| 19 | 18 | <b>CRAIG MORGAN</b> Almost Home (Broken Bow)                          | 1689         | +60        | 1364        | +48       | 19           | 59/0          |
| 21 | 19 | <b>GARTH BROOKS</b> Why Ain't I Running (Capitol)                     | 1554         | +28        | 1272        | +19       | 10           | 63/1          |
| 26 | 20 | <b>BROOKS &amp; DUNN</b> Red Dirt Road (Arista)                       | 1547         | +387       | 1214        | +291      | 3            | 72/7          |
| 23 | 21 | <b>BRAD PAISLEY</b> Celebrity (Arista)                                | 1494         | +217       | 1209        | +163      | 8            | 64/2          |
| 25 | 22 | <b>BRIAN MCCOMAS</b> 99.9% Sure (Never...) (Lyric Street)             | 1393         | +226       | 1141        | +171      | 9            | 64/0          |
| 22 | 23 | <b>TRAVIS TRITT</b> Country Ain't Country (Columbia)                  | 1386         | +25        | 1064        | +16       | 17           | 55/1          |
| 24 | 24 | <b>TRACE ADKINS</b> Then They Do (Capitol)                            | 1382         | +165       | 1106        | +112      | 9            | 67/1          |
| 32 | 25 | <b>SHANIA TWAIN</b> Forever And For Always (Mercury)                  | 1170         | +352       | 958         | +289      | 4            | 66/14         |

(c) 2003 Radio & Records, Inc.

# "Score!"

"THEIR IDEA... MY SUCCESS!"

Choose the decal printer more radio stations have relied on for 30 years.

**Call Today!**  
800.331.4438  
www.cgilink.com

THE DECAL COMPANY

April 29, 2003

| LW           | TW | ARTIST Title Label(s)                                     | Total Points | +/- Points | Total Plays | +/- Plays | Wks on Chart | Total Sta/Add |
|--------------|----|---|--------------|------------|-------------|-----------|--------------|---------------|
| 27           | 26 | SARA EVANS Backseat Of A Greyhound Bus (RCA)              | 1158         | +45        | 929         | +44       | 11           | 60/1          |
| 28           | 27 | WARREN BROTHERS Hey, Mr. President (BNA)                  | 1077         | +93        | 852         | +70       | 5            | 52/0          |
| 31           | 28 | KID ROCK W/SHERYL CROW Picture (Lava/Atlantic)            | 911          | +74        | 763         | +54       | 12           | 36/1          |
| 29           | 29 | SAMMY KERSHAW I Want My Money Back (Audium)               | 875          | -36        | 720         | -23       | 15           | 42/2          |
| 34           | 30 | DUSTY DRAKE One Last Time (Warner Bros.)                  | 680          | +53        | 570         | +45       | 7            | 38/3          |
| 35           | 31 | EMERSON DRIVE Only God (DreamWorks)                       | 665          | +50        | 550         | +45       | 7            | 44/3          |
| 33           | 32 | MARK WILLS When You Think Of Me (Mercury)                 | 663          | -12        | 557         | 0         | 11           | 41/3          |
| 36           | 33 | TRICK PONY A Boy Like You (H2E/WB)                        | 607          | +84        | 506         | +48       | 7            | 33/3          |
| 42           | 34 | DIERKS BENTLEY What Was I Thinkin' (Capitol)              | 571          | +305       | 460         | +237      | 2            | 39/13         |
| 43           | 35 | JOE NICHOLS She Only Smokes When She... (Universal South) | 567          | +305       | 452         | +225      | 2            | 39/14         |
| 37           | 36 | AMY DALLEY Love's Got An Attitude (It...) (Curb)          | 487          | +53        | 401         | +44       | 8            | 31/2          |
| 39           | 37 | VINCE GILL Someday (MCA)                                  | 484          | +97        | 382         | +78       | 5            | 33/7          |
| 41           | 38 | BLAKE SHELTON Heavy Liftin' (Warner Bros.)                | 482          | +165       | 384         | +120      | 2            | 34/7          |
| 40           | 39 | TERRI CLARK Three Mississippi (Mercury)                   | 395          | +30        | 339         | +28       | 6            | 27/3          |
| <b>Debut</b> | 40 | CLAY WALKER A Few Questions (RCA)                         | 266          | +119       | 220         | +97       | 1            | 24/13         |
| 48           | 41 | BRAD MARTIN One Of Those Days (Monument/Epic)             | 260          | +47        | 239         | +45       | 2            | 19/1          |
| 47           | 42 | JENNIFER HANSON This Far Gone (Capitol)                   | 248          | +16        | 227         | +15       | 3            | 22/2          |
| 45           | 43 | MCHAYES It Doesn't Mean I Don't... (Universal South)      | 246          | +2         | 232         | +3        | 4            | 20/2          |
| 50           | 44 | KID ROCK F/ALLISON MOORER Picture (Lava/Universal South)  | 228          | +29        | 205         | +32       | 18           | 6/0           |
| 49           | 45 | JILL KING One Mississippi (Blue Diamond)                  | 211          | +9         | 189         | +2        | 5            | 18/2          |
| <b>Debut</b> | 46 | LEANN RIMES Suddenly (Asylum/Curb)                        | 205          | +18        | 167         | +14       | 1            | 14/1          |
| <b>Debut</b> | 47 | AARON LINES Love Changes Everything (RCA)                 | 186          | +26        | 173         | +22       | 1            | 19/4          |
| <b>Debut</b> | 48 | KENNY ROGERS I'm Missing You (Dreamcatcher)               | 154          | +41        | 137         | +29       | 1            | 15/2          |
| <b>Debut</b> | 49 | RUSHLOW I Can't Be Your Friend (Lyric Street)             | 139          | +56        | 116         | +37       | 1            | 12/4          |
| <b>Debut</b> | 50 | BILLY CURRINGTON Walk A Little Straighter (Mercury)       | 136          | +67        | 123         | +64       | 1            | 15/6          |

(c) 2003 Radio &amp; Records, Inc.

## Need it fast? No problem.

➤ Custom Production - Callouts & Montages

➤ Digital, Clear, Consistent

➤ 65,000+ Song Library

➤ All Formats & International Titles

➤ On-Time Delivery

Featuring: GoldDiscs and HitDiscs

The World's Premier Music Hook Service

 Email: [hooks@hooks.com](mailto:hooks@hooks.com)
[www.hooks.com](http://www.hooks.com)

FAX: (573)443-4016

 200 Old 63 South, #103  
 Columbia, MO 65201-6081

For The Best Auditorium  
 Test Hook Tapes

**Michael Pelaia**  
 (573) 443-4155

(c) 2003 Radio & Records, Inc.

**MOST ADDED**

| ARTIST Title Label(s)                                     | Adds |
|---|------|
| SHANIA TWAIN Forever And For Always (Mercury)             | 14   |
| JOE NICHOLS She Only Smokes When She... (Universal South) | 14   |
| DIERKS BENTLEY What Was I Thinkin' (Capitol)              | 13   |
| CLAY WALKER A Few Questions (RCA)                         | 13   |
| BROOKS & DUNN Red Dirt Road (Arista)                      | 7    |
| BLAKE SHELTON Heavy Liftin' (Warner Bros.)                | 7    |
| VINCE GILL Someday (MCA)                                  | 7    |
| FAITH HILL You're Still Here (Warner Bros.)               | 7    |
| BILLY CURRINGTON Walk A Little Straighter (Mercury)       | 6    |
| AARON LINES Love Changes Everything (RCA)                 | 4    |
| RUSHLOW I Can't Be Your Friend (Lyric Street)             | 4    |
| RACHEL PROCTOR Days Like This (BNA)                       | 4    |
| CLINT DANIELS The Letter (Almost Home) (Monument/Epic)    | 4    |
| WYNONNA What The World Needs (Asylum/Curb)                | 4    |
| EMERSON DRIVE Only God (DreamWorks)                       | 3    |
| MARK WILLS When You Think Of Me (Mercury)                 | 3    |
| DUSTY DRAKE One Last Time (Warner Bros.)                  | 3    |
| TRICK PONY A Boy Like You (H2E/WB)                        | 3    |
| TERRI CLARK Three Mississippi (Mercury)                   | 3    |
| TRACY BYRD The Truth About Men (RCA)                      | 2    |

**MOST INCREASED POINTS**

| ARTIST Title Label(s)                                     | Total Pt. Increase |
|---|--------------------|
| BROOKS & DUNN Red Dirt Road (Arista)                      | +387               |
| TOBY KEITH Beer For My Horses (DreamWorks)                | +361               |
| SHANIA TWAIN Forever And For Always (Mercury)             | +352               |
| DIERKS BENTLEY What Was I Thinkin' (Capitol)              | +305               |
| JOE NICHOLS She Only Smokes When She... (Universal South) | +305               |
| GEORGE STRAIT Tell Me Something Bad About... (MCA)        | +270               |
| TRACY BYRD The Truth About Men (RCA)                      | +240               |
| JIMMY WAYNE Stay Gone (DreamWorks)                        | +236               |
| BRIAN MCCOMAS 99.9% Sure (Never...) (Lyric Street)        | +226               |
| BRAD PAISLEY Celebrity (Arista)                           | +217               |

**MOST INCREASED PLAYS**

| ARTIST Title Label(s)                                      | Total Play Increase |
|--|---------------------|
| BROOKS & DUNN Red Dirt Road (Arista)                       | +291                |
| SHANIA TWAIN Forever And For Always (Mercury)              | +289                |
| TOBY KEITH Beer For My Horses (DreamWorks)                 | +284                |
| DIERKS BENTLEY What Was I Thinkin' (Capitol)               | +237                |
| JOE NICHOLS She Only Smokes When She... (Universal South)  | +225                |
| GEORGE STRAIT Tell Me Something Bad About... (MCA)         | +218                |
| TRACY BYRD The Truth About Men (RCA)                       | +176                |
| BRIAN MCCOMAS 99.9% Sure (Never...) (Lyric Street)         | +171                |
| BRAD PAISLEY Celebrity (Arista)                            | +163                |
| JIMMY WAYNE Stay Gone (DreamWorks)                         | +154                |
| CHRIS CAGLE What A Beautiful Day (Capitol)                 | +125                |
| BLAKE SHELTON Heavy Liftin' (Warner Bros.)                 | +120                |
| LONESTAR My Front Porch Looking In (BNA)                   | +115                |
| DIAMOND RIO I Believe (Arista)                             | +113                |
| TRACE ADKINS Then They Do (Capitol)                        | +112                |
| RANDY TRAVIS Three Wooden ... (Word/Curb/Warner Christian) | +109                |
| RASCAL FLATTS Love You Out Loud (Lyric Street)             | +100                |
| CLAY WALKER A Few Questions (RCA)                          | +97                 |
| VINCE GILL Someday (MCA)                                   | +78                 |
| JESSICA ANDREWS There's More To Me Than You (DreamWorks)   | +74                 |
| TIM MCGRAW She's My Kind Of Rain (Curb)                    | +70                 |
| WARREN BROTHERS Hey, Mr. President (BNA)                   | +70                 |
| BILLY CURRINGTON Walk A Little Straighter (Mercury)        | +64                 |
| KEITH URBAN Raining On Sunday (Capitol)                    | +63                 |
| WYNONNA What The World Needs (Asylum/Curb)                 | +59                 |
| JO DEE MESSINA Was That My Life (Curb)                     | +57                 |
| KID ROCK W/SHERYL CROW Picture (Lava/Atlantic)             | +54                 |
| CRAIG MORGAN Almost Home (Broken Bow)                      | +48                 |
| TRICK PONY A Boy Like You (H2E/WB)                         | +48                 |
| EMERSON DRIVE Only God (DreamWorks)                        | +45                 |



**Don't Miss The One Great Industry Event Of The Year!**

**R&R® convention: 2003**

★ The Beverly Hilton Hotel ★ Beverly Hills, California ★

**June 19-21**

**Register Now!! [www.radioandrecords.com](http://www.radioandrecords.com)**



| Artist Title (Label)  | TW   | LW   | Fam. | Burn | 12+  | Fam. | Burn |
|---|------|------|------|------|------|------|------|
| DARRYL WORLEY Have You Forgotten (DreamWorks)                         | 4.48 | 4.41 | 98%  | 25%  | 4.28 | 98%  | 28%  |
| DIAMOND RIO I Believe (Arista)  | 4.43 | 4.44 | 94%  | 14%  | 4.27 | 94%  | 18%  |
| TOBY KEITH W/WILLIE NELSON Beer For My Horses (DreamWorks)            | 4.25 | 4.08 | 93%  | 14%  | 4.20 | 92%  | 13%  |
| RASCAL FLATTS Love You Out Loud (Lyric Street)                        | 4.21 | 4.24 | 93%  | 17%  | 4.27 | 93%  | 16%  |
| TRACY BYRD The Truth About Men (RCA)                                  | 4.21 | 4.15 | 77%  | 9%   | 4.01 | 77%  | 12%  |
| LONESTAR My Front Porch Looking In (BNA)                              | 4.20 | 4.24 | 87%  | 11%  | 4.21 | 87%  | 11%  |
| CHRIS CAGLE What A Beautiful Day (Capitol)                            | 4.17 | 4.21 | 95%  | 18%  | 4.26 | 96%  | 17%  |
| KEITH URBAN Raining On Sunday (Capitol)                               | 4.17 | 4.18 | 95%  | 21%  | 4.08 | 96%  | 25%  |
| MARTINA MCBRIDE Concrete Angel (RCA)                                  | 4.16 | 4.23 | 99%  | 30%  | 4.20 | 99%  | 31%  |
| ALAN JACKSON That'd Be Alright (Arista)                               | 4.15 | 4.05 | 97%  | 27%  | 3.86 | 97%  | 33%  |
| TRACE ADKINS Then They Do (Capitol)                                   | 4.15 | —    | 58%  | 6%   | 4.06 | 55%  | 7%   |
| RANDY TRAVIS Three Wooden Crosses (Word/Curb/WB)                      | 4.12 | 4.29 | 92%  | 21%  | 4.06 | 91%  | 21%  |
| CRAIG MORGAN Almost Home (Broken Bow)                                 | 4.12 | 4.16 | 73%  | 10%  | 4.04 | 72%  | 13%  |
| MONTGOMERY GENTRY Speed (Columbia)                                    | 4.03 | 4.02 | 90%  | 17%  | 4.06 | 91%  | 17%  |
| JIMMY WAYNE Stay Gone (DreamWorks)                                    | 4.02 | 4.01 | 68%  | 7%   | 4.04 | 73%  | 9%   |
| BRAD PAISLEY Celebrity (Arista)                                       | 4.02 | 3.96 | 68%  | 9%   | 4.05 | 67%  | 8%   |
| TRAVIS TRITT Country Ain't Country (Columbia)                         | 4.01 | 4.03 | 78%  | 12%  | 3.88 | 78%  | 13%  |
| TIM MCGRAW She's My Kind Of Rain (Curb)                               | 4.00 | 3.99 | 99%  | 35%  | 4.00 | 99%  | 34%  |
| KENNY CHESNEY Big Star (BNA)  | 4.00 | 3.96 | 98%  | 33%  | 4.02 | 98%  | 34%  |
| GEORGE STRAIT Tell Me Something Bad About Tulsa (MCA)                 | 4.00 | 3.96 | 60%  | 7%   | 3.90 | 57%  | 7%   |
| JEFF BATES The Love Song (RCA)  | 3.98 | 4.05 | 77%  | 13%  | 3.91 | 78%  | 17%  |
| JESSICA ANDREWS There's More To Me Than You (DreamWorks)              | 3.93 | 3.84 | 87%  | 15%  | 3.98 | 88%  | 17%  |
| KID ROCK Picture (Atlantic)   | 3.87 | 3.93 | 94%  | 33%  | 3.83 | 95%  | 40%  |
| GARTH BROOKS Why Ain't I Running (Capitol)                            | 3.86 | 3.76 | 73%  | 13%  | 3.90 | 73%  | 12%  |
| JO DEE MESSINA Was That My Life (Curb)                                | 3.84 | 3.80 | 83%  | 16%  | 3.79 | 81%  | 16%  |
| PHIL VASSAR This Is God (Arista)                                      | 3.77 | 3.84 | 94%  | 29%  | 3.73 | 93%  | 31%  |
| BRIAN MCCOMAS 99.9% Sure (I've Never Been Here Before) (Lyric Street) | 3.77 | 3.85 | 57%  | 10%  | 3.83 | 62%  | 12%  |
| WARREN BROTHERS Hey Mr. President (BNA)                               | 3.70 | 3.77 | 63%  | 14%  | 3.70 | 62%  | 12%  |
| SARA EVANS Backseat Of A Greyhound Bus (RCA)                          | 3.67 | 3.66 | 61%  | 11%  | 3.74 | 64%  | 10%  |
| SHANIA TWAIN Forever And For Always (Mercury)                         | 3.51 | —    | 73%  | 21%  | 3.57 | 67%  | 17%  |

Total sample size is 658 respondents. **Total average favorability** estimates are based on a scale of 1-5. (1=dislike very much, 5=like very much). **Total familiarity** represents the percentage of respondents who recognized the song. **Total burn** represents the number of respondents who said they are tired of hearing the song. Songs are ranked by favorability among Persons 25-54. Persons are screened via the Internet. Once passed, they can take the music test based on their format/music preference. RateTheMusic.com results are not meant to replace callout research. The results are intended to show opinions of participants on the Internet only. RateTheMusic is a registered trademark of RateTheMusic.com. **The RTM system is available for local radio stations by calling 818/377-5300. RateTheMusic.com data is provided by Mediabase Research, A division of Premiere Radio Networks.**

**If you experienced transmission problems ... please call our Circulation Department at 310/788-1625.**

© 2003 Radio & Records, Inc. All Rights Reserved No part of this material may be reproduced in any form or incorporated in any information retrieval system without written permission of the Publisher.