

# TOP 40 AIRPLAY Monitor

• We Listen To Radio •

August 7, 1998 \$4.95 Volume 6 • No. 32

## TOP 40 HIGHLIGHTS

### MAINSTREAM TOP 40

#1

**GOO GOO DOLLS**  
*Iris* (WARNER SUNSET/REPRISE)

★★★ AIRPOWER ★★★

NATALIE IMBRUGLIA • *Wishing I Was There* (RCA)

### GOING FOR AIRPLAY

98 DEGREES • *Because Of You* (MOTOWN/MERCURY)  
AALIYAH • *Are You That Somebody* (BLACKGROUND/ATLANTIC)  
DES'REE • *Life* (550 MUSIC)  
FOO FIGHTERS • *Walking After You* (CAPITOL/ELEKTRA/EEG)  
EMM GRYNER • *Summerlong* (MERCURY)  
PAPAYA • *Hero* (MAVERICK/REPRISE)

### RHYTHMIC TOP 40

#1

**BRANDY & MONICA**  
*The Boy Is Mine* (ATLANTIC)

★★★ AIRPOWER ★★★

CAM'RON FEATURING MASE • *Horse & Carriage* (UNTERENTAINMENT/EPIC)

### CROSSOVER

#1

**AALIYAH**  
*Are You That Somebody?* (BLACKGROUND/ATLANTIC)

★★★ AIRPOWER ★★★

GINUWINE • *Same Ol' G* (BLACKGROUND/ATLANTIC)  
MO THUGS FAMILY FEATURING FELECIA & KRAYZIE BONE • *All Good* (MO THUGS/RELATIVITY)  
SILKK THE SHOCKER • *It Ain't My Fault* (NO LIMIT/PRIORITY)

### GOING FOR AIRPLAY

98 DEGREES • *Because Of You* (MOTOWN/MERCURY)  
JANITA • *Getting Over* (550 MUSIC)  
PAPAYA • *Hero* (MAVERICK/REPRISE)  
TQ • *Westside* (CLOCKWORK/EPIC)

### ADULT TOP 40

#1

**GOO GOO DOLLS**  
*Iris* (WARNER SUNSET/REPRISE)

★★★ AIRPOWER ★★★

NO RECORDS QUALIFIED FOR AIRPOWER THIS WEEK

### ADULT CONTEMPORARY

#1

**SHANIA TWAIN**  
*You're Still The One* (MERCURY)

★★★ AIRPOWER ★★★

BACKSTREET BOYS • *I'll Never Break Your Heart* (JIVE)  
ANNE COCHRAN & JIM BRICKMAN • *After All These Years* (RENEGADE/WINDHAM HILL)

### GOING FOR AIRPLAY

DES'REE • *Life* (550 MUSIC)  
LUCINDA WILLIAMS • *Right In Time* (MERCURY)  
SISTER HAZEL • *Concede* (UNIVERSAL)  
THIRD EYE BLIND • *Jumper* (ELEKTRA/EEG)

## The Aircheck's In The Mail—And Don't You Wish It Stayed There?

By Dana Hall, Marc Schiffman, Jeff Silberman, and Phyllis Stark

Besides raising the station's ratings and revenue, one of the programmer's most important responsibilities is finding and developing the great air talent of the future. Hey, it's a dirty job, but someone's got to do it.

Every time an on-air opening is publicized, scores of tapes and résumés will flood a station. Most are from up-and-comers who are a bit rough around the edges. The PD's duty is to wade through the mountain of tapes and cover letters to find that diamond in the rough—the future Rick Dees, Tom Joyner, or Howard Stern.

This story is not about those airchecks. Nor is it about the countless

packages that are merely marred by sloppily handwritten cover letters, inferior-quality tapes, misspelled call letters, miscued or even blank tapes, and the like. The following airchecks should've first been evaluated by bomb-sniffing dogs.

What you are about to read is true. The names have been changed to protect the innocent, the guilty, and the potentially dangerous.

### THIS IS PAYING YOUR DUES

"One guy sent me a letter, wanting to change careers and be a DJ," country KFDI-AM-FM Wichita, Kan., OM John "Boy" Speer says. "The only problem was he had a couple of more years to 'serve' because of his 'previous position.' He still had to do two

*Continued on page 20*

# LUCINDA WILLIAMS

## "Right In Time"

from her new album  
**Car Wheels On A Gravel Road**

"★★★★1/2... Perfect... A masterpiece."  
— *Rolling Stone*

"★★★★... Pop magic." — *USA Today*

"The Year's Best Album." — *Spin*

"America's Greatest Songwriter."  
— *Rolling Stone*

IMPACT DATE: AUGUST 10  
TO ADULT TOP 40 AND  
MODERN A/C STATIONS

Performing live on  
Good Morning America August 14th  
200K+ shipped and  
80K+ scanned in first month of release



*Mercury*  
a PolyGram company  
www.mercuryrecords.com/mrcnrc  
© 1998 Mercury Records

# LENNY KRAVITZ THINKING OF YOU



THE NEW SONG FROM THE ALBUM 5  
PRODUCED, WRITTEN, ARRANGED AND PERFORMED BY LENNY KRAVITZ  
REPRESENTATION: CRAIG FRUIN AND HOWARD KAUFMAN/HK MANAGEMENT  
WWW.VIRGINRECORDS.COM AOL KEYWORD: VIRGIN RECORDS  
© 1998 VIRGIN RECORDS AMERICA, INC.



# AIRPLAY Monitor

August 5, 1998

Dear Subscriber,

In addition to the redesigned features introduced inside the magazine last week, there is a lot of activity going on behind the scenes at Airplay Monitor. Here are a few important developments we want to bring to your attention:

***The Results Are In: You Made Airplay Monitor the Industry's #1 Trade!***

Monitor's first independently conducted readership study is now complete. The study was conducted by Harvey Research, the world's largest provider of research services to trade publishers. The goal of this study was not only to evaluate our magazine's content, but also reader's preferences and attitudes toward other trade publications, consultants, independent promotion, network programming, advertising in Monitor and more.

You ranked Monitor the #1 most read, most helpful and most important radio trade magazine! Airplay Monitor is also the most referred to publication in radio station's music meetings.

Thanks to everyone who participated in this study; especially for the comments. Your feedback will guide us in making Monitor more valuable to you in the future.

***Five Years of Airplay Monitor, 1993-1998***

Airplay Monitor is five years old this year! To show our gratitude for your support and loyal readership, Monitor is planning a series of events and a very special **5th Anniversary Issue**. This collectable issue will focus on the impact monitoring has had on the radio and record industry. This issue will be timed for distribution at October's NAB Convention in Seattle. Watch Monitor for details.

***Meet the newest additions to the Airplay Monitor Staff!***

**Linda Silver** has recently joined us as national chart manager, the first chart position fully dedicated to Airplay Monitor! Reporting directly to me, Linda will oversee the chart department of all four Monitors. She will work closely with each chart manager and director to make sure that Monitor charts stay accurate, relevant and informative. Linda can help get your new release listed in the "Going For Airplay" section of Monitor, and can keep you updated of any format panel changes through our fax notification service. Call her @ 212-536-5074 or e-mail at [lsilver@airplaymonitor.com](mailto:lsilver@airplaymonitor.com).

**Rob Accatino** joins Airplay Monitor in the capacity of marketing manager. In this new position, Rob will be responsible for the positioning and marketing of Monitor's family of publications. Rob will also handle conferences, special events, public relations, media kits, sales materials, as well as Airplay Monitor's new website. Rob is based in Los Angeles, and can be reached @ 213-525-2312 or e-mail [raccatino@airplaymonitor.com](mailto:raccatino@airplaymonitor.com).

Veteran music and radio journalist **Jeff Silberman** joins Top 40 Airplay Monitor as managing editor. Jeff has been reporting on the music business since 1978, writing for such publications as Billboard, the Chicago Tribune, Daily Variety and Music Connection, to name just a few. Most

recently, Jeff was editor-in-chief at Network 40; he previously held a similar post at Hitmakers. Jeff is based in Los Angeles, and can be reached @ 323-525-2303 or e-mail [jsilberman@airplaymonitor.com](mailto:jsilberman@airplaymonitor.com).

Along with our new employees, we have a couple of in-house promotions to announce: **Lee Ann Photoglo** has been promoted to senior account manager, handling all advertising in Country Airplay Monitor. With this promotion, Lee Ann gives up her Billboard responsibilities to devote all of her energies to Monitor. Congratulate her @ 615-321-4294 or e-mail [laphotoglo@airplaymonitor.com](mailto:laphotoglo@airplaymonitor.com).

Last, but not least, **Dana Hall's** excellent contribution as a reporter has earned her a promotion to managing editor of R&B Airplay Monitor. Dana has been writing the Radioactive column in that publication since March 1997. Congratulate her @212-536-6430 or e-mail [dhall@airplaymonitor.com](mailto:dhall@airplaymonitor.com).

***Important Note to Labels: Monitor's Chart Revision Policy***

Broadcast Data Systems, Monitor's data provider, has sophisticated audit procedures that can validate and correct any suspected airplay problems once identified. In the interest of accuracy, Airplay Monitor's policy is to accept only corrections made by BDS. In order for corrected BDS spin information to make it into the current issue of Airplay Monitor, potential spin problems must be called in to BDS' Mike Cohen (212-840-2273 x209) *before 1:00 PM ET*. Once released at 1:00 PM, the charts are final and corrections will go into the following week's Monitor.

***1998 Billboard/Airplay Monitor Radio Seminar and Awards - Sept. 17-19***

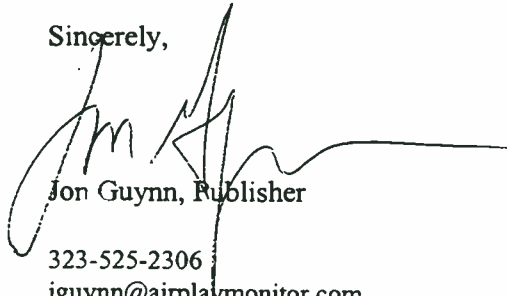
The staff of both publications are now planning the details of this year's Seminar, September 17-19 at Tapatio Hills resort in Phoenix. Media icon **Dick Clark** has been confirmed as the host of this year's Saturday night Awards Dinner.

The Bill Richards Radio Consulting's 2nd Annual Golf Classic – A Tribute to Heston Hosten will take place on Thursday, Sept. 17. Proceeds from this event benefit the Heston Hosten Fellowship for Colon Cancer Research, a charity set up by the Billboard Music Group in association with the TJ Martell Foundation. For more information, contact Dan Richards at 407-292-4424.

More Seminar sponsorship opportunities exist for savvy marketers. Call Michele Quigley 212-536-5088 to reach and influence these conventioners.

We may be busy here, but we're never too busy to talk with our readers. Please feel free to call me or anyone else on the Monitor staff with questions, suggestions or news. Thanks again for your continued readership and support of Airplay Monitor.

Sincerely,



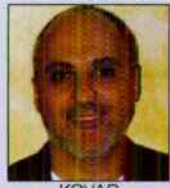
Jon Guynn, Publisher

323-525-2306

[jguynn@airplaymonitor.com](mailto:jguynn@airplaymonitor.com)

## Allen Kovac To Speak At Radio Seminar

Allen Kovac, chairman/CEO of the Left Bank Organization, has amassed quite a track record of creating successful entertainment projects and enterprises over the last two decades, while building a Who's Who of artist careers, including Duran Duran, John Mellencamp, Luther Vandross, the Bee Gees, Deana Carter, Motley Crue, En Vogue, Clint Black, and Blondie.



KOVAC

Kovac will share his unique brand of industry knowledge, including his perspective on how radio plays into the big picture, as keynote speaker at the Billboard/Airplay Monitor Radio Seminar and Awards at 11:45 a.m. Sept. 18. The conference is being held at the Pointe Hilton Resort at Tapatio Cliffs in Phoenix.

Kovac began his career with a successful concert-promotion business while still an undergraduate at the University of Oregon. He then created an independent record company, working with Jeff Lorber, Dave Koz, and Karyn

White, before founding Left Bank in 1983.

In addition, Kovac has created businesses aimed at helping artists target their audiences. In a partnership with Strategic Research, Left Bank pioneered a research venture that applies sophisticated demographic info to the marketing and promotion of artists and music events.

In a recent alliance with DDB-Needham Worldwide, Left Bank has developed advertising campaigns for recorded music, as well as creating original programming, special promotions, and live concert events for artists.



Most recently, Kovac launched independent label Beyond in worldwide partnership with BMG. It comprises national radio, publicity, marketing, and sales departments, as well as local and regional grass-roots support to reach audiences on the street level. The label is home to Blondie, Sponge, Motley Crue, and others.

## Hicks, Muse To Build Global Empire?

Hicks, Muse, Tate & Furst, the Dallas-based investment firm that has principal interest in both Chancellor and Capstar, continued to show signs that it will make a push to expand its broadcast interests beyond our borders. MVS Comunicaciones SA, a Mexican radio group in which Hicks, Muse has a 20% stake, has purchased Radio Grupo Met SA. Grupo Met owns a UHF TV channel and six radio stations in northwest Mexican cities, including Tijuana, Ensenada, and Mexicali. Earlier, Hicks, Muse acquired a 50% interest in Mexico's largest radio firm, Radio Grupo Sexo SA. Further, it has just been reported that the company has acquired a 32.7% stake in Argentine telecom firm CEI Citicorp Holdings for \$700 million.

Hicks, Muse also plans to open an office in London and is reportedly trying to raise up to \$4 billion for its fourth buyout fund. The previous three buyout funds enabled it to turn Capstar into a 300-plus-station radio group and Chancellor into a billion-dollar group. What it would do with that money, we'll soon find out.

### MANAGEMENT: ROBBINS' NEW HOME

Dave Robbins, former GM of Nationwide's Columbus, Ohio, triumvirate of WNCI, WCOL, and WFII-AM, has officially left the company as ownership transfers to Jacor. He didn't have to go far to find a new employer, as he is now VP/GM for CBS' Columbus cluster of album WAZU, country WHOK, and classic rock WLWQ. Expect plenty of competitive fireworks in the coming weeks and months.

### PROGRAMMING

Former WMXV/WDBZ New York PD Steve Weed is named acting PD at top 40 KNDN (the End) Sacramento, Calif.

Chris Miller vacates the PD chair at KKRH (Rosey 105) Portland, Ore. Joel Grey, PD at oldies sister KKSJ, will assume Miller's duties until a successor is named.

On the heels of PD Wayne Coy's departure for KQKQ (Sweet 98) Omaha, Neb., and its best ratings in many years, WABB-FM Mobile, Ala., has promoted co-APD/mornings Jay Hasting to OM/mornings and co-APD/MD/afternoons Darrin Stone to PD. Stone will move to mornings to work with Hasting. Also, overnighter Jeff Jordan moves to Stone's afternoon slot.

WFBC Greenville, S.C., finally found a new PD: WWXM Myrtle Beach, S.C., OM Nikki Nite, who'll start Aug. 25.

KQXY Beaumont, Texas, PD Dale Baird heads north to be PD at WGTZ Dayton, Ohio.

Baird will start in late August.

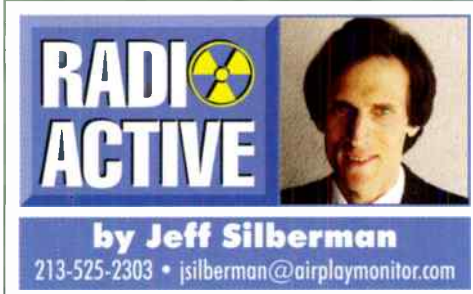
### PEOPLE: E.Z. DOES IT

One of WROX (X96) Richmond, Va., PD Bill Thorman's first hires is ex-KKFR (Power 92) Phoenix air talent E.Z. Street as MD/afternoons.

Ex-KKPN (the Planet) Houston afternoon host Dave Morales crosses the street to do mornings at KHYS. Also at KHYS, KJYO Oklahoma City afternoon host Todd Tucker comes on board to take an identical shift.

Meanwhile, at sister KBXX (the Box) Houston, PD-turned-OM Rob Scorpio will soon be bowing out of his morning gig; the station is already looking for his successor.

WKRQ (Q102) Cincinnati morning host John Jay and sidekick Dangerboy Bobo have left the station; they'll resurface elsewhere in the near future. Meanwhile, afternoon guy Brian Douglas and MD Jim Kelly will co-host the shift until a permanent replacement is made; Mark McFadden takes afternoons for now.



by Jeff Silberman

213-525-2303 • jsilberman@airplaymonitor.com

Former country KZLA Los Angeles jock Bo Reynolds heads for the Rockies to co-host afternoon drive with Greg Thunder at KALC (Alice at 106) Denver.

Although he just joined the station, Mark "Mojo/JoJo" Allen exits his MD/afternoons post at KQBT (the Beat) Austin, Texas.

KSIV (Kiss) Bakersfield, Calif., husband-and-wife morning duo Davin and Ann Fesmire are crossing the street for the same at KKXX.

WNST Charleston, S.C., PD Beau Richards segues to WAOA Melbourne, Fla., for afternoons.

MD Eric Moon is promoted to APD of WNKI Elmira, N.Y.

Crossover WPGC-FM Washington, D.C., co-APD/creative services guy Bob Holmcrans exits the station after 11 years. Holmcrans, who is opting to stay home to raise his children, can be reached at 301-589-7125.

### IT'S ALL OVER BUT THE FORMAT FLIP

With the sale of KKLQ (Q106) San Diego from Jacor to Hefel just hours or days away, Q106 has stopped running all station IDs, and it's playing a brand of mainstream top 40, similar to what Jacor sister KHTS (Channel 93-3) is playing, in anticipation of a flip to Spanish.

### CONTROVERSIES R US

Say what you will about top 40's inherent female appeal and its normally topically wholesome or cash-based promotions (give or take a Clinton-inspired dry-cleaning giveaway), two heritage top 40s are pushing the envelope when it comes to playing off touchy subjects. KIIS Los Angeles is



The SPIN BY THEDA SANDIFORD-WALLER

212-536-5053 • theda@airplaymonitor.com

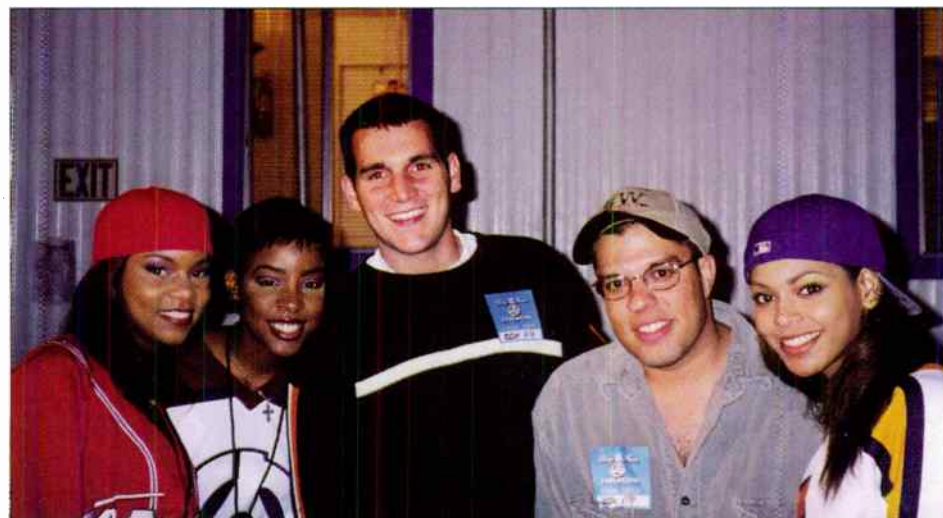
## Crossover Reports To R&B At Interscope

MUSICAL CHAIRS: In an unusual step, Interscope has assembled a regional crossover promotion staff reporting to R&B promotion head Step Johnson. Duties for Interscope's national crossover promo guru Nino Cuccinello essentially remain the same, while Northeast regional Karen Rait drops several stations to concentrate on the rhythmic outlets in her region. Los Angeles-based mix-show promotion guy Brian Greay moves to Houston to work stations there. Interscope will hire a Northeast regional to replace Rait. New to the label's promotion staff are former Universal Los Angeles R&B promo rep Tony Collins, who will be based in L.A.; former WPGC Washington, D.C., mix-show coordinator Tracy Young, who joins in Miami; former EMI Bay Area local Sam Bates, who picks up San Francisco-area stations; and former Chicago-based Grave staffer Jamie Guzman, who joins in that market... Epic Boston-based regional Jimmy Walorz joins Hollywood for Northeast regional promotion chores. Switching from Epic's artist-development department to promotion to fill Walorz's shoes is Bill Millman, while New York regional Todd Glassman adds national pop responsibilities to his plate. Recently departed Grave staffer Dawn Fox will focus on crossover promotion for the Epic Records Group... Elektra's Eric Olesen has relocated to the label's New York offices; he can be reached at 212-275-4097... Skip Bishop's indie promo and marketing firm, Bishop Bait & Tackle, is relocating from Panama City Beach, Fla., to New York in September... Atlantic names Robert Wiegner VP of product development. Wiegner recently headed his own company, Worldwide Artist Management, of which Real McCoy was a client... Former Geffen national promotion guy David Grant has joined Maverick as marketing manager... TVT names Nadine Gelineau director of product management and artist development. She was director of international marketing at Freeworld... Mildred Morgan joins Verity from Epic as manager of publicity... By the time you read this, there will have been a major executive shake-up in the Sony building. Next issue, the Spin will have all the details.

BEST OF THE DECADE, PART DEUX: The Spin continues its tally of the leading songs of this decade based on the total number of spins each song received while on the mainstream top 40 chart. Here are the top 20 songs: (1) Savage Garden's "Truly Madly Deeply" (Columbia), (2) Sugar Ray's "Fly" (Lava/Atlantic), (3) matchbox 20's "3 AM" (Lava/Atlantic), (4) No Doubt's "Don't Speak" (Trauma/Interscope), (5) Smash mouth's "Walkin' On The Sun" (Interscope), (6) Third Eye Blind's "Semi-Charmed Life" (Elektra/EEG), (7) Donna Lewis' "I Love You Always Forever" (Atlantic), (8) Backstreet Boys' "As Long As You Love Me" (Jive), (9) Jewel's "You Were Meant For Me" (Atlantic), (10) Real McCoy's "Another Night" (Arista), (11) Chumbawamba's "Tubthumping" (Republic/Universal), (12) En Vogue's "Don't Let Go (Love)" (EastWest/EEG), (13) Robyn's "Show Me Love" (RCA), (14) the Cardigans' "Lovefool" (Trampoline/Mercury), (15) Natalie Imbruglia's "Torn" (RCA), (16) matchbox 20's "Push" (Lava/Atlantic), (17) Goo Goo Dolls' "Name" (Metal Blade/Warner Bros.), (18) K-Ci & JoJo's "All My Life" (MCA), (19) Janet's "Together Again" (Virgin); and (20) OMC's "How Bizarre" (Huh!/Mercury).

CORRECTIONS: Monitor's first publisher, Michael Ellis, E-mails to clarify that Top 40 Airplay Monitor started publishing in January 1993. I had written that it started in October 1992; that's when the separate mainstream and rhythm-crossover charts first appeared in Billboard prior to Monitor's debut... The name of Columbia's Roze Braunstein was incorrectly spelled last issue... Last issue, spring Arbitron ratings for WWZZ Washington, D.C., and KTXQ Dallas were omitted by mistake. WWZZ's 12-plus share was 4.1, good for sixth in the market, and KTXQ's was 2.4... Last week's playlist for AC reporter KSNE Las Vegas was reused this issue because the station was mistuned during the survey period.

## Who Knew They Needed The Money?




KHTS (Channel 933) San Diego offers Columbia Records act Destiny's Child support out of its very own pockets. Shown, from left, are the act's LaTavia and Kelly, morning producer Kendall, jock Chio "the Freakin' Puerto Rican," and the band's Beyoncé.

giving away actual pieces of O.J. Simpson's Brentwood estate, which was recently demolished by its new owner.

Touchier still was KKRZ (Z100) Portland, Ore.'s reward for capturing a teenage armed robber. When "Morning Zoo" host John Murphy got wind of a local high schooler bragging about his exploits (19 holdups) to his friends in Mexico, Z100 offered a \$1,000 reward for the tip that

would lead to the kid's capture. Others threw in a free trip to Hawaii and an extra \$500 as well. Suffice it to say, the offer incited a firestorm of debate in town between those who wanted the guy captured and those who didn't approve of bribing teens to rat on a friend. The brouhaha attracted tons of local media attention, as well as coverage by "America's Most Wanted." As fate would have it, the suspect turned himself in last week.

## Top 40 Growth Continues In July Format Count

RANK		The M Street  FORMAT MONITOR	STATION COUNT		
THIS MONTH	LAST MONTH		JULY '98	JUNE '98	NET GAIN OR LOSS
FORMATS <small>Copyright M Street Corp. 1998</small>					
1	1	Country	2,410	2,419	-9
2	2	News/Talk	1,110	1,120	-10
3	3	Adult Contemporary	859	866	-7
4	4	Oldies	783	775	8
5	5	Religion (Music)	720	718	2
6	6	Adult Standards	561	554	7
7	7	Spanish	487	490	-3
8	8	Classic Rock/Hits	462	455	7
9	9	Soft AC/Easy Listening	402	403	-1
10	10	Top-40/Mainstream/Rhythm	377	374	3
11	11	Religion (Talk)	355	355	0
12	12	Top-40/Adult	266	266	0
13	13	Mainstream Rock	262	260	2
14	14	Sports	236	237	-1
15	15	R&B Adult/Oldies	178	180	-2
16	16	R&B	168	168	0
17	17	Miscellaneous	163	152	11
18	18	Modern Rock	144	142	2
19	19	Triple-A	96	94	2
20	20	Jazz	90	87	3
21	21	Modern AC	73	74	-1
22	22	Classical	42	42	0
<b>Total commercial operating stations</b>			<b>10,244</b>	<b>10,231</b>	
<b>Stations off the air</b>			<b>116</b>	<b>112</b>	

M Street Corp. is a Nashville-based provider of radio station information to the radio and music industries. Call 615-251-1525 for more information.

## RADIO CONCERT MONITOR

DATE	CALL LETTERS	EVENT	SCHEDULED TO APPEAR
Aug. 16	WHUD Poughkeepsie, N.Y.	Summerfest II	Tommy James, Spinners, Flo & Eddie, Regents, Tokens
Aug. 20	KSLZ St. Louis	Concert	Color Me Badd, Inner Circle, more
Aug. 22	WLAN Lancaster, Pa.	FM97 Summerfest	Savage Garden, Color Me Badd, Billie Myers
Aug. 22	WKRQ Cincinnati	One Earth 3	TBA
Aug. 29	WBBO Monmouth/Ocean County, N.J.	Beach Bash II	Five, Dreamhouse, Amber, Crystal Waters, Inoj, C+C Music Factory
Aug. 29	WSPK Poughkeepsie	K104 Fest II	La Bouche, Inoj, Five, Rachid, LFO, Dreamhouse, Jana Marie, Mini-King

Let us monitor your event! Call Jeff Silberman at 323-525-2303 or E-mail jsilberman@airplaymonitor.com

## Jokes Infected With Foot-In-Mouth Disease



Pictured, from left, are Epic Records senior VP of promotion John Boulos, Gloria Estefan, and WPLJ New York VP of programming Tom Cuddy, who attended Rocky Allen's, seated, "really big shewwww" at the Ed Sullivan Theater. Word has it that Estefan sang with a lot of sole, while Boulos made a mountain out of a mole-heel.

## MONITOR PROFILE

### Jimmy Steal Finds The Right Mix Of Hits, Image, And Personality At KDMX Dallas

**E**leven months ago, Jimmy Steal was faced with a career-defining choice: stay at the successful heritage top 40 WKRQ (Q102) Cincinnati or take a shot at a less-than-sure thing in a larger market.

"Leaving is never easy when you've built a great team and are doing great radio," he says of his PD tenure at Q102. "We doubled our billing by pulling an 8 share, but like a lot of people in this business, when a new challenge is presented to you at the right time, there's no way you can pass it up."

That opportunity was KDMX (Mix 102.9) Dallas. "After hearing the station and monitoring the tracking to see where they sized up in the market matrix, it seemed like an opportunity that called for my area of expertise—namely, station imaging and assembling a team that responds well when you throw raw meat in the control room."

What made KDMX a less-than-sure thing? "It needed a complete marketing overhaul, on-air and otherwise," Steal says. "After ab-

Several of Mix's powers practically refuse to die. "I've had to move some songs back on gut since research showed no burn," Steal says. "Every so often, a song like Sister Hazel's 'All For You' comes along, which appeals to males and females equally. You can sing along after one listen, and there's no abrasiveness. You can't have too many of those songs."

Choosing the hits are Steal, APD Race Taylor, and MD Lisa Thomas. "I like to be surrounded by people who are passionate about music," he says. "Even our marketing director is music-intensive. We take hits wherever and whenever we can get them. If the artists have a track record, we may give them the benefit of the doubt, but are they automatics? Only the audience decides that."

Steal realizes that the right music mix won't turn a station around by itself. "Although I'm a real stickler with the music, it takes more to bring people to KDMX. That's where your personality franchise comes in. It's an unduplicatable success component."

To combat rival K11KS (Kiss-FM) and KVII's morning franchises, Steal showcases Alan Kabel, a veteran of stations such as K11S Los Angeles and WBBM-FM (B96) Chicago. "He totally gets winning radio," Steal asserts. "I basically built Mix around him and gave him the freedom to do what he does best. He's extremely creative and witty. His show is as good as any show in the market. It's just that our primary competitors each have 15 to 20 years of market equity, and that doesn't get erased fast."

A typical promo event designed around Kabel was a "mammogram party bus." "He took people without health insurance to a place for free mammograms, as well as other health and medical giveaways," Steal says. "Our female co-host, U-Turn Laverne, got her mammogram live on a local TV-news broadcast with the newscast's female anchor. We raised awareness and had fun at the same time."

Awareness isn't the only thing KDMX has raised. By going 3.8-5.0 12-plus in the spring book, KDMX achieved its highest ratings in its 25-year history. Those kinds of numbers help Steal resist the temptation of adding units to increase revenue.

"As a programmer, I have two jobs," he says. "One is to create revenue, but first and foremost is to program to an audience. If you put the audience first, you'll reach your station's revenue goals. In Cincinnati, I took Q102 from \$4 million to \$9 million in revenue without adding one unit. We increased the property's value through ratings."

"We do 10 units per hour now, but being third for the first time ever in 25-54 adults will generate more revenue without adding units. Now I temper that by totally getting the notion of debt service, yet I still believe the entertainment value of your station will ultimately make or break you, not the extra unit per hour. Seizing the moment creatively and intelligently will have more impact on your success. Truly entertaining stations can do 20 units an hour and still be No. 1."

By the time you read this, KDMX will have a new owner—Jacor. Suffice it to say, Steal relishes the chance to work with the likes of B.J. Harris, Tom Owens, and Marc Chase. "CEO Randy Michaels used to be a PD. Can you ask for anything more than that?"

"Jacor is built on the notion that radio is show biz, and I believe that, too," he says. "Creatively, I think they'll let me get wilder and do things that will really raise some eyebrows. We're not going to be coarse and vulgar, but we are going to be foreground and interactive—a self-deprecating entertainment product. That's how we provoke listeners to make them remember our call letters in the Arbitron game." **JEFF SILBERMAN**



**Jimmy Steal**  
Program Director  
KDMX Dallas

*'You can call us modern AC or hot AC—as long as we're successful'*

sorbing myself into KDMX's history, I built a time line on what we have to do in increments to achieve our goals, revenue-wise. The length of that time line depends on the people you're trying to displace in the ratings. You have to find out the best ways to undo their market equity. Here, our three main rivals' morning-drive hosts have over 60 years in the market. Mine has less than a year, so we had our work cut out for us."

The first order of business was the music library, because "that could be fixed the quickest," Steal says. "The music needed a better focus. The station had to be known for something musically. When people can't describe what we do in a few words, that's a problem. We had to ascertain our listeners' musical appetite to fill holes in the matrix and exploit our competitors' weaknesses."

As it turns out, the music of choice in Dallas is not too dissimilar to what he played at WKRQ. "Both Mix and Q102 are very hit-oriented," he says. "Being in a smaller market, it was easier to get quick read on a song at WKRQ. Here in a market of almost 4 million people, you have to devote a few more spins to get an accurate read."

Here's a typical hour on KDMX: Goo Goo Dolls, "Iris"; 10,000 Maniacs, "Trouble Me"; matchbox 20, "Push"; Edwin McCain, "I'll Be"; Go-Go's "We Got The Beat"; Semisonic, "Closing Time"; Madonna, "Frozen"; Fastball "The Way"; OMD, "If You Leave"; Alanis Morissette, "Uninvited"; Sugar Ray, "Fly"; ABC, "The Look Of Love (Part 1)"; and Joan Osborne, "One Of Us."

That music mix places KDMX in the modern AC/adult top 40 realm, yet Steal refrains from jumping on the Alice bandwagon. "It's dangerous to base your success on music trends," he says. "I'm a big believer in playing hit music; we're just a non-rhythmic pop station for adults. You can call us modern AC or hot AC—as long as we're successful."

Sometimes  
The Wait  
Is Worth It.

*Monica*  
the first night

The premiere single and  
video from her new album,  
the boy is mine.

This single is exploding at  
R&B and also at  
Crossover

*Impact Date: 8/10*

Produced by Jermaine Dupri  
for So So Def Productions

Album Executive Producers:  
Dallas Austin & Clive Davis



**ARISTA**

© 1998 Arista Records, Inc., a unit of BMG Entertainment

[www.aristarec.com](http://www.aristarec.com)

Management: Mon/Desease Productions • Melinda Dancil

# AND THE NOMINEES ARE...

*AC/Adult Top 40*

**Dave Shakes - Consultant of the Year**

*Adult Top 40/Modern AC*

**KZZO**, Sacramento - Station of the Year

**KMXB**, Las Vegas - Station of the Year

**WSSR**, Tampa - Station of the Year

*Rhythmic CHR*

**WNVZ**, Norfolk - Station of the Year

*AC*

**WWMX**, Baltimore - Station of the Year/Marconi

## CONGRATULATIONS!







# TOP 40 TOPICS BY SEAN ROSS

212-536-5264 • sross@airplaymonitor.com

## As Format Grows, Wars Are Inevitable

Over the last three years, a new handful of top 40 sign-ons have shown that there's room for at least one mainstream top 40 in each market. What we haven't seen so far is much evidence that there's room for the multi-station top 40 wars that used to exist in the mid-'80s. Only two mainstream top 40s, WWHT (Hot 107.9) Syracuse, N.Y., and WVTI (196) Grand Rapids, Mich., have made much headway into their respective markets, and only 196 has done it, at least thus far, without cannibalizing its format rival, WSNX.

Despite that, as top 40's resurgence continues, it's clear that we're going to see more markets with mainstream top 40 wars. Honolulu was never known for its ability to support one mainstream top 40, but the success of KXME was enough to draw KQMQ back from rhythmic. In Birmingham, Ala., it took only the announcement that Cox intended to present mainstream top 40 on WEDA to draw Capstar's WOEN over from adult top 40. In Houston, KHYS is now head to head with rival KRBE, despite signal limitations. In Washington, suburban AM WINX hopes top 40 will put it on the map, despite even greater odds.

Perhaps the biggest surprise, however, is Norfolk, Va., where two stations are joining the fray. Nearby WCXL (Beach 104), previously a hot AC to Elizabeth City, N.C., is now targeting Norfolk with mainstream top 40, while WROX (X96) recently gave up modern rock to become top 40 Tha Bomb under PD Bill Thorman. WROX, despite considerable signal limitations, was earning about a 4 share as the only full-fledged modern rocker in the market (although there was plenty of competition, including a modern adult outlet). And while there's been a hole for mainstream in the market, rhythmic WNVZ (Z104) has always been close enough to the pop side that the difference between it and a Thorman outlet, which traditionally has a heavy R&B flavor, may not be that obvious to the casual listener.

The new cluster of top 40 sign-ons represents a considerable change in thinking from just a few years ago. At that point, it was hard enough to convince many operators that there was a hole for one top 40 in many markets. Now, instead of looking for a hole in the market, many owners just want to take a piece of the biggest player—and only now, after a seven- or eight-year drought—are we seeing enough top 40s atop their market's ratings that they've become tempting targets again, just as country stations were in the early '90s.

Many of the second and third country stations that signed on in that era managed to grow the format's shares, at least initially. However, those stations were usually the first ones hurt when country's young end left. And when the stations' shares dwindled, or when they

went away altogether, their audience didn't move to the other country station. They just drifted elsewhere; that also happened when the second top 40s went away in the early '90s.

If you believe that a second top 40 can help grow the audience, and if, like most people, you subscribe to the notion that competition makes everyone better, then we should be in for some really terrific radio nationwide in the months ahead. Thus far, Grand Rapids is the only evidence that a second station grows the shares, however. And as for competition, I'd like that to be true. Just as often, head-to-head format wars provoke stations to narrow their focus as they react to each other and not the needs of the audience. That saps the resources these stations need to do better radio.

Top 40 is healthier these days, but it's not strong enough to support the wars of attrition that sprung up a decade ago. One hopes that the new stations will play gently with one another, at least for a little while, until the top 40 outlets, having dispensed with the rest of the market, can turn their guns on one another. Clearly, that's not the goal of KHYS, which is there for the obvious purpose of shaving points off KRBE on behalf of R&B rival KBXX (the Box). Otherwise, the new outlets are in the format because they think there's some upside for them. And that's encouraging.

It's also encouraging to see Thorman back in action. And I'm happy to be able to hear WROX on the Web (you can find it through broadcast.com). Already, I've heard one liner on WROX that I'd steal tomorrow if I were programming. There's a line in WROX's music-image promo in which the announcer declares, "We took the best songs from all the [other] stations." That's a pretty obvious selling point for top 40 but not one that I've heard put that way anywhere else until now.

**STILL "CRAZY":** I often see parallels between today's hits and the key records in top 40's early-'80s resurgence. But for a parallel to Edwin McCain's "I'll Be," you have to go back a few years further to Paul Davis' "I Go Crazy." That song, released in the summer of '77, got immediate airplay in the Southern secondary markets where Davis (like McCain) had already garnered attention with previous releases. But it took "I Go Crazy" more than six months to become a major-market hit in the North. The song would eventually spend a surprising 40 weeks on the Hot 100 chart, getting as high as No. 7. Because the song had already run its course in many of its original markets, "I Go Crazy" probably would've been an even bigger chart record if it had developed everywhere at the same time. (Davis, by the way, after more than a decade's hiatus as a solo artist, is recording again on the incarnation of his former label, Bang, as BANG II.)

**Publisher:** Jon Guynn  
**Editor:** Sean Ross  
**Managing Editor:** Jeff Silberman  
**National Chart Manager:** Linda Silver  
**Director of Charts:** Theda Sandiford-Waller  
**Associate Director of Charts:** Steven Graybow  
**Chart Production Manager:** Michael Cusson  
**Asst. Chart Production Manager:** Alex Vitoulis  
**Editorial Production Managers:** Barry Bishin, Marcia Repinski  
**Editorial Production:** Susan Chicola, Marc Giquinto, Maria Manticic, Lisa Rathgeb  
**Copy Editor:** Carl Rosen  
**Advertising Production Manager:** Lydia Mikulko  
**Advertising Production Coordinator:** Paul Page  
**Art Director:** Ray Carlson  
**Advertising Production Artist:** Karen Platt

1515 Broadway, New York, NY 10036 212-764-7300  
5055 Wilshire Blvd., 7th floor, Los Angeles, CA 90036 213-525-2300  
For subscriptions call: 800-745-8922

Airplay Monitor reporting panels are based solely on a station's musical content.

©1998 BPI Communications Inc. No part of this publication may be reproduced, stored in any retrieval system, or transmitted, in any form or by any means, electronic, mechanical, photocopying, recording, or otherwise, without the prior written permission of the publisher.

**National Advertising Manager:** Hank Spann  
**Account Managers:** Jeff Somerstein, Sharon White  
**Advertising Services Manager:** Alyse Zigman  
**Sales Assistants:** Evelyn Aszodi, Erica Bengtson, Candace Gil

**Editorial Adviser:** Timothy White  
**Director of Production & Manufacturing:** Marie Gombert  
**Circulation Director:** Jeanne Jamin  
**Marketing Manager:** Rob Accatino



Billboard Music Group

**President:** Howard Lander  
**Senior VP/General Counsel:** Georgina Challis  
**Vice Presidents:** Irwin Kornfeld, Karen Oertley, Adam White  
**Director of Strategic Development:** Ken Schlager  
**Business Manager:** Joellen Sommer

the band is

# EVERYTHING



the album is Super Natural  
the song is "Hooch"

Mainstream Top 40 Monitor/Chart Bound!

Modern Adult Monitor / 18

Adult Top 40 Monitor / 31 - 28

NEW THIS WEEK  
ADULT TOP 40:

NEW THIS WEEK TOP 40:

- |      |      |      |
|------|------|------|
| KKRD | KRUF | WVKS |
| WXLK | WXYK | WWXM |
| WXIS | WSKS | KLRS |
| WJMX | WMRV | WKMV |
| WVAQ | WNTQ | KSMB |
| KQID | KISX | KMCK |
| WRHT | WWKZ | KWTX |
| KQKQ | WKSZ | WHTS |

- |      |
|------|
| WAKS |
| KZPT |
| WJLK |
| WOMP |
| WQLH |

AT TOP 40:

- |      |      |
|------|------|
| KRBE | WWZZ |
| KALC | WZNY |
| KZHT | WZYP |
| WYOY | WABB |
| WAPE | WMGB |
| WWLD | WSTW |
| WDCG | WZAT |

& MORE

AT ADULT TOP 40:

- |      |      |
|------|------|
| KFMB | WSHE |
| KZZP | WSSR |
| KLLC | KAMX |
| WZNE | KOZN |
| WDRV | KBBT |
| KPTE | KZZO |
| WLNK | KVSR |

& MORE



## ON TOUR NOW!

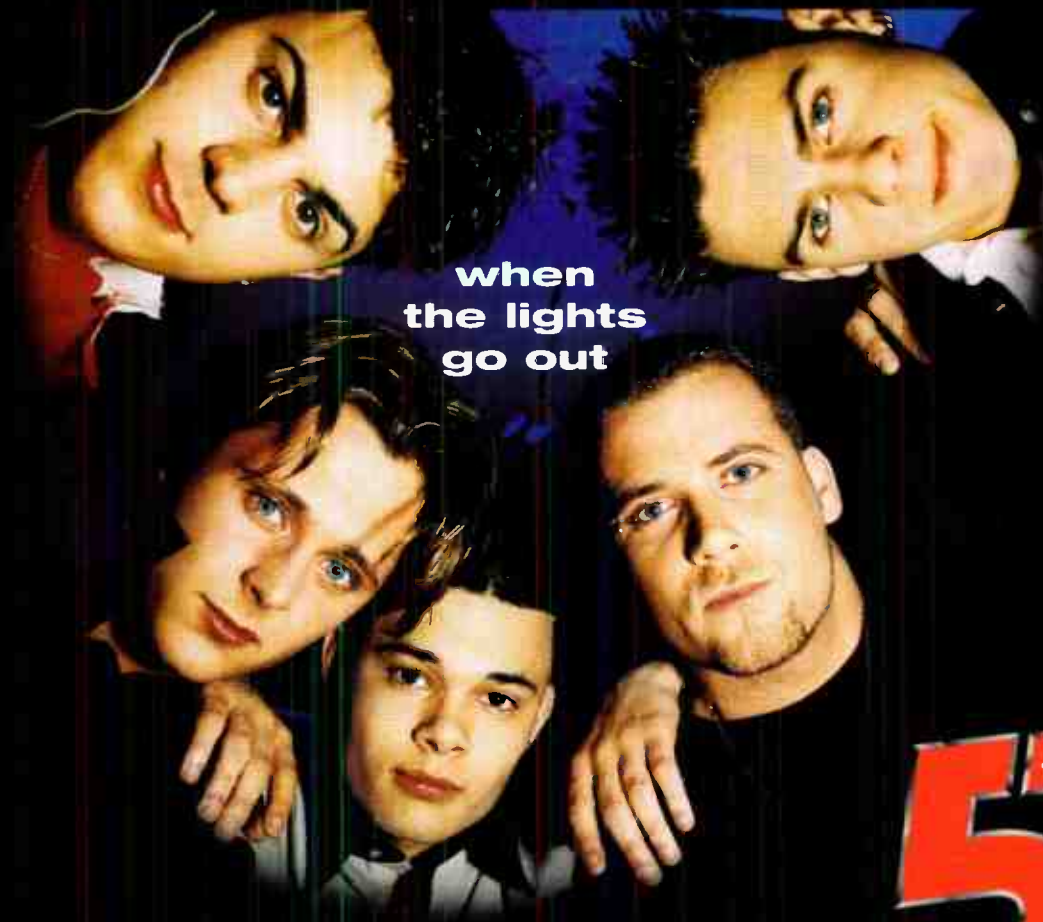
Produced and Mixed by Jim Ebert

www.sirerecords.com

www.blackbirdusa.com



The U.K.'s "best new band of the year" \*  
The U.S. smash that's breaking them here.



when  
the lights  
go out

**5**  
FIVE

**Erupting Everywhere!**

**New: Z100 WNCI B97**

**(25) - (20) - (18) Mainstream Top 40 Monitor  
Top 5 phones everywhere!!!**

**(15) - (10) HOT 100 Singles  
Over 40,000 scanned last week (#9\*)**

**Mainstream Audience: (+) 1.2 Million!!!!**

**Top 10 Callout 18-34 Females**

**WWZZ**

**WZJM**

**WRVQ**

**KZHT**

**WNNK**

**WFBC**

Plus other MAJOR market stations  
that don't want their call-out publicized  
(Call us for details...)

**From their American debut album.**

**ARISTA**



#429

www.aristarec.com © 1998 Arista Records, Inc. a unit of BMG Entertainment \* Smash Hits Magazine

World Radio History

## Strongest Increase In Airplay This Week

### MAINSTREAM TOP 40

	INCREASE IN PLAYS
<b>AEROSMITH • I Don't Want To Miss A Thing (COLUMBIA)</b>	+452
WBLJ +36, WKSZ +32, WABB +30, WHTZ +27, KZQZ +26, WNTQ +26, WLAN +23, KDWB +20, WQZQ +19, KKLQ +18	
<b>BARENAKED LADIES • One Week (REPRISE)</b>	+439
KALC +24, WAEB +19, KQAR +17, WXYV +17, WKSZ +16, WNTQ +16, WYCR +15, WXXS +15, WBHT +14, WKRO +14	
<b>BACKSTREET BOYS • I'll Never Break Your Heart (JIVE)</b>	+384
WKSZ +24, WZYP +21, WWZZ +19, KKLQ +17, WBLJ +15, KQAR +13, WBHT +13, WKRZ +13, WWHT +12, WZAT +12	
<b>JANET • Go Deep (VIRGIN)</b>	+349
KKLQ +33, KZZU +29, WWHT +24, WZYP +17, WDJX +17, WXXB +16, WBZZ +14, WXXL +13, KDWB +13, WHOT +11	
<b>NATALIE IMBRUGLIA • Wishing I Was There (RCA)</b>	+334
WVTV +22, WFBC +22, WXXS +20, WXXS +18, KZZU +18, WBHT +16, WKRZ +16, WNTQ +15, KSMB +14, KHOT +14	
<b>SEMISONIC • Closing Time (MCA)</b>	+318
WXYV +36, KALC +32, WWHT +25, WGTZ +24, WKSZ +19, KJYO +18, WSTW +17, KUMX +16, KCHZ +14, KQAR +13	
<b>JENNIFER PAIGE • Crush (EDEL AMERICA/HOLLYWOOD)</b>	+285
WFLY +34, WQSL +26, WTWB +21, WZAT +19, WBLJ +18, WJBO +15, WLKT +14, KUMX +13, WZJM +13, KKLQ +13	
<b>WILL SMITH • Just The Two Of Us (COLUMBIA)</b>	+280
WDXJ +34, WXYV +34, KKLQ +31, KSLZ +30, KJYO +27, WXXB +22, KXMG +22, WPHY +21, WGTZ +20, WKSZ +14	
<b>INOJ • Time After Time (SO SO DEF/COLUMBIA)</b>	+255
KKLQ +20, KUMX +18, WDJX +14, KKRZ +14, KHOT +13, KQKQ +13, KZQZ +12, WWZZ +12, WFLY +12, KIIS +12	
<b>FAITH HILL • This Kiss (WARNER BROS.)</b>	+241
WWHT +19, WZPL +18, WAEB +14, WHYI +13, KRBE +13, WNKX +12, WWZZ +11, WWCK +11, WYOY +10, WBHT +10	

### RHYTHMIC TOP 40

	INCREASE IN PLAYS
<b>LAURYN HILL • Can't Take My Eyes Off Of You (RUFFHOUSE/COLUMBIA)</b>	+190
KLUC +41, KXXX +40, KDGS +26, KBOS +19, KOHT +18, KKFR +16, WBTT +11, WJJS +9, KGGI +9, WKTU +8	
<b>SHAGGY FEAT. JANET • Luv Me, Luv Me (FLYTE TYME/MCA)</b>	+176
KSFM +25, WBBM +24, WXXK +23, XHTZ +21, KGGI +15, KDGS +13, WJJS +11, KYLZ +10, WFHN +10, KISV +7	
<b>AALIYAH • Are You That Somebody? (BLACKGROUND/ATLANTIC)</b>	+166
KBOS +26, KQMQ +21, WXXJ +18, KHYS +15, KXXX +15, KYLZ +14, KZFM +11, KSFM +11, WBBM +11, KPRR +10	
<b>MONIFAH • Touch It (UPTOWN/UNIVERSAL)</b>	+149
KOHT +29, XHTZ +18, WJJS +15, KXXX +13, KZFM +12, KKSS +12, WHHH +11, WDRQ +8, KBOS +8, KQKS +8	
<b>INOJ • Time After Time (SO SO DEF/COLUMBIA)</b>	+148
KQMQ +29, KKSS +25, WXXJ +15, WJMN +15, WDRQ +12, WKTU +11, KDON +9, WBBM +9, WBTT +8, WHHH +8	
<b>MYA FEAT. SILKK THE SHOCKER • Movin' On (UNIVERSITY/INTERSCOPE)</b>	+128
KYLQ +25, KCAQ +15, KSFM +12, KXXX +11, KDGS +10, KOHT +10, WBTT +8, KYLZ +7, WJJS +6, WHHH +5	
<b>TATYANA ALI • Daydreamin' (MJJ/WORK)</b>	+127
KBOS +23, KQKS +20, WXXK +17, KTFM +16, KUBE +11, KYLD +10, WJMN +8, KDON +7, WXXJ +7, KISV +6	
<b>GINUWINE • Same Ol' G (BLACKGROUND/ATLANTIC)</b>	+112
WXXK +28, KSFM +20, WHHH +18, KDGS +13, KYLD +10, KOHT +7, KKSS +6, KKFR +6, KLUC +4, KBOS +4	
<b>CAM'RON FEAT. MASE • Horse &amp; Carriage (UNTERENTAINMENT/EPIC)</b>	+110
KYLZ +15, KYLD +12, WPOW +9, KLUC +8, KTFM +8, KOHT +7, KXXX +7, KKSS +6, KDON +5, WHHH +5	
<b>BACKSTREET BOYS • I'll Never Break Your Heart (JIVE)</b>	+99
KIKI +25, KYLZ +23, WDRQ +18, KQMQ +8, WJJS +8, WBTT +5, KDGS +5, WXXJ +5, WHHH +5, KLUC +4	

### CROSSOVER

	INCREASE IN PLAYS
<b>MYA FEAT. SILKK THE SHOCKER • Movin' On (UNIVERSITY/INTERSCOPE)</b>	+346
WFXA +33, KYLD +25, WCKX +21, WJMH +19, KMEL +18, WPEG +17, KCAQ +15, WJBT +14, WGCI +14, WEAS +12	
<b>GINUWINE • Same Ol' G (BLACKGROUND/ATLANTIC)</b>	+318
KKDA +40, KXHT +34, WJMH +31, WXXK +28, WJHM +22, WHHH +18, WQOK +15, KDGS +13, WKYS +11, WCHB +10	
<b>LAURYN HILL • Can't Take My Eyes Off Of You (RUFFHOUSE/COLUMBIA)</b>	+305
KLUC +41, WQOK +32, WGCI +28, KDGS +26, WCHB +25, WENN +20, KBOS +19, WIZF +19, WJHM +19, WCKX +16	
<b>SNOOP DOGG • Still A G Thang (NO LIMIT/PRIORITY)</b>	+226
KPWR +30, KCAQ +28, WQUE +16, WWVZ +15, WYOK +13, KRRQ +11, WJMI +9, KKBT +9, WCHB +8, XHTZ +7	
<b>XSCAPE • My Little Secret (SO SO DEF/COLUMBIA)</b>	+225
WEAS +21, WPHI +19, WWVZ +17, WUSL +17, WQUE +15, WVEE +15, KDGS +13, WROU +12, WBLX +12, WPGC +12	

### MODERN ADULT

	INCREASE IN PLAYS
<b>AEROSMITH • I Don't Want To Miss A Thing (COLUMBIA)</b>	+186
KYIS +25, WVRV +25, WDRV +24, KBBT +20, WTCI +20, WMBX +16, KLLY +16, KMXB +12, KDMX +10, WSSR +8	
<b>BARENAKED LADIES • One Week (REPRISE)</b>	+151
WPTE +25, KALC +24, WMBX +17, KDMX +15, WKRQ +14, WTCI +13, WXXL +11, KLLY +10, KXPK +10, KVSR +8	
<b>THE BRIAN SETZER ORCHESTRA • Jump Jive An' Wail (INTERSCOPE)</b>	+150
WKZL +35, KAEP +16, KALC +14, KYSR +13, WPTE +11, KDMX +10, KAMX +9, KLLY +8, WDCG +8, WXXL +7	
<b>THE SMASHING PUMPKINS • Perfect (VIRGIN)</b>	+135
KZZO +21, WPNT +20, KMXB +14, KAEP +11, WVRV +9, KFMB +9, WXXM +8, KLLY +6, WJXB +6, KZON +6	
<b>SMASH MOUTH • Can't Get Enough Of You Baby (ELEKTRA/EEG)</b>	+128
KMXB +18, KYSR +16, WMBX +16, WDCG +15, KVSR +12, KLLY +10, KAMX +9, WBAM +7, KXPK +7, WVRV +7	

### ADULT TOP 40

	INCREASE IN PLAYS
<b>AEROSMITH • I Don't Want To Miss A Thing (COLUMBIA)</b>	+376
WEZB +42, KYIS +25, WDRV +24, KBBT +20, WTCI +20, KSTP +19, KISN +18, WMBX +16, KLLY +16, WMMX +16	
<b>SEMISONIC • Closing Time (MCA)</b>	+170
WEZB +32, WKZL +25, KQMB +19, WXXB +19, WSSR +16, WKDD +15, KDMX +14, KMXB +13, WQLH +12, WLTS +10	
<b>SMASH MOUTH • Can't Get Enough Of You Baby (ELEKTRA/EEG)</b>	+167
WRQX +22, KMXB +18, KYSR +16, WMBX +16, KVSR +12, KLLY +10, KSTZ +10, KAMX +9, WIOG +8, WKQI +8	
<b>BARENAKED LADIES • One Week (REPRISE)</b>	+146
WPTE +25, WMBX +17, WIOG +16, KDMX +15, WTCI +13, WEZB +11, KLLY +10, WKDD +9, KVSR +8, KAMX +7	
<b>THE BRIAN SETZER ORCHESTRA • Jump Jive An' Wail (INTERSCOPE)</b>	+146
WKZL +35, KSTZ +17, KYSR +13, WPTE +11, KDMX +10, KAMX +9, KLLY +8, KYKY +7, KQMB +5, KVUU +5	

### ADULT CONTEMPORARY

	INCREASE IN PLAYS
<b>BACKSTREET BOYS • I'll Never Break Your Heart (JIVE)</b>	+175
WJDX +13, KTDY +11, WMYI +9, WLEV +8, KIMN +8, KUDL +8, WSHH +8, WLIT +7, WJXB +7, WTFM +7	
<b>LIONEL RICHIE • Time (MERCURY)</b>	+155
WJDX +21, WRSN +15, WJXB +14, KISC +8, WLHT +8, KSSK +7, WSLQ +7, WRMF +6, WMYI +6, WSHH +6	
<b>ANNE COCHRAN &amp; JIM BRICKMAN • After All These Years (RENEGADE/WINDHAM HILL)</b>	+102
WMAG +10, KSSK +9, WBBQ +8, WMYI +6, WTCB +5, WLEV +4, WLTO +4, WGSY +4, WEZF +4, KGBY +4	
<b>GARTH BROOKS • To Make You Feel My Love (CAPITOL)</b>	+99
WLMG +14, WSLQ +12, WALK +8, KEFM +8, WLTE +8, WRCH +7, WINK +6, WMJJ +6, KOSI +6, WMYI +6	
<b>CHRISTINA AGUILERA • Reflection (WALT DISNEY/HOLLYWOOD)</b>	+62
WTCB +9, WSNY +8, WASH +8, KTDY +7, WMJQ +6, KIMN +4, WMGS +4, WAHR +3, KOSI +3, WPCH +3	



**GREATEST SALES GAINER!!**  
**ALBUM SALES SOAR TO 88,000 UNITS (+111%)!**  
**#12 SOUNDCAN!**  
**ALBUM NOW CERTIFIED PLATINUM!**

14 MAINSTREAM TOP 40 MONITOR (+215)  
 30 RHYTHMIC TOP 40 MONITOR (+47)

**THANK YOU!**

# "LIFE"

SHE GIVES IT A WHOLE NEW MEANING.



# DES'ree

The first single from Supernatural...

"LIFE" continues the **DES'ree** evolution  
started by her top 5 anthem  
"you gotta be."


**1** EARLY ADD!  
MUSIC FIRST

Produced by Prince Sampson and Des'ree

Management: David Wennham for Wildlife Management.



[www.desree.com](http://www.desree.com) [www.sonyrsg.com](http://www.sonyrsg.com)

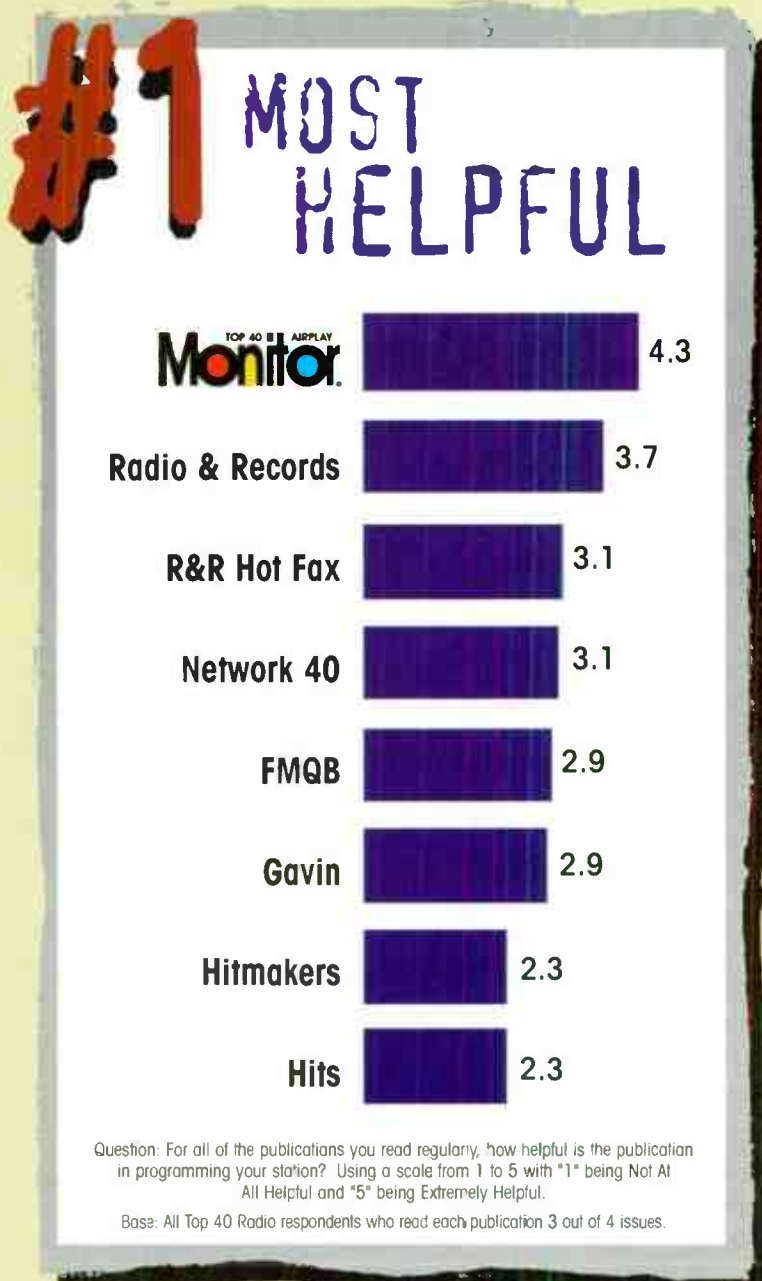
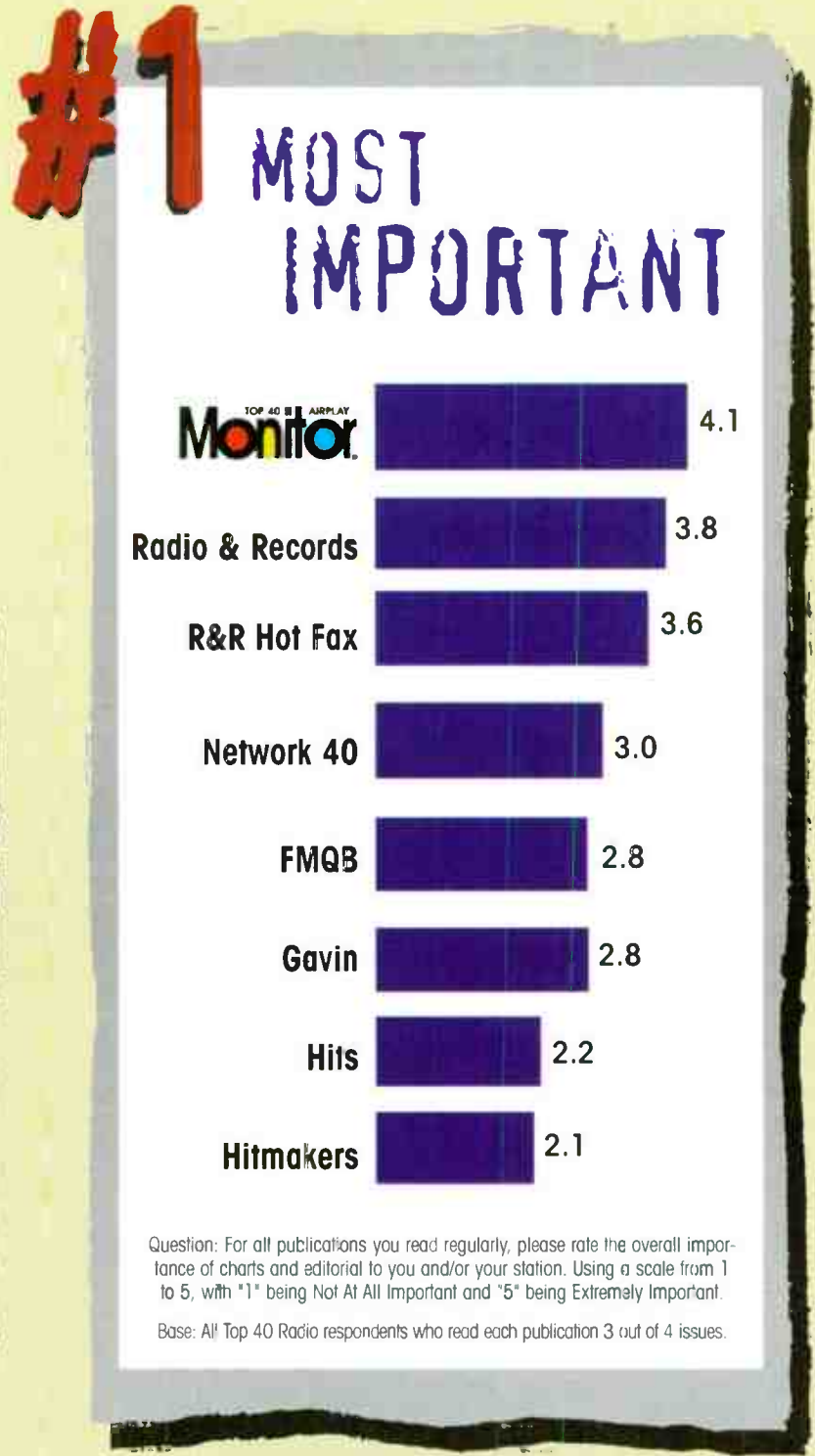
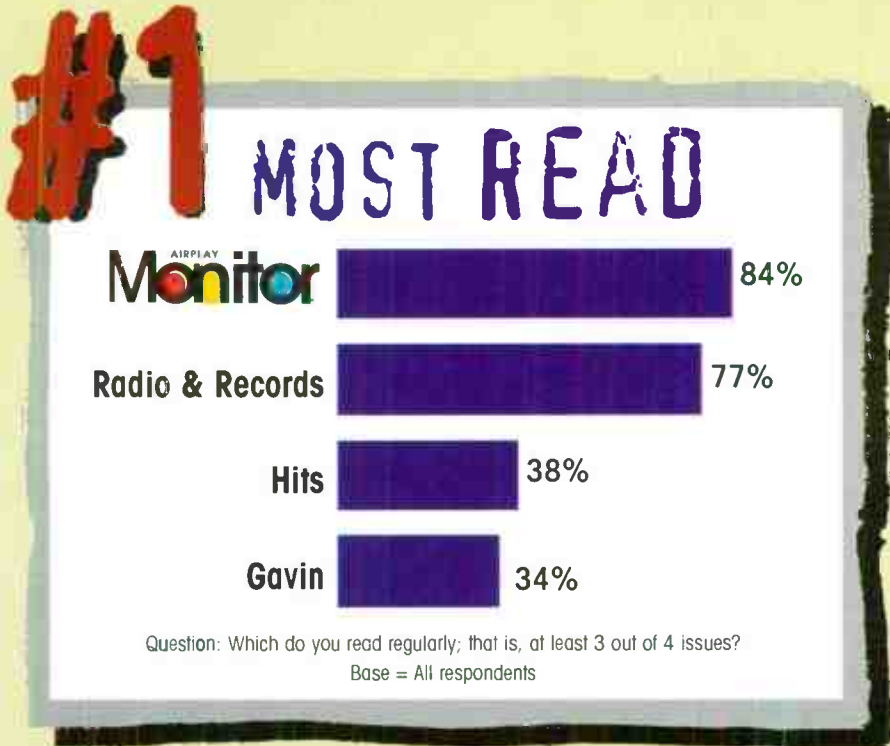
\*S&S Music\* and design: "SOUL" "REEL" and  Reg. U.S. Pat. & Tm. Off. Maria Rodriguez © 2001 Sony Music Entertainment Inc.



World Radio History



# THANK YOU FOR MAKING US THE **#1** RADIO TRADE PUBLICATION IN THE BUSINESS\*



• We Listen To Radio •

\*1998 Harvey Research Organization, Inc.  
The world's largest supplier of research services to trade publishers

Songs ranked by number of plays in monitored week. Playlists are listed in order of TBA weekly count, beginning with the highest-cumulative station. Counts are updated twice yearly following the release of the spring and fall Arbitron surveys. The number of stations shown each week varies depending upon space.

WNCI Columbus PD: John Dimick APD/MD: Neal Sharpe 614-224-9624 Nationwide



Table with 2 columns: Rank and Song/Artist. Top songs include Aerosmith, 'I Don't Want to Miss a Thing' and Go Go Dolls, 'Iris'.

KBKS Seattle PD: Mike Preston APD: L.A. Reid MD: Paul Anthony 206-282-5477 CBS



Table with 2 columns: Rank and Song/Artist. Top songs include Matchbox 20, 'Real World' and Natalie Imbruglia, 'Torment'.

WZJM Cleveland PD: Dave Eubanks MD: Action Jackson 216-621-9300 Zapis



Table with 2 columns: Rank and Song/Artist. Top songs include Go Go Dolls, 'Iris' and All Saints, 'Never Ever'.

KMXV Kansas City PD: Jon Zellner MD: Dylan 816-753-0933 CBS



Table with 2 columns: Rank and Song/Artist. Top songs include Backstreet Boys, 'Everybody' and Fastball, 'The Way'.

WKRC Cincinnati OM: Mike Marino MD: Bill Klaproth MD: Jim Kelly 513-763-5500 CBS



Table with 2 columns: Rank and Song/Artist. Top songs include Matchbox 20, 'Real World' and Sarah McLachlan, 'Adia'.

KALC Denver PD: Gregg Cassidy MD: Kelly Michaels 303-572-7000 Chancellor



Table with 2 columns: Rank and Song/Artist. Top songs include Go Go Dolls, 'Iris' and Matchbox 20, '3 AM'.

WBLI Long Island PD: Ken Medek MD: Al Levine 516-732-1061 Cox



Table with 2 columns: Rank and Song/Artist. Top songs include Will Smith, 'Gettin' Jiggy Wit It' and Go Go Dolls, 'Iris'.

WXFL Orlando OM/PD: Adam Cook APD/MD: Pete deGraaf 407-339-1067 Chancellor



Table with 2 columns: Rank and Song/Artist. Top songs include Brandy & Monica, 'The Boy Is Mine' and Will Smith, 'Just the Two of Us'.

WYXV Baltimore PD: Dave Ferguson APD: Throb MD: Albie Dee 410-889-0098 CBS



Table with 2 columns: Rank and Song/Artist. Top songs include Brandy & Monica, 'The Boy Is Mine' and Will Smith, 'Just the Two of Us'.

WNKS Charlotte PD: Brian Bridgman MD: Danny Wright 704-331-9510 CBS



Table with 2 columns: Rank and Song/Artist. Top songs include Go Go Dolls, 'Iris' and All Saints, 'Never Ever'.

WDCG Raleigh OM: Brian Burns MD: Rip Taylor 919-871-1051 Capstar



Table with 2 columns: Rank and Song/Artist. Top songs include Sarah McLachlan, 'Adia' and Alanis Morissette, 'Uninvited'.

WZPL Indianapolis PD: Tom Gierdum MD: Dave Decker 317-816-4000 Mystar



Table with 2 columns: Rank and Song/Artist. Top songs include Shania Twain, 'You're Still the One' and Go Go Dolls, 'Iris'.

WIXX Green Bay PD: Dan Stone MD: David Burns 920-435-3771 Midwest Communications



Table with 2 columns: Rank and Song/Artist. Top songs include Jennifer Paige, 'Crush' and Matchbox 20, 'Real World'.

WRVW Nashville OM: Charlie Quinn PD/MD: Tom Peace 615-664-2400 Capstar



Table with 2 columns: Rank and Song/Artist. Top songs include Aerosmith, 'I Don't Want to Miss a Thing' and Matchbox 20, 'Real World'.

KUMX New Orleans OM: Dave Stewart PD/MD: Kandy Klutch 504-679-7300 Clear Channel



Table with 2 columns: Rank and Song/Artist. Top songs include Go Go Dolls, 'Iris' and Aerosmith, 'I Don't Want to Miss a Thing'.

WPPO Providence PD: Tony Bristol MD: Davey Morris 401-433-4200 Citadel



Table with 2 columns: Rank and Song/Artist. Top songs include Go Go Dolls, 'Iris' and Edwin McCain, 'I'll Be'.

KJYO Oklahoma PD: Mike McCoy MD: Joe Friday 405-840-5271 Clear Channel



Table with 2 columns: Rank and Song/Artist. Top songs include Aerosmith, 'I Don't Want to Miss a Thing' and Matchbox 20, 'Real World'.

KHFI Austin VP/Pgm: John Roberts MD: Krash Kelly MD: Leslie Basenberg 512-474-9233 Clear Channel



Table with 2 columns: Rank and Song/Artist. Top songs include Will Smith, 'Just the Two of Us' and Brandy & Monica, 'The Boy Is Mine'.



Songs ranked by number of plays in monitored week. Playlists are listed in order of TBA weekly sums, beginning with the highest...

WKSE Buffalo
OM: Sue O'Neil
PD/MD: Dave Universal
716-884-5107
Sinclair
KISS 98.5
FM LW
1 Aerosmith, I Don't Want To Miss A Thing 59 56

WFLY Albany
OM: Mike Morgan
PD: Rob Dawes
MD: Ron "Sugarbear" Williams
518-786-6600
Albany Broadcasting
FLY 92.2
FM LW
1 Aerosmith, I Don't Want To Miss A Thing 67 68

WGTV Dayton
OM: Michael Luczak
PD: Dani Steele
MD: 294-5858
Clear Channel
Z-93
FM LW
1 Aerosmith, I Don't Want To Miss A Thing 75 66

WFBC Greenville, SC
MD: J. Love
864-271-9200
Sinclair
B-93.7
FM LW
1 Next, Too Close 58 55

WDJX Louisville
PD: C.C. Matthews
APD/MD: Rod Phillips
502-589-4800
Jacor
99.7 DJX
FM LW
1 Next, Too Close 74 75

WKRZ Wilkes-Barre
PD: Tony Banks
APD/MD: Jerry Padden
717-883-9850
Sinclair
FM LW
1 Edina McClain, I'll Be 49 50

KBFM McAllen
OM: Billy Santiago
PD/MD: Jeff DeWitt
956-702-7070
Calendar
100.1 B104
FM LW
1 Goo Go Go Dolls, Iris 42 41

VVKS Toledo
VP/Pgm: Mike Wheeler
APD/MD: Bill Michaels
419-244-8321
Jacor
92.5 Kiss FM
FM LW
1 Matchbox 20, Real World 52 47

WPXY Rochester
OM/PD: Clarke Ingram
MD: Mike Danger
AMD: Norm On The Barstool
716-272-7260
CBS
98.9 PX
FM LW
1 Goo Go Go Dolls, Iris 68 65

KHTT Tulsa
VP/Pgm: Sean Phillips
PD: Carly Rush
MD: Scotty Mack
918-492-2020
Renda Broadcasting
K-HITS 100.9 FM
FM LW
1 Brandy & Monica, The Boy Is Mine 83 79

KZHT Salt Lake City
PD: Marc Summers
MD: Jeff McCartney
801-908-1300
Jacor
94.9 ZHT
FM LW
1 Will Smith, Gettin' Jiggy Wit It 74 71

WAPE Jacksonville
PD: Cat Thomas
APD/MD: Tony Mann
904-642-1055
Capstar
WAVE-FM
FM LW
1 Goo Go Go Dolls, Iris 61 60

WAEB Allentown
PD: Brian Check
MD: Chuck McGee
610-434-1742
Atlantic Star
104.5 B104
FM LW
1 Aerosmith, I Don't Want To Miss A Thing 42 25

WSNX Grand Rapids
PD: John Thomas
MD: Keith Curry
616-956-6696
Goodrich Radio Broadcasting
104.5 WSNX
FM LW
1 Five, When The Lights Go Out 48 39

KKLQ San Diego
PD: Todd Shaheen
Acting MD: Hitman Haze
619-565-6005
Jacor
107.9 Q100
FM LW
1 Goo Go Go Dolls, Iris 57 61

KRQQ Tucson
PD: Tim Richards
MD: Dino
520-623-7556
Pacific Star
93.7 KRQQ
FM LW
1 Next, Too Close 64 63

WXLK Roanoke
PD: Russ Brown
MD: Lisa Jo Elliott
540-774-9200
Mel Wheeler Inc.
K92
FM LW
1 Ace Of Base, Cruel Summer 44 43

KQKQ Omaha
PD: Wayne Coy
MD: J.J. Morgan
402-342-2000
Mitchel Broadcasting
SHEET 98
FM LW
1 Next, Too Close 63 57

Upward-moving songs ranked in order of spin count. Songs are removed if they lose more than 5% of their detections from previous week or if their spin count declines for two consecutive weeks.

## MOST NEW STATIONS

Songs detecting six or more spins at new stations this week

	NEW STATIONS
<b>BEASTIE BOYS</b> <i>Intergalactic (Grand Royal/Capitol)</i>	20
<b>BARENAKED LADIES</b> <i>One Week (Reprise)</i>	16
<b>MERRIL BAINBRIDGE</b> <i>Lonely (Universal)</i>	13
<b>FAITH HILL</b> <i>This Kiss (Warner Bros.)</i>	10
<b>DAVE MATTHEWS BAND</b> <i>Stay (Wasting Time) (RCA)</i>	9
<b>INOJ</b> <i>Time After Time (So So Def/Columbia)</i>	9
<b>USHER</b> <i>My Way (LaFace/Arista)</i>	9



(Minimum 1500 detections for the first time)

Total Plays/Gain

**NATALIE IMBRUGLIA 1673/334**  
*Wishing I Was There (RCA)*  
 Total Stations: 87/Chart Move: 29-28  
 Heavy (40+ plays): 3 KSMB, KZZU, WXIS  
 Medium (20-39): 40 KALC, KBKS, KDWB, KIIS, KJYO, KKLQ, KKRZ, KMXV, KQAR, KQKQ, KRUF, KSLZ, KZHT, WABB, WAEB, WBHT, WBZZ, WCIL, WDCG, WFBC, WHOT, WIXX, WJBO, WKRO, WLSS, WNKS, WNOK, WNTQ, WPRO, WPST, WPXY, WRVW, WSTR, WYKS, WYTI, WYXS, WYXL, WYXX, WYZZ  
 Light (Under 20): 44  
 New Airplay This Week: 6 KHTO, KRBE, WFBC, WKRZ, WRHT, WVTI



Total Plays/Gain

**BARENAKED LADIES 1362/439**  
*One Week (Reprise)*  
 Total Stations: 73/Chart Move: 38-29  
 Heavy (40+): 2 WDCG, WXYV  
 Medium (20-39): 30 KALC, KBKS, KCHZ, KJYO, KQKQ, KRBE, KZHT, WABB, WDDJ, WFBC, WHOT, WIXX, WKCI, WKRO, WKSE, WKSZ, WLSS, WNOC, WNTQ, WPRO, WQSL, WRVW, WSSX, WSTR, WSTW, WTVR, WXIS, WZAT, WZNY, WZPL  
 Light (Under 20): 41  
 New Airplay This Week: 16 KIIS, KKMKG, KQAR, KRUF, KSLZ, WAEB, WBHT, WFLZ, WHTZ, WKSL, WKSS, WWST, WYKS, WYXX, WYCR, WZYP

**SWIRL 360 1343/229**  
*Hey Now Now (Mercury)*  
 Total Stations: 89/Chart Move: 30-30  
 Heavy (40+): 2 WVTI, WXIS  
 Medium (20-39): 24 KKLQ, KMXV, KQKQ, KSLZ, KSMB, KUMX, WABB, WAEB, WAPE, WBZZ, WFLZ, WGTZ, WHYI, WJBO, WKRZ, WLKT, WLSS, WSTW, WYKS, WYXL, WYCR, WYQY, WZJM, WZNY  
 Light (Under 20): 63  
 New Airplay This Week: 5 KRQQ, WCIL, WFLY, WTVR, WYKB

**JANET 1309/349**  
*Go Deep (Virgin)*  
 Total Stations: 83/Chart Move: 36-31  
 Heavy (40+): 2 KHHT, WSNX

Medium (20-39): 28 KBFM, KCHZ, KDWB, KIIS, KKLQ, KKRZ, KRUF, KRQQ, KSMB, KZQZ, KZZU, WBHT, WCIL, WDDJ, WDJX, WFLY, WFLZ, WKSE, WLKT, WNNK, WRVW, WWCK, WWHT, WXIS, WYKB, WYXL, WZJM  
 Light (Under 20): 53  
 New Airplay This Week: 7 KKLQ, KZZU, WBZZ, WNTQ, WPXY, WZNY, WZYP

**USHER 1228/145**  
*My Way (LaFace/Arista)*  
 Total Stations: 88/Chart Move: 31-32  
 Heavy (40+): 4 KUMX, WKSE, WSNX, WWHT  
 Medium (20-39): 24 KBFM, KHFI, KHKS, KHTO, KRBE, KRQQ, KSLZ, KSMB, KXME, KZZU, WDDJ, WDJX, WFBC, WGTZ, WLKT, WLSS, WRVW, WWSR, WXIS, WYKB, WYXL, WYXX, WYCR, WZJM  
 Light (Under 20): 60  
 New Airplay This Week: 9 KHHT, KIIS, KKLQ, KKMKG, KQAR, KQKQ, KSLZ, WKSZ, WXXX

**DAVE MATTHEWS BAND 1202/209**  
*Stay (Wasting Time) (RCA)*  
 Total Stations: 84/Chart Move: 35-33  
 Heavy (40+): 0  
 Medium (20-39): 31 KALC, KKLQ, KQKQ, KSLZ, KSMB, WABB, WAPE, WBHT, WBZZ, WDCG, WDDJ, WFBC, WFLY, WIXX, WJBO, WKRZ, WKSZ, WNOK, WPST, WQSL, WSSX, WSTR, WSTW, WTVR, WXIS, WYXL, WYCR, WYQY, WZAT, WZNY, WZPL  
 Light (Under 20): 53  
 New Airplay This Week: 9 KQKQ, WDJX, WHOT, WKRQ, WLAN, WLKT, WNOC, WPRO, WRVW

**FAITH HILL 916/241**  
*This Kiss (Warner Bros.)*  
 Total Stations: 54/Chart Move: Debut 36  
 Heavy (40+): 2 KRBE, WKSE  
 Medium (20-39): 19 KKMKG, KQKQ, WAEB, WFBC, WKRZ, WKSZ, WNKS, WPRO, WPST, WQSL, WRVW, WSTR, WTVR, WWCK, WWHT, WWZZ, WYKS, WYXL, WZAT  
 Light (Under 20): 33  
 New Airplay This Week: 10 KDWB, KKRZ, WBHT, WFLY, WHOT, WHYI, WLAN, WPXY, WYQY, WZPL

**THE BRIAN SETZER ORCHESTRA 897/172**  
*Jump Jive An' Wail (Interscope)*  
 Total Stations: 73/Chart Move: 40-37  
 Heavy (40+): 1 WXIS  
 Medium (20-39): 23 KALC, KBKS, KHTO, KKRZ, KQKQ, KZHT, WABB, WBZZ, WDDJ, WFLY, WHOT, WIXX, WJBO, WKSZ, WNNK, WRVW, WSSX, WSTW, WWCK, WWZZ, WYXL, WZPL, WZYP  
 Light (Under 20): 49  
 New Airplay This Week: 8 KJYO, KRUF, KZZU, WAEB, WDCG, WDJX, WKSZ, WLSS

**INOJ 835/255**  
*Time After Time (So So Def/Columbia)*  
 Total Stations: 53/Chart Move: Debut 40  
 Heavy (40+): 2 KZQZ, WKSL  
 Medium (20-39): 20 KBFM, KHFI, KHTO, KKLQ, KKRZ, KRUF, KSLZ, KXME, WDJX, WFLY, WHYI, WIOQ, WKSE, WKSZ, WPXY, WQZQ, WSNX, WWZZ, WYXL, WZJM  
 Light (Under 20): 31  
 New Airplay This Week: 9 KDWB, KKLQ, KQKQ, KUMX, WHOT, WJBO, WKRZ, WLKT, WWCK

## CHART BOUND

Total Plays/Gain

**VOICES OF THEORY 822/92**  
*Say It (H.O.L.A./Red Ant)*  
 Total Stations: 63  
 Heavy (40+): 2 KZQZ, WZJM  
 Medium (20-39): 16 KBFM, KHKS, KKMKG, KQKQ, KRUF, KRUS, KSMB, KXME, WDDJ, WHYI, WYXL, WSNX, WWCK, WWZZ, WXIS, WYXL  
 Light (Under 20): 45  
 New Airplay This Week: 5 KCHZ, WFBC, WKSZ, WYXL, WYCR

**HARVEY DANGER 658/90**  
*Flagpole Sitta (Slash/London/Island)*  
 Total Stations: 41  
 Heavy (40+): 3 KXME, WXIS, WXYV  
 Medium (20-39): 5 KBKS, KHTO, KSMB, KZHT, WYXL  
 Light (Under 20): 33  
 New Airplay This Week: 6 WHOT, WLKT, WQSL, WSTW, WWSR, WZNY

**BEASTIE BOYS 569/226**  
*Intergalactic (Grand Royal/Capitol)*  
 Total Stations: 50  
 Heavy (40+): 2 KXME, WXYV  
 Medium (20-39): 2 KKRZ, KRBE  
 Light (Under 20): 46  
 New Airplay This Week: 20 KBKS, KCHZ, KDWB, KHFI, KHKS, KJYO, KKLQ, KKMKG, KKRZ, KQKQ, WBLI, WDCG, WFLY, WGTZ, WHOT, WKCI, WKSZ, WNOK, WRHT, WWCK

**EAGLE-EYE CHERRY 523/26**  
*Save Tonight (WORK)*  
 Total Stations: 48  
 Heavy (40+): 0  
 Medium (20-39): 13 KALC, KBKS, KSMB, WDCG, WDDJ, WJBO, WSTR, WSTW, WXIS, WYXL, WYCR, WYQY, WZNY  
 Light (Under 20): 35  
 New Airplay This Week: 3 KSLZ, WLSS, WNOK

**MISTER JONES 491/58**  
*Destiny (A&M)*  
 Total Stations: 45  
 Heavy (40+): 0  
 Medium (20-39): 4 KALC, WDDJ, WXIS, WYCR  
 Light (Under 20): 41  
 New Airplay This Week: 5 KDWB, KHKS, WHOT, WYKS, WZNY

**DAKOTA MOON 430/70**  
*Another Day Goes By (Elektra/EEG)*  
 Total Stations: 37  
 Heavy (40+): 0  
 Medium (20-39): 9 KQKQ, KRUF, WDDJ, WKCI, WQSL, WWCK, WXIS, WYCR, WZAT  
 Light (Under 20): 28  
 New Airplay This Week: 3 WCIL, WKSZ, WTVR

**BIG PUNISHER FEAT. JOE 414/59**  
*Still Not A Player (Loud/RCA)*  
 Total Stations: 28  
 Heavy (40+): 1 KXME  
 Medium (20-39): 6 KHFI, WBLI, WKSZ, WSNX, WWHT, WXYV  
 Light (Under 20): 21  
 New Airplay This Week: 2 KKLQ, WRVQ

**4 THE CAUSE 383/12**  
*Stand By Me (RCA)*  
 Total Stations: 24  
 Heavy (40+): 2 KRQQ, KXME  
 Medium (20-39): 2 KSLZ, WYKS  
 Light (Under 20): 20  
 New Airplay This Week: 1 WYXL

**DREAMHOUSE 378/82**  
*Stay (Trauma)*  
 Total Stations: 34  
 Heavy (40+): 0  
 Medium (20-39): 4 KCHZ, WBHT, WYXL, WZYP  
 Light (Under 20): 30  
 New Airplay This Week: 2 KQKQ, WHOT

**AALIYAH 373/109**  
*Are You That Somebody? (Background/Atlantic)*  
 Total Stations: 20  
 Heavy (40+): 3 KXME, WSNX, WXYV  
 Medium (20-39): 5 KKLQ, KRQQ, KZZU, WKSE, WQZQ  
 Light (Under 20): 12  
 New Airplay This Week: 2 KHFI, KKLQ

**PURE SUGAR 328/83**  
*Delicious (Geffen)*  
 Total Stations: 38  
 Heavy (40+): 0  
 Medium (20-39): 5 WKSL, WKSZ, WXIS, WYXL, WZJM  
 Light (Under 20): 33  
 New Airplay This Week: 5 WCIL, WDDJ, WLKT, WNNK, WWZZ

**EVERYTHING 297/60**  
*Hooch (Blackbird/Sire)*  
 Total Stations: 25  
 Heavy (40+): 1 WDCG  
 Medium (20-39): 6 KALC, WABB, WAPE, WWZZ, WYQY, WZNY  
 Light (Under 20): 18  
 New Airplay This Week: 2 KRUF, WDDJ

**MERRIL BAINBRIDGE 266/177**  
*Lonely (Universal)*  
 Total Stations: 32  
 Heavy (40+): 0  
 Medium (20-39): 3 KKRZ, WNNK, WYXL  
 Light (Under 20): 29  
 New Airplay This Week: 13 KQKQ, KSMB, WBHT, WCIL, WDDJ, WDJX, WNTQ, WRHT, WRVW, WSTW, WWSR, WWCK, WYXL

**HEATHER NOVA 230/3**  
*London Rain (Nothing Heals Me Like You Do) (Big Cat/WORK)*  
 Total Stations: 23  
 Heavy (40+): 0  
 Medium (20-39): 2 WKSE, WZYP  
 Light (Under 20): 21  
 New Airplay This Week: 1 WYXL

**LAURYN HILL 178/72**  
*Can't Take My Eyes Off Of You (Ruffhouse/Columbia)*  
 Total Stations: 9  
 Heavy (40+): 1 KXME  
 Medium (20-39): 2 KZQZ, WXYV  
 Light (Under 20): 6  
 New Airplay This Week: 3 KIIS, KZQZ, WBLI

**SARAH MCLACHLAN 168/-7**  
*I Will Remember You (Arista)*  
 Total Stations: 10  
 Heavy (40+): 2 KQAR, WVTI  
 Medium (20-39): 2 WGTZ, WKRQ  
 Light (Under 20): 6

**CLEOPATRA 156/4**  
*Cleopatra's Theme (Maverick/Warner Bros.)*  
 Total Stations: 17  
 Heavy (40+): 0  
 Medium (20-39): 2 WDDJ, WWSR  
 Light (Under 20): 15  
 New Airplay This Week: 1 KSLZ

**DEBORAH COX 149/32**  
*Things Just Ain't The Same (Arista)*  
 Total Stations: 18  
 Heavy (40+): 0  
 Medium (20-39): 3 WBLI, WHTZ, WYXL  
 Light (Under 20): 15  
 New Airplay This Week: 4 KHTO, WYXL, WRHT, WYXL

**EVE 6 137/100**  
*Inside Out (RCA)*  
 Total Stations: 24  
 Heavy (40+): 0  
 Medium (20-39): 0  
 Light (Under 20): 24  
 New Airplay This Week: 8 KSMB, WABB, WQSL, WXIS, WYXL, WYQY, WZAT, WZNY

**ROCKELL 124/3**  
*In A Dream (Robbins)*  
 Total Stations: 7  
 Heavy (40+): 0  
 Medium (20-39): 4 KIIS, WBLI, WHTZ, WYXL  
 Light (Under 20): 3

**TATYANA ALI 106/41**  
*Daydreamin' (MJJ/WORK)*  
 Total Stations: 9  
 Heavy (40+): 0  
 Medium (20-39): 1 WSNX  
 Light (Under 20): 8  
 New Airplay This Week: 2 KKLQ, WZJM

**NICOLE FEAT. MISSY ELLIOTT & MOCHA 103/39**  
*Make It Hot (The Gold Mind, Inc./EastWest/EEG)*  
 Total Stations: 13  
 Heavy (40+): 0  
 Medium (20-39): 1 WSNX  
 Light (Under 20): 12  
 New Airplay This Week: 4 WDJX, WKSZ, WXYV, WZJM

**BRANDY (FEAT. MASE) 99/14**  
*Top Of The World (Atlantic)*  
 Total Stations: 14  
 Heavy (40+): 1 WSNX  
 Medium (20-39): 0  
 Light (Under 20): 13  
 New Airplay This Week: 2 KKLQ, WKSE

**THE TAMPERER FEAT. MAYA 96/49**  
*Feel It (Battery/Jive)*  
 Total Stations: 21  
 Heavy (40+): 0  
 Medium (20-39): 1 WXYV  
 Light (Under 20): 20  
 New Airplay This Week: 5 WBLI, WHYI, WIOQ, WKSZ, WXIS

**FUEL 96/21**  
*Shimmer (550 Music)*  
 Total Stations: 15  
 Heavy (40+): 0  
 Medium (20-39): 0  
 Light (Under 20): 15  
 New Airplay This Week: 3 KSMB, WSTW, WYXL

**THIRD EYE BLIND 92/71**  
*Jumper (Elektra/EEG)*  
 Total Stations: 20  
 Heavy (40+): 0  
 Medium (20-39): 0  
 Light (Under 20): 20  
 New Airplay This Week: 4 KBKS, WKRZ, WXIS, WZAT

**ANGGUN 92/40**  
*Snow On The Sahara (Epic)*  
 Total Stations: 11  
 Heavy (40+): 0  
 Medium (20-39): 1 WSTW  
 Light (Under 20): 10  
 New Airplay This Week: 3 WDDJ, WHYI, WKRQ

**GARTH BROOKS 92/-3**  
*To Make You Feel My Love (Capitol)*  
 Total Stations: 4  
 Heavy (40+): 1 WAPE  
 Medium (20-39): 1 WNOK  
 Light (Under 20): 2

**BEASTIE BOYS 85/44**  
*Unite (Grand Royal/Capitol)*  
 Total Stations: 2  
 Heavy (40+): 1 KXME  
 Medium (20-39): 0  
 Light (Under 20): 1

**FATBOY SLIM 85/0**  
*The Rockafeller Skank (Skint/Astralwerks)*  
 Total Stations: 2  
 Heavy (40+): 1 KXME  
 Medium (20-39): 0  
 Light (Under 20): 1

**ROCKELL (DUET WITH COLLAGE) 82/28**  
*Can't We Try (Robbins)*  
 Total Stations: 8  
 Heavy (40+): 0  
 Medium (20-39): 3 WBLI, WIOQ, WKSZ  
 Light (Under 20): 5



JANET 1309/349 Go Deep (Virgin) Total Stations: 83 Chart Move: 36-31

MATCHBOX 20 4003/75 Real World (Lava/Atlantic) Total Stations: 95 Chart Move: 5-4

EDWIN MCCAIN 2127/177 I'll Be (Lava/Atlantic) Total Stations: 87 Chart Move: 22-19

PRAS MICHEL FEAT. OL' DIRTY SUPASTAR & MYVA 1822/105 Ghetto Supastar (That Is What You Are) (Interscope) Total Stations: 90 Chart Move: 27-24

MISTER JONES 491/58 Destiny (A&M) Total Stations: 45

'N SYNC 2523/215 Tearin' Up My Heart (RCA) Total Stations: 94 Chart Move: 14-14

NEXT 3665/141 Too Close (Arista) Total Stations: 94 Chart Move: 8-5

JENNIFER PAIGE 3392/285 Crush (Edel America/Hollywood) Total Stations: 94 Chart Move: 10-7

SAVAGE GARDEN 2257/80 To The Moon And Back (Columbia) Total Stations: 93 Chart Move: 17-17

SEMISONIC 3111/318 Closing Time (MCA) Total Stations: 93 Chart Move: 13-12

SMASH MOUTH 2071/53 Can't Get Enough Of You Baby (Elektra/EEG) Total Stations: 91 Chart Move: 19-20

WILL SMITH 3233/280 Just The Two Of Us (Columbia) Total Stations: 90 Chart Move: 11-10

SWIRL 360 1343/229 Hey Now Now (Mercury) Total Stations: 89 Chart Move: 30-30

USHER 1228/145 My Way (LaFace/Arista) Total Stations: 88 Chart Move: 31-32

VOICES OF 822/92 Say It (H.O.L.A./Red Ant) Total Stations: 63

Songs ranked by number of plays in monitored week. Playlists are listed in order of TSA weekly count, beginning with the highest-scoring station. Counts are updated twice weekly following the release of the spring and fall Arbitron surveys. The number of stations shown each week varies depending upon space.

WKUT New York PD: Frankie Blue APD/MD: Andy Shane 201-420-3700 Chancellor

WBBM Chicago PD: Todd Cavanah MD: Erik Bradley 312-944-6000 CBS

WJMN Boston PD: Cadillac Jack APD/MD: Danny Ocean 718-290-0009 Chancellor

KYLD San Francisco PD: Michael Martin MD: "Jazzy" Jim Archer 315-931-1077 Chancellor

WPOW Miami PD: Kid Curry MD: Phil Jones 305-653-6796 Beasley

KUBE Seattle PD: Eric Powers MD: Julie Pilat 206-285-2295 Acherly

WDRQ Detroit PD: Alex Tear MD: Jimi Jamm 248-354-9300 ABC/Disney

KSFM Sacramento PD: Bob West MD: John E. Kage 916-920-1025 CBS

KGGI Riverside PD: Diana Laird APD: Jesse Duran MC: Ricky Fuentes 909-684-1991 Chancellor

KTFM San Antonio PD: Cliff Tredway MD: Steve Chavez 210-595-5500 Waterman

KHTS San Diego PD: Todd Shannon APD: Ron Geronimo MD: Hitman Haze 619-291-9191 Jacor

KKFR Phoenix PD/MD: Bruce St. James APD: Krazy Kid Stevens MD: Mark Medina 602-258-6161 The Broadcast Group

XHTZ San Diego OM/PD: Lisa Vazquez MD: Dale Soliven 619-585-9090 Noventa FM 90

KQKS Denver PD: Cat Collins MD: Jennifer Wilde 303-321-0950 Jefferson-Pilot

KBOS Fresno PD: Steve Wall MD: Travis Loughrath 209-243-4300 Capstar

KPRR El Paso PD/MD: John Candelaria 915-566-9301 Clear Channel

KLUC Las Vegas PD: Cat Thomas MD: Melissa Stefan 702-364-8400 CBS

WNVZ Norfolk PD: Don London APD/MD: Jay West 757-497-2000 Sinclair



Upward-moving songs ranked in order of spin count. Songs are removed if they lose more than 5% of their detections from previous week or if their spin count declines for two consecutive weeks.

## MOST NEW STATIONS

**Songs detecting six or more spins at new stations this week**

	NEW STATIONS
<b>LAURYN HILL</b> <i>Can't Take My Eyes Off Of You (Ruffhouse/Columbia)</i>	7
<b>BEASTIE BOYS</b> <i>Intergalactic (Grand Royal/Capitol)</i>	6
<b>MONIFAH</b> <i>Touch It (Uptown/Universal)</i>	6
<b>SHAGGY FEAT. JANET</b> <i>Luv Me, Luv Me (Flyte Tyme/MCA)</i>	6
<b>INOJ</b> <i>Time After Time (So So Def/Columbia)</i>	5

**AIRPOWER**  
(Minimum 500 detections for the first time)

Medium (20-39): 9 KDGS, KKFR, KIOX, KOHT, KSFM, KTFM, WHHH, WWXX, XHTZ  
Light (Under 20): 8  
New Airplay This Week: 4 KGGI, KKSS, KYLD, WWXX

**ACE OF BASE 374/24**  
*Cruel Summer (Arista)*  
Total Stations: 14/Chart Move: 32-33  
Heavy (40+): 1 KLUC  
Medium (20-39): 12 KBGS, KDGS, KHTS, KIKI, KTFM, KZFM, WDRQ, WFHN, WJJS, WKTU, WKQJ, WNVZ  
Light (Under 20): 1

**FIVE 371/-12**  
*When The Lights Go Out (Arista)*  
Total Stations: 22/Chart Move: 29-34  
Heavy (40+): 1 WKQJ  
Medium (20-39): 7 KHTS, KZFM, WDRQ, WFHN, WJJS, WNVZ, XHTZ  
Light (Under 20): 14  
New Airplay This Week: 1 KBOS

**MYA FEAT. SILKK THE SHOCKER 326/128**  
*Movin' On (University/Interscope)*  
Total Stations: 19/Chart Move: Debut 37  
Heavy (40+): 1 KIOX  
Medium (20-39): 6 KCAQ, KDGS, KOHT, KSFM, KYLD, WHHH  
Light (Under 20): 12  
New Airplay This Week: 2 KYLZ, WJJS

**JD FEAT. JAY-Z 318/30**  
*Money Ain't A Thang (So So Def/Columbia)*  
Total Stations: 23/Chart Move: 36-38  
Heavy (40+): 2 KIOX, KQKS  
Medium (20-39): 4 KCAQ, KKFR, KYLD, WWXX  
Light (Under 20): 17  
New Airplay This Week: 1 KSFM

**NEXT 298/93**  
*I Still Love You (Arista)*  
Total Stations: 22/Chart Move: Debut 39  
Heavy (40+): 0  
Medium (20-39): 6 KDGS, KKSS, KIOX, WHHH, WJJS, XHTZ  
Light (Under 20): 16  
New Airplay This Week: 4 KBOS, KCAQ, KYLZ, WBTT

**CHART BOUND**

**BEASTIE BOYS 276/49**  
*Intergalactic (Grand Royal/Capitol)*  
Total Stations: 23  
Heavy (40+): 1 KUBE  
Medium (20-39): 3 KTFM, WPOW, WWXX  
Light (Under 20): 19  
New Airplay This Week: 6 KQMQ, KSFM, KYLD, WHHH, WJJS, XHTZ

**GINUWINE 386/112**  
*Same Ol' G (Blackground/Atlantic)*  
Total Stations: 19/Chart Move: 37-31  
Heavy (40+): 2 KLUC, KYLZ

**JENNIFER PAIGE 273/53**  
*Crush (Edel America/Hollywood)*  
Total Stations: 11  
Heavy (40+): 3 KDON, WFHN, WKXJ  
Medium (20-39): 3 KHTS, WDRQ, WNVZ  
Light (Under 20): 5

**KELLY PRICE 253/25**  
*Friend Of Mine (T-Neck/Island)*  
Total Stations: 21  
Heavy (40+): 1 KDGS  
Medium (20-39): 5 KKFR, KOHT, WBTT, WHHH, WJJS  
Light (Under 20): 15

**GOO GOO DOLLS 239/54**  
*Iris (Warner Sunset/Reprise)*  
Total Stations: 9  
Heavy (40+): 2 KHTS, KQMQ  
Medium (20-39): 3 WBBM, WBTT, WFHN  
Light (Under 20): 4  
New Airplay This Week: 1 WBBM

**MASE (FEAT. PUFF DADDY) 234/21**  
*Lookin' At Me (Bad Boy/Arista)*  
Total Stations: 23  
Heavy (40+): 0  
Medium (20-39): 2 KYLD, WBBM  
Light (Under 20): 21  
New Airplay This Week: 2 KIOX, WPOW

**JAYO FELONY (FEAT. METHOD MAN & DMX) 205/19**  
*Whatcha Gonna Do (Yab Yum/550 Music)*  
Total Stations: 19  
Heavy (40+): 1 KIOX  
Medium (20-39): 1 XHTZ  
Light (Under 20): 17

**JAGGED EDGE 181/7**  
*Gotta Be (So So Def/Columbia)*  
Total Stations: 15  
Heavy (40+): 0  
Medium (20-39): 4 KDGS, KOHT, KQMQ, KZFM  
Light (Under 20): 11  
New Airplay This Week: 2 KCAQ, XHTZ

**COLOR ME BADD 181/30**  
*Remember When (Epic)*  
Total Stations: 6  
Heavy (40+): 2 KIKI, WJJS  
Medium (20-39): 3 KQMQ, KZFM, WFHN  
Light (Under 20): 1

**AEROSMITH 178/74**  
*I Don't Want To Miss A Thing (Columbia)*  
Total Stations: 11  
Heavy (40+): 1 KQMQ  
Medium (20-39): 3 KHTS, KTFM, WBTT  
Light (Under 20): 7  
New Airplay This Week: 1 KTFM

**MONTELL JORDAN 176/40**  
*I Can Do That (Def Jam/Mercury)*  
Total Stations: 12  
Heavy (40+): 0  
Medium (20-39): 3 KIOX, KOHT, KQKS  
Light (Under 20): 9  
New Airplay This Week: 1 XHTZ

**PURE SUGAR 164/43**  
*Delicious (Geffen)*  
Total Stations: 14  
Heavy (40+): 0  
Medium (20-39): 4 KBOS, KGGI, KOHT, WDRQ  
Light (Under 20): 10  
New Airplay This Week: 1 KOHT

**MATCHBOX 20 139/38**  
*Real World (Lava/Atlantic)*  
Total Stations: 8  
Heavy (40+): 1 WBTT  
Medium (20-39): 3 KHTS, KQMQ, WFHN  
Light (Under 20): 4  
New Airplay This Week: 1 KQMQ

**BONE THUGS-N-HARMONY WITH FLESH-N-BONE, WITH HENRY ROLLINS, TOM MORELLO AND FLEA 130/16**  
*War (DreamWorks/Geffen)*  
Total Stations: 12  
Heavy (40+): 0

Medium (20-39): 2 KCAQ, KOHT  
Light (Under 20): 10

**★ BLACK EYED PEAS 128/78**  
*Joints & Jams (Interscope)*  
Total Stations: 12  
Heavy (40+): 0  
Medium (20-39): 3 KCAQ, KIOX, XHTZ  
Light (Under 20): 9  
New Airplay This Week: 2 KBOS, WBTT

**E-40 122/48**  
*Hope I Don't Go Back (Sick Wid' It/Jive)*  
Total Stations: 10  
Heavy (40+): 0  
Medium (20-39): 2 KKFR, KIOX  
Light (Under 20): 8

**MARY J. BLIGE 117/19**  
*Missing You (MCA)*  
Total Stations: 11  
Heavy (40+): 0  
Medium (20-39): 3 KOHT, WJJS, XHTZ  
Light (Under 20): 8  
New Airplay This Week: 1 KISV

**JAZZY JEFF & FRESH PRINCE 115/7**  
*Summertime '98 (Jive)*  
Total Stations: 29  
Heavy (40+): 0  
Medium (20-39): 0  
Light (Under 20): 29  
New Airplay This Week: 1 WBBM

**★ QUEEN WITH WYCLEF JEAN FEAT. PRAS AND FREE 114/77**  
*Another One Bites The Dust (DreamWorks/Geffen)*  
Total Stations: 14  
Heavy (40+): 0  
Medium (20-39): 2 KKFR, KKSS  
Light (Under 20): 12  
New Airplay This Week: 3 KCAQ, KKSS, WBTT

**SAVAGE GARDEN 107/4**  
*To The Moon And Back (Columbia)*  
Total Stations: 9  
Heavy (40+): 0  
Medium (20-39): 3 KHTS, WDRQ, WFHN  
Light (Under 20): 6

**GERALD LEVERT 106/1**  
*Thinkin' Bout It (EastWest/EEG)*  
Total Stations: 13  
Heavy (40+): 0  
Medium (20-39): 0  
Light (Under 20): 13

**TYRESE 98/38**  
*Nobody Else (RCA)*  
Total Stations: 10  
Heavy (40+): 0  
Medium (20-39): 2 KDGS, KOHT  
Light (Under 20): 8

**BEENIE MAN 97/20**  
*Who Am I (2 Hard/VP)*  
Total Stations: 7  
Heavy (40+): 0  
Medium (20-39): 2 WJMN, WWXX  
Light (Under 20): 5

**SARAH MCLACHLAN 92/20**  
*Adia (Arista)*  
Total Stations: 8  
Heavy (40+): 0  
Medium (20-39): 3 KQMQ, KTFM, WKXJ  
Light (Under 20): 5

**DEBORAH COX 90/14**  
*Things Just Ain't The Same (Arista)*  
Total Stations: 4  
Heavy (40+): 1 WKTU  
Medium (20-39): 0  
Light (Under 20): 3  
New Airplay This Week: 1 WBBM

**RICKY MARTIN 88/15**  
*The Cup Of Life (The Official Song Of The World Cup, France '98) (Columbia)*  
Total Stations: 3  
Heavy (40+): 1 KPRR

Medium (20-39): 1 KZFM  
Light (Under 20): 1

**PUFF DADDY & THE FAMILY 85/1**  
*It's All About The Benjamins (Bad Boy/Arista)*  
Total Stations: 17  
Heavy (40+): 1 WJMN  
Medium (20-39): 0  
Light (Under 20): 16

**4 THE CAUSE 85/20**  
*Stand By Me (RCA)*  
Total Stations: 5  
Heavy (40+): 0  
Medium (20-39): 2 KOHT, WJJS  
Light (Under 20): 3

**MAXWELL 85/3**  
*Luxury: Cococure (Columbia)*  
Total Stations: 5  
Heavy (40+): 1 KDGS  
Medium (20-39): 1 WJJS  
Light (Under 20): 3

**AMARI 82/10**  
*Callin' (Tommy Boy)*  
Total Stations: 7  
Heavy (40+): 0  
Medium (20-39): 2 KOHT, WHHH  
Light (Under 20): 5

**★ TQ 78/41**  
*Westside (Clockwork/Epic)*  
Total Stations: 5  
Heavy (40+): 1 KCAQ  
Medium (20-39): 0  
Light (Under 20): 4  
New Airplay This Week: 3 KBOS, KIOX, KYLD

**★ SHAQUILLE O'NEAL FEAT. PETER GUNZ 73/36**  
*The Way It's Goin' Down (T.W.is.M. for His) (T.W.is.M./A&M)*  
Total Stations: 13  
Heavy (40+): 0  
Medium (20-39): 2 KCAQ, XHTZ  
Light (Under 20): 11  
New Airplay This Week: 1 KCAQ

**LA BOUCHE 72/1**  
*You Won't Forget Me (RCA)*  
Total Stations: 3  
Heavy (40+): 0  
Medium (20-39): 2 WJJS, WKTU  
Light (Under 20): 1

**★ FUNKMASTER FLEX PRESENTS KHADEJIA FEAT. PRODUCT 71/29**  
*Here We Go (Loud/RCA)*  
Total Stations: 10  
Heavy (40+): 1 XHTZ  
Medium (20-39): 0  
Light (Under 20): 9  
New Airplay This Week: 1 WPOW

**HANNAH JONES 71/-1**  
*You Only Have To Say You Love Me (Ariola Dance/BMG Latin)*  
Total Stations: 3  
Heavy (40+): 1 WKTU  
Medium (20-39): 0  
Light (Under 20): 2

**NUTTA BUTTA FEAT. ANONYMOUS 70/4**  
*Freak Out (Interscope)*  
Total Stations: 9  
Heavy (40+): 0  
Medium (20-39): 1 XHTZ  
Light (Under 20): 8

**★ SWIRL 360 70/15**  
*Hey Now Now (Mercury)*  
Total Stations: 8  
Heavy (40+): 0  
Medium (20-39): 1 KHTS  
Light (Under 20): 7  
New Airplay This Week: 1 WNVZ

Detailed tracking for songs with increased spins this week. Total Plays/Gain does not include video play. Markets listed in order of population.

Table for AALIYAH - 1673/166. Song: Are You That Somebody? (Background/Atlantic). Total Stations: 33. Chart Move: 5-3.

Table for ACE OF BASE - 374/24. Song: Cruel Summer (Arista). Total Stations: 14. Chart Move: 32-33.

Table for AEROSMITH - 178/74. Song: I Don't Want To Miss A Thing (Columbia). Total Stations: 11.

Table for TATYANA ALI - 902/127. Song: Daydreamin' (MJJ/WORK). Total Stations: 31. Chart Move: 13-12.

Table for BACKSTREET BOYS - 769/99. Song: I'll Never Break Your Heart (Jive). Total Stations: 25. Chart Move: 19-16.

Table for BEASTIE BOYS - 276/49. Song: Intergalactic (Grand Royal/Capitol). Total Stations: 23.

Table for BRANDY (FEAT. MASE) - 813/68. Song: Top Of The World (Atlantic). Total Stations: 30. Chart Move: 15-14.

Table for CAM'RON FEAT. MASE - 512/110. Song: Horse & Carriage (Entertainment/Epic). Total Stations: 28. Chart Move: 28-22.

Table for COLOR ME BADD - 181/30. Song: Remember When (Epic). Total Stations: 6.

Table for JD FEAT. JAY-Z - 318/30. Song: Money Ain't A Thing (So So Def/Columbia). Total Stations: 23. Chart Move: 36-38.

Table for GINUWINE - 386/112. Song: Same Ol' G (Blackground/Atlantic). Total Stations: 19. Chart Move: 37-31.

Table for GOO GOO DOLLS - 239/54. Song: Iris (Warner Sunset/Reprise). Total Stations: 9.

Table for LAURYN HILL - 1003/190. Song: Can't Take My Eyes Off Of You (Ruffhouse/Columbia). Total Stations: 30. Chart Move: 11-9.

Table for INOJ - 835/148. Song: Time After Time (So So Def/Columbia). Total Stations: 30. Chart Move: 18-13.

Table for JAGGED EDGE - 181/7. Song: Gotta Be (So So Def/Columbia). Total Stations: 15.

Table for JAYO FELONY (FEAT. METHOD MAN & DMX) - 205/19. Song: Whatcha Gonna Do (Yab Yum/550 Music). Total Stations: 19.

Table for MONTELL JORDAN - 176/40. Song: I Can Do That (Def Jam/Mercury). Total Stations: 12.

Table for MASE (FEAT. PUFF DADDY) - 234/21. Song: Lookin' At Me (Bad Boy/Arista). Total Stations: 23.

Table for MONICA - 597/83. Song: The First Night (Arista). Total Stations: 28. Chart Move: 22-20.

Table for MONIFAH - 393/149. Song: Touch It (Uptown/Universal). Total Stations: 24. Chart Move: 40-28.

Table for MYA FEAT. SILK THE SHOCKER - 326/128. Song: Movin' On (University/Interscope). Total Stations: 19. Chart Move: Debut 37.

Table for 'N SYNC - 391/47. Song: Tearin' Up My Heart (RCA). Total Stations: 17. Chart Move: 33-30.

Table for NATE DOGG FEAT. WARREN G - 392/39. Song: Nobody Does It Better (Dogg Foundation/Epic/Breakaway). Total Stations: 18. Chart Move: 31-29.

Table for NEXT - 298/93. Song: I Still Love You (Arista). Total Stations: 22. Chart Move: Debut 39.

Table for NICOLE FEAT. MISSY ELLIOTT & MOCHA - 1023/71. Song: Make It Hot (The Gold Mnd, Inc./EastWest/EEG). Total Stations: 33. Chart Move: 10-8.

Table for JENNIFER PAIGE - 273/53. Song: Crush (Edel America/Hollywood). Total Stations: 11.

Table for KELLY PRICE - 253/25. Song: Friend Of Mine (T-Neck/Island). Total Stations: 21.

Table for SHAGGY FEAT. JANET - 440/176. Song: Luv Me, Luv Me (Flyte Tyme/MCA). Total Stations: 24. Chart Move: 38-25.

Table for WILL SMITH - 1724/9. Song: Just The Two Of Us (Columbia). Total Stations: 35. Chart Move: 2-2.

Table for USHER - 1356/9. Song: My Way (LaFace/Arista). Total Stations: 33. Chart Move: 7-6.



Songs ranked by number of plays in monitored week. Playlists are listed in order of TBA weekly cumes, beginning with the highest-cumming station. Cumes are updated twice yearly following the release of the spring and fall Arbitron surveys. The number of stations shown each week varies depending upon space.

WQHT New York PD: Tracy Cloherty MC: Deane Womack 212-229-9797 Emmis

KPWR Los Angeles VP/Pgm: Steve Smith MD: Damion Young 818-953-4200 Emmis

KKBT Los Angeles PD: Michelle Santosuosso MD: Dorey Fuller AMD: Tawala Sharp 213-634-1800 Chancellor

WGCI Chicago PD: Elroy R. C. Smith APD/MD: Jay Alan 312-427-4800 Chancellor

WUSL Philadelphia OM: Helen Little MD: Glenn Cooper 215-483-8900 Chancellor

WPGC Washington, DC PD: Jay Stevens CO-APD/MD: Maurice Devo 301-441-3500 CBS

WJLB Detroit PD: Michael Saunders MD: Janet Gee 313-965-2000 Chancellor

WVEE Atlanta PD: Tony Brown MD: Rajeyah Shabazz 404-898-8900 CBS

KBXX Houston PD: Robert Scorpio MD: Kashon Powell 713-623-2108 Clear Channel

WKYS Washington, DC VP/Pgm: Steve Hegwood APD: Daryl Huckaby MD: Lisa Lisa 301-306-1111 Radio One

KMEL San Francisco PD: Joey Arbogay MD: Glen Aure MC: Larry Jackson 415-538-1061 Chancellor

KKDA Dallas PD: Skip Cheatham 972-263-9911 Service Broadcasting

WPHI Philadelphia PD: Mic Fox APD: Lamonda Williams MC: Egypt 215-884-9400 Radio One

WERQ Baltimore OM: Tom Calococi APD: Frank Ski MD: Buttahman 410-332-8200 Radio One

WCHB Detroit PD: James Alexander APD/MD: Vicki Preston 313-871-0591 Radio One

WHTA Atlanta VP/Pgm: Steve Hegwood OM: Don Alias PD: Sean Taylor 404-765-9750 Radio One

WPEG Charlotte PD: Andre Carlson MD: Nate Quick 704-333-0131 CBS

WQVE New Orleans OM: Gerod Stevens MD: Angela Harrison 504-827-6000 Clear Channel

WJHM Orlando OM: Adam Cook PD: Russ Allen MD: Al Fiala 407-333-0072 Chancellor

WQOK Raleigh PD: Hozie Mack MD: Jodi Berry 919-848-9736 Clear Channel

WJMH Greensboro PD: Brian Douglas MD: Mary K 336-605-5200 Sinclair

WKVV Milwaukee PD: Nate Bell MD: Dallas Scott 414-321-1007 Clear Channel

WJMI Jackson OM: Stan Branson APD: Alice Marie Dixon 601-957-1300 Clear Channel

WIZF Cincinnati VP/Pgm: Tony Fields APD: Mark Gunn MD: Lauri Jones 513-697-6000 Blue Chip





# Monitor AIRPLAY **SONG ACTIVITY REPORTS** FOR WEEK ENDING AUGUST 2, 1998

Detailed tracking for songs with increased spins this week. Total Plays/Gain does not include video play. Markets listed in order of population.

Total Plays/Gain												Total Plays/Gain												Total Plays/Gain												Total Plays/Gain												Total Plays/Gain											
<b>AALIYAH</b> <i>Are You That Somebody? (Background/Atlantic)</i> Total Stations: 62 Chart Move: 1-1												<b>TATYANA ALI</b> <i>Daydreamin' (MJJ/WORK/Epic)</i> Total Stations: 49 Chart Move: 21-19												<b>BRANDY (FEAT. MASE)</b> <i>Top Of The World (Atlantic)</i> Total Stations: 61 Chart Move: 9-7												<b>CAM'RON FEAT. MASE</b> <i>Horse &amp; Carriage (Unentertainment/Epic)</i> Total Stations: 59 Chart Move: 15-17												<b>JD FEAT. JAY-Z</b> <i>Money Ain't A Thang (So So Def/Columbia)</i> Total Stations: 57 Chart Move: 20-18											
New York L.A. KPWR WGTI KMYL WPHI WWSL WCHB WJLB WKDA WYKS WPGC KBXK WJMN WHTA WVEE WKBE WTLG WPEG WQUE WJHM												New York L.A. KPWR WGTI KMYL WPHI WWSL WCHB WJLB WKDA WYKS WPGC KBXK WJMN WHTA WVEE WKBE WTLG WPEG WQUE WJHM												New York L.A. KPWR WGTI KMYL WPHI WWSL WCHB WJLB WKDA WYKS WPGC KBXK WJMN WHTA WVEE WKBE WTLG WPEG WQUE WJHM												New York L.A. KPWR WGTI KMYL WPHI WWSL WCHB WJLB WKDA WYKS WPGC KBXK WJMN WHTA WVEE WKBE WTLG WPEG WQUE WJHM												New York L.A. KPWR WGTI KMYL WPHI WWSL WCHB WJLB WKDA WYKS WPGC KBXK WJMN WHTA WVEE WKBE WTLG WPEG WQUE WJHM											
<b>GINUWINE</b> <i>Same Ol' G (Background/Atlantic)</i> Total Stations: 41 Chart Move: 33-22												<b>LAURYN HILL</b> <i>Can't Take My Eyes Off Of You (Ruffhouse/Columbia)</i> Total Stations: 44 Chart Move: 19-15												<b>JANET</b> <i>Go Deep (Virgin)</i> Total Stations: 56 Chart Move: 13-14												<b>JAGGED EDGE</b> <i>Gotta Be (So So Def/Columbia)</i> Total Stations: 41 Chart Move: 26-26												<b>MONTELL JORDAN</b> <i>I Can Do That (Def Jam/Mercury)</i> Total Stations: 44 Chart Move: Debut 32											
<b>GERALD LEVERT</b> <i>Thinkin' Bout It (EastWest/EEG)</i> Total Stations: 45 Chart Move: 22-23												<b>MAXWELL</b> <i>Luxury: Cococure (Columbia)</i> Total Stations: 34 Chart Move: 30-30												<b>MO THUGS FAMILY FEAT. FELECIA &amp; KRAYZIE BONE</b> <i>All Good (Mo Thugs/Relativity)</i> Total Stations: 39 Chart Move: 24-24												<b>MONICA</b> <i>The First Night (Arista)</i> Total Stations: 60 Chart Move: 12-12												<b>MYA FEAT. SILK THE SHOCKER</b> <i>Movin' On (University/Interscope)</i> Total Stations: 55 Chart Move: 17-13											
<b>NICOLE FEAT. MISSY ELLIOTT &amp; MOCHA</b> <i>Make It Hot (The Gold Mind, Inc./EastWest/EEG)</i> Total Stations: 60 Chart Move: 3-3												<b>KELLY PRICE</b> <i>Friend Of Mine (T-Neck/Island)</i> Total Stations: 54 Chart Move: 11-9												<b>PUBLIC ANNOUNCEMENT</b> <i>It's About Time (A&amp;M)</i> Total Stations: 36 Chart Move: 36-31												<b>SILK THE SHOCKER</b> <i>It Ain't My Fault (No Limit/Priority)</i> Total Stations: 42 Chart Move: 25-25												<b>XSCAPE</b> <i>My Little Secret (So So Def/Columbia)</i> Total Stations: 40 Chart Move: 39-28											

Monitor ADULT TOP 40

POWER PLAYLIST

FOR WEEK ENDING AUGUST 2, 1998

WPLJ New York
VP/Pgm: Tom Cuddy
PD: Scott Shannon
MD: Tony Mascaro
212-603-8900
ABC/Disney

95.5 WPLJ NEW YORK
TW LW
1 Goo Goo Dolls, Ins 51 51
2 Natalie Merchant, Kind & Generous 50 50
3 Green Day, Time Of Your Life 49 50

WBIX New York
PD: Jeff Scott
APD: Andy West
212-704-1051
Chancellor

Big 105.5
TW LW
1 LeAnn Rimes, How Do I Live 43 36
2 Natalie Imbruglia, Torn 43 41
3 Shania Twain, You're Still The One 43 40

WKQI Detroit
PD: Tom D'Brien
MD: Dana Lundon
248-967-3750
Chancellor

WYXR Philadelphia
PD: Kurt Johnson
APD/MD: Kim Ashley
610-668-0750
Chancellor

KSTP Minneapolis
PD: Todd Fisher
MD: Leighton Peck
612-642-4141
Hubbard

KHMX Houston
PD: Lorin Palagi
APD/MD: Rich Anhorn
713-790-0965
Nationwide

WQAL Cleveland
PD: Mary Ellen Kachinske
MD: Steve Brown
216-696-6666
ML Media Partners

KPLZ Seattle
OM: Rob Dunlop
PD: Kent Phillips
206-223-5700
Fisher Broadcasting

WPLL Miami
PD: Rob Roberts
APD: Robert Archer
954-463-9299
Clear Channel

WWMX Baltimore
PD: Bill Pasha
MD: Greg Carpenter
410-825-5400
CBS

WRAL Raleigh
PD: Steve Reynolds
919-890-6101
WRAL, Inc

KYKY St. Louis
PD: Smokey Rivers
MD: Greg Hewitt
314-531-0000
CBS

WOMX Orlando
PD: David Isreal
MD: Tim Baldwin
407-629-5105
Chancellor

WMVX Cleveland
PD: Randy James
MD: Jay Hudson
216-696-4444
Jagor

WKTI Milwaukee
PD: Danny Clayton
APD/MD: Leonard Peace
414-967-5339
Journal

WMYX Milwaukee
PD/MD: Brian Kelly
APD: Jim Morales
414-529-1250
Sinclair

WENS Indianapolis
PD: Greg Dunkin
MD: Jim Cerone
317-266-9700
Emmis

WAKS Tampa
PD: Mason Dixon
MD: Rico Blanco
813-839-9393
Jacor

KSMG San Antonio
DM: Virgil Thompson
PD: Andy Holt
MD: Tom Lazar
210-615-5400
Cox

WKDD Akron
PD/MD: Chuck Collins
330-836-4700
Barnstable

WVMX Cincinnati
PD: Brad Ellis
MD: Haynes Johns
513-763-5700
Jacor

KISN Salt Lake City
PD: Sam Elliott
MD: Brian DeGuer
801-262-9759
Trumper



# AIRPLAY Monitor<sup>TM</sup> SONG ACTIVITY REPORTS

## ADULT TOP 40 FOR WEEK ENDING AUGUST 2, 1998

### ADULT CONTEMPORARY

Total Plays/Gain	Total Plays/Gain
------------------	------------------

AEROSMITH 1665/376 <i>I Don't Want To Miss A Thing</i> (Columbia)												
Total Stations: 60						Chart Move: 14-12						
City	Station	PL	W1	W2	W3	City	Station	PL	W1	W2	W3	
New York	WVLP	33	27	11	11	WENS	29	30	27	25	58	
New York	WVLP	33	27	11	11	WENS	29	30	27	25	58	
New York	WVLP	33	27	11	11	WENS	29	30	27	25	58	

GREEN DAY 1619/27 <i>Time Of Your Life (Good Riddance)</i> (Reprise)												
Total Stations: 69						Chart Move: 12-13						
City	Station	PL	W1	W2	W3	City	Station	PL	W1	W2	W3	
New York	WVLP	12	13	14	10	WENS	21	46	32	41	7	
New York	WVLP	12	13	14	10	WENS	21	46	32	41	7	
New York	WVLP	12	13	14	10	WENS	21	46	32	41	7	

MATCHBOX 20 2205/141 <i>Real World (Lava/Atlantic)</i>												
Total Stations: 72						Chart Move: 6-5						
City	Station	PL	W1	W2	W3	City	Station	PL	W1	W2	W3	
New York	WVLP	34	30	22	22	WENS	29	16	12	128	128	
New York	WVLP	34	30	22	22	WENS	29	16	12	128	128	
New York	WVLP	34	30	22	22	WENS	29	16	12	128	128	

SMASH MOUTH 1406/167 <i>Can't Get Enough Of You Baby</i> (Elektra/EEG)												
Total Stations: 56						Chart Move: 15-14						
City	Station	PL	W1	W2	W3	City	Station	PL	W1	W2	W3	
New York	WVLP	15	15	15	15	WENS	27	29	23	148	148	
New York	WVLP	15	15	15	15	WENS	27	29	23	148	148	
New York	WVLP	15	15	15	15	WENS	27	29	23	148	148	



MOST NEW STATIONS

Songs detecting six or more spins at new stations this week

- BACKSTREET BOYS NEW STATIONS 13
I'll Never Break Your Heart (Jive)
ANNE COCHRAN & JIM BRICKMAN 9
After All These Years (Renegade/Windham Hill)
MARILYN SCOTT 4
Starting To Fall (Warner Bros.)



AIRPOWER BOUND

CHRISTINA AGUILERA 394/62
Reflection (Walt Disney/Hollywood)

Total Stations: 47/Chart Move: 22-23
Heavy (21+ plays): 3 KBIG, KTDY, WRVF
Medium (14-20): 5 KESZ, KIMN, WBBQ, WLIT, WTCB
Light (Under 14): 39
New Airplay This Week: 2 WMJQ, WSNY

BOB SEGER & MARTINA MCBRIDE 293/10
Chances Are (Capitol)

Total Stations: 43/Chart Move: 27-25
Heavy (21+): 1 WAHR
Medium (14-20): 5 KTDY, WJDX, WLIF, WLTO, WMGS
Light (Under 14): 37
New Airplay This Week: 2 KSSK, WINK

FAITH HILL 291/55
This Kiss (Warner Bros.)

Total Stations: 24/Chart Move: 28-26
Heavy (21+): 3 KBIG, KLSY, WMJQ
Medium (14-20): 5 KIMN, KIOI, KTDY, WASH, WMGS
Light (Under 14): 16
New Airplay This Week: 3 WLIF, WLTW, WTCB

K-CI & JOJO 244/22
All My Life (MCA)

Total Stations: 33/Chart Move: 30-27
Heavy (21+): 5 WALK, WJDX, WLMG, WRMF, WYJB
Medium (14-20): 3 KSSK, WMJQ, WRRM
Light (Under 14): 25

MARILYN SCOTT 214/4
Starting To Fall (Warner Bros.)

Total Stations: 34/Chart Move: Debut 28
Heavy (21+): 0
Medium (14-20): 1 KTDY
Light (Under 14): 33
New Airplay This Week: 4 KGBX, WMJJ, WRCH, WRSN

CHART BOUND

Total Plays/Gain

AEROSMITH 190/54
I Don't Want To Miss A Thing (Columbia)

Total Stations: 15
Heavy (21+): 3 KLSY, WLMG, WMJQ
Medium (14-20): 3 KIOI, KTDY, WLIF
Light (Under 14): 9
New Airplay This Week: 2 KGBY, KIOI

ACE OF BASE 175/42
Cruel Summer (Arista)

Total Stations: 15
Heavy (21+): 2 KIMN, WTFM
Medium (14-20): 2 KTDY, WMJQ
Light (Under 14): 11
New Airplay This Week: 3 WALK, WLIF, WRFM

SAVAGE GARDEN 145/27
To The Moon And Back (Columbia)

Total Stations: 20
Heavy (21+): 1 KBIG
Medium (14-20): 2 WMJQ, WTCB
Light (Under 14): 17
New Airplay This Week: 2 KESZ, WLHT

NATALIE MERCHANT 145/9
Kind & Generous (Elektra/EEG)

Total Stations: 10
Heavy (21+): 4 KLSY, KTDY, WMJQ, WMXS
Medium (14-20): 1 WTCB
Light (Under 14): 5

GEORGE BENSON 142/30
Standing Together (GRP)

Total Stations: 22
Heavy (21+): 1 WAHR
Medium (14-20): 0
Light (Under 14): 21
New Airplay This Week: 3 KEFM, KISC, WGSY

DARYL HALL JOHN OATES 136/5
Throw The Roses Away (Push)

Total Stations: 23
Heavy (21+): 1 WRVF
Medium (14-20): 1 KEFM
Light (Under 14): 21
New Airplay This Week: 1 WDEF

MARC ANTHONY & TINA ARENA 107/27
I Want To Spend My Lifetime Loving You (Sony Classical/Columbia)

Total Stations: 12
Heavy (21+): 0
Medium (14-20): 3 KGBY, WDEF, WTCB
Light (Under 14): 9
New Airplay This Week: 3 KTDY, WLIT, WLTE

Table with columns: THIS WEEK, LAST WEEK, WEEKS ON, TITLE/IMPRINT/PROMOTION LABEL, ARTIST, TW, LW. Includes songs like YOU'RE STILL THE ONE, TO LOVE YOU MORE, OOH LA LA, TRULY MADLY DEEPLY, ADIA, LOOKING THROUGH YOUR EYES, TORN, MY FATHER'S EYES, TIME, AS LONG AS YOU LOVE ME, HEAVEN'S WHAT I FEEL, TO MAKE YOU FEEL MY LOVE, I DON'T WANT TO WAIT, GIVE ME FOREVER (I DO), SOMETHING ABOUT THE WAY YOU LOOK TONIGHT, I'LL NEVER BREAK YOUR HEART, MY HEART WILL GO ON, ALL ROADS LEAD TO YOU, HOW DO I LIVE, YOUR IMAGINATION, AFTER ALL THESE YEARS, RECOVER YOUR SOUL, REFLECTION, ONE BELIEF AWAY, CHANCES ARE, THIS KISS, ALL MY LIFE, STARTING TO FALL, FROZEN, I HONESTLY LOVE YOU.

Records showing an increase in detections over the previous week, regardless of chart movement. A record that has been on the chart for more than 20 weeks will not receive a bullet, even if it registers an increase in detections. Airpower awarded to those records that attain 400 detections for the first time. If two records are tied in number of plays, the record being played on more stations is placed first. Records below the top 20 are removed from the chart after 26 weeks.

ADULT CONTEMPORARY POWER PLAYLISTS

Grid of 12 radio station playlists including WLTW New York, KOST Los Angeles, KBIG Los Angeles, WLIT Chicago, WBEB Philadelphia, KVIL Dallas, WNND Chicago, KIOI San Francisco, WASH Washington, DC, WPCH Atlanta, WFLC Miami, and WLTE Minneapolis. Each station lists top songs and their positions on the playlist.

Impact tracks upward-moving songs ranked in order of spin count. Songs are removed if they lose more than 5% of their spin count declines for two consecutive weeks. Initial impact: records appearing on this page for the first time.





POWER PLAYLISTS

KYSR Los Angeles
PD: Angela Perilli
APD: Chris Ebbott
818-955-7000
Chancellor



WTMX Chicago
VP/Pgm: Barry James
APD/MD: Jaime Kartak
312-946-1019
Bonneville



WBMX Boston
PD: Greg Strassell
617-236-6898
CBS



Table with 3 columns: Rank, Title, TW LW. Top entries: 1. Goo Goo Dolls, Iris; 2. Natalie Imbruglia, Torn; 3. Green Day, Time Of Your Life.

Table with 3 columns: Rank, Title, TW LW. Top entries: 1. Goo Goo Dolls, Iris; 2. The Smashing Pumpkins, Perfect; 3. Corrs, I Never Loved You Anymore.

Table with 3 columns: Rank, Title, TW LW. Top entries: 1. Matchbox 20, Real World; 2. Fastball, The Way; 3. Natalie Merchant, Kind & Generous.

KLLC San Francisco
PD: Louis Kaplan
APD/MD: Julie Stoessel
415-765-4000
CBS



KDMX Dallas
PD: Jimmy Steal
APD: Race Taylor
972-991-1029
Nationwide



KFMB San Diego
GM/MD: Tracy Johnson
MD: Greg Simms
919-292-7600
Midwest TV



Table with 3 columns: Rank, Title, TW LW. Top entries: 1. Brian Setzer Orchestra, Jump Jive An' Wail; 2. Semisonic, Closing Time; 3. Goo Goo Dolls, Iris.

Table with 3 columns: Rank, Title, TW LW. Top entries: 1. Natalie Imbruglia, Torn; 2. Matchbox 20, 3 AM; 3. Goo Goo Dolls, Iris.

Table with 3 columns: Rank, Title, TW LW. Top entries: 1. Natalie Merchant, Kind & Generous; 2. Goo Goo Dolls, Iris; 3. Matchbox 20, Real World.

WTIC Hartford
OM: Steve Sahlany
MD: David Simpson
860-522-1080
CBS



KZZP Phoenix
PD: Dan Persigehl
MD: Dave Cooper
602-964-4000
Nationwide



KZZO Sacramento
PD: Carmy Ferreri
MD: Sonia Jackson
916-923-6800
CBS



Table with 3 columns: Rank, Title, TW LW. Top entries: 1. Natalie Imbruglia, Torn; 2. Goo Goo Dolls, Iris; 3. Edwyn McCain, I'll Be.

Table with 3 columns: Rank, Title, TW LW. Top entries: 1. Goo Goo Dolls, Iris; 2. Aerosmith, I Don't Want To Miss A Thing; 3. Natalie Imbruglia, Torn.

Table with 3 columns: Rank, Title, TW LW. Top entries: 1. Sarah McLachlan, Adia; 2. Goo Goo Dolls, Iris; 3. Alanis Morissette, Uninvited.

WXMX Philadelphia
PD: Chuck Tisa
MD: Ali Castellini
215-482-6000
Greater Media



WDRV Pittsburgh
PD: Chris Shebel
MD: Scott Alexander
412-937-1441
Chancellor



WSSR Tampa
PD: Chuck Morgan
MD: Frank Brinsley
813-536-9600
Clear Channel



Table with 3 columns: Rank, Title, TW LW. Top entries: 1. Barenaked Ladies, One Week; 2. Goo Goo Dolls, Iris; 3. Natalie Merchant, Kind & Generous.

Table with 3 columns: Rank, Title, TW LW. Top entries: 1. Goo Goo Dolls, Iris; 2. Alanis Morissette, Uninvited; 3. Matchbox 20, 3 AM.

Table with 3 columns: Rank, Title, TW LW. Top entries: 1. Green Day, Time Of Your Life; 2. Natalie Imbruglia, Torn; 3. Fastball, The Way.

Main chart table with columns: THIS WEEK, LAST WEEK, WKS. ON CHART, TITLE/IMPRINT/PROMOTION LABEL, ARTIST, TW, LW. Includes 'NO. 1' and 'AIRPOWER' markers.

Records showing an increase in detections over the previous week, regardless of chart movement. A record that has been on the chart for more than 20 weeks will not receive a bullet, even if it registers an increase in detections.

## POWER PLAYLISTS™

**WXRK New York**  
 PD: Steve Kingston  
 MD: Mike Peer  
 Music Coord: Booker  
 212-314-9230  
 CBS

	TW	LW
1	Monster Magnet, Space Lord	37 31
2	Beastie Boys, Intergalactic	35 35
3	Harvey Danger, Flagpole Sitta	34 35
4	Rage Against The Machine, No Shelter	34 34
5	Eve 6, Inside Out	31 26
6	The Smashing Pumpkins, Ava Adore	31 22
7	Foo Fighters, My Hero	29 22
8	The Smashing Pumpkins, Perfect	24 34
9	Everclear, Father Of Mine	23 19
10	Creed, My Own Prison	22 20
11	Metallica, The Unforgotten II	22 22
12	Go Go Dolls, Ins	22 26
13	Foo Fighters, Hey, Johnny Park!	21 8
14	Radiohead, Karma Police	21 24
15	Creed, What's This Life For	21 26
16	Pearl Jam, I Think I'm Paranoid	21 14
17	Semisonic, Closing Time	20 32
18	Blink 182, Dammit	20 16
19	Barenaked Ladies, One Week	20 21
20	Pearl Jam, Wishlist	20 26
21	Jane's Addiction, Jane Says	19 17
22	Everclear, I Will Buy You A New Life	19 22
23	Days Of The New, The Down Town	19 21
24	Everclear, Everything To Everyone	18 12
25	Pearl Jam, Given To Fly	18 12
26	Alice In Chains, Agam	18 15
27	Sevendust, Black	17 19
28	Days Of The New, Touch, Peel And Stand	17 15
29	Third Eye Blind, Graduate	17 17
30	Tool, Forty Six & 2	17 12

**KROQ Los Angeles**  
 VP/Pgm: Kevin Weatherly  
 APD: Gene Sandbloom  
 MD: Lisa Worden  
 818-567-1067  
 CBS

	TW	LW
1	Beastie Boys, Intergalactic	43 43
2	Harvey Danger, Flagpole Sitta	40 40
3	Smash Mouth, Can't Get Enough Of You Baby	39 37
4	Rage Against The Machine, No Shelter	37 30
5	Fat Boy Slim, The Rockafeller Skank	35 37
6	Barenaked Ladies, One Week	35 29
7	Garbage, I Think I'm Paranoid	34 29
8	Maxx, I'm Ok, You're Ok	31 37
9	Go Go Dolls, Ins	28 37
10	Sprung Monkey, Get 'em Outta Here	27 30
11	Go Go Dolls, Ins	26 35
12	Brian Setzer Orchestra, Jump Jive An' Wail	25 24
13	Massive Attack, Teardrop	24 25
14	Hole, Celebrity Skin	23 0
15	The Smashing Pumpkins, Perfect	21 21
16	Garbage, Push It	21 27
17	Rage Against The Machine, No Shelter	19 21
18	Green Day, Time Of Your Life	18 22
19	Blink 182, Josie	18 17
20	Save Ferris, Goodbye	17 16
21	Semisonic, Closing Time	17 20
22	Everclear, I Will Buy You A New Life	17 23
23	Everclear, Father Of Mine	17 17
24	Sublime, Badfish	16 17
25	Sublime, Wrong Way	16 8
26	Third Eye Blind, Jumper	16 19
27	Fastball, Fire Escape	15 17
28	Ozomatli, Como Ves	15 13
29	Crystal Method, Busy Child	13 13
30	Brian Setzer Orchestra, Jump Jive An' Wail	14 11

**WKQX Chicago**  
 PD: Alex Luke  
 MD: Mary Shuminas  
 312-527-8348  
 Emmis

	TW	LW
1	Eve 6, Inside Out	43 46
2	Beastie Boys, Intergalactic	41 42
3	Barenaked Ladies, One Week	39 47
4	Harvey Danger, Flagpole Sitta	38 43
5	Creed, What's This Life For	38 43
6	The Smashing Pumpkins, Perfect	29 40
7	Smash Mouth, Can't Get Enough Of You Baby	29 27
8	Pearl Jam, In Hiding	27 23
9	Go Go Dolls, Ins	26 27
10	Everclear, Father Of Mine	26 21
11	Go Go Dolls, Ins	24 24
12	Shawn Mullins, Lullaby	24 22
13	Dovetail Joint, Level On The Inside	22 28
14	Hole, Celebrity Skin	22 23
15	The Cure, World In My Eyes	21 20
16	Dave Matthews Band, Stay	21 27
17	Esthero, Heaven Sent	19 22
18	Grant Lee Buffalo, Truly, Truly	19 25
19	Smoking Popes, I Know You Love Me	19 28
20	Semisonic, Closing Time	17 28
21	Eagle Eye Cherry, Save Tonight	16 18
22	Foo Fighters, My Hero	15 23
23	Feeder, High	14 12
24	Dishwalla, Once In A While	14 16
25	Blair, Song 2	13 16
26	Flyz, Got You	13 14
27	Pearl Jam, Wishlist	15 17
28	Local H, All The Kids Are Right	13 2
29	Foo Fighters, Monkey Wrench	13 13
30	Days Of The New, Touch, Peel And Stand	13 17

The chart and Power Playlists, reprinted from Rock Airplay Monitor, are based on a national sample of data compiled by Broadcast Data Systems' Radio Track service. 81 modern rock stations are electronically monitored 24 hours a day, 7 days a week. Songs ranked by number of detections in monitored week.

THIS WEEK	LAST WEEK	WKS. ON CHART	TITLE/IMPRINT/PROMOTION LABEL	ARTIST	DETECTIONS	
					TW	LW
			★★★ No. 1 ★★★			
①	1	16	INSIDE OUT RCA	EVE 6	2759	2693
②	2	9	ONE WEEK REPRISE	BARENAKED LADIES	2752	2645
③	4	19	FLAGPOLE SITTA SLASH/LONDON/ISLAND	HARVEY DANGER	2566	2512
4	3	19	IRIS WARNER SUNSET/REPRISE	GOO GOO DOLLS	2327	2572
5	5	23	SHIMMER 550 MUSIC	FUEL	2195	2256
⑥	6	8	PERFECT VIRGIN	THE SMASHING PUMPKINS	2058	1964
⑦	7	10	INTERGALACTIC GRAND ROYAL/CAPITOL	BEASTIE BOYS	1998	1926
⑧	9	6	STAY (WASTING TIME) RCA	DAVE MATTHEWS BAND	1707	1672
9	8	23	CLOSING TIME MCA	SEMISONIC	1662	1866
⑩	14	5	I THINK I'M PARANOID ALMO SOUNDS/INTERSCOPE	GARBAGE	1463	1293
11	10	15	SAIN'T JOE ON THE SCHOOL BUS CAPITOL	MARCY PLAYGROUND	1425	1573
12	11	10	TRULY, TRULY SLASH/WARNER BROS.	GRANT LEE BUFFALO	1377	1463
⑬	13	12	GET 'EM OUTTA HERE SURFOOG/HOLLYWOOD	SPRUNG MONKEY	1351	1316
⑭	17	8	WHAT'S THIS LIFE FOR WIND-UP	CREED	1330	1179
15	12	11	WALKING AFTER YOU CAPITOL/ELEKTRA/EEG	FOO FIGHTERS	1329	1409
⑮	15	7	HOOCHE BLACKBIRD/SIRE	EVERYTHING	1327	1263
⑯	19	4	★★★ AIRPOWER ★★★	FATHER OF MINE EVERCLEAR	1227	1080
⑰	20	5	★★★ AIRPOWER ★★★	OVER YOUR SHOULDER SEVEN MARY THREE	1161	1073
19	16	26	THE WAY HOLLYWOOD	FASTBALL	1131	1237
⑳	24	4	★★★ AIRPOWER ★★★	JUMPER THIRD EYE BLIND	1114	1016

Records showing an increase in detections over the previous week, regardless of chart movement. A record that has been on the chart for more than 200 weeks will not receive a bullet, even if it registers an increase in detections. Airpower awarded to those records that attain 1,000 detections for the first time. If two records are tied in number of plays, the record being played on more stations is placed first. ©1998, Billboard/BPI Communications.

**WBCN Boston**  
 VP/Pgm: Oedipus  
 MD: Steve Strick  
 AMD: Mike Green  
 617-266-1111  
 CBS

	TW	LW
1	Harvey Danger, Flagpole Sitta	38 39
2	Beastie Boys, Intergalactic	37 38
3	Barenaked Ladies, One Week	35 39
4	Pearl Jam, In Hiding	34 32
5	Creed, What's This Life For	34 34
6	Rage Against The Machine, No Shelter	31 28
7	Everclear, Father Of Mine	25 22
8	Seven Mary Three, Over Your Shoulder	25 26
9	Eagle Eye Cherry, Save Tonight	25 27
10	Garbage, I Think I'm Paranoid	25 26
11	The Smashing Pumpkins, Perfect	25 24
12	Go Go Dolls, Ins	24 38
13	Lenny Kravitz, Fly Away	24 18
14	Candlebox, It's Alright	24 14
15	Monster Magnet, Space Lord	23 16
16	Stretch Princess, Sorry	18 11
17	Foo Fighters, Walking After You	18 15
18	Local H, All The Kids Are Right	17 0
19	Eve 6, Inside Out	17 14
20	Stabbing Westward, Save Yourself	17 14
21	Third Eye Blind, Jumper	17 20
22	Days Of The New, The Down Town	17 12
23	Brian Setzer Orchestra, Jump Jive An' Wail	17 15
24	Sprung Monkey, Get 'em Outta Here	17 16
25	Dave Matthews Band, Stay	16 31
26	Grant Lee Buffalo, Truly, Truly	16 18
27	Marcy Playground, Saint Joe On The School	16 18
28	Amazing Royal Crowns, Do The Devil	15 16
29	Fastball, Fire Escape	13 9
30	Everything, Hooch	13 13

**KLYV Los Angeles**  
 VP/Pgm: Steve Blatter  
 MD: Mike Savage  
 805-393-1900  
 Big City Radio

	TW	LW
1	Eve 6, Inside Out	33 32
2	Barenaked Ladies, One Week	33 20
3	Eagle Eye Cherry, Save Tonight	32 26
4	The Smashing Pumpkins, Perfect	31 24
5	Esthero, Heaven Sent	31 24
6	K's Choice, Everything For Free	19 10
7	Massive Attack, Teardrop	17 9
8	Everclear, Father Of Mine	16 13
9	Garbage, I Think I'm Paranoid	15 12
10	Brian Setzer Orchestra, Jump Jive An' Wail	15 14
11	The Cure, World In My Eyes	14 10
12	Matchbox 20, Real World	11 1
13	Go Go Dolls, Ins	11 7
14	Beastie Boys, Intergalactic	11 6
15	Harvey Danger, Flagpole Sitta	10 8
16	Everclear, I Will Buy You A New Life	10 11
17	Foo Fighters, My Hero	10 11
18	Semisonic, Singing In My Sleep	10 8
19	Dramarama, Anything	9 5
20	Smash Mouth, Can't Get Enough Of You Baby	9 5
21	Depeche Mode, Strangelove	9 4
22	The Wallflowers, Heroes	9 5
23	Seven Mary Three, Over Your Shoulder	9 6
24	Beck, Deadweight	9 7
25	Snakerhythm, Underground	9 7
26	Everything, Hooch	9 7
27	Fastball, The Way	9 7
28	R.E.M., Orange Crush	8 8
29	Violent Femmes, Blister In The Sun	8 8
30	Echo & The Bunnymen, People Are Strange	8 3

**WPLY Philadelphia**  
 PD: Jim McGuinn  
 APD: Doug Binkinski  
 MD: Preston Elliot  
 610-565-8900  
 Greater Media

	TW	LW
1	Go Go Dolls, Ins	45 44
2	Barenaked Ladies, One Week	45 40
3	Third Eye Blind, Losing A Whole Year	44 41
4	Dave Matthews Band, Stay	44 44
5	Black Lab, Time Ago	43 28
6	Harvey Danger, Flagpole Sitta	42 28
7	The Smashing Pumpkins, Perfect	35 31
8	Eve 6, Inside Out	34 30
9	Everything, Hooch	33 33
10	Smash Mouth, Can't Get Enough Of You Baby	33 33
11	Fuel, Shimmer	33 33
12	Matchbox 20, Real World	32 28
13	Athenaeum, What I Didn't Know	32 30
14	Tori Amos, Spark	31 32
15	Pearl Jam, In Hiding	31 32
16	Natalie Imbruglia, Wishing I Was There	28 28
17	Everclear, I Will Buy You A New Life	27 41
18	Alanis Morissette, Uninvited	27 33
19	Green Day, Time Of Your Life	25 44
20	Fastball, The Way	23 20
21	Eagle Eye Cherry, Save Tonight	23 15
22	Beastie Boys, Intergalactic	22 22
23	Dishwalla, Once In A While	21 17
24	Big Bad Voodoo Daddy, You And Me And The	21 22
25	Pearl Jam, Wishlist	9 7
26	Grant Lee Buffalo, Truly, Truly	20 22
27	Everclear, Everything To Everyone	19 16
28	Natalie Imbruglia, Torn	19 19
29	Brian Setzer Orchestra, Jump Jive An' Wail	18 21
30	Foo Fighters, Walking After You	18 20

**WHFS Washington, DC**  
 PD: Robert Benjamin  
 APD: Bob Waugh  
 MD: Pat Ferrise  
 301-306-0991  
 CBS

	TW	LW
1	Harvey Danger, Flagpole Sitta	41 40
2	Barenaked Ladies, One Week	40 42
3	Dave Matthews Band, Stay	36 36
4	Eve 6, Inside Out	36 37
5	Fuel, Shimmer	34 26
6	Everything, Hooch	33 27
7	Smash Mouth, Can't Get Enough Of You Baby	33 27
8	Beastie Boys, Intergalactic	31 35
9	The Smashing Pumpkins, Perfect	26 23
10	Brian Setzer Orchestra, Jump Jive An' Wail	25 22
11	Go Go Dolls, Ins	24 31
12	Big Bad Voodoo Daddy, You And Me And The	23 22
13	Semisonic, Closing Time	22 17
14	Fastball, Fire Escape	22 20
15	Eagle Eye Cherry, Save Tonight	21 20
16	Maxx, I'm Ok, You're Ok	21 22
17	Sprung Monkey, Get 'em Outta Here	20 19
18	Third Eye Blind, Jumper	19 34
19	Pearl Jam, In Hiding	19 22
20	Garbage, I Think I'm Paranoid	19 12
21	Flyz, Got You	19 12
22	Semisonic, Singing In My Sleep	17 21
23	Fat Boy Slim, The Rockafeller Skank	17 14
24	Everclear, I Will Buy You A New Life	17 14
25	Foo Fighters, Walking After You	16 12
26	Green Day, Time Of Your Life	16 12
27	Blink 182, Dammit	16 16
28	Fastball, The Way	15 15
29	Cherry Poppin' Daddies, Zoot Surf Riot	15 8
30	Everclear, Father Of Mine	15 12

**WPLT Detroit**  
 PD: Garett Michaels  
 MD: Ann Delisi  
 313-871-3030  
 ABC/Disney

	TW	LW
1	Natalie Imbruglia, Torn	43 37
2	Fastball, Fire Escape	42 38
3	Edwin McCain, I'll Be	42 44
4	Natalie Merchant, Kind & Generous	41 44
5	Fastball, The Way	41 45
6	Green Day, Time Of Your Life	41 44
7	Go Go Dolls, Ins	34 35
8	Grant Lee Buffalo, Truly, Truly	25 25
9	The Smashing Pumpkins, Perfect	24 23
10	Cherry Poppin' Daddies, Zoot Surf Riot	24 23
11	Patty Griffin, One Big Love	23 23
12	The Wallflowers, Heroes	23 24
13	Fuel, Shimmer	23 24
14	Everything, Hooch	22 23
15	Alanis Morissette, Uninvited	22 23
16	Smash Mouth, Can't Get Enough Of You Baby	22 24
17	Foo Fighters, Walking After You	22 23
18	Brian Setzer Orchestra, Jump Jive An' Wail	22 25
19	Agents Of Good Roads, Smiling Up The Fro	22 23
20	Athenaeum, What I Didn't Know	21 25
21	Smash Mouth, Can't Get Enough Of You Baby	20 30
22	The Smashing Pumpkins, Perfect	20 23
23	Tori Amos, Spark	20 18
24	Eve 6, Inside Out	19 22
25	Suzanne None The Richer, Kiss Me	19 18
26	Harvey Danger, Flagpole Sitta	18 20
27	Swift 360, Hey Now Now	18 12
28	Seven Mary Three, Over Your Shoulder	17 20
29	Third Eye Blind, How's It Going To Be	16 20
30	Dishwalla, Once In A While	14 12

**KDGE Dallas**  
 PD: Duane Doherty  
 APD/MD: Alan E. Smith  
 972-770-7777  
 Chancellor

	TW	LW
1	The Smashing Pumpkins, Ava Adore	39 33
2	Garbage, Push It	38 38
3	Tori Amos, Spark	38 39
4	Fuel, Shimmer	37 39
5	Go Go Dolls, Ins	37 40
6	Beastie Boys, Intergalactic	36 31
7	Semisonic, Closing Time	34 35
8	Everything, Hooch	24 21
9	Barenaked Ladies, One Week	24 18
10	Our Lady Peace, 4 Am	23 40
11	Eve 6, Inside Out	21 22
12	Harvey Danger, Flagpole Sitta	21 22
13	Fastball, The Way	19 15
14	Everclear, I Will Buy You A New Life	18 17
15	Green Day, Time Of Your Life	18 18
16	Marcy Playground, Saint Joe On The School	18 19
17	Grand Street, Push Erase	18 18
18	Foo Fighters, My Hero	17 11
19	Rammstein, Du Hast	17 10
20	Matchbox 20, Real World	16 20
21	Third Eye Blind, Graduate	16 19
22	Creed, What's This Life For	16 19
23	Smash Mouth, Walkin' On The Sun	16 20
24	Bush, Mouth	16 10
25	Uninvited, What God Said	16 16
26	Harvey Danger, Flagpole Sitta	16 15
27	Feeder, High	16 24
28	Marcy Playground, Sex & Candy	16 24
29	Failure, Enjoy The Silence</	



COMBINED TOP 40 AUDIENCE											AIRPLAY BY FORMAT														
TW	LW	WKS	TITLE (IMPRINT/PROMOTION LABEL)	ARTIST	THIS WEEK			LAST WEEK			MAINSTREAM TOP 40			RHYTHMIC TOP 40			ADULT TOP 40			AC			MODERN		
					Audience (millions)	Detections No.	Rank	Audience (millions)	Detections No.	Rank	Audience (millions)	Detections No.	Rank	Audience (millions)	Detections No.	Rank	Audience (millions)	Detections No.	Rank	Audience (millions)	Detections No.	Rank	Audience (millions)	Detections No.	Rank
1	1	16	IRIS (WARNER SUNSET/REPRISE)	GOO GOO DOLLS	97.1882	11090	1	95.2167	11124	1	52.0030	5429	1	2.6444	239	—	27.8014	3041	1	0.2392	54	—	14.5002	2327	4
2	2	19	YOU'RE STILL THE ONE (MERCURY)	SHANIA TWAIN	78.3876	7103	5	81.1179	7415	4	31.5229	3214	11	9.7570	509	23	20.6102	2019	6	16.4975	1361	1	—	—	—
3	3	26	TORN (RCA)	NATALIE IMBRUGLIA	77.2767	7778	2	79.6682	8183	2	32.4067	3355	9	6.6855	342	35	25.1514	2709	2	10.3736	962	7	2.6595	410	—
4	7	8	I DON'T WANT TO MISS A THING (COLUMBIA)	AEROSMITH	67.5799	7190	4	56.1195	6225	9	47.6475	5147	2	1.4797	178	—	15.8736	1665	12	2.5431	190	—	0.0360	10	—
5	4	11	THE BOY IS MINE (ATLANTIC)	BRANDY & MONICA	66.5922	6415	8	68.7649	6497	7	40.8956	4335	3	24.7656	1908	1	0.7838	154	—	0.1472	18	—	—	—	—
6	5	21	THE WAY (HOLLYWOOD)	FASTBALL	58.5606	7214	3	63.2229	7748	3	28.3546	3388	8	0.5001	69	—	23.0575	2585	3	0.1860	41	—	6.4624	1131	19
7	8	9	JUST THE TWO OF US (COLUMBIA)	WILL SMITH	54.6942	5060	13	52.4299	4700	13	31.6194	3233	10	22.4619	1724	2	0.5320	93	—	0.0809	10	—	—	—	—
8	6	16	UNINVITED (WARNER SUNSET/REPRISE)	ALANIS MORISSETTE	54.1993	6170	9	60.7945	6778	6	33.4556	3552	6	2.3047	172	—	16.0027	2017	7	0.0210	14	—	2.4153	415	—
9	9	16	TOO CLOSE (ARISTA)	NEXT	51.4570	5296	11	52.0494	5144	11	32.3427	3665	5	18.4920	1497	5	0.4771	122	—	0.1452	12	—	—	—	—
10	10	14	REAL WORLD (LAVA/ATLANTIC)	MATCHBOX 20	50.3440	7035	6	49.0327	6831	5	29.2980	4003	4	0.7587	139	—	16.9245	2205	5	0.0599	34	—	3.3029	654	39
11	11	13	CLOSING TIME (MCA)	SEMISONIC	47.2520	6607	7	46.2666	6327	8	22.5612	3111	12	0.2825	30	—	13.9733	1790	10	0.0659	14	—	10.3691	1662	9
12	12	13	ADIA (ARISTA)	SARAH MCLACHLAN	43.5249	5104	12	43.6456	5321	10	15.2852	1795	25	0.7671	92	—	15.9062	1991	9	10.5599	1018	5	1.0065	208	—
13	14	10	TO LOVE YOU MORE (550 MUSIC)	CELINE DION	42.3199	4006	20	41.8715	4117	17	16.9814	1784	27	3.3008	80	—	6.4544	784	23	15.5833	1358	2	—	—	—
14	13	38	TRULY MADLY DEEPLY (COLUMBIA)	SAVAGE GARDEN	41.2303	3974	21	42.6929	4036	19	11.4559	1276	—	3.8783	284	—	10.9576	1268	15	14.9046	1125	4	0.0339	21	—
15	16	28	TIME OF YOUR LIFE (GOOD RIDDANCE) (REPRISE)	GREEN DAY	38.9969	4128	18	39.8681	4098	18	15.0832	1432	—	0.1268	31	—	16.8573	1619	13	0.1134	27	—	6.8162	1019	25
16	18	15	I'LL BE (LAVA/ATLANTIC)	EDWIN MCCAIN	38.3631	4456	15	38.0472	4203	15	18.6627	2127	19	0.0990	20	—	17.7923	2013	8	0.5945	136	—	1.2146	160	—
17	15	29	ALL MY LIFE (MCA)	K-CI & JOJO	38.1582	4083	19	40.4366	4191	16	22.4022	2716	13	10.3972	690	17	3.1335	433	36	2.2253	244	27	—	—	—
18	19	13	KIND & GENEROUS (ELEKTRA/EEG)	NATALIE MERCHANT	35.9471	4738	14	37.2656	5089	12	12.2810	1834	23	0.0229	4	—	20.6058	2388	4	0.7835	145	—	2.2539	367	—
19	23	4	ONE WEEK (REPRISE)	BARENAKED LADIES	35.1145	5324	10	30.2154	4632	14	8.0681	1362	29	—	—	—	9.9427	1210	16	—	—	—	17.1037	2752	2
20	17	22	ANYTIME (MOTOWN)	BRIAN MCKNIGHT	34.7891	2696	36	34.4576	2903	31	20.8184	1790	26	10.8571	638	18	1.6431	228	—	1.4705	40	—	—	—	—
21	20	39	3 AM (LAVA/ATLANTIC)	MATCHBOX 20	33.7019	3682	25	36.2039	3815	22	14.5649	1409	—	0.3680	52	—	15.5155	1681	11	0.7468	68	—	2.5067	472	—
22	26	3	I'LL NEVER BREAK YOUR HEART (JIVE)	BACKSTREET BOYS	33.6904	3926	22	28.4138	3159	29	17.3081	2349	16	9.6504	769	16	1.6717	312	40	5.0602	496	16	—	—	—
23	21	8	GHETTO SUPASTAR (THAT IS WHAT YOU ARE) (INTERSCOPE)	PRAS MICHEL FEAT. OL' DIRTY BASTARD & INTRODUCING MYA	33.6629	3360	29	35.1878	3365	26	14.5863	1822	24	18.9595	1515	4	0.8353	14	—	0.0695	8	—	0.0123	1	—
24	24	5	CRUSH (EDEL AMERICA/HOLLYWOOD)	JENNIFER PAIGE	30.8235	4224	16	28.7655	3757	23	24.9722	3392	7	1.7306	273	—	4.0158	532	31	0.0046	3	—	0.1003	24	—
25	27	5	CAN'T GET ENOUGH OF YOU BABY (ELEKTRA/EEG)	SMASH MOUTH	29.2437	4205	17	26.5084	3911	21	10.9810	2071	20	0.1852	23	—	11.4336	1406	14	0.0011	1	—	6.6428	704	37
26	22	33	SEX AND CANDY (CAPITOL)	MARCY PLAYGROUND	28.9078	3712	24	32.3215	4012	20	16.7514	1839	22	0.5387	87	—	7.0272	995	20	0.0029	8	—	4.5876	783	32
27	25	40	AS LONG AS YOU LOVE ME (JIVE)	BACKSTREET BOYS	27.8254	2553	38	28.5699	2727	34	9.3307	1004	—	1.3592	129	—	5.6633	685	—	11.4495	823	10	0.0227	12	—
28	28	5	TO THE MOON AND BACK (COLUMBIA)	SAVAGE GARDEN	25.7316	3578	27	26.2698	3412	25	15.0668	2257	17	1.2745	107	—	7.6628	1026	18	1.5434	145	—	0.1841	43	—
29	29	4	TEARIN' UP MY HEART (RCA)	'N SYNC	25.6552	3029	30	24.9459	2750	32	19.3627	2523	14	5.8420	391	30	0.4503	114	—	—	—	—	0.0002	1	—
30	31	3	WISHING I WAS THERE (RCA)	NATALIE IMBRUGLIA	24.9247	3587	26	22.7947	3201	28	12.3747	1673	28	0.3055	38	—	8.7618	1106	17	0.0170	7	—	3.4657	763	33
31	36	4	MY WAY (LAFACE/ARISTA)	USHER	22.3328	2614	41	20.2424	2433	41	7.1235	1228	32	15.0295	1356	6	0.0364	18	—	0.1434	12	—	—	—	—
32	30	30	GETTIN' JIGGY WIT IT (COLUMBIA)	WILL SMITH	21.9640	1959	53	23.0064	2001	51	16.8733	1551	—	4.9842	374	—	0.1065	34	—	—	—	—	—	—	—
33	35	52	I DON'T WANT TO WAIT (IMAGO/WARNER BROS.)	PAULA COLE	21.6908	2104	49	21.2299	2107	47	5.2301	603	—	0.0470	8	—	7.5323	831	—	8.5050	591	13	0.3764	71	—
34	NEW		INTERGALACTIC (GRAND ROYAL/CAPITOL)	BEASTIE BOYS	21.5839	2844	33	18.6456	2496	39	4.1703	569	—	3.5652	276	—	0.0072	1	—	—	—	—	13.8412	1998	7
35	32	5	NEVER EVER (LONDON/ISLAND)	ALL SAINTS	21.5799	2825	34	22.1910	2687	36	17.4902	2378	15	3.8659	383	32	0.2238	65	—	—	—	—	—	—	—
36	40	2	GO DEEP (VIRGIN)	JANET	21.2985	2390	44	19.6523	2044	49	10.6294	1309	31	10.1098	1002	10	0.2505	54	—	0.2768	20	—	0.0320	5	—
37	38	3	FLAGPOLE SITTA (SLASH/LONDON/ISLAND)	HARVEY DANGER	21.2000	3491	28	19.9270	3281	27	2.4542	658	—	—	—	—	2.2015	264	—	0.0270	3	—	16.5173	2566	3
38	34	51	WALKIN' ON THE SUN (INTERSCOPE)	SMASH MOUTH	20.4680	2615	40	21.8632	2706	35	9.9826	1181	—	0.0550	20	—	7.7430	872	—	0.0120	11	—	2.6754	531	—
39	NEW		ARE YOU THAT SOMEBODY? (BLACKGROUND/ATLANTIC)	AALIYAH	20.3265	2065	51	17.4687	1773	55	1.8908	373	—	18.2501	1673	3	—	—	—	0.1767	18	—	0.0089	1	—
40	39	9	I WILL BUY YOU A NEW LIFE (CAPITOL)	EVERCLEAR	19.4789	2951	32	19.8698	3083	30	5.2050	942	35	0.0522	9	—	7.1150	967	21	0.0034	10	—	7.1033	1023	24

Records showing an increase in audience over the previous week, regardless of chart movement. Rankings by format (on right side of this page) correspond to 40-position charts printed in this week's Monitor (30 positions for adult contemporary); therefore rankings do not exist for recurrents and records below No. 40 (No. 30 for adult contemporary). Audience computed by cross-referencing exact times of airplay with Arbitron listener data. © 1998, Billboard/BPI Communications.

Billboard & Monitor

# RADIO

## Seminar & awards

September 17 - 19, 1998

The Pointe Hilton Resort at Tapatio Cliffs, Phoenix, Arizona

Join radio's key players  
for a bounty of industry  
panels, artist showcases,  
keynoters and all  
the networking you  
can muster!

For information call:  
**Michele Quigley 212-536-5088**



Compiled from a national sample of airplay supplied by Broadcast Data Systems' Radio Track service to Top 40 Airplay Monitor, 30 mainstream top-40 and 20 rhythmic top-40 stations are electronically monitored 24 hours a day, 7 days a week. Songs are ranked by number of detections. © 1998 Billboard/BPI Communications.

THIS WEEK	LAST WEEK	WKS. ON CHART	DETECTIONS		ARTIST	TITLE/IMPRINT/PROMOTION LABEL
			TW	LW		
<b>★ ★ ★ No. 1 ★ ★ ★</b>						
1	1	16	4 weeks at No. 1	5313	GOO GOO DOLLS	IRIS WARNER SUNSET/REPRISE
2	2	11		4695	AEROSMITH	I DON'T WANT TO MISS A THING COLUMBIA
3	3	11		4380	BRANDY & MONICA	THE BOY IS MINE ATLANTIC
4	5	12		3928	MATCHBOX 20	REAL WORLD LAVA/ATLANTIC
5	8	14		3524	NEXT	TOO CLOSE ARISTA
6	4	17		3982	ALANIS MORISSETTE	UNINVITED WARNER SUNSET/REPRISE
7	10	7		3107	JENNIFER PAIGE	CRUSH EDEL AMERICA/HOLLYWOOD
8	7	16		3650	FASTBALL	THE WAY HOLLYWOOD
9	6	25		3666	NATALIE IMBRUGLIA	TORN RCA
10	11	9		2953	WILL SMITH	JUST THE TWO OF US COLUMBIA
11	9	21		3468	SHANIA TWAIN	YOU'RE STILL THE ONE MERCURY
12	13	10		2793	SEMISONIC	CLOSING TIME MCA
13	12	28		2822	K-CI & JOJO	ALL MY LIFE MCA
14	14	6		2308	'N SYNC	TEARIN' UP MY HEART RCA
15	15	10		2236	ALL SAINTS	NEVER EVER LONDON/ISLAND
16	21	5		1965	BACKSTREET BOYS	I'LL NEVER BREAK YOUR HEART JIVE
17	17	19		2177	SAVAGE GARDEN	TO THE MOON AND BACK COLUMBIA
18	18	9		2058	FIVE	WHEN THE LIGHTS GO OUT ARISTA
19	22	22		1950	EDWIN MCCAIN	I'LL BE LAVA/ATLANTIC
20	19	7		2018	SMASH MOUTH	CAN'T GET ENOUGH OF YOU BABY ELEKTRA/EEG
21	25	6		1834	ACE OF BASE	CRUEL SUMMER ARISTA
22	20	25		2016	MARCY PLAYGROUND	SEX AND CANDY CAPITOL
23	16	13		2211	NATALIE MERCHANT	KIND & GENEROUS ELEKTRA/EEG
24	27	6		1717	PRAS MICHEL FEAT. OL' DIRTY BASTARD & INTRODUCING MYA	GHETTO SUPASTAR (THAT IS WHAT YOU ARE) INTERSCOPE
25	24	15		1866	SARAH MCLACHLAN	ADIA ARISTA
26	23	19		1912	BRIAN MCKNIGHT	ANYTIME MOTOWN
27	26	11		1785	CELINE DION	TO LOVE YOU MORE 550 MUSIC
<b>★ ★ ★ AIRPOWER ★ ★ ★</b>						
28	29	3		1339	NATALIE IMBRUGLIA	WISHING I WAS THERE RCA
29	38	2		923	BARENAKED LADIES	ONE WEEK REPRISE
30	30	4		1114	SWIRL 360	HEY NOW NOW MERCURY
31	36	3		960	JANET	GO DEEP VIRGIN
32	31	4		1083	USHER	MY WAY LAFACE/ARISTA
33	35	4		993	DAVE MATTHEWS BAND	STAY (WASTING TIME) RCA
34	32	21		1077	BACKSTREET BOYS	EVERYBODY [BACKSTREET'S BACK] JIVE
35	33	9		1042	EVERCLEAR	I WILL BUY YOU A NEW LIFE CAPITOL
36	<b>NEW</b>			675	FAITH HILL	THIS KISS WARNER BROS.
37	40	2		725	THE BRIAN SETZER ORCHESTRA	JUMP JIVE AN' WAIL INTERSCOPE
38	37	19		934	DESTINY'S CHILD	NO, NO, NO COLUMBIA
39	34	13		1012	MADONNA	RAY OF LIGHT MAVERICK/WARNER BROS.
40	<b>NEW</b>			580	INOJ	TIME AFTER TIME SO SO DEF/COLUMBIA

THIS WEEK	LAST WEEK	WKS. ON CHART	DETECTIONS		ARTIST	TITLE/IMPRINT/PROMOTION LABEL
			TW	LW		
<b>★ ★ ★ No. 1 ★ ★ ★</b>						
1	1	14	9 weeks at No. 1	1994	BRANDY & MONICA	THE BOY IS MINE ATLANTIC
2	2	12		1715	WILL SMITH	JUST THE TWO OF US COLUMBIA
3	5	7		1507	AALIYAH	ARE YOU THAT SOMEBODY? BLACKGROUND/ATLANTIC
4	3	14		1644	PRAS MICHEL FEAT. OL' DIRTY BASTARD & INTRODUCING MYA	GHETTO SUPASTAR (THAT IS WHAT YOU ARE) INTERSCOPE
5	4	28		1561	NEXT	TOO CLOSE ARISTA
6	7	15		1347	USHER	MY WAY LAFACE/ARISTA
7	6	13		1356	BIG PUNISHER FEATURING JOE	STILL NOT A PLAYER LOUD/RCA
8	10	9		952	NICOLE FEAT. MISSY "MISDEMEANOR" ELLIOTT & MOCHA	MAKE IT HOT THE GOLD MIND, INC./EASTWEST EEG
9	11	10		813	LAURYN HILL	CAN'T TAKE MY EYES OFF OF YOU RUFFHOUSE/COLUMBIA
10	9	8		1025	JANET	GO DEEP VIRGIN
11	8	20		1032	VOICES OF THEORY	SAY IT H.O.L.A./RED ANT
12	13	6		775	TATYANA ALI	DAYDREAMIN' MJJ/WORK
13	18	5		687	INOJ	TIME AFTER TIME SO SO DEF/COLUMBIA
14	15	6		745	BRANDY (FEATURING MASE)	TOP OF THE WORLD ATLANTIC
15	12	12		792	JON B.	THEY DON'T KNOW YAB YUM/550 MUSIC
16	19	4		670	BACKSTREET BOYS	I'LL NEVER BREAK YOUR HEART JIVE
17	17	37		713	K-CI & JOJO	ALL MY LIFE MCA
18	14	28		752	BRIAN MCKNIGHT	ANYTIME MOTOWN
19	16	16		722	MYA & SISQO	IT'S ALL ABOUT ME UNIVERSITY/INTERSCOPE
20	22	3		514	MONICA	THE FIRST NIGHT ARISTA
21	21	15		530	BRIAN MCKNIGHT	THE ONLY ONE FOR ME MOTOWN
<b>★ ★ ★ AIRPOWER ★ ★ ★</b>						
22	28	3		402	CAM'RON FEATURING MASE	HORSE & CARRIAGE ENTERTAINMENT/EPIC
23	23	11		468	SHANIA TWAIN	YOU'RE STILL THE ONE MERCURY
24	20	15		614	SPARKLE	BE CAREFUL ROCK LAND/INTERSCOPE
25	38	2		264	SHAGGY FEATURING JANET	LUV ME, LUV ME FLYTE TYME/MCA
26	26	6		418	MO THUGS FAMILY FEAT. FELECIA & KRAYZIE BONE	ALL GOOD MO THUGS/RELATIVITY
27	27	7		409	K-CI & JOJO	DON'T RUSH (TAKE LOVE SLOWLY) MCA
28	40	2		244	MONIFAH	TOUCH IT UPTOWN/UNIVERSAL
29	31	4		353	NATE DOGG FEAT. WARREN G	NOBODY DOES IT BETTER DOGG FOUNDATION/EPIC/BREAKAWAY
30	33	3		344	'N SYNC	TEARIN' UP MY HEART RCA
31	37	2		274	GINUWINE	SAME OL' G BLACKGROUND/ATLANTIC
32	25	10		422	ALL SAINTS	NEVER EVER LONDON/ISLAND
33	32	4		350	ACE OF BASE	CRUEL SUMMER ARISTA
34	29	7		383	FIVE	WHEN THE LIGHTS GO OUT ARISTA
35	30	14		383	NATALIE IMBRUGLIA	TORN RCA
36	24	17		451	MARIAH CAREY	MY ALL COLUMBIA
37	<b>NEW</b>			198	MYA FEATURING SILKK THE SHOCKER	MOVIN' ON UNIVERSITY/INTERSCOPE
38	36	2		288	JD FEATURING JAY-Z	MONEY AIN'T A THANG SO SO DEF/COLUMBIA
39	<b>NEW</b>			205	NEXT	I STILL LOVE YOU ARISTA
40	34	14		341	LINK	WHATCHA GONE DO? RELATIVITY

Records showing an increase in detections over the previous week, regardless of chart movement. A record that has been on either chart for more than 20 weeks will not receive a bullet, even if it registers an increase in detections. Airpower awarded to those records that attain 1,500 detections (mainstream) or 500 detections (rhythm) for the first time. If two records are tied in number of plays, the record being played on more stations is placed first. Records below the top 20 are removed from the chart after 26 weeks.



**Faith.** *we all need some.*

**(28) - (25) Billboard HOT 100**

**Debut (36) Top 40 Mainstream Monitor**  
**675 to 916 Detections (+241)**  
**#10 Greatest Gainer**

**#4 Most New Stations Including:**

**KHKS WZPL WHOT WIXX WNOK**  
**WBHT WFLY WXXX WYOY WEZB**



Produced by Byron Gallimore and Faith Hill. Management: Borman Entertainment. ©1998 Warner Bros. Records Inc. www.wbr.com



# beastie boys ..intergalactic..

**#1 SOUNDSCAN ALBUM 3 WEEKS STRAIGHT!!  
1 MILLION SCANNED IN 2 WEEKS!!**

## MULTI-FORMAT SMASH AT:

KIIS	KMEL	KHKS	KTFM	KSLZ	KC101
KYLD	KKRZ	WKSS	WPOW	WZJM	WXYV
KRBE	WFLZ	WHHH	WWKX	WDJX	WBTT
KDWB	KSFM	WXXL	KKRD	WHOT	WWCK
KUBE	WDCG	KRQQ	KDGS	WFLY	KZZU

**“Top 10 phones! The Beastie Boys have made their most mass appeal record. It fits in perfectly with today’s music.”**  
- Jay Michaels, MD, KRBE

**“It’s a hit of ‘Intergalactic’ proportions! Our #1 phone record!”**  
- Dr. Dave, PD, WXYV/Baltimore

**ON TOUR NOW**





# THIRDEYEBLIND

## JUMPER

THE NEW SINGLE  
FROM THEIR  
MULTI-PLATINUM  
SELF-TITLED  
DEBUT ALBUM.

SEMI-CHARMED LIFE  
GRADUATE  
HOW'S IT GOING TO BE  
LOSING A WHOLE YEAR

Are you listening?

### ON TOUR NOW.

AUGUST 1 Augusta, GA  
AUGUST 3 Savannah, GA  
AUGUST 4 Myrtle Beach, SC  
AUGUST 6 Mobile, AL  
AUGUST 7 Pellham, AL  
AUGUST 8 Knoxville, TN  
AUGUST 9 Asheville, NC  
AUGUST 11 Pompano Beach, FL  
AUGUST 12-13 Lake Buena Vista, FL  
AUGUST 14 Atlanta, GA  
AUGUST 15 Indianapolis, IN  
AUGUST 16 Bethel, NY  
AUGUST 26 St. Paul, MN  
SEPTEMBER 5 Seattle, WA

Produced by Stephen Jenkins. Copyright © 1998 Warner Bros. Entertainment Inc. All rights reserved. Elektra Records, Inc. A Time Warner Company.

# IMPACTING TOP 40, ADULT TOP 40 AND MODERN AC NOW!

