

# TOP 40 ■ AIRPLAY Monitor

• We Listen To Radio •

May 8, 1998 \$4.95 Volume 6 • No. 19

## TOP 40 HIGHLIGHTS

### MAINSTREAM TOP 40

#1

**NATALIE IMBRUGLIA**

*Torn* (RCA)

★★★ AIRPOWER ★★★

FASTBALL • *The Way* (HOLLYWOOD)  
GOO GOO DOLLS • *Iris* (WARNER SUNSET/REPRISE)  
PAULA COLE • *Me* (IMAGO/WARNER BROS.)

### GOING FOR AIRPLAY

CELINE DION • *To Love You More* (550 MUSIC)  
LFO • *(Sex U Up) The Way You Like It* (LOGIC)  
MATCHBOX 20 • *Real World* (LAVA/ATLANTIC)  
OLIVIA NEWTON-JOHN • *I Honestly Love You* (MCA NASHVILLE/UNIVERSAL)  
NU FLAVOR • *Baby Be There* (REPRISE)  
PUBLIC ENEMY • *He Got Game* (DEF JAM/MERCURY)  
MICHAEL W. SMITH • *Love Me Good* (REUNION/JIVE)  
THE TUESDAYS • *I'll Be Here* (ARISTA)

### RHYTHMIC TOP 40

#1

**NEXT**

*Too Close* (ARISTA)

★★★ AIRPOWER ★★★

SPARKLE • *Be Careful* (ROCK LAND/INTERSCOPE)

### CROSS-OVER

#1

**NEXT**

*Too Close* (ARISTA)

★★★ AIRPOWER ★★★

USHER • *My Way* (LAFACE/ARISTA)  
BRIAN MCKNIGHT • *The Only One For Me* (MOTOWN)

### GOING FOR AIRPLAY

DEF SQUAD • *Full Cooperation* (DEF JAM/MERCURY)  
CELINE DION • *To Love You More* (550 MUSIC)  
LFO • *(Sex U Up) The Way You Like It* (LOGIC)  
MILITIA • *Who's The Next* (RED ANT)  
OLIVIA NEWTON-JOHN • *I Honestly Love You* (MCA NASHVILLE/UNIVERSAL)  
RELL • *Love For Free* (ROC-A-FELLA/DEF JAM/MERCURY)

### ADULT TOP 40

#1

**NATALIE IMBRUGLIA**

*Torn* (RCA)

★★★ AIRPOWER ★★★

GOO GOO DOLLS • *Iris* (WARNER SUNSET/REPRISE)  
SHANIA TWAIN • *You're Still The One* (MERCURY)

### ADULT CONTEMPORARY

#1

**SAVAGE GARDEN**

*Truly Madly Deeply* (COLUMBIA)

★★★ AIRPOWER ★★★

MICHAEL BOLTON • *Safe Place From The Storm* (COLUMBIA)

### GOING FOR AIRPLAY

CELINE DION • *To Love You More* (550 MUSIC)  
THE GETAWAY PEOPLE • *She Gave Me Love* (COLUMBIA)  
KENNY LOGGINS • *Just Breathe* (COLUMBIA)  
MATCHBOX 20 • *Real World* (LAVA/ATLANTIC)  
OLIVIA NEWTON-JOHN • *I Honestly Love You* (MCA NASHVILLE/UNIVERSAL)

## Monitor Survey Shows Top 40 Hits Still Breaking Closer To Home

by Sean Ross

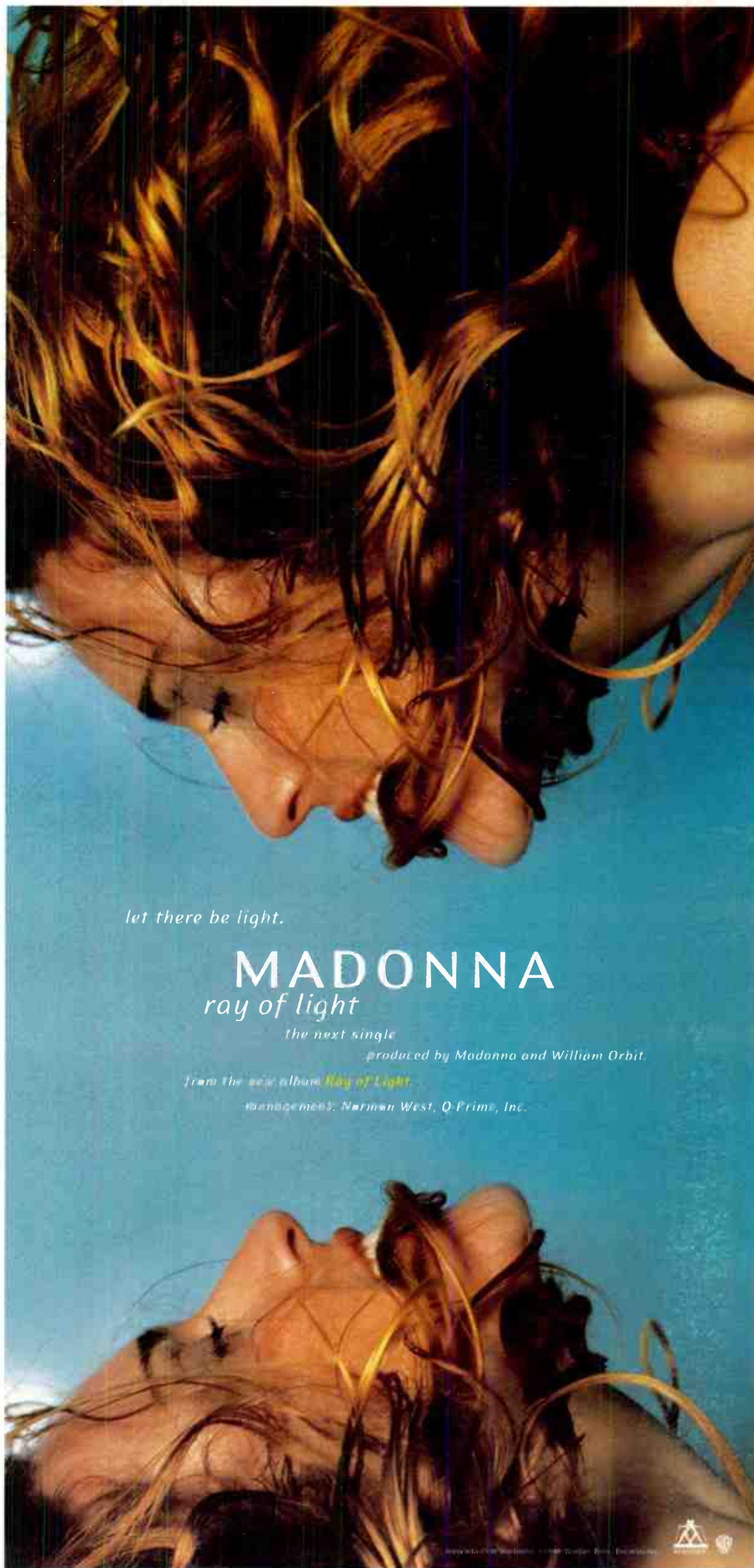
It's been almost two years since a resurgent top 40 format declared its intention to play records that it could own, instead of those that had broken at other formats. And Airplay Monitor's first look in more than six months at where the top 40 hits break shows that mainstream top 40 is, indeed, still making good on that promise. Modern rock, which, after a brief fallow period, reclaimed its influence last time,

**EXCLUSIVE  
BDS  
ANALYSIS**

continues to cross records to the mainstream, but rhythmic top 40 is crossing considerably fewer songs these days, finding itself almost tied with R&B radio on that score.

Airplay Monitor analyzed where each mainstream top 40 hit in the April 17 issue had charted first. When ties were included, mainstream top 40 was first, with 15 songs. Of those, 11 charted exclusively at top 40 first and four charted at top 40 in the same week

*Continued on page 6*



let there be light.

**MADONNA**  
*ray of light*

the next single

produced by Madonna and William Orbit

from the new album *Ray of Light*

management: Norman West, Q-Prime, Inc.







# I DON'T WANT TO MISS A THING

The track that launches

**ARMAGEDDON:** the album....

...album in stores

**TUESDAY, JUNE 30...**

A JERRY BRUCKHEIMER PRODUCTION  
TOUCHSTONE PICTURES

...film opens nationally

**WEDNESDAY, JULY 1.**



## ARMAGEDDON

A MICHAEL BAY PRODUCTION

Don't miss the first transmission of

**AEROSMITH**  
I DON'T WANT TO MISS A THING

**TUESDAY, MAY 12, 9pm.**

The channels are:

<b>SATCOM</b>	<b>C5</b>
<b>TRANSPONDER</b>	<b>19</b>
<b>DATS CHANNELS</b>	<b>10 and 11</b>



Produced and Arranged by MATT SERLETIC  
Soundtrack Executive Producer: JERRY BRUCKHEIMER  
Management: Wendy Laister for MAGUS ENTERTAINMENT, INC.  
[www.aerosmith.com](http://www.aerosmith.com) [www.armageddon.com](http://www.armageddon.com) [www.columbiarecords.com](http://www.columbiarecords.com)

COLUMBIA

SONY MUSIC  
SOUNDTRAX



MOVIE PICTURE ARTWORK & ARTWORK TITLE © 1998 TOUCHSTONE PICTURES. ALL RIGHTS RESERVED.  
COLUMBIA REG. U.S. PAT. & TOL. OFF. MARCA REGISTRADA. © 1998 SONY MUSIC ENTERTAINMENT INC.

World Radio History



## Then They Were Off To WLS, CKLW, And WKBW



Just in case you thought we had completely blown by the '70s revival on the way to the big '80s, consider the double flashback of David Cassidy promoting a hip-hop remake of the Partridge Family's "I Think I Love You" and Olivia Newton-John working a remake of her "I Honestly Love You." In the top picture, Cassidy, second from left, is flanked by KYSR (Star 98.7) Los Angeles' Ryan Seacrest, PD Angela Perelli, and Lisa Foxx. Shown below at WBIX (Big 105) New York, from left, are Universal's Charlie Foster, WBIX morning man (and former Partridge Family star) Danny Bonaduce, Newton-John, and Universal's David Nathan.



## Chancellor Sets Jeff Marcus At Top

The much-anticipated official announcement that **Jeff Marcus** has been named Chancellor Media Corp. president/CEO was released this week. Marcus joins the company with little radio background. He was most recently chairman of Marcus Cable, the nation's largest privately held cable TV company. That resumé is in line with **Tom Hicks'** vision to expand Chancellor from its radio base into other media. Marcus has been on Chancellor's board since 1995.

In other Chancellor news, COO **Jim de Castro** has rebutted a report by equity researcher Bear, Stearns that claims the company had already written \$25 million in pay-for-play contracts. Bear, Stearns' report was based on an interview with Hicks, but de Castro says that while "we are in the process of working with the record companies" on attempts to increase label revenue in a way that "will be win/win for everyone," no such pay-for-play deals have been written.

The New York Post reports that Chancellor's AMFM Networks will debut a rhythmic countdown hosted by WKTU New York morning man **Hollywood Hamilton** and a show from former WKTU morning host **RuPaul** on the way on the July 4 weekend.

### MANAGEMENT

Former Patterson regional VP **Dan Savadove**, the former GM of WNNK Harrisburg, Pa., is the new VP/GM at Chancellor's WIOQ (Q102) Philadelphia, replacing **Gil Rozzo**. Former WMYX/WAMG Milwaukee GM **Craig Hodgeson** returns to the adult top 40 combo after a stint in TV. He replaces **Cary Merz**. WMYX is celebrating its first-ever 12-plus win over rival WKTI, which has added '80s features at 1 p.m. and 5 p.m. to its existing "Big '80s At 8" show.

### DUOPOLY COMES TO CANADA

Canada's broadcast regulator has released new

radio rules that finally make duopoly legal in that country (it has existed in only a few unusual situations thus far). Canadian broadcasters are now allowed to own up to two AMs and two FMs in some larger markets and up to three stations (with two FMs) in smaller markets. As part of the trade-off, broadcasters who had previously been required to play 30% Canadian music will now be forced to play 35% Cancon.

### RATINGS BIAS: IT'S FOR THE KIDS

Jacor's WVMX (Mix 94) Cincinnati has been cited for special station activity in the just-released winter Arbitron report. According to the page 13 note, WVMX issued a press release challenging top 40 rival WKRC (Q102) to donate \$10,000 to a children's charity based on the outcome of the bet. The bet, which was never accepted by Q102, was reported on Jacor's WKRC-TV.

In flagging the station, Arbitron wrote, "WVMX's promotion combines references to a survey in progress, emphasis on the importance of ratings, and the prospect of contributions to needy children... WVMX's promotion may affect the way diarykeepers record their listening, by prompting [them] to use the diary as a means of supporting the station. WVMX's promotion may also prompt diarykeepers to overreport listening to the station or underreport listening to other stations."

In other Arbitron news, the ratings firm announces it will measure Puerto Rico as a market twice a year. The island becomes market No. 11.

### PROGRAMMING: 'KTU MIXING LESS

If you're checking out rhythmic top 40 WKTU these days, you're not as likely to hear mixing. While the station continues its Saturday-night mixes, it's dropped its Friday-night mixes, as well as a 4 p.m. daily mix. (The station's 10 p.m. mix

## Mainstream, Adult T40 Share The Hits

**C**HART WATCH: Has anyone else noticed that with the exception of one rhythmic title, the top five of the mainstream top 40 and adult top 40 are nearly identical? Would you believe that 17% of the songs on the mainstream top 40 chart appear on soundtracks (Nos. 3, 18, 19, 20, 22, 35, and 37)? In case you didn't know, Marcy Playground's "Sex And Candy" is on the "Hurricane Streets" soundtrack.

In its second week on the rhythmic top 40 chart, **Sparkle's** "Be Careful" (Rock Land/Inter-scope) nearly doubles its spin count to 573 and jumps 34-21, attaining Airpower status... **K-Ci & Jojo's** wedding anthem "All My Life" (MCA) may be No. 2 on the rhythmic top 40 list, behind **Next's** "Too Close" (Arista), but the former would be No. 1 if the chart were based on audience impressions and not spins. "All My Life" has 20 million listeners, compared with 19 million for "Too Close."

**MUSICAL CHAIRS:** Capitol's **Phil Costello** adds marketing to his plate and to his title, becoming senior VP promotion and marketing... There have been several changes at MCA. The label will not renew the contracts of senior VP of creative affairs **Jonas Livingston** or senior director of soundtracks **Deanna Cohen**, while VP of dance music promotion **Bobby Shaw** exits after 14 years of service. Shaw can be reached at 212-254-5656.

Motown promotion vet **Barry O'Neil** exits the label after 19 years. O'Neil can be reached at 213-654-2291... Look for former GlassNote GM and Universal promotion staffer **Evan Forrester** to join HOLA in an executive role to be determined... Atlantic ups **Pamela Jouan** to senior director of pop promotion and **Kris Metzdorf** to senior director of alternative promotion... Former Enclave staffer **Dara Kravitz** joins Trauma as Northeast regional promotion manager... Work has named **Diarmuid Quinn** senior VP of marketing. Quinn was senior VP of marketing for Hollywood... Former Lava senior director of A&R **Kevin Weaver** has joined Tommy Boy to oversee the soundtrack division. Weaver will also work on compilations and reissues... Capitol ups **Perry Watts-Russell** to senior VP of A&R.

RCA restructures its publicity department following the departure of associated director of publicity **Michael Taub**. **Pamela Murphy** and **Stuart Goldberg** join in New York as director of publicity and manager of tour marketing, respectively. Murphy previously worked at the independent PR firm Schock Inc., while Goldberg did local promo for A&M in Florida. Publicity director **Gina Orr** moves from New York to the West Coast office.

**FOR THE RECORD:** Due to a fire at the BDS monitoring site in Chicago April 27, all the radio stations that are monitored from that site will reuse the previous week's playlist, meaning that the Monday-Sunday spins reflected in this week's chart will be identical with the previous week's chart. The stations involved are **WBBM-FM, WGCI, WTMX, WLIT, and WNND**.

**IN INK:** **Metallica** drummer **Lars Ulrich** and the band's former tour manager, **Tim Duffy**, have formed the imprint the Record Company, or TRC, which will be distributed through Elektra... **Tom Zutaut's** Enclave has been picked up by Mercury. The first release, **Drain STH's** "Horror Wrestling," is due June 9.

**ARTIST MONITOR:** **Mariah Carey** is close to inking a deal with Universal Pictures for a starring role opposite **Chris Tucker** in the action comedy "Double-O-Soul." Carey would play the villain's stepdaughter... **Snoop Doggy Dogg** is close to clinching his first starring role in "Bones," New Line Cinema's film about a ghost who seeks revenge against those who killed him 20 years earlier... Would you believe that **Celine Dion** mania has escalated to the point that a German company is selling a martini toothpick that is the spitting image of Dion?... Look for **Sean "Puffy" Combs** to perform "Kashmir" with **Jimmy Page** on the May 9 season finale of "Saturday Night Live."

ended a while ago.) Meanwhile, the Daily News reports that New York market veteran **Al Bandiero**, last heard on WKTU, has popped up on adult top 40 sister **WBIX** (Big 105).

**KZQZ** (Z95.7) San Francisco PD **Mike Edwards** is heading home to Charlotte, N.C., where he will program adult top 40 **WLNK**, last helmed by **Stacy Cantrell**, who exited late last year. No replacement has been named.

Adult top 40 **WAKS** (Kiss-FM) Tampa, Fla., has gone hotter in recent weeks, adding **Will Smith's** "Gettin' Jiggy Wit It" and others.

**Paul Kraimer**, PD of AC **WHMS** (Lite Rock 97.5) Champaign, Ill., is the new PD at top 40 **WIFC** Wausau, Wis. He replaces **Rod Phillips**, now APD/MD at **WDJX** Louisville, Ky.

Classic rock **KIOO** Visalia, Calif., OM/PD **Rik McNeil** officially gets the same title at rhythmic top 40 sister **KSEQ**, replacing **Charlie Wolf**.

**WWST** Knoxville, Tenn., PD **Rich Bailey** adds PD stripes for new country sister station **WQBB-FM**, as that station flips from standards.

Veteran programmer **Larry Kent** is named regional PD for Gulfstar's east Texas stations, in Texarkana, Tyler, and Lufkin.

Zapoleon Media Strategies consultant **John Clay** is keeping busy these days. Besides his ZMS duties, teaching at a local radio/TV school and adult Spanish, and serving as production director at N/T **KFNN** Phoenix, he's managing a rock act, the **Zack Phillips Band**, whose debut album will be released in the next two to three weeks.

### SEINFELD: THE TITANIC MIX

In anticipation of the "Seinfeld" finale May 14, **WKSI** (the Point) Greensboro, N.C., has put together a customized version of **Green Day's** "Time of Your Life" with drops from the departing series. Contact PD **Michael Hayes** for info.

### PEOPLE: DELILAH CAME HOME

Broadcast Programming's syndicated AC night host **Delilah** is added to nights at hometown **KWRM** (Warm 106.9) Seattle, sending **Dale Hubbard** to P/T.

**KMEL** San Francisco APD **Pete Azarnoosh** returns to the production director post.

**WYOY** (Y101.9) Jackson, Miss., MD/night jock **Kevin Vaughn** is upped to APD/middays, as **Mandy Morgan** becomes morning co-host.

**WDEK** DeKalb, Ill.'s **Paul Cook** returns to adult top 40 **KYKY** (Y98) St. Louis for nights.

**KKMG** Colorado Springs, Colo., MD **Valerie Hart** exits for nights at classic rock **KKHK** (the Hawk) Denver... **WWHT** Syracuse, N.Y., taps **Sean Michaels**, morning producer at rival **WNTQ** (93Q), for late nights, replacing **Cane**.

Adult top 40 **KKOB-FM** Albuquerque, N.M., P/T **Greg Fite** is upped to nights, replacing **D.J. Lopez**.

New rhythmic top 40 **WJXY** (Hot 93) Myrtle Beach, S.C., taps **Jetson** from now-defunct modern rival **WWSK** (the Shark) for nights.

Consultant **Bill Stairs** is looking for an RCS-skilled p.m. driver for a small-market client. T&Rs to 213 Overhill Rd., Orinda, Calif. 94563.



## Always Madfly Season In Roanoke



Not exactly the album cover for an "Osmond Family Christmas," it's Blackheart/Mercury's own Madfly spending some quality time in Roanoke, Va., where the group's single "Sleep Tonight" happens to be huge. Pictured, from left, are Madfly's Jeffrey Blount and William Duvall; Stephanie Banasik of Jeff McClusky & Associates; band manager Ron Herbert, JMA; WXLK (K92) PD Russ Brown; Madfly's Nico Constantine and Bevan Davies; and Kevin Kollins, JMA.

## RADIO CONCERT MONITOR

DATE	CALL LETTERS	EVENT	SCHEDULED TO APPEAR
May 9	KSFM Sacramento, Calif.	Spring Jam	Destiny's Child, Sylk-E. Fyne, Queen Pen, Timbaland & Magoo w/Missy Elliott, more
May 15	WABB Mobile, Ala.	25th Birthday	Naked, Sister 7, Garrison Starr, Tuesdays
May 15	WYOY Jackson, Miss.	Jubilee Jam	Jonny Lang
May 16	KPRR El Paso, Texas	Power Jam	Sylk-E. Fyne, Kinsu, Mase, Los Umbrellos, Luke, Rockell, Southside Connection, Voices Of Theory, more
May 16	WNKS Charlotte, N.C.	Kiss Concert	Meredith Brooks, Paula Cole, Color Me Badd, Billie Myers, Smash mouth, S.O.A.P., Tuesdays, Vanilla Ice
May 16	WYOY	Jubilee Jam	Kenny Wayne Shepherd
May 17	WYOY	Jubilee Jam	Edwin McCain
May 22	KRUF Shreveport, La.		Samantha Cole, Billie Myers, more
May 22	KZHT Salt Lake City	First Birthday	Dakota Moon, Billie Myers, Naked, Tonic
May 22	WNVZ Norfolk, Va.	Summer Kickoff	S.O.A.P.
May 23	WBBO Monmouth, N.J.	First Birthday	Dakota Moon, She Moves, Tuesdays
May 24	WAEB Allentown, Pa.	Mayfair	TBA
May 24	WBLI Long Island, N.Y.	Summer Jam 1	Dakota Moon, more
May 24	WSPK Poughkeepsie, N.Y.	K104 Fest	Amber, Blessid Union, Samantha Cole, Color Me Badd, Edwin McCain, No Authority, Quad City DJ's, React, Jimmy Ray, She Moves, S.O.A.P., more
May 25	WKSE Buffalo, N.Y.	Summer Concert	TBA

Let us monitor your event! Call Sean Ross at 212-536-5264 or E-mail Sross@billboard.com

PUBLISHER: JON GYNN  
 EDITOR: SEAN ROSS  
 DIRECTOR OF CHARTS: THEDA SANDFORD-WALLER  
 ASSOCIATE DIRECTOR OF CHARTS: STEVEN GRAYBOW  
 WRITER/REPORTER: DANA HALL  
 CHART PRODUCTION MANAGER: MICHAEL CUSSON  
 ASST. CHART PRODUCTION MANAGER: ALEX VITOLIS  
 EDITORIAL PRODUCTION MANAGERS: BARRY BISHIN, MARCIA REPINSKI  
 EDITORIAL PRODUCTION: SUSAN CHICOLA, MARC GIAQUINTO  
 MARIA MANLICIC, KAY WANOUS  
 COPY EDITOR: CARL ROSEN  
 ADVERTISING PRODUCTION MANAGER: LYDIA MIKULKO  
 ADVERTISING PRODUCTION COORDINATOR: PAUL PAGE  
 ART DIRECTOR: RAY CARLSON  
 ADVERTISING PRODUCTION ARTIST: KAREN PLATT

NATIONAL ADVERTISING MANAGER: HANK SPANN  
 ACCOUNT MANAGERS: JEFF SOMERSTEIN, SHARON WHITE  
 ADVERTISING SERVICES MANAGER: ALYSE ZIGMAN  
 SALES ASSISTANTS: EVELYN ASZODI, ERICA BENGTSON, CANDACE GIL

EDITORIAL ADVISER: TIMOTHY WHITE  
 CIRCULATION DIRECTOR: MARIE GOMBERT  
 CIRCULATION DIRECTOR: JEANNE JAMIN



1515 Broadway, New York, NY 10036 212-764-7300  
 5055 Wilshire Blvd., 7th floor, Los Angeles, CA 90036 213-525-2300  
 For subscriptions call: 800-722-2346

Alplay Monitor reporting panels are based solely on a station's musical content.

©1998 BPI Communications Inc. No part of this publication may be reproduced, stored in any retrieval system, or transmitted, in any form or by any means, electronic, mechanical, photocopying, recording, or otherwise, without the prior written permission of the publisher.



## TOP 40 TOPICS BY SEAN ROSS

212-536-5264 • sross@billboard.com

## I Smell Segues And Candy; Or, C'mon And Ride The Trainwreck

**I**t was Friday morning in my office. It was Friday night in Australia. I was listening to Queensland's Cool FM—which is nominally a top 40, but, like many international outlets, would be a hot AC here—when I heard it. "Spice Up Your Life" by Spice Girls cold-segued into "Hey Joe" by Jimi Hendrix.

Incongruous though it sounded, I was busy enough that I didn't notice the segue right away. Instead, it took me about 30 seconds to realize the enormity of what I'd heard. So I E-mailed about three-dozen radio folks and told them I'd heard one of the great trainwreck segues of all time. One that actually topped last year's favorite, "Butterfly Kisses" by Bob Carlisle into "Ohio" by Crosby, Stills, Nash & Young on hot AC CKDK (K104) Woodstock, Ontario. It may have even challenged my all-time fave: "Draw The Line" by Aerosmith (which, you'll recall, ends with about 15 seconds of over-the-top screeching) into "You Don't Bring Me Flowers" by Barbra Streisand and Neil Diamond on then automated top 40 WIQB Ann Arbor, Mich., in 1980.

Trainwreck segues never fail to ignite a dialogue among radio folks. Kind of like mangled song lyrics among civilians. If only folks would wander up to their friends at conventions and launch right into a particularly bizarre trainwreck-segue story, we could finally be spared the madness of "When'd ya get in?" and "Hey, your station sounds great." I spent most of this year's Country Radio Seminar telling folks about hearing Shania Twain's hard-driving "Don't Be Stupid (You Know I Love You)" cold-segued into Charlie Rich's "Behind Closed Doors" on well-respected country KASE Austin, Texas. I've also gotten a lot of mileage out of WBLN New York going from Mase's "What You Want" into Candi Staton's 1978 R&B midcharter "Victim" under a previous PD.

So I sort of knew I'd hear other folks' trainwreck stories, and I did. It also started a lively dialogue between the folks I'd E-mailed, some of whom apparently were encountering each other for the first time. Most of the stories were from the '70s and '80s. KFRC-FM San Francisco p.m. driver Ron Parker recalls hearing KKBQ (79Q) Houston segue from Devo's "Whip It" into SSgt. Barry Sadler's "The Ballad Of The Green Berets." WMGX Portland, Maine, PD Randi Kirshbaum weighed in with album QORS Minneapolis seguing from "Both Sides Now" by Joni Mitchell into "Iron Man" by Black Sabbath in its early days. That led Parker to come back with "Iron Man" into Helen Reddy's "I Am Woman" at WRFC Athens, Ga., in 1972. (Parker notes that he and his friends had deliberately requested "Iron Man" knowing the morning man wouldn't know what it sounded like until it was too late.)

In the early days of WHTX Pittsburgh (now WDRV), Clarke Ingram, now WPXY Rochester, N.Y., PD, once segued from "Love My Way" by the Psychedelic Furs into "Didn't I (Blow Your Mind)" by the Delfonics. WJBQ (Q97.9) Portland, Maine, PD Tim Moore recalled AC WRFD Columbus, Ohio, playing AC/DC's "Dirty Deeds Done Dirt Cheap" into Bobby Goldsboro's "Watching Scotty Grow." (I remember WRFD around the same time, by the way, as the only station still playing "Run Joey Run" by David Geddes in 1981. When that happens, nobody will

ever know what you play next.)

KMXV (Mix 93.3) Kansas City PD Jon Zellner once got an aircheck from a job applicant whose station segued from Three Dog Night's "Shambala" into "Macarena." The interviewee told Zellner that his station had never weeded its library in 30 years and was up to 2,000 titles.

Country consultant Bob Moody staged a "worst segue contest," as voted by the audience of his oldies show on WAKY Louisville, Ky., in the early '80s. The winner was Led Zeppelin's "Whole Lotta Love" into Stonewall Jackson's 1959 country crossover "Waterloo."

Even today, after nearly a decade of modernization, international radio remains a fertile ground for wide segues. Frequent "T4T" contributor Doug Fleming is spending a year in Hong Kong, where he recently heard RTHK Radio 3 segue from Ray Anthony Orchestra's "Dancing In The Dark" (the adult standard, not the Springsteen song) into Puff Daddy's "All About The Benjamins," which you think would've been banned in Hong Kong by now as part of its conversion to a glorious workers' paradise.

At top 40 CKIK Calgary, Alberta, PD Rob Mise reports hearing his rival, CKIS, segue from "Sex And Candy" by Marcy Playground into "Seven Year Ache" by Rosanne Cash. (It must be noted that the CKIK/CKIS battle makes the WFLZ/WRBQ Tampa, Fla., rivalry look friendly, so this submission must be taken in context. But since CKIS is a top 40/country hybrid whose positioner is "all the hits, all the time," it's not unlikely.) Similarly, KFRC's Parker claims to have heard smooth jazz rival KKSF segue from Enigma's "Sadness" into Dave Brubeck's "Take Five." And consultant Bob McNeill heard AC client WJDX Jackson, Miss., segue from "Unchained Melody" by the Righteous Brothers into "Pour Some Sugar On Me" by Def Leppard—before he began working with them.

McNeill noted that the best stories all concern '70s full-service MORs, back when those stations were grappling with modernization and the birth of the AC format. But even with research and even with most music pre-programmed, you still hear some classics. A friend's well-regarded major-market hot AC cold-segued about nine months ago from "Should I Stay Or Should I Go" by the Clash into "Because You Loved Me" by Celine Dion. They both tested, right?

But I'd rather hear trainwrecks than a lot of the mundanely bad radio I hear now. Music software hasn't stopped a lot of folks from following four pop records with four rhythmic titles. Or playing three ballads in a row. Or playing the same record in the same hour for three days in a row. And in an era when hearing Twain followed by Will Smith on mainstream top 40 is, for the author, a good thing, it's hard to get into too much trouble if you're well-produced. I'd rather see the end of the cold segue (which contributes nothing to humanity) than folks pruning their libraries too thoroughly.

PDs who are familiar with their station's own body of music are often so comfortable with it that they don't hear the same incongruities as an outsider. That doesn't mean they should drop the songs that keep their stations interesting (except, perhaps, for "Watching Scotty Grow," which is inexcusable under any circumstances). It just means that the station needs to be set up in such a way that listeners expect the unexpected.



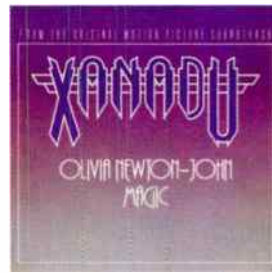
"I Honestly Love You"  
#1 1974



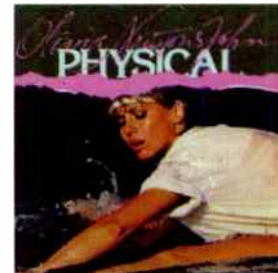
#1 1975



#1 1979



#1 1980



#1 1981



"I Honestly Love You"  
1998

What goes around comes around.

# OLIVIA NEWTON-JOHN

## "I Honestly Love You"

New Version Produced by David Foster

**Airplay 5/11**





## Monitor Survey Shows Top 40 Hits Still Breaking Closer To Home

Continued from page 1

that they charted at another format. Either way, the total is more records than top 40 has charted first at any time in the nearly two years that we've been looking at this issue. It's more indigenous hits than top 40 was playing last October, and the format was the biggest manufacturer of its own hits even then, with 11 total, of which eight were exclusives.

Modern rock was the second-greatest provider of mainstream top 40 hits, with a total of nine titles, seven of which were outright exclusives. If you include ties, modern was tied for second with adult top 40, which was also first to chart nine songs; eight of those, however, were ties, making adult top 40 first outright on only one subsequent top 40 hit, Billie Myers' "Kiss The Rain."

Rhythmic top 40 was fourth. It was first on a total of six songs, including two ties. Modern AC was next, with five songs, all of them ties. R&B radio, if you count mainstream and adult outlets together, was first on four songs outright. Album rock and triple-A were each first on two titles, including ties. AC was first on only one song. So was country, although the fact that country has been the starter format for any songs on two consecutive surveys represents a major change from the benign neglect top 40 usually shows country hits.

The songs that mainstream top 40 was first to chart outright this time included the current hits by Savage Garden, 'N Sync, Robyn ("Do You Really Want Me"), Backstreet Boys ("Everybody [Backstreet's Back]"), Chumbawamba, Aqua, S.O.A.P., the Tuesdays, Hanson, Mariah Carey, and She Moves.

Mainstream top 40's four ties were Madonna's "Frozen" (with rhythmic and adult top 40), Backstreet Boys' "As Long As You Love Me" (with rhythmic), "Are You Jimmy Ray?" (with adult top 40), and Vonda Shepard (with adult top 40).

### OTHER FORMATS CEDING CUSTODY?

That mainstream top 40 is first to chart so many of its own hits says a lot not only about PDs' determination to play records they can own, but also about the way several other traditional starter formats have evolved. Rhythmic top 40 had long ago ceded Euro-dance hits (of which there are few at the moment) to mainstream top 40, but over the past six months, the increasingly R&B-driven nature of key rhythmic top 40 outlets has meant that the danceable teen-idol records are also charting first at mainstream. In October '97, when we last examined this issue, mainstream and rhythmic were sharing custody of previous Robyn and Backstreet Boys singles. This time, mainstream top 40 was allowed to chart them first.

(Rhythmic was first outright on four hits: Janet's "Together Again," Uncle Sam's "I Don't Ever Want To See You Again," Will Smith's "Gettin' Jiggy Wit It," and K-Ci & JoJo's "All My Life.")

The same goes for adult top 40. At one time, you wouldn't have expected that format to let mainstream have a Mariah Carey single first. And you wouldn't have expected adult top 40 to sit out "Turn Back Time" or "It's Up To You" altogether. But the influx of modern adult outlets has pulled adult top 40 stations from anything that it considers too rhythmic or too teen.

Six months ago, adult top 40 was first only on two titles—both of them exclusives. Besides those hits previously mentioned, adult top 40 was tied this time for the lead on tracks by Natalie Imbruglia, Paula Cole ("Me"), Edwin McCain, Loreena McKennitt, and Alanis Morissette.

### MODERN NO LONGER TORN OVER POP

Modern rock, after a year or so of ceding custody of certain poppier titles to its modern adult brethren, roared back into contention last year. Last October, it was first on 10 titles, eight of them exclusives. This time, its seven exclusives were tracks by matchbox 20 ("3 AM"), Marcy Playground, Third Eye Blind, Smash mouth, Ben Folds Five, Green Day, and the Verve. Its two ties were on Imbruglia and Morissette.

And while modern adult and adult top 40 are often serviced with records shortly before mainstream top 40 gets them (or at the same time), modern rock gets to hold onto its hits for a while, especially given the tendency of most mainstream

top 40 PDs not to start playing those records until they're officially worked to top 40. Modern rock charted Marcy Playground's "Sex And Candy" 17 weeks before mainstream top 40. It charted Smash mouth's "Walkin' On The Sun" 11 weeks earlier. It started the Verve's "Bitter Sweet Symphony" 19 weeks earlier. (In fairness, it must be noted that mainstream top 40 wasn't given that particular record 19 weeks later; it just took mainstream that long to be forced on the song by the Nike commercials.)

Six months ago, we observed that most of the hits that crossed from modern rock to mainstream top 40 had to be vetted by modern adult stations first but that those stations were starting few titles of their own. Last October, modern AC was tied for first on one title but had no exclusives. This time, it was tied for first on five titles (tracks by Imbruglia, Cole, McCain, McKennitt, and Morissette) but still had no songs that it had charted first altogether. All of which says that it's hard for modern adult outlets to find records that are too soft for modern rock but not poppy enough for immediate top 40 support.

Moving now to your left, triple-A, which was first on five titles last time (three of them exclusives), had no exclusives this time and two ties, on tracks by McKennitt and Eric Clapton. Mainstream album rock, which hasn't been a major supplier of records to top 40 for some time, was tied for first on Clapton and first outright on "Open Up Your Eyes" by Tonic, which it originally charted in July 1996, before the multi-format success of "If You Could Only See."

### R&B INCHES BACK INTO CONTENTION

Six months ago, R&B radio, whose influence on mainstream top 40 has been marginal over the past three years, had almost fallen out of contention altogether. Last October, it could claim to have charted only one mainstream top 40 hit first, the Notorious B.I.G.'s "Mo Money Mo Problems."

This time, mainstream R&B was first on both Usher hits, "You Make Me Wanna..." and "Nice & Slow," as well as Destiny's Child's "No, No, No." Adult R&B was first on Brian McKnight's "Anytime," although that song still charted at mainstream R&B well before it charted at rhythmic top 40. (Adult R&B was tied for first on one song last October and had started no songs outright.)

An irony of recent years has been that mainstream top 40s have seemed more interested in R&B records *without* a pedigree at mainstream R&B. It's still the case that rhythmic top 40's four contributions to the mainstream top 40 chart were all R&B cuts, all four of those hits ("All My Life," "Gettin' Jiggy," "I Don't Ever Want To See You Again," and "Together Again") got some subsequent R&B chart action, with two of them, the Uncle Sam and K-Ci & JoJo titles, becoming major chart hits, suggesting that mainstream R&B is also willing to cede fewer records.

### AC STILL THE ONE FOR CELINE

AC stations were first to chart only one record outright this time, but what a record it was. Celine Dion's "My Heart Will Go On" charted at AC in early December, three weeks before charting at mainstream top 40 and two weeks before the opening of "Titanic." Although "My Heart" would become the fastest-breaking record in recent memory, it's worth noting that many mainstream top 40 PDs, still ambiguous in their support of Dion at that particular moment, couldn't see it at the time. (The week she charted at AC, Dion had 300 mainstream plays, with neither Greatest Gainer nor most-new-stations status.)

Technically, country was first to chart Shania Twain's "You're Still The One." The catch is that if you were to treat country as a 40-position chart, rather than a 75-position one, those honors would have gone to AC, too. Then again, you could also say the same about LeAnn Rimes' "How Do I Live." Without controlling for chart size, country has been the first format to chart a mainstream top 40 hit for two surveys in a row—something that hasn't happened in the format since at least 1992 and that hasn't happened regularly at country since the early '80s.

## MONITOR PROFILE

### Everyone Stand Back—Not Sure How Big Atlanta's Star 94 Will Get

**I**m not sure that anybody thought we could get this thing this high," says Dan Bowen, PD of Jefferson-Pilot's WSTR (Star 94) Atlanta. A year ago, Star was sitting at a 5.1 share—a fairly respectable 12-plus number, given the post-Telecom climate. Fast forward to April 1998, when the fall book delivered a whopping 8.1 share (the station's previous high had been a 7.2). In the just-released winter Arbitron survey, Star 94 scored an 8.3 share, making it No. 3 in the market. And, according to Bowen, WSTR is the market's No. 1-cuming music station.

To most industry observers, Star 94, while adhering to the "top 40 for the market" thesis, never really fit the commonly accepted mass-appeal top 40 template. On paper, some said, the station was damn near hot AC. "One ingredient that has been proved not to work here time and again is music from the rhythmic side," says Bowen. "I think a lot of people look at this market and assume that they could come in here, do mainstream, and be huge. If that was true, [the late WAPW] Power 99 would still be here."

Working with VP of programming Don Benson and MD J.R. Ammons, Bowen says, "We're

"The personalities and the marketing were already in place here," Bowen says. "We just fine-tuned the music. We know what our strengths are."

Those strengths include an already successful heritage radio station with a painfully stable air staff. "I wanted to be able to enhance that heritage without stepping on it," he says. "We just took the station in for a checkup and put all elements to the test, just to make sure everything was as good as we thought they should be. Over time, we tend to add so many layers that a station tends to become very broad. It was time to scrape off the old layers and get back to basics, and that needs to be done on a regular basis, because over time we've added this and this and this, and we want to make sure it's all still valuable."

Other, not-so-secret weapons at Bowen's disposal include Jefferson-Pilot VP of programming Don Benson, conveniently located down the hall (when he's not on the road). "I can draw upon Don's experience as a former PD of Star, but he's here only as an adviser," says Bowen. "I have no problem asking his opinion on issues, but he never sets any mandates for Star."

VP/GM Mark Kanov has been at the station for 30 years. OM/director of marketing Alan Hennes is an eight-year station vet. "Alan is the 'go to' guy here," says Bowen. "He's very well-connected and very professional."

Ammons "has developed a very keen programming sense but at his own pace," says Bowen, who is reminded of his own transition to the PD chair. "I told him that people will try to push you into a PD gig faster than you want to be pushed. I was in the same boat at around age 27 at WNCI. People were trying to push me at the time, but I never felt internally comfortable about it until Dave Robbins was promoted to GM and the Denver situation came up. By that time, I had developed the confidence to actually leave the nest and do it. To leave prematurely, you risk doing something that could end up being detrimental to your career."

The air staff is led by morning duo Steve McCoy and Vikki Locke, who have been together for more than 10 years, followed by middayer Kevin Steele and p.m. driver Craig Hunt, both in place more than five years each. Three-year vet Downtown Billy Brown does nights, followed by overnighter Terry Bello. "We have a lot of one-on-one meetings to make sure they feel good about what's happening during their shows," says Bowen, who initially met with all of the jocks to set goals for their respective air shifts. "I felt that we needed to give the station a face; it needed a bit more personality, entertainment value, and consistency from shift to shift to shift, including contesting and promotional events."

Even with such a stable full-time air staff, Bowen, like most PDs today, still has a tough time finding qualified, motivated people. "Everyone wants those diamonds in the rough, people who willingly go that extra mile, but it's getting tougher to find them," he says. "Our P/T air staff and promotion people are every bit as valuable as the full-timers." To that end, he makes it a point to listen to every tape that comes his way. "I'm always on the hunt for a P/T in the making, especially if they're local, even if they sound like they need a little grooming. You might find one out of a hundred tapes, but you never know when that one tape will pop up."

So, what about the conventional wisdom that those 8-share days are over in the major markets? "I'm not sure what to expect tomorrow," Bowen says. "I'd like to think we can always top ourselves. Our hard work is paying off, and I'd like to believe that this run will continue for some time to come." **KEVIN CARTER**



**Dan Bowen**  
Program Director  
WSTR Atlanta

*I'd like to think we can always top ourselves'*

very disciplined about the types of records that fit our sound, which really does translate into top 40 for Atlanta. We're fairly conservative and not out of the box on lots of stuff" (not surprisingly, very similar to the vibe at WNCI Columbus, Ohio, where Bowen spent 12 years). "Coming from the outside, I thought we could play certain songs, but after looking at the research, I found that there's a very clear-cut line, musically," he says.

Here's a 6 p.m. hour of Star 94: Sheryl Crow, "Everyday Is A Winding Road"; Backstreet Boys, "As Long As You Love Me"; U2, "I Still Haven't Found What I'm Looking For"; Natalie Imbruglia, "Torn"; Bobby Brown, "My Prerogative"; Hootie & the Blowfish, "I Go Blind"; Ben Folds Five, "Brick"; La Bouche, "Sweet Dreams"; Smash mouth, "Walkin' On The Sun"; Paula Cole, "Where Have All The Cowboys Gone?"; Janet Jackson, "Together Again"; John Mellencamp, "Small Town"; and Loreena McKennitt, "The Mumpers' Dance."

Bowen transferred to Star 94 in March 1997, after nine months at his first PD gig at Jefferson-Pilot sister KQKS Denver, which had just finished the transition from mainstream Mix 107.5 to rhythmic KS107.5. "Originally, when we flipped Mix, I told Don, 'If I'm not the right guy for this format, tell me now,'" Bowen says. "Don assured me that KS107.5 needed a solid thinker and a marketing guy, and I was that guy. It took me some time to learn the music, but after about 90 days into the new format, the signs were obvious that it was on its way."

Meanwhile, PD Kevin Peterson had exited Star 94, and Benson came calling on Bowen's 12 years of mainstream experience as APD/MD/promotion director at WNCI.



# BRANDY -&- MONICA



## The Boy Is Mine

brandy

Z100    KIIS    B96    KYLD    KKRZ  
KMEL    WIOQ    WPGC    KBXX    WNVZ  
KRBE    KTFM    WJMN    KUBE    WWKX  
KQKS    Z90    KHTS    KDWB    KKFR  
WERQ    WHHH    And Many, Many More!

Rhythmic Top 40 Debut (31)  
#1 Most New Stations  
#2 Greatest Gainer

Crossover Debut (27)  
#1 Most New Stations  
#1 Greatest Gainer

"The Boy Is Mine" produced by Rodney Jerkins  
for Darkchild Entertainment, Inc.  
Dallas Austin for Darp, Inc. and Brandy for Brand Nu, Inc.  
Monica appears courtesy of Arista Records, Inc.



www.atlantic-records.com

• New album NEVER - SAY - NEVER in stores June 9th

World Radio History

THE ATLANTIC GROUP ©1998 ATLANTIC RECORDING CORP. A TIME WARNER COMPANY



# WINTER '98 ARBITRONS

12-plus overall average quarter hour shares (#) indicates Arbitron market rank. Copyright 1998, Arbitron Ratings Co. May not be quoted or reproduced without the prior written permission of Arbitron.

Call Format '97 '97 '97 '97 '98

## SAN FRANCISCO—(4)

Call	Format	'97	'97	'97	'97	'98
KGO	N/T	7.0	6.5	6.8	6.6	6.4
KCBS	N/T	4.5	4.3	4.0	4.8	5.3
KOIT-AM-FM	AC	3.8	3.9	3.8	3.9	4.3
KYLD	top 40/rhythm	1.8	1.9	4.3	4.2	3.8
KIOI	AC	3.3	3.2	3.3	2.9	3.7
KISQ	R&B adult	2.4	2.7	1.8	3.0	3.5
KABL	adult std	2.1	2.5	3.0	3.2	3.3
KSFD	N/T	2.2	2.6	3.2	2.6	3.3
KFGB/KFFG	triple-A	3.0	3.0	2.9	2.9	3.2
KNOB	sports	3.1	4.3	4.5	4.1	3.1
KBXL	R&B adult	3.2	3.0	2.7	2.9	2.9
KFRC-AM-FM	R&B oldies	3.8	4.3	3.5	3.3	2.9
KZQZ	top 40	1.0	1.0	1.9	2.7	2.9
KMEL	R&B	4.1	3.9	3.7	3.4	2.8
KKSF	jazz	3.7	3.6	3.3	3.3	2.7
KLLC	AC	2.7	2.8	2.7	2.5	2.6
KDFC-FM	classical	2.6	2.5	2.7	2.8	2.3
KYCY	country	1.2	1.3	1.5	1.5	2.1
KTSN	cls rock	4.8	4.2	1.0	1.1	2.0
KNSA	modern	1.8	2.1	1.9	1.8	1.8
KOME	modern	2.0	2.0	2.1	1.9	1.8
KSJO	album	2.0	1.9	1.5	1.6	1.6
KBRG	Spanish	1.0	1.0	1.9	1.7	1.4
KSDJ/KZOL	Spanish	1.4	1.3	1.7	1.2	1.3
KBOY	AC	1.4	1.3	1.7	1.2	1.3
KLOK	Spanish	1.3	1.6	1.2	1.4	1.1
KRTY	country	1.0	1.0	1.3	1.7	1.0

## ATLANTA—(12)

Call	Format	'97	'97	'97	'97	'98
WRTO	Spanish	1.9	1.9	1.6	1.2	1.5
WJNA	N/T	2.1	1.8	1.7	1.4	1.4
WUSA	Spanish	1.4	1.5	1.4	1.6	1.4
WACC	Spanish	1.9	1.7	1.8	1.8	1.0
WFBA	Spanish	1.9	1.7	1.8	1.8	1.0
WSB-AM	N/T	9.0	8.3	8.9	9.3	11.0
WYEE	R&B	9.8	10.7	9.7	9.7	8.7
WSTR	top 40	5.9	7.3	7.0	8.1	8.3
WKXN-FM	country	8.3	6.7	6.1	7.3	6.6
WNNX	modern	5.0	4.8	5.1	5.5	5.9
WSP-FM	AC	4.3	5.1	5.5	5.7	5.9
WALR-AM-FM	R&B adult	6.2	5.9	6.2	6.3	5.6
WPCH	AC	5.6	4.9	5.9	5.1	5.6
WHTA	R&B	4.9	5.2	5.1	5.0	4.7
WGST-AM-FM	N/T	4.8	4.4	3.1	3.1	4.1
WKLS	album	4.5	4.8	4.7	4.5	3.8
WFOX	oldies	4.2	4.3	4.0	4.2	3.6
WZGC	cls rock	4.2	4.3	4.0	3.9	3.5
WYAY	country	3.4	3.6	4.0	3.4	2.9
WJFZ	jazz	2.3	2.8	3.2	2.6	2.4
WAMJ	R&B oldies	—	—	—	—	2.2
WAOK	religious	1.5	2.3	2.0	2.1	2.1

## SEATTLE—(13)

Call	Format	'97	'97	'97	'97	'98
KUBE	top 40/rhythm	6.1	7.1	6.9	6.3	5.9
KIRO-AM	N/T	6.7	8.3	6.6	7.2	5.6
KBSB-AM-FM	oldies	5.3	5.3	5.0	4.6	5.0
KLST	AC	3.9	3.0	4.0	3.4	4.8
KRPM/KBKS	top 40	2.8	2.5	3.2	3.8	4.6
KING	classical	4.5	4.3	3.4	3.5	4.3
KMPS-AM-FM	country	4.6	5.2	4.7	4.7	4.0
KHDD	modern	4.6	4.3	4.2	4.2	3.9
KVI	N/T	4.3	4.6	4.6	4.7	3.9
KISW	album	4.7	3.8	3.2	3.8	3.8
KRWZ	jazz	3.0	2.6	3.2	3.5	3.8
KIEM	adult std	2.9	4.6	3.7	4.0	3.6
KVPM	N/T	2.7	2.9	3.4	3.2	3.2
KOMO	N/T	4.0	3.7	3.4	3.4	3.2
KZOR	cls rock	4.0	3.7	3.4	3.4	3.2
KIR-FM	cls rock	3.6	3.3	2.9	2.6	3.1
KMTT	triple-A	3.8	2.9	3.1	3.1	3.1
KIRO-FM	N/T	2.3	2.0	2.3	2.8	2.9
KYCW	country	3.9	3.3	2.6	2.8	2.9
KIR-AM	sports	2.5	2.5	2.2	2.9	2.5
KCMS	religious	1.5	1.9	1.7	1.7	1.9
KMWX	N/T	1.3	1.0	1.3	1.5	1.2

## MINNEAPOLIS/ST. PAUL—(14)

Call	Format	'97	'97	'97	'97	'98
WCCO	N/T	13.0	11.5	11.6	12.3	11.8
KORS-FM	album	11.3	10.4	10.5	11.2	11.2
KEYE	country	6.4	6.9	7.5	8.0	8.1
KDWB	top 40	6.4	6.9	8.1	7.8	8.0
WLTE	AC	6.8	6.7	6.5	6.3	5.9
KSTP-AM	N/T	5.2	5.0	4.5	5.0	5.3
KOQL	oldies	5.4	5.0	5.3	4.5	5.2
KSTP-FM	AC	5.4	5.2	6.1	5.3	5.1
KTCZ	triple-A	3.6	4.4	4.5	4.0	3.8
KOOR	album	5.6	4.6	4.5	2.8	3.5
WRQC	album	4.3	4.5	3.1	3.8	3.5
KMJJ	jazz	2.4	3.1	2.9	2.9	3.1
KZNR/KZMZ/KZNT	modern	1.9	2.6	1.9	2.0	3.1
KFAN	sports	1.8	1.8	1.4	2.6	2.2
KLBB/WLOL	adult std	2.7	2.4	1.9	1.6	1.5

## PHOENIX—(17)

Call	Format	'97	'97	'97	'97	'98
KMLE	country	6.3	6.0	5.9	5.2	6.2
KTAR	N/T	6.3	5.5	5.6	6.4	5.7
KZEP	AC	3.4	4.5	4.4	4.7	5.7
KOFR	adult std	5.0	5.1	5.0	5.3	5.4
KSTP-FM	top 40/rhythm	4.7	4.9	5.9	4.3	5.3
KESZ	AC	4.2	3.8	4.2	4.9	5.2
KYCN	country	6.8	7.0	5.9	6.5	5.1
KDWB	oldies	4.8	6.0	5.4	5.2	4.7
KYCN	N/T	5.4	5.5	5.0	5.2	4.7
KOOL-FM	album	5.1	4.7	4.2	4.9	4.7
KFTY	jazz	3.3	3.1	3.9	3.6	3.6
KYOT	AC	2.8	2.9	2.6	3.0	3.4
KJLT	album	3.5	3.1	3.8	2.6	3.3
KDWB	modern	3.0	3.7	3.8	3.0	3.3
KEDJ/KDJJ	modern	4.0	3.6	3.4	3.5	3.2
KGLD	cls rock	1.9	1.7	2.1	2.4	2.4
KPTT/KRIM	top 40/rhythm	3.0	2.7	3.2	2.4	2.2
KSLX-AM-FM	cls rock	2.7	3.2	2.6	2.7	2.2
KWCV	country	1.3	1.9	1.4	2.2	1.9
KHOT-FM	R&B oldies	1.5	1.0	1.2	1.9	1.5
KVA-FM	Spanish	1.3	1.4	1.7	1.2	1.0

## ST. LOUIS—(18)

Call	Format	'97	'97	'97	'97	'98
KMOX	N/T	11.8	11.8	12.0	11.2	10.7
WIL	country	8.6	7.8	8.4	8.5	7.3
KEZZ	AC	6.9	6.1	6.0	5.5	6.8
KMJM	R&B	1.2	1.4	1.3	6.8	6.1
KSHE	album	4.0	4.4	4.5	4.6	5.0
KPNT	modern	4.7	5.4	4.6	4.6	4.9
KTRY	AC	4.9	4.9	5.3	4.8	4.7
KSLZ	top 40	7.1	7.2	7.3	1.8	4.6
WJWX	country	4.5	4.3	5.3	5.0	4.2
KLOU	oldies	4.3	4.9	4.6	3.7	3.9
KTRS	N/T	2.4	2.3	2.9	3.4	3.3
WVRV	triple-A	4.0	3.9	3.2	3.0	3.2
KIHT	cls rock	2.6	2.6	2.5	3.1	3.1
KATZ-FM	R&B adult	1.9	2.3	1.9	1.8	3.0
WALC	AC	4.0	4.2	4.1	3.7	2.9
KFUD-FM	classical	2.8	2.7	2.6	3.1	2.8
KSD-FM	album	3.2	3.0	2.8	3.0	2.5
WRTN	adult std	2.6	3.4	2.5	2.1	2.4
KDWB	R&B adult	2.6	2.4	2.4	2.3	2.1
KYPT	religious	1.5	1.0	1.9	2.1	1.9
KFNS	sports	1.2	1.8	1.1	1.2	1.0
WEW	adult std	1.2	1.0	1.1	1.1	1.0

## BALTIMORE—(19)

Call	Format	'97	'97	'97	'97	'98
WERQ	R&B	8.0	10.0	9.2	9.8	9.8
WBAL	N/T	8.5	7.5	9.4	7.0	6.8
WPCC	country	7.6	6.4	6.4	6.4	6.7
WJLF	AC	5.6	4.7	5.3	4.5	5.8
WQSR	oldies	6.0	6.2	6.8	7.2	5.5
WYNNX	AC	6.6	5.9	5.5	5.0	5.4
WYTY	top 40	3.5	3.3	3.8	4.1	4.8
WYNN-FM	R&B adult	3.6	3.8	3.6	3.4	4.1
WYYY	album	4.0	4.1	3.9	4.3	3.9
WCAO	religious	2.5	2.7	2.2	4.2	3.3
WOCF	cls rock	2.6	3.7	3.4	2.8	2.9
WHFS	modern	3.3	3.8	3.7	2.7	2.4
WRBS	religious	1.9	1.6	1.5	1.9	2.2
WCBM	N/T	2.5	2.5	2.1	2.3	2.1
WHUR	R&B adult	1.4	1.2	1.6	1.4	2.0

Call	Format	'97	'97	'97	'97	'98
WJFK-AM	N/T	1.6	1.8	1.6	1.8	1.7
WPCF-FM	R&B	1.6	1.6	1.4	1.6	1.7
WASA/WVWG	country	1.3	1.0	1.2	1.3	1.2
WGRX	adult std	1.3	1.0	1.5	1.2	1.2
WOLB	N/T	1.0	1.0	1.0	1.2	1.2
WVIN-AM	religious	1.0	1.0	1.0	1.2	1.2
WRMR-FM	triple-A	1.0	1.0	1.0	1.2	1.2
WRQX	AC	1.2	1.0	1.4	1.1	1.0

## PITTSBURGH—(20)

Call	Format	'97	'97	'97	'97	'98
KDKA	N/T	12.2	13.7	11.9	12.4	12.6
WQVE	album	9.0	8.8	9.0	9.2	8.6
WOST-AM-FM	country	7.5	8.3	8.1	7.4	7.4
WRZZ	top 40	6.3	7.2	6.5	6.5	6.9
WIAS	adult std	4.5	4.3	5.0	5.2	6.2
WWSW-AM-FM	oldies	5.3	5.9	6.3	5.6	5.6
WSSH	AC	5.4	4.4	4.1	4.6	5.4
WLTI	AC	4.3	3.7	3.6	3.9	4.4
WAMO-FM/WSSZ	R&B	3.4	3.1	4.0	3.4	4.3
WDXD	modern	5.3	5.0	4.8	5.0	4.2
WZPT	cls rock	2.5	3.2	3.1	3.5	3.9
WDRV	AC	3.3	3.1	3.5	3.2	2.8
WUJJ	jazz	3.8	3.7	3.3	3.5	2.8
WRRK	cls rock	2.6	3.1	2.8	2.4	2.7
WASP-FM	country	1.0	1.5	1.0	1.5	1.7
WTAE	N/T	3.8	3.5	3.6	3.4	3.4
KOV	N/T	1.1	1.0	1.1	1.2	1.3

## TAMPA, FLA.—(21)

Call	Format	'97	'97	'97	'97	'98
WFLZ	top 40	9.5	9.5	10.4	9.3	9.7
WDOV	adult std	8.1	6.7	8.7	7.1	7.0
WYUF-FM	country	8.2	6.8	7.2	8.3	6.9
WFLA	N/T	5.8	6.4	7.1	6.3	6.5
WTBT	cls rock	2.2	2.9	2.8	5.5	5.8
WXTB	album	4.8	5.3	4.9	4.5	5.6
WFRM	AC	5.6	6.1	4.6	6.5	4.8
WRBQ-FM	country	5.0	4.8	4.9	4.4	4.6
WWSJ	jazz	3.3	3.5	4.1	3.9	4.6
WWSR-FM	AC	4.2	4.4	3.6	3.5	4.4
WFLU-AM-FM	adult std	3.7	3.3	4.5	4.2	4.3
WFOU	oldies	3				



# COUNTRY AIRPLAY Monitor

We Listen To Radio •

December 19, 1997 \$2.95 Volume 4 • No. 51

## Some See Paid Play As Valid Tool, But PDs Fear Loss Of Control

by Kevin Carter, Janine Coveney, Dana Hall, Marc Schiffman, and Phyllis Stark

With broadcasters scrambling for new revenue streams, it was inevitable that the issue of paid airplay by labels would resurface. Such programs have been attempted several times from the

ative ways to increase that revenue. For years, AM stations have run infomercials as longform programming for cash."

Benson believes that for such a program to work, "you would have to leave the programming department out of it, at least initially, and set it up as

# ROCK AIRPLAY Monitor

We Listen To Radio •

March 20, 1998 \$4.95 Volume 5 • No. 12

## Pay For Play Lands At KUFO

by Marc Schiffman

American Radio Systems-owned album outstation and Flip/Interscope has become the first label to overtly engage in the hotly debated practice of "pay for play" since the long-running controversy resurfaced last fall.

Dave Numme, OM of KUFO and modern AC sister KBBT, startled the

about the Limp Bizkit spins and that Flip/Interscope is getting a better return than it might have from another promotion or other incentive in that it's act is given significant airplay. "It's a more efficient use of money for the record companies," Numme says, because that money usually "concerns getting the record to the PDs. This

You read about it here first!  
(again)

THE BOSTON GLOBE THURSDAY, APRIL 2, 1998

## Pay-for-play makes a disquieting return

By Clea Simon  
GLOBE STAFF

When legendary DJ Alan Freed took cash to spin certain songs, his act was called payola, he was indicted, and

play arrangement as the wave of the future, an inevitable result of declining record sales and radio station consolidation.

"The record industry is suffering," says Geddis, program director of WBCN-FM (94.1).

"What we're going to see are alternative ways of marketing music."

Inevitable or not, many find the implications of the Portland airtime-for-cash precedent disquieting. Radio exposure is what sells records,

competitor to the NBC institution.

Promising "a show that deals in reality" with "wackos from all walks of life," Stern's jokey press conference suggested a mix of current

and scripted radio. The show will have a star, Stern, the star probably

# Los Angeles Times

SUNDAY MORNING, MARCH 29, 1998

## Label Pays Real Money for 'Counterfeit' Airing

MONDAY, MARCH 16, 1998 B1

THE WALL STREET JOURNAL

# MARKETPLACE

Technology: Compaq will give away accessories to reduce its volume Page B10.

Health: FDA approves an ultrasound device to detect osteoporosis Page B10.

## Radio's New Spin on an Oldie: Pay-for-Play

By PATRICK M. REILLY  
Staff Reporter of THE WALL STREET JOURNAL  
A decade after the record industry's last payola scandal, radio stations are again exploring the notion of swapping air time, they say, the

Meanwhile, EMI Group's Capitol Nashville record label, home of Garth Brooks, is pitching the idea of paying radio-station groups perhaps \$1 million for an hour of prime programming time for its artists. And Jacor Communications Inc., whose

### Nashville Unplugged

The percentage of U.S. music consumers buying country music is going down



# The New York Times

NEW YORK, TUESDAY, MARCH 31, 1998

## Pay-for-Play Back on the Air But This Rendition Is Legal

By NEIL STRAUSS

In January, a radio station in Portland, Ore., and a record label in Los Angeles struck an unusual arrangement. The record company, Flip/Interscope, agreed to pay the radio station, KUFO-FM, about \$5,000 to play a song by one of the label's

times during five "Counterfeit," is by hip-hop-influenced whose music the considered a lit-audience.

their minds, making it the most rock station one of the most revenue-raising radio industry for several months, pay-for-play that executives either hope or

scandal-mired practice of past decades when reigning rock disk jockeys like Alan Freed were dethroned after they admitted to accepting money from record labels in exchange for spinning certain songs. But there is a difference between payola and pay-for-play.

Laws against payola, according to the radio regulators at the Federal Communications Commission, protect broadcasters (more specifically than the public), prohibiting employees from receiving money or gifts under the table in exchange for sneaking records on the playlist. Pay-for-play occurs when a station receives the money upfront and discloses to listeners at the time of broadcast that the song or block of programming involved has been paid for. This approach is legal, like

# AIRPLAY Monitor

We Listen To Radio •



**Strongest Increase In Airplay This Week**

**MAINSTREAM TOP 40** INCREASE IN PLAYS

<b>FASTBALL • The Way (HOLLYWOOD)</b>	+541
<small>WKSV +37, KSMB +24, WAEB +23, WAPE +21, WABB +20, WWHT +19, KKRD +17, KJYO +16, WXIS +15, WFLY +14</small>	
<b>ALANIS MORISSETTE • Uninvited (WARNER SUNSET/REPRISE)</b>	+458
<small>WBHT +22, KDWB +18, WAEB +17, WNTQ +16, WLSS +16, WPRO +16, KRUF +15, WLAN +15, WKCI +15, WDJX +15</small>	
<b>NATALIE MERCHANT • Kind &amp; Generous (ELEKTRA/EEG)</b>	+452
<small>WSTR +22, WKSZ +21, WKSE +20, WZPL +20, WYOY +19, WQSL +19, WAPE +19, KBKS +18, KRUF +15, WKRZ +15</small>	
<b>THE WALLFLOWERS • Heroes (SONY MUSIC SOUNDTRAX/EPIC)</b>	+391
<small>WKRQ +23, WABB +20, WXLK +18, WSTR +17, KKLQ +17, WAEB +15, WQSL +14, WCIL +13, KSMB +13, WIXX +13</small>	
<b>GOO GOO DOLLS • Iris (WARNER SUNSET/REPRISE)</b>	+369
<small>WQSL +21, WPST +17, KUMX +16, KZZU +16, WNNK +16, KHFI +16, KALC +16, KCHZ +14, KSMB +14, KZHT +12</small>	
<b>SHANIA TWAIN • You're Still The One (MERCURY)</b>	+348
<small>WFLY +31, KKRD +30, WZJM +23, KHFI +23, KJYO +21, WWSR +19, WKCI +16, KDWB +16, WQSL +14, WDDJ +14</small>	
<b>BRIAN MCKNIGHT • Anytime (MOTOWN)</b>	+287
<small>WDJX +24, KIIS +23, WKSZ +18, KZZU +18, KUMX +17, WNOK +17, WKRZ +14, WYCR +13, WXXX +12, WNKS +11</small>	
<b>MARCY PLAYGROUND • Sex And Candy (CAPITOL)</b>	+285
<small>WWHT +32, WABB +31, WLAN +25, KDWB +22, WPST +21, WNCI +18, KMXV +14, WAPE +14, WZPL +14, WYOY +11</small>	
<b>NEXT • Too Close (ARISTA)</b>	+260
<small>WWHT +36, KZQZ +28, KHFI +26, WKSZ +16, KKMG +14, WYCR +13, WKSE +13, WDDJ +11, WGTZ +11, WLKT +10</small>	
<b>VONDA SHEPARD • Searchin' My Soul (550 MUSIC)</b>	+260
<small>WLSS +15, WQZQ +13, KSMB +11, WVKX +11, WWCK +11, KKRD +11, WXIS +9, WXLK +9, WHYI +9, WLKT +8</small>	

**RHYTHMIC TOP 40** INCREASE IN PLAYS

<b>SPARKLE • Be Careful (ROCK LAND/INTERSCOPE)</b>	+286
<small>KISV +38, KLUC +32, WWKX +32, KQKS +31, KOHT +25, XHTZ +24, WKXJ +16, KQMQ +15, KIOX +14, WHHH +10</small>	
<b>BRANDY &amp; MONICA • The Boy Is Mine (ATLANTIC)</b>	+282
<small>KIOX +35, KUBE +28, WWKX +27, KHTS +22, WHHH +22, WJMN +20, KKSS +19, XHTZ +16, KDGS +12, KQKS +12</small>	
<b>USHER • My Way (LAFACE/ARISTA)</b>	+184
<small>XHTZ +26, KHTS +24, KYLZ +23, KKSS +19, KLUC +18, KCAQ +16, KDON +15, KZFM +12, WHHH +12, KGGI +11</small>	
<b>PRAS MICHEL FEAT. OL' DIRTY BASTARD &amp; MYA • Ghetto Supastar (That Is What You Are) (INTERSCOPE)</b>	+164
<small>KYLZ +43, KISV +19, KCAQ +18, KIKI +15, WHHH +9, KYLD +9, KKSS +9, KSFM +9, KTFM +9, XHTZ +8</small>	
<b>MARIAH CAREY • My All (COLUMBIA)</b>	+143
<small>WKXJ +28, WBBM +17, KHTS +16, WJJS +11, WWKX +10, KDON +9, XHTZ +8, KQMQ +7, KIKI +7, WDRQ +6</small>	
<b>IMAJIN FEAT. KEITH MURRAY • Shorty (You Keep Playin' With My Mind) (JIVE)</b>	+128
<small>KOHT +18, KHTS +14, WJJS +14, KKSS +14, XHTZ +13, WWKX +12, WFNH +10, KIOX +9, WHHH +8, KQMQ +6</small>	
<b>LINK • Whatcha Gone Do? (RELATIVITY)</b>	+96
<small>KISV +35, KDON +15, KQKS +14, WKXJ +13, KCAQ +11, WHHH +4, KIKI +3, KSFM +3, KDGS +2, KBOS +2</small>	
<b>PUBLIC ENEMY • He Got Game (DEF JAM/MERCURY)</b>	+86
<small>KUBE +26, WHHH +23, WJMN +11, KOHT +9, KYLZ +7, KKSS +6, WJJS +3, KBOS +2, KISV +1, WWKX +1</small>	
<b>TAMIA • Imagination (QWEST/WARNER BROS.)</b>	+85
<small>KOHT +20, KDON +15, WKXJ +15, KIOX +15, KIKI +14, KBOS +10, KHTS +9, KCAQ +6, WHHH +5, WJJS +4</small>	
<b>BACKSTREET BOYS • Everybody [Backstreet's Back] (JIVE)</b>	+82
<small>KPRR +28, WKXJ +23, KIOX +18, WWKX +17, KIKI +10, WKTU +7, KLUC +6, WDRQ +5, KZFM +3, KTFM +3</small>	

**CROSSOVER** INCREASE IN PLAYS

<b>BRANDY &amp; MONICA • The Boy Is Mine (ATLANTIC)</b>	+729
<small>KOHT +33, KMEL +31, WTLN +30, KBXX +29, WFXA +28, KUBE +28, WPGC +28, WWKX +27, KKBT +26, WJBT +26</small>	
<b>SPARKLE • Be Careful (ROCK LAND/INTERSCOPE)</b>	+569
<small>KISV +38, KLUC +32, WWKX +32, KQKS +31, WCKX +30, WQHT +29, WGZB +28, WIZF +28, XHTZ +24, KPWR +23</small>	
<b>PRAS MICHEL FEAT. OL' DIRTY BASTARD &amp; MYA • Ghetto Supastar (That Is What You Are) (INTERSCOPE)</b>	+273
<small>WJMH +44, KYLZ +43, KPWR +23, KISV +19, KCAQ +18, KIKI +15, WJHM +10, WERQ +9, WHHH +9, KYLD +9</small>	
<b>USHER • My Way (LAFACE)</b>	+262
<small>KKDA +27, XHTZ +26, KYLZ +23, KPWR +22, KKSS +19, WIZF +19, KLUC +18, KCAQ +16, WGZB +15, WCKX +14</small>	
<b>BRIAN MCKNIGHT • The Only One For Me (MOTOWN)</b>	+255
<small>KIKI +52, WIZF +24, WJBT +23, KLUC +15, WSGF +14, WENN +13, KBXX +12, WROU +10, WCHB +9, WKXJ +9</small>	

**MODERN ADULT** INCREASE IN PLAYS

<b>NATALIE MERCHANT • Kind &amp; Generous (ELEKTRA/EEG)</b>	+545
<small>WPTE +26, KAMX +23, KZZO +23, WVRV +21, KYSR +21, WSHE +20, KPEK +19, KTNP +19, WLNK +19, KZZP +18</small>	
<b>GOO GOO DOLLS • Iris (WARNER SUNSET/REPRISE)</b>	+201
<small>WVRV +24, WALC +21, KYSR +17, KALC +16, WMXB +15, KLLC +12, WSSR +12, KBBT +10, KAEP +9, WKZL +9</small>	
<b>CHERRY POPPIN' DADDIES • Zoot Suit Riot (MOJO/UNIVERSAL)</b>	+146
<small>KPEK +24, KZZO +17, WDCG +16, WXLE +15, WLNK +14, WSHE +11, KFMB +9, KKPN +6, KMXB +6, WMXB +6</small>	
<b>FASTBALL • The Way (HOLLYWOOD)</b>	+124
<small>WMXB +24, WSHE +17, KBBT +16, KMXB +13, KZZP +12, WWCD +12, KZZO +10, KPEK +9, WDCG +9, WKZL +8</small>	
<b>THE WALLFLOWERS • Heroes (SONY MUSIC SOUNDTRAX/EPIC)</b>	+118
<small>WPTE +26, WKRQ +23, KBBT +18, WSHE +17, KZZP +15, WXLE +14, WBAM +9, KTNP +7, WPLT +6, KLLY +5</small>	

**ADULT TOP 40** INCREASE IN PLAYS

<b>NATALIE MERCHANT • Kind &amp; Generous (ELEKTRA/EEG)</b>	+494
<small>WPTE +26, KVVU +24, KAMX +23, KZZO +23, KYSR +21, WSHE +20, KPEK +19, KTNP +19, WLNK +19, KZZP +18</small>	
<b>GOO GOO DOLLS • Iris (WARNER SUNSET/REPRISE)</b>	+263
<small>WIOG +22, WALC +21, WRAL +20, KYSR +17, WAKS +17, WMXB +15, KBEE +13, KLLC +12, WSSR +12, WQAL +11</small>	
<b>VONDA SHEPARD • Searchin' My Soul (550 MUSIC)</b>	+213
<small>KAMX +25, KPEK +19, WMC +18, WRQX +16, KISN +14, WSNE +12, WQLH +11, WKDD +10, WMXL +8, KVVU +8</small>	
<b>FASTBALL • The Way (HOLLYWOOD)</b>	+207
<small>WMXB +24, WKDD +17, WSHE +17, KBBT +16, WEZB +15, KSTP +15, KMXB +13, KZZP +12, WMC +11, KZZO +10</small>	
<b>ALANIS MORISSETTE • Uninvited (WARNER SUNSET/REPRISE)</b>	+169
<small>KLLC +18, KAMX +16, WENS +13, WPLJ +13, KLLY +12, WKDD +10, KHMV +10, KOZN +10, WSHE +10, WEZB +9</small>	

**ADULT CONTEMPORARY** INCREASE IN PLAYS

<b>GLORIA ESTEFAN • Heaven's What I Feel (EPIC)</b>	+127
<small>WINK +22, KGBY +18, KEZK +11, WTFM +10, WJDX +9, KMZQ +9, WARM +7, WLEV +5, KKCW +5, KISC +4</small>	
<b>MARIAH CAREY • My All (COLUMBIA)</b>	+89
<small>WLTS +27, WINK +22, KSSK +10, WBEB +7, WJDX +7, WMJQ +5, KSNE +4, WYJB +3, KOSI +3, KUDL +2</small>	
<b>SARAH MCLACHLAN • Adia (ARISTA)</b>	+89
<small>WAHR +15, WLIF +12, KESZ +11, WRRM +10, WMJQ +9, WRMF +8, KGBX +5, WLEV +4, KISC +4, WGSY +3</small>	
<b>NATALIE IMBRUGLIA • Torn (RCA)</b>	+60
<small>WLTS +12, KBIG +7, KIMN +6, WLTV +6, WALK +6, KLSY +6, KKCW +6, KTDY +4, WGSY +3, WLHT +3</small>	
<b>MADONNA • Frozen (MAVERICK/WARNER BROS.)</b>	+57
<small>KMZQ +13, KGBX +8, KTDY +7, KMGA +7, WEZF +6, WMYI +6, WLHT +5, WLEV +4, WDEF +4, WSHH +4</small>	



**TAMI DAVIS**  
**HOW DO I SAY**  
**I'M SORRY?**

**GOING FOR**  
**CHR / RHYTHMIC**  
**ADDS MAY 19TH**

ALREADY ADDED TO





## Let's Not Forget:

- "Sweet Dreams" album=2x platinum!
- "Be My Lover"-#16 most played song of 1996!
- "Sweet Dreams"- #13 most played song of 1996!
- #4 most played artist of 1996 with 3 charted hits!
  - Over 375,000 La Bouche BDS spins!

**You Won't Forget Me**

# **La Bouche**

*from the forthcoming album SOS*



## They didn't forget:

- WKTU/New York (20x)
- B96/Chicago (10x)
- Y100/Miami (add)
- KHKS Dallas (add)
- Z95.7/San Francisco (35x)
- KRBE/Houston (add)
- WWZZ/Washington **\*\***(34x)
- WXYV/ Baltimore (add)
- KSLZ/St. Louis (add)
- WBLI Long Island (30x)
- WNVZ/Norfolk (add)
- WKSL/Memphis (add)
- KCHZ/Kansas City (20x)
- & many more**

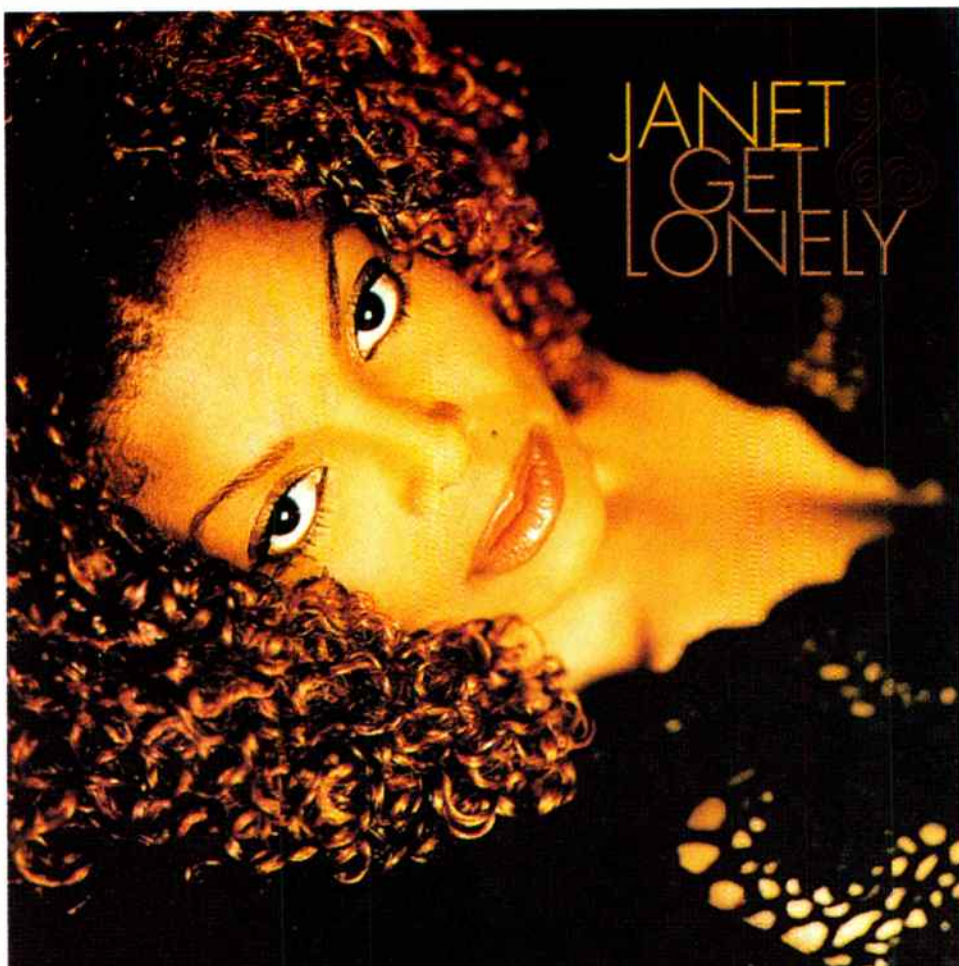
**\*\*Already on Top 10 callout overall at WWZZ/Washington**



A FM Production for AME - Miami, FL  
Mixed by FMP  
Managed by Thor Enterprises  
Website: [www.labouche.de/](http://www.labouche.de/)

The RCA Records Label is a unit of BMG Entertainment. World Radio History. © 1998 BMG Entertainment





# JANET GET LONELY

THE FOLLOW-UP TO  
THE #1 SMASH "TOGETHER AGAIN"  
FROM THE DOUBLE-PLATINUM ALBUM  
**THE VELVET ROPE**

"The call-out is looking great... Top 10 overall. Sales are also very strong in the market. Janet is a hit artist with a hit record and hot tour."  
- Danny Ocean - APD/MD - Z95/San Francisco

"Janet is pulling Top 10 phones!!!" - Rich Davis - MD - KDWB/Minneapolis

### BDS NUMBERS

TOP 40 MAINSTREAM **37** - **36**

TOP 40 RHYTHM **6**

CROSSOVER **3**

R&B **2**

ON OVER 120 STATIONS INCLUDING:

WKTU	KKFR	KIIS	KPTY	KKBT	KHTS	KPWR	XHTZ
WBBM	KKLQ	KMEL	KQMQ	KYLD	WXYV	Z95.7	KIKI
KHKS	WERQ	WDRQ	WWKX	WJMN	WFLZ	WHYI	KKSS
KDWB	KGGI	WWZZ	KRQ	WPOW	KOHT	KUBE	WKSE

### SOUNDCAN

#26 (36,232 UNITS THIS WEEK)

NORTH AMERICAN TOUR STARTS JULY 9TH...  
OVER 50 CITIES IN FOUR MONTHS!!!

CONTAINS REMIXES BY:  
TEDDY RILEY (FEATURING BLACKSTREET)  
JIMMY JAM & TERRY LEWIS  
AND JASON NEVINS



HEAVY



MEDIUM



Executive Producers: Janet Jackson and René Elizondo, Jr.  
Produced by Jimmy Jam & Terry Lewis  
(for Flyte Tyme Productions, Inc.) and Janet Jackson  
RD Worldwide Management, B.V.  
<http://www.janet-jackson.com>  
© 1998 Black Doll, Inc.



# MAINSTREAM TOP 40

## POWER PLAYLISTS



AIRPLAY  
**Monitor**

For Week Ending  
May 3, 1998

Playlists supplied by Broadcast Data Systems' Radio Track service. Songs ranked by number of plays in monitored week. Playlists are listed in order of TSA weekly curve, beginning with the highest-ranking station. Curves are updated twice yearly following the release of the Spring and Fall Arbitron surveys. The number of stations shown each week varies depending upon space.

MUSIC TELEVISION	
1	Lord Tariq & Peter Gunz, Deja Vu 33 34
2	K-Ci & JoJo, All My Life 31 36
3	Dave Matthews Band, Don't Drink The Water 28 26
4	Marcy Playground, Sex & Candy 28 28
5	Puff Daddy & The Family, Victory 27 31
6	Mariah Carey, My All 27 29
7	Natalie Imbruglia, Torn 26 30
8	Garbage, Push It 26 28
9	Backstreet Boys, Everybody 26 26
10	Next, Too Close 24 30
11	Janet, I Get Lonely 23 26
12	Master P, Make 'em Say Ugh 23 24
13	Destiny's Child, No, No, No 21 6
14	Semisonic, Closing Time 21 6
15	Fastball, The Way 21 17
16	The Wallflowers, Heroes 20 11
17	Hanson, Weird 20 21
18	Mase, What You Want 19 11
19	Will Smith, Gettin' Jiggy Wit It 19 23
20	Ice Cube, We Be Clubbin' 19 13
21	Goo Goo Dolls, Iris 19 1
22	Matchbox 20, Real World 16 10
23	Brian McKnight, Anytime 15 20
24	Everclear, I Will Buy You A New Life 15 21
25	Usher, Nice & Slow 14 22
26	'N Sync, I Want You Back 14 6
27	Cherry Poppin' Daddies, Zoot Suit Riot 12 11
28	Green Day, Time Of Your Life 12 9
29	Robyn, Do You Really Want Me 12 9
30	Matchbox 20, 3 AM 10 7
31	Montell Jordan W/Master P, Let's Ride 10 11
32	Savage Garden, Truly Madly Deeply 10 2
33	Shania Twain, You're Still The One 8 0
34	Radiohead, No Surprises 7 6
35	Usher, You Make Me Wanna 7 3
36	Puff Daddy, Been Around The World 7 5
37	Mase, Feel So Good 7 4
38	Busta Rhymes, Turn It Up 7 5
39	Boyz II Men, Can't Let Her Go 6 9
40	Sylk-E. Fyne, Romeo And Juliet 6 2

MUSIC TELEVISION	
1	Fastball, The Way 26 24
2	Pulp, This Is Hardcore 26 26
3	Robert Bradley, Bellybone 24 15
4	Verve, Lucky Man 24 24
5	2Pac, Do For Love 24 22
6	Fuel, Shimmer 24 21
7	Jerry Cantrell, Cut You In 24 24
8	Elliott Smith, Miss Misery 24 20
9	Semisonic, Closing Time 23 27
10	Radiohead, No Surprises 22 29
11	Mary Lou Lord, Lights Are Changing 21 19
12	Texas, Black Eyed Boy 20 21
13	Urge, Jump Right In 20 19
14	Propellerheads, History Repeating 20 21
15	Barenaked Ladies, Brian Wilson 19 21
16	Busta Rhymes, Turn It Up 19 20
17	Sneaker Pimps, Post-Modern Sleeze 18 20
18	Public Enemy, He Got Game 18 20
19	Spacehog, Mungo City 17 15
20	DJ Honda, On The Mic 14 14
21	Third Eye Blind, Losing A Whole Year 13 12
22	Sarah McLachlan, Adia 13 15
23	Scott Weiland, Barbarella 13 24
24	Supergrass, Late In The Day 12 13
25	Pietasters, Out All Night 12 15
26	Stereophonics, A Thousand Trees 12 13
27	Getaway People, She Gave Me Love 12 15
28	Hum, Green To Me 12 7
29	The Mighty Mighty Bosstones, Wrong Thing Rig 12 13
30	Daft Punk, Revolution 909 11 22
31	Cappadonna, Slang Editorial 11 10
32	Mono, Life In Mono 11 9
33	Portishead, Only You 11 15
34	Agents Of Good The Roots, Come On 11 13
35	Stabbing Westward, Save Yourself 11 9
36	Plastilina Mosh, Mr. P. Mosh 11 11
37	Paula Cole, Me 10 15
38	God Lives Underwater, From Your Mouth 10 14
39	Jeremy Topack, The Word Behind Words 9 12
40	Pras Michel Feat. Of Dirty Bas, Ghetto S 9 12

Z100	
1	Natalie Imbruglia, Torn 65 59
2	Janet, Together Again 62 61
3	Savage Garden, Truly Madly Deeply 60 60
4	Will Smith, Gettin' Jiggy Wit It 59 61
5	K-Ci & JoJo, All My Life 57 43
6	Madonna, Frozen 47 65
7	Amber, One More Night 41 39
8	The Notorious B.I.G., Mo Money Mo Problems 40 34
9	Matchbox 20, 3 AM 39 43
10	Celine Dion, My Heart Will Go On 39 42
11	Brian McKnight, Anytime 39 38
12	Paula Cole, I Don't Want To Wait 35 38
13	Alanis Morissette, Uninvited 34 30
14	Marcy Playground, Sex & Candy 34 38
15	Shania Twain, You're Still The One 31 26
16	Billie Myers, Kiss The Rain 29 31
17	Selena, Dreaming Of You 29 30
18	Mariah Carey, My All 28 23
19	Inej, Love You Down 27 35
20	Third Eye Blind, How's It Going To Be 26 28
21	Smash Mouth, Walkin' On The Sun 22 25
22	Backstreet Boys, As Long As You Love Me 22 24
23	Spice Girls, Stop 21 19
24	Diana King, I Say A Little Prayer 21 20
25	Fastball, The Way 21 18
26	LaAnn Rimes, How Do I Live 20 25
27	Puff Daddy & Faith Evans, I'll Be 19 19
28	Matchbox 20, Real World 18 17
29	Usher, You Make Me Wanna 18 24
30	S.O.A.P., This Is How We Party 17 13
31	Z Unwitted, Get Ready For This 16 13
32	Backstreet Boys, Everybody 16 18
33	Chumbawamba, Tubthumping 15 15
34	Fugees, No Woman, No Cry 15 11
35	Real McCoy, Run Away 14 8
36	Various Artists, The Jock Jam 14 13
37	Everything But The Girl, Missing 14 13
38	Vonda Shepard, Searchin' My Soul 13 10
39	Sugar Ray, Fly 13 11
40	Janet, Dreamer 13 8

KIIS	
1	Natalie Imbruglia, Torn 72 69
2	Third Eye Blind, How's It Going To Be 70 68
3	K-Ci & JoJo, All My Life 69 68
4	Madonna, Frozen 61 61
5	'N Sync, I Want You Back 54 44
6	Savage Garden, Truly Madly Deeply 52 70
7	Janet, Together Again 47 24
8	Will Smith, Gettin' Jiggy Wit It 45 61
9	Uncle Sam, I Don't Ever Want To See You 44 71
10	Janet, Together Again 37 38
11	Backstreet Boys, As Long As You Love Me 37 37
12	Usher, Nice & Slow 37 36
13	Matchbox 20, 3 AM 36 35
14	Amber, One More Night 36 40
15	Usher, You Make Me Wanna 35 37
16	Janet, I Get Lonely 34 35
17	Fastball, The Way 34 29
18	Mono, Life In Mono 34 26
19	Destiny's Child, No, No, No 31 24
20	Smash Mouth, Walkin' On The Sun 26 25
21	Wyclef Jean, Gone Till November 25 26
22	Robyn, Show Me Love 24 27
23	Next, Too Close 24 24
24	Mariah Carey, My All 24 25
25	The Notorious B.I.G., Mo Money Mo Problems 24 22
26	Billie Myers, Kiss The Rain 23 23
27	Madonna, Ray Of Light 22 19
28	S.O.A.P., This Is How We Party 20 19
29	Alanis Morissette, Uninvited 20 12
30	Vonda Shepard, Searchin' My Soul 18 15
31	Cherry Poppin' Daddies, Zoot Suit Riot 18 10
32	Paula Cole, I Don't Want To Wait 17 25
33	Mase, Feel So Good 17 23
34	No Flavour, Heaven 16 17
35	Gloria Estefan, Heaven's What I Feel 16 13
36	Public Announcement, Body Bumpin' 16 12
37	Daft Punk, Around The World 14 6
38	Boyz II Men, 4 Seasons Of Loneliness 12 11
39	Paula Cole, Me 12 11

KISS 108	
1	Marcy Playground, Sex & Candy 62 61
2	Natalie Imbruglia, Torn 60 62
3	Savage Garden, Truly Madly Deeply 59 59
4	Shania Twain, You're Still The One 58 55
5	Third Eye Blind, How's It Going To Be 58 61
6	Backstreet Boys, As Long As You Love Me 55 43
7	Sarah McLachlan, Adia 49 41
8	Janet, Together Again 41 39
9	Verve, Bitter Sweet Symphony 40 35
10	Fleetwood Mac, Landslide 41 39
11	Edwin McCain, I'll Be 40 36
12	Billie Myers, Kiss The Rain 39 36
13	K-Ci & JoJo, All My Life 37 38
14	Matchbox 20, Real World 32 30
15	Vonda Shepard, Searchin' My Soul 31 32
16	Matchbox 20, 3 AM 30 34
17	Mariah Carey, My All 30 29
18	Rebekah, Sin So Well 30 31
19	Paula Cole, Me 30 30
20	Madonna, Frozen 25 22
21	Fastball, The Way 24 22
22	B-52's, Debbie 23 3
23	Goo Goo Dolls, Iris 22 19
24	Matchbox 20, Push 21 17
25	Celine Dion, My Heart Will Go On 20 25
26	Alanis Morissette, Uninvited 20 9
27	The Cranberries, Go Your Own Way 19 18
28	Paula Cole, I Don't Want To Wait 19 21
29	Natalie Merchant, Kind And Generous 18 13
30	Blessid Union Of Souls, Light In Your Eye 18 19
31	Ben Folds Five, Brink 17 15
32	Robyn, Show Me Love 16 21
33	Tonic, If You Could Only See 16 20
34	Fugees, No Woman, No Cry 13 13
35	Olivia Newton-John, I Honestly Love You 13 10
36	The Mighty Mighty Bosstones, The Impression 13 9
37	Indigo Girls, Shame On You 13 7
38	Lisa Loeb, Let's Forget About It 13 12
39	The Wallflowers, Heroes 12 8
40	Madonna, Ray Of Light 12 12

KRBE	
1	Savage Garden, Truly Madly Deeply 65 62
2	Shania Twain, You're Still The One 62 65
3	Will Smith, Gettin' Jiggy Wit It 61 68
4	Celine Dion, My Heart Will Go On 58 58
5	Backstreet Boys, As Long As You Love Me 54 60
6	Natalie Imbruglia, Torn 48 52
7	K-Ci & JoJo, All My Life 47 50
8	Usher, You Make Me Wanna 44 36
9	Alanis Morissette, Uninvited 44 44
10	Selena, Dreaming Of You 39 35
11	Robyn, Show Me Love 37 32
12	Madonna, Frozen 37 36
13	Janet, Together Again 36 36
14	Usher, Nice & Slow 35 22
15	Matchbox 20, 3 AM 32 34
16	Tonic, If You Could Only See 29 28
17	Third Eye Blind, How's It Going To Be 28 27
18	Madonna, Ray Of Light 27 18
19	Boyz II Men, A Song For Mama 26 14
20	Dario G, Sunchyme 23 15
21	Marcy Playground, Sex & Candy 23 30
22	OMC, How Bizarre 22 20
23	Sugar Ray, Fly 21 22
24	Matchbox 20, Push 21 20
25	Cherry Poppin' Daddies, Zoot Suit Riot 21 16
26	Paula Cole, Me 20 22
27	The Cardigans, Lovelool 19 18
28	Gloria Estefan, Heaven's What I Feel 19 17
29	Puff Daddy & Faith Evans, I'll Be 19 10
30	The Notorious B.I.G., Mo Money Mo Problems 19 22
31	'N Sync, I Want You Back 19 16
32	Paula Cole, I Don't Want To Wait 18 32
33	Dave, Super Hero 18 7
34	Meredith Brooks, Bitch 17 14
35	Smash Mouth, Walkin' On The Sun 17 20
36	Brooklyn Bounce, Get Ready To Bounce 16 16
37	Destiny's Child, No, No, No 15 19
38	En Vogue, Don't Let Go (Love) 14 16
39	Mariah Carey, My All 14 17
40	Jai, Heaven 14 14

KISS 106.1	
1	K-Ci & JoJo, All My Life 71 67
2	Brian McKnight, Anytime 66 68
3	Matchbox 20, 3 AM 65 67
4	Natalie Imbruglia, Torn 63 48
5	Will Smith, Gettin' Jiggy Wit It 63 50
6	Savage Garden, Truly Madly Deeply 58 68
7	Usher, Nice & Slow 54 59
8	Paula Cole, I Don't Want To Wait 46 47
9	Da Real One, U Like Pina Colada 45 53
10	Usher, You Make Me Wanna 44 40
11	Smash Mouth, Walkin' On The Sun 43 49
12	Uncle Sam, I Don't Ever Want To See You 42 44
13	'N Sync, I Want You Back 42 25
14	Matchbox 20, Push 40 39
15	Madonna, Ray Of Light 36 24
16	Janet, Together Again 35 44
17	Janet, I Get Lonely 35 31
18	Robyn, Do You Really Want Me 35 35
19	Mariah Carey, My All 33 16
20	Marcy Playground, Sex & Candy 24 17
21	Boyz II Men, 4 Seasons Of Loneliness 22 32
22	K.P. & Envy, Swing My Way 21 17
23	Madonna, Frozen 20 26
24	Next, Too Close 20 20
25	Various Artists, The Jock Jam 19 19
26	The Cardigans, Lovelool 19 18
27	Duncan Sheik, Barely Breathing 17 19
28	Quad City DJ's, C'mon N' Ride It 16 14
29	Ea Yogue, Don't Let Go (Love) 15 16
30	Selena, Dreaming Of You 14 14
31	Brandy, Sittin' Up In My Room 14 9
32	Meredith Brooks, Bitch 13 17
33	Cooffie, I,2,3,4 13 12
34	Inej, Love You Down 13 27
35	Vonda Shepard, Searchin' My Soul 13 7
36	Los Umbrales, No Tengo Dinero 12 17
37	Blackstreet, No Diggity 12 15
38	Alanis Morissette, Uninvited 12 1
39	Mighty Dub Kats, Magic Carpet Ride 12 9
40	Destiny's Child, No, No, No 12 14

Q102	
1	Matchbox 20, 3 AM 56 51
2	Will Smith, Gettin' Jiggy Wit It 55 54
3	Savage Garden, Truly Madly Deeply 54 54
4	Robyn, Show Me Love 53 51
5	Paula Cole, I Don't Want To Wait 46 48
6	Natalie Imbruglia, Torn 40 37
7	Janet, Together Again 35 34
8	Backstreet Boys, As Long As You Love Me 35 40
9	Usher, You Make Me Wanna 34 35
10	Debra McLaughlin, How Do I Live 34 33
11	Billie Myers, Kiss The Rain 32 32
12	K-Ci & JoJo, All My Life 28 30
13	Latricia McNeal, Ain't That Just The Way 28 24
14	'N Sync, I Want You Back 28 20
15	Backstreet Boys, Everybody 27 24
16	Brian McKnight, Anytime 22 24
17	The Notorious B.I.G., Mo Money Mo Problems 21 19
18	Madonna, Frozen 21 20
19	Boyz II Men, A Song For Mama 20 24
20	Inej, Love You Down 20 20
21	Robyn, Do You Really Want Me 20 15
22	Sugar Ray, Fly 18 13
23	Diana King, I Say A Little Prayer 18 12
24	Smash Mouth, Walkin' On The Sun 17 21
25	Shania Twain, You're Still The One 17 12
26	Chumbawamba, Tubthumping 15 17
27	Will Smith, Men In Black 14 6
28	Gloria Estefan, Heaven's What I Feel 14 13
29	S.O.A.P., This Is How We Party 13 12
30	Spice Girls, Stop 13 14
31	Rece, In A Dream 13 19
32	All Saints, Never Ever 13 11
33	Voices Of Theory, Say It 13 15
34	Solid Harmonie, I'll Be There For You 13 11
35	Captain Hollywood Project, More And More 12 12
36	Escape, The Arms Of The One Who Loves 12 8
37	Various Artists, The Jock Jam 11 10
38	Inner Circle, Sweat 11 11
39	Hanson, Weird 10 13
40	Snap, Rhythm Is A Dancer 10 10

STAR 94	
1	Natalie Imbruglia, Torn 61 61
2	Sister Hazel, Happy 60 56
3	Shania Twain, You're Still The One 60 60
4	Matchbox 20, 3 AM 59 57
5	Third Eye Blind, How's It Going To Be 59 60
6	Backstreet Boys, As Long As You Love Me 51 37



POWER PLAYLISTS



AIRPLAY  
**Monitor**

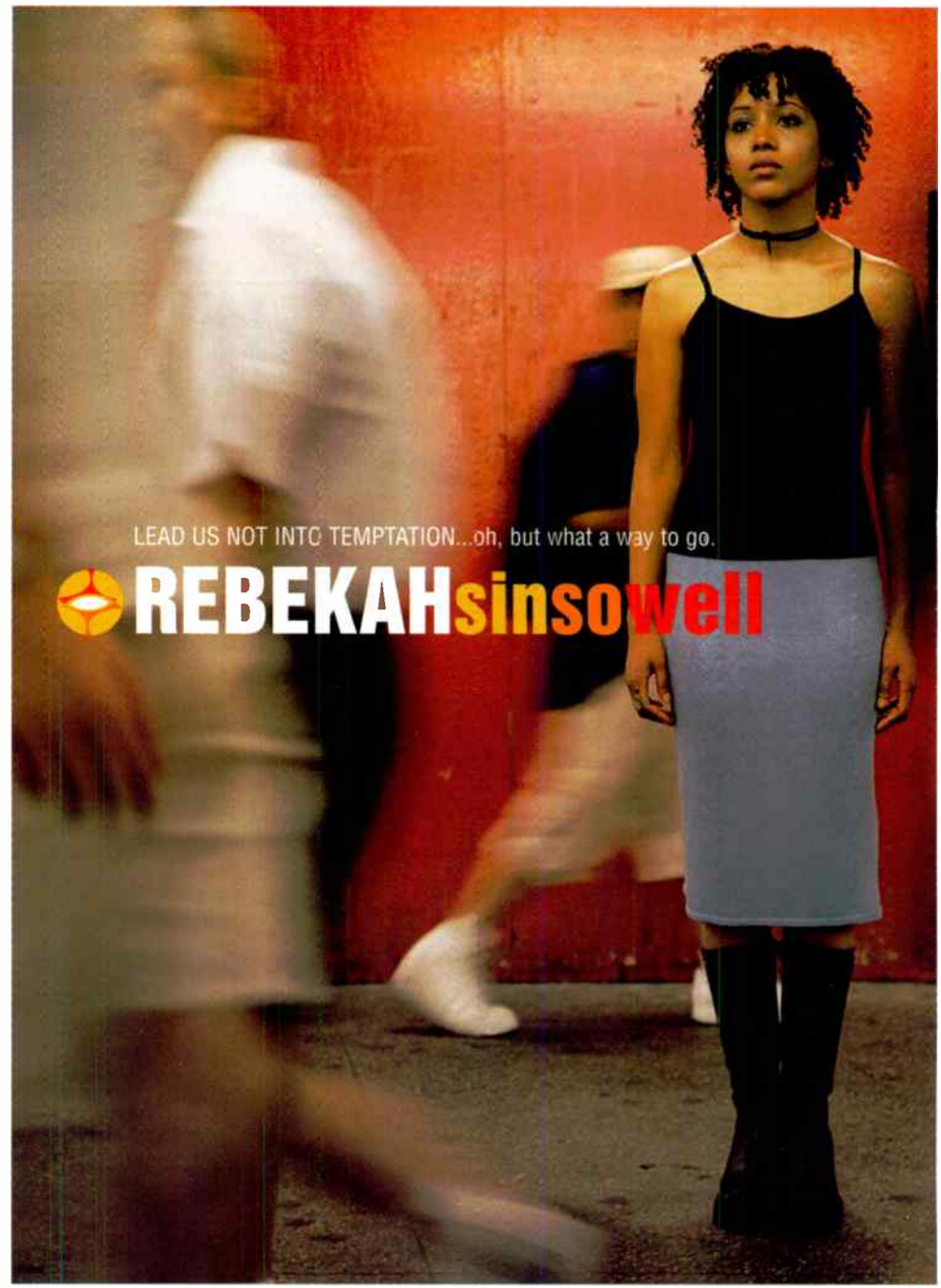
For Week Ending  
May 3, 1998

Playlists supplied by Broadcast Data Systems' Radio Track service. Songs ranked by number of plays in monitored week. Playlists are listed in order of TBA weekly count, beginning with the highest-ranking station. Counts are updated twice weekly following the release of the Spring and Fall Arbitron surveys. The number of stations shown each week varies depending upon spots.

Z104		WFLZ		KDWB	
WWZZ	PD: Dale O'Brian APD/MD: Ron Ross	WFLZ	OM: B.J. Harris APD/MD: Domino	KDWB	PD: Rob Morris APD/MD: Rich Davis
Washington, DC		Tampa		Minneapolis	
TW	LW	TW	LW	TW	LW
1	66	1	73	1	60
2	64	2	71	2	60
3	64	3	65	3	64
4	61	4	71	4	64
5	61	5	72	5	61
6	62	6	75	6	61
7	62	7	46	7	42
8	62	8	41	8	45
9	62	9	48	9	45
10	62	10	48	10	45
11	62	11	48	11	45
12	62	12	48	12	45
13	62	13	48	13	45
14	62	14	48	14	45
15	62	15	48	15	45
16	62	16	48	16	45
17	62	17	48	17	45
18	62	18	48	18	45
19	62	19	48	19	45
20	62	20	48	20	45
21	62	21	48	21	45
22	62	22	48	22	45
23	62	23	48	23	45
24	62	24	48	24	45
25	62	25	48	25	45
26	62	26	48	26	45
27	62	27	48	27	45
28	62	28	48	28	45
29	62	29	48	29	45
30	62	30	48	30	45
31	62	31	48	31	45
32	62	32	48	32	45
33	62	33	48	33	45
34	62	34	48	34	45
35	62	35	48	35	45
36	62	36	48	36	45
37	62	37	48	37	45
38	62	38	48	38	45
39	62	39	48	39	45
40	62	40	48	40	45

Z95.7		B94		Y100	
KZQZ	APD/MD: Danny Ocean	WBZZ	OM: Keith Clark PD: David Edgar MD: Laura Lilley	WHYI	PD: Rob Roberts APD: Al Chio MD: Deidre Poyner
San Francisco		Pittsburgh		Miami	
TW	LW	TW	LW	TW	LW
1	65	1	61	1	57
2	66	2	56	2	56
3	66	3	55	3	57
4	55	4	52	4	56
5	53	5	47	5	49
6	46	6	44	6	33
7	46	7	34	7	32
8	46	8	34	8	32
9	46	9	32	9	32
10	46	10	36	10	30
11	46	11	34	11	29
12	46	12	33	12	28
13	46	13	29	13	28
14	46	14	28	14	27
15	46	15	27	15	27
16	46	16	26	16	27
17	46	17	26	17	26
18	46	18	26	18	26
19	46	19	25	19	26
20	46	20	25	20	26
21	46	21	25	21	26
22	46	22	25	22	26
23	46	23	25	23	26
24	46	24	25	24	26
25	46	25	25	25	26
26	46	26	25	26	26
27	46	27	25	27	26
28	46	28	25	28	26
29	46	29	25	29	26
30	46	30	25	30	26
31	46	31	25	31	26
32	46	32	25	32	26
33	46	33	25	33	26
34	46	34	25	34	26
35	46	35	25	35	26
36	46	36	25	36	26
37	46	37	25	37	26
38	46	38	25	38	26
39	46	39	25	39	26
40	46	40	25	40	26

KISS 95.7		Z100		WPST	
WKSS	PD: Jay Beau Jones MD: Mike McCowan	KKRZ	PD: Tommy Austin MD: Lara	WPST	Sr. VP/Pgm: Michelle Stevens PD: Dave McKay MD: Chris Puoro
Hartford		Portland		Trenton	
TW	LW	TW	LW	TW	LW
1	63	1	72	1	60
2	63	2	75	2	60
3	54	3	62	3	57
4	53	4	63	4	53
5	59	5	58	5	52
6	45	6	57	6	54
7	43	7	57	7	50
8	46	8	47	8	50
9	46	9	43	9	47
10	42	10	46	10	44
11	40	11	40	11	44
12	39	12	33	12	32
13	37	13	36	13	31
14	36	14	34	14	30
15	36	15	32	15	30
16	32	16	33	16	29
17	32	17	31	17	29
18	32	18	31	18	29
19	32	19	28	19	28
20	32	20	28	20	28
21	32	21	26	21	28
22	32	22	25	22	28
23	32	23	24	23	28
24	31	24	24	24	28
25	31	25	23	25	28
26	31	26	22	26	28
27	31	27	22	27	28
28	31	28	21	28	28
29	31	29	21	29	28
30	31	30	21	30	28
31	31	31	21	31	28
32	31	32	21	32	28
33	31	33	21	33	28
34	31	34	21	34	28
35	31	35	21	35	28
36	31	36	21	36	28
37	31	37	21	37	28
38	31	38	21	38	28
39	31	39	21	39	28
40	31	40	21	40	28



LEAD US NOT INTO TEMPTATION...oh, but what a way to go.

**REBEKAH** sinsowell

**35 - 33 MAINSTREAM TOP 40**

"After 200 spins 'Sin So Well' is showing all the signs of a hit record in Boston!"  
John Ivey/David Corey - KISS 108

**RESEARCH-O-RAMA:**

**KISS 108/Boston**  
#11/40 overall  
95% familiar  
200+ spins

**WMXB/Richmond**  
#12/35 overall  
#11/35 w/females 25-34  
70% familiar  
200+ spins

**WPTE/Norfolk**  
#14/30 overall  
96% familiar  
200+ spins

On tour now with Matchbox 20

PRODUCED BY MATTHEW WILDER  
MANAGEMENT: ARTHUR SPIVAK/STUART SOBOL FOR SPIVAK ENTERTAINMENT

ON ELKTRA COMPACT DISCS AND 90+ CASSETTES WWW.ELKTRA.COM  
©1998 ELKTRA ENTERTAINMENT GROUP A DIVISION OF WARNER COMMUNICATIONS INC. A TIME WARNER COMPANY





POWER PLAYLISTS

For Week Ending May 3, 1998

Playlists supplied by Broadcast Data Systems' Radio Track service. Songs ranked by number of plays in monitored week. Playlists are listed in order of TSA weekly count, beginning with the highest-counting station. Cumes are updated twice weekly following the release of the Spring and Fall Arbitron surveys. The number of stations shown each week varies depending upon space.

KISS 98.5 PD: Sue O'Neil APD/MD: Dave Universal. List of 40 songs with TW and LW columns.

FLY 92 OM: Mike Morgan PD: Rob Dawes MD: Ron "Sugarbear" Williams. List of 40 songs with TW and LW columns.

Z93 OM: Michael Lucczak MD: Dani Steele. List of 40 songs with TW and LW columns.

B93.7 PD: Rob Wagman MD: J. Love. List of 40 songs with TW and LW columns.

WDJX PD: C.C. Matthews APD/MD: Rod Phillips. List of 40 songs with TW and LW columns.

WKRZ PD: Tony Banks APD/MD: Jerry Padden. List of 40 songs with TW and LW columns.

B104 OM: Billy Santiago PD/MD: Jeff DeWitt. List of 40 songs with TW and LW columns.

WVKS VP/Pgm: Mike Wheeler APD/MD: Bill Michaels. List of 40 songs with TW and LW columns.

98PXY OM/PD: Clarke Ingram APD/MD: J.J. Rice. List of 40 songs with TW and LW columns.

KHTT VP/Pgm: Sean Phillips PD: Carly Rush MD: Scotty Mack. List of 40 songs with TW and LW columns.

94.9 ZHT PD: Marc Summers MD: Jeff McCartney. List of 40 songs with TW and LW columns.

WAPE PD: Cat Thomas APD/MD: Tony Mann. List of 40 songs with TW and LW columns.

B104 PD: Brian Check MD: Chuck McGee. List of 40 songs with TW and LW columns.

WSNX PD: John Thomas MD: Keith Curry. List of 40 songs with TW and LW columns.

Q106 PD: Todd Shannon. List of 40 songs with TW and LW columns.

KRQ PD: Tim Richards APD: Mark Medina MD: Dino. List of 40 songs with TW and LW columns.

K92 PD: Russ Brown MD: Lisa Jo Elliott. List of 40 songs with TW and LW columns.

SWEET 98 PD: Michael Steele MD: J.J. Morgan. List of 40 songs with TW and LW columns.



POWER PLAYLISTS

For Week Ending May 3, 1998



Playlists supplied by Broadcast Data Systems' Radio Track service. Songs ranked by number of plays in monitored week. Playlists are listed in order of TBA weekly count, beginning with the highest-counting station. Closes are updated twice yearly following the release of the Spring and Fall Arbitron surveys. The number of stations shown each week varies depending upon space.

Grid of 20 radio station playlists including Q94, WABB, WZYP, WHOT, THE CAT, WINK 104, 93Q, KC101, THE PARTY, WNOK, WRHT, STAR 93.1, KKMG, Z107.7, FM97, B103.9, HOT 107.9, and KSMB. Each station's playlist includes song titles, artists, and play counts.





POWER PLAYLISTS

For Week Ending May 3, 1998



Playlists supplied by Broadcast Data Systems... Radio Track service. Songs ranked by number of plays in monitored week.

KZZU Spokane PD: Ken Hopkins MD: John Conner. Top 40 playlist including Matchbox 20, K-Ci & Jolo, Marcy Playground, etc.

KRUF Shreveport PD: Gary Robinson MD: Erin Dewerff. Top 40 playlist including 'N Sync, I Want You Back, Marcy Playground, etc.

98YCR York OM: Rick McCauslin PD: Davy Crockett. Top 40 playlist including K-Ci & Jolo, All My Life, Marcy Playground, etc.

LOOSE 102 Baton Rouge PD: Robert Eifman MD: Todd Chase. Top 40 playlist including K-Ci & Jolo, All My Life, Marcy Playground, etc.

WSTW Wilmington PD: John Wilson Assoc. PD/MD: Mike Rossi. Top 40 playlist including Tonic, Open Up Your Eyes, Eric Clapton, etc.

KKRD Wichita GM/OM/PD: Jack Oliver MD: Craig Hubbard. Top 40 playlist including K-Ci & Jolo, All My Life, Marcy Playground, etc.

HOT 97 WBHT Wilkes Barre PD: Steve McKay MD: Mark McCarthy. Top 40 playlist including Third Eye Blind, K-Ci & Jolo, etc.

KISS FM WKSZ Green Bay PD: Miles Ryker MD: Nathan Reed. Top 40 playlist including Robyn, Do You Really Want Me, Marcy Playground, etc.

CK105 Flint PD/MD: Scott Seipel. Top 40 playlist including Natalie Imbruglia, Marcy Playground, etc.

Q70.9 WBQ Portland, ME PD: Tim Moore MD: Keith Scott. Top 40 playlist including Natalie Imbruglia, Marcy Playground, etc.

95SX WSSX Charleston, SC PD: Calvin Hicks MD: Christine Cross. Top 40 playlist including Natalie Imbruglia, Marcy Playground, etc.

ELECTRIC 102.7 WWSR Charleston, WV PD/MD: Bill Shahan. Top 40 playlist including Marcy Playground, Savage Garden, etc.

WZNY Augusta PD/MD: Bruce Stevens. Top 40 playlist including Third Eye Blind, K-Ci & Jolo, etc.

95XXX WXXX Burlington PD: Ben Hamilton MD: Sean Michaels. Top 40 playlist including Natalie Imbruglia, Marcy Playground, etc.

Y101.7 WYOX Jackson PD: Dick O'Neill. Top 40 playlist including Natalie Imbruglia, Marcy Playground, etc.

HOT 106 KHTO Springfield, MO PD/MD: Dave Alexander MD: Ray Michaels. Top 40 playlist including Natalie Imbruglia, Marcy Playground, etc.

KCHZ Kansas City PD/MD: Rod Staats. Top 40 playlist including Natalie Imbruglia, Marcy Playground, etc.

TOWER 98 WTWR Toledo PD: Terri McCormick. Top 40 playlist including Natalie Imbruglia, Marcy Playground, etc.







# WORLD RADIO HITS MAINSTREAM TOP 40 SONG & ACTIVITY REPORTS

For Week Ending May 3, 1998

Total Plays/Gain

## BACKSTREET BOYS 2424/143

Everybody (Backstreet's Back) (Jive)

Total Stations: 90 Chart Move: 16-11

MTV	DW	LW	2W	IP	Tulsa	KHHT	DW	LW	2W	IP
16	18	20	20	120	Scranton	WBHT	24	25	27	121
18	13	15	15	120	Tucson	WBHT	13	13	11	117
19	13	15	15	120	Tucson	WBHT	13	13	11	117
20	13	15	15	120	Tucson	WBHT	13	13	11	117
21	13	15	15	120	Tucson	WBHT	13	13	11	117

## BLACK LAG 516/15

Time Ago (DGC/Geffen)

Total Stations: 45

MTV	DW	LW	2W	IP	Tulsa	KHHT	DW	LW	2W	IP
13	13	15	15	120	Scranton	WBHT	13	13	11	117
14	13	15	15	120	Scranton	WBHT	13	13	11	117
15	13	15	15	120	Scranton	WBHT	13	13	11	117
16	13	15	15	120	Scranton	WBHT	13	13	11	117
17	13	15	15	120	Scranton	WBHT	13	13	11	117

## BLAIR 813/123

Have Fun, Go Mad! (Jersey/MCA)

Total Stations: 64 Chart Move: Debut 37

MTV	DW	LW	2W	IP	Tulsa	KHHT	DW	LW	2W	IP
9	9	9	9	49	Tucson	KROD	9	9	9	49
10	9	9	9	49	Tucson	KROD	9	9	9	49
11	9	9	9	49	Tucson	KROD	9	9	9	49
12	9	9	9	49	Tucson	KROD	9	9	9	49
13	9	9	9	49	Tucson	KROD	9	9	9	49

## MARIAH CAREY 1643/126

My All (Columbia)

Total Stations: 89 Chart Move: 24-24

MTV	DW	LW	2W	IP	Tulsa	KHHT	DW	LW	2W	IP
27	29	19	102	138	Scranton	WBHT	27	29	19	102
28	29	19	102	138	Scranton	WBHT	27	29	19	102
29	29	19	102	138	Scranton	WBHT	27	29	19	102
30	29	19	102	138	Scranton	WBHT	27	29	19	102
31	29	19	102	138	Scranton	WBHT	27	29	19	102

## CHERRY POPPIN' DADDIES 577/145

Zoot Suit Riot (Mojo/Universal)

Total Stations: 52

MTV	DW	LW	2W	IP	Tulsa	KHHT	DW	LW	2W	IP
18	10	5	33	33	Tucson	KROD	18	10	5	33
19	10	5	33	33	Tucson	KROD	18	10	5	33
20	10	5	33	33	Tucson	KROD	18	10	5	33
21	10	5	33	33	Tucson	KROD	18	10	5	33
22	10	5	33	33	Tucson	KROD	18	10	5	33

## PAULA COLE 1517/57

Me (Imago/Warner Bros.)

Total Stations: 85 Chart Move: 26-25

MTV	DW	LW	2W	IP	Tulsa	KHHT	DW	LW	2W	IP
14	18	11	20	1	Scranton	WBHT	14	18	11	20
15	18	11	20	1	Scranton	WBHT	14	18	11	20
16	18	11	20	1	Scranton	WBHT	14	18	11	20
17	18	11	20	1	Scranton	WBHT	14	18	11	20
18	18	11	20	1	Scranton	WBHT	14	18	11	20

## DESTINY'S CHILD 1279/76

No, No, No (Columbia)

Total Stations: 81 Chart Move: 30-28

MTV	DW	LW	2W	IP	Tulsa	KHHT	DW	LW	2W	IP
11	15	10	6	107	Scranton	WBHT	11	15	10	6
12	15	10	6	107	Scranton	WBHT	11	15	10	6
13	15	10	6	107	Scranton	WBHT	11	15	10	6
14	15	10	6	107	Scranton	WBHT	11	15	10	6
15	15	10	6	107	Scranton	WBHT	11	15	10	6

## GLORIA ESTEFAN 432/77

Heaven's What I Feel (Epic)

Total Stations: 41

MTV	DW	LW	2W	IP	Tulsa	KHHT	DW	LW	2W	IP
1	2	3	3	50	Tucson	KROD	1	2	3	50
2	3	3	3	50	Tucson	KROD	1	2	3	50
3	3	3	3	50	Tucson	KROD	1	2	3	50
4	3	3	3	50	Tucson	KROD	1	2	3	50
5	3	3	3	50	Tucson	KROD	1	2	3	50

## EVERCLEAR 471/95

I Will Buy You A New Life (Capitol)

Total Stations: 37

MTV	DW	LW	2W	IP	Tulsa	KHHT	DW	LW	2W	IP
15	21	14	14	147	Scranton	WBHT	15	21	14	147
16	21	14	14	147	Scranton	WBHT	15	21	14	147
17	21	14	14	147	Scranton	WBHT	15	21	14	147
18	21	14	14	147	Scranton	WBHT	15	21	14	147
19	21	14	14	147	Scranton	WBHT	15	21	14	147

## FASTBALL 1965/541

The Way (Hollywood)

Total Stations: 82 Chart Move: 28-21

MTV	DW	LW	2W	IP	Tulsa	KHHT	DW	LW	2W	IP
21	17	18	95	113	Scranton	WBHT	21	17	18	95
22	17	18	95	113	Scranton	WBHT	21	17	18	95
23	17	18	95	113	Scranton	WBHT	21	17	18	95
24	17	18	95	113	Scranton	WBHT	21	17	18	95
25	17	18	95	113	Scranton	WBHT	21	17	18	95

## GOO GOO DOLLS 1824/369

Iris (Warner Sunset/Reprise)

Total Stations: 80 Chart Move: 27-22

MTV	DW	LW	2W	IP	Tulsa	KHHT	DW	LW	2W	IP
19	1	2	23	1	Scranton	WBHT	19	1	2	23
20	1	2	23	1	Scranton	WBHT	19	1	2	23
21	1	2	23	1	Scranton	WBHT	19	1	2	23
22	1	2	23	1	Scranton	WBHT	19	1	2	23
23	1	2	23	1	Scranton	WBHT	19	1	2	23

## NATALIE IMBRUGLIA 5272/200

Torn (RCA)

Total Stations: 93 Chart Move: 1-1

MTV	DW	LW	2W	IP	Tulsa	KHHT	DW	LW	2W	IP
26	30	24	281	21	Scranton	WBHT	26	30	24	281
27	30	24	281	21	Scranton	WBHT	26	30	24	281
28	30	24	281	21	Scranton	WBHT	26	30	24	281
29	30	24	281	21	Scranton	WBHT	26	30	24	281
30	30	24	281	21	Scranton	WBHT	26	30	24	281

## JANET 870/39

I Get Lonely (Virgin)

Total Stations: 48 Chart Move: 37-36

MTV	DW	LW	2W	IP	Tulsa	KHHT	DW	LW	2W	IP
23	26	14	119	57	Scranton	WBHT	23	26	14	119
24	26	14	119	57	Scranton	WBHT	23	26	14	119
25	26	14	119	57	Scranton	WBHT	23	26	14	119
26	26	14	119	57	Scranton	WBHT	23	26	14	119
27	26	14	119	57	Scranton	WBHT	23	26	14	119

## K-CI & JOJO 4755/125

All My Life (MCA)

Total Stations: 91 Chart Move: 2-2

MTV	DW	LW	2W	IP	Tulsa	KHHT	DW	LW	2W	IP
31	36	24	318	18	Scranton	WBHT	31	36	24	318
32	36	24	318	18	Scranton	WBHT	31	36	24	318
33	36	24	318	18	Scranton	WBHT	31	36	24	318
34	36	24	318	18	Scranton	WBHT	31	36	24	318
35	36	24	318	18	Scranton	WBHT	31	36	24	318

## LISA LOEB 698/50

Let's Forget About It (Geffen)

Total Stations: 78 Chart Move: Debut 39

MTV	DW	LW	2W	IP	Tulsa	KHHT	DW	LW	2W	IP
1	2	2	31	165	Scranton	WBHT	1	2	2	31
2	2	2	31	165	Scranton	WBHT	1	2	2	31
3	2	2	31	165	Scranton	WBHT	1	2	2	31
4	2	2	31	165	Scranton	WBHT	1	2	2	31
5	2	2	31	165	Scranton	WBHT	1	2	2	31



# SONG ACTIVITY REPORTS

For Week Ending May 3, 1998



Detailed song tracking information for the last 3 weeks for all songs showing increased play this week. Total plays and gain do not include video play. Markets listed in order of population.

MADONNA 572/178				MADONNA 572/178			
Ray of Light (Maverick/Warner Bros.)				Ray of Light (Maverick/Warner Bros.)			
Total Stations: 64				Total Stations: 64			
MTV	WLTW	WZLX	IP	MTV	WLTW	WZLX	IP
1	1	1	1	1	1	1	1
2	2	2	2	2	2	2	2
3	3	3	3	3	3	3	3
4	4	4	4	4	4	4	4
5	5	5	5	5	5	5	5
6	6	6	6	6	6	6	6
7	7	7	7	7	7	7	7
8	8	8	8	8	8	8	8
9	9	9	9	9	9	9	9
10	10	10	10	10	10	10	10
11	11	11	11	11	11	11	11
12	12	12	12	12	12	12	12
13	13	13	13	13	13	13	13
14	14	14	14	14	14	14	14
15	15	15	15	15	15	15	15
16	16	16	16	16	16	16	16
17	17	17	17	17	17	17	17
18	18	18	18	18	18	18	18
19	19	19	19	19	19	19	19
20	20	20	20	20	20	20	20
21	21	21	21	21	21	21	21
22	22	22	22	22	22	22	22
23	23	23	23	23	23	23	23
24	24	24	24	24	24	24	24
25	25	25	25	25	25	25	25
26	26	26	26	26	26	26	26
27	27	27	27	27	27	27	27
28	28	28	28	28	28	28	28
29	29	29	29	29	29	29	29
30	30	30	30	30	30	30	30
31	31	31	31	31	31	31	31
32	32	32	32	32	32	32	32
33	33	33	33	33	33	33	33
34	34	34	34	34	34	34	34
35	35	35	35	35	35	35	35
36	36	36	36	36	36	36	36
37	37	37	37	37	37	37	37
38	38	38	38	38	38	38	38
39	39	39	39	39	39	39	39
40	40	40	40	40	40	40	40
41	41	41	41	41	41	41	41
42	42	42	42	42	42	42	42
43	43	43	43	43	43	43	43
44	44	44	44	44	44	44	44
45	45	45	45	45	45	45	45
46	46	46	46	46	46	46	46
47	47	47	47	47	47	47	47
48	48	48	48	48	48	48	48
49	49	49	49	49	49	49	49
50	50	50	50	50	50	50	50
51	51	51	51	51	51	51	51
52	52	52	52	52	52	52	52
53	53	53	53	53	53	53	53
54	54	54	54	54	54	54	54
55	55	55	55	55	55	55	55
56	56	56	56	56	56	56	56
57	57	57	57	57	57	57	57
58	58	58	58	58	58	58	58
59	59	59	59	59	59	59	59
60	60	60	60	60	60	60	60
61	61	61	61	61	61	61	61
62	62	62	62	62	62	62	62
63	63	63	63	63	63	63	63
64	64	64	64	64	64	64	64

MARCY PLAYGROUND 4256/285				MARCY PLAYGROUND 4256/285			
Sex And Candy (Capitol)				Sex And Candy (Capitol)			
Total Stations: 91				Total Stations: 91			
MTV	WLTW	WZLX	IP	MTV	WLTW	WZLX	IP
1	1	1	1	1	1	1	1
2	2	2	2	2	2	2	2
3	3	3	3	3	3	3	3
4	4	4	4	4	4	4	4
5	5	5	5	5	5	5	5
6	6	6	6	6	6	6	6
7	7	7	7	7	7	7	7
8	8	8	8	8	8	8	8
9	9	9	9	9	9	9	9
10	10	10	10	10	10	10	10
11	11	11	11	11	11	11	11
12	12	12	12	12	12	12	12
13	13	13	13	13	13	13	13
14	14	14	14	14	14	14	14
15	15	15	15	15	15	15	15
16	16	16	16	16	16	16	16
17	17	17	17	17	17	17	17
18	18	18	18	18	18	18	18
19	19	19	19	19	19	19	19
20	20	20	20	20	20	20	20
21	21	21	21	21	21	21	21
22	22	22	22	22	22	22	22
23	23	23	23	23	23	23	23
24	24	24	24	24	24	24	24
25	25	25	25	25	25	25	25
26	26	26	26	26	26	26	26
27	27	27	27	27	27	27	27
28	28	28	28	28	28	28	28
29	29	29	29	29	29	29	29
30	30	30	30	30	30	30	30
31	31	31	31	31	31	31	31
32	32	32	32	32	32	32	32
33	33	33	33	33	33	33	33
34	34	34	34	34	34	34	34
35	35	35	35	35	35	35	35
36	36	36	36	36	36	36	36
37	37	37	37	37	37	37	37
38	38	38	38	38	38	38	38
39	39	39	39	39	39	39	39
40	40	40	40	40	40	40	40
41	41	41	41	41	41	41	41
42	42	42	42	42	42	42	42
43	43	43	43	43	43	43	43
44	44	44	44	44	44	44	44
45	45	45	45	45	45	45	45
46	46	46	46	46	46	46	46
47	47	47	47	47	47	47	47
48	48	48	48	48	48	48	48
49	49	49	49	49	49	49	49
50	50	50	50	50	50	50	50
51	51	51	51	51	51	51	51
52	52	52	52	52	52	52	52
53	53	53	53	53	53	53	53
54	54	54	54	54	54	54	54
55	55	55	55	55	55	55	55
56	56	56	56	56	56	56	56
57	57	57	57	57	57	57	57
58	58	58	58	58	58	58	58
59	59	59	59	59	59	59	59
60	60	60	60	60	60	60	60
61	61	61	61	61	61	61	61
62	62	62	62	62	62	62	62
63	63	63	63	63	63	63	63
64	64	64	64	64	64	64	64

EDWIN MCCAIN 1192/53				EDWIN MCCAIN 1192/53			
I'll Be (Lava/Antiatic)				I'll Be (Lava/Antiatic)			
Total Stations: 79				Total Stations: 79			
MTV	WLTW	WZLX	IP	MTV	WLTW	WZLX	IP
1	1	1	1	1	1	1	1
2	2	2	2	2	2	2	2
3	3	3	3	3	3	3	3
4	4	4	4	4	4	4	4
5	5	5	5	5	5	5	5
6	6	6	6	6	6	6	6
7	7	7	7	7	7	7	7
8	8	8	8	8	8	8	8
9	9	9	9	9	9	9	9
10	10	10	10	10	10	10	10
11	11	11	11	11	11	11	11
12	12	12	12	12	12	12	12
13	13	13	13	13	13	13	13
14	14	14	14	14	14	14	14
15	15	15	15	15	15	15	15
16	16	16	16	16	16	16	16
17	17	17	17	17	17	17	17
18	18	18	18	18	18	18	18
19	19	19	19	19	19	19	19
20	20	20	20	20	20	20	20
21	21	21	21	21	21	21	21
22	22	22	22	22	22	22	22
23	23	23	23	23	23	23	23
24	24	24	24	24	24	24	24
25	25	25	25	25	25	25	25
26	26	26	26	26	26	26	26
27	27	27	27	27	27	27	27
28	28	28	28	28	28	28	28
29	29	29	29	29	29	29	29
30	30	30	30	30	30	30	30
31	31	31	31	31	31	31	31
32	32	32	32	32	32	32	32
33	33	33	33	33	33	33	33
34	34	34	34	34	34	34	34
35	35	35	35	35	35	35	35
36	36	36	36	36	36	36	36
37	37	37	37	37	37	37	37
38	38	38	38	38	38	38	38
39	39	39	39	39	39	39	39
40	40	40	40	40	40	40	40
41	41	41	41	41	41	41	41
42	42	42	42	42	42	42	42
43	43	43	43	43	43	43	43
44	44	44	44	44	44	44	44
45	45	45	45	45	45	45	45
46	46	46	46	46	46	46	46
47	47	47	47	47	47	47	47
48	48	48	48	48	48	48	48
49	49	49	49	49	49	49	49
50	50	50	50	50	50	50	50
51	51	51	51	51	51	51	51
52	52	52	52	52	52	52	52
53	53	53	53	53	53	53	53
54	54	54	54	54	54	54	54
55	55	55	55	55	55	55	55
56	56	56	56	56	56	56	56
57	57	57	57	57	57	57	57
58	58	58	58	58	58	58	58
59	59	59	59	59	59	59	59
60	60	60	60	60	60	60	60
61	61	61	61	61	61	61	61
62	62	62	62	62	62	62	62
63	63	63	63	63	63	63	63
64	64	64	64	64	64	64	64

BRIAN MCKNIGHT 2680/287				BRIAN MCKNIGHT 2680/287			
Anytime (Motown)				Anytime (Motown)			
Total Stations: 89				Total Stations: 89			
MTV	WLTW	WZLX	IP	MTV	WLTW	WZLX	IP
1	1	1	1	1			



POWER PLAYLISTS

For Week Ending May 3, 1998



Playlists supplied by Broadcast Data Systems. Radio track service. Songs ranked by number of plays in monitored week. Playlists are listed in order of TBA weekly cuts, beginning with the highest-ranking station. Cuts are updated twice weekly following the release of the Spring and Fall Arbitron surveys. The number of stations shown each week varies depending upon space.

Table with 12 columns representing radio stations: WKTU, B96, JAM'N 94.5, WILD 94.9, POWER 96, KUBE, WDRQ, FM102, KGGI, KTFM, CHANNEL 93-3, POWER 92, Z90, KS107.5, B95, POWER 102, KLUC, Z104. Each column contains a list of songs and their corresponding chart positions.



WHAT HAS GONE DO?

# LINK

©1998 RELATIVITY RECORDS



**DEBUT**

**32**

**RHYTHMIC TOP 40 MONITOR**

**GREATEST GAINER!**



Compiled from a national survey of airplay reported by On-air Stations. Radio-Only stations in Top 40 Airplay. Stations are ranked by number of detections and 24 hours of airplay are electronically monitored 24 hours a day, 7 days a week. Songs are ranked by number of detections. © 1998 BMG Music Communications.

THIS WEEK	LAST WEEK	WKS. ON CHART	MAINSTREAM TOP 40		DETECTIONS		
			TITLE/IMPRINT/PROMOTION LABEL	ARTIST	TW	LW	
			★★★★ NO. 1 ★★★★★				
1	1	12	TORN RCA	NATALIE IMBRUGLIA	5272	5072	
2	2	15	ALL MY LIFE MCA	K-CI & JOJO	4755	4630	
3	5	12	SEX AND CANDY CAPITOL	MARCY PLAYGROUND	4256	3971	
4	3	28	TRULY MADLY DEEPLY COLUMBIA	SAVAGE GARDEN	4091	4359	
5	4	25	3 AM LAVA/ATLANTIC	MATCHBOX 20	3917	3971	
6	6	20	GETTIN' JIGGY WIT IT COLUMBIA	WILL SMITH	3502	3541	
7	7	16	I WANT YOU BACK RCA	'N SYNC	3235	3140	
8	9	27	TOGETHER AGAIN VIRGIN	JANET	2717	2669	
9	13	6	ANYTIME MOTOWN	BRIAN MCKNIGHT	2680	2393	
10	11	10	DO YOU REALLY WANT ME RCA	ROBYN	2550	2592	
11	16	8	EVERYBODY (BACKSTREET'S BACK) JIVE	BACKSTREET BOYS	2424	2281	
12	10	28	AS LONG AS YOU LOVE ME JIVE	BACKSTREET BOYS	2413	2667	
13	8	11	FROZEN MAVERICK/WARNER BROS.	MADONNA	2374	2698	
14	18	8	YOU'RE STILL THE ONE MERCURY	SHANIA TWAIN	2305	1957	
15	14	24	HOW'S IT GOING TO BE ELEKTRA/VEEG	THIRD EYE BLIND	2297	2370	
16	15	20	KISS THE RAIN UNIVERSAL	BILLIE MYERS	2186	2312	
17	17	33	WALKIN' ON THE SUN INTERSCOPE	SMASH MOUTH	2084	2121	
18	22	4	UNINVITED WARNER SUNSET/REPRISE	ALANIS MORISSETTE	2079	1621	
19	20	4	SEARCHIN' MY SOUL 550 MUSIC	VONDA SHEPARD	2067	1807	
20	12	20	MY HEART WILL GO ON 550 MUSIC	CELINE DION	2060	2544	
			★★★★ AIRPOWER ★★★★★				
21	28	3	THE WAY HELLWORLD	FASTBALL	1965	1424	
			★★★★ AIRPOWER ★★★★★				
22	27	3	IRIS WARNER SUNSET/REPRISE	GOD GOO DOLLS	1824	1455	
23	21	6	THIS IS HOW WE PARTY CRAVE	S.O.A.P.	1691	1654	
24	24	4	MY ALL COLUMBIA	MARIAH CAREY	1643	1517	
			★★★★ AIRPOWER ★★★★★				
25	26	10	ME IMAGI/WARNER BROS.	PAULA COLE	1517	1460	
26	25	10	NICE & SLOW LAFACE/ARISTA	USHER	1444	1470	
27	23	12	MY FATHER'S EYES REPRISE	ERIC CLAPTON	1416	1589	
28	30	6	NO, NO, NO COLUMBIA	DESTINY'S CHILD	1279	1203	
29	31	9	I'LL BE LAVA/ATLANTIC	EDWIN MCCAIN	1192	1139	
30	29	14	BRICK 550 MUSIC	BEN FOLDS FIVE	1070	1352	
31	NEW		TOO CLOSE ARISTA	NEXT	1019	759	
32	34	2	ADIA ARISTA	SARAH MCLACHLAN	994	873	
33	35	3	SIN SO WELL ELEKTRA/VEEG	REBEKAH	952	848	
34	32	7	OPEN UP YOUR EYES POLYDOR/A&M	TONIC	926	1046	
35	NEW		HEROES SONY MUSIC SOUNDTRAX/EPIC	THE WALLFLOWERS	924	533	
36	37	2	I GET LONELY VIRGIN	JANET	870	831	
37	NEW		HAVE FUN, GO MAD! JERSEY/MCA	BLAIR	813	690	
38	40	14	I DON'T EVER WANT TO SEE YOU AGAIN STONECREEK/EPIC	UNCLE SAM	721	784	
39	NEW		LET'S FORGET ABOUT IT GEFLEN	LISA LOEB	698	648	
40	36	13	BITTER SWEET SYMPHONY VCHUT/VIRGIN	THE VERVE	644	833	

THIS WEEK	LAST WEEK	WKS. ON CHART	RHYTHMIC TOP 40		DETECTIONS		
			TITLE/IMPRINT/PROMOTION LABEL	ARTIST	TW	LW	
			★★★★ NO. 1 ★★★★★				
1	1	15	TOO CLOSE ARISTA	NEXT	1760	1730	
2	3	24	ALL MY LIFE MCA	K-CI & JOJO	1389	1405	
3	2	15	ANYTIME MOTOWN	BRIAN MCKNIGHT	1368	1531	
4	5	8	BODY BUMPIN' YIPPIE-YI-YO A&M	PUBLIC ANNOUNCEMENT	1245	1198	
5	4	21	NICE & SLOW LAFACE/ARISTA	USHER	1190	1245	
6	6	10	I GET LONELY VIRGIN	JANET	1097	1142	
7	9	10	LET'S RIDE DEF JAM/MERCURY	MONTELL JORDAN FEAT. MASTER P & SILKK THE SHOCKER	1019	999	
8	8	16	WHAT YOU WANT BAD BOY/ARISTA	MASE (FEATURING TOTAL)	1005	1008	
9	7	13	ROMEO AND JULIET GRAND JURY/RCA	SYLK-E. FYNE FEATURING CHILL	990	1108	
10	11	25	GETTIN' JIGGY WIT IT COLUMBIA	WILL SMITH	934	907	
11	10	21	NO, NO, NO COLUMBIA	DESTINY'S CHILD	926	936	
12	13	8	DEJA VU (UPTOWN BABY) CODEINE/COLUMBIA	LORD TARIQ & PETER GUNZ	805	848	
13	14	15	TRULY MADLY DEEPLY COLUMBIA	SAVAGE GARDEN	802	825	
14	16	7	EVERYBODY (BACKSTREET'S BACK) JIVE	BACKSTREET BOYS	781	699	
15	12	19	SWING MY WAY EASTWEST/VEEG	K.P. & ENVI	754	904	
16	20	4	MY ALL COLUMBIA	MARIAH CAREY	727	584	
17	18	4	CAN'T LET HER GO MOTOWN	BOYZ II MEN	686	630	
18	23	5	IMAGINATION QWEST/WARNER BROS.	TAMIA	604	519	
19	21	7	SAY IT H.O.L.A./RED ANT	VOICES OF THEORY	594	537	
20	15	19	LUV 2 LUV U BLACKGROUND/ATLANTIC	TIMBALAND AND MAGOO	577	711	
			★★★★ AIRPOWER ★★★★★				
21	34	2	BE CAREFUL ROCK LANE/INTERSCOPE	SPARKLE	573	287	
22	22	6	THE ARMS OF THE ONE WHO LOVES YOU SO SO DEF/COLUMBIA	XSCAPE	560	526	
23	24	10	I WANT YOU BACK RCA	'N SYNC	529	518	
24	17	17	MY HEART WILL GO ON 550 MUSIC	CELINE DION	511	632	
25	28	3	IT'S ALL ABOUT ME UNIVERSITY/INTERSCOPE	MYA & SISQO	447	392	
26	38	2	MY WAY LAFACE/ARISTA	USHER	447	263	
27	25	18	GONE TILL NOVEMBER RUFFHOUSE/COLUMBIA	WYCLEF JEAN	442	466	
28	26	11	FROZEN MAVERICK/WARNER BROS.	MADONNA	373	457	
29	36	2	THE ONLY ONE FOR ME MOTOWN	BRIAN MCKNIGHT	360	282	
30	29	8	DO YOU REALLY WANT ME RCA	ROBYN	357	367	
31	NEW		THE BOY IS MINE ATLANTIC	BRANDY & MONICA	351	69	
32	NEW		WHATCHA GONE DO? RELATIVITY	LINK	336	240	
33	NEW		GHETTO SUPASTAR (THAT IS WHAT YOU ARE) INTERSCOPE	PRAS MICHEL FEAT. OL' DIRTY BASTARD & INTRODUCING MYA	335	171	
34	32	3	MAKE EM' SAY UH! NO LIMIT/PRIORITY	MASTER P FEAT. FIEND, SILKK THE SHOCKER, MIA X, & MYSTIKAL	331	329	
35	NEW		TORN RCA	NATALIE IMBRUGLIA	310	234	
36	30	6	CLOCK STRIKES BLACKGROUND/ATLANTIC	TIMBALAND AND MAGOO	298	347	
37	33	6	WE BE CLUBBIN' HEAVYWEIGHT/A&M	ICE CUBE	289	327	
38	31	4	DING-A-LING RESTLESS	HI-TOWN DJs	286	331	
39	NEW		SHORTY (YOU KEEP PLAYIN' WITH MY MIND) JIVE	IMAJIN FEAT. KEITH MURRAY	275	147	
40	NEW		TURN IT UP (REMIX)/FIRE IT UP ELEKTRA/VEEG	BUSTA RHYMES	247	221	

Records showing an increase in detections over the previous week, regardless of chart movement. A record which has been on either chart for more than 20 weeks will not receive a bullet, even if it registers an increase in detections. Airpower awarded to those records which attain 1500 detections (mainstream) or 500 detections (rhythm) for the first time. If two records are tied in number of plays, the record being played on more stations is placed first. Records below the top 20 are removed from the chart after 26 weeks.

# HI-TOWN DJs

# "DING-A-LING"

On tour June & July  
Book your show NOW!

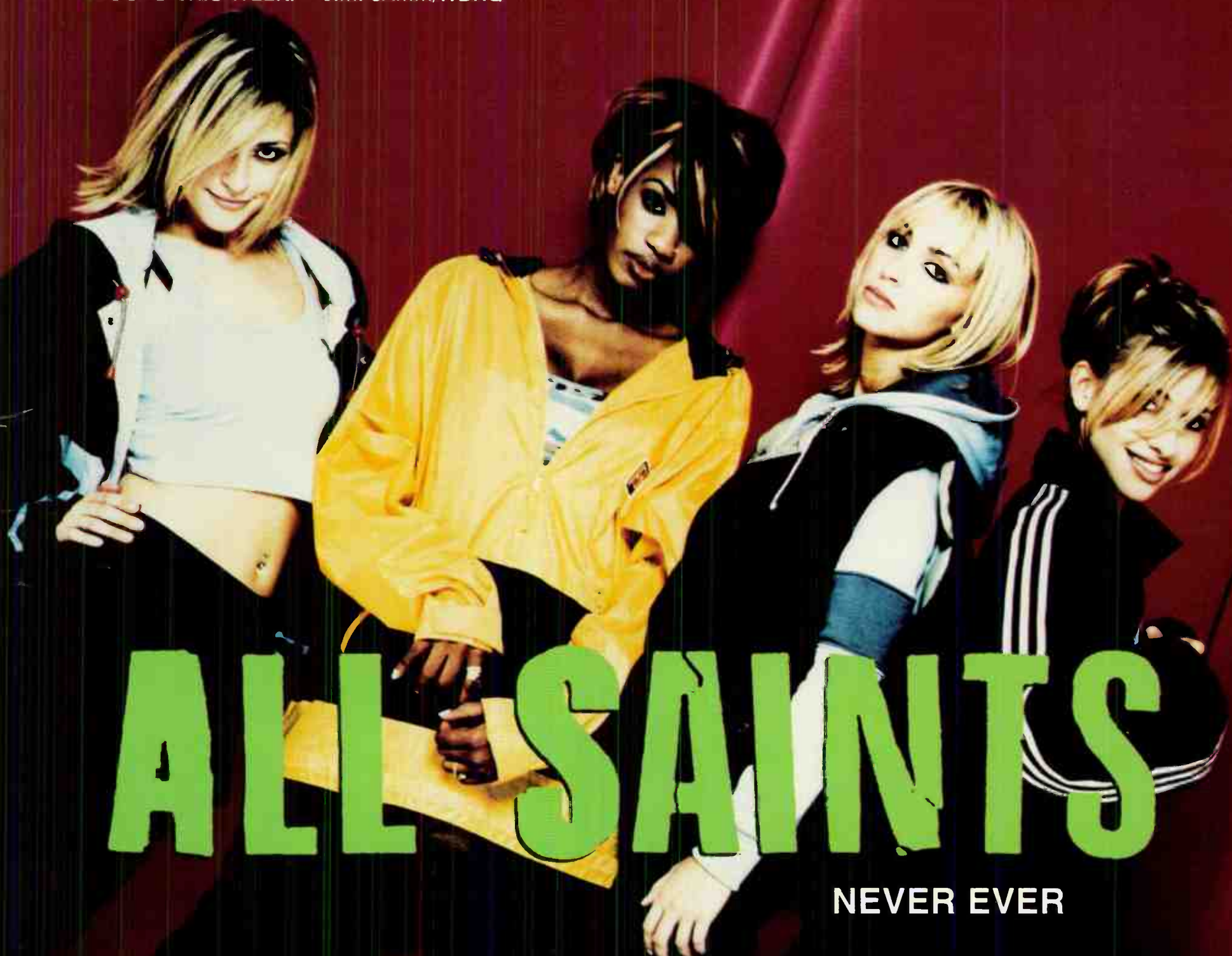
RHYTHMIC TOP 40 MONITOR #38  
WJMN/BOSTON - ADD!!  
KUBE/SEATTLE - ADD!!

New BDS this week: KMEL, WDRQ, WZJM, WNVZ  
#1 Phones!! KLUC, B95, WKXJ, KIKI  
Top 5 Phones!! KYLD, KDGS, KYLZ,  
WWKX, KWNZ, KOHT



"INSTANT REACTION!" TOP 5 PHONES AND CONTINUES TO GROW!" -ANDY SHANE/WKTU

"THIS TRACK HAS GENERATED A TREMENDOUS AMOUNT OF CURIOSITY CALLS THAT HAVE TURNED INTO REQUESTS. DON'T WAIT TO ADD THIS!! TIED WITH K-CI & JOJO AS THE MOST REQUESTED RECORD THIS WEEK." -JIMI JAMM/WDRQ



# ALL SAINTS

NEVER EVER

WKTU TOP 5 PHONES, 39 DETECTIONS  
WDRQ #1 PHONES  
WWZZ TOP 10 PHONES  
KKLQ TOP 10 PHONES  
KGGI TOP 15 PHONES  
KDUK TOP 5 PHONES  
WIXX TOP 10 PHONES  
KZFM TOP 5 PHONES  
CK105 #1 PHONES  
Z104 TOP 5 PHONES  
KHTO TOP 10 PHONES

**NEW AT:  
WXYV  
WNCI  
AND MORE**

**LP OVER 250,000 SOLD**



a PolyGram company

Management: JOHN BENSON MUSIC MANAGEMENT Produced by CAMERON MCVEY & MAGNUS FIENNES Additional production by RICKIDY RAW & MYSTRO  
www.londonrecords.com ©1997 London Records 90 Ltd



8 MILLION ALBUMS SOLD IN JUST 5 MONTHS...

HER **TITANIC** LOVE SONG MADE HISTORY BEFORE OUR VERY EARS...

...NOW IT'S TIME FOR THE ONLY RECORD THAT COULD FOLLOW  
**THE BIGGEST SINGLE OF THE DECADE**



**CELINE DION**

*TO LOVE YOU MORE*

#1 CALLOUT RESEARCH RECORD AND #1 PHONE RECORD *EVERYWHERE IT'S BEEN PLAYED*

STATIONS THAT CAN ALREADY TESTIFY:

Y100/MIAMI WKSE/BUFFALO K101/S.F. WLIT/CHICAGO KLSY/SEATTLE KESZ/PHOENIX WMJQ/BUFFALO  
WPXY/ROCHESTER KBIG/L.A. WASH/WASHINGTON, D.C. WALK/L.I. and more...

**IMPACTING ALL FORMATS MAY 12TH**



Produced by David Foster for Chartmaker Inc. Management: Rene Angeli Feeling Productions Inc. BK 68861 [www.celineonline.com](http://www.celineonline.com) [www.550music.com](http://www.550music.com)  
[www.epicrecords.com](http://www.epicrecords.com) [www.sony.com](http://www.sony.com) "550 Music" and design, "SONY," "Epic" and  Reg. U.S. Pat. & Tm. Off. Marca Registrada. © 1998 Sony Music Entertainment (Canada) Inc.

World Radio History

