

ROCK ■ AIRPLAY Monitor

• We Listen To Radio •

January 22, 1999 \$4.95 Volume 6•No. 4

ROCK HIGHLIGHTS

MAINSTREAM

#1

METALLICA

Turn The Page (ELEKTRA/EEG)

★ ★ ★ AIRPOWER ★ ★ ★

COLLECTIVE SOUL • Heavy (ATLANTIC)

ON YOUR DESK

FASTBALL • Out Of My Head (HOLLYWOOD)

JEFFERSON STARSHIP • Let Me Fly (CMC INTERNATIONAL)

JULIAN LENNON • Day After Day (FUEL 2000)

MUDHONEY • Ghost (REPRISE)

THE OFFSPRING • Why Don't You Get A Job? (COLUMBIA)

OLEANDER • Why I'm Here (REPUBLIC/UNIVERSAL)

THE SCREAMIN' CHEETAH WHEELIES • Right Place Wrong Time (CAPRICORN/MERCURY)

SECOND COMING • Vintage Eyes (CAPITOL)

MODERN

#1

EVERLAST

What It's Like (TOMMY BOY)

★ ★ ★ AIRPOWER ★ ★ ★

NO RECORDS QUALIFIED FOR AIRPOWER THIS WEEK

ON YOUR DESK

FASTBALL • Out Of My Head (HOLLYWOOD)

JUDE • Rick James (MAVERICK/REPRISE)

LIT • My Own Worst Enemy (RCA)

LOVE AND ROCKETS • R.I.P. 20C (RED ANT)

LIZ PHAIR • Johnny Feelgood (MATADOR/CAPITOL)

TRIPLE-A

#1

NEW RADICALS

You Get What You Give (MCA)

★ ★ ★ AIRPOWER ★ ★ ★

SHERYL CROW • There Goes The Neighborhood (A&M)

Warning: R&B Oldies May Be Hazardous To Rock's Share

by Marc Schiffman

Each week, at least one or two stations are turning to R&B oldies in search of the next big thing, among them former active rock standard-bearer WRCX Chicago, which became WUBT (the Beat) last fall.

"Jammin' oldies" stations, as many of them are positioned, usually target listeners in the 35-54 demo. While they vary from market to market, their musical center is usually in the '70s, with a smattering of '60s Motown and early-to-mid-'80s titles. Unlike R&B oldies outlets of the past (most of which were on AM), many of the new stations play only those titles that crossed to pop radio at the time, meaning that their goal is to target the general audience, not merely fragment R&B radio's current shares.

While the titles are obviously different, the musical era that R&B oldies stations are super-serving overlaps with many classic and heritage rock stations. And while R&B oldies stations are more female in appeal than their rock counterparts, one wonders if a station that plays Al Green, Stevie Wonder, and Aretha Franklin will have at least some appeal to rock listeners whose current P1 stations already have some blues or roots-music feel to them.

So far, rock PDs are allowing that jammin' oldies stations could siphon off their upper-demo listeners, but only in the way that a new, heavily pub-

licized format ends up affecting everybody else in a market at the outset. Like the '70s oldies outlets that dotted their markets during the mid-'90s, the current rhythmic oldies outlets will either have no legs or revert to a listener's P2 choice quickly, some PDs say. And some PDs believe that the format is too female-oriented, or too aimed at a traditional oldies station, to pose any threat to them.

But there are champions of the format within the rock world. "I absolutely love the format and wish Denver would get one," says SBR Creative Media consultant John Bradley. As far as taking listeners, he says, "anyone who's in the age group is fair game."

"In markets with weak rock or classic rock—upper-demo rock stations—it's arguable that this music is so fresh and special that it may win over some of the former disenfranchised rock users," says WUBT PD Jay Beau Jones, former PD of modern WMRQ Hartford, Conn.

Even in a market where disco records were once publicly blown up by album rock rival WLUP (the Loop)'s Steve Dahl, Jones says that "looking at the last six weeks extrapolated, we're No. 3 [with] 25-54 men. A lot is due to the fact that if you're an upper-demo male in your 30s, this format was your top 40 when you were growing up."

Across the street from Jones, WLUP PD Greg Solk says, "They're affecting

Continued on page 5

THE OFFSPRING



WHY DON'T YOU GET A JOB?

The follow-up to the hit track *Pretty Fly (For A White Guy)*

From **AMERICANA**

- Nearly 2 million sold
- #4 Album in America
- #1 Alternative Album

US Tour Begins February 24th

Produced and Mixed by Dave Jerden

Management: Rebel Waltz, Inc.

www.offspring.com

COLUMBIA

"Columbia" Reg. U.S. Pat. & Tm. Off. Marca Registrada. © 1999 Sony Music Entertainment Inc.

secret smile the new single

;) *Semisonic*

#2 Most New Stations!

Not such a secret...

**WBCN KNDD KEDJ KZNZ KWOD
99X WPLY WEDG KXRK WEND
and many more**

1999 GRAMMY NOMINEE "Song Of The Year"

"Albums That Mattered In 1998"
"1998 Year End Reader's Poll"
-Rolling Stone

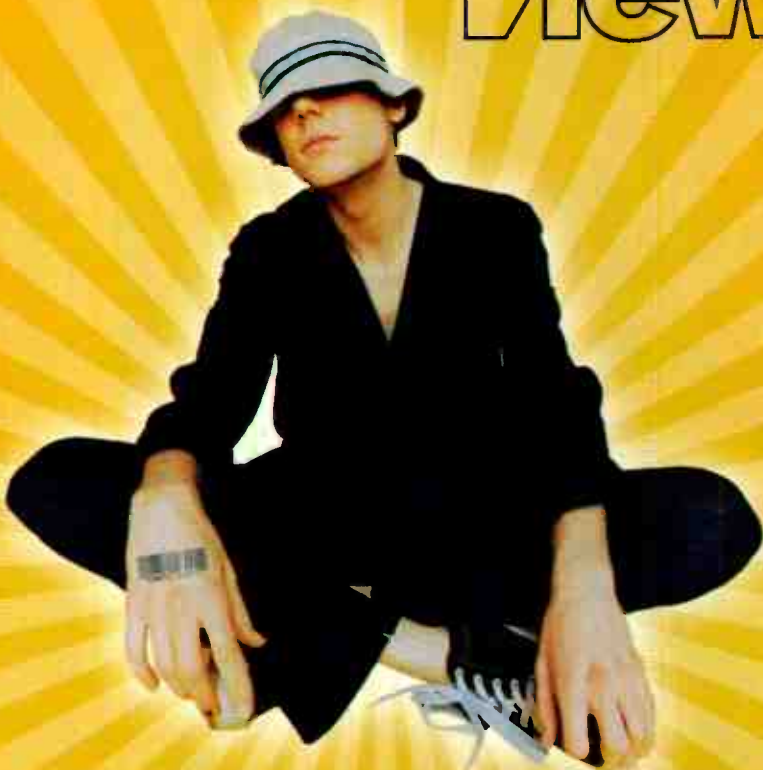


From *Feeling Strangely Fine*
www.semisonic.com • www.mcarecords.com
©1999 MCA Records, Inc.



NewRadicals

"you get what you give"



**Top 10
Modern Rock Monitor!**



Buzzworthy



Produced & Arranged by Gregg Alexander
Management: Steve Jensen and Martin Kirkup/Direct Management Group, Inc.
www.mcarecords.com • newradicals.com • ©1999 mca records, inc.

Congressmen Ask FCC To Investigate Radio Group/Label 'Marketing' Deals

The Los Angeles Times reported Jan. 14 that both Sen. **Paul Wellstone** (D-Minn.) and Rep. **John Conyers** (D-Mich.) were calling on the FCC to investigate whether recent deals between group broadcasters and labels skirt payola laws. Last month, the Times, following Top 40 Airplay Monitor's lead, reported a \$237,000 promotional deal between A&M and Chancellor Media on behalf of artist **Bryan Adams**. Now, Conyers says, "the idea that radio stations may have invented new ways of accepting pay-for-play confirms my worst fears about merger mania."

For his part, FCC mass-media bureau enforcement chief **Charles Kelly** tells the Times, "We have not made a decision yet as to what course we will follow, but this is certainly an area that we could pursue."

STERN'S STALKER IMPRISONED

Syndicated morning personality **Howard Stern** can breathe the easy after the man who referred to Stern as "Dead Man Walking" in letters was sentenced to 2½ years in prison. **Michael Lance Carvin**, 44, sent four letters to Stern last spring from Las Vegas, one of which said, "I will absolutely, without a doubt, kill you, and this is 100% guaranteed." The sentence was nearly twice as much as federal sentencing guidelines called for. "The purpose of this sentence is to deter this defendant and others from engaging in this type of conduct," said the judge.

BUSINESS: CITADEL SELLS 25

Citadel Broadcasting is selling 25 small-market stations to Marathon Media for \$26 million. Included in the deal are classic hits **KEHK** Eugene, Ore.; classic rock **KBOY** Medford, Ore.; classic rock **KTHK**/album **KXRX** Tri-Cities, Wash.; album **WQWK** State College, Pa., and simulcast sister **WQKK** Johnstown, Pa.; and classic rock **KMHK** Billings, Mont. Separately, the FCC has delayed approving Citadel's proposed purchase of Wicks Broadcasting's five Binghamton, N.Y., stations, including classic rock **WAAL**, citing concentration concerns.

Triple-A **WRSI** Greenfield, Mass., has purchased simulcast partner **WVAY** Brattleboro, Vt., which it had been controlling under an LMA for the past year.

Modern **WBUS** Toledo, Ohio, and simulcast sister **WJZE** are acquired by Cumulus, owner of six other stations in the market.

Northeast Broadcasting Co., which owns triple-A stations **WNCS** Montpelier, Vt.; **WSHX** Danville, Vt.; and **WXRV** Haverhill, Mass., has bought **WVFM** Campton, N.H., from White Mountain Radio for \$325,000.

Sorry to report that ABC Radio Networks senior VP of programming **Robert Hall**, who oversees ABC's 24-hour formats, is leaving due to progressive hearing loss. He will still consult ABC. Meanwhile, ABC entertainment news producer **Dave Alpert** joins Westwood One as executive editor of entertainment news.

Worried about the impact of digital automation? Try taking it into your own hands. Portland, Ore., album radio vet **Bob "B.A." Ancheta** launches Internetjock.com to deliver custom voice-tracks to automated stations worldwide via the MP3 format.

FORMATS: CLASSIC CONVERTS

Classic rock **WWBR** Detroit has flipped to AC as **WKSK** (Kiss-FM) under a new owner. PD **Joe Wade Formicola** exits, according to The M Street Daily. Meanwhile, The Detroit Free Press hints that former **WWBR** morning man **Ted Nugent** may pick up P/T work at crosstown **WKRK**.

Classic rock **KSD-FM** St. Louis becomes the latest convert to Jacor's rock-based top 40 format as **Mix 93.7**. **KHMX** (Mix 96.5) Houston PD **Randy James** is consulting. **Steve Brill** remains

PD. The change returns **KSD-FM** to the AC station that it was through the '80s.

PD **Chuck Summers** returns triple-A **WLUM** Milwaukee to mainstream rock as **Rock 102.1**. Night host **Billy Berghammer** exits, replaced by P/T **Southside Eddy**.

PROGRAMMING: UP THE CREEGER

Classic rock **KSLX** Phoenix, Ariz., morning man **Rich Creeger** picks up PD stripes at the station. One of his first jobs is to find a new co-host after the departure of **Joey T**.

Modern **WMRQ** Hartford, Conn., MD/middayer **Dave Hill** becomes PD. P/T **Silent J** is acting MD.

Album **KSEZ** Sioux City, Iowa, PD/middayer **Tom Stevens** transfers to PD duties at soft AC sister **KSFT**. OM **Rich Randall** picks up PD duties, while **Steve Arthur** comes in for middays from the same at top 40 sister **KGLI**.

Dave Parks is no longer OM at Amaturio's Santa Rosa, Calif., stations, including album **KXFX**.

Corey Deitz, morning host of modern **KDRE** Little Rock, Ark., is the new PD at top 40 sister **KHTE** (K-Hits 106). The **Corey** and **Jay** show also moves to afternoons at **KDRE**, replacing **Catfish**. **Alyne Hoover** becomes OM for **KDRE**.

PEOPLE: HE GOES TO EXTREMES

Modern **KXPK** (the Peak) Denver APD/nights **Eric Schmidt** joins album **WXTM** (Extreme Radio) St. Louis as MD/middayer. Afternoon host **Jeff "Woody" Fife** is AMD.

Spokane, Wash., market vet **Brad Lee** takes the open morning slot at album **KNJY**, replacing **Steve Hawk**, who left in October.

Country **WPOC** Baltimore promotion director **Sheila Silverstein** is upped to marketing director for Jacor Baltimore, including classic rock **WOCT**. **Dean Smith** joins as event/marketing manager. He previously worked in radio sales.

The Chicago Sun Times reports that album **WLUP** night host **Laura Steele** is named morning co-host/news anchor.

Triple-A **KTAO** Taos, N.M., MD/middayer **Marina Colman** exits. PD **Brad Hockmeyer** picks up the MD duties; **Jackson**, in sales, adds middays... Triple-A **KSPN** Aspen, Colo., P/T **Sam Scholl** takes MD/nights.

Album **KTYD** Santa Barbara, Calif., MD/night jock **Dayna Birkley** exits. Director of FM programming **Keith Royer** now handles music.

Album **WMMS** Cleveland morning host **Danny Czekalinski** exits.

The Myrtle Beach, S.C., Sun News reports that syndicated morning men **John Boy** and **Billy** move from classic rock **WWSK** to similarly formatted **WSEA**. **WWSK** afternooner **Michael Parnell** gets mornings. Market veteran **Wally B.** returns for the afternoon vacancy.

Modern **WARQ** Columbia, S.C., morning sidekick **Kendall** exits.

Album **WAMX** Huntington, W.Va., morning man **Quinn** joins modern **WHMP** Springfield, Mass., for same, joined by **Joan Austin**, promotion director at album **WHCN** Hartford, Conn.

Modern **WWDX** Lansing, Mich., promotion director/morning co-host **Stacie Hyde** heads to triple-A **WVRV** (the River) as promotion director. Crosstown noncommercial **WDBM** PD **Nicole Chuminatto** replaces Hyde at **WWDX**.

Julie Hoyt, formerly MD/night host at modern **KTEG** Albuquerque, N.M., joins modern **KDGE** Dallas for nights, replacing **Michelle Boros**, who moved to mornings a few months ago.

Modern **WXEG** Dayton, Ohio, p.m. host **Allen Rantz** swaps shifts with middayer **Scott Mallory**.

At album **WXRA** Greensboro, N.C., morning producer **Monica Cline** moves to nights, replacing the **Dave**. Hot AC **WKBC-FM** North Wilkesboro, N.C., night host **Jason Brewer** replaces her.

San Diego radio vet **Rossman** joins the weekend lineup at modern **KCXX** Riverside, Calif.

Classic rock **KZAP** Chico, Calif., adds radio

His Performance Is Now



The staffers of the syndicated Bob and Tom morning show had so much fun with their recent Live Day broadcast that they went for another one with John Mellencamp as their special guest. Shown, from left, are Bob Kevoian, Mellencamp, Tom Griswold, and sidekick Kristi Lee.



212-536-5361 • sgraybow@airplaymonitor.com

'Praise' For Electronica, As Slim Charts

IN 'PRAISE' OF ELECTRONICA: Though the electronic music revolution hasn't quite evolved into the commercially dominant genre many had predicted, a handful of artists continue to make an impression on radio. One repeat visitor is **Fatboy Slim**, who makes his third appearance in 12 months on the modern chart with the debut of "Praise You" (Astralwerks). ("Praise" would be at No. 30, six positions higher, if the chart were based on audience). This time last year, Slim made his first entry on the modern chart with "Going Out Of My Head," which debuted at the No. 40 spot with 476 spins. One year later, and with fewer stations on the panel (81 then and 74 now), the new Fatboy Slim track collects 571 spins in its first week.

"Praise You" is featured in a Nike commercial that first aired before the holidays; it already surpasses the highest weekly spin total for Slim's "Rockafeller Skank." Interestingly, the allegedly more conservative Midwest is the only region where the record has been spun at least once by all of the panel's reporting stations.

CHART MONITOR: Despite a 5% dip in spins, **Everlast** continues to dominate the modern rock chart with a 184-spin edge over No. 2 **Sugar Ray**. Last week's 333-spin advantage that Everlast had over No. 2 **Cake** was the largest gap between the top two records at modern rock since **Chumbawamba** had a 395-spin advantage over **Smash mouth** in November 1997. Last year, there were only four instances in which the top record possessed a 300-plus spin gap over the No. 2 record: **Marcy Playground** twice in March, and **Fastball** and **the Goo Goo Dolls** in April.

Lenny Kravitz' "Fly Away" (Virgin) ties the record for holding down the No. 1 spot on any Monitor rock chart, as it remains at the top of the audience chart for a 16th straight week. Previously, **Days Of The New's** "Touch, Peel And Stand" had spent 16 weeks at No. 1 on both mainstream rock and active rock, while the **Kenny Wayne Shepherd Band's** "Blue On Black" visited the top of the heritage rock chart for the same length of time. **Marcy Playground's** "Sex And Candy" is the modern rock record holder with a 15-week run at No. 1. **Matchbox 20's** "3 AM" and **the Goo Goo Dolls'** "Iris" share the modern adult record with 13 weeks atop that chart.

Metallica's "Turn The Page" spends its 10th week at No. 1 on both the mainstream and active charts. That makes it only the fifth title to spend 10 or more weeks at No. 1 on the mainstream chart since Rock Airplay Monitor began publishing in January 1994. **Days Of The New** did it twice, with "Touch, Peel And Stand" and "The Down Town," as did **Stone Temple Pilots'** "Interstate Love Song" and **Live's** "Lightning Crashes." "Page" also becomes only the second track in the 19-month history of the active rock chart to remain at No. 1 for 10 or more weeks, along with "Touch, Peel and Stand."

Does first quarter mean more activity? Consider that the last time there were four **Airpowers** on the active rock chart was in the Aug. 14 issue of last year.

PERSONNEL FILE: Top 40 Airplay Monitor director of charts **Theda Sandiford-Waller** exits for a label position to be announced shortly. Reach her at 201-223-1314.

Wind-Up national director rock promotion **Joanne Grand** becomes national director of rock/triple-A promotion.

Ark 21 national director of promotion **Mark Naylor** exits. Reach him at 212-684-8755.

PANEL CHANGES: **WKRK** Detroit is removed from the mainstream and active rock panels, following its segue to a talk-based format. Panel sizes are 111 and 50, respectively. **KTOZ** Springfield, Mo., is removed from the modern rock panel; it will become a modern adult and adult top 40 reporter next week.

newcomer **Eric Rogers** to nights. He replaces **Tony Ward**, now in the computer business.

Former album **WQBZ** Macon, Ga., PD **Serena Scott** returns to the station as promotion director/middayer, replacing **Jon Byrd**.

With last week's exit of **J.J. Thomas** from classic rock **KBSO** Corpus Christi, Texas, **KBSO** PD **Mike "Pudge" Aradillas** moves from middays to the **Dan and Pudge** morning show. **Joseph Valdez**, production director at sports sister

KCCT, tacks on **KBSO** midday duties. Promotion director **Roxy Waters** becomes APD, and crosstown album **KNCN** P/T **Brandie Albrecht** joins **KBSO** as MD/promotion assistant.

Album **KBOY** overnigher **Michael Dee** joins crosstown country **KAKT** as MD/middayer.

Radio marketing veteran **Jim Marchyshyn**, most recently at album **WKRK** Detroit, has become director of communications at the International Hot Rod Assn.

FALL '98 ARBITRONS

12-plus overall average quarter-hour shares. (#) indicates Arbitron market rank. Copyright 1999, Arbitron Ratings Co. May not be quoted or reproduced without the prior written permission of Arbitron.

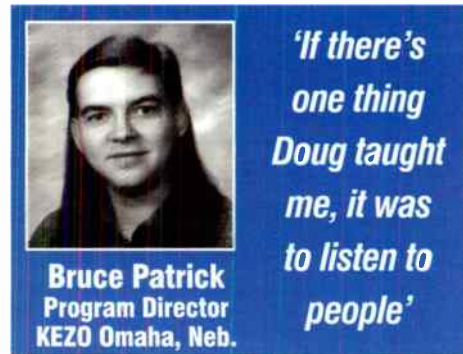
Call	Format	'97	'98	'98	'98	'98	Call	Format	'97	'98	'98	'98	'98							
SAN FRANCISCO—(4)																				
KGO	N/T	6.6	6.4	6.6	6.5	7.3	KLNK	Spanish	1.9	2.3	2.3	1.7	2.5							
KOIT-AM-FM	AC	3.9	4.3	4.7	4.2	4.9	KPOP	adult std	3.1	3.6	3.7	2.8	2.5							
KCBS	N/T	4.8	5.3	4.5	4.6	4.4	KFI	N/T	2.2	2.1	2.2	1.9	2.1							
KYLD	top 40/rhythm	4.2	3.8	4.7	4.4	3.9	KMSX	AC	3.3	3.2	3.2	—	1.6							
KKSF	jazz	3.3	2.7	2.8	3.0	3.6	KSDO	N/T	1.0	1.3	2.0	1.3	1.5							
KMEL	R&B	3.4	2.8	3.5	2.9	3.6	KLQV	Spanish	1.7	2.2	1.8	1.6	1.4							
KDFC-FM	classical	2.8	2.3	2.7	3.0	3.5	XBCA	Spanish	1.1	1.1	1.0	1.0	1.3							
KISQ	R&B adult	3.0	3.5	2.9	3.4	3.4	KFSO	classical	1.4	1.2	1.3	1.7	1.3							
KFRC-AM-FM	oldies	3.3	2.9	3.5	3.4	3.2	KIST	triple-A	1.6	1.1	1.3	1.3	1.3							
KIOI/KNEW	AC	4.3	4.4	3.9	3.6	3.1	KMX	N/T	1.1	1.1	1.4	1.0	1.1							
KSFO	N/T	2.6	3.3	3.1	3.2	3.1	BALTIMORE—(20)													
KNBR	sports	4.1	3.1	4.4	3.8	2.8	WERQ	R&B	9.8	9.8	8.8	9.5	9.6							
KBLX	R&B adult	2.9	2.9	2.6	2.1	2.7	WPCC	country	6.4	6.7	7.2	7.4	6.8							
KFOG/KFFG	triple-A	2.9	3.2	2.6	2.7	2.7	WVNO	AC	5.0	5.4	4.7	4.9	6.0							
KITS	modern	1.8	1.8	1.9	3.0	2.7	WBAL	N/T	7.0	6.8	6.8	8.4	5.9							
KLLC	AC	2.5	2.6	2.4	2.8	2.6	WQSR	oldies	7.2	5.5	6.1	5.8	5.6							
KZQZ	top 40	2.7	2.9	3.0	2.7	2.5	WVIV-FM	R&B adult	3.4	4.1	5.8	4.7	5.5							
KABL	adult std	3.2	3.3	2.8	3.6	2.4	WLIF	AC	4.5	5.8	5.0	5.7	4.9							
KSJO/KFJO/KSZF	album	1.6	1.6	1.7	1.7	1.8	WTTT	album	4.3	3.9	4.2	4.2	4.3							
KSOL/KZOL	Spanish	2.4	1.3	1.4	2.0	1.7	WHFS	modern	2.7	2.4	3.4	2.8	3.6							
KBRG/KZWC	Spanish	7	1.4	1.3	1.4	1.6	WYXY	top 40	4.1	4.8	4.0	3.8	3.5							
KLOK	Spanish	1.4	1.1	1.4	1.2	1.6	WOCF	cls rock	2.8	2.9	3.3	3.8	3.3							
KSAN	cls rock	1.1	2.0	1.6	2.0	1.5	WCAO	religious	4.2	3.3	2.9	2.8	2.7							
KYCY	country	1.5	2.1	1.6	1.8	1.1	WCBM	N/T	2.3	2.1	2.1	2.1	2.4							
KBAY	AC	1.2	1.2	1.1	1.8	1.0	WPCC-FM	R&B	1.6	1.7	1.7	1.7	1.9							
KEZR	AC	9	9	1.0	1.1	1.0	WRBS	religious	1.9	2.2	1.7	1.5	1.8							
KUFX	cls rock	1.2	9	6	1.2	1.0	WHUR	R&B adult	1.4	2.0	1.5	1.5	1.5							
PHILADELPHIA—(5)																				
KYW	N/T	6.8	7.4	7.2	6.4	6.4	WJFK-AM	N/T	1.8	1.7	1.6	1.4	1.5							
WBEB	AC	5.9	5.8	7.2	6.2	5.9	WVLG	adult std	1.2	1.2	1.2	1.3	1.4							
WDAS-FM	R&B adult	5.5	6.4	6.2	5.8	5.9	WVFX	country	1.2	1.2	1.2	1.1	1.1							
WYSP	album	6.3	5.4	5.1	5.4	5.6	WVIR-AM	religious	1.0	1.2	9	1.0	1.1							
WGLL	oldies	5.0	4.6	4.9	4.9	5.5	WASH	AC	8	9	6	5	1.0							
WUOL	R&B	4.7	4.3	5.1	4.7	5.3	WKYS	R&B	1.2	9	1.0	1.1	1.0							
WVDB	N/T	4.6	5.0	4.0	5.0	4.4	CLEVELAND—(24)													
WJIZ	jazz	4.2	5.1	4.5	4.1	4.2	WZAK	R&B	9.9	9.3	9.0	8.7	8.7							
WJZO	country	3.7	4.2	4.3	4.7	4.2	WVJH	oldies	8.0	8.1	8.5	9.0	7.4							
WJOD	top 40	3.2	3.7	3.9	4.0	4.1	WVGR	country	7.5	6.9	8.0	6.6	7.3							
WPEN	adult std	3.6	3.8	4.1	3.3	4.0	WDOK	AC	6.9	7.2	6.3	6.1	7.0							
WMGX	cls rock	4.7	3.9	4.1	4.1	3.9	WTAM	N/T	4.3	4.9	8.3	8.7	6.9							
WMMR	album	3.2	3.1	3.0	3.6	3.6	WZJM	top 40	6.0	4.8	4.9	5.6	5.8							
WPHI	R&B	3.5	3.5	3.4	3.1	3.3	WMMS	album	4.4	4.6	4.1	4.1	5.4							
WYXR	AC	3.0	3.2	3.3	3.1	3.1	WMVX	AC	3.3	5.7	5.9	5.8	5.4							
WIP	sports	3.7	3.4	2.6	2.7	2.9	WVVC	album	6.9	5.1	5.3	5.2	5.4							
WPLY	modern	2.6	2.2	2.3	2.3	2.1	WVWV	jazz	4.0	3.9	4.3	4.1	5.4							
WXOM	AC	1.6	2.2	2.2	2.3	2.1	WVWL	AC	5.0	4.5	4.0	4.5	5.0							
WPST	top 40	1.1	1.3	1.3	1.5	1.4	WRMR	adult std	5.5	6.2	5.4	5.8	4.8							
WKXW	N/T	9	1.0	9	9	1.3	WJMO	R&B oldies	1.7	2.5	2.1	2.2	2.6							
WDAS-AM	religious	1.2	1.3	1.2	1.0	1.2	WVXZ	modern	2.0	2.6	2.5	2.4	2.4							
WPHT	N/T	7	1.1	1.2	1.3	1.0	WVCL	classical	2.9	3.4	2.3	3.1	2.3							
DETROIT—(6)																				
WWIC	AC	7.4	7.6	7.5	8.0	8.0	WKWR	sports	1.8	1.9	1.6	1.5	1.6							
WJLB	R&B	7.9	8.1	7.7	7.1	6.8	WDFN	oldies	1.9	1.1	1.6	1.1	1.5							
WJR	N/T	6.4	5.8	6.8	6.0	6.8	WXDG	cls rock	2.3	1.8	2.0	1.7	1.4							
WDMC	oldies	5.5	5.9	5.6	6.6	5.6	WVBR	N/T	2.3	1.8	2.0	1.7	1.4							
WWJ	R&B adult	3.9	4.0	3.9	3.6	4.5	WGPR	R&B adult	1.2	1.4	1.3	1.0	1.3							
WWXD	jazz	3.5	4.7	4.1	4.8	4.5	WVGH	R&B oldies	1.1	1.1	9	1.4	1.3							
WRIF	album	3.8	4.1	3.4	3.5	4.1	WVXZ	modern	1.5	1.4	1.5	1.4	1.2							
WCSX	cls rock	3.1	3.0	3.9	4.1	3.7	WVUZ	religious	1.5	1.2	8	7	1.0							
WWWV	country	3.4	3.7	3.2	4.0	3.6	BOSTON—(8)													
WKQI	AC	4.1	4.1	4.3	4.6	3.5	WBZ	N/T	9.4	7.9	7.8	7.9	8.7							
WXYT	N/T	3.6	3.4	2.8	3.1	3.4	WJMN	top 40/rhythm	6.2	6.6	7.1	6.9	6.3							
WDTJ	R&B	3.2	3.4	3.5	3.2	3.3	WMJX	AC	6.0	6.8	6.0	6.8	5.5							
CKWW	adult std	3.0	2.3	3.1	2.0	2.6	WBCN	modern	5.2	5.5	5.8	5.7	5.4							
WYCD	country	3.5	3.0	3.0	3.2	2.6	WXKS-FM	top 40	5.9	6.3	5.8	5.6	5.0							
WDRQ	top 40/rhythm	3.2	2.6	3.5	3.0	2.5	WRKO	N/T	6.4	5.7	5.7	6.0	4.9							
WFLY	album	3.0	2.7	2.6	2.3	2.4	WODS	oldies	5.0	4.3	4.1	4.6	4.3							
WRRK	album	1.4	1.7	2.0	1.8	2.3	WBMX	AC	3.6	3.9	4.6	4.8	4.1							
WDFN	sports	1.8	1.9	1.6	1.5	1.6	WCRB	classical	4.0	4.8	4.6	3.3	3.9							
WXDG	modern	1.9	1.1	1.6	1.1	1.5	WEEL	sports	3.4	3.7	3.9	3.6	3.8							
WVBR	cls rock	2.3	1.8	2.0	1.7	1.4	WKLB	country	3.2	3.3	2.5	2.7	3.5							
WGPR	R&B adult	1.2	1.4	1.3	1.0	1.3	WVAF	album	3.0	2.7	3.2	2.6	3.4							
WVGH	R&B oldies	1.1	1.1	9	1.4	1.3	WZLX	cls rock	3.3	3.0	3.2	3.3	3.2							
WVXZ	modern	1.5	1.4	1.5	1.4	1.2	WROR	oldies	2.9	2.7	3.0	2.8	3.0							
WVUZ	religious	1.5	1.2	8	7	1.0	WVIZ	jazz	1.8	2.8	2.4	2.3	2.4							
BOSTON—(8)																				
WBZ	N/T	9.4	7.9	7.8	7.9	8.7	WVGG	cls rock	2.9	2.1	2.2	2.6	2.3							
WJMN	top 40/rhythm	6.2	6.6	7.1	6.9	6.3	WVOS	triple-A	2.1	2.5	2.2	2.0	1.7							
WMJX	AC	6.0	6.8	6.0	6.8	5.5	WXKS-AM	adult std	2.5	1.4	1.7	2.3	1.6							
WBCN	modern	5.2	5.5	5.8	5.7	5.4	WVFX	modern	1.2	1.2	1.2	1.6	1.3							
WXKS-FM	top 40	5.9	6.3	5.8	5.6	5.0	WXLO	AC	6	4	5	6	1.0							
WRKO	N/T	6.4	5.7	5.7	6.0	4.9	WZLD	AC	—	—	—	—	1.0							
WODS	oldies	5.0	4.3	4.1	4.6	4.3	WASHINGTON, D.C.—(9)													
WBMX	AC	3.6	3.9	4.6	4.8	4.1	WHUR	R&B adult	5.2	6.1	6.1	5.6	5.6							
WCRB	classical	4.0	4.8	4.6	3.3	3.9	WPCC-FM	R&B	5.6	5.5	6.1	6.3	5.6							
WEEL	sports	3.4	3.7	3.9	3.6	3.8	WKYS	R&B	6.3	4.9	5.2	5.3	5.4							
WKLB	country	3.2	3.3	2.5	2.7	3.5	WROX	AC	4.3	4.5	4.0	4.3	5.1							
WVAF	album	3.0	2.7	3.2	2.6	3.4	WMMJ	R&B adult	4.0	4.2	4.1	3.7	5.0							
WZLX	cls rock	3.3	3.0	3.2	3.3	3.2	WASH	AC	4.2	5.5	4.2	4.0	4.7							
WROR	oldies	2.9	2.7	3.0	2.8	3.0	WMZQ	country	5.1	4.8	5.5	4.2	4.5							
WVIZ	jazz	1.8	2.8	2.4	2.3	2.4	WBG	oldies	4.1	3.8	3.7	4.5	4.4							
WVGG	cls rock	2.9	2.1	2.2	2.6	2.3	WVHAL	N/T	4.1	4.6	3.6	4.6	4.2							
WVOS	triple-A	2.1	2.5	2.2	2.0	1.7	WVJW	jazz	3.4	3.5	3.4	4.0	4.1							
WXKS-AM	adult std	2.5	1.4	1.7	2.3	1.6	WVMS	classical	4.0	4.3	3.9	4.5	3.6							
WVFX	modern	1.2	1.2	1.2	1.6	1.3	WVFK-FM	N/T	4.6	2.4	2.9	4.1	3.6							
WXLO	AC	6	4	5	6	1.0	WVFC-FM	album	4.0	3.4	3.3	3.3	3.5							
WZLD	AC	—	—	—	—	1.0	WVAY	AC	3.7	3.4	3.4	3.2	3.2							

Patrick Builds On Sorensen's Legacy At Album Rocker KEZO Omaha

For KEZO Omaha, Neb., 1998 was a bitter-sweet year. Z92 celebrated 20 years as an album rocker and had some remarkable books last year, but all that was more than offset by the death of OM Doug Sorensen. Z92 was in the midst of a PD search at the time of Sorensen's death; those duties eventually fell to MD/mid-layer Bruce Patrick, who not only had to maintain a juggernaut radio station, but keep morale up during the grieving period for someone who, by all accounts, was a remarkable boss.

And it's a remarkable move for Patrick himself, who grew up outside of Omaha and was practically raised on Z92. After cutting his teeth at a full-service station, followed by air work in South Dakota, Patrick followed his fiancée to Omaha, responded to a classified ad for P/T work at Z92 on a whim, and was suddenly working at the station he grew up with. "That was the dream shot of getting a job at the station you had listened to all your life," Patrick says.

Patrick worked that P/T status for all it was worth. "I was at the PD and MD's beck and call. Anything they needed. If it was 10 minutes to 3



o'clock, and the 3 o'clock jock had called in sick, I'd be here by five after 3."

Under PD Randy Chambers, Patrick was MD at the time of Sorensen's arrival. "I was really intimidated, coming in to work for Doug, because Doug had such an authoritative presence, initially. And once you get to meet Doug, he was just the pussycat of pussycats to work with. Just a fabulous guy. He had the best attitude of anybody I've ever worked with. He always [reminded us], 'How lucky everyone is to work in a business like this that isn't really like work.'"

Sorensen loved to talk shop, and Patrick was a willing protégé. "You'd go in to his office and ask him one question, and you'd be in there a half-hour," he says. "Doug had not been selfish with his knowledge and all the tools that he had had in his head, and he shared that with pretty much anybody who wanted to listen. I really wanted to listen. I wanted to learn how to do things the way Doug had done them, because he was so well-respected."

Perhaps most important to Sorensen's legacy was his ability to build a team. "Doug instilled a piece of action into everybody, whether it was a person who was working as a board operator on our satellite-automated AM to the morning show of the best station in town in the ratings. Everybody was treated as an equal and everybody had something to say and everybody's opinion was valid... When you have somebody like that at the top that does what they say they're going to do, it pretty much filters down to everybody within the organization."

Patrick says it was the memory of Sorensen that continued to drive Z92 after his death. "When Doug got here, he took the slingshot, pulled it back, and shot us forward, and we still have a lot of that forward momentum here."

The fear, especially after Sorensen's death, was that an outsider would come in and quash the spirit that had developed in the halls. Once management decided to give the station to

Patrick, the apprentice, the team could pick up where Sorensen left off. "A lot of it had to do with the dedication to Doug and that I had worked under Doug for so long," Patrick says.

Musically, Sorensen taught Patrick that "in the mainstream rock format, you don't have to be an absolute pioneer on anything. You can sit back and watch the grass grow for a while," he says. The other side of the equation was knowing when to stretch your musical parameters. "In adding a record, a lot of times Doug said, 'Well, it's hot. People want to hear this, and it doesn't matter if it's an exact fit or if it's a little out on the edge. If it's a hit right now, you've got to get on things while they're hot and leave the stage while the audience is still applauding.'"

KEZO plays to the breadth of its listeners' tastes. "Omaha's a heavy metal town," Patrick says, recalling one of his P/T jocks who has a scrapbook of articles from the early '90s, when dozens of metal bands played the market. "But again, you look at the Midwest rock environment, and you can't ignore your Tom Pettys, your John Mellencamps, your Lynyrd Skynyrd—things that mainstream rock has been built on, and it's nice to have that broadness, where you can go from the Offspring to Lynyrd Skynyrd. It's really nice to have that flexibility."

He accomplishes that reach through day-parting and matching the personality to the music. "At night we almost turn active rock," Patrick says. And the one responsible for rocking at night is J.P. Cruz, a former club DJ who wanted to be on the air and got her chance from Sorensen. After training as a P/T jock, she took nights as "the Rock Queen." "She's got a show that's very music-intensive [and] era-intensive as well. At nights, we have a segment we call 'Perfect Hair At Eight,' where we do eight songs from the Motley Crues, the Warrants, the Wingers, the Slaughterers."

To introduce the show to the market, KEZO went to the "World Of Wheels" show with Cruz in full "rock chick" leather hosting a Perfect Hair Air Guitar contest. "It was a fabulous imaging statement to have her out in the public and looking like that and MC'ing that whole contest," Patrick says. "From there we developed her show to be a really aggressive rock show. There's still a lot of mainstream rock stations that will play Skynyrd or ZZ Top or some Mellencamp stuff at night, and we don't touch that at night. We make it a rock show, and we made it her show. We made her the star."

Here's a sample 7 p.m. hour on KEZO: AC/DC, "You Shook Me All Night Long"; Jerry Cantrell, "My Song"; Thin Lizzy, "The Boys Are Back In Town"; Offspring, "Come Out And Play"; Def Leppard, "Animal"; Eve 6, "Inside Out"; Rush, "Red Barchetta"; Godsmack, "Whatever"; Motley Crue, "Kickstart My Heart"; Smashing Pumpkins, "Bullet With Butterfly Wings"; Judas Priest, "Living After Midnight"; and Creed, "One."

An odd part of Patrick's homecoming has been working with the Todd and Tyler morning show. "The week before I moved up to South Dakota," says Patrick, "they had moved to Omaha, and they were the new morning show. I had the opportunity to listen to them for, like, a week before I moved."

Now working with them day to day, "it's slightly intimidating," says Patrick. "In dealing with morning shows, you have to do a lot of ego stroking, and you also have to listen, because these guys wouldn't be doing a morning show and be as successful as they are if they weren't tremendously intelligent. You have to respect their intelligence, and you have to respect their opinions. If there's one thing Doug taught me, it was to listen to people. Because some of the best ideas come from inside."

MARC SCHIFFMAN



212-536-5051 • mmarone@airplaymonitor.com

Q101 Gives Dovetail Joint A Boost

After a frustrating three years of major-label kisses without a commitment, Chicago band **Dovetail Joint** decided to stop worrying about big recording contracts and sign with local independent Aware Records. Ironically, while mixing what became its Aware/C2/Columbia debut, the single "Level On The Inside" found its way onto modern **WKQX** (Q101) Chicago and brought the act to a major's attention after all. For singer/guitarist **Chuck Gladfelter**, the turnabout was as surreal as it was satisfying. "All of a sudden after all these years we not only got a deal, but the song was all over Q101. Prior to that, once a month we could pack a place with 500 people."



Dovetail Joint: Robert Byrne, Joe Dapier, Jon Kooker, Charles Gladfelter

Even before the group could pack a club, Gladfelter and long-time friend and drummer **Joe Dapier** were driven by an ambition that began when the two met in sixth grade. They attended the progressive New Trier High School in suburban Chicago—where the music program included **Liz Phair**, former **Filter** and **Smashing Pumpkins** drummer **Matt Walker**, and American recording artist **Jonny Polonsky**. Gladfelter recalls the positive influence Walker, his brother **Sal** (a former Dovetail Joint bass player), and Polonsky had on the pair, as the then sophomores began opening their ears to more than heavy metal. "We started learning a more professional approach to music from them," he says. "We were in jazz band [class] so we didn't have to be taking geometry. Those guys were in jazz band because they wanted to learn about jazz. So once we saw that there was more underneath that music, we kind of changed our perspective and saw that if we really want to do this for a while, there are some basics that we're going to need to learn. And it's got nothing to do with makeup and spiked wristbands and cool leather ties."

Gladfelter is encouraged by Dovetail Joint's breakout play on Chicago's modern outlet, despite the band's inspiration being a trio of classic rock core artists. "We knew it was going to be a guitar rock thing. We knew we'd be sticking by the old **Zeppelin/Stones/Beatles** thing. And that's really where we're coming from," he says.

Warning: R&B Oldies May Be Hazardous To Rock's Share

Continued from page 1

the entire market. These are very strong magnets. It's great music. A lot of it's very fresh to the market. In some markets, the stuff hasn't been played in years."

Solk sees it "taking people from all over the place. It's very spread [out, so that it doesn't take a lot of numbers from any specific station] but from every possible format."

While Solk says that "there's no doubting their initial strength, [and] this will far surpass that oldies quick burn," he adds that it's not clear how long the station will hold listeners. "I don't know what the future is for this," but for the present, "if anyone dismisses the appeal or strength of these stations, it's a mistake."

MARKETWIDE IMPACT

Consultant Jeff Pollack says that at the outset of an R&B oldies station's life span, "there's such a hole for it, and you'll see these numbers jump. It may debut at a 5 [share] but will ultimately end up with a high 2, low 3 share."

Pollack predicts that what happened in Chicago will "unquestionably" play out in other markets. "When these stations launch, they impact the entire marketplace. When you have somebody pulling huge numbers out of the pie, that means a lot. The whole question is not the initial impact. But six months in, nine months," because "if you're a Led Zeppelin fan, after you have fun listening to Al Green you'll probably revert" to rock radio.

Album **KLBJ** Austin, Texas, OM Jeff Carrol is facing an R&B oldies station, former modern rocker **KFMK**, in a market with a considerable blues and roots music heritage. He admits, "The demo is there, and some of that stuff appeals to me. I think it will be a come kind of thing for listeners at first, but not long term... If you're not happy with the rock station to begin with, it might be one more button when you're making your rounds."

THE NEW 25-54 CHAMPION?

"We've all heard, 'It's a trend format, and it will go away in one to two years,'" says Jones of R&B oldies' critics. "But the response on the street and hearing the station and what we're doing here, I believe this is going to replace all of

the weak classic rock and all of the weak ACs—the weakest stations that target 25-54." He sees R&B oldies stations as "a permanent fixture" in the top three or top five of any market's 25-54 rankers. "Any station with an original franchise of energy may be replaced by this."

Others are not so sure. Bill Gamble programs classic rock rival **WXCD**—ironically, the station that (as late-'70s disco outlet **WDAI**) once prompted **Dahl's** disco demolition—and says, "We're really not seeing anything. You may see some secondary listeners on all kinds of radio stations sampling a new radio station. Format has less to do with it than their inclination toward a new product."

Gamble admits that classic hits stations could fall victim to an R&B oldies foe, "but if you're a Clapton, Floyd, and Zeppelin station, it's not in your world."

In New York, album **WNEW** PD Garry Wall has a similar take on new rival **WBIX** (Jammin' 105). "If they have an impact, it will be on the female-based and older-focused stations," he says. "It's a novelty attraction. Whether or not the legs for this on a long-term basis are there is yet to be determined. Initially, it's really a refreshing sound, but they're very tight... we'll see what happens."

One consultant who asked to remain anonymous agrees, saying the research shows that a market's oldies station has the most to lose when jammin' oldies comes to town. "If there's a format it will hit other than oldies, it would be classic hits, but it's a temporary hit."

And rock? It could suffer while an R&B oldies outlet goes through its growth cycle. "What will happen with those stations is that it will find a small core, have a big bloom, start to settle down, and then the research will show that they have to lean one way or the other," says the consultant, which could force the station in the direction of finally super-serving African-American listeners or moving closer to traditional oldies—either way, it would likely fall off the classic/heritage rock listeners' radar at that point.

And even as a fan, Bradley says, "my fear is that people put these things on with 200-300 songs, and they're toast in a couple of months."

Strongest Increase In Airplay This Week

MAINSTREAM ROCK

INCREASE
IN PLAYS

COLLECTIVE SOUL • Heavy (ATLANTIC)	+633
KCAL +21, WRXL +19, KEGL +19, KPOI +18, WRDU +18, KNJY +17, WTPT +17, WZZO +17, WHJY +17, WPLR +16	
METALLICA • Whiskey In The Jar (ELEKTRA/EEG)	+315
KRAB +25, KCAL +18, WAAF +18, KZRR +16, KATT +15, WAQX +14, KEZO +14, KNJY +11, KMJX +11, WEBN +11	
BLACK SABBATH • Selling My Soul (EPIC)	+294
WXTM +17, WAAF +16, KZRR +13, KNJY +12, KRZR +12, WQXA +11, KMJY +10, KICT +10, WCCC +10, WIYY +10	
BARE JR. • You Blew Me Off (IMMORTAL/EPIC)	+231
KICT +15, WXTM +13, WCCC +11, WROV +10, KHTQ +9, WZTA +9, WZZO +8, KNCN +8, KATT +8, KRXQ +8	
R.E.M. • Lotus (WARNER BROS.)	+163
WZZO +17, WEGR +16, WTKX +13, WSTZ +12, WNEW +12, WROV +10, WROQ +10, WZZR +10, KLPX +9, WDVE +9	
REMY ZERO • Prophecy (DGC/GEFFEN)	+106
WXTM +16, WTFX +14, WCCC +9, KPOI +7, WZTA +7, WAQX +7, WMFS +5, KQRC +5, KLAQ +5, KLBJ +5	
MARILYN MANSON • I Don't Like The Drugs (But The Drugs Like Me) (NOTHING/INTERSCOPE)	+103
WKLQ +15, WJRR +12, KUFO +11, KRZR +11, KXXR +10, WMFS +8, KDKB +7, WRQC +6, WBZX +6, WNOR +6	
EVERLAST • What It's Like (TOMMY BOY)	+100
KNCN +16, WMMS +12, WRQC +11, WLVQ +10, KLLO +10, KMJY +9, KQRC +9, WIYY +8, KATT +7, WCCC +6	
MOTLEY CRUE • Enslaved (MOTLEY/BEYOND MUSIC)	+100
KNJY +16, KXUS +7, WQXA +7, KMOD +7, WRQC +6, KXXR +6, WIOT +6, WAPL +6, KHTQ +5, WXTB +5	
STABBING WESTWARD • Haunting Me (COLUMBIA)	+93
KNJY +14, KRZR +12, WCCC +10, KICT +8, WZMT +7, WTPA +7, WMFS +6, WBZX +6, WAAF +6, KMJY +5	

MODERN ROCK

INCREASE
IN PLAYS

COLLECTIVE SOUL • Heavy (ATLANTIC)	+413
KDGE +24, WRXQ +22, KDRE +21, WEND +17, KFRR +17, KNRK +16, KMYZ +16, WCYY +15, WARQ +15, WKRL +14	
EVERCLEAR • One Hit Wonder (CAPITOL)	+370
WXDX +28, KROQ +25, KNRK +23, KDRE +19, WBCN +19, WQBK +17, KFRR +16, KFMA +15, WRXQ +15, WWCD +15	
SEMISONIC • Secret Smile (MCA)	+279
WRXQ +19, WENZ +19, WARQ +18, KZON +18, KLZR +17, KJEE +16, KRAD +15, KDRE +14, WGRD +13, WZAZ +12	
R.E.M. • Lotus (WARNER BROS.)	+264
WXNR +26, KLZR +20, KDRE +19, KZNY +19, WRXQ +14, WRXR +14, WXZZ +12, WAVF +12, KKND +11, KROX +11	
TIN STAR • Head (v2)	+260
WBTZ +17, WWCD +16, WAVF +15, WXDX +14, KDGE +14, WKRO +13, WRAX +12, KFRR +11, WRXR +11, WGRD +11	
MARVELOUS 3 • Freak Of The Week (HIFI/ELEKTRA/EEG)	+197
KKDM +19, KDGE +19, KDRE +12, KENZ +11, KJEE +11, WXDX +11, WCYY +10, WRXQ +10, KROX +9, KCXX +9	
CREED • One (WIND-UP)	+157
KXPK +23, WHFS +19, KFRR +16, KDRE +13, KPNT +13, KJEE +12, WCYY +12, WRXR +12, WAVF +12, WNFZ +11	
FATBOY SLIM • Praise You (SKINT/ASTRALWERKS)	+149
WJBX +19, KKDM +18, WEQX +18, KWOD +18, KDGE +17, CFNY +13, KLZR +10, CIMX +9, WNNX +9, KROQ +9	
STABBING WESTWARD • Haunting Me (COLUMBIA)	+139
KDRE +21, WENZ +16, WMRQ +15, WKRL +14, KROX +11, KRAD +10, KFTE +9, WHFS +9, KNDD +8, WQBK +7	
THE LIVING END • Prisoner Of Society (REPRISE)	+125
KXTE +14, WQBK +13, WNFZ +11, KLZR +11, WBRU +11, WBCN +11, KDRE +10, KWOD +8, KFTE +7, KRAD +7	

VIDEO PLAYLISTS

MOST PLAYED ROCK TRACKS



	TW	LW
1 Jewel, Hands	36	16
2 Shawn Mullins, Lullaby	33	11
3 Sheryl Crow, My Favorite Mistake	32	16
4 Eagle-Eye Cherry, Save Tonight	31	15
5 Sarah McLachlan, Angel	30	10
6 Goo Goo Dolls, Iris	25	11
7 Third Eye Blind, Jumper	20	9
8 Alanis Morissette, Thank U	20	10
9 Barenaked Ladies, It's All Been Done	20	9
10 Goo Goo Dolls, Slide	19	8
11 Sugar Ray, Every Morning	16	10
12 Hootie & The Blowfish, Only Lonely	16	8
13 Barenaked Ladies, One Week	15	7
14 Lenny Kravitz, Fly Away	15	8
15 U2, Sweetest Thing	13	6
16 Fastball, The Way	13	9
17 Aerosmith, I Don't Want To Miss A Thing	12	6
18 Rolling Stones, Gimme Shelter	12	9
19 New Radicals, You Get What You Give	11	4
20 Semisonic, Closing Time	10	7
21 Collective Soul, Run	10	4
22 Natalie Imbruglia, Torn	10	6
23 Dave Matthews Band, Crush	9	3
24 Matchbox 20, Real World	8	5
25 Green Day, Time Of Your Life	8	10
26 Brian Setzer Orchestra, Jump Jive An' Wail	8	10
27 R.E.M., Lotus	8	8
28 Hole, Malibu	8	0
29 Smash Mouth, Walkin' On The Sun	7	6
30 Sarah McLachlan, Adia	7	4

TRIPLE-A

INCREASE
IN PLAYS

COLLECTIVE SOUL • Run (HOLLYWOOD/ATLANTIC)	+92
WVRV +18, WKOC +17, KACD +13, WTTS +12, WXRV +10, WDOD +7, WRLT +6, WNCS +3, KKZN +2, KMTT +2	
R.E.M. • Lotus (WARNER BROS.)	+60
KGSR +8, WDOD +7, WRLT +7, WNCS +7, KTCZ +7, CIDR +6, KFOG +6, KACD +5, WTTS +5, WBOS +4	
SUGAR RAY • Every Morning (LAVA/ATLANTIC)	+53
KTCZ +13, KACD +11, WHPT +11, WDOD +10, WKOC +5, WXRV +4, KMTT +3, WRLT +1, WLUM +1	
JOHN MELLENCAMP • I'm Not Running Anymore (COLUMBIA)	+52
KTCZ +17, KACD +12, KGSR +10, KFOG +6, WXRT +3, KKZN +2, WNCS +2, CIDR +1	
SHAWN MULLINS • Shimmer (SMG/COLUMBIA)	+48
WRLT +10, WNCS +9, WXRV +9, KINK +6, KGSR +6, CIDR +5, KKZN +2, KFOG +2, KMTT +1, KTCZ +1	
SHERYL CROW • There Goes The Neighborhood (A&M)	+34
WDOD +8, WRLT +6, KMTT +6, KINK +5, KGSR +5, CIDR +4, WXRT +4, WBOS +3, KKZN +2, KFOG +2	
JONNY LANG • Still Rainin' (A&M)	+32
KACD +12, KKZN +10, KGSR +8, KFOG +7, KTCZ +5, WDOD +3, KMTT +2	
SINEAD LOHAN • Diving To Be Deeper (INTERSCOPE)	+30
KMTT +8, WXRV +8, WNCS +5, WBOS +5, KINK +3, WXRT +2	
HOLE • Malibu (DGC/GEFFEN)	+29
WDOD +18, WKOC +10, WBOS +3	
PETER HIMMELMAN • Fly So High (SIX DEGREES/KOCH)	+25
KMTT +8, KGSR +7, WXRT +6, WNCS +3, KINK +1, WXRV +1	

AIRPLAY
Monitor
5055 Wilshire Boulevard, Los Angeles, CA 90036
~~213~~-525-2300
~~213~~-525-2395
323

EARTHQUAKES, MUD SLIDES, EL NIÑO AND NOW THIS...

OUR NEW LA AREA CODE IS **323**

Monitor AIRPLAY MAINSTREAM ROCK

POWER PLAYLIST

FOR WEEK ENDING JANUARY 17, 1999

WNEW New York PD: Garry Wall MD: Andrea Karr 212-489-1027 CBS

WRIF Detroit PD: Doug Petrell MD: Troy Hanson 248-547-0101 Greater Media

KEGL Dallas PD/Pgm: Greg Stevens MD: Cindy Scull 972-869-9700 Jacor

KBPI Denver PD: Bob Richards MD: Willie B. 303-893-3699 Jacor

KLOS Los Angeles PD: Rita Wilde 310-840-4800 ABC/Disney

WKLS Atlanta PD: Pat Ervin MD: Lisa Sturgis 404-325-0960 Jacor

WNXC Cleveland PD: Bill Lusk MD: David Jockers 216-861-0100 Clear Channel

WXTB Tampa PD: Brad Hardin MD: Carl Harris 813-572-9808 Jacor

WYSP Philadelphia PD: Tim Sabean PD: Neal Mirsky MD: Nancy Palumbo 215-625-9460 CBS

WDVE Pittsburgh PD: Garrett Hart MD: Val Porter 412-937-1441 Chancellor

WZTA Miami PD/Pgm: Gregg Steele MD: Kimba 305-654-9494 Clear Channel

WIYY Baltimore PD: Rick Strauss APD/MD: Bob Heckman 410-889-0098 Hearst Broadcasting

KQRS Minneapolis PD: Dave Hamilton APD/MD: Reed Enderse 612-545-5601 ABC/Disney

WAAB Boston PD: DAVE Douglas APD: Ron Valeri MD: John Osterlind 617-236-1073 Entercom

KSHE St. Louis VP: Rick Balis MD: Al Hofer 314-621-0095 Emmis

KXXR Minneapolis PD: Wade Linder APD/MD: Josh Bitney 612-545-5601 ABC/Disney

WMMR Philadelphia PD: Joe Bonadonna MD: Ken Zipeto 610-771-0933 Greater Media

WFBQ Indianapolis MD: Marty Bender MD: Ace Cosby 317-257-7565 Capstar

WMMS Cleveland PD: Greg Ausham APD: "Spaceman" Scott Hughes 216-781-9667 Jacor

KISW Seattle SM/PD: Clark Ryan APD/MD: Cathy Faulkner 206-285-7625 Entercom

WWDC Washington, DC PD: Bob Neumann APD/MD: Buddy Rizer 301-578-7100 Chancellor

KLOL Houston Dir Of Ops: Michael Hughes APD/MD: Max Dugan 713-526-6855 Chancellor

WEBN Cincinnati OM: Scott Reinhart PD: Michael Walter 513-621-9326 Jacor

WRQC Minneapolis PD: Andy Bloom APD/MD: Lauren MacLeash 612-333-8118 Chancellor

KSJO San Jose PD: Jim Richards MD: Laurie Free 408-453-5400 Jacor



Table with 2 columns: Song/Artist and TW/LW. Top entries include Lenny Kravitz, Fly Away; Metallica, Turn The Page; Tool, Forty Six & 2.

WBZX Columbus, OH PD: Hal Fish APD/MD: Ronni Hunter 614-481-7800 North America



Table with 2 columns: Song/Artist and TW/LW. Top entries include Rob Zombie, Dragula; Lenny Kravitz, Fly Away; Metallica, Turn The Page.

KQRC Kansas City PD: Vince Richards MD: Valerie Knight 913-514-3000 Sinclair



Table with 2 columns: Song/Artist and TW/LW. Top entries include Metallica, Turn The Page; Lenny Kravitz, Fly Away; Metallica, Turn The Page.

WXTM St. Louis PD: Tommy Matous APD: Rob Walker MD: Eric Schmidt 314-621-0400 Emmis



Table with 2 columns: Song/Artist and TW/LW. Top entries include Rage Against The Machine, No Shelter; Tool, Eulogy; Lenny Kravitz, Fly Away.

WHY Providence PD: Joe Bevilacqua MD: Sharon Schifino 401-438-6110 Capstar



Table with 2 columns: Song/Artist and TW/LW. Top entries include Lenny Kravitz, Fly Away; Kenny Wayne Shepherd, Everything Is Broken; Everlast, What It's Like.

WBAB Long Island VP Pmg: Bob Buchman DM: Eric Wellman 516-587-1023 Cox



Table with 2 columns: Song/Artist and TW/LW. Top entries include Goo Goo Dolls, Slide; Kenny Wayne Shepherd, Everything Is Broken; Everlast, What It's Like.

WLZR Milwaukee PD: Keith Hastings MD: Marijany Mee 414-454-0900 Saga Communications



Table with 2 columns: Song/Artist and TW/LW. Top entries include Metallica, Turn The Page; Lenny Kravitz, Fly Away; Hole, Celebrity Skin.

WONE Akron PD: J.D. APD: Tim Daugherty 330-869-9800 Tom Mandell



Table with 2 columns: Song/Artist and TW/LW. Top entries include Metallica, Turn The Page; Lenny Kravitz, Fly Away; Goo Goo Dolls, Slide.

KISS San Antonio OM: Virgil Thompson APD: Tim Vargas MD: C.J. Cruz 210-646-0105 Cox



Table with 2 columns: Song/Artist and TW/LW. Top entries include Rob Zombie, Dragula; The Offspring, Pretty Fly (For A White Guy); Lenny Kravitz, Fly Away.

WRDU Raleigh PD: Bob Edwards MD: Mark Arsen 919-876-1061 Capstar



Table with 2 columns: Song/Artist and TW/LW. Top entries include Train, Free; Black Sabbath, Selling My Soul; The Black Crowes, Kickin' My Heart Around.

KUFO Portland DM: Dave Numme APD: Al Scott 503-222-9700 CBS



Table with 2 columns: Song/Artist and TW/LW. Top entries include Creed, Torn; The Offspring, Why Don't You Get A Job?; Rob Zombie, Dragula.

WCCC Hartford PD: Michael Picozzi APD/MD: Mike Karolyi 860-233-4426 Marlin Broadcasting



Table with 2 columns: Song/Artist and TW/LW. Top entries include Rob Zombie, Dragula; Godsmack, Whatever; Everlast, What It's Like.

WJRR Orlando PD: Dick Sheetz MD: Pat Lynch 407-916-7790 Clear Channel



Table with 2 columns: Song/Artist and TW/LW. Top entries include Creed, One; Fuel, Bittersweet; Everlast, What It's Like.

KUPD Phoenix OM: Tim Maranville PD: JJ Jeffries 602-345-5921 Sandusky



Table with 2 columns: Song/Artist and TW/LW. Top entries include Second Coming, Soft; Monster Magnet, Powertrip; Rob Zombie, Dragula.

KIOZ San Diego PD: Tim Dukas APD/MD: Sharon Leder 619-565-6006 Jacor



Table with 2 columns: Song/Artist and TW/LW. Top entries include Metallica, Turn The Page; Everlast, What It's Like; Rob Zombie, Dragula.

KATT Oklahoma City PD: Chris Baker MD: Jake Daniels 405-848-0100 Caribou Communications



Table with 2 columns: Song/Artist and TW/LW. Top entries include Lenny Kravitz, Fly Away; Metallica, Turn The Page; Everlast, What It's Like.

KRQQ Sacramento SM: Curtiss Johnson APD: Pat Martin MD: Kylee Brooks 916-334-7777 Entercom



Table with 2 columns: Song/Artist and TW/LW. Top entries include Rob Zombie, Dragula; Everlast, What It's Like; Monster Magnet, Powertrip.

WROQ Greenville, S.C. PD: Ken Carson APD/MD: K.C. Carson 864-242-0101 Capstar



Table with 2 columns: Song/Artist and TW/LW. Top entries include Kenny Wayne Shepherd, Everything Is Broken; Jonny Lang, Still Ramin'.

WQXA Harrisburg PD: Claudine DeLorenzo MD: Nixon 717-367-7700 Citadel



Table with 2 columns: Song/Artist and TW/LW. Top entries include The Offspring, Pretty Fly (For A White Guy); Jimmie's Chicken Shack, Another Day.

KYSS Kansas City PD: Greg Bergen MD: Slacker 913-677-8998 Entercom



Table with 2 columns: Song/Artist and TW/LW. Top entries include The Black Crowes, Kickin' My Heart Around; Jonny Lang, Still Ramin'.

WIMZ Knoxville PD: Jim Pemberton MD: Bill Kidd 423-525-6000 South Central



Table with 2 columns: Song/Artist and TW/LW. Top entries include Rolling Stones, Gimme Shelter; The Black Crowes, Kickin' My Heart Around.

WCKW New Orleans PD: Ted Edwards MD: Bill Kidd 504-831-8811 222 Corporation



Table with 2 columns: Song/Artist and TW/LW. Top entries include Everlast, What It's Like; Metallica, Turn The Page; Goo Goo Dolls, Slide.

WLVC Columbus PD: Charley Lake APD/MD: Joe Show 614-227-9696 CBS



Table with 2 columns: Song/Artist and TW/LW. Top entries include The Flys, Got You (Where I Want You); Jonny Lang, Still Ramin'.

WPYX Albany PD/MD: John Cooper 518-785-9800 Capstar



Table with 2 columns: Song/Artist and TW/LW. Top entries include Shawn Mullins, Lullaby; Train, Free.

KDKB Phoenix PD: Tim Maranville MD: Tracy Lea 602-897-9300 Sandusky

93.3 KDKB Rocks Arizona WZZO PD: Robin Lee MD: Keith Moyer 610-434-1742 Atlantic Star

FM99 WNOB PD: Harvey Kojan APD/MD: Tim Parker 757-366-9900 Saga Communications

WDHA Morrirstown PD: Lenny Bloch MD: Terrie Carr 800-540-1055 Northern N.J. Radio Group

WTUE Dayton PD: Mike Thomas MD: John Beaulieu 937-224-1137 Jacor

WFVY Jacksonville PD: David Moore MD: "Woodman" 904-642-1055 Capstar

Table with 2 columns: Song Title, Time. Includes tracks like 'Indigenous, Now That You're Gone', 'Fuel, Bittersweet', 'Train, Free'.

Table with 2 columns: Song Title, Time. Includes tracks like 'Lenny Kravitz, Fly Away', 'Jonny Lang, Still Ramin', 'The Black Crowes, Kickin' My Heart Around'.

Table with 2 columns: Song Title, Time. Includes tracks like 'The Offspring, Pretty Fly (For A White Guy)', 'Lenny Kravitz, Fly Away', 'Rob Zombie, Dragula'.

Table with 2 columns: Song Title, Time. Includes tracks like 'Kenny Wayne Shepherd, Everything Is Broken', 'Eye 6, Inside Out', 'Rolling Stones, Gimme Shelter'.

Table with 2 columns: Song Title, Time. Includes tracks like 'Collective Soul, Heavy', 'Lenny Kravitz, Fly Away', 'Creed, What's This Life For'.

Table with 2 columns: Song Title, Time. Includes tracks like 'Metallica, Turn The Page', 'Black Sabbath, Psycho Man', 'The Black Crowes, Kickin' My Heart Around'.

KLAQ El Paso PD/MD: "Magic" Mike Ramsey 915-544-8864 New Wave Broadcasting

WTPT Greenville, S.C. PD: Zack Tyler 864-242-4660 Clear Channel

WIOT Toledo DM/MD: Darrin Arriens APD: Don Davis 419-244-8321 Jacor

WEGR Memphis PD: Drake Hall MD: Zeke Logan 901-578-1100 Clear Channel

WROV Roanoke PD: Buzz Casey MD: Bryan Shaw 540-343-4444 Atlantic Star

WTFX Louisville DM: Michael Lee MD: Keith D'Loane 502-560-1069 Clear Channel

Table with 2 columns: Song Title, Time. Includes tracks like 'Goo Goo Dolls, Slide', 'Everlast, What It's Like', 'Metallica, Turn The Page'.

Table with 2 columns: Song Title, Time. Includes tracks like 'Lenny Kravitz, Fly Away', 'Pearl Jam, Elderly Woman Behind The Hood'.

Table with 2 columns: Song Title, Time. Includes tracks like 'Creed, What's This Life For', 'Jonny Lang, Still Ramin', 'Kenny Wayne Shepherd, Everything Is Broken'.

Table with 2 columns: Song Title, Time. Includes tracks like 'The Black Crowes, Kickin' My Heart Around', 'Jonny Lang, Still Ramin', 'R.E.M., Lotus'.

Table with 2 columns: Song Title, Time. Includes tracks like 'Kenny Wayne Shepherd, Blue On Black', 'The Flies, Got You (Where I Want You)', 'Lenny Kravitz, Fly Away'.

Table with 2 columns: Song Title, Time. Includes tracks like 'Lenny Kravitz, Fly Away', 'Everlast, What It's Like', 'Hole, Celebrity Skin'.

KEZO Omaha PD/MD: Bruce Patrick 402-595-5300 Journal Broadcasting

KBER Salt Lake City DM: Bruce Jones MD: Helen Powers 801-485-6700 Citadel

WCMF Rochester APD: Scott VanDuser MD: Dave Kane 716-272-7260 CBS

WKLQ Grand Rapids PD: Tony Gates APD/MD: Mark Feurie 616-774-8461 Bloomington Broadcasting

KMOD Tulsa PD: Phil Stone MD: Rob Hurt 918-664-2810 Clear Channel

WPLR New Haven PD: John Griffin MD: Pam Landry 203-287-9070 Capstar

Table with 2 columns: Song Title, Time. Includes tracks like 'The Black Crowes, Kickin' My Heart Around', 'Lenny Kravitz, Fly Away', 'Fuel, Bittersweet'.

Table with 2 columns: Song Title, Time. Includes tracks like 'Metallica, Turn The Page', 'Everlast, What It's Like', 'The Flies, Got You (Where I Want You)'.

Table with 2 columns: Song Title, Time. Includes tracks like 'Indigenous, Now That You're Gone', 'Jonny Lang, Still Ramin', 'The Black Crowes, Kickin' My Heart Around'.

Table with 2 columns: Song Title, Time. Includes tracks like 'The Offspring, Pretty Fly (For A White Guy)', 'The Flies, Got You (Where I Want You)', 'Metallica, Turn The Page'.

Table with 2 columns: Song Title, Time. Includes tracks like 'The Black Crowes, Kickin' My Heart Around', 'Jonny Lang, Still Ramin', 'Kenny Wayne Shepherd, Everything Is Broken'.

Table with 2 columns: Song Title, Time. Includes tracks like 'Goo Goo Dolls, Slide', 'Lenny Kravitz, Fly Away', 'The Black Crowes, Kickin' My Heart Around'.

WBLM Portland, ME PD: Herb Ivy MD: Brian James 207-774-6364 Fuller Jeffrey

KMIX Little Rock PD: Tom Wood MD: Jimmy Edwards 501-372-7740 Clear Channel

WXRA Greensboro PD: Tim Satterfield APD: Patricia Gan 336-727-8826 Clear Channel

WXRC Charlotte PD: Ron Bowen 828-322-9472 Pacific Broadcasting Group

KCAL San Bernardino PD: Steve Hoffman MD: MJ Matthews 909-793-3554 CBS

WAPL Green Bay PD: Randy Hawke 920-455-7625 Woodworth Communication

Table with 2 columns: Song Title, Time. Includes tracks like 'Jonny Lang, Still Ramin', 'The Black Crowes, Kickin' My Heart Around', 'Goo Goo Dolls, Slide'.

Table with 2 columns: Song Title, Time. Includes tracks like 'Lenny Kravitz, Fly Away', 'Moon Dog Mane, Turn It Up!', 'Kenny Wayne Shepherd, Everything Is Broken'.

Table with 2 columns: Song Title, Time. Includes tracks like 'Fuel, Bittersweet', 'The Offspring, Pretty Fly (For A White Guy)', 'Everlast, What It's Like'.

Table with 2 columns: Song Title, Time. Includes tracks like 'Fuel, Bittersweet', 'Creed, One', 'Train, Free', 'The Flies, Got You (Where I Want You)'.

Table with 2 columns: Song Title, Time. Includes tracks like 'The Offspring, She's Got Issues', 'Black Sabbath, Selling My Soul', 'Creed, One'.

Table with 2 columns: Song Title, Time. Includes tracks like 'Creed, One', 'Kiss, You Wanted The Best', 'The Black Crowes, Kickin' My Heart Around'.

Upward-moving songs ranked in order of spin count. Songs are removed if they lose more than 5% of their detections from previous week or if their spin count declines for two consecutive weeks.

MOST NEW STATIONS

Songs detecting six or more spins at new stations this week

	NEW STATIONS
COLLECTIVE SOUL <i>Heavy (Atlantic)</i>	32
BLACK SABBATH <i>Selling My Soul (Epic)</i>	26
METALLICA <i>Whiskey In The Jar (Elektra/EEG)</i>	23
BARE JR. <i>You Blew Me Off (Immortal/Epic)</i>	18
R.E.M. <i>Lotus (Warner Bros.)</i>	14



Total Plays/Gain

COLLECTIVE SOUL 1401/633

Heavy (Atlantic)
Total Stations: 92/Chart Move: 20-6
Heavy (21+ plays): 13 KAZR, KCAL, KICT, WAPL, WKLS, WKQQ, WLZR, WNOR, WRIF, WSTZ, WTUE, WXRA, WZTA
Medium (14-20): 45 KBER, KEGL, KEZO, KHTQ, KILQ, KIOZ, KISS, KISW, KLAQ, KLB, KLPX, KMBY, KMOD, KNJY, KOMP, KPOI, KQRC, KRXQ, KUPD, WBLM, WBUZ, WCCC, WCKW, WDVE, WEBN, WEGR, WHJY, WIOT, WIXV, WIYY, WJRR, WKLC, WKLO, WMFS, WNCD, WONE, WPLR, WRDU, WROQ, WRXL, WTPA, WTPT, WAFX, WXTB, WZZO
Light (Under 14): 34

New Airplay This Week: 32 KATT, KCAL, KEGL, KNCN, KNJY, KPOI, KRZR, KSJO, KXUS, KZRR, WBZX, WCCC, WCMF, WDMA, WEGR, WEZX, WFBQ, WHJY, WIZN, WKLO, WLVO, WMMR, WPLR, WPYX, WRDU, WROV, WRXL, WTPT, WWDC, WYSP, WZZO, WZZR

AIRPOWER BOUND

Total Plays/Gain

METALLICA 791/315

Whiskey In The Jar (Elektra/EEG)
Total Stations: 69/Chart Move: 30-19
Heavy (21+): 6 KAZR, KCAL, KRAB, KXXR, WAAF, WMFS
Medium (14-20): 21 KATT, KEZO, KICT, KILQ, KISS, KMBY, KMJX, KNJY, KOMP, KRZR, KTAL, KUFO, KZRR, WAQX, WBUZ, WIYY, WJRR, WRIF, WTKX, WXRA, WZMT
Light (Under 14): 42
New Airplay This Week: 23 KATT, KBER, KBPI, KDKB, KEZO, KLB, KLPX, KMJX, KTUX, KZRR, WAPL, WAQX, WBZX, WCKW, WEBN, WMMR, WNEW, WROV, WRQC, WTUE, WXTB, WXTM, WZTA

EVE 6 724/41

Leech (RCA)
Total Stations: 53/Chart Move: 23-22
Heavy (21+): 9 KHTQ, KICT, KNJY, WAAF, WJRR, WKLO, WMFS, WTPT, WZTA
Medium (14-20): 18 KEZO, KILQ, KLAQ, KLB, KPOI, KRZR, KTUX, WBZX, WCCC, WEBN, WNOR, WQXA, WTKX, WTPA, WXRA, WXRC, WXTM, WZZO
Light (Under 14): 26
New Airplay This Week: 2 KUPD, WZZR

MONSTER MAGNET 679/-25

Powertrip (A&M)
Total Stations: 51/Chart Move: 21-23
Heavy (21+): 10 KAZR, KCAL, KNJY, KRXQ, KUPD, WAAF, WBUZ, WKLO, WLZR, WXTB
Medium (14-20): 12 KIOZ, KISS, KLB, WCCC, WJRR, WMFS, WNOR, WQXA, WTKX, WXRC, WXTM, WYSP
Light (Under 14): 29
New Airplay This Week: 1 WZZR

REMY ZERO 583/106

Prophecy (DGC/Geffen)
Total Stations: 63/Chart Move: 29-25
Heavy (21+): 6 KHTQ, KICT, KNJY, KRZR, WJRR, WXTB
Medium (14-20): 15 KILQ, KLB, KNCN, KQRC, KRXQ, WCCC, WEBN, WQXA, WTX, WTKX, WTPT, WWDC, WXTM, WZMT, WZTA
Light (Under 14): 42
New Airplay This Week: 4 KLAQ, WAQX, WTFX, WXTM

SPRUNG MONKEY 570/-23

Super Breakdown (Surfdog/Hollywood)
Total Stations: 50/Chart Move: 25-26
Heavy (21+): 3 KHTQ, WMFS, WXTM
Medium (14-20): 13 KIOZ, KNCN, KRXQ, KRZR, KXXR, WCCC, WJRR, WNOR, WQXA, WTPT, WXRA, WXRC, WZMT
Light (Under 14): 34

INDIGENOUS 532/26

Now That You're Gone (Pachyderm)
Total Stations: 46/Chart Move: 27-27
Heavy (21+): 5 KDKB, KLPX, KNCN, WDMA, WZZO
Medium (14-20): 9 KEZO, KLB, KOMP, KRZR, WAQX, WCMF, WFBQ, WROV, WTUE
Light (Under 14): 32
New Airplay This Week: 3 KISS, WIOT, WKLC

BLACK SABBATH 502/294

Selling My Soul (Epic)
Total Stations: 61/Chart Move: Debut 29
Heavy (21+): 3 KCAL, KNJY, WRDU
Medium (14-20): 6 KILQ, KLB, KOMP, KRXQ, WAAF, WXTM
Light (Under 14): 52
New Airplay This Week: 26 KBPI, KDKB, KEGL, KEZO, KICT, KLAQ, KLPX, KMBY, KMOD, KNCN, KRZR, KTAL, KTUX, KZRR, WAAF, WAPL, WCCC, WFBQ, WIOT, WIYY, WMFS, WQXA, WRIF, WRQC, WXTM, WZZR

MARILYN MANSON 501/103

I Don't Like The Drugs (But The Drugs Like Me) (Nothing/Interscope)
Total Stations: 47/Chart Move: 33-30
Heavy (21+): 4 KNJY, KRAB, WMFS, WXTM

Medium (14-20): 5 WAAF, WBUZ, WKLO, WTFX, WXRA
Light (Under 14): 38
New Airplay This Week: 11 KDKB, KQRC, KRZR, KUFO, KXXR, WBZX, WIYY, WJRR, WKLO, WNOR, WSTZ

KID ROCK 415/-20

I Am The Bullgod (Top Dog/Lava/Atlantic)
Total Stations: 41/Chart Move: 32-32
Heavy (21+): 3 KNJY, WAAF, WBUZ
Medium (14-20): 7 KRZR, WCCC, WJRR, WQXA, WTKX, WXRC, WZTA
Light (Under 14): 31
New Airplay This Week: 2 KLAQ, WTPA

ROB ZOMBIE 399/76

Living Dead Girl (Geffen)
Total Stations: 49/Chart Move: Debut 33
Heavy (21+): 5 KNJY, KRAB, KXXR, WMFS, WXTM
Medium (14-20): 1 WJRR
Light (Under 14): 43
New Airplay This Week: 7 KBPI, KCAL, KNCN, KTUX, WCCC, WNOR, WTKX

STABBING WESTWARD 368/93

Haunting Me (Columbia)
Total Stations: 42/Chart Move: Debut 35
Heavy (21+): 2 KNJY, WZTA
Medium (14-20): 6 KRXQ, KUPD, KXXR, WJRR, WTKX, WXRA
Light (Under 14): 34
New Airplay This Week: 10 KICT, KIOZ, KRZR, WAAF, WBZX, WCCC, WMFS, WNCD, WTPA, WZMT

LIMP BIZKIT 362/2

Faith (Flip/Interscope)
Total Stations: 39/Chart Move: 36-36
Heavy (21+): 2 KNJY, WAAF
Medium (14-20): 1 WBUZ
Light (Under 14): 36
New Airplay This Week: 1 WRIF

BARE JR. 349/231

You Blew Me Off (Immortal/Epic)
Total Stations: 46/Chart Move: Debut 37
Heavy (21+): 1 KHTQ
Medium (14-20): 3 KICT, KRXQ, WQXA
Light (Under 14): 42
New Airplay This Week: 18 KATT, KBER, KDKB, KEZO, KICT, KNCN, KPOI, KQRC, WCCC, WEBN, WMFS, WNOR, WROV, WRXL, WTPT, WXTM, WZTA, WZZO

ORGY 342/10

Blue Monday (Elementree/Reprise)
Total Stations: 34/Chart Move: 39-39
Heavy (21+): 1 KNJY
Medium (14-20): 9 KICT, KISS, KPOI, WJRR, WNOR, WTPT, WXRC, WXTM, WZMT
Light (Under 14): 24

CHART BOUND

Total Plays/Gain

CAKE 294/16

Never There (Capricorn/Mercury)
Total Stations: 18
Heavy (21+): 7 KPOI, KRAB, WKLO, WTKX, WWDC, WZMT, WZTA
Medium (14-20): 3 KTUX, WJRR, WQXA
Light (Under 14): 8
New Airplay This Week: 1 WBZX

PLACEBO 283/22

Pure Morning (Hut/Virgin)
Total Stations: 30
Heavy (21+): 3 KRAB, WXTM, WZTA
Medium (14-20): 3 KPOI, WKLO, WZMT
Light (Under 14): 24
New Airplay This Week: 1 KICT

CREED 261/51

I'm Eighteen (Columbia)
Total Stations: 27
Heavy (21+): 2 KDKB, WRIF
Medium (14-20): 5 KXXR, WAQX, WIYY, WTKX, WXRC
Light (Under 14): 20
New Airplay This Week: 4 KMBY, KOMP, KRZR, WIOT

R.E.M. 229/163

Lotus (Warner Bros.)
Total Stations: 26
Heavy (21+): 0
Medium (14-20): 6 KQRS, WEGR, WSTZ, WTKX, WXRA, WZZO
Light (Under 14): 20
New Airplay This Week: 14 KLB, KLPX, KTUX, WAQX, WDVE, WEGR, WKLC, WNEW, WROQ, WROV, WSTZ, WTKX, WZZO, WZZR

PANTERA 220/18

Hole In The Sky (EastWest/EEG)
Total Stations: 27
Heavy (21+): 1 KNJY
Medium (14-20): 1 KUPD
Light (Under 14): 25
New Airplay This Week: 1 WYSP

SOUL COUGHING 189/3

Circles (Slash/Warner Bros.)
Total Stations: 21
Heavy (21+): 2 WTKX, WZTA
Medium (14-20): 0
Light (Under 14): 19
New Airplay This Week: 1 WNCD

QUEENS OF THE STONE AGE 173/15

If Only (Loose Groove)
Total Stations: 18
Heavy (21+): 1 WTKX
Medium (14-20): 4 KISW, KUPD, WAAF, WZTA
Light (Under 14): 13

SUGAR RAY 173/51

Every Morning (Lava/Atlantic)
Total Stations: 13
Heavy (21+): 3 KPOI, KRAB, WWDC
Medium (14-20): 3 KRXQ, WBAB, WNEW
Light (Under 14): 7
New Airplay This Week: 1 WRXL

MOTLEY CRUE 146/100

Enslaved (Motley/Beyond Music)
Total Stations: 23
Heavy (21+): 0
Medium (14-20): 2 KNJY, KXXR
Light (Under 14): 21
New Airplay This Week: 9 KMOD, KNJY, KQRC, KXUS, WAPL, WIOT, WQXA, WRIF, WRQC

NEW RADICALS 133/-3

You Get What You Give (MCA)
Total Stations: 14
Heavy (21+): 2 KRAB, WBAB
Medium (14-20): 1 KLPX
Light (Under 14): 11

HOLE 125/33

Malibu (DGC/Geffen)
Total Stations: 20
Heavy (21+): 1 WTKX
Medium (14-20): 4 KPOI, KRAB, WQXA, WXRA
Light (Under 14): 15
New Airplay This Week: 3 KPOI, KTUX, WZTA

KORN 122/64

Freak On A Leash (Immortal/Epic)
Total Stations: 27
Heavy (21+): 1 KNJY
Medium (14-20): 1 WXTM
Light (Under 14): 25
New Airplay This Week: 2 WMFS, WTKX

JOHN MELLENCAMP 113/70

I'm Not Running Anymore (Columbia)
Total Stations: 13
Heavy (21+): 0
Medium (14-20): 2 WEGR, WIMZ
Light (Under 14): 11
New Airplay This Week: 8 KMOD, KQRS, KRZZ, KTAL, KYYS, WEGR, WIMZ, WKLC

THE OFFSPRING 112/54

Why Don't You Get A Job? (Columbia)
Total Stations: 17
Heavy (21+): 0
Medium (14-20): 4 KNJY, KRXQ, KUFO, WWDC
Light (Under 14): 13
New Airplay This Week: 5 KILQ, KNJY, KRAB, WAAF, WRXL

FEAR FACTORY 104/57

Descent (Roadrunner)
Total Stations: 21
Heavy (21+): 1 KNJY
Medium (14-20): 1 KUPD
Light (Under 14): 19
New Airplay This Week: 2 WAAF, WSTZ

DC TALK 95/1

My Friend (So Long) (Forefront/Virgin)
Total Stations: 14
Heavy (21+): 1 WMMR
Medium (14-20): 0
Light (Under 14): 13

NAZARETH 78/48

Light Comes Down (CMC International)
Total Stations: 14
Heavy (21+): 0
Medium (14-20): 1 WZZR
Light (Under 14): 13
New Airplay This Week: 4 KMBY, KXUS, WNCD, WRXK

THE OFFSPRING 78/1

She's Got Issues (Columbia)
Total Stations: 4
Heavy (21+): 2 KCAL, KXXR
Medium (14-20): 0
Light (Under 14): 2

* Initial impact: records appearing on this page for the first time.

Includes tracking for songs with increased spins this week. Top plays only. Data starts on 1/11/99. Some play. Monitors based on survey of stations.

BARE JR. **349/231**
Total Stations: 46 Chart Move: Debut 37
You Blew Me Off (Immortal/Epic)

City	Station	TWLW2W IP			City	Station	TWLW2W IP		
		TW	LW	2W			IP	TW	LW
New York	MTV	-	-	-	Dayton	WTUE	-	-	-
New York	WNEW	-	-	-	Jacksonv.	WFYV	-	-	-
L.A.	KLOS	-	-	-	Austin	KLBJ	-	-	-
Phila.	WMMR	13	9	110	Richmond	WRXL	-	-	-
Phila.	WYSP	-	-	-	Albany	WPYX	-	-	-
Detroit	WRFI	4	-	-	Honolulu	KPOI	6	-	6
Dallas	KEGL	-	-	-	Greenv.	WROQ	-	-	-
Wash., DC	WVDC	5	-	-	WTPPT	6	-	6	
Houston	KLDL	-	-	-	Tulsa	KMDD	-	-	-
Boston	WAFF	-	-	-	Scranton	WEZX	7	7	14
Miami	WZTA	9	-	-	WZMT	1	2	4	
Atlanta	WKLS	-	-	-	Tucson	KLPX	7	10	9
Seattle	KISW	-	-	-	McAllen	KFRQ	-	-	-
Long Isl.	WBAB	1	-	-	Allentown	WZZO	-	-	-
San Diego	KIOZ	1	1	-	Fresno	KRZR	11	-	11
Minn.	KORS	-	-	-	Gr.Rap.	WKLO	2	-	2
Minn.	KXKR	9	6	15	Akron	WONE	-	-	-
St. Louis	WRQC	5	-	-	Syracuse	WAQX	-	-	-
St. Louis	KSHE	1	-	-	Knouv.	WIMZ	-	-	-
Balt.	WXTM	13	-	-	El Paso	KLAQ	-	-	-
Pitts.	WVVE	-	-	-	Albuq.	KZRR	5	-	5
Phoeni.	KDKB	7	-	-	Harrisb.	WOXA	14	8	22
Tampa	KUPD	1	-	-	WTPA	9	7	16	
Clevel.	WMTS	4	-	-	WIDT	-	-	-	
Clevel.	WNCX	-	-	-	Monterey	KMBY	4	-	4
Denver	KBPI	1	-	-	L.Rock	KMJX	-	-	-
Port., OR	KUFO	-	-	-	Bakersf.	KRAB	-	-	-
Cincinnati	WEBN	8	-	-	D.Moines	KAZR	-	-	-
Kan City	KQRC	11	4	15	KGGO	-	-	-	
Kan City	KYYS	-	-	-	Youngst.	WNCO	10	8	18
Rivers	KCAL	11	8	19	Wichita	KICT	15	-	15
Milwauk.	WLZR	1	-	-	KRZZ	1	-	1	
Sacram.	KRXQ	16	8	24	New Haven	WPLR	-	-	-
San Jose	KSJD	-	-	-	Spokane	KHTQ	28	19	47
Provid.	WHJY	-	-	-	Knouv.	KNJY	-	-	-
Colum., OH	WBZX	3	-	-	Col.Spr.	KILO	2	-	2
Colum., OH	WLVO	-	-	-	Roanoke	WROV	10	-	10
Norfolk	WNDR	7	-	-	Momstow.	WDHA	-	-	-
San Antonio	KISS	-	-	-	Lex., KY	WKQQ	-	-	-
Salt Lake	KBFR	6	-	-	Jackson	WSTZ	-	-	-
Indian.	WFBO	-	-	-	Fl. Myers	WRXX	-	-	-
Char., NC	WXRC	-	-	-	Pensac.	WTKX	12	10	22
New Or.	WCKW	-	-	-	Shrev.	KTAL	-	-	-
Orlando	WJRR	1	1	3	KTUX	5	3	8	
Hartford	WCCC	11	-	-	C.Christi	KNCN	9	1	10
Greensb.	WXRA	-	-	-	Montgom.	WXFX	1	1	3
Memphis	WEGR	-	-	-	Spring, MO	KXUS	-	-	-
Memphis	WMFS	11	5	16	Savannah	WIXV	-	-	-
Rochest.	WCMF	-	-	-	Char., WV	WKLC	-	-	-
W.P.Beach	WZZR	2	-	-	Port., ME	WBLM	-	-	-
Las Vegas	KOMP	7	1	-	Colum., GA	WVRK	-	-	-
Louisv.	WTFX	5	2	7	Gr.Bay	WAPL	-	-	-
Ral./Dur.	WRDU	-	-	-	Santa Barb.	KTYD	-	-	-
Okla City	KATT	8	-	-	Burling.	WIZN	-	-	-

BLACK SABBATH **502/294**
Total Stations: 61 Chart Move: Debut 29
Selling My Soul (Epic)

City	Station	TWLW2W IP			City	Station	TWLW2W IP		
		TW	LW	2W			IP	TW	LW
New York	MTV	-	-	-	Dayton	WTUE	-	-	-
New York	WNEW	-	-	-	Jacksonv.	WFYV	3	4	7
L.A.	KLOS	-	-	-	Austin	KLBJ	17	11	4
Phila.	WMMR	-	-	-	Richmond	WRXL	-	-	-
Phila.	WYSP	-	-	-	Albany	WPYX	-	-	-
Detroit	WRFI	9	3	12	Honolulu	KPOI	8	6	14
Dallas	KEGL	6	3	10	Greenv.	WROQ	-	-	-
Wash., DC	WVDC	-	-	-	WTPPT	-	-	-	
Houston	KLDL	-	-	-	Tulsa	KMDD	6	1	7
Boston	WAFF	18	2	20	Scranton	WEZX	-	-	-
Miami	WZTA	-	-	-	WZMT	1	2	3	
Atlanta	WKLS	-	-	-	Tucson	KLPX	6	-	6
Seattle	KISW	13	11	21	McAllen	KFRQ	-	-	-
Long Isl.	WBAB	1	-	-	Allentown	WZZO	1	3	4
San Diego	KIOZ	2	1	4	Fresno	KRZR	12	-	12
Minn.	KORS	-	-	-	Gr.Rap.	WKLO	4	-	4
Minn.	KXKR	4	-	-	Akron	WONE	1	-	1
St. Louis	WRQC	10	2	12	Syracuse	WAQX	-	-	-
St. Louis	KSHE	1	-	-	Knouv.	WIMZ	-	-	-
Balt.	WXTM	17	-	-	El Paso	KLAQ	6	-	6
Pitts.	WVVE	5	-	-	Albuq.	KZRR	13	-	13
Phoeni.	KDKB	10	-	-	Harrisb.	WOXA	11	-	11
Tampa	KUPD	11	14	25	WTPA	1	1	2	
Clevel.	WMTS	-	-	-	WIDT	-	-	-	
Clevel.	WNCX	-	-	-	Monterey	KMBY	10	-	10
Denver	KBPI	12	2	14	L.Rock	KMJX	-	-	-
Port., OR	KUFO	-	-	-	Bakersf.	KRAB	51	49	59
Cincinnati	WEBN	-	-	-	D.Moines	KAZR	-	-	-
Kan City	KQRC	3	-	-	KGGO	-	-	-	
Kan City	KYYS	-	-	-	Youngst.	WNCO	-	-	-
Rivers	KCAL	45	43	102	Wichita	KICT	10	-	10
Milwauk.	WLZR	5	-	-	KRZZ	1	-	1	
Sacram.	KRXQ	16	8	24	New Haven	WPLR	-	-	-
San Jose	KSJD	-	-	-	Spokane	KHTQ	-	-	-
Provid.	WHJY	1	1	2	Knouv.	KNJY	22	10	32
Colum., OH	WBZX	-	-	-	Col.Spr.	KILO	19	11	31
Colum., OH	WLVO	-	-	-	Roanoke	WROV	4	-	4
Norfolk	WNDR	-	-	-	Momstow.	WDHA	-	-	-
San Antonio	KISS	3	-	-	Lex., KY	WKQQ	-	-	-
Salt Lake	KBFR	2	-	-	Jackson	WSTZ	-	-	-
Indian.	WFBO	8	-	-	Fl. Myers	WRXX	-	-	-
Char., NC	WXRC	-	-	-	Pensac.	WTKX	-	-	-
New Or.	WCKW	-	-	-	Shrev.	KTAL	7	3	13
Orlando	WJRR	-	-	-	KTUX	8	-	8	
Hartford	WCCC	10	-	-	C.Christi	KNCN	8	-	8
Greensb.	WXRA	1	-	-	Montgom.	WXFX	-	-	-
Memphis	WEGR	-	-	-	Spring, MO	KXUS	-	-	-
Memphis	WMFS	6	1	7	Savannah	WIXV	-	-	-
Rochest.	WCMF	-	-	-	Char., WV	WKLC	-	-	-
W.P.Beach	WZZR	9	-	-	Port., ME	WBLM	1	-	1
Las Vegas	KOMP	17	16	5	Colum., GA	WVRK	-	-	-
Louisv.	WTFX	9	-	-	Gr.Bay	WAPL	7	-	7
Ral./Dur.	WRDU	30	26	74	Santa Barb.	KTYD	-	-	-
Okla City	KATT	-	-	-	Burling.	WIZN	-	-	-

CAKE **294/16**
Total Stations: 18 Chart Move: Debut 16
Never There (Capricorn/Mercury)

City	Station	TWLW2W IP			City	Station	TWLW2W IP		
		TW	LW	2W			IP	TW	LW
New York	MTV	3	9	2	83	Dayton	WTUE	-	-
New York	WNEW	-	-	-	Jacksonv.	WFYV	-	-	-
L.A.	KLOS	-	-	-	Austin	KLBJ	-	-	-
Phila.	WMMR	-	-	-	Richmond	WRXL	9	7	7
Phila.	WYSP	-	-	-	Albany	WPYX	-	-	-
Detroit	WRFI	-	-	-	Honolulu	KPOI	22	21	10
Dallas	KEGL	-	-	-	Greenv.	WROQ	-	-	-
Wash., DC	WVDC	26	15	15	145	WTPPT	-	-	-
Houston	KLDL	-	-	-	Tulsa	KMDD	-	-	-
Boston	WAFF	-	-	-	Scranton	WEZX	-	-	-
Miami	WZTA	24	26	25	237	WZMT	26	23	21
Atlanta	WKLS	-	-	-	Tucson	KLPX	-	-	-
Seattle	KISW	-	-	-	McAllen	KFRQ	-	-	-
Long Isl.	WBAB	-	-	-	Allentown	WZZO	-	-	-
San Diego	KIOZ	-	-	-	Fresno	KRZR	-	-	-
Minn.	KORS	-	-	-	Gr.Rap.	WKLO	21	19	17
Minn.	KXKR	-	-	-	Akron	WONE	-	-	-
St. Louis	WRQC	-	-	-	Syracuse	WAQX	-	-	-
St. Louis	KSHE	-	-	-	Knouv.	WIMZ	-	-	-
Balt.	WXTM	-	-	-	El Paso	KLAQ	8	10	8
Pitts.	WVVE	-	-	-	Albuq.	KZRR	-	-	-
Phoeni.	KDKB	-	-	-	Harrisb.	WOXA	18	16	19
Tampa	KUPD	-	-	-	WTPA	-	-	-	
Clevel.	WMTS	-	-	-	WIDT	-	-	-	
Clevel.	WNCX	-	-	-	Monterey	KMBY	-	-	-
Denver	KBPI	6	20	19	174	L.Rock	KMJX	-	-
Port., OR	KUFO	-	-	-	Bakersf.	KRAB	51	49	59
Cincinnati	WEBN	-	-	-	D.Moines	KAZR	-	-	-
Kan City	KQRC	-	-	-	KGGO	-	-	-	
Kan City	KYYS	-	-	-	Youngst.	WNCO	-	-	-
Rivers	KCAL	-	-	-	Wichita	KICT	-	-	-
Milwauk.	WLZR	-	-	-	KRZZ	-	-	-	
Sacram.	KRXQ	-	-	-	New Haven	WPLR	-	-	-
San Jose	KSJD	-	-	-	Spokane	KHTQ	-	-	-
Provid.	WHJY	-	-	-	Knouv.	KNJY	-	-	-
Colum., OH	WBZX	11	3	-	Col.Spr.	KILO	-	-	-
Colum., OH	WLVO	-	-	-	Roanoke	WROV	-	-	-
Norfolk	WNDR	-	-	-	Momstow.	WDHA	-	-	-
San Antonio	KISS	-	-	-	Lex., KY	WKQQ	-	-	-
Salt Lake	KBFR	-	-	-	Jackson	WSTZ	-	-	-

Qualified stations for songs with increased activity this week. Total plays data does not include week 20. Weeks used in order of population.

Grid of song activity reports for MARILYN MANSON, METALLICA, ORGY, BLUE MONDAY, PANTERA, and PLACEBO. Each entry includes station call letters, song title, and activity metrics.

Grid of song activity reports for R.E.M., REMY ZERO, STABBING WESTWARD, TRAIN, and ROB ZOMBIE. Each entry includes station call letters, song title, and activity metrics.



Compiled from a national sample of airplay supplied by Broadcast Data Systems' Radio-Track service to Rock Airplay Monitor. 20 active rock and 43 heritage rock stations are electronically monitored 24 hours a day, 7 days a week. Songs are ranked by number of detections. © 1999, Database BP1 Communications.

THIS WEEK	LAST WEEK	WKS. ON CHART	HERITAGE ROCK		DETECTIONS	
			TITLE/IMPRINT/PROMOTION LABEL	ARTIST	TW	LW
★ ★ ★ No. 1 ★ ★ ★						
1	1	12	KICKIN' MY HEART AROUND AMERICAN/COLUMBIA 9 weeks at No. 1	THE BLACK CROWES	1070	1093
2	2	24	FLY AWAY VIRGIN	LENNY KRAVITZ	917	977
3	3	19	STILL RAININ' A&M	JONNY LANG	865	962
4	4	11	TURN THE PAGE ELEKTRA/VEEG	METALLICA	841	920
5	5	19	SLIDE WARNER BROS.	GOO GOD DOLLS	839	909
6	6	12	EVERYTHING IS BROKEN REVOLUTION/REPRISE	KENNY WAYNE SHEPHERD BAND	803	863
7	7	14	FREE AWARE/COLUMBIA	TRAIN	713	686
8	14	3	HEAVY ATLANTIC	COLLECTIVE SOUL	709	381
9	8	6	ONE WIND-UP	CREED	566	547
10	11	16	GOT YOU (WHERE I WANT YOU) DELICIOUS VINYL/TRAUMA	THE FLYS	430	416
11	9	16	NOW THAT YOU'RE GONE PACHYDERM	INDIGENOUS	429	435
12	10	32	WHAT'S THIS LIFE FOR WIND-UP	CREED	391	430
13	13	8	YOU WANTED THE BEST MERCURY	KISS	372	382
14	20	9	WHAT IT'S LIKE TOMMY BOY	EVERLAST	372	310
15	15	24	INSIDE OUT RCA	EVE 6	350	376
16	16	54	BLUE ON BLACK REVOLUTION/REPRISE	KENNY WAYNE SHEPHERD BAND	344	375
17	17	20	CELEBRITY SKIN DGC/GEFFEN	HOLE	331	375
18	12	16	PSYCHO MAN EPIC	BLACK SABBATH	282	414
19	39	2	WHISKEY IN THE JAR ELEKTRA/VEEG	METALLICA	266	107
20	18	34	THE DOWN TOWN OUTPOST/GEFFEN	DAYS OF THE NEW	264	334
21	21	11	BITTERSWEET 550 MUSIC/ERG	FUEL	243	264
22	25	20	DRAGULA GEFFEN	ROB ZOMBIE	241	235
23	24	15	PRETTY FLY (FOR A WHITE GUY) COLUMBIA	THE OFFSPRING	240	243
24	19	11	GIMME SHELTER (LIVE) VIRGIN	THE ROLLING STONES	231	318
25	37	2	SELLING MY SOUL EPIC	BLACK SABBATH	223	119
26	22	22	PSYCHO CIRCUS MERCURY	KISS	209	258
27	23	18	TURN IT UP! EUREKA	MOON DOG MANE	208	256
28	27	5	ANOTHER BRICK IN THE WALL (PART 2) COLUMBIA	CLASS OF '99	198	210
29	NEW		LOTUS WARNER BROS.	R.E.M.	175	45
30	30	9	WHATEVER REPUBLIC/UNIVERSAL	GODSMACK	173	194
31	29	10	ELDERLY WOMAN BEHIND THE COUNTER IN A SMALL TOWN (LIVE) EPIC	PEARL JAM	169	204
32	32	5	LEECH RCA	EVE 6	167	165
33	31	17	SWEETEST THING ISLAND	U2	164	174
34	36	3	PROPHECY DGC/GEFFEN	REMY ZERO	162	127
35	26	21	YOUR LIFE IS NOW COLUMBIA	JOHN MELLENCAMP	155	230
36	35	8	POWERTRIP A&M	MONSTER MAGNET	132	128
37	28	14	10,000 HORSES MAVERICK/WARNER BROS.	CANDLEBOX	126	207
38	NEW		I'M NOT RUNNING ANYMORE COLUMBIA	JOHN MELLENCAMP	113	42
39	NEW		YOU BLEW ME OFF IMMORTAL/EPIC	BARE JR.	112	36
40	33	12	I WANNA BE WITH YOU COLUMBIA	BRUCE SPRINGSTEEN	92	148

Records showing an increase in detections over the previous week, regardless of chart movement. A record that has been on the chart for more than 20 weeks will not receive a bullet, even if it registers an increase in detections. Airpower awarded to those records that attain 300 detections for the first time. If two records are tied in number of plays, the record being played on more stations is placed first. Records below the top 20 are removed from the chart after 26 weeks.

THIS WEEK	LAST WEEK	WKS. ON CHART	ACTIVE ROCK		DETECTIONS	
			TITLE/IMPRINT/PROMOTION LABEL	ARTIST	TW	LW
★ ★ ★ No. 1 ★ ★ ★						
1	1	11	TURN THE PAGE ELEKTRA/VEEG 10 weeks at No. 1	METALLICA	1327	1409
2	2	11	WHAT IT'S LIKE TOMMY BOY	EVERLAST	1320	1282
3	3	29	FLY AWAY VIRGIN	LENNY KRAVITZ	1044	1100
4	6	7	ONE WIND-UP	CREED	960	922
5	4	16	PRETTY FLY (FOR A WHITE GUY) COLUMBIA	THE OFFSPRING	950	1022
6	5	25	DRAGULA GEFFEN	ROB ZOMBIE	905	951
7	7	17	WHATEVER REPUBLIC/UNIVERSAL	GODSMACK	815	824
8	10	21	GOT YOU (WHERE I WANT YOU) DELICIOUS VINYL/TRAUMA	THE FLYS	710	762
9	9	11	KICKIN' MY HEART AROUND COLUMBIA	THE BLACK CROWES	705	792
★ ★ ★ AIRPOWER ★ ★ ★						
10	23	2	HEAVY ATLANTIC	COLLECTIVE SOUL	592	387
11	8	22	CELEBRITY SKIN DGC/GEFFEN	HOLE	558	780
12	12	18	BITTERSWEET 550 MUSIC/ERG	FUEL	591	676
13	14	34	WHAT'S THIS LIFE FOR WIND-UP	CREED	573	607
14	18	7	LEECH RCA	EVE 6	557	518
15	13	7	ANOTHER BRICK IN THE WALL (PART 2) COLUMBIA	CLASS OF '99	551	599
16	15	16	POWERTRIP A&M	MONSTER MAGNET	547	576
17	16	19	SLIDE WARNER BROS.	GOO GOO DOLLS	535	575
18	11	16	PSYCHO MAN EPIC	BLACK SABBATH	531	706
★ ★ ★ AIRPOWER ★ ★ ★						
19	24	2	WHISKEY IN THE JAR ELEKTRA/VEEG	METALLICA	525	369
20	20	10	SUPER BREAKDOWN SURFDG/HOLLYWOOD	SPRUNG MONKEY	493	503
21	19	25	GOT THE LIFE IMMORTAL/EPIC	KORN	459	508
★ ★ ★ AIRPOWER ★ ★ ★						
22	25	5	I DON'T LIKE THE DRUGS (BUT THE DRUGS LIKE ME) NOTHING/INTERSCOPE	MARILYN MANSON	439	354
23	17	18	SUREFIRE (NEVER ENOUGH) RESTLESS	ECONOLINE CRUSH	429	566
★ ★ ★ AIRPOWER ★ ★ ★						
24	26	6	PROPHECY DGC/GEFFEN	REMY ZERO	421	350
25	21	14	I AM THE BULLGOD TOP DOG/LAVA/ATLANTIC	KID ROCK	384	405
26	29	2	LIVING DEAD GIRL GEFFEN	ROB ZOMBIE	362	298
27	27	13	FAITH FLIP/INTERSCOPE	LIMP BIZKIT	348	342
28	37	3	HAUNTING ME COLUMBIA	STABBING WESTWARD	326	246
29	22	22	SOFT CAPITOL	SECOND COMING	293	396
30	32	6	BLUE MONDAY ELEMENTREE/REPRISE	ORGY	287	276
31	NEW		SELLING MY SOUL EPIC	BLACK SABBATH	279	89
32	31	7	EVERYTHING IS BROKEN REVOLUTION/REPRISE	KENNY WAYNE SHEPHERD BAND	279	297
33	28	13	BITCH TVT	SEVENDUST	275	307
34	34	9	NEVER THERE CAPRICORN/MERCURY	CAKE	274	251
35	NEW		YOU BLEW ME OFF IMMORTAL/EPIC	BARE JR.	237	82
36	33	11	STILL RAININ' A&M	JONNY LANG	237	273
37	35	23	THE DOPE SHOW NOTHING/INTERSCOPE	MARILYN MANSON	234	256
38	40	4	PURE MORNING HUT/VIRGIN	PLACEBO	232	209
39	30	10	ELDERLY WOMAN BEHIND THE COUNTER IN A SMALL TOWN (LIVE) EPIC	PEARL JAM	223	285
40	38	6	YOU WANTED THE BEST MERCURY	KISS	216	242

Records showing an increase in detections over the previous week, regardless of chart movement. A record that has been on the chart for more than 20 weeks will not receive a bullet, even if it registers an increase in detections. Airpower awarded to those records that attain 400 detections for the first time. If two records are tied in number of plays, the record being played on more stations is placed first. Records below the top 20 are removed from the chart after 26 weeks.

GREATEST GAINERS	INCREASE IN PLAYS
COLLECTIVE SOUL • Heavy (ATLANTIC)	+328
KCAL +21, WRXL +19, WRDU +18, WZZO +17, WHJY +17, WPLR +16, WEGR +15, WIZN +12, WPYX +12, WFBQ +12	
METALLICA • Whiskey In The Jar (ELEKTRA/VEEG)	+159
KCAL +18, KZRR +16, WAQX +14, KEZO +14, KMJX +11, WEBN +11, KDKB +11, KTAL +9, WAPL +8, KMBY +7	
R.E.M. • Lotus (WARNER BROS.)	+130
WZZO +17, WEGR +16, WSTZ +12, WNEW +12, WROV +10, WROQ +10, WZZR +10, KLPX +9, WDVE +9, WAQX +7	
BLACK SABBATH • Selling My Soul (EPIC)	+104
KZRR +13, KMBY +10, KDKB +10, WZZR +9, WRQC +8, WFBQ +8, WAPL +7, KEZO +7, KLPX +6, KLAQ +6	
BARE JR. • You Blew Me Off (IMMORTAL/EPIC)	+76
WROV +10, WZZO +8, WEBN +8, KEZO +7, WRXL +7, KDKB +7, WRQC +5, KZRR +5, KMBY +4, WMMR +4	

GREATEST GAINERS	INCREASE IN PLAYS
COLLECTIVE SOUL • Heavy (ATLANTIC)	+305
KEGL +19, KPOI +18, KNJY +17, WTPT +17, WKLQ +14, WCCC +14, KBER +13, WJRR +12, WYSP +11, KRZR +11	
BLACK SABBATH • Selling My Soul (EPIC)	+190
WXTM +17, WAAF +16, KNJY +12, KRZR +12, WQXA +11, KICT +10, WCCC +10, WIYY +10, KBPI +10, KNCN +8	
METALLICA • Whiskey In The Jar (ELEKTRA/VEEG)	+156
KRAB +25, WAAF +18, KATT +15, KNJY +11, WZTA +9, KBER +9, WRIF +8, WXTM +7, KBPI +7, WBZX +6	
BARE JR. • You Blew Me Off (IMMORTAL/EPIC)	+155
KICT +15, WXTM +13, WCCC +11, KHTQ +9, WZTA +9, KNCN +8, KATT +8, KRXQ +8, KQRC +7, WNOR +7	
MARILYN MANSON • I Don't Like The Drugs (But The Drugs Like Me) (NOTHING/INTERSCOPE)	+85
WKLQ +15, WJRR +12, KUFO +11, KRZR +11, KXXR +10, WMFS +8, WBZX +6, WNOR +6, WIYY +6, KQRC +5	



: ADDED TO BUZZ CLIP!

MODERN ROCK MONITOR: 15 !!!
1271 PLAYS!

#1 HEATSEEKERS!



From their new album: **Candyass**
www.orgymusic.com
© 1998 Elementree/Reprise Records



Over 250,000 units shipped!

Over 130,000 units scanned!

#3 VIBRATOR & #2 requests in HITS!

Breaking a band w/a lot of help from our friends. Thank You!

Catch The Living End @ The Gavin Convention on 2/19 @ The House Of Blues w/Muzzle & Cowboy Mouth

On Tour w/ The Offspring Feb. 24 through April!

The Living End CD in stores 2/9/99

BDS: 448 plays, + 125!!!

Taking new **PRISONERS @**

KDGE, 91X, WPBZ, KROX, WAVE, WRAX, KFMA, KKDM, WWDX, WARQ

On @ over **50 stations** including:

WXRK, KROQ, Q101, KITS, WBCN, KNDD, WHFS, WFNX, WXDC, WDXD, CIMX, KNR, WENZ, KEDJ, WBRU, KKND, KXTE, WEDG

PRISONER OF SOCIETY

from the new album **THE LIVING END**

AIRPLAY Monitor POWER PLAYISTS

MODERN ROCK

FOR WEEK ENDING JANUARY 17, 1999

WXRK New York
PD: Steve Kingston
MD: Mike Peer
Music Coord: Booker
212-314-9230
CBS



KROQ Los Angeles
VP/Pgm: Kevin Weatherly
APD: Gene Sandbloom
MD: Lisa Worden
818-567-1067
CBS



WKQX Chicago
PD: Dave Richards
MD: Mary Shuminas
312-527-8348
Emmis

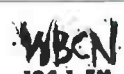


TW LW		TW LW
1	Metallica, Turn The Page	33 33
2	Creed, Torn	31 33
3	Rob Zombie, Dragula	31 31
4	Pearl Jam, Elderly Woman Behind The	28 28
5	Hole, Celebrity Skin	27 36
6	Lenny Kravitz, Fly Away	26 33
7	Rob Zombie, Living Dead Girl	25 24
8	Beastie Boys, Remote Control	24 12
9	The Offspring, Pretty Fly (For A White Guy)	22 23
10	Sublime, Badfish	22 17
11	Everlast, What It's Like	21 22
12	Stabbing Westward, Save Yourself	21 22
13	Pearl Jam, Last Kiss	20 6
14	Everlast, Ends	20 16
15	Creed, One	20 18
16	Sugar Ray, Every Morning	20 21
17	Class Of '99, Another Brick In The Wall	20 10
18	Placebo, Pure Morning	19 27
19	Korn, Got The Life	18 24
20	The Offspring, Why Don't You Get A Job?	18 17
21	Rage Against The Machine, No Shelter	16 17
22	Limp Bizkit, Faith	16 13
23	Everlast, What It's Like	15 34
24	Blink 182, Dammn	15 18
25	The Living End, Prisoner Of Society	15 15
26	Creed, What's This Life For	15 19
27	Toot, Eulogy	14 19
28	Eve 6, Leech	13 12
29	Marilyn Manson, I Don't Like The Drugs	12 17
30	Orgy, Blue Monday	13 17

TW LW		TW LW
1	The Offspring, Why Don't You Get A Job?	39 42
2	Everlast, What It's Like	39 39
3	Beastie Boys, The Negotiation Limerick	38 39
4	Sugar Ray, Every Morning	38 28
5	Orgy, Blue Monday	35 39
6	Hole, Malibu	33 24
7	Lenny Kravitz, Fly Away	32 27
8	Garbage, Special	32 27
9	The Offspring, Pretty Fly (For A White Guy)	29 31
10	Hole, Celebrity Skin	28 31
11	Everclear, One Hit Wonder	28 3
12	Fatboy Slim, Franchise You	26 17
13	Lit, My Own Worst Enemy	25 14
14	Kottonmouth Kings, Dog's Life	25 11
15	Korn, Got The Life	24 25
16	Fuel, Shimmer	24 27
17	Green Day, Nice Guys Finish Last	24 14
18	Sublime, Badfish	22 20
19	Eve 6, Inside Out	21 23
20	Everclear, Father Of Mine	20 24
21	Marvelous 3, Freak Of The Week	20 18
22	U2, Sweetest Thing	20 27
23	Creed, One	19 15
24	Harvey Danger, Flagpole Sitta	19 19
25	3 Colours Red, Beautiful Day	17 17
26	Blur, Song 2	17 20
27	The Smashing Pumpkins, Perfect	17 13
28	Foo Fighters, Everlong	17 14
29	Blink 182, Dammn	17 15
30	Jimmy Eat World, Lucky Denver Mint	17 21

TW LW		TW LW
1	Rob Zombie, Dragula	38 28
2	Everlast, What It's Like	37 41
3	Lenny Kravitz, Fly Away	34 37
4	The Offspring, Pretty Fly (For A White Guy)	33 47
5	Orgy, Blue Monday	25 25
6	Dave Matthews Band, Crush	24 21
7	Korn, Got The Life	24 25
8	Hole, Celebrity Skin	23 20
9	U2, Sweetest Thing	22 23
10	The Cardigans, My Favourite Game	22 23
11	Vast, Touched	22 20
12	Beastie Boys, Intergalactic	22 23
13	The Flys, Got You (Where I Want You)	20 26
14	Hole, Malibu	20 20
15	Eve 6, Leech	20 16
16	Cake, Never There	18 20
17	Sugar Ray, Every Morning	17 23
18	Creed, One	16 13
19	Stone Temple Pilots, Plush	14 14
20	Foo Fighters, Monkey Wrench	13 13
21	Everclear, Father Of Mine	13 12
22	The Crystal Method, Busy Child	13 19
23	Soundgarden, Fell On Black Days	12 10
24	Beastie Boys, Body Movin'	12 23
25	Fatboy Slim, Franchise You	12 24
26	The Offspring, Why Don't You Get A Job?	12 11
27	Economic Crash, Surefire	11 5
28	Alice In Chains, Summertime	11 8
29	Alice In Chains, Man In The Box	11 8
30	Garbage, Special	11 14

WBCN Boston
VP/Pgm: Dedipus
MD: Steve Strick
AMD: Mike Green
617-266-1111
CBS



KLY Los Angeles
PD: John Duncan
MD: Mike Savage
626-351-9107
Big City Radio



WPLY Philadelphia
PD: Jim McGuinn
APD: Doug Kubinski
MD: Preston Elliot
610-565-8900
Greater Media Radio Co



TW LW		TW LW
1	Beastie Boys, Body Movin'	39 38
2	Everlast, What It's Like	38 39
3	U2, Sweetest Thing	38 39
4	Dave Matthews Band, Crush	37 37
5	Korn, Got The Life	36 33
6	Social Distortion, Story Of My Life	36 40
7	Sugar Ray, Every Morning	26 28
8	Placebo, Pure Morning	26 28
9	Hole, Malibu	25 26
10	Orgy, Blue Monday	24 37
11	Metallica, Turn The Page	24 37
12	Remy Zero, Prophecy	22 23
13	The Black Crowes, Kickin' My Heart Around	22 17
14	Fatboy Slim, Franchise You	22 27
15	Hole, Celebrity Skin	22 12
16	Garbage, Special	21 23
17	Everclear, One Hit Wonder	20 1
18	The Cardigans, My Favourite Game	20 24
19	The Offspring, Pretty Fly (For A White Guy)	20 23
20	Class Of '99, Another Brick In The Wall	20 24
21	Eve 6, Leech	19 24
22	The Smashing Pumpkins, To Sheila	19 21
23	Cake, Never There	19 24
24	Rob Zombie, Dragula	18 38
25	Creed, One	18 25
26	Creeper Lagoon, Dreaming Again	18 12
27	Better Than Ezra, At The Stars	17 24
28	Creed, What's This Life For	17 14
29	Tin Star, Head	17 18
30	Blondie, Maria	15 14

TW LW		TW LW
1	Lenny Kravitz, Fly Away	40 39
2	Hole, Celebrity Skin	38 36
3	Everlast, What It's Like	36 38
4	Everclear, Father Of Mine	36 39
5	Cake, Never There	36 40
6	New Radicals, You Get What You Give	36 40
7	The Cardigans, My Favourite Game	30 29
8	Neve, It's Over Now	29 25
9	Harvey Danger, Flagpole Sitta	28 23
10	Soul Coughing, Circles	28 27
11	Love And Rockets, Holy Fool	27 27
12	The Smashing Pumpkins, Perfect	27 14
13	U2, Sweetest Thing	26 30
14	Creed, One	26 28
15	Blondie, Maria	23 14
16	Garbage, Special	23 28
17	Sugar Ray, Every Morning	21 19
18	Khaliel, No Mercy	21 14
19	Eagle-Eye Cherry, Save Tonight	21 27
20	Eve 6, Inside Out	20 24
21	Green Day, Time Of Your Life	20 15
22	Collective Soul, Run	19 9
23	The Mighty Mighty Bosstones, The Impression	18 16
24	Goo Goo Dolls, Slide	17 18
25	Garbage, I Think I'm Paranoid	16 18
26	Everclear, Father Of Mine	16 16
27	Eagle-Eye Cherry, Save Tonight	16 11
28	Shawn Mullins, Lullaby	16 17
29	Depeche Mode, Only When I Lose Myself	15 10
30	Alanis Morissette, Jamming You	15 17

TW LW		TW LW
1	Sugar Ray, Every Morning	45 40
2	Goo Goo Dolls, Slide	44 43
3	Lenny Kravitz, Fly Away	42 44
4	New Radicals, You Get What You Give	42 40
5	Eve 6, Inside Out	40 49
6	Fuel, Shimmer	37 40
7	Better Than Ezra, At The Stars	35 27
8	Hole, Malibu	34 32
9	Everlast, What It's Like	33 35
10	Cake, Never There	33 35
11	Hole, Celebrity Skin	32 32
12	Dave Matthews Band, Crush	32 31
13	U2, Sweetest Thing	31 32
14	Barenaked Ladies, It's All Been Done	30 29
15	Matchbox 20, Back 2 Good	28 29
16	Marvelous 3, Freak Of The Week	28 20
17	The Flys, Got You (Where I Want You)	28 20
18	Third Eye Blind, Jumper	25 32
19	Garbage, Special	25 19
20	The Offspring, Pretty Fly (For A White Guy)	24 25
21	Sheryl Crow, My Favorite Mistake	23 23
22	Soul Coughing, Circles	23 17
23	Shawn Mullins, Lullaby	20 21
24	The Smashing Pumpkins, Perfect	20 19
25	Beastie Boys, Intergalactic	19 17
26	Everclear, Father Of Mine	18 20
27	Eagle-Eye Cherry, Save Tonight	17 28
28	Goo Goo Dolls, Ins	16 16
29	Pearl Jam, Elderly Woman Behind The	16 22
30	Blondie, Maria	15 3

WHFS Washington, DC
PD: Robert Benjamin
APD: Bob Waugh
MD: Pat Ferrise
301-306-0991
CBS



WPLT Detroit
PD: Garrett Michaels
MD: Ann Delisi
313-871-3030
ABC/Disney



KDGE Dallas
PD: Duane Doherty
APD/MD: Alan E. Smith
972-770-7777
Chancellor



TW LW		TW LW
1	Sugar Ray, Every Morning	44 40
2	Cake, Never There	41 42
3	Everlast, What It's Like	41 43
4	Lenny Kravitz, Fly Away	36 31
5	U2, Sweetest Thing	35 33
6	Marvelous 3, Freak Of The Week	35 33
7	Hole, Malibu	34 32
8	Garbage, Special	33 29
9	Hole, Celebrity Skin	30 25
10	The Offspring, Pretty Fly (For A White Guy)	27 26
11	The Cardigans, My Favourite Game	25 24
12	The Offspring, Why Don't You Get A Job?	25 21
13	Everlast, Ends	24 12
14	Fatboy Slim, Franchise You	24 23
15	Dave Matthews Band, Crush	22 18
16	Tin Star, Head	22 22
17	Creed, One	22 3
18	New Radicals, You Get What You Give	21 25
19	Blur, Song 2	19 19
20	Eve 6, Inside Out	18 18
21	Fuel, Shimmer	18 15
22	Art Alexakis, Overwhelming	17 19
23	Collective Soul, Heavy	17 14
24	Eagle-Eye Cherry, Save Tonight	16 25
25	Beastie Boys, Intergalactic	16 15
26	Everclear, Father Of Mine	16 15
27	Goo Goo Dolls, Slide	16 13
28	The Flys, Got You (Where I Want You)	15 1
29	Eve 6, Leech	15 18
30	The Smashing Pumpkins, Perfect	15 18

TW LW		TW LW
1	Goo Goo Dolls, Slide	40 40
2	Eagle-Eye Cherry, Save Tonight	40 38
3	Dave Matthews Band, Crush	40 41
4	Sixpence None The Richer, Kiss Me	39 40
5	Sarah McLachlan, Angel	38 39
6	Eve 6, Inside Out	37 40
7	Shawn Mullins, Lullaby	37 41
8	Cake, Never There	27 26
9	Lenny Kravitz, Fly Away	26 26
10	Soul Coughing, Circles	25 26
11	Better Than Ezra, At The Stars	25 22
12	Sheryl Crow, My Favorite Mistake	24 23
13	Matchbox 20, Back 2 Good	24 23
14	Everlast, What It's Like	24 24
15	Fuel, Shimmer	24 26
16	U2, Sweetest Thing	23 22
17	Everything, Hoop	23 24
18	Sugar Ray, Every Morning	23 26
19	Jewel, Hands	23 26
20	Alanis Morissette, Thank U	23 24
21	Barenaked Ladies, It's All Been Done	22 23
22	Natalie Merchant, Break Your Heart	22 23
23	Third Eye Blind, Jumper	21 24
24	R.E.M., Lotus	20 20
25	Semisonic, Satisfy My Soul	19 21
26	dc Talk, Consuming Me	19 19
27	New Radicals, You Get What You Give	17 22
28	Marshall Crenshaw, Starless Summer Sky	17 14
29	Marvelous 3, Freak Of The Week	17 15
30	The Flys, Got You (Where I Want You)	17 16

TW LW		TW LW
1	Everlast, What It's Like	62 62
2	Cake, Never There	61 45
3	Hole, Celebrity Skin	60 59
4	Fuel, Shimmer	58 43
5	Lenny Kravitz, Fly Away	57 59
6	Alanis Morissette, Jamming You	47 38
7	Collective Soul, Heavy	40 16
8	Korn, Got The Life	40 38
9	Creed, One	37 33
10	Sugar Ray, Every Morning	37 40
11	Orgy, Blue Monday	35 38
12	Placebo, Pure Morning	33 36
13	Remy Zero, Prophecy	29 29
14	Marvelous 3, Freak Of The Week	28 9
15	Eve 6, Inside Out	26 43
16	Third Eye Blind, Graduate	25 23
17	Eve 6, Leech	25 11
18	Tin Star, Head	25 11
19	Fatboy Slim, Franchise You	25 8
20	Goo Goo Dolls, Slide	24 24
21	The Smashing Pumpkins, Perfect	24 24
22	Harvey Danger, Flagpole Sitta	23 29
23	The Offspring, Why Don't You Get A Job?	23 7
24	Green Day, Time Of Your Life	22 25
25	Everclear, Father Of Mine	21 23
26	Third Eye Blind, Jumper	21 20
27	Blur, Song 2	21 11
28	Limp Bizkit, Faith	21 25
29	Hole, Malibu	20 21
30	Everclear, Everything To Everyone	20 8

WNNX Atlanta
PD: Leslie Fram
MD: Sean Demery
404-266-0997
Susquehanna



KITS San Francisco
DM: Ron Nenni
PD: Jay Taylor
MD: Aaron Axelson
415-512-1053
CBS



KTBS Houston
PD: Jim Trapp
APD: Steve Robison
MD: David Sadoff
713-968-1000
Jacor

AIRPLAY Monitor POWER PLAYLISTS

MODERN ROCK FOR WEEK ENDING JANUARY 17, 1999

CIMX Detroit
 PD: Murray Brookshaw
 APD/MD: Vince Cannova
 519-258-8888
 CHUM Group

	TW	LW
1	Sugar Ray, Every Morning	49 43
2	The Offspring, Pretty Fly (For A White Guy)	47 44
3	Alanis Morissette, Joking You	44 45
4	Hole, Malibu	43 44
5	Cake, Never There	42 48
6	Touch & Go, Would You?	37 35
7	Beastie Boys, Body Movin'	37 38
8	Vast, Touched	37 34
9	The Cardigans, My Favourite Game	34 39
10	Eagle Eye Cherry, Save Tonight	34 38
11	Everlast, What It's Like	32 47
12	Garbage, Special	31 23
13	Go Go Dolls, Slide	29 27
14	Everclear, Father Of Mine	28 25
15	Fuelt, Shimmer	27 28
16	Barenaked Ladies, It's All Been Done	27 25
17	Lenny Kravitz, Fly Away	26 31
18	Eve 6, Inside Out	26 25
19	Korn, Got The Life	25 24
20	Sloan, Wrong Way	25 20
21	The Flies, Got You (Where I Want You)	24 27
22	Ozzy, Blue Monday	24 19
23	Finger Eleven, Quicksand	23 23
24	The Tragically Hip, something On	23 25
25	Everlast, Ends	22 0
26	Creed, My Own Prison	22 28
27	Fuelt, Bittersweet	22 28
28	Eve 6, Leech	22 15
29	B.T.K., Piggypop	21 19
30	Hole, Celebrity Skin	21 19

KNDD Seattle
 PD: Phil Manning
 MD: Kim Monroe
 206-622-3251
 Entercom

	TW	LW
1	Lenny Kravitz, Fly Away	41 40
2	Hole, Malibu	40 42
3	Ozzy, Blue Monday	39 31
4	Sugar Ray, Every Morning	39 26
5	The Offspring, Why Don't You Get A Job?	39 38
6	Garbage, Special	39 37
7	Soul Coughing, Rolling	29 8
8	Marvelous 3, Freak Of The Week	29 30
9	Zebrhead, Get Back	34 32
10	Fatboy Slim, Praise You	28 29
11	Vast, Touched	28 31
12	The Cardigans, My Favourite Game	27 26
13	Everlast, Ends	27 26
14	Slabbing Westward, Haunting Me	26 18
15	The Flies, Got You (Where I Want You)	25 17
16	Queens Of The Stone Age, If Only	25 26
17	Class Of '99, Another Brick In The Wall	24 29
18	Collective Soul, Heavy	24 28
19	Sebadah, Flame	24 27
20	Built To Spill, Ominar Of The Universe	23 3
21	Korn, Freak On A Leash	23 21
22	Green Day, Nice Guys Finish Last	24 19
23	Marilyn Manson, I Don't Like The Drugs	21 27
24	Baz Luhrmann, Everybody's Free	20 30
25	Everlast, What It's Like	18 42
26	The Living End, Prisoner Of Society	18 21
27	Remy Zero, Prophecy	17 22
28	Beastie Boys, Body Movin'	16 1
29	Fun Lovin' Criminals, Korean Badgirl	15 0
30	Eve 6, Leech	14 31

WXDX Pittsburgh
 PD: John Moschitta
 MD: Lenny Diana
 412-937-1441
 Chancellor

	TW	LW
1	The Offspring, Pretty Fly (For A White Guy)	40 37
2	Everlast, What It's Like	39 37
3	The Flies, Got You (Where I Want You)	39 37
4	Sugar Ray, Every Morning	37 38
5	Cake, Never There	37 38
6	Hole, Celebrity Skin	33 34
7	Everclear, Ona Hit Wonder	30 2
8	Go Go Dolls, Dizzy	27 26
9	Alanis Morissette, Joking You	26 26
10	Ozzy, Blue Monday	26 29
11	Collective Soul, Heavy	25 27
12	Fuelt, Bittersweet	25 35
13	Garbage, Special	25 37
14	The Cardigans, My Favourite Game	25 26
15	Class Of '99, Another Brick In The Wall	21 20
16	Lenny Kravitz, Fly Away	21 27
17	Eve 6, Inside Out	21 17
18	Eve 6, Leech	21 23
19	Creed, One	21 26
20	Pushmonkey, Handslide	21 25
21	Third Eye Blind, Jumper	18 15
22	Hole, Malibu	22 13
23	Korn, Got The Life	18 18
24	Dovetail Joint, Level On The Inside	18 17
25	Beastie Boys, Intergalactic	17 13
26	Sublime, Santitas	17 13
27	Rob Zombie, Dragula	17 17
28	Khailee, No Merry	16 19
29	Kid Rock, I Am The Bulldog	16 19
30	Eagle Eye Cherry, Save Tonight	15 15

WMRQ Hartford
 PD: Dave Hill
 Acting MD: Silent J
 860-723-6160
 Capstar

	TW	LW
1	Everlast, What It's Like	45 49
2	The Flies, Got You (Where I Want You)	44 46
3	Go Go Dolls, Slide	44 43
4	Fuelt, Bittersweet	42 39
5	Hole, Celebrity Skin	42 39
6	Creed, What's This Life For	33 9
7	Sugar Ray, Every Morning	30 28
8	Beastie Boys, Body Movin'	29 29
9	Cake, Never There	29 32
10	Collective Soul, Heavy	29 27
11	Garbage, Special	29 23
12	New Radicals, You Get What You Give	27 24
13	The Offspring, Pretty Fly (For A White Guy)	27 31
14	R.E.M., Lotus	26 18
15	Marvelous 3, Freak Of The Week	26 21
16	Zebrhead, Get Back	25 20
17	Creed, One	24 33
18	Hole, Malibu	24 28
19	The Cardigans, My Favourite Game	24 17
20	Green Day, Nice Guys Finish Last	23 17
21	Vast, Touched	22 14
22	Eve 6, Leech	20 22
23	Lenny Kravitz, Fly Away	19 43
24	Soul Coughing, Circles	19 29
25	Ozzy, Blue Monday	18 22
26	Dave Matthews Band, Crush	16 28
27	Limp Bizkit, Faith	17 15
28	Remy Zero, Prophecy	17 19
29	Slabbing Westward, Haunting Me	16 1
30	Placebo, Pure Morning	16 18

KPNT St. Louis
 OM: Allan Fee
 APD: Marty Linck
 MD: Traci Wilde
 314-231-1057
 Sinclair

	TW	LW
1	Lenny Kravitz, Fly Away	41 41
2	Go Go Dolls, Slide	41 41
3	The Offspring, Pretty Fly (For A White Guy)	41 40
4	Cake, Never There	40 41
5	Eve 6, Inside Out	40 40
6	Everlast, What It's Like	33 9
7	Creed, One	35 22
8	Collective Soul, Heavy	27 25
9	Sugar Ray, Every Morning	24 24
10	Placebo, Pure Morning	24 24
11	New Radicals, You Get What You Give	24 22
12	Ozzy, Blue Monday	23 27
13	Better Than Ezra, At The Stars	23 11
14	Everclear, One Hit Wonder	22 14
15	The Urge, 1999	21 21
16	Hole, Malibu	21 19
17	Hole, Celebrity Skin	20 18
18	Days Of The New, Touch, Peel And Stand	20 17
19	Pearl Jam, Elderly Woman Behind The	20 13
20	Beastie Boys, Intergalactic	19 15
21	Foo Fighters, Everlong	19 18
22	Dovetail Joint, Level On The Inside	19 17
23	Everclear, Father Of Mine	18 18
24	Third Eye Blind, Jumper	18 19
25	Remy Zero, Prophecy	18 17
26	Fuelt, Shimmer	18 16
27	Bare Jr., You Blew Me Off	18 2
28	Slabbing Westward, Save Yourself	17 16
29	The Urge, Jump Right In	15 16
30	Green Day, Nice Guys Finish Last	15 4

WENZ Cleveland
 PD: Dan Binder
 APD: Ric Bennett
 MD: No. 1 Son
 216-861-0100
 Clear Channel

	TW	LW
1	Go Go Dolls, Slide	40 43
2	Barenaked Ladies, It's All Been Done	39 41
3	U2, Sweetest Thing	39 40
4	Everlast, What It's Like	35 45
5	The Flies, Got You (Where I Want You)	34 44
6	Cake, Never There	34 42
7	Korn, Got The Life	33 36
8	Sugar Ray, Every Morning	32 26
9	Collective Soul, Heavy	22 15
10	Beastie Boys, Intergalactic	20 23
11	Eve 6, Inside Out	20 21
12	Semisonic, Secret Smile	20 1
13	Creed, My Own Prison	19 22
14	Shawn Mullins, Lullaby	19 23
15	Lenny Kravitz, Fly Away	19 46
16	Eve 6, Leech	19 18
17	Garbage, Special	18 21
18	Alanis Morissette, Joking You	18 18
19	Ozzy, Blue Monday	18 13
20	Dave Matthews Band, Crush	18 19
21	Placebo, Pure Morning	18 23
22	Hole, Malibu	18 16
23	The Offspring, Why Don't You Get A Job?	18 0
24	Everclear, One Hit Wonder	17 9
25	Better Than Ezra, At The Stars	17 23
26	Limp Bizkit, Faith	16 18
27	Garbage, I Think I'm Paranoid	16 20
28	Khailee, No Merry	16 21
29	Class Of '99, Another Brick In The Wall	16 21
30	Hole, Celebrity Skin	16 23

KEDJ Phoenix
 PD: Shellie Hart
 APD/MD: Chris Patyk
 602-266-1360
 New Century

	TW	LW
1	Everlast, What It's Like	51 45
2	Cake, Never There	51 48
3	Lenny Kravitz, Fly Away	48 39
4	Sugar Ray, Every Morning	46 35
5	Fuelt, Shimmer	39 35
6	Beastie Boys, Intergalactic	36 37
7	Sublime, Badfish	36 41
8	Go Go Dolls, Slide	35 39
9	Beastie Boys, Body Movin'	32 34
10	The Offspring, Why Don't You Get A Job?	31 42
11	Ozzy, Blue Monday	29 26
12	The Flies, Got You (Where I Want You)	29 8
13	Harvey Danger, Flagpole Sitta	28 23
14	Everclear, Father Of Mine	27 13
15	The Offspring, Pretty Fly (For A White Guy)	27 23
16	Hole, Malibu	25 29
17	Hole, Celebrity Skin	23 24
18	Blink 182, Damin	23 24
19	Semisonic, Closing Time	23 23
20	Eve 6, Inside Out	22 26
21	Creed, My Own Prison	22 14
22	Garbage, Special	22 1
23	Limp Bizkit, Faith	21 16
24	Everclear, Everything To Everyone	20 21
25	Korn, Got The Life	20 18
26	Garbage, I Think I'm Paranoid	19 21
27	Bare Jr., You Blew Me Off	16 8
28	Eve 6, Leech	16 10
29	Barenaked Ladies, One Week	15 19
30	Placebo, Pure Morning	15 15

KZON Phoenix
 PD: Paul Peterson
 APD: Laura Smith
 MD: Kevin Mannion
 602-258-8181
 Chancellor

	TW	LW
1	Cake, Never There	33 31
2	Sugar Ray, Every Morning	32 32
3	Everlast, What It's Like	31 32
4	The Flies, Got You (Where I Want You)	31 32
5	Lenny Kravitz, Fly Away	30 32
6	Everclear, Father Of Mine	29 31
7	The Cardigans, My Favourite Game	27 20
8	Eve 6, Inside Out	26 18
9	Hole, Celebrity Skin	24 17
10	Creed, What's This Life For	23 31
11	New Radicals, You Get What You Give	22 32
12	Go Go Dolls, Slide	22 32
13	Green Day, Time Of Your Life	19 17
14	Marvelous 3, Freak Of The Week	18 14
15	Semisonic, Secret Smile	18 0
16	Matchbox 20, Buck 2 Good	18 18
17	Shawn Mullins, Lullaby	18 12
18	Garbage, I Think I'm Paranoid	18 17
19	Fuelt, Shimmer	18 17
20	Third Eye Blind, Jumper	17 18
21	U2, Sweetest Thing	17 17
22	The Smashing Pumpkins, Perfect	17 15
23	Soul Coughing, Circles	17 16
24	Shawn Mullins, Shimmer	16 0
25	Go Go Dolls, Ins	16 13
26	Eagle Eye Cherry, Save Tonight	16 23
27	Athenaem, What I Didn't Know	16 18
28	Collective Soul, Heavy	15 2
29	Chris Isaak, Flying	14 13
30	Alanis Morissette, Front Row	14 19

KWOD Sacramento
 PD: Ron Bunce
 MD: Carla "Raz" Raswyck
 916-448-5000
 Royce International

	TW	LW
1	The Offspring, Pretty Fly (For A White Guy)	52 50
2	Everlast, What It's Like	52 49
3	Sugar Ray, Every Morning	51 49
4	Fuelt, Shimmer	51 53
5	Fatboy Slim, Praise You	49 31
6	New Radicals, You Get What You Give	43 34
7	The Cardigans, My Favourite Game	37 50
8	Soul Coughing, Circles	34 52
9	Foo Fighters, Everlong	33 33
10	Less Than Jake, History Of A Boring Town	31 26
11	Everclear, One Hit Wonder	31 34
12	Hole, Malibu	30 33
13	Ozzy, Blue Monday	30 24
14	Cake, Shoop Go To Heaven	30 29
15	Beastie Boys, Body Movin'	28 24
16	Lenny Kravitz, Fly Away	28 33
17	Collective Soul, Heavy	27 23
18	Go Go Dolls, Dizzy	23 13
19	Tin Star, Head	21 21
20	Fuelt, Bittersweet	21 18
21	Fuelt, Shimmer	21 18
22	Marvelous 3, Freak Of The Week	21 18
23	Eve 6, Leech	21 21
24	Hole, Celebrity Skin	21 19
25	Cake, Never There	20 28
26	Feeder, High	20 19
27	Vast, Touched	20 29
28	MaxP, I'm OK, You're OK	19 18
29	Shawn Mullins, Lullaby	18 17
30	Remy Zero, Fly-ph-zzy	18 22

XTRA San Diego
 PD: Bryan Schock
 MD: Chris Muckley
 619-291-9191
 Jacor

	TW	LW
1	Sugar Ray, Every Morning	41 40
2	Cake, Never There	40 42
3	The Offspring, Pretty Fly (For A White Guy)	39 42
4	The Cardigans, My Favourite Game	39 40
5	Everlast, What It's Like	38 39
6	Hole, Celebrity Skin	36 39
7	Soul Coughing, Circles	28 28
8	Fatboy Slim, Praise You	24 17
9	Marvelous 3, Freak Of The Week	24 23
10	Spring Heeled Jack, Julime	23 0
11	Eve 6, Leech	22 21
12	Khailee, No Merry	21 24
13	U2, Sweetest Thing	21 24
14	New Radicals, You Get What You Give	18 25
15	Hole, Malibu	15 24
16	Lenny Kravitz, Fly Away	18 19
17	Everclear, Father Of Mine	16 15
18	Eagle Eye Cherry, Save Tonight	16 26
19	Touch & Go, Would You?	15 21
20	Blur, Song 2	15 15
21	Dave Matthews Band, Crush	14 16
22	Everlast, Ends	14 16
23	Foo Fighters, Everlong	14 18
24	Eve 6, Inside Out	14 15
25	Fountains Of Wayne, Sink To The Bottom	14 16
26	Sublime, Wrong Way	13 13
27	Green Day, Time Of Your Life	13 11
28	Sublime, Bassfilla	13 14
29	Blink 182, Damin	12 15
30	Sublime, Don't Time	12 10

WRZX Indianapolis
 PD: Scott Jameson
 MD: Michael Young
 317-257-7565
 Capstar

	TW	LW
1	Everlast, What It's Like	37 39
2	Touch & Go, Would You?	37 39
3	The Flies, Got You (Where I Want You)	37 35
4	Fuelt, Bittersweet	37 39
5	Sugar Ray, Every Morning	36 37
6	Lenny Kravitz, Fly Away	35 36
7	Cake, Never There	34 36
8	Hole, Celebrity Skin	33 34
9	Go Go Dolls, Slide	28 36
10	Vast, Touched	28 27
11		

WKDF Nashville PD: Kidd Redd MD: Sheri Sexton 615-244-9533 Dick Broadcasting



Table with 2 columns: Song Title, TW LW. Includes tracks like 'Lenny Kravitz, Fly Away', 'Barenaked Ladies, It's All Been Done', 'Goo Goo Dolls, Slide'.

WQKB Albany PD/MD: Kelli McNamara AMD: Jeff Callan 518-462-5555 Radio Enterprises



Table with 2 columns: Song Title, TW LW. Includes tracks like 'Barenaked Ladies, It's All Been Done', 'Lenny Kravitz, Fly Away', 'The Flies, Got You (Where I Want You)'.

KXPX Denver 303-832-5665 Chancellors



Table with 2 columns: Song Title, TW LW. Includes tracks like 'Everlast, What It's Like', 'Lenny Kravitz, Fly Away', 'Hole, Celebrity Skin'.

WRAX Birmingham PD: Dave Rossi AMD: Hurricane Shane MD: Suzy Boe 205-945-4646 Dick Broadcasting



Table with 2 columns: Song Title, TW LW. Includes tracks like 'Collective Soul, Run', 'Lenny Kravitz, Fly Away', 'Everlast, What It's Like'.

WGRD Grand Rapids PD/MD: Margot Smith AMD: Tim Bronson 616-459-4111 Capstar



Table with 2 columns: Song Title, TW LW. Includes tracks like 'Alanis Morissette, Joining You', 'Sugar Ray, Every Morning', 'Everlast, What It's Like'.

WXDG Detroit PD: Amy Doyle MD: Spike 313-298-3343 Greater Media



Table with 2 columns: Song Title, TW LW. Includes tracks like 'Cake, Never There', 'Lenny Kravitz, Fly Away', 'Everlast, What It's Like'.

WBRU Providence PD: Tim Schiavelli 401-272-9550 Brown Broadcasting



Table with 2 columns: Song Title, TW LW. Includes tracks like 'The Offspring, Pretty Fly (For A White Guy)', 'Creed, One', 'Lenny Kravitz, Fly Away'.

KTCL Denver PD: Mike O'Connor 303-623-9330 Tsunami Communications



Table with 2 columns: Song Title, TW LW. Includes tracks like 'The Offspring, Pretty Fly (For A White Guy)', 'Garbage, I Think I'm Paranoid', 'Stabbing Westward, Save Yourself'.

WFNX Boston PD: Cruze MD: Laurie Gail AMD: Kevin Mays 781-595-6200 Phoenix Media



Table with 2 columns: Song Title, TW LW. Includes tracks like 'Hole, Malibu', 'Everlast, What It's Like', 'Placebo, Pure Morning'.

KNRX Portland, OR PD/MD: Mark Hamilton 503-223-1441 Entercom



Table with 2 columns: Song Title, TW LW. Includes tracks like 'Cake, Never There', 'The Offspring, Pretty Fly (For A White Guy)', 'Third Eye Blind, Jumper'.

KCXX Riverside/San Bernardino OM/MD: Dwight Arnold MD: Bruce Pulley 909-384-1039 All Pro Broadcasting



Table with 2 columns: Song Title, TW LW. Includes tracks like 'Everlast, What It's Like', 'Marvelous 3, Freak Of The Week', 'Lenny Kravitz, Fly Away'.

WZAZ Columbus PD: Matthew Harris APD: Ben Williams 614-841-9696 Jacor



Table with 2 columns: Song Title, TW LW. Includes tracks like 'Lenny Kravitz, Fly Away', 'Cake, Never There', 'Everlast, What It's Like'.

KXRX Salt Lake City PD: Mike Summers MD: Sean Ziebarth 801-364-9601 Simmons



Table with 2 columns: Song Title, TW LW. Includes tracks like 'Hole, Malibu', 'New Radicals, You Get What You Give', 'Sugar Ray, Every Morning'.

WEND Charlotte PD: Jack Daniel MD: Kristen Pettus 704-338-9600 Dalton Group



Table with 2 columns: Song Title, TW LW. Includes tracks like 'Goo Goo Dolls, Slide', 'Everlast, What It's Like', 'The Flies, Got You (Where I Want You)'.

WNVE Rochester PD/MD: Erick Anderson 716-246-0440 Jacor



Table with 2 columns: Song Title, TW LW. Includes tracks like 'Eve 6, Inside Out', 'Everlast, What It's Like', 'Lenny Kravitz, Fly Away'.

WEDG Buffalo OM: John Hager PD/MD: Rich Wall 716-881-4555 Mercury Broadcasting



Table with 2 columns: Song Title, TW LW. Includes tracks like 'Lenny Kravitz, Fly Away', 'The Flies, Got You (Where I Want You)', 'Cake, Never There'.

KKND New Orleans OM: Dave Stewart APD/MD: Rod Ryan 504-679-7300 Clear Channel



Table with 2 columns: Song Title, TW LW. Includes tracks like 'Everlast, What It's Like', 'Orgy, Blue Monday', 'The Flies, Got You (Where I Want You)'.

KENZ Salt Lake City PD: Bruce Jones MD: Andrea Gappmayer 801-470-1075 Citadel



Table with 2 columns: Song Title, TW LW. Includes tracks like 'Sheryl Crow, My Favorite Mistake', 'Better Than Ezra, At The Stars', 'Barenaked Ladies, It's All Been Done'.

WPBZ West Palm Beach OM/MD: John O'Connell APD/MD: Dan O'Brien 561-616-4600 Palm Beach Radio



Table with 2 columns: Song Title, TW LW. Includes tracks like 'Sugar Ray, Every Morning', 'Soul Coughing, Circles', 'Goo Goo Dolls, Slide'.

KFRR Fresno PD: Bruce Wayne 209-255-1041 Ionosphere Broadcasting



Table with 2 columns: Song Title, TW LW. Includes tracks like 'Cake, Never There', 'The Offspring, Pretty Fly (For A White Guy)', 'Lenny Kravitz, Fly Away'.

KXTE Las Vegas PD: Dave Wellington APD: Chris Ripley 702-889-7500 CBS



Table with 2 columns: Song Title, TW LW. Includes tracks like 'Korn, Freak On A Leash', 'Sawdust, Bitch', 'Godsmack, Whatever'.

KMYZ Tulsa PD: Lynn Barstow MD: Ray Dog 918-665-3131 Shamrock



Table with 2 columns: Song Title, TW LW. Includes tracks like 'Cake, Never There', 'Garbage, Special', 'The Offspring, Pretty Fly (For A White Guy)'.

KROX Austin PD: Sara Trexler MD: Brad Hastings 512-832-4000 LBIS Broadcasting



Table with 2 columns: Song Title, TW LW. Includes tracks like 'Placebo, Pure Morning', 'Class Of '99, Another Brick In The Wall', 'Rob Zombie, Dragula'.

WXEG Dayton PD: Jeff Stevens MD: Alan Rantz 937-224-1137 Jacor



Table with 2 columns: Song Title, TW LW. Includes tracks like 'Lenny Kravitz, Fly Away', 'New Radicals, You Get What You Give', 'Sheryl Crow, My Favorite Mistake'.

Updated tracks: (1) for songs with increased spins
This week: (2) for songs with new spins
This week: (3) for songs with new spins
This week: (4) for songs with new spins

Total Plays/Gain				Total Plays/Gain				Total Plays/Gain				Total Plays/Gain				Total Plays/Gain							
BARE JR. <i>You Blew Me Off (Immortal/Epic)</i> Total Stations: 32				BLONDIE <i>Marla (Beyond Music)</i> Total Stations: 28				THE CARDIGANS <i>My Favourite Game (Stockholm/Mercury)</i> Total Stations: 47				COLLECTIVE SOUL <i>Run (Hollywood/Atlantic)</i> Total Stations: 26				COLLECTIVE SOUL <i>Heavy (Atlantic)</i> Total Stations: 58				COLLECTIVE SOUL <i>Heavy (Atlantic)</i> Total Stations: 58			
Chart Move: 26-22				Chart Move: 26-22				Chart Move: 26-22				Chart Move: 26-22				Chart Move: 37-25							
New York L.A. Chicago San Fran. Phila. Detroit				New York L.A. Chicago San Fran. Phila. Detroit				New York L.A. Chicago San Fran. Phila. Detroit				New York L.A. Chicago San Fran. Phila. Detroit				New York L.A. Chicago San Fran. Phila. Detroit				New York L.A. Chicago San Fran. Phila. Detroit			
Dallas Wash., DC Houston Boston				Dallas Wash., DC Houston Boston				Dallas Wash., DC Houston Boston				Dallas Wash., DC Houston Boston				Dallas Wash., DC Houston Boston				Dallas Wash., DC Houston Boston			
Atlanta Seattle San Diego Minn. St. Louis Pitts. Phoenix				Atlanta Seattle San Diego Minn. St. Louis Pitts. Phoenix				Atlanta Seattle San Diego Minn. St. Louis Pitts. Phoenix				Atlanta Seattle San Diego Minn. St. Louis Pitts. Phoenix				Atlanta Seattle San Diego Minn. St. Louis Pitts. Phoenix				Atlanta Seattle San Diego Minn. St. Louis Pitts. Phoenix			
Cleveland Denver				Cleveland Denver				Cleveland Denver				Cleveland Denver				Cleveland Denver				Cleveland Denver			
Port., OR Kan City Rivers. Sacram. Provid. Colum., OH				Port., OR Kan City Rivers. Sacram. Provid. Colum., OH				Port., OR Kan City Rivers. Sacram. Provid. Colum., OH				Port., OR Kan City Rivers. Sacram. Provid. Colum., OH				Port., OR Kan City Rivers. Sacram. Provid. Colum., OH				Port., OR Kan City Rivers. Sacram. Provid. Colum., OH			
Salt Lake Indian. Charl., NC				Salt Lake Indian. Charl., NC				Salt Lake Indian. Charl., NC				Salt Lake Indian. Charl., NC				Salt Lake Indian. Charl., NC				Salt Lake Indian. Charl., NC			

Total Stations: 59				Total Stations: 22				Total Stations: 33				Total Stations: 68				Total Stations: 56			
CREED <i>One (Wind-up)</i> Chart Move: 21-14				DIG <i>Live In Sound (Radiouniverse/Universal)</i>				DOVETAIL JOINT <i>Level On The Inside (Aware/C2/Columbia)</i>				EVE 6 <i>Leech (RCA)</i> Chart Move: 13-9				EVERCLEAR <i>One Hit Wonder (Capitol)</i> Chart Move: 39-30			
New York L.A. Chicago San Fran. Phila. Detroit				New York L.A. Chicago San Fran. Phila. Detroit				New York L.A. Chicago San Fran. Phila. Detroit				New York L.A. Chicago San Fran. Phila. Detroit				New York L.A. Chicago San Fran. Phila. Detroit			
Dallas Wash., DC Houston Boston				Dallas Wash., DC Houston Boston				Dallas Wash., DC Houston Boston				Dallas Wash., DC Houston Boston				Dallas Wash., DC Houston Boston			
Atlanta Seattle San Diego Minn. St. Louis Pitts. Phoenix				Atlanta Seattle San Diego Minn. St. Louis Pitts. Phoenix				Atlanta Seattle San Diego Minn. St. Louis Pitts. Phoenix				Atlanta Seattle San Diego Minn. St. Louis Pitts. Phoenix				Atlanta Seattle San Diego Minn. St. Louis Pitts. Phoenix			
Cleveland Denver				Cleveland Denver				Cleveland Denver				Cleveland Denver				Cleveland Denver			
Port., OR Kan City Rivers. Sacram. Provid. Colum., OH				Port., OR Kan City Rivers. Sacram. Provid. Colum., OH				Port., OR Kan City Rivers. Sacram. Provid. Colum., OH				Port., OR Kan City Rivers. Sacram. Provid. Colum., OH				Port., OR Kan City Rivers. Sacram. Provid. Colum., OH			
Salt Lake Indian. Charl., NC				Salt Lake Indian. Charl., NC				Salt Lake Indian. Charl., NC				Salt Lake Indian. Charl., NC				Salt Lake Indian. Charl., NC			

Total Stations: 14				Total Stations: 45				Total Stations: 59				Total Stations: 16				Total Stations: 18			
EVERLAST <i>Ends (Tommy Boy)</i>				FATBOY SLIM <i>Praise You (Skint/Astralwerks)</i> Chart Move: Debut 36				GARBAGE <i>Special (Aimo Sounds/Interscope)</i> Chart Move: 14-11				GODSMACK <i>Whatever (Republic/Universal)</i>				GOO GOO DOLLS <i>Dizzy (Warner Bros.)</i>			
New York L.A. Chicago San Fran. Phila. Detroit				New York L.A. Chicago San Fran. Phila. Detroit				New York L.A. Chicago San Fran. Phila. Detroit				New York L.A. Chicago San Fran. Phila. Detroit				New York L.A. Chicago San Fran. Phila. Detroit			
Dallas Wash., DC Houston Boston				Dallas Wash., DC Houston Boston				Dallas Wash., DC Houston Boston				Dallas Wash., DC Houston Boston				Dallas Wash., DC Houston Boston			
Atlanta Seattle San Diego Minn. St. Louis Pitts. Phoenix				Atlanta Seattle San Diego Minn. St. Louis Pitts. Phoenix				Atlanta Seattle San Diego Minn. St. Louis Pitts. Phoenix				Atlanta Seattle San Diego Minn. St. Louis Pitts. Phoenix				Atlanta Seattle San Diego Minn. St. Louis Pitts. Phoenix			
Cleveland Denver				Cleveland Denver				Cleveland Denver				Cleveland Denver				Cleveland Denver			
Port., OR Kan City Rivers. Sacram. Provid. Colum., OH				Port., OR Kan City Rivers. Sacram. Provid. Colum., OH				Port., OR Kan City Rivers. Sacram. Provid. Colum., OH				Port., OR Kan City Rivers. Sacram. Provid. Colum., OH				Port., OR Kan City Rivers. Sacram. Provid. Colum., OH			
Salt Lake Indian. Charl., NC				Salt Lake Indian. Charl., NC				Salt Lake Indian. Charl., NC				Salt Lake Indian. Charl., NC				Salt Lake Indian. Charl., NC			

Monitor MODERN ROCK

SONG ACTIVITY REPORTS

FOR WEEK ENDING JANUARY 17, 1999

Charting based on 30 songs with increased play this week. Total Plays/Gain does not include new plays. Markets listed in order of population.

TOMMY HENRIKSEN 373/27					HOLE 1689/71					KORN 191/46					LIMP BIZKIT 533/47					THE LIVING END 443/125				
<i>I See The Sun (Capitol)</i>					<i>Malibu (DGC/Geffen)</i>					<i>Freak On A Leash (Immortal/Epic)</i>					<i>Faith (Flip/Interscope)</i>					<i>Prisoner Of Society (Reprise)</i>				
Total Stations: 26					Total Stations: 67					Total Stations: 26					Total Stations: 46					Total Stations: 43				
MTV	TW	LW	2W	IP	MTV	TW	LW	2W	IP	MTV	TW	LW	2W	IP	MTV	TW	LW	2W	IP	MTV	TW	LW	2W	IP
New York	WXRK	-	-	-	New Or	KKND	16	17	2	New Or	KKND	23	23	25	New Or	KKND	14	15	15	New Or	KKND	15	9	2
Wash., DC	WXRK	-	-	-	Buffalo	WEDG	1	1	1	Buffalo	WEDG	1	1	1	Buffalo	WEDG	1	1	1	Buffalo	WEDG	5	3	1
Houston	KLYY	-	-	-	Hartford	WMRO	10	10	10	Hartford	WMRO	24	28	27	Hartford	WMRO	17	15	17	Hartford	WMRO	3	1	1
Chicago	KROQ	-	-	-	Memphis	WRXQ	14	16	11	Memphis	WRXQ	3	4	1	Memphis	WRXQ	12	13	12	Memphis	WRXQ	7	3	1
San Fran.	WKQX	-	-	-	Nashv.	WKDF	33	35	36	Nashv.	WKDF	32	26	15	Nashv.	WKDF	1	1	1	Nashv.	WKDF	1	1	1
Phila.	KITS	-	-	-	Rochest.	WVVE	36	36	33	Rochest.	WVVE	17	9	19	Rochest.	WVVE	1	1	1	Rochest.	WVVE	1	1	1
Phila.	WPLY	-	-	-	W.P.Beach	WPBZ	34	32	22	W.P.Beach	WPBZ	34	28	18	W.P.Beach	WPBZ	1	1	1	W.P.Beach	WPBZ	1	1	1
Detroit	CIMX	-	-	-	Las Vegas	KXTE	43	44	38	Las Vegas	KXTE	38	32	25	Las Vegas	KXTE	19	36	37	Las Vegas	KXTE	15	1	1
Dayton	WPLT	-	-	-	Louisv.	WLSR	1	1	1	Louisv.	WLSR	10	10	15	Louisv.	WLSR	10	10	15	Louisv.	WLSR	10	9	1
Dayton	WXDG	-	-	-	Dayton	WXEG	1	1	1	Dayton	WXEG	1	1	1	Dayton	WXEG	1	1	1	Dayton	WXEG	1	1	1
Dallas	KDGE	-	-	-	Jacksonv.	WPLA	19	18	22	Jacksonv.	WPLA	20	10	1	Jacksonv.	WPLA	1	1	1	Jacksonv.	WPLA	1	1	1
Wash., DC	WHFS	-	-	-	Austin	KROX	34	33	27	Austin	KROX	23	26	14	Austin	KROX	19	21	21	Austin	KROX	13	9	3
Houston	KTBB	37	24	22	Birming.	WRAX	21	17	21	Birming.	WRAX	6	7	13	Birming.	WRAX	9	11	9	Birming.	WRAX	9	9	9
Boston	WBCH	-	-	-	Albany	WEQX	13	6	1	Albany	WEQX	1	1	1	Albany	WEQX	1	1	1	Albany	WEQX	1	1	1
Atlanta	WFNX	-	-	-	WQBK	2	2	2	WQBK	2	2	2	WQBK	13	1	1	WQBK	13	1	1	WQBK	13	1	1
Seattle	WNNX	1	1	1	Tulsa	KMYZ	1	1	1	Tulsa	KMYZ	1	1	1	Tulsa	KMYZ	1	1	1	Tulsa	KMYZ	1	1	1
San Diego	KNDD	-	-	-	Tucson	KFMA	16	17	11	Tucson	KFMA	16	17	11	Tucson	KFMA	16	17	11	Tucson	KFMA	16	17	11
Min.	XTRA	-	-	-	Fresno	KFRF	17	17	24	Fresno	KFRF	17	17	24	Fresno	KFRF	17	17	24	Fresno	KFRF	17	17	24
St. Louis	KZNY	7	6	4	Gr.Rap.	WGRD	13	13	13	Gr.Rap.	WGRD	13	13	13	Gr.Rap.	WGRD	13	13	13	Gr.Rap.	WGRD	13	13	13
Pitts.	KPNT	-	-	-	Syracuse	WKRL	1	1	1	Syracuse	WKRL	1	1	1	Syracuse	WKRL	1	1	1	Syracuse	WKRL	1	1	1
Phoenix	WXDX	-	-	-	Knouv.	WNFZ	1	1	1	Knouv.	WNFZ	2	9	12	Knouv.	WNFZ	2	9	12	Knouv.	WNFZ	2	9	12
Cleveland	KEDJ	-	-	-	New Bem	WXNR	1	1	1	New Bem	WXNR	1	1	1	New Bem	WXNR	1	1	1	New Bem	WXNR	1	1	1
Denver	KZON	-	-	-	L.Rock	KDRE	39	39	38	L.Rock	KDRE	39	39	38	L.Rock	KDRE	39	39	38	L.Rock	KDRE	39	39	38
Port., OR	WENZ	15	23	21	Charl., SC	WAVF	1	1	1	Charl., SC	WAVF	1	1	1	Charl., SC	WAVF	1	1	1	Charl., SC	WAVF	1	1	1
Kan.City	KTCL	-	-	-	Col., SC	WARQ	17	17	18	Col., SC	WARQ	17	17	18	Col., SC	WARQ	17	17	18	Col., SC	WARQ	17	17	18
Rivers	KPKX	-	-	-	O.Moines	KKDM	19	24	22	O.Moines	KKDM	19	24	22	O.Moines	KKDM	19	24	22	O.Moines	KKDM	19	24	22
Sacram.	KWDD	8	6	4	Lex., KY	WXZZ	7	1	2	Lex., KY	WXZZ	7	1	2	Lex., KY	WXZZ	7	1	2	Lex., KY	WXZZ	7	1	2
Provid.	WBRU	20	13	12	Aug., GA	WRXR	1	1	1	Aug., GA	WRXR	1	1	1	Aug., GA	WRXR	1	1	1	Aug., GA	WRXR	1	1	1
Colum., OH	WWCD	-	-	-	Fl. Myers	WJXB	1	1	1	Fl. Myers	WJXB	1	1	1	Fl. Myers	WJXB	1	1	1	Fl. Myers	WJXB	1	1	1
Salt Lake	WZAZ	10	14	15	C.Christi	KRAD	15	13	14	C.Christi	KRAD	15	13	14	C.Christi	KRAD	15	13	14	C.Christi	KRAD	15	13	14
Indian	KENZ	-	-	-	Port., ME	WCYY	1	1	1	Port., ME	WCYY	1	1	1	Port., ME	WCYY	1	1	1	Port., ME	WCYY	1	1	1
Charl., NC	KXKR	5	1	1	Santa Barb.	KJEE	1	1	1	Santa Barb.	KJEE	1	1	1	Santa Barb.	KJEE	1	1	1	Santa Barb.	KJEE	1	1	1
Wash., DC	WRZZ	18	13	11	Burling.	WBZT	1	1	1	Burling.	WBZT	1	1	1	Burling.	WBZT	1	1	1	Burling.	WBZT	1	1	1
Wash., DC	WEND	23	30	10	Toronto	CFNY	1	1	1	Toronto	CFNY	1	1	1	Toronto	CFNY	1	1	1	Toronto	CFNY	1	1	1

MARILYN MANSON 499/115					MARVELOUS 3 1045/197					THE OFFSPRING 525/107					ORGY 1271/5					R.E.M. 472/264				
<i>I Don't Like The Drugs (But The Drugs Like Me) (Nothing/Interscope)</i>					<i>Freak Of The Week (HiFi/Elektra/EEG)</i>					<i>Why Don't You Get A Job? (Columbia)</i>					<i>Blue Monday (Elementree/Reprise)</i>					<i>Lotus (Warner Bros.)</i>				
Total Stations: 43					Total Stations: 63					Total Stations: 39					Total Stations: 62					Total Stations: 40				
MTV	TW	LW	2W	IP	MTV	TW	LW	2W	IP	MTV	TW	LW	2W	IP	MTV	TW	LW	2W	IP	MTV	TW	LW	2W	IP
New York	WXRK	13	9	4	New Or	KKND	18	15	16	New Or	KKND	25	19	44	New Or	KKND	38	31	23	New Or	KKND	12	1	1
Wash., DC	KLYY	-	-	-	Buffalo	WEDG	17	21	19	Buffalo	WEDG	17	21	19	Buffalo	WEDG	18	20	11	Buffalo	WEDG	19	21	17
Houston	KROQ	3	2	4	Hartford	WMRO	26	21	28	Hartford	WMRO	26	21	28	Hartford	WMRO	18	25	9	Hartford	WMRO	26	18	1
Chicago	WKQX	9	13	20	Memphis	WRXQ	11	7	13	Memphis	WRXQ	2	4	1	Memphis	WRXQ	16	18	21	Memphis	WRXQ	15	1	1
San Fran.	KITS	12	14	33	Nashv.	WKDF	5	5	5	Nashv.	WKDF	5	5	5	Nashv.	WKDF	5	5	5	Nashv.	WKDF	5	5	5
Phila.	WPLY	1	1	1	Rochest.	WVVE	1	1	1	Rochest.	WVVE	1	1	1	Rochest.	WVVE	1	1	1	Rochest.	WVVE	1	1	1
Detroit	CIMX	11	1	1	W.P.Beach	WPBZ	2	3	4	W.P.Beach	WPBZ	2	3	4	W.P.Beach	WPBZ	2	3	4	W.P.Beach	WPBZ	2	3	4
Dayton	WPLT	12	1	1	Las Vegas	KXTE	19	22	22	Las Vegas	KXTE	19	22	22	Las Vegas	KXTE	19	22	22	Las Vegas	KXTE	19	22	22
Dayton	WXDG	12	6	18	Louisv.	WLSR	1	1	1	Louisv.	WLSR	1	1	1	Louisv.	WLSR	1	1	1	Louisv.	WLSR	1	1	1
Dallas	KDGE	-	-	-	Dayton	WXEG	1	1	1	Dayton	WXEG	1	1	1	Dayton	WXEG	1	1	1	Dayton	WXEG	1	1	1
Wash., DC	WHFS	-	-	-	Jacksonv.	WPLA	1	1	1	Jacksonv.	WPLA	1	1	1	Jacksonv.	WPLA	1	1	1	Jacksonv.	WPLA	1	1	1
Houston	KTBB	-	-	-	Austin	KROX	29	16	24	Austin	KROX	29	16	24	Austin	KROX	25	16	15	Austin	KROX	25	16	15
Boston	WBCH	12	12	5	Birming.	WRAX	4	4	4	Birming.	WRAX	4	4	4	Birming.	WRAX	4	4	4	Birming.	WRAX	4	4	4
Atlanta	WFNX	10	10	6	Albany	WEQX	1	1	1	Albany	WEQX	1	1	1	Albany	WEQX	1	1	1	Albany	WEQX	1	1	1
Seattle	WNNX	1	2	1	WQBK	2	2	2	WQBK	2	2	2	WQBK	13	1	1	WQBK	13	1	1	WQBK	13	1	1
San Diego	KNDD	21	27	20	Tulsa	KMYZ	12	16	13	Tulsa	KMYZ	12	16	13	Tulsa	KMYZ	12	16	13	Tulsa	KMYZ	12	16	13
Min.	XTRA	-	-	-	Tucson	KFMA	12	16	13	Tucson	KFMA	12	16	13	Tucson	KFMA	12	16	13	Tucson	KFMA	12	16	13
St. Louis	KZNY	-	-	-	Fresno	KFRF	17	17	24	Fresno	KFRF	17	17	24	Fresno	KFRF	17	17	24	Fresno	KFRF	17	17	24
Pitts.	KPNT	9	4	5	Gr.Rap.	WGRD	13	13	13	Gr.Rap.	WGRD	13	13	13	Gr.Rap.	WGRD	13	13	13	Gr.Rap.	WGRD	13	13	13
Phoenix	WXDX	14	13	9	Syracuse	WKRL	16	15	4	Syracuse	WKRL	16	15	4	Syracuse	WKRL	16	15	4	Syracuse	WKRL	16	15	4
Cleveland	KEDJ	13	14	9	Knouv.	WNFZ	24	24	16	Knouv.	WNFZ	24	24	16	Knouv.	WNFZ	24	24	16	Knouv.	WNFZ	24	24	16
Denver	KZON	12	2	1	New Bem	WXNR	1	1	1	New Bem	WXNR	1	1	1	New Bem	WXNR	1	1	1	New Bem	WXNR	1	1	1
Port., OR	WENZ	12	2	1	L.Rock	KDRE	41	41	27	L.Rock	KDRE	41	41	27	L.Rock	KDRE	41	41	27	L.Rock	KDRE	41	41	27
Kan.City	KTCL	-	-	-	Charl., SC	WAVF	37	26	10	Charl., SC	WAVF	37	26	10	Charl., SC	WAVF	37	26	10	Charl., SC	WAVF	37	26	10
Rivers	KPKX	20	17	29	Col., SC	WARQ	12	15	7	Col., SC	WARQ	12	15	7	Col., SC	WARQ	12	15	7	Col., SC	WARQ	12	15	7
Sacram.	KWDD	3	3	1	O.Moines	KKDM	2	6	5	O.Moines	KKDM	2	6	5	O.Moines	KKDM	2	6	5	O.Moines	KKDM	2	6	5
Provid.	WBRU	20	19	9	Lex., KY	WXZZ	7	1	2	Lex., KY	WXZZ	7	1	2	Lex., KY	WXZZ	7	1	2	Lex., KY	WXZZ	7	1	2
Colum., OH	WWCD	-	-	-	Aug., GA	WRXR	1	1	1	Aug., GA	WRXR	1	1	1	Aug., GA	WRXR	1	1	1	Aug., GA	WRXR	1	1	1
Salt Lake	WZAZ	-	-	-	Fl. Myers	WJXB	1	1	1	Fl. Myers	WJXB	1	1	1	Fl. Myers	WJXB	1	1	1	Fl. Myers	WJXB	1	1	1
Indian	KENZ	-	-	-	C.Christi	KRAD	11	7	11	C.Christi	KRAD	11	7	11	C.Christi	KRAD	11	7	11	C.Christi	KRAD	11	7	11
Charl., NC	KXKR	14	11	3	Port., ME	WCYY	1	1	1	Port., ME	WCYY	1	1	1	Port., ME	WCYY	1	1	1	Port., ME	WCYY	1	1	1
Wash., DC	WRZZ	4	7	1	Santa Barb.	KJEE	1																	

AIRPLAY **MONITOR** [®] TRIPLE-A AIRPLAY

FOR WEEK ENDING JANUARY 17, 1999



POWER PLAYLISTS TM

KFOG San Francisco

PD: Paul Marszalek
APD/MD: Bill Evans
415-817-5364
Susquehanna

TW	LW	1	2	3	4	5	6	7	8	9	10	11	12	13	14	15	16	17	18	19	20	21	22	23	24	25	26	27	28	29	30																														
		1	Jonny Lang, Still Rainin'	2	Go Go Dolls, Slide	3	Dave Matthews Band, Crush	4	Sheryl Crow, There Goes The Neighborhood	5	New Radicals, You Get What You Give	6	Brian Setzer Orchestra, This Cat's On A	7	Seal, Human Beings	8	Chris Isaak, Flying	9	Barenaked Ladies, It's All Been Done	10	Phish, Birds Of A Feather	11	Susan Tedeschi, It Hurt So Bad	12	R.E.M., Lotus	13	Cake, Never There	14	Lisa Loeb, All Day	15	John Mellencamp, I'm Not Running Anymore	16	B.B. King, Bad Case Of Love	17	Wes Cunningham, So It Goes	18	Scott Thomas Band, Sad Girl	19	Eagle-Eye Cherry, Save Tonight	20	Rolling Stones, Paint It Black	21	Bonnie Raitt, One Belief Away	22	Shawn Mullins, Lullaby	23	Train, Free	24	U2, Sweetest Thing	25	R.E.M., Daysleeper	26	Bruce Hornsby, Great Divide	27	Kenny Wayne Shepherd, Blue On Black	28	Big Head Todd & The Monsters, It's Aight	29	Santana, Europe	30	Dave Matthews & Tim Reynolds, Ants Marching

WXRT Chicago

VP/Pgm: Norm Wilner
MD: Paul Martin
773-777-1700
CBS

TW	LW	1	2	3	4	5	6	7	8	9	10	11	12	13	14	15	16	17	18	19	20	21	22	23	24	25	26	27	28	29	30																														
		1	Sugar Ray, Every Morning	2	Soul Couping, Circles	3	Go Go Dolls, Slide	4	Jewel, Hands	5	Cake, Never There	6	Fastball, Fire Escape	7	Lenny Kravitz, Fly Away	8	Barenaked Ladies, It's All Been Done	9	Cracker, Seven Days	10	Blondie, Maria	11	Sheryl Crow, There Goes The Neighborhood	12	Wes Cunningham, So It Goes	13	Dave Matthews Band, Crush	14	Susan Tedeschi, It Hurt So Bad	15	Peter Himmelman, Fly So High	16	Liz Phair, Johnny Feelgood	17	Elliott Smith, Waltz #2	18	Lucinda Williams, Can't Let Go	19	The Tragically Hip, Poets	20	Hole, Mezzanine	21	Golden Smog, Until You Came Along	22	Eagle-Eye Cherry, Save Tonight	23	U2, Sweetest Thing	24	Beck, Tropicalia	25	Seal, Human Beings	26	Everything, Hooch	27	Jonny Lang, Still Rainin'	28	Sinead Lohan, No Mermaid	29	Rusted Root, Magenta Radio	30	The Smashing Pumpkins, Daphne Descends

WBOS Boston

PD: George Taylor Morris
MD: Cliff Nash
617-254-9267
Greater Media

TW	LW	1	2	3	4	5	6	7	8	9	10	11	12	13	14	15	16	17	18	19	20	21	22	23	24	25	26	27	28	29	30																														
		1	Sheryl Crow, There Goes The Neighborhood	2	Jewel, Hands	3	Susan Tedeschi, You Need To Be With Me	4	Jonny Lang, Still Rainin'	5	Lucinda Williams, Can't Let Go	6	Go Go Dolls, Slide	7	Mysteries Of Life, Downhill	8	Dada, Goodbye	9	New Radicals, You Get What You Give	10	Dave Matthews Band, Crush	11	Indigenous, Now That You're Gone	12	Wes Cunningham, So It Goes	13	Seal, Human Beings	14	R.E.M., Lotus	15	Better Than Ezra, At The Stars	16	Sinead Lohan, Diving To Be Deeper	17	Rolling Stones, Memory Motel	18	U2, Sweetest Thing	19	Bruce Hornsby, Great Divide	20	Rusted Root, Magenta Radio	21	Chris Isaak, Flying	22	Barenaked Ladies, It's All Been Done	23	Go Go Dolls, Slide	24	Matchbox 20, Back 2 Good	25	Sonia Dada, Zachary	26	Beck, Tropicalia	27	Phish, Birds Of A Feather	28	Chris Isaak, Please	29	Lyla Lovett, West Texas Highway	30	Great Big Sea, When I'm Up

KTCZ Minneapolis

PD: Lauren MacLeash
MD: Mike Wolf
612-339-0000
Chancellor

TW	LW	1	2	3	4	5	6	7	8	9	10	11	12	13	14	15	16	17	18	19	20	21	22	23	24	25	26	27	28	29	30																														
		1	New Radicals, You Get What You Give	2	Jonny Lang, Still Rainin'	3	Go Go Dolls, Slide	4	John Mellencamp, I'm Not Running Anymore	5	Dave Matthews Band, Crush	6	B.B. King, Bad Case Of Love	7	Train, Free	8	Sugar Ray, Every Morning	9	Shawn Mullins, Shimmer	10	Lucinda Williams, Can't Let Go	11	Sheryl Crow, There Goes The Neighborhood	12	Bruce Springsteen, I Wanna Be With You	13	Chris Isaak, Flying	14	Jewel, Hands	15	Barenaked Ladies, It's All Been Done	16	U2, Sweetest Thing	17	Rolling Stones, Memory Motel	18	Matchbox 20, Back 2 Good	19	R.E.M., Lotus	20	R.E.M., Daysleeper	21	Scott Thomas Band, Sad Girl	22	Robbie Fulks, Let's Kill Saturday Night	23	Brian Setzer Orchestra, This Cat's On A	24	David & David, Welcome To The Boomtown	25	Dave Bowie, Changes	26	Slime, Fortress Around Your Heart	27	Police, Every Breath You Take	28	Adam Cohen, Tell Me Everything	29	Paul Westerberg, Lookin' Out Forever	30	Randall Bramblett, Out On The Runway

KBCO Denver

PD: Dave Benson
MD: Scott Arbough
303-444-5600
Jacor

TW	LW	1	2	3	4	5	6	7	8	9	10	11	12	13	14	15	16	17	18	19	20	21	22	23	24	25	26	27	28	29	30																														
		1	Rolling Stones, Paint It Black	2	Bob Dylan, Like A Rolling Stone	3	Brad, The Day Brings	4	Squirrel Nut Zippers, Hell	5	Supertramp, Give A Little Bit	6	Lyla Lovett, Bears	7	B.B. King, Bad Case Of Love	8	Jewel, Hands	9	Wes Cunningham, So It Goes	10	Grateful Dead, Good Lovin'	11	Preferans, Don't Get Me Wrong	12	Ziggy Marley & The Melody Makers, People	13	Midnight Oil, Beds Are Burning	14	Dave Matthews Band, Crush	15	Talking Heads, And She Was	16	Third Eye Blind, Jumper	17	U2, New Year's Day	18	Cake, Never There	19	Rickie Lee Jones, Danny's All-Star Joint	20	Everlast, What It's Like	21	Soul Couping, Circles	22	Phish, Birds Of A Feather	23	Ke\$ha, Muddy Water	24	Lyla Lovett, You've Been So Good To U	25	Stevie Ray Vaughan & Double, The House	26	Sheryl Crow, A Change Would Do You Good	27	John Mellencamp, I'm Not Running Anymore	28	Big Head Todd & The Monsters, Broken	29	The Psychedelic Furs, Love My Way	30	Shawn Mullins, Lullaby

KACD Los Angeles

Acting PD: Dave Benson
Pgm. Mgr.: Keith Cunningham
MD: Nicole Sandler
310-451-1031
Jacor

TW	LW	1	2	3	4	5	6	7	8	9	10	11	12	13	14	15	16	17	18	19	20	21	22	23	24	25	26	27	28	29	30																														
		1	Susan Tedeschi, It Hurt So Bad	2	Dave Matthews Band, Crush	3	Seal, Human Beings	4	Sugar Ray, Every Morning	5	Lucinda Williams, Can't Let Go	6	Everlast, What It's Like	7	Jewel, Hands	8	Go Go Dolls, Slide	9	Wes Cunningham, So It Goes	10	New Radicals, You Get What You Give	11	U2, Sweetest Thing	12	Soul Couping, Circles	13	Sonia Dada, Zachary	14	Lyla Lovett, Bears	15	Bonnie Raitt, One Belief Away	16	Beck, Tropicalia	17	Sheryl Crow, There Goes The Neighborhood	18	Shawn Mullins, Lullaby	19	Fastball, Fire Escape	20	Alanis Morissette, Thank U	21	Deterium, Silence	22	Collective Soul, Run	23	Sheryl Crow, My Favorite Mistake	24	Eagle-Eye Cherry, Save Tonight	25	Chris Isaak, Please	26	B.B. King, Bad Case Of Love	27	Phish, Birds Of A Feather	28	John Mellencamp, I'm Not Running Anymore	29	Jonny Lang, Still Rainin'	30	Cake, Never There

WHPT Tampa

PD: Chuck Beck
MD: Kurt Schreiner
813-577-7131
Clear Channel

TW	LW	1	2	3	4	5	6	7	8	9	10	11	12	13	14	15	16	17	18	19	20	21	22	23	24	25	26	27	28	29	30																														
		1	Sarah McLachlan, Angel	2	Matchbox 20, Real World	3	Sheryl Crow, My Favorite Mistake	4	Go Go Dolls, Slide	5	Shawn Mullins, Lullaby	6	Eagle-Eye Cherry, Save Tonight	7	Sugar Ray, Every Morning	8	Matchbox 20, 3 AM	9	Green Day, Time Of Your Life	10	Sheryl Crow, If It Makes You Happy	11	Semisonic, Secret Smile	12	Gary Wright, Dream Weaver	13	Pink Floyd, Another Brick In The Wall	14	Yes, Owner Of A Lonely Heart	15	Jewel, Hands	16	Pink Floyd, The Happiest Days Of Our Lives	17	Seal, Kiss From A Rose	18	Sister Hazel, All For You	19	Crowded House, Don't Dream It's Over	20	U2, I Still Haven't Found What I'm	21	Natalie Imbruglia, Torn	22	Kenny Loggins & Jim Messina, My Mama	23	Paula Cole, Where Have All The Cowboys	24	Mike & The Mechanics, Silent Running	25	John Cougar, Jack & Diane	26	Foreigner, Waiting For A Girl Like You	27	Huey Lewis & The News, The Heart Of Rock	28	Eric Clapton, Layla	29	Strong, Fields Of Gold	30	The Romantics, Talking In Your Sleep

KKZN Dallas

PD: Joel Folger
APD: Abbey Goldstein
214-526-2400
Susquehanna

TW	LW	1	2	3	4	5	6	7	8	9	10	11	12	13	14	15	16	17	18	19	20	21	22	23	24	25	26	27	28	29	30																														
		1	Go Go Dolls, Slide	2	R.E.M., Daysleeper	3	Susan Tedeschi, It Hurt So Bad	4	Barenaked Ladies, It's All Been Done	5	Jonny Lang, Still Rainin'	6	Dave Matthews Band, Crush	7	Seal, Human Beings	8	New Radicals, You Get What You Give	9	Alanis Morissette, Thank U	10	Natalie Imbruglia, Torn	11	Jewel, Hands	12	Eagle-Eye Cherry, Save Tonight	13	Sheryl Crow, My Favorite Mistake	14	Shawn Mullins, Lullaby	15	B.B. King, Bad Case Of Love	16	Chris Isaak, Flying	17	U2, Sweetest Thing	18	Fastball, Fire Escape	19	Wes Cunningham, So It Goes	20	Scott Thomas Band, Sad Girl	21	Bonnie Raitt, One Belief Away	22	Smash Mouth, Walkin' On The Sun	23	The Wallflowers, One Headlight	24	Edwin McCain, I'll Be	25	Sheryl Crow, There Goes The Neighborhood	26	Barenaked Ladies, One Week	27	Dave Matthews Band, Stay	28	Chris Isaak, Please	29	Matchbox 20, Real World	30	Sheryl Crow, A Change Would Do You Good

WVRV St. Louis

OM: Allan Fee
PD: Joe Larson
MD: David Myers
314-231-3699
Sinclair

TW	LW	1	2	3	4	5	6	7	8	9	10	11	12	13	14	15	16	17	18	19	20	21	22	23	24	25	26	27	28	29	30																														
		1	Go Go Dolls, Slide	2	Third Eye Blind, Jumper	3	Eagle-Eye Cherry, Save Tonight	4	Sheryl Crow, My Favorite Mistake	5	Shawn Mullins, Lullaby	6	Sarah McLachlan, Angel	7	New Radicals, You Get What You Give	8	Jewel, Hands	9	Alanis Morissette, Thank U	10	Matchbox 20, Back 2 Good	11	Barenaked Ladies, It's All Been Done	12	Lisa Loeb, All Day	13	Hootie & The Blowfish, Only Lonely	14	U2, Sweetest Thing	15	Collective Soul, Run	16	Dave Matthews Band, Crush	17	Khaleel, No Mercy	18	Seal, Human Beings	19	Sixpence None The Richer, Kiss Me	20	Natalie Merchant, Break Your Heart	21	Natalie Imbruglia, Torn	22	Sir, One Of The Few	23	Marcy Playground, Sex And Candy	24	The Impression, The Impression	25	Tonic, Open Up Your Eyes	26	Green Day, Time Of Your Life	27	Sneakers Pimps, Underground	28	Albenazer, What I Didn't Know	29	Natalie Merchant, Kind & Generous	30	Everclear, I Will Buy You A New Life

KMTT Seattle

SM: Chris Mays
PD: Jason Parker
MD: Dean Carlson
206-233-1037
Entercom

TW	LW	1	2	3	4	5	6	7	8	9	10	11	12	13	14	15	16	17	18	19	20	21	22	23	24	25	26	27	28	29	30																														
		1	New Radicals, You Get What You Give	2	Seal, Human Beings	3	Shawn Mullins, Shimmer	4	Brian Setzer Orchestra, This Cat's On A	5	Jonny Lang, Still Rainin'	6	Jewel, Hands	7	Sheryl Crow, There Goes The Neighborhood	8	Wes Cunningham, So It Goes	9	Deterium, Silence	10	Cowboy Junkies, New Dawn Coming	11	Sugar Ray, Every Morning	12	U2, Sweetest Thing	13	Chris Isaak, Flying	14	B.B. King, Bad Case Of Love	15	R.E.M., Lotus	16	Sinead Lohan, Diving To Be Deeper	17	Everlast, What It's Like	18	R.L. Burnside, It's Bad You Know	19	Everything, Good Thing	20	Rusted Root, Magenta Radio	21	Bruce Hornsby, Great Divide	22	Phish, Birds Of A Feather	23	Go Go Dolls, Slide	24	Peter Himmelman, Fly So High	25	Barenaked Ladies, It's All Been Done	26	Elliott Smith, Waltz #2	27	Sonia Dada, Phases Of The Moon	28	Susan Tedeschi, You Need To Be With Me	29	Lucinda Williams, Can't Let Go	30	Lyla Lovett, West Texas Highway

CIDR Detroit

PD: Wendy Duff
MD: Jerry Mason
519-258-8888
CHUM Group

TW	LW	1	2	3	4	5	6	7	8	9	10	11	12	13	14	15	16	17	18	19	20	21	22	23	24	25	26	27	28	29	30																												
		1	Jewel, Hands	2	New Radicals, You Get What You Give	3	Go Go Dolls, Slide	4	U2, Sweetest Thing	5	Dave Matthews Band, Crush	6	Matchbox 20, Back 2 Good	7	Lucinda Williams, Can't Let Go	8	Barenaked Ladies, It's All Been Done	9	Sheryl Crow, There Goes The Neighborhood	10	Seal, Human Beings	11	Sarah McLachlan, Angel	12	Wes Cunningham, So It Goes	13	Alanis Morissette, Unsent	14	Rusted Root, Magenta Radio	15	Susan Tedeschi, It Hurt So Bad	16	Alanis Morissette, Thank U	17	B.B. King, Bad Case Of Love	18	R.E.M., Daysleeper	19	Adam Cohen, Tell Me Everything	20	Fastball, The Way	21	Eagle-Eye Cherry, Save Tonight	22	Shawn Mullins, Lullaby	23	Sarah McLachlan, Adia	24	Charlat Krewiazak, God Made Me	25	Go Go Dolls, Ins	26	Sheryl Crow, My Favorite Mistake	27	Grant Lee Buffalo, Truly, Truly	28	R.E.M., Lotus	29	Edwin McCain, I'll Be

WLUM Milwaukee

PD: Chuck Summers
APD/MD: Terry Havel
414-771-1021
All Pro Broadcasting

TW	LW	1	2	3	4	5	6	7	8	9	10	11	12	13	14	15	16	17	18	19	20	21	22	23	24	25	26	27	28	29	30																														
		1	The Offspring, Pretty Fly For A White Guy	2	Metallica, Turn The Page	3	Lenny Kravitz, Fly Away	4	Chris Isaak, This Life For	5	Everlast, What It's Like	6	Citizen King, Better Days	7	New Radicals, You Get What You Give	8	Collective Soul, Heavy	9	The Firm, Got You (Where I Want You)	10	Kenny Wayne Shepherd, Somewhere, Somewhere	11	Hole, Celebrity Skin	12	Jonny Lang, Still Rainin'	13	Go Go Dolls, Slide	14	Indigenous, Now That You're Gone	15	Pearl Jam, Elderly Woman Behind The	16	Days Of The New, The Down Town	17	Green Day, Time Of Your Life	18	Marcy Playground, Sex And Candy	19	Eye 6, Inside Out	20	Everclear, I Will Buy You A New Life	21	Semisonic, Closing Time	22	Aerosmith, Pink	23	Days Of The New, Touch, Peel And Stand	24	Kenny Wayne Shepherd, Blue On Black	25	Third Eye Blind, Semi-Charmed Life	26	Fuel, Shimmer	27	The Offspring, All I Want	28	The Black Crowes, Kickin' My Heart Around	29	Barenaked Ladies, It's All Been Done	30	Metallica, The Undergreen

The chart and Power Playlists are based on a national sample of data compiled by Broadcast Data



COMBINED ROCK AUDIENCE										AIRPLAY BY FORMAT									
TW	LW	WKS	TITLE (IMPRINT/PROMOTION LABEL)	ARTIST	THIS WEEK			LAST WEEK			MAINSTREAM			MODERN			TRIPLE-A		
					Audience (millions)	Detections No.	Rank	Audience (millions)	Detections No.	Rank	Audience (millions)	Detections No.	Rank	Audience (millions)	Detections No.	Rank	Audience (millions)	Detections No.	Rank
1	1	22	FLY AWAY (VIRGIN)	LENNY KRAVITZ	28.4774	4233	2	29.8635	4484	1	12.6093	1961	2	15.2642	2162	4	0.6039	110	—
2	2	14	WHAT IT'S LIKE (TOMMY BOY)	EVERLAST	27.8534	4365	1	28.1991	4380	2	9.4126	1692	4	17.7625	2504	1	0.6783	169	16
3	3	19	SLIDE (WARNER BROS.)	GOO GOO DOLLS	20.3120	3356	3	21.9651	3589	3	8.7287	1374	7	8.9168	1623	8	2.6665	359	2
4	6	8	EVERY MORNING (LAVA/ATLANTIC)	SUGAR RAY	18.5054	2669	7	17.6149	2500	10	1.5910	173	—	15.7140	2320	2	1.2004	176	15
5	5	22	CELEBRITY SKIN (DGC/GEFFEN)	HOLE	16.7396	2289	11	18.2486	2585	8	6.2256	989	13	10.4182	1272	13	0.0958	28	—
6	7	18	NEVER THERE (CAPRICORN/MERCURY)	CAKE	16.7087	2660	8	17.2102	2708	7	1.3086	294	—	14.5903	2256	3	0.8098	110	—
7	4	16	PRETTY FLY (FOR A WHITE GUY) (COLUMBIA)	THE OFFSPRING	16.7069	2898	4	18.5519	3103	4	5.5865	1190	8	10.8938	1632	6	0.2266	76	—
8	8	11	TURN THE PAGE (ELEKTRA/JEOP)	METALLICA	15.8234	2652	9	17.0270	2811	6	12.9476	2168	1	2.6712	417	—	0.2096	67	—
9	11	6	ONE (WIND-UP)	CREED	15.6770	2798	6	14.5567	2584	9	7.9491	1526	5	7.7279	1272	14	—	—	—
10	9	23	GOT YOU (WHERE I WANT YOU) (DELICIOUS VINYL/TRAUMA)	THE FLYS	14.5921	2826	5	16.0381	2964	5	5.2464	1140	10	9.1514	1624	7	0.1943	62	—
11	10	36	INSIDE OUT (RCA)	EVE 6	13.9326	1939	14	15.3112	2086	11	5.3915	771	20	8.3868	1129	18	0.1543	39	—
12	27	2	HEAVY (ATLANTIC)	COLLECTIVE SOUL	13.3048	2361	10	8.4072	1298	33	8.0532	1401	6	5.1597	937	25	0.0919	23	—
13	14	7	MALIBU (DGC/GEFFEN)	HOLE	12.0494	1879	15	12.1930	1746	18	0.4020	125	—	11.2856	1689	5	0.3618	65	—
14	12	16	SWEETEST THING (ISLAND)	U2	11.4312	1572	21	14.0170	1831	17	1.6050	203	—	8.3053	1150	16	1.5209	219	9
15	13	17	DRAGULA (GEFFEN)	ROB ZOMBIE	11.2863	1754	17	12.2459	1853	16	6.8775	1146	9	4.4038	608	33	—	—	—
16	15	11	KICKIN' MY HEART AROUND (AMERICAN/COLUMBIA)	THE BLACK CROWES	10.7609	1836	16	11.5552	1944	15	10.3285	1775	3	0.3786	23	—	0.0538	38	—
17	19	5	LEECH (RCA)	EVE 6	10.6962	2175	12	10.5777	2042	12	3.3539	724	22	7.2938	1435	9	0.0485	16	—
18	16	12	YOU GET WHAT YOU GIVE (MCA)	NEW RADICALS	10.6533	1949	13	11.1774	2025	13	0.9637	133	—	7.3442	1427	10	2.3454	389	1
19	17	27	FATHER OF MINE (CAPITOL)	EVERCLEAR	9.5157	1331	29	10.8941	1532	22	1.1790	193	—	8.1311	1078	—	0.2056	60	—
20	23	10	SPECIAL (ALMO SOUNDS/INTERSCOPE)	GARBAGE	9.3216	1439	24	9.2046	1427	28	0.0097	4	—	8.9595	1334	11	0.3524	101	—
21	21	46	SHIMMER (550 MUSIC/ERG)	FUEL	9.1039	1336	28	9.3090	1359	31	1.9838	335	—	6.9940	962	—	0.1311	39	—
22	18	31	WHAT'S THIS LIFE FOR (WIND-UP)	CREED	9.0581	1470	23	10.6455	1594	21	5.7831	964	15	3.2029	479	—	0.0721	27	—
23	20	13	STILL RAININ' (A&M)	JONNY LANG	8.6983	1336	27	9.5943	1437	27	6.8096	1102	11	—	—	—	1.8887	234	8
24	28	6	BLUE MONDAY (ELEMENTREE/REPRISE)	ORGY	8.3233	1613	19	8.2748	1598	20	0.9962	342	39	7.3271	1271	15	—	—	—
25	26	17	GOT THE LIFE (IMMORTAL/EPIC)	KORN	8.1866	1377	26	8.3836	1498	23	2.2313	488	31	5.9573	889	28	—	—	—
26	24	10	CRUSH (RCA)	DAVE MATTHEWS BAND	8.1191	1221	34	8.6029	1285	35	—	—	—	5.9966	941	24	2.1225	280	4
27	NEW		FREAK OF THE WEEK (HIFI/ELEKTRA/JEOP)	MARVELOUS 3	7.5216	1104	37	6.4491	882	49	0.4171	58	—	7.1012	1045	21	0.0033	1	—
28	22	25	SAVE TONIGHT (WORK/ERG)	EAGLE-EYE CHERRY	7.5178	1182	36	9.1957	1456	25	0.9829	110	—	5.1150	885	—	1.4189	187	12
29	25	12	BITTERSWEET (550 MUSIC/ERG)	FUEL	7.2677	1713	18	8.6178	2001	14	4.0816	834	17	3.1861	879	29	—	—	—
30	29	14	CIRCLES (SLASH/WARNER BROS.)	SOUL COUGHING	7.1684	1604	20	8.2064	1744	19	0.4301	189	—	6.0633	1318	12	0.6750	97	—
31	32	5	MY FAVOURITE GAME (STOCKHOLM/MERCURY)	THE CARDIGANS	7.0750	1055	39	7.3128	1038	42	—	—	—	6.9571	1003	22	0.1179	52	—
32	31	70	MY OWN PRISON (WIND-UP)	CREED	7.0310	1009	41	7.3335	1006	45	3.5439	500	—	3.4251	490	—	0.0620	19	—
33	33	73	TOUCH, PEEL AND STAND (OUTPOST/GEFFEN)	DAYS OF THE NEW	6.6206	980	44	7.2922	1038	43	4.6071	629	—	1.9716	339	—	0.0419	12	—
34	40	5	PROPHECY (DGC/GEFFEN)	REMY ZERO	6.4731	1509	22	6.4702	1437	26	2.4297	583	25	4.0087	917	27	0.0347	9	—
35	37	60	TIME OF YOUR LIFE (GOOD RIDDANCE) (REPRISE)	GREEN DAY	6.4612	866	50	6.6365	876	50	1.6838	224	—	4.3423	563	—	0.4351	79	—
36	NEW		WHY DON'T YOU GET A JOB? (COLUMBIA)	THE OFFSPRING	6.3519	637	71	5.6695	476	107	0.7043	112	—	5.6476	525	39	—	—	—
37	30	10	ELDERLY WOMAN BEHIND THE COUNTER IN A SMALL TOWN (LIVE) (EPIC)	PEARL JAM	6.0567	1035	40	7.4212	1248	36	1.8929	392	34	4.0019	612	32	0.1619	31	—
38	34	11	IT'S ALL BEEN DONE (REPRISE)	BARENAKED LADIES	6.0347	1235	31	7.0661	1425	29	0.6182	73	—	3.6563	921	26	1.7602	241	7
39	NEW		ONE HIT WONDER (CAPITOL)	EVERCLEAR	6.0325	868	49	3.4931	493	102	0.4264	54	—	5.6037	811	30	0.0024	3	—
40	38	3	AT THE STARS (ELEKTRA/JEOP)	BETTER THAN EZRA	5.9737	1228	32	6.5363	1297	34	0.0443	17	—	5.7102	1150	17	0.2192	61	—

Records showing an increase in audience over the previous week, regardless of chart movement. Rankings broken down by mainstream, modern, and triple-A formats (on right side of this page) correspond to charts printed in this week's Monitor and therefore rankings do not exist for recurrences and records below No. 40 (No. 20 for triple A). Audience computed by cross-referencing exact times of airplay with Arbitron listener data. ©1999, Billboard/BPI Communications.

THE MOST PLAYLISTS EVERY WEEK!

ROCK AIRPLAY
Monitor

Compiled from a national sample of airplay supplied by Broadcast Data Systems' Radio Track service to Rock Airplay Monitor. 111 mainstream rock and 73 modern rock stations are electronically monitored 24 hours a day, 7 days a week. Songs are ranked by number of detections. © 1999, Billboard, EPI Communications.



MAINSTREAM

THIS WEEK	LAST WEEK	WKS. ON CHART	TITLE/IMPRINT/PROMOTION LABEL	ARTIST	DETECTIONS	
					TW	LW
★★★★ No. 1 ★★★★★						
1	1	11	TURN THE PAGE ELEKTRA/EEG	METALLICA	2168	2329
10 weeks at No. 1						
2	2	29	FLY AWAY VIRGIN	LENNY KRAVITZ	1961	2077
3	3	11	KICKIN' MY HEART AROUND AMERICAN/COLUMBIA	THE BLACK CROWES	1775	1885
(4)	4	11	WHAT IT'S LIKE TOMMY BOY	EVERLAST	1692	1592
(5)	6	7	ONE WIND-UP	CREED	1526	1469
★★★★ AIRPOWER ★★★★★						
(6)	20	2	HEAVY ATLANTIC	COLLECTIVE SOUL	1401	768
7	5	19	SLIDE WARNER BROS.	GOO GOO DOLLS	1374	1484
8	7	16	PRETTY FLY (FOR A WHITE GUY) COLUMBIA	THE OFFSPRING	1190	1265
9	9	24	DRAGULA GEFEN	ROB ZOMBIE	1146	1186
10	10	21	GOT YOU (WHERE I WANT YOU) DELICIOUS VINYL/TRAUMA	THE FLYS	1140	1178
11	8	18	STILL RAININ' A&M	JONNY LANG	1102	1235
12	12	11	EVERYTHING IS BROKEN REVOLUTION/REPRISE	KENNY WAYNE SHEPHERD BAND	1082	1160
13	11	21	CELEBRITY SKIN DGC/GEFFEN	HOLE	989	1155
14	15	15	WHATEVER REPUBLIC/UNIVERSAL	GODSMACK	988	1018
15	14	33	WHAT'S THIS LIFE FOR WIND-UP	CREED	964	1037
(16)	17	10	FREE AWARE/COLUMBIA	TRAIN	910	885
17	16	17	BITTERSWEET 550 MUSIC/ERG	FUEL	834	940
18	13	16	PSYCHO MAN EPIC	BLACK SABBATH	813	1120
(19)	30	2	WHISKEY IN THE JAR ELEKTRA/EEG	METALLICA	791	476
20	19	27	INSIDE OUT RCA	EVE 6	771	796
21	18	6	ANOTHER BRICK IN THE WALL (PART 2) COLUMBIA	CLASS OF '99	749	809
(22)	23	7	LEECH RCA	EVE 6	724	683
23	21	14	POWERTRIP A&M	MONSTER MAGNET	679	704
24	24	7	YOU WANTED THE BEST MERCURY	KISS	588	624
(25)	29	6	PROPHECY DGC/GEFFEN	REMY ZERO	583	477
26	25	8	SUPER BREAKDOWN SURFDOG/HOLLYWOOD	SPRUNG MONKEY	570	593
(27)	27	5	NOW THAT YOU'RE GONE PACHYDERM	INDIGENOUS	532	506
28	22	18	SUREFIRE (NEVER ENOUGH) RESTLESS	ECONOLINE CRUSH	513	701
(29)	NEW ▶		SELLING MY SOUL EPIC	BLACK SABBATH	502	208
(30)	33	3	I DON'T LIKE THE DRUGS (BUT THE DRUGS LIKE ME) NOTHING/INTERSCOPE	MARILYN MANSON	501	398
31	26	24	GOT THE LIFE IMMORTAL/EPIC	KORN	488	535
32	32	9	I AM THE BULLGOD TOP DOG/LAVA/ATLANTIC	KID ROCK	415	435
(33)	NEW ▶		LIVING DEAD GIRL GEFEN	ROB ZOMBIE	399	323
34	28	10	ELDERLY WOMAN BEHIND THE COUNTER IN A SMALL TOWN (LIVE) EPIC	PEARL JAM	392	489
(35)	NEW ▶		HAUNTING ME COLUMBIA	STABBING WESTWARD	368	275
(36)	36	5	FAITH FLIP/INTERSCOPE	LIMP BIZKIT	362	360
(37)	NEW ▶		YOU BLEW ME OFF IMMORTAL/EPIC	BARE JR.	349	118
38	31	20	SOFT CAPITOL	SECOND COMING	344	440
(39)	39	2	BLUE MONDAY ELEMENTREE/REPRISE	ORGY	342	332
40	35	9	BITCH TVT	SEVENDUST	330	367

MODERN

THIS WEEK	LAST WEEK	WKS. ON CHART	TITLE/IMPRINT/PROMOTION LABEL	ARTIST	DETECTIONS	
					TW	LW
★★★★ No. 1 ★★★★★						
1	1	17	WHAT IT'S LIKE TOMMY BOY	EVERLAST	2504	2628
6 weeks at No. 1						
(2)	4	8	EVERY MORNING LAVA/ATLANTIC	SUGAR RAY	2320	2255
3	2	19	NEVER THERE CAPRICORN/MERCURY	CAKE	2256	2297
4	3	22	FLY AWAY VIRGIN	LENNY KRAVITZ	2162	2283
(5)	8	8	MALIBU DGC/GEFFEN	HOLE	1689	1618
6	5	16	PRETTY FLY (FOR A WHITE GUY) COLUMBIA	THE OFFSPRING	1632	1773
7	6	24	GOT YOU (WHERE I WANT YOU) DELICIOUS VINYL/TRAUMA	THE FLYS	1624	1728
8	7	20	SLIDE WARNER BROS.	GOO GOO DOLLS	1623	1716
(9)	13	8	LEECH RCA	EVE 6	1435	1343
10	9	14	YOU GET WHAT YOU GIVE MCA	NEW RADICALS	1427	1515
(11)	14	14	SPECIAL ALMO SOUNDS/INTERSCOPE	GARBAGE	1334	1330
12	10	20	CIRCLES SLASH/WARNER BROS.	SOUL COUGHING	1318	1447
13	11	22	CELEBRITY SKIN DGC/GEFFEN	HOLE	1272	1379
(14)	21	6	ONE WIND-UP	CREED	1272	1115
(15)	17	9	BLUE MONDAY ELEMENTREE/REPRISE	ORGY	1271	1266
16	12	16	SWEETEST THING ISLAND	U2	1150	1345
17	18	11	AT THE STARS ELEKTRA/EEG	BETTER THAN EZRA	1150	1211
18	16	40	INSIDE OUT RCA	EVE 6	1129	1254
19	19	9	JOINING YOU MAVERICK/REPRISE	ALANIS MORISSETTE	1128	1202
20	20	14	PURE MORNING HUT/VIRGIN	PLACEBO	1102	1183
(21)	29	4	FREAK OF THE WEEK HIFI/ELEKTRA/EEG	MARVELOUS 3	1045	848
(22)	26	10	MY FAVOURITE GAME STOCKHOLM/MERCURY	THE CARDIGANS	1003	997
23	23	12	BODY MOVIN' GRAND ROYAL/CAPITOL	BEASTIE BOYS	947	1083
24	25	14	CRUSH RCA	DAVE MATTHEWS BAND	941	957
(25)	37	2	HEAVY ATLANTIC	COLLECTIVE SOUL	937	524
26	22	13	IT'S ALL BEEN DONE REPRISE	BARENAKED LADIES	921	1074
27	28	10	PROPHECY DGC/GEFFEN	REMY ZERO	917	951
28	27	24	GOT THE LIFE IMMORTAL/EPIC	KORN	889	962
29	24	18	BITTERSWEET 550 MUSIC/ERG	FUEL	879	1061
(30)	39	2	ONE HIT WONDER CAPITOL	EVERCLEAR	811	441
(31)	35	4	TOUCHED ELEKTRA/EEG	VAST	622	579
32	30	10	ELDERLY WOMAN BEHIND THE COUNTER IN A SMALL TOWN (LIVE) EPIC	PEARL JAM	612	731
33	33	17	DRAGULA GEFEN	ROB ZOMBIE	608	667
34	31	22	LULLABY SMG/COLUMBIA	SHAWN MULLINS	595	673
35	32	10	GET BACK COLUMBIA	ZEBRAHEAD	578	674
(36)	NEW ▶		PRAISE YOU SKINT/ASTRALWERKS	FATBOY SLIM	571	422
37	34	5	ANOTHER BRICK IN THE WALL (PART 2) COLUMBIA	CLASS OF '99	547	590
(38)	38	2	FAITH FLIP/INTERSCOPE	LIMP BIZKIT	533	486
(39)	NEW ▶		WHY DON'T YOU GET A JOB? COLUMBIA	THE OFFSPRING	525	418
(40)	NEW ▶		I DON'T LIKE THE DRUGS (BUT THE DRUGS LIKE ME) NOTHING/INTERSCOPE	MARILYN MANSON	499	384

Records showing an increase in detections over the previous week, regardless of chart movement. A record that has been on either chart for more than 20 weeks will not receive a bullet, even if it registers an increase in detections. Airpower awarded to those records that attain 800 detections (mainstream) or 1,100 (modern) for the first time. If two records are tied in number of plays, the record being played on more stations is placed first. Records below the top 20 are removed from the chart after 26 weeks.

GODSMACK

"Whatever"
Billboard Top 200 Debut
#1 Northeast New Artist 19 Consecutive Weeks

Already On: WXRK, KXTE, WBRU, WLRS, WNFZ, WKRL, WAVF, KFTE, KRAD, WRZX, KFMA, KMYZ, WJSE and over 125 more Modern & Active Rock Stations

Republic © 1998 Universal Records Inc.



What is a familiar artist?

The Way & Fire Escape
over 500,000 spins combined!

Listeners purchasing
over 1.4 million copies
of the album!

Grammy
nominated!

Fastball
out of my head

from the platinum album
ALL THE PAIN MONEY CAN BUY

IMPACTING MODERN ROCK 1.26.99

CAKE



Sheep go to Heaven

the new track from the gold album

Looking for the Magic

Early activity at:

99X	91X
KWOD	WKDF
KXRK	WRAX
WKRO	KJEE
WARQ	WBTZ
KQRX	

On tour:

1/31	Orlando
2/1	Jacksonville
2/2	New Orleans
2/4	Houston
2/5	Austin
2/6	Dallas
2/7	Tulsa
2/9,10	Denver
2/12	Phoenix
2/14	San Diego
2/16	Los Angeles
2/17	San Francisco
2/19	Portland
2/20	Seattle

The follow-up to the #1 smash "Never There"

Capricorn

The album produced by Don Robey. Arranged by C.A.B., Don Robey, Tyler Pope, Chuck Propst, Jim Campilongo, Greg Brown and Joe Snook.
Album and "Sheep go to Heaven" performed by Eric Burdon except "Never There" and "Where Would We Be" mixed by Art Scharer and Craig Long.
Management by Jennie Simmons, Oakland, CA.

© 1999 Capricorn Records, Inc. Manufactured and marketed by World Radio History. Distributed by EMI Music Group Distribution. www.capri.com.com