

ROCK AIRPLAY Monitor

• We Listen To Radio •

April 24, 1998

\$4.95

Volume 5 • No. 17

ROCK HIGHLIGHTS

MAINSTREAM

#1

KENNY WAYNE SHEPHERD BAND

Blue On Black (REVOLUTION)

★★★ AIRPOWER ★★★

PEARL JAM • *Wishlist (EPIC)*

GOING FOR AIRPLAY

BAD RELIGION • *Shades Of Truth (ATLANTIC)*

CAROLINE'S SPINE • *Wallflower (HOLLYWOOD)*

THE CONNELLS • *Crown (TVT)*

FOGHAT • *Bad Bad Lovin' (PLUM/SIMITAR)*

THE HONEYRODS • *Float (CAPRICORN/MERCURY)*

OUR LADY PEACE • *4AM (COLUMBIA)*

RORSCHACH TEST • *Sex (SLIPDISC/MERCURY)*

SPRUNG MONKEY • *Get 'Em Outta Here (SURFDOG/INTERSCOPE)*

MODERN

#1

FASTBALL

The Way (HOLLYWOOD)

★★★ AIRPOWER ★★★

HARVEY DANGER • *Flagpole Sitta (SLASH/LONDON/ISLAND)*

GOING FOR AIRPLAY

BIG WRECK • *That Song (ATLANTIC)*

THE CONNELLS • *Crown (TVT)*

FEEDER • *High (ECHO/ELEKTRA/JEAG)*

HAYDEN • *The Hazards Of Sitting Beneath Palm Trees (OUTPOST/GEFFEN)*

THE HONEYRODS • *Float (CAPRICORN/MERCURY)*

MASSIVE ATTACK • *Teardrop (VIRGIN)*

OUR LADY PEACE • *4AM (COLUMBIA)*

PUBLIC ENEMY • *He Got Game (DEF JAM/MERCURY)*

RADIOHEAD • *No Surprises (CAPITOL)*

RIDEL HIGH • *Self Destructive (MY RECORDS/A&M)*

SPRUNG MONKEY • *Get 'Em Outta Here (SURFDOG/HOLLYWOOD)*

TRIPLE A

#1

DAVE MATTHEWS BAND

Don't Drink The Water (RCA)

★★★ AIRPOWER ★★★

NO RECORDS QUALIFIED FOR AIRPOWER THIS WEEK

Recent Tornado, Storms Show Radio Veterans, Outlets Prepared For Worst

by Marc Schiffman

Tornadoes that touched down in Nashville on April 16 were only the latest in a stretch of natural disasters that have hit Birmingham, Ala., and Orlando, Fla., in the last few months alone. How does a music-intensive radio station prepare both itself and its audience in times of disaster? Programmers we spoke with pointed to the need for redundant systems and getting the information out responsibly.

Classic rock WGFX Nashville PD J.J. Duling saw the April 16 tornadoes firsthand. "We knew from the Doppler radar that it was headed this way," says Duling. Station staffers looked out over the town from the back of their building. "You could see this wall of clouds. It was unbelievable. We could see stuff blowing sideways," he says. "The whole thing just enveloped the downtown. [Growing up in the Midwest], I've been in tornadoes before, but I've never seen anything like this."

While damage was extensive only six blocks from the station, WGFX stayed on the air, suffering just a few

downed trees. Its antenna is on the tower used by a local TV station on the north side of town, and the tornadoes cut a path between the station and the transmitter, leaving both untouched.

Duling also relates that only two weeks ago he had drilled his air staff on what to do in case of a storm. "The dissemination of information is critical, as is having an air staff ready for it," he says.

THE GATHERING STORM

Radio is a necessity when it comes to the public managing its way through a storm. Long after cable lines snap and power outages render TV sets useless, a battery-operated radio can be the last link to the outside world. While stations everywhere are likely to have redundant systems, it's even more important when it's a station in a frequent tornado or hurricane area. What's more, the new technologies make redundancy systems even deeper.

Modern WKRO/classic rock WHOG/top 40 WVYB Daytona Beach, Fla., caught some of the recent

Continued on page 5

VAN HALEN

"FIRE IN THE HOLE"

From Their New Album VAN HALEN 3

www.vanhalen3.com ©1998 Warner Bros. Records Inc.



DEBUT **29** MAINSTREAM ROCK AIRPLAY CHART

ADDS APRIL 27TH & 28TH

ON TOUR:

5/13 HOUSTON	5/19 DETROIT
5/14 DALLAS	5/21 BOSTON
5/16 CHICAGO	5/22 NEW YORK
5/17 CLEVELAND	5/24 PHILADELPHIA

SUMMER TOUR STARTS IN JULY 1998



Add date: 4/27!

Already spinning on WDET, KCRW,
"World Cafe", WXPB, Live 105

On tour with The Verve this Summer

7/28	Chicago	Rosemont Horizon
7/29	Detroit	Palace of Auburn Hills
7/31	Hamilton ONT	Copps Coliseum
8/1	Montreal	Molson Center
8/3	Boston	Tsongas Arena
8/5	New York	Madison Square Garden
8/7	Atlanta	TBA
8/9	Houston	Arial Theater
8/11	Denver	Red Rocks
8/14	Los Angeles	Arrowhead Pond
8/15	San Francisco	Bill Graham Civic Arena
8/17	Seattle	Key Arena

MASSIVE ATTACK TEARDROP

Vox (★★★★★, Album Of The Month)

".....An arguably superior answer to
OK Computerone of the most gloriously
disturbed soul albums in history and every bit
as good as their epochal debut."

Sky (★★★★)

"Still a mile ahead of the competition, it's the
genuine article."

The Guardian

"They are among the most influential groups
in contemporary music."

Time Out

"You'll bathe in the Mezzanine over and over
again, because right now, Massive Attack sets
the standards the other showers can't match."

NME

Massive Attack are perhaps the greatest
English group of the past ten years."

Mezzanine in stores May 12th

the new single from the album **MEZZANINE**

produced by Massive Attack and Neil Davidge

Virgin **MELANKOLIC**

www.virginrecords.com
AOL Keyword: Virgin Records
© 1998 Circa Records Ltd.

WINTER 1998 ARBITRONS

12-plus overall average quarter hour shares. (#) indicates Arbitron market rank. Copyright 1998, Arbitron Ratings Co. May not be quoted or reproduced without the prior written permission of Arbitron.

Call	Format	W '97	Sp '97	Su '97	Fa '97	W '98	Call	Format	W '97	Sp '97	Su '97	Fa '97	W '98
NEW YORK—(1)													
WLTW	AC	5.7	6.0	6.4	6.2	6.7	WLT	AC	5.1	4.8	4.5	4.5	4.8
WSNQ	Spanish	4.4	4.3	5.1	5.6	6.1	WNUA	jazz	3.5	3.9	4.3	4.8	4.5
WQHT	R&B	6.1	6.1	6.2	5.9	5.5	WBBM-FM	top 40/rhythm	4.8	4.5	5.0	4.6	4.4
WHTZ	top 40	3.1	3.5	4.3	3.9	4.7	WVAZ	R&B adult	4.5	4.2	4.7	4.3	4.3
WCBS-FM	oldies	4.4	4.7	4.7	4.6	4.6	WBBM-AM	N/T	4.1	4.2	3.8	3.6	4.0
WXRK	modern	3.6	3.8	3.5	4.1	4.3	WLS	N/T	4.0	4.1	3.8	4.3	4.0
WRRS	R&B adult	4.3	4.1	4.6	4.4	4.2	WUSH	country	3.7	3.4	3.9	3.5	3.4
WKTU	top 40/rhythm	4.8	4.7	4.7	4.6	3.9	WJMK	oldies	3.3	4.0	3.9	3.4	3.3
WINS	N/T	3.7	3.5	3.6	3.0	3.6	WQXQ	modern	2.8	3.3	3.4	2.9	3.0
WPAT-FM	Spanish	3.4	3.2	2.8	3.3	3.5	WRCX	album	3.3	3.2	2.9	3.0	3.0
WQCD	jazz	3.1	3.4	3.2	2.8	3.2	WCKG	N/T	2.6	2.8	2.3	2.3	2.9
WOR	N/T	3.4	3.6	3.2	3.0	3.1	WAIT	adult std	2.6	2.2	2.2	2.3	2.8
WABC	N/T	3.1	2.7	3.2	3.1	3.0	WVND	AC	2.0	2.1	1.8	2.3	2.7
WQXR	classical	3.0	2.9	2.2	2.4	2.9	WVWX	AC	2.2	2.7	2.6	2.6	2.6
WCBS-AM	N/T	3.4	3.1	3.2	3.2	2.8	WVCD	cls rock	1.2	1.5	3.3	2.8	2.6
WPLI	AC	2.6	2.6	2.8	2.8	2.6	WVRT	triple-A	2.9	2.9	2.5	1.9	2.6
WBSL	R&B	2.9	2.7	2.5	2.3	2.5	WLEY	Spanish	1.9	1.0	1.7	2.5	2.3
WADO	Spanish	2.0	1.9	1.8	2.0	2.3	WMAQ	N/T	2.2	1.8	2.2	2.3	2.3
WFAN	sports	2.5	2.5	2.9	2.8	2.2	WVOJ	Spanish	2.7	2.9	2.0	1.8	2.2
WQEW	adult std	1.8	2.1	1.8	2.1	2.0	WVIB/WVIZ	classical	1.6	1.7	1.4	1.7	1.9
WAXQ	cls rock	2.1	2.0	1.9	1.4	1.5	WVLP	cls rock	2.1	2.0	1.8	1.5	1.6
WBIX	AC	1.5	1.5	1.6	1.5	1.5	WVSR	sports	2.9	1.6	1.9	2.0	1.5
WVFX	cls rock	1.8	1.6	1.8	1.7	1.5	WFMT	classical	1.4	1.5	1.3	1.2	1.2
WLIB	N/T	1.0	.9	1.5	1.3	1.0	WVCI-AM	R&B oldies	1.2	1.4	1.2	1.7	1.2
							WVMP	N/T	1.1	1.4	1.4	1.1	1.2
LOS ANGELES—(2)													
KSCA	Spanish	3.5	4.4	4.5	4.9	5.4	WALK-FM	AC	6.1	6.2	5.8	5.3	5.7
KLVE	Spanish	6.0	6.6	6.0	6.1	5.3	WHTZ	top 40	4.2	4.0	5.2	4.9	5.6
KFI	N/T	4.3	3.7	4.1	4.0	4.4	WRRK	modern	5.2	4.7	5.3	5.3	5.3
KPWR	R&B	4.6	4.3	4.6	4.2	4.0	WBLI	top 40	3.9	4.4	3.7	5.0	4.5
KKBT	R&B	5.5	4.5	4.0	4.5	3.9	WVLS	oldies	3.9	4.1	3.9	4.4	3.9
KUIS-FM	top 40	3.2	3.8	3.9	4.0	3.8	WCBS-FM	oldies	3.9	4.1	3.9	4.4	3.9
KOST	AC	3.2	3.6	3.9	3.8	3.8	WLTW	AC	3.7	3.3	4.3	4.3	3.9
KLAX	Spanish	3.2	2.6	2.3	2.1	3.4	WABC	N/T	3.4	3.3	2.7	2.9	3.8
KROQ	modern	3.4	3.8	3.6	3.0	3.4	WHLI	adult std	3.8	3.0	2.8	2.8	3.7
KRTH	oldies	3.3	3.9	4.0	4.0	3.4	WOR	N/T	4.0	4.3	3.0	3.3	3.7
KTWV	jazz	3.8	3.4	3.6	3.4	3.3	WCBS-AM	N/T	4.8	3.8	3.8	4.2	3.6
KBIG	AC	2.7	2.4	2.6	2.7	3.0	WFAN	sports	3.1	3.9	3.7	3.9	3.4
KYSR	AC	2.1	2.8	2.5	2.8	2.9	WKYJ	AC	2.7	2.3	3.1	2.4	3.4
KCMG	R&B oldies	1.8	1.6	1.7	1.4	2.7	WKTU	top 40/rhythm	4.9	3.7	3.9	3.6	3.2
KABC	N/T	3.0	2.8	3.1	3.0	2.6	WPLI	AC	2.8	3.4	3.0	2.9	3.1
KCBS-FM	cls rock	2.8	2.6	1.9	2.7	2.5	WVAB/WVFM	album	2.8	2.6	3.3	3.5	2.9
KLSX	N/T	1.9	2.0	2.0	2.5	2.4	WQRT	R&B	3.2	3.6	3.2	3.3	2.9
KMX	N/T	2.4	2.0	2.2	2.0	2.4	WBZO	oldies	2.9	3.2	2.3	2.8	2.6
KLOS	album	2.3	2.2	2.0	2.6	2.3	WQXR	classical	1.8	2.5	2.1	1.9	2.5
KZLA	country	2.1	2.5	2.5	2.7	2.3	WNEW	cls rock	1.9	1.7	2.0	2.0	2.3
KLAC	adult std	2.4	2.2	2.6	2.3	2.2	WIBS	N/T	2.0	1.8	2.4	2.5	2.2
KFWB	N/T	2.8	2.0	1.8	2.1	2.1	WVCD	jazz	2.8	2.4	3.1	2.3	2.1
KGGO	classical	1.6	1.5	1.5	1.7	1.9	WAXQ	cls rock	2.5	1.9	2.1	1.8	1.9
KTNQ	Spanish	2.1	2.5	2.0	2.1	1.9	WVJC	country	1.5	1.6	1.9	1.2	1.8
KBUE	Spanish	2.0	1.7	1.4	1.6	1.7	WVLR/WVRE	modern	1.1	1.6	1.7	1.3	1.5
KSSE	Spanish	.4	.8	1.4	1.2	1.6	WRRS	R&B adult	1.6	1.2	1.4	1.7	1.5
KJLH	R&B adult	1.7	1.3	1.0	1.4	1.2	WVSKO-FM	Spanish	1.2	1.2	1.6	1.2	1.3
							WBIX	AC	.8	1.0	1.6	1.2	1.1
							WVLS	R&B	1.2	1.6	1.4	1.3	1.0
							WVLU	adult std	1.1	1.0	1.0	.9	1.0
CHICAGO—(3)													
WGN	N/T	6.2	5.9	5.6	6.1	6.6							
WGCI-FM	R&B	5.5	5.6	7.0	7.2	6.4							

212-536-5361 • sgraybow@billboard.com

Dave Matthews Band Returns To The Top

CHART MONITOR: The Dave Matthews Band's "Don't Drink The Water" (RCA) vaults 3-1 on the triple-A chart, marking the group's second stint atop that chart. "Too Much" spent one week at No. 1 in June 1996.

Is Goo Goo Dolls' "Iris" (Warner Sunset/Reprise) poised to become the next multi-format soundtrack hit? This issue, the title bowed on the mainstream rock chart at No. 39 with 2.3 million audience impressions and on the mainstream top 40 chart at No. 34 with 7.2 million audience impressions.

Despite having topped the modern rock list for 15 weeks and falling out of the pole position four weeks ago, Marcy Playground's "Sex And Candy" (Capitol) still reigns on the rock Big Picture audience chart with 25 million listener impressions.

UNDERTOW: Back in the Oct. 24, 1997, issue, Ozzy Osbourne's "Back On Earth" (Epic) bowed simultaneously on the mainstream, active, and heritage rock charts. This issue, after 26 weeks on those charts, "Back On Earth" goes to recurrent and comes off all three charts. Several other titles reach recurrent status this week: matchbox 20's "3 AM" (Lava/Atlantic) comes off the mainstream and active rock charts, the Verve's "Bitter Sweet Symphony" (Virgin) comes off the modern rock list, and Days Of The New's "Touch, Peel And Stand" (Outpost/Interscope) comes off the heritage rock chart after 37 weeks on that chart.

MUSICAL CHAIRS: Mercury's Steve Ellis gets his senior VP of promotion stripes . . . Look for A&M's Scot Finck to join Hollywood as VP of promotion once his contract expires in July . . . Mercury's Los Angeles local promo guy Rob Dillman has joined Hollywood as national director of hot AC promotion . . . Former Elektra and Left Bank promo gal Andrea Newton joins Mercury in Philadelphia for mid-Atlantic promotion chores . . . RCA ups Shari Segalini and Dave Remedi to senior director of singles sales and merchandising and senior director of national accounts, respectively. RCA also picks up Mike Del Tufo as regional label director of sales for the East Coast from Relativity, where he held a similar position, and Mary Buzard as regional label director of sales for the Mid-Central area from A&M, where she was the Detroit local marketing coordinator.

FOR THE RECORD: Effective this issue, WZAT Savannah, Ga., has been dropped from the mainstream and active rock panels due to a format change. There are now 109 mainstream rock panelists and 50 active rock stations. KTEG Albuquerque, N.M., has been temporarily removed from the modern rock panel due to the station's transmitter problems.

OFF THE RECORD: Billboard Bulletin reports that Slash/Reprise act Faith No More is no more. Lead signer Mike Patton remains a member of Warner Bros. act Mr. Bungle and is also involved in a new band, Phantoms, with Mr. Bungle bassist Trevor Dunn. FNM keyboardist Roddy Bottum is a member of London Records Imperial Teen . . . Smashing Pumpkins are now in the H.O.R.D.E. lineup . . . Former Soundgarden drummer Matt Cameron is taking the drummer role on the forthcoming Pearl Jam tour, while Jack Irons takes a leave due to "health reasons."

Top 40 Airplay Monitor director of charts Theda Sandiford-Waller contributed to this column.

Chancellor Re-Signs de Castro, Devine

On the heels of CEO Scott Ginsburg's surprise departure from Chancellor Media last week, COO Jimmy de Castro and CFO Matthew E. Devine have signed new, five-year contracts with the company. According to a statement issued by Tom Hicks, chairman and interim CEO of Chancellor Media Corp., de Castro will also "increase his oversight responsibilities to include any and all radio stations Chancellor may acquire." Chancellor also announced that it has reached a separation and consultancy agreement with Ginsburg—the company's largest individual shareholder—under which he will resign from Chancellor's board of directors.

Meanwhile, equity researcher Bear Stearns, following a conference call with Tom Hicks, has issued a report saying Chancellor has written \$25 million in pay-for-play contracts. The report states, "We think that record companies will find this concept intriguing to (a) 'break' an artist, (b) push important artists' releases, and (c) help an artist gain a foothold in an increasingly fragmented and competitive music industry. The company could use the strength of distribution of the 400-plus radio stations owned by Chancellor (108 stations) and Capstar (300 stations) and combined cumulative 12-plus . . . reach of nearly 61 million listeners and take full advantage of the economics of these 'audio infomercials.'"

The report also praises Chancellor for "in-

venting new forms of promotion on radio. Typically, movies, concerts, and trips were given out by individual stations during individual station promotions. However, the company is now developing cross-station promotions."

TRANSACTIONS: BIG CITY GETS FOUR

Big City Radio, owner of modern trimulcast KLYY Los Angeles, is at it again, picking up four suburban Chicago outlets, including triple-A WCBR Arlington Heights, Ill.

PROGRAMMING: WDRQ ON A TEAR

Modern WPLT Detroit APD/MD Alex Tear officially gets the PD slot at sister rhythmic top 40 WDRQ.

Modern KFMA Tucson, Ariz., interim PD/MD/afternoons Chuck Roast officially gets the PD nod.

Modern AC WSSR (Star 95.7) Tampa, Fla., PD Chuck Morgan is upped to director of programming for Clear Channel/Tampa, including triple-A WHPT (the Point).

Classic rock KIOO Visalia Calif., OM/PD Charlie Wolff exits. Sister top 40 KSEQ morning man Rik McNeil is acting OM for both properties.

Mahlon Moore, PD of Pacific Star Broadcasting's modern adult KUCD (Star 101.9) Honolulu, exits to program crosstown Caribou R&B oldies outlet KHUL (Kool 102.7). Packages to director of programming Jeff Silvers.

Classic rock WXCR Albany, N.Y., is still

212-536-5065 • mschiffman@billboard.com

Stevens, Pruett, And Sister 7



In Houston, Arista/Austin band Sister 7 held a high-level summit with KLOL morning team Stevens and Pruett. Shown, clockwise from upper left, are Mark Stevens; Sister 7's Darrel Phillips, Patrice Pike, Wayne Sutton, and Sean Phillips; Jim Pruett; PD Michael Hughes; and morning producer Jimmy Ray.

RADIO CONCERT MONITOR

DATE	CALL LETTERS	EVENT	SCHEDULED TO APPEAR
April 25	KNRK Portland, Ore.	Snowjob	Absinthe, Fastball, God Lives Underwater, Pennywise, the Specials
April 25	KTBZ Houston	BuzzFestival '98	Big Wreck, Black Lab, Cool For August, Creed, Foo Fighters, Mighty Joe Plum, Our Lady Peace, more
May 2	WYNF Sarasota, Fla.	Birthday Bash	Brother Cane, Cool For August, Econoline Crush, Mighty Joe Plum, Neurotica
May 4	KMTT Seattle	Earthday Concert	Pete Droge, Elaine Summers
May 9	KMYZ Tulsa, Okla.	Edge Birthday Bash	Big Wreck, Course Of Empire, Econoline Crush, God Lives Underwater, Gravity Kills, Jimmie's Chicken Shack, Jolene, the Nixons, the Specials, Stabbing Westward
May 9	WNNX (99X) Atlanta	99X Save Tibet Concert	Grant Lee Buffalo, Wyclef Jean, Joan Osborne, Scott Weiland
May 17	WBZU Richmond, Va.	Buzzfest	TBA
May 23-24	KXXR/KZMZ Minneapolis	Edge-Fest	TBA
May 23	WKQX Chicago	Jamboree 1998	Barenaked Ladies, Creed, Eve 6, Foo Fighters, Ben Folds Five, Harvey Danger, Soul Asylum, the Specials, Scott Weiland
May 28	WQXA Harrisburg, Pa.	Big X Summer Ball	Cherry Poppin' Daddies, Green Day, the Mighty Mighty Bosstones, Samiam
May 29	WPLY Philadelphia	Y100 FEZtival	Cherry Poppin' Daddies, Cornershop, Everclear, Ben Folds Five, Green Day, Marcy Playground, the Mighty Mighty Bosstones
May 30	WXRK New York	Revenge of the Dysfunctional Family Picnic	Jerry Cantrell, Ben Folds Five, Green Day, Fuel, Scott Weiland, Third Eye Blind
May 31	WBCN Boston	River Rave	TBA
June 27	KRXQ Sacramento, Calif.	Second 98 Rock Real Rock Jamboree	TBA
June 28	WDHA Morristown, N.J.	Rock the Park	Blue Oyster Cult, Gov't Mule, Nine Days

To include your station's concert information in Rock Concert Monitor, call Marc Schiffman at 212-536-5065, fax 212-536-5286, or E-mail mschiffman@billboard.com

PUBLISHER: JON GUYNN
 EDITOR: SEAN ROSS
 MANAGING EDITOR: MARC SCHIFFMAN
 MAINSTREAM ROCK/TRIPLE A CHART MANAGER: ANTHONY COLOMBO
 MODERN ROCK CHART MANAGER: MARK MARONE
 MODERN ADULT CHART MANAGER: STEVE GRAYBOW
 WRITER/REPORTER: DANA HALL
 CHART PRODUCTION MANAGER: MICHAEL CUSSON
 ASST. CHART PRODUCTION MANAGER: ALEX VITOLIS
 EDITORIAL PRODUCTION MANAGERS: BARRY BISHIN, MARCIA REPINSKI
 EDITORIAL PRODUCTION: MADELINE CARROLL, SUSAN CHICOLA,
 MARC GIAQUINTO, SARAH JOHNSON, MARIA MANLICIC
 COPY EDITOR: CARL ROSEN
 ADVERTISING PRODUCTION MANAGER: LYDIA MIKULKO
 ADVERTISING PRODUCTION COORDINATOR: PAUL PAGE
 ART DIRECTOR: RAY CARLSON
 ADVERTISING PRODUCTION ARTIST: SHIRA HALFON

NATIONAL ADVERTISING MANAGER: HANK SPANN
 ACCOUNT MANAGERS: JEFF SOMERSTEIN, SHARON WHITE
 ADVERTISING SERVICES MANAGER: ALYSE ZIGMAN
 SALES ASSISTANTS: EVELYN ASZODI,
 ERICA BENTGSON, CANDACE GIL
 EDITORIAL ADVISER: TIMOTHY WHITE
 PRODUCTION DIRECTOR: MARIE GOMBERT
 CIRCULATION DIRECTOR: JEANNE JAMIN



PRESIDENT: HOWARD LANDER
 SENIOR VP/GENERAL COUNSEL: GEORGINA CHALLIS
 VICE PRESIDENTS: IRWIN KORNFELD, KAREN OERTLEY, ADAM WHITE
 DIRECTOR OF STRATEGIC DEVELOPMENT: KEN SCHLAGER
 BUSINESS MANAGER: JOELLEN SOMMER

1515 Broadway, New York, NY 10036 212-764-7300
 For subscriptions call: 800-722-2346

Airplay Monitor reporting panels are based solely on a station's musical content.

©1998 BPI Communications Inc. No part of this publication may be reproduced, stored in any retrieval system, or transmitted, in any form or by any means, electronic, mechanical, photocopying, recording, or otherwise, without the prior written permission of the publisher.

MONITOR PROFILE

Modern Rocker Posts Big 12-Plus Numbers But Remains Musically Aggressive

Since it moved to a better frequency in November '97, modern rocker WRAX Birmingham, Ala., has more than doubled its numbers, up 3.5-6.0 from summer to fall and up to an 8.3 share 12-plus in the second winter Arbitrend. In a market that has been without a true mainstream top 40 for years, WRAX's determinedly broad music mix has allowed it to fill several niches. Yet at a time when many modern outlets are going more conservative to compete with modern AC and a reinvigorated top 40, WRAX PD Dave Rossi remains one of the format's most outspoken advocates of new music.

After five years of programming modern WAVF Charleston, S.C., Rossi signed on as PD of WRAX when that station was an overly wide active rocker in what Rossi calls "a very boring radio town." Rossi and Jacobs Media flipped the station modern but were hampered by a 6,000-watt signal that only half of the station's own employees could pick up in their offices. His engi-

Rossi draws from the widest possible universe. "You've got pop alternative, rock alternative, [and] adult alternative to pull from. You've got these tremendous pools of music out there, [so] that you don't have to sit there and say, 'Everything's got to sound like Alice In Chains,' and then you have Creed, Days Of The New, and five other bands that sound like that. You don't have to do that. That's a flavor. You can be diverse. And I think that's the opportunity that a lot of people [miss when they] stay under one little area," says Rossi. "There's a lot of palatable music out there. The alternative format can be the most mass-appeal format on the radio."

Here's a music monitor on WRAX: Days Of The New, "Shelf In The Room"; Candlebox, "Far Behind"; Alanis Morissette, "Uninvited"; Third Eye Blind, "Losing A Whole Year"; Dave Matthews Band, "Crash Into Me"; Morcheeba, "Let Me See"; Primitive Radio Gods, "Standing Outside A Broken Phone Booth With Money In My Hand"; Our Lady Peace, "Clumsy"; Radiohead, "Creep"; Semisonic, "Closing Time"; Tonic, "If You Could Only See"; and Jolene, "Pensacola."

When Rossi's not worrying about radio's lack of support for new acts, he worries about localism being lost to automation and satellite broadcasting. "You're basically going to have the same format with the same jock. All the jocks are going to be doing is saying 'Birmingham' instead of 'Charlotte' or 'Nashville.' It gives you that tremendous opportunity there to own the [local] position," says Rossi. "You hear about the advantage that radio's local, but radio seems like it's getting away from the local aspect, and I don't want to be part of the demise of radio. I don't want to be part of what kills radio. I don't want to give this new technology, this new type of radio, the opportunity to do what I do. I don't want to strip my radio station so bare that [a listener will think], 'Why not listen to a satellite-delivered radio station?'"

That gets back to his arrival in Birmingham. "It was almost like everybody had a truce in this market, like 'I'm not going to try my best. You don't try your best. You just do your thing, I'll do my thing, and we're not going to after one another. We're not going to be aggressive,'" says Rossi. "Our station in Charleston was amazingly promotionally active. And I brought that here. 'Let's get out in bars. We can't be out enough. There is no such thing in my opinion as being overexposed in a market. It does not exist for an alternative radio station... Let's get our call letters up wherever we can.'"

Month by month a promotional calendar, which seemingly no other station in the market had thought of, according to Rossi, was built. "Two years ago, I was here for St. Patty's Day, and it might as well have been any other day of the week," says Rossi. "We implemented a pub crawl, and it's immensely successful. So we go from two years of nothing to this year being covered by the TV stations down here."

Rossi also put Romano's concept of raising listener expectations to use in the annual City Stages event for which streets are blocked off and 15 stages are set up for all types of musical performances. "That's when we whipped out our Porta-Potty giveaway," says Rossi. "We were able to position it as, 'We're the little guys, with no budget. We're going to give you what you really want. We're going to give you VIP passes, so you can VIP hassle-free at City Stages. We're going to give you your own personal Porta-Potty, so you could go whenever you want. Fuck the cars. Fuck the houses that you're never going to win. But how about a Porta-Potty for this big event that you're dying to go to?'"

MARC SCHIFFMAN



Dave Rossi
 Program Director
 WRAX Birmingham, Ala.

There is no such thing as being overexposed in a market'

neer would constantly crack jokes like "You're really 1,400 watts because of the tower height, so your hair dryer has more watts than your station" and "We're using more wattage on the tower lights than for your entire radio station."

A year after the modern launch, Jacobs and WRAX parted company. Rossi began to rely on what he had learned from Gene Romano when the now Jacor group PD was a consultant for WAVF. "He's the best programmer in the country, period. His thing is the art of cross-promotion. Also, he understands music very well... He implemented the philosophy with me of, 'Yeah, you can step out. You can be weird, as long as it fits what you're doing. You don't always have to play the hits, one after another after another after another. There's an identity there—whatever identity you want to create, be very careful and be consistent when you do step out on things, whether it's an album cut or a new song, that it's consistent with what you want people to think about the radio station.'"

That direction has allowed Rossi to be aggressive on new music and even change label agendas. Matchbox 20's "Push" became Atlantic's work track only after WRAX began playing it in fall '96 in support of a station concert. Rossi says that most modern rockers miss the fact that "the nature of alternative music fans is, 'Throw some shit at me that's going to totally blow my mind. I want to put on the radio and look at my radio and go, 'What the hell is that?'"

While Rossi says that radio is "getting away from breaking bands," he believes that "the more that you can rally around these bands and break bands, those are golden opportunities that make the bands [and] the listeners loyal to you forever. They add to that image of a groundbreaking radio station and 'I'm going to hear it here first.' More than going on-air every break, saying, 'You're going to hear the songs here first.' You don't have to do that if you're breaking bands."

Recent Tornado, Storms Show Radio Veterans, Outlets Prepared For Worst

Continued from page 1

tornadoes that passed through the Orlando area in February. They're all "digital paperless radio stations," says OM Taft Moore. "That means mirrored hard drives, and we also need CD players . . . From an engineering standpoint, it's important to have redundant systems throughout the group."

For those areas like Daytona Beach, where high winds are a given, "you need to have the extra guywires on your tower," says Moore.

And there's also the extra tower. WGFX's is in its backyard. Ironically, Duling says, "a year and a half ago, we lost our [backup] tower to a twister . . . The new stick made it through fine."

When Louisville, Ky., was beset by a tornado two years ago and endured last year's devastating floods, country WHKW was a first-person participant in every aspect. PD Dennis Hill cites an unexpected benefit of consolidation. Being part of Louisville's Clear Channel family, the station's building currently houses "four [radio] stations, plus the Kentucky News Network and an ABC-TV affiliate. For individual stations, it's kind of difficult to do what we can do here. We can pool resources. One of our sister stations is a major news and information station," says Hill. "Things that need to be passed along to the public, they'll do the computer printout and make four or five copies for everyone."

Moore tells one scary story of his station's early days in a field in a disaster-magnet trailer. There was a hurricane bearing down on the facility. Moore phoned his announcer and told him to voice-track his last hour and get out of there. "It took me five calls to the place" to motivate the guy, recalls Moore, because the announcer wasn't happy with the tracks. "I actually ended up screaming at him, 'I can no longer be responsible for your safety. You're in the path of a hurricane. You are in a mobile trailer. If it hits, you will die.'"

WE INTERRUPT THIS BROADCAST

Aside from the EAS responsibility that all stations have, most PDs will go the extra mile when natural disasters strike. "We're a very music-intensive station," says WHKW's Hill. But when the going gets rough, "you throw the format out the window."

"News and national disasters don't happen during stop sets and liner breaks and talkovers," says Moore. "This is the great advantage of radio over other media. Radio is about immediacy. I want it to be my station that they're listening to."

Especially when it comes to tornadoes, time is precious. "Usually, if there's a tornado warning, it's been spotted . . . When you have a warning, you dump out of a song. Otherwise, by the time your song fades out, somebody's dead," Duling says. "This one took about three minutes. A lot of songs are longer than three minutes . . . We will fade a song down and get it on."

Duling says new technology has widened the window. "Now, thanks to Doppler radar, you can see these things coming. You can give them 10 minutes," which, he notes, might make the difference when it comes to a worker in a high-rise office building getting to the basement.

Birmingham also recently lived through tornadoes of historic proportion. Modern WRAX Birmingham PD Dave Rossi says the weather was gathering all day, giving his station the opportunity to keep his listeners informed and prepared. As in Louisville, "there are six stations here," he says. "We have our [newswoman] that jumps on and monitors everything . . . She provides information for all six stations."

In Daytona Beach, Moore has structured his three music stations in a network situation around his AM N/T WNDB. "Because all four are networked through a newsgathering computer, my news anchors can break in programming in any stations at any point in time."

"I don't want my jocks to be responsible for telling the general public what to do. I want them handing off to my news department . . . That way, you're getting your facts from a factual source."

Other programmers note the need to stay

calm on-air. "We're careful not to overreact or oversensationalize," says Rossi. "If there is a warning, we will say a tornado has been sighted . . . We won't freak out on the air. We won't put people on chasing the storm. What radio does is it keeps people calm."

During the Birmingham storms, Rossi says, he instructed his staff to repeat the warning, run down the list of what to do in a tornado, and then play a short record and use that time to recheck radar, check the TV stations, and have the latest info by the time the record ends.

Rossi's next project is trying to set up a deal he had during his Charleston, S.C., days. He wants to find a local TV station and "hook up ISDN phone lines and put somebody over there in their newsroom as they're gathering that information and put it on the air," says Rossi. "It takes that out of our hands. We can then relay the information, but we're not giving wrong information."

AFTER THE DELUGE

Aside from guiding people as heavy weather bears down on a community, radio provides important resources in the aftermath. In response to the disasters that struck Louisville in the past two years, "we just tried to be very available to emergency crews and delivered emergency messages," says Hill. The community has "a very good emergency activation force, and they were constantly in touch with us and feeding us information as far as which creeks were going up and which roads were closed."

There's still a balance between regular and emergency programming. "You certainly don't turn into a news talk station. We're awfully music-intensive to begin with," says Duling, who spent the morning after the tornadoes hit putting local officials on-air to make important announcements about the downtown being closed.

The limus test for Duling was, "What are the situations people might be in? Let's address those immediate concerns, making sure the majority of our time on the air goes to Red Cross and Salvation Army," agencies that were most active in helping people get their lives back together.

And lightning can strike twice, so Rossi emphasizes the need to not push people's panic buttons and manipulate the situation after the fact. He points to TV stations in his market that were tracking tornado warnings 60 or more miles away even a week after Birmingham had been hit. "They were tracking it to the Georgia border a hundred miles from here. It didn't really warrant the three hours of coverage it got," says Rossi. "Let's put the warnings out, but let's not get people going crazy."

Moore says that once the dust has settled, "we use the news department to assess the damage in terms of dollars and the human element. While we're doing that, we're thinking about [public-service] promotions." Given that his station jumps in on such campaigns "with both feet," Moore takes care to make sure enough people's lives have been touched to warrant a grand-scale effort.

When the tornadoes hit the Orlando area last February, the Federal Emergency Management Agency didn't see the Daytona Beach damage warranting any funding. But Moore's stations did. The morning teams at top 40 WVYB and classic rock WHOG challenged each other to a fund-raising contest to see who could gather the most dollars to aid tornado victims. "We averaged collecting \$305 an hour," Moore says.

Less than 24 hours after Nashville was swept away in the tornadoes, Duling was already planning relief. The station's weekday \$1,000 giveaway was put on hold for the two days surrounding the storm, and it's giving the \$2,000 that wasn't won to the Salvation Army. And the annual Nashville River Stages event his station is working on with PACE Concerts has also been turned into a fund-raiser. PACE "called me, and we're going to donate \$5 from every three-day pass sold."

First week Modern Rock adds include:

99X	KROX	WEND	WDST	WJSE
89X	WROX	WWCD	KORB	WUBZ
WXDG	WLUM	KTEG	WEJE	WBNK
KDGE	WMAD	WPGU	KQRX	WTGZ
KXPK	CFNY	KNRQ	KFMA	KHLR
KEDJ	WXXM	WBER	WHTG	and
WFNX	WKDF	WARQ	WRRV	more...
XHRM	WAVF	WOXY	WDOX	

Adult Alternative:

CIDR	KGSR	WNCS	WXRV	WNBA
WXPB	KMTT	WDET	WMWV	WEBK
KFMU	KTHX	WMVY	KRVM	
KBAC	KFXJ	WBOS	WLPW	

Lenny Kravitz IF YOU CAN'T SAY NO



The first song from the new album 5 Produced, written, arranged and performed by Lenny Kravitz
Representation: Craig Fruin and Howard Kaufman/HK Management

©1998 Virgin Records America, Inc. www.virginrecords.com AOL Keyword: Virgin Records

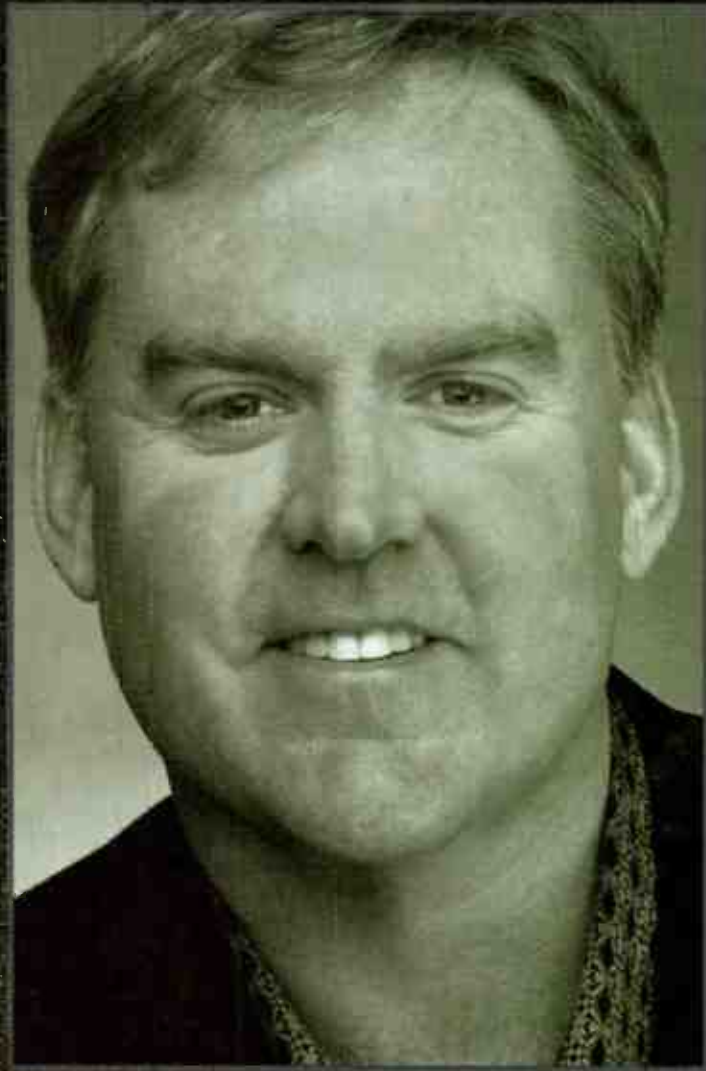
Virgin

The new album "5" in stores May 12th

Appearing on Modern Rock Live
May 31st and Rockline June 1st

SCREW PHILIPS

**PLEASE JOIN US
IN PUTTING
THE SCREWS TO
BRIAN PHILIPS**



**at the 10th annual
T.J. Martell Foundation Roast.**

**Featuring an All-Star Dais with
Personalities and Artists From the Worlds
of Radio, Records, Comedy and Music.**

Chairman: Kid Leo; Columbia Records
For More Information Call: 212-833-8605

Help Honor Susquehanna's Director of
Programming; Atlanta/Dallas, at the
10th Annual Music Industry Roast to
support the T.J. Martell Foundation
for Leukemia, Cancer & AIDS Research.

Date: Wednesday, May 6th 1998

Place: Motown Cafe
104 West 57th St.
(between 6th and 7th Aves.)

Doors: 7:00 PM

Dinner: 7:30 PM

Roast: 8:30 PM

Tickets: \$400 Advance Donation
\$500 At The Door

Event Sponsors: Motown Cafe, Schieffelin &
Somerset Co., Sony Studios



MOTOWN

Cafe

This Event Is Dedicated to the Memory of Edward M. Nowak

© 1998 Sony Music Entertainment Inc.

World Radio History

AIRPLAY Monitor®

GREATEST GAINERS™

Broadcast Data Systems
A Division of

Strongest Increase In Airplay This Week

MAINSTREAM ROCK

INCREASE
IN PLAYS

THE WALLFLOWERS • Heroes (EPIC)	+245
KCAL +19, WZTA +14, WWDC +14, WDHA +12, WNCN +12, KZRR +12, KQRS +12, WIZN +11, KTAL +11, WTPA +11	
PEARL JAM • Wishlist (EPIC)	+240
KTUX +24, KCAL +19, WXRC +18, WYSP +17, WIYY +14, KXUS +12, KATT +12, KTXQ +12, WZZO +11, WVRK +11	
JIMMY PAGE ROBERT PLANT • Shining In The Light (ATLANTIC)	+189
WRXC +12, WONE +10, WMMR +10, WIYY +9, WRIF +9, KILO +8, WRXK +6, WROQ +6, WRXL +6, KLOS +6	
SOUL ASYLUM • I Will Still Be Laughing (COLUMBIA)	+185
WSTZ +11, KTUX +11, KMBY +10, KRAD +10, KUPD +10, WBUZ +9, WAQX +9, WKQQ +9, WZTA +7, WYUE +7	
VAN HALEN • Fire In The Hole (WARNER BROS.)	+182
KUPD +18, KEGL +18, WLZR +16, KTXQ +16, KXUS +14, KZRR +14, WRXL +14, WMFS +11, WIOT +10, KNJY +9	
JIMMY PAGE ROBERT PLANT • Most High (ATLANTIC)	+173
WZTA +17, WXRC +16, KBER +15, KCAL +15, WPLR +12, WAFX +9, WAQX +9, KATT +9, WDHA +8, WTUE +8	
DLR BAND • Slam Dunk (WAWAZAT!!)	+123
WIYY +16, WZZO +13, WMFS +9, KXUS +9, WLZR +9, WMMR +9, KMOD +8, WTUE +7, WWDC +7, WYSP +6	
GOO GOO DOLLS • Iris (WARNER SUNSET/REPRISE)	+122
KLAQ +13, WSTZ +12, KZRR +12, KTUX +11, WVRK +9, WKQQ +9, WZMT +7, KTXQ +7, KRAD +6, WIZN +6	
JIMMY PAGE ROBERT PLANT • Walking Into Clarksdale (ATLANTIC)	+102
WRIF +9, WROQ +6, WKQQ +5, KMBY +4, WDHA +4, WKLC +4, WONE +4, WNCX +3, KRZZ +3, KOMP +3	
KENNY WAYNE SHEPHERD BAND • Blue On Black (REVOLUTION)	+92
KFRQ +18, KLAQ +11, KDKB +10, WTKX +9, KRAB +9, KBPI +9, WAFX +8, WFBQ +8, WKLS +8, WRIF +8	

MODERN ROCK

INCREASE
IN PLAYS

GOO GOO DOLLS • Iris (WARNER SUNSET/REPRISE)	+354
KLZR +21, WEND +20, KNDD +20, WPLT +19, WJXB +17, KLYY +15, WRXR +15, WEDG +15, WLUM +15, WHFS +13	
THE WALLFLOWERS • Heroes (EPIC)	+338
WENZ +25, WBRU +22, KEDJ +21, KXRX +18, WEDG +18, KROQ +17, KWOD +16, WRAX +15, KICT +15, WWCD +14	
THE VERVE • Lucky Man (VCI/HUT/VIRGIN)	+292
WNNX +25, CIMX +20, XTRA +17, KJEE +15, KHLY +15, KTCL +14, KLYY +13, KFMA +12, WROX +11, KZON +11	
HARVEY DANGER • Flagpole Sitta (SLASH/LONDON/ISLAND)	+277
KLYY +25, WXRA +19, KTOZ +17, WRXR +16, KPNT +14, WBZU +13, KEDG +13, KITS +13, KROX +12, WKRO +11	
LENNY KRAVITZ • If You Can't Say No (VIRGIN)	+230
CIMX +30, KLYY +23, WROX +21, CFNY +18, XHRM +13, WLUM +12, WKRO +11, WPBZ +11, KEDJ +10, XTRA +9	
SOUL ASYLUM • I Will Still Be Laughing (COLUMBIA)	+209
WLUM +18, WEND +12, KTOZ +12, WKRO +11, WXNR +10, WAQZ +10, KICT +10, WBRU +10, WRXQ +9, KNRX +9	
PEARL JAM • Wishlist (EPIC)	+204
WKRL +22, KNRX +16, KTCL +16, KFMA +14, KHLY +14, WJXB +13, WRXQ +13, WKGX +13, KAEP +12, XTRA +12	
BEN FOLDS FIVE • Song For The Dumped (550 MUSIC)	+167
WEND +15, KTOZ +14, WEQX +14, KFMA +12, WBRU +12, WXEG +11, KNRK +10, WEDG +9, CFNY +8, WROX +7	
FUEL • Shimmer (550 MUSIC)	+167
KFRR +21, WQBK +20, WPLY +13, KHLY +12, KENZ +11, KLZR +11, WNNX +10, KNRK +9, KEDJ +9, WLUM +9	
TORI AMOS • Spark (ATLANTIC)	+160
WWCD +20, WJXB +14, WNNX +14, WXDX +12, KLZR +12, WXZZ +10, KOME +10, KFTE +9, WCYY +8, KWOD +8	

VIDEO PLAYLISTS

MOST PLAYED ROCK TRACKS

1
VH
MUSIC FIRST

	TW	LW
1 Matchbox 20, 3 AM	32	29
2 Madonna, Frozen	25	30
3 Natalie Imbruglia, Torn	24	20
4 Smash Mouth, Walkin' On The Sun	21	19
5 Ben Folds Five, Brick	20	19
6 Fastball, The Way	16	9
7 Marcy Playground, Sex And Candy	15	15
8 Sugar Ray, Fly	15	15
9 Chumbawamba, Tubthumping	14	16
10 Sarah McLachlan, Adia	14	16
11 Eric Clapton, My Father's Eyes	14	16
12 Jewel, Foolish Games	13	12
13 The Wallflowers, One Headlight	13	12
14 Third Eye Blind, Semi-Charmed Life	13	13
15 Paula Cole, I Don't Want To Wait	12	11
16 Billie Myers, Kiss The Rain	12	14
17 Fleetwood Mac, Landslide	11	16
18 Paula Cole, Me	11	14
19 Matchbox 20, Push	8	13
20 Bonnie Raitt, One Belief Away	8	8
21 Elton John, Recover Your Soul	7	9
22 Jewel, You Were Meant For Me	6	3
23 Matchbox 20, Real World	6	0
24 Ebbi Forsberg, Lost Count	6	7
25 The Verve, Bitter Sweet Symphony	5	10
26 Van Halen, Without You	5	7
27 Go-Go's, Vacation	4	0
28 Blues Traveler, Run Around	4	1
29 Natalie Merchant, Carnival	4	0
30 Alanis Morissette, Head Over Feet	4	3



TW LW

1 Marcy Playground, Sex And Candy	25	25
2 Natalie Imbruglia, Torn	24	30
3 Puff Daddy & The Family, Victory	22	18
4 Dave Matthews Band, Don't Drink The Water	22	1
5 Fastball, The Way	18	16
6 Green Day, Time Of Your Life (Good Riddance)	17	6
7 Semisonic, Closing Time	16	0
8 Madonna, Frozen	15	20
9 Radiohead, No Surprises	14	14
10 Everclear, I Will Buy You A New Life	14	11
11 Third Eye Blind, Semi-Charmed Life	11	8
12 Metallica, The Unforgiven II	11	14
13 Van Halen, Without You	11	16
14 Matchbox 20, 3 AM	10	6
15 Cherry Poppin' Daddies, Zoot Suit Riot	10	7
16 Creed, My Own Prison	9	10
17 Tonic, Open Up Your Eyes	7	11
18 Jerry Cantrell, Cut You In	5	7
19 Limp Bizkit, Counterfeit	4	4
20 Beck, Loser	3	4
21 Dave Matthews Band, Crash Into Me	3	4
22 Ben Folds Five, Brick	3	15
23 Blur, Song 2	3	4
24 God Lives Underwater, From Your Mouth	3	6
25 Scott Weiland, Barbarella	3	5
26 Third Eye Blind, Losing A Whole Year	3	1
27 Beastie Boys, Sabotage	2	2
28 No Doubt, Just A Girl	2	2
29 The Smashing Pumpkins, Tonight, Tonight	2	2
30 The Wallflowers, One Headlight	2	1
31 Matchbox 20, Real World	2	0
32 Matchbox 20, Push	2	2
33 Paula Cole, Me	2	4
34 The Mighty Mighty Bosstones, The Impression That I Get	2	3
35 The Wallflowers, The Difference	2	1
36 Puff Daddy & The Family, It's All About The Benjamins	2	3
37 Foo Fighters, Everlong	2	0
38 Sarah McLachlan, Adia	2	5
39 Jewel, You Were Meant For Me	2	0
40 Poison, Every Rose Has Its Thorn	1	0

TRIPLE-A

INCREASE
IN PLAYS

ERIC CLAPTON • She's Gone (REPRISE)	+49
WRLT +27, CIDR +13, WNCN +8, WHPT +4, KTCZ +3, WTTT +2, WBOS +1, KBCO +1, KFOG +1	
DAVE MATTHEWS BAND • Don't Drink The Water (RCA)	+44
WDOO +14, WRLT +8, KGSR +8, KMTT +4, WVRV +3, WNCN +3, WTTT +2, KTCZ +2, KBCO +2, WKOC +1	
GOO GOO DOLLS • Iris (WARNER SUNSET/REPRISE)	+38
WRLT +12, KXPK +11, WDOO +8, WNCN +6, CIDR +4, KTCZ +4, WXRT +2, WTTT +1, WVRV +1	
PETE DROGE • Spacey And Shakin' (FIFTY SEVEN/EPIC)	+33
WKOC +13, WRLT +11, KFOG +8, WXRV +2	
FASTBALL • The Way (HOLLYWOOD)	+30
CIDR +14, WVRV +13, KTCZ +6, KINK +2, WKOC +2, KBCO +2, KXPK +1, WXRT +1	
SEMISONIC • Closing Time (MCA)	+29
WVRV +9, KBCO +8, WRLT +5, KXPK +3, WXRV +3, WDOO +2, CIDR +2, WBOS +2, WXLE +1, KTCZ +1	
EVERCLEAR • I Will Buy You A New Life (CAPITOL)	+28
WXRV +10, WRLT +9, KXPK +5, WBOS +2, WTTT +1, WNCN +1	
NATALIE IMBRUGLIA • Torn (RCA)	+25
KBCO +14, WRLT +11, WVRV +2, WHPT +2, KGSR +2, WBOS +1	
EVERYTHING • Hooch (BLACKBIRD/SIRE)	+24
KXPK +17, KKZN +7, KBCO +3	
ROBBIE ROBERTSON • Unbound (CAPITOL)	+24
WKOC +13, WRLT +7, KMTT +4, WXRV +3, WNCN +1, KBCO +1	



*I don't "listen" to my competition...
I "Monitor" them!*

Jay Philpott, APD/MD
WRQC, Minneapolis



Radio listens to us.

POWER PLAYLISTS

For Week Ending April 19, 1998



Playlists supplied by Broadcast Data Systems Radio Track service. Songs ranked by number of plays in monitored week. Playlists are listed in order of TBA weekly come, beginning with the highest-cumulative station. Cumulative are updated twice weekly following the release of the Spring and Fall Arbitron surveys. The number of stations shown each week varies depending upon space.



KLOS Los Angeles PD: John Duncan MD: Rita Wilde. Playlist table with columns for rank, song, and station.

WYSP Philadelphia OM: Tim Sabean PD: Neal Mirsky. Playlist table with columns for rank, song, and station.

WRCC Chicago SM: Dave Richards APD/MD: Jo Robinson. Playlist table with columns for rank, song, and station.

KQRS Minneapolis PD: Dave Hamilton APD/MD: Reed Endersbe. Playlist table with columns for rank, song, and station.

WMMR Philadelphia PD: Joe Bonadonna MD: Ken Zipeto. Playlist table with columns for rank, song, and station.

WWDC Washington, DC VP/Pgm: Dave Brown MD: Buddy Rizer. Playlist table with columns for rank, song, and station.

WFBQ Indianapolis OM: Marty Bender MD: Ace Cosby. Playlist table with columns for rank, song, and station.

WRIF Detroit OM: Doug Podell APD: Dave Wellington. Playlist table with columns for rank, song, and station.

WAAF Boston PD: Dave Douglas MD: John Osterlind. Playlist table with columns for rank, song, and station.

WDVE Pittsburgh PD: Garrett Hart MD: Cris Winter. Playlist table with columns for rank, song, and station.

WNXC Cleveland PD: Bill Louis MD: David Jockers. Playlist table with columns for rank, song, and station.

WKLS Atlanta PD: Pat Ervin MD: Lisa Sturgis. Playlist table with columns for rank, song, and station.

KTXQ Dallas OM: Andy Lockridge MD: Redbear. Playlist table with columns for rank, song, and station.

KEGL Dallas PD: Greg Stevens MD: Cindy Scull. Playlist table with columns for rank, song, and station.

WMMS Cleveland PD: Bob Neumann APD: "Spaceman" Scott Hughes. Playlist table with columns for rank, song, and station.

WZTA Miami VP/Pgm: Gregg Steele. Playlist table with columns for rank, song, and station.

KSHE St. Louis PD: Rick Balis MD: Al Hofer. Playlist table with columns for rank, song, and station.

WEBN Cincinnati OM: Jim Richards MD: Rick Jamie. Playlist table with columns for rank, song, and station.

KSJO San Jose PD: Dana Jang MD: Laurie Free. Playlist table with columns for rank, song, and station.

WIYY Baltimore PD: Rick Strauss APD/MD: Rob Heckman. Playlist table with columns for rank, song, and station.

WRQC Minneapolis OM: Andy Bloom PD: Lauren MacLeash APD/MD: Jay Philpott. Playlist table with columns for rank, song, and station.

WKRR Detroit PD: John Gorman MD: Erin Carmen. Playlist table with columns for rank, song, and station.

KXKR Minneapolis PD: Wade Lind APD/MD: Bill Jones. Playlist table with columns for rank, song, and station.

WXTB Tampa OM: Brad Hardin MD: Brian Medlin. Playlist table with columns for rank, song, and station.

MAINSTREAM ROCK

POWER PLAYLISTS™

AIRPLAY
Monitor®

For Week Ending
April 19, 1998

Playlists supplied by Broadcast Data Systems' Radio Track service. Songs ranked by number of plays in monitored week. Playlists are listed in order of BSA weekly chart, beginning with the highest-ranking station. Charts are updated twice yearly following the release of the Spring and Fall Arbitron surveys. The number of stations shown each week varies depending upon space.

WLRZ Milwaukee
PD: Keith Hastings
MD: Marlynn Mee

PURE ROCK
LATER 100

	TW	LW
1 Days Of The New, Shelf In The Room	34	36
2 Metallica, The Unforgiven II	33	33
3 Kenny Wayne Shepherd, Blue On Black	30	35
4 Foo Fighters, My Hero	28	29
5 Jerry Cantrell, Cut You In	28	27
6 Creed, My Own Prison	26	36
7 Jimmy Page Robert Plant, Most High	24	25
8 W.R. Band, Slam Dunk	22	13
9 Creed, Torn	21	22
10 Megadeth, Use The Man	21	15
11 Stabbing Westward, Save Yourself	21	14
12 Metallica, Fuel	20	23
13 Pearl Jam, In Hiding	20	25
14 Brother Cane, Lie In The Bed I Make	18	17
15 Van Halen, Fire In The Hole	17	13
16 Foo Fighters, Baker Street	17	9
17 Tool, Skrifft	11	12
18 Nirvana, Smells Like Teen Spirit!	11	8
19 Foo Fighters, Everlong	10	11
20 Pearl Jam, Alive	10	8
21 Stone Temple Pilots, Interstate Love Song	10	14
22 Alice In Chains, Rooster	10	8
23 Marcy Playground, Sex And Candy	10	8
24 Nirvana, Come As You Are	10	8
25 Days Of The New, The Dam Town	10	7
26 Tool, Anemone	9	9
27 Jimmie's Chicken Shack, Dropping Anchor	9	6
28 Alice In Chains, Would	8	9
29 Tool, L337	8	7
30 Stone Temple Pilots, Push	8	11

KISW Seattle
SM/PD: Clark Ryan
MD: Cathy Faulkner

KISW
99.9 FM

	TW	LW
1 Kenny Wayne Shepherd, Blue On Black	27	26
2 Jerry Cantrell, Cut You In	26	29
3 Days Of The New, Shelf In The Room	25	27
4 Van Halen, Without You	23	24
5 Brother Cane, Lie In The Bed I Make	18	16
6 Pearl Jam, Wishlist	18	16
7 Jimmy Page Robert Plant, Most High	17	14
8 Boris D'Amico, Sunshower	17	18
9 Everclear, I Will Buy You A New Life	16	14
10 Creed, Torn	15	16
11 Tonic, If You Could Only See	10	2
12 Screaming Trees, All I Know	10	6
13 Creed, My Own Prison	9	4
14 Days Of The New, Touch, Peel And Stand	9	4
15 Pearl Jam, Given To Fly	9	4
16 The Offspring, Gone Away	9	6
17 Tonic, Open Up Your Eyes	9	5
18 Foo Fighters, Everlong	9	6
19 Foo Fighters, Monkey Wrench	9	4
20 Metallica, Fuel	9	7
21 Soundgarden, Pretty Noose	8	5
22 The Offspring, I Choose	8	7
23 Metallica, Hero Of The Day	8	3
24 Foo Fighters, My Hero	7	10
25 Reverend Horton Heat, Lie Detector	7	4
26 Megadeth, Use The Man	7	6
27 Stabbing Westward, Save Yourself	7	7
28 Ted Nugent, Face-For-All	6	5
29 Judas Priest, You've Got Another Thing C	6	4
30 Blue Oyster Cult, (Don't Fear) The Reaper	6	4

WBAB Long Island
ON: Eric Wellman

WBAB
102.3

	TW	LW
1 Matchbox 20, 3 AM	32	31
2 Marcy Playground, Sex And Candy	30	31
3 Verve, Bitter Sweet Symphony	30	30
4 Pearl Jam, Given To Fly	19	22
5 Eric Clapton, My Father's Eyes	19	23
6 Pearl Jam, Wishlist	18	18
7 Dave Matthews Band, Don't Drink The Water	17	11
8 Natalie Imbruglia, Torn	17	15
9 Third Eye Blind, How's It Going To Be	16	18
10 Kenny Wayne Shepherd, Blue On Black	16	17
11 The Walkers, Heroes	15	13
12 Metallica, The Unforgiven II	15	12
13 Gov't Mule, Blind Man In The Dark	13	11
14 Soul Asylum, I Will Still Be Laughing	13	14
15 Eric Clapton, She's Gone	13	5
16 Fastball, The Way	12	0
17 Matchbox 20, Real World	10	0
18 Days Of The New, Touch, Peel And Stand	9	11
19 Green Day, Time Of Your Life	9	5
20 Tonic, If You Could Only See	9	6
21 Jimmy Page Robert Plant, Most High	8	8
22 Richie Sambora, Hard Times Come Easy	8	7
23 Joe Satriani, Ceremony	8	8
24 Days Of The New, Shelf In The Room	8	7
25 Van Halen, Without You	7	9
26 Smash Mouth, Walkin' On The Sun	7	6
27 The Walkers, The Difference	7	4
28 Van Halen, Dirty Water Dog	7	8
29 Pearl Jam, In Hiding	6	7
30 Yes, New State Of Mind	6	15

WHJY Providence
MD: Sharon Schifano

94 WHJY

	TW	LW
1 Marcy Playground, Sex And Candy	28	27
2 Dave Matthews Band, Don't Drink The Water	25	31
3 Kenny Wayne Shepherd, Blue On Black	24	29
4 Creed, My Own Prison	21	27
5 Everclear, I Will Buy You A New Life	16	18
6 Jerry Cantrell, Cut You In	16	18
7 Metallica, The Unforgiven II	15	22
8 Brother Cane, Lie In The Bed I Make	14	15
9 Jimmy Page Robert Plant, Most High	13	17
10 Days Of The New, Shelf In The Room	13	16
11 Foo Fighters, My Hero	13	15
12 Pearl Jam, In Hiding	13	12
13 Semisonic, Closing Time	11	14
14 Eric Clapton, She's Gone	10	15
15 The Mighty Mighty Bosstones, The Impression	9	8
16 Days Of The New, Touch, Peel And Stand	8	11
17 Fastball, The Way	8	6
18 Spacohog, Mungo City	8	9
19 Matchbox 20, 3 AM	7	4
20 Pink Floyd, Another Brick In The Wall	7	4
21 Aerosmith, Taste Of Inoa	7	6
22 Chris Cornell, Sunshower	7	12
23 Tonic, If You Could Only See	6	5
24 Bareknaked Ladies, The Old Apartment	6	9
25 The Walkers, 6th Avenue Heartache	6	8
26 Van Halen, Oh Pretty Woman	6	10
27 Smash Mouth, Walkin' On The Sun	6	10
28 Live, Lakini's Juice	6	6
29 The Verve Pipe, The Freshmer	6	7
30 Green Day, Hitchin' A Ride	6	5

KSD St. Louis
PD: Steve Brill
Interim MD: Smasher

93.7KSD

	TW	LW
1 Kenny Wayne Shepherd, Blue On Black	24	22
2 Journey, Any Way You Want It	13	8
3 ZZ Top, La Grange	12	9
4 Ryo Spector, Roll With The Changes	11	6
5 Beach Boys, Wouldn't It Be Nice	11	6
6 Eric Clapton, She's Gone	11	12
7 Foreigner, Cold As Ice	10	2
8 Eric Clapton, My Father's Eyes	10	10
9 Aerosmith, Dream On	9	6
10 Cars, Good Times Roll	9	11
11 Steve Miller Band, Swingtown	9	11
12 Journey, Lights	9	5
13 Kansas, Point Of Know Return	9	5
14 Joe Satriani, Ceremony	9	7
15 Nazareth, Love Hurts	9	4
16 Who, Baba O'Nely	9	6
17 Dave Matthews Band, Don't Drink The Water	9	16
18 Jimmy Page Robert Plant, Most High	9	11
19 Fleetwood Mac, The Chain	9	5
20 Dire Straits, Sultans Of Swing	8	6
21 Big Head Todd & The Monsters, Boom Boom	8	7
22 Blue Oyster Cult, (Don't Fear) The Reaper	8	5
23 Bad Company, Bad Company	8	6
24 Eagles, Take It Easy	8	2
25 Supertramp, Take The Long Way Home	8	5
26 John Cougar Mellencamp, Authentic Song	8	2
27 Ryo Spector, Roll With The Changes	8	5
28 Edgar Winter Group, Free Ride	8	6
29 Supertramp, The Logical Song	8	7
30 ZZ Top, Tush	7	5

WBZX Columbus, OH
PD: Hal Fish
APD/MD: Ronni Hunter

Blitz
107.9 FM

	TW	LW
1 Green Day, Time Of Your Life	29	21
2 Marcy Playground, Sex And Candy	28	31
3 Days Of The New, Touch, Peel And Stand	27	28
4 Metallica, The Unforgiven II	26	28
5 Creed, My Own Prison	26	36
6 The Offspring, Gone Away	18	15
7 Kenny Wayne Shepherd, Blue On Black	17	16
8 Metallica, The Memory Remains	15	19
9 Metallica, Until It Sleeps	14	10
10 Third Eye Blind, Graduate	13	14
11 Foo Fighters, Everlong	13	13
12 Tool, H	12	12
13 Van Halen, Without You	12	12
14 Foo Fighters, My Hero	11	15
15 Jimmy Page Robert Plant, Most High	11	9
16 Matchbox 20, 3 AM	11	13
17 Verve, Bitter Sweet Symphony	11	10
18 Alice In Chains, Man In The Box	11	12
19 Megadeth, Use The Man	11	11
20 Jerry Cantrell, Cut You In	11	9
21 Pearl Jam, Given To Fly	11	10
22 Metallica, An't My Bitch	11	6
23 Creed, Torn	10	13
24 Metallica, Hero Of The Day	10	8
25 Tool, Skrifft	10	11
26 Brother Cane, Lie In The Bed I Make	10	11
27 Smash Mouth, Walkin' On The Sun	10	7
28 Local H, Bound For The Floor	9	10
29 Faith No More, Last Cup Of Sorrow	9	15
30 Days Of The New, Shelf In The Room	9	14

WJRR Orlando
PD: Dick Sheetz
MD: Pat Lynch

WJRR
93.7 FM

	TW	LW
1 Days Of The New, Shelf In The Room	31	35
2 Stabbing Westward, Save Yourself	31	16
3 Everclear, I Will Buy You A New Life	30	33
4 Foo Fighters, My Hero	30	32
5 Creed, Torn	28	34
6 Fat Numb	27	11
7 Semisonic, Closing Time	22	21
8 Metallica, Fuel	22	21
9 Jimmie's Chicken Shack, Dropping Anchor	21	20
10 Brother Cane, Lie In The Bed I Make	21	22
11 Wank, Forgiven	20	23
12 Garbage, Push It	20	18
13 Jerry Cantrell, Cut You In	20	17
14 Ecenoline Crash, Home	20	19
15 Addict, Monsterade	19	22
16 Matchbox 20, Real World	19	17
17 Third Eye Blind, Losing A Whole Year	19	19
18 Soul Asylum, I Will Still Be Laughing	18	18
19 Deftones, No Karma No Candy	18	20
20 Hungeer, Mocoarab	18	18
21 Marcy Playground, Saint Jon On The School	18	11
22 Megadeth, Use The Man	18	17
23 Alice In Chains, Man In The Box	17	17
24 Stegosaurus, At The Water	16	19
25 Two, I Am A Pig	15	17
26 Big Wreck, The Oaf	15	13
27 Our Lady Peace, Clumsy	14	33
28 Sevendust, Too Close To Harz	14	14
29 Din Pedals, Ashtray	13	19
30 Fuel, Shimmer	13	12

KQRC Kansas City
PD: Vince Richards
MD: Valerie Knight

The Rock!
98.3 FM

	TW	LW
1 Big Wreck, The Oaf	30	30
2 Foo Fighters, My Hero	29	29
3 Marcy Playground, Sex And Candy	29	28
4 Creed, Torn	29	33
5 Metallica, The Unforgive I	28	28
6 Creed, My Own Prison	22	16
7 Local H, Bound For The Floor	22	17
8 Brother Cane, Lie In The Bed I Make	22	18
9 Days Of The New, Shelf In The Room	21	15
10 Spacohog, Mungo City	21	21
11 Soul Asylum, I Will Still Be Laughing	20	15
12 Pearl Jam, Wishlist	19	19
13 Foo Fighters, Baker Street	19	18
14 Brother Cane, Lie In The Bed I Make	19	20
15 Foo Fighters, Everlong	18	18
16 Days Of The New, Shelf In The Room	18	18
17 Jimmy Page Robert Plant, Most High	17	18
18 Jerry Cantrell, Cut You In	17	15
19 Van Halen, Without You	17	17
20 DLB Band, King Of The Hill	15	15
21 Kenny Wayne Shepherd, Blue On Black	14	14
22 Metallica, Fuel	14	14
23 Guns N' Roses, Paradise City	10	7
24 Stabbing Westward, Save Yourself	10	10
25 The Black Crowes, Hard To Handle	9	8
26 Del Leppard, Photograph	9	8
27 Jane's Addiction, Jane Says	9	9
28 Faith No More, Epic	9	10
29 AC/DC, Shoot To Thrill	9	6
30 Led Zepplin, The Girl On The Wave	9	9

KUPD Phoenix
OM: Tim Maranville
PD: JJ Jeffries

98KUPD

	TW	LW
1 Foo Fighters, My Hero	24	20
2 Life Of Agony, Tongsire	23	19
3 Jerry Cantrell, Cut You In	22	28
4 Van Halen, Fire In The Hole	22	4
5 Days Of The New, Shelf In The Room	22	19
6 Jimmy Page Robert Plant, Most High	22	18
7 Jimmie's Chicken Shack, Dropping Anchor	19	18
8 Brother Cane, Lie In The Bed I Make	19	19
9 Megadeth, Use The Man	19	19
10 DLB Band, Starz Dunk	18	13
11 Metallica, Fuel	17	9
12 Creed, Torn	17	14
13 Agnes Gooch, Hi-C	16	13
14 Addict, Monsterade	15	14
15 Shit, I Want To Be Rich	14	19
16 Stabbing Westward, Save Yourself	14	27
17 Rammstein, Du Hast	14	4
18 Soul Asylum, I Will Still Be Laughing	14	4
19 Sevendust, Black	14	16
20 Spacohog, Mungo City	13	21
21 The Offspring, Gone Away	13	9
22 Metallica, The Unforgiven II	12	12
23 Megadeth, Trust	11	10
24 Blink 182, Oarmit	11	11
25 Deftones, Be Quiet And Drive	11	16
26 Foo Fighters, Everlong	10	9
27 Creed, My Own Prison	10	14
28 Tool, Anemone	10	13
29 Live, Lakini's Juice	10	7
30 Faith No More, Last Cup Of Sorrow	9	6

WONE Akron
PD: J.D.
APD: Tim Daugherty

106.1 WONE

	TW	LW
1 Eric Clapton, My Father's Eyes	22	16
2 Van Halen, Without You	22	24
3 Pearl Jam, Given To Fly	22	27
4 Jimmy Page Robert Plant, Most High	21	24
5 Bowling For Soup, Santa Claus Is Back In Town	19	23
6 Metallica, The Unforgiven II	18	21
7 Richie Sambora, Hard Times Come Easy	13	21
8 Kenny Wayne Shepherd, Blue On Black	13	20
9 Pearl Jam, Wishlist	12	14
10 Van Halen Once	12	12
11 Cool For August, Walk Away	11	21
12 Van Zant, Rage	11	19
13 Eric Clapton, She's Gone	11	19
14 Matchbox 20, Real World	10	24
15 Jimmy Page Robert Plant, Shimm In Th	10	10
16 Aerosmith, Pink	8	8
17 Jimmy Page Robert Plant, Burning Up	7	0
18 Thin Lizzy, The Boys Are Back In Town	6	4
19 Heart, Magic Man	6	3
20 Deep Purple, Space Truckin'	6	3
21 Van Halen, Dirty Water Dog	6	7
22 Thin Lizzy, Jailbreak	6	5
23 Tom Petty, You Wreck Me	6	6
24 Creed, Torn	6	7
25 Jerry Cantrell, Cut You In	6	10
26 Collective Soul, Blame	5	4
27 Steve Miller Band, Take The Money And Ru	5	4
28 John Mellencamp, W/Ma'shell Nde, Wild My	5	4
29 Pink Floyd, Run Like Hell	5	4
30 John Mellencamp, Key West Intermezzo	5	2

WRDU Raleigh
PD: Bob Edwards

106.1 WRDU
The Home of Rock W/ Bob

	TW	LW
1 Jimmy Page Robert Plant, Most High	27	25
2 Brother Cane, Lie In The Bed I Make	27	25
3 Eric Clapton, She's Gone	26	27
4 Big Head Todd & The Monsters, Boom Boom	25	26
5 Van Halen, Fire In The Hole	19	23
6 Kenny Wayne Shepherd, Everything Is Brok	17	26
7 Gregg Allman, Starlin' Over	13	9
8 Matthew Ryan, The Dead Girl	13	8
9 Jon Satriani, Ceremony	12	11
10 U2, Venus	12	10
11 Van Zant, Rage	9	5
12 Big Wreck, The Oaf	7	9
13 Rolling Stones, Saint Of Me	8	8
14 Ozzy Osbourne, Back On Earth	8	8
15 Sweet Vine, Evergreen	8	10
16 Kenny Wayne Shepherd, Blue On Black	8	8
17 Sammy Hagar, Both Sides Now	7	6
18 Kiss, Jungle	7	6
19 Van Halen, Without You	7	6
20 Sammy Hagar, Marchin' To Mars	7	7
21 Kenny Wayne Shepherd, Slow Ride	7	5
22 Sammy Hagar, Little White Lie	7	5
23 Bad Company, Rock 'n' Roll Fantasy	6	2
24 The Walkers, Heroes	6	0
25 Metallica, The Unforgiven II	6	9
26 Metallica, The Memory Remains	6	9
27 Judas Priest, Living After Midnight	5	5
28 Cry Of Love, Peace Pact	5	7
29 Kansas, Point Of Know Return	5	4
30 Jefferson Starship, Jan	5	8

KBPI Denver
PD: Bob Richards
MD: Willie B.

BPI
107.9 FM

	TW	LW
1 Marcy Playground, Sex And Candy		



Playlists supplied by Broadcast Data Systems... Radio Track service. Songs ranked by number of plays in monitored week.

WIMZ Knoxville PD: Jim Pemberton MD: Bill Kidd. Playlist with 30 items including Marcy Playground, Sex And Candy, Marcy Playground, Sex And Candy, Marcy Playground, Sex And Candy.

KUFO Portland OM: Dave Numme APD: Al Scott. Playlist with 30 items including Marcy Playground, Sex And Candy, Marcy Playground, Sex And Candy, Marcy Playground, Sex And Candy.

KISS San Antonio PD: Kevin Vargas MD: C.J. Cruz. Playlist with 30 items including Marcy Playground, Sex And Candy, Marcy Playground, Sex And Candy, Marcy Playground, Sex And Candy.

WCCC Hartford PD: Ron Dresner APD/MD: Mike Karolyi. Playlist with 30 items including Marcy Playground, Sex And Candy, Marcy Playground, Sex And Candy, Marcy Playground, Sex And Candy.

KIOZ San Diego PD: Tim Dukes MD: Shanon Leder. Playlist with 30 items including Marcy Playground, Sex And Candy, Marcy Playground, Sex And Candy, Marcy Playground, Sex And Candy.

WQXA Harrisburg PD: Chris Lloyd MD: Claudine DeLorenzo. Playlist with 30 items including Marcy Playground, Sex And Candy, Marcy Playground, Sex And Candy, Marcy Playground, Sex And Candy.

WROQ Greenville, S.C. PD: Ken Carson APD/MD: K.C. Carson. Playlist with 30 items including Marcy Playground, Sex And Candy, Marcy Playground, Sex And Candy, Marcy Playground, Sex And Candy.

KDKB Phoenix OM: Tim Maranville MD: Tracy Lea. Playlist with 30 items including Marcy Playground, Sex And Candy, Marcy Playground, Sex And Candy, Marcy Playground, Sex And Candy.

WCKW New Orleans GM: Sid Levit. Playlist with 30 items including Marcy Playground, Sex And Candy, Marcy Playground, Sex And Candy, Marcy Playground, Sex And Candy.

KATT Oklahoma City PD: Chris Baker MD: Jake Daniels. Playlist with 30 items including Marcy Playground, Sex And Candy, Marcy Playground, Sex And Candy, Marcy Playground, Sex And Candy.

WLVC Columbus PD: Greg Ausham. Playlist with 30 items including Marcy Playground, Sex And Candy, Marcy Playground, Sex And Candy, Marcy Playground, Sex And Candy.

WDHA Morristown PD: Lenny Bloch MD: Terrie Carr. Playlist with 30 items including Marcy Playground, Sex And Candy, Marcy Playground, Sex And Candy, Marcy Playground, Sex And Candy.

WEGR Memphis PD: Drake Hall MD: Zeke Logan. Playlist with 30 items including Marcy Playground, Sex And Candy, Marcy Playground, Sex And Candy, Marcy Playground, Sex And Candy.

WIOT Toledo OM/PD: Darrin Arriens APD: Don Davis. Playlist with 30 items including Marcy Playground, Sex And Candy, Marcy Playground, Sex And Candy, Marcy Playground, Sex And Candy.

KLAQ El Paso PD/MD: "Magic" Mike Ramsey. Playlist with 30 items including Marcy Playground, Sex And Candy, Marcy Playground, Sex And Candy, Marcy Playground, Sex And Candy.

WAPL Green Bay PD: Randy Hawke. Playlist with 30 items including Marcy Playground, Sex And Candy, Marcy Playground, Sex And Candy, Marcy Playground, Sex And Candy.

WFVY Jacksonville PD: David Moore MD: "Woodman". Playlist with 30 items including Marcy Playground, Sex And Candy, Marcy Playground, Sex And Candy, Marcy Playground, Sex And Candy.

KBKR Salt Lake City OM: Bruce Jones. Playlist with 30 items including Marcy Playground, Sex And Candy, Marcy Playground, Sex And Candy, Marcy Playground, Sex And Candy.

KLBJ Austin OM: Jeff Carrol MD: Loris Lowe. Playlist with 30 items including Marcy Playground, Sex And Candy, Marcy Playground, Sex And Candy, Marcy Playground, Sex And Candy.

WTUE Dayton PD: Chris Geisen MD: John Beauieu. Playlist with 30 items including Marcy Playground, Sex And Candy, Marcy Playground, Sex And Candy, Marcy Playground, Sex And Candy.

WNOR Norfolk PD: Harvey Kojan APD/MD: Tim Parker. Playlist with 30 items including Marcy Playground, Sex And Candy, Marcy Playground, Sex And Candy, Marcy Playground, Sex And Candy.

KRXQ Sacramento SM: Curtiss Johnson APD: Pat Martin MD: Kylee Brooks. Playlist with 30 items including Marcy Playground, Sex And Candy, Marcy Playground, Sex And Candy, Marcy Playground, Sex And Candy.

WPYX Albany PD/MD: John Cooper. Playlist with 30 items including Marcy Playground, Sex And Candy, Marcy Playground, Sex And Candy, Marcy Playground, Sex And Candy.

WBLM Portland, ME PD: Herb Ivy MD: Brian James. Playlist with 30 items including Marcy Playground, Sex And Candy, Marcy Playground, Sex And Candy, Marcy Playground, Sex And Candy.



★ ★ ★ **AIRPOWER** ★ ★ ★
(Minimum 800 detections for the first time)

Total Plays/Gain

PEARL JAM 800/240

Wishlist (Epic)

Total Stations: 62/Chart Move: 27-16
Heavy (21+ plays): 7 KATT, KCAL, KTUX, WAAF, WDHA, WMMR, WZTA
Medium (14-20): 17 KEGL, KISW, KLAQ, KLBJ, KNJY, KOMP, KQRC, WAPL, WBAB, WIYY, WIZN, WPLR, WRIF, WTPA, WVRK, WXRC, WYSP
Light (Under 14): 38
New Airplay This Week: 11 KRAD, KSJO, KTUX, KTXQ, KXUS, WIYY, WKLC, WROV, WXRC, WYSP, WZZO

AIRPOWER BOUND

Total Plays/Gain

ERIC CLAPTON 676/8

She's Gone (Reprise)

Total Stations: 51/Chart Move: 21-19
Heavy (21+ plays): 6 KLPX, KZRR, WBLM, WEGR, WLWQ, WRDU
Medium (14-20): 16 KGGO, KMJX, KTAL, WCKW, WDHA, WFYV, WIXV, WIZN, WKLC, WNCX, WPLR, WROQ, WRXL, WVRK, WZZO
Light (Under 14): 29
New Airplay This Week: 1 WBAB

MATCHBOX 20 668/63

Real World (Lava/Atlantic)

Total Stations: 54/Chart Move: 24-20
Heavy (21+): 5 KATT, KLAQ, KTUX, WKLS, WZTA
Medium (14-20): 15 KEZO, KLBJ, KRAD, KRXQ, WAPL, WCKW, WEGR, WIOT, WJRR, WKLC, WROV, WTPA, WTPT, WTUE, WWDC, WZTA, WZZO
Light (Under 14): 34
New Airplay This Week: 4 WBAB, WDHA, WFYV, WIZN

DAVE MATTHEWS BAND 637/80

Don't Drink The Water (RCA)

Total Stations: 58/Chart Move: 26-23
Heavy (21+): 4 KTUX, WHJY, WTKX, WXRC
Medium (14-20): 17 KATT, KMJX, KRAD, KTXQ, KXUS, WAQX, WBAB, WCCC, WDHA, WQXA, WROV, WTPA, WTPT, WTUE, WWDC, WZTA, WZZO
Light (Under 14): 37
New Airplay This Week: 5 KLPX, KRAD, WAPL, WQXA, WZZO

DLR BAND 595/123

Slam Dunk (Wawazat!)

Total Stations: 57/Chart Move: 31-24
Heavy (21+): 5 KCAL, KEGL, WFYV, WLZR, WRIF
Medium (14-20): 14 KEZO, KILO, KOMP, KRZZ, KUPD, KXXR, WAQX, WBUZ, WIYY, WNCX, WROQ, WRQC, WYSP, WZZR
Light (Under 14): 38
New Airplay This Week: 10 KGGO, KMOD, KXUS, WIYY, WMFS, WMMR, WRCX, WTUE, WWDC, WZZO

SOUL ASYLUM 524/185

I Will Still Be Laughing (Columbia)

Total Stations: 46/Chart Move: Debut 26
Heavy (21+): 2 KTUX, WZTA
Medium (14-20): 14 KBER, KLBJ, KOMP, KQRC, KQRS, KRAD, KRXQ, KUPD, KZRR, WEBN, WJRR, WQXA, WTKX, WTPT
Light (Under 14): 30
New Airplay This Week: 12 KEZO, KMBY, KUPD, WAQX, WBUZ, WIOT, WIZN, WKQQ, WPLR, WSTZ, WTUE, WVRK

VAN HALEN 494/182

Fire In The Hole (Warner Bros.)

Total Stations: 62/Chart Move: Debut 29
Heavy (21+): 3 KTXQ, KUPD, WTFX
Medium (14-20): 10 KEGL, KIOZ, KLAQ, KXUS, KXXR, KZRR, WLZR, WRCX, WRDU, WRXL
Light (Under 14): 49
New Airplay This Week: 12 KCAL, KEGL, KNJY, KRZZ, KUPD, KXUS, KZRR, WIOT, WLZR, WMFS, WRXL, WXRC

JOE SATRIANI 494/-16

Ceremony (Epic)

Total Stations: 46/Chart Move: 28-30
Heavy (21+): 2 KCAL, WRCX
Medium (14-20): 9 KOMP, KRXQ, KXUS, WDVE, WMMR, WMMS, WNCX, WZZO, WZZR
Light (Under 14): 35

FUEL 481/9

Shimmer (550 Music)

Total Stations: 40/Chart Move: 30-31
Heavy (21+): 6 KNJY, KTUX, WAAF, WQXA, WTPT, WZZO
Medium (14-20): 10 KILO, KLBJ, KRAD, KRXQ, KUFO, WCCC, WTKX, WTPA, WXRC, WZMT
Light (Under 14): 24
New Airplay This Week: 2 KZRR, WBZ

BLACK LAB 457/46

Time Ago (DGC/Geffen)

Total Stations: 52/Chart Move: 33-32
Heavy (21+): 1 KTUX
Medium (14-20): 8 KDKB, KNCN, KRAD, WBUZ, WQXA, WTPT, WWDC, WZTA
Light (Under 14): 43
New Airplay This Week: 6 KEZO, WCCC, WCKW, WIOT, WSTZ, WTFX

BIG HEAD TODD & THE MONSTERS 424/9

With John Lee Hooker (Revolution)

Total Stations: 31/Chart Move: 36-33
Heavy (21+): 4 KMOD, WCKW, WFYV, WRDU
Medium (14-20): 14 KGGO, KLBJ, KMJX, KRZZ, KZRR, WAQX, WDHA, WIXV, WPLR, WPYX, WROQ, WSTZ, WZZO, WZZR
Light (Under 14): 13
New Airplay This Week: 1 WAFX

FOO FIGHTERS 383/3

Baker Street (EMI-Capitol)

Total Stations: 27/Chart Move: 40-36
Heavy (21+): 5 KAZR, KEGL, KEZO, KILO, WRIF
Medium (14-20): 7 KATT, KNJY, KQRC, WMMS, WNOR, WYSP, WZTA
Light (Under 14): 15
New Airplay This Week: 1 KBPI

THIRD EYE BLIND 378/47

Losing A Whole Year (Elektra/EEG)

Total Stations: 32/Chart Move: Debut 37
Heavy (21+): 6 KFRQ, KRAD, KTUX, WQXA, WTKX, WTPT
Medium (14-20): 7 KATT, KLBJ, KMBY, KNJY, WJRR, WWDC, WXRC
Light (Under 14): 19
New Airplay This Week: 4 KEGL, KILO, WFBQ, WVRK

GOO GOO DOLLS 347/122

Iris (Warner Sunset/Reprise)

Total Stations: 37/Chart Move: Debut 39
Heavy (21+): 2 WWDC, WZTA
Medium (14-20): 6 KTAL, KTXQ, WEBN, WKLS, WKQQ, WNCX
Light (Under 14): 29
New Airplay This Week: 13 KLAQ, KLBJ, KMOD, KRAD, KTUX, KZRR, WIZN, WPYX, WROQ, WSTZ, WVRK, WAFX, WZMT

MOST NEW STATIONS

No. Of Stations

THE WALLFLOWERS <i>Heroes (Epic)</i>	16
CAMEL <i>Lucy (41/Geffen)</i>	14
GOO GOO DOLLS <i>Iris (Warner Sunset/Reprise)</i>	13
SOUL ASYLUM <i>I Will Still Be Laughing (Columbia)</i>	12
VAN HALEN <i>Fire In The Hole (Warner Bros.)</i>	12

CHART BOUND

Total Plays/Gain

THE WALLFLOWERS 335/245

Heroes (Epic)

Total Stations: 44
Heavy (21+): 3 KCAL, WIYY, WMMR
Medium (14-20): 5 KTXQ, WBAB, WDHA, WWDC, WZTA
Light (Under 14): 36
New Airplay This Week: 16 KCAL, KFRQ, KIOZ, KMBY, KQRS, KRXQ, KTAL, KZRR, WDHA, WDVE, WIZN, WNCX, WRDU, WTPA, WWDC, WZTA

DEFTONES 314/85

Be Quiet And Drive (Far Away) (Maverick/Warner Bros.)

Total Stations: 40
Heavy (21+): 0
Medium (14-20): 6 KAZR, KNJY, KRAD, WAAF, WBUZ, WMFS
Light (Under 14): 34
New Airplay This Week: 7 KILO, KRAD, KZRR, WJRR, WTPT, WWDC, WXRC

ECONOLINE CRUSH 310/19

Home (Restless)

Total Stations: 36
Heavy (21+): 0
Medium (14-20): 7 KAZR, KNJY, KRAD, WJRR, WKLO, WQXA, WXRC
Light (Under 14): 29
New Airplay This Week: 1 WZZR

FASTBALL 284/88

The Way (Hollywood)

Total Stations: 29
Heavy (21+): 3 KRAB, KRAD, WQXA
Medium (14-20): 4 KLBJ, WEBN, WMMS, WTKX
Light (Under 14): 22
New Airplay This Week: 4 KLAQ, KTXQ, WBAB, WZTA

SAMAM 251/31

She Found You (Ignition)

Total Stations: 30
Heavy (21+): 0
Medium (14-20): 5 KBPI, KRXQ, KTUX, WCCC, WXRC
Light (Under 14): 25
New Airplay This Week: 3 WNCX, WZTA, WZZO

SEVENDUST 243/33

Too Close To Hate (TVT)

Total Stations: 34
Heavy (21+): 0
Medium (14-20): 2 KNJY, WJRR
Light (Under 14): 32
New Airplay This Week: 3 KFRQ, KXXR, KZRR

STEGOSAURUS 235/-1

At The Water (Reprise)

Total Stations: 35
Heavy (21+): 0
Medium (14-20): 3 KRXQ, WJRR, WZTA
Light (Under 14): 32
New Airplay This Week: 3 WIOT, WTFX, WZZR

ATHENAEUM 233/27

What I Didn't Know (Atlantic)

Total Stations: 29
Heavy (21+): 0
Medium (14-20): 6 KATT, KRAD, WJRR, WTKX, WTPA, WXRC
Light (Under 14): 23
New Airplay This Week: 2 KFRQ, WRIF

GOV'T MULE 232/31

Blind Man In The Dark (Capricorn/Mercury)

Total Stations: 29
Heavy (21+): 0
Medium (14-20): 4 WIZN, WSTZ, WXRC, WZZO
Light (Under 14): 25
New Airplay This Week: 2 KZRR, WZZO

ADDICT 226/7

Monsterside (V2)

Total Stations: 28
Heavy (21+): 0
Medium (14-20): 5 KILO, KTUX, KUPD, WJRR, WZTA
Light (Under 14): 23
New Airplay This Week: 5 KFRQ, KRXQ, WKLO, WRCX, WTKX

BIG WRECK 203/61

That Song (Atlantic)

Total Stations: 34
Heavy (21+): 0
Medium (14-20): 3 KLBJ, KMBY, WAAF
Light (Under 14): 31
New Airplay This Week: 7 KAZR, KFRQ, KLBJ, WCCC, WKLO, WTKX, WXRC

CAMEL 200/77

Lucy (41/Geffen)

Total Stations: 41
Heavy (21+): 3 KRAB, KRAD, WQXA
Medium (14-20): 3 KRXQ, KTUX, WKLO
Light (Under 14): 37
New Airplay This Week: 14 KBPI, KLBJ, KQRC, KRXQ, KTUX, WAAF, WAPL, WAQX, WCMF, WDVE, WKLO, WMFS, WMMS, WZMT

JIMMY PAGE ROBERT PLANT 195/189

Shining In The Light (Atlantic)

Total Stations: 74
Heavy (21+): 0
Medium (14-20): 0
Light (Under 14): 74
New Airplay This Week: 10 KILO, KLOS, WIYY, WMMR, WONE, WRCX, WRIF, WROQ, WRXK, WRXL

AGENTS OF GOOD ROOTS 146/3

Come On (Let Your Blood Come Alive) (RCA)

Total Stations: 21
Heavy (21+): 0
Medium (14-20): 4 KTUX, WNOR, WRXL, WTPT
Light (Under 14): 17
New Airplay This Week: 1 KFRQ

RAMMSTEIN 137/34

Du Hast (Slash/London/Island)

Total Stations: 25
Heavy (21+): 0
Medium (14-20): 2 KNJY, KUPD
Light (Under 14): 23
New Airplay This Week: 4 KAZR, KBPI, KIOZ, KUPD

TODD SNIDER 128/-3

I Am Too (MCA)

Total Stations: 16
Heavy (21+): 0
Medium (14-20): 6 KEZO, KLBJ, KLPX, KRAD, KTUX, WFBQ
Light (Under 14): 10
New Airplay This Week: 1 KFRQ

UFO 126/34

Venus (I Just Can't Quit It Babe) (CMC International)

Total Stations: 14
Heavy (21+): 0
Medium (14-20): 3 KSJO, WIOT, WNCX
Light (Under 14): 11
New Airplay This Week: 2 KCAL, KXUS

GARBAGE 118/21

Push It (Aimo Sounds/Interscope)

Total Stations: 11
Heavy (21+): 1 KTUX
Medium (14-20): 3 WJRR, WQXA, WWDC
Light (Under 14): 7
New Airplay This Week: 1 KRAB

SHIFT 114/14

I Want To Be Rich (Columbia)

Total Stations: 17
Heavy (21+): 0
Medium (14-20): 2 KNJY, KUPD
Light (Under 14): 15
New Airplay This Week: 1 WVRK

JIMMY PAGE ROBERT PLANT 105/102

Walking Into Clarksdale (Atlantic)

Total Stations: 55
Heavy (21+): 0
Medium (14-20): 0
Light (Under 14): 55
New Airplay This Week: 2 WRIF, WROQ

JIMMY PAGE ROBERT PLANT 94/91

Burning Up (Atlantic)

Total Stations: 51
Heavy (21+): 0
Medium (14-20): 0
Light (Under 14): 51
New Airplay This Week: 3 KSJO, WONE, WROQ

JOLENE 90/3

Pensacola (Sire)

Total Stations: 11
Heavy (21+): 0
Medium (14-20): 3 KRAD, KTUX, WVRK
Light (Under 14): 8
New Airplay This Week: 1 KRAD

JIMMY PAGE ROBERT PLANT 81/81

Please Read The Letter (Atlantic)

Total Stations: 49
Heavy (21+): 0
Medium (14-20): 0
Light (Under 14): 49

JIMMY PAGE ROBERT PLANT 80/80

When The World Was Young (Atlantic)

Total Stations: 45
Heavy (21+): 0
Medium (14-20): 0
Light (Under 14): 45
New Airplay This Week: 3 KATT, WIYY, WKQQ

JIMMY PAGE ROBERT PLANT 79/79

Upon A Golden Horse (Atlantic)

Total Stations: 44
Heavy (21+): 0
Medium (14-20): 0
Light (Under 14): 44
New Airplay This Week: 3 WIYY, WRIF, WROQ

THE VERVE 75/20

Lucky Man (VC/Hut/Virgin)

Total Stations: 9
Heavy (21+): 0
Medium (14-20): 3 KTXQ, WQXA, WTPA
Light (Under 14): 6
New Airplay This Week: 1 WWDC



SONG ACTIVITY REPORTS



Detailed song tracking information for the last 3 weeks for all songs showing increased play this week. Total plays and gain do not include video play. Markets listed in order of population.

For Week Ending April 19, 1998

Table with 12 columns: Song Title, Artist, Total Plays/Gain, and 12 radio markets (L.A., Chicago, Phila., Detroit, Dallas, Wash., DC, Boston, Miami, Atlanta, Seattle, Long Isl., San Diego, Minn., St. Louis, Balt., Pitts., Phoenix, Tampa, Clevel., Denver, Port., OR, Cincinnati, Kan. City, Rivers, Milwaukee, Sacram., San Jose, Provid., Colum., OH, Norfolk, San Antonio, Salt Lake, Indian, Char., NC, New Or., Orlando, Hartford, Memphis, Rochest., W.P. Beach, Las Vegas, Louisv., Ral./Dur.).

Table with 12 columns: Song Title, Artist, Total Plays/Gain, and 12 radio markets (L.A., Chicago, Phila., Detroit, Dallas, Wash., DC, Boston, Miami, Atlanta, Seattle, Long Isl., San Diego, Minn., St. Louis, Balt., Pitts., Phoenix, Tampa, Clevel., Denver, Port., OR, Cincinnati, Kan. City, Rivers, Milwaukee, Sacram., San Jose, Provid., Colum., OH, Norfolk, San Antonio, Salt Lake, Indian, Char., NC, New Or., Orlando, Hartford, Memphis, Rochest., W.P. Beach, Las Vegas, Louisv., Ral./Dur.).



SONG ACTIVITY REPORTS

For Week Ending April 19, 1998



Detailed song tracking information for the last 3 weeks for all songs showing increased play this week. Total plays and gain do not include video play. Markets listed in order of population.

Grid of song activity reports for METALICA, JIMMY PAGE ROBERT PLANT, PEARL JAM, DLR BAND, SEMISONIC, KENNY WAYNE SHEPHERD BAND, SOUL ASYLUM, STABBING WESTWARD, THIRD EYE BLIND, and VAN HALEN. Each section includes station names, song titles, and activity metrics.

Grid of song activity reports for KENNY WAYNE SHEPHERD BAND, SOUL ASYLUM, STABBING WESTWARD, THIRD EYE BLIND, and VAN HALEN. Each section includes station names, song titles, and activity metrics.

THIS WEEK	LAST WEEK	WKS. ON CHART	HERITAGE ROCK		DETECTIONS	
			TITLE/IMPRINT/PROMOTION LABEL	ARTIST	TW	LW
★★★ No. 1 ★★★						
1	1	15	BLUE ON BLACK <small>REVOLUTION</small> 9 weeks at No. 1	KENNY WAYNE SHEPHERD BAND	1125	1087
2	2	3	MOST HIGH <small>ATLANTIC</small>	JIMMY PAGE ROBERT PLANT	1039	946
3	4	6	I LIE IN THE BED I MAKE <small>VIRGIN</small>	BROTHER CANE	685	671
4	3	9	WITHOUT YOU <small>WARNER BROS.</small>	VAN HALEN	657	737
5	5	6	SHE'S GONE <small>REPRISE</small>	ERIC CLAPTON	641	636
6	6	11	RAGE <small>CMC INTERNATIONAL</small>	VAN ZANT	535	567
7	7	17	SEX AND CANDY <small>CAPITOL</small>	MARCY PLAYGROUND	510	534
8	9	16	SHELF IN THE ROOM <small>OUTPOST/GEFFEN</small>	DAYS OF THE NEW	491	505
9	8	29	SAINT OF ME <small>VIRGIN</small>	THE ROLLING STONES	456	525
10	11	9	CUT YOU IN <small>COLUMBIA</small>	JERRY CANTRELL	437	447
11	13	32	MY OWN PRISON <small>WIND-UP</small>	CREED	421	443
12	15	7	BOOM BOOM <small>REVOLUTION</small> BIG HEAD TODD & THE MONSTERS WITH JOHN LEE HOOKER		405	393
13	10	22	THE UNFORGIVEN II <small>ELEKTRA/VEEG</small>	METALLICA	397	488
14	18	4	REAL WORLD <small>LAVA/ATLANTIC</small>	MATCHBOX 20	394	355
15	12	27	3 AM <small>LAVA/ATLANTIC</small>	MATCHBOX 20	390	444
★★★ AIRPOWER ★★★						
16	24	3	WISHLIST <small>EPIC</small>	PEARL JAM	373	269
★★★ AIRPOWER ★★★						
17	21	4	SLAM DUNK <small>WAWAZAT!</small>	DLR BAND	347	299
18	17	9	CEREMONY <small>EPIC</small>	JOE SATRIANI	345	364
19	19	3	DON'T DRINK THE WATER <small>RCA</small>	DAVE MATTHEWS BAND	341	335
20	14	18	GIVEN TO FLY <small>EPIC</small>	PEARL JAM	329	396
★★★ AIRPOWER ★★★						
21	23	7	CLOSING TIME <small>MCA</small>	SEMISONIC	314	288
22	16	14	SUNSHOWER <small>ATLANTIC</small>	CHRIS CORNELL	306	370
23	26	7	TORN <small>WIND-UP</small>	CREED	259	250
24	22	9	HARD TIMES COME EASY <small>MERCURY</small>	RICHIE SAMBORA	247	291
25	25	7	MUNGO CITY <small>HIFI/SIRE/WARNER BROS.</small>	SPACEHOG	242	265
26	27	11	MY HERO <small>ROSSELL/CAPITOL</small>	FOO FIGHTERS	237	241
27	31	2	FIRE IN THE HOLE <small>WARNER BROS.</small>	VAN HALEN	222	157
28	NEW ▶		HEROES <small>EPIC</small>	THE WALLFLOWERS	216	65
29	37	2	IRIS <small>WARNER SUNSET/REPRISE</small>	GOO GOO DOLLS	215	139
30	40	2	I WILL STILL BE LAUGHING <small>COLUMBIA</small>	SOUL ASYLUM	207	118
31	34	6	BLIND MAN IN THE DARK <small>CAPRICORN/MERCURY</small>	GOV'T MULE	180	148
32	30	3	FUEL <small>ELEKTRA/VEEG</small>	METALLICA	166	168
33	35	3	TIME AGO <small>DGC/GEFFEN</small>	BLACK LAB	163	145
34	29	8	USE THE MAN <small>CAPITOL</small>	MEGADETH	153	189
35	33	11	MY FATHER'S EYES <small>REPRISE</small>	ERIC CLAPTON	146	149
36	38	25	THE GIRL I LOVE <small>ATLANTIC</small>	LED ZEPPELIN	138	134
37	36	22	TASTE OF INDIA <small>COLUMBIA</small>	AEROSMITH	119	144
38	NEW ▶		SHINING IN THE LIGHT <small>ATLANTIC</small>	JIMMY PAGE ROBERT PLANT	116	0
39	NEW ▶		SAVE YOURSELF <small>COLUMBIA</small>	STABBING WESTWARD	116	97
40	39	20	TIME OF YOUR LIFE (GOOD RIDDANCE) <small>REPRISE</small>	GREEN DAY	107	119

Records showing an increase in detections over the previous week, regardless of chart movement. A record which has been on the chart for more than 20 weeks will not receive a bullet, even if it registers an increase in detections. Airpower awarded to those records which attain 300 detections for the first time. If two records are tied in number of plays, the record being played on more stations is placed first. Records below the top 20 are removed from the chart after 26 weeks.

GREATEST GAINERS		INCREASE IN PLAYS
THE WALLFLOWERS • Heroes (EPIC)		+151
KCAL +19, WDHA +12, WNCN +12, KZRR +12, KORS +12, WIZN +11, KTAL +11, WDVE +11, KMBY +6, KFRO +6		
JIMMY PAGE ROBERT PLANT • Shining In The Light (ATLANTIC)		+116
WONE +10, WMMR +10, WRXK +6, WROQ +6, WRXL +6, KLOS +6, WKLC +5, KOMP +5, KMBY +4, WDHA +4		
PEARL JAM • Wishlist (EPIC)		+104
KCAL +19, KXUS +12, WZZO +11, WVRK +11, WROV +10, KOMP +8, KLAQ +8, WKLC +7, WDHA +5, WFBO +5		
JIMMY PAGE ROBERT PLANT • Most High (ATLANTIC)		+93
KCAL +15, WPLR +12, WAFX +9, WAQX +9, WDHA +8, WFBO +7, KORS +7, KRZZ +6, WAPL +6, WKLS +6		
SOUL ASYLUM • I Will Still Be Laughing (COLUMBIA)		+89
WSTZ +11, KMBY +10, WAQX +9, WKQQ +9, WIZN +6, KOMP +6, WCKW +6, KORS +6, WDHA +5, WVRK +5		

THIS WEEK	LAST WEEK	WKS. ON CHART	ACTIVE ROCK		DETECTIONS	
			TITLE/IMPRINT/PROMOTION LABEL	ARTIST	TW	LW
★★★ No. 1 ★★★						
1	1	19	SHELF IN THE ROOM <small>OUTPOST/GEFFEN</small> 5 weeks at No. 1	DAYS OF THE NEW	1102	1164
2	2	15	MY HERO <small>ROSSELL/CAPITOL</small>	FOO FIGHTERS	1043	1063
3	4	12	TORN <small>WIND-UP</small>	CREED	1037	1036
4	3	10	CUT YOU IN <small>COLUMBIA</small>	JERRY CANTRELL	1029	1056
5	8	3	MOST HIGH <small>ATLANTIC</small>	JIMMY PAGE ROBERT PLANT	948	868
6	6	6	I LIE IN THE BED I MAKE <small>VIRGIN</small>	BROTHER CANE	891	884
7	9	14	BLUE ON BLACK <small>REVOLUTION</small>	KENNY WAYNE SHEPHERD BAND	870	816
8	5	20	SEX AND CANDY <small>CAPITOL</small>	MARCY PLAYGROUND	802	945
9	7	22	THE UNFORGIVEN II <small>ELEKTRA/VEEG</small>	METALLICA	791	880
10	13	18	FUEL <small>ELEKTRA/VEEG</small>	METALLICA	709	690
11	12	7	SAVE YOURSELF <small>COLUMBIA</small>	STABBING WESTWARD	703	701
12	11	37	MY OWN PRISON <small>WIND-UP</small>	CREED	699	724
13	14	11	USE THE MAN <small>CAPITOL</small>	MEGADETH	640	660
14	15	42	TOUCH, PEEL AND STAND <small>OUTPOST/GEFFEN</small>	DAYS OF THE NEW	627	608
15	17	7	CLOSING TIME <small>MCA</small>	SEMISONIC	517	505
16	10	9	WITHOUT YOU <small>WARNER BROS.</small>	VAN HALEN	502	782
★★★ AIRPOWER ★★★						
17	28	2	WISHLIST <small>EPIC</small>	PEARL JAM	427	291
18	18	12	I WILL BUY YOU A NEW LIFE <small>CAPITOL</small>	EVERCLEAR	421	483
19	20	8	MUNGO CITY <small>HIFI/SIRE/WARNER BROS.</small>	SPACEHOG	407	462
20	16	18	GIVEN TO FLY <small>EPIC</small>	PEARL JAM	406	519
21	22	6	SHIMMER <small>550 MUSIC</small>	FUEL	387	381
22	21	11	I AM A PIG <small>NOTHING/INTERSCOPE</small>	TWO	356	456
23	19	16	SUNSHOWER <small>ATLANTIC</small>	CHRIS CORNELL	355	474
24	23	9	DROPPING ANCHOR <small>ROCKET/SLAND</small>	JIMMIE'S CHICKEN SHACK	355	361
25	24	7	BAKER STREET <small>EMI-CAPITOL</small>	FOO FIGHTERS	349	345
26	NEW ▶		I WILL STILL BE LAUGHING <small>COLUMBIA</small>	SOUL ASYLUM	317	221
27	40	2	DON'T DRINK THE WATER <small>RCA</small>	DAVE MATTHEWS BAND	296	222
28	25	7	TANGERINE <small>ROADRUNNER</small>	LIFE OF AGONY	294	321
29	29	3	TIME AGO <small>DGC/GEFFEN</small>	BLACK LAB	294	266
30	30	26	FORTY SIX & 2 <small>FREEWORLD</small>	TOOL	289	281
31	32	5	LOSING A WHOLE YEAR <small>ELEKTRA/VEEG</small>	THIRD EYE BLIND	284	250
32	NEW ▶		BE QUIET AND DRIVE (FAR AWAY) <small>MAVERICK/WARNER BROS.</small>	DEFTONES	279	198
33	35	3	REAL WORLD <small>LAVA/ATLANTIC</small>	MATCHBOX 20	274	250
34	NEW ▶		FIRE IN THE HOLE <small>WARNER BROS.</small>	VAN HALEN	272	155
35	37	4	HOME <small>RESTLESS</small>	ECONOLINE CRUSH	257	246
36	NEW ▶		SLAM DUNK <small>WAWAZAT!</small>	DLR BAND	248	173
37	27	21	TIME OF YOUR LIFE (GOOD RIDDANCE) <small>REPRISE</small>	GREEN DAY	245	287
38	33	24	THE MEMORY REMAINS <small>ELEKTRA/VEEG</small>	METALLICA	235	271
39	26	22	CLUMSY <small>COLUMBIA</small>	OUR LADY PEACE	228	330
40	NEW ▶		TOO CLOSE TO HATE <small>TVT</small>	SEVENDUST	213	193

Records showing an increase in detections over the previous week, regardless of chart movement. A record which has been on the chart for more than 20 weeks will not receive a bullet, even if it registers an increase in detections. Airpower awarded to those records which attain 400 detections for the first time. If two records are tied in number of plays, the record being played on more stations is placed first. Records below the top 20 are removed from the chart after 26 weeks.

GREATEST GAINERS		INCREASE IN PLAYS
PEARL JAM • Wishlist (EPIC)		+136
KTUX +24, WXRC +18, WYSP +17, WIYY +14, KATT +12, KTXQ +12, WTPA +9, WWDC +9, WZTA +7, KNJY +6		
VAN HALEN • Fire In The Hole (WARNER BROS.)		+117
KUPD +18, KEGL +18, WLZR +16, KTXQ +16, WMFS +11, WIOT +10, KNJY +9, WXRC +7, WAAF +5, WRXC +3		
SOUL ASYLUM • I Will Still Be Laughing (COLUMBIA)		+96
KTUX +11, KRAD +10, KUPD +10, WBUZ +9, WZTA +7, WTUE +7, WTKX +6, WTPT +6, KQRC +5, WQXA +5		
THE WALLFLOWERS • Heroes (EPIC)		+94
WZTA +14, WWDC +14, WTPA +11, WIYY +11, KIOZ +10, KRXQ +8, KTXQ +8, WMMS +5, KILO +4, WCCC +3		
DEFTONES • Be Quiet And Drive (Far Away) (MAVERICK/WARNER BROS.)		+81
KRAD +13, WJRR +12, WXRC +9, KILO +7, WCCC +7, WWDC +7, KNJY +6, WTPT +5, WKLO +5, WBUZ +4		

MODERN ROCK

POWER PLAYLISTS

AIRPLAY
Monitor

For Week Ending
April 19, 1998

Playlists supplied by Broadcast Data Systems' Radio Track service. Songs ranked by number of plays in monitored week. Playlists are listed in order of TSA weekly curve, beginning with the highest-ranking station. Curves are updated twice yearly following the release of the Spring and Fall Arbitron surveys. The number of stations shown each week varies depending upon space.

WXRK New York
PD: Steve Kingston
MD: Mike Peer
Music Coord: Booker



	TW	LW
1	Verve, Bitter Sweet Symphony	37 40
2	Foo Fighters, My Hero	36 37
3	Third Eye Blind, Graduate	35 35
4	Jane's Addiction, Jane Says	34 32
5	Alice In Chains, Down In A Hole	31 29
6	Metallica, The Unforgiven II	30 23
7	Marcy Playground, Sex And Candy	28 20
8	Dave Matthews Band, Don't Drink The Water	27 26
9	Goo Goo Dolls, Iris	27 19
10	Creed, My Own Prison	26 23
11	Radiohead, Karma Police	23 32
12	Everclear, I Will Buy You A New Life	23 20
13	Blink 182, Dammit	23 23
14	Pearl Jam, Wishlist	22 15
15	Harvey Danger, Flagpole Sitta	22 15
16	Fuel, Shimmer	22 16
17	Toof, Forty Six & 2	21 18
18	Green Day, Time Of Your Life	21 35
19	Days Of The New, Touch, Peel And Stand	20 20
20	Stabbing Westward, Save Yourself	18 17
21	Foo Fighters, Everlong	19 24
22	Days Of The New, Shell In The Room	18 22
23	Everclear, Everything To Everyone	18 22
24	Fitter & The Crystal Method, (Can't You)	17 16
25	Toof, Anema	17 25
26	Verve, Lucky Man	16 16
27	Black Lab, Time Ago	15 18
28	The Offspring, Gone Away	15 17
29	Toof, Sober	15 13
30	Semisonic, Closing Time	14 10

WBCN Boston
VP/Pgm: Oedipus
MD: Steve Strick
AMD: Mike Green



	TW	LW
1	Blink 182, Dammit	37 36
2	Sublime, Badfish	36 36
3	Marcy Playground, Sex And Candy	36 35
4	Pearl Jam, Wishlist	36 35
5	Foo Fighters, My Hero	36 38
6	Radiohead, Karma Police	35 37
7	Dave Matthews Band, Don't Drink The Water	35 35
8	Semisonic, Closing Time	27 26
9	Garbage, Push It	25 29
10	Verve, Lucky Man	25 18
11	Green Day, Redundant	24 28
12	Fuel, Shimmer	24 26
13	Everclear, I Will Buy You A New Life	19 17
14	God Lives Underwater, From Your Mouth	19 21
15	Scott Weiland, Barbarella	18 17
16	Our Lady Peace, Clumsy	18 17
17	Absolutely, What I Didn't Know	18 10
18	Fastball, The Way	17 19
19	Harvey Danger, Flagpole Sitta	17 17
20	Urge, Jump Right In	16 12
21	Cherry Poppin' Daddies, Zoot Suit Riot	16 20
22	Feeder, Cement	16 14
23	Soul Asylum, I Will Still Be Laughing	16 14
24	Jerry Cantrell, Cut You In	15 19
25	Third Eye Blind, Losing A Whole Year	15 19
26	Tori Amos, Spark	14 15
27	Nirvana, All Apologies	13 9
28	Stabbing Westward, Save Yourself	13 9
29	The Mighty Mighty Bosstones, Wrong Thing	13 13
30	Days Of The New, Shell In The Room	12 17

WHFS Washington, DC
PD: Robert Benjamin
APD: Bob Waugh
MD: Pat Ferrise



	TW	LW
1	Garbage, Push It	37 35
2	Cherry Poppin' Daddies, Zoot Suit Riot	36 30
3	Fastball, The Way	36 31
4	Dave Matthews Band, Don't Drink The Water	34 26
5	Creed, My Own Prison	34 16
6	Harvey Danger, Flagpole Sitta	32 28
7	Everclear, I Will Buy You A New Life	30 30
8	Semisonic, Closing Time	28 22
9	Tori Amos, Spark	29 26
10	Goo Goo Dolls, Iris	28 15
11	Natalie Imbruglia, Torn	25 27
12	Urge, Jump Right In	23 22
13	Green Day, Redundant	22 20
14	Verve, Lucky Man	22 19
15	Verve, Bitter Sweet Symphony	22 19
16	Marcy Playground, Sex And Candy	20 22
17	Fuel, Shimmer	19 17
18	Baronak Ladies, Brian Wilson	18 19
19	Marcy Playground, Saint Joe On The School	18 18
20	Wank, Forgiveness	17 13
21	God Lives Underwater, From Your Mouth	17 12
22	Smash Mouth, Walkin' On The Sun	17 13
23	The Mighty Mighty Bosstones, The Impression	16 13
24	Foo Fighters, My Hero	16 12
25	Everclear, Everything To Everyone	16 13
26	Sublime, Badfish	14 17
27	Sublime, Wrong Way	14 12
28	Foo Fighters, Everlong	14 14
29	Pearl Jam, Wishlist	14 17
30	Beck, Deadweight	13 9

WNNX Atlanta
OM: Brian Phillips
PD: Leslie Fram
MD: Sean Demery



	TW	LW
1	Semisonic, Closing Time	33 34
2	Dave Matthews Band, Don't Drink The Water	32 22
3	Eve 6, Inside Out	32 28
4	Harvey Danger, Flagpole Sitta	31 28
5	Garbage, Push It	31 28
6	Urge, Jump Right In	31 28
7	Fastball, The Way	29 34
8	Cherry Poppin' Daddies, Zoot Suit Riot	29 26
9	Everclear, I Will Buy You A New Life	29 33
10	Goo Goo Dolls, Iris	28 31
11	Tori Amos, Spark	28 34
12	Pearl Jam, Wishlist	28 36
13	Verve, Lucky Man	25 0
14	God Lives Underwater, From Your Mouth	25 28
15	Scott Weiland, Barbarella	24 25
16	Bran Van 3000, Drinking In L.A.	24 16
17	Third Eye Blind, Losing A Whole Year	24 21
18	Fuel, Shimmer	23 13
19	Agents Of Good Deeds, Come On	22 13
20	Gustar, Airport Song	21 9
21	Creed, My Own Prison	19 36
22	Matchbox 20, Real World	17 23
23	Everclear, Everything To Everyone	17 18
24	Green Day, Time Of Your Life	17 17
25	Addict, Worstcase	17 0
26	Natalie Imbruglia, Torn	16 13
27	Marcy Playground, Sex And Candy	16 21
28	Foo Fighters, Everlong	16 20
29	Sarah McLachlan, Adia	16 14
30	Days Of The New, Touch, Peel And Stand	15 18

KROQ Los Angeles
VP/Pgm: Kevin Weatherly
APD: Gene Sandbloom
MD: Lisa Worden



	TW	LW
1	Fastball, The Way	39 40
2	Harvey Danger, Flagpole Sitta	38 36
3	Blink 182, Dammit	37 27
4	311, Beautiful Disaster	36 35
5	Garbage, Push It	35 40
6	Cherry Poppin' Daddies, Zoot Suit Riot	35 30
7	Save Ferris, Goodbye	24 25
8	Foo Fighters, My Hero	33 25
9	Marcy Playground, Sex And Candy	31 32
10	Semisonic, Closing Time	29 33
11	Urge, Jump Right In	28 27
12	Verve, Bitter Sweet Symphony	27 25
13	Foo Fighters, Everlong	26 26
14	Everclear, I Will Buy You A New Life	26 24
15	Third Eye Blind, Graduate	25 25
16	Everclear, Everything To Everyone	25 28
17	Green Day, Time Of Your Life	24 21
18	Green Day, Redundant	24 23
19	Tori Amos, Spark	23 32
20	Sublime, Wrong Way	23 22
21	Marcy Playground, Saint Joe On The School	23 21
22	Sublime, Badfish	23 21
23	Beck, Deadweight	21 18
24	Creed, My Own Prison	21 19
25	Natalie Imbruglia, Torn	20 26
26	Sprung Monkey, Get 'em Outta Here	19 0
27	Mono, Life In Mono	19 27
28	God Lives Underwater, From Your Mouth	19 17
29	Pearl Jam, Wishlist	18 21
30	Dave Matthews Band, Don't Drink The Water	18 16

KLYY Los Angeles
VP/Pgm: Steve Blatter
MD: Mike Savage



	TW	LW
1	Fastball, The Way	40 23
2	Goo Goo Dolls, Iris	40 25
3	Everclear, I Will Buy You A New Life	37 18
4	Harvey Danger, Flagpole Sitta	36 11
5	Pearl Jam, Wishlist	25 24
6	Specials, It's You	25 15
7	Lenny Kravitz, If You Can't Say No	23 0
8	Semisonic, Closing Time	20 17
9	Garbage, Push It	18 15
10	Alanis Morissette, Uninvited	18 15
11	Verve, Lucky Man	17 4
12	Mono, Life In Mono	17 16
13	Natalie Imbruglia, Torn	16 2
14	The Mighty Mighty Bosstones, Wrong Thing	14 15
15	Foo Fighters, Everlong	14 10
16	Cherry Poppin' Daddies, Zoot Suit Riot	14 6
17	Days Of The New, Touch, Peel And Stand	13 21
18	Marcy Playground, Sex And Candy	12 10
19	Third Eye Blind, How 's It Going To Be	12 7
20	Sublime, Wrong Way	12 8
21	Fuel, Shimmer	12 8
22	Violet Femmes, Add It Up	11 8
23	Sundays, Summertime	11 8
24	Creed, My Own Prison	11 6
25	Third Eye Blind, How 's It Going To Be	10 9
26	The Smashing Pumpkins, Today	10 5
27	Beck, The New Pollution	10 8
28	Verve, Bitter Sweet Symphony	10 9
29	Everclear, Everything To Everyone	10 6
30	Presidents Of The United State, Video Ki	10 9

WPLT Detroit
PD: Carett Michaels



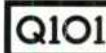
	TW	LW
1	Marcy Playground, Sex And Candy	51 46
2	Natalie Imbruglia, Torn	50 41
3	Goo Goo Dolls, Iris	47 28
4	Alanis Morissette, Uninvited	47 27
5	Matchbox 20, Real World	45 21
6	Green Day, Time Of Your Life	45 38
7	Fastball, The Way	44 19
8	Smash Mouth, Walkin' On The Sun	31 35
9	Mono, Life In Mono	30 23
10	Paula Cole, Me	28 25
11	Semisonic, Closing Time	26 29
12	Verve, Bitter Sweet Symphony	26 25
13	Agents Of Good Deeds, Scream Up The Fire	26 23
14	Sarah McLachlan, Adia	26 22
15	Dave Matthews Band, Don't Drink The Water	26 25
16	Loreena McKennitt, The Mummers' Dance	26 47
17	Ben Folds Five, Brick	25 22
18	Tonic, Open Up Your Eyes	25 27
19	Third Eye Blind, Losing A Whole Year	24 25
20	Everclear, I Will Buy You A New Life	24 13
21	Matchbox 20, 3 AM	23 44
22	Third Eye Blind, How 's It Going To Be	23 13
23	Lisa Loeb, I Do	23 10
24	Everclear, Everything To Everyone	22 22
25	Baronak Ladies, Brian Wilson	23 19
26	Sister Hazel, All For You	19 14
27	Specials, It's You	19 20
28	Soul Asylum, I Will Still Be Laughing	18 22
29	Tori Amos, Spark	17 25
30	Alana Davis, 32 Flavors	17 14

KITS San Francisco
VP/Pgm: Richard Sands
APD: Roland West
MD: Aaron Axelson



	TW	LW
1	Harvey Danger, Flagpole Sitta	41 28
2	Cherry Poppin' Daddies, Zoot Suit Riot	40 28
3	Garbage, Push It	40 29
4	Fastball, The Way	39 30
5	Tori Amos, Spark	35 35
6	Natalie Imbruglia, Torn	35 26
7	Jane's Addiction, Jane Says	31 17
8	Green Day, Redundant	29 20
9	Marcy Playground, Sex And Candy	28 28
10	Urge, Jump Right In	26 23
11	Urge, Jump Right In	26 23
12	Tommy Mack, Hang In Your Head	26 19
13	Everclear, Everything To Everyone	23 17
14	Blur, Song 2	23 20
15	Sonic Youth, Sunday	23 26
16	Foo Fighters, Everlong	22 18
17	Dave Matthews Band, Don't Drink The Water	22 12
18	Foo Fighters, My Hero	22 21
19	Third Eye Blind, How 's It Going To Be	21 15
20	Wank, Forgiveness	21 15
21	Verve, Lucky Man	21 28
22	Verve, Bitter Sweet Symphony	21 22
23	Everclear, I Will Buy You A New Life	20 21
24	Duff Punk, Da Funk	20 11
25	The Mighty Mighty Bosstones, The Impression	20 14
26	Smash Mouth, Walkin' On The Sun	20 10
27	Semisonic, Closing Time	19 22
28	Blink 182, Dammit	19 28
29	Beck, Devil's Haircut	18 9
30	Sublime, Badfish	18 19
31	Radiohead, Karma Police	17 20

WKQX Chicago
PD: Alex Luke
MD: Mary Shuminas



	TW	LW
1	Pearl Jam, Wishlist	43 30
2	Fastball, The Way	43 41
3	Baronak Ladies, Brian Wilson	42 45
4	Semisonic, Closing Time	41 35
5	Dave Matthews Band, Don't Drink The Water	40 38
6	Foo Fighters, My Hero	35 39
7	Harvey Danger, Flagpole Sitta	34 25
8	Eve 6, Inside Out	29 33
9	Everclear, I Will Buy You A New Life	25 32
10	Natalie Imbruglia, Torn	25 26
11	Goo Goo Dolls, Iris	24 23
12	Radiohead, Karma Police	23 26
13	Loreena McKennitt, The Mummers' Dance	23 23
14	Days Of The New, Shell In The Room	21 21
15	Garbage, Push It	21 19
16	Matchbox 20, Real World	20 24
17	Creed, My Own Prison	19 33
18	Foo Fighters, Everlong	18 14
19	Marcy Playground, Sex And Candy	18 16
20	Specials, It's You	17 19
21	Tori Amos, Spark	16 14
22	Smash Mouth, Walkin' On The Sun	16 18
23	Ben Folds Five, Brick For The Dumped	16 11
24	Soul Asylum, I Will Still Be Laughing	16 10
25	Days Of The New, Touch, Peel And Stand	15 15
26	Fuel, Shimmer	15 10
27	Everclear, Everything To Everyone	13 17
28	Verve, Bitter Sweet Symphony	13 14
29	Green Day, Time Of Your Life	13 11
30	Third Eye Blind, Semi-Charmed Life	13 10

WPLY Philadelphia
PD: Jim McGuinn
APD: Doug Kubinski
MD: Preston Eliot



	TW	LW
1	Marcy Playground, Sex And Candy	45 46
2	Natalie Imbruglia, Torn	44 46
3	Third Eye Blind, How 's It Going To Be	43 43
4	Semisonic, Closing Time	43 36
5	Fastball, The Way	41 42
6	Green Day, Time Of Your Life	40 43
7	Creed, My Own Prison	39 27
8	Everclear, Everything To Everyone	37 39
9	Cherry Poppin' Daddies, Zoot Suit Riot	36 34
10	Goo Goo Dolls, Iris	36 35
11	Tori Amos, Spark	17 44
12	Everclear, I Will Buy You A New Life	33 30
13	Pearl Jam, Wishlist	33 33
14	Fuel, Shimmer	30 17
15	Dave Matthews Band, Don't Drink The Water	29 30
16	Matchbox 20, Real World	29 29
17	Ben Folds Five, Brick	28 42
18	Third Eye Blind, Losing A Whole Year	27 28
19	Black Lab, Time Ago	24 16
20	Verve, Bitter Sweet Symphony	23 30
21	Sublime, Deaf Time	22 30
22	Fiona Apple, Criminal	22 21
23	Kula Shaker, Hush	21 16
24	Athenasium, What I Didn't Know	21 20
25	Tonic, Open Up Your Eyes	21 23
26	Matchbox 20, 3 AM	20 20
27	Specials, It's You	11 20
28	Fiona Apple, Shadowboxer	14 28
29	Cornershop, Brrrrful Of Asha	17 23
30	Jane's Addiction, Jane Says	17 24

KOGE Dallas
PD: Duane Doherty
APD/MD: Alan E. Smith



POWER PLAYLISTS

For Week Ending April 19, 1998



Playlists supplied by Broadcast Data Systems' Radio Track service...

KTBT Houston PD: Jim Trapp APD: Steve Robison MD: David Sadoff. Top 30 playlist for Houston.

KOME San Jose OM: Ron Nenni PD: Jay Taylor MD: Jeannette Grgurevic. Top 30 playlist for San Jose.

WXDX Pittsburgh PD: John Moschitta MD: Lenny Diana. Top 30 playlist for Pittsburgh.

KPNT St. Louis OM: Allan Fee APD: Marty Linck MD: Traci Wilde. Top 30 playlist for St. Louis.

CIMX Detroit PD: Murray Brookshaw APD/MD: Vince Cannova. Top 30 playlist for Detroit.

KEDJ Phoenix PD: Shelle Hart APD/MD: Chris Patyk. Top 30 playlist for Phoenix.

WMRQ Hartford PD: Jay Beau Jones MD: Dave Hill. Top 30 playlist for Hartford.

KWOD Sacramento PD: Ron Bunce MD: Carla "Raz" Raswyck. Top 30 playlist for Sacramento.

WENZ Cleveland PD: Dan Binder APD: Ric Bennett MD: No. 1 Son. Top 30 playlist for Cleveland.

WKDF Nashville PD: Kidd Redd MD: Sheri Sexton. Top 30 playlist for Nashville.

WRX Indianapolis PD: Scott Jameson MD: Michael Young. Top 30 playlist for Indianapolis.

KZON Phoenix PD: Paul Peterson MD: Kevin Mannion. Top 30 playlist for Phoenix.

XTRA San Diego PD: Bryan Schock MD: Chris Muckley. Top 30 playlist for San Diego.

WGRD Grand Rapids PD/MD: Margot Smith AMD: Tim Bronson. Top 30 playlist for Grand Rapids.

KZMZ Minneapolis/St. Paul PD: John Lassman APD: Mike Hanson. Top 30 playlist for Minneapolis/St. Paul.

WQBK Albany PD/MD: Kelli McNamara. Top 30 playlist for Albany.

WLUM Milwaukee OM: Alex Cosper PD: Chuck Summers. Top 30 playlist for Milwaukee.

WBRU Providence PD: Tim Schiavelli MD: Mike Green. Top 30 playlist for Providence.

WNVE Rochester PD/MD: Erick Anderson. Top 30 playlist for Rochester.

KNRK Portland, OR PD/MD: Mark Hamilton. Top 30 playlist for Portland, OR.

WEND Charlotte PD: Jack Daniel MD: Rick Brewer. Top 30 playlist for Charlotte.

WFNX Boston PD: Cruze MD: Laurie Gail. Top 30 playlist for Boston.

KXKR Salt Lake City PD: Mike Summers MD: Sean Ziebarth. Top 30 playlist for Salt Lake City.

KCXX Riverside/San Bernardino OM/PD: Dwight Arnold MD: Bruce Pulley. Top 30 playlist for Riverside/San Bernardino.

POWER PLAYLISTS

For Week Ending April 19, 1998



Playlists supplied by Broadcast Data Systems' RadioTrack service. Songs ranked by number of plays in monitored week. Playlists are listed in order of TSA weekly count, beginning with the highest-counting station. Cumulative counts are updated twice yearly following the release of the Spring and Fall Arbitron surveys. The number of stations shown each week varies depending upon area.



KENZ Salt Lake City PD: Bruce Jones MD: Dom Casual



Table with 2 columns: Song Title, Rank. Top songs include Matchbox 20, Real World; Semisonic, Closing Time; Natalie Imbruglia, Torn.

KKND New Orleans OM: Dave Stewart APD/MD: Rod Ryan



Table with 2 columns: Song Title, Rank. Top songs include Creed, My Own Prison; Blink 182, Dammit; Fastball, The Way.

XHRM San Diego PD: Mike Halloran MD: Chaz Kelly



Table with 2 columns: Song Title, Rank. Top songs include Garbage, Push It; Lucy's Fur Coat, El Cahon; Delerium, Silence.

WEDG Buffalo PD: John Hager MD: Rich Wall



Table with 2 columns: Song Title, Rank. Top songs include Goo Goo Dolls, Iris; Foo Fighters, My Hero; Creed, My Own Prison.

WPBZ West Palm Beach PD: John O'Connell MD: Dan O'Brien



Table with 2 columns: Song Title, Rank. Top songs include Chris Cornell, Sunshower; Fuel, Shimmer; Creed, My Own Prison.

WAOZ Cincinnati PD/MD: Matt Harris APD: Sterling Schiessler



Table with 2 columns: Song Title, Rank. Top songs include Third Eye Blind, How's It Going To Be; Natalie Imbruglia, Torn; Creed, My Own Prison.

KNRX Kansas City PD: John Lenac APD: Dave Horn MD: Jason Justice



Table with 2 columns: Song Title, Rank. Top songs include Days Of The New, Shelf In The Room; Fastball, The Way; Garbage, Push It.

KMYZ Tulsa PD: Lynn Barstow MD: Ray Dog



Table with 2 columns: Song Title, Rank. Top songs include Fastball, The Way; Garbage, Push It; Creed, My Own Prison.

KROX Austin PD: Sara Trexler APD/MD: Lloyd "LA" Hocutt



Table with 2 columns: Song Title, Rank. Top songs include Fuel, Shimmer; Fastball, The Way; Creed, My Own Prison.

KTCL Denver PD: Mike O'Connor



Table with 2 columns: Song Title, Rank. Top songs include Fastball, The Way; Beck, Deadwood; Cherry Poppin' Daddies, Zoot Suit Riot.

KXTE Las Vegas PD: Mike Stern MD: Chris Ripley



Table with 2 columns: Song Title, Rank. Top songs include Bad Religion, Shades Of Truth; Tool, Furry Six & 2; Stabbing Westward, Save Yourself.

WXRA Greensboro PD: Tim Satterfield APD: Marcia Gan



Table with 2 columns: Song Title, Rank. Top songs include Creed, My Own Prison; Foo Fighters, My Hero; Third Eye Blind, How's It Going To Be.

WROX Norfolk PD/MD: Al Mitchell



Table with 2 columns: Song Title, Rank. Top songs include Everclear, I Will Buy You A New Life; Marcy Playground, Sex And Candy; Semisonic, Closing Time.

WRAX Birmingham PD: Dave Rossi APD: Hurricane Shane MD: Suzy Boe



Table with 2 columns: Song Title, Rank. Top songs include Fastball, The Way; Natalie Imbruglia, Torn; Goo Goo Dolls, Iris.

WXEX Providence PD: Brent Petersen MD: John Alters

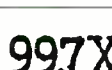


Table with 2 columns: Song Title, Rank. Top songs include Marcy Playground, Sex And Candy; Stabbing Westward, Save Yourself; Days Of The New, Shelf In The Room.

WXEG Dayton PD: Jeff Stevens MD: Alan Rantz



Table with 2 columns: Song Title, Rank. Top songs include Marcy Playground, Sex And Candy; Natalie Imbruglia, Torn; Fastball, The Way.

WBZU Richmond PD: JJ Quest MD: Jay Smack



Table with 2 columns: Song Title, Rank. Top songs include Fuel, Shimmer; Semisonic, Closing Time; Agents Of Good Roots, Come On.

WPLA Jacksonville PD: Jim Randall MD: Greg Brady



Table with 2 columns: Song Title, Rank. Top songs include Radiohead, Karma Police; Creed, My Own Prison; Days Of The New, Shelf In The Room.

KFRR Fresno PD: Bruce Wayne



Table with 2 columns: Song Title, Rank. Top songs include Blink 182, Dammit; Fastball, The Way; Everclear, I Will Buy You A New Life.

KEDG Las Vegas PD: Ftz MD: April Lee



Table with 2 columns: Song Title, Rank. Top songs include Fastball, The Way; Pearl Jam, Wishlist; Garbage, Push It.

KLZR Kansas City PD: Roger The Dodger MD: Bob Osborn AMD: Jeff Petterson



Table with 2 columns: Song Title, Rank. Top songs include Semisonic, Closing Time; Pearl Jam, Wishlist; Garbage, Push It.

WCY Portland, ME PD: Herb Ivy MD: Brian James



Table with 2 columns: Song Title, Rank. Top songs include Fastball, The Way; Semisonic, Closing Time; Dave Matthews Band, Don't Drink The Water.

WWCD Columbus PD/MD: Andy Davis



Table with 2 columns: Song Title, Rank. Top songs include Pearl Jam, Wishlist; Everclear, I Will Buy You A New Life; Fastball, The Way.

KPOI Honolulu PD: Brock Whaley MD: Nikki Basque



Table with 2 columns: Song Title, Rank. Top songs include Marcy Playground, Sex And Candy; Everclear, I Will Buy You A New Life; Natalie Imbruglia, Torn.



★ ★ ★ **AIRPOWER** ★ ★ ★

(Minimum 1,100 detections for the first time)

Total Plays/Gain

HARVEY DANGER 1191/277

Flagpole Sitta (Slash/London/Island)

Total Stations: 68/Chart Move: 26-18

Heavy (30+ plays): 13 KEDG, KHTY, KITS, KJEE, KLYY, KNDD, KNRK, KOME, KROQ, KXKR, WHFS, WKQX, WNNX

Medium (15-29): 27 CFNY, KEDJ, KFMA, KKND, KPOI, KTBB, KTOZ, KWOD, WARQ, WBCN, WBRU, WBTZ, WEQX, WFNX, WJTB, WKRO, WLUM, WMRQ, WPBZ, WQBK, WRXQ, WRXZ, WRXR, WWCD, WXRA, WXRK, XHRM

Light (Under 15): 28

New Airplay This Week: 10 KFTE, KKDM, KPNT, KROX, WBZU, WRXR, WXDX, WXRA, WXZZ, XTRA

AIRPOWER BOUND

Total Plays/Gain

TORI AMOS 1042/160

Spark (Atlantic)

Total Stations: 63/Chart Move: 29-21

Heavy (30+ plays): 5 KITS, KNDD, KWOD, KXKR, WPLY

Medium (15-29): 36 CFNY, CIMX, KEDG, KENZ, KFMA, KFTE, KHTY, KJEE, KLZR, KNRK, KOME, KPOI, KROQ, KROX, KTCL, KTOZ, KZNZ, WARQ, WAVF, WBRU, WENZ, WEQX, WFNX, WHFS, WKQX, WKRO, WLUM, WNNX, WPLT, WRAX, WROX, WRXR, WWCD, WXDX, WXZZ, XHRM

Light (Under 15): 22

New Airplay This Week: 10 KDGE, KKDM, KZON, WCY, WEND, WJTB, WPBZ, WPLA, WWCD, WXDX

DAYS OF THE NEW 1038/26

Shelf In The Room (Outpost/Geffen)

Total Stations: 58/Chart Move: 23-22

Heavy (30+): 14 KFRR, KICT, KMYZ, KNRX, KTBB, WBZU, WCY, WEND, WENZ, WGRD, WKRO, WQBK, WRXQ, WXEX

Medium (15-29): 22 KCXX, KFMA, KFTE, KHTY, KKND, KLZR, KPNT, KPOI, KTOZ, KXKR, WAVF, WBRU, WKQX, WKRL, WLUM, WPLA, WRAX, WROX, WXDX, WXRA, WXRK, WXZZ

Light (Under 15): 22

New Airplay This Week: 1 WPLA

THE URGE 1026/93

Jump Right In (Immortal/Epic)

Total Stations: 61/Chart Move: 25-23

Heavy (30+): 6 KLZR, KNDD, KPNT, KXKR, WBZU, WNNX

Medium (15-29): 29 KEDJ, KFMA, KFTE, KHTY, KICT, KITS, KJEE, KKND, KKND, KNRK, KNRK, KOME, KROQ, KTCL, KTOZ, KWOD, WBCN, WBRU, WBTZ, WEDG, WEND, WHFS, WKDF, WQBK, WROX, WRXR, WWCD, WXDX, WXRA

Light (Under 15): 26

New Airplay This Week: 5 KJEE, WCY, WGRD, WKRO, WRXR

STABBING WESTWARD 891/-29

Save Yourself (Columbia)

Total Stations: 59/Chart Move: 27-25

Heavy (30+): 4 KNDD, KPOI, KXTE, WXEX

Medium (15-29): 21 KEDJ, KFTE, KICT, KJEE, KLZR, KMYZ, KNRK, KNRX, KPNT, KTOZ, WBTZ, WBZU, WCY, WJTB, WKRL, WKRO, WPBZ, WRXQ, WXDX, WXRA, WXRK

Light (Under 15): 34

ALANIS MORISSETTE 875/72

Uninvited (Warner Sunset/Reprise)

Total Stations: 46/Chart Move: 31-26

Heavy (30+): 12 CIMX, KAEP, KFTE, KKDM, KPOI, KTOZ, KWOD, WAQZ, WENZ, WPLT, WRAX, WXEG

Medium (15-29): 11 KEDG, KFMA, KLYY, KROX, WBRU, WCY, WGRD, WPLA, WRXR, WXRK, WXZZ

Light (Under 15): 23

GREEN DAY 842/89

Redundant (Reprise)

Total Stations: 56/Chart Move: 33-28

Heavy (30+): 0

Medium (15-29): 31 CFNY, KFMA, KFTE, KICT, KITS, KJEE, KKND, KLZR, KNDD, KNRK, KOME, KPNT, KROQ, KWOD, WARQ, WBCN, WBTZ, WGRD, WHFS, WLUM, WPBZ, WPLA, WRAX, WROX, WRXQ, WRXR, WRXZ, WWCD, WXDX, WXEX, WXRA

Light (Under 15): 25

New Airplay This Week: 5 KLYY, WAQZ, WBRU, WKRL, WNVE

THE SPECIALS 778/38

It's You (Way Cool Music/MCA)

Total Stations: 52/Chart Move: 34-29

Heavy (30+): 2 KHTY, KNDD

Medium (15-29): 26 KAEP, KCXX, KEDG, KENZ, KFMA, KFTE, KJEE, KLYY, KMYZ, KNRK, KTCL, KZON, WCY, WEQX, WFNX, WGRD, WKQX, WLUM, WMRQ, WPLT, WPLY, WRAX, WROX, WRXR, WWCD, XHRM

Light (Under 15): 24

New Airplay This Week: 3 WAQZ, WPBZ, WXZZ

THE VERVE 747/292

Lucky Man (VC/Hut/Virgin)

Total Stations: 61/Chart Move: Debut 30

Heavy (30+): 2 CIMX, KHTY

Medium (15-29): 22 CFNY, KFMA, KITS, KJEE, KLYY, KLZR, KOME, KXKR, WBCN, WBTZ, WEDG, WENZ, WEQX, WHFS, WKRL, WNNX, WRAX, WRXR, WWCD, WXRK, XHRM, XTRA

Light (Under 15): 37

New Airplay This Week: 17 KFTE, KKND, KLYY, KPNT, KPOI, KTCL, KWOD, KZON, WKQX, WKRO, WNNX, WPLT, WROX, WRXQ, WRXZ, XTRA

ATHENAEUM 711/76

What I Didn't Know (Atlantic)

Total Stations: 51/Chart Move: 35-33

Heavy (30+): 2 KENZ, KWOD

Medium (15-29): 21 KEDG, KFTE, KKDM, KMYZ, KNRK, KPNT, KROX, KTOZ, WARQ, WBCN, WBRU, WCY, WEQX, WGRD, WKDF, WLUM, WPLT, WPLY, WRAX, WRXZ, WXDX

Light (Under 15): 28

New Airplay This Week: 5 KKND, KTBB, WBRU, WXNR, WXZZ

SOUL ASYLUM 693/209

I Will Still Be Laughing (Columbia)

Total Stations: 52/Chart Move: Debut 34

Heavy (30+): 1 WAQZ

Medium (15-29): 26 CIMX, KCXX, KFTE, KHTY, KICT, KKDM, KLZR, KNDD, KTBB, KXKR, WARQ, WAVF, WBCN, WENZ, WEQX, WGRD, WKQX, WKRL, WLUM, WPLT, WQBK, WRAX, WRXR, WWCD, WXNR, WXRA

Light (Under 15): 25

New Airplay This Week: 10 KNRX, KTOZ, WBRU, WEND, WKRO, WLUM, WRXQ, WXEG, WXEX, WXZZ

BLACK LAB 646/118

Time Ago (DGC/Geffen)

Total Stations: 44/Chart Move: 40-36

Heavy (30+): 0

Medium (15-29): 25 KAEP, KEDG, KFMA, KFTE, KICT, KNDD, KTBB, KTOZ, KWOD, KZNZ, WARQ, WEQX, WGRD, WKDF, WKRO, WPBZ, WPLY, WRAX, WRXQ, WRXR, WRXZ, WXDX, WXEX, WXRK, WXZZ

Light (Under 15): 19

New Airplay This Week: 4 KJEE, KOME, KROX, WEDG

AGENTS OF GOOD ROOTS 562/-33

Come On (Let Your Blood Come Alive) (RCA)

Total Stations: 39/Chart Move: 37-38

Heavy (30+): 1 WBZU

Medium (15-29): 15 KFTE, KJEE, KLZR, KMYZ, KNRX, KPNT, WAVF, WBTZ, WEQX, WNNX, WRXZ, WWCD, WXDX, WXRA, XHRM

Light (Under 15): 23

EVE 6 545/85

Inside Out (RCA)

Total Stations: 48/Chart Move: Debut 40

Heavy (30+): 2 KCXX, WNNX

Medium (15-29): 13 KHTY, KKDM, KKND, KNRK, KTCL, KWOD, KXKR, WGRD, WKQX, WRAX, WRXQ, WRXR, WXZZ

Light (Under 15): 33

New Airplay This Week: 4 KJEE, KPOI, WJTB, WQBK

MOST NEW STATIONS

No. Of Stations

THE WALLFLOWERS <i>Heroes (Epic)</i>	24
THE VERVE <i>Lucky Man (VC/Hut/Virgin)</i>	17
LENNY KRAVITZ <i>If You Can't Say No (Virgin)</i>	14
TORI AMOS <i>Spark (Atlantic)</i>	10
BEN FOLDS FIVE <i>Song For The Dumped (550 Music)</i>	10
HARVEY DANGER <i>Flagpole Sitta (Slash/London/Island)</i>	10
SONIC YOUTH <i>Sunday (DGC/Geffen)</i>	10
SOUL ASYLUM <i>I Will Still Be Laughing (Columbia)</i>	10

CHART BOUND

Total Plays/Gain

BEN FOLDS FIVE 517/167

Song For The Dumped (550 Music)

Total Stations: 48

Heavy (30+): 0

Medium (15-29): 14 KFTE, KKND, KLZR, KNRK, KROX, WBTZ, WBZU, WEND, WENZ, WKQX, WPBZ, WRAX, WROX, WRXQ

Light (Under 15): 34

New Airplay This Week: 10 CFNY, KFMA, KTOZ, WBRU, WEDG, WEND, WEQX, WPLY, WXEG, WXZZ

WANK 499/28

Forgiven (Maverick/Reprise)

Total Stations: 46

Heavy (30+): 1 KJEE

Medium (15-29): 17 KEDG, KFTE, KHTY, KITS, KKDM, KOME, KROQ, KTCL, KTOZ, KWOD, WARQ, WEQX, WGRD, WHFS, WRAX, WRXQ, WRXR

Light (Under 15): 28

MARCY PLAYGROUND 497/90

Saint Joe On The School Bus (Capitol)

Total Stations: 42

Heavy (30+): 2 KOME, KWOD

Medium (15-29): 15 CIMX, KEDG, KFMA, KJEE, KKND, KNDD, KROQ, KXKR, WBTZ, WGRD, WHFS, WKRO, WROX, WRXQ, WXRA

Light (Under 15): 25

New Airplay This Week: 4 KCXX, KFTE, KHTY, WAVF

THE WALLFLOWERS 483/338

Heroes (Epic)

Total Stations: 59

Heavy (30+): 0

Medium (15-29): 13 KEDJ, KICT, KPNT, KROQ, KWOD, KXKR, WARQ, WBRU, WEDG, WENZ, WRAX, WWCD, XHRM

Light (Under 15): 46

New Airplay This Week: 24 CFNY, KAEP, KEDJ, KICT, KLYY, KMYZ, KNRX, KOME, KTBB, KWOD, KXKR, KZNZ, WBRU, WEDG, WEND, WENZ, WKDF, WKQX, WLUM, WRAX, WROX, WWCD, WXDX, WXEG

JIMMIE'S CHICKEN SHACK 369/10

Dropping Anchor (Rocket/Island)

Total Stations: 29

Heavy (30+): 1 WBZU

Medium (15-29): 10 KEDJ, KFTE, KKND, KMYZ, KPOI, KTOZ, WKRL, WPBZ, WXDX, WXEX

Light (Under 15): 18

CREED 253/73

Torn (Wind-up)

Total Stations: 36

Heavy (30+): 1 WXEX

Medium (15-29): 6 KFTE, KICT, KNRX, KTOZ, KXTE, WRXQ

Light (Under 15): 29

DEFTONES 252/88

Be Quiet And Drive (Far Away) (Maverick/Warner Bros.)

Total Stations: 32

Heavy (30+): 0

Medium (15-29): 2 KNDD, WXRA

Light (Under 15): 30

New Airplay This Week: 7 KFMA, KLZR, KOME, KXTE, WBZU, WKRL, WPLA

PROPELLERHEADS 238/46

History Repeating (DreamWorks/Geffen)

Total Stations: 34

Heavy (30+): 0

Medium (15-29): 4 KXKR, WBTZ, WBZU, XHRM

Light (Under 15): 30

New Airplay This Week: 4 KITS, WAVF, WFNX, WHFS

★ LENNY KRAVITZ 231/230

If You Can't Say No (Virgin)

Total Stations: 40

Heavy (30+): 1 CIMX

Medium (15-29): 3 CFNY, KLYY, WROX

Light (Under 15): 36

New Airplay This Week: 14 CFNY, CIMX, KEDJ, KFMA, KLYY, KOME, WAVF, WFNX, WKRO, WLUM, WPBZ, WROX, XHRM, XTRA

SONIC YOUTH 217/145

Sunday (DGC/Geffen)

Total Stations: 45

Heavy (30+): 0

Medium (15-29): 5 KITS, KLZR, KNDD, KXKR, WAVF

Light (Under 15): 40

New Airplay This Week: 10 CFNY, KFTE, KLZR, KNRK, KXKR, WAVF, WEQX, WQBK, WXDX, XHRM

SUPERDRAG 214/5

Do The Vampire (Elektra/EEG)

Total Stations: 21

Heavy (30+): 1 KNDD

Medium (15-29): 2 WBTZ, WXRA

Light (Under 15): 18

New Airplay This Week: 1 KLZR

WYCLEF JEAN 185/29

Gone Till November (Ruffhouse/Columbia)

Total Stations: 17

Heavy (30+): 2 KKND, WBTZ

Medium (15-29): 2 CIMX, WEQX

Light (Under 15): 13

New Airplay This Week: 1 WRAX

ECONOLINE CRUSH 175/-1

Home (Restless)

Total Stations: 19

Heavy (30+): 0

Medium (15-29): 3 KKND, WBZU, WXRA

Light (Under 15): 16

New Airplay This Week: 1 WNNX

SAMIAM 170/34

She Found You (Ignition)

Total Stations: 20

Heavy (30+): 0

Medium (15-29): 5 KEDG, KEDJ, KFMA, WAVF, WRAX

Light (Under 15): 15

New Airplay This Week: 3 CIMX, KEDG, KFTE

REVEREND HORTON HEAT 165/38

Broadcast Data Systems logo and detailed song tracking information for the last 3 weeks.

TORI AMOS 1042/160 Spark (Atlantic) Total Stations: 63 Chart Move: 29-21

ATHENAUM 711/76 What I Didn't Know (Atlantic) Total Stations: 51 Chart Move: 35-33

BIEN FOLDS FIVE 517/167 Song For The Dumped (550 Music) Total Stations: 48 Chart Move: 11-1

BLACK LAB 646/118 Time Ago (DGC/Geffen) Total Stations: 44 Chart Move: 40-36

CHEERY POPPIN' DADDIES 1242/55 Zoot Suit Riot (Mojo/Universal) Total Stations: 71 Chart Move: 18-16

CREED 253/73 Torn (Wind-up) Total Stations: 36 Chart Move: 1-1

DAYS OF THE NEW 1038/26 Shelf In The Room (Outpost/Geffen) Total Stations: 58 Chart Move: 23-22

EVERCLEAR 2273/36 I Will Buy You A New Life (Capitol) Total Stations: 79 Chart Move: 3-3

FASTBALL 2616/49 The Way (Hollywood) Total Stations: 78 Chart Move: 1-1

FUEL 1756/167 Shimmer (550 Music) Total Stations: 74 Chart Move: 10-8

GARBAGE 1964/120 Push It (Almo Sounds/Interscope) Total Stations: 78 Chart Move: 6-6

GOD LIVES UNDERWATER 1202/122 From Your Mouth (1500/A&M) Total Stations: 73 Chart Move: 21-17

GOO GOO DOLLS 1694/354 Iris (Warner Sunset/Reprise) Total Stations: 74 Chart Move: 14-9

GREEN DAY 842/89 Redundant (Reprise) Total Stations: 56 Chart Move: 33-28

GOD LIVES UNDERWATER 1202/122 From Your Mouth (1500/A&M) Total Stations: 73 Chart Move: 21-17

SONG ACTIVITY REPORTS

For Week Ending April 19, 1998



Detailed song tracking information for the last 3 weeks for all songs showing increased play this week. Total plays and gain do not include video play. Markets listed in order of population.

HARVEY DANGER 1191/277

Flagpole Sitta (Slash/London Island) Total Stations: 68 Chart Move: 26-18

Table with columns for station, song, and activity. Includes stations like New York L.A., Chicago WKDQ, Dallas KDFW, etc.

JIMMIE'S CHICKEN SHACK 369/10

Droppin' Anchor (Rocket/Island) Total Stations: 29

Table with columns for station, song, and activity. Includes stations like New York L.A., Chicago WKDQ, Dallas KDFW, etc.

MARCY PLAYGROUND 497/90

Saint Joe On The School Bus (Capitol) Total Stations: 42

Table with columns for station, song, and activity. Includes stations like New York L.A., Chicago WKDQ, Dallas KDFW, etc.

MATCHBOX 20 1178/76

Real World (Lava/Anti) Total Stations: 59 Chart Move: 19-19

Table with columns for station, song, and activity. Includes stations like New York L.A., Chicago WKDQ, Dallas KDFW, etc.

DAVE MATTHEWS BAND 2155/127

Don't Drink The Water (RCA) Total Stations: 79 Chart Move: 5-4

Table with columns for station, song, and activity. Includes stations like New York L.A., Chicago WKDQ, Dallas KDFW, etc.

ALANIS MORISSETTE 875/72

Uninvited (Warner Sunset/Reprise) Total Stations: 46 Chart Move: 31-26

Table with columns for station, song, and activity. Includes stations like New York L.A., Chicago WKDQ, Dallas KDFW, etc.

PEARL JAM 1918/204

Whistler (Epic) Total Stations: 78 Chart Move: 7-7

Table with columns for station, song, and activity. Includes stations like New York L.A., Chicago WKDQ, Dallas KDFW, etc.

SEMISONIC 2422/113

Closing Time (MCA) Total Stations: 79 Chart Move: 2-2

Table with columns for station, song, and activity. Includes stations like New York L.A., Chicago WKDQ, Dallas KDFW, etc.

SOUL ASYLUM 693/209

I Will Still Be Laughing (Columbia) Total Stations: 52 Chart Move: Debut 34

Table with columns for station, song, and activity. Includes stations like New York L.A., Chicago WKDQ, Dallas KDFW, etc.

THE SPECIALS 778/38

It's You (Way Cool Music/MCA) Total Stations: 52 Chart Move: 34-29

Table with columns for station, song, and activity. Includes stations like New York L.A., Chicago WKDQ, Dallas KDFW, etc.

THIRD EYE BLIND 1286/18

Losing A Whole Year (Elektra/EEG) Total Stations: 72 Chart Move: 15-13

Table with columns for station, song, and activity. Includes stations like New York L.A., Chicago WKDQ, Dallas KDFW, etc.

THE URGE 1026/93

Jump Right In (Immortal/Epic) Total Stations: 61 Chart Move: 25-23

Table with columns for station, song, and activity. Includes stations like New York L.A., Chicago WKDQ, Dallas KDFW, etc.

THE VERVE 747/292

Lucky Man (VC/Hut/Virgin) Total Stations: 61 Chart Move: Debut 30

Table with columns for station, song, and activity. Includes stations like New York L.A., Chicago WKDQ, Dallas KDFW, etc.

THE WALLFLOWERS 483/338

Heroes (Epic) Total Stations: 59 Chart Move: Debut 30

Table with columns for station, song, and activity. Includes stations like New York L.A., Chicago WKDQ, Dallas KDFW, etc.

WANK 499/28

Forgiven (Maverick/Reprise) Total Stations: 46 Chart Move: Debut 30

Table with columns for station, song, and activity. Includes stations like New York L.A., Chicago WKDQ, Dallas KDFW, etc.

POWER PLAYLISTS

KFOG San Francisco
PD: Paul Marszalek
APD/MD: Bill Evans

	TW	LW
1 Pearl Jam, 'Wishlist	20	15
2 Kenny Wayne Shepherd, Blue On Black	20	21
3 Bonnie Raitt, One Belief Away	20	21
4 Marc Cohn, Already Home	19	22
5 Agents Of Good Roots, Smiling Up The Fro	19	22
6 Rolling Stones, Saint Of Me	17	15
7 Eric Clapton, She's Gone	13	12
8 Matchbox 20, 3 AM	13	8
9 Eric Clapton, My Father's Eyes	12	12
10 Dave Matthews Band, Don't Drink The Water	11	10
11 B.B. King Feat. Bonnie Raitt, Baby I Love	11	10
12 Jimmy Page, Robert Plant, Most High	11	7
13 Box Set, Back To You	10	9
14 Sister Hazel, Hippy	10	9
15 Lisa Loeb, I Do	9	18
16 Whiskeytown, 16 Days	9	9
17 Sheryl Crow, Hard To Make A Stand	8	8
18 Big Head Todd & The Monsters, Boom Boom	8	8
19 Jonny Lang, Live To Me	8	8
20 Robbie Robertson, Unbound	8	10
21 Pete Dinklage, Spacely And Shakira	8	0
22 Indigo Girls, Shame On You	8	7
23 Rolling Stones, Anybody Seen My Baby	7	10
24 Sarah McLachlan, Sweet Surrender	7	9
25 B.B. King Feat. Tracy Chapman, The Thrill	7	10
26 Verve, Bitter Sweet Symphony	7	6
27 Mark Knopfler, Wag The Dog	7	6
28 Robert Cray Band, 1040 Blues	6	0
29 The Wallflowers, One Headlight	6	8
30 Blues Traveler, Most Precarious	6	10

WBOS Boston
PD: Jim Herron
MD: Cliff Nash

	TW	LW
1 Edwin McCain, I'll Be	39	32
2 Eric Clapton, My Father's Eyes	33	33
3 Natalie Imbruglia, Torn	32	31
4 Third Eye Blind, How's It Going To Be	31	31
5 Marcy Playground, Sex And Candy	31	33
6 Matchbox 20, Real World	29	23
7 Bonnie Raitt, One Belief Away	29	22
8 Verve, Lucky Man	23	24
9 Goo Goo Dolls, Iris	23	26
10 Paula Cole, Me	22	23
11 Tonic, If You Could Only See	22	17
12 Smash Mouth, Walkin' On The Sun	22	18
13 Dave Matthews Band, Don't Drink The Water	22	21
14 Fastball, The Way	22	23
15 Green Day, Time Of Your Life	19	22
16 The Verve Pipe, The Freshmen	18	19
17 Matchbox 20, 3 AM	17	15
18 William Topley, The Ring	17	15
19 Verve, Bitter Sweet Symphony	15	16
20 Chantal Kreviazuk, Unsurrounded	13	3
21 Barenaked Ladies, The Old Apartment	12	12
22 Sublime, What I Got	12	12
23 Dave Matthews Band, Crash Into Me	11	15
24 Rebekah, Sin So Well	11	9
25 Counting Crows, A Long December	10	12
26 Sister Hazel, All For You	10	17
27 Tracy Chapman, Give Me One Reason	10	12
28 The Mighty Mighty Bosstones, The Impression	10	11
29 Ben Folds Five, Brick	10	18
30 Yonda Shepard, Searchin' My Soul	10	8

WXRT Chicago
VP/Pgm: Norm Winer
MD: Patty Martin

	TW	LW
1 Marcy Playground, Sex And Candy	22	20
2 Dave Matthews Band, Don't Drink The Water	21	20
3 Loreena McKennitt, The Mummers' Dance	17	20
4 Fastball, The Way	16	15
5 Jimmy Page, Robert Plant, Most High	13	20
6 Bonnie Raitt, One Belief Away	12	14
7 Agents Of Good Roots, Smiling Up The Fro	12	10
8 Eric Clapton, My Father's Eyes	12	13
9 Kristin Hersh, Like You	11	4
10 Tori Amos, Spark	11	7
11 Pearl Jam, Wishlist	10	10
12 Chris Stills, Razorblades	10	10
13 Steve Peltz, Silver Lining	9	13
14 Radiohead, Karma Police	9	7
15 Whiskeytown, 16 Days	9	5
16 Matchbox 20, Real World	9	7
17 Pearl Jam, In Hiding	9	10
18 Moby, 180	9	11
19 Robbie Robertson, Unbound	9	9
20 Verve, Bitter Sweet Symphony	8	13
21 Kenny Wayne Shepherd, Blue On Black	8	7
22 Beth Orton, Someone's Daughter	8	8
23 Eric Clapton, She's Gone	8	10
24 Ani DiFranco, As Is	8	9
25 Pearl Jam, Given To Fly	8	6
26 Semisonic, Closing Time	8	6
27 Goo Goo Dolls, Iris	7	5
28 Lisa Loeb, I Do	7	6
29 Eric Clapton, Back And Tired	7	10
30 Eric Clapton, One Chance	7	8

KTCZ Minneapolis
PD: Lauren MacLeash
MD: Mike Wolf

	TW	LW
1 Verve, Bitter Sweet Symphony	27	17
2 Fastball, The Way	26	20
3 Bonnie Raitt, One Belief Away	25	20
4 Kenny Wayne Shepherd, Blue On Black	25	21
5 Marc Cohn, Already Home	24	10
6 Eric Clapton, My Father's Eyes	24	18
7 Agents Of Good Roots, Smiling Up The Fro	23	7
8 Marcy Playground, Sex And Candy	14	21
9 Honeydew, Kisses You	11	6
10 Gregg Allman, Startin' Over	10	7
11 John Fogarty, Bring It Down To Jelly Roll	10	6
12 Goo Goo Dolls, Iris	10	6
13 Dave Matthews Band, Don't Drink The Water	10	8
14 Matchbox 20, Real World	9	6
15 Edwin McCain, I'll Be	9	6
16 Ben Folds Five, Brick	8	8
17 U2, I Still Haven't Found What I'm	8	3
18 David Bowie, Changes	8	6
19 Corey Steves, Take It Back	8	8
20 Soul Asylum, I Will Still Be Laughing	8	6
21 Shawn Colvin, Nothin' On Me	8	7
22 B.B. King Feat. Bonnie Raitt, Baby I Love	7	7
23 Rob Stewart, Maggie May	7	7
24 Eric Clapton, She's Gone	7	4
25 Dire Straits, Money For Nothing	7	5
26 Semisonic, Closing Time	7	6
27 Bob Dylan, Love Sick	7	5
28 Jars Of Clay, Five Candles	7	7
29 Steve Peltz, Silver Lining	7	3
30 Sister Hazel, All For You	6	3

KBCO Denver
PD: Dave Benson
MD: Scott Arbough

	TW	LW
1 Agents Of Good Roots, Smiling Up The Fro	32	28
2 Fastball, The Way	30	28
3 Dave Matthews Band, Don't Drink The Water	30	28
4 Eric Clapton, My Father's Eyes	30	27
5 Bonnie Raitt, One Belief Away	27	17
6 Everything, Hooch	20	17
7 Sarah McLachlan, Adia	19	26
8 Sister Hazel, Hippy	18	17
9 Dixie Chicks, Not Ready To Wait	18	17
10 Kenny Wayne Shepherd, Blue On Black	18	19
11 Matchbox 20, 3 AM	17	19
12 Fraddy Jones Band, Wonder	17	17
13 Alana Davis, Crazy	17	17
14 Brad, The Day Begins	16	18
15 William Topley, The Ring	16	16
16 Edwin McCain, I'll Be	16	17
17 Third Eye Blind, How's It Going To Be	16	19
18 Marc Cohn, Already Home	16	18
19 Marcy Playground, Sex And Candy	15	18
20 Loreena McKennitt, The Mummers' Dance	15	18
21 Indigo Girls, Get Out The Map	15	17
22 Natalie Imbruglia, Torn	14	10
23 Eric Clapton, My Father's Eyes	14	10
24 Delbert McClinton, Somebody To Love You	9	7
25 William Topley, Starbrook Woman	8	12
26 Semisonic, Closing Time	8	0
27 John Fogarty, Blueboy	8	7
28 John Mellencamp, Just Another Day	8	7
29 Smash Mouth, Walkin' On The Sun	7	6
30 Blues Traveler, Most Precarious	7	6

WHPT Tampa
PD: Chuck Beck
MD: Kurt Schreiner

	TW	LW
1 Eric Clapton, My Father's Eyes	34	30
2 John Mellencamp, Without Expression	32	31
3 Natalie Imbruglia, Torn	32	30
4 Sister Hazel, Hippy	31	34
5 Matchbox 20, 3 AM	30	30
6 Dave Matthews Band, Don't Drink The Water	13	14
7 The Wallflowers, Heroes	11	0
8 Bonnie Raitt, One Belief Away	10	8
9 Todd Rundgren, Bang The Drum All Day	8	4
10 Melissa Etheridge, I'm The Only One	8	3
11 U2, Pride	8	7
12 Sheryl Crow, Home	8	10
13 Eric Clapton, She's Gone	8	4
14 Peter Gabriel, In Your Eyes	7	6
15 John Fogarty, The Old Man Down The Road	7	6
16 Robert Plant, Little By Little	7	6
17 Talking Heads, Once In A Lifetime	7	5
18 Tim Cochrane, Life Is A Highway	7	6
19 Robert Plant, Big Log	7	5
20 Grateful Dead, Touch Of Grey	7	5
21 Cars, You Might Think	7	3
22 Traveling Wilburys, Handle With Care	7	4
23 Eric Clapton, She's Gone	11	10
24 Dishwalla, Counting Blue Cars	7	7
25 Leah Anderson, It's Alright It's OK	7	6
26 Tears For Fears, Everybody Wants To Rule	7	3
27 Lisa Loeb, Let's Forget About It	7	5
28 Talking Heads, Burning Down The House	7	6
29 Georgia Satellites, Keep Your Hands To Y	7	5
30 Agents Of Good Roots, Smiling Up The Fro	7	7

KMTT Seattle
SM: Chris Mays
APD: Jason Packer
MD: Dean Carlson

	TW	LW
1 Ben Harper, Mama's Trappin'	22	18
2 Dave Matthews Band, Don't Drink The Water	21	17
3 Robbie Robertson, Unbound	19	15
4 Bonnie Raitt, One Belief Away	18	17
5 Marc Cohn, Already Home	17	20
6 Eric Clapton, My Father's Eyes	17	20
7 Sarah McLachlan, Adia	15	19
8 Big Head Todd & The Monsters, Boom Boom	11	9
9 Elaine Summers, The Real Low Down	10	6
10 B.B. King Feat. Rolling Stones, I'm T	8	6
11 Finley Quaye, Sunday Shining	8	7
12 Agents Of Good Roots, Smiling Up The Fro	8	5
13 Loreena McKennitt, Marco Polo	8	5
14 Ani DiFranco, As Is	8	7
15 Chris Stills, Razorblades	7	10
16 Eric Clapton, She's Gone	7	7
17 Rebekah, Sin So Well	6	7
18 U2, Staring At The Sun	6	3
19 Radiohead, Karma Police	6	9
20 The Wallflowers, One Headlight	6	9
21 Specials, It's You	6	2
22 Verve, Lucky Man	6	7
23 Pearl Jam, Wishlist	6	6
24 Steve Peltz, Silver Lining	6	3
25 Train, Meet Virginia	6	4
26 Paula Cole, Me	6	7
27 Pete Dinklage, Spacely And Shakira	6	6
28 Tom Petty & The Heartbreakers, Walls	6	1
29 Loreena McKennitt, The Mummers' Dance	5	5
30 Blues Traveler, Run Around	5	2

WVRV St. Louis
PD: Mike Richter
APD: Chuck Jeffries

	TW	LW
1 Edwin McCain, I'll Be	40	41
2 Matchbox 20, 3 AM	37	37
3 Natalie Imbruglia, Torn	37	35
4 Third Eye Blind, How's It Going To Be	35	38
5 Marcy Playground, Sex And Candy	34	28
6 Eric Clapton, My Father's Eyes	32	22
7 Bonnie Raitt, One Belief Away	31	28
8 Dave Matthews Band, Don't Drink The Water	31	28
9 Sarah McLachlan, Adia	25	13
10 Green Day, Time Of Your Life	25	17
11 Alana Davis, Crazy	22	9
12 Lisa Loeb, I Do	22	37
13 Paula Cole, Me	20	17
14 Fastball, The Way	20	17
15 Semisonic, Closing Time	20	11
16 Marc Cohn, Already Home	19	1
17 Shawn Colvin, Nothin' On Me	19	18
18 Collective Soul, December	17	16
19 Smash Mouth, Walkin' On The Sun	16	24
20 Tonic, If You Could Only See	15	11
21 Sundays, Summertime	15	15
22 Naked, Raining On The Sky	14	19
23 Billie Myers, Kiss The Rain	14	15
24 Barenaked Ladies, Binan Wilson	13	17
25 Sister Hazel, All For You	12	15
26 The Wallflowers, One Headlight	11	13
27 The Mighty Mighty Bosstones, The Impression	11	10
28 Natalie Imbruglia, Torn	11	10
29 Dishwalla, Counting Blue Cars	10	16
30 Agents Of Good Roots, Smiling Up The Fro	10	18

KXPK Denver
PD: Gary Schoenwetter
APD/MD: Eric Schmidt

	TW	LW
1 Semisonic, Closing Time	32	29
2 Fastball, The Way	31	30
3 Agents Of Good Roots, Smiling Up The Fro	30	31
4 Dave Matthews Band, Don't Drink The Water	25	25
5 Kenny Wayne Shepherd, Blue On Black	25	25
6 Pearl Jam, Wishlist	25	23
7 Third Eye Blind, How's It Going To Be	23	13
8 Everything, Hooch	17	0
9 Everclear, I Will Buy You A New Life	17	12
10 Bonnie Raitt, One Belief Away	16	15
11 William Topley, The Ring	14	10
12 Natalie Imbruglia, Torn	13	13
13 Robbie Robertson, Unbound	13	13
14 Marcy Playground, Sex And Candy	12	10
15 Radiohead, Karma Police	12	12
16 Tori Amos, Spark	12	10
17 Matchbox 20, 3 AM	11	7
18 Goo Goo Dolls, Iris	11	0
19 Paula Cole, Me	11	11
20 Verve, Lucky Man	11	13
21 Sublime, Santitas	11	9
22 Smash Mouth, Walkin' On The Sun	9	7
23 Big Head Todd & The Monsters, Boom Boom	9	3
24 Sugar Ray, Fly	8	7
25 Eric Johnson, S.R.V.	8	9
26 Lisa Loeb, I Do	8	5
27 Sister Hazel, Hippy	8	9
28 Sarah McLachlan, Sweet Surrender	8	5
29 Matchbox 20, Real World	8	12
30 Green Day, Time Of Your Life	8	10

CIDR Detroit
PD: Wendy Duff
MD: Ann Delis

	TW	LW
1 Paula Cole, Me	37	37
2 Sarah McLachlan, Adia	34	32
3 Robbie Robertson, Unbound	34	34
4 Bonnie Raitt, One Belief Away	34	34
5 Natalie Imbruglia, Torn	34	34
6 Marc Cohn, Already Home	33	34
7 Agents Of Good Roots, Smiling Up The Fro	32	32
8 Fastball, The Way	31	17
9 Edwin McCain, I'll Be	24	30
10 Eric Clapton, My Father's Eyes	22	35
11 Verve, Lucky Man	19	13
12 Alanis Morissette, Uninvited	19	19
13 Ani DiFranco, Little Plastic Castle	18	19
14 Dave Matthews Band, Don't Drink The Water	18	19
15 Semisonic, Closing Time	18	16
16 Kenny Wayne Shepherd, Blue On Black	17	20
17 Tori Amos, Spark	17	14
18 Alana Davis, Crazy	17	10
19 Steve Peltz, Silver Lining	17	3
20 Eliza Fornsberg, Lost Count	16	17
21 Goo Goo Dolls, Iris	16	12
22 Lisa Loeb, I Do	15	12
23 Billie Myers, Kiss The Rain	15	24
24 Eric Clapton, She's Gone	13	10
25 Jai, Heaven	13	0
26 Billy Bragg, Beat Myself Up	12	3
27 Junkster, She Only One	12	11
28 Whiskeytown, 16 Days	11	11
29 Fiona Apple, Criminal	11	12
30 Sundays, Summertime	11	11

KKZ Dallas
PD: Joel Folger
Interim MD: Abbey Goldstein

	TW	LW
1 Kenny Wayne Shepherd, Blue On Black	29	28
2 Natalie Imbruglia, Torn	26	28
3 Marcy Playground, Sex And Candy	25	23
4 Third Eye Blind, How's It Going To Be	24	24
5 Agents Of Good Roots, Smiling Up The Fro	24	25
6 Eric Clapton, My Father's Eyes	24	26
7 Matchbox 20, 3 AM	24	22
8 Verve, Bitter Sweet Symphony	14	14
9 Athenaeum, What I Didn't Know	13	15
10 Shawn Colvin, Nothin' On Me	13	12
11 Pearl Jam, Wishlist	13	14
12 Too Much To, Forget About It	13	9
13 Edwin McCain, I'll Be	13	12
14 Rolling Stones, Saint Of Me	12	11
15 Goo Goo Dolls, Iris	12	14
16 Everything, Hooch	11	4
17 Bonnie Raitt, One Belief Away	11	11
18 Marc Cohn, Already Home	11	12
19 The Wallflowers, One Headlight	11	9
20 Dave Matthews Band, Don't Drink The Water	11	13
21 Specials, It's You	11	14
22 Semisonic, Closing Time	10	12
23 Eric Clapton, She's Gone	10	16
24 Mayfield, Reach Out	10	0
25 Soul Asylum, I Will Still Be Laughing	10	10
26 Lisa Loeb, Let's Forget About It	9	8
27 Dave Matthews Band, Crash Into Me	9	9
28 Paula Cole, Me	9	9
29 Matchbox 20, Real World	9	11
30 Ani DiFranco, Little Plastic Castle	8	12

WXRV Boston
PD: Joanne Doody
MD: Mike Mullaney

COMBINED ROCK AUDIENCE										AIRPLAY BY FORMAT									
TW	LW	WKS	TITLE (IMPRINT/PROMOTION LABEL)	ARTIST	THIS WEEK			LAST WEEK			MAINSTREAM			MODERN			TRIPLE-A		
					Audience (millions)	Detections No.	Rank	Audience (millions)	Detections No.	Rank	Audience (millions)	Detections No.	Rank	Audience (millions)	Detections No.	Rank	Audience (millions)	Detections No.	Rank
1	1	26	SEX AND CANDY (CAPITOL)	MARCY PLAYGROUND	25.1286	3637	1	26.5796	3902	1	8.9754	1312	6	14.3604	2049	5	1.7928	276	7
2	3	10	THE WAY (HOLLYWOOD)	FASTBALL	20.4851	3290	3	19.7797	3123	3	1.7545	284	—	16.3252	2616	1	2.4054	390	2
3	2	15	MY HERO (ROSWELL/CAPITOL)	FOO FIGHTERS	19.9836	2844	7	20.3735	2893	6	8.4754	1280	8	11.5082	1564	10	—	—	—
4	5	4	DON'T DRINK THE WATER (RCA)	DAVE MATTHEWS BAND	19.9619	3203	4	19.1829	2952	4	3.5007	637	23	13.7960	2155	4	2.6652	411	1
5	4	8	CLOSING TIME (MCA)	SEMISONIC	19.9254	3488	2	19.4028	3308	2	4.0258	831	14	14.8509	2422	2	1.0487	235	12
6	8	9	WISHLIST (EPIC)	PEARL JAM	19.0009	2906	5	17.3259	2450	10	5.5548	800	16	12.2283	1918	7	1.2178	188	18
7	6	31	MY OWN PRISON (WIND-UP)	CREED	17.3365	2692	8	18.7642	2767	7	7.1895	1120	11	10.0952	1554	11	0.0518	18	—
8	7	13	I WILL BUY YOU A NEW LIFE (CAPITOL)	EVERCLEAR	16.7860	2878	6	17.2448	2902	5	2.6293	511	28	13.8264	2273	3	0.3303	94	—
9	9	13	SHELF IN THE ROOM (OUTPOST/GEFFEN)	DAYS OF THE NEW	14.7018	2631	9	15.6848	2681	9	9.1973	1593	3	5.5045	1038	22	—	—	—
10	18	4	IRIS (REPRISE)	GOO GOO DOLLS	14.3877	2202	13	11.8558	1688	25	2.3695	347	39	11.2170	1694	9	0.8012	161	20
11	11	12	BLUE ON BLACK (REVOLUTION)	KENNY WAYNE SHEPHERD BAND	14.3075	2299	11	14.2104	2212	11	12.2132	1995	1	0.2723	44	—	1.8220	260	8
12	15	3	MOST HIGH (ATLANTIC)	JIMMY PAGE ROBERT PLANT	14.2459	2115	14	13.1831	1908	17	13.1890	1987	2	0.4213	39	—	0.6356	89	—
13	10	10	CUT YOU IN (COLUMBIA)	JERRY CANTRELL	13.7590	2606	10	15.4024	2701	8	8.9050	1466	5	4.8540	1140	20	—	—	—
14	16	4	PUSH IT (ALMO SOUNDS/INTERSCOPE)	GARBAGE	12.7093	2091	15	12.8547	1951	14	0.5897	118	—	12.0581	1964	6	0.0615	9	—
15	19	7	SHIMMER (550 MUSIC)	FUEL	12.2892	2237	12	11.7053	2061	12	1.8483	481	31	10.4409	1756	8	—	—	—
16	13	37	TOUCH, PEEL AND STAND (OUTPOST/GEFFEN)	DAYS OF THE NEW	12.0315	1765	17	13.7677	1932	16	6.4214	926	12	5.6101	839	—	—	—	—
17	12	23	TIME OF YOUR LIFE (GOOD RIDDANCE) (REPRISE)	GREEN DAY	11.4558	1709	21	13.7449	1951	15	2.2236	352	38	8.6965	1245	15	0.5357	112	—
18	14	29	BITTER SWEET SYMPHONY (VCI/HUT/VIRGIN)	THE VERVE	11.0923	1538	26	13.2538	1750	20	1.4916	239	—	8.3936	1088	—	1.2071	211	15
19	21	4	REAL WORLD (LAVA/ATLANTIC)	MATCHBOX 20	10.7779	2007	16	10.6126	1855	18	3.7210	668	20	6.2270	1178	19	0.8299	161	—
20	20	11	TORN (RCA)	NATALIE IMBRUGLIA	10.6174	1732	18	11.1439	1742	21	0.3478	29	—	8.4541	1333	12	1.8155	370	4
21	22	41	EVERLONG (ROSWELL/CAPITOL)	FOO FIGHTERS	10.0629	1301	30	10.5243	1307	33	3.3147	433	—	6.7482	868	—	—	—	—
22	23	17	THE UNFORGIVEN II (ELEKTRA/EEG)	METALLICA	9.7059	1394	29	10.4782	1551	29	7.8358	1188	9	1.8701	206	—	—	—	—
23	36	4	FLAGPOLE SITTA (SLASH/LONDON/ISLAND)	HARVEY DANGER	9.5182	1233	35	8.0147	940	45	0.1709	41	—	9.3454	1191	18	0.0019	1	—
24	27	5	I LIE IN THE BED I MAKE (VIRGIN)	BROTHER CANE	9.3285	1715	19	9.5265	1681	26	8.3386	1576	4	0.9899	139	—	—	—	—
25	25	6	LOSING A WHOLE YEAR (ELEKTRA/EEG)	THIRD EYE BLIND	9.1215	1676	22	9.6854	1615	27	1.5326	378	37	7.5618	1286	13	0.0271	12	—
26	24	28	3 AM (LAVA/ATLANTIC)	MATCHBOX 20	9.0464	1457	27	10.0805	1593	28	3.5506	592	—	3.9184	628	—	1.5774	237	11
27	17	18	GIVEN TO FLY (EPIC)	PEARL JAM	8.8976	1628	23	12.4053	2054	13	3.9550	735	18	4.8097	866	27	0.1329	27	—
28	29	25	HOW'S IT GOING TO BE (ELEKTRA/EEG)	THIRD EYE BLIND	8.5414	1262	33	9.2625	1348	32	0.3339	31	—	6.9022	1005	24	1.3053	226	13
29	33	22	DAMMIT (GROWING UP) (CARGO/MCA)	BLINK 182	8.2359	1138	40	8.3058	1225	36	1.1061	161	—	7.1298	977	—	—	—	—
30	28	34	EVERYTHING TO EVERYONE (CAPITOL)	EVERCLEAR	8.2040	1037	42	9.4059	1097	37	0.6961	104	—	7.3852	899	—	0.1227	34	—
31	37	3	TORN (WIND-UP)	CREED	8.2033	1549	25	7.9159	1466	31	7.3635	1296	7	0.8398	253	—	—	—	—
32	35	7	ZOOT SUIT RIOT (MOJO/UNIVERSAL)	CHERRY POPPIN' DADDIES	8.1162	1283	31	8.1065	1241	35	0.0067	5	—	7.9779	1242	16	0.1316	36	—
33	32	3	SAVE YOURSELF (COLUMBIA)	STABBING WESTWARD	7.8379	1710	20	8.5194	1718	23	3.8620	819	15	3.9759	891	25	—	—	—
34	39	2	SPARK (ATLANTIC)	TORI AMOS	7.8132	1182	38	7.2670	1007	41	0.0117	3	—	7.1716	1042	21	0.6299	137	—
35	30	21	CLUMSY (COLUMBIA)	OUR LADY PEACE	7.7986	1555	24	9.1178	1814	19	1.2831	271	—	6.5105	1282	14	0.0050	2	—
36	34	41	WALKIN' ON THE SUN (INTERSCOPE)	SMASH MOUTH	7.2395	1189	37	8.2500	1284	34	1.5629	269	—	4.8886	793	—	0.7880	127	—
37	NEW		HEROES (EPIC)	THE WALLFLOWERS	7.1189	865	50	2.4705	266	199	3.2849	335	—	3.3157	483	—	0.5183	47	—
38	31	13	KARMA POLICE (CAPITOL)	RADIOHEAD	6.8210	837	53	8.6891	1016	39	0.1582	21	—	6.1526	728	32	0.5102	88	—
39	RE-ENTRY		JANE SAYS (WARNER BROS.)	JANE'S ADDICTION	6.6207	688	63	6.1938	688	65	1.3191	148	—	5.2700	533	—	0.0316	7	—
40	NEW		I WILL STILL BE LAUGHING (COLUMBIA)	SOUL ASYLUM	6.4914	1268	32	4.7932	871	49	2.8421	524	26	3.4167	693	34	0.2326	51	—

Records showing an increase in audience over the previous week, regardless of chart movement. Rankings broken down by mainstream, modern and triple-A formats (on right side of this page) correspond to charts printed in this week's Monitor and therefore rankings do not exist for recurrences and records below No. 40 (No. 20 for triple-A). Audience computed by cross-referencing exact times of airplay with Arbitron listener data. ©1998, Billboard/BPI Communications.

the **power** of information... right at your fingertips!

This Radio Powerbook contains all the information that you need to make your job easier.

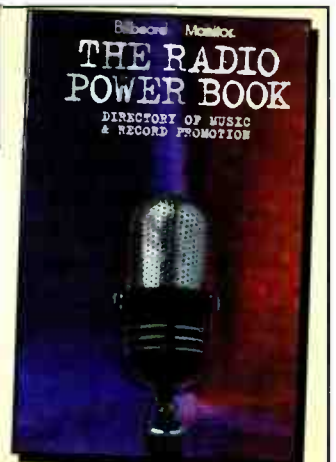
LOCATE THOUSANDS OF LISTINGS IN A SNAP:

Comprehensive listings of radio stations (both BDS and non-BDS monitored stations) in all 15 formats covered by Airplay Monitor
Consultants • Label Promotion Directory • Arbitron Ratings and History for Top 100 Markets • BDS and How It Works

ORDER NOW!!

Order your copy now for \$85 (plus \$6 shipping and handling) by calling 1-800-344-7119. You can fax your order to (732) 363-0338 or mail this ad with check or money order to: Billboard Directories, P.O. Box 2016, Lakewood, NJ 08701

Please add appropriate sales tax in NY, NJ, PA, CA, TN, MA, IL & DC. Orders payable in U.S. funds only. All sales are final.



sprung monkey



EARLY ADDS:

KROQ
Q101
KOME
WARQ
WXZZ
XTRA
XHRM
KTEG
WHFS

“get ‘em outta here”

ADDS 4/28

Produced by Jim Wirt
Executive Producer: Dave Kaplan
Mixed by Jean-Marie Horvat and Dave Kaplan

from the upcoming album *mr. funny face*

Management: Al Guerra Management

www.sprungmonkey.com

© 1998 Surfdog Records

World Radio History



Hollywood
RECORDS

Compiled from a national sample of airplay reported by Broadcast Data Systems. Radio Track service by Rock Airplay Monitor. 100 mainstream rock and 80 modern rock stations are electronically monitored 24 hours a day, 7 days a week. Songs are ranked by number of detections. © 1998 Broadcast Data Communications.

THIS WEEK	LAST WEEK	WKS. ON CHART	MAINSTREAM		DETECTIONS	
			TITLE/IMPRINT/PROMOTION LABEL	ARTIST	TW	LW
			★ ★ ★ No. 1 ★ ★ ★			
①	1	15	BLUE ON BLACK <small>REVOLUTION</small> 3 weeks at No. 1	KENNY WAYNE SHEPHERD BAND	1995	1903
②	2	3	MOST HIGH ATLANTIC	JIMMY PAGE ROBERT PLANT	1987	1814
③	3	18	SHELF IN THE ROOM <small>OUTPOST/GEFFEN</small>	DAYS OF THE NEW	1593	1669
④	4	6	I LIE IN THE BED I MAKE VIRGIN	BROTHER CANE	1576	1555
⑤	6	10	CUT YOU IN COLUMBIA	JERRY CANTRELL	1466	1503
⑥	7	20	SEX AND CANDY CAPITOL	MARCY PLAYGROUND	1312	1479
⑦	10	11	TORN WIND-UP	CREED	1296	1286
⑧	9	14	MY HERO ROSWELL/CAPITOL	FOO FIGHTERS	1280	1304
⑨	8	22	THE UNFORGIVEN II ELEKTRA/VEEG	METALLICA	1188	1368
⑩	5	9	WITHOUT YOU WARNER BROS.	VAN HALEN	1159	1519
⑪	11	36	MY OWN PRISON WIND-UP	CREED	1120	1167
⑫	12	41	TOUCH, PEEL AND STAND <small>OUTPOST/GEFFEN</small>	DAYS OF THE NEW	926	919
⑬	16	11	FUEL ELEKTRA/VEEG	METALLICA	875	858
⑭	17	7	CLOSING TIME MCA	SEMISONIC	831	793
⑮	18	7	SAVE YOURSELF COLUMBIA	STABBING WESTWARD	819	798
			★ ★ ★ AIRPOWER ★ ★ ★			
⑯	27	2	WISHLIST EPIC	PEARL JAM	800	560
⑰	15	11	USE THE MAN CAPITOL	MEGADETH	793	849
⑱	13	18	GIVEN TO FLY EPIC	PEARL JAM	735	915
⑲	21	5	SHE'S GONE REPRISE	ERIC CLAPTON	676	668
⑳	24	4	REAL WORLD LAVA/ATLANTIC	MATCHBOX 20	668	605
㉑	14	15	SUNSHOWER ATLANTIC	CHRIS CORNELL	661	844
㉒	19	8	MUNGO CITY HIFI/SIRE/WARNER BROS.	SPACEHOG	649	727
㉓	26	3	DON'T DRINK THE WATER RCA	DAVE MATTHEWS BAND	637	557
㉔	31	2	SLAM DUNK WAWAZAT!!	DLR BAND	595	472
㉕	22	10	RAGE CMC INTERNATIONAL	VAN ZANT	575	629
㉖	NEW		I WILL STILL BE LAUGHING COLUMBIA	SOUL ASYLUM	524	339
㉗	25	17	SAINT OF ME VIRGIN	THE ROLLING STONES	513	602
㉘	23	12	I WILL BUY YOU A NEW LIFE CAPITOL	EVERCLEAR	511	599
㉙	NEW		FIRE IN THE HOLE WARNER BROS.	VAN HALEN	494	312
㉚	28	8	CEREMONY EPIC	JOE SATRIANI	494	510
㉛	30	4	SHIMMER 550 MUSIC	FUEL	481	472
㉜	33	2	TIME AGO OGC/GEFFEN	BLACK LAB	457	411
㉝	36	4	BOOM BOOM REVOLUTION BIG HEAD TODD & THE MONSTERS WITH JOHN LEE HOOKER		424	415
㉞	29	11	I AM A PIG NOTHING/INTERSCOPE	TWO	411	493
㉟	34	6	DROPPING ANCHOR ROCKET/ISLAND	JIMMIE'S CHICKEN SHACK	406	409
㊱	40	3	BAKER STREET EMI-CAPITOL	FOO FIGHTERS	383	380
㊲	NEW		LOSING A WHOLE YEAR ELEKTRA/VEEG	THIRD EYE BLIND	378	331
㊳	35	21	TIME OF YOUR LIFE (GOOD RIDDANCE) REPRISE	GREEN DAY	352	406
㊴	NEW		IRIS WARNER SUNSET/REPRISE	GOO GOO DOLLS	347	225
㊵	RE-ENTRY		TANGERINE ROA/RUNNER	LIFE OF AGONY	336	359

THIS WEEK	LAST WEEK	WKS. ON CHART	MODERN		DETECTIONS	
			TITLE/IMPRINT/PROMOTION LABEL	ARTIST	TW	LW
			★ ★ ★ No. 1 ★ ★ ★			
①	1	11	THE WAY HOLLYWOOD 4 weeks at No. 1	FASTBALL	2616	2567
②	2	8	CLOSING TIME MCA	SEMISONIC	2422	2309
③	3	13	I WILL BUY YOU A NEW LIFE CAPITOL	EVERCLEAR	2273	2237
④	5	4	DON'T DRINK THE WATER RCA	DAVE MATTHEWS BAND	2155	2028
⑤	4	27	SEX AND CANDY CAPITOL	MARCY PLAYGROUND	2049	2137
⑥	6	4	PUSH IT ALMO SOUNDS/INTERSCOPE	GARBAGE	1964	1844
⑦	7	10	WISHLIST EPIC	PEARL JAM	1918	1714
⑧	10	8	SHIMMER 550 MUSIC	FUEL	1756	1589
⑨	14	4	IRIS WARNER SUNSET/REPRISE	GOO GOO DOLLS	1694	1340
⑩	9	16	MY HERO ROSWELL/CAPITOL	FOO FIGHTERS	1564	1589
⑪	8	23	MY OWN PRISON WIND-UP	CREED	1554	1581
⑫	13	12	TORN RCA	NATALIE IMBRUGLIA	1333	1361
⑬	15	7	LOSING A WHOLE YEAR ELEKTRA/VEEG	THIRD EYE BLIND	1286	1268
⑭	12	22	CLUMSY COLUMBIA	OUR LADY PEACE	1282	1409
⑮	11	23	TIME OF YOUR LIFE (GOOD RIDDANCE) REPRISE	GREEN DAY	1245	1430
⑯	18	9	ZOOT SUIT RIOT MOJO/UNIVERSAL	CHERRY POPPIN' DADDIES	1242	1187
⑰	21	8	FROM YOUR MOUTH 1500/A&M	GOD LIVES UNDERWATER	1202	1080
			★ ★ ★ AIRPOWER ★ ★ ★			
⑱	26	4	FLAGPOLE SITTA SLASH/LONDON/ISLAND	HARVEY DANGER	1191	914
⑲	19	5	REAL WORLD LAVA/ATLANTIC	MATCHBOX 20	1178	1102
㉑	17	9	CUT YOU IN COLUMBIA	JERRY CANTRELL	1140	1198
㉒	29	2	SPARK ATLANTIC	TORI AMOS	1042	882
㉓	23	10	SHELF IN THE ROOM <small>OUTPOST/GEFFEN</small>	DAYS OF THE NEW	1038	1012
㉔	25	4	JUMP RIGHT IN IMMORTAL/EPIC	THE URGE	1026	933
㉕	22	26	HOW'S IT GOING TO BE ELEKTRA/VEEG	THIRD EYE BLIND	1005	1082
㉖	27	6	SAVE YOURSELF COLUMBIA	STABBING WESTWARD	891	920
㉗	31	5	UNINVITED WARNER SUNSET/REPRISE	ALANIS MORISSETTE	875	803
㉘	20	18	GIVEN TO FLY EPIC	PEARL JAM	866	1103
㉙	33	2	REDUNDANT REPRISE	GREEN DAY	842	753
㉚	34	6	IT'S YOU WAY COOL MUSIC/MCA	THE SPECIALS	778	740
㉛	NEW		LUCKY MAN VC/HUT/VIRGIN	THE VERVE	747	455
㉜	24	9	MUNGO CITY HIFI/SIRE/WARNER BROS.	SPACEHOG	729	954
㉝	28	25	KARMA POLICE CAPITOL	RADIOHEAD	728	902
㉞	35	2	WHAT I DIDN'T KNOW ATLANTIC	ATHENAEUM	711	635
㉟	NEW		I WILL STILL BE LAUGHING COLUMBIA	SOUL ASYLUM	693	484
㊱	32	24	BRICK 550 MUSIC	BEN FOLDS FIVE	665	780
㊲	40	2	TIME AGO OGC/GEFFEN	BLACK LAB	646	528
㊳	30	14	SUNSHOWER ATLANTIC	CHRIS CORNELL	575	848
㊴	37	3	COME ON (LET YOUR BLOOD COME ALIVE) RCA	AGENTS OF GOOD ROOTS	562	595
㊵	38	21	BEAUTIFUL DISASTER CAPRICORN/MERCURY		311	554
㊶	NEW		INSIDE OUT RCA	EVE 6	545	460

Records showing an increase in detections over the previous week, regardless of chart movement. A record which has been on either chart for more than 20 weeks will not receive a bullet, even if it registers an increase in detections. Airpower awarded to those records which attain 800 detections (mainstream) or 1,100 (modern) for the first time. If two records are tied in number of plays, the record being played on more stations is placed first. Records below the top 20 are removed from the chart after 26 weeks.

the verve

LUCKY MAN

the new song from the platinum album URBAN HYMNS

DEBUT 30 MODERN ROCK MONITOR

NEW: WMRQ, WEND, KAEP, WEJE, KTBZ, KNDD (re-add), WRIF, WYNF, WRLT, KQRX, KZYR, WRRV, WVDX, WCYY, KTOZ... already on over 100 stations.

U.S. TOUR STARTS
JULY 28th

http://www.virginrecords.com
AOL Keyword: Virgin Records
©1998 VC Records Ltd t/a Hut Recordings, issued under exclusive license in the United States to Virgin Records America, Inc.