

# ROCK ■ AIRPLAY Monitor

• We Listen To Radio •

October 10, 1997 \$4.95 Volume 4 • No. 41

## ROCK HIGHLIGHTS

### MAINSTREAM

#1

#### DAYS OF THE NEW

Touch, Peel And Stand (OUTPOST/IGEFFEN)

★★★ AIRPOWER ★★★

NO RECORDS QUALIFIED FOR AIRPOWER THIS WEEK

GOING FOR AIRPLAY

COLD • Give (FLIP/A&M)  
COWARD • Wish (ELEKTRA/EEG)  
MEXICO 70 • Hate For You (BIG POPI/RED ANT)  
QUEENSRYCHE • The Voice Inside (EMI/VIRGIN)  
REEF • Come Back Brighter (EPIC)  
PAUL RODGERS • Saving Grace (EAGLE ROCK/VELVEL)  
THIRD DAY • You Make Me Mad (REUNION/SILVERTONE)  
TOOL • Forty Six & 2 (FREEWORLD)  
TREPONEM PAL • Renegade (MERCURY)

### MODERN

#1

#### SMASH MOUTH

Walkin' On The Sun (INTERSCOPE)

★★★ AIRPOWER ★★★

NO RECORDS QUALIFIED FOR AIRPOWER THIS WEEK

GOING FOR AIRPLAY

COWARD • Wish (ELEKTRA/EEG)  
HURRICANE #1 • Step Into My World (SIRE/WARNER BROS.)  
KARA'S FLOWERS • Myself (REPRISE)  
MEXICO 70 • Hate For You (BIG POPI/RED ANT)  
THE MURMURS • Big Talker (MCA)  
STEREOPHONICS • Traffic (V2)  
TOOL • Forty Six & 2 (FREEWORLD)  
UGLY BEAUTY • Forgotten (ATLANTIC)

### TRIPLE-A

#1

#### BLUES TRAVELER

Most Precarious (A&M)

★★★ AIRPOWER ★★★

NO RECORDS QUALIFIED FOR AIRPOWER THIS WEEK

## Modern Supplying More Top 40 Hits, But Modern Adult Is The Gatekeeper

by Sean Ross

Six months ago, we reported that mainstream top 40, having declared its eagerness to play records that it could own, was making good on its promise. Airplay Monitor looked at where mainstream top 40's hits were charting first and found that the largest number were starting at mainstream top 40, followed closely by rhythmic top 40. Modern rock, however, was starting far fewer mainstream top 40 hits than a year prior.

An analysis of last week's Mainstream Top 40 Airplay chart shows that mainstream and rhythmic top 40 are still the leading source of the format's hits, even though both are off slightly. Modern rock, however, is again contributing hits to top 40 at roughly the same pace that it did 18 months ago; the catch appears to be that those songs had to pass muster at the new modern AC format, which started almost no records of its own but seemed to serve as mainstream top 40's gatekeeper.

Mainstream top 40 was either the first format or tied for first to chart 11 of its own chart hits. It was the first format outright to chart eight of

those. That's down from 13 songs, including ties, and five outright last April. It was tied with rhythmic top 40, down slightly from 12 altogether/seven outright six months ago to 11 and seven this time. Modern rock was first/tied for first on 10 mainstream top 40 hits this time and first outright on eight songs; those figures are twice what they were in April.

Triple-A was first to chart five songs, including ties, and two outright; it was down from eight songs, seven of them exclusives in the spring. Adult top 40, which a year ago was first on the largest number of songs, has slipped from 13 to seven in the spring to two this time, both of which charted first exclusively at adult top 40. AC was first on two songs, as it has been since we first did this sort of analysis a year ago. Mainstream rock was first on one title.

Mainstream R&B and urban AC, which have seen their already slight influence erode over the last year, were first on one song apiece, tying them each with country—a format that almost never sends records to mainstream top 40.

Continued on page 5

EXCLUSIVE  
W&A  
BDS  
ANALYSIS

"Don't be afraid of this band! 'Don't Go Away' jumped 15 slots in my callout and who wants a record like that? I do!" -Doug Podell-PD WRIF

# oasis

## "BE HERE NOW"

THE NEW ALBUM FEATURING

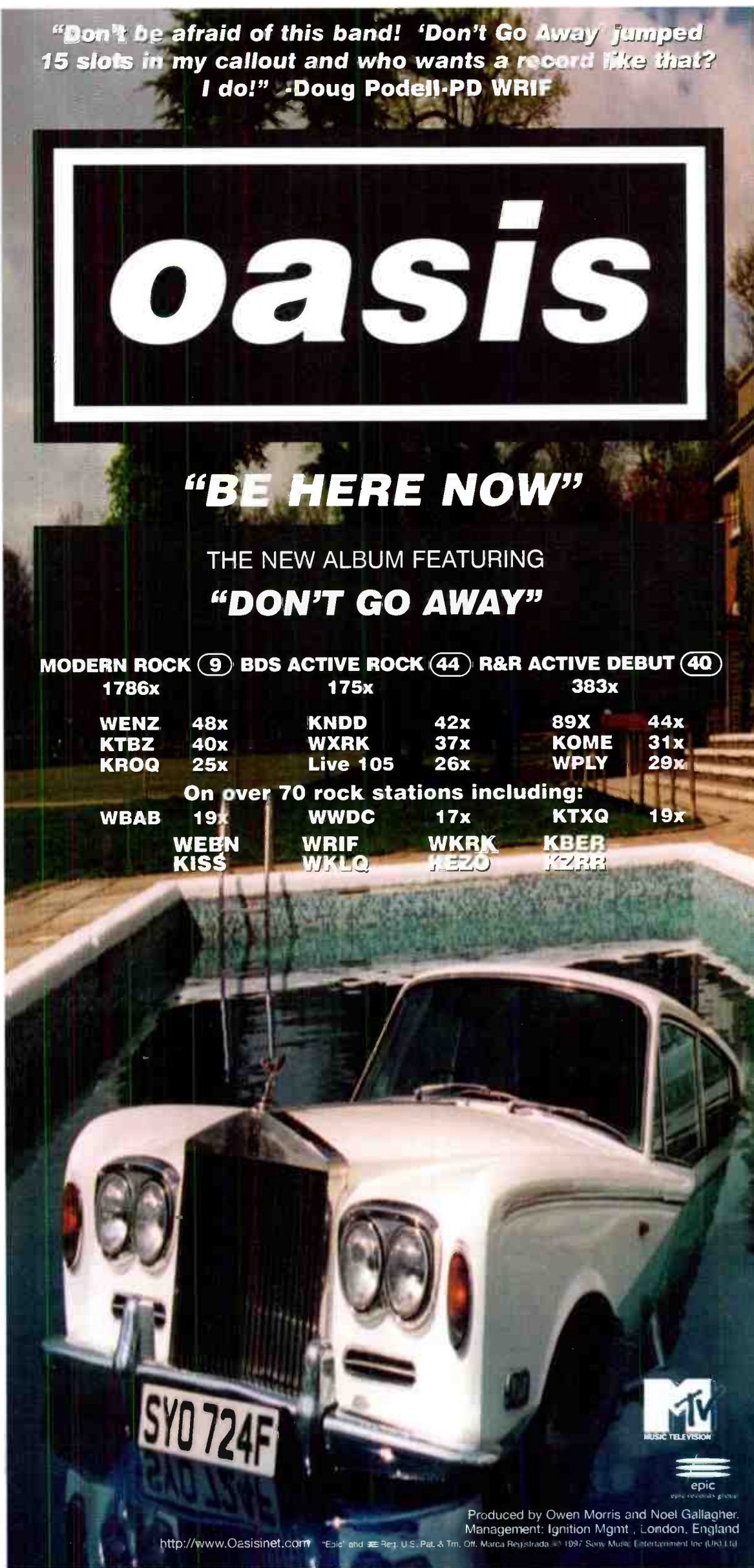
## "DON'T GO AWAY"

MODERN ROCK (9) BDS ACTIVE ROCK (44) R&R ACTIVE DEBUT (40)  
1786x 175x 383x

WENZ	48x	KNDD	42x	89X	44x
KTBZ	40x	WXRK	37x	KOME	31x
KROQ	25x	Live 105	26x	WPLY	29x

On over 70 rock stations including:

WBAB	19x	WWDC	17x	KTXQ	19x
WEEN		WRIF		WKRK	
KISS		WKLO		KEZO	
				KBER	
				KZRR	



MUSIC TELEVISION

epic  
epic records group

Produced by Owen Morris and Noel Gallagher.  
Management: Ignition Mgmt., London, England

<http://www.Oasisinet.com> "Epic" and Reg. U.S. Pat. & Tm. Off. Marca Registrada. © 1997 Sony Music Entertainment Inc. (UK) Ltd.

# TOOL

"FORTY SIX & 2"

WHAT'S AHEAD OF ME?

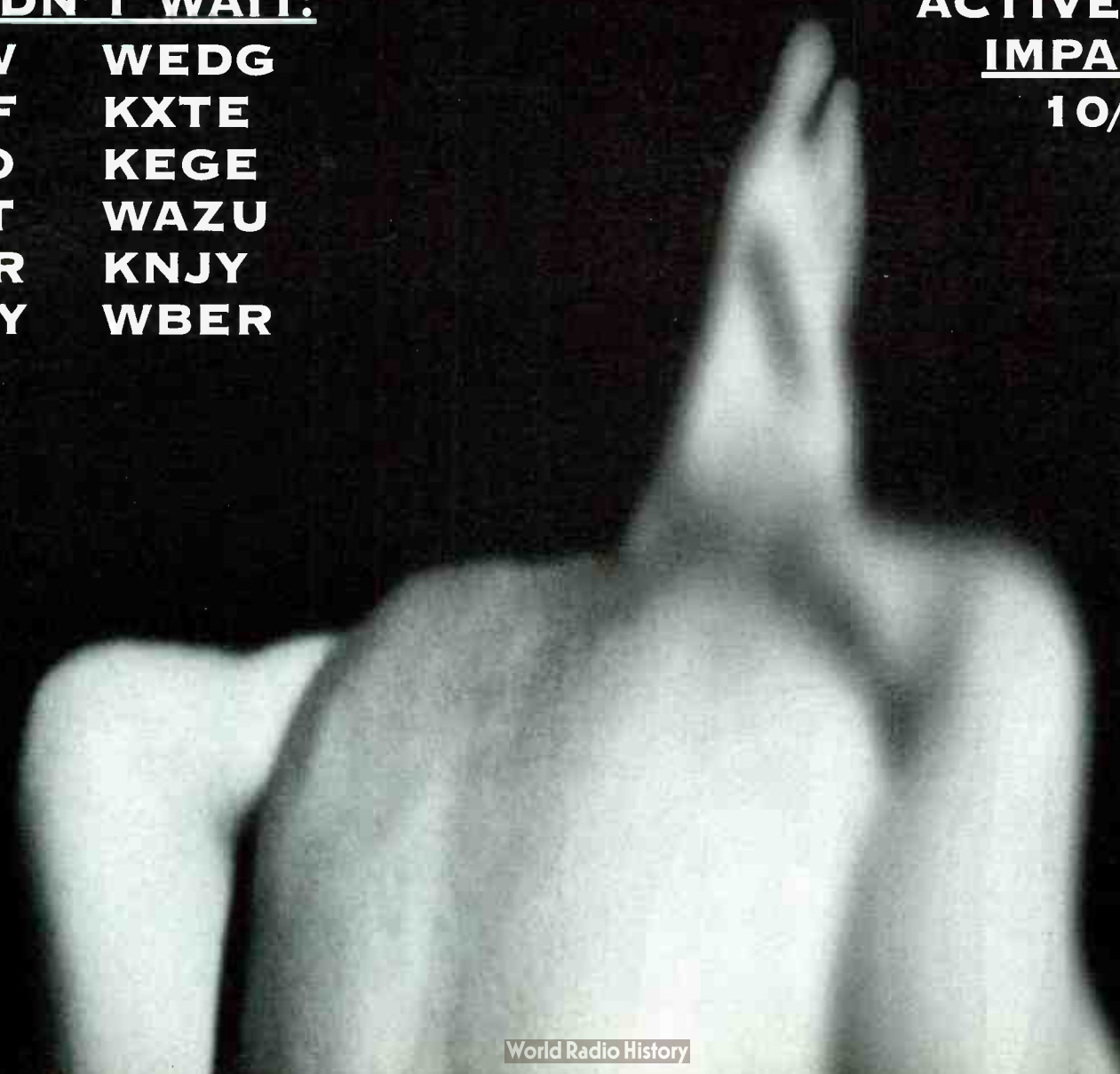
**COULDN'T WAIT:**

- |      |      |
|------|------|
| KISW | WEDG |
| WRIF | KXTE |
| KSJO | KEGE |
| KATT | WAZU |
| KBER | KNJY |
| KMBY | WBER |

**ACTIVE & MODERN**

**IMPACT DATE:**

**10/13 - 14**





## Letters To Boston



Modern WBCN Boston played host to local heroes Letters To Cleo. Crowded into the studio, from left, are WBCN's Bill Abbate; manager Michael Creamer; Letters To Cleo's Mike "U.S.A." Einstein, Kay Hanley, and Tom Polce; MD Carter Alan; and Letters To Cleo's Scott Riebling and Greg McKenna.

## Much Moore Music



KNCN (C101) Corpus Christi, Texas, celebrates the grand opening of GulfStar's new broadcast facility. Playing live in C101's studios were Capricorn's Ian Moore Band. Pictured, from left, are band member Bukka Allen, PD Kelli Cluque, band member Chris White, Ian Moore, APD Paula Hanson, Capricorn Southwest regional Dale Miller, and band member Michael Villegas.

## Really Out There



In her tribute to radio, "Are You Out There," Razor & Tie artist Dar Williams asks the musical question, "Are you out there? Can you hear me, Jimmy Olsen, Johnny Memphis." Williams, center, gets her answer between WRSI Greenfield, Mass., DJs Memphis, left, and Olsen.



## CHEET SHEET BY MARK MARONE

212-536-5051 • mmarone@billboard.com

## U2 Can Enjoy Longpigs' Angst

British quartet **Longpigs** may have subconsciously hoped to have some of the Irish rub off on them when they signed with the U2-owned label Mother. As band founder **Crispin Hunt** exclaims without exaggeration about the group's calamitous start, "We've been through the worst that any band can."

Three years ago, guitarist/singer Hunt was confident that he had accumulated a good-enough batch of songs to cut a demo with drummer **Dee Boyle**, formerly of **Cabaret Voltaire**. "We lied our way into the record companies by saying, 'Hey, we're going down to see so-and-so, and we thought we might pop in and play you this,'" explains Hunt. "And it all kind of snowballed from there." He hustled together a band, and after a few showcases, Longpigs were signed by Elektra U.K. Indie-rock producer **Gil Norton** was enlisted, and the group set about recording its debut album.

But three weeks before putting out its first single, Elektra U.K. was shut down, leaving the act signed to Warner Bros. against its will. Longpigs suddenly found themselves lingering in the limbo of legal entanglement that prevented them from negotiating with anyone else. Downtime of about nine months ensued, during which Hunt found himself dipping into his grandmother's

Prozac supply and accepting an offer from his friend's parents to mind their cottage deep in the middle of the woods. "I was the only person under 60 in our village of 15 people," says Hunt of the "odd but liberating" experience. "You can wander around the mountain shouting, wearing no clothes, because there's nobody there to see you." So he did.

By the time the band finally located a loophole in the contract that would free it up, three Longpigs had been laid up with extended hospital stays after the group's van rear-ended a stationary truck at 70 miles an hour. Hunt was in a coma for three days. "People come out of these things with stories of light at the end of the tunnel, but for



From left, Simon Stafford, Crispin Hunt, Richard Hawley, Dee Boyle

me was it was just complete nothing. I came out of it mortified at the fact that I realized I was mortal," says Hunt, who says his beliefs changed from casual Catholic into "deviant atheist."

Two days after nullifying its Warner Bros. deal, Mother was waiting with a contract. Hunt says that lately he's become more enamored of U2, particularly the sense of humor the group has introduced into pop music. "I'm more into them now than I used to be. We're more than happy to be spending their money," he says.

Neither of Hunt's hippie parents worked. When he was 3, he and his family moved from London to a rural woodlands farm, where they grew their own food and made their own clothes. As a boy, he knew he was growing up left of center. "Well, I think it's fairly obvious when you go to school wearing your elder sister's hand-me-downs, which I'd try and disguise as boy's clothes, but everybody could see they were girl's clothes," he says with a laugh. "Though Hunt believes an alternative lifestyle can only work if one is well-off monetarily, there were a couple of years in which his family achieved "relative Eden-like bliss, which is a very special thing to have experienced."

The upside of this idealistic upbringing was that music was constantly on around the house. Among the acts Hunt became acquainted with through his parents' collection were **the Beatles**, **the Rolling Stones**, **the Velvet Underground**, and **David Bowie**. "When I was about 5 or 6, my dad bought me a pair of blue suede desert boots and told me about the song 'Blue Suede Shoes.' So I went and dug out my mom's old record and learned all the words for that and kind of fell in love with **Elvis** in a very pure light." As a youngster of 12, he got his first guitar and began practicing those all-important poses in the mirror. With the knowledge of a few basic chords, he began writing his own songs as early as he can recall.

Hunt brings his innermost, unfiltered emotions to his songs. "The best tunes are the ones that I go, 'Ooh, I'm not sure if I can say this,' or 'This is a little bit too close to the bone,'" says the singer. Although referring to the pained emotional outpouring of facing his lover running off with one of his friends in "Over Our Bodies"—the last track on the band's debut, "The Sun Is Often Out"—Hunt's impassioned vocal delivery is what characterizes Longpigs' hook-driven, awash-in-guitars pop music. "I've always been hugely into a lot of the old black soul singers and people like **John Lennon**, who I think is a white soul singer."

One of the most exemplary moments is the single "On And On," an emotionally wrenching tune in which Hunt delivers a plaintive melody over a stark **Neil Young**-style acoustic guitar groove, heightened further by Hammond organ and Hunt's occasional yearning-falsetto slide. "At the time I was deeply in love with someone, and it became a harrowing experience. We just kept on having a go at each other and hurting each other and trying to kind of kill this love, but it wouldn't die," explains Hunt. He describes the tune as a kind of wistful blues. "The whole of being in love is not only it being about a box of chocolates. Part of the thrill of life is the trauma every now and again," he says. "People create traumas in their own lives to make it really seem like you're living. I think that's what that song's about."

## RADIO CONCERT MONITOR

DATE	CALL LETTERS	EVENT	SCHEDULED TO APPEAR
Oct. 31	WLUM Milwaukee	Halloween Show	Mighty Joe Plum, Toad The Wet Sprocket,
Nov. 2	WCKW New Orleans	Fifth Annual Motorcycle Run	John Kay & Steppenwolf, JJ Muggler, Corey Stevens, Storyville

To include your station's concert information in Rock Concert Monitor, call Marc Schiffman at 212-536-5065, fax 212-536-5286, or E-mail mschiffman@billboard.com

## Modern Supplying More Top 40 Hits, But Modern Adult Is The Gatekeeper

Continued from page 1

### MAINSTREAM TOP 40 ON ITS OWN

The eight records on last week's chart that started exclusively at mainstream top 40 were by Spice Girls, OMC, Hanson, Aqua, Mr. President, Blessid Union, Imani Coppola, and Peach Union. The three ties were Backstreet Boys, Mariah Carey, and Robyn's "Do You Know (What It Takes)" (all with rhythmic top 40). While not all 11 of those titles were ultimately records that sold both albums and singles, the inclusion of hits like "Honey," "Quit Playing Games (With My Heart)," and "2 Become 1" is further evidence that a record that charts first at mainstream top 40 is no longer doomed for turntable hit status.

One reason that mainstream top 40 now seems to have some records that it can chart first is the ongoing teen-idol revival. Those acts didn't stop existing after New Kids On The Block, but they were almost always R&B or rhythmic top 40 acts in the New Edition/Boyz II Men/Color Me Badd/All-4-One mode. Those acts are still heavily represented among the 11 songs that rhythmic top 40 charted first. Its seven exclusives include 98 Degrees, Az Yet, and Allure, as well as Will Smith, Puff Daddy, En Vogue, and INOJ. Besides the three ties it shares with mainstream top 40, rhythmic top 40 tied with adult R&B as the first format to chart Boyz II Men's "4 Seasons Of Loneliness."

### MORE FUN IN THE MODERN WORLD

As recently as six to nine months ago, it was common to hear from record reps that having a success story at modern rock hurt a record, as PDs overcompensated for their mid-'90s modern binge. Now, the number of top 40 hits that charted first at modern is back to about where it was 18 months ago. Modern rock was first to chart 10 songs, eight of them outright, vs. 12 songs, 10 of them outright, in spring '96.

The eight exclusives were Chumbawamba, Smash Mouth, Verve Pipe, Sugar Ray, Third Eye Blind, Tonic, Meredith Brooks, and Mighty Mighty Bosstones. The two hits that first charted simultaneously at modern rock and triple-A were by Sarah McLachlan and the Dave Matthews Band. The difference between now and 18 months ago is that modern crossovers have modern AC as a way station, which seems to legitimize them for some mainstream top 40 PDs. Of those 10 songs, nine charted first at modern adult before debuting at mainstream top 40. The only exception was "The Freshmen," which charted at mainstream top 40 before a separate modern adult chart was published.

In other words, just as few R&B hits can get to mainstream top 40 without first being vetted by rhythmic or crossover radio, it now appears that modern adult has become the acid test for whether a modern rock song will make it to mainstream top 40. (Then again, few R&B hits get to mainstream top 40 altogether. The only one of last week's hits that charted first at R&B was the Notorious B.I.G.'s "Mo Money Mo Problems.")

Although it often serves as the customs house for modern rock product, modern adult starts almost no records of its own, as one might expect from the hybrid nature of the format. Only Sheryl Crow's "A Change Would Do You Good" charted first at modern adult, and in that case it was tied with triple-A.

### ADULT TOP 40 LESS AGGRESSIVE?

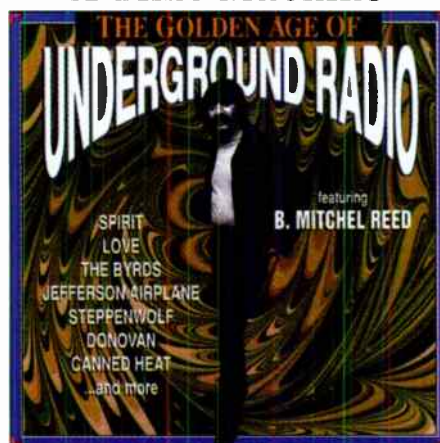
Compared with a year ago, when it was first on a surprising number of records, adult top 40 didn't start much itself this time. It was first on only two songs, the ironically titled "I Don't Want To Wait" and "Foolish Games," both of which could as easily have broken at modern adult. Once dismissed as a format that took its orders primarily from top 40, adult top 40 now seems to be taking its cues mostly from modern AC (by way of modern). Since it resists all but the biggest rhythmic records, and since many traditional AC artists have now been exiled to the AC chart and rarely move beyond it, that leaves adult top 40 with very little of its own. Then again, it's also the case that a year ago modern PDs were only warming up to poppier titles like "Bitch" or "Tubthumping," meaning that adult top 40 would have been more likely to get there first.

Triple-A, besides its three shared titles, was first outright on Sister Hazel and "The Difference" by the Wallflowers. Rock, not first to chart anything last time, was first on Matchbox 20's "Push."

Mainstream AC was first to chart Amy Grant's and Elton John's "Candle In The Wind" (the latter because so many AC PDs got a jump on competitors by throwing an earlier version into current rotation until the recut version was available).

Country's rare contribution to the mainstream top 40 chart was LeAnn Rimes' "How Do I Live." Ironically, while country did chart that record first, most stations ultimately opted instead for the rival Trisha Yearwood version. If you were to count only formats where Rimes ultimately had a hit, the song should be credited to AC, which charted it a month before mainstream top 40.

## Make Your CD Player A Time Machine



Those longing for the days of progressive FM radio's birth can now train their laser beam across "The Golden Age of Underground Radio, Vol. 2," a compilation/recreation of B. Mitchel Reed's tenure at KMET Los Angeles from 1968 to 1971. The DCC Compact Classics release features period music from the likes of Spirit, Donovan, Electric Flag, and Brewer & Shipley interspersed with Reed's banter, spots, and news.

## MONITOR PROFILE

### Stern (Mike) And Stern (Howard) Give KXTE A Hard Edge In Las Vegas

**M**ike Stern got his start in the business with Jacobs Media. He programmed Jacobs sign-on WXEG Dayton, Ohio, from its inception, but soon was transferred by ARS to Las Vegas to fight another Jacobs station, KEDG, as PD of KXTE (Extreme Radio).

Upon arriving in Vegas, "The Edge here was up in the 7s, 12-plus," says Stern. "It was one of the highest-rated 12-plus alternative stations in the country. The AOR here [KOMP] is fairly sleepy and classic leaning, so they never really had any competition on that side. The top 40 [KLUC], which we also own, is very urban. So they never really had any competition on that side. They'd been left alone and able to grow pretty large, in a lot of ways by default."

Stern inherited a classic rocker with Howard Stern in mornings. "When we researched the radio station," Stern says, "we found out that Howard was obviously bringing a lot of cume to the frequency every morning. The most co-

format," says Stern. "His numbers are better than they've ever been. And we think we've brought a lot of people to the show. Howard always does better on a healthy radio station, and I think we've brought in a lot of listeners. I'm not going to argue with having the No. 1 morning show in town. That's never a bad thing. That mixture has really worked well. Our recycling of Howard into middays and afternoons was at 55% last book. For a Stern station, that's pretty good. It's hard to get his people to come back."

Promotionally, Vegas provides a unique challenge, since the local casinos are giving away cars and houses. KXTE, instead, targets its listeners' lifestyle. One such campaign is the Radical Sabbatical. Listeners qualify by visiting local "adventuretainment" centers for bungee jumping and indoor skydiving to qualify for weekly giveaway trips to drag-racing school, sea kayaking, and the like. "For Extreme Radio," says Stern, "that's going to be a really good imager."

During the NCAA March Madness, Stern took one of radio's mainstay promotions and turned it into "Extreme March Madness. [We] put 64 bands into a tournament bracket. We had a big tournament pool with a big-screen TV as the prize, so people could get the bracket and make their predictions and fax them into us. We got over 400 entries off of one newspaper ad. Then we had the 'games' on the air. OK, it's Pearl Jam vs. Korn, call in and vote for your band. And we had halftime stuff and a bad Dick Vitale impersonator. We were getting 400-500 calls an hour. The phones were just jammed."

Stern saves his highest praise for his jocks in executing the promotion in the spirit it was intended. "They got in there and sold the whole concept," he says. "When Pearl Jam finally lost—I think they made it to the Great Eight—[one jock] went on in what should have been the middle of the third quarter and said, 'Omgod. This is a tragedy. Eddie Vedder saw a Pepsi logo in the stands and decided it was all too corporate and stalked off the court! Pearl Jam's in trouble!' They totally sold the concept of these games, and it was riveting. We had people calling in from offices saying, 'We blew up a copy of the bracket. The secretary's tracking everything. We have our own bet here.' It was really fun and really compelling radio."

Although he tried a direct-mail campaign, Stern wasn't happy with the outcome. "The target demo is not paying attention to it. I just don't think it's an effective way to reach these guys," he says, although he still maintains a database. "One of the things I'm really big on doing is, when the labels ship a postcard across my desk from a band we're playing or we're going to add, I hit them up to, 'Hey, give me a thousand of those, postmark them. It'll cost you 25 bucks.' Then I'll put my mailing labels on them and ship them out. And we've got a stamp that says 'hear it on Extreme Radio' that we stamp all the cards with before we send them out. It costs the labels nothing. Plus it's marketing their band. I think that works real well, keeping us in their mailbox."

Ranked No. 48 by Arbitron just a year ago, Vegas is now No. 43. The town that Stern entered 18 months ago has grown "from being a sleepy, acts-like-a-smaller-market-than-it-is place to becoming a competitive, acts-like-a-slightly-larger-market-than-it-is type of city," he says. "The growth here is phenomenal. I'm figuring if I stay here long enough, [I'll be] in a top 10 market. That's my goal, just to ride it out." **MARC SCHIFFMAN**



**Mike Stern**  
Program Director  
KXTE Las Vegas

*'You're not going to have to deal with the poppier end of the format when you listen to our radio station'*

hesive chunk we could find was going to the alternative station [the Edge] every morning." Further research showed listeners being turned off by the pop end of alternative. "So we spend a lot of time making sure they realize that they're not going to have to deal with the poppier end of the format when they listen to our radio station."

KXTE was just one part of the ARS master plan. The company "signed on a modern AC station [KMVB] on the Edge's female side, and then we signed on Extreme Radio, KXTE, with Howard in the morning and like a brand of harder alternative on their male side," says Stern. "That was the plan, cut it off at the pop end, and I don't have to worry about 'Am I losing a hit record?' because my sister station is busy owning it." In the spring Arbitron, KXTE was up to a 5.1 share. By the second Arbitrend, it was at 5.9, while KMVB was No. 1 18-34.

Here's a sample hour on KXTE: Offspring, "All I Want"; Sevendust, "Black"; Metallica, "Wherever I May Roam"; Red Hot Chili Peppers, "Higher Ground"; Days Of The New, "Touch, Peel & Stand"; Pearl Jam, "Not For You"; Jane's Addiction, "Been Caught Stealin'"; Talk Show, "Hello, Hello"; Jimmie's Chicken Shack, "High"; Green Day, "Brain Stew/Jaded"; Filter & Crystal Method, "(Can't U) Trip Like I Do"; Local H, "Bound For The Floor"; and Nirvana, "The Man Who Sold The World."

Stern says part of the reason KEDG's five-year head start hasn't meant as much is the transient nature of Las Vegas. Having Howard Stern in mornings doesn't hurt either. Every month, he says, "We get phone calls saying, 'Oh I love Howard. And I found him, and then I love your radio station!'" So, we actually have that national type of magnet that people will search out when they go to a market.

"[Howard Stern has been on this] signal five years through oldies, classic rock and now our

EDITOR IN CHIEF: HESTON HOSTEN

EDITOR: SEAN ROSS

MANAGING EDITOR: MARC SCHIFFMAN

MAINSTREAM ROCK/TRIPLE A CHART MANAGER: ANTHONY COLOMBO

MODERN ROCK CHART MANAGER: MARK MARONE

MODERN ADULT CHART MANAGER: STEVE GRAYBOW

WRITER/REPORTER: DANA HALL

CHART PRODUCTION MANAGER: MICHAEL CUSSON

ASST. CHART PRODUCTION MANAGER: ALEX VITOULIS

EDITORIAL PRODUCTION MANAGERS: BARRY BISHIN, MARCIA REPINSKI

EDITORIAL PRODUCTION: MADELINE CARROLL, SUSAN CHICOLA,

MARC GIAQUINTO, SARAH JOHNSON, MARIA MANIUCIC

COPY EDITOR: CARL ROSEN

ADVERTISING PRODUCTION MANAGER: LYDIA MIKULKO

ASSOC. ADVERTISING PRODUCTION MANAGER: CINDIE WEISS

ADVERTISING ART DIRECTOR: RAY CARLSON

ADVERTISING PRODUCTION ARTIST: SHIRA HALFON

©1997 BPI Communications

1515 Broadway, New York, NY 10036 212-764-7300

For subscriptions call: 800-722-2346

Airplay Monitor reporting panels are based solely on a station's musical content.

GENERAL MANAGER: JON GUYNN

ACCOUNT MANAGERS: GARY NUJELL, JEFF SOMERSTEIN

ADVERTISING SERVICES MANAGER: ALYSE ZIGMAN

SALES ASSISTANTS: EVELYN ASZODI,

ERICA BENGTON, TODD MAYCHER

EDITORIAL ADVISER: TIMOTHY WHITE

PRODUCTION DIRECTOR: MARIE GOMBERT

DIRECTOR OF MARKETING: ELISSA TOMASETTI

CIRCULATION DIRECTOR: JEANNE JAMIN



PRESIDENT: HOWARD LANDER

SENIOR VP/GENERAL COUNSEL: GEORGINA CHALLIS

VICE PRESIDENTS: KAREN OERTLEY, ADAM WHITE

DIRECTOR OF STRATEGIC DEVELOPMENT: KEN SCHLAGER

BUSINESS MANAGER: JOELLEN SOMMER

# AIRPLAY Monitor®

## Broadcast Data Systems

# GREATEST GAINERS™

Strongest Increase In Airplay This Week

## MAINSTREAM ROCK

INCREASE  
IN PLAYS

<b>KISS • Jungle (MERCURY)</b>	<b>+486</b>
KAZR +27, WRIF +27, KMBY +19, KOMP +19, KUPD +19, WMFS +18, WZMT +18, WDHA +17, WBZX +17, KEGE +17	
<b>SAMMY HAGAR • Both Sides Now (THE TRACK FACTORY/MCA)</b>	<b>+284</b>
WIXV +16, WZAT +16, KOMP +15, KMOD +14, WYSP +12, KXUS +12, KLBJ +12, WTUE +11, KRZZ +10, KTUX +10	
<b>MEGADETH • Almost Honest (CAPITOL)</b>	<b>+186</b>
KATT +20, WRQC +15, WWDC +15, WRXL +14, KISW +13, KEGE +12, KLPX +9, KMBY +7, KIOZ +7, KAZR +7	
<b>YES • Open Your Eyes (BEYOND MUSIC)</b>	<b>+155</b>
WMMS +16, WBAB +14, KLPX +13, WEGR +12, WZZR +12, WMMR +12, WIOT +11, WKLC +10, WWDC +10, WSTZ +9	
<b>KENNY WAYNE SHEPHERD BAND • Slow Ride (REVOLUTION)</b>	<b>+150</b>
WBLM +13, KZRR +11, WFVY +10, KISS +9, WRXK +8, WAQX +8, KAZR +8, WDHA +7, WYSP +7, KXUS +7	
<b>THE WALLFLOWERS • Three Marlenas (INTERSCOPE)</b>	<b>+130</b>
KTUX +15, WZAT +13, WKLC +13, KTYD +9, KMJX +9, WZTA +8, KGGG +8, WEZX +8, WRXK +6, WPYX +6	
<b>COLLECTIVE SOUL • Blame (ATLANTIC)</b>	<b>+118</b>
WCMF +13, WIYY +13, WKLQ +12, KZRR +11, KTUX +10, WTUE +10, WZZO +8, WROV +8, WTFX +6, WRXK +6	
<b>DREAM THEATER • Burning My Soul (EASTWEST/EEG)</b>	<b>+118</b>
KOMP +14, WMFS +13, KEGE +11, WRQC +10, KLPX +10, WHJY +8, KQRC +6, KAZR +6, KIOZ +5, WTUE +5	
<b>KULA SHAKER • Hush (COLUMBIA)</b>	<b>+112</b>
WJRR +13, WKLQ +9, KBPI +9, WIYY +8, KTYD +7, WZMT +5, KRAD +5, WTFX +5, WRXK +5, WAPL +5	
<b>LIVE • Rattlesnake (RADIOACTIVE/MCA)</b>	<b>+112</b>
KTXQ +20, WXRA +17, WIXV +16, WTPA +14, WZAT +13, KLAQ +13, WEZX +7, WZMT +4, WARQ +4, KAZR +4	

## MODERN ROCK

INCREASE  
IN PLAYS

<b>THE CURE • Wrong Number (FICTION/ELEKTRA/EEG)</b>	<b>+580</b>
KNDD +37, XHRM +30, KITS +27, KOME +26, WLUM +26, WFNX +25, KROQ +25, WHFS +24, WBRU +23, WBTZ +19	
<b>CHUMBAWAMBA • Tubthumping (REPUBLIC/UNIVERSAL)</b>	<b>+352</b>
KCXX +22, KEDJ +18, KXPX +17, WRXQ +17, KENZ +16, KNRX +16, WEND +16, KLYY +15, WXEG +15, KKDM +14	
<b>U2 • Please (ISLAND)</b>	<b>+221</b>
WAQZ +16, WENZ +16, WXNR +12, KNDD +12, WRXQ +11, KEDG +11, WNNX +11, KKDM +10, KHTY +10, WRXR +10	
<b>THE VERVE • Bitter Sweet Symphony (HUT/VIRGIN)</b>	<b>+212</b>
CIMX +18, WKQX +17, KROQ +17, KHTY +13, KFTE +11, WROX +11, KROX +10, KXPK +10, KNRK +9, CFNY +9	
<b>BUSH • Mouth (TRAUMA/INTERSCOPE/HOLLYWOOD)</b>	<b>+204</b>
KROQ +21, KOME +20, KITS +18, WKQX +16, KXTE +14, WHFS +14, KDGE +13, WXRK +12, WLUM +12, WEND +11	
<b>LIVE • Rattlesnake (RADIOACTIVE/MCA)</b>	<b>+187</b>
WPLY +17, KMYZ +16, WEND +15, WENZ +15, WQBK +14, WPLA +14, WBZU +12, WXDX +11, KTBZ +9, KAEP +9	
<b>OASIS • Don't Go Away (EPIC)</b>	<b>+182</b>
KFRR +21, WCYY +20, KFTE +14, WAVE +13, WLIR +13, WENZ +12, KEDJ +11, KTEG +9, WAVF +9, WBRU +9	
<b>LONGPIGS • On And On (ISLAND)</b>	<b>+169</b>
WNNX +28, KTOZ +16, KWOD +14, WBRU +13, WHFS +13, KFMA +12, WROX +12, WEND +11, KLZR +10, KMYZ +9	
<b>EVERCLEAR • Everything To Everyone (CAPITOL)</b>	<b>+154</b>
WKQX +15, KCXX +14, WBRU +11, KROQ +11, KFMA +10, WROX +10, CFNY +10, WFNX +10, KEDG +9, WGRD +9	
<b>FOO FIGHTERS • Everlong (ROSWELL/CAPITOL)</b>	<b>+149</b>
WEND +22, WBRU +14, WXZZ +13, WQBK +12, KAEP +12, KROQ +12, KROX +11, WHFS +11, KPOI +9, WPLA +9	

# VIDEO PLAYLISTS

## MOST PLAYED ROCK TRACKS



1  
VH  
MUSIC FIRST

	TW	LW	TW	LW
1 The Rolling Stones, Anybody Seen My Baby?	38	34	29	24
2 Jewel, Foolish Games	37	34	24	21
3 Sarah McLachlan, Building A Mystery	34	34	24	12
4 Matchbox 20, Push	33	33	21	22
5 Third Eye Blind, Semi-Charmed Life	33	39	21	26
6 Sister Hazel, All For You	28	27	20	12
7 Fleetwood Mac, Silver Springs	25	27	20	19
8 Paula Cole, I Don't Want To Wait	24	16	20	22
9 Shawn Colvin, Sunny Came Home	18	21	19	11
10 Fiona Apple, Criminal	16	19	18	13
11 Elton John, Something About The Way You Look Tonight	16	15	14	1
12 Smash Mouth, Walkin' On The Sun	13	10	13	14
13 Sheryl Crow, Everyday Is A Winding Road	12	10	13	20
14 Savage Garden, I Want You	12	12	12	11
15 The Wallflowers, The Difference	12	28	11	7
16 The Wallflowers, One Headlight	11	11	11	7
17 Sugar Ray, Fly	11	4	10	10
18 Texas, Say What You Want	10	7	9	10
19 The Verve Pipe, The Freshmen	9	12	8	5
20 Tonic, If You Could Only See	9	9	7	18
21 Duncan Sheik, Barely Breathing	9	12	7	8
22 No Doubt, Don't Speak	9	10	6	5
23 Shawn Colvin, You And The Mona Lisa	9	5	6	5
24 The Cardigans, Lovefool	9	10	6	9
25 Sheryl Crow, Home	9	8	6	0
26 The Rolling Stones, Start Me Up	8	6	5	5
27 The Rolling Stones, Love Is Strong	8	6	5	6
28 Paula Cole, Where Have All The Cowboys Gone?	8	9	4	1
29 The Rolling Stones, Undercover Of The Night	8	5	4	5
30 The Rolling Stones, Going To A Go-Go	8	6	3	14
			2	1

## TRIPLE-A

INCREASE  
IN PLAYS

<b>SHERYL CROW • Home (A&amp;M)</b>	<b>+65</b>
WMAX +11, CIDR +11, WXLE +9, WHPT +9, WXRV +8, KGSR +8, KMTT +5, WTTS +3, KINK +2	
<b>BARENAKED LADIES • Brian Wilson (REPRISE)</b>	<b>+53</b>
WRLT +15, CIDR +9, WXRV +9, WNCN +6, WXRC +5, WMAX +4, WXLE +4, WTTS +2, WDOD +1	
<b>MATCHBOX 20 • 3 AM (LAVA/ATLANTIC)</b>	<b>+50</b>
KKZN +12, KXPT +10, WTTS +7, WNCN +6, WJXB +5, CIDR +5, WBOS +2, WXRT +2, WXRV +1	
<b>SMASH MOUTH • Walkin' On The Sun (INTERSCOPE)</b>	<b>+49</b>
WVRV +22, WHPT +13, WBOS +4, WOOD +3, WXLE +3, WNCN +3, WJXB +2, WRLT +1, KGSR +1	
<b>STEVE EARLE • Telephone Road (E-SQUARED/WARNER BROS.)</b>	<b>+47</b>
WRLT +10, CIDR +9, KPIG +9, KGSR +8, WXRT +7, KMTT +2, KINK +1, WHPT +1	
<b>U2 • Please (ISLAND)</b>	<b>+42</b>
WXRT +9, WJXB +8, KGSR +6, WXLE +5, WRLT +4, WHPT +4, KMTT +2, WTTS +2, KTCZ +2	
<b>BLUES TRAVELER • Most Precarious (A&amp;M)</b>	<b>+37</b>
KKZN +11, WXLE +10, WXRV +7, WBOS +7, KBCO +6, KINK +4, WXRT +4, WDOD +3, KXPT +2, WKOC +2	
<b>JACKSON BROWNE • The Next Voice You Hear (ELEKTRA/EEG)</b>	<b>+36</b>
WTTS +12, WKOC +12, KXPT +8, KBCO +5, WXRT +4, KGSR +3, KKZN +2, WDOD +1, CIDR +1, KPIG +1	
<b>THE WALLFLOWERS • Three Marlenas (INTERSCOPE)</b>	<b>+35</b>
WJXB +8, WVRV +7, WDOD +5, KFOG +5, WRLT +4, KXPT +3, WKOC +3, KKZN +2, KTCZ +2, KBCO +2	
<b>LOREENA MCKENNITT • The Mummer's Dance (WARNER BROS.)</b>	<b>+31</b>
CIDR +12, WXRV +10, KGSR +7, WRLT +1, KMTT +1	

# Billboard & Monitor AIRPLAY

## Radio Seminar & Awards

October 16 - 18, 1997 • The Renaissance Orlando Resort

with live  
performances  
by



SISTER HAZEL



DANCE HALL CRASHERS



KIM FOX



SHE MOVES

Join Us For The  
**OPENING NIGHT**  
Kick-Off Party

at Universal Studios Florida® Mainstage

sponsored by  
Universal, MCA, Geffen,  
Dreamworks  
Universal Music Group

Private VIP Reception for  
conference attendees with plenty of  
food, drinks and live entertainment...  
what more could you want?

For more info regarding registering for the seminar, please call Maureen Ryan at: 212.536.5002



POWER PLAYLISTS

For Week Ending October 5, 1997



Playlists supplied by Broadcast Data Systems... Radio Track service...

Grid of 48 radio station playlists (KLOS, WYSP, WRCX, WMMR, KQRS, WWDC, WRIF, WFBQ, WAAF, KEGL, WKLS, KEGE, KTXQ, WMMS, WRQC, KSHE, WZTA, KSJO, WIYY, WEBN, KISW, WHJY, WXTB, WONE) with columns for station name, PD, and song lists with airplay counts.

MAINSTREAM ROCK

POWER PLAYLISTS

For Week Ending October 5, 1997



Playlists supplied by Broadcast Data Systems' Radio Track set vice. Songs ranked by number of plays in monitored week. Playlists are listed in order of TSA weekly came, beginning with the highest-cumulative station. Cumes are updated twice yearly following the release of the Spring and Fall Arbitron surveys. The number of stations shown each week varies depending upon space.

Grid of 48 radio station playlists (KBPI, WLZR, WBZX, WJRR, WRDU, KQRC, WBAB, KISS, KUPD, WIMZ, WPYX, KIOZ, WCCC, KUFO, WDHA, KRXQ, WROQ, KATT, KDKB, WLVQ, WNOR, WCKW, WTFX, WTUE) with columns for station name, PD, MD, and song lists with TW/LW ratings.



# MAINSTREAM ROCK

## POWER PLAYLISTS™

Broadcast Data Systems  
www.bds.com  
Airplay Monitor

AIRPLAY  
**Monitor**®

For Week Ending  
October 5, 1997

Playlists supplied by Broadcast Data Systems' Radio Track service. Songs marked by number of plays in monitored week. Playlists are listed in order of TSA weekly cume, beginning with the highest-cuming station. Cumes are updated twice yearly following the release of the Spring and Fall Arbitron surveys. The number of stations shown each week varies depending upon space.

**WEGR**  
Memphis PD: Drake Hall  
MD: Zeke Lagan

TW	LW
1	22
2	20
3	20
4	18
5	17
6	17
7	17
8	16
9	16
10	16
11	16
12	16
13	16
14	16
15	16
16	16
17	16
18	16
19	16
20	16
21	16
22	16
23	16
24	16
25	16
26	16
27	16
28	16
29	16
30	16

**WC MF**  
Rochester OM: Harry Jacobs  
MD: Dave Kane

TW	LW
1	22
2	21
3	19
4	18
5	17
6	16
7	15
8	14
9	13
10	12
11	11
12	10
13	9
14	8
15	7
16	6
17	5
18	4
19	3
20	2
21	1
22	0
23	0
24	0
25	0
26	0
27	0
28	0
29	0
30	0

**WIOT**  
Toledo OM/PD: Darrin Ariens  
APD: Don Davis

TW	LW
1	22
2	21
3	19
4	18
5	17
6	16
7	15
8	14
9	13
10	12
11	11
12	10
13	9
14	8
15	7
16	6
17	5
18	4
19	3
20	2
21	1
22	0
23	0
24	0
25	0
26	0
27	0
28	0
29	0
30	0

**WFYV**  
Jacksonville PD: David Moore  
APD/MD: Charlie Waters

TW	LW
1	26
2	25
3	25
4	20
5	17
6	16
7	16
8	16
9	16
10	16
11	16
12	16
13	16
14	16
15	16
16	16
17	16
18	16
19	16
20	16
21	16
22	16
23	16
24	16
25	16
26	16
27	16
28	16
29	16
30	16

**KLAQ**  
El Paso PD/MD: "Magic" Mike Ramsey

TW	LW
1	22
2	20
3	19
4	18
5	17
6	16
7	15
8	14
9	13
10	12
11	11
12	10
13	9
14	8
15	7
16	6
17	5
18	4
19	3
20	2
21	1
22	0
23	0
24	0
25	0
26	0
27	0
28	0
29	0
30	0

**WKLQ**  
Grand Rapids OM: Tony Gates  
MD: Mark Feurie

TW	LW
1	38
2	37
3	37
4	37
5	37
6	37
7	37
8	37
9	37
10	37
11	37
12	37
13	37
14	37
15	37
16	37
17	37
18	37
19	37
20	37
21	37
22	37
23	37
24	37
25	37
26	37
27	37
28	37
29	37
30	37

**WPLR**  
New Haven PD: John Griffin  
MD: Pam Landry

TW	LW
1	17
2	16
3	16
4	16
5	16
6	16
7	16
8	16
9	16
10	16
11	16
12	16
13	16
14	16
15	16
16	16
17	16
18	16
19	16
20	16
21	16
22	16
23	16
24	16
25	16
26	16
27	16
28	16
29	16
30	16

**WXRA**  
Greensboro PD: Tim Satterfield  
APD: Marica Gan

TW	LW
1	41
2	37
3	38
4	39
5	38
6	38
7	38
8	38
9	38
10	38
11	38
12	38
13	38
14	38
15	38
16	38
17	38
18	38
19	38
20	38
21	38
22	38
23	38
24	38
25	38
26	38
27	38
28	38
29	38
30	38

**WBLM**  
Portland, ME PD: Herb Ivy  
MD: Brian James

TW	LW
1	19
2	18
3	17
4	17
5	17
6	17
7	17
8	17
9	17
10	17
11	17
12	17
13	17
14	17
15	17
16	17
17	17
18	17
19	17
20	17
21	17
22	17
23	17
24	17
25	17
26	17
27	17
28	17
29	17
30	17

**KMJX**  
Little Rock PD: Tom Wood  
MD: Jimmy Edwards

TW	LW
1	20
2	20
3	20
4	20
5	20
6	20
7	20
8	20
9	20
10	20
11	20
12	20
13	20
14	20
15	20
16	20
17	20
18	20
19	20
20	20
21	20
22	20
23	20
24	20
25	20
26	20
27	20
28	20
29	20
30	20

**KEZO**  
Omaha QM: Doug Sorensen  
MD: Allison Steele

TW	LW
1	25
2	25
3	25
4	25
5	25
6	25
7	25
8	25
9	25
10	25
11	25
12	25
13	25
14	25
15	25
16	25
17	25
18	25
19	25
20	25
21	25
22	25
23	25
24	25
25	25
26	25
27	25
28	25
29	25
30	25

**WZZO**  
Allentown PD: Robin Lee  
MD: Keith Moyer

TW	LW
1	28
2	28
3	28
4	28
5	28
6	28
7	28
8	28
9	28
10	28
11	28
12	28
13	28
14	28
15	28
16	28
17	28
18	28
19	28
20	28
21	28
22	28
23	28
24	28
25	28
26	28
27	28
28	28
29	28
30	28

# cleopatra

"Cleo..." is all over Rock Radio!!!  
New at WMMS!!!

The first rock single from the new album **Tailspin Headwhack**\*

"Cleo" is clawing its way through Active Rock Radio at: WTPA, WRCN, KLB, KNCN, WMMS, KRAD, KISS, KIBZ, KRZR, KBER and more.

Monitor Heritage Rock Chart #22

Produced by Gordie Johnson  
\*Produced by David Z

Another 2000 pieces over the counter sold this week  
Heatseekers Chart!!!!

**CHRIS IS ON TOUR FOREVER...  
COMING TO YOUR TOWN SOON!!**

Call Silvertone for details: 212-727-0016

Massive spinning at:  
WFBQ, WZZO, WCMF, WIXV, KMJX, KLPX, KMOD, KRZZ, KGGO, KQRS and plenty more

**SILVERTONE RECORDS**

**AIRPLAY**  
**Monitor**

**BDS IMPACT**  
DETECTIONS

**BDS**  
Broadcast Data Systems  
Media Recognition Service

**AIRPOWER**  
(Minimum 800 detections for the first time)

**NO RECORDS QUALIFIED FOR AIRPOWER THIS WEEK**

**AIRPOWER BOUND**

Total Plays/Gain

**SMASH MOUTH 784/110**  
*Walkin' On The Sun (Interscope)*

Total Stations: 71/Chart Move: 22-15  
Heavy (21+ plays): 14 KEG, KILO, KISS, KRAB, KRAD, KRXX, KTUX, WARQ, WEBN, WJRR, WKLO, WVRK, WWDC, WXR  
Medium (14-20): 14 KBER, KLAQ, KMBY, KMJX, KNCN, KTAL, WBAB, WHJY, WMMS, WTFX, WTPA, WXTB, WZAT, WZTA  
Light (Under 14): 43  
New Airplay This Week: 4 KATT, KEZO, WBZ, WZZR

**EVERCLEAR 757/91**  
*Everything To Everyone (Capitol)*

Total Stations: 58/Chart Move: 23-17  
Heavy (21+): 10 KAZR, KRAD, KTUX, KUFO, WJRR, WWDC, WXR, WXTB, WZAT, WZTA  
Medium (14-20): 17 KBER, KEGE, KEGL, KEZO, KILO, KISS, KQRC, KRZR, KSJO, KTXQ, WAAF, WARQ, WBAB, WCCC, WIXV, WMFS, WRXL  
Light (Under 14): 31  
New Airplay This Week: 5 WCCC, WDHA, WEBN, WLZR, WVRK

**MEGADETH 676/186**  
*Almost Honest (Capitol)*

Total Stations: 60/Chart Move: 31-18  
Heavy (21+): 7 KAZR, KEGE, KILO, KRXX, KUPD, WBZ, WXR  
Medium (14-20): 16 KATT, KISW, KRZR, WCCC, WIXV, WJRR, WMFS, WNOR, WRXX, WRQC, WRXL, WTPA, WWDC, WYSP, WZMT  
Light (Under 14): 37  
New Airplay This Week: 12 KATT, KBPI, KFRQ, KIOZ, KISW, KLPX, KMBY, WAPL, WRQC, WRXL, WWDC, WXTB

**JIMMIE'S CHICKEN SHACK 654/56**  
*High (Rocket/A&M)*

Total Stations: 51/Chart Move: 25-23  
Heavy (21+): 8 KBER, KILO, KNCN, KUPD, WAAF, WMFS, WXR, WZAT  
Medium (14-20): 14 KAZR, KEGL, KFRQ, KIOZ, KISS, KRXX, KSJO, KTUX, KTXQ, WCCC, WKLO, WNOR, WRXX, WWDC  
Light (Under 14): 29

**THE NIXONS 653/47**  
*The Fall (MCA)*

Total Stations: 48/Chart Move: 24-24  
Heavy (21+): 8 KISS, KRAD, KTUX, WAAF, WJRR, WXR, WZAT, WZTA  
Medium (14-20): 14 KAZR, KEGL, KEZO, KLB, KMBY, KQRC, KRZR, KSJO, KRZR, WCCC, WIXV, WYXX, WTPA, WTUE  
Light (Under 14): 26

**THE WALLFLOWERS 551/130**  
*Three Marlenas (Interscope)*

Total Stations: 48/Chart Move: 34-26  
Heavy (21+): 4 KTUX, KTYD, WAPL, WONE  
Medium (14-20): 11 KLAQ, KLB, KRAB, WBAB, WEGR, WEZX, WKLC, WMMR, WMMS, WZAT, WZZR  
Light (Under 14): 33  
New Airplay This Week: 6 KDKB, KGGO, KMJX, WPYX, WRXX, WZTA

**TOOL 520/-18**  
*Aenema (Freeworld)*

Total Stations: 44/Chart Move: 28-28  
Heavy (21+): 10 KAZR, KBPI, KEGE, KIOZ, KRAD, KSJO, KUPD, WAAF, WNOR, WZAT  
Medium (14-20): 6 KBER, KRXX, KTUX, WDHA, WKLO, WXR  
Light (Under 14): 28

**BLUES TRAVELER 490/-7**  
*Most Precarious (A&M)*

Total Stations: 42/Chart Move: 29-29  
Heavy (21+): 4 KTYD, WEZX, WXR, WZZO

Medium (14-20): 8 KLB, KMBY, KZRR, WARQ, WEGR, WKLC, WMMR, WZZR  
Light (Under 14): 30  
New Airplay This Week: 1 KMOD

**THIRD EYE BLIND 489/68**  
*Graduate (Elektra/EEG)*

Total Stations: 43/Chart Move: 35-30  
Heavy (21+): 6 KILO, KRAD, KRXX, WARQ, WKLO, WXR  
Medium (14-20): 7 KEGE, KEGL, KMBY, KRZR, KUFO, WJRR, WWDC  
Light (Under 14): 30  
New Airplay This Week: 4 KLB, WBZ, WEBN, WJRR

**COOL FOR AUGUST 488/52**  
*Trials (Warner Bros.)*

Total Stations: 50/Chart Move: 33-31  
Heavy (21+): 5 KNCN, KRAB, KTUX, WAAF, WZAT  
Medium (14-20): 5 KRAD, KRZR, KUFO, WXR, WZTA  
Light (Under 14): 40  
New Airplay This Week: 5 KRAB, WLZR, WMFS, WMMR, WZZR

**KISS 487/486**  
*Jungle (Mercury)*

Total Stations: 59/Chart Move: Debut 32  
Heavy (21+): 2 KAZR, WRIF  
Medium (14-20): 13 KCAL, KEGE, KEGL, KISW, KMBY, KOMP, KUPD, WBZ, WDHA, WIYY, WMFS, WMMS, WZMT  
Light (Under 14): 44  
New Airplay This Week: 33 KAZR, KBER, KCAL, KEGE, KEGL, KILO, KISS, KISW, KLPX, KMBY, KNCN, KOMP, KQRC, KRZZ, KUPD, WAPL, WBAB, WBZ, WDHA, WEZX, WHJY, WIXV, WIYY, WKLO, WMFS, WMMS, WNCD, WRIF, WRQC, WTFX, WTPA, WTUE, WZMT

**KULA SHAKER 395/112**  
*Hush (Columbia)*

Total Stations: 41/Chart Move: Debut 37  
Heavy (21+): 4 KTUX, WKLO, WWDC, WZAT  
Medium (14-20): 8 KBPI, KEGL, KILO, KLPX, KRAD, WIYY, WTFX, WZZR  
Light (Under 14): 29  
New Airplay This Week: 4 KTYD, WCKW, WJRR, WMMS

**JOHN FOGERTY 385/21**  
*Blueboy (Warner Bros.)*

Total Stations: 31/Chart Move: Re-Entry 39  
Heavy (21+): 3 KTAL, WLQ, WONE  
Medium (14-20): 11 KGGO, KMJX, KTYD, WAPL, WBAB, WEGR, WIZN, WKLC, WPLR, WRXK, WZZR  
Light (Under 14): 17  
New Airplay This Week: 1 WROV

**CHART BOUND**

Total Plays/Gain

**SAMMY HAGAR 374/284**  
*Both Sides Now (The Track Factory/MCA)*

Total Stations: 42  
Heavy (21+): 1 WZAT  
Medium (14-20): 7 KLAQ, KMOD, KOMP, KSHE, KSJO, WCCC, WIXV  
Light (Under 14): 34  
New Airplay This Week: 24 KFRQ, KIOZ, KLB, KMOD, KNCN, KOMP, KRZR, KRZZ, KTUX, KTXQ, KXUS, KZRR, WAPL, WCMF, WEZX, WIOT, WIXV, WKLC, WNCD, WRDU, WRXX, WTUE, WYXX, WYSP

**SEVEN MARY THREE 372/-3**  
*Lucky (Mammoth/Atlantic)*

Total Stations: 31  
Heavy (21+): 5 KRAD, KTUX, WAAF, WAPL, WZAT  
Medium (14-20): 7 KEGL, KTYD, WEBN, WJRR, WKQQ, WROV, WXTB  
Light (Under 14): 19  
New Airplay This Week: 2 WCKW, WMMS

**FLEETWOOD MAC 367/92**  
*The Chain (Reprise)*

Total Stations: 44  
Heavy (21+): 1 WROV  
Medium (14-20): 9 KLAQ, KLPX, KMOD, KXUS, WBLM, WEZX, WIZN, WKLC, WMMS  
Light (Under 14): 34  
New Airplay This Week: 8 KTYD, WBLM, WEGR, WIOT, WLQ, WRXL, WSTZ, WVRK

**CHRIS DUARTE GROUP 365/-10**  
*Cleopatra (Silvertone)*

Total Stations: 35  
Heavy (21+): 2 WIXV, WZZO  
Medium (14-20): 9 KBER, KEZO, KLB, KLPX, KRZR, KTUX, WRXL, WTUE, WZZR  
Light (Under 14): 24  
New Airplay This Week: 1 WMMS

**HEADSWIM 305/36**  
*Hype (550 Music)*

Total Stations: 34  
Heavy (21+): 2 WXR, WZTA  
Medium (14-20): 3 KRZR, WJRR, WMFS  
Light (Under 14): 29  
New Airplay This Week: 1 KBPI

**THE JASON BONHAM BAND 298/72**  
*Drown In Me (MJJ/WORK)*

Total Stations: 37  
Heavy (21+): 0  
Medium (14-20): 7 KILO, KOMP, KQRC, KRZR, WIXV, WNOR, WRDU  
Light (Under 14): 30  
New Airplay This Week: 9 KBER, KDKB, KEGL, KMBY, KSJO, KTUX, WNOR, WRXX, WYXX

**DREAM THEATER 296/118**  
*Burning My Soul (EastWest/EEG)*

Total Stations: 41  
Heavy (21+): 1 KILO  
Medium (14-20): 3 KOMP, KQRC, WMFS  
Light (Under 14): 37  
New Airplay This Week: 8 KAZR, KEGE, KLPX, KOMP, WDHA, WHJY, WNOR, WRQC

**CELLOPHANE 295/1**  
*Down (Virgin)*

Total Stations: 43  
Heavy (21+): 0  
Medium (14-20): 3 WAAF, WMFS, WZAT  
Light (Under 14): 40  
New Airplay This Week: 1 WZAT

**LIFE OF AGONY 275/102**  
*Weeds (Roadrunner)*

Total Stations: 30  
Heavy (21+): 1 WZAT  
Medium (14-20): 3 WCCC, WXR, WXTB  
Light (Under 14): 26  
New Airplay This Week: 8 WAAF, WARQ, WDHA, WKLO, WSTZ, WXR, WZAT, WZTA

**LIVE 270/112**  
*Rattlesnake (Radioactive/MCA)*

Total Stations: 30  
Heavy (21+): 3 KAZR, WXTB, WZAT  
Medium (14-20): 7 KILO, KLAQ, KSJO, KTXQ, WIXV, WTPA, WXR  
Light (Under 14): 20  
New Airplay This Week: 3 WEZX, WIXV, WZMT

**THE REFRESHMENTS 265/32**  
*Good Year (Mercury)*

Total Stations: 31  
Heavy (21+): 1 WXR  
Medium (14-20): 7 KILO, KLB, KRAD, KTUX, WIXV, WJRR, WWDC  
Light (Under 14): 23  
New Airplay This Week: 3 WARQ, WTPA, WZMT

**THE TEA PARTY 263/45**  
*Temptation (Atlantic)*

Total Stations: 37  
Heavy (21+): 0  
Medium (14-20): 2 KRZR, WAAF  
Light (Under 14): 35  
New Airplay This Week: 6 KEGE, KEGL, KRXX, WKLO, WSTZ, WYSP

**OASIS 241/59**  
*Don't Go Away (Epic)*

Total Stations: 27  
Heavy (21+): 2 KTUX, WZAT  
Medium (14-20): 5 KRAD, KTXQ, WARQ, WTPA, WWDC  
Light (Under 14): 20  
New Airplay This Week: 5 KISS, KLAQ, WRIF, WVRK, WZMT

**MOST NEW STATIONS**

No. Of Stations

**KISS 33**  
*Jungle (Mercury)*

**SAMMY HAGAR 24**  
*Both Sides Now (The Track Factory/MCA)*

**YES 13**  
*Open Your Eyes (Beyond Music)*

**MEGADETH 12**  
*Almost Honest (Capitol)*

**JASON BONHAM BAND 9**  
*Drown In Me (MJJ/WORK)*

**THE ROLLING STONES 224/59**  
*Saint Of Me (Virgin)*

Total Stations: 40  
Heavy (21+): 0  
Medium (14-20): 4 KGGO, KQRS, KRXX, WRXC  
Light (Under 14): 36  
New Airplay This Week: 5 KEGL, KXUS, WAQX, WHJY, WTFX

**SISTER HAZEL 219/-7**  
*All For You (Universal)*

Total Stations: 16  
Heavy (21+): 3 KEZO, WBAB, WYXX  
Medium (14-20): 5 KLAQ, KQRS, KTAL, KTUX, WKLO  
Light (Under 14): 8

**PISTON 194/-3**  
*Grey Flap (Fierce/Lava/Atlantic)*

Total Stations: 14  
Heavy (21+): 3 KEGL, KQRC, KUPD  
Medium (14-20): 2 KILO, KRAD  
Light (Under 14): 9

**YES 192/155**  
*Open Your Eyes (Beyond Music)*

Total Stations: 24  
Heavy (21+): 1 KSHE  
Medium (14-20): 2 WBAB, WMMS  
Light (Under 14): 21  
New Airplay This Week: 13 KFRQ, KLPX, WBAB, WEGR, WIOT, WIZN, WKLC, WMMR, WMMS, WYXX, WSTZ, WWDC, WZZR

**MATTHEW RYAN 184/73**  
*Guilty (A&M)*

Total Stations: 27  
Heavy (21+): 0  
Medium (14-20): 1 KTUX  
Light (Under 14): 26  
New Airplay This Week: 7 KQRS, KXUS, WCKW, WMMR, WSTZ, WVRK, WYSP

**MATCHBOX 20 164/32**  
*3 AM (Lava/Atlantic)*

Total Stations: 19  
Heavy (21+): 2 WJRR, WWDC  
Medium (14-20): 1 KRXX  
Light (Under 14): 16  
New Airplay This Week: 1 WVRK

**311 145/57**  
*What Was I Thinking (Capricorn/Mercury)*

Total Stations: 21  
Heavy (21+): 0  
Medium (14-20): 2 WAAF, WMFS  
Light (Under 14): 19  
New Airplay This Week: 5 KISS, KMBY, KTUX, WMMS, WXR

**THE ROLLING STONES 119/10**  
*Low Down (Virgin)*

Total Stations: 26  
Heavy (21+): 0  
Medium (14-20): 0  
Light (Under 14): 26  
New Airplay This Week: 3 WIOT, WMMR, WRIF

**AEROSMITH 119/21**  
*Taste Of India (Columbia)*

Total Stations: 12  
Heavy (21+): 2 WLZR, WRDU  
Medium (14-20): 3 KEGL, KILO, WAPL  
Light (Under 14): 7

**VIBROLUSH 116/9**  
*No Regrets (Iguana/Interscope)*

Total Stations: 13  
Heavy (21+): 0  
Medium (14-20): 4 KEGE, KQRC, WJRR, WKLO  
Light (Under 14): 9  
New Airplay This Week: 1 KEGE

**U2 116/39**  
*Please (Island)*

Total Stations: 10  
Heavy (21+): 2 KISS, KRZR  
Medium (14-20): 1 WMMR  
Light (Under 14): 7  
New Airplay This Week: 2 KNCN, WVRK

**FAITH NO MORE 113/30**  
*Ashes To Ashes (Slash/Reprise)*

Total Stations: 17  
Heavy (21+): 1 WMFS  
Medium (14-20): 2 KILO, WAAF  
Light (Under 14): 14

**SOUTHERN CULTURE ON THE SKIDS 108/20**  
*Shotgun (DGC/Geffen)*

Total Stations: 15  
Heavy (21+): 1 WXR  
Medium (14-20): 0  
Light (Under 14): 14  
New Airplay This Week: 1 KNCN

**TONIC 96/48**  
*Soldier's Daughter (Polydor/A&M)*

Total Stations: 17  
Heavy (21+): 0  
Medium (14-20): 1 WTPA  
Light (Under 14): 16  
New Airplay This Week: 3 KDKB, KOMP, WIOT

**CHUMBAWAMBA 87/21**  
*Tubthumping (Republic/Universal)*

Total Stations: 8  
Heavy (21+): 1 WKLO  
Medium (14-20): 2 KRAB, WWDC  
Light (Under 14): 5  
New Airplay This Week: 2 KBPI, KRAB

**LONGPIGS 83/-3**  
*On And On (Mother/Island)*

Total Stations: 17  
Heavy (21+): 0  
Medium (14-20): 0  
Light (Under 14): 17  
New Airplay This Week: 1 WVRK

**SOAK 79/11**  
*Shutter Gut (RainMaker/Interscope)*

Total Stations: 7  
Heavy (21+): 0  
Medium (14-20): 3 KEGL, KISS, KRXX  
Light (Under 14): 4

**THE MIGHTY MIGHTY BOSSTONES 76/10**  
*The Rascal King (Big Rig/Mercury)*

Total Stations: 11  
Heavy (21+): 1 WAAF  
Medium (14-20): 1 WWDC  
Light (Under 14): 9

MAINSTREAM ROCK



SONG ACTIVITY REPORTS



For Week Ending October 5, 1997

Detailed song tracking information for the last 3 weeks for all songs showing increased play this week. Total plays and gain do not include video plays. Markets listed in order of population.

Total Plays/Gain Total Plays/Gain Total Plays/Gain Total Plays/Gain

COLLECTIVE SOUL 919/118 Blame (Atlantic) Total Stations: 62 Chart Move: 17-13

COOL FOR AUGUST 488/52 Trials (Warner Bros.) Total Stations: 50 Chart Move: 33-31

CREED 1181/101 My Own Prison (Wind-up) Total Stations: 69 Chart Move: 8-7

DAYS OF THE NEW 2012/35 Touch, Peel And Stand (Outpost/Geffen) Total Stations: 90 Chart Move: 1-1

EVERCLEAR 757/91 Everything To Everyone (Capitol) Total Stations: 58 Chart Move: 23-17

JOHN FOGERTY 385/21 Bluejoy (Warner Bros.) Total Stations: 31 Chart Move: Re-Entry 39

FOO FIGHTERS 1269/87 Everlong (Roswell/Capitol) Total Stations: 67 Chart Move: 5-4

GREEN DAY 1068/99 Hitchin' A Ride (Reprise) Total Stations: 66 Chart Move: 12-10

JIMMIE'S CHICKEN SHACK 654/56 High (Rocket/A&M) Total Stations: 51 Chart Move: 25-23

KISS 487/486 Jungle (Mercury) Total Stations: 69 Chart Move: Debut 32



SONG ACTIVITY REPORTS



For Week Ending October 5, 1997

Detailed song tracking information for the last 3 weeks for all songs showing increased play this week. Total plays and gain do not include video play. Markets listed in order of population.

Grid of song activity reports for KULA SHAKER, MATCHBOX 20, MEGADETH, MIGHTY JOE PLUM, and THE NIXONS. Each entry includes station, city, and play/gain data.

Grid of song activity reports for THE OFFSPRING, KENNY WAYNE SHEPHERD BAND, SMASH MOUTH, THIRD EYE BLIND, and THE WALLFLOWERS. Each entry includes station, city, and play/gain data.



## HERITAGE ROCK

THIS WEEK	LAST WEEK	WKS. ON CHART			DETECTIONS		
			TITLE/LABEL/PROMOTION LABEL	ARTIST	TW	LW	
			<b>*** NO. 1 ***</b>				
1	1	5	ANYBODY SEEN MY BABY? VIRGIN 4 weeks at No. 1	THE ROLLING STONES	1027	1091	
2	2	23	PINK COLUMBIA	AEROSMITH	980	983	
3	3	10	TOUCH, PEEL AND STAND OUTPOST/GEFFEN	DAYS OF THE NEW	685	655	
4	5	28	IF YOU COULD ONLY SEE POLYDOR/A&M	TONIC	659	634	
5	7	5	SLOW RIDE REVOLUTION	KENNY WAYNE SHEPHERD BAND	644	571	
6	6	32	PUSH LAVA/ATLANTIC	MATCHBOX 20	579	601	
7	10	4	BLAME ATLANTIC	COLLECTIVE SOUL	532	462	
8	9	12	LIVE THROUGH THIS (FIFTEEN STORIES) ATLANTIC	MIGHTY JOE PLUM	490	474	
9	4	12	MARCHING TO MARS THE TRACK FACTORY/MCA	SAMMY HAGAR	438	644	
10	8	16	SOUL OF LOVE EAGLEROCK/VELVEL	PAUL RODGERS	385	481	
11	15	6	BLUEBOY WARNER BROS.	JOHN FOGERTY	369	347	
			<b>*** AIRPOWER ***</b>				
12	20	2	THREE MARLENAS INTERSCOPE	THE WALLFLOWERS	366	289	
13	11	8	MOST PRECARIOUS A&M	BLUES TRAVELER	365	383	
14	16	22	LISTEN ATLANTIC	COLLECTIVE SOUL	342	338	
			<b>*** AIRPOWER ***</b>				
15	25	2	THE CHAIN REPRISE/WARNER BROS.	FLEETWOOD MAC	331	251	
16	12	11	ONE ANGEL AWARE/CAPITOL	STIR	329	379	
17	18	19	CAROLINA BLUES A&M	BLUES TRAVELER	307	297	
18	13	15	TURN MY HEAD RADIOACTIVE/MCA	LIVE	293	364	
19	26	4	I CHOOSE COLUMBIA	THE OFFSPRING	293	240	
20	29	3	WALKIN' ON THE SUN INTERSCOPE	SMASH MOUTH	263	196	
21	14	11	HIT THE GROUND RUNNING A&M	JONNY LANG	253	360	
22	22	6	CLEOPATRA SILVERTONE	CHRIS DUARTE GROUP	239	258	
23	21	23	THE DIFFERENCE INTERSCOPE	THE WALLFLOWERS	238	277	
24	17	12	SUGARCANE COLUMBIA	CRY OF LOVE	238	322	
25	24	7	HELLO HELLO ATLANTIC	TALK SHOW	237	252	
26	28	4	MY OWN PRISON WIND-UP	CREED	231	202	
27	NEW		BOTH SIDES NOW THE TRACK FACTORY/MCA	SAMMY HAGAR	222	48	
28	19	10	CONGO ATLANTIC	GENESIS	215	294	
29	40	2	EVERLONG ROSWELL/CAPITOL	FOO FIGHTERS	182	148	
30	23	8	MY NEIGHBORHOOD EUREKA/DISCOVERY	COREY STEVENS	179	255	
31	33	2	HITCHIN' A RIDE REPRISE	GREEN DAY	178	175	
32	30	7	ALL FOR YOU UNIVERSAL	SISTER HAZEL	177	190	
33	NEW		JUNGLE MERCURY	KISS	175	0	
34	27	13	LAZY EYE WARNER SUNSET/WARNER BROS.	GOO GOO DOLLS	175	212	
35	32	21	WALKING IN A HURRICANE WARNER BROS.	JOHN FOGERTY	164	178	
36	36	18	BLEEDING ME ELEKTRA/VEEG	METALLICA	162	168	
37	37	16	SEMI-CHARMED LIFE ELEKTRA/VEEG	THIRD EYE BLIND	155	165	
38	NEW		GUILTY A&M	MATTHEW RYAN	154	93	
39	NEW		SAINT OF ME VIRGIN	THE ROLLING STONES	152	122	
40	NEW		OPEN YOUR EYES BEYOND MUSIC	YES	148	32	

Records showing an increase in detections over the previous week, regardless of chart movement. A record which has been on the chart for more than 20 weeks will not receive a bullet, even if it registers an increase in detections. Airpower awarded to those records which attain 300 detections for the first time. If two records are tied in number of plays, the record being played on more stations is placed first. Records below the top 20 are removed from the chart after 26 weeks.

## GREATEST GAINERS

INCREASE IN PLAYS

<b>KISS • Jungle (MERCURY)</b> KMBY +19, KOMP +19, WDHA +17, KCAL +16, KRZZ +13, WBAB +12, WIXV +10, WEZX +9, WHJY +8, WTFX +7	<b>+175</b>
<b>SAMMY HAGAR • Both Sides Now (THE TRACK FACTORY/MCA)</b> WIXV +16, KOMP +15, KMOD +14, KXUS +12, KRZZ +10, WKLC +10, WNCD +9, WRXK +9, KZRR +9, WRDU +8	<b>+174</b>
<b>YES • Open Your Eyes (BEYOND MUSIC)</b> WBAB +14, KLPX +13, WEGR +12, WZZR +12, WMMR +12, WKLC +10, WSTZ +9, WIZN +7, KFRO +6, WPYX +6	<b>+116</b>
<b>FLEETWOOD MAC • The Chain (REPRISE)</b> WBLM +14, WROV +12, WRXL +12, WEGR +8, WLVO +8, KMOD +6, WSTZ +5, KEZO +5, KLAQ +5, WTKA +4	<b>+80</b>
<b>THE WALLFLOWERS • Three Marlenas (INTERSCOPE)</b> WKLC +13, KMJX +9, KGGO +8, WEZX +8, WRXK +6, WPYX +6, KDKB +6, WBAB +6, WAPL +5, KMOD +5	<b>+77</b>

## ACTIVE ROCK

THIS WEEK	LAST WEEK	WKS. ON CHART			DETECTIONS		
			TITLE/LABEL/PROMOTION LABEL	ARTIST	TW	LW	
			<b>*** NO. 1 ***</b>				
1	1	14	TOUCH, PEEL AND STAND OUTPOST/GEFFEN 7 weeks at No. 1	DAYS OF THE NEW	1327	1322	
2	2	10	EVERLONG ROSWELL/CAPITOL	FOO FIGHTERS	1087	1034	
3	3	9	MY OWN PRISON WIND-UP	CREED	950	878	
4	4	13	I CHOOSE COLUMBIA	THE OFFSPRING	928	876	
5	6	6	HITCHIN' A RIDE REPRISE	GREEN DAY	890	794	
6	5	14	PINK COLUMBIA	AEROSMITH	866	873	
7	7	7	HELLO HELLO ATLANTIC	TALK SHOW	800	789	
8	9	14	LIVE THROUGH THIS (FIFTEEN STORIES) ATLANTIC	MIGHTY JOE PLUM	687	694	
9	8	21	TRUST CAPITOL	MEGADETH	670	704	
10	13	5	EVERYTHING TO EVERYONE CAPITOL	EVERCLEAR	624	548	
11	11	20	BLEEDING ME ELEKTRA/VEEG	METALLICA	608	636	
12	15	12	HIGH ROCKET/A&M	JIMMIE'S CHICKEN SHACK	586	539	
13	18	3	SLOW RIDE REVOLUTION	KENNY WAYNE SHEPHERD BAND	563	486	
			<b>*** AIRPOWER ***</b>				
14	23	4	ALMOST HONEST CAPITOL	MEGADETH	538	396	
15	10	20	SUPERMAN'S DEAD COLUMBIA	OUR LADY PEACE	521	641	
16	21	8	WALKIN' ON THE SUN INTERSCOPE	SMASH MOUTH	521	478	
17	20	5	ANYBODY SEEN MY BABY? VIRGIN	THE ROLLING STONES	512	483	
18	22	5	THE FALL MCA	THE NIXONS	505	460	
19	12	28	IF YOU COULD ONLY SEE POLYDOR/A&M	TONIC	501	583	
20	17	16	AENEMA FREEWORLD	TOOL	483	500	
21	19	21	LAST CUP OF SORROW SLASH/REPRISE	FAITH NO MORE	432	484	
			<b>*** AIRPOWER ***</b>				
22	27	6	GRADUATE ELEKTRA/VEEG	THIRD EYE BLIND	421	359	
23	14	13	LAZY EYE WARNER SUNSET/WARNER BROS.	GOO GOO DOLLS	390	542	
24	28	4	BLAME ATLANTIC	COLLECTIVE SOUL	387	339	
25	30	7	TRIALS WARNER BROS.	COOL FOR AUGUST	349	310	
26	25	10	FLY LAVA/ATLANTIC	SUGAR RAY	342	387	
27	29	22	LISTEN ATLANTIC	COLLECTIVE SOUL	325	338	
28	NEW		JUNGLE MERCURY	KISS	312	1	
29	38	2	HUSH COLUMBIA	KULA SHAKER	267	189	
30	NEW		WEEDS ROADRUNNER	LIFE OF AGONY	259	164	
31	36	3	HYPE 550 MUSIC	HEADSWIM	256	221	
32	32	4	LUCKY MAMMOTH/ATLANTIC	SEVEN MARY THREE	250	248	
33	31	9	(CAN'T YOU) TRIP LIKE I DO IMMORTAL/EPIC	FILTER AND THE CRYSTAL METHOD	246	273	
34	26	15	TURN MY HEAD RADIOACTIVE/MCA	LIVE	244	378	
35	33	5	DOWN VIRGIN	CELOPHANE	240	240	
36	34	24	MONKEY WRENCH ROSWELL/CAPITOL	FOO FIGHTERS	236	229	
37	24	11	MARCHING TO MARS THE TRACK FACTORY/MCA	SAMMY HAGAR	235	390	
38	39	2	TEMPTATION ATLANTIC	THE TEA PARTY	227	185	
39	NEW		RATTLESNAKE RADIOACTIVE/MCA	LIVE	223	155	
40	NEW		BURNING MY SOUL EASTWEST/VEEG	DREAM THEATER	218	146	

Records showing an increase in detections over the previous week, regardless of chart movement. A record which has been on the chart for more than 20 weeks will not receive a bullet, even if it registers an increase in detections. Airpower awarded to those records which attain 400 detections for the first time. If two records are tied in number of plays, the record being played on more stations is placed first. Records below the top 20 are removed from the chart after 26 weeks.

## GREATEST GAINERS

INCREASE IN PLAYS

<b>KISS • Jungle (MERCURY)</b> KAZR +27, WRIF +27, KUPD +19, WMFS +18, WZMT +18, WBZX +17, KEGE +17, WIYY +17, KEGL +17, WMMS +15	<b>+311</b>
<b>MEGADETH • Almost Honest (CAPITOL)</b> KATT +20, WRQC +15, WWDC +15, KISW +13, KEGE +12, KIOZ +7, KAZR +7, KBER +7, KNCN +6, WIYY +6	<b>+142</b>
<b>SAMMY HAGAR • Both Sides Now (THE TRACK FACTORY/MCA)</b> WZAT +16, WYSP +12, KLBJ +12, WTUE +11, KTUX +10, KIOZ +9, KRZR +9, KNCN +8, WIOT +8, KTXQ +8	<b>+110</b>
<b>GREEN DAY • Hitchin' A Ride (REPRISE)</b> WXRA +10, KBER +8, WMMS +8, KISS +7, KUFO +6, KLBJ +6, KRAB +5, WRIF +5, WMFS +4, WZMT +4	<b>+96</b>
<b>LIFE OF AGONY • Weeds (ROADRUNNER)</b> WZAT +20, WXRA +17, WZTA +11, WKLQ +8, WCCC +7, WBZX +4, KBPI +4, WAAF +4, WARQ +3, WJRR +3	<b>+95</b>

# The Format is going "nuts" over Jars Of Clay's "Crazy Times"

KXPK-DENVER #1 Spins!!!

"This is doing great on air, sales are great too! We love Jars!" Eric Schmidt, KXPK

Just Added



Already on: 99X KDGE KPNT KXPK KROX KCXX  
 XTRA XHRM KZON KXXP WQXA WRXQ  
 WLUM WMAD WCYY KFTE KCHZ (50 spins!!!)  
 KTOZ KNRX and many more!!

also including multi-format airplay at:

KLOS-Los Angeles KTXQ-Dallas KSHZ-St.Louis KGSR-Austin  
 KMTT-Seattle Cities 97-Minneapolis KKZN-Dallas and more!!

jars of clay

# crazy times

the first of many singles and videos from the new LP *much afraid*

BILLBOARD SOUNDSCAN TOP 200 ALBUMS CHART:  
 @ #18 58,000 plus units sold this week!!!

600,000 albums plus shipped, 150,000 scanned in two weeks!!!!!!

US tour beginning soon!

Produced & Mixed by Stephen Lipson  
 Engineered by Heff Moraes

Rendy Lovelady Management

The first ten dates of the US tour are SOLD OUT!!!

© 1997 Essential Records 41812-2/4



# MODERN ROCK

## POWER PLAYLISTS

AIRPLAY Monitor

For Week Ending  
 October 5, 1997

City	Station	PD	MD	TW	LW
New York	WXRK	Steve Kingston			
Los Angeles	KROQ	Kevin Weatherly	Gene Sandbloom		
Chicago	WKQX	Alex Luke	Mary Shuminas		
Boston	WBCN	Oedipus	Carter Alan		
Philadelphia	WPLY	Jim McGuinn	Doug Kubinski		
Los Angeles	KLYY	Steve Blatter	Sandy Horowitz		
Washington, DC	WHFS	Robert Benjamin	Bob Waugh		
Atlanta	WNNX	Brian Philips	Leslie Fram		
Detroit	WPLT	Garett Michaels	Alex Tear		
Dallas	KDGE	Joel Folger	Mike Peer		
San Francisco	KITS	Richard Sands	Roland West		
Seattle	KNDD	Phil Manning	Kim Monroe		

# MODERN ROCK

## POWER PLAYLISTS™

**Monitor**  
For Week Ending  
October 5, 1997

Playlists supplied by Broadcast Data Systems' Radio Track service. Songs ranked by number of plays in monitored week. Playlists are listed in order of TSA weekly count, beginning with the highest-counting station. Counts are updated twice yearly following the release of the Spring and Fall Arbitron surveys. The number of stations shown each week varies depending upon space.

KOME			
San Jose	OM: Ron Nenni PD/MD: Jay Taylor		
TW	LW		
1	Chambawamba, Tubthumping	41	38
2	Everclear, Everything To Everyone	38	35
3	Sublime, Wrong Way	37	19
4	Save Ferris, Come On Eileen	34	19
5	Third Eye Blind, Graduate	33	25
6	The Cure, Wrong Number	33	7
7	Foo Fighters, Everlong	32	35
8	Oasis, Don't Go Away	31	34
9	Mighty Mighty Bosstones, The Rascal King	30	19
10	Beck, Jack-Ass	29	28
11	Our Lady Peace, Superman's Dead	29	30
12	Smash Mouth, Walkin' On The Sun	27	37
13	Blink 182, Danni (Growing Up)	26	28
14	Green Day, Hitchin' A Ride	26	30
15	Marcy Playground, Sex & Candy	25	24
16	Third Eye Blind, How's It Going To Be	25	20
17	Fiona Apple, Criminal	23	34
18	Smear Pimp, 6 Underground	22	24
19	Sublime, Don't Time	22	24
20	Matchbox 20, Long Day	21	1
21	Tonic, If You Could Only See	21	21
22	Bush, Mouth	21	1
23	Reel Big Fish, Sell Out	18	14
24	The Sundays, SummerTime	18	9
25	Matchbox 20, Push	17	26
26	Blair, Song 2	17	13
27	Garage, #1 Crush	17	14
28	Prodigy, Breathe	17	18
29	Foo Fighters, My Hero	17	9
30	Smear Pimp, Spin Spin Sugar	16	14

KTBZ			
Houston	PD: Jim Trapp MD: David Sadoff		
TW	LW		
1	Smash Mouth, Walkin' On The Sun	42	44
2	Sublime, Wrong Way	42	40
3	Matchbox 20, 3 AM	41	41
4	Sugar Ray, Fly	41	41
5	Oasis, Don't Go Away	40	43
6	Seven Mary Three, Lucky	40	43
7	Days Of The New, Touch, Peel And Stand	35	24
8	Everclear, Everything To Everyone	34	33
9	Foo Fighters, Everlong	32	26
10	Talk Show, Hello Hello	32	33
11	Live, Turn My Head	28	40
12	Go Go Dolls, Lazy Eye	28	31
13	Tanya Donnelly, Pretty Deep	27	20
14	Green Day, Hitchin' A Ride	26	26
15	Third Eye Blind, Graduate	26	17
16	Love Spit Love, Long Long Time	25	28
17	The Sundays, SummerTime	24	25
18	The Offspring, I Choose	23	18
19	Mighty Joe Plum, Live Through This	21	23
20	311, Prisoner	20	5
21	Oasis, D' You Know What I Mean?	20	18
22	U2, Do You Feel Loved?	19	4
23	Toad The Wet Sprocket, Whatever I Fear	18	26
24	Tonic, If You Could Only See	17	8
25	Spacehog, In The Meantime	16	17
26	The Refreshments, Bandits	16	6
27	Collective Soul, Precious Declaration	15	1
28	Blues Traveler, Most Precarious	15	13
29	Blaze Foley, All For You	15	17
30	Alice In Chains, Heaven Beside You	14	11

CIMX			
Detroit	Prgr. Mngr.: Murray Brookshaw PD/MD: Vince Cannova		
TW	LW		
1	The Verve, Briter Sweet Symphony	55	37
2	Chambawamba, Tubthumping	51	43
3	Oasis, Don't Go Away	44	42
4	Smash Mouth, Walkin' On The Sun	43	44
5	Fiona Apple, Criminal	41	40
6	Sugar Ray, Fly	41	44
7	Foo Fighters, Everlong	39	37
8	Sarah McLachlan, Building A Mystery	37	30
9	Everclear, Everything To Everyone	36	44
10	Green Day, Hitchin' A Ride	36	46
11	Third Eye Blind, Semi-Charmed Life	34	38
12	Beck, Jack-Ass	29	31
13	Reel Big Fish, Sell Out	28	27
14	Third Eye Blind, How's It Going To Be	27	16
15	Our Lady Peace, Automatic Flowers	25	10
16	Forest For The Trees, Dream	23	19
17	Mighty Mighty Bosstones, The Rascal King	23	22
18	Chantal Kreviazuk, Surrounded	22	6
19	Our Lady Peace, Glammy	22	24
20	Jana's Addiction, Been Caught Stealing	21	6
21	Sublime, Don't Time	20	21
22	Dave Matthews Band, Crash Into Me	20	20
23	Beck, The New Pollution	20	6
24	Talk Show, Hello Hello	20	25
25	Blink 182, Danni (Growing Up)	20	8
26	Mighty Mighty Bosstones, The Impression	19	21
27	Jamiroquai, Alright	19	3
28	Matchbox 20, Push	19	17
29	Matchbox 20, 3 AM	19	13
30	Goldfinger, This Lonely Place	19	17

KPNT			
St. Louis	PD: Allan Fee MD: Adam Potts		
TW	LW		
1	Chambawamba, Tubthumping	34	27
2	Our Lady Peace, Superman's Dead	34	34
3	Smash Mouth, Walkin' On The Sun	33	34
4	Fiona Apple, Criminal	33	34
5	Foo Fighters, Everlong	33	28
6	Sugar Ray, Fly	33	28
7	Green Day, Hitchin' A Ride	31	33
8	Mighty Mighty Bosstones, The Rascal King	31	30
9	Str...One Angel	31	28
10	Everclear, Everything To Everyone	26	24
11	Third Eye Blind, Graduate	24	32
12	Sarah McLachlan, Building A Mystery	24	30
13	Kula Shaker, Hush	23	21
14	Sublime, Wrong Way	22	20
15	Days Of The New, Touch, Peel And Stand	22	18
16	Goldfinger, This Lonely Place	20	20
17	Matchbox 20, 3 AM	19	9
18	The Offspring, I Choose	19	22
19	311, Prisoner	19	21
20	Marcy Playground, Sex & Candy	19	21
21	Beck, Jack-Ass	18	12
22	The Honeyrods, Love Bee	18	14
23	Tonic, If You Could Only See	17	16
24	Oasis, Don't Go Away	17	14
25	Reel Big Fish, Sell Out	17	21
26	K's Choice, Not An Addict	16	19
27	Matchbox 20, Push	16	25
28	Longlegs, On And On	16	15
29	The Cure, Wrong Number	16	0
30	Blair, Song 2	15	16

WXDX			
Pittsburgh	PD: Ali Castellini MD: Leny Diana		
TW	LW		
1	Artificial Joy Club, Sift & Beautiful	35	31
2	Sugar Ray, Fly	34	30
3	Seven Mary Three, Lucky	33	30
4	Sarah McLachlan, Building A Mystery	33	32
5	Sublime, Wrong Way	32	28
6	The Smashing Pumpkins, The End Is The	32	28
7	Matchbox 20, Push	31	33
8	Fiona Apple, Criminal	30	32
9	Chambawamba, Tubthumping	30	23
10	Smash Mouth, Walkin' On The Sun	27	29
11	Foo Fighters, Everlong	26	25
12	Our Lady Peace, Superman's Dead	25	14
13	Green Day, Hitchin' A Ride	24	25
14	Everclear, Everything To Everyone	24	24
15	Talk Show, Hello Hello	22	21
16	Oasis, Don't Go Away	22	22
17	Mighty Mighty Bosstones, The Rascal King	19	26
18	Luscious Jackson, Under Your Skin	19	2
19	Blues Traveler, Most Precarious	19	14
20	The Wallflowers, Three Marlenas	18	22
21	Jars Of Clay, Crazy Times	17	12
22	Love Spit Love, Long Long Time	17	15
23	Mighty Joe Plum, Live Through This	14	14
24	Filter & The Crystal Method, (Can't You)	14	14
25	Goldfinger, This Lonely Place	13	12
26	Prodigy, Breathe	13	13
27	The Offspring, I Choose	13	14
28	Letters To Cleo, Anchor	12	14
29	The Refreshments, Good Year	12	0
30	Forest For The Trees, Dream	11	12

KEDJ			
Phoenix	PD: Shellie Hart APD/MD: Chris Patyk		
TW	LW		
1	Blair, Song 2	53	46
2	Smash Mouth, Walkin' On The Sun	49	36
3	Filter & The Crystal Method, (Can't You)	43	31
4	Sugar Ray, Fly	38	33
5	Foo Fighters, Everlong	35	30
6	Everclear, Everything To Everyone	35	34
7	Green Day, Hitchin' A Ride	34	37
8	The Offspring, I Choose	34	27
9	Tonic, If You Could Only See	33	24
10	Chambawamba, Tubthumping	33	15
11	Days Of The New, Touch, Peel And Stand	30	25
12	Sublime, Don't Time	27	16
13	Mighty Mighty Bosstones, The Impression	26	24
14	Our Lady Peace, Superman's Dead	26	43
15	Less Than Jake, Dope-man	25	19
16	Third Eye Blind, Graduate	25	44
17	Matchbox 20, 3 AM	23	36
18	Prodigy, Breathe	23	19
19	Sugar Ray, Fly	22	28
20	The Wallflowers, I'm A Mess	22	14
21	Snow Doggy Bag W/Rage Against, Bounce	22	3
22	The Offspring, Gone-Away	20	38
23	Dance Hall Crashers, Lost Again	20	25
24	Creed, My Own Prison	19	0
25	Tool, Stinkfist	18	15
26	Korn & The Beast Brothers, Kick The P.A.	18	19
27	Save Ferris, Come On Eileen	17	14
28	Blink 182, Danni (Growing Up)	17	17
29	The Cure, Wrong Number	16	0
30	Smear Pimp, 6 Underground	16	22

WLIR			
Long Island	PD: Jeff Levine Mus. Coord.: Lynda Lopez		
TW	LW		
1	Matchbox 20, Push	38	30
2	Third Eye Blind, Semi-Charmed Life	37	42
3	Sugar Ray, Fly	36	39
4	Sister Hazel, All For You	36	41
5	The Wallflowers, Three Marlenas	36	27
6	Oasis, Don't Go Away	32	19
7	Chambawamba, Tubthumping	26	37
8	Smash Mouth, Walkin' On The Sun	26	24
9	Mighty Mighty Bosstones, The Impression	25	26
10	Dave Matthews Band, Crash Into Me	25	23
11	The Verve Pipe, The Freshmen	24	26
12	The Sundays, SummerTime	24	41
13	OMG, How Bizarre	23	28
14	Paula Cole, I Don't Want To Wait	22	25
15	Sublime, Wrong Way	22	25
16	Tonic, If You Could Only See	21	18
17	Sarah McLachlan, Building A Mystery	21	25
18	Shawn Colvin, Sunny Came Home	20	22
19	The Wallflowers, The Difference	19	22
20	Meredith Brooks, Bitch	18	19
21	Sheryl Crow, A Change Would Do You Good	17	19
22	Luscious Jackson, Naked Eye	17	19
23	Fiona Apple, Criminal	17	18
24	Paula Cole, Where Have All The Cowboys	16	14
25	Sublime, Santana	16	20
26	Savage Garden, I Want You	15	20
27	White Town, Your Woman	15	20
28	Reel Big Fish, Sell Out	15	17
29	The Wallflowers, One Headlight	13	17
30	Collective Soul, Shine	10	9

XTRA			
San Diego	PD: Bryan Schock MD: Chris Muckley		
TW	LW		
1	Everclear, Everything To Everyone	34	31
2	Oasis, Don't Go Away	34	33
3	Beck, Jack-Ass	33	33
4	Smash Mouth, Walkin' On The Sun	33	30
5	Sublime, Don't Time	32	30
6	Mighty Mighty Bosstones, The Rascal King	32	30
7	Foo Fighters, Everlong	32	31
8	311, Prisoner	32	34
9	Marcy Playground, Sex & Candy	29	30
10	Chambawamba, Tubthumping	20	20
11	Buck-O-Nine, Jennifer's Cold	19	1
12	Beck, Jack-Ass	18	19
13	Green Day, Hitchin' A Ride	18	18
14	Longlegs, On And On	17	17
15	The Verve, Briter Sweet Symphony	17	21
16	The Sundays, SummerTime	17	18
17	Duran Duran, Electric Barbarella	17	18
18	Less Than Jake, Dope-man	17	17
19	Squirrel Nut Zippers, Put A Lid On It	17	17
20	Save Ferris, Come On Eileen	16	17
21	Dance Hall Crashers, Lost Again	16	17
22	Oliver, You're Not Alone	16	19
23	Monty Python, Let's Start A New Day With My Soul	15	2
24	Fiona Apple, Criminal	15	17
25	Forest For The Trees, Dream	14	18
26	Radiohead, Let Down	14	15
27	Royal Crown Revue, Barbies At The Beach	14	1
28	Sarah McLachlan, Building A Mystery	13	13
29	Calixta, Denis	12	11
30	The Platysters, Out All Night	12	6

WMRQ			
Hartford	PD: Jay Beau Jones MD: Dave Hill		
TW	LW		
1	Smash Mouth, Walkin' On The Sun	45	35
2	Sugar Ray, Fly	44	45
3	Sublime, Wrong Way	44	43
4	Foo Fighters, Everlong	42	35
5	Tonic, If You Could Only See	41	41
6	Chambawamba, Tubthumping	39	29
7	Smear Pimp, 6 Underground	32	33
8	Longlegs, On And On	26	24
9	Reel Big Fish, Sell Out	25	25
10	Everclear, Everything To Everyone	25	27
11	Oasis, Don't Go Away	25	21
12	Green Day, Hitchin' A Ride	25	25
13	Forest For The Trees, Dream	24	27
14	Matchbox 20, Push	24	34
15	Fiona Apple, Criminal	23	30
16	Mighty Mighty Bosstones, The Rascal King	23	24
17	Collective Soul, List'n	23	17
18	Third Eye Blind, Graduate	22	24
19	Radiohead, Let Down	20	23
20	K's Choice, Not An Addict	20	23
21	Jacal R, Bound For The Floor	20	16
22	Mighty Mighty Bosstones, The Impression	17	25
23	Homa Apple, Criminal	17	12
24	Seven Mary Three, Cumbersome	16	17
25	Prodigy, Breathe	16	14
26	Blues Traveler, Most Precarious	15	16
27	Third Eye Blind, Semi-Charmed Life	15	13
28	Sublime, Don't Time	15	14
29	Our Lady Peace, Superman's Dead	15	15
30	Dandy Warhols, Not If You Were The Last	12	13

WENZ			
Cleveland	PD/MD: Sean Robertson		
TW	LW		
1	Sugar Ray, Fly	48	48
2	Our Lady Peace, Superman's Dead	48	49
3	Oasis, Don't Go Away	46	46
4	Fiona Apple, Criminal	46	46
5	Green Day, Hitchin' A Ride	45	47
6	Smash Mouth, Walkin' On The Sun	45	46
7	Foo Fighters, Everlong	45	40
8	Sublime, Wrong Way	43	46
9	Chambawamba, Tubthumping	39	26
10	The Verve, Briter Sweet Symphony	26	18
11	Everclear, Everything To Everyone	24	20
12	Goldfinger, This Lonely Place	24	19
13	The Sundays, SummerTime	24	19
14	Love Spit Love, Long Long Time	22	18
15	Forest For The Trees, Dream	21	24
16	Mighty Mighty Bosstones, The Rascal King	21	19
17	Marcy Playground, Sex & Candy	21	21
18	Sarah McLachlan, Building A Mystery	20	44
19	Kula Shaker, Hush	20	17
20	Longlegs, On And On	20	14
21	The Refreshments, Good Year		

POWER PLAYLISTS

For Week Ending October 5, 1997



Playlists supplied by Broadcast Data Systems' Radio Track service. Songs ranked by number of plays in monitored week. Playlists are listed in order of TBA weekly come, beginning with the highest-ranking station. Cumulative are updated twice yearly following the release of the Spring and Fall Arbitron surveys. The number of stations shown each week varies depending upon space.

Grid of 48 radio station playlists (WRZZ, KWOD, KZON, XHRM, WQBK, WEND, WQXA, WLUM, WNVE, WFNX, KXXP, WBRU, WEDG, KCCX, WGRD, KNRK, KENZ, KXRK, WPBZ, WAQZ, WROX, KTCL, KXTE, KNRX) with columns for station name, PD, MD, and song/album/artist with play counts.



POWER PLAYLISTS
AIRPLAY Monitor For Week Ending October 5, 1997

WEDGE Providence PD: Brent Petersen MD: John Allers
1 Foo Fighters, Everlong
2 Our Lady Peace, Superman's Dead

KMYZ Tulsa PD: Paul Krieger MD: Greg Kocsack
1 Sugar Ray, Fly
2 Sublime, Wrong Way
3 Foo Fighters, Everlong

KKND New Orleans MD: Rod Ryan
1 Our Lady Peace, Superman's Dead
2 Smash Mouth, Walkin' On The Sun

KCXX Riverside/San Bernardino OM/PD: Dwight Arnold MD: Bruce Pulley
1 Everclear, Everything To Everyone
2 Smash Mouth, Walkin' On The Sun

KGDE Omaha PD: Lynn Barstow MD: Scott Papek
1 Green Day, Hitchin' A Ride
2 Foo Fighters, Everlong

KROX Austin PD: Sara Trexler APD/MD: Lloyd "LA" Hocutt
1 Chumbawamba, Tubthumping
2 Prodigy, Braathe

KEDG Las Vegas PD: John Griffin MD: Freddy Snakeskin
1 Green Day, Hitchin' A Ride
2 Chumbawamba, Tubthumping

WXEG Dayton PD: Jeff Stevens MD: Alan Rance
1 Sugar Ray, Fly
2 Smash Mouth, Walkin' On The Sun

WPLA Jacksonville PD: Jim Randall MD: Greg Brady
1 Sarah McLachlan, Building A Mystery
2 Oasis, D' You Know What I Mean?

WCYY Portland, ME PD: Herb Ivy MD: Brian James
1 Everclear, Everything To Everyone
2 Smash Mouth, Walkin' On The Sun

KFRR Fresno PD: Don O'Neal AMD: Andy Winford
1 Smash Mouth, Walkin' On The Sun
2 Sugar Ray, Fly

WWCD Columbus PD: Jane Purcell MD: Andy Davis
1 Chumbawamba, Tubthumping
2 Forest For The Trees, Dream



EARLY BELIEVERS:
KXKR 31x
KKDM 10x

hurricane #1



STEP INTO MY WORLD.
The first single from the debut album.

Produced by Stephen Harris and Andy Ball
Exclusive Worldwide Management by Stephen King at Riccochet

AIRPLAY Monitor

BDS IMPACT



DETECTIONS

AIRPOWER

NO RECORDS QUALIFIED FOR AIRPOWER THIS WEEK

AIRPOWER BOUND

311 1023/-10 Prisoner (Capricorn/Mercury)

DAYS OF THE NEW 947/119 Touch, Peel And Stand (Outpost/Geffen)

SEVEN MARY THREE 815/79 Lucky (Mammoth/Antallic)

LONGPIGS 814/169 On And On (Mother/Island)

THE OFFSPRING 799/133 I Choose (Columbia)

THE VERVE 775/212 Bitter Sweet Symphony (Hut/Virgin)

SAVE FERRIS 769/69 Come On Eileen (Starpool/Epic)

SUBLIME 659/99 Doin' Time (Gasoline Alley/MCA)

Medium (15-29): 20 CIMX, KCXX, KEDJ, KFMA, KITS, KLYY, KLZR, KNDD, KNRX, KOME, KROQ, KTCL, KOXE, WBRU, WEQX, WFNX, WKQX, WMRQ, WNNX, XHRM

THE WALLFLOWERS 658/101 Three Marlenas (Interscope)

\* THE CURE 627/580 Wrong Number (Fiction/Elektra/EEG)

LOVE SPIT LOVE 625/-19 Long Long Time (Maverick/Warner Bros.)

MATCHBOX 20 596/130 3 AM (Lava/Antallic)

BLINK 182 576/83 Dammit (Growing Up) (Cargo/MCA)

CHART BOUND

SISTER HAZEL 528/-1 All For You (Universal)

JARS OF CLAY 524/34 Crazy Times (Essential/Silvertone)

JAMIROQUAI 472/32 Alright (WORK)

MOST NEW STATIONS

Table with 2 columns: Station Name, No. Of Stations

LESS THAN JAKE 308/24 Dopeman (Capitol)

SQUIRREL NUT ZIPPERS 305/-1 Put A Lid On It (Mammoth)

DURAN DURAN 284/40 Electric Barbarella (Capitol)

PAULA COLE 262/51 I Don't Want To Wait (Imago/Warner Bros.)

KULA SHAKER 247/48 Hush (Columbia)

MIGHTY JOE PLUM 246/28 Live Through This (Fifteen Stories) (Atlantic)

JIMMIE'S CHICKEN SHACK 241/16 High (Rocket/A&M)

THIRD EYE BLIND 218/27 How's It Going To Be (Elektra/EEG)

\* CREED 214/87 My Own Prison (Wind-up)

\* BUSH 204/204 Mouth (Trauma/Hollywood)

Medium (15-29): 4 KITS, KOME, KROQ, WKQX Light (Under 15): 16

SUMMERCAMP 200/37 Should I Walk Away (Maverick/Reprise)

OLIVE 190/6 You're Not Alone (RCA)

\* CORNERSHOP 188/105 Brimful Of Asha (Luaka Bop/Warner Bros.)

THE NIXONS 186/36 The Fall (MCA)

BARENAKED LADIES 181/26 Brian Wilson (Reprise)

SARAH MCLACHLAN 172/-2 Sweet Surrender (Nettwerk/Arista)

BJORK 166/10 Joga (Elektra/EEG)

\* TRANSISTER 152/35 Look Who's Perfect Now (Interscope)

\* THE CRYSTAL METHOD 151/49 Busy Child (Outpost/Geffen)

\* SNEAKER PIMPS 147/32 Spin Spin Sugar (Clean Up/Virgin)

\* SPACE MONKEYS 132/127 Sugar Cane (Factory/Chingon/Interscope)

SONG ACTIVITY REPORTS

For Week Ending October 5, 1997

Grid of song activity reports for artists: FIONA APPLE, BLINK 182, CHUMBAWAMBA, COLLECTIVE SOUL, THE CURE. Includes columns for Total Plays/Gain, Chart Move, and station data.

Grid of song activity reports for artists: DAYS OF THE NEW, DURAN DURAN, EVERCLEAR, FOO FIGHTERS, GOLDFINGER. Includes columns for Total Plays/Gain, Chart Move, and station data.

Grid of song activity reports for artists: GREEN DAY, JAMIROQUAI, JARS OF CLAY, K'S CHOICE, LESS THAN JAKE. Includes columns for Total Plays/Gain, Chart Move, and station data.

SONG ACTIVITY REPORTS

For Week Ending October 5, 1997



Detailed song tracking information for the last 3 weeks for all songs showing increased play this week. Total plays and gain do not include video play. Markets listed in order of population.

Grid of 12 charts including: LETTERS TO CLEO, LIVE Rattlesnake, LONGPIGS On And On, MATCHBOX 20, THE MIGHTY MIGHTY BOSSTONES, OASIS Don't Go Away, THE OFFSPRING I Choose, THE REFRESHMENTS Good Year, SAVE FERRIS, SEVEN MARY THREE, SUBLIME, THE SUNDAYS, U2, THE VERVE, and THE WALLFLOWERS.

Grid of 12 charts including: THE MIGHTY MIGHTY BOSSTONES, THE MIGHTY MIGHTY BOSSTONES, THE MIGHTY MIGHTY BOSSTONES, THE MIGHTY MIGHTY BOSSTONES, THE MIGHTY MIGHTY BOSSTONES, THE MIGHTY MIGHTY BOSSTONES, THE MIGHTY MIGHTY BOSSTONES, THE MIGHTY MIGHTY BOSSTONES, THE MIGHTY MIGHTY BOSSTONES, THE MIGHTY MIGHTY BOSSTONES, THE MIGHTY MIGHTY BOSSTONES, THE MIGHTY MIGHTY BOSSTONES.

Grid of 12 charts including: THE MIGHTY MIGHTY BOSSTONES, THE MIGHTY MIGHTY BOSSTONES, THE MIGHTY MIGHTY BOSSTONES, THE MIGHTY MIGHTY BOSSTONES, THE MIGHTY MIGHTY BOSSTONES, THE MIGHTY MIGHTY BOSSTONES, THE MIGHTY MIGHTY BOSSTONES, THE MIGHTY MIGHTY BOSSTONES, THE MIGHTY MIGHTY BOSSTONES, THE MIGHTY MIGHTY BOSSTONES, THE MIGHTY MIGHTY BOSSTONES, THE MIGHTY MIGHTY BOSSTONES.

POWER PLAYLISTS

Table for station WXRT (Chicago). Columns include rank, song title, artist, and chart movement. Top song: 'The Carr, Wrong Number' by Freddy Jones Band.

Table for station KFOG (San Francisco). Columns include rank, song title, artist, and chart movement. Top song: 'Freddy Jones Band, Wonder' by Freddy Jones Band.

Table for station WBOS (Boston). Columns include rank, song title, artist, and chart movement. Top song: 'Sarah McLachlan, Building A Mystery' by Sarah McLachlan.

Table for station KTCZ (Minneapolis). Columns include rank, song title, artist, and chart movement. Top song: 'John Fogerty, Blueboy' by John Fogerty.

Table for station WHPT (Tampa). Columns include rank, song title, artist, and chart movement. Top song: 'Sarah McLachlan, Building A Mystery' by Sarah McLachlan.

Table for station WVRV (St. Louis). Columns include rank, song title, artist, and chart movement. Top song: 'Tonic, If You Could Only See' by Tonic.

Table for station KBCO (Denver). Columns include rank, song title, artist, and chart movement. Top song: 'Sarah McLachlan, Building A Mystery' by Sarah McLachlan.

Table for station KMTT (Seattle). Columns include rank, song title, artist, and chart movement. Top song: 'Jackson Browne, The Next Voice You Hear' by Jackson Browne.

Table for station CIDR (Detroit). Columns include rank, song title, artist, and chart movement. Top song: 'Jen Trynin, Getaway' by Jen Trynin.

Table for station KKZN (Dallas). Columns include rank, song title, artist, and chart movement. Top song: 'Blues Traveler, Most Precarious' by Blues Traveler.

Table for station KINK (Portland, OR). Columns include rank, song title, artist, and chart movement. Top song: 'Elton John, Something About The Way You' by Elton John.

Table for station WXRV (Boston). Columns include rank, song title, artist, and chart movement. Top song: 'Billie Myers, Kiss The Rain' by Billie Myers.

Main chart for POWER PLAYLISTS showing top 25 songs. Includes columns for 'THIS WEEK', 'LAST WEEK', 'WKS. ON CHART', 'TITLE/LABEL/PROMOTION LABEL', 'ARTIST', 'DETECTIONS', and 'TW/LW'. Top song: 'Most Precarious' by Blues Traveler.

Main chart for MODERN ADULT showing top 25 songs. Includes columns for 'THIS WEEK', 'LAST WEEK', 'WKS. ON CHART', 'TITLE/LABEL/PROMOTION LABEL', 'ARTIST', 'DETECTIONS', and 'TW/LW'. Top song: 'Fly' by Sugar Ray.

For Week Ending October 5, 1997

COMBINED ROCK AUDIENCE													AIRPLAY BY FORMAT						
TW	LW	WKS	TITLE (LABEL/PROMOTION LABEL)	ARTIST	THIS WEEK			LAST WEEK			MAINSTREAM			MODERN			TRIPLE-A		
					Audience (millions)	Detections No.	Rank	Audience (millions)	Detections No.	Rank	Audience (millions)	Detections No.	Rank	Audience (millions)	Detections No.	Rank	Audience (millions)	Detections No.	Rank
1	1	13	EVERLONG (ROSWELL/CAPITOL)	FOO FIGHTERS	27.7375	3712	2	25.4395	3475	2	9.2972	1269	4	18.4344	2439	3	0.0059	4	—
2	2	13	WALKIN' ON THE SUN (INTERSCOPE)	SMASH MOUTH	23.9827	3800	1	23.5732	3641	1	4.2017	784	15	18.9266	2827	1	0.8544	189	17
3	3	17	FLY (LAVA/ATLANTIC)	SUGAR RAY	20.1724	3060	4	21.1522	3216	3	2.6701	423	35	16.7447	2464	2	0.7576	173	19
4	5	9	TOUCH, PEEL AND STAND (OUTPOST/GEFFEN)	DAYS OF THE NEW	19.5501	2959	5	18.3135	2805	5	14.0305	2012	1	5.5196	947	23	—	—	—
5	4	6	HITCHIN' A RIDE (REPRISE)	GREEN DAY	19.3209	3084	3	18.4244	2919	4	6.9473	1068	10	12.3368	1998	6	0.0368	18	—
6	8	5	TUBTHUMPING (REPUBLIC/UNIVERSAL)	CHUMBAWAMBA	18.6046	2576	7	16.4865	2181	12	0.5628	87	—	17.8008	2384	4	0.2410	105	—
7	9	6	EVERYTHING TO EVERYONE (CAPITOL)	EVERCLEAR	18.0658	2808	6	16.1012	2550	7	4.4595	757	17	13.5752	2037	5	0.0311	14	—
8	7	28	IF YOU COULD ONLY SEE (POLYDOR/A&M)	TONIC	17.4984	2453	8	17.9040	2495	8	8.2518	1160	9	7.6303	1059	—	1.6163	234	12
9	6	28	PUSH (LAVA/ATLANTIC)	MATCHBOX 20	16.0526	2407	10	18.1811	2576	6	5.8978	960	12	8.8847	1212	16	1.2701	235	11
10	10	12	CRIMINAL (CLEAN SLATE/WORK)	FIONA APPLE	15.9059	2431	9	15.4838	2380	9	0.5326	78	—	13.3423	1984	7	2.0310	369	5
11	12	4	DON'T GO AWAY (EPIC)	OASIS	14.9952	2139	11	14.6243	1871	16	1.0584	241	—	13.3966	1786	9	0.5402	112	—
12	15	8	I CHOOSE (COLUMBIA)	THE OFFSPRING	14.3117	2021	15	13.0253	1783	21	8.3711	1221	5	5.9386	799	29	0.0020	1	—
13	13	5	ANYBODY SEEN MY BABY? (VIRGIN)	THE ROLLING STONES	14.0810	2043	14	14.1399	2085	13	10.7811	1539	3	0.4677	96	—	2.8322	408	3
14	11	12	SUPERMAN'S DEAD (COLUMBIA)	OUR LADY PEACE	13.6500	2121	12	15.2846	2350	10	4.4396	662	22	9.2103	1458	11	0.0001	1	—
15	16	19	WRONG WAY (GASOLINE ALLEY/MCA)	SUBLIME	13.2714	1756	20	12.9744	1790	20	1.3641	147	—	11.8686	1591	10	0.0387	18	—
16	14	16	BUILDING A MYSTERY (NETTWERK/IARISTA)	SARAH MCLACHLAN	13.1320	1946	16	13.4251	2082	14	0.1198	53	—	9.8856	1428	12	3.1266	465	2
17	18	8	PINK (COLUMBIA)	AEROSMITH	12.3704	1846	18	11.8731	1858	17	12.3704	1846	2	—	—	—	—	—	—
18	21	10	GRADUATE (ELEKTRA/EEG)	THIRD EYE BLIND	11.6948	1801	19	11.1723	1746	22	2.4428	489	30	9.2422	1308	14	0.0098	4	—
19	20	9	THE RASCAL KING (BIG RIG/MERCURY)	THE MIGHTY MIGHTY BOSSTONES	11.6621	1937	17	11.3277	1910	15	0.8713	76	—	10.7239	1830	8	0.0669	31	—
20	17	7	HELLO HELLO (ATLANTIC)	TALK SHOW	11.2029	2120	13	12.1329	2235	11	5.6299	1037	11	5.5680	1082	19	0.0050	1	—
21	19	29	SEMI-CHARMED LIFE (ELEKTRA/EEG)	THIRD EYE BLIND	11.0908	1551	23	11.8348	1688	23	2.1526	293	—	7.5859	1062	20	1.3523	196	16
22	22	29	THE IMPRESSION THAT I GET (BIG RIG/MERCURY)	THE MIGHTY MIGHTY BOSSTONES	10.9564	1370	28	10.9136	1395	26	1.6355	237	—	8.6413	1018	—	0.6796	115	—
23	25	6	SUMMERTIME (DGC/GEFFEN)	THE SUNDAYS	9.8610	1569	22	9.4672	1443	24	0.0232	8	—	8.7674	1316	13	1.0704	245	9
24	26	8	MOST PRECARIOUS (A&M)	BLUES TRAVELER	9.4911	1746	21	9.3100	1822	18	2.4616	490	29	4.2599	788	31	2.7696	468	1
25	23	22	6 UNDERGROUND (CLEAN UP/VIRGIN)	SNEAKER PIMPS	9.0871	1093	36	10.0753	1196	31	0.1744	36	—	8.1509	964	22	0.7618	93	—
26	36	3	MY OWN PRISON (WIND-UP)	CREED	8.9202	1395	27	7.1896	1207	30	7.4876	1181	7	1.4326	214	—	—	—	—
27	27	34	GONE AWAY (COLUMBIA)	THE OFFSPRING	8.6959	1099	35	9.0184	1209	29	5.4131	667	20	3.2828	432	—	—	—	—
28	34	2	THREE MARLENAS (INTERSCOPE)	THE WALLFLOWERS	8.6101	1504	24	7.2931	1238	28	2.7894	551	26	4.1372	658	35	1.6835	295	6
29	30		LIVE THROUGH THIS (FIFTEEN STORIES) (ATLANTIC)	MIGHTY JOE PLUM	7.8877	1426	26	8.0599	1389	27	6.6162	1177	8	1.2600	246	—	0.0115	3	—
30	<b>NEW</b>		WRONG NUMBER (ELEKTRA/EEG)	THE CURE	7.8866	643	72	1.1310	47	493	0.0195	3	—	7.5468	627	36	0.3203	13	—
31	31	14	TRUST (CAPITOL)	MEGADETH	7.7447	843	51	7.6380	881	50	6.8570	817	14	0.8877	26	—	—	—	—
32	24	20	TURN MY HEAD (RADIOACTIVE/MCA)	LIVE	7.6639	1495	25	9.5466	1792	19	2.8583	537	27	4.3311	819	26	0.4745	139	—
33	33	25	SONG 2 (FOOD/PARLOPHONE/VIRGIN)	BLUR	7.3050	976	44	7.3312	962	47	1.0037	145	—	6.2917	828	—	0.0096	3	—
34	38	2	THIS LONELY PLACE (MOJO/UNIVERSAL)	GOLDFINGER	7.2355	1298	30	6.6764	1182	32	0.0109	7	—	7.1772	1270	15	0.0474	21	—
35	35	47	ONE HEADLIGHT (INTERSCOPE)	THE WALLFLOWERS	7.2155	1019	41	7.2225	1069	38	2.7012	388	—	3.7260	507	—	0.7883	124	—
36	<b>NEW</b>		BLAME (ATLANTIC)	COLLECTIVE SOUL	7.1945	1336	29	6.0365	1147	35	5.6497	919	13	1.2021	357	—	0.3427	60	—
37	<b>NEW</b>		BITTER SWEET SYMPHONY (HIT/VIRGIN)	THE VERVE	7.1833	791	55	4.7949	574	78	0.0049	2	—	7.1272	775	32	0.0512	14	—
38	37	14	D' YOU KNOW WHAT I MEAN? (EPIC)	OASIS	7.0760	1036	37	6.9925	1180	33	1.3784	171	—	5.6288	835	25	0.0688	30	—
39	32	15	BLEEDING ME (ELEKTRA/EEG)	METALLICA	7.0732	845	50	7.3699	881	51	6.7092	770	16	0.3640	75	—	—	—	—
40	<b>NEW</b>		DOIN' TIME (GASOLINE ALLEY/MCA)	SUBLIME	6.9971	659	70	5.3557	560	83	—	—	—	6.9971	659	34	—	—	—

Records showing an increase in audience over the previous week, regardless of chart movement. Rankings broken down by mainstream, modern and triple-A formats (on right side of this page) correspond to charts printed in this week's Monitor and therefore rankings do not exist for recurrenents and records below No. 40 (No. 20 for triple-A). Audience computed by cross-referencing exact times of airplay with Arbitron listener data. ©1997, Billboard/BPI Communications

# THIRD EYE BLIND



## "GRADUATE"

**NOW ON TOUR  
WITH U2 &  
THE ROLLING STONES**



**MAINSTREAM MONITOR 35 - 30**

**ACTIVE MONITOR 27 - 23**

**OVER 100 ROCK GRADUATES INCLUDING:**

- |             |             |              |             |             |
|-------------|-------------|--------------|-------------|-------------|
| <b>WHJY</b> | <b>WYSP</b> | <b>KBPI</b>  | <b>WMMS</b> | <b>KLBJ</b> |
| <b>WRCX</b> | <b>KSJO</b> | <b>WRIF</b>  | <b>KATT</b> | <b>KBER</b> |
| <b>KRXQ</b> | <b>WLZR</b> | <b>DC101</b> | <b>WEBN</b> | <b>WBUZ</b> |
| <b>WJRR</b> | <b>WZTA</b> | <b>WXTB</b>  | <b>KILO</b> | <b>WBZX</b> |
| <b>KEGL</b> | <b>KISS</b> | <b>KUFO</b>  | <b>KRZR</b> | <b>KEGE</b> |



# matchbox 20

**3**  
**AM**

THE FOLLOW-UP TO THE #1 HIT SINGLE *PUSH*

FROM THEIR DOUBLE PLATINUM DEBUT ALBUM  
*YOURSELF OR SOMEONE LIKE YOU*

DEBUT (38) BDS MODERN ROCK MONITOR  
#1 CALLOUT ALREADY 99X ATLANTA

EARLY ADDS INCLUDE:

WXRK	KNRK
Q101	WLUM
KDGE	KPNT
99X	and many more
KTZ	

Produced by Matt Serletic for Melisma Productions, Inc. Mixed by Greg Archilla and Matt Serletic Management - LIPPMAN ENTERTAINMENT



THIS WEEK	LAST WEEK	WKS. ON CHART	MAINSTREAM		DETECTIONS		
			TITLE/LABEL/PROMOTION LABEL	ARTIST	TW	LW	
			★★★★ No. 1 ★★★★★				
①	1	13	TOUCH, PEEL AND STAND OUTPOST/GEFFEN 3 weeks at No. 1	DAYS OF THE NEW	2012	1977	
2	2	23	PINK COLUMBIA	AEROSMITH	1846	1856	
3	3	5	ANYBODY SEEN MY BABY? VIRGIN	THE ROLLING STONES	1539	1574	
④	5	9	EVERLONG ROSWELL/CAPITOL	FOO FIGHTERS	1269	1182	
⑤	7	12	I CHOOSE COLUMBIA	THE OFFSPRING	1221	1116	
⑥	9	4	SLOW RIDE REVOLUTION	KENNY WAYNE SHEPHERD BAND	1207	1057	
⑦	8	8	MY OWN PRISON WINO-UP	CREED	1181	1080	
⑧	6	13	LIVE THROUGH THIS (FIFTEEN STORIES) ATLANTIC	MIGHTY JOE PLUM	1177	1168	
9	4	28	IF YOU COULD ONLY SEE POLYDOR/A&M	TONIC	1160	1217	
⑩	12	5	HITCHIN' A RIDE REPRISE	GREEN DAY	1068	969	
11	10	7	HELLO HELLO ATLANTIC	TALK SHOW	1037	1041	
12	13	32	PUSH LAVA/ATLANTIC	MATCHBOX 20	960	949	
⑬	17	4	BLAME ATLANTIC	COLLECTIVE SOUL	919	801	
14	14	21	TRUST CAPITOL	MEGADETH	817	873	
⑮	22	6	WALKIN' ON THE SUN INTERSCOPE	SMASH MOUTH	784	674	
16	16	19	BLEEDING ME ELEKTRA/VEEG	METALLICA	770	804	
⑰	23	4	EVERYTHING TO EVERYONE CAPITOL	EVERCLEAR	757	666	
⑱	31	2	ALMOST HONEST CAPITOL	MEGADETH	676	490	
19	11	11	MARCHING TO MARS THE TRACK FACTORY/MCA	SAMMY HAGAR	673	1034	
20	19	34	GONE AWAY COLUMBIA	THE OFFSPRING	667	752	
21	21	22	LISTEN ATLANTIC	COLLECTIVE SOUL	667	676	
22	15	17	SUPERMAN'S DEAD COLUMBIA	OUR LADY PEACE	662	824	
⑳	25	9	HIGH ROCKET/A&M	JIMMIE'S CHICKEN SHACK	654	598	
㉑	24	5	THE FALL MCA	THE NIXONS	653	606	
25	18	13	LAZY EYE WARNER SUNSET/WARNER BROS.	GOO GOO DOLLS	565	754	
㉒	34	2	THREE MARLENAS INTERSCOPE	THE WALLFLOWERS	551	421	
27	20	15	TURN MY HEAD RADIOACTIVE/MCA	LIVE	537	742	
28	28	12	AENEMA FREEWORLD	TOOL	520	538	
29	29	3	MOST PRECARIOUS A&M	BLUES TRAVELER	490	497	
㉓	35	2	GRADUATE ELEKTRA/VEEG	THIRD EYE BLIND	489	421	
㉔	33	4	TRIALS WARNER BROS.	COOL FOR AUGUST	488	436	
㉕	<b>NEW</b>		JUNGLE MERCURY	KISS	487	1	
33	27	18	LAST CUP OF SORROW SLASH/REPRISE	FAITH NO MORE	483	548	
34	26	9	ONE ANGEL AWARE/CAPITOL	STIR	457	560	
35	32	8	FLY LAVA/ATLANTIC	SUGAR RAY	423	462	
36	30	14	SOUL OF LOVE EAGLEROCK/VELVEL	PAUL RODGERS	400	496	
㉖	<b>NEW</b>		HUSH COLUMBIA	KULA SHAKER	395	283	
38	38	19	CAROLINA BLUES A&M	BLUES TRAVELER	386	401	
㉗	<b>RE-ENTRY</b>		BLUEBOY WARNER BROS.	JOHN FOGERTY	385	364	
40	36	23	THE DIFFERENCE INTERSCOPE	THE WALLFLOWERS	381	414	

THIS WEEK	LAST WEEK	WKS. ON CHART	MODERN		DETECTIONS		
			TITLE/LABEL/PROMOTION LABEL	ARTIST	TW	LW	
			★★★★ No. 1 ★★★★★				
1	1	14	WALKIN' ON THE SUN INTERSCOPE 4 weeks at No. 1	SMASH MOUTH	2827	2827	
2	2	17	FLY LAVA/ATLANTIC	SUGAR RAY	2464	2584	
③	3	12	EVERLONG ROSWELL/CAPITOL	FOO FIGHTERS	2439	2290	
④	4	5	TUBTHUMPING REPUBLIC/UNIVERSAL	CHUMBAWAMBA	2384	2032	
⑤	7	6	EVERYTHING TO EVERYONE CAPITOL	EVERCLEAR	2037	1883	
⑥	6	6	HITCHIN' A RIDE REPRISE	GREEN DAY	1998	1937	
⑦	5	13	CRIMINAL CLEAN SLATE/WORK	FIONA APPLE	1984	1939	
⑧	8	11	THE RASCAL KING BIG RIG/MERCURY	THE MIGHTY MIGHTY BOSSTONES	1830	1820	
⑨	10	4	DON'T GO AWAY EPIC	OASIS	1786	1604	
10	9	19	WRONG WAY GASOLINE ALLEY/MCA	SUBLIME	1591	1645	
11	12	12	SUPERMAN'S DEAD COLUMBIA	OUR LADY PEACE	1458	1524	
12	11	16	BUILDING A MYSTERY NETTWERK/ARISTA	SARAH MCLACHLAN	1428	1558	
⑬	17	7	SUMMERTIME OGC/GEFFEN	THE SUNDAYS	1316	1192	
14	15	11	GRADUATE ELEKTRA/VEEG	THIRD EYE BLIND	1308	1325	
⑮	18	5	THIS LONELY PLACE MOJO/UNIVERSAL	GOLDFINGER	1270	1152	
16	14	25	PUSH LAVA/ATLANTIC	MATCHBOX 20	1212	1357	
17	13	22	SELL OUT MOJO/UNIVERSAL	REEL BIG FISH	1190	1385	
18	19	8	DREAM DREAMWORKS/GEFFEN	FOREST FOR THE TREES	1082	1135	
19	16	7	HELLO HELLO ATLANTIC	TALK SHOW	1082	1194	
20	20	30	SEMI-CHARMED LIFE ELEKTRA/VEEG	THIRD EYE BLIND	1062	1131	
21	22	7	PRISONER CAPRICORN/MERCURY	311	1023	1033	
22	21	26	6 UNDERGROUND CLEAN UP/VIRGIN	SNEAKER PIMPS	964	1043	
㉑	28	4	TOUCH, PEEL AND STAND OUTPOST/GEFFEN	DAYS OF THE NEW	947	828	
24	27	15	BREATHE XL MUTE/MAVERICK/WARNER BROS.	PRODIGY	857	879	
25	24	14	D' YOU KNOW WHAT I MEAN? EPIC	OASIS	835	946	
26	26	19	TURN MY HEAD RADIOACTIVE/MCA	LIVE	819	892	
㉒	29	4	LUCKY MAMMOTH/ATLANTIC	SEVEN MARY THREE	815	736	
㉓	32	2	ON AND ON MOTHER/ISLAND	LONGPIGS	814	645	
㉔	31	3	I CHOOSE COLUMBIA	THE OFFSPRING	799	666	
30	23	12	JACK-ASS OGC/GEFFEN	BECK	788	1019	
31	25	8	MOST PRECARIOUS A&M	BLUES TRAVELER	788	894	
㉕	35	2	BITTER SWEET SYMPHONY HUT/VIRGIN	THE VERVE	775	563	
㉖	30	3	COME ON EILEEN STARPOOL/EPIC	SAVE FERRIS	769	700	
㉗	36	3	DOIN' TIME GASOLINE ALLEY/MCA	SUBLIME	659	560	
㉘	37	2	THREE MARLENAS INTERSCOPE	THE WALLFLOWERS	658	557	
㉙	<b>NEW</b>		WRONG NUMBER FICTION/ELEKTRA/VEEG	THE CURE	627	47	
37	33	6	LONG LONG TIME MAVERICK/WARNER BROS.	LOVE SPIT LOVE	625	644	
㉚	<b>NEW</b>		3 AM LAVA/ATLANTIC	MATCHBOX 20	596	466	
39	34	10	(CAN'T YOU) TRIP LIKE I DO IMMORTAL/EPIC	FILTER AND THE CRYSTAL METHOD	588	615	
㉛	40	2	DAMMIT (GROWING UP) CARGO/MCA	BLINK 182	576	493	

Records showing an increase in detections over the previous week, regardless of chart movement. A record which has been on either chart for more than 20 weeks will not receive a bullet, even if it registers an increase in detections. Airpower awarded to those records which attain 800 detections (mainstream) or 1,100 (modern) for the first time. If two records are tied in number of plays, the record being played on more stations is placed first. Records below the top 20 are removed from the chart after 26 weeks.

# BLINK 182

## "Dammit" (Growing Up)

From The New Album *Dude Ranch*  
**On Tour With Less Than Jake**

**40 MODERN ROCK MONITOR**

**ON OVER 50 STATIONS, "DAMMIT"!!!**

WXRK	WFNX	KTCL	XHRM	WXZZ
KROQ	91X	WCYY	KPNT	WWDX
Q101	KXRR	WAQZ	KWOD	KTOZ
89X	WENZ	KLZR	KOME	WPLA

**80,000 UNITS SCANNED, "DAMMIT"!!!**



Produced by Mark Trombino Mixed by Tom Lord-Alge Management: Rick Devoe <http://www.blink182.com> Get AMPed at MCA Online: [www.mcarecords.com](http://www.mcarecords.com)