

ROCK AIRPLAY Monitor

• We Listen To Radio •

November 11, 1994 \$ 4.95 Volume 1 • No. 47

ROCK HIGHLIGHTS

ALBUM ROCK

#1

STONE TEMPLE PILOTS
Interstate Love Song (ATLANTIC)

★ ★ ★ AIRPOWER ★ ★ ★

CANDLEBOX • *Cover Me (MAVERICK/SIRE/WARNER BROS.)*

ROLLING STONES • *Out Of Tears (VIRGIN)*

PEARL JAM • *Spin The Black Circle (EPIC)*

NEW RELEASES

SHERYL CROW • *Strong Enough (A&M)*

TODD SNIDER • *Alright Guy (MCA)*

SOULHAT • *Good To Be Gone (EPIC)*

MODERN ROCK

#1

THE CRANBERRIES
Zombie (ISLAND)

★ ★ ★ AIRPOWER ★ ★ ★

PEARL JAM • *Spin The Black Circle (EPIC)*

NEW RELEASES

BIG CHIEF • *Lion's Mouth (CAPITOL)*

BLUR • *Tracy Jacks (SBK/EMI)*

SHERYL CROW • *Strong Enough (A&M)*

DANZIG • *Cantspeak (AMERICAN/REPRISE)*

DINOSAUR JR. • *I Don't Think So (SIRE/REPRISE)*

THE FLAMING LIPS • *She Don't Use Jelly (WARNER BROS.)*

FRETBLANKET • *Direct Approach (A&M)*

DIAMANDA GALAS WITH JOHN PAUL JONES • *Do You Take This Man (MUTE)*

HOOTIE & THE BLOWFISH • *Hannah Jane (ATLANTIC)*

R.E.M. • *Bang and Blame (WARNER BROS.)*

SATCHEL • *Mr. Pink (EPIC)*

TODD SNIDER • *Seattle Grunge Rock Blues (MCA)*

SOUP DRAGONS • *Do You Care? (MERCURY)*

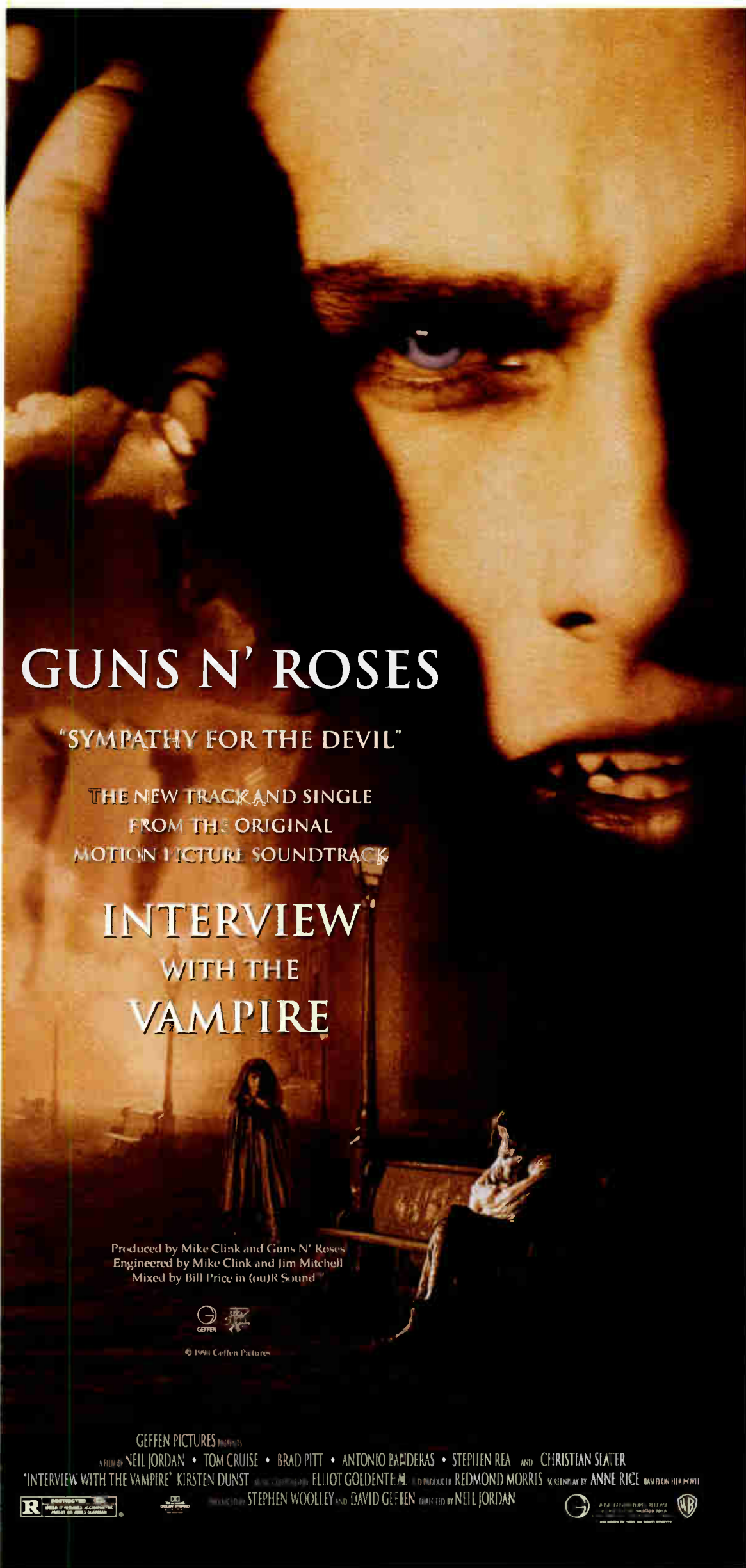
PUBLISHER: MICHAEL ELLIS
DIRECTOR OF CHARTS: DAVE ELLIOTT
ALBUM ROCK CHART MANAGER: ANTHONY COLOMBO
MODERN ROCK CHART MANAGER: MARK MARONE
CHART PRODUCTION MANAGER: MICHAEL CUSSON
ASST. CHART PRODUCTION MANAGER: PAUL PAGE
EDITORIAL PRODUCTION MANAGER: BARRY BISHIN
ASST. EDITORIAL PRODUCTION MANAGER: MARCIA REPINSKI
EDITORIAL PRODUCTION: MARC GIAGUINTO, MORRIS KLEGMAN
ADVERTISING PRODUCTION MANAGER: LYDIA MIKULKO
ADVERTISING PRODUCTION ASST.: CINDEE WEISS
ADVERTISING ART DIRECTOR: RAY CARLSON
CIRCULATION MANAGER: JEANNE JAMIN

NATIONAL ADVERTISING MANAGER: JON GYNN
ADVERTISING SALES: NANICY BOWMAN, JACK FULMER
ADVERTISING SERVICES MGR.: MICHELE JACANGELO
SALES ASSISTANTS: EVELYN ASZODI, ERICA BENGTSON,
DOUG FERGUSON, ALYSE ZIGMAN
PROMOTION DIRECTOR: ELISSA TOMASETTI

EDITORIAL ADVISER: TIMOTHY WHITE
PRODUCTION DIRECTOR: MARIE GOMBERT
DIRECTOR OF RESEARCH: JANE RANZMAN

BILLBOARD MUSIC GROUP
PRESIDENT: HOWARD LANDER

© 1994 BPI Communications, 1515 Broadway, New York, NY 10036
212-536-5039 For subscriptions call: 800-722-2346



GUNS N' ROSES

"SYMPATHY FOR THE DEVIL"

THE NEW TRACK AND SINGLE
FROM THE ORIGINAL
MOTION PICTURE SOUNDTRACK

INTERVIEW WITH THE VAMPIRE

Produced by Mike Clink and Guns N' Roses
Engineered by Mike Clink and Jim Mitchell
Mixed by Bill Price in (ou)R Sound™



© 1994 Geffen Pictures

GEFFEN PICTURES PRESENTS
A FILM BY NEIL JORDAN • TOM CRUISE • BRAD PITT • ANTONIO BANDERAS • STEPHEN REA AND CHRISTIAN SLATER
"INTERVIEW WITH THE VAMPIRE" KIRSTEN DUNST MUSIC COMPOSED BY ELLIOT GOLDENTHORN PRODUCED BY REDMOND MORRIS SCREENPLAY BY ANNE RICE BASED ON THE NOVEL
PRODUCED BY STEPHEN WOOLLEY AND DAVID GEFFEN DIRECTED BY NEIL JORDAN



Rolling Stones[®]
SPARKS WILL FLY

OUT NOW

OUT OF TEARS

THE LARGEST GROSSING AMERICAN TOUR EVER!
FROM THE DOUBLE PLATINUM ALBUM VOODOO LOUNGE

PRODUCED BY DON WAS AND THE GLIMMER TWINS



© 1994 VIRGIN RECORDS LTD. "ROLLING STONES" AND TONGUE AND LIP DESIGN ARE TRADEMARKS OF MUSIDOR B.V.

Virgin

Strongest Increase In Airplay This Week

ALBUM ROCK

INCREASE
IN PLAYS

| | |
|--|-------------|
| PEARL JAM • Spin The Black Circle (EPIC) | +792 |
| WAAF +51, KRAB +28, KIL0 +25, WUFx +25, KL0L +24, KBPI +22, KEGL +22, WI0T +19, WKDF +18, KUPD +18 | |
| PEARL JAM • Tremor Christ (EPIC) | +764 |
| KTXQ +32, WKLQ +27, WMMS +26, KZRZ +25, WBCN +25, WUFx +23, WLZR +20, KISW +20, KNAC +17, WEBN +16 | |
| GUNS N' ROSES • Sympathy For The Devil (Geffen) | +626 |
| WXTB +24, KIOZ +24, WUFx +22, KOMP +21, WLZR +20, KIL0 +19, KSJO +19, WBCN +19, WIYY +18, KMYZ +17 | |
| SOUNDGARDEN • My Wave (A&M) | +251 |
| WAAF +34, KTXQ +23, WRIF +14, KTAL +13, WMMS +13, KL0L +12, KBPI +11, WIXV +9, WKLQ +9, WNOR +9 | |
| PINK FLOYD • Lost For Words (Columbia) | +204 |
| WRXR +21, KICT +13, WONE +13, WZZR +13, KGGO +12, WZAT +11, WGCX +11, WTPA +11, WTUE +9, WDVE +8 | |
| TOM PETTY • You Don't Know How It Feels (Warner Bros.) | +203 |
| KRAB +20, WZAT +17, KHOP +14, WTFX +12, WRDU +12, WHCN +12, WPYX +11, WMMS +11, KMYZ +10, WRNO +10 | |
| CANDLEBOX • Cover Me (Maverick/Sire/Warner Bros.) | +199 |
| KBPI +20, KIL0 +19, KTAL +17, KTXQ +14, KEGL +13, WRIF +11, KNCN +10, KCAL +9, KRXQ +9, WMMS +9 | |
| LIVE • I Alone (Radioactive/MCA) | +175 |
| KBPI +20, KRAB +18, KTXQ +17, KUPD +13, WNEW +12, KIL0 +11, WUFx +11, WONE +11, KISS +10, WCMF +9 | |
| ROLLING STONES • Out Of Tears (Virgin) | +143 |
| KTXQ +18, WONE +13, KXUS +12, KRXQ +12, WROV +11, WZAT +9, KMYZ +9, WBLM +8, WRIF +8, WPYX +7 | |
| TESLA • Need Your Lovin' (Geffen) | +135 |
| KTUX +21, KBPI +20, KRZR +12, KHOP +11, KIOZ +11, WZAT +10, WONE +10, WZZR +7, WBLM +6, WI0T +6 | |

MODERN ROCK

INCREASE
IN PLAYS

| | |
|--|-------------|
| PEARL JAM • Spin The Black Circle (EPIC) | +696 |
| WKQX +42, WCHZ +39, KNDD +34, KROQ +32, KTOZ +30, WLUM +27, KEDJ +26, WBER +26, CIMX +25, KITS +25 | |
| PEARL JAM • Tremor Christ (EPIC) | +342 |
| KEGE +33, WKQX +31, KNDD +24, WEQX +23, WRXQ +22, WDRE +17, WHFS +17, KROQ +18, WENZ +16, WNNX +16 | |
| BIG AUDIO • Looking For A Song (Columbia) | +278 |
| KEGE +33, KXRK +30, XHRM +24, WDRE +19, KEDJ +17, KTCL +17, KITS +15, WRXQ +13, XTRA +13, WENZ +12 | |
| CANDLEBOX • Cover Me (Maverick/Sire/Warner Bros.) | +109 |
| WLUM +21, WENZ +18, WEQX +12, KEDG +11, WAQZ +10, KEGE +7, WRXQ +6, KXRK +6, KWOD +5, WNNX +5 | |
| R.E.M. • Bang And Blame (Warner Bros.) | +93 |
| KDGE +22, CIMX +14, WKQX +12, KOME +12, WEQX +11, WHFS +8, WRLG +6, WZRH +5, KEDG +4, WXRT +4 | |
| WEEZER • Buddy Holly (DGC/Geffen) | +85 |
| WAQZ +12, KEGE +11, WEQX +9, WRXQ +8, WENZ +8, WRLG +7, WWCD +7, WBRU +7, WZRH +6, KOME +6 | |
| ALICE IN CHAINS • Got Me Wrong (Columbia) | +78 |
| KWOD +26, KNDD +13, KBBT +10, WDRE +10, WLUM +9, WKQX +5, KOME +5, KEGE +2, KTOZ +1, XTRA +1 | |
| THE MURMURS • You Suck (MCA) | +75 |
| KEGE +19, KEDJ +18, KPNT +9, WEQX +9, WRLG +8, WHFS +6, KTCL +6, WBER +5, WLUM +4, WCHZ +2 | |
| FLAMING LIPS • She Don't Use Jelly (Warner Bros.) | +68 |
| WLUM +27, WNNX +15, WKQX +11, WZRH +8, KTCL +4, KLZR +2, WRAS +2, KOME +1, XHRM +1 | |
| BAD RELIGION • 21st Century (Digital Boy) (Atlantic) | +67 |
| KITS +12, WRXQ +11, WLUM +9, KPNT +8, WDRE +7, WHFS +6, CIMX +5, KFMG +5, KNDD +4, WAQZ +4 | |

ROCK ROUNDUP

by Mark Marone

Is radio getting better, or is the music better now? One thing for sure is that rock radio is becoming more current-based and at the same time getting great ratings numbers. We have all seen how well the current-based stations have done for themselves, and they are also instrumental in breaking artists. The charts we publish allow us to monitor what radio is doing, and we have seen that with rock radio committing to playing good current records, rising artists have more of a chance than ever to break. It seems that the gravitation to a more diverse, current-based selection of music in higher rotations has been the recipe for success in both the ratings game and for breaking artists. By pointing out some achievements on the charts this year, we can see that times are changing:

- With a little help from their friends at Modern Rock radio and then MTV, **Offspring** catapulted from indie punks to the success story of the year. It became the first time in the six-year history of the Modern Rock chart that an independent record took the top spot.

- Until recently, there had not been a track that could garner plays on every station on the Album Rock panel. Rock radio came on so strong with its support of **Soundgarden's** "Black Hole Sun" that on July 10 it became the first song to collect the entire Album Rock panel of 108 stations since we introduced a monitoring system. Would this have happened a few years ago, with all the fragmentation of the rock format, or have the barriers begun to crumble for a song of exceptional popularity?

- Judging from recent No. 1 Modern Rock titles, play totals have been increasing for hit records at Modern stations. **The Cranberries'** "Zombie" is the first Modern record to reach over 1100 spins. When the panel increased from 32 to 37 stations in May, No. 1 records generally were in the 800-spin area. On a panel that totaled 38 stations, **Green Day's** "Basket Case" broke through with 1024 spins on Aug. 26 and became the first Modern Rock record to achieve over 1000 spins. What's noteworthy about the Green Day track is that the 1000+ spins were attained with only 34 of the 38 stations playing it.

MTV PLAYLIST

Most-Played Rock Tracks

| | TW | LW | | TW | LW | | |
|----|--|----|----|----|--|----|----|
| 1 | Stone Temple Pilots, Interstate Love Son | 33 | 32 | 21 | Sting, When We Dance | 11 | 11 |
| 2 | Offspring, Self Esteem | 33 | 31 | 22 | Soundgarden, My Wave | 10 | 10 |
| 3 | Nirvana, About A Girl | 32 | 27 | 23 | Queensryche, I Am I | 10 | 11 |
| 4 | John Mellencamp, Dance Naked | 29 | 31 | 24 | Soul Asylum, Can't Even Tell | 9 | 6 |
| 5 | R.E.M., What's The Frequency, Kenneth? | 25 | 22 | 25 | Freedy Johnston, Bad Reputation | 8 | 6 |
| 6 | The Cranberries, Zombie | 24 | 23 | 26 | Bad Religion, 21st Century Digital Boy | 8 | 5 |
| 7 | Aerosmith, Blind Man | 22 | 0 | 27 | Eric Clapton, Motherless Child | 8 | 8 |
| 8 | The Black Crowes, A Conspiracy | 20 | 18 | 28 | Urge Overkill, Girl, You'll Be A Woman S | 8 | 7 |
| 9 | Hole, Doll Parts | 17 | 13 | 29 | Smashing Pumpkins, Disarm | 7 | 3 |
| 10 | Beastie Boys, Sure Shot | 17 | 13 | 30 | Megadeth, Train Of Consequences | 7 | 8 |
| 11 | Sheryl Crow, All I Wanna Do | 17 | 20 | 31 | Candlebox, Far Behind | 6 | 6 |
| 12 | Rolling Stones, Out Of Tears | 16 | 18 | 32 | Hootie & The Blowfish, Hold My Hand | 6 | 10 |
| 13 | Veruca Salt, Seether | 15 | 10 | 33 | Luscious Jackson, Citysong | 6 | 6 |
| 14 | Bon Jovi, Always | 15 | 22 | 34 | Corrosion Of Conformity, Albatross | 6 | 6 |
| 15 | Live, I Alone | 14 | 12 | 35 | Eagles, Get Over It | 6 | 11 |
| 16 | Liz Phair, Supernova | 14 | 10 | 36 | Soundgarden, Black Hole Sun | 5 | 8 |
| 17 | Green Day, Basket Case | 13 | 12 | 37 | Offspring, Come Out And Play | 5 | 3 |
| 18 | Jimmy Page & Robert Plant, Gallows Pole | 13 | 15 | 38 | G. Love & Special Sauce, Cold Beverage | 5 | 6 |
| 19 | Lucas, Lucas With The Lid Off | 12 | 17 | 39 | Jane's Addiction, Been Caught Stealing | 4 | 1 |
| 20 | Candlebox, Cover Me | 11 | 11 | 40 | Pearl Jam, Jeremy | 4 | 3 |



SUBSCRIBE TO REALITY.

TOP 40 AIRPLAY MONITOR • COUNTRY AIRPLAY MONITOR • R&B AIRPLAY MONITOR • ROCK AIRPLAY MONITOR

The only radio publications based exclusively on electronically monitored airplay from Broadcast Data Systems!

• **CALL (800) 722-2346 TO SUBSCRIBE** •

Special Offer!! **BILLBOARD** subscribers can receive any or all the **AIRPLAY MONITORS** at the special rate of just \$129 each - that's 35% off the regular subscription rate of \$199. To subscribe call (800) 722-2346 or FAX your order to (212) 536-5294. Or mail this ad with your payment to:

Airplay Monitor, Attn: Carlton Posey, 1515 Broadway, NY, NY 10036.

Part of the Billboard Music Group

It's a perfect fit!

SHE DON'T USE JELLY THE FLAMING LIPS

From the album, Transmissions From The Satellite Heart

ON!: KROQ Q101 99X WLUM

LOS ANGELES!!! CHICAGO (#2 PHONES)! ATLANTA! MILWAUKEE!

ALSO SPINNING ON:

KLZR WCHZ WRXQ KTCL WRAS WZRH KOME WRLG XHRM

WATCH FOR THE VIDEO ON



DEAD CAN DANCE

"American Dreaming"



DEBUT #1 HEATSEEKERS! • DEBUT #131 THE BILLBOARD 200!

SPINNING ON: KXRK KWOD KNDD WBER KEDG KFMG KLZR KPNT KTCL KTOZ WBRU WEQX 99X WRAS



ROCK AIRPLAY Monitor POWER PLAYLISTS FOR WEEK ENDING NOVEMBER 6, 1994

Playlists supplied by Broadcast Data Systems' Radio Track service. Stations selected from panel of leading broadcasters in 125 radio markets, electronically monitored 24 hours a day, 7 days a week. Songs ranked by number of plays in monitored week.

ALBUM ROCK

Table with columns for KLOS, WNEW, and WMMR. Each column lists station name, PD, MD, and a ranked list of songs with TW and LW values.

Table with columns for WAXQ, WRCX, and KQRS. Each column lists station name, PD, APD, MD, and a ranked list of songs with TW and LW values.

MODERN ROCK

Table with columns for KROQ, WKQX, and WXRT. Each column lists station name, PD, APD, MD, and a ranked list of songs with TW and LW values.

Table with columns for KITS, WHFS, and WDRE. Each column lists station name, PD, MD, and a ranked list of songs with TW and LW values.

ROCK AIRPLAY
Monitor POWER PLAYLISTS
 FOR WEEK ENDING
 NOVEMBER 6, 1994

Playlists supplied by Broadcast Data Systems' Radio Track service. Stations selected from panel of leading broadcasters in 125 radio markets, electronically monitored 24 hours a day, 7 days a week. Songs ranked by number of plays in monitored week.

A L B U M R O C K

| WBCN Boston | | WWDC Washington, DC | | WFBQ Indianapolis | |
|--------------------------------|----|-----------------------------------|----|-----------------------------------|----|
| PD: Oedipus MD: Carter Alan | | PD: Dave Brown MD: Dusty Scott | | PD: Marty Bender MD: Ace Cosby | |
| TW | LW | TW | LW | TW | LW |
| 1 | 25 | 0 | 1 | 20 | 18 |
| 2 | 24 | 22 | 2 | 19 | 20 |
| 3 | 24 | 19 | 3 | 18 | 17 |
| 4 | 23 | 22 | 4 | 16 | 16 |
| 5 | 19 | 0 | 5 | 16 | 15 |
| 6 | 18 | 17 | 6 | 16 | 12 |
| 7 | 15 | 16 | 7 | 16 | 15 |
| 8 | 15 | 11 | 8 | 16 | 16 |
| 9 | 13 | 22 | 9 | 15 | 19 |
| 10 | 13 | 1 | 10 | 15 | 18 |
| 11 | 12 | 8 | 11 | 15 | 12 |
| 12 | 12 | 7 | 12 | 15 | 11 |
| 13 | 11 | 21 | 13 | 14 | 9 |
| 14 | 11 | 13 | 14 | 13 | 7 |
| 15 | 11 | 12 | 15 | 13 | 14 |
| 16 | 11 | 17 | 16 | 12 | 11 |
| 17 | 10 | 12 | 17 | 12 | 10 |
| 18 | 10 | 10 | 18 | 12 | 9 |
| 19 | 10 | 9 | 19 | 12 | 8 |
| 20 | 10 | 10 | 20 | 11 | 9 |
| 21 | 10 | 11 | 21 | 11 | 8 |
| 22 | 9 | 0 | 22 | 11 | 9 |
| 23 | 9 | 12 | 23 | 11 | 9 |
| 24 | 9 | 22 | 24 | 10 | 24 |
| 25 | 9 | 8 | 25 | 10 | 13 |
| 26 | 9 | 9 | 26 | 10 | 9 |
| 27 | 9 | 4 | 27 | 10 | 9 |
| 28 | 9 | 7 | 28 | 10 | 8 |
| 29 | 8 | 10 | 29 | 9 | 10 |
| 30 | 8 | 7 | 30 | 9 | 12 |

| WRIF Detroit | | WDVE Pittsburgh | | WAAF Boston | |
|--------------------------------------|----|-----------------------------------|----|--------------------------------------|----|
| PD: Doug Podell MD: Mark Thompson | | PD: Gene Romano MD: Cns Winter | | PD: Ron Valeri MD: John Osterlind | |
| TW | LW | TW | LW | TW | LW |
| 1 | 31 | 1 | 18 | 1 | 51 |
| 2 | 30 | 2 | 17 | 2 | 40 |
| 3 | 30 | 3 | 17 | 3 | 37 |
| 4 | 28 | 4 | 15 | 4 | 36 |
| 5 | 27 | 5 | 14 | 5 | 34 |
| 6 | 27 | 6 | 14 | 6 | 33 |
| 7 | 26 | 7 | 13 | 7 | 32 |
| 8 | 24 | 8 | 11 | 8 | 31 |
| 9 | 22 | 9 | 11 | 9 | 31 |
| 10 | 21 | 10 | 11 | 10 | 31 |
| 11 | 21 | 11 | 11 | 11 | 29 |
| 12 | 15 | 12 | 10 | 12 | 22 |
| 13 | 15 | 13 | 9 | 13 | 21 |
| 14 | 15 | 14 | 8 | 14 | 21 |
| 15 | 15 | 15 | 8 | 15 | 19 |
| 16 | 14 | 16 | 8 | 16 | 19 |
| 17 | 12 | 17 | 8 | 17 | 15 |
| 18 | 12 | 18 | 8 | 18 | 17 |
| 19 | 11 | 12 | 8 | 19 | 16 |
| 20 | 11 | 0 | 7 | 20 | 16 |
| 21 | 10 | 0 | 7 | 21 | 14 |
| 22 | 10 | 2 | 7 | 22 | 13 |
| 23 | 10 | 2 | 7 | 23 | 17 |
| 24 | 9 | 13 | 6 | 24 | 13 |
| 25 | 9 | 13 | 6 | 25 | 13 |
| 26 | 8 | 15 | 6 | 26 | 18 |
| 27 | 8 | 7 | 6 | 27 | 12 |
| 28 | 8 | 0 | 5 | 28 | 12 |
| 29 | 8 | 10 | 5 | 29 | 12 |
| 30 | 8 | 0 | 4 | 30 | 11 |

M O D E R N R O C K

| KDGE Dallas | | WNNX Atlanta | | KEGE Minneapolis | |
|-------------------------------------|----|---------------------------------------|----|-------------------------------------|----|
| PD: Joel Folger MD: Jay Michaels | | PD: Brian Philips APD: Leslie Fram | | PD: John Lassman MD: Wade Linder | |
| TW | LW | TW | LW | TW | LW |
| 1 | 53 | 1 | 30 | 1 | 43 |
| 2 | 50 | 2 | 30 | 2 | 43 |
| 3 | 47 | 3 | 29 | 3 | 43 |
| 4 | 47 | 4 | 28 | 4 | 42 |
| 5 | 45 | 5 | 27 | 5 | 39 |
| 6 | 44 | 6 | 26 | 6 | 35 |
| 7 | 43 | 7 | 25 | 7 | 33 |
| 8 | 42 | 8 | 24 | 8 | 33 |
| 9 | 37 | 9 | 22 | 9 | 33 |
| 10 | 36 | 10 | 22 | 10 | 33 |
| 11 | 32 | 11 | 20 | 11 | 32 |
| 12 | 32 | 12 | 18 | 12 | 27 |
| 13 | 31 | 13 | 18 | 13 | 26 |
| 14 | 31 | 14 | 18 | 14 | 25 |
| 15 | 27 | 15 | 18 | 15 | 23 |
| 16 | 26 | 16 | 17 | 16 | 22 |
| 17 | 23 | 17 | 17 | 17 | 24 |
| 18 | 23 | 18 | 17 | 18 | 24 |
| 19 | 23 | 19 | 17 | 19 | 23 |
| 20 | 23 | 20 | 16 | 20 | 23 |
| 21 | 22 | 21 | 16 | 21 | 23 |
| 22 | 22 | 22 | 16 | 22 | 22 |
| 23 | 22 | 23 | 15 | 23 | 22 |
| 24 | 21 | 24 | 15 | 24 | 22 |
| 25 | 21 | 25 | 15 | 25 | 21 |
| 26 | 21 | 26 | 14 | 26 | 21 |
| 27 | 19 | 27 | 14 | 27 | 21 |
| 28 | 19 | 28 | 14 | 28 | 19 |
| 29 | 18 | 29 | 14 | 29 | 12 |
| 30 | 18 | 30 | 14 | 30 | 15 |

| CIMX Detroit | | KNDD Seattle | | XTRA San Diego | |
|---|----|---------------------------------------|----|---|----|
| PD: Murray Brookshaw MD: Vince Cannova | | PD: Rick Lambert MD: Marco Collins | | PD: Kevin Stapleford MD: Mike Halloran | |
| TW | LW | TW | LW | TW | LW |
| 1 | 33 | 1 | 34 | 1 | 32 |
| 2 | 32 | 2 | 32 | 2 | 25 |
| 3 | 32 | 3 | 31 | 3 | 25 |
| 4 | 31 | 4 | 30 | 4 | 24 |
| 5 | 31 | 5 | 29 | 5 | 23 |
| 6 | 30 | 6 | 29 | 6 | 23 |
| 7 | 29 | 7 | 29 | 7 | 23 |
| 8 | 29 | 8 | 29 | 8 | 22 |
| 9 | 25 | 9 | 26 | 9 | 21 |
| 10 | 25 | 10 | 26 | 10 | 21 |
| 11 | 24 | 11 | 25 | 11 | 20 |
| 12 | 22 | 12 | 24 | 12 | 22 |
| 13 | 21 | 13 | 24 | 13 | 18 |
| 14 | 21 | 14 | 24 | 14 | 17 |
| 15 | 20 | 15 | 24 | 15 | 16 |
| 16 | 20 | 16 | 24 | 16 | 15 |
| 17 | 20 | 17 | 24 | 17 | 15 |
| 18 | 20 | 18 | 24 | 18 | 14 |
| 19 | 19 | 19 | 24 | 19 | 13 |
| 20 | 19 | 20 | 24 | 20 | 13 |
| 21 | 19 | 21 | 24 | 21 | 13 |
| 22 | 19 | 22 | 24 | 22 | 13 |
| 23 | 19 | 23 | 24 | 23 | 13 |
| 24 | 19 | 24 | 24 | 24 | 13 |
| 25 | 18 | 25 | 24 | 25 | 13 |
| 26 | 18 | 26 | 24 | 26 | 13 |
| 27 | 18 | 27 | 24 | 27 | 13 |
| 28 | 18 | 28 | 24 | 28 | 13 |
| 29 | 16 | 29 | 24 | 29 | 13 |
| 30 | 16 | 30 | 24 | 30 | 13 |



Dishwalla

"It's Going To Take Some Time"

From the album
If I Were A Carpenter



**MORE THAN
 250,000
 SOLD!**

**MORE THAN
 100 SPINS
 AT
 MODERN
 ROCK!**

Executive producers:
Matt Wallace & David Konjoyan

©1994 A&M Records, Inc. All rights reserved.

Monitor POWER PLAYLISTS

Playlists supplied by Broadcast Data Systems' Radio Track service. Stations selected from panel of leading broadcasters in 125 radio markets, electronically monitored 24 hours a day, 7 days a week. Songs ranked by number of plays in monitored week.

FOR WEEK ENDING NOVEMBER 6, 1994

ALBUM ROCK

Grid of radio station playlists for Cleveland (WMMS), Detroit (WLLZ), Atlanta (WKLS), Houston (KLOL), Dallas (KEGL), and St. Louis (KSHE). Each station's list includes song titles, artists, and play counts.

Grid of radio station playlists for Dallas (KTXQ), Miami (WSHE), Cincinnati (WEBN), San Jose (KSJO), Baltimore (WIYY), and Tampa (WXTB). Each station's list includes song titles, artists, and play counts.

Grid of radio station playlists for Providence (WHJY), Long Beach (KNAC), Seattle (KISW), Portland (KUFO), Long Island (WBAB), and Orlando (WJRR). Each station's list includes song titles, artists, and play counts.

MODERN ROCK

Grid of radio station playlists for Milwaukee (WLUM), San Diego (XHRM), Cleveland (WENZ), Boston (WFNX), San Jose (KOME), and Sacramento (KWOD). Each station's list includes song titles, artists, and play counts.

Carolspeak

The Hit Track From

DANZIG

ON TOUR ALL OVER.

**ALREADY
PERFORMING ON:**

| | |
|------|-------------------------------|
| 99X | ATLANTA |
| WFNX | BOSTON |
| KISW | SEATTLE |
| KNDD | SEATTLE |
| KOME | SAN JOSE |
| X96 | SALT LAKE CITY (#1 RANKED) |
| WROX | NORFOLK |
| KTCL | DENVER |

| | | | |
|-------------|-------------------|-------------|--------------------|
| November 12 | Mesa, AZ | December 1 | Providence, RI |
| November 13 | Tucson, AZ | December 2 | Fitchburg, MA |
| November 15 | Oklahoma City, OK | December 3 | Upper Darby, PA |
| November 17 | Dallas, TX | December 5 | Detroit, MI |
| November 18 | Houston, TX | December 8 | Dayton, OH |
| November 19 | San Antonio, TX | December 9 | Chicago, IL |
| November 21 | New Orleans, LA | December 10 | Milwaukee, WI |
| November 22 | Atlanta, GA | December 12 | Denver, CO |
| November 23 | Raleigh, NC | December 14 | Salt Lake City, UT |
| November 26 | Buffalo, NY | December 16 | San Jose, CA |
| November 28 | New York, NY | December 18 | Salem, OR |
| November 29 | Baltimore, MD | December 19 | Seattle, WA |

Produced by **GLENN DANZIG** and **RICK RUBIN**

Management: BFD Entertainment, Inc.



© 1994 American Recordings

Detailed song tracking information for the last 3 weeks for all songs showing increased play this week. Total plays and gain do not include video play. Markets listed in order of population.

ALBUM ROCK

Table with 12 columns: Artist, Title, Total Stations, Position, and station call letters with week-to-week activity. Artists include Aerosmith, Alice in Chains, The Black Crowes, Candlebox, Cinderella, Eric Clapton, Corrosion of Conformity, Counting Crows, The Cranberries, Pete Drogé, Bob Dylan, and Eagles.

Table with 12 columns: Artist, Title, Total Stations, Position, and station call letters with week-to-week activity. Artists include Corrosion of Conformity, Counting Crows, The Cranberries, Pete Drogé, Bob Dylan, and Eagles.

Detailed song tracking information for the last 3 weeks for all songs showing increased play this week. Total plays and gain do not include video play. Markets listed in order of population.

ALBUM ROCK

Table with 12 columns for different albums: GUNS N' ROSES, JACKYL, LIVE, MEGADETH, JOHN MELLENCAMP, MOIST. Each column contains station codes, city names, and play counts.

Table with 12 columns for different albums: NIRVANA, OASIS, OFFSPRING, PEARL JAM, PEARL JAM, TOM PETTY. Each column contains station codes, city names, and play counts.

Detailed song tracking information for the last 3 weeks for all songs showing increased play this week. Total plays and gain do not include video play. Markets listed in order of population.

ALBUM ROCK

Table with 10 columns for artists: TOM PETTY, LIZ PHAIR, PRIDE & GLORY, R.E.M., ROLLING STONES, ROYAL JELLY. Each column contains station call letters, city, and play counts.

Table with 10 columns for artists: SMASHING PUMPKINS, SOUL ASYLUM, SOUNDGARDEN, SPONGE, TESLA, WHITE ZOMBIE. Each column contains station call letters, city, and play counts.

Monitor

SONG ACTIVITY REPORTS

For Week Ending November 6, 1994

Rock Airplay Monitor
 Detailed song tracking information for the last 3 weeks for all songs showing increased play this week. Total plays and gain do not include video play. Markets listed in order of population.

MODERN ROCK

| Total Plays/Gain | | | Total Plays/Gain | | | Total Plays/Gain | | | Total Plays/Gain | | | Total Plays/Gain | | | Total Plays/Gain | | |
|--|--|--|-------------------|--|--|-------------------|--|--|-------------------|--|--|-------------------|--|--|-------------------|--|--|
| ALICE IN CHAINS 209/78 | | | | | | | | | | | | | | | | | |
| Got Me Wrong (Columbia) | | | | | | | | | | | | | | | | | |
| Total Stations: 11 | | | | | | | | | | | | | | | | | |
| MTV 11 11 | | | Denver KTCL 11 11 | | | Denver KTCL 11 11 | | | Denver KTCL 11 11 | | | Denver KTCL 11 11 | | | Denver KTCL 11 11 | | |
| BAD RELIGION 305/67 | | | | | | | | | | | | | | | | | |
| 21st Century (Digital Boy) (Atlantic) | | | | | | | | | | | | | | | | | |
| Total Stations: 26 | | | | | | | | | | | | | | | | | |
| MTV 11 11 | | | Denver KTCL 11 11 | | | Denver KTCL 11 11 | | | Denver KTCL 11 11 | | | Denver KTCL 11 11 | | | Denver KTCL 11 11 | | |
| BIG AUDIO 329/278 | | | | | | | | | | | | | | | | | |
| Looking For A Song (Columbia) | | | | | | | | | | | | | | | | | |
| Total Stations: 28 | | | | | | | | | | | | | | | | | |
| MTV 11 11 | | | Denver KTCL 11 11 | | | Denver KTCL 11 11 | | | Denver KTCL 11 11 | | | Denver KTCL 11 11 | | | Denver KTCL 11 11 | | |
| THE BLACK CROWES 273/26 | | | | | | | | | | | | | | | | | |
| A Conspiracy (American/Reprise) | | | | | | | | | | | | | | | | | |
| Total Stations: 22 | | | | | | | | | | | | | | | | | |
| MTV 11 11 | | | Denver KTCL 11 11 | | | Denver KTCL 11 11 | | | Denver KTCL 11 11 | | | Denver KTCL 11 11 | | | Denver KTCL 11 11 | | |
| CANDLEBOX 325/109 | | | | | | | | | | | | | | | | | |
| Cover Me (Maverick/Sire/Warner Bros.) | | | | | | | | | | | | | | | | | |
| Total Stations: 24 | | | | | | | | | | | | | | | | | |
| MTV 11 11 | | | Denver KTCL 11 11 | | | Denver KTCL 11 11 | | | Denver KTCL 11 11 | | | Denver KTCL 11 11 | | | Denver KTCL 11 11 | | |
| COMPULSION 264/43 | | | | | | | | | | | | | | | | | |
| Delivery (Interscope) | | | | | | | | | | | | | | | | | |
| Total Stations: 30 | | | | | | | | | | | | | | | | | |
| MTV 11 11 | | | Denver KTCL 11 11 | | | Denver KTCL 11 11 | | | Denver KTCL 11 11 | | | Denver KTCL 11 11 | | | Denver KTCL 11 11 | | |
| COUNTING CROWS 163/32 | | | | | | | | | | | | | | | | | |
| Rain King (DGC/Geffen) | | | | | | | | | | | | | | | | | |
| Total Stations: 16 | | | | | | | | | | | | | | | | | |
| MTV 11 11 | | | Denver KTCL 11 11 | | | Denver KTCL 11 11 | | | Denver KTCL 11 11 | | | Denver KTCL 11 11 | | | Denver KTCL 11 11 | | |
| COUNTING CROWS 114/48 | | | | | | | | | | | | | | | | | |
| A Murder Of One (DGC/Geffen) | | | | | | | | | | | | | | | | | |
| Total Stations: 18 | | | | | | | | | | | | | | | | | |
| MTV 11 11 | | | Denver KTCL 11 11 | | | Denver KTCL 11 11 | | | Denver KTCL 11 11 | | | Denver KTCL 11 11 | | | Denver KTCL 11 11 | | |
| THE CRAMPS 152/11 | | | | | | | | | | | | | | | | | |
| Ultra Twist! (Medicine/Giant) | | | | | | | | | | | | | | | | | |
| Total Stations: 15 | | | | | | | | | | | | | | | | | |
| MTV 11 11 | | | Denver KTCL 11 11 | | | Denver KTCL 11 11 | | | Denver KTCL 11 11 | | | Denver KTCL 11 11 | | | Denver KTCL 11 11 | | |
| DEAD CAN DANCE 136/33 | | | | | | | | | | | | | | | | | |
| American Dreaming (4AD/Warner Bros.) | | | | | | | | | | | | | | | | | |
| Total Stations: 14 | | | | | | | | | | | | | | | | | |
| MTV 11 11 | | | Denver KTCL 11 11 | | | Denver KTCL 11 11 | | | Denver KTCL 11 11 | | | Denver KTCL 11 11 | | | Denver KTCL 11 11 | | |
| DINK 174/38 | | | | | | | | | | | | | | | | | |
| Green Mind (Capitol) | | | | | | | | | | | | | | | | | |
| Total Stations: 24 | | | | | | | | | | | | | | | | | |
| MTV 11 11 | | | Denver KTCL 11 11 | | | Denver KTCL 11 11 | | | Denver KTCL 11 11 | | | Denver KTCL 11 11 | | | Denver KTCL 11 11 | | |
| PETE DROGE 215/17 | | | | | | | | | | | | | | | | | |
| If You Don't Love Me (American/Reprise) | | | | | | | | | | | | | | | | | |
| Total Stations: 22 | | | | | | | | | | | | | | | | | |
| MTV 11 11 | | | Denver KTCL 11 11 | | | Denver KTCL 11 11 | | | Denver KTCL 11 11 | | | Denver KTCL 11 11 | | | Denver KTCL 11 11 | | |
| FLAMING LIPS 109/68 | | | | | | | | | | | | | | | | | |
| She Don't Use Jelly (Warner Bros.) | | | | | | | | | | | | | | | | | |
| Total Stations: 12 | | | | | | | | | | | | | | | | | |
| MTV 11 11 | | | Denver KTCL 11 11 | | | Denver KTCL 11 11 | | | Denver KTCL 11 11 | | | Denver KTCL 11 11 | | | Denver KTCL 11 11 | | |
| GO-GO'S 349/43 | | | | | | | | | | | | | | | | | |
| The Whole World Lost Its Head (IRS) | | | | | | | | | | | | | | | | | |
| Total Stations: 30 | | | | | | | | | | | | | | | | | |
| MTV 11 11 | | | Denver KTCL 11 11 | | | Denver KTCL 11 11 | | | Denver KTCL 11 11 | | | Denver KTCL 11 11 | | | Denver KTCL 11 11 | | |
| GREEN DAY 705/60 | | | | | | | | | | | | | | | | | |
| Welcome To Paradise (Reprise) | | | | | | | | | | | | | | | | | |
| Total Stations: 33 | | | | | | | | | | | | | | | | | |
| MTV 11 11 | | | Denver KTCL 11 11 | | | Denver KTCL 11 11 | | | Denver KTCL 11 11 | | | Denver KTCL 11 11 | | | Denver KTCL 11 11 | | |
| HOLE 750/59 | | | | | | | | | | | | | | | | | |
| Doll Parts (DGC/Geffen) | | | | | | | | | | | | | | | | | |
| Total Stations: 34 | | | | | | | | | | | | | | | | | |
| MTV 11 11 | | | Denver KTCL 11 11 | | | Denver KTCL 11 11 | | | Denver KTCL 11 11 | | | Denver KTCL 11 11 | | | Denver KTCL 11 11 | | |
| L7 157/28 | | | | | | | | | | | | | | | | | |
| Stuck Here Again (Slash/Reprise) | | | | | | | | | | | | | | | | | |
| Total Stations: 16 | | | | | | | | | | | | | | | | | |
| MTV 11 11 | | | Denver KTCL 11 11 | | | Denver KTCL 11 11 | | | Denver KTCL 11 11 | | | Denver KTCL 11 11 | | | Denver KTCL 11 11 | | |
| LOVE SPIT LOVE 201/61 | | | | | | | | | | | | | | | | | |
| Change In The Weather (Imago) | | | | | | | | | | | | | | | | | |
| Total Stations: 21 | | | | | | | | | | | | | | | | | |
| MTV 11 11 | | | Denver KTCL 11 11 | | | Denver KTCL 11 11 | | | Denver KTCL 11 11 | | | Denver KTCL 11 11 | | | Denver KTCL 11 11 | | |
| AIMEE MANN 302/41 | | | | | | | | | | | | | | | | | |
| That's Just What You Are (Imago) | | | | | | | | | | | | | | | | | |
| Total Stations: 22 | | | | | | | | | | | | | | | | | |
| MTV 11 11 | | | Denver KTCL 11 11 | | | Denver KTCL 11 11 | | | Denver KTCL 11 11 | | | Denver KTCL 11 11 | | | Denver KTCL 11 11 | | |
| MAZZY STAR 177/63 | | | | | | | | | | | | | | | | | |
| Halah (Capitol) | | | | | | | | | | | | | | | | | |
| Total Stations: 19 | | | | | | | | | | | | | | | | | |
| MTV 11 11 | | | Denver KTCL 11 11 | | | Denver KTCL 11 11 | | | Denver KTCL 11 11 | | | Denver KTCL 11 11 | | | Denver KTCL 11 11 | | |
| THE MIGHTY MIGHTY BOSSTONES 224/26 | | | | | | | | | | | | | | | | | |
| Kinder Words (Mercury) | | | | | | | | | | | | | | | | | |
| Total Stations: 23 | | | | | | | | | | | | | | | | | |
| MTV 11 11 | | | Denver KTCL 11 11 | | | Denver KTCL 11 11 | | | Denver KTCL 11 11 | | | Denver KTCL 11 11 | | | Denver KTCL 11 11 | | |
| THE MURMURS 232/75 | | | | | | | | | | | | | | | | | |
| You Suck (MCA) | | | | | | | | | | | | | | | | | |
| Total Stations: 19 | | | | | | | | | | | | | | | | | |
| MTV 11 11 | | | Denver KTCL 11 11 | | | Denver KTCL 11 11 | | | Denver KTCL 11 11 | | | Denver KTCL 11 11 | | | Denver KTCL 11 11 | | |
| NIRVANA 1038/34 | | | | | | | | | | | | | | | | | |
| About A Girl (DGC/Geffen) | | | | | | | | | | | | | | | | | |
| Total Stations: 37 | | | | | | | | | | | | | | | | | |
| MTV 11 11 | | | Denver KTCL 11 11 | | | Denver KTCL 11 11 | | | Denver KTCL 11 11 | | | Denver KTCL 11 11 | | | Denver KTCL 11 11 | | |
| OFFSPRING 248/41 | | | | | | | | | | | | | | | | | |
| Gotta Get Away (Epitaph) | | | | | | | | | | | | | | | | | |
| Total Stations: 18 | | | | | | | | | | | | | | | | | |
| MTV 11 11 | | | Denver KTCL 11 11 | | | Denver KTCL 11 11 | | | Denver KTCL 11 11 | | | Denver KTCL 11 11 | | | Denver KTCL 11 11 | | |
| PEARL JAM 696/696 | | | | | | | | | | | | | | | | | |
| Spin The Black Circle (Epic) | | | | | | | | | | | | | | | | | |
| Total Stations: 37 | | | | | | | | | | | | | | | | | |
| MTV 11 11 | | | Denver KTCL 11 11 | | | Denver KTCL 11 11 | | | Denver KTCL 11 11 | | | Denver KTCL 11 11 | | | Denver KTCL 11 11 | | |
| PEARL JAM 342/342 | | | | | | | | | | | | | | | | | |
| Tremor Christ (Epic) | | | | | | | | | | | | | | | | | |
| Total Stations: 32 | | | | | | | | | | | | | | | | | |
| MTV 11 11 | | | Denver KTCL 11 11 | | | Denver KTCL 11 11 | | | Denver KTCL 11 11 | | | Denver KTCL 11 11 | | | Denver KTCL 11 11 | | |
| LIZ PHAIR 760/44 | | | | | | | | | | | | | | | | | |
| Supernova (Matador/Antonic) | | | | | | | | | | | | | | | | | |
| Total Stations: 37 | | | | | | | | | | | | | | | | | |
| MTV 11 11 | | | Denver KTCL 11 11 | | | Denver KTCL 11 11 | | | Denver KTCL 11 11 | | | Denver KTCL 11 11 | | | Denver KTCL 11 11 | | |
| R.E.M. 222/21 | | | | | | | | | | | | | | | | | |
| Strange Currencies (Warner Bros.) | | | | | | | | | | | | | | | | | |
| Total Stations: 22 | | | | | | | | | | | | | | | | | |
| MTV 11 11 | | | Denver KTCL 11 11 | | | Denver KTCL 11 11 | | | Denver KTCL 11 11 | | | Denver KTCL 11 11 | | | Denver KTCL 11 11 | | |
| R.E.M. 248/93 | | | | | | | | | | | | | | | | | |
| Bang And Blame (Warner Bros.) | | | | | | | | | | | | | | | | | |
| Total Stations: 22 | | | | | | | | | | | | | | | | | |
| MTV 11 11 | | | Denver KTCL 11 11 | | | Denver KTCL 11 11 | | | Denver KTCL 11 11 | | | Denver KTCL 11 11 | | | Denver KTCL 11 11 | | |
| SMASHING PUMPKINS 877/37 | | | | | | | | | | | | | | | | | |
| Landslide (Virgin) | | | | | | | | | | | | | | | | | |
| Total Stations: 37 | | | | | | | | | | | | | | | | | |
| MTV 11 11 | | | Denver KTCL 11 11 | | | Denver KTCL 11 11 | | | Denver KTCL 11 11 | | | Denver KTCL 11 11 | | | Denver KTCL 11 11 | | |
| SOUL ASYLUM 504/58 | | | | | | | | | | | | | | | | | |
| Can't Even Tell (Columbia) | | | | | | | | | | | | | | | | | |
| Total Stations: 36 | | | | | | | | | | | | | | | | | |
| MTV 11 11 | | | Denver KTCL 11 11 | | | Denver KTCL 11 11 | | | Denver KTCL 11 11 | | | Denver KTCL 11 11 | | | Denver KTCL 11 11 | | |
| SOUL COUHING 105/32 | | | | | | | | | | | | | | | | | |
| Screenwriter's Blues (Slash/Warner Bros.) | | | | | | | | | | | | | | | | | |
| Total Stations: 13 | | | | | | | | | | | | | | | | | |
| MTV 11 11 | | | Denver KTCL 11 11 | | | Denver KTCL 11 11 | | | Denver KTCL 11 11 | | | Denver KTCL 11 11 | | | Denver KTCL 11 11 | | |
| SOUNDGARDEN 440/36 | | | | | | | | | | | | | | | | | |
| My Wave (A&M) | | | | | | | | | | | | | | | | | |
| Total Stations: 31 | | | | | | | | | | | | | | | | | |
| MTV 11 11 | | | Denver KTCL 11 11 | | | Denver KTCL 11 11 | | | Denver KTCL 11 11 | | | Denver KTCL 11 11 | | | Denver KTCL 11 11 | | |
| URGE OVERKILL 303/39 | | | | | | | | | | | | | | | | | |
| Girl, You'll Be A Woman Soon (MCA) | | | | | | | | | | | | | | | | | |
| Total Stations: 33 | | | | | | | | | | | | | | | | | |
| MTV 11 11 | | | Denver KTCL 11 11 | | | Denver KTCL 11 11 | | | Denver KTCL 11 11 | | | Denver KTCL 11 11 | | | Denver KTCL 11 11 | | |
| WEEZER 505/85 | | | | | | | | | | | | | | | | | |
| Buddy Holly (DGC/Geffen) | | | | | | | | | | | | | | | | | |
| Total Stations: 31 | | | | | | | | | | | | | | | | | |
| MTV 11 11 | | | Denver KTCL 11 11 | | | Denver KTCL 11 11 | | | Denver KTCL 11 11 | | | Denver KTCL 11 11 | | | Denver KTCL 11 11 | | |

MODERN ROCK AIRPLAY

★ ★ ★ AIRPOWER ★ ★ ★

(Minimum 400 detections for the first time)

Total Plays/Gain

★ PEARL JAM 696/696

Spin The Black Circle (Epic)

Total Stations: 37/Position On Chart: 11
Heavy (30+ plays): 5 KNDD, KROQ, KTOZ, WCHZ, WKQX
Medium (15-29): 20 CIMX, KBBT, KDGE, KEDJ, KITS, KLZR, KOME, KPNT, KWOD, KXKR, WBER, WDRE, WENZ, WEQX, WFNX, WHFS, WLUM, WNNX, WZRH, XTRA
Light (Under 15): 12
New Airplay This Week: 33 CIMX, KBBT, KDGE, KEDG, KEDJ, KEGE, KITS, KLZR, KNDD, KOME, KPNT, KROQ, KTCL, KTOZ, KWOD, KXKR, WBER, WBRU, WCHZ, WDRE, WENZ, WEQX, WFNX, WHFS, WKQX, WLUM, WNNX, WRAS, WRLG, WRXQ, WWCD, WZRH, XTRA

399 - 300 DETECTIONS

Total Plays/Gain

GO-GO'S 349/43

The Whole World Lost Its Head (IRS)

Total Stations: 30/Position On Chart: 24
Heavy (30+ plays): 1 KDGE
Medium (15-29): 10 KEDJ, KITS, KTOZ, KWOD, KXKR, WBRU, WCHZ, WDRE, WNNX, WRXQ
Light (Under 15): 19
New Airplay This Week: 5 KEDG, KEDJ, WAQZ, WEQX, WWCD

★ PEARL JAM 342/342

Tremor Christ (Epic)

Total Stations: 32/Position On Chart: 25
Heavy (30+): 2 KEGE, WKQX
Medium (15-29): 8 KNDD, KROQ, WDRE, WENZ, WEQX, WHFS, WNNX, WRXQ
Light (Under 15): 22
New Airplay This Week: 21 KEGE, KLZR, KNDD, KPNT, KROQ, KTCL, KXKR, WBRU, WCHZ, WDRE, WENZ, WEQX, WHFS, WKQX, WLUM, WNNX, WRAS, WRLG, WRXQ, WXRT, XTRA

★ BIG AUDIO 329/278

Looking For A Song (Columbia)

Total Stations: 28/Position On Chart: 27
Heavy (30+): 2 KEGE, KXKR
Medium (15-29): 7 KEDJ, KITS, KTCL, WAQZ, WBRU, WDRE, XHRM
Light (Under 15): 19
New Airplay This Week: 17 KEDJ, KEGE, KITS, KPNT, KTCL, KXKR, WDRE, WENZ, WEQX, WFNX, WNNX, WRXQ, WWCD, WXRT, WZRH, XHRM, XTRA

CANDLEBOX 325/109

Cover Me (Maverick/Sire/Warner Bros.)

Total Stations: 24/Position On Chart: 29
Heavy (30+): 2 KEGE, WLUM
Medium (15-29): 8 CIMX, KEDG, KNDD, KWOD, WAQZ, WENZ, WKQX, WRXQ
Light (Under 15): 14
New Airplay This Week: 2 WENZ, WEQX

BAD RELIGION 305/67

21st Century (Digital Boy) (Atlantic)

Total Stations: 26/Position On Chart: 33
Heavy (30+): 0
Medium (15-29): 6 CIMX, KEDJ, KLZR, WLUM, WNNX, WRXQ
Light (Under 15): 20
New Airplay This Week: 5 KFMG, KITS, KPNT, WAQZ, WDRE

URGE OVERKILL 303/39

Girl, You'll Be A Woman Soon (MCA)

Total Stations: 33/Position On Chart: 34
Heavy (30+): 1 KROQ
Medium (15-29): 6 CIMX, KEDJ, KOME, KTOZ, WCHZ, XHRM
Light (Under 15): 26
New Airplay This Week: 2 KNDD, KWOD

AIMEE MANN 302/41

That's Just What You Are (Imago)

Total Stations: 22/Position On Chart: 35
Heavy (30+): 1 KTOZ
Medium (15-29): 10 KEDJ, KFMG, WAQZ, WBRU, WCHZ, WENZ, WEQX, WHFS, WRXQ, XHRM
Light (Under 15): 11
New Airplay This Week: 2 WFNX, WHFS

299 - 200 DETECTIONS

Total Plays/Gain

THE BLACK CROWES 273/26

A Conspiracy (American/Reprise)

Total Stations: 22/Position On Chart: 37
Heavy (30+): 2 KTOZ, WCHZ
Medium (15-29): 7 KOME, KROQ, KXKR, WEQX, WHFS, WRXQ, XTRA
Light (Under 15): 13
New Airplay This Week: 1 WZRH

COMPULSION 264/43

Delivery (Interscope)

Total Stations: 30/Position On Chart: 39
Heavy (30+): 0
Medium (15-29): 2 KEDJ, KXKR
Light (Under 15): 28
New Airplay This Week: 1 WNNX

OFFSPRING 248/41

Gotta Get Away (Epitaph)

Total Stations: 18
Heavy (30+): 1 KNDD
Medium (15-29): 8 KBBT, KITS, KOME, KROQ, KXKR, WBRU, WFNX, WKQX
Light (Under 15): 9
New Airplay This Week: 1 KTCL

R.E.M. 248/93

Bang And Blame (Warner Bros.)

Total Stations: 22
Heavy (30+): 2 KOME, KROQ
Medium (15-29): 4 CIMX, KDGE, WHFS, WZRH
Light (Under 15): 16
New Airplay This Week: 4 CIMX, KDGE, WKQX, WRLG

THE MURMURS 232/75

You Suck (MCA)

Total Stations: 19
Heavy (30+): 2 WKQX, WLUM
Medium (15-29): 4 KEDJ, KEGE, KPNT, KTOZ
Light (Under 15): 13
New Airplay This Week: 5 KEDJ, KTCL, WEQX, WRLG, WZRH

THE MIGHTY MIGHTY BOSSTONES 224/26

Kinder Words (Mercury)

Total Stations: 23
Heavy (30+): 0
Medium (15-29): 6 KEDG, KLZR, KTOZ, KXKR, WDRE, WEQX
Light (Under 15): 17
New Airplay This Week: 3 KEDG, WAQZ, WCHZ

R.E.M. 222/21

Strange Currencies (Warner Bros.)

Total Stations: 22
Heavy (30+): 2 KEGE, WKQX
Medium (15-29): 3 WHFS, WLUM, XTRA
Light (Under 15): 17
New Airplay This Week: 3 KEDG, KFMG, WENZ

PETE DROGE 215/17

If You Don't Love Me (American/Reprise)

Total Stations: 22
Heavy (30+): 0
Medium (15-29): 8 CIMX, KBBT, KNDD, WDRE, WENZ, WEQX, WHFS, WRXQ

MOST NEW AIRPLAY THIS WEEK

No. Of Stations

| | |
|--|----|
| PEARL JAM <i>Spin The Black Circle (Epic)</i> | 33 |
| PEARL JAM <i>Tremor Christ (Epic)</i> | 21 |
| BIG AUDIO <i>Looking For A Song (Columbia)</i> | 17 |
| GO-GO'S <i>The Whole World Lost Its Head (IRS)</i> | 5 |
| THE MURMURS <i>You Suck (MCA)</i> | 5 |

Light (Under 15): 14

ALICE IN CHAINS 209/78

Got Me Wrong (Columbia)

Total Stations: 11
Heavy (30+): 2 KOME, WLUM
Medium (15-29): 5 KBBT, KNDD, KROQ, KWOD, WKQX
Light (Under 15): 4
New Airplay This Week: 2 KWOD, WDRE

LOVE SPIT LOVE 201/61

Change In The Weather (Imago)

Total Stations: 21
Heavy (30+): 0
Medium (15-29): 3 KEDJ, KTOZ, KXKR
Light (Under 15): 18
New Airplay This Week: 4 KFMG, KNDD, WCHZ, WRLG

199 - 100 DETECTIONS

Total Plays/Gain

MAZZY STAR 177/63

Halah (Capitol)

Total Stations: 19
Heavy (30+): 0
Medium (15-29): 6 CIMX, KBBT, KITS, KOME, KROQ, XTRA
Light (Under 15): 13
New Airplay This Week: 4 CIMX, KNDD, KTOZ, KWOD

DINK 174/38

Green Mind (Capitol)

Total Stations: 24
Heavy (30+): 0
Medium (15-29): 3 KEDJ, KITS, KXKR
Light (Under 15): 21
New Airplay This Week: 1 WDRE

COUNTING CROWS 163/32

Rain King (DGC/Geffen)

Total Stations: 16
Heavy (30+): 0

Medium (15-29): 7 CIMX, KDGE, KNDD, KWOD, WAQZ, WHFS, WNNX
Light (Under 15): 9
New Airplay This Week: 2 KDGE, KPNT

L7 157/28

Stuck Here Again (Slash/Reprise)

Total Stations: 16
Heavy (30+): 0
Medium (15-29): 2 WKQX, WNNX
Light (Under 15): 14
New Airplay This Week: 2 WAQZ, WDRE

THE CRAMPS 152/11

Ultra Twist! (Medicine)

Total Stations: 15
Heavy (30+): 0
Medium (15-29): 4 KEDJ, KLZR, KWOD, WBRU
Light (Under 15): 11
New Airplay This Week: 4 KEDG, WFNX, WRXQ, XTRA

DEAD CAN DANCE 136/33

American Dreaming (4AD/Warner Bros.)

Total Stations: 14
Heavy (30+): 1 WBER
Medium (15-29): 3 KNDD, KWOD, KXKR
Light (Under 15): 10
New Airplay This Week: 1 WBRU

COUNTING CROWS 114/48

A Murder Of One (DGC/Geffen)

Total Stations: 18
Heavy (30+): 1 KEGE
Medium (15-29): 1 WLUM
Light (Under 15): 16

★ FLAMING LIPS 109/68

She Don't Use Jelly (Warner Bros.)

Total Stations: 12
Heavy (30+): 1 WLUM
Medium (15-29): 2 WKQX, WNNX
Light (Under 15): 9
New Airplay This Week: 2 WNNX, WZRH

★ SOUL COUGHING 105/32

Screenwriter's Blues (Slash/Warner Bros.)

Total Stations: 13
Heavy (30+): 0
Medium (15-29): 3 KEDJ, KNDD, WHFS
Light (Under 15): 10

Airpower awarded to those records which attain 400 detections for the first time. New airplay lists those stations registering six or more detections per week on a record for the first time. ★ Initial impact: records registering 100 or more total detections for the first time.



MISSISSIPPI
featuring
superstar



The CRAMPS

"ULTRA-TWIST"



the first
twisted single
from
their new
album:
FLAMEJOB

TWISTING ON:

| | | | |
|------|-----|------|-----|
| KWOD | 23x | WNNX | 10x |
| KEDJ | 20x | KTCL | 10x |
| WBRU | 16x | WRXQ | 10x |
| KLZR | 15x | XTRA | 9x |
| WCHZ | 13x | KEDG | 8x |

TWISTING ACROSS AMERICA:

| | |
|-------|-------------|
| 11/9 | MADISON |
| 11/11 | CHICAGO |
| 11/12 | ST. LOUIS |
| 11/14 | CINCINNATI |
| 11/15 | COLUMBUS |
| 11/16 | CLEVELAND |
| 11/19 | DETROIT |
| 11/25 | NEW YORK |
| 12/2 | KANSAS CITY |
| 12/7 | SACRAMENTO |
| 12/13 | LAS VEGAS |
| 12/17 | SEATTLE |



Letters to Cleo

"HERE & NOW"

THE 2nd HIT SINGLE
FROM MELROSE PLACE

ALREADY ON:
WMMS 13X
WFNX 9X

M AIMEE Mann

"That's Just What You Are"

| | |
|------|-----|
| KTOZ | 32x |
| WCHZ | 29x |
| XHRM | 20x |
| WENZ | 19x |
| WHFS | 18x |
| KFMG | 18x |
| KEDJ | 18x |
| WEQX | 17x |
| WBRU | 15x |
| WAQZ | 15x |
| KLZR | 14x |
| WRXQ | 14x |
| WFNX | 12x |
| WNNX | 12x |
| KTCL | 12x |
| WWCD | 11x |
| WXRT | 9x |
| WRLG | 8x |



(i-mä'gō)



PLOWED.

The new single from the album
"ROTTING PIÑATA."

Getting Plowed:

DEBUTS (37)!

BDS ALBUM ROCK CHART

Fastest growing new artist on the chart!

**NEW! KTXQ, WQFM, Z-ROCK,
WLLZ, KKYK, WVRK**

Bob Richards/KBPI "Top 5 phones for the last month,
Top 5 tester across the board!"

Carey Curelop/KLOS "Research looks strong!"

Duane Doherty/KEGL "This is gonna be HUGE!"

VIDEO ON MTV'S 120 MINUTES!

➡ ➡ ➡ **ON TOUR IN NOVEMBER!** ⬅ ⬅ ⬅

Cleveland, Toledo, Minneapolis, Madison,
Dallas, San Antonio, Austin, Houston,
Lubbock, Albuquerque, Tucson, Phoenix,
San Diego, LA, Sacramento



*"I can't touch
the ground"*



*"I'm plowed into
the sound"*

Not everything from Detroit comes off an assembly line.

Produced by Sponge. Co-produced by Tim Pritikin. Management: Scott Gifford, Inc. Creative: Team 100.
CH2CS and Chaos design and Cadabra of Sony Music Entertainment Inc. ©1994 Sony Music Entertainment Inc.



Monitor ROCK AIRPLAY™



DETECTIONS

OCT. 31—NOV. 6, 1994

Compiled from a national sample of airplay supplied by Broadcast Data Systems' Radio Track service to Rock Airplay Monitor. 109 album rock and 38 modern rock stations are electronically monitored 24 hours a day, 7 days a week. Songs ranked by number of detections. ©1994, Billboard/BPI Communications.

| THIS WEEK | LAST WEEK | WKS. ON CHART | TITLE/LABEL/DISTRIBUTING LABEL | ARTIST | DETECTIONS | |
|-------------------------|-----------|---------------|--|---------------------------|------------|------|
| | | | | | TW | LW |
| *** No. 1 *** | | | | | | |
| 1 | 1 | 14 | INTERSTATE LOVE SONG ATLANTIC 10 weeks at No. 1 | STONE TEMPLE PILOTS | 2271 | 2334 |
| 2 | 3 | 9 | WHAT'S THE FREQUENCY, KENNETH? WARNER BROS. | R.E.M. | 2010 | 1994 |
| 3 | 2 | 5 | GALLOWS POLE ATLANTIC | JIMMY PAGE & ROBERT PLANT | 1839 | 2067 |
| 4 | 5 | 3 | YOU DON'T KNOW HOW IT FEELS WARNER BROS. | TOM PETTY | 1812 | 1609 |
| 5 | 6 | 4 | A CONSPIRACY AMERICAN/REPRISE | THE BLACK CROWES | 1615 | 1585 |
| 6 | 7 | 3 | BLIND MAN GEFEN | AEROSMITH | 1600 | 1563 |
| 7 | 8 | 6 | ABOUT A GIRL DGC/GEFFEN | NIRVANA | 1589 | 1493 |
| 8 | 4 | 5 | GET OVER IT GEFEN | EAGLES | 1540 | 1642 |
| 9 | 9 | 13 | FELL ON BLACK DAYS A&M | SOUNDGARDEN | 1214 | 1406 |
| 10 | 11 | 9 | I ALONE RADIOACTIVE/MCA | LIVE | 1186 | 1011 |
| 11 | 10 | 5 | I AM I EMI | QUEENSRYCHE | 1114 | 1129 |
| 12 | 12 | 8 | SELF ESTEEM EPITAPH | OFFSPRING | 1101 | 987 |
| *** AIRPOWER *** | | | | | | |
| 13 | 17 | 3 | COVER ME MAVERICK/SIRE/WARNER BROS. | CANDLEBOX | 978 | 779 |
| *** AIRPOWER *** | | | | | | |
| 14 | 20 | 4 | OUT OF TEARS VIRGIN | ROLLING STONES | 838 | 695 |
| 15 | 13 | 7 | COMING DOWN (DRUG TONGUE) BEGGARS BANQUET/SIRE/REPRISE | THE CULT | 828 | 898 |
| *** AIRPOWER *** | | | | | | |
| 16 | NEW | | SPIN THE BLACK CIRCLE EPIC | PEARL JAM | 808 | 16 |
| 17 | 16 | 31 | FAR BEHIND MAVERICK/SIRE/WARNER BROS. | CANDLEBOX | 796 | 805 |
| 18 | NEW | | TREMOR CHRIST EPIC | PEARL JAM | 764 | 0 |
| 19 | 28 | 3 | MY WAVE A&M | SOUNDGARDEN | 758 | 507 |
| 20 | 15 | 13 | BASKET CASE REPRISE | GREEN DAY | 756 | 847 |
| 21 | 18 | 17 | HOLD MY HAND ATLANTIC | HOOTIE & THE BLOWFISH | 702 | 777 |
| 22 | 14 | 11 | TORE DOWN DUCK/REPRISE | ERIC CLAPTON | 698 | 865 |
| 23 | 19 | 24 | VASOLINE ATLANTIC | STONE TEMPLE PILOTS | 694 | 725 |
| 24 | 23 | 6 | DANCE NAKED MERCURY | JOHN MELLENCAMP | 674 | 617 |
| 25 | NEW | | SYMPATHY FOR THE DEVIL GEFEN | GUNS N' ROSES | 626 | 0 |
| 26 | 21 | 19 | COME OUT AND PLAY EPITAPH | OFFSPRING | 612 | 652 |
| 27 | 22 | 5 | SOMETHING'S ALWAYS WRONG COLUMBIA | TOAD THE WET SPROCKET | 606 | 632 |
| 28 | 25 | 12 | YELLOW LEDBETTER EPIC | PEARL JAM | 575 | 604 |
| 29 | 29 | 4 | DON'T FOLLOW COLUMBIA | ALICE IN CHAINS | 567 | 495 |
| 30 | 32 | 2 | CAN'T EVEN TELL COLUMBIA | SOUL ASYLUM | 533 | 457 |
| 31 | 30 | 3 | CEILING ISLAND | ROYAL JELLY | 502 | 485 |
| 32 | 26 | 18 | YOU GOT ME ROCKING VIRGIN | ROLLING STONES | 455 | 599 |
| 33 | 31 | 12 | PLANET CARAVAN EASTWEST | PANTERA | 432 | 477 |
| 34 | 24 | 10 | ALLISON ROAD A&M | GIN BLOSSOMS | 423 | 614 |
| 35 | 27 | 13 | HIGH HOPES COLUMBIA | PINK FLOYD | 413 | 552 |
| 36 | 38 | 2 | HEADED FOR DESTRUCTION GEFEN | JACKYL | 408 | 355 |
| 37 | NEW | | PLOWED CHAOS | SPONGE | 402 | 316 |
| 38 | 36 | 18 | LONGVIEW REPRISE | GREEN DAY | 387 | 363 |
| 39 | NEW | | A MURDER OF ONE DGC/GEFFEN | COUNTING CROWS | 382 | 288 |
| 40 | NEW | | ALBATROSS COLUMBIA | CORROSION OF CONFORMITY | 377 | 279 |

| THIS WEEK | LAST WEEK | WKS. ON CHART | TITLE/LABEL/DISTRIBUTING LABEL | ARTIST | DETECTIONS | |
|-------------------------|-----------|---------------|--|--------------------------|------------|------|
| | | | | | TW | LW |
| *** No. 1 *** | | | | | | |
| 1 | 1 | 8 | ZOMBIE ISLAND 3 weeks at No. 1 | THE CRANBERRIES | 1081 | 1112 |
| 2 | 2 | 6 | ABOUT A GIRL DGC/GEFFEN | NIRVANA | 1038 | 1004 |
| 3 | 4 | 6 | LANDSLIDE VIRGIN | SMASHING PUMPKINS | 877 | 840 |
| 4 | 3 | 9 | WHAT'S THE FREQUENCY, KENNETH? WARNER BROS. | R.E.M. | 876 | 946 |
| 5 | 5 | 14 | INTERSTATE LOVE SONG ATLANTIC | STONE TEMPLE PILOTS | 795 | 808 |
| 6 | 8 | 10 | SUPERNOVA MATADOR/ATLANTIC | LIZ PHAIR | 760 | 716 |
| 7 | 9 | 6 | DOLL PARTS DGC/GEFFEN | HOLE | 750 | 691 |
| 8 | 7 | 16 | SELF ESTEEM EPITAPH | OFFSPRING | 727 | 760 |
| 9 | 6 | 13 | FEEL THE PAIN SIRE/REPRISE | DINOSAUR JR. | 724 | 782 |
| 10 | 11 | 9 | WELCOME TO PARADISE REPRISE | GREEN DAY | 705 | 645 |
| *** AIRPOWER *** | | | | | | |
| 11 | NEW | | SPIN THE BLACK CIRCLE EPIC | PEARL JAM | 696 | 0 |
| 12 | 10 | 11 | SEETHER MINTY FRESH/DGC/GEFFEN | VERUCA SALT | 635 | 660 |
| 13 | 12 | 7 | SWEET JANE NOTHING/INTERSCOPE | COWBOY JUNKIES | 552 | 559 |
| 14 | 15 | 8 | SUPERSONIC EPIC | OASIS | 511 | 513 |
| 15 | 18 | 3 | BUDDY HOLLY DGC/GEFFEN | WEEZER | 505 | 420 |
| 16 | 17 | 4 | CAN'T EVEN TELL COLUMBIA | SOUL ASYLUM | 504 | 446 |
| 17 | 14 | 14 | I ALONE RADIOACTIVE/MCA | LIVE | 494 | 520 |
| 18 | 19 | 5 | MY WAVE A&M | SOUNDGARDEN | 440 | 404 |
| 19 | 13 | 12 | SOMETHING'S ALWAYS WRONG COLUMBIA | TOAD THE WET SPROCKET | 438 | 523 |
| 20 | 24 | 16 | FELL ON BLACK DAYS A&M | SOUNDGARDEN | 377 | 356 |
| 21 | 16 | 11 | GOOD ENOUGH ARISTA | SARAH MCLACHLAN | 372 | 479 |
| 22 | 21 | 17 | FADE INTO YOU CAPITOL | MAZZY STAR | 363 | 384 |
| 23 | 20 | 20 | BASKET CASE REPRISE | GREEN DAY | 359 | 390 |
| 24 | 30 | 3 | THE WHOLE WORLD LOST ITS HEAD IRS | GO-GO'S | 349 | 306 |
| 25 | NEW | | TREMOR CHRIST EPIC | PEARL JAM | 342 | 0 |
| 26 | 26 | 7 | COMING DOWN (DRUG TONGUE) BEGGARS BANQUET/SIRE/REPRISE | THE CULT | 330 | 332 |
| 27 | NEW | | LOOKING FOR A SONG COLUMBIA | BIG AUDIO | 329 | 51 |
| 28 | 25 | 19 | ALL I WANNA DO A&M | SHERYL CROW | 328 | 333 |
| 29 | NEW | | COVER ME MAVERICK/SIRE/WARNER BROS. | CANDLEBOX | 325 | 216 |
| 30 | 22 | 15 | SOMETIMES ALWAYS AMERICAN/WARNER BROS. | THE JESUS AND MARY CHAIN | 323 | 372 |
| 31 | 23 | 10 | MOCKINGBIRDS REPRISE | GRANT LEE BUFFALO | 322 | 362 |
| 32 | 28 | 9 | BAD REPUTATION ELEKTRA | FREEDY JOHNSTON | 314 | 330 |
| 33 | NEW | | 21ST CENTURY (DIGITAL BOY) ATLANTIC | BAD RELIGION | 305 | 238 |
| 34 | 35 | 2 | GIRL, YOU'LL BE A WOMAN SOON MCA | URGE OVERKILL | 303 | 264 |
| 35 | 36 | 3 | THAT'S JUST WHAT YOU ARE IMAGO | AIMEE MANN | 302 | 261 |
| 36 | 27 | 19 | FAR BEHIND MAVERICK/SIRE/WARNER BROS. | CANDLEBOX | 294 | 330 |
| 37 | 39 | 2 | A CONSPIRACY AMERICAN/REPRISE | THE BLACK CROWES | 273 | 247 |
| 38 | 29 | 19 | UNDONE - THE SWEATER SONG DGC/GEFFEN | WEEZER | 272 | 308 |
| 39 | NEW | | DELIVERY INTERSCOPE | COMPULSION | 264 | 221 |
| 40 | 31 | 19 | EINSTEIN ON THE BEACH DGC/GEFFEN | COUNTING CROWS | 263 | 290 |

Records showing an increase in detections over the previous week, regardless of chart movement. A record which has been on either chart for more than 20 weeks will not receive a bullet, even if it registers an increase in detections. Airpower awarded to those records which attain 800 detections (album) or 400 detections (modern) for the first time. If two records are tied in number of plays, the record being played on more stations is placed first. Records below the top 20 are removed from the charts after 26 weeks.

{ lay it down }
the second single

from
magnaPop
off the debut album

hot boxing

Already Spinning On:
 WLUM KWOD WDRE
 WCBR KKNB WHTG
 KACV KEDJ WRLG

play it again on records

PRIORITY RECORDS

©1994 RRE