

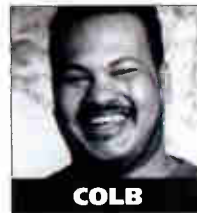
Monitor

R&B AIRPLAY

• We Listen To Radio •

OCTOBER 18, 2002

WPHI Taps Market Vet
Colby Colb As PD p. 3
New York, L.A., Chicago, Philly,
Detroit Summer Ratings p. 4



COLB

VOLUME 10 • NO. 42

\$6.95

NO. 1 THIS WEEK:

R&B/HIP-HOP:

MISSY "MISDEMEANOR" ELLIOTT
Work It (THE GOLD MIND/ELEKTRA/EEG)

ADULT R&B:

RUFF ENDZ
Someone To Love You (EPIC)

RAP:

NELLY FEATURING KELLY ROWLAND
Dilemma (FO' REEL/UNIVERSAL/JUMRG)

Work Ethic Sagging, Is It Radio's Fault?

■ by Dana Hall

Is this a familiar scene at your station? Every day your midday jock shows up 10 minutes before the shift . . . and leaves 10 minutes afterward; your night jock hands in a poorly produced spot; your promotion director consistently arrives late for live remotes and club events, instead of being there to set up; the MD stops returning phone calls to the record reps; or your afternoon jock walks into your office at 4 p.m., during his shift, and quits on the spot because he was offered a new gig.

This sort of poor work ethic, according to some PDs, has become an epidemic in the broadcast industry. But is the culprit a new generation of radio people with mixed-up priorities? Or is the changing landscape in broadcasting creating fewer opportunities, more work with lower wages, and more frustration among aspiring radio announcers and programmers?

"Work ethic went to the bottom of the priority list," says one PD, who asked to remain anonymous. "Now, taking the shorter path has taken precedence over what may take longer but have longer-lasting results."

Ron "Sugarbear" Williams, PD of WJZ Albany, N.Y., says, "A lot of us in these positions—PDs, OMs, or GMs—had to have a certain work ethic to get to where we are now. But sometimes I feel the next generation isn't in it for the love of the game. They are in it for the money. Not that I don't want to get paid too, but it's the prime motivation for most new cats. And they're not willing to put a little blood and sweat into their dream. I was always told that if money is your prime motivation, it won't happen for you. You have to love what you do. And when you love what you do, believe it or not, you would even do it for pennies."

Sam Weaver, OM of adult R&B KRNB Dallas,
Continued on page 6



WEAVER

Hit The Freeway

BRAXTON TONI

THE NEW HIT SINGLE
FEATURING LOON

Produced by The Neptunes

LOON APPEARS COURTESY OF BAD BOY RECORDS

Impacting 10.21

ARISTA

© 2002 Arista Records, Inc. a unit of BMG Entertainment

702



**MEELAH, MISHA AND IRISH ARE BACK!
THE ORIGINAL MEMBERS OF 702 SHINE BRIGHTER THAN EVER!
INCLUDES THE UNDERGROUND SMASH "STAR" FEATURING CLIPSE
PRODUCED BY THE NEPTUNES**

ALREADY ON AT

**HOT 97 NEW YORK
WXYV BALTIMORE
WUSL PHILADELPHIA
WWWZ CHARLESTON
WQOK RALEIGH**

**WVEE ATLANTA
WBOT BOSTON
WPGC WASHINGTON
WPEG CHARLOTTE**

**WEDR MIAMI
WJMN BOSTON
KKDA DALLAS
KATZ ST. LOUIS**

**WERQ BALTIMORE
WBLK BUFFALO
WQUE NEW ORLEANS
WWDM COLUMBIA**

"STAR" IN STORES DECEMBER 10TH

www.702world.com
www.motown.com

WorldRadioHistory

© 2002 Motown Records, a Division of UMG Recordings, Inc.

Bringing The Flava



Brit import Craig David returns to the States to work his latest single, "What's Your Flava," from his upcoming sophomore Atlantic album. Pictured at WBLS New York, from left, are PD Vinny Brown, David, and MD Deneen Womack.

RADIOACTIVE

BY DANA HALL 646-654-4711 • dhall@airplaymonitor.com

D.C. Stations Live In Sniper's Shadow

The serial sniper siege in the Washington, D.C., area hasn't only prompted on-air changes for PDs in that market. It has also meant a change in their day-to-day activities, both at work and at home.

Kathy Brown, OM of adult R&B WMMJ (Majic 102), says, "We try to still be out in the community, but our first priority is the safety of our staff, so we have curtailed some of our van runs," and the events that remain scheduled "are primarily indoor events."

Reggie Rouse, APD of WPGC-FM, also says that "after the shooting last night [Oct. 14], we suspended all van appearances and hits today. A station van is a high-profile vehicle, and there is no reason to put your staff in danger when it's not necessary." The station is also doing more news updates throughout the day.

WMMJ is too. "From an on-air standpoint, we will interrupt the music to go to any breaking news stories, and we run constant updates," Brown says. "I prefer to have news people give the information rather than have the jocks deal with this kind of news, due to the seriousness of it. We also have to be careful about not giving out incorrect information. For example, a few days ago, CNN reported a shooting at a school, but it turned out to be just some kids with firecrackers."

Dave Dickenson, PD of adult R&B WHUR, says his station has "brought specialists, like a child psychologist and a terrorist expert on the air, to talk about the effects" of the shootings on children and the community in general. "We're also starting to try to come up with ways to help raise funds to benefit the families of the victims."

Off-air, Dickenson adds, "we've canceled almost all of our outdoor events. But this past weekend, the annual Taste of D.C. went on as scheduled, which we co-sponsored. The mayor was adamant about having the event, because he doesn't want this person to change how we live our lives. But not surprisingly, there was a low turnout. . . You want to maintain a mind-set of 'business as usual,' but it's almost impossible."

Brown says, "Personally, things have changed dramatically for each of us. The shooting of the 13-year-old boy at his school is literally right down the street from my house. I had been walking every morning for exercise up until this started. I don't anymore. There are constant helicopters flying overhead, and every time you hear a police siren, you stop in your tracks. It's

always around us and on the news. There are at least two to three press conferences a day updating us, so it's constantly on people's minds."

Rouse adds that for him, "I'm always conscious of everything I do and what's going on around me. Little things like not parking in the same place everyday, so that I don't establish a pattern someone could follow. . . There are even people who work here who walk zig-zag in the parking lot. Also, when you go to buy gas, you make sure you are behind the pump and not out in the open."

PROGRAMMING: COLBY'S BACK

WPHI (the Beat) Philadelphia taps market veteran **Colby Colb** as PD/morning host, replacing **Anthony "Luscious Ice" Harris**, who exits. Colby was last APD/afternoon host at WWPR (Power 105.1) New York, but he spent the majority of his career at WUSL (Power 99) Philadelphia.

WKQB Fayetteville, N.C., taps **Ray Thomas** as PD/afternoon host, replacing **Bill Black**. Thomas was production director at WERQ (92Q) Baltimore but spent several years in the Fayetteville market as an air talent at WZFX (Foxy 99). Back at 92Q, APD/MD/middayer **Neke Howse** decides to stay.

Former WHBX Tallahassee, Fla., PD **Kevin Gardner** is named OM of R&B oldies WJMO and PD of adult R&B WKJS Richmond, Va., replacing **Kevin Kofax**, who exits.

FORMATS: NO. 1 FOR LESS HIP-HOP

WJNZ Grand Rapids, Mich., alters its format slightly by going adult R&B in middays and afternoons. Hip-hop will play only in mornings (on the syndicated **Russ Parr** show) and nights. Also, production director **Jameal Dye** adds PD duties, replacing **Ali Foxx**, who exited earlier this month.

WHYY-FM Montgomery, Ala., returns to mainstream top 40 after a stint on the rhythmic side. **Karen Rite** and the staff remain, as does the positioner, "the beat of Montgomery."

MORE CC REGIONAL VPS

The parade of Clear Channel programmers adding regional VP (RVP) of programming stripes this week include:

- **KMEL/KYLD** San Francisco OM **Michael Martin** is RVP of programming for Northern California, including San Francisco, San Jose,

THE SPIN

BY MINAL PATEL 646-654-4623 • mpatel@airplaymonitor.com

Missy's No. 1, But Nelly's An Adult

In a very tight race to the top of the R&B/hip-hop chart, Missy "Misdemeanor" Elliott's "Work It" (the Gold Mind/Elektra/EEG) beats **LL Cool J's** "Luv U Better" (Def Jam/IDJMG) by a mere 20 spins, while also dethroning "Dilemma" by **Nelly Featuring Kelly Rowland**. LL Cool J, who trailed Elliott by 112 spins last week, narrowed the gap with the second-highest detection gain for the format (up 449 spins), compared with Elliott's gain of 357 spins. LL, however, controls the audience chart, with a lead of 5 million audience impressions. "Work It" does slide into the top slot on the crossover chart with the third-highest gain for that format. It is Elliott's second No. 1 on both charts, following "Get Ur Freak On," which spent three weeks at the top.

Meanwhile, "Dilemma" demonstrates its broad appeal by entering the adult R&B chart this week and earning Greatest Gainer stripes as well. Nelly is not, however, the first rapper to appear on the adult R&B chart as the lead artist. In 1994-95, *Monitor's* adult R&B panel included some upper-demo-targeted mainstays that regularly played the biggest rap records. In February 1994, the first R&B act to chart was **Salt-N-Pepa** with "Whatta Man." That was followed by "Got Me Waiting" by **Heavy D. & the Boyz** and "Regulate" by **Warren G & Nate Dogg**. Dancehall reggae records have also charted: "Here Comes the Hotstepper" by **Ini Kamoze** and "Let's Get It On" by **Shabba Ranks**.

In 1995, the adult and mainstream panels were realigned, and rap-to-adult-R&B crossovers became rarer. But as the hip-hop audience grew into the adult R&B demo, a second wave was inevitable. **Erick Sermon** peaked at No. 5 last year with "Music," although most adult R&B outlets played the version that excised his rapping and turned up the **Marvin Gaye** vocal.

Some acts have also crossed to adult R&B by singing instead of rapping. **Wyclef Jean** recently charted with "Two Wrongs" and earlier on "911," and **Lauryn Hill's** "Everything Is Everything" peaked at No. 15. Most recently, Elliott's "Take Away" made the adult R&B audience chart for 11 weeks but never the airplay chart.

One reason for the adult R&B success of "Dilemma" is likely its source material, **Patti LaBelle's** 1984 classic "Love, Need and Want You." That song reached No. 10 on *Billboard's* R&B chart as a follow-up to LaBelle's four-week-long No. 1 "If Only You Knew." Around the time of those two hits, LaBelle managed another top 10 on her duet with **Bobby Womack**, "Love Has Finally Come at Last," at a time when collabos of that sort were the exception rather than the rule in R&B.

PERSONNEL FILE: Atlantic promotes **James Lopez** from senior director to VP of marketing for the urban division.

Neptunes partner **Chad Hugo** has signed a co-publishing deal with BMG songs, according to *Billboard Bulletin*. The new deal is effective Jan. 1, 2003. Hugo is currently signed to EMI Music Publishing.

and Salinas/Monterey.

- CC/Miami OM **Rob Roberts**, now RVP of programming for the Miami and West Palm Beach, Fla., markets.
- **WIHT** Washington, D.C., PD/**WMZQ** D.C. OM **Jeff Wyatt** (Baltimore/Washington).
- CC/Houston director of operations and programming **Ken Charles** (Houston/New Orleans region).
- CC/Birmingham, Ala., director of programming **Doug Hamand** (Alabama and Central Gulf Coast regions).
- CC/Little Rock, Ark., director of programming **Phil Hunt** (West Texas).
- CC/Austin, Texas, director of operations **Jason Kane** (South Central Texas).
- CC/Denver director of FM programming **Mike O'Connor** (Rocky Mountain trading zone).
- CC/Oklahoma City OM **L.J. Smith**, who had already added some regional duties recently (Oklahoma/Arkansas region).
- CC/St. Louis "chief PD" **Mike Wheeler** (Missouri/Kansas region).

PEOPLE: K-KYS HOLIDAY

K.K. Holiday returns to nights at **WKYS** Washington, D.C., replacing **2-Face** and **D-Masters** aka the **Wild Boyz**. Holiday was last host of MTV's *Beach House* but previously held the night slot at **WKYS** in the late '90s.

WOWI Norfolk, Va., welcomes the returning **D.J. Bee** for nights, moving **Big Dose** to late nights. Bee was last at **WXYV** (X105.9) Baltimore, which he joined in October 2001 for nights.

At rhythmic top 40 **KTTB** (B96) Minneapolis, MD/afternoon driver **Broadway Joe** exits, following last week's arrival of new PD **Dusty Hayes**.

Adult R&B **WRKS** (98.7 Kiss FM) New York morning producer **David Ellis** heads crosstown to **WBLS** as programming assistant, as well as weekend air work. Ellis produced the syndicated

Just One Man For Sarah . . .



And it's Background recording artist **Tank**, right, who's hanging with **WPGC-FM** Washington, D.C., MD **Sarah O'Connor**.

Tom Joyner Morning Show at Kiss and was heard as local talent on the show after **Isaac Hayes** moved to weekends.

Former **WPWX** (Power 92) Chicago P/T **Spank Boogie** joins **WKKV** (V100) Milwaukee for the same duties.

MOTOWN FUNK SOCIAL CLUB?

With the recent release of *Standing in the Shadows of Motown*—an Artisan Entertainment documentary that hopes to do for Motown's Funk Brothers session players what Artisan's *Buena Vista Social Club* did for Cuban music—adult R&B or R&B oldies stations looking to tie in with the film can call either Universal's **Elliot Kendall**, who is handling the soundtrack, at 310-865-9852, or Artisan's **Paul Campbell** at 212-386-6866 for information on screenings.

SOUNDS OF BLACKNESS

Soul Symphony

featuring the new single

“Don’t you ever give up”

Going for urban adult adds

Oct 28 & 29

The new album by Sounds of Blackness
SOUL SYMPHONY

In stores November 26



says, "Sure, there are a lot of jocks who look at this as a glamour job, and it's all about the money for them. Work ethic may not be their strong suit. But it boils down to those who get it and those who don't. It has always been that way. You have to ask, Where does work ethic really start? In the home. So, if there is a lack of good work ethic in our industry, you have to look at the social mores in our society overall . . . Some people would say the younger generation has no loyalty to the company they work for. But you also have to ask, Do these conglomerates have any loyalty to their employees?"

Weaver continues, "We've become a fast-paced society. We want results faster, more money sooner, and so on. We used to earn those things over time, through good work ethic. Today, everyone wants them right now."

Williams was taught that a "good work ethic means just doing the job isn't enough. You have to have the internal mechanism that pushes you to do your best work, because it is *your* work. Being focused on the goal of making your station No. 1 is top priority, and in most situations, you do that as a team. Everyone plays a role. When one person has a poor work ethic, that puts more responsibility on the others. Some people simply want to work less hours but get more in return."

'WILLING TO JUST GIVE UP'

While some may argue that radio consolidation and the corporatization of broadcasting should have created a greater professionalism, others say it has created the opposite effect.

Weaver explains, "Frustrations are so high right now, people are more willing to just give up. A jock recently told me she was offered a new job at a major company, which she accepted. A few days later, she was told the offer was rescinded because of budget cuts. Young people just see all opportunities to move up dwindling every day."

Jay Dixon, PD of adult R&B WBHK Birmingham, Ala., agrees. "Most of us are multi-tasking in radio. We take on more roles, more challenges, and bigger responsibilities. The issues arise when there is no one at the top directing and guiding you. I'm lucky to be at Cox, where the management team is very focused, but I'm not sure that is the case at every company. All radio companies need to take a closer look at how they train managers, because this issue of work ethic really starts there."

Williams says the industry changes have resulted in a lack of passion among those trying to work their way up. "It's hard to stay motivated when you are supposed to sit in a box for an hour and crank out a five-hour show by voice-tracking. Hell, you don't even get to hear the songs anymore. For most of these people, radio has become a second job or a way to make a little extra money on the side. It's not their top priority or their career passion. So, if radio is a second or third priority to them, their work ethic will probably suffer as well."

Terry Avery, OM of WPEG/WBAV Charlotte, N.C., says, "A lot of people are probably feeling underappreciated in their roles. Radio has become more impersonal as it has become big business. That's not good business. It will eventually show up as unhappiness or apathy in your staff, and ultimately, less new talent aspiring to get into the business in the future."

In addition to affecting what comes out of the radio, a poor work ethic may have a greater impact on the business itself. Williams says it's happening already. "It's very difficult to find people who are committed to work and be team players. Finding someone who will come to a smaller market, maybe at lower wages, and still work hard is almost impossible. It's only about what is in it for them monetarily. The thing is, we're supposed to be the farm team for the large markets."

Dixon says that ultimately, "the listeners are the ones who will suffer. When people lose their enthusiasm for their job, they start to look at it as a burden or task, as opposed to being a service and a creative outlet for the listener. It can be

MONITOR PROFILE

WVEE/WXYV Morning Man Frank Ski Joins The Syndication Crew

Tom Joyner, Doug Banks, Russ Parr, Frank Ski . . . Frank Ski? Yes, the WVEE (V103) Atlanta/WXYV (X105.9) Baltimore morning man whose paychecks say "Frank Rodriguez" has officially gone syndicated, with the addition of a non-Infinity-owned affiliate, WPAL-FM (Mega 100.9) Charleston, S.C.

Late last year, Infinity relaunched WXYV—the former heritage R&B outlet that had gone top 40 in the mid-'90s—borrowing the company's top-rated Atlanta morning man. Rodriguez had a long history in the Baltimore market dating back to 1985, including mornings at WXYV when it was V103 from 1994 to 1996, and then at crosstown WERQ (92Q) from '96 to '98.

Rodriguez says, "It has really taken me a year to understand how this thing works and to get it working smoothly. Mentally, it's very difficult to be syndicated. In fact, for the first few months, I would get off the air every day with a headache."

Among the kinks that had to be worked out were keeping each city's local element prominent. Rodriguez had made a name for himself in both cities for his community-focused morning show. It was common for the mayor of Atlanta to appear on his program, which, obviously, didn't translate to listeners in Baltimore.

Rodriguez says, "We had to make sure this wasn't simply a simulcast of the Atlanta show. In Baltimore, listeners expected a great deal more from me than that. They loved me so much there, and when I left, there was a huge void. When I came back, they expected me to fill that void."

One challenge, Rodriguez says, was with his on-air guests. "We are unlike other syndicated shows in that we are broadcasting from a radio station. So when guests come in, they have a tendency to say, 'Hey, Atlanta' or 'WVEE V103!' So to remind them that we are on in other markets, each guest gets a packet of information to read as soon as they arrive. It explains to them that they should not say the call letters or the city and so forth."

To keep the show locally focused, Rodriguez explains that "we have certain local segments for each market that are preproduced. So at 8:40, I can go into a four-minute local story from Atlanta, and if Baltimore doesn't have anything that day, they can play a music segment that features more regional songs. The show hasn't changed. I don't even mention that I'm going into the local segment—it just happens, so it sounds seamless to the listener. It's so seamless the Atlanta listeners have totally forgotten that we are syndicated now."

He adds that the stations are prepared in the event of a major issue developing. "Let's say something really big happens in Baltimore. We have several shows already in the can for

Atlanta, which allows me and the whole team to fly up to Baltimore to do the show from there, for however long it takes to cover the issue."

But as the show grows and more affiliates are added, won't customized local segments become a challenge, if only because of time constraints?



"FRANK SKI" RODRIGUEZ Morning Man

WVEE Atlanta/WXYV Baltimore Owner: Infinity

'We had to make sure this wasn't simply a simulcast of the Atlanta show'

"Many of the syndicated shows have so many stations on their roster [that] it would make it difficult for them," Rodriguez says. "We could probably get 100 or more affiliates like Tom Joyner, but I don't really want that. I would lose control then. I'd be happy with 10 affiliates, then I could continue to do things like go to the markets on a regular basis. Right now, I'm in Baltimore a couple of weekends a month. I need to be there so the listeners can see me and so that I can stay in touch with the Baltimore audience. My No. 1 goal is to satisfy the listeners—to educate them and hopefully help them become better people through the information I provide. You can lose that when you become too big."

That said, Rodriguez always had plans to grow. "When I first came down to Atlanta, we worked out a syndication clause in my contract, long before it was even a possibility," he says. "I wanted that because I knew it was one of my goals down the road. When the opportunity did come up, we were already on the same page."

He continues, "Infinity is the syndicator of my show, along with Rick Caffey, the GM of V103. We base it on the model that Howard Stern uses, who is also in the Infinity family. If you look at his flagship station, WXRK New York also benefits from his show being syndicated by getting a percentage from each affiliate. In order for Rick Caffey to give me, his morning man, the blessing to be heard on other stations, his station has to benefit as well."

And how does new affiliate WPAL benefit? "We'll be on in a market that already has Tom, Doug, and Russ, which allows WPAL to be on a level playing field in terms of star quality," Rodriguez says. "I'll be honest—we weren't their

first choice, but everyone else was taken. But I look at this as an opportunity to prove myself against the other national morning shows. In Atlanta, I've already done that. Before I arrived, Tom Joyner was No. 1, and now I'm No. 1 in the 18-34 and 25-54 demos."

Rodriguez says that ironically, being No. 1 25-54 has actually challenged him in the syndication game. "We've had a number of stations interested in picking up the show, and we've been through lengthy discussions. But surprisingly, the one thing that hurts us is that we're both hip-hop and adult. I don't understand that thought process. Radio has become so niche-programmed and marketed that some companies are overlooking the value of being mass appeal. I had one GM tell me that he didn't think my show would work on his station, because I had interviewed Teddy Pendergrass and his listeners wouldn't know who he was. I find that ridiculous."

And Rodriguez has some evidence to the contrary. "I am also still a DJ who hosts the hottest nightclubs in Atlanta," he says. "I see what these listeners want. I see the younger audience loves Jay-Z and DMX, but they also go crazy if Cheryl Lynn's 'Got to Be Real' or Frankie Beverly & Maze's 'Before I Let Go' comes on. Of course these kids know that music."

"It's ironic," he adds. "The same week this guy made the comment to me about Teddy Pendergrass was the week I was on Bill O'Reilly's television show, defending Ludacris after Pepsi dropped him. I stay in touch with everything the listeners are thinking about—from hanging out at the clubs, to hearing the latest music, to spending hours reading the local newspapers for community-interest ideas."

Rodriguez is also expanding his Frank Ski Kids Foundation—an off-air endeavor that benefits needy kids—to include children from each of his affiliate cities. The foundation is 2 years old and holds educational and entertainment programs, such as sending teens to NASA's Space Camp and organizing free family days at Six Flags amusement park.

Rodriguez says his show can benefit not only the stations that pick him up but also the listeners in each city. "Unfortunately, there are fewer morning teams out there equipped or trained to do good, informational, entertaining, and educational shows. And I don't blame that on syndicated radio shows taking away jobs. I actually blame it on consolidation. It's not that most DJs don't have the ability or the inherent talent—it's that nobody in these companies is taking the time to develop them or train them. Radio corporations aren't saying that news and community involvement is important anymore. And that's just not true." **DANA HALL**

something as simple as a jock just giving up on taking requests."

WHAT GOES AROUND . . .

Jocks shouldn't think they can start with a clean slate at every new job either. PDs say a history of having a good work ethic is a priority when hiring new talent. Avery says, "I would definitely investigate a potential employee's past work ethic. What they have done or not done in the past is what you can expect in the future."

Weaver says, "You can never know for sure until you hire someone, but you can certainly see a history through someone's work pattern. Just because someone changes jobs every six months doesn't mean they are unreliable, but it would spark my interest to find out why they made so many changes. Was it because they were looking for better opportunities? Or did they give up on their jobs too soon? I try to consider the stations they were at, the people they worked with, and

then make a decision."

"Although it is subjective from PD to PD, I would be interested in talking to them about their view of an employee's work ethic," Dixon says. "But that doesn't mean the jock doesn't have the potential with the right direction."

And how do you put them in the right direction? PDs say it's best to lead by example.

Williams says, "I'll do anything and everything I ask my staff to do. Move equipment, pass out fliers, whatever it takes. And that shows them that you're never too big to be part of the team. Also, I try to show them that it's OK to aspire to be more, to get to a larger market and move up, but that it takes time and experience to be ready once you get there."

Dixon says, "It's important for me to have a positive and healthy attitude about my role and responsibilities. That's first. Second, I have to look at each individual and find what their passion is. That's part of a manager's job. Not all jocks are

good at or love production. Others prefer to do promotional events, and others are really passionate about the music. When you find out what that key is for your jock, then encourage them to take part in those areas—even give them duties in those areas—their work ethic will flourish, because they are more interested in what they're doing. They will become self-motivated."

Avery agrees that it's partly her responsibility to find a jock's passion and encourage it. But she also says the simple things—like "coming into work on time, calling when I know I'm going to be late, and communicating with everyone who is affected by my decisions—are extremely important."

Avery adds, "I guess I'm lucky, because I don't have any of those horror stories that some other PDs have had. I hope that's because I try to create an atmosphere where my staff enjoys working with me and for me, therefore, taking pride in the work they do. That's the best motivator in creating good work ethic—self pride."

AT-A-GLANCE

Map chart detections are compiled from 88 mainstream R&B and 47 rhythmic top 40 stations which are electronically monitored 24 hours a day, 7 days a week.

ON YOUR DESK! GOING FOR AIRPLAY THIS WEEK

	R&B/HIP-HOP	ADULT
3LW • <i>Neva Get Enuff</i> (NINE LIVES/EPIC)	✓	
702 • <i>Star</i> (MOTOWN/UMRG)	✓	
TONI BRAXTON FEATURING LOON • <i>Hit The Freeway</i> (ARISTA)	✓	
JAY-Z FEATURING BEYONCE KNOWLES • <i>'03 Bonnie & Clyde</i> (ROC-A-FELLA/DEF JAM/IDJMG)	✓	
K-CI & JOJO • <i>It's Me</i> (MCA)	✓	✓
ANGIE MARTINEZ FEATURING KELIS • <i>Take U Home</i> (ELEKTRA/EEG)	✓	
MUL-TY • <i>Looking For Love</i> (SPERKALA/UNIVERSAL/UMRG)		✓
TYRESE • <i>How U Gonna Act Like That</i> (J)	✓	✓

To be included contact Minal Patel at 646-654-4623 or email mpatel@airplaymonitor.com

Billboard Hot R&B/Hip-Hop Singles Sales™

THE CHART, REPRINTED FROM BILLBOARD MAGAZINE, IS BASED ON SALES DATA COMPILED FROM A NATIONAL SUBSET OF CORE R&B/HIP-HOP STORES BY Nielsen SoundScan

THIS WEEK	LAST WEEK	WKS. ON CHART	TITLE/IMPRINT/PROMOTION LABEL	ARTIST
Billboard Issue Date: October 19, 2002				
◀ No. 1 ▶				
1	2	7	IF YOU ONLY KNEW BIG3/BEYOND 1 week at No. 1	PRYMARY COLORZ FEATURING RAH DIGGA
2	1	15	DON'T MESS WITH MY MAN JIVE	NIVEA FEATURING BRIAN & BRANDON CASEY
3	4	14	BLUE JEANS MAGIC JOHNSON/MCA	YASMEEN
4	13	11	GIMME THE LIGHT BLACK SHADOW/2 HARD/VP	SEAN PAUL
5	31	2	RUN 4 US INTELLIGENT/EAST CLEVELAND	MARK LANE
6	3	8	OVER THE YEARS PAPER DOWN	GOOD BAD UGLY
7	11	10	WHEN THE LAST TIME STAR TRAK/ARISTA	CLIPSE
8	5	3	HEATSEEKER STIMULUS	YOUNG MC
9	19	28	GRINDIN' STAR TRAK/ARISTA	CLIPSE
10	6	18	I DON'T REALLY KNOW HEAVENLY TUNES	BRANDY MOSS-SCOTT
11	9	9	LUV U BETTER DEF JAM/IDJMG	LL COOL J
12	NEW		REACT J	ERICK SERMON FEATURING REDMAN
13	30	2	CRUSH TONIGHT TERROR SQUAD/ATLANTIC	FAT JOE FEATURING GINUWINE
14	7	11	SEX, MONEY, & MUSIC WESTWORLD	ABOVE THE LAW
15	8	5	HERE AND NOW (FULL CIRCLE) JTS	TERRY STEELE
16	12	8	HEY MA ROC-A-FELLA/DEF JAM/IDJMG	CAM'RON FEATURING JUELZ SANTANTA, FREEKEY ZEKEY & TOYA
17	15	4	LIKE I LOVE YOU JIVE	JUSTIN TIMBERLAKE
18	29	5	ROCK THE PARTY SURRENDER/ELEKTRA/EEG	BENZINO
19	23	10	I'M GONNA BE ALRIGHT EPIC	JENNIFER LOPEZ FEATURING NAS
20	52	2	BOUT IT BOUT IT... PART III ROC-A-FELLA/DEF JAM/IDJMG	THE DIPLOMATS FEATURING MASTER P

○ Songs with the greatest sales gains. © 2002 VNU Business Media, Inc. and Nielsen SoundScan, Inc. All rights reserved.

Billboard TOP R&B/HIP-HOP ALBUMS™

THE CHART, REPRINTED FROM BILLBOARD MAGAZINE, IS BASED ON SALES DATA COMPILED FROM A NATIONAL SUBSET OF CORE R&B/HIP-HOP STORES BY Nielsen SoundScan

THIS WEEK	LAST WEEK	2 WKS. AGO	WKS. ON CHART	ARTIST	IMPRINT & CATALOG NUMBER/DISTRIBUTING LABEL (SUGGESTED LIST PRICE)	TITLE	PEAK POSITION
Billboard Issue Date: October 19, 2002							
◀ No. 1 ▶							
1	NEW		1	XZIBIT	LOUD/COLUMBIA 85925*/CRG (12.98 EQ/18.98)	1 week at No. 1	MAN VS MACHINE 1
2	2	—	2	PASTOR TROY	MADD SOCIETY/UNIVERSAL 064652*/UMRG (12.98/18.98)		UNIVERSAL SOLDIER 2
3	1	—	2	INDIA.ARIE	MOTOWN 064755*/UMRG (12.98/18.98)		VOYAGE TO INDIA 1
4	NEW		1	FLOETRY	DREAMWORKS 450313*/INTERSCOPE (17.98 CD)		FLOETIC 4
5	6	2	16	NELLY ▲	FO' REEL/UNIVERSAL 017747*/UMRG (12.98/18.98)		NELLYVILLE 1
6	5	3	20	EMINEM ▲	WEB/AFTERMATH 493290*/INTERSCOPE (12.98/19.98)		THE EMINEM SHOW 1
7	4	1	3	VARIOUS ARTISTS	LUDACRIS PRESENTS DISTURBING THA PEACE: GOLDEN GRAIN (12.98/18.98)		1
8	3	—	2	NAS	ILL WILL/COLUMBIA 85275*/CRG (12.98 EQ/18.98)		THE LOST TAPES 3
9	8	—	2	SOUNDTRACK	FOX 113028*/MCA (18.98 CD)		BROWN SUGAR 8
10	7	4	7	CLIPSE ●	STAR TRAK 14735*/ARISTA (12.98/18.98)		LORD WILLIN' 1

○ Albums with the greatest sales gains. ● Recording Industry Assn. of America (RIAA) certification for sales of 500,000 album units. ▲ RIAA certification for sales of 1 million units, with multiplatinum titles indicated by a numeral following the symbol. Greatest Gainer shows chart's largest unit increase. Pacesetter indicates biggest percentage growth. © 2002 VNU Business Media, Inc. and Nielsen SoundScan, Inc. All rights reserved.

FOR WEEK ENDING OCTOBER 13, 2002 RAP AIRPLAY

THIS WEEK	LAST WEEK	WKS. ON CHART	TITLE/IMPRINT/PROMOTION LABEL	ARTIST	TW	LW
★★★ No. 1 ★★★						
1	1	17	DILEMMA FO' REEL/UNIVERSAL/UMRG 11 weeks at No. 1	NELLY FEATURING KELLY ROWLAND	7183	7379
2	2	7	WORK IT THE GOLD MIND/ELEKTRA/EEG	MISSY "MISDEMEANOR" ELLIOTT	7117	6587
3	4	13	HEY MA ROC-A-FELLA/DEF JAM/IDJMG	CAM'RON FEATURING JUELZ SANTANA, FREEKEY ZEKEY & TOYA	5881	5816
4	5	11	LUV U BETTER DEF JAM/IDJMG	LL COOL J	5554	4982
5	3	16	GANGSTA LOVIN' RUFF RYDERS/INTERSCOPE	EVE FEATURING ALICIA KEYS	5349	6138
6	6	23	MOVE B***H DISTURBING THA PEACE/DEF JAM SOUTH/IDJMG	LUDACRIS FEATURING MYSTIKAL & INFAMOUS 2.0	4084	4576
7	12	9	GIMME THE LIGHT 2 HARD/VP/ATLANTIC	SEAN PAUL	3971	3488
8	7	15	TRADE IT ALL EPIC	FABOLOUS FEATURING P. DIDDY & JAGGED EDGE	3847	4245
9	9	19	PO' FOLKS ATLANTIC	NAPPY ROOTS FEATURING ANTHONY HAMILTON	3842	4065
10	8	23	NOTHIN' DEF JAM/IDJMG	N.O.R.E.	3710	4184
11	10	11	OH YEAH! CASH MONEY/UNIVERSAL/UMRG	BIG TYMERS FEATURING TATEEZE, BOO & GOTTI	3633	3696
12	15	8	WHEN THE LAST TIME STAR TRAK/ARISTA	CLIPSE	3090	2836
13	17	4	LOSE YOURSELF SHADY/INTERSCOPE	EMINEM	3065	2540
14	14	18	GOOD TIMES RUFF RYDERS/INTERSCOPE	STYLES	2800	3101
15	11	16	CLEANIN' OUT MY CLOSET WEB/AFTERMATH/INTERSCOPE	EMINEM	2785	3512
16	13	22	I NEED A GIRL (PART TWO) BAD BOY/ARISTA	P. DIDDY & GINUWINE FEATURING LOON, MARIO WINANS & TAMMY RUGGERI	2612	3155
17	16	26	HOT IN HERRE FO' REEL/UNIVERSAL/UMRG	NELLY	2214	2547
18	18	21	IF I COULD GO! ELEKTRA/EEG	ANGIE MARTINEZ FEATURING LIL' MO & SACARIO	2025	2360
★★ AIRPOWER ★★						
19	24	6	REACT J	ERICK SERMON FEATURING REDMAN	1725	1347
20	20	31	STILL FLY CASH MONEY/UNIVERSAL/UMRG	BIG TYMERS	1721	1940
21	23	10	BY MYSELF COLLIPARK/IN THE PAINT/KOCH	YING YANG TWINS FEATURING MR. BALL	1676	1697
22	19	21	DOWN 4 U MURDER INC./DEF JAM/IDJMG	IRV GOTTI PRESENTS THE INC. FEATURING JA RULE, ASHANTI, CHARLI BALTIMORE & VITA	1623	2017
★ GREATEST GAINER/MOST AIRPLAY ADDS ★						
23	NEW		'03 BONNIE & CLYDE ROC-A-FELLA/DEF JAM/IDJMG	JAY-Z FEATURING BEYONCE KNOWLES	1569	197
24	26	4	CRUSH TONIGHT TERROR SQUAD/ATLANTIC	FAT JOE FEATURING GINUWINE	1515	1305
25	21	21	IN DA WIND SLIP-N-SLIDE/ATLANTIC	TRICK DADDY FEATURING CEE-LO & BIG BOI	1505	1809
26	22	10	CHING, CHING BEAT CLUB/INTERSCOPE	MS. JADE FEATURING TIMBALAND & NELLY FURTADO	1419	1802
27	27	6	ROCK THE PARTY SURRENDER/ELEKTRA/EEG	BENZINO	1327	1264
28	25	11	ARE WE CUTTIN' MADD SOCIETY/UNIVERSAL/UMRG	PASTOR TROY FEATURING MS. JADE	1254	1336
29	28	6	SICK OF BEING LONELY MCA	FIELD MOB	1192	1070
30	33	4	AIR FORCE ONES FO' REEL/UNIVERSAL/UMRG	NELLY FEATURING ST. LUNATICS	1101	868
31	31	8	MULTIPLY LOUD/COLUMBIA	XZIBIT	1069	1024
32	34	3	TELL ME (WHAT'S GOIN' ON) ARTISTDIRECT	SMILEZ & SOUTHSTAR	1025	803
33	32	6	THE STREETS DEF JAM/IDJMG	WC FEATURING NATE DOGG	1019	911
34	30	13	THE WAY WE BALL SUCKAFREE/LOUD/COLUMBIA	LIL' FLIP	1015	1025
35	29	24	GRINDIN' STAR TRAK/ARISTA	CLIPSE	896	1063
36	NEW		THUG LOVIN' MURDER INC./DEF JAM/IDJMG	JA RULE FEATURING BOBBY BROWN	680	243
37	37	4	GROWING PAINS (DO IT AGAIN) DISTURBING THA PEACE/DEF JAM SOUTH/IDJMG	DISTURBING THA PEACE FEATURING LUDACRIS, SCARFACE, SHAWNNA, LIL' FATE & KEON BRYCE	680	703
38	38	3	NOTHINS FREE BME/TVT	OOBIE FEATURING LIL' JON & THE EAST SIDE BOYZ	658	673
39	35	14	FEEL IT BOY VP/VIRGIN	BENIE MAN FEATURING JANET	633	762
40	39	2	B R RIGHT SLIP-N-SLIDE/ATLANTIC	TRINA FEATURING LUDACRIS	570	503

Songs ranked by number of detections. ○ Songs showing an increase in detections over the previous week, regardless of chart movement. A song will also receive a bullet if its percentage loss in detections does not exceed the percentage of monitored station downtime for the format. A song that has been on the chart for more than 20 weeks will generally not receive a bullet, even if it registers an increase in detections. Airpower awarded to songs appearing in the top 20 on both the Airplay and Audience charts for the first time with increases in both detections and audience. Greatest Gainer awarded to the song with the largest increase in detections. Most Airplay Adds awarded to the song registering six or more detections at the most stations for the first time this week. A song with a gain in detections over the previous week is placed first if tied with a song with a decline over the same period. When tied songs are each gaining detections or each losing detections, the song being played on more stations is placed first. Songs below the top 20 become recurrents and are removed from the chart after 26 weeks.

GREATEST GAINERS RAP

INCREASE IN DETECTIONS	
JAY-Z FEATURING BEYONCE KNOWLES • <i>'03 Bonnie & Clyde</i> (ROC-A-FELLA/DEF JAM/IDJMG)	+1372
WZMX +55, KUBE +47, KXHT +46, WJMH +46, WQHT +38, WPOW +38, WJHM +35, KBOS +35, WWBZ +34, WXIS +32	
LL COOL J • <i>Luv U Better</i> (DEF JAM/IDJMG)	+572
KBFB +37, KHTE +36, KNDA +32, WWBZ +30, WQUE +29, KKBT +26, WNPL +26, KTHT +20, KYLD +18, KXJM +17	
MISSY "MISDEMEANOR" ELLIOTT • <i>Work It</i> (THE GOLD MIND/ELEKTRA/EEG)	+530
WIFZ +28, KBBT +25, KKWD +25, KZFM +24, WCKX +23, WRJH +20, WNPL +20, WQUE +20, WCDX +19, WPHI +18	
EMINEM • <i>Lose Yourself</i> (SHADY/INTERSCOPE)	+525
WJMN +38, KTHT +37, WNVZ +32, KNDA +31, KZFM +31, KUBE +30, KQKS +28, WPYO +25, KZPP +22, KOHT +22	
SEAN PAUL • <i>Gimme The Light</i> (2 HARD/VP/ATLANTIC)	+483
WCKX +39, WHZT +36, WQZB +25, KPWR +24, WWBZ +21, WRJH +21, KZFM +20, XHTZ +19, WBTF +19, WDTJ +18	

Compiled from a national sample of data supplied by Broadcast Data Systems to R&B Airplay Monitor. 96 R&B/Hip-Hop stations are electronically monitored 24 hours a day, 7 days a week. © 2002 VNU Business Media, Inc. All rights reserved.

THIS WEEK	LAST WEEK	WKS. ON CHART	R&B/HIP-HOP AIRPLAY		DETECTIONS		
			TITLE/IMPRINT/PROMOTION LABEL	ARTIST	TW	LW	
			★ ★ ★ No. 1 ★ ★ ★				
1	2	6	WORK IT THE GOLD MIND/ELEKTRA/VEEG	MISSY "MISDEMEANOR" ELLIOTT	4534	4177	
2	3	9	LUV U BETTER DEF JAM/IDJMG	LL COOL J	4514	4065	
3	1	15	DILEMMA FO' REEL/UNIVERSAL/UMRG	NELLY FEATURING KELLY ROWLAND	4367	4483	
4	10	10	DONTCHANGE DEF SOUL/IDJMG	MUSIQ	3207	2957	
5	6	10	HEY MA ROC-A-FELLA/DEF JAM/IDJMG	CAM'RON FEATURING JUELZ SANTANA, FREEKEY ZEKEY & TOYA	3201	3191	
6	8	16	BABY MURDER INC./AJM/IDJMG	ASHANTI	3114	3049	
7	9	13	I CARE 4 U BLACKGROUND	AALIYAH	3075	3010	
8	11	6	GIMME THE LIGHT 2 HARD/VP/ATLANTIC	SEAN PAUL	3068	2763	
9	4	16	GANGSTA LOVIN' RUFF RYDERS/INTERSCOPE	EVE FEATURING ALICIA KEYS	3002	3546	
10	5	17	STINGY EPIC	GINUWINE	2978	3203	
11	7	21	MOVE B***H DISTURBING THA PEACE/DEF JAM SOUTH/IDJMG	LUDACRIS FEATURING MYSTIKAL & INFAMOUS 2.0	2682	3092	
12	12	18	PO' FOLKS ATLANTIC	NAPPY ROOTS FEATURING ANTHONY HAMILTON	2659	2750	
13	16	6	WHEN THE LAST TIME STAR TRAK/ARISTA	CLIPSE	2395	2209	
14	15	9	OH YEAH! CASH MONEY/UNIVERSAL/UMRG	BIG TYMERS FEATURING TATEEZE, BOO & GOTTI	2201	2214	
15	14	13	TRADE IT ALL EPIC	FABOLOUS FEATURING P. DIDDY & JAGGED EDGE	2193	2487	
16	13	20	NOTHIN' DEF JAM/IDJMG	N.O.R.E.	2189	2534	
17	20	9	LOVE OF MY LIFE (AN ODE TO HIP HOP) FOX/MCA	ERYKAH BADU FEATURING COMMON	2106	1853	
18	19	4	BRAID MY HAIR 3RD STREET/J	MARIO	2011	1907	
19	21	6	WHY I LOVE YOU EPIC	B2K	1904	1835	
20	17	15	GOOD TIMES RUFF RYDERS/INTERSCOPE	STYLES	1904	2155	
21	18	11	CLEANIN' OUT MY CLOSET WEB/AFTERMATH/INTERSCOPE	EMINEM	1759	2108	
22	24	7	BY MYSELF COLLIPARK/IN THE PAINT/KOCH	YING YANG TWINS FEATURING MR. BALL	1465	1491	
23	31	2	REACT J	ERICK SERMON FEATURING REDMAN	1440	1122	
24	26	5	FLOETIC SOLJAZ/DREAMWORKS/INTERSCOPE	FLOETRY	1412	1349	
25	22	25	HOT IN HERRE FO' REEL/UNIVERSAL/UMRG	NELLY	1342	1573	
26	38	2	GIRL TALK ARISTA	TLC	1326	898	
27	25	21	I NEED A GIRL (PART TWO) BAD BOY/ARISTA	P. DIDDY & GINUWINE FEATURING LOON, MARIO WINANS & TAMMY RUGGERI	1231	1448	
28	NEW		★ GREATEST GAINER®/MOST AIRPLAY ADDS ★				
28	NEW		'03 BONNIE & CLYDE ROC-A-FELLA/DEF JAM/IDJMG	JAY-Z FEATURING BEYONCE KNOWLES	1214	179	
29	23	19	TWO WRONGS COLUMBIA	WYCLEF JEAN FEATURING CLAUDETTE ORTIZ	1187	1506	
30	28	18	IN DA WIND SLIP-N-SLIDE/ATLANTIC	TRICK DADDY FEATURING CEE-LO & BIG BOI	1068	1250	
31	40	2	LOSE YOURSELF SHADY/INTERSCOPE	EMINEM	1041	855	
32	NEW		AIR FORCE ONES FO' REEL/UNIVERSAL/UMRG	NELLY FEATURING ST. LUNATICS	1041	819	
33	34	3	STOLE MUSIC WORLD/COLUMBIA	KELLY ROWLAND	1040	966	
34	30	6	CHING, CHING BEAT CLUB/INTERSCOPE	MS. JADE FEATURING TIMBALAND & NELLY FURTADO	1038	1155	
35	32	8	ARE WE CUTTIN' MADD SOCIETY/UNIVERSAL/UMRG	PASTOR TROY FEATURING MS. JADE	1026	1046	
36	NEW		FABOLOUS DIVINE MILL/WARNER BROS.	JAHEIM FEATURING THA RAYNE	1024	790	
37	27	12	ONE MAN BLACKGROUND	TANK	990	1281	
38	NEW		CRUSH TONIGHT TERROR SQUAD/ATLANTIC	FAT JOE FEATURING GINUWINE	981	823	
39	37	2	SICK OF BEING LONELY MCA	FIELD MOB	978	902	
40	NEW		TALKIN' TO ME RISE/COLUMBIA	AMERIE	941	770	

Songs ranked by number of detections. ○ Songs showing an increase in detections over the previous week, regardless of chart movement. A song will also receive a bullet if its percentage loss in detections does not exceed the percentage of monitored station downtime for the format. A song that has been on the chart for more than 20 weeks will generally not receive a bullet, even if it registers an increase in detections. Airpower awarded to songs appearing in the top 20 on both the Airplay and Audience charts for the first time with increases in both detections and audience. Greatest Gainer awarded to the song with the largest increase in detections. Most Airplay Adds awarded to the song registering six or more detections at the most stations for the first time this week. A song with a gain in detections over the previous week is placed first if tied with a song with a decline over the same period. When tied songs are each gaining detections or each losing detections, the song being played on more stations is placed first. Songs below the top 20 become recurrents and are removed from the chart after 26 weeks.

GREATEST GAINERS R&B/HIP-HOP

INCREASE IN DETECTIONS

- JAY-Z FEATURING BEYONCE KNOWLES • '03 Bonnie & Clyde (ROC-A-FELLA/DEF JAM/IDJMG)** +1035
WZMX +55, KXHT +46, WJMH +46, WQHT +38, WJHM +35, WWBZ +34, WYVY +31, WKPO +29, WJMN +28, KBFB +28
- LL COOL J • Luv U Better (DEF JAM/IDJMG)** +449
KBFB +37, KNDK +32, WWBZ +30, WQUE +29, KKBT +26, WNPL +26, KMEL +16, WQSL +16, KBMB +16, WTLZ +16
- TLC • Girl Talk (ARISTA)** +428
WQSL +27, WJNH +26, WJBT +23, WFUN +20, WDHT +20, WCKX +19, WENZ +18, WZFX +17, KJMM +17, WHRK +16
- MISSY "MISDEMEANOR" ELLIOTT • Work It (THE GOLD MIND/ELEKTRA/VEEG)** +357
WZFX +28, WCKX +23, WRJH +20, WNPL +20, WQUE +20, WCDX +19, WBOT +15, WZBZ +15, WJNH +14, WWVZ +13
- JA RULE FEATURING BOBBY BROWN • Thug Lovin' (MURDER INC./DEF JAM/IDJMG)** +345
WKPO +42, WJNH +34, WBTF +27, WZHT +25, WJMN +22, WWPR +21, WQHT +19, WWBZ +18, KBMB +18, WDKX +18

R&B/HIP-HOP AUDIENCE

THIS WEEK	LAST WEEK	WKS. ON CHART	R&B/HIP-HOP AUDIENCE		AUDIENCE (millions)		
			TITLE/IMPRINT/PROMOTION LABEL	ARTIST	TW	LW	
			★ ★ ★ No. 1 ★ ★ ★				
1	2	11	LUV U BETTER DEF JAM/IDJMG	LL COOL J	60.602	54.604	
2	1	16	DILEMMA FO' REEL/UNIVERSAL/UMRG	NELLY FEATURING KELLY ROWLAND	55.468	57.233	
3	3	7	WORK IT THE GOLD MIND/ELEKTRA/VEEG	MISSY "MISDEMEANOR" ELLIOTT	55.041	51.985	
4	7	16	GIMME THE LIGHT 2 HARD/VP/ATLANTIC	SEAN PAUL	46.812	41.948	
5	5	15	I CARE 4 U BLACKGROUND	AALIYAH	46.809	46.657	
6	8	10	HEY MA ROC-A-FELLA/DEF JAM/IDJMG	CAM'RON FEATURING JUELZ SANTANA, FREEKEY ZEKEY & TOYA	43.812	39.876	
7	9	17	BABY MURDER INC./AJM/IDJMG	ASHANTI	39.839	36.896	
8	4	16	GANGSTA LOVIN' RUFF RYDERS/INTERSCOPE	EVE FEATURING ALICIA KEYS	39.375	47.707	
9	11	9	DONTCHANGE DEF SOUL/IDJMG	MUSIQ	37.287	33.334	
10	6	21	MOVE B***H DISTURBING THA PEACE/DEF JAM SOUTH/IDJMG	LUDACRIS FEATURING MYSTIKAL & INFAMOUS 2.0	36.942	42.676	
11	10	17	STINGY EPIC	GINUWINE	34.550	36.843	
12	15	8	WHEN THE LAST TIME STAR TRAK/ARISTA	CLIPSE	32.283	30.586	
13	14	12	PO' FOLKS ATLANTIC	NAPPY ROOTS FEATURING ANTHONY HAMILTON	29.484	30.840	
14	12	14	TRADE IT ALL EPIC	FABOLOUS FEATURING P. DIDDY & JAGGED EDGE	27.620	31.751	
15	13	23	NOTHIN' DEF JAM/IDJMG	N.O.R.E.	25.792	31.593	
16	NEW		'03 BONNIE & CLYDE ROC-A-FELLA/DEF JAM/IDJMG	JAY-Z FEATURING BEYONCE KNOWLES	25.003	4.082	
17	20	9	LOVE OF MY LIFE (AN ODE TO HIP HOP) FOX/MCA	ERYKAH BADU FEATURING COMMON	23.661	19.049	
18	17	11	CLEANIN' OUT MY CLOSET WEB/AFTERMATH/INTERSCOPE	EMINEM	23.419	24.861	
19	18	5	BRAID MY HAIR 3RD STREET/J	MARIO	22.833	21.745	
20	16	18	GOOD TIMES RUFF RYDERS/INTERSCOPE	STYLES	22.804	29.660	
21	21	4	REACT J	ERICK SERMON FEATURING REDMAN	21.161	18.818	
22	19	7	WHY I LOVE YOU EPIC	B2K	18.953	19.621	
23	26	8	OH YEAH! CASH MONEY/UNIVERSAL/UMRG	BIG TYMERS FEATURING TATEEZE, BOO & GOTTI	18.529	18.040	
24	22	22	I NEED A GIRL (PART TWO) BAD BOY/ARISTA	P. DIDDY & GINUWINE FEATURING LOON, MARIO WINANS & TAMMY RUGGERI	16.487	18.613	
25	24	15	BURNIN' UP BAD BOY/ARISTA	FAITH EVANS FEATURING MISSY "MISDEMEANOR" ELLIOTT	15.829	18.524	
26	23	18	TWO WRONGS COLUMBIA	WYCLEF JEAN FEATURING CLAUDETTE ORTIZ	15.494	18.604	
27	25	26	HOT IN HERRE FO' REEL/UNIVERSAL/UMRG	NELLY	14.860	18.105	
28	29	3	LOSE YOURSELF SHADY/INTERSCOPE	EMINEM	13.942	13.004	
29	40	3	WANKSTA G-UNIT/SHADY/INTERSCOPE	50 CENT	13.822	10.113	
30	27	3	FLOETIC SOLJAZ/DREAMWORKS/INTERSCOPE	FLOETRY	13.372	13.536	
31	33	2	CRUSH TONIGHT TERROR SQUAD/ATLANTIC	FAT JOE FEATURING GINUWINE	12.392	11.264	
32	NEW		FABOLOUS DIVINE MILL/WARNER BROS.	JAHEIM FEATURING THA RAYNE	12.285	9.993	
33	NEW		JENNY FROM THE BLOCK EPIC	JENNIFER LOPEZ FEATURING JADAKISS & STYLES	12.184	7.716	
34	30	3	MULTIPLY LOUD/COLUMBIA	XZIBIT	11.880	12.078	
35	NEW		AIR FORCE ONES FO' REEL/UNIVERSAL/UMRG	NELLY FEATURING ST. LUNATICS	11.532	9.798	
36	NEW		THUG LOVIN' MURDER INC./DEF JAM/IDJMG	JA RULE FEATURING BOBBY BROWN	11.231	4.664	
37	35	3	BY MYSELF COLLIPARK/IN THE PAINT/KOCH	YING YANG TWINS FEATURING MR. BALL	10.896	10.753	
38	NEW		GIRL TALK ARISTA	TLC	10.884	8.934	
39	34	12	IF I COULD GO! ELEKTRA/VEEG	ANGIE MARTINEZ FEATURING LIL' MO & SACARIO	10.781	11.027	
40	39	2	TALKIN' TO ME RISE/COLUMBIA	AMERIE	10.327	10.133	

Songs ranked by number of audience, computed by cross-referencing exact times of airplay with Arbitron listener data. ○ Songs showing an increase in audience over the previous week, regardless of chart movement. A song will also receive a bullet if its percentage loss in detections does not exceed the percentage of monitored station downtime for the format. A song that has been on the chart for more than 20 weeks will generally not receive a bullet, even if it registers an increase in audience. A song with a gain in audience over the previous week is placed first if tied with a song with a decline over the same period. When tied songs are each gaining in audience or each losing in audience, the song being played on more stations is placed first. Songs become recurrents and are removed from this chart in conjunction with the R&B/Hip-Hop Airplay chart.

Monitor RECURRENTS R&B/HIP-HOP

RANK	TITLE	ARTIST (IMPRINT/PROMOTION LABEL)	DETECTIONS	
			TW	LW
1	STILL FLY	BIG TYMERS (CASH MONEY/UNIVERSAL/UMRG)	967	1120
2	OH BOY	CAM'RON FEAT. JUELZ SANTANA (ROC-A-FELLA/DEF JAM/IDJMG)	870	898
3	HALFCRAZY	MUSIQ (DEF SOUL/IDJMG)	747	795
4	FOOLISH	ASHANTI (MURDER INC./AJM/IDJMG)	656	700
5	ADDICTIVE	TRUTH HURTS FEAT. RAKIM (AFTERMATH/INTERSCOPE)	649	640
6	U DON'T HAVE TO CALL	USHER (ARISTA)	579	681
7	PASS THE COURVOISIER PART II	BUSTA RHYMES FEAT. P. DIDDY & PHARRELL (J)	479	508
8	SOMEONE TO LOVE YOU	RUFF ENDZ (EPIC)	413	416

RANK	TITLE	ARTIST (IMPRINT/PROMOTION LABEL)	DETECTIONS	
			TW	LW
9	ANYTHING	JAHEIM FEAT. NEXT (DIVINE MILL/WARNER BROS.)	396	448
10	OOPS (OH MY)	TWEET (THE GOLD MIND/ELEKTRA/VEEG)	391	408
11	WHAT'S LUV	FAT JOE FEAT. ASHANTI (TERROR SQUAD/ATLANTIC)	375	417
12	LIGHTS, CAMERA, ACTION!	MR. CHEEKS (UNIVERSAL/UMRG)	342	414
13	RAINY DAYZ	MARY J. BLIGE FEAT. JA RULE (MCA)	320	327
14	WELCOME TO ATLANTA	JERIMINE DUPRI & LUDACRIS/ISO SO DEF/DEF JAM SOUTH/COLUMBIA	313	317
15	I NEED A GIRL (PART ONE)	P. DIDDY FEAT. USHER & LOON (BAD BOY/ARISTA)	313	340
16	U GOT IT BAD	USHER (ARISTA)	308	312
17	ROCK THE BOAT	AALIYAH (BLACKGROUND)	303	285
18	ON MY BLOCK	SCARFACE (DEF JAM SOUTH/IDJMG)	298	319
19	CALL ME	TWEET (THE GOLD MIND/ELEKTRA/VEEG)	291	351
20	PEACHES & CREAM	112 (BAD BOY/ARISTA)	274	283

WorldRadioHistory.com Recurrents are titles that have appeared on the R&B/Hip-Hop Airplay chart for 26 weeks and have dropped below the top 20.

TRICK DADDY "THUG HOLIDAY"

(FEATURING LA TOCHA SCOTT)

PRODUCED BY DAVID BANNER

**IMPACTING
NOVEMBER 18th & 19th**

NOW PLAYING:

WFXE	18x
WEUP	36x
WEDR	16x
WJWZ	30x
WMBX	61x
WWBZ	32x
WCHH	30x
WPEG	26x
WHXT	19x
WJUC	26x

FROM THE ALBUM
TRUG HOLIDAY
www.atlantic-records.com
www.thug.com



Slip-N-Slide Records manufactured and distributed by Atlantic Recording Corporation, Warner Music Group, An AOL Time Warner Company, ©2002 Slip-N-Slide Records, Inc. exclusively licensed to Atlantic Recording Corporation for the United States and WEA International for the world outside of the United States.



TRINA "B R R I G H T"

(FEATURING LUDACRIS)

PRODUCED BY KANYE WEST

IMPACTING
NOVEMBER
4TH & 5TH

Now PLAYING:

WERQ	13x
WBHH	23x
WEDR	24x
WJWZ	19x
WJHM	43x
WMBX	51x
WCHH	17x
KXHT	54x
WNPL	34x
WUBT	61x
KUUU	23x



THE NEXT SINGLE TO BLOW UP
FROM THE ALBUM

DIAMOND PRINCESS

WWW.ATLANTIC-RECORDS.COM
WWW.TRINA-ONLINE.COM

WorldRadioHistory



JAY-Z

THE NEW SMASH HIT "03 BONNIE & CLYDE" FEATURING BEYONCÉ

Monitor
R&B/Hip Hop **28**

★ Greatest Gainer/
Most Airplay Adds ★

IMPACTING
10/21 & 10/22



www.rocafella.com
©2002 Roc-A-Fella Records LLC.

PARENTAL
ADVISORY
EXPLICIT CONTENT

EDITED
VERSION ALSO
AVAILABLE.

FROM THE DOUBLE CD IN STORES NOV 12TH

WorldRadioHistory

KKDA - Skip Cheatham, PD
"This is a relationship anthem!...
My phones are blowing up!!!"

WOWI - Daisy Davis, PD
"HUGE!...Instant phones!"

WVEE - Frank Ski, Jock
"Perfect union!...
This song is HOT!"

WHXT - Harold Banks, APD
"A female friendly record!...
immediate POWER spins!!!!"

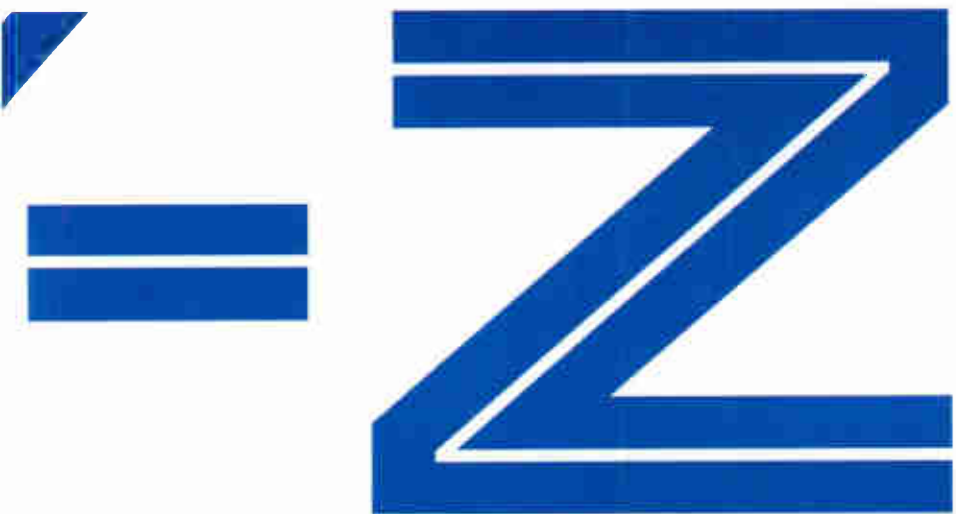
WPEG - Nate Quick, MD
"Loves the record, Jigga's back...
It has the potential
to be a #1 record!"

WIZF - Big Greg, Music coordinator
"Repolish the crown!...
the KING is back!"

WBHH - Heart Attack, PD
"This is the FU* & %N SH*T!!!"

WPWX - Jay Alan, PD
"Hot record!!!!"

WKKV - Doc Love, MD
"HOT 2 DEF!!!!!"



BONNIE & CLYDE... AND RADIO!

WZMX	76x	WQHT	59x
WJMH	58x	KXHT	58x
WXYV	53x	KUBE	51x
WJHM	52x	WWBZ	51x
WXIS	48x	WLLD	47x
WPGC	42x	WCHH	42x
WJNH	42x	WPWX	42x
WWPR	41x	KXJM	40x
KBFB	38x	WKPO	38x
WENZ	38x	WERQ	38x
WJMN	38x	WBTF	37x
WDKX	35x	WPEG	37x
WKYS	35x	KQKS	32x
KBOS	32x	WWKX	32x
KBXX	32x	WEDR	32x
WUBT	31x	WDTJ	31x
WBLK	30x	WPHI	28x
WOWI	27x	WIZF	27x
WGCI	27x		
WFUN	20x		
KKDA	20x		
KKBT	18x		

R&B/HIP-HOP POWERPLAYS



Songs ranked by number of detections. Playlists are listed in order of TSA weekly cumes, beginning with the highest-cuming station. Cumes are updated twice yearly following the release of the spring and fall Arbitron surveys. The number of stations shown each week varies depending upon space.

WJLB Detroit PD: K.J. Holiday APD/MD: Kris Kelly Clear Channel 313-965-2000

KKDA Dallas PD: Skip Cheatham Service 972-263-9911

WDTJ Detroit PD: Charles "Spudd" Spence Radio One 313-259-2000

KBFB Dallas PD: John Candelaria Interim MD: Big Bink Radio One 972-331-5400

WZMX Hartford PD: Victor Starr APD: David Simpson Infinity 860-677-6700

WHTA Atlanta PD: Jerry Smokin' B APD: Dimitrios Stevens MD: Ramona DeBraux Radio One 404-765-9750

Table with 2 columns: Rank and Song/Artist. Top songs include 'Musiq Donchange', 'Aaliyah I Care 4 U', 'Ginuwine Slingy', etc.

Table with 2 columns: Rank and Song/Artist. Top songs include 'Missy "Misdemeanor" Elliott Work It', 'LL Cool J Luv U Better', 'Nelly Featuring Kelly Rowland Dilemma', etc.

Table with 2 columns: Rank and Song/Artist. Top songs include 'LL Cool J Luv U Better', 'Nelly Featuring Kelly Rowland Dilemma', 'Nelly Featuring Kelly Rowland Dilemma', etc.

Table with 2 columns: Rank and Song/Artist. Top songs include 'Missy "Misdemeanor" Elliott Work It', 'Musiq Donchange', 'Nelly Featuring Kelly Rowland Dilemma', etc.

Table with 2 columns: Rank and Song/Artist. Top songs include 'Missy "Misdemeanor" Elliott Work It', 'Musiq Donchange', 'Nelly Featuring Kelly Rowland Dilemma', etc.

Table with 2 columns: Rank and Song/Artist. Top songs include 'LL Cool J Luv U Better', 'Missy "Misdemeanor" Elliott Work It', 'Musiq Donchange', etc.

WJHM Orlando PD: Stevie DeMann APD: Keith Memoly MD: Jay Love Infinity 407-919-1000

KKFR Phoenix PD: Bruce St. James APD: Joey Boy MD: J Philla Emmis 602-274-6200

WERQ Baltimore PD: Dion Summers Radio One 410-332-8200

WQVE New Orleans PD: Carla Boatman APD/MD: Upton Angela Clear Channel 504-827-6000

WPEG Charlotte PD: Terry Avery APD/MD: Nate Quick Infinity 704-333-0131

WENZ Cleveland PD: Hurricane Dave Smith APD/MD: 107.1 Radio One 216-579-1111

Table with 2 columns: Rank and Song/Artist. Top songs include 'Aaliyah I Care 4 U', 'Nelly Featuring Kelly Rowland Dilemma', 'LL Cool J Luv U Better', etc.

Table with 2 columns: Rank and Song/Artist. Top songs include 'Ludacris Featuring Mystikal Move B***h', 'Nelly Featuring Kelly Rowland Dilemma', 'Cam'ron Featuring Juelz Sant Hey Ma', etc.

Table with 2 columns: Rank and Song/Artist. Top songs include 'LL Cool J Luv U Better', 'Musiq Donchange', 'Nelly Featuring Kelly Rowland Dilemma', etc.

Table with 2 columns: Rank and Song/Artist. Top songs include 'Nelly Featuring Kelly Rowland Dilemma', 'Musiq Donchange', 'LL Cool J Luv U Better', etc.

Table with 2 columns: Rank and Song/Artist. Top songs include 'Missy "Misdemeanor" Elliott Work It', 'Nelly Featuring Kelly Rowland Dilemma', 'LL Cool J Luv U Better', etc.

Table with 2 columns: Rank and Song/Artist. Top songs include 'Missy "Misdemeanor" Elliott Work It', 'LL Cool J Luv U Better', 'Nelly Featuring Kelly Rowland Dilemma', etc.

KQKS Denver PD: Cat Collins MD: John E. Kage Jefferson-Pilot 303-321-0950

WJHM Greensboro PD: Brian Douglas MD: Tap Money Entercom 336-605-5200

WXYV Baltimore PD/MD: Thea Mitchem Infinity 410-828-7722

KPTY Houston PD/MD: Marco Arias Hispanic 713-407-1415

WQOK Raleigh PD: Cy Young MD: Shawn Alexander Radio One 919-848-9736

WHRK Memphis PD: Nate Bell APD/MD: Devin Steel Clear Channel 901-529-4300

Table with 2 columns: Rank and Song/Artist. Top songs include 'Ludacris Featuring Mystikal Move B***h', 'Cam'ron Featuring Juelz Sant Hey Ma', 'Nelly Featuring Kelly Rowland Dilemma', etc.

Table with 2 columns: Rank and Song/Artist. Top songs include 'Sean Paul Gimme The Light', 'LL Cool J Luv U Better', 'Nelly Featuring Kelly Rowland Dilemma', etc.

Table with 2 columns: Rank and Song/Artist. Top songs include 'Missy "Misdemeanor" Elliott Work It', 'LL Cool J Luv U Better', 'Sean Paul Gimme The Light', etc.

Table with 2 columns: Rank and Song/Artist. Top songs include 'Missy "Misdemeanor" Elliott Work It', 'Nelly Featuring Kelly Rowland Dilemma', 'Styies Good Times', etc.

Table with 2 columns: Rank and Song/Artist. Top songs include 'Nelly Featuring Kelly Rowland Dilemma', 'Eve Featuring Alicia Keys Gangsta Lovin', 'Nappy Roots Featuring Anthon Po' Folks', etc.

Table with 2 columns: Rank and Song/Artist. Top songs include 'Nappy Roots Featuring Anthon Po' Folks', 'Eve Featuring Alicia Keys Gangsta Lovin', 'Nelly Featuring Kelly Rowland Dilemma', etc.

R&B/HIP-HOP
SONG AIRPLAY MONITOR

FOR WEEK ENDING OCTOBER 13, 2002

Monitor AIRPLAY
Detailed tracking for upward-moving songs. Total Detections/Gain does not include video play. Tracking week for video play reflects a Fri - Th cycle. Markets listed in order of population.

Total Detections/Gain

AALIYAH 3075/65
I Care 4 U (Blackground)
Total Stations: 84

Table with columns for city, station, and song. Includes entries for New York (MTV, WBLS, WHDR), Chicago (WGTB, WUAB), San Fran. (KMBL), etc.

Total Detections/Gain

AMERIE 941/171
Talkin' To Me (Rise/Columbia)
Total Stations: 67

Table with columns for city, station, and song. Includes entries for New York (MTV, WBLS), Chicago (WGTB), San Fran. (KMBL), etc.

Total Detections/Gain

ASHANTI 3114/65
Baby (Murder Inc./A&M/JDJMG)
Total Stations: 95

Table with columns for city, station, and song. Includes entries for New York (MTV, WBLS), Chicago (WGTB), San Fran. (KMBL), etc.

Total Detections/Gain

B2K 1904/69
Why I Love You (Epic)
Total Stations: 88

Table with columns for city, station, and song. Includes entries for New York (MTV, WBLS), Chicago (WGTB), San Fran. (KMBL), etc.

Total Detections/Gain

ERIKY BADU FEATURING COMMON 2106/253
Love Of My Life (An Ode To Hip Hop) (Fox/MCA)
Total Stations: 76

Table with columns for city, station, and song. Includes entries for New York (MTV, WBLS), Chicago (WGTB), San Fran. (KMBL), etc.

Total Stations: 78
BENZINO 785/31
Rock The Party (Surrender/Elektra/EEG)
Total Stations: 78

Table with columns for city, station, and song. Includes entries for New York (MTV, WBLS), Chicago (WGTB), San Fran. (KMBL), etc.

Total Stations: 91
BIG TYMERS FEAT. TATEEZ, BOO & GOTTI 2201/-13
Oh Yeah! (Cash Money/Universal/UMRG)
Total Stations: 91

Table with columns for city, station, and song. Includes entries for New York (MTV, WBLS), Chicago (WGTB), San Fran. (KMBL), etc.

Total Stations: 93
CAM'RON 3201/10
Hey Ma (Roc-A-Fella/Def Jam/JDJMG)
Total Stations: 93

Table with columns for city, station, and song. Includes entries for New York (MTV, WBLS), Chicago (WGTB), San Fran. (KMBL), etc.

Total Stations: 91
CLIPSE 2395/186
When The Last Time (Star Trak/Arista)
Total Stations: 91

Table with columns for city, station, and song. Includes entries for New York (MTV, WBLS), Chicago (WGTB), San Fran. (KMBL), etc.

Total Stations: 66
DRU HILL 690/257
I Should Be... (Def Soul/JDJMG)
Total Stations: 66

Table with columns for city, station, and song. Includes entries for New York (MTV, WBLS), Chicago (WGTB), San Fran. (KMBL), etc.

Total Stations: 56
EMINEM 1041/186
Lose Yourself (Shady/Interscope)
Total Stations: 56

Table with columns for city, station, and song. Includes entries for New York (MTV, WBLS), Chicago (WGTB), San Fran. (KMBL), etc.

Total Stations: 82
FAT JOE FEATURING GINUWINE 981/158
Crush Tonight (Terror Squad/Atlantic)
Total Stations: 82

Table with columns for city, station, and song. Includes entries for New York (MTV, WBLS), Chicago (WGTB), San Fran. (KMBL), etc.

Total Stations: 57
FIELD MOB 978/76
Sick Of Being Lonely (MCA)
Total Stations: 57

Table with columns for city, station, and song. Includes entries for New York (MTV, WBLS), Chicago (WGTB), San Fran. (KMBL), etc.

Total Stations: 81
FLOETRY 1412/63
Floetic (Solja/DreamWorks/Interscope)
Total Stations: 81

Table with columns for city, station, and song. Includes entries for New York (MTV, WBLS), Chicago (WGTB), San Fran. (KMBL), etc.

Total Stations: 64
INDIA.ARIE 828/-5
Little Things (Motown/UMRG)
Total Stations: 64

Table with columns for city, station, and song. Includes entries for New York (MTV, WBLS), Chicago (WGTB), San Fran. (KMBL), etc.

SOUND ACTIVITY REPORTS



Detailed tracking for upward-moving songs. Total Detections/Gain does not include video play. Tracking week for video play reflects a Fri - Thu cycle. Markets listed in order of population.

Total Detections/Gain Total Detections/Gain Total Detections/Gain Total Detections/Gain Total Detections/Gain

JAHEIM FEATURING THA RAYNE 1024/234 Fabulous (Divine Mill/Warner Bros.)

JA RULE FEAT. BOBBY BROWN 565/345 Thug Lovin' (Murder Inc./Def Jam/IDJMG)

JAY-Z FEATURING BEYONCE KNOWLES 1214/1035 '03 Bonnie & Clyde (Roc-A-Fella/Def Jam/IDJMG)

SYLEENA JOHNSON 914/38 Tonight I'm Gonna Let Go (Jive)

LIL' FLIP 793/12 The Way We Ball (Suckafree/Loud/Columbia)

LL COOL J 4514/449 Liv U Better (Def Jam/IDJMG)

JENNIFER LOPEZ FEAT. JADAKISS & STYLES 934/325 Jenny From The Block (Epic)

MARIO 2011/104 Braid My Hair (3rd Street/J)

MUSIQ 3207/250 Dontchange (Def Soul/IDJMG)

NELLY FEATURING ST. LUNATICS 1041/222 Air Force Ones (Fo' Reel/Universal/UMRG)

SEAN PAULS 3068/305 Gimme The Light (2 Hard/VP/Aatlantic)

KELLY ROWLAND 1040/74 Stole (Music World/Columbia)

ERICK SERMON FEATURING REDMAN 1440/318 React (J)

TLC 1326/428 Girl Talk (Arista)

XZIBIT 801/35 Multiply (Loud/Columbia)

Compiled from a national sample of data supplied by Broadcast Data Systems to R&B Airplay Monitor. All adult R&B stations are electronically monitored 24 hours a day 7 days a week. © 2002 VNU Business Media, Inc. All rights reserved.

THIS WEEK	LAST WEEK	WKS. ON CHART	ADULT R&B AIRPLAY		DETECTIONS		
			TITLE/IMPRINT/PROMOTION LABEL	ARTIST	TW	LW	
			★ ★ ★ No. 1 ★ ★ ★				
1	1	33	SOMEONE TO LOVE YOU EPIC	RUFF ENDZ	911	960	
(2)	2	12	FUNNY ELEKTRA/EEG	GERALD LEVERT	773	703	
(3)	4	11	DONTCHANGE DEF SOUL/IDJMG	MUSIQ	688	653	
4	3	48	ANYTHING DIVINE MILL/WARNER BROS.	JAHEIM FEATURING NEXT	646	655	
5	6	39	I'D RATHER J	LUTHER VANDROSS	636	590	
6	5	32	HALFCRAZY DEF SOUL/IDJMG	MUSIQ	559	629	
(7)	7	8	MORE THAN A WOMAN J	ANGIE STONE & JOE	537	534	
8	8	66	LIFETIME COLUMBIA	MAXWELL	506	503	
9	9	31	YOU KNOW THAT I LOVE YOU UNTOUCHABLES/ARISTA	DONELL JONES	481	477	
(10)	11	11	RELAX YOUR MIND ARISTA	BOYZ II MEN FEATURING FAITH EVANS	465	440	
(11)	12	9	LITTLE THINGS MOTOWN/UMRG	INDIA.ARIE	463	432	
(12)	16	10	I CARE 4 U BLACKGROUND	AALIYAH	428	341	
13	10	33	WHAT IF A WOMAN JIVE	JOE	412	467	
14	14	77	TAKE YOU OUT J	LUTHER VANDROSS	390	387	
(15)	20	7	LOVE OF MY LIFE (AN ODE TO HIP HOP) FOX/MCA	ERYKAH BADU	377	283	
(16)	18	7	HE IS RCA	HEATHER HEADLEY	364	316	
17	15	10	ONE MAN BLACKGROUND	TANK	356	371	
18	13	22	IN THE MORNING COLUMBIA	MARY MARY	351	391	
19	17	16	ONE ON ONE ELEKTRA/EEG	KEITH SWEAT FEATURING LOLA TROY & LADE BAC	294	341	
(20)	21	7	BABY DO THOSE THINGS MOTOWN/UMRG	DAVE HOLLISTER	277	243	
(21)	22	6	I WONDER WHY PEAK/CONCORD	GLENN JONES	262	240	
			★ MOST AIRPLAY ADDS ★				
(22)	27	3	LET ME LOVE YOU MOTOWN/UMRG	BRIAN MCKNIGHT	219	164	
(23)	25	4	UP & DOWN (IN & OUT) J	DEBORAH COX	193	181	
24	23	20	BRIGHTER DAY GOSPO CENTRIC/JIVE	KIRK FRANKLIN	187	217	
(25)	29	4	SECRETS OF LOVE GRP/VERVE	AL JARREAU	186	143	
			★ GREATEST GAINER ★				
(26)	NEW		DILEMMA FO' REEL/UNIVERSAL/UMRG	NELLY FEATURING KELLY ROWLAND	185	82	
27	24	15	TWO WRONGS COLUMBIA	WYCLEF JEAN FEATURING CLAUDETTE ORTIZ	179	182	
28	26	26	I'M GONNA BE READY ELEKTRA/EEG	YOLANDA ADAMS	150	173	
(29)	NEW		FABULOUS DIVINE MILL/WARNER BROS.	JAHEIM FEATURING THA RAYNE	131	93	
(30)	39	11	GET YOUR GROOVE ON TRIUMPH	THEO	129	111	
31	31	4	SOMEDAY DEF SOUL/IDJMG	KELLY PRICE	123	130	
32	36	26	IS THERE ANYBODY LONELY MARDI GRAS	SIR CHARLES JONES	122	119	
33	37	3	STINGY EPIC	GINUWINE	118	119	
34	33	12	ROCK THE BOAT SHANACHIE	STREETWIZE FEATURING KIM WATERS	117	122	
35	30	24	KEEP LOVIN' YOU MCA	DAVE HOLLISTER	116	143	
(36)	NEW		WILL YOU BE MINE EPIC	RUFF ENDZ	96	87	
37	40	11	DON'T TALK TO ME LIKE THAT GRP/VERVE	WILL DOWNING	95	105	
(38)	NEW		GUESS WHAT JIVE	SYLEENA JOHNSON	94	63	
39	35	12	LET'S MAKE LOVE BLUEBIRD/RCA VICTOR/RCA	FOURPLAY	89	120	
40	32	20	IN THE SHOWER GOLDEN BOY	TONY TERRY	84	126	

Songs ranked by number of detections. ○ Songs showing an increase in detections over the previous week, regardless of chart movement. A song will also receive a bullet if its percentage loss in detections does not exceed the percentage of monitored station downtime for the format. A song that has been on the chart for more than 20 weeks will generally not receive a bullet, even if it registers an increase in detections. Airpower awarded to songs appearing in the top 20 on both the Airplay and Audience charts for the first time with increases in both detections and audience. Greatest Gainer awarded to the song with the largest increase in detections. Most Airplay Adds awarded to the song registering six or more detections at the most stations for the first time this week. A song with a gain in detections over the previous week is placed first if tied with a song with a decline over the same period. When tied songs are each gaining detections or each losing detections, the song being played on more stations is placed first. Songs below the top 20 become recurrenents and are removed from the chart after 26 weeks.

GREATEST GAINERS ADULT R&B

INCREASE IN DETECTIONS

NELLY FEATURING KELLY ROWLAND • Dilemma (FO' REEL/UNIVERSAL/UMRG) +103
KJMS +48, WSVY +27, WRKS +19, WLVI +6, WSOL +3, KJLH +2, WHQT +1

ERYKAH BADU FEATURING COMMON • Love Of My Life (An Ode To Hip Hop) (FOX/MCA) +94
KJMS +42, WLVI +12, WHQT +10, KOKY +7, WRKS +7, KSOC +6, WMMX +6, WMMJ +5, WALR +4, KMJM +3

AALIYAH • I Care 4 U (BLACKGROUND) +87
WSVY +20, WSOL +17, KJMS +15, KMJM +14, WRKS +7, WQOK +7, WALR +6, WDLT +5, WVAZ +4, KMJK +4

GERALD LEVERT • Funny (ELEKTRA/EEG) +70
WKJS +12, WRKS +11, WALR +11, KOKY +9, WMMJ +8, WWIN +7, WDAZ +5, WCFB +5, WVAZ +5, WJMR +4

DRU HILL • I Should Be... (DEF SOUL/IDJMG) +68
WHQT +9, WFLM +9, WWIN +9, WKXI +7, WALR +6, KOKY +5, WSVY +5, KMJM +4, WBAV +4, WMGL +4

WorldRadioHistory

THIS WEEK	LAST WEEK	WKS. ON CHART	ADULT R&B AUDIENCE		AUDIENCE (millions)		
			TITLE/IMPRINT/PROMOTION LABEL	ARTIST	TW	LW	
			★ ★ ★ No. 1 ★ ★ ★				
1	1	29	SOMEONE TO LOVE YOU EPIC	RUFF ENDZ	10.059	10.544	
(2)	5	14	FUNNY ELEKTRA/EEG	GERALD LEVERT	8.985	6.695	
3	2	32	HALFCRAZY DEF SOUL/IDJMG	MUSIQ	8.540	9.654	
4	3	47	ANYTHING DIVINE MILL/WARNER BROS.	JAHEIM FEATURING NEXT	8.087	7.279	
(5)	4	12	DONTCHANGE DEF SOUL/IDJMG	MUSIQ	7.916	7.142	
6	7	38	I'D RATHER J	LUTHER VANDROSS	7.549	6.321	
7	6	31	YOU KNOW THAT I LOVE YOU UNTOUCHABLES/ARISTA	DONELL JONES	7.132	6.532	
(8)	9	7	I CARE 4 U BLACKGROUND	AALIYAH	6.613	5.723	
9	8	33	WHAT IF A WOMAN JIVE	JOE	5.983	6.279	
(10)	10	11	RELAX YOUR MIND ARISTA	BOYZ II MEN FEATURING FAITH EVANS	5.690	5.111	
11	11	67	LIFETIME COLUMBIA	MAXWELL	5.510	5.082	
12	16	77	TAKE YOU OUT J	LUTHER VANDROSS	4.946	3.939	
(13)	15	9	LITTLE THINGS MOTOWN/UMRG	INDIA.ARIE	4.842	4.086	
(14)	17	10	HE IS RCA	HEATHER HEADLEY	4.586	3.498	
(15)	14	8	MORE THAN A WOMAN J	ANGIE STONE & JOE	4.549	4.354	
(16)	18	8	LOVE OF MY LIFE (AN ODE TO HIP HOP) FOX/MCA	ERYKAH BADU	4.404	3.087	
17	12	24	IN THE MORNING COLUMBIA	MARY MARY	4.230	4.713	
(18)	22	13	DILEMMA FO' REEL/UNIVERSAL/UMRG	NELLY FEATURING KELLY ROWLAND	4.161	2.540	
(19)	19	7	ONE MAN BLACKGROUND	TANK	2.888	2.724	
(20)	21	16	ONE ON ONE ELEKTRA/EEG	KEITH SWEAT FEATURING LOLA TROY & LADE BAC	2.810	2.589	
21	20	6	STINGY EPIC	GINUWINE	2.530	2.606	
22	23	26	I'M GONNA BE READY ELEKTRA/EEG	YOLANDA ADAMS	1.972	2.415	
(23)	31	4	I WONDER WHY PEAK/CONCORD	GLENN JONES	1.955	1.638	
(24)	28	4	UP & DOWN (IN & OUT) J	DEBORAH COX	1.948	1.894	
25	26	14	ROCK THE BOAT SHANACHIE	STREETWIZE FEATURING KIM WATERS	1.913	1.967	
26	25	19	BRIGHTER DAY GOSPO CENTRIC/JIVE	KIRK FRANKLIN	1.893	2.059	
(27)	29	5	BABY DO THOSE THINGS MOTOWN/UMRG	DAVE HOLLISTER	1.890	1.847	
(28)	37	2	LET ME LOVE YOU MOTOWN/UMRG	BRIAN MCKNIGHT	1.817	1.120	
(29)	32	3	GUESS WHAT JIVE	SYLEENA JOHNSON	1.759	1.497	
30	27	17	FULL MOON ATLANTIC	BRANDY	1.716	1.898	
(31)	RE-ENTRY		BABY MURDER INC./AJM/IDJMG	ASHANTI	1.648	0.886	
(32)	38	2	THROUGH THE RAIN MONARCH/ISLAND/IDJMG	MARIAH CAREY	1.538	1.085	
33	24	15	HAPPY MURDER INC./AJM/IDJMG	ASHANTI	1.458	2.174	
34	30	24	KEEP LOVIN' YOU MCA	DAVE HOLLISTER	1.412	1.820	
35	33	10	TWO WRONGS COLUMBIA	WYCLEF JEAN FEATURING CLAUDETTE ORTIZ	1.301	1.361	
36	34	23	JUST A FRIEND 2002 J	MARIO	1.252	1.261	
(37)	39	2	IN THE NAME OF LOVE JIVE	R. KELLY	1.185	1.067	
(38)	RE-ENTRY		IS THERE ANYBODY LONELY MARDI GRAS	SIR CHARLES JONES	1.159	1.013	
(39)	RE-ENTRY		SECRETS OF LOVE GRP/VERVE	AL JARREAU	1.110	0.953	
(40)	NEW		FLOETIC SOLJAZ/DREAMWORKS/INTERSCOPE	FLOETRY	1.064	0.673	

Songs ranked by number of audience, computed by cross-referencing exact times of airplay with Arbitron listener data. ○ Songs showing an increase in audience over the previous week, regardless of chart movement. A song will also receive a bullet if its percentage loss in detections does not exceed the percentage of monitored station downtime for the format. A song that has been on the chart for more than 20 weeks will generally not receive a bullet, even if it registers an increase in audience. A song with a gain in audience over the previous week is placed first if tied with a song with a decline over the same period. When tied songs are each gaining in audience or each losing in audience, the song being played on more stations is placed first. Songs become recurrenents and are removed from this chart in conjunction with the Adult R&B Airplay chart.

AIRPLAY Monitor RECURRENENTS ADULT R&B

RANK	TITLE	ARTIST (IMPRINT/PROMOTION LABEL)	DETECTIONS	
			TW	LW
1	MADE TO LOVE YA	GERALD LEVERT (ELEKTRA/EEG)	323	324
2	THE BATTLE IS THE LORD'S	YOLANDA ADAMS (VERITY/JIVE)	262	275
3	WISH I DIDN'T MISS YOU	ANGIE STONE (J)	252	315
4	THE WAY	JILL SCOTT (HIDDEN BEACH/EPIC)	230	280
5	THIS WOMAN'S WORK	MAXWELL (COLUMBIA)	221	256
6	DIFFERENCES	GINUWINE (EPIC)	198	179
7	WE FALL DOWN	DONNIE MCCLURKIN (VERITY/JIVE)	190	179
8	BROTHA	ANGIE STONE (J)	185	211

Recurrenents are titles that have appeared on the Adult R&B Airplay chart for 26 weeks and have dropped below the top 20.

RANK	TITLE	ARTIST (IMPRINT/PROMOTION LABEL)	DETECTIONS	TW	LW
9	FODLISH	ASHANTI (MURDER INC./AJM/IDJMG)	183	218	
10	JUST IN CASE	JAHEIM (DIVINE MILL/WARNER BROS.)	172	220	
11	WHAT AM I GONNA DO	TYRESE (RCA)	160	106	
12	DON'T YOU FORGET IT	GLENN LEWIS (EPIC)	159	200	
13	BUTTERFLIES	MICHAEL JACKSON (EPIC)	154	153	
14	THE COLOR OF LOVE	BOYZ II MEN (ARISTA)	152	148	
15	FALLIN'	ALICIA KEYS (J)	148	149	
16	BROWN SKIN	INDIA.ARIE (MOTOWN)	142	119	
17	U GOT IT BAD	USHER (ARISTA)	140	147	
18	PUT IT ON PAPER	ANN NESBY FEAT. AL GREEN (UNIVERSAL/UMRG)	134	126	
19	A LONG WALK	JILL SCOTT (HIDDEN BEACH/EPIC)	127	135	
20	SEXUAL HEALING	MARVIN GAYE (COLUMBIA)	124	129	

Charting songs are ranked by airplay on both the Airplay and Audience charts for the first time with increases in both detections and audience. Initial impact: songs appearing on this page for the first time. are songs with 6 or more detections at new stations this week. The ranks taste-maker stations that have been the most successful in identifying future hit songs as measured by the amount of AIRPOWER titles for which they were Airplay Leaders. Refer to each format's Power Playlists page to see this week's Airplay Leaders.

AIRPOWER

NO RECORDS QUALIFIED FOR AIRPOWER THIS WEEK

AIRPOWER BOUND

Total Detections/Gain

DAVE HOLLISTER 277/34

Baby Do Those Things (Motown/UMRG) Total Stations: 23/Chart Move: 21-20 Heavy (30+): 0 Medium (15-29): 11 KJMS, KMJK, KMJM, KOKY, WFLM, WGPR, WHQT, WJMR, WKXI, WLWH, WMGL Light (Under 15): 12 Airplay Adds: 1 WLWH

GLENN JONES 262/22

I Wonder Why (Peak/Concord) Total Stations: 34/Chart Move: 22-21 Heavy (30+): 1 KOKY Medium (15-29): 6 KMJK, WFLM, WKXI, WMGL, WWIN, WZAK Light (Under 15): 27

BRIAN MCKNIGHT 219/55

Let Me Love You (Motown/UMRG) Total Stations: 25/Chart Move: 27-22 Heavy (30+): 0 Medium (15-29): 2 KJMS, KMJM Light (Under 15): 23 Airplay Adds: 6 KJMS, WALR, WCFB, WDSAS, WDMK, WFXC

DEBORAH COX 193/12

Up & Down (In & Out) (J) Total Stations: 23/Chart Move: 25-23 Heavy (30+): 0 Medium (15-29): 4 KMJK, WHUR, WQOK, WZAK Light (Under 15): 19 Airplay Adds: 1 WDMK

AL JARREAU 186/43

Secrets Of Love (GRP/Verve) Total Stations: 25/Chart Move: 29-25 Heavy (30+): 1 KOKY Medium (15-29): 3 WHUR, WKXI, WMGL Light (Under 15): 21 Airplay Adds: 1 KJLH

NELLY FEATURING KELLY ROWLAND 185/103

Dilemma (Fo' Reel/Universal/UMRG) Total Stations: 9/Chart Move: Debut 26 Heavy (30+): 3 KHHT, KJMS, WSOL Medium (15-29): 2 WRKS, WSVY Light (Under 15): 4 Airplay Adds: 4 KJLH, KJMS, WLWH, WSVY

WYCLEF JEAN FEAT. CLAUDETTE ORTIZ 179/-3

Two Wrongs (Columbia) Total Stations: 14/Chart Move: 24-27 Heavy (30+): 1 KMJM Medium (15-29): 3 WJMR, WMGL, WSVY Light (Under 15): 10 Airplay Adds: 1 WVKL

JAHEIM FEATURING THA RAYNE 131/38

Fabulous (Divine Mill/Warner Bros.) Total Stations: 19/Chart Move: Debut 29 Heavy (30+): 0 Medium (15-29): 0 Light (Under 15): 9 Airplay Adds: 6 KJMS, KSOC, WCFB, WDLT, WFLM, WMGL

THEO 129/18

Get Your Groove On (Triumph) Total Stations: 12/Chart Move: 39-30 Heavy (30+): 1 KOKY Medium (15-29): 2 KJLH, WHQT Light (Under 15): 10

SIR CHARLES JONES 122/3

Is There Anybody Lonely (Mardi Gras) Total Stations: 11/Chart Move: 36-32 Heavy (30+): 0 Medium (15-29): 4 KMJK, WALR, WBHK, WHQT Light (Under 15): 7

GINUWINE 118/-1

Stingy (Epic) Total Stations: 9/Chart Move: 37-33 Heavy (30+): 1 WJMR Medium (15-29): 2 KHHT, WHQT Light (Under 15): 6

STREETWIZE FEATURING KIM WATERS 117/-5

Rock The Boat (Shanachie) Total Stations: 32/Chart Move: 33-34 Heavy (30+): 1 WHQT Medium (15-29): 1 KOKY Light (Under 15): 30

RUFF ENDZ 96/9

Will You Be Mine (Epic) Total Stations: 12/Chart Move: Debut 36 Heavy (30+): 0 Medium (15-29): 1 KMJK Light (Under 15): 11

SYLEENA JOHNSON 94/31

Guess What (Jive) Total Stations: 4/Chart Move: Debut 38 Heavy (30+): 1 WHQT Medium (15-29): 2 WJMR, WVAZ Light (Under 15): 1 Airplay Adds: 1 WJMR

CHART BOUND

Total Detections/Gain

MAYSA 82/6

Simple Life (N-Coded/Warlock) Total Stations: 8 Heavy (30+): 0 Medium (15-29): 1 WGPR Light (Under 15): 7

VIVIAN GREEN 80/54

Emotional Rollercoaster (Columbia) Total Stations: 12 Heavy (30+): 0 Medium (15-29): 1 WGPR Light (Under 15): 11 Airplay Adds: 4 WBAV, WFLM, WHUR, WVAZ

KENNY LATTIMORE & CHANTE MOORE 77/59

Loveable (Arista) Total Stations: 18 Heavy (30+): 0 Medium (15-29): 1 WLWH Light (Under 15): 17 Airplay Adds: 4 KJLH, KOKY, WKXI, WMXD

DRU HILL 75/68

I Should Be... (Def Soul/IDJMG) Total Stations: 14 Heavy (30+): 0 Medium (15-29): 0 Light (Under 15): 14 Airplay Adds: 5 KOKY, WFLM, WHQT, WKXI, WWIN

ASHANTI 75/30

Baby (Murder Inc./AJM/IDJMG) Total Stations: 6 Heavy (30+): 1 KHHT Medium (15-29): 2 KMJM, WJMR Light (Under 15): 3 Airplay Adds: 1 KMJM

MICHELLE WILLIAMS 67/21

Heart To Yours (Music World/Columbia) Total Stations: 7 Heavy (30+): 0 Medium (15-29): 2 KOKY, WGPR Light (Under 15): 5 Airplay Adds: 2 WFLM, WKXI

MARIAH CAREY 63/18

Through The Rain (MonarC/Island/IDJMG) Total Stations: 7 Heavy (30+): 0 Medium (15-29): 1 KHHT Light (Under 15): 6 Airplay Adds: 2 WDLT, WFLM

FLOETRY 52/16

Floetic (Soljaz/DreamWorks/Interscope) Total Stations: 5 Heavy (30+): 0 Medium (15-29): 2 KJLH, WHQT Light (Under 15): 3 Airplay Adds: 1 KJLH

BOB BALDWIN 50/5

Too Late (Narada/Virgin) Total Stations: 5 Heavy (30+): 0 Medium (15-29): 1 WFLM Light (Under 15): 4

RAHSAAN PATTERSON 44/2

The One For Me (MCA) Total Stations: 7 Heavy (30+): 0 Medium (15-29): 2 KMJK, WZAK Light (Under 15): 5

AALIYAH 428/87

Table with columns: City, Station, Detections, Gain, etc. for AALIYAH's 'I Care 4 U (Background)'

DEBORAH COX 193/12

Table with columns: City, Station, Detections, Gain, etc. for DEBORAH COX's 'Up & Down (In & Out) (J)'

DAVE HOLLISTER 277/34

Table with columns: City, Station, Detections, Gain, etc. for DAVE HOLLISTER's 'Baby Do Those Things (Motown/UMRG)'

AL JARREAU 186/43

Table with columns: City, Station, Detections, Gain, etc. for AL JARREAU's 'Secrets Of Love (GRP/Verve)'

KENNY LATTIMORE & CHANTE MOORE 77/59

Table with columns: City, Station, Detections, Gain, etc. for KENNY LATTIMORE & CHANTE MOORE's 'Loveable (Arista)'

BRIAN MCKNIGHT 219/55

Table with columns: City, Station, Detections, Gain, etc. for BRIAN MCKNIGHT's 'Let Me Love You (Motown/UMRG)'

RUFF ENDZ 96/9

Table with columns: City, Station, Detections, Gain, etc. for RUFF ENDZ's 'Will You Be Mine (Epic)'

ERYKAH BADU 377/94

Table with columns: City, Station, Detections, Gain, etc. for ERYKAH BADU's 'Love Of My Life (An Ode To Hip Hop) (Fox/MCA)'

VIVIAN GREEN 80/54

Table with columns: City, Station, Detections, Gain, etc. for VIVIAN GREEN's 'Emotional Rollercoaster (Columbia)'

INDIA.ARIE 463/31

Table with columns: City, Station, Detections, Gain, etc. for INDIA.ARIE's 'Little Things (Motown/UMRG)'

SYLEENA JOHNSON 94/31

Table with columns: City, Station, Detections, Gain, etc. for SYLEENA JOHNSON's 'Guess What (Jive)'

GERALD LEVERT 773/70

Table with columns: City, Station, Detections, Gain, etc. for GERALD LEVERT's 'Funny (Elektra/EEG)'

MUSIQ 688/35

Table with columns: City, Station, Detections, Gain, etc. for MUSIQ's 'Dontchange (Def Soul/IDJMG)'

ANGIE STONE & JOE 537/3

Table with columns: City, Station, Detections, Gain, etc. for ANGIE STONE & JOE's 'More Than A Woman (J)'

BOYZ II MEN FEAT. FAITH EVANS 465/25

Table with columns: City, Station, Detections, Gain, etc. for BOYZ II MEN FEAT. FAITH EVANS's 'Relax Your Mind (Arista)'

HEATHER HEADLEY 364/48

Table with columns: City, Station, Detections, Gain, etc. for HEATHER HEADLEY's 'He Is (RCA)'

JAHEIM FEATURING THA RAYNE 131/38

Table with columns: City, Station, Detections, Gain, etc. for JAHEIM FEATURING THA RAYNE's 'Fabulous (Divine Mill/Warner Bros.)'

GLENN JONES 262/22

Table with columns: City, Station, Detections, Gain, etc. for GLENN JONES's 'I Wonder Why (Peak/Concord)'

MAYSA 82/6

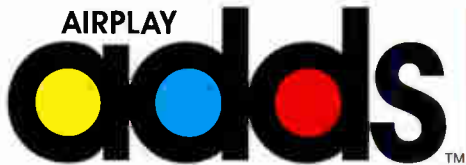
Table with columns: City, Station, Detections, Gain, etc. for MAYSA's 'Simple Life (N-Coded/Warlock)'

NELLY FEATURING KELLY ROWLAND 185/103

Table with columns: City, Station, Detections, Gain, etc. for NELLY FEATURING KELLY ROWLAND's 'Dilemma (Fo' Reel/Universal/UMRG)'

THEO 129/18

Table with columns: City, Station, Detections, Gain, etc. for THEO's 'Get Your Groove On (Triumph)'



AIRPLAY Monitor Nielsen Broadcast Data Systems A SONG RECEIVES AN AIRPLAY ADD WHEN IT REACHES SIX OR MORE DETECTIONS ON A STATION FOR THE FIRST TIME DURING A CHART WEEK

most airplay adds ADULT R&B

NEW STATIONS

BRIAN MCKNIGHT Let Me Love You (Motown/UMRG) 6 KJMS, WALR, WCFB, WDAS, WDMK, WFXC Total Stations With Six Or More Detections: 18 TOTAL DETECTIONS BY DAYPART: 6-10 3%, 10-3 20%, 3-7 16%, 7-12 31%, 12-6A 31%

JAHEIM FEATURING THA RAYNE Fabulous (Divine Mill/Warner Bros.) 6 KJMS, KSOC, WCFB, WDLT, WFLM, WMGL Total Stations With Six Or More Detections: 11 TOTAL DETECTIONS BY DAYPART: 6-10 5%, 10-3 21%, 3-7 18%, 7-12 19%, 12-6A 36%

ERYKAH BADU Love Of My Life (An Ode To Hip Hop) (Fox/MCA) 5 KJMS, KSOC, WALR, WLVA, WMXD Total Stations With Six Or More Detections: 22 TOTAL DETECTIONS BY DAYPART: 6-10 7%, 10-3 22%, 3-7 22%, 7-12 19%, 12-6A 31%

DRU HILL I Should Be... (Def Soul/IDJMG) 5 KOKY, WFML, WHQT, WKXI, WWWN Total Stations With Six Or More Detections: 6 TOTAL DETECTIONS BY DAYPART: 6-10 3%, 10-3 21%, 3-7 16%, 7-12 27%, 12-6A 33%

KENNY LATTIMORE & CHANTE MOORE Loveable (Arista) 4 KJLH, KOKY, WKXI, WMXD Total Stations With Six Or More Detections: 6 TOTAL DETECTIONS BY DAYPART: 6-10 3%, 10-3 18%, 3-7 10%, 7-12 34%, 12-6A 35%

AIRPLAY LEADERBOARD THE STATIONS THAT BREAK THE HITS #1 KMJK Kansas City, MO (PD/MD: Love/Michaels) Airplay Leader Designations: 2

Table with columns: Rank, Station, PD/MD, Airplay Leader Designations, and a list of songs with their chart positions.

Table for KHHT Los Angeles with columns: Rank, Station, PD/MD, Clear Channel, and a list of songs with their chart positions.

Table for WDAZ Philadelphia with columns: Rank, Station, PD/MD, Clear Channel, and a list of songs with their chart positions.

Table for WVVA Chicago with columns: Rank, Station, PD/MD, Clear Channel, and a list of songs with their chart positions.

Table for WHUR Washington, DC with columns: Rank, Station, PD/MD, Howard Univ., and a list of songs with their chart positions.

Table for WHQT Miami with columns: Rank, Station, PD/MD, Cox, and a list of songs with their chart positions.

Table for KMJQ Houston with columns: Rank, Station, PD/MD, Radio One, and a list of songs with their chart positions.

Table for KJLH Los Angeles with columns: Rank, Station, PD/MD, TAXI, and a list of songs with their chart positions.

Table for WALR Atlanta with columns: Rank, Station, PD/MD, Cox, and a list of songs with their chart positions.

Table for WMXD Detroit with columns: Rank, Station, PD/MD, Clear Channel, and a list of songs with their chart positions.

Table for WMMJ Washington, DC with columns: Rank, Station, PD/MD, Radio One, and a list of songs with their chart positions.

Table for WZAK Cleveland with columns: Rank, Station, OM, Radio One, and a list of songs with their chart positions.

Table for WYLD New Orleans with columns: Rank, Station, OM, Clear Channel, and a list of songs with their chart positions.

Table for WDMK Detroit with columns: Rank, Station, PD/MD, Radio One, and a list of songs with their chart positions.

Table for WWIN Baltimore with columns: Rank, Station, PD/MD, Radio One, and a list of songs with their chart positions.

Table for KJMS Memphis with columns: Rank, Station, PD/MD, Clear Channel, and a list of songs with their chart positions.

Table for WFXC Raleigh with columns: Rank, Station, OM, Radio One, and a list of songs with their chart positions.

Table for WALR Atlanta with columns: Station, Detections, and a list of songs.

Table for WWIN Baltimore with columns: Station, Detections, and a list of songs.

Table for WBHK Birmingham, Ala. with columns: Station, Detections, and a list of songs.

Table for WGLT Boston with columns: Station, Detections, and a list of songs.

Table for WMGL Charleston, S.C. with columns: Station, Detections, and a list of songs.

Table for WBAV Charlotte, N.C. with columns: Station, Detections, and a list of songs.

Table for WZAK Cleveland with columns: Station, Detections, and a list of songs.

Table for WDMK Detroit with columns: Station, Detections, and a list of songs.

Table for WGPR Detroit with columns: Station, Detections, and a list of songs.

Table for WMXD Detroit with columns: Station, Detections, and a list of songs.

Table for WQMG Greensboro, N.C. with columns: Station, Detections, and a list of songs.

Table for KMJQ Houston with columns: Station, Detections, and a list of songs.

Table for WTLC Indianapolis with columns: Station, Detections, and a list of songs.

Table for WKXI Jackson, Miss. with columns: Station, Detections, and a list of songs.

Table for WBAV Charlotte, N.C. with columns: Station, Detections, and a list of songs.

Table for WZAK Cleveland with columns: Station, Detections, and a list of songs.

Table for KJLH Los Angeles with columns: Station, Detections, and a list of songs.

Table for KJMS Memphis with columns: Station, Detections, and a list of songs.

Table for WHQT Miami with columns: Station, Detections, and a list of songs.

Table for WJMR Milwaukee with columns: Station, Detections, and a list of songs.

Table for WKXI Jackson, Miss. with columns: Station, Detections, and a list of songs.

Table for WBAV Charlotte, N.C. with columns: Station, Detections, and a list of songs.

Table for WZAK Cleveland with columns: Station, Detections, and a list of songs.

Table for WDMK Detroit with columns: Station, Detections, and a list of songs.

Table for WKVL Norfolk, Va. with columns: Station, Detections, and a list of songs.

Table for WCFB Orlando, Fla. with columns: Station, Detections, and a list of songs.

Table for WDAZ Philadelphia with columns: Station, Detections, and a list of songs.

Table for WKJS Richmond, Va. with columns: Station, Detections, and a list of songs.

Table for WFLV Savannah, Ga. with columns: Station, Detections, and a list of songs.

Table for WMMJ Washington, D.C. with columns: Station, Detections, and a list of songs.

Table for WFLM West Palm Beach with columns: Station, Detections, and a list of songs.

Table for WSVY Norfolk, Va. with columns: Station, Detections, and a list of songs.

most airplay adds
R&B/HIP-HOP

NEW STATIONS

JAY-Z FEATURING BEYONCE KNOWLES '03 Bonnie & Clyde (Roc-A-Fella/Def Jam/IDJMG)	35
KBFB, KBMB, KKBK, KKDA, KKFR, KMEI, KPWR, KQKS, KXHT, WAMO, WBLK, WBOT, WBTF, WDKX, WDTJ, WENZ, WFUN, WFXA, WFXE, WGGI, WHXT, WJMF, WJMM, WJNH, WJWZ, WKVK, WOWI, WPHR, WPRW, WQSL, WUBT, WWBZ, WWDM, WWWZ	
Total Stations With Six Or More Detections: 49	
TOTAL DETECTIONS BY DAYPART: 6-10 10% , 10-3 22% , 3-7 23% , 7-12 26% , 12-6A 19%	
TLC Girl Talk (Arista)	23
KIPR, KJMM, KKFR, KMJJ, KVSP, WAJZ, WBLX, WBOT, WDHT, WZZZ, WENZ, WFXE, WHRK, WHTA, WIKS, WJBT, WJMI, WKPO, WQOK, WQSL, WQUE, WRJH, WTLZ	
Total Stations With Six Or More Detections: 71	
TOTAL DETECTIONS BY DAYPART: 6-10 9% , 10-3 26% , 3-7 19% , 7-12 16% , 12-6A 30%	
DRU HILL I Should Be... (Def Soul/IDJMG)	20
KBMB, KIPR, KJMM, KKFR, KMJJ, KVSP, WBLX, WBTF, WCKX, WDZZ, WEUP, WFUN, WFXA, WFXE, WGZB, WHRK, WJUC, WPRW, WTLZ, WWBZ	
Total Stations With Six Or More Detections: 43	
TOTAL DETECTIONS BY DAYPART: 6-10 6% , 10-3 19% , 3-7 15% , 7-12 23% , 12-6A 38%	
ERICK SERMON FEATURING REDMAN React (J)	17
KJMM, KNDA, KVSP, WBLX, WBTF, WCDX, WDKX, WEUP, WJKS, WJTT, WNPL, WRJH, WROU, WSSP, WVEE, WZFX, WZHT	
Total Stations With Six Or More Detections: 73	
TOTAL DETECTIONS BY DAYPART: 6-10 6% , 10-3 16% , 3-7 21% , 7-12 29% , 12-6A 29%	
FAT JOE FEATURING GINUWINE Crush Tonight (Terror Squad/Atlantic)	16
KJMM, KNDA, KPRS, KVSP, WBLX, WENZ, WFXA, WFXE, WJLB, WJMH, WJMI, WNPL, WOWI, WWDM, WWWZ, WZHT	
Total Stations With Six Or More Detections: 57	
TOTAL DETECTIONS BY DAYPART: 6-10 7% , 10-3 16% , 3-7 20% , 7-12 29% , 12-6A 29%	

WAJZ Albany, N.Y.	25
Jennifer Lopez Featuring Jenny Fro	22
Eminem Lose Yourself	18
TLC Girl Talk	17
Jahelme Featuring The Rayn Fabulous	17
Mos Def Featuring Faith E Brown Sug	17
Talib Kweli Featurin Bila Waitin' F	16
Legit Ballaz Tattoo	6
WHTA Atlanta	7
TLC Girl Talk	7
Xzibit Multiply	7
YoungBloodZ Cadillac Pimpin'	6
WVEE Atlanta	18
LL Cool J Featuring P. Diddy After Sch	14
Baby Featuring P. Diddy Do That...	14
Mary J. Blige Never Been	13
Erick Sermon Featuring Re React	9
WFXA Augusta, Ga.	12
82K Why I Love You	12
Jay-Z Featuring Beyonce K '03 Bonni	10
Dru Hill I Should Be...	9
Fat Joe Featuring Ginuwine Crush Ton	8
Smilez & Southstar Tell Me (What's	7
Ja Rule Featuring Bobby B Thug Lovi	7
WPRW Augusta, Ga.	12
Jay-Z Featuring Beyonce K '03 Bonni	12
Trick Daddy Featuring LaT Tug Holi	11
Toni Braxton Featuring Lo Hit The F	11
3LW Neva Get Enuf	10
Baby Featuring P. Diddy Do That...	10
Dru Hill I Should Be...	8
Talib Kweli Featurin Bila Waitin' F	8
Tank Let Me Live	7
Fabulous This Is My Party	7
WERQ Baltimore	9
Happy Roots Featuring Art Po' Folks	9
Vivian Green Emotional Rollercoaste	7
Petey Pablo Blow Your Whistle	6
WXYV Baltimore	19
Jahelme Featuring The Rayn Fabulous	19
WEMX Baton Rouge, La.	11
Clipse When The Last Time	11

WJNH Baton Rouge, La.	34
Ja Rule Featuring Bobby B Thug Lovi	34
Jay-Z Featuring Beyonce K '03 Bonni	27
Mario Braid My Hair	20
WBHJ Birmingham, Ala.	20
Trina Featuring Ludacris B R Right	20
Pastor Troy You Can't Pimp Me	16
Ms. Jade Featuring Timbal Ching, Ch	6
WBOT Boston	17
Disturbing The Peace Feat Growing P	17
Busta Rhymes Featuring Sp Make It C	14
TLC Girl Talk	10
Toni Braxton Featuring Lo Hit The F	10
Snoop Dogg From The Chuuch To Da P	8
Pastor Troy You Can't Pimp Me	6
Ms. Jade Featuring Timbal Ching, Ch	6
WJMN Boston	29
Jay-Z Featuring Beyonce K '03 Bonni	29
Memphis Bleek Featuring J 1, 2 Ya'll	7
Busta Rhymes Featuring Sp Make It C	6
WBLK Buffalo, N.Y.	20
702 Star	20
Jay-Z Featuring Beyonce K '03 Bonni	18
Eve Satisfaction	9
Jahelme Featuring The Rayn Fabulous	7
WSSP Charleston, S.C.	15
Doggy Style Allstars Not Like It Wa	15
Erick Sermon Featuring Re React	10
Nelly Featuring St. Lunat Air Force	9
Disturbing The Peace Feat Growing P	7
WWBZ Charleston, S.C.	39
Jay-Z Featuring Beyonce K '03 Bonni	39
R. Kelly Ignition	36
Common Featuring Mary J. Come Clos	33
504 Boyz Tight Whips	18
Dru Hill I Should Be...	10
Talib Kweli Featurin Bila Waitin' F	10
Tweet Smoking Cigarettes	9
B2K Why I Love You	7
WWWZ Charleston, S.C.	20
Jahelme Featuring The Rayn Fabulous	20
Smilez & Southstar Tell Me (What's	13
Ooble Featuring Lil Jon & Nothins F	12
Nas No Ideas Original	9
Jay-Z Featuring Beyonce K '03 Bonni	8
Jim Crow Hot Wheels	8
Baby Featuring P. Diddy Do That...	8
Snoop Dogg From The Chuuch To Da P	7
Camp Lo How U Walkin	7
Ruffi Endz Will You Be Mine	7
Fat Joe Featuring Ginuwine Crush Ton	6
WCHH Charlotte, N.C.	23
YoungBloodZ Cadillac Pimpin'	23
WPEG Charlotte, N.C.	28
R. Kelly Ignition	28
Nas Made You Look	15
Talib Kweli Featurin Bila Waitin' F	12
YoungBloodZ Cadillac Pimpin'	6
Ieyras Single For The Rest Of My Lif	6
WJTT Chattanooga	15
Kizzzy Rock Twurkulator Part II	15
Erick Sermon Featuring Re React	10
Tank Let Me Live	9
Camp Lo How U Walkin	6
Toni Braxton Featuring Lo Hit The F	6
WC Featuring Nate Dogg The Streets	6
Mariah Carey Through The Rain	6
WGGI Chicago	15
Jay-Z Featuring Beyonce K '03 Bonni	15
Common Featuring Mary J. Come Clos	12
Vivian Green Emotional Rollercoaste	10
Big Tymers Featuring Tate Oh Yeah!	6
WPWX Chicago	24
R. Kelly Ignition	24
WIZF Cincinnati	17
Jay-Z Featuring Beyonce K '03 Bonni	17
Field Mob Sick Of Being Lonely	10
Tyrese How You Gonna Act Like That	8
Tank Let Me Live	8
Snoop Dogg From The Chuuch To Da P	8
Baby Featuring P. Diddy Do That...	6
WCKX Columbus, Ohio	13
Dru Hill I Should Be...	13
Fabulous This Is My Party	9

KNDA Corpus Christi	8
Ja Rule Featuring Bobby B Thug Lovi	8
Jahelme Featuring The Rayn Fabulous	7
Erick Sermon Featuring Re React	7
BLACKstreet Featuring Mys Wizzy Wow	7
Fat Joe Featuring Ginuwine Crush Ton	7
KBFB Dallas	30
The Diplomats Featuring M Bout It B	30
Jay-Z Featuring Beyonce K '03 Bonni	28
Nelly Featuring St. Lunat Air Force	25
Snoop Dogg From The Chuuch To Da P	14
Nasam Brigade What You Doin Wif Dat	8
KKDA Dallas	30
R. Kelly Ignition	30
YoungBloodZ Cadillac Pimpin'	18
Jay-Z Featuring Beyonce K '03 Bonni	11
Choppa Choppa Style	7
Snoop Dogg From The Chuuch To Da P	6
WDHT Dayton, Ohio	20
TLC Girl Talk	20
Eminem Lose Yourself	11
WROU Dayton, Ohio	11
Erick Sermon Featuring Re React	11
Brian McKnight Let Me Love You	6
KQKS Denver	17
Jay-Z Featuring Beyonce K '03 Bonni	17
WDTJ Detroit	22
Jay-Z Featuring Beyonce K '03 Bonni	22
Royce Da 5'9" Mr. Baller	13
India.Arie Little Things	6
Donell Jones Do U Wanna	6
WJLB Detroit	20
Eminem Lose Yourself	20
Fat Joe Featuring Ginuwine Crush Ton	12
Pastor Troy Featuring Ms. Are We Cu	12
Ieyras Single For The Rest Of My Lif	6
WZFX Fayetteville	8
Erick Sermon Featuring Re React	8
Ruffi Endz Will You Be Mine	6
WDZZ Flint, Mich.	18
Dru Hill I Should Be...	18
Heather Headley He Is	13
TLC Girl Talk	12
WJMH Greensboro, N.C.	46
Jay-Z Featuring Beyonce K '03 Bonni	46
Mario Braid My Hair	41
Fat Joe Featuring Ginuwine Crush Ton	16
B2K Why I Love You	7
WJMZ Greenville, S.C.	10
No Airplay Adds This Week	10
WZMX Hartford, Conn.	31
Jahelme Featuring The Rayn Fabulous	31
Pastor Troy Featuring Ms. Are We Cu	7
Busta Rhymes Featuring Sp Make It C	6
KBXX Houston	10
No Airplay Adds This Week	10
KPTY Houston	16
Sean Paul Gimme The Light	16
WEUP Huntsville, Ala.	36
YoungBloodZ Cadillac Pimpin'	36
Lil' Flip The Way We Ball	33
Dru Hill I Should Be...	12
B2K Why I Love You	11
Erick Sermon Featuring Re React	8
WHNH Indianapolis	8
Toni Braxton Featuring Lo Hit The F	8
WJMI Jackson, Miss.	11
Fat Joe Featuring Ginuwine Crush Ton	11
504 Boyz Tight Whips	9
TLC Girl Talk	7
Eve Satisfaction	7
Fabulous This Is My Party	7
Dirty That's Dirty	7
WRJH Jackson, Miss.	14
Erick Sermon Featuring Re React	14
B2K Why I Love You	11
504 Boyz Tight Whips	11
Talib Kweli Featurin Bila Waitin' F	9
Erick Sermon Featuring Re React	9
BLACKstreet Featuring Mys Wizzy Wow	8
Camp Lo How U Walkin	8
Heather Headley He Is	8
TLC Girl Talk	6
WJBT Jacksonville, Fla.	24
Smilez & Southstar Tell Me (What's	24
TLC Girl Talk	24
Tank Let Me Live	7
Deuce Komradz If It Ain't	6
Baby Featuring P. Diddy Do That...	6
Camp Lo How U Walkin	6
KPRS Kansas City	20
Jennifer Lopez Featuring Jenny Fro	20
Nelly Featuring St. Lunat Air Force	10
Jahelme Featuring The Rayn Fabulous	10
3rd Storez Featuring Joe Get With	8
Fat Joe Featuring Ginuwine Crush Ton	6
WBTF Lexington, Ky.	32
Ja Rule Featuring Bobby B Thug Lovi	32
Jay-Z Featuring Beyonce K '03 Bonni	25
Erick Sermon Featuring Re React	25
Snoop Dogg From The Chuuch To Da P	9
Heather Headley I Wish I Wasn't	8
Dru Hill I Should Be...	6
Xzibit Multiply	6
KIPR Little Rock, Ark.	17
TLC Girl Talk	17
Khia Featuring DSD The K-Wang	11
Dru Hill I Should Be...	7
Eminem Lose Yourself	7
Blackmale Ride Wit Me	7
Snoop Dogg From The Chuuch To Da P	6
WC Featuring Nate Dogg The Streets	6
KKBT Los Angeles	12
Jay-Z Featuring Beyonce K '03 Bonni	12
KPWR Los Angeles	21
Jay-Z Featuring Beyonce K '03 Bonni	21
LL Cool J Lux U Better	17
Ja Rule Featuring Bobby B Thug Lovi	12
Benzino Rock The Party	11
50 Cent Wanksta	10
Ras Kass Goldyn Chyld	8
Freeway Featuring Jay-Z & What We D	8
Fabulous This Is My Party	6
WGZB Louisville, Ky.	22
Dru Hill I Should Be...	22
Fabulous This Is My Party	6
WKPO Madison, Wisc.	13
TLC Girl Talk	13
Smilez & Southstar Tell Me (What's	10
Benzino Rock The Party	8
KXHT Memphis	50
Jay-Z Featuring Beyonce K '03 Bonni	50
R. Kelly Ignition	23
Baby Featuring P. Diddy Do That...	19
Ja Rule Featuring Bobby B Thug Lovi	14
WHRK Memphis	31
R. Kelly Ignition	31
Dru Hill I Should Be...	17
TLC Girl Talk	17
504 Boyz Tight Whips	16
Smilez & Southstar Tell Me (What's	6
WEDR Miami	12
50 Cent Wanksta	12
Ja Rule Featuring Bobby B Thug Lovi	10
LL Cool J Featuring P. Diddy After Sch	8
Wayne Wonder No Letting Go	7
Elephant Man Elephant Message	7
WKWK Milwaukee	8
Jay-Z Featuring Beyonce K '03 Bonni	8
Ruffi Endz Will You Be Mine	8
Legit Ballaz Tattoo	7
WBLX Mobile, Ala.	10
TLC Girl Talk	10
Dru Hill I Should Be...	10
Field Mob Sick Of Being Lonely	8
Legit Ballaz Tattoo	8
504 Boyz Tight Whips	8
Lil' Jon & The East Side B I Don't G	8
Fabulous This Is My Party	6
Rich Boy Cold As Ice	6
Fat Joe Featuring Ginuwine Crush Ton	6
WJWZ Montgomery, Ala.	12
Jay-Z Featuring Beyonce K '03 Bonni	12
Ja Rule Featuring Bobby B Thug Lovi	11
Busta Rhymes Featuring Sp Make It C	10
Killer Mike AKShon (Yeah)	8
Talib Kweli Featurin Bila Waitin' F	8
504 Boyz Tight Whips	8
Jennifer Lopez Featuring Jenny Fro	8
Kizzzy Rock Twurkulator Part II	6
Eminem Lose Yourself	6
WZHT Montgomery, Ala.	25
Jennifer Lopez Featuring Jenny Fro	25
Ja Rule Featuring Bobby B Thug Lovi	25
Dirty That's Dirty	25
Pastor Troy Featuring Ms. Are We Cu	7
Erick Sermon Featuring Re React	7
Fat Joe Featuring Ginuwine Crush Ton	7
Tweet Smoking Cigarettes	6
Keith Sweat Featuring Lol One On On	6
WNPL Nashville	22
Eminem Lose Yourself	22
Fat Joe Featuring Ginuwine Crush Ton	21
Nelly Pimp Juice	16
Erick Sermon Featuring Re React	15
WUBT Nashville	16
Jay-Z Featuring Beyonce K '03 Bonni	16
Erykah Badu Featuring Com Love Of M	16
Musiq halcraxy	8
YoungBloodZ Cadillac Pimpin'	7

WIKS New Bern, N.C.	20
Jahelme Featuring The Rayn Fabulous	20
TLC Girl Talk	9
Ja Rule Featuring Bobby B Thug Lovi	9
WQSL New Bern, N.C.	28
TLC Girl Talk	28
Jay-Z Featuring Beyonce K '03 Bonni	11
WQUE New Orleans	20
Missy "Widemeanor" Elio Work It	20
TLC Girl Talk	18
Pastor Troy Featuring Ms. Are We Cu	13
WBLS New York	13
LL Cool J Featuring Ameri Paradise	13
Clipse When The Last Time	8
Erick Sermon Featuring Re React	7
WQHT New York	13
Busta Rhymes Featuring Sp Make It C	13
Jennifer Lopez Featuring Jenny Fro	11
WWPR New York	28
Wayne Wonder No Letting Go	28
Nas Made You Look	24
Ja Rule Featuring Bobby B Thug Lovi	21
Busta Rhymes Featuring Sp Make It C	16
WBHH Norfolk, Va.	37
Jurassic 5 What's Golden?	37
Talib Kweli Featurin Bila Waitin' F	37
Busta Rhymes Featuring Sp Make It C	32
Nas Made You Look	27
Gang Starr Skills	25
Das EFX East Coast Hustlers	9
B2K Why I Love You	8
WOWI Norfolk, Va.	15
Jay-Z Featuring Beyonce K '03 Bonni	15
Smilez & Southstar Tell Me (What's	8
Freeway Featuring Jay-Z & What We D	8
Fat Joe Featuring Ginuwine Crush Ton	7
Busta Rhymes Featuring Sp Make It C	7
KVSP Oklahoma City	14
3LW Neva Get Enuf	14
TLC Girl Talk	14
Tekitha You	12
Dru Hill I Should Be...	11
Vivian Green Emotional Rollercoaste	10
Mos Def Featuring Faith E Brown Sug	8
Jurassic 5 What's Golden?	7
Erick Sermon Featuring Re React	6
Fat Joe Featuring Ginuwine Crush Ton	6
WJHM Orlando, Fla.	10
Yang Yang Twins Featuring By Myself	10
KCAQ Oxnard, Calif.	13
DJ Sammy & Yanou Feat. De Heaven	13
Snoop Dogg From The Chuuch To Da P	12
Eve Satisfaction	6
WUSL Philadelphia	14
Snoop Dogg From The Chuuch To Da P	14
Ja Rule Featuring Bobby B Thug Lovi	13