

AIRPLAY Monitor

THIS WEEK IN MONITOR:

Indie Life After Clear
Channel Edict p. 3

Country WKDF Finally
No. 1 In Nashville p. 35

103
WKDF

MAY 9, 2003

• We Listen To Radio •

VOLUME 11 • NO. 19 \$6.95

Life After Layoff: How Things Look

■ by Skip Dillard

If you were staffing a new radio station today, you could fill every airshift with world-class talent because of the number of unemployed radio veterans. Same goes for the label side, where a slew of recently downsized executives would let you have national quality in every local slot. *Airplay Monitor* talked to some of those executives about life, priorities, and the future of the record industry.

MICHAEL PLEN

Virgin's former senior VP says there's a feeling that if you don't go right back to work at another label, everyone assumes you're just on the beach. His story proves that one's contacts can make the difference.

"While at Virgin, I had a chance to work closely with one of our acts, Blue Man Group. Surprisingly, they were dropped from the label after selling over 700,000 units. The group's management called me shortly after I [was] let go and asked me what I was doing. They told me I was one of the few who really got them and believed in their potential, and they asked me to work with them. [Now] I assist with everything from promotion to marketing strategy. I have been getting calls from labels looking for music people, but I'm looking for



PLEN

Continued on page 5

Radio Peers In Apple's Store Window

■ by Bram Teitelman

A catalog of more than 200,000 songs from all five major labels. No membership fee. Downloads for only 99 cents. Ease of use. It's no surprise that Apple's new iTunes Music Store service has been met with immediate enthusiasm by both the music industry and consumers. Early reports estimate that 1 million tracks were downloaded within the first week of the service. That's even more impressive when noting that the service is initially available only on Apple computers, which comprise less than 10% of the home computer market. So how do labels and radio view the new service and its ramifications for the industry?

Despite the initial success, "the big question is whether the kids who've become accustomed to downloading whatever they want for free are going to be willing to pay," active rock WNOR (FM99) Norfolk, Va., PD Harvey Kojan says. "The price certainly seems right, and you've got complete freedom to do what you want with the downloads. But it's still not free, and nothing



Continued on page 41

**CLAY
walker**
"a few questions"

the first single
from his forthcoming RCA Records album

Over 80 stations playing the record!

**Thanks Country Radio
for a great start!**

 
© 2003 BMG Music www.rca.com/nashville.com

2 FAST 2 FURIOUS

THE SOUNDTRACK

featuring

THE **HOT NEW**
ANTHEM FROM

LUDACRIS

"ACT A FOOL"

WBHH	54x
WWHV	42x
KXHT	34x
WCHH	31x
WHHH	31x
WHTA	30x
WWBZ	24x
WFXE	20x
WPEG	20x
WHXT	20x
WPRW	18x
WPWX	17x
WBTT	17x
WWWZ	17x
WZHT	15x
WEDR	14x
WBTF	13x

Impacting
May 12th
& **May 13th**

SOUNDTRACK

IN STORES
MAY 27TH



www.defjamsouth.com

Indies Split On Impact Of CC Policy

Nearly one month after Clear Channel's announcement that it would sever its ties with independent promoters, reaction in that community varies widely, with some indies saying that their access hasn't changed and others upset that the actions of others have cost them access as well. That's particularly true for the "retainer" indies who did not have exclusivity deals with stations.

"As a new independent radio promoter who operates a very legitimate and hard-working business, the issue that Clear Channel has taken with independent radio promoters is unfair and will damage the future of the radio promotion business as well as the future of the music industry," says Cheryl Dellamedaglia of Nashville-based Totally Connected.

"I have worked very hard making great relationships and friendships with the radio folks and have adds and possible adds on a project I am currently working on," Dellamedaglia says. "Now I am told I am no longer able to call my business associates and follow up. That is wrong and very unfair. I have worked in radio for over 13 years and I know both sides, and to make everyone pay for the wrongdoings of a few radio stations' involvement in the 'payola' nonsense is ridiculous."

"All around it's tough," says Issy Sanchez of ADM Marketing in New York. "We're preparing by being smarter. As labels look at ways of spending money more wisely, people like us with strong relationships are going to endure... We've spent years developing relationships... Opportunities still exist."

Other promoters agree. One R&B independent, who asked to remain anonymous, says, "I thought [CC's new policy] was going to be a problem, but it ended [up] not being [one]. I can still communicate with the folks I need to. I think Clear Channel hasn't really figured out exactly what it's going to do yet. It's still feeling its way through and working on some plan way up on the corporate ladder. We won't know the real impact on the independent promotion industry until they do finally figure it out. As long as I can still talk to the programmers, I'm happy."

"I look at our jobs as part of the setup on a record, so even if there are some stations we can't reach, there are other things we will be doing in any given market," the anonymous promoter adds, citing his strategy of "working the competition to force the Clear Channel station on the record or working the clubs and mix shows. We're only doing the same thing that the regional would do, except we may have a better relationship at one station."

"Just because Clear Channel needed to clean their act up on paper does not automatically necessitate a change in practice," one rock indie promoter says. "The bottom line is that everything is basically status quo."

Jesus Garber, president of the adult R&B firm the Jesus Garber Co., says, "A good promotion person is like a chameleon and can adapt to any new challenges the industry sets forth. And so we shall deal with this as well."

Garber continues, "In the case of the records we tend to work, which are usually on small independent labels [that] have no promotion staff, when it's a hit and working its way up the chart, then these programmers have no choice but to speak with us, because we are representing that label. And if they want information or promotional support on a record that is working for them on-air, I am at their service."

"Most indies are former record company executives, with 20 or 30 years of experience," Garber adds. "We also have the relationships with programmers, especially at the adult R&B format, that go back that long. So, people are still going to take our calls. And if you have an artist who has a long history at the format and you're the person working them, again, they will have to talk to you."

A more in-depth look at the impact of the Clear Channel decision will appear in the May 17 issue of *Billboard*.

'KTU'S BLUE NOT RENEWED

Rhythmic top 40 WKTU New York's Frankie Blue, who has programmed the station since 1996, is no longer PD of the station. The station's



BLUE

announcement says that "Blue's contract as PD... will not be renewed when it expires at the end of the year," but APD Jeff Z has already been given interim PD duties. CC/New York senior VP of programming Tom Poleman "will oversee Jeff Z and continue to be heavily involved" with

WKTU. WKTU has, in the past year, evolved into a more adult-leaning approach that CC now describes as "dance AC."

Meanwhile, the station is tying in with marketing company Fly-Life for a May 8 event to benefit the Gay & Lesbian Alliance Against Defamation. Fly-Life's Carmen Cacciatore says it's the first instance of a commercial New York station promoting a gay-themed event on the air.

SOME NIX CHICKS, SOME 'NIX' JOCKS

Despite Cumulus' decision to let its country stations decide individually whether to lift the former groupwide ban on the Dixie Chicks, Nielsen BDS figures show that 43% of *Airplay Monitor's* country reporters were still not playing any songs by the group as of May 2.

Meanwhile, KKCS Colorado Springs, Colo., got national press attention after "suspending" the station's Dave Moore and Jeff Singer for putting the group's music back on the air too early. As with many others of this sort, the suspensions are rumored to be a stunt but were reported as news in the Associated Press.

Meanwhile, the station that will soon be KKCS' sister, dance-leaning rhythmic top 40 KXDC (X102.1) Denver, becomes classic country "102.1 Thunder Country."

STATION FIGHTS SARS PANIC

As Toronto grapples with the SARS crisis, rhythmic top 40 CISS (Kiss 92) decided to "fight SARS paranoia" when morning hosts Mad Dog & Billie took 200 listeners to lunch at a branch of the city's Mandarin Buffet chain. The restaurants have been losing \$600,000 per week since the SARS epidemic began, even though no employees have been affected.

A RESPONSE TO RESPONSE WOES

Following last week's news that winter Arbitron response rates were down to 33.9% from 36.2% one year earlier, the ratings service has unveiled a comprehensive plan aimed at raising response rates. The plan includes a new calling center in the Southwest and more bilingual interviewers. The words "Arbitron Ratings" will also appear on caller ID machines on all calls originating from the company's call centers. The company will begin making contact with some households by e-mail to recruit them to participate in the survey and is testing an Internet-delivered electronic diary.

Rod Rainey joins Archway/New Bern, N.C., as market manager. He was GM of WSAR New Bedford, Mass.

PUT SOME COUNTRY IN YOUR DRIVE

John Trapani, APD/MD of country KILT



BY ANTHONY COLOMBO, WADE JESSEN, PATRICK MCGOWAN & MINAL PATEL

Chart Battle Of A Different Kind

For the first time in R&B/hip-hop chart history, a song debuts without a label affiliation as "Hail Mary" by Eminem, 50 Cent & Busta Rhymes enters at No. 39. It is the second-highest gainer at that format, increasing 626 spins. "Hail Mary" lifts the sample of the 2Pac/Makaveli song by that name, which peaked at No. 12 in the Feb. 21, 1997, issue. It's the latest in the rhyme war between Shady/Aftermath artists and the Murder Inc. roster and an answer to Ja Rule's "Loose Change," which has appeared on street mix tapes but has not been worked to radio. "Hail Mary" also comes from mix tapes and has not been worked by any label, but it was serviced by Violator, which manages 50 Cent and Rhymes. Since there is no label affiliation, none is listed on the chart.

Jive Records claims back-to-back No. 1s at mainstream top 40 for the first time since July 2000, as Justin Timberlake tops that chart for the first time with "Rock Your Body," replacing R. Kelly's "Ignition" after one week. Timberlake last occupied the No. 1 slot as part of 'N Sync, when "It's Gonna Be Me" replaced Britney Spears' "Oops!... I Did It Again" on that week in question nearly three years ago.

Darryl Worley's "Have You Forgotten?" (DreamWorks) logs a seventh week atop the country chart and becomes the third track to stay at No. 1 for that long in the Nielsen BDS era. Worley ties Kenny Chesney's "The Good Stuff" (2002) at seven weeks, one behind record-holder "Amazed" by Lonestar (1999).

Willie Nelson's "Beer for My Horses" (DreamWorks) duet with Toby Keith puts the Country Music Hall of Fame member in country's top 10 for the first time in 13 years, and it also marks his first top 10 duet in almost 20 years. Nelson last saw the top 10 in January 1990 with the No. 8 "There You Are." His last top 10 duet came in December 1983 with Waylon Jennings on a cover of the Eagles' "Take It to the Limit," which also peaked at No. 8.

PANEL NEWS: WKSZ Green Bay, Wis., is added to the adult top 40 panel. WCKT Fort Myers, Fla., returns to the country panel after being removed because of technical issues.

Houston, makes a format segue to the PD job at classic rock WDTW (the Drive) Detroit. Trapani replaces Jay Nachlis.

Former top 40 WFKS (Kiss 107) Cincinnati PD B.J. Harris resurfaces at adult top 40 KALC (Alice 106) Denver for similar duties.

R&B WFUN (Q95) St. Louis ups APD Craig Blac to the PD post, replacing Mo Shay. P/T Isis Jones takes over Mo Shay's midday slot.

Former '80s gold outlet WPTP (the Point) Philadelphia has evolved into adult top 40.

R&B WCDX Richmond, Va., PD/afternoon host Terry Foxx exits.

After more than one year as acting PD, Ronnie Ramirez gets the official PD duties at rhythmic top 40 KKWD Oklahoma City. He replaces Steve English, now at country sister KQBL.

Top 40 WDJX Louisville, Ky., APD/MD Jim Allen is named PD at top 40 KZMG (Magic 93.1) Boise, Idaho, replacing Beau Richards.

Oldies KWFM Tucson, Ariz., flips to R&B oldies, with PD Alan Cook remaining on board.

Oldies WWIZ Youngstown, Ohio, flips to active rock as "Rock 104" under PD Jim Loboy from top 40 sister WHOT.

RECORDS: ON THE MOVE

Island Def Jam Music Group ups VPs of pop promotion Mike Easterlin and Erik Olesen to VPs of promotion over all formats. They will both report to senior VP Ken Lane.

Reprise ups Los Angeles local Leah Kiyonaga to modern rock/rock national.

PEOPLE: SMALDONE SPEAKS OUT

Longtime WLTW New York middayer Valerie Smaldone has become a spokesperson for the Ovarian Cancer National Alliance. Smaldone is a former ovarian cancer patient. The PSAs will run on Clear Channel/Premiere Radio Networks affiliates and on 17 stations in the New York area.

Former R&B WBLX Mobile, Ala., morning man Jae Delai returns to morning radio after five years, doing wake-ups at R&B WZHT (Hot 105) Montgomery, Ala.

Adult top 40 WTMX Chicago gives morning hosts Eric & Kathy a one-hour highlight show from 9 p.m. to 10 p.m.

Former R&B WPHI Philadelphia APD/middayer Cherry Martinez is handling morning duties for Sirius' Hip-Hop Nation channel.

Adult top 40 KFMB-FM (Star 100.7) San Diego chooses Dallas McLaughlin as the winner in its "Supermouth" talent search.

R&B WGCI-FM Chicago p.m. driver Sam Syll returns to his former market via voice-tracking. He's doing P/T on top 40 WAKS Cleveland.

Country WSM-FM Nashville afternoon host Jayme Austin joins Nashville-based Emerald Entertainment as affiliations manager.

Top 40 KHFI (Kiss 96.7) Austin, Texas, promotes night talent Bobby Bones to MD.

R&B KMJJ Shreveport, La., late-nighter/market veteran G.Q. Riley adds MD duties, while promotions director Matt Thompson exits.

THIS IS WHAT IT SOUNDS LIKE WHEN CATS FLY

After a months-long period when the post-Opie & Anthony fallout seemed to be resulting in less outrageous morning-show stunts, modern rock WXTM (Xtreme Radio) Cleveland's new morning jock Rover caused a stir by announcing that the show was tying helium balloons to a cat, which then floated away. The local animal protection league received more than 100 calls, until producer Lunchbox said the balloons were shot down and the cat was OK. The three-hour bit was, of course, just theater of the mind. KALC Denver has since staged a similar stunt.

DreamWorks & Donald



DreamWorks Nashville senior executive for promotion and artist development Scott Borchetta, left, visits with Secretary of Defense Donald Rumsfeld at the Pentagon where DreamWorks artist Darryl Worley recently performed.



Life After Layoff: How Things Look

Continued from page 1

something special in terms of rejoining a label."

Plen says being away from the day-to-day aspects of the industry has given him a chance to see what needs to be done for the future. "Everyone's afraid for their jobs, so much that many aren't even into the music. No one wants to champion the next phase of the industry, and we're at ground zero today in terms of development. The old way is all we've known, while the future is out there waiting to be designed. We cannot be afraid to take a few steps back and re-invent it. Things in the past that sold the records may not work anymore."

Plen says those who are still working must look ahead for opportunities. "Be aware of everything going on around you. Learn what influences everyone you work with as well as the public. Be prepared to work as if you're back at square one. That next major artist may not necessarily sign with a major label. Realize that independent labels are going to be heard like never before, along with artists who cut a path of their own."



Former RCA VP of adult format promotion Cheryl Khaner, left, makes the most of her time away from work, as evidenced by a recent trip to New Zealand.

RON GESLIN

RCA's former senior VP of promotion says that being out of work for a while after having few breaks can be a blessing in disguise. "If a company would allow you to take a short sabbatical every few years, it would be the smartest thing they could ever do. After 12 years straight, the last four months off have melted away. You have no problem finding things to catch up on, especially family stuff. My stress level is down, and I've lost 10 pounds. Now I feel like going back into the game totally regenerated."

In terms of being prepared for the recent merger with J Records that led to his departure, Geslin said one frame of mind kept everyone together. "I told my staff they could not take it personally. We're no different than great athletes. If it happens, it happens. We broke great artists including Foo Fighters and Christina Aguilera. But look at the facts. If you lost just 8% to 10% of your business a year overall, that's about \$1 billion out of a \$12 billion industry. That means there are going to be many people who are no longer going to have a chance to work doing what they've always been doing. And it has affected everyone, no matter how good you are."

In terms of the future, Geslin looks to failures of the present. "I was at lunch with an industry associate just the other day. We were looking at a recent America Online poll. The question was 'Do you think online music trading is wrong?' Eighty-three percent of the several thousand respondents said it was 'the current prices of CDs that ought to be illegal.' That was shocking, given that while much talk is of the A&R side of our industry, we're very much an R&D business, and we have probably the worst image of any industry out there... We have to find ways to educate the public on the price of doing business. We've spent so much time recently convincing the public that downloading is stealing. How about a two-prong effort to educate the public about the current cost of breaking music in America?"

Geslin's advice for others? "Never feel if something happens to you that you're not good enough. Keep networking and stay visible. You have to be at those important events; go to the concerts, radio events. And there is hope. I've seen entrepreneurs like Big 3 Records start up

recently. The owner came from the mortgage industry. There are people today who've made money in much larger industries and want to get involved in entertainment. I think there will be money out there for more start-ups. You can't give up and go hide away. You've got to find new ways to stay in the game."

ERIC MURPHY

The former RCA VP of promotion and marketing has used his time away (and the multiple hats he has worn at his former label) to form his own marketing/promotion company, Pop 2 Life.

Murphy says the new company is based on what he has been doing throughout his career at labels. "While at RCA, I was always putting together large-scale promotions to help market our records. What I found was that while our industry was spending so much money hyping and promoting our own labels, we left the consumers out of the equation. That's why label promotion

as we know it is going away. Money is now going to be spent on doing things that impact promotion and marketing to the consumer. People who survive in today's industry must have talent in both promotion and marketing."

Murphy feels that his company will keep him on the pulse of the industry without having to directly work at a label. "Today it's about creating consumer experiences. There are so many messages today, and if a consumer doesn't feel like they're a part of something, they just won't connect to it."

KELLY SCHWEINSBERG

The former VP/GM of Logic Records was displaced by the recent shutdown of the respected indie. "It's a changing industry, and I've been so blessed to run with it for 18 years," Schweinsberg says. "I don't know what the future holds. I'm going to finish out with Logic, take a little vacation, then regroup in June and see what's out there job-wise. At Logic, there were only six of us, so I learned to do everything from promoting to selling records. We all wore multiple hats, and it allowed me to see the shift over time."

"I remember the first project on our artist John Blair," she continues. "We had a small but targeted fan base and with creative niche marketing sold 35,000 units. His most recent project moved only 3,000. That's where we are today in our industry. My advice to those working is, 'Do what you need to do to get paid for as long as you can.' I have no regrets, because my goal over 18 years ago was to find a way to get paid and still have a chance to hit the clubs at night, and I did that through promoting and running dance departments for labels both small and large."

MARVIN MACK

The former VP of urban and crossover promotion at Hollywood has found that time off can expand horizons. "I'm doing something I'd put off for some time: going back to school to complete my MBA in marketing. I knew change was coming, but just like many of us out there, you never feel it's going to hit you personally. I was laid off last October, but I'm thankful that I always worked over the years to keep a cushion under myself—you just never know."

"What I do know is that the industry is changing in a way that will allow independent labels to get their shot," he adds. "Majors will have to fig-

In Philly, A Sunny Winter

When Clear Channel's VP of AC programming Jim Ryan and market manager Rich Lewis flipped adult top 40 WLCE Philadelphia to super-soft WSNI (Sunny 104.5) last August, the plan was to flank oldies WOGL and AC powerhouse WBEB (B101) rather than compete with them 12-plus. But in the just-released winter Arbitron, WSNI was up 3.9-4.2, even without the Christmas music that helped propel it in the fall. WBEB, which was in the 7-share range one year ago, was off 6.5-5.7, and WOGL was down 4.2-4.1.

Until now, a handful of similar sign-ons had found smaller, if respectable, niches. WPLM Boston does a 3.4 in the Providence, R.I., book and a 2.1 in Boston, while KMEQ Dallas gets a 1.6 share. WSNI PD Brian Check, who is also regional VP of programming for CC, says the station has already outperformed its initial goal of the mid-3s. He attributes Sunny's success to sounding "different than a typical soft AC. If we had come on with the same tired radio phrases about 'variety,' 'mix,' 'soft rock,' and '10 in a row,' we wouldn't have created much attention."

"The station is really threefold. It's one part Motown oldies, targeted against WOGL; one part soft AC, targeted against B101; and the third part is really a '70s-based playlist that you don't hear on any Philadelphia radio station," Check continues. "There probably aren't many stations in America still playing Barry Manilow and the Carpenters and the Bee Gees." Since getting the station's initial music test back, "we've been able to better focus the station, but by most programmers' standards, it's still a very broad and very deep product. We love to surprise our listeners" with carefully spiked titles, such as "I Think I Love You" by the Partridge Family or "Knock Three Times" by Tony Orlando & Dawn.

At the same time, there are some songs you might hear on any mainstream AC: "Dancing in the Dark," "Don't Stop," or "Caribbean Queen," which Check says keep the station from being pigeonholed as an oldies or '70s outlet. There are also some Jammin' Oldies titles that can hardly be called soft, such as "Forget Me Nots."

Presentationally, WSNI's drops are "Nick Scenes," voiced by Nick Michaels and Ann DeWig, typified by, "You meet at the bottom of the art museum steps and take a long walk along the river... Ah! Spring!... Philadelphia's new Sunny 104.5." There isn't any on-air contesting, although there are promo driving listeners to the Web site for the current "mother/daughter look-alike contest."

The lineup is also unconventional: a morning show with Jennifer Ryan whose primary content is "the most traffic and weather on FM" from 5:30 a.m. to 8:30 a.m., a "stress-free workday" between 8:30 a.m. and 4:30 p.m. with two breaks per hour from former WBEB staffer Donna Rowland, and a 4:30 p.m.-9 p.m. shift by MD Tom Cook, who Check calls "an amazing find. [He's] a young, aggressive radio guy who sounds a lot older on the air than he really is."

Check's previous PD posting was the equally unconventional WAEB-FM (B104) Allentown, Pa., known for a much broader era mix than most mainstream top 40s. "B104 proved that sometimes we define our formats in radio terms and categorize music by radio genre, and when you talk to a listener, they either like a song or they don't," he says. Now, "if you're going to go for 35- to 54-year-old females, I can be open-minded enough to appreciate all the different genres of music that might work for that demo."

SEAN ROSS



7:30 P.M.

Eddie Holman, "Hey There Lonely Girl"
Neil Diamond, "Sweet Caroline"
Rick Astley, "Together Forever"
Mary Wells, "My Guy"
Elton John, "Don't Let the Sun Go Down on Me"
George Benson, "On Broadway"
Sonny & Cher, "I Got You Babe"
Carl Carlton, "Everlasting Love"
Billy Ocean, "Caribbean Queen"
Engelbert Humperdinck, "After the Lovin'"
The Isley Brothers, "This Old Heart of Mine"
Carly Simon, "Haven't Got Time for the Pain"
Daryl Hall & John Oates, "Maneater"
Chairmen of the Board, "Give Me Just a Little More Time"
Seals & Crofts, "Get Closer"

RADIO CONCERT MONITOR

DATE	STATION	EVENT	PROMOTIONS DIRECTOR
May 9	WNEW New York	100% NYC Concert	Ethel Miller
		APPEARING: Norah Jones, the Roots	
May 9	WWKX Providence, R.I.	Hot Night 10	Joey Foxx
		APPEARING: 50 Cent, Busta Rhymes, Fabolous, Lil' Kim, Lil' Mo, Kevin Little, Lyric	
May 10	KHKS Dallas	Second Chance Prom	Greg Sherrell
		APPEARING: MC Hammer, Jennifer Love Hewitt	
May 15	KYLD San Francisco	Bomb 2003	Ray Wong
		APPEARING: 50 Cent, Fabolous, Frankie J, Da Brat, Smiley & Southstar, Blu Cantrell	
May 17	KIIS Los Angeles	Wango Tango	Alfredo Ferero
		APPEARING: Nelly, Christina Aguilera, Santana, Sting, Tyrese, Kiss, Michelle Branch, Craig David, Musiq, Amanda Perez, Bowling for Soup, O-Town, Lasgo, JC Chasez, Lisa Marie Presley, Sugar Ray, Danlel Bedingfield, Jennifer Love Hewitt	

Let us monitor your event. Call Skip Dillard at 646-654-4688 or e-mail sdillard@airplaymonitor.com

ure [out] a different system in order to do cost-effective business." Even with all the challenges, Mack says, "I feel my experience in both R&B and crossover will be valuable, along with having completed my MBA."

Mack's advice to those working? "Save your

money and invest conservatively. Develop relationships with other executives. If you've been in promotion for 10 years, then why not try marketing or sales? In today's climate, chances are you could very well find yourself at a small independent label wearing more hats anyway."

Mainstream Top 40 chart table with columns: Rank, This Week, Last Week, Weeks on Chart, Title/Imprint/Promotion Label, Artist, TW, LW, Millions, Audience Rank.

Songs ranked by number of detections. Songs showing an increase in detections over the previous week, regardless of chart movement. A song will also receive a bullet if its percentage loss in detections does not exceed the percentage of monitored station downtime for the format.

most airplay adds

MAINSTREAM TOP 40

NEW STATIONS

50 CENT FEATURING NATE DOGG 21 Questions (Shady/Aftermath/Interscope) 26

Total Stations With Six Or More Detections: 76
TOTAL DETECTIONS BY DAYPART: 6-10 6%, 10-3 12%, 3-7 14%, 7-12 40%, 12-6A 28%

SUGAR RAY Mr. Bartender (It's So Easy) (Atlantic) 25

Total Stations With Six Or More Detections: 40
TOTAL DETECTIONS BY DAYPART: 6-10 9%, 10-3 17%, 3-7 16%, 7-12 21%, 12-6A 38%

T.A.T.U. Not Gonna Get Us (Interscope) 23

Total Stations With Six Or More Detections: 60
TOTAL DETECTIONS BY DAYPART: 6-10 4%, 10-3 9%, 3-7 11%, 7-12 21%, 12-6A 55%

KELLY CLARKSON Miss Independent (RCA/RMG) 21

Total Stations With Six Or More Detections: 103
TOTAL DETECTIONS BY DAYPART: 6-10 9%, 10-3 19%, 3-7 17%, 7-12 28%, 12-6A 26%

FABOLOUS FEAT. MIKE SHOREY & LIL' MO Can't Let You Go (Desert Storm/Elektra/EEG) 14

Total Stations With Six Or More Detections: 49
TOTAL DETECTIONS BY DAYPART: 6-10 5%, 10-3 12%, 3-7 16%, 7-12 32%, 12-6A 36%

GREATEST GAINERS MAINSTREAM TOP 40

INCREASE IN DETECTIONS

KELLY CLARKSON • Miss Independent (RCA/RMG) +1088

SEAN PAUL • Get Busy (VP/Atlantic) +806

50 CENT FEATURING NATE DOGG • 21 Questions (Shady/Aftermath/Interscope) +744

JENNIFER LOPEZ • I'm Glad (Epic) +621

JUSTIN TIMBERLAKE • Rock Your Body (Jive) +540

Monitor. RECURRENTS MAINSTREAM TOP 40

Recurrents chart table with columns: Rank, Title, Artist, Detections TW, LW.

Recurrents chart table with columns: Rank, Title, Artist, Detections TW, LW.

Recurrents are titles that have appeared on the Mainstream Top 40 Airplay chart for 26 weeks and have dropped below the top 20.

MERCYME "I CAN ONLY IMAGINE"

FROM THE PLATINUM ALBUM... "ALMOST THERE"... NOW SHOWING HUGE SALES INCREASES!!!!

OVER 420 TOP 40 SPINS... UP OVER 100 SPINS WITH ONLY 27 STATIONS PLAYING!!!

"IN TOP 40'S WORLD OF VULGARITY & EXTREMES, MERCYME IS THE BALANCE OUR FEMALE LISTENERS HAVE BEEN WAITING FOR. 'I CAN ONLY IMAGINE' IS A GREAT POP SONG WITH A GREAT MESSAGE. I'M STILL BEING BOMBARDED WITH POSITIVE CALLS & E-MAILS. GIVE IT ONE SPIN & YOUR PHONES & E-MAIL WILL BE SLAMMED TOO."

- TOMMY CHUCK/WKXJ



IMMEDIATE PHONES & E-MAILS GENERATE IMMEDIATE SPINS:

- WRVW 74x - POWER ROATION... #1 CALL-OUT POTENTIAL
WXXL 29x MOVING TO SUB POWER
WKXJ 40x WZNY 39x WFBC 32x
WNOK 25x WYKS 25x WRHT 21x
KSMB 18x WQEN 16x KJYO 15x

WINNING BATTLES EVERYWHERE... A RECORD YOUR AUDIENCE WILL THANK YOU FOR PLAYING.



TOP 10 BOUND

Total Detections/Gain GOOD CHARLOTTE 3966/53

The Anthem (Daylight/Epic)

Total Stations: 120 Chart Move: 11-11

H (10), M (69), L (41)

Table with columns: Station, ID, LW, ZW, ID, Airplay Adds: 1

MATCHBOX TWENTY 3809/427

Unwell (Atlantic)

Total Stations: 112 Chart Move: 14-12

H (29), M (40), L (43)

Table with columns: Station, ID, LW, ZW, ID, Airplay Adds: 5

GINUWINE FEATURING BABY 3733/244

Hell Yeah (Epic)

Total Stations: 120 Chart Move: 13-13

H (15), M (51), L (54)

Table with columns: Station, ID, LW, ZW, ID, Airplay Adds: 2

Table with columns: Station, ID, LW, ZW, ID

STACIE ORRICO 3624/272

Stuck (Forefront/Virgin)

Total Stations: 123 Chart Move: 15-14

H (3), M (73), L (47)

Table with columns: Station, ID, LW, ZW, ID, Airplay Adds: 3

AVRIL LAVIGNE 3122/111

Losing Grip (Arista)

Total Stations: 119 Chart Move: 18-17

H (1), M (69), L (49)

Table with columns: Station, ID, LW, ZW, ID, Airplay Adds: 1

GINUWINE FEATURING BABY 3733/244

Hell Yeah (Epic)

Total Stations: 120 Chart Move: 13-13

H (15), M (51), L (54)

Table with columns: Station, ID, LW, ZW, ID, Airplay Adds: 2

AIRPLAY LEADER

(FIRST STATION TO 150 PLAYS)

WKXU · Chattanooga, TN

PD: Tommy Chuck

MD: Riggs

Date: 04/27/03

Also: WHYI · Miami, FL; WIHT · Wash-

ington, DC

Total Stations: 120 Chart Move: 21-15

H (2), M (69), L (49)

Table with columns: Station, ID, LW, ZW, ID, Airplay Adds: 7

KELLY CLARKSON 3233/1088

Miss Independent (RCA/RMG)

Total Stations: 120 Chart Move: 26-16

H (3), M (62), L (55)

Table with columns: Station, ID, LW, ZW, ID, Airplay Adds: 21

AIRPLAY LEADER

(FIRST STATION TO 150 PLAYS)

WKSS · Hartford, CT

PD: Rick Vaughn

MD: JoJo Brooks

Date: 05/04/03

Also: WKFS · Cincinnati, OH; WAKS ·

Cleveland, OH

Total Stations: 120 Chart Move: 26-16

H (3), M (62), L (55)

Table with columns: Station, ID, LW, ZW, ID, Airplay Adds: 21

WAYNE WONDER 2729/395

No Letting Go (VP/Atlantic)

Total Stations: 116 Chart Move: 22-19

H (8), M (40), L (68)

Table with columns: Station, ID, LW, ZW, ID, Airplay Adds: 9

AIRPLAY LEADER

(FIRST STATION TO 150 PLAYS)

WFLY · Albany, NY

PD: Donnie Michaels

MD: John Fox

Date: 02/23/03

Also: WOHM · New York, NY; WKSS ·

Hartford, CT

Total Stations: 116 Chart Move: 22-19

H (8), M (40), L (68)

Table with columns: Station, ID, LW, ZW, ID, Airplay Adds: 9

JEWEL 2530/513

Intuition (Atlantic)

Total Stations: 116 Chart Move: 28-21

H (0), M (49), L (67)

Table with columns: Station, ID, LW, ZW, ID, Airplay Adds: 8

COLDPLAY 2402/134

Clocks (Capitol)

Total Stations: 117 Chart Move: 24-23

H (3), M (39), L (75)

Table with columns: Station, ID, LW, ZW, ID, Airplay Adds: 2

TYRESE 2242/111

How You Gonna Act Like That (J/RMG)

Total Stations: 114 Chart Move: 27-26

H (4), M (36), L (74)

Table with columns: Station, ID, LW, ZW, ID, Airplay Adds: 3

FRANKIE J 2197/325

Don't Wanna Fly (Columbia)

Total Stations: 112 Chart Move: 34-27

H (3), M (41), L (68)

Table with columns: Station, ID, LW, ZW, ID, Airplay Adds: 12

Songs posting gains in detections or with a percentage loss in detections equal to or better than the monitored downtime percentage in the format: Songs listed in order of detections

*Initial Impact: songs appearing on this page for the first time in summary form. Airplay Adds are songs with 6 or more detections at new stations this week. The Airplay Leaderboard ranks last-minute stations that were the most successful in identifying their hit songs as measured by the amount of AIRPOWER titles for which they were Airplay Leaders. Refer to each format's Power Playlists page to see this week's Airplay Leaders.



Nielsen Broadcast Data Systems

Songs posting gains in detections or with a percentage loss in detections equal to or better than the monitored downtime percentage in the format. Songs listed in-order of detections.

MAINSTREAM TOP 40

NAS 2087/136 I Can (III Will/Columbia)

Total Stations: 111 Chart Move: 30-29 H (4), M (32), L (75) Airplay Adds: 6

Table with columns: Station, ID, LW, WZ, ID, LW, WZ, ID. Lists stations and their chart positions for the song 'I Can'.

SNOOP DOGG 1842/369 Beautiful (Doggystyle/Priority/Capitol)

Total Stations: 118 Chart Move: 39-31 H (5), M (23), L (90) Airplay Adds: 11

Table with columns: Station, ID, LW, WZ, ID, LW, WZ, ID. Lists stations and their chart positions for the song 'Beautiful'.

50 CENT FEATURING NATE DOGG 1835/744 21 Questions (Shady/Aftermath/Interscope)

Total Stations: 103 Chart Move: Debut 32 H (6), M (19), L (78) Airplay Adds: 26

Table with columns: Station, ID, LW, WZ, ID, LW, WZ, ID. Lists stations and their chart positions for the song '21 Questions'.

BUSTA RHYMES & MARIAH CAREY 1754/380 I Know What You Want (J/Monarc/CRMG/IDJMG)

Total Stations: 98 Chart Move: 40-34 H (6), M (22), L (70) Airplay Adds: 9

Table with columns: Station, ID, LW, WZ, ID, LW, WZ, ID. Lists stations and their chart positions for the song 'I Know What You Want'.

THE ALL-AMERICAN REJECTS 1586/238 Swing, Swing (Doghouse/DreamWorks)

Total Stations: 87 Chart Move: Debut 35 H (0), M (21), L (66) Airplay Adds: 4

Table with columns: Station, ID, LW, WZ, ID, LW, WZ, ID. Lists stations and their chart positions for the song 'Swing, Swing'.

AUDIOSLAVE 1343/176 Like A Stone (Interscope/Epic)

Total Stations: 91 Chart Move: Debut 38 H (0), M (10), L (81) Airplay Adds: 2

Table with columns: Station, ID, LW, WZ, ID, LW, WZ, ID. Lists stations and their chart positions for the song 'Like A Stone'.

JASON MRAZ 1318/138 The Remedy (I Won't Worry) (Elektra/EEG)

Total Stations: 70 Chart Move: Debut 39 H (0), M (24), L (46) Airplay Adds: 9

Table with columns: Station, ID, LW, WZ, ID, LW, WZ, ID. Lists stations and their chart positions for the song 'The Remedy'.

LINKIN PARK 903/85 Somewhere I Belong (Warner Bros.)

Total Stations: 64 Chart Move: Debut 39 H (0), M (24), L (46) Airplay Adds: 9

Table with columns: Station, ID, LW, WZ, ID, LW, WZ, ID. Lists stations and their chart positions for the song 'Somewhere I Belong'.

JAY-Z 880/110 Excuse Me Miss (Roc-A-Fella/Def Jam/IDJMG)

Total Stations: 66 Chart Move: Debut 39 H (0), M (24), L (46) Airplay Adds: 9

Table with columns: Station, ID, LW, WZ, ID, LW, WZ, ID. Lists stations and their chart positions for the song 'Excuse Me Miss'.

T.A.T.U. 831/311 Not Gonna Get Us (Interscope)

Total Stations: 66 Chart Move: Debut 39 H (0), M (24), L (46) Airplay Adds: 9

Table with columns: Station, ID, LW, WZ, ID, LW, WZ, ID. Lists stations and their chart positions for the song 'Not Gonna Get Us'.

LIL' KIM FEATURING MR. CREEKS 683/83 The Jump Off (Queen Bee/Atlantic)

Total Stations: 64 Chart Move: Debut 39 H (0), M (24), L (46) Airplay Adds: 9

Table with columns: Station, ID, LW, WZ, ID, LW, WZ, ID. Lists stations and their chart positions for the song 'The Jump Off'.

SUGAR RAY 660/381 Mr. Bartender (It's So Easy) (Atlantic)

Total Stations: 59 Chart Move: Debut 39 H (0), M (24), L (46) Airplay Adds: 9

Table with columns: Station, ID, LW, WZ, ID, LW, WZ, ID. Lists stations and their chart positions for the song 'Mr. Bartender'.

BECKY BAELING 295/72 Getaway (Universal/UMRG)

Total Stations: 31 Chart Move: Debut 39 H (0), M (24), L (46) Airplay Adds: 9

Table with columns: Station, ID, LW, WZ, ID, LW, WZ, ID. Lists stations and their chart positions for the song 'Getaway'.

SUM 41 284/51 The Hell Song (Island/IDJMG)

Total Stations: 36 Chart Move: Debut 39 H (0), M (24), L (46) Airplay Adds: 9

Table with columns: Station, ID, LW, WZ, ID, LW, WZ, ID. Lists stations and their chart positions for the song 'The Hell Song'.

PLAY 278/53 I Must Not Chase The Boys (Columbia)

Total Stations: 24 Chart Move: Debut 39 H (0), M (24), L (46) Airplay Adds: 9

Table with columns: Station, ID, LW, WZ, ID, LW, WZ, ID. Lists stations and their chart positions for the song 'I Must Not Chase The Boys'.

CHART BOUND Total Detections/Gain

SIMPLE PLAN 1181/302 Addicted (Lava)

Total Stations: 86 Chart Move: Debut 39 H (0), M (24), L (46) Airplay Adds: 9

Table with columns: Station, ID, LW, WZ, ID, LW, WZ, ID. Lists stations and their chart positions for the song 'Addicted'.

FABOLOUS FEAT. MIKE SHOREY & LIL' MO 1170/385 Can't Let You Go (Desert Storm/Elektra/EEG)

Total Stations: 74 Chart Move: Debut 39 H (0), M (24), L (46) Airplay Adds: 9

Table with columns: Station, ID, LW, WZ, ID, LW, WZ, ID. Lists stations and their chart positions for the song 'Can't Let You Go'.

TRAIN 452/176 Calling All Angels (Columbia)

Total Stations: 24 Chart Move: Debut 39 H (0), M (24), L (46) Airplay Adds: 9

Table with columns: Station, ID, LW, WZ, ID, LW, WZ, ID. Lists stations and their chart positions for the song 'Calling All Angels'.

THE TROYS 451/96 What Do You Do (Elektra/EEG)

Total Stations: 37 Chart Move: Debut 39 H (0), M (24), L (46) Airplay Adds: 9

Table with columns: Station, ID, LW, WZ, ID, LW, WZ, ID. Lists stations and their chart positions for the song 'What Do You Do'.

JENNIFER LOVE HEWITT 108/17 Can I Go Now (Jive)

Total Stations: 7 Chart Move: Debut 39 H (0), M (24), L (46) Airplay Adds: 9

Table with columns: Station, ID, LW, WZ, ID, LW, WZ, ID. Lists stations and their chart positions for the song 'Can I Go Now'.

THE ATARIS 103/77 In This Diary (Columbia)

Total Stations: 21 Chart Move: Debut 39 H (0), M (24), L (46) Airplay Adds: 9

Table with columns: Station, ID, LW, WZ, ID, LW, WZ, ID. Lists stations and their chart positions for the song 'In This Diary'.

H=Heavy (55+ Detections), M=Medium (25-54), L=Light (Under 25). Airpower awarded to songs appearing in the top 20 on both the Airplay and Audience charts for the first time with increases in both detections and audience. Initial impact: songs appearing on this page for the first time in summary form. Airplay Adds are songs with 6 or more detections at new stations this week. The Airplay Leaderboard ranks taste-maker stations that have been the most successful in identifying future hit songs as measured by the amount of AIRPOWER titles for which they were Airplay Leaders. Refer to each format's Power Playlists page to see this week's Airplay Leaders.



Nielsen Broadcast Data Systems

Songs ranked by number of detections. Playlists are listed in order of TSA weekly cumes, beginning with the highest-cuming station. Cumes are updated twice yearly following the release of the spring and fall Arbitron surveys. The number of stations shown each week varies depending upon space. *Indicates station reports to both Adult Top 40 and Modern AC. Airplay Adds (AA) denotes songs with 6 or more detections at station for first time this week.

AIRPLAY LEADERBOARD

THE STATIONS THAT BREAK THE HITS



KYSR Los Angeles (PD/MD: Ivey/Patyk) Airplay Leader Designations: 6

- #2 KAMX, Austin, TX (PD/MD: Stevens/Culver) 3
#3 WTMX, Chicago, IL (PD: Mary Ellen Kachinske) 2
#4 WZPL, Indianapolis, IN (PD/MD: Sands/Decker) 2
#5 WMBZ, Memphis, TN (OM/MD: Dean/Kramer) 2

Refer to Impact! page for this week's Airplay Leaders and Airplay Leaderboard rules.

WPLJ New York* VP/Pgm. Tom Cuddy PD: Scott Shannon ABC/Disney 212-613-8900

Table with 2 columns: Rank, Song/Artist. Top songs include Counting Crows, Jason Mraz, and Avril Lavigne.

KYSR Los Angeles* PD: John Ivey APD/MD: Chris Patyk Clear Channel 818-955-7000

Table with 2 columns: Rank, Song/Artist. Top songs include No Doubt, Jason Mraz, and Kid Rock.

WTMX Chicago* SM: Barry James PD: Mary Ellen Kachinske Bonneville 312-946-1019

Table with 2 columns: Rank, Song/Artist. Top songs include Maroon 5, Jason Mraz, and Alicia Keys.

WBMX Boston* PD: Greg Strassel APD/MD: Mike Mullaney ABC/Disney 617-779-2000

Table with 2 columns: Rank, Song/Artist. Top songs include Uncle Kracker, Counting Crows, and Jason Mraz.

WRQX Washington, DC OM/MD: Kenny King MD: Carol Parker ABC/Disney 202-686-3100

Table with 2 columns: Rank, Song/Artist. Top songs include Uncle Kracker, Jason Mraz, and Counting Crows.

KIOI San Francisco OM/MD: Michael Martin APD/MD: James Baker Clear Channel 415-538-1013

Table with 2 columns: Rank, Song/Artist. Top songs include Counting Crows, Uncle Kracker, and Jason Mraz.

WWZZ Washington, DC* PD: Mike Edwards APD/MD: Sean Sellers Bonneville 703-522-1041

Table with 2 columns: Rank, Song/Artist. Top songs include matchbox twenty, Evanesence, and Jason Mraz.

KDMX Dallas* PD: Pat McMahon APD/MD: Lisa Thomas Clear Channel 972-991-1029

Table with 2 columns: Rank, Song/Artist. Top songs include Santana, Jason Mraz, and Uncle Kracker.

KLCC San Francisco* PD: John Peake MD: Derek Madden Infinity 415-765-4000

Table with 2 columns: Rank, Song/Artist. Top songs include Jason Mraz, Uncle Kracker, and Maroon 5.

KSTP Minneapolis PD: Leighton Peck MD: Jill Roen Hubbard 651-642-4141

Table with 2 columns: Rank, Song/Artist. Top songs include Uncle Kracker, matchbox twenty, and Jason Mraz.

KHMX Houston PD: Marc Sherman APD: Ryan O'Bryan Clear Channel 713-830-8000

Table with 2 columns: Rank, Song/Artist. Top songs include 3 Doors Down, Jason Mraz, and Uncle Kracker.

WMWX Philadelphia OM: Gerry DeFrancisco APD/MD: Joe Proke Greater Media 610-771-0957

Table with 2 columns: Rank, Song/Artist. Top songs include Uncle Kracker, Celine Dion, and Avril Lavigne.

WDVD Detroit* PD: Greg Ausham MD: Ann Delisi ABC/Disney 313-871-3030

Table with 2 columns: Rank, Song/Artist. Top songs include matchbox twenty, Jason Mraz, and Uncle Kracker.

WOAL Cleveland PD: Allan Fee MD: Rebecca Wilde Infinity 216-696-0123

Table with 2 columns: Rank, Song/Artist. Top songs include Uncle Kracker, Jason Mraz, and Avril Lavigne.

KPLZ Seattle OM: Rob Dunlop PD: Kent Phillips Fisher 206-223-5700

Table with 2 columns: Rank, Song/Artist. Top songs include Avril Lavigne, Jason Mraz, and Uncle Kracker.

WMVX Cleveland PD: Dave Popovich MD: Jay Hudson Clear Channel 216-520-2600

Table with 2 columns: Rank, Song/Artist. Top songs include matchbox twenty, Uncle Kracker, and Jason Mraz.

KMXP Phoenix PD: Ron Price MD: Trent Edwards Clear Channel 602-279-5577

Table with 2 columns: Rank, Song/Artist. Top songs include Jimmy Eat World, Uncle Kracker, and Jason Mraz.

WMWX Baltimore OM: Bill Pasha PD/MD: Steve Monz Infinity 410-825-5400

Table with 2 columns: Rank, Song/Artist. Top songs include John Mayer, Uncle Kracker, and Counting Crows.

WOMX Orlando PD: Jeff Cushman MD: Laura Francis Infinity 407-919-1000

Table with 2 columns: Rank, Song/Artist. Top songs include matchbox twenty, Jason Mraz, and Uncle Kracker.

KYKY St. Louis VP/Pgm: Smokey Rivers MD: Greg Hewitt Infinity 314-531-0000

Table with 2 columns: Rank, Song/Artist. Top songs include Norah Jones, Jason Mraz, and Counting Crows.

KALC Denver* PD: Bill Harris APD/MD: Kozman Entercom 303-572-7000

Table with 2 columns: Rank, Song/Artist. Top songs include Evanesence, Jason Mraz, and Uncle Kracker.

WVRV St. Louis* PD: Marty Link MD: Jill Devine Bonneville 314-231-3699

Table with 2 columns: Rank, Song/Artist. Top songs include Avril Lavigne, Jason Mraz, and Uncle Kracker.

WTIC Hartford* OM: Steve Salhany APD/MD: Jeanine Jersey Infinity 860-677-6700

Table with 2 columns: Rank, Song/Artist. Top songs include Counting Crows, Jason Mraz, and Uncle Kracker.

ADULT TOP 40

FOR WEEK ENDING MAY 4, 2003

Airplay Adds (AA) denotes songs with 6 or more detections at station for first time this week.



Nielsen Broadcast Data Systems

POWER LAYERS

WLKN Charlotte* PD: Neal Sharpe APD: Chris Allen MD: Derek James Jefferson Pilot 704-374-3500

KFMB San Diego* GM: Tracy Johnson APD/MD: Jen Sewell Midwest TV 858-292-7600

WKRC Cincinnati PD: Tommy Frank APD: Grover Collins MD: Brian Douglas Infinity 513-699-5102

WBNS Columbus, OH* PD: Jeff Ballentine MD: Robin Cole Radio Ohio 614-460-3850

KMYI San Diego PD: Duncan Payton MD: Mel McKay Clear Channel 858-522-5781

WKTI Milwaukee OM: Rick Belcher PD/MD: Bob Walker Journal 414-967-5339

WSSR Tampa* DM: Jeff Kapugi PD: Rick Schmidt APD: Kurt Schreiner Clear Channel 813-839-9393

KRSK Portland* PD: Dan Persigehl APD: Lisa Adams MD: Sheryl Stewart Entercom 503-223-1441

KIMN Denver PD: Ron Harrell APD/MD: Michael Gifford Infinity 303-832-5665

WSNE Providence PD: Bill Hess MD: Gary Trust Clear Channel 401-438-9300

WMYX Milwaukee OM: Brian Kelly PD: Tom Gjerdrum APD: Mark Richards Entercom 414-529-1250

WTSS Buffalo OM/PD: Sue O'Neil MD: Rob Lucas Entercom 716-843-0600

AIRPLAY Monitor MODERN AC

Compiled from a national sample of data supplied by Broadcast Data Systems to Top 40 Airplay Monitor. 45 modern AC stations are electronically monitored 24 hours a day, 7 days a week. © 2003 VNU Business Media Inc. All rights reserved.

Nielsen Broadcast Data Systems

FOR WEEK ENDING MAY 4, 2003

Main chart table with columns: THIS WEEK, LAST WEEK, WKS. ON CHART, TITLE/IMPRINT/PROMOTION LABEL, ARTIST, DETECTIONS, TW, LW, MILLIONS, RANK. Includes top 40 and Greatest Gainers/Most Airplay Adds.

Songs ranked by number of detections. Songs showing an increase in detections over the previous week, regardless of chart movement. A song will also receive a bullet if its percentage loss in detections does not exceed the percentage of monitored station downtime for the format.

GREATEST GAINERS MODERN AC

Table listing Greatest Gainers with columns: SUGAR RAY • Mr. Bartender (It's So Easy) (+125), LIVE • Heaven (Radioactive/MCA) (+105), TRAIN • Calling All Angels (Columbia) (+102), JASON MRAZ • The Remedy (I Won't Worry) (Elektra/EEG) (+78), FRANKY PEREZ • Something Crazy (Lava) (+68).

IMPACT!



Songs posting gains in detections or with a percentage loss in detections equal to or better than the monitored downtime percentage in the format. Songs listed in order of detections.

TOP 10 BOUND

DANIEL BEDINGFIELD 875/207 If You're Not The One (Island/IDJMG)

Table with columns for station, week, and detections/gain for Daniel Bedingfield's song.

Table with columns for station, week, and detections/gain for various songs.

Table with columns for station, week, and detections/gain for various songs.

Table with columns for station, week, and detections/gain for various songs.

AMERICAN IDOL FINALISTS 53/6 God Bless The U.S.A. (RCA/RMG)

JOHN MAYER 48/20 Why Georgia (Aware/Columbia)

KELLY CLARKSON 34/19 Miss Independent (RCA/RMG)

TRAIN 30/11 Calling All Angels (Columbia)

DARYL HALL JOHN OATES 28/28 Man On A Mission (U-Watch)

VONDA SHEPARD 28/0 Rainy Days (Jacket)

CHANTAL KREVIK 27/13 In This Life (Columbia)

MADONNA 25/0 American Life (Maverick/Warner Bros.)

AIRPOWER

NO RECORDS QUALIFIED FOR AIRPOWER THIS WEEK

AIRPOWER BOUND

ROD STEWART 233/13 They Can't Take That Away From Me (J/RMG)

MERCYME 136/32 I Can Only Imagine (INO/Curb)

MATCHBOX TWENTY 118/18 Unwell (Atlantic)

LAURA PAUSINI 92/22 If That's Love (Atlantic)

SUZY K 88/16 Teaching (Vellum)

FRANKIE J 58/31 Don't Wanna Try (Columbia)

COUNTING CROWS FEAT. VANESSA CARLTON 225/28 Big Yellow Taxi (Geffen/Interscope)

STYX 59/16 Yes I Can (Sanctuary)

SHANIA TWAIN 484/271 Forever And For Always (Mercury/IDJMG)

JOHN MAYER 640/13 Your Body Is A Wonderland (Aware/Columbia)

JOHN MAYER 640/13 Your Body Is A Wonderland (Aware/Columbia)

JOHN MAYER 640/13 Your Body Is A Wonderland (Aware/Columbia)

JOHN MAYER 640/13 Your Body Is A Wonderland (Aware/Columbia)

JOHN MAYER 640/13 Your Body Is A Wonderland (Aware/Columbia)

JOHN MAYER 640/13 Your Body Is A Wonderland (Aware/Columbia)

NO DOUBT 152/3 Underneath It All (Interscope)

LAURA PAUSINI 92/22 If That's Love (Atlantic)

FRANKIE J 58/31 Don't Wanna Try (Columbia)

FRANKIE J 58/31 Don't Wanna Try (Columbia)

FRANKIE J 58/31 Don't Wanna Try (Columbia)

FRANKIE J 58/31 Don't Wanna Try (Columbia)

FRANKIE J 58/31 Don't Wanna Try (Columbia)

FRANKIE J 58/31 Don't Wanna Try (Columbia)

FRANKIE J 58/31 Don't Wanna Try (Columbia)

FRANKIE J 58/31 Don't Wanna Try (Columbia)

FRANKIE J 58/31 Don't Wanna Try (Columbia)

FRANKIE J 58/31 Don't Wanna Try (Columbia)

FRANKIE J 58/31 Don't Wanna Try (Columbia)

FRANKIE J 58/31 Don't Wanna Try (Columbia)

FRANKIE J 58/31 Don't Wanna Try (Columbia)

FAITH HILL 711/61 One (Warner Bros.)

Table with columns for station, week, and detections/gain for Faith Hill's song.

KID ROCK FEAT. SHERYL CROW 542/53 Picture (Lava/Atlantic)

Table with columns for station, week, and detections/gain for Kid Rock's song.

ROD STEWART 233/13 They Can't Take That Away From Me (J/RMG)

Table with columns for station, week, and detections/gain for Rod Stewart's song.

MERCYME 136/32 I Can Only Imagine (INO/Curb)

Table with columns for station, week, and detections/gain for MercyMe's song.

AMERICAN IDOL FINALISTS 53/6 God Bless The U.S.A. (RCA/RMG)

JOHN MAYER 48/20 Why Georgia (Aware/Columbia)

KELLY CLARKSON 34/19 Miss Independent (RCA/RMG)

TRAIN 30/11 Calling All Angels (Columbia)

DARYL HALL JOHN OATES 28/28 Man On A Mission (U-Watch)

VONDA SHEPARD 28/0 Rainy Days (Jacket)

CHANTAL KREVIK 27/13 In This Life (Columbia)

MADONNA 25/0 American Life (Maverick/Warner Bros.)

RHYTHMIC TOP 40

TOP 10 BOUND

DA BRAT FEATURING CHERISH 1576/184 In Love Wit Chu (So So Def/Arista)

Table with columns: Station, ID, and Airplay Adds. Lists stations like BET, MTV, WKTU, etc., and their respective airplay counts.

STAGGA LEE 1356/41 Roll Wit M.V.P. (M.V.P./ARTISDirect)

Table with columns: Station, ID, and Airplay Adds. Lists stations like BET, MTV, WKTU, etc., and their respective airplay counts.

JENNIFER LOPEZ 1099/173 I'm Glad (Epic)

Table with columns: Station, ID, and Airplay Adds. Lists stations like BET, MTV, WKTU, etc., and their respective airplay counts.

AIRPOWER BOUND

R. KELLY FEATURING BIG TIGGER 883/285 Snake (Jive)

Table with columns: Station, ID, and Airplay Adds. Lists stations like BET, MTV, WKTU, etc., and their respective airplay counts.

MONICA 731/92 So Gone (J/RMG)

Table with columns: Station, ID, and Airplay Adds. Lists stations like BET, MTV, WKTU, etc., and their respective airplay counts.

PANJABI MC FEATURING JAY-Z 1111/188 Beware Of The Boys (Mundian To Bach Ke) (Sequence)

AIRPLAY LEADER (FIRST STATION TO 100 PLAYS) WPOW • Miami, FL PD: Kid Curry MD: Eddie Mix Date: 10/13/02

Total Stations: 43 Chart Move: 20-17 H (2), M (18), L (23) Airplay Adds: 4

Table with columns: Station, ID, and Airplay Adds. Lists stations like BET, MTV, WKTU, etc., and their respective airplay counts.

LIL' KIM FEATURING 50 CENT 991/333 Magic Stick (Queen Bee/Atlantic)

AIRPLAY LEADER (FIRST STATION TO 100 PLAYS) KIKI • Honolulu, HI PD: Jamie Hiatt MD: Tati Pelegreen Date: 04/27/03

Total Stations: 36 Chart Move: 26-19 H (4), M (16), L (16) Airplay Adds: 8

Table with columns: Station, ID, and Airplay Adds. Lists stations like BET, MTV, WKTU, etc., and their respective airplay counts.

AIRPOWER BOUND

R. KELLY FEATURING BIG TIGGER 883/285 Snake (Jive)

Table with columns: Station, ID, and Airplay Adds. Lists stations like BET, MTV, WKTU, etc., and their respective airplay counts.

MONICA 731/92 So Gone (J/RMG)

Table with columns: Station, ID, and Airplay Adds. Lists stations like BET, MTV, WKTU, etc., and their respective airplay counts.

LIL' MO FEATURING FABOLOUS 718/25 4 Ever (The Gold Mind/Elektra/EEG)

Total Stations: 38 Chart Move: 24-25 H (0), M (14), L (24) Airplay Adds: 2

Table with columns: Station, ID, and Airplay Adds. Lists stations like BET, MTV, WKTU, etc., and their respective airplay counts.

JOE BUDDEN 673/162 Pump It Up (Def Jam/IDJMG)

Total Stations: 39 Chart Move: 37-26 H (0), M (12), L (27) Airplay Adds: 7

Table with columns: Station, ID, and Airplay Adds. Lists stations like BET, MTV, WKTU, etc., and their respective airplay counts.

TALIB KWELI 628/1 Get By (Rawkus/MCA)

Total Stations: 39 Chart Move: 28-28 H (0), M (7), L (32) Airplay Adds: 4

Table with columns: Station, ID, and Airplay Adds. Lists stations like BET, MTV, WKTU, etc., and their respective airplay counts.

ASHANTI 624/242 Rock Wit U (Awww Baby) (Murder Inc./Def Jam/IDJMG)

Total Stations: 33 Chart Move: Debut 29 H (2), M (10), L (21) Airplay Adds: 7

Table with columns: Station, ID, and Airplay Adds. Lists stations like BET, MTV, WKTU, etc., and their respective airplay counts.

FABOLOUS FEATURING ASHANTI 612/169 Into You (Desert Storm/Elektra/EEG)

Total Stations: 24 Chart Move: 40-30 H (0), M (13), L (11) Airplay Adds: 6

Table with columns: Station, ID, and Airplay Adds. Lists stations like BET, MTV, WKTU, etc., and their respective airplay counts.

KILEY DEAN 603/218 Make Me A Song (Beat Club/Interscope)

Total Stations: 37 Chart Move: Debut 31 H (0), M (7), L (30) Airplay Adds: 11

Table with columns: Station, ID, and Airplay Adds. Lists stations like BET, MTV, WKTU, etc., and their respective airplay counts.

HITMAN SAMMY SAM 508/103 Step Daddy (ColliPark/Universal/UMRG)

Total Stations: 22 Chart Move: Debut 36 H (1), M (8), L (13) Airplay Adds: 0

Table with columns: Station, ID, and Airplay Adds. Lists stations like BET, MTV, WKTU, etc., and their respective airplay counts.

SMILEZ & SOUTHSTAR 435/149 Now That You're Gone (ARTISDirect)

Total Stations: 33 Chart Move: 28-28 H (0), M (7), L (32) Airplay Adds: 4

Table with columns: Station, ID, and Airplay Adds. Lists stations like BET, MTV, WKTU, etc., and their respective airplay counts.

DANIEL BEDINGFIELD 362/43 If You're Not The One (Island/IDJMG)

Total Stations: 18 Chart Move: 27-16 H (3), M (3), L (12) Airplay Adds: 2

Table with columns: Station, ID, and Airplay Adds. Lists stations like BET, MTV, WKTU, etc., and their respective airplay counts.

BONE CRUSHER FEAT. KILLER MIKE & T.I. 346/121 Never Scared (Break 'Em Off)

Total Stations: 28 Chart Move: 31-19 H (0), M (4), L (24) Airplay Adds: 4

Table with columns: Station, ID, and Airplay Adds. Lists stations like BET, MTV, WKTU, etc., and their respective airplay counts.

THE ROC PROJECT FEAT. TINA ARENA 315/13 Never (Past Tense) (Tommy Boy Silver Label/Tommy Boy)

Total Stations: 14 Chart Move: 26-15 H (2), M (3), L (9) Airplay Adds: 2

Table with columns: Station, ID, and Airplay Adds. Lists stations like BET, MTV, WKTU, etc., and their respective airplay counts.

DAVID BANNER FEAT. LIL' FLIP 308/373 Like A Pimp (SRC/Universal/UMRG)

Total Stations: 26 Chart Move: 26-15 H (0), M (3), L (23) Airplay Adds: 2

Table with columns: Station, ID, and Airplay Adds. Lists stations like BET, MTV, WKTU, etc., and their respective airplay counts.

50 CENT 165/36 If I Can't (Shady/Aftermath/Interscope)

Total Stations: 15 Chart Move: 15-15 H (1), M (1), L (13) Airplay Adds: 0

IIO 162/13 At The End (Ministry Of Sound/Made)

Total Stations: 6 Chart Move: 15-15 H (1), M (1), L (13) Airplay Adds: 0

Table with columns: Station, ID, and Airplay Adds. Lists stations like BET, MTV, WKTU, etc., and their respective airplay counts.

SARAI 140/78 Ladies (Sweet/Epic)

Total Stations: 11 Chart Move: 11-11 H (1), M (1), L (9) Airplay Adds: 1

AALIYAH 130/113 Come Over (Blackground/Universal/UMRG)

Total Stations: 21 Chart Move: 21-21 H (0), M (1), L (20) Airplay Adds: 6

Table with columns: Station, ID, and Airplay Adds. Lists stations like BET, MTV, WKTU, etc., and their respective airplay counts.

DRU HILL 120/7 I Love You (Def Soul/IDJMG)

Total Stations: 12 Chart Move: 12-12 H (0), M (1), L (11) Airplay Adds: 1

LUMIDEE 119/37 Never Leave You (Uh Ooh, Uh Ooh) (Straight Face/Universal/UMRG)

Total Stations: 9 Chart Move: 9-9 H (0), M (2), L (7) Airplay Adds: 0

Table with columns: Station, ID, and Airplay Adds. Lists stations like BET, MTV, WKTU, etc., and their respective airplay counts.

CASSIUS WITH STEVE EDWARDS 110/16 The Sound Of Violence (Astralwerks)

Total Stations: 4 Chart Move: 4-4 H (1), M (1), L (2) Airplay Adds: 1

Table with columns: Station, ID, and Airplay Adds. Lists stations like BET, MTV, WKTU, etc., and their respective airplay counts.

LIL JON & THE EAST SIDE BOYZ 109/27 Get Low (BME/TVT)

Total Stations: 15 Chart Move: 15-15 H (1), M (1), L (14) Airplay Adds: 0

PRYMARY COLORZ 98/2 If I Could Change (Big3)

Total Stations: 10 Chart Move: 10-10 H (0), M (1), L (9) Airplay Adds: 0

6-ZERO 95/20 Stay (Show Stopper)

Total Stations: 2 Chart Move: 2-2 H (1), M (1), L (0) Airplay Adds: 0

BUBBA SPARXXX 94/16 Jimmy Mathis (Beat Club/Interscope)

Total Stations: 15 Chart Move: 15-15 H (0), M (2), L (13) Airplay Adds: 1

BEYONCE KNOWLES 94/46 In Da Club (Not Listed)

Total Stations: 13 Chart Move: 13-13 H (1), M (1), L (11) Airplay Adds: 0

FAT JOE & HUEY DUNBAR 94/24 Chasing Papi (Sony Discos/Jellybean)

Total Stations: 11 Chart Move: 11-11 H (0), M (0), L (11) Airplay Adds: 2

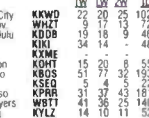
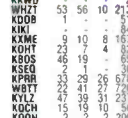
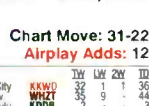
TAMIA 82/59 Officially Missing You (Elektra/EEG)

Total Stations: 14 Chart Move: 14-14 H (0), M (1), L (13) Airplay Adds: 4

Songs posting gains in detections or with a percentage loss in detections equal to or better than the monitored downtime percentage in the format. Songs listed in order of detections. *Indicates station experienced between 25 and 56 hours of monitored downtime during the chart week.



Nielsen Broadcast Data Systems



H=Heavy (55+ Detections), M=Medium (25-54), L=Light (Under 25). Airpower awarded to songs appearing in the top 20 on both the Airplay and Audience charts for the first time with increases in both detections and audience. *Initial impact: songs appearing on this page for the first time in summary form. Airplay Adds are songs with 6 or more detections at new stations this week. The Airplay Leaderboard ranks taste-maker stations that have been the most successful in identifying future hit songs as measured by the amount of AIRPOWER titles for which they were Airplay Leaders. Refer to each format's Power Playlists page to see this week's Airplay Leaders.



WMMJ And PD Kathy Brown Climb Atop The Ratings Hill In D.C.

While adult R&B outlets can easily be No. 1 25-54 in their markets, few top the 12-plus ratings. But WMMJ (Majic 102.3) Washington, D.C., has achieved that several times in the past two years, including the recent winter book, where it climbed 6.0-7.0.

In summer 2000, WMMJ welcomed two new additions that were instrumental in achieving the station's current success: ABC's syndicated *Tom Joyner Morning Show* and PD Kathy Brown. While Brown is ecstatic about being No. 1 overall, she's quick to add, "We're not touting that. Instead, we want to image ourselves as simply 'the R&B station.' That has probably helped us overall 12-plus too."

Brown feels her format has evolved so much during the past five years "that you now have several different forms of the adult R&B format. You have stations that are primarily old school, others that are more current R&B and younger-targeted, and even those that are neo-soul. We're a little bit of all that, and that's why we call ourselves, simply, 'R&B.'"

WMMJ's main competitor is adult R&B WHUR. Brown says, "While we go after the same demo, we are each targeting very different people within that demo... We're not trying to be all things for all people, yet we also don't exclusively serve just the more affluent demo. We appeal to the blue collar, middle income, and the white-collar professionals."

"D.C. is a very eclectic city," Brown continues. "You have government workers who actually make a really good salary. They can afford to see an Anita Baker show on a Saturday night, then hit a club on Wednesday night as well. In other markets, you may have listeners who can't, or won't, do that. They may be able to see only one show per pay period. Two tickets to a show and dinner, along with parking, could easily cost over \$200. We find our listeners have more disposable income. Just look at Maxwell—he sold out six shows in a row in D.C."

She adds, "Not many other cities, especially in the African-American communities, are that active with concerts or events. We thrive in those areas."

ALWAYS SPIFF ANYONE OVER 30

One of the most successful ways that WMMJ serves its core demo is with the station's "30 and Over Club" card, Brown says. "In the two years since we implemented the club, we've grown to 150,000 members." That's one-quarter of its cume. "We can tie it in to almost every event, concert, promotion, or advertiser on the station."

Brown says that when the station does something, "it's not just a show—it's an event. We just came off a weekend of three major promotions. We started off with the Old-School Block Party, which ran from midnight Thursday night to 5 a.m.

It was a pre-Tom Joyner Sky Show party. We figured since people start lining up on Thursday morning anyway, and there's usually a crowd by later that night, why not throw those loyal Joyner followers a party? We broadcast live, serve coffee and doughnuts, and have a ball. Then the Sky Show takes place from 6-10 a.m.—we had Chaka Khan perform at this one. After the show, Tom does a number of appearances all day that we tag along for."

If that wasn't enough, Brown says, "we then had to get ready for our Lifestyle Expo, which took place the day after the Sky Show. We do this annual event in conjunction with our Radio One sister stations in the market—R&B/hip-hop WKYS, black talk WOL, and gospel WYCB."

After going four days straight, "I gave my staff the day off on Monday—the behind-the-scenes staff. There's a group of folks we call the 'furious five'—Michelle Martin, Tim Smith, El Jay

DeShields, Carla Swinton, and Chris Harris—who help me put together and execute all our marketing and promotions."

AND THEN THERE'S TOM

According to Brown, this kind of dedication from the staff and the constant desire to serve their listeners are keys to WMMJ's success. It also doesn't hurt to have a top-rated morning man who has a long history of success in the market.

Brown says Joyner is a major factor, but one of the reasons he does so well is "because we work very hard at making him sound like he's here. From the on-air presentation of the show to the way we get his name out in the streets, it all contributes to the morning show's success." Joyner is No. 1 12-plus, 25-54, and 25-64.

Joyner "may be here a little more often than other markets, but that's because we work very closely with him and his core staff to make that convenient for him," Brown notes. "He's a major part of our focus overall."

With several years in programming behind her before she joined WMMJ, Brown says she has continued to grow and evolve her programming views in the past two years. "When I first arrived, I felt I had to prove myself as a PD in a major market for the first time. Coming from [WWIN] Baltimore and even having success there didn't mean so much, because so many people would say, 'Oh, you didn't have any competition' or 'It's not the same as D.C.' Well, now I feel pretty good about what we've accomplished. When I arrived at this station, it was No. 6 25-54. But since I arrived, we've consistently been No. 1."

"Even when you have things going on around you that you can't control, you have to stay squarely focused on the No. 1 task at hand—your ratings," she says. "As a PD, I have to deal with relationships with the labels, but I also have to deal with relationships within my own company. If you want success, you have to learn how to balance the two."

While many programmers in recent years have complained that radio is no longer fun for them, Brown disagrees. "I find the fun in radio in teaching the next generation coming

Patti Cooks In More Ways Than One

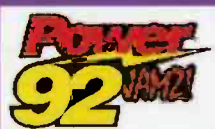


Recently signed to Def Jam Classics, Patti LaBelle visited the WHUR Washington, D.C., studios to discuss her new cookbook, *Patti LaBelle's Lite Cuisine: 101 Dishes With To-Die-For Taste, Made With To-Live-For Recipes*. Pictured, from left, are WHUR's Lorna Newton and PD Dave Dickinson, LaBelle, and the station's Doug Gilmore.



BROWN

3 P.M. FRIDAY: RICHMOND, VA



WCDX
RADIO ONE



WBTJ
CLEAR CHANNEL

ON-AIR PERSONALITY: TERRY FOX NAs, "I Can"
R. Kelly Featuring Big Tigger, "Snake"
Big Tymers, "Get Your Roll On"
Aaliyah, "Miss You"
The Isley Brothers, "What Would You Do?"

STOPSET

Busta Rhymes & Mariah Carey, "I Know What You Want"
Lil' Kim, "The Jump Off"
Field Mob, "Sick of Being Lonely"
Jaheim, "Put That Woman First"

STOPSET

Snoop Dogg Featuring Pharrell & Uncle Charlie Wilson, "Beautiful"

ON-AIR PERSONALITY: MIKE STREET
Busta Rhymes & Mariah Carey, "I Know What You Want"
Junior M.A.F.I.A., "Player's Anthem"
Vivian Green, "Emotional Rollercoaster"
Clipse, "Hot Damn"

STOPSET

Aaliyah, "Miss You"
2Pac, "Thugz Mansion"
The Notorious B.I.G., "Hypnotize"
KeKe Wyatt, "Nothing in This World"
Fabolous, "Can't Let You Go"

STOPSET

Jaheim, "Put That Woman First"
Lil' Kim, "The Jump Off"
50 Cent, "In Da Club"

POSITIONERS & PROMOTIONS

"Power 92.1 Jams, the most hip-hop and R&B"

"All summer, join us for the Friday Night Spread on Mayo Island. It's the best of the old school and new school, live in concert."

"Russ Parr's Platinum Passport is your chance to win big. Keep it tuned to Power 92.1 for more details."

"Richmond's No. 1 for hip-hop and R&B, the all-new 106.5 the Beat"

"Join Theo for 106 After Hours, tonight at 10."

"The 106 Dear Mama Weekend is your chance to thank your mama and win a gift basket and flower bouquet."

RADIO CONCERT MONITOR

DATE	STATION	EVENT	PROMOTIONS DIRECTOR
May 14	WJKS Wilmington, Del. APPEARING: Lil' Mo, MC Lyte, Killer Mike, Ms. Jade, Freeway	Kiss Spring Jam	Tony Q
May 16	WHXT Columbia, S.C. APPEARING: TBA	Doug Banks Jam Session	Tessica Island

Let us monitor your event. Call Dana Hall at 646-654-4711 or e-mail dhall@airplaymonitor.com

up at the station. They aren't exposed to a lot of the things or people I was while coming up, so I try to relate those things I've learned from people like Jerry Boulding, Barry Mayo, and Steve Hegwood.

"Also, when you see someone coming in who has the passion that we did coming up—and there aren't a lot of people who do anymore—that inspires me to keep doing what I'm doing and passing on the knowledge I have inside of me."

No longer the south's best kept secret.

TRAP M.U.Z.I.K.

24's

The first single from the highly anticipated album

TRAP MUZIK

dropping August 2003.

Produced By
DJ Toomp for Zone Boy/Grand Hustle

On Your Desks Now



www.trapmuzik.com www.atlanticrecords.com
©2003 Atlantic Recording Corporation. Warner Music Group. An AOL Time Warner Company.

POWER PLAYLISTS



Nielsen Broadcast Data Systems

Songs ranked by number of detections. Playlists are listed in order of TSA weekly cumes, beginning with the highest-cuming station. Cumes are updated twice yearly following the release of the spring and fall Arbitron surveys. The number of stations shown each week varies depending upon space.

Airplay Adds (A+) denotes songs with 6 or more detections at station for first time this week.

AIRPLAY LEADERBOARD

THE STATIONS THAT BREAK THE HITS



WZMX Hartford, CT (PD: Victor Starr) Airplay Leader Designations: 12

- #2 WQHT, New York, NY (PD/MD: Cloherty/E-Bro) 5
#3 KKDA, Dallas, TX (PD: Skip Cheatham) 5
#4 WJNH, Baton Rouge, LA (PD: Randy Chase) 5
#5 WBHH, Norfolk, VA (PD: Heart Attack) 5

Refer to Impact! page for this week's Airplay Leaders and Airplay Leaderboard rules.

WQHT New York VP/Pgm: Tracy Cloherty MD: E-Bro Emmis 212-229-9797



Table with 2 columns: Rank, Song/Artist. Top songs include '50 Cent Featuring Nate Dogg 21 Question' and 'Lil' Kim Featuring Mr. Cheek The Jump O'.

KPWR Los Angeles VP/Pgm: Jimmy Steal APD: Damion Young MD: E-man Emmis 818-953-4200



Table with 2 columns: Rank, Song/Artist. Top songs include 'Lil' Kim Featuring 50 Cent Magic Stick' and 'Fabolous Featuring Mike Shor Can't Let'.

WWPR New York PD: Michael Saunders MD: Mara Melendez Clear Channel 212-704-1051



Table with 2 columns: Rank, Song/Artist. Top songs include '50 Cent Featuring Nate Dogg 21 Question' and 'Fabolous Featuring Mike Shor Can't Let'.

WBLS New York PD: Vinny Brown MD: Deneen Womack Inner City 212-447-1000



Table with 2 columns: Rank, Song/Artist. Top songs include 'Tyrese How You Gonna Act Like That' and 'Nas I Can'.

KKBT Los Angeles PD: Robert Scorpio APD/MD: Dorsey Fuller Radio One 323-634-1800



Table with 2 columns: Rank, Song/Artist. Top songs include 'Sean Paul Get Busy' and '50 Cent Featuring Nate Dogg 21 Question'.

WGCI Chicago OM: Elroy R.C. Smith APD/MD: Tiffany Green Clear Channel 312-540-2000



Table with 2 columns: Rank, Song/Artist. Top songs include '50 Cent P.I.M.P.' and 'R. Kelly Featuring Big Tige Snake'.

WJMN Boston PD: Jack McCartney APD: Dennis O'Heron MD: Chris Tyler Clear Channel 781-663-2500



Table with 2 columns: Rank, Song/Artist. Top songs include 'Lil' Kim Featuring 50 Cent Magic Stick' and 'Sean Paul Get Busy'.

WPGC Washington, DC VP/Pgm: Jay Stevens OM: Reggie Rowe MD: Sarah O'Connor Infinity 301-918-0955



Table with 2 columns: Rank, Song/Artist. Top songs include 'Lil' Kim Featuring 50 Cent Magic Stick' and 'Sean Paul Get Busy'.

WUSL Philadelphia PD: Glenn Cooper MD: Coka-Lani AMD: Cosmic Key Clear Channel 215-483-8900



Table with 2 columns: Rank, Song/Artist. Top songs include '50 Cent Featuring Nate Dogg 21 Question' and 'Fabolous Featuring Mike Shor Can't Let'.

WVEE Atlanta PD: Tony Brown APD/MD: Tosha Love Infinity 404-898-8900



Table with 2 columns: Rank, Song/Artist. Top songs include '50 Cent Featuring Nate Dogg 21 Question' and 'Fabolous Featuring Mike Shor Can't Let'.

WKYS Washington, DC PD: Darryl Huckaby MD: DJ Iran Radio One 301-306-1111



Table with 2 columns: Rank, Song/Artist. Top songs include 'Busta Rhymes & Mariah Carey I Know Who' and 'Sean Paul Get Busy'.

WPWX Chicago PD/MD: Jay Alan APD: Tracie Reynolds AMD: Barbara McDowell Crawford 773-734-4455



Table with 2 columns: Rank, Song/Artist. Top songs include 'Sean Paul Get Busy' and 'R. Kelly Featuring Big Tige Snake'.

KMEL San Francisco OM: Michael Martin APD/MD: 'Jazzy' Jim Archer Clear Channel 415-538-1061



Table with 2 columns: Rank, Song/Artist. Top songs include 'Fabolous Featuring Mike Shor Can't Let' and 'H.A.W.K. You Already Know'.

KBXX Houston PD: Tom Calococco MD: Carmen Contreras Radio One 713-623-2108



Table with 2 columns: Rank, Song/Artist. Top songs include 'Sean Paul Get Busy' and 'H.A.W.K. You Already Know'.

KKDA Dallas PD: Skip Cheatham Service 972-263-9911



Table with 2 columns: Rank, Song/Artist. Top songs include 'Fabolous Featuring Mike Shor Can't Let' and 'H.A.W.K. You Already Know'.

WEDR Miami PD/MD: Cedric Hollywood AMD: Shelby Rushin Cox 305-623-7711



Table with 2 columns: Rank, Song/Artist. Top songs include '50 Cent Featuring Nate Dogg 21 Question' and 'R. Kelly Featuring Big Tige Snake'.

WJLB Detroit PD: K.J. Holiday APD/MD: Kris Kelly Clear Channel 313-965-2000



Table with 2 columns: Rank, Song/Artist. Top songs include '50 Cent Featuring Nate Dogg 21 Question' and 'Busta Rhymes & Mariah Carey I Know Who'.

POWERPLAYS



Songs ranked by number of detections. Playlists are listed in order of TSA weekly cumes, beginning with the highest-cuming station. Cumes are updated twice weekly following the release of the spring and fall Arbitron surveys. The number of stations shown each week varies depending upon space.

KBFB Dallas PD: John Candelaria MD: Big Bink Radio One 972-331-5400

WDTJ Detroit PD: Charles "Spudd" Spence Radio One 313-259-2000

WPHI Philadelphia PD: Colby Colb APD/MD: Raphael George Radio One 215-884-9400

WHTA Atlanta PD: Jerry Smokin' B APD: Dimitrios Stevens MD: Ramona DeBreaux Radio One 404-765-9750

KPTY Houston PD/MD: Marco Arias Hispanic 713-407-1415

WJHM Orlando PD: Stevie DeLano APD: Keith Memoly MD: Jay Love Infinity 407-919-1000

Table with 2 columns: Rank and Song/Artist. Top songs include Lil Jon & The East Side Boyz Get Low, 50 Cent In Da Club, Fabolous Featuring Mike Shor Can't Let, etc.

Table with 2 columns: Rank and Song/Artist. Top songs include 50 Cent Featuring Nate Dogg 21 Question, Busta Rhymes & Mariah Carey I Know Who, Fabulous Featuring Mike Shor Can't Let, etc.

Table with 2 columns: Rank and Song/Artist. Top songs include 50 Cent Featuring Nate Dogg 21 Question, Busta Rhymes & Mariah Carey I Know Who, Fabulous Featuring Mike Shor Can't Let, etc.

Table with 2 columns: Rank and Song/Artist. Top songs include Lil Jon & The East Side Boyz Get Low, Bone Crusher Featuring Killie Never Scar, 50 Cent In Da Club, etc.

Table with 2 columns: Rank and Song/Artist. Top songs include Sean Paul Get Busy, Busta Rhymes & Mariah Carey I Know Who, 50 Cent In Da Club, etc.

Table with 2 columns: Rank and Song/Artist. Top songs include Jahiem Put That Woman First, Sean Paul Get Busy, 50 Cent Featuring Nate Dogg 21 Question, etc.

WZMX Hartford PD: Victor Starr APD: David Simpson Infinity 860-677-6700

KKFR Phoenix PD: Bruce St. James MD: Joey Boy MD: J Philla Emmis 602-274-6200

WPEG Charlotte OM: Terry Avery APD/MD: Nate Quick Infinity 704-333-0131

KQKS Denver PD: Cat Collins APD/MD: John E. Kage Jefferson-Pilot 303-321-0950

WQUE New Orleans OM: Carla Boatner PD/MD: Upton Angela Clear Channel 504-827-6000

WENZ Cleveland PD: Kim Johnson MD: Eddie Bauer Radio One 216-579-1111

Table with 2 columns: Rank and Song/Artist. Top songs include Panjabi MC Featuring Jay-Z Beware Of Th, Lil' Kim Featuring 50 Cent Magic Stick, Sean Paul Get Busy, etc.

Table with 2 columns: Rank and Song/Artist. Top songs include 50 Cent Featuring Nate Dogg 21 Question, Busta Rhymes & Mariah Carey I Know Who, Fabulous Featuring Mike Shor Can't Let, etc.

Table with 2 columns: Rank and Song/Artist. Top songs include Lil' Kim Featuring 50 Cent Magic Stick, Lil' Mo Featuring Fabulous 4 Ever, Lil' Kim Featuring Mr. Cheek The Jump O, etc.

Table with 2 columns: Rank and Song/Artist. Top songs include 50 Cent Featuring Nate Dogg 21 Question, Busta Rhymes & Mariah Carey I Know Who, Fabulous Featuring Mike Shor Can't Let, etc.

Table with 2 columns: Rank and Song/Artist. Top songs include Busta Rhymes & Mariah Carey I Know Who, Fabolous Featuring Mike Shor Can't Let, Vivian Green Emotional Rollercoaster, etc.

Table with 2 columns: Rank and Song/Artist. Top songs include Busta Rhymes & Mariah Carey I Know Who, Snoop Dogg Featuring Pharrell Beautiful, 50 Cent Featuring Nate Dogg 21 Question, etc.

WERQ Baltimore Interim PD: Neke Howse Radio One 410-332-8200

WQOK Raleigh OM: Cy Young MD: Shawn Alexander Radio One 919-848-9736

WHRK Memphis PD: Nate Ball APD/MD: Devin Steel Clear Channel 901-529-4300

WJMW Greensboro OM/MD: Brian Douglas MD: Tap Money Entercom 336-605-5200

KATZ St. Louis VP Operations/PD: Chuck Atkins APD: Dwight Stone Clear Channel 314-692-5108

WOWI Norfolk DM: Daisy Davis APD/MD: Heart Attack Clear Channel 757-466-9116

Table with 2 columns: Rank and Song/Artist. Top songs include Aaliyah Miss You, Sean Paul Get Busy, Busta Rhymes & Mariah Carey I Know Who, etc.

Table with 2 columns: Rank and Song/Artist. Top songs include Fabolous Featuring Mike Shor Can't Let, Tyrese How You Gonna Act Like That, Snoop Dogg Featuring Pharrell Beautiful, etc.

Table with 2 columns: Rank and Song/Artist. Top songs include 50 Cent Featuring Nate Dogg 21 Question, Busta Rhymes & Mariah Carey I Know Who, The Isley Brothers Featuring What Would, etc.

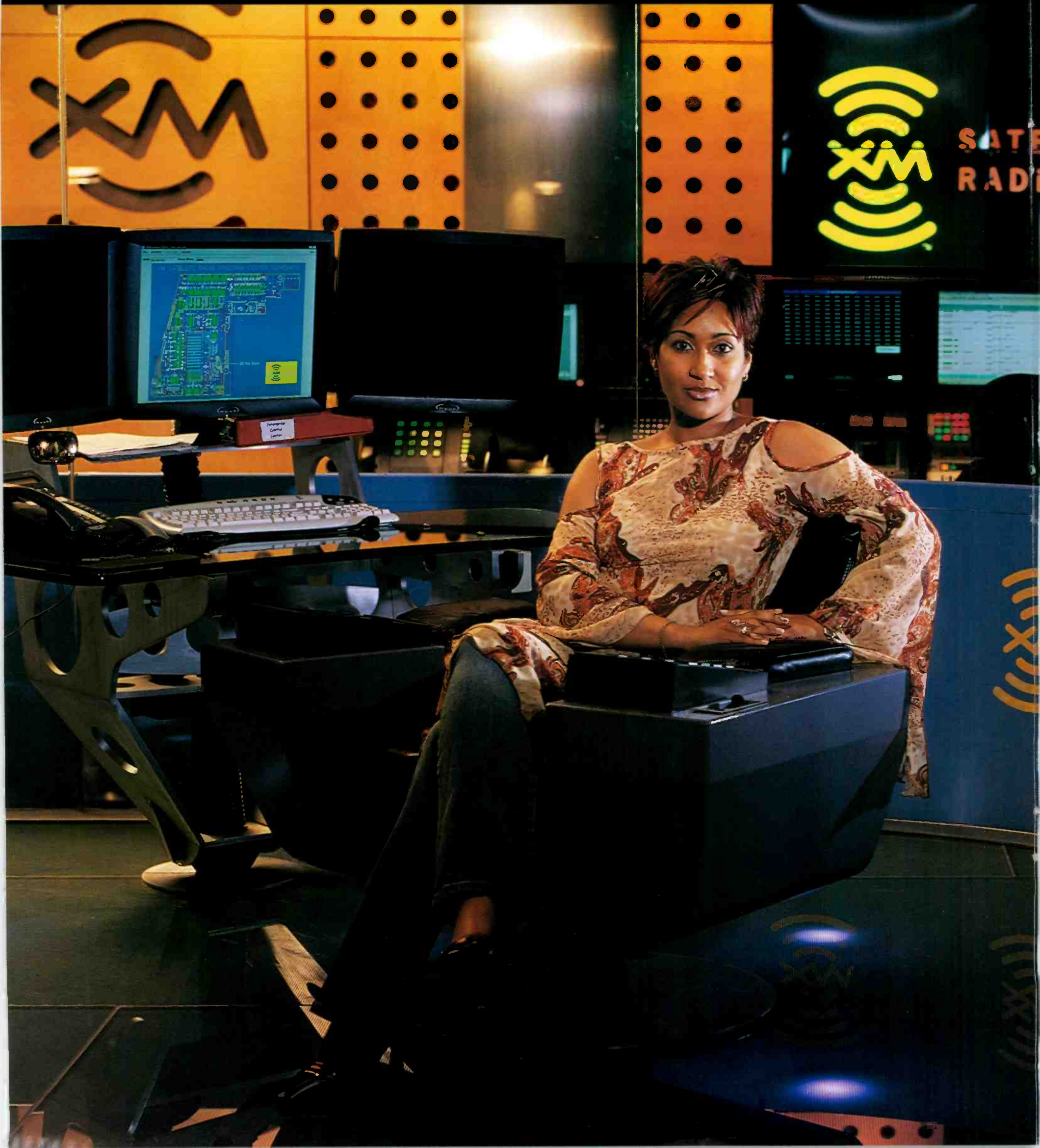
Table with 2 columns: Rank and Song/Artist. Top songs include Fabolous Featuring Mike Shor Can't Let, Sean Paul Get Busy, Lil Jon & The East Side Boyz I Don't G, etc.

Table with 2 columns: Rank and Song/Artist. Top songs include Busta Rhymes & Mariah Carey I Know Who, Vivian Green Emotional Rollercoaster, Missy 'Misdemeanor' Elliott P***ycat, etc.

Table with 2 columns: Rank and Song/Artist. Top songs include Sean Paul Get Busy, Busta Rhymes & Mariah Carey I Know Who, 50 Cent Featuring Nate Dogg 21 Question, etc.



Congratulations Tr



SATELLITE
RADIO



Integrated
Control
Center



Traci LaTrelle

Program Director, XM-The Flow

*R&B
Competition 3
Grand Prize Winner*

What a blessing!! You just don't know how shocked I was to get "The Winning Call" from the folks at AIR. I first want to thank The Lord for this wonderful gift and may he use me to channel blessings through to others. I'd like to thank Tony Anderson for all the support he's given me spanning back 15 years ago. I can honestly say that Tony was the very first "Record" person that reached out and showed genuine support for all of us at Satellite One/XM in the early stages of this revolutionary radio medium. Baby Sam was also extremely helpful and continues to be a great asset to me even though I am not working directly with her. This is my second competition, where I now have the pleasure to work with Nate Anderson. I can always count on Nate to get the songs/albums that haven't been serviced to me. He's always making sure I'm "straight" on music. Needless to say AIR has helped me out tremendously. The song information alone that I get from AIR is such a useful programming tool. I've been in Radio for 18 years and just being #1 among my peers in this competition, excluding the prize, is enough of a pay-off for me. Thank-you so much AIR!!

Peace,
Traci LaTrelle



Grand Prize:
Mercedes-Benz SLK

Congratulations to all our R&B Winners



Steve Murray

WEUF, Huntsville, AL

I always look forward to the weekly call from Nate; it's a chance to really talk about music without somebody trying to hype me on something that is a stiff. It's good straightforward information and the competition is hot...on and the prizes ain't bad either. Thank You AIR!!



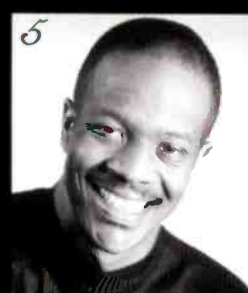
Eddie Brasco

KVSP, Oklahoma City, OK

Wow! 3rd place is a really big step for me. I'm so glad that AIR gives the smaller market programmers a chance to showcase our knowledge and ability to hear a hit. Talking with Baby Sam every Thursday is something that I look forward to. AIR is not only a competition, but also a work tool that I utilize every way I can. Thanks so much for this honor!



Nate Quick
WPEG, Charlotte, NC



Garth Adams
WHHH, Indianapolis, IN



Leo G Pryor
XM-Raw, National



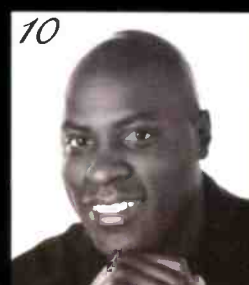
DJ Finesse
WWDM, Columbia, SC



John Mosley
KRRQ, Lafayette, LA



Terri Thomas
WIZF, Cincinnati, OH



Mickey Johnson
WBHJ, Birmingham, AL



Tabari Daniels
WJZD, Biloxi, MS



Craig Blac
WFUN, St. Louis, MO



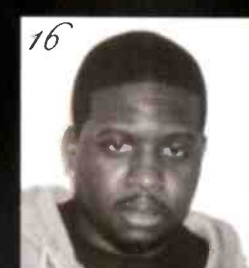
DJ Boogie
WAMO, Pittsburgh, PA



Justin Tyme
MTV, National



Brant Johnson
WQHH, Lansing, MI



J-Black
WPHI, Philadelphia, PA



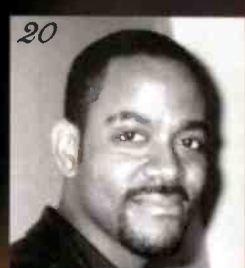
Aaror Bernard
KJMM, Tulsa, OK



Deneen Womack
WBLS, New York, NY



Barbara McDowell
WPWX, Chicago, IL



Dion Summers
Formerly of WERQ,
Baltimore, MD



Terri Avery
WPEG, Charlotte, NC



Marie Cristal
WAJZ, Albany, NY



Chris Conner
WHXT, Columbia, SC



Da Lil' Homie
WBHJ, Birmingham, AL



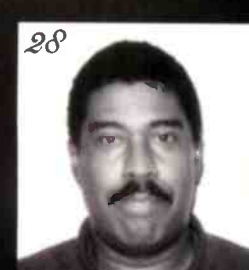
Doug Davis
WJMZ, Greenville, SC



Theo Smith
Formerly of WROU,
Dayton, OH



Skip Dillard
Formerly of WBLK,
Buffalo, NY



Qquincy
Formerly of WTMG,
Gainesville, FL



Shanik Mincie
WHXT, Columbia, SC



Sherita Saulsberry
KVEG, Las Vegas, NV

It All Starts With Listening

FCC approved since 1983.



A I R

WWW.AIRCOMPETITION.COM

Active Industry Research, Inc. - 9861 Broken Land Pkwy., Suite 200A - Columbia, MD 21046 - Tel. (410) 381-6800 - Fax. (410) 381-4942
Active Industry Research of California, Inc. - 1353 N. Sycamore Ave. - Hollywood, CA 90028 - Tel. (323) 769-1212 - Fax. (323) 769-8027

TOP 10 BOUND

Total Detections/Gain FLOETRY 2680/327 Say Yes (Sofja/DreamWorks) Total Stations: 85 Chart Move: 15-12 H (17), M (40), L (28) Airplay Adds: 6

Table with columns for station, song title, and chart position. Includes stations like BET, MTV, WBLS, WJZZ, WJLA, etc.

LIL' MO FEATURING FABOLOUS 2282/167 4 Ever (The Gold Mind/Elektra/EEG) Total Stations: 92 Chart Move: 17-16 H (6), M (43), L (43) Airplay Adds: 0

Table with columns for station, song title, and chart position. Includes stations like BET, MTV, WBLS, WJZZ, WJLA, etc.

WAYNE WONDER 2148/42 No Letting Go (VP/Atlantic) Total Stations: 95 Chart Move: 18-20 H (5), M (40), L (50) Airplay Adds: 2

Table with columns for station, song title, and chart position. Includes stations like BET, MTV, WBLS, WJZZ, WJLA, etc.

AIRPOWER

R. KELLY FEATURING BIG TIGGER 2367/600 Snake (Jive) AIRPLAY LEADER (FIRST STATION TO 150 PLAYS) KVEG • Las Vegas, NV PD: Sherita Saulsberry Date: 03/30/03

Total Stations: 96 Chart Move: 22-15 H (11), M (37), L (48) Airplay Adds: 22

Table with columns for station, song title, and chart position. Includes stations like BET, MTV, WBLS, WJZZ, WJLA, etc.

LIL' KIM FEATURING 50 CENT 2196/509 Magic Stick (Queen Bee/Atlantic) AIRPLAY LEADER (FIRST STATION TO 150 PLAYS) WJNH • Baton Rouge, LA PD: Randy Chase Date: 04/06/03

Total Stations: 80 Chart Move: 23-17 H (16), M (20), L (44) Airplay Adds: 10

Table with columns for station, song title, and chart position. Includes stations like BET, MTV, WBLS, WJZZ, WJLA, etc.

AIRPOWER BOUND

BONE CRUSHER FEAT. KILLER MIKE & T.I. 2181/274 Never Scared (Break 'Em Off/So So Def/Arista) Total Stations: 94 Chart Move: 19-18 H (10), M (29), L (55) Airplay Adds: 3

Table with columns for station, song title, and chart position. Includes stations like BET, MTV, WBLS, WJZZ, WJLA, etc.

Table with columns for station, song title, and chart position. Includes stations like L.A., Chicago, San Fran., etc.

JOE BUDDEN 1975/206 Pump It Up (Def Jam/IDJMG) Total Stations: 96 Chart Move: 21-21 H (6), M (24), L (66) Airplay Adds: 5

Table with columns for station, song title, and chart position. Includes stations like BET, MTV, WBLS, WJZZ, WJLA, etc.

THE ISLEY BROTHERS FEAT. RONALD ISLEY 1895/98 What Would You Do? (DreamWorks) Total Stations: 74 Chart Move: 20-22 H (9), M (30), L (35) Airplay Adds: 1

Table with columns for station, song title, and chart position. Includes stations like BET, MTV, WBLS, WJZZ, WJLA, etc.

HITMAN SAMMY SAM 1612/36 Step Daddy (Collipark/Universal/UMRG) Total Stations: 80 Chart Move: 25-24 H (6), M (21), L (53) Airplay Adds: 7

Table with columns for station, song title, and chart position. Includes stations like BET, MTV, WBLS, WJZZ, WJLA, etc.

Table with columns for station, song title, and chart position. Includes stations like Col. Sc., WJZZ, WJLA, etc.

MISSY "MISDEMEANOR" ELLIOTT 1590/-2 P***ycat (The Gold Mind/Elektra/EEG) Total Stations: 72 Chart Move: 24-25 H (6), M (21), L (45) Airplay Adds: 2

Table with columns for station, song title, and chart position. Includes stations like BET, MTV, WBLS, WJZZ, WJLA, etc.

PANJABI MC FEATURING JAY-Z 1488/15 Beware Of The Boys (Mundian To Bach Ke) (Sequence) Total Stations: 81 Chart Move: 28-26 H (4), M (24), L (53) Airplay Adds: 4

Table with columns for station, song title, and chart position. Includes stations like BET, MTV, WBLS, WJZZ, WJLA, etc.

TALIB KWELI 1479/34 Get By (Rawkus/MCA) Total Stations: 87 Chart Move: 29-27 H (1), M (20), L (66) Airplay Adds: 1

Table with columns for station, song title, and chart position. Includes stations like BET, MTV, WBLS, WJZZ, WJLA, etc.

DRU HILL 1478/153 I Love You (Def Soul/IDJMG) Total Stations: 78 Chart Move: 31-28 H (3), M (18), L (57) Airplay Adds: 4

Table with columns for station, song title, and chart position. Includes stations like BET, MTV, WBLS, WJZZ, WJLA, etc.

DA BRAT FEATURING CHERISH 1449/116 In Love Wit Chu (So So Def/Arista) Total Stations: 83 Chart Move: 30-29 H (3), M (20), L (60) Airplay Adds: 3

Table with columns for station, song title, and chart position. Includes stations like BET, MTV, WBLS, WJZZ, WJLA, etc.

DAVID BANNER FEAT. LIL' FLIP 1383/71 Like A Pimp (SRC/Universal/UMRG) Total Stations: 85 Chart Move: 32-31 H (5), M (10), L (70) Airplay Adds: 6

Table with columns for station, song title, and chart position. Includes stations like BET, MTV, WBLS, WJZZ, WJLA, etc.

ASHANTI 1368/661 Rock Wit U (Awww Baby) (Murder Inc./Def Jam/IDJMG) Total Stations: 83 Chart Move: Debut 32 H (2), M (23), L (58) Airplay Adds: 23

Table with columns for station, song title, and chart position. Includes stations like BET, MTV, WBLS, WJZZ, WJLA, etc.

H=Heavy (45+ Detections), M=Medium (25-44), L=Light (Under 25). Airpower awarded to songs appearing in the top 20 on both the Airplay and Audience charts for the first time with increases in both detections and audience. *Initial impact: songs appearing on this page for the first time in summary form. Airplay Adds are songs with 6 or more detections at new stations this week. The Airplay Leaderboard ranks taste-maker stations that have been the most successful in identifying future hit songs as measured by the amount of AIRPOWER titles for which they were Airplay Leaders. Refer to each format's Power Playlists page to see this week's Airplay Leaders.

Songs posting gains in detections or with a percentage loss in detections equal to or better than the monitored downtime percentage in the format. Songs listed in order of detections. *Indicates station experienced between 24 and 56 hours of monitored downtime during the chart week.

Table with columns for city, station, and chart position. Includes entries for Detroit, Boston, Wash DC, Houston, Atlanta, Miami, Phoenix, St. Louis, etc.

LIL JON & THE EAST SIDE BOYZ 1217/131 Get Low (BME/TVT)

Total Stations: 68 Chart Move: 33-33 H (8), M (11), L (49) Airplay Adds: 4

Table with columns for city, station, and chart position. Includes entries for New York, LA, Chicago, San Fran, Dallas, Detroit, Boston, Wash DC, Houston, Atlanta, Miami, Phoenix, St. Louis, etc.

HEATHER HEADLEY 1212/195 I Wish I Wasn't (RCA/RMG)

Total Stations: 62 Chart Move: 35-34 H (2), M (18), L (42) Airplay Adds: 3

Table with columns for city, station, and chart position. Includes entries for New York, LA, Chicago, San Fran, Dallas, Detroit, Boston, Wash DC, Houston, Atlanta, Miami, Phoenix, St. Louis, etc.

CHINGY 1191/256 Right Thurr (Disturbing Tha Peace/Priority/Capitol)

Total Stations: 82 Chart Move: 38-35 H (1), M (13), L (68) Airplay Adds: 14

Table with columns for city, station, and chart position. Includes entries for New York, LA, Chicago, San Fran, Dallas, Detroit, Boston, Wash DC, Houston, Atlanta, Miami, Phoenix, St. Louis, etc.

Table with columns for city, station, and chart position. Includes entries for Norfolk, Charl. NC, Indian, Orlando, Las Vegas, New Or., Greensb., Nashv., etc.

GINUWINE 1085/487 In Those Jeans (Epic)

Total Stations: 73 Chart Move: Debut 37 H (0), M (11), L (62) Airplay Adds: 24

Table with columns for city, station, and chart position. Includes entries for New York, LA, Chicago, San Fran, Dallas, Detroit, Boston, Wash DC, Houston, Atlanta, Miami, Phoenix, St. Louis, etc.

EMINEM, 50 CENT & BUSTA RHYMES 949/626 Hail Mary (Not Listed)

Total Stations: 62 Chart Move: Debut 39 H (4), M (13), L (45) Airplay Adds: 22

Table with columns for city, station, and chart position. Includes entries for New York, LA, Chicago, San Fran, Dallas, Detroit, Boston, Wash DC, Houston, Atlanta, Miami, Phoenix, St. Louis, etc.

AALIYAH 853/343 Come Over (Background/Universal/UMRG)

Total Stations: 69 Chart Move: Debut 40 H (2), M (4), L (63) Airplay Adds: 23

Table with columns for city, station, and chart position. Includes entries for New York, LA, Chicago, San Fran, Dallas, Detroit, Boston, Wash DC, Houston, Atlanta, Miami, Phoenix, St. Louis, etc.

CHART BOUND

Total Detections/Gain

JUSTIN TIMBERLAKE 838/49 Rock Your Body (Jive)

Total Stations: 60 Chart Move: Debut 37 H (0), M (11), L (62) Airplay Adds: 24

LUDACRIS 689/248 Act A Fool (Disturbing Tha Peace/Def Jam South/IDJMG)

Total Stations: 65 Chart Move: Debut 37 H (0), M (11), L (62) Airplay Adds: 24

50 CENT 631/152 P.I.M.P. (Shady/Aftermath/Interscope)

Total Stations: 51 Chart Move: Debut 37 H (0), M (11), L (62) Airplay Adds: 24

KILEY DEAN 613/161 Make Me A Song (Beat Club/Interscope)

Total Stations: 67 Chart Move: Debut 37 H (0), M (11), L (62) Airplay Adds: 24

FIELD MOB FEAT. CEE-LO & JAZZE PHA 554/64 All I Know (MCA)

Total Stations: 53 Chart Move: Debut 37 H (0), M (11), L (62) Airplay Adds: 24

AMANDA PEREZ 493/78 Angel (Powerhouse/Virgin)

Total Stations: 30 Chart Move: Debut 37 H (0), M (11), L (62) Airplay Adds: 24

SMILEY & SOUTHSTAR 441/170 Now That You're Gone (ARTISTdirect)

Total Stations: 50 Chart Move: Debut 37 H (0), M (11), L (62) Airplay Adds: 24

KELLY PRICE 424/200 He Proposed (Def Soul/IDJMG)

Total Stations: 34 Chart Move: Debut 37 H (0), M (11), L (62) Airplay Adds: 24

FREEWAY FEATURING PEEDEE CRACK 414/150 Flipside (Roc-A-Fella/Def Jam/IDJMG)

Total Stations: 68 Chart Move: Debut 37 H (0), M (11), L (62) Airplay Adds: 24

TYRESE 402/248 Signs Of Love Makin' (JRM/G)

Total Stations: 46 Chart Move: Debut 37 H (0), M (11), L (62) Airplay Adds: 24

THREE 6 MAFIA 358/125 Riddin' Spinners (Hypnotize Minds/Loud/Columbia)

Total Stations: 54 Chart Move: Debut 37 H (0), M (11), L (62) Airplay Adds: 24

JAY-Z 344/37 Excuse Me Miss Again (Roc-A-Fella/Def Jam/IDJMG)

Total Stations: 62 Chart Move: Debut 37 H (0), M (11), L (62) Airplay Adds: 24

R. KELLY 315/44 I'll Never Leave (Jive)

Total Stations: 20 Chart Move: Debut 37 H (0), M (11), L (62) Airplay Adds: 24

JAY-Z 311/15 Stop (Roc-A-Fella/Def Jam/IDJMG)

Total Stations: 59 Chart Move: Debut 37 H (0), M (11), L (62) Airplay Adds: 24

JS 297/154 Ice Cream (DreamWorks/Interscope)

Total Stations: 37 Chart Move: Debut 37 H (0), M (11), L (62) Airplay Adds: 24

LOON FEATURING KELIS 295/39 How You Want That (Bad Boy/UMRG)

Total Stations: 65 Chart Move: Debut 37 H (0), M (11), L (62) Airplay Adds: 24

DEBRECA 289/45 21 Questions (Again) (Mass Appeal)

Total Stations: 22 Chart Move: Debut 37 H (0), M (11), L (62) Airplay Adds: 24

LATIF 286/111 I Don't Want To Hurt You (Motown/UMRG)

Total Stations: 35 Chart Move: Debut 37 H (0), M (11), L (62) Airplay Adds: 24

MOBB DEEP FEAT. BIG NOYD 283/43 Double Shots (Landspeed/Koch)

Total Stations: 47 Chart Move: Debut 37 H (0), M (11), L (62) Airplay Adds: 24

FOXY BROWN FEAT. THE LETTER M. 255/30 I Need A Man (Def Jam/IDJMG)

Total Stations: 46 Chart Move: Debut 37 H (0), M (11), L (62) Airplay Adds: 24

ROSCOE FEATURING SLEEPY BROWN 253/63 Head To Toe (Priority/Capitol)

Total Stations: 29 Chart Move: Debut 37 H (0), M (11), L (62) Airplay Adds: 24

JENNIFER LOPEZ 236/18 I'm Glad (Epic)

Total Stations: 18 Chart Move: Debut 37 H (0), M (11), L (62) Airplay Adds: 24

H.A.W.K. 234/33 You Already Know (Game Face)

Total Stations: 8 Chart Move: Debut 37 H (0), M (11), L (62) Airplay Adds: 24

PETEY PABLO FEAT. LIL JON 228/75 U Don't Want That (Jive)

Total Stations: 43 Chart Move: Debut 37 H (0), M (11), L (62) Airplay Adds: 24

YOUNG GUNZ 224/32 Can't Stop, Won't Stop (Roc-A-Fella/Def Jam/IDJMG)

Total Stations: 17 Chart Move: Debut 37 H (0), M (11), L (62) Airplay Adds: 24

FABOLOUS FEATURING ASHANTI 213/82 Into You (Desert Storm/Elektra/EEG)

Total Stations: 11 Chart Move: Debut 37 H (0), M (11), L (62) Airplay Adds: 24

LIL' MO FEATURING FREE 201/74 21 Answers (Not Listed)

Total Stations: 35 Chart Move: Debut 37 H (0), M (11), L (62) Airplay Adds: 24

TAMIA 192/110 Officially Missing You (Elektra/EEG)

Total Stations: 31 Chart Move: Debut 37 H (0), M (11), L (62) Airplay Adds: 24

AX 180/14 Dream Eyes (Lil Van)

Total Stations: 14 Chart Move: Debut 37 H (0), M (11), L (62) Airplay Adds: 24

54TH PLATOON 175/30 She Like (FB/Koch)

Total Stations: 20 Chart Move: Debut 37 H (0), M (11), L (62) Airplay Adds: 24

LUMIDEE 166/47 Never Leave You - Uh Oooh, Uh Oooh! (Universal/UMRG)

Total Stations: 24 Chart Move: Debut 37 H (0), M (11), L (62) Airplay Adds: 24

50 CENT 162/3 If I Can't (Shady/Aftermath/Interscope)

Total Stations: 39 Chart Move: Debut 37 H (0), M (11), L (62) Airplay Adds: 24

CLIPSE FEAT. AB-LIVA & ROSCO P. COLDCHAIN 161/53 Hot Damn (Star Trak/Arista)

Total Stations: 45 Chart Move: Debut 37 H (0), M (11), L (62) Airplay Adds: 24

NEEDA-S 160/10 Baby's Mama (Carry Your Baby) (T.U.G./New Line)

Total Stations: 10 Chart Move: Debut 37 H (0), M (11), L (62) Airplay Adds: 24

50 CENT 153/42 What Up Gangsta (Shady/Aftermath/Interscope)

Total Stations: 34 Chart Move: Debut 37 H (0), M (11), L (62) Airplay Adds: 24

BUBBA SPARXXX 130/6 Jimmy Mathis (Beat Club/Interscope)

Total Stations: 40 Chart Move: Debut 37 H (0), M (11), L (62) Airplay Adds: 24

KELLY SPADE 118/46 We Ain't Goin Nowhere (D-Lo)

Total Stations: 19 Chart Move: Debut 37 H (0), M (11), L (62) Airplay Adds: 24

PHARRELL FEATURING JAY-Z 117/117 Frontin' (Star Trak/Arista)

Total Stations: 30 Chart Move: Debut 37 H (0), M (11), L (62) Airplay Adds: 24

YOUNGBLOODZ FEATURING LIL JON 110/10 Damn (Arista)

Total Stations: 20 Chart Move: Debut 37 H (0), M (11), L (62) Airplay Adds: 24

BOO DA BOSS PLAYA 97/6 Say It To My Face (One Love One Life)

Total Stations: 13 Chart Move: Debut 37 H (0), M (11), L (62) Airplay Adds: 24

WESTSIDE CONNECTION FEAT. KNOX-TURN'AL 97/10 Lights Out (Hoo-Bangin'/Baby Bee/Bungalo)

Total Stations: 3 Chart Move: Debut 37 H (0), M (11), L (62) Airplay Adds: 24

SEAN PAUL 95/47 Like Glue (VP/Atlantic)

Total Stations: 27 Chart Move: Debut 37 H (0), M (11), L (62) Airplay Adds: 24

LL COOL J FEAT. KANDICE LOVE 90/48 Amazin' (Def Jam/IDJMG)

Total Stations: 26 Chart Move: Debut 37 H (0), M (11), L (62) Airplay Adds: 24

ELEPHANT MAN 85/18 Pon De River, Pon De Bank (VP/Atlantic)

Total Stations: 22 Chart Move: Debut 37 H (0), M (11), L (62) Airplay Adds: 24

H-Heavy (45+ Detections), M=Medium (25-44), L=Light (Under 25). Airpower awarded to songs appearing in the top 20 on both the Airplay and Audience charts for the first time with increases in both detections and audience. *Initial impact: songs appearing on this page for the first time in summary form. Airplay Adds are songs with 6 or more detections at new stations this week. The Airplay Leaderboard ranks taste-maker stations that have been the most successful in identifying future hit songs as measured by the amount of AIRPOWER titles for which they were Airplay Leaders. Refer to each format's Power Playlists page to see this week's Airplay Leaders.

ADULT R&B POWER PLAYS

AIRPLAY LEADERBOARD THE STATIONS THAT BREAK THE HITS. #1 WHUR, Washington, DC (PD: David A. Dickinson) 3. #2 KJMS, Memphis, TN (PD/MD: Belu/Gollier) 2. #3 KMJM, St. Louis, MO (PD: Eric Mychaels) 2. #4 KRWP, Houston, TX (PD: Maurice DeVoe) 2.

WRKS New York OM: John Mullen PD: Toya Beasley MC: Julie Gustines Emmis 212-242-9870. 1 Tyrese How You Gonna Act Like That 22 23. 2 Heather Headley I Wish I Wasn't 22 24. 3 Wayne Wonder No Letting Go 21 14.

KHHT Los Angeles PD/MD: Michelle Santosouso APD: Rick Nuhn Clear Channel 818-845-1027. 1 R. Kelly I'll Never Leave 33 35. 2 Aaliyah Miss You 32 37. 3 R. Kelly Ignition 31 34.

WVAC Chicago OM: Eloy Smith APD/MD: Armando Rivera Clear Channel 312-360-9000. 1 Kem Love Calls 35 31. 2 Maxwell Lifetime 35 33. 3 Jaheim Put That Woman First 34 32.

WDAS Philadelphia VP/GM/MD: Joe Tamburro MD: Jo Gamble Clear Channel 610-617-8500. 1 Jaheim Featuring The Rayne Fabulous 34 28. 2 Brian McKnight Shoutda, Wouda, Coulda 32 25.

WHUR Washington, DC PD/MD: David A. Dickinson Howard Univ. 202-806-3500. 1 The Isley Brothers Featuring What Would 22 17. 2 Kem Love Calls 22 17.

KMJJ Houston PD: Carl Conner MD: Sam Choice Radio One 713-623-2108. 1 Floetry Say Yes 28 29. 2 Syleena Johnson Guess What 27 27.

WMMJ Washington, DC PD: Kathy Brown MD: Mike Chase Radio One 301-306-1111. 1 Vivian Green Emotional Rollercoaster 27 22. 2 Heather Headley I Wish I Wasn't 26 23.

KJLH Los Angeles PD/MD: Cliff Winston TAXI 310-330-2200. 1 Floetry Say Yes 25 16. 2 Heather Headley I Wish I Wasn't 24 18.

WMXD Detroit PD: Jamillah Muhammad Clear Channel 313-965-2000. 1 Whitney Houston One Of Those Days 43 41. 2 Luther Vandross Take You Out 43 46.

WHQT Miami PD: Derrick Brown APD/MD: Karen Vaughn Cox 954-584-7117. 1 Heather Headley I Wish I Wasn't 34 29. 2 Brian McKnight Shoutda, Wouda, Coulda 34 35.

KBLX San Francisco PD: Kevin Brown Inner City 415-284-1029. 1 Floetry Say Yes 22 17. 2 Luther Vandross Dance With My Father 22 10.

WZAK Cleveland OM: Kim Johnson MD: Bobby Rush Radio One 216-579-1111. 1 Syleena Johnson Guess What 31 31. 2 Vivian Green Emotional Rollercoaster 31 31.

KRWP Houston PD/MD: Maurice Devoe Cumulus 713-300-3500. 1 Jaheim Put That Woman First 24 21. 2 Brian McKnight Shoutda, Wouda, Coulda 23 23.

WFXX Raleigh OM: Cy Young APD/MD: Jodi Berry Radio One 919-848-9736. 1 Vivian Green Emotional Rollercoaster 21 18. 2 Gerald Levert Closure 20 17.

WWIN Baltimore PD: Tim Watts MD: Keith Fisher Radio One 410-332-8200. 1 Floetry Say Yes 32 31. 2 Brian McKnight Shoutda, Wouda, Coulda 27 24.

WYLD New Orleans OM: Carla Boatner PD/MD: AJ Appleberry Clear Channel 504-827-6000. 1 Floetry Say Yes 38 36. 2 Musiq d'changement 36 34.

KSOC Dallas OM: John Candelaria PD: Gary Leigh Radio One 972-331-5400. 1 Floetry Say Yes 23 14. 2 Vivian Green Emotional Rollercoaster 23 15.

ADULT R&B IMPACT! Monitor

TOP 10 BOUND KINDRED THE FAMILY SOUL 498/103 Far Away (Hidden Beach/Epic) Total Detections/Gain 498/103. H (1), M (20), L (19) Chart Move: 14-12 Airplay Adds: 4.

Songs posting gains in detections or with a percentage loss in detections equal to or better than the monitored downtime percentage in the format: Songs listed in order of detections. *Indicates station experienced between 24 and 56 hours of monitored downtime during the chart week.

Table with columns: City, Station, Song, Detections, Gain. Includes cities like New York, Chicago, San Fran, Phila, Dallas, Detroit, Wash, DC, Houston, Miami, St. Louis, Balt, Cleveland, Kan City, Milwaukee.

LUTHER VANDROSS 154/154 Dance With My Father (J/RMG) Total Stations: 35 Chart Move: Debut 30. Heavy (0) Medium (3), Light (32) Airplay Adds: 8 KBLX, KJLH, WCFB, WDAS, WHQT, WQMG, WVAC, WWIN.

R. KELLY 420/85 I'll Never Leave (Jive) Total Stations: 25 Chart Move: 17-14 H (5), M (7), L (13) Airplay Adds: 4.

KENNY LATTIMORE & CHANTE MOORE 131/20 You Don't Have To Cry (Arista) Total Stations: 15 Chart Move: 33-33 Heavy (0) Medium (5), Light (10) Airplay Adds: 1 KQXL.

AIRPOWER CHART BOUND Total Detections/Gain. AARIES 49/1 Strangers To Lovers (Atlantic) Total Stations: 27 Heavy (0) Medium (0), Light (27) Airplay Adds: 1 WBVA.

KELLY PRICE 395/35 He Proposed (Def Soul/IDJMG) AIRPLAY LEADER (FIRST STATION TO 100 PLAYS) WHQT • Miami, FL PD: Derrick Brown MD: Karen Vaughn Date: 03/02/03.

JEFF FLOYD 39/0 I Found Love (On A Lonely Highway) (Wilbe) Total Stations: 7 Heavy (0) Medium (2), Light (5).

WHITNEY HOUSTON 223/53 Try It On My Own (Arista) Total Stations: 24 Heavy (0) Medium (8), Light (16) Airplay Adds: 4 KBLX, KJLH, WHUR, WWIN.

ASHANTI 35/8 Rock Wit U (Awww Baby) (Murder Inc./Def Jam/IDJMG) Total Stations: 4 Heavy (1) KHHT Medium (0), Light (3) Airplay Adds: 1 WRKS.

JEFFREY OSBORNE 174/51 Rest Of Our Lives (Jay Oz/Koch) Total Stations: 29 Chart Move: 31-26 Heavy (0) Medium (5), Light (24) Airplay Adds: 6 WBVA, WDLT, WGRN, WKJS, WLVA, WQQK.

★ BAR-KAYS 33/15 You're My Joy (JEA) Total Stations: 2 Heavy (0) Medium (2), Light (0). ★ DONNIE MCCLURKIN WITH YOLANDA ADAMS 32/10 The Prayer (Verity/Jive) Total Stations: 11 Heavy (0) Medium (1), Light (10).

H=Heavy (24+ Detections), M=Medium (12-23), L=Light (Under 12). Airpower awarded to songs appearing in the top 20 on both the Airplay and Audience charts for the first time with increases in both detections and audience. *Initial Impact: songs appearing on this page for the first time in summary form. Airplay Adds are songs with 6 or more detections at new stations this week.



Nashville's New Country Titan

For the first time in its four-year history in the format, WKDF Nashville is Music City's top-ranked country station. In the winter Arbitrons, WKDF was up 5.2-5.8 12-plus, tied for third place overall in the market.

It's the first time that Citadel's WKDF has overtaken rival and perennial country market leader WSIX, which dipped 6.3-5.5 to tie for sixth place overall. Among Nashville's other major country outlets, WSM-FM was off 4.5-3.7, tied for 11th place, and classic country WSM-AM was 14th, going 4.4-3.2.

"I always felt this was a much better radio station that we were getting credit for in Arbitron," WKDF PD Dave Kelly says. "So one of the focuses of the station has been to build cume."

To that end, the station added Titans football broadcasts to its lineup last year, which, Kelly says, "gave us an opportunity to get more people through the door. [With] the cume increase we got from the Titans, we were able to pull that through the week." He notes that TSL and cume are up in every key daypart and demo.

But those increases didn't come automatically. "The mark of any good radio station is self-promotion," Kelly says. "Any opportunity you have to get in front of more listeners, you have to take advantage of it."

Working with Citadel/Nashville's Larry Stone, executive producer of the Titans Radio Network, Kelly "tried to make [the Titans] part of the station, not just an entity that shows up every once in a while," he says. That included

such initiatives as having liners featuring Titans players talking about country music. "We took every possible opportunity to showcase the radio station to new cume."

It also helped that the Titans had a great season, getting within one game of the Super Bowl. But, Kelly says, "the way we were able to incorporate the Titans into the radio station was pretty

good, regardless of what their record was. At the same time, their record definitely helped out. And the fact that we took full advantage of it helped as well."

Kelly adds, "Game days are 16-hour workdays for anyone who happens to be employed by Citadel/Nashville."

WAR AND THE CHICKS

While he doesn't think WKDF got much of a kiss from the Iraqi war itself, which started late in the book, Kelly does think the station's early support for the troops paid off.

Even before the war started, WKDF was deep into a five-week program called Operation Appreciation, in which five hours of programming was prepared every Sunday and sent to troops overseas. The station had two voicemail accounts set up to accept troop greetings from listeners, and staffers also collected artist greetings.

"Any time we mentioned it on the air, it would logjam our switchboard. We could still be doing that show—the response to it was huge."

The Dixie Chicks controversy, while bad for the group, clearly had some benefits for country radio this book. Kelly says WKDF was no exception: "The added [media] bonus for country has been invaluable."

But dealing with it was no picnic. "The Toby Keith deal created a lot of media [last summer], and so did Darryl Worley," he says, "but the Chicks thing was off the Richter scale."

From the moment the controversy started, Kelly says, "any time we would

play a Chicks record, the phones would go ballistic." Early on in the controversy, Kelly forgot he had a sweeper that mentioned the group. After it aired just once, he says, "I got 150 e-mails off that one little sweeper."

While he backed off their music while things were really hot, he's now trying to ease them back into rotation, a task that's not as easy as it sounds.

"It has been a slow and interesting process," he says. "I'm just trying to throw some records back on without making a big deal of it, but every time I'd try to ease back into it, something big would stir the emotions up again," such as the group's recent round of interviews. At the height of the controversy, he says, "we literally set up a separate phone line just to take calls about the Chicks thing [after] our receptionist, one of the dearest women in the world, almost quit" as a result of the irate calls.

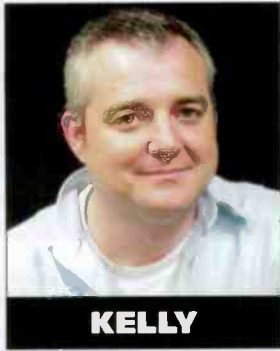
Kelly is hoping that by the time the group's tour ends Aug. 4 in Nashville, "all will be forgiven."

STICKING TO THE GAME PLAN

"One of the biggest things we do is try to stay really, really focused on us," Kelly says. "There are four other country radio stations in this market, and it would be real easy to get distracted away from our game plan."

Even so, he's well aware of the competition.

"There has been some inconsistencies with WSM-FM and some of the things they tried to do," he says, referring to the station's "Live 95" positioning. "I take my hat off to [former WSM-FM PD] Kevin O'Neal for trying to do something



KELLY



5 P.M.

Chris Cagle, "What a Beautiful Day"
Merle Haggard, "Workin' Man Blues"
Martina McBride, "Independence Day"
Darryl Worley, "I Miss My Friend"
Wynonna, "What the World Needs"
Diamond Rio, "I Believe"
Mary Chapin Carpenter, "Down at the Twist and Shout"
Randy Travis, "Diggin' Up Bones"
Tim McGraw, "She's My Kind of Rain"
Billy Dean, "Only Here for a Little While"
Blake Shelton, "The Baby"
Shania Twain, "Honey, I'm Home"
Phil Vassar, "That's When I Love You"
Alan Jackson, "Who's Cheatin' Who"
Kid Rock Feat. Sheryl Crow, "Picture"

Marks Brothers

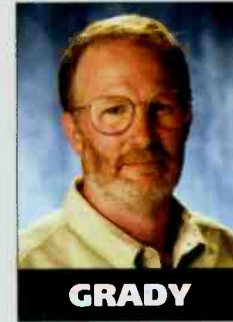


Vince Gill, left, catches up with KWNR Las Vegas OM John Marks.

Sony Music Flips Nashville Execs

In a surprise move, Sony Music U.S. president Don Jenner flew into Nashville May 2 and fired longtime Sony Music Nashville president/CEO Allen Butler, executive VP/GM Mike Kraski, and executive VP of A&R Blake Chancey.

Replacing Butler is John Grady, formerly president of Nashville-based DMZ Records. Grady had a pre-existing relationship with Jenner, because DMZ is a joint venture with Columbia Records in New York. Prior to joining DMZ, Grady was senior VP of sales, marketing, and pro-



GRADY

motion at Mercury and Lost Highway Records in Nashville. Look for Chancey's replacement to be Mark Wright, who is currently executive VP of A&R at MCA Nashville. Kraski, a 27-year Sony veteran, is not expected to be replaced.

Larry Pareigis, senior VP of promotion for Sony's Epic/Monument Records, is expected to add oversight duties for the Nashville office's Columbia Records division. Columbia VP of country promotion Ted Wagner will report to Pareigis.

ON THE FROW

WIVK, KSON Nab ACM Awards

WIVK Knoxville, Tenn., has won the Academy of Country Music's (ACM) station of the year award. KSON San Diego morning hosts Tony & Kris have been named ACM's air personalities of the year. The Messina Group's Louis Messina is the winner in the Don Romeo talent buyer/promoter of the year category. Nashville's Wildhorse Saloon won in the nightclub of the year category. The Mandalay Bay Resort & Casino in Las Vegas is the winner in the casino of the year category.

In related news, the ACM's annual online auction to benefit St. Jude Children's Research Hospital has already received commitments for donated items from Alabama, Toby Keith, Willie Nelson, Tim McGraw, Sheryl Crow, Lee Ann Womack, and Emerson Drive. Keith donated a 10-night Caribbean cruise to the auction. Other artists will donate something they wore or used during the show or at rehearsal. The auction will be held May 22-26 on CMT's Web site.

Meanwhile, Wynonna, Diamond Rio, LeAnn Rimes, and Terri Clark have been added as performers for the May 21 ACM Awards telecast. Presenters will include Kellie Coffey, Jennifer Hanson, Rebecca Lynn Howard, Joe Nichols, Blake Shelton, Darryl Worley, Emerson Drive, Pinmonkey, and NASCAR driver Tony Stewart.

TREVINO GOES FOR A RUN WITH WB

Former Columbia Records artist Rick Trevino, best-known for his 1996 No. 1 single "Running Out of Reasons to Run" and five other top 10 hits in the '90s, has signed with Warner Bros. Records in Nashville. The label will release his new album, *In My Dreams*, in September, and a first single will go to radio in June. The album was produced by Mavericks singer Raul Malo and executive-produced by Paul Worley.

Buddy Jewell, a 41-year-old Nashville demo singer, has scored a recording contract with Sony Music Nashville as the winner in USA Network's *Nashville Star* competition. Clint Black

will produce his debut album. Jewell's first single, "Pour Out the Rain," has been shipped to country radio.

CMT has signed on as the media sponsor of the Dixie Chicks' Top of the World tour. The network previously partnered with the group for its Fly tour.

Scott Welch, a principal in Mosaic Media, will move from Los Angeles to Nashville in June to open a Music City arm of Mosaic's management agency, according to *Billboard Bulletin*. Mosaic already has a Nashville publishing firm, run by Lionel Conway. Welch takes with him clients that include Alanis Morissette, Atlantic act Billy Talent, and new client LeAnn Rimes, who is also relocating from L.A. to Nashville, as reported here last issue.

Leslie Roberts has been appointed manager of A&R at RCA Label Group (RLG). She previously was creative director for Mighty Isis Music. At RLG, she will focus on smaller and independent publishers and song pluggers.

Don Cook is stepping down from his position as senior VP/chief creative officer at Sony/ATV Tree in Nashville but will maintain an office at the music publishing company. Cook will concentrate on his prominent producer/songwriter career and will not be replaced at Sony/ATV Tree.

Universal South Records senior partner Tony Brown has been flown from UCLA Medical Center to Nashville's Centennial Hospital, where he was listed in fair condition at press time. Brown has been hospitalized since he fell and hit his head in an April 11 accident in L.A. (*Airplay Monitor*, April 18).

Blake Shelton has been tapped to open Toby Keith's 2003 tour.

Former Great American Country producer Tamara Saviano has launched Nashville-based American Roots Publishing, a nonprofit organization that publishes and distributes the works of American artists including writers, poets, singers, songwriters, and visual artists. Joe Ely's debut novel, *Super Reverb*, will be the company's first release in spring 2004.

a little differently. He had the nads to try it, even if it didn't work as well as they hoped."

"WSIX is just a hell of a radio station," says Kelly, who used to be the PD there. "The biggest obstacle we've had to overcome is that WSIX is a great radio station. They're not doing anything to chase listeners away."

Back at WKDF, Kelly credits the station's personnel for its success. "The staff is just phenomenal. They're all pros, and they're all hungry."

The vibe in the building is also key. "Another thing we do is try to have fun," Kelly says. "This is radio the way everybody used to love it. You come in and do the job every day, but you have fun."

Having met his short-term goal of becoming the No. 1 country station in Nashville, Kelly now wants even more. "I think that country has a place at the top of the ratings in Nashville," he says. "That's my ultimate goal."

Songs posting gains in detections or with a percentage loss in detections equal to or better than the monitored downtime percentage in the format. Songs listed in order of detections.

TOP 10 BOUND

JIMMY WAYNE 3226/179 Stay Gone (DreamWorks)

Table with columns: City, Station, and Airplay Additions. Lists stations like WLSW, WYUZ, WYUZ, etc.

JESSICA ANDREWS 2605/4 There's More To Me Than You (DreamWorks)

Table with columns: City, Station, and Airplay Additions. Lists stations like WYUZ, WYUZ, WYUZ, etc.

JEFF BATES 2970/49 The Love Song (RCA)

Table with columns: City, Station, and Airplay Additions. Lists stations like WYUZ, WYUZ, WYUZ, etc.

GEORGE STRAIT 2255/133 Tell Me Something Bad About Tulsa (MCA Nashville)

Table with columns: City, Station, and Airplay Additions. Lists stations like WYUZ, WYUZ, WYUZ, etc.

BRAD PAISLEY 1991/312 Celebrity (Arista Nashville)

Table with columns: City, Station, and Airplay Additions. Lists stations like WYUZ, WYUZ, WYUZ, etc.

CRAIG MORGAN 3015/264 Almost Home (Broken Bow)

Table with columns: City, Station, and Airplay Additions. Lists stations like WYUZ, WYUZ, WYUZ, etc.

TRACY BYRD 2646/129 The Truth About Men (RCA)

Table with columns: City, Station, and Airplay Additions. Lists stations like WYUZ, WYUZ, WYUZ, etc.

JO DEE MESSINA 2368/88 Was That My Life (Curb)

Table with columns: City, Station, and Airplay Additions. Lists stations like WYUZ, WYUZ, WYUZ, etc.

BRIAN MCCOMAS 1923/166 99.9% Sure (I've Never Been Here Before) (Lyric Street)

Table with columns: City, Station, and Airplay Additions. Lists stations like WYUZ, WYUZ, WYUZ, etc.

BROOKS & DUNN 2023/506 Red Dirt Road (Arista Nashville)

Table with columns: City, Station, and Airplay Additions. Lists stations like WYUZ, WYUZ, WYUZ, etc.

MONTGOMERY GENTRY 2976/107 Speed (Columbia)

Table with columns: City, Station, and Airplay Additions. Lists stations like WYUZ, WYUZ, WYUZ, etc.

NO RECORDS QUALIFIED FOR AIRPOWER THIS WEEK

Table with columns: City, Station, and Airplay Additions. Lists stations like WYUZ, WYUZ, WYUZ, etc.

AIRPOWER BOUND

Table with columns: City, Station, and Airplay Additions. Lists stations like WYUZ, WYUZ, WYUZ, etc.

KID ROCK FEAT. SHERYL CRAW OR ALLISON MOORE 2223/26 Picture (Lava/Atlantic/Universal South/WRN)

Table with columns: City, Station, and Airplay Additions. Lists stations like WYUZ, WYUZ, WYUZ, etc.

AIRPLAY MONITOR

Table with columns: City, Station, and Airplay Additions. Lists stations like WYUZ, WYUZ, WYUZ, etc.

AIRPLAY MONITOR

Table with columns: City, Station, and Airplay Additions. Lists stations like WYUZ, WYUZ, WYUZ, etc.

AIRPLAY MONITOR

Table with columns: City, Station, and Airplay Additions. Lists stations like WYUZ, WYUZ, WYUZ, etc.

AIRPLAY MONITOR

Table with columns: City, Station, and Airplay Additions. Lists stations like WYUZ, WYUZ, WYUZ, etc.

AIRPLAY MONITOR

Table with columns: City, Station, and Airplay Additions. Lists stations like WYUZ, WYUZ, WYUZ, etc.

AIRPLAY MONITOR

Table with columns: City, Station, and Airplay Additions. Lists stations like WYUZ, WYUZ, WYUZ, etc.

H=Heavy (45+ Detections), M=Medium (25-44), L=Light (Under 25). Airpower awarded to songs appearing in the top 20 on both the Airplay and Audience charts for the first time in summary form. Airplay Adds are songs with 6 or more detections at new stations this week. The Airplay Leaderboard ranks taste-maker stations that have been the most successful in identifying future hit songs as measured by the amount of AIRPOWER titles for which they were Airplay Leaders. Refer to each format's Power Playlists page to see this week's Airplay Leaders.

IMPACT!



Nielsen Broadcast Data Systems

Songs posting gains in detections or with a percentage loss in detections equal to or better than the monitored downtime percentage in the format. Songs listed in order of detections.

*Indicates station experienced between 24 and 56 hours of monitored downtime during the chart week.

Table with columns for station, song, and detections. Includes Memphis, Austin, W.P. Beach, etc.

SHANIA TWAIN 1861/246 Forever And For Always (Mercury) Total Stations: 136 Chart Move: 28-27

Table with columns for station, song, and detections. Includes L.A., Chicago, Phila., Dallas, etc.

TRACE ADKINS 1538/99 Then They Do (Capitol) Total Stations: 139 Chart Move: 30-30

Table with columns for station, song, and detections. Includes L.A., Chicago, Phila., Dallas, etc.

TOP 30 BOUND

SARA EVANS 1467/84 Backseat Of A Greyhound Bus (RCA) Total Stations: 140 Chart Move: 31-31

DUSTY DRAKE 1133/28 One Last Time (Warner Bros./WRN) Total Stations: 123 Chart Move: 33-32

MARK WILLS 926/88 When You Think Of Me (Mercury) Total Stations: 123 Chart Move: 36-35

VINCE GILL 820/145 Someday (MCA Nashville) Total Stations: 124 Chart Move: 37-37

TERRI CLARK 726/125 Three Mississippi (Mercury) Total Stations: 123 Chart Move: 38-38

DIERKS BENTLEY 562/106 What Was I Thinkin' (Capitol) Total Stations: 79 Chart Move: 41-39

CLAY WALKER 555/253 A Few Questions (RCA) Total Stations: 74 Chart Move: 48-40

JOE NICHOLS 510/216 She Only Smokes When She Drinks (Universal South) Total Stations: 64 Chart Move: 49-41

WYNNONA 496/296 What The World Needs (Asylum-Curb) Total Stations: 86 Chart Move: 55-42

EMERSON DRIVE 485/45 Only God (Could Stop Me Loving You) (DreamWorks) Total Stations: 75 Chart Move: 42-44

LEANN RIMES 398/7 Suddenly (Asylum-Curb) Total Stations: 72 Chart Move: 44-46

TRICK PONY 362/53 A Boy Like You (Warner Bros./WRN) Total Stations: 68 Chart Move: 57-47

AARON LINES 338/20 Love Changes Everything (RCA) Total Stations: 52 Chart Move: 45-48

FAITH HILL 338/65 You're Still Here (Warner Bros./WRN) Total Stations: 47 Chart Move: 52-49

BILLY CURRINGTON 315/104 Walk A Little Straighter (Mercury) Total Stations: 43 Chart Move: 53-50

BRAD MARTIN 295/10 One Of Those Days (Epic/EMN) Total Stations: 45 Chart Move: 50-52

RUSHLOW 279/89 I Can't Be Your Friend (Lyric Street) Total Stations: 41 Chart Move: 56-53

CLINT DANIELS 208/86 The Letter (Almost Home) (Epic/EMN) Total Stations: 66 Chart Move: Debut 56

RACHEL PROCTOR 166/78 Days Like This (BNA) Total Stations: 35 Chart Move: Debut 57

CHARLIE ROBISON 165/105 Walter (Lucky Dog/Columbia) Total Stations: 59 Chart Move: Debut 58

TIM MCGRAW 116/11 Real Good Man (Curb) Total Stations: 8 Chart Move: Debut 60

KENNY ROGERS 91/3 I'm Missing You (Dreamcatcher) Total Stations: 14 Chart Move: Debut 60

DEANA CARTER 85/46 I'm Just A Girl (Arista Nashville) Total Stations: 28 Chart Move: Debut 60

NORAH JONES 83/83 Wurlitzer Prize (I Don't Want To Get Over You) (Dualtone) Total Stations: 42 Chart Move: Debut 60

PAT GREEN 80/71 Wave On Wave (Republic/Universal South) Total Stations: 19 Chart Move: Debut 60

TIM MCGRAW 69/16 Tiny Dancer (Curb) Total Stations: 13 Chart Move: Debut 60

CHAD BROCK 66/21 It's A Woman Thing (Broken Bow) Total Stations: 21 Chart Move: Debut 60

KENNY CHESNEY 58/2 Live Those Songs (BNA) Total Stations: 4 Chart Move: Debut 60

JAMIE O'NEAL 54/51 Every Little Thing (Mercury) Total Stations: 31 Chart Move: Debut 60

Medium (0), Light (31) Airplay Adds: 1 WGGY

KENNY CHESNEY 49/35 No Shoes, No Shirt, No Problems (BNA) Total Stations: 13 Chart Move: Debut 60

TOBY KEITH 37/33 Good To Go To Mexico (DreamWorks) Total Stations: 2 Chart Move: Debut 60

LISA MARIE PRESLEY 36/3 Lights Out (Capitol) Total Stations: 8 Chart Move: Debut 60

BLAKE SHELTON 34/34 Playboys Of The Southwestern World (Warner Bros./WRN) Total Stations: 2 Chart Move: Debut 60

SHANIA TWAIN 33/4 She's Not Just A Pretty Face (Mercury) Total Stations: 8 Chart Move: Debut 60

PAT GREEN 33/2 A Guy Like Me (Republic/Universal South) Total Stations: 2 Chart Move: Debut 60

SHANIA TWAIN 33/4 She's Not Just A Pretty Face (Mercury) Total Stations: 8 Chart Move: Debut 60

PAT GREEN 33/2 A Guy Like Me (Republic/Universal South) Total Stations: 2 Chart Move: Debut 60

FAITH HILL 29/0 Free (Warner Bros./WRN) Total Stations: 1 Chart Move: Debut 60

KENNY CHESNEY 28/0 Never Gonna Feel That Way Again (BNA) Total Stations: 1 Chart Move: Debut 60

CAROLYN DAWN JOHNSON 25/4 Masterpiece (Arista Nashville) Total Stations: 1 Chart Move: Debut 60

H=Heavy (45+ Detections), M=Medium (25-44), L=Light (Under 25). Airpower awarded to songs appearing in the top 20 on both the Airplay and Audience charts for the first time with increases in both detections and audience.



Radio Looks In Apple's Store Window

Continued from page 1

I've heard or read indicates the vast majority of consumers really buy into the 'downloading is stealing' idea. That being said, if it's as easy and user-friendly as it seems, it has potential to be a great service."

Calling Apple's new initiative "a baby step in the right direction," Edison Media Research consultant Jayne Charneski also questions whether users will be willing to pay. "The no monthly fee thing is an improvement over the subscription model," she says. "But it's pretty hard to compete with 'free' no matter how low the cost per song or how user-friendly the service is. Until attitudes about downloading change, the vast majority of downloaders will not pay for something they think should be free."

"Our research shows that the majority of music downloaders do have some reservations about artists and labels not being compensated but download music for free anyway," Charneski continues. "This is especially true among teens. There is a huge misconception out there that the true cost of a music CD is no different than the cost of a CD-R. The cost of A&R, marketing, promotion, videos, and so on is rarely taken into consideration by the average consumer. So it's no wonder consumers think CDs are overpriced and are driven to file-swapping sites."

Yet others say they would have no problem forking over money for a download of good quality. "I like the idea of Apple having enough relations with labels to propagate their list of songs that people would actually want to download," modern KITS (Live 105) San Francisco PD Sean Demery says. "More important, I like the idea of a centralized server that ensures that your download will be clean and high quality. I've done a fair share of downloading in the last two years, and if little Johnny in Dubuque, Iowa, has an old-time sound card in his computer and he rips a song, it can sound like shit even if it's

at 196k. It's great that Apple has been the conduit to get all these companies together to sell their music. I'll gladly download music for 99 cents apiece if I can be assured it's a clean, non-bullshit copy."

Calling the iTunes Music Service a "good start," modern rock WBCN Boston PD Oedipus thinks that 99 cents is too much to pay. "Just think if 100 million people were paying a dime a song. It should either be a dime a song or a flat rate, like you do for a cable package. You pay a flat rate, and you get everything you want. They can monitor what's being downloaded, and they could figure out the royalty rates that way."

SHOULD RADIO BE I-RATE?

Radio people were divided on the service's potential impact on their medium. Active rock KRXQ (98 Rock) Sacramento, Calif., PD Pat Martin sees iTunes as yet another in a list of listener distractions. "Anything that takes time away from listening to the radio will have an adverse effect on us," he says. "Generally, it's not any one thing that hurts radio. It's a cumulative effect from all of the elements, [like] the Internet, cable TV, videogames, and satellite radio."

But Demery doesn't see the service having that much of an effect on radio. "Anybody who understands what radio's place is in all this would understand that radio is the Siskel & Ebert of the music industry. Their job is to bring the best new product and give it a thumbs up or thumbs down to the consumer so that the consumer will download it for themselves."

Oedipus agrees that radio acts as a filter for popular music. "There's so much music out there that radio can provide that we can weed through a lot of music and present the best music," he says. "When listeners hear it, they can go out and buy it or download it. That's what we do."

And as far as practical applications that radio can bring away from the new service, Virgin head of rock formats Steve Leeds says that iTunes will "probably be a good place to sniff around and see what the early adapters are buying as an indication of what the public's clamoring for." Demery, however, says he's already going to online media-measurement company bigchampaigne.com for that information.

From the label standpoint, anything's better than songs being downloaded for free. "Any opportunity to get music exposed and into more hands is a good thing," Leeds says. "And with revenue attached to it, it's fantastic. It's a legitimate place where people can go to hear and purchase music in a new way. If it's a new venue and vehicle for exposing music and for consumers to purchase, that's always a good thing. Now more people can legally obtain music, and the artist gets paid, so that's good too."

Arista's Dave Lombardi brings up the point that the best-selling albums are among the most available via file-sharing services. "You've got Eminem, Avril Lavigne, 50 Cent—and Linkin Park isn't hurting either," he says. "People are still buying records, and you've got to figure that something that's sold the most is going to be the most readily available. Wouldn't that mean that the most people would have it to post?"

And after a sales slump over the past decade, iTunes' initial success just might herald the return of the single. "This shows that if people have the opportunity to spend the money, they will, even if it's just for a song," Lombardi says. "The business used to be predicated on single sales. Retailers obviously care about singles, because they drive a lot of traffic. If it's a way for people to get into a record and sample an artist, maybe that's a gateway to buying the full album. If it's not, I question whether those people would have bought the album anyway."

3 P.M. FRIDAY: WASHINGTON, D.C.



WWDC
CLEAR CHANNEL



WHFS
INFINITY

311, "All Mixed Up"
Foo Fighters, "Times Like These"
The Black Crowes, "Hard to Handle"
Radiohead, "Karma Police"
3 Doors Down, "When I'm Gone"
Beastie Boys, "Paul Revere"
Chevelle, "Send the Pain Below"
Nine Inch Nails, "Closer"
Incubus, "Wish You Were Here"
Sublime, "Santeria"
U2, "With or Without You"
Queens of the Stone Age, "No One Knows"

Trapt, "Headstrong"
Green Day, "Welcome to Paradise"
Nirvana, "Smells Like Teen Spirit"
Finch, "What It Is to Burn"
Alice in Chains, "Would?"
Audioslave, "Like a Stone"
Sum 41, "Still Waiting"
Weezer, "Buddy Holly"
Jack Johnson, "Holes to Heaven"
Screaming Trees, "Nearly Lost You"
Zwan, "Honestly"

For Those About To Race . . .



Heritage WKLS (96 Rock) Atlanta welcomed AC/DC's Brian Johnson to co-host a live broadcast with afternoon team Dick & Justice. Johnson was in town for the Mitty Challenge, a racing event. Pictured, from left, are Johnson's co-driver Ralph Kelleners, Dick, Johnson, and Justice.

What's On Your iPod?

iTunes works best with Apple's iPod, the most popular of the MP3 players. Those who own iPods have already put them to practical use. Virgin's Steve Leeds uses the iRock, a wireless transmitter that plugs into the headphone jack of the iPod, allowing it to play through a car stereo. "If I'm with a program director and I want to play them something but their CD changer is in the trunk, I can just play it through his stereo," he says. And Arista's Dave Lombardi notes that "ultimately, you could send all your record reps out into the field and on the road with all the priority tracks for every format on the iPod, play them for the stations by plugging them into the existing stereo, and in some cases, just plug them into the station's equipment and download the tracks."

Leeds says that his iPod contains "a whole bunch of Virgin things, including the new Blur CD, as well as some really obscure old stuff, like Crow's 'Evil Woman Don't Play Your Games With Me,' the Free Design's 'Kites Are Fun,' and Stan Getz's 'The Girl From Ipanema.'" He enjoys listening to his iPod at home in random rotation on the weekends. "It's always fun to hear a Massive Attack track into the Electric Prunes segued into a Ben Harper track, followed by music from the Kissing Jessica Stein soundtrack."

WBCN Boston's Oedipus uses his iPod every other day, when he's working out. He says that he puts all kinds of music on his iPod, from rock to classical to opera to R&B. He names the Postal Service and 50 Cent as two recent acts he has loaded onto his iPod.

RADIO CONCERT MONITOR

DATE	STATION	EVENT	PROMOTIONS DIRECTOR
May 10	KLEC Little Rock, Ark.	Fifth Annual Birthday Bash	Marty Oehlhof
		APPEARING: Fed(Planet Earth), Popsonic, Reach 454, Revis, Saliva, Socialburn, Starkz	
May 10	KTBS Houston	Buzz Fest XI	Clayann Meabon
		APPEARING: the All-American Rejects, Breaking Benjamin, Evanescence, the Exies, Godsmack, Maroon 5, MXPX, New Found Glory, Riddlin' Klds, Seether, Socialburn	
May 17	KDGE Dallas	Edgefest 12	Sam Grafford
		APPEARING: the All-American Rejects, Evanescence, the Fags, Good Charlotte, Maroon 5, MXPX, New Found Glory, Riddlin' Kids, Seether, Socialburn	
May 17	KXTE Las Vegas	Our Big Concert 6	Mary Helen Ciaravino
		APPEARING: Blindside, Deftones, Mudvayne, S.T.U.N., Social Distortion, Taking Back Sunday, Taproot, Trapt, the Used	
May 18	WDYL Richmond, Va.	Y101 Birthday Bash	Vivian Oswald
		APPEARING: A Simple Plan, Chevelle, Cold, the Exies, Gob, Ben Kweller, River City High, Taking Back Sunday, Theory of a Deadman, Unloco	

Let us monitor your event! Call Bram Teitelman at 646-654-4727 or e-mail bteitelman@airplaymonitor.com

WE DON'T DO WINDOWS . . . YET

Despite all of the pluses that the iTunes Music Store has, many of the people *Monitor* spoke with are reserving judgment until the end of the year, when it becomes available to the majority of computer users operating with Windows. "We need to wait until the end of the year, when the service extends beyond the Apple OS X operat-

ing system, to gauge how well it's going to do," Charneski says. "It helps that Apple—a well-respected, trendy brand—is behind the service."

Lombardi agrees. "Only [a small percentage] of the nation's computers are Macs. So until they come up with Windows-compatible software, we won't really know much, because availability is so limited."

MODERN ROCK POWER PLAYS



Nielsen Broadcast Data Systems

Songs ranked by number of detections. Playlists are listed in order of TSA weekly cumes, beginning with the highest-cuming station. Cumes are updated twice yearly following the release of the spring and fall Arbitron surveys. The number of stations shown each week varies depending upon space.

Airplay Adds (LA) denotes songs with 6 or more detections at station for first time this week.

AIRPLAY LEADERBOARD

THE STATIONS THAT BREAK THE HITS

#1 92.1 KFSB

KFSB San Diego, CA (PD: Jeremy Pritchard) Airplay Leader Designations: 5

#2 KITS, San Francisco, CA (PD/MD: Demery/Axelsen) 4

#3 KROQ, Los Angeles, CA (PD/MD: Weatherly/Worden) 4

#4 KNDD, Seattle, WA (PD: Phil Manning) 3

#5 WMRQ, Hartford, CT (PD/MD: Thomas/Kelly) 3

Refer to Impact page for this week's Airplay Leaders and Airplay Leaderboard rules.

WXRK New York PD: Steve Kingston MD: Mike Peer Infinity 212-314-9230

Table with 2 columns: Rank and Song/Station. Top songs include Goldplay Clocks, Audioslave Like A Stone, The White Stripes Seven Nation Army.

KROQ Los Angeles Sr. VP/Pgm: Kevin Weatherly APD: Gene Sandblom MD: Lisa Worden Infinity 323-930-1067

Table with 2 columns: Rank and Song/Station. Top songs include The White Stripes Seven Nation Army, Red Hot Chili Peppers Can't Stop, Evanesence Featuring Paul M Bring Me T.

WKQX Chicago PD: Tim Richards APD/MD: Mary Shumina Emmis 312-527-8348

Table with 2 columns: Rank and Song/Station. Top songs include Linkin Park Somewhere I Belong, Trap Headstrong, Evanesence Featuring Paul M Bring Me T.

WBCN Boston VP/Pgm: Oedipus APD/MD: Steven Strick AMD: Josh Aarons Infinity 617-266-1111

Table with 2 columns: Rank and Song/Station. Top songs include Audioslave Like A Stone, Evanesence Featuring Paul M Bring Me T, The White Stripes Seven Nation Army.

WWDC Washington, DC PD: Buddy Rizer MD: Leann Curtis Clear Channel 301-587-7100

Table with 2 columns: Rank and Song/Station. Top songs include Linkin Park Somewhere I Belong, Evanesence Featuring Paul M Bring Me T, Audioslave Like A Stone.

WZZM Chicago PD: Bill Gamble APD: Steve Levy MD: James VanOsdol ABC 312-984-9923

Table with 2 columns: Rank and Song/Station. Top songs include Linkin Park Somewhere I Belong, Evanesence Featuring Paul M Bring Me T, Trap Headstrong.

WHFS Washington, DC PD: Robert Benjamin APD: Bob Waugh MD: Pat Ferrise Infinity 301-306-0991

Table with 2 columns: Rank and Song/Station. Top songs include Audioslave Like A Stone, Linkin Park Somewhere I Belong, Evanesence Featuring Paul M Bring Me T.

KDGE Dallas PD: Duane Doherty APD/MD: Alan Ayo Clear Channel 972-770-7777

Table with 2 columns: Rank and Song/Station. Top songs include Live Heaven, Audioslave Like A Stone, The White Stripes Seven Nation Army.

KTBB Houston PD: Vince Richards APD: Eric Schmidt Clear Channel 713-968-1067

Table with 2 columns: Rank and Song/Station. Top songs include Chevelle Send The Pain Below, Trap Headstrong, Evanesence Featuring Paul M Bring Me T.

WPLY Philadelphia PD: Jim McGuinn MD: Dan Fein Radio One 610-276-1100

Table with 2 columns: Rank and Song/Station. Top songs include Audioslave Like A Stone, The White Stripes Seven Nation Army, Trap Headstrong.

KITS San Francisco PD: Sean Deery MD: Aron Axelsen Infinity 415-402-6700

Table with 2 columns: Rank and Song/Station. Top songs include Foo Fighters Times Like These, The White Stripes Seven Nation Army, Audioslave Like A Stone.

WNNX Atlanta Dir/Pgm: Leslie Fram PD: Chris Williams MD: Jay Harren Susquehanna 404-266-0997

Table with 2 columns: Rank and Song/Station. Top songs include Evanesence Featuring Paul M Bring Me T, Linkin Park Somewhere I Belong, Eminem Sing For The Moment.

CIMX Detroit PD: Murray Brookshaw APD: Vince Cannova MD: "Phat" Matt Franklin CHUM Group 519-258-8888

Table with 2 columns: Rank and Song/Station. Top songs include Evanesence Featuring Paul M Bring Me T, Chevelle Send The Pain Below, Trap Headstrong.

KNDD Seattle PD: Phil Manning APD: Jim Keller Entercom 206-622-3251

Table with 2 columns: Rank and Song/Station. Top songs include The White Stripes Seven Nation Army, Audioslave Like A Stone, Evanesence Featuring Paul M Bring Me T.

KZON Phoenix PD: Tim Maranville APD/MD: Kevin Mannion Infinity 602-258-8181

Table with 2 columns: Rank and Song/Station. Top songs include Avr11 Lovers Losing Grip, Trap Headstrong, Audioslave Like A Stone.

WZTA Miami OM: Rob Roberts Dir/Rock Pgm: Troy Hanson APD/MD: Ryan Castle Clear Channel 954-862-2000

Table with 2 columns: Rank and Song/Station. Top songs include Linkin Park Somewhere I Belong, Trap Headstrong, The White Stripes Seven Nation Army.

XTRA San Diego PD: Bryan Schock Clear Channel 858-292-2000

Table with 2 columns: Rank and Song/Station. Top songs include Audioslave Like A Stone, Linkin Park Somewhere I Belong, The White Stripes Seven Nation Army.

WXDX Pittsburgh OM: John Moschitta MD: Winnie Ferguson Clear Channel 412-937-1441

Table with 2 columns: Rank and Song/Station. Top songs include Audioslave Like A Stone, Evanesence Featuring Paul M Bring Me T, Linkin Park Somewhere I Belong.

KTCL Denver Dir/Pgm: Mike O'Connor Interim MD: Hill Jordan Clear Channel 303-713-8000

Table with 2 columns: Rank and Song/Station. Top songs include Jimmy Eat World A Praise Chorus, Trap Headstrong, Evanesence Featuring Paul M Bring Me T.

WLIR Long Island PD/MD: Gary Cee Jarad 516-222-1103

Table with 2 columns: Rank and Song/Station. Top songs include Evanesence Featuring Paul M Bring Me T, Fishchopper Emerge, Train Calling All Angels.

WJRR Orlando PD: Pat Lynch MD: Brian Dickerman Clear Channel 407-916-7790

Table with 2 columns: Rank and Song/Station. Top songs include Linkin Park Somewhere I Belong, Trap Headstrong, Audioslave Like A Stone.

KPNT St. Louis PD: Tommy Mattern APD: Woody Fife MD: Frizz Emmis 314-231-1057

Table with 2 columns: Rank and Song/Station. Top songs include Finch What It Is To Burn, Trap Headstrong, Red Hot Chili Peppers Can't Stop.

WOCL Orlando PD: Alan Smith APD/MD: Bobby Smith Infinity 407-919-1000

Table with 2 columns: Rank and Song/Station. Top songs include The White Stripes Seven Nation Army, Evanesence Featuring Paul M Bring Me T, Red Hot Chili Peppers Can't Stop.

TOP 10 BOUND

THE ATARIS 1804/51

Total Stations: 82 Chart Move: 11-11 H (20), M (35), L (27) Airplay Adds: 1

Table listing stations and their respective counts for 'THE ATARIS'.

SUM 41 1589/35

The Hell Song (Island/IDJMG) Total Stations: 75 Chart Move: 13-15 H (11), M (42), L (22) Airplay Adds: 1

Table listing stations and their respective counts for 'SUM 41'.

COLD 1584/104

Stupid Girl (Flip/Geffen/Interscope) Total Stations: 76 Chart Move: 15-16 H (15), M (44), L (17) Airplay Adds: 1

Table listing stations and their respective counts for 'COLD'.

P.O.D. 1531/149

Sleeping Awake (Maverick/Reprise) Total Stations: 76 Chart Move: 18-17 H (12), M (42), L (22) Airplay Adds: 3

Table listing stations and their respective counts for 'P.O.D.'.

ARPOWER

DEFTONES 1676/459

Minerva (Maverick/Reprise) Total Stations: 80 Chart Move: 22-12 H (17), M (38), L (25) Airplay Adds: 11

Table listing stations and their respective counts for 'DEFTONES'.

QUEENS OF THE STONE AGE 1617/143

Go With The Flow (Interscope) Total Stations: 79 Chart Move: 16-13 H (13), M (46), L (20) Airplay Adds: 1

Table listing stations and their respective counts for 'QUEENS OF THE STONE AGE'.

Woxy - Cincinnati, OH

PD: Matt Taylor MD: Matt Shiverdecker Date: 01/19/03

Table listing stations and their respective counts for 'WOXY'.

SEETHER 1420/96

Driven Under (Wind-up) Total Stations: 68 Chart Move: 19-19 H (14), M (35), L (19) Airplay Adds: 2

Table listing stations and their respective counts for 'SEETHER'.

3 DOORS DOWN 1008/24

The Road I'm On (Republic/Universal/UMRG) Total Stations: 54 Chart Move: 27-24 H (7), M (29), L (18) Airplay Adds: 1

Table listing stations and their respective counts for '3 DOORS DOWN'.

SALIVA 1312/48

Rest In Pieces (Island/IDJMG) Total Stations: 63 Chart Move: 21-21 H (15), M (31), L (17) Airplay Adds: 2

Table listing stations and their respective counts for 'SALIVA'.

REVIS 1108/37

Caught In The Rain (Epic) Total Stations: 62 Chart Move: 25-22 H (7), M (26), L (29) Airplay Adds: 1

Table listing stations and their respective counts for 'REVIS'.

RADIOHEAD 1010/189

There There (Capitol) Total Stations: 68 Chart Move: 30-23 H (3), M (31), L (34) Airplay Adds: 6

Table listing stations and their respective counts for 'RADIOHEAD'.

SMILE EMILY SOUL 798/159

Bottom Of A Bottle (Lava) Total Stations: 60 Chart Move: 35-30 H (3), M (25), L (32) Airplay Adds: 4

Table listing stations and their respective counts for 'SMILE EMILY SOUL'.

COLDPLAY 982/60

The Scientist (Capitol) Total Stations: 66 Chart Move: 28-25 H (6), M (26), L (34) Airplay Adds: 4

Table listing stations and their respective counts for 'COLDPLAY'.

TAPROOT 928/47

Mine (Velvet Hammer/Anticon) Total Stations: 58 Chart Move: 29-27 H (4), M (24), L (30) Airplay Adds: 1

Table listing stations and their respective counts for 'TAPROOT'.

MARILYN MANSON 853/110

Mobscene (Nothing/Interscope) Total Stations: 57 Chart Move: 32-29 H (2), M (24), L (31) Airplay Adds: 4

Table listing stations and their respective counts for 'MARILYN MANSON'.

LINKIN PARK 630/90

Faint (Warner Bros.) Total Stations: 40 Chart Move: Debut 35 H (4), M (17), L (19) Airplay Adds: 3

Table listing stations and their respective counts for 'LINKIN PARK'.

CAVE IN 650/76

Anchor (RCA/RMG) Total Stations: 57 Chart Move: 40-35 H (1), M (16), L (40) Airplay Adds: 5

Table listing stations and their respective counts for 'CAVE IN'.

LIVE 664/36

Heaven (Radioactive/MCA) Total Stations: 39 Chart Move: 36-34 H (6), M (16), L (17) Airplay Adds: 0

Table listing stations and their respective counts for 'LIVE'.

SMILE EMILY SOUL 798/159

Bottom Of A Bottle (Lava) Total Stations: 60 Chart Move: 35-30 H (3), M (25), L (32) Airplay Adds: 4

Table listing stations and their respective counts for 'SMILE EMILY SOUL'.

H=Heavy (30+ Detections), M=Medium (15-29), L=Light (Under 15). Airpower awarded to songs appearing in the top 20 on both the Airplay and Audience charts for the first time with increases in both detections and audience.

PAW Monitor

Nielsen Broadcast Data Systems. Songs posting gains in detections or with a percentage loss in detections equal to or better than the monitored downtime percentage in the format. Songs listed in order of detections.

TOP 10 BOUND

3 DOORS DOWN 913/36

The Road I'm On (Republic/Universal/UMRG)

Total Stations: 50 Chart Move: 14-11 H (20), M (13), L (17)

Table with columns for station, song title, and chart position. Includes stations like Chicago, San Fran, Philadelphia, etc.

POWERMAN 5000 881/29

Free (DreamWorks)

Total Stations: 56 Chart Move: 16-14 H (17), M (12), L (27)

Table with columns for station, song title, and chart position. Includes stations like Chicago, San Fran, Philadelphia, etc.

REVIS 875/17

Caught In The Rain (Epic)

Total Stations: 53 Chart Move: 15-15 H (14), M (15), L (24)

Table with columns for station, song title, and chart position. Includes stations like Chicago, San Fran, Philadelphia, etc.

MARILYN MANSON 767/71

Mobscene (Nothing/Interscope)

Total Stations: 53 Chart Move: 15-15 H (14), M (15), L (24)

Table with columns for station, song title, and chart position. Includes stations like Chicago, San Fran, Philadelphia, etc.

AIRPLAY LEADER (FIRST STATION TO 100 PLAYS)

KOXR - Minneapolis, MN

PD: Wade Linder

Date: 05/04/03

Table with columns for station, song title, and chart position. Includes stations like Chicago, San Fran, Philadelphia, etc.

SEETHER 759/66

Driven Under (Wind-up)

AIRPLAY LEADER (FIRST STATION TO 100 PLAYS)

KRAB - Bakersfield, CA PD: Danny Spanks Date: 03/09/03

Total Stations: 47 Chart Move: 22-19 H (17), M (11), L (19)

Table with columns for station, song title, and chart position. Includes stations like Chicago, San Fran, Philadelphia, etc.

AIRPOWER BOUND

DEFTONES 668/164

Minerva (Maverick/Reprise)

Total Stations: 50 Chart Move: 29-21 H (8), M (14), L (28)

Table with columns for station, song title, and chart position. Includes stations like Chicago, San Fran, Philadelphia, etc.

P.O.D. 610/31

Sleeping Awake (Maverick/Reprise)

Total Stations: 48 Chart Move: 27-22 H (9), M (6), L (33)

Table with columns for station, song title, and chart position. Includes stations like Chicago, San Fran, Philadelphia, etc.

BREAKING BENJAMIN 608/16

Skin (Hollywood)

Total Stations: 48 Chart Move: 25-23 H (7), M (11), L (30)

Table with columns for station, song title, and chart position. Includes stations like Chicago, San Fran, Philadelphia, etc.

BLACK LABEL SOCIETY 603/22

Stillborn (Spittire)

Total Stations: 38 Chart Move: 26-24 H (11), M (14), L (13)

Table with columns for station, song title, and chart position. Includes stations like Chicago, San Fran, Philadelphia, etc.

TAPROOT 601/4

Mine (Velvet Hammer/Antiatic)

Total Stations: 48 Chart Move: 24-25 H (8), M (10), L (30)

Table with columns for station, song title, and chart position. Includes stations like Chicago, San Fran, Philadelphia, etc.

SHINE DOWN 505/71

Fly From The Inside (Atlantic)

Total Stations: 45 Chart Move: 31-26 H (6), M (8), L (31)

Table with columns for station, song title, and chart position. Includes stations like Chicago, San Fran, Philadelphia, etc.

UNLOCO 482/20

Failure (Maverick/Reprise)

Total Stations: 45 Chart Move: 30-27 H (4), M (8), L (33)

Table with columns for station, song title, and chart position. Includes stations like Chicago, San Fran, Philadelphia, etc.

DOUBLEDRIVE 437/22

Imprint (Roadrunner/IDJMG)

Total Stations: 35 Chart Move: 32-29 H (5), M (11), L (19)

Table with columns for station, song title, and chart position. Includes stations like Chicago, San Fran, Philadelphia, etc.

SMILE EMPTY SOUL 395/79

Bottom Of A Bottle (Lava)

Total Stations: 37 Chart Move: 35-30 H (4), M (7), L (26)

Table with columns for station, song title, and chart position. Includes stations like Chicago, San Fran, Philadelphia, etc.

PRESENCE 338/39

Tonz Of Fun (Curb)

Total Stations: 36 Chart Move: 36-31 H (3), M (3), L (30)

Table with columns for station, song title, and chart position. Includes stations like Chicago, San Fran, Philadelphia, etc.

QUEENS OF THE STONE AGE 337/48

Go With The Flow (Interscope)

Total Stations: 38 Chart Move: 37-32 H (2), M (6), L (30)

Table with columns for station, song title, and chart position. Includes stations like Chicago, San Fran, Philadelphia, etc.

MEMENTO 225/50

Nothing Sacred (Columbia)

Total Stations: 34 Chart Move: Debut 37 H (0), M (3), L (31)

Table with columns for station, song title, and chart position. Includes stations like Chicago, San Fran, Philadelphia, etc.

LIVE 212/13

Heaven (Radioactive/MCA)

Total Stations: 16 Chart Move: Debut 37 H (3), M (3), L (10)

Table with columns for station, song title, and chart position. Includes stations like Chicago, San Fran, Philadelphia, etc.

CAVE IN 202/17

Anchor (RCA/RMG)

Total Stations: 26 Chart Move: Debut 38 H (0), M (3), L (23)

Table with columns for station, song title, and chart position. Includes stations like Chicago, San Fran, Philadelphia, etc.

CHART BOUND

Total Detections/Gain

RA 155/101

Rectifier (Republic/Universal/UMRG)

Total Stations: 22 Chart Move: Debut 38 H (0), M (3), L (23)

Table with columns for station, song title, and chart position. Includes stations like Chicago, San Fran, Philadelphia, etc.

ETHER SEEDS 143/80

Save Your Own Life (Roadrunner/IDJMG)

Total Stations: 21 Chart Move: Debut 38 H (0), M (3), L (23)

Table with columns for station, song title, and chart position. Includes stations like Chicago, San Fran, Philadelphia, etc.

CLOSURE 127/23

Look Out Below (TVT)

Total Stations: 16 Chart Move: Debut 38 H (0), M (3), L (23)

Table with columns for station, song title, and chart position. Includes stations like Chicago, San Fran, Philadelphia, etc.

DIE TRYING 106/75

Oxygen's Gone (Island/IDJMG)

Total Stations: 21 Chart Move: Debut 38 H (0), M (3), L (23)

Table with columns for station, song title, and chart position. Includes stations like Chicago, San Fran, Philadelphia, etc.

VENDETTA RED 99/26

Shatterday (Epic)

Total Stations: 15 Chart Move: Debut 38 H (0), M (3), L (23)

Table with columns for station, song title, and chart position. Includes stations like Chicago, San Fran, Philadelphia, etc.

ACROMA 92/11

Sun Rises Down (Republic/Universal/UMRG)

Total Stations: 14 Chart Move: Debut 38 H (0), M (3), L (23)

Table with columns for station, song title, and chart position. Includes stations like Chicago, San Fran, Philadelphia, etc.

H=Heavy (21+ Detections), M=Medium (14-20), L=Light (Under 14). Airpower awarded to songs appearing in the top 20 on both the Airplay and Audience charts for the first time with increases in both detections and audience.



Airplay Adds (AA) denotes songs with 6 or more detections at station for first time this week.

POWER PLAYISTS

AIRPLAY LEADERBOARD

THE STATIONS THAT BREAK THE HITS

Table with 2 columns: Rank and Station/Artist. #1 WEWN Cincinnati, OH (PD/MD: Reinhart/Vaske) Airplay Leader Designations: 5.

Refer to Impact! page for this week's Airplay Leaders and Airplay Leaderboard rules.

WLUP Chicago VP/Pgmgr & Dps: Greg Solk Pgm Mgr: Bill Klapproth

Table with 2 columns: Rank and Song/Artist. 1 Ted Nugent Stranglehold, 2 Aerosmith Walk This Way, 3 George Thorogood & The Destroyer Band The Bad To The Bone

WFBQ Indianapolis DM: Marty Bender PD: Mike Thomas MD: Ace Cosby

Table with 2 columns: Rank and Song/Artist. 1 Lynyrd Skynyrd Red White And Blue, 2 Train Calling All Angels, 3 3 Doors Down When I'm Gone

KISW Seattle PD: Dave Richards APD: Kylee Brooks

Table with 2 columns: Rank and Song/Artist. 1 Trapt Headstrong, 2 Chevelle The Red, 3 Queens Of The Stone Age No One Knows

KDKB Phoenix PD: Joe Bonadonna MD: Dock Ellis

Table with 2 columns: Rank and Song/Artist. 1 Audioslave Like A Stone, 2 Foo Fighters All My Life, 3 Train Calling All Angels

WAXQ New York PD: Bob Buchmann APD/MD: Eric Wellman

Table with 2 columns: Rank and Song/Artist. 1 The Allman Brothers Band Firing Line, 2 Lynyrd Skynyrd Red White And Blue, 3 Eric Clapton Higher Ground

WMMR Philadelphia PD: Sam Milkman APD/MD: Ken Zepeto

Table with 2 columns: Rank and Song/Artist. 1 Red Hot Chili Peppers Can't Stop, 2 Audioslave Like A Stone, 3 Linkin Park Somewhere I Belong

WKLS Atlanta Reg. VP/Pgmgr: Tim Duques APD/MD: Jimmy Tidwell

Table with 2 columns: Rank and Song/Artist. 1 3 Doors Down When I'm Gone, 2 Puddle Of Mudd Drift & Die, 3 Saliva Always

WEWN Cincinnati DM/PD: Scott Reinhart MD: Rick "The Dude" Vaske

Table with 2 columns: Rank and Song/Artist. 1 Seether Fine Again, 2 3 Doors Down When I'm Gone, 3 Queens Of The Stone Age No One Knows

WBAB Long Island PD: John Olsen APD/MD: John Parise

Table with 2 columns: Rank and Song/Artist. 1 Audioslave Like A Stone, 2 Santana Featuring Chad Kroeger Why Don't You Stop Now

KLOS Los Angeles PD: Rita Wilde ABC/Disney 310-840-4800

Table with 2 columns: Rank and Song/Artist. 1 Fleetwood Mac Peacekeeper, 2 Santana Evil Ways, 3 Who Who Are You

WDVE Pittsburgh OM: John Moschitta MD: Val Porter

Table with 2 columns: Rank and Song/Artist. 1 3 Doors Down When I'm Gone, 2 Train Calling All Angels, 3 Lynyrd Skynyrd Red White And Blue

KLOL Houston DM: Vince Richards

Table with 2 columns: Rank and Song/Artist. 1 Primus With Ozzy N.I.B., 2 Audioslave Cochise, 3 Seether Fine Again

KSHE St. Louis PD: Rick Balis Emmis 614-621-0095

Table with 2 columns: Rank and Song/Artist. 1 3 Doors Down The Road I'm On, 2 Theory Of A Deadman Make Up Your Mind, 3 Cold Spud God

WHJY Providence PD: Joe Bevilacqua APD: Doug Palmieri MD: John Laurenti

Table with 2 columns: Rank and Song/Artist. 1 Stained Price To Pay, 2 Godsmack Straight Out Of Line, 3 3 Doors Down When I'm Gone



Songs posting gains in detections or with a percentage loss in detections equal to or better than the monitored downtime percentage in the format. Songs listed in order of detections.

IMPACT!

TOP 10 BOUND

SALIVA Rest In Pieces (Island/IDJMG) Total Detections/Gain 232/16

Table with 4 columns: Station, Rank, Song, Gain. New York MTV, WAXQ, KLOS, etc.

AIRPOWER

BLACK LABEL SOCIETY 324/39 Stillborn (Spitfire)

AIRPLAY LEADER (FIRST STATION TO 100 PLAYS)

WDHA - Morristown, NJ PD: Terrie Carr

Table with 4 columns: Station, Rank, Song, Gain. New York MTV, WAXQ, KLOS, etc.

KLOL Houston DM: Vince Richards

Table with 4 columns: Station, Rank, Song, Gain. New York MTV, WAXQ, KLOS, etc.

TRAIN Calling All Angels (Columbia)

NO AIRPLAY LEADER

Table with 4 columns: Station, Rank, Song, Gain. New York MTV, WAXQ, KLOS, etc.

ETHER SEEDS Save Your Own Life (Roadrunner/IDJMG)

12 STONES Crash (Wind-up)

(HED)PLANET EARTH Half The Man (Volcano/Jive)

SOUTHFM Dear Claudia (Brando/MCA)

SMILE EMPTY SOUL Bottom Of A Bottle (Lava)

REVIS Caught In The Rain (Epic)

DOUBLEDRIVE Imprint (Roadrunner/IDJMG)

REVIS Caught In The Rain (Epic)

DOUBLEDRIVE Imprint (Roadrunner/IDJMG)

REVIS Caught In The Rain (Epic)

DOUBLEDRIVE Imprint (Roadrunner/IDJMG)

REVIS Caught In The Rain (Epic)

DOUBLEDRIVE Imprint (Roadrunner/IDJMG)

REVIS Caught In The Rain (Epic)

DOUBLEDRIVE Imprint (Roadrunner/IDJMG)

REVIS Caught In The Rain (Epic)

DOUBLEDRIVE Imprint (Roadrunner/IDJMG)

REVIS Caught In The Rain (Epic)

DOUBLEDRIVE Imprint (Roadrunner/IDJMG)

REVIS Caught In The Rain (Epic)

DOUBLEDRIVE Imprint (Roadrunner/IDJMG)

REVIS Caught In The Rain (Epic)

LIVE Heaven (Radioactive/MCA) Total Stations: 18

FORTY FOOT ECHO Save Me (Hollywood) Total Stations: 21

COLD Stupid Girl (Flip/Geffen/Interscope) Total Stations: 8

EVANESCENCE FEAT. PAUL MCCOY Bring Me To Life (Wind-up) Total Stations: 9

ERIC CLAPTON Higher Ground (Motown/UMRG) Total Stations: 8

UNLOCO Failure (Maverick/Reprise) Total Stations: 12

TAPROOT Mine (Velvet Hammer/Antiatic) Total Stations: 10

SHINE DOWN Fly From The Inside (Atlantic) Total Stations: 14

QUEENS OF THE STONE AGE Go With The Flow (Interscope) Total Stations: 9

P.O.D. Sleeping Awake (Maverick/Reprise) Total Stations: 10

SAMMY AND THE WABOS Hallelujah (Sanctuary) Total Stations: 8

ETHER SEEDS Save Your Own Life (Roadrunner/IDJMG) Total Stations: 6

12 STONES Crash (Wind-up) Total Stations: 6

(HED)PLANET EARTH Half The Man (Volcano/Jive) Total Stations: 21

SOUTHFM Dear Claudia (Brando/MCA) Total Stations: 5

SMILE EMPTY SOUL Bottom Of A Bottle (Lava) Total Stations: 8

REVIS Caught In The Rain (Epic) Total Stations: 18

DOUBLEDRIVE Imprint (Roadrunner/IDJMG) Total Stations: 18

REVIS Caught In The Rain (Epic) Total Stations: 18

DOUBLEDRIVE Imprint (Roadrunner/IDJMG) Total Stations: 18

REVIS Caught In The Rain (Epic) Total Stations: 18

DOUBLEDRIVE Imprint (Roadrunner/IDJMG) Total Stations: 18

REVIS Caught In The Rain (Epic) Total Stations: 18

DOUBLEDRIVE Imprint (Roadrunner/IDJMG) Total Stations: 18

REVIS Caught In The Rain (Epic) Total Stations: 18

DOUBLEDRIVE Imprint (Roadrunner/IDJMG) Total Stations: 18

REVIS Caught In The Rain (Epic) Total Stations: 18

DOUBLEDRIVE Imprint (Roadrunner/IDJMG) Total Stations: 18

REVIS Caught In The Rain (Epic) Total Stations: 18

DOUBLEDRIVE Imprint (Roadrunner/IDJMG) Total Stations: 18

REVIS Caught In The Rain (Epic) Total Stations: 18

DOUBLEDRIVE Imprint (Roadrunner/IDJMG) Total Stations: 18

REVIS Caught In The Rain (Epic) Total Stations: 18

DOUBLEDRIVE Imprint (Roadrunner/IDJMG) Total Stations: 18

REVIS Caught In The Rain (Epic) Total Stations: 18

DOUBLEDRIVE Imprint (Roadrunner/IDJMG) Total Stations: 18

REVIS Caught In The Rain (Epic) Total Stations: 18

DOUBLEDRIVE Imprint (Roadrunner/IDJMG) Total Stations: 18

REVIS Caught In The Rain (Epic) Total Stations: 18

DOUBLEDRIVE Imprint (Roadrunner/IDJMG) Total Stations: 18

REVIS Caught In The Rain (Epic) Total Stations: 18

DOUBLEDRIVE Imprint (Roadrunner/IDJMG) Total Stations: 18

REVIS Caught In The Rain (Epic) Total Stations: 18

DOUBLEDRIVE Imprint (Roadrunner/IDJMG) Total Stations: 18

H=Heavy (24+ Detections), M=Medium (12-23), L=Light (Under 12). Airpower awarded to songs appearing in the top 20 on both the Airplay and Audience charts for the first time with increases in both detections and audience. Initial impact: songs appearing on this page for the first time in summary form. Airplay Adds are songs with 6 or more detections at new stations this week.

MAINSTREAM TOP 40

Table listing top 40 mainstream songs with station call letters and detection counts. Includes entries like WFLY Albany, N.Y., WAEB Allentown, Pa., WYAT Atlanta, etc.

Table listing songs and stations for KFMD Denver, KKDM Des Moines, Iowa, WDRQ Detroit, etc.

Table listing songs and stations for WBLI Long Island, N.Y., KIIS Los Angeles, WJZZ Louisville, Ky., etc.

Table listing songs and stations for WFHN Providence, R.I., KRQQ Tucson, Ariz., WPRO Providence, R.I., etc.

Table listing songs and stations for WKSZ Green Bay, Wisc., WNNK Harrisburg, Pa., WTIC Hartford, Conn., etc.

Table listing songs and stations for KTOZ Springfield, Mo., KYKY St. Louis, WVRV St. Louis, etc.

Table listing songs and stations for KOST Los Angeles, WMCN Madison, Wisc., KVLV McAllen, Texas, etc.

Table listing songs and stations for KSTW San Jose, Calif., KZLZ Albuquerque, WALK Long Island, N.Y., etc.

Table listing radio stations and their top songs, including KXMG Austin, Texas; KISV Bakersfield, Calif.; KKKX Bakersfield, Calif.; WQXS Boston; CKEY Buffalo, N.Y.; WRVZ Charleston, W.Va.; WBBM Chicago; KZFM Corpus Christi; KPRR El Paso, Texas; WBTT Fort Myers, Fla.; KBOS Fresno, Calif.; WHZT Greenville, S.C.; KDDB Honolulu; KXME Honolulu; KLUC Las Vegas; KHTE Little Rock, Ark.; WKPO Madison, Wisc.; WPYM Miami; KTTB Minneapolis; KDON Monterey, Calif.; WKTU New York; WNVZ Norfolk, Va.

Table listing radio stations and their top songs, including KKWD Oklahoma City; KQCH Omaha, Neb.; WPYO Orlando, Fla.; KCAQ Oxnard, Calif.; WRED Portland, Maine; KXJM Portland, Ore.; WXXK Providence, R.I.; KGGI Riverside, Calif.; KSFM Sacramento; KBBT San Antonio; KGJZ San Antonio; XHTZ San Diego; KPTI San Francisco; KYLD San Francisco; KUBE Seattle; KSPW Springfield, Mo.; WLLD Tampa, Fla.; KOHT Tucson, Ariz.; KDGS Wichita, Kan.; WHXT Columbia, S.C.; WAJZ Albany, N.Y.; WFXA Augusta, Ga.; WPRW Augusta, Ga.; WHTA Atlanta; WMYE Atlanta; WFXA Augusta, Ga.; WCKX Columbus, Ohio; WNDW Columbia, S.C.; WJMI Jackson, Miss.; WRJH Jackson, Miss.; WJBT Jacksonville, Fla.; WQSL New Bern, N.C.; WQBT Savannah, Ga.; WZAK Cleveland; WQVE New Orleans; WBLS New York; WBSL Norfolk, Va.; WQHT New York; WVEG Las Vegas; KWID Las Vegas; WBTF Lexington, Ky.; KVEG Las Vegas.

Table listing radio stations and their top songs, including WJNH Baton Rouge, La.; WBHJ Birmingham, Ala.; WBOT Boston; WJMN Boston; WBLK Buffalo, N.Y.; WSSP Charleston, S.C.; WJMH Greensboro, N.C.; WJMZ Greenville, S.C.; WZMX Hartford, Conn.; WWWW Charleston, S.C.; WPEG Charlotte, N.C.; KPTY Houston; WJTT Chattanooga; WEUP Huntsville, Ala.; WWHH Indianapolis; WNPJ Nashville; WKML San Francisco; WUBT Nashville; WIKS New Bern, N.C.; WQSL New Bern, N.C.; KNOU New Orleans; WQUE New Orleans; WJMI Jackson, Miss.; WRJH Jackson, Miss.; WJBT Jacksonville, Fla.; WQSL New Bern, N.C.; WQBT Savannah, Ga.; WZAK Cleveland; WQVE New Orleans; WBLS New York; WBSL Norfolk, Va.; WQHT New York; WVEG Las Vegas; KWID Las Vegas; WBTF Lexington, Ky.; KVEG Las Vegas.

Table listing radio stations and their top songs, including KKDA Dallas; KIPR Little Rock, Ark.; KVSP Oklahoma City; WJUC Toledo, Ohio; WJHM Orlando, Fla.; WPHI Philadelphia; WUSL Philadelphia; WKFR Phoenix; WAMO Pittsburgh; WEDR Miami; WKWK Milwaukee; WBLX Mobile, Ala.; WDKX Rochester, N.Y.; WJWZ Montgomery, Ala.; KBMB Sacramento; WTLZ Saginaw, Mich.; KUUL Salt Lake City; KQXL Baton Rouge, La.; WBBK Birmingham, Ala.; WMGL Charleston, S.C.; WEAS Savannah, Ga.; WBAV Charlotte, N.C.; WVAZ Chicago; WZAK Cleveland; KNOU New Orleans; WQUE New Orleans; WBLS New York; WBSL Norfolk, Va.; WQHT New York; WVEG Las Vegas; KWID Las Vegas; WBTF Lexington, Ky.; KVEG Las Vegas.

Table listing radio stations and their top songs, including WJUC Toledo, Ohio; WJHM Orlando, Fla.; WPHI Philadelphia; WUSL Philadelphia; WKFR Phoenix; WAMO Pittsburgh; WEDR Miami; WKWK Milwaukee; WBLX Mobile, Ala.; WDKX Rochester, N.Y.; WJWZ Montgomery, Ala.; KBMB Sacramento; WTLZ Saginaw, Mich.; KUUL Salt Lake City; KQXL Baton Rouge, La.; WBBK Birmingham, Ala.; WMGL Charleston, S.C.; WEAS Savannah, Ga.; WBAV Charlotte, N.C.; WVAZ Chicago; WZAK Cleveland; KNOU New Orleans; WQUE New Orleans; WBLS New York; WBSL Norfolk, Va.; WQHT New York; WVEG Las Vegas; KWID Las Vegas; WBTF Lexington, Ky.; KVEG Las Vegas.

Table listing radio stations and their top songs, including WJUC Toledo, Ohio; WJHM Orlando, Fla.; WPHI Philadelphia; WUSL Philadelphia; WKFR Phoenix; WAMO Pittsburgh; WEDR Miami; WKWK Milwaukee; WBLX Mobile, Ala.; WDKX Rochester, N.Y.; WJWZ Montgomery, Ala.; KBMB Sacramento; WTLZ Saginaw, Mich.; KUUL Salt Lake City; KQXL Baton Rouge, La.; WBBK Birmingham, Ala.; WMGL Charleston, S.C.; WEAS Savannah, Ga.; WBAV Charlotte, N.C.; WVAZ Chicago; WZAK Cleveland; KNOU New Orleans; WQUE New Orleans; WBLS New York; WBSL Norfolk, Va.; WQHT New York; WVEG Las Vegas; KWID Las Vegas; WBTF Lexington, Ky.; KVEG Las Vegas.

Table listing radio stations and their top songs, including WJUC Toledo, Ohio; WJHM Orlando, Fla.; WPHI Philadelphia; WUSL Philadelphia; WKFR Phoenix; WAMO Pittsburgh; WEDR Miami; WKWK Milwaukee; WBLX Mobile, Ala.; WDKX Rochester, N.Y.; WJWZ Montgomery, Ala.; KBMB Sacramento; WTLZ Saginaw, Mich.; KUUL Salt Lake City; KQXL Baton Rouge, La.; WBBK Birmingham, Ala.; WMGL Charleston, S.C.; WEAS Savannah, Ga.; WBAV Charlotte, N.C.; WVAZ Chicago; WZAK Cleveland; KNOU New Orleans; WQUE New Orleans; WBLS New York; WBSL Norfolk, Va.; WQHT New York; WVEG Las Vegas; KWID Las Vegas; WBTF Lexington, Ky.; KVEG Las Vegas.

Table listing radio stations and their top songs, including WJUC Toledo, Ohio; WJHM Orlando, Fla.; WPHI Philadelphia; WUSL Philadelphia; WKFR Phoenix; WAMO Pittsburgh; WEDR Miami; WKWK Milwaukee; WBLX Mobile, Ala.; WDKX Rochester, N.Y.; WJWZ Montgomery, Ala.; KBMB Sacramento; WTLZ Saginaw, Mich.; KUUL Salt Lake City; KQXL Baton Rouge, La.; WBBK Birmingham, Ala.; WMGL Charleston, S.C.; WEAS Savannah, Ga.; WBAV Charlotte, N.C.; WVAZ Chicago; WZAK Cleveland; KNOU New Orleans; WQUE New Orleans; WBLS New York; WBSL Norfolk, Va.; WQHT New York; WVEG Las Vegas; KWID Las Vegas; WBTF Lexington, Ky.; KVEG Las Vegas.

Table listing radio stations and their top songs, including KKCS Colorado Springs, KWNR Las Vegas, WYLD Roanoke, Va., and WYXX Roanoke, Va.

Table listing radio stations and their top songs, including WSLC Roanoke, Va., WYXX Albany, N.Y., WYXX Knoxville, Tenn., and KFTE Lafayette, La.

Table listing radio stations and their top songs, including WYXX Albany, N.Y., WYXX Knoxville, Tenn., KFTE Lafayette, La., and KXTE Las Vegas.

Table listing radio stations and their top songs, including WYXX Albany, N.Y., WYXX Knoxville, Tenn., KFTE Lafayette, La., and KXTE Las Vegas.

Table listing radio stations and their top songs, including WYXX Albany, N.Y., WYXX Knoxville, Tenn., KFTE Lafayette, La., and KXTE Las Vegas.

Table listing radio stations and their top songs, including WYXX Albany, N.Y., WYXX Knoxville, Tenn., KFTE Lafayette, La., and KXTE Las Vegas.

Table listing radio stations and their top songs, including WYXX Albany, N.Y., WYXX Knoxville, Tenn., KFTE Lafayette, La., and KXTE Las Vegas.

Table listing radio stations and their top songs, including WYXX Albany, N.Y., WYXX Knoxville, Tenn., KFTE Lafayette, La., and KXTE Las Vegas.

JOSH TURNER

“Looking back,
I guess I was Country from the get-go.
My grandmother
introduced me to it, so Country music
was in me from day one.”

“long black train”

On Your Desk Now • Add Date May 19th

MCA
NASHVILLE
RECORDING COMPANY

© 2002 MCA Nashville, a division of UMG Recordings, Inc.