

# Radio & Records

THE MUSIC INDUSTRY NEWSPAPER

VOLUME 2, NUMBER 18

FRIDAY, MAY 10, 1974

## A TROPICAL STORM: HEFTEL'S QFM/HAWAII

HONOLULU ROCKER COMES OUT OF NOWHERE—PAGE 3

## LENNON, NILSSON JOIN WABC WALK-A- THON



Harry Nilsson and John Lennon (making his first public appearance in three years) on stage in Central Park to salute the March of Dimes at a show provided

by WABC. The concert, arranged as a tribute to the station's 20-mile "Walk-A-Thon," drew an estimated 80,000 people, the largest crowd in Central Park's

concert history. The Chambers Brothers, Brooklyn Bridge, and Raspberries were the featured groups. More on page 3.

**Radio's  
Largest  
Classified  
Section—  
Page  
4**

### BLORE



THE R&R INTERVIEW  
PAGE 5

### STEVENS



NUMBER ONE COUNTRY  
PAGE 18

### LIGHTFOOT



NUMBER ONE POP/MOR  
PAGE 21

### ROCK INFO

**Radio & Records**  
May 10, 1974

| Rank | Artist            | Title           |
|------|-------------------|-----------------|
| 1    | John Lennon       | Two of Us       |
| 2    | Harry Nilsson     | Without You     |
| 3    | Chambers Brothers | Time            |
| 4    | Brooklyn Bridge   | Brooklyn Bridge |
| 5    | Raspberries       | Black and Blue  |
| 6    | John Lennon       | Two of Us       |
| 7    | John Lennon       | Two of Us       |
| 8    | John Lennon       | Two of Us       |
| 9    | John Lennon       | Two of Us       |
| 10   | John Lennon       | Two of Us       |

#### NEW & ACTIVE

FOR YOUR CONVENIENCE:  
ON THE BACK PAGE

# "Star Baby"

## THE GUESS WHO

### BREAKING IN

### NASHVILLE, CINCINNATI, CHICAGO, HOUSTON, MILWAUKEE, CLEVELAND

**ALREADY TOP TEN AT 31 KEY STATIONS**

**Bill Gavin Report**

MAY 6, 1974

**No. 19**

#### NEW ALBUM



APL1/AP51/APK1-0405  
Produced by Jack Richardson  
Nimbus 9 Productions

#### Group Currently On Tour

- |   |  |
|---|--|
| 5/10 Seattle Arena<br>Seattle, Wash.        | 5/26 Cleveland Arena<br>Cleveland, Ohio            |
| 5/12 Portland Coliseum<br>Portland, Oregon  | 5/27 Springfield, Mass.                            |
| 5/17 Selland Arena<br>Fresno, Calif.        | 5/28 Portland Exposition Center<br>Portland, Maine |
| 5/18 Long Beach Arena<br>Long Beach, Calif. | 6/1,2 Aerie Crown Theatre<br>Chicago, Ill.         |
| 5/22 Bowling University<br>Toledo, Ohio     | 6/4,5 Ambassador Theatre<br>St. Louis, Missouri    |
| 5/24 Masonic Hall<br>Detroit, Mich.         | 6/7 Moody Coliseum<br>Dallas, Texas                |
|   | 6/8 Sam Houston Coliseum<br>Houston, Texas         |

**RCA**  
Records and Tapes



# RADIO

## Honolulu: Heftel's QFM-93 Shows Super Strong

Honolulu: Q FM-93 in the new TRACE survey, the one that computes in-car and in-home listening, shows the new rocker coming from nowhere to an overall third in the market and the number one rocker for in-home listening. Even in morning drive, the in-home count shows QFM number one rock. Heftel Broadcasting now has the number one TV station, the number one radio station (KGMB) and the number one FM rocker. Rumors have it he'll be the next governor too. Staff at QFM-93 is Dave Shaw mornings, Tommy Kramer middays, Capt. Cook afternoons, and Rob Walker nights and PD.

**WHAT RADIO'S ABOUT**  
WLEE-Richmond co-promoted the "Cherry Blossom Music Festival." Broadcasting live from their new remote unit, PD Bob Paiva watched out his window as a policeman began to

make a drug bust, right in front of the mobile facility. The crowd did not take to the policeman and began to throw things, burn police cars, etc., etc. Paiva reacted as any pro would, he began broadcasting the riot, calling the color and keeping Richmond posted. They ended the day with a recap and documentary on the reasons for and how to prevent in the future riots in their town. Said Paiva, "Isn't that what radio is all about, happening right now, right there."

**SPRING STING**  
WCOL-Columbus running a "Spring Sting," in which contestant gets an amount of money selected by a "stop" process on a rotating cart. He can then go for a prize by matching the money, or can keep the bread. They also had an "Easter Streaking Bunny" driving around the city looking for porch lights turned on, as promoted by

station, and would walk up to the residence and offer the person a chance to grab a prize out of the WCOL Easter Basket.

**BUZZ BOGGLES BOOK**  
Buzz Bennett came to Minneapolis-St. Paul April 7. He made immediate jock and music changes. The Hooper survey was taken April 17-23. KDWB came from two and threes to the following:

|      |      |      |      |      |       |
|------|------|------|------|------|-------|
|      | 7-10 | 10-3 | 3-7  | 7-12 | TOTAL |
| KDWB | 8.5  | 3.4  | 10.0 | 10.7 | 8.0   |
| KSTP | 7.1  | 5.8  | 13.1 | 9.6  | 9.0   |
| WDGY | 6.1  | 7.4  | 6.2  | 6.6  | 6.7   |

If the ARB reflects the same thing, maybe Jim Channell, PD of KSTP, will have to acclaim Buzz the first man in radio to be able to walk on water.

**\$400 MAN**  
KEZY-Anaheim running a takeoff on the "Six Million Dollar Man" tv show with their \$4000 Dollar Man. A mystery voice

scramble game. Prize is a trip to Tahiti, a \$1000 bon voyage party and a color video tape machine.

**99X JACKED UP**  
99X-New York has upped their hourly Cash Call jackpot to \$20,000 and figures it will be higher soon. They are also having a "Battle Of The Hits" weekend.

**FIFTIES WEEKEND**  
WTAE-Pittsburgh is bringing back their very successful "Fabulous 50's Weekend." This time these have a special guest, Wolfman Jack, to help revive the hits of those years gone by. Also giving away complete oldies libraries throughout the weekend.

**NEW SOUNDS BATTLE**  
K100-Los Angeles now running "The Battle Of The New Sounds" nightly. They pit three records against each other on Monday nights, with the winner, determined by audience voting on

the phones, taking on two new challengers the next night, and the action continues all week. They are also presenting The K100 Countdown on Sundays, counting down the top 100 current records.

**COLUMBUS PULSE**  
Columbus Jan-Mar Pulse, 6am - 12 mid

| Station    | Men | Wom | Teens | Total |
|------------|-----|-----|-------|-------|
| WBBY FM R  | 1   | 2   | 2     | 2     |
| WBNS M     | 13  | 12  | 1     | 11    |
| WBNS FM BM | 12  | 11  | 1     | 10    |
| WCOL R     | 14  | 15  | 49    | 20    |
| WCOL FM P  | 6   | 4   | 7     | 5     |
| WHOK FM C  | 1   | 1   | 1     | 1     |
| WMNI C     | 12  | 12  |       | 10    |
| WNCI FM R  | 10  | 8   | 29    | 12    |
| WTVN M     | 13  | 14  | 1     | 11    |
| WVKO AM B  | 2   | 5   | 7     | 4     |
| WVKO FM B  | 3   | 3   | 5     | 3     |

Format Code: R-rock, M-MOR, BM-Beautiful music, P-progressive, C-country B-black

WDRQ-Detroit into "Free Ride" Phase 1 & 2 with Phase One giving away bicycles every hour over the weekend.

### LATE NEWS:

## Nationwide Hooper

Chicago: WBBM FM up from a Jan-Feb 2.1 to an April 4.5, WCFL down from a J-F 10.7 to April 6.4, while WLS moves 10 in J-F to 15.3 April.

Boston: WRKO down from a Jan-Feb 14.2 to April 10.6, WVBF from 2.4 to a 5.4.

Philadelphia: WFIL holding steady with 10.5 average, WIBG also steady averaging 5.2.

Denver: KIMN still strong averaging almost a 10 share, KTLK close to a 6 share, and holding. KHOW the dominant number one station.

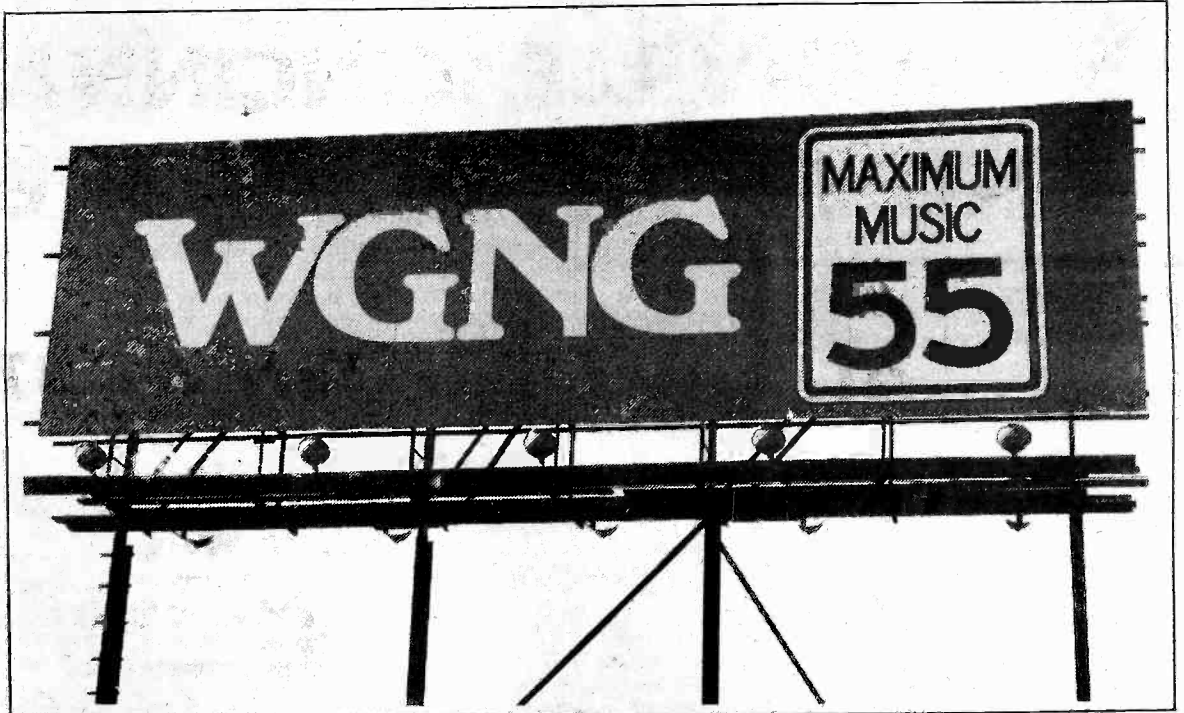
St. Louis: KSLQ still far above KXOK. KSLQ 12.5 in April, KXOK 6.2.

Los Angeles: KHJ moving from an 8.4 in Jan-Feb to an 8.9 in

April, down a bit from a peak in March. K100 up from 2.2 in J-F to 3.3 in April, KKDJ still moving up from 3.7 in J-F to 5.7 April only. KLOS improved a bit 3.0 J-F, 3.8 April. KMET down from 2.3 J-F to 1.7 April only. The most action was around KEGJ and KDAY. KEGJ down from 5.1 in J-F to 2.9 in April with KDAY up from 2.9 in J-F to 4.3 April.

Although there are exceptions, we have found that most of the time, the Hooper Trend closely approximates the upcoming ARB results. It should be interesting to watch.

**RUMOR**  
WHDH-Boston going top 40. They have apparently contacted a major market program director and offered him the job.



WGNC/Providence's clever billboard promotion to tie in with the speed limit cutback. They're telling listeners that their maximum speed as well as their maximum music are both at 55.



**BOB WILSON**  
PUBLISHER  
**MARK SHIPPER**  
MANAGING EDITOR  
**DICK KRIZMAN**  
AD DIRECTOR  
**ANN VAN BEBBER**  
ASSOCIATE EDITOR  
**JONATHAN FRICKE**  
COUNTRY EDITOR  
**BUFF COLLIE**  
NASHVILLE EDITOR  
**MIKE KASABO**  
POP/MOR EDITOR  
**JASON SHIRINKY**  
FCC LEGAL COUNSEL  
**CANDY TUSKEN**  
ASSOCIATE EDITOR  
**NANCY FRICKE**  
COUNTRY CHARTS

RADIO & RECORDS is published every Friday by Radio & Records, Inc., 6255 Sunset Blvd., Suite 719, Hollywood, CA 90028, 213-466-1605. Subscriptions \$130 per year or \$35 per quarter. No portion of this publication may be reprinted without the written permission of the publisher. Copyright 1974

## Lennon, Nilsson, Alice Turn Out For WABC Walk-A-Thon

Many radio stations have reported "Walk-a-thons" for local charities. WABC-New York did a March of Dimes walkathon with 15,000 walkers participating in a 20-mile walk. It all culminated in Central Park with the public invited. A crowd of 100,000 turned out to see John Lennon, Harry Nilsson, Alice Cooper, Chambers Brothers, Raspberries, and the Brooklyn Bridge. KYSN-Col. Springs raised a few thousand for a local charity in their "Walk For Mankind" with their jocks walking 26 miles for the money.

**MORE WALKING**  
WAMS-Wilmington jock Ray Quinn, known by his friends as "Mighty" walked 20 miles by himself for listener pledges totaling \$440.00 all for the March Of Dimes.

**BLASTING BACK**  
WGH-Newport News ran a special "Weekend Of The Past" playing music from '59 to '69. They featured their old jingle packages, and recorded

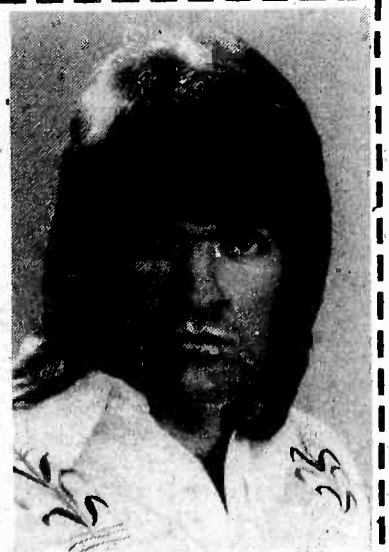
messages from past jocks. A special feature was their "Record Recall" asking listeners if they had a copy of the oldie being played, in which case the station would trade it for a hit album.

**KLZ ELVIS PROMO**  
KLZ-Denver: A unique promotion on both KLZ AM and FM. They are each giving away a weekend to see Elvis in Lake Tahoe. AM is running a trivia qualifying contest and FM is running a "guess who" the artist is, with hourly qualifiers getting Guess Who Albums.

**CINCINNATI SURPRISE**  
WSAI-Cincinnati promoted a Gregg Allman concert, which was the final one on Gregg's current tour. On the air they gave away albums and promised a special surprise at the concert that not even Gregg knew about. The surprise turned out to be Dickie Betts and The Allman Brothers Band coming out to join Gregg on stage during the encore. Crowd reaction was phenomenal

## PERSONAL TOP TEN

The Personal Top Ten is a weekly R&R feature designed to provide insight into what radio might sound like if the taste of the audience didn't have to be taken into account. The songs listed reflect only the choices of the person interviewed, and in no way constitute an endorsement by Radio & Records or the individual stations.



**SCOTT SHANNON**  
PROGRAM DIRECTOR  
WMAK/NASHVILLE

### OLDIES!

1. ASSOCIATION/Cherish (Warner Brothers)
2. CHICAGO/Color My World (Columbia)
3. BUDDY HOLLY/Peggy Sue (Decca)
4. LINDA RONSTADT/Long Long Time (Capitol)
5. REFLECTIONS/Just Like Romeo & Juliet
6. BEACH BOYS/Surfin' USA (Capitol)
7. EDDIE COCHRAN/Somethin' Else (Liberty)
8. EAGLES/Take It Easy (Asylum)
9. FOUR TOPS/Reach Out (Motown)
10. BOB DYLAN/Like A Rolling Stone (Columbia)

# RADIO

## CHANGES CLASSIFIED

### Grand Rapids Rockers React For New ARB

The three main rock competitors in this city are really reacting to each other during the current ARB. WZZM-FM promos "They play fewer commercials and answers more requests." WLAV moved all their commercials into the first 20 minutes of the hour, with their news being at :55, and they began pitching the amount of minutes of non-stop music they were playing each hour. They also moved their daytime newscasts from :55 to :35 to get the jump on WGRD's news at :40 (are you with us so far? If not go back to go and collect \$200). WGRD then reacted by dropping selected newscasts and began clustering to allow for maximum music play. They adjusted so they could play non-stop music from 7pm to 12 mid. WZZM, not to be outdone, cut to one minute newscasts and rearranged their spotload for max-music presentation. ARB will tell one of two things. Who listens for the most music, and the most (or least) news.

#### CHICAGO HOOPER

The new Hooper for March-April is out and confirms the Jan-Feb pulse in the WCFL-WLS battle:

|      | 7-10 | 10-3 | 3-7  | 7-12 | TOTAL |
|------|------|------|------|------|-------|
| WLS  | 14.6 | 8.6  | 13.5 | 15.7 | 12.9  |
| WCFL | 5.4  | 5.7  | 12.4 | 14.1 | 8.9   |

#### INDIANAPOLIS MARKETRON

From Jan-Feb.

|      | MOR  | Teens | 12-17 |
|------|------|-------|-------|
| WIBC | 17.3 | 3.2   |       |
| WIFE | 17.2 | 35.5  |       |
| WIRE | 15.3 | 2.7   |       |
| WNAP | 8.1  | 21.5  |       |
| WNDE | 6.5  | 15.2  |       |
| WTLC | 10.3 | 18.0  |       |

#### DETROIT WELCOME

CKLW-Detroit threw a gala welcoming party for new morning man Gary Burbank. Heading the party were Cheech & Chong and the Four Tops.

#### HERE COMES 'WATERLOO'

Once a year, Europe's television viewers get to vote on their favorite songs of the year. A half million viewers voted this year, the winner was a song that has already sold a million copies, and climbed to No. 1 in England in four short weeks: "Waterloo" by ABBA. We understand Atlantic Records has purchased and is rush releasing it in the U.S.

Super morning personality at KGIL-San Fernando, "Sweet Dick" Whittington, recently set out to find if he could travel around the world on 80 gallons. It worked like this: he drove a Datsun to the airport, left the car with eighty gallons of gas to be manned and remain constantly running while he boarded a flight to take him around the world. The flight lasted four days, stopping over in such exotic posts as New Delhi, Beirut, Frankfurt, and London for phone-in reports to the station. When he returned, the Datsun had only used up 22 gallons! What great new wisdom did he gain from his trip? Says Dick: "I picked up something called Andrea Facial Pads from the airline and I think what I have learned more than anything else going around the world is that you can not take a sponge bath in a Pam Am head at 35,000 feet with Andrea Facial Pads!"

Jerry Bright out as KRUX-Phoenix PD.  
 Scott Slade returns to WAYS-Charlotte as Asst. PD and Music Director from WAPE-Jacksonville, Florida.  
 Ed Trimmel to WAVZ-New Haven.  
 Cleveland Wheeler to WAPE-Jacksonville as Asst. PD and Music Director  
 Dr. J.J. Jamer from KCBQ-San Diego to KQEO-Albuquerque.  
 Charlie Ross new night man at KXOL-Ft. Worth replacing Steve Woods who is now at KDAY-Los Angeles.  
 Peter Knight WJAR-Providence to WPRO-Providence.  
 Jim Carnegie promoted to Music Director at KQV-Pittsburgh.  
 Ron Baptist from CHAM-Hamilton to WDRQ-Detroit.  
 Gary Lockwood new 6-10 at KING-Seattle.  
 Rick Donovan new Music Director at KING-Seattle.  
 Uncle Jack Randall from WSPT-Stevens Point to WNAM-Neenah.  
 Mike Phillips from WXLO, WWDJ, KFRC to afternoon drive at KGW-Portland.  
 C.Z. Smith from KHAP-Aztec, N.M. to KIMM-Rapid City.  
 Pete Kremin exists KALE to join KBFW as News Director.  
 Ken Stevens WDRQ-Detroit to KYA-San Francisco as Program Director.  
 Mark Roberts moves to KSJO-San Jose.  
 Steve Sands to KEZY-Anaheim 8-12 mid from KGBS-FM-Los Angeles.  
 Bruce Chandler upped to afternoon drive from nights at KEZY.  
 Bill Tanner promoted to PD at Y100-Miami, formerly with WDJX.  
 Lee Sims to WMYQ-Miami.  
 Fred De Mann new National Promotion for Elektra-Asylum.  
 Corky Mayberry exits General Manager position at Granite Records remains weekends at KFOX.

## CLASSIFIED OPENINGS

KRIO-McAllen, Tx. looking for a jock contact Dick Lahm. (5-2)  
 WKAU-Appleton, Wisc. opening for part time jock contact Steve Bailey or B.J. Crocker 414-766-4663. (5-2)  
 KGW-Portland, Ore. looking for a jock contact Alan Mason.  
 KGRT-Las Cruces, New Mexico looking for midday jock with production contact Larry Edwards 505-526-6681. (5-2)  
 WSPT-Stevens Point looking for a jock contact Jim Schuh, Box 247, 54481. (5-2)  
 KYSN-Colo. needs a first phone air talent, rocker, contact Greagar Vaule, P.O. Box 1715 Colorado Springs, Col. 80901. No calls, tapes 7 resumes only. (5-2)  
 WCOU-Lewiston needs Female Air Talent (C&W) contact Tom Starr 207-784-6921  
 WNAT-Natchez looking for Air Talent (C&W) contact Skip Campbell 601-442-4895  
 KSTT-Davenport looking for Air Talent with 1st Phone contact Steve McCloud 319-326-2541  
 WQTC-Two Rivers looking for Air Talent contact Dennis Carpenter, Two Rivers, Wisc. Box 266 Zip 54241  
 KOOK-Billings looking for Air Talent contact Brian Bennett Box 1276, Billings, Montana 59103  
 KKXL-Grand Forks, N. Dakota needs morning man. Tapes, resume to Mark Renier, P.O. Box 997, 58201  
 KEYN-Wichita Looking for a weekend jock contact Roger Munday  
 KLBK-Lubbock looking for 7-9 a.m. jock contact Don Richter  
 KEEL-Shreveport looking for afternoon drive and production contact Larry Ryan  
 WVMI-FM-Biloxi looking for DJ, contact Bob Lima.  
 KSEE-Santa Maria needs DJ, write J. Michael Stewart, Box 442-93456.  
 WSPT-Stevens Point needs two jocks one with strong production abilities. Contact Donn Nichols. (4-24)  
 WLYV-Ft. Wayne looking for a Program Director (C&W) contact Bob Hamilton 615-456-5461. (4-24)  
 KLEO-Wichita needs a first phone jock. Call Gary Mack 316-685-0261. Rock (4-24)  
 KNOW-Austin looking for jock and production contact Dave Jarrott, Box 2197, Austin, Texas 78767. (4-24)  
 KWVB-Bismarck looking for Air Talent contact Allen Moos, Box 1377, Bismarck, North Dakota 58501  
 WYNA-Raleigh looking for C&W jock contact Harv Riddle 919-782-9233. (4-24)  
 WLYV-Ft. Wayne looking for C&W jock contact Bob Hamilton 616-456-5461 (4-24)  
 KAKC-Tulsa looking for two jocks contact Gary Stevens. (4-24)  
 KASH-Eugene looking for Jock with 1st Phone contact Don Kennedy (Box 10767, Eugene, Oregon 97401.) (4-24)  
 WISM-Madison opening for a first phone jock, Rock, Contact Bill Vancil, 608-271-1484 (4-24)  
 KYAC-Seattle looking for a jock contact Robert Nesbitt, 3rd Avenue, Seattle, Washington 98101. (4-24)  
 WNOE-New Orleans needs a morning man contact Jason O'Brien.  
 KISM-Bellingham, Wn. looking for a jock contact Mike Bettelli, Box 943, Bellingham, Wn. 98225.  
 WROK-Rockford needs good rock jock with production talents for the 10pm-2am shift. Contact Dave Hamilton 815-399-2233. (4-23)  
 KSJO-San Jose looking for a jock contact Bo Donaldson, Box 1723, Bellevue, Wn. 98009. (4-24)  
 WHVW-Hyde Park, N.Y. Looking for jocks. Contact Tom Shovan 914-454-1020. (4-26)  
 K PAM-Portland needs afternoon drive man to assume production director duties. No hype or Q type. Send tapes to Michael O'Brien, 4700 S.W. Council Crest, Portland, Ore. 97201 (4-20)  
 KJRB-Spokane needs first phone AM drive. Call Steve West (509) 535-8861, or send tapes to Box 8007, Spokane, Wash. 99203. (4-20)  
 WATH-Athens, Ohio looking for jocks contact Dave Palmer (614-593-6651)  
 KYNO-Fresno looking for jocks contact John Wallace, 2125 N. Barton-93703.  
 WROV-Roanoke looking for jocks contact Bart Prater (Box 4005-24015)  
 KIMM-Rapid City looking for jock & production director contact Jim Shaw (605-348-1100)  
 WWJO-FM - St. Cloud looking for Operations Manager contact Mike Dlem (612-251-4422)  
 WFEA-Manchester, N.H., DJ position, contact Victory Pryles, Box 149-03105  
 Two jocks needed at KSO-Des Moines, C&W, call Perry St. John, 515-265-6181  
 WWUN-Jackson, Jock spot open, contact Steve Starr, Box E-Delta Station. 39213

### OPENINGS

WHVW-High Park, N.Y. need jocks contact Tom Shovan  
 WNCT-Greenville, N.C. needs a morning man, first ticket contact Johnny West  
 KUDE-Oceanside, needs a jock. Tapes and resume to Paul Wonder.  
 WNAM-Neenah, Wisc. Midday man, First ticket preferred. Contact Ron Ross  
 WJAB-Portland, Maine needs up tempoed FM jocks, contact Bill Craig  
 KLBK-Lubbock, 7-9 a.m. contact Kevin Stone  
 Female country announcer, tapes and resume to R&R-D, P.O. Box 1641, Long Beach, Ca. 90801.  
 WBBF-Rochester Call Carl Strandell for DJ opening (716) 232-7550

### NEWSMEN & WOMEN

WAXY-Ft. Lauderdale needs a newsman. Contact Scot Seagraves, 305-525-6351. (5-2)  
 KNUS-Dallas looking for a newsman. Contact Mark St. John. (5-2)  
 WQXI-Atlanta needs a News Director and Falcon Network Director. Contact Bill Sherard, 404-261-2970. Equal Oppt. Employment. (5-2)  
 WLEE-Richmond looking for a really exciting newsman. Pay and fringes are good, opportunity to move up in chain. Contact Bob Palva, Box 8477, Richmond, Virginia 23226. (4-20)  
 WCLG-Morgantown, West Va. looking for a newperson who can gather and write local news. Contact Bob Sherman, tapes and resumes only.  
 KYNO-Fresno looking for a newsman. Send tapes and resumes to John Wallace. KYNO-2125 No. Barton, Fresno, Calif. 93703  
 WGRQ-Buffalo looking for a newsman. Send tapes to J.J. Jordan  
 CHUM-Toronto looking for News-Sports Man contact Dick Smythe 1331 Younge St., M4T1Y1  
 KOOK-Billings looking for a Newsman, Contact Brian Bennett, Box 1276, Billings, Montana 59102  
 WQTC-Two Rivers, Wisc., looking for a Newsman contact Dennis Carpenter, Box 266, Two Rivers, Wisc. 54241  
 WBIA-Augusta looking for a Newswoman contact Martin Farrell 404-724-2421  
 KRSP-Salt Lake City needs a Newsman, Contact Allan Hague 801-262-5541  
 KFRC-San Francisco looking for a newperson. Creative production oriented person is a must. Contact Dave Cook 415-982-9200. (4-24)  
 WVMT-Burlington, Vermont looking for newsdirector contact John Bulmer, Box 1044, Burlington, Vermont 05401. (4-24)  
 WDFH-Chicago looking for a newsman contact Larry Butler, 108 N. State, Chicago, Illinois 60602. (4-24)  
 KSJO-San Jose looking for a newsdirector contact Bo Donaldson, Box 1723, Bellevue, Wn. 98009. (4-24)

### PRODUCTION

WOW-Omaha looking for a production man, contact Steve Shannon  
 WKGN-Knoxville looking for a Production Director contact Bob Baron 615-573-2931  
 WDRQ-Detroit in need of a creative production man. The pay is better than average. Contact John Lodge 312-272-8000. (5-2)  
 KSJO-San Jose looking for Production Director contact Bo Donaldson, Box 1723, Bellevue, Wn. 98009. (4-24)  
 WJAR-Providence, R.I. (Adult Contemporary into Class) looking for Commercial Production Manager. Excellent opportunity for creative, multi-talented type. We're looking for ability in preference to experience. This could be your gig; all applicants considered. Tape, resume, etc. to Dave Hedrick, WJAR Radio, 176 Weybosset, Providence, R.I. 02903, 401-751-5700. (4-23)

### POSITIONS SOUGHT

J.W. Walker looking formerly with WSPT-Stevens Point 715-341-1300.  
 Steve Jordan desires major market or upper-medium market as Asst. PD or announcer. Presently with KYA as afternoon drive. Experienced in AM Drive. contact 415-282-7990.  
 Phil Murphy WSPT-Stevens Point looking. 715-341-1300.  
 College Grad with degree in Journalism, formerly news editor at KTFM and K TSA in San Antonio looking for a news spot in medium market. Call Jerry Chandler at 512-625-0262.  
 Tim Donohue formerly with WLAM-Lewiston, Me. looking. 207-783-1470.  
 Dusty Morgan formerly with KMEN 3 1/2 yrs. and KWIZ looking. 714-882-9797.  
 Richard Orlando formerly with KRIO-McAllen, Tex. looking. 512-682-3309.  
 Bill Bevins formerly with WHAP-Hopewell, Va. looking. 804-748-5905. Also to fill in as Music Director.  
 Gene Osborn formerly with WMAQ-Chicago looking for sports-news contact 505-265-8605.  
 Gregg Stewart formerly with WDRQ-Detroit looking for PD-Jock contact 313-886-0471.  
 Keith James formerly with WPEZ-Pittsburgh looking for a major market jock opening or medium market PD gig. 419-878-7941.  
 Jerry Bright, former PD KRUX-Phoenix looking 602-934-8639  
 Barry Chase, former WQXI jock looking. 404-971-0205.  
 Joe Fiorillo PD at KRMH-Austin looking for a jock opening, late night in medium or large market. 10 years experience in Programming, Jock & Production. Call 512-477-9926. Available immediately. (4-26)  
 Bob Savage former jock at WWDJ-NY available. Call 215-256-9001. Currently working relief at WIBG. (4-23)  
 Larry Woodside formerly with KPCC & KROQ-FM, Los Angeles looking. 1st ticket, prefer prog. FM will relocate. 213-242-8560 or 378-0995. (4-26)  
 Bruce Rhoads formerly with Y100 (also known as Hymn) looking. 219-432-9023  
 Jim King, formerly with WWDJ, looking for a gig. 201-440-0695  
 Ted Carson, midday man formerly with WCAR-Detroit, looking for MOR-Top 40 gig; 313-675-1382  
 George Hart, formerly with WIXZ-Pittsburgh, looking. Call (before 6 p.m., EST) 412-381-0899  
 Jeff Finch formerly with WDAI-Chicago looking, contact 312-629-5456  
 Jim Gibb formerly with KGGF-Coffeyville, looking 316-745-3351  
 Dave Arlington formerly with WKIS-Orlando contact 305-851-3719  
 Bill Murdock formerly with KPTL-Carson City looking 702-329-9261  
 Gene Osborn formerly with WMAQ-Chicago Sports-News contact 505-265-8605  
 Bob Witkin News Director formerly with WSAG-Miami looking 203-887-8520



# RADIO

## CHUCK BLORE

**"I have no desire to re-create KFWB..."**

THE R&R INTERVIEW WITH BOB WILSON



The following is the first of a two-part interview with Chuck Blore. Chuck, well known for his past success with KFWB and his current award winning commercial company, one year ago, entered radio again as a creative consultant and programmer for KIIS-Los Angeles.

**R&R:** About a year ago, Claude Hall at Billboard did a very extensive interview with you about your return to radio. Now I'd like to talk about the results of the first year. KIIS has not been the outstanding success the world had expected from you. I would like to get your comments about why it hasn't happened the way you would have liked, and the changes you have made to strengthen the position of the station in the market.

**Blore:** You see I had this type of format in my mind -- a very positive radio station that would basically give someone an alternative that they could relate to in a positive fashion. Everywhere you turned, radio was either records or bad news and what I wanted to do was show people that there was still good things, positive forces in the world and by exposing this, make their life a little better. I had no desire, really, to be number one or to recreate KFWB. As a matter of fact I stayed out of radio for 10 years because that's what people wanted me to do whenever I was contacted. Many times they would say that they wanted to do KFWB all over again. KFWB was in 1958 to 1962, and it belonged to that era. It's a very nice memory.

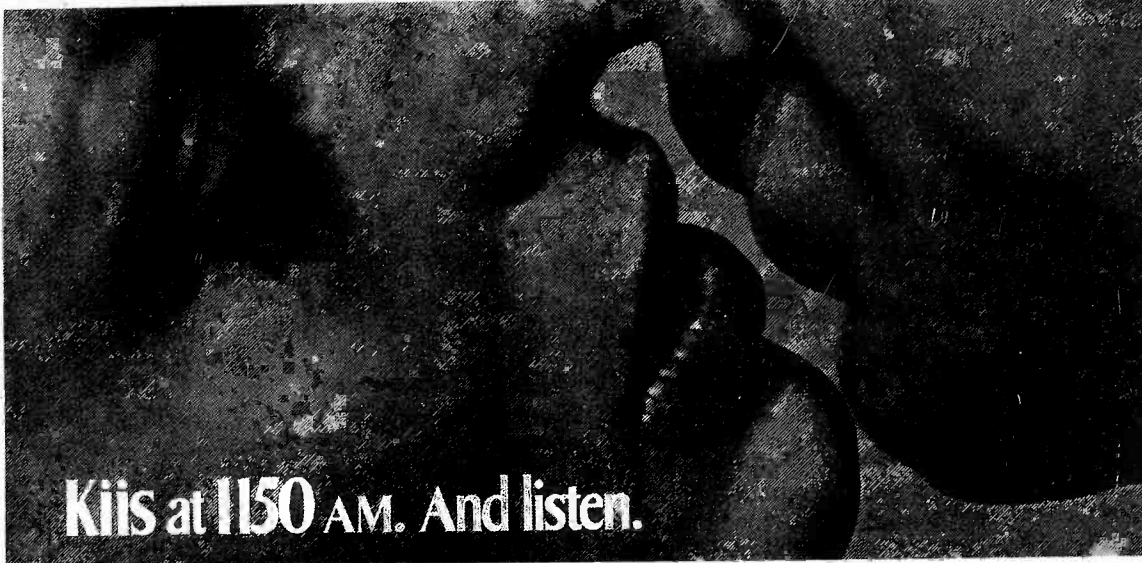
**R&R:** What do you listen to?

**Blore:** I listen for my commercials -- where my commercials are, I listen. Or that used to be before KIIS, and I listened to the news stations.

**R&R:** Would you say the loss in total shares for AM contemporary radio in most every market is due to more dial pushing, or less talent on the air, or what? No one station has the shares KFWB had years ago.

**Blore:** No one will ever have those shares again. We had 45 shares. I think the fact that a number one station in L.A. has 8 or 9 shares is disgraceful. I think there still can be dominants, however, I don't believe you'll have 45 shares, at least not in a market with 70 radio stations because basically the stations are generally doing a better job.

Specifically they are not, I don't think there is anyone doing a better job than we did at KFWB years ago, including myself, but generally the radio stations are better. There is a tremendous loss of listenership to the FM stations which is a whole new area we didn't even have to consider 10 years ago. They are, as far as the music area, absolutely taking



Kiis at 1150 AM. And listen.

over. I think in 5 years a music station is going to be an anomaly -- really kind of a weird thing. Right now at KIIS, at least once or twice a week, we're trying to figure out what we're going to be doing with that AM property in 3 to 4 years, in addition to actively seeking to buy an FM. So I don't think there will be a huge share percentage again. Although I don't know why a radio station couldn't have 15 or 16.

**R&R:** Let's go back to the first question, about the failure of KIIS to become a dominant factor in Los Angeles radio. Have you held back anything, are you going to make any major moves?

**Blore:** The original premise of holding back at KIIS, as there are some tremendous inherent problems as to what KIIS is and what it was. The biggest problem was that I didn't want to be just another radio station, I wanted to be as original and as unique as we were in 1957 with KFWB, but in a totally different direction. I thought that the positive aspect of being alive in this time and place are basically what I wanted to be the thrust of the station to be. I wanted to reflect the good in man, generally, and at the same time be absolutely fascinating, if possible. So that was it and we had all kinds of ways to do this and all kinds of things to do to be effective radio.

I thought I'd go over and impose this format on an existing radio station. But it didn't work. The whole thing had to be torn down and rebuilt from the beginning. So the first 6 months were just trying to figure out how it would work.

How would we build that foundation upon which you build a radio station. There was no place to go to learn, you couldn't ask anybody. You couldn't listen to another radio station. We had to find out ourselves. So we listened and listened and we'd try it and the first months were experiments of trying this and trying that.

**R&R:** You mentioned the radio station is about life, and things you like. Do you consider yourself the norm, the mass?

**Blore:** I don't think I spend my time in an isolated ivory tower. I am constantly trying to do and be what people are today. The commercials I make do communicate, I know that as a fact. They are very today and hopefully have a tinge of tomorrow. I think it's communicating with the masses on a mass scale.

I can point to many, many campaigns we have had on the radio where unbelievable things happen as a result of audience reaction to the commercials. So I have to feel that I still basically, not intellectually because I have never done it intellectually, but by the seat of my pants, have the ability to be in touch with the people.

The only thing that has changed is that my respect for them has gone up considerably. KFWB was a lot of dazzle, a lot of show biz and flash. It was obvious flash; it was there to be flash. But you look back, and the people in that time were flashy. You didn't see people running around in jeans and sandals as we do today. I think it is much more honest today, there is a lot less falsehood. There was a facade that everyone used to have that for the first 2 or 3 hours or days or years that you met people, you really didn't know what they were like because they were playing that role that says "here is something I must do." I can't see any validity in it at all. But everyone did it so I guess that in itself made it valid.

But that's not the case anymore with the people that I am trying to communicate with. That still exists everywhere but I can't be concerned with those people because I don't know how to communicate with them. All I am concerned about is the people who do relate to things much the way I do.

**R&R:** Could the failing be that somewhere along the line you forgot that not too many people are like you?

**Blore:** Well, I don't believe that because I programmed KFWB for me; I write my commercials for me.

**R&R:** Were you a millionaire then, were you as affluent as you are today, and mostly were you able to have the feeling about life that you now have? Or were you then a young hard working programmer trying to get to the top?

**Blore:** At KFWB I was at the top. If you remember, I was God in the radio business.

**R&R:** But after KFWB.

**Blore:** No, during KFWB, I had reached the peak of whatever it was at KFWB. The influences of success were certainly already there. The ability to buy a new car if you wanted one were there and so on.

On a day-to-day basis, if my commercials are to be successful, I have to communicate with people on their level, a gut level if you will. And communication is only possible if you keep totally in tune with people. It is my feeling that you could come up with almost any kind of format that has some general appeal and stick with it and are honest with it, you will eventually attract people who can relate to that and think like that.

If the appeal is broad enough, so that maybe 10 percent of the people can relate to it and react to it, then suddenly you find yourself with a very impressive force in broadcasting. Because that 10 percent instead of being dissipated, are at one point on the dial. Suddenly there is a very impressive rating situation. The rating situation at KIIS right now is that we have, for many reasons, a technical problem at night with the pattern.

**R&R:** You knew that going in, didn't you?

**Blore:** No, I didn't bother to investigate. I didn't want to go

back into radio. I was really quite content with my production and commercial company. We talked for months before I went back. And I also enjoyed the role I was playing, the "past master" so to speak. But it was fun, I liked it.

**R&R:** I think one radio station, if they had every element correct and had a positive energy force coming out of that station 24 hours a day, could have 25 shares in this market like KFWB did. I really believe that. If you had a good signal and were playing mass appeal music, and I don't mean 18 records being played over and over again, but whatever it would take, people have not changed that much. It was everything surrounding those records.

**Blore:** Well it was much less mechanical then and we were constantly changing too. One of the things that was exciting about KFWB is that there was constant change. We had the guys have something new every day. That was the requirement. "What did you do today that you had not done before?" After a couple of years, that gets to be a big challenge.

**R&R:** Am I correct in assuming that most people living in the era of KFWB can recall the personalities on the radio stations. For KHJ you may remember Robert W. Morgan and Don Steele, but I don't think anybody can remember all the different jocks that were in between during those 9 years of radio.

**Blore:** I think the radio station is, was and will always be the singular attraction. DJ's come and go. You take a Don Steele or Bob Morgan and one of the things that lets you remember them most quickly is not their talent, which is considerable, but their tenacity. They had been there for a long time. At KFWB, while I was there, I had a total of 9 jocks plus a couple of part time people. After I left, and I think the station went then for another 2 or 3 years, the 1st grew to 80. That's one of the differences.

**R&R:** At KIIS, then, the radio station, the concept, the format or the energy that you are putting out is more important than the announcers because there are really no personalities per se. The radio station is what counts as opposed to what I feel is an opposite or at least a 50-50 blend from before at KFWB.

**Blore:** Not actually, the personalities at KFWB may have been stronger or more apparent. Just take the strike as an example. When those guys left, all of them walked out at once, we had a tiny slump in the next month's ratings, but a few months later we had higher ratings than we ever had before with all brand new people. So it was definitely the radio station and not the individual. I could change shifts; I had Bruce Hayes on in the morning, took him off and put Bill Ballance on in the morning. Took him off and came on with Gary Owens in the morning and the ratings changed very, very little.

In part two, Chuck talks about the music philosophy at KIIS and gives some excellent tips for small market stations to improve their production.

parenthesis after dropped records indicate highest number achieved by record at station

# added this week...

**Most added**  
**WILLIAM DE VAUGHN**  
**CHER**  
**CARLY SIMON**  
**STEELEY DAN**  
**OZARK MTN.**

### PARALLEL 1

**CKLW/DETROIT**  
Gladys Knight  
Heywoods  
Jim Stafford  
DROPS  
Mike Oldfield  
Gladys Knight  
Terry Jacks

**WRKO/BOSTON**  
Righteous Bros.  
Stylistics  
Hues Corp.  
DROPS  
Albert Hammond (top 10)  
Terry Jacks (1)  
Carly & James (top 5)

**KFRC/SAN FRANCISCO**  
Cher  
Hollies  
Golden Earrings  
DROPS  
Gladys Knight (top 5)  
Terry Jacks (1)  
Albert Hammond (top 20)

**99X/NEW YORK**  
Hues Corp.  
William De Vaughn  
DROPS  
Blue Swede (1)  
Terry Jacks (1)

**KHJ/LOS ANGELES**  
Jim Stafford  
Gordon Lightfoot  
DROPS  
Charlie Rich (top 20)  
Carly Simon (top 5)  
McCartney "Jet" (top 10)

**WPEZ/PITTSBURGH**  
Marvin Hamlisch  
DROPS  
McCartney "Jet" (top 10)

**WQXI/ATLANTA**  
Guess Who  
Wet Willie  
DROPS  
Redbone (top 10)  
Rick Derringer (top 5)  
Main Ingredient (top 15)

**WPIX/NEW YORK**  
O Jays  
Anne Murray  
Eddie Kendricks  
Rick Cunha  
DROPS  
BTO "Let It Ride" (11)  
Denver (2)  
Sister Janet (top 10)  
Gladys Knight (top 10)

**13Q/PITTSBURGH**  
Landslaget  
Brownsville Station  
Olivia Newton John  
DROPS  
David Essex (1)

**WABC/NEW YORK**  
Hues Corp.  
Carpenters  
Joni Mitchell  
DROPS  
Not Available

**WRC/WASH D.C.**  
Jim Stafford  
Z.Z. Top  
DROPS  
McCartney "Jet" (3)  
Croce (9)

**KQV/PITTSBURGH**  
O Jays  
Jim Stafford  
Aretha Franklin  
Gordon Lightfoot  
DROPS  
Elton John (1)  
Blue Swede (1)  
Ringo (5)  
BTO "Let It Ride" (10)  
Billy Joel (no chart, no sales or requests, played for 3 weeks)

**K100/LOS ANGELES**  
Olivia Newton John  
Steeley Dan  
William De Vaughn  
DROPS  
Blue Swede (1)  
Charlie Rich (top 10)  
Eddie Kendricks (top 5)  
McCartney "Jet" (top 10)

**KFJZ/FT. WORTH**  
Ozark Mt. Daredevils  
William De Vaughn  
Steeley Dan  
Seals & Crofts  
DROPS  
Mike Oldfield (3)  
MFSB (1)  
Staples Singers (11)  
BTO "Let It Ride" (17)

**KKDJ/LOS ANGELES**  
Maria Muldaur  
DROPS  
"Jungle Boogie" (4)  
Carly & James (6)

**WIBG/PHILADELPHIA**  
Spinners  
Gordon Lightfoot  
Joni Mitchell  
DROPS  
Helen Reddy  
McCartney "Jet"

**KSLQ/ST. LOUIS**  
William De Vaughn  
DROPS  
Billy Paul (top 20)

**WDRQ/DETROIT**  
William De Vaughn  
DROPS  
James Brown  
(top 10, sales dropped)  
Heywoods  
(top 15, 3 weeks, no info)

**WLS/CHICAGO**  
Joni Mitchell  
Heywoods  
DROPS  
Croce (8)  
Womack (13)  
Main Ingredient (14)

**WFIL/PHILADELPHIA**  
Guess Who  
DROPS  
Mocedades  
Carly & James  
Emotions

**PARALLEL 2**

**KAKC/TULSA**  
William De Vaughn  
Nilsson  
Ozark Mt.  
Righteous Bros.

**WAXY/Ft. Lauderdale**  
William De Vaughn  
Carly Simon  
DROPS  
Oldfield  
Mocedades  
Albert Hammond

**WHBQ/MEMPHIS**  
Joni Mitchell  
Guess Who  
DROPS  
Blue Swede (1)  
Sister Janet (top 10)

**WLEE/RICHMOND**  
Mac Davis  
Olivia Newton John  
DROPS  
Not Available

**WMYQ/MIAMI**  
O Jays  
Guess Who  
DROPS  
Redbone (top 10)  
Ringo (top 15)

**KCBQ/SAN DIEGO**  
Gordon Lightfoot  
Paper Lace  
Stylistics  
Stevie Wonder  
Garfunkel  
DROPS  
"Jungle" (top 20)  
Carpenters (went to 18 and then down, no sales for 5 or 6 weeks)  
Zeel Black (top 10)

**WOKY/MILWAUKEE**  
Abba  
Cher  
Eddie Kendricks  
Doobie Bros  
Anne Murray  
DROPS  
Sister Janet (top 5)  
Lobo (top 15)  
MFSB (top 10)  
Croce (top 10)  
Ringo (top 10)  
Denver (top 5)  
Maggie Bell (top 30)  
Gladys Knight (top 15)  
Mocedades (top 10)

**KTLK/DENVER**  
Joni Mitchell  
Cher  
Brownsville Station  
DROPS  
Rick Derringer (4)  
Womack (21)  
Blue Swede (1)

**WSGA/SAVANNAH**  
Olivia Newton John  
Carly Simon  
DeFranco  
Nilsson  
DROPS  
Ringo (8)  
Mac Davis (20)  
Womack (17)  
3 Dog (3)

**KAFY/BAKERSFIELD**  
Heywoods  
O Jays  
Stylistics  
DROPS  
Leon Russell (top 10)  
Billy Joel  
Denver (1)  
Redbone (1)  
Terry Jacks (1)  
Guess Who

**KCPX/SALT LAKE CITY**  
Cher  
Brownsville Station  
Stylistics  
O Jays  
Cat Stevens  
DROPS  
Kool & the Gang "Jungle"  
Croce (12)  
Terry Jacks (1)

**WGNG/PROVIDENCE**  
Stylistics  
De Franco Family  
Jim Stafford  
DROPS  
Denver (2)  
Albert Hammond (12)

**WGRD/GRAND RAPIDS**  
Gordon Lightfoot  
Maria Muldaur  
DROPS  
Sister Janet (2)

**WGOW/CHATTANOOGA**  
DeFranco  
Eagles  
Ozark Mt. Devils  
Stylistics  
William De Vaughn  
DROPS  
Stevie Wonder (25, no sales or requests)  
Doobies (23, did not happen in this town)

**KTKT/TUCSON**  
Main Ingredient  
Carly Simon  
Nilsson  
DROPS  
None

**WSAI/CINCINNATI**  
Wet Willie (Re-add)  
DROPS  
Blue Swede (1)  
Cozy Powell (top 15)  
Albert Hammond (top 20)  
Terry Jacks (1)  
Carly & James (top 5)  
Sister Janet (top 5)

**KFXM/SAN BERN**  
Olivia Newton John  
Bill Withers  
Doobie Bros  
Four Tops  
Charlie Rich  
DROPS  
Sister Janet Mead (4)  
Croce (18)  
Cozy Powell (26)  
Lobo (30)  
Womack (8)

**KSEA/SAN DIEGO**  
Cat Stevens  
Stylistics  
Cher  
CROPS  
Croce  
Redbone  
Blue Swede

**KPAM/PORTLAND**  
Stylistics  
ZZ Top  
Olivia Newton John  
Steeley Dan  
DROPS  
Mike Oldfield (1)  
Gladys Knight (7)  
Ringo (3)  
Helen Reddy (11)

**WAYS/CHARLOTTE**  
William De Vaughn  
Olivia Newton John  
Carly Simon  
DROPS  
MFSB  
Elton John  
Main Ingredient

**KING/SEATTLE**  
4 Tops  
David Bowie  
Boz Scaggs  
Seals & Crofts  
Anne Murray  
William De Vaughn  
Righteous Bros.  
DROPS  
Croce (top 5)  
Al Green (no chart)  
5 Man Electrical Band  
Mac Davis (no chart)  
Stevie Wonder (no chart)

**WGRQ/BUFFALO**  
Carly Simon  
Fancy  
Steve Miller  
BTO "Takin"  
DROPS  
Blue Swede (top 5)  
MFSB (top 5)

**Y100/FT. LAUDERDALE**  
Joni Mitchell  
DeFranco  
DROPS  
None

**KRSP/SALT LAKE CITY**  
Cher  
Carly Simon  
George Fischhoff  
O Jays  
Golden Earrings  
DROPS  
Croce (5)  
BTO "Let It Ride" (14)  
MFSB (2)

**WZZM FM/GRAND RAP**  
Olivia Newton John  
Doobies  
Seals & Crofts  
Jimmy Buffett  
DROPS  
MFSB (4)  
Ringo (6)  
Elton John (1)  
Blue Swede (2)  
Billy Joel (3)

**KIOA/DES MOINES**  
Rick Cunha  
Anne Murray  
Hollies  
O Jays  
DROPS  
Oldfield (7)  
Muldaur (17)  
ELO (27)  
Reddy (6)

**KFMG/DES MOINES**  
O Jays  
Nilsson  
Anne Murray  
Carly Simon  
DROPS  
Terry Jacks (1)  
Oldfield (5)  
Denver (2)  
Wonder (26)

**KUPD/PHOENIX**  
Righteous Bros  
Richie Leckra  
DROPS  
None

**WFLI/CHATTANOOGA**  
Joni Mitchell  
ZZ Top  
5 Man Electrical  
Jim Stafford  
O Jays  
DROPS  
Carly & James (6)  
Ringo (11)  
Olivia Newton John  
(never had much action)

**WIFE/INDIANAPOLIS**  
5 Man Electrical  
Hollies  
Joni Mitchell  
ZZ Top  
O Jays  
DROPS  
Terry Jacks (1)  
"Jungle" (2)  
Gilbert O Sullivan (15)  
Womack (10)  
Gladys Knight (7)

**KYNO/FRESNO**  
Guess Who  
Anne Murray  
Steeley Dan  
Carly Simon  
William De Vaughn  
DROPS  
Helen Reddy (top 5)  
Blue Swede (1)

**PARALLEL 3**

**KJR/SEATTLE**  
Nilsson  
Cher  
Razzy  
Kendricks  
Doc & the Prohibitions  
Wet Willie  
David Essex  
DROPS  
Todd Rundgren  
Leon Russell

**WCFL/CHICAGO**  
O Jays  
ZZ Top  
Brownsville Station  
DROPS  
Stafford  
Sister Janet  
McCartney "Jet"

**KILT/HOUSTON**  
Cher  
Ozark Mountain Daredevils  
Carly Simon  
DROPS  
Not Available

**WXVY/CLEVELAND**  
Not Available  
DROPS  
Cat Stevens (2)  
Al Green (12)  
BTO (top 5 "Let it Ride")  
Bloodstone (19)  
Lobo (23, 7 wks. play)  
Elton John (1)

**WISM/MADISON**  
William De Vaughn  
Carly Simon  
Dave Loggins  
Olivia Newton John  
Rupert Holmes  
DROPS  
Sister Janet (3)  
Gladys Knight (5)  
Helen Reddy (12)  
Blue Swede (1)

**KDZA/PUEBLO**  
William De Vaughn  
Steeley Dan  
DROPS  
Albert Hammond (25)  
Jim Croce (8)  
Charlie Rich (16)  
Billy Joel (17)  
BTO "Let it Ride" (30)

**WPOP/HARTFORD**  
Righteous Bros  
DROPS  
Billy Joel (3)  
Jim Croce (6)  
Terry Jacks (1)  
Sister Janet (6)  
Carly & James (3)

**WBGN/BOWLING GREEN**  
Wednesday  
Seals & Crofts  
J.J. Cale  
Clint Holmes  
Doc & Prohibition  
DROPS  
Charlie Rich (top 10)  
Doobies (top 20)  
Oldfield (top 10)  
Stevie Wonder (24)

**KYSN/COLORADO SPRINGS**  
Stylistics  
Diana & Marvin  
Mac Davis  
Jim Stafford  
Steeley Dan  
DROPS  
Main Ingredient  
Billy Joel  
Staples  
Helen Reddy

**WPGC/WASH D.C.**  
Pepper Box  
Steeley Dan  
DROPS  
Blue Swede (1)

**KKLS/RAPID CITY**  
Fanny  
Cher  
DeFranco  
Seals & Crofts  
BTO "Takin' Care of Business"  
DROPS  
Joni Mitchell (played 1p 5 weeks, 28)  
5 Man Electrical Band (2)  
Chicago (8)  
Olivia Newton John  
Todd Rundgren

**KLIF/DALLAS**  
Gladys Knight  
Steeley Dan  
DROPS  
Croce (7)  
Elton (1)  
Staples (11)

**KKXL/GRAND FORKS**  
George Fischhoff  
Cher  
BTO  
Fanny  
Seals & Crofts  
DeFranco Family  
DROPS  
MFSB (18)  
Bill Amesbury (8)  
Ringo (6)  
Southcote (4 weeks 24)

**WCOL/COLUMBUS**  
Sam Neely  
George Fischhoff  
Spinners  
Chase  
Cher  
DROPS  
O Jays (13)  
Todd Rundgren (12)  
Lobo (21)  
Chicago (6)  
Aretha Franklin (26 only black in the market)  
Stevie Wonder (9)

**WMAK/NASHVILLE**  
Razzy  
Cat Stevens  
Cher  
Mac Davis  
DROPS  
Sami Jo (top 5)  
Carly & James (top 5)

**WAMS/WILMINGTON**  
Golden Earrings  
Olivia Newton John  
Anne Murray  
Eagles  
DeFranco  
4 Tops  
DROPS  
Elton (1)  
Denver (1)  
Albert Hammond (20)  
Flesh Gordon (21)  
Bloodstone (27)

**KEEL/SHREVEPORT**  
DeFranco  
William De Vaughn  
DROPS  
"Best Thing" (1)  
Croce (1)  
Elton (1)  
Main Ingredient (6)  
Diana & Marvin (15)  
Isley Bros (6 weeks, no sales or requests)

**KJRB/SPOKANE**  
Steve Miller  
Abba  
Alvin Stardust  
Cher  
3 Dog Night  
"Put Out the Light"  
Joni Mitchell  
DROPS  
Todd Rundgren (3 weeks, no chart)  
Hammond (top 20)  
Leon Russell (top 20)  
Stevie Wonder (top 15)  
Ringo (top 10)  
5 Man Electrical Band (17)

**Parentthesis After Dropped Records Indicate Highest Number Achieved By Record At Station**



# Atlantic wins the battle of 'Waterloo'

Every major record company has been battling for the U.S./Canadian distribution rights for ABBA's dynamic single, 'Waterloo.' And Atlantic has just won them.

'Waterloo' was the top song at the Nineteenth Annual Eurovision Song Festival, winning over 7000 entries from Britain, Holland, Israel and Yugoslavia while Eurovision's 500 million viewers in 32 countries watched the competition.

The record is now heading for #1 on the British charts and climbing rapidly throughout the rest of Europe as well. And 'Waterloo' will be scoring a big musical victory in America, too.

'Waterloo' (3035) by ABBA  
Produced by Stig Anderson.



On Atlantic Records and Tapes.

A division of Warner Communications, Inc.

# FM ROCK RADIO

by Mike Harrison

In last week's column we dealt briefly with FM radio in New York City as the management of Classical WNCN flatly denied rumors that it was switching to a Progressive format. My mind flashed back to WCBS-FM which up until about two years ago was New York's third album rock station. For a complex combination of reasons, the station didn't make it as a Progressive operation, switched formats, and went on to become one of the most successful Oldies stations in the nation.

Bill Brown, one of the finest professionals on or off the air in this business, recently became Program Director of WCBS-FM when John Geron went to WLS in Chicago. Brown has worked major stations on both coasts, and was a jock on both the Oldies and Progressive WCBS-FMs.

We talked about the WNCN rumor. That led to interesting observations. **MH:** As a knowledgeable observer, how do you think another FM album station in New York would fare?

**BB:** I haven't the slightest idea whether or not anybody is planning to do it, but if anybody did, they would have to know exactly what they were doing because WNEW-FM is such a dominant factor in the market, and has been so many years. The city is very tight and competitive right now. WPLJ is making a great effort to compete with NEW with their good blend of new and established product, but WNEW-FM is so strong and entrenched that it appears difficult. WXLO is taking aim at WABC. That too is not an easy task. Its very hard to overtake established stations here.

**MH:** That sure says something about New Yorkers.

**BB:** Right. Its probably the toughest audience in the world to budge. You've got to work like crazy for the longest time to get them to notice and like you. But then when you do get them, they stick.

**MH:** You were part of the old Progressive CBS-FM. Why the format switch?

**BB:** Well it goes back to the old bottom line. WNEW-FM was strong as always and PLJ was Progressive. It was obvious, though, that New York had a tremendous need for a good, solid Oldies station. We moved in and filled the vacuum and have had excellent books ever since.

Much credit has been given to John Geron who really put this station together. When people congratulate me on good books, I tell them to send a letter to Chicago.

**MH:** Were there any other reasons besides saturation that you think led to the demise of the old format?

**BB:** I guess inconsistent progressive leadership and direction. For a while there it looked like we were about to make it under the programming of Les Turpin, but unfortunately he left just before his book came out and it turned out to be a great book. After that, though, the station never did get back on the track. There are so many problems in programming that kind of radio. For example, new music. You hear something that's great, you go on it early. Then by the time that the public is fully turned on to it and getting into it, its already burnt out with your audience. That was a problem we had. Why the interest in the old station?

**MH:** I'm leading to an interesting point. Actually, if you honestly stop to think about it, other than those problems which most stations encounter, the old CBS-FM was a

# ROCK ALBUMS

New entries are boxed.  
\*Denotes most played cuts

|  |   |   |
|--|---|---|
| <b>BACHMAN-TURNER OVERDRIVE</b><br>Bachman-Turner Overdrive II (Mercury)<br><i>CUTS: Let It Ride*, Blown, Takin' Care of Business</i>                                    | <b>JANIS IAN</b><br>Stars (Columbia)<br><i>CUTS: Jesse, Without You</i>   | <b>SAVOY BROWN</b><br>Boogie Brothers (London)<br><i>CUTS: Everybody Loves A Drinking Man, My Loves Lying Down</i>                                |
| <b>MAGGIE BELL</b><br>Queen Of The Night (Atlantic)<br><i>CUTS: After Midnight, Oh My My, Trade Winds</i>  | <b>BILLY JOEL</b><br>Piano Man (Columbia)<br><i>CUTS: Piano Man*, Travelin' Prayer</i>  | <b>BOZ SCAGGS</b><br>Slow Dancer (Columbia)<br><i>CUTS: You Make It So Hard*, Slow Dancer, Pain of Love</i>                                       |
| <b>BRIAN AUGER'S OBLIVION EXPRESS</b><br>Straight Ahead (RCA)<br><i>CUTS: Straight Ahead*, You'll Stay In My Heart, Bumpin' On Sunset</i>                                | <b>GORDON LIGHTFOOT</b><br>Sundown (WB)<br><i>CUTS: High &amp; Dry, Sundown*, Seven Island Suite</i>                                    | <b>PAUL SIMON</b><br>Live Rhymin' (Columbia)<br><i>CUTS: Mother and Child Reunion, Bridge Over Troubled Water, The Sounds Of Silence</i>          |
| <b>JIMMY BUFFETT</b><br>Living and Dying in 1/4 Time (Dunhill)<br><i>CUTS: Come Monday, Ballad Of Spider John</i>  | <b>MARSHALL TUCKER BAND</b><br>A New Life (Capricorn)<br><i>CUTS: Southern Woman*, A New Life, Another Cruel Love*, Blue Ridge Mnt.</i> | <b>STEELY DAN</b><br>Pretzel Logic<br><i>CUTS: Rikki Don't Lose That Number*, Parkers Band</i>  |
| <b>CHICAGO</b><br>Chicago "7" (Columbia)<br><i>CUTS: Searchin' So Long, Wishing You Were Here, Skinny Boy, Call On Me*</i>   | <b>JONI MITCHELL</b><br>Court And Spark (Asylum)<br><i>CUTS: Help Me*, Free Man In Paris*, Troubled Child</i>                           | <b>CAT STEVENS</b><br>Buddha And The Chocolate Box (A&M)<br><i>CUTS: Music, A Bad Penny, Ready, Oh Very Young</i>                                 |
| <b>DEEP PURPLE</b><br>Burn (W.B.)<br><i>CUTS: Mistreated, What's Goin' On Here, Might Just Take Your Life*, You Fool No One</i>  | <b>MOTT THE HOPPLE</b><br>The Hoople (Columbia)<br><i>CUTS: The Golden Age Of Rock 'N' Roll, Born Late '58, Roll Away The Stone</i>     | <b>AL STEWART</b><br>Past-Present And Future (Janus)<br><i>CUTS: Roads To Moscow, Nostradamus</i>   |
| <b>THE DOOBIE BROTHERS</b><br>What Were Once Vices... (WB)<br><i>CUTS: Pursuit on 53rd Street, Black Water, Eyes Of Silver, Down In The Track*</i>                       | <b>THE OZARK MOUNTAIN DAREDEVILS</b><br>The Ozark Mountain Daredevils (A&M)<br><i>CUTS: If You Wanna Get To Heaven</i>                  | <b>THREE DOG NIGHT</b><br>Hard Labor (ABC Dunhill)<br><i>CUTS: Play Something Sweet, Sitting In Limbo, Put Out The Light, The Show Must Go On</i> |
| <b>BOB DYLAN</b><br>Planet Waves (Asylum)<br><i>CUTS: Going, Going, Gone, Tough Mama*, Something There Is About You, Forever Young*, (Part 1 &amp; 2), You Angel You</i> | <b>PROCOL HARUM</b><br>Exotic Birds And Fruit (Chrysalis)<br><i>CUT: Nothing But The Truth</i>  | <b>TOWER OF POWER</b><br>Back To Oakland (WB)<br><i>CUTS: I Got The Chop, Don't Change Horses</i>   |
| <b>EAGLES</b><br>On The Border (Asylum)<br><i>CUTS: Already Gone*, You Never Cry Like A Lover, Best Of My Love, James Dean</i>   | <b>LARRY RASPBERRY</b><br>Highsteppin' Fancy Dancin' (Enterprise)<br><i>CUTS: Rock &amp; Roll Warning, Road Blues</i>                   | <b>ROBIN TROWER</b><br>Bridge Of Sighs (Chrysalis)<br><i>CUTS: In This Place, Day Of The Eagle, Two Rolling Stoned*, Foolin' Me*</i>              |
| <b>GOLDEN EARRING</b><br>Moontan (MCA)<br><i>CUT: Radar Love*, Big Tree Blue Sea</i>   | <b>LOU REED</b><br>Rock & Roll Animal (RCA)<br><i>CUTS: Sweet Jane*, Rock &amp; Roll, White Light/White Heat</i>                        | <b>JOHNNY WINTER</b><br>Saints & Sinners (Columbia)<br><i>CUTS: Stone County, Stray Cat Blues, Boney Moroney, Blinded By Love*</i>                |
| <b>GRAND FUNK</b><br>Shinin' On (Grand Funk)<br><i>CUTS: Locomotion*, Shinin' On</i>   | <b>TODD RUNDGREN</b><br>Todd (WB)<br><i>CUTS: A Dream Goes On Forever*, Sons of 1984, Heavy Metal Kids, The Last Ride</i>               | <b>JESSE COLIN YOUNG</b><br>Light Shine (WB)<br><i>CUTS: California Child, Light Shine, Motorcycle Blues</i>                                      |

pretty good station with little fault to be found.

**BB:** Actually you're right.

**MH:** What I'm getting at is that now, years later, I hear stations that sound just like the old CBS-FM all over the country on both AM and FM, playing

singles and albums, some Progressive, some Top 40.

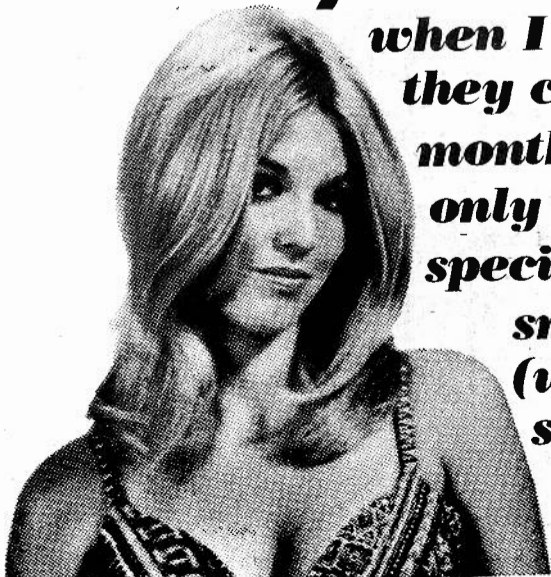
**BB:** The truth is, when you stop to think about it, we were doing what is currently called the "Q" format. We were doing the "Q" format with jingles in New York back in 1969! Today they're doing it without jingles.

## ALBUM NOTES BY BOB WILSON

What a great week for new product.

The new EDGAR WINTER lp is super, cuts are "Some Kinda Animal", "Miracle of Love" and "Rock & Roll Woman". (EPIC) Note that the lp is produced by Rick Derringer. Calling your attention to the new WB release, top stand outs reported are ARLO GUTHRIE, WET WILLIE, RY COODER, DOUG KERSHAW. We hope to have top play cuts for you next week. ACE SPECTRUM on Atlantic is crossing from R&B play to progressive, you might check it out. New PERSUASIONS now on A&M, they've added some musicians this time which could put them in the forefront more than ever. Also on A&M, Kris's girl RITA COOLIDGE has got a great lp "Fall Into Spring", listen to "Love Has No Pride" and "That's What Friends Are For," plus the rest of the album. There's also an A&M release of some old and some new MOVE material. LP is correctly marked to let you know the difference.

**I Really Grab Jocks when I tell them that they can now get 3 months of R&R for only \$12<sup>50</sup>! It's our special new DJ and small market (under 100,000) station rate.**



**How does that grab you?**

CALL US: (213) 466-1605



# PARALLELS

## DEFINITION OF PARALLELS:

**SIMPLY PUT:** they group similar stations together by playlist size and air presentation.

**REASON:** To better define what's happening with a given record at a particular type of radio station. (KJH should not be compared with WHHY.)

**EASY WAY TO USE:** First, find which Parallel your station fits into by using the boxed definitions below. You can watch a record's progress at various stations, and affirm your decision to go or not to go on a record. You can also tell at a glance what action the record's receiving at stations.

- P1: Top 15 major markets/20-30 record playlist/emphasize 7-10 "hot records"/very little new product added.
- P2: Secondary market/20-30 record playlist/emphasize 7-10 "hot records"/very little new product added.
- P3: Major and secondary market stations with 30-50 record playlists/some new product exposed.
- P4: Specialized markets affected by black or country influences.

**BACHMAN-TURNER OVERDRIVE**  
(Mercury) 4:21

*Let It Ride*

|    |  |
|----|--|
| P1 | 13Q 22-25, WRC 19-20, WFIL 25-21, K100 15-14, KHJ 17-16, WHBQ 23-23, WRKO 14-19, CKLW 22-25  |
| P2 | KFXM 27-27, WGNG 27-29, KTKT 11-19, WGOW 13-17, KCPX 22-29, Y100 12-19, WIFE 14-20, WFLI 17-20, KUPD 16-13, KTLK 10-13, WSAI 20-21, KYNO 3-7, WAXY 8-19, |
| P3 | WAMS 17-15, KLIF 16-14, KYSN 13-16, WBGN 12-15, WMAK 7-10  |

NOTES: New single is getting good play first week-see new & active.

**BLUE SWEDE**  
(EMI) 2:54

*Hooked On A Feeling*

|    |   |
|----|---|
| P1 | WPIX 2-9, WQXI 5-8, WPEZ 3-5, WABC 6-9, 13Q 17-21, WFIL 23-29, KSLQ 7-9, KKDJ 14-22, WIBG 13-15, WLS 9-11, KHJ 9-11, KFRC 13-17, WRKO 13-21, CKLW 24-29                               |
| P2 | KFXM 10-14, WGNG 11-16, WGRD 3-14, KIOA 7-9, KFMG 11-13, Y100 14-17, WFLI 27-27, KUPD 1-3, WMYQ 8-17, KCBQ 8-17, WOKY 6-13, KTLK 24-25, KAFY 23-23, WSGA 13-26, KING 6-10, WAXY 13-28 |
| P3 | WAMS 2-8, WPGC 26-29, KYSN 20-25, WMAK 15-17, KJRB 26-27, WCFL 20-28, KDZA 9-14   |

NOTES:

**CARPENTERS**  
(A&M) 3:47

*I Won't Last A Day Without You*

|    |   |
|----|---|
| P1 | WQXI 15-11, WABC 27-17, 13Q 15-15, KQV 16-9, WRC 13-12, WFIL 11-10, WHBQ 19-19, KSLQ 19-16, KFJZ 8-4, KKDJ 8-8, WIBG 16-16, K100 11-9, KHJ 11-10, KFRC 19-11, WRKO 21-18  |
| P2 | KING 19-12, WAXY 11-16, KAFY 12-11, WSGA 20-20, KYNO 18-10, KFXM 21-19, WGNG 15-13, WGRD 12-7, WZZM FM 13-9, KTKT 17-14, WGOW 18-24, KIOA 26-22, WRGQ 19-16, KFMG 20-14, KCPX 9-6, Y100 11-14, KRSP 5-5, WIFE 5-3, KUPD 26-25, WLEE 11-9, WMYQ 16-15, WOKY 16-14, KTLK 15-15, WSAI 21-19, |
| P3 | WCFL 18-15, WISM 25-20, WIXY 8-10, KILT top 15, KJR 10-13, KDZA 12-8, WAMS 24-23, KLIF 19-12, WPOP 11-10, WPGC 20-26, KYSN 5-2, WBGN 19-16, KKLS 25-23, WMAK 11-8, WCOL 19-15, KEEL 4-2, KKXL 11-14, KJRB 6-12,   |

NOTES:

**CHICAGO**  
(Columbia) 4:19

*(I've Been) Searchin' So Long*

|    |  |
|----|--|
| P1 | WPIX 12-10, WQXI 3-4, WABC 25-16, 13Q 13-9, KQV 9-6, WRC 5-4, WFIL 4-8, WDRQ 9-11, KSLQ 11-7, KFJZ 3-1, KKDJ 9-9, WIBG 3-5, WLS 16-15, K100 8-8, KHJ 7-7, KFRC 15-13, WHBQ 16-8, WRKO 10-11, CKLW 18-11  |
| P2 | KFXM 13-10, WGRD 9-8, WZZM FM 4-4, KTKT 5-5, WGOW 10-5, KIOA 12-10, WGRQ 14-15, KFMG 6-8, KCPX 5-4, Y100 21-13, KRSP 7-9, WIFE 6-8, WFLI 4-8, KUPD 14-15, WLEE 8-6, WMYQ 9-13, KCBQ 19-12, WOKY 12-11, KTLK 2-4, WSAI 7-10, KAFY 15-10, WSGA 3-3, KYNO 2-1, KING 8-7, WAXY 7-8 |
| P3 | WAMS 4-3, KLIF 2-2, WPOP 12-26, WPGC 2-2, KYSN 2-4, WBGN 6-12, WMAK 4-5, KEEL 5-4, KKXL 1-1, KJRB 4-6, WCFL 9-7, WISM 5-8, WIXY 10-7, KDZA 7-4   |

NOTES:

**JIM CROCE**  
(ABC) 2:30

*I'll Have To Say I Love You In A Song*

|    |  |
|----|--|
| P1 | WFIL 8-13, KKDJ 12-17, WIBG 21-21, K100 17-19, KHJ 18-24, WHBQ 20-20, WRKO 17-23   |
| P2 | WGNG 6-9, WGRD 19-19, KTKT 25-27, Y100 13-15, WIFE 4-6, WFLI 27-29, KCBQ 15-15, KTLK 12-16, WSAI 12-15, KAFY 3-5, WAXY 22-26 |
| P3 | WAMS 9-11, KYSN 11-15, WMAK 21-21, WCFL 16-23, WISM 4-7  |

NOTES:

**RICK CUNHA**  
(GRC) 2:46

*Yo Yo Man*

|    |                                 |
|----|---------------------------------|
| P1 | WPIX add                        |
| P2 | KIOA debut 27, WLEE debut 27    |
| P3 | KEEL 34-29, WIXY 37-34, KILT on |

NOTES: Picking up well.

**MAC DAVIS**  
(Columbia) 2:52

*One Hell Of A Woman*

|    |   |
|----|---|
| P1 | WQXI 11-10,   |
| P2 | KFXM debut 30, WZZM FM 16-13, KIOA 15-6, KFMG 27-12, KCPX 15-12, KRSP 28-27, WLEE add |
| P3 | KLIF 26-22, KYSN debut 40, WMAK add, WCOL 6-7, KJR debut 18                           |

NOTES: Strong sales, mainly an adult record.

**DE FRANCO FAMILY**  
(20th Century)-2:58

*Save The Last Dance For Me*

|    |  |
|----|--|
| P1 | 13Q debut 23, KQV on, KFJZ debut 30  |
| P2 | WGNG add, WGOW add, KCPX 23-18, Y100 debut 30, KRSP 27-17, WLEE 30-25, WOKY 23-16, WSAI debut 25, WSGA debut 29                                  |
| P3 | WAMS add, KLIF 40-36, KKLS add, WCOL 30-18, KEEL debut 39, KJRB 36-29, WCFL 28-22, WISM debut 28, WISM add, WIXY 38-21, KJR debut 20, KDZA 37-30 |

NOTES: Start is strong.

**WILLIAM DE VAUGHN**  
(Roxbury)-3:25

*Be Thankful For What You Got*

|    |  |
|----|--|
| P1 | WDRQ debut 18, KSLQ debut 26, KFJZ add, K100 add, 99X debut 18, KFRC 28-25, WHBQ 29-24, CKLW 16-10                         |
| P2 | WGOW add, WAYS add, KYNO add, KING add, WAXY debut 22, KAKC debut 27   |
| P3 | KLIF debut 40, WPOP debut 28, WPGC debut 23, WBGN 21-26, WCOL on, KEEL debut 40, KKXL add, WIXY debut 26, KJR on, KDZA add |

NOTES: Super strong-second week.

# PARALLELS

**RICK DERRINGER**  
(Blue Sky)—2:38

*Teenage Love Affair*

|   |
|---|
| P1  |
| P2 WZZM FM 26-21, WFLI 23-30                      |
| P3 KLIF 36-33, KYSN 38-35, WCOL 35-28, KJRB 22-15 |

NOTES: Pretty spotty.

**DOOBIE BROTHERS**  
(WB) 3:39

*Another Park, Another Sunday*

|   |
|---|
| P1 KFJZ 26-24   |
| P2 KFXM add, WZZM FM debut 28, KFMG 24-21, KCPX debut 27, KRSP debut 30, WIFE on, WFLI 26-28, KUPD debut 28, WLEE 24-21, WOKY add, KYNO 16-8, KING on |
| P3 WAMS on, KLIF 34-30, WPOP debut 23, KYSN 16-13, KEEL 29-25, KKXL 12-12, KJRB 18-26, WCFL 38-33, WISM 30-27, KJR 17-12, KDZA 40-34                  |

NOTES:

**EAGLES**  
(Asylum)—3:39

*All Ready Gone*

|  |
|--|
| P1   |
| P2 WZZM FM 30-25, WGOW add, KUPD debut 30, KPAM on, KING on                            |
| P3 WAMS add, KLIF 33-29, KKLS debut 32, WMAK on, WCOL debut 35, KKXL 40-35, WIXY 28-24 |

NOTES: Doing well.

**ELECTRIC LIGHT ORCHESTRA**  
(UA) 3:31

*Daybreaker*

|                                       |
|---------------------------------------|
| P1                                    |
| P2 KUPD debut 31                      |
| P3 WPOP 25-25, WBGW 30-27, WCOL 31-25 |

NOTES: Growth & spread is improving.

**FANNY**  
(Casablanca)—2:59

*I've Had It*

|                              |
|------------------------------|
| P1                           |
| P2 KCPX 28-20, WSAI debut 27 |
| P3 KKLS add, KKXL add        |

NOTES:

## DEFINITION OF PARALLELS:

**SIMPLY PUT:** they group similar stations together by playlist size and air presentation.

**REASON:** To better define what's happening with a given record at a particular type of radio station. (KHJ should not be compared with WHYY.)

**EASY WAY TO USE:** First, find which Parallel your station fits into by using the boxed definitions below. You can watch a record's progress at various stations, and affirm your decision to go or not to go on a record. You can also tell at a glance what action the record's receiving at stations.

- P1: Top 15 major markets/20-30 record playlist/emphasize 7-10 "hot records" /very little new product added.
- P2: Secondary market/20-30 record playlist/emphasize 7-10 "hot records" /very little new product added.
- P3: Major and secondary market stations with 30-50 record playlists/some new product exposed.
- P4: Specialized markets affected by black or country influences.

**FIVE MAN ELECTRICAL BAND**  
(Polydor) 3:28

*Werewolf*

|   |
|---|
| P1 KFJZ 24-22   |
| P2 WGOW 16-16, KCPX 17-21, KRSP 20-10, WIFE debut 26, WFLI debut 16 |
| P3 WAMS on, KYSN 23-17, WBGW 7-14, WMAK 8-13, KJR 9-14              |

NOTES:

**FLASH CADILLAC**  
(Epic)—3:01

*Dancin' (On A Saturday Night)*

|                              |
|------------------------------|
| P1                           |
| P2 WIFE 19-19                |
| P3 KJRB debut 36, KDZA 39-36 |

NOTES:

**ARETHA FRANKLIN**  
(Atlantic) 2:48

*I'm In Love*

|  |
|--|
| P1 KQV debut 20, WRC 29-24, WDRQ 21-15, K100 on, CKLW 29-15            |
| P2 KFXM 29-26, WLEE debut 29, KYNO debut 29                            |
| P3 WAMS on, KLIF 24-18, WBGW 10-18, KKLS 35-35, KEEL 17-10, KKXL 37-30 |

NOTES:

**GRAND FUNK**  
(Grand Funk) 2:45

*Locomotion*

|  |
|--|
| P1 WPIX 3-2, WQXI 2-2, WPEZ 1-1, WABC 3-2, 13Q 1-4, KQV 1-1, WRC 1-2, WFLI 1-1, WDRQ 1-3, KSLQ 2-2, KFJZ 1-7, KKDJ 2-3, WIBG 1-1, WLS 2-1, K100 1-1, KHJ 1-1, 99X 4-3, KFRC 6-6, WHBQ 2-2, WRKO 2-2, CKLW 2-4  |
| P2 KFXM 1-2, WGNG 1-1, WGRD 5-4, WZZM FM 1-2, KTKT 1-3, WGOW 1-1, KIOA 2-2, WGRQ 2-5, KFMG 2-2, KCPX 4-7, WMAK 9-11, Y100 2-4, KRSP 9-14, WIFE 3-4, WFLI 2-1, KUPD 5-3, WLEE 1-3, WMYQ 3-4, KCBQ 2-3, WOKY 3-4, KTLK 1-5, WSAI 3-2, KAFY 4-7, WSGA 2-1, KYNO 1-5, KING 1-2, WAXY 3-3 |
| P3 WAMS 3-1, KLIF 1-1, WPOP 3-1, WPGC 2-2, KYSN 1-3, WBGW 4-4, KKLS 11-12, KDZA 3-3, WCOL 9-13, KKXL 9-9, KJRB 3-3, WCFL 2-2, WISM 2-3, WIXY 4-4, KILT top 5, KJR 5-5,   |

NOTES:



Bite it

# "DAWBREAK"

APBO - 0246

The new single by Harry Nilsson

From the Apple film "Son of Dracula"  
starring Harry Nilsson and Ringo Starr



RCA Records and Tapes

Bite it

# PARALLELS

**GUESS WHO**  
(RCA) 2:37

*Star Baby*

|    |   |
|----|---|
| P1 | WQXI add, WFIL add, KSLQ 25-23, WLS 14-4, WHBQ debut 30   |
| P2 | WZZM FM 21-18, WGOW 7-7, KIOA 11-4, KFMG 8-6, WIFE on, WFLI 6-4, WMYQ debut 20, WOKY 10-8, WSAI 14-13, KYNO add |
| P3 | KLIF 17-15, KYSN 29-24, WBGW on, KKLS 8-13, WMAK 28-16, WCFL 10-8, WISM 23-17, KILT top 15, KDZA 41-35          |

NOTES: Very strong movement this week.

**BILL HALEY & THE COMETS**  
(MCA)-2:08

*Rock Around the Clock*

|    |  |
|----|--|
| P1 |  |
| P2 | WZZM FM 23-20, KCPX 27-22, KRSP debut 29, KCBQ 21-19 |
| P3 | WPOP 7-9, WCOL 24-16, KEEL 32-27                     |

NOTES:

**MARVIN HAMLISCH**  
(MCA) 2:57

*Music From "The Sting"*

|    |   |
|----|---|
| P1 | WPIX 10-5, WQXI 18-14, WPEZ debut 18, WABC 8-3, 13Q 11-6, KQV 10-7, WRC 26-16, WFIL 7-4, WDRQ 13-13, KSLQ 6-5, KFJZ 5-8, KKDJ 6-6, WIBG 5-3, WLS 3-3, K100 5-2, KHJ 6-5, 99X 9-4, KFRC 2-3, WRKO 3-4, CKLW 5-5  |
| P2 | KFXM 8-6, WGNG 16-8, WGRD 1-2, WZZM FM 3-6, KTKT debut 23, WGOW 3-6, KIOA 3-8, KFMG 3-3, KCPX 3-3, Y100 6-6, KRSP 3-3, WIFE 18-9, WFLI 7-6, KUPD 17-14, WLEE 7-5, WMYQ 13-6, KCBQ 4-5, WOKY 2-2, KTLK 18-11, WSAI 5-8, KAFY 16-12, WSGA 5-7, KYNO 19-14, KING 9-8, WAXY 5-4 WHBQ 13-10, |
| P3 | WAMS 28-21, KLIF 6-3, WPOP 4-4, WPGC 5-5, KYSN 15-7, WBGW 5-11, WGRQ 5-4, KDZA 8-5, WMAK 6-4, WCOL 7-11, KEEL 14-8, KJRB 7-5, WCFL 7-6, WISM 13-5, WIXY 2-2, KILT 2-2,  |

NOTES:

**ALBERT HAMMOND**  
(Mums) 3:16

*I'm A Train*

|    |  |
|----|--|
| P1 |  |
| P2 | WGNG 21-26, WGRD 10-10, WZZM FM 10-10, KTKT 21-18, KIOA 10-12, KFMG 13-11, WIFE 7-10, WFLI 29-22, KYNO 10-16 |
| P3 | KLIF 29-28, WPOP 13-27, KYSN 22-28, WCFL 24-27   |

NOTES:

**BO DONALDSON AND THE HEYWOODS**  
(ABC) 3:25

*Billy, Don't Be A Hero*

|    |   |
|----|---|
| P1 | WQXI debut 22, WPEZ 17-11, 13Q 14-11, KQV 19-12, WRC 6-5, WFIL 17-12, KFJZ 30-26, KKDJ 7-2, WIBG 12-11, WLS debut 17, K100 26-11, KFRC 24-23, WRKO 28-24, CKLW add, KHJ 27-14   |
| P2 | KFXM 28-18, WGNG 22-12, WGRD debut 27, KTKT 3-1, WGOW debut 12, KIOA 28-24, WGRQ 1-1, KFMG 21-15, KCPX 2-2, Y100 20-10, KRSP 2-2, WIFE 28-13, WFLI 25-14, KUPD 24-17, WLEE 25-23, WSAI 3-2, KAFY add, WSGA 28-23, KYNO 25-18, WHBQ 26-21, KING debut 14, WAXY 24-14 |
| P3 | WAMS 30-25, KLIF 38-35, WPOP 22-19, WBGW 9-1, KKLS 6-4, WMAK 29-19, KJR 4-1, KDZA 2-2, WCOL 11-1, KEEL 33-28, KKXL 13-11, KJRB 16-10, WCFL 23-18, WISM 27-21, WIXY 5-5,   |

NOTES: Mostly teen-some spread to 25.

**THE HOLLIES**  
(Epic) 3:45

*The Air That I Breathe*

|    |  |
|----|--|
| P1 | KFRC debut 27  |
| P2 | WZZM FM 17-14, KIOA debut 29, KFMG 25-22, KCPX 21-16, KRSP 24-12, WIFE debut 27, WLEE 24-18, KJR debut 15, WSAI 18-12, WSGA 29-25, KING on |
| P3 | WAMS 29-27, KYSN 30-26, WBGW debut 28, KKLS 14-6, WCOL 20-8, KKXL 21-16, KJRB 15-8, WISM debut 29, WIXY 32-23, KILT top 10, KDZA 41-37     |

NOTES: Excellent growth this week.

**THE JACKSON FIVE**  
(Motown) 2:29

*Dancing Machine*

|    |  |
|----|--|
| P1 | WPIX 1-1, WQXI 10-7, WPEZ 9-4, WABC 2-1, 13Q 4-3, KQV 3-3, WRC 25-25, WFIL 12-5, WDRQ 5-5, KSLQ 3-3, KFJZ 6-2, KKDJ 4-4, WIBG 10-9, WLS 7-6, K100 4-4, KHJ 4-4, 99X 1-1, KFRC 1-1, WRKO 1-1, CKLW 13-18  |
| P2 | KFXM 6-5, WGNG 7-4, WGRD 2-3, WZZM FM 25-23, KTKT 14-8, WGOW 4-3, KIOA 9-5, WGRQ 10-10, KFMG 5-5, KCPX 25-19, Y100 3-3, KRSP 19-11, WIFE 29-21, WFLI 11-11, KUPD 10-6, WLEE 2-2, WMYQ 2-2, KCBQ 12-18, WOKY 5-3, KTLK 11-7, WSAI 16-11, KAFY 10-4, WSGA 8-8, KYNO 11-4, KING 7-5, WAXY 2-2 WHBQ 3-4, |
| P3 | WAMS 16-13, KLIF 5-4, WPOP 5-3, WPGC 8-10, WBGW 3-3, KKLS 9-8, WMAK 3-3, KDZA 17-10, WCOL 2-5, KKXL 15-13, KJRB 13-9, WCFL 17-12, WISM 8-4, WIXY 9-14, KILT top 5, KJR 7-8,  |

NOTES:

**ELTON JOHN**  
(MCA) 5:12

*Bennie & The Jets*

|    |   |
|----|---|
| P1 | WPEZ 2-3, WABC 1-6, 13Q 5-7, WRC 3-6, WFIL 6-17, WDRQ 12-16, KSLQ 4-6, KKDJ 5-7, WIBG 4-6, WLS 6-9, K100 2-3, KHJ 2-3, 99X 3-8, KFRC 9-9,   |
| P2 | KUPD 6-7, WLEE 13-20, WMYQ 11-11, KCBQ 3-4, WOKY 7-10, KTLK 27-28, WSAI 6-14, KFXM 5-8, WGNG 10-17, WGRD 18-26, KTKT 10-16, WGOW 20-14, KIOA 13-18, WGRQ 3-6, KFMG 14-20, KCPX 19-26, Y100 15-16, KRSP 12-25, WIFE 8-12, WFLI 5-9, KAFY 11-16, WSGA 7-11, KING 3-6, WAXY 14-13 WHBQ 6-9 |
| P3 | WPOP 14-15, WPGC 3-7, KYSN 28-32, WMAK 10-14, KJRB 38-39, WCFL 22-29, WISM 9-12, KDZA 22-26   |

NOTES: Some have flipped to "Harmony"

**OLIVIA NEWTON-JOHN**  
(MCA) 3:12

*If You Love Me*

|    |  |
|----|--|
| P1 | 13Q add, WQXI 21-17, KFJZ debut 27, K100 add   |
| P2 | KFXM add, WZZM FM debut 27, WGOW 19-18, KCPX debut 25, Y100 debut 29, WIFE on, WLEE add, WAYS add, KPAM add, WSAI debut 26, WSGA debut 27, KYNO 29-27, KING on |
| P3 | WAMS add, KLIF 31-26, WPGC 19-17, WBGW 1-2, WMAK 2-2, WCOL 10-20, KEEL 30-26, KKXL 28-22, KJRB debut 30, WISM add, WIXY 21-18, KJR 19-19, KOZA debut 38        |

NOTES: Coming on more each week.

**KOOL & THE GANG**  
(DeLite)-4:35

*Hollywood Swinging*

|    |  |
|----|--|
| P1 | WDRQ 8-8, CKLW 7-7                       |
| P2 | WGOW debut 22, WSGA 25-17, KYNO debut 30 |
| P3 | WAMS debut 28, WCOL 40-31, WIXY 36-19    |

NOTES:

**GORDON LIGHTFOOT**  
(Reprise) 3:37

*Sundown*

|    |   |
|----|---|
| P1 | WQXI 23-16, WDRQ 20-17, CKLW 15-12, WPIX on, KSLQ 22-15, KFRC 26-20, 13Q 26-18, WIBG debut 23, KHJ debut 28, WRC 27-18, KFJZ 28-20, KQV debut 21, K100 debut 20, WFIL debut 26, WRKO 27-14  |
| P2 | KFXM debut 25, KYNO 26-22, WSGA 12-10, WGNG debut 30, WZZM FM 5-3, KIOA 4-3, KCPX 14-9, WSAI 4-3, WMYQ 20-18, KING 4-4, KFMG 4-4, KAFY debut 20, WGRQ 20-14, KUPD 29-19, KCBQ debut 22, WAXY debut 21, WGOW 24-15, Y100 debut 28, |
| P3 | WCOL 5-4, WAMS on, KYSN 19-10, KJR 3-3, KDZA 25-18, WMAK 1-1, KEEL 16-9, WPGC 13-6, WCFL 30-21, KKLS 2-2, WPOP 20-17, KJRB 2-2, WISM 28-23, KLIF 31-24, WBGW 16-5, KKXL 6-4, WIXY 11-8  |

NOTES: Showing top 10 action many stations.



**THE ORIGINAL  
RIGHTEOUS BROTHERS  
ARE BACK!**



**Bill Medley & Bobby Hatfield**

**...and They've Recorded a Smash Single on Haven Records!**

**ROCK AND ROLL HEAVEN**

b/w I Just Wanna Be Me  
(7002)

Produced by Dennis Lambert and Brian Potter



Distributed by Capitol Records

# PARALLELS

**LOBO**  
(Big Tree) 2:45 *Standing At The End Of The Line*

|    |   |
|----|---|
| P1 | WPIX on, WRC 22-21, KFJZ 22-21  |
| P2 | KCPX 20-17, WLEE 29-24, WSGA 26-24, KYNO 28-25, KUPD 23-23, KIOA 25-19, WZZM FM 27-24   |
| P3 | KEEL 24-22, WBGX 11-21, WCFL 15-14, WMAK 27-18, KYSN 32-27, KKLS 24-21, WPGC 21-16, KLIF 30-27, KJRB 24-18, WAMS debut 30, KKXL 31-28 |

NOTES:

**DAVE LOGGINS**  
(Epic)-3:57 *Please Come To Boston*

|    |                              |
|----|------------------------------|
| P1 |                              |
| P2 |                              |
| P3 | WCOL debut 38, WMAK debut 24 |

NOTES:

**PAUL MC CARTNEY & WINGS**  
(Apple) 3:50 *Band On The Run*

|    |   |
|----|---|
| P1 | KQV 2-2, WFIL 18-14, WIBG 17-12, KFRC 23-12, WRC 16-8, WLS 21-12, CKLW debut 20, 99X 15-14, 13Q 2-1, WDRQ 18-9, WIFE 27-17, KHJ 12-9, WPIX 14-11, K100 9-7, WQXI 9-3, KFJZ 11-5, WRKO 8-6, WPEZ 4-2, KKDJ 17-10,  |
| P2 | KFMG 12-7, KCPX 10-5, KYNO 4-2, KCBQ 5-1, WAXY 6-6, KIOA 22-16, KTLK 9-6, WGNG 12-7, WFLI 10-5, WMYQ 6-3, WHBQ 17-12, WZZM FM 2-1, WDRD 15-6, KAFY 14-6, WLEE 19-12, KRSP 6-6, KTKT 16-12, WSGA 4-2, KUPD 15-10, Y100 4-2, WGOW 14-11, WSAI 11-5, WGRQ 4-3, KFXM 20-12, WOKY 8-5, KING 10-9 |
| P3 | WCOL 4-2, KLIF 18-13, KJRB 8-4, WIXY 15-11, WMAK 14-6, WPOP 10-6, KEEL 15-15, WPGC 7-3, WISM 19-9, KKLS 3-3, WBGX 23-13, KJR 2-2, WAMS 26-19, KYSN 10-1, WCFL 19-13,  |

NOTES: Extremely strong.

**MAIN INGREDIENT**  
(RCA) 3:31 *Just Don't Want To Be Lonely*

|    |  |
|----|--|
| P1 | WABC 19-12, KSLQ 9-10, WRC 17-17, K100 23-23, WFIL 21-18, KFRC 8-8, WIBG 27-22, 99X 16-16, KKDJ debut 14, KHJ 26-15, KFJZ 7-11   |
| P2 | KCPX 12-23, KING 16-20, WIFE 11-16, WSAI 30-23, WAXY 21-11, WSGA 19-19, KTKT add, WHBQ 7-5, KAFY debut 19, WGOW 22-21, WMYQ 12-10, KTLK 29-21, KRSP 17-13, WLEE 5-11, KFXM 12-9, Y100 16-8, KYNO 21-17 |
| P3 | KKLS 32-30, WPGC 25-33, WCFL 11-20, KLIF 12-11, KJRB 10-16, WISM 18-14, WAMS 18-17, KKXL 32-24, KDZA 21-22, WBGX 17-6, KJR 11-6  |

NOTES:

**MFSB**  
(Phy/Int) 3:29 *TSOP*

|    |   |
|----|---|
| P1 | WPEZ 12-12, WFIL 3-7, K100 10-15, WPIX 4-4, WIBG 6-7, WRKO 5-7, 13Q 3-8, KKDJ 15-18, CKLW 27-28, WABC 4-5, KSLQ 10-14, KFRC 7-10, WRC 23-27, WDRQ 14-14, 99X 2-5, KQV 4-8, WLS 5-7,   |
| P2 | KUPD 11-2, WSGA 14-18, Y100 5-7, WIFE 12-18, KAFY 5-9, KFXM 2-4, KYNO 8-13, WSAI 15-16, KING 14-16, WMYQ 4-7, KTKT 7-11, WAXY 4-9, KCBQ 6-6, WGRD 6-9, WHBQ 4-8, KTLK 14-17, WGNG 4-6 |
| P3 | WAMS 1-2, KYSN 21-23, WMAK 13-15, WCFL 5-9, KEEL 2-5, WISM 6-11, WPOP 1-8, KDZA 10-15   |

NOTES:

## DEFINITION OF PARALLELS:

**SIMPLY PUT:** they group similar stations together by playlist size and air presentation.

**REASON:** To better define what's happening with a given record at a particular type of radio station. (KHJ should not be compared with WHHY.)

**EASY WAY TO USE:** First, find which Parallel your station fits into by using the boxed definitions below. You can watch a record's progress at various stations, and affirm your decision to go or not to go on a record. You can also tell at a glance what action the record's receiving at stations.

- P1: Top-15 major markets/20-30 record playlist/emphasize 7-10 "hot records" /very little new product added.
- P2: Secondary market/20-30 record playlist/emphasize 7-10 "hot records" /very little new product added.
- P3: Major and secondary market stations with 30-50 record playlists/some new product exposed.
- P4: Specialized markets affected by black or country influences.

**STEVE MILLER BAND**  
(Capitol)-3:22 *Living In The U.S.A.*

|    |                                     |
|----|-------------------------------------|
| P1 |                                     |
| P2 | WGRQ (nite)                         |
| P3 | WISM debut 30, WIXY 42-36, KJRB add |

NOTES: Look out for this-it is strong with audience.

**JONI MITCHELL**  
(Asylum) 3:22 *Help Me*

|    |  |
|----|--|
| P1 | WPIX on, WLS add, KFRC 16-16, WABC add, WIBG debut 25, WRC 12-11, KFJZ 10-12, KQV debut 17, K100 debut 29, WQXI debut 23, WRKO 9-8, WFIL debut 30, CKLW 19-22  |
| P2 | WGRQ 15-13, WIFE debut 28, KFXM 17-17, Y100 debut 27, KYNO 27-23, WSAI 19-18, WZZM FM 7-8, WLEE 22-17, KING on, KTKT 15-21, KIOA 20-20, WOKY 30-21, WHBQ debut 29, WGRD 13-11, KFMG 19-18, KTLK debut 27, KTLK add, WGNG debut 25, WFLI debut 13, WSGA 16-14, KUPD 22-18 |
| P3 | WAMS 25-20, WPGC 16-13, KLIF 10-7, KJRB add, WPOP 9-7, KKXL 24-18, WBGX 27-23, WCFL 35-30, KYSN 9-11, KDZA 26-21   |

NOTES:

**MARIA MULDAUR**  
(Reprise) 3:36 *Midnight At The Oasis*

|    |   |
|----|---|
| P1 | KQV 18-14, WFIL 14-6, WLS 19-16, KHJ 19-12, WRC 9-13, WIBG 18-10, K100 19-13, WABC 14-14, KKDJ add, WRKO 6-5, 13Q 19-10, KFJZ 9-6, CKLW 11-6, WPIX debut 13, KSLQ 23-11, KFRC 4-4, WQXI 7-5, WDRQ 7-7, 99X 18-10  |
| P2 | WGOW 9-4, Y100 10-5, KUPD 20-22, WLEE 9-8, WMYQ 10-5, KTKT 9-4, KRSP 18-18, WAXY 9-5, KYNO 23-19, WDRD debut 18, WZZM FM 6-5, WHBQ 14-6, WIFE 13-7, WGNG 19-14, KFMG 22-24, WFLI 3-7, WSGA 10-9, KCPX 13-11, KFXM 7-7, WOKY 9-9, KAFY 19-15, WGRQ 11-7, WSAI 17-20, KCBQ 17-7, KTLK 4-3 |
| P3 | KEEL 13-7, WPOP 2-2, KILT top 5, KKSL 4-17, WCFL 13-10, WISM 10-6, KKXL 2-3, KLIF 14-9, KYSN 6-5, WIXY 13-9, WAMS 19-16, WPGC 12-20, KDZA 16-11, WMAK 16-25,  |

NOTES: Some show a peak, also loss of men.

**ANNE MURRAY**  
(Capitol) 2:58 *You Won't See Me*

|    |   |
|----|---|
| P1 | WPIX add, KKDJ 19-12, K100 debut 22, CKLW 26-24   |
| P2 | KCPX 18-14, WOKY add, KFMG debut 30, KYNO add, KING add, KIOA debut 28, WIFE 30-24, WZZM FM 20-17, WSGA 23-21, KRSP 23-22, KFXM debut 28,                                       |
| P3 | KEEL 18-11, WAMS add, KKXL 35-29, WCOL 28-24, WBGX 28-25, KJR on, WMAK 20-12, KYSN 12-12, WIXY 26-22, KKLS 31-16, WPGC 35-25, KDZA 36-31, KLIF 39-34, KJRB 29-22, WPOP debut 29 |

NOTES:



# PARALLELS

**NILSSON**  
(RCA) 3:03

*Daybreak*

|    |   |
|----|---|
| P1 | WABC on, KFJZ debut 28, WRKO 11-13, WPIX debut 18   |
| P2 | WSAI debut 28, KING on, KTKT add, KAKC add, WSGA debut 30, KFMG debut 29, WZZM FM 22-19                               |
| P3 | KEEL debut 37, WPGC 34-28, WCOL 22-19, KJRB 12-21, KKLS 16-11, KKXL 19-15, WAMS on, KJR on, WPOP 21-20, KDZA debut 39 |

NOTES:

**O'JAYS**  
(Phil/Int) 3:45

*For The Love Of Money*

|    |  |
|----|--|
| P1 | WQXI 19-15, KSLQ 24-21, CKLW 12-16, WPIX add, WIBG 28-26, KFRC 20-14, WRC 28-19, KKDJ debut 20, 99X 8-13, KQV debut 18, KFJZ 27-25, KHJ 22-19, WFIL debut 28, K100 25-21, WDRQ 3-6, WRKO 20-12   |
| P2 | WGOW 5-8, KFMG debut 28, WAXY 17-10, KAFY add, KTKT 24-20, KIOA debut 30, WHBQ 11-7, KFXM debut 23, KCPX add, KRSP add, WFLI debut 25, WGRD debut 20, WDRQ debut 20, WMYQ debut 19, WGNG debut 28, KING 20-18, WLEE 26-22, WSGA 24-22, WIFE debut 30, KYNO 30-28 |
| P3 | KKLS 27-25, KYSN 27-20, WIXY 19-17, KLIF 37-31, WPGC 27-26, KDZA 30-23, WAMS 22-18, KJR 16-9, KKXL 39-32, WPOP 23-21, WCFL debut 34, WBGW 13-10, WISM debut 26   |

NOTES:

**MIKE OLDFIELD**  
(Virgin) 3:18

*Tubular Bells/Theme From The "Exorcist"*

|    |  |
|----|--|
| P1 | KQV 15-13, WLS 11-13, KHJ 8-6, WRC 8-10, WIBG 9-14, WABC 11-11, KKDJ 18-11, 13Q 6-12, K100 12-10, WPIX 6-3, KFRC 12-18, WFIL 20-25, 99X 12-15  |
| P2 | KAFY 9-14, WFLI 12-3, WGRD 7-5, KING 12-11, KTLK 17-20, KUPD 9-12, WGOW 8-9, WHBQ 9-16, WOKY 13-18, WZZM FM 9-11, KTKT 2-2, KCBQ 9-13, KRSP 21-24, WSAI 13-17, WLEE 3-7, WGRQ 13-9, KFXM 4-20, WIFE 15-22, KCPX 8-15, WGNG 5-3 |
| P3 | KEEL 20-20, KYSN 17-19, KDZA 6-12, WMAK 19-29, WPGC 14-19, KLIF 8-8, KJRB 14-11, WAMS 13-9, WCFL 4-11, WPOP 8-16, WISM 14-25   |

NOTES:

**OZARK MOUNTAIN DAREDEVILS**  
(A&M) 3:04

*If You Wanna Get To Heaven*

|    |   |
|----|---|
| P1 | WRC debut 28, KFJZ add  |
| P2 | WGOW add, KIOA 24-23, KING on, KAKC add   |
| P3 | WCOL 16-12, WPGC 29-21, KILT add, KKLS 29-26, KJRB 30-24, WIXY 40-31, KLIF debut 39, KKXL 38-33, WBGW on, KJR 19-11 |

NOTES: One of the strongest new ones.

**COZY POWELL**  
(Chrysalis) 3:32

*Dance With The Devil*

|    |  |
|----|--|
| P1 | WPEZ 18-19, 13Q 20-24  |
| P2 | KFMG 9-10, KTKT 12-6, KUPD 19-21, KIOA 14-7, KRSP 14-19, KTLK 5-10 |
| P3 | WMAK 26-23, KDZA 35-32, KCPX 24-30, KYSN 7-9, WISM 11-10           |

NOTES:

**REDBONE**  
(Epic) 3:30

*Come And Get Your Love*

|    |  |
|----|--|
| P1 | WPEZ 8-13, KSLQ 13-19, WPIX 5-7, KKDJ 21-21, 13Q 28-29, K100 13-17, WABC 5-10, CKLW 6-3, WLS 4-5, 99X 5-9, WDRQ 6-4, KHJ 14-17 |
| P2 | WGNG 24-27, KCBQ 7-11, KUPD 4-4, KTLK 22-23, Y100 19-21, KFXM 25-29, WAXY 23-25, WFLI 20-24                                    |
| P3 | WCFL 1-4, KDZA 32-33   |

NOTES:

**GENE REDDING**  
(Capitol) 3:22

*This Heart*

|    |                           |
|----|---------------------------|
| P1 | WBG 26-24                 |
| P2 |                           |
| P3 | WIXY debut 37, WPOP 27-24 |

NOTES:

**DIANA ROSS & MARVIN GAYE**  
(Motown) 2:55

*My Mistake*

|    |   |
|----|---|
| P1 | WRC 21-22, KFJZ 13-15   |
| P2 | WSGA 6-6  |
| P3 | WCOL 13-9, KJRB 33-31, KLIF 13-10, KDZA 4-7, WAMS 14-10, WBGW 15-9, KYSN debut 38 |

NOTES:

**CARLY SIMON**  
(Elektra) 3:50

*Haven't Got Time For The Pain*

|    |  |
|----|--|
| P1 | KFJZ debut 29, WRKO 29-17  |
| P2 | WAYS add, KRSP add, KTKT add, WGRQ add, WGOW on, KING on, WSGA debut 28, WAXY add, KFMG debut 31, KYNO add, WZZM FM 24-22  |
| P3 | KEEL 38-33, WBGW on, WISM add, WCOL 38-30, KYSN 36-30, WIXY 30-27, WMAK debut 30, KJRB debut 34, KDZA debut 40, KKLS debut 29, KKXL debut 39, WPOP 28-22, KLIF 35-32, KILT add |

NOTES:

**JIM STAFFORD**  
(MGM) 3:12

*My Girl Bill*

|    |  |
|----|--|
| P1 | WQXI 22-20, K100 29-26, WRC add, WRKO 30-27, KQV debut 19, CKLW add, KSLQ 16-13, KFRC 27-24, KFJZ 29-19, KHJ debut 27, WPIX debut 19   |
| P2 | WGRQ 17-11, WSGA 9-5, WIFE 10-5, KCPX 11-8, WOKY 21-19, WFLI debut 19, KFMG 16-16, WGNG add, KCBQ 13-10, KFXM debut 24, KIOA 30-26, WGRD 22-21, WMYQ 15-16, KING debut 17, WZZM FM 29-26, WGOW 11-13, WLEE 20-15, WAXY 18-17, KRSP 8-8, WSAI 10-9, KYNO 20-15, WHBQ 30-25, |
| P3 | KEEL 21-16, WAMS debut 29, KJRB 25-20, KDZA 33-29, WCOL 12-23, WPOP 19-12, KKXL 27-20, WMAK 25-22, WBGW 18-8, WCFL 34-26, KKLS 10-10, KYSN debut 33, WISM 29-24, KLIF 27-25, WPGC 18-14, WIXY 17-16  |

NOTES: Getting some negs, mostly positive at this time.

**RINGO STARR**  
(Apple) 3:15

*Oh My My*

|    |  |
|----|--|
| P1 | WPEZ 14-14, KKDJ 10-13, WQXI 4-13, K100 14-16, 13Q 8-16, WRKO 18-25, WRC 11-14, KHJ 13-20, WFIL 13-19, WIBG 7-13               |
| P2 | WGRD 8-13, KCBQ 10-9, WGNG 18-22, WLEE 12-16, Y100 18-18, KYNO 9-12, KING 15-15, WIFE 16-23, WAXY 15-18, KAFY 13-17, KFXM 9-21 |
| P3 | WAMS 11-7, WPGC 24-27, KLIF 3-6, WCFL 32-36, WMAK 17-26, WISM 7-18, KEEL 7-12, KDZA 13-19, KYSN 26-31                          |

NOTES:

# PARALLELS

STEELEY DAN  
(ABC) 3:58

*Rikki Don't Lose That Number*

|    |   |
|----|---|
| P1 | KFJZ add, K100 add  |
| P2 | KTKT debut 25 KRSP 26-20, KING on, KYNO add   |
| P3 | KEEL 39-34, WPGC add, WCOL 36-26, KJRB debut 33, KKLS-26-15, KKXL 36-26, KLIF debut 38, KJR on, KYSN debut 37, WIXY 39-30, KDZA add |

NOTES: Should do well judging from the beginnings.

CAT STEVENS  
(A&M) 2:33

*Oh Very Young*

|    |   |
|----|---|
| P1 | WPIX on, WFIL 30-22, 13Q 24-20, KSLQ 26-25, WABC on, KFJZ 19-10, WRC 10-7, K100 debut 28, KQV 21-16, WRKO 22-16, WQXI debut 21  |
| P2 | KCPX add, KFMG 28-25, WSGA 18-15, WSAI debut 24, KIOA 29-25, KAFY debut 22, KTKT 19-15, KING on, KTLK 25-18, WGOW on, WLEE 16-13, KFXM 11-11, WGNG 30-24, KYNO 5-9, WZZM FM 14-12, WIFE 17-11 |
| P3 | KEEL 19-14, WPOP 16-13, KKXL 8-10, WMAK add, WBGW 26-20, WCFL 31-25, KKLS 18-14, KYSN 8-8, WISM 20-15, KLIF 25-23, WPGC 17-12, KDZA 31-27, WAMS on, KJRB 23-17                                |

NOTES:

RAY STEVENS  
(Barnaby) 3:15

*The Streak*

|    |   |
|----|---|
| P1 | WPEZ 13-6, KQV 8-4, KKDJ 1-1, 99X 13-7, WQXI 1-1, WFIL 16-9, WIBG 14-8, KHJ 5-2, WPIX debut 20, WLS 1-2, K100 6-5, 13Q 12-2, WDRQ 2-2, WRKO 12-10, WABC 27-7, KSLQ 1-1, CKLW 1-1, WRC 2-1, KFJZ 2-9, KFRC 3-2   |
| P2 | KRSP 1-1, WGRD 11-1, WFLI 1-2, WOKY 1-1, WAXY 1-1, Y100 1-1, KTKT on, WIFE 1-1 KTLK 3-1, WHBQ -11, WGRQ 8-2, WGOW 2-2, KYNO 17-6, WSGA 1-4, KCPX 1-1, KFMG 1-1, WLEE 6-1, KAFY 1-1, KFXM 14-1, KIOA 1-1 WMYQ 1-1, WSAI 1-1, WGNG 20-11, KUPD 2-1 KCBQ 1-2, KING 2-1 |
| P3 | KEEL 1-3, KDZA 1-1, WPGC 1-1, WAMS debut 24, WIXY 1-1, WBGW 8-17, WMAK 5-9, WISM 1-1, KYSN 4-18, WCOL 1-6, KILT 1-1, KJRB 5-7, WPOP 17-11, WCFL 3-1   |

NOTES: Many have cut rotation, despite sales & requests.

STYLISTICS  
(Avco) 4:45

*You Make Me Feel Brand New*

|    |  |
|----|--|
| P1 | WPIX 18-8, WDRQ 4-1, CKLW 4-2, 13Q 25-17, KSLQ 20-17, WFIL 2-2, WRKO debut 29, WABC 21-8, KFJZ 23-14, 99X 7-2, WRC 7-9, WIBG 2-2, KHJ 28-18, KQV 20-15, K100 18-12,  |
| P2 | WGRQ debut 27, WMYQ 18-8, KFMG 29-23, WSAI 9-4, Y100 debut 20, KCBQ debut 24, KING debut 19, WGOW add, KRSP 29-26, WOKY 25-15, WAXY debut 20, WGRD debut 23, WZZM FM 19-15, WSGA 15-13, WHBQ 22-17, WGNG add, KYNO 24-20, KAFY add, WIFE on, KCPX add, WLEE 10-10, KFXM 22-15, |
| P3 | WISM 22-13, WAMS 10-6, KJRB debut 30, WIXY 7-3, WCOL 3-3, KEEL 26-18, KKXL 29-23, KDZA 23-17, WMAK debut 27, WBGW 29-19, KJR 12-4, WPOP debut 30, KKLS 33-31, KYSN debut 34, WCFL 21-19, KLIF 21-16, WPGC 23-24,   |

NOTES:

THREE DOG NIGHT  
(ABC) 3:29

*The Show Must Go On*

|    |   |
|----|---|
| P1 | KQV 5-5, WPEZ 15-7, WLS 13-8, WRC 4-3, WFIL 5-3, K100 3-6, WABC 7-4, WIBG 8-4, WRKO 7-9, 13Q 7-5, KKDJ 3-5, KFRC 10-15, WPIX 9-6, KFJZ 4-3, 99X 14-11 WQXI 8-6, KSLQ 5-4, KHJ 3-8   |
| P2 | KFMG 7-9, KCPX 6-13, KAFY 8-2, WLEE 4-4, KING 5-3, KIOA 5-11, WGOW 6-19, WGNG 2-2, KTLK 8-14, WIFE 2-2, WAXY 12-7, WZZM FM 8-7, WGRD 21-15, WOKY 4-6, WFLI 9-18, WHBQ 2-13, KRSP 10-15, KTKT 4-7, KCBQ 11-8, KUPD 8-9, Y100 8-9, KCPX 6-13, WGRQ 9-8, KFXM 3-3, KYNO 7-11, WSAI 8-7 WMYQ 7-9, |
| P3 | KEEL 3-1, WMAK 12-7, WIXY 3-6, KKXL 3-7, WAMS 8-5, WCOL 8-14, KJR 6-7, KYSN 3-6, WISM 3-2, KJRB 1-1, KLIF 4-5, WPOP 6-5, WCFL 8-3, WPGC 6-8, KKLS 1-1, KDZA 5-6,  |

NOTES:

WEDNESDAY  
(Sussex) 2:30

*Teen Angel*

|    |                      |
|----|----------------------|
| P1 |                      |
| P2 | WSAI 29-22           |
| P3 | WIXY 27-25, WBGW add |

NOTES:

STEVIE WONDER  
(Tamla) 3:40

*Don't You Worry 'about A Thing*

|    |  |
|----|--|
| P1 | KQV12-11, KFJZ 18-13, WQXI 20-18, K100 24-24, 13Q 16-19, KFRC 11-7, WRC 18-15, 99X 6-6, WFIL 29-20, WIBG 22-20   |
| P2 | KTKT 18-13, WAXY 16-12, KTLK 13-9, WGRD 28-22, WHBQ 15-14, KFXM 19-16, WGNG 25-20, KCBQ debut 26 KUPD 28-26, WLEE 18-14, WZZM FM 15-16, KYNO 6-3, KRSP 30-28, KAFY 22-18 |
| P3 | KEEL 10-6, WPOP 15-14, WCFL 26-24, KKLS 5-7, KYSN 18-14, WISM 26-22, KLIF 20-17, WPGC 11-11, KDZA 14-13, WAMS debut 26, KKXL 10-6  |

NOTES:

Z.Z. TOP  
(London) 3:15

*Le Grange*

|    |   |
|----|---|
| P1 | WQXI 14-12, WRC add, KFJZ 25-23   |
| P2 | KFMG 30-26, KING on, WFLI debut 15, WIFE debut 29, WSGA 22-16, KTLK 32-24 |
| P3 | WPGC debut 35, KJRB 21-38, KJR debut 17, WCFL debut 38                    |

NOTES:

## Now On The Back Page

# ROCK

### Radio & Records

TREND: May 10, 1974

| 4/12 | 4/19 | 4/26 | 5/2 | 5/9 | 5/16 |
|------|------|------|-----|-----|------|
| 4    | 1    | 1    | 1   | 1   | 1    |
| 15   | 6    | 2    | 2   | 2   | 2    |
| 14   | 9    | 5    | 4   | 4   | 4    |
| 14   | 12   | 5    | 4   | 4   | 4    |
| 8    | 5    | 3    | 3   | 3   | 3    |
| 15   | 7    | 7    | 6   | 7   | 7    |
| 17   | 14   | 10   | 8   | 8   | 8    |
| 1    | 2    | 2    | 7   | 9   | 10   |
| 3    | 4    | 4    | 8   | 11  | 13   |
| 18   | 18   | 13   | 10  | 10  | 10   |
| 23   | 22   | 16   | 13  | 13  | 13   |
| 12   | 11   | 10   | 11  | 15  | 15   |
| 2    | 3    | 8    | 12  | 16  | 16   |
| 22   | 21   | 20   | 18  | 18  | 18   |
| 10   | 16   | 19   | 19  | 21  | 21   |
| 11   | 8    | 12   | 14  | 23  | 23   |
| 24   | 24   | 24   | 24  | 24  | 24   |
| 24   | 24   | 24   | 24  | 24  | 24   |

# NEW & ACTIVE

CHER "Train" (MCA) immediate action on what sounds like her best ever: debut 26 KFRC, add 13Q, add WMAK, KSEA, WCOL, KRSP, KING, WOKY, KTLK, KCPX and KKLS, add KILT, KJR.

RIGHTEOUS BROTHERS (Haven) right on WRKO at 28, add KUPD, WPOP, KING.

GOLDEN EARRING (MCA) getting good activity: debuts 29 KUPD, add KRSP.

KING, debuts 28 KFRC, on WAMS nights, debuts 40 WCOL.

RAZZY (MGM) packed up this week: 21-15, KIOA, 18 KKLS, add WMAK, 27-17 WCOL with number 6 requests, add KJR, 7-5 KKXL.

SEALS & CROFTS (WB) doing much better than the last one: debuts 29 WZZM, add KING, add KFJZ, KKLS, 35-30, KEEL, add WBGW, on KJR, add KKXL.

BROWNSVILLE STATION (Big Tree) right on 13Q, KTLK, KCPX & WCFL, good rock & roll.

HUES CORP (RCA) from R&B play good New York action: add WABC at 15, 99X adds at 19.

WET WILLIE (Capricorn) still alive and splashing: add WQXI, re-add WSAI, and night play at WCOL, add KJR.

GLADYS KNIGHT (Buddah) add CKLW, WCOL, 39-36 KYSN.

WTO "Taken Care of Business" add WGRQ nights, KING, KKLS, on KJR, 32-25 KJRB. (Mer.)

FOUR TOPS (ABC) add KFXM, KING, WAMS, 25-20 WIXY.

JIMMY BUFFETT (ABC) Many like this one: 23-21 KIOA, debuts 30 WZZM, 22-19, KKLS, on WBGW, 41-35 WIXY.

CROSS COUNTRY (Atlantic) 30-27 KUPD, debuts 39 WCOL.

CHASE (Epic) 31-27 KFMC, add WCOL, on WISM.

EDDIE KENDRICKS (Motown) on WPIX, add WOKY, 40-35 WCFI, add KJR.

### The Golden Ear

RIGHTEOUS BROTHERS  
Rock & Roll Heaven (Haven) 3:23

T.J. LAMBERT, MD WPOP/Hartford: "I only added one record this week because it's the best: even the jocks are flipping out!"

### RAZZY

I Hate Hate (MGM) 3:15

SCOTT SHANNON, PD WMAK/Noahville: "Nobody likes it but the listeners...it's a hit!"

BROWNSVILLE STATION  
Leader of the Gang (Big Tree) 3:09

GARY WALDRON, PD KCPX/Salt Lake City: "Sounds like a cross between Grand Funk and Alice Cooper. I think it'll be a monster."

### Parallel Summary

CARETAKERS: Some showing mid-chart, but many show strong top 10 action. See page 9.

RICK CUMBA add WPIX, charts at WLEE 37, KIOA 27. See page 9.

MAC DAVIS the believers have been vindicated: 11-10 WQXI, top 10 WCOL, 15-13 KCPX, strong adult appeal. See page 9.

DE FRANCESCO: debuts 22 at 13Q, on 19 KFJZ, 28-22 WCFL. See page 9.

WILLIAM DEVAUGHN super adds: should be a giant. See page 9.

DOONES: still moving: 24-21 WLEE 24-30 KLIF, 17-12 KJR. See page 9.

EAGLE: add WGOW, on WMAK, debuts 25 WCOL. See page 10.

ELLO: still very much alive 31-25 WCOL, 20-27 WBGW. See page 10.

FANNY: picking up more each week: 28-20 KCPX, debut 27 WSAI. See page 10.

ARETHA: debuts 20 KQV, 21-15 WDRQ, on KIOA, 24-18 KLIF, 17-10 KEEL. See page 10.

QUESS WING: super action this week, add WQXI, WFIL, 14-4 WLS. See page 12.

BO & NEV WOODS: super strong leads, debuts 22 WQXI, 27-14 KHJ, 4-3 WRC, 22 WSAI. See page 12.

HOLLIES: another "real" believers brought home: debuts 27 KFRC, 15-13 KJRB, 20-20 WIXY, top 10 KILT. See page 12.

OLIVIA NEWTON-JOHN: add 13Q, 21-17 WQXI, add KIOA, 19-17 WPGC. See page 12.

KOOL & THE BARTONS: add 13Q, 25-17 WSGA, top ten both CKLW and WDRQ, see page 12.

GORDON LIGHTFOOT: heading for top ten. Many have it already there. Page 12.

LOBO: a hit story in some markets this week. Check page 14.

MAC STEVEY: "disappoint" from the album. Numbers this week prove it. See page 14.

MAIN INGREDIENT: 24-15 KHJ, 4-4 KFRC, 11-4 KJR, 17-4 WIXY. See page 14.

JOHN MITCHELL: had a good week, add WLS, WABC, debuts 17 WIXY, 24-15 KKLS. See page 14.

AMER MURRAY: 18-11 KEEL, 19-12 KRDO, 20-12 WMAK. See page 14.

WILSON: on WABC, debuts 23 WSAI, 24-25 WPGC. See page 15.

O JAYS: still looks good, a few strong movements. See page 15.

DEANES JIMMY GARDNER: one of the most active, leads very good, debuts 18 WRC, 18-13 WCOL, 19-11 KJR, add KILT. See page 15.

CHARL SIMON: picked up good additions and some nice early chart movement. See page 15.

STEELEY DAN: looks strong, add KFJZ, KING, KYNO, 30-28 WIXY, 30-15 KKLS. See page 15.

CAT STEVENS: already a top 10, many top 15, all moving up. See page 16.

STYLISTICS: looks like it could go top 10 in many markets. See page 16.

STEVIE WONDER: after a slow start it finally had a good week: 15-11 KQV, 11-7 KFRC, 10-13 KILT, 15-10 WPCP. See page 16.

Z.Z. TOP: 14-12 WQXI, add WRC, 20-26 KFJZ, debuts 21 WPGC. See page 16.



# Country

JONATHAN FRICKE, Editor

## Response To WHK/Cleveland Promo Jams Telephone Switching Lines

According to Dave Donahue, Program Director, WHK-Cleveland listener response to a recent promotion "Battle of the Country Giants" was so great the telephone switching equipment jammed. An operator logged 28,000 phone calls during that weekend. An official with Ohio Bell estimated a minimum of 200,000 callers attempted to reach WHK. Their current promotion revolves around Mickey Gilley's "Room Full of Roses." WHK is giving away enough roses to fill a room and the grand prize is a room to put them in... a room at the Playboy Hotel on Mother's Day. Since it is not Easter, no bunnies will be included.

### HOTTEST BRAND GOING

Beginning tomorrow (11) and continuing every Saturday night KCKC will originate a six-hour broadcast from the Brandin' Iron in San Bernardino. It will be known as "Saturday Night Out

With KCKC." 1350 personality Mark Williams will host the 6-Midnight broadcasts with help from the other KCKC announcers. A specially constructed soundproof booth, housing a complete broadcast studio will be used. "Live" entertainment broadcasts will use Brandin' Iron artists.

### WJJD NAMES EDWARDS

R&R extends congratulations to Mark Edwards on being named Operations Manager at WJJD. Mark, promoted from Production Manager, works 10-noon shift.

### WIRE AT THE WIRE

Indiana AP Broadcasters Association recently awarded the WIRE News Dept., under the direction of Bob Coker, first place for the following:

- 1) Best locally originated news cast (This is their third consecutive year.)
- 2) Best local news story. A six part series on the status of senior citizens.

3. Important new feature. Agri-business Dept. placed first in Farm News.

4) Continuing public affairs program.

The WIRE News Dept. also received the Broadcast Award from the Indianapolis Community Service Council.

Moon Mullins, Program Director of WINN Louisville was quoted in Time Magazine (5-6) as was General Manager Glen George KCKN Kansas City. At last report Moon was at the local newsstand buying all available copies of Time.

Gary Shaffer, Program Director WWHY Huntington is hosting the Proctorville Volunteer Fire Dept. Show featuring Jean Shepard.

On May 11, Steve Warren, Music Director WHN is MC'ing a show in the Felt Forum called the "Final Country In New York." It features George Jones and Tammy Wynette.

## Biff Collie INSIDE NASHVILLE



Faron Young, who spent a week in Baptist Hospital, in Nashville, after being carried from a date in Houston, is expected back on the job by now. Extensive tests at the hospital made a week's rest necessary. Charlie Walker

Edwards, for 20 years the No. 1 pop morning radio man in San Antonio are no relation!!

The TV special shot at the Tennessee State Prison hosted by ex-con Glen Sherley came off like a charm, according to Glen. Featured Johnny Cash, Linda Ronstadt, Foster Brooks and Richard Pryor, plus two acts chosen from the prison population. They finished editing this week, next week will take it to the networks for viewing. Should be seen this summer. Glen said it was another new experience for him, and the backers of the show were very happy.

### This Week's Most added

HENSON CARGILL

*Stop And Smell The Roses*

MEL TILLIS

*Stomp Them Grapes (MGM)*

MARTY ROBBINS

*Don't You Think (MCA)*

BILLY CRASH CRADDOCK

*Rub It In (ABC)*

worked a number of dates to fulfill Faron's commitments, with Faron's band as well.

Harlan Howard and his wife Donna Gale just got back from a month's tour of the West Coast, from San Diego to Seattle and all points in-between. Said he was giving Donna Gale country education, making stops at virtually every country night club on the route. Harlan's Melba Montgomery hit is flirting with the No. 1 spot on the Hit Parade, and Harlan says Charlie Walker's next week scheduled record will be his next No. 1. Charlie hopes so Harlan!...

Tommy Overstreet on music row Wednesday, exciting over the Central Park "Woodstock" type Country Festival this summer. Tommy will cut a "live" album there, make TV film for later networking, and expects another "Tonight Show" shot soon, resulting from his guesting with Roy Clark last month on the show.

Great reaction ... David Houston, a colonel on the Louisiana Governor's staff, sent his general Tillman Franks to run interference for his next Epic session this month with music row's resident genius Billy Sherrill. Toji Tabuchi, erstwhile fiddler with the David Houston show, expecting his first Dot release momentarily, is already set for some solo bookings. Standby fiddler, Wade Ray, is busy lately in this Fender Nashville office, with Rex Allen on his rodeo and fair dates and now, when time allows, with the David Houston show. Wade, one of our great singers, was a successful RCA artist for many years. Wade's wife Grace recently retired as postmaster of Ridgetop, Tennessee. If you wondered where the Bryants got the idea for the Osbornes' giant hit, perhaps now you know...

Stoney Edwards called from San Antonio to say, in case there's any question, that he and Howard

### Quickies

Eddy Arnold sessioned in Hollywood last week. (That's a twist)... Dale Potter, a pioneer Nashville sound fiddler, stopped by with a heavy new writer-fiddler-rodeo performer Ken McDuffie. Ken is peddling an album session of cowboy-rodeo material. Good too!... Rev. Jimmie Rodgers Snow (Hank's son) on music row, re: syndicating of his "Grand Old Gospel" radio show, which is done live every Friday night from the stage of the new Grand Ole Opry House...

Combine's Johnny McRae's beard being paged for a TV commercial (not John, just his unique beard!)... Gary S. Paxton has now lost 63 pounds since he started his doctor's care diet four months ago. He wrote Roy Clark's and Don Gibson's current records.. Tillman Franks told me if he had had a seat belt on the night Johnny Horton was killed in that October 1960 car crash in East Texas, that he would have been killed too!!! (Tillman was in the car with Johnny).

Ask Wilderness Music's Don Davis how to keep a trim waist... Cedarwood publishing's John Denny says Bill Sterling is one of the most talented record acts in town. One day he'll be discovered John.

Remember the name Sharon Reynolds. Great voice, from Greenville, S.C. whose husband Otis operates Mark V Studios there, and arranges her sounds. Really something!... Larry James of WUNI Radio in Mobile, has one of the best collections of voice characters on his shows that I've heard since Dick Haynes at KLAC... Audie Ashworth huddled with Alex Harvey on future Harvey Capitol session plans. Bob Artabasy, manager at WPAS Radio, Zephyrhills, Florida, told me he got a letter from a listener regarding one of his ex-disc jockeys which read: "If ---- is getting paid for what he does on the air, he is stealing money!"

## NOTES from Jonathan Fricke



The ten songs that have shown the strongest gains this past week (includes the fastest movers, the top sellers, most requested and most added records regardless of how long they have been available) are:

1. Mickey Gilley (Playboy)
2. Dolly Parton (RCA)
3. Waylon Jennings (RCA)
4. Ray Stevens (Barnaby)
5. Hoyt Axton (A&M)
6. Loretta Lynn (MCA)
7. Olivia Newton-John (MCA)
8. Conway Twitty (MCA)
9. Don Williams (JMI)
10. Joe Stampley (Dot)



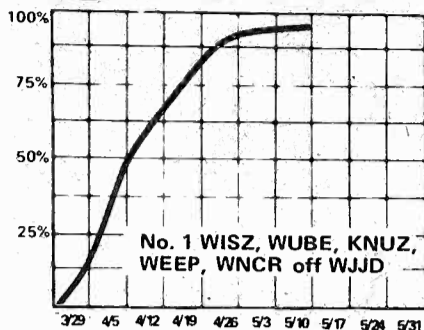
KFOX-Long Beach MD Chris Collier (right) greets Glen Campbell backstage at the Las Vegas Hilton after a recent performance.



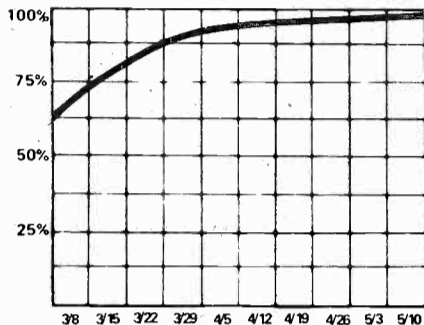
THE SEARCH ENDS-The winner in the nationwide "Search For The Singing Cowboy" is Neely Reynolds (third from left). 20th Century President Russ Regan (left) has wasted no time in signing and releasing product from the talented 24 year-old winner. Next to Regan is Pierre Cossette, and at right is Wes Farrell.

● signifies fastest moving records

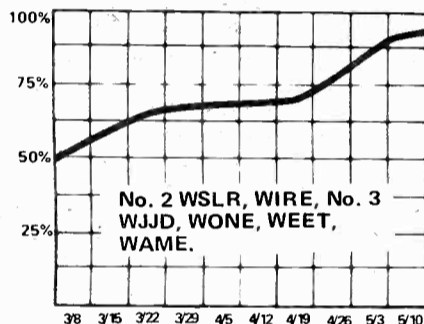
# 1 STEVENS



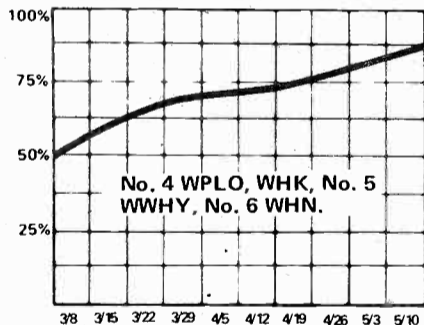
# 2 SMITH



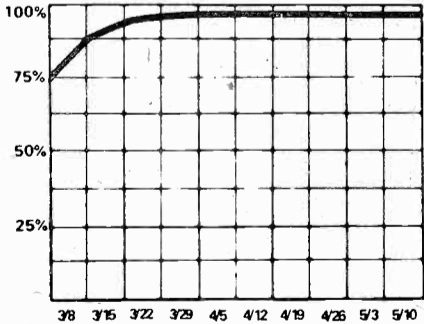
# 3 JAMES



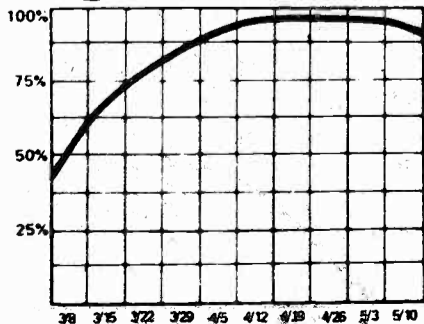
# 4 D. WILLIAMS



# 5 HAGGARD



# 6 SNOW

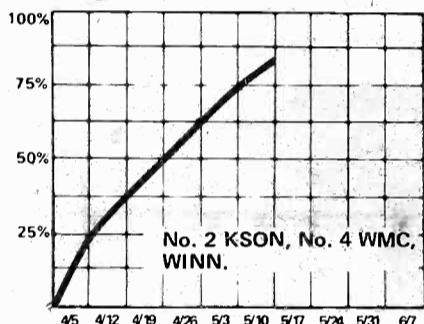


# Country TOP TWENTY

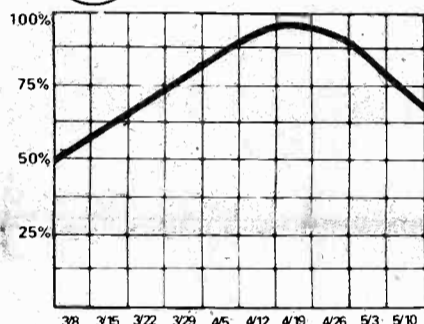
Friday, May 10, 1974

- |      |     |    |   |
|------|-----|----|---|
| 4-26 | 5-3 | ●  | RAY STEVENS/The Streak (Barnaby)                  |
| 5    | 3   | 2  | CAL SMITH/Country Bumpkin (MCA)                   |
| 3    | 1   | 3  | SONNY JAMES/Is It Wrong (Columbia)                |
| 7    | 4   | ●  | DON WILLIAMS/We Should Be Together (JMI)          |
| 11   | 7   | 5  | MERLE HAGGARD/Things Aren't Funny Anymore         |
| 8    | 6   | 6  | HANK SNOW/Hello Love (RCA)                        |
| 2    | 1   | ●  | DOLLY PARTON/I Will Always Love You (RCA)         |
| 14   | 11  | 8  | CHARLIE RICH/A Very Special Love Song (Epic)      |
| 1    | 5   | 9  | ROY CLARK/Honeymoon Feeling (Dot)                 |
| 15   | 12  | ●  | RONNIE MILSAP/Pure Love (RCA)                     |
| 17   | 14  | 11 | MELBA MONTGOMERY/No Charge (Elektra)              |
| 4    | 8   | 12 | BUCK OWENS/Cover Of The Music City News (Capitol) |
| -    | 16  | 13 | JOHNNY RODRIQUEZ/Something/Born To Lose           |
| 18   | 18  | 14 | FARON YOUNG/Some Kind Of Woman (Mercury)          |
| -    | 17  | 15 | TINA & DADDY/The Telephone Call (Epic)            |
| 20   | 20  | 16 | DOTTIE WEST/Last Time I Saw Him (RCA)             |
| 19   | 19  | ●  | OLIVIA NEWTON JOHN/If You Love Me (MCA)           |
| -    | -   | 18 | CHARLIE PRIDE/We Could (RCA)                      |
| -    | -   | 19 | TOMMY OVERSTREET/You Were A Lady (Dot)            |
| 10   | 10  | 20 | MOE BANDY/Hatin' Cheatin' Songs (GRC)             |
| 16   | -   |    |   |

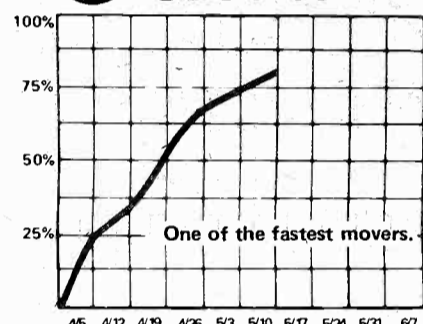
# 7 PARTON



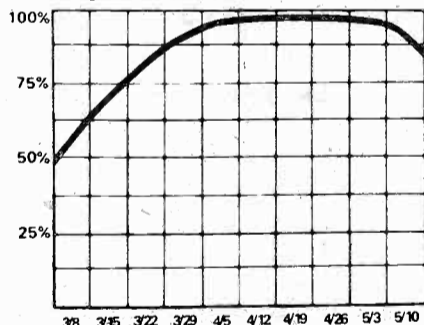
# 11 MELBA



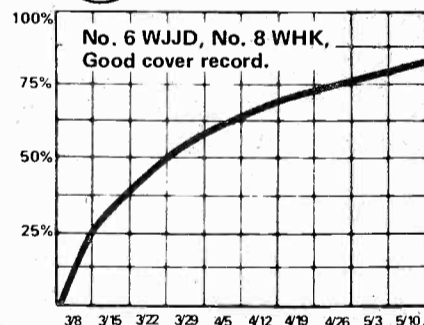
# 17 OLIVIA



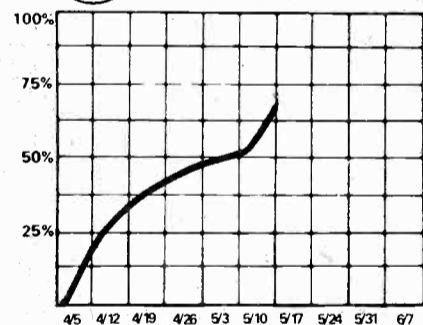
# 8 RICH



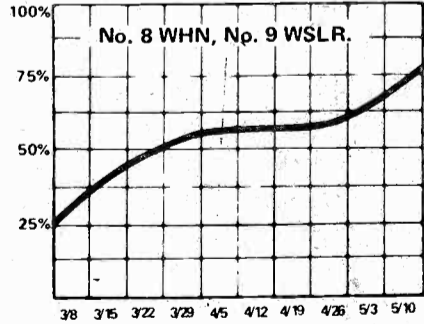
# 12 OWENS



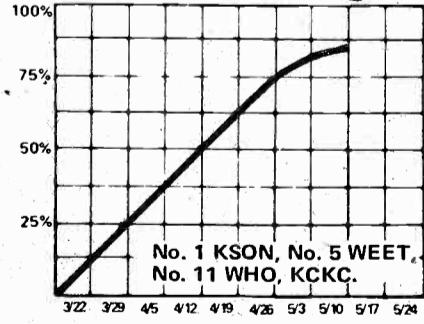
# 18 PRIDE



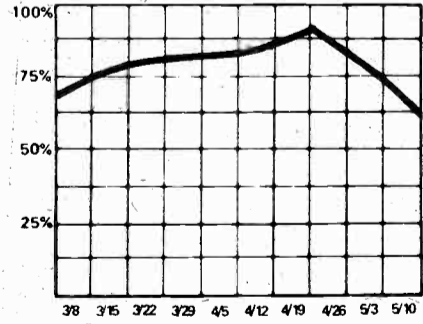
# 9 CLARK



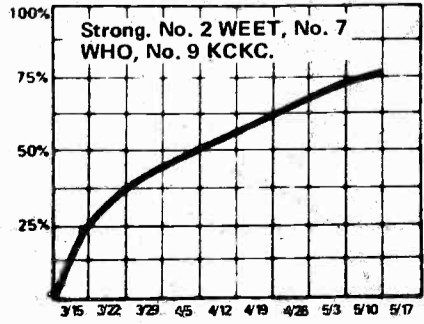
# 13 RODRIQUEZ



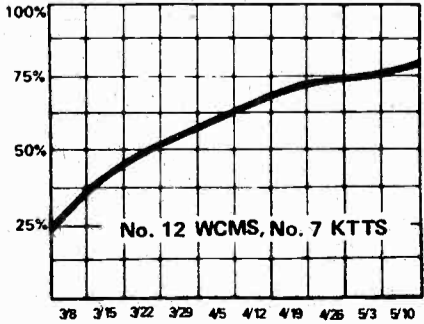
# 19 OVERSTREET



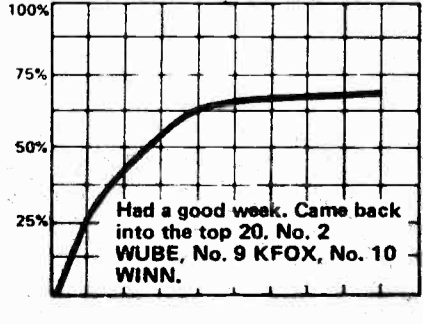
# 10 MILSAP



# 14 YOUNG

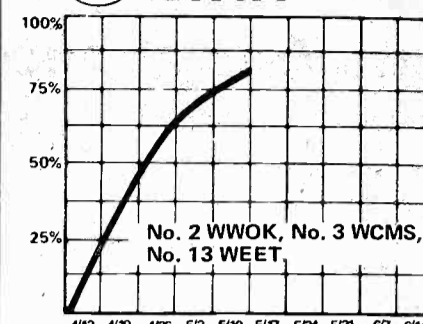


# 20 BANDY

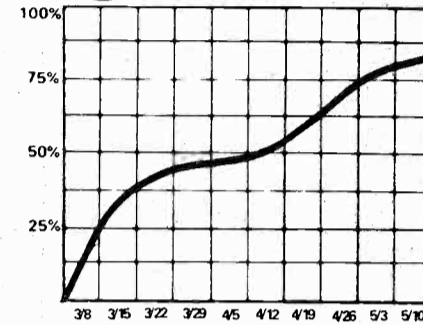


← The top twenty listings reflect SALES  
The graphs measure the song's level of audience appeal

# 15 TINA



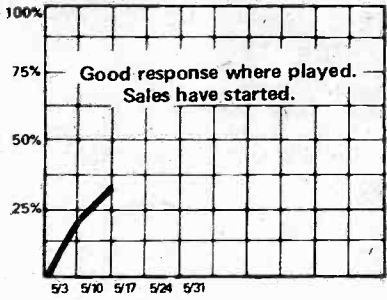
# 16 WEST



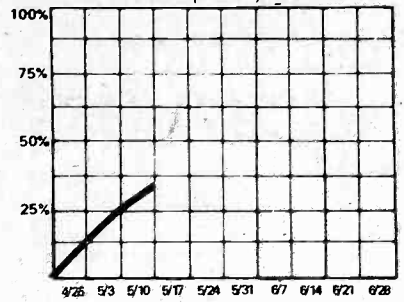


# Country SINGLES

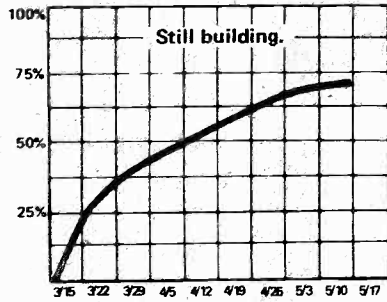
**REX ALLEN, JR.**  
*Goodbye (WB)*



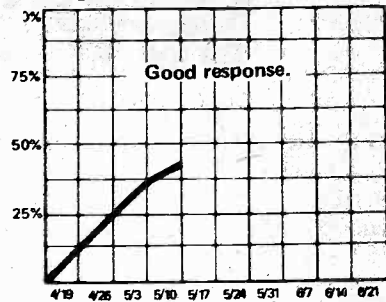
**JIM MUNDY**  
*Come Home (ABC)*



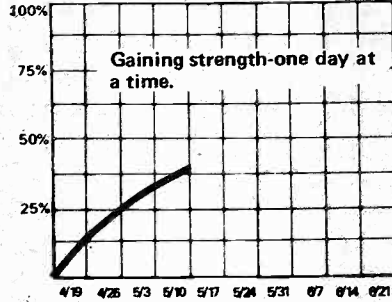
**HOYT AXTON**  
*When The Morning Comes (A&M)*



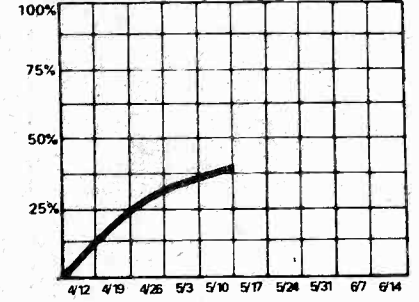
**JOHNNY CASH**  
*Ragged Old Flag (Columbia)*



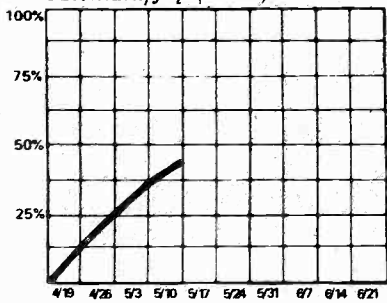
**DON GIBSON**  
*One Day At A Time (Hickory)*



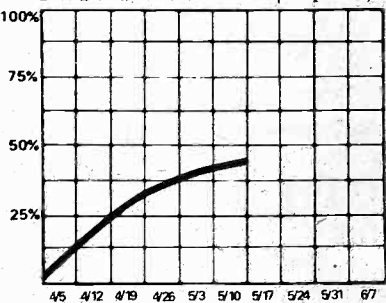
**ANNE MURRAY**  
*He Thinks I Still Care (Capitol)*



**BOBBY BARE**  
*Mermaid/flip (RCA)*



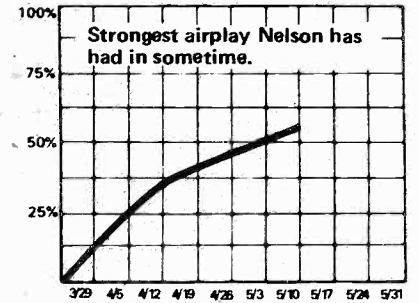
**LA COSTA**  
*I Wanna Get To You (Capitol)*



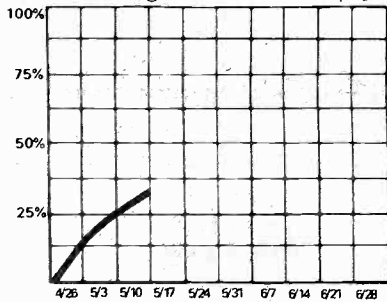
**MICKY GILLEY**  
*Room Full Of Roses (Playboy)*



**WILLIE NELSON**  
*Bloody Mary Morning (Atlantic)*



**BLANCHARD & MORGAN**  
*Something On Your Mind (Epic)*

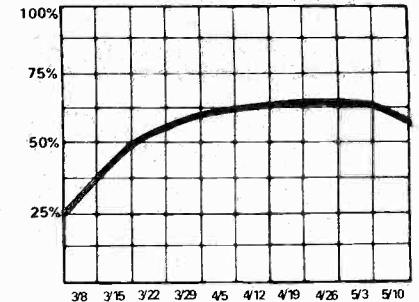


**AUDIENCE APPEAL GRAPHS**

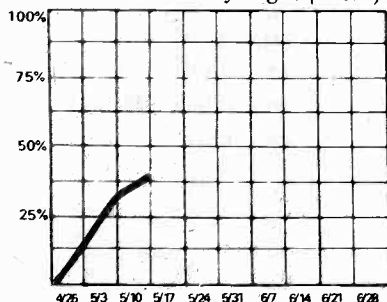
**SIMPLY PUT:** The levels (0%-100%) represent a record's progress at R&R's reporting Country stations. The higher the percentage, the more stations that record is charted on, and/or the higher the chart number that record has at the reporting stations.

A RECORD reaching 90-100% is a total, across the demographic board smash. A record registering 50% may do so because it's appealing to only a portion of the audience—say, teens, or mostly males. The graphs will also show how a record may "hold on" in audience popularity long after sales have dropped.

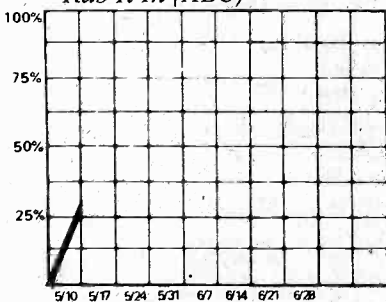
**JOHNNY PAYCHECK**  
*My Part Of Forever (Epic)*



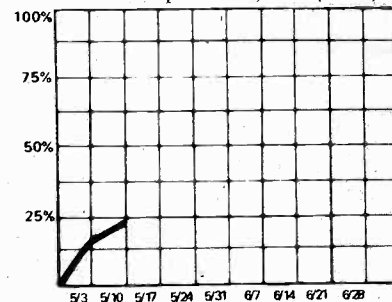
**JIM ED BROWN**  
*It's That Time Of Night (RCA)*



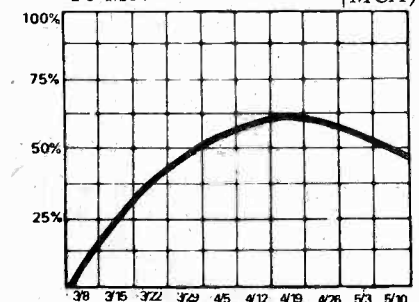
**BILLY "CRASH" CRADDOCK**  
*Rub It In (ABC)*



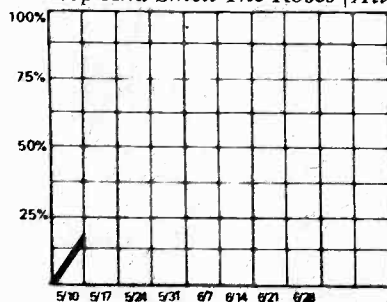
**MARY KAY JAMES**  
*Please Help Me Say No (JMI)*



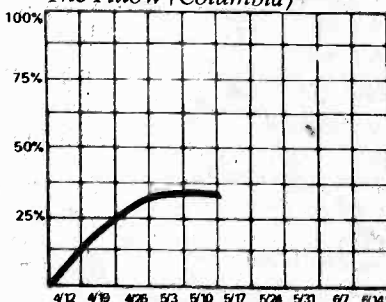
**JEANNE PRUETT**  
*To Move A Mountain (MCA)*



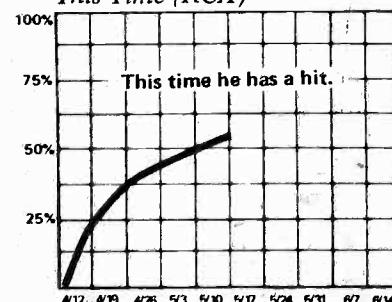
**HENSON CARGILL**  
*Stop And Smell The Roses (Atlantic)*



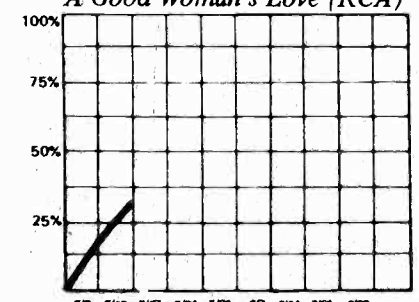
**JOHNNY DUNCAN**  
*The Pillow (Columbia)*



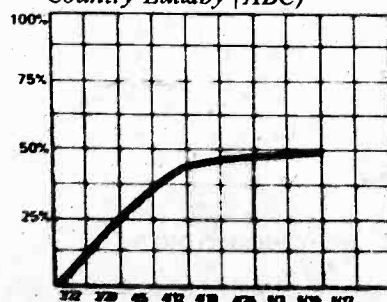
**WAYLON JENNINGS**  
*This Time (RCA)*



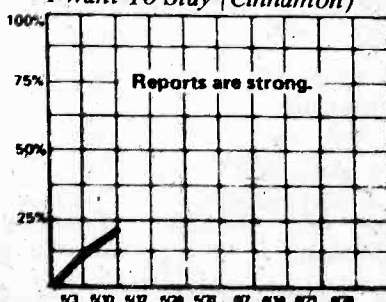
**JERRY REED**  
*A Good Woman's Love (RCA)*



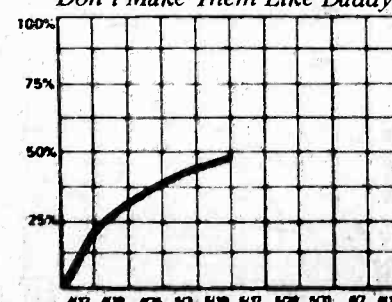
**JOHNNY CARVER**  
*Country Lullaby (ABC)*



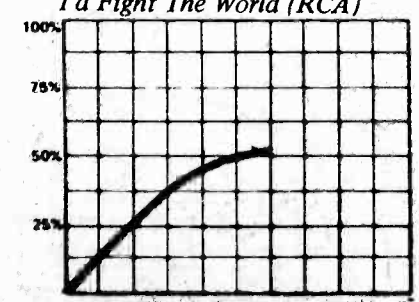
**NARVEL FELTS**  
*I Want To Stay (Cinnamon)*



**LORETTA LYNN**  
*Don't Make Them Like Daddy (MCA)*

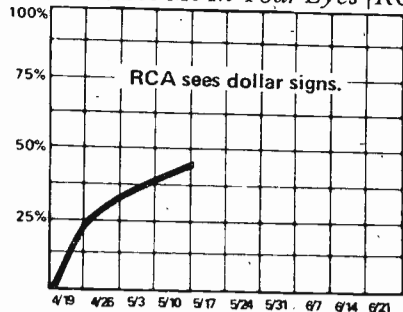


**JIM REEVES**  
*I'd Fight The World (RCA)*

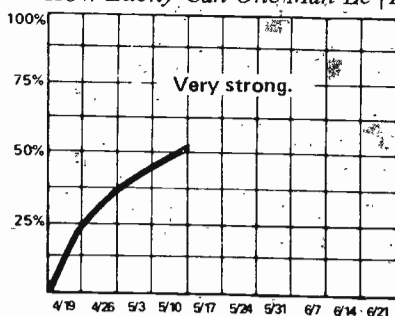


# added this week...

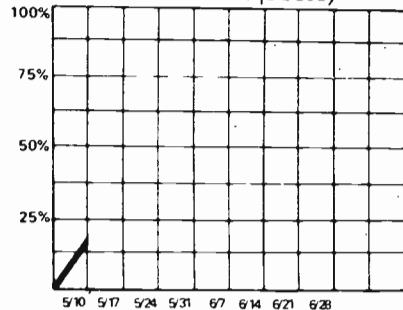
**CHARLIE RICH**  
*Don't See Me In Your Eyes (RCA)*



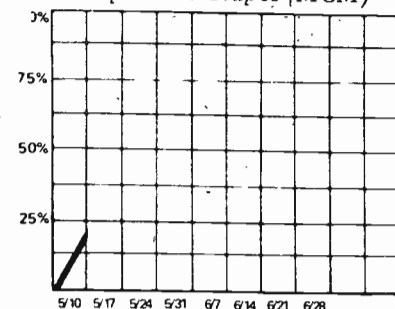
**JOE STAMPLEY**  
*How Lucky Can One Man Be (Dot)*



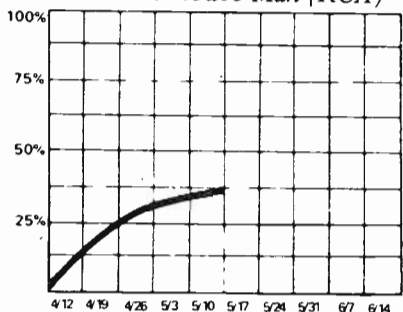
**MARTY ROBBINS**  
*Don't You Think (MCA)*



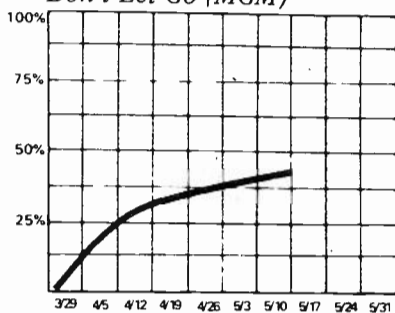
**MEL TILLIS**  
*Stomp Them Grapes (MGM)*



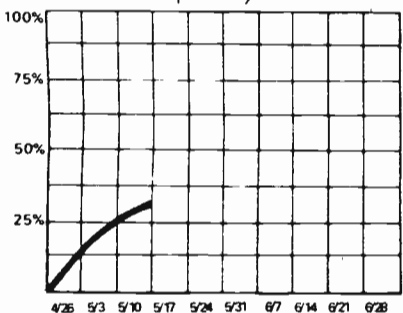
**JOHNNY RUSSELL**  
*She Loves Rodeo Man (RCA)*



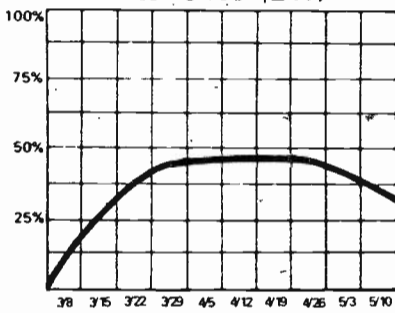
**TILLIS & BRYCE**  
*Don't Let Go (MGM)*



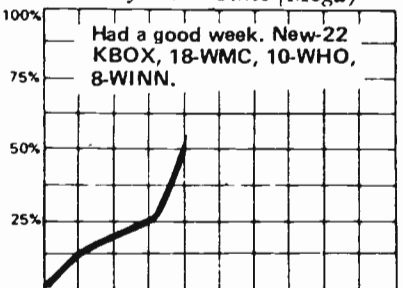
**JEANNIE SEELEY**  
*I Miss You (MCA)*



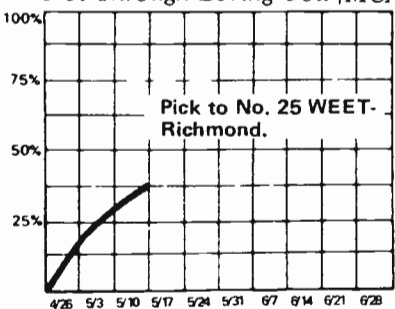
**DIANA TRASK**  
*Lean It All On Me (Dot)*



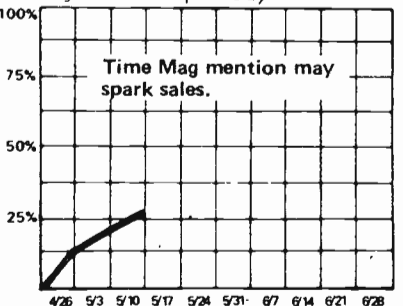
**MARILYN SELLARS**  
*One Day At A Time (Mega)*



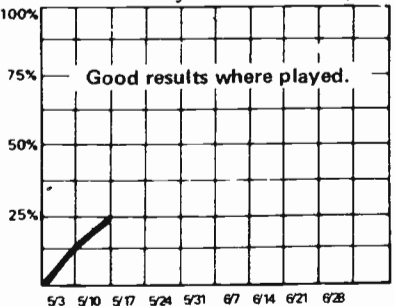
**CONWAY TWITTY**  
*Not Through Loving You (MCA)*



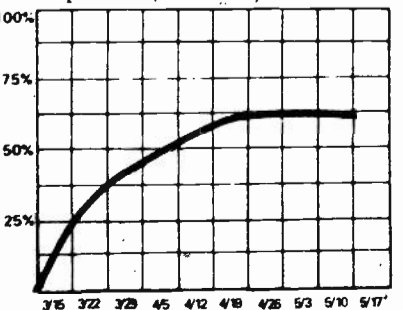
**JIM STAFFORD**  
*My Girl Bill (MGM)*



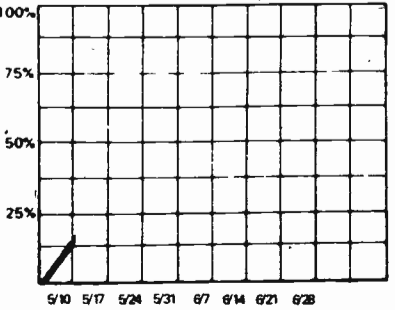
**NANCY WAYNE**  
*Back Door of Heaven (20th)*



**TERRY STAFFORD**  
*Captured (Atlantic)*



**FREDDY WELLER**  
*Sexy Lady (Columbia)*



**WSLR-AKRON**

- Narvel Felts
- Mel Tillis
- Brian Collins
- Susan Raye
- Jim Mundy
- DROPS
- Connie Smith

**WPLO-ATLANTA**

- Tom T. Hall
- Gordon Lightfoot

**WISZ BALTIMORE**

- Jerry Reed
- Anne Murray
- Joel Mathis
- Nancy Wayne
- DROPS
- Connie Smith
- Buck Owens
- Dave Dudley
- Dottie West
- Johnny Rodriguez

**WJJD-CHICAGO**

- Mel Tillis
- Marty Robbins
- Henson Cargill
- Bobby Bare
- Buddy Alan
- Penny De Haven
- Charlie McCoy
- DROPS
- Ray Stevens
- Bobby Wood
- Jim Croce

**WUBE-CINCINNATI**

- Marty Robbins
- Joe Allen
- Jerry Reed
- Crystal Gayle
- DROPS
- Sonny James
- Blanchard & Morgan

**WHK-CLEVELAND**

- Crystal Gayle
- Jerry Reed
- DROPS
- Hank Williams, Jr.
- Lefty Frizzell
- Jean Shepard

**WONE-DAYTON**

- Larry Kingston
- Henson Cargill
- Houston & Mandrell
- Charlie McCoy
- DROPS
- Penny De Haven

**WHO-DES MOINES**

- David Rogers
- Henson Cargill
- Charlie McCoy
- DROPS
- Brian Shaw
- Faron Young
- Ray Price

**KCKC-SAN BERN**

- Billy Crash Craddock
- DROPS
- Diana Trask

**KNUZ-HOUSTON**

- Vicky Fletcher
- Henson Cargill
- Marty Robbins
- Stoney Edwards (flip)
- Troy Seals
- Roy Acuff
- David Rogers

**DROPS**

- Tillis & Bryce
- Johnny Paycheck
- Jeanne Pruett

**WWHY-HUNTINGTON**

- Willie Nelson
- Jeannie Seely
- Jim Mundy
- Conway Twitty
- Jim Ed Brown
- Nall & Lane
- Houston & Mandrell
- DROPS
- Jody Miller
- Stan Hitchcock
- Johnny Paycheck

**WIRE- INDIANAPOLIS**

- Henson Cargill
- Floyd Cramer
- Skeeter Davis
- Narvel Felts
- Lawands Lindsey
- Charlie McCoy
- Nashville
- Mel Tillis
- Tom T. Hall

**DROPS**

- Roy Drusky
- Patti Page
- Tex Williams
- Slim Whitman
- Rick Nelson
- George Kent
- Glen Barber
- Tony Booth
- Diana Shore
- Burt Reynolds
- Commander Cody
- Sessions/Tierney

**KSON-SAN DIEGO**

- Hank Williams, Jr.
- Jody Miller
- Conway Twitty
- Mel Tillis
- Mickey Gilley
- Loretta Lynn
- Darrell McCall
- Johnny Cash
- Rex Allen, Jr.
- Jeanne Pruett
- Nall & Lane
- Billy Crash Craddock

**DROPS**

- Ray Price
- Bob Luman
- Billy Mize
- Tommy Overstreet
- Del Reeves
- Brian Shaw

**WMC-MEMPHIS**

- Charlie McCoy
- Marty Robbins
- DROPS
- Johnny Paycheck

**WHN-NEW YORK**

- Mel Tillis
- Bobby Russell
- Marty Robbins
- Houston & Mandrell
- Jimmy Buffett
- Crystal Gayle
- Red Simpson
- Karen Carpenter

**WCMS-NORFOLK**

- Atlanta James
- Houston & Mandrell
- Lawanda Lindsey
- Roy Acuff
- Dick Curless
- David Rogers
- Henson Cargill
- Nancy Wayne
- Guy Harden
- Skeeter Davis
- Jimmy Dean
- Blanchard & Morgan
- Crystal Gayle

**WEEP-PITTSBURGH**

- Diana Trask
- Don Gibson
- Mel Tillis
- Jim Ed Brown
- Billy Crash Craddock
- Gordon Lightfoot
- DROPS
- Hank Williams, Jr.
- Terry Stafford

**WEET-RICHMOND**

- Mel Tillis
- Jeannie Seely
- Jerry Reed
- Nall & Lane
- Henson Cargill
- Brian Collins
- Jimmy Dean
- Nancy Wayne
- David Allen Coe
- Atlanta James
- NO DROPS

**WINN-LOUISVILLE**

- Jerry Reed
- Mel Street
- Marty Robbins
- Sam Neely
- Tennessee Pulleybone
- DROPS
- Donna Fargo

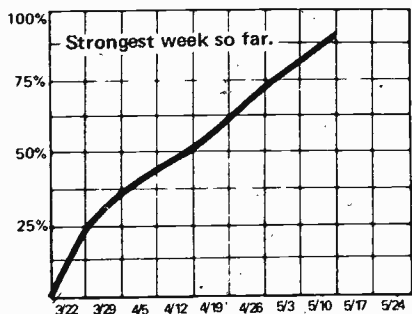
**KFOX-LONG BEACH**

- David Rogers
- Narvel Felts
- Susan Raye
- Henson Cargill
- Billy Crash Craddock
- DROPS
- Terry Stafford
- Merle Haggard
- Lynn Anderson
- Jeanne Pruett

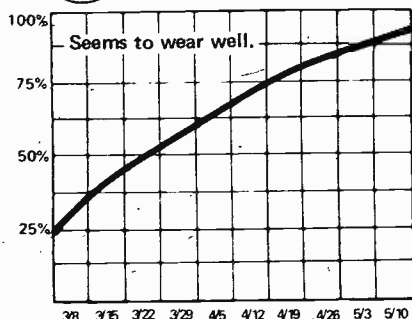


● signifies fastest moving records

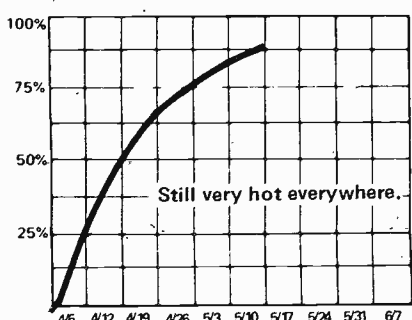
# 1 LIGHTFOOT



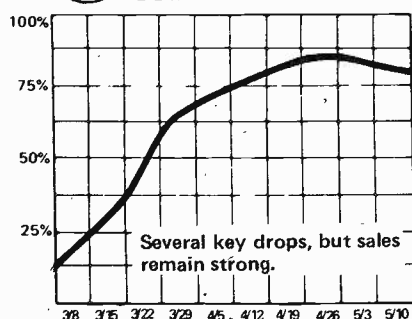
# 2 MITCHELL



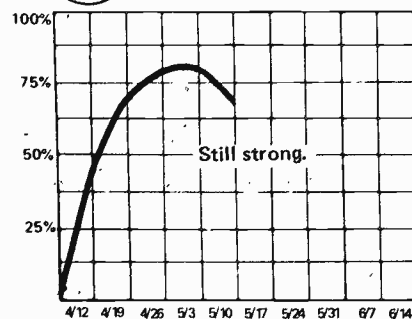
# 3 CARPENTRS



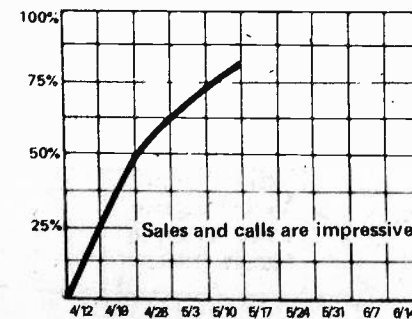
# 4 M. DAVIS



# 5 STEVENS



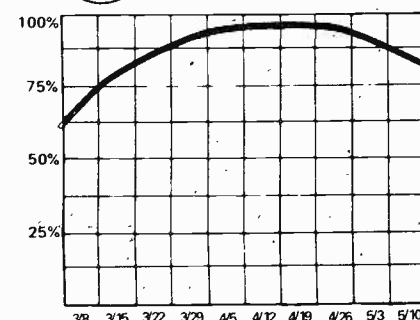
# 6 STAFFORD



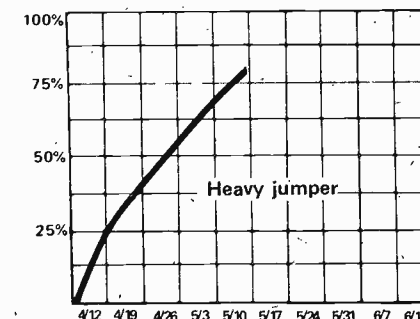
## TREND:

| Rank  | Artist | Record Title                    | Label                      |
|-------|--------|---------------------------------|----------------------------|
| 9 2   | 1      | SUNDOWN                         | Gordon Lightfoot (Reprise) |
| 6 3   | 2      | HELP ME                         | Joni Mitchell (Asylum)     |
| 14 8  | 3      | WON'T LAST A DAY WITHOUT YOU    | Carpenters (A&M)           |
| 3 4   | 4      | ONE HELL OF A WOMAN             | Mac Davis (Columbia)       |
| 2 1   | 5      | THE STREAK                      | Ray Stevens (Baranby)      |
| 17 12 | 6      | MY GIRL BILL                    | Jim Stafford (MGM)         |
| 4 6   | 7      | MIDNIGHT AT THE OASIS           | Maria Muldaur (Reprise)    |
| 19 13 | 8      | YOU WON'T SEE ME                | Anne Murray (Capitol)      |
| 15    | 9      | SEARCHIN' SO LONG               | Chicago (Columbia)         |
| 5 7   | 10     | TUBULAR BELLS                   | Mike Oldfield (Virgin)     |
| 20    | 11     | OH VERY YOUNG                   | Cat Stevens (A&M)          |
| 7 9   | 12     | I'M A TRAIN                     | Albert Hammond (MAM)       |
| 10 11 | 13     | TSOP-MFSB                       | (Philly int.)              |
| 17    | 14     | YOU MAKE ME FEEL GRAND NEW      | Stylistics (Avco)          |
| 20 16 | 15     | IF YOU LOVE ME                  | Olivia Newton John (MCA)   |
| 17    | 16     | DON'T YOU WORRY                 | Stevie Wonder (Tamla)      |
| 18    | 17     | STANDING AT THE END OF THE LINE | Lobo (Big Tree)            |
| 18    | 18     | BAND ON THE RUN                 | Paul McCartney (Apple)     |
| 2 19  | 19     | FOREVER YOUNG                   | Joan Baez (A&M)            |
| 20    | 20     | SONG FOR ANNA                   | Herb Ohta (A&M)            |

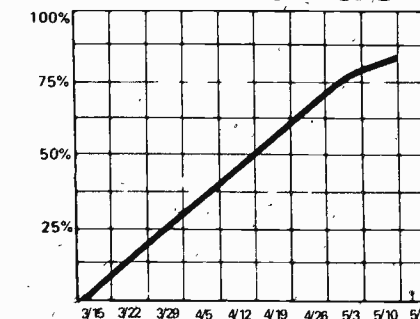
# 7 MULDAUR



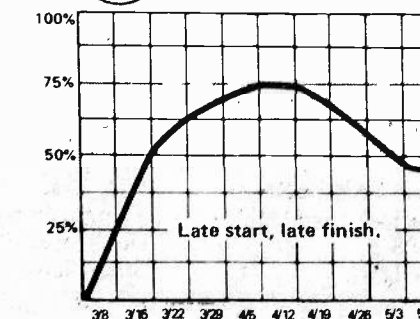
# 8 MURRAY



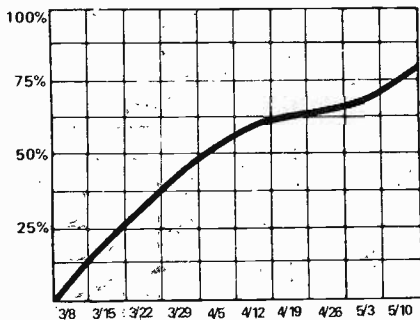
# 9 CHICAGO



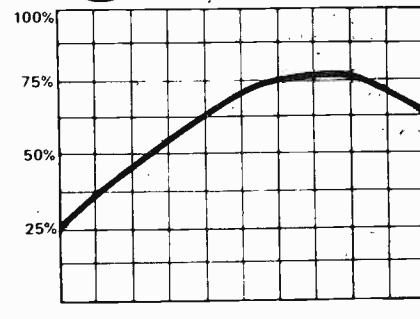
# 10 OLDFIELD



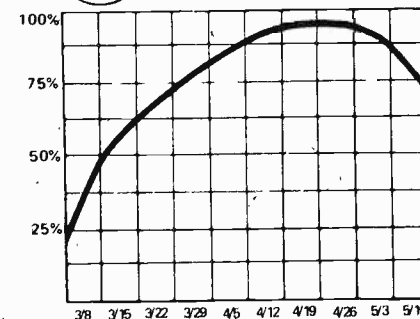
# 11 C. STEVENS



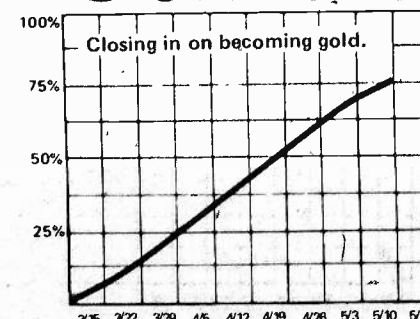
# 12 HAMMOND



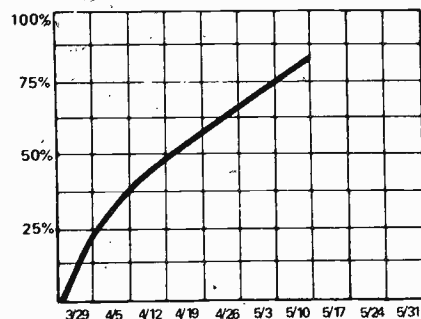
# 13 MFSB



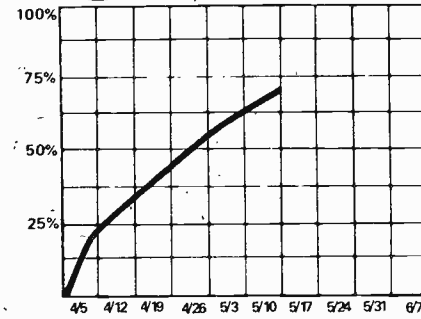
# 14 STYLISTICS



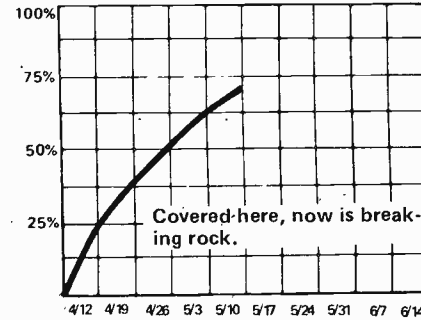
# 15 OLIVIA



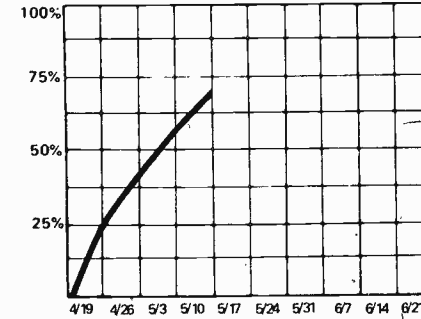
# 16 WONDER



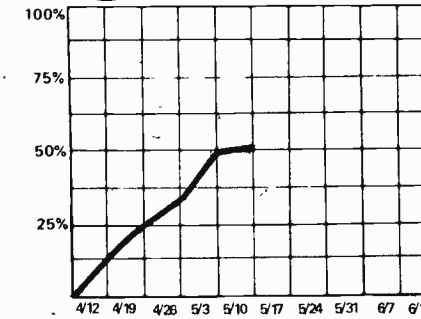
# 17 LOBO



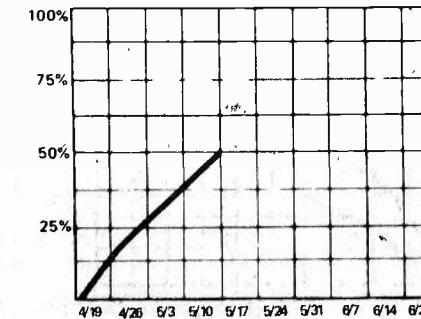
# 18 McCARTNEY



# 19 BAEZ



# 20 OHTA



← The top twenty listings reflect SALES  
The graphs measure the song's level of audience appeal

**POP/MOR  
NOTES  
by Mike  
Kasabo**



(Music Director, KIIS/Los Angeles)

Although it could not be confirmed at press time, rumors are very strong that MCA will pick up the Ardie Bryant record, "America." The record has been registering outstanding phone reaction in Los Angeles from airplay at KMPC and KGIL. Sales have also been impressive.

Last week we reported activity on the "B" side of Perry Como's latest release. This week, through our reporters, we can confirm that "Weave Me The Sunshine" is definitely the top side. Those stations that are still playing both sides confirm that "Weave" is getting by far most of the action.

Del Hull, KRNT-Des Moines, reports that "I Hate Hate" by Razy & The Neighborhood Kids is a big item and growing!

"Flight 309 To Tennessee" by Vickie Britton on Bell has been stirring up a bit of activity in the past several weeks. Jim Heath, KHOW-Denver, is the latest to air the side. By the way, Jim feels quite strongly about the record's appeal.

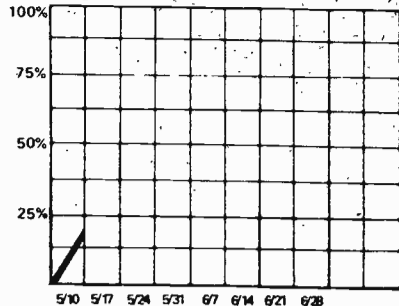
"Please Come To Boston," by Dave Loggins new at KIIS-Los Angeles and already healthy phone response. "Hickory," Frankie Valli & Four Seasons ... just keeps hanging on. It's been around for almost six months. Initially got good play, built from there and then slipped. But a few markets have kept it alive (mainly Philadelphia) and now Motown has re-issued it.

Denny Doherty record "You'll Never Know" new at WMAL-Washington and KMEN-San Bernardino. Other newer sides that are looking good: "The Everywhere Calypso," Ramsey Lewis, "Our National Pastime," Rupert Holmes, "Cajun Moon," J.J. Cale, "Smile, Smile, Smile," Kate Smith, and "A Good Woman's Love," Jerry Reed ... getting more attention than anything he's done in over a year.

In general this was not an outstanding week for hot information, but don't forget the ARB survey has just been completed. That should open things up a bit.

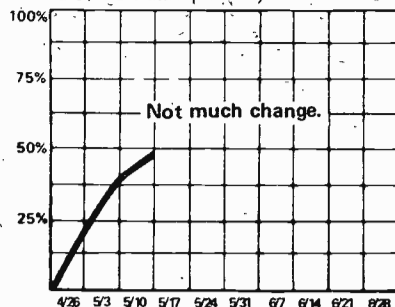
**VICKIE BRITTON**

*Flight 309 To Tennessee (Bell)*



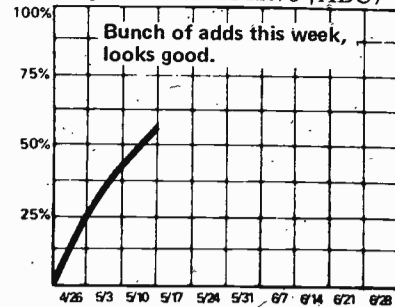
**RICK CUNHA**

*Yo, Yo Man (GRC)*



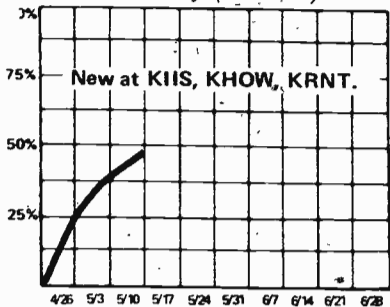
**BO DONALDSON & HEYWOODS**

*Billy Don't Be A Hero (ABC)*



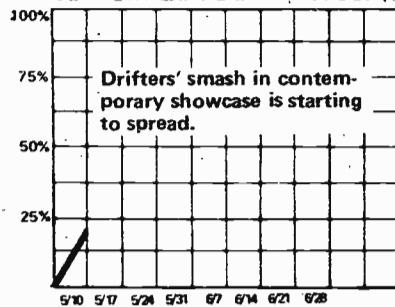
**JIMMY BUFFETT**

*Come Monday (Dunhill)*



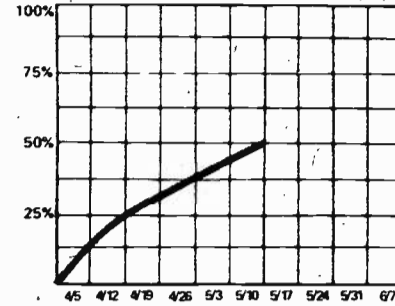
**DE FRANCO FAMILY**

*Save The Last Dance For Me (20th)*



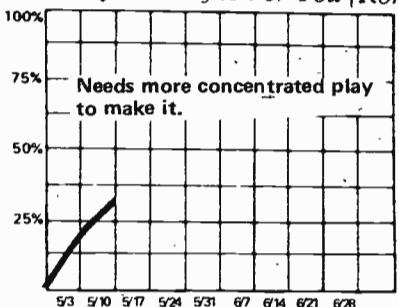
**HOLLIES**

*The Air That I Breathe (Epic)*



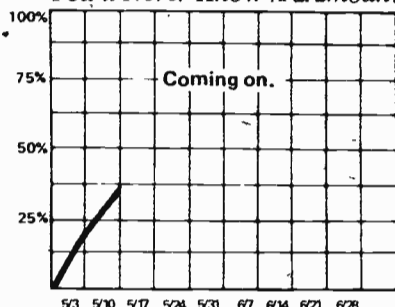
**MEL CARTER**

*I Only Have Eyes For You (Romar)*



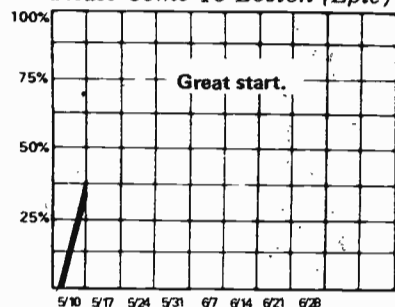
**DENNY DOHERTY**

*You'll Never Know (Paramount)*



**DAVE LOGGINS**

*Please Come To Boston (Epic)*



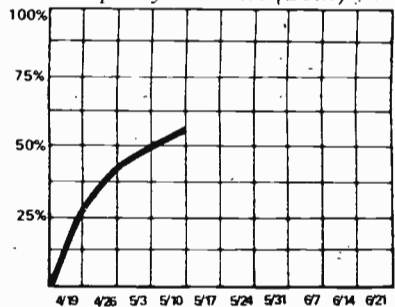
**AUDIENCE APPEAL GRAPHS**

**SIMPLY PUT:** The levels (0% to 100%) represent a record's increasing or decreasing popularity with the "general mass audience" for the format being graphed.

A RECORD reaching 90-100% is a total, across the demographic board smash. A record registering 50% may do so because it's appealing to only a portion of the audience—say, teens, or mostly males. The graphs will also show how a record may "hold on" in audience popularity long after sales have dropped.

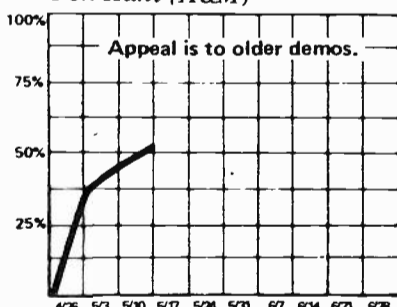
**LOVE UNLIMITED**

*Rhapsody In White (20th)*



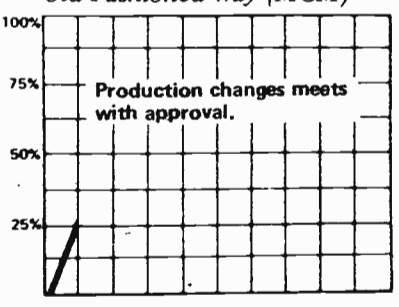
**HERB ALPERT**

*Fox Hunt (A&M)*



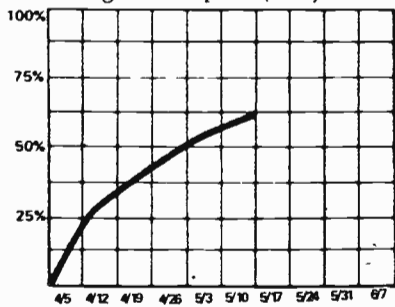
**PET CLARK**

*Old Fashioned Way (MGM)*



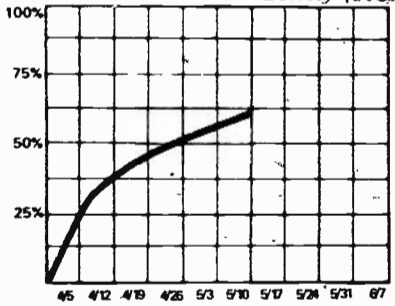
**GEORGE FISCHOFF**

*Georgia Porcupine (UA)*



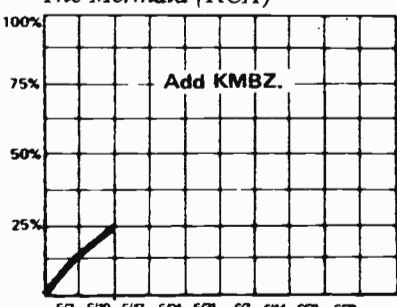
**MAIN INGREDIENT**

*Don't Want To Be Lonely (RCA)*



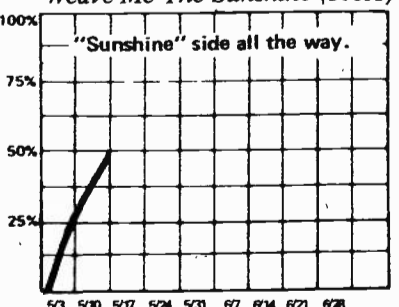
**BOBBY BARE**

*The Mermaid (RCA)*



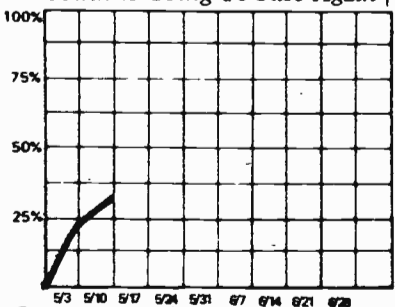
**PERRY COMO**

*Weave Me The Sunshine (RCA)*



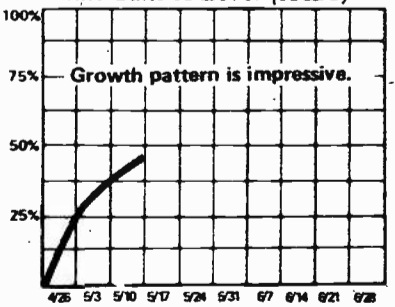
**BOBBY GOLDSBORO**

*South Is Going To Rise Again (UA)*



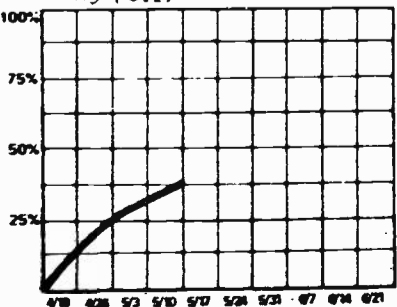
**SAM NEELY**

*Sadie Take A Lover (A&M)*



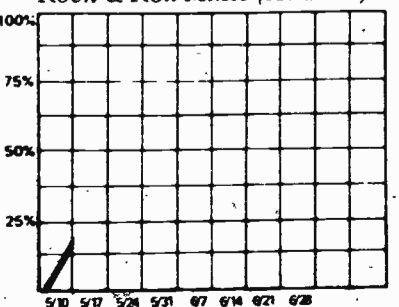
**SHIRLEY BASSEY**

*Davy (UA)*



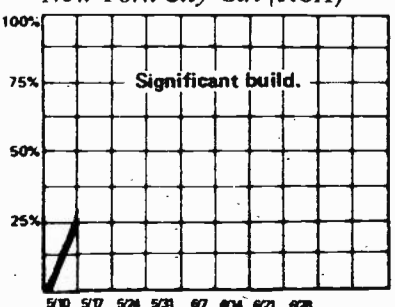
**CROSS COUNTRY**

*Rock & Roll Music (Atlantic)*



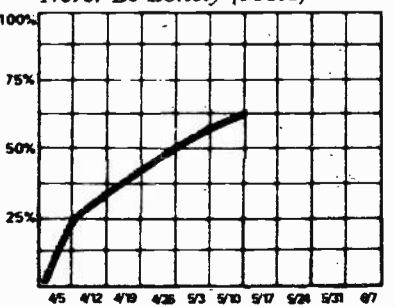
**ROB HEGEL**

*New York City Girl (RCA)*



**NEW COLONY SIX**

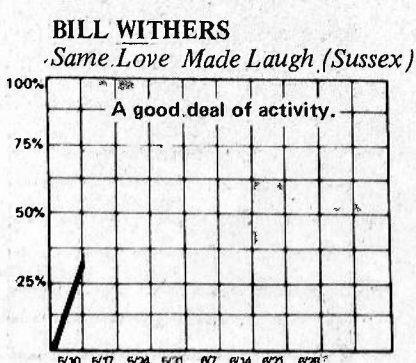
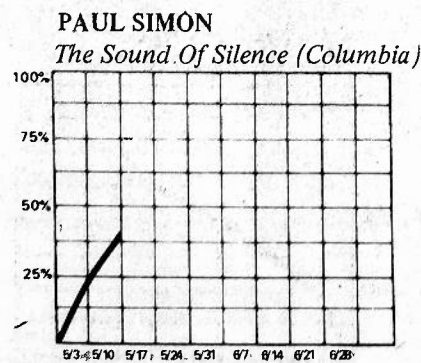
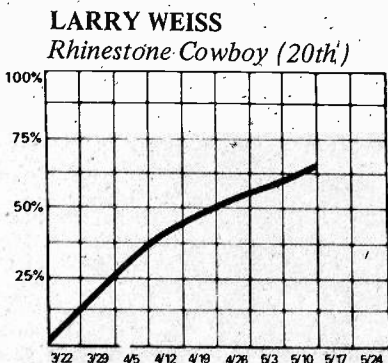
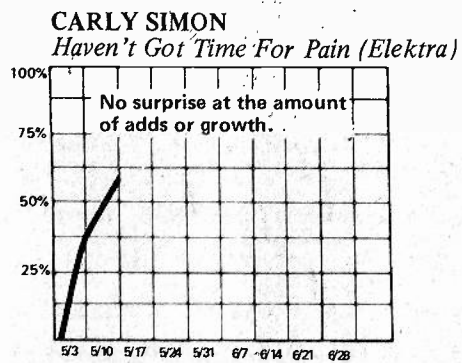
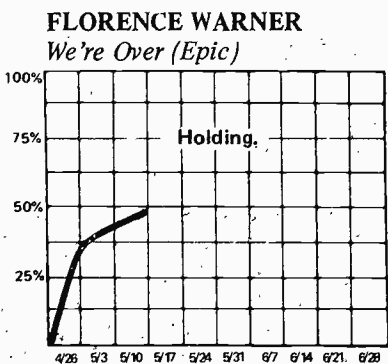
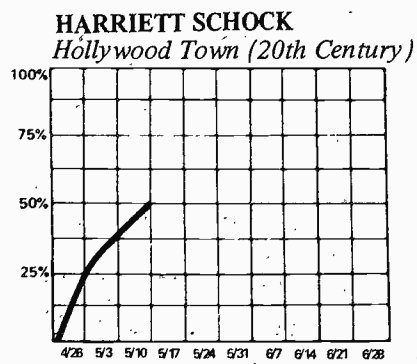
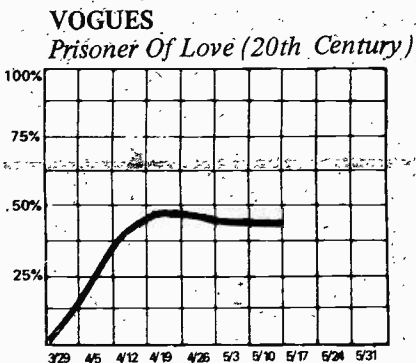
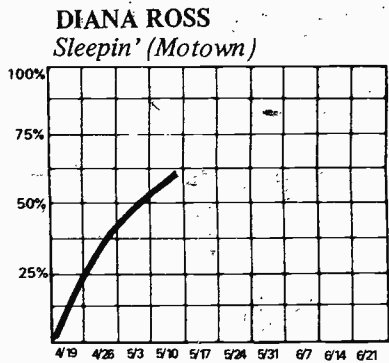
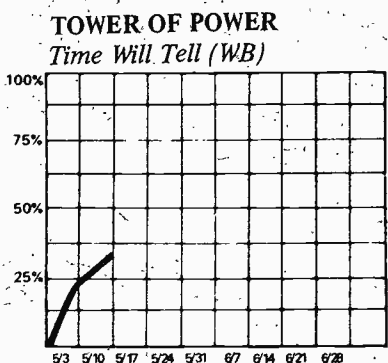
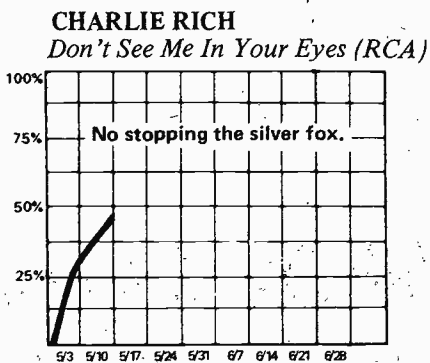
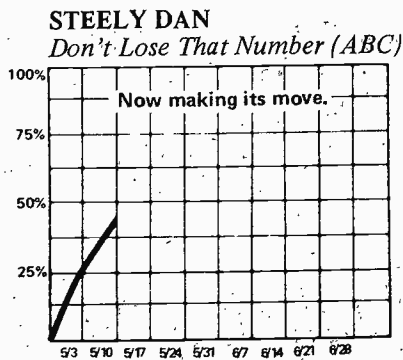
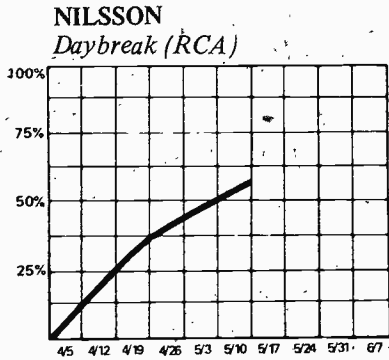
*Never Be Lonely (MCA)*





# POP/MOR SINGLES

# added this week...



**KCRA—SACRAMENTO**

Lobo  
Carly Simon  
Paul Simon  
Deodato  
Lena Zavaroni  
Rupert Holmes

**KAKE—WICHITA**

Dave Loggins  
Petula Clark  
Perry Como  
Carly Simon

**KOL—SEATTLE**

Heywoods  
Ray Stevens

**WBAL—BALTIMORE**

Don Goodwin  
Rupert Holmes  
Ferlin Husky  
Rick Cunha  
Hummers  
Ramsey Lewis  
C. McCoy & B. Jerry  
DROPS  
Gallery  
Pointer Sisters  
Helen Reddy  
Sammy Savis  
Gilbert O Sullivan

**WEEI—FM—BOSTON**

J.J. Cale  
James Griffin  
Florence Warner  
DROPS  
Shelby Flint

**WMAQ—CHICAGO**

Main Ingredient  
Doobie Bros.  
Bill Withers  
Isaac Hayes  
Heywoods  
Henry Mancini  
Charlie Rich (RCA)  
DROPS  
Lois Fletcher  
Dawn  
Sami Jo  
Carly Simon  
Charlie Rich (RCA)  
Barbra Streisand

**WGAR—CLEVELAND**

Bill Withers  
Heywoods  
Doobie Bros.

**KHOW—DENVER**

Paul McCartney (edit)  
Vickie Britton  
Lobo  
Jimmy Buffett  
Pet Clark  
DROPS  
Gilbert O Sullivan  
Diana Ross  
Gladys Knight  
Sami Jo  
Jim Croce

**KRNT—DES MOINES**

B.W. Stevenson  
Jimmy Buffett  
Perry Como (Weave)  
Mac Davis  
DROPS  
Cher  
Stealer's Wheel  
Mocedades

**WRIE—ERIE**

Johnny Cash  
Bill Withers  
DeFranco Family  
Dion  
Steely Dan  
DROPS  
Lou Christie  
Cher  
Al Wilson  
Charlie Rich (RCA)

**KMBZ—KANSAS CITY**

Bobby Bare  
Sam Neely  
Perry Como (Weave)  
Jerry Reed  
Deodato  
Seals & Crofts  
Herb Ohta  
Pet Clark  
Carly Simon

**KHIS—LOS ANGELES**

Jimmy Buffett  
Paul Simon  
Dave Loggins  
Harriett Schock  
Perry Como  
Carly Simon  
DROPS  
John Denver  
Staple Singers  
Gilbert O Sullivan  
Blue Swede  
Sister Janet Mead  
Garfunkel

**KMPC—LOS ANGELES**

Paul McCartney  
Englebert Humperdinck  
Mocedades  
Stevie Wonder  
Chicago  
DeFranco Family  
Herb Ohta  
DROPS  
Kris & Rita  
Garfunkel  
Sami Jo

**WTAE—PITTSBURGH**

Carly Simon  
Fanny

**KMEN—SAN BERNARDINO**

Wednesday  
Love Unlimited Orc.  
Doobie Bros.  
Denny Doherty  
DROPS  
Mike Oldfield  
Billy Joel  
Sami Jo  
Albert Hammond

**KNBR—SAN FRANCISCO**

Denny Doherty  
Ventures (LP)  
Ramsey Lewis  
Brian Auger  
Rupert Holmes  
DROPS  
Staple Singers  
Suzi Maddox  
Bobby Gosh

**KGIL—SAN FERNANDO**

George Clements  
April  
Ramsey Lewis  
Cliff DeYoung  
Tony Christie  
Johnny Mathis  
Mills Bros.  
Mocedades  
Englebert Humperdinck

**KRIO—SEATTLE**

Deodato  
Love Unlimited Orc.  
Shirley Bassey

**WMAL—WASHINGTON**

Paul Williams  
Ray Charles  
Rick Nelson  
Bill Withers  
Perry Como

|  |  |  |
|--|--|--|
| <b>CHICAGO</b><br>Chicago VII (Columbia)<br>CUTS: Call On Me,<br>Wishing You Were Here                         | <b>MELANIE</b><br>Madrugada (Neighborhood)<br>CUTS: It's Gonna Rain Today                  | <b>HELEN REDDY</b><br>Love Song For Jeffrey (Capitol)<br>CUTS: You And Me Against The<br>World, You're My Home,<br>That Old American Dream |
| <b>MAC DAVIS</b><br>Stop And Smell The Roses<br>(Columbia)<br>CUTS: Good Friends & Fireplaces,<br>Two Plus Two | <b>TIM MOORE</b><br>Tim Moore (A Small Record<br>Company)<br>CUT: Second Avenue            | <b>CHARLIE RICH</b><br>Very Special Love Songs (Epic)<br>CUTS: A Field Of Yellow Daisies   |
| <b>KIKI DEE</b><br>Loving And Free (Rocket)<br>CUTS: Song For Adam,<br>Loving And Free                         | <b>MARIA MULDAUR</b><br>Maria Muldaur (Reprise)<br>CUTS: The Work Song,<br>Long Hard Climb | <b>JOHNNY RIVERS</b><br>Road (Atlantic)<br>CUTS: Lights On The Highway,<br>See You Then  |
| <b>ELVIS</b><br>Good Times (RCA)<br>CUTS: Lovin' Arms,<br>She Wears My Ring                                    | <b>SERGIO MENDES</b><br>Vintage '74 (Bell)<br>CUTS: Don't You Worry<br>'Bout A Thing       | <b>HARRIETT SCHOCK</b><br>Hollywood Town (20th Century)<br>CUTS: Ain't No Way To<br>Treat A Lady   |
| <b>GLADYS KNIGHT &amp; THE PIPS</b><br>Knight Time (Soul)<br>CUT: Between Her Goodbye<br>and My Hello          | <b>ANNE MURRAY</b><br>Love Song (Capitol)<br>CUTS: Real Emotion                            | <b>SINGERS UNLIMITED</b><br>Four Of Us (BASF)<br>CUTS: We've Only Just Begun,<br>Snowfall, My Ship   |
| <b>RAMSEY LEWIS</b><br>Solar Wind (Columbia)<br>CUTS: The Everywhere Calypso,<br>Loves Me Like A Rock          | <b>GORDON LIGHTFOOT</b><br>Sundown (Reprise)<br>CUTS: Somewhere U.S.A.,<br>Circle of Steel | <b>BILL WITHERS</b><br>Justments (Sussex)<br>CUT: Stories  |
| <b>MFSB</b><br>Love Is The Message (Philly Int.)<br>CUT: One And Only Love                                     | <b>JOHNNY NASH</b><br>My Merry-Go-Round (Epic)<br>CUTS: Nice Time                          | <b>JESSE COLIN YOUNG</b><br>Light Shine (WB)<br>CUT: Pretty And The Fair   |

# ROCK

## Radio & Records

### TREND:

### May 10, 1974

| 4/12 | 4/19 | 4/26 | 5/3 |   |
|------|------|------|-----|---|
| 4    | 1    | 1    | 1   | ① GRAND FUNK/Locomotion (Grand Funk)            |
| -    | 15   | 6    | 2   | 2 RAY STEVENS/The Streak (Barnaby)              |
| -    | 14   | 9    | 5   | ③ MARVIN HAMLISCH/The Sting (MCA)               |
| 14   | 12   | 5    | 4   | 4 JACKSON FIVE/Dancing Machine (Motown)         |
| -    | -    | 16   | 9   | ⑤ PAUL MC CARTNEY/Band on the Run (Apple)       |
| 8    | 5    | 3    | 3   | 6 THREE DOG NIGHT/The Show Must Go On (ABC)     |
| 15   | 7    | 7    | 6   | 7 CHICAGO/Searchin' So Long (Columbia)          |
| -    | 17   | 14   | 10  | 8 MARIA MULDAUR/Midnight At the Oasis (Reprise) |
| 1    | 2    | 2    | 7   | 9 ELTON JOHN/Bennie & The Jets (MCA)            |
| -    | -    | 18   | 13  | 10 CARPENTERS/Won't Last A Day (A&M)            |
| 3    | 4    | 4    | 8   | 11 MFSB/T.S.O.P. (Phy/Int)                      |
| -    | -    | -    | 18  | ⑫ BO DONALDSON/Billy Don't be a Hero (ABC)      |
| -    | 23   | 22   | 16  | 13 STYLISTICS/You Make Me Feel Brand New (Avco) |
| -    | -    | -    | 21  | ⑭ GORDON LIGHTFOOT/Sundown (Reprise)            |
| 12   | 11   | 10   | 11  | 15 MIKE OLDFIELD/Exorcist Theme (Virgin)        |
| 2    | 3    | 8    | 12  | 16 BLUE SWEDE/Hooked on a Feeling (EMI)         |
| -    | -    | -    | 25  | 17 JIM STAFFORD/My Girl Bill (MGM)              |
| -    | 22   | 21   | 20  | 18 MAIN INGREDIENT/Don't Want to be Lonely      |
| -    | -    | -    | 23  | 19 STEVIE WONDER/Don't You Worry (Tamla)        |
| -    | -    | -    | 27  | 20 CAT STEVENS/Oh Very Young (A&M)              |
| 10   | 16   | 19   | 19  | 21 REDBONE/Come and Get Your Love (Epic)        |
| -    | -    | -    | 24  | 22 JONI MITCHELL/Help Me (Elektra)              |
| 11   | 8    | 12   | 14  | 23 RINGO STARR/Oh My My (Apple)                 |
| -    | -    | -    | -   | 24 GUESS WHO/Star Baby (RCA)                    |
| -    | -    | -    | 24  | 25 O JAYS/For The Love of Money (Phy/Int)       |

## NEW & ACTIVE

CHER "Train" (MCA) immediate action on what sounds like her best ever: debut 26 KFRC, add 13Q, add WMAK, KSEA, WCOL, KRSP, KING, WOKY, KTLK, KCPX and KKLS, add KILT, KJR.

RIGHTEOUS BROTHERS (Haven) right on WRKO at 28, add KUPD, WPOP, KING.

GOLDEN EARRING (MCA) getting good activity: debuts 29 KUPD, add KRSP

KING, debuts 28 KFRC, on WAMS nights, debuts 40 WCOL.

RAZZY (MGM) picked up this week: 21-15, KIOA, 18 KKLS, add WMAK, 27-17 WCOL with number 6 requests, add KJR, 7-5 KKXL.

SEALS & CROFTS (WB) doing much better than the last one: debuts 29 WZZM, add KING, add KFJZ, KKLS, 35-30, KEEL, add WBG, on KJR, add KKXL.

BROWNSVILLE STATION (Big Tree) right on 13Q, KTLK, KCPX & WCFL, good rock & roll.

HUES CORP (RCA) from R&B play good New York action: add WABC at 15, 99X adds at 19.

WET WILLIE (Capricorn) still alive and splashing: add WQXI, re-add WSAI, and night play at WCOL, add KJR.

GLADYS KNIGHT (Buddah) add CKLW, WCOL, 39-36 KYSN.

BTO "Takin Care of Business" add WGRQ nights, KING, KKLS, on KJR, 32-25 KJRB. (Merc.)

FOUR TOPS (ABC) add KFXM, KING, WAMS, 25-20 WIXY.

JIMMY BUFFET (ABC) Many like this one: 23-21 KIOA, debuts 30 WZZM, 22-19, KKLS, on WBG, 41-35 WIXY.

CROSS COUNTRY (Atlantic) 30-27 KUPD, debuts 39 WCOL.

CHASE (Epic) 31-27 KFMG, add WCOL, on WISM.

EDDIE KENDRICKS (Motown) on WPIX, add WOKY, 40-35 WCFL add KJR.

## The Golden Ear

### RIGHTEOUS BROTHERS

#### Rock & Roll Heaven (Haven)-3:23

T.J. LAMBERT, MD WPOP/Hartford: "I only added one record this week because it's the best; even the jocks are flipping out".

### RAZZY

#### I Hate Hate (MGM)-3:15

SCOTT SHANNON, PD WMAK/Nashville: "Nobody likes it but the listeners....it's a hit."

### BROWNSVILLE STATION

#### Leader of the Gang (Big Tree)-3:09

GARY WALDRON, PD KCPX/Salt Lake City: "Sounds like a cross between Grand Funk and Alice Cooper, I think it'll be a monster."

## Parallel Summary

CARPENTERS: Some slowing midchart, but many show strong top 10 action. See page 9.

RICK CUNHA add WPIX, charts at WLEE 27, KIOA 27, See page 9.

MAC DAVIS the believers have been vindicated. 11-10 WQXI, top 10, WCOL, 15-12 KCPX, strong adult appeal. See page 9.

DEFRANCOS: debuts 23 at 13Q, on at 30 KFJZ, 28-22 WCFL. See page 9.

WILLIAM DeVAUGHN super adds: should be a giant. See page 9.

DOOBIES: still moving, 24-21, WLEE 34-30 KLIF, 17-12 KJR, See page 10.

EAGLES: add WGOW, on WMAK, debuts 35 WCOL. See page 10.

ELO: still very much alive 31-25 WCOL, 30-27 WBG, See page 10.

FANNY: picking up more each week. 28-20 KCPX, debut 27 WSAI, See page 10.

ARETHA: debuts 20 KQV, 21-15 WDRQ, on K100, 24-18 KLIF, 17-10 KEEL. See page 10.

GUESS WHO: super action this week, add WQXI, WFJL, 14-4 WLS, See page 12.

BO & HEYWOODS: super strong teens, debuts 22 WQXI, 27-14 KHJ, 6-5 WRC, 3-2 WSAI. See page 12.

HOLLIES: another that believers brought home, debuts 27 KFRC, 15-8 KJRB, 32-23 WIXY, top 10 KILT. See page 12.

OLIVIA NEWTON JOHN: ad 13Q, 21-17 WQXI, add K100, 19-17 WPGC, See page 12.

KOOL & GNAG 36-19 WIXY, 25-17 WSGA, top ten both CKLW and WDRQ, see page 12.

GORDON LIGHTFOOT: heading for top ten. Many have it already there, Page 12.

LOBO: a bit slow in some markets this week. Check page 14.

MCCARTNEY: strongest from the album. Numbers this week prove it. See page 14.

MAIN INGREDIENT: 26-15 KHJ, 8-8 KFRC, 11-6 KJR, 17-6 WBG, See page 14.

JONI MITCHELL: had a good week, add WLS, WABC, debuts 17 KQV, 10-7 KLIF, 9-7 WPOP, See page 14.

ANNE MURRAY: 18-11 KEEL, 19-12 KKDJ, 20-12 WMAK, See page 14.

NILSSON: on WABC, debuts 28 WSAI, 34-28 WPGC, See page 15.

O JAYS: still looks good, a few strong movements, See page 15.

OZARK MNT DAREDEVILS: one of the most active, looks very good, debuts 28 WRC, 16-12 WCOL, 19-11 KJR, add KILT, See page 15.

CARLY SIMON: picked up good additions and some nice early chart movement. See page 15.

STEELY DAN: looks strong, add KFJZ, K100, KYNO, 39-30 WIXY, 26-15 KKLS, See page 16.

CAT STEVENS: already a few top 10, many top 15, all moving up. See page 16.

STYLISTICS: looks like it could go top 10 in many markets. See page 16.

STEVIE WONDER: after a slow start it finally had a good week, 12-11 KQV, 11-7 KFRC, 18-13 KTKT, 15-14 WPOP, See page 16.

Z.Z. TOP: 14-12 WQXI, add WRC, 30-26 KFMG, debuts 35 WPGC, See page 16.