

This Week's Most Active ROCK

Grand Funk - Locomotion
 Charlie Rich - Very Special Love Song
 3 Dog Night - Show Must Go On
 Mike Oldfield - Exorcist Theme
 Bobby Womack - Lookin' For A Love

COUNTRY

Hank Snow - Hello Love
 Cal Smith - Country Bumpkin
 Freddie Hart - Hang In There

POP/MOR

Mike Oldfield - Exorcist Theme
 Gilbert O' Sullivan - Happiness Is
 Ringo Starr - Oh My My

R R R

RADIO & RECORDS

TOP TWENTY

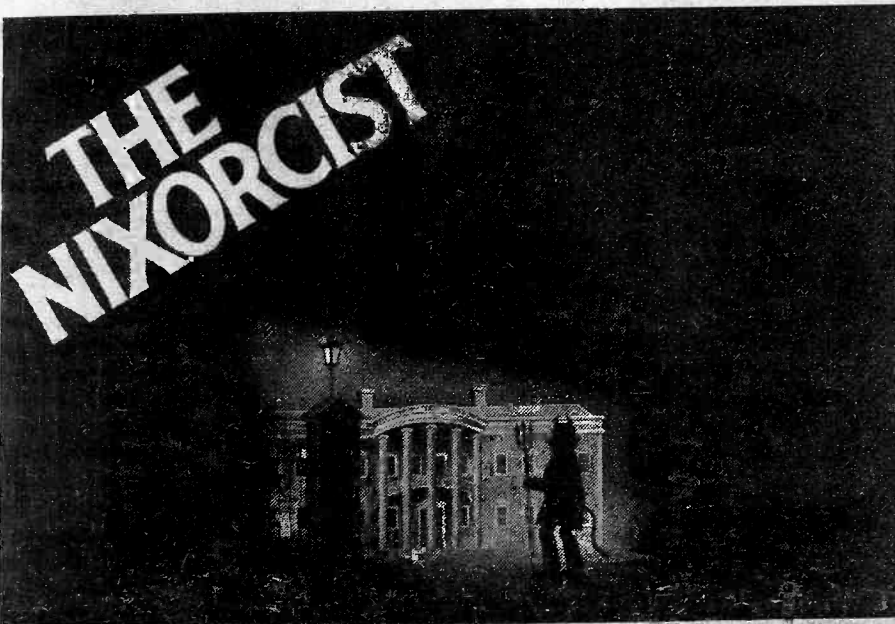
FRIDAY, MARCH 22, 1974

- 2 ① ELTON JOHN
- 1 2 TERRY JACKS
- 3 ③ BLUE SWEDE
- 4 4 JOHN DENVER
- 5 5 GARLY & JAMES
- 9 ⑥ PAUL MC CARTNEY
- 6 7 GHER
- 14 ⑧ MFSB
- 8 9 EDDIE KENDRICKS
- 11 10 KOOL & THE GANG
- 7 11 DAVID ESSEX
- 13 12 SISTER JANET MEAD
- 18 ⑬ GLADYS KNIGHT
- 10 14 REDBONE
- 12 ⑮ JIM STAFFORD
- 16 16 MOCEDADES
- ⑯ RINGO STARR
- ⑰ JIM CROCE
- 17 19 RICK DERRINGER
- ⑳ CHARLIE RICH

VOLUME 2, NUMBER 11

THE MUSIC INDUSTRY NEWSPAPER

FRIDAY MORNING, MARCH 22, 1974



They've gotta be the two hottest topics in the country: Nixon and exorcism. And Lou Adler's not the kind of guy who wastes time. Film producer Joseph Morgenstern came to Adler with "The Nixorcist" by Perfectly Clear, a 'dramatic novelty' track he wrote and produced. It's the forerunner of an Ode album of the same title, and is already on the air in many areas.

LATE NEWS:

Lin Sells Four Stations To Multimedia—9.3 Million

Lin Broadcasting, evidently in a financial bind over raising funds for their purchase of WBAP-TV-Dallas (price: \$30 million), has sold off their Southernmost (and smallest) radio properties. Total price, paid by Multimedia Broadcasting of Greenville, S.C. was \$9.3 million; sold were WAKY-Louisville, KAAY-Little Rock, and KEEL and KMBQ-FM-Shreveport. When approved by the FCC, the purchases will give Multimedia their limit of seven AM stations and raise their FM station holdings to four.

Rick Carroll pointed out that the station showed significant increases in 25-35 men and went up in women 18-24.

CAPT. JOHN TO MOTOR CITY

Captain John, who resigned last week from his 6-9 pm airshift at KHJ-L.A., is the new PD at WDRQ-Detroit (Chris Cane is out). Capt. John is looking for jocks: "insane energy freaks" desired.

Changes At KAFM/Dallas: New Crew, 'Modified Q'

Dallas has got a new FM station. Well, maybe not a new "station," but listeners to KAFM-FM's normal progressive format were rudely awakened Friday, March 8, at 6 am to a whole new thing: KAFM had gone Top 40, in a big way.

It all started less than a month ago, when program director Jay Blackburn and general manager John Barger, both alumni of the Art Holt

corporation, got together with the idea of turning KAFM around. Once they'd mapped out the strategy (Blackburn refers to the new KAFM as "sort of a modified 'Q'"), it took them about five days to prepare the attack.

For starters, they brought in a whole new air lineup, recruiting partially from the ranks of WQRK-Norfolk which Blackburn ran before coming to Dallas. The current roster includes McKenzie Fox (from WQRK), 6-10 am; 10-noon, Marcus Hook (who's been sort of a traveling programmer for the Holt Corporation); noon to 3 pm, Captain Billy (also from the Norfolk Q); 3-7 pm, Shotgun; Tom Kelly; 7-midnight, Stone Cannon; and midnight to six, China Boy Davis (from WBUD-Trenton, N.J.).

According to Blackburn, "we're playing the top 17 to 25, with a larger

(Continued on page 3)

Stevie Wonder To Move To Africa

Stevie Wonder surprised everyone at a press conference in Los Angeles, Thursday, March 14, when he disclosed he'll shortly be moving to Africa.

He plans to work with charities helping underprivileged children, particularly the blind. He said, that despite the fact that he's concerned about some of the political problems in the States, that's not what has motivated his decision to leave.

He told newsmen, "I want to go to work helping the children over there ... I believe that you have to give unselfishly. You can sing about things and talk about things, but if your actions don't speak louder than your words, you're nothing."

Stevie also announced he would be planning one final, nationwide tour in the U.S. before he leaves, to raise some funds for the people he intends to help in Africa.

NEW RELEASES:

Simon, Chicago, Grand Funk Head List Of Surefire Sellers

Last week was a bumper crop for superstar albums, it seems. Guaranteed bestsellers were released by Paul Simon, Grand Funk and Chicago. And more are on the way.

In contrast to Grand Funk's comparatively high-profile *Shinin' On* (complete with a 3-D cover and accompanying 3-D glasses), Simon's *Live Rhymin'* is a less flashy package. Just Paul with guitar, Urubamba and the Jessy Dixon Singers, doing a hit repertoire that extends from "The Sound of Silence" through "Mother And Child Reunion" and "Loves Me Like A Rock."

Mark, Don, Mel and Craig rock through a completely original program, with the exception of Goffin-King's "The Loco-Motion."

In the tradition of *Chicago II, III* and *IV*, *Chicago VII* is yet another embossed beauty, this time a simulated leather-crafted cover with the inimitable logo. It's a hefty two-record set.

Nor is there an end in sight to the rash of spring fever. Expected within weeks are new albums by Three Dog Night (*Hard Labor*, due any day now), Carole King, and sometime before the end of the season a new one from long-silent Joe Cocker. Get ready.



Stevie Wonder, who surprised everyone at his recent press conference with the announcement that he'll soon be moving to Africa. See story this page.

JAN.-FEB. HOUSTON HOOPER

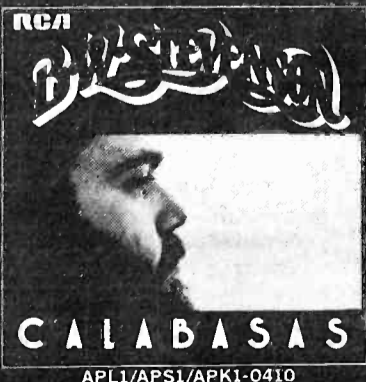
Total share:

KILT (rock)	12.0
KAUM (ABC FM prog. Rock)	2.2
KRBE (FM rock)	9.2
KILT-FM (prog.)	3.0
KIKK (country)	3.0
KIKK-FM (country)	3.3
KENR (country)	8.5
KNUZ (country)	3.5
KYOK (R&B)	9.8
KPRC (old line)	9.2
KTRH (CBS talk)	8.5

KKDJ CORRECTION

A typo last issue gave KKDJ a "2-" in teens in the Nov.-Dec. '73 P.A. Pulse. Should've been "20." As noted last week, KKDJ dropped in men 18-24; PD

"Look For The Light"
APBO-0242
 The new single from
B. W. Stevenson.



B. W. Stevenson and Danny Moore, the singer-songwriter team that brought you "My Maria" and "Shambala," have hit it again. "Look For The Light." A new single by B. W. Stevenson from his upcoming album, "Calabasas."

RCA Records and Tapes

APL1/APS1/APK1-0410

RADIO

No Streak Peak This Week . . .

More Streak Stories? You ain't heard nothin' yet. **WBBQ**-Augusta morning man **Buddy Carr** is in the running to claim a new world record; he's allegedly the first streaker to walk across the set of a TV show which was on the air. Carr showed up at **WRDW** TV to interrupt the news program in progress. He walked across the set wearing only a hat and sunglasses, and a sign which said "Don't be meek. Streak."

PHANTOM STREAK

WFLI-Chattanooga is into it too. Right now they're into "Multiple Rips, Dimension Two-Streakin'"; it's a rotation game, on cart. Each hour the Phantom Streakers make a run and listeners call in to guess how many Streakers will run (anywhere from 1 to 100). Winners get \$100 bills, while losers pick up an Official WFLI Streakers Uniform (a blank envelope).

SEATTLE STREAKING

KING-Seattle handed out over 600 nudie Streaker t-shirts in a week. The basic phone ripoff was so strong, they arranged with seven retail stores to start stocking the items. They also hosted a Streak Rally at a frat house at the University of Washington.

GRIN AND BARE IT SOME MORE

WMAK-Nashville is giving away "Official WMAK Streaking Uniforms" consisting of ski masks and sneakers, while **KHJ**-Los Angeles is offering "Streaking Sneakers." . . . **KJRB**-Spokane got streaked by four guys who ran through the studios and left a note saying they were from a non-profit organization for the beautification of something or other . . . **KRIZ**-Phoenix is reviving "Street Rips," this time as "Streak Rips"; on air promos saying "Jay Stone is out on the street wearing nothing but a \$100 bill . . . If he asks you what station you listen to, be sure to say 'KRIZ' and collect his cash."

WLEE-Richmond has the "WLEE Loveline." A recordophone answers and listeners record their "I love you, WLEE" lines. If they later hear themselves over the air, they win cash. Evidently the promotion has been so successful the phone company called a halt to the Loveline until WLEE can come up with a different system, to eliminate the massive input on calls and misdials.

WALKIN' TO ORLANDO

WLOF-Orlando played a significant part in this year's March of Dimes Pledge Walk March 2. In addition to supporting the charity campaign with free spots and volunteer work by the staff, four announcers rode

motorcycles over the 21-mile course as part of "the WLOF Motorcycle Bandaid Brigade." They distributed bandaids for blistered feet and awarded prizes to walkers listening to the station on their transistor radios . . . The Walk netted over \$80,000 in pledges, which will be used to finance the building of a neo-natal clinic in the Orlando area.

RUMPER ROOM

WPIX-FM-New York is in the process of giving away thousands of "Non Stop Music Rumper Stickers" to listeners. No contest involved, just a plain old giveaway; listeners send in s.a.s. envelopes to get Rumper Stickers. We're not sure if this is a

Streak-related item or not. The press release accompanying the sticker we got says they "can be easily affixed to just about anything."

BOOK IT AND LEAVE IT

Get a couple of improved books and they take you off the air! That's what happened to music director **TJ Lambert** at **WPOP**-Hartford; he can now concentrate fully on music research and promotions for the station.

FLOOD TIME

WSGA-Savannah is running the "Great Savannah Flood," raining prizes down on their listenership for forty days and forty nights with a winner an hour. Prizes range from albums to sailboats and color TV's.

WATCH THE SHOES

WPIX, billing itself as "the station that gave listeners the shirt off its back in the summer," gave away the shoes off its feet last week. Postcard-mailers have 15 minutes to call in once they hear their name on the air, to win one of 102 pairs of Pro Keds that will be given away.

TEXAS RADIO & THE BIG BEAT

The second annual Texas Radio Conference has been scheduled for the weekend of June 28-30 at the Armadillo World Headquarters in Austin . . . More details later.

BEATLES AGAIN

XEROX-El Paso got into a Beatle weekend a couple of weeks back. In addition to Beatle cuts every hour for four days, they interspersed produced bits on Beatle episodes past and present and conducted a listeners' poll, to learn their fave Fab Four raves. The results were interesting; almost an equal, alternating preference for recent and oldie items . . . Top 5 tunes; "Hey Jude," "I Want to Hold Your Hand," "Let It Be," "Help," "Yellow Submarine." . . .

ST. PAT PROMO

KMPC-Los Angeles set up a pretty ambitious St. Patrick's Day promotion by giving away an all-expense paid vacation for two in Ireland; first listener who correctly deciphered clues and called a mystery phone number won it, courtesy of the station and Continental Airlines. More "Flight Line" contests will follow.

. . . Infamous **KMPC** 3-6 p.m. man **Gary Owens** is off on another project. He'll do the voices and narration in the upcoming Warner Bros. film, "Prisoner of Second Avenue," which stars Jack Lemmon and Ann Bancroft.

FCC RE-EXAMINES FEE HIKE

The FCC, which two weeks ago announced a proposed hike in broadcasters' filing fees, has already changed its mind.

Originally, the Commission had said they'd boost the filing fee from \$1000 to \$1335, effective May 1. Now, following the Supreme Court's decision shooting down the fees the FCC charges the cable TV industry, the Commission says it will reconsider its revised fee schedule. The proposed May 1 effective date for fee increases has been postponed, indefinitely.



At Columbia Records' party for Boz Scaggs in San Francisco are (l to r) National FM Promo man Mike Flenfner, KSAN PD Tom O'Hara and wife, Boz, and VP of promotion Steve Popovich.

KAFM/Dallas

(Continued from page 1)

playlist of about 570, including gold, etc. We're actually the thirteenth rocker in the combined Ft. Worth-Dallas metro market, but we're actually the first people to attack Gordon McClendon down here in fifteen years."

The station came on with plenty of enthusiasm. In Blackburn's words, "everybody is already reacting to us . . . we're starting to turn around the market." KAFM's debut as a Top 40 FMer was announced by bus, billboard and television advertising.

"We're running a new set of jingles, which we refer to as the 'inward basic' type; they run from the end of the record into the commercial. I developed them in '72 at the Norfolk Q, then recorded them for PAMS.

"We're the only Top 40 in the market now with 100,000 watts at 1600 feet. We're sharing the stick with two other stations, one Country and one progressive, but we'll have the best coverage for a Top 40. McClendon's KNUS doesn't cover the whole area by any means."

KAFM is the sister station of KRLD, and the station's executive vice president is John Cash Butler.

In Blackburn's opinion, "we're rockin' our ass off, and things are beginning to sound crazy . . . When we took over QRK in Norfolk, we turned it around in exactly eighty-three days. I expect about the same to happen at KAFM."



Mystery Streaker

Streak Team Invades WEA Sales Meeting

It's a happening thing, they say. Streakers were part of last week's regular sales meeting of the Warner-Elektra-Asylum distribution arm in Glendale. Alan Mink, regional WEA sales manager, cued it all with the line "Warners is streaking up the charts." WEA vice president, sales and marketing, **Ed Rosenblatt**, then opened the door to the meeting room and a nude couple made a brisk entry and exit, much to the surprise of everyone in attendance. Except Alan; he found no trouble in getting the couple, branch employees, to participate in the sprint. All for fun.

RR

RADIO & RECORDS

BOB WILSON
PUBLISHER

GENE SCULATTI
EDITOR

MARK SHIPPER
MANAGING EDITOR

DICK KRIZMAN
AD DIRECTOR

ANN VAN BEBBER
ASSOCIATE EDITOR

JONATHAN FRICKE
COUNTRY EDITOR

BIFF COLLIE
NASHVILLE EDITOR

MIKE KASABO
POP/MOR EDITOR

JASON SHRINSKY
FCC LEGAL COUNSEL

ANDY LAIRD
ENGINEERING ADVISOR

CINDY ZALLEN
SUBSCRIPTIONS

NANCY FRICKE
COUNTRY CHAIRS

RADIO & RECORDS is published every Friday by Radio & Records, Inc., 6255 Sunset Blvd., Suite 719, Hollywood, CA 90028, 213-466-1605. Subscriptions \$130 per year or \$35 per quarter. No portion of this publication may be reprinted without the written permission of the publisher. Copyright 1974

RADIO

EVERYTHING YOU ALWAYS WANTED TO KNOW ABOUT ARB'S

A Visit To Beltsville, Md.

HOW TO FILL IN THE ARBITRON DIARY

Please carry the Arbitron diary with you wherever you go during the seven days of the survey. Then, each time you listen to a radio —

- 1 Please fill in the time you start listening and the time you stop. Be sure to indicate whether the time is AM (morning) or PM (afternoon and evening). Whenever you change stations, please fill in a new line.
- 2 Check (✓) only when you are listening on the FM dial. If you are listening on the AM dial, leave the column blank.
- 3 Fill in the "call letters" of the station you are listening to. If you don't know the call letters, fill in the name of the program — or the dial setting.
- 4 Check (✓) to show whether you are listening at-home or away-from-home.
- 5 If you don't listen to a radio on a certain day, check (✓) the circle at the bottom of the page for that day.

HERE'S WHAT A SAMPLE PAGE MIGHT LOOK LIKE —

TIME (Indicate AM or PM)		WHEN LISTENING TO FM, CHECK HERE (✓)	STATION FILL IN STATION "CALL LETTERS" IF YOU DON'T KNOW THEM, FILL IN PROGRAM NAME OR DIAL SETTING	PLACE CHECK ONE (✓)	
FROM —	TO —			AT HOME	AWAY-FROM-HOME (INCLUDING IN A CAR)
6:40 AM	7:30 AM	✓	WWTM	✓	
10:10 AM	11:30 AM		PIERCE SHOW		✓
4:45 PM	5:20 PM		WREF		✓
6:30 PM	8:30 PM		WWAC	✓	
10:50 PM	11:10 PM	✓	101.1 on the dial	✓	

5 PLEASE CHECK HERE IF YOU DID NOT LISTEN TO A RADIO TODAY.

IMPORTANT — Many stations broadcast on both AM and FM. For this Arbitron survey, it is important to correctly identify whether you are listening on AM or FM (even though the station may use the same call letters and broadcast the same thing over the air).

To keep your Arbitron diary from getting mixed up with any others in your home — please fill in your initials (or first name) here

It's a major understatement to say that most people in radio are unfamiliar with the way in which the various rating services operate. With that in mind, Bob Pittman, program director of WPEZ-FM-Pittsburgh, with a little help from his friends (station manager Dick Booth, and WWSW G.M. Charlie Warner) visited Beltsville, Maryland, to look into the ARB diaries. What follows is a piece he submitted to us upon his return.

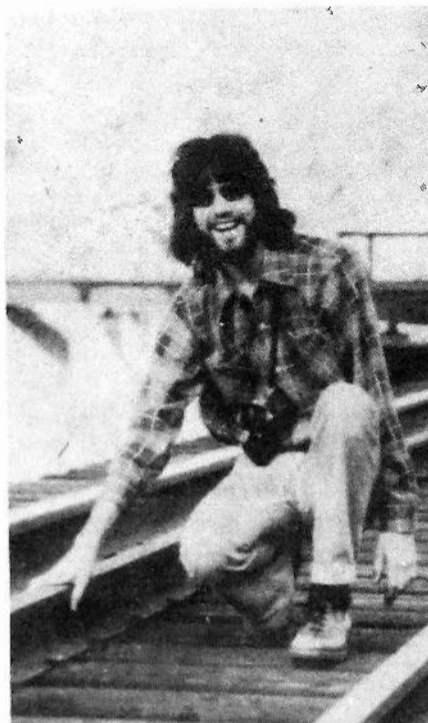
It's one thing to understand the methodologies that ARB makes use of,

but it's an entirely different thing to see a book from raw data all the way to finished product. One tends to be academic, the other's almost emotional.

I've been involved in studying the workings of ARB for a while, but until recently, I had never taken the time to make the trip to Beltsville. On most occasions when I've had a question, the people at Arbitron have been able to provide the answer for me. Sometimes they've had to go to the coders and programmers in Beltsville to find the answer, but they've always answered my questions. But these questions have always been questions of theory, about ARB's in general, not questions about my market in particular. There is only one way to get these type of questions answered -- to go to Beltsville. Which is why I went.

It's advisable for more than one person to make the trip because of the large volume of information and the limited amount of time. On my trip, I was accompanied by two programming oriented management people, Dick Booth (WPEZ Station Manager) and Charlie Warner (General Manager of our sister station, WWSW). Between the three of us, we were able to pull together quite a bit of information.

The two primary items to be examined are the diaries and the mechanical diary, a printout of all diaries in which a particular station was mentioned. Examining the diaries bordered on being an emotional experience. Before my trip to Beltsville, I was well aware of how a



Bob Pittman

YOUR ANSWERS TO THESE QUESTIONS WILL NEVER BE RELEASED TO ANYONE — THEY ARE FOR RESEARCH USE ONLY.

1. What is your age and sex?

Age A
Sex Male Female

2. Where do you live?

City or Town Pittsburgh
County Allegheny
State Pennsylvania
Zip Code 15211

IF YOU HAVE COMMENTS OR SUGGESTIONS, USE THIS SPACE

To make this very clear, there is something that I must explain. When I say that I listen to just one station that is really wrong. I keep turning the station. All the stations that I listen to are: WPEZ (FM) WDVE (FM) WTAE (FM) KQV (AM) WKTC (AM) WKZ (AM) & WTAE (AM). The station that I wrote in the survey sheet is the one that I listened to most in the said time.

"Interesting that this person listed the FM's first. Notice the age and sex. Also notice, she listed 13-Q as WKTO"—Pittman.

SUS RESPUESTAS A ESTAS PREGUNTAS NUNCA SERAN DIVULGADAS A NADIE. SU UNICO PROPOSITO ES EL DE LA ENCUESTA.

1. ¿Cual es su edad y su sexo?

Edad A
Sexo masculino femenino

2. ¿Dónde vive?

Ciudad Pittsburgh
Condado Allegheny
Estado Pennsylvania
Zip 15211

Anote aquí cualquier comentario o sugerión que pueda tener.

She did not request Spanish diaries.

"This lady and her husband both received Spanish diaries. No one knows why. They both listened exclusively to WQED, the educational station."

YOUR ANSWERS TO THESE QUESTIONS WILL NEVER BE RELEASED TO ANYONE — THEY ARE FOR RESEARCH USE ONLY.

1. What is your age and sex?

Age A
Sex Male Female

2. Where do you live?

City or Town Pittsburgh
County Allegheny
State Pennsylvania
Zip Code 15211

IF YOU HAVE COMMENTS OR SUGGESTIONS, USE THIS SPACE

I really don't think you can listen to one radio station. At work I listen to WYDD but in the bosses office it's wwsu. At home it depends on what's on the radio. If it's something I don't like, I switch. Either from KQV, WX12, 13Q, WTAE, WPIZ-FM, or sometimes KDKA. — I really don't think it's possible to say you just listen to one radio station.

"This girl listed WPIZ-FM on the back, but in the diary she listed it as WPEZ FM. Implications?"

RADIO

CHANGES Radio

diary is coded. But to actually see my station lose a quarter hour because of the methods of coding used, is an entirely different experience. Again, academic versus emotional. Theory versus actual workings. On the other hand, there is an almost sadistic pleasure to be derived from seeing the competition lose, to coding methodologies, a quarter hour, or better yet, a whole diary. And believe me, I saw a lot of that.

There are a good many questions which can be answered by studying the diaries. A few are:

1. Determining relative strength of a station in the different areas of the market. This can be accomplished by doing a break-out of the zip-codes on the diaries. Then this can be compared to a breakdown, by zip-codes, of the population of the market. It then becomes apparent in which areas a specific station has its strengths and weaknesses.

2. Determining average listening spans. This becomes even more meaningful if the average listening span is determined for different ages, sexes, races, geographic locations, and types of listeners (based upon such criteria as: other stations listened to

and time of day the person listens to the radio).

3. Determining which stations you're sharing your listeners with.

4. Determining the various listening patterns.

5. Comparing these patterns in family units, in geographic units, and in demographic units.

6. Determining tune-in points and tune-out points for all primary stations in the market.

And these are only a very few. Examination of the diaries can provide an answer to almost any programming question, relative to impact upon the listener. The key to getting the question answered is knowing how the question relates to the diaries and the methodologies used.

If a station has the necessary money and manpower, all the diaries could be copied and a later date could be run on a computer. This would be the ultimate in usefulness of the diaries.

If you're planning a trip to Beltsville, the only thing I can suggest is that you completely breakout the book before you go. Once you have examined quarterhour maintenance, daypart listening, etc. you'll know the questions that need to be answered. Then you can look for answers instead of questions.

WHILE WE'RE ON THE SUBJECT . . .

Jan-Feb ARB Results

NEW YORK
(Mon-Sun 6 am-12 mid ¼ hr SHARES)

TOTAL 12+	M		W		TEENS
	18-24	25-34	18-24	25-34	
WABC	6.9	5.7	9.9	10.9	22.1
WNBC	2.8	12.0	7.1	4.9	5.9
WPIX	1.8	2.9	4.3	3.2	1.5
WPLJ	1.5	5.1	1.8	4.6	0.7
WWDJ	1.8	3.1	1.8	5.9	2.2
WWLO	1.8	2.6	2.7	4.9	3.2
WWRL	1.4	2.3	2.2	1.2	2.6
WNEW FM	3.2	15.1	5.3	10.6	2.5
WCBS FM	3.5	9.2	9.7	9.2	4.7
WHN (35+)	3.0	3.6	2.4	0.1	6.3

SAN FRANCISCO
(Mon-Sun 6 am - 12 mid Av ¼ SHARES)

TOTAL 12+	M		W		TEENS
	18-24	25-34	18-24	25-34	
KFRC	6.3	12.7	3.1	9.1	4.1
KYA	2.7	3.8	2.2	5.8	2.0
KLIV (SJ)	2.0	2.7	1.1	2.6	1.5
KIOI	3.4	6.7	8.1	6.5	5.9
KSAN	3.7	12.7	9.8	9.3	2.4
KSFJ	1.0	2.2	0.9	0.4	1.7
KNEW	2.4	2.9	3.3	5.2	5.2
KSFO	5.5	1.8	8.5	2.8	5.8

RANK: KCBS No. 1 10.4 (all news) (35+)
KGO No. 2 8.5 talk (35+) KFRC No. 3 6.3 rock

FOUR BOOK TREND FOR NEW YORK

	A/M 73	J/A 73	O/N 73	J/F 74
WABC	8.6	9.2	8.9	6.9
WCBS FM	5.2	4.4	3.0	3.5
WHN	2.3	3.8	2.5	3.0
WNBC	3.7	2.8	2.8	2.8
WNEW FM	2.7	3.5	3.8	3.2
WPIX	1.8	1.3	1.6	1.8
WPLJ	2.3	2.6	1.7	1.5
WXLO	1.7	2.2	1.6	1.8
WWRL	2.3	2.3	1.7	1.4

SAN FRANCISCO TREND

	A/M 73	J/A 73	O/N 73	J/F 74
KFRC	5.9	6.6	6.9	6.3
KYA	3.6	3.4	2.3	2.7
KIOI	3.5	3.0	4.2	3.4
KNEW	3.7	2.6	3.1	2.4
KSAN	3.5	3.3	3.3	3.7
KSFO	8.8	8.5	7.2	5.0
KSFJ	1.6	0.7	0.9	1.0

CHICAGO
(Mon-Sun 6 am - 12 mid Av ¼ hr SHARES)

TOTAL 12+	M		W		TEENS
	18-24	25-34	18-24	25-34	
WCFL	6.5	14.4	7.5	11.5	4.3
WLS	7.8	10.9	11.4	14.9	9.6
WDAI	3.6	12.0	2.0	11.2	1.8
WFYR	0.7	2.5	2.3	1.1	1.9
WBBM FM	3.0	7.0	4.6	9.9	3.4
WGN	12.3				
WIND	4.2	2.1	7.4	2.6	6.4
WVON	4.1	3.4	3.7	4.8	6.4
WJJD	3.9	3.1	4.8	1.2	4.2

LOS ANGELES
(Mon-Sun 6 am - 12 mid ¼ Hr SHARES)

TOTAL 12+	MEN		WOMEN		TEENS
	18-24	25-34	18-24	25-34	
KHJ	5.9	10.7	5.6	10.4	8.1
KKDJ	2.6	3.2	1.3	3.6	2.8
KIQQ	1.3	1.4	1.1	4.6	2.0
KLOS	3.7	14.4	6.7	7.8	2.5
KMET	1.7	8.3	1.5	5.4	0.2
KRLA	1.7	3.8	2.1	5.6	1.5
KROQ	0.4	1.6	0.6	0.2	0.0
KRTH	2.3	4.1	4.8	8.9	4.3
KLAC (35+)	2.8	0.4	5.9	1.0	1.5
KFOC (35+)	1.1	0.0	2.1	0.0	0.4
KMPC (35+)	4.0	1.4	3.7	1.6	1.5
KFI (35+)	3.7	6.4	3.7	0.4	2.8
KABC (50+)	5.5	1.7	4.9	0.1	2.4
KIIS	2.3	1.4	6.1	6.1	5.4
KDAY	1.9	0.8	1.1	4.3	1.0
KGFJ	2.4	5.1	1.5	3.7	2.9

MARKET RANK:
KHJ NO. 1, KNX NO. 2, KABC NO. 3

CHICAGO TREND:

	A/M 73	J/A 73	O/N 73	J/F 74
WLS	7.3	6.8	8.5	7.8
WCFL	7.2	8.5	8.4	6.5
WBBM FM	2.4	3.2	2.0	3.0
WDAI	2.1	3.1	3.2	3.6
WJJD	3.2	2.4	3.4	3.2
WVON	5.1	5.1	4.2	4.1

FOUR BOOK TREND FOR LOS ANGELES

	A/M 73	J/A 73	O/N 73	J/F 74
KDAY	1.1	1.3	1.7	1.9
KGFJ	3.3	5.1	3.3	2.4
KHJ	6.3	7.1	5.7	5.9
KKDJ	3.2	4.0	3.4	2.6
KIQQ	1.3	0.8	1.5	1.3
KIIS	3.3	2.4	2.3	2.3
KMPC	3.5	5.0	5.2	4.0
KFI	4.6	5.8	4.3	3.7
KLAC	1.9	2.1	2.3	2.8
KFOC	0.7	0.7	1.1	1.1
KLOS	2.6	3.4	3.8	3.7
KMET	2.1	1.6	1.8	1.7
KRLA	1.3	3.8	1.6	1.7
KROQ	0.6	0.3	0.4	0.2
KRTH	1.8	2.6	2.0	2.3

PHILADELPHIA
(Mon-Sun 6 am - 12 mid Av ¼ hr SHARES)

TOTAL 12+	M		W		TEENS
	18-24	25-34	18-24	25-34	
WDAS FM	3.2	11.1	1.6	10.1	5.2
WFIL	9.0	10.8	9.0	19.3	11.9
WIBG	4.6	11.5	3.9	7.8	4.8
WIP (35+)	8.6	0.7	5.5	4.8	8.7
WMMR	2.3	12.2	2.4	3.8	2.1
WYSP	2.1	8.1	2.0	5.5	2.0
WIFI	3.4	8.5	2.0	4.8	1.2

FALLEN TO WWSW
Ray Fallen, formerly of sister station WPEZ-FM, has joined the staff of WWSW-Pittsburgh. In addition to handling the 3-8 pm slot, he is also the station's new production director. Before coming to WPEZ-WWSW, he was production director-air personality at WDVZ-Pittsburgh and music director at WKBN-Youngstown.

TEXAS TO DENVER
New 6-10 pm man at KIMN-Denver is C.C. McCartney. He was formerly with KILT-Houston, and he replaces Bruce Clark at KIMN.

LONE STAR STUFF
Bill Dante has resigned as manager of KTFM-San Antonio. Lee Randall, program director of sister KTSA has been promoted to operations manager of KTSA and KTFM. Tony Raven continues as program director of KTFM, while Terry Osborne remains music director of KTSA ... KTFM has added Nick St. John to its staff, with the lineup forthcoming... At KTSA, the lineup is Bruce Hathaway, 5:30-9 am; David Kline, 9-noon; Terry Osborne, noon-3 pm; Lee Randall, 3-6 pm; Charlie Brown, 6-10 pm; Sam Burke, 10 pm-2; Mike Kelly, 2-6 am, and John Wagner, weekends.

MINNESOTA MOVEMENT
The new 9-noon man at KDWB-St. Paul is Rich Erickson; he's from KSTT-Davenport. The new lineup at KDWB is: Bob Shannon, 6-9 am; Rich Erickson 9-noon; Bob Lange (from WEBC-Duluth), noon-3 pm; "True" Don Bleu (music director), 3-6 pm; Rob Sherwood, 6-10 pm; David Bradley (from KSTT-Davenport), 10-2 am; Chris Roberts, 2-6 am; and Don Beacher (from WEBC) to do weekends.

KHJ TO KRTH
New general manager at KRTH-FM-Los Angeles is Allan Chlowitz. He was most recently an account executive with KHJ-Los Angeles, worked previously with KNX-FM-Los Angeles in sales, and was formerly with CBS Spot Sales in New York.

KHJ AGAIN
Latest to leave KHJ-Los Angeles is night man Captain John. He resigned last week; program director Gerry Peterson is looking for a new night man (213 462-2133)... Bobby Rich, who recently left the station, has accepted a position with KFMB-San Diego; he's the new operations director under program director Jack Woods, and he'll also hold down the afternoon drive shift... About his stay at KHJ, Rich says, "I really enjoyed my stay there. I was treated fairly and leave on good terms. KFMB sounds like a winner... All in all, I'm very excited and ready to win in San Diego. The 'Q' era is coming to a close." Prior to KHJ, Bobby jocked at WAVZ-New Haven, WMYQ-Miami and at several stations in Spokane. He also programmed KSTT-Davenport, Iowa for four years.

EL PASO POWER
John Long, formerly PD at WROR-Boston, is the new PD of XEROK-El Paso. No word on what happened to Jim White. Long says he's excited and that "it's going to be a m---f---er."
DALLAS EXIT
Jack Robinson, former program director, KAFM-FM-Dallas, is looking

for a gig, the result of the format change and personnel shift at the former progressive rocker. See CLASSIFIED.

IOWA AGAIN, AND INDIANA
The new 10 pm to 2 am jock at KIOA-Des Moines is Steve Randall, formerly with KSO... And, at WAMS-Wilmington, Delaware, the new music director is Jay Christian, from WMEE-Ft. Wayne, Indiana.

OHIO TO VIRGINIA
The new afternoon drive man at WLEE-Richmond is Dan Cameron, previously with WMOH-Hamilton, Ohio.

Records

National promotion director Stan Bly at Phonogram, has appointed Cliff Burnstein to the new position of assistant national promotion director. Jim Randazzo, brought to the label six months ago as special projects manager, assumes the position of promotion manager for Cleveland, Pittsburgh and Buffalo.

CALVOTOGRC
Christine Calvo has been appointed A&R coordinator for GRC Records. She'll be responsible for all label copy, contracts, budgets, etc. for artists on GRC, Aware and Hotlanta. Prior to joining GRC, she was executive assistant with the Los Angeles-based Music Marketing International and worked with Capitol Records in sales and advertising.

ABC, BABY, R & B
Otis Smith, ABC Records vice president, has appointed David Kimmelman as national promotion director of R&B-Pop product. The newly created position is designed to give more attention to ABC's R&B acts breaking into the Pop market... Kimmelman came to ABC in '72, doing regional promotion in Cleveland-Pittsburgh-Louisville.

...Dennis Lavinthal, v.p. at ABC, detailed further changes within the label's promotion department. The 2 national coordinators, Sammy Alfano and Pat McCoy, will have new reorganized staffs; Jerry Goodman, brought from Bell, will report to Alfano as the national field singles promotion man, while Bob McKensie will handle a similar job, reporting to McCoy ... Bobby Applegate is assigned to L.A.-Denver areas, and Lenny Luffman will handle Chicago-Milwaukee-St. Louis... Mike Burns, new national album coordinator, will work out of L.A. with a regional staff, including Scott Jackson in Atlanta and Greg Kimmelman in Boston. Also working in lp promotion will be Arnie Leeman, who'll work out of Chicago.

RCA GALANTE
Director of Nashville operations for RCA, Jerry Bradley announced the appointment of Joe Galante as manager, administration, in the label's Nashville office. Galante had formerly been manager, merchandising administration, for RCA in New York. He's been with RCA since 1971.

CAPRICORN'S SAUL
Larry Saul has been promoted to Capricorn's vice president, general manager in Los Angeles; he's been with the label since April 1973, as West Coast general manager.

ROCK

Radio & Records

March 22, 1974

TREND:

3/1	3/8	3/15	3/22
11	6	2	1 ELTON JOHN/Bennie & The Jets (MCA)
1	1	1	2 TERRY JACKS/Seasons In The Sun (Bell)
16	7	3	3 BLUE SWEDE/Hooked On A Feeling (EMI)
4	3	4	4 JOHN DENVER/Sunshine (RCA)
7	4	5	5 CARLY SIMON & JAMES TAYLOR/Mockingbird (Elektra)
17	9	9	6 PAUL MC CARTNEY/Jet (Apple)
3	2	6	7 CHER/Dark Lady (MCA)
-	21	14	8 MFSB/T.S.O.P. (Pht/Int)
6	8	8	9 EDDIE KENDRICKS/Boogie Down (Tamla)
15	13	11	10 KOOL & THE GANG/Jungle Boogie (DeLite)
2	5	7	11 DAVID ESSEX/Rock On (Columbia)
22	16	13	12 SISTER JANET MEAD/Lord's Prayer (A&M)
-	24	18	13 GLADYS KNIGHT/Best Thing That Ever Happened (Buddah)
9	10	10	14 REDBONE/Come Get Your Love (Epic)
8	12	12	15 JIM STAFFORD/Spiders & Snakes (MGM)
18	15	16	16 MOCEDADES/Eres Tu (Tara)
-	-	-	17 RINGO STARR/Oh My My (Apple)
-	-	-	18 JIM CROCE/Have To Say I Love You (ABC)
13	14	17	19 RICK DERRINGER/Rock & Roll Hootchie Koo (Blue Sky)
-	-	-	20 CHARLIE RICH/Very Special Love Song (Epic)
-	-	-	21 GRAND FUNK/Locomotion (Grand Funk)
-	-	-	22 MIKE OLDFIELD/Exorcist Theme (Virgin)

NEW & ACTIVE

GILBERT O'SULLIVAN (MAM) one of the most added, great beginnings for this one: debut 28 KLIF, 34-22 WCOL, 38-35 KDZA, on KJR, 25-22 KDWB, 27-28 WOKY, 29-26 KRSP, add KING and WIFE.

LEON RUSSELL (SHELTER) excellent spread week: debut 23 CKLW, debut 24 WFLI, 23-17 KCBQ, debut 26 KAKC, add KAFY.

SEALS & CROFTS (WB) finally catching on and beginning to spread: 29-16 WCOL, 24-24 WAMS, 12-7 KYSN, 29-26 KDWB, debut 27 WLEE.

FIVE MAN ELECTRICAL BAND (POLYDOR) Abe Glaser must be feeling better, this one is starting out great: 41-33 WIXY, add KEWI, add WCOL, 30-27 WMAK, add KJR, 28-27 CKLW.

STYLISTICS (AVCO) growing steadily: add WCOL and WGH, 40-28 WIXY, and WAMS, 29-22 WFIL, 21-16 WRC, add WQXI.

DIANA & MARVIN (MOTOWN) first week picked up quite a few stations: add WAMS, on at 25 WLOF, add KRUX, 40-34 KDZA, debuts 28 WMC FM.

MAC DAVIS (COLUMBIA) picked up some significant action this week, could cross from MOR to Rock all the way: debuts 30 KJRB, debuts 24 WQXI, add WLEE, debut 30 WSGA.

BILL HALEY (MCA) 7-4 WLOF, debuts 13 KJR, 17-10 WSAI with top 5 phones.

HENRY GROSS (A&M) still showing growth: 35-32 WCFL, add WOKY, 30-27 WGRQ.

AL GREEN (HI) 35-29 WIXY, add WAKY, 21-17 WDRQ, has not shown crossover pattern yet.

B.B. KING (ABC) action, but not crossed: 20-24 WCFL, 22-17 WISM, 17-20 WIXY, 34-32 KEWI, 15-14 KLIF.

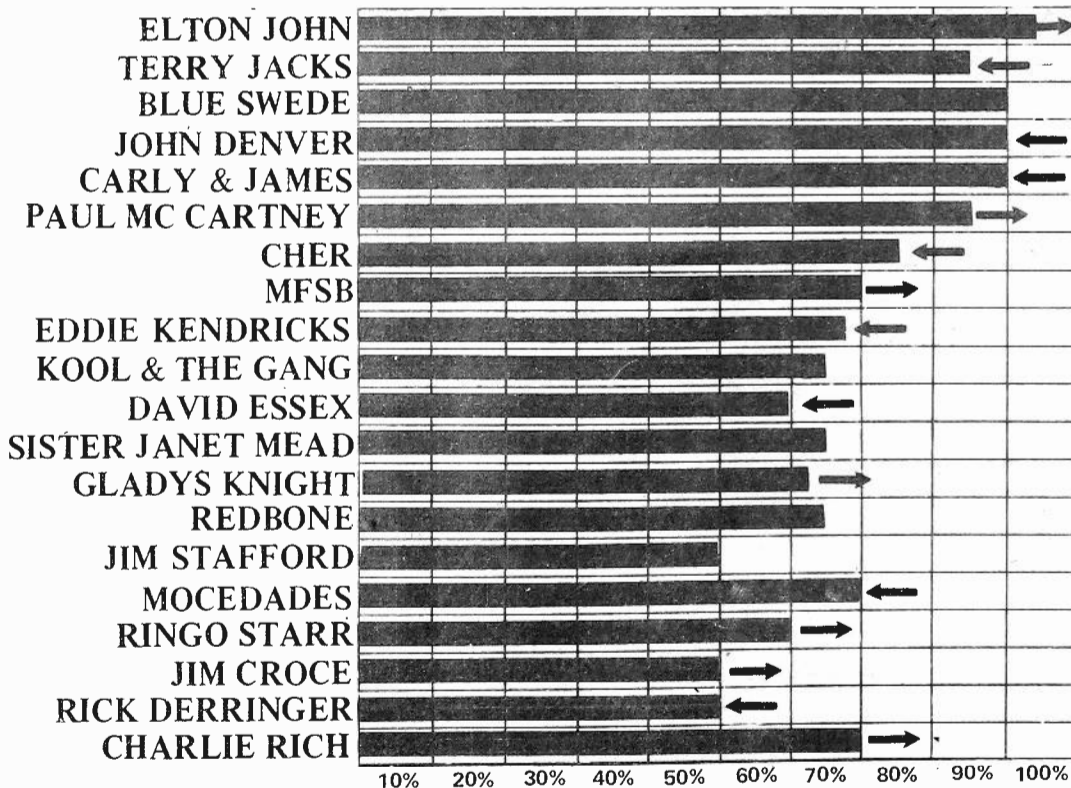
AL WILSON (ROCKY ROAD) 37-35 WGH, add WAMS, 30-24 WMC FM. Slow start, may pick up.

DOOBIE BROTHERS (WB) add WLEE, KING KYSN, KDWB.

LOBO (BIG TREE) debut 39 WCFL, add WOKY.

TODD RUNDGREN (BEARSVILLE) add WCOL, 39-35 KLIF

Comparative Audience Appeal



Parallel Summary

BACHMAN TURNER OVERDRIVE: looks good this week, 15-12 KDWB, 21-14 WIFE, 21-15 WSAI, 5-3 KJRB. See page 10.

BLUE SWEDE: probably will go number one, see page 10.

CHICAGO: some nice moves and many adds, 26-18 WIBG, debut 28 WRKO, 23-18 WFIL, 38-31 WCOL, 25-18 KIOA, see page 10.

JIM CROCE: some very nice top 10 moves, 37 percent show top 15 and moving. See page 10.

JOHN DENVER: several report sales off slightly, but requests still strong possibly due to tv special; see page 10.

NEIL DIAMOND: very slow in growth. See page 10.

EMOTIONS: picking up and spreading, one to watch.

GRAND FUNK: one of the strongest this week, 30-19 KHJ, 16-13 WRC, 29-19 CKLW, 12-1 WMAK, 16-10 KCBQ. See page 11.

GUESS WHO: looks good at some stations: 19-9 KCPX, 7-8 KDWB, 9-8 KJR. See page 11.

MARVIN HAMLISCH: one of the most added. 13-8 CKLW, on KFRC, debuts 28 WIBG. Movie is strong with audience.

ALBERT HAMMOND: 23-15 KCPX, 27-19 WIFE, 19-15 WLOF, 14-11 KJR. See page 11.

JACKSON 5: many added it. See page 11.

SAMI JO: had a good week, 5-4 WQXI, 20-18 WSAI, 1-3 WMAK, 6-4 KLIF, add WPOP. See page 11.

BILLY JOEL: 20-16 WFIL, 30-19 WSAI, 24-17 KIOA. Some report a bit slow, see page 11.

GLADYS KNIGHT: looks like it will go top ten. See page 12.

MAIN INGREDIENT: solid crossed-over, 21-15 WIXY, 18-13 WCFL, add WQXI, 19-16 WXLO. See page 12.

STEVE MILLER: seems slow starting, check out page 12.

JONI MITCHELL: picked up a bit this week, 30-28 CKLW, 40-37 KYSN, debut 36 WCOL, 24-20 WISM. See page 12.

MARIA MULDAUR: Looks better each week, 18-14 WSAI, add WPOP, WLEE, KIMN, 18-9 WRC. See page 12.

MIKE OLDFIELD: be aware that the single sales might be slow, but the lp sales are monstrous. 15-11 KFRC, 20-10 Y100, 10-4 WAKY, 31-24 KLIF. See page 14.

HELEN REDDY: Picked up this week, 24-16 KHJ, 17-11 KKDJ, 30-25 Y100, debut 24 KIMN. See page 14.

CHARLIE RICH (Epic) could go top 10, 29-19 WRKO, 28-18 KFRC, 23-14 WPOP, 15-6 WQXI. See page 14.

STAPLES: some top chart action, see page 14.

RINGO: although very few big numbers, the jumps averaged 5 positions. See page 15.

THINK: many have shown a peak. See page 15.

THREE DOG NIGHT: 11-9 KDWB, 27-21 WRKO, 23-11 WSGA, 36-28 WCFL, 40-30 WCOL, 28-24 KYNO, looks good so far.

BOBBY WOMACK: one of the most added, definitely has crossed. See page 15.

CROSSOVERS

BLACK TO ROCK:

MOMENTS/Sexy Mama (Stang) 3:05
 BOBBY WOMACK/ Lookin' For A Love (UA) 2:37
 MAIN INGREDIENT/Just Don't Want To Be Lonely (RCA)-3:31
 BLOODSTONE/Outside Woman (London) 3:55
 AL GREEN/Let's Get Married (Hi) 3:16
 BOBBY WOMACK "CROSSED" debuts 30 KHJ, 8-8 WFIL, 20-13 WIBG, debut 20 KQV, debut 25 KFRC, 3-1 WAKY.
 MAIN INGREDIENT, looks pretty solid. 10-9 WDRQ, add WPIX at 19, debuts 24 WRC, add WQXI, KING, 18-13 WCFL.
 MOMENTS: 27-23 WFIL, 20-17 KTKT, 11-15 WCFL, 26-22 WISM, not totally crossed.
 AL GREEN: looks good, 35-29 WIXY, add WAKY, 21-17 WDRQ.

COUNTRY TO ROCK:

TANYA TUCKER/Lay With Me (Columbia)
 Looks pretty good, 15-7 WAKY, 29-26 KLIF, add KOMA, on KILT, KUDL' KFJZ, top 20 KEYN.

MOR TO ROCK:

GILBERT O SULLIVAN/Happiness Is Me And You (Mam)-3:06
 MARIA MULDAUR/Midnight At The Oasis (Reprise) 3:36
 MARVIN HAMLISCH/Music From "Sting" (MCA) 2:57

All three received super cross action this week, so check their individual Parallels.

parenthesis
after dropped
records indicate
highest number
achieved by
record at station

added this week...

Most added
GRAND FUNK
BOBBY WOMACK
JACKSON 5

PARALLEL 1

WIBG/PHILADELPHIA
Grand Funk
Marvin Hamlisch
Jim Croce
DROPS:
Bachman-Turner Overdrive (23)

WLS/CHICAGO
Ringo Starr
Redbone
DROPS:
Eddie Kendricks (7)
Olivia Newton John (9)
Barry White (10)
Dickie Goodman (12)
Rick Derringer (23)

WRC/WASHINGTON D.C.
Mike Oldfield
Joni Mitchell
Jackson Five
DROPS:
Redbone (4)
Cliff De Young (5)
Anne Murray (17)

KDWB/ST. PAUL
Marvin Hamlisch
Doobie Bros.
Gladys Knight
Bill Amesbury
DROPS:
Neil Diamond (22)
Rick Derringer (3)

KKDJ/LOS ANGELES
Charlie Rich
Jim Croce
DROPS:
Steve Miller (1)
Brownsville (5)
Anne Murray (12)

WFIL/PHILADELPHIA
Gladys Knight
Hall & Oates
Jim Croce
Billy Paul
DROPS:
Ringo Starr
Anne Murray
Redbone

WDRQ/DETROIT
Grand Funk
Billy Paul
Carly Simon
Bobby Womack
DROPS:
Spinners (12)
Barry White (14)
Kool & the Gang (7)
Mike Oldfield (No chart)

KSLQ/ST. LOUIS
Jackson Five
Grand Funk
Isley Brothers
DROPS:
Sister Janet Mead (16)
Ringo Starr (14)

WPEZ/PITTSBURGH
Hexorcist
DROPS:
None

WPIX/NEW YORK
Bobby Womack
Chicago
Grand Funk
Three Dog Night
DROPS:
Jim Stafford (top 5)
Aretha Franklin (top 10)
Ringo Starr (top 5)

KQV/PITTSBURGH
Charlie Rich (Epic)
Bobby Womack
Jim Croce
DROPS:
Barbra Streisand (1)

WRKO/BOSTON
Chicago
Jackson Five
DROPS:
Al Wilson (top 5)
Ringo Starr (1)
Think (24)

KHJ/LOS ANGELES
Three Dog Night
Bobby Womack
DROPS:
Rick Derringer (top 15)
Ringo Starr (1)

WXLO/NEW YORK
Jim Croce
Chicago
Stevie Wonder
DROPS:
Aretha Franklin (top 5)
Love Unlimited (top 5)

KFRC/SAN FRANCISCO
Marvin Hamlisch
Bobby Womack
Jackson Five
DROPS:
Barbra Streisand (1)
Wednesday (top 10)
Think (top 20)
Cliff De Young (top 15)
David Essex (1)

CKLW/DETROIT
Gordon Lightfoot
DROPS:
Paul McCartney (top 15)
Kool & the Gang (top 10)
Guess Who (top 25)

PARALLEL 2

KAKC/TULSA
Billy Joel
Jim Croce
DROPS:
Gregg Allman (top 15)
Diana Ross (top 10)
Love Unlimited (top 5)

WSGA/SAVANNAH
Grand Funk
Mac Davis
DROPS:
David Essex (3)
Lamont Dozier (22)

WHBQ/MEMPHIS
Mike Oldfield
Helen Reddy
Bobby Womack
Jackson Five
DROPS:
Barbra Streisand (top 5)
Anne Murray (top 20)
Harry Chapin (top 25)
Lamont Dozier (top 25)

Y100/MIAMI
Grand Funk
MFSB
Gladys Knight
DROPS:
Love Unlimited (1)
Albert Hammond (25)

KTKT/TUCSON
Ringo Starr
Chicago
Doobie Bros.
DROPS:
None

KAFY/BAKERSFIELD
Ringo Starr
Charlie Rich (Epic)
Helen Reddy
DROPS:
Bob Dylan
Black Oak (top 5)
Olivia Newton John (top 5)

WLEE/RICHMOND
Jackson Five
Seals & Crofts
Maria Muldaur
Doobie Bros.
DROPS:
Rick Derringer (11)
Sister Mead (14)
Charlie Rich (RCA) (28)

KCBQ/SAN DIEGO
MFSB
DROPS:
Rick Derringer (14)
Byron Mac Gregor (6)
Jim Stafford (2)
Steve Miller (2)
Stones (10)

WGRQ/BUFFALO
Cozy Powell
Mike Oldfield
DROPS:
Dickie Goodman (top 5)
Olivia Newton John (top 10)
De Franco (top 10)

WIFE/INDIANAPOLIS
Barry White
DROPS:
Aretha Franklin (top 15)
Black Oak (3)
Love Unlimited (1)

WQXI/ATLANTA
Stylistics
Billy Joel
Main Ingredient
Gregg Allman
DROPS:
B.B. King (15)
Wednesday (13)

KING/SEATTLE
Staple Singers
Main Ingredient
Cat Stevens
Gilbert O Sullivan
Z.Z. Top
Doobie Brothers
DROPS:
Eddie Kendricks (4)
Diana Ross (8)
Barbra Streisand (1)

WMC-FM/MEMPHIS
Bee Gees
Diana & Marvin
Sami Jo
Sugarloaf
Undisputed Truth
DROPS:
Diana Ross (9)
O Jays (8)
Aretha Franklin (2)
Love Unlimited (1)
James Gang (No chart)

WMYQ/MIAMI
Grand Funk
DROPS:
Stealers Wheel (19)

WFLI/CHATTANOOGA
Leon Russell
Staple Singers
Bachman-Turner Overdrive
DROPS:
Sister Mead (16)
Al Wilson (4)
Stevie Wonder (11)

KCPX/SALT LAKE
Mike Oldfield
Chicago
Billy Joel
Maria Muldaur
DROPS:
Bob Dylan (22)
James Gang (10)
Anne Murray (13)

KYNO/FRESNO
Boz Scaggs
Grand Funk
Stevie Wonder
DROPS:
Stones
Bachman-Turner Overdrive
Gregg Allman

WSAI/CINCINNATI
Bobby Womack
Jim Croce
Grand Funk
Lou Christie
ADDED TO NITE TIME:
Chicago
Mike Oldfield
Gladys Knight
Cozy Powell
Ringo Starr
Bill Amesbury
Wet Willie
DROPS:
Tom T. Hall (3)
Aretha Franklin (15)
O Jays (22)
Dickie Goodman (7)

KRSP/SALT LAKE
Maria Muldaur
Mike Oldfield
Nilsson
DROPS:
Jimmy Osmond (15)
Aretha Franklin (7)
Bob Dylan (18)
Diana Ross (9)

WGRD/GRAND RAPIDS
Gladys Knight
Jim Croce
DROPS:
Love Unlimited (2)
Barbra Streisand (1)

KIMN/DENVER
Bobby Womack
Maria Muldaur
Marvin Hamlisch
DROPS:
Anne Murray (19)
Paul McCartney (21)
Charlie Rich (RCA) (22)

WOKY/MILWAUKEE
Marvin Hamlisch
Lobo
Bill Amesbury
Henry Gross
DROPS:
Elvis Presley (19)

PARALLEL 3

3

WCFL/CHICAGO
Redbone
Helen Reddy
Marvin Hamlisch
Lobo
Bobby Womack
DROPS:
Rolling Stones
Love Unlimited
Rick Derringer
De Franco
Natural Four

WPOP/HARTFORD
Marvin Hamlisch
Maria Muldaur
DROPS:
Rick Derringer (16)
NRBQ (12)
Love Unlimited (3)
Jimmy Buffet (22)
Bob Dylan (25)

WISM/MADISON
Jim Croce
Charlie Rich (Epic)
Bobby Womack
DROPS:
Stealers Wheel (25)
Barbra Streisand (1)
Aretha Franklin (3)
Mocedades (9)

WIXY/CLEVELAND
Not Available
DROPS:
Four Tops (16)
Jim Croce (22)
Bob Dylan
Harry Chapin (20)
Rick Derringer (top 15)

KOMA/OKLAHOMA CITY
Tanya Tucker
DROPS:
Not Available

KEWI/TOPEKA
Soul Children
Sami Jo
Five Man Electrical Band
DROPS:
Bobby Bare (10)
Barbra Streisand (2)
Stealers Wheel (26)
Glen Campbell (39)

WGH/NORFOLK
Charlie Rich (Epic)
Stylistics
Albert Hammond
DROPS:
Diana Ross (10)
Love Unlimited (1)
B.B. King (25)

KLIF/DALLAS
Marvin Hamlisch
Gilbert O Sullivan
Joni Mitchell
Stu Nunnery
DROPS:
Terry Jacks (1)
Cher (4)
O Jays (9)
Stealers Wheel (24)

WCOL/COLUMBUS
Todd Rundgren
Jackson Five
Stylistics
Five Man Electrical Band
Gordon Lightfoot
DROPS:
Billy Joel (3)
Moments (27)
Guess Who (24)
Maria Muldaur (9)
King Harvest (22)
Eddie Kendricks (7)

WAKY/LOUISVILLE
Jackson Five
Flesh Gordon
Melba Montgomery
Al Green
DROPS:
Black Oak (top 5)
Love Unlimited (top 5)
Electric Light (top 5)
Ringo Starr (top 5)
WAMS/WILMINGTON
Al Wilson
Bachman-Turner Overdrive
Sami Jo
Diana & Marvin
Albert Hammond
Chicago
DROPS:
Eddie Kendricks
Stafford
Barbra Streisand
Elvis Presley
Bob Dylan
Lamont Dozier

KJRB/SPOKANE
Sister Janet Mead
Mac Davis
Z.Z. Top
Emotions
Main Ingredient
Jimmy Webb

WLOF/ORLANDO
Grand Funk
Jim Croce
Three Dog Night
Mike Oldfield
Chicago
DROPS:
Stevie Wonder (3)
War (7)
Love Unlimited (1)
Redbone (5)
Black Oak Arkansas

WMAK/NASHVILLE
Bobby Womack
Marvin Hamlisch
Maria Muldaur
Olivia Newton John
James Gang (Nite)
DROPS:
Cliff De Young (top 10)

KYSN/COLORADO SPRINGS
Grand Funk
Doobie Brothers
Al Wilson
DROPS:
Anne Murray (2)
Harry Chapin (19)
Redbone (4)

KRUX/PHOENIX
Barry White
Main Ingredient
Helen Reddy
Diana & Marvin
Mike Oldfield
Grand Funk
Staple Singers
Soul Children

DROPS:
Moments
Barbra Streisand
Lamont Dozier
Gregg Allman
Bob Dylan

KIOA/DES MOINES
Maria Muldaur
Bobby Womack
Albert Hammond
Bachman-Turner Overdrive
Gladys Knight
DROPS:
Stafford (5)
Bobby Bare (3)
Ventures (16)
Tom T. Hall (9)
Barbra Streisand (1)
Rick Derringer (18)

KDZA/PUEBLO
Bobby Womack
Maria Muldaur
DROPS:
Anne Murray (12)
Love Unlimited (3)
Dickie Goodman (15)
O Jays (20)

KJR/SEATTLE
Main Ingredient
Five Man Electrical Band
Cat Stevens
Gordon Lightfoot
Stevie Wonder
Jimmy Webb
DROPS:
Heartsfield (No chart)
Billy Joel (No chart)
Eddie Kendricks (top 5)
Carly Simon (top 15)
Hall & Oates (top 20)

PROGRESSIVE RADIO

by Mike Harrison

Syndicated taped radio concerts have become very popular among FMers as of late. They have many advantages: they save the station the time and effort of organizing and producing programs; they may not ordinarily have the opportunity to enjoy them; they provide the station with a special sales package; they create the excitement of a "special" with common denominator appeal.

One of the most successful of these packages is THE KING BISQUIT FLOWER HOUR. This program, produced by D.I.R. Broadcasting Corp. of New York, runs bi-weekly Sunday evenings on major radio stations coast to coast. Among the acts that have been presented are Loggins and Messina, J. Geils, Emerson Lake and Palmer, Seals and Crofts, Procol Harum, Rod Stewart and The Faces, and numerous other top names. Upcoming programs will include The Who, Harry Chapin, and The Bee Gees.

A member of my staff, Jeff Gelb, recently spoke to Bob Meyrowitz, President of D.I.R.

JG: What prompted you to start D.I.R.?

BM: I was with NBC Radio around the time of that killing at the Stones concert at Altimont. It was at this point, I believe, that many people became disillusioned with the giant rock concerts. It occurred to me that broadcasting live concerts over the radio could bring the music to millions of people at the same time both safely and comfortably. Our first program ran, strangely enough, on the AM stations. In spite of its many rough edges and monophonic sound, it received tremendous audience reaction. That was about two and half years ago. It took us over 6 months to convince sponsors that it should run on FM was where it was really happening.

JG: How many stations are now carrying THE KING BISQUIT FLOWER HOUR?

BM: 135.

JG: How do you go about selecting the acts that you present?

BM: That's handled by Peter Kauff, who's been in the rock business for about 15 years now. He does remarkably well from a research and timing standpoint. For example, when Edgar Winter was on our show he had the number one single and his album was in the top five. When J. Geils was on, the same thing. When Steve Miller was on, the same thing, he had the number one single and the number one album. Now for our next show, we've got the WHO. That's the kind of group that you work on and work on until you get. The same with Emerson Lake and Palmer.

JG: Do you actually set up the concerts to record them?

BM: No, we go to where the concerts are. That's the only way you can capture a natural spontaneous sound and environment.

JG: How do you record?

BM: We use 16 track sound trucks, take the tapes back to the studio and usually with the help of the groups themselves mix them down to quad for radio broadcast. We work with the acts on this so that the sound meets their expectations. They've all been very cooperative. We just finished recording Stephen Stills in Chicago.

JG: What sort of quad do you use?

BM: SQ encoded quad. This allows every station to play it and the people who have the equipment to hear it. A

ROCK ALBUMS		
BACHMAN-TURNER-OVERDRIVE Bachman-Turner Overdrive II (Mercury) <i>CUTS: Let It Ride*, Blown, Takin' Care of Business</i>	FOGHAT Energized (Bearsville) <i>CUTS: That'll Be The Day*, Step Outside</i>	LOU REED Rock & Roll Animal (RCA) <i>CUTS: Sweet Jane*, Rock & Roll, White Light/White Heat</i>
JIMMY BUFFETT Living and Dying in 1/4 Time (Dunhill) <i>CUTS: Saxophones, Come Monday, Ballad Of Spider John</i>	GRAND FUNK Shinin' On (Grand Funk) <i>CUTS: Locomotion*, Shinin' On</i>	TODD RUNDGREN Todd (WB) <i>CUTS: A Dream Goes On Forever*, Sons of 1984, Heavy Metal Kids, The Last Ride</i>
BLACK SABBATH Sabbath Bloody Sabbath (WB) <i>CUTS: Sabbath Bloody Sabbath</i>	HUMBLE PIE Thunderbox (A&M) <i>CUTS: 99lbs*, Every Single Day, Don't Worry-Be Happy</i>	BOZ SCAGGS Slow Dancer (Columbia) <i>CUTS: You Make It So Hard*, Slow Dancer, Pain of Love</i>
HARRY CHAPIN Short Stories (Elektra) <i>CUTS: World*-They Call Her Easy</i>	BILLY JOEL Piano Man (Columbia) <i>CUTS: Worse Comes To Worse, Piano Man*, Travellin' Prayer, Captain Jack</i>	SEALS & CROFTS Unborn Child (W.B.) <i>CUTS: Unborn Child, Windflowers</i>
CHICAGO Chicago "7" (Columbia) <i>CUTS: Searchin' So Long, Wishing You Were Here, Skinny Boy</i>	KISS Kiss (Casablanca) <i>CUTS: Nothin To Lose*, Cold Gin</i>	PAUL SIMON Live Rhymin' (Columbia) <i>CUTS: Mother and Child Reunion, Bridge Over Troubled Water, The Sounds Of Silence</i>
COMMANDER CODY Planet Airmen (Paramount) <i>CUTS: Duggy Diggy Lo, Riot In Cell Block No. 9</i>	GORDON LIGHTFOOT Sundown (WB) <i>CUTS: High & Dry, Sundown*, Seven Island Suite</i>	GRACE SLICK Manhole (Grunt) <i>CUTS: Better Lying Down, Manhole</i>
DEEP PURPLE Burn (W.B.) <i>CUTS: Mistreated, What's Goin' On Here, Might Just Take Your Life*</i>	LOGGINS & MESSINA Full Sail (Columbia) <i>CUTS: A Love Song*, Watching The River Run, Sailing The Wind, Didn't I Know You When</i>	CARLY SIMON Hotcakes (Elektra) <i>CUTS: Mockingbird*, Safe & Sound, Think I'm Gonna Have A Baby, Haven't Got Time For The Pain*, Mind On My Man</i>
THE DOOBIE BROTHERS What Were Once Vices... (WB) <i>CUTS: Pursuiton 53rd Street*, Daughters of the Sea, Eyes of Silver, Road Angel</i>	MARSHALL TUCKER BAND A New Life (Capricorn) <i>CUTS: Southern Woman*, A New Life, Another Cruel Love</i>	STEELY DAN Pretzel Logic <i>CUTS: Rikki Don't Lose That Number*, East St. Louis Toodle-oo, Night By Night</i>
BOB DYLAN Planet Waves (Asylum) <i>CUTS: On A Night Like This*, Going, Going, Gone, Tough Mama*, Something There Is About You, Forever Young*, (Pt 1&2), You Angel You, Never Say Goodbye*</i>	JONI MITCHELL Court And Spark (Asylum) <i>CUTS: Court and Spark, Help Me*, Free Man In Paris*, People's Party, Same Situation, Car On A Hill*, Raised On Robbery*</i>	TOWER OF POWER Back To Oakland (WB) <i>CUTS: Time Will Tell, I Got The Chop</i>
EMERSON LAKE & PALMER Brain Salad Surgery (Manticore) <i>CUTS: Still-You Turn Me On*-Karn Evil 9-Part 2 & 3</i>	GRAHAM NASH Wild Tales (Atlantic) <i>CUTS: Grave Concern, Prison Song*, Wild Tales</i>	JOHNNY WINTER Saints & Sinners (Columbia) <i>CUTS: Stone County, Stray-Cat Blues, Boney Moroney Blinded By Love*</i>
DAVID ESSEX Rock On (Columbia) <i>CUTS: Rock On*-For Emily-Lanplight</i>	NAZARETH Loud and Proud (A&M) <i>CUTS: This Flight Tonight, Freewheeler</i>	YES Tales From Topographic Oceans (Atlantic) <i>CUTS: Side One Edits 2 & 5, Side Three Edit 4, Side Four Edit 2, Side Two Edit 5</i>

New entries are boxed.
*Denotes most played cuts

year and a half ago quad was a gimmick, but look at it today. It's definitely the coming thing in FM radio.

JG: Does D.I.R. have any other

projects in the works other than THE KING BISQUIT FLOWER HOUR?

BM: Yes, we are currently putting a five minute rock news program

(Continued on page 20)

Progressive Top Play Singles

- HARRY CHAPIN/WOLD (Elektra)-3:56
- CHICAGO/(I've Been) Searchin' So Long (Columbia)-4:19
- CRUSADERS/Scratch (Blue Thumb) 2:30
- JOHN DENVER/Sunshine On My Shoulder (RCA)-3:18
- RICK DERRINGER/Rock & Roll Hootchie Coo (Blue Sky)-3:42
- EMERSON, LAKE & PALMER/Still You Turn Me On (Manticore)-2:50
- GRAND FUNK/Locomotion (Grand Funk)-2:45
- HENRY GROSS/Simone (A&M)-3:25
- THE JAMES GANG/Must Be Love (Atco)-3:30
- LOGGINS & MESSINA/Watching The River Run (Columbia)-3:25
- STEVE MILLER BAND/Your Cash Ain't Nothin' But Trash (Capitol)
- MFSB/TSOP (Phy/Int)-3:29
- MIKE OLDFIELD/Theme From Exorcist (Virgin)-3:18
- PINK FLOYD/Us And Them (Harvest)-3:15
- COZY POWELL/Dance With The Devil (Chrysalis)-3:32
- LEON RUSSELL/If I Were A Carpenter (Shelter)-2:38
- BLACK SABBATH/Sabbath Bloody Sabbath (WB)-3:33
- SANTANA/When I Look Into Your Eyes (Columbia)-2:40
- CARLY SIMON/Mockingbird (Elektra)-3:45
- STEALERS WHEEL/Star (A&M)-2:58
- CAT STEVENS/Oh Very Young (A&M)-2:33
- DAVID T. WALKER/I Got Work To Do (Ode)-4:12
- JOHNNY WINTER/Stone Country (Columbia)-3:31

ALBUM NOTES

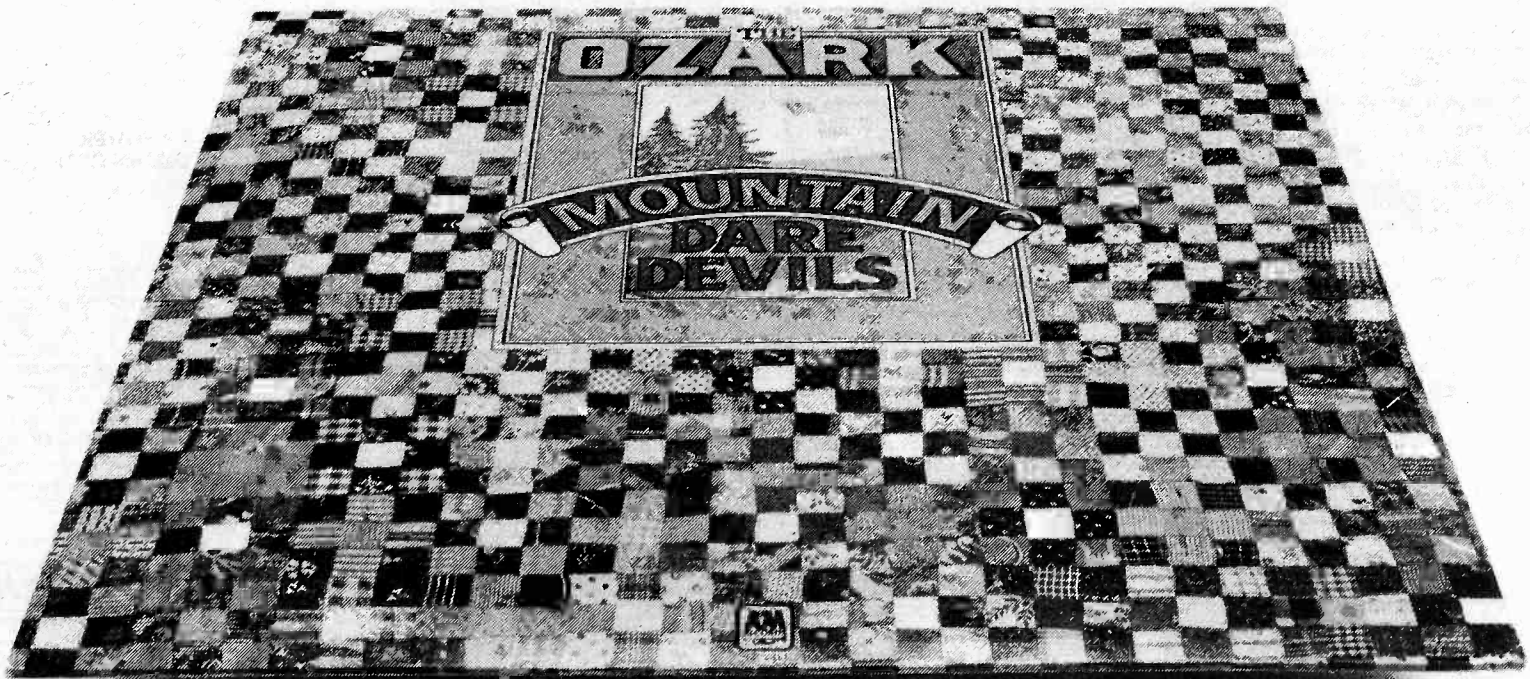
BY BOB WILSON

Watch out for a couple of new albums. One is an import, "ARGENT"; the key cut is "Coming of Kohoutek", according to Brent Alberts at WIIN. He also received a dub of the new SAVOY BROWN (London); key cut is the title, "Boogie Brothers." While we're in the South, WZZQ reports top action on KATHI McDONALD (Capitol) and the JIM STAFFORD lp. Many report super phones when they play STAFFORD.

Also getting action is the CARAVAN lp (London), and the BUFFY SAINTE-MARIE (MCA). Both the MARIA MULDAUR single and album are getting top exposure again. OZARK MOUNTAIN DAREDEVILS (A&M) now surfacing at several stations. Key cut is "Get to Heaven..."

New action singles; B.W. STEVENSON (RCA), NILSSON (RCA), CAT STEVENS (A&M) BOBBY WOMACK (U.A.). The GUESS WHO single (RCA) added at KLOS-Los Angeles, as well as at many others. The CRUSADERS' new album (Blue Thumb) got immediate airplay, mostly on the title cut, "Scratch"; looks good.

INTRODUCING THE 1974 OZARK MOUNTAIN DAREDEVILS.



The word is spreading fast. Pockets of cult followers are springing up everywhere. And sales indicate that Ozark Mountain Daredevil

Music is definitely a thing of the present. Especially now with the release of their new single, "If You Wanna Get To Heaven."
(AM 1515)

THE DEBUT ALBUM OF THE OZARK MOUNTAIN DAREDEVILS. ON A&M RECORDS.

Produced by David Anderle and Glyn Johns

(SP 4411)

PARALLELS

SPEAKING OF STREAKING . . .

The dictionary describes streak as "a brief run, a lightning bolt, to move swiftly," and judging by the following list...the record companies seem to have done just that in one week!

- FLESH GORDON/Super Streaker (Paramount)
- THE STREAKERS/Streaking (ABC)
- SPRINGFIELD MASS./Streakin' Across The U.S.A. (Columbia)
- THE STREAKS/Streakin' And Freakin' (20th Century)
- TREASURE/Come Streak With Me (Casablanca)
- ZONA ROSA/Streaking (Exorcist)
- DASH FLASHER/They Call It Streakin' (Ace)
- KRTH NO SHORTS/We Like Streaking (Era)

BILL AMESBURY
(Casablanca) 2:30

Virginia

P1	Add KDWB
P2	29-28 WGRQ, Add WSAI-Nite, 29-25 KCPX, Add WOKY
P3	13-13 WAMS, 38-36 WGH, 22-20 WCFL, 22-34 KJRB, 13-11 WPOP, 23-20 KIOA, 31-24 WCOL, 16-11 WISM

NOTES: Had a slightly better week.

BACHMAN-TURNER OVERDRIVE
(Mercury) 4:21

Let It Ride

P1	On WPIX, 15-12 KDWB, 22-19 WRC, 24-24 CKLW
P2	29-25 WGRD, 21-14 WIFE, 28-21 KTKT, 26-25 KRSP, Debut 30 KCPX, 25-20 WOKY, 16-16 KING, 30-30 WLEE, Debut 30 KIMN, Debut 26 WFLI, 25-22 WMYQ, 28-24 WGRQ, 21-15 WSAI, 30-27 KYNO, 26-22 WSGA
P3	7-11 WAMS, 34-32 KLIF, 36-34 KEWI, 29-25 WISM, 28-22 KRUX, 6-5 KJR, 5-3 KJRB, 20-11 WCOL, Debut 35 KOMA, 29-26 WCFL, Add WAMS, 39-38 KYSN, 34-28 WGH, 16-10 WIXY, Debut 29 KIOA, 39-36 KDZA

NOTES: Looks better, heading for top of mid chart, may go top 10.

BLUE SWEDE
(EMI) 2:54

Hooked On A Feeling

P1	4-4 KSLQ, 14-8 KQV, 3-4 KKDJ, 3-1 KHJ, 2-2 WRKO, 5-3 WIBG, 9-5 WPEZ, 2-1 WLS, 1-2 WRC, 4-3 WXLO, 27-26 CKLW, 9-6 WPIX, 12-9 WFIL, 4-1 KDWB, 9-4 KFRC
P2	3-2 WGRD, 3-8 WIFE, 2-2 Y100, 6-5 KAFY, 2-2 WSAI, 13-7 KYNO, 11-4 WGRQ, 3-1 WOKY, 2-3 WQXI, 11-7 KTKT, 5-3 WLEE, 1-1 KRSP, 2-3 KCPX, 7-11 WHBQ, 6-2 WMYQ, 6-2 KING, 11-7 WMC-FM, 5-8 KCBQ, 3-2 KIMN, 1-1 WFLI, 3-1 KAKC, 8-3 WSGA
P3	8-5 KJRB, 18-8 KYSN, 1-3 WCOL, 6-2 KOMA, 6-2 WISM, 11-5 KRUX, 9-5 WMAK, 12-8 KLIF, 8-5 KDZA, 10-6 WLOF, 1-3 WAKY, 9-5 WGH, 2-2 WPOP, 5-2 WCFL, 14-9 WAMS, 2-1 KJR, 6-4 KEWI, 4-3 WIXY, 3-2 KIOA

HARRY CHAPIN
(Elektra) 3:56

WOLD

P1	22-21 KHJ, 11-11 WRKO, 14-14 WRC
P2	21-14 KAKC
P3	27-25 WAMS, 25-25 KEWI

NOTES: Very weak.

CHER
(MCA) 3:26

Dark Lady

P1	19-16 WDRQ, 16-15 WPIX, 6-10 WFIL, 5-10 KHJ, 7-10 WRKO, 8-8 WIBG, 5-5 KFRC, 11-12 KSLQ, 4-3 KQV, 8-10 KKDJ, 8-5 WXLO, 12-12 CKLW, 17-10 WPEZ, 11-13 WLS, 6-11 WRC, 8-10 WGRD, 2-4 WIFE, 3-5 Y100, 1-2 WLEE, 10-18 KRSP, 6-21 KCPX, 10-19 KAKC, 10-15 WOKY, 3-3 KING, 6-5 KTKT, 6-7 KCBQ, 5-5 KIMN, 8-15 WFLI, 7-10 WSGA, 8-12 WMYQ, 8-10 WGRQ, 2-1 KAFY, 10-12 WSAI, 9-6 KYNO, 5-6 WHBQ
P3	9-6 WAMS, 10-13 WMAK, 10-16 WGH, 7-13 WPOP, 15-23 WCFL, 3-7 KDZA, 3-8 WISM, 4-2 KJRB, 17-28 KYSN, 3-3 KEWI, 3-18 WIXY, 4-5 KIOA, 3-1 WLOF, 8-13 WAKY, 8-9 KOMA

NOTES: Many show big declines. Actives are gone.

CHICAGO
(Columbia) 4:19

(I've Been) Searchin' So Long

P1	Debut 20 WXLO, 26-18 WIBG, 27-19 KDWB, Debut 26 WRC, 23-18 WFIL, Add WPIX, Debut 28 WRKO
P2	22-18 WIFE, Add KTKT, Debut 19 KIMN, 29-25 WSGA, Debut 20 WQXI, Debut 29 WLEE, Debut 29 KYNO, Add WSAI-Nite, Debut 33 WGRQ, Debut 28 KRSP, Add KCPX
P3	37-28 KJRB, 36-24 KYSN, 38-31 WCOL, 39-35 WCFL, 42-38 KDZA, Debut 30 WLOF, On KJR Debut 29 WAKY, Debut 33 KOMA, 25-18 KIOA, 28-23 WMAK, 38-34 KLIF, 29-25 WPOP, Add WAMS

NOTES: Growing weekly—looks good at this point, with no negatives.

JIM CROCE
(ABC) 2:30

I'll Have To Say I Love You In A Song

P1	18-15 KSLQ, Debut 25 KKDJ, 6-4 KDWB, 25-20 KHJ, Debut 30 WFIL, 15-12 WRC, Debut 13 WXLO, 22-20 WRKO, Debut 20 WPIX, Debut 21 KQV, 25-20 KFRC, Debut 29 WIBG
P2	30-18 WGRD, Debut 28 WIFE, 18-16 WGRQ, 27-19 WMC-FM, 22-20 KRSP, 26-20 KCPX, 11-9 WOKY, 19-13 WQXI, 23-13 Y100, 13-11 WLEE, 18-11 KIMN, 15-23 WFLI, 20-14 WMYQ, Debut 18 KING, 23-19 KTKT, Debut 28 WSAI, 12-8 KYNO, Add KAKC, 12-9 WSGA
P3	Debut 30 WAMS, 15-12 WMAK, 25-14 WCOL, Debut 25 KOMA, 21-14 WCFL, Debut 19 KJR, 28-25 KJRB, 27-15 KYSN, 29-29 WGH, 24-16 WPOP, 13-8 KIOA, Debut 26 WLOF, 23-19 KLIF

NOTES: Most all show good jumps. 37% show top 15.

CLIFF DE YOUNG
(MCA) 2:40

My Sweet Lady

P1	15-15 KQV, 14-11 WFIL, 19-23 KDWB
P2	14-16 WGRD, 5-15 WGRQ, 14-23 WSAI, 18-30 KAKC, 12-15 WMYQ, 18-18 Y100, 8-9 KIMN, 18-30 WFLI, 15-18 WLEE, 6-10 KYNO
P3	13-20 WAKY, 9-14 WIXY, 33-31 WGH, 10-10 KRUX, 18-18 WPOP, 20-26 KDZA

NOTES:

JOHN DENVER
(RCA) 3:18

Sunshine On My Shoulder

P1	13-6 WDRQ, 7-4 WPIX, 6-3 KKDJ, 1-2 KDWB, 4-2 KFRC, 15-14 WIBG, 10-6 WXLO, 15-5 CKLW, 7-6 KSLQ, 3-2 KQV, 10-7 WRC, 7-7 KHJ, 12-9 WRKO, 6-6 WPEZ, 6-8 WLS, 18-13 WFIL
P2	1-1 WGRD, 1-2 WIFE, 9-5 WGRQ, 3-2 WMC-FM, 13-6 KCBQ, 4-13 KIMN, 6-8 WFLI, 4-4 WOKY, 10-10 WQXI, 4-3 Y100, On KAFY, 5-7 WSAI, 14-9 KYNO, 9-8 WHBQ, 5-6 WMYQ, 11-5 KING, 2-1 KTKT, 8-5 WLEE, 2-2 KRSP, 16-24 KCPX, 14-23 KAKC, 3-2 WSGA
P3	6-4 WAMS, 4-10 WMAK, 11-9 KLIF, 7-4 KOMA, 2-1 WISM, 1-1 KRUX, 8-8 KEWI, 6-7 WIXY, 2-6 KJRB, 3-1 KYSN, 3-2 WGH, 3-3 WPOP, 2-6 WCFL, 8-17 WCOL, 11-12 KJR, 4-2 WLOF, 5-6 WAKY

NOTES: TV special put new life into requests. Still strong.

RICK DERRINGER
(Blue Sky) 3:42

Rock and Roll Hoochie Koo

P1	16-17 WPEZ, 21-27 WRKO, 17-18 WPIX, 11-14 WFIL, 5-6 WRC, 13-16 WIBG
P2	21-28 WGRD, 18-18 WQXI, 12-15 Y100, 18-15 KAFY, 5-7 WFLI, 11-15 WSGA, 21-17 WOKY, 19-13 KING, 15-23 KTKT, 7-6 WSAI, 4-10 WHBQ, 14-23 WMYQ, 12-11 WGRQ, 16-17 WMC-FM, 12-29 KCPX, 8-6 KAKC
P3	12-14 WAMS, 11-12 KYSN, 14-14 WGH, 6-6 KRUX, 2-5 WLOF, 7-9 WAKY, 23-22 KEWI, 15-15 KDZA, 7-8 WMAK, 18-28 WCOL, 11-18 KOMA

NOTES: Many show large drops. Holding with males.

NEIL DIAMOND
(Columbia) 2:18

Skybird

P1	
P2	
P3	36-32 KJRB, 40-33 WGH, 22-19 KYSN, 31-29 KDZA, 35-34 WCOL, On KEEL

NOTES: Very slow.

LAMONT DOZIER
(ABC) 4:24

Trying To Hold On To My Woman

P1	
P2	14-16 WQXI, 13-12 WMC-FM, 26-19 WLEE
P3	38-29 KJRB, 24-20 WGH, 9-15 WAKY, 48-43 KEWI, 28-25 KLIF, 24-31 WCFL

NOTES:

PARALLELS

BOB DYLAN
(Asylum) 2:57

On A Night Like This

P1
P2 17-16 KTKT, 11-17 KYNO
P3 14-22 KYSN, 41-41 KEWI, 23-27 KDZA, 30-27 KLIF, 25-11 KOMA, 32-32 WGH, 23-18 WISM

NOTES:

EMOTIONS
(Volt) 3:10

Put A Little Love Away

P1 15-12 WFIL, 22-22 WIBG
P2 28-23 KCPX, Debut 28 WLEE, 27-24 KRSP
P3 Debut 36 KJRB

NOTES: Picking up—could still happen.

DAVID ESSEX
(Columbia) 2:51

Rock On

P1 1-2 WDRQ, 3-5 WPIX, 4-6 WFIL, 14-22 KHJ, 3-6 WIBG, 10-11 KSLQ, 5-10 KQV, 13-16 KKDJ, 3-7 WRKO, 8-12 WPEZ, 4-6 WLS, 6-12 WXLO, 1-1 CKLW
P2 6-6 WGRD, 23-28 WMYQ, 8-15 KTKT, 12-15 WLEE, 6-8 KIMN, 8-8 WOKY, 15-20 WSAI, 20-25 WIFE, 5-10 WMC-FM, 2-3 KCBQ, 4-9 WFLI, 3-10 KING, 6-14 WGRQ, 14-17 KAFY, 2-1 WHBQ
P3 4-2 WAMS, 7-11 WGH, 11-21 WIXY, 13-16 WMAK, 18-20 KEWI, 8-15 WISM, 12-14 KDZA, 17-22 WAKY, 6-8 WPOP, 4-8 WCFL

NOTES: Peaked, but still fairly solid.

LOIS FLETCHER
(Playboy) 2:32

I Am What I Am

P1 19-21 CKLW
P2 On WOKY
P3 38-33 WCFL

NOTES:

GRAND FUNK
(Grand Funk) 2:45

Locomotion

P1 20-14 KKDJ, 23-20 KDWB, 30-19 KHJ, 29-19 CKLW, Debut 25 KSLQ, 16-13 WRC, 27-21 KFRC, Debut 27 WIBG, Add WPIX, Debut 18 WDRQ, 25-14 WRKO,
P2 12-10 WFLI, 30-15 KIMN, Debut 23 WGRD, Debut 27 WIFE, 17-9 WGRQ, 30-25 WHBQ, Debut 28 KCPX, 29-21 WLEE, Debut 26 WOKY, Debut 17 WQXI, Debut 30 Y100, 27-21 WISM, Debut 29 WSAI, Debut 29 WMYQ, Debut 19 KING, Debut 25 KTKT, 16-12 KAFY, 16-10 KCBQ,
P3 33-25 WCFL, 31-25 WGH, On WAMS, 12-1 WMAK, 37-32 KDZA, 13-7 KJR, Debut 24 WLOF, 22-12 WIXY, 33-28 KLIF, 26-17 KJRB, Debut 37 KYSN, 32-30 KOMA, 51-36 KEWI, 11-5 WCOL,

NOTES: One of the strongest—across the board.

GUESS WHO
(RCA) 2:37

Star Baby

P1 7-8 KDWB
P2 19-9 KCPX, 13-11 KTKT, 16-14 KRSP, On WMC-FM, 14-15 KING
P3 25-24 WIXY, 22-18 WLOF, 22-20 KLIF, 9-8 KJR, 11-11 KJRB

NOTES: Some stations look very good.

DARYL HALL & JOHN OATES
(Atlantic) 3:24

She's Gone

P1 Debut 25 WRC, Debut 29 WFIL
P2
P3 35-23 KLIF, 22-19 KIOA

NOTES:

MARVIN HAMLISCH
(MCA) 2:57

Music From "The Sting"

P1 Debut 24 KFRC, 13-8 CKLW, Debut 28 WIBG, Debut 28 KDWB
P2 30-21 KRSP, Add WOKY, Add KIMN
P3 Debut 37 WCFL, Debut 37 KLIF, On KEWI, 39-29 WCOL, Add WPOP, Add WMAK

NOTES: One of the most added. Movie is large with all but teens.

ALBERT HAMMOND
(Mums) 3:16

I'm A Train

P1
P2 23-15 KCPX, 27-19 WIFE, Debut 28 KYNO, 26-25 WMC-FM, Debut 23 KRSP, 22-22 WLEE
P3 Debut 28 WISM, 50-40 KEWI, 19-12 KJRB, Debut 28 WMAK, 14-11 KJR, Debut 28 WPOP, Add WGH, 19-15 WLOF, 37-34 KYSN, Debut 34 KOMA, 26-19 WCOL, Add WAMS, Debut 28 KIOA

NOTES:

TERRY JACKS
(Bell) 3:24

Seasons In The Sun

P1 3-4 WLS, 1-1 WPEZ, 2-2 KKDJ, 3-4 WRC, 1-3 KHJ, 1-1 WIBG, 1-1 KQV, 9-10 CKLW, 1-2 KSLQ, 2-3 KDWB, 1-1 KFRC, 1-1 WRKO, 1-1 WPIX, 17-11 WDRQ, 1-4 WFIL, 1-2 WXLO,
P2 2-6 WSGA, 3-6 WFLI, 1-1 KIMN, 2-3 WGRD, 4-9 WIFE, 2-3 WGRQ, 1-1 WMC-FM, 1-1 KCBQ, 1-1 KCPX, 5-13 KRSP, 1-2 WOKY, 1-2 WQXI, 1-1 Y100, 4-8 KAFY, 1-2 WHBQ, 2-5 KYNO, 1-3 WSAI, 1-1 WMYQ, 1-1 KING, 1-2 KTKT, 4-10 WLEE, 17-29 KAKC
P3 3-4 WCFL, 1-1 WPOP, 1-1 WGH, 3-8 WAMS, 20-21 WMAK, 1-4 WISM, 4-7 KOMA, 1-2 KDZA, 5-12 WCOL, 1-1 KJRB, 1-4 KYSN, 1-1 KIOA, 14-23 WIXY, 1-1 KEWI, 4-5 WAKY, 1-7 WLOF, 4-4 KJR

NOTES:

THE JACKSON FIVE
(Motown) 2:29

Dancing Machine

P1 Add WRC, Debut 26 KFRC, 7-7 WDRQ, Debut 29 WRKO, Debut 24 KSLQ, 6-4 CKLW
P2 Debut 26 WGRQ, Debut 30 WHBQ, Debut 25 WLEE, 28-22 KAKC
P3 39-19 WIXY, 8-9 KRUX, Add WCOL, Debut 30 WAKY

NOTES: Another of the most added. Good start.

THE JAMES GANG
(Atco) 3:30

Must Be Love

P1
P2 24-20 KIMN, 13-9 KRSP
P3 21-18 KEWI, 29-28 KJRB, 13-11 KLIF, On WMAK-Nite, 6-15 WCOL, On KJR

NOTES:

SAMI JO
(MGM South) 2:59

Tell Me A Lie

P1
P2 26-21 KYNO, 5-4 WQXI, 20-18 WSAI, Debut 29 WMC-FM, 19-21 WOKY, On WIFE
P3 23-22 WIXY, Add KEWI, 13-21 KJRB, Debut 24 KIOA, Debut 30 WPOP, 6-4 KLIF, 14-11 WLOF, On KJR, 29-23 KOMA, Add WAMS, 1-3 WMAK, Debut 29 KRUX

NOTES: Had a good week of spreading.

BILLY JOEL
(Columbia) 3:16

Piano Man

P1 22-17 KDWB, 23-22 WRKO, 20-16 WFIL, 16-15 WIBG, 20-16 WPIX
P2 29-26 KYNO, 30-19 WSAI, Add WQXI, 27-21 WSGA, Debut 29 KIMN, 24-24 WOKY, 27-23 WGRQ, Add KCPX, 17-11 WIFE, 27-21 WHBQ, Add KAKC
P3 31-30 WIXY, 42-42 KEWI, 29-26 WAMS, 28-23 KYSN, 24-17 KIOA, 30-26 WPOP, 28-23 WGH, 28-20 WLOF, 33-30 KDZA, 23-21 KOMA, 26-22 KLIF, 24-25 WMAK

NOTES: Nice growth—average jump was 4 points.

PARALLELS

DEFINITION OF PARALLELS:

SIMPLY PUT: they group similar stations together by playlist size and air presentation.

REASON: To better define what's happening with a given record at a particular type of radio station. (KHJ should not be compared with WHYY.)

EASY WAY TO USE: First, find which Parallel your station fits into by using the boxed definitions below. You can watch a record's progress at various stations, and affirm your decision to go or not to go on a record. You can also tell at a glance what action the record's receiving at stations.

- P1:** Top 15 major markets/20-30 record playlist/emphasize 7-10 "hot records" /very little new product added.
- P2:** Secondary market/20-30 record playlist/emphasize 7-10 "hot records" /very little new product added.
- P3:** Major and secondary market stations with 30-50 record playlists/some new product exposed.
- P4:** Specialized markets affected by black or country influences.

ELTON JOHN (MCA) 5:12

Bennie & The Jets

P1 5-3 WLS, 3-2 WPEZ, 5-3 WFIL, 9-5 WRC, 2-2 KHJ, 10-5 WIBG, 9-8 WXLO, 2-2 CKLW, 13-6 KQV, 2-1 KSLQ, 1-1 KKDJ, 8-8 KFRC, 5-5 WRKO, 13-11 WPIX, 3-3 WDRQ, 8-5 KDWB,
P2 1-1 WSGA, 11-3 WFLI, 11-7 KIMN, 5-7 WGRD, 14-5 WIFE, 1-1 WGRQ, 6-5 WMC-FM, 4-2 KCBQ, 3-2 KCPX, 3-6 KRSP, 9-5 WOKY, 12-7 WQXI, 10-4 Y100, 11-7 KAFY, 6-4 WHBQ, 3-2 KYNO, 4-1 WSAI, 2-3 WMYQ, 7-4 KING, 10-6 KTKT, 6-4 WLEE, 9-5 KAKC
P3 8-3 WCFL, 8-4 WPOP, 4-3 WGH, 6-8 WAKY, 16-14 WLOF, 5-2 KRUX, 6-6 KIOA, 11-6 KEWI,

9-5 WISM, 31-16 KOMA, 16-12 KLIF, 2-1 WAMS, 2-2 WMAK, 5-1 KDZA, 1-2 KJR, 1-1 WIXY,
NOTES: Solid—very few negatives.

EDDIE KENDRICKS (Tamla) 3:30

Boogie Down

P1 9-14 KSLQ, 22-23 KKDJ, 11-12 KHJ, 13-12 WRKO, 2-3 WPIX, 12-15 WRC, 2-3 KFRC, 4-7 CKLW, 2-7 KQV, 6-5 WDRQ, 3-4 WXLO
P2 20-14 WFLI, 13-12 KIMN, 11-13 WMYQ, 4-6 WGRQ, 2-3 WMC-FM, 8-7 WHBQ, 5-4 KYNO, 12-16 WSAI, 15-17 WIFE, 7-9 Y100, 3-6 KAFY, 23-28 KAKC, 24-19 KCPX, 12-9 WGRD, 4-8 KING, 4-10 KTKT, 7-12 WLEE, 14-29 WSGA
P3 17-22 WCFL, 21-28 KOMA, 10-5 KLIF, 5-3 WLOF, 2-7 KRUX, 5-7 WISM, 5-9 KYSN, 19-24 KEWI, 16-19 WAKY, 17-17 WMAK, 10-13 KDZA, 5-5 WPOP, 2-6 WGH, 10-14 KJRB,

NOTES: 20% still show growth.

GLADYS KNIGHT & THE PIPS (Buddah) 3:45

Best Thing That Ever Happened To Me

P1 13-10 KSLQ, 2-1 WDRQ, 20-18 WRC, 19-14 KFRC, 3-6 CKLW, Debut 17 WPIX, 20-15 WRKO, 21-13 KKDJ, 16-11 KHJ, 15-7 WXLO, 28-25 WIBG, 17-12 KQV, 14-25 WFIL, Debut 30 KDWB,
P2 19-12 WFLI, 12-12 WOKY, 26-21 WGRQ, Debut 27 KTKT, 9-7 WLEE, 18-18 WSGA, 16-11 KYNO, 22-16 WMYQ, 15-11 Y100, 18-13 WMC-FM, 15-9 WHBQ, Add WSAI-Nite, Debut 21 WGRD, 30-26 WIFE, 4-5 WQXI, 22-19 KAFY, 11-8 KAKC.
P3 25-17 WCFL, Debut 24 WPOP, 13-10 WGH, 28-21 WAKY, 4-2 KYSN, 20-13 WISM, 20-18 KJR, 33-15 KOMA, 17-13 KLIF, Debut 22 WAMS, 16-12 KRUX, Debut 30 KIOA, 15-9 WMAK, 8-4 WIXY,

NOTES: Looks like good potential top 10. 58% already show top 15 and moving.

KOOL AND THE GANG (DeLite) 3:08

Jungle Boogie

P1 15-12 WLS, 21-26 WFIL, 6-5 KHJ, 18-18 WRKO, 14-14 WPEZ, 4-8 KKDJ, 3-6 KFRC, 7-11 KQV, 22-23 KSLQ, 13-17 WXLO
P2 25-21 WFLI, 15-10 KIMN, 9-8 WGRD, 8-12 WQXI, 17-17 Y100, 10-12 KCBQ, 4-7 WSGA, 14-7 KCPX, 9-8 KRSP, 3-5 WMYQ, 9-11 KING, 5-3 KTKT, 16-18 WHBQ, 19-12 KYNO, 5-1 WIFE, 16-13 WGRQ, 7-3 KAFY, 6-3 KAKC, 8-11 WSAI,
P3 6-11 WCFL, 12-15 KEWI, 17-27 WCOL, 6-6 WMAK, 24-12 KIOA, 11-12 WISM, 8-9 WGH, 18-23 WAKY, 20-21 KRUX, 17-17 KJR, 10-13 KOMA, 7-6 KLIF, 1-3 WAMS, 2-3 KDZA

NOTES:

LOVE UNLIMITED ORCHESTRA (20th Century) 3:30

Love's Theme

P1 9-13 WRKO, 20-25 KHJ, 19-21 KKDJ, 23-27 WLS
P2 14-23 Y100, 14-22 WFLI, 11-24 WGRD, 17-24 WMYQ, 11-13 WSAI
P3 17-27 KOMA, 17-20 KRUX, 15-19 KJRB

NOTES: Most have 'stashed'.

MAIN INGREDIENT (RCA) 3:31

Just Don't Want To Be Lonely

P1 10-11 CKLW, 26-23 KFRC, Debut 19 WPIX, 19-16 WXLO, Debut 24 WRC, 10-9 WDRQ
P2 29-21 WMC-FM, Debut 29 WGRQ, 27-24 WLEE, Add WQXI, Add KING
P3 21-15 WIXY, 35-34 WGH, 37-32 WCOL, 30-30 KYSN, Add KJR, On KEWI, 36-31 KLIF, Debut 37 KJRB, Add KRUX, 18-13 WCFL

NOTES: Really good spread, sure looks good.

PAUL MC CARTNEY (Apple) 3:45

Jet

P1 4-4 WRKO, 5-10 WXLO, 4-3 WRC, 5-9 KKDJ, 15-11 WPEZ, 16-11 WLS, 13-17 WFIL, 4-4 KHJ, 10-10 KFRC, 12-18 KDWB, 8-12 WDRQ, 5-9 WPIX, 4-2 WIBG, 8-7 KSLQ, 9-4 KQV,
P2 14-11 WOKY, 10-8 WSGA, 5-14 Y100, 8-8 WMC-FM, 8-3 WIFE, 19-19 WMYQ, 6-3 KRSP, 15-11 KAKC, 14-14 KTKT, 10-6 WLEE, 16-9 WQXI, 7-5 KCPX, 9-8 WSAI, 12-15 WHBQ, 9-10 KAFY, 3-2 WGRQ, 8-9 KING, 1-1 KYNO, 10-11 WGRD
P3 10-7 WCFL, 9-10 WPOP, 15-13 WGH, 29-17 WAKY, 14-11 WMAK, 7-6 KDZA, 10-10 WCOL, 7-6 WISM, 1-8 KOMA, 5-3 KLIF, 17-15 WAMS, 8-10 KYSN, 5-6 KJR, 5-6 WIXY, 26-23 KEWI,

NOTES: Most report still hot.

SISTER JANET MEAD (A&M) 2:59

The Lord's Prayer

P1 13-13 KFRC, 5-6 KDWB, 10-9 WPEZ, 9-5 WLS, 6-7 WIBG, 19-15 WFIL, 14-13 WPIX
P2 5-5 WSGA, 19-14 WHBQ, 26-20 KTKT, 18-7 KING, 14-23 KIMN, 4-4 WGRD, 13-7 KAKC, 8-6 Y100, 20-11 WMC-FM, 18-10 WMYQ, 7-4 KRSP, 2-3 WOKY, 23-21 KAFY, 13-9 WGRQ, 8-6 KCPX, 3-4 WSAI
P3 16-9 WCFL, 2-2 WIXY, 2-2 KEWI, 4-4 WCOL, 25-20 WAMS, 2-3 KIOA, 10-21 KYSN, 3-3 KJR, 14-10 WISM, 10-7 WPOP, 20-17 WGH, 14-18 WAKY, Debut 26 KJRB, 11-9 KDZA, 13-10 WLOF,

NOTES: A few have put into limited play even though sales are good.

MFSB (Phy/Int) 3:29

TSOP

P1 5-3 CKLW, 2-1 WXLO, 14-9 WIBG, 7-5 WFIL, 15-7 WPIX, 10-3 WRKO, 11-9 KFRC, 24-21 KDWB, 4-4 WDRQ, 20-14 KQV, 12-6 KHJ, 13-8 WRC, 9-5 KKDJ, 12-8 KSLQ
P2 15-13 WSGA, Debut 20 Y100, 3-1 WLEE, 29-15 WIFE, 24-11 WFLI, 29-18 KIMN, 19-10 KAKC, 22-18 KTKT, Debut 18 KCBQ, 6-1 WQXI, Debut 22 KCPX, 28-27 KRSP, 14-5 WHBQ, 13-11 KAFY, 24-17 WGRQ, 26-18 WMYQ, 22-20 KYNO, 28-26 WOKY, 28-9 WSAI, 18-13 KJRB,
P3 34-29 WCFL, 28-22 WPOP, 12-8 WGH, 12-12 WAKY, 27-22 WMAK, 21-13 WCOL, 35-26 KEWI, Debut 24 WISM, 34-24 KOMA, 19-15 KLIF, 11-7 WAMS, 23-13 KYSN, 24-17 KDZA, 7-5 WIXY,

NOTES: 35% show top 10 and moving. Strong hit.

STEVE MILLER (Capitol) 3:10

Your Cash Ain't Nothin' But Trash

P1
P2
P3 37-33 KLIF, 16-14 KYSN, Debut 29 WAMS

NOTES: Slow beginnings.

JONI MITCHELL (Asylum) 3:22

Help Me

P1 30-28 CKLW, 28-25 KDWB, Add WRC, 30-27 KCPX
P2
P3 24-20 WISM, Debut 39 KLIF, 40-37 KYSN, 24-27 WIXY, Debut 36 WCOL, On KJR

NOTES: Showed a bit more growth this week.

MOCEDADES (Tara) 3:12

Eres Tu

P1 26-18 CKLW, 12-11 WIBG, 18-20 KKDJ, 12-9 KQV, 17-17 WRKO, 8-10 WRC, 3-2 WFIL, 26-14 WLS, 15-23 KHJ, 13-7 KDWB, 10-8 WPIX
P2 13-28 WSGA, 13-16 Y100, 11-9 WLEE, 19-6 WIFE, 24-20 WMYQ, 13-22 WSAI, 24-17 KAKC, 9-6 WMC-FM, 3-5 KCBQ, 11-15 WQXI, 5-4 KCPX, 16-22 WGRD, 10-13 WHBQ, 15-20 KAFY, 19-12 WGRQ, 15-14 KING, 20-22 KRSP, 6-7 WOKY
P3 14-10 WCFL, 12-12 WPOP, 17-12 WGH, 21-18 WAMS, 7-26 KYSN, 3-1 KOMA, 15-16 WIXY, 13-13 KEWI, 20-25 WAKY, 21-22 KJRB, 17-23 KDZA, 12-19 WLOF

NOTES: Very few report any negatives.

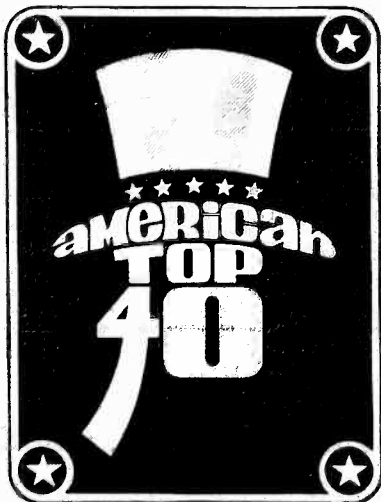
CASEY KASEM Proudly Announces He Has Joined the Staff at KLOM, Lompoc, California.



... And, within the past few weeks, the staffs at KGB, San Diego, KIXS, Killeen, Texas; KGRN, Las Vegas, Nevada; KBMN, Bozeman, Montana; WLCY, St. Petersburg, Florida and WBYQ, Nashville, Tennessee. In fact, Casey is a weekend man on about 250 radio stations around the world. Job offers come in every week, and he'll take every one of them (sorry, only one per market).

Your station needs a Casey Kasem, and the program that comes with him, **AMERICAN TOP 40.**

To find out how easy it is to have the most listened to voice in the world working for you, send in the coupon. Until you do, Lompoc's one up on you.



**AMERICAN TOP 40
WATERMARK, INC.
10700 VENTURA BLVD.
NO. HOLLYWOOD, CALIF. 91604**

I might just have an opening for your Casey Kasem.
Send me the entire, free, 1974 AMERICAN TOP 40
Presentation Package, rates and market availability.

NAME _____ TITLE _____
CALL LETTERS _____ ADDRESS _____
CITY _____ STATE _____ ZIP _____

PARALLELS

DEFINITION OF PARALLELS:

SIMPLY PUT: they group similar stations together by playlist size and air presentation.

REASON: To better define what's happening with a given record at a particular type of radio station. (KHJ should not be compared with WHYY.)

EASY WAY TO USE: First, find which Parallel your station fits into by using the boxed definitions below. You can watch a record's progress at various stations, and affirm your decision to go or not to go on a record. You can also tell at a glance what action the record's receiving at stations.

- P1: Top 15 major markets/20-30 record playlist/emphasize 7-10 "hot records"/very little new product added.
- P2: Secondary market/20-30 record playlist/emphasize 7-10 "hot records"/very little new product added.
- P3: Major and secondary market stations with 30-50 record playlists/some new product exposed.
- P4: Specialized markets affected by black or country influences.

MOMENTS (Stang) 3:05

Sexy Mama

P1	27-23 WFIL
P2	20-17 KTKT
P3	11-15 WCFL, 14-14 KEWI, 26-22 WISM, Debut 27 WAMS

NOTES:

MARIA MULDAUR (Reprise) 3:36

Midnight At The Oasis

P1	18-9 WRC
P2	Add WLEE, Add KCPX, 18-14 WSAI, 20-20 KING, Add KIMN, Add KRSP
P3	Add WPOP, Add WMAK, Debut 42 KDZA, 3-8 KJRB, Debut 26 KIOA, 10-10 KJR

NOTES: Good growth.

MIKE OLDFIELD (Virgin) 3:18

Tubular Bells/Theme From The "Exorcist"

P1	30-26 WRKO, 18-16 KDWB, 15-11 KFRC, Debut 15 WLS, Add WRC
P2	6-4 WSGA, Debut 26 WHBQ, Debut 35 WGRQ, 15-8 WMYQ, Add KRSP, 30-18 KAKC, 20-10 Y100, Debut 29 WIFE, Add KCPX, Add WSAI-Nite, 25-23 WMC-FM, 22-21 WQXI, 9-3 KIMN, 22-23 WOKY
P3	30-19 WCFL, 36-27 WGH, 12-7 WCOL, Debut 29 WLOF, Add KRUX, On KJR, 41-37 KDZA, Debut 28 WISM, 31-24 KLIF, 10-4 WAKY, 26-20 WMAK, 30-26 KIOA, 54-38 KEWI, 24-16 KYSN

NOTES: Strong requests. Sales seem to be on lp rather than single in many markets.

COZY POWELL (Chrysalis) 3:32

Dance With The Devil

P1	30-27 KDWB, 20-19 WPEZ
P2	21-19 WSGA, On WIFE, 23-17 KIMN, Add WSAI-Nite, Debut 34 WGRQ, 13-10 KCPX, 12-12 KRSP
P3	On KEWI, 16-10 KJRB, 16-16 KJR, 19-9 WCOL, 27-21 KIOA

NOTES:

ELVIS PRESLEY (RCA) 2:20

I've Got a Thing About You Baby

P1	
P2	17-16 WHBQ, 7-17 WFLI, Debut 8 WQXI, 2-4 KAKC
P3	20-14 KOMA, 13-20 WCOL, 15-20 KYSN, On KJR, 15-12 KEWI, 5-7 WMAK, 26-24 KRUX

NOTES:

REDBONE (Epic) 3:30

Come And Get Your Love

P1	11-11 WXLO, 19-24 WIBG, 5-4 WPEZ, 12-12 WPIX, 8-8 KHJ, 9-10 KDWB, 8-13 KQV, 7-7 KFRC, 7-7 KKDJ, 25-20 KSLQ, On WLS
P2	7-16 KAKC, 3-4 KTKT, 14-17 WLEE, 30-20 WIFE, 7-14 KYNO, 16-19 WOKY, 15-20 WGRQ, 13-12 WHBQ, 10-9 WMC-FM, 7-4 KCBQ, 10-7 WMYQ, 2-4 KIMN, 11-7 Y100, 1-2 KAFY, 2-4 WFLI
P3	Debut 30 WCFL, 16-20 KOMA, 2-2 KLIF, 21-30 WMAK, 4-4 KDZA, 10-9 WISM, 16-11 KEWI, Debut 27 WAKY, 4-11 KRUX, 20-29 WPOP, 18-22 WGH

NOTES: Still has a lot of top 10 action.

HELEN REDDY (Capitol) 3:03

Keep On Singing

P1	24-16 KHJ, 27-26 WIBG, 14-14 KDWB, 21-16 KFRC, 25-22 WRC, 17-11 KKDJ, 30-28 WFIL, On WPIX
P2	20-20 WSGA, Debut 28 WHBQ, 27-22 KTKT, 20-14 KCPX, 23-17 KRSP, 20-19 WQXI, 25-21 KAKC, 30-25 Y100, 25-16 WLEE, 27-25 KYNO, 23-18 WOKY, Add KAFY, 28-24 WFLI
P3	Debut 34 WCFL, Debut 19 WPOP, 30-30 WGH, On WAMS, Debut 29 WMAK, 15-13 KIOA, 28-26 WISM, 24-22 KOMA, 27-21 KLIF, 27-18 KJRB, 29-18 KYSN, 26-22 KDZA, 33-31 WIXY, 49-37 KEWI, 33-21 WCOL, 29-23 WLOF, Add KRUX, On KJR

NOTES: Picked up nicely this week.

CHARLIE RICH (RCA) 2:22

There Won't Be Anymore

P1	29-19 WRKO, 26-23 WRC, 22-20 WFIL, 29-24 KHJ, 16-13 KDWB, 3-5 KSLQ, 21-21 WIBG, 28-18 KFRC, Debut 24 KKDJ, Debut 19 KQV
P2	19-16 WSGA, 28-22 WHBQ, 20-13 WLEE, 11-8 KCPX, 29-21 WSAI, 18-12 KTKT, 29-19 KRSP, Add KAFY, 23-21 WIFE, 21-19 KYNO, 7-13 WOKY, Debut 24 KAKC, 15-6 WQXI, 10-5 WFLI
P3	Add WISM, 23-14 WPOP, Add WGH, 2-2 WAKY, 17-13 WLOF, 25-18 KRUX, 32-32 WIXY, 14-10 KOMA, 14-10 KLIF, 18-17 WAMS, 25-19 WMAK, 26-15 KIOA, 18-20 KJR, 28-16 KEWI, 7-6 WCOL, 9-7 KJRB, 20-17 KYSN, 28-24 KDZA

NOTES: Should go top 10 easily.

CARLY SIMON & JAMES TAYLOR (Elektra) 3:45

Mockingbird

P1	21-16 CKLW, 7-9 WXLO, 10-6 KKDJ, 2-1 WFIL, 10-11 KDWB, 6-12 KFRC, 2-4 WIBG, 9-9 KHJ, 4-2 WPIX, 5-5 KSLQ, 2-1 WRC, Debut 20 WDRQ, 6-6 WRKO, 6-5 KQV, 19-18 WPEZ
P2	15-14 WOKY, 4-7 KRSP, 4-16 KCPX, 7-11 WMYQ, 10-8 WGRQ, 5-9 KAFY, 9-11 WQXI, 7-6 KIMN, 6-5 WSAI, 9-2 WFLI, 10-6 KING, 15-15 KCBQ, 4-4 WMC-FM, 7-5 WGRD, 4-3 KYNO, 10-10 WIFE, 2-8 WLEE, 9-9 KTKT, 6-8 Y100, 3-1 KAKC, 3-3 WHBQ, 9-14 WSGA
P3	6-8 KDZA, 2-5 KYSN, 6-9 KJRB, 3-2 WCOL, 7-7 KEWI, 12-8 WIXY, 19-11 WAKY, 6-4 WGH, 8-9 KIOA, 3-4 WMAK, 5-5 WAMS, 3-1 KLIF, 2-6 KOMA, 4-3 WISM, 9-8 KRUX, 8-8 WLOF, 4-6 WPOP

NOTES: Some show a slowing trend, many report "super hot".

SPINNERS (Atlantic) 3:14

Mighty Love

P1	11-10 WPIX, 16-14 WXLO, 18-18 KQV, 24-22 KSLQ
P2	Debut 26 WLEE, 24-23 WSGA, 15-14 WMC-FM
P3	14-14 KRUX, 22-14 WAKY, 29-29 KEWI, 19-33 KYSN, 16-15 WGH

NOTES: Making a return at some stations.

JIM STAFFORD (MGM) 4:08

Spiders And Snakes

P1	13-10 WLS, 2-3 WPEZ, 16-27 WFIL, 7-10 WIBG, 8-8 WRKO, 12-15 KFRC, 17-17 KHJ, 10-16 KQV, 6-9 KSLQ
P2	5-6 WOKY, 17-16 WFLI, 11-12 WIFE, 10-16 KAFY, 9-12 Y100, 10-21 KIMN, 4-4 WMYQ, 7-7 WGRQ, 7-16 WMC-FM, 18-24 WHBQ, 16-24 KTKT
P3	13-21 KDZA, 14-16 KJRB, 4-5 KEWI, 16-21 WPOP, 12-19 WISM, 12-19 KRUX, 5-7 WGH, 15-26 KOMA, 9-5 WCFL, 9-11 KYSN

NOTES: Most have "stashed", new single due any day.

STAPLE SINGERS (Stax) 3:26

Touch A Hand, Make A Friend

P1	14-13 KSLQ
P2	14-10 KRSP, 17-12 KCPX, Add KING, 28-20 WLEE, 25-23 KYNO, Debut 20 WFLI, 17-14 WQXI, 17-17 WSGA
P3	On KJR, 38-36 KYSN, 20-24 KJRB, 26-26 WGH, Debut 39 KDZA, 24-17 WLOF, 36-33 WCOL, 30-27 WISM, 18-16 KLIF

NOTES: Sure sounds good on the air.

PARALLELS

RINGO STARR
(Apple) 3:15

Oh My My

P1 14-17 CKLW, Debut 32 WLS, 18-14 WPIX, 23-21 KSLQ, Debut 18 KKDJ, 24-21 WRC, 24-20 WIBG, 18-17 KFRC, 16-16 WRKO, 19-17 KQV, 7-8 WPEZ, 26-21 WFIL, 17-15 KDWB
P2 17-10 WOKY, Add WSAI-Nite, 21-13 KCPX, 24-14 WLEE, 21-19 Y100, 16-12 WSGA, 28-25 KIMN, 20-18 KYNO, 21-13 WFLI, 22-17 WHBQ, 22-15 KAKC, 11-11 KRSP, Debut 22 WQXI, 7-7 WIFE, Add KAFY, Add KTKT
P3 Debut 15 KJR, Debut 27 KRUX, 33-23 KJRB, 30-18 WCOL, 31-28 KEWI, 10-9 WIXY, 21-16 KDZA, 13-6 KYSN, 30-28 WAMS, 21-17 KLIF, 13-5 KOMA, Debut 30 WISM, Debut 25 KIOA

NOTES: Average 5 point jump.

STEALERS WHEEL
(A&M) 2:58

Star

P1 20-24 KDWB
P2 24-27 WGRD, 25-24 WSGA, 18-13 KYNO
P3 30-28 KDZA, 5-3 KOMA, 13-13 KRUX, 13-11 WIXY, 21-32 KYSN

NOTES:

CAT STEVENS
(A&M) 2:33

Oh Very Young

P1
P2 Add KING, Debut 30 KYNO
P3 Add KJR, 20-13 WIXY, 33-27 KYSN, Debut 35 WCOL

NOTES:

BARBRA STREISAND
(Columbia) 3:29

The Way We Were

P1 7-13 CKLW, 15-24 WRKO, 13-15 WPEZ, 5-8 WDRQ, 16-17 KKDJ, 12-19 WXLO, 10-15 KHJ, 12-16 WLS, 19-19 KSLQ, 17-24 WFIL, 9-12 WIBG
P2 17-17 WGRD, 9-17 WMYQ, 14-22 WGRQ, 21-22 KAFY, 16-24 WSAI, 5-12 KING, 18-19 KCBQ, 16-27 WFLI
P3 27-31 KDZA, 24-26 WAKY, 19-27 WCFL, 8-15 WMAK, 11-18 WGH, 16-24 Y100, 24-33 KJRB, 14-17 WPOP

NOTES:

THINK
(Big Tree) 3:55

Once You Understand

P1 15-12 KKDJ, 20-18 KSLQ, 21-18 KHJ, On WPIX
P2 8-5 KRSP, 9-17 KCPX, 28-18 WGRQ, 13-16 WOKY, 13-9 WMYQ, 26-20 WHBQ
P3 Debut 40 WCOL

NOTES: Mostly teen appeal reported.

THREE DOG NIGHT
(ABC) 3:29

The Show Must Go On

P1 11-9 KDWB, 27-21 WRKO, 21-17 KSLQ, 24-19 KKDJ, 29-23 WIBG, 24-22 KFRC, Debut 29 KHJ, Add WPIX, 15-14 WDRQ, 23-20 WRC
P2 Debut 26 WMC-FM, 24-15 KRSP, 25-18 KCPX, Debut 26 KTKT, 29-25 KAKC, 27-14 KIMN, 28-24 KYNO, Debut 30 WGRQ, 29-27 WHBQ, 29-22 WOKY, 23-11 WSGA
P3 ON KJR, 29-19 KDZA, DEBUT 22 KIOA, 32-25 KYSN DEBUT 27 WLOF, 35-20 KJRB, 40-30 WCOL, 39-37 WGH, 35-30 KLIF, ON KEWI, 36-28 WCFL 34-26 WIXY ON WAMS

NOTES: Getting some good moves, still too early to tell.

TANYA TUCKER
(Columbia)

Would You Lay With Me

P1
P2
P3 15-7 WAKY, 29-26 KLIF, Add KOMA

NOTES:

WEDNESDAY
(Sussex) 2:31

Last Kiss

P1 1-2 WLS, 4-7 WPEZ
P2 17-18 KAFY, 5-9 KAKC, 11-19 WHBQ
P3 16-18 KDZA, 19-14 WISM, 12-16 WCFL

NOTES:

BARRY WHITE
(20th Century) 2:54

Honey Please, Can't Ya See

P1 18-15 WXLO
P2 Add WIFE
P3 Add KRUX, 20-18 KLIF, 19-17 WIXY, 34-31 KYSN, Debut 27 WPOP

NOTES:

BOBBY WOMACK
(UA) 2:37

Lookin' For A Love

P1 16-15 CKLW, Debut 20 KQV, Debut 21 WDRQ, 19-17 WRC, Debut 30 KHJ, Debut 25 KFRC, 20-18 WXLO, Add WPIX, 8-8 WFIL, 20-13 WIBG
P2 Debut 30 KRSP, 27-21 WMYQ, Debut 29 WHBQ, Debut 27 WSAI, Debut 23 WLEE, 30-27 WSGA, Add KIMN, 23-18 WMC-FM
P3 Debut 41 KDZA, Add WMAK, 14-23 WCOL, 40-35 KEWI, 28-25 WIXY, 25-24 WGH, Add WISM, Debut 27 KIOA, 16-16 WAMS, 32-29 KLIF, Debut 40 WCFL, Debut 28 KRUX, 3-1 WAKY,

NOTES: Looks excellent.

LEGEND

PARALLEL 1

WPIX NEW YORK
CKLW DETROIT/WINDSOR
KFRC SAN FRANCISCO
KHJ LOS ANGELES
KKDJ LOS ANGELES
KSLQ ST. LOUIS
WABC NEW YORK
WDRQ DETROIT
WRKO BOSTON
WXLO NEW YORK
KDWB ST. PAUL/MINN.
WFIL PHILADELPHIA
WRC WASHINGTON D.C.
13Q PITTSBURGH
WIBG PHILADELPHIA
WPEZ PITTSBURGH
K100 LOS ANGELES
KQV PITTSBURGH
WLS CHICAGO

PARALLEL 3

WGH NEWPORT NEWS
WRFC ATHENS
KDZA PUEBLO
KEEL SHREVEPORT
KGW PORTLAND
KIOA DES MOINES
KILT HOUSTON
KLEO WICHITA
KLIF DALLAS
KOIL OMAHA
KOMA OKLAHOMA CITY
WAYS CHARLOTTE
WBBQ AUGUSTA
WCAO BALTIMORE
WCFL CHICAGO
WCOL COLUMBUS
WAMS WILMINGTON
WISM MADISON
WIXY CLEVELAND
WMAK NASHVILLE
WPGC WASHINGTON D.C.
KSLY SAN LUIS OBISPO
WMEX BOSTON
WAKY LOUISVILLE
WLOF ORLANDO
KJRB SPOKANE
KJR SEATTLE
WPOP HARTFORD
WERC BIRMINGHAM
KYSN COLORADO SPRINGS
KEWI TOPEKA

PARALLEL 2

WKBW BUFFALO
KFXM SAN BERNARDINO
KCBO SAN DIEGO
KCPX SALT LAKE CITY
KIMN DENVER
KING SEATTLE
KLIV SAN JOSE
KRIZ PHOENIX
KRSP SALT LAKE CITY
WGRQ BUFFALO
WHBQ MEMPHIS
WIFE INDIANAPOLIS
WOKY MILWAUKEE
WMYQ MIAMI
WQXI ATLANTA
WSGA SAVANNAH
KAKC TULSA
KAFY BAKERSFIELD
Y100 MIAMI
KYNO FRESNO
WLEE RICHMOND
WJDX JACKSON
WSAI CINCINNATI
KTKT TUSCON
KUPD PHOENIX
WFLI CHATTANOOGA
XEROK EL PASO
WMC FM MEMPHIS

PARALLEL 4

Black Demographic

Examples
DETROIT
WASHINGTON D.C.
CHICAGO
SHREVEPORT
RALEIGH
RICHMOND
PHILADELPHIA

C&W Demographic

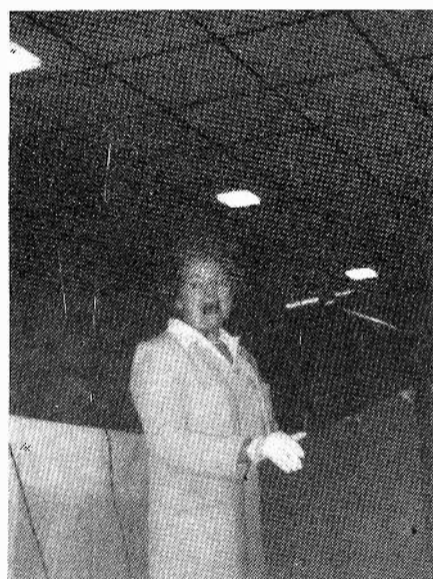
Examples
NASHVILLE
LOUISVILLE
MEMPHIS
HOUSTON
DALLAS

Country

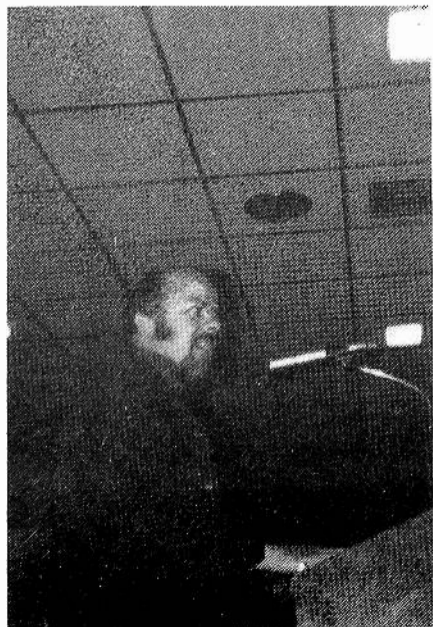
Country Seminar '74



Sonny James was keynote speaker. He presented the theme "Country Radio . . . Positively."



Dorothy Ritter, the late Tex Ritter's wife, opens the seminar by welcoming everyone to Nashville.



Bob Mitchell, GM KCKC on the hotseat.

COUNTRY NEWS

Over One Thousand Apply For Dolly Parton Position

According to Porter Wagoner, "over 1000" girl singers have applied to take the place in his show vacated by Dolly Parton. Dolly's set to leave the Wagoner show in July, and Porter says they'll sure enough come up with a replacement in about five weeks. All hopefuls, keep your fingers crossed

THAT MAN HANK

The Hank Williams Jr. Show broke all records at Lynchburg, Va., despite the fact that Hank's fans had to wait in line in four inches of snow for their man. Over 4000 people showed up (for a gross of \$20,000); over 1500 anxious fans were turned away.

ANOTHER HALL

Tom T. Hall's brother Hillman has signed an exclusive publishing deal with Buckhorn Music Company.

NEW LABEL

Green Menu Music Factory Inc. in New York, a management and publishing firm, has initiated their own label. Green Menu Records issued its first single last week (by Henry Jerome's Banjos) . . . Jerome, Green Menu president, is in the process of working out the distribution deal now with Beta Records in New York.

ACADEMY OF COUNTRY MUSIC AWARDS

Next week the Academy of Country Music will hold its ninth annual awards show in the John Wayne Theatre at Los Angeles' Knotts Berry Farm. The show will be taped March 25, and is scheduled to be shown over ABC TV on March 28, from 11:30 p.m. to 2 a.m. Roger Miller will rush back from his engagement at the Nugget in Sparks, Nevada, to host the show . . . Joining him will be Charlie Rich, Freddie Hart, Conway Twitty, Doug Kershaw, Tanya Tucker, Loretta Lynn, Donna Fargo and "Mr. Entertainer," Roy Clark . . . Awards will be given for Entertainer, Female and Male Vocalists of the Year, Most Promising Vocalists, Song, Single Record and Album of the Year, as well as best touring band and individual instrument musicians' awards.

. . . Voting took place among the Academy's 700 members, Cliffie Stone, president.

COUNTRY LINKS

. . . The Academy is also sponsoring a gold tournament March 23-24 at

Camarillo near Los Angeles; according to Cliffie Stone, participants will include plenty of "celebrities and athletes," among them some Rams, Roy Clark and Lawrence Welk. Each hole on the course is to be sponsored by a record company (i.e. at 18th hole, an MCA sign reading, "Remember Loretta!") . . . Should be fun



Due to the Fifth Annual Radio Seminar in Nashville, many reports were not received in time for this week's column. Therefore, may I take this opportunity to say "thank you" to the many people who made my position as Chairman of the Agenda Committee a very enjoyable and rewarding task.

We certainly hope that those in attendance found the seminar beneficial. This year's participation was excellent. Your ideas and suggestions are always welcome. Each year the seminar strives to encompass more information and offer an insight into today's ever changing radio world.

Hopefully the seminar was challenging. It is only with positive progressive thinking and professional planning that country radio can continue to advance. "Country Radio . . . Positively" was this year's theme. If people left the seminar with a positive feeling about the growth and potential of country radio; plus new ideas and concepts to think about, this year's conference was a success.

The following is a partial list of recommended cuts from various albums as reported by our correspondents:

- WISZ-Baltimore - Bill Barden: Bobby Bare - Mermaid.
- WAME-Charlotte - Edd Robinson: Ray Stevens - Destroyed.
- WJJD-Chicago - Craig Scott: Narvel Felts - She Loves Me Like A Rock, We'll Have Our Day Someday.
- Johnny Rodriguez - Dance With Me.
- WUBE-Cincinnati - Jack Reno: Jim

KLAC-Los Angeles' Jay Lawrence couldn't come up with anything along the lines of an extra oil well or two to solve the gas crisis, but he did his best. Last week he set up shop at two L.A. area gas stations and served coffee and donuts to drivers waiting for their gas. Courtesy Winchell's Donut-Houses and KLAC.

Stafford - Mr. Bojangles; Merle Haggard - I'm An Old Old Man.

KBOX-Dallas - Tom Allen: Johnny Rodriguez - Last Letter; Tanya Tucker - Bed of Roses; Don Williams - Down The Road I Go; Charlie Rich - Field of Yellow Daisies and Why Don't We Go Somewhere And Love.

KLAK-Denver - Con Shader: Tom T. Hall - Subdivision Blues.

KIKK-Houston - Joe Ladd: Charlie Rich - Why Don't We Go Somewhere and Love; Tanya Tucker - What If We Ran Out Of Love; Johnny Rodriguez - Faded Love; Joe Stampley - Hello Charlie.

KFOX-Long Beach - Chris Collier: Tom T. Hall - When We Were Young; Tanya Tucker - The Man Who Turned My Momma On; Don Williams - Down The Road I Go.

WMC-Memphis - Les Acree: Merle Haggard - To Each His Own; Charlie Rich - Field of Yellow Daisies; Don Williams - Down The Road I Go.

WHN-New York - Steven Warren: Narvel Felts - Fraulein; Diana Trask - If I Could Read Your Mind.

KTUF-Phoenix - Steve Martin: Tammy Wynette - Homecoming; Charlie Rich - Field of Yellow Daisies.

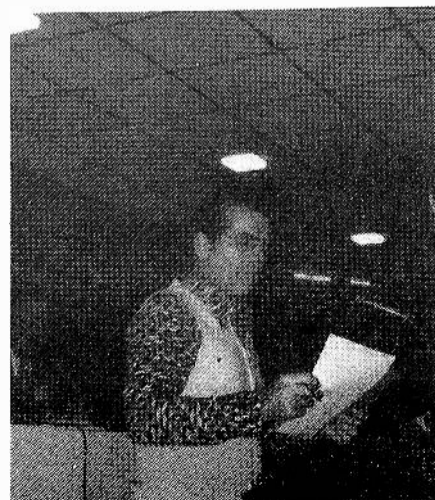
KWJJ-Portland - Sammy Taylor: Johnny Rodriguez - Jane.

WEET-Richmond - Bob Walker: Parton - Early Morning Breeze and When Someone Wants To Love; Charlie Rich - Why Don't We Go Somewhere And Love.

KCKC-San Bernardino - Bob Mitchell: Charlie Rich - Satisfied Man and Field of Yellow Daisies.

KSON-San Diego - Jim Duncan: Tanya Tucker - The Man Who Turned My Momma On, Let Me Be There and South Will Rise Again; Johnny Rodriguez - Ramblin' Man.

It has been reported that Atlantic plans to release Willie Nelson's "Bloody Mary Morning" from the "Phrases & Stages" album very shortly.



Biff Collie, executive director.



"Up Your Image" panel: Bert Wahlen GM KSON, Carl Hirsh GM WRCP, Bill

Jenkins GM WUBE, Bob Riggsbee from BBD&O, Ric Libby PD KENR.

We have the hit. On GRC!

GRC

Moe Bandy

«I just started hatin' cheatin' songs today»

GRC 2006

a total
entertainment concept



Produced by
Ray Baker

turning dreams
into realities
— Michael Thevis
**GENERAL RECORDING
CORPORATION**

174 Mills St.
Atlanta, Ga 30313

CABLE HOTLANTA
ATLANTA

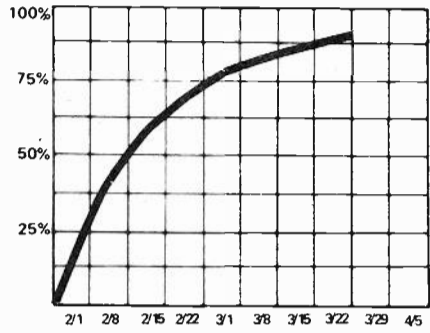
A
MICHAEL THEVIS
ENTERPRISE

● signifies fastest moving records

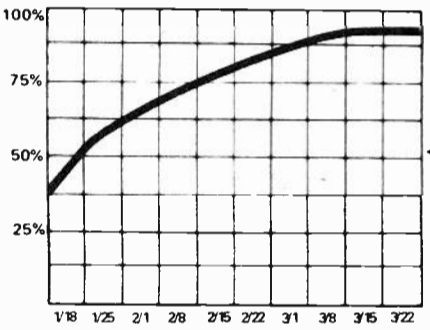
1 TWITTY



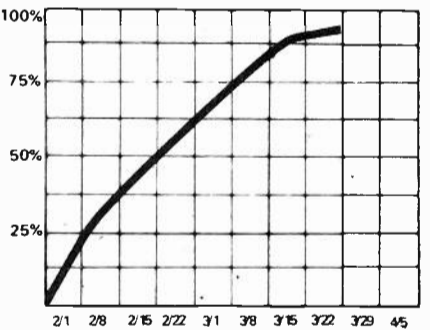
2 CRADDOCK



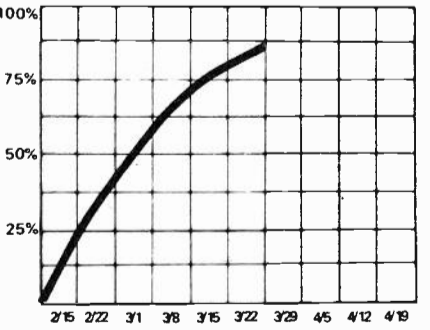
3 TUCKER



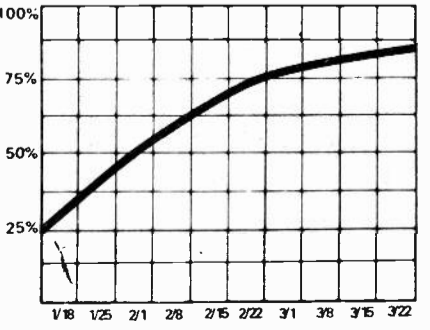
4 TILLIS



5 SNOW



6 ROBBINS



Country TOP TWENTY

Friday, March 22, 1974

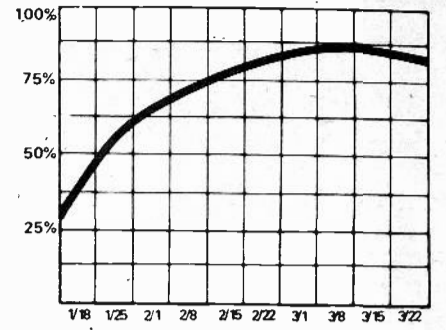
TREND

2/8	2/15	2/22	
2	1	1	CONWAY TWITTY/Honky Tonk Angel (MCA)
5	3	2	"CRASH" CRADDOCK/Sweet Magnolia Blossom (ABC)
1	2	3	TANYA TUCKER/Would You Lay With Me (Columbia)
12	7	4	MEL TILLIS/Midnight, Me And The Blues (MGM)
*	15	5	HANK SNOW/Hello Love (RCA)
17	9	6	MARTY ROBBINS/I'm Wanting To (MCA)
*	14	7	CHARLIE RICH/A Very Special Love Song (Epic)
3	4	8	TAMMY WYNETTE/Another Lonely Song (Epic)
10	6	9	DAVID ROGERS/Loving You Has Changed (A&M)
4	5	10	CHARLIE RICH/There Won't Be Anymore (RCA)
*	17	11	FREDDIE HART/Hang In There Girl (Capitol)
*	15	12	ELVIS PRESLEY/Take Good Care/Flip (RCA)
*	16	13	JONES / WYNETTE/(We're Not) The Jet Set (Epic)
*	18	14	GLEN CAMPBELL/Houston (Capitol)
13	13	15	BRENDA LEE/Wrong Ideas (MCA)
6	10	16	HOUSTON & MANDRELL/I Love You (Epic)
11	11	17	BOBBY BARE/Daddy What If (RCA)
*	*	18	CAL SMITH/Country Bumpkin (MCA)
*	*	19	MERLE HAGGARD/Things Aren't Funny (Capitol)
*	*	20	CONNIE CATO/Superskirt (Capitol)

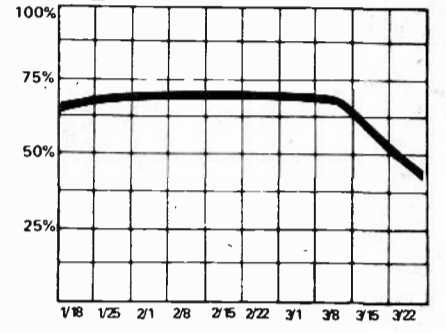
← The top twenty listings reflect SALES

The graphs measure the song's level of audience appeal

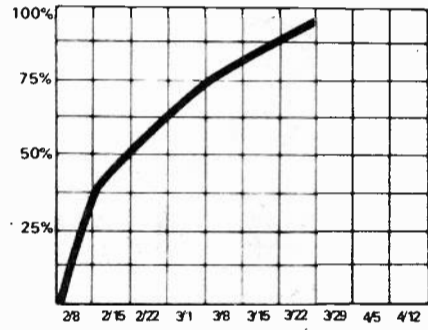
15 LEE



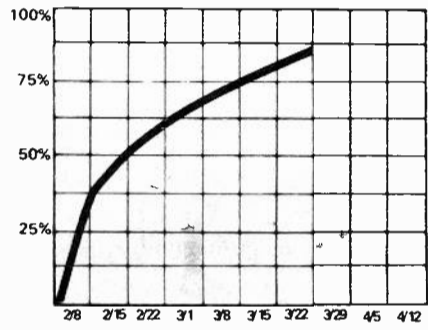
16 HOU. & MAN.



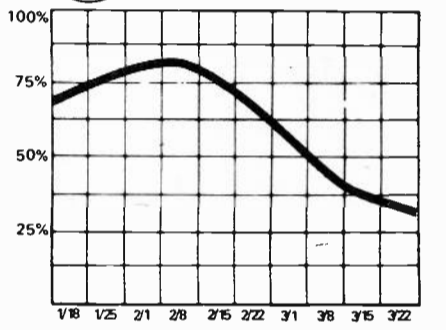
7 RICH



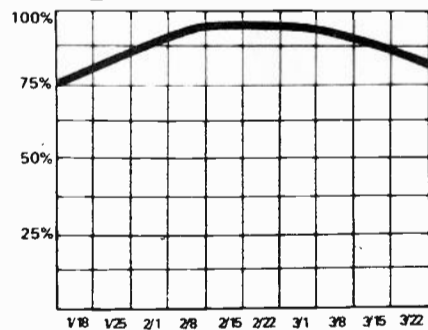
11 HART



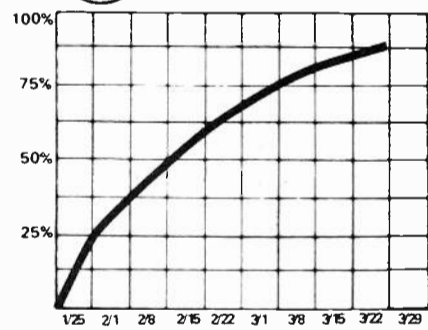
17 BARE



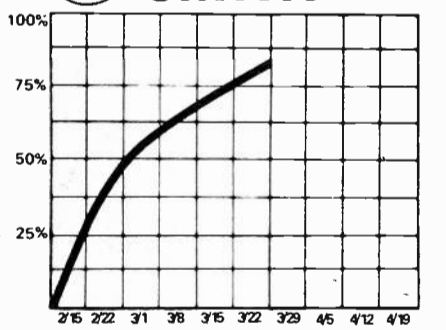
8 WYNETTE



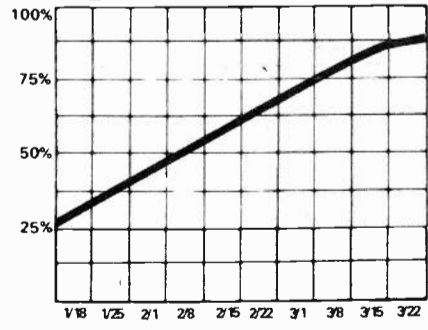
12 PRESLEY



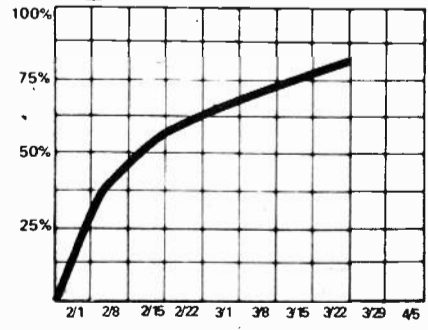
18 SMITH



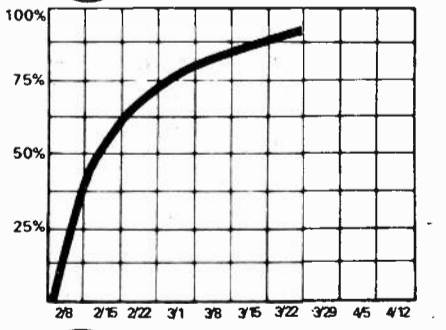
9 ROGERS



13 JONES



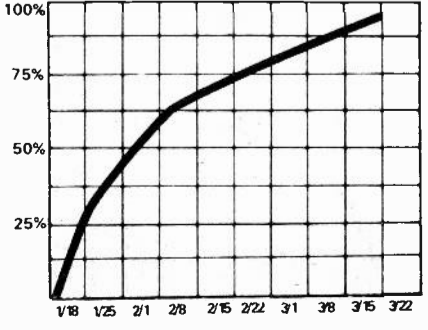
19 HAGGARD



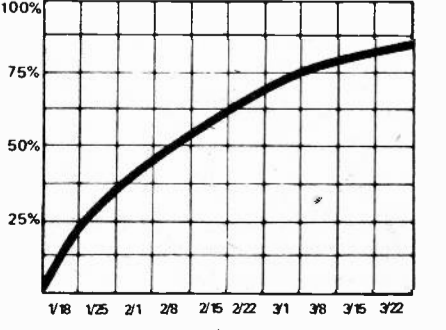
10 RICH



14 CAMPBELL

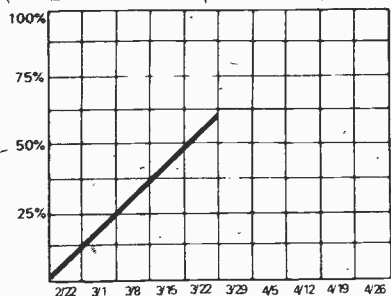


20 CATO

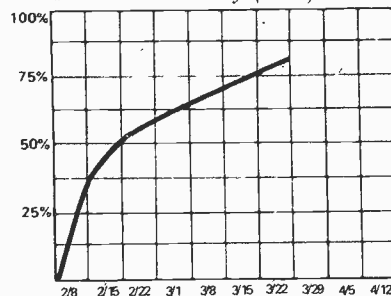


Country SINGLES

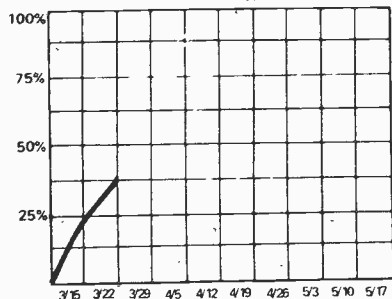
LYNN ANDERSON
Smile For Me (Columbia)



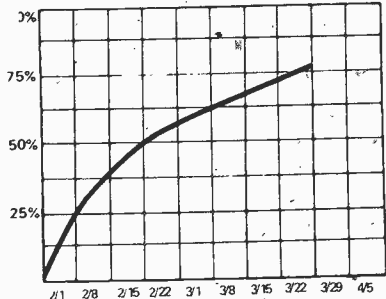
TOMMY OVERSTREET
You Were A Lady (Dot)



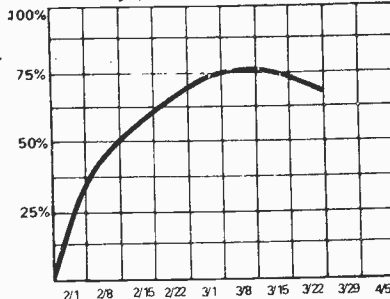
HOYT AXTON
When The Morning Comes (A&M)



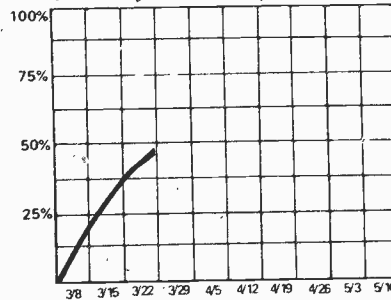
NARVEL FELTS
Good Love Was Mine (Cinnamon)



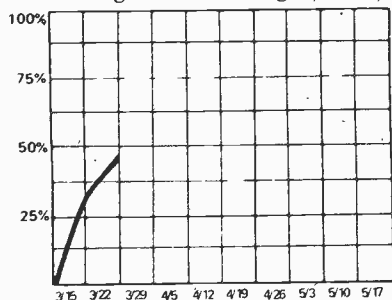
JERRY LEE LEWIS
I'm Left, You're Right. (Mercury)



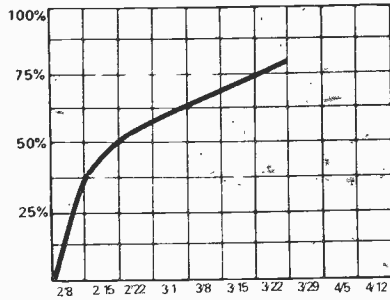
BUCK OWENS
Cover Of Music City News (Capitol)



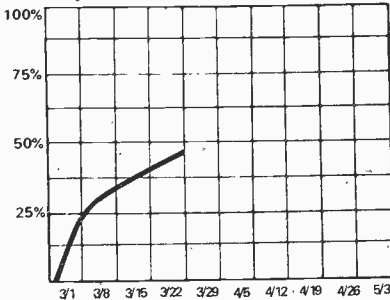
MOE BANDY
Hating Cheatin' Songs (GRC)



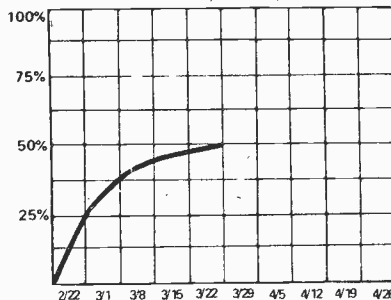
JACK GREENE
It's Time To Cross That Bridge (MCA)



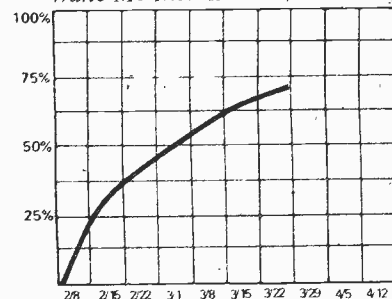
JODY MILLER
Reflections (Epic)



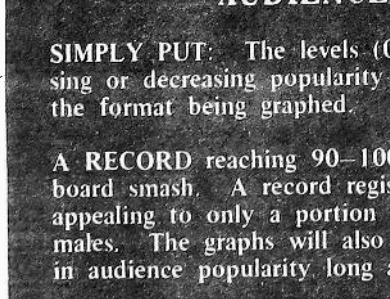
MARIE OWENS
J. John Jones (MCA)



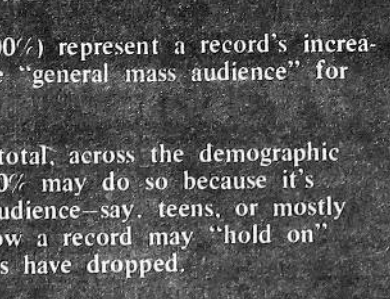
BURGESS & LOGAN
Wake Me Into Love (Shannon)



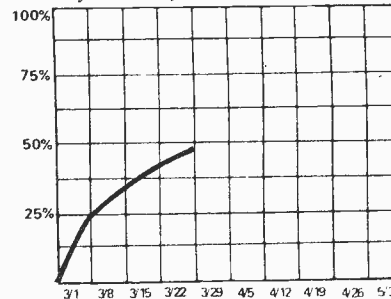
SONNY JAMES
Is It Wrong (Columbia)



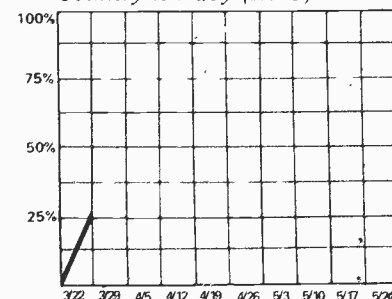
RONNIE MILSAP
Pure Love (RCA)



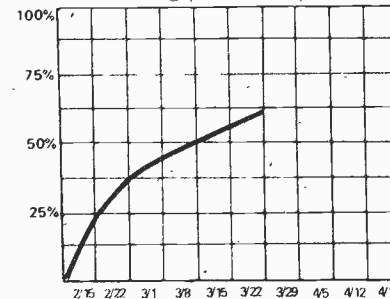
JOHNNY PAYCHECK
My Part Of Forever (Epic)



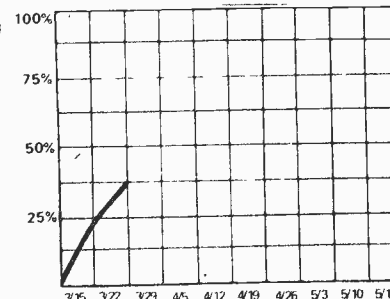
JOHNNY CARVER
Country Lullaby (ABC)



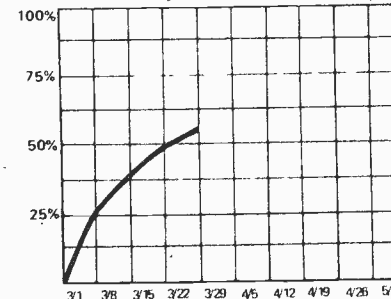
WAYNE KEMP
Listen (MCA)



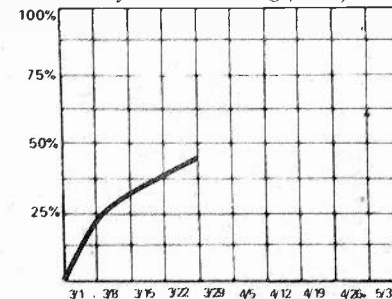
MELBA MONTGOMERY
No Charge (Elektra)



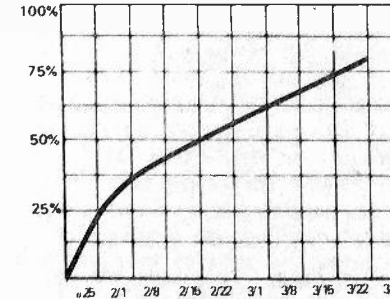
RAY PRICE
Storms Of Troubled Times (Col)



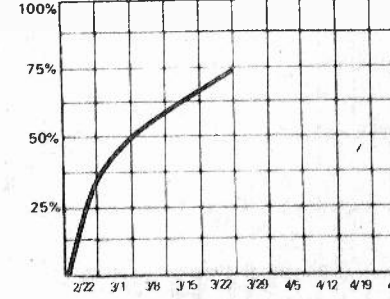
ROY CLARK
Honeymoon Feeling (Dot)



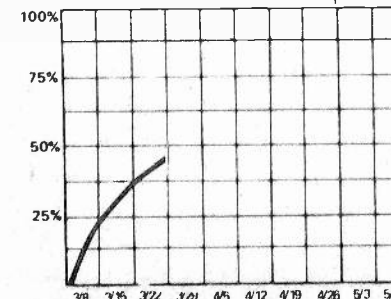
DICKEY LEE
I Use The Soap (RCA)



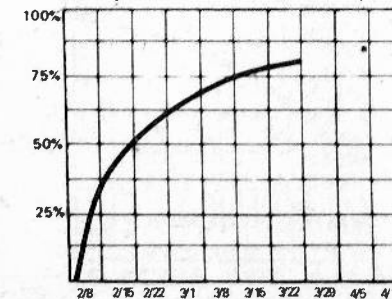
GEORGE MORGAN
Red Rose (MCA)



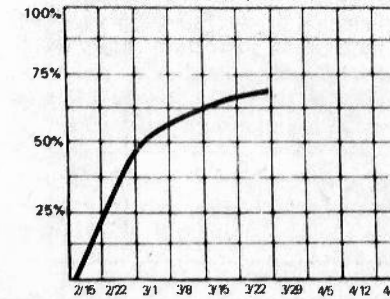
JEANNE PRUETT
To Move A Mountain (MCA)



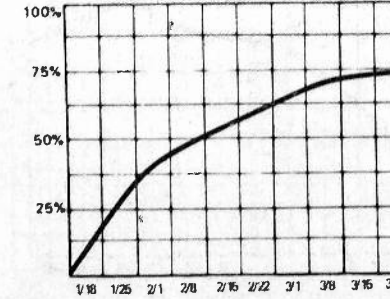
DONNA FARGO
I'll Try A Little Bit Harder (Dot)



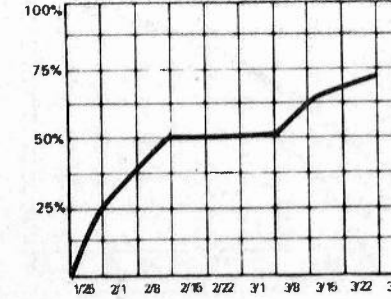
JERRY REED
Crude Oil Blues (RCA)



JERRY REED
Crude Oil Blues (RCA)



JERRY REED
Crude Oil Blues (RCA)

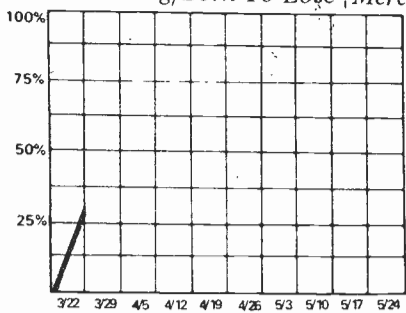


AUDIENCE APPEAL GRAPHS

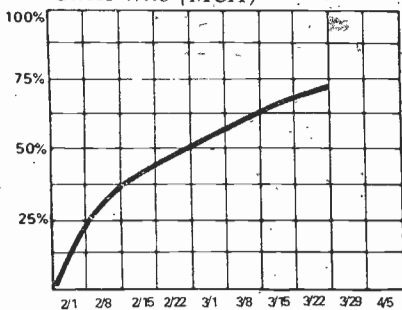
SIMPLY PUT: The levels (0% to 100%) represent a record's increasing or decreasing popularity with the "general mass audience" for the format being graphed.

A RECORD reaching 90-100% is a total, across the demographic board smash. A record registering 50% may do so because it's appealing to only a portion of the audience—say, teens, or mostly males. The graphs will also show how a record may "hold on" in audience popularity long after sales have dropped.

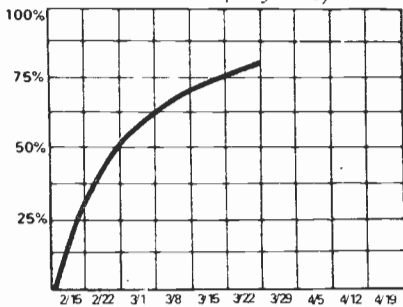
JOHNNY RODRIQUEZ
Something/Born To Lose (Mercury)



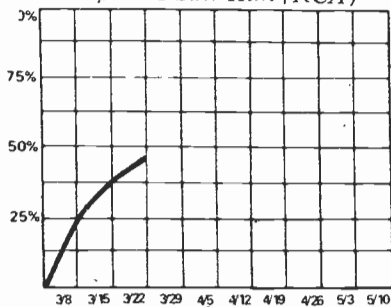
JERRY WALLACE
Guess Who (MCA)



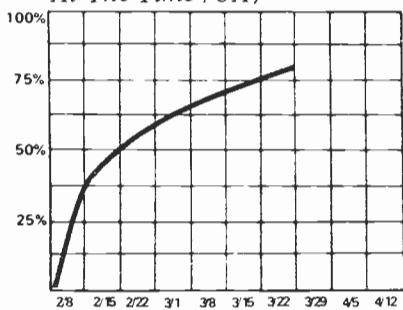
LINDA RONSTADT
Silver Threads (Asylum)



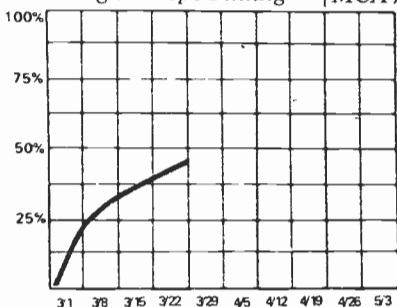
DOTTIE WEST
Last Time I Saw Him (RCA)



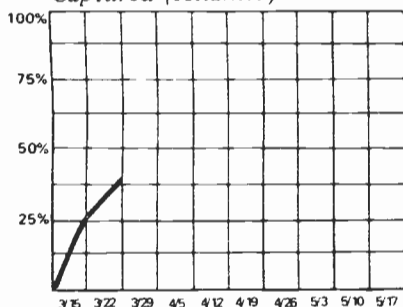
JEAN SHEPARD
At The Time (UA)



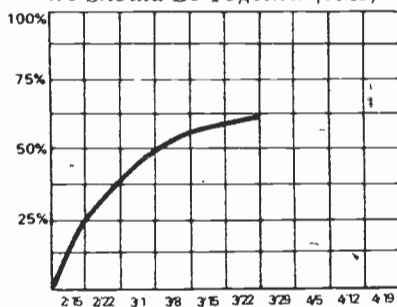
LITTLE DAVID WILKINS
Georgia Keeps Pulling (MCA)



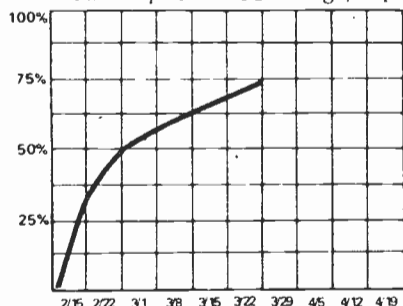
TERRY STAFFORD
Captured (Atlantic)



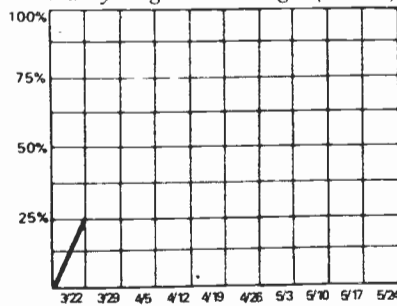
DON WILLIAMS
We Should Be Together (JMI)



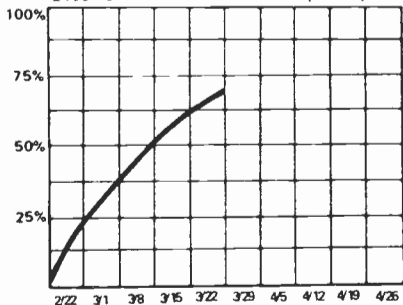
RED STEGALL
I Gave Up Good Morning (Capitol)



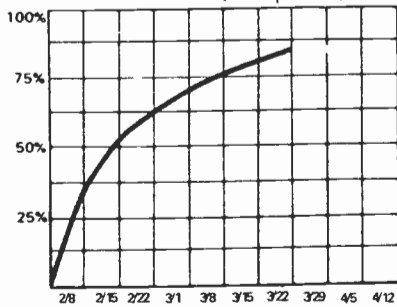
HANK WILLIAMS, JR.
Rainy Night In Georgia (MGM)



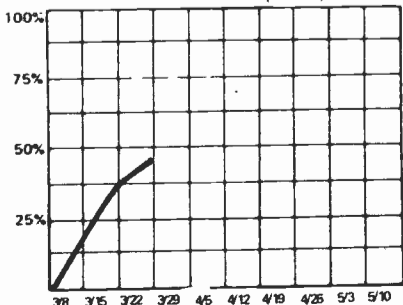
HANK THOMPSON
The Older The Violin (Dot)



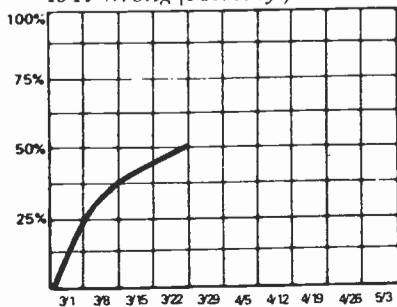
BOBBY WRIGHT
Seasons In The Sun (ABC)



DIANA TRASK
Lean It All On Me (Dot)



FARON YOUNG
Is It Wrong (Mercury)



WHAT SORT OF WOMAN READS R&R?

Up and coming superstars like MGM's Sami Jo. She knows that to get to the top, it requires more information about the industry than merely if her record has "bullets" or if it's getting "picks and plays." Sami needs to know who's playing her record, where it's crossing, and what kind of stations are programming it. That's why she reads R&R, where this week's action is reported **THIS WEEK**, not next Monday.

PROGRESSIVE

(Continued from page 8)

together which will be sort of a "Random Notes" of the air. Our stations will be receiving demo tapes of that in about two weeks.

JG: Are you primarily concerned with FM radio?

BM: We deal only with FM. FM offers more latitude and creativity. You can do things on FM that you can't do on AM. I firmly believe in the future and growth of FM radio.

If you would like further information on D.I.R. activities, contact Bob Meyrowitz or Griffith W. McRee at (212) 371-6850. Meyrowitz told Jeff that they are not actively seeking to expand their network because they've already penetrated the top 100 markets and then some.

I've been involved in programming THE KING BISQUIT FLOWER HOUR at stations on both coasts and the program and production quality as well as audience reaction has been constantly excellent. If you are carrying the show, D.I.R. would like to hear your reaction and feedback.

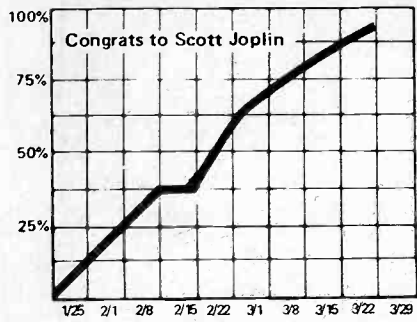
KLZ-FM-Denver PD Bill Struck reports a jock change. Jonathon Stone is now doing 7-midnight (he's from KELI-Tulsa).

COUNTRY CORRESPONDENTS

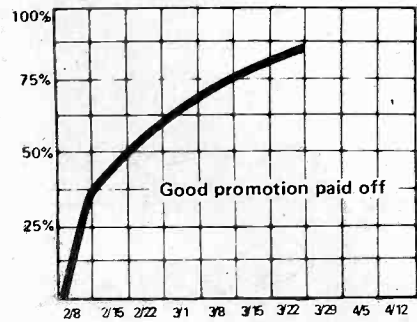
- KLAK DENVER
- WCMS NORFOLK
- KWJJ PORTLAND
- WHOO ORLANDO
- WIRE INDIANAPOLIS
- KIKK HOUSTON
- WKDA NASHVILLE
- KCKC SAN BERNARDINO
- WQIN SEATTLE
- WMC MEMPHIS
- WINN LOUISVILLE
- KLAC LOS ANGELES
- KFOX LONG BEACH
- KHOS TUCSON
- KRAK SACRAMENTO
- KFGO FARGO
- WEET RICHMOND
- WUBE CINCINNATI
- KTUF PHOENIX
- KUZZ BAKERSFIELD
- KFYV ARROYO GRANDE
- KENR HOUSTON
- KBMY BILLINGS
- KERE DENVER
- WRCP PHILADELPHIA
- WPLO ATLANTA
- WGVM GREENVILLE
- WAME CHARLOTTE
- WONE DAYTON
- KSON SAN DIEGO
- WSLR AKRON
- WHN NEW YORK
- WJJD CHICAGO
- WMNI COLUMBUS
- WIL ST. LOUIS
- WEEP PITTSBURGH
- KCKN KANSAS CITY
- KBOX DALLAS
- KNUZ HOUSTON
- WWHY HUNTINGTON

● signifies fastest moving records

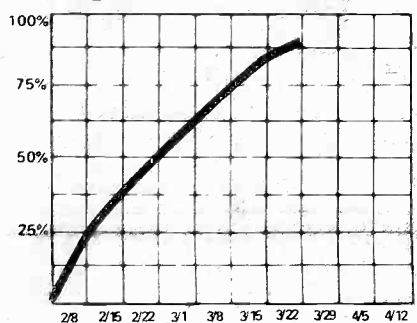
1 HAMLISCH



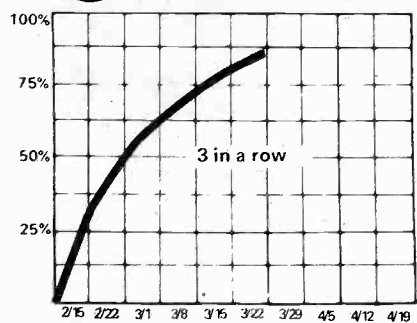
2 JOEL



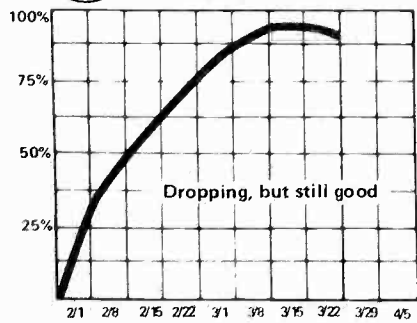
3 MULDAUR



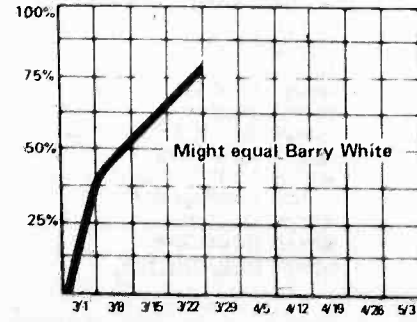
4 RICH



5 DENVER



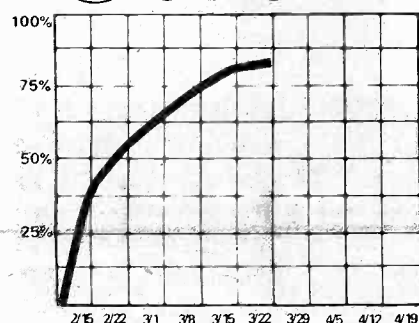
6 MFSB



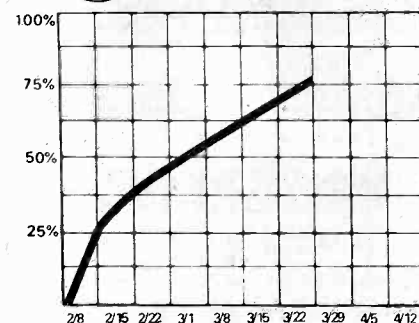
TREND

3/8	3/15	3/22	1 MARVIN HAMLISCH/The Entertainer (MCA)
3	2	2	2 BILLY JOEL/Piano Man (Columbia)
8	3	3	3 MARIA MULDAUR/Midnight At The Oasis (Reprise)
5	5	4	4 CHARLIE RICH/Very Special Love Song (Epic)
12	6	5	5 JOHN DENVER/Sunshine On My Shoulder (RCA)
2	4	6	6 M.F.S.B./T.S.O.P. (Phy Int.)
13	10	7	7 CARLY & JAMES/Mockingbird (Elektra)
11	9	8	8 SAMI JO/Tell Me A Lie (MGM South)
9	8	9	9 SISTER JANET MEAD/The Lord's Prayer (A&M)
1	1	10	10 LOU CHRISTIE/Blue Horizon (Three Brothers)
4	7	11	11 ALBERT HAMMOND/I'm A Train (MUMS)
20	13	12	12 SAMMY DAVIS JR./Singin' In The Rain (MGM)
18	12	13	13 MAC DAVIS/One Hell Of A Woman (Columbia)
-	15	14	14 HELEN REDDY/Keep On Singing (Capitol)
19	18	15	15 KRIS & RITA/Lovin' Arms (A&M)
17	17	16	16 NEIL DIAMOND/Skybird (Columbia)
-	20	17	17 GLADYS NIGHT/Best Thing (Buddah)
-	-	18	18 MIKE OLDFIELD/Tubular Bells (Virgin)
-	-	19	19 JONI MITCHELL/Help Me (Asylum)
-	-	20	20 RINGO STARR/Oh My My (Apple)

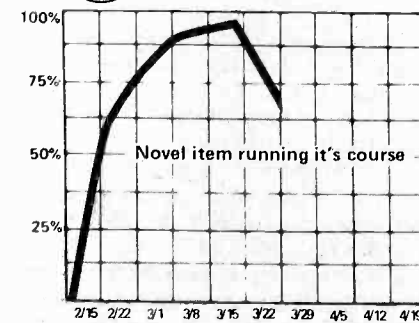
7 SIMON



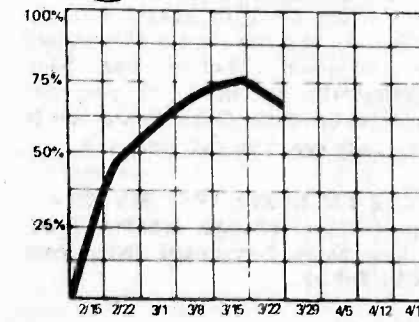
8 JO



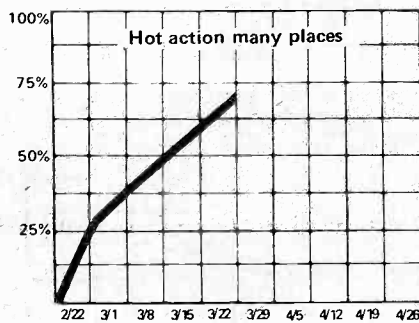
9 MEAD



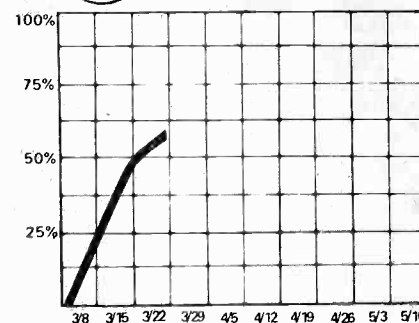
10 CHRISTIE



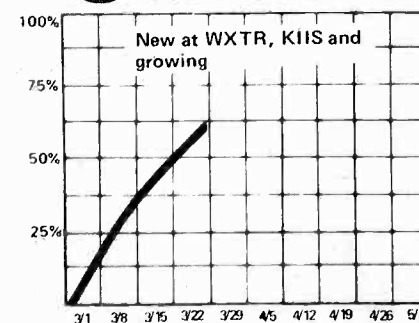
11 HAMMOND



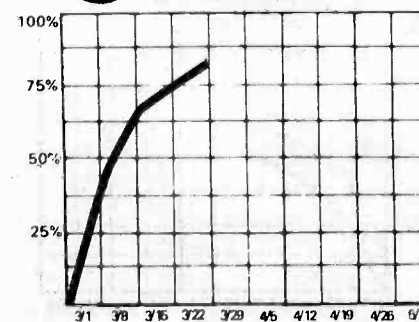
12 S. DAVIS



13 M. DAVIS



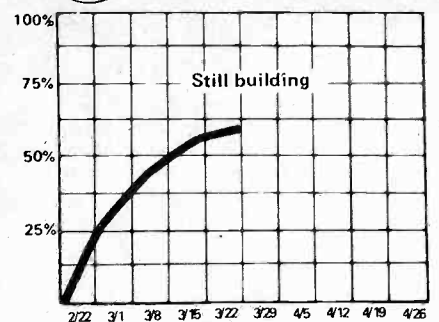
14 REDDY



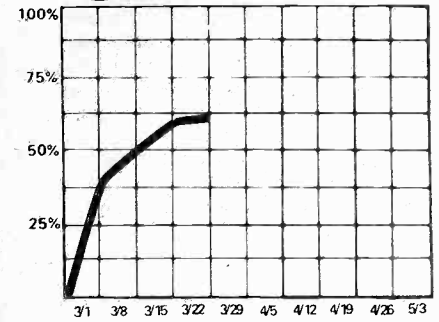
← The top twenty listings reflect SALES

The graphs measure the song's level of audience appeal

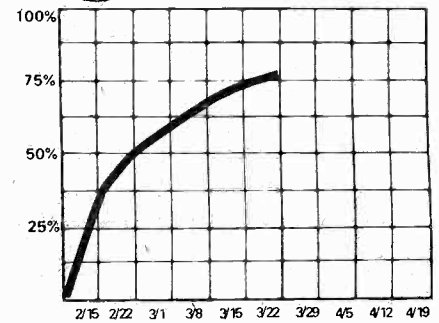
15 KRIS & RITA



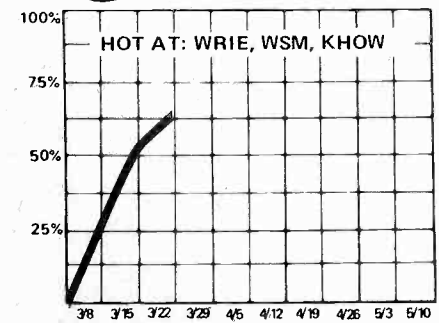
16 DIAMOND



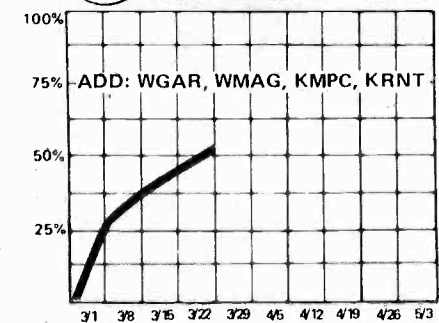
17 GLADYS



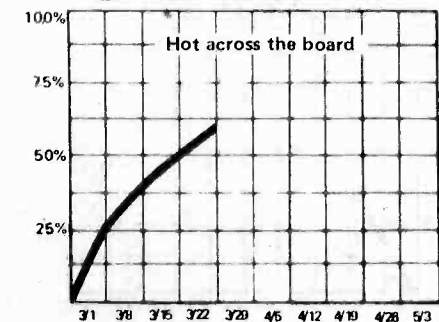
18 OLDFIELD



19 MITCHELL



20 RINGO



POP/MOR NOTES by Mike Kasabo



(Music Director, KHIS/Los Angeles)

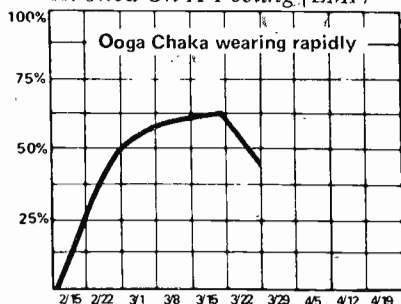
The new **DAWN** "It Only Hurts When I Try To Smile" takes the most-added-of-the-week-award. **Mike Oldfield** finally makes the Top Twenty, coming in at 18. Although we dropped **Rick Nelson's** "Windfall" from the graph section, there is still some activity on it. Same applies for **Billy Paul** record. The following are hot & heavy... "One Hell Of A Woman" **Mac Davis** added at WCBM-Baltimore, KHIS-Los Angeles, WTRX-Flint, "Help Me" **Joni Mitchell** add KMPC-Los Angeles, KRNT-Des Moines, WGAR-Cleveland, WMAQ-Chicago.

"Touch A Hand Make A Friend" **Staple Singers** looking stronger every week ... new record "Put A Little Love Away" has loads of new action including **KOY-Phoenix**, **KMPC-Los Angeles**, **KHOW-Denver**, **WCBM-Baltimore** ... hot action at **WIP-Philadelphia**. "Oh My My" **Ringo** is across the board now. **Kris & Rita's** "Lovin' Arms" picking up nicely at most stations. **Frank Sinatra** continues to pick up some play new at **WSB-Atlanta**, **WMAL-Washington**. **Gilbert O'Sullivan** virtually blanketed airplay at this point.

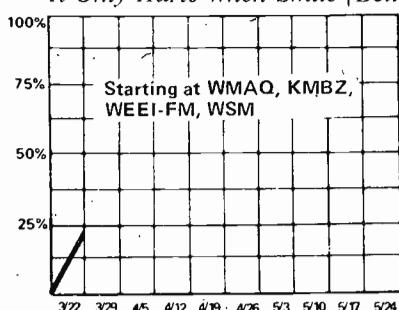
With the majority of our contributors having dropped "Time In A Bottle" this week, watch for "I'll Have To Say I Love You In A Song" take a big leap next week. "Searchin' For So Long," **Chicago** new at **WTRX-Flint**, **KRNT-Des Moines**, **WGAR-Cleveland**. Newer sides getting good initial reaction... "If I Were A Carpenter," **Leon Russell**... added to **KNBR-San Francisco**, **WTRX-Flint**. "Sundown," **Gordon Lightfoot** on **WEEI-FM-Boston**. "Never Be Lonely," **New Colony Six** on **WMAQ-Chicago**, **KGIL-San Fernando**. "Rhinstone Cowboy," **Larry Weiss** new at **WSM-Nashville**.

Many of our contributors are excited about a couple of cuts on the new **Charlie Rich** album... most often reported is "A Field of Yellow Daisies" which is being played at **WIP-Philadelphia**, **WSB-Atlanta**, **WSM-Nashville**. The other cut is "Why Don't We Go Somewhere And Love."

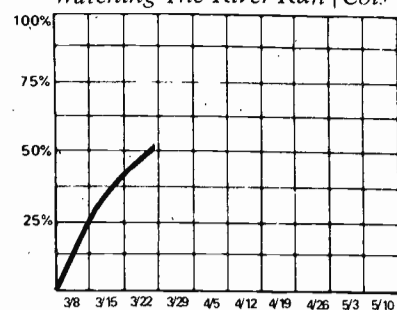
BLUE SWEDE *Hooked On A Feeling (EMI)*



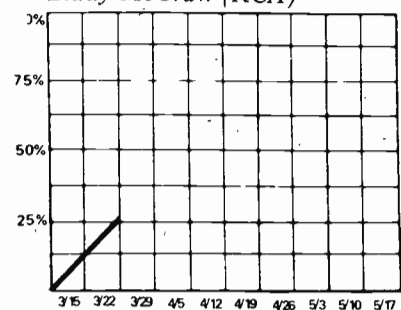
DAWN *It Only Hurts When Smile (Bell)*



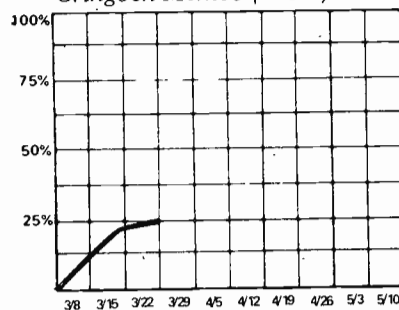
LOGGINS & MESSINA *Watching The River Run (Col)*



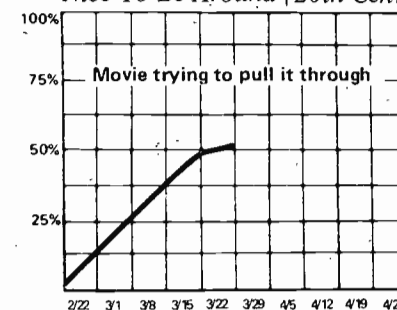
CARLTON SHOWBAND *Biddy McGraw (RCA)*



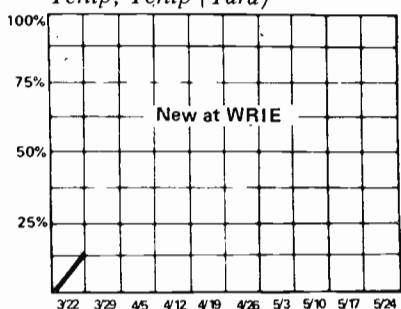
EL CHICANO *Gringo Mexico (MCA)*



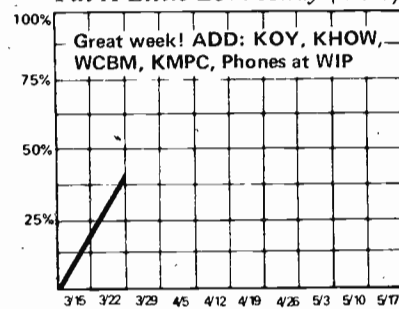
MAUREEN MCGOVERN *Nice To Be Around (20th Century)*



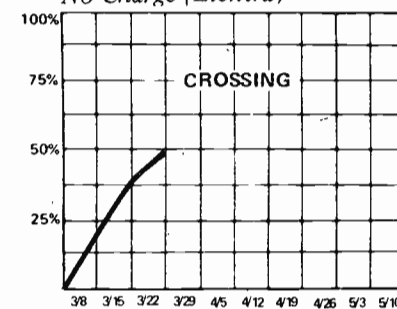
CASH & CARRY *Tchip, Tchip (Tara)*



EMOTIONS *Put A Little Love Away (Volt)*



MELBA MONTGOMERY *No Charge (Elektra)*

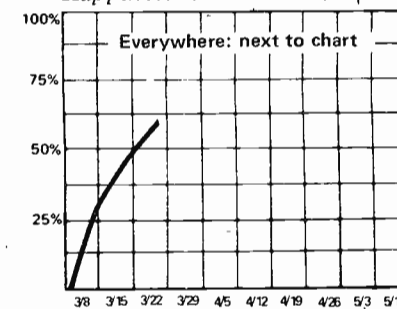


AUDIENCE APPEAL GRAPHS

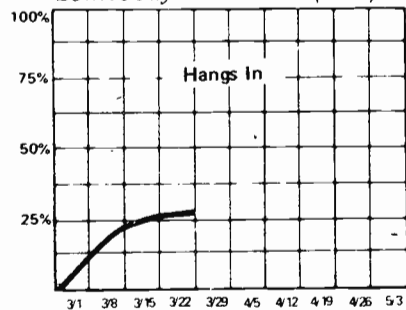
SIMPLY PUT: The levels (0% to 100%) represent a record's increasing or decreasing popularity with the "general mass audience" for the format being graphed.

A RECORD reaching 90-100% is a total, across the demographic board smash. A record registering 50% may do so because it's appealing to only a portion of the audience—say, teens, or mostly males. The graphs will also show how a record may "hold on" in audience popularity long after sales have dropped.

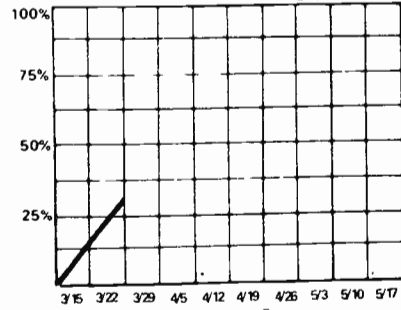
GILBERT O'SULLIVAN *Happiness Is Me And You (MAM)*



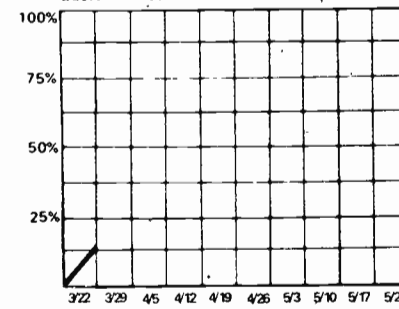
ADDRISI BROTHERS *Somebody Found Her (Bell)*



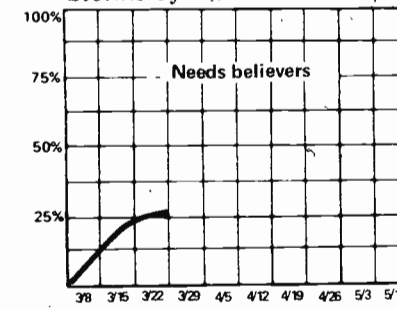
CHICAGO *Searchin' For So Long (Col.)*



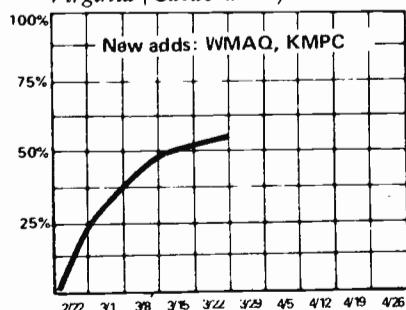
PERCY FAITH *Hill Where Lord Hides (Columbia)*



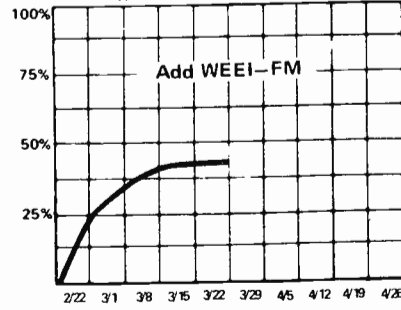
RAY PRICE *Storms Of Troubled Times (Col)*



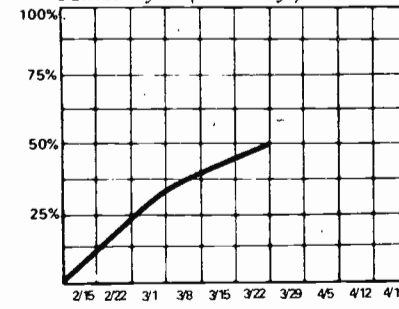
BILL AMESBURY *Virginia (Casablanca)*



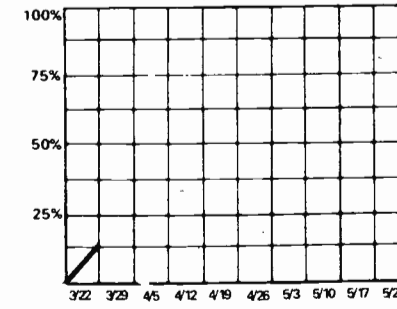
FLOYD CRAMER *"Young And The Restless" (RCA)*



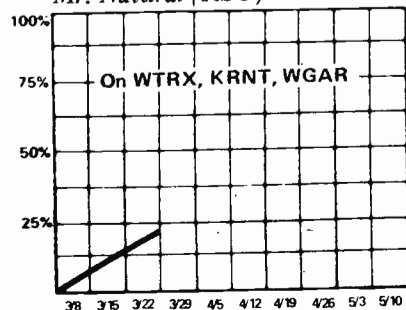
HEARTSFIELD *Music Eyes (Mercury)*



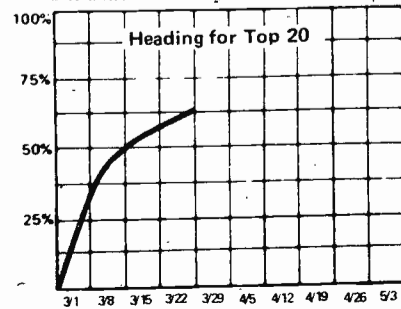
POINTER SISTERS *Steam Heat (Blue Thumb)*



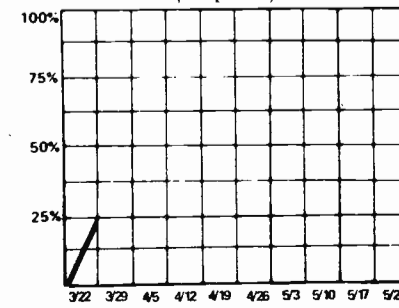
BEE GEES *Mr. Natural (RSO)*



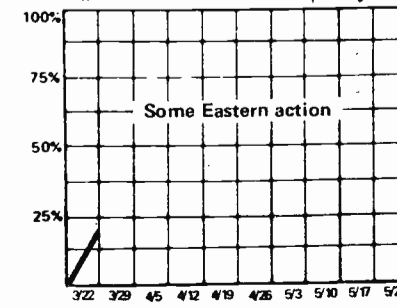
JIM CROCE *I'll Have To Say I Love You (ABC)*



GORDON LIGHTFOOT *Sundown (Reprise)*

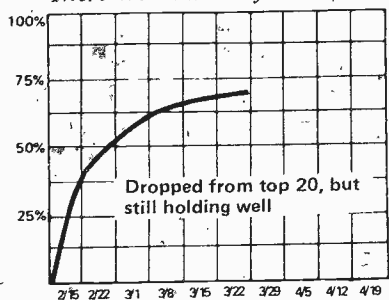


COZY POWELL *Dance With The Devil (Chrysalis)*

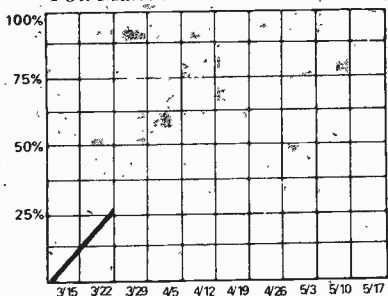


added this week...

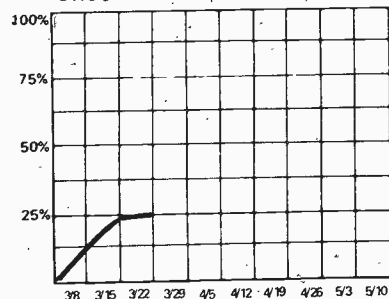
CHARLIE RICH
There Won't Be Anymore (RCA)



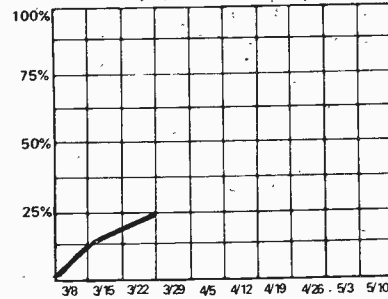
STYLISTICS
You Make Me Feel New (Avco)



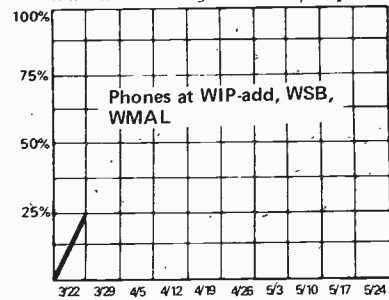
SEALS & CROFTS
Unborn Child (Warners)



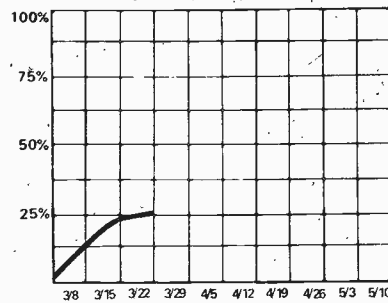
TEMPTATIONS
Heavenly (Gordy)



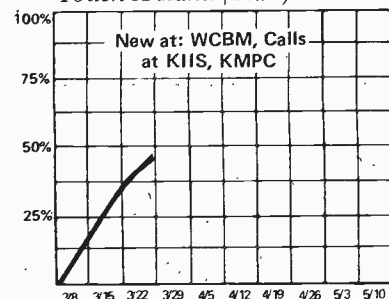
FRANK SINATRA
Bad Bad Leroy Brown (Reprise)



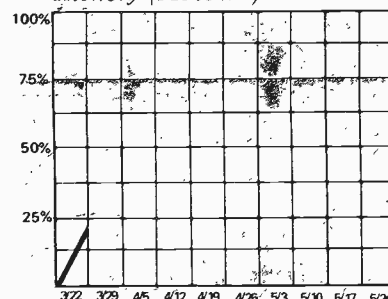
THREE DOG NIGHT
The Show Must Go On (Dunhill)



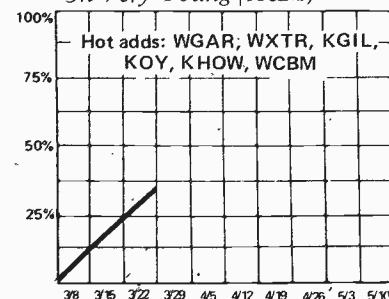
STAPLE SINGERS
Touch A Hand (Stax)



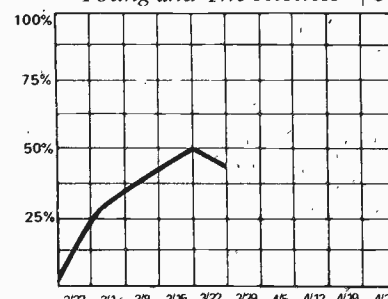
FRANKIE VALLI
Hickory (Motown)



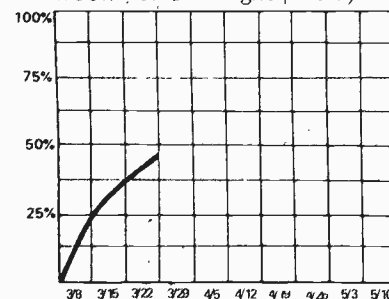
CAT STEVENS
Oh Very Young (A&M)



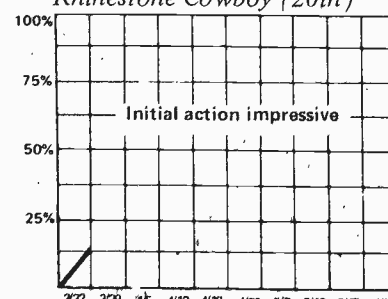
VENTURES
"Young and The Restless" (UA)



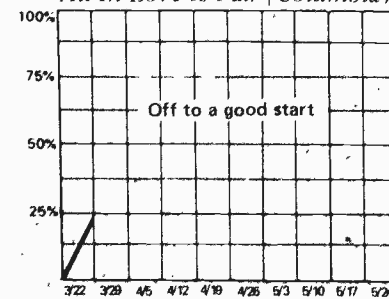
BW STEVENSON
Look For The Light (RCA)



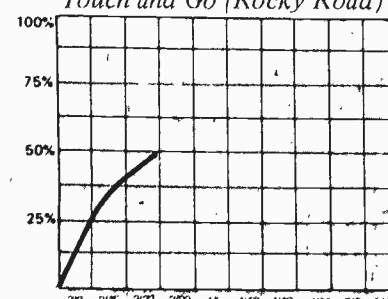
LARRY WEISS
Rhinestone Cowboy (20th)



BARBRA STREISAND
All In Love Is Fair (Columbia)



AL WILSON
Touch and Go (Rocky Road)



WSB-ATLANTA
Gilbert O'Sullivan
Buck Owens
Cash & Carry
Blue Swede
Frank Sinatra

WCBM-BALTIMORE
Mac Davis
Staple Singers
Hall & Oates
Cat Stevens
Emotions

WEEI-FM-BOSTON
Gordon Lightfoot
Floyd Cramer
Vogues
Dawn

WMAQ-CHICAGO
Barbra Streisand
Ringo Starr
Joni Mitchell
New Colony Six
Bill Amesbury
Al Wilson
Dawn
DROPS
Olivia Newton-John
Aretha Franklin
New Seekers
Harry Chapin
Rick Nelson
Jim Croce

WGAR-CLEVELAND
Chicago
Joni Mitchell
Bloodstone
Mike Oldfield
Cat Stevens
Neil Diamond
DROPS
Aretha Franklin
Anne Murray
Loggins & Messina
Moments
Jim Stafford

KHOW-DENVER
Cat Stevens
Emotions
Barbra Streisand
DROPS
Addrisi Bros.
Blue Swede
John Denver
Cher
Terry Jacks

KRNT-DES MOINES
Chicago
Gilbert O'Sullivan
Joni Mitchell
Neil Diamond
DROPS
Olivia Newton-John
New Seekers
Jim Croce

WRIE-ERIE
Gilbert O'Sullivan
Cashman & West
Cat Stevens
Cash & Carry
B.W. Stevenson
DROPS
Allman Bros.
Anne Murray
Jim Croce
Al Wilson

WTRX-FLINT
Chicago
Mac Davis
Ringo Starr
Leon Russell
Cat Stevens
DROPS
Heartsfield
Southcote
Bill Amesbury

WMBZ-KANSAS CITY
Gilbert O'Sullivan
Dawn
Tommy Overstreet
Joan Baez
DROPS
Rick Nelson
Hot Butter
Roger Williams
Ringo Starr
Al Wilson
Tom T. Hall
Olivia Newton-John
New Seekers

KMPC-LOS ANGELES
Joni Mitchell
Frankie Valli
Heartsfield
Emotions
Pointer Sisters
Bill Amesbury
DROPS
Tom T. Hall
Anne Murray
Johnny Mathis
Diana Ross
Aretha Franklin

KIIS-LOS ANGELES
Albert Hammond
Main Ingredient
Mac Davis
Barry White

DROPS
Diana Ross
Stealers Wheel
Glen Campbell
Temptations

KGIL-SAN FERNANDO
New Colony Six
Larry Weiss
Cat Stevens

WSM-NASHVILLE
Dawn
Larry Weiss
Percy Faith
George Fischhoff
5-Man Electrical Band
DROPS
Addrisi Bros.
Bette Midler
Band
Ventures

WIP-PHILADELPHIA
Pointer Sisters (Limited)
DROPS
Diana Ross

KOY-PHOENIX
MFSB
Cat Stevens
Emotions
Melba Montgomery
Herb Ohta
Stylistics
DROPS
Diana Ross
Simon Park
Looking Glass
Kiki Dee
Tom T. Hall
Floyd Cramer

KDKA-PITTSBURGH
Bachman-Turner
Spinners
Stealers Wheel
Charlie Rich
DROPS
Ringo Starr
Steve Miller
Olivia Newton-John
Diana Ross

KNBR-SAN FRANCISCO
Leon Russell
Cash & Carry
Dawn
Dolly Parton
DROPS
Cher
Floyd Cramer
Rick Nelson
Herbie Mann

WMAL-WASHINGTON
Cat Stevens
Cliff DeYoung
Frank Sinatra
Marvin Hamlisch
Rick Nelson
Percy Faith
Stylistics
DROPS
Bobby Bare
Vicki Lawrence
Statler Bros.
Engelbert Humperdinck

ALBUMS

JIMMY BUFFETT
Living And Dying In 1/4 Time (Dunhill)
CUT: *Pencil Thin Mustache*

TERRY JACKS
Seasons In The Sun (Bell)
CUT: *Sail Away*

JACK JONES
Harbour (RCA)
CUTS: *Friends Are For, Do Me Wrong*

MOCEDADES
Eres Tu (Tara)
CUT: *Dime Senior*

ANNE MURRAY
Love Song (Capitol)
CUTS: *Real Emotion, You Won't See Me*

CHARLIE RICH
Very Special Love Song (Epic)
CUTS: *Pretty People, Somewhere And Love*

CARLY SIMON
Hotcakes (Elektra)
CUT: *Older Sister*

PAUL SIMON
Live Rhymin' (Columbia)
CUTS: *Sounds of Silence, Boxer, Loves Me Like A Rock*

B.W. STEVENSON
Calabasas (RCA)
CUTS: *Anna Lisa, Roll On, Bit Of Understanding*

BARRY WHITE
Rhapsody In White (20th Century)
CUTS: *Rhapsody In White, Barry's Theme*

PAUL WILLIAMS
Inspiration (A&M)
CUT: *Dream Away*

CLASSIFIED

KBOX-Dallas needs morning man (Country); send tape, resume, photo to Tom Allen, KBOX, 9900 McCree Rd., Dallas 75238.

WROR-Boston needs a pdtn.-oriented talent familiar w. oldies. Contact Paul Kirby, WROR-WROR, 617 742-9000.

KDAY-Los Angeles looking for a black general market sounding jock; tapes, resume to Jim Maddox, 1700 N. Alvarado, Los Angeles.

KKXL-Grand Forks, N. Dakota needs morn. man; tapes, resume to Mark Renier, P.O. Box 997, 58201.

WEZY-Cocoa, Fla. needs Top 40 jock with last ticket, to do midnight-six; tapes, resumes to Glen Hill, PD, P.O. Box 2029, 32922, 305 636-4411.

KRSP-Salt Lake City needs a newsman-jock-pdtn. man. 3-fold job; contact Allan Haigue, 801 262-5541.

POSITIONS SOUGHT:

Jim King, formerly with WWDJ, looking for gig. 201 440-0695.

Ted Carson, midday man formerly with WCAR-Detroit, looking for MOR-Top 40 gig; 313 675-1382.

George Hart, Form. with WIXZ-Pittsburgh, looking. Call (before 6 pm, EST) -- 412 381-0899 High quality economy duo-programmer (5 yrs. exp.) and chief engr. (7 yrs.), both expert cookin' jocks currently in top So. Calif. market, looking for medium or small market to take to the top; 714 433-1350.

Jack Robinson, former PD, KAFM-FM-Dallas, looking for PD or jock gig in major market; 214 369-3917.

Rich Paladino, most recently West Coast promotion/Elektra-Asylum, looking for gig. 213 849-5367.

EVERYBODY'S TALKING ABOUT KATHI McDONALD



Kathi McDonald was a background singer with Leon Russell, Joe Cocker, The Rolling Stones, Ike & Tina Turner, and others.

With a little help from some very talented friends, she's recorded a smashing debut album,

INSANE ASYLUM INSANE ASYLUM

Capitol Album ST-11224

