

# Radio Guide

Radio's Technology Resource

www.radio-guide.com www.radio-classifieds.com

Including Radio Shopper

November 2002

Volume 10 Issue 11

## ERI Loses a Family Member

Scott Beeler, Director of Worldwide Sales for ERI, was killed in a traffic accident Thursday morning, October 3, 2002, near his home in Cincinnati, Ohio.

Scott coordinated the ERI sales force, which specializes in antenna and structural systems. Scott played a major role in forming new partnerships with suppliers and end users, and in enhancing existing distribution paths.

Jim Meleski, ERI's Chief Operating Officer, will temporarily assume the leadership duties vacated by Scott's death.

"We are all dismayed by the untimely, accidental death of Scott Beeler," said Tom Silliman, President of ERI. "His expertise and energy will be missed, but his momentum will carry forward as ERI continues to grow."

Starting his career with Allied Broadcast Equipment, Scott had over 20 years of broadcast and communications equipment sales experience. Prior to ERI, he served most recently as Director of Radio Sales for Harris Broadcast and had many professional and personal friends throughout the industry.

Donations to the family can be made to Kim Beeler, and sent in care of Diana Combs, ERI, 7777 Gardner Rd, Chandler, IN 47610.



## Radio Moves Ahead

SBE Convention, New EAS Codes, RG Feedback

Fall has definitely arrived, and then some. Parts of the country are already showing white. And, as the leaves have gone through their changes, so the broadcast industry continues to change as well.

It was interesting to listen in on the discussions at the SBE national convention, held in Phoenix in Mid-October, in concert with the Arizona Broadcasters Association. EAS, IBOC and the continuing consolidation were key topics.

SBE organizers Jerry Grunig and Robert Reymont, from Chapter 9, certainly were successful in getting everything arranged for the approximately 400 who were registered for the convention, which included the national membership meeting and an exhibit hall with 50 some booths. The SBE President, Troy Pennington, heads a strong board of directors, who are already making some important changes in the SBE and its relationship with the members.

Meanwhile, stations around the country are grappling with the problems of implementing the new EAS codes approved by the FCC earlier this year, while trying to integrate the AMBER programs that have become popular with politicians, yet still have some bugs in the procedures to work out.

Add that to the IBOC decision in October, and stations all across the country are starting to look at where the transmission part of the equation is going.

Radio Guide is also moving ahead. This year has brought some interesting changes as we have brought a new emphasis on the history of the industry. But any publication that *only* looks backward is not going anywhere. The radio industry has had more change in the past 10 years, perhaps than in the 90 years previous.

Technology has already changed the way many parts of the station look, and now we are going to see major changes in our transmission plants. RG is firmly committed to helping the engineering community understand and deal with the changes.

Of course, for us to achieve that goal, we need to continually seek out your feedback to make sure we are on track. What is it that you like about Radio Guide? What is it that you don't like? What would you like to see added to the "mix?" Please take a moment and let us know. Just send your comments to [radio@broadcast.net](mailto:radio@broadcast.net).

Your voice is very important to us.

### Radio Guide

Ray Topp (Editor and Publisher)

Barry Mishkind (Associate Editor)

PO Box 20975, Sedona, AZ 86341

928-284-3700 Fax: 866-728-5764

Email: [radio@broadcast.net](mailto:radio@broadcast.net)

DAVE STEWART  
HISPANIC BROADCASTING  
5850 Belt Line Rd. Apt. 1309  
Dallas, TX 75254-7734  
531 P6

PRSR STD  
U.S. POSTAGE  
PAID  
PERMIT NO. 596  
MPLS MN

## This Issue

**In the Public Interest – Pg. 3**  
*The FCC can rock your world.*

**Contract Engineering – Pg. 5**  
*The good, the bad, and the unsafe.*

**Radio Chronicles – Pg. 8**  
*WWJ brings news to the world.*

**The Studio Site – Pg. 11**  
*Clean audio is happy audio.*

**Computer Connection – Pg. 13**  
*Building a new station computer.*

**The Transmitter Site – Pg. 15**  
*Econco Tube Topics – Part 3*

**State of the Art – Pg. 17**  
*Low power FM signal optimization.*

**EAS Q&A – Pg. 19**  
*Some new EAS codes.*

**Gear Guide – Pg. 21**  
*The Jingle Book, by Ken R. Henry's new Matchbox. Orban V 2.1 software update.*

**Classified Ad Listings – Pg. 22**  
*Bay Country equipment list. Big "D" equipment list.. Mooretronix equipment list.*

**www.radio-classifieds.com**  
*We no longer print individual equipment listings in the Radio Guide. You can post your gear, at no charge, on our new website.*

Radio Guide, ISSN 1061-7027, is published monthly, 12 times a year, by Media Magazines Inc., PO Box 20975, Sedona, AZ 86341. Radio Guide is copyright 2002, Media Magazines Inc., and may not be reproduced or stored in any form without the written permission of the publisher.

## "The best choice"

Ron and Beth Fruit of WRCO wrote us a letter about BSI's digital automation

Simian digital automation



Only \$1499

When we made the decision to go digital, our choice was BSI. I was convinced it was the best choice for us before I ever wrote the check. After purchase, we were up and running in no time.

When we announced the change to digital at WRCO, staff members were skeptical. Today, the comment often is, "I wish we would have done this even sooner."

As we have implemented change here at WRCO, BSI products have easily made the change with us. With BSI, I control the station and the software, not the other way around.

From the production studio to the control room, I can't imagine why we would ever want anything but BSI. It's reliable, user friendly software with the flexibility and power to make it a great investment.

Ron and Beth Fruit  
WRCO AM & FM Radio  
Richland Center, Wisconsin



More than 5000 broadcasters use our software in more than 50 nations around the world. Simian includes one year of 365/24/7 tech support and software upgrades. Simian has amazing features, such as FlexTime and touchscreen compatibility. Runs on Windows 98, NT, 2000, ME and XP.

Test and try  
before you buy.



Broadcast  
Software  
International

[www.bsiusa.com](http://www.bsiusa.com)

888-bsiusa1

[sales@bsiusa.com](mailto:sales@bsiusa.com)

## SMART CHOICE

### EXCELLENT VALUE

The bottom line is that Millennium consoles work because their performance, look and sound present the best console value around.

### PROVEN

Over 500 broadcasters use more than 3000 Millennium and RS series consoles to stay on the air every day. Most users who have bought one of our consoles bought another.

### FULL FEATURED

You can buy options for a Radio Systems console – but you don't have to! From full remote control to complete monitoring, Millennium consoles work right out of the box!

### GREAT LOOKS

Millennium consoles are beautifully styled with glowing soft-touch keypads and rich mahogany side-panels. And, owners can even inexpensively update their older consoles to a Millennium model.

### GUARANTEED

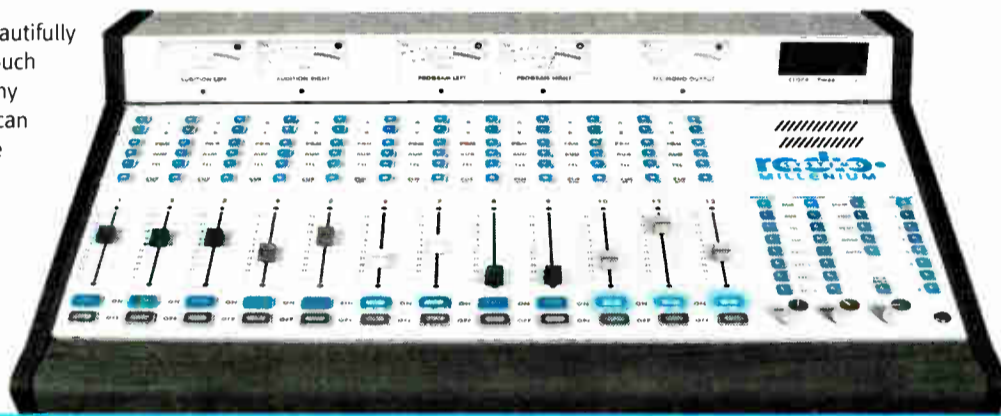
Our consoles come with the best warranty in the business with 2-year no charge overnight parts delivery to keep you on the air.

### EASY INSTALLATION

Make an afternoon out of installing your next console – not a career! These boards almost seem to wire and install themselves.

### SUPERB ENGINEERING

These boards have the low noise and distortion specs that you need to compete with digital alternatives. And full DC control and modular construction keeps the performance clean and repairs a snap for the life of the console.

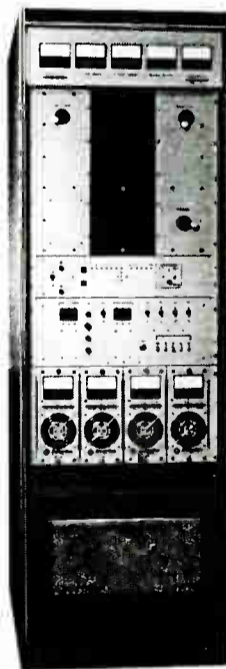


## We Sell At Least One ECO FM Transmitter Per Day!!

**ENERGY-ONIX** ECO Transmitters are the most popular FM Transmitters ever built. There are at least 1000 of these transmitters operating world wide.

They utilize one zero bias triode operating in a grounded grid mode and incorporate a solid state driver and frequency agile exciter. Their reliability is unprecedented and their prices are realistic.

Do you want to know more details? Contact our office or your neighbor — he must have an ECO transmitter. Or, better yet — visit our modern 35,000 sq. ft. factory in beautiful “Upstate” New York and “Kick the Tires.”



### HERE ARE SOME OF THE REASONS

- ◆ Honest Prices
- ◆ Understandable Control System
- ◆ Single, Long Life, Triode in Grounded Grid Configuration
- ◆ No Neutralization Required
- ◆ Minimum Plate Voltage (7500 Volts for 25KW Output)
- ◆ Solid State IPA with Loads of Reserve
- ◆ Automatic Power Output Control
- ◆ VSWR Foldback and Trip Control
- ◆ Extremely Long Tube Life
- ◆ Personalized Technical Support from Competent Engineers who Designed These Transmitters
- ◆ Models Available at 4, 6, 8, 10, 15, 22, 25, 30, 40 & 50KW
- ◆ Manufactured in our U.S.A. Factory



**ENERGY-ONIX**  
BROADCAST EQUIPMENT CO., INC.

**“The Transmitter People”**

P.O. Box 801, 1306 River St., Valatie, NY 12184  
VOICE: 518-758-1690/888-324-6649 FAX: 518-758-1476  
E-MAIL: [energy-onix@energy-onix.com](mailto:energy-onix@energy-onix.com)  
WEB PAGE: [www.energy-onix.com](http://www.energy-onix.com)

# In the Public Interest



By Ken and Kelly Orchard

Email: [pifile@aol.com](mailto:pifile@aol.com) Phone: 760-243-4733

## The FCC Can Rock Your World

The FCC has proven that they can definitely "Rock Your World." The FCC Enforcement Bureau just celebrated its third anniversary last month, and reported their major accomplishments. Many broadcasters must be relieved that they haven't been targeted by the FCC Enforcement Bureau yet, but beware: if they haven't visited you yet, you must be on their list.

One of the main actions taken seriously by the FCC is Public Safety enforcement: the enhanced 911 operation of the Emergency Alert System, tower painting and lighting for aviation safety, and unauthorized operations or equipment that can interfere with air traffic control frequencies. The Bureau also provided assistance to federal, state and local public safety and law enforcement entities to determine the source of signals causing interference on public safety frequencies, and served as a focal point for FCC Homeland Security related work.

In the month of August alone, the Enforcement Bureau's Field Offices issued twenty-two Notices of Apparent Liability, in the amounts totaling \$211,000. Twelve involved violations of the Commission's safety-related rules (e.g., antenna structure, AM station fencing requirements, and Emergency Alert System). There were even a few Local Public Inspection File violations.

The FCC has their own term for "AOR." Once, AOR simply stood for Album Oriented Rock format, but it has an all-new meaning with the FCC. In their terminology, it is "Area of Responsibility," and each Enforcement Bureau Field Office takes their area of responsibility very seriously. California has the most, with three Enforcement Bureaus, and last month we had the pleasure of meeting the FCC representatives in Hawaii.

We apologize to our readers who had an issue with us reporting that we were on our way to Hawaii. Upon returning, we had several comments about it: "Tough duty," or "Must be nice." It was a great pleasure to have the opportunity to work in "paradise," but believe us, it *was* work! We were initially contracted to come over and inspect ten stations for the Hawaii Association of Broadcasters. Due to the efforts of the organization, they rallied the broadcasters to participate, and we actually inspected a total of sixteen stations while we were on Oahu! It was quite an experience! But, we managed to fit it all in! Mercifully, many broadcast transmitters are located at the same place, which eliminated a good deal of travel time to the transmitter site, which is usually the most cumbersome part of performing multiple inspections.

As expected, there were a percentage that passed, and a percentage that needed to "take corrective measures." We continue to find the broadcast industry in this condition, so do not be alarmed. We never "fail" any station, but rather give them a full report on what corrective measures need to be taken. And, according to the agreement with the FCC, stations then have a period of sixty days to bring their facility up to FCC Compliance before their "grace period" ends.

Once again, we must continue to remind you, that the Enforcement Bureau is celebrating (and yes, they do consider themselves successful) three years in existence. If you have any expertise in statistics or odds, you can bet that if you haven't been inspected yet, you will be in the near future. It is crucial to begin looking in to your FCC Compliance now, as many states are nearing the "half-way" point toward license renewal. Stations are also undergoing ownership changes, mergers, acquisitions, frequency swaps and so forth.

That list alone could possibly include nearly every broadcaster in the country! You should really get busy! There are two ways for you to accomplish this task. 1) Go to the FCC website at [www.fcc.gov](http://www.fcc.gov), download the FCC Inspection Checklist, and go through it item by item. It's a very educational and eye-opening experience that every manager or engineer should go through. 2) Call your state association and elect to participate in the Alternative Broadcast Inspection Program. Most states have a program in place now, and the FCC not only endorses it, but they highly encourage it.

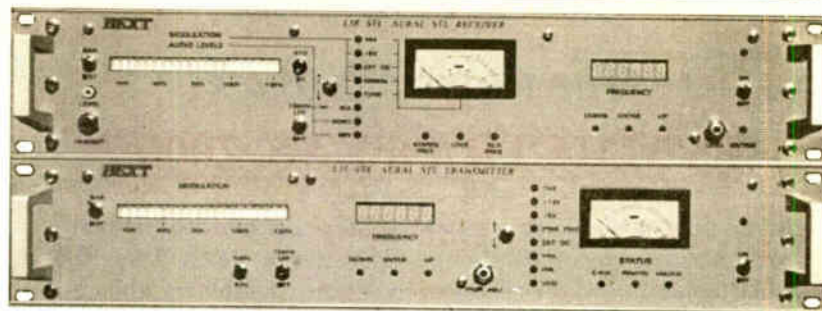
Recently, a client of ours provided us with a memorandum from a seminar they had attended. This session was hosted by one of the many Washington D.C. law firms that specialize in broadcast law, and was specifically centered in the area of FCC Compliance, including Public File Rules. We appreciate the chance to utilize the expertise of others in the industry to get our point across to our readers and clients. The following is an excerpt from the memo:

### Broadcast Licensee Public Inspection File

"As part of its obligations as a public trustee, a broadcast licensee must make available for public inspection and copying certain materials and records. Recently, the Federal Communications Commission announced that Public File infractions constituted one of the most frequent violations noted by Field Office Bureau personnel when making routine inspections. This Memorandum discusses the nature of the materials and the procedures, which must be implemented to insure that public access is uninhibited. Failure to maintain a Public File, or keep it updated, can subject a licensee to monetary forfeiture. Refusal of all public access to the Public File can result in more severe sanctions."

(Continued on page 4)

## The Most Reliable STL



NOW AT A BETTER PRICE!

LJ STL SYSTEM ONLY **\$ 3,850** FOR LIMITED TIME.

- ✓ Frequency Agile
- ✓ 2-year warranty
- ✓ 24 hour Tech Support
- ✓ Aural Composite MPX
- ✓ Outstanding Audio Specs
- ✓ Digital Frequency Readout
- ✓ Front Panel Frequency Selection

**10W**

CALL TODAY OUR TOLL-FREE NUMBER!

**1 877 239 8462**

**BEXT**

1045 Tenth Ave • San Diego, CA • 92101  
USA TEL: 619 239-8462 FAX: 619 239-8474

[www.BEXT.com](http://www.BEXT.com)

Price valid while supplies last or until December 2002

## Quality Parts and Service from

**ERI**

Don't be fooled by:

- used parts sold as new
- misfitting imitations
- misguided technical support

**Insist on the Original Factory Warrantied Parts**

**Electronics Research, Inc.**

7777 Gardner Road • Chandler, IN 47610

(812) 925-6000 • Fax (812) 925-4030

[www.ERlinc.com](http://www.ERlinc.com)

Attention: AM, FM & TV Broadcasters  
and Recording Studios

*The Classic is Back!*

## **SYMMETRA-PEAK 2000™**

Audio purists once again have the ideal passive tool to deal with problem voices. Years ago, Symmetra-Peak™ was the industry standard for restoration of voice symmetry ahead of any voice processing.

Modern day audio processing systems imitate, but never duplicate, the basic tonal balance provided by the totally passive Symmetra-Peak™.

Best of all, Symmetra-Peak 2000™ has been shrunk in size so it can be installed inside your audio console or equipment enclosure without wasting valuable rack panel space. The price has also been shrunk, without sacrificing quality or performance. (Flat 15-20,000 Hz ±0.5dB)

By designing Symmetra-Peak 2000™ only for 600 ohm balanced operation, with compact modular mounting, its modern miniature introductory price is only \$299.00 FOB Carle Place, NY, plus any local taxes.

SYMMETRA-PEAK 2000™ is our newest quality product and we at Kahn Communications are most proud to add it to our menu of advanced high value broadcast products, which include POWER-side™ and POWER-side-CLEAR™.

### **KAHN COMMUNICATIONS, INC.**

338 Westbury Avenue  
Carle Place, New York 11514

New York Sales Office

212-983-6765  
800-570-0722

# **S.C.M.S. Inc.**

## **Charlotte, N.C.**

- ✓ Competitive Prices
- ✓ Experienced Staff
- ✓ New and Re-built RF
- ✓ New and Rebuilt Audio
- ✓ Representing Over 600 Quality Manufacturers
- ✓ Extensive Rental Fleet  
(RF, Codecs, Test Equipment, Audio)
- ✓ Used Trade-Ins Welcomed
- ✓ Custom Studio Design and Furniture
- ✓ Turnkey Installation Available



## **You Know We Know Radio**

800-438-6040 Fax 704-889-4540

www.scmsinc.com

# **In the Public Interest**

Continued from page 3.



## **Telecommunications Act 1996 in regards to your Public File.**

When license renewal comes around, it really isn't as simple as allowing your attorney to just fill out the necessary paper work. Any broadcaster who has been through this process knows, people wanting to view your Public File will visit you, in hopes they will find a reason to file a petition to deny the license renewal of your station. These visitors could be that of a "coalition group," a non-profit minority organization, your competition, or even some former (disgruntled) employee with an axe to grind, who may know the rules!

In cases where a petition to deny your station license, or a delay of a possible transfer, the FCC will consider the following:

- (1) Continually served the public interest, convenience and necessity;
- (2) Committed serious violations of the FCC's rules or Communications Act;
- (3) Committed other violations which, taken together, would constitute a pattern of abuse.

The only evidence in these cases is found in your Station's Public File, Station Log and FCC compliance of all rules and regulations. This is a very important file! It is your *only* documentation that proves what you have done to serve the community, and your only tool to ward off a delay or potential problem.

As we go to press on this November article for 2002, we have received many emails inquiring about "Pirate Operations" of both AM and FM stations. The following is an amusing little story, but one that we feel is important to pass on to broadcasters, as it is a lesson not only about "Pirate operations," but the FCC's policy on "willful and repeated violations."

The FCC recently visited a station broadcasting on a "pirated" frequency and discovered they had no proper license to operate this station. When the FCC agents arrived, they took field strength measurements of the station's signal and determined that the station required a license to operate. The FCC agents then interviewed "Mr. Pirate," and learned that the station was used as a Ministry for minority church in that area. "Mr. Pirate" admitted that his ministry owned the radio station equipment and operated the station. The FCC agent asked "Mr. Pirate" if he had a license for the station and "Mr. Pirate" replied that a friend had submitted an application to the FCC and had advised him that he could operate the station while the paperwork was being processed.

The FCC agent again advised "Mr. Pirate" that he could not operate the station without a license and directed him to place the station off the air. Although "Mr. Pirate" asked for time to let his listeners know that the station was going off the air, the agents said "no" and "Mr. Pirate" then directed another person to turn off the transmitter. The FCC agents then hand-delivered to "Mr. Pirate" a warning letter which advised him that operation of a radio station without a license violates Section 301 of the Act, ordered him to cease operation of the unlicensed station immediately, and listed the penalties for unauthorized operation of a radio station.

Would you believe that this station went back on the air again within two weeks of the original inspection? A licensed broadcaster filed a complaint with the FCC that their signal was interfering with another, so the FCC once again went out to inspect.

The station had moved to another location, and the FCC found the transmitter by using a mobile direction finding vehicle. Again, field strength measurements were taken and of course it was in violation. The station again was taken off the air. The pastor of the ministry now explained to the FCC that Mr. Pirate was the operator of the station and leased the space from the church. Mr. Pirate had purchased 50% of ownership from the person who had applied for the station. The FCC now issued a NAL to Mr. Pirate for "\$10,000, for operating a station without a license, and willful and repeated violation of Section 301 of the Act.

"Mr. Pirate" and the "ministry" tried to argue with the FCC that they were "duped" by a third party, and that they "didn't have to worry" about operating the station, especially after the FCC had been out once. This third party assured them that the FCC would not be back, and even if they did, they would only issue another warning. *Wrong!* The FCC slapped them with a \$10,000 fine, and now they are scrambling to determine who is ultimately responsible to pay the forfeiture. They asked the FCC to waive it, but the FCC responded with a resounding "NO." Now that can rock your world.

The reason for bringing this particular case to your attention is simply to let you know that the FCC isn't going to accept ignorance of the rules, being "duped" by someone else, or willful violation of broadcast rules and regulations. The Enforcement Bureau is just that, it *enforces* the rules to make broadcasters abide by them.

If you need help with your FCC Compliance, there are several ways that you can achieve it. We always appreciate your calls and emails, and we will do our best to lead you in the right direction, but you must put your compliance on your priority list, before you too, get inspected by the FCC's Enforcement Bureau.

*Avoid FCC fines. Orchard Media Services can help you with your FCC Compliance obligations. Call for rates on all services. OMS will come to your station. We can perform a "mock" FCC Inspection; evaluate your Public Inspection Files, Political Files, Station Logs, EAS Compliance and other FCC rules and requirements. Call Orchard Media Services for questions and information, at 760-243-4733 or via email @ PIFILE@aol.com*

# Contract Engineering

William Bordeaux – San Luis Obispo, California

Email: [bill@stationengineer.com](mailto:bill@stationengineer.com) Phone: 805-543-6855



## The Good, the Bad, and the Unsafe

The Webster's dictionary defines an accident as "an unforeseen and unplanned event or circumstance" and as "an unfortunate event resulting especially from carelessness or ignorance." Couldn't have said it better myself.

The most common thread in an accident is the "unforeseen and unplanned event" part. Having been in a few accidents myself over the years, I'm struck by the unforeseen nature of the situations. When pondering the events surrounding the accident, it's easy to see how all of the elements necessary for an accident have to be in place. Many times, people talking about an accident may say something like, "If only I had left the house a minute later," or "If I had only taken an extra second to be sure the ladder wouldn't move." My brother-in-law (who's an insurance claims adjuster) says if he had a nickel for every time someone said, "I never saw the other car," he could retire. Of course! If they'd seen the other car there wouldn't have been an accident!

The armchair quarterbacking that goes on, following an accident, hopefully will result in a person being more conscious of "unforeseen" possibilities that follow us around in our everyday life. Just thinking of unforeseen possibilities forces them to become "foreseen," and may help to eliminate them from the equation of elements that sum together to create an accident event.

### Learning to See Problems

My seven-year-old son has caused me to realize that this is a unique and learned process. Recently, his second grade class read the story of the little boy in Holland that plugged a hole in the dike with his finger, to prevent the sea from wearing away the dike and ultimately flooding his home and country. His homework required him to talk about the part of the story that he found most interesting. He told me that it was the part where the boy is trying to decide whether to leave to find help (which would surely jeopardize the integrity of the wall) or stay through the cold night, all the while keeping the hole plugged with his finger.

My son felt the thought process of the little boy was very interesting, since he could imagine various outcomes to the situation at hand. It struck me that for an adult, much of this thought process is automatic, while still unique in the world of a seven year old.

The thought process of the little boy with his finger in the dike is a little like the process of changing unforeseen events into foreseen events. Once someone has entertained the possibilities of "unforeseen" outcomes from a situation, they are well on their way to preventing an accident.

### Trust No One and Carry a Big Grounding Stick

When working on equipment, especially high voltage broadcast transmitters, it's critical that we try to imagine the unimaginable. When troubleshooting equipment, or just doing regular maintenance, avoiding an accident means not only following manufacture's safety recommendations, but also looking beyond the normal operation of equipment and imagining what sort of unplanned event might occur.

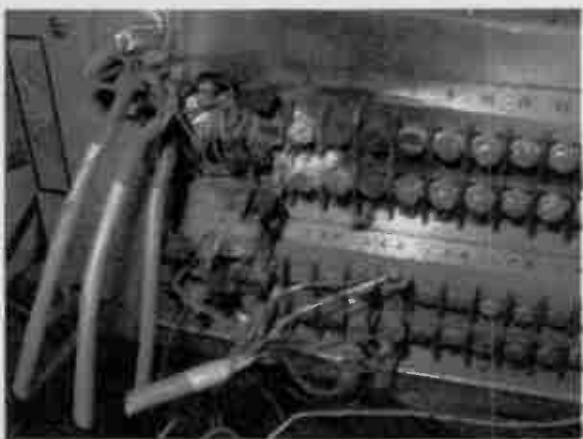
Over the years, we've learned not to trust circuit breakers that say they're "Off" or bleeder resistors that are supposed to safely discharge high voltage capacitors. With the proper amount of skepticism, you can imagine these devices not doing their jobs. It would follow then, that a voltage test on the output of the breaker and careful use of the grounding stick on the capacitor would prevent those obvious unplanned events and the resulting "accident."

Some may accuse me of being overly cautious, but it comes with having a vivid imagination, I guess. I tend to look at a situation and imagine all of the things that are possible, and some that aren't even possible. A good example of this is my caution around plate voltage and current sample lines that exit a transmitter, and connect to your benign remote control system. Some of the newer transmitters have wonderful circuits that sample the voltage and send out a buffered sample through an op amp circuit. These seem to be safe enough. But take a look at some of the sampling circuits on older transmitters, and imagine the failure of a component or two, or a bit of dirt in the right place, and you've got an accident waiting to happen.

### High Voltage "Gotcha"

We'd been nursing along a mid-seventies vintage 2,500-watt transmitter that uses

a simple solid state IPA and a tube final. Everything about this transmitter is funky, from its vacuum caps for output tuning and loading, to the plate circuit that has a ground reference through the sample circuit and plate current meter. I studied the schematics to the transmitter and decided to give this beast a wide birth anytime it was on.



(Continued on page 7.)

A failed plate sample melted the back of a Moseley remote.



## ECONCO Rebuilt Power Tubes

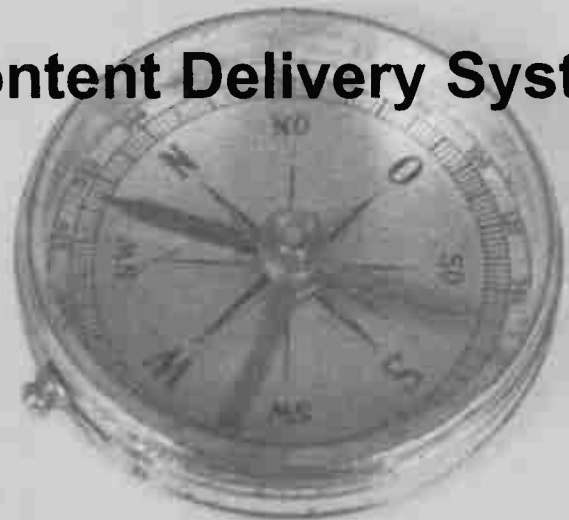


Approximately  
One Half the Cost of New  
3,000 Hour Unconditional Guarantee  
Call for Your Quotation

ECONCO 1318 Commerce Ave., Woodland, CA 95776  
Phone: 530-662-7553 Fax: 530-666-7760  
Toll Free: 800-532-6626 Website: [www.econco.com](http://www.econco.com)

## CDS32

### Content Delivery System



The way to connect with your  
listeners for enhanced presence.

**CDS32 serves your audience  
more than just great audio!**



Pristine Systems

[www.pristinesys.com](http://www.pristinesys.com)

1-800-795-RADIO

# Don't Turn Your Mic On Without It



The NEW SUPERELAY controls "On The Air" warning lights and gives you six relays for utility switching.

- New compact design mounts in one-third rack space
- Plug-in Euro-style connectors for quick and easy installation
- Flasher for warning lights and AC power supply built in

In stock, only \$285 list. Full specs and dealer list at [www.henryeng.com](http://www.henryeng.com)



Rack Mountable



Plug-in Installation



No Wall-Warts!



Henry Engineering  
(626) 355-3656

## Sports Broadcasts



## Interface Solutions



## Communications

Live interviews or remotes? You've got to check out our new ComPack - Universal Telecom Interface and RemoteMix Sport, our most popular broadcast mixer. Both ComPack and RemoteMix Sport interface to PBX systems, cell phones, and analog lines for true flexibility. We also offer a full line of passive interface tools like the Daptor Two - Wireless Phone Audio Interface.

Data sheets, specs, prices all at [www.jkaudio.com](http://www.jkaudio.com)

## JK Audio

800-552-8346 815-786-2929 fax - 815-786-8502 [info@jkaudio.com](mailto:info@jkaudio.com)

Broadcast equipment at exceptional prices.

Customized automation systems.

Complete systems integration.

Quality pre-owned equipment.

Pre-wiring packages.

Broadcast equipment repair.

Complete engineering services.

Toll Free: 866-239-3888  
Tel: 814-239-8323  
Fax: 814-239-8402  
[www.lightnerelectronics.com](http://www.lightnerelectronics.com)

Lightner  
Electronics Inc.

Your Ultimate Solution.





# Radio Guide

www.radio-guide.com

Radio's Technology Resource

www.radio-classifieds.com

PO Box 20975, Sedona, AZ 86341 Phone (928) 284-3700 Email: radio@broadcast.net

## Free Radio Guide Subscription

As of January-2002, **Radio Shopper** is now **Radio Guide**. We have changed our name to better define our primary focus.

**Radio Guide** is a name that you may be familiar with. A few years ago, I published this nuts-and bolts, service-oriented publication for the radio industry. As this industry developed, it became apparent that there were fewer "wire and solder" broadcasters out there, and the need for a publication, dealing with such focus, became less apparent.

While that may still be true, I've found that there's an even greater need for a "radio tools," or problem-solving approach. So much technical knowledge is becoming lost, for lack of an effective venue. It's not so much the component-level problems we face today, but equipment and system installations and wiring, digital audio techniques, and proper maintenance and repair procedures. So that's where we're headed.

You've got to deal with what you have in the rack right now – and every day. Yes, we'll cover the new gear, because you will always need that knowledge – but not at the expense of keeping your current gear operational. Our focus will show you how to select and install the new, but we will also reveal how to keep the used gear functioning *like* new. There won't any less of what you've been getting – just more of it – and more useful.

Our current advertisers are the ones who have supported the **Radio Guide** concept and content, for a very long time. It is *their* support, and *your* response that has helped to make this publication what it is. It's a system that works for many people, and I will always listen to every one of you – **Ray Topp**

### Choose One:

- Enter a Free Subscription
- Change Your Existing Address

### Send It:

Fax: 866-728-5764  
 Web: [www.radio-guide.com/subform.html](http://www.radio-guide.com/subform.html)

**DEADLINE:** Subscriptions for the December-2002 issue, must be received by November 31st.

### Personal Information:

### My title is:

- Chief Engineer
- Station Manager
- Program Director
- Contract Engineer
- Station Owner
- Other: \_\_\_\_\_

Name: \_\_\_\_\_  
 Company: \_\_\_\_\_ Address: \_\_\_\_\_  
 City: \_\_\_\_\_ State: \_\_\_\_\_ Zip: \_\_\_\_\_  
 Phone: \_\_\_\_\_ Fax: \_\_\_\_\_  
 E-Mail: \_\_\_\_\_

You can mail this form to: **Radio Guide, PO Box 20975, Sedona, AZ 86341**

*Attention: AM, FM & TV Broadcasters  
and Recording Studios*

*The Classic is Back!*

## **SYMMETRA-PEAK 2000™**

Audio purists once again have the ideal passive tool to deal with problem voices. Years ago, **Symmetra-Peak™** was the industry standard for restoration of voice symmetry ahead of any voice processing.

Modern day audio processing systems imitate, but never duplicate, the basic tonal balance provided by the totally passive **Symmetra-Peak™**.

Best of all, **Symmetra-Peak 2000™** has been shrunk in size so it can be installed inside your audio console or equipment enclosure without wasting valuable rack panel space. The price has also been shrunk, without sacrificing quality or performance. (Flat 15-20,000 Hz  $\pm$ 0.5dB)

By designing **Symmetra-Peak 2000™** only for 600 ohm balanced operation, with compact modular mounting, its modern miniature introductory price is only \$299.00 FOB Carle Place, NY, plus any local taxes.

**SYMMETRA-PEAK 2000™** is our newest quality product and we at Kahn Communications are most proud to add it to our menu of advanced high value broadcast products, which include **POWER-side™** and **POWER-side-CLEAR™**.

### **KAHN COMMUNICATIONS, INC.**

**338 Westbury Avenue  
Carle Place, New York 11514**

#### **New York Sales Office**

**212-983-6765  
800-570-0722**

*And now let us interrupt this commercial with another commercial ...*

## **Want to Air-Check the Latest Stations to Install POWER-side™?**

Call us at 800-570-0722, and we will also tell you how these stations increased their coverage day & night, dropped power line "buzz," and penetrated into buildings - solving many of AM's most serious problems.



**Kahn Communications, Inc.**

**501 Fifth Avenue (Suite 2002), New York, New York 10017**



# Contract Engineering

Continued from page 5.



I became really concerned about our safety when on one occasion, pushing the "plate on" button caused the Plate Current meter to explode and fling its plastic cover, meter scale and movement across the transmitter room. It's makes for a funny story now, but it narrowly missed the face of the engineer working on the rig and put a nice divot in the wall several feet away. From that point on, we turned the transmitter on using the handle of a broomstick while standing to the side.

The transmitter was later retired, when a failure in the plate sampling circuit sent high voltage through the wiring harness and out to the poor old remote control. The result was truly amazing to see. Imagine working around the remote control when this failure occurred. I've never liked the way that some manufacturers choose to get a high voltage sample available to the outside, and this incident only confirmed my suspicions.

## You Think PCB's are Bad – Try Mercury!

At another transmitter site, we were charged with maintaining another "off brand" transmitter. This transmitter was a true one-of-a-kind. The height of the transmitter building's ceiling was barely over seven feet, which required the manufacturer of the transmitter to cut the box in half and locate the halves side by side. The transmitter was then about the size of a large chest type freezer. Working on this beast required a contortionist with a set of very small tools! Besides the mechanical nightmare this transmitter presented, it also contained a few design techniques that can only be described as "unique." One of the most unusual aspects of the transmitter was the mercury switches that were used to switch line voltage to the primary of the plate transformer.

The mercury switches consisted of a sealed cast iron container partly filled with mercury. When a coil around the switch was energized, the mercury is squeezed up into a cham-



Exploded 3-phase plate transformer contactor using mercury switches.

ber where it completed a connection between the AC power line and the input to the PA transformer. All goes well until one of the three mercury switches fails and the transformer no longer receives the proper three-phase power. The resulting imbalance of power stresses the transformer, rectifiers and remaining mercury switches. Eventually something's got to give. Some times it was the transformer, sometimes the rectifier – and once in a while a mercury switch.

When these mercury switches blow, it's absolute devastation. There are chunks of cast iron and exploded mercury all over the inside of the transmitter. The clean up is nothing short of a toxic chemical spill (which it is). In the midst of this mess, you have to wonder why anyone would ever design a piece of equipment like this.

We've all been warned about insuring capacitors are discharged with a grounding stick, and making sure that all power to an equipment cabinet is turned off at the breaker. We've learned our lessons about proper safety grounding and keeping one hand in the pocket while working electrical circuits (just in case). But what about those "unforeseen events?" What about exploding plate current meters and mercury relays? Or failed plate sample circuits that put plate voltage onto low voltage sample lines? Or what about a chunk of ice falling from 200 feet up a tower?

We would be wise to consider the "unforeseen" before venturing into a project or situation, especially if it's something you've done "a thousand time before." Like the little boy sticking his finger in the dike, you need to consider the myriad of events that may result from your activities.



A failed mercury relay.



## SPACEWISE<sup>®</sup> GIVES YOU LOTS OF CHOICES!

### With GREAT CUSTOMIZABLE STUDIO FURNITURE FOR EVERY BUDGET!

OUR SYSTEMS ARE BUILT OF GENUINE QUALITY FURNITURE PRODUCTS, WOODS & NAME BRAND LAMINATES!  
OUR 5-8 COMPONENTS ASSEMBLE EASILY WITH OUR LARGE SCALE STURDY MODULAR CONSTRUCTION!  
STANDARD SHIPPING IS CRATE & FREIGHT FOR SAFE DELIVERY! DESIGNING BY A VETERAN CE & FORMER DJ!



**OUR #1 SYSTEM FOR YEARS!**

6 RACKS OR 4 SHELVES  
ROOM FOR 2 PC'S  
CABLE BLOCK PLANE

**DELUX<sup>™</sup> SYSTEMS FROM \$2090!**  
ABOVE 30" FULL SYSTEM ONLY \$4395!

**GREAT STYLING!  
AFFORDABLE PRICING!  
QUALITY BUILT!**

UP TO 6 RACKS OR 4 SHELVES!  
ROOM FOR 2 OR MORE PC'S!  
CABLE BLOCK MOUNTING!  
PASSIVE VENTILATION SCHEME!



**BTW...NO KITS SOLD HERE & NO PLASTIC MOLDINGS!**



5 REVERSIBLE RACKS OR SHELVES  
NEVAMAR<sup>®</sup> COLOR HARD LAMINATES  
100% SOLID WOODS AND PLYWOODS

**DQS PREMIUM SYSTEMS FROM \$4495!**  
ABOVE SYSTEM LESS RACKS ONLY \$5495!



USE AS A SERVER STATION  
A PRODUCTION STUDIO  
A SMALL AIR STUDIO  
VIDEO OR AUDIO POST PROD

CPU PLACEMENT &  
SERVER STORAGE

**DAVES BUDGET PRODUCTION OR VIDEO EDITING SYSTEMS...COMPLETE FOR \$2695!**

**RADIAL SYSTEMS FROM \$2329!**  
ABOVE 38" SYSTEM LESS RACK \$5065!



PLY AND SOLID WOODS!  
100% COLOR CHOICES!  
CUSTOM SIZED AS REQUESTED!

**ALLTALK PREMIUM SYSTEMS**  
SYSTEM SHOWN JUST \$5295

**CALL US NOW AT 800-775-3660 FOR COMPLETE PRODUCT INFORMATION!**

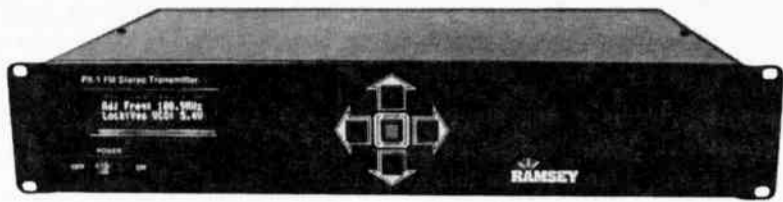
SEE US ON THE WEB AT [spacewise.com](http://spacewise.com) E-Mail us at [info@spacewise.com](mailto:info@spacewise.com) Fax us at 480-704-6149

SAVE 5% OF MORE IMMEDIATELY, NOW THROUGH 2002 WITH OUR NEW CORPORATE MULTIPLE PURCHASE DISCOUNT PROGRAM!

**SPACEWISE BROADCAST FURNITURE INC -- "Quality Furniture For Every Budget!"**

# THE RAMSEY PX1

## 35W FM STEREO EXCITER/TRANSMITTER



- Frequency Agile – 87.5 to 108.0 MHz
- Digitally Synthesized PLL
- Temperature and VSWR Protected
- 120/240/12 VDC Power with Auto Battery Back-up

**ONLY**  
**\$1795<sup>95</sup>**

The PX1 was designed to fill the needs of the low power or community broadcaster. Set-up and use is fast and simple with just 5 buttons to access all parameters – power, frequency, modulation, and more. The 2-line vacuum fluorescent display gives you “at-a glance” verification of all important functions. The micro-controller continuously monitors frequency, temperature, deviation, etc. and makes subtle adjustments on the fly-like a “virtual” station engineer.

Two balanced inputs (XLR) are provided, as are inputs for SCA and RDS (BNC) RF Output connection is type “N”, output power is adjustable from 1 to 35 Watts.

If you're setting up a new station, we also supply consoles, microphones, antennas, feedline, and more.

### AVCOM-RAMSEY TECHNOLOGIES

793 Canning Parkway • Victor, NY 14564

Order Toll-Free: 800-446-2295

www.highpowerfm.com • sales@ramseyelectronics.com

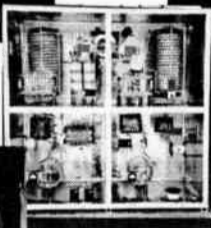
## AM Antenna Solutions



LBA Tunipole™  
Folded Unipole Systems



RF Components



Diplexer, Triplexer and  
Phasor Systems



Antenna Tuning Units



**LBA**  
Since 1963

LBA Technology, Inc. is your proven supplier of innovative, digital-ready AM antenna systems. Our products include tuning units, phasing systems, multiplexers, AM/ wireless isolation systems and components for every power level. We help hundreds

of broadcasters in the USA and worldwide to

**reach further – sound better!**

**LBA Technology, Inc.**

3400 Tupper Drive, Greenville, NC 27834

800-522-4464 / 252-757-0279 / Fax 252-752-9155 / Email Lbotech@Lbagroup.com

www.Lbagroup.com

## Radio Chronicles

Barry Mishkind – a.k.a “The Eclectic Engineer”

Email: [barry@broadcast.net](mailto:barry@broadcast.net) Phone: 520-296-3797



### What is This Thing Called Broadcasting?

Part-10 – WWJ Brings News to the World

In 1920, listening choices were limited for the few radio enthusiasts who owned receiving sets. Most transmissions that could be heard were from commercial stations involved in sending and receiving private messages. Amateur stations, for the most part, operated sporadically and usually with low power – usually only a watt or three.

Although there was much less RFI in those days, that low power level, coupled with the typical crystal detector sets of the time, generally limited reception to stations within about 25 miles.

It also was not a cheap hobby: Just the parts alone for a receiver cost around \$8.00, and transmission gear was an additional expense. Nevertheless, the Detroit Amateur Radio Association (D.A.R.A.) was an active group of several score of local amateurs who had been active in wireless transmissions since the earliest days of the century.

One of these amateurs was Frank Lyons. His station, 8AM, was well located with a high antenna, and could be heard further than most of the other local stations. Lyons, his brother Michael DeLisle Lyons, and Thomas (Ed) Clark were in the forefront of the amateur community, Michael Lyons being the editor of the D.A.R.A.'s Detroit Radio News.

Thus, when the 200 meter (1500 kHz) spot of the dial crackled to life with 20 watts in August 1920, it was indeed something “special” for residents of Detroit. The new sounds came from the Detroit News Building, which had opened 8MK with a series of concerts, leading up to what some would credit as radio's first scheduled newscast on August 31, 1920. WWJ refers to itself as “America's First Commercial Radio Station.” Re-licensed the next year as WBL, and then changing in 1922 to WWJ, 8MK was clearly one of the pioneer stations in the U.S., if not the world.

But, before we explore the issue of first-ness, let us enter the “Wayback Machine,” and listen in to the airwaves on August 20th, 1920. That evening, at 8:15 p.m., Frank Edwards first leaned into the transmitter mouthpiece and announced, “This is 8MK calling.” After a musical program was transmitted, Edwards called out “How do you get it?” Interestingly, unlike modern day listeners (aside from pirates) some of those listeners in 1920 had their own legal transmitters, so as soon as 8MK had made its announcement, and turned off the carrier, other stations began calling back, “It's coming in fine,” and “We're getting everything loudly and distinctly.” Talk about getting instant listener feedback!

### Founders

Of course, this did not come about by accident. It all started in 1902 when William Scripps, son of Detroit News founder James Scripps, became interested in the experiments of local wireless enthusiasts, especially Ed Clark.

Convincing his father to offer Clark financial assistance, William continued his interest in radio, eventually acquiring the 20 watt DeForest OT-10 transmitter and a license from the Department of Commerce.

Of course, there were those in the newspaper business who were less than enthralled with the new technology. For example, there was fear that if radio became popular, people would stop buying newspapers and drive them out of business. On the other hand, if radio failed to become popular, there would be ridicule. So, newspapers tried to put some distance between themselves and wireless. Jeff McQueen reports the original license for station 8MK named his great-uncle Mike Lyons and Radio News and Music, Inc. Even the first printed announcement of the inaugural broadcast was held until it was clear the station would operate.

Nevertheless, the Detroit News decided to put the necessary resources behind the fledgling station, so it would be more than an amateur curiosity. News and weather copy came directly from the editorial department at The News. Speakers were set up outside the building, so those without receivers could come and hear news and sports reports as they were received. Top level talent was hired, and the newspaper began printing the station schedule on the front page each day. 8ML became WBL, and then in March 1922, WWJ.



Photo from [www.wwj.com](http://www.wwj.com) website.

As the station became noticed and popular, WWJ moved to improve their facilities. From the 20 watt DeForest transmitter, the station quickly transitioned to a Western Electric Type 1-A, and 110, then 500 watts. Soon, WWJ was at as much as 1,200 watts.

With such a commitment, it is no wonder that WWJ became synonymous with innovation, being the first, or among the first, in many categories of broadcasting. The list is long. In its first two years, WWJ introduced sportscasts, live symphony, the first radio orchestra, religious broadcasts, the October 1920 World Series, a wedding and more. There was even a special broadcast of music for a local dance party on September 4, 1920.

(Continued on page 9)

# Radio Chronicles

Continued from page 8.



Over the years, the station continued to pioneer with play-by-play sports, broadcasts from an airplane (1928), university courses, a part in the first coast-to-coast network broadcasts, and, of course, entry into FM in 1941 and TV broadcasting in 1947.

Some of the most famous names in the country began their radio careers on WWJ. Among them were, Fanny Brice, Will Rogers and Fred Waring and the Pennsylvanians.

However, from its inception until today, WWJ has been known for its news product. From the pioneering news and election returns in August 1920 to today, WWJ has put a lot of resources into its coverage. Already by 1922, the station had provided a link with other cities, including Toledo, isolated when a sleet storm cut the phone wires. Local papers were able to print, by receiving the reports over the air. WWJ also helped find a missing 13 year old en route to St. Louis, locating the young boy in Ohio.

Clark and Frank Lyons convinced the police in Toledo to install a radio in one of their cars. The rapid apprehension of a burglar, after a radio call, sparked quick demand for radios in the patrol cars and in turn to the first police radio station, with the interesting call sign: KOP.

## Radio Autobiography

A couple of years ago, I was delighted to acquire a copy of a book printed in 1922. "WWJ - The Detroit News," is a fascinating look at how the station itself viewed the infant industry. Starting with the station's first two years of activity, including pictures and descriptions of the radio facility, its staff and the newspaper plant, the book included WWJ's schedule, as well as a list of other stations on the air in early 1922.

The chapter "Behind the Scenes" is especially interesting to modern broadcasters. Discussing studio construction, the book explains the studios were made "echo proof" by special "walls and ceilings, padded with felt two inches thick." Friar's cloth was hung over the walls and doors, to "deaden all sounds save those to be transmitted." And, the "newer type" of microphone was described as "much like a bronze mantel clock, except that it has no dial."

The resulting vibrations were said to be "impressed on the transmitter, which then projects them through the ether . . . on errands of intelligence and entertainment." Apparently they had no "liner cards" in those days!

Some of the "new" concepts that had to be taught to performers seem almost comical. The unresponsive microphone intimidated some artists who simply couldn't perform. Many were "spooked" by the lack of applause or laughter when they finished their part. The Detroit News reported one singer, Ernie Ball, was so surprised the microphone didn't offer applause after his performance that, in a rage, "he stuck his tongue out at the instrument, which seemed to relieve his feelings a lot!"

Others continued to perform in formal dress as they talked or sang on the air until they finally understood the audience couldn't see them. Also described was an "enunciator" which the engineer could illuminate to tell the performer, "Farther from the phone," "Louder," "Softer," and "Stop."

Very interesting were the chapters explaining in 1922 terms how radio worked, including instructions on how to build "Elementary," "Intermediate," and "Advanced" receivers. Diagrams and parts lists were included. An "elementary" radio might cost \$8, an "advanced" \$100.

For safety, a pictorial section on antennae gave advice on installing a lightning arrester. There was even a question and answer section to help anyone wanting advice on how best to receive WWJ.

That such a book was published in 1922 by the station itself really shows the level of commitment to broadcasting on the part of the Scripps' and the Detroit News. It is a wonderful look at the beginnings of our industry. And even viewed from a modern vantage point 82 years later, this history of WWJ was truly befitting of such a pioneer.

Over the years, like many stations did, WWJ jumped around the dial. In 1923 they moved to 580 kHz, in 1925, they moved to 850, then 800, 850, and 920. In the mid 1930's, the power was raised to 5 kW, and in 1941 the frequency was finally fixed at 950 kHz.



Owned by CBS/Infinity Radio since 1989, WWJ took advantage of deregulation to increase its power on the formerly "regional" channel to 10,000 watts days and 25,000 watts nights. Two more increases brought nighttime and then daytime power to 50 kW in April 2002.

## The "First" Question

Was WWJ the first Commercial Radio Station in the US? WWJ's claim took on added significance in 1936 when Lee DeForest got into the act, in 1936, proclaiming WWJ as the "First." However, DeForest liked to style himself as the "Father of Radio" and anointed several stations as "First" depending upon where he was. And, as we have noted in the past, the term "commercial" did not mean the same in 1920 as it does today.

What is clear though, is that the Scripps family and the other players involved in 8MK and WWJ helped foster the birth and growth of one of America's true Pioneer stations. From the original news reports in 1920, to the book published to popularize radio, to today's All News format, WWJ can proudly point to well over 82 years of service to Detroit. And that is certainly an accomplishment worthy of our attention.

Barry Mishkind, aka "The Eclectic Engineer," can be reached via email at "barry@broadcast.net". You can find his home page at "http://www.broadcast.net/~barry/" Of course, please do visit The Broadcast Archive at www.olderadio.com

## RAM BROADCAST SUPPLY

- Analog and Digital Mixers
- Analog and Digital Switchers
- Audio Digital Storage Systems
- Intercom Systems
- Studio Furniture
- Jackfields and Punchblocks
- Microphones and Accessories
- Audio Processors
- CD Players and Recorders
- DAT Record/Reproducers
- Mini-disc Record/Reproducers
- Phone Systems
- ISDN Products

One Stop Shopping  
Low Prices

WWW.RAMSYSCOM.COM

800-779-7575

Phone: 847-487-7575 Fax: 847-487-2440

## WHY NOT SWITCH TO MCI? COMPLETE FM/TV PRODUCT LINE



• ANTENNAS

• SPLITTERS

• NOTCH FILTERS

• HARMONIC FILTERS

• POWER COMBINERS

• CHANNEL COMBINERS

• N + 1 SWITCHING MATRIX

Coax switches from  
7/8" through 6-1/8"  
Control panels available.

Free UPS Ground shipping within the continental USA  
and Canada - SWITCHES ONLY



Micro Communications, Inc.

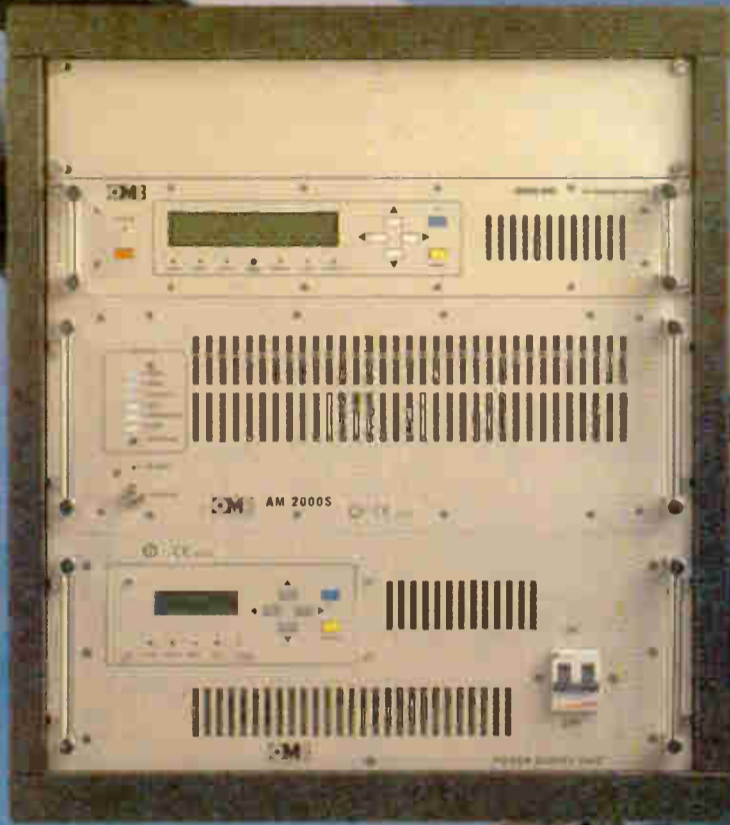
Toll Free: 800-545-0608

www.mcibroadcast.com

ISO 9001:2000 Registered



# HIGH TECH, HIGH QUALITY



- Mosfet technology and switching power supply
- Controlled by microprocessor
- Stainless steel cabinets
- High efficiency and low consumption
- Rack included
- 18 Months Warranty

- Low pass filter built-in
- Complete alarm system
- Synthesized 88-108 MHz (Broadband)
- Forced air cooling system
- Normally in stock
- Technical support

If you need more specifications, visits our web <http://www.omb.com>

- 2000 W. FM transmitter with stereo generator
- 4 bay antenna System (other antenna systems call OMB)
- 2 EIA Flange 7/8 Connectors

- 1000 W. FM transmitter with stereo generator
- 4 bay antenna System (other antenna systems call OMB)
- 2 EIA Flange 7/8 Connectors

**\$11,385.00**



**\$7,900.00**

The best equipment for FM, TV and Antenna systems



AMERICA 3100 NW 72 nd. Avenue Unit 112  
MIAMI, Florida 33122  
Ph.: 305 477-0973 - 305 477-0974 (6 lines)  
Fax: 305 477-0611

Internet: <http://www.omb.com>  
e-mail: [ombusa@bellsouth.net](mailto:ombusa@bellsouth.net)  
Videoconference: 1 305 5940991/92

# The Studio Site

By Allan Soifer – Ottawa Ontario, Canada

Email: [asoiferaudio@broadcast.net](mailto:asoiferaudio@broadcast.net) Phone: 613-820-6974



## Clean Audio is Happy Audio

We have touched on many different aspects of renewing, upgrading, and re-equipping the broadcast studio. Let's have a good look at the basic studio infra-structure – the wiring systems between studio and control room, or studio and rack equipment. Specifically, we'll focus in on maintaining quality pathways for signals and ground return. Physical/mortal danger may exist if wiring and grounding are improperly performed. Your local electrical code serves to protect you – obey it without compromise!

All of us have heard of 'those' studios where everything seems hot to the touch, pops, cracks and hums emanate from the monitors and talent is constantly getting little shocks from the mic. Believe it, there are more deathtraps of this description around the nation that one would like to know about!

Installing wiring, that complies with both local codes and common sense safety is not a difficult thing to do. One should start by drawing up a list of all the needed circuits and runs. Include as many AC circuits as needed and provide lots of extra audio runs – you will congratulate yourself on this wise move, later on. This is the planning stage that will be amended and changed around as often as different folk give input. Get everyone's opinion and include as much of all suggestions as your budget allows for. It is always easy to ignore pairs of wires not needed right now, but very difficult to cope with when you need two more signal pairs and they aren't there.

When planning and executing new wiring and interconnection, there are four major areas that must be addressed to achieve outstanding audio:

- \* PROPER POWER SYSTEMS AND GROUND INSTALLATION
- \* GOOD INTER-CONNECTION METHODS
- \* RF IMMUNITY
- \* SUFFICIENT HEADROOM AND S/N RATIOS

Let's jump right onto the AC power question. After determining how many individual circuits are needed, be sure and install wire and fixtures rated *above* your average current draw. For example, if you are running 20-amp circuits, ensure that your wiring and componentry is rated for 30 amps. You will never have to worry about overheating and fire dangers, if your circuit breakers are 20-amp tripouts. The slightly larger wire will also offset any annoying voltage drop due to line length.

Grounding is absolutely critical here. If you are unfamiliar with safe AC grounding, leave this to experienced pros, or get the right textbooks and inform yourself. All AC must be in steel conduits for shielding purposes. The largest contributor to audio noise and interference is still the AC line, and power line related stuff. Separate the physical AC conduit run from all other signal pairs by at least 12 inches – much more if space permits. Save yourself hassles and potential shock hazards, and *never, never* try to include AC supply voltages on punch-down blocks with audio and other signal lines.

Aside from the illegality according to the code, it's a damned unsafe practice that still exists in far too many stations. For the sake of a few dollars (probably less than \$10.00), use the proper terminal strip and some insulating covers for on-air lights and convenience AC supplies. A better suggestion would be to use low-voltage DC for warning lights and remote start functions.

For some critical installations, separate AC feeders and transformers are utilized, to isolate inductive noises from audio paths. It is essential that, when separate AC circuits are employed, all high power switching equipment be kept off these lines – stuff like SCR lighting dimmers, motor switching, air conditioning, high power vapour lamps, even fluorescent lighting. All of these are sources of electromagnetic interference (EMI). To further isolate noise producing sources, all audio and other signal-related pairs should be enclosed in a separate (from the AC lines) steel conduit, with appropriate grounding.

It's not sufficient to depend on the third wire ground of rack components, etc. Using a ground wire to a ground lug or connection point, and tying that together with AC grounds (third wire) and all conduits, will guarantee a good clean ground. If something is installed that causes a hum, then you know its ground is improper. Never clip the ground lead off the power plug, or use cheaters (three-wire to two-wire adapters). That manuver is both illegal everywhere, and is potentially a lethal shock hazard.

Tie all equipment together in a star-ground configuration with *insulated* grounding lines, to prevent random connections to other grounds (and thus prevent ground loops). Review star-ground practices if you are not sure, but they are fairly simple. Start at one component on the rack, or use the console as start point, Run an insulated line from this ground point to the next component's ground, continue until you have returned full circle to the first point, then extend the ground to true earth ground at one point only! Don't cheat, use real ground wire, approved for that purpose. Do not allow this 'summed' ground to contact anything other than the main building ground, at the utility entrance. Use your own clamp. Include in this star the grounds for all AC lines, and all audio runs or other signal runs.

Do not create a ground where one does not exist, simply extend the star to include any ground on a component or cable that already exists. Since you are connecting all these components to the same AC phase, then all ground potentials should cancel out, and with one ground, no loops should exist. This should cancel any hum induced by varying ground potentials, and also ensure safety between components (no shocks when touching two items). In the unlikely event that the utility ground is not there, make sure that an actual ground is properly prepared – long ground rod, buried deep in earth, with appropriate soil conditioning for conductance as needed. (Continued on page 12)

# BESCO

INTERNACIONAL

World Leader  
in  
AM - FM  
Transmitters

"Now in our 34th year"

## 100 AM & FM Pre-Owned Units in Stock

- ✓ ALL - Powers
- ✓ ALL - Manufacturers
- ✓ ALL- Instruction Books
- ✓ ALL - Complete
- ✓ ALL - Spares

Call and take advantage of our liberal trade-in plan.

Tune and test on your frequency, available on site.

Complete inventory on request.

Dick Witkovski — President

Robert Malany — National & International Sales

New Location

### Besco Internacional

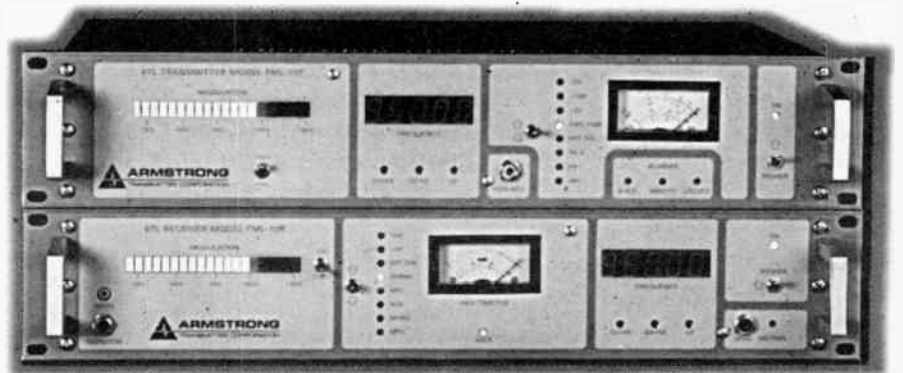
New Location

2105 Anthony Drive, Tyler, TX 75701

Phone (903) 561-6810 Fax (903) 561-4350 Email: [besco@goquest.com](mailto:besco@goquest.com)

Visit our website: [www.besco-int.com](http://www.besco-int.com)

## Frequency Agile STL Systems



▲ If you are looking to deliver clean, crisp audio to your transmitter via microwave, Armstrong FML-10 STL system offers unsurpassed audio purity in a rock-solid, feature-packed package.

▲ Built to tough manufacturing standards throughout, FML-10 system features microprocessor controllers, advanced PLL circuitry, ultra linear VCO and front panel frequency programmability with digital frequency readout.

▲ Currently in service at over 300 stations in 21 countries, this field proven design is a "rock-solid" STL choice for any station.

Complete System Under \$5500.00  
Same Day Shipping  
30 Day Money Back Guarantee



### ARMSTRONG

TRANSMITTER CORPORATION

4835 N. Street • Marcellus, NY 13108 • PH: 315/673-1269 • Fax: 315/673-9972  
E-mail: [info@armstrongtx.com](mailto:info@armstrongtx.com) • [www.armstrongtx.com](http://www.armstrongtx.com)

# The Studio Site



Continued from page 11.

## Signal Interconnection

Volumes are now written about modern impedance matching of equipment. Suffice it to say that the old Bell phone standard of 600 ohm line matching has ceased to be relevant with modern audio gear. Although many of us have been trained to think in that fashion, it's time to wake up and smell the fresh coffee brewing. Modern broadcasting goodies tend to have low impedance output drives, typically 50 or 60 ohms, with input impedances of 100K, or higher. The output Z of 50-60 has been found ideal for the current type of foil-shielded audio cabling in use. Some advantages of this new standard are less generated heat from the source equipment, lower noise pickup by interconnect lines because of the lower line impedance, and a much greater length of cable available before high frequency roll-off – up to ten times as long!

A word of caution: Before changing all your build-out resistors on DA's etc., to change the output impedance, consider what each power supply can safely deliver – more current will be needed at higher frequencies as the output impedance drops down to new low levels. Do the math and check specs before making any sweeping changes. Use low loss cabling in all new runs to be safe. Watch out for double grounding (only one end of audio shields is to be tied to ground). Connect only *one side* of audio ground (or foil or shield) to the star system. The other end (on audio lines only) is left unconnected to prevent injection of hum and noise. It is typical to ground the "send" end of an audio cable, rather the "receive" end. Again, consult a manual or experienced tech for proper grounding techniques.

Wiring jackfields can present a unique challenge to the double-grounding situation. The best way is to tie all ground drain lines together at the equipment ends – both input and output – but *not* at the jackfield. Then, at the jackfield, one can buss all grounds together and tie them to the star ground, with insulated wire. Even better would be to use ground switching jacks. ADC, Switchcraft, and Audio Accessories make them.

## RF Immunity

Nothing on earth is totally immune to the interception and conversion of RF energy. When we say that a circuit or line is RF immune, we are really stating that the intercepted Radio Frequency energy is being dissipated before detection and further amplification. The presence of RF problems can sometimes sound like increased high freq. noise, an unusual 'bubbling' sound, and may even include audible detection of the RF signal. In today's wireless-mad society, it is inevitable that some form of stray RF attempt to find its way into your studio wiring. Of course, close proximity to one's own transmitter sets the stage for a host of these problems. The open-at-one-end shield is great for grounding, but can act as an effective antenna. One cure is to tie the open shield end to its own chassis ground through a high-quality ceramic capacitor, about 0.01uF.

Specialized circuitry using op-amp configurations, LC filters, and Common Mode Filters may be called for in difficult cases. Employing special ferrous conduits for audio cabling and using EMI preventative seals and gaskets on conduit fittings may be

mandated at some transmitter installations. In extreme cases, where a studio must be built in a very high RF field (especially like that found near a TV transmitter) a screened room must be constructed.

## S/N Ratio Matching

The ideal studio install will have all audio components running at a maximum of a 'nominal' 0 VU audio voltage amplitude of +4 dBu. Do not confuse this reference point with digital recording levels, and other input or output readings. The actual measured audio output voltage at the output terminals (when the meter hits that '0' point) should be +4. When your studio is properly set up in this manner, typical output noise floors can sink to -93 dBu, and a potential dynamic range (signal-to-noise) of 120dB can be obtained – more than sufficient for crisp, clear, punchy audio sent to the transmitter! Reference books such as the Audio Cyclopedia, or Yamaha's audio manual offer good instruction in level matching for audio chains. If the demand warrants, perhaps that subject can be dealt with here in a recap article in the future.

One of the common problems is the existing dependence on the VU meter, an outdated and outmoded instrument at best. VU's can only indicate slow, average program material, and were really invented and developed by Bell Telephone Labs back in the 1930's for speech only. Music, a very complex waveform, was not given serious consideration in the makeup of radio programming, back then. The instrument of audio measurement that is far more accurate and useful is the peak program meter, or PPM.

Using these meters exclusively, or next to regular VU indicators, will give the operator superior indication of program material levels, but with a new and more exact control over excessive program peaks. PPMs can be obtained in either standard meter form, or as LED 'ladders.' Another worthwhile addition to a good studio would be a specialized loudness meter, which combines the ease of reading of VU-type meters, but offers the accuracy of PPMs. Dorrough Labs puts out such a meter, and it is invaluable in judging true peaks and loudness, versus average program material. Adjusting station compression becomes much easier when observing the final audio on such a loudness indicator.

Let me repeat my earlier caution: This article is intended as a refresher for those who have done studio wiring previously, or as an explanation of the work involved. If you have not yet had experience in safe wiring and grounding practices, I urge you to seek competent professional guidance before attempting anything described herein. Physical/mortal danger may exist if wiring and grounding are improperly performed. Your local electrical code serves to protect you – obey it without compromise! This writer and Radio Guide waive all responsibility for any incorrectly performed wiring, and any resulting hazards or accidents.

As with all electronic systems, there may be more than one acceptable method of achieving the same result. Just remember to employ the safest method, and that all applicable codes and regulations must be followed. Like the car salesman says, your mileage may vary.

Allan Soifer lurks and works as a consultant/audio engineer in Eastern Canada, and may be reached at 613.820.6974, or emailed at [asoiferaudio@broadcast.net](mailto:asoiferaudio@broadcast.net). Individual questions may be answered as time permits.

# RF Specialties®

EAST: Pittsburgh 866-736-3736, Philadelphia 888-260-9298  
WEST: California-North 888-737-7321, South 800-346-6434  
NORTHWEST: Seattle 800-735-7051  
SOUTHWEST: Texas 800-537-1801, 888-839-7373  
CENTRAL: Missouri 800-467-7373  
SOUTH: Florida, 800-476-8943

- ¥ Microphones
- ¥ Mic Processors
- ¥ Cable & Connectors
- ¥ Antennas
- ¥ Towers
- ¥ Transmission Lines & Accessories
- ¥ Copper Strap & Screen
- ¥ Transmitters
- ¥ Exciters
- ¥ Remote Control Systems
- ¥ RF Amplifiers

Our name says RF,  
but we have EVERYTHING  
from the microphone to the antenna.

Microwave Systems

Consoles – Analog and Digital

Recording Equipment

Monitor Amps and Speakers

Headphones

Audio Processors – Analog and Digital

www.rfspec.com  
RF is GOOD for You!

# Computer Connection

By Tommy Gray – BTSG Software  
Email: tg@btsg.com



## Building a New Station Computer

Over the last few months we have talked a lot about maintenance, upgrading, and proper system care. In this issue, we will discuss building a new machine for your station. If you are like a lot of folks, you have been running "Old Faithful" for several years, and barely escaped the Y2K thing. Now, all of a sudden, you are starting to feel like you are "Driving a Dinosaur." At home, and just about everywhere else, you are using more powerful and much faster machines. Budget considerations are the reason a lot of stations are still running older DOS-based systems, or older Windows 95/98 machines.

In the past, it could be an expensive proposition to build a good machine for your station. Now, with hardware prices dropping to respectable levels, you are in a much better position to build that long-awaited system. There are a few things to note here, with regard to that system, before you go out and get that bargain, only to find out that "you get what you pay for." On television, and in magazine ads, these days you see a lot of system manufacturers selling complete systems for just a few hundred dollars. At first glance, these systems may seem like a great find, but by the time you add in all the necessary hardware to make these machines perform to broadcast specs, you fill soon find that you have not saved much at all.

### Operating System of Choice

No one will argue that the old DOS systems were usually reliable and very stable. The DOS operating system was somewhat limiting in the amount of system RAM you could consume with a program, and thus programs tended to be smaller and operated more efficiently in general. These days, the Windows™ operating system has opened up a whole new ballgame in system capabilities. At one time, the only "Multi-tasking" (being able to run more than one application at a time) we had, was limited to UNIX style operating systems. However, with each new version of Windows™, we have seen more and more capability in this department.

Today's professional versions of the Windows operating system are proving to have the inherent stability that was found in the DOS systems. What the older Windows 3.1, Windows 95, and Windows 98 lacked in crash recovery and reliability, Windows 2000 Professional and Windows XP Professional make up for.

There were several problems with Windows 95/98 (usually called Win9X these days) that were never resolved. These problems included kernel memory leaks, and a host of other problems too numerous to mention. Traditionally, in Windows, the way you were supposed to be able to recover the system from a crashed program was to simply hit Control-Alt-Delete on the keyboard once, and then select "End Task." The problem was (especially with Windows 95) that even though you could, many times, end a crashed program, you seldom recovered all the failed program's memory. This, coupled with the aforementioned memory leaks, led to the eventual necessity of rebooting the system to recover all the lost system memory.

Since I've mentioned "Memory Leaks" several times, let me define that for you who. A memory leak is basically a problem in an application, device driver, etc., which causes memory loss. Here is how it usually occurs. You start a program, or a system device driver, and the system has a certain amount of available memory. After a period of time the program loses memory that is unrecoverable or the device driver does the same. Over a period of time, this "small" loss or "leak" is not too much of a problem. Left unchecked, however, and you are in for an eventual crash or lockup when the available amount of system RAM is no longer sufficient to properly operate the system. This is when the crash or lockup happens. The only way to recover the memory with Win9X systems was usually to do a reboot.

### Better Crash Recovery

Here is where Windows 2000 and XP professional shine. Though Windows 98 was a little better with crash recovery, it still was not totally clean. Though reboots were less frequent than with Windows 95, they were still inevitable. There is also another problem that is not mentioned too often. That is the 47-day thing. It is said by Microsoft (or was a few years back) that Windows had a problem in many versions that would not allow it to operate longer than 47 days (I think 47 was the correct number) without a reboot. I won't get into the specifics of this right now as I seem to recall this was corrected in service packs. Try as they might, Win9X was still a little short in the reliability department, though some would say that Windows 95 OSR2 was better.

Windows ME was so short-lived and buggy that I won't even waste time talking about it in this article. Microsoft quickly abandoned it and came out with 2000. Windows 2000 professional was strictly that. It was, and is, a professional operating system. It only comes in two versions. There is the Windows 2000 Professional which is the successor to Windows NT Workstation, (but a lot better IMHO) and Windows 2000 Server, which replaced Windows NT4 Server.

The real beauty of these systems, and now the XP professional line as well, is that if you somehow crash a program, and lock it up tighter than a drum, you still can get out of it with the Control-Alt-Delete keystroke combination.

This time, select "Task Manager" and find the program in the "processes" list, highlight it and click "End Process." This will end the program, recover the memory, and your Windows system is still running. Occasionally, you may have to try the end task thing more than once, but it is usually good about recovery without reboot. I had a Windows 2000 Professional machine that ran for over 3 months nonstop, playing music without a reboot.

(Continued on page 14)

## Superior Broadcast Products

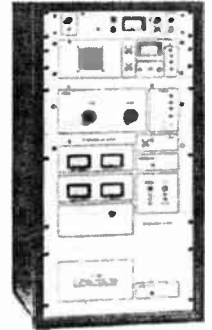
Quality Transmitter and Antennas at Reasonable Prices

### 20 Watt High Performance Digitally Synthesized Exciter

- \* Frequency-agile front panel frequency setting.
- \* Operates on 110 or 220 volts.
- \* Fast delivery.
- \* Power adjustment from 1 watt to 22 watts.
- \* One year parts and service limited warranty.

### FM Transmitter

With Solid State High Performance Digitally Synthesized Exciter



10,000 watt – \$18,990<sup>00</sup>  
12,000 watt – \$22,500<sup>00</sup>  
15,000 watt – \$25,000<sup>00</sup>

### 10 Watt FM STL Transmitter and Receiver

Both transmitter and Receiver  
\$3,500<sup>00</sup>  
STL antennas as low as \$495<sup>00</sup>

20 watt frequency-agile FM exciter. \$850  
100 watt solid state amp. \$995      2,500 watt FM transmitter. \$10,000  
300 watt solid state amp. \$2,000      5,000 watt FM transmitter. \$15,000  
300 watt solid state FM transmitter. \$2,500  
1,000 watt solid state FM transmitter. \$6,000  
120 watt solid state FM transmitter with stereo generator. \$2,500  
350 watt solid state FM transmitter with stereo generator. \$3,500

17194 Preston Road, Suite 123-297, Dallas, TX 75248

Ph: 972-473-2577 800-279-3326 Fax: 972-473-2578 800-644-5958  
E-Mail: jjoynt@superiorbroadcast.com Web: www.superiorbroadcast.com



\* Gibraltar IV Series      \* Standard AZ-EL.  
\* Horizon to Horizon      \* Heavy Duty Polar

# ANTENNAS

# ANTENNAS

# ANTENNAS

# ANTENNAS

# ANTENNAS

# ANTENNAS

## COMMERCIAL QUALITY

(8m, 9m, 1.0m, 1.2m, 1.5m, 1.8m, 2.4m, 2.7m, 3.0m, 3.3m, 3.7m, 3.9m, 4.2m, 4.5m, 5.0m)

### Call For Info

**800-627-9443      608-326-8406**

www.dhsatellite.com

**Offering:**  
\* Feed Horns  
\* LNB's  
\* Multi-Cable  
\* Receivers  
\* Controllers  
\* Antenna Covers  
\* Custom Fabrications

**OVER 600,000 Manufactured**  
\* High Efficiency      \* Custom Fabrications  
\* Fast Direct Delivery      \* 5 Year Warranty

Fax: 608-326-4233  
Email: dhsat@mhtc.net

**Buy Factory Direct & Save!**

# Remotetools

**BROADCAST TOOLS INC.**  
Innovative Problem Solving Tools for Broadcast

Designed by broadcast engineers for broadcasters, our flexible line of remote access and control equipment gives you elegantly functional solutions for your control equipment without the need for "custom boxes".

**DC-8 Plus Dial-Up Remote Control**  
Controls and monitors 8 external devices from any touch-tone telephone with extremely flexible programmable features.

**MC-16 Telephone Hybrid-Coupler**  
Full-featured telephone line coupler/hybrid provides 32 programs; 32 ASCII strings (DTMF to ASCII); 64 macros; 16 relays; auto answer; 4-digit access codes and more.

**SRC-1616L Serial Remote Control**  
Equipped with 16 opto-isolated and CMOS/TTL compatible inputs and 16-Relay (Form C) outputs that may be controlled from a host computer or a pair of units can be used in a stand-alone configuration (relay extension cord).

**PSC Programmable Schedule Controller**  
Stores and controls up to 160 events with Hour/Minute/Seconds, Day/Month/Year, or Day of Week with Daylight Savings Time correction. 20 SPST relays and/or 32 serial custom commands provided.

**PSC-II Programmable Schedule Controller**  
With 512 events intended for controlling up to two RS-232/RS-422 serial devices; 16 - SPDT relays; auxiliary serial ports and relays all in a single rack space. The PSC II controls functions by either scheduled time and date, time and day of week, serial port commands and remote input contact closures.

**SRC-32 Serial Remote Control**  
Equipped with 32 opto-isolated and CMOS/TTL compatible inputs, 24 open-collector outputs and 8-Relay (Form C) outputs that may be controlled from a host computer or a pair of units may be used in a stand-alone configuration (relay extension cord).

**SRC-8 Serial Remote Control**  
The SRC-8 provides a means of adding 8 channels of remote control to RF, wireline, and fiber type STL systems and may also be used with dedicated modems (full and half duplex models).

**UI-411 Universal Interface**  
Perfect for adding logic functions to mechanical switches/relays, adding remote functions to transmitter control/logic, detecting phone line "ring", etc.

**AVR-8 Alarm Voice Response**  
Used as a voice response and remote control system, the AVR-8 automatically reports changes detected on any of its eight digital inputs to a remote telephone and/or pager.

**SSM Smart Silence Monitor**  
Monitors any stereo or two independent monaural sources and generates alarms indicating loss of carrier when white noise and/or silence is detected.

**BOR-4 (Box 'O Relays)**  
The BOR - 4 provides four independent 2PDT relay interfaces with two optically isolated or 5-volt TTL/CMOS compatible inputs.



**PSC**



**SRC-8**



**DC-8 Plus**



**MC-16**



**PSC-II**



**SRC-1616L**



**SRC-32**



**UI-411**



**AVR-8**



**SSM**



**BOR-4**

Check out our web site for product information, pricing, and distributor locations!  
web: [www.broadcasttools.com](http://www.broadcasttools.com) • email: [support@broadcasttools.com](mailto:support@broadcasttools.com) • phn: 360.854.9559

# Computer Connection



Continued from page 13.

That machine was run for over 6 months without rebooting. The thing finally went down in a power bump, but came right back up and went on it's way quickly.

If you are in need of building a new machine for your broadcast operation, then I'd strongly recommend that you don't consider anything else but Windows 2000 Professional or XP Professional for your operating system.

You can use Linux, which is also very stable, but then you are limited to the software you can run, and will have to get ready for a lengthy learning curve cutting over to the Linux OS.

For that reason, we will not go into Linux at this time. If you are a hacker or a UNIX/LINUX buff, then by all means go that route, if it makes you happy. For the average Windows user, however, there is entirely too much in the way of technical stuff to deal with, for average daily station operation. (No please don't send in your hate mail, all you Linux gurus!).

## Different Versions of the Windows Systems

Many major manufacturers use special versions of the Windows operating systems that are not the same as what you get across the counter. Many of these "specials" actually contain portions that are built into the hardware (BIOS, etc.). They accomplish faster booting, and have special functions available via keystroke, which are not normally available in standard Windows systems. These can deal you some misery with compatibility and subsequent upgrades of the Operating System. What this means is that your upgrades will probably have to be purchased directly from the manufacturer at prices that are usually considerably higher than a generic system would be. Be warned!

## Hardware Choices

If you look at the system requirements for most quality broadcast software, you will usually see the recommendation for an Intel Pentium-based system. There is a very good reason for this. Over the last few years, though there have been a lot of other choices to hit the computer market, the Pentium has shown through as the best and most reliable system available. You will see the Pentium in virtually all of the good systems. Manufacturers that have tested different systems will tell you that with the Pentium, they get fewer service calls, and experience fewer unexplained problems than with any other chip.

Yes, you can save some money with something else, but trust me on this one. You do get what you pay for in Pentium processors. The chip of choice right now, though there is a new variety or two coming on the scene, is the Pentium IV. In building up your new machine, I strongly recommend that you stick with a professional operating system, and an Intel based system (Intel Chipset on the motherboard, and a Pentium processor).

## Twist It and Shine a Light Through It!

With regard to motherboards, let me share something with you that a colleague in the computer business told me a few years ago, that I've still found to hold true in most cases. Now mind you that this is not entirely scientific, but based rather on his years in the computer service business. To spot a good motherboard, it should be stiff and not flex easily, and when you hold it up to the light, light should not pass through it.

Cheap boards usually are thinner and flex easily. They are usually built out of cheaper material, and the untrained eye can actually see through it. I personally compared several manufacturers' boards and sure enough - almost without fail - the better boards are stiffer, usually not able to be flexed at all, and are non-translucent to direct light. Now take this with a grain of salt, if you will, but it is a good rule of thumb when picking out hardware.

## Power Supplies

One other thing to consider, when looking at that "Bargain Computer," is the quality of the power supply. Though we don't see it as much as we used to, there is a thing called "UL Listing" that you should remember here. Many an unwitting engineer has searched for ways to get rid of that awful hum in the audio in the control room, after installing that low-priced sound card, only to find out that it was not the sound card at all - it was that new computer. The power supplies that come in most cheap (and sadly to say, a lot of the higher-priced ones as well) can be real hum producers.

## UL Listing

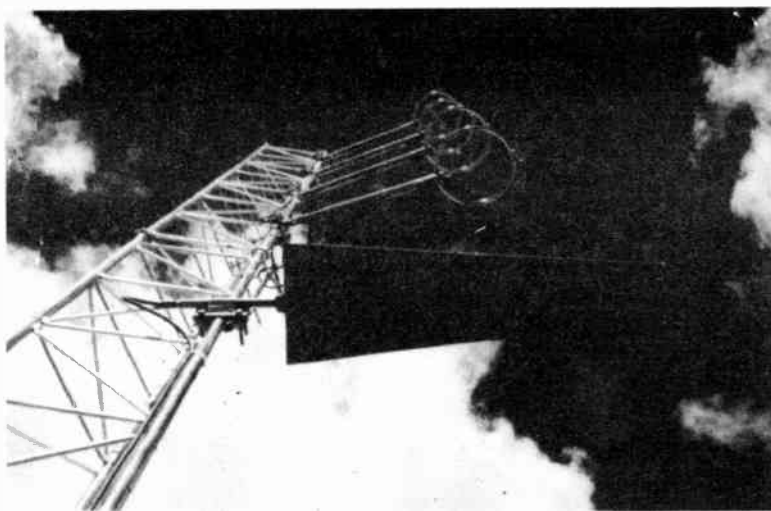
It has only been a few short years since almost everything we bought had the Universal Laboratories Listing "seal of approval" on it, meaning that it had undergone standardized testing and had met certain criteria before being sold. Computer power supplies are not usually one of these UL-tested items. When buying that new computer, or building your own, remember to ask for "UL Listed" power supplies. Then you will get a unit that is very low in EMF, and will minimize the interference with other equipment such as your audio console.

## Next Time

In the next issue, we will discuss other hardware considerations, such as the kind of RAM you choose. We will also explain the differences in the kinds of hardware available for you out there. So come back next month for the next installment in "building up your new computer"

Until next time . . . "Happy Computing!"

# FM & TV Antenna Systems



FM Antennas Educational circular polarization			FM Antennas Low power circular polarization			FM Antennas Medium power circular polarization		
MP-1	\$250	0.6Kw	GP-1	\$350	2Kw	SGP-1	\$690	4Kw
MP-2	\$680	0.8Kw	GP-2	\$1,350	4Kw	SGP-2	\$2,690	8Kw
MP-3	\$980	0.8Kw	GP-3	\$1,900	6Kw	SGP-3	\$3,595	10Kw
MP-4	\$1,280	0.8Kw	GP-4	\$2,600	6Kw	SGP-4	\$4,500	10Kw
MP2-4	\$1,820	2Kw	GP-5	\$3,150	6Kw	SGP-5	\$5,300	10Kw
MP3-5	\$2,270	3Kw	GP-6	\$3,700	6kw	SGP-6	\$6,100	10Kw
MP3-6	\$2,740	3kw						

### Other power configurations contact OMB America

TV UHF panels, VHF panels, Yagis, UHF-VHF power dividers, and Connectors. There is enough stock at our facility in Miami for quick delivery. Please, contact our Sales Department at OMB America:

3100 NW 72 Ave #112  
Miami FL 33122  
Phone 305-4770974 Fax: 305 4770611  
Toll free: 1-888-OMB 4 USA







## ECONCO Tube Topics – Part 3

This is a reprint, of the 2nd edition their popular Tube Topics publication. You can receive your own free copy, direct from Econco, by calling them at: 800-532-6626.

The following photos illustrate the process of power tube rebuilding, as practiced by ECONCO.

Incoming tubes are checked and, based on the measured results, they are routed to the proper rebuilding station. There, the vacuum envelope is opened; the internal elements are then removed as required for inspection and analysis. Experience has shown that many operational problems leave physical evidence within the structure and a thorough examination of the internal topography provides valuable information regarding the reason for failure, exceptional life, or outstanding performance.



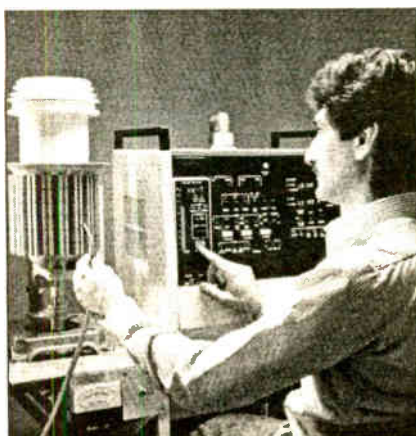
Tube Test



Carburizer

The emission of a thoriated tungsten filament depends on a complex chemical process. One of the carbides of tungsten protects the filament from ion bombardment and acts as a catalyst to lower the temperature for efficient emission.

Operation to new performance specifications requires careful measurement of internal dimensions and duplication of the original component configuration when the tube is rebuilt. Through analysis of a large number of tubes that have failed in the field, ECONCO engineers are sometimes able to improve on the original design and thereby extend tube life.



Leak Detection



Tube Opened on Glass Lathe

Proper operation of a tube depends on a good vacuum within the envelope. The structure of the tube involves many different materials that are joined together. These joints must be vacuum tight. Here, seals are being checked on the mass spectrometer leak detector before further processing.

The operational life of a tube is highly dependent on the degree of vacuum in the envelope; the better the vacuum, the longer the life.

Although ceramic has been replacing glass in power vacuum tubes, in many high voltage applications, glass is the preferred material. The above tube has been opened on a glass lathe and is being prepared for rebuilding.

Vacuum tube manufacture requires special materials and close-tolerance matching of parts. In the rebuilding process, all original tube specifications are met or exceeded.

Glass sealing can be done either in a horizontal or vertical lathe. Here a technician is sealing a 6696. With such glass lathes it is possible to manufacture new envelopes, which enable the rebuilding of tubes once considered irreparable. After being sealed, the envelopes are annealed to relieve stress.

Tubes with cracked ceramics were previously considered unrebuildable. Here, a 4CX3500A is prepared to have the cracked output ceramic removed and replaced.

(Continued on page 16)

## PETER DAHL CAN DO JUST ABOUT EVERYTHING A BROADCASTER NEEDS EXCEPT THE MORNING SHOW



Heavy Duty Transformers  
Custom Rectifier Assemblies  
Transient Suppressors  
DC Filter Capacitors  
Three Phase to Single Phase Conversion  
TV Beam Power Supplies  
24-Hour Tech Support

**(915) 751-2300**

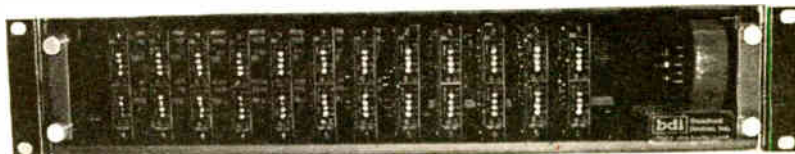


Write or Fax for an extensive catalog.

5869 Waycross, El Paso, Texas 79924 • Fax (915) 751-0768

E-Mail: [pwdco@pwwahl.com](mailto:pwdco@pwwahl.com) Internet Address: <http://www.pwwahl.com>

## The Series 200 Audio Solution



Distribution - Analog or Digital Input  
Interface - Analog or Digital  
Digital to Analog Conversion  
Line Amplification  
Analog Line or Microphone Input  
Digital Standards Conversion

Systems integrators and station engineers will love this product. Finally, there is a one box solution to most studio, master control and transmitter site audio interface and distribution problems. Now you can have a traditional DA share the same compact chassis with consumer to pro interfaces. Or you can add an AES front end to a DA by using our brand-new AES-300 plug in module. Multiple DA's can now share a common chassis as well. One chassis - multiple solutions. Instead of hanging 1 title boxes everywhere wire up your next project with a professional solution.

We invite you to visit our web site and download a UTA-200 Series 200 catalog. Choose from many of our standard configurations or create your own. Call or contact us through our web site before you start your next project. We want to help you save money and time just as we have been doing since 1985.

### Broadcast Devices, Inc.

5 Crestview Avenue  
Cortlandt Manor, NY 10567  
Tel. (914) 737-5032 Fax. (914) 736-6916  
Website: [www.Broadcast-Devices.com](http://www.Broadcast-Devices.com)



# MOORETRONIX

## Is The Pre-Owned Broadcast Equipment Solution

Our client list continues to grow. Thank you for your confidence and your purchases.

We recondition Pacific Recorders BMX I-II-III, AMX, ABX and RMX mixing consoles. Let us re-work your complete console or just the modules. Obtain that added value from a proven winner. Quality built products last and last and last!

We now have in stock, SHURE, SM-5B, wind screens. These are from the OEM vendor and are priced at \$60.00 per set. Make the best voice-over microphone, new again! The Blast Filter that slips over the SM-5B mic capsule will be available soon.

Check our WEB site for great buys on pre-owned broadcast gear. All equipment is repaired, tested and shipped with the manual.

Stretch your broadcast \$\$\$ on quality, pre-owned equipment – sold with a warranty.

**Toll-Free: 800-300-0733**  
**WWW.MOORETRONIX.COM**

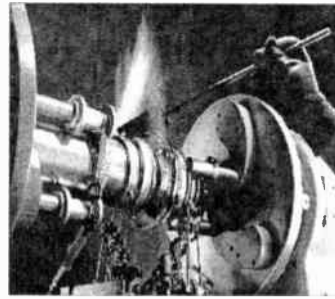


**MOORETRONIX**

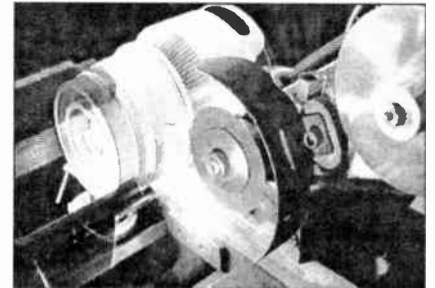
BROADCAST & INDUSTRIAL ELECTRONICS

# The Transmitter Site

Continued from page 15.

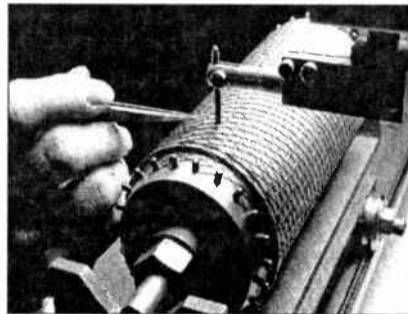


Glass Lathe Sealing a 6696

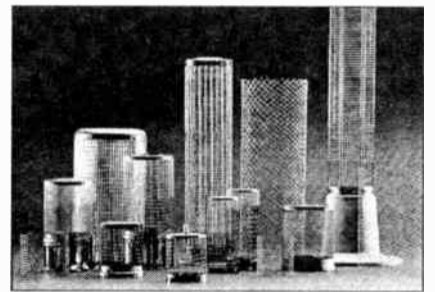


4CX5000A Ceramic Replacement

High temperature atmosphere furnaces are used to braze new ceramic onto prepared stem assemblies. Other furnace applications include heat-setting of metals and processing materials



Mesh Filament on Mandrel



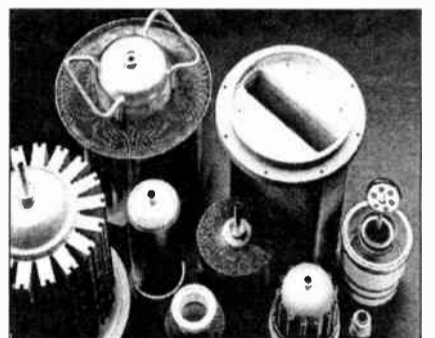
Grid Structures

Normal operation subjects the filament and grid structures to thermal and electrical stresses that can render them unusable in a rebuilt product. Modern tube technology requires extensive use of mesh cathodes, and special fabrication tools and jigs are used to replace the worn out cathodes. Here, a new mesh filament is being wrapped on a mandrel.

The original tube design establishes the overall performance characteristics. Replacement parts exactly duplicate the original parts in form, fit, and function. Jigs and fixtures aid in the production and assembly, but skilled tube technicians are the brains and hands that do the job.

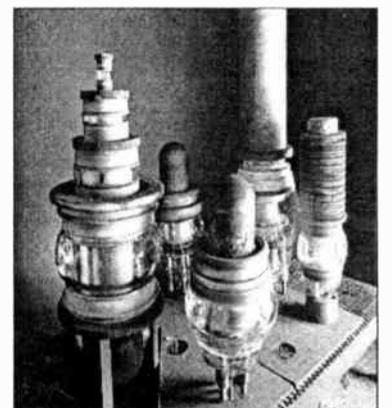
## Anodes

It is possible in the operation of certain industrial tubes that the anode can become damaged, and replacement with a new component is the only solution. ECONCO has the capability of manufacturing new anodes when necessary for a variety of tubes. The anode of a typical tube consists of four primary parts: the internal cup, external fins, the external anode band, and sealing rings.



## Tube Bank

ECONCO buys duds whenever possible for the purpose of having an inventory of the most commonly used types already rebuilt and in stock for delivery. The customer has the option to have a tube from stock (when available) or have a specific dud rebuilt.



## A Tradition of Excellence

The exterior finish on a tube contributes to proper operation. ECONCO believes that silver plate is the best finish for tubes unless other environmental considerations dictate another treatment. At ECONCO, we have the technology to rebuild a wide range of power tubes. Our tubes are used in numerous applications, including radio and TV broadcasting, defense industry, and other areas. **RG**

# TRANSCOM CORP.

Serving the Broadcast Industry Since 1978

For Information and the Latest Prices:

Visit our Internet Website — [www.fmamtv.com](http://www.fmamtv.com)

Send your e-mail requests to: [transcom@fmamtv.com](mailto:transcom@fmamtv.com)

## Fine Used AM & FM Transmitters and New Equipment

The best deals on Celwave products, Andrew Cable and Shively antennas.

FM Xmtrs	Power	Year	Model
	300 W	1988	Harris FM300K Solid State
	2.5 kW	1984	Harris FM-2.5K, Single Phase
	2.5 kW	1980	Harris FM-2.5K, Single Phase
	5 kW	1992	Continental 815A
	10 kW	1974	Harris FM-10H/K
	15 kW	1980	McMartin BF15,000
	20 kW	1981	Harris FM20K
	25 kW	1980	CSI T-25F
	25 kW	1987	Harris FM 25K-1
	25 kW	1992	Continental 816R3B
	50kW	1982	Harris Combiner with auto exciter-transmitter switcher.
	Exciter	-----	BE FX-30
	Exciter	-----	Harris MS-15
	Exciter	-----	Harris MX-15 New 30W Synthesized
AM Xmtrs	Power	Year	Model
	5 kW	1980	Harris MW5A
	5 kW	1978	Harris MW5
	10 kW	1982	Continental 316F
	10 kW	1986	Continental 316F
	10 kW	1982	Harris MW10A
	50 kW	1982	Continental 317C-2
	50 kW	1986	Nautel Ampfet 50 Solid State

PO Box 26744, Elkins Park, PA 19027

800-441-8454 215-938-7304 Fax: 215-938-7361

# State of the Art

By Chip Morgan

Email: [chip@cmbe.com](mailto:chip@cmbe.com) Phone: 800-801-2623



## Low Power FM Signal Optimization

When a radio facility is licensed to operate with very low power, such as a translator, booster, LPFM, or high altitude station with de-rated ERP, proper system design is very important so that every licensed watt of power is delivered to the target audience. In this article, we'll take a look at some of the most important things that you can do to insure maximum performance in a low power system.

With a low power system, it's easy to think that the performance won't be very good because there's so little radiated power, but keep in mind that early communications from the moon to the Earth used about 5 watts of ERP, and cell phones operate with extremely low power at relatively great distances.

There are stations in "hilly" top 10 U.S. markets that have had great commercial success with under 100 watts of ERP. The most interesting part of low power facility design and operation is that the components are small and less massive, so there can be more budget for higher performance design, where physical limitations would be a problem with higher powered systems.

Let's review some basic, and advanced concepts for low power systems design and operation. You may not be able to apply all of these concepts on every station, but where budget permits, the difference in achievable signal quality can be very noticeable.

### The Transmitter

These days, almost all low power transmitters are solid state, broadband systems. This means that they are designed to be easy to operate, typically with front panel frequency controls. Because of this, transmitter efficiency may be low, and output power may vary over various portions of the FM spectrum. Measure the efficiency at the frequency in use, so that you can factor it into power calculations.

Use a calibrated meter to measure operational output power, and compare power indicated there with the calculated power using the FCC indirect method of calculating output power. Resolve any conflicts between measured and calculated power. Measure the losses in any in-line devices such as filters, combiners, switches, etc. These can add up fast and rob the system of final ERP. Control the temperature and humidity of the operating environment to keep performance stable under all weather conditions.

### The Transmission Line

Use a single cable, chosen for its electrical characteristics, when possible. Know the exact loss of the line by measuring it on the licensed frequency at typical temperature of operation, not by using factory loss calculations. Include all connectors. Use high quality line with maximum shielding to minimize line radiation. Keep the line as short as possible, with minimum bends. Test the line after installation of the antenna with a network analyzer to insure there are no problems in the line itself.

### The Tower

Be sure that the tower itself is not hurting the signal by causing undue reflections, signal distortion or signal absorption. With a low power system, you may be operating with horizontal, vertical or circular polarization, and as with any FM system, the mounting structure will have a great deal of effect on the performance of the system.

Tower weight and wind loading can be minimized with low power antennas, and you can use this to your advantage so that you can choose the best system for your application. For example, it may be easy to eliminate guywires, or to use non-metallic guywires for the whole tower. This would be a good way to eliminate the effect of guywires on the signal. You may also find that a small pole, a non-metallic pole, or a wide faced tower may work best, depending on your given situation.

### The Antenna

Use a wideband antenna when possible. At low power, the difference in cost of a wideband antenna and a narrow band antenna is nearly insignificant. If you can use a balanced input antenna, it will almost always out-perform an unbalanced input antenna. If you don't, you may want to consider using a balun at the input of the antenna to be sure all power delivered at the antenna input is transferred to the antenna itself and none is radiated by the unbalanced transmission line leading up it.

A non-directional station built with an array of directional elements such as Yagis or Log Periodics will usually outperform a single element or collinear array of elements when carefully designed and installed. In all cases, antenna orientation is critical, again depending on desired target area and mounting environment. Low power stations can benefit greatly from antenna pattern studies. As with all antenna installations, be sure that the environment around the antenna is consistent and not causing near field problems. In general, don't use radomes if you can avoid it, as the material in the radome will absorb energy that isn't typically accounted for in power calculations.

If you can account for radome loss, do it, but note carefully that some radome antennas are modified to fit a smaller footprint to reduce windload, and performance of the basic antenna design itself may suffer. Don't just estimate connector losses in an antenna system, measure them! Get accurate, measured data on antenna gain at your frequency. Don't just use a published gain spec for a non-specific frequency. Overall antenna gain is much more important than pattern symmetry or shape, unless deep nulls fall on specific target areas. Some manufacturers publish patterns with no gain reference. You need to know what the gain of the antenna is! (Cont. on page 18)

## TRANSMITTER PROBLEMS?

### We Have The Solution.

OUR 51000 SERIES RECTIFIER IS VIRTUALLY "ONE SIZE FITS ALL." FOR SINGLE PHASE TRANSMITTERS LESS THAN 15 KILOWATTS TO THREE-PHASE TRANSMITTERS UP TO 35 KILOWATTS, WE HAVE A QUICK, EXPERT SOLUTION.



**SAME DAY SHIPMENTS**

No matter what transmitter you own, we can provide quality rectifiers from stock. We have a reliable, cost-effective solution to meet the requirements of most AM and FM transmitters built since the 1950s at prices better than the manufacturers'.



**Transmitter Upgrades Available**



[www.rectifiers.com](http://www.rectifiers.com) ■ 800-649-6370

## INTRODUCING FlipJack

**NEW!**



### CELL PHONE INTERFACE MIXER

The FlipJack is a new addition to the Conex line of cell phone interface products. The FlipJack is designed to interface to the Motorola brand StarTac cell phones or other cell phones that have a 2.5 mm hands-free adapter jack.

FOR MORE INFORMATION  
**1-800-645-1061**  
[www.conex-electro.com](http://www.conex-electro.com)

#### Features Include:

- Compact, self-contained unit. Just 3.5" x 1.5" x 4"
- Two XLR Balanced Mic inputs, one switchable to balanced line-level input
- Front panel LED level and low battery indicator
- Headphone jack with a level control
- Tuner Input for off-air monitoring
- Balanced line-level output
- All IC's are socketed for easy maintenance.
- Interconnect Cable provided
- Transformer isolated inputs and outputs
- Operates from it's own 9 V alkaline battery
- Adapter available for driving a dial-up telephone if cell connection not available.



**CONEX ELECTRO SYSTEMS**

1602 Carolina St PO Box 1342 Bellingham WA 98227  
phone: 360.734.4323 fax: 360.676.4822

# State of the Art

Continued from page 17.



## Polarization

If you have the option of choosing polarization of the transmitting antenna, there can be some major advantages to different polarization plans. These are very site specific, so be sure to study them carefully. Antenna height above ground has a very strong impact on choice of polarization. Antenna gains are affected greatly by the height of the antenna, depending on polarization, especially when close to the ground. This can be used to your advantage or disadvantage, depending on attention to detail. Polarization can help fight interference, can provide isolation between systems, and can affect reception on different kinds of radios. Polarization may be one of the least understood antenna parameters in broadcasting, even though it seems simple to say that for car radios, you need good VPOL signal and for homes you need good HPOL. It's much more complex than that!

## Audio Quality

Strive for pristine audio quality, with no phase linearity problems to minimize mono cancellation problems. Consider reducing stereo separation to maximize loudness and reduce noise in the stereo channels. If you can get away with it, a mono signal will go farther with lower noise. Be sure your STL is not causing problems which get re-transmitted by your main transmitter. Use the best audio processing you can afford, and carefully monitor modulation levels to be sure you are running loud and clean.

## Frequency Allocation

Many times a low power facility may have a choice of frequencies. When this is true, spend time to identify the best frequency to use. Interference is far more detrimental to coverage than almost any other problem. A nice clean channel can work quite well for a low power system. If the system is operating near a highly populated area, it can be worth taking time to identify what changes could influence future interference as part of the initial frequency study. Now that IBOC is approved by the FCC in the US, the impact of adjacent channel interference from US stations is also a concern.

Sometimes the best way to identify the cleanest channel when you have options is to simply drive around the target coverage area and listen. Keep in mind, though, that weather conditions have a great effect on extreme fringe coverage of distant stations, so testing must be done over a long period of time in various weather conditions. There's always the possibility that the interfering stations are off the air, operating with temporary facilities or are at lower than normal power. Modern coverage mapping systems can quickly identify and rank the quality of various frequencies when there are options.

## Site Location

Low power systems usually have much greater latitude in location, and you need to take advantage of that flexibility. Sometimes low power systems can use directional antennas, and the prime location for a directional site may differ from that for a non-directional site, which tends, generally, to be best located in the center of target population. As in all FM systems, the best location has good line of sight to the target area, is as high as necessary for good Fresnel zone clearance to the target area, is easily accessible, has power, and has minimum other broadcast facilities on site.

## Installation

Installation of a low power station is fairly simple. Control the utility input power with a UPS, power conditioner or battery bank. Use a remote control that can accurately read with high resolution. Use good grounding techniques, including tower and line bonding, careful layout of power and RF penetrations in the building, and overall lightning protection as appropriate. After installation, measure the exact power delivered at the antenna input, and then compare it to your original line tests and calculations for the line. Measure the VSWR or return loss of the antenna during installation and fine tune the mounting configuration and actual antenna tuning for the best match with the transmission line. This insures maximum power is transferred from the line to the antenna.

## Summary

Low power systems need every available and licensed watt to be delivered to the target areas. Be sure that you aren't wasting any of that precious power on heating portions of the antenna system, or sending it to unimportant areas. Since low power systems use so little power, they can many times be run using alternative energy sources, such as wind and solar power.

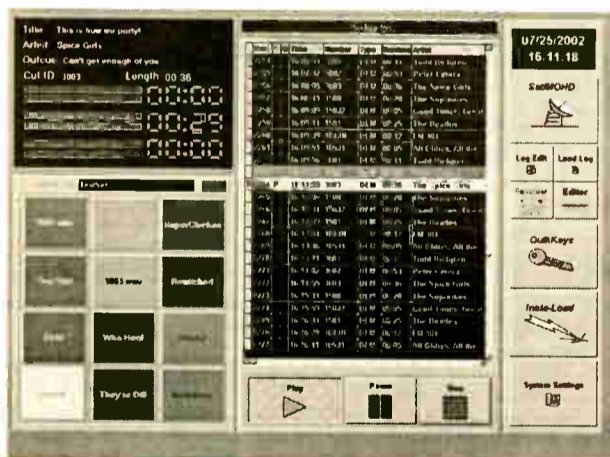
The flexibility of low power FM stations makes them perfect for filling in small target areas or regaining coverage in areas that are theoretically covered, but actually have terrain shielding problems. When properly designed and operated, low power systems can and should sound as "big" as high powered systems, with the only limitation being the area that the signal covers, which is naturally determined by the height and power of the station. Innovative antenna designs can really make a low power system work well, and the cost for more exotic antennas is usually not very high when working at low transmission powers.

If you're an experimenter at heart, low power systems can be a great way to learn techniques and systems with minimal risk that can be directly applied to bigger systems. The physics are all the same, the only real difference is the power level at which the systems melt down!

Chip Morgan's company, CMBE, Inc., provides high performance support and services to broadcasters worldwide. For more information, please visit [www.cmbe.com](http://www.cmbe.com).

# The BTSG Generation IV is Here!!

Coming from our AutoMax and ProRadio line of fine products, is the latest in our family of Great Broadcast Automation Systems!



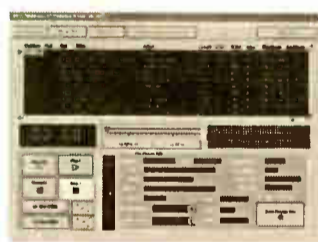
## Automation Module

Satellite, Live Assist and MOHD on one system.

## BTSG Systems

Phone: 318-395-8410

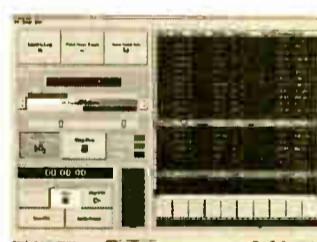
Internet: [www.btsg.com](http://www.btsg.com)



## Production



## Editor



## DJ Tracker

The Generation IV System, from BTSG, is all you'll ever need for complete station audio support. It features a Recorder with a Backup Audio Database, Waveform Editor with CD Ripper and MPEG encoding, and a DJ Tracker to do all your Voice Track sessions.

The Generation IV System is available as a complete system, including all hardware for both the Air and Production Studios. Generation IV uses Industrial Quality Rack-Mount Pentium Computers and Broadcast Audio Cards.

Complete details on our website at: [www.btsg.com](http://www.btsg.com)

Systems starting at \$4,995<sup>00</sup> Software only at \$1,395<sup>00</sup>

Over 35 years of serving Broadcasters!

# The Public Necessity

By Clay Freinwald and Barry Mishkind



## EAS Q&A

Most manufacturers of EAS equipment have brought an upgraded EPROM to the market, so stations can take advantage of the new CAE (AMBER) code. However, questions persist about this and the other new codes, and if they are the "final version" of EPROM upgrades. (At least one manufacturer has acknowledged problems with their upgraded EPROM and is exchanging them for newer new ones.)

**Barry:** Clay, just what is the status of the EPROMs? Are they really ready for stations to purchase?

**Clay:** Unfortunately, not all EAS boxes operate the same way, therefore each is upgraded differently.

For example, those running a TFT 911 can take advantage of the new event codes and other features by purchasing a new chipset from TFT. The cost is \$100.

For those with SAGE ENDEC equipment, most of the changes can be accomplished by communicating with the unit via free software, as it makes understanding these units a whole lot easier. For goodness sake, don't try and communicate with this unit via the front panels buttons. While Sage will be releasing new EPROMs in the future, it's best not to wait to make the changes. Jim Tharp has posted some great step by step instructions at <http://www.eas-wa.info/>

The common rule is to check with the manufacturer.

**Barry:** Of course, the majority of the "buzz" relates to the new CAE code. What can you tell us about it?

**Clay:** CAE is the new event code for Child Abduction Event and is likely to be the most talked about of the new Event Codes. CAE is used with the Amber program we have all heard so much about.

**Barry:** When should stations start using the CAE code in EAS alerts?

**Clay:** The date will differ according to local plans. But we need to remember that the Amber program started in some places well ahead of the FCC's release of the new list of Event Codes. In those areas, they chose to use the CEM code (Civil Emergency Message).

**Barry:** Doesn't the use of CEM create problems?

**Clay:** Yes, there have been some problems around the country with the use of CEM for Amber, most of them related to Television.

EAS messages have two parts. First there is the digital information contained in the 'header codes.' The second is the voice portion of the EAS message with specifics about the event. TV stations often generate their 'crawl' from the information in the 'header codes,' and have no way to transcribe the voice message into additional crawling text.

In some cases, TV stations end up running the Civil Emergency Message crawl over and over. For the deaf, or folks not hearing the voice message (it's only run once) it's easy to get a confused alert. Just imagine what it would be like turning on your TV set in a major city after the voice portion of an Amber message has been run, to see only "Civil Emergency" scrolling across your screen – and having no additional information to tell you what's going on!

This is just one of the reasons why EAS Committees are urging everyone to upgrade their EAS equipment now, so the proper Event Code can be implemented. Many areas have set January 1, 2003 as the deadline for this upgrade. Oregon has a creative system of tracking these upgrades for all to see. They may well be one of the first states to have CAE completely operational.

**Barry:** Do you have any comments on the other codes being added to the EAS system?

**Clay:** Yes there are some very useful codes in the new list. Here are a few:

**DSW - Dust Storm Warning.** With drought conditions getting worse, especially in the Southwestern part of the country, this may well be put to good use.

**FRW - Fire Warning.** This code would have been very useful this past summer fire season in states such as Arizona, Colorado and Oregon.

**EQW - Earthquake Warning.** This isn't quite like it sounds. It's not to be used to warn of an impending earthquake, but rather used in dealing with the aftermath of one.

**TOE - 911 Telephone Outage Information.** Every once in a while a 911 center or Telephone CO goes down and authorities are frantically calling around to all the media with information on what number to call while the telephone techs re-boot their system.

**SPW - Shelter In Place.** This is going to prove to be one of the most useful tools in the new collection from the FCC. In many situations, authorities may want citizens to stay home and perhaps close the windows (think Hazmat).

**VOW - Volcano Warning.** I have to admit the idea for this came from the Pacific Northwest where we have had to be creative and come up with methods of using EAS in dealing with our 'mountains of fire.'

**Barry:** Are any proposed corrections or additions to the EAS codes still pending?

**Clay:** In the FCC's latest revisions to the EAS rules (Docket 01-66) a number of suggestions were made for upgrading the system. Not all ideas submitted are adopted. In some cases, they're put on hold with an invitation for more input.

And that's the case with the matter of being able to transmit text information. Many proponents would like a method whereby the information presently contained in the voice portion of the EAS message could be sent also in text. This would certainly help Television. The FCC left the door open to this idea, for someone to develop a system, submitting their data in the form of a proposal for rule making. However, I don't look for any further changes to the EAS rules for several years.

If you have a question on any aspect of EAS, please feel free to contact us at [radio@broadcast.net](mailto:radio@broadcast.net).

Introducing . . . . .

## the fanfare Model FT-1AP FM MONITOR & TRANSLATOR RECEIVER

"Designed to deal effectively with radiation interference!"



Check it out;

S.L.P. - \$1,395.

- ✓ Heavily shielded, SMT Architecture
- ✓ High Selectivity (25dB-1st Adj. / 80dB - 2nd Adj.)
- ✓ High Sensitivity (31µv= 50dB quieting in Stereo)
- ✓ Low Noise Floor (-80dB down - typical)
- ✓ Reference Quality audio for accurate "off-air"
- ✓ Software upgradable, including "Carrier Sense"

"The FT-1AP is the FM monitor you've been looking for!"

AGILE TUNING  
w/ 8 Presets

COMPOSITE OUT  
Adjustable 1 - 4.5Vp-p

AUDIO OUTPUT  
Bal. +6dB-600Ω / ΩdB



fanfare FM

P.O. Box 455, Buffalo NY 14225  
716-683-5451 - FAX 716-683-5421  
Div. of Fanfare Electronics, Ltd.

U.S. & Canada  
**1-800-268-8637**

Need more info? FAX, or write:  
"proinfo@fanfare.com",  
or visit our website at  
<http://www.fanfare.com>

## Measure Your REALCOVERAGE



## For Less than a Plane Ticket!

Compact, lightweight, and easy-to-use, the 4th generation **FM Navigator** from REALcoverage.com provides complete high speed mobile field strength analysis of FM signals. This system weighs only 2.5 lbs, operates without a PC and measures multiple stations so easily, an intern can do it.

**FM Navigator** is perfect for verifying performance of a new transmission system, measuring the competition, or documenting suspected problems!

For more information call REALcoverage.com at  
**800 700 4196** or visit [www.REALcoverage.com](http://www.REALcoverage.com)

## Model MBC-1

### MESSAGE BOARD CONTROLLER

THE MBC-1 TURNS AN OFF THE SHELF MESSAGE DISPLAY INTO AN INFORMATION CENTER FOR YOUR CONTROL ROOM. RELEASE YOUR STUDIOS FROM THE CONFUSING ARRAY OF FLASHING STROBES AND COLORED INDICATOR LIGHTS. HOTLINE FLASHERS, NEWS WIRE ALERTS, DOOR BELLS... THESE INDICATORS HAVE BECOME A CLUTTERED NUISANCE AND ARE NOTHING MORE THAN AN ANNOYANCE FOR YOUR STAFF TO IGNORE.

NOW COMBINE ALL THOSE WARNING INDICATORS INTO A SINGLE DISPLAY DEVICE THAT GIVES YOUR STAFF THE MESSAGE IN PLAIN ENGLISH. SOUND TOO GOOD TO BE TRUE?

**ON AIR**

**Weather Bulletin**

#### FEATURES

- 15 prioritized signaling inputs
- momentary or latched inputs
- pre-programmed "starter" messages
- fully programmable display messages
- text and graphics in messages
- wide variety of display devices
- multiple displays from one controller

WE SPECIALIZE IN RELIABLE  
COST EFFECTIVE PRODUCTS FOR  
YOUR BROADCAST RELATED NEEDS

**Innovative solutions!**

 **Sine Systems, Inc.**  
innovative solutions

615 • 228 • 3500 (VOX)  
615 • 227 • 2367 (FAX)  
615 • 227 • 2393 (F.O.D.)  
WWW.SINESYSTEMS.COM

## Need a new STEREO FM TRANSMITTER?

Compact size,  
Lightweight unit,  
Switched mode power,  
Universal 85-260 mains,  
Adjustable RF Power:  
**35-150 watts**, Harmonic  
Filtering, Built-in Digital  
Stereo Encoder  
& Compressor/Limiter,  
BNC Loop-through for  
external MPX/audio,  
"D" Type Control  
Connector, Fan Cooled,  
Unsurpassed Specifications



Includes SWR and Overtemp Protection  
**Only \$2495 plus shipping**  
( 2-25 Watt model Only \$1495 )

These and Other Fine Quality Products  
Available in the US exclusively from:

**Progressive Concepts**

305 South Bartlett Rd., Streamwood, IL 60107  
(630)736-9822 Fax (630)736-0353  
www.progressive-concepts.com



Our new website @ [www.radio-guide.com](http://www.radio-guide.com)

# www.broadcast.net

## Internet Broadcast Connections for the Whole Wide World

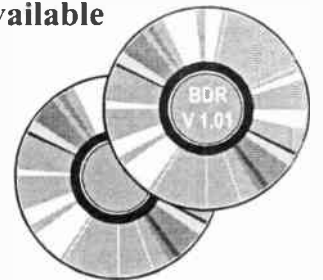


Parts and Equipment Vendors – Trade publications  
AM/FM Database Searches – Software Publishers  
Field Service Vendors – SBE Information  
FCC Information – Contract Engineering Listings  
State Broadcast Associations

## Do You Have the BDR on *Your* Desktop?

Version 1.01 of the BDR Now Available

At April's NAB, Version 1.0 of the Oldradio.com CD was released. This first version of a **Broadcaster's Desktop Reference (BDR)** is now available to everyone.



Since NAB, there have been additions, and some "hidden" goodies, such as a free, full-featured word processor. A work-in-progress – each week more suggestions and submissions arrive for inclusion in the BDR. So, this resource will continue to grow rapidly in the future.

Already included are: Barry's Radio Utilities-2002, The Continental Electronics E-Slide, RF Specialties Toolkit, Tom Osenkowsky's Toolkit, Bob Carpenter's AM and FM/TV database viewer, Top Ten Lists, EAS paper sources, some project schematics, and some nice historical files.

You will find most of the CD contents are listed at:  
[www.oldradio.com/latest.htm](http://www.oldradio.com/latest.htm)

All proceeds from this CD are going to be put into improving the next edition of the CD, and supporting Oldradio.com and its efforts to document and display the history of the Broadcast Industry.

We are suggesting something in the range of \$15-\$20 (or more, if you really want to support the Oldradio Project).

We'll send you a copy of the CD (via postal service or internet download), and personally notify you when Version 2 is made available (The plan is to give registered folks a free upgrade, or at minimal cost for shipping.)

Please send your check or money order to:

**Barry Mishkind, 2033 S. Augusta Place  
Tucson, Arizona 85710.**

Please include your snailmail and email address.

Thanks for your support of OLDRADIO.COM – *Barry M.*



Listings on this page are provided at no charge, as a service to the industry. The deadline for submissions is the 21st of each month.

## The Jingle Book – By Ken R.

*The First Book About Radio Jingles is Available*

This new book is the first dedicated to the hot nostalgia topic of radio ID jingles.

Written by veteran journalist and jingle producer Ken R., "The Jingle Book" includes an audio CD. It will appeal to radio buffs and the growing number of enthusiasts who like to swap stories, CDs and tapes featuring sounds from the "golden age" of jingles in the 1960's and early '70's.

The author interviews dozens of the creators of radio ID's including Johnny Mann, Anita Kerr, Tom Merriman and many others. He tells the story of why Dallas was a jingle hotbed, and he tracks down the most famous jingle singers including Trella Hart, Jim Clancy, Gleni Rutherford and other luminaries whose stories appear in their own words.

The book includes behind-the-glass studio stories of how jingles were made, the personalities of the people involved and numerous stories and candid comments that have remained secret until now.

Ken R. also includes several feature stories about the colorful people he met in radio, including larcenous general managers, flaky jocks, a sexually unrepressed female independent record promoter, and other characters.

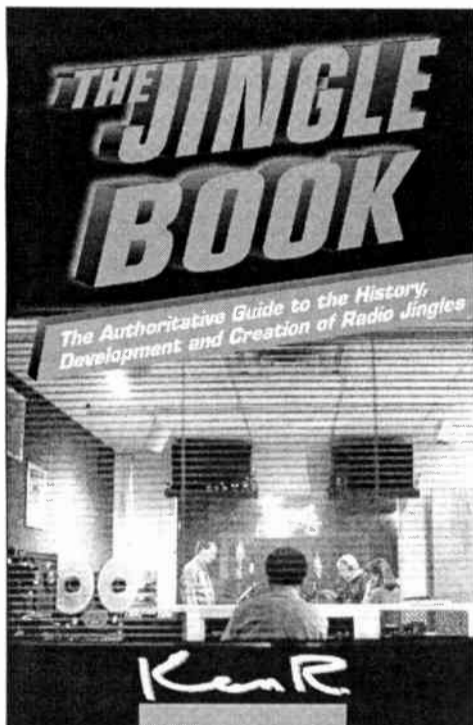
"The Jingle Book" is a 250-page paperback with eight pages of photos. It includes a one-hour audio CD featuring the best jingles from 1960 through 1974 from companies such as PAMS, TM Productions, Pepper Tanner, CRC, Spot Productions and dozens of others.

Written for fans of radio, airchecks and jingles, in a breezy, non-technical style, "The Jingle Book" is an insider narrative that captures the essence of the jingle industry and puts it into historical perspective.

Jingles are the short, sung identifiers used by radio stations to communicate their call letters, frequencies and slogans. The first was written in 1947; they are still used today.

"Radio A Go Go," "More Music More Often" and "Boss Radio" were magic phrases people remember from top-40 stations in the 1960's and early 1970's. Those short little musical ID jingles said them best. WABC(AM), New York; WLS(AM), Chicago; KLIF(AM), Dallas and KHJ(AM), Los Angeles were some of the pioneering radio outlets for the most creative of these jingles.

While the names of companies and people who produced these 10-second wonders may not be known, their work was famous. Their sound blasted from transistor radios and from the dashboard speakers of cars at every sock hop and drive-in restaurant. If you listened to radio then, you heard these jingles.



### ORDERING INFORMATION

The book retails for \$49 plus shipping (\$5 within North America, \$12 anywhere else in the world) which includes the audio CD. It is available through Ken R. LLC.

Details including the full-color front and back covers and table of contents can be viewed on the Internet at [www.kenr.com](http://www.kenr.com).

### Ken R. LLC

6640 Salisbury Rd, Ste 310, Maumee, OH 43537

Phone: 419-866-5399 Email: [ken@kenr.com](mailto:ken@kenr.com)

Website: <http://www.kenr.com>

## Henry Engineering Announces New MATCHBOX Product

*An Updated Version of the "Original" Matchbox*

The MATCHBOX is the industry's most popular level & impedance converter. It permits consumer or semi-pro audio equipment to be used in a professional studio system. It features direct-coupled active circuitry for superb audio performance with over 100db of dynamic range. The AC power supply is built-in, so no "wall warts" are needed.

The new MATCHBOX is rack-mountable in 1/3 rack width by 1RU high. Up to 3 units can be mounted in a 1RU rack shelf, which is optionally available.

The new MATCHBOX is now in stock at all Henry Engineering dealers. For technical specs, pricing, and dealer information, please visit [www.henryeng.com](http://www.henryeng.com).



### Henry Engineering

503 Key Vista Drive, Sierra Madre, CA 91024

Phone: 626-355-3656

Website: <http://www.henryeng.com>

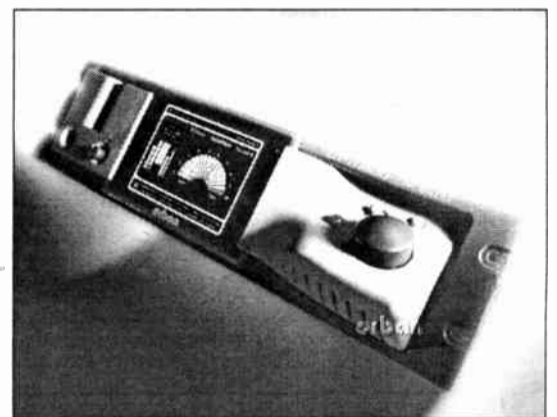
## Orban Releases Optimod-FM Version 2.1 Software

Orban has announced the release of version 2.1 software for its flagship FM audio processor, Optimod-FM 8400. All new 8400s are now shipping with version 2.1 software. It is also available via free download from [www.orban.com](http://www.orban.com) (click "Downloads") to upgrade any existing 8400.

The new software offers a new low-latency mode that reduces delay to 15 milliseconds with minimal trade-off in performance. Operation modes can be switched between the new low-latency and the 20 ms delay mode, first introduced with version 2.0 software for those who want the best possible combination of loudness, presence, and low distortion. Both modes provide the excellent source-to-source consistency, and low speech distortion that are hallmarks of 8400 processing.

Version 2.1 also introduces a new family of IMPACT presets. Oriented towards contemporary hit radio and other mass-appeal formats, these presets provide very loud, crisp audio with plenty of presence and bass punch. Version 2.1 also adds presets in the LOUD-HOT family that take advantage of the low-latency mode.

Version 2.1 allows users to administer the 8400 using ASCII command strings. Users can set up remote communications and recall presets. It is also easy to interface the 8400 to any automation system to recall 8400 presets. Such a connection could change presets to complement the program material on-air, and Orban has customers using automation to change presets between music programming and commercials.



### Orban

1525 Alvarado Street, San Leandro, CA 94577

Phone: 510-351-3500 Email: [sdodaj@orban.com](mailto:sdodaj@orban.com)

Website: <http://www.orban.com>

# Radio Shopper Classifieds

Phone: 928-284-3700  
Email: radio@broadcast.net  
Web: www.radio-classifieds.com

## Classified Ads Relocated www.radio-classifieds.com

The www.radio-classifieds.com website is now on-line for all your individual classified ad postings. Now, everyone has the same access to the equipment listings – at the same time.

### No Charge

You can post your own gear immediately, and make changes and additions to your listings as often as you like. There are no limits to the number of items you can post, and there is no charge for this service.

### The System Notifies You

You can also have radio-classifieds.com email you whenever there is equipment of interest, posted on the website. Just enter your email address, and tell the system what you're looking for. When an item matching your keywords is posted, you'll be immediately notified by email.

### Used Gear Parts & Service Information

The radio-classifieds.com website provides you with the best used equipment listings anywhere. We've also added parts and service information to the website, to help you maintain and repair your older and vintage gear.

Radio-classifieds.com is your one-stop resource, for all your used equipment needs – with links to every used equipment service and dealer across the country.

If you have suggestions for improving this website, please let us know. We'll do whatever it takes to make this your #1 stop for used gear.



Ampex Model 440C, 2-track reel to reel in roll-around cabinet. \$695  
Ampex Model PR-10, 1/2-track stereo reel to reel. Needs work. \$395  
Digicart II random access digital audio reorder. \$695 each.  
RCA Model BTE-10B, 10 watt FM exciter (tube type). \$495  
Comrex Model DXP.1 G.722 digital audio codec w/ power supply. \$600  
Comrex Model 3XP.1, multi-line frequency extender (encoder). \$300  
Tektronix Model 422, dual trace oscilloscope. \$300  
Carver Model TX-8, AM/FM tuner. \$179  
ATI Model DA-1000, 1x8 audio distribution amplifier. \$75  
dBx Model 760X, microphone pre-amplifier. \$125  
CBS Model 4450, Audimax, FM stereo AGC. \$300  
CBS Model 4110, Volumax FM stereo limiter. \$300  
Studer Model A725, CD players. \$325 each.  
O.C. White Model 51900, black 29-inch mic arm with riser. \$60 each.  
Electro-Voice Model 309A, shock mount for RE-20 mic. \$50 each.  
Electro-Voice Model ELX1-R, rack mount mixer with limiter. \$250  
Shure Model DFR11EQ, feedback reducer, limiter and delay. \$300  
Shure Model SM-5B, on-air microphones. \$600 each.  
Shure Model SM-53, dynamic cardioid microphone. \$90  
Denon Model DN-950FA, CD cart players. \$250 each.  
Wheatstone Model A300, 20-channel on-air console. \$3,895  
Wohler Model AMP-2, audio monitor panel (2RU). \$695  
Wohler Model VM-2, audio monitor panel (1RU). \$250  
Audiometrics Model ST-3, studio timer. \$40

### Big "D" Broadcast Exchange

Phone: 765-935-2443 Email: darrin@bigdmc.com  
Website: www.bigdmc.com



ANTEX SX-23e digital audio card (simultaneous record & play).  
ANTEX SX-9 digital audio card (play only version of SX-23e) 2 available.  
APHEX Model 720 Dominator audio processor.  
AUDIO-TECHNICA AT4033SM Cardioid Mic (with spider shock mount).  
COMREX Nexus ISDN audio codec.  
COMSTREAM ABR-200 Digital satellite receiver (7 available).  
COMSTREAM LNB Downconverter, C-Band 3.70 to 4.20 GHz.  
DENON DN-961FA tray loading CD player.  
GENTNER DH III Single line digital phone hybrid.  
MARTI CR-10 UHF dual frequency RPU receiver.  
ORBAN Optimod 8100A/1 Analog FM audio processor.  
ORBAN 8100A/ST Studio chassis (2 available, one with LED meters).  
POTOMAC INSTRUMENTS AM-19-5 5-tower antenna monitor.  
QEI 691/01 FM modulation monitor/test set.  
SYMETRIX A-220 20 watts per channel stereo power amplifier.  
UREI LA-4 Compressor/limiter (black face plate).  
Call or E-Mail For Condition And Pricing.

Used Equipment List Updated Daily on the Website

### Bay Country Broadcast Equipment Inc.

Phone: 877-722-1031 Email: info@baycountry.com  
Website: www.baycountry.com



## MOORETRONIX

*The Pre-Owned Broadcast Equipment Solution.*

HARRIS Impulse digital console, 12 input plus 2 telco. \$5,995  
MARTI RPT-15 UHF transmitter, tuned to your frequency. \$895  
MARTI CR-10 UHF receiver, tuned to your frequency. \$895  
MARTI UHF Yagi antenna. \$100  
ORBAN 8100A Optimod audio processor. \$2,700  
ORBAN 8000A Optimod audio processor. \$1,400  
TEXAR RCF-1 card for Optimod 8100/Prism combo. \$795  
TEXAR Audio Prism pair. \$1,700  
SHURE SM-5B Wind screen set. \$60  
SHURE SM-5B capsule blast filter. \$15  
ORBAN Co-Operator. \$795  
PR&E BMX-II, 18 input console, with 6 month warranty. \$9,400  
PR&E BMX-II, 26 input console w/overbridge, 6 mo. warranty. \$12,999  
BEXT TEX-20 FM exciter. \$1,500  
QEI Model 695 FM exciter. \$2,500  
OTARI MX-5050 reel recorder, serviced and re-capped. \$1,095  
TELCOM C4 stereo noise reduction unit. \$695  
HARRIS CD-2001 CD cartridge player. \$895  
MOSELEY PCL505C Receiver & transmitter for export. \$1,600  
MODULATION SCIENCES CP-803, composite audio processor. \$895  
MARTI VHF Yagi antenna. \$125  
MARTI STL-8 transmitter, tuned to your frequency. \$1095  
MARTI STL R-200/950 receiver, tuned to your frequency. \$1095  
CARTS – Audio Pak and Scotchcart, various lengths. \$2.00 each.

### Mooretronix

Phone: 231-924-7818 Email: rrmooejr@aol.com  
Website: www.mooretronix.com



# Radio Shopper Classifieds

Phone: 928-284-3700  
 Email: radio@broadcast.net  
 Web: www.radio-classifieds.com

## AC Power – Surge Protection, UPS

**Power Quality & Protection is no longer an "option," it's a "must!"**

In today's "high tech" Broadcast environment, sensitive solid state electronics demand "clean power." Since 1987, we've offered a complete line of Power Quality Products to the broadcast industry.

- Lightning/Surge Protectors for Coax, Studio & Transmitters
- Power Conditioners
- Voltage Regulators
- Generators
- UPS Systems (1&3 phase)
- Inverters/Converters
- Batteries
- Ground Rods
- Grounding Systems

**Energy Control Systems - Fort Worth Texas**  
 800-383-6956 ~ www.ecsintl.com

## Contract Engineering

Our Company Has Become Successful by Selling Everything You Need For Your RADIO STATION  
 We plan to stay successful, by offering something we think you'll like:  
**Customer Service!**



**Erickson Broadcast Service**  
 Call Toll Free: 1-888-830-8223  
 www.broadcastworld.net

## Newsflash . . . Not All UPS Systems are Created Equal

Don't trust your mission-critical, sensitive loads to just any UPS. Best Power, one of the world's largest mfrs. of single-phase UPS's, offers a complete line to the Broadcast Industry, ranging from 250VA, to 15kVA single-phase & 10kVA to 220kVA three-phase.

**Fortress Rackmount Series 750VA/450W, 3.5"h x 17.5"w only \$449**

Energy Control Systems - Fort Worth Texas  
 800-383-6956 ~ www.ecsintl.com



"Your systems's not complete without one." UNINTERRUPTIBLE POWER SYSTEMS

- FM Allocation Study – \$149.00
  - Complete FCC FM Application – \$1,200.00
  - Full Color Coverage Maps (any contour) – \$69.00
  - Multi-Signal, AM & FM Duoploy Maps – \$349.00
- Established in 1970**

**Scientific Broadcast Systems**  
 1680 Highway 62 NE, Corydon, IN 47112  
 Phone: 812-738-3482

## Automation – Systems, Live-Assist, MOHD

### Windows NT Automation Systems

- Music on Hard Drive
- Satellite Automation
- 90+ Hours of Audio
- Voice Tracking
- Music Scheduling
- PII 400 MHz, 64 MB
- Digital Editing

Only \$125<sup>00</sup>  
 per Month  
 \$3,450<sup>00</sup>

Phone: 810-724-2638  
 www.voicetracking.com

## M. Celenza Communications Consultant

AM-FM-TV-LPTV-LPFM

Applications - Amendments - Frequency Searches  
 Upgrades - Field Work - Contour Maps

41 Kathleen Crescent Phone: 631-928-0077  
 Coram, NY 11727 Fax: 631-928-1905

## Broadcast Engineering

Serving the Upper Midwest

Phone consultations available.

Dave Seavy  
 Phone: 507-990-2578  
 Email: seavydj@msn.com

## Audio Amplifiers – Amps, Preamps, DA's

**FREE 44pg Catalog & 80 Audio/Video Applic.**  
 PWR SUPP, EQ, 250 PRODUCTS  
 PHONO, MIC, TRANS, ACN, TAPE, VIDEO, LINE, OSC  
 PRESS BOXES

1-in/8-out Video/Audio  
 1-in/16-out Video/Audio  
 2-in/24-out Audio Only  
 1-in/32-out Video/Audio

Video & Audio Dist. Ampls.  
 RGB-Sync Dist. Ampls.  
 Routing Switchers

**OPAMP LABS INC (323) 934-3566**  
 1033 N Sycamore Av LOS ANGELES CA, 90038  
 www.opamlabs.com

## Databases – RF Studies & Allocations

**V-Soft COMMUNICATIONS**  
 Broadcast Communications Software and Engineering Consulting

V-Soft Communications Introduces  
**FM Prospector with FREE FM Data**

**FM Prospector is the ideal low-cost frequency search program**

- Free FM Database downloads
- Upgrade stations & find new channels
- Create area-to-locate maps
- LPFM & full service spacings
- Find translator channels

800 743-3684  
 www.v-soft.com

Leaders in broadcast engineering software for two decades

## Contract Engineering

**FM FREQUENCY SEARCH - \$249**  
**FCC FM APPLICATIONS - \$1349**  
**Amendments & Upgrades**  
 Field Work \* Site Construction  
 "MX" Resolutions \* Petitions  
**COLOR COVERAGE MAPS - \$49**  
**MBC Consulting (800) 219-7461**  
 www.mbcradio.org engineer@mbcradio.org

Radio History @ [www.olderadio.com](http://www.olderadio.com)  
 Used Gear @ [www.radio-classifieds.com](http://www.radio-classifieds.com)

# Radio Shopper Classifieds

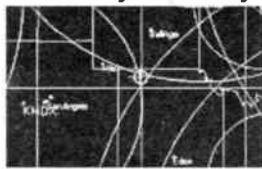
Phone: 928-284-3700  
 Email: radio@broadcast.net  
 Web: www.radio-classifieds.com

## Databases – RF Studies & Allocations

### Save Real Money on FM Databases!

If you currently use FM frequency search software and you're paying for FCC FM databases, rfDetective-FM will save you money!

rfDetective -Pro lets you download **FREE** FCC data from the Internet.



Outstanding lease opportunities available!

Find out how you can save money right now. Get complete info and a free, fully functional, demo program online at <http://www.rfsoftware.com>  
 rfSoftware.com Sales: (352) 336-7223 \ Support: 367-1700

## Equipment for Sale – Used & Vintage Gear

### WE BUY & SELL USED BROADCAST EQUIPMENT

We currently have a large number of ITC Cart Machines in stock, including splice finder/erasers, all at very reasonable prices. And, yes, we still repair Telfax Phone Remote Units.

A/Q America

Phone: 515-432-5780

E-Mail: [cjp2001@excite.com](mailto:cjp2001@excite.com)

Fax your usedequipment list to: 630-604-6493

## Equipment Leasing

### EQUIPMENT FINANCING

- ◆ FAST, EASY APPROVALS
- ◆ We Specialize in Broadcasting Equipment
- ◆ No Financials Necessary up to \$150,000
- ◆ True Lease or Finance Lease Option
- ◆ New or Used Equipment

**LOANS BY PHONE**  
 Call Jeff Wetter Toll-Free for Complete Information!  
**(800)699-FLEX**  
 24hr. Fax (972)599-0650  
 Contact Us at Our Web Address:  
[www.flexlease.com](http://www.flexlease.com)

**FLEXLEASE, Inc.**  
 COMMERCIAL EQUIPMENT FINANCING

## Equipment for Sale – Used & Vintage Gear

### Bay Country Broadcast Equipment

Your #1 Source for Quality Used Broadcast Equipment

Call us for our latest list of quality, in stock radio broadcast equipment, or view it at our website:

<http://www.baycountry.com>

Also looking to buy quality equipment, fax your list today.

**Bay County Broadcast Equipment**

7117 Olivia Rd, Baltimore, MD 21220

877-722-1031 Fax: 786-513-0812 Email: [info@baycountry.com](mailto:info@baycountry.com)

## WANTED!

Older audio equipment for immediate purchase!

Especially compressors & mic preamps.

Langevin, RCA, Pultec, Universal Audio, Fairchild, Collins, WE, Altec, etc.

**Microphones:** Neumann, AKG, RCA, Telefunken, etc.

**U.R.E.I. Compressors:** Models 1176, LA-2, LA-3, LA-4

**Mark Linett**

Phone: 818-244-1909 Fax: 818-500-0742 [yrplace@earthlink.net](mailto:yrplace@earthlink.net)

## Receivers & Monitors – Mod, EAS, Weather

### LOW COST NWS RECEIVER FOR EAS

- Very sensitive ... up to 70 miles with outside antenna (BNC connector).
- Built in speaker plus remote audio for EAS systems.
- Tone alert squelch and output to trip remote alarm.
- All 7 NWS channels • Only \$149.00
- We also make WWV rcvrs and nbfm Link transmitters & receivers.

65 Moul Rd; Hilton NY 14468; 585-392-9430

See website for details

**hamtronics.com**



### Chris Scott & Associates

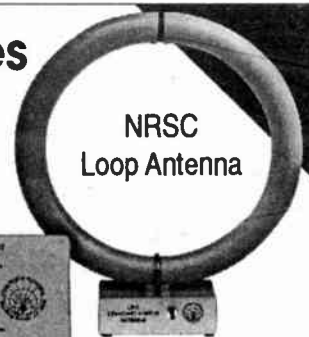
Bowling Green, Kentucky

Visit our comprehensive website

[www.scott-inc.com](http://www.scott-inc.com)

Ph: (270)781-5301  
 Fax: (270)781-1232

AM-FM  
 Notch  
 Filters



## SURPLUS EQUIPMENT SALES CO.

Recycled Broadcast & Pro Audio Gear

- |                   |                     |                                 |
|-------------------|---------------------|---------------------------------|
| Amplifiers        | DAT Reorders        | Reel to Reel Decks              |
| Audio Processing  | Exciters            | RF Components & Tubes           |
| Cart Machines     | Microphones & Booms | Speaker Systems                 |
| CD Players        | Modulation Monitors | Studio Installation Accessories |
| Consoles & Mixers | Patch Panels        | Telephone Equipment             |
|                   |                     | Transmitter Remote Controls     |
|                   |                     | Turntables & Preamps            |

**Bill Stallman – Proprietor**  
 PO Box 2193, Bala Cynwyd, PA 19004  
 Phone: 610-664-4539 Fax: 610-664-2366

Asset Recycling for the Broadcast Industry

## Service & Repair – Repairs & Calibration

### Broadcast Equipment Repair

at Lightner Electronics, Inc.

- ▶ Consoles
- ▶ Exciters
- ▶ STL'S
- ▶ Automation
- ▶ Audio Processors
- ▶ Transmitters
- ▶ Remote Equipment



1771 Beaver Dam Rd. Claysburg, PA 16625 Tel: 814-239-8323

[www.lightnerelectronics.com](http://www.lightnerelectronics.com)

# Radio Shopper Classifieds

Phone: 928-284-3700  
Email: radio@broadcast.net  
Web: www.radio-classifieds.com

## Service & Repair – Repairs & Calibration

### Broadcast Equipment Repair

- AM Antenna Monitors
- AM/FM Modulation Monitors
- Audio Processing
- Exciters
- RPU Transmitters/Receivers
- STL Transmitter/Receivers
- Test Equipment
- Transmitter Field Repair

**Rapid Turnaround - Professional Service**

**D C S** DIVERSIFIED COMMUNICATIONS SYSTEMS  
9139 PA Route 18, Cranesville, PA 16410  
Richard C. Pogson (814) 756-3053 Email: rpogson@aol.com



## Continental

Transmitter Services

**Jan Aerts**

aerts@airmail.net  
Phone: 972-270-0683  
Fax: 972-613-1158

- Transmitter Repair
- Socket Repair
- Board Repair
- Equipment Rental  
(Call for Availability)

**24 HOURS**

### Does Your RF Gear Sound Bad?

Poorly operating or defective RF gear, and un-calibrated mod-monitors, are taking away your competitive edge, which is costing you money!

We will repair your RPU's, STL's and exciters (<1GHz), and repair and calibrate your Modulation Monitors – AM & FM.

**Sound good again . . . and be more competitive!**

**Francis Technical Services**

Rt 1 Box 42-B, Prichard, WV 25555  
Phone 304-486-9056 Email: derf@EZWV.com

## Studio – Furniture, Controllers, Clocks

**MIKE FLAGS**  
www.mikeflags.com



### BEAUTIFUL TALK RADIO FURNITURE!

You get the **BEST PRICE, CHOICE & CONSTRUCTION WITH SPACEWISE** in six hand-crafted systems.a

BUILT WITH STURDY EASILY HANDLED MODULES!

EASY TO SHIP & ASSEMBLE – LARGE WOOD AND LAMINATE SELECTION

CUSTOMIZATION IN TODAY'S BEST VALUE! **WHY PAY ANY MORE ELSEWHERE?**

**Call 800-775-3660** →

www.spacewise.com ALL TALK  
info@spacewise.com RADIAL

**SPACEWISE®**



### BEAUTIFUL QUALITY STUDIO FURNITURE!

You get the **BEST PRICE, CHOICE & CONSTRUCTION WITH SPACEWISE** in six hand-crafted systems.

BUILT WITH STURDY EASILY HANDLED MODULES

EASY-TO SHIP & ASSEMBLE – LARGE WOOD AND LAMINATE SELECTION

CUSTOMIZATION IN TODAY'S BEST VALUE! **WHY PAY ANY MORE ELSEWHERE?**

**Call 800-775-3660** →

www.spacewise.com RADIAL  
info@spacewise.com GUEST

**SPACEWISE®**



## Studio – Furniture, Controllers, Clocks

### The KONTROLLEX A-1 From Jasoni Electronics The speaker & warning light solution.

Speaker muting and warning lights can be actuated by three methods:

1. Mic audio "send."
2. Normally closed switch.
3. Send 5-32 VDC.



**JASONI ELECTRONICS**  
3149 E. Desert Inn Rd #94, Las Vegas, NV 89121  
Phone: 702-791-3394

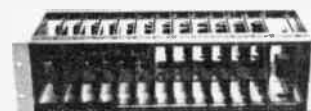
**Kontrollex A-1**  
Introductory Price  
\$195.00 Pre-Paid

## Telephone – Remotes, Hybrids, Couplers

### Powerful Everyday Solutions By CircuitWerkes



**The DR-10 Telephone Dial-Up Controller & Audio Interface.**  
Great for unattended Remotes, Automated recording & more!



**The AC-12 Telephone Autocoupler bank for multi-line IFB, Networks, Etc.**

Get Info & tech manuals online at [www.circuitwerkes.com](http://www.circuitwerkes.com)  
CircuitWerkes - (352) 335-6555 / fax (352) 380-0230

## Transmitters

### McPherson Radio Corporation

Specializing in pre-owned QEI transmitter products.

**QEI**

– 6 Month Warranty –

**QEI**

All equipment tuned and tested on your frequency. MRC has a repair facility to meet your broadcast needs, for repair of QEI exciters and low power transmitters. Other broadcast manufacturer products are welcomed too.

Contact: Bob Brown at 856-232-1625 Email: rjbeme@aol.com

## Transmitters – RF Components & Parts

### Power Tube & Vacuum Capacitor Clearance Sale - Limited Quantities

4CW20,000A1 - \$2750 9019VC130 - \$2,500 GE GL-35391 - \$500 4CX35,000D (used) - \$2,500 4CW150,000E - \$10,000

— Jennings Variable Capacitors —

CVCJ-1000-3S (7-1000PF 3KV)	\$500	CVT1-216-0120(216PF 20KV)	\$450
CVCD-1000-3N794 (10-1000PF 3KV)	\$650	CVT2-44-0135(44PF 35KV)	\$750
CVCD-2000-5S (20-2000PF 5KV)	\$650	CTV2-122-0135(122PF 35KV)	\$750
CVDD-300-7.5N611 (10-300PF 7.5KV)	\$500	CTV2-160-0135(160PF 35KV)	\$750
CVDD-500-7.5S (20-500PF 7.5KV)	\$500	CVT2-41-0150(41PF 50KV used)	\$500
CVEC-4000-10N764(100-4000PF 10KV)	\$1000	CTV2-160-0150(160PF 50KV)	\$1000
CVEP-1500-20N789 (100-1500PF 20KV)	\$1950	CFED-150-20S(150PF 20KV)	\$450
CVHP-650-45S (30-650PF 45KV USED)	\$1000	CFHG-16.3-30N782(16.3pF 30kV)	\$500
MC1-500-15N529(500PF 15KV)	\$250		
MC-500-15S(500PF 15KV)	\$250	— Vacuum Switch —	
MC-100-15S(1000PF 15KV)	\$250	RF23-D2654(N.O. air operated)	\$450
MLC-1000-30S(1000PF 30KV)	\$450	RP233X4515004M00(28.5VDC)	\$450

ACE ELECTRONIC PARTS 3210 ANTOINE DR., HOUSTON, TEXAS 77092  
713-688-8114 FAX 713-688-7167 WWW.ACE4PARTS.COM CRAIG@ACE4PARTS.COM

## COMMERCIAL RADIO COMPANY

ORIGINAL PARTS, NEW AND USED FOR  
RCA, GATES & COLLINS TRANSMITTERS

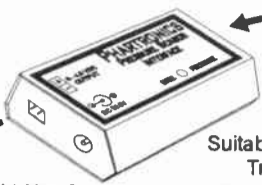
CAPACITORS: MICA TRANSMITTING - CERAMIC RF  
VARIABLE AIR - FIXED AND VARIABLE VACUUM  
NON-PCB OIL FILLED CAPACITORS AND  
NON-PCB TRANSMITTER REPLACEMENT KITS AVAILABLE  
OVERNIGHT SHIPPING - MANY STOCK ITEMS

802-226-7582 Fax 802-226-7738 Web: [www.radio-guide.com/crc.html](http://www.radio-guide.com/crc.html)

## Transmitters – Transmission Line



**PRESSURE SENSOR INTERFACE**  
**Phartronics Engineering**



0 - 15 PSI IN  
 Model PSI-V3  
 0 - 4.5 VDC OUT

Suitable for Radio or Television Transmission Facilities  
 Compatible With Any Remote Control

What's Your Line Pressure Right Now?  
 For More Information or How To Purchase:  
<http://www.tekwav.com/phartronics/index.html> Email phartronics@tekwav.com

## Transmitters – Tubes



**D&C Electronics Co.**  
**- New Tubes -**

We have the alternatives for all your needs, at the lowest prices, direct from our stock!

EIMAC, SVETLANA, PRO-TEK®, EEV, and many others.

352-688-2374 or 800-881-2374

 VISA & MASTERCARD Accepted 

**Save 30 - 70%, and More!!!**  
**Andrew - Times Microwave - RFS**

We have 1/2" - 1 5/8". Both air and foam dielectric available.  
 Why pay retail? You can literally save thousands!  
 We do not sell used cable. These are factory new lengths.

Ph: 757-546-7007 Fax: 757-546-0371  
 Or, visit us on the web at: <http://www.surplusserv.com>

## Transmitters – Services



**Directional AM Antenna Work**

We do all types of directional work.  
 Re-new - Re-build - Tune - Proof Work - Field Readings  
 Common-Point Set Up - Repair - What Have You . . .  
 Rebuild and install single tower LTU setups.  
 40 years experience in the RF field.

Give us a call at: 715-268-2233  
 E-Mail at: radiorey@spacestar.net

## Transmitters – Tubes



**RF POWER TUBES**  
 & High Voltage Rectifiers  
 In stock for immediate delivery

We stock a broad line of Power Tubes, RF Power Transistors, Capacitors, Tube Sockets, Bird Wattmeters, etc. Orders received by 2 p.m. PST/5 p.m. EST shipped same day.

 **Taylor TUBES**

On-line Catalog: <http://www.rfparts.com>

(760) 744-0700	(800) RF-PARTS	(800) 737-2787
• Fax • (760) 744-1943	 <b>RF PARTS</b> 435 SOUTH PACIFIC ST. SAN MARCOS, CA 92069	• E-mail • rfp@rfparts.com
Se Habla Español		We Export

**DA HOOK**  
 Safety Grounding Hook  
 Solid Brass Hook & Hardware  
 Fiberglass Rod Handle  
 #10 Copper Cable & Alligator Clip

**DA GAP**  
 Lightning Dissipation Gap  
 Available with Horn or Ball Dissipaters  
 Patented (#5,661,262)  
 Hot Adjust Mechanism

To purchase, or for more technical data, telephone, write, or email home page.

**Wilk Science and Technology Inc.**  
 1112 North Grove Avenue, Oak Park, Illinois 60302  
 Telephone & Fax: (708) 524-8588  
<http://members.tripod.com/w70mum/edwilk.htm>

**Amperex, Eimac, RCA, Ed-Com**  
**Power Tubes & RF Transistors**

3CX400A7/8874, 3CX2500F3, 3CX3000A7, 3-500ZG,  
 4CX250B, 4CX250R/7580W, 4-65, 4-125A, 4-400C,  
 4CX300A, 4CX350A, 4CX1000A, 4CX1500B,  
 4CX5000A, 807, 811, 833C, and more.

Call Westgate at: 800-213-4563

**AM Ground Systems**

Reliable, On-Time Installation  
 Quality Workmanship  
 Ground System Evaluation & Repair

[www.amgroundsystems.com](http://www.amgroundsystems.com)  
 1-877-766-2999



**ECONCO**

1/2 the Cost of New!  
 Rebuilt Power Tubes

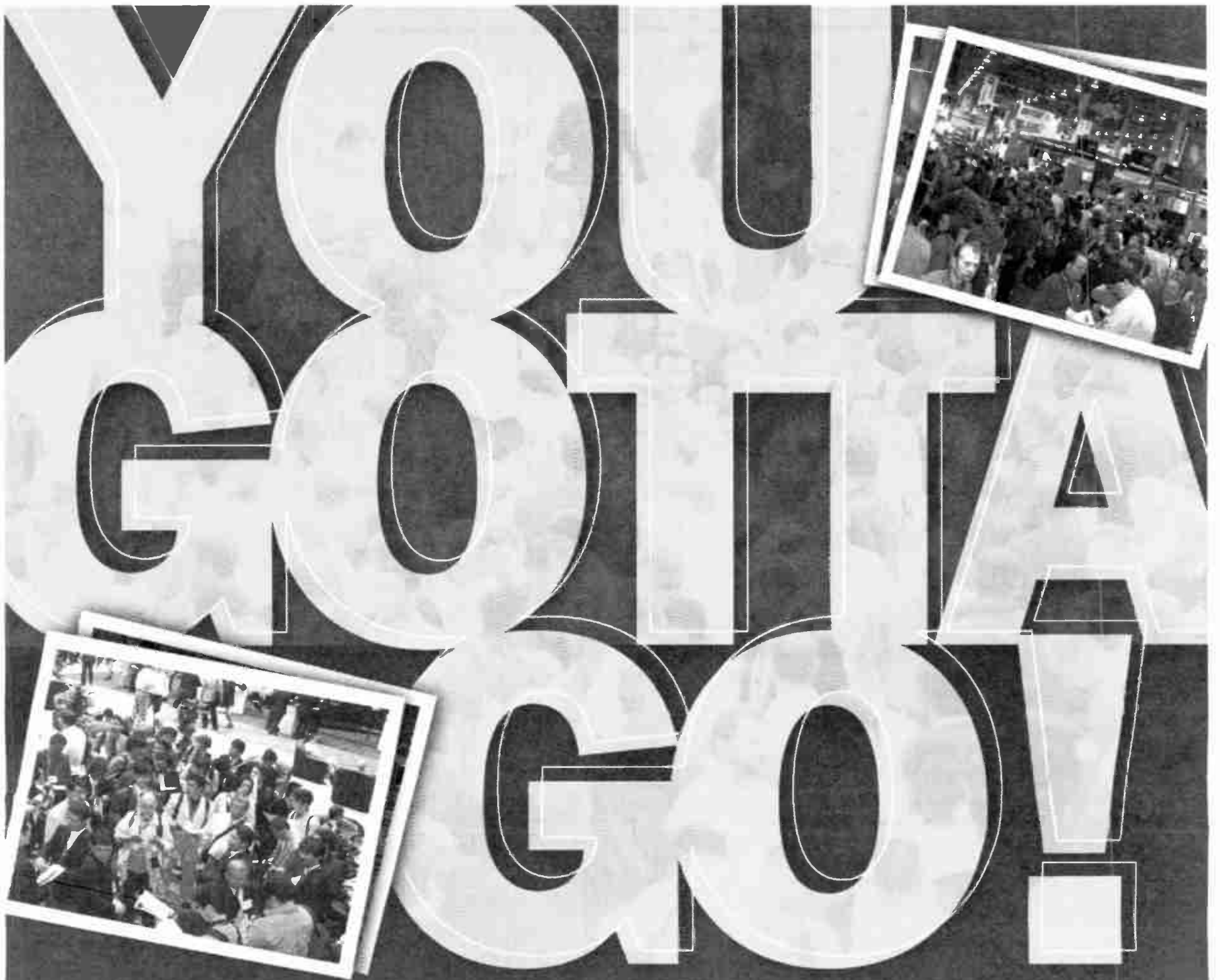
Se Habla Español

**ECONCO**

Tel: 800-532-6626 Web: [www.econco.com](http://www.econco.com)  
 Intl: +1-530-662-7553 Fax: +1-530-666-7760



**ECONCO**



**You gotta network. You gotta learn. You gotta see. You gotta NAB.**

Let's face it, time is money — now more than ever. For the most comprehensive electronic media industry experience available, you'd be wise to invest your time in an event with global returns.

NAB2003 is the only truly worldwide event for electronic media, offering professional networking opportunities with industry leaders from more than 137 different countries. Our educational offerings are guaranteed to leave you with the wisdom you need to succeed well into the future. And there's no bigger or more complete showcase of broadcast and multimedia products on the planet.

Make plans to attend NAB2003, The World's Largest Electronic Media Show. Because if you wanna know, You Gotta Go!

**NAB**  
**THE WORLD'S LARGEST  
ELECTRONIC MEDIA SHOW**  
April 5-10, 2003 • Las Vegas, NV

**Conferences: April 5-10, 2003 • Exhibits: April 7-10 • [www.nab.org/conventions](http://www.nab.org/conventions)**

# Automation for Satellite Music/News Talk

## Reliable Automation with Superior Support

# WireReady<sup>R</sup>32

Automation Deck 1 am-tue.ply Running 0:00:10:18 Seq: 504 Audio Ca

SEQ#	Command	Parameters
494	Set Clock	13:00:00
495	Switch to ABC News	ComTalk : "P1*31{0x0d}P1*31{0x0d}P2*M1{0xc
496	Wait Until	13:05:00
497	Switch to audio card	ComTalk : "P1*21{0x0d}P1*21{0x0d}P2*M1{0xc
498	Scheduled Break	13:05:00 Length: 01:40 Description:
499	Play Rotation	8100 I:\audio\8110-A.wav ALL COMMERC
500	Play Rotation	psa30 I:\audio\PS23.wav MO DEPT OF CC
501	Play Rotation	kt11 I:\audio\kt11.wav VOICE ID KTTR/K
502	Wait Until	13:06:40
503	Switch to Dolans	ComTalk : "P1*71{0x0d}P1*71{0x0d}P2*M1{0xc
504	Wait For Channel	B1-E: Dolans Break to go Hi . Not before
505	Switch to audio card	ComTalk : "P1*21{0x0d}P1*21{0x0d}P2*M1{0xc
506	Scheduled Break	13:19:00 Length: 02:10 Description:
507	Play Rotation	3146 L:\audio\3146.wav FOREST CITY MI
508	Play Rotation	1198 I:\audio\1198-B.wav PCRMC O: .25
509	Play Rotation	8100 I:\audio\8110-A.wav ALL COMMERC
510	Switch to Dolans	ComTalk : "P1*71{0x0d}P1*71{0x0d}P2*M1{0xc
511	Wait For Channel	B1-E: Dolans Break to go Hi . Not before
512	Switch to audio card	ComTalk : "P1*21{0x0d}P1*21{0x0d}P2*M1{0xc
513	Play Rotation	L:\audio\ID I:\audio\KT59.wav KTTR LEG
514	Wait Until	13:30:00
515	Switch to Missouri...	ComTalk : "P1*81{0x0d}P1*81{0x0d}P2*M1{0xc
516	Wait Until	13:32:00
517	Switch to audio card	ComTalk : "P1*21{0x0d}P1*21{0x0d}P2*M1{0xc
518	Scheduled Break	13:32:00 Length: 02:00 Description:
519	Play Rotation	8100 I:\audio\8110-A.wav ALL COMMERC
520	Play Rotation	4123 I:\audio\4123-A.wav STINKS\MFEDI F

Change Command

Select Command

- W - Play Wave
- P - Play by Name/Code
- N - Play Rotation
- G - Play Wave Rotation
- A - AutoRecord Wave
- R - Record by Name/Code
- U - Wait Until
- C - Wait for Channel
- X - Com Talk
- F - If
- B - Scheduled Break
- M - Scheduled Music Sweep
- L - Label
- 1 - Be Here At
- T - Load and Start
- S - Set Clock
- I - Sync
- G - Log
- K - Wait For Hot Key
- O - Wait for Closure
- ! - Pulse Channel
- @ - Latch Channel
- & - Pulse And Wait
- H - Hex Talk
- D - Delay For
- 2 - Goto
- { - GoSub
- } - ReturnSub
- < - Network On
- > - Network Off
- 3 - Stop / Shut down
- 4 - Skip

Start | WireReady32 | 1:09 PM

## \$17,995 - Ready-to-go Mirrored ON-AIR/Production System

Two computers with switchers/controllers/cards/setup/training and support.

Or lease for \$624/month. Own in 36 months, all service/upgrades/warranties included for 3 years.

Let WireReady provide you a ready-to-go-system with everything you need pre-configured and tested.

We'll program ALL your schedules/clocks for you, and then teach you how to maintain them.

Two computer system - production is identical to ON-AIR and can run station in an emergency.

WireReady32 can automatically synchronize your audio inventory, rotation and playlists on **both** systems.

Both computers come with Broadcast Tools controllers/switchers and Lynx ONE pro-audio cards.

WireReady32 can receive or send inventory via email or FTP over the internet.

WireReady32 can EMAIL you warnings if programs don't exist, are out of date or are the wrong length.

WireReady32 can take action if cuts are out of date or missing. A traffic system interface is included.

Included box will reboot system if something in Windows goes wrong and resume /pick up where it should.

WireReady32 can log/trace every step of the automation and provide confirmation logs of what plays.

Engineers and board ops love our screen because you see and understand EVERY step of the automation.

Multitask up to EIGHT of these sequentially running play and record spot, liner and program schedules.

sales@wireready.com  
call (800) 833-4459  
call (508) 393-0200  
www.wireready.com

Call NOW  
for your personal  
one-on-one  
demonstration!!!



WireReady NSI

When You're Ready, We're Ready

On-site installation/training available for additional cost.