

THE  
AUSTRALASIAN

Registered at the G.P.O.,  
Sydney, for transmission  
by post as a periodical

*W. J. ...*

# Radio World

*6*  
VOL. 7 . . . . . NO. 12

MAY 15 . . . . . 1942



**Some unusual facts explained  
and strange theories exposed.**



**Receiver uses single valve as  
three ordinary valves.**



**Receiver alignment explained  
in detail for novice and expert.**



**Guide to short-wave reception  
and list of stations heard.**

**Price 1/-**



# KEEP EVERY RADIO WORKING

*"Keep 'Em Listening"*



**T**HE responsibility rests with you—the Radio Dealers and Servicemen—for you are the fellows on whom the whole community depends, if it is to keep on getting its radio news, entertainment, and home defence warnings. "KEEP 'EM LISTENING" is the war-time pledge which our fellow American radio men have set as their goal, and to which we at Crown heartily endorse. Crown Radio Products, have for years, given you a "reliable line" of standardised replacement parts. Furthermore, Crown are doing all within their power to maintain constant supplies of components to you, no matter what the obstacles—material shortage or production restrictions.

You can depend on "Crown" and Crown Authorised Distributors to help you—



**"KEEP 'EM LISTENING"**

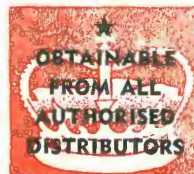
*Crown*



**RADIO PRODUCTS PTY. LTD.**

**51-53 MURRAY STREET  
PYRMONT - SYDNEY**

Telephone MW 2628  
(2 Lines)



# THE AUSTRALASIAN RADIO WORLD

*Devoted entirely to Technical Radio*

and incorporating  
**ALL-WAVE ALL-WORLD DX NEWS**

- ★ Proprietor —
- ★ Publisher —
- ★ Editor —

A. G. HULL

- ★ Editorial Offices —

117 Reservoir Street, Sydney  
Phones: M 4078 - M 4079

- ★ Office Hours —

Week-days: 9 a.m. - 5 p.m.  
Not open Saturday morning

- ★ Subscription Rates —

6 issues ..... 5/3  
12 issues ..... 10/6  
24 issues ..... £1  
Post free to any address

- ★ Service Departments —

Back Numbers, 6d. ea., post free  
Reply-by-mail Queries, 1/- each  
Laboratory Service, 2/6 per set

Vol. 6

MAY, 1942

No. 12

## CONTENTS

### CONSTRUCTIONAL —

Adding A.V.C. to "Little Companion" ..... 5

### TECHNICAL —

Strange Theories and Facts ..... 6  
The Alignment of Modern Receivers ..... 10  
Radio Step By Step (Part 2) ..... 15  
The Triplex Single ..... 18

### SHORT-WAVE SECTION —

Short-Wave Review ..... 20  
New Stations ..... 21  
Loggings of the Month ..... 22

### THE SERVICE PAGES —

Answers ..... 26

## EDITORIAL

The recent increases in sales tax on radio parts appear to place a most unfortunate load on an industry which is already carrying more than a fair share of the war's unavoidable burdens.

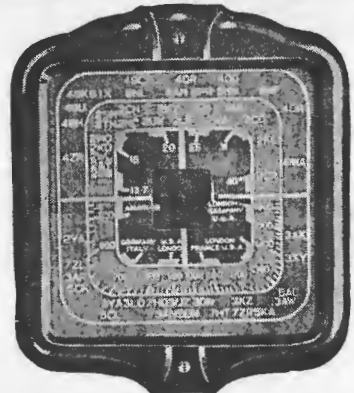
The possibility of a long war makes it desirable to think of the rising lads who will be swelling the ranks of the air crews and the signals section in a year or two. Steps are being taken to train them for service in the R.A.A.F. by that most worthy effort, the Air Training Service. Yet, so far as we know, there is nothing being done to encourage youngsters to study the practice of radio communication, in fact they are being discouraged. The heavier sales tax makes it difficult for them to afford to buy the necessary parts with which to experiment.

Even so, we can readily imagine what a rush there would be from modern lads if they were given the opportunity to enlist in a radio training corps with permission to build, erect and operate their own transmitting and receiving centres. Even whilst training they could be put to good use for N.E.S. and other emergency work.

Yet we hesitate to push the suggestion for already there seems to be enough talking and wrangling; enough man-power spent at the income tax office to put up a good war effort if only directed at some better purpose than struggling for a tupenny-ha'penny refund.

And so we appeal to the radio enthusiasts and the radio trade to bear the burden of increased sales tax as best they can, accepting it as part of their war effort.

# SOLVE YOUR PROBLEMS before they START!..



Code DA-9



The new D.W. Kit Dial, Code DA-9, has all parts supplied ready to assemble. This is an excellent replacement dial and is suited for crystal and small T.R.F. sets. The special walnut escutcheon is easy to fit and requires an aperture 3 in. x 3 in. Available for use with "H" type Gang Condenser on 1600 and 550 k.c. and 13.7 to 40 metres, S.W. bands.

Code	Price
DA-9	9/-
DA-1 Standard D.W. Dial	22/6
DA-2 Communications Dial	22/6
DA-5 13.7 to 40 metres D.W. Dial, "H" Condenser	22/6
DA-6 Mantel Set Dial, D.W. "H" gang	18/9
DA-7 Portable Kit Dial, D.W. "H" gang	9/-
DA-8 Same as DA-7, but ready assembled	13/6

### R.C.S. TROLITUL BROADCAST COILS

These coils are available in both Air Core and Permeability tuned types. The latter are adjusted to ensure maximum efficiency in our laboratories.



**AIR CORE "H" GANG**

E342 Aerial	6/6
E343 R.F.	6/6
E344 Osc.	6/6

**PERM. TUNED "H" GANG**

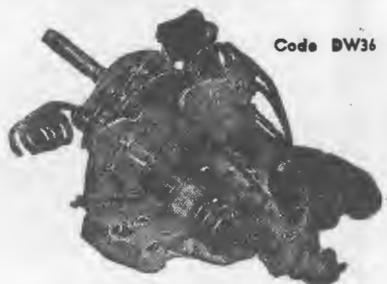
E345 Aerial	8/6
E346 R.F.	8/6
E347 Osc.	8/6

**T.R.F. TYPE-AIR CORE**

T88 Aerial	6/6
T89 R.F.	6/6
T87 R.F. with reaction	6/6
T81 Reinartz	6/6

For the construction of the new version of the "Little Companion"—and for all amateur construction work—there can be no better choice of component parts and coils than those bearing the R.C.S. trademark. Built to extreme precision limits, they are the constructor's best guarantee of perfect results and a safeguard against "disappointments." For the "Little Companion" circuit we recommend: Co.1 Kit Code K198, consisting of R.C.S. DW Bracket and 2 permeability I.F.'s

R.C.S. Dial DA-8	£2 15 0
	13 6



Code DW36

### R.C.S. TROLITUL D.W. UNIT

Type DW-36, as illustrated, consists of Aerial and Oscillator Coils, Wave Change Switch, the necessary B.C. and S.W. Trimmers and Padder mounted together, wired up ready to assemble into a set utilising 465 k.c., the bands being S.W. 13.7 to 40 metres, and B.C. 1600 to 550 k.c. Code DW-36—Price £1/7/6  
R.C.S. D.W. Unit, with R.F. Stage—DW-35 for "H" gang, B.C. and 13.7 to 40 metres £3/7/6

"The Coil People" lead in the use of Trolitul insulating material just as they lead in every other worthwhile coil development. Trolitul ensures high "Q," maximum sensitivity and selectivity—to be sure of really successful results you MUST use R.C.S. Trolitul coils and components.

### R.C.S. TROLITUL MIDGET CONDENSERS

R.C.S. Midget Condensers are made in two types, using Trolitul supports, thus guaranteeing practically no loss.



M.C. Type

The 14-plate equals old style 23-plate capacity. The M.C. type may be ganged.

### R.C.S. PERM. TUNED I.F.'s

The new R.C.S. permeability-tuned I.F.'s are wound on special Trolitul formers into which are inserted the adjustable iron cores. These R.C.S. permeability-tuned I.F.'s are the most dependable and efficient I.F.'s it is possible to produce. They should be used whenever the optimum in results is required.



When three I.F.'s are used:

IF164 1st	13/9
IF164 2nd	13/9
IF163 3rd	13/9
465 K.C. I.F.'s	
IF166 1st	7/6
IF167 2nd	7/6
Air Core 175 K.C.	
1E68 1st	7/6
1E69 2nd	7/6
IF162	
465 K.C. I.F.'s	

When two I.F.'s are used:  
IF162 1st 13/9  
IF163 2nd 13/9

### R.C.S. Products Are Obtainable Only Through These Distributors:

**SYDNEY:** Bloch & Gerber—Martin de Launay—Fox & MacGillycuddy—Lawrence & Hanson Electrical—John Martin—Radio Equipment—Radio House—United Radio Distributors—Homecrafts Ltd.  
**ADELAIDE:** Gerard & Goodman—A. G. Healing—Newton, McLaren Ltd.

**BRISBANE:** Chandler's—Trackson's—Homecrafts.  
**TASMANIA:** W. & G. Genders, Lunceston—W. & G. Genders, Hobart—W. & G. Genders, Burnie.  
**MELBOURNE:** A. J. Vealls—Homecrafts—Hortlev's.  
**WEST AUSTRALIA:** Carlyle & Co., Perth

DO NOT WRITE DIRECT TO—

## R.C.S. RADIO PTY. LTD., SYDNEY N.S.W.

# ADDING A.V.C. TO "LITTLE COMPANION"

THE little dual-wave mantel model, which we described in our March issue under the title of "Little Companion," has proved a most popular little job.

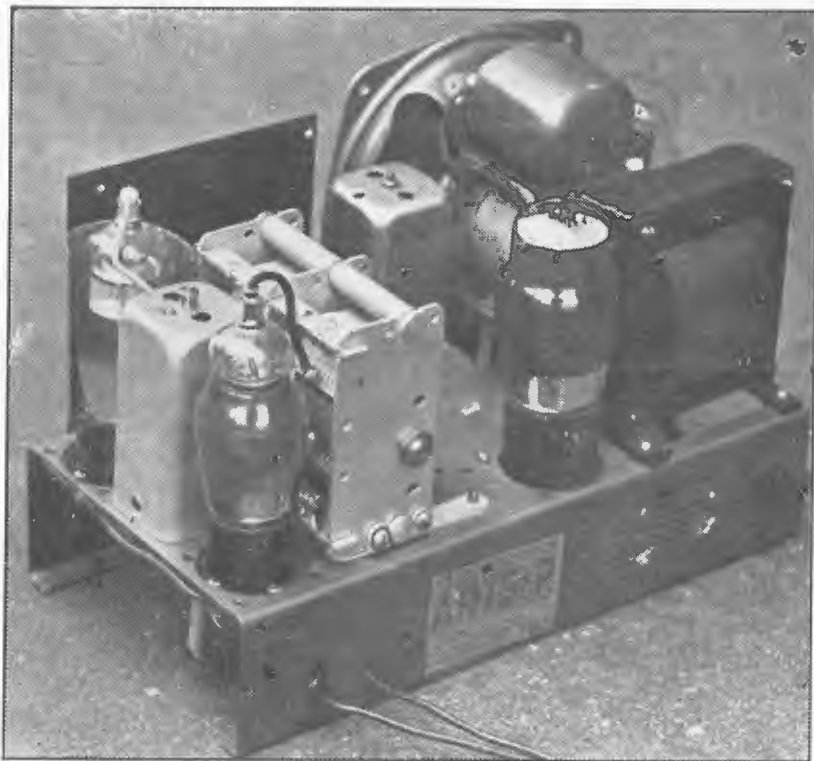
Doubtless a big factor in this popularity was the marketing methods, the complete kit being readily available as a unit, thereby saving the shopping difficulties which are sometimes encountered in these difficult times.

However, the little set had plenty of other attractions, being a neat little job in every way and yet capable of splendid performances on both broadcast and short-wave bands.

Just one minor trifle has come in for a little criticism, the absence of automatic volume control. Fortunately there is little difficulty in fitting this refinement and so in response to numerous requests, here are a few words about adding a.v.c.

When it comes to playing local stations, there is little need of a.v.c., the stations all having signal strength of about the same level, and there is seldom any question of fading until the signal has travelled at least a hundred miles.

On the short-wave band, however, the automatic volume control feature is really worth while, bringing all stations up to approximately the same strength, provided they are within range. Should the strength vary with fading, the a.v.c. will do its utmost to hold the signal steady.



The original "Little Companion."

Of course there is no actual increase in the effective sensitivity of the receiver, so that in cases where the signal fades to a low level, the auto-

matic volume control can only do its best to hold the signal.

## Parts Required

The only extra parts required are: A .5 megohm volume control potentiometer; a 1 megohm 1-watt resistor; and a .1 mfd. tubular condenser.

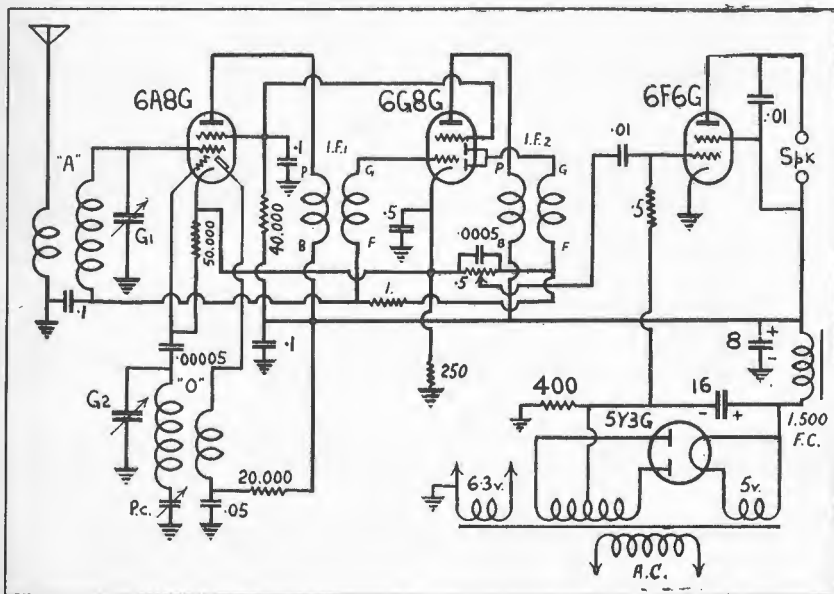
These are fitted as shown in the amended circuit diagram herewith, the bulk of the circuit arrangement remaining without any modification.

## The Manual Control

The manual volume control can be retained as a sensitivity control, the actual potentiometer being moved to the back of the chassis, where the control can be set to give best results and then left in this position.

A sensitivity control of this type is handy to make certain of stability as any tendency towards oscillation can be checked by using this control to steady down the overall gain of the set. Later, in the course of months, maybe the valves will be settling down a bit, when it may be found possible to again advance the stability control and thereby bring the sensitivity back to maximum.

On the other hand, those who want



The modified circuit.

(Continued on page 26)

# STRANGE THEORIES AND FACTS

## Sidebands

If we comment upon the lack of "life" in the reproduction from a super-selective set we immediately get the cry: "The sidebands are cut." What are the sidebands? Are they something real or just an excuse for poor tone? Let us first consider the facts: If selectivity of a receiver is too great, the higher A.F.'s of a modulated wave are attenuated though not completely lost.

Mathematicians explained the fact thus: A wave modulated at a certain A.F. is equivalent to the sum of two waves one of which has a frequency lower than the original by the particular A.F., the other having its frequency increased by the same amount. The waves modulated at highest frequencies are then equivalent to two other waves which, being away from the original frequency, are chopped off in a selective receiver. Note the words "equivalent to." Now, according to this theory, at 100 per cent. modulation or when the high A.F. transmitted is loudest, the entire origi-

pletely modulated at high A.F. But does it?

Now for a different explanation: What really happens in a super-selective receiver is this: If a circuit is very lightly "damped" by resistance, then any oscillation tends to keep on going. If a rapidly-modulated signal is being received, the modulation or "increasing-and-decreasing" of the oscillation does not occur—the oscillation builds up to a maximum and stays there so that the modulated signal has been replaced by an unmodulated one. (According to the sideband cutting theory, it's just wiped out). But all tuned circuits have some resistance, so the modulation remains to a certain extent (see Fig. 1). The attenuation can be compensated for by various types of high-

boost circuit as in the "Stenode" or "Radiostat" circuit invented by Dr. James Robinson. A block diagram of this circuit is shown in Fig. 2 and in Fig. 3 is a circuit to correct for the high-note attenuation due to selective tuning circuits.

By —

JOHN W. STRAEDE

B.Sc., A.M.I.R.E.

7 Adeline Street, Preston, Victoria

nal wave is destroyed and is completely replaced by these two waves (or sidebands) so that if a very selective receiver is used, it should receive very little when the original signal is com-

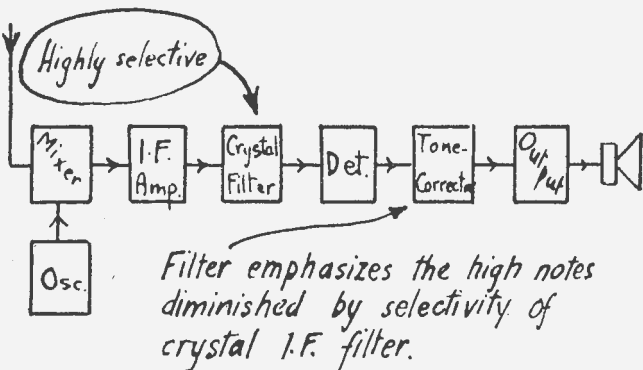


Diagram to illustrate the theory of the "Stenode" and other circuits featuring tone correction.

FIG. 2. BLOCK DIAGRAM OF STENODE.

### LITTLE DAMPING

### LARGE DAMPING

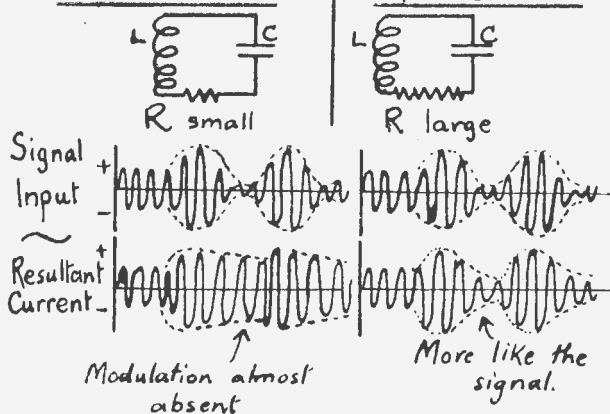


FIG. 1. EFFECT OF DAMPING.

### Output Curves

Sales managers once discovered that amplifiers could be more easily sold if supplied with a graph made by ruling a straight horizontal line on a sheet of graph paper.

When public opinion became too strong, the vertical axis of the graph was labelled "db" and the horizontal axes "cycles." To add conviction, the straight line was given a very slight bump at each end and a tail (also at each end). Most of these output curves are now honestly obtained, but are no guide whatever to the tone of the sound to be obtained from the speaker. Very often the amplifier with the straightest graph has the dulllest tone. Why?

The answer is: The graphs are voltage-frequency response curves. What really counts is not the voltage across the loudspeaker, but the power supplied to it. Apply plenty of inverse feedback (voltage) to a beam or pentode and you get a beautifully straight voltage-frequency graph. The brilliance, however, has departed. If you must use a terrific amount of inverse feedback, then use part voltage feedback and part current feedback. Back to the curves: The voltage



Hallmark  
of  
Perfection

# RADIOKES

Build your set with perfect confidence. See that the coils and components you buy are genuine Radiokes parts — the precision-built radio equipment that is chosen by set manufacturers and expert constructors time after time. They know that for dependability, maximum efficiency and first class performance, there is nothing to equal Radiokes.

For the "Little Companion"  
Radiokes Coil Kit  
Type CK198 — £2/15/-  
Radiokes Dial DWD-8 13/6

## RADIOKES BROADCAST COIL

Radiokes Broadcast Coil, trolitul rigid construction available in air-cored and permeability types. Types A.C.B., Aer., R.F. or Osc.

List Price, 6/6

## RADIOKES DUAL-WAVE UNIT

This is a highly selective unit with an exceptionally high range. The DWU-1 matches "H" type gang condenser, and incorporates 4-in-1 padder. Solidly mounted with coils.

Type DWU-1 ..... Price £1/7/6

AVAILABLE FROM ALL LEADING STORES

**RADIOKES Pty. Ltd.**

P.O. Box 90  
BROADWAY - - - SYDNEY

shown may be across a resistive load, across the primary of the usual speaker transformer or across the voice coil. If the impedance-frequency relation of the voice coil and the efficiency-frequency graph of the speaker were known, then an idea could be obtained of the real acoustic power/frequency response.

## Microphone Response and Level Ratings

Recently I was asked about the Fluore crystal "mike" I generally use, and was rash enough to state that I didn't know what its response curve was like and that all I cared about was: "It sounds nice." I was then promptly attacked by enthusiasts whose microphones were "+ or - 2db from 30 to 30,000 cycles" (They meant "within + or -" and "cycles per second" or "hertz.")

Now such a statement is meaningless. The load on a microphone affects its frequency response, the nature of the response change depending on the type of microphone. An increased load (due to a decreased load resistance) causes a bass-loss with capacity microphones such as condenser and crystal types and a high note-loss with inductive microphones such as dynamic and ribbon types.

Another factor affecting frequency response is the angle at which sound arrives at the microphone. Figure 4 shows the effect of angle on frequency for a dynamic microphone while Fig. 5 shows a crystal microphone with a .25 meg. load to give bass suppression on speech and a 5 meg. load to give full bass for the reproduction of music.

Microphone output levels are probably the most meaningless of all published data. A microphone may be labelled "—55 db," but it is not stated which of three or four standard reference levels it is 55 db. below, what acoustic power is being supplied to the microphone or what the

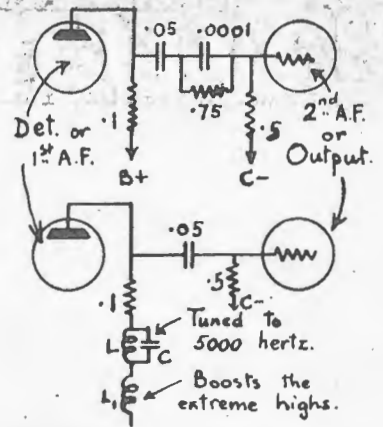


FIG. 3. CIRCUITS TO COMPENSATE for "SIDE-BAND CUTTING" (sic).

peak air pressure generated by the sound of the microphone is, what the load on the microphone is or what frequency. A really complete specification might read: — 55 db below 1 volt per bar with 1 megohm load, at a frequency of 400 hertz. (The "bar" is a unit of air pressure—"hertz" means "cycles per second" and is the unit of frequency.)

## Amplifier Gain in Decibels

The "decibel" is a ratio of one power to another. Because power often varies as the square of a voltage, engineers have come to compare voltages in decibels. So far, so good. The trouble starts when voltages are compared with powers. An "amplifier" is a voltage operated device but has a power output. Some manufacturers publish statements such as "120 db gain from microphone to speaker." That only means that the output power is one billion times the input power. But the input power depends on the grid resistor of the first tube and is no guide to the voltage required. By having a large grid resistor

(Continued on page 9)

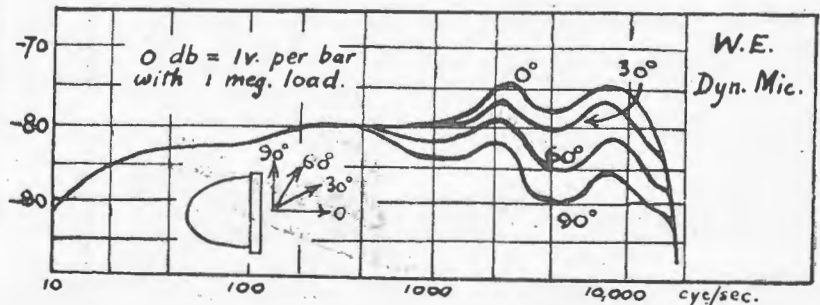


FIG. 4. EFFECT of ANGLE on MICROPHONE RESPONSE.

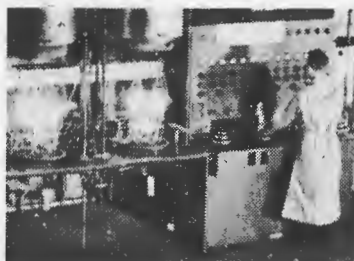
# ELECTRONS IN ACTION!



With the aid of this Electron Microscope, one can actually observe the action of electrons being emitted from a heated filament. Like a moving picture, the emission characteristics of a filament are projected on a lens-like screen. Observations, thus made, enable Eimac engineers to maintain the enviable record of dependability and superior performance enjoyed by Eimac valves.



Before filament assemblies are sealed into the valves they are placed under a temporary vacuum and heated to much higher temperatures than normal. This vital test enables technicians to weed out faulty parts before valve is actually pumped.



Hard vacuum is essential to preserve peak filament emission. Special pumps are built in the Eimac laboratories to fit the exact requirements of Eimac valves. During the pumping process, plate dissipation is run up to ten times normal. Valves that cannot stand this abuse never leave the factory.



Here is a special Emission Tester which enables laboratory men to ascertain the actual performance capabilities of filaments after the valves are completed. Under this test filaments are made to perform much more difficult tasks than could possibly be required under normal operating conditions.

## MAXIMUM FILAMENT EMISSION ASSURED IN EIMAC VALVES

All Eimac valves are unconditionally guaranteed against valve failures resulting from gas released internally. No other valve carries such a guarantee. This guarantee plus the fact that leading engineers throughout the world use and recommend them provides ample reasons for you to consider Eimac valves for your application.


Follow the leaders to

**Eimac**  
VALVES

Eitel-McCullough, Inc.,  
San Bruno, California, U. S. A.

*Eimac's unusual performance capabilities are receiving the enthusiastic acceptance in all branches of the service ARMY, NAVY, AIR CORPS.*

### EIMAC 450T

(In use by practically every major airline in the U. S. A.!) 

Filament Voltage . . . . . 7.5 to 7.7 Volts  
Filament Current (approx.) . . . . 12 Amperes  
Maximum Plate Voltage . . . . . 6000 Volts  
Continuous Plate Dissipation . . . 450 Watts  
Power output at 75% efficiency . . 1350 Watts

Foreign Division: FRAZAR & CO., LTD., 301 Clay Street, San Francisco, California, U. S. A.



# STRANGE THEORIES

(Continued from page 7)

istor for the first tube, the power supplied is very minute and the power gain in db. is very high.

In Figure 6 are shown two circuits each of the same sensitivity, that is, giving the same power output for the same input voltage. The power gains are quite different and the one with the larger value of grid resistor has a more impressive "gain in db." figure!

The best way to rate amplifier gain would be the same as for output valve sensitivity. After all, the simplest type of amplifier is just an output valve! Either "watts output per (microvolt)" or "microvolts required for one watt input" would be satisfactory.

## High Fidelity

The best receivers on the Austral-

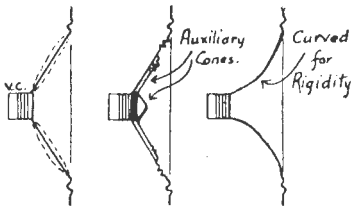


FIG. 7. SECTIONS OF SPEAKER CONES  
Dotted lines indicate vibration possible with straight-sided cones.

ian market (and probably on any market) give a reproduction that, from a scientific viewpoint, is far from the original but which is, nevertheless, pleasant to listen to. Is reality desired? Many a brass band or screeching singer sounds better if some of the highs-and-harmonics are eliminated.

Receivers with a frequency range greater than usual are termed high-fidelity, but an extended frequency range does not mean more pleasant listening. Very often the reverse.

Frequency distortion is the least objectionable of all types — a restricted frequency range actually compensates for some other types of distortion. Any DX enthusiast knows the reduction of noise that is obtained when the tone-control is turned to the "bass" (high-note loss) position. Public Address specialists use bass-suppression to make speech more intelligible.

The worst type of distortion is undoubtedly "harmonic" or amplitude distortion and is overcome only by using output valves of high power and efficient speakers (so that the output valves are not driven to the limit).

American "hi-fi" circuit designers

appear to be unanimous on four points: accurate tuning, ample power, inverse feedback and a "super" speaker. To reduce resonances in the speaker cone itself, auxiliary cones may be added or the cone may be curved-sided instead of straight-sided (see Figure 7).

Australian designers are not so fond of the words "High Fidelity" but employ the same principles, though to a lesser extent. The H.M.V. Model 425 was a good example of "hi-fi" Australian design.

The circuit embodies high output, inverse feedback, special I.F. transformer design to give sufficient damping, fully energized speaker. A 6U5 tuning indicator is provided.

## Popular Misconceptions

"My set has a 12-inch speaker, so I get good bass." An efficient well-energized 8-inch speaker is far better than a larger one with low field excitation and of low efficiency. It's the performance that counts. A large, under-energized speaker may seem to accentuate bass because of resonance and distortion making the bass more noticeable.

Class A operation is better than class AB1. Is it? With class AB1 the reserve power is greater, resulting in lower distortion on peaks and transients, the valves are usually working under easier conditions most of the time, and grid current distortion is less likely.

What is the definition of a class B amplifier? In answer to a question, a certain American magazine stated: "A linear class B amplifier is one in

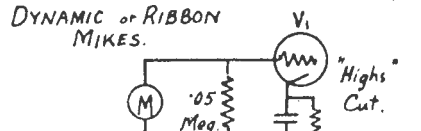
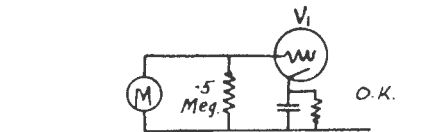
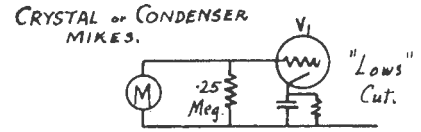
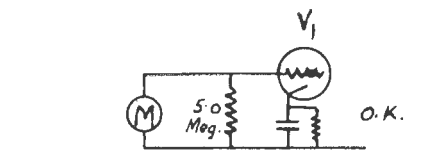


FIG. 5. MICROPHONE LOAD AFFECTS THE RESPONSE.

which the output power is proportional to the square of the input voltage." Unfortunately, many people got the idea that this was a definition of class B. It isn't. It's a definition of "linear." Actually a class B amplifier is one that is biased practically to cut-off.

Just to conclude: Have you heard of the jewel-wave receivers (jewelled in every wave)?

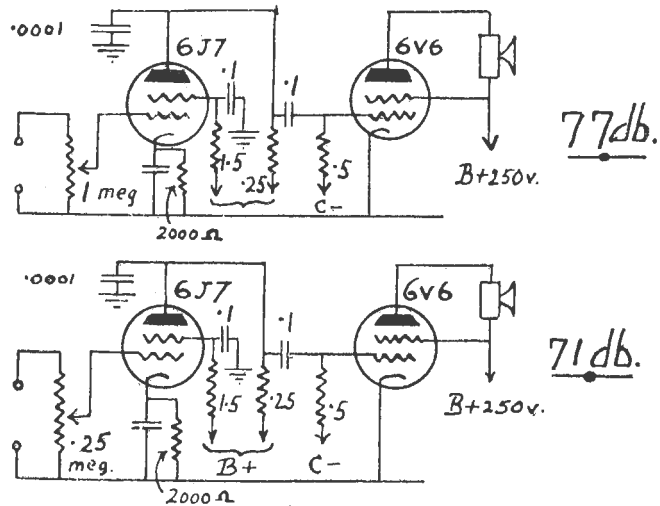


FIG. 6. SIMPLE AMPLIFIER CIRCUITS.  
Same amplification but different "gain in db."

# THE ALIGNMENT OF MODERN RECEIVERS

**M**ANY volumes have been written on this subject, both from a technical and a serviceman's viewpoint, and justly, because improper alignment is one of the most common ailments encountered in service work to-day, especially in receivers of the all-wave type. Many servicemen are somewhat afraid to make adjustments on receivers, as long as the set plays at all, because they are not familiar with the various functions and workings of modern receivers. This article is intended to help clarify to the serviceman who wishes to learn the why of such adjustments, how the various radio frequency circuits of a radio receiver function, and how to make practical adjustments necessary in order to restore a set to its original factory performance and efficiency.

A vitally important part of a radio receiver is the small compensating condenser used to make adjustments of the various tuned circuits. These small adjustable condensers, usually called padders or trimmers, are constructed in various ways. They usually consist of two or more plates insulated from each other, one plate being made of spring material, so it will hold the adjustment or spacing given it by means of turning a screw or nut.

These condensers are used to obtain fine adjustment of the tuned circuits, so that they may be completely in resonance and perform at their highest efficiency. Since it is commercially impractical to construct coils or tuning condensers which would be accurate at every point on

the dial, these trimmer condensers are placed across them so as to provide an accurate and easy means of making each circuit resonate at the proper dial position.

## T.R.F. Receivers

In a tuned radio frequency type of receiver the adjustments of these padders are usually made at the high frequency end of the dial using a signal generator or a station as a signal source, and adjusting the



**Selected from the "N.Z. Radiogram" on account of its comprehensive coverage, this article should clear up all points of this important subject.**



trimmers until maximum output is obtained. In some of the older type receivers, where the tuning coils were not properly impregnated, they absorbed moisture through exposure, which causes considerable losses or reduces their Q, and appreciably reduces the already none too abundant selectivity. Replacement or a baking and re-impregnating process is recommended for such cases before adjusting the trimmers.

In some of the older sets not using screen grid tubes, it is necessary to neutralise the circuits to prevent oscillations or howling, before the re-

sonant circuit trimmer condensers are adjusted. Neutralisation was usually accomplished by means of small trimmer type condensers, which served to compensate for the grid to plate energy transfer due to the grid to plate capacity of the triode tubes then used.

## Superheterodynes

The modern superheterodyne is considerably more complicated than these older type receivers and a brief review of the elementary theory involved in this type of receiver is necessary, so that the importance of making accurate adjustments on these receivers may be more fully appreciated. In this type of receiver circuit, the incoming R.F. signal is usually impressed across the primary of an antenna coil. The antenna coils' secondary is tuned over the desired frequency range by a variable condenser, which in turn is adjusted by means of the trimmer condenser connected across it. The signal usually goes from there into the grid of the first tube. In smaller sets the tube may be a detector oscillator or in larger sets it may be the first R.F. tube. In other cases, the signal may be fed from the first coil into another coil which is also tuned over the range by a condenser across it. This is commonly called a band pass filter type circuit. The signal then goes to the first tube. In the circuits having a combination detector oscillator tube, the incoming signal is mixed with the local oscillator signal producing a beat note, or the frequency difference between the incoming R.F. signal and the local oscillator signal.

There's an

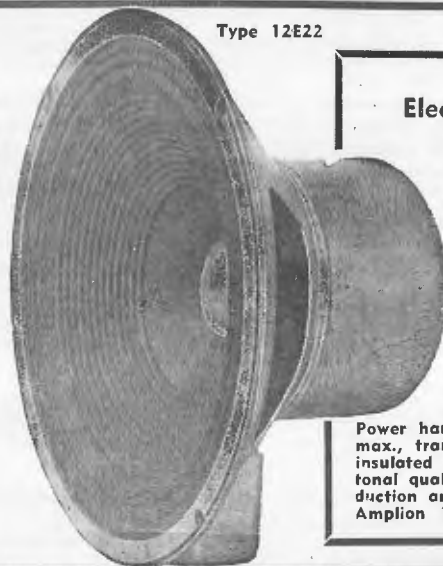
# AMPLION

for every purpose . . .

In the AMPLION range of fine speakers there is a type that is exactly right for your set or amplifier. Offering greater power-carrying capacity, completely electrically-welded construction throughout, insulated core and tropically sealed transformers, and true undistorted tone, they add immeasurably to the success of your work. Write for catalogue, prices, etc.

**Amplion [A/sia] Pty. Ltd.**

382 KENT STREET - - - SYDNEY



Type 12E22

### 12E22 Electrically welded

- Greater Output
- Sealed Transformers
- Complete Dust-proofing
- Extended Frequency Range

Unrivalled for P.A. or receiver equipment, the AMPLION 12E22 offers features not to be found in any other speaker, regardless of type or price.

Power handling is 13 to 20 watts max., transformers are sealed and insulated from the core, and the tonal quality and fidelity of reproduction are unequalled.

Amplion 12E22 ..... 62/-

Some of the larger sets employ a separate oscillator tube and a separate first detector tube. In such cases, the oscillator tube generates the oscillator signal frequency which is combined with the R.F. signal in the first detector or modulator tube. In both cases the two frequencies are mixed in the first detector tube, so as to produce another frequency, which is the difference between the two. When the circuits are operating correctly, this frequency difference is equal to the intermediate frequency (I.F.) of the set. The local oscillator and the R.F. sections of the set are both tuned by means of variable condensers and the circuits are so adjusted that the beat note produced by the mixing of the two frequencies is always equal to the I.F. frequency of the set throughout their tuning range.

### Commercial Design

Commercial design uses an oscillator frequency higher than the incoming R.F. signal, because it is more economical to build a set with less capacity and inductance (required to produce the higher osc. frequency) than when it is lower, requiring more capacity and inductance. Capacity and inductance values when higher oscillator frequencies are employed, are much lower than would be required if the oscillator frequency were lower than the incoming frequency (R.F.). When a gang type tuning condenser is employed this requires that the capacity of the oscillator section be less than that of the R.F. sections. Commercially, this is done by either making all condenser sections alike and inserting a small padder type condenser in series with the oscillator section capacity across the oscillator coil, or by using a cut plate type oscillator section, which has the required reduced capacity. In either case, a small trimmer condenser is also connected across the oscillator condenser so as to correctly adjust the minimum capacity of the combination or adjust the highest frequency end of the oscillator range.

### The Intermediate Frequency

The signal resulting from the mixing of the incoming R.F. signal and the local oscillator is fed into the intermediate frequency amplifier. The first I.F. transformer serves to couple the output from the first detector into the grid circuit of the first I.F. amplifier tube. The signal is amplified by this tube and then passes through a second I.F. transformer, which may feed it into a second I.F. tube or the second detector tube, depending on the size of the set. I.F. transformers are designed so that their natural resonant frequency is approximately the required I.F. frequency. In order to obtain maximum selectivity and sensitivity, both their primaries and

secondaries are tuned to the exact I.F. frequency of the set by means of trimmer condensers.

The advantages of this system are: that since it is easier to design an amplifier for lower frequencies, an I.F. amplifier can be designed to operate at one fixed frequency much more efficiently, resulting in far higher amplifications and increased sensitivity and selectivity than an amplifier designed to operate at higher frequencies and over a wide frequency range.

### Adjusting Compensating Condensers

Adjustment of these condensers should be made when the set lacks selectivity or sensitivity after other possible sources of this trouble have been checked and eliminated; such as

weak tubes, poor aerial, improper tube voltages, etc.

### I.F. Alignment

The I. F. trimmer condensers should be adjusted before the R.F. section is adjusted. This is best done by using a signal generator with an audio modulated signal tuned to the exact I.F. frequency of the set. The signal from the generator is fed into the grid of the first detector tube. In some cases it is desirable to "kill" the local set oscillator by placing a by-pass condenser across the oscillator section of the tuning condenser to eliminate any erroneous beats which may be produced. An output meter should be connected from the plate

(Continued on next page)



# BRITANNIC

*RULES THE RADIO WAVES*

---

**YES, the "Aegis" kit for the "Little Companion" contains every component you need for the assembly of an efficient dual-wave mantel model.**

**Insist on the "Aegis" kit as featured in last month's issue.**

**WRITE FOR QUOTATIONS**



The original "Little Companion" as built from the "Aegis" kit.

★

**INTER-OFFICE COMMUNICATORS AND SIGNAL TRACERS ARE OUR SPECIALTIES**

★

**MAGRATH'S are also Agents for:**

MARQUIS PRODUCTS — W.W. Potentiometers, Knobs, Formers, etc.

WESTERN CABINETS — As recommended by "Radio World."

UNIVERSITY TEST EQUIPMENT — Oscillators, Voltmeters, etc.

AEGIS — Power Transformers, Chassis and a complete range of quality Kitsets.

## **J. H. MAGRATH PTY. LTD.**

208 LITTLE LONSDALE STREET, MELBOURNE, C.1

Phone: Central 3688-4414

## ALIGNMENT

(Continued from page 11)

of the last audio tube to ground or from plate to plate in case of push pull output.

If one owns a meter of sufficient sensitivity, it may be connected across the voice coil of the set. Sets using automatic volume control should be adjusted either by reducing the signal output of the service oscillator to a point where the A.V.C. does not function, and using the output meter, or by inserting a milliammeter in series with the load resistor in the A.V.C. network or connecting a vacuum tube voltage across the A.V.C. network, so as to read the A.V.C. voltage developed.

If the set is provided with a resonance indicator such as the "Shadow Meter" or cathode ray "Magic Eye" this will provide an excellent indicator for adjustment purposes. After having made suitable provision for indicating resonance, the I.F. trimmer condensers should be adjusted for maximum output, or so as to tune the I.F. circuits to their exact resonant frequency.

A signal generator should always be used for aligning the I.F. transformers. If a station signal is used one is apt to get the entire I.F. system "off" frequency, although it may be set for maximum output thus causing poor tracking of the oscillator and R circuits, producing dead spots on the dial and in most cases

whistles and birdies. In high fidelity sets where the fidelity is variable, it is usually advisable to set the fidelity control to the low fidelity or sharp tuning position of the I.F. circuits, and adjust the I.F. trimmers so as to produce an overall I.F. tuning curve with a "flat top." Possibly the most accurate method and easiest of adjusting such high fidelity sets is to use a cathode ray tube in conjunction with a frequency modulated test oscillator, so as to reproduce the entire tuning curve of the I.F. system on the screen of the screen of the tube. However, this is a subject requiring volumes for satisfactory explanation, and cannot be included in this article. Sets which are equipped with automatic frequency control should be adjusted with the A.F.C. control turned off.

After these adjustments have been made, the I.F. system of the set will respond to a signal which is exactly equal to a frequency for which the circuit has been adjusted.

In many modern superheterodynes, a wave trap is provided in series with the antenna circuit which is tuned to the I.F. frequency of the set, so as to prevent any unwanted signals of this frequency from entering the set and getting to the first detector and coming on through the I.F. system. The proper adjustment of such a wave trap is to connect the signal generator to the antenna post of the set and then adjust it to the I.F. frequency. Then turn the generator to maximum output. The trimmer condenser across the wave trap should be adjusted until minimum response is obtained in the output of the set.

### R.F. Alignment

After the I.F. section of the set has been aligned to the proper frequency, the next job is to align the R.F. and oscillator sections. Compensating or trimmer condensers are connected across the R.F. and oscillator coils in order to provide a means of accurately adjusting these circuits.

The test oscillator should be connected to the antenna and ground terminals of the set and adjusted for a frequency close to the highest frequency portion of the range being adjusted. On the broadcast band, the adjustment is usually made at 1400 kc. The trimmer condenser provided across the oscillator condenser is for the purpose of making the oscillator track at the high frequency end of the dial.

For instance, in a superheterodyne with an I.F. frequency of 465 kc., when the R.F. sections are tuned to 1400 kc., the oscillator must oscillate at 1400 kc. plus 465 kc. or 1865 kc.



*It's New!*

## The University Universal SPEAKER & OUTPUT METER

Yes, Mr. Radio Enthusiast, it's as efficient as it looks, and better. This much needed service instrument combines the functions of an accurately calibrated Output meter and a Universal Speaker. It is designed to suit ALL types of radio receivers and apparatus.

### RADIO EQUIPMENT PTY. LTD.

E.S. & A. BANK BUILDINGS, BROADWAY, SYDNEY (opp. Grace Bros.)

You are invited to send for leaflet fully describing this instrument, and all other recent "University" releases.



Obtainable from leading wholesalers in all States.

This frequency difference must be maintained between the oscillator and R.F. sections throughout the tuning range of the set. In order to maintain this frequency difference at the low frequency end of the dial, there is a compensating condenser placed in series with the oscillator gang.

On broadcast, this adjustment is usually made at 600 kc. If the R.F. is set at 600 kc., a set with a 465 kc. I.F. would have the oscillator oscillating at 600 kc. plus 465 kc, or 1065 kc. Therefore, the high and low frequency padders provide the necessary tracking adjustments for two points on the dial.

Modern receivers are designed for three point tracking for instance, on the broadcast band at 1400 kc., 9000 kc., and 600 kc. The tracking at the third point, or 900 kc., is determined by the oscillator coil inductance. Although this is entirely a matter of set design, occasionally a serviceman gets a set in which oscillator inductance trouble is suspected and in which case he usually tries to obtain a new one. Unfortunately, however, they are sometimes unobtainable at any price, so the only choice he has is to repair the one available.

#### Tracking Oscillator Coil with R.F. Coils

First, the local set oscillator should be killed by shunting bypass condenser across the oscillating gang section, and the set operated as a T.R.F. set and the dial calibration checked at several points across the band. The R.F. should be adjusted so that the dial corresponds as nearly as possible with the R.F. tuning. Also, the extreme ends of the range should be

noted. Say that they are 1500 kc. and 550 kc.

Second, connect the test oscillator so that it will beat with the local set oscillator into the first detector.

#### Next Month:

**An article dealing with every aspect of instability is due to appear in next month's issue. Order your copy now.**

The R.F. tubes should be taken out so as to prevent any unwanted signal coming through. A pair of bypassed ear phones in the oscillator plate or first detector plate circuit will allow one to detect the beat between the two oscillators. Then set the dial exactly to the previously noted high position, say, 1500 kc., and set the test oscillator to 1965 kc. (I.F. frequency equals 465 kc. plus R.F. frequency). Then adjust the high frequency padder so that the local oscillator comes to zero beat with the test oscillator. Repeat the same performance at the low frequency end, setting the dial at exactly 550 kc., and the test oscillator to 1015 kc. Then adjust the series padder so that the local oscillator comes to zero beat with the test oscillator.

Third, set the dial to 900 kc. and determine what frequency the set oscillator now has by beating it against the test oscillator. It should be 1365 kc. If it is above this, the inductance of the oscillator coil is too low. If it is below this value, the inductance is too high. Turns are added to increase the inductance and taken off to decrease it, one turn being a large amount unless the frequency dis-

crepancy is extremely large. The easiest way of increasing the coil inductance is to arrange a piece of radio frequency iron on a screw, so as to move it up into the coil, or if the inductance is already too high, arrange a copper penny in similar fashion. In this manner, the coil inductance may be adjusted "on the nose" so as to make the oscillator's frequency 1365 kc. when the dial is set at 900 kc.

Fourth, after the midpoint has been made to coincide, the set should again be operated as a super and the padding and trimming of the local oscillator completed or redone at 600 and 1400 kc.

This method is not perfect, since changing the inductance to make it coincide at 900 kc. changes the other two points but by working back and forth a fairly good job can be done of tracking the oscillator with the R.F. and the dial and a great improvement can be made in the sensitivity and reduction of squeals over the entire band.

#### Adjustments of R. F. Circuits in All-wave Receivers

Adjustment of all-wave receivers is somewhat more involved than a broadcast band receiver due to the multiplicity of circuits involved and consequent increase in number of necessary adjustments. Before adjusting any all-wave set, it is good practice to allow the set to warm up for approximately 30 minutes to allow for thermal expansion of the parts.

Each band of an all-wave receiver must be adjusted separately in the same fashion as an ordinary broadcast receiver is adjusted; that is, connect the signal generator to the set's

## FOR CERTAIN SATISFACTION



No piece of equipment is better than the valves it uses . . . no one can afford to take the risk of breakdowns or unreliability. That is why every set-builder should —

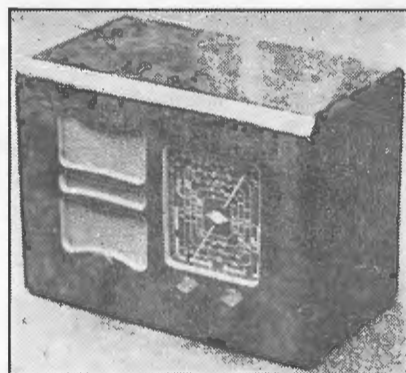
### SPECIFY and INSIST on MULLARD VALVES

Mullard Valves have that extra reserve of efficiency and dependability that has made the name of **Mullard** a household word wherever the British flag flies.

FOR ANY PURPOSE THERE NEVER HAS BEEN A BETTER VALVE THAN MULLARD

MULLARD AUSTRALIA PTY. LTD.  
367-371 Kent Street, Sydney, N.S.W.  
Telephone - - - - MJ 4688

# Mullard



For the "Little Companion" described in this issue, Mullard valves are specially recommended. The types required are:— 1—6A8G, 1—6G8G, 1—6F6G and 1—5Y3G.



## ALIGNMENT

(Continued from previous page)

antenna and ground (usually doublet antenna-equipped sets should have the two antenna posts connected together), and adjust the generator to some frequency near the high frequency portion of the band. Note: In some cases it is extremely important that a dummy antenna be provided as recommended by the manufacturer. This is usually a carbon resistor and a small condenser.

Then the oscillator trimmer (shunt) condenser should be adjusted until the generator's signal comes in at the desired point on the dial. Incidentally, it is extremely important that the oscillator trimmer be adjusted to the fundamental and not the image

frequency. This can be assured by backing the trimmer screw entirely out, then slowly turning it in, until a maximum peak occurs. Turning the condenser slightly beyond this point will bring in another peak somewhat weaker than the first which is the image frequency.

Another check is to set the trimmer on the fundamental and leaving the generator at the same frequency, rotate the gang condenser to a lower frequency position until the image signal is heard. This signal should be lower in frequency than the generator frequency by twice the value of the set's I.F. frequency.

Double responses or image interference is due to a lack of R.F. selectivity before the first detector tube, and is especially noticeable in the

higher frequency bands. Very few manufacturers use more than one tuned R.F. stage ahead of the first detector on their high frequency bands, and some do not use any.

After the oscillator has been adjusted, the R.F. trimmers for the band being adjusted should be adjusted for maximum output. Then if there is a low frequency oscillator padder for the band concerned, it should be adjusted so as to make some known signal generator frequency near the low frequency end of the band come in at the correct dial setting.

Each band is adjusted in the same manner until the R.F. section of the set is completely adjusted. In some all-wave sets, the circuit arrangement is such that there is an interlocking of adjustments between bands. In this case, the highest frequency band must be adjusted first, the next highest frequency band, and so on, until all bands have been adjusted, unless otherwise recommended by the set manufacturer.

### Adjusting the Signal Generator

Most generators have compensating condensers which can be adjusted to correct for any shifting of calibration that may have occurred. Their adjustment is simple, since it only involves:

First, tuning in a broadcast station near the high frequency portion of the generator's band.

Second, connecting the generator to the antenna of the set and beating it against the station.

Third, adjusting the generator's compensating condenser until the dial reading obtained on the generator at zero beat corresponds with the known station frequency.

Fourth, repeating the same process for some known station frequency near the low frequency end of the generator's dial and adjusting the series padder condenser until zero beat is obtained between the station and the generator, until the calibration of the generator corresponds to the known station frequency.

Some signal generators are not provided with a means of making their generated frequency track with the dial at the low frequency ends of the various bands. In such cases, nearly perfect tracking can be effected by arranging a means of varying the inductance of the oscillator coil. If the inductance is too high, it can be lowered by moving a copper penny on a screw into the coil, or if it is too low, by moving a piece of R.F. iron on a screw into the coil. There is probably nothing more time-wasting in adjusting a set, than attempting to correctly adjust it with a generator whose dial calibration is incorrect.



### SPECIALISATION

For 19 years, the entire I.R.C. organisation has focused its research work, its ability and its energy exclusively upon the design and manufacture of fixed and variable resistors. From this specialisation have resulted products of tested quality, a world-wide reputation for engineering achievement and a thorough knowledge of resistance problems.

### DIVERSIFICATION

This concentration of effort has resulted in the development of many kinds of resistors for widely divergent applications and is constantly providing new designs for current research problems.

Metallized Controls  
Insulated Metallized Resistors  
High Frequency Metallized Resistors (to 100 watts)  
Ultra-High Range Metallized Resistors  
All-Metal Power Rheostats (25 and 50 watts)  
Insulated Wire Wound Resistors ( $\frac{1}{2}$  and 1 watt)  
High Voltage Metallized Resistors  
Metallized Suppressors  
Precision Wire Wound Resistors  
Fixed and Variable Power Wire Wound Resistors



SOLE AGENTS FOR AUSTRALIA:

**Wm. J. McLELLAN & CO.**

BRADBURY HOUSE, 55 YORK STREET, SYDNEY.

# VOLTS, AMPERES AND OHMS

**I**N last month's article it was explained how a current of electricity flowing through a conductor is merely a drift of electrons moving through the conductor under the influence of an electric field set up by a battery.

Thus, a wire carrying a current of electricity can be likened to a hose-pipe carrying water, where the molecules correspond to the moving electrons in the conductor.

Electrons are so tiny, however, that a measure of electric current in terms of them would be impracticable, so a much larger unit, the ampere, is used. To show how tiny the electron really is, nearly  $10^{19}$  (ten million, million million) of them should flow past a point in one second to represent a current of one ampere.

Last month, we saw that to start or maintain an electric current, some form of driving force is necessary, just as pressure is required to drive water through a hose-pipe. This electrical driving force is called an electromotive force (E.M.F.).

In the case of a simple conductor this force is utilised in forcing the stream of electrons through the conductor against the resisting force opposing their transfer from one atom to the next. It is this resisting force which constitutes the resistance of the conductor.

Resistance depends on the length of the conductor, the material of which it is made, its cross-sectional area, and to some extent, its temperature. Resistance can be merely an incidental property of a conductor, or it can be deliberately inserted in the path of the current for a special reason, as is often done in radio.

A poor conducting material has a high resistance; so it is quite easy to choose a suitable material and insert it in a circuit so that it impedes the flow of current.

## Ampere, Volts and Ohms

The practical unit of current is the ampere, which is not a quantity of electricity, as so often imagined, but

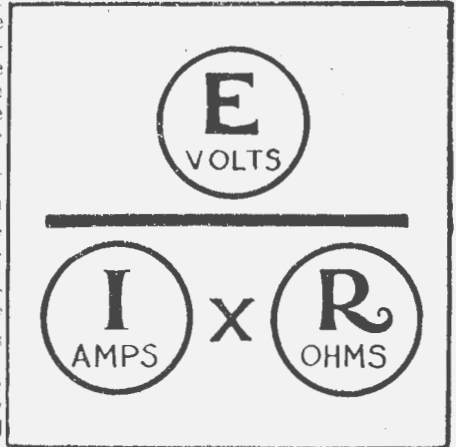


Fig. 1.—As explained in the text, this sketch will be found very handy for working out Ohm's Law problems.

It is a very simple law, but a sound working knowledge of its applications is essential to anybody studying radio.

## Ohm's Law Explained

Stated simply, Ohm's law says that the current in amperes is equal to the electro-motive force (pressure in volts). It is usually expressed in the

form  $I = \frac{E}{R}$ , where I stands for current (in amperes), E for electro-motive force (in volts), and R for resistance (in ohms).

The law can be expressed in three ways, namely  $I = \frac{E}{R}$  amperes;  $R = \frac{E}{I}$  ohms, and  $E = IR$  volts, enabling any one of the three quantities to be found when the other two are known.

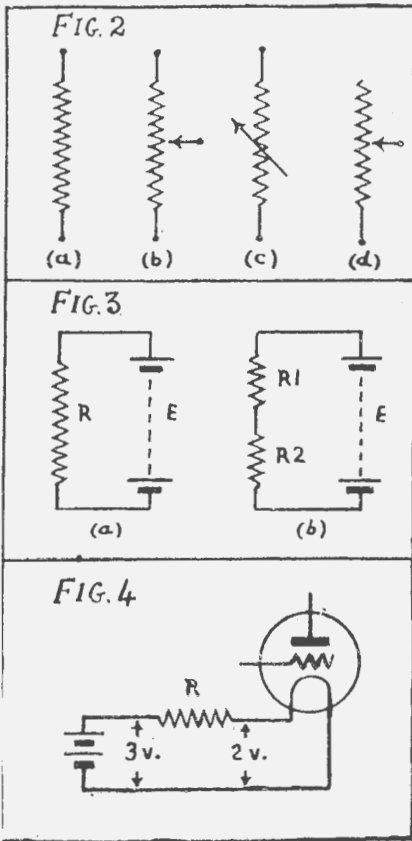
The sketch on this page (Fig. 1) will be found very handy for working out Ohm's law problems. To use it, cover up with a finger the letter representing the unknown, and the way to deal with the other two quantities will be revealed.

Thus by covering up E, I and R are left together and should be multiplied to obtain the result. If I is covered, then it becomes obvious that E should be divided by R.

## How Resistances Are Drawn

A zig-zag line is used to depict all kinds of resistances, minor variations being added to differentiate between various types.

Fig. 2 (a) shows the way an ordin-



## Part 1 of this series was in the April issue.

a rate of flow. In other words, in the hose-pipe analogy mentioned above, the equivalent of the ampere is not the gallon, but gallons per second, or rate of flow.

The electrical quantity corresponding to the gallon is the coulomb, and a flow of one coulomb per second is one ampere.

The unit of voltage is the volt, which is the electrical difference of potential required to cause a current of one ampere to flow in a circuit having one ohm resistance. The ohm, by the way, is the unit of resistance.

## Factors Governing Current Flow

The number of amperes that flow round a circuit when a given electromotive force is applied is controlled by the resistance of that circuit. That is to say, if the circuit has a low resistance, a smaller voltage will be needed to force a given current along the wire than if the circuit had a high resistance.

Hence, voltage, resistance and current are closely inter-related, and any one of them can be calculated, provided the other two are known. The law connecting the three is known as Ohm's law, named after Professor Ohm, a noted early electrical pioneer.



## SERVING YOU *Still!*

THE majority of our Male Staff—including the Country Travellers—have been on Military Service for quite a while. They serve you still... though in a different way. Naturally we cannot now keep as close a personal contact with our clientele, as in the past. You will help the War Effort, help yourself and do us a favour by mailing your orders to us. They will receive the usual prompt attention.

# MARTIN de LAUNAY

PTY. LTD.

### SYDNEY:

Cnr. Clarence and Druitt  
Sts. (next Town Hall)  
M2691 (4 lines)

### NEWCASTLE:

Cnr. King and Darby  
Sts. B2244 (2 lines)

## STEP BY STEP

(Continued from previous page)

any fixed resistance is represented, while the symbol for a potentiometer, which is a special kind of variable resistance, is illustrated in Fig. 2 (b). An ordinary kind of variable resistance such as a rheostat is indicated in Fig. 2(c). An alternative way of indicating a variable resistance is to use the potentiometer symbol, but omitting the connection at one end, as shown in Fig. 2 (d).

The symbol for a battery of any kind was described and illustrated last month, so the meaning of Fig. 3(a) now becomes apparent. It shows a resistance R connected across a battery of voltage E.

### Some Practical Examples

If the resistance R, which will be taken as representing the entire resistance in the circuit, has a value of 500 ohms, and the voltage E of the battery is 100 volts, then the current that flows through the resistance can be found from Ohm's law. From the formula  $I = \frac{E}{R}$ , we obtain  $I = \frac{100}{500} = 1/5$  or .2 ampere.

Ohm's law is particularly useful in radio for working out the voltages which are developed across resistances. In Fig. 3(b) is shown a battery of E volts, across which are connected two separate resistances, R1 and R2, which we will assume have values of 600 and 400 ohms respectively.

The current flowing through both resistances will be the same. If the voltage E equals 100 volts, the current I will be  $\frac{100}{600 + 400} = .1$  ampere

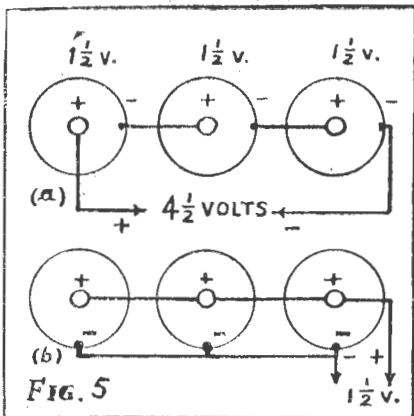
Now, to find out the voltage dropped across either resistance, all that is necessary is to multiply the resistance in question by this current. Thus, 60 volts are dropped across R1 and 40 across R2, giving a total drop equal to the battery voltage.

In radio, it is often necessary to reduce voltage available to a value required. For example, if the filament of a 2-volt valve is to be supplied by two 1½-volt cells connected in series, making 3 volts, a resistance has to be inserted to drop one volt, as shown in Fig. 4. If the filament current is .1 ampere, then from the formula  $R = \frac{E}{I}$  we find that  $R = \frac{1}{.1} = 10$  ohms.

### Some Common Prefixes

In radio, it often happens that in the one calculation one unit is being considered in thousands and even millions, while the same problem may





nection equally widely used in radio — the parallel connection. To link cells in this way, all the positive terminals are connected together, and all the negative, as shown in Fig. 5(b). The voltage of the combination is not increased, but the advantage of this connection is that the current drain that can be taken from cells so joined is equal to the maximum drain that can be taken with safety from one cell, multiplied by the number of cells. For example, if .5 ampere can be taken from one of the cells shown in Fig. 5(b) without overloading it, then 1.5 amperes can be taken with safety from the three joined in parallel.

### Resistances in Series and Parallel

Fig. 6(a) shows a pair of resistors connected in series, and Fig. 6(b) shows the parallel connection.

As with cells, when two or more resistors are connected in series, the total resistance of the combination is equal to the sum of the separate resistors. For example, if  $R_1$  in Fig. 6(a) has a value of 600 ohms and  $R_2$  400 ohms, the total resistance is 1000 ohms.

With any number of resistors connected in parallel, the total resistance is always less than that of the smallest resistor. If  $R_1$  and  $R_2$  in Fig. 6(b) have the same values as for the previous example, then the equivalent

resistance  $R$  of the combination is given by the formula:—

$$\frac{1}{R} = \frac{1}{R_1} + \frac{1}{R_2}$$

$$\frac{1}{R} = \frac{1}{600} + \frac{1}{400}$$

$$= \frac{2}{1200} + \frac{3}{1200}$$

$$= \frac{5}{1200}$$

Therefore,  $R = \frac{1200}{5} = 240$  ohms.

The same formula, extended according to the number of resistors, always applies. For example, if four resistors of 120, 40, 60 and 30 ohms are connected in parallel, then the resultant resistance is given by:—

$$\frac{1}{R} = \frac{1}{120} + \frac{1}{40} + \frac{1}{60} + \frac{1}{30}$$

$$= \frac{1}{120} + \frac{3}{120} + \frac{2}{120} + \frac{4}{120}$$

$$= \frac{10}{120}$$

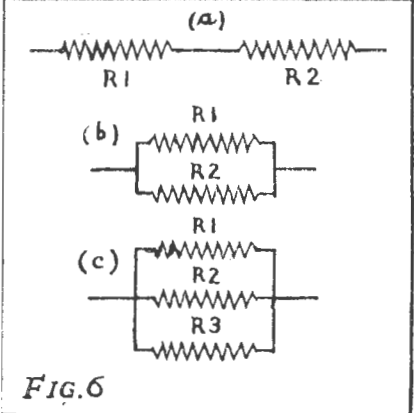
Thus,  $R = 12$  ohms.

### Calculating Electrical Power

The unit of power is the watt, denoted by the letter  $W$ , while the formula for power is  $W$  (Watts) =  $E$  (Volts)  $\times$   $I$  (Amps).

So if a pressure of one volt is causing a flow of one amp. (which incidentally infers a resistance of one ohm)

(Continued on next page)



involve only a one-millionth part of another unit. To overcome this apparent difficulty in the tremendous range of quantities, prefixes are used.

To reduce the unit to a smaller dimension, we have —

Milli = one thousandth

Micro = one millionth

Thus one milliampere is one thousandth of an ampere, and to convert the latter to the former it should be multiplied by 1000. For example, .03 ampere equals 30 milliamperes. Similarly .02 volt equals 20 milli-volts, or 20,000 microvolts.

To increase the unit to a larger dimension we have —

Kilo means 1000.

Meg (or mega) means 1,000,000.

Thus, one megohm is one million ohms, and 500 kilocycles equal 500,000 cycles.

### Series and Parallel Connections

Last month it was explained that when any number of cells are connected together, positive of one to negative of the next and so on, then the voltage between the free positive and negative terminals is equal to the voltage of each cell multiplied by the number of cells. This is illustrated in Fig. 5(b). Cells, or in fact anything at all, so linked are said to be connected in series.

There is also another type of con-

**SAVE MONEY**  
**WITH A**  
**SUBSCRIPTION!**

**Order Yours To-Day**

Make sure you get every issue as soon as it is published. Place an order with your newsagent or send direct to us for a subscription.

**IT SAVES YOU TIME!**

**IT SAVES YOU MONEY!**

We guarantee that every subscriber has his copy posted the same day it comes off the press.

**SPECIAL RATES**

- ★ 6 issues .. 5/3
- ★ 12 issues .. 10/6
- ★ 24 issues .. 20/-

**POST FREE**

Enclosed please find remittance for 10/6 in payment for an annual subscription to the "Australasian Radio World," commencing with the..... issue.

NAME .....

STREET and NUMBER .....

CITY ..... STATE .....

**THE AUSTRALASIAN RADIO WORLD**  
117 RESERVOIR STREET, SYDNEY

# The TRIPLEX SINGLE

Reprinted from "The N.Z. Radiogram."

THERE are doubtless many who have made up single tube sets using the 1D8GT and who would like to try "something different." Although this tube is really three tubes in the one envelope (consisting of diode detector, triode and output pentode) in all small sets to date the diode has been either disregarded altogether or perhaps earthed as an after thought. The set to be described uses it for its proper purpose as a detector, and also to provide AVC.

AVC may seem to be unusual in a set of this type, but it is well worth

experimenting with and can easily be omitted if it is not wanted.

Otherwise there is nothing unusual in the circuit except that the triode is used as an R.F. amplifier instead of a detector or A.F. amplifier. The following points will bear noting, however.

The coils should be high gain, iron-cored types in order to get as much lift as possible. This is so that the

obtained by using an 800 ohm resistor by-passed with a 10 M.F. 25-volt electrolytic between B— and earth or by using a separate bias battery as shown in the circuit diagram. The latter method is recommended as it allows the full 90 volts on the plate and full power, whereas the former method drops the plate voltage by 9 volts and the output correspondingly. The set only has one tube after all, and it is only fair to give it every chance possible!

The resistor in the plate lead of the triode acts as an R.F. filter and may be omitted if satisfactory operation can be obtained without it, but it will usually be found necessary to

## STEP BY STEP

(Continued from previous page)

the power being expended is exactly one watt.

Because of the relation between E, I and R given by Ohm's law, power in watts can be defined in two ways additional to the formula given above. From Ohm's law we know that

$I = \frac{E}{R}$ . Substituting in the equation

for power given above, we obtain

$$W = \frac{E \times E}{R}$$

Thus,  $W = \frac{E^2}{R}$ .

Again, as  $E = IR$ ,  $W = I \times IR$ . Or,  $W = I^2 R$ .

### Some Practical Problems

Set-builders are chiefly concerned with power in choosing resistors to carry a certain current safely. Supposing a 450-ohm resistor is required to pass a current of 50 milliamps, what should be the watts rating of the resistor? In this instance, the formula  $W = I^2 R$  is used. From it we have  $W = \frac{50}{1000} \times \frac{50}{1000} \times \frac{450}{1}$  (remembering that milliamps must be divided by 1000 to bring them to amps. to make the calculation correct). This gives  $W = 1.125$  watts, and to ensure an adequate margin of safety, a 2-watt resistor should be chosen.

If the voltage drop across the resistor is required, it can be found

$$\text{from } E = \frac{50}{1000} \times \frac{450}{1} = 22.5 \text{ volts.}$$

Next month: Direct and Alternating Currents.

set may be used with only a short length of aerial and still give good results. When wiring the aerial coil be careful not to earth the bottom of the secondary, as if this is done the AVC will be shorted out.

The tuning condensers are ganged, but two separate single gang condensers could be used if desired, in which case the exact capacity would not be very critical. The only disadvantage of this arrangement is that there is an extra control. When a ganged condenser is used with commercial coils, be sure it is the correct capacity to match the coils or else it may not track.

Connections to the tube are quite easy and the only thing to watch is to keep R.F. and A.F. leads apart as much as possible. In a few instances it may be necessary to shield the tube, but this will depend upon the individual case.

A bias of 9 volts is necessary for the pentode and this may either be

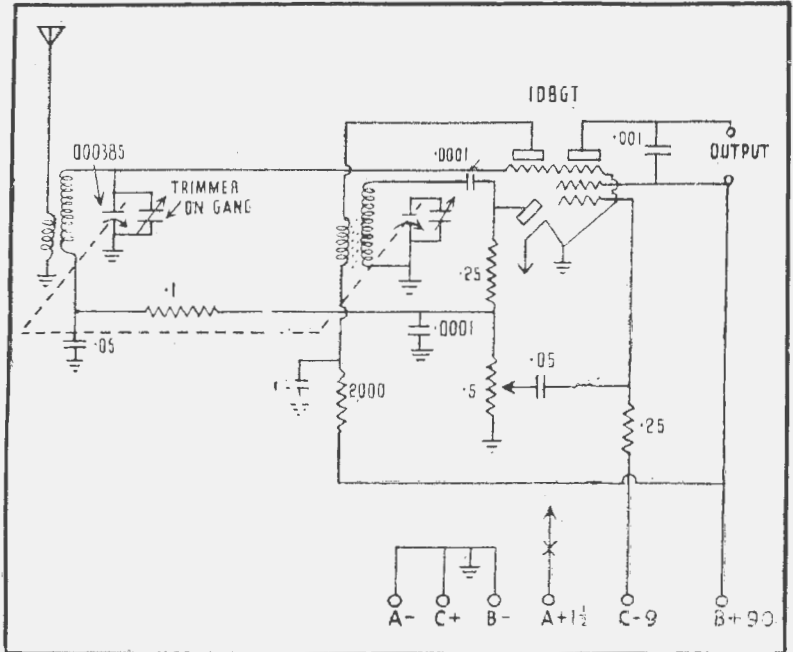
prevent parasitic feedback.

The by-pass condenser between B+ and earth is given at .25 M.F., but a larger value than this will do no harm, in fact, to do the thing properly, a 16 M.F. would be best of all.

No special chassis dimensions are given because individual constructors will vary as to their choice. If the set is to be used as a portable it may be built into a very compact unit indeed. In this case the aerial coil may be removed from its shield to save space, but leave the R.F. coil as it is.

Either headphones or speaker may be used with this set, although it was originally designed for use with phones and any convenient piece of wire as an aerial. With a good speaker and aerial-earth system the results are surprising, and the AVC helps to overcome fading.

There is plenty of room for experiment with this set, including short wave but as yet this has not been tried on the original model.





**Wireless alone can  
meet the exacting  
needs of communication  
for Mobile Units...**

**INSTANT \* CONSTANT  
CERTAIN**

**AUSTRALIAN-MADE**

**RADIOTRON\***

**RADIO VALVES**

**\*  
STANDARD TO ARMY TRANSMITTERS & RECEIVERS**

# Shortwave Review

CONDUCTED BY

L. J. KEAST

## NOTES FROM MY DIARY

### Winter-time is Daytime

Even if the weather is not indicative of winter, the B.B.C. about this time of the year make the suggestion by an alteration in the Pacific schedule. Since April 19, they open up this service at 2.57 p.m. instead of 4.15 p.m. and close at 6.15 whereas formerly they continued till 8 p.m.

The Eastern service now opens at 8.45 p.m. with interesting announcements and at 9 the news is read by Robert Harris, Pat Butler or Derrick Prentice. I have given more information under "Loggings" than is usual but with the great number of occasions on which they broadcast in foreign languages, it will assist readers in checking their sheets.

Listeners will find from now on, daylight signals will improve very rapidly, in fact it may be possible, probably before the next issue of "A.R.W." is on sale to listen to London and Europe right throughout the day. By the same token, evening signals will be zizzy in some instances.

Yes, winter-time is daytime for overseas reception.

### Winter-time is 7.20 p.m.

This sounds like a contradiction of the above paragraph, but with the

entry of the U.S.A. into the war we met William Winter through KGEI, 'Frisco, and his talks were most interesting. Evidence of this is shown by the A.B.C., who at 7.20 p.m. on

## HELP WANTED

### Location and call sign unknown,

15,075kc, 19.9m  
Has been heard for several weeks from about 8 p.m. till 9.50 p.m. or so. Plays some records night after night and at intervals announces five times: "ABC." Is undoubtedly a test being conducted—probably a Jap. Signal is very strong—drifts a little and from 9.30 is often overpowered by morse. First heard by myself on 16th April.—Ed.  
Dr. Gaden telegraphed me. He was hearing a stranger on approximately 20 metres and thought call sign sounded like KET. Another report heard ABC called several times on 18.75 metres, while Mr. Hooper, of Wahroonga, figured he heard coll on 17 metres.

### Z—, South Africa

Mr. Condon of South Australia reports hearing a station around 6.30 a.m. on approximately 50.32m. Plays popular dance numbers. English announcements. S.A.B.C. Station. B.B.C. news at 6.45 a.m., closes 7 a.m.

Saturdays put over a talk by Winter, taken by radiophone earlier in the day—result, excellent transmission and from "Ladies and Gentlemen, how do you do." is most informative.

## Listen and Talk

I was very touched by the reference Mr. Ray Simpson, S.W. Editor of "Radio and Hobbies" made to our AWDXAW Club in May issue of his magazine. There has always been a friendly co-operation between "R.&H." and "A.R.W." I know Ted Whiting who has taken up the reins now that Mr. Simpson has enlisted, and he can feel assured of any help I can give in the interests of our mutual hobby.

I am sure all members of the AWDXAW club join with me in congratulating Mr. Whiting and wishing Ray best of luck.

With this ace listener away it behoves every member to not only listen but to talk or in other words write about what they heard and where and when. Remember only a very small number send in reports, in fact one could be pardoned for coining Mr. Churchill's famous reference to the R.A.F. "Never before have so many owed so much to so few." Your report need not be a long one, just mention anything unusual.

An instance of interest in short-wave listening is shown by Mr. Mitchellhill of Muswellbrook who, still in hospital following an operation, used an improvised receiver to keep in touch with things overseas and with commendable thoughtfulness sent a list of his loggings.

## Hong Kong

I read where someone was asking the call-sign of the station heard on the wavelength of our old ZBW-3, Hong Kong.

I figure the letters JTHK as used by the "A.B.C. Weekly" fits the bill as JTHK could stand for Japanese Territory, Hong Kong. We might prefix JTHK with another T for Temporary Japanese Territory.

## AW720DX

We welcome a new member, Mr. T. L. Hooper of Wahroonga, who sends in some interesting loggings.

### Brief mention:

On Saturday, 2nd May, at 8.50 p.m. heard sports commentary by Bill Stern; Station WCRC, New York, 11,837kc., 25.3 metres. Excellent signal and at 8.59 p.m. we were invited to have a seat in the grandstand again next week and Bill Stern says "Goodbye." At 9 p.m. C.B.S. announcement: "Reports on quality of test transmission would be appreciated by Columbia Broadcasting System, New York, U.S.A." Then followed musical programme by Eileen Gerard.

CBFY, Montreal, who are now on 25.54m were heard on 30th April at 10.20 p.m. in "morning devotion." Excellent signal.

## ALL-WAVE ALL-WORLD DX CLUB

### Application for Membership

The Secretary,  
All-Wave All-World DX Club,  
117 Reservoir Street, Sydney, N.S.W.

Dear Sir,

I am very interested in dxing, and am keen to join your Club.

Name .....

Address .....

(Please print both plainly) .....

My set is a .....

I enclose herewith the Life Membership fee of 3/6 (Postal Notes or Money Order), for which I will receive, post free, a Club Badge and a Membership Certificate showing my Official Club Number.

(Signed) .....

(Readers who do not want to mutilate their copies can write out the details required.)



WCBX, New York, 15,270kc, 19.64m  
 Good signal at 9.32 p.m. Robert Taylor and Barbara Stanwyck in play sponsored by company advertising chrysanthemum plants.

Heard Radio Saigon, 25.47m say the other night "Roy Hallett of Sydney requested some time last year 'Over the Rainbow' so here it is again." They played it so take a bow, Roy.

VUD-3, Delhi, 19.63m, are being heard at surprisingly good strength around about 8.30 p.m. Speak a lot of Hindustani, but All India Radio, of Delhi, is mentioned quite often.

**NEW STATIONS**

**Radio Metropole**, Location Unknown  
 11,740kc, 25.56m  
 A definitely pro-Fascist station heard in the Ukrainian language and occasionally Russian from 1.15 to 1.25 a.m. (Probably Japanese operated).

**ZNB**, Mafeking ..... 5895kc, 50.90m  
 I don't think this is actually a new station, but it is new to our columns. Mr. Perkins reports this as being heard in parallel with ZRH, Johannesburg, at 6.45 a.m.

**Deutscher Volkssender**, Location Unknown  
 15,310kc, 19.60m  
 This station whose call sign is "German People's Transmitter" is anti-Fascist and is heard in German from 12 to 12.20 a.m. At 4 a.m. the same station is heard on 32 metres.

**Brief Mention**

The Sudeten German Freedom Radio has now moved from 19.60m to 20.15m and transmission 1 is heard from 9.30 to 9.50 p.m. Transmission 2 is heard on 30.36m from 4 to 4.45 a.m.

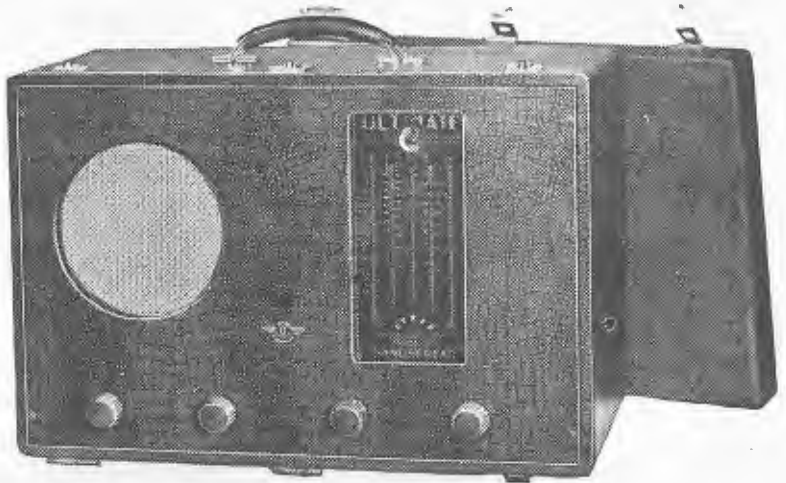
XGOI at 10 p.m. says: "Here is XGOI, Shanghai, China, on 9.66mc. and 9.3mc." Signal on 31.06m is R7 to 8, but on 32.26m is only faint, say R4-5. News in English is given at 10.10 p.m.

At 9.40 p.m., "Hullo everybody, here is Radio Centre Moscow, transmitting on 38.61 and 40.6 metres. I was listening on 31.36 and 25.24 metres, but could find no trace on their claim.

Talking of Russia, Khabarovsk on 50.76m gives the same programme as 31.36m nightly, excepting from 9 to 9.30 p.m. and 10.30 p.m. to 11.15 p.m., in between, from 10 p.m. to 10.15 p.m., you will hear Yiddish — not Hebrew — Yiddish.

Moscow or Kuibyshev is heard on 22.87m at 8.45 p.m. and on 24.61 at 9-10 p.m., while at 10.45 p.m. English news is heard from Kuibyshev on 29.88 metres with an R7-8 signal.

And here is a new Russian station: Situated in Aschehabad or Askabad the capital of Transcaspian Territory, the name of the station is given at 9 p.m. and 10 p.m., but no call sign. Transmission is on 29.50 metres and Turkistan dialect is used. Do not confuse with Jap. station on 29.45m. Askabad is not heard on Saturday or Sunday.



**ULTIMATE 7 or 9 valve Multi-Wave  
 A.C. TRANSPORTABLE MODEL**

This model must not be confused with the usual small Portable battery-operated sets with their comparatively-limited sensitivity.

This set incorporates the identical full-sized chassis embodied in the "Majestic" Console with all its special features and refinements such as Band Spread Tuning on Short-wave Bands, and others, in an easily transportable form. This is achieved by means of a simply attached lid fitted with handle.

Power is immense, tone is superb, sensitivity is extreme, performance is almost unbelievable. Take it anywhere 240 A.C. current is available — dependability and satisfaction are assured under even the most difficult conditions. The ideal set for particularised work, for the hard of hearing, for reception rooms, halls, meetings, dances, etc. There's nothing like it on the market for convenience, appearance, durability, dependability and performance. Removal of front sliding lid instantly transforms this unique set into a most artistic-looking Montel Radio worthy of first place in any home. Particularly suitable for the Pacific Islands wherever 240 A.C. power is available. Specially protected against humidity and insects. Fully guaranteed in every way by "ULTIMATE" reputation.

**Cut out  
 this  
 Coupon  
 and post  
 to-day.**

**GEORGE BROWN & CO. PTY. LTD., 267 Clarence Street, Sydney.**

Please send me particulars of "ULTIMATE" Full Bandspread Receivers as advertised in "Australasian Radio World."

NAME .....

ADDRESS .....R.W



Sole Australian Concessionaires:

**GEORGE BROWN & CO. PTY. LTD., 267 Clarence St., Sydney**

**Victorian Distributors: J. H. MAGRATH PTY. LTD., 208 Little Lonsdale St., Melbourne**

# The MONTH'S LOGGINGS

ALL TIMES ARE AUSTRALIAN EASTERN STANDARD TIME

Further pressure on space makes it imperative to only record changes or items of outstanding interest. Enemy stations are only briefly referred to.

## AUSTRALIA

- VLG-6**, Melbourne ..... 15,230kc, 19.69m  
3.55 to 4.40 p.m., French session for Tahiti.  
4.55 to 5.25 p.m., for British Isles.
- VLG-7**, Melbourne ..... 15,160kc, 19.79m  
National Programme from 6.30 a.m. to 8.10  
a.m.; 12 noon to 3.40 p.m.; 7 p.m. to 7.18  
p.m. Could not be bettered when trans-  
mitting. (Mitchellhill).
- VLR-3**, Melbourne ..... 11,880kc, 25.25m  
Nat. Prog., 12 noon to 6.15 p.m.
- VLQ-2**, Sydney ..... 11,870kc, 25.27m  
8.40 p.m. to 9.15 p.m. for North-East Asia.  
2.55 p.m. to 3.40 p.m., for Western States  
of North America.
- VLR-8**, Melbourne ..... 11,760kc, 25.51m  
Nat. Prog. 6.30 a.m. to 10.15 a.m.
- VLG-3**, Melbourne ..... 11,710kc, 25.62m  
For Western States of N. America, 2.55  
p.m. to 3.40 p.m.
- VLQ**, Sydney ..... 9615kc, 31.21m  
R max. at 6.30 p.m.  
Programme for New Caledonia and French  
Oceania in French from 6.25 pm. to 7.25  
p.m.
- VLW-5**, Wanneroo ..... 9610kc, 31.22m  
For South-East Asia in Dutch, French and  
English from 11.15 p.m. to 1 a.m.
- VLQ-6**, Sydney ..... 9580kc, 31.32m  
For British Isles from 4.55 p.m. to 5.25 p.m.
- VLR**, Melbourne ..... 9580kc, 31.32m  
Nat. Prog., 6.45 p.m. to 11.30 p.m.
- VLG-2**, Melbourne ..... 9540kc, 31.45m  
9.25 p.m. to 10.10 p.m., for Eastern States  
of North America. For South-East Asia in  
Dutch, French and English, 11.15 p.m. to  
1 a.m.
- VLQ-9**, Sydney ..... 7250kc, 41.38m  
9.25 p.m. to 10.10 p.m. for Eastern States  
of North America.
- VLQ-4**, Sydney ..... 7220kc, 41.55m  
For Western States of North America, from  
12.25 a.m. to 1.10 a.m.

## OCEANIA

- Fiji:**
- VPD-2**, Suva ..... 15,160kc, 19.79m  
Schedule: 2 p.m. to 2.30 p.m.  
French session. Excellent strength. Have  
had no opportunity of checking this lately.
- New Caledonia:**
- FK8AA**, Noumea ..... 6130kc, 48.94m  
This country is well in the limelight and  
can be heard from 5.30 p.m. till 6.30 p.m.  
Would not be surprised, because of news-  
paper reference to happenings there, that  
longer programmes and perhaps English  
sessions will be heard

## AFRICA

- Algeria:**
- TPZ**, Algiers ..... 12,120kc, 24.76m  
Broadcasts Vichy-French programme at 7  
a.m. and again at 5.45 p.m.
- TPZ-4**, Algiers ..... 8960kc, 33.48m  
Vichy-French programme at 7 a.m.
- Bechuanaland:**
- ZNB**, Mafeking ..... 5895kc, 50.90m  
Mr. Perkins is first with this one. Says  
"Heard in parallel with ZRH at 6.45 a.m.  
Closes 7 a.m. Mr. Condon of Laura, South  
Australia, refers being heard weakly there.
- Belgian Congo:**
- OPM**, Leopoldville ..... 10,140kc, 29.59m  
Being heard weakly. Asking for reports.  
Closes at 5.45 a.m. with Belgian National  
Anthem.

- Egypt:**
- Radio Cairo**, Cairo ..... 5980kc, 50.17m  
Music till 6 a.m. News in English till 6.15  
a.m., when same News is given in French.  
Closes at 6.30 a.m.
- SUX**, Cairo ..... 7865kc, 38.15m  
Fair signal at 6 a.m. No English (Condon).

- Ethiopia:**
- , Addis Ababa ..... 9625kc, 31.17m  
From just after midnight till 1.30 a.m.

- French Equatorial Africa:**
- FZI**, Brazzaville ..... 11,965kc, 25.06m  
News in English at 5.45 a.m.  
Heard concluding News in English at 2 p.m.  
Sunday (Hallett). Heard at 4 p.m. in  
Free French programme.—Ed.

- Kenya Colony:**
- VQ7LO**, Nairobi ..... 6060kc, 49.5m  
2.15 to 5.15 a.m. News, 2.30 a.m. and  
4 a.m.

- Morocco:**
- CNR**, Rabat ..... 8035kc, 37.34m  
4 a.m. to 10 a.m. R5 at 7.38 a.m. (Per-  
kins).

- Portuguese East Africa:**
- Mozambique:**
- CR7BE**, Lourenco Marques ..... 9840kc, 30.48m  
News at 6 a.m. Closes 7.20 a.m. (Gaden).

- Portuguese West Africa:**
- CR6RA**, Luanda Angola ..... 9470kc, 31.68m  
Monday, Tuesday, Wednesday and Thursday,  
5.30 a.m. and 6.30 a.m.
- CR7BD**, Lourenco Marques ..... 15,250kc, 19.66m  
From 7-8 a.m. (Gaden).

- Senegal:**
- FGR**, Dakar ..... 9410kc, 31.88m  
Opens at 5.15 a.m. Signal now better.

- Transvaal:**
- ZRH**, Johannesburg ..... 6007kc, 49.95m  
Schedule: 1.30 a.m. to 7 a.m. News 5.30.  
News in Afrikaans at 5.45 a.m. B.B.C. News  
at 6.45. R5 at 6.45 a.m. with re-broadcast  
of B.B.C. news. (Perkins).

## AMERICA

NOTE: America is now on War Time, which  
brings the Eastern States within four hours  
of G.M.T. i.e. New York, 8 a.m.; London, noon;  
Sydney, 10 p.m.

- Central:**
- Costa Rica:**
- TIEMC**, San Jose ..... 11,900kc, 25.21m  
May just be heard after **XGOY** leaves the  
air.
- TIJMT**, San Jose ..... 11,900kc, 25.21m  
"Radio America Latina." Address: Apar-  
tado 849, San Jose.
- TIPG**, San Jose  
Opens at 10 p.m. (Condon).
- Nicaragua:**
- YNRS**, Managua ..... 8585kc, 34.95m  
"Radio Nicaraguense." Heard about 11 p.m.  
Weak and plenty of most interference.  
(Condon).

- Panama:**
- HP5A**, Panama City ..... 11,700kc, 25.64m  
Good at 4 p.m. (Ferguson).

- North:**
- WNBI**, New York ..... 17,780kc, 16.87m  
Carries same programme at 11.30 p.m. as  
on 19.81 but not quite so loud.—Ed.
- KGEI**, San Francisco  
"This is the United States of America broad-  
casting from the Fairmount Hotel in a  
round-the-world service." Transmitting on  
the . . . Various bands are mentioned,  
to suit the particular hour. Apart from News,  
some splendid talks are given. Excellent  
musical sessions are also given.  
15,330kc, 19.57m: News 11 a.m. and  
1 p.m. Closes at 2 p.m. Nearly mid-

day before pleasant signal at present.  
7250kc, 41.38m: Opens at 4 p.m. with  
News. Also News at 5, 6, 7, 9.30,  
10.30 p.m., 12.30 a.m. and 1.45 a.m.  
Excellent at 7 p.m. Talk on Japan at  
5 p.m. "Victory for China in Chinese"  
at 9.45 p.m.  
6860kc, 43.73m: Opens at 6 with News.  
News also at 7, 9.30, 10.30 p.m.,  
12.30 a.m. and 1.45 a.m. News in  
Chinese at 9.45 p.m. Very good sig-  
nal of 10.30 p.m. but may be spoilt  
by morse.

- WGEA**, Schenectady ..... 15,330kc, 19.57m  
Listen to "March of Time," 7 a.m. to 7.30  
a.m. Sundays. Closes at 8.30 a.m. with  
fair signal.

- WCBX**, New York ..... 15,270kc, 19.64m  
Very good signal at 11 a.m. with news  
(Condon). Very good at 9.14 p.m. Heard  
Robert Taylor and Barbara Stanwyck—Ed.
- WLWO**, Cincinnati ..... 15,250kc, 19.67m  
News at 7 a.m. and 3 p.m.

- WBOS**, Boston ..... 15,210kc, 19.72m  
News at midnight and 1 a.m.  
Mr. Perkins says news at 11 p.m.

- WNBI**, New York ..... 15,150kc, 19.81m  
Fairly good at 11.30 p.m., but better in  
news at midnight.—Ed.

- WRCA**, New York ..... 15,145kc, 19.81m  
News at Midnight.

- KKQ**, Bolinas ..... 11,950kc, 25.11m  
Heard at 4 p.m. when News from Fair-  
mount Hotel is given.

- WBOS**, Boston ..... 11,870kc, 25.27m  
Good at 9 a.m. in News.

- WBOS** ..... 25.26m  
Heard well at 9-9.30 a.m. in English  
(Gaden).

- WCRC**, New York ..... 11,830kc, 25.36m  
Irregular, but heard occasionally about  
5 a.m.

- WRUL**, Boston ..... 11,790kc, 25.45m  
Excellent signal every morning. News by  
Volney Hurd, "Christian Science Monitor,"  
at 7 a.m. Special session for Australia on  
Tuesdays, Thursdays and Saturdays at 7.15  
a.m. Closes at 8.25 a.m.

- WRUL**, Boston ..... 11,730kc, 25.58m  
R4 at 9 a.m.

- WLWO**, Cincinnati ..... 11,710kc, 25.62m  
Opens nicely at 8.30 a.m., closes 9.45 a.m.  
(Gaden). Opens again on 31.28 at 10  
a.m.—Ed.

- KJE-9**, Los Angeles ..... 10,750kc, 27.90m  
Opens about 1 a.m. (Perkins).

- WRUW**, Boston ..... 9700kc, 30.93m  
Opens at 6.50 a.m. Signal erratic at 9  
a.m.—Ed.

- WRCA**, New York ..... 9670kc, 31.02m  
8 a.m. to 7 p.m. News 4 p.m. and 6.45  
p.m. Now very good at mid-day.—Ed.  
R6-7 at 6.45 p.m. (Perkins).

- WLWO**, Cincinnati ..... 9590kc, 31.28m  
Opens at 10 a.m. with splendid signal.  
(Gaden). News at 10.30 a.m.

- WGEA**, Schenectady ..... 9,550kc, 31.41m  
In splendid form at 9.30 a.m. and R7 with  
news at 10.15 a.m. (Gaden).

- WGE0**, Schenectady ..... 9,530kc, 31.48m  
Only fair in mornings.

- KRCA**, "Frisco" ..... 9480kc, 31.65m  
News at 4 p.m. (Hooper). Talk at 5 p.m.  
(Mitchellhill) (Reports are asked for.—  
Ed.)

- KRCA**, San Francisco ..... 9480kc, 31.65m  
Opens at 2.15 p.m. with news. Also news  
again at 4 p.m., 5 p.m., 6 p.m., 7 p.m.,  
9.30 p.m., 10.30 p.m., 12.30 p.m.

- KJE-8**, Los Angeles ..... 9390kc, 31.94m  
Heard transmitting test programme with R7  
signal at midnight (Perkins).

- KEQ**, Honolulu ..... 7370kc, 40.70m  
Irregularly heard around 10 p.m. talking  
to U.S.A.

- KTG-3**, Los Angeles ..... 6920kc, 43.35m  
Heard closing on February 28 at 12.04 a.m.  
Gave location and frequency; said would  
return to air in one hour on 1750kc  
(Byard).

- Mexico:**
- XEQQ**, Mexico City ..... 9680kc, 30.99m  
Fair just after midnight. Best at 3 p.m.
- XEWV**, Mexico City ..... 9503kc, 31.57m  
Good in afternoon and at 11 p.m. (Per-  
kins).

**South:**  
**Argentina**  
**LRX**, Buenos Aires ..... 9660kc, 31.06m  
 Heard at R4-5 on 26th April at 8.30 p.m.  
 Heard on Good Friday around 9 a.m., when it was fair. (Condon).  
**LSX**, Buenos Aires ..... 10,350kc, 28.98m  
 Heard weakly on Good Friday at 9 a.m. (Condon). (On looking up my records, find note that this station was heard transmitting to U.S.A., April, 1941, at 9 a.m.—Ed.)  
**Brazil:**  
**PRE-9**, Fortaleza ..... 6105kc, 49.14m  
 Reported being heard around about 6 a.m.  
**PRA-8**, Pernambuco ..... 6010kc, 49.92m  
 Heard at 5.30 a.m.  
**Chile:**  
**CB-1180**, Santiago ..... 11,975kc, 25.05m  
 Heard at good strength at 2.30 p.m. in languages, etc. (Gaden). Splendid at 9.30 p.m.  
**Ecuador:**  
**HCJB** ..... 12,460kc, 24.08m  
 Appears to have regular schedule and signal is quite good. 9-10 a.m., noon to 1 p.m., 10 to 11.30 p.m. Very good in English at noon. (Cushen).  
**Peru:**  
**OAX4J**, Lima ..... 9340kc, 32.12m  
 Nightly at 11 p.m., Sundays at 2 p.m.  
**OAX5C**, Ica ..... 9540kc, 31.45m  
 This well known Peruvian station who has had many frequencies, is now heard at 3 p.m. on 9540kc. Slogan "Los ondas de Ica para tod el pais." ("The waves of Ica for all the country.")

**THE EAST**

**Burma:** .....  
**XYZ**, Rangoon ..... 6007kc, 49.94m  
 Heard for about an hour from 10 p.m.  
**China:**  
**XGQX**, Chungking ..... 15,190kc, 19.75m  
 News at 7.30 p.m. and also heard at 10 a.m. with news.  
**FFZ**, Shanghai ..... 12,068kc, 24.86m  
 Gives News in Russian at 8.30 p.m. Better signal lately. Heard opening weakly at 4.45 p.m. (Gaden). Talk in English at 9.15 p.m. At 8 p.m. French-English lessons.  
**XIRS**, Shanghai ..... 11,980kc, 25.02m  
 Excepting for morse, this Italian owned station has good signal. News at 9.15 p.m.  
**XGOY**, Chungking ..... 11,900kc, 25.21m  
 Note slight change in frequency. Good in early evenings. News at 8.15.—Ed.  
**XMHA**, Shanghai ..... 11,855kc, 25.3m  
 This Jap-controlled station, "Call of the Orient," gives news at 8.30 p.m.  
**XGRS**, Shanghai ..... 11,675kc, 25.7m  
 This German owned station still has a good signal nightly. News at 9.45 and 10.30.  
**XGOA**, Chungking ..... 9720kc, 30.86m  
 English News at midnight.  
**XGOI**, Shanghai ..... 9665kc, 31.04m  
 On Sundays appears to give news at 9.30 while at 9.15 on week days.  
**JTHK**, Hongkong ..... 9525kc, 31.49m  
 Heard from 8 p.m. (Jap-controlled). News at 11.10 p.m.  
**XLMA**, — ..... 9370kc, 32.02m  
 From 9 to 11 p.m. only fair. R3-4 at 10 p.m. (Perkins).  
**XGAP**, Peking ..... 6100kc, 49.18m  
 Opens at 11 p.m. in English.  
**XGOY**, Chungking ..... 5950kc, 50.42m  
 News at 9.30 p.m. and 11.30 p.m.  
**Portuguese China:**  
**CR8AA**, Macao ..... 6250kc, 48.00m  
 R5 at 10.15 p.m. (Byard).  
**XCEI**, Kuiming (Free China)  
 This station reported by Mr. Perkins in April issue, has also been heard by Dr. Gaden on 42.5m, when at 9.40 p.m. announcement in perfect English was made that XGEI was testing on 49.41, 31.25, 19 and 16 metres.  
**Caroline Islands:**  
 ..... 11,740kc, 25.55m  
 This Jap-controlled station, is said to be located in Palao, Caroline Islands, and uses 10 k.w. of power, hence excellent signal.  
 ..... 9565kc, 31.37m  
 Also said to be in Caroline Islands.

**French Indo-China:**

**Radio Saigon**, Saigon ..... 11,780kc, 25.47m  
 9.30 p.m. and 1.45 a.m. Closes at 2 a.m. Excellent in news at 8.15 p.m. and 9.30 p.m. (Mitchellhill).  
**Radio Saigon**, Saigon ..... 6188kc, 48.48m  
 Opens at 10 p.m. Loud signal. News 10.15 p.m. and 1.45 a.m., closes at 2 a.m.  
**Dutch East Indies:**  
**YDB**, Saerabaya ..... 9550kc, 31.41m  
 Splendid at 11.25 p.m. Dutch spoken (Gaden).  
**India:**  
**VUD-3**, Delhi ..... 15,290kc, 19.62m  
 News gives News at 6 p.m. Heard well at 8.30 p.m. (Gaden). Heard with an R6 signal at 9.37 p.m. (Perkins).  
**VUD-4**, Delhi ..... 11,830kc, 25.36m  
 In view of terrific interest in the East, News 10.30 p.m.  
**VUD-2**, Delhi ..... 9590kc, 31.28m  
 News 10.30 p.m. and 1 a.m. After news at 10.30, presents "Counter Attack." (Perkins).  
**Indian Freedom Station** ..... 9380kc, 31.98m  
 1 to 1.30 a.m. Now reported to be heard on 11,500kc, 26.09m from 1.35 a.m. to 1.55 a.m. Its anti-British attitude would, as Mr. Cushen suggests, class it as a Jap.  
**VWY**, Kirkee ..... 9045kc, 33.17m  
 Announcing as "Radio Francais libre d'orient" is heard at 3.30 a.m. Radiating programmes directed to Syria. (R. & H.).  
**VUD-2**, Delhi ..... 6130kc, 48.94m  
 Opens up at 11.15 p.m. News heard here also at 1.50 a.m.

**Japan:**

**JLU-4**, Tokyo ..... 17,790kc, 16.86m  
 News at 5.45 p.m.  
**JZK**, Tokyo ..... 15,160kc, 19.79m  
 Nippon calling U.S.A. at 3 p.m. (Mitchellhill).  
**JZJ**, Tokyo ..... 11,800kc, 25.42m  
 News at 7 p.m. and 10 p.m.  
**JZI**, Tokyo ..... 9530kc, 31.46m  
 Gives News at 7 p.m. and 1 a.m.  
**JYW**, Tokyo ..... 7257kc, 41.34m  
 Announced on March 29, "As from April 1, JYW will be discontinued, and programme will be heard on JZK, 19.79m."  
**JLG-4** ..... 15,105kc, 19.86m  
 Announcements and News at 8.55 a.m. Heard again at 12.10 p.m. in News for U.S.A.  
**JUZ-2**, Tokyo ..... 11,825kc, 25.37m  
 News at 10 p.m. and 12.30 a.m.  
**JIE-2**, Taiwan (Formosa) ..... 9695kc, 30.96m  
 Very good with news at 9.30 and 11.30 p.m. (Cushen).  
**JLG-2**, Tokyo ..... 9505kc, 31.57m  
 Talk on Indio in pidgin English at 10.45 p.m. (Gaden) R4 at 6.55 a.m. (Perkins).

**Malaya:**

**ZHJ**, Penang ..... 6095kc, 49.23m  
 Although English is heard till station closes at 9.45 p.m., remember Japanese-controlled.  
**Manchuria:**  
**MTCY**, Hsinking ..... 11,775kc, 25.48m  
 Heard at 4.15 p.m.  
 ..... 31.35m  
 Undoubtedly the old **KZRM**. News at 4.30 p.m.  
**MTCY**, Hsinking ..... 9545kc, 31.43m  
 News at 7 a.m.  
**MTCY**, Hsinking ..... 6125kc, 48.98m  
 Heard nightly.

**Philippines:**  
**KZRC**, Cebu ..... 6100kc, 49.18m  
 The only Philippine station left under old regime and still being heard.  
**KZRH**, Manila ..... 9640kc, 31.12m  
 Now back on air under Japs. News at 11.30 p.m. and 11.45 p.m.  
**KZRF**, Manila ..... 6140kc, 48.86m  
 News at 10.15 p.m. Closes at 11 p.m. and opens again at 11.15 p.m. (Gaden) (Jap.-controlled of course.—Ed.)

**Secret Philippine Station** ..... 9643kc, 31.11m  
 "The Voice of Freedom, broadcasting from somewhere in the Philippines," opens with News nightly at 8.30 p.m. in parallel with 48.94m also heard at 7.30 a.m. (Just afraid these two stations are now unfortunately silent.—Ed.)

**Thai:**

**HSP-5**, Bangkok ..... 11,715kc, 25.61m  
 News at 10.35 p.m.

**GREAT BRITAIN**

"This is London calling."  
 As is usual at this time of the year, London makes many changes in frequencies and schedules. The Pacific service now opens at 2.57 p.m. and closes at 6.15 p.m. while the Eastern service opens at 8.45 p.m. These transmissions will probably remain until October.

African service opens at 1.30 a.m., closes 7 a.m. Radio Newsreel (Pacific edition) is heard at 5 p.m.

**GRQ** ..... 18,030kc, 16.64m  
 'Too hard to enjoy.

**GRP** ..... 17,890kc, 16.77m  
 Eastern service 8.45 p.m.

**GSV** ..... 17,810kc, 16.84m  
 Opens at 8.45 p.m. in Eastern service.

**GSG** ..... 17,790kc, 16.86m  
 Will gradually fade out.

**GRD** ..... 15,440kc, 19.42m  
 Excellent signal in Eastern service opening at 8.45 p.m.

**GRE**, London ..... 15,375kc, 19.51m  
 Tuesdays and Fridays from 8.30 to 8.45 p.m. and at 11.30 p.m. on Wednesdays and Saturdays.

**GSF** ..... 15,140kc, 19.82m  
 Excellent transmitter at 9 p.m. Good in South American programme at 7.45 a.m.

**GRV** ..... 12,040kc, 24.92m  
 Special session for South America from 8.30 a.m. to 12.45 p.m. Opens at 4.45 p.m. Great strength.

**GSN**, ..... 11,820kc, 25.38m  
 Swedish at 3 a.m.

**GSD** ..... 11,750kc, 25.53m  
 Probably the most consistent of the B.B.C. transmitters and one of the earliest of the after-lunch stations. N. America service heard from 11 a.m. till 2.45 p.m. News at 2.30 p.m. Pacific service now opens at 2.57 p.m. and is heard till 6.15 p.m.

**GRG** ..... 11,680kc, 25.68m  
 Used in African service. Weak towards day-break.

**GRH** ..... 9825kc, 30.53m  
 Another transmitter used in N. America service. Closes at 2.15 p.m.

**GRX** ..... 9690kc, 30.96m  
 3-4 a.m. French, German, Dutch; English 6 a.m., but getting weak then.

**GRY** ..... 9600kc, 31.25m  
 Heard in afternoons.

**GSC** ..... 9580kc, 31.32m  
 Used in special session to North America. Audible from 11.30 a.m. till closing at 2.45 p.m. News at 2.30 p.m.

**GSB** ..... 9510kc, 31.55m  
 Good afternoon station for Pacific service 2.57 to 6.15 p.m.

**GRU** ..... 9450kc, 31.75m  
 Excellent towards midnight.

**GRI** ..... 9515kc, 31.86m  
 Not sure of schedule but heard occasionally around 9.30 p.m. Often very noisy.

**GRJ** ..... 7320kc, 40.98m  
 Splendid at 5.45 a.m. (Gaden).

**GRM** ..... 7250kc, 41.38m  
 African service 1.30 a.m. to 2.15 a.m.

**GRK** ..... 7185kc, 41.75m  
 Home service, but often audible here early mornings and again late afternoon.

**GRS** ..... 7065kc, 42.49m  
 Reliable transmitter for Pacific service 2.57 p.m. to 6.15 p.m.

**GRN** ..... 6194kc, 48.43m  
 Good at 6.20.

**GRO** ..... 6180kc, 48.54m  
 Another of the African transmitters and in early mornings.

**GRW** ..... 6145kc, 48.82m  
 Heard from after midnight and good signal at 6 a.m.

**GSL** ..... 6110kc, 49.10m  
 Heard morning and evening in home service.

**GRR** ..... 6080kc, 49.34m  
 News at 5 a.m. Good signal at 6 a.m.

**GSA** ..... 6050kc, 49.59m  
 Spoilt at 5.45 a.m. by terrific interference.

## EUROPE

**Bohemia:**  
**DHE4A**, Prague ..... 11,840kc, 25.34m  
 Heard at 6.30 a.m. Can be identified by old Czechoslovakian nine-note signal. No English.

**France:**  
**Radio Vichy**, Vichy ..... 15,245kc, 19.69m  
 Delightful at midnight. (Gaden).  
**Radio Vichy**, Vichy ..... 11,880kc, 25.25m  
 Heard opening at 5.45 p.m. Also good at 8.30 a.m. (Hallett).  
**Radio Vichy**, Vichy ..... 9520kc, 31.51m  
 Closes at 5.30 p.m. (Perkins).  
**Paris Mondial**, Vichy or Paris, 6200kc, 48.39m  
 Heard at 5 a.m. Good signal.

**Germany:**  
**DJR**, Berlin ..... 15,340kc, 19.56m  
 Listen to "Arzac Tattoo" on Saturdays at 10.15 p.m. As recommended tuned in—very interesting. (Hooper) News in Dutch at midnight.  
**DJQ**, Berlin ..... 15,280kc, 19.63m  
 7-8 at 3.45 p.m. (Perkins).  
**DJB**, Berlin ..... 15,220kc, 19.74m  
 News at 3.30 p.m., also news at 11.30 p.m.  
**DJL**, Berlin ..... 15,110kc, 19.85m  
 Lord Haw Haw 10.30p.m. News 11.30 p.m.  
**DZH**, Berlin ..... 14,460kc, 20.75m  
 Have been heard at 1 p.m. in programme for Sth. America.  
 —, Berlin ..... 12,775kc, 23.48m  
 At 12.30 a.m. announces in English "This is Berlin calling," and then gives News in Hindustani.  
**DZE**, Berlin ..... 12,130kc, 24.73m  
 Good from 2 to 3 p.m.  
**DJP**, Berlin ..... 11,855kc, 25.31m  
 Good signal in afternoons, late evening and early morning.  
**DXR**, Berlin ..... 11,760kc, 25.51m  
 Good at 3.15 p.m. Also heard at 6 a.m.  
**DXC-2**, Berlin ..... 11,740kc, 25.55m  
 News at 3 p.m. Followed by "Triple B" or B.B.B. programme. Very funny. (Gaden).  
**DZC**, Berlin ..... 10,290kc, 29.15m  
 Good at 1.30 p.m.  
**CJW**, Berlin ..... 9650kc, 31.09m  
 "Ghost Voice" can be heard nightly in German between 11 and midnight. "Ghost Voice" was also heard on 26th April at 9.30 p.m. News at midnight. (Hooper). Good at 1.30 p.m.  
**DXZ**, Berlin ..... 9570kc, 31.35m  
 News and talk at 3.30 and 4.30 a.m.  
**DJA**, Berlin ..... 9560kc, 31.38m  
 Fair signal at 1.30 p.m.  
**DXM**, Berlin ..... 7270kc, 41.27m  
 News at 2.30 a.m., 4.30 a.m. and 5.30 a.m.

**DXJ**, Berlin ..... 7240kc, 41.44m  
 News at 3.30 a.m., and in German at 4 a.m.  
**DXX**, Berlin ..... 6140kc, 48.86m  
 News in English at 6.30 a.m. Very nice signal (Gaden).  
**DWX**, Berlin ..... 6130kc, 48.95m  
 This new German gives English News at 4.30 a.m.

**Holland:**  
**PCJ-2**, Huizen ..... 15,220kc, 19.71m  
 This German-controlled station announces at 9.45 p.m., "Here is Holland calling." News follows and again at 10.45 p.m. Just before opening with music at 9.30, beautiful harpischord effect is heard.—Ed. Heard at 10.30 p.m. free of swirling noise (Condon).  
**PCV**, Amsterdam ..... 18,070kc, 16.6m  
 In parallel with **PCJ-2**.

**Italy:**  
**Rome:**  
**2RO-17**, ..... 19,590kc 15.37m  
 Russian at 10.30 p.m.  
**2RO-6**, ..... 15,300kc, 19.61m  
 Programme for North America closes at 3.50 a.m. Good in News at 8.20 a.m. and terrific signal in News at 5.20 p.m.  
**2RO**, ..... 14,760kc, 20.33m  
 Russian from 1.15 to 1.30 a.m. and from 5.15 to 5.30 p.m.  
**2RO-**, ..... 11,950kc, 25.10m  
 Think this is the station Dr. Gaden is hearing in French at 3.45 p.m., closed at 4.45 p.m.—Ed. Also heard in foreign languages at 3.30 a.m.  
**2RO-4**, ..... 11,810kc, 25.40m  
 News at 7.12 a.m. followed by names of prisoners of war at 7.25 a.m. Close at 7.30 a.m. and re-open at 8.20 a.m. (Mitchellhill).  
 —, ..... 11,695kc, 25.65m  
 Announces "Here is Italian Broadcasting Station," and news in Russian is given at 5.15 p.m. and 1.15 a.m.  
**2RO-?**, ..... 10,320kc, 29.07m  
 Also good signal at 3.40 a.m.  
**2RO-18**, ..... 9765kc, 30.74m  
 Good signal at 3.35 a.m.  
**2RO-18**, Rome ..... 9760kc, 30.74m  
 Very good at 2.30 p.m. (Gaden).  
**2RO-3**, ..... 9630kc, 31.15m  
 News in English for Australia at 5.20 p.m. Excellent signal (Hallett).  
 —, ..... 34.76m  
 "Here is Italian Broadcasting Station." News in Russian 12.15 to 12.30 a.m.

## Vatican City:

**HVJ**, ..... 15,120kc, 19.84m  
 Time of opening seems to vary, but generally around 4.30 p.m. and in Italian.  
**HVJ**, ..... 11,740kc, 25.55m  
 Prisoners-of-war announced at 5 p.m.  
**HVJ**, ..... 9660kc, 31.06m  
 Information re English prisoners-of-war at 3.10 a.m. (Perkins).  
**HVJ**, ..... 6005kc, 49.96m  
 Heard in English from 5.15 a.m. to 5.30 a.m. (Condon).

**Portugal:**  
**CSW-6**, Lisbon ..... 11,040kc, 27.17m  
 Talk in Portuguese from 3.30 to 3.45 a.m. Station closes, but heard again at 5 a.m. with talk at 6 a.m., closes 6.30 a.m.  
**CSW-7**, Lisbon ..... 9740kc, 30.8m  
 Opens at 6.40 with music.  
**CS2WD**, Lisbon ..... 6200kc, 48.38m  
 Heard as early as 9.30 p.m. All announcements in Portuguese, and closes with Portuguese National Anthem at 11 p.m. Also heard occasionally at 7 a.m.

**Roumania:**  
**Radio Bucharesti**, ..... 9255kc, 32.41m  
 News at 6.50.

**Russia:**  
 Transmission from either Moscow or Kuibyshev.  
 —, Kuibyshev ..... 15,230kc, 19.69m  
 U.S.A. programme at 10 p.m. Good morning session at 7.15. Also heard occasionally from 8.45 a.m. for about an hour.  
 —, Kuibyshev ..... 15,180kc, 19.76m  
 Good from 11 p.m. till midnight.  
 —, Sverdlovsk ..... 12,225kc, 24.54m  
 Russian at 12.30 a.m.  
 —, Sverdlovsk ..... 12,060kc, 24.88m  
 English from 11 p.m. to midnight.  
 —, Kuibyshev ..... 11,885kc, 25.24m  
 Not a clear signal but loud at 10 p.m. Calls Columbia Broadcasting System. Says: "This is Kuibyshev" and time check is given, (female announcer.) C.B.S. representative spoke at 10.10 p.m.  
 —, Askabad ..... 10,150kc, 29.50m  
 Name of station given at 9 and 10 p.m. But no call sign. This station must not be confused with Jap. station a whisper away. (See new stations).  
 —, Kuibyshev ..... 10,040kc, 29.88m  
 News of 3 p.m. and 11.30 p.m.  
 —, Moscow ..... 9585kc, 31.30m  
 News at 9.40 p.m. (Cushen).

**RV-96**, Moscow ..... 9520kc, 31.51m  
 News at 6.30 a.m., morse interference (Mitchellhill). Heard at 10 p.m. on April 8, "This is Kuibyshev calling N.B.C." Reporter spoke then another to C.B.S.—splendid signal. (Gaden).  
 —, Kuibyshev ..... 8050kc, 37.27m  
 English at 6 a.m. Swirling background noise, R4, fades at 6.30 a.m. (Mitchellhill)  
 —, Kuibyshev ..... 6115kc 49.08m  
 N.B.C. and C.B.S. talks to U.S.A. at 10 p.m. (Gaden) News at 9.45 p.m. (Cushen).

**RW-96**, Moscow ..... 6061kc, 49.5m  
 English at 10 p.m. but much better signal on 31.30m.  
 —, U.S.S.R. .... 5910kc, 50.76m  
 Great signal at 9.45 p.m. Closed at 10.15 p.m.—opened again later (Gaden).

**Siberia:**  
 —, Khabarovsk ..... 9566kc, 31.36m  
 Relays Moscow of 8 p.m. Heard in news at 10.07 p.m. (Perkins). See "Notes from My Diary."—Ed.)

**Spain:**  
**Radio Malaga**, Malaga ..... 7210kc, 41.61m  
 Good most morning. News in Spanish at 7 a.m. (Condon).  
**EAJ22**, Oviedo ..... 7140kc, 42.02m  
 Heard weakly at 7 a.m. relaying Radio Malago. Suffers from interference. (Condon).  
**Radio Mediterraneo**, Valencia, 70.35kc, 42.66m  
 Opens at 6 a.m. with march. Slogan, "Voz Espana." R4 at 7.35 a.m. (Perkins) Takes Radio Malaga, 41.61 from 7 a.m. to 7.20 (Condon).

## NOTICE TO DX CLUB MEMBERS

Members of the All-Wave All-World DX Club are advised that they should make a point of replenishing their stock of stationery immediately, as all paper prices have risen, and we expect that it will be necessary to increase prices by at least 25%.

Already it has been found necessary to abandon the log-sheets and club stickers. However, while stocks last, the following stationery is available at the old prices, as shown.

**REPORT FORMS.**—Save time and make sure of supplying all the information required by using these official forms, which identify you with an established DX organisation.  
 Price ..... 1/6 for 50, post free

**NOTEPAPER.**—Headed Club notepaper for members' correspondence is also available.

Price ..... 1/6 for 50 sheets, post free  
**ALL-WAVE ALL-WORLD DX CLUB, 119 Reservoir Street, Sydney**



**Switzerland:**  
**UER-3**, Schwarzenburg ..... 6165kc, 48.66m  
 Still heard of a morning with a musical programme and talks.

**Scandinavia:**

**Sweden:**  
**SvP**, Stockholm ..... 11,710kc, 25.63m  
 Now being heard from 4.40 p.m. till 5.30 p.m. Heard again in early morning about 4 o'clock.

**SBU**, Motala ..... 9530kc, 31.46m  
 Heard call sign at 5.30 p.m. (Gaden)

**Finland:**  
**OFE**, Lahti ..... 11,785kc, 25.46m  
 Heard in late afternoon. News at 2.45 a.m. and 4.15 a.m.

**OFD**, Lahti ..... 9500kc, 31.58m  
 Also heard in late afternoon and at 6 a.m. Gives news at 4.15 a.m.

**MISCELLANEOUS**

**Canada:**  
**CBFY**, Montreal ..... 11,745kc, 25.54m  
 Heard at good strength about 10.30 p.m. Note change in frequency. Heard morning devotion at 10.20 p.m. Had call sign at 10.30 p.m.—Ed.  
 News at 10 p.m. (Hooper) Only fair at midnight (Gaden).

**CFRX**, Toronto ..... 6070kc, 49.42m  
 Opens around 9.30 p.m., but best at midnight.

**CJCX**, Sydney (Nova Scotia) ..... 6010kc, 49.92m  
 Reported fair at 10 p.m.—but not at Carlingford—Ed.

**CBRX**, Vancouver ..... 6160kc, 40.7m  
 This is a new one opening at 12.30 a.m.—see New Stations.

**Iran:**  
**EQB**, Teheran ..... 6155kc, 48.74m  
 News at 4.50 a.m.

**Turkey:**  
**TAP**, Ankara ..... 9465kc, 31.70m  
 News at 4.15 a.m., closes at 6 a.m.

**Location Unknown:**

..... 15,360kc, 19.53m  
 Transmitter of the friends of the S.A. (S.A. equals German abbreviation for Storm Troops). Another anti-Fascist station, location unknown, heard in German between 8.30 and 9 p.m.

..... 15,310kc, 19.60m  
 No call sign but this anti-Fascist station is heard from 9.30 to 9.50 p.m. in German.

**"Deutscher Volkssender"**, ..... 15,310kc, 19.60m  
 This "German Peoples' Transmitter" whose location is unknown and uses German only from 12 to 12.30 a.m. Definitely anti-Fascist, announces on 32 metres from 4 to 5.35 a.m.

**"Radio Metropole"**, ..... 11,735kc, 25.56m  
 This pro-Fascist station talking in Ukrainian and Russian is heard from 1.15 to 1.25 a.m. (Most likely a Jap.)

..... 10,525kc, 28.50m  
 This anti-British station has now been heard on this frequency from 12.30 to 12.53 a.m. At 12.53 a.m. announcer says: "We are now signing off. Don't forget to listen on 9650kc at this is Broadcasting station."  
 (Can someone fill the blanks?—Ed.)

..... 9880kc, 30.36m  
 Sudeten German Freedom Station announcement in German or Czech ("Sudeten Deutsche Freiheits Station") 4 to 4.25 a.m. Czechoslovakian, 4.25 to 4.45 a.m. German.

..... 9750kc, 30.77m  
 This Free French station heard signing at 3.30 p.m. Good strength. (Cushen).

**European Revolutionary Station**  
 9640kc, 31.12m  
 Invariably announce they are on 31.20m. Heard every morning from 4 a.m.

**Arabia:**  
**ZNR**, Aden ..... 12,110kc, 24.76m  
 R3 at 3.40 a.m., closed 3.45 (Perkins).

(Continued on page 26)



# FOR BEST RESULTS

—SENSITIVITY

—SELECTIVITY—

RELIABILITY—

## USE ONLY MULLARD

THE CHOICE OF BRITAIN'S  
 BETTER RADIO MANUFACTURERS!  
**AND AUSTRALIA'S TOO!**

**Mullard** THE MASTER  
**RADIOVALVE**

Mullard-Australia Pty. Ltd., 367-371 Kent Street, Sydney, N.S.W.

Telephone: MJ 4688



# SPEEDY QUERY SERVICE

Conducted under the personal supervision of A. G. HULL

**"Ex-ham" (Newcastle) enquires about the use of transmitting gear, as suggested in the latest (March) issue of "Q.S.T."**

A.—Yes, we noticed the article and appreciate it as being most interesting. We would not, however, accept the responsibility of recommending our readers to dabble in such matters as we feel sure that they would run foul of the radio inspectors sooner or later. In the U.S. they have definite rules which were introduced to cover the mystery gramophone outfits, and these rules can be watched, as suggested in the article. But, so far as we have been able to find out, there are no definite rules here to cover this subject, and it is pretty safe to assume that if such an outfit was heard on a broadcast receiver a report to the R.I. would follow, and then you would have to talk mighty fast to keep out of jail. For the benefit of those other readers who have not seen the article we might mention that the American hams, in an endeavour to keep active in spite of war restrictions, are suggesting to use induction trans-

mission over short distances, being allowed to do so provided that the signal strength does not exceed 15 microvolts at a distance equal to the wavelength divided by twice pi. For a suitable wavelength in the broadcast band this works out at a hundred yards or so.

In the same issue there is a suggestion for using low frequency communication transmission via the power lines, but again we hesitate to think that it would be a suitable field for experiment in our particular case, our line voltages being so much higher. Both schemes sound interesting but dangerous.



**P.E.P. (Torrenville, S.A.) has bought a speaker with a special transformer and finds that the original impedance has been scratched out and a new number scrawled on the transformer in pencil. He asks whether this is likely to have been done by a big speaker factory, also as to whether he can check the ratio by means of a multimeter and a small a.c. voltage.**

A.—It is quite possible that the scrawl on the transformer was done at the speaker factory, such things being done even in the best of circles. However, it is quite a sound scheme to test the actual ratio by comparing voltages. We suggest, however, that the best way would be to connect a 2½ volt filament winding across the voice coil leads, with the transformer removed from the speaker. Then by measuring the voltage across the input leads you should get the overall turns ratio. You will not need to allow for inefficiency. The turns ratio, squared, should give you a key to the impedance ratio.

The baffle in the December, 1938 issue should be quite suitable for your speaker.

## LOGGINGS

(Continued from previous page)

### Newfoundland:

**VONH**, St. John's ..... 5970kc, 50.25m  
It is just about a year ago, in fact in April issue, 1941, I mentioned Mr. Roy Taylor of Mosman had reported hearing this station at 11.30 p.m.

### West Indies:

**COCY**, Havana ..... 11,740kc, 25.55m  
Good at 3 p.m., fair at 7 a.m.—Ed.

**COK**, Havana ..... 11,620kc, 25.82m  
Good, morning, afternoon and night. English spoken frequently. Heard on most mornings around 7.30. (Condon).

**COCH**, Havana ..... 9435kc, 31.80m  
Heard at 9.45 p.m. (Gaden). Suffers from morse interference.—Ed.

**COCO**, Havana ..... 8700kc, 34.48m  
Heard nightly from 10 o'clock.

**COCQ**, Havana ..... 8850kc, 33.9m  
Can be heard morning, afternoon and night. (Condon).

**COHI**, Havana ..... 6455kc, 46.48m  
Heard around 10 p.m.

**COCQ**, Havana ..... 6375kc, 47.06m  
Fair from 9.40 p.m.

### Haiti:

**HH3W**, Port au Prince ..... 10,130kc, 29.62m  
Good in morning around 6 a.m.

### Dominican Republic:

**H12G**, Cuidad Trujillo ..... 32.28m  
Heard opening around 7.45 a.m., strength varies quite a lot. Plays Blue Danube Waltz on opening. Mainly a musical programme. (Condon).

A full range of all types of new and used Radio Test Equipment, including Oscilloscopes, Oscillators, Multimeters, V.T.V. Meters, Valve Testers, odd Meters, etc. We trade in and buy all types of Test Equipment. **DENHAM'S RADIO SERVICE**, Box 145, Maryborough, Queensland.

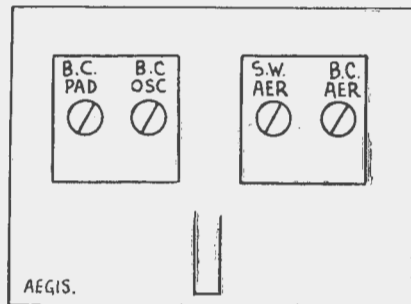
## VARIABLE I.F.

Builders of "The Acoustic Compensated Superhet with Variable Selectivity," "My Own" and other receivers using the Britannic intermediate transformer with the tertiary wiring, should beware of a minor point which makes a whale of a difference in results. Some of these transformers are supplied with an internal wiring arrangement which connects the secondary trimmer to earth, instead of directly across the winding as required.

An inspection of the transformer will soon reveal this connection as a bare wire soldered across to the frame bolt on the top of the unit, inside the can.

The solution to the problem is to remove this wire and re-connect according to the original diagram.

Receivers using the earthed transformer will be found to lack sensitivity and tone and yet all voltages check normally, presenting quite a problem to anyone looking for the cause of the trouble.



## THE "AEGIS" COLOUR CODE

The coil unit supplied with the "Little Companion" kit as marketed by J.H. Magrath Pty. Ltd., contains an "Aegis" coil kit with the following colour code:

Red — High Tension.

Orange — Osc. Grid.

Black — Aerial.

Yellow — Earth.

Green — Osc. Plate.

Brown — Control Grid.

The trimmers on the unit, looking at it from the front are (left to right) B.C. Padder, B.C. Oscillator, S.W. Aerial, B.C. Aerial.

It will be noticed that there is no oscillator trimmer for short-waves and no short-wave padder. Both these are unnecessary and the short-wave band should fall according to the dial.

Unobtainable in most places, but we can supply 1A7GT, 1A5GT, 1P5GT, 2A3, ...A3, 6L7G, 6L6G, 6N7, KT66, EK2P valves, and dozens of other types. Also hard-to-obtain odd type Valves, Transformers, Condensers, Dial Glasses, etc., both new and used. Write to us to-day for anything in Radio. **DENHAM'S RADIO SERVICE**, Queensland's Premier Radio Distributors, Box 145, P.O., Maryborough, Queensland.

## LITTLE COMPANION

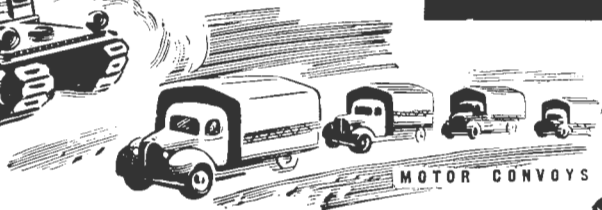
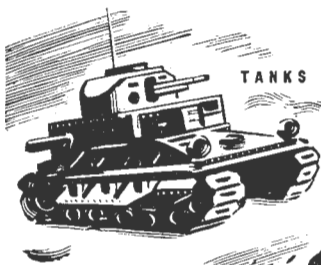
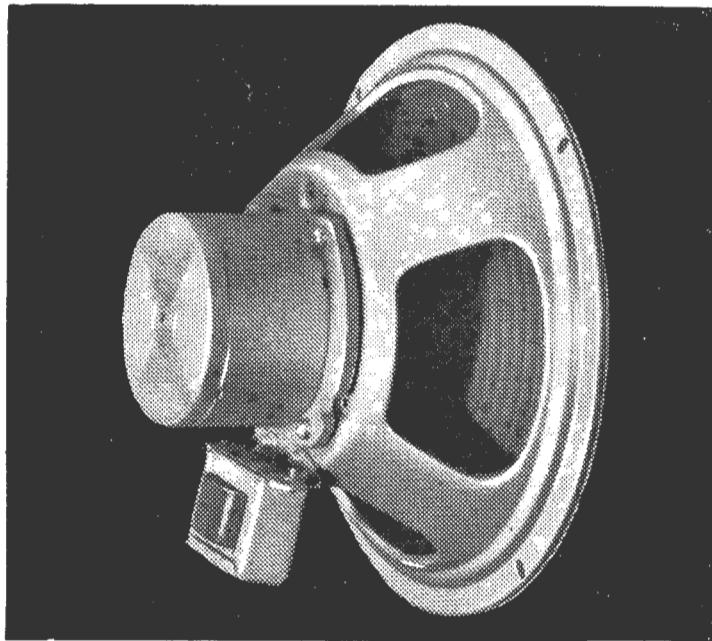
(Continued from page 5)

the simplest circuit arrangement can follow our diagram, fitting a single resistor of about 250 ohms, instead of the original 100 ohm resistor and 5,000 ohm potentiometer. We say about 250, for in actual practice it may be found possible with some sets to use a resistor of only 100 ohms, thereby getting maximum performance. With another set of identical appearance, it may be found that 100 ohms will give instability trouble, making it necessary to use a resistor of 250 or even 500 ohms. A little experimenting is the only way to discover the best valve to use.

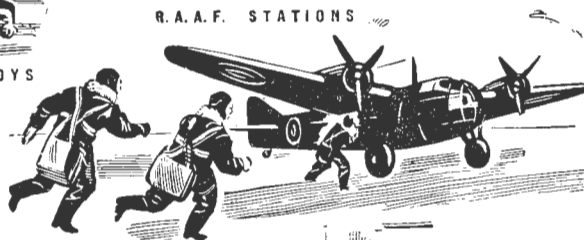
# "Orders are Orders!"

and they come  
clear and undistorted  
through

## **ROLA LOUD SPEAKERS**



R.A.A.F. STATIONS



IN communication equipment for the Army's mobile forces, at R.A.A.F. aerodromes and training centres, with A.R.P. organisations, and in ships of war, Rola Speakers are serving with unfailing efficiency.

Rola Loud Speakers are selected because of their outstanding performance and unique ability to withstand extremely hard service conditions. They are made in the widest range of models available in Australia — a type for every purpose. The best sets invariably embody Rola — the world's finest Loud Speaker.



A.R.P.



Listen to Rola Radio Newsreel, 7.15 to 7.45 p.m.  
E.S.T. from 3XY, 2UE, 5AD-PI-MU-SE.

**ROLA COMPANY (Australia) PTY. LIMITED**

The Boulevard, Richmond, Victoria and 116 Clarence, Street, Sydney

Nq 621.38405 AUS

# PLANNED FOR AFTER THE WAR

## Is YOUR Future Secure?

**AT THE END OF THE WAR — DON'T JOIN THE ARMY OF THE UNSKILLED. BECOME A TRAINED RADIO ENGINEER NOW, AND ASSURE YOUR FUTURE.**

Almost every day, you read in your papers, and hear over the Radio, urgent appeals for men with Radio knowledge.

This is a War of technicians — trained specialists, such as Radio men, are needed in thousands to fill vital positions in our armed forces. Does it not impress you, that the Peace to follow will, more than ever, demand trained specialists, particularly radio engineers? Radio is a young industry which has shown remarkable progress in the past few years. The future possibilities of Radio are unlimited — they spell security for a man who is trained.

**YOU CAN START RIGHT AWAY**

Of the many industries crying out for skilled men, none is more important to the nation than Radio. We offer you the opportunity to enter Radio, either in industry, or in the fighting forces.

**TRAIN AT HOME OR AT OUR BENCHES**

The Australian Radio College offers ambitious men a sound proven course in Radio Engineering! Sound, because it is the result of many years' successful operation; proven, because hundreds of ex-students owe their present jobs and success to the College. You can learn with equal facility in your own home (by means of our correspondence course) or attend night classes at the modern-ly equipped College workshops.

**PREVIOUS KNOWLEDGE UNNECESSARY**

You don't need a knowledge of Radio or Electricity. We'll give you all you need of both — you'll start at the beginning, building up knowledge just as carefully and systematically as you would lay brick after brick in its place when building a wall. You get the knowledge you want, presented in a manner that makes it easy to learn **FAST**.

**LOOK WHAT A.R.C. HAS DONE FOR THESE MEN**

"I would like to thank you for my Certificate, which I received quite safely. I would also like to thank you and the staff for your sincere co-operation while and since doing my course. I have also just received a position in the control room of one of our national stations, and like this work very much."

H. L., Hobart, Tas.

"I am writing to let you know that I, who took your service engineering course, am now in camp with the 1st Corps, H.Q. Sigs. of the 2nd A.I.F. I am in as a radio maintenance man and instrument (radio) mechanic. Because of the training I received from you I am able to take my place as engineer in a wireless station or mobile van radio station. Because of the training I have had I am able to pass tests set by the instructors where many fail, and it will probably mean two or three stripes for me as N.C.O. in charge of full transmitting equipment."

C.T.S., Melbourne

## AUSTRALIAN RADIO COLLEGE Pty. Ltd.

Corner City Road and Broadway, Sydney.

Phones: M 6391 and M 6392

**THIS VITAL BOOK IS FREE!**

You will enjoy reading every page of this fascinating book "Careers in Radio and Television." It is chock full of vital and interesting facts concerning the Radio Industry — shows pictures of engineers at work, and tells how you too can succeed in Radio. Post the Coupon Now for your free copy.



To Mr. L. B. Graham, Principal, Australian Radio College Pty. Ltd. Broadway, Sydney

Dear Sir,— I am interested in getting into the Radio and Communications Industry. Please send me, without obligation on my part, the free book, "Careers in Radio and Television."

NAME

ADDRESS